

# Duff burning from wildfires in a moist region: different impacts on PM<sub>2.5</sub> and Ozone

Aoxing Zhang<sup>1</sup>, Yongqiang Liu<sup>1</sup>, Scott Goodrick<sup>1</sup>, Marcus D Williams<sup>1</sup>

<sup>1</sup>Center for Forest Disturbance Science, US Forest Service, 320 Green St., Athens, 30602, United States

5 *Correspondence to:* Yongqiang Liu (yongqiang.liu@usda.gov)

**Abstract.** Wildfires can significantly impact air quality and human health. However, little is known about how different fuel bed components contribute to these impacts. This study investigates the air quality impacts of ~~of~~ duff and peat consumption during wildfires in southeastern United States, with a focus on the differing contributions of fine particulate matter less than 2.5 μm in size (PM<sub>2.5</sub>) and ozone (O<sub>3</sub>) to air quality episodes associated with the four largest wildfire events in the region during this century. The emissions of duff burning were estimated based on a field measurement ~~of a 2016 southern Appalachian fire~~. The emissions from the burning of other fuels were obtained from the Fire INventory from NCAR (FINN). The air quality impacts were simulated using a 3-D regional air quality model. The results show the duff burning emitted PM<sub>2.5</sub> comparable to the burning of the above-ground fuels. The simulated surface PM<sub>2.5</sub> concentrations due to duff burning increased by 61.3% locally over a region approximately 300 km within the fire site and by 21.3% and 29.7% in the remote metro Atlanta and Charlotte during the 2016 southern Appalachian fires, and by 131.9% locally and by 17.7% and 24.8% in the remote metro Orlando and Miami during the 2007 Okefenokee fire. However, the simulated ozone impacts from the duff burning were negligible due to the small duff emission factors of ozone precursors such as NO<sub>x</sub>. This study suggests the need to improve the modeling of PM<sub>2.5</sub> and the air quality, human health, and climate impacts of wildfires in moist ecosystems by including duff burning in global fire emission inventories.

Formatted: Font color: Auto, Pattern: Clear

## 20 **1 Introduction**

Wildfires, caused by natural factors or human activities, have a fundamental impact on air quality, human health, and climate. Wildfires contribute up to 40% organic carbon (OC) emissions in Europe, 42% in Asia, 64% globally, and dominate the regional particular matters (PM) concentrations over the major fire regions in Africa and South America (Granier et al., 2011; Diehl et al., 2012). Fires contribute 26.9% of total volatile organic compounds (VOC) emissions and 27.5% of PM emissions in the U.S. according to the 2014 US Environmental Protection Agency (EPA) National Emissions Inventory (NEI) (USEPA, 2017). Wildfires are large sources of atmospheric aerosols (Crutzen and Andreae, 1990; Bond et al., 2005; Bowman et al., 2009; Brey and Fischer, 2016), contributing 30% of the aerosol optical thickness (AOT) in Europe (Hodzic et al., 2007), more than 80% in the Amazon area during the fire season (Reddington et al., 2019), and 10% globally (Tosca et al., 2013). In the contiguous US during 2008 - 2012, fires contribute 11% of the total PM<sub>2.5</sub> concentrations (Wilkins et al., 2018).

30

Wildfires emit tracer gases including ozone precursors and therefore contribute to tropospheric ozone, a critical air pollution compound that adversely impacts human health (McKee, 1993). Ozone production has been detected in fire plumes (Goode et al., 2000; Jaffe et al., 2008). Wildfires ~~produce about~~ accounts for 3.5% of global tropospheric ozone production, though ozone production rates of individual fires vary with location, time, fuel type, combustion efficiency, meteorology, and local pre-  
35 existing atmospheric composition, etc. (Alvarado et al., 2010; Jaffe and Wigder, 2012). In the United States, when fires are present, 14% of simulated maximum daily 8-h average ozone concentrations surpassed 70 ppb (Wilkins et al., 2018), which is the standard from EPA.

40

High-severity fire events have frequently impacted metropolitan regions. For example, the smoke from the 2013 Rim Fire and wildfires during 2017 and 2018 in California, US was transported long-range and affected large urban areas (Liu et al., 2016; Navarro et al., 2016; Mass and Ovens, 2019; Brown et al., 2020). The smoke from the 2009 Attica forest fires decreased the surface solar irradiance levels by 70% in Athens, Greece (Amiridis et al., 2012). The 2017 Italian Alps fire had a significant impact on metro Torino, Italy (Bo et al., 2020). Similar fire events impacted urban air quality in other regions around the world  
45 (Shaposhnikov et al., 2014; Mallia et al., 2015; He et al., 2016; Cuchiara et al., 2017). In many regions around the world, including the U.S., wildfires have an increasing trend during recent decades in both the number and the area of total large fires (Yang et al., 2011; Dennison et al., 2014; Barbero et al., 2015;-). In addition, weather with high fire potential has appeared more frequently. (Yang et al., 2011; Jolly et al., 2015; Abatzoglou and Williams, 2016), leading to an increasing concern on their adverse impact on air quality (Singh et al., 2012; Goodrick et al., 2013; Liu et al., 2014; Zhang and Wang, 2016).

50

Negative impacts of wildfires on human health are devastating when firesmoke plumes are transported to populated metropolitan areas (Kunzli et al., 2006). Epidemiological studies have revealed fire emissions' contribution to PM<sub>2.5</sub> oxidative potential, which is related to respiratory and cardiovascular diseases (Verma et al., 2014; Yang et al., 2016; Fang et al., 2016).  
55 ~~Wildfires also interact with climate in terms of the atmospheric circulation, land cover change, terrestrial productivity, and radiative forcing~~ (Tosca et al., 2013; Yue and Unger, 2018; Zou et al., 2020). ~~Smoke aerosols have both positive and negative impacts on global radiative balance, depending on the absorbing and scattering contribution of aerosols, which contributes 40% of global radiative forcing uncertainties (IPCC, 2013).~~ During the fire events in northwestern U.S. during August-September, a regional mortality of 183 due to PM<sub>2.5</sub> exposure was estimated, in which 95% was contributed by fire emissions (Zou et al., 2019). Based on the U.S. respiratory hospital admissions and additional premature deaths during and after fire  
60 ~~events, the economic loss is \$11 – 20 billion due to short term exposures, and \$76 – 130 billion due to long-term exposures~~ (Fann et al., 2018).

65 Several datasets and three-dimensional atmospheric models have been used to understand the amount, transport, and physical  
and chemical processes of fire emissions (Liu et al., 2020; Pan et al., 2020). Some widely used global fire emission inventories  
include the Global Fire Emission Dataset (GFED) (Randerson et al., 2012; Giglio et al., 2013; Van Der Werf et al., 2017), Fire  
INventory from NCAR (FINN) (Wiedinmyer et al., 2006; Wiedinmyer et al., 2011), Global Fire Assimilation System (GFAS)  
(Kaiser et al., 2009; Kaiser et al., 2012), Fire Energetics and Emissions Research (FEER) (Ellison et al., 2014), and Quick Fire  
Emissions Dataset (QFED) (Darmonov and da Silva, 2013). Global atmospheric models such as the Community Earth System  
70 Model (CESM) were used to study wildfire smoke transport and interactions with land and atmosphere (Jiang et al., 2020;  
Zhang et al., 2020; Zou et al., 2020) and the GEOS-Chem model was used to evaluate the wildfire contribution to atmospheric  
chemistry (Lu et al., 2016). Regional air quality models, such as the Weather Research and Forecasting model with Chemistry  
(WRF-Chem) and the Community Multiscale Air Quality (CMAQ) model have higher spatial resolutions, thus have  
advantages when simulating fire smoke aging and regional plume transport (Jaffe et al., 2008; Lu and Sokolik, 2017; San Jose  
75 et al., 2017; Wilkins et al., 2018; Guan et al., 2020).

Emissions from duff burns are an important contributor to the global carbon cycle. Duff typically represents the detritus or  
dead plant organic materials fallen at the top layer of soil. Besides duff, peat is another burnable organic soil that typically  
represents the fermentation below the duff layer (Frandsen, 1987). “Organic soil” is often used to represent soil formed by  
80 plant and animal decomposition, including peat and duff. Duff, peat and organic soil were sometimes used interchangeably,  
and we focus on duff in this study. Temperate and boreal duff layers are well distributed in forests and swamps in North  
America, Europe and Asia (Wieder et al., 2006). Compared to the burning of above-ground fuel, duff burning can have a  
similar or larger amount of carbon emission, enlarging the regional and global effect from wildfires (Ballhorn et al., 2009;  
Reddy et al., 2015). The burning of the above-ground fuel and the below-ground organic soils may provoke each other in fire  
85 events (Rein, 2011). Ground-based studies have been conducted to estimate the carbon loss from temperate duff flaming or  
smoldering. Davies et al. (2013) surveyed the peatland smoldering in the Scottish Highlands, UK and estimated a  $17.5 \pm 2.0$   
cm burned depth of below-ground fuel and  $9.6 \pm 1.5$  kg m<sup>-2</sup> carbon loss due to smoldering. In North Carolina, US, the 1985  
Pocosin Lakes fire resulted in a carbon flux of 0.2 - 11 kg m<sup>-2</sup>, that varies with burned depth, vegetation type and burning  
severity (Poulter et al., 2006). Assuming 50% of the duff mass is carbon (Watts, 2013), this fuel loading results in a carbon  
90 loss of approximately 1.6 kg m<sup>-2</sup>. Watts (2013) estimated 4.18 kg m<sup>-2</sup> carbon release from the swamp combustion in the Big  
Cypress National Preserve in southern Florida, US. Duff and peat are a major reservoir of wetland ~~Besides duff, peat is another  
burnable organic soil that typically represents the fermentation below the duff layer (Frandsen, 1987).~~ Duff and peat are a  
major reservoir of swamp carbon and contribute 3% of global land cover (Gorham, 1991; Yu et al., 2010). The burning  
properties and emission factors of the below-ground organic soils, including duff and peat, are similar (Raaflaub and Valeo,  
95 2009; Urbanski, 2014). The air quality impacts from peatland burning are have also been evaluated in tropical peatlands in  
Indonesia (Page et al., 2002; Kiely et al., 2020).

100 However, the air quality impacts of emissions from duff fires are ~~verystill limited and~~ not well understood ~~over some regions~~ (Page et al., 2002; Hu et al., 2018). One of the reasons is the lack of the fire emission data (Ward et al., 2012), which is a large  
105 uncertainty source for simulations of the fire impacts on air quality. Satellite remote sensing is a very useful tool to obtain fire emissions with detailed global and regional coverage. The organic soil burning over tropical peatlands has been considered in GFED (Randerson et al., 2012; Giglio et al., 2013; Van Der Werf et al., 2017). Indonesia peat fire emissions are also updated and evaluated in FINN (Kiely et al., 2019). However, compared to above-ground fuel burning, duff emissions are not documented enough by satellite-based global fire emission datasets in forest ecosystems, partially due to the presence of  
110 overhead canopies. Another reason is that duff burning usually occurs during the ~~smolderingsmouldering~~ phase because of the relatively high soil moisture (Ottmar, 2014). ~~SmolderingSmouldering~~ often lasts over a long time. Also, the emissions do not rise to high elevations due to low heat release. Thus, the emissions, especially particles, have little impact on regional air quality in populated areas far from the source region.

110 Similar to many world regions (e.g. tropical forests in southeast Asia (Page et al., 2002) and temperate forests in the Great British Isles (Davies et al., 2013)), the southeastern US is a duff-rich region because of the high humidity and large forest coverage (Zhu and Evans, 1994; Gaffen and Ross, 1999). The warm and moist climate makes vegetation growth and falling  
115 leaves and branches decompose fast and therefore accumulate as deep duff, especially in the southern Appalachians (Ottmar and Andreu, 2007) and the Okefenokee swamp (Watts and Kobziar, 2012), which are located in the northern and southern portions of this region, respectively. This region has some unique features among all US regions in the contributions to the carbon cycling and regional air pollution. On one hand, most ~~of the~~ fires in the southeastern US are prescribed (~~planned~~) and conducted in weather where duff consumption is minimized (~~Yokelson et al., 2013~~ Waldrop and Goodrick, 2012). Thus, duff burn may be only a small contributor to total pollutant emissions in this region. On the other hand, there are large wildfires that occur under drought conditions and are close to populated areas, although the frequency and severity are usually small  
120 relative to those in the western US (Goodrick et al., 2013). Wildfires in the southeastern US usually occur in ~~springsspring~~ before the summertime rain season starts. Sometimes wildfires can occur in other seasons under drought conditions such as the southern Appalachians fire in fall 2016. As described above, duff burning usually occurs during smouldering phase, however, this situation is changing with more frequent occurrences of droughts, which increases the flammability of the duff layer (Hille and Stephens, 2005). Duff burn during flaming phase of the 2016 Rough Ridge Fire in the southern Appalachian,  
125 which occurred during a prolonged severe drought (Park Williams et al., 2017), was reported by fire managers and the related fuel consumption was measured (Zhao et al., 2019). The measured duff layer burned by the fire was 4.6 cm deep with 31.5 Mg ha<sup>-1</sup> (3.15 kg m<sup>-2</sup>) fuel loading, ~~accountingestimated to account~~ for approximately 60% of total PM<sub>2.5</sub> emitted from the fire. The simulations including duff emissions conducted by Zhao et al. (2019) indicated that the duff burn was a major contributor to the air pollutions in the nearby metro Atlanta. In contrast, a model simulation study on all major 2016 southern  
130 Appalachian fires that excluded duff burning resulted in an underestimation of PM<sub>2.5</sub> during the fire events (Guan et al., 2020).

Formatted: Not Superscript/ Subscript

The Okefenokee swamp experienced fires during the dry years of 2007, 2011, and 2017, each with much larger burned area than the total burned area from the 2016 southern Appalachian fires. The burning of the duff layer was reported during all three fire events in the Okefenokee region (The 2007 Big Turnaround Fire: [https://www.fws.gov/fire/downloads/fire\\_updates/BigTurnaround.FINAL.pdf](https://www.fws.gov/fire/downloads/fire_updates/BigTurnaround.FINAL.pdf), the 2011 Honey Prairie Fire: <https://www.wunderground.com/blog/weatherhistorian/the-great-okefenokee-swamp-fire-of-2011.html>; the 2017 West Mims Fire: <https://gatrees.org/wp-content/uploads/2020/02/Wildfire-Damage-Assessment-for-the-West-Mims-Fire.pdf>). However, it is not clear how much the duff burning from these fire events contributed to air pollutions in the populated areas.

140 The literature is still not conclusive on the differing impacts of duff burning on various air pollutants. The emission factors of duff are different from those of above-ground fuels (Yokelson et al., 2013; Urbanski, 2014; Hu et al., 2018; Kiely et al., 2019). For example, the temperate forest duff emission factor of nitrogen oxides (NO<sub>x</sub>) is 0.67 g/kg (Yokelson et al., 2013), more than 50% smaller than the conifer forest emission factors. However, the temperate forest duff emission factor of PM<sub>2.5</sub> is 50 ± 16 g/kg (Geron and Hays, 2013), which is more than twice of the PM<sub>2.5</sub> emission factors from conifer forests (13 - 23 g/kg) (Yokelson et al., 2013; Urbanski, 2014). Because NO<sub>x</sub> is a major precursor of ozone formation, these different emission factors potentially lead to a stronger PM<sub>2.5</sub> impact than ozone impact for duff burning.

150 The goal of this study is to investigate the contributions of duff burning from the largest wildfires this century in the southeastern US to regional air pollutions and the differences between PM<sub>2.5</sub> and ozone. The simulations of regional smoke transport were conducted based on the duff measurements from the Rough Ridge Fire (Zhao et al. 2019) and the global fire emission dataset from FINNv1.5. **The simulated concentrations of air pollutants were compared with those from observations, between burns with and without duff, and between PM<sub>2.5</sub> and ozone.** The results are expected to provide important implications for the needs in improving global fire emission inventories and understanding the contributions of duff and **petpeat** burnings in other world regions to regional air pollution.

## 155 2 Methods

### 2.1 Study region

The study region is the southeastern US, which comprises the states of Florida, Alabama, Georgia, South Carolina, North Carolina, Tennessee, Mississippi, and Louisiana. This region is dominated by a humid subtropical climate (Belda et al., 2014). The summers are typically long with high temperature and humidity, contributed by the water vapor transport from Bermuda High (Li et al., 2011). The winters are typically dry in peninsular Florida, but relatively wet in the mid-south, such as Tennessee and the northern Georgia and Alabama (Gaffen and Ross, 1999). The ecozones in the southeastern US include broadleaf forest over the Appalachian region in the west of North Carolina and South Carolina, and the north of Georgia, and mixed forest in the other regions including most Georgia and Florida (Bachelet et al., 2001; Blood et al., 2016). Hardwood and pine are major

above-ground fuels in the southeastern US (Ottmar and Andreu, 2007). Because of the sufficient light, and the regularly high humidity ~~and widely distributed deciduous trees that are located in wildlife refuges and regions that lack of prescribed burn removal~~, the duff layer is accumulated in the southeastern US and contributes as the potential below-ground fuel, especially in wildlife refuges or regions where deciduous trees are widely distributed with lack of prescribed burn removal.

The wildfire cases investigated in this study occurred in ~~two~~three areas. ~~One~~The first is the southern Appalachian Mountains in the northern part of the southeastern US. This area is located in the boundaries of Georgia, North Carolina, South Carolina, Tennessee, Virginia, West Virginia, and Kentucky. The Southern Appalachian region is deciduous forests dominated, with small proportions of evergreen forests and mixed forests. The main forest type is the hardwood oak forest (Southern Appalachian Man and the Biosphere, 1996). The ~~other~~second area is the Okefenokee Swamp located across the Georgia-Florida border. The 438,000 acres swamp is mainly covered by the Okefenokee National Wildlife Refuge. Cypress forests and scrub-shrub vegetation are the major vegetation types over the Okefenokee region, and the wetland is covered by a duff layer with a depth of up to 4.6 m (Url: <https://www.fws.gov/refuge/okefenokee/>, last access: November 17, 2020). The Okefenokee region is sensitive to rainfall. Under drought conditions, the region is vulnerable to wildfire. The third area is coastal eastern North Carolina. The ground forest fuels are rich of organic decomposition due to the moist and warm climate. There are many populated metros nearby in the west including Raleigh-Durham-Chapel Hill triangle. Smoke from fires in this area can be transported to affect these metros rapidly under easterly winds.

## 2.2 Fire cases

In this study, we investigated ~~four~~six wildfire cases (Table 1-), and the map of the fire cases over the studies regions shown in Fig. 1 and Fig. S2. The first case included 10 large fires from mid-October to December 2016 in the southern Appalachian mountains during an extreme drought (Konrad and Knox, 2017; Park Williams et al., 2017). The fires burned 91,191 acres of forest, caused losses of 14 lives and massive property loss (McDowell et al., 2017; Pouliot et al., 2017). The largest fires were the Rough Ridge Fire (34.88° N, 84.63° W, ignited on October 16, 27,610 acres burned), the Rock Mountain Fire (34.98° N, 83.52° W, ignited on November 9, 25,224 acres burned), and the Tellico Fire (35.28° N, 83.58° W, ignited on November 3, 14,172 acres burned). We denote this case as App16.

The ~~other~~next three cases occurred in Okefenokee in 2007, 2011, and 2017, respectively. We denote them as Oke07, Oke11, and Oke17. The 2007 Okefenokee mega wildfire was ignited in the Okefenokee Wildlife Refuge (30.67° N, 82.45° W) on April 16, and had burned more than 500,000 acres until late June (Fire Behavior Assessment Team, 2007). Protracted drought led to low water levels in the Okefenokee swamp and provided the condition of burning in a mix of shrub scrub, wetland prairies, duff, cypress and long-leaf pine forests. This fire remains the largest wildfire in the history of Georgia and Florida (Url: [https://www.fws.gov/fire/downloads/fire\\_updates/BigTurnaround.FINAL.pdf](https://www.fws.gov/fire/downloads/fire_updates/BigTurnaround.FINAL.pdf), last access: October 29, 2020).

200 The 2011 Honey Prairie Fire was ignited on April 30 under a severe drought, during which the Okefenokee Swamp water level was lower than that during the 2007 mega-fire ([https://www.fws.gov/refuges/news/HoneyPrairieFire\\_05112011.html](https://www.fws.gov/refuges/news/HoneyPrairieFire_05112011.html), last access: December 3, 2020). 147,065 acres were burned (Finco et al., 2012). The 2017 West Mims Fire was ignited on April 6 under an extreme drought and developed fast in early May (<http://www.gatrees.net/forest-management/forest-health/alerts-and-updates/Wildfire%20Damage%20Assessment%20for%20the%20West%20Mims%20Fire.pdf>, last access: December 3, 2020). 166,737 acres were burned. [Historical fire records from 19<sup>th</sup> century revealed the strong connection between drought and Okefenokee fires, leading to a ‘Okefenokee drought-fire cycle’](https://www.frames.gov/catalog/34075) (<https://www.frames.gov/catalog/34075>, last access: November 5, 2021). [Although the Okefenokee fires from 2007 to 2017 is more frequent than the historical mean, more information of the fire cycle change is needed.](#)

210 [The other two fire cases occurred in the coastal southeastern US. The 2008 Evans Road Fire was ignited to the south of the Pocosin Lakes National Wildlife Refuge, North Carolina on June 1, 2008 by lightning. 41,060 acres were burned](https://files.nc.gov/ncdeq/Air%20Quality/monitor/specialstudies/exceptionalevents/2008/Exceptional%20Event%20Evans%20Road%20Fire.pdf) (<https://files.nc.gov/ncdeq/Air%20Quality/monitor/specialstudies/exceptionalevents/2008/Exceptional%20Event%20Evans%20Road%20Fire.pdf>, last access: October 27, 2021). [The 2011 Pains Bay Fire was ignited in the FWS Alligator River National Wildlife Refuge in the coastal North Carolina, 29,400 acres were burned](https://www.geobabble.org/~hnhw/first/EWSNews/EWS_Fire_PainsBay_2011-0601.pdf) ([https://www.geobabble.org/~hnhw/first/EWSNews/EWS\\_Fire PainsBay 2011-0601.pdf](https://www.geobabble.org/~hnhw/first/EWSNews/EWS_Fire_PainsBay_2011-0601.pdf), last access: October 27, 2021). [Significant organic/ground fuels were burned during the two coastal fires, causing subsequent air quality impacts and health impacts \(Rappold et al., 2011; Tinling et al., 2016\). We denote these two fire cases as ER08 and PB11, respectively.](#)

## 215 2.3 Model simulations

### 2.3.1 Model

220 The model components and implementation procedure used for simulations are illustrated in Fig. 42. We used WRF-Chem version 3.9.1 (Grell et al., 2005; Fast et al., 2006; Powers et al., 2017) to simulate the aerosol, gas transport, and atmospheric chemistry over the southeastern US. The model has coupled gas-phase atmospheric chemistry (Wang et al., 2015; Zhang et al., 2016), aerosol optical properties (Barnard et al., 2010), and the new Thompson graupel microphysics scheme (Thompson et al., 2008). The radiation scheme is the Rapid Radiative Transfer Method for Global Climate Models (GCMs) (RRTMG) (Iacono et al., 2008; Mlawer et al., 1997). The kinetic preprocessor (KPP) library was used for chemical reactions (Damian et al., 2002; Sandu et al., 2003; Sandu and Sander, 2006). The 1° x 1° meteorological data from National Centers for Environmental Prediction (NCEP) FNL (final) Operational Model Global Tropospheric Analyses (FNL NCEP, 2000) was used as the meteorological initial and boundary conditions for the simulations.

225 The Model for Ozone and Related chemical Tracers (MOZART) (Emmons et al., 2010) was used as the WRF chemistry module, coupled with Georgia Tech/Goddard Global Ozone Chemistry Aerosol Radiation and Transport (GOCART) aerosol

scheme (Chin et al., 2002). Madronich F-TUV photolysis scheme was applied, with a time step of 15 minutes (Madronich, 1987). The time step was 3 minutes for chemistry. Gas and aerosol dry deposition, aerosol wet scavenging, vertical mixing, subgrid convective transport, and subgrid aqueous chemistry (Peckham et al., 2018) were included in the model simulations. The global simulation result from MOZART (Pfister et al., 2011b) was used as the chemical initial and boundary conditions of the simulation in this study. The ozone initial and boundary conditions from MOZART were also scaled by comparing the mean surface ozone concentration over the simulation domain with the US EPA Air Quality System (AQS) observations (<https://www.epa.gov/outdoor-air-quality-data>, last access: October 22, 2020).

### 2.3.2 Simulation domains

The simulation domain for App16 was from 30.4° N to 37.5° N and from 88.3° W to 77.7° W, with a spatial resolution of 12 km. This domain included the major burning sites and the downwind nearby large cities including Atlanta (33.75° N, 84.39° W) and Charlotte (35.23° N, 80.84° W). The simulation period was November 7 - 22, 2016. The daily trend of FINN organic carbon (OC) emissions over the fire region is shown in Fig. S1, indicating that the simulation period cases contained the most severe burning that occurred during the fire case.

The simulation domain for the three Okefenokee cases was from 23.9° N to 37.0° N and from 92.6° W to 72.4° W, with a spatial resolution of 12 km (Fig. S1). The Okefenokee Wildlife Refuge was located at the center of this domain. Nearby cities and the ocean were included to evaluate the smoke transport to urban and remote areas. The simulation periods were May 6-30, 2007, May 4-15, 2011, and April 19 - May 13, 2017, respectively. The simulation domain for the PB11 cases is the same as the Oke11 case, and the simulation domain for the ER08 case was from 31.7° N to 38.1° N and from 84.9° W to 74.1° W.

### 2.3.3 Simulations and evaluations

For each fire case, we conducted three simulations to evaluate the air quality impacts from fires and duff burning (Table 1). (1) sim\_nofire: no fire emissions; (2) sim\_FINN: FINNv1.5 fire emission dataset was used as the fire emission input, but duff burning was not included in this dataset; (3) sim\_FINN+duff: same as sim\_FINN but with duff burning emissions. We used the differences in the results between sim\_FINN and sim\_nofire to represent the impacts from fire, and the differences between sim\_FINN+duff and sim\_FINN to represent the impacts from duff burning.

We evaluated the model performances in simulating air pollutant concentrations by comparing them with the EPA Air Quality System (AQS) in-situ hourly observations for PM<sub>2.5</sub> and ozone (<https://www.epa.gov/outdoor-air-quality-data>, last access: October 22, 2020). Starting in 2008, EPA included the Federal Reference Methods (FRM) or Federal Equivalent Methods (FEM) for the particulate measurement as a systematic framework, which provides standard methodologies and procedures for measuring and analyzing PM (Noble et al., 2001). During Oke07, the FRM/FEM was not spread out in the PM<sub>2.5</sub>



measurement system from EPA AQS. For the consistency of all the fire cases, both FRM/FEM and non-FRM/FRM datasets were used for comparison. [56 PM<sub>2.5</sub> observation sites and 53 ozone observation sites are included in the evaluation for App16, 76 PM<sub>2.5</sub> observation sites and 225 ozone observation sites for Oke07, 112 PM<sub>2.5</sub> observation sites and 215 ozone observation sites for Oke11 and PB11, 120 PM<sub>2.5</sub> observation sites and 208 ozone observation sites for Oke17, 38 PM<sub>2.5</sub> observation sites and 101 ozone observation sites for ER08.](#)

The day-time surface ozone concentrations, calculated by averaging surface ozone concentrations from local time 10 am to 6 pm, were evaluated between the baseline simulations (sim\_FINN) and the observations. In the model evaluation and the following result analysis, the surface concentrations in the simulation are defined as the concentrations at the bottom layer in the model, which was also the layer where the surface emission input was added in.

## 2.4 Emission data

### 2.4.1 Fire emissions of above-ground fuels

The fire emissions from FINNv1.5 were implemented into WRF-Chem by Pfister et al. (2011a), which contains the daily burned area and emissions of an amount of gas and aerosol species with a spatial resolution of 1 km (Wiedinmyer et al., 2011). [No a-priori diurnal cycle of the fire emission was applied in the WRF-Chem model, and the hourly fire emission applied in the WRF-Chem simulations was the hourly emission converted from the daily fire cases from FINN, assuming that fire at each observed fire hotspot lasted for one day.](#) The plume rise calculation of the fire emission using a 1-D time-dependent dynamic cloud model was called every 30 minutes (Freitas et al., 2007; Grell et al., 2011). The high-resolution in both space and time with the FINN fire data is a valuable feature for this study.

The biogenic emissions from the Model of Emissions of Gases and Aerosols from Nature (MEGAN) (Guenther, 2006; Sakulyanontvittaya et al., 2008) were used as the WRF-Chem input, from which monthly biogenic emissions with a spatial resolution of approximately 1 km were derived. The dust, dimethylsulfide (DMS) and sea salt emissions from GOCART were included in the model (Ginoux et al., 2001; Chin et al., 2002). For the model anthropogenic emission input, we used the NEI 2014v2 hourly anthropogenic emission dataset for the [U.S.-US](#), based on the criteria pollutant emissions from the 2014 EPA platform (USEPA, 2018b) implemented for the National Air Toxics Assessment (USEPA, 2018a). During the simulation, the meteorological field was nudged towards the 1° x 1° NCEP FNL reanalyses (FNL NCEP, 2000) every 6 hours, using the WRF Four-Dimensional Data Assimilation (FDDA) method (Stauffer and Seaman, 1990).

### 2.4.2 Fire emissions of duff

Current major global fire emission inventories, such as GFED and FINN (Wiedinmyer et al., 2011; Giglio et al., 2013; Van Der Werf et al., 2017), do not include enough duff and peat emissions. The fuel loading in FINN is based on the regional

average from Global Wildland Fire Emission Model (GWEM) (Hoelzemann et al., 2004). Total fuel loading of each grid is assigned with one of specific land cover classifications. Litter is included in GWEM, but peat and duff are not. In contrast, duff is explicitly included in GFED. GFED4s assumes the PM<sub>2.5</sub> emission factor of 9.1 g/kg from duff and peat burning based on Andreae and Merlet (2001), which is smaller than the above-ground fuel emission factors, and significantly smaller than the recent field and experiment results (Yokelson et al., 2013; Urbanski, 2014). Andreae (2019) updated the PM<sub>2.5</sub> emission factor of peat burning to 18.9 g/kg, which is larger than the above-ground fuel emission factors, but the latest fire emission inventory has not been updated accordingly yet.

The amount of duff burned during the fire cases investigated in this study was estimated based on the measurements from Zhao et al. (2019). During the 2016 Rough Ridge Fire, 4.6 cm of a duff layer was burned within one day, which accounted for more than 90% of the total duff. The duff burning was estimated to have contributed 60% of the total PM<sub>2.5</sub> emission. To our best knowledge, this measurement is the only duff burned depth measurement during the flaming phase in the temperate region. In previous studies, duff burning in the smoldering phase was evaluated. For example, the duff smoldering depth in North Carolina peat fires were measured from 0.5 cm to 10 cm (Wilbur and Christensen, 1983; Poulter et al., 2006), and Watts (2013) estimated 8.9 ± 5.2 cm duff burn depth during the smoldering in cypress swamps in Florida. Light detection and ranging (LiDAR) instruments detected an approximately 47 cm soil elevation loss during the 2011 Lateral West fire in a swamp in Virginia (Reddy et al., 2015). Because smoldering occurs at a low temperature in the long-term (months to years) (Rein and Belcher, 2013), which just creates weak and low plumes, here we only studied the regional air quality impact from duff flaming.

The duff emission estimation in this study is described in Fig. 23. We estimated duff emissions and added them to FINN with the following method. First, we calculated the daily duff mass burned,  $M(x, y, t)$  (kg day<sup>-1</sup>), in the burning case over the model grid box  $(x, y)$  on the day  $(t)$ :

$$M(x, y, t) = a(x, y, t)h\rho, \quad (1)$$

where  $a(x, y, t)$  is burned area (m<sup>2</sup>),  $h$  is the average duff-layer depth burned daily in the case ( $h = 0.045$  m day<sup>-1</sup> assumed), and  $\rho$  is the density of duff, which was assumed to be 57.4 kg m<sup>-2</sup> m<sup>-1</sup> according to the measurements over the southeastern US with the vegetation type of Pine and Hardwoods (Ottmar and Andreu, 2007). The measurements from different locations showed a 21% standard error of mean duff density.

The duff emissions were then added to FINN fire emission  $E(x, y, t)_{FINN+duff,s}$  (kg day<sup>-1</sup>) for each grid box, day, and species ( $s$ ):

$$E(x, y, t)_{FINN+duff,s} = E(x, y, t)_{FINN,s} + M(x, y, t) * EF_s * 0.001, \quad (2)$$

where  $E(x, y, t)_{FINN,s}$  is the original FINN fire emission, and  $EF_s$  is the duff emission factor of the species  $s$  (g/kg).

325

The PM<sub>2.5</sub> emission factor of duff / peat burning varies noticeably among the studies across the world regions and ecosystems (Table S1). The four studies in the southeastern US obtained average values of about 50 g/ kg ([for ground fire a field study that made in-situ measurements of PM<sub>2.5</sub> emission factors from three different peat fires in coastal North Carolina](#), Geron and Hays, 2013), 5.5 g/ kg ([a laboratory study that measured EF from peat core samples from two locations in North Carolina](#), Black et al. 2016), 44 g/ kg (Benner 1977), and 30 g/ kg (McMahon et al. 1980). The first two studies took soil samples from the same peat location in eastern North Carolina, US. Due to a previous fire investigated by the first study, the sample from the second one had much less carbon but more ash. This was a major reason for the much lower PM<sub>2.5</sub> emission factor proposed by the authors. For this reason, we did not consider the value from the second study when we specified the emission factor value for our study. The value from the first study was used as the US temperate duff burning emission factor in the review paper by Urbanski (2014). It was also used in our study because it is likely to better represent the burning on the vegetation type in the southeastern US. [Previous studies of measuring the PM<sub>2.5</sub> emission factors of duff/peat/organic soil burning are summarized in Table S1.](#)

330

335

Formatted: Not Superscript/ Subscript

Formatted: Font: 10 pt

340

345

As described in the introduction section, the differences in emission factors between duff and above-ground fuels suggest different impacts of duff burning on PM<sub>2.5</sub> and ozone- ([Table 2](#)). The emission factor of PM<sub>2.5</sub> from duff burning used in this study (50 g kg<sup>-1</sup>) is more than 3 times that from forest burning (13 g kg<sup>-1</sup>). However, the emission factors of NO<sub>x</sub> from duff burning (0.559 g kg<sup>-1</sup> for NO and 0.176 g kg<sup>-1</sup> for NO<sub>2</sub>) are less than 25% of those from forest fire (0.34 g kg<sup>-1</sup> for NO and 2.7 g kg<sup>-1</sup> for NO<sub>2</sub>). [Although the NO<sub>x</sub> emission factors vary from different locations and ecosystems, the gap of NO<sub>x</sub> emission factors from duff and the above-ground fuel was shown in different previous studies, summarized in Table S3 \(Clements and McMahon, 1980; McMeeking et al., 2009; Burling et al., 2010; Selimovic et al., 2018\). Except for NO<sub>x</sub> and PM<sub>2.5</sub>, a set of major fire emission compounds were added to duff emissions, as reported by Yokelson et al. \(2013\). The duff emission species considered in this study is summarized in Table 1 and Table S2.](#)

350

355

For App16, where fires had been absent for decades before 2016 in many fire sites, emissions from duff burning were calculated using the measured depth of duff burn at the Rough Ridge Fire site. The situation was the same for Oke07. However, some areas of Oke11 were overlapped with those of Oke07, while some burned areas of Oke17 overlapped with those of Oke07 and/or Oke11. From the FINN emission dataset, 87% of the burned area in Oke11 was burned by Oke07, and 79% of Oke17 was burned by the 2007 and 2011 fires. We assumed a duff layer recovery rate of 1 mm/year based on previous studies (Ovenden, 1990; Frolking et al., 2001; Borren et al., 2004; Milner et al., 2020). Only a fraction of the measured burned duff depth for the Rough Ridge Fire (Zhao et al., 2019) was assumed for the reburned areas. For example, if the burning during Oke11 was also burned in 2007, only 4 mm of the duff layer was assumed to be burned and the related duff emissions were added to the 2011 sim\_FINN+duff run. [For the other fire cases that the burning region had not been burnt in the previous](#)

decade, a duff flaming rate of 4.6 cm/day was applied. The case mean duff flaming rate and the corresponding fuel loading is summarized in Table S4.

## 360 2.5 Sensitivity experiments

Many fire inventories using satellite-based models often underestimate fire emissions for a variety of reasons (clouds, small burned areas, timing, etc.) (Wiedinmyer et al., 2011) and a-priori emissions are normally scaled up to improve model - measurement agreement (Ward et al., 2012). We found that the burned area in all four wildfire cases from FINN was approximately 50% less than the burned area summarized in Monitoring Trends and Burn Severity (MTBS) (Eidenshink et al., 365 2007), which is obtained based on vegetation changes before and after a fire rather than hot spots. The FINN emissions were also lower approximately at this rate than the calculated- emissions from based on the measured above-ground fuel consumption by the Rough Ridge Fire in northern Georgia on November 10 and 14, 2016 (Zhao et al. 2019). ~~We did not use the commonly used approach to scale up the FINN emissions because we wanted to understand if the missing duff burning contributed to the underestimate FINN emissions to a certain extent.2019.~~ This FINN emission underestimate would lead to 370 uncertainty in quantitatively estimating the contribution relative to the above-ground fuel consumption. ~~We~~To roughly assess the uncertainty, we did a sensitivity experiment by doubling FINN emissions for the Oke07 case (Exp\_FINN, Table 1) ~~to roughly assess the uncertainty).~~

As described above, there are large variations in  $PM_{2.5}$  and  $NO_x$  emission factor. ~~Also, there factors. There~~ were not enough 375 duff measurements for the fire cases we investigated, ~~and the duff emission factors between smouldering and flaming were also not well investigated.~~ To evaluate the uncertainty of our simulation results due to high spatial variation of the duff layer depth, we conducted week-long sensitivity runs for App16 and Oke07 with changes of the duff burning rates by  $\pm 20\%$  (Exp\_duff, Table 1),  $30\%$  (Exp\_duff, Table 1). In addition, another set of sensitivity runs was conducted for App16 and Oke07 by doubling the duff emission of  $NO_x$  to evaluate the uncertainties of the ozone effect due to the  $NO_x$  emission factors 380 (Exp\_2x\_duff\_NOx, Table 1).

## 3 Results

### 3.1 Comparisons between simulations and observations

Here we define the fire influence based on the  $PM_{2.5}$  impact from fire. If the  $PM_{2.5}$  difference between sim\_nofire and sim\_FINN is less than  $1 \mu g m^{-3}$  over a specific region (and time), then this region (and time) is not influenced by fire smoke. 385 This value is near the low end of the thresholds often used to assess the smoke impacts (Munoz-Alpizar et al. 2017, Matz et al. 2020). For both sim\_nofire and sim\_FINN, the simulated  $PM_{2.5}$  concentrations agree with the observations over the areas not influenced by fire events (Fig. S3). However, the baseline simulation (sim\_FINN) underestimates  $PM_{2.5}$  concentrations over the fire-impacted areas, shown in Fig. 34. For example, in the App16 areas ( $34.5^\circ N$  to  $36^\circ N$ ,  $82^\circ W$  to  $84^\circ W$ ), the model

underestimates  $PM_{2.5}$  by 56.6% for sim\_nofire and by 29.2 % for sim\_FINN. For Oke07 and Oke11, the massive plume  
390 simulated by the model is transported to a large area of Georgia. The model underestimates  $PM_{2.5}$  in Georgia by 56.2 % in  
2007 and 49.0% in 2011 for sim\_nofire, and 47.5 % in 2007 and 39.5% in 2011 for sim\_FINN. The simulated smoke from  
Oke17 disperses more widely in space than that from Oke11, so the intensity of the mean fire impact is minor. The comparisons  
of time series comparison show similar results, that is, sim\_FINN underestimated  $PM_{2.5}$  surface concentrations (Fig. 34).  
Figure 34 also shows a  $PM_{2.5}$  increase in all the 4 cases due to duff emissions, which improves the overall model performance,  
395 although the simulations still underestimate in the Oke11 and Oke17 cases, and slightly overestimates the  $PM_{2.5}$  level in the  
App16 case.

The model is able to reproduce the spatial distributions of surface ozone for all fire cases (Fig. S7). The baseline (sim\_nofire)  
runs capture the observed background daytime ozone concentrations and the concentrated  $PM_{2.5}$  spots (the spots with high-  
400 level surface  $PM_{2.5}$  concentrations directly due to fire smoke) in the fire and remote areas. For example, the model reproduces  
the high ozone concentrations from northern Alabama and Georgia to northwestern South Carolina and North Carolina and  
eastern Tennessee, as well as the coastal Louisiana and Mississippi and central Florida from Oke07 (Fig. S7f). However, the  
model overestimates surface ozone in the western South Carolina and North Carolina mountains (Fig. S7c and Fig. S7g). This  
might be caused by the uncertainty of estimating biogenic VOC emissions.

405  
The observed ozone maximum 8-hour average (MDA8) shows an agreement with the baseline simulation for all fire cases.  
The observation-simulation correlation coefficients are larger than 0.5 for App16 and larger than 0.6 for the Okefenokee cases  
(Fig. S4). Both sim\_FINN and sim\_FINN+duff simulations also agree with the observations in terms of the time series and  
trend during the fire events (Fig. 45). The model overestimates night-time ozone by approximately 10 ppb for App16,  
410 indicating the potential bias on night-time ozone chemistry or planetary boundary layer height estimation (Li and  
Rappenglueck, 2018).

While the sim\_FINN simulations underestimate  $PM_{2.5}$  concentrations over the burning region, especially sites with the smoke  
impact, sim\_FINN+duff simulations have better agreement with the observations, as shown in Fig. S5. The slope of the linear  
415 regression is 0.91 between sim\_FINN+duff results and the observations, while the slope is only 0.15 between sim\_FINN and  
observations. Although adding duff burning improves the regional simulation in terms of both the slope and the correlation  
coefficient (from 0.29 to 0.56), the correlation coefficient is still low, indicating the potential spatial-temporal uncertainty of  
the fire emissions. The evaluations for the SA16, Oke11 and Oke17 fires are similar to the Oke07 results as shown in Fig. S5.

420 The model performance in simulating the spatial patterns of smoke is evaluated by the Moderate Resolution Imaging  
Spectroradiometer (MODIS) image product from the Terra satellite. Fig. S6 shows that the simulated smoke transport agrees

well with the satellite image of the smoke. The results in the Oke07, Oke11 and Oke17 fires also shows good agreement between the simulation and the satellite image. In the following sections, we will further discuss the spatial and temporal patterns of smoke ozone and PM<sub>2.5</sub>.

### 425 3.2 The PM<sub>2.5</sub> emission and transport from duff burning

Here we show the improvement of model performance in simulating PM<sub>2.5</sub> by including duff burning emissions. The simulation results on selected dates of November 15, 2016, May 10, 2007, May 8, 2011, and April 29, 2017 for the four fire cases are shown in Fig. 56 and Fig. 67, and those on other days are provided in Figs. S8 to S15.

430 The sim\_FINN simulated smoke from App16 is transported southeastward to Georgia, South and North Carolinas on November 15, 2016 (Fig. 6a7a and Fig. 6e7e), leading to increased air pollution. However, the model underestimates the observed surface PM<sub>2.5</sub> concentrations by approximately 50% in areas with peak local concentration (Fig. 5e6e). On November 10 and 16, 2016, the simulated plume moves in the clockwise direction, causing air pollutions in the large cities in Georgia (Fig. S9). Fig. 6a7a and Fig. 6e7e indicate that the PM<sub>2.5</sub> concentrations from duff burning are at the same magnitude as or even slightly higher than those from the emissions of above-ground fuel burning. Thus, implementing duff burning doubles the fire-induced PM<sub>2.5</sub> concentrations from during App16 over the studied domain.

440 The total burned area of Oke07 was 5 times more than that of App16. ~~The emissions were larger from, and over the periods of the simulations, the daily average fire emission during Oke07 and correspondingly was 3 times more than that during App16 (Fig. S1). Correspondingly,~~ the simulated PM<sub>2.5</sub> concentrations during Oke07 are greater. In addition, different from App16 that occurred in November, Oke07 occurred in May. Thus, the photochemistry of ozone and its precursors was more active. In the sim\_FINN+duff runs, the simulated surface PM<sub>2.5</sub> in the fire plume effectively approaches the underestimated regions showing greatest fire impact, but the enhancement is still not enough over some regions. For example, on May 10, the simulations including duff emissions are in better agreement with the observation over southwestern Florida, where the simulated concentrations are underestimated by a factor of 2-5 (Fig. 5f6f and Fig. 5j6j). Over the fire impacted region (24° N - 34° N, 76° W - 86° W) on May 10, the surface PM<sub>2.5</sub> increase due to duff burning is 126% more than that due to above-ground fuel burning. However, the simulation that is the closest to the observation still underestimates the surface PM<sub>2.5</sub> concentrations in the fire impacted region in northern Georgia and North Carolina. The sim\_FINN simulation underestimates some concentrated PM<sub>2.5</sub> during the fire, including southwest Florida on May 11, the Atlanta region on May 16, and western Georgia on May 26, by as much as more than 10 times sometimes (Fig. S9).

Similar to the other cases, the sim\_FINN+duff simulated surface PM<sub>2.5</sub> concentrations from Oke11 and Oke17 are approximately doubled over the fire areas of those simulated in sim\_FINN (Fig. 6e, 6d, 6g-7c, 7d, 7g and 6h7h). However, the sim\_FINN simulation of the fire cases does not underestimate PM<sub>2.5</sub> as much as Oke07. Because a large portion of the two

455 fires was burned by the previous fires in 2007 (and 2011 for the 2017 fire), the simulated duff impacts from them are weaker. In addition, the simulated smoke from the two fires is transported to the ocean during half of the major burning periods (May 9 - 11, 2011 and May 2 - 12, 2017) (Fig. S14 and Fig. S15), which weakens the fire impact in the land areas. This inter-case comparison over the same area supports the evidence that the underestimation of PM<sub>2.5</sub> in the sim\_FINN runs is mainly due to the missing of duff burning emissions.

460

The important PM<sub>2.5</sub> impacts of duff burning are also seen in the temporal variations of station surface concentrations (Fig. 78). The panels 7a, d, g and h show the locations close to the fire areas. During App16, the simulated PM<sub>2.5</sub> concentrations increase by approximately 100% during the major burning days on November 7, 8, 13, 14 and 15, due to including duff burning (Fig. 7a8a). The daily variations are different between observations and simulations because the observed fire emission dataset was at daily rather than hourly intervals. The sim\_FINN+duff improves the simulations of PM<sub>2.5</sub> surface concentrations in metro Atlanta, Georgia (Fig. 7b8b) and metro Charlotte, North Carolina (Fig. 7e8c) on major burning days.

465

During Oke07, including duff burning makes the simulated PM<sub>2.5</sub> levels 1 to 10 times closer to the observed PM<sub>2.5</sub> levels at many observation locations, for example, on May 9 and May 18 in Duval County, Florida (Fig. 7d8d), and May 8 to May 13 in Orange County, Florida (where metro Orlando is located) (Fig. 7f8f). The simulation shows a high bias on May 27 in Duval, potentially due to the bias on fire emissions, but on the same day, the simulation still underestimates the PM<sub>2.5</sub> concentrations in Atlanta, Georgia. Duff emission increases the PM<sub>2.5</sub> concentrations in Atlanta (Fig. 7e8e), but the model underestimation still exists.

470

475 Because of the weak impacts of duff burning during Oke11 and Oke17 on PM<sub>2.5</sub> in metro areas as shown above, we evaluated sim\_FINN+duff model performance by comparing with in-situ observation at the locations close to the fire site (Fig. 7g8g, h). Although the sim\_FINN+duff simulation overestimates PM<sub>2.5</sub> concentrations on May 7, 2011, May 2 - 3, 2017 and May 7, 2017, adding duff burning generally reduces the PM<sub>2.5</sub> underestimation in sim\_FINN runs on May 9, 12, 14, 2011, April 24 - 26 and May 9 - 13, 2017. Duff burning increases local PM<sub>2.5</sub> concentration by 50-400%, depending on the above-ground fuel burning and the duff recovery conditions.

480

The PM<sub>2.5</sub> concentrations in the sim\_FINN+duff runs better fit the burning-day observations during ER08 and PB11 (Fig. 12 and Fig. 13). In June 11-12, 2011, the ER08 fire smoke transported throughout North Carolina, affected urban and rural regions more than 200 km away from the burning site. Compared to the sim\_FINN runs, adding duff burning enhanced PM<sub>2.5</sub> by 2 to 3 times in both the Charlotte metro, North Carolina and the rural region close to burning. The PM<sub>2.5</sub> impact from the PB11 fire is relatively smaller in both the sim\_FINN and the sim\_FINN\_duff runs, because the burned area is less in PB11 than in ER08, and part of the fire smoke transported to the ocean during burning. Due to duff burning, the PM<sub>2.5</sub> concentration increased by approximately 10% in May 11, 2011 in the Charlotte metro, and the increase is up to 100% in the rural region close to fire.

485

Formatted: Not Superscript/ Subscript

Formatted: Font: 10 pt

490 There are large mismatches at times between observations and simulations. Both biases in fire emission calculation and smoke  
transport simulation should be the contributors- (Li et al., 2020; Garcia-Menendez et al. 2013). In addition to the uncertainties  
with the FINN fire emissions and duff emission calculation described above, fires have large diurnal variations, but only daily  
burned area data for emission calculation were available. Despite the general agreement in spatial patterns between the  
simulated and satellite detected smoke plume as shown above, biases in WRF simulations of atmospheric conditions, especially  
495 wind direction and speed, would lead to shifts in both space and time of the simulated plume from its actual position.

### 3.3 The different ozone and PM<sub>2.5</sub> impacts from duff burning

Although the above-ground fuel burning of App16 led to a 6 - 10 ppb increase of surface ozone on November 15, 2016 (Fig.  
8a9a) over the areas affected by fire plume, adding duff burning to the model simulation does not increase the surface ozone  
concentration. Over the downwind region where the ozone increase is high from above-ground fuel burning, duff burning  
500 slightly offset the ozone increase by 0 - 4 ppb. A similar minor ozone impact from duff burning is also simulated for other  
days (Fig. S20). The ambient VOC concentrations are lower in November than that in summer, which provides a VOC-limited  
scenario in the ozone photochemistry. In this scenario, when NO<sub>x</sub> concentration is high due to the above-ground fuel burning,  
more NO<sub>x</sub> emissions from duff burning tend to decrease ozone concentrations (Seinfeld and Pandis, 2016). The above-ground  
fuel burning increases ozone concentrations by 10 - 15 ppb on November 13 - 15, but the ozone concentrations in  
505 sim\_FINN+duff are very similar to those in sim\_FINN, indicating that the duff burning has a neglectable impact on ozone  
concentrations in App16 (Fig. 40a11a-c). The ozone simulation agrees better with observations in the urban than in the rural  
fire areas, and similarly to the fire area, the ozone in the urban areas is not significantly affected by duff burning.

The simulated duff burning impact on ozone is positive during Oke07, but still smaller than the PM<sub>2.5</sub> impact. The above-  
ground fuel burning and the duff burning increase the ozone concentration in the fire-impacted areas (Fig. 9b10b and 9f10f,  
510 Fig. S21). Oke07 occurred in summer and the fire site was located further south in comparison with App16, meaning higher  
temperature, sunlight and biogenic activities. Thus the overall VOC concentrations and the simulated ozone pollution are  
stronger than those in November 2016 (Seinfeld and Pandis, 2016). However, the ozone impact is significantly weaker from  
duff burning than from above-ground fuel burning (Fig. 9b10b and 9f10f, Fig. S21). The simulated surface ozone increase due  
515 to duff burning is only 32% of that due to above-ground fuel burning over the fire impacted region (24° N - 34° N, 76° W -  
86° W) on May 10, 2007. This contribution is much smaller than that of duff burning to the PM<sub>2.5</sub> impact, which is 126% more  
than that from above-ground fuel burning. These different contributions of duff burning to PM<sub>2.5</sub> and ozone are due to the  
larger PM<sub>2.5</sub> emission factor but smaller NO<sub>x</sub> emission factors of duff in comparison with the above-ground fuel, as assumed  
in Section 2.4. The difference is also seen in the temporal variations. The above-ground burning led to ozone increases by 10  
520 - 20 ppb in Atlanta on May 21 - 23 (Fig. 40e11e) and by 2 - 15 ppb in Orlando on May 8 - 12 (Fig. 40f11f), but duff burning  
led to ozone increases by 0 - 7 ppb in both Duval (Fig. 40d11d) and Orlando (Fig. 40f11f) on May 8 - 12.



The ozone increase is significant due to the above-ground fuel burning from Oke11 and Oke17 (Fig. 9e10c and Fig. 9d10d), with a level comparable to Oke07. However, the level of ozone increase due to duff burning is low (Fig. 9g10g and Fig. 9h10h).

This low level is also seen in the temporal variations (Fig. 40g11g, Fig. 40h11h). The sim\_FINN and sim\_FINN+duff runs accurately capture several ozone peaks on May 8 and May 10, 2011, May 2 and May 8 - 13, 2017. Duff's contribution to the ozone peak is weak, similar to that of PM<sub>2.5</sub>. The duff layer in the Okefenokee swamp in 2011 and 2017 was not well recovered from Oke07.

~~The ozone and PM<sub>2.5</sub> impacts~~The ozone and PM<sub>2.5</sub> impacts during the simulated fire periods (App16: November 7-20, 2016; Oke07: May 6-30, 2007; Oke11: May 6-14, 2011; Oke17: April 20 - May 13, 2017; ER08: June 8-14, 2008; PB11: May 6-14, 2011) from duff burning and the above-ground burning in the fire areas (6° x 6° in size centered at the fire site) and nearby areas are summarized in Table 3. The above-ground fuel burning significantly increases ozone over the fire area in all cases except 2017, but duff burning does not affect ozone concentrations significantly. However, duff burning has comparable PM<sub>2.5</sub> impacts to above-ground fuel burning in all the fire cases. Duff burning also significantly affects urban air quality during App16 and Oke07. During 2007, when duff burning in the simulation is strong in the Okefenokee swamp, the duff impact accounts for double that of the above-ground fuel impact. During Oke11 and Oke17, the duff impacts are weaker due to the slow recovering speed of the duff layer after the 2007 fire, but the PM<sub>2.5</sub> impact is still significant over the fire area.

### 3.4 Sensitivity runs

The result from Exp\_2x\_duff\_NOx (Figure S26) shows that doubling the NO<sub>x</sub> emissions from duff does not change the result of the different PM<sub>2.5</sub> and ozone effects from duff burning. During the App16 case, increasing NO<sub>x</sub> further decreases the ozone concentration in the nearby urban and the closest big city. Compared to the sim\_FINN runs, ozone decreases 7.5% in Charlotte, North Carolina during the App16 case, and 7.9% in the rural region of Macon, North Carolina that is close to fire. During the Oke07 case the ozone increase with more NO<sub>x</sub> from duff, the ozone in the Exp\_2x\_duff\_NOx case is 1.3% and 4.8% more than the sim\_FINN runs over the rural region close to fire (Duval, Florida) and over the nearby big city (Orlando, Florida), still weaker than the PM<sub>2.5</sub> effect.

The result from Exp\_FINN shows that doubling FINN emission does not affect our conclusions, as shown in Fig. S26S27. When the regional underestimation for PM<sub>2.5</sub> is 36% with no duff burning, doubling FINN emission improved the underestimation to 20%, but still significantly underestimated the regional fire impacts. Doubling FINN emission did not ~~fixed~~fix the missing of some fire peaks on date like May 8, 11 and 14. All four fire cases shown in Fig. S26S27 overestimated the PM<sub>2.5</sub> on May 12, potentially due to the model bias on fire emission time and the smoke transport.

555

The result from Exp\_duff (Fig. S24-25) shows that the uncertainty of duff emission does not affect our finding of the different PM<sub>2.5</sub> and ozone effects by duff burning. The PM<sub>2.5</sub> concentrations change by ~~±(-11.7% to 9.5-13.2)-7%~~ near the fire site for App16, and ~~±(-2.6-14.9)-38% to +25%~~ for Oke07 (Fig. S24a and Fig. S24c). The ozone concentrations change within ± 2 % (Fig. S25). The PM<sub>2.5</sub> concentrations change by ~~±(-5.5-10.1)-4.6% to +2.3%~~ in ~~Charlotte, North Carolina~~Atlanta, Georgia for App16, and ~~±(2.3-11.5)-13% to +40%~~ in Orlando, Florida for Oke07 (Fig. S24b and Fig. S24d).

560

#### 4 Conclusions and discussion

565 Duff burning emissions have been calculated from the largest wildfires in this century in the moist southeastern US based on our previous field measurements at the site of the Rough Ridge Fire, one of the fires investigated in the study, and atmospheric PM<sub>2.5</sub> and ozone concentrations have been simulated using WRF-Chem with the duff burning emissions added to the FINN fire emission inventory. The results indicate that contributions from duff burning to the air pollutions are comparable, and sometimes more than the burning of above-ground fuels, which supports the previous finding from a study of the Rough Ridge  
570 Fire (Zhao et al. 2019). The WRF-Chem simulations of all the fire cases including duff burning show better agreements with the observed PM<sub>2.5</sub> surface concentration than the baseline simulations which include only fire emissions from above-ground fuel burning. Thus, regional air quality modeling in the southeastern US can be substantially improved by adding duff burning emissions in the existing fire emission datasets. It is further concluded that the impacts of duff burning on PM<sub>2.5</sub> are much more remarkable than those on ozone. The simulation results indicate that the above-ground fuel burning increases regional ozone  
575 surface concentrations, but the ozone changes due to duff burning are statistically insignificant.

The importance of duff burning contribution to PM<sub>2.5</sub> concentrations suggests an effective approach to improve regional air quality simulations in the other global regions with deep and peat duff accumulations. As described before, current major fire emission inventories, such as GFED and FINN (Wiedinmyer et al., 2011; Giglio et al., 2013; Van Der Werf et al., 2017), do  
580 not include enough duff and peat emissions. FINN v1.5 applied the emission factors mainly based on Andreae and Merlet (2001) and Akagi et al. (2011) but the emission factors of duff and peat burning are not included. On the other hand, Tansey et al. (2008) investigated the uncertainties of burned area and satellite fire hotspots over the tropical peatlands, indicating that duff burning in the emission inventories based on satellite data is highly uncertain. This potentially leads to significant underestimation over fire events with duff and peat burning, which further affects the evaluation of the regional air quality and  
585 human health impacts (Reid et al., 2016).

One major uncertainty in this study is the amount of duff burned in the Okefenokee fires. Although reports show that during the 2007 Okefenokee extreme drought and fire, 2 feet (61 cm) of duff thicknesses reduction was observed in some intensively burned areas, which potentially due to the combination of burning and deflation of domed duff and peat surfaces, an average duff consumption for simulation is not provided from measurements (Johnson and Schmerfeld, 2016). In the sensitivity runs described in Section 3.4, we indicate that this bias has a minimal effect on the major findings of the large PM<sub>2.5</sub> impact from duff burning and the different impacts between PM<sub>2.5</sub> and ozone. Another uncertainty is the values used in the duff emission calculation, for example, the bulk density of duff mass and the emission factors of different species from duff burning. We used  $50 \pm 16$  g/kg PM<sub>2.5</sub> emission factor for duff burns in this study based on fires in North Carolina (Geron and Hays, 2013; Urbanski, 2014), which is closest to the fire sites. It is comparable to some other peat fire measurements in the southeastern US such as  $44 \pm 9$  g/kg from Benner (1977) and  $30 \pm 20$  g/kg from McMahon et al. (1980). However, the spatial variability of duff bulk density is large in the southern US, ranging from 39.4 to 103.7 kg m<sup>-2</sup> m<sup>-1</sup> (Ottmar and Andreu, 2007).

Many evaluation studies have indicated that WRF-Chem is able to provide ground ozone simulations within reasonable biases, less than 20% for Europe (Mar et al., 2016) and 15-30% for the western, northeastern and midwestern US (Astitha et al., 2017). However, ozone simulation within plume is much more complexed, depending on many factors such as emissions of ozone precursors, photochemical processes, radiation change and temperature changes due to smoke, and lifetime of smoke, which make simulate ozone from wildfires challenging (Jaffe and Wigder, 2012). Our simulations did not consider the impacts of smoke on radiation, possibly leading to overestimating ozone production in plume (Selimovic et al., 2020). We conducted a test simulation for the Ofc07 case by including the impacts to evaluate the related uncertainty in ozone simulations. The result shows that missing the aerosol radiation impacts leads to approximately 15% of ozone overestimation in the fresh plume, and 10% of ozone increase in the aged plume. Further evaluation of ozone simulation in fire plume is needed. The recent implements of many field campaigns, especially Western wildfire Experiment for Cloud chemistry, Aerosol absorption and Nitrogen (WE-CAN) (<https://www2.acom.ucar.edu/campaigns/we-can>), are expected to help fill the evaluation and simulation gaps.

The findings from this study on the air quality impacts of wildfires in the southeastern US are valuable for future studies and can serve as guidance for other global regions with duff and peat burning such as northeastern China (Jiang et al., 2008) and the Great British Isles (Davies et al., 2013). In the southeastern US, the general high humidity provides good conditions for the duff layer to accumulate, which serves as a large potential fuel source during wildfires under droughts. The peatland in boreal forests (e.g. the boreal forest in Canada and Northern Eurasia) and tropical forests (e.g. the peatland in Indonesia) are also vulnerable to fire. Although the duff and peat layer and the burning types vary with ecosystems, the carbon loss from duff and peat fire and the different emission factors between the below-ground fuel and above-ground fuel are common issues (Page et al., 2002; Turetsky et al., 2015), which need to be addressed as what was conducted for the southeastern US in this study. The PM<sub>2.5</sub> emission factor used in this study is higher than the measurements in the other regions, such as 20.6 g/kg estimated

in the US prescribed burning (Yokelson et al., 2013), 8-58 g/kg measured in fires in Southeast Asia (Roulston et al., 2018), and 18.9 g/kg from global estimation summarized by Andreae (2019). This difference suggests that the impacts of duff burning during flaming phase on PM<sub>2.5</sub> may be more remarkable in the southeastern US than many other world regions.

625 Duff consumption in different fire cases is highly variable, making it difficult to conduct practical operational prediction of  
duff consumption and the air quality impacts. A number of efforts could be made towards a solution. One is to map spatial  
distributions of duff. Fuel data such as the Fuel Characteristics Classification System (Prichard et al., 2019) could be expanded  
to include more complete duff information. The data need to be dynamical to reflect not only duff accumulation over time but  
630 also disturbance due to wildland fires. Another effort is to conduct more field measurements of duff consumption by both  
wildfires and prescribed fires, such as those by Zhao et al. (2019) and the Fire and Smoke Model Evaluation Experiment  
(FASMEE) (Prichard et al., 2019). The measurements are essential for developing tools for duff consumption and air quality  
impact modeling (Liu et al., 2019). Duff burning by flaming fires occurs mainly under persistent drought conditions. Thus,  
duff fuel moisture is a critically important parameter to predict if and how much duff will be consumed by a wildfire. There  
are fire danger rating systems such as the Canadian Forest Fire Weather Index (FWI) System (FWI) (Stocks et al., 1989) and  
635 FARSITE (Finney, 1998) that estimate duff fuel moisture. They are empirically based rather than physics based dynamical  
tools. Improvements to these tools and development of dynamical tools, including those that relate duff fuel moisture with  
drought indices such as the Keetch-Byram Drought Index (KBDI) (Keetch and Byram, 1968), are needed. [In this study, we  
focused more on duff flaming than smouldering because of the relatively weak ability to transport of smouldering and the  
limitation of WRF-Chem to well processes smouldering. We are planning to dig into the duff smouldering phase more in a  
640 separate study using a specific smoke model such as the PB-P model \(Liu et al., 2018\)](#)

Under climate change due to the increasing atmospheric greenhouse gases, duff burning becomes more important for PM  
simulation and the air quality impacts. Duff burning is likely to become more active under the changing climate. The increasing  
frequency of extreme droughts has been observed in the US (Mazdiyasn and AghaKouchak, 2015; Clark et al., 2016) and  
645 around the world, and projected for the future climate scenario (Masih et al., 2014; Longo et al., 2018; Grillakis, 2019).  
Therefore, fire events ignited on a generally wet land suffered by extreme drought are likely to happen more often in the future,  
and the duff and peat land that does not burn currently (e.g. the Amazon rainforests and Africa rainforests (Bonal et al., 2016))  
may become burnable under future extreme drought. The importance of duff burning is further strengthened with climate-  
ecosystem interactions. With the increasing mean temperature and CO<sub>2</sub> concentrations, the duff layer accumulation is  
650 potentially benefiting from the acceleration of vegetation growth (Qian et al., 2010; Huang et al., 2018; Lawal et al., 2019; Bai  
et al., 2020) and soil organic carbon decomposition (Fierer et al., 2006; Karhu et al., 2014). Besides, tropical peatland fires are  
sensitive to ENSO-induced climate variability, indicating that it is necessary to evaluate the fire-climate interactions in order  
to better understand the duff and peat burning (Field et al., 2009; Tosca et al., 2011).

655 *Data availability.* The EPA AQS measurement data of ozone and PM<sub>2.5</sub> are available at the EPA website  
(<https://www.epa.gov/outdoor-air-quality-data>, last access: October 22, 2020). The FINNV1.5 fire emission inventory is  
available at the NCAR ACOM website (<https://bai.acom.ucar.edu/Data/fire/>, last access: January 16, 2021). The MOZART  
simulation results used for simulation initial and boundary conditions are available at [https://www.acom.ucar.edu/wrf-  
chem/mozart.shtml](https://www.acom.ucar.edu/wrf-chem/mozart.shtml), last access: January 16, 2021. The WRF-Chem model results are available from the corresponding author  
660 upon request.

*Competing interests.* The authors declare that they have no conflict of interest.

*Author contribution.* Yongqiang Liu provided the original idea. Aoxing Zhang and Yongqiang Liu designed the model  
665 experiments. Aoxing Zhang carried out the model experiments, analyzed the observation and simulation data and prepared the  
manuscript. Yongqiang Liu, Scott Goodrick and Marcus D Williams contributed to the methodology and manuscript  
improvement.

*Acknowledgments.* This study was supported by an agreement between the USDA Forest Service and the Oak Ridge Institute  
for Science and Education (ORISE).

670

## References

- Abatzoglou, J. T., and Williams, A. P.: Impact of anthropogenic climate change on wildfire across western US forests, Proceedings of the  
National Academy of Sciences, 113, 11770-11775, <https://doi.org/10.1073/pnas.1607171113>, 2016.
- 675 Akagi, S., Yokelson, R. J., Wiedinmyer, C., Alvarado, M., Reid, J., Karl, T., Crounse, J., and Wennberg, P.: Emission factors for open and  
domestic biomass burning for use in atmospheric models, Atmospheric Chemistry and Physics, 11, 4039-4072, [https://doi.org/10.5194/acp-  
11-4039-2011](https://doi.org/10.5194/acp-11-4039-2011), 2011.
- Alvarado, M., Logan, J., Mao, J., Apel, E., Riemer, D., Blake, D., Cohen, R., Min, K., Perring, A., and Browne, E.: Nitrogen oxides and  
PAN in plumes from boreal fires during ARCTAS-B and their impact on ozone: an integrated analysis of aircraft and satellite observations,  
Atmospheric Chemistry and Physics, 10, 9739-9760, <https://doi.org/10.5194/acp-10-9739-2010>, 2010.
- 680 Amiridis, V., Zerefos, C., Kazadzis, S., Gerasopoulos, E., Eleftheratos, K., Vrekoussis, M., Stohl, A., Mamouri, R.-E., Kokkalis, P., and  
Papayannis, A.: Impact of the 2009 Attica wild fires on the air quality in urban Athens, Atmospheric Environment, 46, 536-544,  
<https://doi.org/10.1016/j.atmosenv.2011.07.056>, 2012.
- Andreae, M. O., and Merlet, P.: Emission of trace gases and aerosols from biomass burning, Global biogeochemical cycles, 15, 955-966,  
<https://doi.org/10.1029/2000GB001382>, 2001.
- 685 Andreae, M. O.: Emission of trace gases and aerosols from biomass burning—an updated assessment, Atmospheric Chemistry and Physics,  
19, 8523-8546, <https://doi.org/10.5194/acp-19-8523-2019>, 2019.
- Astitha, M., Luo, H., Rao, S. T., Hogrefe, C., Mathur, R., and Kumar, N.: Dynamic evaluation of two decades of WRF-CMAQ ozone  
simulations over the contiguous United States, Atmospheric Environment, 164, 102-116, 2017.
- 690 Bachelet, D., Neilson, R. P., Lenihan, J. M., and Drapek, R. J.: Climate change effects on vegetation distribution and carbon budget in the  
United States, Ecosystems, 4, 164-185, <https://doi.org/10.1007/s10021-001-0002-7>, 2001.
- Bai, Y., Guo, C., Degen, A. A., Ahmad, A. A., Wang, W., Zhang, T., Li, W., Ma, L., Huang, M., and Zeng, H.: Climate warming benefits  
alpine vegetation growth in Three-River Headwater Region, China, Science of the Total Environment, 742, 140574,  
<https://doi.org/10.1016/j.scitotenv.2020.140574>, 2020.
- Ballhorn, U., Siegert, F., Mason, M., and Limin, S.: Derivation of burn scar depths and estimation of carbon emissions with LIDAR in  
Indonesian peatlands, Proceedings of the National Academy of Sciences, 106, 21213-21218, <https://doi.org/10.1073/pnas.0906457106>,  
2009.
- 695 Barbero, R., Abatzoglou, J. T., Larkin, N. K., Kolden, C. A., and Stocks, B.: Climate change presents increased potential for very large fires  
in the contiguous United States, International Journal of Wildland Fire, 24, 892-899, <https://doi.org/10.1071/WF15083>, 2015.

- Barnard, J. C., Fast, J. D., Paredes-Miranda, G., Arnott, W., and Laskin, A.: Evaluation of the WRF-Chem" Aerosol Chemical to Aerosol Optical Properties" Module using data from the MILAGRO campaign, *Atmospheric Chemistry & Physics*, 10, <https://doi.org/10.5194/acp-10-7325-2010>, 2010.
- Belda, M., Holtanová, E., Halenka, T., and Kalvová, J.: Climate classification revisited: from Köppen to Trewartha, *Climate research*, 59, 1-13, <https://doi.org/10.3354/cr01204>, 2014.
- Benner, W. H.: Photochemical reactions of forest fire combustion products, University of Florida, 1977.
- Black, R. R., Aurell, J., Holder, A., George, I. J., Gullett, B. K., Hays, M. D., Geron, C. D., and Tabor, D.: Characterization of gas and particle emissions from laboratory burns of peat, *Atmospheric Environment*, 132, 49–57, <https://doi.org/10.1016/j.atmosenv.2016.02.024.2016>.
- Blood, A., Starr, G., Escobedo, F., Chappelka, A., and Staudhammer, C.: How do urban forests compare? Tree diversity in urban and periurban forests of the southeastern US, *Forests*, 7, 120, <https://doi.org/10.3390/f7060120>, 2016.
- Bo, M., Mercalli, L., Pognant, F., Berro, D. C., and Clerico, M.: Urban air pollution, climate change and wildfires: The case study of an extended forest fire episode in northern Italy favoured by drought and warm weather conditions, *Energy Reports*, 6, 781-786, <https://doi.org/10.1016/j.egyr.2019.11.002>, 2020.
- Bonal, D., Burban, B., Stahl, C., Wagner, F., and Hérault, B.: The response of tropical rainforests to drought—lessons from recent research and future prospects, *Annals of Forest Science*, 73, 27-44, <http://doi.org/10.1007/s13595-015-0522-5>, 2016.
- Bond, W. J., Woodward, F. I., and Midgley, G. F.: The global distribution of ecosystems in a world without fire, *New phytologist*, 165, 525-538, <https://doi.org/10.1111/j.1469-8137.2004.01252.x>, 2005.
- Borren, W., Bleuten, W., and Lapshina, E. D.: Holocene peat and carbon accumulation rates in the southern taiga of western Siberia, *Quaternary Research*, 61, 42-51, <https://doi.org/10.1016/j.yqres.2003.09.002>, 2004.
- Bowman, D. M., Balch, J. K., Artaxo, P., Bond, W. J., Carlson, J. M., Cochrane, M. A., D'Antonio, C. M., DeFries, R. S., Doyle, J. C., and Harrison, S. P.: Fire in the Earth system, *science*, 324, 481-484, <http://doi.org/10.1126/science.1163886>, 2009.
- Brey, S. J., and Fischer, E. V.: Smoke in the city: how often and where does smoke impact summertime ozone in the United States?, *Environmental science & technology*, 50, 1288-1294, <https://doi.org/10.1021/acs.est.5b05218>, 2016.
- Brown, T., Leach, S., Wachter, B., and Gardunio, B.: The Extreme 2018 Northern California Fire Season, *Bulletin of the American Meteorological Society*, 101, S1-S4, <https://doi.org/10.1175/BAMS-D-19-0275.1>, 2020.
- Chapman, E. G., Gustafson Jr, W., Easter, R. C., Barnard, J. C., Ghan, S. J., Pekour, M. S., and Fast, J. D.: Coupling aerosol-cloud-radiative processes in the WRF-Chem model: Investigating the radiative impact of elevated point sources, *Atmospheric Chemistry & Physics*, 9, <https://doi.org/10.5194/acp-9-945-2009>, 2009.
- Chin, M., Ginoux, P., Kinne, S., Torres, O., Holben, B. N., Duncan, B. N., Martin, R. V., Logan, J. A., Higurashi, A., and Nakajima, T.: Tropospheric aerosol optical thickness from the GOCART model and comparisons with satellite and Sun photometer measurements, *Journal of the atmospheric sciences*, 59, 461-483, [https://doi.org/10.1175/1520-0469\(2002\)059<0461:TAOTFT>2.0.CO;2](https://doi.org/10.1175/1520-0469(2002)059<0461:TAOTFT>2.0.CO;2), 2002.
- Clark, J. S., Iverson, L., Woodall, C. W., Allen, C. D., Bell, D. M., Bragg, D. C., D'Amato, A. W., Davis, F. W., Hersh, M. H., and Ibanez, I.: The impacts of increasing drought on forest dynamics, structure, and biodiversity in the United States, *Global change biology*, 22, 2329-2352, <https://doi.org/10.1111/gcb.13160>, 2016.
- Crutzen, P. J., and Andreae, M. O.: Biomass burning in the tropics: Impact on atmospheric chemistry and biogeochemical cycles, *Science*, 250, 1669-1678, <http://doi.org/10.1126/science.250.4988.1669>, 1990.
- Cuchiara, G. C., Rappenglück, B., Rubio, M. A., Lissi, E., Gramsch, E., and Garreaud, R. D.: Modeling study of biomass burning plumes and their impact on urban air quality; a case study of Santiago de Chile, *Atmospheric Environment*, 166, 79-91, <https://doi.org/10.1016/j.atmosenv.2017.07.002>, 2017.
- Damian, V., Sandu, A., Damian, M., Potra, F., and Carmichael, G. R.: The kinetic preprocessor KPP—a software environment for solving chemical kinetics, *Computers & Chemical Engineering*, 26, 1567-1579, [https://doi.org/10.1016/S0098-1354\(02\)00128-X](https://doi.org/10.1016/S0098-1354(02)00128-X), 2002.
- Darmenov, A., and da Silva, A.: The quick fire emissions dataset (QFED)—documentation of versions 2.1, 2.2 and 2.4, NASA Technical Report Series on Global Modeling and Data Assimilation, NASA TM-2013-104606, 32, 183, <https://ntrs.nasa.gov/citations/20180005253>, 2013.
- Davies, G. M., Gray, A., Rein, G., and Legg, C. J.: Peat consumption and carbon loss due to smouldering wildfire in a temperate peatland, *Forest Ecology and Management*, 308, 169-177, <https://doi.org/10.1016/j.foreco.2013.07.051>, 2013.
- Dennison, P. E., Brewer, S. C., Arnold, J. D., and Moritz, M. A.: Large wildfire trends in the western United States, 1984–2011, *Geophysical Research Letters*, 41, 2928-2933, <https://doi.org/10.1002/2014GL059576>, 2014.
- Diehl, T., Heil, A., Chin, M., Pan, X., Streets, D., Schultz, M., and Kinne, S.: Anthropogenic, biomass burning, and volcanic emissions of black carbon, organic carbon, and SO<sub>2</sub> from 1980 to 2010 for hindcast model experiments, *Atmospheric Chemistry & Physics Discussions*, 12, <https://doi.org/10.5194/acpd-12-24895-2012>, 2012.
- Eidenshink, J., Schwind, B., Brewer, K., Zhu, Z.-L., Quayle, B., and Howard, S.: A project for monitoring trends in burn severity, *Fire ecology*, 3, 3-21, 2007.
- Ellison, L., Ichoku, C., Zhang, F., and Wang, J.: Building the Fire Energetics and Emissions Research (FEER) Smoke Emissions Inventory Version 1.0, <https://core.ac.uk/download/pdf/42724821.pdf>, 2014.

- 755 Emmons, L. K., Walters, S., Hess, P. G., Lamarque, J.-F., Pfister, G. G., Fillmore, D., Granier, C., Guenther, A., Kinnison, D., and Laepple, T.: Description and evaluation of the Model for Ozone and Related chemical Tracers, version 4 (MOZART-4), <http://doi.org/10.5194/gmd-3-43-2010>, 2010.
- Fang, T., Verma, V., Bates, J. T., Abrams, J., Klein, M., Strickland, M. J., Sarnat, S. E., Chang, H. H., Mulholland, J. A., and Tolbert, P. E.: Oxidative potential of ambient water-soluble PM<sub>2.5</sub> in the southeastern United States: contrasts in sources and health associations between ascorbic acid (AA) and dithiothreitol (DTT) assays, *Atmos. Chem. Phys.*, 16, 3865-3879, <https://doi.org/10.5194/acp-16-3865-2016>, 2016.
- 760 [Fann, N., Alman, B., Broome, R.A., Morgan, G.G., Johnston, F.H., Pouliot, G. and Rappold, A.G.: The health impacts and economic value of wildland fire episodes in the US: 2008–2012. \*Science of the total environment\*, 610, pp.802-809, <https://doi.org/10.1016/j.scitotenv.2017.08.024>, 2018.](https://doi.org/10.1016/j.scitotenv.2017.08.024)
- 765 Fast, J. D., Gustafson Jr, W. I., Easter, R. C., Zaveri, R. A., Barnard, J. C., Chapman, E. G., Grell, G. A., and Peckham, S. E.: Evolution of ozone, particulates, and aerosol direct radiative forcing in the vicinity of Houston using a fully coupled meteorology-chemistry-aerosol model, *Journal of Geophysical Research: Atmospheres*, 111, <https://doi.org/10.1029/2005JD006721>, 2006.
- Field, R. D., Van Der Werf, G. R., and Shen, S. S.: Human amplification of drought-induced biomass burning in Indonesia since 1960, *Nature Geoscience*, 2, 185-188, <https://doi.org/10.1038/ngeo443>, 2009.
- 770 Fierer, N., Colman, B. P., Schimel, J. P., and Jackson, R. B.: Predicting the temperature dependence of microbial respiration in soil: A continental-scale analysis, *Global Biogeochemical Cycles*, 20, <https://doi.org/10.1029/2005GB002644>, 2006.
- Finco, M., Quayle, B., Zhang, Y., Lecker, J., Megown, K. A., and Brewer, C. K.: Monitoring trends and burn severity (MTBS): monitoring wildfire activity for the past quarter century using Landsat data, In: Morin, Randall S.; Liknes, Greg C., comps. *Moving from status to trends: Forest Inventory and Analysis (FIA) symposium 2012*; 2012 December 4-6; Baltimore, MD. Gen. Tech. Rep. NRS-P-105. Newtown Square, PA: US Department of Agriculture, Forest Service, Northern Research Station,[CD-ROM]: 222-228., 2012, 222-228.
- 775 Finney, M. A.: FARSITE, Fire Area Simulator--model development and evaluation, 4, US Department of Agriculture, Forest Service, Rocky Mountain Research Station, 1998.
- Fire Behavior Assessment Team: Big Turnaround and Georgia Bay Complexes Fire Behavior Assessment Report, <http://citeseeerx.ist.psu.edu/viewdoc/download?doi=10.1.1.649.9331&rep=rep1&type=pdf>, 2007.
- 780 FNL NCEP: NCEP FNL Operational Model Global Tropospheric Analyses, continuing from July 1999. , Research Data Archive at the National Center for Atmospheric Research; Computational and Information Systems Laboratory: Boulder, CO, USA, <http://doi.org/10.5065/D6M043C6>, 2000.
- Frandsen, W. H.: The influence of moisture and mineral soil on the combustion limits of smoldering forest duff, *Canadian Journal of Forest Research*, 17, 1540-1544, <https://doi.org/10.1139/x87-236>, 1987.
- 785 Freitas, S. R., Longo, K. M., Chatfield, R., Latham, D., Silva Dias, M., Andreae, M., Prins, E., Santos, J., Gielow, R., and Carvalho Jr, J.: Including the sub-grid scale plume rise of vegetation fires in low resolution atmospheric transport models, *Atmospheric Chemistry and Physics*, 7, 3385-3398, <https://doi.org/10.5194/acp-7-3385-2007>, 2007.
- Frolking, S., Roulet, N. T., Moore, T. R., Richard, P. J., Lavoie, M., and Muller, S. D.: Modeling northern peatland decomposition and peat accumulation, *Ecosystems*, 4, 479-498, <https://doi.org/10.1007/s10021-001-0105-1>, 2001.
- 790 Gaffen, D. J., and Ross, R. J.: Climatology and trends of US surface humidity and temperature, *Journal of Climate*, 12, 811-828, [https://doi.org/10.1175/1520-0442\(1999\)012<0811:CATOUS>2.0.CO;2](https://doi.org/10.1175/1520-0442(1999)012<0811:CATOUS>2.0.CO;2), 1999.
- [Garcia-Menendez, F., Hu, Y., and Odman, M. T.: Simulating smoke transport from wildland fires with a regional-scale air quality model: Sensitivity to uncertain wind fields. \*Journal of Geophysical Research: Atmospheres\*, 118\(12\), 6493-6504, <https://doi.org/10.1002/jgrd.50524>, 2013.](https://doi.org/10.1002/jgrd.50524)
- 795 Geron, C., and Hays, M.: Air emissions from organic soil burning on the coastal plain of North Carolina, *Atmospheric environment*, 64, 192-199, <https://doi.org/10.1016/j.atmosenv.2012.09.065>, 2013.
- Giglio, L., Randerson, J. T., and Werf, G. R.: Analysis of daily, monthly, and annual burned area using the fourth-generation global fire emissions database (GFED4), *Journal of Geophysical Research: Biogeosciences*, 118, 317-328, <https://doi.org/10.1002/jgrg.20042>, 2013.
- 800 Ginoux, P., Chin, M., Tegen, I., Prospero, J. M., Holben, B., Dubovik, O., and Lin, S. J.: Sources and distributions of dust aerosols simulated with the GOCART model, *Journal of Geophysical Research: Atmospheres*, 106, 20255-20273, <https://doi.org/10.1029/2000JD000053>, 2001.
- Goode, J. G., Yokelson, R. J., Ward, D. E., Susott, R. A., Babbitt, R. E., Davies, M. A., and Hao, W. M.: Measurements of excess O<sub>3</sub>, CO<sub>2</sub>, CO, CH<sub>4</sub>, C<sub>2</sub>H<sub>4</sub>, C<sub>2</sub>H<sub>2</sub>, HCN, NO, NH<sub>3</sub>, HCOOH, CH<sub>3</sub>COOH, HCHO, and CH<sub>3</sub>OH in 1997 Alaskan biomass burning plumes by airborne Fourier transform infrared spectroscopy (AFTIR), *Journal of Geophysical Research: Atmospheres*, 105, 22147-22166, <https://doi.org/10.1029/2000JD900287>, 2000.
- 805 Goodrick, S. L., Achtemeier, G. L., Larkin, N. K., Liu, Y., and Strand, T. M.: Modelling smoke transport from wildland fires: a review, *International Journal of Wildland Fire*, 22, 83-94, <https://doi.org/10.1071/WF11116>, 2013.
- Gorham, E.: Northern peatlands: role in the carbon cycle and probable responses to climatic warming, *Ecological applications*, 1, 182-195, <https://doi.org/10.2307/1941811>, 1991.
- 810 Granier, C., Bessagnet, B., Bond, T., D'Angiola, A., van Der Gon, H. D., Frost, G. J., Heil, A., Kaiser, J. W., Kinne, S., and Klimont, Z.: Evolution of anthropogenic and biomass burning emissions of air pollutants at global and regional scales during the 1980–2010 period, *Climatic Change*, 109, 163, <https://doi.org/10.1007/s10584-011-0154-1>, 2011.

- Grell, G., Freitas, S., Stuefer, M., and Fast, J.: Inclusion of biomass burning in WRF-Chem: impact of wildfires on weather forecasts, *Atmospheric Chemistry & Physics*, 11, <https://doi.org/10.5194/acp-11-5289-2011>, 2011.
- Grell, G. A., Peckham, S. E., Schmitz, R., McKeen, S. A., Frost, G., Skamarock, W. C., and Eder, B.: Fully coupled “online” chemistry within the WRF model, *Atmospheric Environment*, 39, 6957-6975, <https://doi.org/10.1016/j.atmosenv.2005.04.027>, 2005.
- 815 Grillakis, M. G.: Increase in severe and extreme soil moisture droughts for Europe under climate change, *Science of The Total Environment*, 660, 1245-1255, <https://doi.org/10.1016/j.scitotenv.2019.01.001>, 2019.
- Guan, S., Wong, D. C., Gao, Y., Zhang, T., and Pouliot, G.: Impact of wildfire on particulate matter in the southeastern United States in November 2016, *Science of The Total Environment*, 138354, <https://doi.org/10.1016/j.scitotenv.2020.138354>, 2020.
- 820 Guenther, C.: Estimates of global terrestrial isoprene emissions using MEGAN (Model of Emissions of Gases and Aerosols from Nature), *Atmospheric Chemistry and Physics*, 6, <https://doi.org/10.5194/acp-6-3181-2006>, 2006.
- Gustafson Jr, W. I., Chapman, E. G., Ghan, S. J., Easter, R. C., and Fast, J. D.: Impact on modeled cloud characteristics due to simplified treatment of uniform cloud condensation nuclei during NEAQS 2004, *Geophysical Research Letters*, 34, <https://doi.org/10.1029/2007GL030021>, 2007.
- 825 He, C., Miljevic, B., Crilley, L. R., Surawski, N. C., Bartsch, J., Salimi, F., Uhde, E., Schnelle-Kreis, J., Orasche, J., and Ristovski, Z.: Characterisation of the impact of open biomass burning on urban air quality in Brisbane, Australia, *Environment international*, 91, 230-242, <https://doi.org/10.1016/j.envint.2016.02.030>, 2016.
- Hille, M. G., and Stephens, S. L.: Mixed conifer forest duff consumption during prescribed fires: tree crown impacts, *Forest Science*, 51, 417-424, <https://doi.org/10.1093/forestscience/51.5.417>, 2005.
- Hodzic, A., Madronich, S., Bohn, B., Massie, S., Menut, L., and Wiedinmyer, C.: Wildfire particulate matter in Europe during summer 2003: meso-scale modeling of smoke emissions, transport and radiative effects, <https://doi.org/10.5194/acp-7-4043-2007>, 2007.
- 830 Hu, Y., Fernandez-Anez, N., Smith, T. E., and Rein, G.: Review of emissions from smouldering peat fires and their contribution to regional haze episodes, *International Journal of Wildland Fire*, 27, 293-312, <https://doi.org/10.1071/WF17084>, 2018.
- Huang, K., Xia, J., Wang, Y., Ahlström, A., Chen, J., Cook, R. B., Cui, E., Fang, Y., Fisher, J. B., and Huntzinger, D. N.: Enhanced peak growth of global vegetation and its key mechanisms, *Nature ecology & evolution*, 2, 1897-1905, <https://doi.org/10.1038/s41559-018-0714-0>, 2018.
- 835 Iacono, M. J., Delamere, J. S., Mlawer, E. J., Shephard, M. W., Clough, S. A., and Collins, W. D.: Radiative forcing by long-lived greenhouse gases: Calculations with the AER radiative transfer models, *Journal of Geophysical Research: Atmospheres*, 113, <https://doi.org/10.1029/2008JD009944>, 2008.
- 840 ~~IPCC: Climate Change 2013: The Physical Science Basis. Contribution of Working Group I to the Fifth Assessment Report of the Intergovernmental Panel on Climate Change, 1535 pp., in, Cambridge Univ. Press, Cambridge, UK, and New York, 2013.~~
- Jaffe, D., Chand, D., Hafner, W., Westerling, A., and Spracklen, D.: Influence of fires on O<sub>3</sub> concentrations in the western US, *Environmental science & technology*, 42, 5885-5891, <https://doi.org/10.1021/es800084k>, 2008.
- Jaffe, D. A., and Wigder, N. L.: Ozone production from wildfires: A critical review, *Atmospheric Environment*, 51, 1-10, <https://doi.org/10.1016/j.atmosenv.2011.11.063>, 2012.
- 845 Jiang, W., Leroy, S. A., Ogle, N., Chu, G., Wang, L., and Liu, J.: Natural and anthropogenic forest fires recorded in the Holocene pollen record from a Jinchuan peat bog, northeastern China, *Palaeogeography, Palaeoclimatology, Palaeoecology*, 261, 47-57, <https://doi.org/10.1016/j.palaeo.2008.01.007>, 2008.
- Jiang, Y., Yang, X.-Q., Liu, X., Qian, Y., Zhang, K., Wang, M., Li, F., Wang, Y., and Lu, Z.: Impacts of wildfire aerosols on global energy budget and climate: The role of climate feedbacks, *Journal of Climate*, 33, 3351-3366, <https://doi.org/10.1175/JCLI-D-19-0572.1>, 2020.
- 850 Johnson, K. A., and Schmerfeld, J.: THE UNITED STATES' NATIONAL WILDLIFE REFUGE SYSTEM: A NATURAL LABORATORY FOR STUDYING PEATLAND CARBON STORAGE, ECOSYSTEM SERVICES, AND IMPACTS OF MANAGEMENT, 15TH INTERNATIONAL PEAT CONGRESS 2016 <https://peatlands.org/assets/uploads/2019/06/ipc16p696-700a253johnson.schmerfeld.pdf>, 2016.
- 855 Jolly, W. M., Cochrane, M. A., Freeborn, P. H., Holden, Z. A., Brown, T. J., Williamson, G. J., and Bowman, D. M.: Climate-induced variations in global wildfire danger from 1979 to 2013, *Nature communications*, 6, 7537, <https://doi.org/10.1038/ncomms8537>, 2015.
- Kaiser, J., Flemming, J., Schultz, M., Suttie, M., and Wooster, M.: The MACC Global Fire Assimilation System: First Emission Products (GFASvO), ECMWF, 2009.
- Kaiser, J., Heil, A., Andreae, M., Benedetti, A., Chubarova, N., Jones, L., Morcrette, J.-J., Razinger, M., Schultz, M., and Suttie, M.: Biomass burning emissions estimated with a global fire assimilation system based on observed fire radiative power, *Biogeosciences*, 9, 527, <https://doi.org/10.5194/bg-9-527-2012>, 2012.
- 860 Karhu, K., Auffret, M. D., Dungait, J. A., Hopkins, D. W., Prosser, J. I., Singh, B. K., Subke, J.-A., Wookey, P. A., Ågren, G. I., and Sebastia, M.-T.: Temperature sensitivity of soil respiration rates enhanced by microbial community response, *Nature*, 513, 81-84, <https://doi.org/10.1038/nature13604>, 2014.
- 865 Keetch, J. J., and Byram, G. M.: A drought index for forest fire control, US Department of Agriculture, Forest Service, Southeastern Forest Experiment ..., 1968.



- Kiely, L., Spracklen, D. V., Wiedinmyer, C., Conibear, L., Reddington, C. L., Archer-Nicholls, S., Lowe, D., Arnold, S. R., Knote, C., and Khan, M. F.: New estimate of particulate emissions from Indonesian peat fires in 2015, <http://doi.org/10.5194/acp-19-11105-2019>, 2019.
- Kiely, L., Spracklen, D. V., Wiedinmyer, C., Conibear, L. A., Reddington, C. L., Arnold, S. R., Knote, C., Khan, M. F., Latif, M. T., and Syaufina, L.: Air quality and health impacts of vegetation and peat fires in Equatorial Asia during 2004–2015, *Environmental Research Letters*, <https://doi.org/10.1088/1748-9326/ab9a6c>, 2020.
- 875 Konrad, C. E., and Knox, P.: The Southeastern Drought and wildfire of 2016, Available at <http://www.sercc.com/NIDISDroughtAssessmentFINAL.pdf> [Verified 29 October 2020], 2017.
- Kunzli, N., Avol, E., Wu, J., Gauderman, W. J., Rappaport, E., Millstein, J., Bennion, J., McConnell, R., Gilliland, F. D., and Berhane, K.: Health effects of the 2003 Southern California wildfires on children, *American journal of respiratory and critical care medicine*, 174, 1221-1228, <https://doi.org/10.1164/rccm.200604-519OC>, 2006.
- Lawal, S., Lennard, C., and Hewitson, B.: Response of southern African vegetation to climate change at 1.5 and 2.0° global warming above the pre-industrial level, *Climate Services*, 16, 100134, <https://doi.org/10.1016/j.cliser.2019.100134>, 2019.
- Li, W., Li, L., Fu, R., Deng, Y., and Wang, H.: Changes to the North Atlantic subtropical high and its role in the intensification of summer rainfall variability in the southeastern United States, *Journal of Climate*, 24, 1499-1506, <https://doi.org/10.1175/2010JCLI3829.1>, 2011.
- 880 Li, X., and Rappenglueck, B.: A study of model nighttime ozone bias in air quality modeling, *Atmospheric Environment*, 195, 210-228, <https://doi.org/10.1016/j.atmosenv.2018.09.046>, 2018.
- [Li, Y., Tong, D. Q., Ngan, F., Cohen, M. D., Stein, A. F., Kondragunta, S., Zhang, X., Ichoku, C., Hyer, E. J., and Kahn, R. A.: Ensemble PM2.5 forecasting during the 2018 camp fire event using the HYSPLIT transport and dispersion model. \*J. Geophys. Res.-Atmos.\* 125 \(15\):e2020JD032768. <https://doi.org/10.1029/2020JD032768>, 2020](https://doi.org/10.1016/j.atmosenv.2018.09.046)
- 885 Liu, J., Lin, P., Laskin, A., Laskin, J., Kathmann, S. M., Wise, M., Caylor, R., Imholt, F., Selimovic, V., and Shilling, J. E.: Optical properties and aging of light-absorbing secondary organic aerosol, *Atmospheric Chemistry and Physics*, 16, 12815-12827, <https://doi.org/10.5194/acp-16-12815-2016>, 2016.
- Liu, T., Mickle, L. J., Marlier, M. E., DeFries, R. S., Khan, M. F., Latif, M. T., and Karambelas, A.: Diagnosing spatial biases and uncertainties in global fire emissions inventories: Indonesia as regional case study, *Remote Sensing of Environment*, 237, 111557, <https://doi.org/10.1016/j.rse.2019.111557>, 2020.
- 890 Liu, Y., Goodrick, S., and Heilman, W.: Wildland fire emissions, carbon, and climate: Wildfire–climate interactions, *Forest Ecology and Management*, 317, 80-96, <https://doi.org/10.1016/j.foreco.2013.02.020>, 2014.
- [Liu Y-Q, Goodrick S., Achtemeier G: The Weather Conditions for Desired Smoke Plumes at a FASMEE Burn Site. \*Atmosphere\* 2018, 9\(7\), 259; <https://doi.org/10.3390/atmos9070259>, 2018.](https://doi.org/10.1016/j.foreco.2013.02.020)
- 895 Liu, Y., Kochanski, A., Baker, K. R., Mell, W., Linn, R., Paugam, R., Mandel, J., Fournier, A., Jenkins, M. A., and Goodrick, S.: Fire behaviour and smoke modelling: model improvement and measurement needs for next-generation smoke research and forecasting systems, *International journal of wildland fire*, 28, 570-588, 2019.
- Longo, M., Knox, R. G., Levine, N. M., Alves, L. F., Bonal, D., Camargo, P. B., Fitzjarrald, D. R., Hayek, M. N., Restrepo-Coupe, N., and Saleska, S. R.: Ecosystem heterogeneity and diversity mitigate Amazon forest resilience to frequent extreme droughts, *New Phytologist*, 219, 914-931, <https://doi.org/10.1111/nph.15185>, 2018.
- 900 Lu, X., Zhang, L., Yue, X., Zhang, J., Jaffe, D. A., Stohl, A., Zhao, Y., and Shao, J.: Wildfire influences on the variability and trend of summer surface ozone in the mountainous western United States, <https://doi.org/10.5194/acp-16-14687-2016>, 2016.
- Lu, Z., and Sokolik, I. N.: Examining the Impact of Smoke on Frontal Clouds and Precipitation During the 2002 Yakutsk Wildfires Using the WRF-Chem-SMOKE Model and Satellite Data, *Journal of Geophysical Research: Atmospheres*, 122, 12,765-712,785, <https://doi.org/10.1002/2017JD027001>, 2017.
- 905 Madronich, S.: Photodissociation in the atmosphere: 1. Actinic flux and the effects of ground reflections and clouds, *Journal of Geophysical Research: Atmospheres*, 92, 9740-9752, <https://doi.org/10.1029/JD092iD08p09740>, 1987.
- Mallia, D., Lin, J., Urbanski, S., Ehleringer, J., and Nehrkorn, T.: Impacts of upwind wildfire emissions on CO, CO2, and PM2.5 concentrations in Salt Lake City, Utah, *Journal of Geophysical Research: Atmospheres*, 120, 147-166, <https://doi.org/10.1002/2014JD022472>, 2015.
- 910 Mar, K. A., Ojha, N., Pozzer, A., and Butler, T. M.: Ozone air quality simulations with WRF-Chem (v3.5.1) over Europe: model evaluation and chemical mechanism comparison, *Geoscientific Model Development*, 9, 3699-3728, 2016.
- Masih, I., Maskey, S., Mussá, F., and Trambauer, P.: A review of droughts on the African continent: a geospatial and long-term perspective, *Hydrology and Earth System Sciences*, 18, 3635, <https://doi.org/10.5194/hess-18-3635-2014>, 2014.
- 915 [Matz, C.J., Egeved, M., Xi, G., Racine, J., Pavlovic, R., Rittmaster, R., Henderson, S.B. and Stieb, D.M: Health impact analysis of PM2.5 from wildfire smoke in Canada \(2013–2015, 2017–2018\). \*Science of the Total Environment\*, 725, p.138506. <https://doi.org/10.1016/j.scitotenv.2020.138506>, 2020](https://doi.org/10.1016/j.scitotenv.2020.138506)
- Mass, C. F., and Ovens, D.: The Northern California wildfires of 8–9 October 2017: The role of a major downslope wind event, *Bulletin of the American Meteorological Society*, 100, 235-256, <https://doi.org/10.1175/BAMS-D-18-0037.1>, 2019.
- 920 Mazdiyasi, O., and AghaKouchak, A.: Substantial increase in concurrent droughts and heatwaves in the United States, *Proceedings of the National Academy of Sciences*, 112, 11484-11489, <https://doi.org/10.1073/pnas.1422945112>, 2015.

- McDowell, I., Pierce, T., Pouliot, G., Eder, B., Foley, K., Gilliam, R., and Wilkins, J.: PM2.5 concentrations observed and modeled for the 2016 southern Appalachian wildfire event, 16th Annual CMAS Conference, [https://cfpub.epa.gov/si\\_public\\_record\\_report.cfm?dirEntryId=338093&Lab=NERL](https://cfpub.epa.gov/si_public_record_report.cfm?dirEntryId=338093&Lab=NERL), 2017.
- 925 McKee, D.: Tropospheric ozone: human health and agricultural impacts, CRC Press, 1993.
- McMahon, C. K., Wade, D. D., and Tsoukalas, S. N.: Combustion characteristics and emissions from burning organic soils, In: 73rd Annual Meeting of the Air Pollution Control Association. Montreal, Quebec: June 22-27, 1980. 2-16., 1980, 2-16.
- Milner, A. M., Baird, A. J., Green, S. M., Swindles, G. T., Young, D. M., Sanderson, N. K., Timmins, M. S., and Gafka, M.: A regime shift from erosion to carbon accumulation in a temperate northern peatland, *Journal of Ecology*, <https://doi.org/10.1111/1365-2745.13453>, 2020.
- 930 Mlawer, E. J., Taubman, S. J., Brown, P. D., Iacono, M. J., and Clough, S. A.: Radiative transfer for inhomogeneous atmospheres: RRTM, a validated correlated-k model for the longwave, *Journal of Geophysical Research: Atmospheres*, 102, 16663-16682, <https://doi.org/10.1029/97JD00237>, 1997.
- <https://doi.org/10.1029/2017JD027523>, 2017.
- 935 Munoz-Alpizar, R., Pavlovic, R., Moran, M.D., Chen, J., Gravel, S., Henderson, S.B., Menard, S., Racine, J., Duhamel, A., Gilbert, S., Beaulieu, P.A., Landry, H., Davignon, D., Cousineau, S. and Bouchet, V.: Multi-year (2013–2016) PM2.5 wildfire pollution exposure over North America as determined from operational air quality forecasts, *Atmosphere* 8, 179, <https://doi.org/10.3390/atmos8090179>, 2017
- Navarro, K. M., Cisneros, R., O'Neill, S. M., Schweizer, D., Larkin, N. K., and Balmes, J. R.: Air-quality impacts and intake fraction of PM2.5 during the 2013 Rim Megafire, *Environmental Science & Technology*, 50, 11965-11973, <https://doi.org/10.1021/acs.est.6b02252>, 2016.
- 940 Noble, C. A., Vanderpool, R. W., Peters, T. M., McElroy, F. F., Gemmill, D. B., and Wiener, R. W.: Federal reference and equivalent methods for measuring fine particulate matter, *Aerosol science & technology*, 34, 457-464, <https://doi.org/10.1080/02786820121582>, 2001.
- Ottmar, R., and Andreu, A.: Litter and duff bulk densities in the Southern United States, Seattle, WA: Fire and Environmental Applications team, USDA Forest Service, Joint Fire Science Program Project, 04-02, [https://www.firescience.gov/projects/04-2-1-49/project/04-2-1-49\\_final\\_report.pdf](https://www.firescience.gov/projects/04-2-1-49/project/04-2-1-49_final_report.pdf), 2007.
- 945 Ottmar, R. D.: Wildland fire emissions, carbon, and climate: modeling fuel consumption, *Forest Ecology and Management*, 317, 41-50, <https://doi.org/10.1016/j.foreco.2013.06.010>, 2014.
- Ovenden, L.: Peat accumulation in northern wetlands, *Quaternary research*, 33, 377-386, [https://doi.org/10.1016/0033-5894\(90\)90063-Q](https://doi.org/10.1016/0033-5894(90)90063-Q), 1990.
- Page, S. E., Siebert, F., Rieley, J. O., Boehm, H.-D. V., Jaya, A., and Limin, S.: The amount of carbon released from peat and forest fires in Indonesia during 1997, *Nature*, 420, 61-65, <https://doi.org/10.1038/nature01131>, 2002.
- 950 Page, S. E., Banks, C. J., and Rieley, J. O.: Tropical peatlands: distribution, extent and carbon storage-uncertainties and knowledge gaps, *Peatlands International*, 2, 26-27, [https://www.researchgate.net/profile/Susan\\_Page/publication/239531431\\_Tropical\\_peatlands\\_Distribution\\_extent\\_and\\_carbon\\_storage\\_uncertainties\\_and\\_knowledge\\_gaps/links/0046352976c99c75d3000000.pdf](https://www.researchgate.net/profile/Susan_Page/publication/239531431_Tropical_peatlands_Distribution_extent_and_carbon_storage_uncertainties_and_knowledge_gaps/links/0046352976c99c75d3000000.pdf), 2007.
- 955 Pan, X., Ichoku, C., Chin, M., Bian, H., Darnenov, A., Colarco, P., Ellison, L., Kucsera, T., da Silva, A., and Wang, J.: Six global biomass burning emission datasets: intercomparison and application in one global aerosol model, *Atmospheric Chemistry and Physics*, 20, 969-994, <https://doi.org/10.5194/acp-20-969-2020>, 2020.
- Park Williams, A., Cook, B. I., Smerdon, J. E., Bishop, D. A., Seager, R., and Mankin, J. S.: The 2016 southeastern US drought: An extreme departure from centennial wetting and cooling, *Journal of Geophysical Research: Atmospheres*, 122, 10,888-810,905, <https://doi.org/10.1002/2017JD027523>, 2017.
- 960 Peckham, S., Grell, G., McKeen, S., Schmitz, R., Salzmann, M., Freitas, S., Fast, J., Gustafson, W., Ghan, S., and Zaveri, R.: WRF-Chem Version 3.9.1.1 User's Guide, 2018.
- Pfister, G., Avise, J., Wiedinmyer, C., Edwards, D., Emmons, L., Diskin, G., Podolske, J., and Wisthaler, A.: CO source contribution analysis for California during ARCTAS-CARB, *Atmospheric Chemistry and Physics*, 11, 7515, <https://doi.org/10.5194/acp-11-7515-2011>, 2011a.
- 965 Pfister, G., Parrish, D., Worden, H., Emmons, L., Edwards, D., Wiedinmyer, C., Diskin, G., Huey, G., Oltmans, S., and Thouret, V.: Characterizing summertime chemical boundary conditions for air masses entering the US West Coast, *Atmospheric Chemistry and Physics*, 11, 1769, <https://doi.org/10.5194/acp-11-1769-2011>, 2011b.
- Pouliot, G., Gilliam, R., Eder, B., McDowell, I., Wilkins, J., and Pierce, T.: Evaluating the Wildfire Emission estimates in an Air Quality Simulation of the 2016 Southeastern United States Wildfires, *International Emissions Inventory Conference*, 2017.
- 970 Poulter, B., Christensen Jr, N. L., and Halpin, P. N.: Carbon emissions from a temperate peat fire and its relevance to interannual variability of trace atmospheric greenhouse gases, *Journal of Geophysical Research: Atmospheres*, 111, <https://doi.org/10.1029/2005JD006455>, 2006.
- Powers, J. G., Klemp, J. B., Skamarock, W. C., Davis, C. A., Dudhia, J., Gill, D. O., Coen, J. L., Gochis, D. J., Ahmadov, R., and Peckham, S. E.: The weather research and forecasting model: Overview, system efforts, and future directions, *Bulletin of the American Meteorological Society*, 98, 1717-1737, <https://doi.org/10.1175/BAMS-D-15-00308.1>, 2017.
- 975 Prichard, S. J., Andreu, A. G., Ottmar, R. D., and Eberhardt, E.: Fuel Characteristic Classification System (FCCS) field sampling and fuelbed development guide, Gen. Tech. Rep. PNW-GTR-972. Portland, OR: US Department of Agriculture, Forest Service, Pacific Northwest Research Station. 77 p., 972, 2019.

- Qian, S., Fu, Y., and Pan, F.: Climate change tendency and grassland vegetation response during the growth season in Three-River Source Region, *Science China Earth Sciences*, 53, 1506-1512, <http://doi.org/10.1007/s11430-010-4064-2>, 2010.
- 980 Raaflaub, L., and Valeo, C.: Hydrological properties of duff, *Water resources research*, 45, <https://doi.org/10.1029/2008WR007396>, 2009.
- Randerson, J., Chen, Y., Werf, G., Rogers, B., and Morton, D.: Global burned area and biomass burning emissions from small fires, *Journal of Geophysical Research: Biogeosciences*, 117, <https://doi.org/10.1029/2012JG002128>, 2012.
- [Rappold, A. G., Stone, S. L., Cascio, W. E., Neas, L. M., Kilaru, V. J., Carraway, M. S., Szykman, J. J., Ising, A., Cleve, W. E., Meredith, J. T., Vaughan-Batten, H., Deyneka, L., and Devlin, R. B.: Peat bog wildfire smoke exposure in rural North Carolina is associated with cardiopulmonary emergency department visits assessed through syndromic surveillance.](https://doi.org/10.1029/2012JG002128)
- 985 [Environ. Health Perspect.](https://doi.org/10.1289/ehp.1003206) 119 (10):1415-1420. doi: 10.1289/ehp.1003206, 2011.
- Reddington, C. L., Morgan, W. T., Darbyshire, E., Brito, J., Coe, H., Artaxo, P., Scott, C. E., Marsham, J., and Spracklen, D. V.: Biomass burning aerosol over the Amazon: analysis of aircraft, surface and satellite observations using a global aerosol model, *Atmospheric Chemistry and Physics*, <https://doi.org/10.5194/acp-19-9125-2019>, 2019.
- 990 Reddy, A. D., Hawbaker, T. J., Wurster, F., Zhu, Z., Ward, S., Newcomb, D., and Murray, R.: Quantifying soil carbon loss and uncertainty from a peatland wildfire using multi-temporal LiDAR, *Remote Sensing of Environment*, 170, 306-316, <https://doi.org/10.1016/j.rse.2015.09.017>, 2015.
- Reid, C. E., Brauer, M., Johnston, F. H., Jerrett, M., Balmes, J. R., and Elliott, C. T.: Critical review of health impacts of wildfire smoke exposure, *Environmental health perspectives*, 124, 1334-1343, <https://doi.org/10.1289/ehp.1409277>, 2016.
- 995 Rein, G.: Smoldering combustion phenomena and coal fires, *Coal and Peat Fires: A Global Perspective: Coal—Geology and Combustion*, 1, 307-315, <http://doi.org/10.1016/B978-0-444-52858-2.00017-7>, 2011.
- Rein, G., and Belcher, C.: Smoldering fires and natural fuels, *Fire phenomena and the Earth system: an interdisciplinary guide to fire science*, 15-33, <https://doi.org/10.1002/9781118529539.ch2>, 2013.
- Roulston, C., Paton-Walsh, C., Smith, T., Guérette, É. A., Evers, S., Yule, C. M., Rein, G., and Van der Werf, G.: Fine particle emissions from tropical peat fires decrease rapidly with time since ignition, *Journal of Geophysical Research: Atmospheres*, 123, 5607-5617, <https://doi.org/10.1029/2017JD027827>, 2018.
- 1000 Sakulyanontvittaya, T., Duhl, T., Wiedinmyer, C., Helmig, D., Matsunaga, S., Potosnak, M., Milford, J., and Guenther, A.: Monoterpene and sesquiterpene emission estimates for the United States, *Environmental science & technology*, 42, 1623-1629, <https://doi.org/10.1021/es702274e>, 2008.
- 1005 San Jose, R., Pérez, J., González, R., Pecci, J., and Palacios, M.: Improving air quality modelling systems by using on-line wild land fire forecasting tools coupled into WRF/Chem simulations over Europe, *Urban climate*, 22, 2-18, <https://doi.org/10.1016/j.uclim.2016.09.001>, 2017.
- Sandu, A., Daescu, D. N., and Carmichael, G. R.: Direct and adjoint sensitivity analysis of chemical kinetic systems with KPP: Part I—theory and software tools, *Atmospheric Environment*, 37, 5083-5096, <https://doi.org/10.1016/j.atmosenv.2003.08.019>, 2003.
- 1010 Sandu, A., and Sander, R.: Simulating chemical systems in Fortran90 and Matlab with the Kinetic PreProcessor KPP-2.1, *Atmospheric Chemistry and Physics*, 6, 187-195, <https://doi.org/10.5194/acp-6-187-2006>, 2006.
- Seinfeld, J. H., and Pandis, S. N.: *Atmospheric chemistry and physics: from air pollution to climate change*, John Wiley & Sons, 2016.
- Selimovic, V., Yokelson, R. J., McMeeking, G. R., and Coefield, S.: Aerosol mass and optical properties, smoke influence on O<sub>3</sub>, and high NO<sub>3</sub> production rates in a western US city impacted by wildfires, *Journal of Geophysical Research: Atmospheres*, 125, e2020JD032791, 2020.
- 1015 Shaposhnikov, D., Revich, B., Bellander, T., Bedada, G. B., Bottai, M., Kharkova, T., Kvasha, E., Lezina, E., Lind, T., and Semutnikova, E.: Mortality related to air pollution with the Moscow heat wave and wildfire of 2010, *Epidemiology (Cambridge, Mass.)*, 25, 359, <http://doi.org/10.1097/EDE.000000000000090>, 2014.
- Singh, H., Cai, C., Kaduwela, A., Weinheimer, A., and Wisthaler, A.: Interactions of fire emissions and urban pollution over California: Ozone formation and air quality simulations, *Atmospheric Environment*, 56, 45-51, <https://doi.org/10.1016/j.atmosenv.2012.03.046>, 2012.
- 1020 Southern Appalachian Man and the Biosphere: The Southern Appalachian assessment summary report, in, US Department of Agriculture Washington, DC, 1996.
- Stauffer, D. R., and Seaman, N. L.: Use of four-dimensional data assimilation in a limited-area mesoscale model. Part I: Experiments with synoptic-scale data, *Monthly Weather Review*, 118, 1250-1277, [https://doi.org/10.1175/1520-0493\(1990\)118<1250:UOFDDA>2.0.CO;2](https://doi.org/10.1175/1520-0493(1990)118<1250:UOFDDA>2.0.CO;2), 1990.
- 1025 Stocks, B. J., Lynham, T., Lawson, B., Alexander, M., Wagner, C. V., McAlpine, R., and Dube, D.: Canadian forest fire danger rating system: an overview, *The Forestry Chronicle*, 65, 258-265, 1989.
- Tansey, K., Beston, J., Hoscilo, A., Page, S., and Paredes Hernández, C.: Relationship between MODIS fire hot spot count and burned area in a degraded tropical peat swamp forest in Central Kalimantan, Indonesia, *Journal of Geophysical Research: Atmospheres*, 113, <https://doi.org/10.1029/2008JD010717>, 2008.
- 1030 Thompson, G., Field, P. R., Rasmussen, R. M., and Hall, W. D.: Explicit forecasts of winter precipitation using an improved bulk microphysics scheme. Part II: Implementation of a new snow parameterization, *Monthly Weather Review*, 136, 5095-5115, <https://doi.org/10.1175/2008MWR2387.1>, 2008.

- [Tinling, M. A., West, J. J., Cascio, W. E., Kilaru, V., and Rappold, A. G.: Repeating cardiopulmonary health effects in rural North Carolina population during a second large peat wildfire. \*Environmental Health\*, 15\(1\). <https://doi.org/10.1186/s12940-016-0093-4>, 2016.](#)
- 1035 Tosca, M., Randerson, J., Zender, C., Nelson, D., Diner, D., and Logan, J.: Dynamics of fire plumes and smoke clouds associated with peat and deforestation fires in Indonesia. *Journal of Geophysical Research: Atmospheres*, 116, <https://doi.org/10.1029/2010JD015148>, 2011.
- Tosca, M., Randerson, J., and Zender, C.: Global impact of smoke aerosols from landscape fires on climate and the Hadley circulation. *Atmospheric Chemistry and Physics*, 13, 5227-5241, <https://doi.org/10.5194/acp-13-5227-2013>, 2013.
- 1040 Turetsky, M. R., Benscoter, B., Page, S., Rein, G., Van Der Werf, G. R., and Watts, A.: Global vulnerability of peatlands to fire and carbon loss. *Nature Geoscience*, 8, 11-14, <https://doi.org/10.1038/ngeo2325>, 2015.
- Urbanski, S.: Wildland fire emissions, carbon, and climate: Emission factors. *Forest Ecology and Management*, 317, 51-60, <https://doi.org/10.1016/j.foreco.2013.05.045>, 2014.
- USEPA: Profile of version 1 of the 2014 national emissions inventory, [https://www.epa.gov/sites/production/files/2017-04/documents/2014neiv1\\_profile\\_final\\_april182017.pdf](https://www.epa.gov/sites/production/files/2017-04/documents/2014neiv1_profile_final_april182017.pdf), 2017.
- 1045 USEPA: EPA's 2014 National Air Toxics Assessment (Technical Support Document). , U.S. Environmental Protection Agency, Research Triangle Park, North Carolina. url: <https://www.epa.gov/national-air-toxics-assessment/2014-nata-technical-support-document>, 2018a.
- USEPA: Preparation of Emissions Inventories for the Version 7.1 2014 Emissions Modeling Platform for the National Air Toxics Assessment (Technical Support Document). U.S., Environmental Protection Agency, Research Triangle Park, North Carolina. url: <https://www.epa.gov/air-emissions-modeling/2014-version-71-platform>, 2018b.
- 1050 Van Der Werf, G. R., Randerson, J. T., Giglio, L., Van Leeuwen, T. T., Chen, Y., Rogers, B. M., Mu, M., Van Marle, M. J., Morton, D. C., and Collatz, G. J.: Global fire emissions estimates during 1997-2016. *Earth System Science Data*, 9, 697-720, <https://doi.org/10.5194/essd-9-697-2017>, 2017.
- Verma, V., Fang, T., Guo, H., King, L., Bates, J., Peltier, R., Edgerton, E., Russell, A., and Weber, R.: Reactive oxygen species associated with water-soluble PM 2.5 in the southeastern United States: spatiotemporal trends and source apportionment. *Atmospheric Chemistry & Physics Discussions*, 14, <https://doi.org/10.5194/acp-14-12915-2014>, 2014.
- 1055 [Waldrop, T.A. and Goodrick, S.L.: Introduction to prescribed fires in Southern ecosystems. \*Science Update SRS-054. Asheville, NC: US Department of Agriculture Forest Service, Southern Research Station\*. 80 p., 54, pp.1-80, 2012.](#)
- Wang, K., Zhang, Y., Yahya, K., Wu, S.-Y., and Grell, G.: Implementation and initial application of new chemistry-aerosol options in WRF/Chem for simulating secondary organic aerosols and aerosol indirect effects for regional air quality. *Atmospheric Environment*, 115, 716-732, <https://doi.org/10.1016/j.atmosenv.2014.12.007>, 2015.
- 1060 Ward, D. S., Kloster, S., Mahowald, N. M., Rogers, B. M., Randerson, J. T., and Hess, P. G.: The changing radiative forcing of fires: global model estimates for past, present and future. *Atmospheric Chemistry and Physics*, 12, 10857-10886, [10.5194/acp-12-10857-2012](https://doi.org/10.5194/acp-12-10857-2012), 2012.
- Watts, A. C., and Kobziar, L. N.: Smoldering Combustion in Organic Soils: Peat and Muck Fires in the Southeastern US, SFE Research Synthesis, 1-5, [https://www.firescience.gov/projects/11-3-1-22/project/11-3-1-22\\_SFE\\_Synthesis\\_Smoldering\\_2012-9.pdf](https://www.firescience.gov/projects/11-3-1-22/project/11-3-1-22_SFE_Synthesis_Smoldering_2012-9.pdf), 2012.
- 1065 Watts, A. C.: Organic soil combustion in cypress swamps: moisture effects and landscape implications for carbon release. *Forest Ecology and Management*, 294, 178-187, <https://doi.org/10.1016/j.foreco.2012.07.032>, 2013.
- Wieder, R. K., Vitt, D. H., and Benscoter, B. W.: Peatlands and the boreal forest, in: *Boreal peatland ecosystems*, Springer, 1-8, 2006.
- 1070 Wiedinmyer, C., Quayle, B., Geron, C., Belote, A., McKenzie, D., Zhang, X., O'Neill, S., and Wynne, K. K.: Estimating emissions from fires in North America for air quality modeling. *Atmospheric Environment*, 40, 3419-3432, <https://doi.org/10.1016/j.atmosenv.2006.02.010>, 2006.
- Wiedinmyer, C., Akagi, S., Yokelson, R. J., Emmons, L., Al-Saadi, J., Orlando, J., and Soja, A.: The Fire INventory from NCAR (FINN): A high resolution global model to estimate the emissions from open burning. *Geoscientific Model Development*, 4, 625, <https://doi.org/10.5194/gmd-4-625-2011>, 2011.
- 1075 Wilbur, R. B., and Christensen, N. L.: Effects of fire on nutrient availability in a North Carolina coastal plain pocosin. *American Midland Naturalist*, 54-61, <https://doi.org/10.2307/2425213>, 1983.
- Wilkins, J. L., Pouliot, G., Foley, K., Appel, W., and Pierce, T.: The impact of US wildland fires on ozone and particulate matter: a comparison of measurements and CMAQ model predictions from 2008 to 2012. *International Journal of Wildland Fire*, 27, 684-698, <https://doi.org/10.1071/WFI18053>, 2018.
- 1080 Yang, A., Janssen, N. A., Brunekreef, B., Cassee, F. R., Hoek, G., and Gehring, U.: Children's respiratory health and oxidative potential of PM2. 5: the PIAMA birth cohort study. *Occupational and Environmental Medicine*, 73, 154-160, <http://dx.doi.org/10.1136/oemed-2015-103175>, 2016.
- Yang, G., Di, X.-y., Guo, Q.-x., Shu, Z., Zeng, T., Yu, H.-z., and Wang, C.: The impact of climate change on forest fire danger rating in China's boreal forest. *Journal of Forestry Research*, 22, 249-257, <https://doi.org/10.1007/s11676-011-0158-8>, 2011.
- 1085 Yokelson, R. J., Burling, I., Gilman, J., Warneke, C., Stockwell, C., Gouw, J. d., Akagi, S., Urbanski, S., Veres, P., and Roberts, J.: Coupling field and laboratory measurements to estimate the emission factors of identified and unidentified trace gases for prescribed fires. *Atmospheric Chemistry and Physics*, 13, 89-116, 2013.
- Yu, J.-Y., Kao, H.-Y., and Lee, T.: Subtropics-related interannual sea surface temperature variability in the central equatorial Pacific. *Journal of Climate*, 23, 2869-2884, <https://doi.org/10.1175/2010JCLI13171.1>, 2010.

1090 Yue, X., and Unger, N.: Fire air pollution reduces global terrestrial productivity, *Nature communications*, 9, 1-9, <https://doi.org/10.1038/s41467-018-07921-4>, 2018.

Zhang, A., Wang, Y., Zhang, Y., Weber, R. J., Song, Y., Ke, Z., and Zou, Y.: Modeling the global radiative effect of brown carbon: a potentially larger heating source in the tropical free troposphere than black carbon, *Atmos. Chem. Phys.*, 20, 1901-1920, <https://doi.org/10.5194/acp-20-1901-2020>, 2020.

1095 Zhang, L., Wang, T., Zhang, Q., Zheng, J., Xu, Z., and Lv, M.: Potential sources of nitrous acid (HONO) and their impacts on ozone: A WRF-Chem study in a polluted subtropical region, *Journal of Geophysical Research: Atmospheres*, 121, 3645-3662, <https://doi.org/10.1002/2015JD024468>, 2016.

Zhang, Y., and Wang, Y.: Climate-driven ground-level ozone extreme in the fall over the Southeast United States, *Proceedings of the National Academy of Sciences*, 113, 10025-10030, <https://doi.org/10.1073/pnas.1602563113>, 2016.

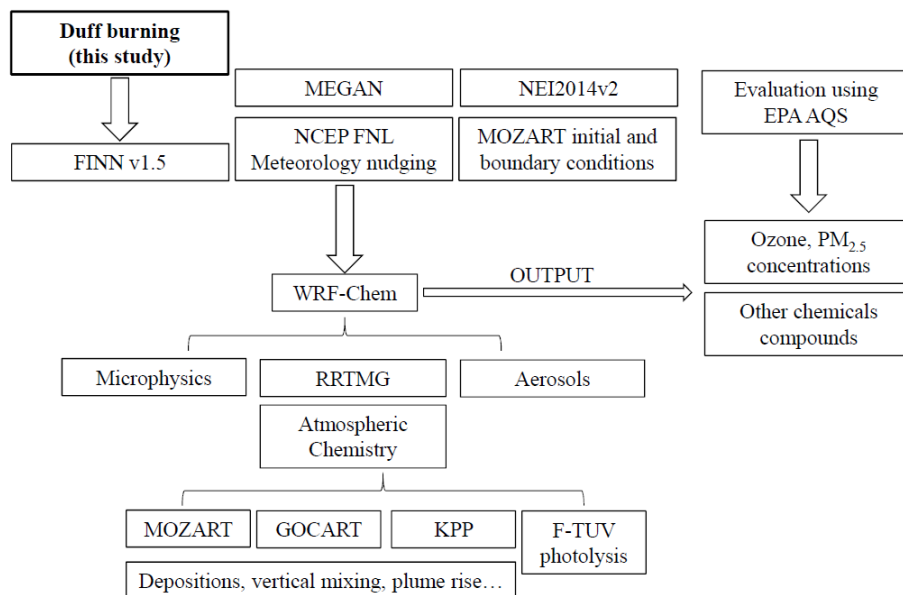
1100 Zhao, F., Liu, Y., Goodrick, S., Hornsby, B., and Schardt, J.: The contribution of duff consumption to fire emissions and air pollution of the Rough Ridge Fire, *International Journal of Wildland Fire*, 28, 993-1004, <https://doi.org/10.1071/WF18205>, 2019.

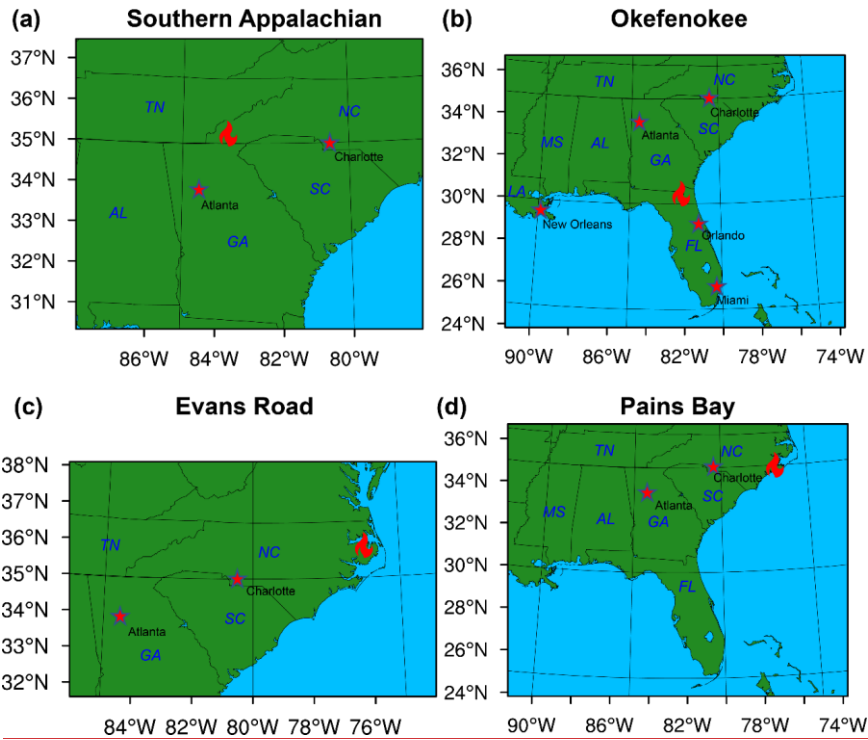
Zhu, Z., and Evans, D. L.: US forest types and predicted percent forest cover from AVHRR data, *PE & RS- Photogrammetric Engineering & Remote Sensing*, 60, 525-531, [https://www.asprs.org/wp-content/uploads/pers/1994journal/may/1994\\_may\\_525-531.pdf](https://www.asprs.org/wp-content/uploads/pers/1994journal/may/1994_may_525-531.pdf), 1994.

1105 Zou, Y., O'Neill, S.M., Larkin, N.K., Alvarado, E.C., Solomon, R., Mass, C., Liu, Y., Odman, M.T., Shen, H.: Machine Learning-Based Integration of High-Resolution Wildfire Smoke Simulations and Observations for Regional Health Impact Assessment. *Int. J. Environ. Res. Public Health*, 16, 2137. <https://doi.org/10.3390/ijerph16122137>, 2019

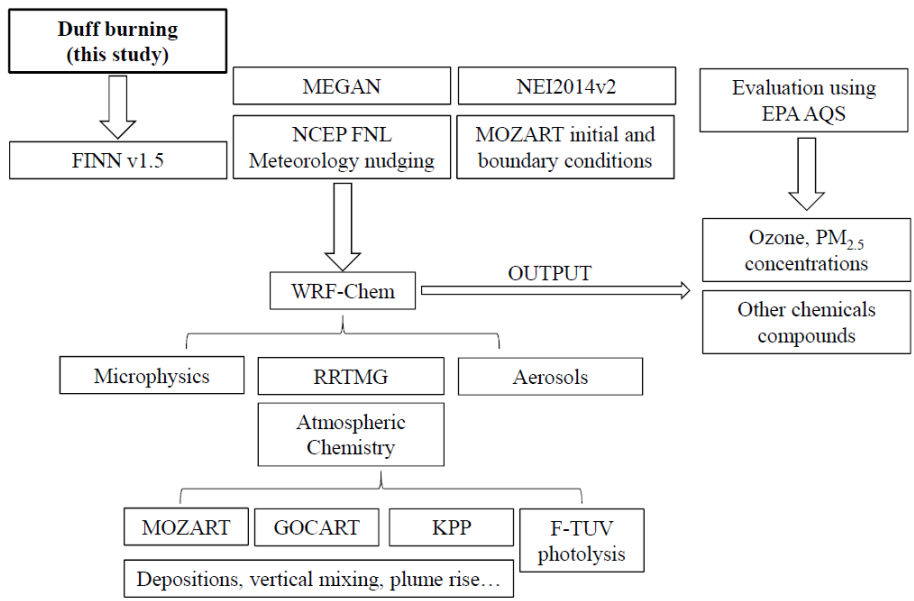
Zou, Y., Wang, Y., Qian, Y., Tian, H., Yang, J., and Alvarado, E.: Using CESM-RESFire to understand climate-fire-ecosystem interactions and the implications for decadal climate variability, *Atmospheric Chemistry and Physics*, 20, <https://doi.org/10.5194/acp-20-995-2020>, 2020.

Formatted: Font: SimSun





**Figure 1-1.** The WRF-Chem domain used in (a) App16, (b) the Okefenokee cases, (c) ER08 and (d) PB11. The fire sites and nearby major cities are marked. The abbreviations of the US state names are Florida (FL), Alabama (AL), Georgia (GA), South Carolina (SC), North Carolina (NC), Tennessee (TN), Mississippi (MS) and Louisiana (LA).



**Figure 2.** Description of the model components, input data, and implementation procedures.

Formatted: Caption

Formatted: Font: Not Bold

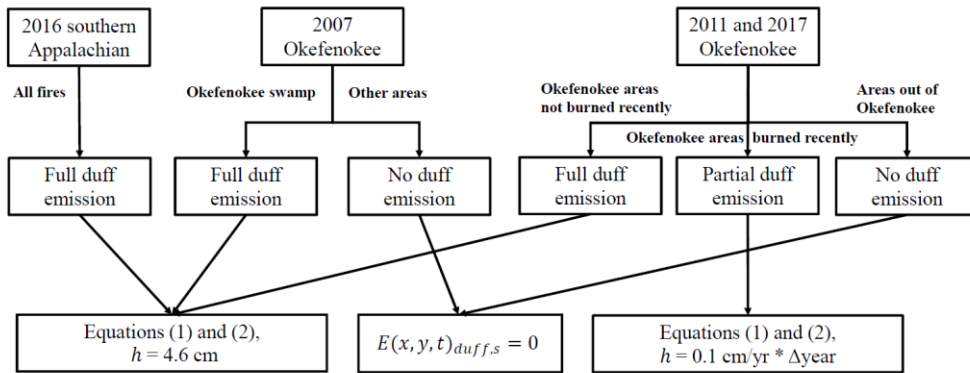


Figure 2.3. Description of the duff emission estimation.

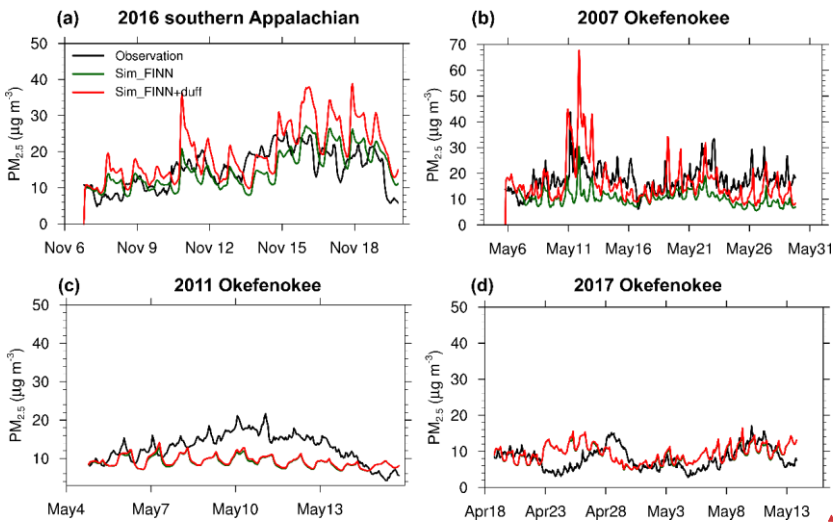


Figure 3.4. The time series of hourly surface  $PM_{2.5}$  concentrations. Black: Measurements averaged over observation sites within the simulation domain. Green and red: Simulations of Sim\_FINN and Sim\_FINN+duff, respectively, averaged over the observation sites.

Formatted: Keep with next  
Formatted: Font: 10 pt, Not Bold

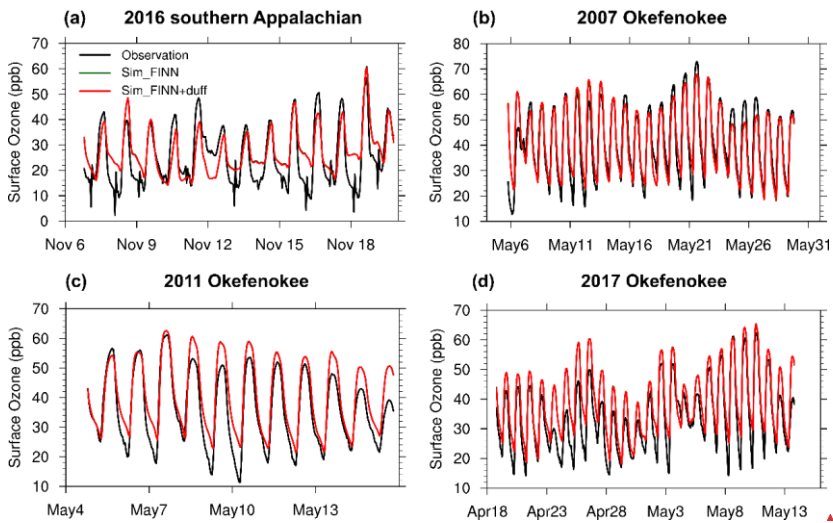
Formatted: Font: Not Bold  
Formatted: Caption

Formatted: Keep with next  
Formatted: Font: 10 pt, Not Bold

Formatted: Caption

Formatted: Font: Not Bold





**Figure 4-5.** The time series of hourly surface ozone concentrations. Black: Measurements averaged over observation sites within the simulation domain. Green and red: Simulations of Sim\_FINN and Sim\_FINN+duff, respectively, averaged over the observation sites.

Formatted: Keep with next

Formatted: Font: 10 pt, Not Bold

Formatted: Caption

Formatted: Font: Not Bold

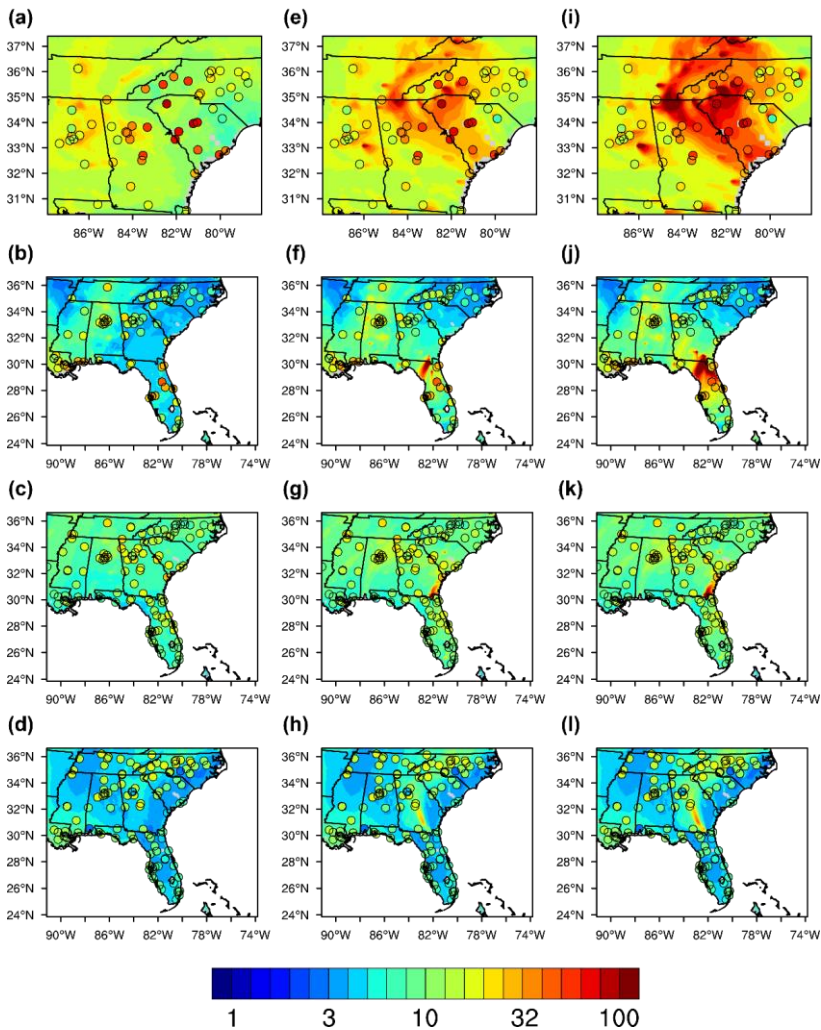


Figure 5.6. The mean surface concentration of simulated and observed PM<sub>2.5</sub> ( $\mu\text{g m}^{-3}$ ) on representative days. (a) App16 (November 15, 2016), (b) Oke07 (May 10, 2007), (c) Oke11 (May 8, 2011), and (d) Oke17 (April 29, 2017) for sim\_nofire. (e) - (h) are the corresponding fire cases for sim\_FINN, and (i) - (l) are the corresponding daily mean PM<sub>2.5</sub> concentrations.

Formatted: Keep with next

Formatted: Not Superscript/ Subscript

Formatted: Caption

Formatted: Not Superscript/ Subscript

Formatted: Not Superscript/ Subscript

Formatted: Font: Not Bold

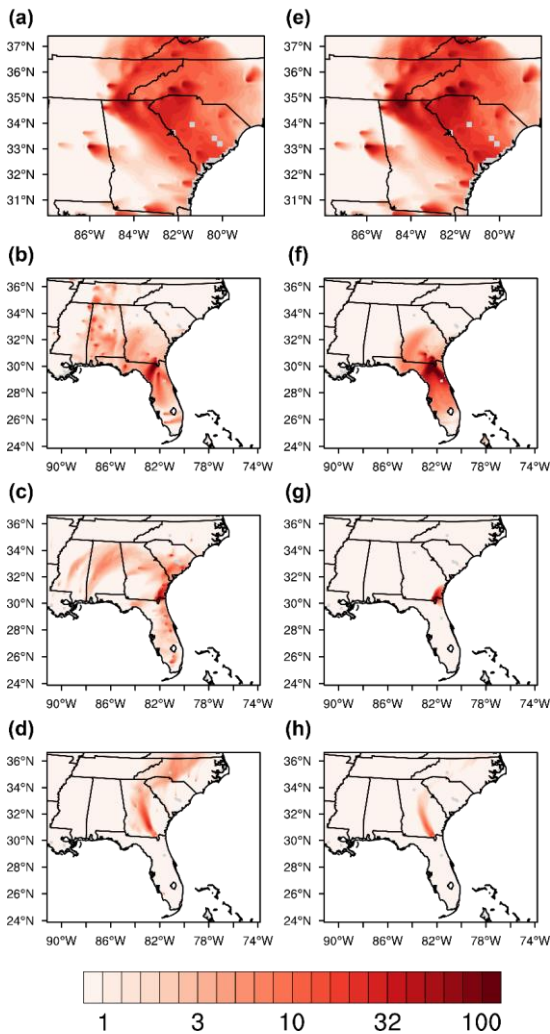


Figure 6.7. The surface PM<sub>2.5</sub> concentration change ( $\mu\text{g m}^{-3}$ ) on representative days. (a) The change due to above-ground fuel burning during App16 (November 15, 2016), (b) Oke07 (May 10, 2007), (c) Oke11 (May 8, 2011), and (d) Oke17 (April 29, 2017). (e) - (h) are the corresponding changes due to duff burning.

Formatted: Keep with next

Formatted: Not Superscript/ Subscript

Formatted: Caption

Formatted: Not Superscript/ Subscript

Formatted: Font: Not Bold

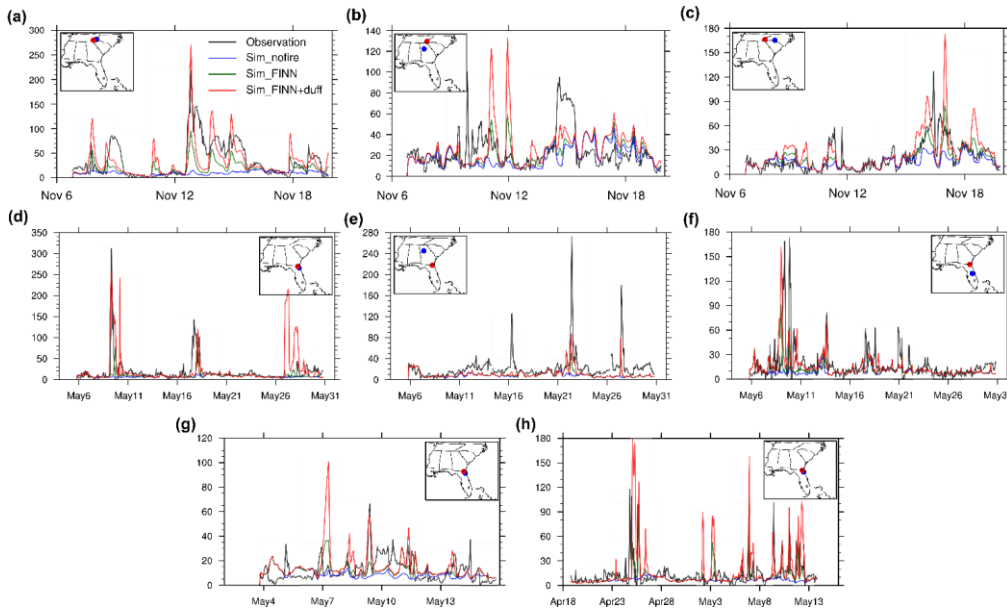


Figure 7.8. Comparisons of in-situ hourly surface PM<sub>2.5</sub> concentrations ( $\mu\text{g m}^{-3}$ ) among the observation (black), sim\_nofire (blue), sim\_FINN (green) and sim\_FINN+duff (red) simulations. (a - c) App16, (d - f) Oke07, (g) Oke11 and (h) the 2017 Okfeokee Fire. The fire location (red) and site location (blue) are shown in the map attached to each panel. The observation sites are located in (a) Macon county, NC, (b) Fulton county, Georgia, (c) Mecklenburg county, NC, (d) Duval county, Florida, (e) Fulton county, Georgia, (f) Orange county, Florida, (g) - (h) Duval county, Florida.

Formatted: Keep with next

Formatted: Caption

Formatted: Not Superscript/ Subscript

Formatted: Font: Not Bold

Formatted: Font: 10 pt, Not Bold

1145

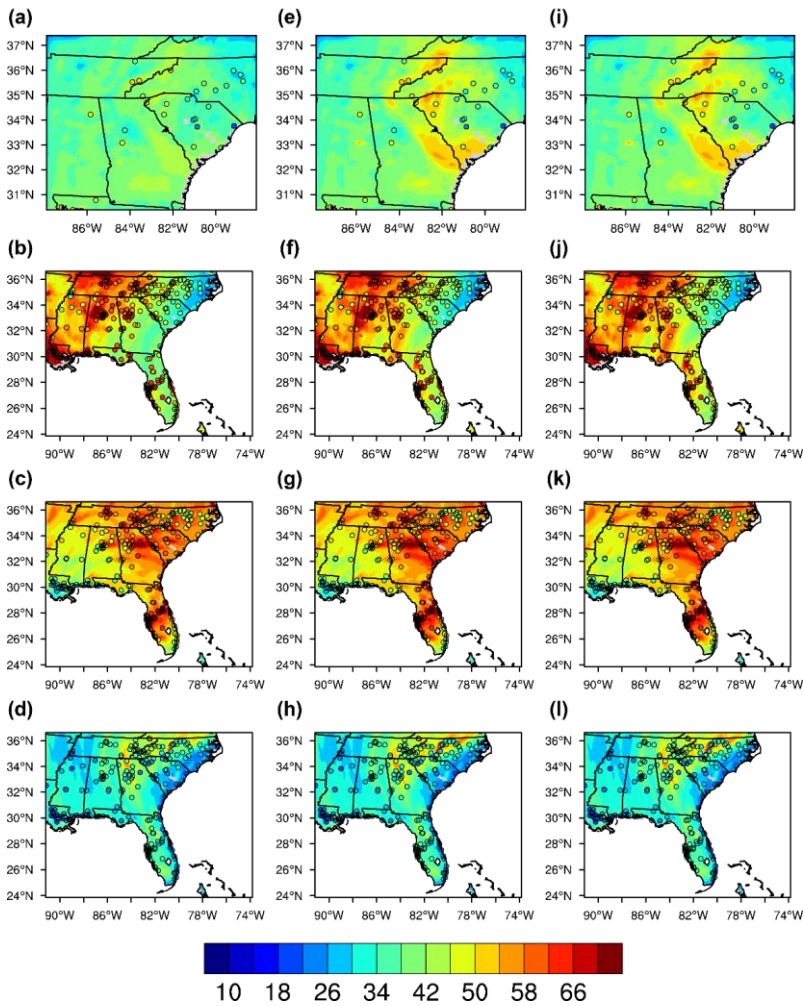
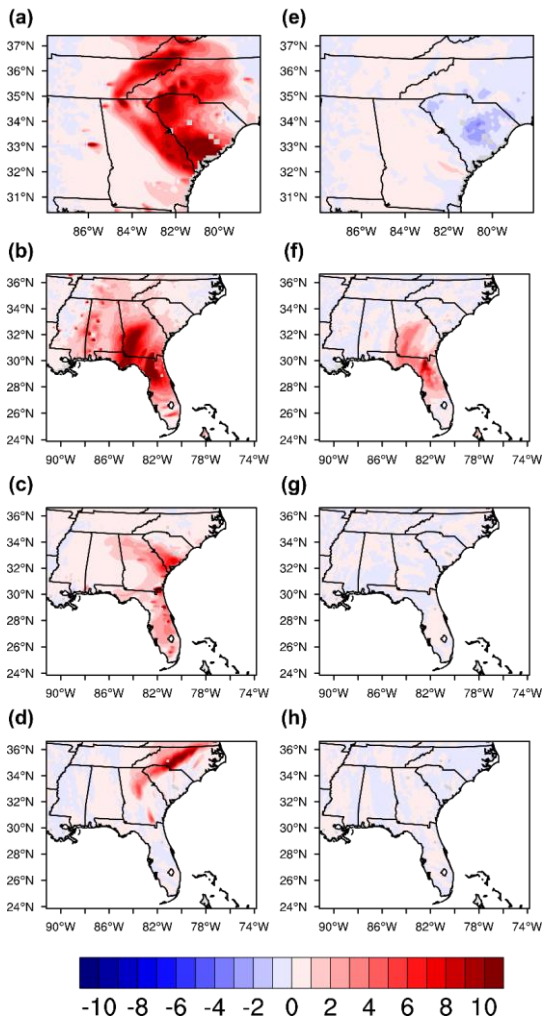


Figure 8.9. The day-time mean (from local time 10 am to 6 pm) surface ozone concentration of simulated and observed ozone (ppb) on representative days. (a) App16 (November 15, 2016), (b) Oke07 (May 10, 2007), (c) Oke11 (May 8, 2011), and (d) Oke17 (April 29, 2017) for sim\_nofire. (e) - (h) are the corresponding fire cases for sim\_FINN, and (i) - (l) are the corresponding fire cases for sim\_FINN+duff. The color scatters represent the observed day-time mean surface ozone concentrations.

Formatted: Keep with next

Formatted: Caption

Formatted: Font: Not Bold



155

Figure 9.10. The day-time mean (from local time 10 am to 6 pm) surface ozone concentration change due to above-ground fuel burning (ppb) on representative days. (a) 2016 southern Appalachian case (November 15, 2016), (b) Oke07 (May 10, 2007), (c) Oke11 (May 8, 2011), and (d) Oke17 (April 29, 2017). (e) - (h) are the corresponding changes due to duff burning.

Formatted: Keep with next

Formatted: Caption

Formatted: Font: Not Bold

Formatted: Font: 9 pt, Bold

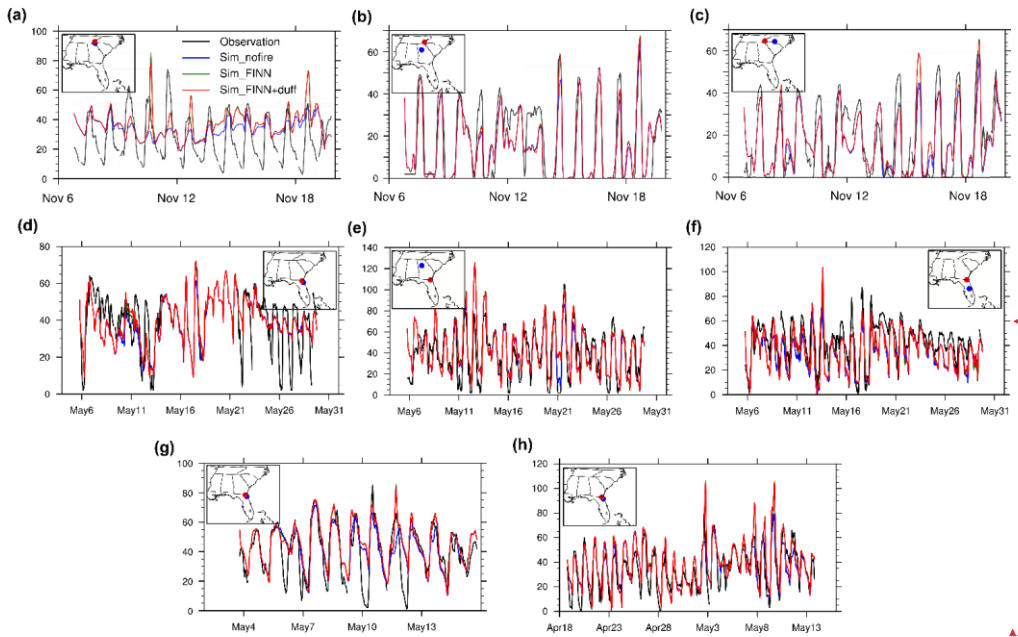


Figure 10.11. Comparisons of in-situ hourly surface ozone concentrations (ppb) among the observation (black), sim\_nofire (blue), sim\_FINN (green) and sim\_FINN+duff (red) simulations. (a - c) App16, (d - f) Oke07, (g) Oke11 and (h) Oke17. The fire location (red) and site location (blue) are shown in the map attached to each panel. The studied sites are in (a) Macon county, North Carolina, (b) Fulton county, Georgia, (c) Mecklenburg county, NC, (d) Duval county, Florida, (e) Fulton county, Georgia, (f) Orange county, Florida, (g) - (h) Duval county, Florida.

Formatted: Keep with next  
 Formatted: Font: 10 pt, Not Bold

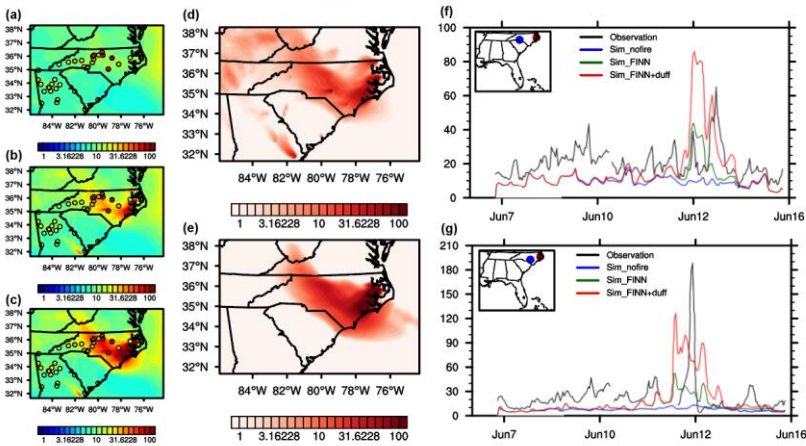
Formatted: Caption

Formatted: Font: Not Bold

160

165

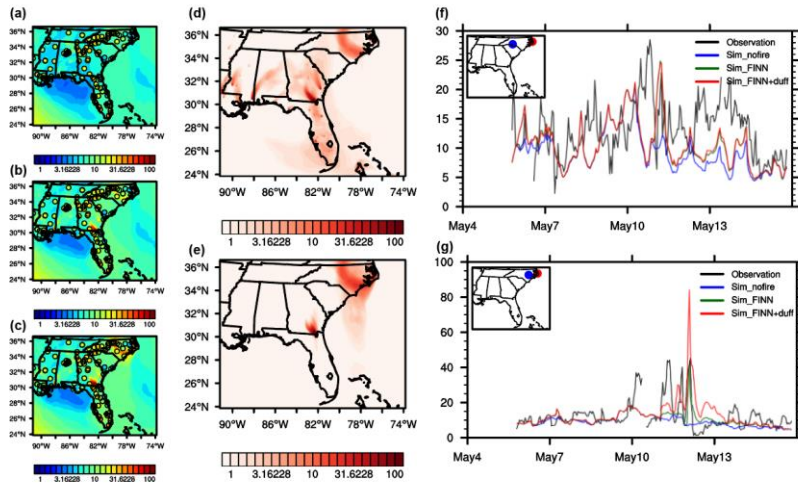




**Figure 12.** The PM<sub>2.5</sub> distribution and time series during the 2008 Evans Road Fire. (a-c) PM<sub>2.5</sub> daily mean surface concentration ( $\mu\text{g m}^{-3}$ ) on June 12, 2008 simulated in (a) *sim\_nofire*, (b) *sim\_FINN* and (c) *sim\_FINN+duff* runs. (d-e) The PM<sub>2.5</sub> daily surface concentration differences ( $\mu\text{g m}^{-3}$ ) between (d) *sim\_FINN* and *sim\_nofire* and between (e) *sim\_FINN+duff* and *sim\_FINN* on June 12, 2008. (f-g) The comparison of the time series of hourly surface PM<sub>2.5</sub> concentrations ( $\mu\text{g m}^{-3}$ ) between the observation and simulations from June 7 to June 14, 2008 in (f) Mecklenburg county, NC and (g) Cumberland county, NC.

170





**Figure 13.** The PM<sub>2.5</sub> distribution and time series during the 2011 Pains Bay Fire. (a-c) PM<sub>2.5</sub> daily mean surface concentration ( $\mu\text{g m}^{-3}$ ) on May 12, 2011 simulated in (a) *sim\_nofire*, (b) *sim\_FINN* and (c) *sim\_FINN+duff* runs. (d-e) The PM<sub>2.5</sub> daily surface concentration differences ( $\mu\text{g m}^{-3}$ ) between (d) *sim\_FINN* and *sim\_nofire* and between (e) *sim\_FINN+duff* and *sim\_FINN* on May 12, 2008. (f-g) The comparison of the time series of hourly surface PM<sub>2.5</sub> concentrations ( $\mu\text{g m}^{-3}$ ) between the observation and simulations from May 6 to May 15, 2011 in (f) Mecklenburg county, NC and (g) Wayne county, NC.

**Table 1-Simulations1.** The simulation period and fire emission inventories applied in different WRF-Chem simulations and experiments.

Simulation and experiment	Simulation Period	Fire emission	
		FINN fire emission	Duff emission
<i>Sim_nofire</i>	App 16: 11/7-11/22, 2016, <u>91,191 acres</u> Oke07: 5/6-5/30, 2007, <u>&gt;500,000 acres</u>	No	No
<i>Sim_FINN</i>	Oke11: 5/4-5/15, 2011, <u>147,065 acres</u> Oke17: 4/19-5/13, 2017, <u>166,737 acres</u>	1x FINN emission	No
<i>Sim_FINN+Duff</i>	ER08: 6/7-6/15-2008, <u>41,560 acres</u> PB11: 5/4-5/15, 2011, <u>29,400 acres</u>	1x FINN emission	1x duff emission
<i>Exp_FINN</i>	Oke07: May 6-16, 2007, <u>&gt;500,000 acres</u>	2x FINN emission	1x duff emission
<i>Exp_duff</i>	App16: Nov 7-14, 2016, Oke07: May 6-16, 2007	1x FINN emission	0.8x duff emission 1.3x duff emission

- Formatted: Line spacing: 1.5 lines
- Formatted: Caption, Keep with next
- Formatted: Font: Not Bold
- Formatted: Font: 9 pt
- Formatted Table
- Formatted: Font: 9 pt
- Formatted: Font: 9 pt
- Formatted: Font: 9 pt
- Formatted: Font: 9 pt
- Formatted: Font: 9 pt
- Formatted: Font: 9 pt
- Formatted Table
- Formatted: Font: 9 pt
- Formatted: Font: 9 pt
- Formatted: Font: 9 pt
- Formatted: Font: 9 pt
- Formatted: Font: 9 pt

<del>2x duff NOx</del>	<del>App16: Nov 7-14, 2016, Oke07: May 6-16, 2007</del>	<del>1x FINN emission</del>	<del>1.2x duff emission for NOx 1x duff emission for the other species</del>
------------------------	---	-----------------------------	--

Formatted: Font: 9 pt

Split Cells

Split Cells

Split Cells

Formatted: Font: 9 pt

Formatted: Font: Times New Roman

Formatted: Font: Times New Roman

Formatted: Font: Times New Roman, Font color: Auto

Formatted: Font: Times New Roman

Formatted: Font: Times New Roman, Not Bold

Formatted: Caption, Line spacing: single, Keep with next

185 Table 2.2. Comparison of duff and temperate mixed forest emission factors (g/kg) used in this study.

Species	Peat and duff	FINN temperate mixed forest
CO	271±51 <sup>a</sup>	102 <sup>c</sup>
NO	0.559 <sup>b</sup>	0.34 <sup>e</sup>
NO <sub>2</sub>	0.176 <sup>b</sup>	2.7 <sup>e</sup>
SO <sub>2</sub>	1.76 <sup>b</sup>	1 <sup>f</sup>
NH <sub>3</sub>	2.67 <sup>b</sup>	1.5 <sup>e</sup>
PM <sub>2.5</sub>	50±16 <sup>c</sup>	13 <sup>f</sup>
OC	37.5 <sup>d</sup>	9.2 <sup>f</sup>
BC	0.375 <sup>d</sup>	0.56 <sup>f</sup>

<sup>a</sup> Urbanski 2014, averaged based on Geron and Hays (2013) and Hao et al. (2007).

<sup>b</sup> Yokelson et al. (2013)

<sup>c</sup> Urbanski 2014, an average of Geron and Hays (2013)

<sup>d</sup> An estimated 100:1 ratio of OC/BC emission factors based on Jen et al. (2019), after applying the PM<sub>2.5</sub>/carbonaceous aerosol emission ratio from the FINN emission factors.

<sup>e</sup> Akagi et al. (2011)

<sup>f</sup> Andreae (2008) in extratropical Forest

Table 3.3. Summary of the increased ratio of PM<sub>2.5</sub> and ozone due to duff burning and above-ground fuel burning. The bold numbers represent that the increase or decrease ratio passes the Student's t-test with p = 0.05.

YearFire Case	Location	fire-nofire PM <sub>2.5</sub>	duff-noduff PM <sub>2.5</sub>	fire-nofire ozone	duff-noduff ozone
2007Oke07	Fire region	<b>63.40%</b>	<b>131.90%</b>	<b>3.30%</b>	0.90%
2007Oke07	Atlanta	<b>13.20%</b>	<b>6.00%</b>	2.10%	-0.10%
2007Oke07	Charlotte	7.20%	2.60%	1.40%	-0.10%
2007Oke07	Orlando	<b>28.30%</b>	<b>17.70%</b>	9.10%	2.90%
2007Oke07	Miami	<b>27.20%</b>	<b>24.80%</b>	<b>7.00%</b>	1.90%

Formatted: Font: Times New Roman

Formatted: Caption, Line spacing: single, Keep with next

Formatted: Font: Times New Roman

Formatted: Font: Times New Roman, Not Superscript/ Subscript

Formatted: Font: Times New Roman

Formatted: Font: Times New Roman

Formatted: Font: Times New Roman, Not Bold

<u>2007Oke07</u>	New Orleans	<b>9.80%</b>	<b>8.50%</b>	4.10%	2.20%
<u>2016App16</u>	Fire region	<b>80.60%</b>	<b>61.30%</b>	<b>5.20%</b>	-0.20%
<u>2016App16</u>	Atlanta	<b>28.10%</b>	<b>21.30%</b>	10.70%	2.50%
<u>2016App16</u>	Charlotte	<b>41.20%</b>	<b>29.70%</b>	22.50%	4.90%
<u>2011Oke11</u>	Fire region	<b>41.70%</b>	<b>13.00%</b>	<b>4.80%</b>	0.20%
<u>2017Oke17</u>	Fire region	<b>29.70%</b>	<b>10.90%</b>	2.70%	0.00%
ER08	Fire region	<b>60.02%</b>	<b>137.30%</b>	<b>3.80%</b>	<b>0.89%</b>
PB11	Fire region	<b>14.1%</b>	<b>32.7%</b>	<b>12.0%</b>	<b>0.22%</b>

\*The "fire region" is the squared 6° x 6° area with the fire site in the center.

Formatted Table