

Data assimilation of CrIS-NH₃ satellite observations for improving spatiotemporal NH₃ distributions in LOTOS-EUROS.

Shelley van der Graaf^{1,2}, Enrico Dammers², Arjo Segers², Richard Kranenburg², Martijn Schaap^{2,3}, Mark W. Shephard⁴, Jan Willem Erisman⁵

5 ¹Vrije Universiteit Amsterdam, Earth and Climate Cluster, The Netherlands.

²TNO, Climate Air and Sustainability, Utrecht, The Netherlands.

³Freie Universität Berlin, Institute of Meteorology, Berlin, Germany.

⁴Environment and Climate Change Canada, Toronto, Ontario, Canada.

⁵Universiteit Leiden, Institute of Environmental Sciences, Leiden, The Netherlands.

10 *Correspondence to:* Shelley van der Graaf (s.c.vander.graaf@vu.nl)

Abstract. Atmospheric levels of ammonia (NH₃) have substantially increased during the last century, posing a hazard to both human health and environmental quality. The atmospheric budget of NH₃, however, is still highly uncertain due to an overall lack of observations. Satellite observations of atmospheric NH₃ may help us in the current observational and knowledge gaps. Recent observations of the Cross-track Infrared Sounder (CrIS) provide us with daily, global distributions of NH₃. In this study, the CrIS-NH₃ product is assimilated into the LOTOS-EUROS chemistry transport model using two different methods aimed at improving the modelled spatio-temporal NH₃ distributions. In the first method NH₃ surface concentrations from CrIS are used to fit spatially varying NH₃ emission time factors to redistribute model input NH₃ emissions over the year. The second method uses the CrIS-NH₃ profile to adjust the NH₃ emissions using a Local Ensemble Transform Kalman Filter (LETKF) in a top-down approach. The two methods are tested separately and combined, focusing on a region in western Europe (Germany, Belgium, and the Netherlands). In this region, the mean CrIS-NH₃ total columns were up to a factor 2 higher than the simulated NH₃ columns between 2014 and 2018, which, after assimilating the CrIS-NH₃ columns using the LETKF algorithm, led to an increase of the total NH₃ emissions of up to approximately 30%. Our results illustrate that CrIS-NH₃ observations can be used successfully to estimate spatially variable NH₃ time factors, and improve NH₃ emission distributions temporally, especially in spring (March to May). Moreover, the use of the CrIS-based NH₃ time factors resulted in an improved comparison with the onset and duration of the NH₃ spring peak observed at observation sites at hourly resolution in the Netherlands. Assimilation of the CrIS-NH₃ columns with the LETKF algorithm is mainly advantageous for improving the spatial concentration distribution of the modelled NH₃ fields. Compared to in-situ observations, a combination of both methods led to the most significant improvements in modelled monthly NH₃ surface concentration and NH₄⁺ wet deposition fields, illustrating the usefulness of the CrIS-NH₃ products to improve the temporal representativity of the model and better constrain the budget in agricultural areas.

1. Introduction

Ammonia (NH_3) is an alkaline gas in the Earth's atmosphere. NH_3 is highly reactive and readily reacts with available acids, forming aerosol components harmful to human health (Pope et al., 2009, Lelieveld et al., 2015, Giannakis et al., 2019) and, directly and indirectly, impacting global climate change (Erisman et al., 2011, Myhre et al., 2013). NH_3 is emitted from a large number of sources, including agriculture, natural nitrogen fixation in oceans and plants, volcanic eruptions, and biomass-, industrial- and fossil fuel burning (Erisman et al., 2015). Globally, agriculture is the largest source of NH_3 . Agricultural emissions of NH_3 consist of, among others, volatilized NH_3 after manure and chemical fertilizer application, livestock housing and grazing and harvesting of crops. About 40% of the total global NH_3 emissions follow directly from volatilization of animal manure and chemical fertilizer, a spatially variable process highly controlled by the temperature and acidity of soils (Sutton et al., 2013). In western Europe, for instance, agriculture is an even more dominant source of NH_3 and contributes to 85-100% of all NH_3 emissions (Hertel et al., 2011). After the emitted NH_3 is transported through the atmosphere, it is deposited back to the Earth's surface through the processes of wet and dry deposition. Excess amounts of reactive nitrogen deposition can cause several adverse effects, such as eutrophication in aquatic ecosystems and soil acidification (Erisman et al., 2007) and biodiversity loss in terrestrial ecosystems (Bobbink et al., 2010).

Even though NH_3 at its current levels is an important threat to human health and environmental quality, its atmospheric budget is still very uncertain. NH_3 concentrations are highly variable in space and time and are difficult to be reliably measured in-situ due to the sticky nature of NH_3 leading to potential adsorption to parts of the measurement devices (von Bobruzki et al., 2010). Globally, only a few NH_3 measurement networks exist, most of which contain only a small number of locations. Moreover, most measurements are performed at a coarse temporal resolution (weeks to months), while most atmospheric processes occur on much shorter time scales. Due to the lack of dense and precise measurement networks, measures for NH_3 emission controls currently rely mostly on estimates from models, for instance from chemical transport models (CTMs). CTMs simulate atmospheric processes such as emissions, transport, deposition and chemical conversion to estimate the spatial and temporal distribution of atmospheric NH_3 . However, these models involve large uncertainties. On the one hand, model assumptions and parameterizations are uncertain due to insufficient or lack of knowledge of some of the processes, for instance, the limited understanding of bi-directional fluxes of NH_3 (Schrader and Brümmner, 2014, Schrader et al., 2018) or the direct effect of meteorology on NH_3 emissions (Sutton et al., 2013). On the other hand, uncertainties stem from the underlying input data and the spatial and temporal variation in emissions. Compared to other air pollutants, NH_3 emission inputs are especially uncertain due to their large spatiotemporal variability resulting from the diverse nature of agricultural sources (Behera et al., 2013). In Europe, the uncertainty of the total annual reported NH_3 emissions on a country level is for instance already estimated to be at least around ~30% (EEA, 2019). Naturally, NH_3 emissions from individual sources have a much higher uncertainty due to errors related to spatial and temporal distribution. So as to reduce the uncertainty in modelled NH_3 fields from CTMs, it is vital to better understand both the spatiotemporal distribution of NH_3 emissions.

65 With the scarceness of in-situ measurements and uncertainties in existing models, the atmospheric NH₃ budget remains among
the least known parts of the nitrogen cycle (Erisman et al., 2007). Recent satellite observations of NH₃ in the lower troposphere
can help us to fill in both observational and knowledge gaps. Satellite instruments, such as the NASA Tropospheric Emission
Spectrometer (TES) (Beer et al., 2008), ESA's Infrared Atmospheric Sounder Interferometers (IASI) (Clarisse et al., 2009),
the NASA Atmospheric Infrared Sounder (AIRS) (Warner et al., 2016), the Thermal And Near-infrared Spectrometer for
70 Observation-Fourier Transform Spectrometer (TANSO-FTS) (Someya et al., 2020) and the NASA/NOAA Cross-track
Infrared Sounder (CrIS) (Shephard and Cady-Pereira, 2015) provide global observations of atmospheric NH₃. Out of the
operational satellites that observe NH₃ with twice daily global coverage, CrIS is the newest instrument and has the lowest
radiometric noise in the spectral region used for NH₃ (Zavalyov et al., 2013). Moreover, CrIS has greater vertical sensitivity
to near-surface NH₃, and provides retrievals of the vertical distribution of NH₃ (Shephard et al., 2020).

75

These atmospheric trace gas measurements with satellites have opened up new ways to study the atmospheric budget. Recently,
satellite observations have successfully been used for direct estimates of emissions and lifetimes of various other atmospheric
species (e.g., SO₂, NO₂, CO₂) of single anthropogenic or natural point sources (e.g., Fioletov et al., 2015, Nassar et al., 2017)
or even multiple sources at a time (Fioletov et al., 2017, Beirle et al., 2019). For NH₃ specifically, multiple studies have reported
80 emissions and atmospheric lifetime estimates either based on satellite data (e.g., Zhu et al., 2013, Whitburn et al., 2015, Van
Damme et al., 2018, Zhang et al., 2018, Cao et al., 2020, Evangelidou et al., 2021) or directly estimated from satellite data (e.g.,
Van Damme et al., 2018, Adams et al., 2019, Dammers et al., 2019). Here, also different forms of model inversions have been
used. Overall, these studies indicate an underestimation of both anthropogenic and natural NH₃ emissions in the current
emission inventories. In addition to estimating NH₃ emissions, various studies used satellite observations to estimate dry
85 deposition fluxes of NH₃ (Kharol et al., 2018, Van der Graaf et al., 2018, Lui et al., 2020).

In this manuscript, we describe two methods to improve both the temporal and spatial variation of NH₃ emissions in the
LOTOS-EUROS chemistry transport model with CrIS-NH₃ observations. The first method aims at deriving an improved set
of a-priori, observation-based NH₃ time factors to be used for the daily distribution of agricultural emission sources within
90 LOTOS-EUROS. In this method, the temporal variation of NH₃ surface concentrations from CrIS is used. The second method
is used to assimilate the CrIS-NH₃ observations into the LOTOS-EUROS model, using a Local Ensemble Transform Kalman
Filter (LETKF) approach as data-assimilation system. The impact of the two methods, both individually and combined, on the
simulated NH₃ emissions, concentration and deposition fields is then evaluated. The focus region of the study is a low-to-high
NH₃ emission area within western Europe (The Netherlands, Germany, Belgium), which is representative for other intense
95 agricultural regions in the world. Moreover, the NH₃ emissions within this region are relatively well known and in-situ
observations are sufficiently available.

2. Methodology

2.1. LOTOS EUROS

LOTOS-EUROS is an Eulerian chemistry transport model (Manders et al., 2017) that could be used to simulate trace gas and aerosol concentrations in the lower troposphere. The model has an intermediate complexity with limited run time, allowing ensemble-based simulations and assimilation studies. LOTOS-EUROS uses meteorological data as input, which in this study is taken from the using European Centre for Medium-Range Weather Forecasts (ECMWF). The gas-phase chemistry follows a carbon-bond mechanism (Schaap et al., 2008). The dry deposition fluxes are calculated with the Deposition of Acidifying Compounds (DEPAC) 3.11 module, following the resistance approach and it includes a calculation of bi-directional NH_3 fluxes (Van Zanten et al., 2010, Wichink Kruit et al., 2012). The wet deposition fluxes are computed using the CAMx (Comprehensive Air quality Model with Xtensions) approach, which includes both in-cloud and below-cloud scavenging (Banzhaf et al., 2012). The anthropogenic emissions are taken from CAMS-REG-AP (Copernicus Atmospheric Monitoring Services Regional Air Pollutants) emissions dataset v2.2 (Granier et al., 2019). For Germany, high resolution gridded NH_3 emission inputs (GRETA) are used (Schaap et al., 2018). In this study, a region in Western Europe (47°N - 56°N , 2°E - 16°E) is modelled, which includes all of Germany, the Netherlands and Belgium (Fig. 2). A spatial resolution of 0.20° longitude by 0.10° latitude is used, corresponding to approximately 12 by 12 square kilometers, which is also roughly the footprint size of CrIS (14 by 14 km^2 at nadir). The vertical grid extends up to 200 hPa and is split up into 13 vertical layers. This captures the largest part of atmospheric NH_3 , as it is a relatively short-lived species mainly located in the boundary layer. The interfaces of the vertical layers are based on the pressure layers used in the ECMWF meteorological input data. LOTOS-EUROS is part of the operational Copernicus Atmosphere Monitoring Service (CAMS) ensemble forecasts and analysis for Europe (Marécal et al., 2015). The model has participated in multiple model intercomparison studies (e.g., Bessagnet et al., 2016, Colette et al., 2017, Vivanco et al., 2018), showing overall good performance.

2.2. Datasets

2.2.1. CrIS NH_3

The Cross-Track Infrared Sounder (CrIS) is an instrument aboard NASA's sun-synchronous, Earth orbiting Suomi NPP satellite with an equatorial overpass at 13:30 and 1:30 LST. The CrIS sensor has a spectral resolution of 0.625 cm^{-1} (Shephard et al., 2015) and a detection limit of 0.3-0.5 ppbv under favorable conditions (Shephard et al., 2020). The instrument has a wide swath of up to 2200 km with pixels of approximately 14 km in size at nadir. Compared to other NH_3 satellite sounders (e.g., AIRS, IASI), CrIS has greater vertical sensitivity of NH_3 close to the surface due to its low spectral noise of approximately 0.04K at 280K in the NH_3 spectral region (Zavyalov et al., 2013). Moreover, CrIS has a relatively high near-surface sensitivity and an overpass time around 1:30 LST, which coincides with the time of the day with the highest thermal contrast. The peak sensitivity of the instrument is typically between 900 and 700 hPa, which corresponds to approximately 1 to 3 km (Shephard et al., 2020). The CrIS NH_3 total columns have an estimated total random measurement error of around 10-15%, and an

130 estimated random total error of ~30%. Due to the limited vertical resolution, the NH₃ concentrations at individual retrieval
levels have a higher random measurement error of about 10-30% and a total error of ~60-100% (Shephard et al., 2020). Version
1.3 of the CrIS-NH₃ product has been evaluated against in-situ Fourier Transform Infrared (FTIR) measurements (Dammers
et al., 2017) showing an overall good performance and high correlations of $r \sim 0.8$. In this study, we used version 1.5 of the
CrIS fast physical retrieval (FPR)-NH₃ product, which is based on the optimal estimation method (Rodgers, 2000). More
135 details about the CrIS FPR-NH₃ product can be found in (Shephard et al., 2020). Here, we used daytime observations of NH₃
(partial) column concentrations and surface concentrations made between January 2014 and December 2018 from the first
CrIS sensor, which has the longest observing period. During this 5-year period, a virtually continuous timeseries of CrIS
observations was available. More recent observations were not used due to the technical issues of the CrIS instrument during
the summertime in 2019, and the potentially anomalous situation resulting from the COVID-19 outbreak in 2020.

2.2.2. In-situ observations

140 Several measurement networks were used to evaluate the simulated concentration and deposition fields. The NH₃ surface
concentrations are evaluated against observations from the Dutch Meetnet Ammoniak in Natuurgebieden (MAN) network
(Lolkema et al., 2015), the Dutch Landelijk Meetnet Luchtkwaliteit (LML) network (van Zanten et al., 2017), the Belgium
Flanders Environment Agency (VMM) network (den Bril et al., 2011) and the German Environment Agency (UBA) network
(Schaap et al., 2018). The locations of these sites are shown in Fig. 1. The MAN network provides monthly mean NH₃ surface
145 concentrations since 2005, spread over 80 mostly low NH₃ emission nature areas in the Netherlands. The measurements are
performed with low-cost passive samplers from Gradko and have an estimated uncertainty of ~20% for high concentrations
and ~41% for low concentrations (Lolkema et al., 2015). The NH₃ concentrations in Flanders are measured with passive
samplers from Radiello and IVL samplers (den Bril et al., 2011). The LML network observes hourly NH₃ concentrations at
six different locations in the Netherlands with different emission regimes (high, moderate, low). Initially, continuous flow
150 denuders from AMOR were used, which have a reported uncertainty of at least 9% for hourly concentrations (Blank et al.,
2001). Around 2016, the AMOR instruments were replaced by miniDOAS instruments (Berkhout et al., 2017), which are
active differential optical absorption spectrometers. For evaluation of the wet deposition fields, observations from wet-only
samplers from the Dutch Landelijk Meetnet Regenwatersamenstelling (LMRe) network (van Zanten et al., 2017), whose
locations largely overlap with the LML network, and the UBA network (Schaap et al., 2018) are used. The locations of the
155 wet-only samplers are shown in Fig. S1.

Mean NH₃ surface concentration (2014-2017)

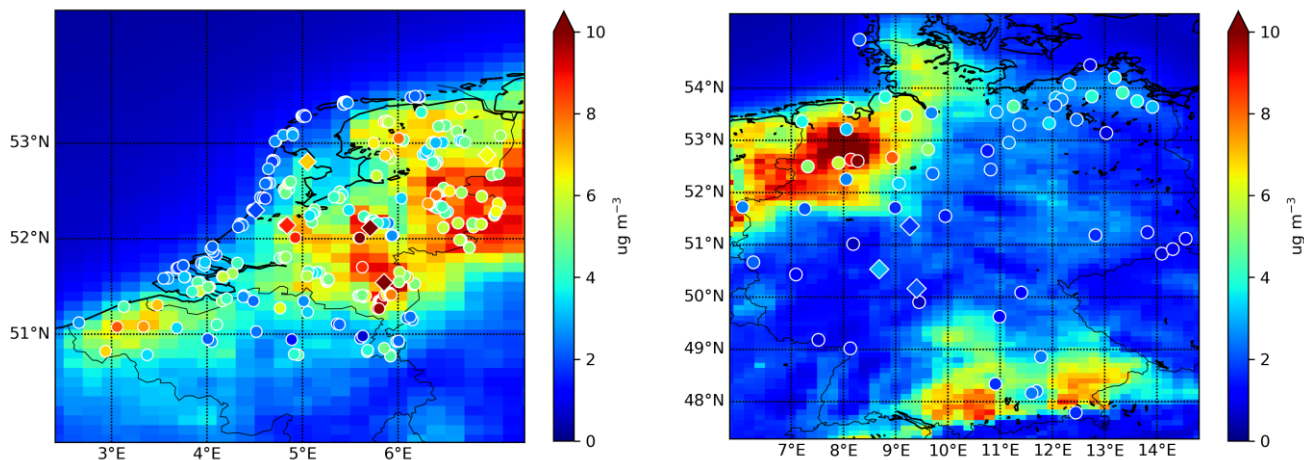


Figure 1: Locations of stations that measure NH₃ surface concentrations. The circles depict passive samplers and the diamonds hourly observations stations.

160 2.3. Fitting method for deriving CrIS-based NH₃ time factors

A non-linear least squares method is used to fit a trimodal gaussian curve to the scaled NH₃ surface concentrations (see section 2.3.3) from CrIS in each grid cell. The Trust Region Reflective algorithm is used to perform the minimization (Conn et al., 2000). The minimalization algorithm is restrained with initial parameter guesses and bounds for three fitted gaussians. The three gaussians represent the spring (μ_1 , σ_1 , and A_1), autumn (μ_2 , σ_2 , and A_2) and summer peak (μ_3 , σ_3 , and A_3) in NH₃ emissions, respectively. The initial parameter guesses are based on the standard MACC-III (Kuenen et al., 2014) NH₃ emission time profiles. The bounds are defined as follows:

- the mean values ($\mu_{1,2,3}$) are permitted to shift by one month (30 days) to cover the most probable emission peaks
- the standard deviations ($\sigma_{1,2,3}$) are permitted to vary by half their initial value guess (i.e., $\pm 0.5\sigma$)
- the fitted amplitude of the spring peak (A_1) is allowed to be between 0.1 and 1.0 and amplitudes of the autumn and summer gaussians ($A_{2,3}$) between 0.1 and 0.8

An overview of the permitted parameter bounds is given in Table 1. The range in permitted $A_{1,2,3}$ values is quite large, allowing the minimization algorithm to fit meaningful trimodal curves for different types of time variant NH₃ emission sources simultaneously (e.g., flatter peaks for emissions that are mainly dependent of temperature and specific periods, such as open stables, a sharper more distinct spring and autumn peaks for emissions following fertilizer or manure application).

	Spring peak			Autumn peak			Summer peak		
	μ_1 (doty)	σ_1 (days)	A_1 (-)	μ_2 (doty)	σ_2 (days)	A_2 (-)	μ_3 (doty)	σ_3 (days)	A_3 (-)
Lower bound	47.4	13.1	0.1	222.8	11.6	0.1	148.9	26.9	0.1
First guess (MACC-III)	77.4	26.1	0.96	252.8	23.2	0.26	178.9	53.7	0.21
Upper bound	107.4	39.1	1.0	282.8	34.8	0.8	208.9	107.4	0.8

Table 1: Initial parameter guesses and parameter bounds used in the trimodal fit algorithm.

180 After the daily NH_3 time factors are fitted, the diurnal variation from the MACC-III NH_3 time factors is added to obtain hourly time factors. The resulting hourly CrIS-based time factors are used as input for all time-variant NH_3 sources from agriculture subcategories in LOTOS-EUROS, i.e., continuous NH_3 point sources emissions remain time-invariant.

2.3.2. Data selection

The CrIS NH_3 concentrations in the lowest retrieval level, i.e., closest to the surface, are used to adjust the daily variability in the hourly profiles spatially on a regular 0.1° by 0.05° grid. First, to collect a sufficient number of observations for the fitting algorithm, the CrIS NH_3 surface concentrations with a quality flag of at least 3 and within a selection radius of 1° around the center points of each grid cell are selected. The daily average NH_3 concentrations throughout the year are computed after application of a simple outlier filter ($>99^{\text{th}}$ percentile excluded given more than 3 observations). Due to the lower number of observations during winter, and to avoid a bias towards higher values due to lower thermal contrast, observations in January, November and December are ignored. During these months it is anyway prohibited to apply fertilizer or spread manure in parts of the regions (for the Netherlands, see RVO, 2021), and in combination with the colder temperatures, NH_3 concentrations are expected to be low due to low volatilization rates (e.g., Søgaard et al., 2002).

2.3.3. Correction for local emission to concentration ratio

The relationship between NH_3 emissions and surface concentrations differs by region and changes throughout the year due to changes in the meteorological and chemical conditions. To correct for this, the following adjustment factor is applied to the daily CrIS NH_3 surface concentrations. The factor is derived from the NH_3 emission and simulated surface concentration fields from LOTOS-EUROS, which are used to compute the local ratio of the smoothed daily total NH_3 emissions to the NH_3 surface concentrations at the CrIS overpass time per grid cell. These are used as a first order approximation for the relation between the emission and concentration. The ratios are rescaled by the mean annual values for each grid cell to obtain a unitless daily scaling factor (Fig. S2). After multiplying the daily averaged CrIS NH_3 surface concentrations with this scaling factor, a $\pm 1\sigma$ filter is used to smoothen out the daily time series. To avoid too much flattening of the spring emission peak, a separate filter is applied for the spring period. NH_3 emissions originating from the application of synthetic or manure fertilizers are mainly

found during this period, at the beginning of the growing season. This may lead to an increase in observed NH₃ concentrations, that would be filtered out when the same filter is applied for the entire year. Finally, the scaled NH₃ surface concentrations are normalized for each grid cell.

2.4. Data assimilation system

2.4.1. Local Ensemble Transform Kalman Filter

The Ensemble Kalman Filter (Evensen, 2003) is a sequential data assimilation method that could be used to combine model simulations with observation. In this study, the Local Ensemble Transform Kalman Filter (LETKF) formulation is used (Hunt et al, 2007) following the implementation by (Shin et al., 2016). The LETKF performs an analysis per grid cell based on nearby observations only and it therefore computationally advantageous compared to the regular implementation of the Ensemble Transform Kalman Filter. The basic idea behind an Ensemble Kalman Filter is to express the probability function of the state in terms of an ensemble with N possible states x_1, x_2, \dots, x_N , each considered to be a possible sample out of the distribution of the true state. In this study, the state contains the NH₃ concentrations in a three-dimensional grid and two-dimensional NH₃ emission perturbation factors β . The perturbation factors describe the uncertainty in the emissions, and are modelled as samples out of normal distribution with zero mean and standard deviation σ . Spatial variations are initially not defined, but are introduced by a localization length scale that is described below. The temporal variation in the emission factors is described by temporal correlation coefficient α , that depends on temporal length scale τ (Lopez-Restrepo et al., 2020, Barbu et al., 2009):

$$\alpha_k = e^{-|t_k - t_{k-1}|/\tau} \quad (\text{Eq. 1})$$

220

An initial ensemble is created by generating random samples of the perturbation factors. The ensemble is then propagated in time in what is called the *forecast* step between consecutive *analysis* times for which observations are available. In the *forecast* step, the model propagates the *analysed* ensemble members from time t_{k-1} to time t_k following:

$$\mathbf{x}_i(k) = \mathbf{M}_{k-1}(\mathbf{x}_i^a(k-1)) \quad (\text{Eq. 2})$$

225

where operator \mathbf{M}_{k-1} describes the model simulation, including application of the perturbation factors that are present in \mathbf{x} . The ensemble mean \bar{x} and forecast error covariance \mathbf{P} at time k are expressed as:

$$\bar{x} = \frac{1}{N} \sum_{i=1}^N x_i \quad (\text{Eq. 3})$$

$$\mathbf{P} = \frac{1}{N-1} \sum_{i=1}^N (x_i - \bar{x})(x_i - \bar{x})^T \quad (\text{Eq. 4})$$

230

When CrIS observations (\mathbf{y}^{CrIS}) are available (at time t_k), the LETKF algorithm *analyses* the ensemble by incorporating the observations to reduce the ensemble spread. The *analysed* ensemble members are computed from:

$$\mathbf{x}_i^a = \mathbf{x}_i + \mathbf{P}^a \mathbf{H}^T \mathbf{R}^{-1} (\mathbf{y}^{\text{CrIS}} - \mathbf{h}(x_i) + \mathbf{v}_i) \quad (\text{Eq. 5})$$

235 In here, $\mathbf{h}(x_i)$ represents the simulated retrieval from the state \mathbf{x}_i , or in particular from the concentration array in \mathbf{x}_i . Operator \mathbf{H} is a linearization of $\mathbf{h}(x)$ to x (see section 2.4.4). The matrix \mathbf{R} is the *observation representation error covariance*, which describes the difference between the simulation and the observation due to measurement and representation errors:

$$\mathbf{y}^{\text{CrIS}} - \mathbf{h}(x_i) \sim \text{N}(0, \mathbf{R}) \quad (\text{Eq. 6})$$

240 The actual implementation of \mathbf{h} , \mathbf{H} , and \mathbf{R} are described below. The *analysis covariance* \mathbf{P}^a is computed from:

$$\mathbf{P}^a = [\mathbf{P}\mathbf{H}^T\mathbf{R}^{-1}\mathbf{H} + \mathbf{I}]^{-1} \mathbf{P} \quad (\text{Eq. 7})$$

2.4.2. Observation simulation

The simulated observation vector $\mathbf{h}(x_i)$ represents the simulated retrieval, which is what the satellite observes from concentrations described in 3-dimensional grid cell x_i , and is computed from:

$$245 \quad \mathbf{h}(x_i) = \mathbf{y}_a - \mathbf{A}\mathbf{y}_a + \mathbf{A}\mathbf{G}\mathbf{x}_i \quad (\text{Eq. 8})$$

Here, matrix \mathbf{G} , the gridding operator, is applied to horizontally and vertically match the simulated partial NH_3 columns in LOTOS-EUROS with the retrieval CrIS pressure levels. Here, air-mass weighted averaging is used to average the model layers to the retrieval levels. The relationship between the true and the retrieved atmospheric NH_3 profiles, i.e., the vertical sensitivity of the CrIS measurements, is described by averaging kernel \mathbf{A} . The full relationship between the true and the observed state is given by $\mathbf{y}^{\text{true}} = \mathbf{h}(x^{\text{true}}) + \mathbf{v}$, which can be rewritten to (Eq. 9) (Rodgers and Connor, 2003):

$$250 \quad \mathbf{y}^{\text{true}} = \mathbf{y}_a + \mathbf{A}(\mathbf{G}\mathbf{x}^{\text{true}} - \mathbf{y}_a) + \mathbf{v} \quad (\text{Eq. 9})$$

with \mathbf{y}_a the a-priori profile that is part of the CrIS retrieval product. The error \mathbf{v} is a sample of the *observation representation error* taken from a normal distribution that describes the possible differences between simulation and retrieval:

$$255 \quad \mathbf{v} \sim \text{N}(0, \mathbf{R}) \quad (\text{Eq. 10})$$

In this study, \mathbf{R} is set to the retrieval error covariance that is part of the CrIS product. The linearized observation operator becomes:

$$260 \quad \mathbf{H} = \mathbf{A}\mathbf{G} \quad (\text{Eq. 11})$$

2.4.3. Analysis per grid cell

The analysis described above is applied per model grid cell; for the exact implementation we refer to Shin et al. (2016). First, the simulated observation vectors $\mathbf{h}(x_i)$ are computed for all ensemble members. For the grid cell to be analyzed, all simulations are collected that are within 3.5ρ distance, where ρ is called the localization length scale as well as the matching

265 actual observations \mathbf{y}^{CrIS} . The state elements corresponding to the grid cell are then analyzed using the collected observations and simulations, where the weight of observations further away is limited using Gaussian correlation that decays with distance and that uses the same correlation length scale ρ that is used for collection.

2.4.4. Observation selection

270 CrIS observations with the highest quality flag, $\text{QF} = 5$, were used. These observations have a relatively higher impact because of their low uncertainty. As the assumed vertical NH_3 profile shape in background areas used in the CrIS retrieval and in LOTOS-EUROS differ, CrIS retrievals with “unpolluted” a-priori profiles were filtered out. The original CrIS retrieval is performed in the log domain and therefore either the averaging kernels A from CrIS need to be linearized or the LOTOS-EUROS profiles transformed to the log-domain. Linearization of the kernel is only accurate for higher concentrations, and since this is the case for the selected “polluted” retrievals, this option was found to be suitable.

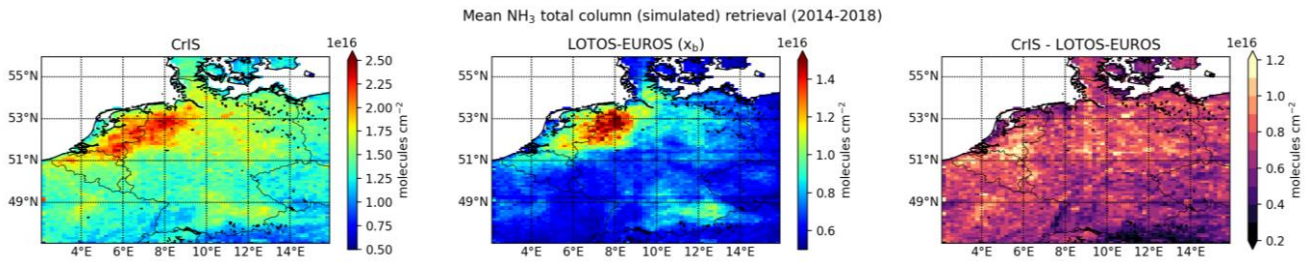
275 2.4.5. Parameter calibration

In this study, we used a localization radius of $\rho = 15$ km, a standard deviation of $\sigma = 0.5$ and a temporal correlation length of $\tau = 3$ days. Two experiments were performed to study the effect of ρ , σ and τ in more detail. A description of the experiments can be found in section S1 of the supplementary materials. A limited ensemble size of $N=12$ was found to be sufficient to describe the imposed model uncertainty, which is not too complicated due to short life-time of NH_3 and therefore strong
280 relation between concentrations and nearby emissions.

3. Results

3.1. Direct comparison of NH_3 concentrations from CrIS and LOTOS-EUROS

Before looking at the effects of assimilating the CrIS observations, a direct comparison of the modelled and observed NH_3 column densities was made. The simulated NH_3 concentrations from the default run in LOTOS-EUROS were sampled at the
285 locations of the CrIS observations, and after application of the averaging kernels compared with the retrievals. The observed and simulated NH_3 total columns averaged over all years are shown in Fig. 2. Similar maps per year are available in Fig. S3 of the supplementary materials. The general pattern of the NH_3 total column densities matches quite well. For instance, the observed and simulated NH_3 columns are very similar in southwestern Germany, and close to the Dutch border. The CrIS NH_3 total columns are generally higher than the simulated NH_3 total columns. This is for instance found in large parts of northeastern
290 Germany, along the Belgium coast and in the south of the Netherlands. Here, the observed NH_3 columns were on average approximately a factor 2 higher than the simulated NH_3 columns. Moreover, the observed NH_3 total columns are consistently higher than the simulated NH_3 columns in background areas, with a bias between the observed and modelled concentrations of approximately $\sim 0.5 \times 10^{16}$ molecules/cm².



295 **Figure 2: Mean retrieved (left) and simulated (middle) NH₃ total column from 2014-2018, and their absolute difference (right).**

3.2. CrIS-based NH₃ time factors

3.2.1. Effect on NH₃ emissions in LOTOS-EUROS

Following the method described in section 2.3, temporal profiles for the NH₃ have been obtained per grid cell. Compared to the original model, the new time profiles vary spatially. Fig. 3 shows a comparison of the daily grid-averaged NH₃ emissions
 300 between the default background model run (x_b) and the background run with the CrIS-based NH₃ time factors ($x_{b,CrIS}$), using a different color for each month. The default NH₃ time factors from MACC-III provide more intra-annual variation than the CrIS-based NH₃ time factors. The default time factors include a very high peak in spring and much lower peaks during summer and autumn (i.e., $A_1/A_3 = 4.57$, $A_1/A_2 = 3.70$). Fig. S4 shows the fitted spring parameters (μ_1 , σ_1 and A_1). The NH₃ spring peak present in the CrIS-NH₃ surface concentrations is generally lower than the default NH₃ spring peak. In large parts of the model
 305 region, the CrIS-observed NH₃ spring peak is subsequently lower and less sharp. Compared to the default NH₃ time factors, the amplitude of the spring peak in the CrIS-based NH₃ time factors is now generally much lower. The amplitude of the spring peak differs almost by a factor 2 on average. As a result, there is a decrease in springtime NH₃ emissions, especially in March and April. The CrIS-based NH₃ time factors, and consequently the NH₃ emissions, are, on the other hand, generally higher later in the year. The NH₃ emissions are on average approximately 50% higher in summer and the beginning of autumn (June
 310 to September), and approximately twice as high in October.

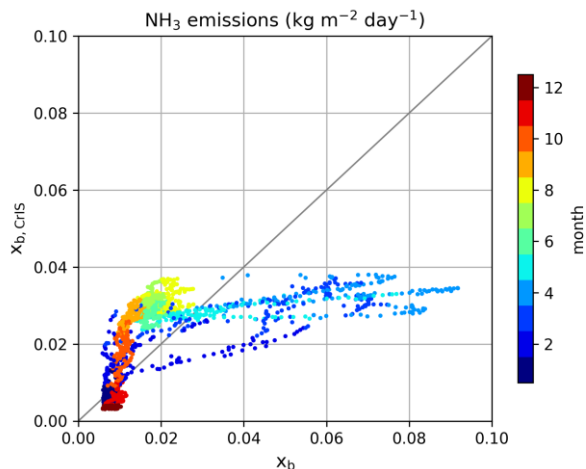


Figure 3: Daily grid-average NH₃ emission, colored per month. Here, x_b represents the default background run and $x_{b,CrIS}$ the background run with CrIS-based NH₃ time factors.

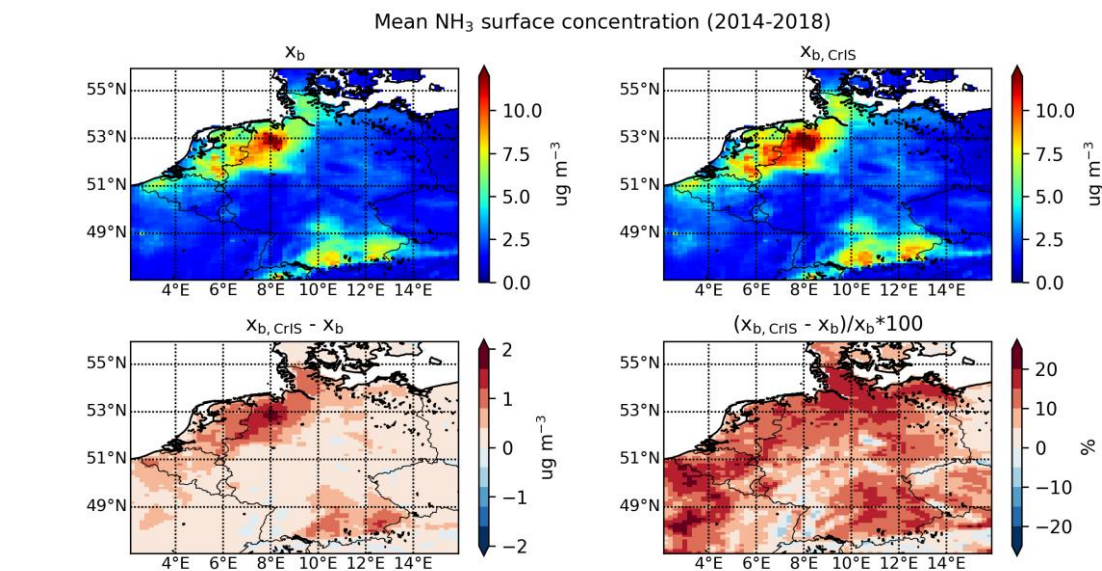
3.2.2. Effect on NH₃ concentrations and deposition fields in LOTOS-EUROS

315 The changes in modelled NH₃ surface concentration, total column concentrations and NH_x total deposition from 2014 to 2018 related to the use of the CrIS-based NH₃ time factors alone are shown in Fig. 4, Fig. S5 in the supplementary materials and Fig. 5. Here, x_b represents the default background run and $x_{b,CrIS}$ the background run with the CrIS-based NH₃ time factors. The use of the CrIS-based emission time profiles led to an overall increase in mean NH₃ surface concentrations. The absolute change is largest in areas with already relatively high NH₃ surface concentrations, for instance in northwestern Germany, where the mean NH₃ surface concentrations increased with up to 2 µg/m³. The mean NH₃ surface concentrations increased with up to ~25% due to the change in NH₃ time factors. The effect of the CrIS-based NH₃ time factors on the NH₃ total column concentrations is smaller, with minor changes from minus ~5% up to 5%. The mean NH₃ total column concentrations generally increase in areas with already high NH₃ concentrations, such as large parts of the Netherlands, and decrease in background areas with little NH₃ emissions, for instance in central Germany. The use of the CrIS-based NH₃ time factors led to ~10% less total NH_x deposition along the northwestern coast, including agricultural hotspots such as the Netherlands and northwestern Germany, and an increase of up to ~10% in background areas.

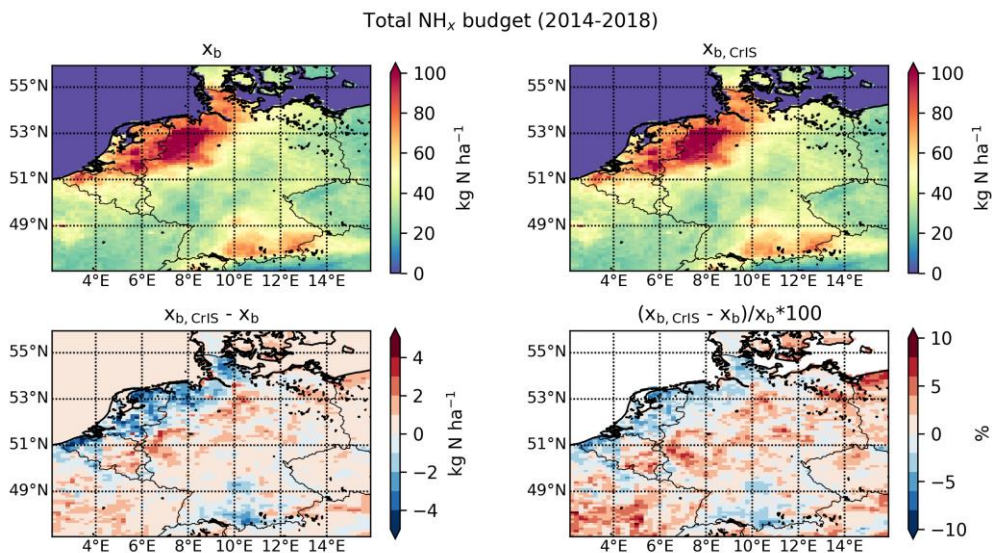
Fig. S6 compares the daily, grid averaged, NH₃ surface concentrations, total column concentrations and NH_x wet and dry deposition, with different colors per month. Here, a similar redistribution is observed for the NH₃ concentration and deposition fields as seen earlier for the NH₃ emission fields. Compared to the default background run (x_b), the NH₃ concentration fields were up to a factor 2 lower during March and April. The NH₃ total columns decreased in spring, the largest decrease occurring in April (up to ~60%). The NH₃ surface concentrations increased during the summer and the beginning of autumn, up to ~50% in September. During these months, a similar but slightly lower increase in the NH₃ total column concentrations is observed.

Because the CrIS-based NH_3 time factors vary per year, the interannual variation in the modelled NH_3 fields is much larger. Fig. S7 shows the relative changes in NH_3 surface concentration, total column concentration and NH_x deposition fields per year. Overall, the mean NH_3 surface concentration increases by up to $\sim 30\%$ per year. The largest increases occurred in 2016 and 2018, years with relatively high summer temperatures (Copernicus Climate Change Service, 2021). The variation in the annual mean NH_3 total column concentrations is much smaller (-15 to $+15\%$). The relative change in NH_x budget shows much more variation, with the most prominent increase occurring in 2014 ($+25\%$) and decreases occurring in 2018 (-25%).

The temporal redistribution of the NH_3 emissions thus significantly impacts the modelled NH_3 concentration and deposition fields, too. Generally, a part of the initial spring NH_3 emissions is now attributed to the summer and autumn months. Depending on the degree of redistribution, there are distinct changes in the NH_x budget. Looking at the fitted spring peak parameters (Fig. S4) and the matching CrIS-based NH_3 factors at hourly measurement sites (Fig. S8), clear interannual differences are observed. For instance, a relatively sharp spring peak was observed over the Netherlands in 2014. In 2018, on the other hand, the fitted spring peak had a distinctly lower amplitude and started later in the year. Moreover, a relatively large rise in NH_3 time factors was observed again in late summer and autumn (July to September). Compared to 2014, this resulted in a relatively larger redistribution of the NH_3 emissions towards warmer months. The higher temperatures resulted in lower dry deposition velocities and more vertical mixing and transport of NH_3 , leading to an overall decrease in NH_x deposition over the Netherlands. Moreover, the summer of 2018 was relatively dry, also leading to higher NH_3 total column concentrations and a decrease in wet NH_x deposition.



350 **Figure 4: The mean NH_3 surface concentration over 2014 to 2018 from the (top left) default background run (x_b) and the (top right) background run with CrIS-based NH_3 time factors ($x_{b, \text{CrIS}}$) and their (bottom left) absolute and (bottom right) relative difference.**



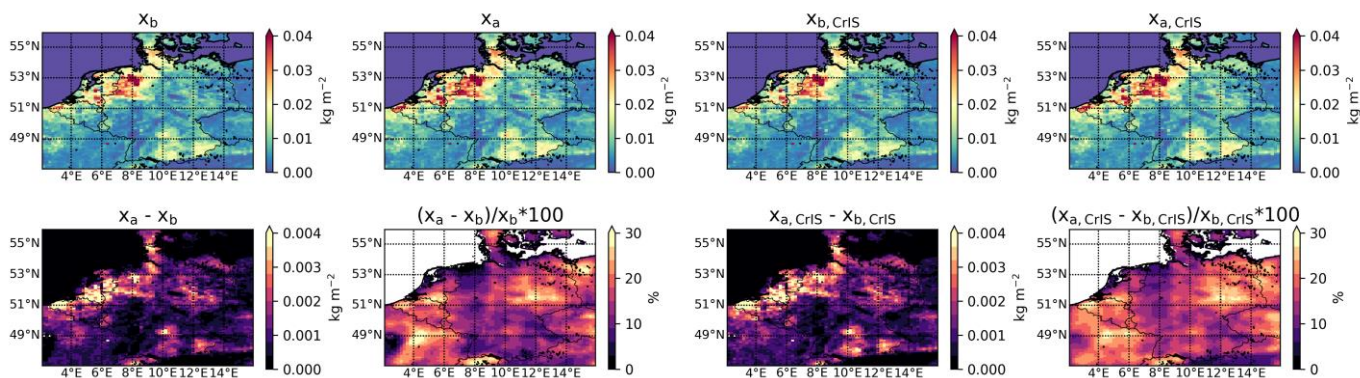
355 **Figure 5: The total NH_x deposition from 2014 to 2018 from the (top left) default background run (x_b) and the (top right) background run with CrIS-based NH₃ time factors ($x_{b,CrIS}$) and their (bottom left) absolute and (bottom right) relative difference.**

3.3. Local Ensemble Transform Kalman Filter

3.3.1. Effect on NH₃ emissions and concentrations in LOTOS-EUROS

The CrIS-NH₃ columns were assimilated using the Local Ensemble Transform Kalman Filter (LETKF) described in section 2.4. Assimilations were performed using either the default emission time profiles (x_a), or using the CrIS-based profiles ($x_{a,CrIS}$).
 360 The total NH₃ emissions from 2014 to 2018 and the relative and absolute changes compared to background simulations x_b and $x_{b,CrIS}$ are shown in Fig. 6. The corresponding mean NH₃ surface and total column concentrations are shown in Fig. S9 and Fig. S10 of the supplementary materials. The absolute NH₃ emission updates by the LETKF are, as expected, largest in regions with already high NH₃ emissions. There is a maximum increase of ~30% in total NH₃ emission by the LETKF over the entire period for some grid cells. Relatively, the largest changes are found in the southern parts of the Netherlands (province of Noord-Brabant), the west coast of Belgium (province of West-Vlaanderen), the northeastern parts of Germany and France.
 365 Compared to the analysis run using default emission time profiles (x_a), the analysis runs with the CrIS-based NH₃ profiles ($x_{a,CrIS}$) generally have more NH₃ emission and consequently higher NH₃ surface and total column concentrations. The long-term spatial patterns of the emission updates by the LETKF, however, remained very similar.

Total NH₃ emissions (2014-2018)



370 **Figure 6: The total NH₃ emissions in 2014-2018 in the background runs x_b and $x_{b,CrIS}$ and in analysis runs x_a and $x_{a,CrIS}$ (top panels), as well as their absolute and relative difference (bottom panels).**

To study the effect of the LETKF in more detail, the daily grid average NH₃ emissions of the background runs (x_b and $x_{b,CrIS}$) are plotted against analysis runs (x_a and $x_{a,CrIS}$) in Fig. 7. Similarly, the NH₃ surface and total column concentrations are plotted
 375 in Fig. S11 of the supplement. In the runs with the default NH₃ time factors (x_b and x_a), data assimilation of the CrIS-NH₃ columns led to both positive and negative emission updates in spring. In the summer, on the contrary, it mostly resulted in an increase in NH₃ emissions. In the runs with the CrIS-based NH₃ time factors ($x_{b,CrIS}$ and $x_{a,CrIS}$), the pattern is distinctly different. Compared to the default runs, the NH₃ emission updates in spring are now smaller and largely positive, with the largest updates occurring in April. Moreover, the NH₃ emission updates were generally smaller during summer, too. This is related to the fact
 380 that the CrIS-NH₃ surface concentrations were used to fit the NH₃ time factors, which resulted in the model being closer to the CrIS observations already.

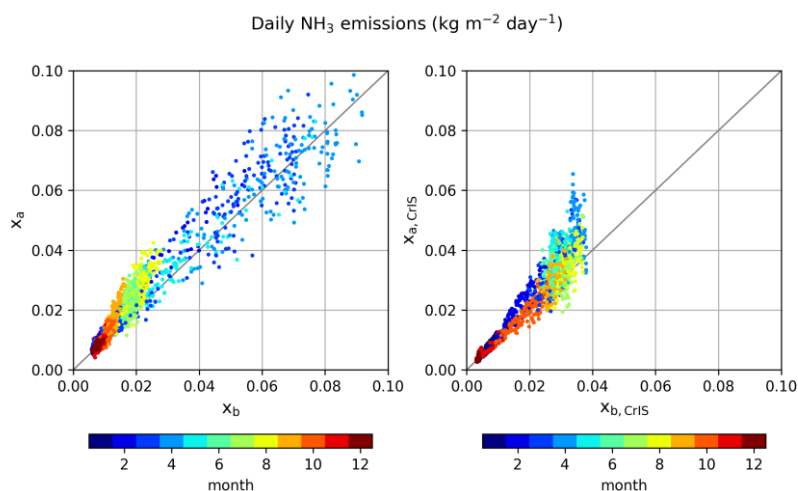
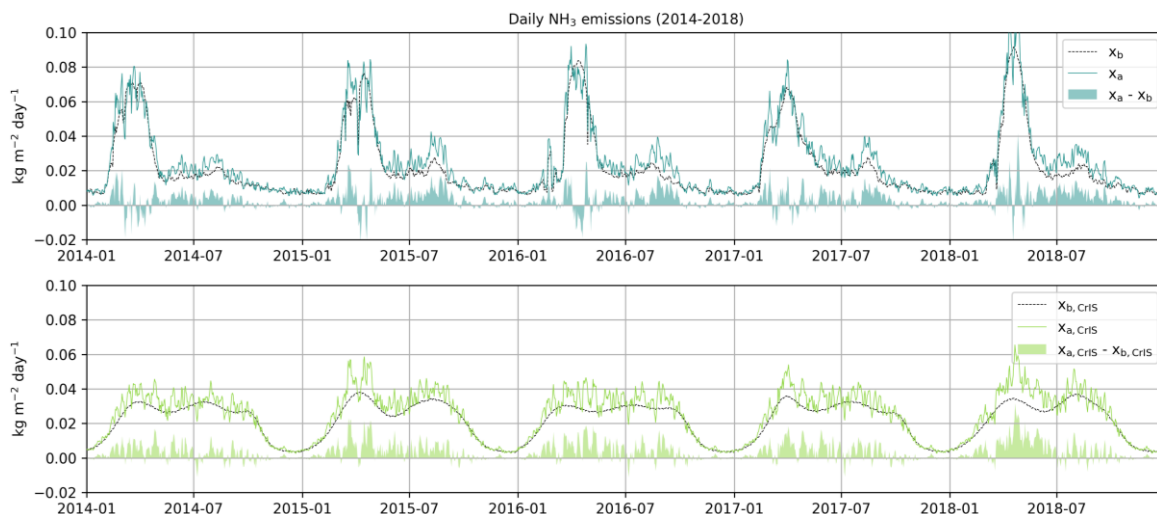


Figure 7: Daily grid average NH₃ emissions in 2014-2018 from the (left) default background run (x_b) versus analysis run (x_a), and from the (right) background run with the CrIS-based NH₃ time factors ($x_{b,CrIS}$) versus analysis run $x_{a,CrIS}$, colored per month.

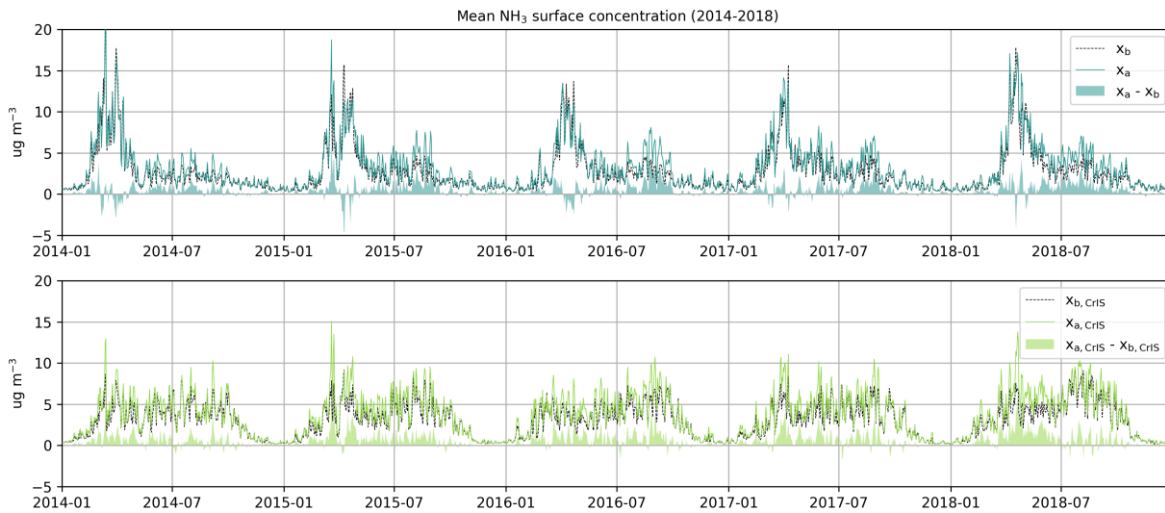
385 Perturbation factor β is the computed multiplication factor by which the initial input NH_3 emissions are updated in the LETKF. The mean perturbation factors β per year are shown in Fig. S12 of the supplementary materials. The pattern of the NH_3 emission updates does not change drastically between years, which points to a consistent, spatial misdistribution of the emissions in the current inventory. By far the largest mean NH_3 emission updates took place in 2018, followed by 2015.

Fig. 8 shows timeseries of the daily grid average NH_3 emissions in both background runs x_b and $x_{b,\text{CrIS}}$ and analysis runs x_a and $x_{a,\text{CrIS}}$. Fig. 9 and S13 show the corresponding timeseries and changes in NH_3 surface and total column concentrations. The NH_3 emissions in the default background run (x_b) have a strong, annually reoccurring spring peak. After this peak, the NH_3 emissions decrease steeply and then slightly increase again in late summer and autumn (August and September). In analysis run x_a , the spring NH_3 emissions are both positively and negatively adjusted. Later in the year, almost only positive emission updates are found. The largest positive NH_3 emission updates occurred around August and September, which suggests an
395 underestimation of the autumn NH_3 peak in the default runs.

In the background runs with the CrIS-based NH_3 time factors ($x_{b,\text{CrIS}}$), the NH_3 emissions are much more evenly distributed over the year. In contrast to the default runs, practically only positive NH_3 emission updates occurred in the analysis run ($x_{a,\text{CrIS}}$). The largest NH_3 updates took place during spring (March to May). The flattening of the NH_3 emissions led to a flattening in NH_3 concentration fields, too. Compared to default runs (x_b and x_a), there is much less interannual variation in the
400 NH_3 surface and total column concentrations. As a result, the NH_3 concentrations during summer and autumn could be at the same level or even higher than the springtime concentrations. During the warm summer of 2018 (Copernicus Climate Change Service, 2021), for instance, the NH_3 concentrations in August even clearly exceed the spring NH_3 concentrations.



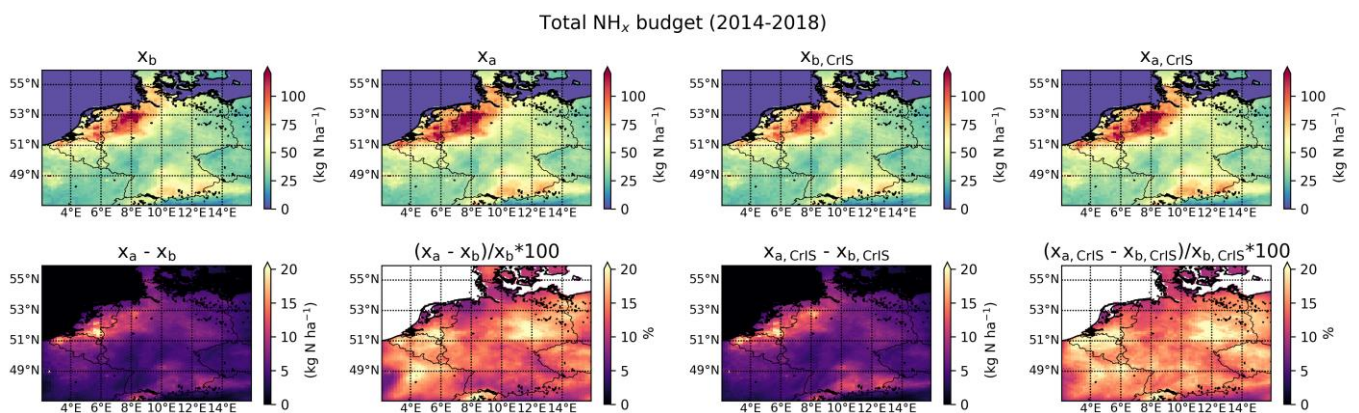
405 **Figure 8: Timeseries of the daily grid-averaged NH_3 emissions in the background and analysis runs, and their absolute difference. The top figure (blue) represents the default background (x_b) and analysis run (x_a). The bottom figure (green) the background ($x_{b,\text{CrIS}}$) and analysis run ($x_{a,\text{CrIS}}$) with the CrIS-based NH_3 time factors.**



410 **Figure 9: Timeseries of the daily grid-averaged NH₃ surface concentrations in the background and analysis runs, and their absolute difference. The top figure (blue) represents the default background (x_b) and analysis run (x_a). The bottom figure (green) the background ($x_{b,CrIS}$) and analysis run ($x_{a,CrIS}$) with the CrIS-based NH₃ time factors.**

3.3.2. Effect on NH_x deposition in LOTOS-EUROS

The modelled total NH_x budgets from 2014 to 2018 from the two background runs (x_b and $x_{b,CrIS}$) and analysis runs (x_a and $x_{a,CrIS}$) are shown in Fig. 10. Overall, the modelled NH_x budget shows the same spatial pattern as the NH₃ emissions. Like the NH₃ emissions, the relatively largest spatial differences between the background and analysis runs took place in the south of the Netherlands, the west of Belgium and northeast Germany. Compared to the default runs, the relative changes in total NH_x budget were slightly larger in the runs with the CrIS-based NH₃ time factors ($x_{b,CrIS}$ and $x_{a,CrIS}$).



420 **Figure 10: The total NH_x budget from 2014-2018 in the background (x_b and $x_{b,CrIS}$) and analysis (x_a and $x_{a,CrIS}$) model runs in LOTOS-EUROS, and their absolute and relative difference.**

The modelled NH_x deposition follows the temporal distribution of the NH_3 emissions, too. Timeseries of the daily wet and dry deposition amounts in the domain are shown in Fig. 11. The wet and dry deposition in the default runs (x_b and $x_{b,\text{CrIS}}$) versus the analysis runs (x_a and $x_{a,\text{CrIS}}$) per month is shown in Fig. S14 in the supplement. In the default background run (x_b), the total NH_x deposition peaks in March and April. In the analysis run (x_a), the dry and wet deposition both increased and decreased during spring (March to May). Later in the year, the wet and dry NH_x deposition mostly increased in the analysis run, particularly in August and September. In the background runs with the CrIS-based NH_3 time factors ($x_{b,\text{CrIS}}$ and $x_{a,\text{CrIS}}$), the modelled dry and wet deposition fields are much less variable. Following the NH_3 emission updates, both the dry and wet deposition mostly increased in the analysis run, especially in March and April. Moreover, the use of the CrIS-based NH_3 time factors resulted in a redistribution of the ratio of wet and dry deposition over the year. As a result of the relatively lower spring NH_3 surface concentrations, there is a reduction of the dry deposition during spring. The relatively higher summer NH_3 total column concentrations led to a shift in wet deposition, too, from spring to summer.

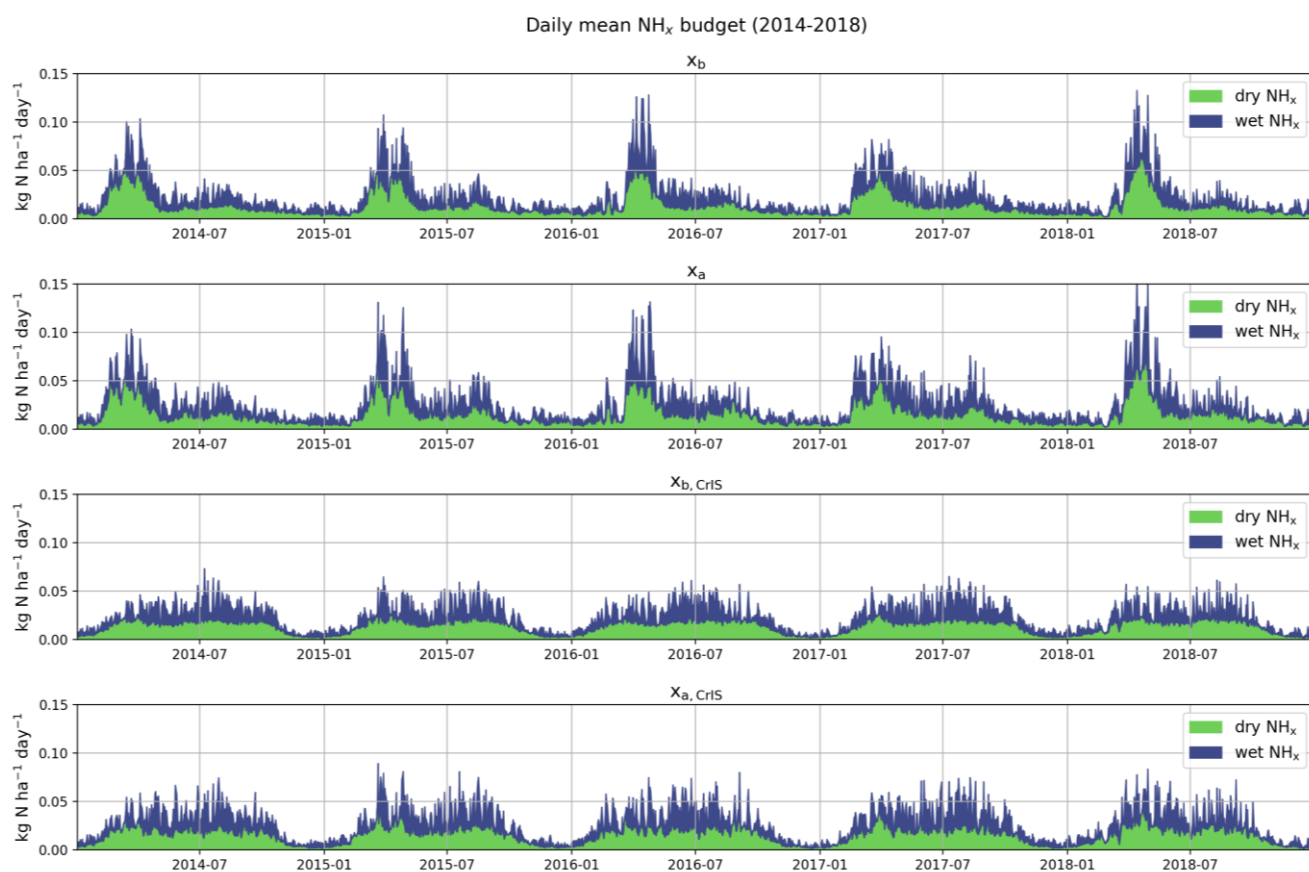


Figure 11: Timeseries of the average amounts of dry (green) and wet (blue) NH_x deposition in the different model runs. The top two figures represent the default background (x_b) and analysis (x_a) run and the bottom two figures the background ($x_{b,\text{CrIS}}$) and analysis ($x_{a,\text{CrIS}}$) run with the CrIS-based NH_3 time factors.

3.4. Comparison to in-situ observations

The modelled NH_3 surface concentration and NH_4^+ wet deposition fields are compared with in-situ observations. First, the spatial distribution is evaluated by comparing the modelled NH_3 surface concentration and NH_4^+ wet deposition fields to the
440 observed annual averages per measurement site. Second, the temporal distribution is evaluated by comparing the modelled NH_3 surface concentration and NH_4^+ wet deposition fields to the same set of observations, but on a monthly basis. The comparisons are done per type of observation, e.g., all available wet-only measurements simultaneously. To differentiate between different NH_3 emission regimes, the results are plotted separately for either all hourly observations or for the passive samplers. The results are shown in Fig. 12 and 13. The Dutch site with the highest NH_3 surface concentrations, Vredepeel, is
445 excluded from this comparison because of the large model-observation discrepancies here (see Fig. S18). This site is located near agricultural emission sources and therefore less representative of a larger region. In these figures, the first column shows the comparison for the default background run (x_b), the second column shows the background run with CrIS-based NH_3 time factors ($x_{b,\text{CrIS}}$), the third column shows the analysis run with the default NH_3 time factors (x_a) and, finally, the fourth column shows the analysis run with CrIS-based NH_3 time factors ($x_{a,\text{CrIS}}$).

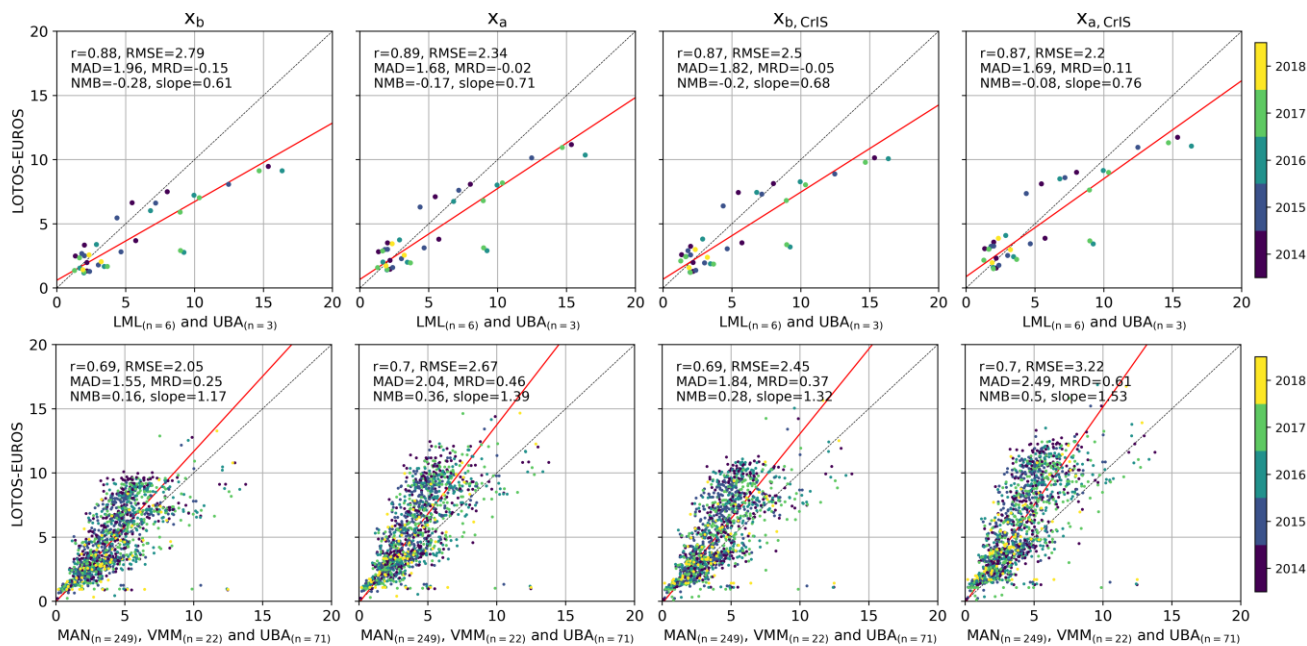
450 3.4.1. Spatial distribution

Fig. 12 shows the scatterplots of the annual averages per site per year. The annual average NH_3 surface concentrations (top row) in the default run x_b show a strong correlation ($r = 0.88$) with the observed concentrations at the hourly observation sites (LML and UBA). Here, the NH_3 surface concentrations are generally underestimated (slope = 0.61). The annual average NH_3 surface concentrations (middle row) at the passive sampler sites (MAN, VVM and UBA) are generally overestimated (slope = 1.17), with a lower, but still relatively strong correlation is observed ($r = 0.69$). The modelled annual average NH_4^+ wet
455 deposition budgets (bottom row) are moderately correlated with the observations from wet-only samplers ($r = 0.45$), and are generally lower than the observed wet deposition (slope = 0.81). When using the CrIS-based NH_3 time factors, the annual average NH_3 surface concentrations and NH_4^+ wet deposition budgets are slightly increased. This led to a slight, overall increase in slope between all observations and the background run with the CrIS-based NH_3 time factors ($x_{b,\text{CrIS}}$). As the annual
460 totals, and herewith the spatial distribution of the NH_3 emissions, remained the same in this run, the other measures (r , RMSE, MAD, MRD, NMB) didn't change drastically on a yearly basis.

The comparison with annual average NH_3 surface concentrations from the passive sampler networks from both analysis runs (x_a and $x_{a,\text{CrIS}}$) slightly worsened compared to the background runs (x_b and $x_{b,\text{CrIS}}$). The comparison at the hourly observation
465 and wet-only sampler sites, on the other hand, showed clear improvements. Here, virtually all statistical measures improved, illustrating an overall improvement in modelled NH_3 surface concentration and NH_4^+ wet deposition field spatially. Of all runs, the analysis run with the CrIS-based NH_3 time factors ($x_{a,\text{CrIS}}$) compared the best with the hourly observation and wet-only sampler network. The differences between the modelled and observed NH_3 surface concentrations at the hourly observation

were distinctly smaller, compared to the default background run (x_b : {RMSE = 2.79, MAD = 1.96, MRD = -0.15, NMB = -0.28} versus $x_{a,CrIS}$: {RMSE = 2.2, MAD = 1.69, MRD = -0.11, NMB = -0.08}). Here, also the slope largely improved (x_b : slope = 0.61 versus $x_{a,CrIS}$: slope = 0.76). The same is observed for the modelled NH_4 wet deposition fields, where the slope improved particularly (x_b : {RMSE = 0.95, MAD = 0.63, MRD = -0.13, NMB = -0.22, slope = 0.81} versus $x_{a,CrIS}$: {RMSE = 0.92, MAD = 0.61, MRD = -0.02, NMB = -0.11, slope = 0.95}).

NH_3 surface concentration ($\mu g m^{-3}$)



475 **Figure 12: Comparison of the modelled annual average NH_3 surface concentrations and NH_4^+ wet deposition fields to in-situ observations.**

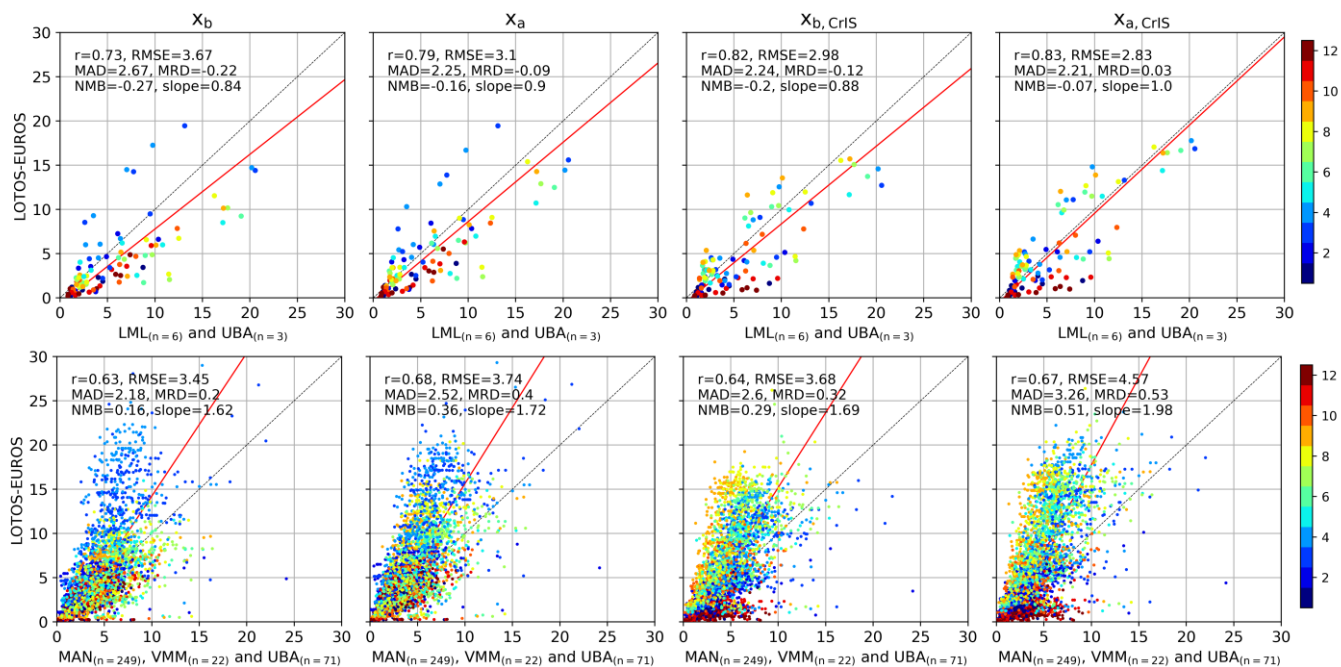
3.4.2. Temporal distribution

Fig. 13 shows the scatterplots of the monthly means per site. The modelled monthly NH_3 surface concentrations from the default background run (x_b) are strongly correlated with the hourly observation network ($r = 0.73$), and with the passive sampler network ($r = 0.63$). Both comparisons show a distinct overestimation of the NH_3 surface concentration in March and April. The observed NH_3 surface concentrations at the hourly observation sites are higher than the modelled ones during the rest of the year. At the passive sampler sites, the observed versus modelled monthly NH_3 surface concentrations during the rest of the year lie more around the one-on-one line. Here, too, the modelled NH_3 surface concentrations are slightly underestimated at the beginning of summer (June and July). The NH_4^+ wet deposition is moderately correlated with monthly observations from wet-only samplers ($r = 0.44$). At these sites, a similar pattern is observed. The modelled NH_4^+ wet deposition is overestimated in spring (especially March and April), and underestimated during the rest of the year. In general, this comparison indicates an overestimation of the NH_3 spring peak emissions in the default model runs, particularly in March and April, and an underestimation of the NH_3 emission during the rest of the year, mainly during summer (June, July, August).

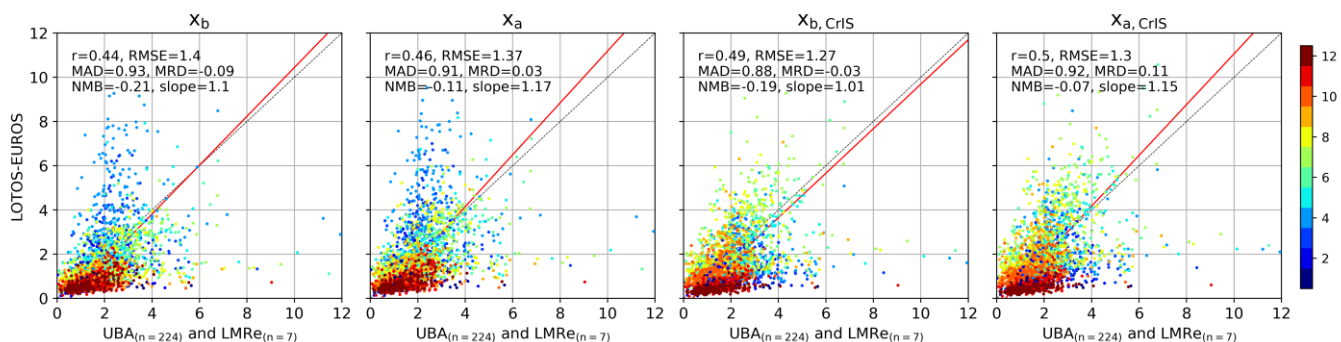
The use of the CrIS-based NH_3 time factors ($x_{b,\text{CrIS}}$) led to an overall improvement at the hourly observation and wet-only sampler sites. Compared to the default background run (x_b), higher correlations and lower differences (RMSE, MAD, MRD, NMB) are observed. At the hourly observation sites, the comparison improved the most (x_b : $\{r = 0.73, \text{RMSE} = 3.67, \text{MAD} = 2.67, \text{MRD} = -0.22, \text{NMB} = -0.27, \text{slope} = 0.84\}$ versus $x_{b,\text{CrIS}}$: $\{r = 0.82, \text{RMSE} = 2.98, \text{MAD} = 2.24, \text{MRD} = -0.12, \text{NMB} = -0.20, \text{slope} = 0.88\}$). Compared to observations from the passive sampler and wet-only sampler networks, the modelled monthly NH_3 surface concentration and NH_4^+ wet deposition fields now generally lie around the one-on-one line during spring (March, April, May). There is, on the other hand, an overestimation in July and August now. Moreover, as a result of the decrease in CrIS-based NH_3 time factors to zero during winter, the NH_3 surface concentration and NH_4^+ wet deposition in December is underestimated in the $x_{b,\text{CrIS}}$ run.

Compared to the background runs (x_b and $x_{b,\text{CrIS}}$), the two analysis runs (x_a and $x_{a,\text{CrIS}}$) show higher correlations with all types of measurements. The differences (RMSE, MAD, MRD, NMB) between the observed and modelled monthly NH_3 surface concentrations at the passive sampler sites are now, on the other hand, larger in the two analysis runs (x_a and $x_{a,\text{CrIS}}$), illustrating an overall overestimation of the NH_3 concentrations in background regions. Although a large shift in the temporal distribution of the monthly NH_4^+ wet deposition is observed, the differences between the observed and modelled values remained similar. At the hourly observation sites, the comparison improved the most in the analysis run with the CrIS-based NH_3 time factors ($x_{a,\text{CrIS}}$). Here, compared to the default background run (x_b), higher correlations and smaller differences were found (x_b : $\{r = 0.73, \text{RMSE} = 3.67, \text{MAD} = 2.67, \text{MRD} = -0.22, \text{NMB} = -0.27, \text{slope} = 0.84\}$ versus $x_{a,\text{CrIS}}$: $\{r = 0.83, \text{RMSE} = 2.83, \text{MAD} = 2.21, \text{MRD} = 0.03, \text{NMB} = -0.07, \text{slope} = 1.0\}$).

NH₃ surface concentration (ug m⁻³)



NH₄ wet deposition (mg m⁻²)



510

Figure 13: Comparison of the modelled monthly mean NH₃ surface concentrations and NH₄⁺ wet deposition fields to in-situ observations. The colors indicate the month.

3.4.3. Regional patterns

The modelled NH₃ surface concentrations were compared to observations from each passive sampler network separately. Fig. 515 S15, S16 and S17 show comparison with the MAN network in the Netherlands, the UBA network in Germany and the VMM network in Belgium, respectively. In the default background run (x_b), the Dutch sites with relatively higher NH₃ surface concentrations are overestimated, most of which are located along the eastern border of the Netherlands. The highest correlation coefficients and lowest differences (RMSE, MAD) are found at the VMM network in Belgium. Here, the lower

NH₃ surface concentration sites are overestimated and the higher NH₃ concentrations sites are underestimated in the default background run (x_b). At the German UBA stations, the comparison lies more around the one-on-one line. The mean NH₃ surface concentrations at the sites close to the western border of Germany are generally overestimated in the default background run (x_b).

The use of the CrIS-based NH₃ time factors ($x_{b,CrIS}$) led to an overall increase in modelled mean NH₃ surface concentrations compared to the default background run (x_b). This led to a slight, overall increase in differences (RMSE and MAD) at all networks. Furthermore, steeper slopes were found at all three networks, i.e., the modelled NH₃ surface concentrations increased relatively more at sites with already higher concentrations. The same is observed in the two analysis runs (x_a and $x_{a,CrIS}$), but to a greater extent. Compared to background runs (x_b and $x_{b,CrIS}$), the differences (RMSE, MAD) between the modelled and observed concentrations were relatively higher at all networks. At the Dutch MAN network, a slightly higher correlation coefficient is observed.

Fig. S18 of the supplementary materials shows another comparison of the modelled and observed NH₃ surface concentrations at the hourly observation stations at daily resolution. Here, the correlation coefficient, root-mean-squared error RMSE, the mean difference MD and the slope are shown per site. The stations are located in different NH₃ emission regimes and are sorted by increasing NH₃ surface concentrations. The modelled NH₃ surface concentrations in the default background run (x_b) are generally overestimated at stations with low NH₃ emission regimes and underestimated at stations with medium to high NH₃ emission regimes. The use of the CrIS-based NH₃ time factors ($x_{b,CrIS}$) led to an improved comparison (higher correlation coefficient and lower RMSE) at the Dutch stations, but a worse comparison at the German stations. On a monthly basis, the comparison to the German UBA sites slightly worsened after the use of the CrIS-based NH₃ time factors ($x_{b,CrIS}$) (Fig. S19). The modelled NH₃ surface concentrations in the background run with the CrIS-based NH₃ time factors ($x_{b,CrIS}$) were, on the other hand, closer to the observations of the Dutch LML network in most months, with a lower differences (RMSE, MD) and slopes closer to 1. Here, the largest increase in correlation coefficients were found in March and April. In both analysis runs (x_a and $x_{a,CrIS}$), the correlation coefficient improved and lower model-observation differences were found at all sites. Here, no clear distinction between sites located in different NH₃ emission regimes can be seen.

Compared to the default background run (x_b), the modelled NH₃ surface concentrations in the background run with the CrIS-based NH₃ time factors ($x_{b,CrIS}$) thus improved the most at Dutch stations located in medium to high NH₃ emission regimes. Most of the Dutch stations are located in the proximity of agricultural hotspots. The German stations, on the other hand, are located in background areas in central Germany, further away from major agricultural hotspots for NH₃. Fig. S8 of the supplementary materials shows the fitted CrIS-based NH₃ time factors at each site. The fitted NH₃ time factors at the majority of the Dutch stations show clear, identifiable peaks, in particular the spring peak. Moreover, most Dutch sites show clear year-to-year variations. For the German stations, on the other hand, the fitted NH₃ time factors are much flatter and show much less

interannual variation. This indicates that the observed CrIS-NH₃ surface concentrations at these locations remained around the same level, and thus that no clear (inter)annual patterns were present in the CrIS data.

555

In the Netherlands, the CrIS-based NH₃ time factors led to an improvement in the representation of the NH₃ spring peak. A time-series of the observed daily NH₃ surface concentrations at LML sites Valthermond and Zegveld are plotted in Fig. S20 of the supplementary materials. The modelled NH₃ surface concentrations in the default background run (x_b) start to rise too early in the year, particularly in 2014. In the background run with the CrIS-based NH₃ time factors ($x_{b,CrIS}$), both the start and the duration of the spring peak in NH₃ concentration improve. Here, the onset of the spring peak is delayed, better matching the observed NH₃ timeseries.

560

4.1. Summary

In this study, the CrIS-NH₃ product is integrated into the LOTOS-EUROS chemical transport model using two different methods. In the first method, the CrIS-NH₃ surface concentrations were used to fit spatially varying NH₃ time factors to redistribute the NH₃ emission inputs in LOTOS-EUROS over the year. In the second method, the CrIS-NH₃ columns were assimilated to adjust NH₃ emissions through local Ensemble Transform Kalman filtering in a top-down approach.

565

The fitted NH₃ time factors based on the CrIS-NH₃ surface concentrations led to a major temporal redistribution of the NH₃ emissions. In most regions, the updated NH₃ time profiles became flatter, with an overall decrease in spring (March to May) NH₃ emissions and an increase in NH₃ emissions in June to October. As a result, the mean modelled NH₃ fields between 2014 and 2018 spatially changed by up to +25% in NH₃ surface concentrations, -5 to +5% in NH₃ total column concentrations and -5 to +5% in NH_x budget. The CrIS-based NH₃ time factors added an extra interannual variation of up to ±25% in the annual mean NH₃ concentrations and deposition fields. Data assimilation of the CrIS-NH₃ columns with the LETKF led to a unanimous increase in total NH₃ emissions. The modelled NH₃ fields between 2014 and 2018 changed with up to +30% in NH₃ surface concentrations, up to +20% in NH₃ total column concentrations and +10 to +25% in NH_x budget. The largest increases in NH₃ emissions (+30%) were found over the south of the Netherlands (Brabant), the west of Belgium (West-Vlaanderen) and a large region in northeastern Germany. The temporal distribution of the NH₃ emissions wasn't largely adjusted by the LETKF. The largest positive NH₃ emission updates took place in late summer and the beginning of autumn (July to September) and both increases and decreases in NH₃ emissions were observed in spring (March to May).

570

575

580

The modelled NH₃ surface concentration and NH₄⁺ deposition fields were compared to in-situ observations. The statistics are summarized in Table 2. Our results illustrate that the strength of the first method, i.e., CrIS-based NH₃ time factors, primarily lies in improving the temporal distribution of the NH₃ emissions. Compared to in-situ networks, an overall increase in correlation coefficient and clear decrease in differences (RMSE, MAD, MRD, NMB) at the hourly observation and the wet-only sampler sites was observed. Moreover, time-series of observed daily NH₃ surface concentrations illustrate that using the

585

CrIS-based NH₃ time factors resulted in a better representation of both the onset and duration of the spring NH₃ peak in the Netherlands. The second method, data assimilation of the CrIS-NH₃ columns with the LETKF, improved the comparability to in-situ observation both spatially and temporally. Here, higher correlations with both annual and monthly observed mean NH₃ surface concentrations and NH₄⁺ wet deposition were observed. This method also led to a decrease in differences (RMSE, MAD, MRD, NMB) at the hourly observation and the wet-only sampler sites. The mean NH₃ surface concentrations at the passive sampler sites, on the other hand, were more strongly overestimated in both methods. The comparison to in-situ observations improved the most, both spatially and temporally, in the run where both methods are combined (x_{a,CrIS}). This illustrates that an initial, observation-based, rescaling of the NH₃ emissions enhances the adaptability of the LETKF, herewith thus improving the modelled NH₃ surface concentration and NH₄⁺ wet deposition fields.

595

	hourly observations				passive samplers				wet-only samplers				
	Xb	Xa	Xb,cris	Xa,cris	Xb	Xa	Xb,cris	Xa,cris	Xb	Xa	Xb,cris	Xa,cris	
annual mean	r	0.88	0.89	0.87	0.87	0.69	0.70	0.69	0.70	0.45	0.45	0.46	0.46
	RMSE	2.79	2.34	2.50	2.20	2.05	2.67	2.45	3.22	0.95	0.91	0.94	0.92
	MAD	1.96	1.68	1.82	1.69	1.55	2.05	1.84	2.49	0.63	0.61	0.62	0.61
	MRD	-0.15	-0.02	-0.05	0.11	0.25	0.46	0.37	0.61	-0.13	-0.03	-0.14	-0.02
	NMB	-0.28	-0.17	-0.20	-0.08	0.16	0.36	0.28	0.50	-0.22	-0.13	-0.22	-0.11
	slope	0.61	0.71	0.68	0.76	1.17	1.39	1.32	1.53	0.81	0.90	0.84	0.95
monthly mean	r	0.73	0.79	0.82	0.83	0.63	0.68	0.64	0.67	0.44	0.46	0.49	0.50
	RMSE	3.67	3.10	2.98	2.83	3.45	3.74	3.68	4.57	1.40	1.37	1.27	1.30
	MAD	2.67	2.25	2.24	2.21	2.18	2.52	2.60	3.26	0.93	0.91	0.88	0.92
	MRD	-0.22	-0.09	-0.12	0.03	0.20	0.40	0.32	0.53	-0.09	0.03	-0.03	0.11
	NMB	-0.27	-0.16	-0.20	-0.07	0.16	0.36	0.29	0.51	-0.21	-0.11	-0.19	-0.07
	slope	0.84	0.90	0.88	1.00	1.62	1.72	1.69	1.98	1.10	1.17	1.01	1.15

Table 2: Summary of the computed statistics (correlation coefficient (r), root mean square error (RMSE), mean absolute difference (MAD), mean relative difference (MRD), normalized mean bias (NMB) and slope) for each type of instruments from Figure 12 and 13.

4.2. Discussion

600 4.2.1. CrIS-based NH₃ time factors

The temporal redistribution of the NH₃ emissions after using the fitted CrIS-based NH₃ time factors led to a significantly better representation of the temporal variation in NH₃ emissions, especially the spring peak. Compared to in-situ observations, however, the NH₃ surface concentrations were overestimated in late summer and autumn (August to October). Further fine-tuning of the fitting algorithm could help to reduce the current overestimation and potentially improve the fitted NH₃ time

605 factors. For example, data filtering and selection criteria could be adapted. Narrowing the selection radius used for selecting
the CrIS-NH₃ observations could for instance lead to a better representation of the NH₃ concentrations locally. This, however,
may not always be possible, as a minimum number of observations is needed for a converging fit. Furthermore, the fitting
algorithm currently doesn't allow for NH₃ area emissions during winter, because of the limited number of available CrIS
610 observations at this time. As a result, the fitted NH₃ time factors show a relatively steep increase at the beginning of spring and
a decrease at the beginning of winter. This could lead to step-like functions in areas where clear NH₃ peaks in the CrIS-NH₃
data are absent. However, as this mainly occurs in areas with little to no NH₃ emissions, this shouldn't severely impact the
modelled NH₃ concentrations in this study.

4.2.2. Local Ensemble Transform Kalman Filter

The NH₃ emission updates computed by the Local Ensemble Transform Kalman Filter (LETKF) always remain tied to the
615 initial model fields by a certain uncertainty range. As such, data assimilation of the CrIS-NH₃ columns with the LETKF is
mainly suitable for fine-tuning NH₃ emissions in regions where the NH₃ emissions are already relatively well known. The
chosen LETKF configuration is for instance not able to correct for missing NH₃ emissions in areas where little or no initial
NH₃ emissions are present. Furthermore, the LETKF is unable to resolve temporal patterns well without sensible input, as was
illustrated in an experiment with homogeneous NH₃ emission fields (supplement section S1).

620 The LETKF filter settings used in this modelling setup ($\rho = 15$ km, $\sigma = 0.5$, $\tau = 3$ days) led to a maximum emission increase
of roughly ~30% on the initial NH₃ emissions for long-term simulations. The choice of these filter settings affects the
adaptability of the LETKF, i.e., the achievable emission adjustments by correction factors. In this study, a temporal length
scale τ of 3 days was chosen as a compromise between short time scales needed for irregular emissions (e.g., fertilizer
625 application) and longer time scales needed for regular emissions (e.g., stables and other point sources). Moreover, it matches
the average satellite revisiting time per grid cell given the number of CrIS-NH₃ observations left after data selection (Fig. S21).
A spatial correlation of $\rho = 15$ km was chosen because it matches the footprint size of the satellite. Furthermore, as shown in
section S1 in the supplement, increasing standard deviation σ leads to larger, positive β factors. To prevent further
overestimations in background regions, a σ of 0.5 was used for this region.

630 The current LETKF settings could for instance be improved by using spatially varying τ values. The choice of τ could be
optimized for each emission category in the model. Locations with fertilizer application as dominant NH₃ emission source
could for instance be set to lower τ values than locations with predominantly regular NH₃ sources. Another way to optimize
the filter settings would be to study timeseries of the model-satellite discrepancies in more detail and base the choice of τ on
635 this. A more apparent memory effect (i.e., higher τ) would be useful in areas with consistent model-satellite discrepancies,
whereas in areas with incidental differences a lower τ would be more appropriate. Similarly, statistical analysis of the already
computed emission perturbation factors β could be performed. In this study, the model uncertainty follows a normal

distribution in the current model setup. The distribution of the NH_3 concentrations, however, is, in reality, better approximated by a log-normal distribution. It would therefore be more realistic to use a log-normal distribution for the model uncertainty as well. This would incidentally allow for larger correction factors when high NH_3 peaks are observed, for instance after fertilizer application.

In the current LETKF model setup, only the NH_3 emissions are perturbed. Thus, the discrepancies between the observed and modelled NH_3 concentrations are currently thus fully assigned to errors in the underlying model NH_3 emissions. However, other model uncertainties could also cause these discrepancies, for instance uncertainties in other model inputs (e.g., other trace gas emissions) or parameterizations (e.g., deposition routines). In a follow-up study, it would be interesting to further investigate to the effect of an inverted LETKF setup, where model sink terms are perturbed instead of the source terms. However, the current setup is the most obvious as the NH_3 emissions are likely the largest source of model uncertainty in this area. It would also be interesting to assimilate in-situ observations and/or other satellite products (for instance IASI- NH_3) simultaneously in a follow-up study.

4.2.3. Data products

Direct comparison of the observed and simulated NH_3 columns showed distinctly lower NH_3 total column concentrations in LOTOS-EUROS. This discrepancy could be the result of a systematic underestimation of the input NH_3 emission in LOTOS-EUROS, or other model uncertainties. It could, on the other hand, also be partially related to the CrIS observations themselves. Here, only CrIS observations with the highest quality flag (QF=5) were used, which for instance could have resulted in a bias towards observations with higher NH_3 concentrations or during good weather (e.g., no clouds), as these observations usually have a lower uncertainty. Moreover, an offset of approximately $\sim 0.5 \times 10^{16}$ molecules/ cm^2 is observed. This seems to be the effect of the detection limit of the CrIS instrument, which is unable to detect very low NH_3 concentrations. Furthermore, this, too, could be enhanced by the relatively strict data selection criteria used in this study, which favors higher NH_3 concentrations that usually have a lower uncertainty. In the next version of the CrIS- NH_3 product, which was not yet available for this study, these non-detects are addressed. This might lead to lower NH_3 concentrations in background regions and partially solve this discrepancy. Moreover, this could also result in a better comparison with observations of the passive sampler networks.

The differences between the modelled and observed NH_3 concentrations and NH_4^+ wet deposition fields are partially related to limitations in the spatial representativeness of the in-situ observations. The comparison of the different model runs to in-situ observations showed an overall overestimation at the passive sampler sites. These sites are mainly located in nature areas and therefore assumed to be representative of background regions with little to no NH_3 emissions. However, especially in the Netherlands, the landscape layout is very heterogenous and the nature areas are relatively small. As a result, at the current model grid size, each model pixel is likely to include other landscape elements than nature alone. The larger model scale averages out the small-scale effects, thus leading to an overestimation. The opposite is true for the hourly observation sites

located in medium to high NH₃ emission regimes. Especially at sites close to NH₃ emission sources, an underestimation is expected.

4.2.4. Conclusions

To conclude, satellite observed CrIS-NH₃ timeseries are helpful in improving NH₃ emissions, both spatially and temporally. Our results illustrated that CrIS-NH₃ surface concentrations can be successfully used to fit spatially variable NH₃ time factors, which allows us to improve temporal NH₃ emission distributions relatively easy in a forward modelling setup. Comparison with in-situ NH₃ surface concentrations and NH₄⁺ wet deposition observations showed that the fitted CrIS-based NH₃ time factors were particularly useful for adjusting the timing and duration of the NH₃ spring peak in medium to high NH₃ regimes. Moreover, the comparison showed that the CrIS-based NH₃ time factors improve the temporal distribution of the modelled NH₃ surface concentrations and NH₄⁺ wet deposition fields. Our results show that data assimilation of the CrIS-NH₃ columns data with the Local Ensemble Transform Kalman Filter (LETKF) improves the comparability with in-situ observations both spatially and, to a lesser extent, temporally, too. As the adaptability of the LETKF is limited by the uncertainty in the modelled fields, the strength of this method primarily lies in fine-tuning pre-existing NH₃ emission patterns. As a result, this method proved particularly useful for improving spatial NH₃ distributions in long-term simulations. Moreover, our results illustrated that combining both methods enhanced the adaptability of the LETKF, and led to the largest improvements in modelled NH₃ surface concentration and NH₄⁺ wet deposition fields compared to in-situ observations.

Author contributions. SvdG worked on the observation-based NH₃ time factors. The CrIS-NH₃ dataset was provided by ED and MWS. SvdG, ED, AS and RK worked on the modelling and data assimilation. JWE, ED, AS, MWS, RK and MS helped with the interpretation of the results. SvdG wrote the paper with contributions from all co-authors.

Competing interests. The authors declare that they have no conflict of interest.

Acknowledgements. The authors would like to thank the Rijksinstituut voor Volksgezondheid en Milieu (RIVM), the Vlaamse Milieumaatschappij (VVM) and the Umweltbundesamt (UBA) for providing observations of the NH₃ surface concentrations and NH₄⁺ wet deposition. This research was funded by the Netherlands Organization for Scientific Research (NWO) under project number ALW-GO/16-05.

References

Adams, C., McLinden, C. A., Shephard, M. W., Dickson, N., Dammers, E., Chen, J., Makar, P., Cady-Pereira, K. E., Tam, N., and Kharol, S. K.: Satellite-derived emissions of carbon monoxide, ammonia, and nitrogen dioxide from the 2016 Horse River wildfire in the Fort McMurray area, *Atmospheric Chemistry and Physics*, 19, 2577-2599, 2019.

- Banzhaf, S., Schaap, M., Kerschbaumer, A., Reimer, E., Stern, R., Van Der Swaluw, E., and Bultjes, P.: Implementation and evaluation of pH-dependent cloud chemistry and wet deposition in the chemical transport model REM-Calgrid, *Atmospheric Environment*, 49, 378-390, 2012.
- 705 Barbu, A., Segers, A., Schaap, M., Heemink, A., and Bultjes, P.: A multi-component data assimilation experiment directed to sulphur dioxide and sulphate over Europe, *Atmospheric Environment*, 43, 1622-1631, 2009.
- Beer, R., Shephard, M. W., Kulawik, S. S., Clough, S. A., Eldering, A., Bowman, K. W., Sander, S. P., Fisher, B. M., Payne, V. H., and Luo, M.: First satellite observations of lower tropospheric ammonia and methanol, *Geophysical Research Letters*, 35, 2008.
- 710 Behera, S. N., Sharma, M., Aneja, V. P., and Balasubramanian, R.: Ammonia in the atmosphere: a review on emission sources, atmospheric chemistry and deposition on terrestrial bodies, *Environmental Science and Pollution Research*, 20, 8092-8131, 2013.
- Beirle, S., Borger, C., Dörner, S., Li, A., Hu, Z., Liu, F., Wang, Y., and Wagner, T.: Pinpointing nitrogen oxide emissions from space, *Science advances*, 5, eaax9800, 2019.
- 715 Berkhout, A. J., Swart, D., Volten, H., Gast, L. F., Haaime, M., Verboom, H., Stefess, G., Hafkenscheid, T., and Hoogerbrugge, R.: Replacing the AMOR with the miniDOAS in the ammonia monitoring network in the Netherlands, 2017.
- Bessagnet, B., Pirovano, G., Mircea, M., Cuvelier, C., Aulinger, A., Calori, G., Ciarelli, G., Manders, A., Stern, R., and Tsyro, S.: Presentation of the EURODELTA III intercomparison exercise-evaluation of the chemistry transport models' performance on criteria pollutants and joint analysis with meteorology, 2016.
- 720 Blank, F.: Meetonzekerheid Landelijk Meetnet Luchtkwaliteit (LML), RIVM rapport, 2001.
- Bobbink, R., Hicks, K., Galloway, J., Spranger, T., Alkemade, R., Ashmore, M., Bustamante, M., Cinderby, S., Davidson, E., and Dentener, F.: Global assessment of nitrogen deposition effects on terrestrial plant diversity: a synthesis, *Ecological applications*, 20, 30-59, 2010.
- Cao, H., Henze, D. K., Shephard, M. W., Damers, E., Cady-Pereira, K., Alvarado, M., Lonsdale, C., Luo, G., Yu, F., and Zhu, L.: Inverse modeling of NH₃ sources using CrIS remote sensing measurements, *Environmental Research Letters*, 15, 104082, 2020.
- 725 Clarisse, L., Clerbaux, C., Dentener, F., Hurtmans, D., and Coheur, P.-F.: Global ammonia distribution derived from infrared satellite observations, *Nature Geoscience*, 2, 479-483, 2009.
- Colette, A., Andersson, C., Manders, A., Mar, K., Mircea, M., Pay, M.-T., Raffort, V., Tsyro, S. G., Cuvelier, C., and Adani, M.: EURODELTA-Trends, a multi-model experiment of air quality hindcast in Europe over 1990-2010, 2017.
- 730 Conn, A. R., Gould, N. I., and Toint, P. L.: Trust region methods, SIAM, 2000.
- Copernicus Climate Change Service: European State of the Climate (ESOTC): <https://climate.copernicus.eu/ESOTC>, access: 06-06-2021, 2021.
- Dammers, E., Shephard, M., Palm, M., Cady-Pereira, K., Capps, S., Lutsch, E., Strong, K., Hannigan, J. W., Ortega, I., and Toon, G.: Validation of the CrIS fast physical NH₃ retrieval with ground-based FTIR, 2017.

- Dammers, E., McLinden, C. A., Griffin, D., Shephard, M. W., Van Der Graaf, S., Lutsch, E., Schaap, M., Gainairu-Matz, Y., Fioletov, V., and Van Damme, M.: NH₃ emissions from large point sources derived from CrIS and IASI satellite observations, *Atmospheric Chemistry & Physics*, 19, 2019.
- 740 den Bril, B. V., Meremans, D., and Roekens, E.: A Monitoring Network on Acidification in Flanders, Belgium, *TheScientificWorldJOURNAL*, 11, 2358-2363, 2011.
- Erisman, J., Bleeker, A., Galloway, J., and Sutton, M.: Reduced nitrogen in ecology and the environment, *Environmental pollution*, 150, 140-149, 2007.
- Erisman, J. W., Galloway, J., Seitzinger, S., Bleeker, A., and Butterbach-Bahl, K.: Reactive nitrogen in the environment and its effect on climate change, *Current Opinion in Environmental Sustainability*, 3, 281-290, 2011.
- 745 Erisman, J. W., Galloway, J. N., Dise, N. B., Sutton, M. A., Bleeker, A., Grizzetti, B., Leach, A. M., and De Vries, W.: Nitrogen: too much of a vital resource: Science Brief, WWF Netherlands, 2015.
- European Environment Agency: EMEP/EEA air pollutant emission inventory guidebook 2019. Technical guidance to prepare national emission inventories, 2019.
- 750 Evangeliou, N., Balkanski, Y., Eckhardt, S., Cozic, A., Van Damme, M., Coheur, P.-F., Clarisse, L., Shephard, M., Cady-Pereira, K., and Hauglustaine, D.: 10-year satellite-constrained fluxes of ammonia improve performance of chemistry transport models, *Atmospheric Chemistry and Physics*, 21, 4431-4451, 2021.
- Evensen, G.: The ensemble Kalman filter: Theoretical formulation and practical implementation, *Ocean dynamics*, 53, 343-367, 2003.
- 755 Fioletov, V., McLinden, C. A., Kharol, S. K., Krotkov, N. A., Li, C., Joiner, J., Moran, M. D., Vet, R., Visschedijk, A. J., and Denier van der Gon, H. A.: Multi-source SO₂ emission retrievals and consistency of satellite and surface measurements with reported emissions, Copernicus GmbH, 2017.
- Fioletov, V. E., McLinden, C., Krotkov, N., and Li, C.: Lifetimes and emissions of SO₂ from point sources estimated from OMI, *Geophysical Research Letters*, 42, 1969-1976, 2015.
- 760 Giannakis, E., Kushta, J., Giannadaki, D., Georgiou, G. K., Bruggeman, A., and Lelieveld, J.: Exploring the economy-wide effects of agriculture on air quality and health: evidence from Europe, *Science of The Total Environment*, 663, 889-900, 2019.
- Graaf, S. C., Dammers, E., Schaap, M., and Erisman, J. W.: How are NH₃ dry deposition estimates affected by combining the LOTOS-EUROS model with IASI-NH₃ satellite observations?, *Atmospheric Chemistry and Physics*, 18, 13173-13196, 2018.
- 765 Granier, C., Darras, S., van der Gon, H. D., Jana, D., Elguindi, N., Bo, G., Michael, G., Marc, G., Jalkanen, J.-P., and Kuenen, J.: The Copernicus Atmosphere Monitoring Service global and regional emissions (April 2019 version), 2019.
- Hertel, O., Reis, S., Skjoth, C. A., Bleeker, A., Harrison, R., Cape, J. N., Fowler, D., Skiba, U., Simpson, D., and Jickells, T.: Nitrogen processes in the atmosphere, 2011.
- 770 Hunt, B. R., Kostelich, E. J., and Szunyogh, I.: Efficient data assimilation for spatiotemporal chaos: A local ensemble transform Kalman filter, *Physica D: Nonlinear Phenomena*, 230, 112-126, 2007.

- Kharol, S., Shephard, M., McLinden, C., Zhang, L., Sioris, C., O'Brien, J., Vet, R., Cady-Pereira, K., Hare, E., and Siemons, J.: Dry deposition of reactive nitrogen from satellite observations of ammonia and nitrogen dioxide over North America, *Geophysical Research Letters*, 45, 1157-1166, 2018.
- 775 Kuenen, J., Visschedijk, A., Jozwicka, M., and Denier Van Der Gon, H.: TNO-MACC_II emission inventory; a multi-year (2003–2009) consistent high-resolution European emission inventory for air quality modelling, *Atmos. Chem. Phys.*, 14, 10963-10976, 2014.
- Lelieveld, J., Evans, J. S., Fnais, M., Giannadaki, D., and Pozzer, A.: The contribution of outdoor air pollution sources to premature mortality on a global scale, *Nature*, 525, 367-371, 2015.
- 780 Liu, L., Zhang, X., Xu, W., Liu, X., Wei, J., Wang, Z., and Yang, Y.: Global estimates of dry ammonia deposition inferred from space-measurements, *Science of the Total Environment*, 139189, 2020.
- Lolkema, D., Noordijk, H., Stolk, A., Hoogerbrugge, R., van Zanten, M., and van Pul, W.: The measuring ammonia in nature (MAN) network in the Netherlands, *Biogeosciences*, 12, 5133-5142, 2015.
- Lopez-Restrepo, S., Yarce, A., Pinel, N., Quintero, O., Segers, A., and Heemink, A.: Forecasting PM10 and PM2.5 in the Aburrá Valley (Medellín, Colombia) via EnKF based data assimilation, *Atmospheric Environment*, 232, 117507, 2020.
- 785 Manders, A. M., Builtjes, P. J., Curier, L., Denier van der Gon, H. A., Hendriks, C., Jonkers, S., Kranenburg, R., Kuenen, J. J., Segers, A. J., and Timmermans, R.: Curriculum vitae of the LOTOS–EUROS (v2.0) chemistry transport model, 2017.
- Marécal, V., Peuch, V.-H., Andersson, C., Andersson, S., Arteta, J., Beekmann, M., Benedictow, A., Bergström, R., Bessagnet, B., and Cansado, A.: A regional air quality forecasting system over Europe: the MACC-II daily ensemble production, *Geoscientific Model Development*, 8, 2777-2813, 2015.
- 790 Myhre, G., Samset, B. H., Schulz, M., Balkanski, Y., Bauer, S., Berntsen, T. K., Bian, H., Bellouin, N., Chin, M., and Diehl, T.: Radiative forcing of the direct aerosol effect from AeroCom Phase II simulations, *Atmospheric Chemistry and Physics*, 13, 1853-1877, 2013.
- Nassar, R., Hill, T. G., McLinden, C. A., Wunch, D., Jones, D. B., and Crisp, D.: Quantifying CO2 emissions from individual power plants from space, *Geophysical Research Letters*, 44, 10,045-10,053, 2017.
- 795 Pope III, C. A., Ezzati, M., and Dockery, D. W.: Fine-particulate air pollution and life expectancy in the United States, *New England Journal of Medicine*, 360, 376-386, 2009.
- Rijksdienst voor Ondernemend Nederland (RVO): Wanneer mest uitrijden: <https://www.rvo.nl/onderwerpen/agrarisch-ondernemen/mest/gebruiken-en-uitrijden/wanneer-mest-uitrijden>, access: 8th April, 2021.
- 800 Rodgers, C.: Inverse methods for atmospheric sounding—Theory and practice, Ser. on Atmos. Oceanic and Planet. Phys., 2000.
- Rodgers, C. D., and Connor, B. J.: Intercomparison of remote sounding instruments, *Journal of Geophysical Research: Atmospheres*, 108, 2003.
- 805 Schaap, M., Timmermans, R. M., Roemer, M., Boersen, G., Builtjes, P., Sauter, F., Velders, G., and Beck, J.: The LOTOS? EUROS model: description, validation and latest developments, *International Journal of Environment and Pollution*, 32, 270-290, 2008.

- Schaap, M., Wichink Kruit, R., Hendriks, C., Kranenburg, R., Segers, A., Bultjes, P., Banzhaf, S., Scheuschner, T., and Nagel, H.: Modelling and assessment of acidifying and eutrophying atmospheric deposition to terrestrial ecosystems (PINETI2)–Part I: Atmospheric deposition to German natural and seminatural ecosystems during 2009, 2010 and 2011, UBA-Project No.(FKZ), 3712, 240-241, 2017.
- 810 Schaap, M., Hendriks, C., Kranenburg, R., Kuenen, J., Segers, A., Schlutow, A., Nagel, H.-D., Ritter, A., and Banzhaf, S.: PINETI-3: Modellierung und Kartierung atmosphärischer Stoffeinträge von 2000 bis 2015 zur Bewertung der ökosystem-spezifischen Gefährdung von Biodiversität in Deutschland, Umweltbundesamt, 2018.
- Schrader, F., and Brümmner, C.: Land use specific ammonia deposition velocities: A review of recent studies (2004–2013), *Water, Air, & Soil Pollution*, 225, 1-12, 2014.
- 815 Schrader, F., Schaap, M., Zöll, U., Kranenburg, R., and Brümmner, C.: The hidden cost of using low-resolution concentration data in the estimation of NH₃ dry deposition fluxes, *Scientific reports*, 8, 1-11, 2018.
- Shephard, M., and Cady-Pereira, K.: Cross-track Infrared Sounder (CrIS) satellite observations of tropospheric ammonia, *Atmospheric Measurement Techniques*, 8, 2015.
- 820 Shephard, M. W., Dammers, E., Cady-Pereira, K. E., Kharol, S. K., Thompson, J., Gainariu-Matz, Y., Zhang, J., McLinden, C. A., Kovachik, A., and Moran, M.: Ammonia measurements from space with the Cross-track Infrared Sounder: characteristics and applications, *Atmospheric Chemistry and Physics*, 20, 2277-2302, 2020.
- Shin, S., Kang, J.-S., and Jo, Y.: The local ensemble transform Kalman filter (LETKF) with a global NWP model on the cubed sphere, *Pure and Applied Geophysics*, 173, 2555-2570, 2016.
- 825 Sjøgaard, H. T., Sommer, S. G., Hutchings, N., Huijsmans, J., Bussink, D., and Nicholson, F.: Ammonia volatilization from field-applied animal slurry—the ALFAM model, *Atmospheric Environment*, 36, 3309-3319, 2002.
- Someya, Y., Imasu, R., Shiomi, K., and Saitoh, N.: Atmospheric ammonia retrieval from the TANSO-FTS/GOSAT thermal infrared sounder, *Atmospheric Measurement Techniques*, 13, 309-321, 2020.
- Sutton, M. A., Erisman, J. W., Dentener, F., and Möller, D.: Ammonia in the environment: from ancient times to the present, *Environmental Pollution*, 156, 583-604, 2008.
- 830 Sutton, M. A., Bleeker, A., Howard, C., Erisman, J., Abrol, Y., Bekunda, M., Datta, A., Davidson, E., De Vries, W., and Oenema, O.: Our nutrient world. The challenge to produce more food & energy with less pollution, *Centre for Ecology & Hydrology*, 2013a.
- 835 Sutton, M. A., Reis, S., Riddick, S. N., Dragosits, U., Nemitz, E., Theobald, M. R., Tang, Y. S., Braban, C. F., Vieno, M., and Dore, A. J.: Towards a climate-dependent paradigm of ammonia emission and deposition, *Philosophical Transactions of the Royal Society B: Biological Sciences*, 368, 20130166, 2013b.
- Van Damme, M., Erisman, J. W., Clarisse, L., Dammers, E., Whitburn, S., Clerbaux, C., Dolman, A. J., and Coheur, P. F.: Worldwide spatiotemporal atmospheric ammonia (NH₃) columns variability revealed by satellite, *Geophysical Research Letters*, 42, 8660-8668, 2015.
- 840 Van Damme, M., Clarisse, L., Whitburn, S., Hadji-Lazaro, J., Hurtmans, D., Clerbaux, C., and Coheur, P.-F.: Industrial and agricultural ammonia point sources exposed, *Nature*, 564, 99-103, 2018.

Van Zanten, M., Sauter, F., RJ, W. K., Van Jaarsveld, J., and Van Pul, W.: Description of the DEPAC module: Dry deposition modelling with DEPAC_GC2010, RIVM rapport 680180001, 2010.

Van Zanten, M., Kruit, R. W., Hoogerbrugge, R., Van der Swaluw, E., and Van Pul, W.: Trends in ammonia measurements in the Netherlands over the period 1993–2014, *Atmospheric Environment*, 148, 352-360, 2017.

845 Vivanco, M. G., Theobald, M. R., García-Gómez, H., Garrido, J. L., Prank, M., Aas, W., Adani, M., Alyuz, U., Andersson, C., and Bellasio, R.: Modeled deposition of nitrogen and sulfur in Europe estimated by 14 air quality model systems: evaluation, effects of changes in emissions and implications for habitat protection, *Atmospheric chemistry and physics*, 18, 10199, 2018.

850 von Bobruzki, K., Braban, C., Famulari, D., Jones, S., Blackall, T., Smith, T., Blom, M., Coe, H., Gallagher, M., and Ghalaieny, M.: Field inter-comparison of eleven atmospheric ammonia measurement techniques, *Atmospheric Measurement Techniques*, 3, 91-112, 2010.

Warner, J. X., Wei, Z., Strow, L. L., Dickerson, R. R., and Nowak, J. B.: The global tropospheric ammonia distribution as seen in the 13-year AIRS measurement record, *Atmospheric Chemistry and Physics*, 16, 5467, 2016.

855 Whitburn, S., Van Damme, M., Kaiser, J. W., van der Werf, G. R., Turquety, S., Hurtmans, D., Clarisse, L., Clerbaux, C., and Coheur, P.-F.: Ammonia emissions in tropical biomass burning regions: Comparison between satellite-derived emissions and bottom-up fire inventories, *Atmospheric Environment*, 121, 42-54, 2015.

Wichink Kruit, R., Schaap, M., Sauter, F., Van Zanten, M., and Van Pul, W.: Modeling the distribution of ammonia across Europe including bi-directional surface–atmosphere exchange, *Biogeosciences*, 9, 5261-5277, 2012.

860 Zavyalov, V., Esplin, M., Scott, D., Esplin, B., Bingham, G., Hoffman, E., Lietzke, C., Predina, J., Frain, R., and Suwinski, L.: Noise performance of the CrIS instrument, *Journal of Geophysical Research: Atmospheres*, 118, 108-113, 2013.

Zhang, L., Chen, Y., Zhao, Y., Henze, D. K., Zhu, L., Song, Y., Paulot, F., Liu, X., Pan, Y., and Lin, Y.: Agricultural ammonia emissions in China: reconciling bottom-up and top-down estimates, 2018.

865 Zhu, L., Henze, D., Cady-Pereira, K., Shephard, M., Luo, M., Pinder, R., Bash, J., and Jeong, G. R.: Constraining US ammonia emissions using TES remote sensing observations and the GEOS-Chem adjoint model, *Journal of Geophysical Research: Atmospheres*, 118, 3355-3368, 2013.

870