

Optically thin clouds in the trades

Theresa Mieslinger¹, Bjorn Stevens², Tobias Kölling², Manfred Brath¹, Martin Wirth³, and Stefan A. Buehler¹

¹Universität Hamburg, Faculty of Mathematics, Informatics and Natural Sciences, Department of Earth Sciences, Meteorological Institute, Hamburg, Germany

²Max Planck Institute for Meteorology, Hamburg, Germany

³Institut für Physik der Atmosphäre, Deutsches Zentrum für Luft- und Raumfahrt e.V., Wessling, Germany

Correspondence: Theresa Mieslinger (theresa.mieslinger@mpimet.mpg.de)

Abstract. We develop a new method to describe the total cloud cover including optically thin clouds in trade wind cumulus cloud fields. Climate models as well as Large Eddy Simulations commonly underestimate the cloud cover, while estimates from observations largely disagree on the cloud cover in the trades. Currently, trade wind clouds contribute significantly to the uncertainty in climate sensitivity estimates derived from model perturbation studies. To simulate clouds well and especially how they change in a future climate we have to know how cloudy it is.

In this study we develop a method to quantify the cloud cover from a cloud-free perspective. Using well-known radiative transfer relations we retrieve the cloud-free contribution in high-resolution satellite observations of trade cumulus cloud fields during EUREC⁴A. Knowing the cloud-free part, we can investigate the remaining cloud-related contributions consisting of areas detected by common cloud masking algorithms and those undetected areas related to optically thin clouds. We find that the cloud-mask cloud cover underestimates the total cloud cover by 33 %. Aircraft lidar measurements support our findings by showing a high abundance of optically thin clouds during EUREC⁴A. Mixing the undetected optically thin clouds into the cloud-free signal can cause an underestimation of the cloud radiative effect of up to -7.5 %. We further discuss possible artificial correlations in aerosol-cloud cover interaction studies that might arise from undetected optically thin low clouds. Our analysis suggests that the known underestimation of trade wind cloud cover and simultaneous overestimation of cloud brightness in models is even higher than assumed so far.

1 Introduction

Earth's trade wind regions combine a dry atmosphere and a high abundance of shallow clouds – whose tops are often not much higher than the long-wave emission height – to efficiently cool the planet. How much clouds in the trades cool the climate is quantified by their cloud radiative effect, which in a first approximation depends on the cloud cover and the average cloud reflectance. Changes in the cloud radiative effect with warming can amplify or dampen global warming. Trade cumulus cloud feedback has been shown to contribute significantly to uncertainties in estimates of the global climate sensitivity (Bony and Dufresne, 2005; Vial et al., 2016), part of the well known difficulty climate models have in representing clouds and cloud changes with fidelity.

Especially in low-cloud regions such as the trades, climate models underestimate the cloud cover while overestimating its
25 average reflectance, a problem often called the "too few, too bright" low-cloud problem (Nam et al., 2012; Klein et al., 2013).
Large eddy simulation studies also show an underestimation of trade wind cumulus cloud cover and a limited representation
of small clouds (Nuijens et al., 2015), while the scaling behaviour of trade cumulus clouds suggests a high abundance and
significant contribution of small clouds to the total cloud cover (Plank, 1969; Wielicki and Welch, 1986; Cahalan and Joseph,
1989; Benner and Curry, 1998; Zhao and Di Girolamo, 2007; Mieslinger et al., 2019). Studies on the "twilight" zone even
30 suggest that clouds may extend further into the cloud-free area than assumed so far (Koren et al., 2008). To simulate the change
in clouds with future temperature or aerosol perturbations, we first need to know how cloudy it is.

Estimating the cloud cover is a well-known issue in the sense that it decisively depends on the instrument used and the
purpose of respective datasets. All-sky observations by trained humans might have been the first systematic cloud-cover mea-
surements. Such measurements are synonymous with efforts to predict the weather and led to the first International Cloud Atlas
35 as early as 1896. However, such observations are subject to unknown or hard to quantify uncertainties due to the training of
the observer and further biases originating from overlapping cloud layers and undetected upper clouds, or the higher frequency
of fair weather synoptic reports (Warren et al., 1985). Passive remote sensing opened the way to more objective quantification
of cloud cover from ground, from aircraft since the beginning of the 20th century, and also from space starting in the 1970s.
Active remote sensing added additional approaches to investigate clouds from ground, aircraft, and from space. Those various
40 instruments dedicated to observe clouds have in common the dependence of a best estimate of cloud cover on (a) the data
resolution in space and / or time, (b) suitable thresholds defined in the physical quantity closest to the instrument raw data, (c)
the wavelength used and the resulting sensitivity of the measurement to clouds (Stubenrauch et al., 2013). Even for collocated
measurements with very high spatial (tens of meters) and temporal resolution, Fig. 5 in Stevens et al. (2019) and more recently
Konow et al. (2021) nicely show that the range of cloud cover estimates from active and passive remote sensing can differ by
45 a factor of 2.

In this study we present a different view on clouds by quantifying the cloud-free area. The cloud-free signal is well under-
stood in radiative transfer relations and can be simulated with well-posed approximations. The main advantage of estimating
cloudiness as the complement to cloud-free areas is that we overcome the problem of diverse and instrument-specific hard-
coded thresholds in cloud masking algorithms. We apply the cloud-free approach to high-resolution satellite imagery from the
50 Advanced Spaceborne Thermal Emission and Reflection Radiometer (ASTER) recorded during the field campaign EUREC⁴A
(Elucidating the role of clouds-circulation coupling in climate) in Jan-Feb 2020. EUREC⁴A was dedicated to the investigation
of trade wind cumulus clouds and their interaction with the large-scale environment (Bony et al., 2017; Stevens et al., 2021).
The high resolution of the ASTER data provides the possibility to include clouds of sizes at the deca- to hectometer scale and,
equally important, increases the probability to observe pixels free of any cloud structures. With the cloud-free approach we
55 can detect enhanced reflectance from anomalously humidified aerosols and optically thin cloud areas that are undetected by
traditional cloud-masking algorithms. We show the contribution of optically thin cloud areas to the total cloud area and use
Lidar measurements on board the HALO (High Altitude and Long Range Research Aircraft) research aircraft to support our
findings.

We consider optically thin clouds to be different from humidified aerosols. The marine boundary layer is a humid layer with the constant presence of humidified sea-salt and ammonium sulfate aerosols. The mixing within the boundary layer will bring the aerosols almost always into an environment above 80 % relative humidity such that sea-salt and ammonium sulfate deliquesce, while the humidity is almost everywhere above 60 % making it impossible for the aerosols to effloresce (humidity as shown by the JOANNE dropsonde dataset, George et al. (2021)). Thus, humidified aerosols are omnipresent and part of the cloud-free signal and the signal that we attribute to optically thin clouds within this study goes beyond the cloud-free signal.

The remainder of this article is organized as follows. Section 2 describes the high-resolution ASTER satellite dataset, the WALES (Water Vapor Lidar Experiment in Space demonstrator) Lidar cloud product, and surface wind speed data based on the fifth generation European Centre for Medium-Range Weather Forecasts reanalysis (ERA5) reanalysis. In Section 3 we show the cloud-free model setup, and how we identify optically thin clouds in ASTER observations. Results on the contribution of optically thin clouds to the total cloud cover during EUREC⁴A are shown in Section 4, followed by a discussion of implications of our results in Section 5.

2 Observations

Within this study we exploit the potential of the high spatial resolution passive remote sensing instrument ASTER (Advanced Spaceborne Thermal Emission and Reflection Radiometer; Yamaguchi et al. (1998)) that recorded images of cloud fields east of Barbados in support of the EUREC⁴A campaign. We extend the information on the typical cloud fields observed during EUREC⁴A with airborne high spectral resolution lidar measurements to support our analysis of clouds from an active sensor with a high sensitivity to small and optically thin clouds.

2.1 The ASTER dataset for EUREC⁴A

ASTER is mounted aboard Terra, a polar-orbiting satellite in a descending Sun-synchronous orbit with an equator crossing time of 10:30 local solar time. Terra crosses the latitude of Barbados and the HALO flight circle area roughly at 14:25 UTC, while the tracks further east at about 43°W are observed by ASTER an hour earlier. Fig. 1 shows the location of measurements taken in the area east of Barbados from 7°N to 18°N and from 41°W to 62°W between January 11 and February 19 2020. The data from the observed swaths are segmented in the form of 60 × 60 km² images, each corresponding to 9 s of observation time.

ASTER's visible and near-infrared (VNIR) radiometer pointing nadir has three bands in the range of 0.53 - 0.86 μm. The radiometrically calibrated and geometrically co-registered Level 1B data provide top of atmosphere monodirectional radiances at 15 m pixel resolution at the sub satellite point. We use the band 3 radiance centered at 0.807 μm in the present study to define the total cloud cover. One image of band 3 radiances consists of 4200 pixels along track and 4980 pixels across track where, depending on the viewing angle, about 15.4 % are swath edge pixels and neglected within the further analysis leaving about 17684552 pixels per image.

In our analysis we work with reflectance instead of radiance with the aim to reduce the influence of varying solar zenith angles

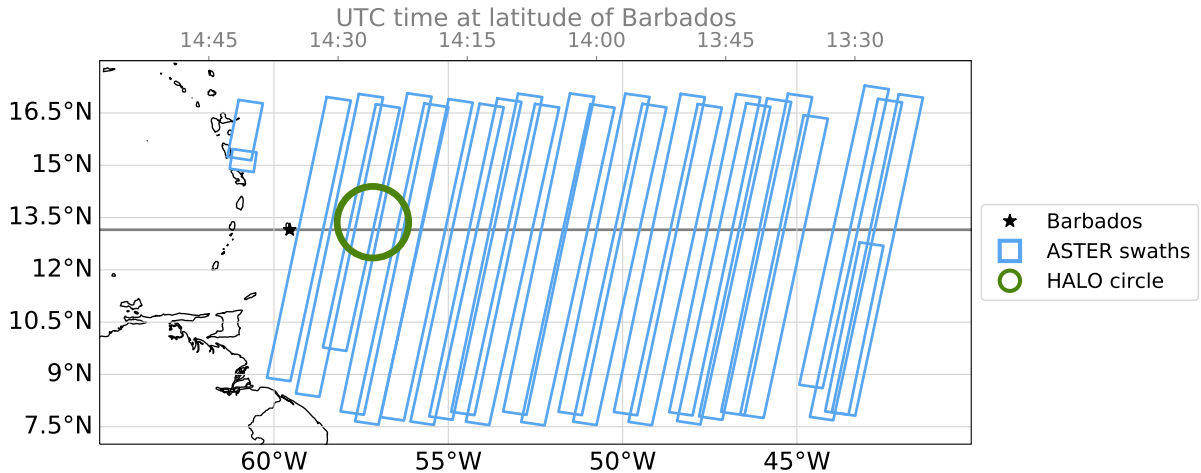


Figure 1. ASTER measurement locations during EUREC⁴A with 419 images (60km x 60km) recorded on 17 days between 11 January and 19 February 2020. WALES lidar measurements are available from HALO’s research flights predominantly on the circular path shown in green from 13 flight days between January 22 and February 15 2020.

θ_0 within the overpasses and slightly varying extraterrestrial solar irradiance E_0 . The reflectance R is calculated from the radiance L as

$$R = \frac{\pi L}{\cos(\theta_0) E_0} \quad (1)$$

95 We further draw comparisons to the ASTER cloud mask which is based on several bands in the VNIR (Werner et al., 2016). The cloud mask works with thresholding tests and is representative for traditional passive remote sensing cloud masking schemes such as the Moderate Resolution Imaging Spectroradiometer (MODIS) cloud detection scheme. In more detail, the algorithm uses three tests to distinguish between bright clouds and the dark ocean from thresholds applied to radiance values in the VNIR range. An additional test based on a band in the short-wave infrared (SWIR) is not applicable anymore as the SWIR
100 detector broke in 2007. Nevertheless, the three thresholding test allow us to distinguish between *confidently clear*, *probably clear*, *probably cloudy*, and *confidently cloudy* pixels following the method described in Werner et al. (2016). Within the current study we combine the flags *probably cloudy* and *confidently cloudy* if we refer to cloudy regions according to the ASTER cloud mask. We omit a fifth test including ASTER’s thermal band 14 (11.65 μm , 90 m pixel resolution) that is designed to detect cirrus contaminated areas and sun glint at the expense of a lower resolution. The observations during EUREC⁴A are luckily
105 recorded at a minimum sun reflection angle larger than 23° making sun glint highly unlikely.

Concerning cirrus cases, we decided to stay with the high resolution, but instead exclude images that have a high likelihood to be contaminated by cirrus clouds. A test based on the ratio of ASTER’s thermal bands 13 and 14 is implemented following a publication by Hulley and Hook (2008). The test unfortunately detects next to cirrus also low thin clouds, the latter being the main actor of the current study which we therefore want to keep in the dataset. Most importantly, we notice that our main results

110 and statements change only marginally indicating that cirrus does not have a strong impact on the current study. Nevertheless, we exclude images that have a chance of more than 10% coverage by potential cirrus as defined by Hulley and Hook (2008), which leaves 380 images for our analysis.

2.2 WALES airborne lidar measurements

The WALES lidar instrument (Water Vapor Lidar Experiment in Space demonstrator; Wirth et al. (2009)) is part of the remote
115 sensing package on board the HALO research aircraft during EUREC⁴A (Stevens et al., 2019). The aircraft flew at about 9 km altitude throughout of the campaign and thus below the typical altitude of cirrus clouds in the trades. We therefore don't expect any cirrus contamination in the WALES dataset. The high spectral resolution lidar measurements from the auxiliary channels of the instrument at 532 nm are well suited to investigate the small and optically thin clouds due to the high instrument sensitivity to small particles ranging from aerosols to cloud droplets. The advantage of WALES compared to space borne
120 active instruments such as the Cloud-Aerosol Lidar with Orthogonal Polarization (CALIOP) simply lies in the closer distance and thus a higher sensitivity to low clouds and the much higher horizontal sampling due to the lower aircraft speed (0.2 km/s versus 7 km/s). The resulting horizontal spatial resolution of the WALES cloud product is about 40 m during EUREC⁴A, which is slightly larger but commensurate with that of ASTER. CALIOP has been shown to struggle detecting small clouds with cloud tops below 1 km (Leahy et al., 2012), while we find 29 % of clouds detected by WALES during EUREC⁴A to have cloud
125 tops below 1 km.

Within the present study we use the cloud mask and cloud optical depth product described in Konow et al. (2021). In the dataset, a cloud is defined where the backscatter ratio exceeds 10. This threshold is lower compared to the studies by Gutleben et al. (2019) and Jacob et al. (2020) where the value was chosen to make the detection limit comparable to CALIOP. The lower value used in the present study nicely separates the highest possible signals originating from marine aerosol and any
130 cloud related signal that might include anomalously humidified aerosols and the smallest cloud droplets. WALES uses the High Spectral Resolution Lidar technique (HSRL; Esselborn et al. (2008)) to distinguish molecular from particle backscatter at 532 nm, which allows for the direct measurement of the (two way) atmospheric transmission. The latter is proportional to the range (r) and atmospheric density corrected lidar signal $R_M(r)$. To a first approximation the optical thickness is given by

$$\tau = -\frac{1}{2} \cdot \ln \left(\frac{R_M(r)}{R_M(0)} \right). \quad (2)$$

135 The complete algorithm adds several corrections and is described in detail in Esselborn et al. (2008).

2.3 Surface wind speed estimates

For the methodology described in Sec. 3 we need surface wind speed estimates at 10 m height for a given ASTER pixel. The fifth generation European Centre for Medium-Range Weather Forecasts reanalysis (ERA5) provides hourly wind speed estimates on a global grid at 10 m height (2D surface product) which would fit our needs, but showed a significant underestimation
140 compared to collocated dropsonde measurements during EUREC⁴A (JOANNE dropsonde dataset: George et al. (2021)). The underestimation is in agreement with a study by Belmonte Rivas and Stoffelen (2019) which find a low bias in ERA5 surface

winds in the trades. Nevertheless, wind speed estimates from the ERA5 profile product (hourly, 0.25° grid; Hersbach et al. (2020)) agree remarkably well with dropsonde measurements.

Thus, we use ERA5 wind speeds at the lowest altitude pressure level 1000 hPa which corresponds to about 135 m above
145 sea level on average based on the dropsonde dataset. We derive a correction that translates from 1000 hPa to 10 m based on a comparison of ERA5 wind speed at 1000 hPa and the 10 m wind speed from dropsonde measurements (Pearson correlation coefficient 0.88). A least squares fit provides us with the coefficients to estimate the 10 m wind speed by

$$ws = 0.92 \cdot ws_{\text{ERA5,1000hPa}} + 0.40. \quad (3)$$

This wind speed is an average value representative for a 0.25° grid cell. We therefore use measurements at the Barbados
150 Cloud Observatory (BCO) to estimate the variance in wind speed within 0.25° compared to the 15 m ASTER grid. The BCO is located at the easternmost point of the island of Barbados and has been shown to take measurements representative of an undisturbed marine trade wind boundary layer (Stevens et al., 2016). We use the standard surface wind speed measurements from a Vaisala WXT-520 to derive an estimate of the surface wind variance within 0.25° (27.12 km at 13°N) which translates to about 80 minutes sampling period. We add a Gaussian perturbation according to the estimated wind variance of 1.63 m²s⁻²
155 to the average wind speed within our further analysis. The campaign average wind speed corresponding to the ASTER image locations is 9.02 ms⁻¹.

3 Methodology

The ASTER cloud mask provides us with a good perception of the certainly clear and certainly cloudy areas, while we are less confident in between. We approach the intermediate range from the cloud-free by simulating the expected probability
160 distributions of cloud-free reflectance for a given ASTER image. Knowing the theoretical cloud-free contribution to an all-sky ASTER image we can then investigate the cloud-related contributions that are undetected by the cloud mask and which we attribute to optically thin clouds. 3D cloud radiative effects are a potential complicating factor in broken cloud conditions and we will discuss their influence in section 4.3 together with results from the WALES lidar.

First, we introduce the methodology with a brief overview on the cloud-free retrieval setup and the necessary input informa-
165 tion on surface wind speed and aerosol optical depth, before we show our approach for transferring the cloud-free information to the all-sky ASTER observations and defining areas of optically thin clouds.

3.1 A simplified clear-sky model (SCSM)

The cloud-free radiance over ocean in the visible range depends on a narrow set of parameters and can be estimated by simplified one-dimensional radiative transfer calculations. In appendix A we describe the full set of equations and approximations
170 made in calculating the cloud-free signal with our simplified clear-sky model (SCSM). We generally assume a single-layer atmosphere with constant air density and calculate the extinction of solar radiance from the top of atmosphere to the ground and back to the sensor in space. How the light is reflected at the surface into the view direction of the sensor is characterized by

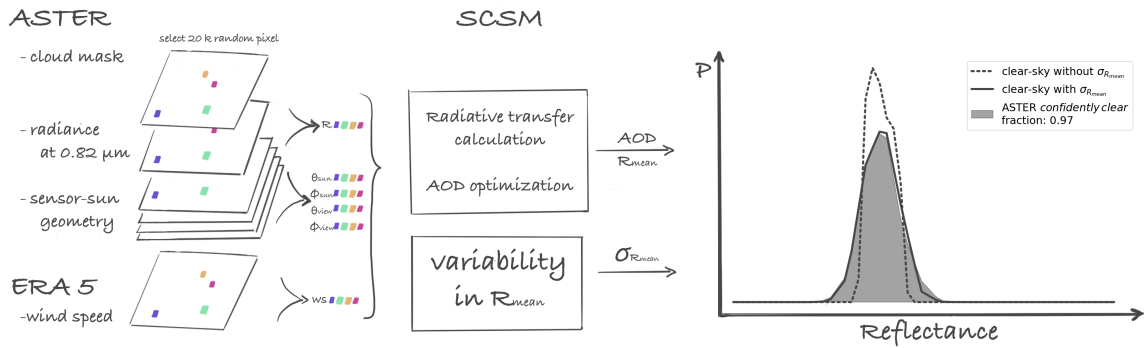


Figure 2. Sketch illustrating the cloud-free retrieval workflow. ASTER and ERA5 input data is used to run radiative transfer simulations with integrated AOD optimization. A Gaussian perturbation is added to the output average pixel reflectance R_{mean} to account for ocean surface variability and measurement noise. The figure on the right shows the processing steps that lead to the simulated cloud-free reflectance distribution for a single ASTER image observed 2020-01-24 14:02:02 UTC.

the bi-directional reflection function which depends on the surface wind speed and the generated ocean wave slope distribution. Here, we use the wind speed estimates described in section 2.3 as input to the Cox and Munk parameterization to derive an average reflectance for a given surface condition (Cox and Munk, 1954).

We further need to know the aerosol optical depth (AOD) to estimate the extinction of direct and diffuse radiation on its path through the atmospheric column. Although the aerosol load does not vary much within a $60 \times 60 \text{ km}^2$ ASTER image, the availability of aerosol information from measurements even for an image-average AOD is very limited. Therefore, we estimate an effective AOD in an optimization approach by including information from the ASTER dataset. We assume that the pixels labeled *confidently clear* in the ASTER cloud mask are a good first guess for cloud-free and shall serve as a reference for finding a suitable effective AOD such that the simulated cloud-free values are in close agreement with the selected ASTER pixel values.

In Fig. 2 we illustrate the cloud-free retrieval workflow. In detail, we randomly select 20000 pixel (0.11 % of valid image pixels) from those defined *confidently clear* by the ASTER cloud mask (see Sect. 2.1) for a given ASTER image. Simulating 20000 samples ensures a proper representation of the cloud-free distribution at a manageable computational cost. For those input pixel locations we run the cloud-free model with the corresponding sensor-sun geometries, surface wind speed estimates, and a first guess on the AOD. We further optimize this image AOD value iteratively by minimizing the summed squared difference between simulated and observed reflectances. Here, we make use of scipy’s implementation of the limited-memory Broyden–Fletcher–Goldfarb–Shanno algorithm (LM-BFGS) with bounds (scipy version 1.5.2). The resulting effective AOD value is representative for the reflectance distribution of a single ASTER image. From all evaluated ASTER images we find a campaign average effective AOD of $0.077 (\pm 0.051)$.

From comparing simulated cloud-free reflectance distributions to selected observed ones for manually checked and seemingly cloud-free ASTER observations, we find two things. First, the distributions agree very well in terms of their expected value. Second, the simulated distributions are more narrow compared to the observed ones as the Cox and Munk parametrization returns average pixel reflectance R_{mean} . We therefore introduce a variability in brightness in a post processing step. We calculate a kernel density estimate with normal kernels characterized by a standard deviation $\sigma_{R_{\text{mean}}}$ that is placed on each of the simulated reflectance values (Rosenblatt, 1956; Parzen, 1962). We derive a suitable value for $\sigma_{R_{\text{mean}}}$ from comparing simulated cloud-free reflectance distributions and corresponding ASTER images that have at minimum 97% *confidently clear* pixels in the ASTER cloud mask. From 22 cases we calculate the average $\sigma_{R_{\text{mean}}} = 0.0026$ from a least-squares optimization using again the LM-BFGS algorithm. We use a constant value for $\sigma_{R_{\text{mean}}}$ for the whole dataset due to the lack of several cloud-free observations for various sensor-sun geometries. However, the ASTER dataset is confined to a narrow set of sensor-sun geometries and outside of possible sun glint observations such that we assume that a constant value is sufficient for our application.

3.2 Identifying optically thin clouds in all-sky observations

The output from our SCSM model provides us with a distribution of cloud-free reflectance $p(R|F_{\text{CLEAR}}, B)$, which is the probability distribution of reflectance values R given that they originate from cloud-free area with the flag $F = F_{\text{CLEAR}}$ and additional background conditions B . The background conditions include the sensor-sun geometry, wind speed, and AOD and are covered by the SCSM by handling each image individually. In the following we evaluate the probabilities on an image basis and therefore omit the implicit condition on B in the notation. Further, we use standard notation whereby “|” means “given that” for conditional probabilities and “,” means “and” and symbolizes combined (or joint) probabilities. For example, the SCSM output is a conditional probability as the SCSM framework does not include any information on the general cloud-free fraction within one image.

In the following, we split the observed reflectance distribution of an ASTER image into the categories or flag values $F \in \{F_{\text{CLEAR}}, F_{\text{OTC}}, F_{\text{CLOUD}}\}$. The ascending order of the flag values indicates the associated expected increase in reflectance. The darkest observed pixels originate from cloud-free ocean observations. Small cloud fragments and humidified aerosols slightly enhance the reflectance, though they are often undetected by cloud masking scheme. We characterize them as optically thin clouds OTC. The flag CLOUD refers to the cloudy pixels detected by the ASTER cloud masking scheme (see Sec. 2.1). We know the CLOUD part of a distribution $p(R, F_{\text{CLOUD}})$ from the observation and we can infer the CLEAR contribution from the SCSM output. The all-sky reflectance distribution $p(R)$ is build up by the arithmetic sum of combined probability distributions of R and the flag values F , that is:

$$\begin{aligned}
 p(R) &= \sum_{F_n} p(R, F_n) \\
 &= p(R, F_{\text{CLEAR}}) + p(R, F_{\text{OTC}}) + p(R, F_{\text{CLOUD}})
 \end{aligned}
 \tag{4}$$

Each combined probability can be represented by the product of the corresponding conditional probability and the probability of the flag value, i.e. for cloud-free

$$p(R, F_{\text{CLEAR}}) = p(R|F_{\text{CLEAR}}) \cdot p(F_{\text{CLEAR}}). \quad (5)$$

225 The probability of cloud-free $p(F_{\text{CLEAR}})$ is the true cloud-free fraction in an observed image and challenging to estimate. Note that the true cloud-free fraction is independent of the ASTER cloud mask. If we would know the cloud-free fraction $p(F_{\text{CLEAR}})$, equations Eq. 5 and Eq. 4 together fully describe the observed reflectance distribution $p(R)$. In the following we describe our approach for estimating the unknown cloud-free fraction.

The first constraint is given by the fact that any probability must be within the range $[0, 1]$, thus we can formulate for our
230 case:

$$p(F_{\text{CLEAR}}|R'') + p(F_{\text{CLOUD}}|R'') \leq 1 \quad \forall R'' \in R \quad (6)$$

We can approach the estimation of the cloud-free fraction $p(F_{\text{CLEAR}})$ from a conservative side by deriving the maximum possible $p(F_{\text{CLEAR}})$ such that Eq.6 still holds. Thinking visually, we scale the simulated cloud-free distribution up until it touches the all-sky distribution $p(R)$. At the reflectance $R = R'$ (of unknown value) where the PDFs touch, we are certain that
235 the non-cloudy classified reflectances are actually due to cloud-free:

$$\exists R' \text{ such that } p(F_{\text{CLEAR}}|R') = 1 - p(F_{\text{CLOUD}}|R') \quad (7)$$

We can solve Eq. 7 and Eq. 6 for $p(F_{\text{CLEAR}})$ (for details see appendix B). While being mathematically concise, the described method faces a problem. It relies on the exact count of measurements in only a single reflectance bin R' and thus is especially susceptible to measurement and model uncertainties. We tackle this problem by extending and relaxing the condition stated
240 in Eq. 7. We modify this first condition from a single value to an extended range of reflectance values. As Eq. 7 would be overdetermined for more than one reflectance value in the presence of measurement and model uncertainties, we demand that the equation approximates the value $1 - p(F_{\text{CLOUD}}|R')$ for reflectivity values measured and known to be caused by cloud-free skies.

In particular, we do this by a weighted linear regression, minimizing the term:

$$245 \int |[p(F_{\text{CLEAR}}|R) - (1 - p(F_{\text{CLOUD}}|R))] \cdot w|^2 dR \quad (8)$$

with $p(F_{\text{CLEAR}})$ as the only free variable. The regression weight $w = p(R)p(R|F_{\text{CLEAR}})$ is chosen to only consider measured reflectance $p(R)$ that overlap with the range of simulated cloud-free reflectance $p(R|F_{\text{CLEAR}})$. The product of both guarantees a close agreement around the peaks of measured and simulated PDF.

The resulting estimate of $p(F_{\text{CLEAR}})$ is more robust in the presence of small measurement or model errors, but a direct
250 consequence of this approximate matching is that Eq. 6 does not necessarily hold for all R'' anymore. As illustrated in Fig. 3 using dotted and dashed lines, we correct this by clipping the resulting probabilities to the allowed range. As this clipping

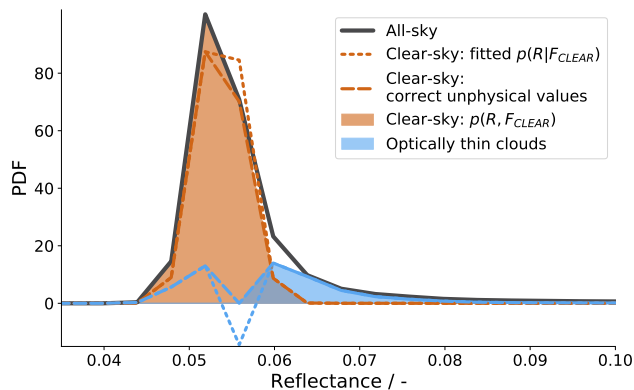


Figure 3. Visualization of the approach for estimating the cloud-free fraction $p(F_{CLEAR})$ by optimization. The orange dotted and dashed lines show the processing steps leading to the filled orange cloud-free PDF. The blue lines are the respective residuals related to optically thin clouds and resulting from the all-sky (grey) minus the CLEAR (orange) and minus the CLOUD PDF (dark blue; not visible).

effectively modifies the simulated reflectance distribution and thus is potentially dangerous, we need to ensure that this method indeed only compensates for small measurement uncertainties (i.e. in the order of a single digital sensor count). We can do this by comparing the expected value of the clear sky reflectance $p(R|F_{CLEAR})$ before and after clipping. On average, this difference
 255 is 0.15% and even in the worst (maximum) case, the clipping causes a shift of 0.0018 in reflectance units, which is well below one digital sensor count of about 0.004 reflectance units. Based on this analysis, we use the more stable regression and clipping method in stead of a direct application of Eq. 7.

Further, the SCSM does not include cloud shadows on the ocean surface which introduce a signal at very low reflectances in the observed distribution. Conceptually we add the low reflectance values originating from such shadowed areas to the
 260 cloud-free reflectance distribution $p(R, F_{CLEAR})$.

In Fig. 4 we show combined probability distributions per flag for an ASTER observation on the 31st of January east of Barbados. The inset figure shows the reflectance image that we translate into the distribution using the method described above.

3.3 Robustness of optically thin cloud estimation

265 Our target variables are the fraction and expected reflectance of optically thin clouds. The retrieval of cloud-free and subsequent optically thin clouds in ASTER images depends on visible cloud-free areas which limits the evaluation of the full ASTER EUREC⁴A dataset to images with less than 85% detected cloud cover in the cloud masking algorithm (380 images).

Within the retrieval we have two main free parameters which can introduce uncertainty in our target values, the surface wind speed estimate and the assumed variability $\sigma_{R_{mean}}$ of simulated average pixel reflectances R_{mean} . We first have a look
 270 at the added variability. From a comparison of 22 manually checked cloud-free reflectance distributions (>97% confidently clear pixels) to the simulated distributions we derived an average variance of 0.0026 (± 0.0007). We apply the methodology

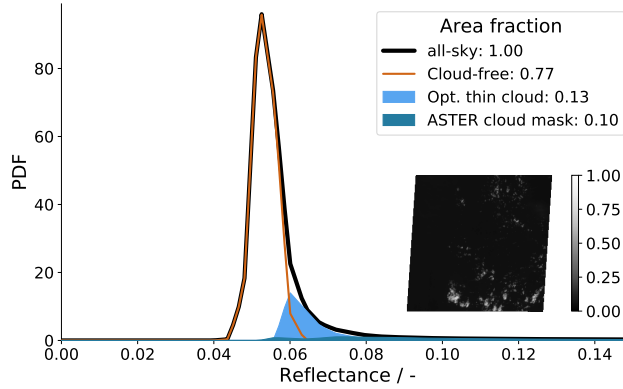


Figure 4. Reflectance distribution corresponding to the ASTER observation shown in the inset figure recorded on 31 January 2020, 14:08:05 UTC south-east of the HALO circle area at 11.37°N, 53.86°W. The cloud-free contribution is retrieved with the method (1) described in section 3.2 and displayed by the orange curve, while pixel reflectances identified cloudy from the ASTER cloud masking algorithm are shown in dark blue. We attribute light blue contribution to the distribution to optically thin clouds.

described in this section for the average value, as well as for a 20 % lower (0.0020) and 20 % higher value (0.0031). Similarly, we add an artificial bias of $\pm 20\%$ to the surface wind speed estimates and investigate the change in our target values. The average wind speed in our dataset is 9.02 ms^{-1} ($\pm 2.38 \text{ ms}^{-1}$). The resulting deviations in our target values, the fraction $p(\text{OTC})$ and expected reflectance $E(R|\text{OTC})$ of optically thin clouds, that result from a bias in $\sigma_{R_{\text{mean}}}$ and / or the surface wind speed are stated in Tab. 1.

The fraction of optically thin clouds $p(\text{OTC})$ changes only slightly with a change in wind speed showing an overestimation for a negative wind speed bias meaning that a small part of the cloud-free distribution is wrongly attributed to optically thin clouds. For a positive wind speed bias the opposite is the case. The low uncertainties (4.6 % and -4.9 %) are a result of the retrieval setup including the optimization of AOD which can partly compensate a bias in wind speed. Changing the variability of simulated average pixel reflectances $\sigma_{R_{\text{mean}}}$ can narrow (negative bias in $\sigma_{R_{\text{mean}}}$) and broaden (positive bias in $\sigma_{R_{\text{mean}}}$) the cloud-free distribution and thus lead to strong over- or underestimation of $p(\text{OTC})$ as high as 13.1 % and -14.1 % (relative deviations). Combining the highest retrieval uncertainties from the two free parameters, the wind speed and the variability $\sigma_{R_{\text{mean}}}$, we can get a deviation in the estimated fraction of optically thin clouds of up to ± 0.027 (relative: $\pm 19.7\%$).

The expected reflectance of optically thin clouds $E(R|\text{OTC})$ shows a smaller sensitivity to changes in the wind conditions and $\sigma_{R_{\text{mean}}}$ compared to the fraction of optically thin clouds discussed above. An underestimation in wind speed leads to a marginal underestimation in the expected reflectance as lower cloud-free reflectance is wrongly attributed to optically thin clouds. In the case of an overestimation in wind speed, the cloud-free reflectance distribution extends to higher reflectance values which are missing in the estimated $E(R|\text{OTC})$ and thus leads to a high bias in $E(R|\text{OTC})$. A more narrow (negative bias in $\sigma_{R_{\text{mean}}}$) or broader (positive bias in $\sigma_{R_{\text{mean}}}$) cloud-free distribution can decrease or increase the expected reflectance of optically thin clouds up to -4.5 %. However, the combined deviation due to possible biases in wind speed and $\sigma_{R_{\text{mean}}}$ are still

Table 1. Deviations of the fraction $\Delta p(\text{OTC})$ and expected reflectance $\Delta E(R|\text{OTC})$ of optically thin clouds for the two main free parameters to the clear-sky retrieval, the surface wind speed and the variability $\sigma_{R_{\text{mean}}}$. The two numbers in each cell state the absolute / relative difference to the reference case with no wind speed bias and $\sigma_{R_{\text{mean}}} = 0.0026$ respectively.

		$\Delta p(\text{OTC})$			$\Delta E(R \text{OTC})$		
wind speed bias		-1.8 ms^{-1}	0 ms^{-1}	1.8 ms^{-1}	-1.8 ms^{-1}	0 ms^{-1}	1.8 ms^{-1}
$\sigma_{R_{\text{mean}}}$	0.00204	0.027 / 19.7 %	0.018 / 13.1 %	0.010 / 7.3 %	-0.0031 / -5.5 %	-0.0026 / -4.5 %	-0.0018 / -3.1 %
	0.00255	0.006 / 4.6 %	0.000 / 0.0 %	-0.007 / -4.9 %	-0.0017 / -3.0 %	0.0000 / 0.0 %	-0.0004 / -0.6 %
	0.00306	-0.014 / -10.6 %	-0.019 / -14.1 %	-0.024 / -17.5 %	-0.0001 / -0.2 %	0.0003 / 0.5 %	0.0007 / 1.3 %

within the range of ± 0.0031 ($\pm 5.5\%$) which is smaller than the reflectance bin size of the original Level 1B ASTER data (least significant bit).

4 Results

295 We investigate 380 ASTER images for the signal from optically thin clouds (OTC) that are undetected by the ASTER cloud mask but can be identified with the method described in Sect. 3. We first visualize pixels in an image that we attribute to the total cloud cover including OTC pixels and those detected in the ASTER cloud mask. We then define a close match of OTC reflectances in ASTER images and the signal of OTC detectable in WALES lidar data. WALES measurements provide an independent view of the results of the cloud cover by OTC from a different instrument technology and complement our analysis based on ASTER images. Finally, we show the significant contribution of optically thin clouds to the total cloud cover.

4.1 Visualizing optically thin clouds in an ASTER image

To visualize the OTC area in an image we can define a threshold in reflectance similar to common cloud masking algorithms. We construct a total cloud cover mask that includes pixels with a probability of that pixel reflectance to be cloudy $p(F_{\text{TOTAL_CLOUD}}|R = R_{\text{pixel}}) \geq 0.9$ with $F_{\text{TOTAL_CLOUD}} = F_{\text{OTC}} \vee F_{\text{CLOUD}}$. In the particular ASTER image shown partially in Fig. 5 all reflectance values greater than 0.049 satisfy that condition. The cloud mask derived with the cloud masking algorithm by including several ASTER bands is shown in blue in panel a) while the total cloud cover mask is shown by the contours in red in panel b). The background reflectance image in panel b) is adjusted in its reflectance range with the aim to enhance the range reflectances related to OTC.

The figure visualizes how OTC is often classified in pixels surrounding detected clouds. Detraining clouds and anomalously humidified aerosols likely cause enhanced reflectances close to thicker clouds. Possible scattering of light at the sides of thicker clouds might additionally enhance the brightness of their surrounding areas. Such surrounding halos of optically thin clouds lead to (threshold dependent) smoother cloud edges, an interesting result in the context of cloud boundaries and related fractal dimensions. Also, cloud structures tend to be more connected in the total cloud cover mask leading to larger cloud objects with

smooth reflectance transitions to the cloud-free ocean background. While there are numerous studies on cloud shapes we rather
 315 focus on a statistical estimate of area coverage and the contribution of OTC to the total cloud cover in the remainder of this
 work.

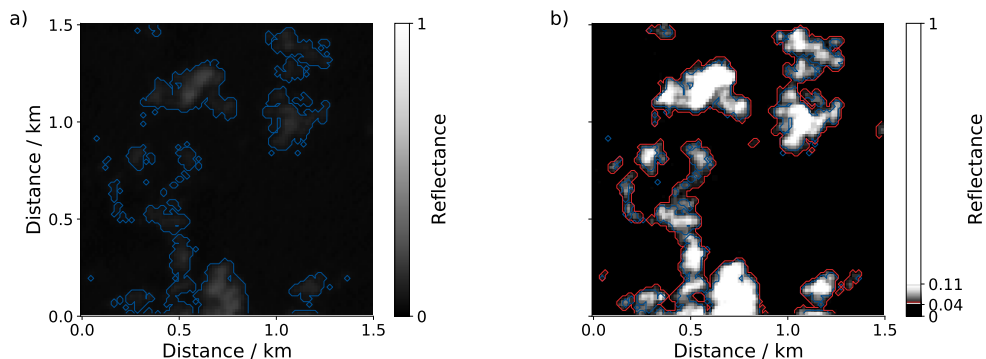


Figure 5. Visualization of the area corresponding to optically thin clouds. Shown are reflectances at $0.807 \mu\text{m}$ for a $1.5 \times 1.5 \text{ km}^2$ selection of an ASTER image recorded on 5 February 2020, 14:25:15 UTC. (a) shows the full physical range of reflectance values ranging from 0 to 1 with overlaid blue contours outlining the ASTER cloud mask. (b) is similar to (a) but with the color scale limited to the 10th and 90th percentile of reflectances attributed to total cloud cover including optically thin clouds. The red contours correspond to $p(F_{\text{TOTAL_CLOUD}} | R = R_{\text{pixel}}) \geq 0.9$.

4.2 The OTC equivalence in Lidar data

In Fig. 5 optically thin clouds are barely visible in the reflectance field in panel a) suggesting that those clouds have a very low cloud optical thickness. Due to non-linearities in the physical and radiative properties of small cumulus clouds and the large
 320 influence of 3D radiative effects, plane-parallel retrieval of microphysical properties do not work reliably and we cannot derive
 cloud optical thickness from ASTER measurements directly (Davies, 1978; Loeb et al., 1997; Várnai and Marshak, 2003; Marshak et al., 2006; Stevens et al., 2019; Kölling, 2020). However, we use the theoretical relationships that plane-parallel retrievals are based on to estimate an effective cloud optical thickness that could be detected by ASTER against the ocean surface background following the two-stream approximation by Lacis and Hansen (1974):

$$325 \quad A = \frac{\sqrt{3}(1-g)\tau}{2 + \sqrt{3}(1-g)\tau} \approx \frac{\tau}{\tau + 7.7} \quad (9)$$

with the cloud albedo A , cloud optical thickness τ and the asymmetry parameter $g = 0.85$. In Fig. 6 we show the relationship stated in Equ. 9 of a plane-parallel cloud (black line) and add uncertainties from cloud 3D effects and the background ocean signal.

The average ocean reflectance during EUREC⁴A was 0.04 including single cases as high as 0.08. Due to additional variability
 330 in the ocean wave reflection we expect that clouds with an albedo below 0.1 and corresponding cloud optical thickness below 1 to dissolve in the ocean signal. For clouds with cloud optical thickness larger than 1, 3D effects such as brightening and

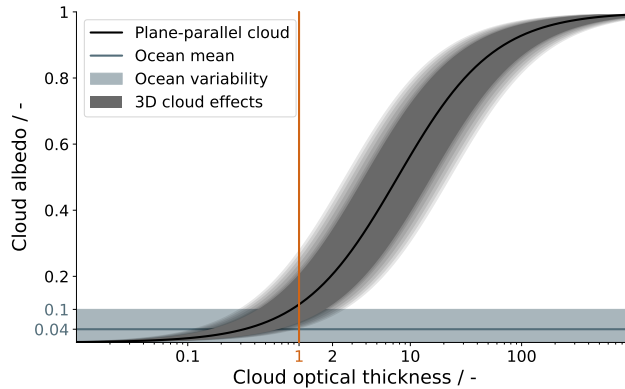


Figure 6. Plane-parallel relationship between cloud albedo and cloud optical thickness following Lacis and Hansen (1974). The ocean reflectance is estimated from the ASTER observations during EUREC⁴A, while the uncertainty due to 3D radiative effects is a rough estimate from the literature (Marshak et al., 2006; Stevens et al., 2019).

shadowing as well as photon loss through the cloud sides become relevant and can easily cause a factor of 2 error in the reflectance that spans up a distribution around the plane-parallel estimate and that we indicate by the grey shaded area in Fig. 6 (Marshak et al., 2006; Stevens et al., 2019). Overall, we assume that due to natural variability in the background ocean signal and the cloud signal, clouds with optical thickness below 1 likely do not stand out from the ocean and the ASTER cloud mask
 335 presumably is insensitive to such optically thin clouds.

Clouds with an optical thickness below 1 are thin enough for a lidar beam to penetrate through the cloud and provide a reliable estimate of the cloud optical thickness. We can therefore make use of WALES lidar measurements for supporting information on the abundance of optically thin clouds.

340 Fig. 7 shows the distribution of cloud optical thickness measurements from WALES for days with local research flights. The peak at low cloud optical thickness values corresponds to optically thin clouds that the lidar beam manages to penetrate. A cloud with optical thickness of about 2.5 reduces the lidar signal below the cloud to more than one hundredth and the method to derive the optical thickness still works. At night the range of retrieved optical thickness increases to about 3.5 due to a better signal to noise ratio above clouds without scattered Sun light. In thicker clouds the signal vanishes in the system noise. We
 345 aggregate all measurements from optically opaque and thick clouds in one bin as we have no information on the actual cloud optical thickness.

In WALES measurements we associate optically thin clouds to have an optical thickness below 1. The campaign average cloud optical thickness of OTC is 0.37, the median is 0.31. Optically thin clouds have on average a cloud top height at 1.3 km altitude (median 1.0 km). We further use the WALES measurements to derive a fractional cloud cover in time for optically thin
 350 clouds and compare the results to the optically thin cloud cover from ASTER in the following section.

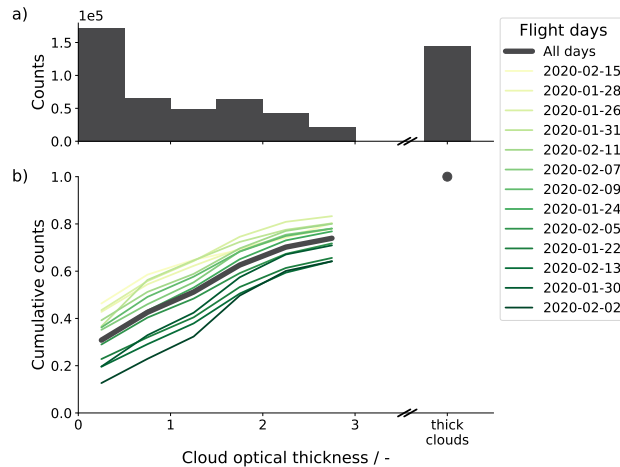


Figure 7. Cloud optical thickness distribution from WALEs lidar measurements for all days with local research flights during EUREC⁴A resulting in 92 hours of data. Panel a) shows the frequency distribution of all days, while panel b) additionally shows the cumulative distributions for individual days. The days are sorted by their increasing average cloud optical thickness that we associate with optically thin clouds (yellow to dark green). The split x-axis visualizes the limited information on thick clouds that are optically opaque to the lidar.

Table 2. Cloud cover estimates during EUREC⁴A from 380 ASTER satellite observations (60 x 60 km²) at 15 m resolution on 17 days and from WALEs lidar measurements recoded within 13 research flights (days) at about 40 m resolution in January and February 2020.

	Optically thin cloud cover / %	Detected ^(*) cloud cover / %	Total cloud cover / %
ASTER (mean)	14.1	28.5	42.6
ASTER (median)	13.3	16.7	34.9
WALEs (mean)	14.3	19.3	33.7

^(*) "detected" refers to the ASTER cloud mask and in the case of WALEs data to clouds with cloud optical thickness ≥ 1 .

4.3 The contribution of OTC to the total cloud cover

From analysing 380 ASTER images during EUREC⁴A we find an average total cloud cover of 42.6 %, combined of 28.5 % from detected clouds and 14.1 % from optically thin clouds (see Tab. 2). Based on the cloud-free retrieval uncertainties derived in Sec. 3.3 we estimate the uncertainty in ASTER optically thin cloud cover to be within the range of ± 2.7 %. In Table 2 we state the respective numbers derived from WALEs measurements. We explicitly note that a direct comparison is not reasonable as the two instruments and approaches show optically thin cloud areas from two different perspectives. However, what we can say is that WALEs lidar measurements indicate a high fractional coverage by optically thin clouds, similar to what we find from ASTER images.

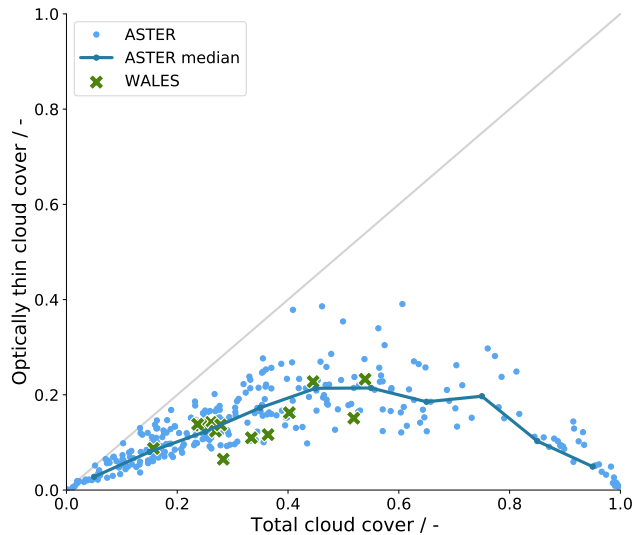


Figure 8. Change in optically thin cloud cover with total cloud cover. The blue markers correspond to values derived from 380 ASTER images ($60 \times 60 \text{ m}^2$) with the dark blue line following along the median values. The green markers correspond to daily-averaged cloud cover estimates from WALEs lidar measurements. The grey diagonal line shows the maximum possible contribution of optically thin clouds to the total cloud cover.

In Sec. 4.1 we mentioned the possible influence of scattering at cloud edges which can illuminate areas surrounding thicker clouds. Such 3D effects would influence our results based on ASTER data and lead to an overestimation of OTC related cloud cover. As WALEs is less affected by the 3D scattering at cloud edges but shows a higher fraction of optically thin clouds (42.4 %) relative to ASTER (33.1 %), the ASTER analysis does not seem to be unduly influenced by 3D radiative effects.

Our results based on ASTER and WALEs measurements are lower compared to an analysis of optically thin marine clouds from CALIOP measurements by Leahy et al. (2012). The authors find a fraction of optically thin clouds in the trades to be as high as 84 %. From WALEs measurements we derived an OTC fraction of 42.4 % for cloudy profiles with cloud optical thickness < 1 . If we include clouds with cloud optical thickness up to about 3 as it is done in the study by Leahy et al. (2012), the OTC fraction in WALEs data increases to 74 %. Estimates based on CALIOP data are likely to overestimate the OTC fraction due to the lower sensor resolution of 90 m footprints every 335 m. The authors in Leahy et al. (2012) derive a possible overestimation of OTC fraction of up to 25 % in the trades due to partially cloudy CALIOP footprints, which supports our findings in the current study of a lower, but still significant contribution of optically thin clouds to the total cloud cover.

We further notice that the area covered by optically thin clouds increases with detected cloud cover for low total cloud cover as shown in Fig. 8 and similarly stated in Leahy et al. (2012). The positive correlation up to 0.4 total cloud cover might be due to a combination of two features. First, optically thin cloud areas are often found surrounding detected clouds (see also Fig. 5). This idea is supported in a study by Koren et al. (2007), which find enhanced reflectances in solar irradiance measurements before and after an identified cloud originating from humidified aerosols and/or unresolved cloud fragments.

The second ingredient to the proposed positive correlation is the cloud field structure. Trade wind cumulus cloud fields at low cloud cover typically correspond to *sugar* or *gravel* type structures as described by Stevens et al. (2020), consisting of many small clouds with enough space in between that can be partly filled with undetected optically thin clouds. More clouds and more cloud boundary therefore leads to more optically thin cloud area up to a point where this relationship saturates at about 0.4 total cloud cover. The saturation might be due to larger clouds or cloud structures being surrounded by pronounced cloud-free regions. A recent study by Schulz et al. (2021) identifies the so-called *flower* and *fish* cloud patterns of having characteristic cloud-free areas between clouds. By constraint, the positive correlation turns negative above 0.7 total cloud cover as the cloud-free, OTC, and detected cloud cover always add up to 1 and high cloud-mask cloud cover situations leave little space for optically thin clouds.

We conclude that optically thin clouds cover large parts of the trades leading to a higher total cloud cover than assumed so far from passive satellite observations.

4.4 The cloud reflectance - cloud cover relationship in ASTER observations

Current climate models typically have a narrow range of cloud optical thickness that might affect model perturbation experiments due to the non-linearity of cloud optical thickness and its albedo. Especially in low-cloud regions such as the trades, climate models underestimate the cloud cover while overestimating its average reflectance, a problem often called the "too few, too bright" low-cloud problem (Nam et al., 2012; Klein et al., 2013). While observations show a positive correlation of cloud cover and cloud reflectance, models show a reverse sign (Konsta et al., 2016).

We investigate the cloud cover - cloud reflectance relationship in Fig. 9 and Fig. 10. Fig. 9 panel a) shows in blue curves the change in all-sky reflectance distribution with increasing cloud cover as defined by the ASTER cloud mask, while the red lines show similarly the change with increasing total cloud cover. We show two representative cloud cover ranges, a low range from 0.1 to 0.3 and a high range from 0.5 to 0.7. With increasing cloud cover, the reflectance distributions shift to higher values meaning that the overall image is brighter (dashed versus solid lines). As expected, the reflectance distributions as defined by our method (red lines, including optically thin clouds) peak at lower reflectance values compared to their ASTER cloud-mask counterparts meaning that the total cloud cover area is less bright on average when optically thin clouds are included.

Panel b) shows an interesting new facet to the difference in total and cloud-mask cloudy areas. The distributions show how the total cloud reflectance relative to the total cloud area in the image depends on cloud cover. The comparison of low and high cloud cover cases reveals that clouds are brighter with increasing cloud cover (dashed versus solid lines), which is in agreement with our perception of larger, deeper, and brighter clouds being present in high cloud cover situations. The change in cloud brightness with cloud cover is less pronounced if the total cloud cover is considered (red lines, including optically thin clouds) compared to the cloud-mask only case (blue lines).

We further investigate the expected cloud reflectance in relation to derived cloud cover values for all 380 ASTER images in Fig. 10. Both, cloud mask and total cloud cover, exhibit positive correlations with respective cloud reflectance values in agreement with findings in Konsta et al. (2016). We here derive a campaign average cloud reflectance from total cloud cover of 0.15, with contributions from the ASTER cloud-mask clouds (avg: 0.21) and optically thin clouds (avg: 0.06), which agrees

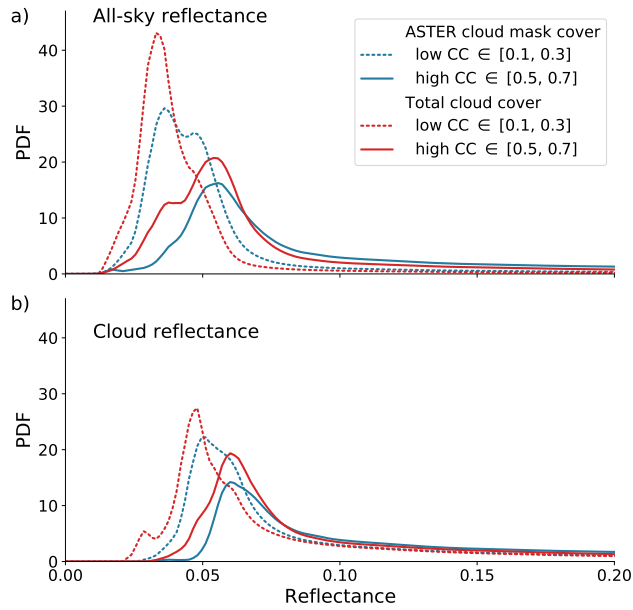


Figure 9. Combined probability density functions (PDF)s of a) all-sky reflectance from ASTER $p(\text{RICC})$, binned according to the total (red) and cloud mask (blue) cloud cover (CC). We define two representative cloud cover ranges, low CC (0.1 to 0.3) and high CC (0.5 to 0.7). Panel b) shows the conditional probability of total cloud reflectance $p(\text{RIF}_{\text{TOTAL}}, \text{CC})$, given that they are within the range of low or high CC. Compared to a), the distributions in panel b) do not include the cloud-free contributions at low reflectance.

410 quite well with an average trade wind cumulus cloud reflectance of 0.15 derived from a combination of POLDER (Polarization and Directionality of the Earth’s Reflectances) and CALIOP measurements in the study by Konsta et al. (2016). Based on the cloud-free retrieval uncertainty stated in Sec. 3.3, the uncertainty in expected reflectance of optically thin clouds is as low as 0.0031 and does not influence our results and conclusions drawn here.

The positive correlation in Fig. 10 for total cloud cover agrees well with the corresponding Fig. 6a in Konsta et al. (2016).
 415 As mentioned before, climate models show a reverse sign of this correlation together with a general underestimation of cloud cover and simultaneous overestimation of cloud reflectance. Next to the model intrinsic mechanisms leading to too few, but too bright clouds, biases might be partially due to tuning the model based on traditional cloud masks that overestimate the cloud reflectance especially in the frequent low cloud cover situations.

5 Discussion

420 Most passive satellite imager operate at resolutions in the order of hectometer to kilometer range and derive cloud products at 1 km scale or coarser. Undetected optically thin clouds, as well as small clouds detected at the ASTER 15 m scale, are unresolved and lead to partially cloudy pixel measurements. Several studies in the past have investigated the resolution effect in trade cumulus cloud cover estimated from passive satellite imagers. Zhao and Di Girolamo (2006) find a three- to fivefold

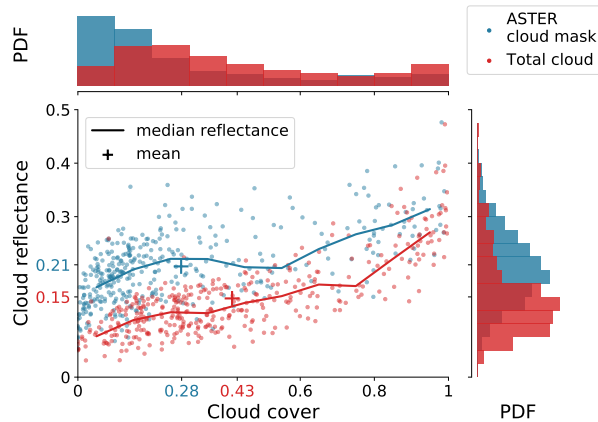


Figure 10. Expected cloud reflectance corresponding to the ASTER cloud mask (blue) and the derived total cloud cover (red) from 380 ASTER images. The median cloud reflectances are given by the lines and the dataset averages are visualized by the “+” marker and the respectively colored tick labels. The frequency distributions of cloud cover and cloud reflectance are shown in the panels on the top and right respectively.

overestimation of cloud cover in MODIS and Multi-angle Imaging SpectroRadiometer (MISR) images respectively compared
 425 to ASTER observations during the RICO (Rain in shallow cumulus over the ocean) campaign. For the same dataset, a study by
 Dey et al. (2008) suggests a fourfold overestimation of cloud cover if the ASTER cloud mask is degraded from 15 m to 1 km
 while cloud detection thresholds are kept constant. However, degrading the resolution can also lead to an underestimation of
 cloud cover estimates in cloud masking schemes if the resulting pixel radiances fall below fixed radiance thresholds. In an early
 study by Wielicki and Parker (1992) the authors estimate that roughly one third of the cloud cover detected in 30 m Landsat
 430 images showing cumulus clouds would not be detected by certain cloud masking schemes, which is in line with our study
 results.

An underestimation of cloud cover due to undetected optically thin clouds and an overestimation due to an reduced spatial
 resolution have compensating tendencies. However, one effect that does not cancel out in typical passive satellite cloud products
 is the influence of optically thin clouds in partially cloudy pixels that are classified to be clear. Pure cloud-free observations are
 435 crucial for aerosol retrievals, as well as cloud radiative effect (CRE) estimates. With decreasing sensor resolution the probability
 for cloud-free observations decreases as well. We therefore investigate implications that undetected optically thin clouds can
 have on CRE estimates, as well as our inferences on cloud-aerosol interactions in the trades, despite their low cloud albedo.

5.1 Implication for CRE estimates

In temperature perturbation studies, cloud feedback defines how clouds adjust to a perturbation in surface temperature and
 440 whether this change amplifies or dampens the initial temperature perturbation. As such, it is tied to the cloud radiative effect

(CRE), the difference in all-sky and cloud-free radiative flux at the top of the atmosphere, in the initial as well as in the perturbed climate.

$$CRE = F_{ALL} - F_{CLEAR} \quad (10)$$

In the trades, climate models show a less negative CRE in response to warming, indicative of a positive cloud feedback (Zelinka et al., 2020). Observational constraints based on satellite data at coarse resolution might be insensitive to sub-pixel scale clouds and consequently lack a robust cloud-free signal. From our analysis we can estimate an upper bound on the error in CRE that might arise from a cloud-free signal that is contaminated by undetected optically thin clouds.

If we assume that the pixel reflectances corresponding to optically thin clouds from the present analysis are fully mixed into the cloud-free signal, we would overestimate the cloud-free reflectance and consequently underestimate the CRE. We derive a relative bias ΔCRE per image from the differences in all-sky L_{ALL} , cloud-free L_{CLEAR} , and "contaminated" cloud-free $L_{CLEAR+OTC}$ expected radiance values:

$$\Delta CRE = \frac{CRE_{CLEAR+OTC} - CRE_{CLEAR}}{CRE_{CLEAR}} \quad (11)$$

$$= \frac{L_{ALL} - L_{CLEAR+OTC}}{L_{ALL} - L_{CLEAR}} - 1 \quad (12)$$

Note that we use here the simulated cloud-free L_{CLEAR} radiances as those do not contain the low radiances from cloud shadows on the ocean surface which would cause a slight underestimation of the cloud-free radiance.

In principle, a mono-directional radiance L can be converted to a radiative flux F as it is done by Clouds and the Earth's Radiant Energy System (CERES) radiative flux products by the following equation (Loeb et al., 2003; Su et al., 2015):

$$F = \frac{\pi L(\theta_s, \theta_v, \Phi)}{f(\theta_s, \theta_v, \Phi)} \quad (13)$$

with the Sun θ_s and sensor view θ_v zenith angles, the azimuthal difference Φ and the anisotropic factor f . The anisotropic factor is challenging to estimate and no suitable values are available for ASTER observations. However, if we assume isotropic scattering of cumulus cloud fields ($f = 1$) we can translate the CRE bias into an effective radiative flux at $0.807 \mu\text{m}$.

The mean CRE bias from the ASTER dataset amounts to -7.5% which roughly translates to about -2.2 Wm^{-2} (at $0.807 \mu\text{m}$). The order of magnitude is significant and highlights the importance of an improved representation of optically thin clouds in future studies.

5.2 Optically thin clouds in the aerosol-cloud interaction context

First, we would like to revisit and confirm our distinction of aerosols and optically thin clouds from the introduction to this article. We consider humidified aerosols to be part of the cloud-free signal. As both, ASTER and WALES data suggest a total cloud cover well below 100% (insensitive to the exact cloud threshold in WALES) we are confident that the described signal of optically thin clouds can only be due to anomalously humidified aerosols and cloud droplets. However, we do see a possibility

470 that fossil clouds, in the form of lingering pockets of humidified aerosol, might be classified as optically thin clouds, too. We think the WALES analysis, and the magnitude of the observed optical depths (from WALES) excludes this as a major contributor. Even if this inference was incorrect, we believe it would be more correct to think of cloud fossils as optically thin (and fading) clouds than as an aerosol signal, particularly since such signals will not scale with aerosol amount. We therefore discuss possible implications of undetected optically thin clouds for aerosol-cloud interaction studies in the following.

475 Aerosol-cloud interaction studies are a topic in itself and we will not go into great detail, but rather want to show where optically thin clouds might need to be considered in these studies. One largely debated issue is the positive correlation of AOD and cloud cover as an indirect aerosol effect. The underlying principle is that hydrophilic aerosols can serve as cloud condensation nuclei and increase the cloud droplet number concentration. More aerosols might therefore reduce the precipitation formation rate and increases the cloud liquid water content and cloud lifetime (Albrecht, 1989). Whether this so-called cloud lifetime effect actually leads to increased cloud cover is largely debated (Loeb and Manalo-Smith, 2005; Kaufman et al., 2005; Stevens and Feingold, 2009; Gryspeerdt et al., 2016).

Some modeling studies suggest negligible or equally small enhancing or decreasing influences of aerosols on the cloud cover (Xue and Feingold, 2006; Quaas et al., 2008; Seifert et al., 2015), while others suggest a considerable effect (Quaas et al., 2009). Observational studies on the other hand, mostly rely on coarse satellite observations and show deficiencies in the accuracy in aerosol and cloud retrievals as discussed in Quaas et al. (2020). The positive correlation in optically thin cloud cover and detected clouds in the current study suggests that part of the proposed sensitivity of cloud cover to AOD might reflect a high bias in cloud-free estimates that is interpreted as high AOD. In agreement with our perception, an observational study by Gryspeerdt et al. (2016) estimates meteorological covariations to account for 80 % of the often proposed AOD-cloud cover relationship with the additional note on shallow cumulus regions having a very weak relationship.

490 Independent of the cloud-lifetime effect, a positive perturbation in aerosols increases the cloud droplet number concentration and thus the cloud brightness, which is commonly referred to as the Twomey effect (Twomey, 1959; Quaas et al., 2020). Increasing the brightness also increases the probability of undetected and optically thin clouds identified in the current study to cross the detection threshold of common cloud masking schemes. We therefore speculate that the Twomey effect indirectly leads to positive AOD-cloud cover relationships found in previous studies. It might be interesting to investigate the AOD-cloud cover relationship based on a more comprehensive definition of total cloud cover including optically thin clouds.

6 Conclusions

Climate models as well as Large Eddy Simulations commonly underestimate the cloud cover, while estimates from observations largely disagree on the cloud cover in the trades. We use a new method to estimate the total cloud cover from the cloud-free perspective by simulating the cloud-free contribution to an observed all-sky reflectance distribution with a simplified radiative transfer model. The present study shows the high abundance of optically thin clouds in the trade wind region that are undetected by common cloud-masking schemes.

We analyzed 380 ASTER satellite images recorded in support of the EUREC⁴A field campaign in January and February 2020 and find that about 33 % of the total cloud cover is due to undetected optically thin clouds. A comparison to independent WALES lidar measurements supports our findings.

505 We find that pixels attributed to optically thin clouds are often found surrounding brighter cloud objects that can be detected in cloud-masking schemes. Accounting for optically thin clouds significantly reduces the average cloud reflectance (-0.06, i.e. 30 %) as optically thin clouds are systematically less reflective than clouds detected in cloud masking schemes. Our analysis suggests that the known underestimation of trade wind cloud cover and simultaneous overestimation of cloud brightness in models is even higher than assumed so far.

510 We identify two implications from our study. First, if mixed into the cloud-free signal, the enhanced radiance from optically thin cloud areas leads to a high bias in cloud-free estimates over ocean and hence a low bias of -7.5 % in the estimated cloud radiative effect of trade wind cumulus cloud fields.

And second, the positive correlation in optically thin cloud cover and detected clouds for low cloud cover suggests that part of the sensitivity of cloud cover to AOD found in aerosol-cloud interaction studies might reflect a high bias in cloud-free estimates that is interpreted as high AOD. In addition, increasing cloud brightness with higher AOD likely increases the probability of undetected and optically thin clouds identified in the current study to cross the detection threshold of common cloud masking schemes. These effects could contribute to an unrealistically strong relationship between satellite retrieved values of AOD and cloud cover, and would suggest that not accounting for optically thin clouds could overstate the strength of aerosol cloud interactions.

520 *Code and data availability.* In addition to the publicly available ASTER L1B data from NASA we provide processed data for the ASTER images recorded during EUREC⁴A and displayed in Fig. 1. NetCDF files containing physical quantities from bands in the VNIR and thermal range, latitude and longitude information, a cloud mask, and cloud top height estimates are available on the AERIS data server (<https://observations.ipsl.fr/aeris/eurec4a-data/SATELLITES/TERRA/ASTER/>). ASTER image tiles were calculated and are stored on AERIS (<https://observations.ipsl.fr/aeris/eurec4a/Leaflet/index.html>) providing a user-friendly browsing experience with the possibility to zoom in on the rich structures of beautiful trade cumulus cloud fields. The cloud information from WALES is published on AERIS <https://doi.org/10.25326/216>) and further described in Konow et al. (2021).

Code for processing the original ASTER L1B data is available in the Python package *typhon* version 0.8.0, subpackage *cloudmask* (<https://github.com/atmtools/typhon>). The basic code for the cloud-free radiative transfer simulations is available at <https://doi.org/10.5281/zenodo.4842675>. The main data resulting from the applied methodology and forming the basis for all interpretations is available at <https://doi.org/10.5281/zenodo.5824818>.

Appendix A: Components and equations to the simplified clear-sky model (SCSM)

Knowing the extraterrestrial irradiance E_0 emitted by the Sun and entering the atmosphere, the radiative transfer equation describes the radiance at any location (x, y, z) and for any direction defined by a zenith angle θ and an azimuthal angle ϕ . In a

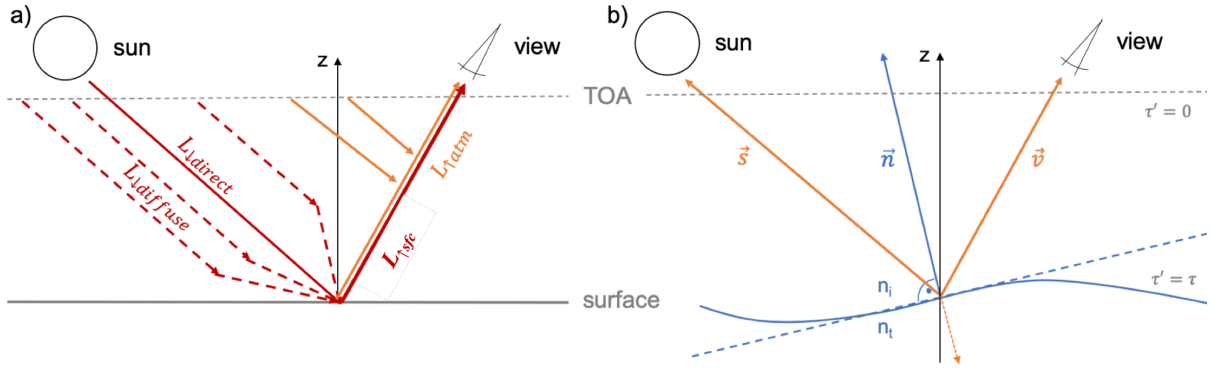


Figure A1. Sketches of the simple clear-sky model. a) illustrated the main radiance components, while b) shows the geometry setup based on the vectors \mathbf{s} pointing into the Sun, \mathbf{v} pointing to the sensor, and the wave facet normal \mathbf{n} .

cloud-free atmosphere with small solar and viewing zenith angles we can use 1D plane-parallel radiative transfer to estimate
 535 the radiance observable at the top of atmosphere (TOA).

The cloud-free radiance L reaching a sensor in space is a combination of three main components that we illustrate in Fig. A1
 a): (1) the direct Sun ray reflected at the ocean surface $L_{\downarrow\text{direct}}$ and (2) the hemispheric diffuse radiance reflected at the surface
 towards the sensor $L_{\downarrow\text{diffuse}}$. Together they are combined in the component $L_{\uparrow\text{sfc}}$ of light that touched the surface. On the way
 from the surface to the sensor $L_{\uparrow\text{sfc}}$ experiences attenuation following Lambert-Beer and depending on the atmospheric optical
 540 thickness τ and the cosine of the sensor or view zenith angle v_z . In addition, there is component (3), the diffuse light from
 single-scattering events happening within the atmosphere $L_{\uparrow\text{atm}}$.

$$L = L_{\uparrow\text{sfc}} + L_{\uparrow\text{atm}} \quad (\text{A1})$$

$$= \exp\left(\frac{-\tau}{v_z}\right) [L_{\downarrow\text{direct}} + L_{\downarrow\text{diffuse}}] + L_{\uparrow\text{atm}} \quad (\text{A2})$$

In the following, we describe the derivation of L based on the vector \mathbf{s} pointing from an observed location on the ground to
 545 the Sun, and the view vector \mathbf{v} pointing to the sensor (see Fig. A1 b)).

$$\mathbf{s} = \begin{pmatrix} s_x \\ s_y \\ s_z \end{pmatrix}, \mathbf{v} = \begin{pmatrix} v_x \\ v_y \\ v_z \end{pmatrix} \quad (\text{A3})$$

\mathbf{s} and \mathbf{v} are unit vectors meaning that they satisfy the condition:

$$|\mathbf{s}| = |\mathbf{v}| = 1. \quad (\text{A4})$$

Working with vectors instead of the traditional approach with angles simplifies several of the following calculations next to
 550 a significant enhancement in computational speed. For example, the previously mentioned view zenith angle v_z is simply the
 third component of the view vector \mathbf{v} .

A1 Direct radiance and the bi-directional reflection function (BRDF)

$L_{\downarrow\text{direct}}$ is defined by the sensor-sun geometry with the cosine of the Sun zenith angle s_z and the corresponding aerosol extinction along the path from the top of atmosphere (TOA) to the surface where the reflection is characterized by the bi-directional reflection function (BRDF) ρ .

$$L_{\downarrow\text{direct}} = E_0 \exp\left(\frac{-\tau}{s_z}\right) \rho(\mathbf{s}, \mathbf{v}, ws, n_i, n_t) \quad (\text{A5})$$

How a Sun ray is reflected at the ocean surface mostly depends on the surface wind speed ws and the generated wave slopes. The earliest and still widely used surface slope parametrization goes back to photographic measurements by Cox and Munk in 1954. Their parametrization is embedded in a 1D Gaussian surface slope distribution p , combined with Fresnel reflection coefficients for unpolarized light r and a prefactor handling the sensor-sun geometry with the Sun \mathbf{s} and view \mathbf{v} vectors. For the general equation for ρ we follow Stamnes et al. (2017):

$$\rho(\mathbf{s}, \mathbf{v}, ws, n_i, n_t) = \frac{1}{4v_z s_z (n_z)^4} \cdot p(\mathbf{s}, \mathbf{v}, ws) \cdot r(\mathbf{s}, \mathbf{v}, n_i, n_t) \quad (\text{A6})$$

In the first factor, n_z is the third component of the wave facet normal \mathbf{n} with

$$\mathbf{n} = \begin{pmatrix} n_x \\ n_y \\ n_z \end{pmatrix} = \frac{\mathbf{s} + \mathbf{v}}{|\mathbf{s} + \mathbf{v}|} \quad (\text{A7})$$

The second factor in Eq. A6 gives the probability of a specular reflection p and the third the intensity of the reflected light r . In detail, we assume a 1D Gaussian surface slope probability distribution p with

$$p(\mathbf{s}, \mathbf{v}, ws) = \frac{1}{\pi \sigma (ws)^2} \exp\left(-\frac{1 - n_z^2}{n_z^2 \cdot \sigma (ws)^2}\right) \quad (\text{A8})$$

and the variance σ^2 of the surface slope distribution. The Cox and Munk parametrization provides an empirical estimate for σ^2 depending on the 10 m surface wind speed ws (Cox and Munk, 1954):

$$\sigma (ws)^2 = 0.003 + 0.00512 \cdot ws. \quad (\text{A9})$$

The intensity of the reflected light r is given by the unpolarized Fresnel reflection coefficient:

$$r(\mathbf{s}, \mathbf{v}, n_i, n_t) = \frac{1}{2} \left[\left(\frac{\mu_i - n_r \mu_t}{\mu_i + n_r \mu_t} \right)^2 + \left(\frac{\mu_t - n_r \mu_i}{\mu_t + n_r \mu_i} \right)^2 \right] \quad (\text{A10})$$

with $n_r = \frac{n_t}{n_i}$, the ratio of the refractive index of the transmitted medium $n_t = 1.333$ (ocean) and the refractive index of the incoming medium $n_i = 1$ (atmosphere). Further, μ_i is the cosine of the incidence angle and is given by the dot product of the Sun and wave facet normal vector:

$$\mu_i = \mathbf{s} \cdot \mathbf{n} \quad (\text{A11})$$

μ_t is the cosine of the transmission angle, which follows directly from Snell's law by transformation:

$$\mu_t = \sqrt{1 - \frac{1 - \mu_i^2}{n_r^2}} \quad (\text{A12})$$

A2 Diffuse downward radiance and hemispheric BRDF

580 The hemispheric diffuse radiance $L_{\downarrow\text{diffuse}}$ includes Sun rays that are scattered within the atmosphere on their way to the ground and get reflected at the pixel of interest into the direction of the sensor view. Thus, we integrate the integration vector \mathbf{x} over the hemisphere Ω :

$$L_{\downarrow\text{diffuse}} = \int_{\Omega} \rho(\mathbf{x}, \mathbf{v}, ws) \cdot L_{\text{in}}(\tau, \mathbf{x}) d\mathbf{x} \quad (\text{A13})$$

Assuming that the incoming diffuse downward radiance $L_{\text{in}}(\tau, \mathbf{x})$ is isotropic, we can pull L_{in} out of the integral and derive
585 a hemispheric BRDF by integrating equation A6 over Ω . Here, we make use of the Gauss-Legendre quadrature to approximate the integral based on only a few nodes in the μ space while keeping a high accuracy.

The diffuse downward irradiance on the other hand is difficult to approximate. Thus, we sample from a pre-calculated look-up table of diffuse downward irradiance for a range of Sun zenith angles and aerosol optical depths. The look-up table was calculated with the full radiative transfer model libRadtran for a sensor at the surface pointing up nadir and observing
590 at ASTER's band 3 central wavelength 807 nm (Mayer and Kylling, 2005; Emde et al., 2016). The input file defines a U.S. Standard Atmosphere with default molecular absorption calculated with the representative wavelengths parameterization REP-TRAN (medium) where the absorption is based on the HITRAN 2004 catalog. The aerosols species is set to be *maritime tropical* as defined by the OPAC package and finally, the radiative transfer equation is solved with DISORT. We further use the bivariate spline approximation provided within the Python package *scipy* (*version 1.5.2*) to interpolate over the output look-up
595 table.

A3 Diffuse upward radiance from single-scattering events

The atmospheric diffuse scattering $L_{\uparrow\text{atm}}$ describes Sun rays that are reflected within the atmosphere into the view direction of the sensor. We only consider single scattering events as the aerosol optical depth over tropical ocean is mostly below or in the order of 0.1 and the probability of further scattering events is unlikely. The extinction within an atmospheric column is generally
600 given by the integral over the extinction coefficients $\sigma_{\text{ext}, i}$ in single atmospheric layers depending on their density (temperature) and particles. We simplify the problem by integrating over τ instead of the atmospheric path lengths with $dl = \frac{dz}{\cos(\theta)}$ of a respective zenith angle θ . Correspondingly, we can write the integral over all single (aerosol) scattering events along an atmospheric path l from the surface to TOA

$$L_{\uparrow\text{atm}} = E_0 \int_{\text{sfc}}^{\text{TOA}} \exp\left(-\frac{1}{s_z} \int_{z_{\text{scat}}}^{\text{TOA}} \sigma_{\text{ext}}(z) dz\right) \quad (\text{A14})$$

$$\cdot \exp\left(-\frac{1}{v_z} \int_{z_{\text{scat}}}^{\text{TOA}} \sigma_{\text{ext}}(z) dz\right) \quad (\text{A15})$$

$$\cdot \sigma_{\text{scat}} \Theta_{\text{HG}} dz_{\text{scat}} \quad (\text{A16})$$

where the extinction is accounted for in the exponential functions with the scattering event happening at the height z_{scat} . The product of the scattering coefficient σ_{scat} and the scattering phase function Θ_{HG} describes the scattering efficiency.

In our atmospheric column of constant density, σ_{scat} is independent of height and the integral $\int_{\text{sfc}}^{\text{TOA}} \sigma_{\text{scat}} l dl$ simplifies to $\int_0^\tau d\tau'$ with τ being the optical depth of the atmospheric column. In more detail, we can rewrite the relation and include the single scattering albedo ω_0

$$\sigma_{\text{scat}} \cdot dl = \omega_0 \sigma_{\text{ext}} \cdot \frac{dz}{\mu_v} = \frac{\omega_0}{\mu_v} d\tau \quad (\text{A17})$$

and further include those in Eq. A14:

$$L_{\uparrow\text{atm}} = \Theta_{\text{HG}} \frac{\omega_0}{\mu_v} \int_0^\tau \exp\left(\frac{-\tau'}{\mu_o}\right) \exp\left(\frac{-\tau'}{\mu_v}\right) d\tau' \quad (\text{A18})$$

The Henyey Greenstein phase function Θ_{HG} is an approximation for the scattering phase function and only depends on the assymetry parameter g , that is the mean cosine of the scattering angle calculated by integrating over the scattering phase function (Henyey and Greenstein, 1941):

$$\Theta_{\text{HG}} = \frac{1}{4\pi} \frac{1 - g^2}{1 + g^2 - 2g(\mu_{\text{scat}})^{3/2}} \quad (\text{A19})$$

For ω_0 and g we use constant values taken from the libRadtran calculations with the input setup described in Sect. A2.

620 Appendix B: Derivation of the cloud-free fraction

Based on equations Eq. 6 and Eq. 7 we could directly solve for the cloud-free fraction $p(F_{\text{CLEAR}})$.

We start with the cloud-free model output and apply Bayes' theorem:

$$p(F_{\text{CLEAR}}|R) = \frac{p(R|F_{\text{CLEAR}})}{p(R)} \cdot p(F_{\text{CLEAR}}) \quad (\text{B1})$$

We can add this information to Eq. 7

$$1 - p(F_{\text{CLOUD}}|R') = \frac{p(R = R'|F_{\text{CLEAR}})}{p(R = R')} \cdot p(F_{\text{CLEAR}}) \quad (\text{B2})$$

and solve for $p(F_{\text{CLEAR}})$

$$p(F_{\text{CLEAR}}) = \frac{p(R = R')}{p(R = R'|F_{\text{CLEAR}})}(1 - p(F_{\text{CLOUD}}|R')) \quad (\text{B3})$$

We further add the information from Eq. B1 and Eq. B3 to our constraint stated in Eq. 6:

$$1 \geq p(F_{\text{CLEAR}}|R) + p(F_{\text{CLOUD}}|R) \quad (\text{B4})$$

$$630 \quad 1 \geq \frac{p(R|F_{\text{CLEAR}})}{p(R)} \cdot \frac{p(R = R')}{p(R = R'|F_{\text{CLEAR}})}(1 - p(F_{\text{CLOUD}}|R')) \quad (\text{B5})$$

$$+ p(F_{\text{CLOUD}}|R) \quad (\text{B6})$$

Rearranging the equation we get

$$\frac{p(R = R'')}{p(R = R''|F_{\text{CLEAR}})}(1 - p(F_{\text{CLOUD}}|R'')) \quad (\text{B7})$$

$$\geq \frac{p(R = R')}{p(R = R'|F_{\text{CLEAR}})}(1 - p(F_{\text{CLOUD}}|R')) \quad \forall R'' \in R \quad (\text{B8})$$

635 and consequently we can find R' by searching for the minimum:

$$R' = \underset{R''}{\text{argmin}} \left(\frac{p(R = R'')}{p(R = R''|F_{\text{CLEAR}})} - (1 - p(F_{\text{CLOUD}}|R'')) \right) \quad (\text{B9})$$

Knowing the R' we could in principle derive the cloud-free fraction $p(F_{\text{CLEAR}})$ from Equ. B3. However, Equ. B9 becomes unstable where $p(F_{\text{CLOUD}}|R'')$ is close to 1 which corresponds to cloudy parts while we are interested in the clear part of the distribution. We therefore apply the modified method described in Sec. 3.2 in the current study.

640 *Author contributions.* BS and TM conceptualized the study. TK, MB, and TM worked out the methodology. MW derived the lidar cloud optical thickness data. SB and BS supervised the project. TM conducted the analysis, and prepared the manuscript with contributions from all co-authors.

Competing interests. The authors declare that they have no conflict of interest.

Acknowledgements. This study was supported by the International Max Planck Research School on Earth System Modelling (IMPRS-ESM), Hamburg, and the Universität Hamburg. It also contributes to the Cluster of Excellence ‘‘CLICCS—Climate, Climatic Change, and Society’’ funded by DFG (EXC 2037, Project Number 390683824), and to the Center for Earth System Research and Sustainability (CEN) of Universität Hamburg.

The ASTER L1B data product was retrieved from the online Data Pool, courtesy of the NASA Land Processes Distributed Active Archive Center (LP DAAC), USGS/Earth Resources Observation and Science (EROS) Center, Sioux Falls, South Dakota (Last accessed 2021-04-21 from https://doi.org/10.5067/ASTER/AST_L1B.003). We would like to thank the ASTER Science Team for scheduling the ASTER

650

data acquisition in support of the EUREC⁴A field campaign. We acknowledge ECMWF and the Copernicus Climate Change Service for providing access to the ERA5 data set through the Climate Data Storage API (last accessed 2021-04-21). Theresa Mieslinger would like to thank Bernhard Mayer for his feedback on a suitable libRadtran setup, as well as Jean-Louis Dufresne for helpful discussions on the cloud cover - cloud reflectance relationship in climate models. In addition, all authors would like to sincerely thank three anonymous reviewers and
655 the editorial team for taking the time and interest in this study and providing constructive and helpful feedback.

References

- Albrecht, B. A.: Aerosols, Cloud Microphysics, and Fractional Cloudiness, *Science*, 245, 1227–1230, <https://doi.org/10.1126/science.245.4923.1227>, <https://science.sciencemag.org/content/245/4923/1227>, 1989.
- Belmonte Rivas, M. and Stoffelen, A.: Characterizing ERA-Interim and ERA5 surface wind biases using ASCAT, *Ocean Science*, 15, 831–660 852, <https://doi.org/10.5194/os-15-831-2019>, <https://os.copernicus.org/articles/15/831/2019/>, 2019.
- Benner, T. C. and Curry, J. A.: Characteristics of small tropical cumulus clouds and their impact on the environment, *Journal of Geophysical Research: Atmospheres*, 103, 28 753–28 767, <https://doi.org/https://doi.org/10.1029/98JD02579>, <https://agupubs.onlinelibrary.wiley.com/doi/abs/10.1029/98JD02579>, 1998.
- Bony, S. and Dufresne, J.-L.: Marine boundary layer clouds at the heart of tropical cloud feedback uncertainties in climate models, *Geophysical Research Letters*, 32, <https://doi.org/https://doi.org/10.1029/2005GL023851>, <https://agupubs.onlinelibrary.wiley.com/doi/abs/10.1029/2005GL023851>, 2005. 665
- Bony, S., Stevens, B., Ament, F., Bigorre, S., Chazette, P., Crewell, S., Delanoë, J., Emanuel, K., Farrell, D., Flamant, C., Gross, S., Hirsch, L., Karstensen, J., Mayer, B., Nuijens, L., Ruppert, J. H., Sandu, I., Siebesma, P., Speich, S., Szczap, F., Totems, J., Vogel, R., Wendisch, M., and Wirth, M.: EUREC4A: A Field Campaign to Elucidate the Couplings Between Clouds, Convection and Circulation, *Surveys in Geophysics*, 38, 1529–1568, <https://doi.org/10.1007/s10712-017-9428-0>, <https://doi.org/10.1007/s10712-017-9428-0>, 2017. 670
- Cahalan, R. F. and Joseph, J. H.: Fractal Statistics of Cloud Fields, *Monthly Weather Review*, 117, 261 – 272, [https://doi.org/10.1175/1520-0493\(1989\)117<0261:FSOCF>2.0.CO;2](https://doi.org/10.1175/1520-0493(1989)117<0261:FSOCF>2.0.CO;2), https://journals.ametsoc.org/view/journals/mwre/117/2/1520-0493_1989_117_0261_fsocf_2_0_co_2.xml, 1989.
- Cox, C. and Munk, W.: Measurement of the Roughness of the Sea Surface from Photographs of the Sun’s Glitter, *J. Opt. Soc. Am.*, 44, 675 838–850, <https://doi.org/10.1364/JOSA.44.000838>, <http://www.osapublishing.org/abstract.cfm?URI=josa-44-11-838>, 1954.
- Davies, R.: The Effect of Finite Geometry on the Three-Dimensional Transfer of Solar Irradiance in Clouds, *Journal of Atmospheric Sciences*, 35, 1712 – 1725, [https://doi.org/10.1175/1520-0469\(1978\)035<1712:TEOFGO>2.0.CO;2](https://doi.org/10.1175/1520-0469(1978)035<1712:TEOFGO>2.0.CO;2), https://journals.ametsoc.org/view/journals/atsc/35/9/1520-0469_1978_035_1712_teofgo_2_0_co_2.xml, 1978.
- Dey, S., Di Girolamo, L., and Zhao, G.: Scale effect on statistics of the macrophysical properties of trade wind cumuli over the tropical western Atlantic during RICO, *Journal of Geophysical Research: Atmospheres*, 113, <https://doi.org/https://doi.org/10.1029/2008JD010295>, <https://agupubs.onlinelibrary.wiley.com/doi/abs/10.1029/2008JD010295>, 2008. 680
- Emde, C., Buras-Schnell, R., Kylling, A., Mayer, B., Gasteiger, J., Hamann, U., Kylling, J., Richter, B., Pause, C., Dowling, T., and Bugliaro, L.: The libRadtran software package for radiative transfer calculations (version 2.0.1), *Geoscientific Model Development*, 9, 1647–1672, <https://doi.org/10.5194/gmd-9-1647-2016>, <https://gmd.copernicus.org/articles/9/1647/2016/>, 2016.
- Esselborn, M., Wirth, M., Fix, A., Tesche, M., and Ehret, G.: Airborne high spectral resolution lidar for measuring aerosol extinction and backscatter coefficients, *Appl. Opt.*, 47, 346–358, <https://doi.org/10.1364/AO.47.000346>, <http://ao.osa.org/abstract.cfm?URI=ao-47-3-346>, 2008. 685
- George, G., Stevens, B., Bony, S., Pincus, R., Fairall, C., Schulz, H., Kölling, T., Kalen, Q. T., Klingebiel, M., Konow, H., Lundry, A., Prange, M., and Radtke, J.: JOANNE: Joint dropsonde Observations of the Atmosphere in tropical North atlaNtic meso-scale Environments, *Earth System Science Data*, 13, 5253–5272, <https://doi.org/10.5194/essd-13-5253-2021>, <https://essd.copernicus.org/articles/13/5253/2021/>, 2021. 690

- Gryspeerdt, E., Quaas, J., and Bellouin, N.: Constraining the aerosol influence on cloud fraction, *Journal of Geophysical Research: Atmospheres*, 121, 3566–3583, <https://doi.org/https://doi.org/10.1002/2015JD023744>, <https://agupubs.onlinelibrary.wiley.com/doi/abs/10.1002/2015JD023744>, 2016.
- 695 Gutleben, M., Groß, S., Wirth, M., Emde, C., and Mayer, B.: Impacts of water vapor on Saharan air layer radiative heating, *Geophysical Research Letters*, 46, 14 854–14 862, <https://elib.dlr.de/134038/>, 2019.
- Heney, L. G. and Greenstein, J. L.: Diffuse radiation in the Galaxy., *Astrophysical Journal*, 93, 70–83, <https://doi.org/10.1086/144246>, 1941.
- Hersbach, H., Bell, B., Berrisford, P., Hirahara, S., Horányi, A., Muñoz-Sabater, J., Nicolas, J., Peubey, C., Radu, R., Schepers, D., Simons, A., Soci, C., Abdalla, S., Abellan, X., Balsamo, G., Bechtold, P., Biavati, G., Bidlot, J., Bonavita, M., De Chiara, G., Dahlgren, P., Dee, D., Diamantakis, M., Dragani, R., Flemming, J., Forbes, R., Fuentes, M., Geer, A., Haimberger, L., Healy, S., Hogan, R. J., Hólm, E., Janisková, M., Keeley, S., Laloyaux, P., Lopez, P., Lupu, C., Radnoti, G., de Rosnay, P., Rozum, I., Vamborg, F., Villaume, S., and Thépaut, J.-N.: The ERA5 global reanalysis, *Quarterly Journal of the Royal Meteorological Society*, 146, 1999–2049, <https://doi.org/https://doi.org/10.1002/qj.3803>, <https://rmets.onlinelibrary.wiley.com/doi/abs/10.1002/qj.3803>, 2020.
- 700 Hulley, G. C. and Hook, S. J.: A new methodology for cloud detection and classification with ASTER data, *Geophysical Research Letters*, 35, <https://doi.org/https://doi.org/10.1029/2008GL034644>, <https://agupubs.onlinelibrary.wiley.com/doi/abs/10.1029/2008GL034644>, 2008.
- Jacob, M., Kollias, P., Ament, F., Schemann, V., and Crewell, S.: Multilayer cloud conditions in trade wind shallow cumulus – confronting two ICON model derivatives with airborne observations, *Geoscientific Model Development*, 13, 5757–5777, <https://doi.org/10.5194/gmd-13-5757-2020>, <https://gmd.copernicus.org/articles/13/5757/2020/>, 2020.
- 710 Kaufman, Y. J., Koren, I., Remer, L. A., Rosenfeld, D., and Rudich, Y.: The effect of smoke, dust, and pollution aerosol on shallow cloud development over the Atlantic Ocean, *Proceedings of the National Academy of Sciences*, 102, 11 207–11 212, <https://doi.org/10.1073/pnas.0505191102>, <https://www.pnas.org/content/102/32/11207>, 2005.
- Klein, S. A., Zhang, Y., Zelinka, M. D., Pincus, R., Boyle, J., and Gleckler, P. J.: Are climate model simulations of clouds improving? An evaluation using the ISCCP simulator, *Journal of Geophysical Research: Atmospheres*, 118, 1329–1342, <https://doi.org/https://doi.org/10.1002/jgrd.50141>, <https://agupubs.onlinelibrary.wiley.com/doi/abs/10.1002/jgrd.50141>, 2013.
- 715 Kölling, T.: Cloud geometry for passive remote sensing, <http://nbn-resolving.de/urn:nbn:de:bvb:19-261616>, 2020.
- Konow, H., Ewald, F., George, G., Jacob, M., Klingebiel, M., Kölling, T., Luebke, A. E., Mieslinger, T., Pörtge, V., Radtke, J., Schäfer, M., Schulz, H., Vogel, R., Wirth, M., Bony, S., Crewell, S., Ehrlich, A., Forster, L., Giez, A., Gödde, F., Groß, S., Gutleben, M., Hagen, M., Hirsch, L., Jansen, F., Lang, T., Mayer, B., Mech, M., Prange, M., Schnitt, S., Vial, J., Walbröl, A., Wendisch, M., Wolf, K., Zinner, T., Zöger, M., Ament, F., and Stevens, B.: EUREC⁴A's HALO, *Earth System Science Data Discussions*, 2021, 1–26, <https://doi.org/10.5194/essd-2021-193>, <https://essd.copernicus.org/preprints/essd-2021-193/>, 2021.
- 720 Konsta, D., Dufresne, J.-L., Chepfer, H., Idelkadi, A., and Cesana, G.: Use of A-train satellite observations (CALIPSO–PARASOL) to evaluate tropical cloud properties in the LMDZ5 GCM, *Climate Dynamics*, 47, 1263–1284, <https://doi.org/10.1007/s00382-015-2900-y>, <https://doi.org/10.1007/s00382-015-2900-y>, 2016.
- 725 Koren, I., Remer, L. A., Kaufman, Y. J., Rudich, Y., and Martins, J. V.: On the twilight zone between clouds and aerosols, *Geophysical Research Letters*, 34, <https://doi.org/https://doi.org/10.1029/2007GL029253>, <https://agupubs.onlinelibrary.wiley.com/doi/abs/10.1029/2007GL029253>, 2007.
- Koren, I., Oreopoulos, L., Feingold, G., Remer, L. A., and Altaratz, O.: How small is a small cloud?, *Atmospheric Chemistry and Physics*, 8, 3855–3864, <https://doi.org/10.5194/acp-8-3855-2008>, <https://acp.copernicus.org/articles/8/3855/2008/>, 2008.

- 730 Lacis, A. A. and Hansen, J.: A Parameterization for the Absorption of Solar Radiation in the Earth's Atmosphere, *Journal of Atmospheric Sciences*, 31, 118 – 133, [https://doi.org/10.1175/1520-0469\(1974\)031<0118:APFTAO>2.0.CO;2](https://doi.org/10.1175/1520-0469(1974)031<0118:APFTAO>2.0.CO;2), https://journals.ametsoc.org/view/journals/atsc/31/1/1520-0469_1974_031_0118_apftao_2_0_co_2.xml, 1974.
- Leahy, L. V., Wood, R., Charlson, R. J., Hostetler, C. A., Rogers, R. R., Vaughan, M. A., and Winker, D. M.: On the nature and extent of optically thin marine low clouds, *Journal of Geophysical Research: Atmospheres*, 117, <https://doi.org/https://doi.org/10.1029/2012JD017929>, <https://agupubs.onlinelibrary.wiley.com/doi/abs/10.1029/2012JD017929>, 2012.
- 735 Loeb, N. G. and Manalo-Smith, N.: Top-of-Atmosphere Direct Radiative Effect of Aerosols over Global Oceans from Merged CERES and MODIS Observations, *Journal of Climate*, 18, 3506 – 3526, <https://doi.org/10.1175/JCLI3504.1>, <https://journals.ametsoc.org/view/journals/clim/18/17/jcli3504.1.xml>, 2005.
- Loeb, N. G., Várnai, T., and Davies, R.: Effect of cloud inhomogeneities on the solar zenith angle dependence of nadir reflectance, *Journal of Geophysical Research: Atmospheres*, 102, 9387–9395, <https://doi.org/https://doi.org/10.1029/96JD03719>, <https://agupubs.onlinelibrary.wiley.com/doi/abs/10.1029/96JD03719>, 1997.
- 740 Loeb, N. G., Manalo-Smith, N., Kato, S., Miller, W. F., Gupta, S. K., Minnis, P., and Wielicki, B. A.: Angular Distribution Models for Top-of-Atmosphere Radiative Flux Estimation from the Clouds and the Earth's Radiant Energy System Instrument on the Tropical Rainfall Measuring Mission Satellite. Part I: Methodology, *Journal of Applied Meteorology*, 42, 240 – 265, [https://doi.org/10.1175/1520-0450\(2003\)042<0240:ADMFTO>2.0.CO;2](https://doi.org/10.1175/1520-0450(2003)042<0240:ADMFTO>2.0.CO;2), https://journals.ametsoc.org/view/journals/apme/42/2/1520-0450_2003_042_0240_admfto_2.0.co_2.xml, 2003.
- 745 Marshak, A., Platnick, S., Várnai, T., Wen, G., and Cahalan, R. F.: Impact of three-dimensional radiative effects on satellite retrievals of cloud droplet sizes, *Journal of Geophysical Research: Atmospheres*, 111, <https://doi.org/https://doi.org/10.1029/2005JD006686>, <https://agupubs.onlinelibrary.wiley.com/doi/abs/10.1029/2005JD006686>, 2006.
- 750 Mayer, B. and Kylling, A.: Technical note: The libRadtran software package for radiative transfer calculations - description and examples of use, *Atmospheric Chemistry and Physics*, 5, 1855–1877, <https://doi.org/10.5194/acp-5-1855-2005>, <https://acp.copernicus.org/articles/5/1855/2005/>, 2005.
- Mieslinger, T., Horváth, A., Buehler, S. A., and Sakradzija, M.: The Dependence of Shallow Cumulus Macrophysical Properties on Large-Scale Meteorology as Observed in ASTER Imagery, *Journal of Geophysical Research: Atmospheres*, 124, 11 477–11 505, <https://doi.org/https://doi.org/10.1029/2019JD030768>, <https://agupubs.onlinelibrary.wiley.com/doi/abs/10.1029/2019JD030768>, 2019.
- 755 Nam, C., Bony, S., Dufresne, J.-L., and Chepfer, H.: The 'too few, too bright' tropical low-cloud problem in CMIP5 models, *Geophysical Research Letters*, 39, <https://doi.org/https://doi.org/10.1029/2012GL053421>, <https://agupubs.onlinelibrary.wiley.com/doi/abs/10.1029/2012GL053421>, 2012.
- Nuijens, L., Medeiros, B., Sandu, I., and Ahlgrimm, M.: The behavior of trade-wind cloudiness in observations and models: The major cloud components and their variability, *Journal of Advances in Modeling Earth Systems*, 7, 600–616, <https://doi.org/https://doi.org/10.1002/2014MS000390>, <https://agupubs.onlinelibrary.wiley.com/doi/abs/10.1002/2014MS000390>, 2015.
- 760 Parzen, E.: On Estimation of a Probability Density Function and Mode, *The Annals of Mathematical Statistics*, 33, 1065 – 1076, <https://doi.org/10.1214/aoms/1177704472>, <https://doi.org/10.1214/aoms/1177704472>, 1962.
- Plank, V. G.: The Size Distribution of Cumulus Clouds in Representative Florida Populations, *Journal of Applied Meteorology and Climatology*, 8, 46 – 67, [https://doi.org/10.1175/1520-0450\(1969\)008<0046:TSDOCC>2.0.CO;2](https://doi.org/10.1175/1520-0450(1969)008<0046:TSDOCC>2.0.CO;2), https://journals.ametsoc.org/view/journals/apme/8/1/1520-0450_1969_008_0046_tsdocc_2_0_co_2.xml, 1969.
- 765

- Quaas, J., Boucher, O., Bellouin, N., and Kinne, S.: Satellite-based estimate of the direct and indirect aerosol climate forcing, *Journal of Geophysical Research: Atmospheres*, 113, <https://doi.org/https://doi.org/10.1029/2007JD008962>, <https://agupubs.onlinelibrary.wiley.com/doi/abs/10.1029/2007JD008962>, 2008.
- 770 Quaas, J., Ming, Y., Menon, S., Takemura, T., Wang, M., Penner, J. E., Gettelman, A., Lohmann, U., Bellouin, N., Boucher, O., Sayer, A. M., Thomas, G. E., McComiskey, A., Feingold, G., Hoose, C., Kristjánsson, J. E., Liu, X., Balkanski, Y., Donner, L. J., Ginoux, P. A., Stier, P., Grandey, B., Feichter, J., Sednev, I., Bauer, S. E., Koch, D., Grainger, R. G., Kirkevåg, A., Iversen, T., Seland, Ø., Easter, R., Ghan, S. J., Rasch, P. J., Morrison, H., Lamarque, J.-F., Iacono, M. J., Kinne, S., and Schulz, M.: Aerosol indirect effects – general circulation model intercomparison and evaluation with satellite data, *Atmospheric Chemistry and Physics*, 9, 8697–8717, <https://doi.org/10.5194/acp-9-8697-2009>, <https://acp.copernicus.org/articles/9/8697/2009/>, 2009.
- 775 Quaas, J., Arola, A., Cairns, B., Christensen, M., Deneke, H., Ekman, A. M. L., Feingold, G., Fridlind, A., Gryspeerdt, E., Hasekamp, O., Li, Z., Lipponen, A., Ma, P.-L., Mülmenstädt, J., Nenes, A., Penner, J. E., Rosenfeld, D., Schrödner, R., Sinclair, K., Sourdeval, O., Stier, P., Tesche, M., van Diedenhoven, B., and Wendisch, M.: Constraining the Twomey effect from satellite observations: issues and perspectives, *Atmospheric Chemistry and Physics*, 20, 15 079–15 099, <https://doi.org/10.5194/acp-20-15079-2020>, <https://acp.copernicus.org/articles/20/15079/2020/>, 2020.
- 780 Rosenblatt, M.: Remarks on Some Nonparametric Estimates of a Density Function, *The Annals of Mathematical Statistics*, 27, 832 – 837, <https://doi.org/10.1214/aoms/1177728190>, <https://doi.org/10.1214/aoms/1177728190>, 1956.
- Schulz, H., Eastman, R. M., and Stevens, B.: Characterization and Evolution of Organized Shallow Convection in the Trades, *Earth and Space Science Open Archive*, p. 34, <https://doi.org/10.1002/essoar.10505836.1>, <https://doi.org/10.1002/essoar.10505836.1>, 2021.
- 785 Seifert, A., Heus, T., Pincus, R., and Stevens, B.: Large-eddy simulation of the transient and near-equilibrium behavior of precipitating shallow convection, *Journal of Advances in Modeling Earth Systems*, 7, 1918–1937, <https://doi.org/https://doi.org/10.1002/2015MS000489>, <https://agupubs.onlinelibrary.wiley.com/doi/abs/10.1002/2015MS000489>, 2015.
- Stamnes, K., Thomas, G. E., and Stamnes, J. J.: *Radiative Transfer in the Atmosphere and Ocean*, Cambridge University Press, 2 edn., <https://doi.org/10.1017/9781316148549>, 2017.
- 790 Stevens, B. and Feingold, G.: Untangling aerosol effects on clouds and precipitation in a buffered system, *Nature*, 461, 607–613, <https://doi.org/10.1038/nature08281>, <https://doi.org/10.1038/nature08281>, 2009.
- Stevens, B., Farrell, D., Hirsch, L., Jansen, F., Nuijens, L., Serikov, I., Brüggemann, B., Forde, M., Linne, H., Lonitz, K., and Prospero, J. M.: The Barbados Cloud Observatory: Anchoring Investigations of Clouds and Circulation on the Edge of the ITCZ, *Bulletin of the American Meteorological Society*, 97, 787 – 801, <https://doi.org/10.1175/BAMS-D-14-00247.1>, <https://journals.ametsoc.org/view/journals/bams/97/5/bams-d-14-00247.1.xml>, 2016.
- 795 Stevens, B., Ament, F., Bony, S., Crewell, S., Ewald, F., Gross, S., Hansen, A., Hirsch, L., Jacob, M., Kölling, T., Konow, H., Mayer, B., Wendisch, M., Wirth, M., Wolf, K., Bakan, S., Bauer-Pfundstein, M., Brueck, M., Delanoë, J., Ehrlich, A., Farrell, D., Forde, M., Göttsche, F., Grob, H., Hagen, M., Jäkel, E., Jansen, F., Klepp, C., Klingebiel, M., Mech, M., Peters, G., Rapp, M., Wing, A. A., and Zinner, T.: A High-Altitude Long-Range Aircraft Configured as a Cloud Observatory: The NARVAL Expeditions, *Bulletin of the American Meteorological Society*, 100, 1061 – 1077, <https://doi.org/10.1175/BAMS-D-18-0198.1>, <https://journals.ametsoc.org/view/journals/bams/100/6/bams-d-18-0198.1.xml>, 2019.
- 800 Stevens, B., Bony, S., Brogniez, H., Hentgen, L., Hohenegger, C., Kiemle, C., L'Ecuyer, T. S., Naumann, A. K., Schulz, H., Siebesma, P. A., Vial, J., Winker, D. M., and Zuidema, P.: Sugar, gravel, fish and flowers: Mesoscale cloud patterns in the trade winds, *Quarterly Journal*

of the Royal Meteorological Society, 146, 141–152, <https://doi.org/https://doi.org/10.1002/qj.3662>, <https://rmets.onlinelibrary.wiley.com/doi/abs/10.1002/qj.3662>, 2020.

805 Stevens, B., Bony, S., Farrell, D., Ament, F., Blyth, A., Fairall, C., Karstensen, J., Quinn, P. K., Speich, S., Acquistapace, C., Aemisegger, F., Albright, A. L., Bellenger, H., Bodenschatz, E., Caesar, K.-A., Chewitt-Lucas, R., de Boer, G., Delanoë, J., Denby, L., Ewald, F., Fildier, B., Forde, M., George, G., Gross, S., Hagen, M., Hausold, A., Heywood, K. J., Hirsch, L., Jacob, M., Jansen, F., Kinne, S., Klocke, D., Kölling, T., Konow, H., Lathon, M., Mohr, W., Naumann, A. K., Nuijens, L., Olivier, L., Pincus, R., Pöhlker, M., Reverdin, G., Roberts, G., Schnitt, S., Schulz, H., Siebesma, A. P., Stephan, C. C., Sullivan, P., Touzé-Peiffer, L., Vial, J., Vogel, R., Zuidema, P., Alexander, N., Alves, L., Arixi, S., Asmath, H., Bagheri, G., Baier, K., Bailey, A., Baranowski, D., Baron, A., Barrau, S., Barrett, P. A., Batier, F., Behrendt, A., Bendinger, A., Beucher, F., Bigorre, S., Blades, E., Blossey, P., Bock, O., Böing, S., Bossler, P., Bourras, D., Bouruet-Aubertot, P., Bower, K., Branellec, P., Branger, H., Brennek, M., Brewer, A., Brilouet, P.-E., Brüggmann, B., Buehler, S. A., Burke, E., Burton, R., Calmer, R., Canonici, J.-C., Carton, X., Cato Jr., G., Charles, J. A., Chazette, P., Chen, Y., Chilinski, M. T., Choulaton, T., 810 Chuang, P., Clarke, S., Coe, H., Cornet, C., Coutris, P., Couvreur, F., Crewell, S., Cronin, T., Cui, Z., Cuypers, Y., Daley, A., Damerell, G. M., Dauhut, T., Deneke, H., Desbios, J.-P., Dörner, S., Donner, S., Douet, V., Drushka, K., Dütsch, M., Ehrlich, A., Emanuel, K., Emmanouilidis, A., Etienne, J.-C., Etienne-Leblanc, S., Faure, G., Feingold, G., Ferrero, L., Fix, A., Flamant, C., Flatau, P. J., Foltz, G. R., Forster, L., Furtuna, I., Gadian, A., Galewsky, J., Gallagher, M., Gallimore, P., Gaston, C., Gentemann, C., Geyskens, N., Giez, A., Gollop, J., Gouirand, I., Gourbeyre, C., de Graaf, D., de Groot, G. E., Grosz, R., Güttler, J., Gutleben, M., Hall, K., Harris, G., Helfer, K. C., Henze, D., Herbert, C., Holanda, B., Ibanez-Landeta, A., Intrieri, J., Iyer, S., Julien, F., Kalesse, H., Kazil, J., Kellman, A., Kidane, A. T., Kirchner, U., Klingebiel, M., Körner, M., Kremper, L. A., Kretzschmar, J., Krüger, O., Kumala, W., Kurz, A., L'Hégaret, P., Labaste, M., Lachlan-Cope, T., Laing, A., Landschützer, P., Lang, T., Lange, D., Lange, I., Laplace, C., Lavik, G., Laxenaire, R., Le Bihan, C., Leandro, M., Lefevre, N., Lena, M., Lenschow, D., Li, Q., Lloyd, G., Los, S., Losi, N., Lovell, O., Luneau, C., Makuch, P., Malinowski, S., Manta, G., Marinou, E., Marsden, N., Masson, S., Maury, N., Mayer, B., Mayers-Als, M., Mazel, C., McGeary, W., McWilliams, J. C., 825 Mech, M., Mehlmann, M., Meroni, A. N., Mieslinger, T., Minikin, A., Minnett, P., Möller, G., Morfa Avalos, Y., Muller, C., Musat, I., Napoli, A., Neuberger, A., Noisel, C., Noone, D., Nordsiek, F., Nowak, J. L., Oswald, L., Parker, D. J., Peck, C., Person, R., Philippi, M., Plueddemann, A., Pöhlker, C., Pörtge, V., Pöschl, U., Pologne, L., Posyniak, M., Prange, M., Quiñones Meléndez, E., Radtke, J., Ramage, K., Reimann, J., Renault, L., Reus, K., Reyes, A., Ribbe, J., Ringel, M., Ritschel, M., Rocha, C. B., Rochetin, N., Röttenbacher, J., Rollo, C., Royer, H., Sadoulet, P., Saffin, L., Sandiford, S., Sandu, I., Schäfer, M., Schemann, V., Schirmacher, I., Schlenczek, O., Schmidt, J., Schröder, M., Schwarzenboeck, A., Sealy, A., Senff, C. J., Serikov, I., Shohan, S., Siddle, E., Smirnov, A., Späth, F., Spooner, B., Stolla, M. K., Szkółka, W., de Szoeko, S. P., Tarot, S., Tetoni, E., Thompson, E., Thomson, J., Tomassini, L., Totems, J., Ubele, A. A., Villiger, L., von Arx, J., Wagner, T., Walther, A., Webber, B., Wendisch, M., Whitehall, S., Wiltshire, A., Wing, A. A., Wirth, M., Wiskandt, J., Wolf, K., Worbes, L., Wright, E., Wulfmeyer, V., Young, S., Zhang, C., Zhang, D., Ziemann, F., Zinner, T., and Zöger, M.: EUREC⁴A, Earth System Science Data Discussions, 2021, 1–78, <https://doi.org/10.5194/essd-2021-18>, <https://essd.copernicus.org/preprints/essd-2021-18/>, 830 2021.

835 Stubenrauch, C. J., Rossow, W. B., Kinne, S., Ackerman, S., Cesana, G., Chepfer, H., Girolamo, L. D., Getzewich, B., Guignard, A., Heidinger, A., Maddux, B. C., Menzel, W. P., Minnis, P., Pearl, C., Platnick, S., Poulsen, C., Riedi, J., Sun-Mack, S., Walther, A., Winker, D., Zeng, S., and Zhao, G.: Assessment of Global Cloud Datasets from Satellites: Project and Database Initiated by the GEWEX Radiation Panel, *Bulletin of the American Meteorological Society*, 94, 1031 – 1049, <https://doi.org/10.1175/BAMS-D-12-00117.1>, <https://journals.ametsoc.org/view/journals/bams/94/7/bams-d-12-00117.1.xml>, 2013.

840

- Su, W., Corbett, J., Eitzen, Z., and Liang, L.: Next-generation angular distribution models for top-of-atmosphere radiative flux calculation from CERES instruments: methodology, *Atmospheric Measurement Techniques*, 8, 611–632, <https://doi.org/10.5194/amt-8-611-2015>, <https://amt.copernicus.org/articles/8/611/2015/>, 2015.
- Twomey, S.: The nuclei of natural cloud formation part II: The supersaturation in natural clouds and the variation of cloud droplet concentration, *Geofisica pura e applicata*, 43, 243–249, <https://doi.org/10.1007/BF01993560>, <https://doi.org/10.1007/BF01993560>, 1959.
- 845 Vial, J., Bony, S., Dufresne, J.-L., and Roehrig, R.: Coupling between lower-tropospheric convective mixing and low-level clouds: Physical mechanisms and dependence on convection scheme, *Journal of Advances in Modeling Earth Systems*, 8, 1892–1911, <https://doi.org/https://doi.org/10.1002/2016MS000740>, <https://agupubs.onlinelibrary.wiley.com/doi/abs/10.1002/2016MS000740>, 2016.
- Várnai, T. and Marshak, A.: A method for analyzing how various parts of clouds influence each other’s brightness, *Journal of Geophysical Research: Atmospheres*, 108, <https://doi.org/https://doi.org/10.1029/2003JD003561>, <https://agupubs.onlinelibrary.wiley.com/doi/abs/10.1029/2003JD003561>, 2003.
- 850 Warren, S. G., Hahn, C. J., and London, J.: Simultaneous Occurrence of Different Cloud Types, *Journal of Applied Meteorology and Climatology*, 24, 658 – 667, [https://doi.org/10.1175/1520-0450\(1985\)024<0658:SOODCT>2.0.CO;2](https://doi.org/10.1175/1520-0450(1985)024<0658:SOODCT>2.0.CO;2), https://journals.ametsoc.org/view/journals/apme/24/7/1520-0450_1985_024_0658_soodct_2_0_co_2.xml, 1985.
- 855 Werner, F., Wind, G., Zhang, Z., Platnick, S., Di Girolamo, L., Zhao, G., Amarasinghe, N., and Meyer, K.: Marine boundary layer cloud property retrievals from high-resolution ASTER observations: case studies and comparison with Terra MODIS, *Atmospheric Measurement Techniques*, 9, 5869–5894, <https://doi.org/10.5194/amt-9-5869-2016>, <https://amt.copernicus.org/articles/9/5869/2016/>, 2016.
- Wielicki, B. A. and Parker, L.: On the determination of cloud cover from satellite sensors: The effect of sensor spatial resolution, *Journal of Geophysical Research: Atmospheres*, 97, 12 799–12 823, <https://doi.org/https://doi.org/10.1029/92JD01061>, <https://agupubs.onlinelibrary.wiley.com/doi/abs/10.1029/92JD01061>, 1992.
- 860 Wielicki, B. A. and Welch, R. M.: Cumulus Cloud Properties Derived Using Landsat Satellite Data, *Journal of Applied Meteorology and Climatology*, 25, 261 – 276, [https://doi.org/10.1175/1520-0450\(1986\)025<0261:CCPDUL>2.0.CO;2](https://doi.org/10.1175/1520-0450(1986)025<0261:CCPDUL>2.0.CO;2), https://journals.ametsoc.org/view/journals/apme/25/3/1520-0450_1986_025_0261_ccpdul_2_0_co_2.xml, 1986.
- 865 Wirth, M., Fix, A., Mahnke, P., Schwarzer, H., Schrandt, F., and Ehret, G.: The airborne multi-wavelength water vapor differential absorption lidar WALES: system design and performance, *Applied Physics B*, 96, 201–213, <https://elib.dlr.de/58175/>, 2009.
- Xue, H. and Feingold, G.: Large-Eddy Simulations of Trade Wind Cumuli: Investigation of Aerosol Indirect Effects, *Journal of the Atmospheric Sciences*, 63, 1605 – 1622, <https://doi.org/10.1175/JAS3706.1>, <https://journals.ametsoc.org/view/journals/atsc/63/6/jas3706.1.xml>, 2006.
- 870 Yamaguchi, Y., Kahle, A. B., Tsu, H., Kawakami, T., and Pniel, M.: Overview of Advanced Spaceborne Thermal Emission and Reflection Radiometer (ASTER), *IEEE Transactions on Geoscience and Remote Sensing*, 36, 1062–1071, <https://doi.org/10.1109/36.700991>, 1998.
- Zelinka, M. D., Myers, T. A., McCoy, D. T., Po-Chedley, S., Caldwell, P. M., Ceppi, P., Klein, S. A., and Taylor, K. E.: Causes of Higher Climate Sensitivity in CMIP6 Models, *Geophysical Research Letters*, 47, e2019GL085782, <https://doi.org/https://doi.org/10.1029/2019GL085782>, <https://agupubs.onlinelibrary.wiley.com/doi/abs/10.1029/2019GL085782>, e2019GL085782 10.1029/2019GL085782, 2020.
- 875 Zhao, G. and Di Girolamo, L.: Cloud fraction errors for trade wind cumuli from EOS-Terra instruments, *Geophysical Research Letters*, 33, <https://doi.org/https://doi.org/10.1029/2006GL027088>, <https://agupubs.onlinelibrary.wiley.com/doi/abs/10.1029/2006GL027088>, 2006.

Zhao, G. and Di Girolamo, L.: Statistics on the macrophysical properties of trade wind cumuli over the tropical western Atlantic, *Journal of Geophysical Research: Atmospheres*, 112, <https://doi.org/https://doi.org/10.1029/2006JD007371>, <https://agupubs.onlinelibrary.wiley.com/doi/abs/10.1029/2006JD007371>, 2007.