

Response to Anonymous Referee #1

General Comments:

Zhang et al. describe a comprehensive analysis of reactivity scales for a Chinese megacity, Guangzhou. They use two methods to characterize base conditions for their Master Chemical Mechanism (MCM) box model. In one, model inputs are based on observations and in the other they are based on emissions. Four reactivity scales were determined using base conditions, maximum incremental reactivity (MIR), maximum ozone reactivity (MOR) and equal benefit incremental reactivity (EBIR) conditions. MOR and MIR reactivity scales estimated for Guangzhou were compared with the corresponding scales for USA conditions using the same chemical mechanism and with the SAPRC-07 mechanism. Sensitivity tests were performed to investigate the influence of environmental conditions on the estimated reactivity scales.

This is a comprehensive study which is well worth publishing in ACP. It should provide the essential data required in the formulation of strategies for tackling elevated ozone levels across China. I particularly liked Figure 2 and how the study links the MIR scale to VOC-limited conditions, MOR to mixed and EBIR to NO_x-limited conditions.

Response: we thank the reviewer for the positive comments and constructive suggestions, which are much helpful for improving the original manuscript. We have carefully considered all of these comments and revised the manuscript accordingly. Below we provide the original reviewer's comments in black italic, with our response and changes in the manuscript in blue and red, respectively.

The study fulfils an important service in providing in Table 1 the IRs for all 116 VOC species in the MCM under the four sets of conditions. Elsewhere in the study more use should be made of relative incremental reactivities, by expressing them relative to a specific VOC such as ethene. Zhang et al. introduce the concept as MIR/Ethene though much more use could be made than the brief mention in section 3.2 (lines 227 onwards). The advantage of relative reactivities is that they clearly reveal small differences between reactivity scales. When discussing the influence of background conditions (lines 270 onwards), these would be much clearer if they were presented as ratios to ethene: IRs/IR_{ethene} . Table 2 should be replaced with Tables of IR/IR_{ethene} values then we could see if the background conditions really changed the reactivities for particular VOCs. Also, in Figures 5 and 6, we see the differences in reactivity scales between Guangzhou and USA. But these would be much more illuminating if they were presented as IR/IR_{ethene} values rather than as ranks. Ranks disguise the magnitudes of the differences.

Response: thanks for the suggestion. We agree that ranks disguise the magnitudes of the

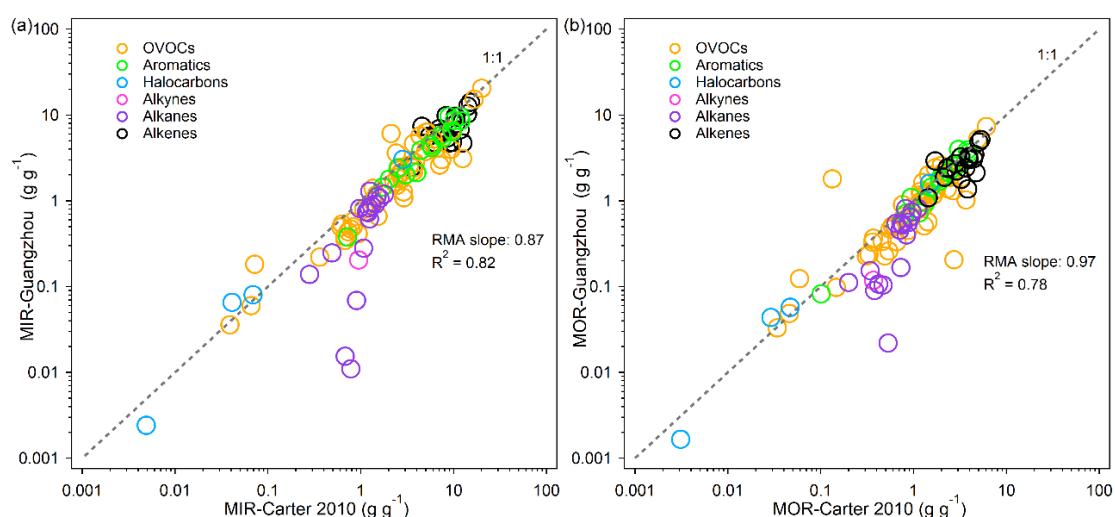
differences, and the results of ranks have been removed from the revised Figures 5 and 6.

We began with IRs and analyses were mainly done based on IRs, as most readers are familiar with the concept of IRs rather than RRs. For this purpose, we decided to save the results of IRs in the revised Figure 5. On the other hand, both the scenarios (U.S. vs. Guangzhou) and chemical mechanisms (SAPRC-07 vs. MCM v3.3.1) are different in the calculations of IR-Carter 2010 and IR-Guangzhou, so we cannot directly quantify the effects of background conditions by comparison between IR-Carter 2010 and IR-Guangzhou.

We used IR/Ethene to represent IRs/IR_{ethene}, and compared MIR/Ethene-CA-MCM with MIR/Ethene-GZ-MCM to determine the influence of environmental conditions (see below the revised Figure 6). With the same chemical mechanism (MCM), the MIR/Ethene scale resulted in higher consistency between Guangzhou and California ($R^2 = 0.90$) than did the U.S scenarios, but the MIR/Ethene magnitudes showed a large discrepancy (RMA slope: 1.54), implying the significant impact of environmental conditions on MIR/Ethene magnitudes.

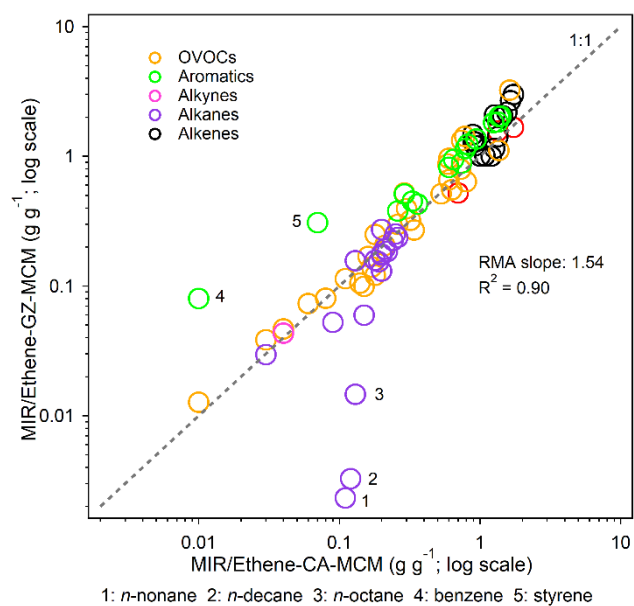
The detailed information of California scenarios was not provided in Derwent et al. (2010), so we mainly examined the reasons for the discrepancy between IR-Carter 2010 and IR-Guangzhou. For this purpose, we decided to save the results of IRs in Table 2. Besides, we have added the results of RRs in the revised supplement (i.e., Table S5) to present the effects of environmental conditions on RRs. For clarity, we have added the following content in the revised manuscript.

“We also conducted similar analyses on RR scales, and the results confirmed that environmental conditions exert large impact on the RR magnitudes (Table S5).”



Revised Figure 5. Comparison of emission-based (a) MIR and (b) MOR scales for 111 common VOC species between Guangzhou and the U.S. The panels are in log scale, and only positively reactive VOCs are shown. The grey dashed line represents the 1:1 line. The

MIR-Carter 2010 and MOR-Carter 2010 data are taken from Carter et al. (2010).



Revised Figure 6: Comparison of the MIR/Ethene (the MIR value of a given VOC divided by the MIR value of ethene) values for 79 common VOC species between Guangzhou and California. Only positively reactive VOCs are shown, and the top five VOC species with a relatively large reactivity value change (shown below the panel) are marked with numbers. The grey dashed line represents the 1:1 line. The MIR-Ethene-CA-MCM data are taken from Derwent et al. (2010).

Table S5a. Dependence of emission-based MIR/Ethene scales for major VOC groups on major environmental conditions. The base MIR/Ethene scales were used as benchmarks (x-axis). Eight sensitivity scenarios: (2) 0.25*VOCs: both initial and emitted VOCs multiplied by 0.25, while other factors were kept unchanged, (3)-(6) X*VOC group: both initial and emitted VOC species contained in the target VOC group multiplied by X, and other VOC compositions increased or decreased to keep VOCs/NOx ratios constant, while other factors were kept unchanged, (7) HONO: both initial and emitted HONO were set to zero, and only the gas phase formation pathway (OH + NO = HONO) of HONO was included in the model, (8) 0.5*J: the photolysis rate was reduced to a half, while other factors were kept unchanged, (9) 3 days: the model integration time lasted for 3 days, while other factors were kept unchanged. Refer to Table S3 for the detailed specification of VOCs.

VOC group	0.25*VOCs		0.25*OVOCs		1.5*Alkanes		2*Aromatics		2*Alkenes		HONO		0.5*J		3 days	
	RMA slope	R ²	RMA slope	R ²	RMA slope	R ²	RMA slope	R ²	RMA slope	R ²	RMA slope	R ²	RMA slope	R ²	RMA slope	R ²
Aldehydes	0.90	0.99	1.12	1.00	1.21	1.00	1.07	1.00	0.89	1.00	1.10	1.00	1.62	0.98	0.73	0.83
Alkanes	1.04	0.99	1.01	1.00	1.06	0.99	0.99	1.00	0.98	1.00	1.00	1.00	1.17	0.92	1.11	0.43
Alkenes	0.77	0.97	1.14	1.00	1.16	1.00	1.19	0.99	0.86	0.99	1.14	1.00	1.64	0.97	0.46	0.64
Aromatics	1.02	1.00	1.03	1.00	1.07	1.00	0.93	1.00	0.97	1.00	1.00	1.00	1.21	0.98	0.73	0.95
TVOC	0.91	0.99	1.09	1.00	1.15	1.00	1.05	0.99	0.92	1.00	1.07	1.00	1.46	0.97	0.72	0.81

Table S5b. The same as Table S5a but for MOR/Ethene scales.

VOC group	0.25*VOCs		0.25*OVOCs		1.5*Alkanes		2*Aromatics		2*Alkenes		HONO		0.5*J		3 days	
	RMA slope	R ²	RMA slope	R ²	RMA slope	R ²	RMA slope	R ²	RMA slope	R ²	RMA slope	R ²	RMA slope	R ²	RMA slope	R ²
Aldehydes	1.00	0.99	1.09	1.00	1.29	0.99	0.92	1.00	0.89	1.00	1.11	1.00	1.68	0.95	0.36	0.01
Alkanes	1.06	0.98	1.01	1.00	1.06	0.97	0.96	0.98	0.99	0.99	0.99	1.00	1.18	0.81	1.10	0.31
Alkenes	0.87	0.98	1.07	1.00	1.23	0.98	1.02	0.99	0.87	0.98	1.13	0.99	1.72	0.91	0.71	0.06
Aromatics	1.07	1.00	1.02	1.00	1.11	1.00	0.89	1.00	0.96	1.00	1.01	1.00	1.19	0.98	0.62	0.80
TVOC	0.99	0.99	1.06	1.00	1.21	0.99	0.94	1.00	0.91	1.00	1.08	1.00	1.50	0.97	0.48	0.42

Specific Comments:

1. line 30: *Agathokleous et al.* is not the best reference to give here. There is an excellent reference available from the *Tropospheric Ozone Assessment Report in Elementa*.

Response: the following three references have been cited in the revised manuscript.

“Fleming, Z. L., Doherty, R. M., von Schneidmesser, E., Malley, C. S., Cooper, O. R., Pinto, J. P., Colette, A., Xu, X., Simpson, D., Schultz, M. G., Lefohn, A. S., Hamad, S., Moolla, R., Solberg, S., and Feng, Z.: Tropospheric Ozone Assessment Report: Present-day ozone distribution and trends relevant to human health, *Elem. Sci. Anth.*, 6, 10.1525/elementa.273, 2018.”

“Lefohn, A. S., Malley, C. S., Smith, L., Wells, B., Hazucha, M., Simon, H., Naik, V., Mills, G., Schultz, M. G., Paoletti, E., De Marco, A., Xu, X., Zhang, L., Wang, T., Neufeld, H. S., Musselman, R. C., Tarasick, D., Brauer, M., Feng, Z., Tang, H., Kobayashi, K., Sicard, P., Solberg, S., and Gerosa, G.: Tropospheric ozone assessment report: Global ozone metrics for climate change, human health, and crop/ecosystem research, *Elem. Sci. Anth.*, 6, 10.1525/elementa.279, 2018.”

“Mills, G., Pleijel, H., Malley, C. S., Sinha, B., Cooper, O. R., Schultz, M. G., Neufeld, H. S., Simpson, D., Sharps, K., Feng, Z., Gerosa, G., Harmens, H., Kobayashi, K., Saxena, P., Paoletti, E., Sinha, V., and Xu, X.: Tropospheric Ozone Assessment Report: Present-day tropospheric ozone distribution and trends relevant to vegetation, *Elem. Sci. Anth.*, 6, 10.1525/elementa.302, 2018.”

2. line 47: *What is meant here? A mechanism is either explicit or not. If it contains non-stoichiometric chemical equations then it is not explicit.*

Response: sorry for the ambiguity. We have replaced “semi-explicit” with “detailed”, as the SAPRC mechanism used for calculation of original IRs was more detailed than most of the “lumped” mechanisms.

3. line 72: *‘results obtained’.*

Response: changed.

4. lines 86-87: *It is widely recognised that the diurnal cycle in ozone is caused by changes in the stability of the boundary layer and not by intense in situ photochemical ozone production. This is explained in the Tropospheric Ozone Assessment Report.*

Response: the diurnal variations in surface ozone are mainly shaped by variations in photochemistry, boundary layer dynamics, surface dry deposition, and transport. The large amplitude of the diurnal O₃ cycle (104 ± 23 ppbv) in urban Guangzhou is a combined result

of intense photochemical O₃ production during daytime and influences of NO titration and/or dry deposition on nighttime O₃ in the shallow nocturnal boundary layer. For clarity, we have made the following modifications in the revised manuscript.

“During the 67 O₃ episodes, the average amplitude (defined as the maximum minus the minimum) of the diurnal O₃ cycle was 104 ± 23 ppbv. The large amplitude indicated the significant influence of intense photochemical O₃ production during daytime as well as impact of NO titration and/or dry deposition during nighttime with shallow nocturnal boundary layer.”

5. line 93: ppbv ppbv⁻¹.

Response: revised.

6. line 99: Reference to the MCM website at the University of York would be more up-to-date.

Response: changed.

7. line 112: Where does these initial concentrations come from if not from observations? There are many sets of OVOC data for China.

Response: observation data were available for 39 compounds. For compounds without available observation data (excluding formaldehyde and acetaldehyde), the initial concentrations of 0.10 ppbv were set according to the lowest observed concentration of all VOC species during the 67 selected O₃ episodes in Guangzhou. For formaldehyde and acetaldehyde, the initial concentrations of 0.50 and 0.30 ppbv were set according to model simulations with 1-day observation-based inputs. Such treatment in VOC initialization was used to represent scenarios with the lowest limit of VOC concentrations in Guangzhou.

We wondered the way to collect OVOC data from published studies, but it was difficult to get the daily input of OVOC concentrations, as most studies merely presented the average concentrations of VOCs.

We admit that such treatment in VOC initialization would cause uncertainty on the obtained RR scales. Sensitivity tests were conducted to evaluate the uncertainty, as documented in the revised Table S4 (see below). The initial concentrations of several selected compounds (either with relatively large or low IRs) were increased to high levels individually (ethanol: 10 ppbv; 1,3-dimethyl-5-ethyl: 2 ppbv; 2-methyl-2-butene: 1.5 ppbv; *i*-butene: 1.5 ppbv; methyl glyoxal: 1.5 ppbv), and such treatment would exert impact ranging from -14 % to 3 % on RR magnitudes, while R^2 fell in the range of 0.99-1.00. Besides, the initial concentrations of VOCs without available observation data were increased to 0.50 ppbv, and such treatment would exert impact of -12% and -11% on RR magnitudes under MIR and MOR scenarios, respectively, while R^2 equaled to 0.98 and 0.99, respectively.

We have clarified this uncertainty of the present study by adding the following statements in the revised manuscript.

“Such treatment of VOC initialization would inevitably cause uncertainty to the obtained RRs. Sensitivity tests were conducted to evaluate the potential uncertainty, and the results are documented in Table S4. The RRs (i.e., IR/Ethene in Table S4: IR value of a given VOC divided by the IR value of ethene) obtained from sensitivity tests exhibited good correlations with those obtained from emission-based base case inputs (R^2 ranged from 0.98-1.00), but minor discrepancy in RR magnitudes existed (reduced major axis (RMA) slope: 0.86-1.03). More high-quality long-term observational data covering a variety of VOCs are highly needed for IR calculation.”

Table S4. Correlations of IR/Ethene scales under MIR and MOR scenarios for 116 VOC species between base case emission-based inputs and sensitivity scenarios. The base IR/Ethene scales were used as benchmarks (x -axis). Six sensitivity scenarios: (1) ADJ1: the initial concentration of ethanol increased to 10 ppbv, while other factors were kept unchanged; (2) ADJ2: the initial concentration of 1,3-dimethyl-5-ethyl increased to 2 ppbv, while other factors were kept unchanged; (3) ADJ3: the initial concentration of 2-methyl-2-butene increased to 1.5 ppbv, while other factors were kept unchanged; (4) ADJ4: the initial concentration of *i*-butene increased to 1.5 ppbv, while other factors were kept unchanged; (5) ADJ5: the initial concentration of methyl glyoxal increased to 1.5 ppbv, while other factors were kept unchanged; (6) ADJ6: the initial concentrations of VOCs without available observational data were set as 0.50 ppbv, while other factors were kept unchanged.

MIR/Ethene			MOR/Ethene		
Scenarios	RMA slope	R^2	Scenarios	RMA slope	R^2
ADJ1	1.03	1.00	ADJ1	1.03	1.00
ADJ2	0.95	1.00	ADJ2	0.92	1.00
ADJ3	0.89	0.99	ADJ3	0.92	0.99
ADJ4	0.96	1.00	ADJ4	0.97	1.00
ADJ5	0.86	0.99	ADJ5	0.89	0.99
ADJ6	0.88	0.98	ADJ6	0.89	0.99

8. line 128: Replace ‘folds’ with scaling factors.

Response: done.

9. line 134 onwards: please explain what the ‘base’ scenario is.

Response: “base” scenario refers to the scenario whose NO_x inputs were derived from observation or emission data, without any adjustment based on reactivity results. For clarity, we have made the following modifications in the revised manuscript.

“[NO_x]_{BASE} represents the NO_x inputs under base scenarios that were directly derived from observation or emission data, without any adjustment based on reactivity results.”

10. line 176: *The chemspider website reference provides rate coefficients presumably and not reaction fluxes.*

Response: sorry for the ambiguity. We have changed “fast reaction rates” to “large rate coefficients”.

“This was reasonable considering their large rate coefficients of reactions with OH radicals (Calvert et al., 2015; McGillen et al., 2020).”

“Calvert, J. G., Orlando, J. J., Stockwell, W. R., Wallington, T. J.: *The Mechanisms of Reactions Influencing Atmospheric Ozone*, Oxford University Press, New York, 2015.”

“McGillen, M. R., Carter, W. P. L., Mellouki, A., Orlando, J. J., Picquet-Varrault, B., and Wallington, T. J.: Database for the kinetics of the gas-phase atmospheric reactions of organic compounds, *Earth Syst. Sci. Data*, 12, 1203-1216, 10.5194/essd-12-1203-2020, 2020.”

11. line 238-242: *It would be exceptionally useful if a little more detail was given here about why the five outliers are difficult to represent in chemical mechanisms. Benzene and styrene, presumably like phenol, are strong inhibitors of ozone formation. Is there a simple explanation how this works mechanistically. Then we have n-octane through n-decane. Presumably the mechanism of inhibition is different here and it would be interesting to know why this is. Why does it begin with n-octane and not n-heptane?*

Response: the major degradation pathways of the five outliers within MCM v3.3.1 have been present in Figure R1 to give a brief explanation. As shown, the major degradation products of benzene and styrene are phenol and benzaldehyde, respectively, which are strong inhibitors of O₃ formation under specific conditions.

For long-chain alkanes, the negative IR was primarily because of radical removal from reactions of peroxy radicals with NO forming organic nitrates. Inhibition due to nitrate formation was not begun with n-octane but was increasingly important as the size of the molecule increases. Overall, the IRs for such compounds reflect a balance between the positive effects on O₃ due to the conversions of NO to NO₂ by the radicals they form, and also due to the reactivity of its products, and the negative effects caused by radical inhibition. Both effects are large and their magnitudes are sensitive to scenario conditions and to the base mechanism, as well as to details on how the reactions of the compound and its product are represented in the mechanism. For that reason, the overall effect, which is the difference between two large and variable numbers, can vary from positive to negative, depending on the scenario and mechanism used.

For clarity, we have made the following modifications in the revised manuscript.

“The IRs for the former three long-chain alkanes reflect a balance between the positive effects on O₃ due to the conversions of NO to NO₂ by the radicals they form, and also due to

the reactivity of its products, and the negative effects caused by radical inhibition (organic nitrates). This is also the case for benzene and styrene, whose major degradation products are phenol and benzaldehyde, respectively, which are strong inhibitors of O₃ formation under specific conditions.”

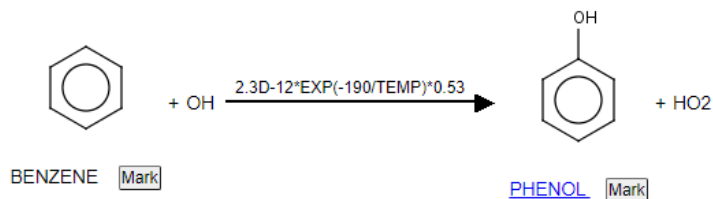


Figure R1a. The major degradation pathways of benzene (BENZENE) to form phenol (PHENOL).

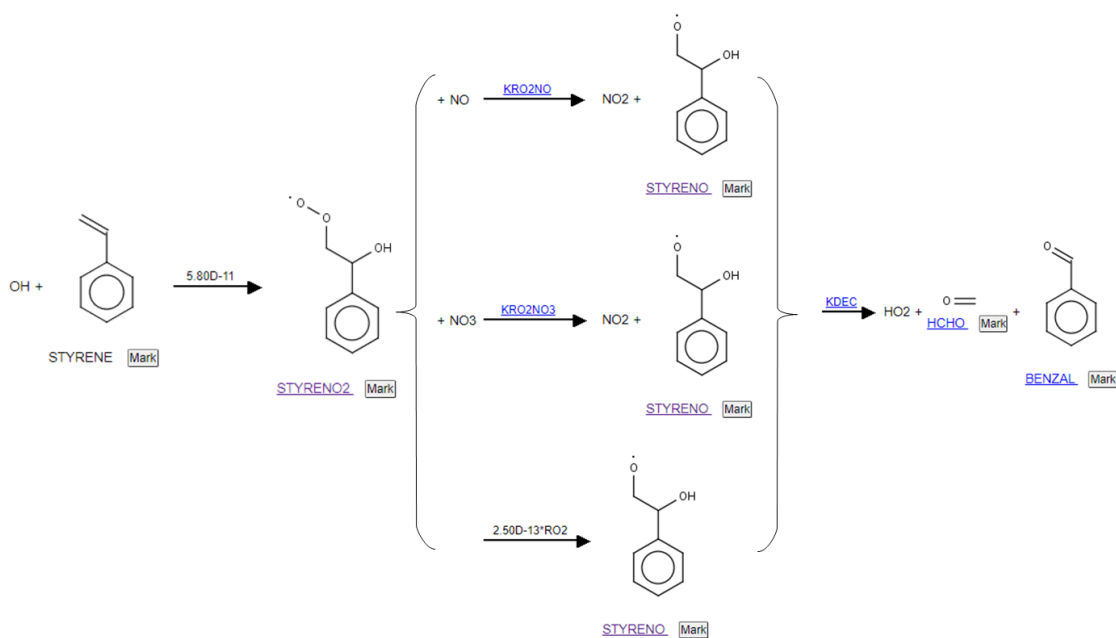


Figure R1b. The major degradation pathways of styrene (STYRENE) to form benzaldehyde (BENZAL).

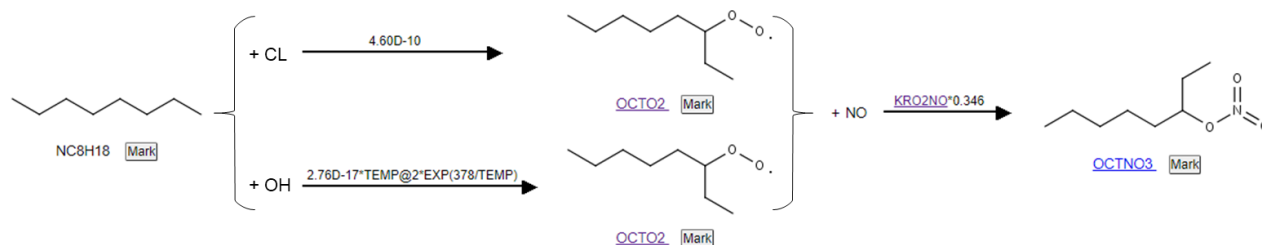


Figure R1c. The major degradation pathways of n-octane (NC8H18) to form octan-3-yl nitrate (OCTNO3).

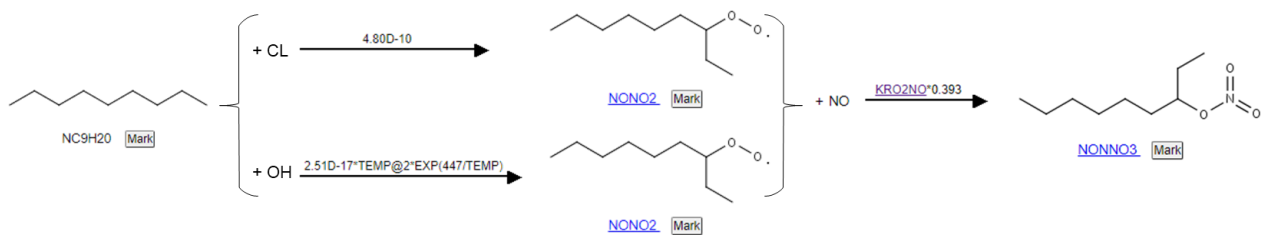


Figure R1d. The major degradation pathways of n-nonane (NC9H20) to form nonan-3-yl nitrate (NONNO3).

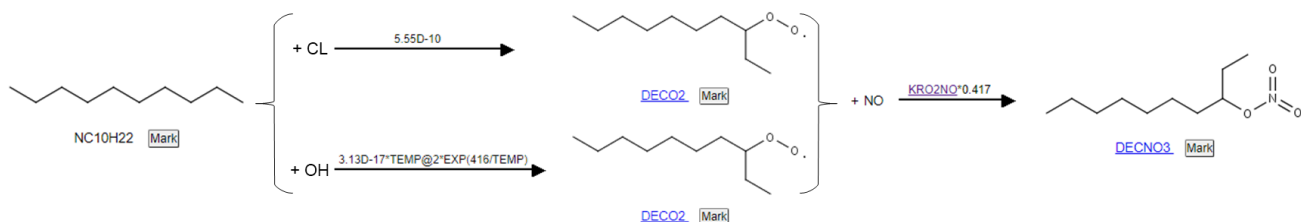


Figure R1e. The major degradation pathways of n-decane (NC10H22) to form decan-3-yl nitrate (represented as DECNO3).

12. line 241: This point would be self-evident if the presentation had been done with MIR/MIR_{ethene} ratios.

Response: the analyses mentioned were actually done based on MIR/MIR_{ethene} ratios (which were represented as “MIR/Ethene” in the revised Figure 6 and Section 3.2). The details have been provided in response to “General Comments”.

13. line 244: MIR

Response: “MR” is the abbreviation of mechanistic reactivity mentioned in line 41 in the revised manuscript. For clarity, “MR” has been changed to “reaction mechanisms”.

14. line 250: What was done with one quarter of the base ratios?

Response: “one quarter of the base ratios” refer to the sensitivity scenario of “0.25*VOCs” in Table 2, in which both initial and emitted VOCs multiplied by 0.25, while other factors were kept unchanged. For clarity, we have made the following modifications in the revised manuscript.

“One quarter of the base VOC/NO_x ratios (both initial and emitted VOCs multiplied by 0.25, while other factors were kept unchanged) in the Guangzhou scenarios tended to increase the overall IR values (by 19 % and 26 % under the MIR and MOR scenarios, respectively).”

15. Section 3.2: This is a big section that would benefit considerably from being split into smaller sub-sections.

Response: the original Section 3.2 has been divided into two sections, with the first being

“3.2 Comparison with ozone reactivity scales for VOCs in U.S.”, and the second being “3.3 Other possible reasons for the IR discrepancy between China and the U.S. scenarios”.

16. line 336 onwards. This is an important recommendation and should be in the Conclusions section with a little more explanation.

Response: we agree with this, and have added the following descriptions in “Conclusions” of the revised manuscript.

“Considering the huge impact of chemical mechanisms and environmental conditions on the IR scales, more systematic comparisons focusing on VOC reactivity scales obtained from the U.S. vs. Chinese conditions using the same and different chemical mechanisms are needed.”