

# Improved gridded ammonia emission inventory in China

Baojie Li<sup>1</sup>, Lei Chen<sup>1</sup>, Weishou Shen<sup>1</sup>, Jianbing Jin<sup>1</sup>, Teng Wang<sup>2</sup>, Pinya Wang<sup>1</sup>, Yang Yang<sup>1</sup>, and Hong Liao<sup>1\*</sup>

<sup>1</sup> Jiangsu Key Laboratory of Atmospheric Environment Monitoring and Pollution Control, Jiangsu Collaborative Innovation Center of Atmospheric Environment and Equipment Technology, School of Environmental Science and Engineering, Nanjing University of Information Science and Technology, Nanjing, 210044, China

<sup>2</sup> College of Oceanography, Hohai University, Nanjing, 210098, China

Correspondence to: Hong Liao (hongliao@nuist.edu.cn)

**Abstract.** As a major alkaline gas in the atmosphere, NH<sub>3</sub> significantly impacts atmospheric chemistry, ecological environment, and biodiversity. Gridded NH<sub>3</sub> emission inventories can significantly affect the accuracy of model concentrations and play a crucial role in the refinement of mitigation strategies. However, several uncertainties are still associated with existing NH<sub>3</sub> emission inventories in China. Therefore, in this study, we focused on improving fertilizer application-related NH<sub>3</sub> emission inventories. We comprehensively evaluated the dates and times of fertilizer application to the major crops that are cultivated in China, improved the spatial allocation methods for NH<sub>3</sub> emissions from croplands with different rice types, and established a gridded NH<sub>3</sub> emission inventory for mainland China with a resolution of 5 min × 5 min in 2016. The results showed that the atmospheric NH<sub>3</sub> emissions in mainland China amounted to 12.11 Tg, with livestock waste (44.8%) and fertilizer application (38.6%) being the two main NH<sub>3</sub> emission sources in China. Obvious spatial variability in NH<sub>3</sub> emissions was also identified, and high emissions were predominantly concentrated in North China. Further, NH<sub>3</sub> emissions tended to be high in summer and low in winter, and the ratio for the July–January period was 3.08. Furthermore, maize and rice fertilization in summer was primarily responsible for the increase in NH<sub>3</sub> emissions in China, and the evaluation of the spatial and temporal accuracy of the NH<sub>3</sub> emission inventory established in this study using the WRF-Chem and ground station- and satellite-based observations showed that it was more accurate than other inventories.

## 1 Introduction

Ammonia, a major form of reactive nitrogen, plays an important role in atmospheric chemistry, the ecological environment, and biodiversity (Sheppard et al., 2011; Zhang et al., 2018). As the major alkaline gas in the atmosphere, it can form (NH<sub>4</sub>)<sub>2</sub>SO<sub>4</sub> and NH<sub>4</sub>NO<sub>3</sub> with H<sub>2</sub>SO<sub>4</sub> and HNO<sub>3</sub> produced from the oxidation of SO<sub>2</sub> and NO<sub>x</sub>, respectively, and contribute to the formation of secondary inorganic aerosols (SIA), thereby increasing the concentration of PM<sub>2.5</sub> (Fu et al., 2017). For example, in China, the contribution of agriculture-related NH<sub>3</sub> emissions to SIA and PM<sub>2.5</sub> is 29% and 16%, respectively (Han et al., 2020), and recent studies have shown that NH<sub>3</sub> can also react with alkanes in the atmosphere to form toxic organic species, including

30 ~~methylamine ( $\text{CH}_3\text{NH}_2$ ), dimethylamine ( $\text{C}_2\text{H}_7\text{N}$ ), and trimethylamine ( $\text{C}_3\text{H}_9\text{N}$ ), which are harmful to organisms (You et al., 2014).~~ This fine particle formation has led to substantial health and economic costs (Paulot and Jacob, 2014).

Haze pollution occurs frequently, particularly in eastern China, and is characterized by an extremely high concentration of  $\text{PM}_{2.5}$ , with a remarkably high proportion (20–60%) of SIAs (Ding et al., 2016; Elser et al., 2016; Wang et al., 2016). The Chinese government has taken effective measures to control  $\text{SO}_2$  and  $\text{NO}_x$  emissions, and a large number of studies have indicated that  $\text{SO}_2$  and  $\text{NO}_x$  concentrations and emissions have decreased in recent years (Zheng et al., 2018; Li et al., 2019b; Zhang et al., 2019). However, measures to reduce  $\text{NH}_3$  emissions are limited. Satellite retrievals have shown an increase in  $\text{NH}_3$  vertical column densities (VCDs) in recent years (Warner et al., 2017; Chen et al., 2020), and China has become a global “hotspot” for  $\text{NH}_3$  emissions and  $\text{NH}_3$  pollution (Liu et al., 2013; Liu et al., 2019a). Such increases in  $\text{NH}_3$  concentrations may reduce the effectiveness of particle pollution control achieved via  $\text{SO}_2$  and  $\text{NO}_x$  emission reduction (Wang et al., 2013; Fu et al., 2017). Therefore, to effectively control PM pollution and reduce SIA concentrations in China, strategies to reduce  $\text{NH}_3$  emissions are urgently required.

Recently,  $\text{NH}_3$  emission reduction has been proposed as a strategic option for mitigating haze pollution (Liu et al., 2019b). Several organizations and researchers have established gridded  $\text{NH}_3$  emission inventories, such as the MEIC, PKU- $\text{NH}_3$ , MASAGE- $\text{NH}_3$ , EDGAR, and REAS (Streets et al., 2003; Paulot et al., 2014; Fu et al., 2015; Kang et al., 2016; Li et al., 2017a; Zhang et al., 2017; Zhang et al., 2018; Crippa et al., 2020; Kurokawa and Ohara, 2020). Based on these studies, substantial progress has been made in the development of  $\text{NH}_3$  emission inventories. However, based on the results of previous studies,  $\text{NH}_3$  emissions in China have been estimated as 8.0–18.3 Tg/year (Zhang et al., 2017; Kong et al., 2019), which is indicative of large uncertainties. Unlike  $\text{SO}_2$  and  $\text{NO}_x$ , which primarily originate from industrial plants,  $\text{NH}_3$  mainly originates from agricultural activities, which are more difficult to evaluate. Of course, certain non-agricultural sources of  $\text{NH}_3$  are also important. For example, vehicular emissions contain both  $\text{NH}_3$  and  $\text{NO}_x$  and may have a more effective pathway to particle formation, particularly in urban areas (Farren et al., 2020; Chang et al., 2016). The amount of  $\text{NH}_3$  emitted by the transportation sector has not been well quantified, and is generally thought to be underestimated (Meng et al., 2017; Farren et al., 2020). Such uncertainty limits the accuracy of  $\text{NH}_3$  and PM concentration estimates simulated using atmospheric chemistry transport models. Fertilizer application and livestock waste were the largest contributors, accounting for more than 80% of total  $\text{NH}_3$  emissions (Zhang et al., 2017; Kang et al., 2016); thus, the improvement of  $\text{NH}_3$  emission inventories should primarily focus on these two sources (Zhao et al., 2020). To improve  $\text{NH}_3$  emission inventory, several environmental factors, including wind speed, temperature, and soil pH, have been considered in some studies (Paulot et al., 2014; Zhang et al., 2018; Zhao et al., 2020). The mass-flow approach, which considers nitrogen transformation at different stages of manure management to improve  $\text{NH}_3$  emission inventories from livestock waste, has also been applied (Huang et al., 2012; Zhang et al., 2018).

Monthly variations in  $\text{NH}_3$  emissions are primarily caused by fertilizer application, according to previous studies (Huang et al., 2012; Zhang et al., 2018). However, fertilizer application-related  $\text{NH}_3$  emission inventories need to be further improved for the following reasons. First, in most existing studies, spatial differences in the quantity of fertilizer application in different provinces were considered but spatial variations with respect to the timing of fertilizer application were not, hence

the uncertainty in the monthly rate of NH<sub>3</sub> emissions. For example, with respect to winter wheat, in North China, basal dressing is usually conducted from late September to mid-October, while in the Yangtze River Delta region, it is usually conducted from late October to early November. Even in the same province, the difference in fertilizer application dates can be approximately 15 days. In most studies, fertilizer application dates were set to a specific month; however, this is not consistent with reality. Farmers in the same province usually apply fertilizers across months, rather than in a specific month. Additionally, the temporal and spatial differences in fertilization dates are critical to the accuracy of the NH<sub>3</sub> emission inventories. Second, there are significant differences in the spatial distribution of planted areas for different crops. This implies that different spatial proxies must be used for different crops. For example, in China, four rice types are cultivated, namely, early, late, single-season, and middle rice, which cannot be allocated using the same spatial allocation method.

Therefore, in this study, we established a 2016 NH<sub>3</sub> emission inventory for mainland China with a 5 min × 5 min resolution. To improve the accuracy of the emission inventory, we focused on improving the accuracy of NH<sub>3</sub> emissions from fertilizer application, and the latest methods in the literature were used for quantifying emissions from other sources, such as livestock waste. Finally, the inventory accuracy was evaluated using WRF-Chem and available ground station- and satellite-based observation data.

## 2 Methods and materials

This study was conducted in mainland China. Hong Kong, Macao, and Taiwan were excluded. Fifty emission sources, including fertilizer application, livestock waste, transportation, biomass burning, and agricultural soil, were considered. The categorization of these sources is presented in Table 1. The gridded NH<sub>3</sub> emissions ( $E_{NH_3}$ ) were calculated according to Eq. (1):

$$E_{NH_3} = \sum_i \sum_j \sum_k A_{i,j,k} \times EF_{i,j,k} \quad (1)$$

where  $i$ ,  $j$ , and  $k$  represent the specific grid, source type, and month, respectively.  $A$  represents the activity level (e.g., fertilizer application amounts corresponding to each crop, mileage of motor vehicles, etc.), and  $EF$  represents the corresponding emission factor.

Reportedly, monthly variations in NH<sub>3</sub> emissions can be primarily attributed to differences in fertilizer application amounts (Huang et al., 2012; Zhang et al., 2018). However, fertilizer application-related NH<sub>3</sub> emission inventories have considerable uncertainties owing to several factors, including fertilizer type, crop type, fertilization times, fertilization dates, and environmental factors. Therefore, in this study, we focused on improving the accuracy of fertilizer application-related NH<sub>3</sub> emission inventories.

**Table 1. NH<sub>3</sub> emission sources in China.**

Category	Subcategory	Category	Subcategory	
Fertilizer application	urea	Residential & commercial	human excrement	
	ammonium bicarbonate (ABC)		indoor firewood combustion	
	diammonium phosphate (DAP)		indoor wheat burning	
	NPK compound fertilizer (NPK)		indoor rice burning	
	other		indoor maize burning	
Livestock waste	beef cattle	Residential & commercial	domestic coal combustion	
	dairy cow		domestic oil combustion	
	goat		domestic gas combustion	
	sheep	Industry	synthetic ammonia	
	rabbit		nitrogen fertilizers production	
	horse/donkey/mule		wastewater treatment	
	sow		waste landfill	
	fattening pig		waste incineration	
	camel		coal combustion	
	meat duck		oil combustion	
	meat goose		gas combustion	
	broilers		Other	agricultural soil
	laying hen			nitrogen-fixing plants (soybean)
	laying duck	nitrogen-fixing plants (peanuts)		
	outdoor straw burning			
Traffic	light-duty gasoline vehicles		forest fires	
	heavy-duty gasoline vehicles		grassland fires	
	light-duty diesel vehicles			
	heavy-duty diesel vehicles			
	motorcycles			

## 2.1 Improvement of fertilizer application-related NH<sub>3</sub> emission inventories

95 Five fertilizer types, including urea, ammonium bicarbonate (ABC), diammonium phosphate (DAP), and complex-fertilizer (NPK) were considered in this study. Additionally, several types of crops that are widely cultivated in China were also considered, including early, middle, late, and single-season rice; winter and spring wheat; spring and summer maize; cotton; potato; spring and winter rapeseed; soybean; spring and summer groundnut; sugarcane; sugar beet; tobacco; apple; citrus; pear; and vegetables. Specifically, the following improvements were made to inventories of NH<sub>3</sub> emissions from fertilizer applications:

100 (1) In most previous studies, fertilization dates were set such that they did not change in space, but were fixed to a specific month; this is not consistent with the actual situation. Therefore, in this study, we comprehensively evaluated the fertilizer application timing and frequency for rice, maize, and wheat crops (these three plants constituted a total of eight sub-categories as shown in Fig. 1) in different regions by collecting data from a large number of studies online (primarily comprising reports on crop phenology in each province in 2016) and the technical guidelines for field management in each  
105 province- [\(see a more detailed explanation in section S1\)](#). The respective amounts of each N fertilizer, applied in different months to each crop category, can be calculated using the following formula:

$$A_{i,j} = A_{total} \times P_j \times x_{i,j} \quad (2)$$

where  $i$  indicates the month.  $A_{total}$  indicates the total amount of each N fertilizer (ABC, DAP, NPK, urea, and other) applied to the different crop types in each province in 2016, which were calculated as a product of the planted cropland area and the  
110 fertilizer application rate per unit area of cropland, based on data from [MARA \(2017\)](#) and [NDRC \(2017\)](#). Over the whole growth period, wheat, maize, and rice generally need three applications of N fertilizer ( $j$ , namely the basal dressing, first topdressing, and second topdressing).  $P_j$  represents the proportion of the total annual fertilization amount applied in the  $j$ -th dressing. The variation in  $P_j$  across the different regions was also considered, based on farmer survey data ([Wang et al., 2008](#)) and other studies in the literature ([Zhang et al., 2009](#); [Zhang and Zhang, 2012](#)).  $x_{i,j}$  represents the probability of the  $j$ -th dressing  
115 in month  $i$ , and is calculated as the proportion of days in the  $i$ -th month during the window period of  $j$ -th dressing. Table S1 lists the basal and topdressing fertilization dates for different crops in different provinces.

An example: in 2016, winter wheat was sown and basal fertilizer was applied in late September to mid-October. So, the dates of basal dressing in Hebei province span two months;  $x=1/3$  in September, while  $x=2/3$  in October. Similarly, the other two top dressings were applied at the jointing and booting stages, i.e., in late March to early April and late April to early  
120 May, respectively. According to the proportion of basal dressing and top dressing for wheat in Hebei, we identified the proportion of total fertilizer applied in each month (basal dressing: 0.2, September; 0.4, October; top dressing: 0.1, March; 0.2, April; and 0.1 in May). Further, the proportion of fertilizer applied in each month in Sichuan, which is located in Southwest China, was different from that in Hebei (basal dressing: 0.2, October; 0.4, November; top dressing: 0.1, January; 0.2, February; and 0.1, March). Besides, four sub-categories of rice were considered in this study (early, middle, late, and single-season rice),  
125 and given the differences in their fertilization dates in different regions, the fertilization dates varied greatly across the country. Furthermore, a comprehensive assessment of the fertilizer application times and dates corresponding to each crop is of great significance with respect to improving the accuracy of  $\text{NH}_3$  emission inventories. Therefore, details regarding the fertilization months and the fertilization ratios corresponding to basal dressing and top dressing for the three main crops were considered (Fig. 1). For other crops, we also identified the corresponding fertilization dates and ratios according to their respective  
130 phenological periods by collecting large amounts of data from existing literatures and reports ([Zhang et al., 2009](#); [Zhang and Zhang, 2012](#); [Zhang et al., 2018](#)).

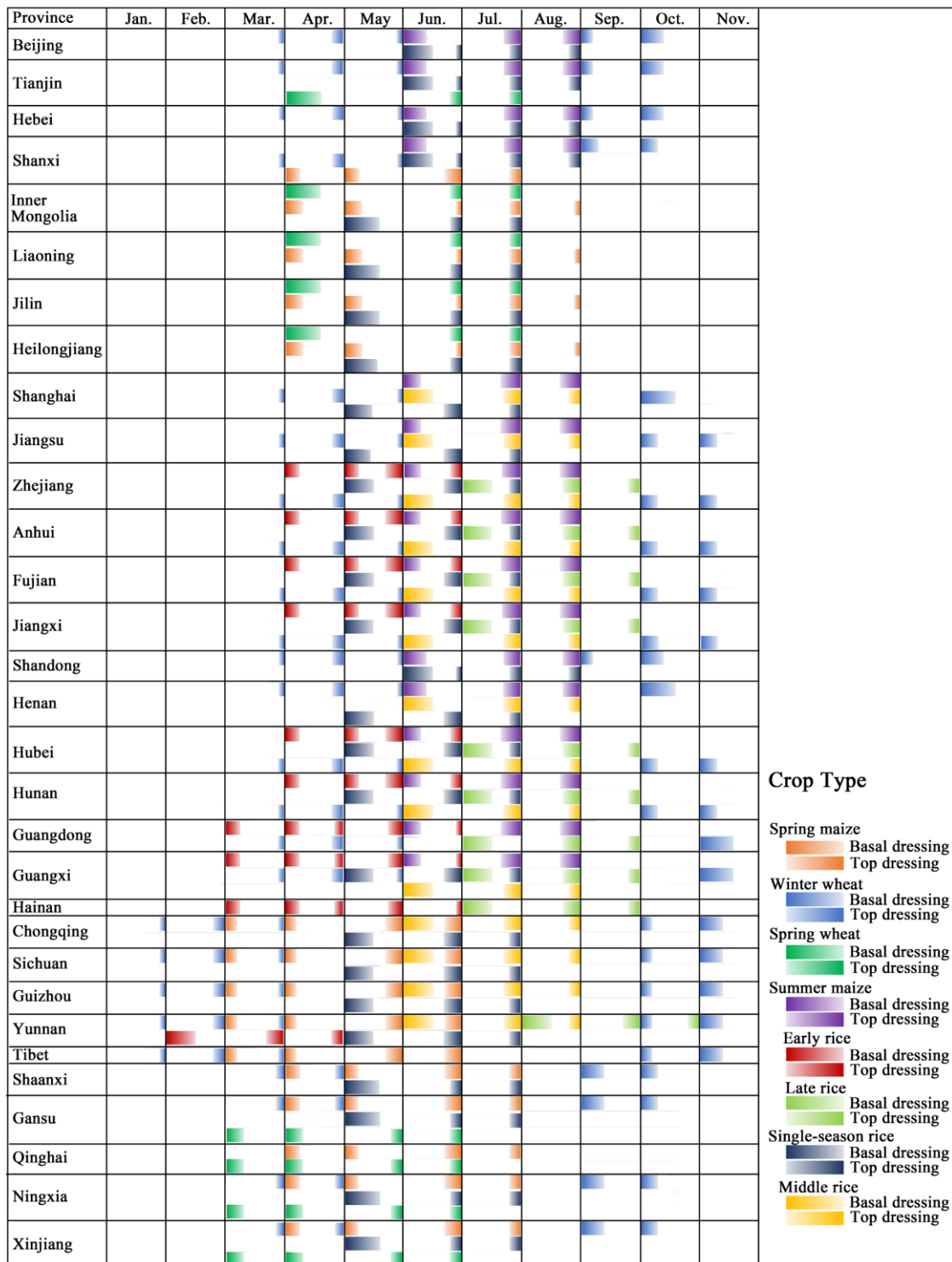


Fig. 1. Basal and topdressing fertilization months and ratios for maize, wheat, and rice in China.

135 (2) Given that rice, which is widely cultivated across China, requires N fertilization, the excessive use of N fertilizer results in sizeable NH<sub>3</sub> emissions (Xia et al., 2020). Fig. 1 shows that compared with other crops, the amount of fertilizer applied to rice in different months is more complex. This implies that more attention should be paid to the spatial allocation of fertilizer quantity corresponding to rice. Therefore, using the spatial distribution of each rice sub-category (i.e., early, late, single-season, and middle rice) as spatial proxies, rather than the overall spatial distribution of rice, can greatly minimize the

140 spatial bias of NH<sub>3</sub> emissions from rice fertilization applications. In this study, we used a variety of data to integrate the spatial distribution of the four rice types in the country. First, spatial distribution data corresponding to the abovementioned rice types in ten provinces of southern China (Henan, Jiangsu, Anhui, Hubei, Hunan, Jiangxi, Zhejiang, Fujian, Guangdong, and Shanghai) were directly obtained from (Qiu et al., 2015). This dataset was proposed based on 500 m 8 day composite Moderate Resolution Imaging Spectroradiometer (MODIS) Enhance Vegetation Indices with two bands (EVI2). Its efficiency was

145 validated using data from 763 ground survey sites, and it showed an overall accuracy of 95.02%. Second, for other provinces, we used land use and land cover change (LUCC) data as well as cropping frequency data. Areas where paddy fields overlap with a single cropping frequency were considered as single-season rice areas. Such areas were primarily distributed in Northeast China. Further, areas where paddy fields overlap with a double cropping frequency were considered double-cropping or middle-rice areas. According to the yield of the two rice types in each province, the spatial distribution of early/late rice and

150 middle rice areas can be further distinguished. LUCC data and cropping frequency data with a resolution of 1 km were downloaded from the Resource and Environment Science and Data Center (<http://www.resdc.cn/data.aspx?DATAID=184> and <http://www.resdc.cn/DOI/doi.aspx?DOIid=42>). The spatial distributions of the rice types (single-season rice, middle rice, and early/late rice) are shown in Fig. S1. For other crops, we used the EarthStat dataset on crop harvest area (Monfreda et al., 2008), which provides global crop harvest areas and yields at a 5 min × 5 min resolution.

155

After completing the above improvements, we further considered the effects of soil properties, agricultural activity, and meteorological conditions (Bouwman et al., 2002; Zhang et al., 2018). The monthly emission factors corresponding to fertilizer application were calculated as follows:

$$EF = EF_0 \times e^{f_{pH} + f_{CEC} + f_{crop} + f_{method}} \times \alpha \quad (3)$$

160 where  $EF_0$  represents the baseline emission factors that reported by (Cai et al., 2002; Dong et al., 2009; Zhou et al., 2016) (Table S2),  $f$  represents the effects of soil pH, soil cation exchange capacity (CEC), fertilization types (basal dressing and top dressing), and crop types (upland crops and paddy field crops) based on (Bouwman et al., 2002; Zhang et al., 2018). Soil pH and CEC data were obtained from the Harmonized World Soil Database (<http://www.fao.org/land-water/databases-and-software/hwsd/en/>). Detailed  $f$  values are listed in Table S2. Further,  $\alpha$  represents the monthly scalar, which was applied to

165 characterize the influence of meteorological factors on NH<sub>3</sub> emissions (Gyldenkaerne et al., 2005; Zhang et al., 2018).

$$\alpha = (e^{0.0223T_i + 0.0419W_i}) / (\frac{1}{12} \sum_{i=1}^{12} e^{0.0223T_i + 0.0419W_i}) \quad (4)$$

where  $T_i$  and  $W_i$  represent 2 m air temperature (°C) and 10 m wind speed (m/s) for a given month,  $i$ , respectively. T and W were processed using ECMWF ERA5 Reanalysis data (<https://www.ecmwf.int/en/forecasts/datasets/reanalysis-datasets/era5>).

## 2.2 NH<sub>3</sub> emission from livestock waste

170 Traditional NH<sub>3</sub> emissions from livestock waste are usually calculated as a product of livestock population and the  
corresponding emission factors. In this study, a more process-based mass-flow approach was applied, considering nitrogen  
transformation at the different stages of manure management (Huang et al., 2012; Kang et al., 2016; EEA, 2019). The total  
ammoniacal nitrogen (TAN) amount was obtained using the annual livestock amount, the daily amount, and the nitrogen  
content of urine and feces for each livestock category. Details in this regard are provided in Table S3. The outdoor and indoor  
175 generated TAN contents were separately estimated based on the proportion of the time each livestock category spent indoor  
and outdoor, respectively. There are three main livestock breeding systems in China, namely grazing, free-ranging, and  
intensive livestock breeding systems. Among them, half of the livestock urine and feces corresponding to the grazing and free-  
range systems are discharged indoors. However, for intensive livestock breeding, all the livestock urine and feces are  
discharged indoors (MEP, 2014). Grazing is practiced only in pastoral and semi-pastoral areas, i.e., in 13 provinces (Hebei,  
180 Shanxi, Inner Mongolia, Liaoning, Jilin, Heilongjiang, Sichuan, Yunnan, Tibet, Gansu, Qinghai, Ningxia, and Xinjiang).  
According to the nitrogen flow and phase of manure management, the activity levels were classified under seven categories:  
outdoor, housing solid, housing liquid, storage solid, storage liquid, spreading solid, and spreading liquid. Thus, NH<sub>3</sub> emissions  
from livestock were calculated as a product of the TAN of the seven categories and the corresponding emission factors (Huang  
et al., 2012; MEP, 2014; Kang et al., 2016). Livestock production in each province was obtained from MARA (2017) and NBS  
185 (2017c).

After estimating the NH<sub>3</sub> emissions corresponding to the three livestock breeding systems in different provinces, we  
allocated the grazing emissions to grids based on grassland areas in the pastoral and semi-pastoral areas and allocated the  
emissions from free-range and intensive livestock production based on the corresponding rural residential areas. In addition to  
emissions from fertilizer applications, the influence of meteorological factors on NH<sub>3</sub> emissions from livestock waste was also  
190 considered. For outdoor NH<sub>3</sub> emissions, we considered the influence of monthly temperature and wind speed using Eq. (3),  
while accounting only for air temperature for indoor emissions (Zhang et al., 2018).

## 2.3 NH<sub>3</sub> emission from other sources

NH<sub>3</sub> emissions from combusted crop residue were estimated based on crop yield, grain-to-straw ratio, combustion ratio, and  
combustion efficiency (Zhou et al., 2017). The contribution of firewood combustion to NH<sub>3</sub> emissions was derived from (Cong  
195 et al., 2017). Additionally, grassfire and forest fire data were obtained by coupling MCD14ML and MCD64A1 fire products



based on previous studies (Qiu et al., 2016; Li et al., 2018). The emissions originating from human excrement were calculated based on the daily excretion data corresponding to children and adults, rural populations, and the fraction of tatty latrines in each province (Huang et al., 2012). The emissions corresponding to the total mileage for each vehicle category were calculated using the number of vehicles and the average annual mileage. Further, NH<sub>3</sub> emissions from other sources were determined following the approaches proposed by previous studies (Huang et al., 2012; Kang et al., 2016). Relevant data were obtained from NBS, 2017a, b, c, and d. The specific emission factors and spatial allocation methods for each source are listed in Table S4.

## 2.4 NH<sub>3</sub> emission inventory uncertainty and accuracy evaluation

The uncertainty of NH<sub>3</sub> emissions was calculated using the Monte Carlo method, which has been widely used in various inventory studies (Zhao et al., 2011; Kang et al., 2016; Li et al., 2019a). Based on previous studies, we assumed that the uncertainties in the activity levels and emission factors were uniformly and normally distributed. The detailed parameters of the CVs of the two datasets were derived from Huang et al. (2012). The NH<sub>3</sub> emission calculations were replicated 10,000 times with a random selection of all the inputs.

Additionally, the NH<sub>3</sub> emission inventory established in this study and the MEIC inventory were applied to WRF-Chem to evaluate the inventory accuracy. Emissions of other air pollutants in 2016 (including SO<sub>2</sub>, NO<sub>x</sub>, CO, CO<sub>2</sub>, NMVOC, BC, OC, PM<sub>2.5</sub>, and PM<sub>10</sub>) were obtained from MEIC (<http://meicmodel.org/>), with a horizontal resolution of 0.25° (Li et al., 2017b). Simulations were conducted for January, April, July, and October in 2016, to represent the four typical seasons. The simulation domain with a resolution of 27 km is shown in Fig. 2, which covers most parts of North, East, Central, and South China. Areas in China with high NH<sub>3</sub> emission density are shown in Fig. 4. Inventory accuracy was further assessed using WRF-Chem and available ground station- and satellite-based observations. First, we compared the NH<sub>3</sub> VCDs obtained using infrared atmospheric sounding interferometer (IASI) satellite observations and with those from WRF-Chem using our estimated inventory and MEIC for the four selected months. Daily IASI NH<sub>3</sub> VCDs were downloaded from the ESPRI data center (<https://cds-espri.ipsl.upmc.fr/etherTypo/index.php?id=1700&L=1>). The mean local solar overpass times were 9:30 am and 9:30 pm at the equator. Furthermore, in this study, only the IASI NH<sub>3</sub> VCDs collected from the morning orbit were considered, as they are generally more sensitive to NH<sub>3</sub> emissions owing to their higher thermal contrast (Van Damme et al., 2014; Van Damme et al., 2015). Furthermore, to ensure comparison accuracy, the average simulated NH<sub>3</sub> concentrations at 09:00 and 10:00 local time were applied to calculate the simulated NH<sub>3</sub> VCDs (Zhao et al., 2020). Second, we compared the NH<sub>3</sub> concentrations simulated using WRF-Chem to ground observation data, in January, April, and July 2016 (as ground observation data were not available for October 2016). Specifically, observed NH<sub>3</sub> concentrations were obtained from the Ammonia Monitoring Network in China (AMoN-China) (Pan et al., 2018), and the simulation domain of WRF-Chem consisted of 30 sampling stations from AMoN-China (Fig. 2).

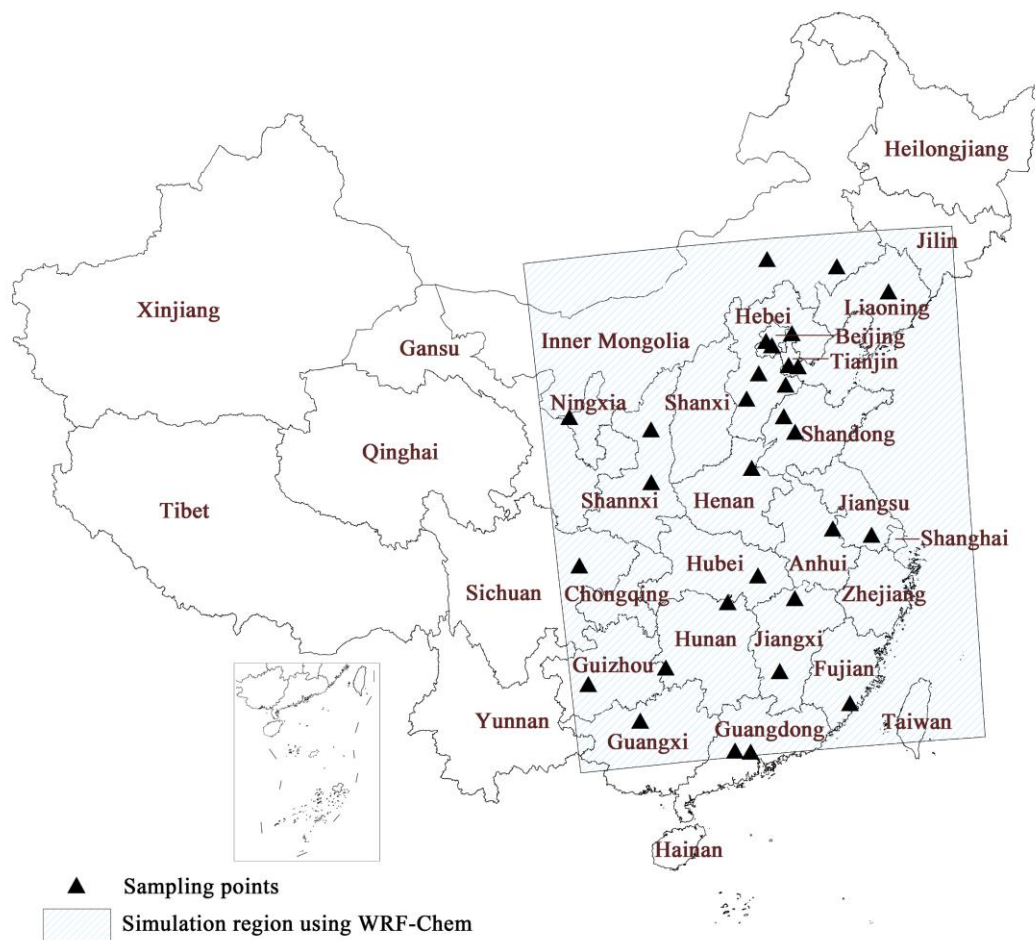


Fig. 2. WRF-Chem simulation domain and sampling points (Ammonia Monitoring Network, China).

### 3 Results and discussion

#### 230 3.1 Emissions and main sources of NH<sub>3</sub> in China

In 2016, the total atmospheric ammonia emission in mainland China was 12.11 Tg (10.54–16.04 Tg, 95% confidence interval based on a Monte Carlo simulation), and the emission density was 1.28 t/km<sup>2</sup>. This total NH<sub>3</sub> emission amount was found to be approximately three-fold that obtained for Europe (4.18 Tg) (Backes et al., 2016), and contributed approximately 38 and 27% of Asian and global NH<sub>3</sub> emissions, respectively (Bouwman et al., 1997; Kurokawa and Ohara, 2020). Further, this estimated emission was relatively close to the improved emissions based on AMoN-China and the Ensemble Kalman Filter (13.1 Tg) (Kong et al., 2019). It was also close to the improved bottom-up emission (11.7 Tg) reported by Zhang et al. (2018). However, the estimation was approximately 25% higher than that reported by Kang et al. (2016), and approximately 15%

235

lower than the REAS emission [Kurokawa and Ohara \(2020\)](#). Table 2 presents a quantitative comparison of this emission inventory with those reported in previous studies.

240

**Table 2. Comparison of estimated NH<sub>3</sub> emissions with those obtained in other studies.**

Source	Base year	Total	References
EDGARv5.0	2015	8.9	<a href="https://edgar.jrc.ec.europa.eu/dataset_ap50">https://edgar.jrc.ec.europa.eu/dataset_ap50</a>
REASv3	2015	14.1	( <a href="#">Kurokawa and Ohara, 2020</a> )
MEIC	2016	10.3	<a href="http://meicmodel.org/">http://meicmodel.org/</a>
MASAGE_NH3	2007	8.4	( <a href="#">Paulot et al., 2014</a> )
Zhang et al.	2015	15.6	( <a href="#">Zhang et al., 2017</a> )
Huang et al.	2006	9.8	( <a href="#">Huang et al., 2012</a> )
Xu et al.	2008	8.4	( <a href="#">Xu et al., 2016</a> )
Xu et al.	2010	10.7	( <a href="#">Xu et al., 2015</a> )
Kang et al.	2012	9.7	( <a href="#">Kang et al., 2016</a> )
Kong et al.	2016	13.1	( <a href="#">Kong et al., 2019</a> )
Zhang et al.	2008	11.7	( <a href="#">Zhang et al., 2018</a> )
Streets et al.	2000	13.6	( <a href="#">Streets et al., 2003</a> )
Zhao et al.	2010	9.8	( <a href="#">Zhao et al., 2013</a> )
This study	2016	12.1	This study

Similar to other studies, livestock waste (5.42 Tg) and fertilizer application (4.67 Tg) were identified as the two largest NH<sub>3</sub> emission sources in China, with their contribution to the total NH<sub>3</sub> emission amount reaching over 80% (Fig. 3). Other sources included synthetic ammonia (0.43 Tg), agriculture soil (0.29 Tg), indoor biomass combustion (0.30 Tg), domestic coal combustion (0.26 Tg), nitrogen fertilizer production (0.22 Tg), transportation (0.10 Tg), and others (0.4 Tg), with contributions to the total emission amount as follows: 3.5, 2.4, 2.5, 2.2, 1.8, 0.9, and 3.3%, respectively.

Similar to previously reported results, with respect to the different fertilizers considered, urea was identified as the major contributor to NH<sub>3</sub> emissions, accounting for approximately 45.4% of fertilizer type-related NH<sub>3</sub> emissions (Fig. 3). [Kang et al. \(2016\)](#) observed that ABC is an important source of fertilizer type-related NH<sub>3</sub> emission source owing to its high volatility; however, in 2016, it only accounted for 12.9% of fertilizer type-related NH<sub>3</sub> emissions. This is because, in recent years, there has been a significant decrease in the proportion of ABC-related emissions in China owing to the decrease in the amounts of ABC applied to the three main crops, maize, rice, and wheat (from 26.55 kg/hm<sup>2</sup> in 2011 to 10.80 kg/hm<sup>2</sup> in 2016, i.e., a 59.32% reduction). However, emissions related to complex fertilizers have increased by 33.61% ([NDRC, 2017](#)). Specifically, NPK fertilizers have become the second-largest source of fertilizer-related NH<sub>3</sub> emissions in China (26.7%). Therefore, replacing ABC with complex fertilizers might reduce fertilizer-related NH<sub>3</sub> emissions.

255

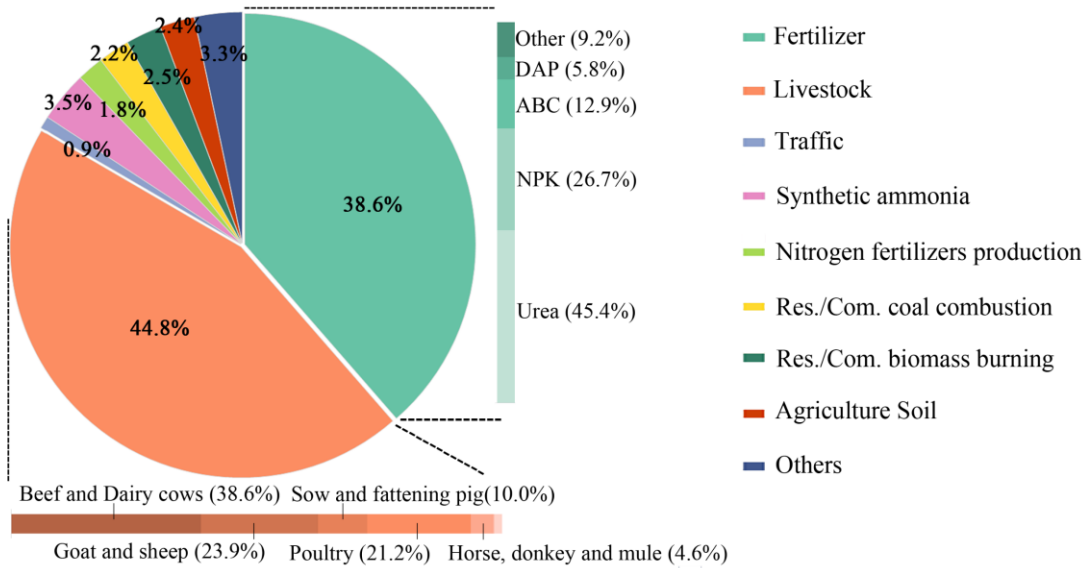
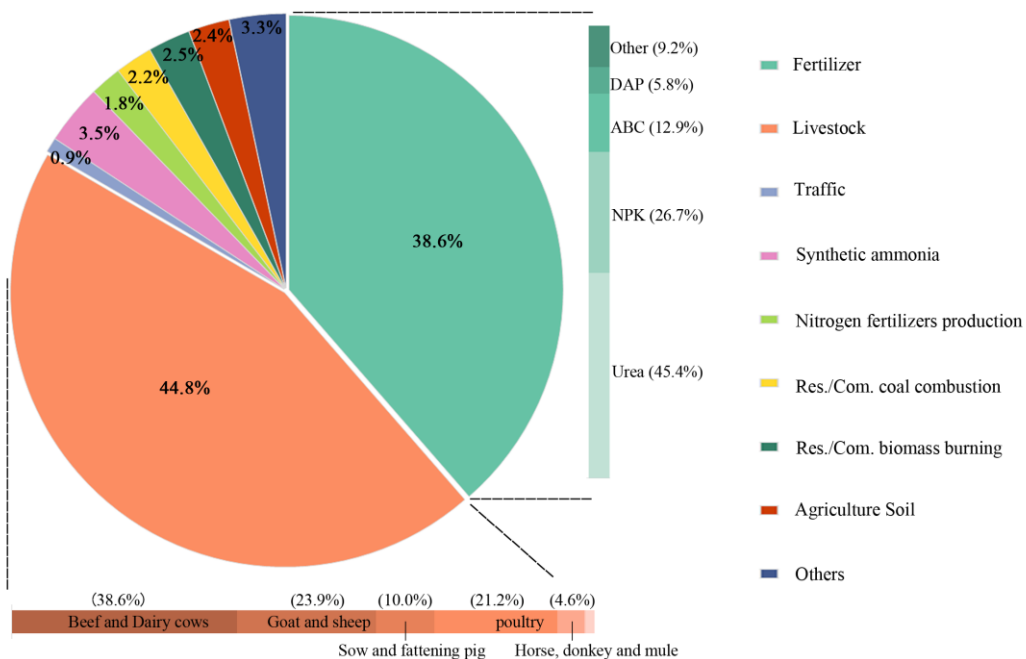


Fig. 3. Contributions of different sources (%) to NH<sub>3</sub> emissions in mainland China (2016).

Maize fertilization contributed the most to NH<sub>3</sub> emissions (1.21 Tg), accounting for 25.94% of fertilizer application-related emissions. This observation could be primarily attributed to the planting area of maize—the largest of the total crop

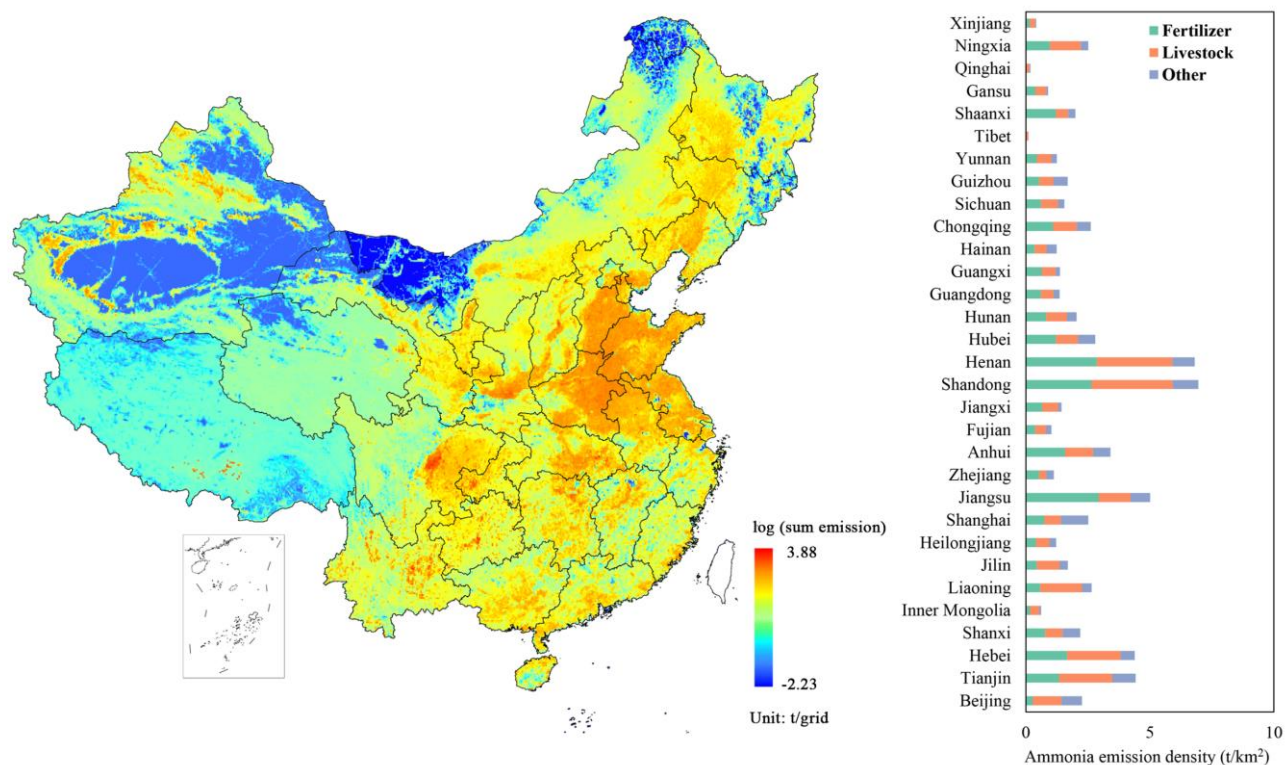
area, up to 22.06% (NBS, 2017c). Moreover, the maize fertilization dates were concentrated in summer, and the high temperature further increased the NH<sub>3</sub> emission rate. It is also worth noting that vegetable fertilization has become the second-  
265 largest fertilizer application-related NH<sub>3</sub> emission source (0.89 Tg), i.e., 19.06%, based on our estimation. In addition to the relatively large area corresponding to vegetable cultivation in China, vegetable-related fertilizer application rates were higher than those corresponding to the three major crops considered in this study (Wang et al., 2018). The amounts of urea, DAP, and NPK used in the fertilization of vegetable-cultivated land were 1.29, 1.77, and 1.40 times those applied in cropland for cultivating the three main crops, respectively. This is due to the lack of scientific fertilization methods for vegetables in China  
270 (NDRC, 2017). Further, rice and wheat fertilization accounted for 17.47 and 14.80% of fertilizer application-related emissions, respectively. Furthermore, NH<sub>3</sub> emissions corresponding to the above four crop types accounted for more than 75% of the total NH<sub>3</sub> emissions from fertilizer application.

Regarding livestock waste, beef and dairy cow waste were the largest contributors (38.6%) to livestock waste-related NH<sub>3</sub> emissions. This was followed by goats and sheep waste (23.9%) and poultry waste (21.2%); this is consistent with Kang  
275 et al. (2016). Further, we analyzed animal breeding system-related nitrogen transformation and migration and observed that the contributions of the four manure management stages to NH<sub>3</sub> emissions were 1.06, 1.14, 0.85, and 2.73 Tg for outdoor (19.60%), housing (21.10%), manure storage (15.65%) and manure spreading (43.65%), respectively. This is also consistent with the results of Xu et al. (2017). Our analysis also showed that the free-range system is the largest contributor to livestock waste-related NH<sub>3</sub> emissions, i.e., 2.80 Tg, which accounted for 51.6% of the total livestock waste-related emissions. This was  
280 followed by the intensive system (1.92 Tg, 35.47%), and lastly, the grazing system (0.70 Tg, 12.90%). The rapid increase in the proportion of intensive livestock raising has slowed down NH<sub>3</sub> emissions to a certain extent (Qian et al., 2018).

### 3.2 Geographical distribution of NH<sub>3</sub> emissions

The spatial distribution of NH<sub>3</sub> emissions in 2016 is shown in Fig. 4, from which a strong spatial variability is evident. The highest NH<sub>3</sub> emission density of 6.96 t/km<sup>2</sup>, which was 5.44-fold higher than the national average (1.28 t/km<sup>2</sup>), was observed  
285 in Shandong. Furthermore, 21 provinces had NH<sub>3</sub> emissions above this national average density, and the provinces with emission densities exceeding 3 t/km<sup>2</sup> included: Shandong (6.96 t/km<sup>2</sup>), Henan (6.81 t/km<sup>2</sup>), Jiangsu (5.01 t/km<sup>2</sup>), Tianjin (4.43 t/km<sup>2</sup>), Hebei (4.39 t/km<sup>2</sup>), and Anhui (3.41 t/km<sup>2</sup>). Although these six provinces account for only 8.08% of the total land area of mainland China, they contributed 33.74% of NH<sub>3</sub> emissions in China. These provinces are all concentrated in the North China Plain (NCP, which includes the above six provinces and Beijing), an area that features well-developed crop farming and  
290 animal husbandry. The NCP contains a large amount of high-quality arable land, and the farms in this area produce 34.47% of China's major farm products (NBS, 2017c). The fertilization of crops emits large amounts of NH<sub>3</sub>. The soil in this area is alkaline (the average pH value is 7.15), which further increases the NH<sub>3</sub> volatilization. Additionally, the NCP produces as much as 28.16 million tons of pork and beef per year, accounting for 32.5% of the total (NBS, 2017c), contributing to higher NH<sub>3</sub> emissions in the North China Plain.

295



**Fig. 4. Geographical distribution of 2016 NH<sub>3</sub> emissions and emission densities in China.**

Shandong and Henan provinces not only had the two top emission densities, but their emissions were also the top two in mainland China, reaching 1.13 and 1.08 Tg, respectively. These high emissions could be primarily attributed to the following reasons: First Shandong and Henan are the major agricultural provinces in China. Although they represent only 3.40% of the total land area of mainland China, in 2016, they accounted for 38.43, 17.74, and 16.31% of wheat, maize, and vegetables yields, respectively (NBS, 2017c). The NH<sub>3</sub> emissions corresponding to these three crops were remarkable, accounting for 80.35 and 79.23% of the fertilizer application-related NH<sub>3</sub> emissions in Shandong and Henan, respectively. Second, there are a large number of livestock farms in these two provinces (Hu et al., 2017). Specifically, beef cattle and poultry breeding in the two provinces also resulted in high NH<sub>3</sub> emissions from livestock waste, and only these two provinces showed livestock waste-related emission densities above 3 t/km<sup>2</sup>.

Furthermore, Jiangsu province had the highest fertilizer application-related emission density (2.94 t/km<sup>2</sup>) in China, which was 5.96 times above the national average. This is not only due to the relatively large crop area in this province, but also, more importantly, the fertilizer application rates in this province were much higher than in other provinces. For example, the rates of urea application to wheat and rice, which together constitute the largest planting area in Jiangsu Province, were 191.40 and 223.80 kg/hm<sup>2</sup>, respectively, i.e., 1.42- and 1.97-fold higher than the national average value, respectively. Further,

emissions from fertilizer application accounted for 58.68% of the total NH<sub>3</sub> emissions in Jiangsu. Therefore, enhancing nitrogen fertilizer use efficiency is an important and effective strategy by which NH<sub>3</sub> emissions in Jiangsu can be controlled.

315 The NH<sub>3</sub> emissions in Sichuan and Xinjiang in Western China were also high, ranking fourth (0.75 Tg) and sixth  
(0.68 Tg) in the country, respectively. Specifically, in Sichuan, rice and vegetable cultivation was identified as the principal  
fertilizer application-related NH<sub>3</sub> emission sources, (25.73 and 20.85%, respectively), while cotton cultivation was identified  
as the main emission source in Xinjiang (49.20%). These results reflect the huge differences in planting structure in China. In  
terms of livestock breeding, the largest emission sources in Sichuan were beef cattle and dairy cow breeding (25.43%) and  
goat and sheep breeding (23.79%), while the total contribution of these two livestock breeding practices in Xinjiang was  
320 86.57%, indicating significant differences in dietary habits in the different provinces China. These findings also indicate that  
different livestock waste-related NH<sub>3</sub> emission reduction strategies are needed for different regions. The specific NH<sub>3</sub>  
emissions corresponding to different emission sources in the different provinces are shown in Table 3, and the spatial  
distribution of NH<sub>3</sub> emissions from fertilizer application, livestock waste, and other sources are shown in Fig. 4.

325 **Table 3. NH<sub>3</sub> emissions (Gg) from various sources in the different provinces in mainland China.**

Province	Fertilizer					Livestock			Other
	Urea	ABC	DAP	NPK	Other	Free	Grazing	Intensive	
Beijing	2.08	0.05	0.36	1.79	0.24	4.10	0.00	15.02	13.53
Tianjin	8.48	0.62	1.94	4.10	0.78	7.75	0.00	17.98	11.14
Hebei	144.97	17.68	28.20	107.11	15.08	185.17	20.51	199.82	107.78
Shanxi	58.93	8.96	10.48	15.15	28.56	48.43	1.41	60.05	112.35
Inner Mongolia	108.06	34.72	30.99	9.97	8.74	40.72	242.87	148.32	79.26
Liaoning	34.11	1.64	6.89	28.43	13.93	118.52	21.97	106.43	56.99
Jilin	37.45	0.85	7.76	17.86	19.93	86.25	25.61	64.39	63.50
Heilongjiang	102.53	0.00	25.23	37.76	18.22	94.23	46.40	105.97	123.07
Shanghai	3.76	0.28	0.02	1.75	0.17	1.92	0.00	3.47	8.90
Jiangsu	178.11	15.06	2.83	86.35	19.56	50.58	0.00	80.92	81.08
Zhejiang	27.87	4.50	0.04	17.26	6.86	16.90	0.00	12.97	32.35
Anhui	107.86	5.00	1.04	82.95	24.12	106.16	0.00	52.50	98.85
Fujian	9.34	17.95	0.01	12.18	7.00	24.37	0.00	28.25	27.29
Jiangxi	44.85	4.27	0.04	46.38	14.21	80.49	0.00	27.27	23.39
Shandong	130.75	24.10	20.42	196.05	40.66	258.12	0.00	252.73	162.09
Henan	165.76	59.08	9.18	174.22	65.62	340.50	0.00	164.65	148.63
Hubei	52.13	78.79	0.63	65.15	29.63	92.95	0.00	72.38	128.85
Hunan	61.72	36.60	0.31	44.12	31.02	137.98	0.00	40.30	81.46
Guangdong	46.33	9.94	0.08	50.38	2.04	66.26	0.00	24.40	43.17
Guangxi	65.03	9.89	0.40	59.97	17.49	111.96	0.00	18.50	42.76
Hainan	4.50	0.09	0.00	6.39	1.29	14.91	0.00	2.08	13.99
Chongqing	27.76	24.63	0.05	31.70	6.19	68.94	0.00	10.62	45.50
Sichuan	103.66	106.80	0.18	60.43	23.38	231.96	44.73	62.37	119.67
Guizhou	57.67	4.47	0.31	18.49	13.43	82.93	0.00	17.67	102.41
Yunnan	109.41	23.92	1.29	24.32	12.81	189.80	1.63	35.94	78.72
Tibet	0.50	0.38	0.01	0.15	0.09	54.33	52.32	5.84	6.94
Shaanxi	110.84	85.87	21.93	27.75	1.55	77.98	0.00	24.59	59.27
Gansu	112.96	5.27	27.01	13.36	6.88	70.96	50.25	62.81	32.24
Qinghai	5.79	0.52	2.21	0.41	0.17	3.76	69.85	19.27	25.99
Ningxia	18.76	19.07	7.85	4.93	0.00	15.96	18.16	30.46	15.56
Xinjiang	177.39	1.10	62.57	2.61	1.48	114.87	103.78	155.04	64.84
Sum	2119.36	602.09	270.23	1249.44	431.14	2799.77	699.49	1923.02	2011.59

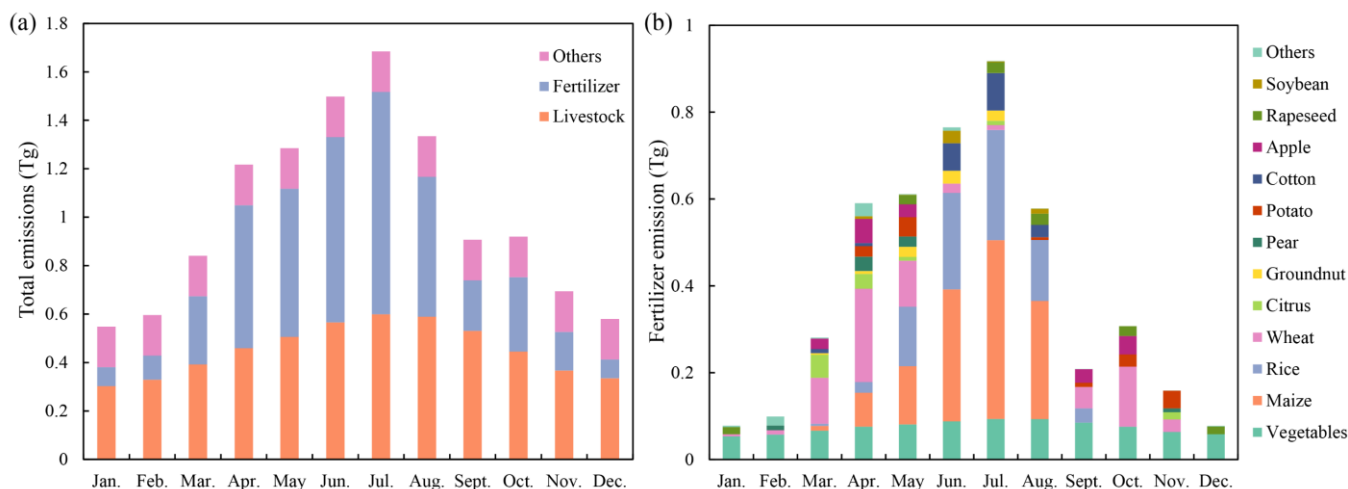
### 3.3 Monthly variation of NH<sub>3</sub> emissions

The monthly variation of NH<sub>3</sub> emissions from the main emission sources is shown in Fig. 5. Unlike some pollutants (such as PM<sub>2.5</sub> and BC) which exhibit higher emissions in winter, NH<sub>3</sub> emissions tended to be high in summer and low in winter. The



highest and lowest emissions (1.68 and 0.55 Tg, respectively) were recorded in July and January, respectively; the July to January emission ratio was 3.08, which is close to the ratio obtained based on IASI satellite observations (2.85), and larger than that based on MEIC data (1.72).

Further, a comparison of the monthly trend of NH<sub>3</sub> emissions based on IASI satellite observations with that obtained in this study showed a strong correlation between the two trends ( $R^2 = 0.85$ ). Owing to temperature changes, livestock waste-related emissions increased slowly from 0.30 Tg in January to 0.60 Tg in July, and then gradually decreased to 0.34 Tg in December. Additionally, the monthly fluctuation of fertilizer application-related NH<sub>3</sub> emissions was greater than that of livestock waste-related emissions (Fig. 5(a)). Fertilizer application-related NH<sub>3</sub> emissions in July were 11.79 times than those observed in January. These monthly variations in NH<sub>3</sub> emission amounts could be primarily attributed to the effect of the farming season on fertilization. Thus, we further analyzed monthly NH<sub>3</sub> emission variation with respect to different crops (Fig. 5(b)). The results obtained was observed that maize and rice fertilization in summer was primarily responsible for the increase in NH<sub>3</sub> emissions in China. For example, NH<sub>3</sub> emissions from maize and rice fertilization in July accounted for 44.89 and 27.61% of the total fertilizer application-related NH<sub>3</sub> emissions, followed by cotton fertilization (8.59%). Even though wheat also contributed significantly to NH<sub>3</sub> emissions (14.80%), the emissions were primarily concentrated in April and September, accounting for 36.38 and 23.47% of the emissions from fertilizer application in these months, respectively.



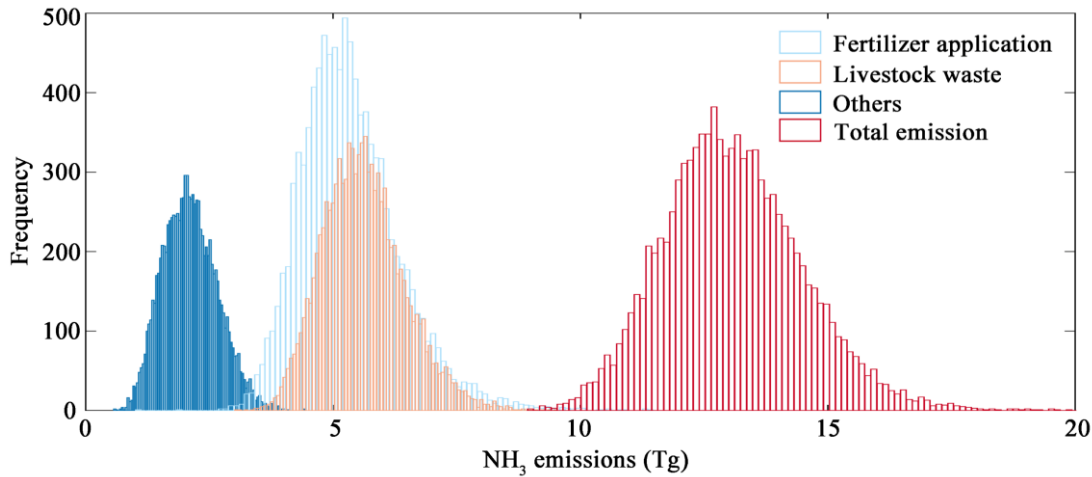
345 **Fig. 5. Monthly NH<sub>3</sub> emissions from: (a) Different sources and (b) Different crops.**

### 3.4 Uncertainty and accuracy of the NH<sub>3</sub> emission inventory

#### 3.4.1 Uncertainty

Uncertainty in the estimated NH<sub>3</sub> emissions results from both the activity level and EF input data. We ran 10000 Monte Carlo simulations to estimate the range of NH<sub>3</sub> emissions from each source with a 95% confidence interval. The estimated total NH<sub>3</sub> emission range was 10.5-16.0 Tg. The 95% confidence intervals of fertilizer application, livestock waste, and others ranged

from -20.5% to 64.41%, -23.0% to 37.1% and -42.9% to 62.4% (Fig. 6). Due to the large amounts of NH<sub>3</sub> emitted by fertilizers and livestock waste, the uncertainty of total NH<sub>3</sub> emissions is mainly caused by the uncertainties of these two sources. The uncertainty of fertilizer application was slightly greater than that of livestock waste. The emission factors, especially the corrected EF, were the largest contributors to the uncertainties of fertilizer application emissions. Additionally, it is clear that  
355 NH<sub>3</sub> emissions from other sources exhibited the largest uncertainty (-42.9% to 62.4%), mainly due to the high degree of uncertainty resulting from the many sub-sources, such as -77.1% ~ 96.9% of the transportation sector and -79.4% ~ 122.7% of the industrial sector. In comparison, the emissions from other sources were relatively small; hence, the large uncertainties of other sources did not have a significant impact on the uncertainty of total NH<sub>3</sub> emissions.



360 **Fig. 6. Uncertainties of NH<sub>3</sub> emissions sourced from fertilizer application, livestock waste, and others.**

### 3.4.2 Temporal accuracy of NH<sub>3</sub> emission inventory

We verified the accuracy of the monthly NH<sub>3</sub> emission trends obtained in this study by determining the correlation between the monthly IASI satellite observations and the monthly emissions of two inventories (MEIC and our study) in 2016. It was observed that the monthly trend of our inventory was significantly more correlated with the IASI data ( $R^2 = 0.84$ ) than the  
365 MEIC inventory ( $R^2 = 0.70$ ). The correlations of the monthly trends of the IASI data and the two inventories were also compared for different regions in China. The results showed that except for Central China, the correlations of the monthly trends between our inventory and IASI data were higher than those between the MEIC inventory and IASI data (Table 4). Additionally, the July to January emission ratio was used to further verify inventory accuracy, and it was observed that our emission inventory ratios were close to those based on IASI data for all regions of China. However, the ratios based on MEIC  
370 data were relatively lower, possibly owing to the underestimation of NH<sub>3</sub> emissions in summer.

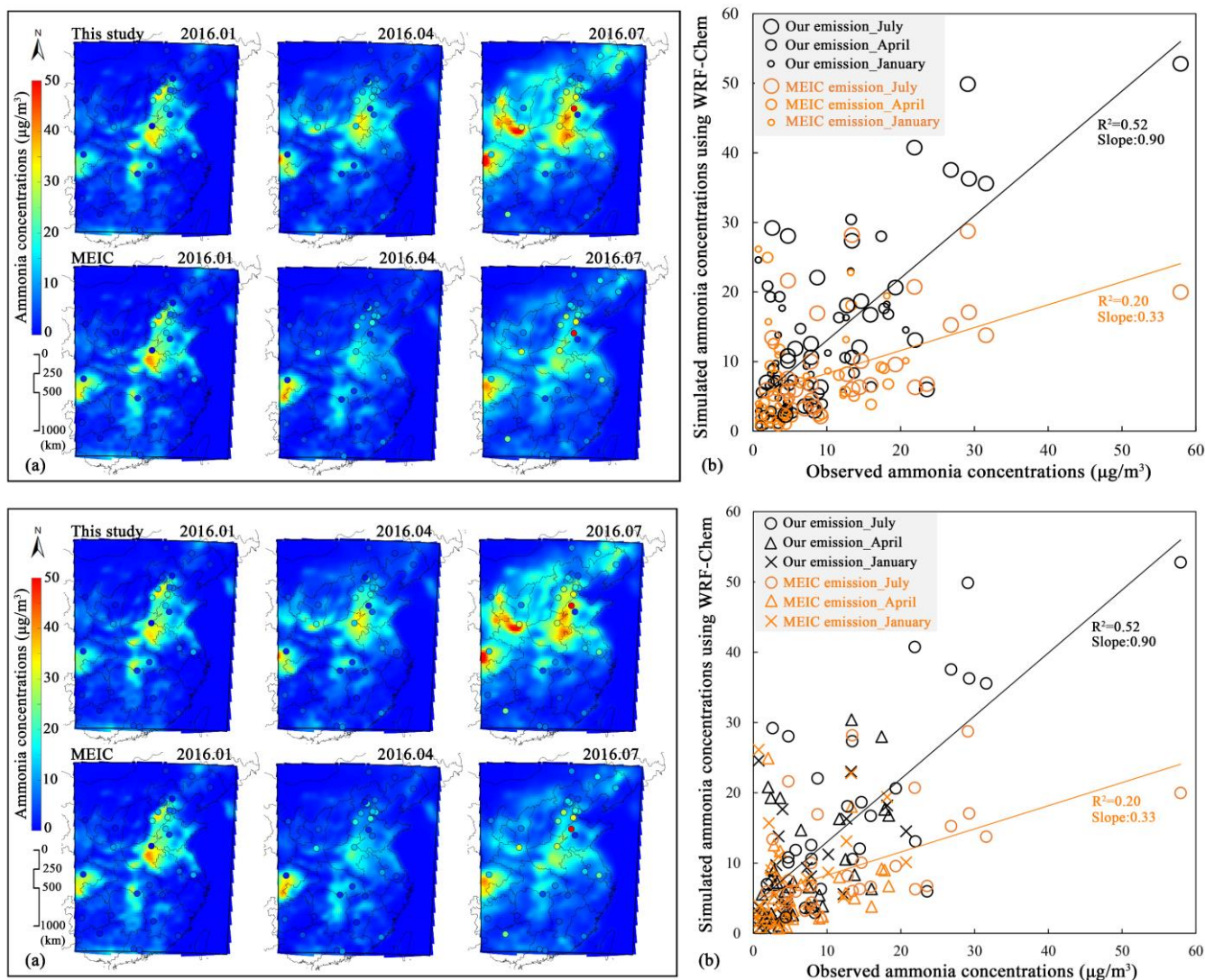
**Table 4. Comparison of the monthly NH<sub>3</sub> emission trends corresponding to IASI satellite observations with the two inventories.**

Region	R <sup>2</sup>		July/Jan ratio		
	IASI vs. OUR	IASI vs. MEIC	IASI	OUR	MEIC
Northeast China	<b>0.92</b>	0.67	3.81	3.94	1.66
Northern China	<b>0.79</b>	0.69	2.77	3.51	1.66
Eastern China	<b>0.62</b>	0.53	4.63	3.51	1.81
Southern China	<b>0.58</b>	0.33	3.93	2.01	1.84
Central China	0.47	0.57	4.09	2.83	1.75
Southwest China	<b>0.43</b>	0.31	2.22	2.02	1.61
Northwest China	<b>0.79</b>	0.59	2.16	3.58	1.77
Beijing-Tianjin-Hebei region	<b>0.59</b>	0.58	3.95	3.35	1.69
Yangtze River Delta region	<b>0.62</b>	0.49	5.45	3.98	1.95
Mainland China	<b>0.84</b>	0.70	2.85	3.08	1.72

Note: R<sup>2</sup> value was obtained by fitting the 2016 monthly values between IASI satellite observations and the NH<sub>3</sub> emissions from two inventories (MEIC and our study). The R<sup>2</sup> values in bold represent improved monthly NH<sub>3</sub> emission trend in our inventory compared to that of the MEIC inventory in the corresponding regions.

### 375 3.4.3 Spatial accuracy of our NH<sub>3</sub> emission inventory

We compared the simulated NH<sub>3</sub> concentration using WRF-Chem to ground observations obtained from AMoN-China in January, April, and July (Fig. 7(a)). Thus, it was observed that the spatial accuracy of our inventory was better than that of the MEIC inventory. Additionally, the simulated NH<sub>3</sub> concentration based on our inventory showed high correlation with ground-based observations (R<sup>2</sup> = 0.52), with a slope of 0.9 (close to 1). However, the correlation between the simulated concentration based on MEIC data and ground-based observations was relatively low, R<sup>2</sup> = 0.20, with a slope of only 0.33 (Fig. 7(b)). ~~These findings indicate that the MEIC inventory possibly underestimates NH<sub>3</sub> emissions.~~ The y-intercepts of the trend lines between the ground observations and the simulated measurements using MEIC and our inventory were respectively 5.0 and 4.0. Positive intercepts mainly resulted from simulation results that overestimated the NH<sub>3</sub> concentrations at relatively low values (Fig. 7(b)) (e.g., the simulation for January). However, the MEIC inventory may have underestimated the NH<sub>3</sub> concentration in areas with a high emission density (e.g., the simulation for the North China Plain in July). For each month, we found similar results for the spatial accuracy of our inventory, which were better than that of the MEIC. The R<sup>2</sup> values and slopes obtained by fitting the ground-based observations with the NH<sub>3</sub> concentrations simulated via the MEIC yielded an R<sup>2</sup> of 0.18 and slope of 0.54 in January, R<sup>2</sup> of 0.01 and slope of 0.11 in April, and R<sup>2</sup> of 0.21 and slope of 0.28 in July, which were significantly lower than those obtained by fitting the simulated NH<sub>3</sub> concentrations using our inventory and the ground-based observations (R<sup>2</sup> of 0.27 and slope of 0.68 in January, R<sup>2</sup> of 0.23 and slope of 0.70 in April, and R<sup>2</sup> of 0.53 and slope of 0.87 in July).

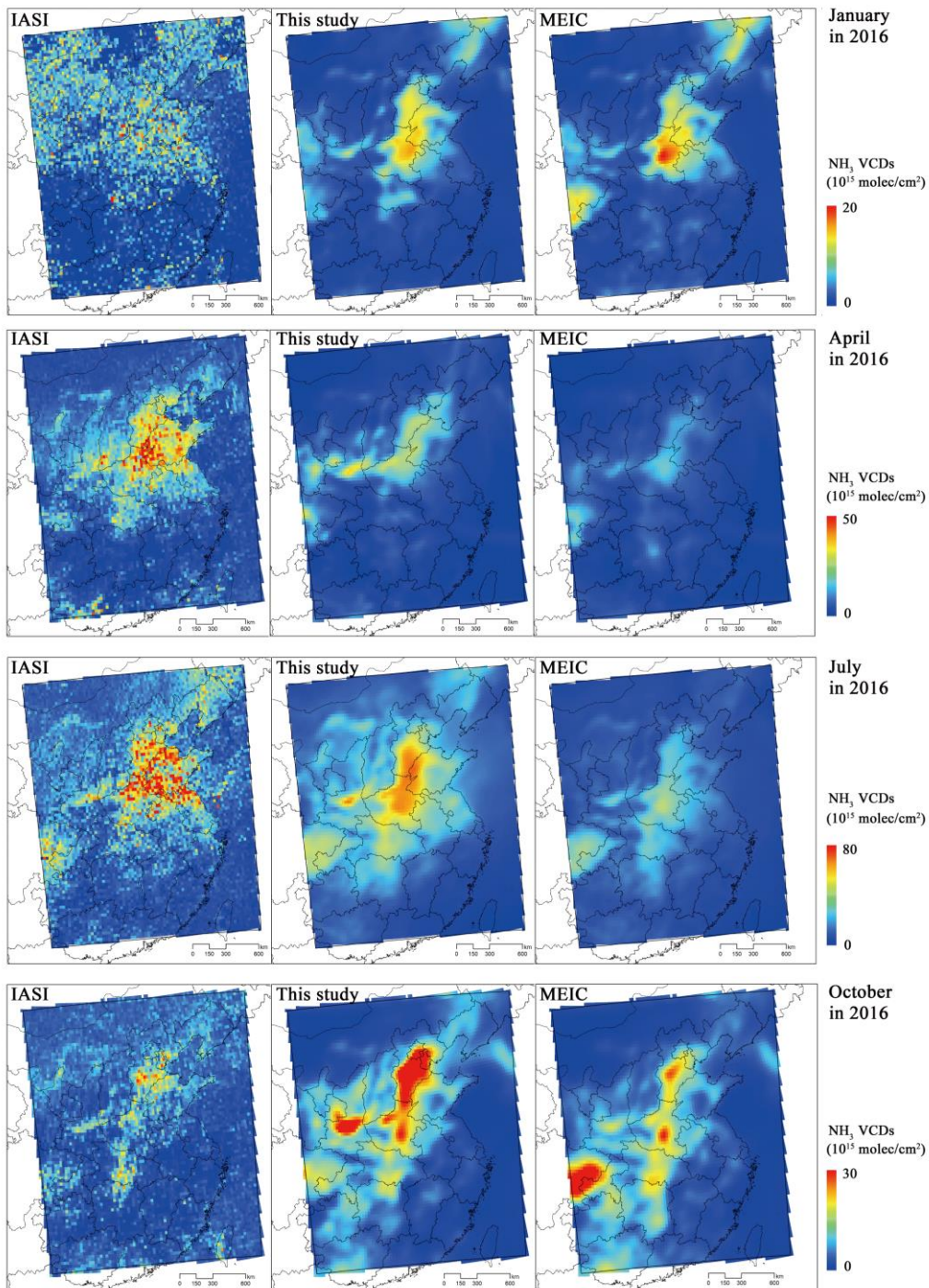


**Fig. 7. (a) Spatial distribution of NH<sub>3</sub> concentrations in 2016, from this study and the MEIC inventory. (b) Correlation between simulated NH<sub>3</sub> concentrations, from different emission inventories, and ground observations obtained from AMoN-China. Circles of different sizes represent the months of January, April, and July.**

We also compared the NH<sub>3</sub> VCDs based on IASI satellite observations with those from WRF-Chem based on the inventory established in this study and that based on MEIC data at a 0.25° resolution. The NH<sub>3</sub> VCDs simulated using our inventory exhibited a similar distribution to that of the IASI VCDs (Fig. 8), and through a density scatter plot, were shown to have a better spatial accuracy than that of the MEIC inventory (Fig. S3). In April and July, fitting the NH<sub>3</sub> VCDs, simulated with our inventory, with the IASI-based VCDs returned coefficients of determination of 0.41 and 0.42, higher than those obtained by fitting the NH<sub>3</sub> VCDs based on MEIC data and IASI data (0.37 and 0.28) (Fig. S3). We observed that the MEIC-

based NH<sub>3</sub> emissions were significantly underestimated for April and July (a slope of only 0.18 and 0.22). The normalized mean biases (NMBs) between IASI VCDs and MEIC-simulated NH<sub>3</sub> VCDs were -76.3% and -42.5% in April and July, respectively. For our simulated NH<sub>3</sub> VCDs, they were -64.9 and 6.1%, respectively. Furthermore, in January and October the spatial accuracy of our inventory (NMB: -23.8% in January, -10.4% in October) was better than that of the corresponding MEIC inventory (NMB: -26.5% in January, -22.9% in October).

In general, our inventory exhibited better spatial accuracy than other inventories that utilize WRF-Chem and observations, although January and October showed a relatively large bias between measured and simulated data. The NH<sub>3</sub> concentrations were low in these two months. We found that the accuracy of the simulation increased as the concentration of atmospheric NH<sub>3</sub> increased. The mean values of IASI NH<sub>3</sub> VCDs in the simulation domain in January and October were  $7.2 \times 10^{15}$  and  $8.7 \times 10^{15}$  molec/cm<sup>2</sup>, respectively, significantly lower than the mean values of  $14.9 \times 10^{15}$  and  $19.4 \times 10^{15}$  molec/cm<sup>2</sup> in April and July. In January and October, the relatively low NH<sub>3</sub> emissions (32.5% and 54.6% of July emissions) combined with the short lifetime of NH<sub>3</sub> and uncertainties in gaseous NH<sub>3</sub> and aerosol NH<sub>4</sub><sup>+</sup> partitioning pose a challenge to the chemical mechanisms of the WRF-Chem model, making it more difficult for the model to fully capture the heterogeneity of NH<sub>3</sub> concentration. Besides, the relatively large uncertainty of the IASI VCDs could also contribute to inconsistency between simulated and observed concentrations (Van Damme et al., 2017; Chen et al., 2020). Zhang et al. (2018) and Zhao et al. (2020) obtained similar results which indicated that the correlations between measured and simulated NH<sub>3</sub> data were lower in January and October than during the other two months.



420

**Fig. 8. The spatial distribution of IASI  $\text{NH}_3$  VCDs and  $\text{NH}_3$  VCDs from WRF-Chem based on the two inventories in January, April, July, and October (2016). Different color scales represent different months to indicate the spatial distribution of the  $\text{NH}_3$  VCDs.**

## 4 Conclusion

425 NH<sub>3</sub>—an important component of the nitrogen cycle—can accelerate the formation of SIAs. Even though several effective  
measures have been taken to reduce SO<sub>2</sub> and NO<sub>x</sub> emissions, the concentration of NH<sub>3</sub> in the atmosphere continues to rise,  
and unfortunately, gridded NH<sub>3</sub> emissions inventories for China still have large uncertainties. Therefore, establishing and  
improving such gridded NH<sub>3</sub> emission inventories can optimize the simulation results of chemical transport models such as  
WRF-Chem; this is of great significance in regional pollution control. Therefore, in this study, we focused on improving NH<sub>3</sub>  
430 emission inventories owing to fertilizer application. To this end, we comprehensively evaluated the times and dates of fertilizer  
application to the major crops that are cultivated in different regions in China, improved the spatial allocation methods for NH<sub>3</sub>  
emissions from different rice types, and established a gridded NH<sub>3</sub> emission inventory for mainland China (2016) with a 5 min  
× 5 min resolution.

The atmospheric ammonia emission in mainland China was found to be 12.11 Tg, and the average emission density  
435 was 1.28 t/km<sup>2</sup>. Livestock waste (44.8%) and fertilization application (38.6%) were identified as the two major NH<sub>3</sub> emission  
sources in China. On the one hand, beef and dairy cow breeding contributed the most to livestock waste-related NH<sub>3</sub> emissions,  
with the free-range system accounting for more than half of the emissions from livestock waste. On the other hand, urea (45.4%)  
and NPK (26.7%) applications were identified as the main fertilizer application-related NH<sub>3</sub> emission sources. NH<sub>3</sub> emissions  
from the cultivation of maize, vegetables, rice, and wheat (25.94, 19.06, 17.47, and 14.8%, respectively) accounted for over  
440 75% of the total emissions from fertilizer application, and in addition to showing the top two emission densities, Shandong  
and Henan Provinces also showed the top two emissions amounts in mainland China, reaching 1.13 and 1.08 Tg, respectively.  
The highest emission (1.68 Tg) was recorded in July and the lowest (0.55 Tg) in January. We also observed a strong correlation  
between the monthly trend of NH<sub>3</sub> emissions based on IASI satellite observations and that established in this study ( $R^2 = 0.84$ ).  
This monthly variation in NH<sub>3</sub> emissions was primarily due to the effect of the farming season on fertilization process.  
445 Specifically, the fertilization of maize and rice in summer was primarily responsible for the increase in NH<sub>3</sub> emissions in China.  
Additionally, the evaluation of the spatial and temporal accuracies of the NH<sub>3</sub> emission inventories obtained in this study using  
WRF-Chem and AMoN-China observations as well as IASI VCDs indicated that the accuracy of our inventory is better than  
that of other inventories.

We believe that the improved NH<sub>3</sub> emission inventory can be used in future research, to simulate atmospheric aerosol  
450 formation, investigate the influence of NH<sub>3</sub> emission on PM<sub>2.5</sub> mass burden and aerosol pH changes, develop targeted NH<sub>3</sub>  
reduction strategies to further improve air quality, and explore the atmospheric N cycle process.

*Data availability.* ~~All data used in this paper~~The gridded ammonia emission inventory is archived on Zenodo  
(<https://doi.org/10.5281/zenodo.5516929>; Li, 2021). The ammonia emissions for each source are available upon request from  
455 the first author Baojie Li (baojieli@nuist.edu.cn) or the corresponding author Hong Liao (hongliao@nuist.edu.cn).

*Author contributions.* Baojie Li and Hong Liao designed and performed this study. Lei Chen performed the WRF-Chem simulations and data analysis. Jianbing Jin contributed the monthly IASI data. Weishou Shen, Teng Wang, Pinya Wang and Yang Yang discussed the results and commented on the paper.

460

*Competing interests.* The authors declare that they have no conflict of interest.

*Acknowledgements.* We acknowledge the Centre National d'Études spatiales (CNES, France), and MEIC team for making their data publicly available. We also thank Yuepeng Pan from Institute of Atmospheric Physics, Chinese Academy of Sciences, 465 for publishing the observed NH<sub>3</sub> concentrations data (AMoN-China) (Pan et al., 2018), which is helpful for the verification of the NH<sub>3</sub> emission inventory.

*Financial support.* This research has been supported by the National Natural Science Foundation of China [grant 42007381], the Natural Science Foundation of Jiangsu Province [grant BK20200812], and the National Key Research and Development 470 Program of China [grant 2020YFA0607803].

## References

- Backes, A., Aulinger, A., Bieser, J., Matthias, V., and Quante, M.: Ammonia emissions in Europe, part I: Development of a dynamical ammonia emission inventory, *Atmos Environ*, 131, 55-66, 10.1016/j.atmosenv.2016.01.041, 2016.
- Bouwman, A., Boumans, L., and Batjes, N.: Estimation of global NH<sub>3</sub> volatilization loss from synthetic fertilizers and animal 475 manure applied to arable lands and grasslands, *Global Biogeochemical Cycles*, 16, 8-1-8-14, 2002.
- Bouwman, A. F., Lee, D. S., Asman, W. A. H., Dentener, F. J., Van Der Hoek, K. W., and Olivier, J. G. J.: A global high-resolution emission inventory for ammonia, 11, 561-587, <https://doi.org/10.1029/97GB02266>, 1997.
- Cai, G. X., Chen, D. L., Ding, H., Pacholski, A., Fan, X. H., and Zhu, Z. L.: Nitrogen losses from fertilizers applied to maize, wheat and rice in the North China Plain, *Nutrient Cycling in Agroecosystems*, 63, 187-195, 10.1023/A:1021198724250, 480 2002.
- Chang, Y. H., Zou, Z., Deng, C. R., Huang, K., Collett, J. L., Lin, J., and Zhuang, G. S.: The importance of vehicle emissions as a source of atmospheric ammonia in the megacity of Shanghai, *Atmos Chem Phys*, 16, 3577-3594, 10.5194/acp-16-3577-2016, 2016.
- Chen, S. H., Cheng, M. M., Guo, Z., Xu, W., Du, X. H., and Li, Y.: Enhanced atmospheric ammonia (NH<sub>3</sub>) pollution in China 485 from 2008 to 2016: Evidence from a combination of observations and emissions, *Environ Pollut*, 263, ARTN 114421, [10.1016/j.envpol.2020.114421](https://doi.org/10.1016/j.envpol.2020.114421), 2020. ~~[10.1016/j.envpol.2020.114421](https://doi.org/10.1016/j.envpol.2020.114421), 2020.~~
- Cong, H., Zhao, L., Wang, J., and Yao, Z.: Current situation and development demand analysis of rural energy in China,



- Transactions of the Chinese Society of Agricultural Engineering, 33, 224-231, 2017. (in Chinese)
- 490 Crippa, M., Solazzo, E., Huang, G. L., Guizzardi, D., Koffi, E., Muntean, M., Schieberle, C., Friedrich, R., and Janssens-Maenhout, G.: High resolution temporal profiles in the Emissions Database for Global Atmospheric Research, *Scientific Data*, 7, ARTN 121, 10.1038/s41597-020-0462-2, 2020.
- Ding, A. J., Huang, X., Nie, W., Sun, J. N., Kerminen, V. M., Petaja, T., Su, H., Cheng, Y. F., Yang, X. Q., Wang, M. H., Chi, X. G., Wang, J. P., Virkkula, A., Guo, W. D., Yuan, J., Wang, S. Y., Zhang, R. J., Wu, Y. F., Song, Y., Zhu, T., Zilitinkevich, 495 S., Kulmala, M., and Fu, C. B.: Enhanced haze pollution by black carbon in megacities in China, *Geophysical Research Letters*, 43, 2873-2879, 10.1002/2016gl067745, 2016.
- Dong, Y., Chen, C., Huang, C., Wang, H., Li, L., Dai, P., and Jia, J.: Anthropogenic emissions and distribution of ammonia over the Yangtze River Delta, *Acta Scientiae Circumstantiae*, 29, 1611-1617, 2009.
- European Environment Agency (EEA): EMEP/CORINAIR Air Pollutant Emission Inventory Guidebook-2019, 3.B Manure management, available at: <https://www.eea.europa.eu/publications/emep-eea-guidebook-2019/part-b-sectoral-guidance-chapters/4-agriculture/>, (last: 25 May 2021), 2019.
- 500 Elser, M., Huang, R. J., Wolf, R., Slowik, J. G., Wang, Q. Y., Canonaco, F., Li, G. H., Bozzetti, C., Daellenbach, K. R., Huang, Y., Zhang, R. J., Li, Z. Q., Cao, J. J., Baltensperger, U., El-Haddad, I., and Prevot, A. S. H.: New insights into PM<sub>2.5</sub> chemical composition and sources in two major cities in China during extreme haze events using aerosol mass spectrometry, *Atmos Chem Phys*, 16, 3207-3225, 10.5194/acp-16-3207-2016, 2016.
- 505 Farren, N. J., Davison, J., Rose, R. A., Wagner, R. L., and Carslaw, D. C.: Underestimated Ammonia Emissions from Road Vehicles, *Environmental Science & Technology*, 54, 15689-15697, 10.1021/acs.est.0c05839, 2020.
- Fu, X., Wang, S., Xing, J., Zhang, X., Wang, T., and Hao, J.: Increasing Ammonia Concentrations Reduce the Effectiveness of Particle Pollution Control Achieved via SO<sub>2</sub> and NO<sub>x</sub> Emissions Reduction in East China, *Environmental Science & Technology Letters*, 4, 221-227, 10.1021/acs.estlett.7b00143, 2017.
- 510 Fu, X., Wang, S. X., Ran, L. M., Pleim, J. E., Cooter, E., Bash, J. O., Benson, V., and Hao, J. M.: Estimating NH<sub>3</sub> emissions from agricultural fertilizer application in China using the bi-directional CMAQ model coupled to an agro-ecosystem model, *Atmos Chem Phys*, 15, 6637-6649, 10.5194/acp-15-6637-2015, 2015.
- Han, X., Zhu, L. Y., Liu, M. X., Song, Y., and Zhang, M. G.: Numerical analysis of agricultural emissions impacts on PM<sub>2.5</sub> in China using a high-resolution ammonia emission inventory, *Atmos Chem Phys*, 20, 9979-9996, 10.5194/acp-20-9979-2020, 2020.
- 515 Hu, Y., Cheng, H., and Tao, S.: Environmental and human health challenges of industrial livestock and poultry farming in China and their mitigation, *Environment International*, 107, 111-130, <https://doi.org/10.1016/j.envint.2017.07.003>, 2017.
- Huang, X., Song, Y., Li, M. M., Li, J. F., Huo, Q., Cai, X. H., Zhu, T., Hu, M., and Zhang, H. S.: A high-resolution ammonia emission inventory in China, *Global Biogeochemical Cycles*, 26, Artn Gb1030, 10.1029/2011gb004161, 2012.
- 520 Kang, Y. N., Liu, M. X., Song, Y., Huang, X., Yao, H., Cai, X. H., Zhang, H. S., Kang, L., Liu, X. J., Yan, X. Y., He, H., Zhang, Q., Shao, M., and Zhu, T.: High-resolution ammonia emissions inventories in China from 1980 to 2012, *Atmos Chem*

- Phys, 16, 2043-2058, 10.5194/acp-16-2043-2016, 2016.
- 525 Kong, L., Tang, X., Zhu, J., Wang, Z. F., Pan, Y. P., Wu, H. J., Wu, L., Wu, Q. Z., He, Y. X., Tian, S. L., Xie, Y. Z., Liu, Z. R., Sui, W. X., Han, L. N., and Carmichael, G.: Improved Inversion of Monthly Ammonia Emissions in China Based on the Chinese Ammonia Monitoring Network and Ensemble Kalman Filter, *Environmental Science & Technology*, 53, 12529-12538, 10.1021/acsest.9b02701, 2019.
- Kurokawa, J. and Ohara, T.: Long-term historical trends in air pollutant emissions in Asia: Regional Emission inventory in ASia (REAS) version 3, *Atmos. Chem. Phys.*, 20, 12761-12793, 10.5194/acp-20-12761-2020, 2020.
- 530 Li, B.: [Gridded ammonia emission inventory in mainland China \(v1.0\) \[Data set\]. Zenodo. https://doi.org/10.5281/zenodo.5516929, 2021.](https://doi.org/10.5281/zenodo.5516929)
- [Li, B.](#), Wang, J., Wu, S., Jia, Z., Li, Y., Wang, T., and Zhou, S.: New Method for Improving Spatial Allocation Accuracy of Industrial Energy Consumption and Implications for Polycyclic Aromatic Hydrocarbon Emissions in China, *Environmental Science & Technology*, 53, 4326-4334, 10.1021/acs.est.8b06915, 2019a.
- 535 Li, B., Zhou, S., Wang, T., Sui, X., Jia, Z., Li, Y., Wang, J., and Wu, S.: An improved gridded polycyclic aromatic hydrocarbon emission inventory for the lower reaches of the Yangtze River Delta region from 2001 to 2015 using satellite data, *Journal of hazardous materials*, 360, 329-339, 2018.
- Li, K., Jacob, D. J., Liao, H., Zhu, J., Shah, V., Shen, L., Bates, K. H., Zhang, Q., and Zhai, S.: A two-pollutant strategy for improving ozone and particulate air quality in China, *Nature Geoscience*, 12, 906-910, 10.1038/s41561-019-0464-x,
- 540 2019b.
- Li, M., Liu, H., Geng, G. N., Hong, C. P., Liu, F., Song, Y., Tong, D., Zheng, B., Cui, H. Y., Man, H. Y., Zhang, Q., and He, K. B.: Anthropogenic emission inventories in China: a review, *National Science Review*, 4, 834-866, 10.1093/nsr/nwx150, 2017a.
- Li, M., Zhang, Q., Kurokawa, J. I., Woo, J. H., He, K., Lu, Z., Ohara, T., Song, Y., Streets, D. G., Carmichael, G. R., Cheng,
- 545 Y., Hong, C., Huo, H., Jiang, X., Kang, S., Liu, F., Su, H., and Zheng, B.: MIX: a mosaic Asian anthropogenic emission inventory under the international collaboration framework of the MICS-Asia and HTAP, *Atmos. Chem. Phys.*, 17, 935-963, 10.5194/acp-17-935-2017, 2017b.
- Liu, L., Zhang, X. Y., Wong, A. Y. H., Xu, W., Liu, X. J., Li, Y., Mi, H., Lu, X. H., Zhao, L. M., Wang, Z., Wu, X. D., and Wei,
- 550 J.: Estimating global surface ammonia concentrations inferred from satellite retrievals, *Atmos Chem Phys*, 19, 12051-12066, 10.5194/acp-19-12051-2019, 2019a.
- Liu, M. X., Huang, X., Song, Y., Tang, J., Cao, J. J., Zhang, X. Y., Zhang, Q., Wang, S. X., Xu, T. T., Kang, L., Cai, X. H., Zhang, H. S., Yang, F. M., Wang, H. B., Yu, J. Z., Lau, A. K. H., He, L. Y., Huang, X. F., Duan, L., Ding, A. J., Xue, L. K., Gao, J., Liu, B., and Zhu, T.: Ammonia emission control in China would mitigate haze pollution and nitrogen deposition, but worsen acid rain, *Proceedings of the National Academy of Sciences of the United States of America*, 116,
- 555 7760-7765, 10.1073/pnas.1814880116, 2019b.
- Liu, X. J., Zhang, Y., Han, W. X., Tang, A. H., Shen, J. L., Cui, Z. L., Vitousek, P., Erisman, J. W., Goulding, K., Christie, P.,

- Fangmeier, A., and Zhang, F. S.: Enhanced nitrogen deposition over China, *Nature*, 494, 459-462, 10.1038/nature11917, 2013.
- 560 Ministry of Agriculture and Rural Affairs of China (MARA): China Animal Husbandry and Veterinary Yearbook, 2017. (in Chinese)
- Ministry of Environmental Protection (MEP): The Guideline of Emission Inventory Development for Atmospheric Ammonia, 2014. (in Chinese)
- Meng, W., Zhong, Q., Yun, X., Zhu, X., Huang, T., Shen, H., Chen, Y., Chen, H., Zhou, F., Liu, J., Wang, X., Zeng, E. Y., and Tao, S.: Improvement of a Global High-Resolution Ammonia Emission Inventory for Combustion and Industrial Sources with New Data from the Residential and Transportation Sectors, *Environmental Science & Technology*, 51, 2821-2829, 10.1021/acs.est.6b03694, 2017.
- 565
- Monfreda, C., Ramankutty, N., and Foley, J. A.: Farming the planet: 2. Geographic distribution of crop areas, yields, physiological types, and net primary production in the year 2000, *Global Biogeochemical Cycles*, 22, <https://doi.org/10.1029/2007GB002947>, 2008.
- 570 National Bureau of Statistics (NBS): China Energy Statistical Yearbook 2016, 2017a. (in Chinese)
- National Bureau of Statistics (NBS): China Industry Statistical Yearbook 2016, 2017b. (in Chinese)
- National Bureau of Statistics (NBS): China Statistical Yearbook 2016, 2017c. (in Chinese)
- National Bureau of Statistics (NBS): China Statistical Yearbook of Environment 2016, 2017d. (in Chinese)
- National Development and Reform Commission of China (NDRC): National data on the cost and profit of agricultural product 2016, 2017. (in Chinese)
- 575
- Pan, Y. P., Tian, S. L., Zhao, Y. H., Zhang, L., Zhu, X. Y., Gao, J., Huang, W., Zhou, Y. B., Song, Y., Zhang, Q., and Wang, Y. S.: Identifying Ammonia Hotspots in China Using a National Observation Network, *Environmental Science & Technology*, 52, 3926-3934, 10.1021/acs.est.7b05235, 2018.
- 580 [Paulot, F. and Jacob, D. J.: Hidden Cost of U.S. Agricultural Exports: Particulate Matter from Ammonia Emissions, \*Environmental Science & Technology\*, 48, 903-908, 10.1021/es4034793, 2014.](#)
- [Paulot, F.](#), Jacob, D. J., Pinder, R. W., Bash, J. O., Travis, K., and Henze, D. K.: Ammonia emissions in the United States, European Union, and China derived by high-resolution inversion of ammonium wet deposition data: Interpretation with a new agricultural emissions inventory (MASAGE\_NH3), *Journal of Geophysical Research-Atmospheres*, 119, 4343-4364, 10.1002/2013jd021130, 2014.
- 585 Qian, Y., Song, K., Hu, T., and Ying, T.: Environmental status of livestock and poultry sectors in China under current transformation stage, *Science of The Total Environment*, 622-623, 702-709, <https://doi.org/10.1016/j.scitotenv.2017.12.045>, 2018.
- Qiu, B., Qi, W., Tang, Z., Chen, C., and Wang, X.: Rice cropping density and intensity lessened in southeast China during the twenty-first century, *Environmental Monitoring and Assessment*, 188, 5, 10.1007/s10661-015-5004-6, 2015.
- 590 Qiu, X., Duan, L., Chai, F., Wang, S., Yu, Q., and Wang, S.: Deriving High-Resolution Emission Inventory of Open Biomass

- Burning in China based on Satellite Observations, *Environmental science & technology*, 50, 11779-11786, 2016.
- Sheppard, L. J., Leith, I. D., Mizunuma, T., Neil Cape, J., Crossley, A., Leeson, S., Sutton, M. A., van Dijk, N., and Fowler, D.: Dry deposition of ammonia gas drives species change faster than wet deposition of ammonium ions: evidence from a long-term field manipulation, 17, 3589-3607, <https://doi.org/10.1111/j.1365-2486.2011.02478.x>, 2011.
- 595 Streets, D. G., Bond, T., Carmichael, G., Fernandes, S., Fu, Q., He, D., Klimont, Z., Nelson, S., Tsai, N., and Wang, M. Q.: An inventory of gaseous and primary aerosol emissions in Asia in the year 2000, *Journal of Geophysical Research: Atmospheres*, 108, 2003.
- Van Damme, M., Whitburn, S., Clarisse, L., Clerbaux, C., Hurtmans, D., and Coheur, P. F.: Version 2 of the IASI NH<sub>3</sub> neural network retrieval algorithm: near-real-time and reanalysed datasets, *Atmos Meas Tech*, 10, 4905-4914, 10.5194/amt-10-600-4905-2017, 2017.
- Van Damme, M., Clarisse, L., Heald, C. L., Hurtmans, D., Ngadi, Y., Clerbaux, C., Dolman, A. J., Erisman, J. W., and Coheur, P. F.: Global distributions, time series and error characterization of atmospheric ammonia (NH<sub>3</sub>) from IASI satellite observations, *Atmos Chem Phys*, 14, 2905-2922, 10.5194/acp-14-2905-2014, 2014.
- Van Damme, M., Clarisse, L., Dammers, E., Liu, X., Nowak, J. B., Clerbaux, C., Flechard, C. R., Galy-Lacaux, C., Xu, W., 605 Neuman, J. A., Tang, Y. S., Sutton, M. A., Erisman, J. W., and Coheur, P. F.: Towards validation of ammonia (NH<sub>3</sub>) measurements from the IASI satellite, *Atmospheric Measurement Techniques*, 8, 1575-1591, 10.5194/amt-8-1575-2015, 2015.
- Wang, G. H., Zhang, R. Y., Gomez, M. E., Yang, L. X., Zamora, M. L., Hu, M., Lin, Y., Peng, J. F., Guo, S., Meng, J. J., Li, J. J., Cheng, C. L., Hu, T. F., Ren, Y. Q., Wang, Y. S., Gao, J., Cao, J. J., An, Z. S., Zhou, W. J., Li, G. H., Wang, J. Y., Tian, 610 P. F., Marrero-Ortiz, W., Secrest, J., Du, Z. F., Zheng, J., Shang, D. J., Zeng, L. M., Shao, M., Wang, W. G., Huang, Y., Wang, Y., Zhu, Y. J., Li, Y. X., Hu, J. X., Pan, B., Cai, L., Cheng, Y. T., Ji, Y. M., Zhang, F., Rosenfeld, D., Liss, P. S., Duce, R. A., Kolb, C. E., and Molina, M. J.: Persistent sulfate formation from London Fog to Chinese haze, *Proceedings of the National Academy of Sciences of the United States of America*, 113, 13630-13635, 10.1073/pnas.1616540113, 2016.
- 615 Wang, J., Ma, W., Jiang, R., and Zhang, F.: Analysis about Amount and Ratio of Basal Fertilizer and Topdressing Fertilizer on Rice, Wheat, Maize in China, *Chinese Journal of Soil Science*, 39, 329-333, 10.19336/j.cnki.trtb.2008.02.024, 2008. (in Chinese)
- Wang, X., Zou, C., Gao, X., Guan, X., Zhang, Y., Shi, X., and Chen, X.: Nitrate leaching from open-field and greenhouse vegetable systems in China: a meta-analysis, *Environmental Science and Pollution Research*, 25, 31007-31016, 620 10.1007/s11356-018-3082-z, 2018.
- Wang, Y., Zhang, Q. Q., He, K., Zhang, Q., and Chai, L.: Sulfate-nitrate-ammonium aerosols over China: response to 2000-2015 emission changes of sulfur dioxide, nitrogen oxides, and ammonia, *Atmos Chem Phys*, 13, 2635-2652, 10.5194/acp-13-2635-2013, 2013.
- Warner, J. X., Dickerson, R. R., Wei, Z., Strow, L. L., Wang, Y., and Liang, Q.: Increased atmospheric ammonia over the

- 625 world's major agricultural areas detected from space, *Geophysical Research Letters*, 44, 2875-2884, 10.1002/2016gl072305, 2017.
- Xia, L., Li, X., Ma, Q., Lam, S. K., Wolf, B., Kiese, R., Butterbach-Bahl, K., Chen, D., Li, Z., and Yan, X.: Simultaneous quantification of N<sub>2</sub>, NH<sub>3</sub> and N<sub>2</sub>O emissions from a flooded paddy field under different N fertilization regimes, 26, 2292-2303, <https://doi.org/10.1111/gcb.14958>, 2020.
- 630 Xu, P., Koloutsou-Vakakis, S., Rood, M. J., and Luan, S.: Projections of NH<sub>3</sub> emissions from manure generated by livestock production in China to 2030 under six mitigation scenarios, *Science of the Total Environment*, 607, 78-86, 10.1016/j.scitotenv.2017.06.258, 2017.
- Xu, P., Zhang, Y. S., Gong, W. W., Hou, X. K., Kroeze, C., Gao, W., and Luan, S. J.: An inventory of the emission of ammonia from agricultural fertilizer application in China for 2010 and its high-resolution spatial distribution, *Atmos Environ*, 115, 635 141-148, 10.1016/j.atmosenv.2015.05.020, 2015.
- Xu, P., Liao, Y. J., Lin, Y. H., Zhao, C. X., Yan, C. H., Cao, M. N., Wang, G. S., and Luan, S. J.: High-resolution inventory of ammonia emissions from agricultural fertilizer in China from 1978 to 2008, *Atmos Chem Phys*, 16, 1207-1218, 10.5194/acp-16-1207-2016, 2016.
- ~~You, Y., Kanawade, V. P., de Gouw, J. A., Guenther, A. B., Madronich, S., Sierra Hernández, M. R., Lawler, M., Smith, J. N., Takahama, S., Ruggeri, G., Koss, A., Olson, K., Baumann, K., Weber, R. J., Nenes, A., Guo, H., Edgerton, E. S., Porcelli, L., Brune, W. H., Goldstein, A. H., and Lee, S. H.: Atmospheric amines and ammonia measured with a chemical ionization mass spectrometer (CIMS), *Atmos. Chem. Phys.*, 14, 12181-12194, 10.5194/acp-14-12181-2014, 2014.~~
- Zhang, F., Chen, X., and Chen, Q.: *Fertilization Guide for Major Crops in China*, China Agricultural University Press, 2009. (in Chinese)
- 645 Zhang, L., Chen, Y. F., Zhao, Y. H., Henze, D. K., Zhu, L. Y., Song, Y., Paulot, F., Liu, X. J., Pan, Y. P., Lin, Y., and Huang, B. X.: Agricultural ammonia emissions in China: reconciling bottom-up and top-down estimates, *Atmos Chem Phys*, 18, 339-355, 10.5194/acp-18-339-2018, 2018.
- Zhang, Q., Zheng, Y., Tong, D., Shao, M., Wang, S., Zhang, Y., Xu, X., Wang, J., He, H., and Liu, W.: Drivers of improved PM<sub>2.5</sub> air quality in China from 2013 to 2017, *Proceedings of the National Academy of Sciences*, 116, 24463-24469, 650 2019.
- Zhang, W. and Zhang, F.: *Report on the development of fertilizer in China*, China Agricultural University Press, 2012. (in Chinese)
- Zhang, X. M., Wu, Y. Y., Liu, X. J., Reis, S., Jin, J. X., Dragosits, U., Van Damme, M., Clarisse, L., Whitburn, S., Coheur, P. F., and Gu, B. J.: Ammonia Emissions May Be Substantially Underestimated in China, *Environmental Science & Technology*, 51, 12089-12096, 10.1021/acs.est.7b02171, 2017.
- 655 Zhao, B., Wang, S. X., Wang, J. D., Fu, J. S., Liu, T. H., Xu, J. Y., Fu, X., and Hao, J. M.: Impact of national NO<sub>x</sub> and SO<sub>2</sub> control policies on particulate matter pollution in China, *Atmos Environ*, 77, 453-463, 10.1016/j.atmosenv.2013.05.012, 2013.

- 660 Zhao, Y., Nielsen, C. P., Lei, Y., McElroy, M. B., and Hao, J.: Quantifying the uncertainties of a bottom-up emission inventory  
of anthropogenic atmospheric pollutants in China, *Atmos Chem Phys*, 11, 2295-2308, 10.5194/acp-11-2295-2011, 2011.
- Zhao, Y., Yuan, M. C., Huang, X., Chen, F., and Zhang, J.: Quantification and evaluation of atmospheric ammonia emissions  
with different methods: a case study for the Yangtze River Delta region, China, *Atmos Chem Phys*, 20, 4275-4294,  
10.5194/acp-20-4275-2020, 2020.
- 665 Zheng, B., Tong, D., Li, M., Liu, F., Hong, C., Geng, G., Li, H., Li, X., Peng, L., and Qi, J.: Trends in China's anthropogenic  
emissions since 2010 as the consequence of clean air actions, *Atmos Chem Phys*, 18, 14095-14111, 2018.
- Zhou, F., Ciais, P., Hayashi, K., Galloway, J., Kim, D. G., Yang, C. L., Li, S. Y., Liu, B., Shang, Z. Y., and Gao, S. S.: Re-  
estimating NH<sub>3</sub> Emissions from Chinese Cropland by a New Nonlinear Model, *Environ Sci Technol*, 50, 564-572,  
10.1021/acs.est.5b03156, 2016.
- 670 Zhou, Y., Xing, X., Lang, J., Chen, D., Cheng, S., Lin, W., Xiao, W., and Liu, C.: A comprehensive biomass burning emission  
inventory with high spatial and temporal resolution in China, *Atmos Chem Phys*, 17, 2839, 2017.