

Quantification of CH₄ emissions from waste disposal sites near the city of Madrid using ground- and space-based observations of COCCON, TROPOMI and IASI

Qiansi Tu¹, Frank Hase¹, Matthias Schneider¹, Omaira García², Thomas Blumenstock¹, Tobias Borsdorff³, Matthias Frey^{1,a}, Farahnaz Khosrawi¹, Alba Lorente³, Carlos Alberti¹, Juan J. Bustos², André Butz⁴, Virgilio Carreño², Emilio Cuevas², Roger Curcoll^{5,b}, Christopher J. Diekmann¹, Darko Dubravica¹, Benjamin Ertl^{1,6}, Carme Estruch⁵, Sergio Fabián León-Luis², Carlos Marrero², Josep-Anton Morgui⁵, Ramón Ramos², Christian Scharun¹, Carsten Schneider⁴, Eliezer Sepúlveda², Carlos Toledano⁷, Carlos Torres²

¹ Karlsruhe Institute of Technology (KIT), Institute of Meteorology and Climate Research (IMK-ASF), Karlsruhe, Germany

^a now at National Institute for Environmental Studies, Tsukuba, Japan

² Izaña Atmospheric Research Centre (IARC), Meteorological State Agency of Spain (AEMet), Tenerife, Spain

³ SRON Netherlands Institute for Space Research, Utrecht, the Netherlands

⁴ Institut für Umweltphysik, Heidelberg University (UH), Germany

⁵ Institut de Ciència i Tecnologia Ambientals (ICTA) - Autonomous University of Barcelona, Spain

^b now at Institute of Energy Technologies, Polytechnic University of Catalonia, Barcelona, Spain

⁶ Karlsruhe Institute of Technology, Steinbuch Centre for Computing (SCC), Karlsruhe, Germany

⁷ Group of Atmospheric Optics, University of Valladolid, Spain

Correspondence to: Qiansi Tu (qiansi.tu@kit.edu)

Abstract. The objective of this study is to derive methane (CH₄) emissions from three landfills, which are found to be the most significant CH₄ sources in the metropolitan city-area of Madrid; in Spain. We derive The CH₄ emissions ~~are derived based on~~ from the CH₄ enhancements observed by ~~the~~ space-borne and ~~the~~ ground-based instruments. ~~To this end, we~~ We apply satellite-based measurements from the Tropospheric Monitoring Instrument (TROPOMI) and the Infrared Atmospheric Sounding Interferometer (IASI) together with measurements from the ground-based Collaborative Carbon Column Observing Network (COCCON) instruments.

In 2018, a two-week field campaign for measuring the atmospheric concentrations of greenhouse gases was performed in Madrid in the framework of Monitoring greenhouse Gas Emissions of Madrid city (MEGEI-MAD) project. Five COCCON instruments were deployed at different locations around the Madrid city center enabling the observation of total column averaged CH₄ mixing ratios (XCH₄). ~~Using available wind data, the differences between CH₄ columns observed at these~~ locations allow to estimate the emissions emerging from the surrounded area. In addition, ~~based on~~ Considering the ~~dominating~~ prevalent wind regimes ~~direction in the Madrid region,~~ we calculate the wind-assigned XCH₄ anomalies ~~difference of the~~ satellite data maps for two opposite wind directions regimes (northeast—southwest, NE—SW). In the following, we refer to ~~the resultant signal as the wind assigned anomaly.~~ We use TROPOMI tropospheric nitrogen dioxide (NO₂) observations as a ~~test to verify our method of wind assigned anomaly and its implementation, taking advantage of the much better detectability~~

35 of the plume due to the short lifetime and low background concentrations of NO_2 . Pronounced bipolar plumes are found ~~along~~
NE and SW wind direction, when applying the method to NO_2 , which implies that our method of wind-assigned anomaly is
suitable to estimate enhancements of trace gases at urban level from satellite-based measurements. ~~working as expected. The~~
~~wind-assigned TROPOMI XCH_4 anomaly shows much weaker symmetric plumes than the NO_2 due to the long lifetime of~~
 ~~CH_4 and in consequence a high accumulated background of CH_4 in the atmosphere.~~ For quantifying the CH_4 emissions
40 ~~estimation~~, the wind-assigned plume method is applied to the TROPOMI XCH_4 and to the lower tropospheric CH_4 /dry air
column ratio (TXCH_4) of the combined TROPOMI+IASI product. ~~TXCH_4 is derived from a posteriori merged IASI profile~~
~~and the TROPOMI total column data.~~

As CH_4 emission strength we estimate $7.4 \times 10^{25} \pm 6.4 \times 10^{24}$ molec s^{-1} from the TROPOMI XCH_4 data and $7.1 \times 10^{25} \pm 1.0 \times 10^{25}$
molec s^{-1} from the TROPOMI & IASI merged TXCH_4 data. We use COCCON observations ~~are used~~ to estimate the local
45 source strength as an independent method. ~~The~~ COCCON observations indicate a weaker CH_4 emission strength of ~~around~~
 3.7×10^{25} molec s^{-1} from a local source (~~near to~~ the Valdemingómez waste plant) ~~in accordance with~~ based on observations ~~in~~
from a single day. That this strength is lower than the one derived from the satellite observations is a plausible result. ~~This is~~
because the analysis of the satellite data refers to a larger area, covering further emission sources in the study region, whereas
the signal observed by COCCON is generated by a nearby local source. All emission rates estimated from the different
50 observations are significantly larger than the emission rates provided via the official Spanish Register of Emissions and
Pollutant Sources.

1 Introduction

Methane (CH_4) is the second most important anthropogenic greenhouse gas (GHG) after carbon dioxide (CO_2) and contributes
about 23.4% to the radiative forcing by long-lived GHGs in the atmosphere (Etminan et al., 2016). The amount of atmospheric
55 CH_4 has increased ~~to 1880 ppb in 2019, corresponding to~~ 260% with respect to ~~of the~~ pre-industrial levels, reaching 1880 ppb
in 2019 (World Meteorological Organization, 2020). The global atmospheric CH_4 ~~sources emissions~~ are to approximately 40%
~~of~~ caused by natural sources (e.g. wetlands and termites) and by about 60% ~~from~~ from anthropogenic sources (~~e.g. agriculture~~
~~and fossil fuels~~, Saunio et al., 2020). ~~The~~ anthropogenic sources of CH_4 mainly originate from production and burning of
fossil fuels, ruminant animals, agriculture and waste management (Bousquet et al., 2006; Chynoweth et al., 2001; Kirschke et
60 al., 2013; Saunio et al., 2020). The waste management sector accounts for 21.5% of the total anthropogenic CH_4 emissions
(Crippa et al., 2019), while ~44% of emissions are from landfills (~55% uncertainty) (Solazzo et al., 2021). The metropolitan
cities are continuously growing due to population movements, industries, etc., and thus, more and more cities incorporate
landfills (and other potential CH_4 sources) into their limits and influential areas, making landfills become one of the main CH_4
sources. Therefore, the quantification of CH_4 emission from landfills using space borne observations is of importance for future
65 climate emission scenarios and for monitoring changes in emissions.

CH₄ is primarily removed through the reaction with the hydroxyl radicals (OH), mostly in the troposphere, which accounts for about 90% of the global CH₄ sink (Kirschke et al., 2013). Consequently, small changes in OH can lead to considerable variability in CH₄ amounts (Dlugokencky et al., 2011). It is therefore important to increase our knowledge on how the different sources and sinks affect the CH₄ amount in the atmosphere. Understanding the sources and sinks of CH₄ is also of importance for future climate emission scenarios. However, CH₄ sources and sinks are still not fully understood. Although a lot of research studies had their focus on the global OH sink of CH₄ and the sum of CH₄ sources, which are relatively well known, large uncertainties still remain in each of the individual CH₄ sources (De Wachter et al., 2017).

Satellite observations of CH₄ started with the launch of the Interferometric Monitor for Greenhouse gases (IMG) aboard the ADEOS satellite in August 1996 (Clerbaux et al., 2003). From 2002–2012 the SCIAMACHY (Scanning Imaging Absorption Spectrometer for Atmospheric Cartography) on board the European Envisat satellite performed measurements of total column CH₄ (Frankenberg et al., 2006). The Greenhouse Gases Observing Satellite (GOSAT) launched in 2009 is the first satellite dedicated to the monitoring of atmospheric GHGs and is still in operation (Kurze et al., 2009). Atmospheric CH₄ measurements from satellite instruments have been used to study CH₄ hotspot emission (e.g. the anomalous CH₄ emission source regions (Kort et al., 2014), anthropogenic emissions (Marais et al., 2014), and tropical wetlands (Lunt et al., 2019). A lot of research has also been carried out to map emission trends (Schneising et al., 2014; Maasakkers et al., 2019) and to estimate regional emissions (Monteil et al., 2013; Turner et al., 2015; Kuze et al., 2020; Tunnicliffe et al., 2020). The current global GOSAT observations are of high quality but have sparse spatial and temporal coverage, limiting the capability to estimate the changes in daily emissions on small scales (Lorente et al., 2021).

Many studies have demonstrated the capabilities of satellite observations to estimate CH₄ emissions e.g. from oil and gas sector, including accidental leakages (e.g. Pandey et al., 2019; Varon et al., 2019; Gouw et al., 2020; Schneising et al., 2020) and from coal mining (Varon et al., 2020). Here, we use satellite observations together with ground-based measurements from portable Fourier Transform Infrared (FTIR) spectrometers to derive CH₄ emissions from landfills in a metropolitan area.

Launched in October 2017, the TROPOspheric Measuring Instrument (TROPOMI) on board the Copernicus Sentinel-5 Precursor satellite provides complete daily global coverage of CH₄ with an unprecedented resolution of $7 \times 7 \text{ km}^2$. The resolution was upgraded to $5.5 \times 7 \text{ km}^2$ in August 2019. Compared to previous satellite instruments, the TROPOMI instrument is therefore able to map/capture the CH₄ enhancements due to emissions on fine scales and to detect large point sources (Varon et al., 2019; Gouw et al., 2020; Schneising et al., 2020). TROPOMI CH₄ data show an excellent agreement with the measurements from the validated GOSAT (Hu et al., 2018) and the ground-based Total Carbon Column Observing Network (TCCON) (Lorente et al., 2021).

Satellite retrievals using thermal infrared nadir spectra as observed for instance by IASI (Infrared Atmospheric Sounding Interferometer) or TES (Tropospheric Emission Spectrometer) are especially sensitive to CH₄ concentrations between the middle troposphere and the stratosphere (e.g. Siddans et al., 2017; García et al., 2018; De Wachter et al., 2017; Kulawik et al., 2021; Schneider et al., 2021a). The IASI sensors are currently orbiting aboard of three different Metop (Meteorological operational) satellites and offer twice daily global coverage with high horizontal resolution (ground pixel diameter at nadir is

12 km). The IASI CH₄ products have a particular good quality and sensitivity between the middle troposphere and the stratosphere as documented in different validation studies (e.g. Siddans et al., 2017; De Wachter et al., 2017; García et al., 2018; Schneider et al., 2021a).

The TCCON network, a network of ~~measures solar absorption spectra in the near infrared region by using~~ high-resolution Fourier Transform Infrared (FTIR) spectrometers (Bruker 125HR, Washenfelder et al., 2006), ~~has been and is primarily~~ designed to provide accurate and long-lasting time series of column-average dry-air molar fractions of GHGs and other atmospheric constituents (Wunch et al., 2011). ~~Therefore, TCCON 125HR provides crucial validation resources for satellite greenhouse gas data, showing TROPOMI CH₄ to be of good quality (Hasekamp et al., 2019; Lorente et al., 2021).~~ Recently, TCCON 125HR GHG observations have been extended by the COCCON Collaborative Carbon Column Observing Network (COCCON, Frey et al., 2019), which is a research infrastructure using well-calibrated low-resolution FTIR spectrometers (EM27/SUN, Gisi et al., 2012) and a common data analysis scheme. Due to the ruggedness of the portable devices used and simple operability, COCCON is well suited for implementing arrays of spectrometers into metropolitan areas for the quantification of local GHG sources (Hase et al., 2015; Luther et al., 2019; Vogel et al., 2019; Dietrich et al., 2021). ~~Many works have used satellite observations to study CH₄ emission from nature gas/oil leakage (Pandey et al., 2019; Varon et al., 2019; Gouw et al., 2020) but however, there are to our knowledge no studies on using TROPOMI together with ground based portable FTIR spectrometer to derive CH₄ emission from landfills in metropolitan city centers. The metropolitan cities are continuously growing due to population movements, industries, etc., and thus, more and more cities incorporate landfills (and other CH₄ potential sources) into their limits/influential areas. These landfills become one of the main CH₄ source in the metropolitan cities.~~

In this study we analyze nearly three years of TROPOMI total column-average dry-air molar fraction of CH₄ (XCH₄) measurements together with COCCON spectrometer observations in the framework of the Monitoring greenhouse Gas Emissions of Madrid (MEGEI-MAD) project (García et al., 2019), in an attempt to quantify the CH₄ emissions from major emission sources – namely three landfills in Madrid, the most important metropolitan area of Spain. In Section 2 our methodology is described, which is as follows: we calculate the difference of the satellite data maps for two opposite wind regimes (we refer to the resulting signals as wind-assigned anomalies). A simple plume model is then applied to predict the wind-assigned anomalies for a chosen position and strength of a source. The results of our study are presented and discussed in Section 3 and. ~~The conclusions of this study drawn~~ from these results are given in Section 4.

2 Method

2.1 Ground-based and space-borne instrumentations

2.1.1 COCCON XCH₄ data set

130 The Bruker EM27/SUN is a robust and portable FTIR spectrometer, operating at a medium spectral resolution of 0.5 cm⁻¹. The EM27/SUN FTIR spectrometer has been developed by the Karlsruhe Institute of Technology (KIT) in cooperation with Bruker Optics GmbH for measuring GHG concentrations (Gisi et al., 2012; Hase et al., 2016). An InGaAs (Indium-Gallium-Arsenide) photodetector is used as the primary detector, covering a spectral range of 5500 – 11000 cm⁻¹. A decoupling mirror reflects 40% of the incoming converging beam to an extended InGaAs photodetector element, covering the spectral range of 4000 –
135 5500 cm⁻¹ for simultaneous carbon monoxide (CO) observations. The recording time, for a typical measurement consisting of five forward and five backward scans, is about 58 seconds in total.

Several successful field campaigns and long-term deployments have demonstrated that the Bruker EM27/SUN FTIR spectrometer is an excellent instrument with good quality, robustness and reliability and its performance offers the potential to support TCCON (Frey et al., 2015 and 2019; Klappenbach et al., 2015; Chen et al., 2016; Butz et al., 2017; Sha et al., 2019;
140 Jacobs et al., 2020; Tu et al., 2020a and 2020b; Dietrich et al., 2021). The Bruker EM27/SUN spectrometers have become commercially available from April 2014 onwards and currently about 70 spectrometers are operated by different working groups in Germany, France, Spain, Finland, Romania, USA, Canada, UK, India, Korea, Botswana, Japan, China, Mexico, Brazil, Australia and New Zealand. The development of the COCCON (<https://www.imk-asf.kit.edu/english/COCCON.php>) became possible by continued European Space Agency (ESA) support. COCCON intends to become a supporting
145 infrastructure for GHG measurements based on common standards and data analysis procedures for the EM27/SUN (Frey et al., 2019).

~~Every COCCON instrument is checked (alignment and instrument line shape) and calibrated with respect to a co-located TCCON spectrometer and the primary Bruker EM27/SUN spectrometer unit operated permanently at KIT before deployment (Frey et al., 2019). For the purpose of COCCON data analysis procedures, a preprocessing tool (PREPROCESS) is applied to
150 the raw interferograms for the generation of spectra and a non-linear least squares fitting algorithm (PROFFAST) is used for the determination of the desired trace gas abundances from pre-generated spectra. These data processing and analysis tools are open-source and freely available (<https://www.imk-asf.kit.edu/english/COCCON.php>). The ESA provided support for the code development in the framework of two projects (COCCON PROCEEDS and COCCON PROCEEDS II) and also supports in this framework the buildup of a central facility of the network. The demonstration of central facility functionalities is performed
155 by KIT in cooperation with other European partners (e.g. the Belgian Institute for Space Aeronomy and Norwegian Institute for Air Research).~~

All the Bruker EM27/SUN spectrometers used in the MEGEI-MAD project were operated in accordance with COCCON requirements. The resulting XCH₄ data used in this work were generated by the central facility operated by KIT for demonstrating a centralized data retrieval for the COCCON network. For these reasons, we refer to the Bruker EM27/SUN

160 spectrometers as COCCON spectrometers in the following. The COCCON XCH₄ data product is derived from the co-observed total column amounts of CH₄ and oxygen (O₂), and the assumed dry-air molar fraction of O₂ (0.2095) (Wunch et al., 2015).

$$XCH_4 = \frac{column_{CH_4}}{column_{O_2}} \times 0.2095 \quad \text{Eq. 1}$$

2.1.2 TROPOMI XCH₄ data set

The TROPOMI data processing deploys the RemoTeC algorithm (Butz et al., 2009, 2011; Hasekamp and Butz, 2008) to retrieve XCH₄ from TROPOMI measurements of sunlight backscattered by the Earth's surface and atmosphere in the near-infrared (NIR) and shortwave-infrared (SWIR) spectral bands (Hu et al., 2016, 2018; Hasekamp et al., 2019; Landgraf et al., 2019). This algorithm has been extensively used to derive CH₄ and CO₂ from GOSAT (Butz et al., 2011; Guerlet et al., 2013). The TROPOMI XCH₄ is calculated from the CH₄ vertical sub-columns x_i and the dry-air column obtained from the surface pressure from European Centre for Medium-Range Weather Forecasts (ECMWF), and the altitude from the Shuttle Radar Topography Mission (SRTM) (Farr et al., 2007) digital elevation map with a resolution of 15 arcsec (Lorente et al., 2021)

170 **analysis:**

$$XCH_4 = \sum_{i=0}^n \frac{x_i}{column_{dryair}} \quad \text{Eq. 2}$$

This study uses the TROPOMI data set of XCH₄ from Lorente et al., (2021), for which an updated retrieval algorithm was implemented to obtain a data set with less scatter. This updated XCH₄ has been demonstrated to be in good agreement with TCCON (-3.4 ± 5.6 ppb) and GOSAT (-10.3 ± 16.8 ppb), with a bias and precision below 1%. Here the TROPOMI XCH₄ between April 30, 2018 and December 30, 2020 within the rectangular area of 39.5°N – 41.5°N and 4.5°W – 3.0°W (125 km × 220 km) over Madrid is analyzed. In addition, In this study we apply a strict quality control to TROPOMI XCH₄ (quality value q = 1.0) to exclude data of questionable quality and to assure data under clear-sky and low-cloud atmospheric conditions (Lorente et al., 2021).

2.1.3 IASI CH₄ data and its synergetic combination with TROPOMI data

180 Satellite retrievals using thermal infrared nadir spectra as observed by IASI (Infrared Atmospheric Sounding Interferometer) or TES (Tropospheric Emission Spectrometer) are especially sensitive to CH₄ concentrations between the middle troposphere and the stratosphere (e.g. Siddans et al., 2017; García et al., 2018; De Wachter et al., 2017; Kulawik et al., 2021; Schneider et al., 2021a). The IASI sensors are currently orbiting aboard of three Metop (Meteorological operational) satellites and offers global coverage twice daily with high horizontal resolution (ground pixel diameter at nadir is 12 km). The IASI CH₄ products have a particular good quality and sensitivity as documented in validation studies (e.g. Siddans et al., 2017; De Wachter et al., 2017; García et al., 2018; Schneider et al., 2021a).

185 Here we use the IASI CH₄ product as generated by the latest MUSICA IASI processor version (Schneider et al., 2021b). Combing these IASI profile data with the TROPOMI total column data causes strong synergies. Schneider et al. (2021a) developed an a posteriori method for such synergetic combination and documented the possibility to detect tropospheric partial

column averaged dry-air molar fractions of CH₄ (TXCH₄) independently from the upper tropospheric/stratospheric dry-air
190 molar fractions of CH₄ (UTSXCH₄). This is not possible by either the TROPOMI or IASI product individually. In this study
we use a tropospheric product averaged from ground to 7 km a.s.l., and an upper tropospheric/stratospheric product averaged
from 7 to 20 km a.s.l.

2.2 COCCON Madrid campaign

Madrid has almost 3.3 million inhabitants with a metropolitan area population of approximately 6.5 million. Madrid is located
195 on the ~~southern~~-Meseta Central and 60 km south of the Guadarrama mountains with a considerable altitude difference across
the city, ranging from 570 to 700 m a.s.l.

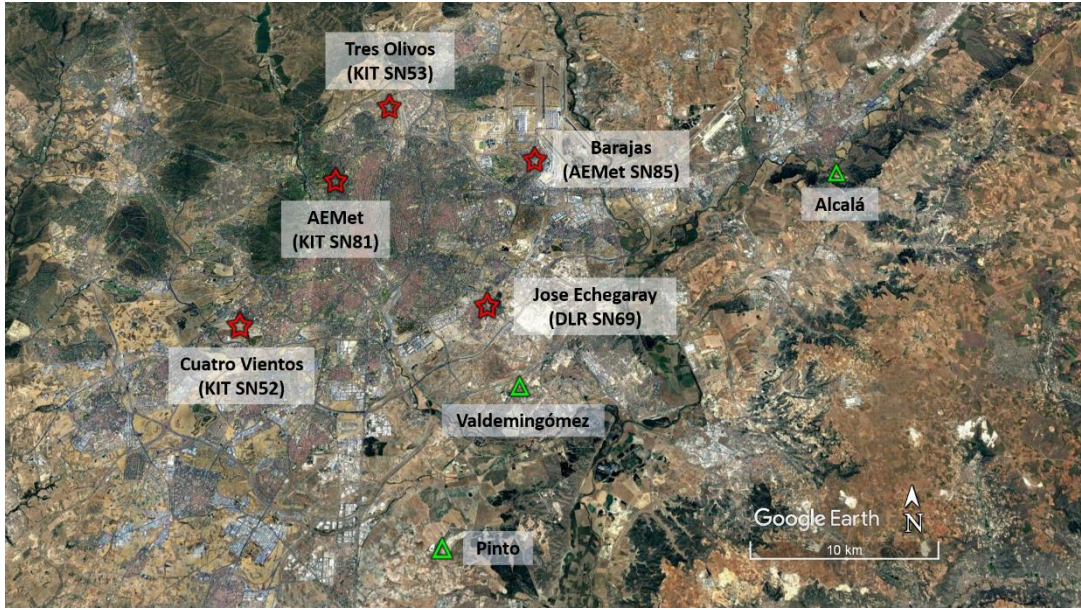
This work was made in the framework of the MEGEI-MAD project (García et al., 2019), which aimed to measure
atmospheric concentrations of GHGs in an urban environment combining FTIR instruments and ground-level
~~analyzers~~analyzers. Another objective of MEGEI-MAD was to analyze the possible use of portable COCCON instruments to
200 shape an operational network for Madrid in the future. The MEGEI-MAD project was initiated by the Izaña Atmospheric
Research Center (AEMet), in cooperation with two German research groups – the Karlsruhe Institute of Technology and the
University of Heidelberg, and two Spanish research groups – the Autonomous University of Barcelona and the University of
Valladolid.

Within MEGEI-MAD, a two-week field campaign was carried out from September 24 to October 7, 2018 in Madrid, where
205 five COCCON instruments were located at five different places circling the metropolitan area (see Figure 1). Table 1
summarizes the coordinates, altitudes of the COCCON locations and auxiliary meteorological data collected for data analysis
of the observations. The locations have been chosen by considering the prevailing winds and the emission sources of CO₂ and
CH₄, as well as other technical and logistic criteria (García et al., 2019; García et al., 2021, in preparation).

~~Though every COCCON instrument is already calibrated at KIT, long distance transportation and long term usage under
210 different conditions might cause some drifts of instrumental characteristics. To minimize any systematic errors due to drifts of
the calibration, a pre-campaign side-by-side comparison of the five COCCON instruments used in MEGEI-MAD was carried
out at the AEMet Headquarter between September 17 and September 20, 2018, to obtain updated calibration factors (Table 2).
The calibration factors are computed as ratios between the observations from each instrument and the ensemble average. These
XCH₄ calibration factors are in good agreement with previous calibration results for these instruments obtained during side-
215 by-side comparisons at KIT (empirical standard deviation of the ratios between previous calibration and campaign results \approx
0.17%). These small changes among the COCCON instruments demonstrate the excellent characteristic of stability. The set
of five COCCON spectrometers used in this work is calibrated based on the inter-comparison measurements and the solar
zenith angle (SZA) range is limited to 75° to reduce airmass dependent effects. The instrument specific calibration factors
systematic differences are within ± 0.06 % for XCH₄.~~

220 **Table 1: Locations of the five COCCON instruments and meteorological records for the MEGEI-MAD field campaign during
September 24 – October 7, 2018.**

Station	EM27/SUN	Latitude (°N)	Longitude (°W)	Altitude (m a.s.l.)	Meteorological Records
Tres Olivos	KIT SN53	40.499	3.689	736	Datalogger from AEMet
Barajas	AEMet SN85	40.465	3.581	637	Barajas Airport
Jose Echegaray	DLR SN69	40.379	3.613	633	Datalogger from DLR
Cuatro Vientos	KIT SN52	40.368	3.780	703	Cuatro Vientos Airport
AEMeT	KIT SN81	40.452	3.724	685	AEMeT Headquarter



225 **Figure 1:** Locations of the five COCCON instruments used in the Madrid field campaign during September 24 – October 7, 2018, represented with red stars and locations of three waste treatment and disposal plants, represented with the green triangles.

Table 2: ~~XCH₄ calibration factors for the five COCCON instruments from the pre-campaign inter-comparison measurements at the AEMet Headquarter.~~

	KIT SN53	AEMeT SN85	DLR SN69	KIT SN52	KIT SN81
side-by-side at AEMet	0.999212	1.000719	1.000594	1.000077	0.999398

2.3 Emission strength calculation using a simple plume model

230 The daily plume is modelled as a function of wind direction and wind speed. The schematic dispersion model for describing emissions assumes an expanding cone-shaped plume with the tip at the plume source at location (0,0). The plume cone has an opening angle of size α and any grid cell within the cone is affected by the emission (see Figure 2). The angle α is a technical parameter to schematically describe a spreading of the plume and is empirically adjusted to a value of 60°. Different opening

angles are modelled and presented in Figure A- 1. The modelled plume has the most similar shape compared to the TROPOMI measured NO₂ plume (see Section 3.3) when $\alpha \geq 60^\circ$. If the grid cell (x, y) locates inside the cone, the column enhancement

$$\Delta column_{(x,y)} = \frac{\varepsilon}{v \cdot d_{(x,y)} \cdot \alpha} \quad \text{Eq. 3}$$

where ε is the emission strength at the source point in molec s^{-1} , v is the wind speed in m s^{-1} , d is the distance between the downwind point and the source, α is the opening angle of the plume in rad (here assumed to be 60°).

$$d(x, y) = \sqrt{x^2 + y^2} \quad \text{Eq. 4}$$

The enhanced dry-air volume mixing ratio for target species ($\Delta XVMR$) at the center of the grid cell (x, y) can then be calculated by dividing the column enhancement by the total column of dry air ($column_{dryair}$):

$$\Delta XVMR = \frac{\Delta column_{(x,y)}}{column_{drvair}} \quad \text{Eq. 5}$$

The $column_{dryair}$ is computed from the surface pressure:

where P_s is the surface pressure, m_{dryair} and m_{H_2O} are the molecular masses of dry air ($\sim 28.96 \text{ g} \cdot \text{mol}^{-1}$) and water vapor ($\sim 18 \text{ g} \cdot \text{mol}^{-1}$), respectively. $column_{dryair}$ and $column_{H_2O}$ are the total column amount of dry air and water vapor, and $g(\varphi)$ is the latitude-dependent surface acceleration due to gravity.

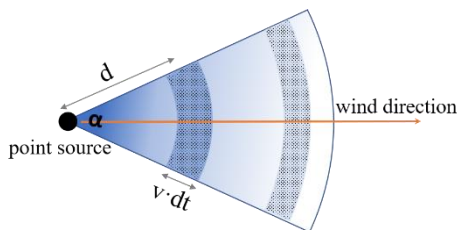
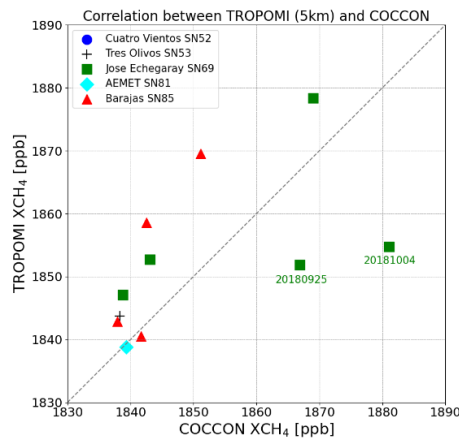


Figure 2: Sketch of the simple plume model used to explain the CH₄ emission estimation method. The methane at the point source is distributed along the wind direction (wind speed: v) in the cone-shaped area with an opening angle of α . The point source emits the methane at an emission rate of ε . We assumed the methane molecules are evenly distributed in the dotted area A, and the distance from area A to the point source is d . Therefore, the emitted methane in dt time period equals to the amount of methane in the area A. It yields the equation $\varepsilon \times dt \approx \Delta column \times \frac{\alpha}{\pi} \times \pi \times d \times v \times dt$.

3 Results and discussion

3.1 Intercomparison of TROPOMI and COCCON XCH₄ measurements

260 To detect whether TROPOMI is capable of measuring XCH₄ precisely in Madrid area, we perform intercomparison between TROPOMI and COCCON XCH₄ measurements. Figure 3 shows the correlation between COCCON and TROPOMI measurements. ~~The TROPOMI data are the~~ The mean value of TROPOMI XCH₄ is calculated by collecting observations ~~collected~~ within a radius of 5 km around each COCCON station. The coincident COCCON mean XCH₄ is calculated from the ~~mean value of~~ the measurements within 30 minutes before or after the TROPOMI overpass. The distance between two stations ranges between 6 km and 14.2 km. The TROPOMI data within a circle with a larger radius might cover the information from other stations nearby, which brings error in the correlation between the coincident data. Therefore, we choose ~~5 km as the~~ radius of a collection circle with a radius of 5 km for TROPOMI. ~~and t~~ The coincident data at each station show generally good agreement. ~~It shows that TROPOMI data have good quality and a low bias.~~ Note that there are 1 to 2 TROPOMI measurements located within a circle of 5 km radius around each station. The mean bias in XCH₄ between TROPOMI and COCCON is 2.7
270 ± 13.2 ppb, which is below the absolute bias between TROPOMI and TCCON (3.4 ± 5.6 ppb, Lorente et al., 2021). The higher scatter of the validation with COCCON reflects the shorter temporal and spatial collocation, but the agreement It ~~shows~~ indicates that TROPOMI data have good quality and a low bias.



275 **Figure 3: Correlation plot between TROPOMI observations collected within 5 km radius around each COCCON station and coincident COCCON (~~within 30 minutes~~) measurements (30 minutes before and after the TROPOMI overpass) at five stations in 2018.**

The coincident data on September 25, 2018 and October 4, 2018 show large biases at Jose Echegaray station where the SN69 COCCON instrument is located. Due to its coarser spatial resolution the TROPOMI XCH₄ observations do not capture the local enhancements detected by the COCCON instrument in the vicinity of the ~~assumed~~ source. Figure 4 illustrates the two
280 exemplary days of the time series of COCCON SN69 and coincident TROPOMI observations. Obvious enhancements are observed at around 13:00 UTC by the COCCON instrument in the downwind site on September 25 and at around 12:30 on

October 4, 2018 (see Figure A- 2 for the other days). ~~It is a~~ Note, that the XCH₄ enhancements can also be observed by the instruments at other stations when the CH₄ plume passes over Madrid. We only discuss the two representative days with obvious enhancements here, as we focus on the specific source near the Jose Echegaray station. The Valdemingómez and Pinto waste plants are located nearby with a distance of 4.5 km and 12 km, respectively. These five COCCON stations can serve as an independent source of information for constraining the wind speed. For example, the distance between the Jose Echegaray and Barajas is about 10 km. The highest anomalies of XCH₄ arrived around 1.5 hours later at Barajas station than it appeared at the Jose Echegaray station on 25 September 2018, which indicates an averaged wind speed of 1.8 m/s. This value fits well to the wind velocity observed at the Cuatro Vientos Airport.

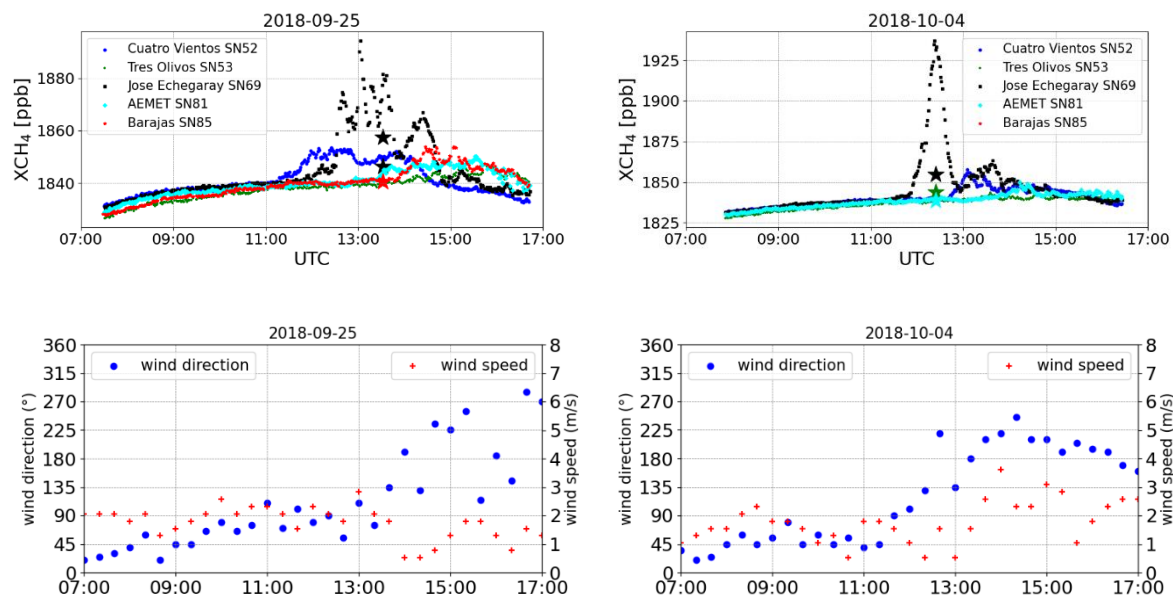


Figure 4: Time series of COCCON measurements at five stations on two days in 2018. Star symbols represent the averaged TROPOMI observations within a radius of 5 km around each station. Lower panels show the wind direction and wind speed measured at the Cuatro Vientos Airport.

TROPOMI detected 10 ppb higher XCH₄ at Jose Echegaray station than at Barajas station on September 25, 2018. However, COCCON observed much a higher amount of XCH₄ (53 ppb) at Jose Echegaray station than at Barajas station (and other stations) at around 13:00 UTC. The delayed enhancement at AEMet and Barajas stations at the downwind direction is found after the wind direction changed from north more towards south direction. Another obvious enhancement of XCH₄ is observed at Jose Echegaray station by the COCCON SN69 instrument at around 12:30 on October 4, 2018, with about 97 ppb higher XCH₄ than COCCON measurements at the other four stations. However, TROPOMI only measured about 13 ppb higher XCH₄ at Jose Echegaray station compared to the TROPOMI measurements at the other stations. These considerable enhancements at Jose Echegaray station observed by the COCCON instrument are likely due to the local source (the nearby Valdemingómez waste plant). The plume is in close vicinity to the source narrower than the pixel scale of the satellite, and therefore is only detected as attenuated signal by TROPOMI. The full width at the half maximum (FWHM) of the enhancement peak on October

305 4, 2018 roughly covers a time period of 30min, with a corresponding wind direction change of 22.5° (~ 0.4 rad) and an averaged wind speed of 1.0 m s^{-1} . The distance between the COCCON SN69 to the Valdemingómez waste plant is about 4500 m. The 97 ppb enhancement measured by COCCON SN69 instrument yields an estimated emission strength of $3.7 \times 10^{25} \text{ molec s}^{-1}$.

According to the Spanish Register of Emissions and Pollutant Sources (PRTR, <http://www.en.prtr-es.es/>, last access: 20 February, 2021), more than 95% of total CH_4 emissions are from three waste treatment and disposal plants in the Madrid region (locations showed in Figure 1). The annual CH_4 emission rates from the PRTR for each plant are listed in Table 2. The total emission strength for each plant is about $2.5 \times 10^{25} \text{ molec s}^{-1}$. This value only considers the "cells" in production, i.e. those where the waste is not yet covered with soil. The emissions from sealed cells are not included in the total emissions, but they still emit CH_4 during some years after sealing. So, the estimated emission rates from the inventories is expected to underestimate the true emissions, which fits reasonably with the estimated emission rate derived from COCCON measurements. The COCCON instruments show a very good ability to detect the source. Based on this evidence we investigate the potential of the TROPOMI and IASI CH_4 products for detecting CH_4 sources in the following.

Table 2: CH_4 emission rates in three waste treatment and disposal plants in Madrid from PRTR.

Waste treatment and disposal plants	Valdemingómez (molec s^{-1})	Pinto (molec s^{-1})	Alcalá (molec s^{-1})	Total (molec s^{-1})
2017	7.4×10^{24}	1.2×10^{25}	2.1×10^{24}	2.2×10^{25}
2018	7.4×10^{24}	1.3×10^{25}	2.1×10^{24}	2.2×10^{25}
2019	9.8×10^{24}	1.4×10^{25}	9.4×10^{23}	2.5×10^{25}

3.2 Predominant wind

To better representing the whole area of Madrid, the hourly ERA5 model wind at a height of 10 m around Madrid is used. ERA5 is the fifth generation climate reanalysis produced by the European Centre for Medium-range Weather Forecasts (ECMWF) (Copernicus Climate Change Service, 2017). The TROPOMI overpasses over Madrid cover the time range from 12:00 UTC – 14:30 UTC (IASI overpasses are typically from 09:30 UTC – 10:30 UTC), but the dispersion of emitted CH_4 is influenced by the ground conditions (e.g. wind speed and wind direction) over a wider time range (Delkash et al., 2016; Rachor et al., 2013). Therefore, the wind information between daytime (08:00 UTC – 18:00 UTC) is chosen to define the predominant wind direction for each day. Figure 5 presents the wind roses for daytime between 10 November 2017 and 10 October 2020 (the first and last day with valid TROPOMI data). The dominating wind direction was southwesterly. To the northwest of Madrid are the Guadarrama mountains located and the Jarama and Manzanares river basins, which influence the air flow. Therefore, we use a wider wind range for the specific wind area in this study to cover the dominant wind directions, i.e. SW for the range of 135° – 315° and NE for the remaining direction. If a wind direction dominates 60% of records for one day, i.e., if the wind direction belongs to one specific area more than 60% of the daytime (08:00 UTC – 19:00 UTC), then this predominant wind direction is selected for that day. The SW and NE wind fields are used for constructing wind-assigned

anomalies in this study and we will demonstrate this construction by using TROPOMI nitrogen dioxide (NO₂) data in the next section. Table 3 summaries the number of days and wind speed for each specific wind area. The wind direction during the TROPOMI overpasses was 61.8% in SW wind field and 28.4% in NE wind field and their averaged wind speed is similar.

335

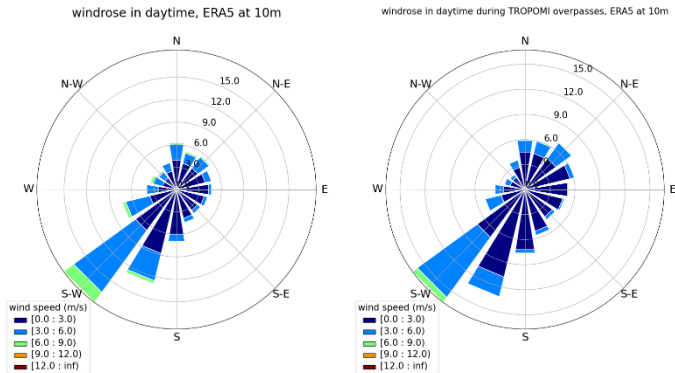


Figure 5: Wind roses for daytime (08:00 UTC – 19:00 UTC) from 10 November 2017 to 10 October 2020 for the ERA5 model wind. The left panel covers all days and the right panel covers the days with TROPOMI overpasses.

Table 3: Number of days and the averaged ERA5 wind speed (\pm standard deviation) per specific wind area in daytime (08:00 UTC – 18:00 UTC) from 10 November 2017 to 10 October 2020. Columns 2 and 3 are for all days, and columns 4 and 5 are for days with TROPOMI overpass.

340

Wind direction range	Number of days in total (%)	Averaged wind speed \pm standard deviation (m s^{-1})	TROPOMI overpass	
			Number of days in total (%)	Averaged wind speed \pm standard deviation (m s^{-1})
NE / $>315^\circ$ or $<135^\circ$	30.4	2.6 ± 1.5	28.4	2.3 ± 1.2
SW / $135^\circ - 315^\circ$	68.4	2.8 ± 1.7	61.8	2.3 ± 1.4

3.3 ~~Illustration~~-Demonstration and validation of the wind-assigned anomaly method

When fossil fuels are burned, nitrogen monoxide (NO) is formed and emitted into the atmosphere. NO reacts with O₂ to form NO₂ and with ozone (O₃) to produce O₂ and NO₂. NO₂ is an extremely reactive gas with a short lifetime of a couple of hours and has lower background levels than CH₄ (Kenagy et al, 2018; Shah et al., 2020). It is measured by TROPOMI with excellent quality. Therefore, it is a suitable proxy for demonstrating the method developed for the wind-assigned anomaly.

345

TROPOMI offers simultaneous observations of NO₂ columns_ ~~with a~~The recommended quality filter value for the analysis of TROPOMI NO₂ columns ~~is ef~~ qa >0.75 (<http://www.tropomi.eu/sites/default/files/files/publicSentinel-5P-Level-2-Product-User-Manual-Nitrogen-Dioxide.pdf>). Based on the predominant wind direction in Madrid (see section 3.2), the averaged wind-assigned anomalies are defined here as the difference of the mean TROPOMI NO₂ column under the wind direction from NE and the mean TROPOMI NO₂ column under the predominant wind direction of SW in Madrid.

350

Figure 6 (a) illustrates the wind-assigned anomalies of TROPOMI NO₂ (ΔNO_2) on a $0.1^\circ \times 0.135^\circ$ latitude/longitude grid during 2018 – 2019. Pronounced fusiform-shape plumes are observed along NE – SW wind direction as expected. Figure 6 (b) shows the wind-assigned anomalies derived from the simple model introduced in Sect. 2.3, using Madrid city center as the

point source ~~and-with~~ an assumed emission rate (ϵ) of 5.0×10^{24} molec s⁻¹ and using ERA5 10 m wind data. The similar
 355 symmetrical positive and negative plumes to those in Figure 6 (a) imply that our method of wind-assigned anomaly is working
 as anticipated ~~nicely~~, and that the ERA5 10 m data are indeed representative for the area and that the implementation of the
 satellite data analysis is correct. Figure 6 (c) shows the strong correlation between the wind-assigned anomalies derived from
 the TROPOMI measurements and the simple plume model ($\epsilon = 5.0 \times 10^{24}$ molec s⁻¹). Using the fitting method as described in
 Sect. B.2, we estimate an emission rate of 3.5×10^{24} molec s⁻¹ \pm 3.9×10^{22} molec s⁻¹. Here the uncertainty is due to noise of the
 360 observations and is calculated according to Eq. 21. This estimated source strength is weaker than the strength obtained by
 Beirle et al. (2011), where the reported NO_x emission is around 150 mol s⁻¹ in Madrid, corresponding to a NO₂ emission of 6.8
 $\times 10^{25}$ molec s⁻¹. It is because our model does not consider the decay of NO₂, which results in a lower emission rate.

The result of this test using NO₂ also allows the used angular spread parameter in the plume model to be adjusted (see
 Section 2.3 and equation (3)). As it can be seen from Figure A- 1, assuming an angular spread of 60° reasonably reproduces
 365 the shape of the plume.

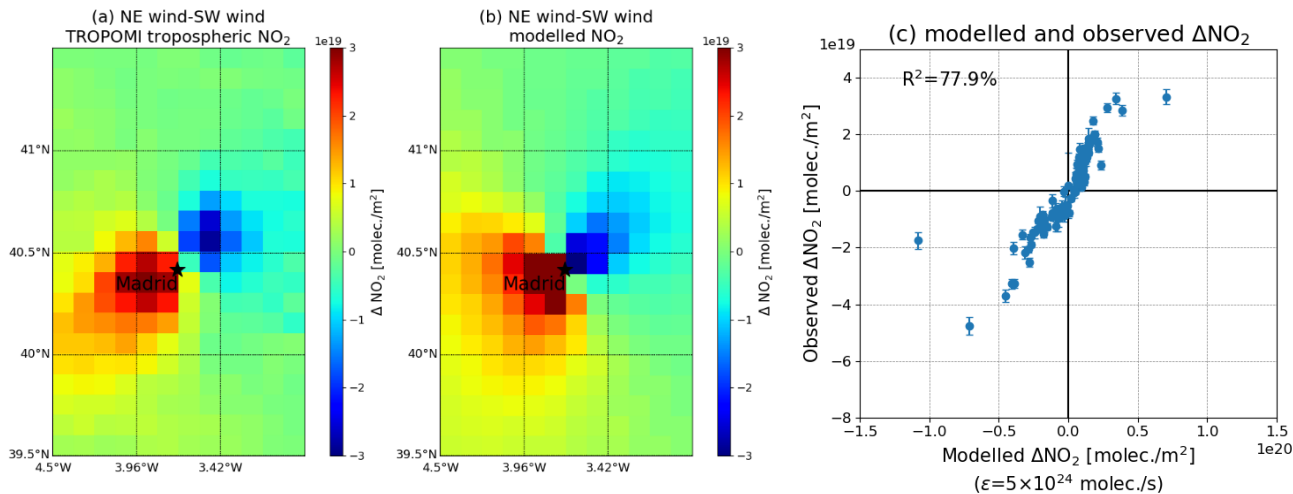


Figure 6: Wind-assigned anomalies derived from (a) TROPOMI tropospheric NO₂ column, (b) our simple plume model ($\epsilon = 5 \times 10^{24}$ molec s⁻¹) over Madrid in NE - SW direction on a $0.1^\circ \times 0.135^\circ$ latitude/longitude grid during 2018 – 2020, and (c) shows the correlation plot between observed ΔNO_2 and modelled ΔNO_2 ($\epsilon = 5 \times 10^{24}$ molec s⁻¹) during 2018-2019.

370 3.4 XCH₄ and TXCH₄ anomaly

CH₄ has a relatively longer lifetime than NO₂ and its background in the atmosphere is high. An increasing trend with obvious seasonality and strong day-to-day signals for XCH₄ is seen in Figure 7 (upper panels). Therefore, these background signals need to be removed before simulating the wind-assigned anomalies (see Sect. B.1). After removing the background, the anomalies (raw data - background) represent more or less the emission from local area (Figure 7 lower panels).

375 Figure 8 illustrates the anomalies of XCH₄, TXCH₄ and UTSXCH₄ for all measurement days, days ~~under-with~~ predominating
 SW wind field and days ~~with predominating under~~ NE wind field. The distributions over the whole area for XCH₄ and TXCH₄

are similar and no obvious enhancement is observed in UTSXCH₄, as expected, since CH₄ abundances dominate in the troposphere. The areas where the three waste plants are located show obvious high anomalies in the ~~all-day-averaged~~ figures (Figure 8 a and d) when the data are averaged over all days for all wind directions, and in downwind direction (Figure 8 b, c, e and f), demonstrating that our method of removing the background works well and the satellite products can detect the local pollution sources after removing the background. Enhanced plumes of XCH₄ and TXCH₄ are better visible ~~in~~on the downwind side of SW than ~~in~~on the downwind side of NE wind field. Because SW is the most dominant wind direction, the SW plume signal is based on a higher number of data and thus less noise.

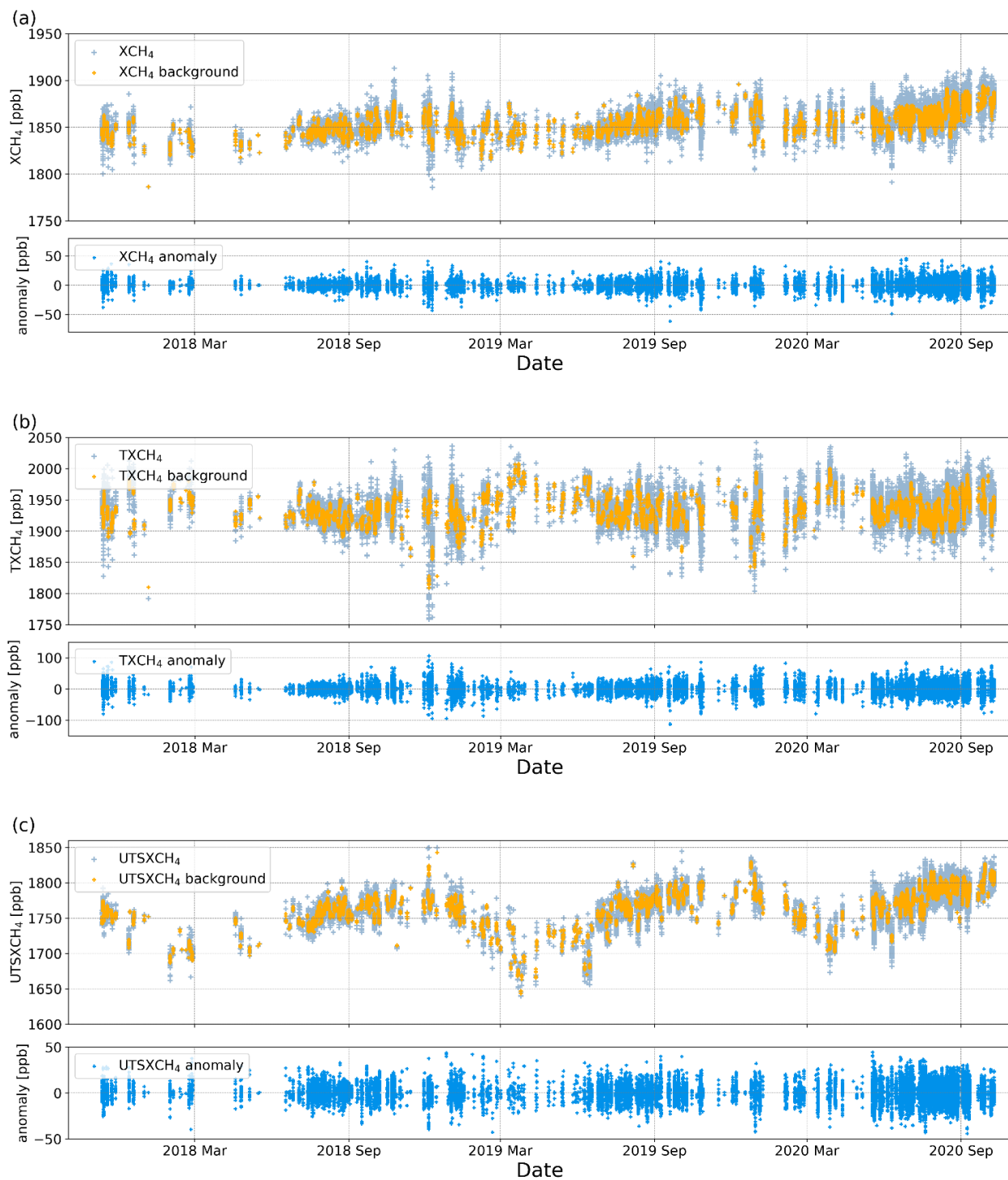


Figure 7: Time series of (a) XCH₄, (b) TXCH₄ and (c) UTS XCH₄, showing raw data and background in each upper panel and anomalies in each corresponding lower panel.

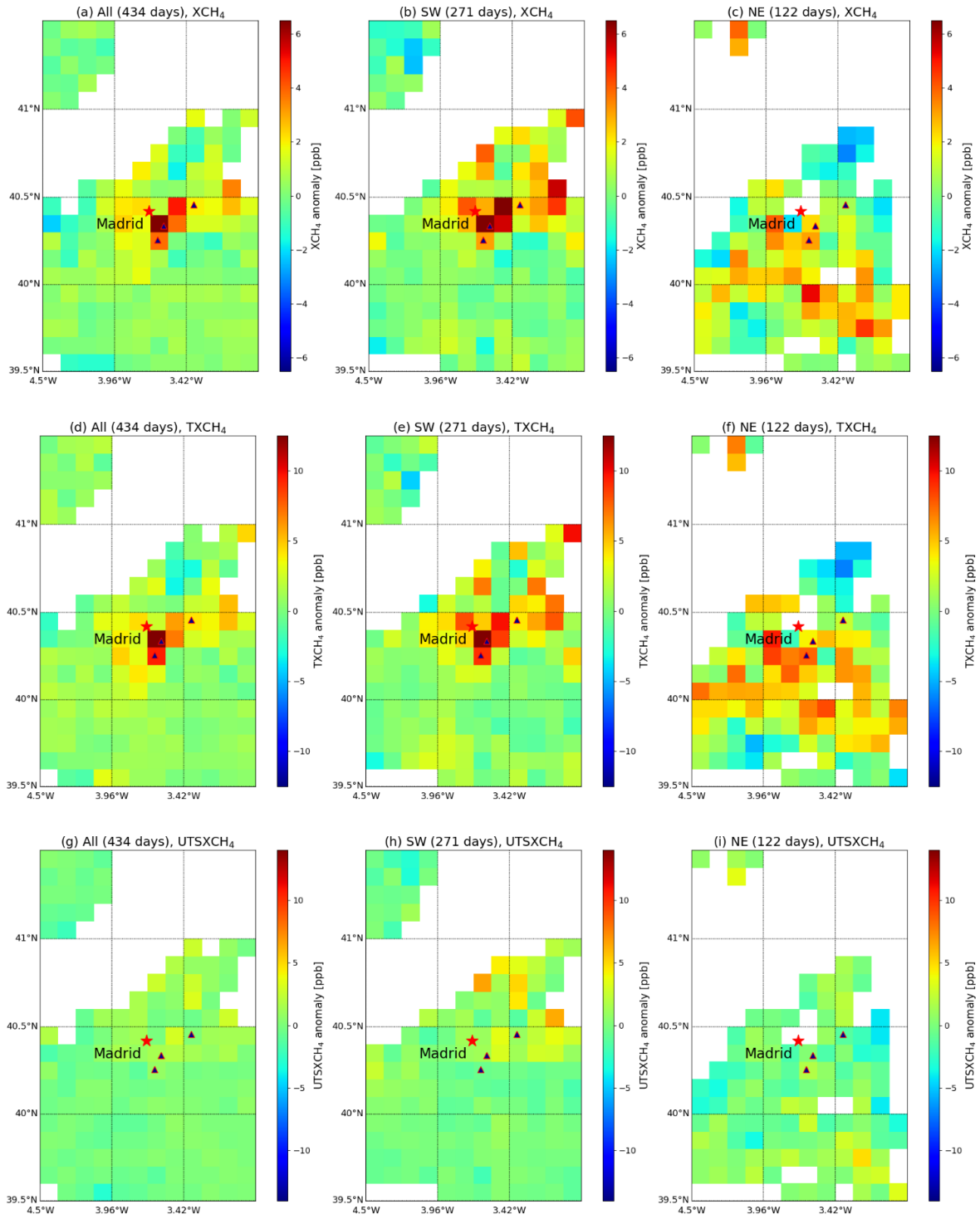


Figure 8: (a-c) XCH₄, (d-f) TXCH₄ and (g-i) UTSXCH₄ anomalies averaged for all days, days with SW wind and NE wind directions. The triangle symbols represent the location of waste plants.

395 **3.5 Estimation of CH₄ emission strengths from satellite data sets**

The wind-assigned anomalies derived from XCH₄ anomalies and TXCH₄ anomalies on a 0.1° × 0.135° latitude/longitude grid are presented in Figure 9. The XCH₄ and TXCH₄ wind-assigned anomalies show similar bipolar plumes but are more disturbed compared to those derived from NO₂. This is because the CH₄ signal is weak compared to the background concentration, so the noise level of the measurement and the imperfect elimination of the background are significant disturbing factors.

400 Based on the ~~a-priori~~ knowledge of the locations of the three waste plants, we choose their locations as point sources to model the enhanced XCH₄ according to the wind information. The initial emission strength is 1×10²⁶ molec s⁻¹ in total and the emission rate at each point source is repartitioned among these three sites according to Table 2. The modelled and observed wind-assigned anomalies show a reasonable linear correlation (coefficient of determination R² of about 49% and 44% for XCH₄ and TXCH₄, respectively) with observed ΔXCH₄. Based on Eq. 18, we obtained an estimated emission rate of 7.4×10²⁵
405 ± 6.4×10²⁴ molec s⁻¹ for XCH₄ and 7.1×10²⁵ ± 1.0×10²⁵ molec s⁻¹ for TXCH₄. The uncertainty values given here are the square root sum of the uncertainty due to the background signal and the data noise, which are calculated according to Eq. 20 and 21. Figure 9 (g), (h) and (i) show the wind-assigned anomalies for UTSXCH₄. For the modelled UTSXCH₄ anomalies we assume here the CH₄ enhancement to occur at altitudes between 7 and 20 km a.s.l. As expected, the fit of these model data to the observed UTSXCH₄ data yields emission rates of close to zero (1.4×10²⁵ ± 7.2×10²⁴ molec s⁻¹), revealing that there is no
410 significant plume signal above 7 km a.s.l. The fact that for TXCH₄ we obtain practically the same emission rates as for XCH₄ and that in the UTSXCH₄ data we see almost no plume nicely proves the quality of our careful background treatment method and the low level of cross-sensitivity between the TXCH₄ and UTSXCH₄ data products. The applied background treatment allows detecting the surface-near emission signal consistently in the total column XCH₄ data and in the tropospheric TXCH₄ data.

415 Figure 10 illustrates the estimated emission strengths for the different products. The emission strengths derived from the satellites are higher than the ones derived from COCCON measurements, as TROPOMI covers a larger area while COCCON measurements are only sensitive to local sources from the nearby waste plant. ~~Table 4 presents some estimated emissions for CH₄ from other studies. Our results fit well with the Indianapolis emissions and is reasonably comparable to the emissions from another European metropolitan cities of similar characteristics, like e.g. Berlin.~~ The PRTR inventory [document gives](#)
420 [lower values than our results. This is probably because it](#) only lists the active landfill cells and does not include the closed ones in Madrid, which probably still emit for many years (Sánchez et al., 2019). ~~This reference table is an additional argument for the relevance of the kind of work we are presenting here.~~

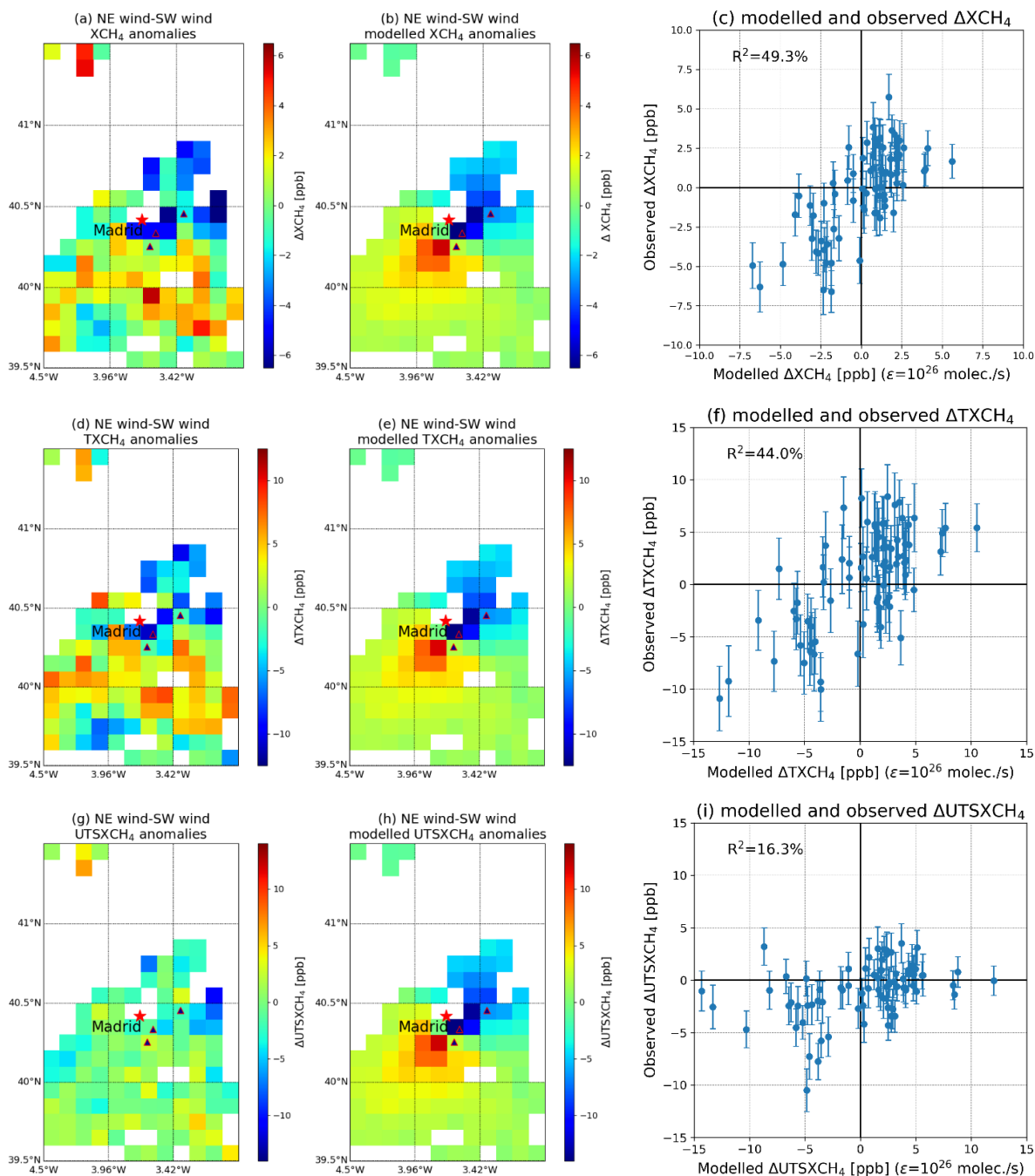


Figure 9: Wind-assigned XCH₄ plume derived from (a) TROPOMI XCH₄ anomalies, (d) synergetic TXCH₄ anomalies and (g) UTSXCH₄ anomalies and their corresponding modelled plume (b, e, h) over Madrid in NE – SW direction on a $0.1^\circ \times 0.135^\circ$ latitude/longitude grid. The correlation plots between observed ΔXCH_4 and modelled ΔXCH_4 ($\epsilon=1 \times 10^{26}$ molec s⁻¹) for different products (c, f, i). Here we use the three waste plants as the point sources (blue triangle with red edge color). The initial emission rate in the plume model is 1×10^{26} molec s⁻¹ and This value is proportionally distributed into three point sources based on the a priori knowledge of emission rate in each waste plant. For the modelled UTSXCH₄ anomalies we assume the CH₄ enhancements to occur at altitudes between 7 and 20 km a.s.l.

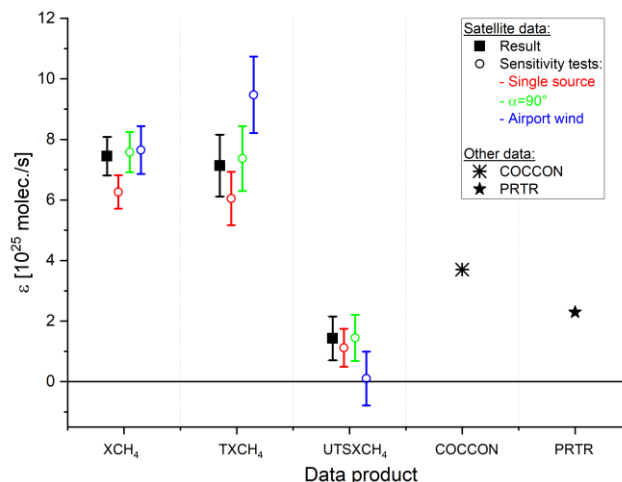


Figure 10: Emission strengths for the different products with and for the sensitivity tests. Also included are the COCCON observations which characterize the Valdemingómez waste plant contribution and the total of all three sources according to the PRTR inventory.

Table 4: CH₄ estimated emissions in some studies.

Reference	Location (specific source)	Estimated emissions (molec s ⁻¹)
Cambaliza et al., 2015	Indianapolis	8.1×10^{25}
Luther et al., 2019	Upper (coal mining)	$7.1 \times 10^{24} - 1.3 \times 10^{26}$
Klausner et al., 2020	Berlin	2.0×10^{26}
Alvarez et al., 2018	U.S. (oil and natural gas supply chain)	1.6×10^{28}

3.6 Sensitivity study for emission strength estimates

The point sources and their proportion in the total emission rate in this study are based on the a priori knowledge of three different waste plant locations. If we use a single source located at the Pinto waste disposal site only, it yields an emission rate of 6.3×10^{25} molec s⁻¹, ~15% lower than that of the three-point sources for CH₄ and 6.0×10^{25} molec s⁻¹ (-15%) for tropospheric CH₄ (see Figure 10). The opening angle (α) is experimentally selected based on the comparison between the TROPOMI measured and modelled NO₂ plume, which results in some uncertainties as well. Using 90° instead of 60° for α in the plume model results in an emission strength of 7.6×10^{25} molec s⁻¹ (+3% change) for CH₄ and of 7.4×10^{25} molec s⁻¹ (+4% change) for tropospheric CH₄.

The surface wind can be influenced by the topography and the actual transport pathway from emission source to the measurement station is difficult to know (Chen et al., 2016; Babenhauserheide et al., 2020). To study the wind sensitivity, the hourly wind information measured at the Cuatro Vientos Airport at 10m height is used instead of the ERA5 10 m wind. There are other in situ measurements available but not used here, as the AEMet Headquarter station is affected by nearby buildings

450 and the Barajas Airport station is very close to a ~~secondary~~-river (Jarama) that determines a specific wind pattern. The wind measured at the Cuatro Vientos Airport is quite different compared to the ERA5 wind, as in situ measured NE wind becomes dominant as well and the wind speed in SW wind field increases by ~50% compared to that of ERA5 wind (Figure A- 3, Figure A- 4 and Table A- 1). Using the wind measured at the Cuatro Vientos Airport results in an emission rate of 7.7×10^{25} molec s⁻¹ (+4%) for CH₄ and 9.5×10^{25} molec s⁻¹ (+34%) for tropospheric XCH₄.

455 In summary, the uncertainties derived from source location, opening angle or wind cannot be ignored, but nevertheless the emission rates estimated from the space-borne observations are clearly larger than the values reported in Table 2 and are larger than the ones estimated from the COCCON SN69 observations in October 2018.

4 Conclusions

The present study analyzes TROPOMI XCH₄ and IASI CH₄ retrievals over an area around Madrid for more than 400 days within a rectangle of 39.5°N – 41.5°N and 4.5°W – 3.0°W (125 km × 220 km) from 10 November 2017 until 10 October 2020. During this time period, a two-week field campaign was conducted in September 2018 in Madrid, in which five ground-based COCCON instruments were used to measure XCH₄ at different locations around the city center.

First, TROPOMI XCH₄ is compared with co-located COCCON data from the field campaign, showing a generally good agreement, even though the radius of the collection circle for the satellite measurements ~~is~~-was as ~~low~~-small as 5 km. However, 465 there are six days when obvious enhancements due to local sources were observed by COCCON around noon at the most southeast station (Jose Echegaray), which were underestimated by TROPOMI. The ground-based COCCON observations indicate a local source strength of 3.7×10^{25} molec s⁻¹ from observations at Jose Echegaray station on October 4, 2018, which is reasonable compared to the emissions assumed for nearby waste plants. The waste plant locations are later used as the point sources to model the emission strength for CH₄.

470 According to the ERA5 model wind at 10 m height, SW (135° – 315°) winds (NE covering the remaining wind field) are dominant in the Madrid city center in the time range from November 2017 to October 2020. Based on this wind information, the wind-assigned anomalies are defined as the difference of satellite data between the conditions of NE wind field and SW wind field. We use the simultaneously measured tropospheric NO₂ column amounts from TROPOMI as a proxy to evaluate the wind-assigned anomaly approach due to its short lifetime, and clear plume shape, by using ERA5 model wind. Pronounced 475 and bipolar NO₂ plumes are observed along the NE – SW wind direction and a tropospheric NO₂ emission strength of $3.5 \times 10^{24} \pm 3.9 \times 10^{22}$ molec s⁻¹ is estimated. This implies that our method of wind-assigned anomaly is working reliably, and that the ERA5 wind data used are indeed representative for the area and the implementation of the satellite data analysis is correct.

CH₄ has a long lifetime and so there are strong CH₄ background signals in the atmosphere. Therefore, ~~this~~-the background values ~~are-needed~~ to be removed and the anomalies have to be determined before calculating emission strengths. In this study, 480 the ~~removed~~ background values include linear increase, seasonal cycle, daily variability and horizontal variability. The areas where the three waste plants are located show obvious high anomalies, demonstrating that ~~the~~-satellite ~~measurements~~ ~~products~~

can detect the local sources after removing the background. Enhanced plumes are [more](#) pronounced in the downwind side of SW, whereas the observed downwind plume signal for NE wind is noisier, partly due to the lower number of NE wind situations.

The wind-assigned TROPOMI XCH₄ anomalies show a less clear bipolar plume than NO₂. This is because CH₄ has a long lifetime and its high background is difficult to be totally removed. Based on the wind-assigned-[anomalies](#)~~method~~, the emission strength estimated from the TROPOMI XCH₄ data is $7.4 \times 10^{25} \pm 6.4 \times 10^{24}$ molec s⁻¹. In addition, this method is applied to the tropospheric partial column averaged (ground – 7 km a.s.l.) dry-air molar fractions of methane (TXCH₄, obtained by combining TROPOMI and IASI products) yielding an emission strength of $7.1 \times 10^{25} \pm 1.0 \times 10^{25}$ molec s⁻¹. We show that in the upper troposphere/stratosphere there is no significant plume signal ($1.4 \times 10^{25} \pm 7.2 \times 10^{24}$ molec s⁻¹). The estimation of very similar emission rates from XCH₄ and TXCH₄ together with the estimated negligible emission rates when using data representing the upper troposphere/stratosphere proves the robustness of our method. The emission rates derived from satellites (XCH₄ and TXCH₄) are higher than that derived from COCCON observations, as satellites cover larger areas with other CH₄ sources and COCCON likely measures local sources.

The surface wind is easily influenced by the topography, which introduces uncertainties in the estimated emission strengths. Using in situ measured wind at the Cuatro Vientos Airport instead of ERA5 model wind results in an estimated emission rate of 7.7×10^{25} molec s⁻¹ (+4%) for CH₄ and 9.5×10^{25} molec s⁻¹ (+34%) for tropospheric CH₄. Uncertainties can as well be caused by the choice of the opening angle in the plume model. The estimated emission rates with $\alpha=90^\circ$ are 7.6×10^{25} molec s⁻¹ (+3%) for CH₄ and of 7.4×10^{25} molec s⁻¹ (+4%) for tropospheric CH₄. When using a single source located in the Madrid city center, the emission strengths are 6.3×10^{25} molec s⁻¹ (-15%) for CH₄ and 6.0×10^{25} molec s⁻¹ (-15%) for tropospheric CH₄.

In summary, in this study for the first time TROPOMI observations are used together with IASI observations and the ground-based COCCON observations to investigate CH₄ emissions from landfills in an important metropolitan area like ~~the~~ Madrid ~~city~~. The COCCON instruments show a promising potential for satellite validation and an excellent ability for observation of local sources. The data presented here [shows](#)~~are provided with the confidence~~ that TROPOMI is able to detect the tropospheric NO₂ and XCH₄ anomalies over metropolitan areas with support from meteorological wind analysis data. As outlook, this methodology could also be applied to other source regions, space-based sensors and sources of CO₂.

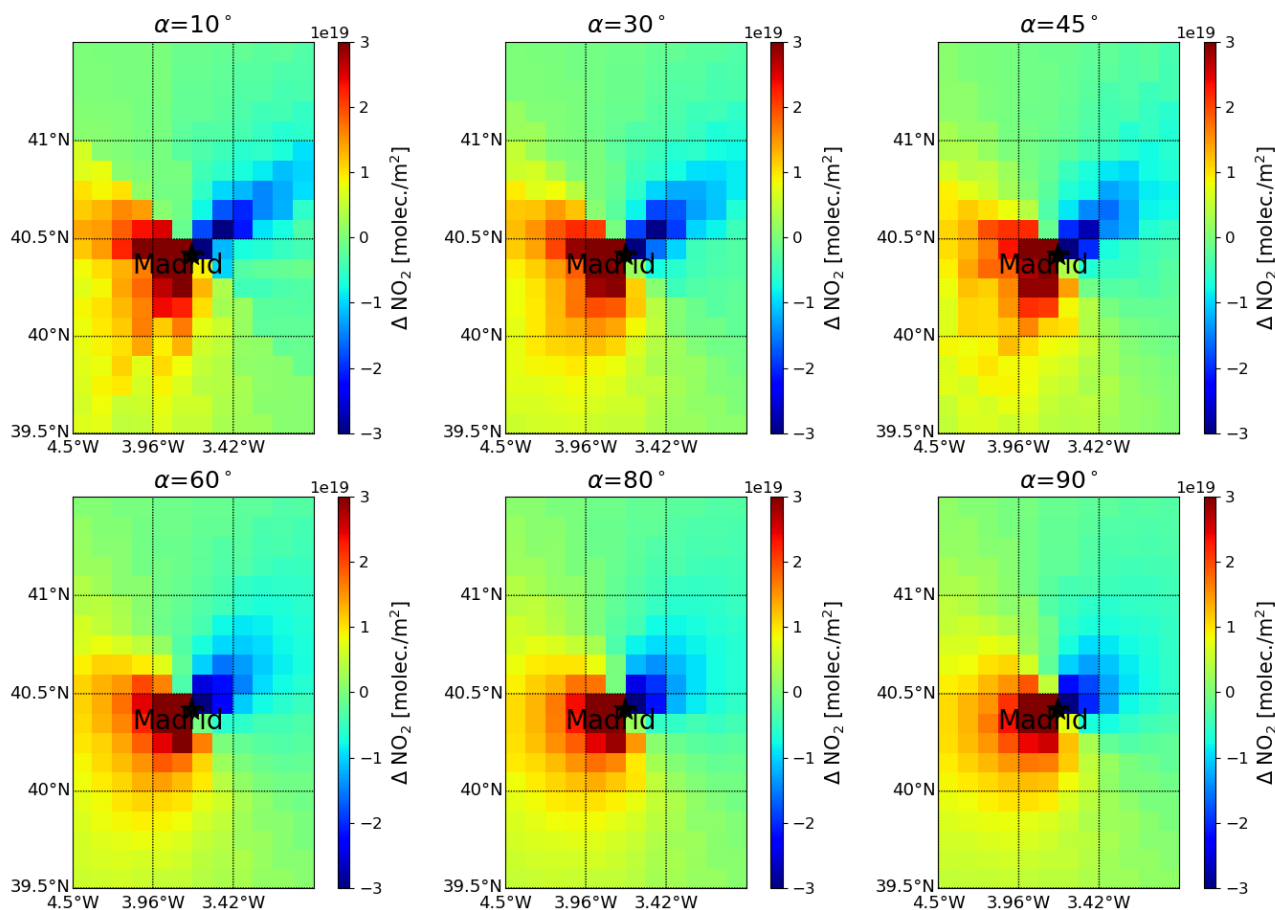
Data availability. The data are accessible by contacting the corresponding author (qiansi.tu@kit.edu). The SRON S5P-RemoTeC scientific TROPOMI CH₄ dataset from this study is available for download at <https://doi.org/10.5281/zenodo.4447228> (Lorente et al., 2021, last access: 06 May 2021). The TROPOMI data set is publicly available from <https://scihub.copernicus.eu/> (last access: 06 May 2021; ESA, 2020). The access and use of any Copernicus Sentinel data available through the Copernicus Open Access Hub are governed by the legal notice on the use of Copernicus Sentinel Data and Service Information, which is given here: https://sentinels.copernicus.eu/documents/247904/690755/Sentinel_Data_Legal_Notice (last access: 06 May 2021; European Commission, 2020). The MUSICA IASI data set is available for download via <https://doi.org/10.35097/408> (Schneider et al. 2021c).

Author contributions. Qiansi Tu, Frank Hase and Omaira García developed the research question. Qiansi Tu wrote the manuscript and performed the data analysis with input from Frank Hase, Omaira García, Matthias Schneider and Farahnaz Khosrawi. Frank Hase suggested the method of constructing wind-assigned anomalies for source quantification. Matthias Schneider suggested the method for calculating the anomalies, for fitting the emission rates and estimating the uncertainty. Omaira García provided the COCCON and meteorological data and helped to interpret it. Tobias Borsdorff and Alba Lorente supported technically for the TROPOMI data analysis. Matthias Schneider, Benjamin Ertl and Christopher J. Diekmann provided the combined (MUSICA IASI + TROPOMI) data and supported technically for the analysis of these data. All other coauthors participated in the field campaign and provided the data. All authors discussed the results and contributed to the final manuscript.

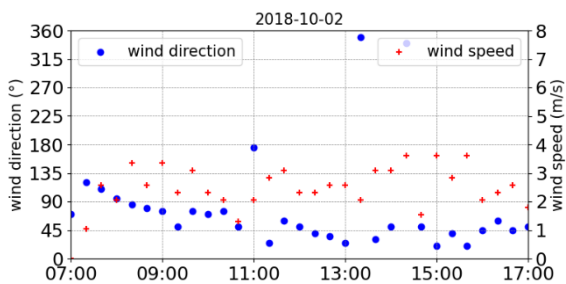
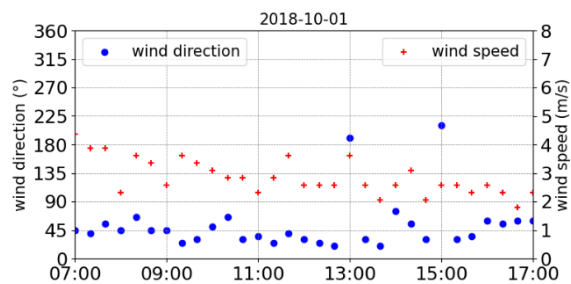
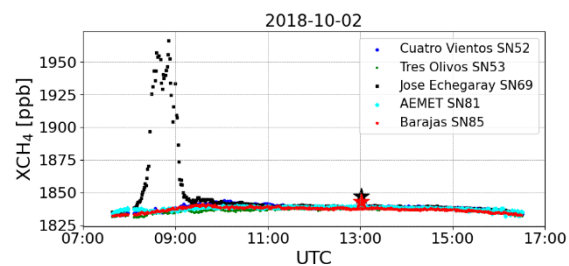
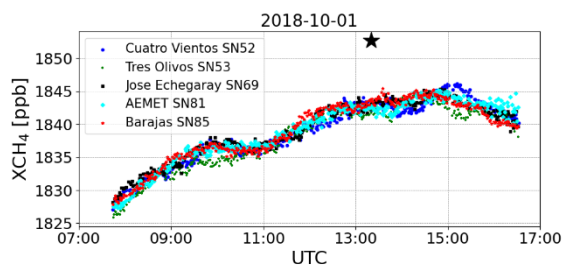
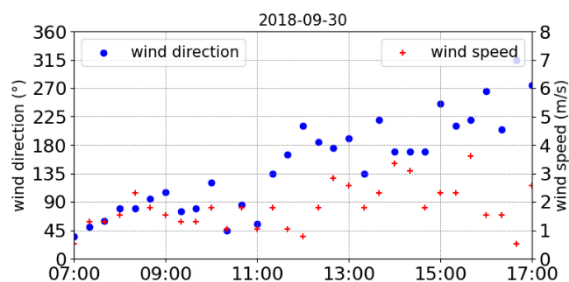
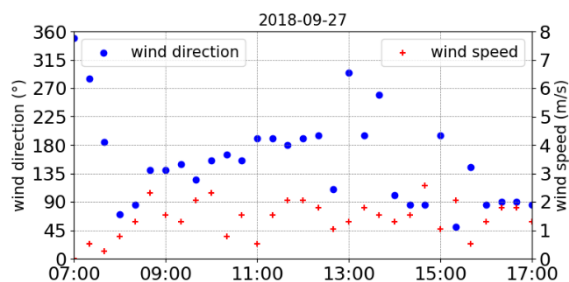
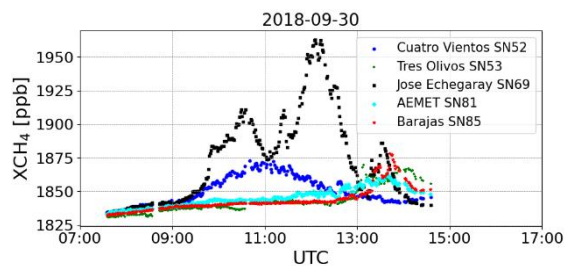
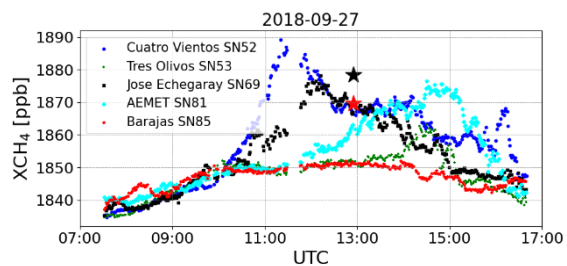
Competing interests. The authors declare that they have no conflict of interest.

Acknowledgements. We acknowledge ESA support through the COCCON-PROCEEDS and COCCON-PROCEEDS II projects. In addition, this research was funded by the Ministerio de Economía y Competitividad from Spain through the INMENSE project (CGL2016-80688-P). This research has largely benefit from funds of the Deutsche Forschungsgemeinschaft (provided for the two projects MOTIV and TEDDY with IDs/290612604 and 416767181, respectively). Important part of this work was performed on the supercomputer ForHLR funded by the Ministry of Science, Research and the Arts Baden-Württemberg and by the German Federal Ministry of Education and Research.

We acknowledge the support by the Deutsche Forschungsgemeinschaft and the Open Access Publishing Fund of the Karlsruhe Institute of Technology.



550 **Figure A- 1: Examples of wind-assigned NO₂ plume based on the simple plume model ($\varepsilon = 5.0 \times 10^{24}$ molec s⁻¹) using Madrid as the point source in NE – SW direction on a $0.1^\circ \times 0.135^\circ$ latitude/longitude grid with different opening angle (α) from 10° to 90° .**



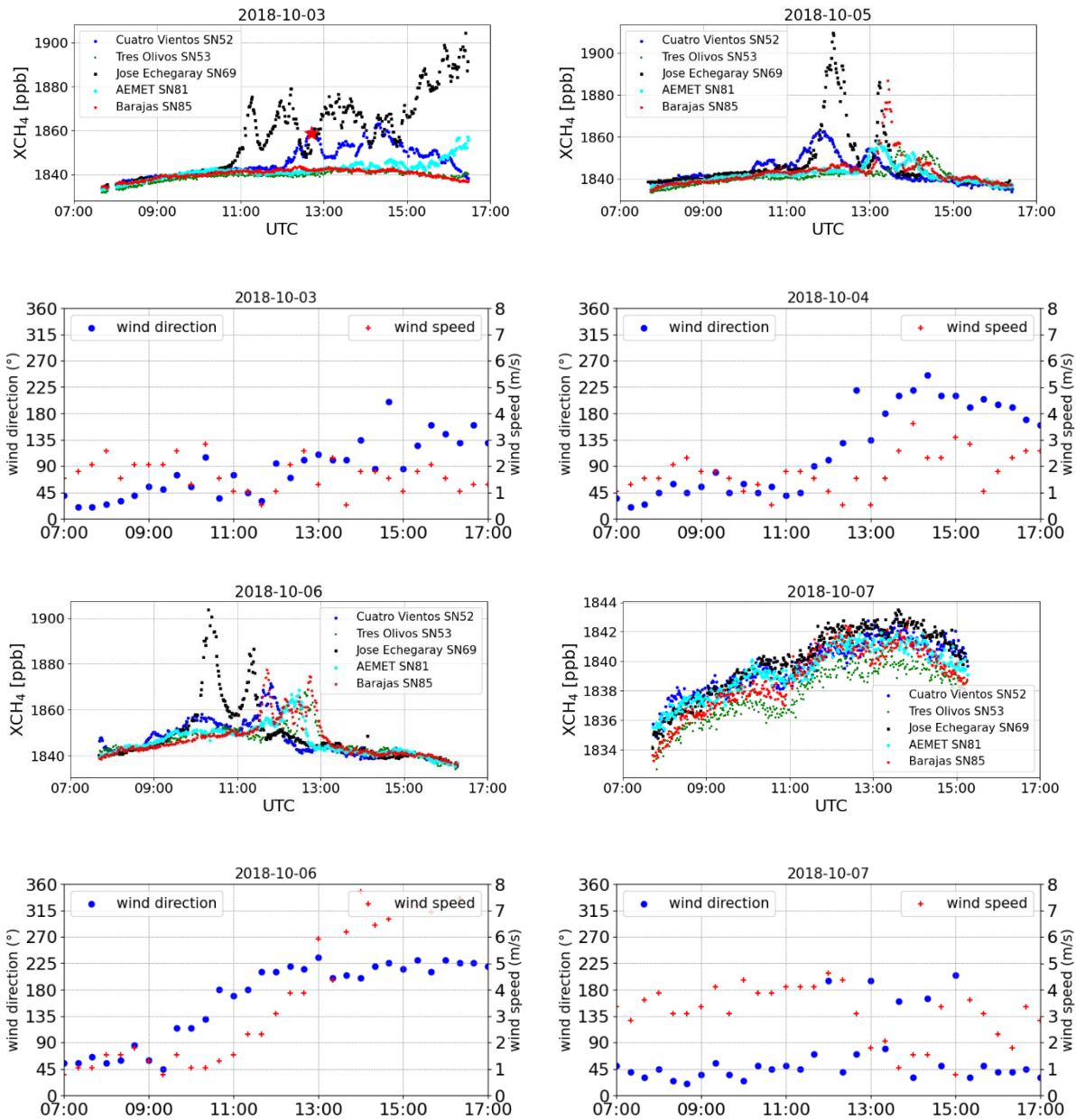
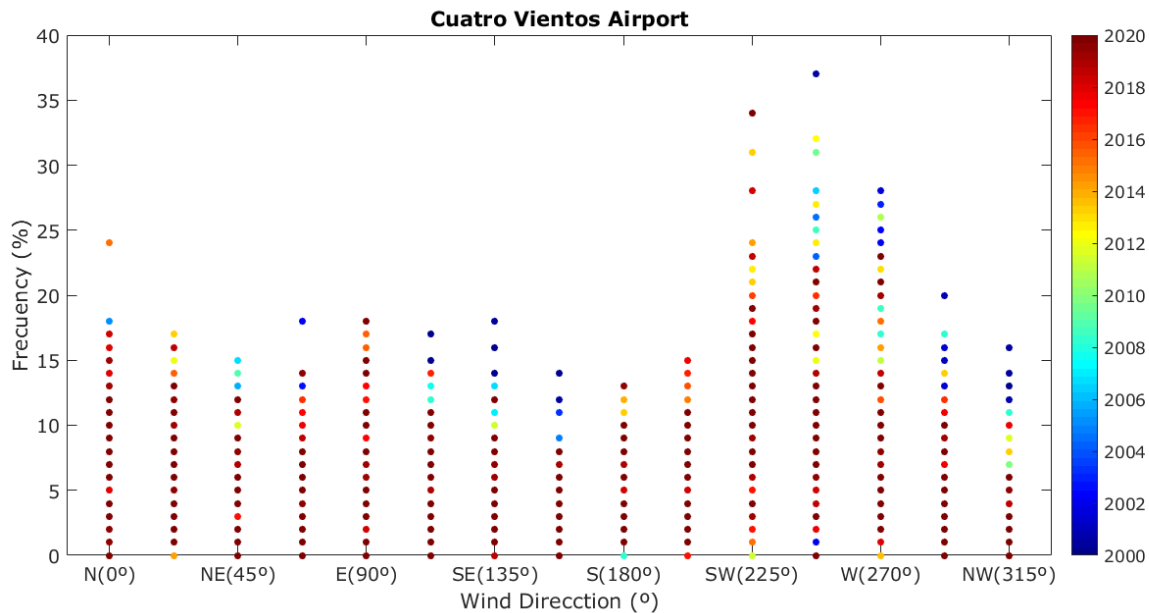
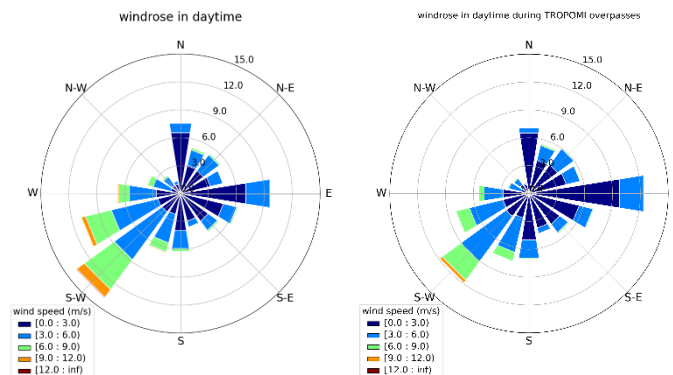


Figure A- 2: Time series of COCCON measurements at five stations and corresponding time series of wind fields (direction and speed) measured at the Cuatro Vientos Airport on eight days during MEGEI-MAD campaign in 2018. Star symbols represent the TROPOMI observations within a radius of 5 km around each station.



565 **Figure A- 3: Percentage of occurrence for wind direction measured at the Cuatro Vientos Airport between 2000 and 2020. The**
predominant wind direction is southwest and up to 35% of time (personal communication of Omaira García).



570 **Figure A- 4: Wind roses for daytime (08:00 UTC – 19:00 UTC) from 10 November 2017 to 11 September 2020 from the wind**
measurements at the Cuatro Vientos Airport. The left panel covers all days and the right panel covers the days with TROPOMI
overpasses.

Table A- 1: Number of days and the averaged wind speed (\pm standard deviation) per specific wind area in daytime (08:00 UTC – 18:00 UTC) from 10 November 2017 to 11 September 2020 measured at the Cuatro Vientos Airport. Columns 2 and 3 are for all days, and columns 4 and 5 are for days with TROPOMI overpass.

Wind direction range	Number of days in total (%)	Averaged wind speed \pm standard deviation (m s^{-1})	TROPOMI overpass	
			Number of days in total (%)	Averaged wind speed \pm standard deviation (m s^{-1})
NE / $>315^\circ$ or $<135^\circ$	35.4	2.4 ± 1.5	36.0	2.2 ± 1.3
SW / $135^\circ - 315^\circ$	49.3	4.2 ± 2.5	44.4	3.4 ± 2.1

Appendix B

575 B.1 CH₄ background signal

The satellite data can be written as a vector \mathbf{y} , where each element corresponds to an individual satellite data point. This signal is caused by a CH₄ background signal and the CH₄ plume due to the emissions from the waste disposal sites near Madrid:

$$\mathbf{y} = \mathbf{y}_{BG} + \mathbf{y}_{plume} \quad \text{Eq. 7}$$

It is of great importance to adequately separate both components for estimating the emission strength from the satellite data.

For determining the background signal (\mathbf{y}_{BG}), we setup a background model:

$$\mathbf{M}_{BG} = \mathbf{y}_{BG} = \mathbf{K}_{BG} \mathbf{x}_{BG} \quad \text{Eq. 8}$$

580 The matrix \mathbf{K}_{BG} is a Jacobian matrix that allows to reconstruct the background according to a few background model coefficients (the elements of the vector \mathbf{x}_{BG}). We also create a Jacobian \mathbf{K}_{BG}^* , which is the same as \mathbf{K}_{BG} but set to zero for observations where the wind data suggest a significant impact of the CH₄ plume on the satellite data. The calculations of the plume CH₄ signals are made according to Sect. 2.3. With the use of \mathbf{K}_{BG}^* we make sure that the estimated background signal is not affected by the CH₄ plume.

585 The Jacobian matrix \mathbf{K}_{BG} considers a smooth background, which is a constant CH₄ value, a linear increase with time and a seasonal cycle described by the amplitude and phase of the three frequencies 1/year, 2/year, and 3/year. Furthermore, we fit a daily anomaly, which is the same for all data measured during a single day and a horizontal anomaly, which is the same for any time but dependent on the horizontal location. For the latter we use a $0.1^\circ \times 0.135^\circ$ (latitude \times longitude) grid.

We invert the problem in order to estimate the background model coefficients (elements of the vector \mathbf{x}_{BG}):

$$\hat{\mathbf{x}}_{BG} = \mathbf{G}_{BG} \mathbf{y} \quad \text{Eq. 9}$$

590 With \mathbf{G}_{BG} being the so-called gain matrix

$$\mathbf{G}_{BG} = (\mathbf{K}_{BG}^{*T} \mathbf{S}_{y,n}^{-1} \mathbf{K}_{BG}^* + \mathbf{S}_a^{-1})^{-1} \mathbf{K}_{BG}^{*T} \mathbf{S}_{y,n}^{-1} \quad \text{Eq. 10}$$

The matrix $\mathbf{S}_{y,n}$ stands for the noise covariance of the satellite data. For constraining the problem, we use a diagonal \mathbf{S}_a^{-1} (no constraint between different coefficients) with a very low constraint value for the coefficient determining the constant and higher constraint values for the other coefficients. Here we use $\mathbf{S}_{y,BG}$ as the diagonal matrix with the mean square value of the difference $\mathbf{y}_{BG} - \mathbf{K}_{BG}^* \hat{\mathbf{x}}_{BG}$ being the diagonal elements. In this context, $\mathbf{S}_{y,BG}$ considers the deficits of the background model.

595 The uncertainty of the background model coefficients can be calculated as:

$$\mathbf{S}_{\hat{\mathbf{x}}_{BG}} = \mathbf{G}_{BG} \mathbf{S}_{y,BG} \mathbf{G}_{BG}^T \quad \text{Eq. 11}$$

For each day there is an uncertainty in the background coefficients and the uncertainty is correlated with the uncertainty at other days. All this information is provided in the uncertainty covariance $\mathbf{S}_{\hat{\mathbf{x}}_{BG}}$.

With the full Jacobian \mathbf{K}_{BG} we can now model the background for the measurement state (also for the measurements that are assumed to be affected by the CH₄ waste disposal plume):

$$\mathbf{y}_{BG} = \mathbf{K}\hat{\mathbf{x}}_{BG} \quad \text{Eq. 12}$$

600 and calculate the plume signal according to Eq. 7 as:

$$\mathbf{y}_{plume} = \mathbf{y} - \mathbf{K}\hat{\mathbf{x}}_{BG} \quad \text{Eq. 13}$$

The uncertainty of these plume signal is the sum of the uncertainties of the satellite data $\mathbf{S}_{y,n}$ and the uncertainty of the estimated background:

$$\mathbf{S}_{y,plume} = \mathbf{S}_{y,n} + \mathbf{K}\mathbf{S}_{\hat{\mathbf{x}}_{BG}}\mathbf{K}^T \quad \text{Eq. 14}$$

B.2 Fitting of CH₄ emission rates

Because the CH₄ plume signal is rather weak compared to the CH₄ background uncertainty and the noise level of the satellite data, we have to work with averages in order to reduce the data noise. The averaging is made by classifying the observation in two predominant wind categories. We calculate the average plume maps for the southwest and northeast wind situations (see Figure 6 and Figure 8). Then we calculate the difference between the south-west and north-east plume maps (the wind-assigned anomalies or Δ -maps). All the calculations are made by binning all observations that fall within a certain $0.135^\circ \times 0.1^\circ$ (longitude \times latitude) area. In order to significantly reduce the data noise, we only consider averages for the $0.135^\circ \times 0.1^\circ$ areas based on at least 25 individual observations made under southwest wind conditions and 25 individual observations made under northeast wind conditions. The binning, the averaging, the wind-assigned Δ -maps calculations, and the data number filtering is achieved by operator \mathbf{D} , and we can write:

$$\Delta\mathbf{y}_{plume} = \mathbf{D}\mathbf{y}_{plume} \quad \text{Eq. 15}$$

and

$$\Delta\mathbf{S}_{y,plume} = \mathbf{D}\mathbf{S}_{y,plume}\mathbf{D}^T \quad \text{Eq. 16}$$

Here $\Delta\mathbf{y}_{plume}$ is a column vector whose elements capture the different signal of the two wind directions at the different locations and $\Delta\mathbf{S}_{y,plume}$ is the corresponding uncertainty covariance.

For modelling the plume signals we use a priori knowledge of CH₄ emission locations, i.e. assuming a repartition of the emissions between the three waste disposal sites according to Table 2 (see Sect. 3.1). Together with information from the wind, we then model the CH₄ plume's wind-assigned anomaly signal $\Delta\mathbf{y}_{plume}$:

$$\Delta\mathbf{y}_{plume} = \Delta\mathbf{k}\mathbf{x} \quad \text{Eq. 17}$$

620 Here the Jacobian $\Delta\mathbf{k}$ (a column vector) represents the wind-assigned anomaly model as described in Sect. 2.3. It describes how an emission at the waste disposal sites according to

Table 2 would be seen in the difference signal. We are interested in the coefficient \mathbf{x} (a scalar describing how the assumed emissions from

Table 2 have to be scaled by a common factor in order to achieve the best agreement with the observed plume).

625 Similar to Eq. 9 and Eq. 10 we write:

$$\hat{x} = \mathbf{g}^T \Delta \mathbf{y}_{plume} \quad \text{Eq. 18}$$

with the row vector

$$\mathbf{g}^T = (\Delta \mathbf{k}^T \Delta \mathbf{S}_{y,plume}^{-1} \Delta \mathbf{k})^{-1} \Delta \mathbf{k}^T \Delta \mathbf{S}_{y,plume}^{-1} \quad \text{Eq. 19}$$

This fitting of the emission rate correctly considers the respective uncertainty of the difference signals at the different locations.

Because of the small plume signals, it is important to estimate the reliability of the fitted emission rate. The uncertainty of x due to the background uncertainty and the noise in the satellite data can be estimated as:

$$\epsilon_{BG} = \sqrt{\mathbf{g}^T \mathbf{D} \mathbf{K} \mathbf{S}_{\hat{x},BG} \mathbf{K}^T \mathbf{D}^T \mathbf{g}} \quad \text{Eq. 20}$$

630 and

$$\epsilon_n = \sqrt{\mathbf{g}^T \mathbf{D} \mathbf{S}_{y,n} \mathbf{D}^T \mathbf{g}} \quad \text{Eq. 21}$$

respectively.

References

- Alvarez, R. A., Zavala-Araiza, D., Lyon, D. R., Allen, D. T., Barkley, Z. R., Brandt, A. R., Davis, K. J., Herndon, S. C., Jacob, D. J., Karion, A., Kort, E. A., Lamb, B. K., Lauvaux, T., Maasakkers, J. D., Marchese, A. J., Omara, M., Pacala, S. W., Peischl, J., Robinson, A. L., Shepson, P. B., Sweeney, C., Townsend-Small, A., Wofsy, S. C. and Hamburg, S. P.: Assessment of methane emissions from the U.S. oil and gas supply chain, *Science* (80-.), 361(6398), 186 LP – 188, doi:10.1126/science.aar7204, 2018.
- Borsdorff, T., García Reynoso, A., Maldonado, G., Mar-Morales, B., Stremme, W., Grutter, M., and Landgraf, J.: Monitoring CO emissions of the metropolis Mexico City using TROPOMI CO observations, *Atmos. Chem. Phys.*, 20, 15761–15774, <https://doi.org/10.5194/acp-20-15761-2020>, 2020.
- [Bousquet, P., Ciais, P., Miller, J. B., Dlugokencky, E. J., Hauglustaine, D. A., Prigent, C., Van der Werf, G. R., Peylin, P., Brunke, E.-G., Carouge, C., Langenfelds, R. L., Lathière, J., Papa, F., Ramonet, M., Schmidt, M., Steele, L. P., Tyler, S. C. and White, J.: Contribution of anthropogenic and natural sources to atmospheric methane variability, *Nature*, 443\(7110\), 439–443, doi:10.1038/nature05132, 2006.](#)
- Beirle, S., Boersma, K. F., Platt, U., Lawrence, M. G., and Wagner, T.: Megacity Emissions and Lifetimes of Nitrogen Oxides Probed from Space, *Science*, 333, 1737, <https://doi.org/10.1126/science.1207824>, 2011.
- Briggs, G. A.: Diffusion estimation for small emissions. Preliminary report, Tech. Rep. TID-28289, National Oceanic and Atmospheric Administration, Oak Ridge, Tenn. (USA). Atmospheric Turbulence and Diffusion Lab., <https://doi.org/10.2172/5118833>, <https://www.osti.gov/biblio/5118833-diffusion-estimation-small-emissions-preliminary-report>, 1973.
- Butz, A., Hasekamp, O. P., Frankenberg, C., and Aben, I.: Retrievals of atmospheric CO₂ from simulated space-borne measurements of backscattered near-infrared sunlight: accounting for aerosol effects, *Appl. Opt.* 48, 3322–3336, 2009.
- Butz, A., Guerlet, S., Hasekamp, O., Schepers, D., Galli, A., Aben, I., Frankenberg, C., Hartmann, J.-M., Tran, H., Kuze, A., Keppel-Aleks, G., Toon, G., Wunch, D., Wennberg, P., Deutscher, N., Griffith, D., Macatangay, R., Messerschmidt, J., Notholt, J., and Warneke, T.: Toward accurate CO₂ and CH₄ observations from GOSAT, *Geophysical Research Letters*, 38, <https://doi.org/10.1029/2011GL047888>, <https://agupubs.onlinelibrary.wiley.com/doi/abs/10.1029/2011GL047888>, 2011.
- Butz, A., Galli, A., Hasekamp, O., Landgraf, J., Tol, P., and Aben, I.: TROPOMI aboard Sentinel-5 Precursor: Prospective performance of CH₄ retrievals for aerosol and cirrus loaded atmospheres, *Remote Sens. Environ.*, 120, 267–276, <https://doi.org/10.1016/j.rse.2011.05.030>, 2012.
- Cambaliza, M. O. L., Shepson, P. B., Bogner, J., Caulton, D. R., Stirm, B., Sweeney, C., Montzka, S. A., Gurney, K. R., Spokas, K., Salmon, O. E., Lavoie, T. N., Hendricks, A., Mays, K., Turnbull, J., Miller, B. R., Lauvaux, T., Davis, K., Karion, A., Moser, B., Miller, C., Obermeyer, C., Whetstone, J., Prasad, K., Miles, N., and Richardson, S.: Quantification

- and source apportionment of the methane emission flux from the city of Indianapolis, *Elementa: Science of the Anthropocene*, 3, <https://doi.org/10.12952/journal.elementa.000037>, 2015.
- 665 Csanady, G. T.: Turbulent Diffusion in the Environment, Springer Netherlands, Dordrecht, <https://doi.org/10.1007/978-94-010-2527-0>, 1973.
- Chen, J., Viatte, C., Hedelius, J. K., Jones, T., Franklin, J. E., Parker, H., Gottlieb, E. W., Wennberg, P. O., Dubey, M. K., and Wofsy, S. C.: Differential column measurements using compact solar-tracking spectrometers, *Atmos. Chem. Phys.*, 16, 8479–8498, <https://doi.org/10.5194/acp-16-8479-2016>, 2016.
- 670 [Chynoweth, D. P., Owens, J. M. and Legrand, R.: Renewable methane from anaerobic digestion of biomass, *Renew. Energy*, 22\(1\), 1–8, doi:\[https://doi.org/10.1016/S0960-1481\\(00\\)00019-7\]\(https://doi.org/10.1016/S0960-1481\(00\)00019-7\), 2001.](#)
- Clerbaux, C., Hadji-Lazaro, J., Turquety, S., Mégie, G., and Coheur, P.-F.: Trace gas measurements from infrared satellite for chemistry and climate applications, *Atmos. Chem. Phys.*, 3, 1495–1508, <https://doi.org/10.5194/acp-3-1495-2003>, 2003.
- 675 Copernicus Climate Change Service (C3S): ERA5: Fifth generation of ECMWF atmospheric reanalyses of the global climate . Copernicus Climate Change Service Climate Data Store (CDS), date of access. <https://cds.climate.copernicus.eu/cdsapp#!/home>, 2017.
- [Crippa, M., Oreggioni, G., Guizzardi, D., Muntean, M., Schaaf, E., Lo Vullo, E., Solazzo, E., Monforti-Ferrario, F., Olivier, J. G. J., and Vignati, E.: Fossil CO₂ and GHG emissions of all world countries – 2019 Report, EUR 29849 EN, Publications Office of the European Union, Luxembourg, JRC117610, <https://doi.org/10.2760/687800>, ISBN 978-92-76-11100-9, 2019.](#)
- 680 De Gouw, J. A., Veefkind, J. P., Roosenbrand, E., Dix, B., Lin, J. C., Landgraf, J., and Levelt, P. F.: Daily Satellite Observations of Methane from Oil and Gas Production Regions in the United States, *Scientific Reports*, 10, 1379, <https://doi.org/10.1038/s41598-020-57678-4>, 2020.
- De Wachter, E., Kumps, N., Vandaele, A. C., Langerock, B., and De Mazière, M.: Retrieval and validation of MetOp/IASI methane, *Atmos. Meas. Tech.*, 10, 4623–4638, <https://doi.org/10.5194/amt-10-4623-2017>, 2017.
- 685 Delkash, M., Zhou, B., Han, B., Chow, F. K., Rella, C. W. and Imhoff, P. T.: Short-term landfill methane emissions dependency on wind, *Waste Management*, 55, 288–298, <https://doi.org/10.1016/j.wasman.2016.02.009>, 2016.
- Dietrich, F., Chen, J., Voggenreiter, B., Aigner, P., Nachtigall, N., and Reger, B.: MUCCnet: Munich Urban Carbon Column network, *Atmos. Meas. Tech.*, 14, 1111–1126, <https://doi.org/10.5194/amt-14-1111-2021>, 2021.
- 690 Dlugokencky, E. J., Nisbet, E. G., Fisher, R., and Lowry, D.: Global atmospheric methane: budget, changes and dangers, *Philos. T. R. Soc. A*, 369, 2058–2072, 2011.
- Etminan, M., Myhre, G., Highwood, E. J., and Shine, K. P., Radiative forcing of carbon dioxide, methane, and nitrous oxide: A significant revision of the methane radiative forcing, *Geophys. Res. Lett.*, 43, 12,614– 12,623, doi:10.1002/2016GL071930, 2016.
- 695 Farr, T. G., Rosen, P. A., Caro, E., Crippen, R., Duren, R., Hensley, S., Kobrick, M., Paller, M., Rodriguez, E., Roth, L., Seal, D., Shaffer, S., Shimada, J., Umland, J., Werner, M., Oskin, M., Burbank, D., and Alsdorf, D.: The Shuttle Radar Topography Mission, *Reviews of Geophysics*, 45, <https://doi.org/10.1029/2005RG000183>, 2007.

- Frankenberg, C., Meirink, J. F., Bergamaschi, P., Goede, A. P. H., Heimann, M., Körner, S., Platt, U., van Weele, M., and Wagner, T.: Satellite chartography of atmospheric methane from SCIAMACHY on board ENVISAT: Analysis of the years 2003 and 2004, *J. Geophys. Res.*, 111, D07303, doi:10.1029/2005JD006235, 2006.
- Frey, M., Hase, F., Blumenstock, T., Groß, J., Kiel, M., Mengistu Tsidu, G., Schäfer, K., Sha, K. M., and Orphal, J.: Calibration and instrumental line shape characterization of a set of portable FTIR spectrometers for detecting greenhouse gas emissions, *Atmos. Meas. Tech.*, 8, 3047–3057, doi:10.5194/amt-8-3047-2015, 2015.
- Frey, M., Sha, M. K., Hase, F., Kiel, M., Blumenstock, T., Harig, R., Surawicz, G., Deutscher, N. M., Shiomi, K., Franklin, J. E., Bösch, H., Chen, J., Grutter, M., Ohyama, H., Sun, Y., Butz, A., Mengistu Tsidu, G., Ene, D., Wunch, D., Cao, Z., Garcia, O., Ramonet, M., Vogel, F., and Orphal, J.: Building the Collaborative Carbon Column Observing Network (COCCON): long-term stability and ensemble performance of the EM27/SUN Fourier transform spectrometer, *Atmos. Meas. Tech.*, 12, 1513-1530, <https://doi.org/10.5194/amt-12-1513-2019>, 2019.
- García, O. E., Schneider, M., Ertl, B., Sepúlveda, E., Borger, C., Diekmann, C., Wiegele, A., Hase, F., Barthlott, S., Blumenstock, T., Raffalski, U., Gómez-Peláez, A., Steinbacher, M., Ries, L., and de Frutos, A. M.: The MUSICA IASI CH₄ and N₂O products and their comparison to HIPPO, GAW and NDACC FTIR references, *Atmos. Meas. Tech.*, 11, 4171–4215, <https://doi.org/10.5194/amt-11-4171-2018>, 2018.
- García, O., J.-A. Morgui, R. Curcoll, C. Estruch, E. Sepúlveda, R. Ramos, E. Cuevas, Characterizing methane emissions in Madrid City within the MEGEI-MAD project: the temporal and spatial ground-based mobile approach, 8th International Symposium on Non-CO₂ Greenhouse Gases (NCGG8), Amsterdam (The Netherlands), June 12-14, 2019.
- García, O., E. Sepúlveda, J.-A. Morgui, M. Frey, C. Schneider, R. Curcoll, C. Estruch, R. Ramos, C. Torres, S.F. León-Luis, F. Hase, A. Butz, C. Toledano, E. Cuevas, T. Blumenstock, M. Guevara, O. Jorba, C. Pérez, J. J. Bustos, C. Marrero, J. López-Solano, P.-M. Romero-Campos, and V. Carreño, Monitoring of Greenhouse Gas Emissions in Madrid (MEGEI-MAD), in preparation, 2021.
- Gifford, F. A.: Turbulent diffusion-typing schemes: a review, http://inis.iaea.org/Search/search.aspx?orig_q=RN:8296495, 1976.
- Gisi, M., Hase, F., Dohe, S., Blumenstock, T., Simon, A., and Keens, A.: XCO₂-measurements with a tabletop FTS using solar absorption spectroscopy, *Atmos. Meas. Tech.*, 5, 2969–2980, doi:10.5194/amt-5-2969-2012, 2012.
- Guerlet, S., Butz, A., Schepers, D., Basu, S., Hasekamp, O. P., Kuze, A., Yokota, T., Blavier, J.-F., Deutscher, N. M., Griffith, D. W. T., Hase, F., Kyro, E., Morino, I., Sherlock, V., Sussmann, R., Galli, A., Aben, I.: Impact of aerosol and thin cirrus on retrieving and validating XCO₂ from GOSAT shortwave infrared measurements, *J. Geophys. Res. Atmos.*, 118, 4887–4905, doi:10.1002/jgrd.50332, 2013.
- Hakkarainen, J., Ialongo, I., Tamminen, J.: Direct space-based observations of anthropogenic CO₂ emission areas from OCO-2. *Geophys. Res. Lett.*, 43, 11400–11406, doi:10.1002/2016GL070885, 2016.
- Hakkarainen, J., Ialongo, I., and Maksyutov, S.: Crisp, D. Analysis of Four Years of Global XCO₂ Anomalies as Seen by Orbiting Carbon Observatory-2. *Remote Sens.*, 11, 850, <https://doi.org/10.3390/rs11070850>, 2019.

- Hase, F., Frey, M., Blumenstock, T., Groß, J., Kiel, M., Kohlhepp, R., Mengistu Tsidu, G., Schäfer, K., Sha, M. K., and Orphal, J.: Application of portable FTIR spectrometers for detecting greenhouse gas emissions of the major city Berlin, *Atmos. Meas. Tech.*, 8, 3059–3068, <https://doi.org/10.5194/amt-8-3059-2015>, 2015.
- 735 Hase, F., Frey, M., Kiel, M., Blumenstock, T., Harig, R., Keens, A., and Orphal, J.: Addition of a channel for XCO observations to a portable FTIR spectrometer for greenhouse gas measurements, *Atmos. Meas. Tech.*, 9, 2303–2313, <https://doi.org/10.5194/amt-9-2303-2016>, 2016.
- Hasekamp, O. P., and Butz, A.: Efficient calculation of intensity and polarization spectra in vertically inhomogeneous scattering and absorbing atmospheres, *J. Geophys. Res.*, 113, D20309, doi:10.1029/2008JD010379, 2008.
- 740 Hasekamp, O., Lorente, A., Hu, H., Butz, A., aan de Brugh, J., and Landgraf, J.: Algorithm Theoretical Baseline Document for Sentinel-5 Precursor methane retrieval, <http://www.tropomi.eu/documents/atbd/>, 2019.
- Hu, H., Landgraf, J., Detmers, R., Borsdorff, T., Brugh, J. A. d., Aben, I., Butz, A., and Hasekamp, O.: Toward Global Mapping of Methane With TROPOMI: First Results and Intersatellite Comparison to GOSAT, *Geophys. Res. Lett.*, 45, 3682–3689, <https://doi.org/10.1002/2018GL077259>, 2018.
- 745 Jacobs, N., Simpson, W. R., Wunch, D., O'Dell, C. W., Osterman, G. B., Hase, F., Blumenstock, T., Tu, Q., Frey, M., Dubey, M. K., Parker, H. A., Kivi, R., and Heikkinen, P.: Quality controls, bias, and seasonality of CO₂ columns in the boreal forest with Orbiting Carbon Observatory-2, Total Carbon Column Observing Network, and EM27/SUN measurements, *Atmos. Meas. Tech.*, 13, 5033–5063, <https://doi.org/10.5194/amt-13-5033-2020>, 2020.
- Kenagy, H. S., Sparks, T. L., Ebben, C. J., Wooldrige, P. J., Lopez-Hilfiker, F. D., Lee, B. H., Thornton, J. A., McDuffie, E. E., Fibiger, D. L., Brown, S. S., Montzka, D. D., Weinheimer, A. J., Schroder, J. C., Campuzano-Jost, P., Day, D. A., Jimenez, J. L., Dibb, J. E., Campos, T., Shah, V., Jaeglé, L. and Cohen, R. C.: NO_x Lifetime and NO_y Partitioning During WINTER, *J. Geophys. Res. Atmos.*, 123(17), 9813–9827, doi:<https://doi.org/10.1029/2018JD028736>, 2018.
- 750 Kirschke, S., Bousquet, P., Ciais, P., Saunio, M., Canadell, J., Dlugokencky, E., Bergamaschi, P., Bergmann, D., Blake, D., Bruhwiler, L., Cameron-Smith, P., Castaldi, S., Chevallier, F., Feng, L., Fraser, A., Heimann, M., Hodson, E., Houweling, S., Josse, B., Fraser, P., Krummel, P., Lamarque, J.-F., Langenfelds, R., Le Quere, C., Naik, V., O'Doherty, S., Palmer, P., Pison, I., Plummer, D., Poulter, B., Prinn, R., Rigby, M., Ringeval, B., Santini, M., Schmidt, M., Shindell, D., Simpson, I., Spahni, R., Steele, L., Strode, S., Sudo, K., Szopa, S., Van Der Werf, G., Voulgarakis, A., Van Weele, M., Weiss, R., Williams, J., and Zeng, G.: Three decades of global methane sources and sinks, *Nat. Geosci.*, 6, 813–823, <https://doi.org/10.1038/ngeo1955>, 2013.
- 760 Klappenbach, F., Bertleff, M., Kostinek, J., Hase, F., Blumenstock, T., Agusti-Panareda, A., Razinger, M., and Butz, A.: Accurate mobile remote sensing of XCO₂ and XCH₄ latitudinal transects from aboard a research vessel, *Atmos. Meas. Tech.*, 8, 5023–5038, doi:10.5194/amt-8-5023-2015, 2015.
- Klausner, T., Mertens, M., Huntrieser, H., Galkowski, M., Kuhlmann, G., Baumann, R., Fiehn, A., Jöckel, P., Pühl, M., and Roiger, A.: Urban greenhouse gas emissions from the Berlin area: A case study using airborne CO₂ and CH₄ in situ observations in summer 2018, *Elementa: Science of the Anthropocene*, 8, <https://doi.org/10.1525/elementa.411>, 2020.
- 765

- Kort, E. A., Frankenberg, C., Costigan, K. R., Lindenmaier, R., Dubey, M. K., and Wunch, D.: Four corners: The largest US methane anomaly viewed from space, *Geophys. Res. Lett.*, 41, 6898–6903, 2014.
- Kulawik, S. S., Worden, J. R., Payne, V. H., Fu, D., Wofsy, S. C., McKain, K., Sweeney, C., Daube Jr., B. C., Lipton, A., Polonsky, I., He, Y., Cady-Pereira, K. E., Dlugokencky, E. J., Jacob, D. J., and Yin, Y.: Evaluation of single-footprint AIRS CH₄ profile retrieval uncertainties using aircraft profile measurements, *Atmos. Meas. Tech.*, 14, 335–354, <https://doi.org/10.5194/amt-14-335-2021>, 2021.
- Kuze, A., Suto, H., Nakajima, M., and Hamazaki, T.: Thermal and near infrared sensor for carbon observation Fourier-transform spectrometer on the Greenhouse Gases Observing Satellite for greenhouse gases monitoring, *Appl. Opt.*, 48, 6716–6733, 2009.
- Kuze, A., Kikuchi, N., Kataoka, F., Suto, H., Shiomi, K., and Kondo, Y.: Detection of Methane Emission from a Local Source Using GOSAT Target Observations. *Remote Sens.*, 12, 267, 2020.
- Landgraf, J., Butz, A., Hasekamp, O., Hu, H., and aan de Brugh, J.: Sentinel 5 L2 Prototype Processors, Algorithm Theoretical Baseline Document: Methane Retrieval, 2019.
- Lorente, A., Borsdorff, T., Butz, A., Hasekamp, O., aan de Brugh, J., Schneider, A., Wu, L., Hase, F., Kivi, R., Wunch, D., Pollard, D. F., Shiomi, K., Deutscher, N. M., Velasco, V. A., Roehl, C. M., Wennberg, P. O., Warneke, T., and Landgraf, J.: Methane retrieved from TROPOMI: improvement of the data product and validation of the first 2 years of measurements, *Atmos. Meas. Tech.*, 14, 665–684, <https://doi.org/10.5194/amt-14-665-2021>, 2021.
- Luther, A., Kleinschek, R., Scheidweiler, L., Defratyka, S., Stanisavljevic, M., Forstmaier, A., Dandocsi, A., Wolff, S., Dubravica, D., Wildmann, N., Kostinek, J., Jöckel, P., Nickl, A.-L., Klausner, T., Hase, F., Frey, M., Chen, J., Dietrich, F., Nęcki, J., Swolkień, J., Fix, A., Roiger, A., and Butz, A.: Quantifying CH₄ emissions from hard coal mines using mobile sun-viewing Fourier transform spectrometry, *Atmos. Meas. Tech.*, 12, 5217–5230, <https://doi.org/10.5194/amt-12-5217-2019>, 2019.
- Maasakkers, J. D., Jacob, D. J., Sulprizio, M. P., Scarpelli, T. R., Nesser, H., Sheng, J.-X., Zhang, Y., Hersher, M., Bloom, A. A., Bowman, K. W., Worden, J. R., Janssens-Maenhout, G., and Parker, R. J.: Global distribution of methane emissions, emission trends, and OH concentrations and trends inferred from an inversion of GOSAT satellite data for 2010–2015, *Atmos. Chem. Phys.*, 19, 7859–7881, <https://doi.org/10.5194/acp-19-7859-2019>, 2019.
- Marais, E. A., Jacob, D. J., Wecht, K., Lerot, C., Zhang, L., Yu, K., Kurosu, T. P., Chance, K., and Sauvage, B.: Anthropogenic emissions in Nigeria and implications for ozone air quality: a view from space, *Atmos. Environ.*, 99, 32–40, 2014.
- Masters, G. M.: Introduction to Environmental Engineering and Science, Prentice-Hall, Inc., 2nd edn., 1998.
- Martin, D. O.: Comment on “The Change of Concentration Standard Deviations with Distance”, *J. Air Pollut. Control Assoc.*, 26, 145–147, <https://doi.org/10.1080/00022470.1976.10470238>, 1976.
- Pandey, S., Gautam, R., Houweling, S., van der Gon, H. D., Sadavarte, P., Borsdorff, T., Hasekamp, O., Landgraf, J., Tol, P., van Kempen, T., Hoogeveen, R., van Hees, R., Hamburg, S. P., Maasakkers, J. D., and Aben, I.: Satellite observations

- 800 reveal extreme methane leakage from a natural gas well blowout, *Proc Natl Acad Sci USA*, 116, 26376, <https://doi.org/10.1073/pnas.1908712116>, 2019.
- Pasquill, F.: THE METEOROLOGICAL MAGAZINE, *Meteorol. Mag.*, 90, 33–49, [https://doi.org/10.1175/1520-0493\(1920\)48<219e:ttmm>2.0.co;2](https://doi.org/10.1175/1520-0493(1920)48<219e:ttmm>2.0.co;2), 1961.
- Rachor, I. M., Gebert, J., Gröngroft, A., Pfeiffer, E.-M.: Variability of methane emissions from an old landfill over different time-scales. *Eur. J. Soil Sci.* 64, 16–26, <https://doi.org/10.1111/ejss.12004>, 2013.
- 805 Saunio, M., Jackson, R. B., Bousquet, P., Poulter, B., and Canadell, J. G.: The growing role of methane in anthropogenic climate change, *Environ. Res. Lett.*, 11, 120207, <https://doi.org/10.1088/1748-9326/11/12/120207>, 2016.
- Saunio, M., Stavert, A. R., Poulter, B., Bousquet, P., Canadell, J. G., Jackson, R. B., Raymond, P. A., Dlugokencky, E. J., Houweling, S., Patra, P. K., Ciais, P., Arora, V. K., Bastviken, D., Bergamaschi, P., Blake, D. R., Brailsford, G., Bruhwiler, L., Carlson, K. M., Carrol, M., Castaldi, S., Chandra, N., Crevoisier, C., Crill, P. M., Covey, K., Curry, C. L., Etiope, G.,
810 Frankenberg, C., Gedney, N., Hegglin, M. I., Höglund-Isaksson, L., Hugelius, G., Ishizawa, M., Ito, A., Janssens-Maenhout, G., Jensen, K. M., Joos, F., Kleinen, T., Krummel, P. B., Langenfelds, R. L., Laruelle, G. G., Liu, L., Machida, T., Maksyutov, S., McDonald, K. C., McNorton, J., Miller, P. A., Melton, J. R., Morino, I., Müller, J., Murguía-Flores, F., Naik, V., Niwa, Y., Noce, S., O'Doherty, S., Parker, R. J., Peng, C., Peng, S., Peters, G. P., Prigent, C., Prinn, R., Ramonet, M., Regnier, P., Riley, W. J., Rosentretter, J. A., Segers, A., Simpson, I. J., Shi, H., Smith, S. J., Steele, L. P., Thornton, B.
815 F., Tian, H., Tohjima, Y., Tubiello, F. N., Tsuruta, A., Viovy, N., Voulgarakis, A., Weber, T. S., van Weele, M., van der Werf, G. R., Weiss, R. F., Worthy, D., Wunch, D., Yin, Y., Yoshida, Y., Zhang, W., Zhang, Z., Zhao, Y., Zheng, B., Zhu, Q., Zhu, Q., and Zhuang, Q.: The Global Methane Budget 2000–2017, *Earth Syst. Sci. Data*, 12, 1561–1623, <https://doi.org/10.5194/essd-12-1561-2020>, 2020.
- Sánchez, C., de la Fuente, M. del M., Narros, A., del Peso, I. and Rodríguez, E.: Comparison of modeling with empirical
820 calculation of diffuse and fugitive methane emissions in a Spanish landfill, *J. Air Waste Manage. Assoc.*, 69(3), 362–372, doi:10.1080/10962247.2018.1541029, 2019.
- Siddans, R., Knappett, D., Kerridge, B., Waterfall, A., Hurley, J., Latter, B., Boesch, H., and Parker, R.: Global height-resolved methane retrievals from the Infrared Atmospheric Sounding Interferometer (IASI) on MetOp, *Atmos. Meas. Tech.*, 10, 4135–4164, <https://doi.org/10.5194/amt-10-4135-2017>, 2017.
- 825 Schneider, M., Ertl, B., Diekmann, C. J., Khosrawi, F., Röhling, A. N., Hase, F., Dubravica, D., García, O. E., Sepúlveda, E., Borsdorff, T., Landgraf, J., Lorente, A., Chen, H., Kivi, R., Laemmle, T., Ramonet, M., Crevoisier, C., Pernin, J., Steinbacher, M., Meinhardt, F., Deutscher, N. M., Griffith, D. W. T., Velasco, V. A., and Pollard, D. F.: Synergetic use of IASI and TROPOMI space borne sensors for generating a tropospheric methane profile product, *Atmos. Meas. Tech. Discuss.* [preprint], <https://doi.org/10.5194/amt-2021-31>, in review, 2021a.
- 830 Schneider, M., Ertl, B., Diekmann, C. J., Khosrawi, F., Weber, A., Hase, F., Höpfner, M., García, O. E., Sepúlveda, E., and Kinnison, D.: Design and description of the MUSICA IASI full retrieval product, *Earth Syst. Sci. Data Discuss.* [preprint], <https://doi.org/10.5194/essd-2021-75>, in review, 2021b.

- Schneider, M., Ertl, B., Diekmann, C.: MUSICA IASI full retrieval product standard output (processing version 3.2.1). Institute of Meteorology and Climate Research, Atmospheric Trace Gases and Remote Sensing (IMK-ASF), Karlsruhe Institute of Technology (KIT). DOI: 10.35097/408, 2021c.
- Schneising, O., Burrows, J. P., Dickerson, R. R., Buchwitz, M., Reuter, M., and Bovensmann, H.: Remote sensing of fugitive methane emissions from oil and gas production in North American tight geologic formations, *Earth's Future*, 2, 548–558, 2014.
- Schneising, O., Buchwitz, M., Reuter, M., Bovensmann, H., Burrows, J. P., Borsdorff, T., Deutscher, N. M., Feist, D. G., Griffith, D. W. T., Hase, F., Hermans, C., Iraci, L. T., Kivi, R., Landgraf, J., Morino, I., Notholt, J., Petri, C., Pollard, D. F., Roche, S., Shiomi, K., Strong, K., Sussmann, R., Velazco, V. A., Warneke, T., and Wunch, D.: A scientific algorithm to simultaneously retrieve carbon monoxide and methane from TROPOMI onboard Sentinel-5 Precursor, *Atmos. Meas. Tech.*, 12, 6771–6802, <https://doi.org/10.5194/amt-12-6771-2019>, 2019.
- [Schneising, O., Buchwitz, M., Reuter, M., Vanselow, S., Bovensmann, H., and Burrows, J. P.: Remote sensing of methane leakage from natural gas and petroleum systems revisited, *Atmos. Chem. Phys.*, 20, 9169–9182, <https://doi.org/10.5194/acp-20-9169-2020>, 2020.](https://doi.org/10.5194/acp-20-9169-2020)
- Sha, M. K., De Mazière, M., Notholt, J., Blumenstock, T., Chen, H., Dehn, A., Griffith, D. W. T., Hase, F., Heikkinen, P., Hermans, C., Hoffmann, A., Huebner, M., Jones, N., Kivi, R., Langerock, B., Petri, C., Scolas, F., Tu, Q., and Weidmann, D.: Intercomparison of low and high resolution infrared spectrometers for ground-based solar remote sensing measurements of total column concentrations of CO₂, CH₄ and CO, *Atmos. Meas. Tech. Discuss.*, <https://doi.org/10.5194/amt-2019-371>, in review, 2019.
- Shah, V., Jacob, D. J., Li, K., Silvern, R. F., Zhai, S., Liu, M., Lin, J., and Zhang, Q.: Effect of changing NO_x lifetime on the seasonality and long-term trends of satellite-observed tropospheric NO₂ columns over China, *Atmos. Chem. Phys.*, 20, 1483–1495, <https://doi.org/10.5194/acp-20-1483-2020>, 2020.
- Smith, M. E.: Recommended guide for the prediction of the dispersion of airborne effluent, ASME, 1973.
- [Solazzo, E., Crippa, M., Guizzardi, D., Muntean, M., Choulga, M., and Janssens-Maenhout, G.: Uncertainties in the Emissions Database for Global Atmospheric Research \(EDGAR\) emission inventory of greenhouse gases, *Atmos. Chem. Phys.*, 21, 5655–5683, <https://doi.org/10.5194/acp-21-5655-2021>, 2021.](https://doi.org/10.5194/acp-21-5655-2021)
- Tu, Q., Hase, F., Blumenstock, T., Kivi, R., Heikkinen, P., Sha, M. K., Raffalski, U., Landgraf, J., Lorente, A., Borsdorff, T., Chen, H., Dietrich, F., and Chen, J.: Intercomparison of atmospheric CO₂ and CH₄ abundances on regional scales in boreal areas using Copernicus Atmosphere Monitoring Service (CAMS) analysis, Collaborative Carbon Column Observing Network (COCCON) spectrometers, and Sentinel-5 Precursor satellite observations, *Atmos. Meas. Tech.*, 13, 4751–4771, <https://doi.org/10.5194/amt-13-4751-2020>, 2020a.
- Tu, Q., Hase, F., Blumenstock, T., Schneider, M., Schneider, A., Kivi, R., Heikkinen, P., Ertl, B., Diekmann, C., Khosrawi, F., Sommer, M., Borsdorff, T., and Raffalski, U.: Intercomparison of arctic XH₂O observations from three ground-based

- Fourier transform infrared networks and application for satellite validation, *Atmos. Meas. Tech.*, 14, 1993–2011, <https://doi.org/10.5194/amt-14-1993-2021>, 2021b.
- 870 Tunnicliffe, R. L., Ganesan, A. L., Parker, R. J., Boesch, H., Gedney, N., Poulter, B., Zhang, Z., Lavrič, J. V., Walter, D., Rigby, M., Henne, S., Young, D., and O'Doherty, S.: Quantifying sources of Brazil's CH₄ emissions between 2010 and 2018 from satellite data, *Atmos. Chem. Phys.*, 20, 13041–13067, <https://doi.org/10.5194/acp-20-13041-2020>, 2020.
- 875 Turner, A. J., Jacob, D. J., Wecht, K. J., Maasakkers, J. D., Lundgren, E., Andrews, A. E., Biraud, S. C., Boesch, H., Bowman, K. W., Deutscher, N. M., Dubey, M. K., Griffith, D. W. T., Hase, F., Kuze, A., Notholt, J., Ohyama, H., Parker, R., Payne, V. H., Sussmann, R., Sweeney, C., Velazco, V. A., Warneke, T., Wennberg, P. O., and Wunch, D.: Estimating global and North American methane emissions with high spatial resolution using GOSAT satellite data, *Atmos. Chem. Phys.*, 15, 7049–7069, <https://doi.org/10.5194/acp-15-7049-2015>, 2015.
- Varon, D. J., McKeever, J., Jervis, D., Maasakkers, J. D., Pandey, S., Houweling, S., Aben, I., Scarpelli, T. and Jacob, D. J. : Satellite discovery of anomalously large methane point sources from oil/gas production, *Geophysical Research Letters*, 46, 13507– 13516. <https://doi.org/10.1029/2019GL083798>, 2019.
- 880 [Varon, D. J., Jacob, D. J., Jervis, D. and McKeever, J.: Quantifying Time-Averaged Methane Emissions from Individual Coal Mine Vents with GHGSat-D Satellite Observations, *Environ. Sci. Technol.*, 54\(16\), 10246–10253, doi:10.1021/acs.est.0c01213, 2020.](#)
- Veefkind, J., Aben, I., McMullan, K., örster, H., de Vries, J., Otter, G., Claas, J., Eskes, H., de Haan, J., Kleipool, Q., vanWeele, M., Hasekamp, O., Hoogeveen, R., Landgraf, J., Snel, R., Tol, P., Ingmann, P., P., V., Kruizinga, P., Vink, R., Visser, H., and Levelt, P.: TROPOMI on the ESA Sentinel-5 Precursor: A GMES mission for global observations of the atmospheric composition for climate, air quality and ozone layer applications, *Remote Sens. Environ.*, 120, 70–83, [doi:10.1016/j.rse.2011.09.027](https://doi.org/10.1016/j.rse.2011.09.027), 2012.
- 885 Vogel, F., Frey, M., Staufer, J., Hase, F., Broquet, G., Xueref-Remy, I., Chevallier, F., Ciais, P., Sha, M.K., Chelin, P., Jeseck, P., Janssen, C., Te, Y., Groß, J., Blumenstock, T., Tu, Q., Orphal, J.: XCO₂ in an emission hot- spot region: the COCCON Paris campaign 2015, *Atmospheric Chemistry and Physics*, doi: 10.5194/acp-19-3271-2019, 2019.
- 890 Washenfeller, R. A., Toon, G. C., Blavier, J.-F., Yang, Z., Allen, N. T., Wennberg, P. O., Vay, S. A., Matross, D. M., and Daube, B. C. (2006), Carbon dioxide column abundances at the Wisconsin Tall Tower site, *J. Geophys. Res.*, 111, D22305, [doi:10.1029/2006JD007154](https://doi.org/10.1029/2006JD007154), 2006.
- World Meteorological Organization, 2020: WMO Greenhouse Gases Bulletin: The State of Greenhouse Gases in the Atmosphere Based on Global Observations through 2019. No. 16, available at: https://reliefweb.int/sites/reliefweb.int/files/resources/GHG-Bulletin-16_en.pdf, last access: 10 January 2020, 2019.
- 895 Wunch, D., Toon, G. C., Blavier, J.-F. L., Washenfeller, R. A., Notholt, J., Connor, B. J., Griffith, D. W. T., Sherlock, V., and Wennberg, P. O.: The total carbon column observing network, *Philos. T. R. Soc. A*, 369, 2087–2112, [doi:10.1098/rsta.2010.0240](https://doi.org/10.1098/rsta.2010.0240), 2011.