

Arctic black carbon during PAMARCMiP 2018 and previous aircraft experiments in spring

Sho Ohata^{1,2,*}, Makoto Koike^{3,*}, Atsushi Yoshida^{3,4}, Nobuhiro Moteki³, Kouji Adachi⁵, Naga Oshima⁵,
5 Hitoshi Matsui⁶, Oliver Eppers^{7,8}, Heiko Bozem⁷, Marco Zanatta^{9,10}, and Andreas B. Herber⁹

¹Institute for Space–Earth Environmental Research, Nagoya University, Nagoya, Aichi, Japan

²Institute for Advanced Research, Nagoya University, Nagoya, Aichi, Japan

³Department of Earth and Planetary Science, Graduate School of Science, University of Tokyo, Tokyo, Japan

10 ⁴National Institute of Polar Research, Tokyo, Japan

⁵Meteorological Research Institute, Tsukuba, Japan

⁶Graduate School of Environmental Studies, Nagoya University, Nagoya, Japan

⁷Johannes Gutenberg University of Mainz, Institute for Atmospheric Physics, Mainz, Germany

⁸Max Planck Institute for Chemistry, Particle Chemistry Department, Mainz, Germany

15 ⁹Alfred Wegener Institute Helmholtz Centre for Polar and Marine Research (AWI), Bremerhaven, Germany

¹⁰LISA, UMR CNRS 7583, Université Paris-Est-Créteil, IPSL, Créteil, France

*These authors contributed equally to this work.

20 *Correspondence to:* Sho Ohata (sho.ohata@isee.nagoya-u.ac.jp)

Running title: Arctic BC during PAMARCMiP 2018

Abstract

25 Vertical profiles of the mass concentration of black carbon (BC) were measured at altitudes up to 5 km during the PAMARCMiP aircraft-based field experiment conducted around the Northern Greenland Sea (Fram Strait) during March and April 2018 from operation base Station Nord (81.6°N, 16.7°W). Median BC mass concentrations in individual altitude ranges were 7–18 ng m⁻³ at standard temperature and pressure at altitudes below 4.5 km. These concentrations were systematically lower than previous
30 observations in the Arctic in spring, conducted by ARCTAS-A in 2008 and NETCARE in 2015, and similar to those observed during HIPPO3 in 2010. Column amounts of BC for altitudes below 5 km in the Arctic (>66.5°N, COL_{BC}), observed during the ARCTAS-A and NETCARE experiments were higher by factors of 4.2 and 2.7, respectively, than those of the PAMARCMiP experiment. These differences could not be explained solely by the different locations of the experiments. The year-to-year
35 variation of COL_{BC} values generally corresponded to that of biomass burning activities in northern mid-latitudes over western and eastern Eurasia. Furthermore, numerical model simulations estimated the year-to-year variation of contributions from anthropogenic sources to be smaller than 30–40%. These results suggest that the year-to-year variation of biomass burning activities likely affected BC amounts in the Arctic troposphere in spring, at least in the years examined in this study. The year-to-year
40 variations in BC mass concentrations were also observed at the surface at high Arctic sites Ny-Ålesund and Barrow, although their magnitudes were slightly lower than those in COL_{BC} .

Numerical model simulations in general successfully reproduced the observed COL_{BC} values for PAMARCMiP and HIPPO3 (within a factor of 2), whereas they markedly underestimated the values for ARCTAS-A and NETCARE by factors of 3.7–5.8 and 3.3–5.0, respectively. Because anthropogenic
45 contributions account for nearly all of the COL_{BC} (82–98%) in PAMARCMiP and HIPPO3, the good agreement between the observations and calculations for these two experiments suggests that anthropogenic contributions were generally well reproduced. However, the significant underestimations of COL_{BC} for ARCTAS-A and NETCARE suggest that biomass burning contributions were underestimated. In this study, we also investigated plumes with enhanced BC mass concentrations,
50 which were affected by biomass burning emissions, observed at 5 km altitude. Interestingly, the mass-averaged diameter of BC (core) and the shell-to-core diameter ratio of BC-containing particles in the plumes were generally not very different from those in other air samples, which were considered to be mostly aged anthropogenic BC. These observations provide useful bases to evaluate numerical model simulations of the BC radiative effect in the Arctic region in spring.

1 Introduction

Over the past few decades, the annual average temperature in the Arctic has increased almost twice as fast as it has elsewhere in the world (IPCC, 2021). The main driver of this warming is the global increase in the concentration of carbon dioxide (CO₂). However, various other climate forcers and feedback processes amplify warming in the Arctic (e.g., Serreze and Barry, 2011). Black carbon (BC) particles in the Arctic have been intensively studied as one of the Short-Lived Climate Forcers (SLCFs) because reductions in their emissions could reduce positive radiative forcing with much shorter timescales as compared with reductions of CO₂ (Arctic Monitoring and Assessment Programme (AMAP), 2015).

Most of the Arctic BC is considered to be transported from regions outside the Arctic, although gas flaring and some other small emission sources within the Arctic also make some contributions (Stohl et al., 2013). Previous studies using numerical model simulations indicate that contributions of BC emission sources change with season, year, and locations within the Arctic. Xu et al. (2017) reported that fossil fuel and biofuel anthropogenic (AN) emissions dominated at all levels (>90%) for the high Arctic region during spring in 2009, 2011, and 2015 when aircraft experiments were conducted. Wang et al. (2011) reported that open biomass burning (BB) accounted for 50% of the total BC in the Arctic (>60°N) tropospheric column in April 2008, a year in which BB activity was quite intense (Warneke et al., 2009; Evangeliou et al., 2016). Considering the year-to-year variation of BB activities and uncertainties in AN and BB BC emissions, estimates of the relative contributions of various sources to Arctic BC still have considerable uncertainties. Furthermore, possible inter-annual increases in BB activities in the warming boreal forest in the near future may further increase the BB BC emissions.

Measurements of vertical profiles of Arctic BC are important for the following two reasons. First, vertical profiles of BC generally reflect BC sources and transport/wet removal processes, thus they provide useful information for investigating these sources and atmospheric processes. Air parcels originating at lower latitudes are uplifted along isentropic surfaces when they are transported to the Arctic, and some BC is removed by precipitation in association with uplifting (Shindell et al., 2008; Matsui et al., 2011; Schulz et al., 2019).

Second and more importantly, the magnitude of the response to the surface temperature depends on the altitude range in which the light absorbing aerosols are located (Flanner 2013; Samset et al., 2013). Strong absorption of solar radiation by BC near the ground heats the air near the ground surface. This heating can reduce the cloud fraction, leading to an increase in the downward shortwave radiation flux at the ground surface. BC at higher altitudes could cause weak surface warming or cooling through decreased surface insolation because the high stability of the Arctic atmosphere inhibits thermal mixing

with surface air. In addition, because BC deposition on snow and ice surfaces lowers their albedo and potentially accelerates ice–albedo feedback (Flanner et al., 2007; Tuzet et al., 2017), it is important to evaluate the altitude dependence of the wet removal processes of BC (Mori et al., 2020).

Aircraft measurements of Arctic BC were made by the following previous experiments in the spring season when direct radiative forcing of BC in the Arctic is considered to be largest: ARCPAC, ARCTAS-A, and POLARCAT in 2008 (Spackman et al., 2010; Matsui et al., 2011; Wang et al., 2011), PAMARCMiP in 2009 and in 2011 (Stone et al., 2010; Herber et al., 2012), HIPPO3 in 2010 (Schwarz et al., 2013), and NETCARE in 2015 (Schulz et al., 2019; Kodros et al., 2018). From these measurements vertical profiles of BC mass concentrations, size distributions, and mixing states, as well as source contributions, transport pathways, and loss mechanisms were studied. However, measurements of BC vertical profiles are still limited in the Arctic and case studies were made for individual experiments.

The Polar Airborne Measurements and Arctic Regional Climate Model simulation Project (PAMARCMiP) 2018 aircraft-based field experiment was carried out around the Northern Greenland Sea (Fram Strait) from 23 March to 4 April 2018 using Station Nord (81.6°N, 16.7°W) as the operation base (Herber et al., 2012, 2019; Donth et al., 2020; Koike et al., 2021), as part of the ArctiC Amplification: Climate Relevant Atmospheric and SurfaCe Processes, and Feedback Mechanisms or (AC)³ project (Wendisch et al., 2017). In this paper, we report vertical profiles of BC mass concentrations, size distributions, and mixing states measured using a University of Tokyo single-particle soot photometer (Yoshida et al., 2020). The measurements (hereafter denoted as PAMARCMiP data) were compared with those made during these previous spring season experiments: ARCTAS-A in 2008, HIPPO3 in 2010, and NETCARE in 2015 (hereafter denoted as ARCTAS, HIPPO, and NETCARE). The year-to-year variation was examined from the viewpoint of BB activities.

2 Measurement

2.1 Instruments and aircraft experiment

In this study, BC was measured onboard a research aircraft by using a single-particle soot photometer (SP2; Droplet Measurement Technologies (DMT), Longmont, CO, USA) calibrated and operated by the University of Tokyo (Yoshida et al., 2020). Detailed descriptions of the SP2, including calibration methods, are given elsewhere (e.g., Moteki and Kondo, 2010). Briefly, the SP2 uses the laser-induced incandescence technique and detects BC on a single-particle basis. It measures BC size distributions in the mass-equivalent diameter (D_m) range of approximately 70–850 nm. The void-free density of BC of 1.8 g cm⁻³ was assumed to convert a particle mass to a mass equivalent diameter. The SP2 was calibrated using fullerene soot particles (Alfa Aeser, stock #40971, lot #FS12S011, Moteki and Kondo, 2010; Kondo et al., 2011b). BC mass concentration (M_{BC}) values reported in this paper were obtained

125 by integrating the mass of BC particles within the detectable diameter range and are expressed in units of ng m^{-3} under standard temperature and pressure (STP, 0°C and 1013.25 hPa) conditions. The accuracy of the M_{BC} measurements estimated from the uncertainty of the calibration and operational conditions of SP2 was about 10%.

As described in Appendix A, M_{BC} measurements made with the University of Tokyo SP2 during
130 ARCTAS (Sahu et al., 2012) were compared with NOAA SP2 measurements (NOAA-ARCPAC experiment, Spackman et al., 2010) and they agreed within 20%. The systematically higher U. Tokyo values might partly be attributed to a wider size range of U. Tokyo BC measurements and a difference in corrections for undetected BC between the measurements. Because M_{BC} measurements were consistently and traceably made by the individual groups, the systematic differences in absolute M_{BC}
135 values are expected to be smaller than 20% at least for the PAMARCMiP and ARCTAS datasets (U. Tokyo) and the HIPPO dataset (NOAA).

Aerosols were also sampled on filters onboard the aircraft during PAMARCMiP and analyzed using transmission electron microscopy (TEM, Adachi et al., 2021). In this study, we used potassium-containing particles as an indicator of influences from biomass burning.

140 Gaseous carbon monoxide (CO) concentration was measured using an Aerolaser AL5002 CO monitor (Gerbig et al., 1999; Scharff et al., 2012), which detects fluorescence in vacuum ultraviolet radiation. CO₂ concentration was measured using an LI-7200 gas analyzer (LI-COR Ltd., USA; Burba et al., 2010; Lampert et al., 2018), which employs the non-dispersive infrared spectroscopy method.

For the aerosol measurements, ambient air was drawn into the aircraft cabin using a forward facing iso-
145 kinetic inlet with a tip hole diameter of 4.6 mm designed and made by DMT. The sample air speed at the inlet tip and true air speed of the aircraft at various altitudes agreed within 10%, indicating that isokinetic sampling was achieved during the experiment. For the gas measurements, two backward facing sampling inlets (Ehrlich et al., 2019) were used.

The PAMARCMiP aircraft experiment was carried out with the Alfred Wegener Institute (AWI)
150 research aircraft Polar 5 (Wesche et al., 2016). The flight tracks are shown in Fig. 1 and the flights are listed in Table 1. The data obtained during 5 min after taking off and 5 min before landing were not used to avoid possible influences of local pollutants emitted from the base Station Nord. Vertical profiles of BC and other atmospheric species were measured up to 5 km during most of the research flights. Appendix B presents 6-day kinematic back trajectories of air parcels measured onboard the
155 aircraft.

2.2 Ground-based M_{BC} measurements at Ny-Ålesund and Barrow

Along with year-to-year variations observed during aircraft experiments, those observed from ground-based M_{BC} measurements at the high Arctic sites Ny-Ålesund in Svalbard (78.9°N, 11.9°E) and Barrow

in Alaska (71.3°N, 156.6°W) are also presented for comparison in this paper. At both sites, M_{BC} data
160 obtained by a continuous soot monitoring system called COSMOS (Kanomax, Osaka, Japan, Miyazaki
et al., 2008; Kondo et al., 2009, 2011b) were used for the years 2015 and 2018. This filter-based
absorption photometer was equipped with an inlet that was heated to 300°C to remove non-refractory
components from the aerosol phase. The M_{BC} values measured by COSMOS and those measured by the
University of Tokyo SP2 agreed to within about 10% at Ny-Ålesund (Ohata et al., 2019). Because
165 COSMOS data were not obtained at these two sites in 2008 and 2010, data obtained by particle
absorption soot photometers (PSAP; Radiance Research, Seattle, WA, USA, Ogren et al., 2017) were
used after scaling their M_{BC} values to agree with COSMOS values by using a scaling factor derived
from side-by-side measurements (Sinha et al., 2017; Ohata et al., 2021). Daily averaged data were used
in this study.

170 **3 Numerical model simulations**

The two climate-aerosol models, the Community Atmosphere Model version 5 with the Aerosol Two-
dimensional bin module for foRmation and Aging Simulation (CAM5-ATRAS), and the Meteorological
Research Institute Earth System Model version 2.0 (MRI-ESM2), were used in this study.

The CAM5-ATRAS model calculates major chemical and aerosol processes in the atmosphere (Matsui,
175 2017; Matsui and Mahowald, 2017; Matsui et al., 2018). The model considers seven aerosol species
(sulfate, nitrate, ammonium, dust, sea salt, organic aerosol, and BC) with a two-dimensional sectional
representation consisting of 12 bins of particle sizes from 1 to 10,000 nm dry diameter and 8 bins of BC
mixing states for fine particles (40 to 1250 nm). Simulations were performed with a horizontal
resolution of $1.9^\circ \times 2.5^\circ$ latitude/longitude and 30 vertical layers. Meteorological nudging used data for
180 temperature and horizontal wind in the free troposphere (<800 hPa) from the Modern-Era Retrospective
analysis for Research and Applications version 2 (MERRA2) dataset (Gelaro et al., 2017). We used
monthly AN emissions from the Coupled Model Intercomparison Project Phase 6 (CMIP6) dataset
(Hoesly et al., 2018) and daily BB emissions from the Global Fire Emissions Database version 4.1
(GFED, van der Werf et al., 2017). Because CMIP6 emissions are available only for years 1750–2014,
185 AN emissions in 2014 were used for simulations for the year 2018. BC from AN (fossil fuel + biofuel)
and BB sources were tracked separately to calculate their individual contributions to total BC.

MRI-ESM2 is an atmosphere–ocean coupled model that integrates interactive models for aerosol and
atmospheric chemistry (Yukimoto et al., 2019; Kawai et al., 2019; Oshima et al., 2020) that participated
in the CMIP6 (Eyring et al., 2016). The model configurations (i.e., use of the atmospheric general
190 circulation model and aerosol model) and calculation methods are the same as those in Adachi et al.
(2021). The model employs TL159 horizontal resolution (approximately 120 km) and 80 vertical layers
from the surface to 0.01 hPa (the model top) in a hybrid sigma-pressure coordinate system. The model

simulation was performed from January 2008 to December 2018 after a 1-year spin-up run with the prescribed sea surface temperature and sea ice data (Ishii et al., 2005). In the simulations, horizontal
195 wind fields were nudged toward 6-hourly Japanese 55-year Reanalysis data (Kobayashi et al., 2015). Simulations used monthly AN emissions from the MACCity emissions dataset (Lamarque et al., 2010) and daily BB emissions from the Global Fire Assimilation System dataset (GFAS, Kaiser et al., 2012). We also performed a model simulation that omitted the BB emissions of BC to estimate the separate contributions of AN and BB sources to total BC concentrations.

200 **4 Year-to-year variation in BC and influences from BB**

4.1 Vertical profile and column amounts of BC mass concentration

Figure 2a shows a vertical profile of M_{BC} using all of the one-minute data obtained during the PAMARCMiP aircraft experiment. Median values in individual altitude ranges are also shown and listed in Table 2. Median M_{BC} values were between 7 and 18 ng m^{-3} at altitudes below 4.5 km. At
205 altitudes around 5 km, enhancements of M_{BC} up to 250 ng m^{-3} (one-minute data) were observed. As described in Sect. 5, these high M_{BC} values were likely due to influences from BB BC emissions.

In Fig. 2b, the vertical profile of median M_{BC} values obtained during the PAMARCMiP experiment is compared with those obtained during the ARCTAS, HIPPO, and NETCARE aircraft experiments made over the Arctic in spring (Table 3). Median values were calculated only from data obtained at latitudes
210 north of 66.5°N, the latitude of the Arctic Circle. This latitude generally corresponded to locations of a boundary of the polar dome, in which Arctic air mass tends to be confined, as estimated for the NETCARE 2014 and 2015 experiments (Bozem et al., 2019). The PAMARCMiP M_{BC} values were generally similar to those obtained during the HIPPO experiment, whereas systematically higher values were observed during the ARCTAS and NETCARE experiments. Although each aircraft measurement
215 was made over a limited area and time duration, they document significant year-to-year variations in M_{BC} values in the Arctic spring. In the following sections, BC mass concentrations obtained during these four aircraft experiments are examined.

Using the four aircraft datasets, BC column amounts at altitudes between 0 and 5 km (COL_{BC} , in units of $\mu\text{g m}^{-2}$) were calculated by vertically integrating the median M_{BC} values at each altitude obtained at
220 latitudes north of 66.5°N (Table 4). Although data were obtained at altitudes higher than 5 km during the ARCTAS and HIPPO experiments, they were not used here and are further discussed in Sect. 4.3 and Appendix D. Figure 3 compares COL_{BC} values among the four experiments. In accordance with the vertical M_{BC} profiles (Fig. 2b), COL_{BC} values are similar between the PAMARCMiP and HIPPO experiments (within a factor of 1.4). The COL_{BC} values for the NETCARE and ARCTAS experiments
225 are about a factor of 2.7 and 4.2, respectively, higher than the PAMARCMiP value (Table 4).

A part of the differences in the observed BC levels could be due to the different locations where the measurements were made. As shown in Fig. 1a, the PAMARCMiP and NETCARE aircraft experiments were conducted mainly at latitudes around 80°N, while ARCTAS and HIPPO data obtained at latitudes between 66.5 and 90°N were used in this study. In Fig. 3 and Table 4, COL_{BC} values calculated using only data obtained at latitudes north of 80°N are also shown, although the amount of data for HIPPO is limited. The ARCTAS COL_{BC} value for >80°N is only 5% lower than the value for >66.5°N, and the HIPPO COL_{BC} value for >80°N is even higher than the value for >66.5°N. Consequently, systematic differences in M_{BC} and COL_{BC} values were likely not due to the different observation locations. This conclusion is also supported by the numerical model simulations described in Sect. 4.3, where COL_{BC} values from the same area (entire Arctic region) are compared for the four time periods.

4.2 Biomass burning fire counts

In Fig. 3a, the daily averaged numbers of fire counts (counts day⁻¹, indicator of BB activities) detected by the MODIS satellite (MCD14DL products, <https://earthdata.nasa.gov/active-fire-data>) are shown for the four aircraft experiments. In this figure, we show fire counts at latitudes north of 50°N for the time period between 14 days before the first day of the aircraft experiment and the last day of the experiment. The averaged fire counts for HIPPO and PAMARCMiP are similar, whereas those for NETCARE and ARCTAS are, respectively, factors of around 5 and 14 higher than that for PAMARCMiP (Fig. 3a and Table 4). Similar tendencies can be also seen in averaged GFAS and GFED BB BC emissions (Fig. 3a) that were created using the fire counts. Consequently, the relative changes in COL_{BC} were generally consistent with those in BB activities.

Figure 3b compares AN and BB BC emissions for >50°N and >60°N used for the CAM5-ATRAS numerical simulations in this study (Sect. 3). The values of BB BC emissions for >50°N are the same as those shown in Fig. 3a. As is shown by this figure, the AN BC emissions slightly decrease over time and no clear correspondence is found in year-to-year variations between AN BC emissions and COL_{BC} . These results suggest that BC emissions from BB likely contributed to the increased COL_{BC} during the NETCARE and ARCTAS experiments, at least to some extent. In other words, year-to-year variations of tropospheric BC amounts in the Arctic in spring were primarily affected by transport of BB BC, at least during these four periods. As described in Sect. 4.3, results from numerical model simulations indicate that the year-to-year variation of AN COL_{BC} (>66.5°N) was smaller than 30–40%, thus supporting that the observed year-to-year variation in COL_{BC} was mostly due to BB BC.

Figure 4 shows maps of the averaged fire counts for the four experimental time periods. Fire counts were generally high at latitudes 45–60°N and longitudes around 30–50°E and 100–130°E (western and eastern Eurasia, respectively). Year-to-year variations in BB activities in these areas contributed to cause the variations in the average fire counts shown in Fig. 3.

260 As described above, we chose a time period of 14 days before the start date of an aircraft experiment for the calculation of the averaged fire counts in consideration of the possible lifetime of BC in the Arctic and the transport time of BC from its sources. The BC lifetime estimated using MRI-ESM2 at latitudes north of 66.5°N in April is 11.9 ± 2.8 days. The annual averages for Arctic BC are 12.1 and 11.5 days for the MRI-ESM2 and CAM5-ATRAS simulations, respectively (Matsui and Liu, 2021). Because
265 Arctic BC could be transported from lower latitudes, the time period of 14 days is somewhat longer than the estimated globally and annually averaged BB-originated BC lifetime of 6–7 days (Koch and Hansen, 2005; Park et al., 2005; Evangeliou et al., 2016). However, even when this criterion was changed to 0, 7, and 21 days before the first day of the experiment, the relative changes in the averaged fire counts shown in Fig. 3 were not strongly affected. Time series of fire counts in individual latitude
270 ranges are presented in Fig. C1 in Appendix C. As seen in this figure, fire counts at latitudes >40°N and >50°N started to increase in mid- to late March during each of the four years examined in this study. Because time periods of 7 or 14 days generally captured this onset of fire activities, the year-to-year variations of fire counts were generally similar irrespective of the chosen time period. Notably, time series of the fire counts at latitudes >40°N and >50°N were generally similar (Fig. C1) and year-to-year
275 variations were also similar when either of these criteria was adopted. Furthermore, the fire counts at latitudes >60°N were negligible in all the cases and the correspondence to their year-to-year variation was less significant. Consequently, transport of air influenced by BB at latitudes between 45°N and 60°N is likely responsible to the increased BC level in the Arctic spring.

As described in Sect. 2, during the PAMARCMiP experiment, air parcels sampled at altitudes below 1,
280 3, and 5 km had generally originated from north of 70°N, 60°N, and 50°N, respectively (Fig. B1). Most of the air parcels sampled at altitudes above 3 km had not passed over high BB areas and had maintained their altitudes, thus, they were likely not significantly influenced by BB BC emissions. Consequently, air parcels sampled during the PAMARCMiP experiment were likely not influenced by recent BC emissions, except for the plumes observed at altitudes around 5 km (Sect. 5).

285 4.3 Evaluation of BB BC using numerical model simulations

In Fig. 5, the observed COL_{BC} (>66.5°N) values are compared with numerical model simulations from CAM5-ATRAS and MRI-ESM2, described in Sect. 3. The model-calculated COL_{BC} values were derived in three different ways by calculating median or average values for individual altitude ranges: (A) median values along the flight tracks, (B) area-weighted averages within the latitudes and
290 longitudes and the time periods of the aircraft experiments shown in Table 3, and (C) area-weighted averages within the entire region at latitudes north of 66.5°N for the time period of an aircraft experiment (Table 5). Because medians were calculated to derive observed COL_{BC} values (Fig. 3 and Table 4), $COL_{BC}(A)$ values can be directly compared with observations. Area-weighted averages were

calculated to derive $COL_{BC}(B)$ and $COL_{BC}(C)$ values, because medians cannot be calculated for gridded
295 model values that have different areal weights depending on the latitudes. The reason for calculating the
statistics in three ways is that temporal and spatial variations of BC may not be accurately reproduced in
the numerical model simulations and it may make more sense to compare statistics over a wider spatial
area. Furthermore, differences between $COL_{BC}(B)$ and $COL_{BC}(C)$ values show possible differences in
 M_{BC} values among the different observational areas of the four experiments. Figure 5 and Table 5 show
300 that $COL_{BC}(B)$ values are generally lower than $COL_{BC}(C)$. $COL_{BC}(B)/COL_{BC}(C)$ ratios were found to be
higher for HIPPO and PAMARCMiP (0.79–0.89) than those of ARCTAS and NETCARE (0.54–0.66),
although the observed COL_{BC} values were higher for the latter two experiments as compared with the
former ones. These results suggest that the observed higher COL_{BC} values during the ARCTAS and
NETCARE experiments are likely not due to the different observational areas but are mostly due to
305 year-to-year variations in M_{BC} over the entire Arctic.

Figure 5 shows that both models reproduced the observed COL_{BC} values well for PAMARCMiP and
HIPPO, whereas they significantly underestimated the observed COL_{BC} values for ARCTAS (by factors
of 3.7–5.8) and NETCARE (by factors of 3.3–5.0), when influences from BB BC emissions are
considered to have been high. Consequently, the significant underestimations in COL_{BC} could be mostly
310 due to those in BB BC.

In Fig. 5, model-calculated contributions from BB and AN emissions are shown separately. In general,
the year-to-year variation of the model-calculated AN values was small (at most 30% or 38% for the
two model results for $>66.5^{\circ}N$, $COL_{BC}(C)$), while that of BB values was much higher (by at most a
factor of 15 or 28). When model simulations reproduced the observations well, namely those from the
315 HIPPO and PAMARCMiP experiments, most of the values of the $COL_{BC}(A)$ originated from AN (98%
and 82–94% for CAM5-ATRAS and MRI-ESM2, respectively). Consequently, the AN contributions
are considered to be generally well reproduced. However, although the BB BC values were higher in
the ARCTAS and NETCARE cases, the total (AN+BB) $COL_{BC}(A)$ values were still significantly lower
than the observations. Reasonable agreement was found only when the calculated BB BC contributions
320 were multiplied by a factor of 3 or more (C' in Fig. 5). As described in Sect. 3, CAM5-ATRAS and
MRI-ESM2 utilized GFED and GFAS BB BC emissions, respectively. Consequently, these results
suggest that BB BC emissions could be largely underestimated or the removal of BC from BB
emissions was overestimated, although the level of these uncertainties cannot be evaluated in this study.

In Appendix D, model-calculated vertical M_{BC} profiles are compared with observations for entire
325 altitude ranges in which observed data are available, namely, up to 10.5, 11.0, 5.5, and 5.0 km for
ARCTAS, HIPPO, NETCARE, and PAMARCMiP, respectively (Fig. D1). When model-calculated
 COL_{BC} values generally agree well with the observations (HIPPO and PAMARCMiP), reasonable
agreement is found for M_{BC} values throughout the altitudes; however, when model calculations

underestimate COL_{BC} values, they underestimate M_{BC} values at all altitudes. These results indicate that
330 the model underestimations in COL_{BC} values for high BB activity years (ARCTAS and NETCARE) are
not due to vertical mismatches of enhanced M_{BC} layers. This conclusion is also consistent with the
analyses of COL_{BC} values for 0–10 km described in Appendix D, namely, the features found for COL_{BC}
values are similar between 0–5 and 0–10 km (Fig. D2).

4.4 Correspondence to surface BC measurements

335 Figure 2b shows that M_{BC} values near the surface were higher for ARCTAS and NETCARE as
compared with those of PAMARCMiP and HIPPO, although larger values were observed in the free
troposphere, namely above 1 km altitude. How much of the year-to-year variation in M_{BC} observed in
the free troposphere was observed at the ground surface? To evaluate the level of the variation, we
examined surface BC data obtained at Ny-Ålesund and Barrow (Sect. 2.3). Figure 6 shows the medians
340 of daily averaged M_{BC} values during the individual aircraft experiments observed at the surface in Ny-
Ålesund and Barrow. Because the number of days for an experiment was relatively small (2 and 7 days
for HIPPO and NETCARE, respectively), medians were also calculated for the 31-day period for which
the median date was chosen to be the median date of the experiment (Fig. 6 and Table 6). The
corresponding average fire counts (31 + 14 days) are also shown in Fig. 6 and Table 6.

345 Previous long time period studies showed that M_{BC} values at Barrow were about a factor of 1.4 higher
than at Ny-Ålesund in March–April (Sinha et al., 2017). This tendency is also recognized in the
ARCTAS and PAMARCMiP periods shown in Fig. 6, although it is not clearly seen in the other two
periods. When the 31-day median values at these two sites were examined, M_{BC} values for the
ARCTAS year were higher by factors of 2.5–3.2 in comparison to the PAMARCMiP period. This
350 relative change was somewhat smaller than for COL_{BC} values (by factors of 4.2 and 3.6 for $>66.5^{\circ}\text{N}$
and 80°N , respectively), however we can still conclude that surface BC measurements can capture the
year-to-year variations of atmospheric COL_{BC} caused by varying BB activities. The smaller year-to-year
variation observed at the surface was likely due to a strong temperature inversion that inhibited vertical
mixing (Brock et al., 2011).

355 5 Case study of BB BC transport

5.1 Origin of air parcels with enhanced M_{BC}

As described in Sect. 4, the atmospheric BC level during the PAMARCMiP experiment was least
affected by recent biomass burning at altitudes below 4.5 km. Considering the negligible levels of BB
activities before the experiment (Fig. C1) and the very small BB contributions predicted by numerical
360 models (Fig. 5), most BC particles observed during PAMARCMiP should be of anthropogenic origin.
This is also supported by the observational results of Yoshida et al. (2020) and Adachi et al. (2021),

who found tight correlations between BC and anthropogenic iron oxide particles during PAMARCMiP. Moreover, plumes with enhanced M_{BC} values up to 250 ng m^{-3} were observed at altitudes around 5 km, as shown by the red data points in Fig. 2a. In this section, we propose that these enhanced M_{BC} values were likely due to influences from BB emissions. We then examine possible differences in microphysical properties between these BC particles and other BC particles that were least affected by BB.

The plumes with enhanced M_{BC} values were observed at similar locations and altitudes on 2, 3, and 4 April. In total, 29 one-minute data with $M_{BC} > 50 \text{ ng m}^{-3}$ were obtained. Time series of one-minute M_{BC} data on 2 April are shown in Fig. S1 in the supplement. Although the horizontal wind direction was different on these three days, wind speeds of 2.5 to 6.5 m s^{-1} suggest that the plumes could extend over 1000 km. Because the research aircraft could not fly at altitudes above 5.2 km, we could not observe the vertical extent of these enhancements. However, the elastic air-borne mobile aerosol Lidar (AMALi) installed onboard the research aircraft observed a well-defined aerosol layer at altitudes between 5.15 and 6.8 km on 2 April (Nakoudi et al., 2020), suggesting that the plumes with enhanced M_{BC} values could extend over this vertical range. A photo taken from the research aircraft POLAR 5 on 3 April is also shown in Appendix D (Fig. D1), where a haze layer with reddish color, which may correspond to the plumes, was captured.

When M_{BC} enhancements were observed, increased aerosol potassium concentration was also observed, suggesting that these plumes had likely been affected by BB emissions (Adachi et al., 2021). Enhancements in CO and CO₂ concentrations were also observed in these plumes. The ratio of their increases ($\Delta\text{CO}/\Delta\text{CO}_2$), derived from a slope of a least squares fit to the scatter plots of CO and CO₂ concentration data during the plume periods, was $12.3 \text{ ppbv ppmv}^{-1}$, suggesting that these plumes were likely due to incomplete combustion. This result is also in accordance with influences from BB. In fact, this ratio is similar to the $\Delta\text{CO}/\Delta\text{CO}_2$ ratio of $15 \pm 5 \text{ ppbv ppmv}^{-1}$ observed in air affected by Asian BB observed during the ARCTAS experiment (Kondo et al., 2011a).

Figure 7a shows 8-day backward trajectories of air with enhanced M_{BC} values. These air parcels originated from eastern Eurasia where active BB took place when air parcels were located. They were likely uplifted upon the passage of a cold frontal system over the BB area. MRI-ESM2 model simulations generally reproduced these transport processes. Figure 7b shows that air with enhanced M_{BC} values (BB origin) was transported on isentropic surfaces up to 450 hPa level along 135°E . AN BC was also transported upward upon the passage of a cold frontal system; however, contributions for M_{BC} values were small (not shown). Air with enhanced M_{BC} values then spread in a horizontal direction at the 500 hPa level. Enhanced M_{BC} values were likely observed within this air (Fig. 7c). The transport pathway of this BB plume is also discussed by Adachi et al. (2021).

The GFED mass emission ratio of BC to CO from BB sources in eastern Eurasia shown in Fig. 7a (40.7°N–52.1°N and 110°E–125°E during 25–27 March, eight days before the observations) was $5.54 \times 10^{-3} \text{ ng m}^{-2} \text{ s}^{-1} (\text{ng m}^{-2} \text{ s}^{-1})^{-1}$, which corresponds to $[\Delta\text{BC}/\Delta\text{CO}]_{\text{source}} = 6.92 \text{ ng m}^{-3} \text{ ppbv}^{-1}$ at STP. Within the plumes, the slope of $[\Delta\text{BC}/\Delta\text{CO}]_{\text{air}} = 4.00 \text{ ng m}^{-3} \text{ ppbv}^{-1}$ at STP was observed. Because CO molecules are not removed by precipitation while BC particles are, the transport efficiency of BC can be estimated to be $TE_{\text{BC}} = [\Delta\text{BC}/\Delta\text{CO}]_{\text{air}} / [\Delta\text{BC}/\Delta\text{CO}]_{\text{source}} = 0.58$, indicating that 42% of the BC emitted from BB had been removed during the transport. When TE_{BC} along air parcel trajectories was estimated using MRI-ESM2 model calculations, values of about 0.4–0.5 were obtained, which is consistent with the TE_{BC} value estimated from the $\Delta\text{BC}/\Delta\text{CO}$ analysis (0.58). Model calculations show that most of the wet removal of BC took place upon lifting in association with the passage of the cold frontal system described above, and that TE_{BC} changed little after air parcels reached the free troposphere. During the ARCTAS experiment, $[\Delta\text{BC}/\Delta\text{CO}]_{\text{source}}$ was estimated to be $7.6 \text{ ng m}^{-3} \text{ ppbv}^{-1}$ at STP within Russian BB plumes, which were likely the least affected by wet deposition (Matsui et al., 2011); this estimate is in accordance with the estimate in this study ($6.92 \text{ ng m}^{-3} \text{ ppbv}^{-1}$) using GFED data. The observed $[\Delta\text{BC}/\Delta\text{CO}]_{\text{air}}$ of about $6.3 \text{ ng m}^{-3} \text{ ppbv}^{-1}$ at STP and the resulting TE_{BC} of 0.83 obtained during the ARCTAS experiment for the Russian BB air were slightly higher than the values obtained in this study ($4.0 \text{ ng m}^{-3} \text{ ppbv}^{-1}$ at STP and 0.58). The lower PAMARCMiP TE_{BC} values are in accordance with the fact that the accumulated precipitation along the backward trajectories (e.g., Oshima et al., 2012; 2013; Raut et al., 2017) was about two times higher than that of the ARCTAS experiments (i.e., 19.7 mm for PAPAMACMiP and 8.5 mm for ARCTAS), suggesting that BC had been more efficiently removed by precipitation during PAMARCMiP.

5.2 Microphysical features of BB BC

Figure 8a shows the vertical profile of the mass averaged diameter of BC particles (D_{BC}), which is defined as

$$D_{\text{BC}} = \left(\frac{6M_{\text{BC}}}{\pi\rho_{\text{BC}}N_{\text{BC}}} \right)^{\frac{1}{3}}, \quad (1)$$

where ρ_{BC} is the void-free density of BC (1.8 g cm^{-3}) and N_{BC} is the number concentrations of BC for the D_{m} range of 70–850 nm. The median D_{BC} values in individual altitude ranges are also shown. Enhanced M_{BC} value data are shown in red color. The median D_{BC} values decreased with increasing altitude; they were about 167 nm near the ground surface and 134 nm at 4.5 km (Table 2). The normalized mass size distribution of BC shows a gradual shift of the mode diameter to a smaller size at higher altitudes (Fig. 9), which is consistent with that observed during the NETCARE experiment (Schulz et al., 2019). The values of the mass median diameter (MMD) and geometric standard deviation (σ_{g}) for the lognormal fitted size distributions are also shown in Fig. 9. A previous study made over

East Asia showed that the D_{BC} values observed in the free troposphere were generally smaller than
430 those in the planetary boundary layer influenced by anthropogenic emissions, likely due to wet removal
during upward transport (Moteki et al., 2012). In fact, when the wet removal fraction was higher (TE_{BC}
was lower), the D_{BC} was smaller in the free troposphere. Because larger diameter BC particles generally
have greater amounts of coating material and, hence, have higher cloud condensation nuclei (CCN)
activities, they are selectively removed by precipitation (Moteki et al., 2012; Ohata et al., 2016; Moteki
435 et al., 2019). When air parcels are uplifted to higher altitudes, they potentially experience higher
supersaturation in clouds, and aerosols with lower CCN activities (smaller diameter of BC core) can
remain. These mechanisms likely resulted in the observed smaller D_{BC} values at higher altitudes during
the PAMARCMiP experiment.

The median value of the D_{BC} in the enhanced M_{BC} air was 145 nm (Table 2), which is only slightly
440 higher than that of other BC particles sampled at this altitude range. Various factors could cause the
observed differences. The BC particles could have already been larger upon BB emission than those
from anthropogenic sources or they could have been removed less efficiently. However, considering the
relatively large change in D_{BC} with altitude (Figs. 8a and 9), the similarity in D_{BC} between recent BB
plumes and aged AN air is remarkable.

445 Figure 8b shows the vertical profile of the median shell-to-core diameter ratios for $D_m = 180\text{--}192$ nm. It
is remarkable that the shell-to-core ratios change so little with altitude. The median values are between
1.40 and 1.48 over the entire altitude range (Table 2). This tendency and similar values were also
observed during the NETCARE experiment (Kodros et al., 2018), suggesting that the observed features
are common in the Arctic spring. Considering the possible greater influences of wet removal at higher
450 altitudes, the small change in the shell-to-core ratios with altitude was not easily interpreted.

The shell-to-core diameter ratios of the enhanced M_{BC} data were only slightly higher than for other data
(Table 2). These air parcels were likely affected by recent (within a week) wet removal and, therefore,
one may expect a smaller coating thickness because BC particles with thicker coating were likely
removed due to higher CCN activities. Weaker updraft speed (lower supersaturation) or less hydrophilic
455 coating compositions could be possible explanations. Cloud-precipitation processes during transport
such as the aqueous-phase reactions or evaporation of precipitating particles after accretion might also
increase the coating thickness of BC. The similarity in the shell-to-core diameter ratios between recent
BB plumes and aged AN air provide useful constraints to validate numerical model simulations.

6 Summary

460 The PAMARCMiP aircraft-based experiment measured vertical profiles of M_{BC} at altitudes up to 5 km
in spring 2018. Median M_{BC} values in individual altitude ranges were $7\text{--}18$ ng m⁻³ at altitudes below 4.5
km. These concentrations were systematically lower than those observed during ARCTAS in 2008 and

NETCARE in 2015, whereas they were similar to those observed during HIPPO in 2010. Vertically integrated BC mass concentrations for altitudes below 5 km in the Arctic ($>66.5^{\circ}\text{N}$, COL_{BC}) observed during the ARCTAS and NETCARE experiments were higher than the PAMARCMiP value by factors of 4.2 and 2.7, respectively. When data obtained only at $>80^{\circ}\text{N}$ were compared, the same tendency was observed: the ARCTAS and NETCARE COL_{BC} values were higher by factors of 3.6 and 2.3, respectively. The year-to-year variation of COL_{BC} values generally corresponded to that of MODIS-derived BB fire counts in northern high latitudes ($45\text{--}60^{\circ}\text{N}$) in western and eastern Eurasia (around $30\text{--}50^{\circ}\text{E}$ and $100\text{--}130^{\circ}\text{E}$, respectively). Furthermore, two numerical model simulations estimated that the year-to-year variation of contributions from AN emissions was lower than 30–40%. These results suggest that the year-to-year variation of BB activities likely affected the BC amounts in the Arctic troposphere in spring, at least in the years examined in this study.

Numerical model simulations generally well reproduced the observed COL_{BC} values for PAMARCMiP and HIPPO (within factors of 2) when BB activities were low, but underestimated the values for ARCTAS and NETCARE (by factors of 3.3 to 5.8) when BB activities were high. Because AN contribution mostly accounts for PAMARCMiP and HIPPO COL_{BC} (82–98%), the good agreements between the observations and model simulations for these two experiments suggest that AN contribution was generally well reproduced. However, the significant underestimations for ARCTAS and NETCARE suggest that the BB contributions were underestimated. For these two cases, reasonable agreement was found only when the calculated BB BC contributions were multiplied by a factor of 3 or more. Consequently, these results suggest that BB BC emissions could be greatly underestimated or the removal of BC from BB emissions was overestimated, although the level of these uncertainties cannot be evaluated in this study.

The year-to-year variation of M_{BC} values obtained at the surface at the high Arctic sites Ny-Ålesund and Barrow during the periods corresponding to the four aircraft experiments was also examined. The 31-day median M_{BC} values for the ARCTAS year were higher by factors of 2.4–3.2 than for the PAMARCMiP period. Although this relative change in M_{BC} values was somewhat smaller than that in the COL_{BC} values (by factors of 4.2 and 3.6 for $>66.5^{\circ}\text{N}$ and 80°N , respectively), likely due to the limited vertical mixing, we can still conclude that ground surface BC measurements can capture the year-to-year variations caused by BB activities.

Because BC particles observed at altitudes below 4.5 km during the PAMARCMiP experiment were least affected by recent BB and mostly originated from AN sources, the microphysical properties of BC particles were studied. The mass averaged diameter of BC particles (D_{BC}) decreased with increasing altitude, from 167 nm near the ground surface to 134 nm at 4.5 km. This tendency is in accordance with the selective removal of BC-containing particles with higher CCN activities. The median shell-to-core diameter ratios for $D_{\text{m}} = 180\text{--}192$ nm changed little with altitude and were between 1.40 and 1.48

throughout the entire altitude range. Interestingly, D_{BC} and the shell-to-core diameter ratio of BC in the BB plumes observed during the PAMARCMiP experiment were generally not very different from those
500 in other air samples, which were considered to be mostly aged AN BC.

Direct radiative forcing of BC in the Arctic is considered to be highest in spring when M_{BC} is the largest and incoming solar radiation is increasing. BC in spring is also important because slight changes in the time of snow/ice melt can influence the radiation budget in the Arctic. The observations presented in this study provide useful bases to improve and evaluate numerical model simulations that assess the BC
505 radiative effect in the Arctic spring.

Global warming has the potential to increase BB activity in various regions, although future projections strongly depend on the assumed socioeconomic scenarios (IPCC, 2021). Our study also suggests that future changes in mid- and high-latitude BB BC emissions will strongly influence the amount of Arctic BC and its radiative impact.

510 **Appendix A. Comparison between the University of Tokyo and NOAA SP2 measurements**

M_{BC} measurements made with the University of Tokyo SP2 during ARCTAS (Sahu et al., 2012) were compared with NOAA SP2 measurements (NOAA-ARCPAC experiment, Spackman et al., 2010). Two measurements were made onboard the NASA DC-8 and NOAA WP-3D, respectively. Figure A1a shows that the two aircraft flew in very close tracks at altitudes between 0.3 and 5.6 km for about 70
515 min on 12 April 2008. This figure also shows that time series of one-minute M_{BC} data agreed well between the two measurements. Figure A1b shows a scatter plot between these two sets of one-minute data. They were strongly correlated ($R^2 = 0.92$) with a slope of 0.80. The systematically higher U. Tokyo values might partly be attributed to a wider size range of U. Tokyo BC measurements and a difference in corrections for undetected BC between the measurements as described below.

520 During the ARCTAS campaign, the U. Tokyo SP2 measured BC particles in the D_m range of 80–860 nm. Although the estimated mass fraction of the undetected BC was small (4% for 50–80 nm), the M_{BC} for the D_m range of 50–900 nm was obtained by integrating the single-mode lognormal fit function of the measured size distribution (Sahu et al., 2012). In contrast, the measured D_m range of the NOAA SP2 during the NOAA-ARCPAC experiment was 90–600 nm. The M_{BC} was estimated by multiplying the
525 integrated mass of BC particles by 1.1, considering the undetected mass fractions of BC outside the detection range (Spackman et al., 2010, Schwarz et al., 2010). These differences in measurements and data reductions could have resulted in some systematic differences between the two M_{BC} datasets.

Because M_{BC} measurements were consistently and traceably made by the individual groups, the systematic differences in absolute M_{BC} values obtained by them are expected to be smaller than 20%.

530 **Appendix B. Back trajectories of sampled air**

Six-day kinematic back trajectories of air parcels measured onboard the aircraft were calculated every minute based on the method described by Tomikawa and Sato (2005). For calculating the trajectories, 6-hourly meteorological data from the National Centers for Environmental Prediction (NCEP) Final (FNL) operational global analysis were used. As shown in Fig. B1, air parcels sampled at altitudes
535 below 1 km and between 1 and 3 km had originated mostly from north of 70°N and 60°N, respectively. Air parcels sampled at altitudes between 3 and 5 km had occasionally originated at latitudes as low as 50°N, in central and eastern Eurasia and northwestern Canada.

Appendix C. Time series of fire counts

Time series of the daily averaged number of fire counts (counts day⁻¹) detected by the MODIS satellite
540 (MCD14DL products, <https://earthdata.nasa.gov/active-fire-data>) are shown in Fig. C1 for the four aircraft experiments at latitudes north of 40°N, 50°N, and 60°N. The first day of each individual aircraft experiments (>66.5°N) is also indicated. Fire counts at latitudes >40°N and >50°N started to increase in mid- to late March in all four of the years examined in this study.

Appendix D. Evaluation of model-calculated vertical M_{BC} profiles

545 Figure D1 shows comparisons of vertical M_{BC} profiles between observations and numerical model calculations. Vertical profiles are shown for entire altitude ranges in which observed data are available, namely, up to 10.5, 11.0, 5.5, and 5.0 km for ARCTAS, HIPPO, NETCARE, and PAMARCMiP, respectively. For calculated values, we use (B) area-weighted averages within the latitudes and longitudes and the time periods of the aircraft-based experiments (described in Sect. 4.3) for both
550 CAM5-ATRAS and MRI-ESM2 (described in Sect. 3). When we use (A) median values along the flight tracks, similar results are obtained. As shown in these figures, both models generally well reproduced the observed low M_{BC} values for the HIPPO and PAMARCMiP experiments, when BB activities were low. On the contrary, both model calculations significantly underestimated the observed high M_{BC} values at all altitudes for ARCTAS and NETCARE. In fact, the year-to-year variations in the model-
555 calculated M_{BC} values are much smaller than those of observations throughout the altitudes. These results are consistent with those of COL_{BC} analyses (M_{BC} column amounts at altitudes between 0 and 5 km as shown in Fig. 5) described in Sect. 4.3. In other words, the model underestimations in COL_{BC} values for high BB activity years (ARCTAS and NETCARE) are not due to vertical mismatches of enhanced M_{BC} layers, but are likely caused by underestimating BB BC emissions.

560 Figure D2 shows comparisons of COL_{BC} values for 0–5, 0–6, and 0–10 km altitude ranges between observations and model calculations ((B) area-weighted averages). Obviously, COL_{BC} values increase

with increasing altitude ranges. Relative COL_{BC} values between AN and BB contributions, and among the four experiments, are similar when values for different altitude ranges are examined. For example, the observed COL_{BC} values for 0–10 km are higher for ARCTAS than HIPPO by a factor of 3.1, which is similar to the 0–5 km values (a factor of 3.0). The year-to-year variation in model-calculated COL_{BC} values for 0–10 km is much smaller than the observations, and contributions from BB are generally lower than those from AN; these features are also similar to those for COL_{BC} values for 0–5 km described in Sect 4. These results again indicate that the model underestimations in COL_{BC} values for high BB activity years (ARCTAS and NETCARE) are not due to vertical mismatches of enhanced M_{BC} layers.

Appendix E. Photo taken from POLAR 5

A photo taken from the research aircraft POLAR 5 on 3 April 2018 is shown in Fig. E1. A haze layer with reddish color, which may correspond to the plumes, was captured. Although not so apparent as in this photo, dark-colored haze layers were also sighted on April 2 and 4, when the plumes with enhanced M_{BC} values were observed.

Data availability

The observational data set including number and mass concentrations, mass-averaged diameters, and median shell-to-core ratios of black carbon aerosols obtained during the PAMARCMiP 2018 campaign is available online (<https://ads.nipr.ac.jp/dataset/A20191217-012> or <https://doi.org/10.17592/001.2019121712>).

Author contributions

SO and MK designed the study and wrote the paper. SO, MK, AY, NM, KA, OE, HB, MZ, and ABH contributed to the PAMARCMiP experiments and data analysis of SP2, TEM, and CO and CO₂ gas analysers. NO and HM conducted numerical model simulations using MRI-ESM2 and CAM5-ATRAS, respectively.

Competing interests

The authors declare that they have no conflicts of interest.

Acknowledgements

590 We are indebted to all the PAMARCMiP 2018 participants for their cooperation and support. The authors also acknowledge the Alfred Wegener Institute (AWI) for the support to conduct the PAMARCMiP 2018 campaign, the use of the Polar 5 research aircraft, and the skill and safety exemplified by the pilots and flight staff. We thank the biogeochemistry department of MPIC for providing the CO instrument and Dieter Scharffe for his support during the preparation phase of the
595 campaign. We thank Yutaka Kondo, Bryan Thomas, Peter Detwiler, Ross Peterson, and the Norwegian Polar Institute for supporting the ground-based COSMOS measurements at Barrow and Ny-Ålesund. We also thank J. Ryan Spackman and Joshua P. Schwarz for making comparison measurements of BC during the ARCTAS and ARCPAC experiments. This research was performed by the Environment Research and Technology Development Fund (JPMEERF20205001, JPMEERF20202003, JPMEERF20172003, and JPMEERF20165005) of the Environmental Restoration and Conservation Agency of Japan, the Global Environmental Research Coordination System of the Ministry of the Environment of Japan (MLIT1753). This study was also supported by the Ministry of Education, Culture, Sports, Science, and Technology and the Japan Society for the Promotion of Science (MEXT/JSPS) KAKENHI Grant Numbers JP17H04709, JP18H03363, JP18H05292, JP20H00638, and
600 JP21H03582 and the Arctic Challenge for Sustainability (ArCS) project (JPMXD1300000000) and ArCS II (JPMXD1420318865) project of the MEXT of Japan. MK thanks Ikuyo Oshima and Takumi Iwata for their contributions to the data analyses. The trajectory calculation program used in this paper was developed by Y. Tomikawa of the National Institute of Polar Research and K. Sato of the University of Tokyo, Japan. We acknowledge the use of the MODIS/Aqua+Terra Thermal Anomalies/Fire locations 1km V006 NRT (Vector data) distributed by LANCE FIRMS NASA Near
610 Real-Time and MCD14DL MODIS Active Fire Detections (TXT format), which are available online (<https://earthdata.nasa.gov/active-fire-data>). We also gratefully acknowledge the funding by the Deutsche Forschungsgemeinschaft (DFG, German Research Foundation) – project ID 268020496 – TRR 172, within the Transregional Collaborative Research Center “Arctic Amplification: Climate Relevant Atmospheric and SurfaCe Processes, and Feedback Mechanisms (AC)³”.

References

- Adachi, K., Oshima, N., Ohata, S., Yoshida, A., Moteki, N., and Koike, M.: Compositions and mixing states of aerosol particles by aircraft observations in the Arctic springtime, 2018, *Atmos. Chem. Phys.*, 21, 3607–3626, <https://doi.org/10.5194/acp-21-3607-2021>, 2021.
- 620 Arctic Monitoring and Assessment Programme (AMAP): AMAP Assessment 2015: Black carbon and ozone as Arctic climate forcers, Oslo, Norway, pp. vii + 116, 2015.

- 625 Bozem, H., Hoor, P., Kunkel, D., Köllner, F., Schneider, J., Herber, A., Schulz, H., Leaitch, W. R., Aliabadi, A. A., Willis, M. D., Burkart, J., and Abbatt, J. P. D.: Characterization of transport regimes and the polar dome during Arctic spring and summer using in situ aircraft measurements, *Atmos. Chem. Phys.*, 19, 15049–15071, <https://doi.org/10.5194/acp-19-15049-2019>, 2019.
- 630 Brock, C. A., Cozic, J., Bahreini, R., Froyd, K. D., Middlebrook, A. M., McComiskey, A., Brioude, J., Cooper, O. R., Stohl, A., Aikin, K. C., de Gouw, J. A., Fahey, D. W., Ferrare, R. A., Gao, R.-S., Gore, W., Holloway, J. S., Hübler, G., Jefferson, A., Lack, D. A., Lance, S., Moore, R. H., Murphy, D. M., Nenes, A., Novelli, P. C., Nowak, J. B., Ogren, J. A., Peischl, J., Pierce, R. B., Pilewskie, P., Quinn, P. K., Ryerson, T. B., Schmidt, K. S., Schwarz, J. P., Sodemann, H., Spackman, J. R., Stark, H., Thomson, D. S., Thornberry, T., Veres, P., Watts, L. A., Warneke, C., and Wollny, A. G.: Characteristics, sources, and transport of aerosols measured in spring 2008 during the aerosol, radiation, and cloud processes affecting Arctic Climate (ARCPAC) Project, *Atmos. Chem. Phys.*, 11, 2423–2453, <https://doi.org/10.5194/acp-11-2423-2011>, 2011.
- 635 Burba, G. G., McDermitt, D. K., Anderson, D. J., Furtaw, M. D., and Eckles, R.: Novel design of an enclosed CO₂/H₂O gas analyser for eddy covariance flux measurements, *Tellus B*, 62, 743–748, <https://doi.org/10.1111/j.1600-0889.2010.00468.x>, 2010.
- 640 Donth, T., Jäkel, E., Ehrlich, A., Heinold, B., Schacht, J., Herber, A., Zanatta, M., and Wendisch, M.: Combining atmospheric and snow radiative transfer models to assess the solar radiative effects of black carbon in the Arctic, *Atmos. Chem. Phys.*, 20, 8139–8156, <https://doi.org/10.5194/acp-20-8139-2020>, 2020.
- 645 Ehrlich, A., Wendisch, M., Lüpkes, C., Buschmann, M., Bozem, H., Chechin, D., Clemen, H. C., Dupuy, R., Eppers, O., Hartmann, J., Herber, A., Jäkel, E., Järvinen, E., Jourdan, O., Kästner, U., Kliesch, L. L., Köllner, F., Mech, M., Mertes, S., Neuber, R., Ruiz-Donoso, E., Schnaiter, M., Schneider, J., Stapf, J., and Zanatta, M.: A comprehensive in situ and remote sensing data set from the Arctic CLOUD Observations Using airborne measurements during polar Day (ACLOUD) campaign, *Earth Syst. Sci. Data*, 11, 1853–1881, <https://doi.org/10.5194/essd-11-1853-2019>, 2019.
- 650 Evangeliou, N., Balkanski, Y., Hao, W. M., Petkov, A., Silverstein, R. P., Corley, R., Nordgren, B. L., Urbanski, S. P., Eckhardt, S., Stohl, A., Tunved, P., Crepinsek, S., Jefferson, A., Sharma, S., Nøjgaard, J. K., and Skov, H.: Wildfires in northern Eurasia affect the budget of black carbon in the Arctic – a 12 year retrospective synopsis (2002–2013), *Atmos. Chem. Phys.*, 16, 7587–7604, <https://doi.org/10.5194/acp-16-7587-2016>, 2016.
- Eyring, V., Bony, S., Meehl, G. A., Senior, C. A., Stevens, B., Stouffer, R. J., and Taylor, K. E.: Overview of the Coupled Model Intercomparison Project Phase 6 (CMIP6) experimental design

- 655 and organization, *Geosci. Model Dev.*, 9, 1937–1958, <https://doi.org/10.5194/gmd-9-1937-2016>, 2016.
- Flanner, M. G.: Arctic climate sensitivity to local black carbon, *J. Geophys. Res.-Atmos.*, 118, 1840–1851, <https://doi.org/10.1002/jgrd.50176>, 2013.
- Flanner, M. G., Zender, C. S., Randerson, J. T., and Rasch, P. J.: Present-day climate forcing and
660 response from black carbon in snow, *J. Geophys. Res.-Atmos.*, 112, 1–17, <https://doi.org/10.1029/2006JD008003>, 2007.
- Gelaro, R., McCarty, W., Suárez, M. J., Todling, R., Molod, A., Takacs, L., Randles, C. A., Darmenov, A., Bosilovich, M. G., Reichle, R., Wargan, K., Coy, L., Cullather, R., Draper, C., Akella, S., Buchard, V., Conaty, A., da Silva, A. M., Gu, W., Kim, G. K., Koster, R., Lucchesi, R., Merkova,
665 D., Nielsen, J. E., Partyka, G., Pawson, S., Putman, W., Rienecker, M., Schubert, S. D., Sienkiewicz, M., and Zhao, B.: The Modern-Era Retrospective Analysis for Research and Applications, version 2 (MERRA-2), *J. Climate*, 30, 5419–5454, <https://doi.org/10.1175/JCLI-D-16-0758.1>, 2017.
- Gerbig, C., Schmitgen, S., Kley, D., Volz-Thomas, A., Dewey, K., and Haaks, D.: An improved fast
670 response vacuum–UV resonance fluorescence CO instrument, *J. Geophys Res.*, 104, 1699–1704, <https://doi.org/10.1029/1998JD100031>, 1999.
- Herber, A. B., Haas, C., Stone, R. S., Bottenheim, J. W., Liu, P., Li, S.-M., Staebler, R. M., Strapp, J. W., and Dethloff, K.: Regular airborne surveys of Arctic sea ice and atmosphere, *Eos*, 93, 41–42, <https://doi.org/10.1029/2012EO040001>, 2012.
- 675 Herber, A., Bozem, H., Hendricks, S., Holzinger, R., Jäkel, E., Koike, M., Neuber, R., Petzold, A., and Stratmann, F.: Raw data of POLAR 5 campaign PAMARCMIP 2018, PANGAEA, <https://doi.pangaea.de/10.1594/PANGAEA.899508>, 2019.
- Hoesly, R. M., Smith, S. J., Feng, L., Klimont, Z., Janssens-Maenhout, G., Pitkanen, T., Seibert, J. J., Vu, L., Andres, R. J., Bolt, R. M., Bond, T. C., Dawidowski, L., Kholod, N., Kurokawa, J. I., Li, M., Liu, L., Lu, Z., Moura, M. C. P., O’Rourke, P. R., and Zhang, Q.: Historical (1750–2014)
680 anthropogenic emissions of reactive gases and aerosols from the Community Emission Data System (CEDS), *Geosci. Model Dev.*, 11, 369–408, <https://doi.org/10.5194/gmd-11-369-2018>, 2018.
- IPCC: Climate Change 2021: The Physical Science Basis, Contribution of Working Group I to the Sixth
685 Assessment Report of the Intergovernmental Panel on Climate Change, Cambridge Univ. Press, Cambridge, U. K., in press.

- Ishii, M., Shouji, A., Sugimoto, S., and Matsumoto, T.: Objective analyses of sea-surface temperature and marine meteorological variables for the 20th century using ICOADS and the Kobe Collection, *Int. J. Climatol.*, 25, 865–879, <https://doi.org/10.1002/joc.1169>, 2005.
- 690 Kaiser, J. W., Heil, A., Andreae, M. O., Benedetti, A., Chubarova, N., Jones, L., Morcrette, J. J., Razinger, M., Schultz, M. G., Suttie, M., and Van Der Werf, G. R.: Biomass burning emissions estimated with a Global Fire Assimilation System based on observed fire radiative power, *Biogeosciences*, 9, 527–554, <https://doi.org/10.5194/bg-9-527-2012>, 2012.
- Kawai, H., Yukimoto, S., Koshiro, T., Oshima, N., Tanaka, T., Yoshimura, H., and Nagasawa, R.: Significant improvement of cloud representation in the global climate model MRI-ESM 2, *Geosci. Model Dev.*, 12, 2875–2897. <https://doi.org/10.5194/gmd-12-2875-2019>, 2019.
- 695 Kawai, H., Yukimoto, S., Koshiro, T., Oshima, N., Tanaka, T., Yoshimura, H., and Nagasawa, R.: Significant improvement of cloud representation in the global climate model MRI-ESM 2, *Geosci. Model Dev.*, 12, 2875–2897. <https://doi.org/10.5194/gmd-12-2875-2019>, 2019.
- Kobayashi, S., Ota, Y., Harada, Y., Ebata, A., Moriya, M., Onoda, H., Onogi, K., Kamahori, H., Kobayashi, C., Endo, H., Miyaoka, K., and Kiyotoshi, T.: The JRA-55 reanalysis: General specifications and basic characteristics, *J. Meteorol. Soc. Jpn.*, 93, 5–48, <https://doi.org/10.2151/jmsj.2015-001>, 2015.
- 700 Kobayashi, S., Ota, Y., Harada, Y., Ebata, A., Moriya, M., Onoda, H., Onogi, K., Kamahori, H., Kobayashi, C., Endo, H., Miyaoka, K., and Kiyotoshi, T.: The JRA-55 reanalysis: General specifications and basic characteristics, *J. Meteorol. Soc. Jpn.*, 93, 5–48, <https://doi.org/10.2151/jmsj.2015-001>, 2015.
- Koch, D. and Hansen, J.: Distant origins of Arctic black carbon: A Goddard Institute for Space Studies Model E experiment, *J. Geophys. Res.*, 110, D04204, <https://doi.org/10.1029/2004JD005296>, 2005.
- Kodros, J. K., Hanna, S. J., Bertram, A. K., Leaitch, W. R., Schulz, H., Herber, A. B., Zanatta, M., Burkart, J., Willis, M. D., Abbatt, J. P. D., and Pierce, J. R.: Size-resolved mixing state of black carbon in the Canadian high Arctic and implications for simulated direct radiative effect, *Atmos. Chem. Phys.*, 18, 11345–11361, <https://doi.org/10.5194/acp-18-11345-2018>, 2018.
- 705 Kodros, J. K., Hanna, S. J., Bertram, A. K., Leaitch, W. R., Schulz, H., Herber, A. B., Zanatta, M., Burkart, J., Willis, M. D., Abbatt, J. P. D., and Pierce, J. R.: Size-resolved mixing state of black carbon in the Canadian high Arctic and implications for simulated direct radiative effect, *Atmos. Chem. Phys.*, 18, 11345–11361, <https://doi.org/10.5194/acp-18-11345-2018>, 2018.
- Koike, M., Goto-Azuma, K., Kondo, Y., Matsui, H., Mori, T., Moteki, N., Ohata, S., Okamoto, H., Oshima, N., Sato, K., Takano, T., Tobo, Y., Ukita, J., and Yoshida, A.: Studies on Arctic aerosols and clouds during the ArCS project, *Polar Sci.*, <https://doi.org/10.1016/j.polar.2020.100621>, 2021.
- 710 Koike, M., Goto-Azuma, K., Kondo, Y., Matsui, H., Mori, T., Moteki, N., Ohata, S., Okamoto, H., Oshima, N., Sato, K., Takano, T., Tobo, Y., Ukita, J., and Yoshida, A.: Studies on Arctic aerosols and clouds during the ArCS project, *Polar Sci.*, <https://doi.org/10.1016/j.polar.2020.100621>, 2021.
- Kondo, Y., Sahu, L., Kuwata, M., Miyazaki, Y., Takegawa, N., Moteki, N., Imaru, J., Han, S., Nakayama, T., Oanh, N. T. K., Hu, M., Kim, Y. J., and Kita, K.: Stabilization of the mass absorption cross section of black carbon for filter-based absorption photometry by the use of a heated inlet, *Aerosol Sci. Tech.*, 43, 741–756, <https://doi.org/10.1080/02786820902889879>, 2009.
- 715 Kondo, Y., Matsui, H., Moteki, N., Sahu, L., Takegawa, N., Kajino, M., Zhao, Y., Cubison, M. J., Jimenez, J. L., Vay, S., Diskin, G. S., Anderson, B., Wisthaler, A., Mikoviny, T., Fuelberg, H. E., Blake, D. R., Huey, G., Weinheimer, A. J., Knapp, D. J., and Brune, W. H.: Emissions of black carbon, organic, and inorganic aerosols from biomass burning in North America and Asia in 2008, *J. Geophys. Res.*, 116, D08204, <https://doi.org/10.1029/2010JD015152>, 2011a.

- 720 Kondo, Y., Sahu, L., Moteki, N., Khan, F., Takegawa, N., Liu, X., Koike, M., and Miyakawa, T.: Consistency and traceability of black carbon measurements made by laser-induced incandescence, thermal-optical transmittance, and filter-based photo-absorption techniques, *Aerosol Sci. Tech.*, 45, 295–312, <https://doi.org/10.1080/02786826.2010.533215>, 2011b.
- Lamarque, J.-F., Bond, T. C., Eyring, V., Granier, C., Heil, A., Klimont, Z., Lee, D., Liousse, C.,
725 Mieville, A., Owen, B., Schultz, M. G., Shindell, D., Smith, S. J., Stehfest, E., Van Aardenne, J., Cooper, O. R., Kainuma, M., Mahowald, N., McConnell, J. R., Naik, V., Riahi, K., and Van Vuuren, D. P.: Historical (1850–2000) gridded anthropogenic and biomass burning emissions of reactive gases and aerosols: Methodology and application, *Atmos. Chem. Phys.*, 10, 7017–7039, <https://doi.org/10.5194/acp-10-7017-2010>, 2010.
- 730 Lampert, A., Hartmann, J., Pätzold, F., Lobitz, L., Hecker, P., Kohnert, K., Larmanou, E., Serafimovich, A., and Sachs, T.: Comparison of Lyman-alpha and LI-COR infrared hygrometers for airborne measurement of turbulent fluctuations of water vapour, *Atmos. Meas. Tech.*, 11, 2523–2536, <https://doi.org/10.5194/amt-11-2523-2018>, 2018.
- Matsui, H.: Development of a global aerosol model using a two-dimensional sectional method: 1.
735 Model design, *J. Adv. Model. Earth Sy.*, 9, 1921–1947, <https://doi.org/10.1002/2017MS000936>, 2017.
- Matsui, H. and Liu, M.: Importance of supersaturation in Arctic black carbon simulations, *J. Climate*, 34, 7843–7856, <https://doi.org/10.1175/JCLI-D-20-0994.1>, 2021.
- Matsui, H., and Mahowald, N.: Development of a global aerosol model using a two-dimensional
740 sectional method: 2, Evaluation and sensitivity simulations, *J. Adv. Model. Earth Sy.*, 9, 1887–1920, <https://doi.org/10.1002/2017MS000937>, 2017.
- Matsui, H., Kondo, Y., Moteki, N., Takegawa, N., Sahu, L. K., Zhao, Y., Fuelberg, H. E., Sessions, W. R., Diskin, G., Blake, D. R., Wisthaler, A., and Koike, M.: Seasonal variation of the transport of black carbon aerosol from the Asian continent to the Arctic during the ARCTAS aircraft
745 campaign, *J. Geophys. Res.*, 116, D05202 <https://doi.org/10.1029/2010JD015067>, 2011.
- Matsui, H., Hamilton, D. S., and Mahowald, N. M.: Black carbon radiative effects highly sensitive to emitted particle size when resolving mixing-state diversity, *Nat. Commun.*, 9, 3446, <https://doi.org/10.1038/s41467-018-05635-1>, 2018.
- Miyazaki, Y., Kondo, Y., Sahu, L. K., Imaru, J., Fukushima, N., and Kanno, A.: Performance of a
750 Newly Designed Continuous Soot Monitoring System (COSMOS). *J. Environ. Monitor.* 10, 1195–1201, 2008.

- Mori, T., Kondo, Y., Ohata, S., Zhao, Y., Sinha, P. R., and Oshima, N., Matsui, H., Moteki, N., and Koike, M.: Seasonal variation of wet deposition of black carbon in Arctic Alaska, *J. Geophys. Res.-Atmos.*, 125, e2019JD032240. <https://doi.org/10.1029/2019JD032240>, 2020.
- 755 Moteki, N. and Kondo, Y.: Dependence of laser-induced incandescence on physical properties of black carbon aerosols: Measurements and theoretical interpretation, *Aerosol Sci. Tech.*, 44, 663–675, <https://doi.org/10.1080/02786826.2010.484450>, 2010.
- Moteki, N., Kondo, Y., Oshima, N., Takegawa, N., Koike, M., Kita, K., Matsui, H., and Kajino, M.: Size dependence of wet removal of black carbon aerosols during transport from the boundary layer to the free troposphere, *Geophys. Res. Lett.*, 39, L13802, <https://doi.org/10.1029/2012GL052034>, 2012.
- 760 Moteki, N., Mori, T., Matsui, H., and Ohata, S.: Observational constraint of in-cloud supersaturation for simulations of aerosol rainout in atmospheric models, *npj Climate and Atmospheric Science*, 2, <https://doi.org/10.1038/s41612-019-0063-y>, 2019.
- 765 Nakoudi, K., Ritter, C., Böckmann, C., Kunkel, D., Eppers, O., Rozanov, V., Mei, L., Pefanis, V., Jäkel, E., Herber, A., Maturilli, M., and Neuber, R.: Does the intra-arctic modification of long-range transported aerosol affect the local radiative budget? (A case study), *Remote Sens.*, 12, <https://doi.org/10.3390/rs12132112>, 2020.
- Ogren, J. A., Wendell, J., Andrews, E., and Sheridan, P. J.: Continuous light absorption photometer for long-term studies, *Atmos. Meas. Tech.*, 10, 4805–4818, <https://doi.org/10.5194/amt-10-4805-2017>, 2017.
- 770 Ohata, S., Moteki, N. Mori, T., Koike, M., Kondo, Y.: A key process controlling the wet removal of aerosols: new observational evidence, *Sci. Rep.*, 6, 34113, <https://doi.org/10.1038/srep34113>, 2016.
- 775 Ohata, S., Kondo, Y., Moteki, N., Mori, T., Yoshida, A., Sinha, P. R., and Koike, M.: Accuracy of black carbon measurements by a filter-based absorption photometer with a heated inlet, *Aerosol Sci. Tech.*, 53, 1079–1091, <https://doi.org/10.1080/02786826.2019.1627283>, 2019.
- Ohata, S., Mori, T., Kondo, Y., Sharma, S., Hyvärinen, A., Andrews, E., Tunved, P., Asmi, E., Backman, J., Servomaa, H., Veber, D., Koike, M., Kanaya, Y., Yoshida, A., Moteki, N., Zhao, Y., Matsushita, J., and Oshima, N.: Estimates of mass absorption cross sections of black carbon for filter-based absorption photometers in the Arctic, *Atmos. Meas. Tech. Discuss.*, <https://doi.org/10.5194/amt-2021-166>, 2021.
- 780 Oshima, N., Kondo, Y., Moteki, N., Takegawa, N., Koike, M., Kita, K., Matsui, H., Kajino, M., Nakamura, H., Jung, J. S., and Kim, Y. J.: Wet removal of black carbon in Asian outflow: Aerosol

- 785 Radiative Forcing in East Asia (A-FORCE) aircraft campaign, *J. Geophys. Res.*, 117, D03204,
<https://doi.org/10.1029/2011JD016552>, 2012.
- Oshima, N., Koike, M., Kondo, Y., Nakamura, H., Moteki, N., Matsui, H., Takegawa, N., and Kita, K.:
Vertical transport mechanisms of black carbon over East Asia in spring during the A-FORCE
aircraft campaign, *J. Geophys. Res.-Atmos.*, 118, 13175–13198,
790 <https://doi.org/10.1002/2013JD020262>, 2013.
- Oshima, N., Yukimoto, S., Deushi, M., Koshiro, T., Kawai, H., Tanaka, T. Y., and Yoshida, K.: Global
and Arctic effective radiative forcing of anthropogenic gases and aerosols in MRI-ESM 2.0.
Progress in Earth and Planetary Science, 7, 38, <https://doi.org/10.1186/s40645-020-00348-w>,
2020.
- 795 Park, R. J., Jacob, D. J., Palmer, P. I., Clarke, A. D., Weber, R. J., Zondlo, M. A., Eisele, F. L., Bandy,
A. R., Thornton, D. C., Sachse, G. W., and Bond, T. C.: Export efficiency of black carbon aerosol
in continental outflow: Global implications, *J. Geophys. Res.*, 110, D11205,
<https://doi.org/10.1029/2004JD005432>, 2005.
- Raut, J. C., Marelle, L., Fast, J. D., Thomas, J. L., Weinzierl, B., Law, K. S., Berg, L. K., Roiger, A.,
800 Easter, R. C., Heimerl, K., Onishi, T., Delanoë, J., and Schlager, H.: Cross-polar transport and
scavenging of Siberian aerosols containing black carbon during the 2012 ACCESS summer
campaign, *Atmos. Chem. Phys.*, 17, 10969–10995, <https://doi.org/10.5194/acp-17-10969-2017>,
2017.
- Sahu, L. K., Kondo, Y., Moteki, N., Takegawa, N., Zhao, Y., Cubison, M. J., Jimenez, J. L., Vay, S.,
805 Diskin, G. S., Wisthaler, A., Mikoviny, T., Huey, L. G., Weinheimer, A. J., and Knapp, D. J.:
Emission characteristics of black carbon in anthropogenic and biomass burning plumes over
California during ARCTAS-CARB 2008, *J. Geophys. Res.-Atmos.*, 117, 1–20,
<https://doi.org/10.1029/2011JD017401>, 2012.
- Samset, B. H., Myhre, G., Schulz, M., Balkanski, Y., Bauer, S., Berntsen, T. K., Bian, H., Bellouin, N.,
810 Diehl, T., Easter, R. C., Ghan, S. J., Iversen, T., Kinne, S., Kirkevåg, A., Lamarque, J.-F., Lin, G.,
Liu, X., Penner, J. E., Seland, Ø., Skeie, R. B., Stier, P., Takemura, T., Tsigaridis, K., and Zhang,
K.: Black carbon vertical profiles strongly affect its radiative forcing uncertainty, *Atmos. Chem.
Phys.*, 13, 2423–2434, <https://doi.org/10.5194/acp-13-2423-2013>, 2013.
- Scharffe, D., Slemr, F., Brenninkmeijer, C. A. M., and Zahn, A.: Carbon monoxide measurements
815 onboard the CARIBIC passenger aircraft using UV resonance fluorescence, *Atmos. Meas. Tech.*,
5, 1753–1760, <https://doi.org/10.5194/amt-5-1753-2012>, 2012.
- Schulz, H., Zanatta, M., Bozem, H., Leaitch, W. R., Herber, A. B., Burkart, J., Willis, M. D., Kunkel,
D., Hoor, P. M., Abbatt, J. P. D., and Gerdes, R.: High Arctic aircraft measurements

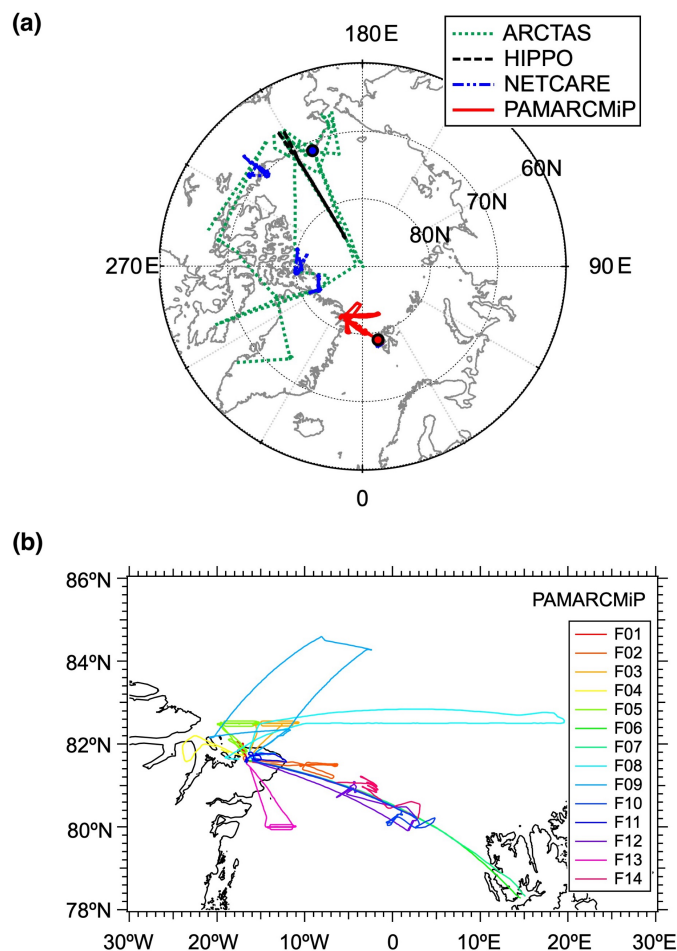
- characterising black carbon vertical variability in spring and summer, *Atmos. Chem. Phys.*, 19, 2361–2384, <https://doi.org/10.5194/acp-19-2361-2019>, 2019.
- 820 Schwarz, J. P., Spackman, J. R., Gao, R. S., Watts, L. A., Stier, P., Schulz, M., Davis, S. M., Wofsy, S. C., and Fahey, D. W.: Global-scale black carbon profiles observed in the remote atmosphere and compared to models, *Geophys. Res. Lett.*, 37, L18812, <https://doi.org/10.1029/2010GL044372>, 2010.
- 825 Schwarz, J. P., Samset, B. H., Perring, A. E., Spackman, J. R., Gao, R. S., Stier, P., Schulz, M., Moore, F. L., Ray, E. A., and Fahey, D. W.: Global-scale seasonally resolved black carbon vertical profiles over the Pacific, *Geophys. Res. Lett.*, 40, 5542–5547, <https://doi.org/10.1002/2013GL057775>, 2013.
- Serreze, M. C., and Barry, R. G.: Processes and impacts of Arctic amplification: A research synthesis, 830 *Global Planet. Change*, 77, 85–96, <https://doi.org/10.1016/j.gloplacha.2011.03.004>, 2011.
- Shindell, D. T., Chin, M., Dentener, F., Doherty, R. M., Faluvegi, G., Fiore, A. M., Hess, P., Koch, D. M., MacKenzie, I. A., Sanderson, M. G., Schultz, M. G., Schulz, M., Stevenson, D. S., Teich, H., Textor, C., Wild, O., Bergmann, D. J., Bey, I., Bian, H., Cuvelier, C., Duncan, B. N., Folberth, G., Horowitz, L.W., Jonson, J., Kaminski, J. W., Marmer, E., Park, R., Pringle, K. J., Schroeder, S., 835 Szopa, S., Takemura, T., Zeng, G., Keating, T. J., and Zuber, A.: A multi-model assessment of pollution transport to the Arctic, *Atmos. Chem. Phys.*, 8, 5353–5372, <https://doi.org/10.5194/acp-8-5353-2008>, 2008.
- Sinha, P. R., Kondo, Y., Koike, M., Ogren, J. A., Jefferson, A., Barrett, T. E., Sheesley, R. J., Ohata, S., Moteki, N., Coe, H., Liu, D., Irwin, M., Tunved, P., Quinn, P. K., and Zhao, Y.: Evaluation of 840 ground-based black carbon measurements by filter-based photometers at two Arctic sites, *J. Geophys. Res.-Atmos.*, 122, 3544–3572, <https://doi.org/10.1002/2016JD025843>, 2017.
- Spackman, J. R., Gao, R. S., Neff, W. D., Schwarz, J. P., Watts, L. A., Fahey, D. W., Holloway, J. S., Ryerson, T. B., Peischl, J., and Brock, C. A.: Aircraft observations of enhancement and depletion of black carbon mass in the springtime Arctic, *Atmos. Chem. Phys.*, 10, 9667–9680, 845 <https://doi.org/10.5194/acp-10-9667-2010>, 2010.
- Stohl, A., Klimont, Z., Eckhardt, S., Kupiainen, K., Shevchenko, V. P., Kopeikin, V. M., and Novigatsky, A. N.: Black carbon in the Arctic: the underestimated role of gas flaring and residential combustion emissions, *Atmos. Chem. Phys.*, 13, 8833–8855, <https://doi.org/10.5194/acp-13-8833-2013>, 2013.
- 850 Stone, R. S., Herber, A., Vitale, V., Mazzola, M., Lupi, A., Schnell, R. C., Dutton, E. G., Liu, P. S. K., Li, S. M., Dethloff, K., Lampert, A., Ritter, C., Stock, M., Neuber, R., and Maturilli, M.: A three-dimensional characterization of Arctic aerosols from airborne Sun photometer observations:

- 855 Tomikawa, Y., and Sato, K.: Design of the NIPR trajectory model, *Polar Meteorol. Glaciol.*, 19, 120–137, 2005.
- Tuzet, F., Dumont, M., Lafaysse, M., Picard, G., Arnaud, L., Voisin, D., Lejeune, Y., Charrois, L., Nabat, P., and Morin, S.: A multilayer physically based snowpack model simulating direct and indirect radiative impacts of light-absorbing impurities in snow, *The Cryosphere*, 11, 2633–2653,
860 <https://doi.org/10.5194/tc-11-2633-2017>, 2017.
- van der Werf, G. R., Randerson, J. T., Giglio, L., van Leeuwen, T. T., Chan, Y., Rogers, B. M., Mu, M., Van Marle, M. J. E., Morton, D. C., Collatz, G. J., Yokelson, R. J., and Kasibhatla, P. S.: Global fire emissions estimates during 1997–2016, *Earth Syst. Sci. Data*, 9, 697–720,
<https://doi.org/10.5194/essd-9-697-2017>, 2017.
- 865 Wang, Q., Jacob, D. J., Fisher, J. A., Mao, J., Leibensperger, E. M., Carouge, C. C., Le Sager, P., Kondo, Y., Jimenez, J. L., Cubison, M. J., and Doherty, S. J.: Sources of carbonaceous aerosols and deposited black carbon in the Arctic in winter-spring: implications for radiative forcing, *Atmos. Chem. Phys.*, 11, 12453–12473, <https://doi.org/10.5194/acp-11-12453-2011>, 2011.
- Warneke, C., Bahreini, R., Brioude, J., Brock, C. A., de Gouw, J. A., Fahey, D. W., Froyd, K. D.,
870 Holloway, J. S., Middlebrook, A., Miller, L., Montzka, S., Murphy, D. M., Peischl, J., Ryerson, T. B., Schwarz, J. P., Spackman, J. R., and Veres, P.: Biomass burning in Siberia and Kazakhstan as an important source for haze over the Alaskan Arctic in April 2008, *Geophys. Res. Lett.*, 36, L02813, <https://doi.org/10.1029/2008GL036194>, 2009.
- Wendisch, M., Brückner, M., Burrows, J. P., Crewell, S., Dethloff, K., Ebell, K., Lüpkes, C., Macke, A.,
875 Notholt, J., Quass, J., Rinke, A., and Tegen, I.: Understanding causes and effects of rapid warming in the Arctic, *EOS*, 98, <https://doi.org/10.1029/2017EO064803>, 2017.
- Wesche, C., Steinhage, D., and Nixdorf, U.: Polar aircraft Polar 5 and Polar 6 operated by the Alfred Wegener Institute, *Journal of large-scale research facilities*, 2, A87,
<http://dx.doi.org/10.17815/jlsrf-2-153>, 2016.
- 880 Xu, J.-W., Martin, R. V., Morrow, A., Sharma, S., Huang, L., Leaitch, W. R., Burkart, J., Schulz, H., Zanatta, M., Willis, M. D., Henze, D. K., Lee, C. J., Herber, A. B., and Abbatt, J. P. D.: Source attribution of Arctic black carbon constrained by aircraft and surface measurements, *Atmos. Chem. Phys.*, 17, 11971–11989, <https://doi.org/10.5194/acp-17-11971-2017>, 2017.
- Yoshida, A., Moteki, N., Ohata, S., Mori, T., Koike, M., Kondo, Y., Matsui, H., Oshima, N., Takami,
885 A., and Kita, K.: Abundances and microphysical properties of light-absorbing iron oxide and

black carbon aerosols over East Asia and the Arctic, *J. Geophys. Res.-Atmos.*, 125, e2019JD032301, <https://doi.org/10.1029/2019JD032301>, 2020.

890 Yukimoto, S., Kawai, H., Koshiro, T., Oshima, N., Yoshida, K., Urakawa, S., Tsujino, H., Deushi, M., Tanaka, T., Hosaka, M., Yabu, S., Yoshimura, H., Shindo, E., Mizuta, R., Obata, A., Adachi, Y., and Ishii, M.: The Meteorological Research Institute Earth System Model version 2.0, MRI-ESM 2.0: Description and basic evaluation of the physical component, *J. Meteorol. Soc. Jpn.*, 97, 931–965, <https://doi.org/10.2151/jmsj.2019-051>, 2019.

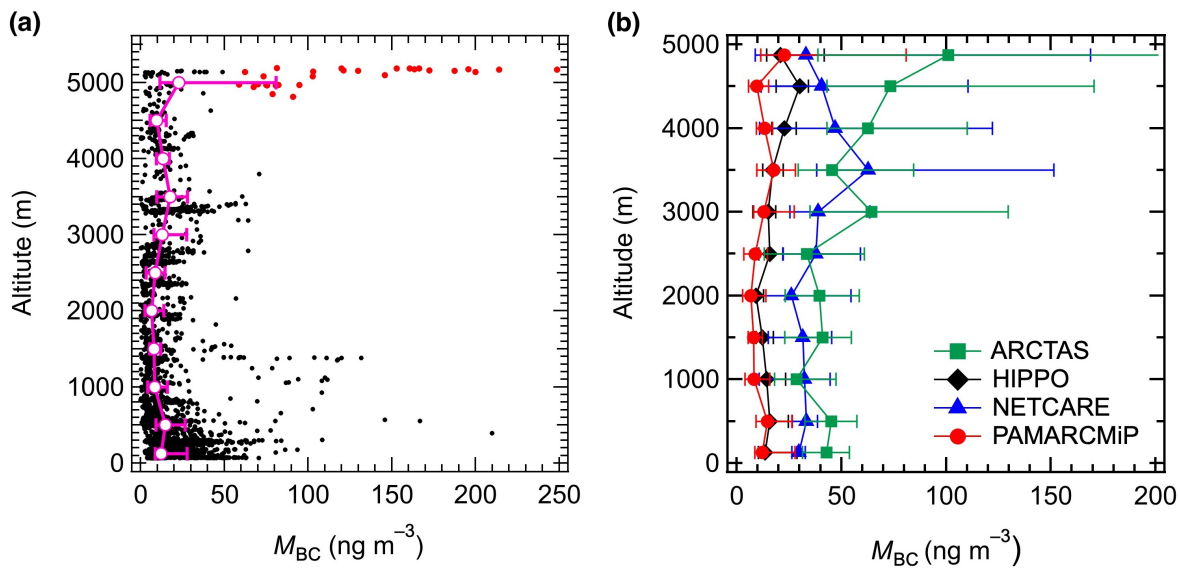
Figures



895

Figure 1. (a) Map of the flight tracks of the PAMARCMiP aircraft-based field experiment and the other three experiments made over the Arctic in spring. In this study, only data obtained at latitudes north of 66.5°N were used and only the flight tracks for them are shown. The locations of the high Arctic sites Ny-Ålesund in Svalbard (78.9°N, 11.9°E) and Barrow in Alaska (71.3°N, 156.6°W) are indicated by the red and blue circles, respectively. (b) Map of the details of the flight tracks of the PAMARCMiP experiment.

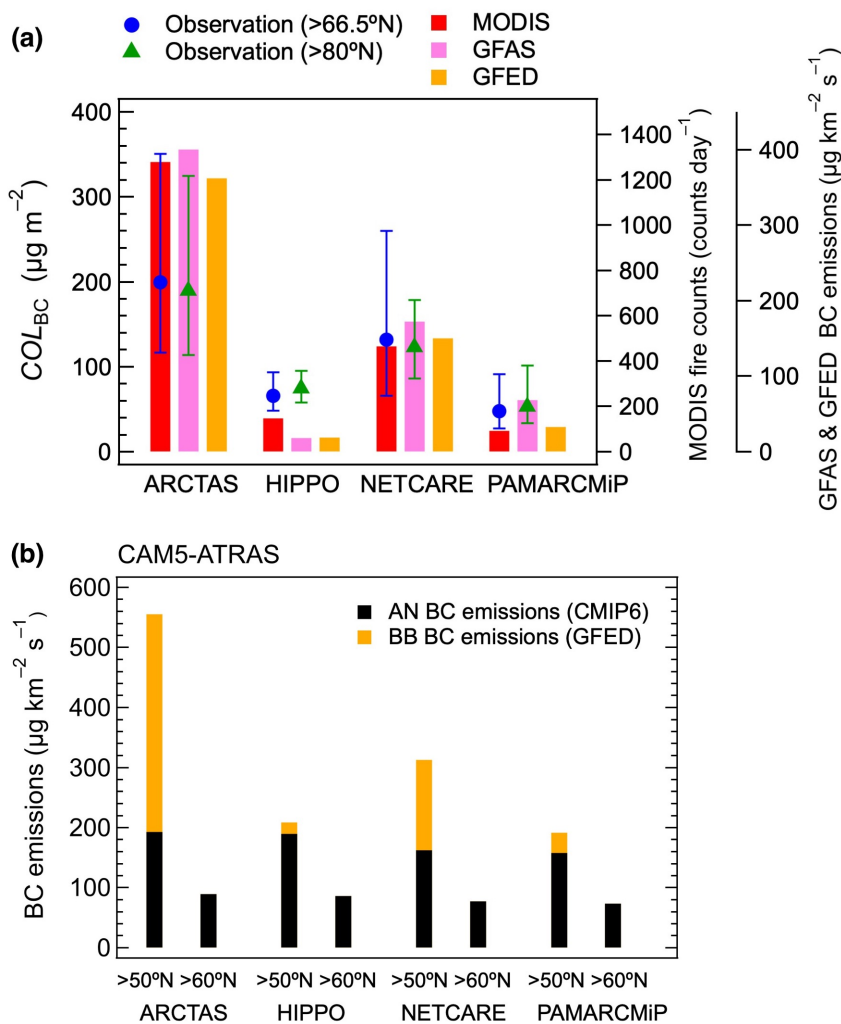
905



910

Figure 2. (a) Vertical profile of the BC mass concentration (M_{BC}) observed during the PAMARCMiP aircraft-based field experiment. Closed circles denote one-minute data. Median values and 25–75% ranges are also shown. Data points shown in red (enhanced M_{BC} data points) were likely influenced by biomass burning emissions and are discussed in Sect. 5. (b) Vertical profiles of median M_{BC} values observed during the aircraft-based experiments made over the Arctic ($>66.5^{\circ}\text{N}$) in spring (Table 3).

915



920 **Figure 3.** (a) Column amounts of BC mass concentration at altitudes between 0 and 5 km (COL_{BC}) at latitudes north of 66.5°N (blue circles) and 80°N (green triangles). MODIS-derived fire counts and biomass burning BC emissions compiled in GFAS and GFED datasets are also shown (vertical bars). The fire counts and BC emissions are those at latitudes north of 50°N for the time period between 14 days before the first day of an aircraft experiment and the last day of the experiment. (b) BC emissions used for the CAM5-ATRAS model simulations. Anthropogenic (AN, CMIP6) and biomass burning (BB, GFED) emissions are shown by black and orange colors, respectively. Values at latitudes north of 50°N and 60°N are shown for the time period between 14 days before the first day of an aircraft experiment and the last day of the experiment. The BB emissions for >50°N are the same as those shown in Fig. 3a. BC emissions used for the MRI-ESM2 model simulations (MACCcity and GFAS) are generally similar

925

930 to those shown in this figure, although AN emissions for >60°N are generally smaller.

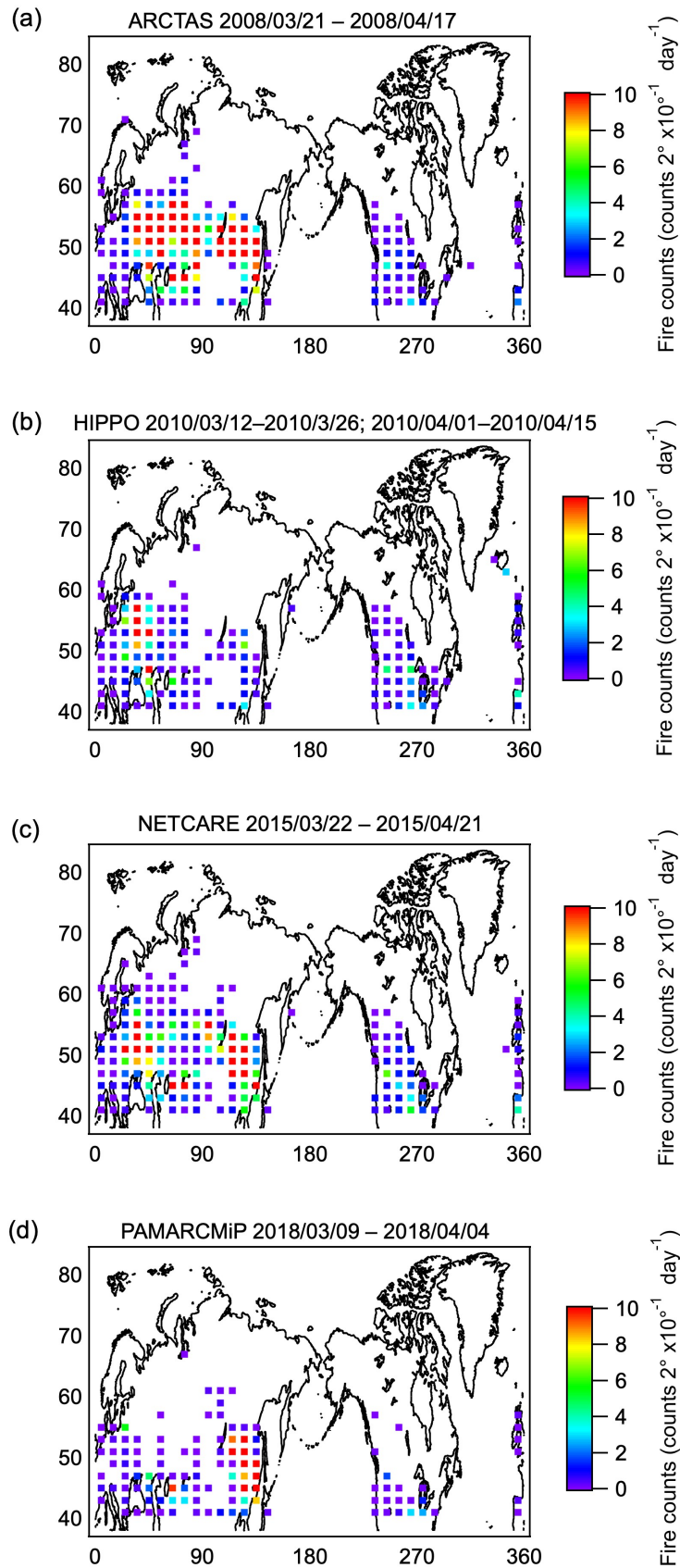
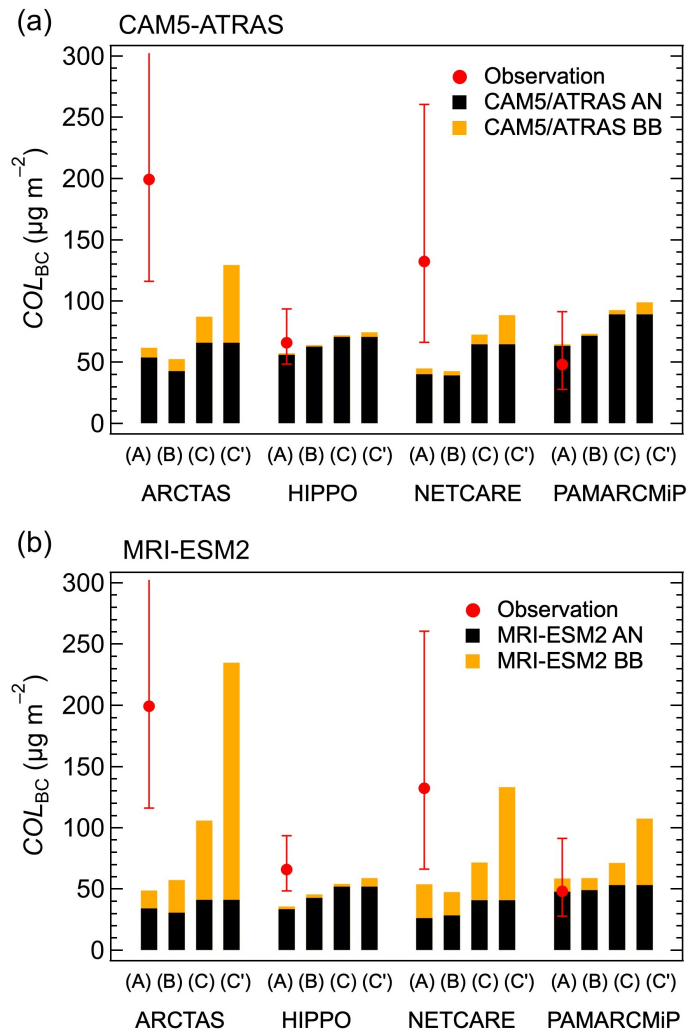


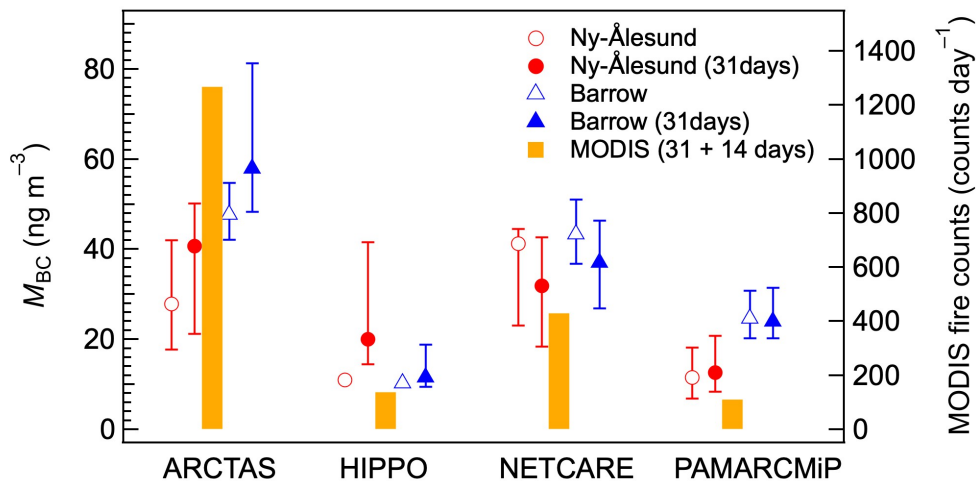
Figure 4. Map of MODIS-derived fire counts. Averaged values are shown for the time period between 14 days before the first day of an aircraft-based experiment and the last day of the experiment.



940

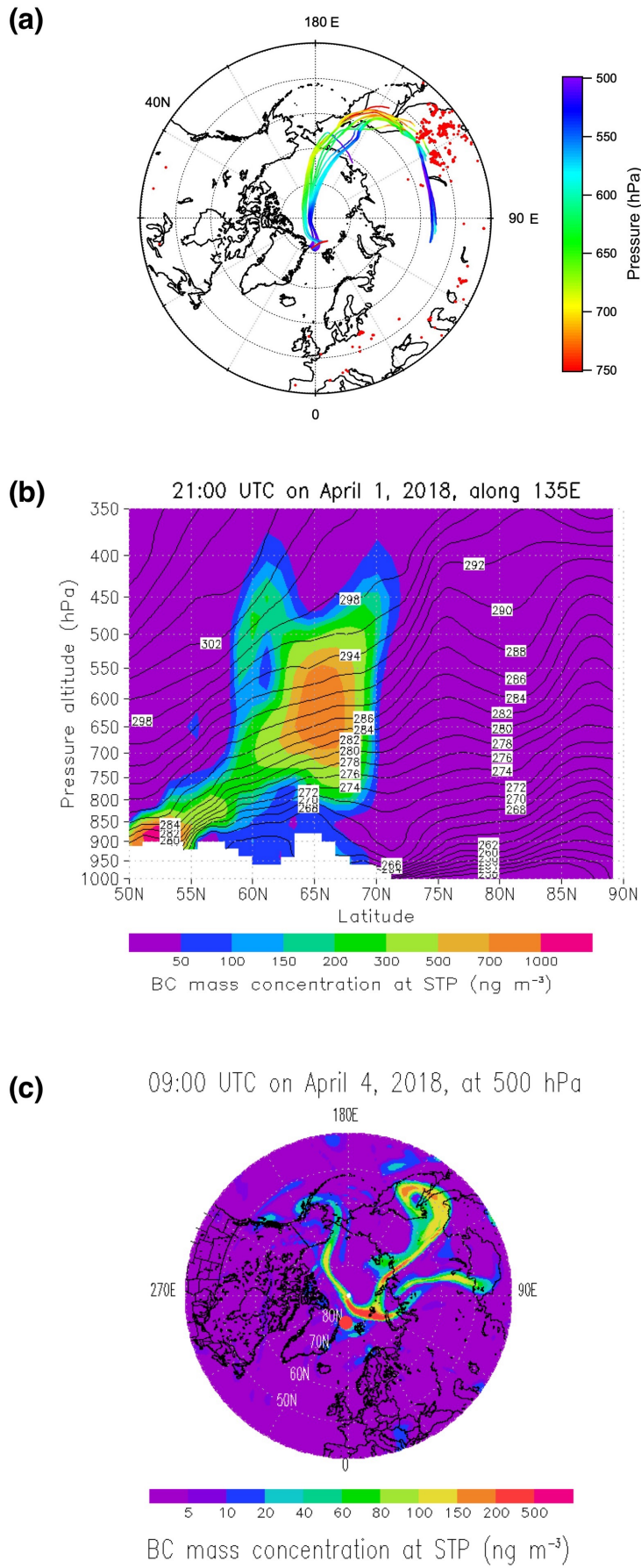
Figure 5. Observed column amounts of BC mass concentration at altitudes between 0 and 5 km and latitudes $>66.5^{\circ}\text{N}$ (COL_{BC} , red circles) and model-calculated COL_{BC} values (vertical bars). For calculated values, contributions from anthropogenic (AN) and biomass burning (BB) emissions are shown by red and green colors, respectively. The model-calculated COL_{BC} values were derived in three
 945 different ways by calculating median or average values for individual altitude ranges: (A) Median values along the flight tracks. (B) Area-weighted averages within the areas and time periods of the individual aircraft-based experiments shown in Table 3. (C) Area-weighted averages within the entire region at latitudes north of 66.5°N for the time periods of the individual aircraft experiments. (C') Same as (C) but with the calculated BB contributions multiplied by a factor of 3. (a) CAM5-ATRAS model
 950 simulations. (b) MRI-ESM2 model simulations.

955



960

Figure 6. BC mass concentrations (M_{BC}) obtained by ground-based measurements at Ny-Ålesund, Svalbard (red), and Barrow, Alaska (blue). Median values of daily averages and 25–75% ranges are shown for the time periods of the individual aircraft experiments (open circles and triangles) and the 31-day period for which the median date was chosen to be the median date of the experiment (closed circles and triangles). Corresponding averaged fire counts (31 + 14 days) at latitudes north of 50°N are also shown (vertical bars). Because the daily averaged M_{BC} was obtained only on one day at Barrow for the HIPPO experiment period (two days), the 25–75% range is not shown.



970 **Figure 7.** (a) Eight-day backward trajectories of air with enhanced BC mass concentrations (M_{BC}) observed on 2, 3, and 4 April 2018 (the data points shown in red in Fig. 2a). Red points are MODIS-

derived hot spots observed during 25–27 March, 8 days before the aircraft observations of the enhanced M_{BC} . (b) Model-calculated latitude–pressure altitude cross-section of M_{BC} along the 135°E line (color) and potential temperature (contours) at 21 UTC on 1 April 2018 (MRI-ESM2 model). M_{BC} values
975 originating from BB are shown. (c) Horizontal distribution of M_{BC} (BB origin) at 500 hPa level at 09 UTC on 4 April 2018 when the enhanced M_{BC} data were observed (MRI-ESM2 model). The red circle denotes the aircraft location when the enhanced M_{BC} data were observed.

980

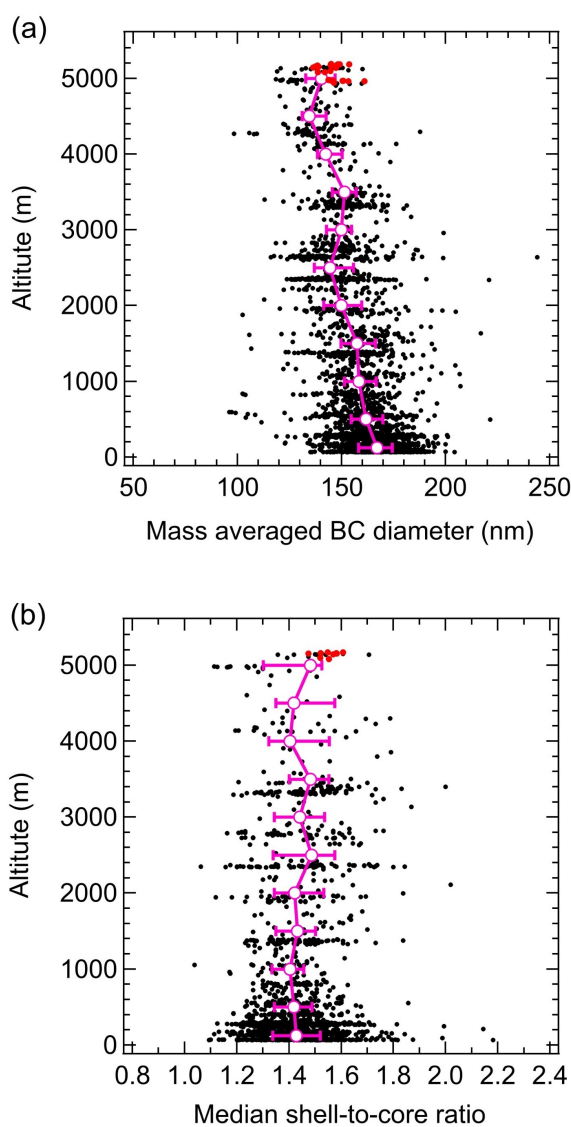


Figure 8. (a) Vertical profile of mass averaged diameters of BC (D_{BC}). Closed circles denote one-minute data that were calculated from one-minute BC mass concentrations (M_{BC}) and BC number concentrations using eq. (1). Median values and 25–75% ranges are also shown. Data points shown in red (the enhanced M_{BC} data points shown in red in Fig. 2a) were likely influenced by biomass burning emissions. (b) Same as (a) but for the median shell-to-core diameter ratios for particles with a mass equivalent BC diameter (core diameter) of 180–192 nm.

990

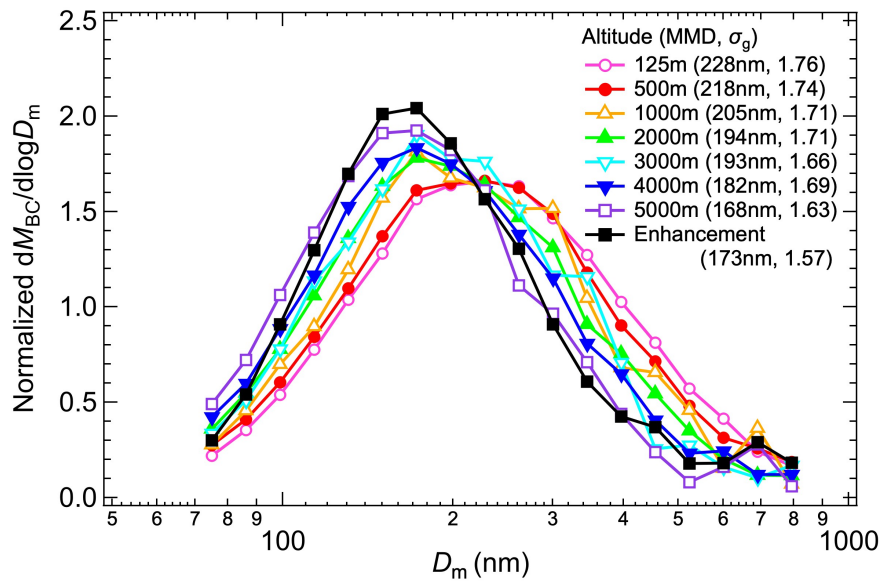


Figure 9. Averaged mass size distribution of BC in each altitude range. Values normalized by the total mass concentrations of BC ($(dM_{BC}/d\log D_m)/M_{BC}$) are shown. The average size distribution for the enhanced M_{BC} data is shown with black squares. The numbers shown in parentheses are the mass median diameter (MMD) and the geometric standard deviation (σ_g) for the lognormal fitted size distributions.

1000

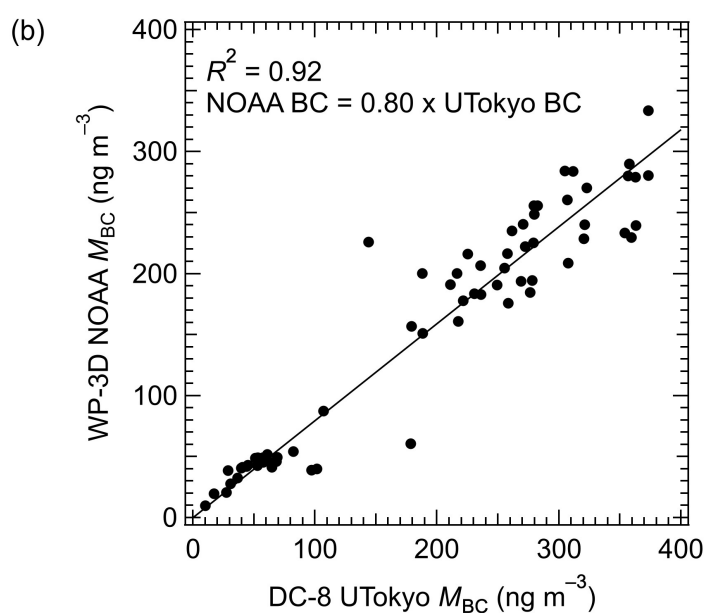
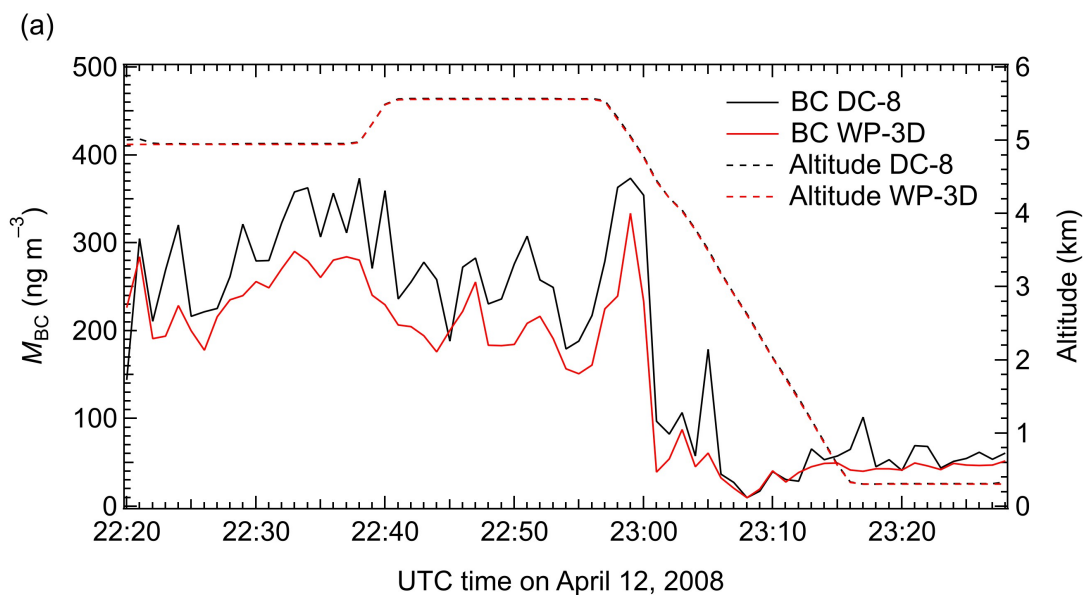


Figure A1. Comparison between M_{BC} measurements made with the University of Tokyo SP2 during ARCTAS onboard the NASA DC-8 (black lines, Sahu et al., 2012) and NOAA SP2 measurements onboard the NOAA WP-3D (red lines, NOAA-ARCPAC experiment, Spackman et al., 2010). (a) Time series of one-minute data of M_{BC} values (solid lines) and aircraft altitudes (dashed lines). (b) Scatter plot between these M_{BC} values. The solid line is the least-squares fitted line forced through (0, 0).

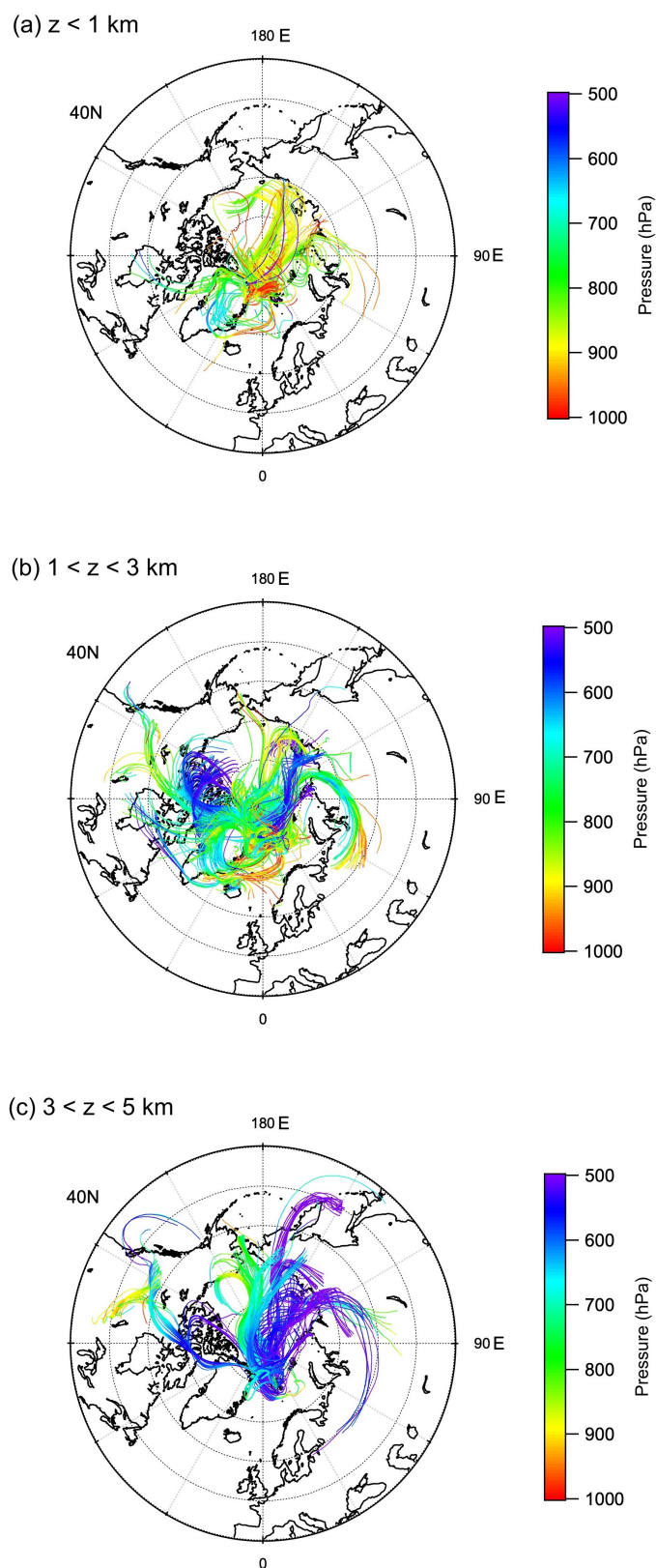


Figure B1. Six-day kinematic back trajectories of air parcels measured onboard the aircraft. Color scales denote the pressure altitude of air. (a) Trajectories starting from altitudes $z < 1$ km. (b) Same as (a) but for $1 < z < 3$ km. (c) Same as (a) but for $3 < z < 5$ km.

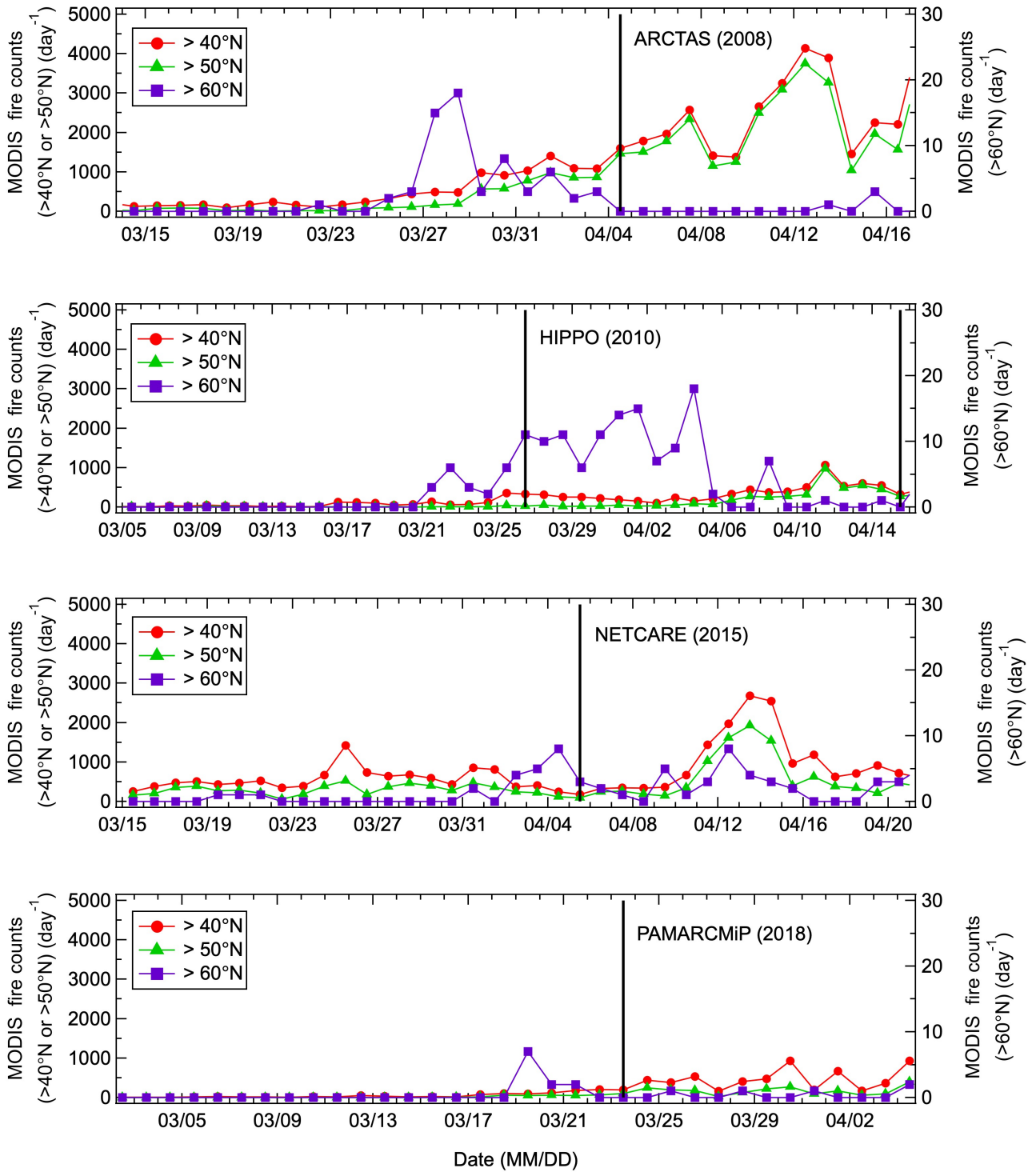


Figure C1. Time series of the daily averaged number of fire counts (counts day⁻¹) detected by the MODIS satellite. Vertical bars indicate the start dates of the individual aircraft-based experiments.

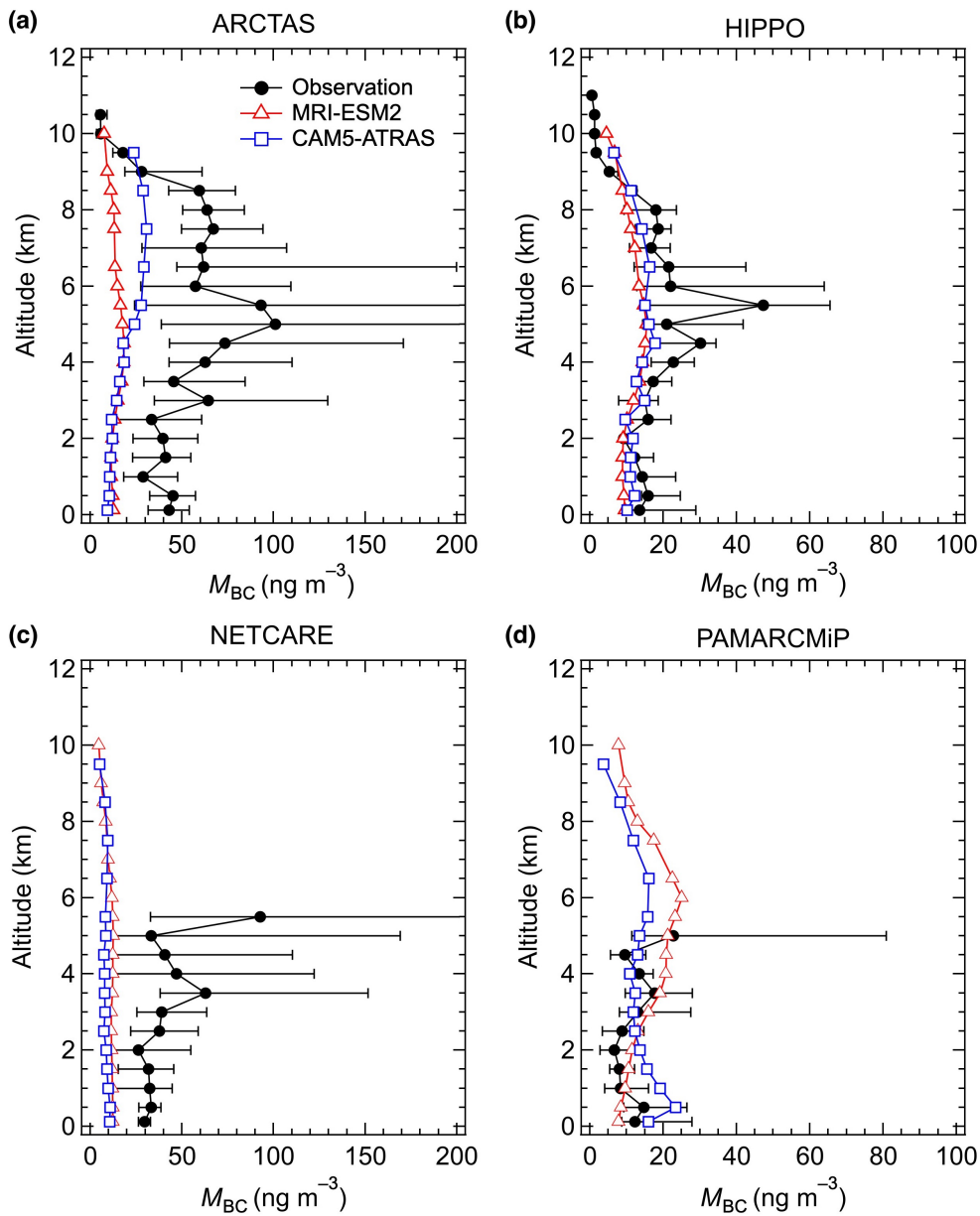


Figure D1. Vertical profiles of median BC mass concentration (M_{BC}) values observed during the aircraft-based experiments made over the Arctic ($>66.5^\circ\text{N}$) in spring. Bars indicate 25–75% ranges. Model-calculated vertical M_{BC} profiles are derived by calculating area-weighted averages within the latitudes and longitudes and the time periods of the individual aircraft-based experiments.

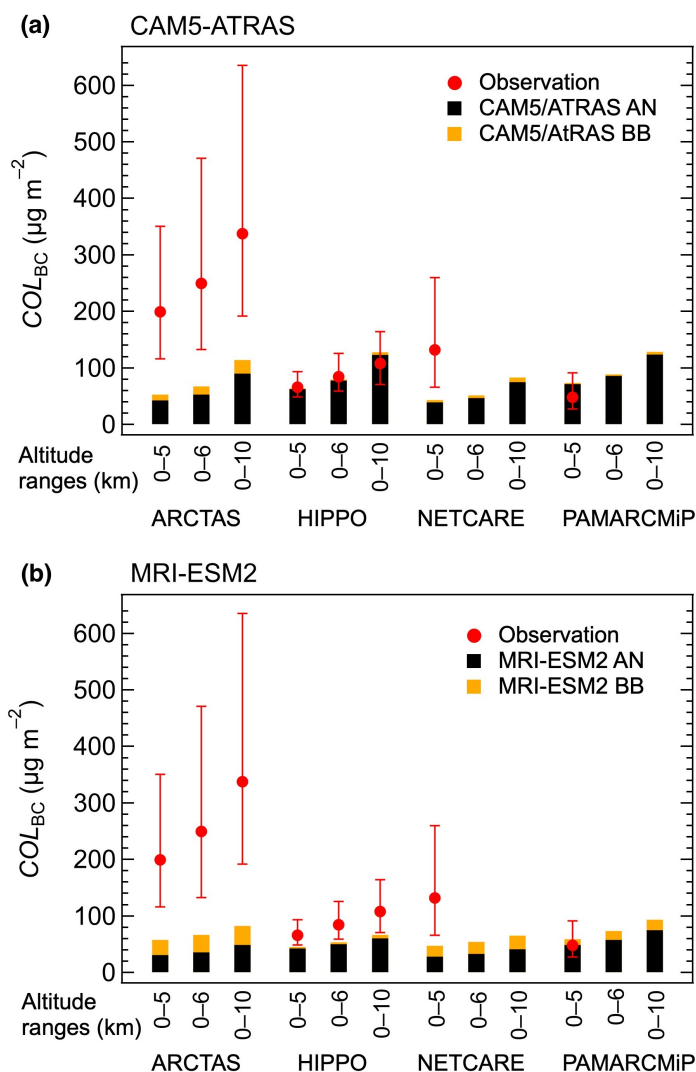


Figure D2. Observed column amounts of BC mass concentration for 0–5, 0–6, and 0–10 km altitude ranges at latitudes $>66.5^\circ\text{N}$ (COL_{BC} , red circles) and model-calculated COL_{BC} values (vertical bars). For calculated values, contributions from anthropogenic (AN) and biomass burning (BB) emissions are shown by black and orange colors, respectively. The model-calculated COL_{BC} values were derived by calculating area-weighted averages within the areas and time periods of the individual aircraft-based experiments. (a) CAM5-ATRAS model simulations. (b) MRI-ESM2 model simulations.



Figure E1. Photo taken from the research aircraft POLAR 5 on 3 April 2018. A haze layer with reddish color, which may correspond to the plumes, was captured.

Tables

Table 1. Summary of research flights made during the PAMARCMiP experiment. The time is UTC.

Flight	Date	Takeoff time	Landing time	Maximum altitude (m)	
F01	3/23	11:53	12:47	1988	
F02	3/25	14:12	17:55	5131	
F03	3/26	11:53	15:41	5155	1060
F04	3/26	16:49	18:06	805	
F05	3/27	13:00	17:04	4987	
F06	3/28	11:00	13:05	2664	1065
F07	3/28	14:58	17:27	2401	
F08	3/30	07:42	13:07	4932	
F09	3/31	11:30	17:39	1362	
F10	4/2	10:07	14:14	5171	1070
F11	4/2	15:07	16:29	2213	
F12	4/3	07:53	11:54	5187	
F13	4/3	12:54	16:44	3324	1075
F14	4/4	07:51	11:50	4975	

1080

Table 2. Vertical profiles of BC observed during the PAMARCMiP experiment. One-minute data were used for these statistics. The plume data were defined as those with $M_{BC} > 50 \text{ ng m}^{-3}$ at STP.

Altitude (m)	BC mass concentration (M_{BC}) (ng m^{-3} at STP)		Mass averaged BC diameter (D_{BC}) (nm)		Shell-to-core diameter ratio	
	Median value	25–75% range	Median value	25–75% range	Median value	25–75% range
0–250	12.3	8.7–27.8	167.1	158.3–174.4	1.43	1.34–1.52
250–750	14.7	9.2–26.4	161.9	154.6–170.0	1.42	1.34–1.49
750–1250	8.4	4.1–16.0	158.4	151.4–166.8	1.40	1.33–1.46
1250–1750	8.0	5.4–12.1	157.4	149.7–166.2	1.43	1.35–1.50
1750–2250	6.7	2.7–13.9	150.0	141.5–159.7	1.42	1.34–1.53
2250–2750	8.8	3.4–14.7	144.5	136.9–155.7	1.49	1.34–1.58
2750–3250	13.0	8.1–27.5	150.0	142.9–154.9	1.44	1.34–1.54
3250–3750	17.7	9.7–28.0	151.5	145.6–157.2	1.48	1.40–1.55
3750–4250	13.4	9.5–17.3	142.4	138.4–150.4	1.40	1.32–1.55
4250–4750	9.5	5.6–15.3	134.5	131.2–142.6	1.42	1.35–1.58
4750–5250	22.8	11.4–80.9	140.3	132.7–146.9	1.48	1.30–1.53
4750–5250 (in the plumes)	103.1	78.9–163.6	145.1	141.9–149.2	1.55	1.52–1.58

1085

1090

1095

1100

1105

1110

1115

Table 3. Aircraft experiments made during the Arctic spring.

Experiment	Year	Date	Location	Number of flights	SP2 operation	Reference
ARCTAS ^a	2008	4–17 April	66.50–89.97°N, 168.66–37.22°W	7	Univ. of Tokyo	Matsui et al., 2011
HIPPO ^a	2010	26 March, 15 April	66.53–85.07°N, 149.88–147.24°W	1, 1	NOAA	Schwarz et al., 2013
NETCARE	2015	5–21 April	66.73–83.53°N, 135.00°W – 14.63°E	10	AWI	Schulz et al., 2019
PAMARCMiP	2018	23 March– 4 April	78.29–84.59°N, 23.95°W–19.57°E	14	Univ. of Tokyo	This study

^a Although measurements were made at latitudes south of 60°N, only data obtained at latitudes north of 66.5°N were used in this study. Dates and numbers of flights correspond to these Arctic measurements.

1125

1130

1135

1140

1145

1150

Table 4. Column BC amounts and biomass burning activities.

Experiment	COL_{BC} ($\mu\text{g m}^{-2}$) ($>66.5^\circ\text{N}$) ^a		COL_{BC} ($\mu\text{g m}^{-2}$) ($>80^\circ\text{N}$) ^a		Averaged fire counts (counts day ⁻¹)	Averaged GFAS BC emissions ($\mu\text{g km}^{-2}$ s ⁻¹)	Averaged GFED BC emissions ($\mu\text{g km}^{-2}$ s ⁻¹)
	Median value	25–75% range	Median value	25–75% range			
ARCTAS	200 (4.2)	116–351	190 (3.6)	114–325	1281 (13.9)	402.4 (5.86)	377.3 (11.32)
HIPPO	66 (1.4)	48–94	75 (1.4)	58–95	130 (1.4)	17.5 (0.26)	17.2 (0.51)
NETCARE	132 (2.7)	66–261	123 (2.3)	86–179	469 (5.1)	250.7 (3.65)	137.7 (4.13)
PAMARC MiP	48 (1.0)	28–91	53 (1.0)	34–101	92 (1.0)	68.7 (1.0)	33.3 (1.0)

^a COL_{BC} is the column BC amount between 0 and 5 km.

1155 Values in parentheses are relative to PAMARCMiP.

1160

1165

1170

1175

1180

Table 5a. Model-calculated column BC amounts with the CAM5-ATRAS model.

Experiment	$COL_{BC}(A)^a$ ($\mu\text{g m}^{-2}$)			$COL_{BC}(B)$ ($\mu\text{g m}^{-2}$)			$COL_{BC}(C)$ ($\mu\text{g m}^{-2}$)		
	AN	BB	AN+BB	AN	BB	AN+BB	AN	BB	AN+BB
ARCTAS	53.9	7.9	61.8	42.9	10.0	52.8	66.1	21.1	87.2
HIPPO	56.3	1.1	57.5	62.7	1.5	64.3	70.6	1.4	72.0
NETCARE	40.4	4.7	45.1	39.5	3.5	43.0	64.6	7.9	72.6
PAMARCMiP	63.6	1.0	64.6	71.8	1.7	73.5	89.4	3.2	92.6

1195

^a COL_{BC} is the column BC amount between 0 and 5 km.

^b AN and BB stand for anthropogenic and biomass burning origins, respectively.

(A): median values along the flight tracks. (B): area-weighted averaged values within the latitudes and longitudes and the time period of the aircraft experiment shown in Table 3. (C): area-weighted averaged values within the entire region at latitudes north of 66.5°N for the time period of the aircraft experiment.

1200

1205

1210

1215

1220

1225

1230

Table 5b. Model-calculated column BC amounts with the MRI-ESM2 model.

1235

Experiment	$COL_{BC}(A)^a$ ($\mu\text{g m}^{-2}$)			$COL_{BC}(B)$ ($\mu\text{g m}^{-2}$)			$COL_{BC}(C)$ ($\mu\text{g m}^{-2}$)		
	AN	BB	AN+BB	AN	BB	AN+BB	AN	BB	AN+BB
ARCTAS	34.3	14.6	49.0	30.8	26.7	57.5	41.4	64.5	105.9
HIPPO	33.7	2.3	36.0	42.8	2.9	45.7	52.0	2.3	54.3
NETCARE	26.3	27.7	53.9	28.5	19.1	47.6	41.0	30.8	71.8
PAMARCMiP	47.9	10.7	58.7	49.1	9.9	59.0	53.2	18.1	71.3

^a COL_{BC} is the column BC amount between 0 and 5 km.

^b AN and BB stand for anthropogenic and biomass burning origins, respectively.

(A): median values along the flight tracks. (B): area-weighted averaged values within the latitudes and longitudes and the time period of the aircraft experiment shown in Table 3. (C): area-weighted averaged values within the entire region at latitudes north of 66.5°N for the time period of the aircraft experiment.

1255

1260

1265

1270

1275

1280

Table 6. BC mass concentrations observed at the ground surface.

1285

Experiment	M_{BC} at Ny-Ålesund (ng m^{-3})		M_{BC} at Barrow (ng m^{-3})		Averaged fire counts (counts day ⁻¹)
	Median value	25–75% range	Median value	25–75% range	
ARCTAS	41 (3.2)	21–50	58 (2.4)	48–81	1267 (11.4)
HIPPO	20 (1.6)	15–42	12 (0.5)	9–19	139 (1.3)
NETCARE	32 (2.5)	18–43	37 (1.5)	27–46	430 (3.9)
PAMARCMiP	13 (1.0)	8–21	24 (1.0)	20–31	111 (1.0)

Medians and 25–75% ranges were calculated for 31-day periods with the median date chosen to be the median date of the experiment given in Table 3. Fire counts were averaged for latitudes north of 50°N. Values in parentheses are relative to PAMARCMiP.

1290