

**Technical Note – AQMEII4 Activity 1: Evaluation of Wet and Dry Deposition Schemes as an Integral Part of Regional-Scale Air Quality Models**

Stefano Galmarini<sup>1</sup>, Paul Makar<sup>2</sup>, Olivia E. Clifton<sup>3</sup>, Christian Hogrefe<sup>4</sup>, Jesse O. Bash<sup>4</sup>, Roberto Bellasio<sup>5</sup>, Roberto Bianconi<sup>5</sup>, Johannes Bieser<sup>6</sup>, Tim Butler<sup>7</sup>, Jason Ducker<sup>8</sup>, Johannes Flemming<sup>9</sup>, Alma Hodzic<sup>3</sup>, Christopher D. Holmes<sup>7</sup>, Ioannis Kioutsioukis<sup>10</sup>, Richard Kranenburg<sup>11</sup>, Aurelia Lupascu<sup>7</sup>, Juan Luis Perez-Camanyo<sup>12</sup>, Jonathan Pleim<sup>4</sup>, Young-Hee Ryu<sup>13</sup>, Roberto San Jose<sup>12</sup>, Donna Schwede<sup>4</sup>, Sam Silva<sup>14</sup>, Marta Garcia Vivanco<sup>15</sup>, Ralf Wolke<sup>16</sup>

<sup>1</sup>Joint Research Center, European Commission, Ispra, Italy

<sup>2</sup>Air Quality Modelling and Integration Section, Environment and Climate Change Canada, Toronto, Canada

<sup>3</sup>National Center for Atmospheric Research, Boulder, CO, USA

<sup>4</sup>Office of Research and Development, U.S. Environmental Protection Agency, Research Triangle Park, NC, USA

<sup>5</sup>Enviroware srl, Concorezzo, MB, Italy

<sup>6</sup>Institute of Coastal Research, Helmholtz-Zentrum Geesthacht, Germany

<sup>7</sup>Institute for Advanced Sustainability Studies, Potsdam, Germany

<sup>8</sup>Earth, Ocean and Atmospheric Science, Florida State University, Tallahassee, FL, USA

<sup>9</sup>European Centre for Medium-Range Weather Forecasts, Reading, U.K.

<sup>10</sup>Laboratory of Atmospheric Physics, Department of Physics, University of Patras, Greece

<sup>11</sup>Netherlands Organization for Applied Scientific Research (TNO), Utrecht, The Netherlands

<sup>12</sup>Technical University of Madrid (UPM), Madrid, Spain

<sup>13</sup>Pohang University of Science and Technology (POSTECH), Pohang, South Korea

<sup>14</sup>Pacific Northwest National Laboratory, Richland, WA, USA

<sup>15</sup>CIEMAT, Madrid, Spain

<sup>16</sup>Leibniz Institute for Tropospheric Research, Leipzig, Germany

## Abstract

We present in this technical note the research protocol for Phase 4 of the Air Quality Model Evaluation International Initiative (AQMEI4). This research initiative is divided in two activities, collectively having three goals: (i) to define the current state of the science with respect to representations of wet and especially dry deposition in regional models, (ii) to quantify the extent to which different dry deposition parameterizations influence retrospective air pollutant concentration and flux predictions, and (iii) to identify, through the use of a common set of detailed diagnostics, sensitivity simulations, model evaluation, and reducing input uncertainty, the specific causes for the current range of these predictions. Activity 1 is dedicated to the diagnostic evaluation of wet and dry deposition processes in regional air quality models (described in this paper), and Activity 2 to the evaluation of dry deposition point models against ozone flux measurements at multiple towers with multiyear observations (~~Part 2~~ to be described in future submissions as part of the special issue on AQMEI4). The scope of ~~these papers~~ this paper is to present the scientific protocols for ~~AQMEI4~~Activity 1, as well to summarize the technical information associated with the different dry deposition approaches used by the participating research groups of AQMEI4. In addition to describing all common aspects and data used for this multi-model evaluation activity, most importantly, we present the strategy devised to allow a common process-level comparison of dry deposition obtained from models using sometimes very different dry deposition schemes. The strategy is based on adding detailed diagnostics to the algorithms used in the dry deposition modules of existing regional air quality models, in particular archiving land use/land cover (LULC)-specific diagnostics and creating standardized LULC categories to facilitate cross-comparison of LULC-specific dry deposition parameters and processes, as well as archiving effective conductance and effective flux as means for comparing the relative influence of different pathways towards the net or total dry deposition. This new approach, along with an analysis of precipitation and wet deposition fields, will provide an unprecedented process-oriented comparison of deposition in regional air-quality models. Examples of how specific dry deposition schemes used in participating models have been reduced to the common set of comparable diagnostics defined for AQMEI4 are also presented.

## 1. Introduction

Since 2009, the Air Quality Model Evaluation International Initiative (AQMEII, Rao et al., 2011) has focused on evaluating regional-scale air quality models used for research and regulatory applications. The goal of AQMEII is to conduct coordinated research projects and model inter-comparisons to advance model evaluation practices and inform model development. This initiative is promoted by the European Commission Joint Research Center, the U.S. Environmental Protection Agency (EPA) and Environment and Climate Change Canada and involves the regional-scale air quality research communities active in both North America and Europe.

AQMEII has been executed in phases that each focused on a critical aspect of modelling systems. The phases were conducted as multi-model comparisons that were analyzed through the organization of common modelling activities and supported by gathering specific monitoring data needed to evaluate model performance. Each of the phases required developing innovative evaluation and data reconciliation techniques to provide scientific insight across disparate modeling systems. AQMEII phase 1 provided the first detailed annual ensemble comparison of air-quality model predictions for North America and Europe (Galmarini et al., 2012). AQMEII phase 2 examined the impacts of feedbacks between air-quality and weather on forecasting skill and identified the key sources of uncertainty in feedback model forecasts (Galmarini et al., 2015). AQMEII phase 3, in collaboration with the Task Force on Hemispheric Transport of Air Pollution (TF HTAP) (<http://www.htap.org>), studied the effects of intercontinental transport on regional air quality predictions (Galmarini et al., 2017). Details and findings of the past three phases of AQMEII can be found in journal special issues dedicated to these activities (Galmarini et al., 2012, 2015, 2017). The AQMEII initiative is based on the four pillars of model evaluation described by Dennis et al. (2010): operational, diagnostic, dynamic, and probabilistic evaluation, which will be partly described hereinafter.

This fourth phase of AQMEII (AQMEII4), detailed in this special issue and introduced by a pair of technical notes, focuses on the processes of wet and especially dry deposition, including the parameterized approaches used within current air quality models, and how these approaches and the details of their implementation influence model predictions and performance across multiple modelling systems. Deposition is critical to the lifecycle of a pollutant, as it regulates the rate of pollutant removal from the atmosphere and determines the net flux of that pollutant to the earth's surface. This latter point is particularly important when the pollutants have a known deleterious effect on ecosystems (e.g. the deposition of acidifying compounds to aquatic ecosystems, or the dry deposition of ozone on vegetation). By affecting the pollution remaining in the atmosphere, deposition estimates also modulate predictions of ambient pollutant concentrations that affect human health through inhalation exposure.

Deposition has only been peripherally investigated in past phases of AQMEII. The operational evaluation of air quality models, in which modelled concentrations are directly compared to monitoring network observations, quantifies the extent to which an air quality model meets expected performance. However, operational evaluation does not provide the process-level understanding of the extent to which the performance results from correct representation of model physical and chemical processes. In this context, dry and wet deposition are key processes within air quality models because they represent removal, which can affect the concentrations of key atmospheric

species. Several past AQMEII publications were dedicated specifically to wet and dry deposition (Vivanco et al. 2018, Hogrefe et al. 2020, Solazzo et al. 2018). However, only wet deposition fluxes could be evaluated against observational data in these papers. The causes of differences in model predictions for dry deposition were not determined. Some of the studies performed within AQMEII also addressed dynamic evaluation (i.e. the performance of a model in capturing changes in concentrations or deposition fluxes when subjected to variations in meteorology or emissions). The effects of these variations on deposition were therefore investigated, but without analysis at the process level on the extent to which the details of deposition algorithms influenced model performance.

Recent studies of dry deposition of ozone have been fueled by the need to quantify impacts on global-to-regional water and carbon cycles (Lombardozzi et al., 2015; Oliver et al., 2018), vegetation damage including crop yields (McGrath et al., 2015; Emberson et al., 2018; Schiferl and Heald, 2018; Hong et al., 2020), and ozone air pollution (Andersson and Engardt, 2010; Silva and Heald, 2018; Baublitz et al., 2020). In particular, reduced stomatal dry deposition of ozone during droughts may contribute to high ozone pollution episodes (Vautard et al., 2005; Solberg et al., 2008; Emberson et al., 2013; Huang et al., 2016; Anav et al., 2018; Lin et al., 2020). Dry deposition of ozone occurring through nonstomatal deposition pathways, on average 45% of the total (Clifton et al., 2020a), has also been shown to be more variable and more important than predicted by current chemical transport models, with implications for background and extreme ozone pollution (Clifton et al., 2017, 2020b). Previous intercomparisons at the global scale suggest large differences in simulated ozone deposition velocities with implications for the simulated tropospheric ozone budgets and the models' ability to quantitatively capture the drivers of recent trends and interannual variability in observed ozone pollution (Hardacre et al., 2015; Wong et al., 2019). However, process-oriented evaluation in regional-to-global models is missing, in large part because key process-oriented diagnostics have not been archived and different land use / land cover (LULC) inputs across models have inhibited the systematic elucidation of processes driving the noted differences (Hardacre et al., 2015; Clifton et al., 2020a). One way in which discrepancies between observed and modelled deposition has been addressed is through model-measurement fusion approaches (Schwede and Lear, 2014; Makar et al., 2018, Robichaud et al., 2019, Robichaud et al., 2020). Such approaches could benefit from an improved characterization of process-level uncertainty in modeled dry deposition.

Despite the great advancements in regional-scale air quality modelling, the primary schemes used for dry and wet deposition in today's models originated in the 1980's and 1990's. Moreover, while the role of deposition as a persistent sink has been known for a long time (e.g. Chang et al., 1987; Irving and Smith, 1991; Borrell and Borrell, 2000), its relative importance in regulating trace species budgets has become more prominent in recent years as the magnitude of the anthropogenic emission source term has generally decreased. The evaluation studies performed within AQMEII (e.g., Solazzo et al. 2017; Hogrefe et al., 2018) and other recent work reaffirmed that deposition is a process of paramount importance within an air quality model (e.g., Knote et al., 2015; Huang et al., 2016; Beddows et al., 2017; Matichuk et al., 2017; Campbell et al., 2019; Sharma et al., 2020) with consequences of primary relevance in a number of sectors (human health, agriculture, forestry, hydrology, soil management, ecosystems management). Thus, there is renewed focus on better characterization of this term and its magnitude.

All the above points were the motivation to make use of the AQMEII community and evaluation infrastructure to construct an AQMEII phase dedicated to deposition. This phase was designed to compare deposition predictions from multiple regional models by isolating specific deposition pathways across multiple modelling systems and across multiple LULC classification systems using common diagnostic tools. Analyzing dry deposition of gaseous species, especially ozone and nitrogen species, is a particular focus, as is quantifying the range of model predictions for acidifying wet and dry deposition. A process-level diagnostic intercomparison of particle dry deposition is not conducted here due to the complexity added by model-to-model differences in the representation of aerosols (size and composition) themselves. We also note that some previous work (e.g. Makar et al., 2018) suggests that the impact of particle deposition on total nitrogen and sulphur deposition is relatively small, although particle deposition is the main source of base cations transferred from the atmosphere to ecosystems. However, more recent work (Saylor et al., 2019, Emerson et al., 2020) suggests that particle dry deposition algorithms used in current modelling systems are highly uncertain, suggesting a need for performing further process-level diagnostic intercomparisons.

AQMEII4 has the following research goals:

- Quantify the performance and variability of dry and wet deposition fields simulated by multiple state-of-the-science regional air quality models.
- Document deposition schemes and key parameters used in these models in a framework that allows their easy intercomparison.
- Identify and quantify the causes of differences in model-generated deposition fluxes by using detailed ancillary diagnostic fields added to deposition algorithms and common LULC categories.
- Analyze dry deposition module performance with single-point model simulations driven by observation data collected at towers with ozone flux measurements, and quantify the impacts of different conditions, processes and parameters on simulated dry deposition (Activity 2; to be covered in ~~a companion technical note~~, other AQMEII4 special issue publications).
- Investigate methods for using simulated meteorological, concentration, and deposition fields from multiple models in conjunction with available observations to estimate maps of total deposition and their environmental impacts, including the prediction of exceedances of critical loads.

Most model dry deposition schemes are derived from Wesely (1989). However, their implementation in regional and global models has considerable variation (a comparison with global models may be found in Hardacre et al., 2015). Specifically, most schemes follow the parameterization structure used by Wesely (1989) but may differ in the details of their representation of individual parameters and processes. This is discussed in more detail in Section 3.

In addition, dry deposition algorithms require, as a key input, information on LULC and vegetation. It is therefore important to determine how the deposition modules themselves work, both as standalone physical descriptions, and within a regional air quality model. AQMEII4 has been organized as two parallel activities to address the research goals outlined above. AQMEII4 Activity 1 (introduced in this technical note) focuses on the detailed diagnostic

comparison of predictions of air quality model deposition fields, along with evaluation of model concentration and wet deposition flux performance at routine monitoring stations in North America (NA) and Europe (EU). Activity 2 (introduced in a separate [technical notes special issue publications](#)) evaluates only the dry deposition schemes used in air quality models, and other models used for impacts assessments, as zero-dimensional single-point models, driven by observed meteorology, biophysics and ecosystem characteristics, at specific sites across the Northern Hemisphere where ozone flux measurements have been collected continuously over at least a year, with many datasets spanning three years or more. AQMEII4 will provide the most comprehensive analyses yet performed on dry deposition schemes, since the schemes will be tested both within and independently from the air quality model, under controlled conditions, and when subjected to variable meteorological and surface characteristic conditions. The single-point modelling component allows a very detailed analysis of how ozone dry deposition is modeled; recent work comparing 5 deposition algorithms at a single site (Wu et al., 2018) here has been extended to multiple sites, additional deposition algorithms, and takes advantage of a new collection of ozone flux measurements at sites around the Northern Hemisphere and new process-oriented diagnostics.

This technical note is ~~the first of two which are~~ designed to summarize all relevant information that constitute the set up and organization of AQMEII4. ~~The Activity 1. Its intent of these technical notes~~ is to provide both the readers and authors of this Special Issue with a common reference for the description of the AQMEII4 aims, scientific protocols, and analysis approaches, the model reporting framework, the model input data and monitoring data used for model evaluation, and descriptions of the model deposition algorithms themselves. By serving as common point of reference for the individual studies undertaken through ~~the AQMEII4 framework, these Activity 1, the~~ technical ~~notes reduce note reduces~~ the need for repetition of background material by individual study papers which allows these papers to focus on specific analyses and the presentation of the results ~~of AQMEII4. They. It~~ also ~~allow allows~~ the reader to access all relevant background material in a single location rather than spread out over several papers. Because of this design, ~~these this~~ technical ~~notes note~~ should not be viewed as ~~a~~ stand-alone scientific ~~papers paper~~ as ~~they do it does~~ not contain any results, but rather as laying the groundwork for subsequent scientific papers contributed by [Activity 1](#) modeling groups to the AQMEII4 Special Issue. ~~This first technical note is dedicated to Activity 1 while the second is dedicated to Activity 2.~~

## 2. AQMEII4 Activity 1 Description

Activity 1 like the previous phases of AQMEII includes the evaluation of regional air quality model simulation on the NA, EU, or both domains for at least a one-year period. Prior to describing the requested output that pertains strictly to dry deposition, we briefly summarize in this section the modeling periods and domains, common inputs, and standard concentration, meteorology, and wet deposition outputs for Activity 1.

### 2.1 Modeling Periods and Domains

190 For AQMEII4 Activity 1 the air quality community listed in Table 1 has been asked to perform two annual simulations  
 191 of the air quality over NA and/or EU.

192

Group/Institution	Modeling System	Model Domains	References
Leibniz Institute for Tropospheric Research (TROPOS), Germany	COSMO / MUSCAT	EU	<a href="#">Wolke et al., 2012</a> <a href="#">Chen et al., 2018</a>
Environment and Climate Change Canada (ECCC), Canada	GEM / MACH (3 different model configurations)	NA	<a href="#">Makar et al., 2021</a> , <a href="#">Makar et al., 2018</a> , <a href="#">Makar et al., 2017</a> , <a href="#">Moran et al., 2010</a>
Technical University of Madrid (UPM), Spain	WRF-Chem	EU and NA	<a href="#">Grell et al., 2005</a>
Netherlands Organization for Applied Scientific Research (TNO), The Netherlands	LOTOS / EUROS	EU	<a href="#">Manders et al., 2017</a>
Institute for Advanced Sustainability Studies (IASS), Germany	WRF-Chem	EU and NA	<a href="#">Grell et al., 2005</a> <a href="#">Fast et al., 2006</a>
<del>U.S.</del> Environmental Protection Agency, USA	WRF / CMAQ (2 different model configurations)	NA	<a href="#">U.S. Environmental Protection Agency, 2019</a> <a href="#">Appel et al., 2021</a>
<del>Helmholtz-Zentrum Geesthacht, Germany</del>	<del>COSMO-CLM / CMAQ</del>	<del>EU and NA</del>	
National Center for Atmospheric Research (NCAR), USA	WRF-Chem	NA	<a href="#">Hodzic et al., 2014</a> <a href="#">Knote et al. 2014</a>
University of Hertfordshire, United Kingdom	WRF / CMAQ	EU	<a href="#">U.S. Environmental Protection Agency, 2019</a> <a href="#">Appel et al., 2021</a>
<del>Research Centre for Energy, Environment and Technology (CIEMAT), Spain</del>	<del>ECMWF/IFS / CHIMERE</del>	<del>EU</del>	

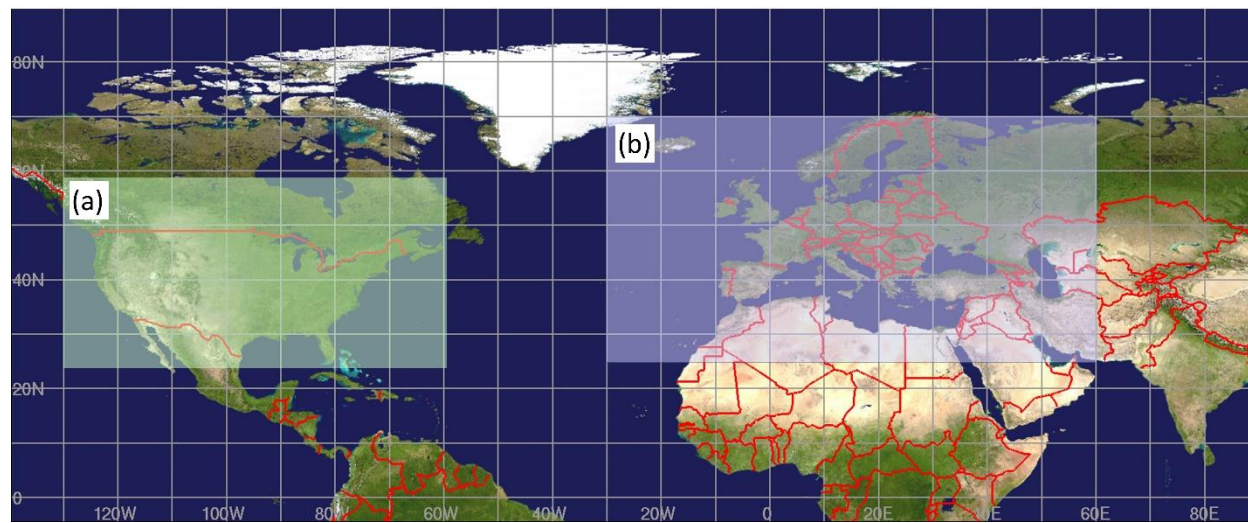
**Table 1. Participating institutes, models names and cases simulated**

Specifically, the years of interest in AQMEII4 are: North America - 2010 and 2016; Europe - 2009 and 2010. The NA years were selected due their past use policy-relevance; the years 2010 and 2016 have featured in policy-relevant emissions scenario simulation, with changes simulations by governments in emission policies that may affect the deposition the continent. In the case of Europe, the years illustrated a marked difference in meteorological signatures between the two years, hence providing a gauge of the impact of meteorological variability on deposition. Modeling multiple years also allows the investigation of the variability of impacts of emission policies and weather conditions on deposition patterns.

All modeling groups carried out simulations on their own grid projections. These “native grid” simulations were interpolated to a common 0.125° x 0.125° latitude-longitude (Figure 1) grid over each continent to allow direct comparison of gridded model data:

NA: 130°W <-> 59.5°W, 23.5°N <-> 58.5°N,

EU: 30°W <-> 60°E, 25°N <-> 70°N



**Figure 1. AQMEII4 North American (a) and European (b) 0.125 degree grid cell size common latitude-longitude comparison domains**

Modeling groups are expected to perform their simulations on a grid with comparable-to-higher horizontal resolution as these reported grids. The interpolation of model results from the native modeling grid to the common analysis grid was recommended to use a mass conserving method for concentrations and fluxes and the nearest neighbor method for diagnostic variables.



## **2.2. Model Inputs Shared By All Participants**

Air-quality models require input fields for meteorology, emissions and chemical boundary conditions; differences in each of these fields lead to differences in model results. All AQMEII exercises have considered the driving meteorology to be an integral part of each participating model (for on-line models, such as studied under AQMEII-2 chemistry and meteorology are inseparable, since both are included in the same modelling platform) and have therefore not attempted to harmonize meteorological fields across participants. However, variations caused by different emissions and chemical boundary conditions are removed in all AQMEII phases by requiring all participating models to use a common set of emissions and lateral chemical boundary conditions (Galmarini et al., 2012, 2015, 2017). Note that due to their dependence on model-specific LULC and meteorology, biogenic emissions are not prescribed and are generated by each group. For AQMEII4, the common model inputs were prepared as follows:

### **2.2.1 Anthropogenic Emissions**

Emissions for anthropogenic sources over NA were prepared from U.S., Canadian, and Mexican inventory data using the emissions processing approach developed for U.S. EPA “emission modeling platforms” (EMP). An EMP includes not only the underlying point source, county or province level inventory data but also controls the temporal and spatial allocation and chemical speciation of these inventories. For 2010, the processing was based on the “2011v6.3 EMP” (<https://www.epa.gov/air-emissions-modeling/2011-version-63-platform>). Year specific adjustments for 2010 were made to the EMP for several sectors (e.g. electric generating units, mobile sources, and residential wood combustion) and Canadian emissions were based on a 2010 inventory rather than the 2013 inventory projected to 2011 used in the EMP. For 2016, the processing was based on the “2016beta EMP” (<https://www.epa.gov/air-emissions-modeling/2016v72-beta-and-regional-haze-platform>) which is documented at <http://views.cira.colostate.edu/wiki/wiki/10197>. These EMP were used by the US EPA to generate 8 different hourly files of speciated ~~files~~ emissions for each day in 2010 (1 gridded file with low-level emissions and files with elevated sources from 7 different sectors) and 9 different hourly speciated files for each day in 2016 (1 gridded file with low-level emissions and files with elevated sources from 8 different sectors) which were then shared with all participants. Speciation was performed for both the CB6R3 and SAPRC07 mechanism to provide flexibility to participants to map emissions to the chemical mechanism used in their model. The same data were used by Environment and Climate Change Canada to generate day-specific emissions for the GEM-MACH air-quality model, for the ADOMII mechanism used within that model. Annual gridded anthropogenic emissions using the Standard Nomenclature for Air Pollution (SNAP) sector classification scheme were prepared over EU by TNO for 2009 and 2010 as part of the MACC-III project (Kuenen et al., 2015) and were provided to EU modeling groups along with reference temporal allocation and speciation profiles. If necessary, EU modeling groups used other emission datasets available to them to fill in emissions near the edges of their modeling domains if their modeling domains extended beyond the are covered by the MACC-III emissions provided by TNO.

### **2.2.2 Forest Fire Emissions**

The forest fire emissions over NA for 2010 were a combination of emissions over the U.S. included in the “2011v6.3” EMP and emissions over Canada provided by Environment and Climate Change Canada (ECCC; [Chen et al., 2013](#)) while 2016 forest fire emissions over both the U.S. and Canada were obtained from the “2016 beta” EMP. Data distributed to modeling groups included both the mass of emissions of Criteria Air Contaminants (speciated into the gases of the gas-phase chemistry mechanisms noted above) and the parameters necessary to compute plume rise using a prescribed plume rise algorithm based on the large stack plume rise formula of Briggs (Briggs, 1971, 1972). While different modelling platforms often have their own approaches for estimating forest fire emissions, particularly in an operational context, as was the case for anthropogenic emissions, this unified approach was adopted in order to reduce the variability in model performance associated with emissions inputs. Forest fire emissions for 2009 and 2010 over EU were provided by the Finnish Meteorological Institute and were developed using the IS4FIRESv2 methodology described in Soares et al. (2015). These emissions were vertically allocated to eight layers with heights ranging from 50m to 6200m, with individual groups re-allocating the resulting mass to their own vertical discretization.

### *2.2.3 NO emissions from lightning*

Although previous phases of AQMEII did not consider NO emissions from lightning, these emissions were included in the current phase due to their impact on nitrogen deposition fluxes. To provide a unified forcing from this source across all models, the emissions were based on the GEIA monthly climatology (Price et al., 1997) rather than in-line parameterizations based on meteorological fields implemented in some but not all participating models. Although using climatological lightning does not capture the linkage between modeled meteorology and NO emission from lightning, this approach ensures that the bulk effects are included in all modeling systems and streamlines the interpretation of the modeling results by removing a potential difference in emissions input. The monthly climatological values were allocated diurnally based on Table 2 in Blakeslee et al. (2014) and distributed to participating groups as 2-dimensional files. Groups were then asked to allocate these emissions to their specific vertical grid based on Table 2 of Ott et al. (2010), using the tropical profiles for land and water (or an average of the two) for grid cells with latitudes below 23.5°N, the subtropical profile for grid cells with latitudes between 23.5°N and 40°N, and the ~~mid-latitude~~[mid-latitude](#) profile for grid cells with latitudes > 40°N.

### *2.2.4 Chemical boundary conditions*

Concentrations of the 33 longer-lived trace gas and aerosol species listed in Table 2 were provided by the European Centre for Medium-Range Weather Forecasts (ECMWF) for the two continents and for the modeled time periods so that participants could prepare initial and boundary conditions for their regional-scale modeling domains. The concentration fields were based on the Copernicus Atmospheric Monitoring Service (CAMS) EAC4 reanalysis product (Inness et al., 2019) and were provided every 3 hours on a 0.75° x 0.75° grid with 54 vertical levels from the surface to 2 hPa. The vertical grid structure varied in both resolution and vertical extent across models and individual participants were responsible for interpolating the CAMS fields to their horizontal and vertical grid structure. The

283 CAMS species were matched by participants to their own internal model speciation (and, in the case of the  
 284 particulate matter emissions, to the particle size distribution of their own models).

Trace Gas Species	Aerosol Species
O <sub>3</sub> (ozone)	Sea Salt Aerosol @80% relative humidity (wet radii 0.03 - 0.5 μm)*
CO (carbon monoxide)	Sea Salt Aerosol @80% relative humidity (wet radii 0.5 - 5 μm)*
NO (nitrogen monoxide; nitric oxide)	Sea Salt Aerosol @80% relative humidity (wet radii 5 - 20 μm)*
NO <sub>2</sub> (nitrogen dioxide)	Dust Aerosol @0% relative humidity (dry radii 0.03 - 0.55 μm)
PAN (peroxyacetyl nitrate)	Dust Aerosol @0% relative humidity (dry radii 0.55 - 0.9 μm)
HNO <sub>3</sub> (nitric acid)	Dust Aerosol @0% relative humidity (dry radii 0.9 - 20 μm)
CH <sub>2</sub> O (formaldehyde)	Hydrophobic Organic Matter Aerosol @0% relative humidity
SO <sub>2</sub> (sulfur dioxide)	Hydrophilic Organic Matter Aerosol @0% relative humidity
H <sub>2</sub> O <sub>2</sub> (hydrogen peroxide)	Hydrophobic Black Carbon Aerosol @0% relative humidity
CH <sub>3</sub> COCH <sub>3</sub> (acetone)	Hydrophilic Black Carbon Aerosol @0% relative humidity
C <sub>2</sub> H <sub>6</sub> (ethane)	Sulphate Aerosol @0% relative humidity
PAR (paraffins)	
CH <sub>3</sub> OH (methanol)	
C <sub>3</sub> H <sub>8</sub> (propane)	
C <sub>2</sub> H <sub>5</sub> OH (ethanol)	
C <sub>2</sub> H <sub>4</sub> (ethene)	
ALD2 (aldehydes)	
OLE (olefins)	
C <sub>5</sub> H <sub>8</sub> (isoprene)	
HCOOH (formic acid)	
CH <sub>3</sub> OOH (methyl peroxide)	
ONIT (organic nitrates)	
*based on guidance from ECMWF, participants were advised to transform the provided values back to dry matter by applying a reduction factor of 4.3 for the mass mixing ratios and a reduction factor of 1.99 for the radii of the sea salt bin limits	

285

286 **Table 2. Variables from the CAMS EAC4 reanalysis provided for the generation of initial and boundary conditions.**

287 **2.3 Standard Model Outputs**

288 We distinguish here between model output similar in scope and intent to previous ensemble model comparisons in  
 289 past phases of AQMEII (i.e., “standard model outputs”), and the detailed diagnostic outputs reported under  
 290 AQMEII4. The standard output requested from all participating models comes in two major forms: as hourly gridded

surface concentrations and meteorological variables on the common grids described earlier, and as model values extracted at monitoring network station locations. Tables A1 – A3 of Appendix A list the variables requested for gas and particle phase species, meteorology, and grid scale deposition fluxes. The meteorological variables have been extended considerably compared to past phases of AQMEII, to include more parameters that describe the planetary boundary layer. The gridded fields of integrated emissions were also requested as output, to be used to check that the right amounts of masses were inputted into the models.

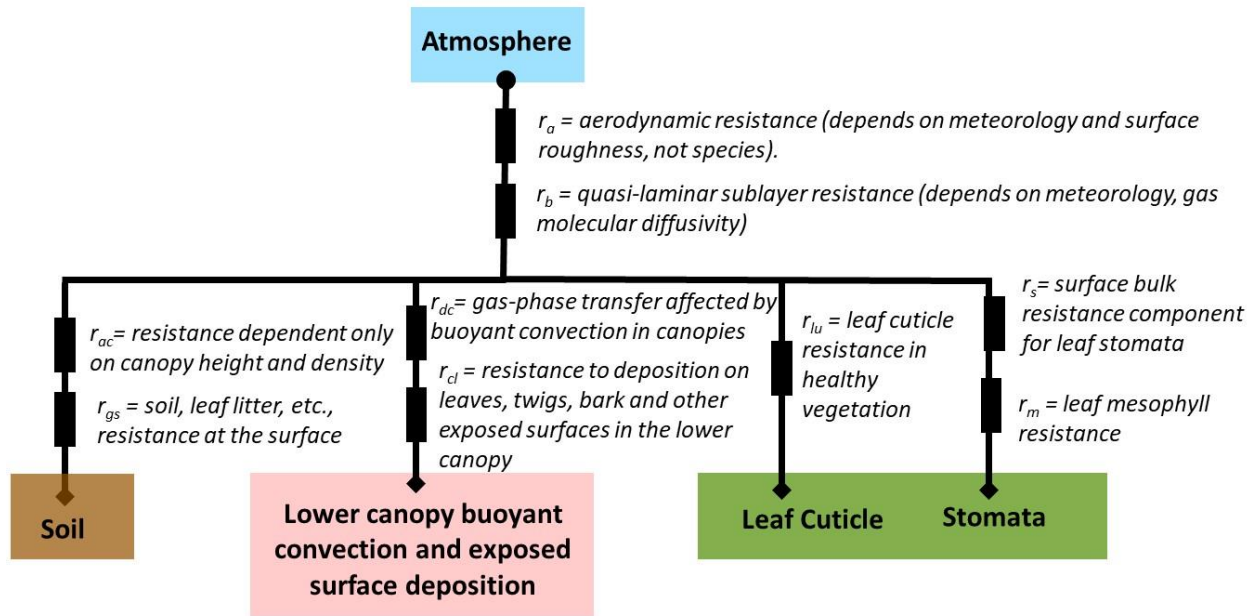
A list of all available surface monitoring locations in both continents for concentrations of gas- and particle-phase species, precipitation chemistry, and meteorology was distributed to the AQMEII4 participants who are expected to produce model results for all species presented in Appendix A for the grid location closest to the monitor or interpolated to the monitoring. In particular, we note that the analysis of wet deposition in AQMEII4 will rely on the precipitation and wet deposition flux variables listed in Table A3. ~~In addition, the locations where vertical profiles of ozone are routinely measured in NA and EU are also provided and modelling groups were expected to produce the ozone vertical profiles at those spots. Note that the units of nitrogen and sulphur deposition in Table A3 are “equivalents” per hectare per year, where the “equivalent” refers to the product of moles and the oxidized charge associated with the deposited species. All species depositing sulphur are assumed to have a charge of 2, all species depositing nitrogen to have a charge of 1. These units are used in the calculation of exceedances of critical loads, where the annual charge balance and flux of charge to ecosystems is used to estimate potential ecosystem impacts.~~ For more information on the routine monitoring networks used in AQMEII please refer to Galmarini et al. (2012, 2015, 2017).

### 3. Strategy For The Diagnostic Intercomparison Of Dry Deposition From Different Grid-Based Models

Analysis of dry deposition is the focus of AQMEII4. In particular, AQMEII4 intends to go beyond an operational evaluation of ambient concentrations and comparison of total deposition across models because this approach does not provide enough information to determine the causes of different deposition totals among regional models. The novelty of AQMEII4 is that we request additional and very detailed diagnostic-evaluation outputs related to dry depositional from all of the models. With these very detailed outputs, we can compare the important elements of the model machinery and understand model differences.

Many regional models use the Wesely (1989) dry deposition scheme, but several variants have been developed and implemented with different levels of sophistication. Dry deposition schemes are mostly resistance frameworks – by framework, we mean the structure of the scheme with respect to how processes relate to one another – and all of the regional models in AQMEII4 use resistance frameworks for dry deposition. Resistance frameworks are based on the representation of series and parallel resistors in electrical circuits. Differences in resistance frameworks across regional models imply that comparing a given process among the regional models is not straightforward. Thus, diagnostic variables that account for differences in resistance frameworks need to be reported. Below, we present

the strategy devised to reduce any dry deposition scheme to the essential set of comparable variables regardless of the differences in the frameworks of the schemes that generated them.



**Figure 42.** Schematic of the resistance framework for gas-phase dry deposition for the Wesely (1989) scheme. Circles and diamonds show where ozone concentration is needed as input for a given framework. At the diamonds, the ozone concentration is assumed to be zero. Rectangles indicate resistances.

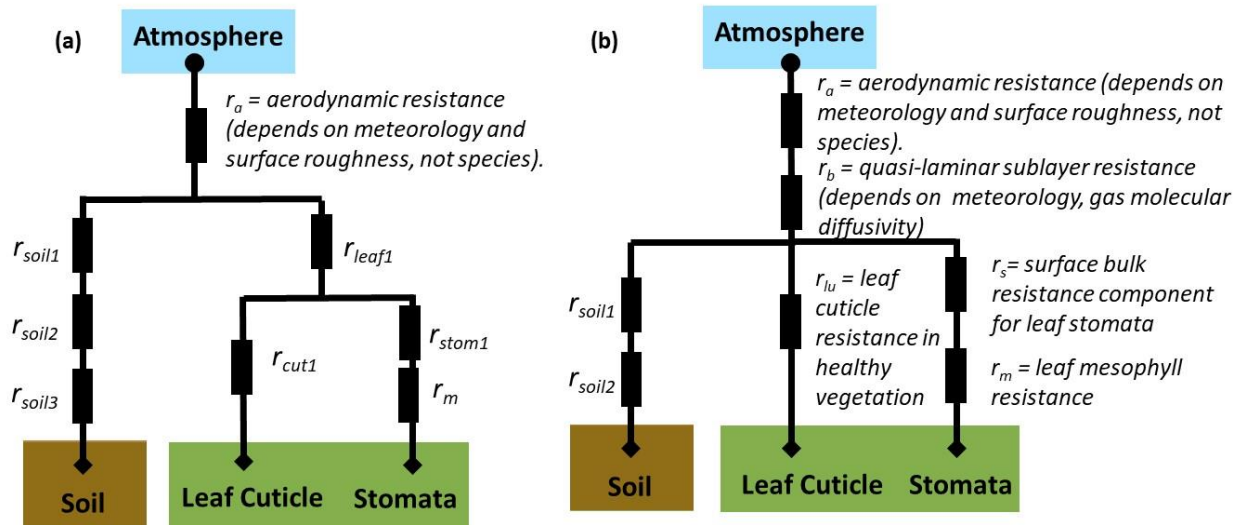
We start with a description of the Wesely (1989) resistance framework, one of the earliest literature examples of a resistance framework for dry deposition and arguably the most popular dry deposition scheme, and follow with both generic and specific examples of other resistance frameworks as a guide to the AQMEI14 output protocol. The components of the deposition velocity are process-based resistances (units  $\text{s cm}^{-1}$ ) that impede the transfer of mass to a variety of surfaces. Resistances are added in series for processes operating on the same depositional pathway, and in parallel when multiple surfaces for dry deposition exist. In the original Wesely (1989) scheme, four deposition pathways were used: soil, “lower canopy and exposed surfaces”, leaf cuticles, and plant stomata. Gases are first impeded by an aerodynamic resistance to deposition ( $r_a$ ), second impeded by a quasi-laminar sublayer resistance ( $r_b$ ), and third impeded by a bulk surface resistance term ( $r_c$ ) composed of a parallel summation of the resistances associated with each pathway. The three impedances to deposition are added into a total resistance, the inverse of which is the deposition velocity of the gas (units  $\text{cm s}^{-1}$ ):

$$v_d = (r_a + r_b + r_c)^{-1} \quad (1)$$

The bulk surface resistance ( $r_c$ ) in Wesely (1989) follows:

$$r_c = \left( (r_s + r_m)^{-1} + (r_{lu})^{-1} + (r_{dc} + r_{cl})^{-1} + (r_{ac} + r_{gs})^{-1} \right)^{-1} \quad (2)$$

The component resistances used in  $r_c$  are defined in Figure 23, which is a schematic of the Wesely (1989) resistance framework.



**Figure 23.** Two generic deposition resistance examples.

Work subsequent to Wesely (1989) also uses the resistance approach, but sometimes with considerable variation in the resistance framework, the number of surfaces to which dry deposition occurs, and/or the processes represented by individual resistances. Several motivating factors likely led to the development of a diversity of resistance frameworks. In the intervening years subsequent to Wesely's introduction of the resistance framework concept, new measurement capabilities (for higher time resolution information, for greater chemical speciation, higher precision measurements) allowed the original algorithms to be tested and modified. Developments in plant physiology understanding have also resulted in improved stomatal resistance parameterizations. Examples include the observation-based introduction of bidirectional fluxes for ammonia gas, and improved understanding of the role of CO<sub>2</sub> fluxes in the deposition of other gases. Also, some divergence in approaches is likely due to algorithm developments having been made in the context of specific regional models – each of which encompasses a diverse range of process representation algorithms, vertical resolutions, horizontal resolutions, etc.. An algorithm which provided good performance relative to surface concentration observations within the context of one regional model thus may not have resulted in as good performance in another model, further spurring model-specific development. These factors have resulted in the variety of approaches for gas-phase deposition in current regional models, and provide the part of the motivation for this first attempt at cross-comparing the results of the models' deposition algorithms in detail – to show and explain the causes for these differences.

Schematics of resistance frameworks as two generic examples are shown in Figure 23. In these examples, the Wesely (1989) deposition pathway for “lower canopy buoyancy and exposed surfaces” deposition is not included. The

example of Figure 23(a) also lacks a quasi-laminar sublayer resistance  $r_b$  applied across all surface types. Instead, surface-specific quasi-laminar sublayer resistances are used:  $r_{soil2}$  for soil and  $r_{leaf1}$  for leaves. The examples in Figure 23 demonstrate two ways in which the resistance framework has been adapted from Wesely (1989). In general, the diversity in resistance frameworks across models complicates model intercomparison of individual resistances.

When there are differences in resistance frameworks across models, the deposition pathways may be compared across models using a construct we will refer to here as *effective conductance* (Paulot et al., 2018; Clifton et al., 2020b). While generally a conductance is simply the inverse of a resistance, an *effective* conductance is the contribution of a given depositional pathway to the deposition velocity, expressed in the same units as the deposition velocity. The sum of the effective conductances for all deposition pathways is the deposition velocity. The effective conductances of the soil ( $E_{SOIL}$ ), lower canopy ( $E_{LCAN}$ ), cuticle ( $E_{CUT}$ ) and stomata ( $E_{STOM}$ ) branches specifically for Wesely (1989) are given by<sup>1</sup>:

$$E_{SOIL} = \left( \frac{(r_{ac} + r_{gs})^{-1}}{(r_s + r_m)^{-1} + (r_{lw})^{-1} + (r_{dc} + r_{cl})^{-1} + (r_{ac} + r_{gs})^{-1}} \right) v_d \quad (3)$$

$$E_{LCAN} = \left( \frac{(r_{dc} + r_{cl})^{-1}}{(r_s + r_m)^{-1} + (r_{lw})^{-1} + (r_{dc} + r_{cl})^{-1} + (r_{ac} + r_{gs})^{-1}} \right) v_d \quad (4)$$

$$E_{CUT} = \left( \frac{(r_{lw})^{-1}}{(r_s + r_m)^{-1} + (r_{lw})^{-1} + (r_{dc} + r_{cl})^{-1} + (r_{ac} + r_{gs})^{-1}} \right) v_d \quad (5)$$

$$E_{STOM} = \left( \frac{(r_s + r_m)^{-1}}{(r_s + r_m)^{-1} + (r_{lw})^{-1} + (r_{dc} + r_{cl})^{-1} + (r_{ac} + r_{gs})^{-1}} \right) v_d \quad (6)$$

The denominator in each of equations (3) to (6) is the inverse of the bulk surface resistance  $r_c$  and the numerators are the inverses of the resistances associated with each pathway in  $r_c$ . We emphasize that the calculation of the effective conductances depends on the resistance framework used; equations (3) to (6) are specific to Wesely (1989) and require modification for other resistance frameworks, and we provide examples of formulae for these terms for other frameworks, in Section 4.1, and Appendix B. Calculation of the effective conductances requires either archiving all component resistances in a given framework and subsequent post-processing, or their online calculation.

For any given model, effective conductances are an invaluable tool for determining the extent to which each pathway impacts dry deposition velocity, and which deposition pathways drive spatiotemporal variability in dry deposition velocity. Key for AQMEII4, the effective conductances allow a cross-comparison of the main deposition pathways across different resistance frameworks. The primary terms of comparison for dry deposition schemes in

<sup>1</sup> Note that the depositing gases in each pathway are influenced by  $r_a$  and  $r_b$  prior to encountering the different resistances that make up  $r_c$ , and this is why  $v_d$ , which includes the influence of  $r_a$  and  $r_b$ , is scaled by the fraction of the inverse of  $r_c$  occurring through a given pathway. Some models include surface-specific quasi-laminar sublayer resistances; when this is the case, these terms appear in the pathway-specific fractions of the total uptake terms.

AQMEII4 are thus the effective conductances. In addition, given that many models' resistance frameworks follow Wesely (1989), we also request those individual resistance terms held in common by most models, to allow exact comparisons of individual processes which may influence or control a given pathway. These resistances include:

- (1) A term for the aerodynamic resistance,  $r_a$ .
- (2) A term for the bulk resistance to deposition associated with surfaces  $r_c$ .
- (3) A term or series addition set of terms describing the stomatal resistance,  $r_s$ .
- (4) A term or series addition set of terms describing the mesophyll resistance  $r_m$ .
- (5) A term or series addition set of terms describing the cuticle resistance,  $r_c$ .
- (6) Terms to describe quasi-laminar sublayer resistance,  $r_b$ .
- (7) A term to describe within-canopy buoyant convection,  $r_{dc}$ .

With regards to (6), the implementation of quasi-laminar sublayer resistance ( $r_b$  in Wesely (1989)) tends to differ among models. Some models use the Wesely (1989) concept of a pathway-independent quasi-laminar sublayer resistance. Others use quasi-laminar sublayer resistances as pathway-dependent (e.g. Fig. 2a, where the  $r_{soil/2}$  and  $r_{leaf1}$  represent quasi-laminar sublayer resistances for soil and leaf pathways, respectively). The quasi-laminar sublayer resistance is thus reported in AQMEII4 for each pathway, with the models for which the term is independent of pathway reporting the same value for each pathway. Pathway-dependent quasi-laminar sublayer resistances are to be reported as "not present" only if the given pathway does not exist in the framework.

Note that models that include a single deposition pathway to soil that incorporates  $r_{dc}$  are requested to report that pathway as "lower canopy" not "soil". For example, the LOTOS-EUROS dry deposition scheme (Fig. B4) reports the effective conductance calculated for the soil pathway as  $E_{LCAN}$  due to the presence of the in-canopy resistance term in this pathway. In contrast, the CMAQ-M3DRY and CMAQ-STAGE dry deposition schemes (Figs. B2 and B3) have two separate pathways for deposition to soil, one for vegetation-covered soil and one for bare soil. Due to the inclusion of the in-canopy convective resistance in the computations for vegetation-covered soil, the effective conductance for that pathway is reported as  $E_{LCAN}$ , while the effective conductance for the bare soil pathway should be reported as  $E_{SOIL}$ .

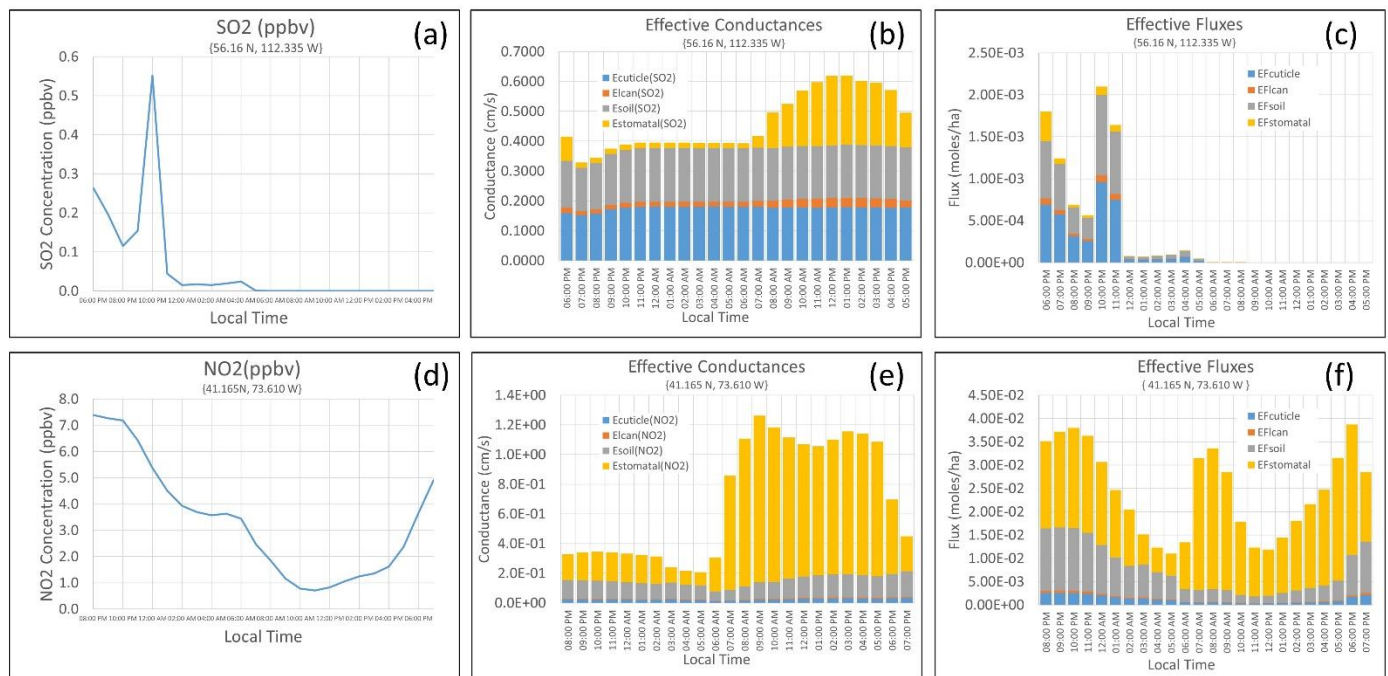
Specific resistance terms for the soil deposition pathway and the lower canopy pathway have not been requested because the resistance frameworks for these pathways vary considerably across models and therefore specific resistance terms are not easily comparable. For example, Wesely (1989) used a single term for the soil resistance (Fig. 1) while other models may use two or three resistances related to dry deposition to soil only and added in series (Fig. 2).

In addition to the effective conductances, another set of diagnostic fields is calculated during post processing: the time-aggregated fractional mass (or charge equivalent) *flux* transferred to the surface via each of the four deposition pathways (hereinafter, *effective flux*). The effective flux is calculated on an hourly basis prior to conversion to AQMEII4 time-aggregated gridded and station data using ENFORM, and is the product of the hourly effective conductances, dry deposition mass fluxes, and inverses of the deposition velocity. Effective *conductances* provide



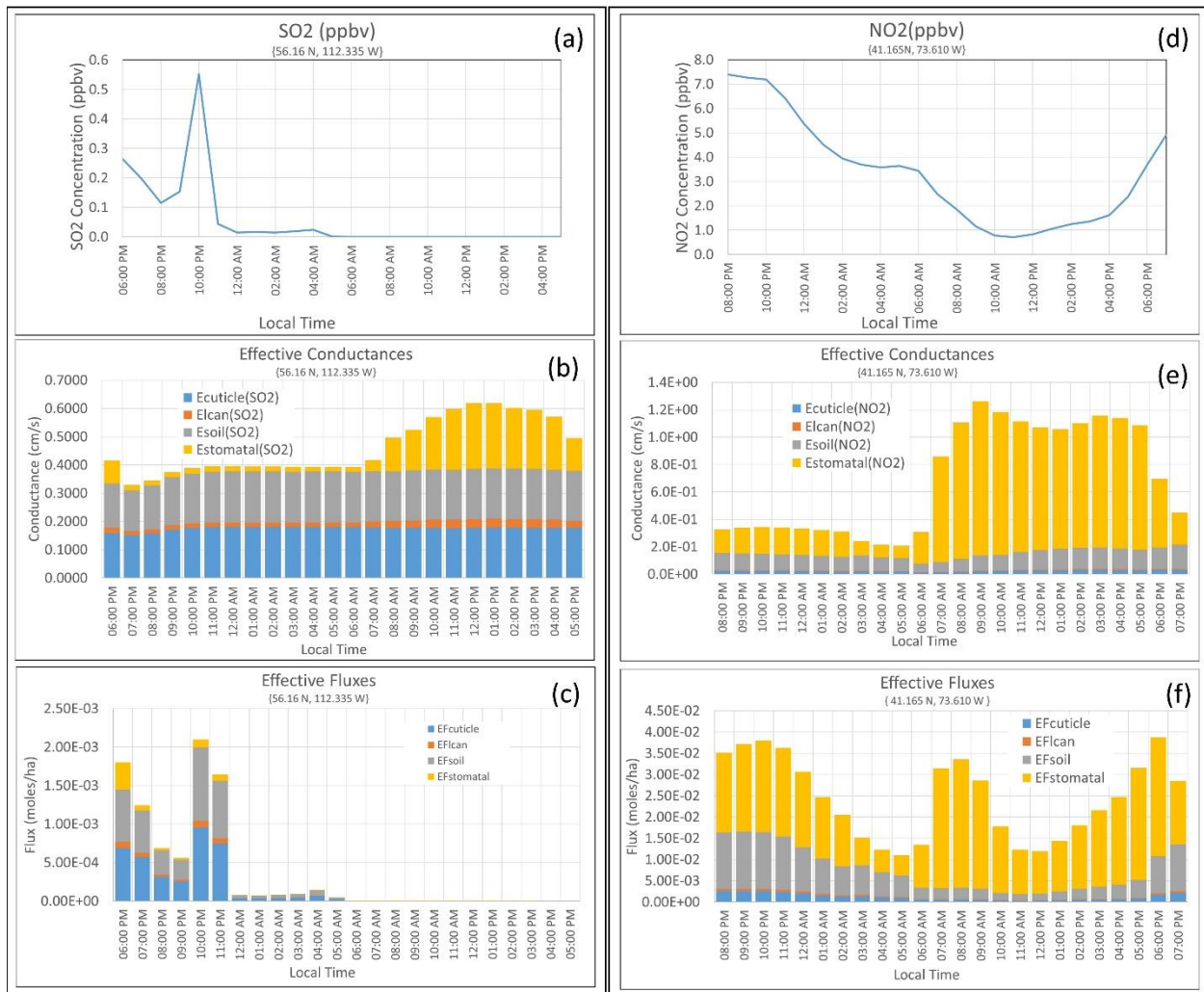
an estimate of the importance of each pathway towards the deposition velocity. However, since the flux depends on the deposition velocity and the near-surface air concentration, which both vary on hourly timescales, estimating the aggregate importance of each deposition pathway towards the flux requires calculating the effective flux before time-aggregation.

Figure 34 provides an example of the different yet complementary information resulting from effective conductances and effective fluxes, showing hourly  $\text{SO}_2$  concentrations, effective conductances, and effective fluxes for a boreal forest impacted by a large industrial  $\text{SO}_2$  stack sources, and hourly  $\text{NO}_2$  concentrations, effective conductances, and effective fluxes for a location to the north-east of New York City. In both cases, high concentrations of the pollutant gas (Fig. 3a4a,d) occur at night, while the deposition velocity, due to the stomatal pathway (Fig. 3b4b,e), maximizes during the day. As a result of the low daytime concentrations, the effective fluxes for  $\text{SO}_2$  (Fig. 3c4c) show a relatively minor contribution of the stomatal pathway to the deposited mass despite the major contribution of the stomatal pathway to the daytime deposition velocity. As the result of high night and morning concentrations, the effective fluxes for  $\text{NO}_2$  (Fig. 3f4f) show separate day and night peaks of about equal magnitude, with the stomatal pathway dominating daytime values, and roughly equivalent contributions from stomatal and soil pathways at night.



Also with reference to Figure 4, it should be noted that the effective conductances and effective fluxes show the relative contributions of the pathway towards the total deposition or the total flux at any given time, and that the net surface resistance appearing in the denominator of these terms may drive the time variation. For example, the soil effective conductance of Fig. 4 e minimizes at 6 AM – however, the factors contributing to the soil pathway itself for the model used in this example (see Appendix Table B1) are relatively time-invariant (seasonally varying).

The temporal variation is driven by hourly variation in the stomatal term, and hence the relative importance of the soil conductance varies with time in Fig. 4 e.



**Figure 4.** Two examples of diurnal variations in concentrations (a, d), effective conductances (b, e), and effective fluxes (c, f) for SO<sub>2</sub> (top row) and NO<sub>2</sub> (bottom row).

We also consider that dry deposition strongly depends on LULC type, and different models use unique LULC databases. We thus request LULC-specific variables along with the fractional areal coverage for each LULC type, which allows quantifying not only the impacts of different LULC specific processes and parameters on dry deposition, but also the impacts of different LULC databases. ‘Generic’ AQMEI4 LULC types were devised due to the use of a wide variety of LULC databases across air quality models, both in terms of the source of the data and the number of LULC types employed. The AQMEI4 LULC types listed in Table 2 are broad LULC types into which the model-specific LULC types could be aggregated, to allow intercomparison between models. Study participants aggregated their LULC-model-specific diagnostic outputs to the set of common AQMEI4 LULC types using the fractional representation of each native LULC type contributing to the AQMEI4 type within each grid cell. Generic AQMEI4 LULC types were constructed after analysis of the LULC schemes in the participating models. A suggested mapping

between model and AQMEII4 LULC types was provided to participants, along with the instruction that the mapping actually employed should be reported. The grid cell fractions of both the native model LULC types, as well as the resulting fractions of AQMEII4 LULC types, were reported by participants. Note that there is a large variety in number and therefore types of LULC across models, and thus each of the generic types represents a rather broad range of LULCs.

We also note that the mapping of LULC types from the individual model land use classifications to the AQMEII4 land use classifications is an unavoidable source of uncertainty in the land-use specific diagnostics. The 15 AQMEII4 land use types themselves were based on a survey of land-use classifications used in 17 regional models. For example, while “Herbaceous” is available as an AQMEII4 land use category, its intent is for use for moors and heathlands, while AQMEII4 land use category “Wetlands” encompasses wetlands which are diversely described in individual model land use categories as herbaceous, wooded, and permanent wetlands, as well as swamps, and peatbogs. However, some categories were held in common by most models (e.g. Evergreen needleleaf forest, Deciduous broadleaf forest, snow and ice, mixed forest (usually taken as a combination of needleleaf and deciduous forests)), while others could easily be classified according to the broader landscape type of which they were a member (e.g. different types of Tundra were recommended to be classified as the AQMEII4 Tundra classification). Both the AQMEII4 and “native model” land use types were reported by participants – with the aim using both sets of information to determine the extent to which land use database variation may be a factor in estimating deposition velocities, and to provide information on specific land use types used by specific models when these differences appear to be large.

For AQMEII4, the terms listed in Table 4 were reported for SO<sub>2</sub>, NO<sub>2</sub>, NO, HNO<sub>3</sub>, NH<sub>3</sub>, PAN, HNO<sub>4</sub>, N<sub>2</sub>O<sub>5</sub>, organic nitrates, O<sub>3</sub>, H<sub>2</sub>O<sub>2</sub> and HCHO, both as a function of the 16 generic AQMEII4 LULC types (Table 3) as well as for the net grid-scale calculation for each grid cell and/or receptor. Models employing bi directional flux algorithms for the dry deposition of atmospheric NH<sub>3</sub> reported a different set of terms, given in Section 4.2.

Generic LULC Categories for Remapping
Water
Developed / Urban
Barren
Evergreen needleleaf forest
Deciduous needleleaf forest
Evergreen broadleaf forest
Deciduous broadleaf forest
Mixed forest

Shrubland
Herbaceous
Planted/Cultivated
Grassland
Savanna
Wetlands
Tundra
Snow and Ice

491

492 **Table 3 Generic land use / land cover types for AQMEII4**

493 Table 4 summarizes the diagnostic variables related to gaseous dry deposition reported by all participants, the  
494 variable names as described in the AQMEII4 TSDs, and a description of each variable. Equations (2) through (6) and  
495 the related text describe the terms specifically for the resistance framework of Wesely (1989); additional examples  
496 for participating models' resistance frameworks are provided in the Appendix tables and figures.

497 The presence of surface wetness or snow is incorporated into the effective conductance, effective flux, and  
498 component resistances. In other words, separate component resistances or effective conductances and fluxes for  
499 snow-covered or wet surfaces were not reported. In order to compare the impacts of the different models'  
500 predictions regarding snow cover or wetness, additional diagnostic variables were requested to describe surface  
501 state (e.g. fractional snow cover and either the values of binary wet/dry conditions or fractions in surface wetness).

Name	AQMEII4 Name	Formula
$V_d$	VD	Deposition velocity
$r_a$	RES-AERO	Aerodynamic resistance
$r_c$	RES-SURF	Bulk surface resistance
$r_s$	RES-STOM	Stomatal resistance
$r_m$	RES-MESO	Mesophyll resistance
$r_{cut}$	RES-CUT	Cuticle resistance
$E_{STOM}$	ECOND-ST	Effective conductance associated with deposition to plant stomata
$E_{CUT}$	ECOND-CUT	Effective conductance associated with deposition to leaf cuticles
$E_{SOIL}$	ECOND-SOIL	Effective conductance associated with deposition to soil and un-vegetated surfaces
$E_{LCAN}$	ECOND-LCAN	Effective conductance associated with deposition to the lower canopy
$r_{b, stom}$	RES-QLST	Quasi-laminar sublayer resistance associated with stomatal pathway*
$r_{b, cut}$	RES-QLCT	Quasi-laminar sublayer resistance associated with cuticular pathway*
$r_{b, soil}$	RES-QLSL	Quasi-laminar sublayer resistance associated with soil pathway*

$r_{b, lcan}$	RES-QLLC	Quasi-laminar sublayer resistance associated with lower canopy pathway*
$r_{dc}$	RES-CONV	Resistance associated with within-canopy buoyant convection
<b>Post Processing Fields: Effective Conductances x Net flux / Deposition Velocity</b>		
DFLX-LCAN		Fraction of flux via lower canopy pathway
DFLX-ST		Fraction of flux via stomatal pathway
DFLX-CUT		Fraction of flux via cuticle pathway
DFLX-SOIL		Fraction of flux via soil pathway

\* =  $r_b$  if this is pathway-independent for the resistance framework

**Table 4. AQMEII4 reported dry deposition diagnostic variables for gas phase species.**

Gridded dry deposition diagnostic variables were archived as hourly values for the native LULC types, and then converted to the generic AQMEII4 LULC types during post-processing. The ENFORM Fortran code provided to all participants was used to convert gridded fields from the hourly values to temporal aggregations of the hourly values. Hourly diagnostics were converted to “monthly median diurnal” values using ENFORM by taking the medians of all values for a given UTC hour in a given month, thus reducing 8,760 hourly values for each year to 288 values (24 hours x 12 months). The use of monthly median diurnal values is motivated by the need to reduce the amount of data to be transferred and analyzed on a single server (despite this aggregation, each year of gridded model output requires up to 200 Gb of storage), while preserving the key aspects of diurnal and seasonal variations.

The use of a median rather than an arithmetic mean for AQMEII4 diagnostic time aggregation resulted from consideration of the manner in which different dry deposition algorithms deal with pathways that effectively shut down under certain conditions. For example, some algorithms employ an upper-limit resistance to represent conditions under which the pathway transmits little mass to the surface (e.g. nighttime stomatal resistances may be set to very large values). Others simply use code branching to prevent a pathway from contributing to  $r_c$  (e.g. the entire stomatal pathway is removed from  $r_c$  at night). Others employ different resistance frameworks for different conditions (e.g. to account for snow-covered surfaces). However, the AQMEII4 protocol requires participants to submit “missing values” as a specific code (-9) in order to allow filtering of valid from invalid data during time aggregation. An algorithm removing a pathway may thus have a different number of valid values from an algorithm employing a large resistance. Similarly, a seasonal transition where the resistance network changes depending on whether a surface is snow-covered becomes difficult to interpret in an time-average, whereas time-median valid values allow for a more meaningful comparison.

For example, if only 20% of the resistances at 14:00 LT in a given month and grid cell are snow covered, then the monthly median for 14:00 LT would represent values typical of snow-free conditions, both for models representing resistances under snow-covered conditions as missing, and models representing them as large values. Thus, the monthly median comparison represents the most common conditions encountered during the month for both models. On the other hand, while the monthly average resistance for 14:00 LT represents snow-free conditions for

the model that treats snow-covered hours as missing, the monthly average for the model that represents snow-covered conditions as a large value is not meaningful and complicates inter-model comparison.

Monthly median diurnal values capture both seasonal and diurnal variations in the archived fields and allow comparisons between algorithms shutting off a pathway by removing the pathway and algorithms shutting off a pathway with high resistance values. Note that the same data completeness criterion used for comparing simulated and observed ambient concentrations was employed here for the construction of the median values. Specifically, more than 75% of the values within a month were required for a median to be constructed.

#### 4. More Example Calculations of AQMEII4 Dry Deposition Variables.

##### 4.1 Variations to the Wesely (1989) Resistance Framework

For the sake of clarity, we provide examples of how specific dry deposition schemes can be reduced to the common set of variables described above. The generic schemes presented in Fig. 2a,b along with the Nemitz et al. (2001) bidirectional scheme for  $\text{NH}_3$  have been selected as examples here, while Appendix B provides additional examples for specific schemes implemented in participating models. The AQMEII4 protocol and these specific examples provide a standard form of representing key aspects of dry deposition schemes, which may be adopted by similar activities or initiatives in the future. Note that some of these example algorithms do not have a separate resistance for lower canopy buoyant convection or a deposition pathway to the lower canopy and exposed surfaces, hence the associated effective conductance (ECOND-LCAN) and resistance (RES-CONV and RES-QLLC) terms are not reported.

Name		AQMEII4 Name = <u>resistance diagram variable name or formula</u>
$r_a$	<del>RES-</del> AERO	RES-AERO = $r_a$
$r_c$	<del>RES-SURF</del>	RES-SURF = $\left( (r_{leaf1} + ((r_{stom1} + r_m)^{-1} + (r_{cut1})^{-1})^{-1})^{-1} \right. \\ \left. + (r_{soil1} + r_{soil2} + r_{soil3})^{-1} \right)^{-1}$
$r_s$	<del>RES-</del> STOM	RES-STOM = $r_{stom1}$

$r_m$	<del>RES-</del> <del>MESO</del>	$RES-MESO = r_m$
$r_{e,cut}$	<del>RES-CUT</del>	$RES-CUT = r_{cut1}$
$E_{STOM}$	<del>ECOND-</del> <del>ST</del>	$ECOND-ST = \left( \frac{(r_{stom1} + r_m)^{-1}}{(r_{stom1} + r_m)^{-1} + (r_{cut1})^{-1}} \right) \left( \frac{(r_{leaf1} + ((r_{stom1} + r_m)^{-1} + (r_{cut1})^{-1})^{-1})^{-1}}{(r_{leaf1} + ((r_{stom1} + r_m)^{-1} + (r_{cut1})^{-1})^{-1})^{-1} + (r_{soil1} + r_{soil2} + r_{soil3})^{-1}} \right)$
$E_{CUT}$	<del>ECOND-</del> <del>CUT</del>	$ECOND-CUT = \left( \frac{(r_{cut1})^{-1}}{(r_{stom1} + r_m)^{-1} + (r_{cut1})^{-1}} \right) \left( \frac{(r_{leaf1} + ((r_{stom1} + r_m)^{-1} + (r_{cut1})^{-1})^{-1})^{-1}}{(r_{leaf1} + ((r_{stom1} + r_m)^{-1} + (r_{cut1})^{-1})^{-1})^{-1} + (r_{soil1} + r_{soil2} + r_{soil3})^{-1}} \right)$
$E_{SOIL}$	<del>ECOND-</del> <del>SOIL</del>	$ECOND-SOIL = \left( \frac{(r_{soil1} + r_{soil2} + r_{soil3})^{-1}}{(r_{leaf1} + ((r_{stom1} + r_m)^{-1} + (r_{cut1})^{-1})^{-1})^{-1} + (r_{soil1} + r_{soil2} + r_{soil3})^{-1}} \right) V_d$
$E_{LCAN}$	<del>ECOND-</del> <del>LCAN</del>	$ECOND-LCAN = -9$
$r_{b,stom}$	<del>RES-QLST</del>	$RES-QLST = r_{leaf1}$
$r_{b,cut}$	<del>RES-QLCT</del>	$RES-QLCT = r_{leaf1}$
$r_{b,soil}$	<del>RES-QLSL</del>	$RES-QLCL = r_{soil2}$
$r_{b,lcان}$	<del>RES-QLLC</del>	$RES-QLLC = -9$
$r_{dc}$	<del>RES-</del> <del>CONV</del>	$RES-CONV = -9$

Table 5. AQMEI4 dry deposition diagnostic variables for gas phase species corresponding to the resistance framework of Fig. 2a.

Name		AQMEII4 Name = <u>resistance diagram</u> <u>variable name or formula</u>	Formula
$r_a$	<del>RES-AERO</del>	$RES-AERO = r_a$	
$r_c$	<del>RES-SURF</del>	$RES-SURF = ((r_s + r_m)^{-1} + (r_{lu})^{-1} + (r_{soil1} + r_{soil2})^{-1})^{-1}$	
$r_s$	<del>RES-STOM</del>	$RES-STOM = r_s$	
$r_m$	<del>RES-MESO</del>	$RES-MESO = r_m$	
$r_{cut}$	<del>RES-CUT</del>	$RES-CUT = r_{lu}$	
$E_{STOM}$	<del>ECOND-ST</del>	$ECOND-ST = \left( \frac{(r_s + r_m)^{-1}}{(r_s + r_m)^{-1} + (r_{lu})^{-1} + (r_{soil1} + r_{soil2})^{-1}} \right) V_d$	
$E_{CUT}$	<del>ECOND-CUT</del>	$ECOND-CUT = \left( \frac{(r_{lu})^{-1}}{(r_s + r_m)^{-1} + (r_{lu})^{-1} + (r_{soil1} + r_{soil2})^{-1}} \right) V_d$	
$E_{SOIL}$	<del>ECOND-SOIL</del>	$ECOND-SOIL = \left( \frac{(r_{soil1} + r_{soil2})^{-1}}{(r_s + r_m)^{-1} + (r_{lu})^{-1} + (r_{soil1} + r_{soil2})^{-1}} \right) V_d$	
$E_{LCAN}$	<del>ECOND-LCAN</del>	$ECOND-LCAN = -9$	
$r_{b, stom}$	<del>RES-QLST</del>	$RES-QLST = r_b$	
$r_{b, cut}$	<del>RES-QLCT</del>	$RES-QLCT = r_b$	
$r_{b, soil}$	<del>RES-QLSL</del>	$RES-QLSL = r_b$	
$r_{b, lcan}$	<del>RES-QLLC</del>	$RES-QLLC = -9$	
$r_{dc}$	<del>RES-CONV</del>	$RES-CONV = -9$	

551

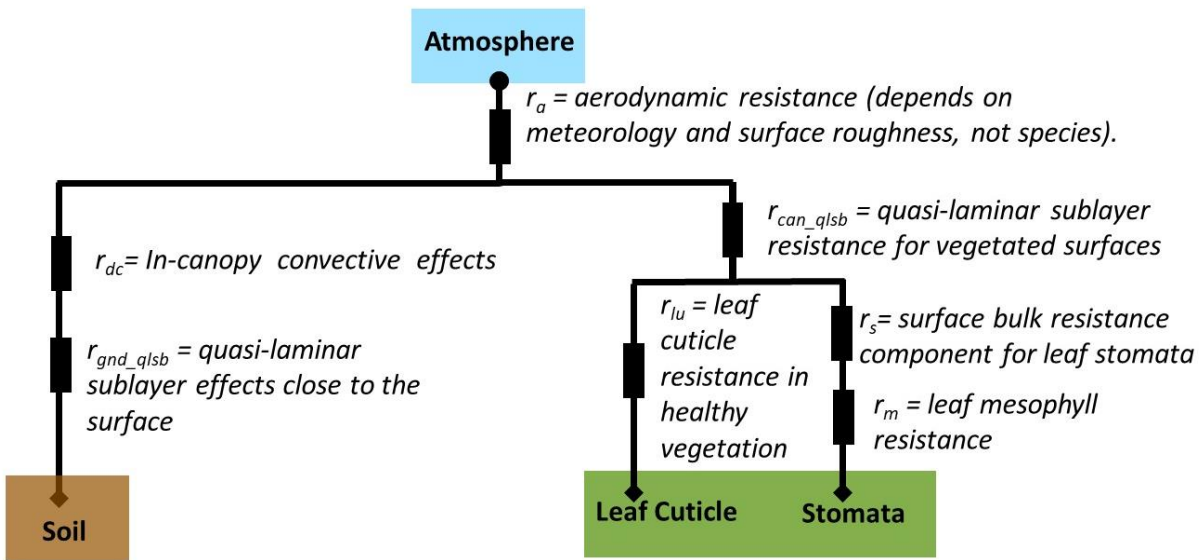
552 **Table 6. AQMEII4 dry deposition diagnostic variables for gas phase species corresponding to the resistance**  
553 **framework of Fig. 2b.**

#### 554 4.2 Bidirectional fluxes of ammonia – a special case

555 Some models make use of the concepts of bidirectional fluxes when describing ammonia gas transfer from and to  
556 surfaces. In the bidirectional flux paradigm, the difference between the ambient gas concentrations and near-  
557 surface (compensation point) concentration is used to determine the direction of the flux: if the ambient air  
558 concentration is greater than the compensation point concentration, the flux is downward (i.e. deposition occurs)  
559 while in the reverse case the flux is upward (i.e. the emission of ammonia previously stored in the surfaces takes  
560 place). The algorithms used in the subset of models employing ammonia bidirectional fluxes were examined, in  
561 order to determine common terms that could be used for points of comparison across the algorithms. As an  
562 example, we present below (Figure 45 and Table 7) the bidirectional flux model of Nemitz et al. (2001), used within  
563 CMAQ to represent bidirectional ammonia gas fluxes. In addition, we also include a comparison of two ammonia  
564 bidirectional flux calculations in Appendix C.



The bidirectional flux algorithms were analyzed as a separate case, with the result that a revised and smaller number of variables were reported for the specific case of ammonia bidirectional fluxes than for other gases, focusing on the compensation point concentrations as diagnostics for the cross-comparison of these algorithms. The reported variables in this case are ammonia's aerodynamic resistance, its net surface resistance, and three compensation point concentrations, for stomata, ground and net compensation points, respectively. These specific parameters for ammonia bidirectional fluxes appear in Table 7, and a detailed comparison of two representative bidirectional ammonia algorithms is presented in Appendix C.



**Figure 45. Nemitz bidirectional flux model for  $\text{NH}_3$ .**

In this example, note that the branch containing the  $r_{dc}$  “soil” term has been designated as the lower canopy pathway, due to the presence of the canopy buoyant convection term  $r_{dc}$  (i.e., closest analogy to Wesely’s setup is to have the pathway involving deposition to “soil” pathway is designated as a “lower canopy” pathway).

**Table 7. Variables for bidirectional fluxes of ammonia.**

Name as described here	AQMEI14 Variable Name	Details
$r_{sum}$	RES-SUM-NH3	Net bidirectional flux ammonia resistance
$r_a$	RES-AERO-NH3	Net Aerodynamic resistance used for ammonia bidirectional fluxes
$c_a$	CONC-NH3-AIR	Air concentration of ammonia used for bidirectional flux calculations
$c_c$	COMP-NH3-NET	Net Ammonia Overall Compensation point concentration
$c_g$	COMP-NH3-GND	Net Ammonia Compensation point concentration with respect to ground
$c_s$	COMP-NH3-STO	Net Ammonia Compensation point concentration with respect to stomata

579

580

581

## 582 **Conclusions**

583 The fourth phase of the Air Quality Model International Initiative has been introduced. The focus of this phase is on  
584 wet and especially dry deposition. The necessity of tackling this subject in a diagnostic way prompted us to divide  
585 the initiative in two activities, one dedicated to the evaluation of the process as described by 4-dimensional air  
586 quality regional-scale models, the second dealing specifically with evaluating ozone dry deposition calculated by  
587 “single-point model” versions of the dry deposition modules used in the regional-scale models with a collection of  
588 ozone flux measurements. Here, the organization of Activity 1 has been formally introduced, whereas Activity 2 ~~is~~  
589 ~~presented~~will be described in a separate ~~companion technical note~~AQMEII4 special issue publications. In addition  
590 to presenting the standard and common input data and the way in which standard output is expected, we also  
591 presented the way in which the very diverse representations of dry deposition in participating models have been  
592 reduced to a common representation that will facilitate model inter-comparison. The essence of the adopted  
593 methodology is the transformation of individual resistances into effective conductances and effective fluxes, which  
594 represent the importance of deposition pathways held in common across the models to the total deposition velocity  
595 and flux. Resistances held in common across different modelling frameworks were also reported, to allow  
596 comparisons at the sub-pathway level, where possible. Thus, regardless of the level of sophistication of the  
597 resistance framework, one can meaningfully inter-compare the results produced by different models.

598

## 599 **Data availability.**

600 No data was generated for this technical note

601

## 602 **Author contributions.**

603 SG, PM, OEC, and CH led the writing of this technical note. SG, PM, OEC, CH, RB, RB, JB, JD, JF, CDH, IK, DS, and SS  
604 conceptualized and implemented the AQMEII4 modeling and analysis framework. JOB, TB, AH, RK, AL, JLPC, JP<YHR,  
605 RSJ, MG, and RW provided documentation of dry deposition schemes used in their models.

606

## 607 **Competing interests.**

608 The authors declare no conflict of interest

609

## 610 **Acknowledgments**

We gratefully acknowledge the contribution of various groups to the fourth AQMEII activity. The following groups contributed the data sets used in the grid modeling aspects of this study: U.S. EPA and Environment and Climate Change Canada (North American emissions processing); TNO (European emissions processing); ECMWF and Copernicus Atmosphere Monitoring Service (Chemical boundary conditions); ECCAD (archiving and distribution of the GEIA lightning emissions data based on Price et al. (1997)); Finnish Meteorological Institute (European wildfire emissions). Ambient North American concentration measurements were extracted from Environment Canada's National Atmospheric Chemistry Database (NAtChem) PM database and provided by several U.S. and Canadian agencies (AQS, CAPMoN, CASTNet, IMPROVE, NAPS, SEARCH and CSN networks); North American precipitation-chemistry measurements were extracted from NAtChem's precipitation-chemistry data base and were provided by several U.S. and Canadian agencies (CAPMoN, NADP, NBPMN, NSPSN, and REPQ networks); the WMO World Ozone and Ultraviolet Data Centre (WOUDC) and its data-contributing agencies provided North American and European ozonesonde profiles; for European air quality data the following data centers were used: EMEP European Environment Agency/European Topic Center on Air and Climate Change/AirBase provided European air- and precipitation-chemistry data. Data from meteorological station monitoring networks were obtained from NOAA and Environment and Climate Change Canada (for the US and Canadian meteorological network data) and the National Center for Atmospheric Research (NCAR) Data Support Section. The Joint Research Center Ispra/Institute for Environment and Sustainability provided its ENSEMBLE system for model output harmonization and analyses and evaluation.

#### Disclaimer

The views expressed in this paper are those of the authors and do not necessarily represent the view or policies of the U.S. Environmental Protection Agency. This material is based upon work supported, in part, by the National Center for Atmospheric Research, which is a major facility sponsored by the National Science Foundation under Cooperative Agreement No. 1852977.

#### References

- Anav, A., Proietti, C., Menut, L., Carnicelli, S., De Marco, A., & Paoletti, E. (2018). Sensitivity of stomatal conductance to soil moisture: implications for tropospheric ozone. *Atmospheric Chemistry and Physics*, 18, 5747-5763. <https://doi.org/10.5194/acp-18-5747-2018>
- Andersson, C., and M. Engardt (2010), European ozone in a future climate: Importance of changes in dry deposition and isoprene emissions, *J. Geophys. Res.*, 115, D02303, doi:10.1029/2008JD011690.
- Appel, K. W., Bash, J. O., Fahey, K. M., Foley, K. M., Gilliam, R. C., Hogrefe, C., Hutzell, W. T., Kang, D., Mathur, R., Murphy, B. N., Napelenok, S. L., Nolte, C. G., Pleim, J. E., Pouliot, G. A., Pye, H. O. T., Ran, L., Roselle, S. J., Sarwar, G., Schwede, D. B., Sidi, F. I., Spero, T. L., and Wong, D. C.: The Community Multiscale Air Quality Model Version 5.3 and 5.3.1: System Updates and Evaluation, *Geosci. Model Dev.* (2021) <https://doi.org/10.5194/gmd-14-2867-2021>
- Bash, J.O., Walker, J.T., Katul, G.G., Jones, M.R., Nemitz, E., Robarge, W.P., (2010). Estimation of in-canopy ammonia sources and sinks in a fertilized Zea mays field, *Environ. Sci. Technol.*, 44, 1683-1689, 2010

647 Bash, J.O., Cooter, E.J., Dennis, R.W., Walker, J.T., Pleim, J.W., (2013) Evaluation of a regional air-quality model with  
648 bi-directional NH<sub>3</sub> exchange coupled to an agro-ecosystem model, *Biogeosci.*, 10, 1635-1645

649 Baublitz, C. B., A. M. Fiore, O. E. Clifton, J. Mao, J. Li, G. Correa, D. Westervelt, L. W. Horowitz, F. Paulot, R. Commane,  
650 & A. P. Williams (2020). Sensitivity of tropospheric ozone over the Southeast USA to dry deposition. *Geophysical*  
651 *Research Letters*. <https://doi.org/10.1029/2020GL087158>

652 Beddows, A. V., Kitwiroon, N., Williams, M. L., & Beevers, S. D. (2017). Emulation and sensitivity analysis of the  
653 community multiscale air quality model for a UK Ozone pollution episode. *Environmental Science & Technology*,  
654 51(11), 6229-6236.

655 Blakeslee, R.J., Mach, D.M., Bateman, M.G., Bailey, J.C. Seasonal variations in the lightning diurnal cycle and  
656 implications for the global electric circuit, *Atmospheric Research*, 228-243,  
657 <https://doi.org/10.1016/j.atmosres.2012.09.023>, 2014.

658 Borrell, P., and P. M. Borrell (eds), 2000. Transport and Chemical Transformation of Pollutants in the Troposphere,  
659 An Overview of the Work of EUROTRAC, <https://doi.org/10.1007/978-3-642-59718-3>, Springer, Berlin, 474 pp.

660 Briggs, Gary A., 1971: Some Recent Analyses of Plume Rise Observation, pp. 1029-1032 in Proceedings of the Second  
661 International Clean Air Congress, edited by H. M. Englun and W. T. Beery. Academic Press, New York.

662 Briggs, Gary A., 1972: Discussion on Chimney Plumes in Neutral and Stable Surroundings, *Atmos. Environ.* 6, 507-  
663 510.

664 Campbell, P. C., Bash, J. O., & Spero, T. L. (2019). Updates to the Noah Land Surface Model in WRF-CMAQ to improve  
665 simulated meteorology, air quality, and deposition. *Journal of Advances in Modeling Earth Systems*, 11, 231-  
666 256. <https://doi.org/10.1029/2018MS001422>

667 Chang, J. S., Brost, R. A., Isaksen, I. S. A., Madronich, S., Middleton, P., Stockwell, W. R., and Walcek, C. J., 1987. A  
668 three-dimensional Eulerian acid deposition model: Physical concepts and formulation *J. Geo. Res.* 92, 14,681-  
669 14,700

670 [Chen, J., R. Pavlovic, D. Anselmo, P.-A. Beaulieu, S. Gravel, M.D. Moran, and D. Davignon, 2013. Development of on-](#)  
671 [line wildfire emissions for the operational Canadian air quality forecast system. 5th International Workshop on](#)  
672 [Air Quality Forecasting Research, 8-9 Oct., Santiago, Chile.](#)

673

674 [Chen, Y., R. Wolke, L. Ran, W. Birmili, G. Spindler, W. Schröder, H. Su, Y. Cheng, I. Tegen and A. Wiedensohler \(2018\).](#)  
675 [A parameterization of heterogeneous hydrolysis of N<sub>2</sub>O<sub>5</sub> for 3-D atmospheric modelling: Improvement of](#)  
676 [particulate nitrate prediction. \*Atmos. Chem. Phys.\* 18\(2\): 673-689.](#)

677 Clifton, O. E., Fiore, A. M., Munger, J. W., Malyshev, S., Horowitz, L. W., Shevliakova, E., et al.: Interannual variability  
678 in ozone removal by a temperate deciduous forest, *Geophys. Res. Lett.*, 44, 542-  
679 552, <https://doi.org/10.1002/2016GL070923>, 2017.

680 Clifton, O. E., Fiore, A. M., Massman, W. J., Baublitz, C. B., Coyle, M., Emberson, L., et al.: Dry deposition of ozone  
681 over land: processes, measurement, and modeling, *Rev. Geophys.*, 58, <https://doi.org/10.1029/2019RG000670>,  
682 2020.

683 Clifton, O. E., Paulot, F., Fiore, A. M., Horowitz, L. W., Correa, G., Fares, S., Goded, I., Goldstein, A. H., Gruening, C.,  
684 Hogg, A. J., Loubet, B., Mammarella, I., Munger, J. W., Neil, L., Stella, P., Uddling, J., Vesala, T., & Weng, E.  
685 (2020b). Influence of dynamic ozone dry deposition on ozone pollution. *Journal of Geophysical Research:*  
686 *Atmospheres*. <https://doi.org/10.1029/2020JD032398>

687 Dennis, R., Fox, T., Fuentes, M. *et al.* A framework for evaluating regional-scale numerical photochemical modeling  
688 systems. *Environ Fluid Mech* **10**, 471–489 (2010). <https://doi.org/10.1007/s10652-009-9163-2>

689 Dizengremel P., D. Le Thiec, M. Bagard, Y. Jolivet, Ozone risk assessment for plants: central role of metabolism-  
690 dependent changes in reducing power, *Environ. Pollut.*, 156 (2008), pp. 11-15

691 Emberson, L. D., Nitwiroon, N., Beevers, S., Büker, P., & Cinderby, S. (2013). Scorched Earth: how will changes in the  
692 strength of the vegetation sink to ozone deposition affect human health and ecosystems? *Atmospheric*  
693 *Chemistry and Physics*, **13**, 6741-6755. <https://doi.org/10.5194/acp-13-6741-2013>

694 Emberson L. D., Håkan Pleijel, Elizabeth A. Ainsworth, Maurits van den Berg, Wei Ren, Stephanie Osborne, Gina Mills,  
695 Divya Pandey, Frank Dentener, Patrick Büker, Frank Ewert, Renate Koeble, Rita Van Dingenen, Ozone effects on  
696 crops and consideration in crop models, *European Journal of Agronomy*, **100**, 2018, 19-34

697 Emerson, E.W., A.L. Hodshire, H.M. DeBolt, K.R. Bilsback, J.R. Pierce, G.R. McMeeking, D.K. Farmer, Revisiting particle  
698 dry deposition and its role in radiative effect estimates, *Proceedings of the National Academy of Sciences*, 2020,  
699 117 (42) 26076-26082; DOI: 10.1073/pnas.2014761117

700 Erisman, J.W., Evaluation of a surface resistance parameterization for sulphur dioxide, *Atmos. Environ.*, 28(16), 2583-  
701 2594, 1994

702 [Fast, J. D., Gustafson Jr., W. I., Easter Jr., R. C., Zaveri, R. A., Barnard, J. C., Chapman, E. G., Grell, G., and Peckham, S.](#)  
703 [E.: Evolution of ozone, particulates, and aerosol direct radiative forcing in the vicinity of Houston using a fully](#)  
704 [coupled meteorology–chemistry–aerosol model, J. Geophys. Res.- Atmos., 111, D21305,](#)  
705 [doi:10.1029/2005JD006721, 2006.](#)

706 Galmarini S., ST Rao, D.G. Steyn, Preface, *Atmos. Environ.* **53**, 2012

707 Galmarini S., C. Hogrefe, D. Brunner, P. Makar, A. Baklanov, Preface, *Atmospheric Environment* **115**, 2015

708 Galmarini S., Brigitte Koffi, Efisio Solazzo, Terry Keating, Christian Hogrefe, Michael Schulz, Anna Benedictow, Jan  
709 Jurgen Griesfeller, Greet Janssens-Maenhout, Greg Carmichael, Joshua Fu, and Frank Dentener, *Atmos. Chem.*  
710 *Phys.*, **17**, 1543–1555, 2017

711 [Grell, G., Peckham, S., Schmitz, R., McKeen, S., Frost, G., Skamarock, W. and Eder, B., 2005. Fully coupled “online”](#)  
712 [chemistry within the WRF model. Atmospheric Environment, 39\(37\), pp.6957-6975.](#)  
713 <https://doi.org/10.1016/j.atmosenv.2005.04.027>

714 Hardacre, C. and Wild, O. and Emberson, L. An evaluation of ozone dry deposition in global scale chemistry climate  
715 models, *Atmospheric Chemistry and Physics*, **15**, 2015, 11, 6419–6436

716 [Hodzic A, Aumont B, Knote C, Lee-Taylor J, Madronich S and Tyndall G 2014 Volatility dependence of Henry's law](#)  
717 [constants of condensable organics: Application to estimate depositional loss of secondary organic aerosols](#)  
718 [Geophysical Research Letters 41 4795–804](#)

719 Hogrefe, C., Liu, P., Pouliot, G., Mathur, R., Roselle, S., Flemming, J., Lin, M., and Park, R. J.: Impacts of different  
720 characterizations of large-scale background on simulated regional-scale ozone over the continental United  
721 States, *Atmos. Chem. Phys.*, **18**, 3839–3864, <https://doi.org/10.5194/acp-18-3839-2018>, 2018.

722 Hogrefe C. et al. (2020) Continental-Scale Analysis of Atmospheric Deposition Over North America and Europe Using  
723 the AQMEII Database. In: Mensink C., Gong W., Hakami A. (eds) *Air Pollution Modeling and its Application XXVI*.  
724 ITM 2018. Springer Proceedings in Complexity. Springer, Cham. [https://doi.org/10.1007/978-3-030-22055-6\\_48](https://doi.org/10.1007/978-3-030-22055-6_48)

725 Hong, C., Mueller, N.D., Burney, J.A., Zhang, Y., AghaKouchak, A., Moore, F.C., Qin, Y., Tong, D. and Davis, S.J., 2020.  
726 Impacts of ozone and climate change on yields of perennial crops in California. *Nature Food*, **1**(3), pp.166-172.

727 Huang, L., McDonald-Buller, E. C., McGaughey, G., Kimura, Y., & Allen, D. T. (2016). The impact of drought on ozone  
728 dry deposition over eastern Texas. *Atmospheric Environment*, 127, 176-186.  
729 <https://doi.org/10.1016/j.atmosenv.2015.12.022>

730 Inness, A., Ades, M., Agustí-Panareda, A., Barré, J., Benedictow, A., Blechschmidt, A.-M., Dominguez, J. J., Engelen,  
731 R., Eskes, H., Flemming, J., Huijnen, V., Jones, L., Kipling, Z., Massart, S., Parrington, M., Peuch, V.-H., Razinger,  
732 M., Remy, S., Schulz, M., and Suttie, M.: The CAMS reanalysis of atmospheric composition, *Atmos. Chem. Phys.*,  
733 19, 3515-3556, <https://doi.org/10.5194/acp-19-3515-2019>, 2019.

734 Irving, P. M., & Smith, E. (1991). Acid deposition: State of science and technology Summary report of the US National  
735 Acid Precipitation Assessment Program, US Govt. Printing Office, ISBN 0-16-035925-2, 274pp., United States.

736 Jarvis, P. G.: The interpretation of the variations in leaf water potential and stomatal conductance found in canopies  
737 in the field, *Phil. Trans. R. Soc. Lond. B.*, 273, 593-610, 1976.

738

739 [Knote C, Hodzic A, Jimenez J L, Volkamer R, Orlando J J, Baidar S, Brioude J, Fast J, Gentner D R, Goldstein A H, Hayes](#)  
740 [P L, Knighton W B, Oetjen H, Setyan A, Stark H, Thalman R, Tyndall G, Washenfelder R, Waxman E and Zhang Q](#)  
741 [2014 Simulation of semi-explicit mechanisms of SOA formation from glyoxal in aerosol in a 3-D model](#)  
742 [Atmospheric Chemistry and Physics 14 6213-39](#)

743 Knote, C., Hodzic, A., and Jimenez, J. L., The effect of dry and wet deposition of condensable vapors on secondary  
744 organic aerosols concentrations over the continental US, *Atmos. Chem. Phys.*, 15, 1-18,  
745 <https://doi.org/10.5194/acp-15-1-2015>, 2015.

746 Kuenen, J., A. Visschedijk, H.A.C. Denier van der Gon. TNO\_MACC-III inventory and its application for FAIRMODE  
747 SoAp, Fairmode technical meeting, Aveiro, Portugal, June 2015,  
748 [https://aqm.jrc.ec.europa.eu/fairmode/document/event/presentation/20150624-](https://aqm.jrc.ec.europa.eu/fairmode/document/event/presentation/20150624-Aveiro/WG3/WG3%20Kuenen.pdf)  
749 [Aveiro/WG3/WG3%20Kuenen.pdf](#)

750 Lin, M., Horowitz, L. W., Xie, Y., Paulot, F., Malyshev, S., Shevliakova, E., ... & Pilegaard, K. (2020). Vegetation  
751 feedbacks during drought exacerbate ozone air pollution extremes in Europe. *Nature Climate Change*, 10(5),  
752 444-451

753 Lombardozzi, D., Levis, S., Bonan, G., Hess, P. G., & Sparks, J. P. (2015). The Influence of Chronic Ozone Exposure on  
754 Global Carbon and Water Cycles. *Journal of Climate*, 28(1), 292-305. [https://doi.org/10.1175/JCLI-D-14-](https://doi.org/10.1175/JCLI-D-14-00223.1)  
755 [00223.1](#)

756 [Makar, P.A., Staebler, R.M., Akingunola, A., Zhang, J., McLinden, C., Kharol, S.K., Pabla, B., Cheung, P., and Zheng, Q.,](#)  
757 [The effects of forest canopy shading and turbulence on boundary layer ozone, Nature Commun., 8, 15243, 2017.](#)  
758 <https://doi.org/10.1038/ncomms15243>.

759 [Makar, P.A., Akingunola, A., Aherne, J., Cole, A.S., Aklilu, Y.-A., Zhang, J., Wong, I., Hayden, K., Li, S.-M., Kirk, J., Scott,](#)  
760 [K., Moran, M.D., Robichaud, A., Cathcart, H., Baratzedah, P., Pabla, B., Cheung, P., Zheng, Q., Jeffries, D.S.,](#)  
761 [Estimates of exceedances of critical loads for acidifying deposition in Alberta and Saskatchewan, Atmos. Chem.](#)  
762 [Phys., 18, 9897-9927, 2018.](#)

763 [Makar, P.A., Stroud, C., Akingunola, A., Zhang, J., Ren, S., Cheung, P., and Zheng, Q., Vehicle-induced turbulence and](#)  
764 [atmospheric pollution, Atmos. Chem. Phys., 21, 12291-12316, 2021.](#)

765 [Manders, A. M. M., Builthies, P. J. H., Curier, L., Denier van der Gon, H. A. C., Hendriks, C., Jonkers, S., Kranenburg, R.,](#)  
766 [Kuenen, J. J. P., Segers, A. J., Timmermans, R. M. A., Visschedijk, A. J. H., Wichink Kruit, R. J., van Pul, W. A. J.,](#)  
767 [Sauter, F. J., van der Swaluw, E., Swart, D. P. J., Douros, J., Eskes, H., van Meijgaard, E., van Uft, B., van Velthoven,](#)  
768 [P., Banzhaf, S., Mues, A. C., Stern, R., Fu, G., Lu, S., Heemink, A., van Velzen, N., and Schaap, M.: Curriculum vitae](#)



769 of the LOTOS-EUROS (v2.0) chemistry transport model, *Geosci. Model Dev.*, 10, 4145-4173,  
770 <https://www.geosci-model-dev.net/10/4145/2017/>

771 Matichuk, R., Tonnesen, G., Luecken, D., Gilliam, R., Napelenok, S. L., Baker, K. R., et al. (2017). Evaluation of the  
772 Community Multiscale Air Quality Model for simulating winter ozone formation in the Uinta Basin. *Journal of*  
773 *Geophysical Research: Atmospheres*, 122(24), 13545-13572. <https://doi.org/10.1002/2017JD027057>

774 Massad, R-S., Nemitz, E., Sutton, M.A., Review and parameterization of bi-directional ammonia exchange between  
775 vegetation and the atmosphere, *Atmos. Chem. Phys.*, 10, 10359-10386, 2010

776 McGrath, J. M., Betzelberger A. M., Wang, S., Shook, E., Zhu, X. G., Long, S. P., and Ainsworth, E. A.: An analysis of  
777 ozone damage to historical maize and soybean yields in the United States, *Proc. Natl. Acad. Sci.*, 112, 14390-5,  
778 2015.

779 Moran, M.D., Menard, S., Talbot, D., Huang, P., Makar, P.A., Gong, W., Landry, H.,  
780 Gravel, S., Gong, S., Crevier, L.-P., Kallaur, A., Sassi, M., Particulate-matter  
781 forecasting with GEM-MACH15, a new Canadian air-quality forecast model. In: Steyn, D.G., Rao, S.T. (Eds.), Air  
782 Pollution Modelling and Its Application XX. Springer, Dordrecht, pp. 289-292, 2010.

783 Nemitz, E., Sutton, M.A., Schjoerring, J.K., Husted, S., Wyers, G.P., Resistance modelling of ammonia exchange over  
784 oilseed rape, *Agriculture and Forest Meteorology*, 105, 405-425, 2000

785 Nemitz, E., Milford, C., Sutton, M.A., A two-layer canopy compensation point model for describing bi-directional  
786 biosphere-atmosphere exchange of ammonia, *Q. J. Roy. Meteor. Soc.*, 127, 815-833, 2001

787 Oliver, R. J., Mercado, L. M., Sitch, S., Simpson, D. M., Medlyn, B. E., Lin, Y., and Folberth, G. A.: Large but decreasing  
788 effect of ozone on the European carbon sink, *Biogeosciences*, 4245-4269, 2018.

789 Ott, L. E., K. E. Pickering, G. L. Stenchikov, D. J. Allen, A. J. DeCaria, B. Ridley, R.-F. Lin, S. Lang, and W.-K. Tao (2010),  
790 Production of lightning NO<sub>x</sub> and its vertical distribution calculated from three-dimensional cloud-scale chemical  
791 transport model simulations, *J. Geophys. Res.*, 115, D04301, doi:10.1029/2009JD011880

792 Paulot, F., Malyshev, S., Nguyen, T., Crounse, J. D., Shevliakova, E., & Horowitz, L. W. (2018). Representing sub-grid  
793 scale variations in nitrogen deposition associated with land use in a global Earth system model: implications for  
794 present and future nitrogen deposition fluxes over North America. *Atmospheric Chemistry and Physics*, 18(24),  
795 17963-17978.

796 Pleim, J.E., Bash, J.O., Walker, J.T., Cooter, E.J., Development and evaluation of an ammonia bidirectional flux  
797 parameterization for air quality models, *J. Geophys. Res. Atm.*, 118, 3794-3806, 2013.

798 Pleim, J. E., Ran, L., Appel, W., Shephard, M. W., & Cady-Pereira, K. (2019). New bidirectional ammonia flux model  
799 in an air quality model coupled with an agricultural model. *Journal of Advances in Modeling Earth Systems*, 11,  
800 2934–2957. <https://doi.org/10.1029/2019MS001728>

801 Price, C.G., J.E. Penner and M.J. Prather NO<sub>x</sub> from lightning, Part I: Global distribution based on lightning physics  
802 *Journal of Geophysical Research* 102 5229-5241 1997.

803 Rao, S.T., Galmarini, S., Puckett, K., 2011. *Air quality model evaluation international initiative (AQMEII)*. Bulletin of  
804 the American Meteorological Society 92, 23-30. DOI:10.1175/2010BAMS3069.1

805 Robichaud, A., Cole, A., Moran, M., Lupu, A., Shaw, M., Roy, G., Beauchemin, M., Fortin, V., and Vet, R., Total  
806 deposition maps evaluated from measurement-model fusion in North America (ADAGIO Project), In: Mensink  
807 C., Gong W., Hakami A. (eds) *Air Pollution Modeling and its Application XXVI*. ITM 2018. Springer  
808 *Proceedings in Complexity*. Springer, Cham. [https://doi.org/10.1007/978-3-030-22055-6\\_40](https://doi.org/10.1007/978-3-030-22055-6_40)



Robichaud, A., Cole, A.S., Moran, M.D., Lupu, A., Beauchemin, M., and Fortin, V., On model-data fusion approaches for wet deposition in North America, National Atmospheric Deposition Program Scientific Symposium and Fall Meeting, October 28-30, 2020; <http://nadp.slh.wisc.edu/conf/2020/?sID=6>, last accessed March 23, 2021.

Schiferl, L. D., and C. L. Heald. "Particulate Matter Air Pollution May Offset Ozone Damage to Global Crop Production." *Atmos. Chem. Phys.* 18, no. 8 (April 27, 2018): 5953–66. <https://doi.org/10.5194/acp-18-5953-2018>

Schwede, D.B. and G.G. Lear, 2014 A novel hybrid approach for estimating total deposition in the United States. *Atmospheric Environment*, 92, 207–220

Sharma, A., Ojha, N., Ansari, T. U., Sharma, S. K., Pozzer, A., & Gunthe, S. S. (2020). Effects of dry deposition on surface ozone over South Asia inferred from a regional chemical transport model. *ACS Earth and Space Chemistry*, 4(2), 321-327.

Sitch, S., Cox, P. M., Collins, W. J., & Huntingford, C. (2007). Indirect radiative forcing of climate change through ozone effects on the land-carbon sink. *Nature*, 448(7155), 791–794. <https://doi.org/10.1038/nature06059>

Shuttleworth, W.J., Wallace, J.S., Evaporation from sparse crops – an energy combination theory, *Q. J. Roy. Meteor. Soc.*, 111, 839-855, 1985

Silva, S. J., & Heald, C. L.: Investigating dry deposition of ozone to vegetation. *Journal of Geophysical Research: Atmospheres*, 123, 559–573. <https://doi.org/10.1002/2017JD027278>, 2018.

Soares, J., M. Sofiev, J. Hakkarainen, 2015. Uncertainties of wild-land fires emission in AQMEII phase 2 case study, *Atmospheric Environment*, 115, 361-370, <https://doi.org/10.1016/j.atmosenv.2015.01.068>

Solazzo E., Angelo Riccio, Rita Van Dingenen, Luana Valentini, Stefano Galmarini, Evaluation and uncertainty estimation of the impact of air quality modelling on crop yields and premature deaths using a multi-model ensemble, *Science of The Total Environment*, 633, 2018, 1437-1452, 2018

Solazzo, E. and Hogrefe, C. and Colette, A. and Garcia-Vivanco, M. and Galmarini, S., Advanced error diagnostics of the CMAQ and Chimere modelling systems within the AQMEII3 model evaluation framework, *Atmospheric Chemistry and Physics*, 17, 2017, 10435–10465

Solberg, S., Hov, Ø., Søvde, A., Isaksen, I. S. A., Coddeville, P., De Backer, H., Forster, C., Orsolini, Y., & Uhse, K. (2008). European surface ozone in the extreme summer 2003. *Journal of Geophysical Research*, 113(D07307). <https://doi.org/10.1029/2007JD009098>

United States Environmental Protection Agency. (2019). CMAQ (Version 5.3.1) [Software]. Available from <https://doi.org/10.5281/zenodo.3585898>

Val Martin, M., Heald, C.L., Arnold, S.R., Coupling dry deposition to vegetation phenology in the Community Earth System Model: Implications for the simulation of surface O<sub>3</sub>, *Geop. Res. Lett.*, 41, 2988-2996, 2014.

Vautard, R., Honore, C., Beekmann, M., & Rouil, L. (2005). Simulation of ozone during the August 2003 heat wave and emission control scenarios. *Atmospheric Environment*, 39(16), 2957-2967.

Vivanco, M. G., Theobald, M. R., García-Gómez, H., Garrido, J. L., Prank, M., Aas, W., Adani, M., Alyuz, U., Andersson, C., Bellasio, R., Bessagnet, B., Bianconi, R., Bieser, J., Brandt, J., Briganti, G., Cappelletti, A., Curci, G., Christensen, J. H., Colette, A., Couvidat, F., Cuvelier, C., D'Isidoro, M., Flemming, J., Fraser, A., Geels, C., Hansen, K. M., Hogrefe, C., Im, U., Jorba, O., Kitwiroon, N., Manders, A., Mircea, M., Otero, N., Pay, M.-T., Pozzoli, L., Solazzo, E., Tsyro, S., Unal, A., Wind, P., and Galmarini, S.: Modeled deposition of nitrogen and sulfur in Europe estimated by 14 air quality model systems: evaluation, effects of changes in emissions and implications for habitat protection, *Atmos. Chem. Phys.*, 18, 10199–10218, <https://doi.org/10.5194/acp-18-10199-2018>, 2018.

851 Wesely, M.L., Parameterization of surface resistances to gaseous dry deposition in regional-scale numerical models,  
852 *Atmospheric Environment*, 23, 1293-1304, 1989.

853 [Wolke, R., W. Schröder, R. Schrödner, E. Renner \(2012\), Influence of grid resolution and meteorological forcing on](#)  
854 [simulated European air quality: A sensitivity study with the modeling system COSMO-MUSCAT, \*Atmos. Environ.\*,](#)  
855 [53\(SI\), 110-130.](#)

856 Wu, Z., Schwede, D.B., Vet., R., Walker, J.T., Shaw, M., Staebler, R., and Zhang, L., Evaluation and intercomparison of  
857 five North American dry deposition algorithms at a mixed forest site, *J. Adv. Mod. Earth Sys*, 10, 1571–1586.  
858 [https://doi.org/ 10.1029/2017MS001231](https://doi.org/10.1029/2017MS001231), 2018.

859 [Yi, C., Momentum transfer within canopies, \*J. Appl. Met. and Clim.\*, 47, 262-275, 2008.](#)

860 Zhang, L., Moran, M.D., Makar, P.A., Brook, J.R., Gong, S., Modelling gaseous dry deposition in AURAMS: a unified  
861 regional air-quality modelling system, *Atmos. Env.*, 36, 537-560, 2002.

862 Zhang, L., Brook, J.R., and Vet, R., A revised parameterization for gaseous dry deposition in air-quality models,  
863 *Atmos. Chem. Phys.*, 3, 2067-2082, 2003.

864 Zhang, L., Wright, L. P., and Asman, W. A. H.: Bi-directional air-surface exchange of atmospheric ammonia: A review  
865 of measurements and a development of a big-leaf model for applications in regional-scale air-quality models, *J.*  
866 *Geophys. Res.*, 115, D20310, <https://doi.org/10.1029/2009JD013589>, 2010.

867

868

869

Variable	Description and Units
PRECIP	Sum of all surface precipitation, cm
PRESS	Surface pressure, hPa
MIXRAT	Water vapour mixing ratio @ 2 m, g kg <sup>-1</sup>
RH	Relative humidity @ 2 m, %
TD	Dew point temperature @ 2 m, K
TEMP	Air temperature @ 2 m, K
WS	Horizontal wind speed @ 10 m, m s <sup>-1</sup>
WD	Horizontal wind direction @ 10 m, deg
W	Vertical wind speed @ 10 m, m s <sup>-1</sup>
SWGUP	Upward shortwave radiation at the ground, W m <sup>-2</sup>
SWGDN	Downward Shortwave Radiation at the ground, W m <sup>-2</sup>
SWTUP	Upward shortwave radiation at atmosphere top, W m <sup>-2</sup>
SWTDN	Downward shortwave radiation at atmosphere top, W m <sup>-2</sup>
PBL	Planetary boundary layer height, m
PAR	Photosynthetically active radiation at the ground, W m <sup>-2</sup>
AOD470	Aerosol optical depth at 470 nm
AOD555	Aerosol optical depth at 555 nm
AOD675	Aerosol optical depth at 675 nm
H2O	Water vapor column, cm <sup>3</sup> cm <sup>-2</sup>
USTAR	Friction velocity, m s <sup>-1</sup>
MOL	Monin-Obukhov length, m
RHO	Air density of lowest model layer
TEMP10	Air temperature at 10 m, K
TSOIL	Uppermost soil layer temperature, K
SNOWC	Fractional coverage of snow in grid cell, 0-1
WETCAN	Canopy wetness, 0.0 if dry and 1.0 if wet
SOILMOI	Uppermost soil layer moisture, m <sup>3</sup> m <sup>-3</sup>
Z0	Surface roughness length, m
ALB	Albedo, fraction
Z	Terrain height above sea level, m
FWET	Wet surface, unitless fraction

LAI-T	Total leaf area index, m <sup>2</sup> m <sup>-2</sup>
-------	---

872

873 **Table A2. AQMEII4 - Gas and Particle Concentrations and Emissions (grid)**

Variable	Description and Units
SO2	Concentration of SO <sub>2</sub> at ground, µg m <sup>-3</sup>
NO2	Concentration of NO <sub>2</sub> at ground, µg m <sup>-3</sup>
NO	Concentration of NO at ground, µg m <sup>-3</sup>
NOx	Concentration of NO <sub>x</sub> at ground, µg m <sup>-3</sup>
NOy	Concentration of NO <sub>y</sub> at ground, µg m <sup>-3</sup>
HNO3	Concentration of HNO <sub>3</sub> at ground, µg m <sup>-3</sup>
NH3	Concentration of NH <sub>3</sub> at ground, µg m <sup>-3</sup>
PAN	Concentration of PAN at ground, µg m <sup>-3</sup>
HNO4	Concentration of HNO <sub>4</sub> at ground, µg m <sup>-3</sup>
N2O5	Concentration of N <sub>2</sub> O <sub>5</sub> at ground, µg m <sup>-3</sup>
HONO	Concentration of HONO at ground, µg m <sup>-3</sup>
ONIT	Concentration of gaseous organic nitrates at ground, µg m <sup>-3</sup>
O3	Concentration of O <sub>3</sub> at ground, µg m <sup>-3</sup>
H2O2	Concentration of H <sub>2</sub> O <sub>2</sub> at ground, µg m <sup>-3</sup>
HCHO	Concentration of formaldehyde at ground, µg m <sup>-3</sup>
CO	Concentration of CO at ground, µg m <sup>-3</sup>
ETHE	Concentration of ethene at ground, µg m <sup>-3</sup>
C5H8	Concentration of isoprene at ground, µg m <sup>-3</sup>
C10H16	Concentration of monoterpenes at ground, µg m <sup>-3</sup>
PM2_5_SU	Concentration of PM <sub>2.5</sub> Sulphate at ground, µg m <sup>-3</sup>
PM2_5_AM	Concentration of PM <sub>2.5</sub> Ammonium at ground, µg m <sup>-3</sup>
PM2_5_NI	Concentration of PM <sub>2.5</sub> Nitrate at ground, µg m <sup>-3</sup>
PM2_5_POA	Concentration of PM <sub>2.5</sub> Primary Organic Aerosol at ground, µg m <sup>-3</sup>
PM2_5_SOA	Concentration of PM <sub>2.5</sub> Secondary Organic Aerosol at ground, µg m <sup>-3</sup>
PM2_5_OC	Concentration of PM <sub>2.5</sub> Organic Carbon at ground, µg m <sup>-3</sup>
PM2_5_EC	Concentration of PM <sub>2.5</sub> Elemental Carbon (Black Carbon) at ground, µg m <sup>-3</sup>
PM2_5_SS	Concentration of PM <sub>2.5</sub> Sea Salt at ground, µg m <sup>-3</sup>
PM2_5_CA	Concentration of PM <sub>2.5</sub> Calcium at ground, µg m <sup>-3</sup>
PM2_5_MG	Concentration of PM <sub>2.5</sub> Magnesium at ground, µg m <sup>-3</sup>
PM2_5_NSNA	Concentration of PM <sub>2.5</sub> Non-Sea-Salt Sodium at ground, µg m <sup>-3</sup>
PM2_5_PK	Concentration of PM <sub>2.5</sub> Potassium at ground, µg m <sup>-3</sup>

PM2_5_FE	Concentration of PM <sub>2.5</sub> Iron at ground, $\mu\text{g m}^{-3}$
PM2_5_MN	Concentration of PM <sub>2.5</sub> Manganese at ground, $\mu\text{g m}^{-3}$
PM2_5_OTH	Concentration of PM <sub>2.5</sub> Other (all not speciated) at ground, $\mu\text{g m}^{-3}$
PM10_SU	Concentration of PM <sub>10</sub> Sulphate at ground, $\mu\text{g m}^{-3}$
PM10_AM	Concentration of PM <sub>10</sub> Ammonium at ground, $\mu\text{g m}^{-3}$
PM10_NI	Concentration of PM <sub>10</sub> Nitrate at ground, $\mu\text{g m}^{-3}$
PM10_POA	Concentration of PM <sub>10</sub> Primary Organic Aerosol at ground, $\mu\text{g m}^{-3}$
PM10_SOA	Concentration of PM <sub>10</sub> Secondary Organic Aerosol at ground, $\mu\text{g m}^{-3}$
PM10_OC	Concentration of PM <sub>10</sub> Organic Carbon (at ground, $\mu\text{g m}^{-3}$
PM10_EC	Concentration of PM <sub>10</sub> Elemental Carbon (Black Carbon) at ground, $\mu\text{g m}^{-3}$
PM10_SS	Concentration of PM <sub>10</sub> Sea Salt at ground, $\mu\text{g m}^{-3}$
PM10_CA	Concentration of PM <sub>10</sub> Calcium at ground, $\mu\text{g m}^{-3}$
PM10_MG	Concentration of PM <sub>10</sub> Magnesium at ground, $\mu\text{g m}^{-3}$
PM10_NSNA	Concentration of PM <sub>10</sub> Non-Sea-Salt Sodium at ground, $\mu\text{g m}^{-3}$
PM10_PK	Concentration of PM <sub>10</sub> Potassium at ground, $\mu\text{g m}^{-3}$
PM10_FE	Concentration of PM <sub>10</sub> Iron at ground, $\mu\text{g m}^{-3}$
PM10_MN	Concentration of PM <sub>10</sub> Manganese at ground, $\mu\text{g m}^{-3}$
PM10_OTH	Concentration of PM <sub>10</sub> Other (all not speciated) at ground, $\mu\text{g m}^{-3}$
PMTOT_SU	Concentration of PMTOT Sulphate at ground, $\mu\text{g m}^{-3}$
PMTOT_AM	Concentration of PMTOT Ammonium at ground, $\mu\text{g m}^{-3}$
PMTOT_NI	Concentration of PMTOT Nitrate at ground, $\mu\text{g m}^{-3}$
PMTOT_POA	Concentration of PMTOT Primary Organic Aerosol at ground, $\mu\text{g m}^{-3}$
PMTOT_SOA	Concentration of PMTOT Secondary Organic Aerosol at ground, $\mu\text{g m}^{-3}$
PMTOT_OC	Concentration of PMTOT Organic Carbon at ground, $\mu\text{g m}^{-3}$
PMTOT_EC	Concentration of PMTOT Elemental Carbon (Black Carbon) at ground, $\mu\text{g m}^{-3}$
PMTOT_SS	Concentration of PMTOT Sea Salt at ground, $\mu\text{g m}^{-3}$
PMTOT_CA	Concentration of PMTOT Calcium at ground, $\mu\text{g m}^{-3}$
PMTOT_MG	Concentration of PMTOT Magnesium at ground, $\mu\text{g m}^{-3}$
PMTOT_NSNA	Concentration of PMTOT Non-Sea-Salt Sodium at ground, $\mu\text{g m}^{-3}$
PMTOT_PK	Concentration of PMTOT Potassium at ground, $\mu\text{g m}^{-3}$
PMTOT_FE	Concentration of PMTOT Iron at ground, $\mu\text{g m}^{-3}$
PMTOT_MN	Concentration of PMTOT Manganese at ground, $\mu\text{g m}^{-3}$
PMTOT_OTH	Concentration of PMTOT Other (all not speciated) at ground, $\mu\text{g m}^{-3}$
PM2_5	Concentration of PM <sub>2.5</sub> at ground, $\mu\text{g m}^{-3}$
PM2_5N	Number concentration of PM <sub>2.5</sub> at ground, $\text{cm}^{-3}$

PM10	Concentration of PM <sub>10</sub> at ground, $\mu\text{g m}^{-3}$
PM10N	Number concentration of PM <sub>10</sub> at ground, $\text{cm}^{-3}$
PMTOT	Concentration of total PM at ground, $\mu\text{g m}^{-3}$
PMTOTN	Number concentration of total PM at ground, $\text{cm}^{-3}$
JNO2	Photolysis rate of NO <sub>2</sub> at ground, $1\text{E-}3\text{ s}^{-1}$
E_SO2	Accumulated emission of SO <sub>2</sub> , $\text{kg km}^{-2}$
E_ANOX	Accumulated emission of anthropogenic NO+NO <sub>2</sub> as NO <sub>2</sub> , $\text{kg km}^{-2}$
E_NH3	Accumulated emission of NH <sub>3</sub> , $\text{kg km}^{-2}$
E_CO	Accumulated emission of CO, $\text{kg km}^{-2}$
E_PM2_5	Accumulated emission of primary PM <sub>2.5</sub> , $\text{kg km}^{-2}$
E_PM10	Accumulated emission of primary PM <sub>10</sub> , $\text{kg km}^{-2}$
E_ETHE	Accumulated emission of ethene, $\text{kg-C km}^{-2}$
E_TOLU	Accumulated emission of toluene, $\text{kg-C km}^{-2}$
E_HCHO	Accumulated emission of formaldehyde, $\text{kg-C km}^{-2}$
E_C5H8	Accumulated emission of isoprene, $\text{kg-C km}^{-2}$
E_MNTP	Accumulated emission of monoterpenes, $\text{kg-C km}^{-2}$
E_SQTP	Accumulated emission of sesquiterpenes, $\text{kg-C km}^{-2}$
E_OVOC	Accumulated emission other VOCs not in above groups, $\text{kg-C km}^{-2}$
E_SNOX	Accumulated emission of soil NO+NO <sub>2</sub> as NO <sub>2</sub> , $\text{kg km}^{-2}$
E_SS	Accumulated emission of sea salt (all particle sizes), $\text{kg km}^{-2}$
E_WBDUST	Accumulated emission of wind blown dust (all particle sizes), $\text{kg km}^{-2}$
PM2_5_WAT	Concentration of PM <sub>2.5</sub> water at ground (if calculated), $\mu\text{g m}^{-3}$
PM10_WAT	Concentration of PM <sub>10</sub> water at ground (if calculated), $\mu\text{g m}^{-3}$
PMTOT_WAT	Concentration of PMTOT water at ground (if calculated), $\mu\text{g m}^{-3}$

874

875

WFLUX-HSO3-	Wet deposition flux of $\text{HSO}_3^-$ ion, eq ha <sup>-1</sup>
WFLUX-SO4=	Wet deposition flux of $\text{SO}_4^{=}$ ion, eq ha <sup>-1</sup>
WFLUX-NO3-	Wet deposition flux of $\text{NO}_3^-$ ion, eq ha <sup>-1</sup>
WFLUX-NH4+	Wet deposition flux of $\text{NH}_4^+$ ion, eq ha <sup>-1</sup>
WFLUX-BCT1	Wet deposition flux of base cations, eq ha <sup>-1</sup>
WFLUX-TOC	Wet deposition flux of total organic carbon, g ha <sup>-1</sup>
PRECIP	Surface precipitation, cm
DFLUX-SO2	Dry deposition flux of sulphur dioxide gas, eq ha <sup>-1</sup>
DFLUX-NO2	Dry deposition flux of nitrogen dioxide gas, eq ha <sup>-1</sup>
DFLUX-NO	Dry deposition flux of nitrogen monoxide gas, eq ha <sup>-1</sup>
DFLUX-HNO3	Dry deposition flux of nitric acid gas, eq ha <sup>-1</sup>
DFLUX-NH3	Net flux of ammonia gas (negative if upwards), eq ha <sup>-1</sup>
DFLUX-PAN	Dry deposition flux of peroxyacetylnitrate gas, eq ha <sup>-1</sup>
DFLUX-HNO4	Dry deposition flux of peroxyntic acid gas, eq ha <sup>-1</sup>
DFLUX-N2O5	Dry deposition flux of dinitrogen pentoxide gas, eq ha <sup>-1</sup>
DFLUX-ONIT	Dry deposition flux of gaseous organic nitrate, eq ha <sup>-1</sup>
DFLUX-O3	Dry deposition flux of ozone gas, g ha <sup>-1</sup>
DFLUX-H2O2	Dry deposition flux of hydrogen peroxide gas, g ha <sup>-1</sup>
DFLUX-HCHO	Dry deposition flux of formaldehyde gas, g ha <sup>-1</sup>
DFLUX-P-SO4	Dry deposition flux of total particle sulphate, eq ha <sup>-1</sup>
DFLUX-P-NO3	Dry deposition flux of total particle nitrate, eq ha <sup>-1</sup>
DFLUX-P-NH4	Dry deposition flux of total particle ammonium, eq ha <sup>-1</sup>
DFLUX-P-TC	Dry deposition flux of total particle organic carbon, g ha <sup>-1</sup>
DFLUX-P-EC	Dry deposition flux of total black carbon, g ha <sup>-1</sup>
DFLUX-P-BCT1	Dry deposition flux of total particulate base cations, eq ha <sup>-1</sup>

DFLUX-P-BCT2	Flux of base cat. removed as non-transportable fraction during emissions processing (if available), eq ha <sup>-1</sup>
DFLUX-P-SS	Dry deposition flux of total sea salt aerosol, moles ha <sup>-1</sup>
DFLUX-P-CM	Dry deposition flux of total crustal material (all particulate components not speciated above), g ha <sup>-1</sup>
DFLUX-PM2_5	Dry deposition flux of PM <sub>2.5</sub> , g ha <sup>-1</sup>
DFLUX-HONO	Dry deposition flux of HONO, eq ha <sup>-1</sup>
RES-AERO	Aerodynamic resistance, s cm <sup>-1</sup>

878

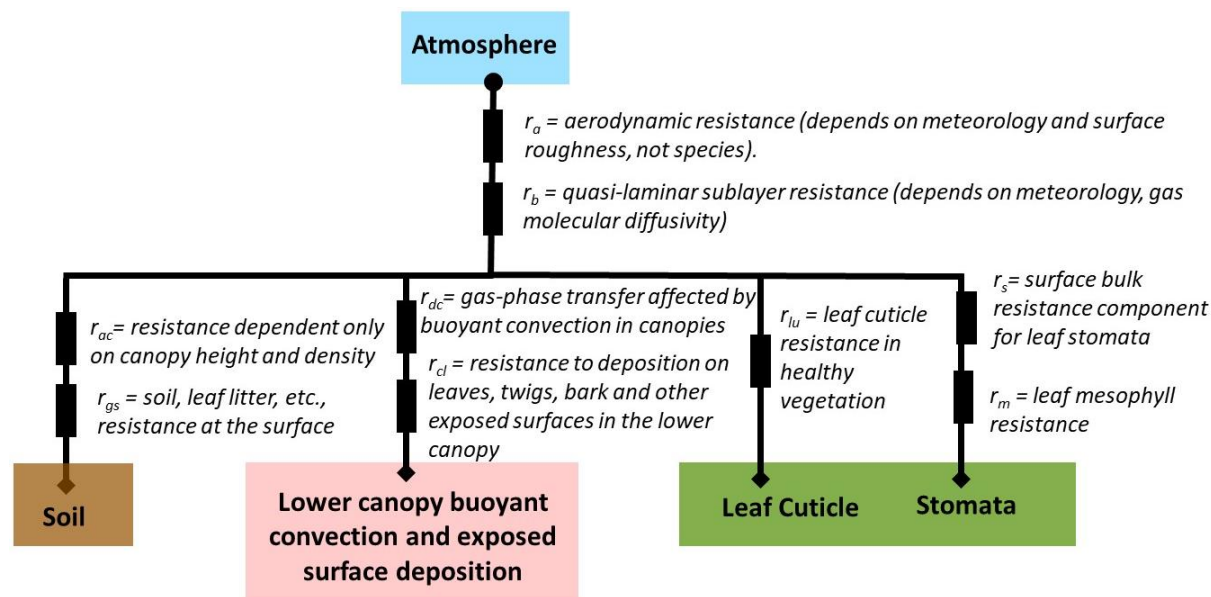


## Appendix B: Resistance Diagrams and Calculation of AQMEII4 Reported Dry Deposition Diagnostic Variables for Dry Deposition Schemes Implemented in Participating Models

### Example 1: GEM-MACH model, default Robichaud scheme.

These are the calculations for the Environment and Climate Change Canada model GEM-MACH (Global Environmental Multiscale- Modelling Air-quality and CHEmistry). The resistance diagram for this model is shown in Figure B1. The deposition algorithm closely follows Wesely's original hence the similarities to Figure 42. The scheme includes further modifications incorporating parameterizations from Jarvis (1976), Val Martin et al. (2014) and other authors; details and references for this scheme may be found in Makar et al (2018) , Supplemental Information). In GEM-MACH, snow, when present, is treated as a separate land use type.

Figure B1. Resistance diagram for the ECCC GEM-MACH model (default Robichaud scheme).



The main difference between the resistances in Wesely (1989) and the GEM-MACH resistances (aside from formulation details) is the addition of a surface wetness term, (1-Wst), intended to account for the influence of wet surfaces on dry deposition.

Table B1. Example 1: AQMEII4 reported gaseous deposition variables corresponding to the GEM-MACH/Robichaud resistance model of Figure B1.

Name as described here		AQMEII4 Variable-Name = resistance diagram variable name or formula	Formulae
$r_a$	<del>RES-AERO</del>	<del>RES-AERO</del>	$RES-AERO = r_a$
$r_c$	<del>RES-SURF</del>	<del>RES-SURF</del>	$\frac{RES-SURF}{\left( \frac{1}{\frac{(1-W_{st})}{(r_s+r_m)} + \frac{1}{r_{lu}} + \frac{1}{r_{dc}+r_{cl}} + \frac{1}{r_{ac}+r_{gs}}} \right)^{-1}} =$
$r_s$	<del>RES-STOM</del>	<del>RES-STOM</del>	$RES-STOM = r_s$
$r_m$	<del>RES-MESO</del>	<del>RES-MESO</del>	$RES-MESO = r_m$
$f_c I_{cut}$	<del>RES-CUT</del>	<del>RES-CUT</del>	$RES-CUT = r_{lu}$
$E_{STOM}$	<del>ECOND-ST</del>	<del>ECOND-ST</del>	$ECOND-ST = \left( \frac{\frac{(1-W_{st})(r_s+r_m)^{-1}}{(1-W_{st})(r_s+r_m)^{-1} + (r_{lu})^{-1} + (r_{dc}+r_{cl})^{-1} + (r_{ac}+r_{gs})^{-1}}}{\left( \frac{(1-W_{st})}{(r_s+r_m)} + \frac{1}{r_{lu}} + \frac{1}{r_{dc}+r_{cl}} + \frac{1}{r_{ac}+r_{gs}}} \right)^{-1}} \right) V_d$
$E_{CUT}$	<del>ECOND-CUT</del>	<del>ECOND-CUT</del>	$ECOND-CUT = \left( \frac{\frac{(r_{lu})^{-1}}{(1-W_{st})(r_s+r_m)^{-1} + (r_{lu})^{-1} + (r_{dc}+r_{cl})^{-1} + (r_{ac}+r_{gs})^{-1}}}{\left( \frac{(1-W_{st})}{(r_s+r_m)} + \frac{1}{r_{lu}} + \frac{1}{r_{dc}+r_{cl}} + \frac{1}{r_{ac}+r_{gs}}} \right)^{-1}} \right) V_d$
$E_{SOIL}$	<del>ECOND-SOIL</del>	<del>ECOND-SOIL</del>	$ECOND-SOIL = \left( \frac{\frac{(r_{dc}+r_{cl})^{-1}}{(1-W_{st})(r_s+r_m)^{-1} + (r_{lu})^{-1} + (r_{dc}+r_{cl})^{-1} + (r_{ac}+r_{gs})^{-1}}}{\left( \frac{(1-W_{st})}{(r_s+r_m)} + \frac{1}{r_{lu}} + \frac{1}{r_{dc}+r_{cl}} + \frac{1}{r_{ac}+r_{gs}}} \right)^{-1}} \right) V_d$
$E_{LCAN}$	<del>ECOND-LCAN</del>	<del>ECOND-LCAN</del>	$ECOND-LCAN = \left( \frac{\frac{(r_{ac}+r_{gs})^{-1}}{(1-W_{st})(r_s+r_m)^{-1} + (r_{lu})^{-1} + (r_{dc}+r_{cl})^{-1} + (r_{ac}+r_{gs})^{-1}}}{\left( \frac{(1-W_{st})}{(r_s+r_m)} + \frac{1}{r_{lu}} + \frac{1}{r_{dc}+r_{cl}} + \frac{1}{r_{ac}+r_{gs}}} \right)^{-1}} \right) V_d$
$r_{b, stom}$	<del>RES-QLST</del>	<del>RES-QLST</del>	$RES-QLST = r_b$
$r_{b, cut}$	<del>RES-QLCT</del>	<del>RES-QLCT</del>	$RES-QLCT = r_b$
$r_{b, soil}$	<del>RES-QLSL</del>	<del>RES-QLSL</del>	$RES-QLSL = r_b$
$r_{b, lcan}$	<del>RES-QLLC</del>	<del>RES-QLLC</del>	$RES-QLLC = r_b$
$r_{dc}$	<del>RES-CONV</del>	<del>RES-CONV</del>	$RES-CONV = r_{dc}$

### Example 2: CMAQ M3DRY.

The second specific air-quality model example is the M3DRY algorithm implemented in the US EPA's Community Multiscale Air Quality (CMAQ) model, one of two available dry deposition options in that model. In this particular case, separate branches occur for the vegetated versus non-vegetated fraction within each model grid cell, and further branching resistance pathways take into account the fraction of the grid cell which is wet versus dry, and snow-covered versus non-snow covered. In-canopy convective effects are only calculated for the vegetated fraction.

Figure B2. Resistance diagram for the US EPA CMAQ model with the M3DRY deposition option.

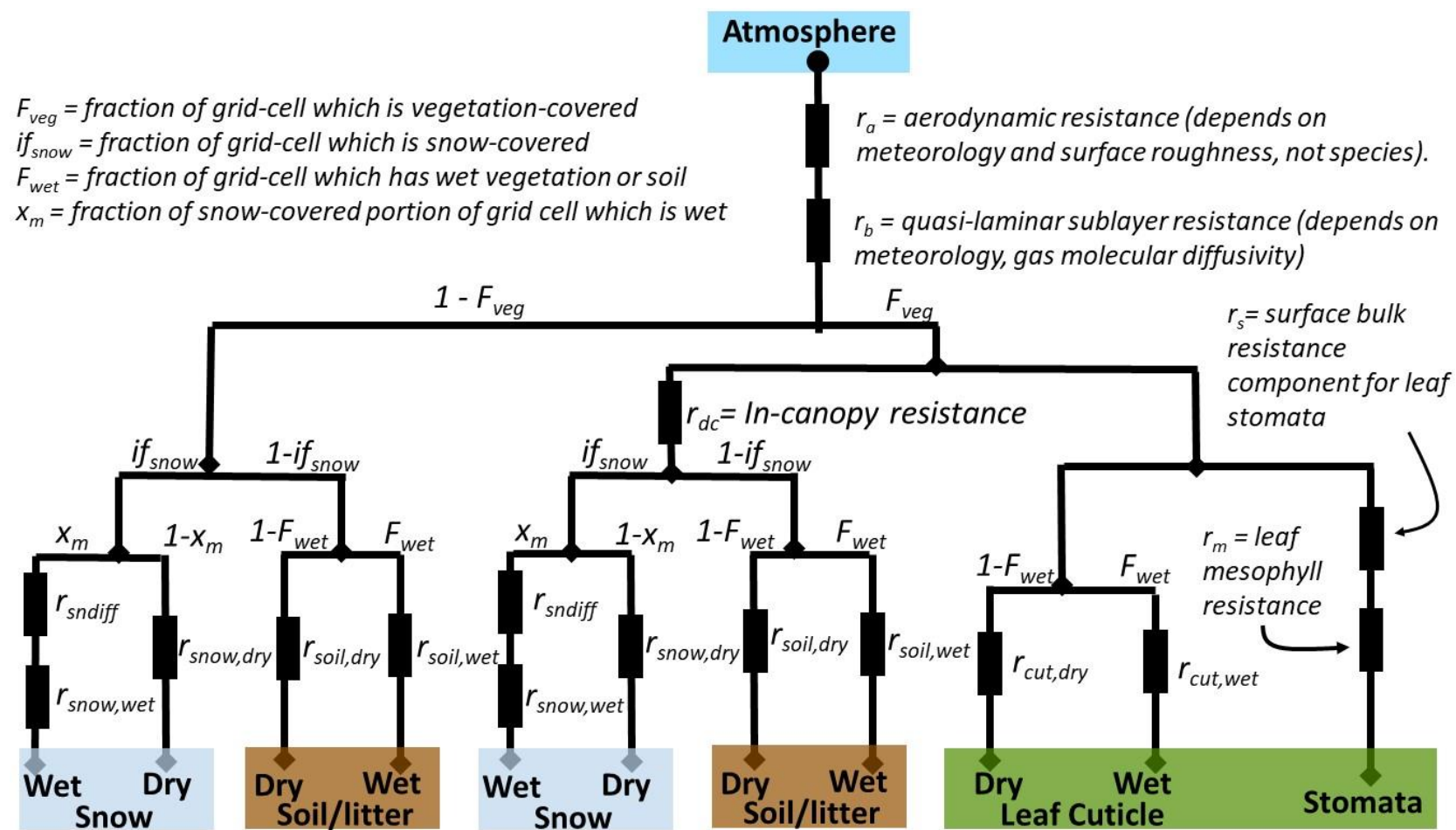


Table B2. AQMEI14 reported gaseous deposition variables corresponding to the CMAQ M3Dry resistance model of Figure B2.

Name as described here		AQMEI14 Variable Name = resistance diagram variable name or formula
$r_a$	<del>RES-AERO</del>	$RES-AERO = r_a$
$r_c$	<del>RES-SURF</del>	$RES-SURF = \left\{ \frac{F_{veg} \left( \frac{1}{r_s + r_m} + \frac{(1-F_{veg})LAI}{r_{cut,dry}} + \frac{F_{veg}LAI}{r_{cut,wet}} + \frac{1}{r_{soil,dry}} + \frac{1}{r_{soil,wet}} \right) + (1-F_{veg}) \left( (1-ifsnow) \left( \frac{(1-F_{wet})}{r_{soil,dry}} + \frac{F_{wet}}{r_{soil,wet}} \right) + (ifsnow) \left( \frac{(1-x_m)}{r_{snow,dry}} + \frac{x_m}{r_{sndiff} + r_{snow,wet}} \right) \right)}{F_{veg} \left( \frac{1}{r_s + r_m} + \frac{(1-F_{veg})LAI}{r_{cut,dry}} + \frac{F_{veg}LAI}{r_{cut,wet}} \right) + (1-F_{veg}) \left( (1-ifsnow) \left( \frac{(1-F_{wet})LAI}{r_{cut,dry}} + \frac{F_{wet}LAI}{r_{cut,wet}} \right) + (ifsnow) \left( \frac{(1-x_m)}{r_{snow,dry}} + \frac{x_m}{r_{sndiff} + r_{snow,wet}} \right) \right)} \right\} RES-SURF = \left\{ \frac{1}{r_s + r_m} + \frac{(1-F_{veg})LAI}{r_{cut,dry}} + \frac{F_{veg}LAI}{r_{cut,wet}} \right\} + (1-F_{veg}) \left( (1-ifsnow) \left( \frac{(1-F_{wet})LAI}{r_{cut,dry}} + \frac{F_{wet}LAI}{r_{cut,wet}} \right) + (ifsnow) \left( \frac{(1-x_m)}{r_{snow,dry}} + \frac{x_m}{r_{sndiff} + r_{snow,wet}} \right) \right)$
$r_s$	<del>RES-STOM</del>	$RES-STOM = r_s$
$r_m$	<del>RES-MESO</del>	$RES-MESO = r_m$
$r_{e,cut}$	<del>RES-CUT</del>	$RES-CUT = \left[ \left( \frac{(1-F_{wet})LAI}{r_{cut,dry}} + \frac{F_{wet}LAI}{r_{cut,wet}} \right) \right]^{-1} RES-CUT = \frac{1}{\frac{(1-F_{wet})LAI}{r_{cut,dry}} + \frac{F_{wet}LAI}{r_{cut,wet}}}$
$E_{STOM}$	<del>ECOND-ST</del>	$ECOND-ST = \left[ \frac{F_{veg}}{(r_s + r_m)} \right] (RES - SURF) V_d$
$E_{CUT}$	<del>ECOND-CUT</del>	$ECOND-CUT = (RES - CUT)^{-1} (RES - SURF) V_d$
$E_{SOIL}$	<del>ECOND-SOIL</del>	$ECOND-SOIL = \left[ (1 - F_{veg}) \left( (1 - ifsnow) \left( \frac{(1-F_{wet})}{r_{soil,dry}} + \frac{F_{wet}}{r_{soil,wet}} \right) + (ifsnow) \left( \frac{(1-x_m)}{r_{snow,dry}} + \frac{x_m}{r_{sndiff} + r_{snow,wet}} \right) \right) \right] (RES - SURF) V_d$
$E_{LCAN}$	<del>ECOND-LCAN</del>	$ECOND-LCAN = \left[ \frac{F_{veg}}{r_{dc} + \frac{1}{(1-ifsnow) \left( \frac{(1-F_{wet})}{r_{soil,dry}} + \frac{F_{wet}}{r_{soil,wet}} \right) + (ifsnow) \left( \frac{(1-x_m)}{r_{snow,dry}} + \frac{x_m}{r_{sndiff} + r_{snow,wet}} \right)}} \right] (RES - SURF) V_d$
$r_{b, stom}$	<del>RES-QLST</del>	$RES-QLST = r_b$
$r_{b, cut}$	<del>RES-QLCT</del>	$RES-QLCT = r_b$
$r_{b, soil}$	<del>RES-QLSL</del>	$RES-QLSL = r_b$
$r_{b, lcan}$	<del>RES-QLLC</del>	$RES-QLLC = r_b$
$r_{dc}$	<del>RES-CONV</del>	$RES-CONV = r_{dc}$

Note that the vegetated fraction and leaf area index used in the above equations for CMAQ with the M3DRY deposition option is for specific LULC types: the quantities in Table B2 will be reported for each of the 16 generic LULC categories for AQMEII4. Note that the lower canopy pathway has been identified as such due to the presence of the  $r_{dc}$  term; i.e. this points to its similarity with Wesely's original lower canopy pathway.

### Example 3: CMAQ STAGE.

The third specific air-quality model example is the algorithm used by the US EPA's Community Multiscale Air Quality (CMAQ) model with the Surface Tiled Aerosol and Gaseous Exchange (STAGE) deposition option. In this particular case, separate branches occur for the vegetated versus non-vegetated fraction for each LULC type within each model grid cell, and further branching resistance pathways take into account the fraction of the grid cell which is wet versus dry, and snow-covered versus non-snow covered. In-canopy convective effects are only calculated for in the vegetated fraction.

Figure B3. Resistance diagram for the US EPA CMAQ model with the STAGE deposition option. Note, that this is an extension of the Massad et al. 2010 and Nemitz et al. 2001 resistance model in the CMAQ modeling framework.

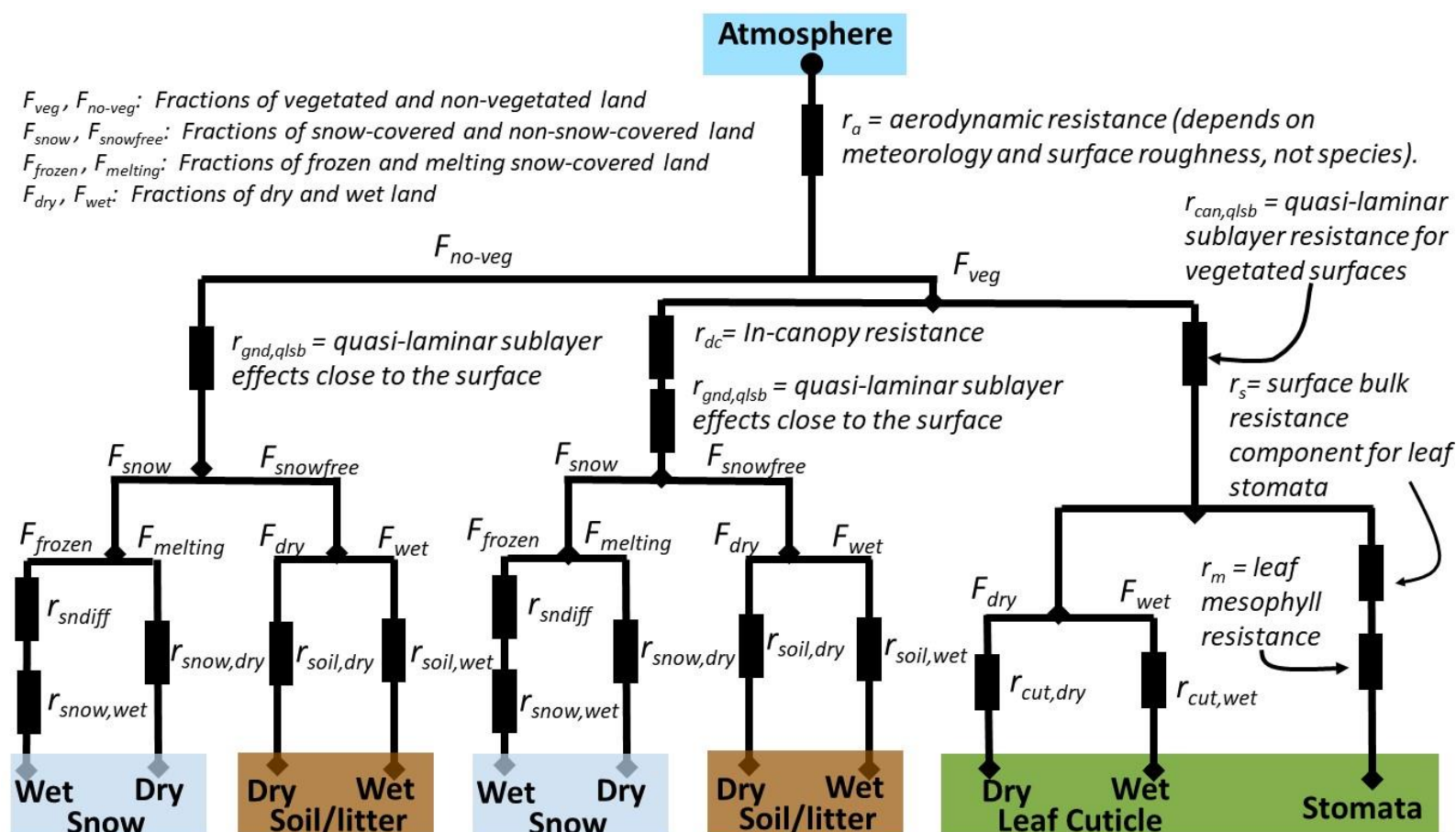


Table B3. AQMEI14 reported gaseous deposition variables corresponding to the CMAQ STAGE resistance model of Figure B3.

Name as described here		AQMEI14 Variable Name = resistance diagram variable name or formula	Formulae
$r_a$	<del>RES-AERO</del>	$RES-AERO = r_a$	
$r_c$	<del>RES-SURF</del>	<del><math>RES-SURF = \left( (r_{can,qslb} + ((r_s + r_m)^{-1} + (r_{cut})^{-1})^{-1} + (r_{dc} + r_{gnd,qslb} + r_{soil})^{-1} \right)^{-1}</math></del>	<del><math>RES-SURF =</math></del> $1 / \left\{ \frac{F_{veg}}{r_{can,qslb} + \frac{1}{\frac{1}{r_s + r_m} + \frac{F_{dry} LAI}{r_{cut,dry}} + \frac{F_{wet} LAI}{r_{cut,wet}}}} + \frac{1}{r_{dc} + r_{gnd,qslb} + \frac{F_{veg}}{F_{snow} \left( \frac{F_{frozen}}{r_{sndiff} + r_{snow,wet}} + \frac{F_{melting}}{r_{snow,dry}} \right) + F_{snowfree} \left( \frac{F_{dry}}{r_{soil,dry}} + \frac{F_{wet}}{r_{soil,wet}} \right)}}} \right\}$ $+ \frac{F_{no-veg}}{r_{gnd,qslb} + \frac{1}{F_{snow} \left( \frac{F_{frozen}}{r_{sndiff} + r_{snow,wet}} + \frac{F_{melting}}{r_{snow,dry}} \right) + F_{snowfree} \left( \frac{F_{dry}}{r_{soil,dry}} + \frac{F_{wet}}{r_{soil,wet}} \right)}}}$
$r_s$	<del>RES-STOM</del>	$RES-STOM = r_s$	
$r_m$	<del>RES-MESO</del>	$RES-MESO = r_m$	
<del><math>r_{cut}</math></del>	<del>RES-CUT</del>	$RES-CUT = r_{cut}$	
$E_{STOM}$	<del>ECOND-ST</del>	<del><math>ECOND-ST = \left[ \frac{(F_{veg})}{(r_s + r_m)} \right] (RES - SURF) V_d</math></del>	<del><math>ECOND-ST = \left[ \frac{(F_{veg})}{(r_s + r_m) \left( r_{can,qslb} \left\{ \frac{1}{\frac{1}{r_s + r_m} + \frac{F_{dry} LAI}{r_{cut,dry}} + \frac{F_{wet} LAI}{r_{cut,wet}}} \right\} + 1 \right)} \right] (RES - SURF) V_d</math></del> <u>Or</u> $ECOND-ST = \left[ \frac{\frac{1}{(r_s + r_m)}}{\frac{1}{r_s + r_m} + \frac{F_{dry} LAI}{r_{cut,dry}} + \frac{F_{wet} LAI}{r_{cut,wet}}} \right] \left[ \frac{(F_{veg})}{r_{can,qslb} + \frac{1}{\frac{1}{r_s + r_m} + \frac{F_{dry} LAI}{r_{cut,dry}} + \frac{F_{wet} LAI}{r_{cut,wet}}}} \right] (RES - SURF) V_d$

$E_{CUT}$	<del><math>E_{COND-CUT}</math></del>	<del><math>E_{COND-CUT} = \frac{F_{veg}}{r_{veg}} (RES - SURF) V_d</math></del> $\underline{E_{COND-CUT}} = \left[ \frac{F_{veg}}{\frac{1}{\frac{F_{dry} LAI}{r_{cut,dry}} + \frac{F_{wet} LAI}{r_{cut,wet}}} \left( r_{can,qlsb} \left\{ \frac{1}{r_s + r_m} + \frac{F_{dry} LAI}{r_{cut,dry}} + \frac{F_{wet} LAI}{r_{cut,wet}} \right\} + 1 \right)} \right] (RES - SURF) V_d$
$E_{SOIL}$	<del><math>E_{COND-SOIL}</math></del>	<del><math>E_{COND-SOIL} = \frac{F_{no-veg}}{r_{gnd,qlsb} + \frac{1}{F_{snow} \left( \frac{F_{frozen}}{r_{sndiff} + r_{snow,wet}} + \frac{F_{melting}}{r_{snow,dry}} \right) + F_{snowfree} \left( \frac{F_{dry}}{r_{soil,dry}} + \frac{F_{wet}}{r_{soil,wet}} \right)}} (RES - SURF) V_d E_{COND-SOIL}</math></del> $\left[ \frac{F_{no-veg}}{r_{gnd,qlsb} + \frac{1}{F_{snow} \left( \frac{F_{frozen}}{r_{sndiff} + r_{snow,wet}} + \frac{F_{melting}}{r_{snow,dry}} \right) + F_{snowfree} \left( \frac{F_{dry}}{r_{soil,dry}} + \frac{F_{wet}}{r_{soil,wet}} \right)}} \right] (RES - SURF) V_d$
$E_{LCAN}$	<del><math>E_{COND-LCAN}</math></del>	<del><math>E_{COND-LCAN} = \frac{F_{veg}}{r_{dc} + r_{gnd,qlsb} + \frac{1}{F_{snow} \left( \frac{F_{frozen}}{r_{sndiff} + r_{snow,wet}} + \frac{F_{melting}}{r_{snow,dry}} \right) + F_{snowfree} \left( \frac{F_{dry}}{r_{soil,dry}} + \frac{F_{wet}}{r_{soil,wet}} \right)}} (RES - SURF) V_d E_{COND-LCAN}</math></del> $\left[ \frac{F_{veg}}{r_{dc} + r_{gnd,qlsb} + \frac{1}{F_{snow} \left( \frac{F_{frozen}}{r_{sndiff} + r_{snow,wet}} + \frac{F_{melting}}{r_{snow,dry}} \right) + F_{snowfree} \left( \frac{F_{dry}}{r_{soil,dry}} + \frac{F_{wet}}{r_{soil,wet}} \right)}} \right] (RES - SURF) V_d$
$r_{b, stom}$	<del><math>RES-QLST</math></del>	$RES-QLST = r_{can,qlsb}$
$r_{b, cut}$	<del><math>RES-QLCT</math></del>	$RES-QLCT = r_{can,qlsb}$
$r_{b, soil}$	<del><math>RES-QLSL</math></del>	$RES-QLSL = r_{gnd,qlsb}$
$r_{b, lcan}$	<del><math>RES-QLLC</math></del>	$RES-QLLC = r_{gnd,qlsb}$
$r_{dc}$	<del><math>RES-CONV</math></del>	$RES-CONV = r_{dc}$

Where

$F_{veg} + F_{no\ veg} = 1$       Vegetation coverage fractions



$$F_{snow} + F_{snowfree} = 1 \quad \text{Snow coverage fraction}$$

$$F_{wet} + F_{dry} = 1 \quad \text{Surface wetness fractions}$$

$$F_{frozen} + F_{melting} = 1 \quad \text{Snow melt fractions, and}$$

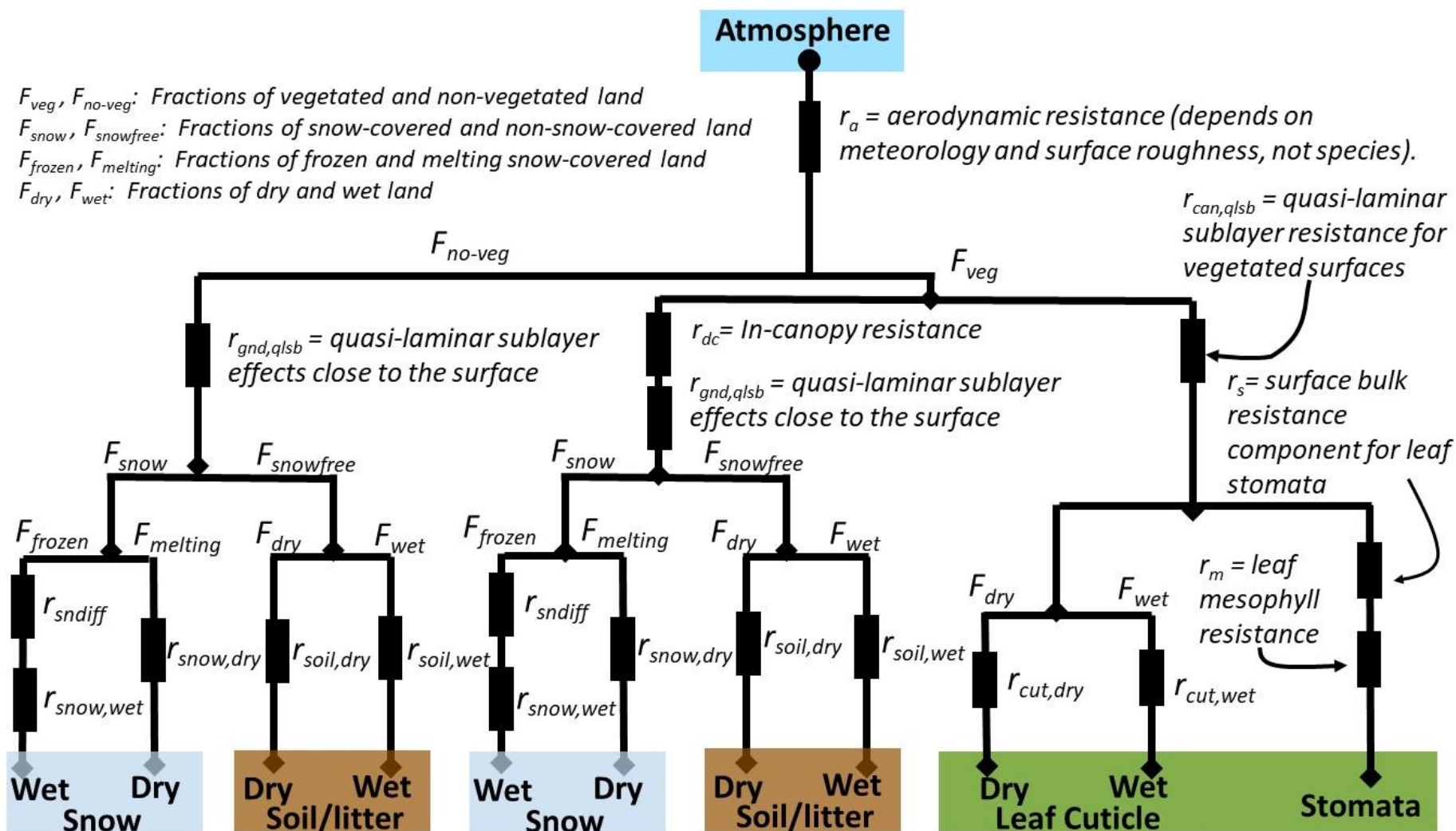
$$r_{veg} = \left( LAI \left( \frac{F_{dry}}{r_{veg} + r_{snow}} + \frac{F_{wet}}{r_{veg} + r_{snow}} \right) \right)$$

$$r_{veg} = \left( F_{frozen} \left( \frac{F_{dry}}{r_{veg} + r_{snow}} + \frac{F_{wet}}{r_{veg} + r_{snow}} \right) + F_{melting} \left( \frac{F_{dry}}{r_{veg} + r_{snow}} + \frac{F_{wet}}{r_{veg} + r_{snow}} \right) \right)$$

Note that the vegetated fraction and leaf area index used in the above equations for CMAQ with the STAGE deposition option is for specific LULC types: the quantities in Table B3 will be reported for each of the 16 generic LULC categories for AQMEII4. Note that the lower canopy pathway has been identified as such due to the presence of the  $r_{dc}$  term; i.e. this points to its similarity with Wesely's original lower canopy pathway.

#### Example 4. LOTOS EUROS

Figure B4. Resistance diagram for the dry deposition scheme implemented in LOTOS EUROS



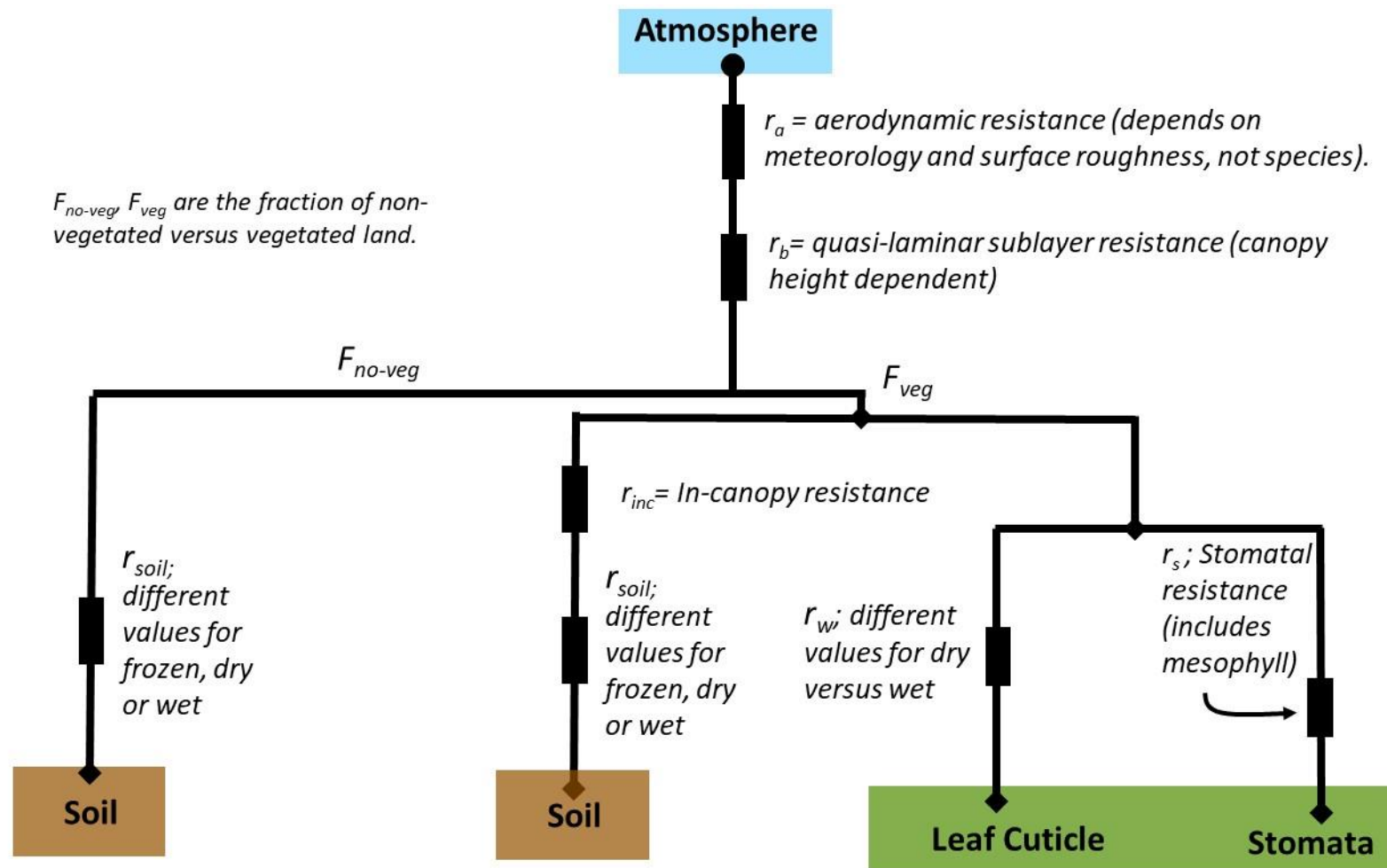


Table B4. AQMEI14 reported gaseous deposition variables corresponding to the LOTOS-EUROS resistance model of Figure B4

Name as described here	AQMEI14 Variable Name = resistance diagram variable name or formula
------------------------	---

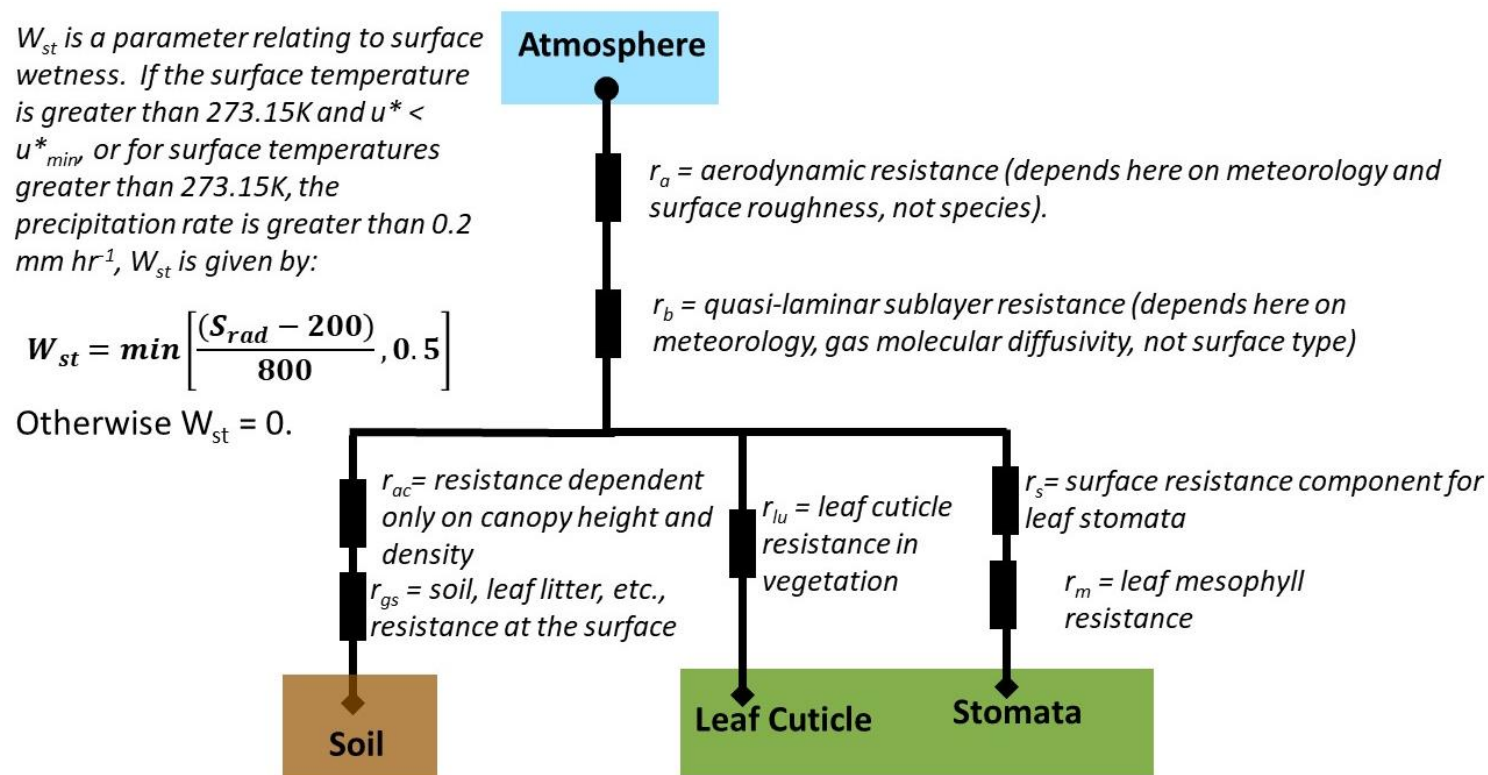
$R_{aL_d}$	RES_AERO	Aerodynamic resistance	$RES\_AERO = \frac{\ln\left(\frac{z_r}{z_0}\right) + 4.7 \left(\frac{z_r - z_0}{L}\right)}{\kappa \cdot u^*}$ for stable conditions, $\kappa$ : von Karman constant (here 0.35), $L$ : Monin-Obukhov length, $z_r$ : reference height, $z_0$ : height of surface roughness
$R_{bL_d}$	RES_QLSB	Quasi-laminar sublayer resistance	$RES\_QLSB = 1.3 \cdot 150 \cdot \frac{L_d}{V(h)}$ , $RES\_QLST = RES\_QLSL = RES\_QLLC = RES\_QLLC = 1.3 \cdot 150$ $L_d$ : cross-wind lead dimension, $V(h)$ : wind speed at canopy top $h$ , factor 1.3 accounts for difference between wind speed and friction velocity
$R_{eL_c}$	RES_SURF	Net canopy resistance	$RES\_SURF = \left(\frac{1}{R_{wp}} + \frac{1}{R_{inc} + R_{soil}} + \frac{1}{R_s}\right)^{-1}$ for $NO_2, NH_3, SO_2, O_3$ $RES\_SURF = 10$ ; $RES\_SURF = 50$ (wet conditions) for $HNO_3, N_2O_5, NO_3, H_2O_2$ $RES\_SURF = 2000$ (wet condition); $RES\_SURF = 500 - 70$ (snow condition); $RES\_SURF = 9999$ for dry conditions For snow conditions: $RES\_SURF = 500$ to $70$ . For other conditions and for $NO, CO$ , $RES\_SURF = 9999$ .
$R_{wL_w}$	RES_CUT	Net cuticle resistance	$RES\_CUT = 2000$ for $NO_2$ $RES\_CUT = 2500$ for $O_3$ $RES\_CUT = 25000 \cdot e^{(-0.0693 \cdot rh)}$ for $SO_2$ if $rh < 81.3$ $RES\_CUT = 5.8 \cdot 10^{11} \cdot e^{(-0.278 \cdot rh)}$ for $SO_2$ if $rh > 81.3$ $RES\_CUT = SAI \cdot a \cdot e^{\frac{(100 - RH)}{\beta}}$ for $NH_3$ $RES\_CUT = 10$ for wet conditions. $RES\_CUT = 2000$ for $NO_2$ $RES\_CUT = 2500$ for $O_3$ $RES\_CUT = 25000 \cdot e^{(-0.0693 \cdot rh)}$ for $SO_2$ if $rh < 81.3$ $RES\_CUT = 5.8 \cdot 10^{11} \cdot e^{(-0.278 \cdot rh)}$ for $SO_2$ if $rh > 81.3$ $RES\_CUT = SAI \cdot a \cdot e^{\frac{(100 - RH)}{\beta}}$ for $NH_3$ $SAI$ : surface area index, $a=2$ s/m, $\beta=12$ , $RH$ : relative humidity (%)
$R_{incL_{inc}}$		In-canopy resistance	$RES\_LCAN = \frac{b \cdot h \cdot SAI}{u^*}$ , $RES\_LCAN = \frac{b \cdot h \cdot SAI}{u^*}$ $b$ : empirical constant ( $14 \text{ m}^{-1}$ ), $h$ : height of vegetation (m), $SAI$ : surface area index, $u^*$ : friction velocity
$R_{soilL_{soil}}$	RES_SOIL	Soil resistance	Parameterized, frozen soil, wet soil, dry soil $RES\_SOIL\_FROZEN = 1000 \text{ s m}^{-1}$ for $NH_3$ ; $2000 \text{ s m}^{-1}$ for $O_3, NO_2$ ; $500 \text{ s m}^{-1}$ for $SO_2$ $RES\_SOIL\_WET = 10 \text{ s m}^{-1}$ for $NH_3, SO_2$ ; $2000 \text{ s m}^{-1}$ for $O_3, NO_2$ $RES\_SOIL\_DRY$ (landuse dependent) $200\text{-}2000 \text{ s m}^{-1}$ for $O_3$ ; $10\text{-}100 \text{ s m}^{-1}$ for $NH_3$ ; $10\text{-}1000 \text{ s m}^{-1}$ for $NO_2$
$R_{eL_s}$			$RES\_STOM = \frac{1}{E_{stom}}$

$E_{STOM}$	<del><math>ECOND\_ST</math></del>	Effective conductance associated with deposition to plant stomata	<del><math>ECOND_{st} = EMax_{stom} * F_{light} * F_{phen} * F_{temp} * F_{vpd} * F_{swp} * C_{diff} =</math></del> $ECOND\_ST = EMax_{stom} * F_{light} * F_{phen} * F_{temp} * F_{vpd} * F_{swp} * C_{diff}$ $EMax$ : Maximum stomatal conductance (derived for ozone, landuse dependent) $F_{light}, F_{phen}, F_{temp}, F_{vpd}, F_{swp}$ : Factors [0-1] for conductance de <del><math>C_{diff}</math></del> $C_{diff}$ : Diffusion coefficient for species with respect to ozone Mesophyll conductance part incorporated in Stomatal conductance
<del><math>C_{comp}</math></del> $C_{comp}$		Bidirectional fluxes of $NH_3$	Use of compensation point to derive bi-directional flux for $NH_3$ following:  Wichink Kruit et al, Modeling the distribution of ammonia across Europe including bi-directional s

**Example 5: GEM-MACH model, Zhang scheme.**

These are the calculations for the Environment and Climate Change Canada model GEM-MACH (Global Environmental Multiscale- Modelling Air-quality and CHEmistry), using the scheme of Zhang et al (2003, 2010). The resistance diagram for this model is shown in Figure B5.

Figure B5. Resistance diagram for the ECCC GEM-MACH model (Zhang scheme).



The main difference in the overall construction of the deposition scheme relative to the default Robichaud scheme (aside from the details of how the different terms are calculated) is in the absence of the lower canopy buoyant convection and exposed surface deposition branch of Wesely's original model. The details of the parameterizations for the terms in the equations also differ from the Robichaud scheme.

Table B5. AQMEI14 reported gaseous deposition variables corresponding to the GEM-MACH/Zhang resistance model of Figure B5.

Name as described here		AQMEI14 Variable Name = resistance diagram variable name or formula	Formulae
$r_a$	RES-AERO	$RES-AERO = r_a$	
$r_c$	RES-SURF	$RES-SURF = \left( (1-W_{st})(r_s+r_m)^{-1} + (r_{lu})^{-1} + (r_{ac}+r_{gs})^{-1} \right)^{-1}$	$RES-SURF = \frac{1}{\frac{(1-W_{st})}{(r_s+r_m)} + \frac{1}{r_{lu}} + \frac{1}{r_{ac}+r_{gs}}}$
$r_s$	RES-STOM	$RES-STOM = r_s$	
$r_m$	RES-MESO	$RES-MESO = r_m$	
$r_{e,cut}$	RES-CUT	$RES-CUT = r_{lu}$	
$E_{STOM}$	ECOND-ST	$ECOND-ST = \left( \frac{(1-W_{st})(r_s+r_m)^{-1}}{(1-W_{st})(r_s+r_m)^{-1} + (r_{lu})^{-1} + (r_{ac}+r_{gs})^{-1}} \right) V_d$	$ECOND-ST = \left( \frac{\frac{(1-W_{st})}{(r_s+r_m)}}{\frac{(1-W_{st})}{(r_s+r_m)} + \frac{1}{r_{lu}} + \frac{1}{r_{ac}+r_{gs}}} \right) V_d$
$E_{CUT}$	ECOND-CUT	$ECOND-CUT = \left( \frac{(r_{lu})^{-1}}{(1-W_{st})(r_s+r_m)^{-1} + (r_{lu})^{-1} + (r_{ac}+r_{gs})^{-1}} \right) V_d$	$ECOND-CUT = \left( \frac{\frac{1}{r_{lu}}}{\frac{(1-W_{st})}{(r_s+r_m)} + \frac{1}{r_{lu}} + \frac{1}{r_{ac}+r_{gs}}} \right) V_d$
$E_{SOIL}$	ECOND-SOIL	$ECOND-SOIL = \left( \frac{(r_{ac}+r_{gs})^{-1}}{(1-W_{st})(r_s+r_m)^{-1} + (r_{lu})^{-1} + (r_{ac}+r_{gs})^{-1}} \right) V_d$	$ECOND-SOIL = \left( \frac{\frac{1}{r_{ac}+r_{gs}}}{\frac{(1-W_{st})}{(r_s+r_m)} + \frac{1}{r_{lu}} + \frac{1}{r_{ac}+r_{gs}}} \right) V_d$
$E_{LCAN}$	ECOND-LCAN	$ECOND-LCAN = -9$	
$r_{b,stom}$	RES-QLST	$RES-QLST = r_b$	
$r_{b,cut}$	RES-QLCT	$RES-QLCT = r_b$	
$r_{b,soil}$	RES-QLSL	$RES-QLSL = r_b$	
$r_{b,lcant}$	RES-QLLC	$RES-QLLC = r_b$	
$r_{dc}$	RES-CONV	$RES-CONV = -9$	

## Example 6. WRF-Chem

Figure B6. Resistance diagram for the gaseous dry deposition scheme implemented in WRF-Chem

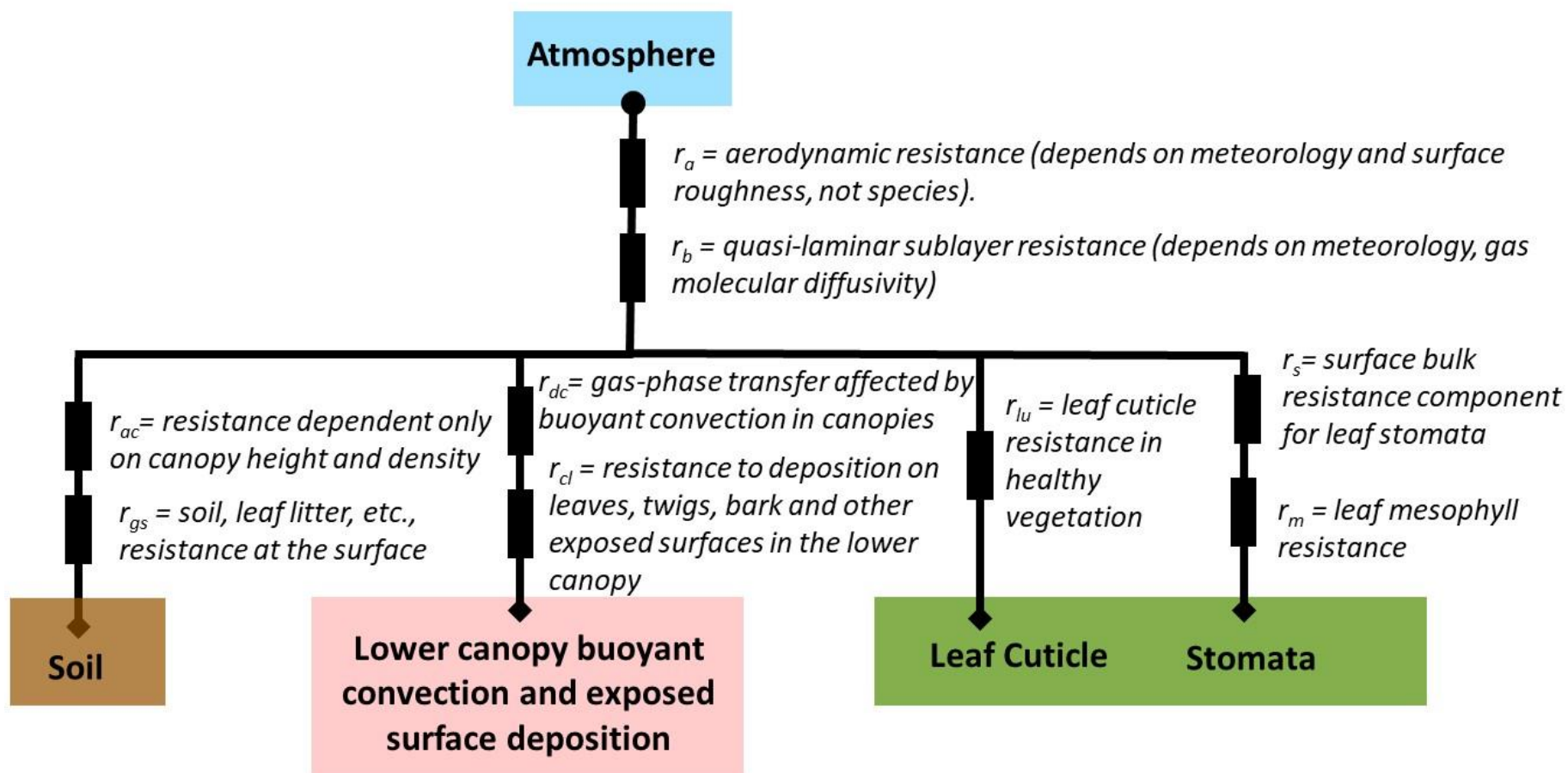




Table B6. AQMEI14 reported gaseous deposition variables corresponding to the WRF-Chem resistance model of Figure B6.

Name <u>as described here</u>	AQMEI14  <u>Name = resistance diagram variable name or formula</u>	Description	Formula
$V_d$	$VD$	Deposition velocity	$Vd = \frac{1}{r_a + r_b + r_c}$
$r_a$	<del>RES-AERO</del> Stable Conditions: $RES-AERO = \frac{0.74 \ln(\frac{z}{z_0}) + 4.7 \frac{z-z_0}{L}}{ku^*}$ , $z = 2 \text{ m.}$  Neutral Conditions: $RES-AERO = \frac{0.74 \ln(\frac{z}{z_0})}{ku^*}$ , $z = 2 \text{ m}$  Unstable Conditions: $RES-AERO = \frac{0.74}{ku^*} \left\{ \ln \left[ \frac{\sqrt{1-9\frac{z}{L}}-1}{\sqrt{1-9\frac{z}{L}}+1} \right] - \ln \left[ \frac{\sqrt{1-9\frac{z_0}{L}}-1}{\sqrt{1-9\frac{z_0}{L}}+1} \right] \right\}$	<del>Aerodynamic</del> resistance	<del>Stable:</del> $r_a = \frac{0.74 \ln(\frac{z}{z_0}) + 4.7 \frac{z-z_0}{L}}{ku^*}$ $z = 2 \text{ m.}$  <del>Neutral:</del> $r_a = \frac{0.74 \ln(\frac{z}{z_0})}{ku^*}$ $z = 2 \text{ m.}$  <del>Unstable:</del> $r_a = \frac{0.74}{ku^*} \left\{ \ln \left[ \frac{\sqrt{1-9\frac{z}{L}}-1}{\sqrt{1-9\frac{z}{L}}+1} \right] - \ln \left[ \frac{\sqrt{1-9\frac{z_0}{L}}-1}{\sqrt{1-9\frac{z_0}{L}}+1} \right] \right\}$
$r_c$	<del>RES-SURF</del> RES-SURF = $\frac{1}{\frac{1}{r_m+r_s} + \frac{1}{r_{cut}} + \frac{1}{r_{dc}+r_{cl}} + \frac{1}{r_{ac}+r_{gs}}}$	<del>Bulk surface</del> resistance	$r_c = \frac{1}{\frac{1}{r_m+r_s} + \frac{1}{r_{cut}} + \frac{1}{r_{ae}+r_{et}} + \frac{1}{r_{ae}+r_{gs}}}$

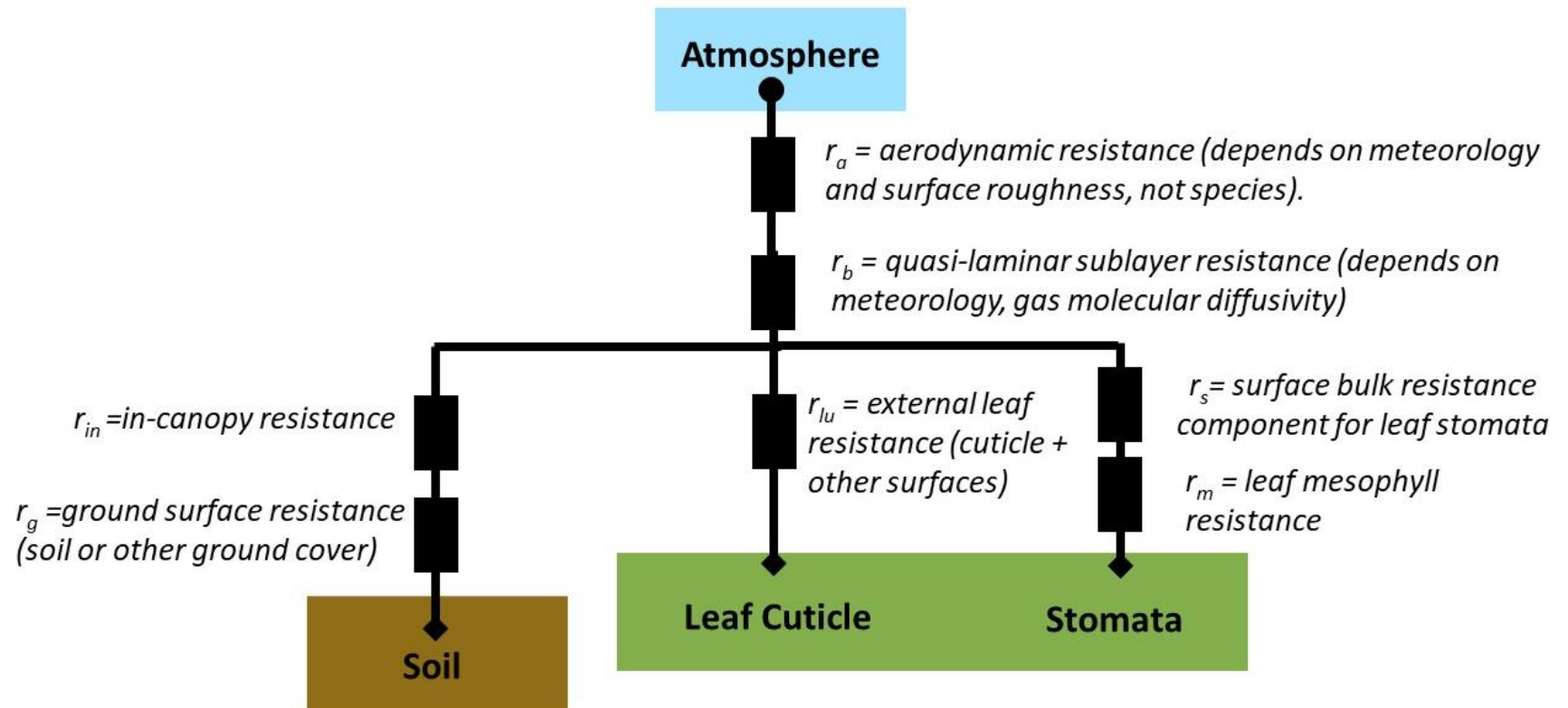
$r_s$	RES-STOM	Net stomatal resistance	$r_s = \text{RES-STOM} = r_i \left\{ 1 + \left( \frac{200}{Rad+0.1} \right)^2 \right\} \frac{400}{T(40-T)}$		
$r_m$			$\text{RES-MESO} = \frac{1}{\frac{H}{3000} + 100f_i}$	Net mesophyll resistance	$r_m = \frac{1}{\frac{H}{3000} + 100f_i}$
$r_{cut}$			$\text{RES-CUT} = r_{lu}$	Net cuticle resistance	$r_{cut} = r_{lu}$
$E_{STOM}$	ECOND-ST	Effective conductance associated with deposition to plant stomata	$E_{STOM} = \frac{1}{r_m + r_s} \text{ECOND-ST} = \frac{1}{r_m + r_s} r_c V_d$		
$E_{cut}$			$\text{ECOND-CUT} = \frac{1}{r_{cut}} r_c V_d$	Effective conductance associated with deposition to plant cuticles	$E_{cut} = \frac{1}{r_{cut}} r_c V_d$
$E_{SOIL}$	ECOND-SOIL	Effective conductance associated with deposition to soil and un-vegetated surfaces	$E_{SOIL} = \frac{1}{r_{ac} + r_{gs}} \text{ECOND-SOIL} = \frac{1}{r_{ac} + r_{gs}} r_c V_d$		
$E_{LCAN}$	ECOND-LCAN	Effective conductance associated	$E_{LCAN} = \frac{1}{r_{dc} + r_{cl}} \text{ECOND-LCAN} = \frac{1}{r_{dc} + r_{cl}} r_c V_d$		

		with deposition to the lower canopy.	
$r_{b, stom}$	<del>RES-QLST</del>	<del>RES_QLST = <math>r_b</math> Quasi-laminar sub-layer resistance</del>	$r_b = \underline{RES-QLST} = 2(ku^*)^{-1}(S_c/P_r)^{2/3}$
$r_{b, cut}$	<del>RES-QLCT</del>	<del>RES_QLCT = <math>r_b</math> Quasi-laminar sub-layer resistance</del>	$r_b = \underline{RES-QLCT} = 2(ku^*)^{-1}(S_c/P_r)^{2/3}$
$r_{b, soil}$	<del>RES-QLSL</del>	<del>RES_QLSL = <math>r_b</math> Quasi-laminar sub-layer resistance</del>	$r_b = \underline{RES-QLSL} = 2(ku^*)^{-1}(S_c/P_r)^{2/3}$
$r_{b, lcan}$	<del>RES-QLLC</del>	<del>RES_QLLC = <math>r_b</math> Quasi-laminar sub-layer resistance</del>	$r_b = \underline{RES-QLLC} = 2(ku^*)^{-1}(S_c/P_r)^{2/3}$
$r_{dc}$	<del>RES-CONV</del>	<del>Resistance associated with within canopy convection.</del>	$r_{dc} = \underline{RES-CONV} = 100(1 + \frac{1000}{Rad})$

	<b>Prescribed values (Table data) [pollutant, season]</b>
	$r_{cl}$ : for exposed surfaces in the lower canopy SO <sub>2</sub> , O <sub>3</sub>
	$r_{ac}$ : for transfer that depends on canopy height and density
	$r_{gs}$ : for ground surfaces SO <sub>2</sub> , O <sub>3</sub>
	$r_{si}$ : for stomatal resistance
	$r_{lu}$ : for outer surfaces in the upper canopy
	$H$ : Henry's law constant
	$f_i$ : Reactivity factor

**Example 7. COSMO-MUSCAT**

Figure B7. Resistance diagram for the dry deposition scheme implemented in CHIMERE

**COSMO-MUSCAT**

|

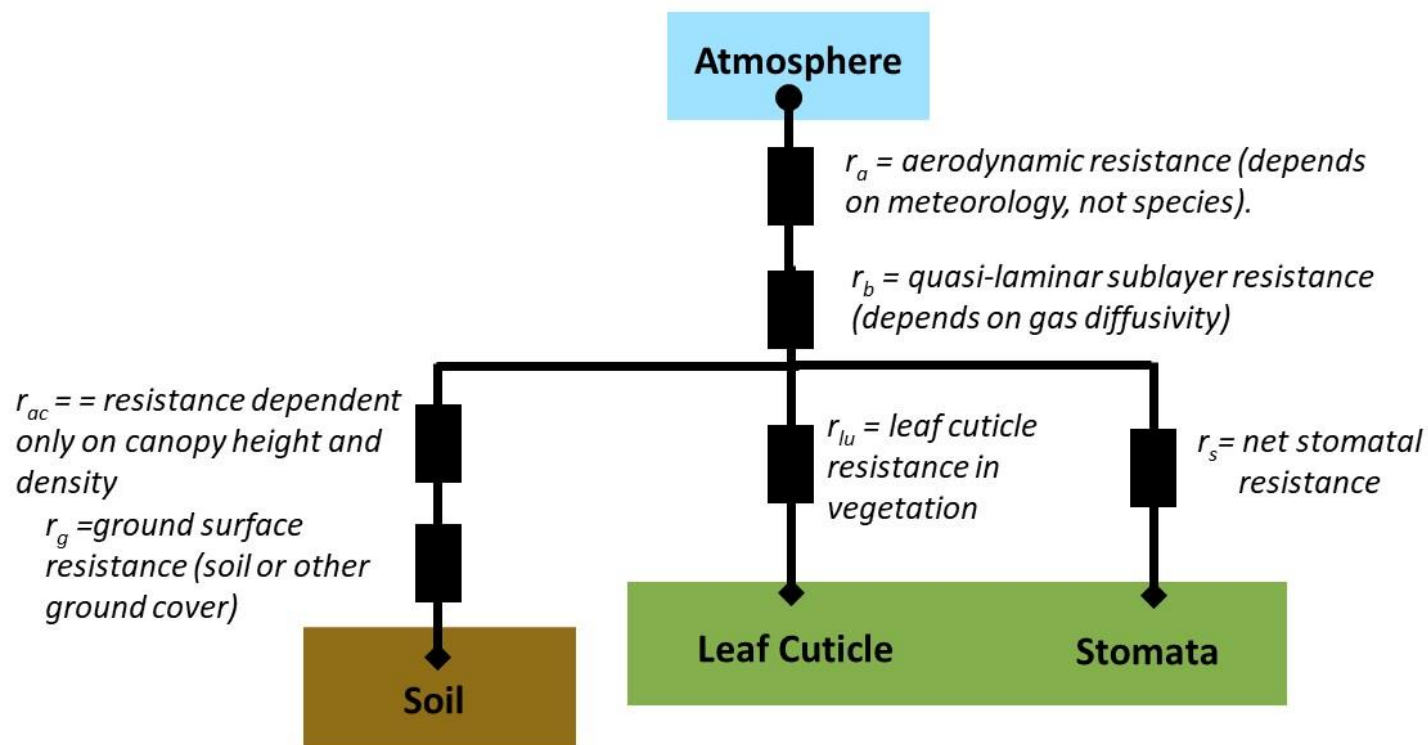


Table B7: AQMEII4 reported gaseous deposition variables corresponding to the [CHIMERE-COSMO-MUSCAT](#) resistance model of Figure [B7B8](#).

Name as described here		AQMEII4 Variable Name = resistance diagram variable name or formula	Formulae
$r_a$	<del>RES_AERO</del>	$RES\_AERO = r_a$	
$r_b$		<del>RES_QLSB</del>	<del><math>RES\_QLSB = r_b</math></del>
$r_c$		<del>RES_SURF</del> $RES\_SURF = \left( (r_s)^{-1} + (r_{lu})^{-1} + (r_{ac} + r_{gs})^{-1} \right)^{-1}$	<del><math>RES\_SURF = \left( (r_s + r_m)^{-1} + (r_{lu})^{-1} + (r_{in} + r_g)^{-1} \right)^{-1}</math></del>
$r_s$	<del>RES_STOM</del>	<del>RES-STOM</del> $RES\_STOM = r_s$	
$r_m$		<del>RES_MESO</del>	<del><math>RES\_MESO = r_m</math></del>
$r_{cut}$	<del>RES_CUT</del>	$RES\_CUT = r_{lu}$	
$r_{gs}$		$RES\_SOIL = r_{gs}$	
$E_{STOM}$	<del>ECOND-ST</del>	$ECOND\_ST = \left( \frac{(r_s + r_m)^{-1}}{(r_s + r_m)^{-1} + (r_{lu})^{-1} + (r_{in} + r_g)^{-1}} \right) \left( \frac{(r_s)^{-1}}{(r_s)^{-1} + (r_{lu})^{-1} + (r_{in} + r_{gs})^{-1}} \right) V_d$	
$E_{CUT}$	<del>ECOND-CUT</del>	$ECOND\_CUT = \left( \frac{(r_{lu})^{-1}}{(r_s + r_m)^{-1} + (r_{lu})^{-1} + (r_{in} + r_g)^{-1}} \right) \left( \frac{(r_{lu})^{-1}}{(r_s)^{-1} + (r_{lu})^{-1} + (r_{in} + r_{gs})^{-1}} \right) V_d$	
$E_{SOIL}$	<del>ECOND-SOIL</del>	$ECOND\_SOIL = \left( \frac{(r_{in} + r_g)^{-1}}{(r_s + r_m)^{-1} + (r_{lu})^{-1} + (r_{in} + r_g)^{-1}} \right) \left( \frac{(r_{in} + r_{gs})^{-1}}{(r_s)^{-1} + (r_{lu})^{-1} + (r_{in} + r_{gs})^{-1}} \right) V_d$	
$E_{LCAN}$		<del>ECOND-LCAN</del> $ECOND\_LCAN = -9$	<del><math>ECOND\_LCAN = -9</math> (not included as a separate a</del>
$r_{b, stom}$		$RES\_QLST = r_b$	



$\underline{r_{b,cut}}$	$\underline{RES-QLCT} = r_b$
$\underline{r_{b,soil}}$	$\underline{RES-QLSL} = r_b$

<b>Resistances provided by COSMO (calculated by the “TKE-Based Surface Transfer Scheme” for water vapor)</b>
<u><math>r_a</math>: aerodynamic resistance (depends on meteorology, not species)</u>
<u><math>r_b</math>: quasi-laminar sublayer resistance (depends on gas diffusivity; H<sub>2</sub>O-dependency is adjusted by gas diffusivity constants of the corresponding species)</u>
<u><math>r_{cut}</math>: net cuticle resistance (“roughness layer” resistance over vegetation)</u>
<u><math>r_{ac}</math>: resistance dependent only on canopy height and density (“roughness layer” resistance over non-vegetation)</u>

#### **The TKE-Based Surface Transfer Scheme (for water vapor)**

The surface-layer scheme used in COSMO is intimately related to the TKE scheme. Here, the surface layer is defined to be the layer of air between the earth surface and the lowest model level. We subdivide the surface layer into a laminar-turbulent sub-layer, the roughness layer, and a constant-flux or Prandtl layer above. The roughness layer extends from the non-planar irregular surface, where the turbulent distance  $l = \lambda / \kappa(\lambda)$  is the turbulent length scale and  $\kappa$  is the von Karman constant) is zero, up to a level  $l = H$ , such that  $l$  is proportional to the vertical height  $z$  within the Prandtl layer above. We choose to be equal to the dynamical roughness length  $z_0$ . The lower boundary of the constant-flux layer (and of the atmospheric model) is defined to be a planar surface at a turbulent distance  $l = H$  from the surface. This subdivision allows to discriminate between the values of the model variables at the rigid surfaces (predicted by the soil model) and values at the level  $l = H$ , which are ‘seen’ by the atmosphere. For both layers, the fluxes are written in resistance form, where a roughness layer resistance is acting for scalar properties but not for momentum. Specific interpolation schemes are used to calculate the transport resistances of the layers. The applied surface scheme does not make use of empirical Monin-Obukhov stability functions, rather it generates these functions by the use of the dimensionless coefficients of the Mellor-Yamada closure and the interpolation rules.

#### **“roughness layer”:**

The region of the atmosphere into which vegetation and/or buildings protrude.



## Appendix C. Bidirectional Ammonia Fluxes

If a bidirectional flux algorithm for ammonia is employed in the model, then the flux may be either downwards (defined positive here) or upwards (defined negative, here). The generic equation for the bidirectional flux with this directionality is:

$$F_T = \frac{c_a - c_c}{r_{sum}} \quad (7)$$

Where  $F_T$  is the net flux,  $c_a$  and  $c_c$  are the atmospheric and canopy compensation point concentrations of ammonia gas, and  $r_{sum}$  is a sum of resistances. Different sources in the literature make use of different formula for both  $c_c$  and  $r_{sum}$ . For example, Zhang et al (2010) employs:

$$r_{sum} = r_a + r_b, \text{ and } c_c = \frac{\left( \frac{c_a}{r_a + r_b} + \frac{c_s}{r_s} + \frac{c_g}{r_{ac} + r_{gs}} \right)}{\left( \frac{1}{r_a + r_b} + \frac{1}{r_s} + \frac{1}{r_{ac} + r_{gs}} + \frac{1}{r_{lw}} \right)} \quad (8)$$

Where  $c_s$  and  $c_g$  are compensation point concentrations relative to stomata and ground, respectively, and all other terms are defined as above. In contrast, CMAQ with the M3dry deposition option uses (Bash et al. 2013, Pleim et al. 2013, Pleim et al., 2019):

$$r_{sum} = r_a + 0.5 r_{inc} \\ r_{inc} = 14LAI \frac{h_{can}}{u_*} \text{ (based on Erisman, 1994)} \quad (9) \\ c_c = \frac{-B + (B^2 - 4AC)^{0.5}}{2A}$$

Where

$$A = r_{wet} G_t \\ B = r_{wb} G_t + LAI(1 - f_{wet}) - r_{wet} (G_a c_a + G_{sb} c_s + G_g c_g) \\ C = -r_{wb} (G_a c_a + G_{sb} c_s + G_g c_g) \\ 14LAI \frac{h_{can}}{u_*} \text{ (based on Erisman, 1994), and } c_c = \frac{-B + (B^2 - 4AC)^{0.5}}{2A} \quad (9)$$

Where the variables A, B, and C in the quadratic of (9) are given by:

$$A = r_{wet} G_t \\ B = r_{wb} G_t + LAI(1 - f_{wet}) - r_{wet} (G_a c_a + G_{sb} c_s + G_g c_g) \\ C = -r_{wb} (G_a c_a + G_{sb} c_s + G_g c_g) \quad (10)$$

And

$$G_a = (r_a + 0.5 r_{inc})^{-1} \\ G_{sb} = (r_s + r_b)^{-1} \\ G_g = (r_{bg} + 0.5 r_{inc} + r_{sum})^{-1} \\ G_t = G_{sb} + G_g + G_a + f_{wet} G_{cw} \\ G_{cw} = \frac{LAI}{r_b + r_{wet}} \\ r_{wet} = \frac{r_{can}}{H_{eff}} \\ r_{wb} = r_{wet} + LAI[a_w(1 - f_{wet}) + r_b] \quad \text{The variables used to generate the coefficients in (10) for the CMAQ M3dry option are given by:}$$

$$\begin{aligned}
G_a &= \frac{1}{r_a + 0.5r_{inc}} \\
G_{sb} &= \frac{1}{r_s + r_b} \\
G_g &= \frac{1}{r_{bg} + 0.5r_{inc} + r_{soil}} \\
G_t &= G_{sb} + G_g + G_a + f_{wet} G_{cw} \\
G_{cw} &= \frac{LAI}{r_b + r_{wet}} \\
r_{wet} &= \frac{R_{wo}}{H_{eff}} \\
r_{wb} &= r_{wet} + LAI[a_h(1 - f_{RH_s}) + r_b]
\end{aligned} \tag{11}$$

Where the terms  $r_{soil}$ ,  $H_{eff}$ ,  $a_h$ ,  $f_{RH_s}$ , and  $R_{wo}$  are defined in Pleim *et al.* (2013). Note that in the latter reference (their equation (20)), the summation term in (10) above  $G_a c_a$  is repeated twice within the bracketed terms (i.e.  $(G_a c_a + G_{sb} c_s + G_g c_g)$  as above is written  $(G_a c_a + G_{sb} c_s + G_a c_a + G_g c_g)$ , but this second occurrence of  $G_a c_a$  is likely a typo).

CMAQ with the STAGE deposition option closely follows the widely used Massad *et al.* (2010) and Nemitz *et al.* (2001) parameterizations modified to include the option for a cuticular compensation point and employs the same resistance model for all deposited species as it reduced to RES-SURF from table B3 when the stomatal,  $C_s$ , cuticular,  $C_{cut}$ , and ground,  $C_g$ , compensation points are zero.  $\text{NH}_3$  bidirectional flux from the cuticle has been shown to be important (cuticular  $\text{NH}_3$  reference) however parameterizations applicable in a regional-scale model do not yet exist

$$r_g = r_{dc} + r_{gnd,qlsb} + r_{gs} \tag{12}$$

$$r_{sum} = r_a \tag{13}$$

$$\frac{C_e}{r_a} = \frac{\frac{C_a}{r_a} + \frac{C_{leaf}}{r_{can,qslsb}} + \frac{C_g}{r_g}}{\frac{C_a}{r_a} + \frac{C_{leaf}}{r_{can,qslsb}} + \frac{C_g}{r_g}} \tag{14}$$

$C_{leaf}$  is the leaf compensation point and is estimated by solving for the exchange between the canopy compensation point and the atmosphere, stomata, cuticle and ground following Kirchhoff's current law (e.g. Nemitz *et al.* 2000).  $C_{leaf}$  is solved from this system of equations as:

$$\frac{C_{leaf}}{r_a} = \frac{\frac{C_a}{r_a} + \frac{C_s}{r_s} + \frac{C_{cut}}{r_{cut}} + \frac{C_g}{r_g}}{\frac{C_a}{r_a} + \frac{C_s}{r_s} + \frac{C_{cut}}{r_{cut}} + \frac{C_g}{r_g}} \tag{15}$$

The resistances  $r_{cut}$ ,  $r_{can,qslsb}$ , and  $r_{gnd,qlsb}$  are taken from Massad *et al.* 2010,  $r_{dc}$  follows Shuttleworth and Wallace (1985) but integrated the canopy transport model of Yi 2008 using the in-canopy eddy diffusivity of Bash *et al.* 2010 from the soil surface to top of the canopy and assuming  $r_a = p_r U/u^*$ , the remainder of the resistances are the same as CMAQ with the M3dry deposition option.

$$r_{dc} = r_a \left( e^{\frac{LAI}{2}} - 1 \right) \tag{16}$$

Comparing approaches (8 through 16),  $r_{sum}$ ,  $r_a$ , and  $C_c$  are held in common, and these approaches also make use of a stomatal ( $C_s$ ) and ground ( $C_g$ ) compensation point concentration, although how these terms are combined varies

considerably between these approaches. For this reason, these common terms are reported as a separate TSD for ammonia bidirectional fluxes in AQMEII4 in order to allow cross-comparison of different approaches.

Note that the net flux of ammonia  $F_T$  appears as DFLUX-NH3 in the AQMEII4 documentation provided to participants as TSDs and may be positive or negative depending on direction. Ammonia values for  $r_b$ , net canopy resistance, stomatal resistance, mesophyll resistance, cuticle resistance and the three effective conductances also appear elsewhere in the TSDs, both for the grid scale and by AQMEII4 LULC category.