

Reply on RC2

Thanks for the feedback on this work. We have responded to each reviewer comment below. Our replies are in blue, and the revised manuscript text is written in bold.

The authors performed inversion analyses of atmospheric CH₄ using column average data from TROPOMI and GOSAT. Since the TROPOMI product is at the initial stage, the retrieved CH₄ data may have substantial uncertainties. Considering those uncertainties, this study elucidated characteristics of the TROPOMI data specifically for inverse results by comparing with the GOSAT data, which are at a mature stage. The inversions and related statistical calculations they performed revealed significant discrepancies between TROPOMI and GOSAT in terms of error characteristics and information content, and much better quality of the GOSAT data at this moment. Detail information of the TROPOMI CH₄ data obtained in this study is surely useful for improving the data quality of the TROPOMI data in a near future. The manuscript is well structured and most descriptions are clear to me. I think this paper can be published for Atmospheric Chemistry and Physics after minor revisions suggested below.

L43: “Climate change action” is better than “Climate action”, isn’t it?

Modified as suggested.

L45: Here, “GOSAT” first appears in the main text. Therefore, it should be written as “Greenhouse Gases Observing Satellite (GOSAT)”

Modified as suggested.

L53-54: Like “TROPOMI (GOSAT) observes light intensity at 2305-2385 (1630-1700) nm wavelength”

Modified as suggested.

L64: “inversion of a chemical transport model” => “inversion with a chemical transport model”

Modified as suggested.

L89-90: “one year of data” => “one year data”

Modified as suggested.

L105: TCCON first appears here. It should be “Total Carbon Column Observing Network (TCCON)”. Furthermore, it is better to make a brief explanation of TCCON so that people who are not familiar in this field can understand the purpose of the use of TCCON.

We made the following modifications:

“We conducted ... with ground-based **Total Carbon Column Observing Network (TCCON)** measurements ... **TCCON is a network of ground-based, sun-viewing, near Infra-Red, Fourier transform spectrometers to measure greenhouse gases [Wunch et al., 2011] and evaluate satellite retrievals [Parker et al., 2011; Butz et al., 2011; Houweling et al., 2014].**”

L141: Why was the 4x5 degree used only here (Fig. 3)? The other analyses seem to be done with the 2x2.5 degree.

We started the project by evaluating the two observations at 4°x5° resolution. We do not expect the bias to change when reducing the resolution to 2°x2.5°, so we did not redo this evaluation.

L201-202: I think this kind of pulse calculations assumes that the model is linear. Does the GEOS-Chem satisfies the model linearity?

We added the following sentence in the first paragraph of Section 3 to clarify:

“We use the GEOS-Chem global CTM ... in the inversion. **The model is essentially linear except for a small nonlinearity from the optimization of OH concentrations [Maasakkers et al., 2019].**”

We also made the following modifications in the third paragraph of Section 1:

“Analytical solution is **possible if the CTM is linear, as is the case for methane, and** has the advantage of ...”

L203: Only one-year-long inversion fluxes would have some errors attributed from the initial mole fraction field, which was optimized just by the globally uniform factor, especially for the earlier period. I think some discussion about that error is needed.

We added the changes in NMSE before and after correcting the initial condition in the sentence following the cited one:

“Initial conditions on January 1, 2019 are obtained from ... This initialization **efficiently reduces the normalized mean square error (NMSE) between GEOS-Chem and TROPOMI observations on January 1, 2019 from 0.37 to 0.02 and** is used for both TROPOMI and GOSAT inversions.”

L256: How is the “35” derived?

We changed the sentence to:

“In this manner we performed **6** inversions using TROPOMI observations only (**base inversion + 5 sensitivity inversions**), **6** inversions using GOSAT observations only, and **6 × 6 = 36** inversions using the joint TROPOMI and GOSAT observations.”

L266: The term “averaging kernel matrix” is familiar in the satellite retrieval field, but not the case for flux inversions. Although, it is theoretically correct, it might be better to put some note to avoid confusion.

We added the following sentence after Equation 6 to clarify:

“Note that A here is different from the retrieval averaging kernel vectors in Section 2, which described the sensitivity of methane satellite retrievals to the vertical distribution of methane.”

L292: The ratios of the posterior/prior non-wetland emissions in Fig. 5 show values close-to-zero or over 2 in many places (e.g., over Europe and Africa in the joint case). Does this mean that the inversion zeroed/doubled non-wetland emissions? If that is the case, are the resulted emissions reasonable?

Doubled emission is not a problem since it is just 2σ ($\sigma = 50\%$) away from the prior. We added the following sentence to the title of Figure 5 to address the negative ratios:

“Less than 3% grid cells have negative posterior / prior ratios, which is allowed by the statistics but is likely unphysical.”

L314: It is hard to see the effect of TROPOMI. It would be better to show sensitivity differences from those of the GOSAT inversion case in the right bottom panel of Fig. 5.

We add a Figure in the Supporting Information to show the difference:

Averaging kernel sensitivities (Joint - GOSAT)

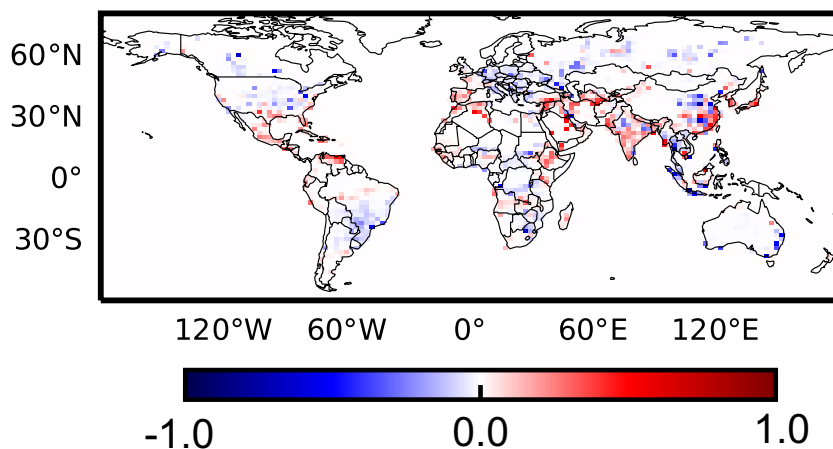


Figure S3. Differences between averaging kernel from the joint inversion and GOSAT inversion.

We change the description of the averaging kernel from the joint inversion to:

“In the joint inversion, TROPOMI observations add additional DOFS to the GOSAT posterior at 0°–30° N (mainly over India and the Middle East, **Figure 5 and Figure S3**), where TROPOMI has more observations than in the rest of the world (Figure 1).”

L324: Is this the same for GOSAT?

We added the following sentence to this paragraph:

“The GOSAT-only inversion without error weighting for wetlands shows no such problems, but we still apply error weighting in that base inversion for comparison to TROPOMI.”

L347: Why does the GOSAT inversion show negative biases against the GOSAT observations almost everywhere? Is that contributed by the strong prior constraint to wetland emissions?

We added the following sentence after the cited one:

“GOSAT observations are still underestimated by an average of 5.3 ppbv in the GOSAT inversion because the information from the observations is not sufficient to fully correct the bias in the prior estimate.”

L371-372: Can you estimate magnitude of the potential errors due to the strong constraint on wetland emissions?

We changed the sentence to:

“Our restricted adjustment of wetland emissions means that errors in wetland emissions could be projected to non-wetland sectors. **For example, for the TROPOMI-only inversion, global posterior non-wetland emissions are 361 Tg a⁻¹ in the base inversion and 389 Tg a⁻¹ in the sensitivity inversion without increased weight for wetland emissions (Table S1). For the GOSAT inversion the effect is much less, 399 versus 404 Tg a⁻¹ (Table S2).**”

L386: Specify the version of EDGAR.

We changed the sentence to:

“This has been a long-standing result of inversions of satellite data using EDGAR **v4.1 and v4.2** as prior estimate ... but GFEI takes its spatial allocation of coal emissions from EDGAR **v4.3.2.**”

L392: Not clear what is “inconsistent” with the TROPOMI inversion.

We changed the sentence to:

“Our TROPOMI inversion over Southeast China shows spatially inconsistent results **with the GOSAT inversion** (Figure 5) and overcorrects ...”

L402: What is the “base” inversion?

We made the following modifications to 7th paragraph of Section 3.2:

“**In addition to the base inversion as described above**, we examined the sensitivity to the choice of γ with sensitivity inversions...”

L424: The number of 34 Tg a⁻¹ seems not consistent with Fig. 7, which looks like around 40 Tg a⁻¹. Furthermore, I am not sure why the joint inversion increased the emissions estimate, as each inversion showed downward estimates from the prior estimate.

A joint inversion is not a linear addition of the adjustments from the TROPOMI and GOSAT inversions. In the joint inversion, the DOFS in the south-central US, where methane emissions show large upward adjustments, becomes relatively large compared to the rest of the US. The large upward adjustments in the south-central US therefore contribute to the upward adjustments in the US posterior emissions.

We changed the last sentence in Section 4.3.2 to:

“The joint inversion adjusts emissions upwards to **40 Tg a⁻¹** due to the larger **averaging kernel** sensitivity over the south-central US, **where emissions have large upward adjustments.**”

We also update the national emissions in Section 4.3.2 to be consistent with Figure 7.