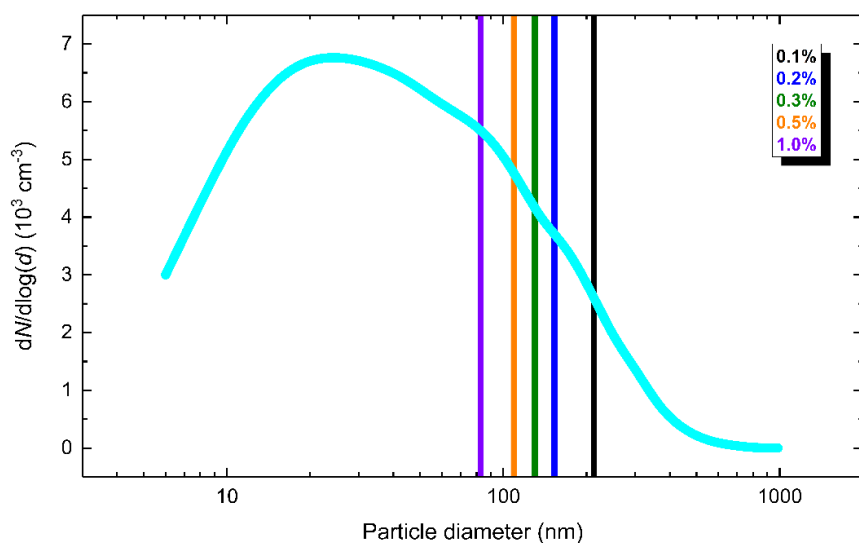
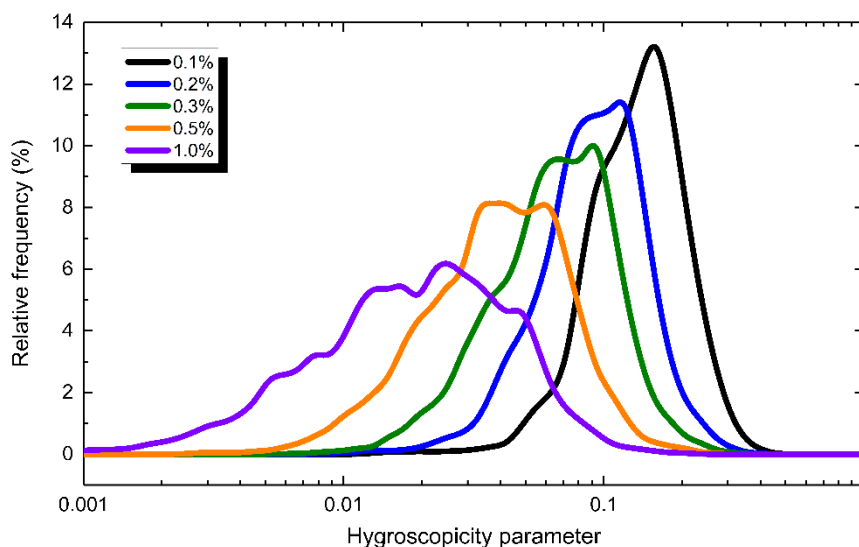


1 **Table S1.** Ranges, medians and means with SDs of the hourly ambient air temperature (T , in $^{\circ}\text{C}$), relative humidity (RH, %),
 2 wind speed (WS, m s^{-1}), global solar radiation (GRad $>10 \text{ W m}^{-2}$, W m^{-2}) and atmospheric pressure (P , hPA) at the
 3 measurement location for the whole measurement year.
 4

Statistics	T	RH	WS	GRad	P
Min	-5.7	12	0.16	10	972.8
Median	13.2	67	1.55	251	1003.2
Max	37	100	7.7	940	1033.0
Mean	13.8	66	1.79	315	1003.6
SD	8.7	20	1.12	252	7.9



19 **Figure S1.** Median particle number size distribution for the whole measurement year with the effective critical dry particle
 20 diameters at 207, 149, 126, 105 and 80 nm, respectively (vertical lines) derived for supersaturations of 0.1, 0.2, 0.3, 0.5 and
 21 1.0 %.



36 **Figure S2.** Differential frequency distributions of hygroscopicity parameter at supersaturations of 0.1, 0.2, 0.3, 0.5 and 1.0 %
 37 normalised to the total count of the parameter data.