

A Satellite Data-Driven Framework to Rapidly Quantify Air Basin-Scale NO_x Emission and Its Application to the Po Valley during the COVID-19 Pandemic

Kang Sun^{1,2}, Lingbo Li¹, Shruti Jagini¹, and Dan Li³

¹Department of Civil, Structural and Environmental Engineering, University at Buffalo, Buffalo, NY, USA

²Research and Education in Energy, Environment and Water Institute, University at Buffalo, Buffalo, NY, USA

³Department of Earth and Environment, Boston University, Boston, MA, USA

Correspondence: Kang Sun (kangsun@buffalo.edu)

Abstract. The evolving nature of the COVID-19 pandemic necessitates timely estimates of the resultant perturbations to anthropogenic emissions. Here we present a novel framework based on the relationships between observed column abundance and wind speed to rapidly estimate air basin-scale NO_x emission rate and apply it at the Po Valley in Italy using OMI and TROPOMI NO_2 tropospheric column observations. The NO_x chemical lifetime is retrieved together with the emission rate and found to be 15–20 h in winter and 5–6 h in summer. A statistical model is trained using the estimated emission rates before the pandemic to predict the trajectory without COVID-19. Compared with this business-as-usual trajectory, the real emission rates show three distinctive drops in March 2020 (–42%), November 2020 (–38%), and March 2021 (–39%) that correspond to tightened COVID-19 control measures. The temporal variation of pandemic-induced NO_x emission changes qualitatively agree with Google and Apple mobility indicators. The overall net NO_x emission reduction in 2020 due to the COVID-19 pandemic is estimated to be 22%.

Copyright statement. TEXT

1 Introduction

Satellite observations have revolutionized our ability to observe the Earth’s atmospheric composition and air quality. Vertical column densities (VCDs) of reactive species such as NO_2 , HCHO, SO_2 , and NH_3 are retrieved from the observed radiances in ultraviolet, visible, or the infrared bands. The tropospheric VCD (TVCD) retrieval of NO_2 has been widely used to infer the emissions of nitrogen oxides ($\text{NO}_x = \text{NO}_2 + \text{NO}$), which is at the center stage of atmospheric chemistry by modulating ozone and secondary aerosol formation (Kroll et al., 2020). The NO_x emissions are dominated by anthropogenic fossil fuel combustion, and its chemical lifetime in the lower troposphere is relatively short. Consequently, the satellite-observed NO_2 TVCD is highly responsive to perturbations of human activities, including economic recession (Castellanos and Boersma, 2012; Russell et al., 2012), long- and short-term emission regulations (Duncan et al., 2016; Mijling et al., 2009; Witte et al.,

2009), and the ongoing global pandemic caused by coronavirus, COVID-19 (Bauwens et al., 2020; Liu et al., 2020; Huang and Sun, 2020).

Although NO_2 TVCD is well established as an indicator of NO_x emission, the quantitative connection between NO_2 abundance and NO_x emission is confounded by nonlinear chemistry and meteorology (Valin et al., 2014; Goldberg et al., 2020; Keller et al., 2021). Many NO_x emission inference methods have been proposed using chemical transport models (CTMs) that resolve chemistry and meteorology in space and time, including mass balance (Martin et al., 2003; Lamsal et al., 2011; Zheng et al., 2020), four-dimension variational data assimilation (4D-Var, Qu et al., 2019; Wang et al., 2020), and Kalman filters (Miyazaki et al., 2020a; Mijling and Van Der A, 2012; Ding et al., 2020). Ding et al. (2020) and Miyazaki et al. (2020b) used CTMs to estimate NO_x emission reduction in China in the early phase of the COVID-19 pandemic, but it is a growing challenge to match the resolution, lag time, and running cost of CTMs with the new generation satellite products that resolve the NO_2 spatial distribution down to a few km. As such, observational data-driven approaches have been also developed, which attempt to derive emissions based on the observed column abundance and without invoking CTMs. A common way to estimate emissions of short-lived species like NO_x is to retrieve emission and lifetime simultaneously by fitting an exponentially-modified Gaussian (EMG) function to the downwind plumes from relatively isolated emission sources (e.g., cities or power plants) (Beirle et al., 2011; Liu et al., 2016; de Foy et al., 2015; Lu et al., 2015; Goldberg et al., 2019b, a; Laughner and Cohen, 2019; Valin et al., 2013; Zhang et al., 2019). However, the observational data-driven approaches using OMI only provide warm-season or annually averaged emissions and hence cannot capture the rapidly varying and ongoing COVID-19-induced emission changes. The availability of much more finely resolved TROPOMI observations since 2018 enables observation-based NO_x emission estimates at daily scale over a megacity (Lorente et al., 2019).

Based on satellite observations and reanalysis wind speed, we develop a novel framework that directly and quickly quantifies air basin-scale NO_x emissions at monthly resolution. We demonstrate this framework using NO_2 TVCDs from both OMI and TROPOMI over the Po Valley air basin in Italy, which has been severely affected by COVID-19 (Filippini et al., 2020). The COVID-19-induced emission decline has to be disentangled from pre-existing trends and seasonality. Leveraging the long data record from OMI, we build a statistical model using historic emission rates and predict the business-as-usual trajectory in 2020–2021. The difference between this trajectory and the real 2020–2021 emissions reflects the net effect of COVID-19. As the pandemic and the controlling policies are still evolving in 2021, this extrapolation using long-term satellite record offers significant advantage over a simple 2020 vs. 2019 comparison. Although only NO_x emission in the Po Valley is investigated in this work, this satellite data-driven framework can be readily applied to other satellite products and regions to rapidly characterize emission changes.

2 Materials

2.1 Satellite TVCDs

We use the most recent (version 4) NO_2 level 2 TVCD retrievals from the NASA operational standard product for OMI (Lamsal et al., 2021). The operational TROPOMI NO_2 product (van Geffen et al., 2020; ESA, 2018) used in this study underwent

several algorithm updates since its public release in 30 April 2018. A significant cloud retrieval algorithm update happened in
55 November 2020, leading to substantial increase of retrieved NO₂ TVCD in polluted regions. The TROPOMI NO₂ algorithm is
expected to be updated with full reprocessing in 2021 to improve its consistency and continuity (GES DISC, 2021). The level
2 orbits covering the geographical region of interest over every month are standardized into single files from October 2004 to
February 2021 for OMI and from May 2018 to February 2021 for TROPOMI. We only use quality-assured level 2 pixels with
cloud fraction < 0.3 and solar zenith angle < 70°. Throughout the OMI mission, its across-track pixels are limited to 5–23 out
60 of 1–60 to avoid the row anomaly and keep the time series analysis consistent (Duncan et al., 2016; Schenkeveld et al., 2017).
TROPOMI features 450 pixels across its 2600-km swath and a nadir pixel size of 3.5 × 5.5 km² (3.5 × 7 km² before 6 August
2019), leading to significantly higher spatial resolution than OMI, whose nadir pixel size is 13 × 24 km².

Validation studies of both OMI and TROPOMI NO₂ TVCDs consistently show systematic low biases (Choi et al., 2020;
Judd et al., 2020; Verhoelst et al., 2021), which can be attributed to the horizontally coarse a priori profile representation as
65 well as uncertainties in surface albedo and cloud parameters in the air mass factor (AMF) calculation. This low bias matters
less for emission trend analysis, but will proportionally impact the absolute values of the derived emission rate. This study
focuses on an air basin in which high level of pollution is confined, and the spatial gradient is significantly less than many other
polluted regions. The relative biases between OMI and TROPOMI NO₂ TVCD are assessed by comparing strictly collocated
level 2 retrievals and given in Appendix A. OMI NO₂ TVCD is generally higher than TROPOMI in the cold season with
70 monthly OMI-TROPOMI normalized mean bias (NMB) up to over 30%, whereas the TROPOMI TVCD is generally higher in
the warm season with monthly OMI-TROPOMI NMB down to −20%.

2.2 Study domain and NO_x emission inventories

The Po Valley air basin is delineated according to the boundary between the flat terrain in northern Italy and mountain ranges in
the north, west, and south as well as the Adriatic Sea coastline in the east, as shown in Figure 1. The air basin area is 6.6 × 10⁴
75 km². The west-east length scale is ~ 500 km, and the south-north length scale is ~ 300 km, both larger than the square root of
basin area (257 km) due to the irregularity of the basin shape. We contrast our derived monthly, air basin-scale NO_x emission
rates with four global inventories. Their emission distributions near the Po Valley air basin are illustrated in Figure 1. The
Jet Propulsion Laboratory (JPL) chemical reanalysis provides monthly top-down emission estimates at 1.1° × 1.1° spatial
resolution in 2005–2019 (Miyazaki et al., 2019, 2020a). The NO_x emissions from the JPL chemical reanalysis (Figure 1a)
80 are constrained by assimilating O₃, NO₂, CO, HNO₃, and SO₂ from the OMI, GOME-2, SCIAMACHY, MLS, TES, and
MOPITT satellite instruments (Miyazaki et al., 2020a) and are considered to have the highest accuracy in spite of its relatively
low spatial resolution. The rest three are bottom-up emission inventories, including the Community Emission Data System
(CEDS, McDuffie et al., 2020), Emissions Database for Global Atmospheric Research version 4.3.2 (EDGAR, Crippa et al.,
2018), and the Peking University NO_x (PKUNOX, Huang et al., 2017) inventories. The CEDS inventory is spatially resolved
85 at 0.5° × 0.5° (Figure 1b) and available monthly from 1970 to 2017. Both EDGAR and PKUNOX are at 0.1° × 0.1° spatial
resolution (Figure 1c-d). EDGAR is available annually from 1970 to 2012, and PKUNOX is available monthly from 1960 to

2014. Because of the large the grid sizes of JPL chemical reanalysis and CEDS inventories, we calculate the air basin-mean emission rate by averaging inventory grid cells that overlap with the Po Valley air basin, weighted by the overlapping area.

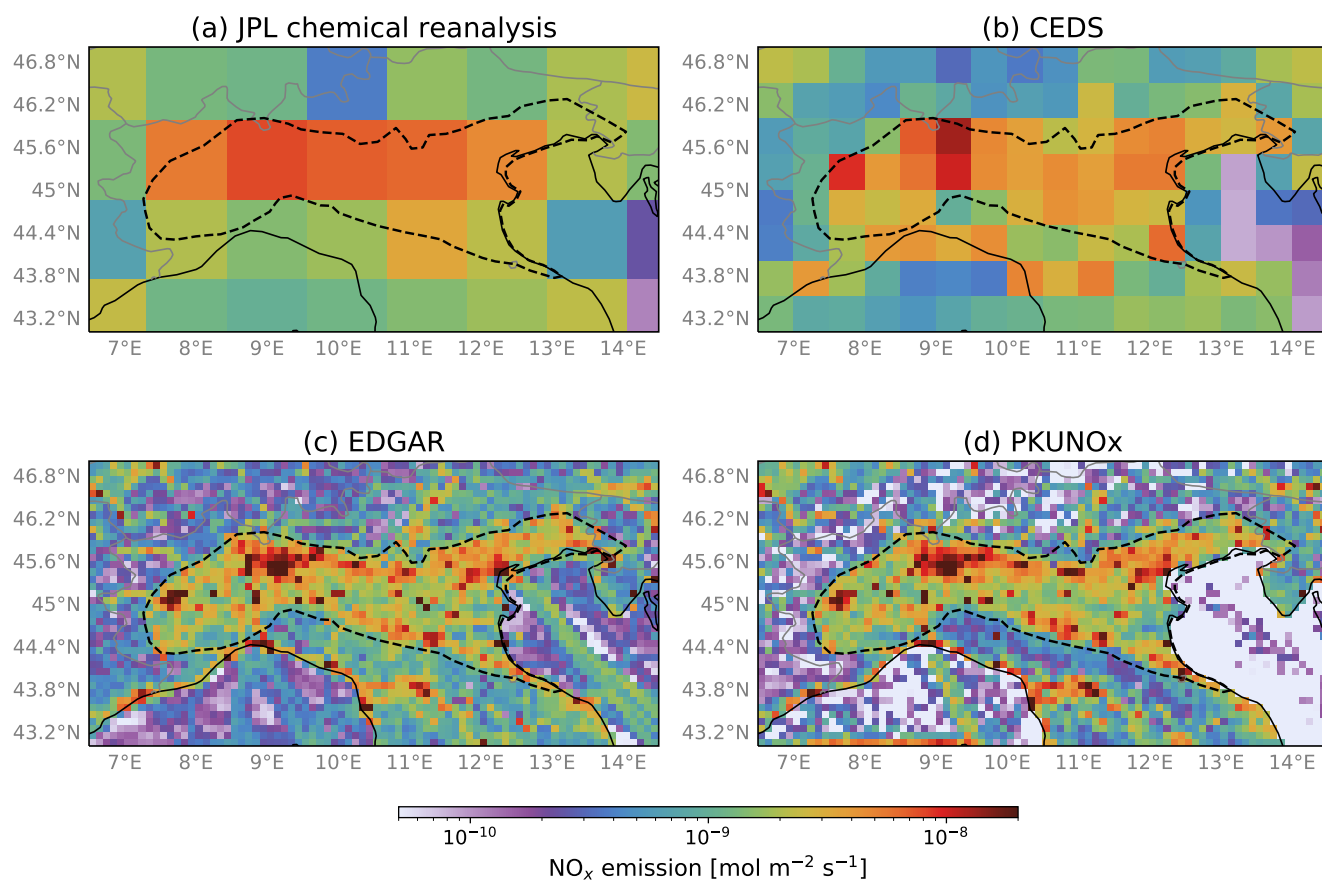


Figure 1. Spatial distribution of annual NO_x emission in 2005 near the Po Valley air basin (black dashed line) from (a) JPL chemical reanalysis, (b) CEDS, (c) EDGAR, and (d) PKUNOx.

2.3 Wind fields

90 We use wind fields gridded at $0.25^\circ \times 0.25^\circ$ spatial resolution and hourly temporal resolution from the ERA5 reanalysis meteorology (Hersbach et al., 2020). The relevant ERA5 fields are spatiotemporally interpolated at each individual OMI/TROPOMI level 2 observation. Previous observational data-driven emission inference studies represented horizontal advection of NO_2 (or similar short-lived tracers like SO_2 and NH_3) by 10m wind above the surface (de Foy et al., 2015), 100m above the surface (Goldberg et al., 2020), vertically averaged wind from surface to 500m (Lu et al., 2015; Liu et al., 2016; Goldberg et al., 2019a), or vertically averaged wind from surface to 1000m (Fioletov et al., 2017; Dammers et al., 2019). Figure 2 quantitatively compares the wind speeds of these four options using ERA5 data sampled at OMI level 2 observations within the Po Valley

air basin boundary (see Figure 1) from October 2004 to February 2021. These four wind speeds show strong linear correlation with stronger winds when higher altitudes are involved. The surface-1000m wind speed is almost twice as strong as the 10m wind, whereas the two intermediate options, the 100m wind and surface-500m wind are similar with a difference of 13%. The wind directions among those four options show much larger discrepancy, but only the wind speeds will be used in this study.

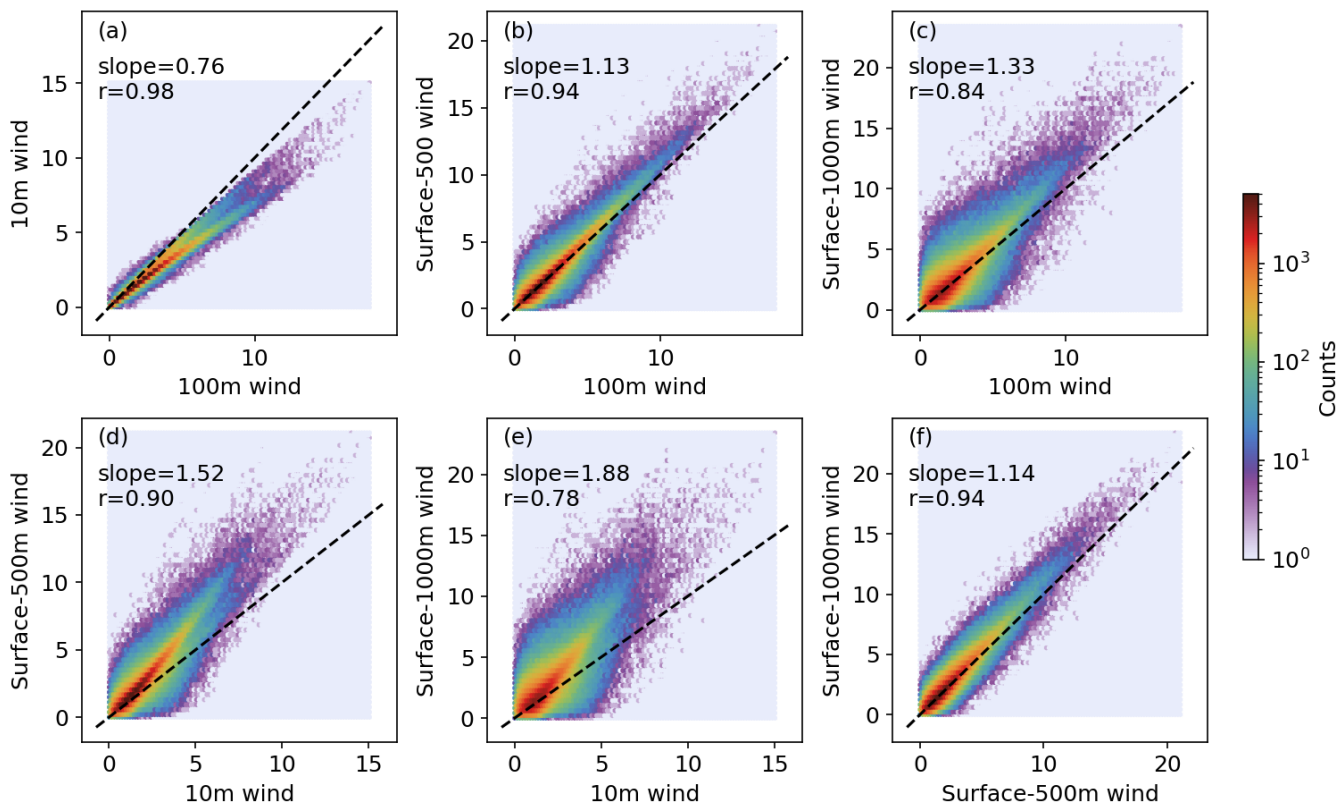


Figure 2. Correlations between speeds of 100m wind and 10m wind (a), 100m wind and surface-500m wind (b), 100m wind and surface-1000m wind (c), 10m wind and surface 500m wind (d), 10m wind and surface-1000m wind (e), and surface-500m wind and surface-1000m wind (f). Wind data are from ERA5 meteorology sampled at valid OMI NO_2 observation locations in the Po Valley air basin in 2004–2021. The slopes labeled in the plot is from orthogonal regression, and r is correlation coefficient. Unit is m s^{-1} .

2.4 In-situ NO_x observations

We use the ground-based NO_x observations over the Po Valley available from air quality data portal of the European Environment Agency (EEA) to constrain the temporal variation of $\text{NO}_x:\text{NO}_2$ ratio (EEA, 2021). The validated data (E1a) are used for years 2013–2019 and combined with up-to-date data (E2a) for 2020–2021. Only valid hourly data in 13–14 local time with both NO_2 and NO_x available are included in the analysis. We include only ground-based observations within OMI level 2 pixels with cloud fraction < 0.3 , but the resultant all-sky vs. clear-sky differences are insignificant.

3 Methods

3.1 Construction of column-wind speed relationships by physical oversampling

110 A key step to estimate NO_x emission from the observed NO_2 TVCDs is to construct the column-wind speed relationship by averaging column amounts over a range of wind speed intervals. Physical oversampling (Sun et al., 2018) provides a flexible way to spatiotemporally average satellite data with proper weighting and slice the data under different environmental conditions (e.g., wind speed). The averaged NO_2 TVCD ($\langle \Omega \rangle$) given sets of filtering criteria with respect to space (s), time (t), and other level 2 parameters (p) can be calculated as:

$$\langle \Omega \rangle(s, t, p) = \frac{\sum_{j \in s} \sum_{i \in t, p} w_{i,j} \Omega_i}{\sum_{j \in s} \sum_{i \in t, p} w_{i,j}}. \quad (1)$$

115 Here j is the index of each level 3 grid cell at 0.01° resolution, and $j \in s$ includes all grid cells satisfying the spatial aggregation criterion s (e.g., within the boundary of an air basin). Ω_i is NO_2 TVCD retrieved at level 2 pixel i . $i \in t, p$ keeps only level 2 pixels satisfying time filtering criteria (e.g., within a calendar month) and parameter filtering criteria (e.g., wind speed at the level 2 pixel within a certain interval). $w_{i,j}$ is the weight of level 2 pixel i at level 3 grid cell j and depends on the spatial response of pixel i at grid cell j as well as the retrieval uncertainty at pixel i (Zhu et al., 2017; Sun et al., 2018).

120 The column-wind speed relationship for an air basin over a certain time interval is an array of averaged NO_2 TVCDs over different wind speed intervals (every 0.5 m s^{-1} in this study):

$$\langle \Omega \rangle = [\langle \Omega \rangle(0 \text{ m s}^{-1} \leq W < 0.5 \text{ m s}^{-1}), \langle \Omega \rangle(0.5 \text{ m s}^{-1} \leq W < 1.0 \text{ m s}^{-1}), \dots], \quad (2)$$

where W is the horizontal wind speed that is interpolated at level 2 pixels and representative of horizontal advection. The four wind speed options shown in Figure 2 are tested in this study. Figure 3 shows the column-wind speed relationships for OMI and TROPOMI over the Po Valley in December 2018–November 2020 grouped into four seasons. TROPOMI provides 2–3 times more coverage than OMI, as indicated by the dot sizes, but ~ 50 times more valid level 2 pixels due to much finer spatial resolution, as labeled in the legends.

3.2 Conceptual model of column-wind speed relationships

The emission rate over an air basin Q can be linked to the basin-average column amount through a box model

$$130 \quad \langle \Omega \rangle = \frac{Q}{\phi A \left(\frac{1}{\tau_d} + \frac{1}{\tau_c} \right)}, \quad (3)$$

where boldface symbols indicate vectors. The averaged NO_2 TVCD $\langle \Omega \rangle$ and dynamic lifetime τ_d are both vectors resolved over a range of wind speeds \mathbf{W} , ϕ is $\text{NO}_x:\text{NO}_2$ ratio, A is the air basin area, and τ_c is the NO_x chemical lifetime. For cloud-free mid-day conditions in polluted air mass, ϕ is conventionally assumed to be a constant of 1.32 with 20% uncertainty in satellite-based NO_x emission estimates (Seinfeld and Pandis, 2006; Liu et al., 2016; Beirle et al., 2019). We further constrain

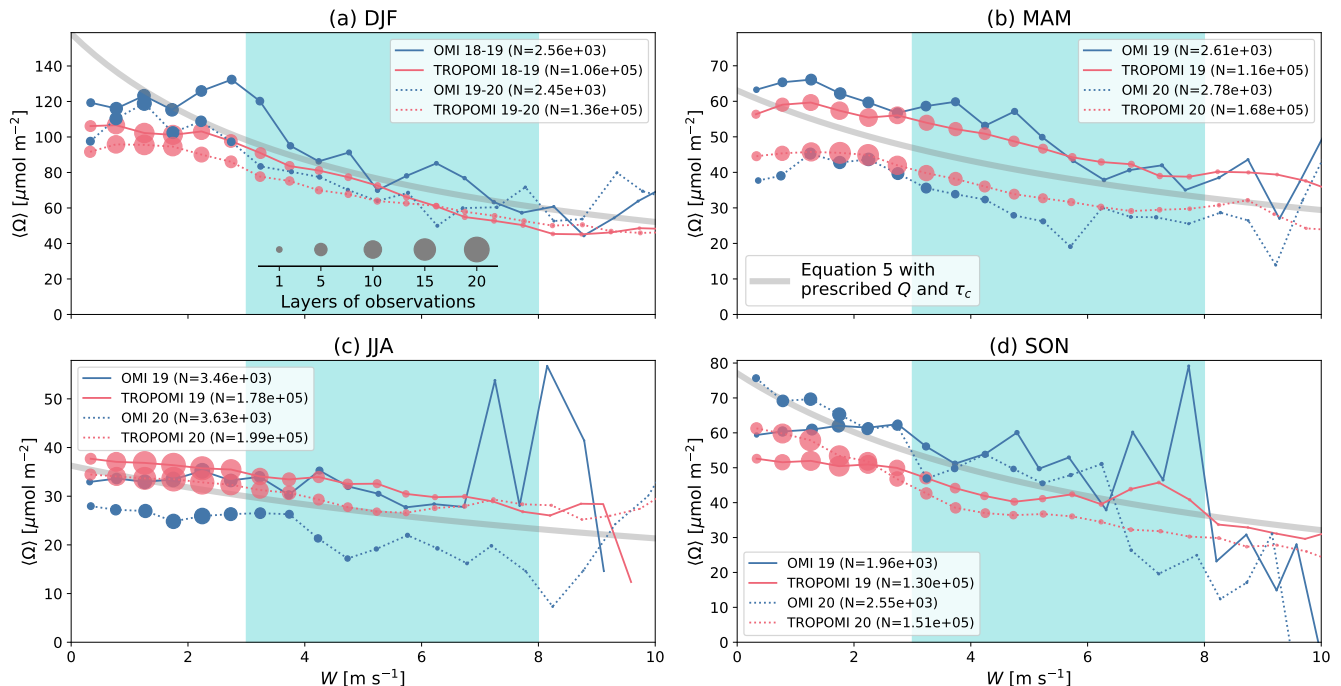


Figure 3. Relationships between OMI (blue) and TROPOMI (red) NO₂ TVCDs and wind speeds in December, January, February (DJF, a), March, April, May (MAM, b), June, July, August (JJA, c), and September, October, and November (SON, d). Data are shown as solid lines for 2019 (including December 2018) and dotted lines for 2020 (including December 2019). Layers of level 2 observation coverage are indicated by dot sizes. N in the legends denotes total number of level 2 pixels used in each column-wind speed relationship. Thick gray lines show the behaviors of Eq. 5 using prescribed NO_x emission rate (Q) of 240, 170, 160, and 170 $\mu\text{mol m}^{-2}$ and chemical lifetime (τ_c) of 16, 9, 5.5, and 11 hours for the four seasons. Modest wind range of 3–8 m s^{-1} is highlighted by cyan shade.

135 the temporal variation of ϕ using observations in Section 4.3. The NO_x chemical lifetime may vary with wind speed depending on complicated nonlinear chemistry (Valin et al., 2013), so the scalar τ_c here should be considered as the average value over the wind speed range. The high noise level in column-wind speed relationships prevents us to obtain further wind speed dependence of chemical lifetime. We simplify the dynamic lifetime dimensionally as the ratio between wind speed and the horizontal length scale of the air basin L :

$$140 \quad \tau_d = \frac{L}{W}. \quad (4)$$

This implicitly assumes that the horizontal wind efficiently ventilates pollution away from the air basin. However, the Po Valley is surrounded by mountains except the east side. Low wind conditions may only circulate air pollution within the basin boundary. We thus limit our analysis over moderate wind speeds as will be shown in Figure 3. We don't find systematic differences in column-wind relationships over different wind directions over moderate wind speeds, so all wind directions are combined to maximize the number of observations. Then the conceptual model of column-wind speed relationship can be

written as

$$\langle \Omega \rangle = \frac{Q}{\phi A \left(\frac{W}{L} + \frac{1}{\tau_c} \right)}, \quad (5)$$

Van Damme et al. (2018) and de Foy et al. (2015) have applied such box models to estimate short-lived NH_3 and NO_x emission rates by prescribing their chemical lifetimes. The dynamic lifetime was neglected (Van Damme et al., 2018) or calculated as the ratio between near-surface wind speed and half edge length of the square box (de Foy et al., 2015). Similar box models have been also used to infer area-integrated CH_4 emission rates from column observations (Buchwitz et al., 2017; Varon et al., 2018). The chemical lifetime of CH_4 is negligible, and the dynamic lifetime was constrained by CTM simulations in these studies. Considering that the four wind options described in Section 2.3 (10m, 100m, surface-500m, and surface-1000m) give different yet strongly correlated wind speed values (Figure 2), we expect different L values are needed for those wind options. End-to-end emission rate estimates are performed using those four wind speed options with a range of L values in Section 4.1. We found that using 100m wind and $L = 280$ km for the Po Valley air basin (close to $\sqrt{A} = 257$ km) gives emission rate estimates that are most consistent with the JPL chemical reanalysis, which is considered to contain the smallest bias due to high level of observational constraints. This is deemed as a calibration for the dynamic lifetime and is specific to the Po Valley air basin.

The behaviour of Eq. 5 is shown in Figure 3 as gray lines with prescribed emission rate Q and chemical lifetime τ_c values for each season. Equation 5 implies that the column abundance should monotonously decrease with wind speed and, for the same chemical lifetime, scales with emission rate. When the chemical lifetime gets shorter, the $1/\tau_c$ term becomes larger relative to the dynamic lifetime term W/L , and hence the column abundance becomes a weaker function of wind speed. This is demonstrated by the fact that the NO_2 TVCDs decrease more rapidly with stronger wind in winter, indicating a longer NO_x chemical lifetime. The overall higher levels of NO_2 TVCDs in winter result from the combined effects of longer chemical lifetime and stronger emissions (see Section 4.4 for the seasonality of emission rates derived from this study as well as other top-down and bottom-up inventories).

As shown in Figure 3, the observed column-wind speed relationship deviates from Eq. 5 at lower and upper limits of wind speed. The simple parameterization of dynamic lifetime by L/W assumes that the ventilation of the air basin is driven by horizontal advection, which is not valid when the basin air mass is stagnant. This is supported by the flattening of column-wind speed relationships at low wind speeds. At high wind speed, the number of valid observations rapidly decreases, leading to excessive noise. Therefore, we restrict our analysis to a moderate wind speed range of 3–8 m s^{-1} , as indicated by the shaded areas in cyan color in Figure 3.

3.3 Retrieving emission rate and chemical lifetime from column-wind speed relationships

As shown in Eq. 5, $\langle \Omega \rangle$ and W are vectors with elements separated by wind speeds, so we may directly fit Eq. 5 to the observed column-wind speed relationships and simultaneously obtain emission rate Q and chemical lifetime τ_c . However, the information of τ_c mainly comes from the flatness of the observed column-wind speed relationship, and thus the fitted τ_c is

highly sensitive to observational noise. Because Q and τ_c are strongly anti-correlated, the error in τ_c is efficiently propagated to the fitted Q . For example, the spikes in the observed OMI column-wind speed relationships in Figure 3c-d would result in unphysically low chemical lifetime and unrealistically high emission rate without proper regularization. To reliably retrieve Q for each calendar month throughout the OMI and TROPOMI record, we build a monthly climatology of τ_c from aggregated observation data and use it as prior information in a Bayesian optimal estimation framework (Rodgers, 2000; Brasseur and Jacob, 2017). The steps are summarized below, followed by described description in this section.

1. The monthly column-wind speed relationships are aggregated into 12 months for all the years (“climatological months” hereafter, in contrast to calendar months), separately for OMI (2004-2021) and TROPOMI (2018-2021). τ_c and Q are then fitted from the column-wind speed relationship of each climatological month.
2. The fitted τ_c values in the previous step are used as prior constraint in a Bayesian inversion to optimally estimate NO_x chemical lifetimes in the 12 climatological months.
3. The optimally estimated τ_c climatology is used as prior constraint to retrieve emission rate Q and τ_c for each calendar month, separately for OMI and TROPOMI.

3.3.1 Constructing and fitting climatological column-wind speed relationships

The column-wind speed relationship of each climatological month is averaged from 3-month windows in all available years. For example, the climatological month June is averaged from May–July in 2005–2020 for OMI and 2018–2020 for TROPOMI. Although each climatological column-wind speed relationship is averaged from a significant number of calendar months (48–51 for OMI and 7–9 for TROPOMI), unregularized nonlinear fitting of Q and τ_c is still highly unstable. Figure 4 shows the independent fitting of the column-wind speed relationships for each climatological month for OMI (a-b) and TROPOMI (c-d) as black symbols. The gray symbols show 100 bootstrap realizations for each climatological month, where the calendar months used for averaging are selected randomly with replacement in each realization. This bootstrapping is necessary for realistic error estimation, as the fitting errors are substantially biased low due to strong anti-correlation of fitted parameters. Some climatological months (April, May, and September for OMI and August–October for TROPOMI) are characterized by nonphysically high emission rate and low chemical lifetime, whereas others (January and February for OMI) are subject to spurious high chemical lifetime. Those originate from irregular features on the column-wind speed relationship (observable in Figure 3) and tend to be more significant when satellite coverage is low. Because of the stochastic nature of atmospheric motion, those irregular features randomly appear in a limited number of calendar months, leading to wide spread of bootstrapping realizations and namely large uncertainties in emission rate and chemical lifetime estimates.

We additionally remove “outlier” calendar months that would significantly alter the fitted τ_c and Q from the climatological column-wind speed relationship. These outlier months are often characterized by anomalously high NO_2 TVCDs over a few wind speed bins. For each calendar month, the corresponding climatological month is processed twice, with and without that calendar month included in the averaging. The differences of the fitted Q and τ_c the climatological month with and without a specific calendar month are displayed in Figure 5. The calendar month is excluded as an outlier if the absolute value of its

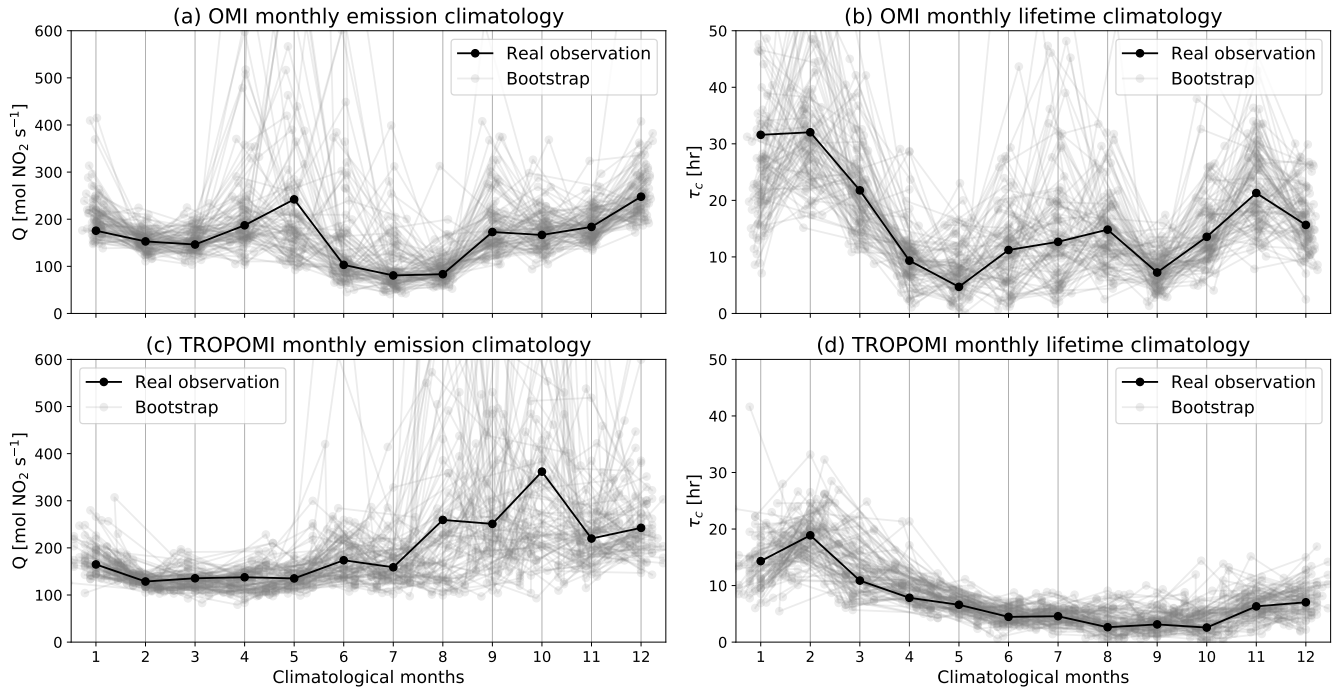


Figure 4. Fitting of the column-wind speed relationships for each climatological month for OMI (a-b) and TROPOMI (c-d). The black symbols are fitted from real observed data, and the gray symbols are bootstrapping realizations.

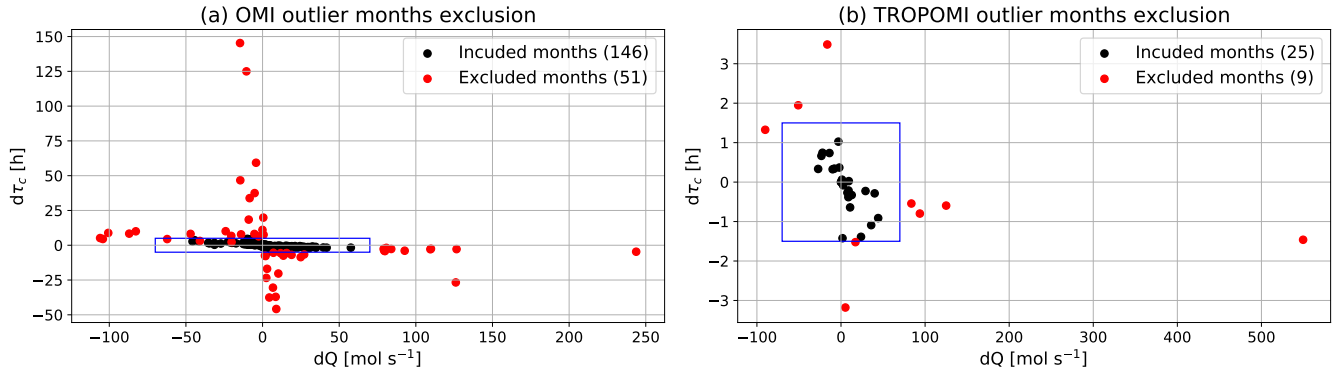


Figure 5. Exclusion of outlier months (red) for OMI (a) and TROPOMI. Each dot locates the differences of Q and τ_c from the corresponding climatological month fitting with and without a specific calendar month. The blue boxes show the boundaries delineating the maximum tolerated Q and τ_c influences from each calendar month to their corresponding climatological month.

impact on the climatological Q is larger than 70 mol s^{-1} or the absolute value of its impact on the climatological τ_c is larger than 1.5 h. The long record of OMI enables a second round of outlier removal, where the climatology is averaged from a single month (instead of 3-month window). It is impossible to do that for TROPOMI as one climatological month would only have 2–3 calendar months to average from. In this round, the max Q difference with/without including a calendar month is still 70 mol s^{-1} , but the max τ_c difference is relaxed to 5 h. The excluded calendar months are highlighted by red dots in Figure 5. More winter months are excluded due to lower coverage and consequently noisier column-wind speed relationship. 53% of winter calendar months in the OMI record are excluded, while the overall removal rate is 30%.

After identifying and excluding the outlier calendar months, the climatological column-wind speed relationships are finalized and the climatology of emission rates and chemical lifetimes are fitted again. The results are shown by Figure 6. The fitting quality is significantly improved, as indicated by the reduced variation of bootstrap realizations.

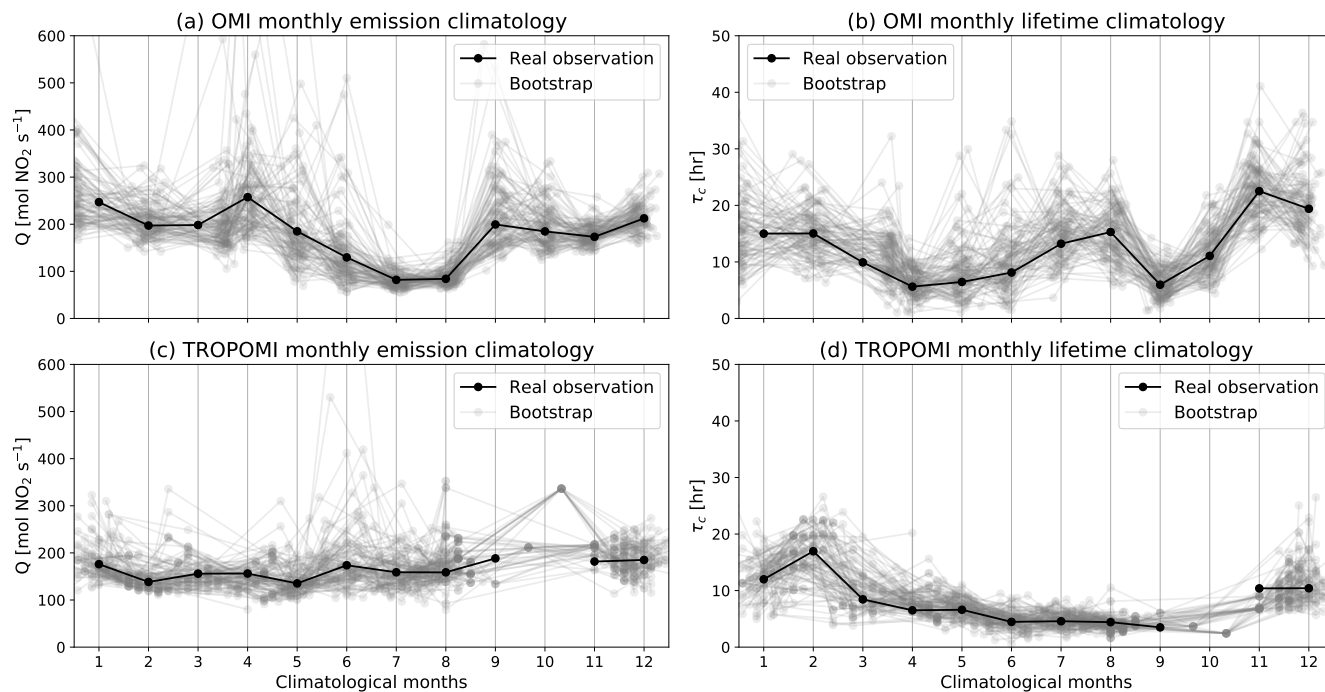


Figure 6. Similar to Figure 4, but after outlier months exclusion shown in Figure 5.

3.3.2 Optimal estimation of climatological chemical lifetime

The climatological NO_x chemical lifetimes fitted from the previous step are still unsatisfactory due to remaining large errors and correlation between fitted emission rates and chemical lifetimes. For instance, the OMI-based chemical lifetimes in climatological months April and September are unrealistically shorter than the summer months (Figure 6b), which is inconsistent with the TROPOMI values (Figure 6d) and corresponds to suspiciously high emission rates in those two climatological

months (Figure 6a). To further improve the climatology estimates, we incorporate the a priori information that the climatology should vary smoothly over the year through a Bayesian optimal estimation. The regularization from the optimal estimation will effectively suppress noise in the observed column-wind speed relationship.

In this optimal estimation setup, the 12 climatological column-wind relationships are concatenated into a single observation
230 vector, and the 12 climatological chemical lifetimes and emission rates are retrieved simultaneously as a 24-element state vector. The fitted OMI- and TROPOMI-based τ_c values with outlier calendar months removed (black symbols in Figure 6b and d) are averaged together and smoothed by a first-order Savitzky-Golay filter with a 3-month window (Savitzky and Golay, 1964). This smoothed curve is used as the prior values of chemical lifetimes for both OMI and TROPOMI. The prior value for the emission rates is a constant 260 mol s^{-1} for all climatological months. The prior error standard deviation is loosely set
235 at 150% for both Q and τ_c , and a time correlation scale of 1.5 month is assumed within the lifetime terms and the emission rate terms in the prior error covariance matrix. The model-observation mismatch error depends on satellite retrieval error, the representativeness of satellite observation in the air basin, and the chaotic nature of atmospheric motion. Little is known about the last two sources of error except that longer averaging time may reduce them, so we simplify the model-observation mismatch error as a single regularization factor λ that presents its overall variance. Optimal λ values are determined separately
240 for OMI and TROPOMI by balancing the norm of fitting residuals and the norm of prior error-weighted deviation of the solution to the prior using the L-curve (Hansen and O'Leary, 1993). Details in the optimal estimation set up are provided in Appendix B.

Figure 7 shows the posterior climatological emission rates Q (a and c) and chemical lifetimes τ_c (b and d) optimally estimated using OMI (a and b) and TROPOMI (c and d) column-wind speed relationships. After taking into account the correlations
245 between climatological months via Bayesian optimal estimation, the errors are markedly reduced compared with individual climatological month fittings shown in Figure 4 and Figure 6. The climatological emission rates estimated from OMI data are higher than TROPOMI, because overall the OMI record covers more early years (2004–2021) than TROPOMI (2018–2021), and the emission rate has been decreasing (see Section 4.4). The posterior climatological chemical lifetimes will be discussed in Section 4.2.

250 3.3.3 Optimal estimation of emission rates and chemical lifetimes for all calendar months

Finally, the monthly NO_x emission rate and chemical lifetime are retrieved from the column-wind speed relationships of all calendar months simultaneously in an optimal estimation algorithm (see Appendix B for technical details). The prior values of monthly τ_c are taken from the OMI-based τ_c climatology due to its overall higher quality and longer temporal coverage (see Figure 7b and d and further discussion in Section 4.2). In other words, the OMI-based posterior chemical lifetimes in the
255 12 climatological months are used as the prior chemical lifetime in each calendar month for both OMI and TROPOMI. The prior error of calendar month τ_c is assumed to be 30% and auto-correlated with an inter-annual time scale of 1.5 years and an intra-annual time scale of 1.5 months. This prior regularization to the τ_c terms is instrumental in the successful retrieval of emission rate Q . The prior values of monthly Q are estimated from an exponential function fitted from the annually averaged JPL chemical reanalysis emission rates, and 100% prior errors are used. No error correlations are assumed among the Q terms

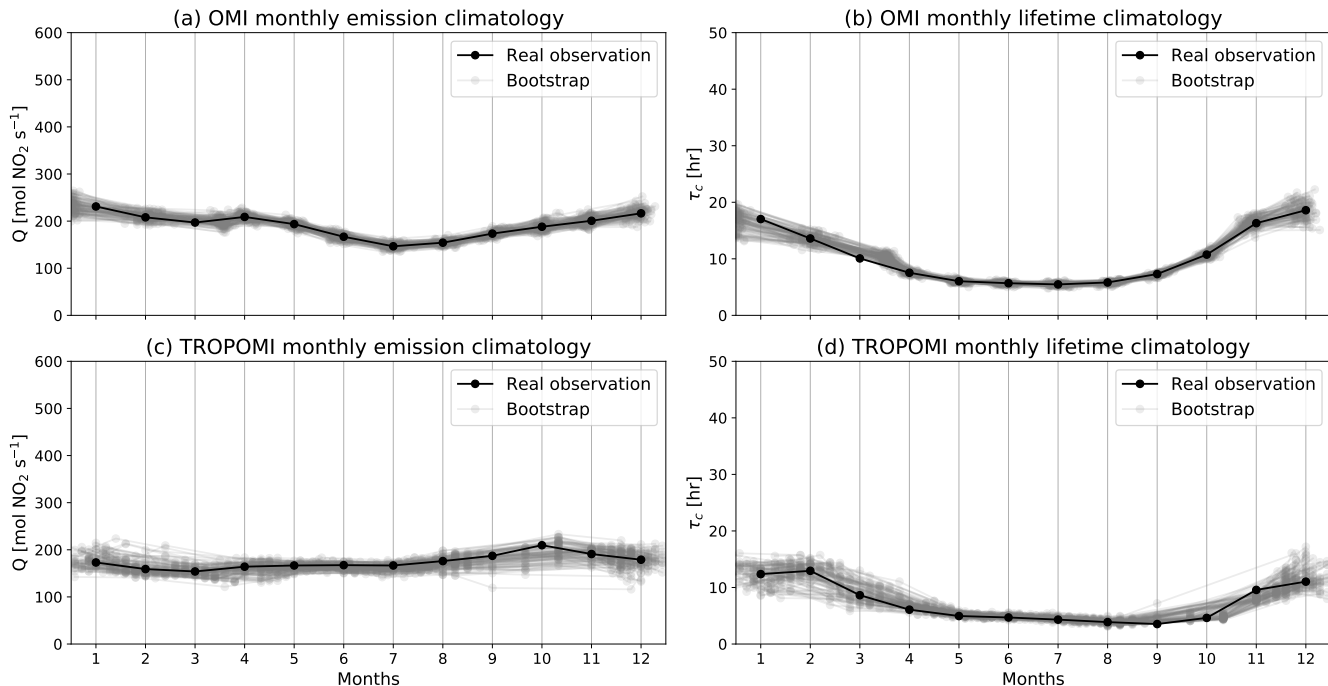


Figure 7. Similar to Figure 4 and Figure 6, but using Bayesian optimal estimation incorporating prior knowledge that the climatological emission rates and lifetimes should vary smoothly.

260 and between Q and τ_c terms. This configuration maximizes the information content of emission rates Q from observations while suppressing excessive noise in the results.

4 Results

4.1 Selection of air basin length scale

Equation 5 expresses the dynamic lifetime of NO_x in an air basin dimensionally as the ratio between a length scale L and wind speed. To assess the uncertainties induced by such simplification, we conduct sensitivity studies using end-to-end emission rate and chemical lifetime estimations described in Section 3.3 by switching wind speed options described in Section 2.3 and varying the prescribed values for L . The resultant OMI-based emission rates are compared with total surface NO_x emission rates from the JPL chemical reanalysis. We choose OMI-based emission rates due to its long-term consistency and large overlap with the JPL chemical reanalysis. The combined wind speed option and L value that gives the closest agreement with the JPL chemical reanalysis monthly emission rate is selected, as the overall accuracy of the the JPL chemical reanalysis is constrained by multiple observation datasets.

265
270

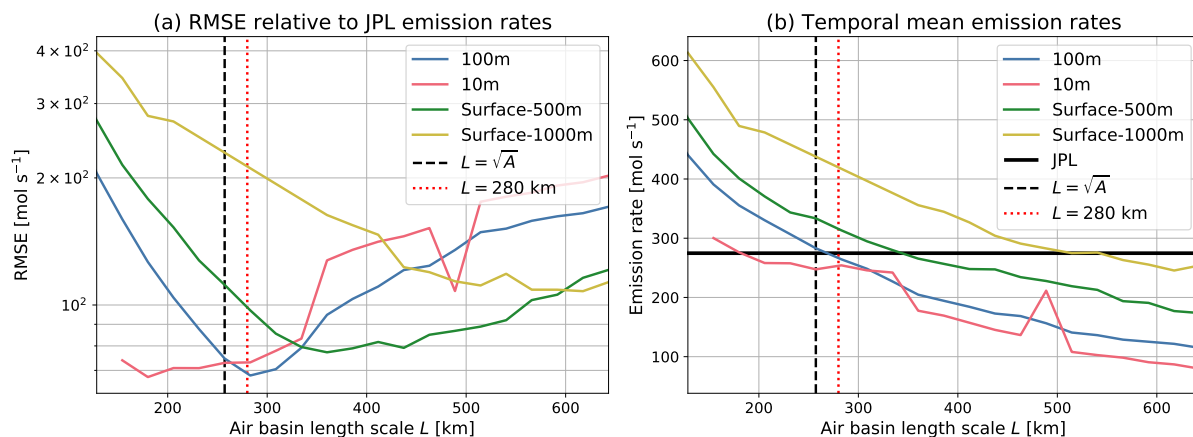


Figure 8. (a) Root-mean-square error (RMSE) of OMI-based emission rates relative to the monthly JPL chemical reanalysis emission rates in 2005–2019 when using 10m, 100m, surface-500m, and surface-1000m wind speeds as \mathbf{W} in Eq. 5 and a range of L values. (b) Comparison of the temporal mean emission rates estimated from those wind and length scale options with the mean JPL chemical reanalysis emission rate. Square root of the air basin area is shown as the black vertical dashed line, and the selected air basin length scale (280 km) is shown as the red vertical dotted line.

Figure 8a shows the root-mean-square error (RMSE) between the OMI-based emission rates and corresponding JPL chemical reanalysis values in 2005–2019, and Figure 8b compares the temporally averaged emission rates. The optimal L value, characterized by the lowest RMSE and the matching of temporal mean emission rates to the JPL mean value, increases in the order of 10m, 100m, surface-500m, and surface-1000m wind, consistent with the overall magnitude of those four wind options. As shown by Figure 2, those four wind speeds are well linearly correlated. Therefore, the optimal L value scales with the wind strengths and partially “absorb” the systematic differences between wind speed options. We choose 100m wind due to its low optimal RMSE and better representation of horizontal advection than the 10m wind. The basin length scale L is selected to be 280 km, similar to the square root of the air basin area (257 km). One should note that this length scale is specific to the Po Valley air basin and should be fixed in time. A length scale should be similarly estimated before applying such framework to other source regions.

4.2 NO_x chemical lifetimes

The optimally estimated climatological chemical lifetimes, which are already shown in Figure 7b and d are replotted in Figure 9 to emphasize the confidence intervals and the prior values that is common for OMI and TROPOMI. The TROPOMI-based chemical lifetime estimates are consistently lower than the OMI-based values, but the error bars overlap in climatological months January–July, indicating that the differences are not significant. Because the OMI climatology spans 2004–2021 while TROPOMI one spans 2018–2021, this difference implies a weak yet notable long-term decrease of NO_x chemical lifetime. This is likely due to the decrease of NO_x emissions (see Figure 12) and consequently the shifting of chemical regimes away

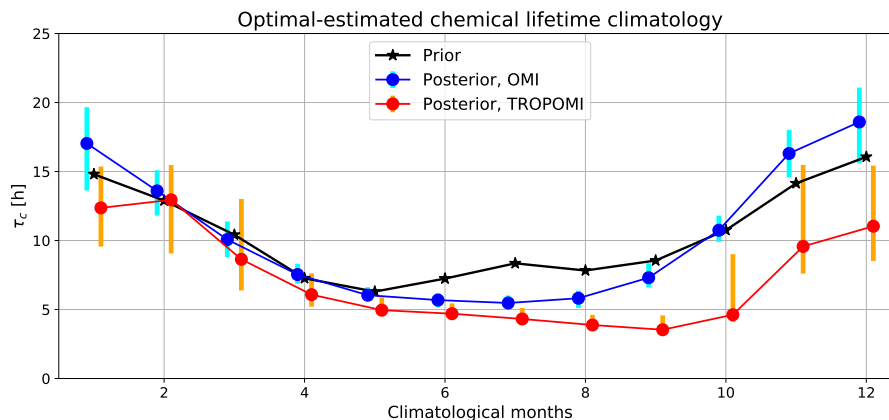


Figure 9. Prior (black) and posterior (blue for OMI and red for TROPOMI) climatological chemical lifetimes from optimal estimation. The prior chemical lifetimes are based on nonlinear fitting to the climatological column-wind speed relationships. The error bars indicate 95% confidence intervals by bootstrapping the calendar months used to construct each climatological column-wind speed relationship.

from NO_x -saturated conditions (Martin et al., 2004). Shifting in summertime NO_x chemical lifetime due to change of NO_x abundance and chemical regimes has been identified in North American cities using OMI observations and an EMG-based approach (Laughner and Cohen, 2019). Model studies indicated similar NO_x chemical lifetime change in polluted regions undergoing decreasing emissions. Using the GEOS-Chem CTM, Silvern et al. (2019) found that the annual mean tropospheric NO_2 column lifetime over the contiguous US is 8.1 h in 2005 and 7.7 h in 2017. Shah et al. (2020) simulated NO_x lifetime to be 6.1 h and 27 h in summer and winter in 2012 and 5.9 h and 21 h in summer and winter 2017 using GEOS-Chem in China. Over The Netherlands, Zara et al. (2021) found the winter NO_x lifetime decreased from 25 to 19 h and the summer NO_x lifetime decreased from 9 to 8 h using the Chemistry Land-surface Atmosphere Soil Slab (CLASS) model.

The TROPOMI-based climatological chemical lifetimes are suspiciously low after September. As the NO_x sinks are driven by ambient temperature and solar radiation, we do not expect lower chemical lifetimes in September–October than June–July. This anomaly likely results from abnormal TROPOMI column-wind speed relationships characterized by high NO_2 TVCDs in a few wind speed bins. Although the individual monthly column-wind speed relationship from OMI is noisier than TROPOMI (Figure 3), the much longer OMI record (197 calendar months vs. 34 calendar months for TROPOMI) enables more effective removal of outlier months and retrieval of climatological chemical lifetimes. As such, we focus on the OMI-based chemical lifetime climatology for the following analysis. The NO_x climatological chemical lifetimes are 5–6 h in summer and 15–20 h in winter, generally consistent with CTMs studies that consider NO_x sinks comprehensively (Mijling and Van Der A, 2012; Stavrou et al., 2013; Silvern et al., 2019; Shah et al., 2020). The summertime NO_x chemical lifetime is also close to or slightly higher than other observational data-driven estimates, mostly through fitting the downwind decay of NO_2 plumes (Valin et al., 2013; de Foy et al., 2015; Liu et al., 2016; Goldberg et al., 2019a; Laughner and Cohen, 2019). This

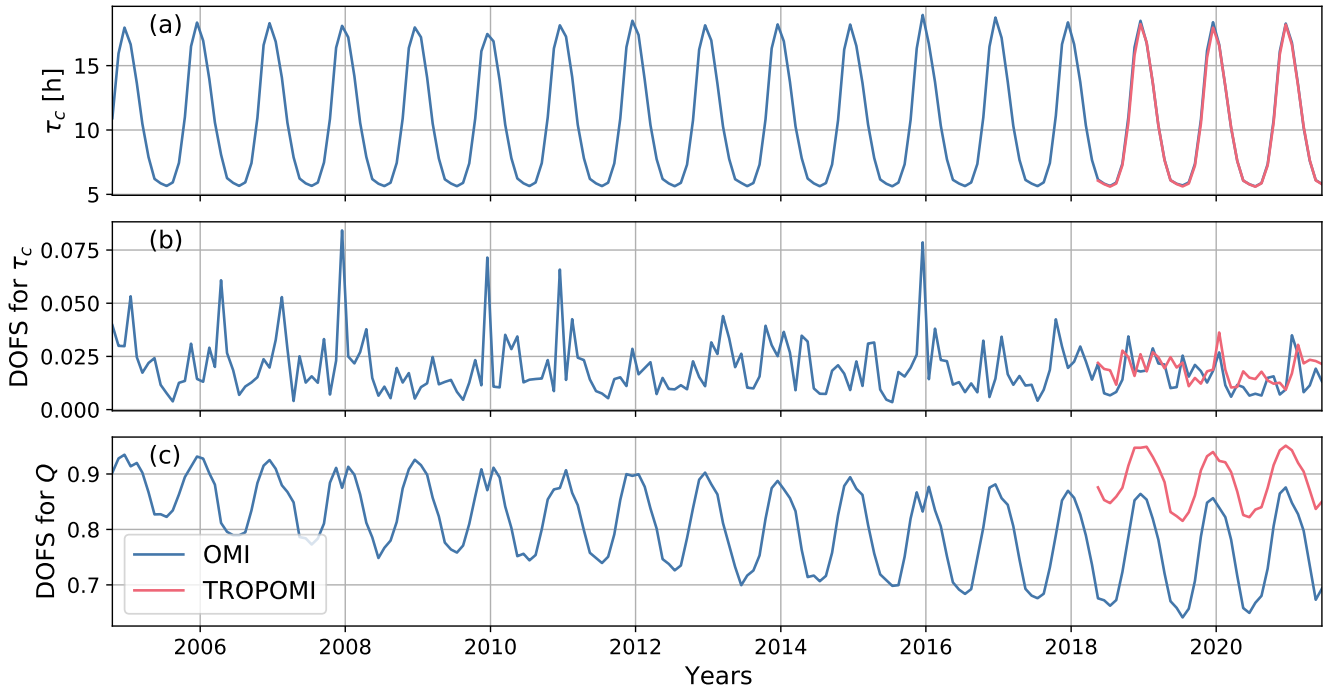


Figure 10. Time series of chemical lifetime (a), degrees of freedom for signal (DOFS) for chemical lifetime τ_c (b), and DOFS for emission rate Q (c) from the calendar month-based optimal estimations using OMI (blue) and TROPOMI (red) monthly data.

is consistent with the modeling verification by de Foy et al. (2014), which found the NO_x chemical lifetime derived from EMG-based approach to be biased low compared to the true lifetimes in the model simulations.

310 The OMI-based climatological chemical lifetimes in Figure 9 are then used as the prior to derive chemical lifetimes in each calendar month, for both OMI and TROPOMI. The resultant monthly NO_x chemical lifetimes are shown in Figure 10a. Note that the chemical lifetimes in Figure 10a are retrieved from column-wind speed relationships for each calendar month, whereas the chemical lifetimes in Figure 9 are retrieved from column-wind speed relationships for each climatological month. The degrees of freedom for signal (DOFS) of retrieved emission rates and chemical lifetimes, shown by Figure 10b and c, are

315 the diagonal elements of the averaging kernel matrix as given in Appendix B. The DOFS quantifies the number of pieces of information retrieved from observations for a specific state vector element (Rodgers, 2000; Brasseur and Jacob, 2017). The observational information content of τ_c for each calendar month, as indicated by the DOFS, is only ~ 0.02 (Figure 10b). This implies that the chemical lifetimes for calendar months are dominated by prior influences from the climatological chemical lifetimes, which reflects our trade-off between emission rates and chemical lifetimes by applying relatively strong prior regularization to τ_c in each calendar month. While the climatological chemical lifetimes are also derived from observations, the lack of

320 observational constraints for the lifetime in each individual calendar month makes them closely resemble the corresponding climatological month values (i.e., the prior) and prevents us from further interpretation of these monthly lifetime values.

The information of retrieved emission rate Q that is gained from observations, indicated by the corresponding DOFS, is however high and close to unity (Figure 10c). This indicates that we can confidently retrieve emission rates from the monthly column-wind speed relationships. The decaying DOFS for OMI-based emission rates from 2004 to 2021 is likely due to the gradual increase of OMI radiance noise (Schenkeveld et al., 2017) and consequently increased uncertainties in OMI NO_2 TVCD. The higher DOFS from TROPOMI than OMI is also consistent with the instrument performances.

4.3 Observational constraints on $\text{NO}_x:\text{NO}_2$ ratio

Despite its limited effect on the estimates of NO_x chemical lifetime and relative emission changes, the uncertainty of $\text{NO}_x:\text{NO}_2$ ratio (ϕ in Eq. 5) will directly propagate to the NO_x emission rate estimates. We investigate ground-based $\text{NO}_x:\text{NO}_2$ ratio measured at EEA sites as labeled in Figure 11a. No ratio data are available in the most polluted Milan metropolitan area because only NO_2 data are reported. Figure 11b shows the monthly distribution of $\text{NO}_x:\text{NO}_2$ ratio in the Po Valley as grayscale background and the monthly median values as red line. The data coverage is sparse in 2015–2017, and no sensible temporal variation can be identified. Consistent seasonal variation of $\text{NO}_x:\text{NO}_2$ ratio is observable in 2018–2021 with high values (1.5–1.6) in the winter and low values (1.2–1.3) in other seasons, with the caveat that the data after 2020 are not fully validated. The ratios in 2013 and 2014 show a similar seasonal pattern but broader distributions and higher median values in the warm months. Given this discontinuity, we cannot draw a conclusion about inter-annual trend of $\text{NO}_x:\text{NO}_2$ ratio. Nonetheless, the seasonal pattern is robust and consistent with low photochemical reactivity in the winter. Therefore, we average the monthly $\text{NO}_x:\text{NO}_2$ ratios in 2013–2014 and 2018–2019 and use it as a climatology.

4.4 NO_x emission rates

Figure 12 presents the monthly air basin-scale emission rate retrieved from OMI and TROPOMI column-wind speed relationships. The long-term trend and seasonality of OMI-based emission rates generally match those from the JPL chemical reanalysis ($r = 0.40$). The emission rates from bottom-up inventories EDGAR, PKUNOx, and CEDS are also shown in Figure 12, where EDGAR is only available as annual average. We use the surface total NO_x emissions from JPL chemical reanalysis, which does not include lightning (1.8% of surface total). According to JPL chemical reanalysis, 96.2% of surface total NO_x emission is anthropogenic. All sectors from CEDS, EDGAR, and PKUNOx are used. Although the PKUNOx and CEDS inventories are monthly, their seasonality differs significantly from the OMI-based and JPL chemical reanalysis values. The inter-annual trends agree reasonably well between bottom-up inventories and top-down emission estimates (JPL chemical analysis and this study) in their overlapping periods, although the emission decrease trends are not as strong in the top-down estimates as in the bottom-up estimates. The JPL chemical reanalysis reports 3.5% of NO_x emission in the Po Valley from soils. However, other top-down studies indicate that the soil emissions may be underestimated in Europe, ranging from 14 to 40% (Visser et al., 2019, and references therein). Since the satellites observe emissions from all sources, the discrepancy may also be from missing soil NO_x emissions in bottom-up inventories. The TROPOMI-based emission rates show similar variation to OMI and JPL chemical reanalysis, but tend to be lower than OMI in the cold months and higher than OMI in the warm months. The calendar month chemical lifetimes retrieved from TROPOMI are similar to OMI (Figure 10a), and hence

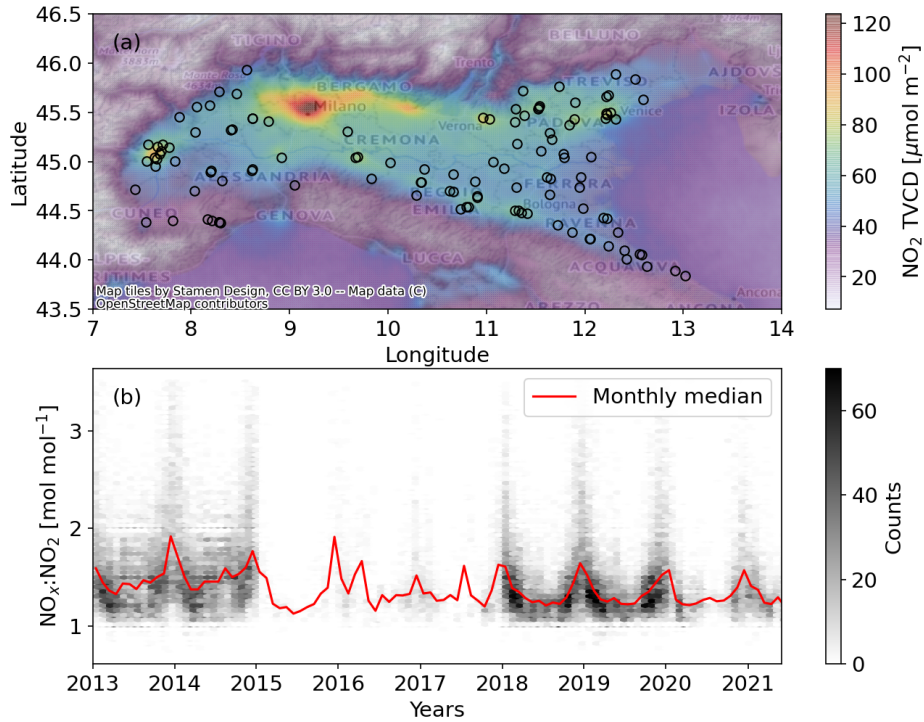


Figure 11. (a) Black circles are locations of ground-based observation sites where NO_x and NO₂ data are available. TROPOMI NO₂ TVCD from May 2018 to May 2019 oversampled to 0.02° grid is illustrated in the background. (b) The background shows the density of available NO_x:NO₂ ratios from filtered hourly ground-based measurements. The red line shows the monthly median values.

the differences in OMI- and TROPOMI-based emission rates directly result from differences in their NO₂ TVCDs. This is supported by Figure 3; when wind speed is controlled, the OMI TVCDs are higher in cold months while the TROPOMI TVCDs are higher in warm months.

Once the air basin length scale is selected (see Section 4.1), the proposed satellite data-driven framework can be used to timely quantify rapid emission perturbations. The Po Valley region experienced two major COVID-19 outbreaks, one in February–May and the second one starting from October and ongoing (Dong et al., 2020). Both triggered lockdown measures that are expected to reduce NO_x emission. However, the quantitative measure of net emission reduction due to the lockdowns is complicated by the long-term decreasing trend and intra-annual variability. For instance, the simple difference between 2020 and 2019 values includes both the pandemic-induced emission changes and the business-as-usual decrease. Leveraging the long and consistent OMI record, we train a statistical model to present the inter- and intra-annual variability using the OMI-based emission rates from January 2010 to December 2019 (yellow shaded region in Figure 13a):

$$Q(t) = \exp \left(\sum_{i=0}^{n_p} (c_i t^i) + \sum_{j=1}^{n_h} (a_j \sin(2\pi t j) + b_j \cos(2\pi t j)) + e \right), \quad (6)$$

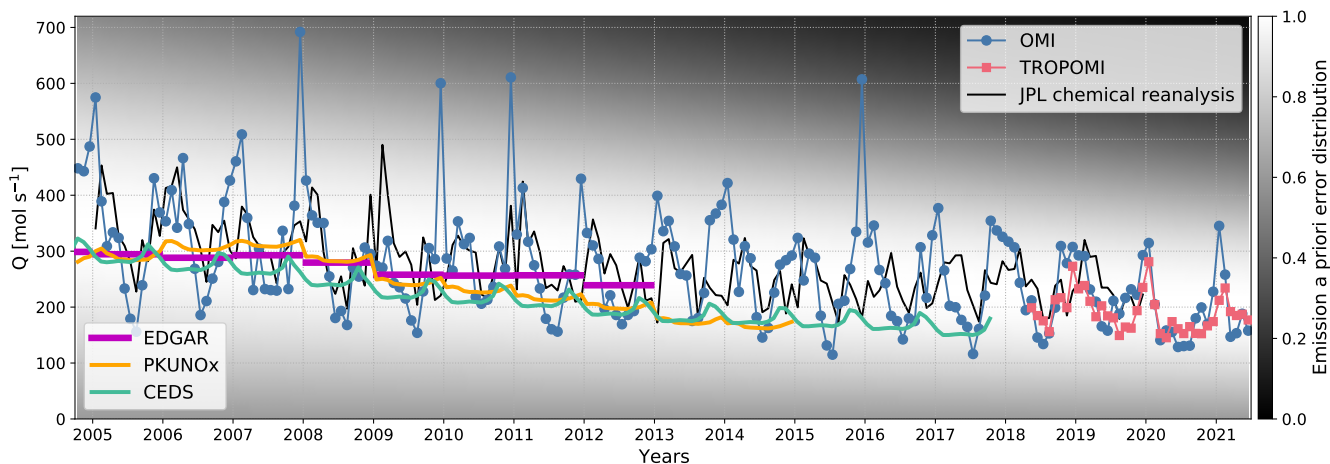


Figure 12. Po Valley NO_x emission rates retrieved from OMI (blue circles) and TROPOMI (red squares) column-wind speed relationships in each calendar month. Monthly emission rates calculated from the JPL chemical reanalysis, EDGAR, PKUNOx, and CEDS inventories are shown as black, magenta, yellow, and cyan lines. The background colormap indicates the prior error distributions normalized to peak height of unity for each calendar month.

where t is time measured in fractional years, resolved by month, c , a , and b are model parameters, and e is an error term. The order of polynomial $n_p = 3$ and the number of harmonics $n_h = 4$ are chosen through the Akaike Information Criterion (Akaike, 1974). The fitted model and 95% confidence intervals are estimated using ordinary least squares and displayed in Figure 13a-b. Because the model fitting does not involve data before 2010 and after 2020, the model line over those years are from extrapolation and characterized by increasingly large uncertainties (i.e., broader confidence intervals) as the range of projection grows. The well-documented emission perturbation during the 2008–2009 financial crisis (Castellanos and Boersma, 2012) is evident through the discrepancy between model extrapolation and real emission rates (Figure 13a). Similarly, since this statistical model is trained using data before the pandemic, the prediction in 2020 and beyond serves as a business-as-usual baseline. Compared to just using a previous year or multi-year averaged climatology as reference (Goldberg et al., 2020; Liu et al., 2020; Bauwens et al., 2020), the model prediction incorporates both the long-term trend and seasonality and is less sensitive to noise in monthly estimates. The real emission rates during the pandemic relative to the predicted emission rates are shown in Figure 13c. Significant COVID-19-induced emission reduction started in February and peaked in March at 42%. The emission rate gradually recovered as the first outbreak was under control and reached 85–95% of the pre-existing trajectory in June–September. Thereafter, the emission rate dropped twice as of July 2021, reaching reductions of 38% and 39% relative to the no-pandemic scenario in November 2020 and March 2021. These reductions correspond to the second and third outbreaks and the subsequent controlling measures. The emission rates in January–February and May–June 2021 seem to be back to the expected normal, highlighting the evolving nature of pandemic-induced emission perturbations. Overall, the real annual emission of 2020 is estimated to be 22% lower due to the net effect of the COVID-19 pandemic in the Po Valley air basin.

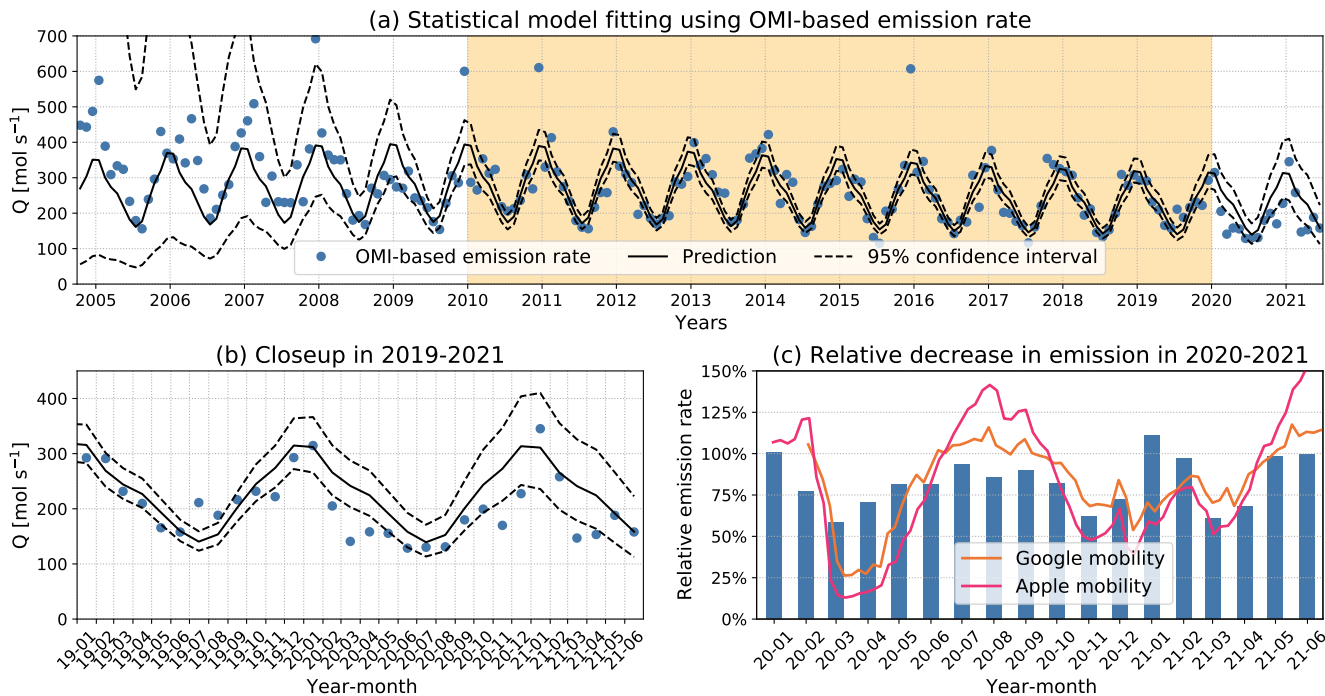


Figure 13. (a) The blue dots show the monthly OMI-based emission rates. The black solid and dash lines show the prediction as well as 95% confidence intervals using the model as in Eq. 6. Only data points in 2010–2019 (yellow shade) are used to fit the model. Prediction values outside this range are extrapolation. (b) is similar to (a) but focused on the period after 2019. (c) The bars show real 2020–2021 emission rates relative to the predicted emission rates. The yellow and red line shows Google and Apple mobility indicators.

We further correlate the COVID-19-induced NO_x emission changes with the qualitative indicators of human activities estimated by the mobility of Google (Google LLC, 2021) and Apple (Apple, 2021) users. The Google mobility is measured by the aggregated Google user activity levels at grocery & pharmacy, parks, transit stations, work places, and retail & recreation relative to a baseline period during 3 January–6 February 2020. Google mobility reported for six Italian regions at the Po
 390 Valley air basin, including Piedmont, Lombardy, Veneto, Liguria, Emilia-Romagna, and Friuli-Venezia Giulia are averaged. The Apple mobility is measured by Apple user activity levels in driving and transit modes over the entire Italy relative to the baseline on 13 January 2020. Both Google and Apple mobility indicators are in daily native resolution and averaged weekly to
 395 remove day-of-week effects. The result is shown in Figure 13c. The relative NO_x emission changes and the mobility indicators consistently show the three troughs corresponding to large outbreaks. The impacts of the second and third outbreaks were lower than the first one, which is also consistent between the mobility indicators and OMI-based net emission changes. Discrepancies are noted in April 2020 and January 2021, when the mobility indicators stayed low after major control measures, but the NO_x emission recovered quicker. We speculate this to be the impact of industrial NO_x emissions that are not well represented by the human mobility indicators.

5 Conclusions and discussion

400 We present a satellite-data driven framework to rapidly quantify NO_x emission rates over an air basin, and demonstrate it in Po Valley, Italy. Monthly emission rates and chemical lifetimes of NO_x are retrieved from observed column-wind speed relationships, where the NO_x column abundance is represented by OMI and TROPOMI NO_2 TVCD observations, and the wind speed is obtained from ERA5 reanalysis. To regularize the retrieval, we derive a NO_x chemical lifetime climatology and use it as prior information. The NO_x chemical lifetime is 5–6 h in summer and 15–20 h in winter. Our observation-based
405 emission rate estimates are consistent with top-down and bottom-up inventories and can be quickly updated as the method only depends on satellite and reanalysis data. Leveraging the long and consistent OMI record, a statistical model is trained to predict the business-as-usual trajectory without the pandemic. Compared with this trajectory, the real 2020–2021 emission rates show three distinctive dips that correspond to tightened COVID-19 control measures and reduced human activities. The overall net NO_x emission reduction due to the COVID-19 pandemic is estimated to be 22% in 2020 with maximum reduction in March,
410 followed by November. The pandemic-induced emission reduction continued in March–April 2021.

Only observations under modest wind ($3\text{--}8\text{ m s}^{-1}$) are used, so there is an implicit assumption that NO_x emissions under modest wind can represent all wind conditions. Since NO_x sources in air basins are mostly anthropogenic, this assumption is deemed to be valid. In addition, the satellite observations are made in the early afternoon local time, so the retrieved emission rates may not necessarily represent the diurnal mean emission rate. This is a common limitation of all observational data-
415 driven approach, and we note that the overall emission rate level is anchored to the overall emission rate level of JPL chemical reanalysis, which is spatiotemporally complete, through the selection of basin length scale L . The uncertainties of the retrieved monthly emission rates may also originate from the systematic biases of NO_2 TVCD products, but the relative emission variations should be insensitive to the observational biases. Updated satellite products (e.g., the version 2 TROPOMI NO_2 product to be released in 2021) can be readily adopted. Monthly climatological $\text{NO}_x:\text{NO}_2$ ratio derived from ground-based
420 observation network is used to convert NO_2 abundance to NO_x abundance, which improves upon the fixed value used in previous studies (Beirle et al., 2011; Valin et al., 2013; de Foy et al., 2015; Liu et al., 2016). However, uncertainty remains from contamination of NO_2 in-situ measurements (Visser et al., 2019) and the representativeness of surface-based $\text{NO}_x:\text{NO}_2$ ratio to the column-integrated one due to vicinity to emission sources and local ozone titration. Moreover, long-term trend in $\text{NO}_x:\text{NO}_2$ may exist as observed in The Netherlands by Zara et al. (2021), although biases in $\text{NO}_x:\text{NO}_2$ have limited impacts on
425 chemical lifetime and relative emission change estimates. The seasonal variability of estimated NO_x emission is determined by the seasonal variabilities of NO_2 TVCD, chemical lifetime, and $\text{NO}_x:\text{NO}_2$ ratio. We attempt to characterize these variabilities using as much observational data as possible, and yet future investigations are still needed. The general framework is not limited to NO_2 and NO_x in the Po Valley air basin, but can be applied to investigating the emissions and lifetimes of other short-lived species in other geographical regions.

430 *Code availability.* Code relevant to this paper can be found at https://github.com/Kang-Sun-CfA/Oversampling_matlab/, last access: 25
March 2021

Data availability. The OMI data are available through NASA GES DISC at <https://doi.org/10.5067/Aura/OMI/DATA2017>. The TROPOMI data are available through Copernicus Open Access Hub at <https://doi.org/10.5270/S5P-s4ljg54>. The ERA5 data are available at <https://doi.org/10.24381/cds.adbb2d47>. The JPL chemical analysis data are available at <https://doi.org/10.25966/9qgv-fe81>. Surface NO_x concentrations are publicly available by the European Environmental Agency at <https://discomap.eea.europa.eu/map/fme/AirQualityExport.htm>.
435

Appendix A: Pixel-based comparison between OMI and TROPOMI NO₂ TVCDs

The TROPOMI retrievals within ± 1 hour from an OMI retrieval are averaged using the relative pixel overlapping area as weight, and only OMI pixels that are $> 80\%$ covered by such TROPOMI pixels are used for comparison. This ensures that OMI and TROPOMI sample essentially the same air mass, and the NO₂ differences reflect the inherent differences of those two
440 products. Figure A1 compares the strictly collocated OMI and TROPOMI retrievals from December 2019 to November 2020. Since the TROPOMI value in each TROPOMI-OMI pair is weight-averaged by 10–90 TROPOMI pixels, its random error is significantly lower than the OMI value, and hence we use the slope in ordinary least square (OLS) regression to represent the OMI/TROPOMI ratio.

Figure A2 compares both the OLS slope and the OMI-TROPOMI NMB. In general, OMI is higher than TROPOMI in
445 the cold season, indicated by slopes larger than unity and NMB larger than zero, whereas TROPOMI is higher in the warm season. The temporal variation of the OLS slope and NMB show only moderate correlation (correlation coefficient $r = 0.54$), indicating that the discrepancy between OMI and TROPOMI is more complicated than an zero-level offset or proportional scaling.

Appendix B: Details in optimal estimations of Q and τ_c

450 This appendix section provides technical details on the optimal estimation using column-wind speed relationships over both climatological months (Section 3.3.2) and calendar months (Section 3.3.3)

Separately for OMI and TROPOMI, the column-wind speed relationship $\langle \mathbf{\Omega} \rangle$ vectors are concatenated to a single observational vector (\mathbf{y}):

$$\mathbf{y} = [\langle \mathbf{\Omega} \rangle(\text{month1}), \langle \mathbf{\Omega} \rangle(\text{month2}), \dots]. \quad (\text{B1})$$

455 There are 12 months for the climatology retrieval, 197 months for OMI-based calendar month retrieval, and 34 months for TROPOMI-based calendar month retrieval. The state vector β includes emission rates and chemical lifetimes of all months:

$$\beta = [Q(\text{month1}), Q(\text{month2}), \dots, \tau_c(\text{month1}), \tau_c(\text{month2}), \dots]. \quad (\text{B2})$$

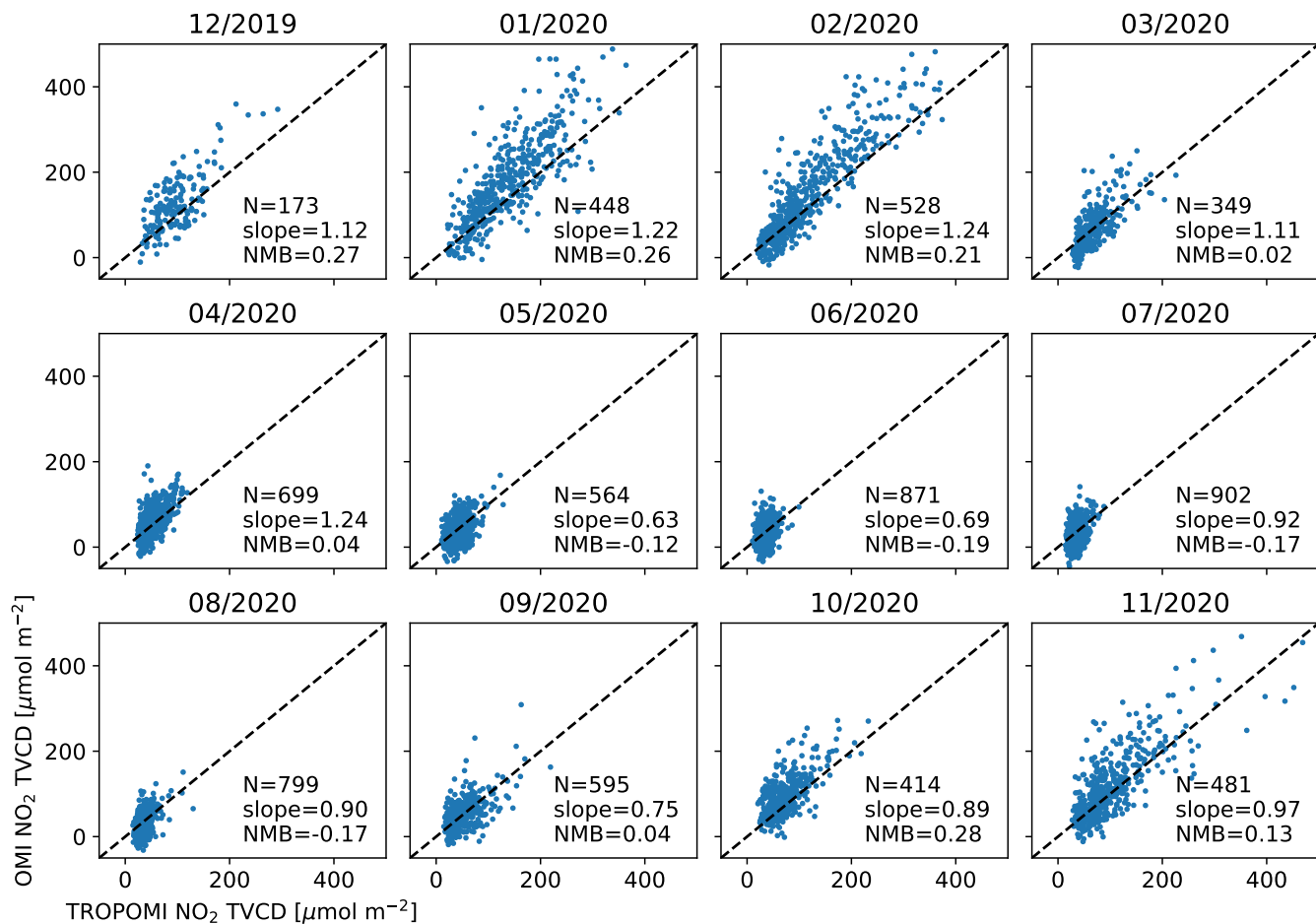


Figure A1. Correlation plots between weight-averaged TROPOMI NO₂ TVCD at OMI pixel and the corresponding OMI NO₂ TVCD. One year data from December 2018 to November 2019 are shown monthly for each panel. Number of collocation pairs (*N*), OMI/TROPOMI slope from OLS regression, and OMI-TROPOMI NMB are shown in each panel. The dashed black line is 1:1.

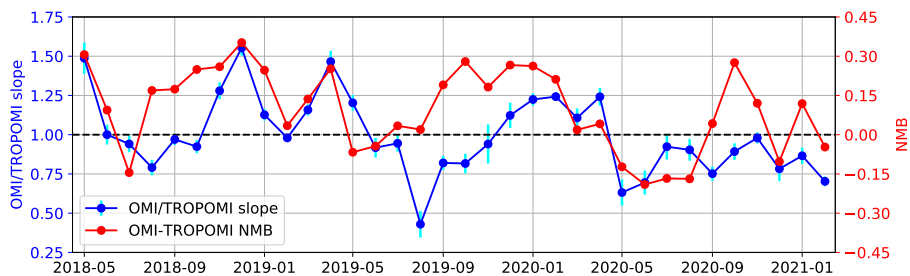


Figure A2. OMI/TROPOMI OLS slope (blue) and OMI-TROPOMI NMB (red) for each month when TROPOMI NO₂ TVCD data are available for comparison.

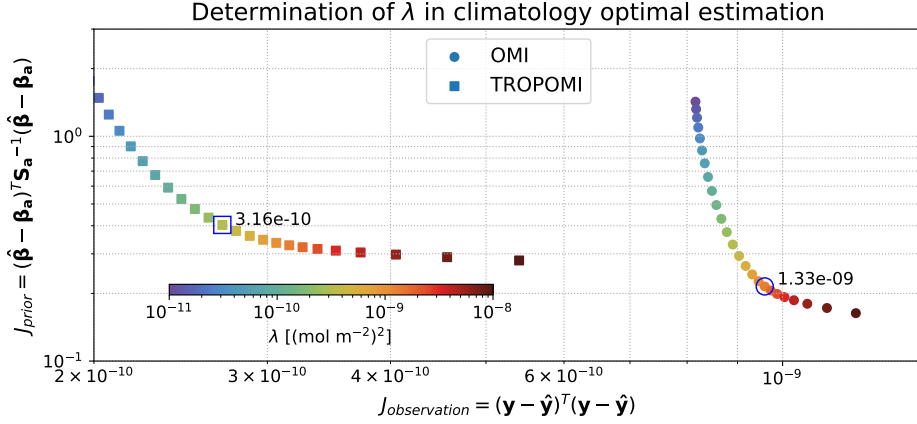


Figure B1. L-curve plot of the squared errors of a regularized solution vs. squared residuals for the climatology of OMI (dots) and TROPOMI (squares).

The optimal estimation is obtained by iteratively minimizing the cost function

$$J = (\mathbf{y} - \mathbf{f}(\boldsymbol{\beta}))^T \lambda^{-1} (\mathbf{y} - \mathbf{f}(\boldsymbol{\beta})) + (\boldsymbol{\beta} - \boldsymbol{\beta}_a)^T \mathbf{S}_a^{-1} (\boldsymbol{\beta} - \boldsymbol{\beta}_a). \quad (\text{B3})$$

460 Here $\mathbf{f}(\boldsymbol{\beta})$ is the forward model by concatenating Eq. 5 for each month, $\boldsymbol{\beta}_a$ is the prior vector, and \mathbf{S}_a is the prior error covariance matrix. In the optimal estimations applied in this study, the strength of prior regularization is controlled by a single factor λ . Lower λ value, or weaker regularization, leads to smaller residuals but larger deviation from the prior; higher λ value, or stronger regularization, leads to smaller deviation from the prior but larger residuals. We select λ values for OMI/TROPOMI and climatology/calendar months separately, by finding the maximum curvature point. The corresponding L-curve plots in the
465 Q/τ_c optimal estimations using column-wind speed relationships averaged to climatological months and in each calendar month are shown in Figure B1 and Figure B2, respectively. The selected λ values are labeled in the plots.

The cost function J (Eq. B3) is minimized by a Gauss-Newton approach, where the state vector is updated in each iteration by the following rule:

$$\boldsymbol{\beta}_{i+1} = \boldsymbol{\beta}_i + (\mathbf{S}_a^{-1} + \mathbf{K}_i^T \lambda^{-1} \mathbf{K}_i)^{-1} (\mathbf{K}_i^T \lambda^{-1} (\mathbf{y} - \mathbf{f}(\boldsymbol{\beta}_i)) - \mathbf{S}_a^{-1} (\boldsymbol{\beta}_i - \boldsymbol{\beta}_a)). \quad (\text{B4})$$

470 Here $\boldsymbol{\beta}_i$ is the state vector estimation in iteration i , and $\boldsymbol{\beta}_0 = \boldsymbol{\beta}_a$. $\mathbf{K}_i = \partial \mathbf{f}(\boldsymbol{\beta}_i) / \partial \boldsymbol{\beta}_i$ is the Jacobian matrix at iteration i . Since the forward model is concatenated from column-wind speed relationship for each month (Eq. 5), and the state vector is concatenated from Q and τ_c for each month, the Jacobian can be constructed using analytical derivations of Eq. 5:

$$\frac{\partial \langle \Omega \rangle}{\partial Q} = \frac{1}{\phi A \left(\frac{W}{L} + \frac{1}{\tau_c} \right)}, \quad (\text{B5})$$

$$\frac{\partial \langle \Omega \rangle}{\partial \tau_c} = \frac{Q}{\phi A} \frac{1}{\tau_c^2 \left(\frac{W}{L} + \frac{1}{\tau_c} \right)^2}. \quad (\text{B6})$$

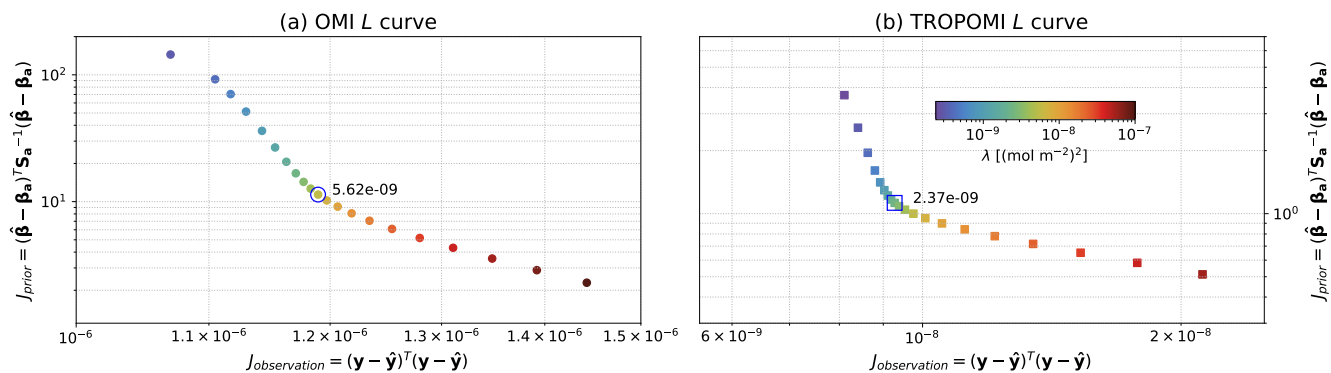


Figure B2. Similar to Figure B1 but showing L-curve plots for the optimal estimation for all calendar months for OMI (a) and TROPOMI (b).

475 The convergence is determined by comparing the error variance derivative (Bösch et al., 2015)

$$d\sigma_i^2 = (\beta_{i+1} - \beta_i)^T \left(\mathbf{K}_i^T \lambda^{-1} (\mathbf{y} - \mathbf{f}(\beta_i)) + \mathbf{S}_a^{-1} (\beta_i - \beta_a) \right) \quad (\text{B7})$$

with a threshold that scales with the number of state vector elements.

After an optimal solution is found, the DOFS for each state vector element (Q or τ_c) is the corresponding diagonal element of the averaging kernel matrix

$$480 \quad \mathbf{A} = \mathbf{I} - (\mathbf{K}^T \lambda^{-1} \mathbf{K} + \mathbf{S}_a^{-1})^{-1} \mathbf{S}_a^{-1}, \quad (\text{B8})$$

where \mathbf{K} is the Jacobian matrix at the final iteration and \mathbf{I} is an identity matrix with the same dimension as the state vector.

Author contributions. KS designed and implemented this study and wrote the paper. LBL helped calculating the top-down and bottom-up inventory emission rates. SJ helped curating satellite data. LBL and SJ contributed to satellite data analysis. DL provided expertise on atmospheric transport and helped with scientific interpretation and discussion.

485 *Competing interests.* The authors declare that they have no conflict of interest.

Acknowledgements. This research has been supported by the NASA Earth Science Division Rapid Response and Novel Research in Earth Science program (RRNES, Award 80NSSC20K1295) and Atmospheric Composition: Modeling and Analysis (ACMAP, Award 80NSSC19K0988). We thank Kazuyuki Miyazaki at JPL and Amir Souri at the SAO for helpful discussions.

References

- 490 Akaike, H.: A new look at the statistical model identification, *IEEE Transactions on Automatic Control*, 19, 716–723, <https://doi.org/10.1109/TAC.1974.1100705>, 1974.
- Apple: COVID-19 Mobility Trends Reports, <https://covid19.apple.com/mobility/>, 2021.
- Bauwens, M., Compennolle, S., Stavrakou, T., Müller, J.-F., van Gent, J., Eskes, H., Levelt, P. F., van der A, R., Veefkind, J. P., Vliet-
inck, J., Yu, H., and Zehner, C.: Impact of Coronavirus Outbreak on NO₂ Pollution Assessed Using TROPOMI and OMI Observations,
495 *Geophysical Research Letters*, 47, e2020GL087978, <https://doi.org/https://doi.org/10.1029/2020GL087978>, 2020.
- Beirle, S., Boersma, K. F., Platt, U., Lawrence, M. G., and Wagner, T.: Megacity emissions and lifetimes of nitrogen oxides probed from
space, *Science*, 333, 1737–1739, 2011.
- Beirle, S., Borger, C., Dörner, S., Li, A., Hu, Z., Liu, F., Wang, Y., and Wagner, T.: Pinpointing nitrogen oxide emissions from space, *Science
Advances*, 5, eaax9800, <https://doi.org/10.1126/sciadv.aax9800>, 2019.
- 500 Bösch, H., Brown, L., Castano, R., Christi, M., Connor, B., Crisp, D., Eldering, A., Fisher, B., Frankenberg, C., Gunson, M., et al.: Orbiting
Carbon Observatory (OCO)-2 Level 2 Full Physics Retrieval Algorithm Theoretical Basis Document, NASA JPL: Pasadena, CA, USA,
2015.
- Brasseur, G. P. and Jacob, D. J.: *Modeling of atmospheric chemistry*, Cambridge University Press, 2017.
- Buchwitz, M., Schneising, O., Reuter, M., Heymann, J., Krautwurst, S., Bovensmann, H., Burrows, J. P., Boesch, H., Parker, R. J., Somkuti,
505 P., Detmers, R. G., Hasekamp, O. P., Aben, I., Butz, A., Frankenberg, C., and Turner, A. J.: Satellite-derived methane hotspot emission
estimates using a fast data-driven method, *Atmospheric Chemistry and Physics*, 17, 5751–5774, [https://doi.org/10.5194/acp-17-5751-
2017](https://doi.org/10.5194/acp-17-5751-2017), 2017.
- Castellanos, P. and Boersma, K. F.: Reductions in nitrogen oxides over Europe driven by environmental policy and economic recession,
Scientific Reports, 2, 265, <https://doi.org/10.1038/srep00265>, 2012.
- 510 Choi, S., Lamsal, L. N., Follette-Cook, M., Joiner, J., Krotkov, N. A., Swartz, W. H., Pickering, K. E., Loughner, C. P., Appel, W., Pfister, G.,
Saide, P. E., Cohen, R. C., Weinheimer, A. J., and Herman, J. R.: Assessment of {NO_2} observations during DISCOVER-AQ and
KORUS-AQ field campaigns, *Atmospheric Measurement Techniques*, 13, 2523–2546, <https://doi.org/10.5194/amt-13-2523-2020>, 2020.
- Crippa, M., Guizzardi, D., Muntean, M., Schaaf, E., Dentener, F., van Aardenne, J. A., Monni, S., Doering, U., Olivier, J. G. J., Pagliari, V.,
and Janssens-Maenhout, G.: Gridded emissions of air pollutants for the period 1970–2012 within EDGAR v4.3.2, *Earth System Science
515 Data*, 10, 1987–2013, <https://doi.org/10.5194/essd-10-1987-2018>, 2018.
- Dammers, E., McLinden, C. A., Griffin, D., Shephard, M. W., Van Der Graaf, S., Lutsch, E., Schaap, M., Gainairu-Matz, Y., Fioletov, V.,
Van Damme, M., Whitburn, S., Clarisse, L., Cady-Pereira, K., Clerbaux, C., Coheur, P. F., and Erismann, J. W.: NH₃ emissions from
large point sources derived from CrIS and IASI satellite observations, *Atmospheric Chemistry and Physics Discussions*, 2019, 1–47,
<https://doi.org/10.5194/acp-2019-453>, 2019.
- 520 de Foy, B., Wilkins, J. L., Lu, Z., Streets, D. G., and Duncan, B. N.: Model evaluation of methods for estimating surface emissions and chem-
ical lifetimes from satellite data, *Atmospheric Environment*, 98, 66–77, <https://doi.org/https://doi.org/10.1016/j.atmosenv.2014.08.051>,
2014.
- de Foy, B., Lu, Z., Streets, D. G., Lamsal, L. N., and Duncan, B. N.: Estimates of power plant NO_x emissions and lifetimes from OMI NO₂
satellite retrievals, *Atmospheric Environment*, 116, 1–11, <https://doi.org/10.1016/j.atmosenv.2015.05.056>, 2015.

- 525 Ding, J., van der A, R. J., Eskes, H. J., Mijling, B., Stavrou, T., van Geffen, J. H. G. M., and Veefkind, J. P.: NO_x Emissions Reduction and Rebound in China Due to the COVID-19 Crisis, *Geophysical Research Letters*, 47, e2020GL089912, <https://doi.org/https://doi.org/10.1029/2020GL089912>, 2020.
- Dong, E., Du, H., and Gardner, L.: An interactive web-based dashboard to track COVID-19 in real time, *The Lancet Infectious Diseases*, 20, 533–534, [https://doi.org/10.1016/S1473-3099\(20\)30120-1](https://doi.org/10.1016/S1473-3099(20)30120-1), 2020.
- 530 Duncan, B. N., Lamsal, L. N., Thompson, A. M., Yoshida, Y., Lu, Z., Streets, D. G., Hurwitz, M. M., and Pickering, K. E.: A space-based, high-resolution view of notable changes in urban NO_x pollution around the world (2005–2014), *Journal of Geophysical Research: Atmospheres*, 121, 976–996, <https://doi.org/10.1002/2015JD024121>, 2016.
- EEA: EEA: Air Quality e-Reporting, <https://discomap.eea.europa.eu/map/fme/AirQualityExport.htm>, 2021.
- ESA: TROPOMI Level 2 Nitrogen Dioxide total column products. Version 01., <https://doi.org/10.5270/S5P-s4ljg54>, 2018.
- 535 Filippini, T., Rothman, K. J., Goffi, A., Ferrari, F., Maffei, G., Orsini, N., and Vinceti, M.: Satellite-detected tropospheric nitrogen dioxide and spread of SARS-CoV-2 infection in Northern Italy, *Science of The Total Environment*, 739, 140278, <https://doi.org/https://doi.org/10.1016/j.scitotenv.2020.140278>, 2020.
- Fioletov, V., McLinden, C. A., Kharol, S. K., Krotkov, N. A., Li, C., Joiner, J., Moran, M. D., Vet, R., Visschedijk, A. J. H., and van der Gon, H. A. C.: Multi-source SO₂ emission retrievals and consistency of satellite and surface measurements with reported emissions, *Atmospheric Chemistry and Physics*, 17, 12 597–12 616, <https://doi.org/10.5194/acp-17-12597-2017>, 2017.
- 540 GES DISC: Copernicus Sentinel data processed by ESA, Koninklijk Nederlands Meteorologisch Instituut (KNMI), Sentinel-5P TROPOMI Tropospheric NO₂ 1-Orbit L2 5.5km x 3.5km, <https://doi.org/10.5270/S5P-s4ljg54>, 2021.
- Goldberg, D. L., Lu, Z., Streets, D. G., de Foy, B., Griffin, D., McLinden, C. A., Lamsal, L. N., Krotkov, N. A., and Eskes, H.: Enhanced Capabilities of TROPOMI NO₂: Estimating NO_x from North American Cities and Power Plants, *Environmental Science & Technology*, 53, 12 594–12 601, <https://doi.org/10.1021/acs.est.9b04488>, 2019a.
- 545 Goldberg, D. L., Saide, P. E., Lamsal, L. N., de Foy, B., Lu, Z., Woo, J.-H., Kim, Y., Kim, J., Gao, M., Carmichael, G., and Streets, D. G.: A top-down assessment using OMI NO₂ suggests an underestimate in the NO₂ emissions inventory in Seoul, South Korea, during KORUS-AQ, *Atmospheric Chemistry and Physics*, 19, 1801–1818, <https://doi.org/10.5194/acp-19-1801-2019>, 2019b.
- Goldberg, D. L., Anenberg, S. C., Griffin, D., McLinden, C. A., Lu, Z., and Streets, D. G.: Disentangling the Impact of the COVID-19 Lockdowns on Urban NO₂ From Natural Variability, *Geophysical Research Letters*, 47, e2020GL089269, <https://doi.org/https://doi.org/10.1029/2020GL089269>, 2020.
- 550 Google LLC: Google COVID-19 Community Mobility Reports, <https://www.google.com/covid19/mobility/>, 2021.
- Hansen, P. C. and O’Leary, D. P.: The use of the L-curve in the regularization of discrete ill-posed problems, *SIAM journal on scientific computing*, 14, 1487–1503, 1993.
- 555 Hersbach, H., Bell, B., Berrisford, P., Hirahara, S., Horányi, A., Muñoz-Sabater, J., Nicolas, J., Peubey, C., Radu, R., Schepers, D., Simmons, A., Soci, C., Abdalla, S., Abellan, X., Balsamo, G., Bechtold, P., Biavati, G., Bidlot, J., Bonavita, M., De Chiara, G., Dahlgren, P., Dee, D., Diamantakis, M., Dragani, R., Flemming, J., Forbes, R., Fuentes, M., Geer, A., Haimberger, L., Healy, S., Hogan, R. J., Hólm, E., Janisková, M., Keeley, S., Laloyaux, P., Lopez, P., Lupu, C., Radnoti, G., de Rosnay, P., Rozum, I., Vamborg, F., Villaume, S., and Thépaut, J.-N.: The ERA5 global reanalysis, *Quarterly Journal of the Royal Meteorological Society*, <https://doi.org/10.1002/qj.3803>, 2020.
- 560 Huang, G. and Sun, K.: Non-negligible impacts of clean air regulations on the reduction of tropospheric NO₂ over East China during the COVID-19 pandemic observed by OMI and TROPOMI, *Science of The Total Environment*, 745, 141023, <https://doi.org/https://doi.org/10.1016/j.scitotenv.2020.141023>, 2020.

- Huang, T., Zhu, X., Zhong, Q., Yun, X., Meng, W., Li, B., Ma, J., Zeng, E. Y., and Tao, S.: Spatial and Temporal Trends in Global Emissions of Nitrogen Oxides from 1960 to 2014, *Environmental Science & Technology*, 51, 7992–8000, <https://doi.org/10.1021/acs.est.7b02235>, 2017.
- Judd, L. M., Al-Saadi, J. A., Szykman, J. J., Valin, L. C., Janz, S. J., Kowalewski, M. G., Eskes, H. J., Veeffkind, J. P., Cede, A., Mueller, M., Gebetsberger, M., Swap, R., Pierce, R. B., Nowlan, C. R., Abad, G. G., Nehrir, A., and Williams, D.: Evaluating Sentinel-5P TROPOMI tropospheric NO₂ column densities with airborne and Pandora spectrometers near New York City and Long Island Sound, *Atmospheric Measurement Techniques*, 13, 6113–6140, <https://doi.org/10.5194/amt-13-6113-2020>, 2020.
- Keller, C. A., Evans, M. J., Knowland, K. E., Hasenkopf, C. A., Modekurty, S., Lucchesi, R. A., Oda, T., Franca, B. B., Mandarino, F. C., Díaz Suárez, M. V., Ryan, R. G., Fakes, L. H., and Pawson, S.: Global impact of COVID-19 restrictions on the surface concentrations of nitrogen dioxide and ozone, *Atmospheric Chemistry and Physics*, 21, 3555–3592, <https://doi.org/10.5194/acp-21-3555-2021>, 2021.
- Kroll, J. H., Heald, C. L., Cappa, C. D., Farmer, D. K., Fry, J. L., Murphy, J. G., and Steiner, A. L.: The complex chemical effects of COVID-19 shutdowns on air quality, *Nature Chemistry*, 12, 777–779, <https://doi.org/10.1038/s41557-020-0535-z>, 2020.
- Lamsal, L. N., Martin, R. V., Padmanabhan, A., Van Donkelaar, A., Zhang, Q., Sioris, C. E., Chance, K., Kurosu, T. P., and Newchurch, M. J.: Application of satellite observations for timely updates to global anthropogenic NO_x emission inventories, *Geophysical Research Letters*, 38, 2011.
- Lamsal, L. N., Krotkov, N. A., Vasilkov, A., Marchenko, S., Qin, W., Yang, E.-S., Fasnacht, Z., Joiner, J., Choi, S., Haffner, D., Swartz, W. H., Fisher, B., and Bucsele, E.: Ozone Monitoring Instrument (OMI) Aura nitrogen dioxide standard product version 4.0 with improved surface and cloud treatments, *Atmospheric Measurement Techniques*, 14, 455–479, <https://doi.org/10.5194/amt-14-455-2021>, 2021.
- Laughner, J. L. and Cohen, R. C.: Direct observation of changing NO_x lifetime in North American cities, *Science*, 366, 723 LP – 727, <https://doi.org/10.1126/science.aax6832>, 2019.
- Liu, F., Beirle, S., Zhang, Q., Dörner, S., He, K., and Wagner, T.: NO_x lifetimes and emissions of cities and power plants in polluted background estimated by satellite observations, *Atmospheric Chemistry and Physics*, 16, 5283–5298, 2016.
- Liu, F., Page, A., Strode, S. A., Yoshida, Y., Choi, S., Zheng, B., Lamsal, L. N., Li, C., Krotkov, N. A., Eskes, H., van der A, R., Veeffkind, P., Levelt, P. F., Hauser, O. P., and Joiner, J.: Abrupt decline in tropospheric nitrogen dioxide over China after the outbreak of COVID-19, *Science Advances*, 6, eabc2992, <https://doi.org/10.1126/sciadv.abc2992>, 2020.
- Lorente, A., Boersma, K. F., Eskes, H. J., Veeffkind, J. P., van Geffen, J. H. G. M., de Zeeuw, M. B., Denier van der Gon, H. A. C., Beirle, S., and Krol, M. C.: Quantification of nitrogen oxides emissions from build-up of pollution over Paris with TROPOMI, *Scientific Reports*, 9, 20033, <https://doi.org/10.1038/s41598-019-56428-5>, 2019.
- Lu, Z., Streets, D. G., de Foy, B., Lamsal, L. N., Duncan, B. N., and Xing, J.: Emissions of nitrogen oxides from US urban areas: estimation from Ozone Monitoring Instrument retrievals for 2005–2014, *Atmospheric Chemistry and Physics*, 15, 10367–10383, <https://doi.org/10.5194/acp-15-10367-2015>, 2015.
- Martin, R. V., Jacob, D. J., Chance, K., Kurosu, T. P., Palmer, P. I., and Evans, M. J.: Global inventory of nitrogen oxide emissions constrained by space-based observations of NO₂ columns, *Journal of Geophysical Research: Atmospheres*, 108, 2003.
- Martin, R. V., Fiore, A. M., and Van Donkelaar, A.: Space-based diagnosis of surface ozone sensitivity to anthropogenic emissions, *Geophysical Research Letters*, 31, <https://doi.org/10.1029/2004GL019416>, 2004.
- McDuffie, E. E., Smith, S. J., O'Rourke, P., Tibrewal, K., Venkataraman, C., Marais, E. A., Zheng, B., Crippa, M., Brauer, M., and Martin, R. V.: A global anthropogenic emission inventory of atmospheric pollutants from sector- and fuel-specific sources (1970–2017): an

- 600 application of the Community Emissions Data System (CEDs), *Earth System Science Data*, 12, 3413–3442, <https://doi.org/10.5194/essd-12-3413-2020>, 2020.
- Mijling, B. and Van Der A, R. J.: Using daily satellite observations to estimate emissions of short-lived air pollutants on a mesoscopic scale, *Journal of Geophysical Research: Atmospheres*, 117, 2012.
- Mijling, B., van der A, R. J., Boersma, K. F., Van Roozendael, M., De Smedt, I., and Kelder, H. M.: Reductions of NO₂ detected from space
605 during the 2008 Beijing Olympic Games, *Geophysical Research Letters*, 36, <https://doi.org/https://doi.org/10.1029/2009GL038943>, 2009.
- Miyazaki, K., Bowman, K., Sekiya, T., Eskes, H., Boersma, F., Worden, H., Livesey, N., Payne, V. H., Sudo, K., Kanaya, Y., Takigawa, M., and Ogochi, K.: Chemical Reanalysis Products, <https://doi.org/10.25966/9qgv-fe81>, 2019.
- Miyazaki, K., Bowman, K., Sekiya, T., Eskes, H., Boersma, F., Worden, H., Livesey, N., Payne, V. H., Sudo, K., Kanaya, Y., Takigawa, M., and Ogochi, K.: An updated tropospheric chemistry reanalysis and emission estimates, TCR-2, for 2005–2018, *Earth System Science
610 Data Discussions*, 2020, 1–64, <https://doi.org/10.5194/essd-2020-30>, 2020a.
- Miyazaki, K., Bowman, K., Sekiya, T., Jiang, Z., Chen, X., Eskes, H., Ru, M., Zhang, Y., and Shindell, D.: Air Quality Response in China Linked to the 2019 Novel Coronavirus (COVID-19) Lockdown, *Geophysical Research Letters*, 47, e2020GL089252, <https://doi.org/https://doi.org/10.1029/2020GL089252>, 2020b.
- Qu, Z., Henze, D. K., Theys, N., Wang, J., and Wang, W.: Hybrid Mass Balance/4D-Var Joint Inversion of NO_x and SO₂ Emissions in East
615 Asia, *Journal of Geophysical Research: Atmospheres*, 124, 8203–8224, <https://doi.org/10.1029/2018JD030240>, 2019.
- Rodgers, C. D.: *Inverse methods for atmospheric sounding: theory and practice*, vol. 2, World scientific Singapore, 2000.
- Russell, A. R., Valin, L. C., and Cohen, R. C.: Trends in OMI NO₂ observations over the United States: effects of emission control technology and the economic recession, *Atmospheric Chemistry and Physics*, 12, 12 197–12 209, <https://doi.org/10.5194/acp-12-12197-2012>, 2012.
- Savitzky, A. and Golay, M. J. E.: Smoothing and Differentiation of Data by Simplified Least Squares Procedures, *Analytical Chemistry*, 36,
620 1627–1639, <https://doi.org/10.1021/ac60214a047>, 1964.
- Schenkeveld, V. M. E., Jaross, G., Marchenko, S., Haffner, D., Kleipool, Q. L., Rozemeijer, N. C., Veefkind, J. P., and Levelt, P. F.: In-flight performance of the Ozone Monitoring Instrument, *Atmospheric Measurement Techniques*, 10, 1957–1986, <https://doi.org/10.5194/amt-10-1957-2017>, 2017.
- Seinfeld, J. H. and Pandis, S. N.: *Atmospheric chemistry and physics: from air pollution to climate change*, John Wiley & Sons, 2006.
- 625 Shah, V., Jacob, D. J., Li, K., Silvern, R. F., Zhai, S., Liu, M., Lin, J., and Zhang, Q.: Effect of changing NO_x lifetime on the seasonality and long-term trends of satellite-observed tropospheric NO₂ columns over China, *Atmospheric Chemistry and Physics*, 20, 1483–1495, <https://doi.org/10.5194/acp-20-1483-2020>, 2020.
- Silvern, R. F., Jacob, D. J., Mickley, L. J., Sulprizio, M. P., Travis, K. R., Marais, E. A., Cohen, R. C., Laughner, J. L., Choi, S., Joiner, J., and Lamsal, L. N.: Using satellite observations of tropospheric NO₂ columns to infer long-term trends in US NO_x emissions: the importance of
630 accounting for the free tropospheric NO₂ background, *Atmospheric Chemistry and Physics*, 19, 8863–8878, <https://doi.org/10.5194/acp-19-8863-2019>, 2019.
- Stavrakou, T., Müller, J.-F., Boersma, K. F., van der A, R. J., Kurokawa, J., Ohara, T., and Zhang, Q.: Key chemical NO_x sink uncertainties and how they influence top-down emissions of nitrogen oxides, *Atmospheric Chemistry and Physics*, 13, 9057–9082, <https://doi.org/10.5194/acp-13-9057-2013>, 2013.
- 635 Sun, K., Zhu, L., Cady-Pereira, K., Chan Miller, C., Chance, K., Clarisse, L., Coheur, P.-F., González Abad, G., Huang, G., Liu, X., Van Damme, M., Yang, K., and Zondlo, M.: A physics-based approach to oversample multi-satellite, multispecies observations to a common grid, *Atmospheric Measurement Techniques*, 11, 6679–6701, <https://doi.org/10.5194/amt-11-6679-2018>, 2018.

- Valin, L. C., Russell, A. R., and Cohen, R. C.: Variations of OH radical in an urban plume inferred from NO₂ column measurements, *Geophysical Research Letters*, 40, 1856–1860, <https://doi.org/10.1002/grl.50267>, 2013.
- 640 Valin, L. C., Russell, A. R., and Cohen, R. C.: Chemical feedback effects on the spatial patterns of the NO_x weekend effect: a sensitivity analysis, *Atmospheric Chemistry and Physics*, 14, 1–9, <https://doi.org/10.5194/acp-14-1-2014>, 2014.
- Van Damme, M., Clarisse, L., Whitburn, S., Hadji-Lazaro, J., Hurtmans, D., Clerbaux, C., and Coheur, P.-F.: Industrial and agricultural ammonia point sources exposed, *Nature*, 564, 99, 2018.
- van Geffen, J., Boersma, K. F., Eskes, H., Sneep, M., ter Linden, M., Zara, M., and Veefkind, J. P.: S5P TROPOMI \chem{NO_2} slant
645 column retrieval: method, stability, uncertainties and comparisons with OMI, *Atmospheric Measurement Techniques*, 13, 1315–1335, <https://doi.org/10.5194/amt-13-1315-2020>, 2020.
- Varon, D. J., Jacob, D. J., McKeever, J., Jervis, D., Durak, B. O. A., Xia, Y., and Huang, Y.: Quantifying methane point sources from fine-scale satellite observations of atmospheric methane plumes, *Atmospheric Measurement Techniques*, 11, 5673–5686, <https://doi.org/10.5194/amt-11-5673-2018>, 2018.
- 650 Verhoelst, T., Compernelle, S., Pinardi, G., Lambert, J.-C., Eskes, H. J., Eichmann, K.-U., Fjæraa, A. M., Granville, J., Niemeijer, S., Cede, A., Tiefengraber, M., Hendrick, F., Pazmiño, A., Bais, A., Bazureau, A., Boersma, K. F., Bogner, K., Dehn, A., Donner, S., Elokhov, A., Gebetsberger, M., Goutail, F., de la Mora, M., Gruzdev, A., Gratsea, M., Hansen, G. H., Irie, H., Jepsen, N., Kanaya, Y., Karagiozidis, D., Kivi, R., Kreher, K., Levelt, P. F., Liu, C., Müller, M., Navarro Comas, M., PETERS, A. J. M., Pommereau, J.-P., Portafaix, T., Prados-Roman, C., Puentedura, O., Querel, R., Remmers, J., Richter, A., Rimmer, J., Rivera Cárdenas, C., de Miguel, L., Sinyakov, V. P., Stremme, W.,
655 Strong, K., Van Roozendaal, M., Veefkind, J. P., Wagner, T., Wittrock, F., Yela González, M., and Zehner, C.: Ground-based validation of the Copernicus Sentinel-5P TROPOMI \chem{NO_2} measurements with the NDACC ZSL-DOAS, MAX-DOAS and Pandonia global networks, *Atmospheric Measurement Techniques*, 14, 481–510, <https://doi.org/10.5194/amt-14-481-2021>, 2021.
- Visser, A. J., Boersma, K. F., Ganzeveld, L. N., and Krol, M. C.: European NO_x emissions in WRF-Chem derived from OMI: impacts on summertime surface ozone, *Atmospheric Chemistry and Physics*, 19, 11 821–11 841, <https://doi.org/10.5194/acp-19-11821-2019>, 2019.
- 660 Wang, Y., Wang, J., Xu, X., Henze, D. K., Qu, Z., and Yang, K.: Inverse modeling of SO₂ and NO_x emissions over China using multisensor satellite data - Part 1: Formulation and sensitivity analysis, *Atmospheric Chemistry and Physics*, 20, 6631–6650, <https://doi.org/10.5194/acp-20-6631-2020>, 2020.
- Witte, J. C., Schoeberl, M. R., Douglass, A. R., Gleason, J. F., Krotkov, N. A., Gille, J. C., Pickering, K. E., and Livesey, N.: Satellite observations of changes in air quality during the 2008 Beijing Olympics and Paralympics, *Geophysical Research Letters*, 36, <https://doi.org/https://doi.org/10.1029/2009GL039236>, 2009.
- 665 Zara, M., Boersma, K. F., Eskes, H., Denier van der Gon, H., Vilà-Guerau de Arellano, J., Krol, M., van der Swaluw, E., Schuch, W., and Velders, G. J. M.: Reductions in nitrogen oxides over the Netherlands between 2005 and 2018 observed from space and on the ground: Decreasing emissions and increasing O₃ indicate changing NO_x chemistry, *Atmospheric Environment: X*, 9, 100 104, <https://doi.org/https://doi.org/10.1016/j.aeoa.2021.100104>, 2021.
- 670 Zhang, Y., Gautam, R., Zavala-Araiza, D., Jacob, D. J., Zhang, R., Zhu, L., Sheng, J.-X., and Scarpelli, T.: Satellite-Observed Changes in Mexico’s Offshore Gas Flaring Activity Linked to Oil/Gas Regulations, *Geophysical Research Letters*, 46, 1879–1888, <https://doi.org/https://doi.org/10.1029/2018GL081145>, 2019.
- Zheng, B., Geng, G., Ciais, P., Davis, S. J., Martin, R. V., Meng, J., Wu, N., Chevallier, F., Broquet, G., Boersma, F., van der A, R., Lin, J., Guan, D., Lei, Y., He, K., and Zhang, Q.: Satellite-based estimates of decline and rebound in China’s CO₂ emissions during COVID-19
675 pandemic, *Science Advances*, 6, eabd4998, <https://doi.org/10.1126/sciadv.abd4998>, 2020.

Zhu, L., Jacob, D. J., Keutsch, F. N., Mickley, L. J., Scheffe, R., Strum, M., González Abad, G., Chance, K., Yang, K., Rappenglück, B., Millet, D. B., Baasandorj, M., Jaeglé, L., and Shah, V.: Formaldehyde (HCHO) as a hazardous air pollutant: mapping surface air concentrations from satellite and inferring cancer risks in the United States, *Environmental Science & Technology*, 51, 5650–5657, <https://doi.org/10.1021/acs.est.7b01356>, 2017.