



# Polycyclic aromatic hydrocarbons (PAHs) and their nitrated and oxygenated derivatives in the Arctic boundary layer: Seasonal trends and local anthropogenic influence

Tatiana Drotikova<sup>1,2</sup>, Alena Dekhtyareva<sup>3</sup>, Roland Kallenborn<sup>1,2</sup>, and Alexandre Albinet<sup>4</sup>

- 5 <sup>1</sup>Department of Arctic Technology, University Centre in Svalbard (UNIS), Longyearbyen, 9171, Norway  
<sup>2</sup>Faculty of Chemistry, Biotechnology and Food Sciences, Norwegian University of Life Sciences (NMBU), Ås, 1432, Norway  
<sup>3</sup>Geophysical Institute, University of Bergen and Bjerknes Centre for Climate Research, Bergen, 5020, Norway  
<sup>4</sup>French National Institute for Industrial Environment and Risks (Ineris), Verneuil en Halatte, 60550, France

Correspondence to: Tatiana Drotikova ([tatiana.drotikova@unis.no](mailto:tatiana.drotikova@unis.no)) and Alexandre Albinet ([alexandre.albinet@ineris.fr](mailto:alexandre.albinet@ineris.fr))

10 **Abstract.** 22 PAHs, 29 oxy-PAHs, and 35 nitro-PAHs (polycyclic aromatic compounds, PACs) were measured in gaseous and particulate phases in the ambient air of Longyearbyen, the most populated settlement in Svalbard, the European Arctic. The sampling campaign started in polar night in November 2017 and lasted for 8 months until June 2018, when a light cycle reached a sunlit period with no night. The transport regimes of the near-surface, potentially polluted air masses from midlatitudes to the Arctic and the polar boundary layer meteorology were studied. The data analysis showed the observed  
15 winter PAC levels were mainly influenced by the lower latitude sources in northwestern Eurasia, while local emissions dominated in spring and summer. The highest PAC concentrations observed in spring, with PAH concentration levels a factor of 30 higher compared to the measurements at the closest background station in Svalbard (Zeppelin; in 115 km distance to Longyearbyen), were attributed to local snowmobile driving emissions. The lowest PAC concentrations were expected in summer due to enhanced photochemical degradation under the 24 h midnight sun conditions and inhibited long-range  
20 atmospheric transport. In contrast, the measured summer concentrations were notably higher than those in winter due to the harbour (ship) emissions.

## 1 Introduction

Polycyclic aromatic hydrocarbons (PAHs) are toxic and carcinogenic compounds (IARC, 2010; Kim et al., 2013) released into the atmosphere primarily through incomplete combustion of fossil fuels and biomass (Ravindra et al., 2008). PAHs react with  
25 several atmospheric oxidants and form toxic oxygenated and nitrated PAH derivatives (oxy-PAHs and nitro-PAHs; Clergé et al., 2019; WHO, 2003; Bolton et al., 2000; Idowu et al., 2019; IARC, 2012), which can also be present in primary emissions (Keyte et al., 2013; Bandowe and Meusel, 2017; Walgraeve et al., 2010; Abbas et al., 2018). PAHs, nitro- and oxy-PAHs (polycyclic aromatic compounds, PACs) are semi-volatile compounds partitioning between gaseous and particulate phases in response to ambient pressure and temperature, and thus have different photolysis rates and long-range atmospheric transport  
30 (LRAT) potentials (Mulder et al., 2019; Tomaz et al., 2016; Albinet et al., 2007; Albinet et al., 2008; Keyte et al., 2013; Nalin et al., 2016; Huang et al., 2014; Odabasi et al., 1999; Shahpoury et al., 2016). Once emitted in the atmosphere, PACs are



35 subjected to dry and wet deposition with different efficiencies depending on compound physical properties (e.g. vapor pressure, water solubility, polarity, particle size and mass), ambient conditions (e.g. air temperature, wind speed, atmospheric stratification), and precipitation intensity (Keyte et al., 2013; Lei and Wania, 2004; Shahpoury et al., 2018). The PACs that escape the listed sink processes disperse via LRAT to remote places, including the Arctic.

40 The Arctic region is a receptor of gas and particulate phase pollution from diverse source regions at lower latitudes. Though, the lower troposphere of the high Arctic is in general well isolated from the rest of the atmosphere due to the very cold air masses located in this region (Bozem et al., 2019), which build the so-called polar dome with the Arctic front as its boundary, formed by the surfaces of constant potential temperature (Klonecki, 2003; AMAP, 2015). Air masses inside and outside the polar dome have different chemical compositions (Klonecki, 2003; Bozem et al., 2019; Willis et al., 2019), confirming the barrier function of the dome. Only the air masses cooled to similar low potential temperatures as within the polar dome area can penetrate it (Klonecki, 2003).

45 During the winter and early spring the Arctic front can move as far south as 40° N with its greatest extent over cold areas of northern Eurasia (AMAP, 2015). It allows a direct low-level transport of air masses from the areas located north of the Arctic front (within the polar dome) to the Arctic lower troposphere. This pathway provides the most rapid (about 10-15 days; Stohl, 2006) and efficient pollution delivery to the high Arctic lower troposphere due to low wet scavenging and absence of photochemical degradation processes during winter polar night, which lasts for about 3.5 months. The average precipitation amount per month is only 14-57 mm during winter and spring in different European Arctic areas (Hanssen-Bauer et al., 2019). At polar sunrise, the number of oxidants significantly increases in the Arctic troposphere (Barrie and Platt, 1997; Atlas et al., 50 2003; Simpson et al., 2007; Monks, 2000). Direct photolysis and reactions with atmospheric oxidants (e.g., hydroxyl and nitrate radicals, ozone, nitrogen dioxide) in the gas phase, and also heterogeneous (gas/particle) reactions, are the dominant loss processes for most PAHs. PAHs' lifetimes towards photochemical degradation range between one hour and 14 days (Keyte et al., 2013). In the Arctic, the atmospheric reactions play a significant role during spring as other sink processes, wet and dry deposition, are limited due to rare precipitation and low vertical turbulence of stably stratified cold air. This may cause 55 the buildup of nitro- and oxy-PAHs though nitro-PAHs degrade quickly (lifetimes of both, particulate and gaseous phase compounds, range between 6 min and 3 h; Reisen and Arey, 2005; Fan et al., 1996) by direct photolysis even under cold conditions. A similar outcome may be presumed for oxy-PAHs based on their photolysis and photochemical degradation rates (Miet et al., 2014; Kameda, 2018; Ringuet et al., 2012; Matsuzawa, 2000).

60 At the same time, the Arctic front starts receding during spring, and by summer, it has significantly retreated northward to about 73.5° N at longitudes between 134° and 17° W according to the recent estimates (Bozem et al., 2019), though the front is not symmetrical. This means potential air pollution sources are located south of the Arctic front barrier. Also, the wintertime atmospheric transport of air masses from northern Eurasia, promoted by a seasonal intensification of Siberian high and Icelandic low systems, weakens in summer due to a change in land-sea temperature contrasts. Consequently, in summer, the LRAT path to the Arctic shifts to a cleaner one, from the North Atlantic Ocean (Stohl, 2006) with no significant potential 65 impacting PAC sources along the LRAT route. The summer LRAT to the Arctic is a slow process, as uplifted (at source or at



Arctic front) emissions are transported to the higher troposphere with further descent into the Arctic lower troposphere from above through radiative cooling (about  $1 \text{ K d}^{-1}$ ; Klonecki, 2003). Descent from the upper troposphere to the near-ground layer typically takes several weeks (AMAP, 2015). This is a long time of exposure to 24 h midnight sun Arctic summer conditions. PACs may significantly degrade (Singh et al., 2017; Kameda, 2018; Matsuzawa, 2000; Cvrčková and Ciganek, 2005; Cvrčková et al., 2006; Ringuet et al., 2012). Furthermore, the lifting of polluted air masses at lower latitudes is typically associated with cloud formation and precipitation (AMAP, 2015) by which soluble and particle-associated PACs can be scavenged from the atmosphere before entering the Arctic dome as well as within the Arctic (Willis et al., 2018).

Thereby, the Arctic front location and permeability, the large scale circulation in the Arctic, available solar radiation, and precipitation regime affect the magnitude of PAC's LRAT to the Arctic lower troposphere, enhancing transport during winter and inhibiting it during summer (Klonecki, 2003; Stohl, 2006; Bozem et al., 2019). It also depends on the Arctic oscillation mode (Eckhardt et al., 2003; Madonna et al., 2014; Stohl et al., 2002), weather along the transport pathway (sea ice extent, air and ocean temperatures as they influence phase partitioning and vertical turbulence), primary emissions strength at lower latitudes, and local high Arctic meteorological conditions.

Svalbard archipelago ( $74^{\circ}$ - $81^{\circ}$  N,  $10^{\circ}$ - $35^{\circ}$  E) is the northernmost land in the European Arctic. Due to its location relative to the low-pressure systems in the Norwegian Sea (Hanssen-Bauer et al., 2019), Svalbard frequently receives air masses from Eurasia. Svalbard is located at the gateway of both atmospheric and oceanic heat transport into the Central Arctic (Serreze et al., 2007) as the Gulf Stream and the North Atlantic cyclone track are along its west coast. The region has experienced the greatest temperature increase during the last three decades (Nordli et al., 2014; Isaksen et al., 2016), and it is the warmest location in the Arctic above  $76^{\circ}$  N latitude (Wickström, 2020) with consequently one of the most visible changes associated with the Arctic amplification (Hanssen-Bauer et al., 2019; Isaksen et al., 2016; van Pelt et al., 2016; Onarheim et al., 2014; Dahlke et al., 2020; Wickström et al., 2020a). Thus, Svalbard is currently identified as an epicenter of climate change and perhaps the main receiver of air pollution from high-latitude Eurasian sources.

PAHs are chemicals of emerging concern in the Arctic (Balmer and Muir, 2017). Their occurrence has been monitored at several Arctic stations for over 30 years (Yu et al., 2019; Balmer et al., 2019), including one in Svalbard (Zeppelin station, Ny-Ålesund,  $78^{\circ}58' \text{ N}$ ,  $11^{\circ}53' \text{ E}$ , 474 m asl). Located on the mountain top, the station is often above a temperature inversion layer, making it ideal for LRAT pollution observations with minimal influence of near-ground pollution plumes (Eckhardt et al., 2013). On the other hand, local source emissions are often not detected at this elevation and are systematically considered negligible though their emissions may significantly contribute to Arctic air pollution (Eckhardt et al., 2013; Aliabadi et al., 2015; Ferrero et al., 2016; Law et al., 2017; Schmale et al., 2018). Thus, the primary purpose of this work was to quantify the occurrence of 86 PACs in the high Arctic lower troposphere, including PAHs, as well as nitro- and oxy-PAHs (a list of the compounds and abbreviations is available in Table S1-S3), which are not yet included in the circum-Arctic monitoring programs. This study was performed over 8 months in Svalbard, 115 km south-west to Ny-Ålesund, in the most populated town of Longyearbyen. During this period, seasonal changes were observed in terms of ambient temperature, absolute humidity, surface albedo, prevailing wind direction, air masses inflow, chemical composition of the troposphere, precipitation



100 type and intensity, clouds height and thickness, as well as an extreme shift from polar night conditions to a completely sunlit period, and a seasonal variation in human activities. The detailed objectives in this work were to investigate the PAC's seasonal variations of concentrations and substance patterns and study the potential influence of local anthropogenic emissions on it, as the air samples (gaseous and particulate phases) were collected within the boundary layer.

## 2 Material and methods

### 105 2.1 Sampling site

The study was performed in the Arctic town of Longyearbyen (78.22° N, 15.65° E) on the west coast of Svalbard (Fig. S1) from November 2017 to June 2018. As a result of the high-latitude location, the sun in Longyearbyen remains below the horizon between late-October and mid-February (polar night). On the contrary, it does not set between mid-April and the end of August (midnight sun or polar day; Fig. S2).

110 Longyearbyen is the largest populated among the northernmost settlements, with about 2400 permanent residents (Statistics Norway, 2020) and a seasonal increase due to tourism, mainly in spring and summer. The local coal-fired power plant (30771 ton year<sup>-1</sup> of coal and 419 ton year<sup>-1</sup> of diesel consumption (Miljødirektoratet, 2018)) and car traffic (1558 vehicles (Statistics Norway, 2018)) are the main permanent local sources of PAC/anthropogenic emissions (Drotikova et al., 2020), while snowmobiles (2135 vehicles (Statistics Norway, 2018)) and marine (718 local boats (Statistics Norway, 2018) and 345  
115 cruise ships (Kystdatahuset, 2018)) traffic is seasonal. There is no local waste incineration and wood burning registered in the town.

Svalbard's topography is predominantly mountainous. The prevailing wind direction over the archipelago is from the eastern sector as a consequence of Svalbard's location relative to the low pressure systems in the Norwegian Sea (Isaksen et al., 2016). Influenced by local orography, it creates the predominant southeasterly winds in Longyearbyen. Sampling equipment was  
120 installed on the roof of the University Centre in Svalbard (UNIS, 25 m asl), which is considered to represent near-surface air pollution. UNIS is located in Adventdalen valley, 300 m to Adventfjærd, and surrounded by mountaintops primarily below 1000 m (Fig. S1c). Considering south-easterly prevailing wind direction and katabatic winds from Longyearbreen and Larsbreen glaciers, nearly all year-round UNIS is located downwind from the town (600 m distance), and the two main gateways (Adventdalen and Longyeardalen valleys) largely used for snowmobile driving during winter and spring. In summer,  
125 the wind direction can temporarily change to northwesterly (Dekhtyareva et al., 2016; Niedźwiedź, 2013), making UNIS position downwind the coal-burning power plant (1 km distance to UNIS) and the harbour (5 km distance to UNIS). UNIS is also surrounded by paved roads that are used by cars all year round (Fig. S1c).

### 2.2 Sample collection

Particulate and gaseous PACs were collected on quartz fiber filters (QFF; pre-burnt at 450 °C for 6 h; Ø = 103 mm; no binder;  
130 Munktell/Ahlstrom, Finland) and polyurethane foams (PUF; Soxhlet pre-cleaned in toluene for 24 h followed by 24 h acetone



wash;  $\phi = 65$  mm;  $L = 100$  mm; Klaus Ziemer GmbH, Germany), respectively, using a high-volume air sampler (TISCH-1000-BLXZ, TISCH Environmental Inc., USA). On average,  $370\text{ m}^{-3}$  of ambient air was collected over 24 h per sample (Table S4). Meteorological parameters, including ambient temperature, atmospheric pressure, wind speed and direction, relative humidity, and UV radiation, were recorded at Gruvefjellet ( $78^{\circ}12'$  N  $15^{\circ}37'$  E; 464 m asl) and Adventdalen ( $78^{\circ}12'$  N  $15^{\circ}49'$  E; 15 m asl) automatic weather stations in 2.6 and 4.6 km distance to the sampling site, respectively.

A total of 31 samples (31 QFFs and 31 PUFs) and 8 field blanks were collected. All samples were kept intact inside the sampling unit after collection. In order to reduce the risk of post-collection contamination, the unit was sealed in two plastic bags for transportation to the lab, where samples were removed from the unit, sealed with layers of aluminium foil, and stored airtight in two plastic bags. Samples were kept frozen at  $-20\text{ }^{\circ}\text{C}$  until sent to the French National Institute for Industrial Environment and Risks (Ineris, France), by express delivery using cool, insulated containers and then stored at  $-10\text{ }^{\circ}\text{C}$  until analysis.

### 2.3 Atmospheric stability, boundary layer height (BLH), and LRAT evaluation

The atmospheric layer between the Adventdalen (17 m asl) and Gruvefjellet (466 m asl) weather stations was studied. The potential temperatures  $\theta$  at 17 and 466 m asl heights were calculated following Wallace and Hobbs (2006):

$$\theta = T \cdot \left(\frac{1000}{p}\right)^k \quad (1)$$

where  $T$  is temperature [K],  $p$  is pressure [mbar],  $k = 0.286$  is a gas constant derived from the Poisson equation. The average temperature inversion strength (TIS, K), expressed as the potential temperature difference  $\theta_{466} - \theta_{17}$ , was evaluated (Arya, 1999).

Turbulence probability (atmospheric stratification) within the atmospheric layer of 449 m thickness between the stations was assessed via bulk Richardson number ( $Ri_{\text{bulk}}$ ):

$$Ri_{\text{bulk}} = \frac{g}{T_v} \frac{\Delta z \cdot \Delta \theta_v}{\Delta U^2} \quad (2)$$

where  $T_v$  is the average virtual potential temperature between the two stations,  $\Delta z$ ,  $\Delta \theta_v$ , and  $\Delta U$  are the differences in height, virtual potential temperature, and wind speed at the two stations, respectively (Wallace and Hobbs, 2006). As the layer is thick, likely, some sharp gradients of temperature and wind speed in the subregions of this layer are averaged out; a thus higher value of critical  $Ri_{\text{bulk}}$  was used to assess the probability of turbulence. The turbulence probability decreases linearly as the value of  $Ri_{\text{bulk}}$  increases from 0.25 to 10.25 (Stull, 1988). The  $Ri_{\text{bulk}}$  value of 5.25 was used to indicate less than a 50% probability of turbulent mixing within the layer between the two stations, i.e., stable stratification.

ERA5 data have been utilized to investigate the synoptic-scale meteorological conditions and BLH over Svalbard for the measurement period. ERA5 is the global reanalysis dataset with hourly output frequency, the horizontal and vertical resolutions of 31 km and 137 levels, respectively (Copernicus C3S, 2017; Hersbach et al., 2020). BLH in the ERA5 data set is based on



$Ri_{\text{bulk}}$  calculations for the specific vertical layer and surface. The values of  $Ri$  superior to 0.25 indicate stable stratification, and the BLH is diagnosed where the  $Ri_{\text{bulk}}$  exceeds this critical value (ECMWF, 2017).

An extended version of the FLEXPART air parcel trajectory data set of Läderach and Sodemann (2016); Fremme and Sodemann (2019) was used to study LRAT of pollutants to the measurement sites. FLEXPART V8.2 is a 3-dimensional  
165 Lagrangian particle dispersion model driven with the meteorological data from European Centre for Medium-Range Weather  
Forecasts' (ECMWF) ERA-Interim reanalysis (Stohl et al., 2005; Dee et al., 2011) with a spatial resolution of approximately  
80 km and temporal resolution of 6 hours. The current FLEXPART data set contains the horizontal and vertical position of 5  
million air parcels that represent the global atmosphere.

The 10-day backward trajectories have been extracted from the data set. The trajectories' points corresponding to the first day  
170 of the simulation were not considered since most of them were over the Svalbard region. The trajectories start at the height  
between 0 and 500 m above the ground in the region covering both Ny-Ålesund and Longyearbyen (from 77.5° N to 79.5° N  
and from 10° E to 20° E). The number of trajectories starting in this vertical layer in the data set varied from 1395 and 4659  
per season (Table S5). To investigate LRAT of air pollutants from mid-latitudes to Svalbard, only the trajectories that reach  
latitudes below 70° N and end up below the local BLH were considered. The air masses that fit these criteria are potential  
175 sources of long-range air pollution to the Arctic from ground-based emissions at the lower latitudes. Additionally, in order to  
assess atmospheric pollutants' possible removal via precipitation, the specific humidity was extracted at each time step along  
the trajectories. The specific humidity reduction on a value of  $\Delta q > 0.1 \text{ g kg}^{-1}$  on the consecutive time steps indicates the  
removal of water vapor from air masses and precipitation event (Läderach and Sodemann, 2016). The precipitation from the  
air parcels with temperatures above (below) 0 °C were considered as rainfall (snowfalls).

## 180 2.4 Analytical procedures

A detailed description of the analytical protocols used has been published previously (Tomaz et al., 2016; Albinet et al., 2006;  
Albinet et al., 2013; Albinet et al., 2014; Srivastava et al., 2018). Slight modifications have been applied here. In brief, a known  
amount of several surrogates (6-methylchrysene, 3 deuterated oxy-PAHs, including benzo[a]anthracene-7,12-dione-d4 (98%,  
TRC, Canada) to quantify the heavier oxy-PAHs, and 7 deuterated nitro-PAHs) were added to the samples prior to extraction.  
185 Gaseous phase PACs were extracted from PUF samples with acetone (two cycles: 80 °C, 100 bars, 5 min heat time, 15 min  
static time) using pressurized liquid extraction (ASE 350, Thermo Scientific, USA). Sample extracts were then reduced under  
a nitrogen stream to a volume of about 200  $\mu\text{L}$  (Turbovap II, Zymark, USA) and adjusted to 1 mL with acetonitrile. A fraction  
(900  $\mu\text{l}$ ) was dedicated to the PAH analyses, while another (100  $\mu\text{l}$ ) was used for nitro- and oxy-PAHs quantification.  
Particulate phase PACs were extracted from a 47 mm diameter QFF sample punch applying a QuEChERS-like (Quick Easy  
190 Cheap Effective Rugged and Safe) method with 7 ml acetonitrile (Albinet et al., 2013; Albinet et al., 2014). The 2 and 3.5 ml  
of supernatant were then reduced to near dryness under a nitrogen stream and reconstituted into 500  $\mu\text{l}$  and 100  $\mu\text{l}$  of acetonitrile  
for PAH and nitro-/oxy-PAH analyses, respectively. The PUF and QFF extracts dedicated to the analysis of oxy- and nitro-





PAHs were purified by solid phase extraction before analysis: first with neutral alumina ( $\text{Al}_2\text{O}_3$ , 500 mg, Macherey Nagel, Germany) and then with unmodified silica gel ( $\text{SiOH}$ , 500 mg, Macherey Nagel, Germany). All the extract volumes were then reduced to near dryness under a gentle nitrogen stream, reconstituted with acetonitrile (100  $\mu\text{l}$  for PUF and 50  $\mu\text{l}$  for QFF), and spiked with a known amount of 2 labelled internal standards prior to further analysis.

The 22 PAHs were analyzed by UHPLC-Fluorescence (Dionex Ultimate 3000, Thermo Scientific, USA) using a C18 UPLC column (Zorbax Eclipse PAH, 2.1 mm  $\times$  150 mm  $\times$  1.8  $\mu\text{m}$ , Agilent, USA; 3  $\mu\text{l}$  injected). GC-NICI/MS under SIM mode (Agilent 7890A GC coupled to 5975C MS, Agilent Technologies, USA) was used to quantify 35 nitro-PAHs and 29 oxy-PAHs. The compounds were separated on a Rxi-PAH column (30 m  $\times$  250  $\mu\text{m}$   $\times$  0.10  $\mu\text{m}$ , Restek, USA). 1  $\mu\text{l}$  of the purified extracts has been injected into the pulsed splitless mode for analysis. In addition, elemental carbon (EC) and organic carbon (OC) were measured on dedicated 1.5  $\text{cm}^2$  filter punches using a Sunset lab analyzer according to the EUSAAR-2 thermal protocol (Cavalli et al., 2010; CEN, 2017).

## 2.5 Quality assurance and quality control

In order to evaluate the background contamination related to sample collection and analysis, PUF and QFF field ( $n = 8$ ) and laboratory blanks ( $n = 6$ ) were performed. Low contamination of laboratory blanks was confirmed. Field blank contamination higher than 30 % of the seasonal average concentrations was determined for biphenyl-2,2'-dicarboxaldehyde, 2,3-naphthalenedicarboxylic anhydride, and 1,8-naphthalic anhydride for the gaseous phase. These compounds, in this phase, were excluded from the results. No blank correction was performed for the concentration calculations. Samples showing PAC concentrations below limit of quantification (LOQ) were replaced by LOQ/2 for further calculations. The instrumental LOQ was defined as the lowest concentration of the compound that can be determined for a signal to noise ratio  $S/N = 10$ . This evaluation was performed using the lowest concentrated standard solution.

Acceptable PAC surrogate recoveries were obtained and ranged between 53–120 %. Quality of the PAH analyses was assessed following the European Committee for Standardization (CEN) standard procedures EN 15549:2008 and TS 16645:2014 (CEN, 2008, 2014). In addition, Ineris routinely participates in national and European PAH analytical inter-comparison biannual exercises. The last exercise results were in good agreement with reference values, including those for the QuEChERS extraction (Verlhac, 2015; Bailleul and Albinet, 2018).

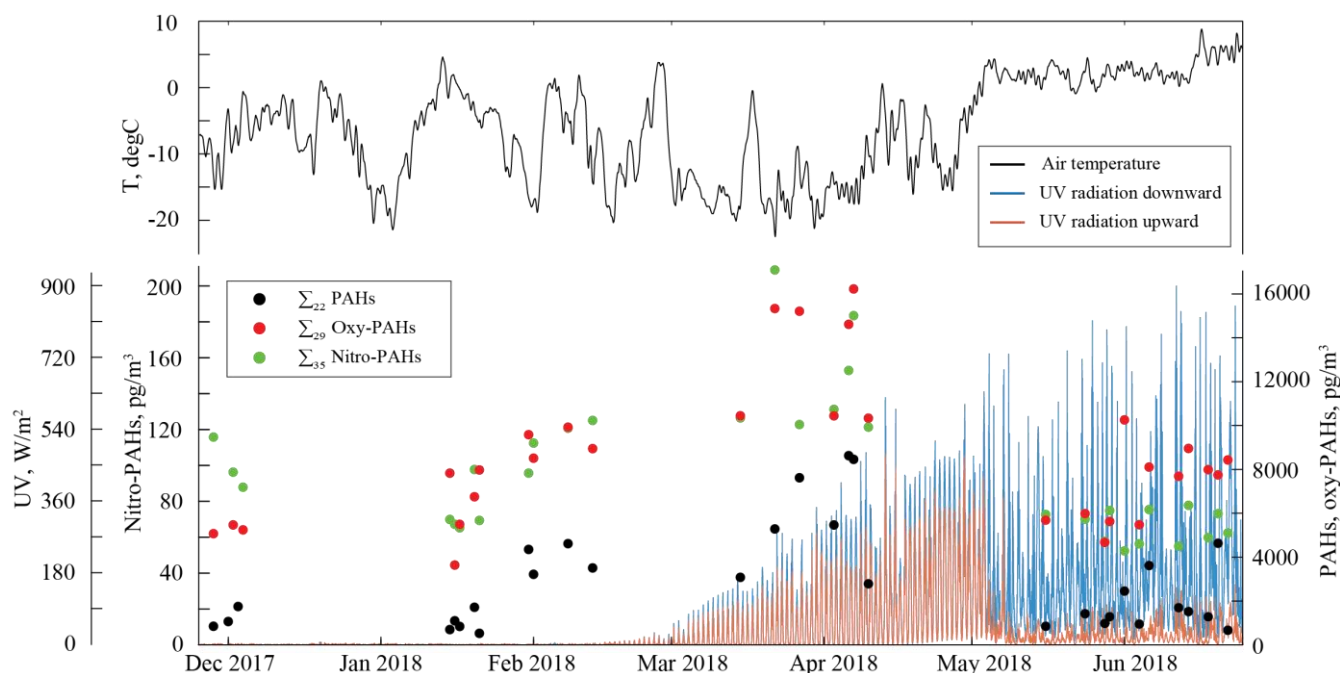
The analytical procedures were also validated ( $n = 3$ ) using NIST standard reference material (SRM 1649b, urban dust). The obtained results were in good agreement with NIST certified, reference, or indicative PAC values and those previously reported in the literature for oxy- and nitro-PAHs (Albinet et al., 2013; Albinet et al., 2014) as reference concentration values in SRM do not exist for several compounds.



### 3 Results and discussion

#### 3.1 Seasonal variations

Individual PAH, oxy- and nitro-PAH, as well as OC and EC average concentrations measured in the ambient air of Longyearbyen are presented in Table S1-S3, and daily values are presented graphically in Figure 1. Large seasonal variations were observed for all the PACs, and the  $\Sigma_{20}$  PAH concentrations trend was found to differ from the long-term observations at the background station at Zeppelin mountain (Fig. S3) in Ny-Ålesund, Svalbard, located 115 km northwest of Longyearbyen. To explain the PAC concentration trends found here, the measurements data set was divided into the four periods (P1-P4) based on weather and light conditions (Fig. S2) and potential sources as follows: November to January (dark winter; P1), February (twilight winter; P2), March to April (day light spring; P3), and May to June (polar day summer; P4). The full details on samples grouping and weather conditions are outlined in the Supplement (Table S4 and S6).

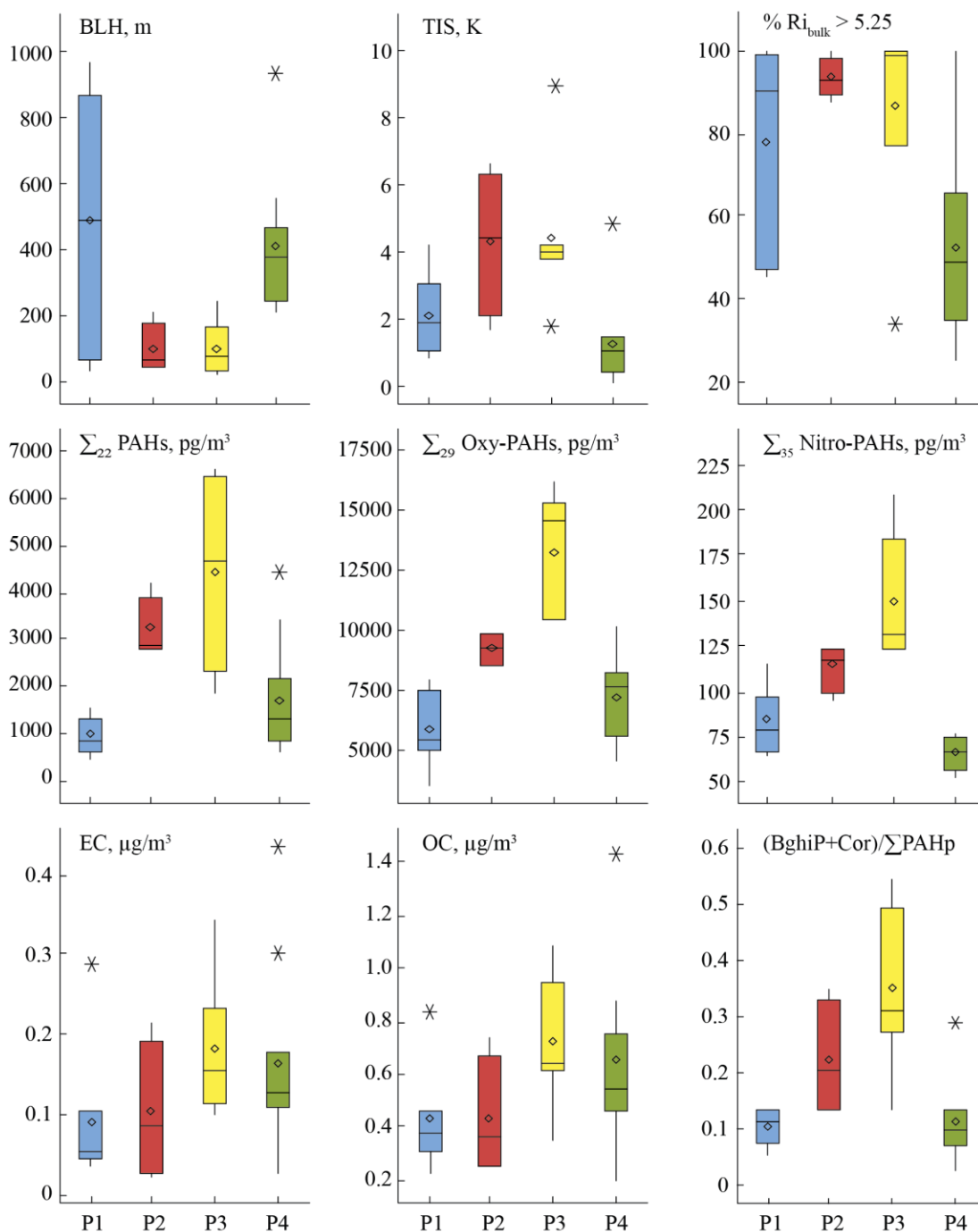


**Figure 1.** Atmospheric temperature, UV radiation, and daily total (gaseous + particulate) concentrations of  $\Sigma_{22}$  PAHs,  $\Sigma_{29}$  oxy-PAHs, and  $\Sigma_{35}$  nitro-PAHs in the urban air of Longyearbyen.

##### 3.1.1 Winter and spring cold P1-P3 periods

The winter season (P1-P2) is characterized by the most considerable weather fluctuations due to the large-scale temperature and pressure gradients between midlatitudes and the Arctic (Sjöblom, 2010). During the sampling period the temperatures ranged from -18 °C and +4 °C being -5 °C as average. In winter, the Arctic weather is strongly controlled by extratropical





**Figure 2.** Box plots of atmospheric characteristics (boundary layer height BLH, thermal inversion strength TIS, bulk Richardson number  $Ri_{bulk}$  as characteristic of thermal stability of air layer), sum PAC (G+P), EC, OC concentrations, and the gasoline emissions PAH diagnostic ratio values  $((BghiP + Cor)/\sum PAH_p)$ . Data are for the November-January (P1; n=8), February (P2; n=4), March-April (P3; n=7), and May-June (P4; n=12) periods. The boxes represent the 25<sup>th</sup> and 75<sup>th</sup> percentiles of the data. The lines in the boxes and diamond symbols represent the median and the mean, respectively. All the outliers beyond the whiskers are shown individually.



cyclones, commonly referred to as low pressure systems, which are at its strongest and the most frequent in December-February (Zhang et al., 2004), and have an increasing tendency in the areas around Svalbard over the last decades (Wickström et al., 2020b). These cyclones are the main atmospheric heat source to the Arctic in winter (Fig. S4), and they are also associated with high winds and precipitation (Wickström, 2020). Such inflows from southern latitudes interrupt the Arctic atmosphere thermal stability and cause the BLH fluctuations (Fig. 2). The southeasterly wind was observed during all the sampling days in the cold P1-P3 periods (Fig. S5a). Thus, the sampling site was upwind the coal-burning emissions at the power plant in winter and spring (Fig. S1c).

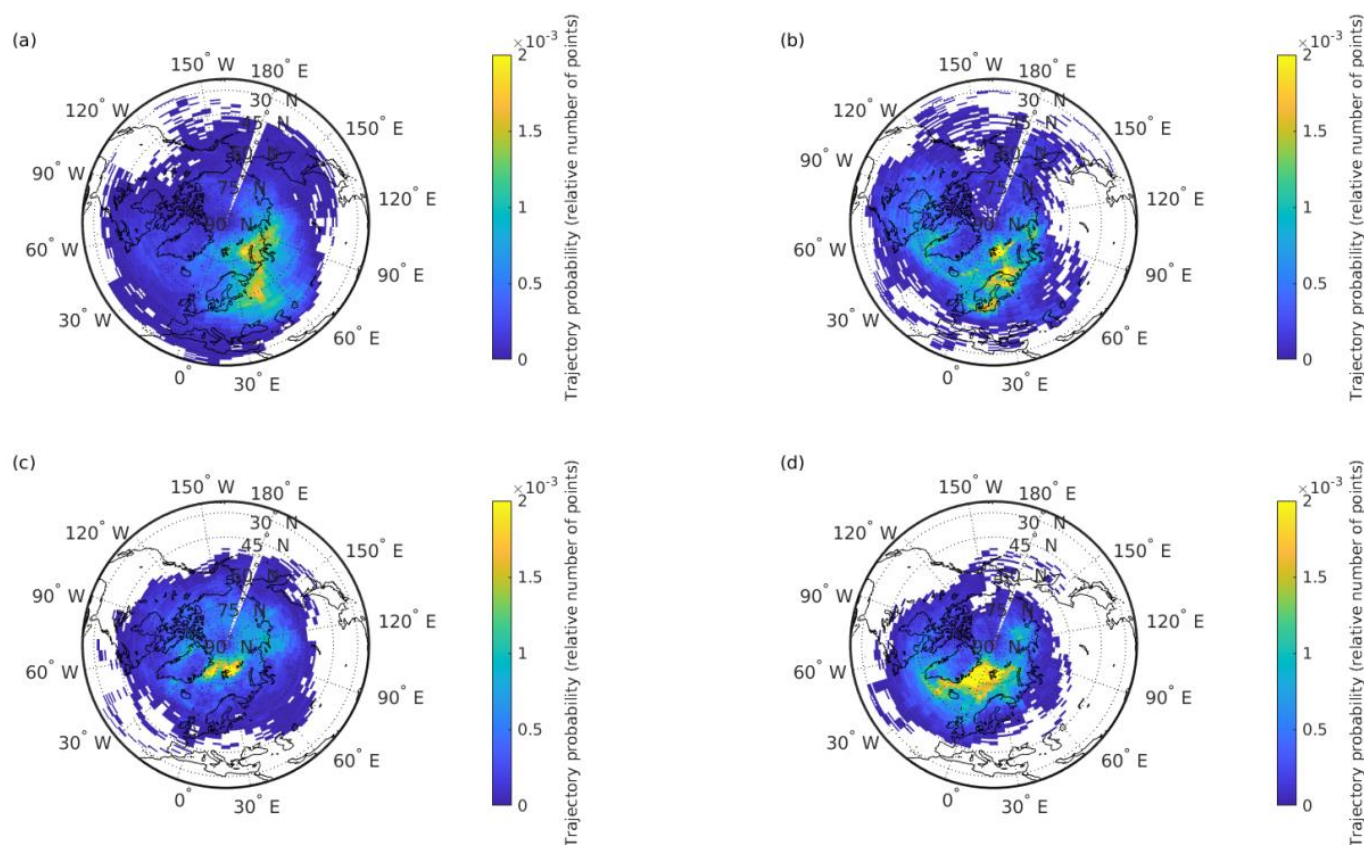
The average P1 winter  $\sum_{22}$  PAH total (gaseous and particulate; G+P) concentrations were  $1068 \pm 449$   $\text{pg m}^{-3}$ . The level of  $\sum_{29}$  oxy-PAH ( $5934 \pm 1480$   $\text{pg m}^{-3}$ ) were about 6-fold higher than PAHs, while  $\sum_{35}$  nitro-PAHs ( $84 \pm 19$   $\text{pg m}^{-3}$ ) were an order of magnitude lower. As discussed earlier, the LRAT of pollutants to the lower Arctic troposphere is maximum in winter, and the PAH multidecadal monitoring data from the Zeppelin station reflects this trend well (Fig. S3 and Yu et al., 2019). The measured PAH concentrations in Longyearbyen were similar (about 19% higher) to those detected at the Zeppelin station (Table S7), confirming LRAT of anthropogenic pollutants as a dominant source of PAHs in the Arctic air during winter. According to the 10 day back-trajectory analysis, the transported air masses in winter mainly originated from the European sector, including the areas of Scandinavia, Northern Europe, Western Russia, and the West Siberian plain (Fig. 3a). Compared to the winter 2018 PAH levels in the background continental air in Northern Finland (Pallas, Matorova station,  $68^{\circ}00'$  N,  $24^{\circ}14'$  E, 340 m asl), where the air masses are frequently delivered from, the Longyearbyen PAH concentrations are a factor of 2 lower (Table S7), which may give us a rough estimation of the PAH's LRAT efficiency though it largely depends on the weather along the transport pathway, as discussed earlier.

At the end of January, the Longyearbyen area starts receiving sunlight. It promotes photochemical processes and notably PAC degradation. As a consequence, a factor of 5 lower PAH concentrations were measured at the Zeppelin station in spring compared to the winter levels (Table S7), also in agreement with earlier studies (Singh et al., 2017; Halsall et al., 1997; Fu et al., 2009). In contrast, a double amount of  $\sum_{86}$  PACs ( $13277 \pm 1295$   $\text{pg m}^{-3}$ ) was detected in Longyearbyen air in February (P2), and even higher levels ( $19281 \pm 4876$   $\text{pg m}^{-3}$ ) were found during the March to April period P3. A pronounced increase of concentrations was revealed for most of the compounds. Compared to the winter levels, a 6-fold increase was detected for  $\sum_{22}$  PAHs ( $5902 \pm 2421$   $\text{pg m}^{-3}$ ), and 2-fold higher concentrations of  $\sum_{29}$  oxy-PAHs ( $13229 \pm 2681$   $\text{pg m}^{-3}$ ) and  $\sum_{35}$  nitro-PAHs ( $150 \pm 34$   $\text{pg m}^{-3}$ ) were determined in spring P3. These levels are about one order of magnitude lower than the average European urban and suburban PAC concentrations measured during cold seasons (Tomaz et al., 2016; Albinet et al., 2008), though the difference is less pronounced with the annual levels in background air (Nežiková et al., 2020): the sum spring concentrations of PAHs (n=15) and HMW oxy-PAHs (n=4) were about a factor of 2 lower, while LMW oxy-PAHs (n=4) and the sum nitro-PAHs (n=15) were in a similar range to up to one order of magnitude higher. Several individual PAC concentrations increased by a factor of 2 to 525 (depending on the compound) compared to the winter levels and several of them significantly exceeded (more than twice) the annual mean urban levels in central Europe (Tables S1 to S3; Tomaz et al., 2016; Albinet et al., 2008). As for the Arctic scale, the  $\sum_{20}$  PAH concentrations measured at UNIS were a factor of 30 higher than those at the Zeppelin



background station (oxy- and nitro-PAHs are not monitored at the station; Table S7). Such a large difference implies a significant contribution of local emissions to the overall PAC levels in Longyearbyen as the UNIS and Zeppelin stations have similar air masses transport from lower latitudes. According to the backward trajectory probability analysis, in spring, the source regions shifted from east to west and significantly up north: from continental locations in Russia and Europe (P1-P2; Fig. 3a-b) to marine ones over the North Atlantic (Fig. 3c), mainly from the area north of the 75 °N latitude with no significant PAC sources. Thus, the influence of local emissions might be prevailing in spring.

Regional high Arctic weather conditions established by spring favor pollution accumulation in the near-ground air layer. Continuous radiative cooling of snow-covered surfaces during several months of polar night results in low temperatures at the ground, which creates thermally very stable air stratification. The median values of  $Ri_{bulk}$  for P2 and P3 periods were significantly higher than 5.25 (Fig. 2), indicating reduced vertical air mixing (Stull, 1988). Strong temperature inversions were frequent during this period with median TIS of about 4.5 °K. The inversion events were the most persistent in spring due to



**Figure 3.** 10-day backward trajectory probability maps for the air masses originated from a source area boundary layer and arrived at 0-500 m above the region of interest in Svalbard. The trajectories' points corresponding to the first day of the simulation are not considered since most of the points for this day are over the Svalbard region. Data are for the November-January P1 (a), February P2 (b), March-April P3 (c), and May-June P4 (d) periods.



typical sustained cold ambient temperatures ( $-13.8 \pm 3.4$  °C as average) in March and April (P3). The estimated BLHs were as low as  $100 \pm 79$  m with its minimum of 19 m under calm ( $1.9$  m  $s^{-1}$  wind as median), cold conditions ( $-15.4$  °C; Table S6). Thus, the spring near-ground PAC concentrations were greatly influenced by local emissions, which were frequently trapped  
300 beneath an inversion layer and their dilution was limited to a very shallow volume of cold air under suppressed vertical mixing conditions. In addition, for secondary species such as nitro- and oxy-PAHs, secondary formation processes could also occur during these periods and might be promoted by such meteorological conditions. This will be further discussed in a forthcoming article.

Similar to PACs, about 2-fold higher EC and OC concentrations were measured in P2 and P3 periods (Fig. 2 and Table S1),  
305 and the peak values were found on weekends and during the Easter holidays. This highlights that a large part of OC was probably related to primary combustion emissions in these periods, although secondary processes (formation of secondary organic aerosol) may occur (Hallquist et al., 2009; Heald and Kroll, 2020; Jimenez et al., 2009; Kroll and Seinfeld, 2008). The coal-burning emissions from the power plant were upwind during all the sampling days. Thus, this source probably had no impact on the concentrations and patterns observed. Car traffic intensity is quite steady through winter to spring (P1-P3), and  
310 the same emission intensities are presumed as of similarly cold ambient temperatures during these periods. However, significantly higher values of the ratio  $(BghiP+Cor)/\sum PAHp$ , representative of gasoline emissions (sum of filter concentrations of 12 PAHs mainly present in the particulate phase (PAHp): from benzo[a]anthracene to coronene according to our observations; Table S1) (Marchand et al., 2004; Albinet et al., 2007) were noticed during and after the polar sunrise (P2 and P3, respectively) compared to the winter period P1 (Fig. 2). Human activities increase greatly with the sun's return. The town  
315 residents start driving snowmobiles predominantly for recreational purposes already during the twilight period P2. It is also the main attraction for tourists, the number of which significantly increases during the spring period P3 (about 16000 monthly hotel guest nights are registered in March and April; Statistics Norway, 2016) and the greatest number of snowmobiles (2135 vehicles; Statistics Norway, 2018) are in use.

The Longyearbyen snowmobiles park predominantly consists of 4-stroke engine touring vehicles (60-150 HP) and a small  
320 number (about 10%) of 2-stroke modern (sport models) and old snowmobiles (registered before 2010). All the snowmobiles are gasoline driven (10-20 L per 100 km; NS-EN 228 Norwegian standard winter Gasoline 95 No. 2 with up to 15% MTBE (methyl tert-butyl ether); Jøran Storø, LNS Spitsbergen, personal communication, 2020) with an addition of synthetic oil (about 2 L per 100 km) for 2-stroke engines. Snowmobile emissions constitute a significant source of carbon monoxide, nitrogen oxides ( $NO_x$ ), particles, aldehydes, a large number of aromatic hydrocarbons (Sive et al., 2003; Bishop et al., 2001; Shively et  
325 al., 2008; Zhou et al., 2010; GYC, 2011), as well as several studies confirmed significant contamination of snow along a snowmobile track by PAHs (McDaniel and Zielinska, 2014; Rhea et al., 2005; Oanh et al., 2019). Due to potentially hazardous consequences related to the emissions, the use of snowmobiles is regulated and controlled in the USA with the hydrocarbons and carbon monoxide emission limits of  $15$  g  $kW-h^{-1}$  and  $90$  g  $kW-h^{-1}$ , respectively (U.S. NPS, 2015). Significantly higher concentrations of numerous aromatic hydrocarbons were measured in Longyearbyen air in spring 2007 caused by snowmobile  
330 driving (Reimann et al., 2009). The last decade's shift from 2 to 4-stroke snowmobile engines, including in Svalbard, has



reduced CO emissions. However, the recent inventory of 2017-2021 production year snowmobiles (499-1056 cc engine displacement; EPA, 2020) still shows up to an order of magnitude higher emissions of hydrocarbons (and probably PACs) from 2-stroke modern sleds, the small number of which in Longyearbyen can cause severe air pollution (Reimann et al., 2009). In conclusion, the results obtained here highlighted a strong impact of the snowmobile emissions on the ambient air PAC concentrations levels observed.

### 3.1.2 Summer P4 period

The Arctic lower troposphere's summer composition is primarily controlled by local Arctic weather conditions and local anthropogenic and natural emission sources due to less efficient LRAT mechanism and enhanced sink processes for PACs. The influence of the midlatitude emissions is more pronounced at higher altitudes because the summer atmospheric transport is directed to the higher troposphere (Klonecki, 2003; Stohl, 2006; Bozem et al., 2019). Arctic age of summer air near the surface north of 75° N is 13-17 days (Stohl, 2006) and the estimated travel time for gaseous pollutants is about three weeks (Bozem et al., 2019), while particles are efficiently scavenged by wet precipitation (Willis et al., 2018; and Table S5). Thus, local emissions are of great importance in summer in the high Arctic.

Increased incoming solar radiation (24 h of sunlight) and warmer ambient temperatures are the most notable changes of the high latitude summer. During the sampling period P4 the temperatures ranged from -0.1 °C and +9.3 °C with the average value of +3.6 °C on the sampling days. Loss of land-based snow cover and retreat of sea ice decrease surface albedo, which consequently creates the dominance of downward short-wave radiation in contrast to the spring period P3 (Fig. 1). Moreover, large areas of open ocean and increased solar insolation create relatively high atmospheric humidity. It allows the formation of low-level liquid-containing clouds (Browse et al., 2012), which are ubiquitous in the Arctic during summer (Lawson et al., 2001; Cesana et al., 2012). These low-level clouds and fogs produce frequent drizzle, which leads to efficient removal of particles associated (Browse et al., 2012), as well as gaseous phase water-soluble pollutants, including the PACs (Lei and Wania, 2004; Shahpoury et al., 2018). Thereby, the Arctic troposphere during summer is generally cleaner than winter (AMAP, 2006; Stohl et al., 2007) and is often considered pristine (Browse et al., 2012; Garrett et al., 2010). The 2-decade atmospheric measurements at several high Arctic monitoring stations confirm that PAH concentrations throughout the year are minimal during summers (Yu et al., 2019). The summer PAH levels are usually 1-2 orders of magnitude lower than in winter and often close to detection limits (Table S7 and Yu et al., 2019; Prevedouros et al., 2004; Singh et al., 2017). Nonetheless, summer  $\sum_{22}$  PAHs concentrations ( $1779 \pm 1210 \text{ pg m}^{-3}$ ) measured in Longyearbyen air were about 67% higher than the winter P1 levels (Table S1). The  $\sum_{29}$  oxy-PAH ( $7219 \pm 1692 \text{ pg m}^{-3}$ ) concentrations were 22% higher, while the levels of  $\sum_{35}$  nitro-PAHs ( $66 \pm 9 \text{ pg m}^{-3}$ ) were 22% lower (Table S2-S3) during P4 compared to winter P1. The PAH levels observed in Longyearbyen were a factor of 19 higher compared to levels measured at the Zeppelin background station during the same period of summer 2018 (Table S7) stresses the predominant contribution of the local anthropogenic emissions. Due to the town's lower demand for electricity and central heating during brighter and warmer midnight sun conditions, coal-burning emissions at the power plant decrease (Bøckman, 2019) as do car traffic emissions (Statistics Norway, 2016), also because of preferences for biking and





walking within the town. Meanwhile, boat traffic increases dramatically, mainly due to tourist cruises (about 53000 vessel  
365 passengers during summer season; Statistics Norway, 2016) and cargo delivery, and can significantly contribute to the local  
air pollution (Eckhardt et al., 2013; Zhan et al., 2014; Law et al., 2017; Ferrero et al., 2016).

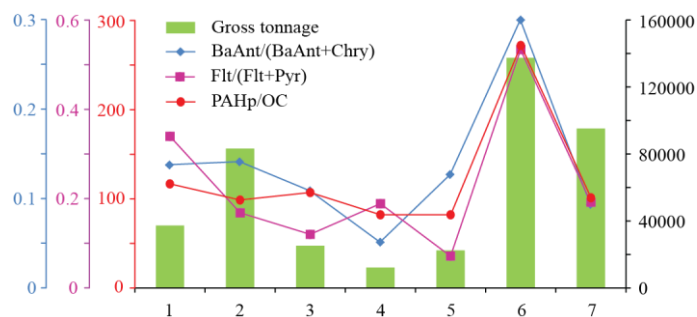
Due to the town's coastal location and the summer-specific land-sea thermal gradient, the northwesterly winds become frequent  
during summer. These winds are characterized by lower velocity ( $4.0 \text{ m s}^{-1}$  as median) compared to southeasterly ( $7.4 \text{ m s}^{-1}$  as  
median), the annual prevailing wind direction (Table S6). About half of the P4 period air samples were collected under  
370 northwesterly wind conditions (Fig. S5c) when the sampling site was downwind the coal power plant and the harbour (Fig. S1  
c-d). The Flu/(Flu+Pyr) coal combustion diagnostic ratio values  $0.81 \pm 0.09$  were found similar to the earlier reported  
(Drotikova et al., 2020) with low variability over the entire summer sampling period P4 indicating steady contamination from  
the power plant. Also, the power plant plumes are emitted at high elevation (95 m asl) and a short distance from UNIS (about  
800 m), and thus might not be well detectable at the UNIS sampling site due to higher BLH, less frequent thermal inversion  
375 events, increased air layers convection, and generally windy conditions during summer ( $4.9 \text{ m s}^{-1}$  during P4 sampling days).  
However, about 29-88 % higher  $\sum_{86}$  PACs, EC, and OC concentrations were detected on the days with a northwesterly wind,  
and the harbour emissions seemed then likely responsible for it as substantial air pollution can be caused by ship emissions  
when docked and during port maneuvering (Huang et al., 2018a). Moreover, these summer PAC concentrations (measured  
during the May to June 2018 period P4) were found about 3-fold higher than those reported previously for the autumn  
380 (measured during the late August to September 2018 period; Drotikova et al., 2020), when ship traffic in the fjord was already  
notably lower as a sailing season was close to its end. The average ( $n = 5$ ) concentrations when the wind blew from the  
southeast direction (from Adventdalen valley;  $n=5$ ) were  $\sum_{22}$  PAHs  $1116 \pm 278$ ,  $\sum_{29}$  oxy-PAHs  $6557 \pm 1821$ , and  $\sum_{35}$  nitro-  
PAHs  $65 \pm 10 \text{ pg m}^{-3}$ , and likely mainly influenced by local car traffic. On average, a factor of 2 and 1.2 higher concentrations  
of  $\sum_{22}$  PAHs ( $2253 \pm 1416 \text{ pg m}^{-3}$ ) and  $\sum_{29}$  oxy-PAHs ( $7691 \pm 1553 \text{ pg m}^{-3}$ ), respectively, were measured on the days with  
385 northwesterly wind (from the harbour;  $n = 7$ ). The  $\sum_{35}$  nitro-PAHs ( $66 \pm 10 \text{ pg m}^{-3}$ ) level did not change markedly. The  
maximum summer concentrations ( $\sum_{22}$  PAHs = 4633,  $\sum_{29}$  oxy-PAH = 10256 and  $\sum_{35}$  nitro-PAHs =  $75 \text{ pg m}^{-3}$ ) were found  
downwind from the harbour when the source strength (summed total tonnage of ships registered in the harbour during the  
sampling hours) was maximum and hourly median wind speed varied between  $1.8$  and  $5.7 \text{ m s}^{-1}$ . Dispersal of ship plumes and  
their visibility at a fixed measurement point is not only dependent on the source strength but also on the atmospheric stability,  
390 wind velocity, and turbulence intensity (Contini et al., 2011). Higher local air pollution by ship emissions and its accumulation  
can be expected at lower wind speed, similar to the summer 2009 case study in Ny-Ålesund, Svalbard (Eckhardt et al., 2013).  
To further highlight ship emissions' influence, samples collected when the moderate wind ( $4.0 \text{ m s}^{-1}$  as median) blew from the  
northwesterly sector ( $292^\circ$ - $313^\circ$ ;  $n = 7$ ) were only considered (Fig. 4). The total (arrival + departure) gross tonnage of vessels  
(Kystdatahuset, 2018) was used as indicator of local ship traffic. A correspondence was found between the summed total  
395 tonnage of ships registered in the harbour during the sampling hours and the Flt/(Flt+Pyr) and BaAnt/(BaAnt+Chry) diagnostic  
ratios, providing clear evidence of the harbour emissions' contribution (Zhang et al., 2019; Drotikova et al., 2020). A factor of  
4 higher concentrations of the PAH<sub>p</sub> were measured on the days with northwesterly wind compared to the days when wind





blew from a southeast direction, which is also in agreement with a recent study on ship emissions in the harbour of Longyearbyen (Dekhtyareva, 2019). Such large increase of particle-associated PAHs also suggests the harbour predominant influence as only about 6% of the power plant total PAC emissions (gaseous + particulate phases) were associated to the particulate phase (Drotikova et al., 2020). Finally, a good correlation of the PAHp/OC ratio values with the summed vessels' total tonnage was also found (Fig. 4), highlighting a higher content of PAHs in OC under such harbour influence.

As a last evidence indicating a significant influence from the harbour, the OC/EC ratio values ranged between 2.5 and 7.4 (3.6 as median) on the selected days. Marine fuel quality and engine operated conditions cause large variation of the OC and EC emissions. The OC/EC ratio values between 2 and 5 are often detected for low- and high-power diesel operated vessel plumes, while the higher values are typical for heavy fuel oil engine emissions (Zhang et al., 2019; Zhang et al., 2020; Sippula et al., 2014), as well as for the ship emissions at low-speed maneuvering during the harbour departure and arrival (Zhang et al., 2016; Sippula et al., 2014; Huang et al., 2018b). Furthermore, the plot of the daily OC/EC ratio values versus total tonnage demonstrates the ratio increasing with the tonnage (Fig. S6).



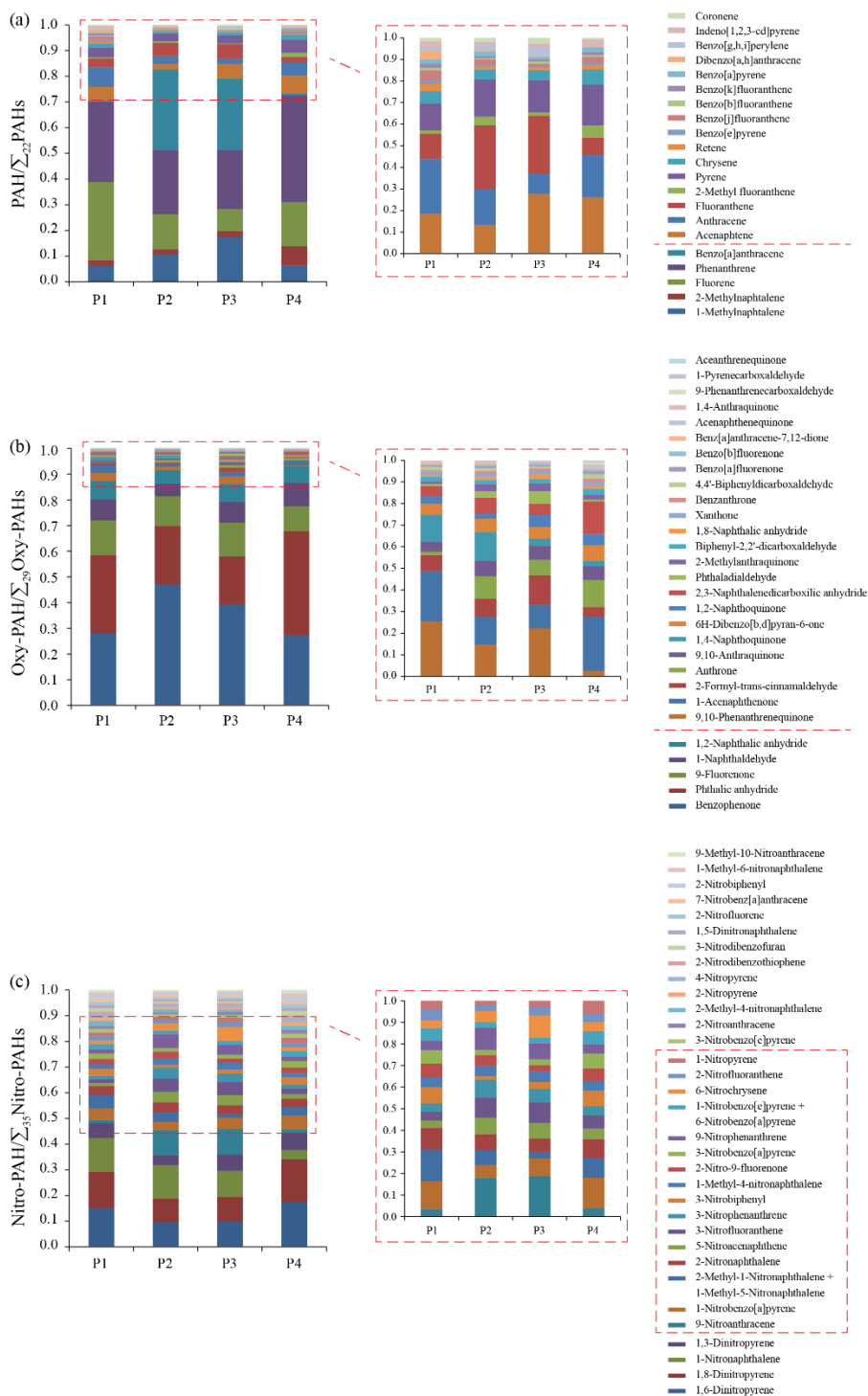
**Figure 4.** Correlations of the diagnostic ratios and the sum gross tonnage (dimensionless) of vessels arriving and departing the harbour of Longyearbyen during sampling hours on the summer period P4 days when the UNIS station was downwind the harbour (n=7).

## 3.2 PAC chemical profiles and source influences

### 3.2.1 PAH profiles

Phenanthrene, fluorene, naphthalene, benzo[a]anthracene, and 1-methylnaphthalene accounted for  $76 \pm 8$  % of total PAHs measured in Longyearbyen. Phenanthrene was the predominant compound in all the periods (P1-P4) and accounted for about 30 % as the average, being higher in summer. The contribution of naphthalene varied from 5 % to 24 %, with a higher proportion in the spring period P3. This compound is not included in the further discussion as it is not source-specific.

The resulting winter profile P1 (Fig. 5a) was dominated by phenanthrene and fluorene (60 %) with a smaller contribution of about 8 % of anthracene, which was highest compared to the other periods. Anthracene is one of the most reactive among



425 **Figure 5:** Average chemical profiles based on the total (gaseous + particulate phases) individual concentrations of PAHs (a), oxy-PAHs (b), and nitro-PAHs (c) for the November-January (P1; n=8), February (P2; n=4), March-April (P3; n=7), and May-June (P4; n=12) periods. Further details can be found in the Supplement (Fig. S7-S11).



PAHs (Keyte et al., 2013). Its higher proportion in winter may indicate accumulation of anthracene due to lower level of atmospheric oxidants under dark conditions during the P1 period.

430 The twilight P2 and spring P3 profiles were strongly influenced by benzo[a]anthracene and 1-methylnaphtalene accounted for 40 % of the total PAHs relative compositions with a higher proportion on weekends and public holidays, when snowmobile traffic is increased. Comparing the PAHs spring weekend profiles ( $n = 7$ ) with the rest of the cold period day profiles (P1-P3;  $n = 12$ ) confirmed a significant increase of benzo[a]anthracene proportion caused by snowmobiling, as well as the higher contribution of 1-methylnaphtalene, fluoranthene, acenaphthene, and coronene to the total PAHs profile (Fig. S7). All over,

435 benzo[a]anthracene, phenanthrene, and 1-methylnaphtalene accounted for 68 % of the average PAHs profile of these days with known high snowmobile traffic. The predominance of phenanthrene and methylated PAHs in snow samples contaminated by a snowmobile emissions has being reported earlier (McDaniel and Zielinska, 2014), although the contribution of 2-methylnaphtalene and 2-methylfluoranthene in the present study was found negligible. Different engine technologies and fuel quality may have been responsible for it.

440 Like in winter, phenanthrene and fluorene were the predominant compounds of the summer PAH profile P4 accounted for 59 % of it. The proportion of 2-methylnaphtalene was found higher in summer. The summer profile represents an average picture of two sample groups collected under different wind conditions (direction) and thus influenced by different sources, though car traffic is similar (Fig. S1c). To investigate the source-specific emissions, profiles of the days with northwesterly wind ( $n = 7$ ) were compared with those samples collected when wind was from the Adventdallen valley (south-easterly wind;  $n = 5$ ).

445 The difference between the average profiles was mainly driven by the significantly higher contribution of fluoranthene, 2-methylfluoranthene, and chrysene on the days with northwesterly wind from the harbour and the coal power plant (Fig. S8). As specified above, increased air convection in summer, the sampling site's proximity to the power plant, and it's almost exclusively gaseous emissions mean that the ground-level emissions from the harbour are more detectable at UNIS than the high elevation power plant plumes. Our assumption is supported by frequent reports of fluoranthene and chrysene as major

450 PAHs in ship emissions (Huang et al., 2018b; Zhang et al., 2019; Zhao et al., 2020; Zhao et al., 2019) and an absence of contribution changes of phenanthrene, fluorene, and pyrene, the predominant compounds emitted from the power plant (Drotikova et al., 2020).

### 3.2.2 Oxy-PAH profiles

Benzophenone, phthalic anhydride, 9-fluorenone, 1-naphthaldehyde, and 1,2-naphthalic anhydride were the predominant

455 substances and accounted for  $89 \pm 4$  % of the total oxy-PAHs in all periods (Fig. 5b). Main changes in the profiles were caused by a 16 % increased contribution of benzophenone in spring and a 17 % higher proportion of phthalic anhydride in summer. Among the minor compounds (ranging from 25 to  $400 \text{ pg m}^{-3}$ ) accounted for about 10 % of the total oxy-PAHs profile, higher proportions of 2,3-naphthalenedicarboxylic anhydride and anthrone were found in summer. Detailed analysis of the average summer profiles based on different prevailing wind directions (Fig. S9) did not reveal any primary local source influence. This

460 may indicate the secondary formation of phthalic anhydride, 2,3-naphthalenedicarboxylic anhydride, and anthrone from PAH



photochemical reactions (Keyte et al., 2013; Chan et al., 2009; Perraudin et al., 2007; Bunce et al., 1997; Lee and Lane, 2009). A higher contribution of 9-fluorenone, 1-naphthaldehyde, 1-acenaphthenone, 6H-dibenzo[b,d]pyran-6-one, 9,10-anthraquinone, 2-methylanthraquinone, and benzanthrone to the total oxy-PAHs summer profile was discovered on days with northwesterly wind (Fig. S9). Several of these compounds have earlier been detected in the ship plumes (Zhao et al., 2020; 465 Czech et al., 2017; Sippula et al., 2014). Note that 9-Fluorenone and 9,10-anthraquinone are the main oxy-PAHs emitted after the local coal burning at the plant (Drotikova et al., 2020).

For the twilight P2 and spring P3 periods, a higher contribution of several oxy-PAHs was found on weekends and public holidays, namely benzophenone, 9,10-phenanthrenequinone, 2-formyl-trans-cinnamaldehyde, anthrone, 9,10-anthraquinone, benzanthrone (Fig. S10a), and the greatest proportion increase were found among the minor compounds 1,2-naphthoquinone, 470 phthaldialdehyde, 2-methylanthraquinone, and 1,8-naphthalic anhydride (ranged from 33 to 102  $\text{pg m}^{-3}$ ; Fig. S10b). These changes seemed likely to be caused by higher human activities and mostly snowmobile driving, as mentioned above. The use of oxidation catalysts as part of 4-stroke snowmobile exhaust after-treatment (Meldrum, 2017) may lead to efficient oxidation of parent PAHs and consequent formation of their oxygenated derivatives.

### 3.2.3 Nitro-PAH profiles

475 1-Nitronaphthalene and dinitropyrenes accounted for  $40 \pm 5$  % of total nitro-PAHs in all periods (Fig. 5c). The contribution of 1-nitronaphthalene decreased in summer while it increased for 1-nitrobenzo[a]pyrene. Different wind directions did not cause notable changes to the P4 summer profile.

The twilight P2 and spring P3 period profiles differ greatly from the winter P1 and summer P4 total nitro-PAHs relative compositions. The P2 and P3 profiles were enhanced by higher proportions of 9-nitroanthracene, 6-nitrochrysene, 3- 480 nitrophenanthrene, 5-nitroacenaphthene, and 3-nitrofluoranthene. A study of daily profiles of the entire cold period (P1-P3) showed evident pattern changes with a significantly greater contribution of the listed nitro-PAHs during non-work days (Fig. S11). No scientific studies on PAC emissions from snowmobiles are reported yet. Nonetheless, snowmobile driving is a well-documented major source of a list of aromatic hydrocarbons (Zhou et al., 2010; Reimann et al., 2009; Eriksson et al., 2003; Shively et al., 2008), and PAHs were detected in snow along snowmobile tracks (McDaniel and Zielinska, 2014; Rhea et al., 485 2005; Oanh et al., 2019). Moreover, a factor of 3 higher  $\text{NO}_x$  emissions from snowmobiles compared to gasoline-driven cars in Svalbard are reported by the Norwegian Climate and Pollution Agency (Vestreng et al., 2009) with the main contribution from four-stroke snowmobiles. Modern technology snowmobiles have a significant side effect of high production of  $\text{NO}_x$  (Ray et al., 2012) due to oxidation reactions in exhaust after-treatment (Aubin et al., 2017). A recent field survey by Dekhtyareva (2019) in Svalbard also confirmed enhanced  $\text{NO}_x$  emissions from snowmobiles. Excess of  $\text{NO}_x$  during combustion drives 490 nitration of PAHs producing nitrated PAH derivatives via electrophilic substitution (Ringuet et al., 2012; Heeb et al., 2008; Carrara and Niessner, 2011; Carrara et al., 2010; Hu et al., 2013; Keyte et al., 2013). To note, pattern changes of the daily total nitro-PAHs profiles were the easiest applicable to recognize snowmobile emissions than PAHs and oxy-PAHs, and 9-



nitroanthracene, 6-nitrochrysene, 3-nitrophenanthrene, 5-nitroacenaphthene, and 3-nitrofluoranthene seems to have strong specificity to the source.

#### 495 **4 Summary and conclusion**

LRAT is believed to play a predominant role in Arctic air pollution. Different seasonal mechanisms of air masses' transport to the lower Arctic troposphere determine the annual trend of remote sources' contribution with its maximum in winter and minimum in summer. The results obtained here from air samples collected within a polar boundary layer at an urban site revealed the importance of anthropogenic emissions within the Arctic, which caused a different seasonal trend of PAC  
500 concentrations.

While the winter PAC levels were found to be mainly influenced by the north-western Eurasian emissions, the highest concentrations, with comparable and even exceeded the European annual mean levels, were measured in spring, the coldest period in the high Arctic. Low BLH, suppressed vertical mixing (stable stratification), and frequent thermal inversions facilitated the accumulation of near-ground emissions during spring. This period coincided with a significant increase in local  
505 human activities followed the several months of winter darkness. Simultaneously, the LRAT dislocated to be mainly from the area north of the 75 °N latitude in the North Atlantic Ocean, with no significant PAC sources. The pollution was primarily attributed to local snowmobile related emissions, resulted in a factor of 30 higher PAH concentrations compared to the Zeppelin background station data. In addition, no typical pristine Arctic summer conditions were observed in Longyearbyen air. The PAC summer levels outreached the winter ones, while they are usually an order of magnitude lower as reported from  
510 background stations. Under inhibited LRAT and enhanced PACs' photochemical degradation (24 h sun) conditions during summer, these elevated levels indicated fresh local emissions. The PAC, OC, and EC levels depended on wind direction and were found to correlate with the local marine traffic. When the wind blew from the harbour, the average PAC concentrations were up to twice higher.

To date, this is the most comprehensive data on the phase-separated concentrations of non-monitored emerging contaminants  
515 in the Arctic like oxy- and nitro-PAHs. These results provide insights on their global fate, persistence in a cold environment (Röhler et al., 2020), and LRAT potential. Moreover, the here reported study allows the influence of the middle latitude sources (LRAT) to be distinguished from local sources. This knowledge is essential for authorities working on national and regional regulatory monitoring and remediation strategies and might further provide confidence for choosing new candidates to be routinely measured (Wong et al., 2021) in densely populated areas and in the Arctic (Röhler et al., 2020). As increased  
520 shipping, industrial development, and further urbanization of local settlements are predicted to substantially increase in the Arctic due to climate change and declining sea ice cover, it is crucial to stay alert on the levels of the emerging contaminants primarily emitted after fossil fuel burning such as the PACs.



*Data availability.* The dataset used in this paper is included in the Supplement, and further information is available from the  
525 corresponding authors at [tatiana.drotikova@unis.no](mailto:tatiana.drotikova@unis.no) and [alexandre.albinet@ineris.fr](mailto:alexandre.albinet@ineris.fr).

*Supplement.* The supplement related to this article is available online at: XXX.

*Author contributions.* TD, RK, and AA designed the study. TD conducted and performed the fieldwork. AA led and validated  
530 the chemical analyses. AD produced the meteorological data and assisted its interpretation. RK provided academic guidance  
and contributed to the paper preparation. TD and AA interpreted the data and wrote the manuscript with inputs from all co-  
authors.

*Competing interests.* The authors declare that they have no conflict of interest.  
535

*Acknowledgements.* The authors thank Valérie Minguet, Arnaud Papin, Ahmad El-Masri, Faustina Fuvel, and Serguei  
Stavrovski (Ineris) for sample preparation and EC/OC and PAC analyses. They acknowledge the Norwegian national archive  
Norstore (project NS9054K) for the trajectory data retrieved in this study, as well as ECMWF for the ERA5 meteorological  
data and personally Michael Sprenger (ETH Zurich) for the support in providing the data. They also acknowledge the Swedish  
540 EPA and Katarina Hansson (IVL Swedish Environmental Research Institute) for the PAH concentrations data monitored at  
Pallas (Finland) station, and Pernilla Bohlin-Nizzetto and Karl Espen Yttri (NILU) for the PAH, EC, and OC data from the  
Zeppelin (Svalbard) station. This research was financially supported by UNIS and the French Ministry of Environment.

## References

- 545 Abbas, I., Badran, G., Verdin, A., Ledoux, F., Roumié, M., Courcot, D., and Garçon, G.: Polycyclic aromatic hydrocarbon derivatives in  
airborne particulate matter: sources, analysis and toxicity, *Environ. Chem. Lett.*, 1-37, 10.1007/s10311-017-0697-0, 2018.
- Albinet, A., Leoz-Garziandia, E., Budzinski, H., and Villenave, E.: Simultaneous analysis of oxygenated and nitrated polycyclic aromatic  
hydrocarbons on standard reference material 1649a (urban dust) and on natural ambient air samples by gas chromatography–mass  
spectrometry with negative ion chemical ionisation, *J. Chromatogr. A*, 1121, 106-113, <https://doi.org/10.1016/j.chroma.2006.04.043>, 2006.
- 550 Albinet, A., Leoz-Garziandia, E., Budzinski, H., and Villenave, E.: Polycyclic aromatic hydrocarbons (PAHs), nitrated PAHs and  
oxygenated PAHs in ambient air of the Marseilles area (South of France): Concentrations and sources, *Sci. Total Environ.*, 384, 280-292,  
<https://doi.org/10.1016/j.scitotenv.2007.04.028>, 2007.
- Albinet, A., Leoz-Garziandia, E., Budzinski, H., Villenave, E., and Jaffrezo, J. L.: Nitrated and oxygenated derivatives of polycyclic aromatic  
hydrocarbons in the ambient air of two French alpine valleys. Part 1: Concentrations, sources and gas/particle partitioning, *Atmos. Environ.*,  
42, 43-54, <http://doi.org/10.1016/j.atmosenv.2007.10.009>, 2008.
- 555 Albinet, A., Tomaz, S., and Lestremau, F.: A really quick easy cheap effective rugged and safe (QuEChERS) extraction procedure for the  
analysis of particle-bound PAHs in ambient air and emission samples, *Sci. Total Environ.*, 450-451, 31-38,  
<https://doi.org/10.1016/j.scitotenv.2013.01.068>, 2013.
- Albinet, A., Nalin, F., Tomaz, S., Beaumont, J., and Lestremau, F.: A simple QuEChERS-like extraction approach for molecular chemical  
characterization of organic aerosols: application to nitrated and oxygenated PAH derivatives (NPAH and OPAH) quantified by GC–NICIMS,  
*Anal. Bioanal. Chem.*, 406, 3131-3148, <https://doi.org/10.1007/s00216-014-7760-5>, 2014.
- 560 Aliabadi, A. A., Staebler, R. M., and Sharma, S.: Air quality monitoring in communities of the Canadian Arctic during the high shipping  
season with a focus on local and marine pollution, *Atmos. Chem. Phys.*, 15, 2651-2673, 10.5194/acp-15-2651-2015, 2015.
- AMAP: AMAP Assessment 2006: Acidifying Pollutants, Arctic Haze, and Acidification in the Arctic, Oslo, Norway, xii+112 pp., 2006.





- 565 AMAP: AMAP Assessment 2015: Black carbon and ozone as Arctic climate forcers, Arctic Monitoring and Assessment Programme (AMAP), Oslo, Norway, 116 pp., 2015.
- Arya, S. P.: Air Pollution and Dispersion Meteorology, Oxford University Press, New York, 310 pp., 1999.
- Atlas, E. L., Ridley, B. A., and Cantrell, C. A.: The tropospheric ozone production about the spring equinox (TOPSE) experiment: introduction, *Journal of Geophysical Research: Atmospheres*, 108, <https://doi.org/10.1029/2002JD003172>, 2003.
- 570 Aubin, C.-P., Girard, E., Langlois, P.-O., Lebreux, Y., and Verner, G.: 4-Stroke IDI Turbocharged Diesel Snowmobile Design, The Clean Snowmobile Challenge 2017 Conference, Ann Arbor, Michigan, United States, March 2017, 2017.
- Bailleul, S., and Albinet, A.: Interlaboratory comparison for the analysis of PAHs in ambient air (2018), LCSQA, <https://www.lcsqa.org/fr/rapport/interlaboratory-comparison-analysis-pah-ambient-air-2018>, 2018.
- Balmer, J., and Muir, D.: Polycyclic aromatic hydrocarbons (PAHs), in: AMAP Assessment 2016: Chemicals of emerging Arctic concern, edited by: Hung, H., Letcher, R., and Yu, Y., Arctic Monitoring and Assessment Programme (AMAP), Oslo, Norway, 219-238, 2017.
- 575 Balmer, J. E., Hung, H., Yu, Y., Letcher, R. J., and Muir, D. C. G.: Sources and environmental fate of pyrogenic polycyclic aromatic hydrocarbons (PAHs) in the Arctic, *Emerging Contaminants*, 5, 128-142, <https://doi.org/10.1016/j.emcon.2019.04.002>, 2019.
- Bandowe, B. A. M., and Meusel, H.: Nitrated polycyclic aromatic hydrocarbons (nitro-PAHs) in the environment – A review, *Sci. Total Environ.*, 581-582, 237-257, <https://doi.org/10.1016/J.SCITOTENV.2016.12.115>, 2017.
- Barrie, L., and Platt, U.: Arctic tropospheric chemistry: an overview, *Tellus B: Chemical and Physical Meteorology*, 49, 450-454, <https://doi.org/10.3402/tellusb.v49i5.15984>, 1997.
- 580 Bishop, G. A., Morris, J. A., and Stedman, D. H.: Snowmobile contributions to mobile source emissions in Yellowstone National Park, *Environ Sci Technol*, 35, 2874-2881, 10.1021/es010513l, 2001.
- Bolton, J. L., Trush, M. A., Penning, T. M., Dryhurst, G., and Monks, T. J.: Role of Quinones in Toxicology, *Chem. Res. Toxicol.*, 13, 135-160, 10.1021/tx9902082, 2000.
- 585 Bozem, H., Hoor, P., Kunkel, D., Köllner, F., Schneider, J., Herber, A., Schulz, H., Leaitch, W. R., Aliabadi, A. A., Willis, M. D., Burkart, J., and Abbatt, J. P. D.: Characterization of transport regimes and the polar dome during Arctic spring and summer using in situ aircraft measurements, *Atmos. Chem. Phys.*, 19, 15049-15071, 10.5194/acp-19-15049-2019, 2019.
- Browse, J., Carslaw, K. S., Arnold, S. R., Pringle, K., and Boucher, O.: The scavenging processes controlling the seasonal cycle in Arctic sulphate and black carbon aerosol, *Atmos. Chem. Phys.*, 12, 6775-6798, 10.5194/acp-12-6775-2012, 2012.
- 590 Bunce, N. J., Liu, L., Zhu, J., and Lane, D. A.: Reaction of Naphthalene and Its Derivatives with Hydroxyl Radicals in the Gas Phase, *Environ. Sci. Technol.*, 31, 2252-2259, 10.1021/es960813g, 1997.
- Bøckman, R.: Fremtidens energiutfordringer på Svalbard (in Norwegian), Longyearbyen Lokalstyre, Norway, Open file at [www.uit.no](http://www.uit.no), last access: 28 January 2020, 10 pp., 2019.
- Carrara, M., Wolf, J.-C., and Niessner, R.: Nitro-PAH formation studied by interacting artificially PAH-coated soot aerosol with NO<sub>2</sub> in the temperature range of 295–523K, *Atmos. Environ.*, 44, 3878-3885, <https://doi.org/10.1016/j.atmosenv.2010.07.032>, 2010.
- 595 Carrara, M., and Niessner, R.: Impact of a NO<sub>2</sub>-regenerated diesel particulate filter on PAH and NPAH emissions from an EURO IV heavy duty engine, *J. Environ. Monit.*, 13, 3373-3379, 10.1039/C1EM10573F, 2011.
- Cavalli, F., Viana, M., Yttri, K. E., Genberg, J., and Putaud, J. P.: Toward a standardised thermal-optical protocol for measuring atmospheric organic and elemental carbon: the EUSAAR protocol, *Atmos. Meas. Tech.*, 3, 79-89, 10.5194/amt-3-79-2010, 2010.
- 600 CEN: European Committee for Standardization, EN-15549: 2008 - Air Quality - Standard Method for the Measurement of the Concentration of Benzo[a]pyrene in Air, CEN, Brussels (Belgium), <https://shop.bsigroup.com/ProductDetail?pid=000000000030142046>, 2008.
- CEN: European Committee for Standardization, TS-16645: 2014- Ambient Air – Method for the Measurement of Benz[a]anthracene, Benzo[b]fluoranthene, Benzo[j]fluoranthene, Benzo[k]fluoranthene, Dibenz[a,h]anthracene, Indeno[1,2,3-cd]pyrene and Benzo[ghi]perylene, CEN, Brussels (Belgium), <https://shop.bsigroup.com/ProductDetail?pid=000000000030277467>, 2014.
- 605 CEN: European Committee for Standardization, EN-16909: 2017 - Ambient air - Measurement of elemental carbon (EC) and organic carbon (OC) collected on filters, CEN, Brussels (Belgium), 2017.
- Cesana, G., Kay, J., Chepfer, H., English, J., and De Boer, G.: Ubiquitous low-level liquid-containing Arctic clouds: New observations and climate model constraints from CALIPSO-GOCCP, *Geophys. Res. Lett.*, 39, <https://doi.org/10.1029/2012GL053385>, 2012.
- 610 Chan, A. W. H., Kautzman, K. E., Chhabra, P. S., Surratt, J. D., Chan, M. N., Crounse, J. D., Kürten, A., Wennberg, P. O., Flagan, R. C., and Seinfeld, J. H.: Secondary organic aerosol formation from photooxidation of naphthalene and alkylnaphthalenes: implications for oxidation of intermediate volatility organic compounds (IVOCs), *Atmos. Chem. Phys.*, 9, 3049-3060, 10.5194/acp-9-3049-2009, 2009.
- Clergé, A., Le Goff, J., Lopez, C., Ledauphin, J., and Delépée, R.: Oxy-PAHs: occurrence in the environment and potential genotoxic/mutagenic risk assessment for human health, *Crit. Rev. Toxicol.*, 1-27, 10.1080/10408444.2019.1605333, 2019.
- 615 Contini, D., Gambaro, A., Belosi, F., De Pieri, S., Cairns, W. R. L., Donato, A., Zanutto, E., and Citron, M.: The direct influence of ship traffic on atmospheric PM<sub>2.5</sub>, PM<sub>10</sub> and PAH in Venice, *J. Environ. Manage.*, 92, 2119-2129, 10.1016/j.jenvman.2011.01.016, 2011.
- Copernicus C3S: Copernicus Climate Change Service (C3S), ERA5: Fifth generation of ECMWF atmospheric reanalyses of the global climate. Copernicus Climate Change Service Climate Data Store (CDS), 2017.



- Cvrčková, O., and Ciganeck, M.: PHOTOSTABILITY OF POLYCYCLIC AROMATIC HYDROCARBONS (PAHs) AND NITRATED POLYCYCLIC AROMATIC HYDROCARBONS (NPAHs) IN DICHLOROMETHANE AND ISOCTANE SOLUTIONS, *Polycyclic Aromat. Compd.*, 25, 141-156, 10.1080/10406630590922166, 2005.
- 620 Cvrčková, O., Ciganeck, M., and Šimek, Z.: ANTHRACENE, CHRYSENE, THEIR NITRO-AND METHYL-DERIVATIVES PHOTOSTABILITY IN ISOCTANE, *Polycyclic Aromat. Compd.*, 26, 331-344, 10.1080/10406630601028221, 2006.
- Czech, H., Stengel, B., Adam, T., Sklorz, M., Streibel, T., and Zimmermann, R.: A chemometric investigation of aromatic emission profiles from a marine engine in comparison with residential wood combustion and road traffic: Implications for source apportionment inside and outside sulphur emission control areas, *Atmos. Environ.*, 167, 212-222, <https://doi.org/10.1016/j.atmosenv.2017.08.022>, 2017.
- 625 Dahlke, S., Hughes, N. E., Wagner, P. M., Gerland, S., Wawrzyniak, T., Ivanov, B., and Maturilli, M.: The observed recent surface air temperature development across Svalbard and concurring footprints in local sea ice cover, *Int. J. Climatol.*, 40, 5246-5265, <https://doi.org/10.1002/joc.6517>, 2020.
- Dee, D. P., Uppala, S. M., Simmons, A. J., Berrisford, P., Poli, P., Kobayashi, S., Andrae, U., Balmaseda, M. A., Balsamo, G., Bauer, P., 630 Bechtold, P., Beljaars, A. C. M., van de Berg, L., Bidlot, J., Bormann, N., Delsol, C., Dragani, R., Fuentes, M., Geer, A. J., Haimberger, L., Healy, S. B., Hersbach, H., Hólm, E. V., Isaksen, I., Kållberg, P., Köhler, M., Matricardi, M., McNally, A. P., Monge-Sanz, B. M., Morcrette, J.-J., Park, B.-K., Peubey, C., de Rosnay, P., Tavolato, C., Thépaut, J.-N., and Vitart, F.: The ERA-Interim reanalysis: configuration and performance of the data assimilation system, *Q. J. R. Meteorolog. Soc.*, 137, 553-597, <https://doi.org/10.1002/qj.828>, 2011.
- Dekhtyareva, A., Edvardsen, K., Holmén, K., Hermansen, O., and Hansson, H. C.: Influence of local and regional air pollution on atmospheric measurements in Ny-Ålesund, *International Journal of Sustainable Development and Planning*, 11, 578-587, <http://doi.org/10.2495/sdp-v11-n4-578-587>, 2016.
- 635 Dekhtyareva, A.: On local and long-range transported air pollution in Svalbard, *Phylosophiae Doctor*, University in Tromsø, UiT The Arctic University of Norway, 2019.
- Drotikova, T., Ali, A. M., Halse, A. K., Reinardy, H. C., and Kallenborn, R.: Polycyclic aromatic hydrocarbons (PAHs) and oxy- and nitro-PAHs in ambient air of the Arctic town Longyearbyen, Svalbard, *Atmos. Chem. Phys.*, 20, 9997-10014, 10.5194/acp-20-9997-2020, 2020.
- 640 Eckhardt, S., Stohl, A., Beirle, S., Spichtinger, N., James, P., Forster, C., Junker, C., Wagner, T., Platt, U., and Jennings, S. G.: The North Atlantic Oscillation controls air pollution transport to the Arctic, *Atmos. Chem. Phys.*, 3, 1769-1778, 10.5194/acp-3-1769-2003, 2003.
- Eckhardt, S., Hermansen, O., Grythe, H., Fiebig, M., Stebel, K., Cassiani, M., Baecklund, A., and Stohl, A.: The influence of cruise ship emissions on air pollution in Svalbard: a harbinger of a more polluted Arctic?, *Atmos. Chem. Phys.*, 13, 8401-8409, 10.5194/acp-13-8401-2013, 2013.
- 645 ECMWF: European Centre for Medium-Range Weather Forecasts. PART IV: PHYSICAL PROCESSES, in: IFS Documentation CY43R3, IFS Documentation, ECMWF, 221 pp., 2017.
- EPA. United States Environmental Protection Agency. Annual Certification Data for Vehicles, Engines, and Equipment: <https://www.epa.gov/compliance-and-fuel-economy-data/annual-certification-data-vehicles-engines-and-equipment>, access: 22 November, 650 2020.
- Eriksson, K., Tjärner, D., Marqvardsen, I., and Järholm, B.: Exposure to benzene, toluene, xylenes and total hydrocarbons among snowmobile drivers in Sweden, *Chemosphere*, 50, 1343-1347, [https://doi.org/10.1016/S0045-6535\(02\)00808-1](https://doi.org/10.1016/S0045-6535(02)00808-1), 2003.
- Fan, Z., Kamens, R. M., Hu, J., Zhang, J., and McDow, S.: Photostability of Nitro-Polycyclic Aromatic Hydrocarbons on Combustion Soot Particles in Sunlight, *Environ. Sci. Technol.*, 30, 1358-1364, 10.1021/es9505964, 1996.
- 655 Ferrero, L., Cappelletti, D., Busetto, M., Mazzola, M., Lupi, A., Lanconelli, C., Becagli, S., Traversi, R., Caiazza, L., Giardi, F., Moroni, B., Crocchianti, S., Fierz, M., Močnik, G., Sangiorgi, G., Perrone, M. G., Maturilli, M., Vitale, V., Udisti, R., and Bolzacchini, E.: Vertical profiles of aerosol and black carbon in the Arctic: a seasonal phenomenology along 2 years (2011–2012) of field campaigns, *Atmos. Chem. Phys.*, 16, 12601-12629, 10.5194/acp-16-12601-2016, 2016.
- Fremme, A., and Sodemann, H.: The role of land and ocean evaporation on the variability of precipitation in the Yangtze River valley, *Hydrol. Earth Syst. Sci.*, 23, 2525-2540, 10.5194/hess-23-2525-2019, 2019.
- 660 Fu, P., Kawamura, K., and Barrie, L. A.: Photochemical and Other Sources of Organic Compounds in the Canadian High Arctic Aerosol Pollution during Winter–Spring, *Environ. Sci. Technol.*, 43, 286-292, 10.1021/es803046q, 2009.
- Garrett, T., Zhao, C., and Novelli, P.: Assessing the relative contributions of transport efficiency and scavenging to seasonal variability in Arctic aerosol, *Tellus B: Chemical and Physical Meteorology*, 62, 190-196, 10.1111/j.1600-0889.2010.00453.x, 2010.
- 665 GYC: Greater Yellowstone Coalition. Existing Research and Data Regarding the Status of Air Quality in the Greater Yellowstone Ecosystem: A Bibliography, edited by: Hettinger, K., 2011.
- Hallquist, M., Wenger, J. C., Baltensperger, U., Rudich, Y., Simpson, D., Claeys, M., Dommen, J., Donahue, N. M., George, C., Goldstein, A. H., Hamilton, J. F., Herrmann, H., Hoffmann, T., Iinuma, Y., Jang, M., Jenkin, M. E., Jimenez, J. L., Kiendler-Scharr, A., Maenhaut, W., McFiggans, G., Mentel, T. F., Monod, A., Prévôt, A. S. H., Seinfeld, J. H., Surratt, J. D., Szmigielski, R., and Wildt, J.: The formation, properties and impact of secondary organic aerosol: current and emerging issues, *Atmos. Chem. Phys.*, 9, 5155-5236, 10.5194/acp-9-5155-2009, 2009.
- 670



- Halsall, C. J., Barrie, L. A., Fellin, P., Muir, D., Billeck, B., Lockhart, L., Rovinsky, F. Y., Kononov, E. Y., and Pastukhov, B.: Spatial and temporal variation of polycyclic aromatic hydrocarbons in the Arctic atmosphere, *Environ. Sci. Technol.*, 31, 3593-3599, <https://doi.org/10.1021/es970342d>, 1997.
- 675 Hanssen-Bauer, I., Førland, E., Hisdal, H., Mayer, S., AB, S., and Sorteberg, A.: Climate in Svalbard 2100 - a knowledge base for climate adaptation. NCCS report no. 1/2019, Norway, 105 pp., 2019.
- Heald, C. L., and Kroll, J. H.: The fuel of atmospheric chemistry: Toward a complete description of reactive organic carbon, *Sci. Adv.*, 6, eaay8967, [10.1126/sciadv.aay8967](https://doi.org/10.1126/sciadv.aay8967), 2020.
- 680 Heeb, N. V., Schmid, P., Kohler, M., Gujer, E., Zennegg, M., Wenger, D., Wichser, A., Ulrich, A., Gfeller, U., Honegger, P., Zeyer, K., Emmenegger, L., Petermann, J.-L., Czerwinski, J., Mosimann, T., Kasper, M., and Mayer, A.: Secondary effects of catalytic diesel particulate filters: conversion of PAHs versus formation of nitro-PAHs, *Environ. Sci. Technol.*, 42, 3773-3779, <http://doi.org/10.1021/es7026949>, 2008.
- Hersbach, H., Bell, B., Berrisford, P., Hirahara, S., Horányi, A., Muñoz-Sabater, J., Nicolas, J., Peubey, C., Radu, R., Schepers, D., Simmons, A., Soci, C., Abdalla, S., Abellan, X., Balsamo, G., Bechtold, P., Biavati, G., Bidlot, J., Bonavita, M., De Chiara, G., Dahlgren, P., Dee, D., Diamantakis, M., Dragani, R., Flemming, J., Forbes, R., Fuentes, M., Geer, A., Haimberger, L., Healy, S., Hogan, R. J., Hólm, E., Janisková, M., Keeley, S., Laloyaux, P., Lopez, P., Lupu, C., Radnoti, G., de Rosnay, P., Rozum, I., Vamborg, F., Villaume, S., and Thépaut, J.-N.: The ERA5 global reanalysis, *Q. J. R. Meteorolog. Soc.*, 146, 1999-2049, <https://doi.org/10.1002/qj.3803>, 2020.
- 685 Hu, S., Herner, J. D., Robertson, W., Kobayashi, R., Chang, M. C. O., Huang, S.-M., Zielinska, B., Kado, N., Collins, J. F., Rieger, P., Huai, T., and Ayala, A.: Emissions of polycyclic aromatic hydrocarbons (PAHs) and nitro-PAHs from heavy-duty diesel vehicles with DPF and SCR, *Journal of the Air & Waste Management Association*, 63, 984-996, <https://doi.org/10.1080/10962247.2013.795202>, 2013.
- 690 Huang, B., Liu, M., Bi, X., Chaemfa, C., Ren, Z., Wang, X., Sheng, G., and Fu, J.: Phase distribution, sources and risk assessment of PAHs, NPAHs and OPAHs in a rural site of Pearl River Delta region, China, *Atmos. Pollut. Res.*, 5, 210-218, <https://doi.org/10.5094/APR.2014.026>, 2014.
- Huang, C., Hu, Q., Li, Y., Tian, J., Ma, Y., Zhao, Y., Feng, J., An, J., Qiao, L., Wang, H., Jing, S. a., Huang, D., Lou, S., Zhou, M., Zhu, S., Tao, S., and Li, L.: Intermediate Volatility Organic Compound Emissions from a Large Cargo Vessel Operated under Real-World
- 695 Conditions, *Environ. Sci. Technol.*, 52, 12934-12942, [10.1021/acs.est.8b04418](https://doi.org/10.1021/acs.est.8b04418), 2018a.
- Huang, C., Hu, Q., Wang, H., Qiao, L., Jing, S. a., Wang, H., Zhou, M., Zhu, S., Ma, Y., Lou, S., Li, L., Tao, S., Li, Y., and Lou, D.: Emission factors of particulate and gaseous compounds from a large cargo vessel operated under real-world conditions, *Environ. Pollut.*, 242, 667-674, <https://doi.org/10.1016/j.envpol.2018.07.036>, 2018b.
- IARC: International Agency for Research on Cancer. Some non-heterocyclic polycyclic aromatic hydrocarbons and some related exposures, <http://monographs.iarc.fr/ENG/Monographs/vol92/mono92.pdf>, 2010.
- 700 IARC: International Agency for Research on Cancer. Some Chemicals Present in Industrial and Consumer Products, Food and Drinking-water, <http://monographs.iarc.fr/ENG/Monographs/vol101/index.php>, 2012.
- Idowu, O., Semple, K. T., Ramadass, K., O'Connor, W., Hansbro, P., and Thavamani, P.: Beyond the obvious: Environmental health implications of polar polycyclic aromatic hydrocarbons, *Environ. Int.*, 123, 543-557, <https://doi.org/10.1016/j.envint.2018.12.051>, 2019.
- 705 Isaksen, K., Nordli, Ø., Førland, E. J., Łupikasza, E., Eastwood, S., and Niedźwiedz, T.: Recent warming on Spitsbergen—Influence of atmospheric circulation and sea ice cover, *Journal of Geophysical Research: Atmospheres*, 121, 11,913-911,931, <https://doi.org/10.1002/2016JD025606>, 2016.
- Jimenez, J. L., Canagaratna, M. R., Donahue, N. M., Prevot, A. S. H., Zhang, Q., Kroll, J. H., DeCarlo, P. F., Allan, J. D., Coe, H., Ng, N. L., Aiken, A. C., Docherty, K. S., Ulbrich, I. M., Grieshop, A. P., Robinson, A. L., Duplissy, J., Smith, J. D., Wilson, K. R., Lanz, V. A., Hueglin, C., Sun, Y. L., Tian, J., Laaksonen, A., Raatikainen, T., Rautiainen, J., Vaattovaara, P., Ehn, M., Kulmala, M., Tomlinson, J. M., Collins, D. R., Cubison, M. J., Dunlea, J., Huffman, J. A., Onasch, T. B., Alfarra, M. R., Williams, P. I., Bower, K., Kondo, Y., Schneider, J., Drewnick, F., Borrmann, S., Weimer, S., Demerjian, K., Salcedo, D., Cottrell, L., Griffin, R., Takami, A., Miyoshi, T., Hatakeyama, S., Shimojo, A., Sun, J. Y., Zhang, Y. M., Dzepina, K., Kimmel, J. R., Sueper, D., Jayne, J. T., Herndon, S. C., Trimborn, A. M., Williams, L. R., Wood, E. C., Middlebrook, A. M., Kolb, C. E., Baltensperger, U., and Worsnop, D. R.: Evolution of Organic Aerosols in the Atmosphere,
- 715 *Science*, 326, 1525-1529, [10.1126/science.1180353](https://doi.org/10.1126/science.1180353), 2009.
- Kameda, T.: Atmospheric Reactions of PAH derivatives: Formation and Degradation, in: *Polycyclic Aromatic Hydrocarbons: Environmental Behavior and Toxicity in East Asia*, edited by: Hayakawa, K., Springer Singapore, Singapore, 75-91, 2018.
- Keyte, I. J., Harrison, R. M., and Lammel, G.: Chemical reactivity and long-range transport potential of polycyclic aromatic hydrocarbons – a review, *Chem. Soc. Rev.*, 42, 9333-9391, <https://doi.org/10.1039/C3CS60147A>, 2013.
- 720 Kim, K.-H., Jahan, S. A., Kabir, E., and Brown, R. J. C.: A review of airborne polycyclic aromatic hydrocarbons (PAHs) and their human health effects, *Environ. Int.*, 60, 71-80, [10.1016/j.envint.2013.07.019](https://doi.org/10.1016/j.envint.2013.07.019), 2013.
- Klonecki, A.: Seasonal changes in the transport of pollutants into the Arctic troposphere-model study, *J. Geophys. Res.*, 108, 8367, <http://doi.org/10.1029/2002jd002199>, 2003.
- 725 Kroll, J. H., and Seinfeld, J. H.: Chemistry of secondary organic aerosol: Formation and evolution of low-volatility organics in the atmosphere, *Atmos. Environ.*, 42, 3593-3624, <https://doi.org/10.1016/j.atmosenv.2008.01.003>, 2008.
- Kystdatahuset. Longyearbyen port traffic as of 2018: <https://kystdatahuset.no/>, access: 05 June 2020, 2018.



- Law, K. S., Roiger, A., Thomas, J. L., Marelle, L., Raut, J.-C., Dalsøren, S., Fuglestvedt, J., Tuccella, P., Weinzierl, B., and Schlager, H.: Local Arctic air pollution: Sources and impacts, *Ambio*, 46, 453-463, 10.1007/s13280-017-0962-2, 2017.
- 730 Lawson, R. P., Baker, B. A., Schmitt, C. G., and Jensen, T.: An overview of microphysical properties of Arctic clouds observed in May and July 1998 during FIRE ACE, *Journal of Geophysical Research: Atmospheres*, 106, 14989-15014, <https://doi.org/10.1029/2000JD900789>, 2001.
- Lee, J. Y., and Lane, D. A.: Unique products from the reaction of naphthalene with the hydroxyl radical, *Atmos. Environ.*, 43, 4886-4893, <https://doi.org/10.1016/j.atmosenv.2009.07.018>, 2009.
- 735 Lei, Y. D., and Wania, F.: Is rain or snow a more efficient scavenger of organic chemicals?, *Atmos. Environ.*, 38, 3557-3571, 10.1016/j.atmosenv.2004.03.039, 2004.
- Läderach, A., and Sodemann, H.: A revised picture of the atmospheric moisture residence time, *Geophys. Res. Lett.*, 43, 924-933, <https://doi.org/10.1002/2015GL067449>, 2016.
- Madonna, E., Wernli, H., Joos, H., and Martius, O.: Warm Conveyor Belts in the ERA-Interim Dataset (1979–2010). Part I: Climatology and Potential Vorticity Evolution, *J. Clim.*, 27, 3-26, 10.1175/jcli-d-12-00720.1, 2014.
- 740 Marchand, N., Besombes, J. L., Chevron, N., Masclet, P., Aymoz, G., and Jaffrezo, J. L.: Polycyclic aromatic hydrocarbons (PAHs) in the atmospheres of two French alpine valleys: sources and temporal patterns, *Atmos. Chem. Phys.*, 4, 1167-1181, 10.5194/acp-4-1167-2004, 2004.
- Matsuzawa, S.: Photodegradation of some Oxygenated Polycyclic Aromatic Hydrocarbons, *Polycyclic Aromat. Compd.*, 21, 331-339, 10.1080/10406630008028543, 2000.
- 745 McDaniel, M., and Zielinska, B.: Polycyclic Aromatic Hydrocarbons in the Snowpack and Surface Water in Blackwood Canyon, Lake Tahoe, CA, as Related to Snowmobile Activity, *Polycyclic Aromat. Compd.*, 35, 102-119, 10.1080/10406638.2014.935449, 2014.
- Meldrum, J.: Optimization of a Direct-Injected 2-Stroke Cycle Snowmobile, in: *Clean Snowmobile Challenge: 1 the Early Years, 4-Stroke Engines Make Their Debut*, SAE, 1-14, 2017.
- Miet, K., Albinet, A., Budzinski, H., and Villenave, E.: Atmospheric reactions of 9,10-anthraquinone, *Chemosphere*, 107, 1-6, 10.1016/J.CHEMOSPHERE.2014.02.050, 2014.
- 750 Miljødirektoratet. Longyearbyen power plant coal and diesel consumption as of 2018: <https://www.norskeutslipp.no/no/Diverse/Virksomhet/?CompanyID=5115>, access: 12 November 2020, 2018.
- Monks, P. S.: A review of the observations and origins of the spring ozone maximum, *Atmos. Environ.*, 34, 3545-3561, [https://doi.org/10.1016/S1352-2310\(00\)00129-1](https://doi.org/10.1016/S1352-2310(00)00129-1), 2000.
- 755 Mulder, M. D., Dumanoglu, Y., Efstathiou, C., Kukučka, P., Matejovičová, J., Maurer, C., Příbylová, P., Prokeš, R., Sofuoglu, A., Sofuoglu, S. C., Wilson, J., Zetzsch, C., Wotawa, G., and Lammel, G.: Fast Formation of Nitro-PAHs in the Marine Atmosphere Constrained in a Regional-Scale Lagrangian Field Experiment, *Environ. Sci. Technol.*, 53, 8914-8924, 10.1021/acs.est.9b03090, 2019.
- Nalin, F., Golly, B., Besombes, J.-L., Pelletier, C., Aujay-Plouzeau, R., Verlhac, S., Dermigny, A., Fievet, A., Karoski, N., Dubois, P., Collet, S., Favez, O., and Albinet, A.: Fast oxidation processes from emission to ambient air introduction of aerosol emitted by residential log wood stoves, *Atmos. Environ.*, 143, 15-26, 10.1016/j.atmosenv.2016.08.002, 2016.
- 760 Nežiková, B., Degrendele, C., Bandowe, B. A. M., Holubová Šmejkalová, A., Kukučka, P., Martiník, J., Mayer, L., Prokeš, R., Příbylová, P., Klánová, J., and Lammel, G.: Three years of atmospheric concentrations of nitrated and oxygenated polycyclic aromatic hydrocarbons and oxygen heterocycles at a central European background site, *Chemosphere*, 128738, <https://doi.org/10.1016/j.chemosphere.2020.128738>, 2020.
- 765 Niedźwiedz, T.: *The atmospheric circulation, Climate and Climate Change at Hornsund, Svalbard*. The Publishing House of Gdynia Maritime University, Gdynia, 2013.
- Nordli, Ø., Przybylak, R., Ogilvie, A. E. J., and Isaksen, K.: Long-term temperature trends and variability on Spitsbergen: the extended Svalbard Airport temperature series, 1898-2012, *Polar Res.*, 33, 10.3402/polar.v33.21349, 2014.
- 770 Oanh, P. K., Kazushi, N., Yoshie, N., Tatsuya, T., Yusuke, F., Miho, A., Toshimitsu, S., Kenji, K., Hideaki, M., Hien, T. O. T., and Norimichi, T.: Concentrations of polycyclic aromatic hydrocarbons in Antarctic snow polluted by research activities using snow mobiles and diesel electric generators, *Bull. Glaciol. Res.*, 37, 23-30, 10.5331/bgr.19A02, 2019.
- Odabasi, M., Vardar, N., Sofuoglu, A., Tasdemir, Y., and Holsen, T. M.: Polycyclic aromatic hydrocarbons (PAHs) in Chicago air, *Sci. Total Environ.*, 227, 57-67, [https://doi.org/10.1016/S0048-9697\(99\)00004-2](https://doi.org/10.1016/S0048-9697(99)00004-2), 1999.
- 775 Onarheim, I. H., Smedsrud, L. H., Ingvaldsen, R. B., and Nilsen, F.: Loss of sea ice during winter north of Svalbard, *Tellus A: Dynamic Meteorology and Oceanography*, 66, 23933, 10.3402/tellusa.v66.23933, 2014.
- Perraudin, E., Budzinski, H., and Villenave, E.: Identification and quantification of ozonation products of anthracene and phenanthrene adsorbed on silica particles, *Atmos. Environ.*, 41, 6005-6017, <https://doi.org/10.1016/j.atmosenv.2007.03.010>, 2007.
- Prevedouros, K., Brorström-Lundén, E., J. Halsall, C., Jones, K. C., Lee, R. G. M., and Sweetman, A. J.: Seasonal and long-term trends in atmospheric PAH concentrations: evidence and implications, *Environ. Pollut.*, 128, 17-27, <https://doi.org/10.1016/j.envpol.2003.08.032>, 2004.
- 780 Ravindra, K., Sokhi, R., and Vangrieken, R.: Atmospheric polycyclic aromatic hydrocarbons: Source attribution, emission factors and regulation, *Atmos. Environ.*, 42, 2895-2921, <http://doi.org/10.1016/j.atmosenv.2007.12.010>, 2008.





- 785 Ray, J. D., Bishop, G., Schuchmann, B., Frey, C., Sandu, G., and Graver, B.: Yellowstone Over-snow Vehicle Emission Tests–2012: Preliminary Report, Natural Resource Technical Report NPS/NRPC/ARD/NRTR—2012. National Park Service, Fort Collins, Colorado, 36 pp., 2012.
- Reimann, S., Kallenborn, R., and Schmidbauer, N.: Severe Aromatic Hydrocarbon Pollution in the Arctic Town of Longyearbyen (Svalbard) Caused by Snowmobile Emissions, *Environ Sci Technol*, 43, 4791–4795, 10.1021/es900449x, 2009.
- Reisen, F., and Arey, J.: Atmospheric Reactions Influence Seasonal PAH and Nitro-PAH Concentrations in the Los Angeles Basin, *Environ. Sci. Technol.*, 39, 64–73, 10.1021/es035454l, 2005.
- 790 Rhea, D. T., Gale, R. W., Orazio, C. E., Peterman, P. H., Harper, D. D., and Farag, A. M.: Polycyclic aromatic hydrocarbons in water, sediment, and snow, from lakes in Grand Teton National Park, Wyoming. Final Report, USGS-CERC-91344, US. Geological Survey, Columbia Environmental Research Center (USGS-CERC), Columbia, South Carolina, USA, 30 pp., 2005.
- Ringuet, J., Albinet, A., Leoz-Garziandia, E., Budzinski, H., and Villenave, E.: Reactivity of polycyclic aromatic compounds (PAHs, NPAHs and OPAHs) adsorbed on natural aerosol particles exposed to atmospheric oxidants, *Atmos. Environ.*, 61, 15–22, 795 <https://doi.org/10.1016/j.atmosenv.2012.07.025>, 2012.
- Röhler, L., Schlabach, M., Haglund, P., Breivik, K., Kallenborn, R., and Bohlin-Nizzetto, P.: Non-target and suspect characterisation of organic contaminants in Arctic air – Part 2: Application of a new tool for identification and prioritisation of chemicals of emerging Arctic concern in air, *Atmos. Chem. Phys.*, 20, 9031–9049, 10.5194/acp-20-9031-2020, 2020.
- Schmale, J., Arnold, S. R., Law, K. S., Thorp, T., Anenberg, S., Simpson, W. R., Mao, J., and Pratt, K. A.: Local Arctic air pollution: A neglected but serious problem, *Earth's Future*, 6, 1385–1412, <https://doi.org/10.1029/2018ef000952>, 2018.
- 800 Serreze, M. C., Barrett, A. P., Slater, A. G., Steele, M., Zhang, J., and Trenberth, K. E.: The large-scale energy budget of the Arctic, *J. Geophys. Res.*, 112, D11122, 10.1029/2006jd008230, 2007.
- Shahpoury, P., Lammel, G., Albinet, A., Sofuoğlu, A., Dumanoğlu, Y., Sofuoğlu, S. C., Wagner, Z., and Zdimal, V.: Evaluation of a Conceptual Model for Gas-Particle Partitioning of Polycyclic Aromatic Hydrocarbons Using Polyparameter Linear Free Energy Relationships, *Environ. Sci. Technol.*, 50, 12312–12319, 10.1021/acs.est.6b02158, 2016.
- 805 Shahpoury, P., Kitanovski, Z., Lammel, G. J. A. C., and Physics: Snow scavenging and phase partitioning of nitrated and oxygenated aromatic hydrocarbons in polluted and remote environments in central Europe and the European Arctic, *Atmos. Chem. Phys.*, 18, 13495–13510, <https://doi.org/10.5194/acp-18-13495-2018>, 2018.
- Shively, D. D., Pape, B. M. C., Mower, R. N., Zhou, Y., Russo, R., and Sive, B. C.: Blowing Smoke in Yellowstone: Air Quality Impacts of Oversnow Motorized Recreation in the Park, *Environmental Management*, 41, 183–199, 10.1007/s00267-007-9036-8, 2008.
- 810 Simpson, W. R., von Glasow, R., Riedel, K., Anderson, P., Ariya, P., Bottenheim, J., Burrows, J., Carpenter, L. J., Frieß, U., Goodsite, M. E., Heard, D., Hutterli, M., Jacobi, H. W., Kaleschke, L., Neff, B., Plane, J., Platt, U., Richter, A., Roscoe, H., Sander, R., Shepson, P., Sodeau, J., Steffen, A., Wagner, T., and Wolff, E.: Halogens and their role in polar boundary-layer ozone depletion, *Atmos. Chem. Phys.*, 7, 4375–4418, 10.5194/acp-7-4375-2007, 2007.
- 815 Singh, D. K., Kawamura, K., Yanase, A., and Barrie, L. A.: Distributions of polycyclic aromatic hydrocarbons, aromatic ketones, carboxylic acids, and trace metals in Arctic aerosols: Long-range atmospheric transport, photochemical degradation/production at polar sunrise, *Environ. Sci. Technol.*, 51, 8992–9004, <https://doi.org/10.1021/acs.est.7b01644>, 2017.
- Sippula, O., Stengel, B., Sklorz, M., Streibel, T., Rabe, R., Orasche, J., Lintelmann, J., Michalke, B., Abbaszade, G., Radischat, C., Gröger, T., Schnelle-Kreis, J., Harndorf, H., and Zimmermann, R.: Particle Emissions from a Marine Engine: Chemical Composition and Aromatic Emission Profiles under Various Operating Conditions, *Environ. Sci. Technol.*, 48, 11721–11729, 10.1021/es502484z, 2014.
- 820 Sive, B. C., Shively, D., and Pape, B.: Spatial variation of volatile organic compounds associated with snowmobile emissions in Yellowstone National Park, National Park Service, 85 pp., 2003.
- Sjöblom, A.: The Ice-atmosphere boundary layer, The University Centre in Svalbard, Norway, Longyearbyen, 30 pp., 2010.
- 825 Srivastava, D., Favez, O., Bonnaire, N., Lucarelli, F., Haefelin, M., Perraudin, E., Gros, V., Villenave, E., and Albinet, A.: Speciation of organic fractions does matter for aerosol source apportionment. Part 2: Intensive short-term campaign in the Paris area (France), *Sci. Total Environ.*, 634, 267–278, <https://doi.org/10.1016/j.scitotenv.2018.03.296>, 2018.
- Statistics Norway: This is Svalbard 2016. What the figures say, Statistics Norway, 28 pp., 2016.
- Statistics Norway. Registered vehicles, by region, statistical variable per year, data for 2018: <https://www.ssb.no/statbank/table/11823/>, access: 05 June 2020, 2018.
- 830 Statistics Norway. Longyearbyen and Ny-Ålesund population as of 2020: <https://www.ssb.no/befolkning/statistikker/befsvvalbard>, access: 12 November, 2020.
- Stohl, A., Eckhardt, S., Forster, C., James, P., and Spichtinger, N.: On the pathways and timescales of intercontinental air pollution transport, *Journal of Geophysical Research: Atmospheres*, 107, ACH 6-1-ACH 6-17, <https://doi.org/10.1029/2001JD001396>, 2002.
- 835 Stohl, A., Forster, C., Frank, A., Seibert, P., and Wotawa, G.: Technical note: The Lagrangian particle dispersion model FLEXPART version 6.2, *Atmos. Chem. Phys.*, 5, 2461–2474, 10.5194/acp-5-2461-2005, 2005.
- Stohl, A.: Characteristics of atmospheric transport into the Arctic troposphere, *Journal of Geophysical Research: Atmospheres*, 111, 10.1029/2005jd006888, 2006.



- 840 Stohl, A., Berg, T., Burkhardt, J. F., Fjærraa, A. M., Forster, C., Herber, A., Hov, Ø., Lunder, C., McMillan, W. W., Oltmans, S., Shiobara, M., Simpson, D., Solberg, S., Stebel, K., Ström, J., Tørseth, K., Treffeisen, R., Virkkunen, K., and Yttri, K. E.: Arctic smoke - record high air pollution levels in the European Arctic due to agricultural fires in Eastern Europe in spring 2006, *Atmos. Chem. Phys.*, 7, 511-534, 10.5194/acp-7-511-2007, 2007.
- Stull, R. B.: An introduction to boundary layer meteorology, Kluwer Academic Publishers, Dordrecht, The Netherlands, 1988.
- 845 Tomaz, S., Shahpoury, P., Jaffrezo, J.-L., Lammel, G., Perraudin, E., Villenave, E., and Albinet, A.: One-year study of polycyclic aromatic compounds at an urban site in Grenoble (France): Seasonal variations, gas/particle partitioning and cancer risk estimation, *Sci. Total Environ.*, 565, 1071-1083, <https://doi.org/10.1016/j.scitotenv.2016.05.137>, 2016.
- U.S. NPS. National Park Service. Best Available Technology (BAT) Snowmobiles as of December 15th, 2015: <https://www.nps.gov/yell/planyourvisit/newbatlist.htm>, access: 30 December 2020, 2015.
- van Pelt, W. J. J., Kohler, J., Liston, G. E., Hagen, J. O., Luks, B., Reijmer, C. H., and Pohjola, V. A.: Multidecadal climate and seasonal snow conditions in Svalbard, *Journal of Geophysical Research: Earth Surface*, 121, 2100-2117, <https://doi.org/10.1002/2016JF003999>, 2016.
- 850 Verlhac, S., Albinet, A., Cabillic, J., Lalère, B. and Fallot, C.: European Interlaboratory Comparison for the analysis of PAHs in ambient air (2015), LCSQA, <https://www.lcsqa.org/fr/rapport/2015/ineris/european-interlaboratory-comparison-for-the-analysis-of-pah-in-ambient-air>, 2015.
- Vestreng, V., Kallenborn, R., and Økstad, E.: Norwegian Arctic climate: climate influencing emissions, scenarios and mitigation options at Svalbard, 56 pp., 2009.
- 855 Walgraeve, C., Demeestere, K., Dewulf, J., Zimmermann, R., and Van Langenhove, H.: Oxygenated polycyclic aromatic hydrocarbons in atmospheric particulate matter: Molecular characterization and occurrence, *Atmos. Environ.*, 44, 1831-1846, 10.1016/j.atmosenv.2009.12.004, 2010.
- Wallace, J. M., and Hobbs, P. V.: Atmospheric science: an introductory survey, Elsevier, 2006.
- WHO: The World Health Organization. Environmental health criteria 229. Selected nitro- and nitro-oxy-polycyclic aromatic hydrocarbons, 511, [http://whqlibdoc.who.int/ehc/WHO\\_EHC\\_229.pdf](http://whqlibdoc.who.int/ehc/WHO_EHC_229.pdf), 2003.
- 860 Wickström, S.: Warmer and wetter winters over the high-latitude North Atlantic: an atmospheric circulation perspective, Doctoral thesis, UiB, The University of Bergen, 2020.
- Wickström, S., Jonassen, M. O., Cassano, J. J., and Vihma, T.: Present Temperature, Precipitation, and Rain-on-Snow Climate in Svalbard, *Journal of Geophysical Research: Atmospheres*, 125, e2019JD032155, <https://doi.org/10.1029/2019JD032155>, 2020a.
- 865 Wickström, S., Jonassen, M. O., Vihma, T., and Uotila, P.: Trends in cyclones in the high-latitude North Atlantic during 1979–2016, *Q. J. R. Meteorolog. Soc.*, 146, 762-779, <https://doi.org/10.1002/qj.3707>, 2020b.
- Willis, M. D., Leaitch, W. R., and Abbatt, J. P. D.: Processes controlling the composition and abundance of Arctic aerosol, *Rev. Geophys.*, 56, 621-671, <https://doi.org/10.1029/2018rg000602>, 2018.
- 870 Willis, M. D., Bozem, H., Kunkel, D., Lee, A. K. Y., Schulz, H., Burkart, J., Aliabadi, A. A., Herber, A. B., Leaitch, W. R., and Abbatt, J. P. D.: Aircraft-based measurements of High Arctic springtime aerosol show evidence for vertically varying sources, transport and composition, *Atmos. Chem. Phys.*, 19, 57-76, 10.5194/acp-19-57-2019, 2019.
- Wong, F., Hung, H., Dryfhout-Clark, H., Aas, W., Bohlin-Nizzetto, P., Breivik, K., Mastromonaco, M. N., Lundén, E. B., Ólafsdóttir, K., Sigurðsson, Á., Vorkamp, K., Bossi, R., Skov, H., Hakola, H., Barresi, E., Sverko, E., Fellin, P., Li, H., Vlasenko, A., Zapevalov, M., Samsonov, D., and Wilson, S.: Time Trends Of Persistent Organic Pollutants (Pops) And Chemicals Of Emerging Arctic Concern (Ceac) In Arctic Air From 25 Years Of Monitoring, *Sci. Total Environ.*, 145109, <https://doi.org/10.1016/j.scitotenv.2021.145109>, 2021.
- 875 Yu, Y., Katsoyiannis, A., Bohlin-Nizzetto, P., Brorström-Lundén, E., Ma, J., Zhao, Y., Wu, Z., Tych, W., Mindham, D., Sverko, E., Barresi, E., Dryfhout-Clark, H., Fellin, P., and Hung, H.: Polycyclic aromatic hydrocarbons not declining in Arctic air despite global emission reduction, *Environ. Sci. Technol.*, 53, 2375-2382, <https://doi.org/10.1021/acs.est.8b05353>, 2019.
- 880 Zhan, J., Gao, Y., Li, W., Chen, L., Lin, H., and Lin, Q.: Effects of ship emissions on summertime aerosols at Ny–Alesund in the Arctic, *Atmospheric Pollution Research*, 5, 500-510, 10.5094/apr.2014.059, 2014.
- Zhang, F., Chen, Y., Tian, C., Lou, D., Li, J., Zhang, G., and Matthias, V.: Emission factors for gaseous and particulate pollutants from offshore diesel engine vessels in China, *Atmos. Chem. Phys.*, 16, 6319-6334, 10.5194/acp-16-6319-2016, 2016.
- Zhang, F., Chen, Y., Cui, M., Feng, Y., Yang, X., Chen, J., Zhang, Y., Gao, H., Tian, C., Matthias, V., and Liu, H.: Emission factors and environmental implication of organic pollutants in PM emitted from various vessels in China, *Atmos. Environ.*, 200, 302-311, <http://doi.org/10.1016/j.atmosenv.2018.12.006>, 2019.
- 885 Zhang, F., Guo, H., Chen, Y., Matthias, V., Zhang, Y., Yang, X., and Chen, J.: Size-segregated characteristics of organic carbon (OC), elemental carbon (EC) and organic matter in particulate matter (PM) emitted from different types of ships in China, *Atmos. Chem. Phys.*, 20, 1549-1564, 10.5194/acp-20-1549-2020, 2020.
- Zhang, X., Walsh, J. E., Zhang, J., Bhatt, U. S., and Ikeda, M.: Climatology and Interannual Variability of Arctic Cyclone Activity: 1948–2002, *J. Clim.*, 17, 2300-2317, 10.1175/1520-0442(2004)017<2300:CAIVOA>2.0.CO;2, 2004.
- 890 Zhao, J., Zhang, Y., Wang, T., Sun, L., Yang, Z., Lin, Y., Chen, Y., and Mao, H.: Characterization of PM2.5-bound polycyclic aromatic hydrocarbons and their derivatives (nitro-and oxy-PAHs) emissions from two ship engines under different operating conditions, *Chemosphere*, 225, 43-52, <http://doi.org/10.1016/j.chemosphere.2019.03.022>, 2019.





- 895 Zhao, J., Zhang, Y., Chang, J., Peng, S., Hong, N., Hu, J., Lv, J., Wang, T., and Mao, H.: Emission characteristics and temporal variation of PAHs and their derivatives from an ocean-going cargo vessel, *Chemosphere*, 249, 126194, <http://doi.org/10.1016/j.chemosphere.2020.126194>, 2020.
- Zhou, Y., Shively, D., Mao, H., Russo, R. S., Pape, B., Mower, R. N., Talbot, R., and Sive, B. C.: Air Toxic Emissions from Snowmobiles in Yellowstone National Park, *Environ. Sci. Technol.*, 44, 222-228, 10.1021/es9018578, 2010.

900