

Lightning-ignited wildfires and long-continuing-current lightning in the Mediterranean Basin: Preferential meteorological conditions

Francisco J. Pérez-Invernón¹, Heidi Huntrieser¹, Sergio Soler², Francisco J. Gordillo-Vázquez², Nicolau Pineda^{3,5}, Javier Navarro-González⁴, Víctor Reglero⁴, Joan Montanyà⁵, Oscar van der Velde⁵, and Nikos Koutsias⁶

¹Deutsches Zentrum für Luft- und Raumfahrt, Institut für Physik der Atmosphäre, Oberpfaffenhofen, Germany

²Instituto de Astrofísica de Andalucía, CSIC, Glorieta de la Astronomía s/n, 18008 Granada, Spain

³Meteorological Service of Catalonia, Carrer Berlín 38–46, 08029 Barcelona, Spain

⁴Image Processing Laboratory, University of Valencia, Valencia, Spain

⁵Lightning Research Group, Technical University of Catalonia, Campus de Terrassa, Edifici TR1, Carrer Colom 1, Terrassa, 08222 Barcelona, Spain

⁶Department of Environmental Engineering, University of Patras, G. Seferi 2, Agrinio GR-30100, Greece

Correspondence: Francisco J. Pérez-Invernón (FranciscoJavier.Perez-Invernon@dlr.de)

Abstract. Lightning is the major cause of natural ignition of wildfires worldwide and produces the largest wildfires in some regions. Lightning strokes produce about 5% of forest fires in the Mediterranean basin and are one of the most important precursors of the largest forest fires during the summer. Lightning-ignited wildfires produce significant emissions of aerosols, black carbon and trace gases, such as CO, SO₂, CH₄ and O₃, affecting air quality. Characterization of the meteorological and cloud conditions of lightning-ignited wildfires in the Mediterranean basin can serve to improve fire forecasting models and to upgrade the implementation of fire emissions in atmospheric models.

This study investigates the meteorological and cloud conditions of Lightning-Ignited Wildfires (LIW) and Long-Continuing-Current (LCC) lightning flashes in the Iberian Peninsula and Greece. LCC lightning and lightning in dry thunderstorms with low precipitation rate have been proposed to be the main precursors of the largest wildfires. We use lightning data provided by the World Wide Lightning Location Network (WWLLN), the Earth Network Total Lightning Network (ENTLN) and the Lightning Imaging Sensor (LIS) onboard the International Space Station (ISS) together with four databases of wildfires produced in Spain, Portugal, Southern France and Greece, respectively, in order to produce a climatology of LIW and LCC lightning over the Mediterranean basin. In addition, we use meteorological data provided by the European Centre for Medium-Range Weather Forecasts (ECMWF) ERA5-reanalysis data set and by the Spanish State Meteorological Agency (AEMET) together with the Cloud Top Height (CTH) product derived from Meteosat Second Generation (MSG) satellites measurements to investigate the meteorological conditions of LIW and LCC lightning. According to our results, LIW and a significant amount of LCC lightning flashes tend to occur in dry thunderstorms with weak updrafts. Our results suggest that lightning-ignited wildfires tend to occur in ~~high-based clouds with~~ clouds with high base with a vertical content of moisture lower than the climatological value, as well as with a higher temperature and a lower precipitation rate. Meteorological conditions of LIW from the Iberian Peninsula and Greece are in agreement, although some differences possibly caused by highly variable topography in Greece

and a more humid environment are observed. These results show the possibility of using the typical meteorological and cloud conditions of LCC lightning flashes as proxy to parameterize the ignition of wildfires in atmospheric or forecasting models.

Copyright statement. This work is distributed under the Creative Commons Attribution 4.0 License.

1 Introduction

25 Every second, about 44 lightning flashes occur around the globe (Christian et al., 2003; Cecil et al., 2014). Apart from being one of the major sources of nitrogen oxides ($\text{NO}_x = \text{NO} + \text{NO}_2$) in the troposphere [e. g., Schumann and Huntrieser (2007) and references therein], lightning discharges are the main precursors of natural forest fires worldwide (Komarek, 1964; Pyne et al., 1998; Latham and Williams, 2001). Lightning-Ignited Wildfires (LIW) produce significant emissions of aerosols, black carbon and some trace gases, such as CO , SO_2 , CH_4 and O_3 [e. g., Schultz et al. (2008); Van der Werf et al. (2010); Huntrieser et al. (2016); Van Der Werf et al. (2017)]. However, there are still noteworthy questions about the meteorological conditions that favor the occurrence of LIW, especially in Europe. For example, what is the relationship between the occurrence of dry thunderstorms and LIW fires in the Mediterranean basin? What is the role of Long-Continuing-Current (LCC) lightning flashes in the ignition?

The linkage between lightning and forest fires has been widely investigated by several authors in different regions using data 35 provided by aircraft campaigns, satellite observations and lightning-detection networks [e. g., Lyons et al. (1998); Anderson (2002); Stocks et al. (2002); Wotton and Martell (2005); Hall and Brown (2006); Fernandes et al. (2006); Kochtubajda et al. (2006); Lang and Rutledge (2006); Rosenfeld et al. (2007); Hall (2007); Altaratz et al. (2010); Dowdy and Mills (2012); Nauslar et al. (2013); Lang et al. (2014); Veraverbeke et al. (2017)]. In Canada, LIW account for 80% (Anderson, 2002) of total area burned, while in the western states of the US, the total area burned by LIW is about 60% (Nauslar et al., 2013). 40 However, European studies are rare. Lightning is the major cause of ignition in the European boreal forests (Granström, 2001; Larjavaara et al., 2005b, a; Granström and Niklasson, 2008; Rolstad et al., 2017) and one of the main cause of ignition in the Alps (Conedera et al., 2006; Moris et al., 2020). In the Mediterranean basin, lightning causes about 5% of the total number of forest fires (Vázquez and Moreno, 1998; Camia et al., 2010; Koutsias et al., 2013), while the rest of fires are man-caused. However, LIW are one of the most important precursors of the largest forest fires during the summer (Vázquez and Moreno, 45 1998; Badia et al., 2002; Amatulli et al., 2007; García-Ortega et al., 2011; Oliveira et al., 2012; San-Miguel-Ayaz et al., 2013; Ganteaume et al., 2013; San José et al., 2014). Contrary to fires with anthropological origin, LIW usually occur in remote areas and under extreme meteorological conditions that hinder the extinction work (Pineda et al., 2014; Pineda and Rigo, 2017). The important role of lightning in initiating the largest forest fires over the Mediterranean basin highlights the need to develop novel forecasting methods.

50 The ignition (fire triggering), survival (smoldering) and arrival (flaming combustion) of LIW (Anderson, 2002) is closely related with intense drought periods and high temperatures (Pineda and Rigo, 2017). The amount of precipitation at surface

(Colson, 1960; Hall, 2007) and the type of vegetation (Pineda et al., 2014; Gora et al., 2017; Baranovskiy and Yankovich, 2018) play a key role in the ignition of wildfires. Most of LIW occur in forest with conifer vegetation (Krawchuk et al., 2006; Reineking et al., 2010; Müller et al., 2013; Pineda and Rigo, 2017; Moris et al., 2020), where dry thunderstorms and strong winds favor the ignition, survival and arrival of fire (Rorig et al., 2007; Pineda and Rigo, 2017). The definition of dry thunderstorm is not homogeneous in the literature. Some authors define dry thunderstorms as storms with total precipitation below nearly 2.5 mm (e.g., Rorig et al., 2007). In this work, we define dry thunderstorms as thunderstorms with 1-hourly accumulated precipitation below the climatological value to investigate the conditions at the moment of ignition and right before possible survival. Some studies over the US suggest that dry lightning and LIW tend to occur in ~~high-based clouds~~ (clouds with high ~~cloud-base~~-base) (Nauslar et al., 2013). Furthermore, significant efforts have been ~~done to investigate the~~ made to identify shared meteorological conditions of fire-producing thunderstorms at ground and in the lower troposphere. However, European studies are rare. For example, Rorig et al. (2007) investigated the role of the instability and content of moisture at midlevel (850-500 hPa). Some research has been done so far on the meteorological conditions of fire-igniting thunderstorms near the upper troposphere, where electrification occurs. For example Wallmann (2004) and Nauslar et al. (2013), included the dynamics of the upper troposphere and the tropopause in the forecasting of dry thunderstorms over the United States.

Lightning discharges can be classified into Intra-Cloud (IC), Cloud-to-Cloud (CC) and Cloud-to-ground (CG) discharges. CG lightning discharges are initiated between two cloud regions with opposite sign electrical charges before escaping from clouds (Rakov and Uman, 2003). After the onset of the discharge, an advancing streamer corona guides the propagation of the leader, a high-temperature plasma channel. When the leader connects the ground to the main charged cloud layer, electrical charge travels across the channel, producing one or several Return Strokes (RS). The majority of the RS are composed ~~by of~~ a highly impulsive electrical current with a duration less than 10 ms, producing electromagnetic radiation that can be detected thousands of kilometers away by Lightning Location Systems (LLS). However, some CG flashes have a continuing current phase lasting between tens to hundreds milliseconds. This type of CG lightning discharges are known as Long-Continuing-Current lightning flashes (LCC lightning flashes), being able to transport a significant amount of electrical charge between the cloud and the attachment point. The continuing current phase of the discharge emits radio signal in the Extremely Low Frequency (ELF) range of frequencies, preventing their detection by typical LLS, that are developed to report radio signals emitted by lightning discharges in the Very Low Frequency (VLF) range. However, the continuing phase of LCC lightning can be detected from optical measurements (Fuquay et al., 1967; Adachi et al., 2009). In this work, we use optical observations reported from the space-based instrument Lightning Imaging Sensor (LIS) to investigate the continuing current phase of lightning discharges over Europe (Bitzer, 2017). For a more extensive description of the physical characteristics of lightning discharges and their electromagnetic emissions, we refer to Rakov and Uman (2003),

Some evidence suggests that LCC lightning flashes are precursors of LIW. This was originally proposed by McEachron and Hagenguth (1942) working with laboratory sparks, who suggested that ignition by natural lightning is usually caused by a discharge having an unusual LCC phase. Later in 1967 this hypothesis was confirmed by Fuquay et al. (1967), who reported

seven cases of fire-igniting lightning strokes with duration between 40 ms and 282 ms. Fuquay et al. (1967) and Adachi et al. (2009) showed that the optical signal emitted by lightning discharges can be related to the duration of the electrical discharge.

Bitzer (2017) reported the first tropical and mid-latitude climatology of LCC lightning discharges with a duration larger than 10 ms. Bitzer (2017) provided the total number of LCC lightning with duration up to 40 ms from optical lightning measurements reported by LIS onboard the Tropical Rainfall Measuring Mission (TRMM) satellite following a low-Earth orbit between 1997 and 2015, providing lightning measurements in the range of latitude between 35°N and 35°S. According to Bitzer (2017), LCC lightning discharges tend to occur in oceanic and winter thunderstorms, where the updrafts are weaker than in typical summer thunderstorms over land. Bitzer (2017) proposed that thunderstorms with weaker updrafts would produce small charging rates, allowing the charging process to develop larger charge regions before the onset of lightning and providing the discharge with more energy to be transferred. However, the TRMM satellite did not cover the European continent. LIS is now operating onboard the International Space Station (ISS), covering for the first time the Mediterranean basin and providing optical measurements of the duration of lightning pulses.

In this work, we investigate the meteorological characteristics of fire-producing thunderstorms and the electrical characteristics of the lightning-igniting fires in the Mediterranean basin. This approach will serve to improve fire forecasting methods and atmospheric models including fire-emissions. As we cannot directly connect LIW to LCC flashes using LLS, we search for shared meteorological conditions. We develop the first climatology of LCC lightning over Europe from the lightning data provided by LIS onboard the International Space Station (ISS-LIS) with a duration larger than 20 ms and its possible relationship with the occurrence of LIW. This duration is lower than the lowest duration of the continuing phase of a fire-igniting lightning reported by Fuquay et al. (1967) (40 ms), but enough to be considered as a LCC lightning flash. In particular, we focus our analysis on the Iberian Peninsula (Spain, Portugal and the Mediterranean France) and Greece. We do not include data over Italy because they were not accessible. We combine five fire databases from these countries with lightning measurements provided by the World Wide Lightning Location Network (WWLLN) and the Earth Network Total Lightning Network (ENTLN). We use meteorological data provided by the European Centre for Medium-Range Weather Forecasts (ECMWF) ERA5-reanalysis data set and by the Spanish State Meteorological Agency (AEMET). For the first time, we combine LCC lightning data provided by LIS onboard the International Space Station (ISS) with meteorological data sets.

2 Data and methodology

Table 1 shows the main characteristics of the data sets employed in this study. In this section, we describe each of the data set and the employed methodology to investigate the meteorological conditions of LIW and LCC lightning flashes.

2.1 Lightning measurements

We use ground-based lightning data provided by the Lightning Locations Systems WWLLN and ENTLN to search the lightning candidates for the forest fires in the periods 2009-2013 and 2014-2019, respectively. In addition, we use lightning optical measurements reported by ISS-LIS between 2017 and 2020 to investigate LCC lightning over Europe.

Table 1. Datasets used in this study. References are given in the text of Section 2.

Data set	Description	Region	Temporal coverage	Variables
WWLLN	VLF lightning data with a stroke DE raging between 8-13%	Mediterranean Basin	April 2009- December 2013	Time, location, radiated energy of lightning strokes
ENTLN	VLF lightning data with a stroke DE about 57%	Mediterranean Basin	January 2014- December 2019	Time, location, polarity and peak current of lightning flashes
ISS-LIS	Optical lightning data	Europe	March 2017 - September 2020	Time and location of groups and lightning flashes
ERA5	Reanalysis meteorological data	Mediterranean Basin	2009-2020	CAPE, CBH, horizontal wind components, hourly-accumulated precipitation, vertical profiles between ground and 200 hPa pressure level of the temperature, the relative humidity, the vertical velocity, the specific cloud ice water content, the specific cloud liquid water content, the specific rain water content and the specific snow water content, runoff index.
PROBA-V and S3 OLCI time series	Classification of forest type	Mediterranean Basin	2015	Type of trees in forest
MSG CTH product	CTH from data acquired by SEVIRI	Mediterranean Basin	2011-2020	CTH
Echo top radar provided by AEMET	Echo top heights measurements (maximum height of the 12-dBZ echo)	Spain	2015	Echo top heights
Forest fires over Spain	Fire data provided by the Spanish Ministerio de Agricultura, Pesca y Alimentación	Spain	2009-2015 (complete) and 2016-2017 (regional)	Location, time of detection and cause of ignition of 92187 fires (2009-2015). 3162 (2009-2015) are LIW (about 3.4%).
Forest fires over Portugal	Fire data provided by the Instituto da Conservação da Natureza e das florestas	Portugal	2009-2015	Location and time of detection of 163190 fires. Thereof 359 LIW filtered out (0.22%).
Forest fires over France	Fire data provided by the Prométhée database	Mediterranean France	2009-2015	Location, time of detection and cause of ignition of 797 fires. 36 are LIW (about 4.5%).
Forest fires over Greece	Fire data provided by the Hellenic Fire Brigade	Greece	2017-2019	Location and time of detection of 62690 fires. Thereof 1999 LIW filtered out (3.2%).

The ground-based WWLLN is composed by a global network of VLF sensors that can provide the position, time of occurrence and energy radiation by lightning discharges (Dowden et al., 2002; Rodger et al., 2005). WWLLN is more sensitive to CG lightning discharges than IC, with a total global stroke Detection Efficiency (DE) between 2009 and 2013 of 8-13% (Hutchins et al., 2012a; Rudlosky and Shea, 2013; Bitzer et al., 2016). The stroke location accuracy of WWLLN is between 5 km and 10 km, while the temporal accuracy is about tens of microseconds (Abreu et al., 2010; Rudlosky and Shea, 2013). In this work, we use the relationship between the energy of the strokes measured by WWLLN and the peak current of the discharge, as reported by Hutchins et al. (2012b) to estimate the peak current of the fire-igniting lightning.

The ground-based ENTLN is a global network composed by VLF sensors that provide the position, time of occurrence, polarity and peak current of lightning strokes. ENTLN has a DE of about 90% for CG strokes over the US (Zhu et al., 2017; Lapierre et al., 2020) and a total global stroke DE of about 57% (Bitzer et al., 2016). The median stroke location error is 631 m (Mallick et al., 2015). In this work, we use the flash product provided by ENTLN. This product is based on the flash criteria proposed by Liu and Heckman (2011), to cluster these strokes into flashes, in which two strokes are part of the same flash if they occur in a 0.7 s temporal window and in a 10 km spatial window.

After the end of operation of LIS on the TRMM satellite in 2015, a similar instrument was placed on the ISS for a 2 to 4 year mission starting in March 2017 covering latitudes between 54.3°N and 54.3°S (Blakeslee et al., 2014, 2020). LIS detects optical emissions from lightning with a frame integration time of 1.79 ms (Bitzer and Christian, 2015) with a spatial resolution of 4 km (Blakeslee et al., 2020). LIS sorts contiguous events into groups, and clusters groups into flashes with a temporal criteria of 330 ms and an spatial criteria of 5.5 km (Mach et al., 2007). Bitzer (2017) proposed a method to identify LCC lightning flashes from the groups reported by TRMM-LIS. According to Bitzer (2017), optical emissions detected in five or more consecutive frames (time contiguous groups), that are in the same flash, can be classified as a LCC lightning flash. In this work, we use the method proposed by Bitzer (2017) to produce a climatology of LCC lightning flashes over Europe based on ISS-LIS lightning measurements between March 2017 and September 2020. We use 20 ms as the lower limit to classify a flash as a LCC flash in order to avoid introducing CG flashes without continuing currents (typical CG) into our climatology.

2.2 Forest fire databases

The data of fires in Spain is provided by the Spanish Ministerio de Agricultura, Pesca y Alimentación (López-Santalla and López-Garcia, 2019). The database includes fires for entire Spain between 1968 and 2015 and for all the region except for the region Castilla y León between 2016 and 2017. The causes of fires is provided when known. LIW are identified by the Spanish Ministerio de agricultura, Pesca y Alimentación using lightning data from the Spanish State Meteorological Agency (AEMET). As the set of forest fires between 2016 and 2017 is not complete, we will exclude them from the analysis except for calculating the spatial flash density associated with LIW. The total number of fires in this database between 2009 and 2015 is 92187, among which 3162 are ignited by lightning (about 3.2%). In this study we do not include forest fires over the Canary Islands.

Data of fires in Portugal are provided by the Instituto da Conservação da Natureza e das florestas (Fernandes, 2015). The database includes fires between 1980 and 2015. The cause of most fires is not provided. The total number of fires in this

database between 2009 and 2015 is 163190. We describe in Section 2.4 a criterion to filter out some LIW from this data set, obtaining 359 LIW (about 0.22%).

155 Data of fires in the Mediterranean area in France are obtained from the Prométhée database (Délégation à la Protection de la Forêt Méditerranéenne, 2020). The database includes fires between 1973 and 2018. Cause of fires are provided. In this study, we only include fires with reported geographical coordinates. The total number of fires in this database between 2009 and 2015, in which the geographical coordinates are provided, is 797, among which 36 are ignited by lightning (about 4.5%).

160 Hellenic Fire Brigade, collects and publish fire incidence data from 2000 onwards, after getting (in summer of 1998) the responsibility of fire extinction in Greece from Forest Service, including the number of fires and the corresponding are burned (Koutsias et al., 2013). During the last years, x and y coordinates of the fire ignition points are also recorded, unfortunately without recording the fire cause. For three years during the period 2017-2019, these data were further checked for providing high positional accuracy and made available to be used here. The total number of fires in this database between 2017 and 2019 is 62690. We use the criterion described in Section 2.4 to filter out some LIW from this data set, obtaining 1999 LIW (about 3.2%).

165 2.3 Meteorological data and satellite measurements

We analyze the meteorological conditions of thunderstorms favoring fires or LCC lightning using meteorological data from the European Centre for Medium-Range Weather Forecasts (ECMWF) fifth generation reanalysis ERA5 (Hersbach et al., 2020) and the Cloud Top Height (CTH) product provided by EUMETSAT (Schmetz et al., 2002). In addition, for some selected cases we analyze the meteorological products provided by the Spanish State Meteorological Agency (AEMET) (Gutiérrez Núñez et al., 2018) for some selected cases.

175 ERA5 provides 1-hourly meteorological data using a 4D-var assimilation scheme at 139 pressure levels with an horizontal resolution of 0.25° . The product ERA5-Land provides meteorological data over land by replaying the land component of the ECMWF ERA5 climate reanalysis with an horizontal resolution of 0.1° (Poli et al., 2016). In this work, we analyzed the 1-hourly ERA5 meteorological data for cell and time step containing lightning flashes reported by WWLLN and ENTLN in the Iberian Peninsula and Mediterranean France for the period 2009-2015 and in Greece for the period 2017-2019. In particular, we have included in the analysis ERA5 meteorological data for 133147 and 78701 cells/hours over, respectively, the Iberian Peninsula and Greece. In addition, we analyzed the ERA5 thermodynamical, dynamical and microphysical variables for 8351 cells/hours including lightning flashes reported by ISS-LIS over Europe between 2017-2019. The selected meteorological variables are the Convective Available Potential Energy (CAPE), the Cloud Base Height (CBH), the horizontal wind components, the hourly-accumulated precipitation, [the specific humidity at 450 hPa](#) and vertical profiles between ground and 200 hPa pressure level of the temperature, the relative humidity, the vertical velocity, the specific cloud ice water content, the specific cloud liquid water content, the specific rain water content ~~and~~, the specific snow water content [and the runoff index. The runoff index is the depth \(in meters\) the water would have if it were spread evenly over the grid box of ERA5 reanalysis, representing the amount of water contained in the soil.](#)

185 The AEMET provides meteorological measurements under request. In this work, we selected some fire-igniting lightning flashes and some LCC lightning over Spain and collected radar echo top height measurements provided by AEMET (maximum height of the 12-dBZ echo). These heights correspond to the maximum heights populated by the precipitable particles.

We use the land cover map from 2015 produced by the European Space Agency (ESA) Climate Change Initiative (CCI) from the PROBA-Vegetation (PROBA-V) and Sentinel-3 OLCI (S3 OLCI) time series to classify lightning flashes over coniferous and mixed forests. This classification of lightning flashes ensures that only lightning flashes occurring over areas with vegetation that can be ignited are included in our analysis, as most of forest fires are due to the ignition of conifers or shrublands during the summer season (Pineda and Rigo, 2017). This map has a temporal resolution of one year and a horizontal resolution of 300 m. We consider that a lightning flash is taking place over coniferous or mixed forests if there is at least one 300 m \times 300 m grid cell with conifer or mixed trees 10 km around the flash position. In particular, we consider coniferous and mixed forests that including the label "needleleaved" in the D3.3.12-v1.3_PUGS_ICDR_LC_v2.1.x_PRODUCTS_v1.3 product. We use elevation data from the NASA Shuttle Radar Topographic Mission Farr et al. (2007) to get the elevation of LIW.

The CTH product provided by EUMETSAT is based on measurements of the Meteosat Second Generation (MSG) satellites. The geostationary orbit of MSG satellites is centered at 0°E, 0°N, reporting data at the rate of one Earth full-disk scan every 15 min. We investigate the CTH of fire-igniting thunderstorms because it is closely related with the level of convection in thunderstorms and the occurrence of lightning (Price and Rind, 1992). The CTH product is calculated by EUMETSAT from data acquired by the Spinning Enhanced Visible and InfraRed Imager (SEVIRI) instrument onboard the MSG satellites with an horizontal resolution of 4 km at the center of the orbit and a vertical resolution of 320 m, reaching a maximum altitude of 16 km. The CTH product is provided every 15 min since June 2011, with a lower rate between 2009 and May 2011 (Schmetz et al., 2002). In this work, we collect all the possible CTH values for the lightning flashes reported by WWLLN and ENTLN in the Iberian Peninsula (and Mediterranean France) between 2012-2015. We also collect the CTH values for all the lightning flashes reported by ENTLN in Greece for the period 2017-2019.

2.4 Search of lightning-candidates for the fires

We search the most probable CG lightning candidate for each fire using the proximity index A proposed by Larjavaara et al. (2005b),

$$210 \quad A = \left(1 - \frac{T}{T_{max}}\right) \times \left(1 - \frac{D}{D_{max}}\right). \quad (1)$$

The proximity index A combines the distance between each fire and each lightning discharge (D) with the delay between them (T), also known as holdover. Parameters (T_{max}) and (D_{max}) correspond to the maximum holdover and distance between a fire and a lightning discharge to consider the later as the cause of ignition. We set $T_{max} = 14$ days and $D_{max} = 10$ km (Larjavaara et al., 2005b). In the case of no CG lightning discharges taking place within the proposed spatio-temporal window with respect to a fire, we consider that the fire was not ignited by lightning. However, the proximity index can be greater than 0 for fires that were not ignited by lightning.

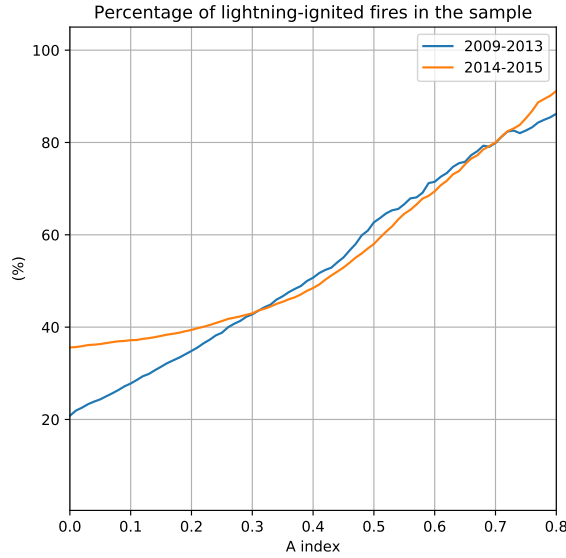


Figure 1. Percentage of LIW with different A index values as threshold in Spain and France during the period 2009-2015.

In the case of the database of fires taking place in Spain and Mediterranean France, the cause of ignition is provided. Therefore, we can easily discard the fires with $A > 0$ that were not ignited by lightning. However, the database of fires in Portugal and Greece do not provide the cause of ignition, and the proximity index can be greater than zero if a lightning discharge preceded a fire even if the discharge did not cause the ignition. In order to discard the fires of Portugal and Greece that were not ignited by lightning, we estimate the threshold value of the A index that ensures that at least 80% of the selected fires are ignited by lightning. To this end, we use the Spanish and French databases of fires. We plot in Fig. 1 the percentage of fires in Spain and France ignited by lightning using different values of A as threshold. According to this figure, setting the minimum value of A as 0.7 ensures that 80% of the selected fires are produced by lightning. Therefore, in our analysis of LIW over Portugal and Greece we only consider fires with $A \geq 0.7$. This approach can exclude a significant number of LIW from the analysis. However, it ensures that the sample is not influenced by fires that were not ignited by lightning. Following this approach, we find 359 (0.22% of the total) and 1999 (3.2% of the total) LIW with $A \geq 0.7$ in Portugal and Greece, respectively. We have obtained a lower percentage of LIW in Portugal with respect to all fires than in Greece, Spain and Mediterranean due to the low DE of WWLLN. Another interesting feature of Fig. 1 is that the percentage of LIW in the sample with A values lower than 0.3 is higher in the period 2014-2015 than in 2009-2013. This difference can be explained by the higher DE of ENT LN than WWLLN in the Iberian Peninsula.

As explained in Section 2.3, we will limit our analysis to LIW occurring between May and September and in coniferous and mixed forest.

2.5 Classification of LCC lightning flashes

235 The standard ISS LIS product includes lightning data at event, group and flash level (Mach et al., 2007). Groups are clustered into flashes if they occur within 330 ms and 5.5 km (Mach et al., 2007). In this work, we use group and flash data. We apply the method to classify lightning flashes reported by ISS-LIS as LCC lightning flashes proposed by Bitzer (2017) for TRMM LIS. We consider a flash as a LCC lightning flash if its optical emissions are detected in ten or more consecutive frames, which entails that the detected optical signal is continuous during about 20 ms. In addition, we have classified flashes with
240 optical emissions detected in five or more consecutive frames (optical signal is continuous during about 10 ms (Bitzer, 2017)) to investigate the possible relationships between the duration of the current and the meteorological conditions.

2.6 Analysis of meteorological conditions

We compare the meteorological variables of fire-igniting lightning flashes to typical CG lightning flashes over coniferous and mixed forest between May and September to identify the characteristics of fire-igniting flashes. In addition, we compare the
245 meteorological conditions associated with LCC lightning flashes reported by ISS-LIS over land in Europe between May and September 2017-2020 to the meteorological conditions of typical lightning flashes to search possible relationships between meteorology and the occurrence of LCC lightning flashes. The comparison of the meteorological variables is performed as follows:

1. We collect the 1-hourly values of the meteorological variables of every ERA5 grid cell containing lightning flashes.
250 For forecasting purposes, we collect the maximum value 3 hours before the discharge, as the value of CAPE during the passage of a thunderstorm is significantly lower than the value of CAPE during the development of the storm. For every lightning discharge, we collect the CTH value provided by EUMETSAT.
2. We define four samples: A first sample containing the meteorological variables of all the selected CG lightning discharges (*CG lightning climatology*), a second sample formed by the meteorological variables of all the fire-igniting lightning candidates (*fire-igniting lightning climatology*), a third sample containing the meteorological variables of all the LCC
255 lightning flashes (*LCC flashes climatology*) and a fourth sample composed by the meteorological variables of all the lightning flashes reported by ISS-LIS without a continuing phase (*Typical lightning flashes*).
3. We calculate the median values of each sample and compare them.
4. We perform a Kruskal-Wallis H-test between both samples to check if the median value differs significantly across
260 samples and calculate the corresponding p -value. The p -value is the level level of marginal significance within the statistical hypothesis of equal median values, indicating the probability of equal median for both samples. If the p -value is lower than 0.05 (less than 5% probability of equal median) we reject the hypothesis of equal medians and consider that both samples are statistically different (Kruskal and Wallis, 1952). It is important to mention that different medians does not necessary imply that the analyzed variable would be a good predictor of LIW.

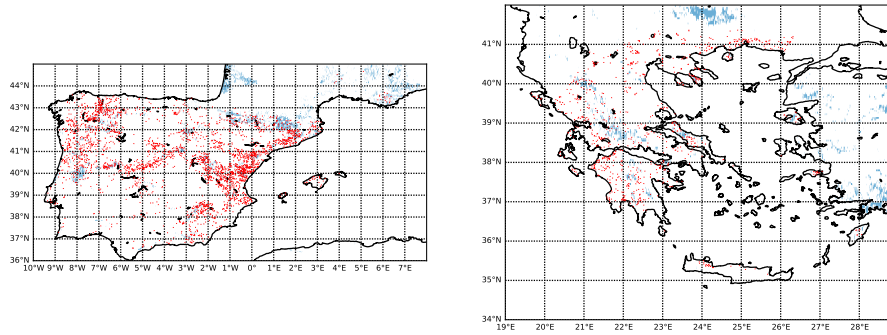


Figure 2. Coniferous and mixed forest (blue area) and LIW (red dots) included in this study. Left panel shows LIW over the Iberian Peninsula between 2009 and 2015, while right panel shows LIW over Greece between 2017 and 2019. We have degraded the resolution of the vegetation map in this plot from 300 m to 4.8 km.

265 3 Results

3.1 Lightning-candidates for fires

The number of *LIW* over coniferous and mixed forest included in our analysis over Spain, Portugal, France and Greece are 3162, 359, 36 and 1999 (Table 1), respectively. In Fig. 2 we plot two maps showing the Iberian Peninsula and Greece, the position of coniferous/mixed forests and the position of all the LIW included in this study.

270 From this point, we refer to the contiguous territory including Spain, Portugal and Mediterranean France and the Balearic islands as the Iberian Peninsula. Fig. 3(a) and 4(a) show the monthly total number of LIW between May and September in the Iberian Peninsula and in Greece, respectively. In the Iberian Peninsula, the occurrence of LIW reaches its peak in July, while in Greece the peak occurs in June and a secondary peak in September.

Fig. 3(b) and 4(b) show the frequency distribution of the lightning peak current of all the lightning taking place over coniferous and mixed forests and fire-igniting lightning during May and September for, respectively, the Iberian Peninsula and Greece. We do not include peak currents during 2009 and 2013, as the WWLLN lightning data does not include information about the polarity and the peak current of the flash. According to these figures, there is a slight shift to higher peaks with a positive polarity. The lack of positive lightning flashes reported by ENTLN with peak currents below 20 kA are a consequence of the data set, that do not include positive CG flashes with peak currents below nearly 20 kA. Positive flashes with peak currents 275 below nearly 20 kA are classified as IC (Cummins and Murphy, 2009).

Fig. 3(c-d) and 4(c-d) show the distance and holdover between when the reported fire ignition and the lightning candidates for the Iberian Peninsula and Greece, respectively. In the Iberian Peninsula, the 25th, 50th and 75th percentiles of the distance are respectively 1.30 km, 2.71 km and 5.39 km, while in Greece they are 0.56 km, 0.93 km and 1.48 km. The distance between fires and fire-igniting flashes is significantly lower in the case of Greece, possibly due to improvement in the detection 285 efficiency of ENTLN between the periods 2014-2015 and 2017-2019. The 25th, 50th and 75th percentiles of the holdovers

Iberian Peninsula

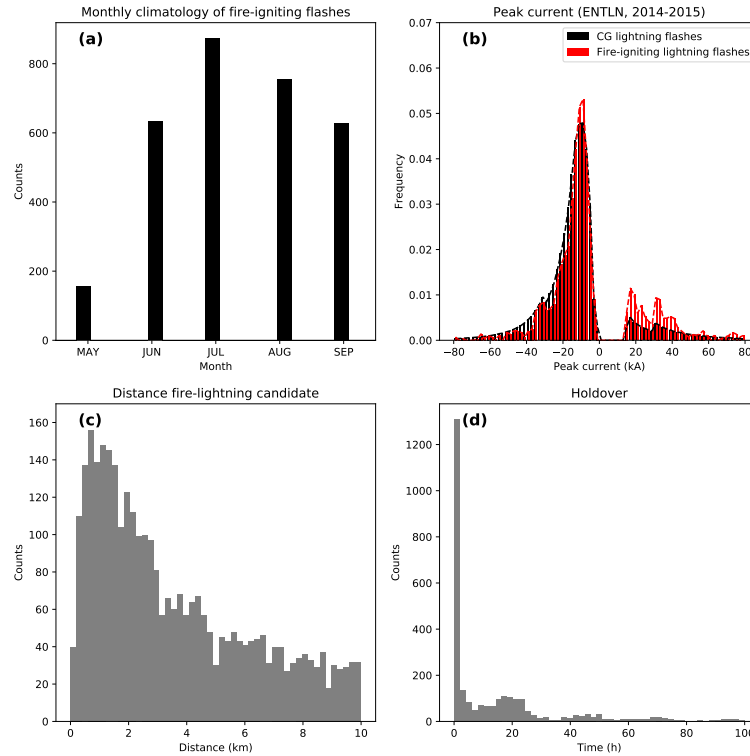


Figure 3. Analysis of fire-igniting flashes in the Iberian Peninsula between 2009 and 2015: (a) Monthly distribution of the occurrence of fire-igniting lightning flashes, (b) Frequency distribution of the peak currents of all CG lightning taking place over coniferous and mixed forest during May and September (black) and of all fire-igniting lightning flashes (red) provided by ENTLN between 2014 and 2015. (c) Distribution of the distance between the reported position of ignition and the lightning candidate. (d) Distribution of the holdover (difference between the time of detection and the time of the lightning candidate).

in the Iberian Peninsula are, respectively, 0.48 hours, 8.13 hours and 29.23 hours, while they are 14.79 hours, 29.43 hours and 48.78 hours in Greece. Differences in the holdover between the Iberian Peninsula and Greece can be due to differences in the detection of fires by local authorities. Fig. 3(d) and 4(d) suggest a diurnal cycle in the holdover that can be due to different conditions for arrival during day, similar as obtained by Pineda and Rigo (2017) for LIW ober Catalonia. At noon, meteorological conditions can favor a rapid arrival after ignition (high temperature and low humidity). Ignitions separated from noon occur under meteorological conditions that do not favor rapid arrival.

We have found that the mean elevation of LIW in the Iberian Peninsula is 775 m, while in the case of Greece the mean elevation is 319 m.

Greece

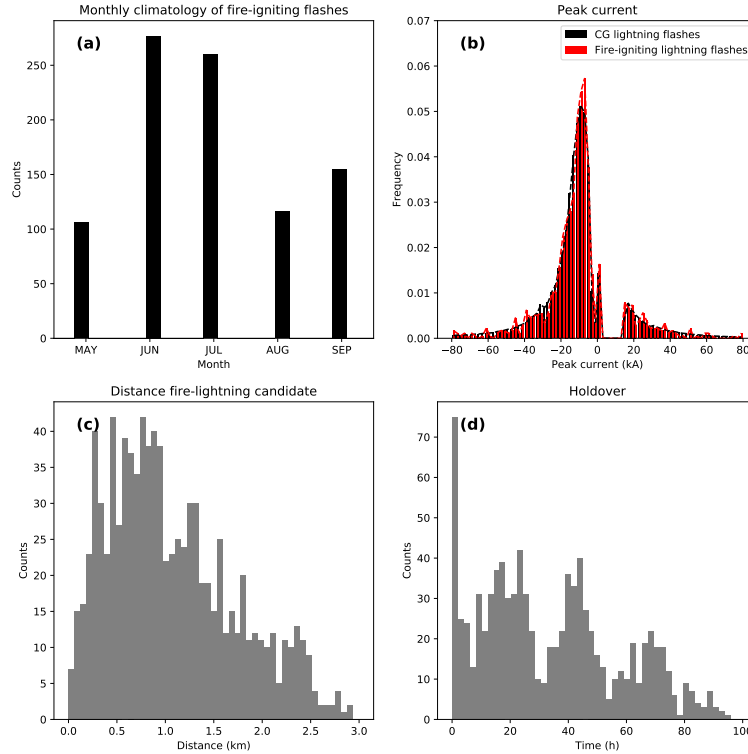


Figure 4. Analysis of fire-igniting flashes in Greece between 2017 and 2019: (a) Monthly distribution of the occurrence of LIW, (b) Frequency distribution of the peak currents of all CG lightning taking place over coniferous and mixed forest during May and September (black) and of all fire-igniting lightning flashes (red) detected with ENTNL. (c) Distribution of the distance between the reported position of ignition and the lightning candidate. (d) Distribution of the holdover.

3.2 Meteorological conditions of fire-igniting lightning

295 We investigate the meteorological conditions of LIW using 1-hourly ERA5 reanalysis data. We compare several meteorological variables of *fire-igniting lightning* with *typical CG lightning* taking place over coniferous and mixed forest between May and September to find the meteorological conditions that favor the ignition of fires by lightning.

Fig. 5(a) and Fig. 6(a) show the frequency distributions of CAPE for the CG lightning and the fire-igniting lightning climatologies for the Iberian Peninsula and Greece, respectively. We have selected the maximum value of CAPE 3 hours before the occurrence of lightning. Comparison of both distributions indicates that low-high values of CAPE are more frequent in fire-igniting flashes than in typical CG lightning flashes ~~over the Iberian Peninsula~~. However, ~~we find an opposite tendency over~~

300

~~Greece. This is not surprising, as~~ according to Nauslar et al. (2013), lower tropospheric thunderstorms indices, such as CAPE, are not enough to forecast the potential of dry thunderstorms. Nevertheless, the p-values lower than 0.05 suggest that local differences in the distributions of CAPE plotted in Fig. 5(a) and Fig. 6(a) are statistically significant.

305 Fig. 5(b) and Fig. 6(b) show the frequency distribution of the hourly accumulated precipitation for the CG lightning and the fire-igniting lightning climatologies. In accordance with previous studies over the US (e.g., Colson, 1960; Hall, 2007; Pineda and Rigo, 2017), our results also suggest that thunderstorms with a low precipitation rate are associated with a higher probability of lightning-ignited fire production over Europe. In the Iberian Peninsula, the 25th, 50th and 75th percentiles of the hourly accumulated precipitation for LIW are respectively 0.10 mm, 0.63 mm and 2.01 mm, while for Greece the percentiles
310 are respectively 0.13 mm, 0.88 mm and 2.76 mm. Again, the p-values suggest that differences in the distributions of the accumulated precipitation plotted in Fig. 5(b) and Fig. 6(b) are statistically significant.

Holzworth et al. (2019) defined lightning superbolts as WWLLN strokes with energy above 10^6 J in the VLF band between 5 and 18 kHz. We have analyzed the stroke energies in the VLF band between 5 and 18 kHz for WWLLN data in the Iberian Peninsula. We have found 95 superbolts over coniferous and mixed forest and between May and September (among
315 207116 strokes) and 3 superbolts that are also fire-igniting lightning-candidates (among 1697 fire-igniting lightning-candidates). Therefore, 0.18% of fire-igniting lightning-candidates are superbolts, while 0.05% of all strokes in coniferous and mixed forests are superbolts. We can then conclude that the incidence of superbolts is higher for detected fire-igniting lightning than for typical lightning, although superbolts do not represent a significant portion of fire-igniting lightning.

We plot in Fig. 5(c) and Fig. 6(c) the comparison of the frequency distribution of the horizontal wind at the surface for the
320 CG lightning and the fire-igniting lightning climatologies. Differences in the median values suggests that stronger winds favor the arrival of fires (distribution shifted to the right) in the Iberian Peninsula and Greece. The p-values suggest that differences in the distributions of the horizontal winds plotted in Fig. 5(c) and Fig. 6(c) are statistically significant.

Fig. 5(d-f) and 6(d-f) show the frequency distribution of, respectively, the Relative Humidity (RH) at 850 hPa level, the air temperature at 2 m altitude and the air temperature at 850 hPa level pressure for the CG lightning and the fire-igniting
325 lightning climatologies. The lower RH and the higher temperature at 850 hPa and 2 m altitude are characteristic conditions of dry thunderstorms over the US (Rorig et al., 2007; Dowdy and Mills, 2012), Australia (Bates et al., 2017; Dowdy, 2020). These conditions favor the evaporation of precipitable water before reaching the ground (Nauslar et al., 2013) increasing the probability of fire-ignition, survival and arrival in the Iberian Peninsula and Greece. Differences in the distributions of RH and temperatures plotted in Fig. 5(d-f) and 6(d-f) are statistically significant, as suggested by p-values lower than 0.05. However,
330 Fig. 6(d, f) suggest that the Relative Humidity (RH) at 850 hPa level and the air temperature at 850 hPa level pressure would not be good predictors for LIW in Greece, as the plotted distributions of fire-igniting lightning and CG lightning are not substantially different. Differences in RH and temperature at 850 hPa between Greece and the Iberian Peninsula could be due to topographic effects. LIW in the Iberian Peninsula tend to occur at higher elevation than in Greece (775 m and 319 m, respectively). Therefore, meteorological conditions at 850 hPa would have a greater influence on ignition, survival and arrival
335 of fires in the Iberian Peninsula than in Greece.

We have also calculated the median value of the variables plotted in 6 using $A \geq 0.8$ and $A \geq 0.85$. We have obtained the same results as using $A \geq 0.7$ in terms of difference between meteorological variables of fire-igniting lightning and typical lightning. However, the p-values are significantly higher, as the total number of fire-igniting lightning included in the sample decreases significantly when increasing the minimum value of A .

340 The temperature difference between vertical levels can be used to investigate the instability of the atmosphere. ~~Let us now analyze the temperature differences between 2-m altitude and 850 hPa pressure level and between 850 hPa and 450 hPa pressure levels.~~ We have found that the median temperature differences between 2 m altitude and ~~850~~700 hPa pressure level for CG lightning in the Iberian Peninsula and Greece are, respectively, ~~5.6~~16.8 K and ~~7.5~~19.0 K. In the case of fire-igniting lightning, the median temperature differences between 2 m altitude and ~~850~~700 hPa pressure level are ~~6.3 K and 8.5 K, respectively.~~

345 ~~The median temperature differences between 850 hPa and 450 hPa pressure levels for CG lightning in the Iberian Peninsula and Greece are 33.5~~18.8 K and ~~33.1~~19.9 K, respectively, while in the case of fire-igniting flashes the median temperature differences between 850 hPa and 450 hPa pressure level for the Iberian Peninsula and Greece are, respectively, ~~35.4 K and 33.2 K.~~ These results indicate that the instability of the ~~atmosphere~~lower troposphere is higher in fire-igniting lightning flashes than in typical CG lightning flashes. ~~However, we have found some differences between the Iberian Peninsula and Greece.~~

350 ~~The highest difference in the temperature of the atmosphere between typical CG lightning and fire-igniting lightning flashes in Greece takes place in the lower troposphere (between 2-m altitude and 850 hPa pressure level), while the highest difference in the instability of the atmosphere between typical CG lightning and fire-igniting lightning flashes in the Iberian Peninsula occurs at higher levels (between 850 hPa and 450 hPa pressure levels). These differences can be explained by the different mean elevation of LIW in the Iberian Peninsula and in Greece, as suggested by the analysis of CAPE (see Fig. 5(a) and Fig. 6(a)).~~

355 Fig. 7 shows the frequency distribution of the CBH for lightning flashes over coniferous and mixed forest and for all the fire-igniting flashes, indicating that ~~high-based clouds~~clouds with high base favor the inception of LIW. ~~High-based clouds~~clouds with high base favor the evaporation of precipitation before reaching the surface, increasing the probability of survival and arrival of LIW. ~~High-based clouds~~clouds with high base and low content of moisture in the low- or mid-level are the typical meteorological conditions of dry thunderstorms in the western United States, as demonstrated by Wallmann (2004) and

360 Nauslar et al. (2013). Our results suggest, for the first time, that ~~high-based clouds~~clouds with high base favor the occurrence and arrival of LIW in the Iberian Peninsula and Greece. The p-values suggest that differences in the distributions of CBH plotted in Fig. 7 are statistically significant.

Finally, we have calculated the median value of the runoff index for fire-igniting lightning and for CG lightning flashes over coniferous and mixed forest. For the Iberian Peninsula, the median value of the runoff index for typical CG flashes is 9×10^{-5} m, while it is 2×10^{-5} m for fire-igniting flashes. For Greece, the median values of the runoff index for fire-igniting lightning and for CG lightning are 2×10^{-4} m and 8×10^{-5} m, respectively. Therefore, the amount of water contained in the soil and consequently the state of vegetation can also influence the occurrence of LIW.

365

Table 2. Median value of the distributions of fire-igniting lightning plotted in Fig. 5-7 for each of the climate zones of the Iberian Peninsula and Greece. We include the median value of the distributions of CG lightning flashes in brackets and the p-values (zero when lower than the machine precision). We also include in this table the median value of the meteorological variables of LCC(>20 ms)-lightning reported by ISS-LIS taking place in [high-based-clouds](#) [with high base](#) (Fig. 18) and the CBH of all LCC(>20 ms)-lightning (Fig. 20), including the median value of the distributions of typical lightning flashes observed by ISS-LIS in brackets.

Region	CAPE (J kg^{-1})	Precipitation (mm)	Wind (m s^{-1})	RH (%)	Temperature (K)	Temperature 850 hPa (K)	CBH (m)
<i>Forest fires</i>							
Iberian Peninsula	361 (435)	0.63 (1.72)	2.04 (1.78)	57.4 (74.1)	297 (293)	291 (287)	1739 (1175)
p-value	< 0.001	< 0.001	< 0.001	< 0.001	< 0.001	< 0.001	< 0.001
<i>Atlantic</i>	444	0.77	1.81	62.3	295	290	1111
<i>Mediterranean</i>	359	0.71	2.24	56.9	297	291	2477
<i>Central</i>	170	0.38	2.04	49.3	297	292	2297
<i>Pyrenees</i>	504	0.45	1.9	60.5	296	290	1750
Greece	666 (466)	0.88 (1.16)	1.69 (1.45)	69.8 (72.1)	297 (295)	288 (288)	1694 (1308)
p-value	< 0.001	< 0.001	< 0.001	< 0.001	< 0.001	< 0.001	< 0.001
<i>LCC(>20 ms)-lightning flashes</i>							
Europe (land)	500 (639)	0.30 (1.20)	-	64.1 (73.9)	296 (296)	289 (288)	1361 (1364)
p-value	0.16	< 0.001	-	< 0.001	< 0.001	< 0.001	0.7

3.2.1 Regional patterns over the Iberian Peninsula

The inland area of the Iberian Peninsula is influenced by a complex spatial climate pattern. Climate in the Atlantic coast is characterized by a high accumulation of precipitation due to the frequent Atlantic storms. The Mediterranean coast has a climate characterized by dry conditions during the summer, while the inland central part of the Iberian Peninsula is influenced by a continental climate with low precipitation and extreme temperatures during winter and summer. Finally, some areas, as the Pyrenees, are influenced by a highland climate. We show in Table 2 the median value of the distributions plotted in Fig. 5 for each of the climate zones of the Iberian Peninsula. In all regions the median values of 1-hour precipitation and relative humidity are lower than the median values for all CG lightning flashes, while the median values of the wind, the temperatures at 2 m and 850 hPa and the CBH are higher than the median values for all CG lightning flashes. The median value of CAPE for fire-igniting lightning in the Iberian Peninsula is lower than the climatological median.

3.2.2 Meteorological conditions in the upper troposphere

Let us now investigate the meteorological conditions of thunderstorms at altitudes above the 850 hPa pressure level. Hydrometeors (in the shape of water or ice) can play an important role for the lightning activity (Deierling et al., 2005; Finney et al., 2014) and for the precipitation rate (Tao et al., 2012). We plot in Fig. 8 and Fig. 9 the vertical profiles of the specific cloud ice water content and the specific rain water content for the CG lightning and the fire-igniting lightning climatologies during May and September in the Iberian Peninsula and Greece, respectively. We plot in the second column of Fig. 8 and 9 the vertical profile of the p-values to indicate the pressure levels where differences are statistically significant.

The total cloud ice is lower for the case of fire-igniting lightning than for the CG lightning climatology (Fig. 8(a) and Fig. 9(a), except at altitudes above 450 hPa pressure levels in the case of Greece. The lower content of ice particles in fire-igniting lightning suggests that fire-producing thunderstorms have a lower content of moisture than the climatological median.

The low rain content in the lower troposphere (altitude below 700 hPa pressure level) for fire-igniting lightning (Fig. 8(b) and Fig. 9(b)) suggests that fire-igniting lightning flashes occur in dry thunderstorms (Nauslar et al., 2013). The red line in Fig. 8(b) disappears when the value is lower than 10^{-8} below about 750 hPa pressure level, indicating that the specific rain water content is negligible. The only pressure levels where differences are not statistically significant (p-value greater than 0.05) are the uppermost levels plotted in each panel of Fig. 9.

Let us now analyze the temperature differences between 700 hPa and 450 hPa pressure levels. The median temperature differences between 700 hPa and 450 hPa pressure levels for CG lightning in the Iberian Peninsula and Greece are 22.4 K and 21.8 K, respectively, while in the case of fire-igniting flashes the median temperature differences between 700 hPa and 450 hPa pressure level for the Iberian Peninsula and Greece are, respectively, 23.1 K and 21.8 K. Therefore, the temperature differences between 700 hPa and 450 hPa pressure levels are only slightly different (for the Iberian Peninsula) or similar (for Greece) for fire-producing thunderstorms than for the climatological median. Therefore, we expect that different content of moisture between fire-producing thunderstorms and the climatological median plays a more important role in the instability of the atmosphere than the vertical temperature profile.

Finally, we plot in Fig. 10 and Fig. 11 the vertical profile of the vertical velocity for the CG lightning and the fire-igniting lightning climatologies in the Iberian Peninsula and in Greece, respectively. The vertical velocity is the speed of air motion in the upward or downward direction, with negative values for upward motion and positive values for downward motion. It is important to mention that the median value that we have obtained is lower than zero at all pressure levels, which means that the vertical velocities plotted in Fig. 10 and Fig. 11 correspond to updrafts. Fig. 10 indicates that fire-igniting lightning in the Iberian Peninsula tends to occur in areas with weaker vertical motion than in the case of typical CG lightning (p-value lower than 0.05 at every level). However, we have calculated the median specific humidity at 450 hPa for fire-producing lightning and CG lightning in the Iberian Peninsula, obtaining respectively $7.7 \times 10^{-4} \text{ kg kg}^{-1}$ and $8.65 \times 10^{-4} \text{ kg kg}^{-1}$ (p-value < 0.05). Given that dry air is more dense than moist air (Picard et al., 2008), we suggest that the updraft of thunderstorms producing LIW in the Iberian Peninsula is lower than the climatological median because they are composed by air that is drier than the climatological median.

We do not find the same trend in Greece, where the vertical profile of the vertical velocity in fire-producing lightning is only slightly different than the climatological median. Fig. 11 shows that vertical velocity is lower-slightly higher for fire-igniting lightning than for CG lightning between 300 hPa and 450 hPa, higher for altitudes below 800 hPa pressure level and statistically similar in the rest of the vertical levels. In the case of Greece, fire-producing thunderstorms have the same content of moisture as the climatological median (see Fig 9), which is in agreement with the comparison of the vertical velocity between fire-producing lightning and typical lightning (Fig. 11).

3.2.3 Cloud Top Height values

Let us now compare the CTH values associated with fire-igniting lightning and with typical lightning using the CTH product provided by EUMETSAT and based on measurements of the MSG satellites. Thunderstorm with high CTH values are related with high level of convection and lightning activity (Price and Rind, 1992). We have collected the value of the CTH for all CG

lightning flashes and fire-igniting lightning flashes for the periods between 2012 and 2015 (Iberian Peninsula) and between 2017 and 2019 (Greece) when it is provided in a temporal window of ± 15 minutes around the occurrence of the discharge and when the reported quality of the estimation of CTH is not poor. As an example, we plot in the supplement the CTH map
425 derived from MSG satellite for one fire-igniting thunderstorm taking place in the Mediterranean coast of the Iberian Peninsula in June 15, 2015 at 14:15 UTC.

We plot the frequency distribution of CTH values in Fig. 12 for both the CG lightning and the fire-igniting lightning climatologies in the Iberian Peninsula (upper panel) and in Greece (lower panel). We obtain a median CTH value of 11.3 km (10.3 km) for fire-igniting lightning and a median value of ~~11.3~~10.9 km (~~10.6~~10.3 km) for typical CG lightning flashes in the
430 Iberian Peninsula (Greece). There are not significant differences in the distribution of CTH values between both climatologies over ~~the Iberian Peninsula-Greece~~ (p-value>0.05), while the difference in the median value of CTH in fire-igniting lightning and CG lightning is of the same order as the resolution of the measurements (320 m (Schmetz et al., 2002)). However, Fig. 12 shows a tendency to higher CTH values for fire-igniting lightning in ~~Greece~~the Iberian Peninsula. The frequency distribution of CTH is flatter for the case of fire-igniting lightning flashes than for the case of CG lightning flashes. The high total number
435 of fire-producing thunderstorms over Greece with CTH above 12 km showed (lower left panel of Fig. 12) coincides with the high content of ice water at 200 hPa plotted in Fig. 9.

There seems to be a disagreement between the CTH and the updrafts in LIW, as fire-igniting lightning tends to occur under weak updraft but not in thunderstorms with low CTH values. It is important to highlight that CTH data is reported every 15 min and with a horizontal resolution of 4 km by EUMETSAT, while ERA5 data is 1-hourly averaged with a resolution of
440 0.25×0.25 degrees latitude and longitude (see section 2.3). The cloud top height at a given point in a single thunderstorm can significantly change in 1 h (Emersic et al., 2011) and within 0.25×0.25 degrees latitude and longitude area. Therefore, our results are compatible with fire-igniting lightning taking place in thunderstorms with weaker convection than the averaged at the spatio-temporal scale of ERA5 but at the time and position when or where cloud tops are high.

3.3 Lightning flash frequency and density in fire-producing thunderstorms

445 Lightning flash frequency and density is used as a proxy variable to forecast or parameterize the inception of lightning ignited fires. For example, Krause et al. (2014) parameterized the inception of LIW in a global model using the flash frequency, while Schultz et al. (2019) found that the majority of flash densities were less than 0.41 flashes per km^{-2} in lightning-ignited fire days in the United States. In this section, we analyze the *temporal evolution* and the *spatial characteristics* of fire-producing thunderstorms in Spain between 2014 and 2015. We assume that the fire-producing thunderstorm is the one that contains
450 the lightning-candidate. However, identifying the thunderstorm containing a flash reported by a lightning network is not a trivial problem. Hutchins et al. (2014) proposed the use of the ST-DBSCAN algorithm to cluster lightning flashes reported by WWLLN into thunderstorms. The ST-DBSCAN algorithm defines a cluster of flashes as the group of flashes that are neighbors according to selected spatial and temporal thresholds. Hutchins et al. (2014) reported that ST-DBSCAN produces a reliable daily global number of thunderstorms (660 ± 70 on any given moment) by using 0.12° in latitude and longitude
455 as spatial parameter and 18 minutes as temporal thresholds to cluster WWLLN flashes into thunderstorms. In this work, we

cluster lightning flashes reported by ENTLN in the region of interest by searching adequate clustering thresholds by using radar measurements of thunderstorms.

Radar echo top measurements at 12 dB provide the maximum height of precipitable particles (Gutiérrez Núñez et al., 2018). Areas where the height of precipitable particles is high are related to areas with strong updrafts that can favor the production of thunderclouds. We use radar echo top maps to identify the position of thunderstorms before clustering flashes into thunderstorms. Fig. 13 (left column) show two echo top radar images around two fire-ignited lightning taking place in the Mediterranean coast of the Iberian Peninsula on June 17, 2015 at 18:00 UTC and on June 15, 2015 at 14:15 UTC, respectively. Fig. 13(right column) show all the lightning flashes reported by ENTLN in the Eastern coast of the Iberian Peninsula during 30 minutes on June 17, 2014 at 18:00 and on June 15, 2015 at 14:15 UTC. Different colors indicate the clusters after applying the clustering algorithm ST-DBSCAN with the spatial and temporal parameters 0.12° and 15 minutes, respectively. Comparison of both columns in Fig. 13 shows that the clustering parameters 0.12° and 15 minutes, can be used to identify thunderstorms from lightning measurements in the region of interest. Hutchins et al. (2014) used 18 minutes for WWLLN global lightning data. However, we found that using 18 minutes for ENTLN lightning data over the Iberian Peninsula would cluster all the lightning flashes shown in Fig. 13(right panel) into the same thunderstorm.

Following this approach to cluster lightning flashes into thunderstorms, we have clustered the lightning flashes taking place in the Iberian Peninsula between 2014 and 2015 during some days with LIW. Given that the clustering process requires high computational resources, we restrict our analysis to the period between 2014 and 2015. In order to select the cases of study, we have only included fire-igniting thunderstorms containing a lightning candidate with a proximity index (A) greater than 0.95 with respect to the fire. Following these criteria, we have selected 77 cases. Fig. 14 shows the cumulative number of flashes occurring in the selected cases 1400 minutes around the ignition of LIW. *Ignitions tend to occur at the moment when the lightning activity just starts to increase from the regime with the lowest lightning activity to the regimen with the highest lightning activity.* The regime with a higher lightning activity coincides with a higher precipitation rate (Soriano et al., 2001) that contributes to inhibit the possibility of fire ignition. We have found no relationships between the cumulative number of different type and polarity of lightning discharges and the time of ignition.

Several authors have investigated the spatial density of CG flashes 24 h prior to the ignition as a proxy for the occurrence of fires in the US depending on the 100-h fuel moisture information (e.g., Latham, 1989; Hardy et al.; Schultz et al., 2019). They have found a that the threshold value of the CG spatial flash density to ignite a fire and allow it to reach the arrival phase would strongly depend on the lightning detection system. In this work, we have calculated the CG spatial flash density 5 km around and 24 h before the ignition of all the LIW in Spain during 2016 and 2017 using CG flashes reported by ENTLN. The DE of ENTLN can have increased during recent years. We have calculated the CG spatial flash density for the period between 2016 and 2017 for the case of utility, as 2016-2017 are the most recent years in our fire database in the Iberian Peninsula. Therefore, is the most recent . We obtain a median value of 0.44 flashes per km^{-2} , a 25th percentile of 0.26 flashes per km^{-2} , and a 75th percentile of 0.69 flashes per km^{-2} . In addition to meteorological parameters, these values could be used in regional fire forecasting or atmospheric models to quantify the risk of ignition by thunderstorms, specially if radar measurements of precipitation rate are not available.

3.4 Long-Continuing-Current (LCC) lightning

In this section, we investigate the climatology of LCC lightning flashes over Europe derived from ISS-LIS data between March 2017 and September 2020 and the meteorological and cloud conditions under which they take place. This approach will help us to identify possible relationships between LCC lightning and fire-igniting lightning flashes.

495 3.4.1 LCC lightning distribution over Europe

In order to perform this analysis, we compare three samples of lightning data. The first sample is formed by all lightning flashes without a long continuous phase of 20 ms or more reported by ISS-LIS over land in Europe between May-September 2017-2020, here referred as "Typical lightning flashes". The second and third samples are composed by all the LCC lightning flashes reported by ISS-LIS over land in southern Europe with a continuous phase duration equal or greater than 20 ms and
500 10 ms, respectively. We refer to these climatologies as, respectively, LCC(>20 ms) and LCC(>10 ms). The total number of LCC(>20 ms) and LCC(>10 ms)-lightning flashes reported by ISS-LIS over land in Europe between May-September 2017-2020 are 1227 and 9211, respectively, while the total number of typical lightning flashes is 148482. Therefore, about 6.2% lightning flashes reported by ISS-LIS over Europe are LCC(>10 ms), while only about 0.8% lightning flashes are LCC(>20 ms). We plot the obtained geographical distribution of LCC(>20 ms)-lightning flashes in Fig. 15 together with the geographical
505 distribution of lightning flashes reported by ISS-LIS. According to this figure, LCC(>20 ms)-lightning flashes tend to occur over the oceans and over coastal regions, even when the maximum occurrence rate of total lightning flashes is produced over land. Lightning flashes tend to be more energetic over ocean than over land (Said et al., 2013; Holzworth et al., 2019), which is in agreement with the different ratio of LCC(>20 ms)-lightning flashes to total lightning flashes plotted in the top-right panel of Fig. 15.

510 Comparison of LIW maps (Fig. 2) and LCC(>20 ms)-lightning maps (Fig. 15) in the Iberian Peninsula and Greece is difficult as a consequence of the low total number of reported LCC(>20 ms)-lightning flashes by ISS-LIS. However, it is interesting to highlight the high occurrence of LCC(>20 ms) flashes and fire-igniting lightning in the Mediterranean coast of the Iberian Peninsula. In addition, we have obtained a high occurrence of LIW and LCC(>20 ms)-lightning flashes over the Greek coastal regions and over some parts of the Pindus Mountains.

515 Fig. 16 shows the monthly occurrence of typical lightning and LCC(>20 ms)-lightning flashes over land in Europe. The peak in the occurrence rate of LCC(>20 ms)-lightning flashes is reached during the summer season, while the peak in the ratio of LCC(>20 ms)-lightning to typical lightning flashes occurs during the winter. The total number of flashes during winter is lower than during summer, causing that the ratio of LCC(>20 ms)-lightning to typical lightning flashes oscillates more during winter than during summer. Winter thunderstorms are characterized by weak updrafts, which suggests that weaker convection
520 in thunderstorms favors the occurrence of LCC(>20 ms)-lightning flashes, as proposed by Bitzer (2017).

3.4.2 Meteorological conditions for LCC lightning

With the purpose of finding possible relationships between LIW and LCC(>20 ms)-lightning flashes, we analyze the meteorological conditions associated with LCC(>20 ms)-lightning flashes reported by ISS-LIS over land in Europe between May and September 2017-2020. We exclude winter and autumn seasons (January-April and October-December) LCC(>20 ms)-lightning data from our analysis because the total number of LIW during those seasons is negligible.

We show in the supplement the frequency distribution of CAPE, the accumulated precipitation, the relative humidity at 850 hPa pressure level and the temperature at 2 m altitude and at 850 hPa pressure level for typical lightning and LCC(>20 ms) lightning flashes. We also show the analysis of the vertical content of moisture in the supplement, that suggest that LCC(>20 ms) flashes tend to occur in thunderstorms with lower content of moisture than the climatological median. We have added these values to Table 2. We have not found any evident link between these meteorological conditions at the lower-troposphere and the occurrence of LCC(>20 ms) lightning flashes.

However, two of the meteorological parameters that are relevant for the occurrence of fire-igniting lightning (Section 2.3) are also related with the occurrence of LCC(>20 ms)-lightning flashes: the vertical velocity and the CBH. The median vertical profiles of the vertical velocity for typical and LCC(>20 ms)-lightning plotted in Fig. 17 indicate that *LCC(>20 ms)-lightning flashes tend to occur under weaker convection than typical lightning flashes*. The p-value is below 0.05 for all the pressure levels at altitudes below 400 hPa, indicating that differences in medians of both distributions are statistically significant.

The median temperature differences between 700 hPa and 450 hPa pressure levels for LCC(>20 ms)-lightning flashes is 21.8 K, while the climatological median is 21.9 K. The median specific humidity at 450 hPa pressure levels for LCC(>20 ms)-lightning flashes is $9.7 \times 10^{-4} \text{ kg kg}^{-1}$, while the climatological median is $9.5 \times 10^{-4} \text{ kg kg}^{-1}$. Therefore, we suggest that differences in the vertical velocity between LCC(>20 ms)-lightning flashes and the climatology are due to differences in the vertical profiles of humidity and temperature.

We plot in Fig. 18 the frequency distribution of the CBH for typical lightning and LCC(>20 ms)-lightning. The median value of the CBH associated with LCC(>20 ms)-lightning flashes is similar as the value of CBH for typical lightning. The distribution of CBH for LCC(>20 ms)-lightning has two peaks, one of them in about 500 m and another in about 1250 m, while the distribution of CBH for typical lightning peaks in nearly 1000 m. The frequency distribution of CBH for LCC(>20 ms)-lightning is higher than the frequency distribution for typical lightning in low-based clouds (CBH lower than 500 m) as well as in high-based thunderstorms (CBH>2000 m). The p-value is below 0.05, indicating that differences in medians of the showed distributions are statistically significant. Probably, LCC(>20 ms)-lightning flashes in low-based clouds do not produce a significant amount of LIW because they are accompanied by high precipitation rates that do not favor the survival and arrival phases of fires. However, LCC(>20 ms)-lightning occurring in ~~high-based clouds~~ clouds with high base could be the main precursors of LIW. We will explore this possible relationship between LCC(>20 ms)-lightning and LIW in Section ~~??~~3.5.

We plot as red dots the LCC(>20 ms)-lightning flashes in thunderstorm with CBH>2000 m in the first panel of Fig.15. The geographical distribution of LCC(>20 ms)-lightning flashes in thunderstorm with CBH>2000 m suggests that they tend

to occur over mountains. However, a climatology covering a larger number of years is needed to explain the geographical
555 distribution of LCC(>20 ms)-lightning flashes with CBH>2000 m.

Fig. 19 shows the frequency distribution of CTH values of typical and LCC(>20 ms)-lightning flashes reported by ISS-LIS
over Europe between 2017 and 2019. The median CTH value of LCC(>20 ms)-lightning flashes is slightly below the median
CTH value of typical lightning flashes (11.1 km). These results suggest that LCC(>20 ms)-lightning flashes tend to occur in
thunderstorms with weaker convection than the median, as suggested by Bitzer (2017) for LCC(>10 ms)-lightning. The p-value
560 is below 0.05, indicating that differences in medians of the showed distributions are statistically significant.

3.4.3 Lightning flash frequency in LCC(>20 ms)-producing thunderstorms

For the sake of completeness, let us now investigate the temporal evolution of the lightning activity in LCC(>20 ms)-producing
thunderstorms. Following the clustering method mentioned in Section 3.3, we cluster the lightning flashes reported by ENTLEN
and taking place in the Iberian Peninsula in 2017 for 3 selected LCC(>20 ms)-producing thunderstorms reported by ISS-LIS.
565 Fig. ?? shows the cumulative number of flashes occurring in the selected cases 1400 minutes around the occurrence of a
LCC(>20 ms)-lightning flash. As in the case of fire-producing lightning discharges, LCC(>20 ms)-lightning flashes tend to
occur at the moment when the lightning activity increase from the regime with the lowest lightning activity to the regimen with
the highest lightning activity. We have found no relationships between the cumulative number of different type and polarity of
lightning discharges and the time of occurrence of LCC(>20 ms)-lightning.

570 Cumulative number of flashes occurring in 3 LCC(>20 ms)-producing thunderstorms 1400 minutes around the occurrence
of the LCC-lightning flash. We plot all flashes, all IC flashes (\pm IC), all CG flashes (\pm CG) and -CG flashes in the right panel.
We plot +CG flashes in the left panel.

3.5 Possible relationship between thunderstorms producing fire-igniting lightning and LCC lightning

Let us now compare the meteorological and cloud conditions of fire-igniting lightning and LCC(>20 ms)-lightning. According
575 to Fig. 18, there exists a sub set of LCC(>20 ms)-lightning flashes taking place in high-based clouds clouds with high base
(CBH larger than 2000 m). LCC(>20 ms)-lightning flashes are plotted as red dots in the first panel of Fig.15. As we discussed in
Section 3.2, high-based thunderclouds favor the occurrence of dry lightning and LIW. In particular, Fig. 8 shows that there is a
significant total number of fire-igniting flashes taking place in thunderstorms with CBH larger than 2000 m. For this reason, in
this section we analyze the meteorological conditions of LCC(>20 ms)-lightning flashes taking place in high-based clouds with
580 clouds with high base with CBH values larger than 2000 m. The total number of LCC(>20 ms)-lightning flashes in high-based
thunderclouds is 392. LCC(>20 ms)-lightning flashes with CBH > 2000 m are plotted as red dots in the first panel of Fig. 15.

Fig. 20 shows the frequency distribution of some meteorological variables for typical lightning and LCC(>20 ms)-lightning
flashes in high-based thunderclouds. According to this figure, the median values of accumulated precipitation and RH at
850 hPa are lower for LCC(>20 ms)-lightning flashes in high-based thunderclouds than for the climatological median, with
585 p-values lower than the threshold of 0.05. In addition, temperature at 2 m altitude and at 850 hPa are higher for LCC(>20 ms)-
lightning flashes in high-based thunderclouds than for the climatological median, again with p-values lower than the threshold

of 0.05, indicating that differences are statistically significant. These are typical conditions of fire-igniting lightning flashes (see Section 3.2). We have ~~not found statistically significant differences between the median value~~ found slightly lower values of CAPE for ~~typical lightning and~~ LCC(>20 ms)-lightning flashes (~~p-value greater than 0.05~~) in high-based thunderclouds than for typical lightning.

Comparison of Figures 10, ~~11~~ and 17 shows that fire-igniting lightning flashes in the Iberian Peninsula and LCC(>20 ms)-lightning flashes take place in thunderstorms with weaker updraft than the climatological median, ~~at least between 300 hPa and 450 hPa (where p-values lower than 0.05)~~. We do not find the same tendency in Greece (see Fig. 10). As we show in Figures. 8 and S6 (supplement), the content of moisture of LIW-producing thunderstorms in the Iberian Peninsula and LCC(>20 ms)-lightning-producing thunderstorms are lower than the climatological median, which could be the reason behind the weaker updrafts, as drier air is more dense as moist air (Picard et al., 2008). Deep convective clouds are usually associated with the 440 hPa level (Rossow, 1996), included in the region where the updraft is weaker than the climatological median for LIW in the Iberian Peninsula and LCC(>20 ms)-lightning. Several lightning parameterizations are based on the updraught mass flux at 440 hPa, where electrification occurs Grewe et al. (2001); Allen and Pickering (2002); Finney et al. (2014). Weaker updraft leads to a slower rime accretion rate (Takahashi, 1978). As suggested by Bitzer (2017), weaker charging rate can lead to development of larger charge regions before lightning is initiated, producing a larger charge region available to be neutralized by a lightning flash. Large charge regions can favor the occurrence of LCC(>20 ms)-lightning (Bitzer, 2017) and, according to our results, could also favor the occurrence of LIW.

We have compared the LCC(>20 ms) lightning flashes with CBH>2 km taking place in the Iberian Peninsula and Greece with ENTLN flash data. Among 39 LCC(>20 ms) lightning flashes reported by ISS-LIS, we have found 12 ENTLN lightning flashes (3 CG and 9 IC) taking place in a radius of 0.2 degrees (latitude and longitude) around the flashes reported by ISS-LIS and within a temporal delay smaller than 2 seconds. Therefore, we conclude that ENTLN is not adequate to detect the continuing phase of LCC(>20 ms) flashes in the studied regions. These results are in agreement with Bitzer (2017), who reported that between 25% and 40% of LCC-lightning flashes detected by TRMM-LIS have only an IC pulse detected by the National Lightning Detection Network (NLDN), with no CG strokes detected.

We also attempted to directly correlate LIW in Greece (2017-2019) and over the Iberian Peninsula (2017) with LCC-lightning flashes reported by ISS-LIS. However, we did not find any case in which ISS-LIS was flying over Greece or the Iberian Peninsula at the moments of ignitions.

4 Discussion

To the best of our knowledge, this study is the first that investigates the shared meteorological characteristics of LIW and LCC-lightning and the upper-tropospheric meteorological characteristics of LIW and LCC-lightning flashes in the Mediterranean. As extensively discussed in Section 1, past studies have reported the meteorological characteristics in the lower troposphere of LIW in the Mediterranean basin and the possible linkage between dry thunderstorms and fire-igniting flashes in the United States and in Australia (Rorig et al., 2007; Dowdy and Mills, 2012; Bates et al., 2017; Dowdy, 2020). According to our

620 results, dry thunderstorms with high-based thunderclouds are also the main precursor of LIW in the Mediterranean basin. In accordance with previous studies in Catalonia (e.g., Pineda and Rigo, 2017), our results also suggest that ~~thunderstormstakeing~~ thunderstorms taking place with high temperatures at surface and at 850 hPa pressure level and horizontal wind velocities at surface tend to be related with LIW.

Fuquay et al. (1967) proposed that LCC-lightning could be the main precursors of LIW. Bitzer (2017) reported the first
625 climatology of LCC-flashes, without including the Mediterranean basin. According to Bitzer (2017), LCC-lightning tends to occur in thunderstorms with weaker updraft than the climatological median. We have found that LIW over the Iberian Peninsula and LCC(>20 ms)-lightning ~~over the Mediterranean basin~~ tend to occur in thunderstorms with weaker updrafts than the climatological median. In addition, we have found that a significant number of LIW and LCC(>20 ms)-lightning flashes take place in dry thunderstorms with high-based thunderclouds. ~~According to our results, LIW and LCC(>20 ms)-lightning tend to occur at the moment when the lightning activity just starts to increase from the regime with the lowest lightning activity to the regimen with the highest lightning activity. Our findings suggest a possible link between LIW and LCC(>20 ms)-lightning. The low content of moisture in these thunderstorms can be the reason for weaker updrafts, as dry air is more dense as moist air.~~

Some previous studies have developed statistical methods, machine learning approaches or parameterizations based on
635 meteorological variables to predict LIW (e.g., Fuquay, 1979; Flannigan and Wotton, 1991; Krause et al., 2014; Coughlan et al., 2021). These methods typically use lightning parameterizations to predict the occurrence of lightning and then estimate the risk of LIW according to environmental factors. However, the employed lightning parameterizations do not distinguish between regular/typical lightning and LCC-lightning flashes. The analysis of meteorological conditions of LIW and LCC(>20 ms)-lightning in the Mediterranean basin suggests that using the updraft between 300 hPa and 450 hPa could serve
640 to improve LIW forecasting methods. The common features of thunderstorms producing LIW and LCC(>20 ms)-lightning flashes confirm that monitoring the occurrence of LCC(>20 ms)-lightning flashes and/or the characteristics of thunderstorms producing them could improve the forecast of fire ignition. In particular, calibrating existent lightning potential indexes (e.g., Yair et al., 2010; Lynn et al., 2012) against the occurrence of LCC(>20 ms)-lightning could improve forecast capabilities in operational models. Parameterization of LCC(>20 ms)-lightning flashes in global atmospheric models based on these fea-
645 tures can also serve to produce better estimate of the global fire emissions in a warmer climate. However, more data are needed to study the role of LCC(>20 ms)-lightning in LIW in other regions of the world.

5 Conclusions

The main objective of this work was to shed light into the following questions: What is the relationship between the occurrence of dry thunderstorms and LIW fires in the Mediterranean basin? What is the role of Long-Continuing-Current (LCC) lightning
650 flashes in the ignition?

We have investigated the meteorological and cloud conditions of fire-igniting lightning over the Iberian Peninsula and Greece between 2009 and 2017 and between 2017 and 2019, respectively. In addition, we have analyzed for the first time the relation-

ship between LCC(>20 ms)-lightning determined from by ISS-LIS data over Europe with a continuous current lasting more than 20 ms and fire-igniting lightning. We have focused our analysis on LCC(>20 ms)-lightning flashes because the continuous phase of the discharge can transfer a significant amount of energy to trees, producing ignition. We have developed the first LCC(>20 ms)-lightning map over the Mediterranean basin based on optical measurements of ISS-LIS between 2017 and 2020. However, more data are needed to produce a climatology.

We have searched the lightning candidate of each fire using a proximity index that combines the holdover and the distance between flashes and fires. The fire databases used in this study have been provided by national institutions from Spain, Portugal, France and Greece, while the lightning data have been provided by WWLLN, ENTLN and ISS-LIS.. We have collected meteorological and cloud conditions for the lightning flashes included in this study from ERA5-reanalysis data set, from the Spanish State Meteorological Agency (AEMET) and from the CTH-product derived from Meteosat Second Generation (MSG) satellites measurements. Finally, we have compared the meteorological and cloud conditions of fire-producing lightning and LCC(>20 ms)-lightning producing thunderstorms with the climatological median. The main conclusions of this work are as follows:

1. Fire-igniting flashes over the studied region tend to occur in dry thunderstorms with a low accumulated precipitation value and a low content of moisture. Fire-producing thunderstorms are characterized by ~~high-based clouds~~ clouds with high base and by weak updrafts between 300 hPa and 450 hPa pressure levels. High temperatures at surface and at 850 hPa pressure level and horizontal wind velocities at surface favor the ignition and spreading of lightning-produced fires. We have obtained a slightly higher probability of ignition for positive CG lightning flashes than for negative CG lightning flashes, in agreement with Latham and Williams (2001).
2. ~~Both fire-igniting flashes and LCC(>20 ms)-lightning flashes tend to occur during the brief transition phase when the lightning activity increase from the regimen with the lowest lightning activity to the regimen with the highest lightning activity.~~
3. The common meteorological and cloud conditions of thunderstorms producing LIW and LCC(>20 ms)-lightning flashes are the low content of ~~moisture~~ 1-hour accumulated precipitation and the weak updrafts between 300 hPa and 450 hPa pressure levels.
4. We have found that the temperature at 2 m altitude and at 850 hPa pressure level is higher than the climatological value in high-based thunderclouds (CBH larger than 2000 m) producing LCC(>20 ms) flashes, coinciding with the meteorological conditions of fire-producing thunderstorms. In total, about a third of all the analyzed LCC(>20 ms)-lightning flashes occurs in high-based thunderclouds. This result suggests that parameterizing and/or monitoring the occurrence of LCC(>20 ms)-lightning flashes could serve to improve fire forecasting models and LIW parameterizations.

Our analysis suggests that LCC-lightning occurrence over Europe can be parameterized in atmospheric models using meteorological variables as proxy. Such a parameterization can be used in future studies to improve the modeling of fire occurrence and its atmospheric emissions in such models, where different atmospheric variables are used as proxies for the occurrence

of lightning [e.g., (Tost et al., 2007; Murray et al., 2012; Gordillo-Vázquez et al., 2019)]. The launch of the Meteosat Third Generation (MTG) geostationary satellites of the European organization for the exploitation of METeorological SATellites (EUMETSAT) in 2022 will provide for the first time a continuous monitoring of the occurrence of lightning flashes and fires in Europe and Africa through the instruments Lightning Imager (LI) and Flexible Combined Imager (FCI) from 2023, after
690 the commissioning phase (Stuhlmann et al., 2005). MTG-LI will also provide for the first time a climatology of LCC flashes over Europe and Africa, enabling us to investigate the relationships between LIW and LCC flashes in both continents. New flash and fire climatology provided by the MTG-LI and the MTG-FCI together with meteorological measurements will mean a substantial advance in the study of the meteorological conditions of LIW in the Mediterranean basin.

Data availability. All data used in this paper are directly available after a request is made to authors F. J. P. I (FranciscoJavier.Perez-Invernón@dlr.de) or H. H. (Heidi.Huntrieser@dlr.de). All the analyzed EUMETSAT CTH product are freely accessible through the EUMETSAT Earth Observation Portal (<https://eoportal.eumetsat.int/userMgmt/protected/welcome.faces>). The ERA5 meteorological data are freely accessible through Copernicus Climate Change Service (C3S) (2017): ERA5: Fifth generation of ECMWF atmospheric reanalyses of the global climate. Copernicus Climate Change Service Climate Data Store (CDS) (<https://cds.climate.copernicus.eu/cdsapp>). WWLLN lightning data are available from the University of Valencia. ENTLN lightning data are available from Earth Networks. ISS-LIS lightning data
700 are freely accessible through the NASA Global Hydrology Resource Center (https://ghrc.nsstc.nasa.gov/lightning/data/data_{_}lis_{_}iss). Echotop radar measurements are available through the AEMET. Fire data over Spain are available through the Spanish Ministerio de Agricultura, Pesca y Alimentación. Fire data over Portugal are freely available through ICNF Sistema de Gestao de Incendios Florestais (<http://www2.icnf.pt/portal/florestas/dfci/inc>). Fire data over France are freely available through Promethee database (<https://www.promethee.com>). Fire data over Greece are provided by the Hellenic Fire Brigade.

705 *Author contributions.* F.J.P.I.: Conceptualization, methodology, validation, formal analysis, investigation, data curation, writing—original draft. H.H.: Conceptualization, methodology, validation., formal analysis, supervision, investigation, writing—review and editing. F.J.G.V.: Conceptualization, data curation, validation, writing—review and editing. N.P., J.M. and O.V.: Conceptualization, validation, writing—review and editing. S.S., J.N.G. V.R. and N.K.: data curation.

Competing interests. Authors declare no competing interests.

710 *Acknowledgements.* The authors would like to thank NASA for providing LIS-ISS lightning data, Earth Networks for providing ENTLN lightning data, WWLLN for providing WWLLN lightning data, Spanish State Meteorological Agency (AEMET) for providing echotop radar measurements, EUMETSAT for providing CTH product data, ECMWF for providing us the data of ERA5 forecasting models, the Spanish Ministerio de agricultura, Pesca y Alimentación for providing fire data over Spain, the Instituto da Conservação da Natureza e das florestas for providing fire data over Portugal, the Prométhée database for providing fire data over Mediterranean France and the Hellenic

715 Fire Brigade for providing fire data over Greece. Authors would also like to ~~thanks~~thank Luca Bugliaro Goggia (Deutsches Zentrum für
Luft- und Raumfahrt, DLR) for his support in the processing of METEOSAT data and Matthias Nützel (Deutsches Zentrum für Luft- und
Raumfahrt, DLR) for providing valuable comments on this manuscript. FJPI acknowledges the sponsorship provided by the Federal Ministry
for Education and Research of Germany through the Alexander von Humboldt Foundation. Additionally, this work was supported by the
Spanish Ministry of Science and Innovation, under project PID2019-109269RB-C43 and FEDER program. FJGV and SS acknowledge
720 financial support from the State Agency for Research of the Spanish MCIU through the 'Center of Excellence Severo Ochoa' award for
the Instituto de Astrofísica de Andaluca (SEV-2017-0709). The contribution of the Universitat Politècnica de Catalunya was supported by
research grants from the Spanish Ministry of Economy and the European Regional Development Fund (FEDER); PID2019-109269RB-C42.

References

- Abreu, D., Chandan, D., Holzworth, R., and Strong, K.: A performance assessment of the World Wide Lightning Location Network (WWLLN) via comparison with the Canadian Lightning Detection Network (CLDN), *Atmos. Meas. Tech.*, 3, 1143–1153, 2010.
- Adachi, T., Cummer, S. A., Li, J., Takahashi, Y., Hsu, R.-R., Su, H.-T., Chen, A. B., Mende, S. B., and Frey, H. U.: Estimating lightning current moment waveforms from satellite optical measurements, *Geophys. Res. Lett.*, 36, 2009.
- Allen, D. J. and Pickering, K. E.: Evaluation of lightning flash rate parameterizations for use in a global chemical transport model, *J. Geophys. Res. Atmos.*, 107, ACH-15, 2002.
- Altaratz, O., Koren, I., Yair, Y., and Price, C.: Lightning response to smoke from Amazonian fires, *Geophys. Res. Lett.*, 37, 2010.
- Amatulli, G., Pérez-Cabello, F., and de la Riva, J.: Mapping lightning/human-caused wildfires occurrence under ignition point location uncertainty, *Ecological modelling*, 200, 321–333, 2007.
- Anderson, K.: A model to predict lightning-caused fire occurrences, *Int J Wildland Fire*, 11, 163–172, 2002.
- Badia, A., SAURÍ, D., Cerdan, R., and Llurdés, J.-C.: Causality and management of forest fires in Mediterranean environments: an example from Catalonia, *Glob Environ Change Part B: Environmental Hazards*, 4, 23–32, 2002.
- Baranovskiy, N. and Yankovich, E.: GIS-TECHNOLOGIES AND MATHEMATICAL SIMULATION TO PREDICT LIGHTNING-CAUSED FOREST FIRE DANGER, *Radio Electronics, Computer Science, Control*, pp. 30–40, 2018.
- Bates, B. C., Dowdy, A. J., and Chandler, R. E.: Classification of Australian thunderstorms using multivariate analyses of large-scale atmospheric variables, *J Appl Meteorol Climatol*, 56, 1921–1937, 2017.
- Bitzer, P. M.: Global distribution and properties of continuing current in lightning, *J. Geophys. Res. Atm.*, 122, 1033–1041, 2017.
- Bitzer, P. M. and Christian, H. J.: Timing uncertainty of the lightning imaging sensor, *J Atmos Ocean Technol*, 32, 453–460, 2015.
- Bitzer, P. M., Burchfield, J. C., and Christian, H. J.: A Bayesian approach to assess the performance of lightning detection systems, *J Atmos Ocean Technol*, 33, 563–578, 2016.
- Blakeslee, R., Lang, T., Koshak, W., Buechler, D., Gatlin, P., Mach, D., Stano, G., Virts, K., Walker, T., Cecil, D., et al.: Three years of the Lightning Imaging Sensor onboard the International Space Station: Expanded Global Coverage and Enhanced Applications, *Earth Space Sci. Open Archive*, 35812, 83, 2020.
- Blakeslee, R. J., Christian, H. J., Stewart, M., Mach, D., Bateman, M., Walker, T. D., Buechler, D., Koshak, W., O'Brien, S., Wilson, T., et al.: Lightning Imaging Sensor (LIS) for the International Space Station (ISS): mission description and science goals, 2014.
- Camia, A., Durrant Houston, T., and San-Miguel-Ayanz, J.: The European fire database: development, structure and implementation, in: *Proceedings of the VI International conference on forest fire research*, Coimbra, Portugal, 2010.
- Cecil, D. J., Buechler, D. E., and Blakeslee, R. J.: Gridded lightning climatology from TRMM-LIS and OTD: Dataset description, *Atmos Res.*, 135, 404–414, 2014.
- Christian, H. J., Blakeslee, R. J., Boccippio, D. J., Boeck, W. L., Buechler, D. E., Driscoll, K. T., Goodman, S. J., Hall, J. M., Koshak, J. M., Mach, D. M., and Stewart, M. F.: Global frequency and distribution of lightning as observed from space by the Optical Transient Detector, *J. Geophys. Res.*, 108, ACL 4–1, <https://doi.org/10.1029/2002JD002347>, 2003.
- Colson, D.: High level thunderstorms of July 31–August 1, 1959, *Mon. Wea. Rev.*, 88, 279–285, 1960.
- Conedera, M., Cesti, G., Pezzatti, G., Zumbunnen, T., and Spinedi, F.: Lightning-induced fires in the Alpine region: An increasing problem, *For. Ecol. Manag.*, 234, S68, 2006.

- Coughlan, R., Di Giuseppe, F., Vitolo, C., Barnard, C., Lopez, P., and Drusch, M.: Using machine learning to predict fire-ignition occurrences from lightning forecasts, *Meteorol. Appl.*, 28, e1973, 2021.
- Cummins, K. L. and Murphy, M. J.: An overview of lightning locating systems: History, techniques, and data uses, with an in-depth look at the US NLDN, *IEEE transactions on electromagnetic compatibility*, 51, 499–518, 2009.
- Deierling, W., Latham, J., Petersen, W. A., Ellis, S. M., and Christian, H. J.: On the relationship of thunderstorm ice hydrometeor characteristics and total lightning measurements, *Atmos Res.*, 76, 114 – 126, <https://doi.org/https://doi.org/10.1016/j.atmosres.2004.11.023>, atmospheric Electricity, 2005.
- Dowden, R. L., Brundell, J. B., and Rodger, C. J.: VLF lightning location by time of group arrival (TOGA) at multiple sites, *J Atmos Sol Terr Phys*, 64, 817–830, 2002.
- Dowdy, A. J.: Climatology of thunderstorms, convective rainfall and dry lightning environments in Australia, *Clim. Dyn.*, 54, 3041–3052, 2020.
- Dowdy, A. J. and Mills, G. A.: Atmospheric and fuel moisture characteristics associated with lightning-attributed fires, *J Appl Meteorol Climatol*, 51, 2025–2037, 2012.
- Délégation à la Protection de la Forêt Méditerranéenne: PROMÉTHÉE 2: Forest fires database for Mediterranean area in France , <https://www.promethee.com/>, 2020.
- Emersic, C., Heinselman, P., MacGorman, D. R., and Bruning, E.: Lightning activity in a hail-producing storm observed with phased-array radar, *Mon. Weather Rev.*, 139, 1809–1825, 2011.
- Farr, T. G., Rosen, P. A., Caro, E., Crippen, R., Duren, R., Hensley, S., Kobrick, M., Paller, M., Rodriguez, E., Roth, L., et al.: The shuttle radar topography mission, *Rev. Geophys.*, 45, 2007.
- Fernandes, S.: Incêndios Florestais em Portugal Continental fora do " período crítico ". Contributos para o seu conhecimento., Master's thesis, 2015.
- Fernandes, W. A., Pinto, I. R., Pinto Jr, O., Longo, K. M., and Freitas, S. R.: New findings about the influence of smoke from fires on the cloud-to-ground lightning characteristics in the Amazon region, *Geophys. Res. Lett.*, 33, 2006.
- Finney, D., Doherty, R., Wild, O., Huntrieser, H., Pumphrey, H., and Blyth, A.: Using cloud ice flux to parametrise large-scale lightning, *Atmospheric Chem. Phys.*, 14, 12 665–12 682, 2014.
- Flannigan, M. and Wotton, B.: Lightning-ignited forest fires in northwestern Ontario, *Canadian Journal of Forest Research*, 21, 277–287, 1991.
- Fuquay, D. M.: A model for predicting lightning fire ignition in wildland fuels, vol. 217, Intermountain Forest and Range Experiment Station, Forest Service, US . . . , 1979.
- Fuquay, D. M., Baughman, R., Taylor, A., and Hawe, R.: Characteristics of seven lightning discharges that caused forest fires, *J. Geophys. Res.*, 72, 6371–6373, 1967.
- Ganteaume, A., Camia, A., Jappiot, M., San-Miguel-Ayanz, J., Long-Fournel, M., and Lampin, C.: A review of the main driving factors of forest fire ignition over Europe, *Environ Manage*, 51, 651–662, 2013.
- García-Ortega, E., Trobajo, M., López, L., Sánchez, J., Lasaponara, R., and Ghermandi, L.: Synoptic patterns associated with wildfires caused by lightning in Castile and Leon, Spain., *Natural Hazards & Earth System Sciences*, 11, 2011.
- Gora, E. M., Bitzer, P. M., Burchfield, J. C., Schnitzer, S. A., and Yanoviak, S. P.: Effects of lightning on trees: A predictive model based on in situ electrical resistivity, *Ecol. Evol.*, 7, 8523–8534, 2017.

- Gordillo-Vázquez, F. J., Pérez-Invernón, F. J., Huntrieser, H., and Smith, A. K.: Comparison of Six Lightning Parameterizations in CAM5 and the Impact on Global Atmospheric Chemistry, *Earth Space Sci.*, 6, 2317–2346, <https://doi.org/10.1029/2019EA000873>, 2019.
- Granström, A.: Fire management for biodiversity in the European boreal forest, *Scandinavian Journal of Forest Research*, 16, 62–69, 2001.
- Granström, A. and Niklasson, M.: Potentials and limitations for human control over historic fire regimes in the boreal forest, *Philos. Trans. R. Soc. B*, 363, 2351–2356, 2008.
- 800 Grewe, V., Brunner, D., Dameris, M., Grenfell, J., Hein, R., Shindell, D., and Staehelin, J.: Origin and variability of upper tropospheric nitrogen oxides and ozone at northern mid-latitudes, *Atmospheric Environ.*, 35, 3421–3433, 2001.
- Gutiérrez Núñez, J. M., Guerrero Peralta, I., and Momblona, D.: Radar meteorológico y red de rayos, 2018.
- Hall, B. L.: Precipitation associated with lightning-ignited wildfires in Arizona and New Mexico, *Int J Wildland Fire*, 16, 242–254, 2007.
- 805 Hall, B. L. and Brown, T. J.: Climatology of positive polarity flashes and multiplicity and their relation to natural wildfire ignitions, in: Preprints, International Lightning Detection Conference, pp. 24–25, 2006.
- Hardy, C. C., Bunnell, D. L., Menakis, J., Schmidt, K., Long, D., Simmerman, D., and Johnston, C.: Coarse-scale spatial data for wildland fire and fuel management, USDA Forest Service, Rocky Mountain Research Station, Fire Sciences Laboratory., year=1999.
- Hersbach, H., Bell, B., Berrisford, P., Hirahara, S., Horányi, A., Muñoz-Sabater, J., Nicolas, J., Peubey, C., Radu, R., Schepers, D., et al.: The ERA5 global reanalysis, *Q J R Meteorol Soc*, 146, 1999–2049, 2020.
- 810 Holzworth, R., McCarthy, M., Brundell, J., Jacobson, A., and Rodger, C.: Global distribution of superbolts, *J. Geophys. Res. Atm.*, 124, 9996–10005, 2019.
- Huntrieser, H., Lichtenstern, M., Scheibe, M., Aufmhoff, H., Schlager, H., Pucik, T., Minikin, A., Weinzierl, B., Heimerl, K., Pollack, I., et al.: Injection of lightning-produced NO_x, water vapor, wildfire emissions, and stratospheric air to the UT/LS as observed from DC3 measurements, *J. Geophys. Res. Atm.*, 121, 6638–6668, 2016.
- 815 Hutchins, M., Holzworth, R., Brundell, J., and Rodger, C.: Relative detection efficiency of the world wide lightning location network, *Radio Science*, 47, 1–9, 2012a.
- Hutchins, M. L., Holzworth, R. H., Rodger, C. J., and Brundell, J. B.: Far-field power of lightning strokes as measured by the World Wide Lightning Location Network, *J Atmos Ocean Technol*, 29, 1102–1110, 2012b.
- 820 Hutchins, M. L., Holzworth, R. H., and Brundell, J. B.: Diurnal variation of the global electric circuit from clustered thunderstorms, *J. Geophys. Res. Space Phys.*, 119, 620–629, 2014.
- Kochtubajda, B., Flannigan, M., Gyakum, J., Stewart, R., Logan, K., and Nguyen, T.-V.: Lightning and fires in the Northwest Territories and responses to future climate change, *Arctic*, pp. 211–221, 2006.
- Komarek, E.: The natural history of lightning, in: Proceedings of the Tall Timbers fire ecology conference, vol. 3, pp. 139–183, 1964.
- 825 Koutsias, N., Xanthopoulos, G., Founda, D., Xystrakis, F., Nioti, F., Pleniou, M., Mallinis, G., and Arianoutsou, M.: On the relationships between forest fires and weather conditions in Greece from long-term national observations (1894–2010), *Int J Wildland Fire*, 22, 493–507, 2013.
- Krause, A., Kloster, S., Wilkenskjeld, S., and Paeth, H.: The sensitivity of global wildfires to simulated past, present, and future lightning frequency, *J. Geophys. Res.: Biogeosciences*, 119, 312–322, 2014.
- 830 Krawchuk, M., Cumming, S., Flannigan, M. D., and Wein, R.: Biotic and abiotic regulation of lightning fire initiation in the mixedwood boreal forest, *Ecology*, 87, 458–468, 2006.
- Kruskal, W. H. and Wallis, W. A.: Use of ranks in one-criterion variance analysis, *J Am Stat Assoc*, 47, 583–621, 1952.

- Lang, T. J. and Rutledge, S. A.: Cloud-to-ground lightning downwind of the 2002 Hayman forest fire in Colorado, *Geophys. Res. Lett.*, 33, 2006.
- 835 Lang, T. J., Rutledge, S. A., Dolan, B., Krehbiel, P., Rison, W., and Lindsey, D. T.: Lightning in wildfire smoke plumes observed in Colorado during summer 2012, *Mon Weather Rev.*, 142, 489–507, 2014.
- Lapierre, J. L., Laughner, J. L., Geddes, J. A., Koshak, W. J., Cohen, R. C., and Pusede, S. E.: Observing US regional variability in lightning NO₂ production rates, *J. Geophys. Res. Atm.*, 125, e2019JD031 362, 2020.
- Larjavaara, M., Kuuluvainen, T., and Rita, H.: Spatial distribution of lightning-ignited forest fires in Finland, *For. Ecol. Manag.*, 208, 177–
840 188, 2005a.
- Larjavaara, M., Pennanen, J., and Tuomi, T.: Lightning that ignites forest fires in Finland, *Agric For Meteorol*, 132, 171–180, 2005b.
- Latham, D. and Williams, E.: Lightning and forest fires, in: *Forest Fires*, pp. 375–418, Elsevier, 2001.
- Latham, D. J.: Ignition probabilities of wildland fuels based on simulated lightning discharges, vol. 411, US Department of Agriculture, Forest Service, Intermountain Research Station, 1989.
- 845 Liu, C. and Heckman, S.: The application of total lightning detection and cell tracking for severe weather prediction, in: 91st American Meteorological Society Annual Meeting, pp. 1–10, 2011.
- López-Santalla, A. and López-García, M.: Los Incendios Forestales en España. Decenio 2006–2015, 2019.
- Lynn, B. H., Yair, Y., Price, C., Kelman, G., and Clark, A. J.: Predicting Cloud-to-Ground and Intracloud Lightning in Weather Forecast Models, *Weather Forecast*, 27, 1470 – 1488, <https://doi.org/10.1175/WAF-D-11-00144.1>, [https://journals.ametsoc.org/view/journals/wefo/](https://journals.ametsoc.org/view/journals/wefo/27/6/waf-d-11-00144_1.xml)
850 [27/6/waf-d-11-00144_1.xml](https://journals.ametsoc.org/view/journals/wefo/27/6/waf-d-11-00144_1.xml), 2012.
- Lyons, W. A., Nelson, T. E., Williams, E. R., Cramer, J. A., and Turner, T. R.: Enhanced Positive Cloud-to-Ground Lightning in Thunderstorms Ingesting Smoke from Fires, *Science*, 282, 77, <https://doi.org/10.1126/science.282.5386.77>, 1998.
- Mach, D. M., Christian, H. J., Blakeslee, R. J., Boccippio, D. J., Goodman, S. J., and Boeck, W. L.: Performance assessment of the optical transient detector and lightning imaging sensor, *J. Geophys. Res. Atm.*, 112, 2007.
- 855 Mallick, S., Rakov, V., Hill, J., Ngin, T., Gamera, W., Pilkey, J., Jordan, D., Uman, M., Heckman, S., Sloop, C., et al.: Performance characteristics of the ENTLN evaluated using rocket-triggered lightning data, *Electric power systems research*, 118, 15–28, 2015.
- McEachron, K. and Hagenguth, J.: Effect of lightning on thin metal surfaces, *IEEE Trans. Commun.*, 61, 559–564, 1942.
- Moris, J. V., Conedera, M., Nisi, L., Bernardi, M., Cesti, G., and Pezzatti, G. B.: Lightning-caused fires in the Alps: Identifying the igniting strokes, *Agric For Meteorol*, 290, 107 990, 2020.
- 860 Müller, M. M., Vacik, H., Diendorfer, G., Arpacı, A., Formayer, H., and Gossow, H.: Analysis of lightning-induced forest fires in Austria, *Theor. Appl. Climatol.*, 111, 183–193, 2013.
- Murray, L. T., Jacob, D. J., Logan, J. A., Hudman, R. C., and Koshak, W. J.: Optimized regional and interannual variability of lightning in a global chemical transport model constrained by LIS/OTD satellite data, *J. Geophys. Res. Atm.*, 117, <https://doi.org/10.1029/2012JD017934>, 2012.
- 865 Nauslar, N. J., KAPLAN, M. L., WALLMANN, J., and BROWN, T. J.: A Forecast Procedure for Dry Thunderstorms., *Journal of Operational Meteorology*, 1, 2013.
- Oliveira, S., Oehler, F., San-Miguel-Ayán, J., Camia, A., and Pereira, J. M.: Modeling spatial patterns of fire occurrence in Mediterranean Europe using Multiple Regression and Random Forest, *For. Ecol. Manag.*, 275, 117–129, 2012.
- Picard, A., Davis, R., Gläser, M., and Fujii, K.: Revised formula for the density of moist air (CIPM-2007), *Metrologia*, 45, 149, 2008.
- 870 Pineda, N. and Rigo, T.: The rainfall factor in lightning-ignited wildfires in Catalonia, *Agric For Meteorol*, 239, 249–263, 2017.

- Pineda, N., Montanyà, J., and Van der Velde, O. A.: Characteristics of lightning related to wildfire ignitions in Catalonia, *Atmos Res.*, 135, 380–387, 2014.
- Poli, P., Hersbach, H., Dee, D. P., Berrisford, P., Simmons, A. J., Vitart, F., Laloyaux, P., Tan, D. G., Peubey, C., Thépaut, J.-N., et al.: ERA-20C: An atmospheric reanalysis of the twentieth century, *J. Clim.*, 29, 4083–4097, 2016.
- 875 Price, C. and Rind, D.: A simple lightning parameterization for calculating global lightning distributions, *J. Geophys. Res. Atm.*, 97, 9919–9933, 1992.
- Pyne, S. J., Andrews, P. L., Laven, R. D., and Cheney, N.: Introduction to wildland fire, *Forestry*, 71, 82–82, 1998.
- Rakov, V. A. and Uman, M. A.: *Lightning Physics and Effects*, Cambridge University Press, Cambridge, 2003.
- Reineking, B., Weibel, P., Conedera, M., and Bugmann, H.: Environmental determinants of lightning-v. human-induced forest fire ignitions
880 differ in a temperate mountain region of Switzerland, *Int J Wildland Fire*, 19, 541–557, 2010.
- Rodger, C., Brundell, J., and Dowden, R.: Location accuracy of VLF World-Wide Lightning Location (WWLL) network: post-algorithm upgrade, in: *Annales Geophysicae*, vol. 23, pp. 277–290, Copernicus GmbH, 2005.
- Rolstad, J., Blanck, Y.-I., and Storaunet, K. O.: Fire history in a western Fennoscandian boreal forest as influenced by human land use and climate, *Ecol Monogr.*, 87, 219–245, 2017.
- 885 Rorig, M. L., McKay, S. J., Ferguson, S. A., and Werth, P.: Model-generated predictions of dry thunderstorm potential, *J Appl Meteorol Climatol*, 46, 605–614, 2007.
- Rosenfeld, D., Fromm, M., Trentmann, J., Luderer, G., Andreae, M., and Servranckx, R.: The Chisholm firestorm: observed microstructure, precipitation and lightning activity of a pyro-cumulonimbus, *Atmospheric Chem. Phys.*, 7, 645–659, 2007.
- Rossow, W. B.: International Satellite Cloud Climatology Project (ISCCP) documentation of new cloud datasets, WMO/TD737, World
890 Climate Research Programme (ICSU and WMO), 115, 1996.
- Rudlosky, S. D. and Shea, D. T.: Evaluating WWLLN performance relative to TRMM/LIS, *Geophys. Res. Lett.*, 40, 2344–2348, 2013.
- Said, R. K., Cohen, M. B., and Inan, U. S.: Highly intense lightning over the oceans: Estimated peak currents from global GLD360 observations, *J. Geophys. Res. Atm.*, 118, 6905–6915, 2013.
- San José, R., Pérez, J. L., González, R. M., Pecci, J., and Palacios, M.: Analysis of fire behaviour simulations over Spain with WRF-FIRE,
895 *Int J Environ Pollut*, 55, 148–156, 2014.
- San-Miguel-Ayanz, J., Moreno, J. M., and Camia, A.: Analysis of large fires in European Mediterranean landscapes: lessons learned and perspectives, *For. Ecol. Manag.*, 294, 11–22, 2013.
- Schmetz, J., Pili, P., Tjemkes, S., Just, D., Kerkmann, J., Rota, S., and Ratier, A.: An introduction to Meteosat second generation (MSG), *Bull Am Meteorol Soc*, 83, 977–992, 2002.
- 900 Schultz, C. J., Nauslar, N. J., Wachter, J. B., Hain, C. R., and Bell, J. R.: Spatial, Temporal and Electrical Characteristics of Lightning in Reported Lightning-Initiated Wildfire Events, *Fire*, 2, 18, 2019.
- Schultz, M. G., Heil, A., Hoelzemann, J. J., Spessa, A., Thonicke, K., Goldammer, J. G., Held, A. C., Pereira, J. M., and van Het Bolscher, M.: Global wildland fire emissions from 1960 to 2000, *Global Biogeochemical Cycles*, 22, 2008.
- Schumann, U. and Huntrieser, H.: The global lightning-induced nitrogen oxides source, *Atmospheric Chem. Phys.*, 7, 3823,
905 <https://doi.org/10.5194/acp-7-3823-2007>, 2007.
- Soriano, L. R., De Pablo, F., and Díez, E. G.: Relationship between convective precipitation and cloud-to-ground lightning in the Iberian Peninsula, *Mon Weather Rev.*, 129, 2998–3003, 2001.

- Stocks, B., Mason, J., Todd, J., Bosch, E., Wotton, B., Amiro, B., Flannigan, M., Hirsch, K., Logan, K., Martell, D., et al.: Large forest fires in Canada, 1959–1997, *J. Geophys. Res. Atm.*, 107, FFR–5, 2002.
- 910 Stuhlmann, R., Rodriguez, A., Tjemkes, S., Grandell, J., Arriaga, A., Bézy, J.-L., Aminou, D., and Benssi, P.: Plans for EUMETSAT’s Third Generation Meteosat geostationary satellite programme, *Adv. Space Res.*, 36, 975–981, 2005.
- Takahashi, T.: Riming electrification as a charge generation mechanism in thunderstorms, *Journal of the Atmospheric Sciences*, 35, 1536–1548, 1978.
- Tao, W.-K., Chen, J.-P., Li, Z., Wang, C., and Zhang, C.: Impact of aerosols on convective clouds and precipitation, *Rev. Geophys.*, 50, 2012.
- 915 Tost, H., Jöckel, P., and Lelieveld, J.: Lightning and convection parameterisations – uncertainties in global modelling, *Atmospheric Chem. Phys.*, 7, 4568, 2007.
- Van der Werf, G. R., Randerson, J. T., Giglio, L., Collatz, G., Mu, M., Kasibhatla, P. S., Morton, D. C., DeFries, R., Jin, Y., and van Leeuwen, T. T.: Global fire emissions and the contribution of deforestation, savanna, forest, agricultural, and peat fires (1997-2009), *Atmospheric Chem. Phys.*, 10, 11 707–11 735, 2010.
- 920 Van Der Werf, G. R., Randerson, J. T., Giglio, L., Van Leeuwen, T. T., Chen, Y., Rogers, B. M., Mu, M., Van Marle, M. J., Morton, D. C., Collatz, G. J., et al.: Global fire emissions estimates during 1997-2016, *Earth System Science Data*, 9, 697–720, 2017.
- Vázquez, A. and Moreno, J. M.: Patterns of lightning-, and people-caused fires in peninsular Spain, *Int J Wildland Fire*, 8, 103–115, 1998.
- Veraverbeke, S., Rogers, B. M., Goulden, M. L., Jandt, R. R., Miller, C. E., Wiggins, E. B., and Randerson, J. T.: Lightning as a major driver of recent large fire years in North American boreal forests, *Nat Clim Chang.*, 7, 529, 2017.
- 925 Wallmann, J.: A procedure for forecasting dry thunderstorms in the Great Basin using the dynamic tropopause and alternate tools for assessing instability, NOAA/NWS WR Tech. Attach, pp. 04–08, 2004.
- Wotton, B. and Martell, D. L.: A lightning fire occurrence model for Ontario, *Canadian Journal of Forest Research*, 35, 1389–1401, 2005.
- Yair, Y., Lynn, B., Price, C., Kotroni, V., Lagouvardos, K., Morin, E., Mugnai, A., and Llasat, M. d. C.: Predicting the potential for lightning activity in Mediterranean storms based on the Weather Research and Forecasting (WRF) model dynamic and microphysical fields, *J. Geophys. Res.*, 115, <https://doi.org/https://doi.org/10.1029/2008JD010868>, <https://agupubs.onlinelibrary.wiley.com/doi/abs/10.1029/2008JD010868>, 2010.
- 930 Zhu, Y., Rakov, V., Tran, M., Stock, M., Heckman, S., Liu, C., Sloop, C., Jordan, D., Uman, M., Caicedo, J., et al.: Evaluation of ENTLN performance characteristics based on the ground truth natural and rocket-triggered lightning data acquired in Florida, *J. Geophys. Res. Atm.*, 122, 9858–9866, 2017.

Iberian Peninsula

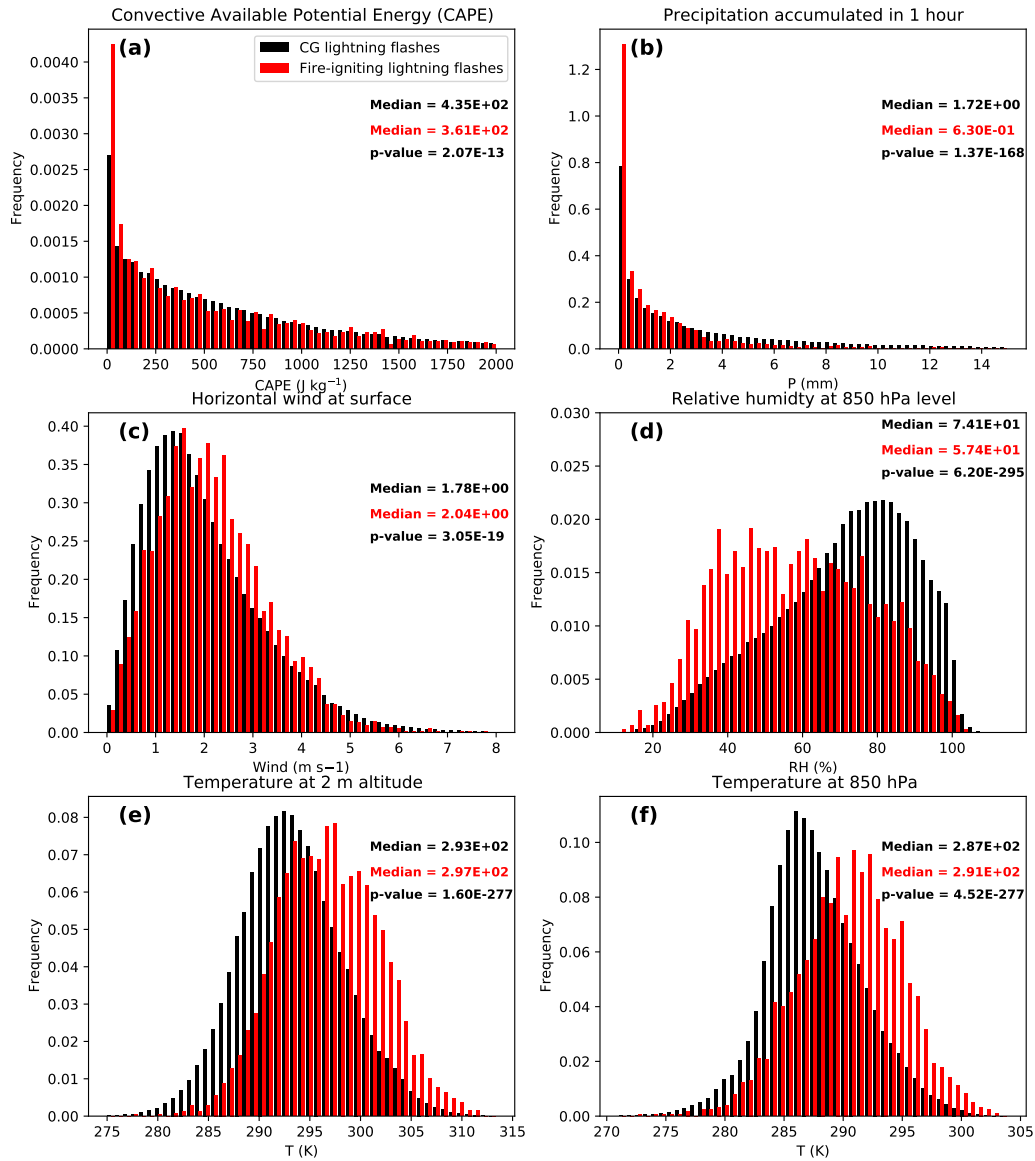


Figure 5. Frequency distribution of the Convective Available Potential Energy (CAPE), the hourly accumulated precipitation, the horizontal wind at surface, the relative humidity at 850 hPa level and the air temperature at 2 m and at 850 hPa level for the CG lightning and the fire-igniting lightning climatologies in the Iberian Peninsula between 2009 and 2015.

Greece

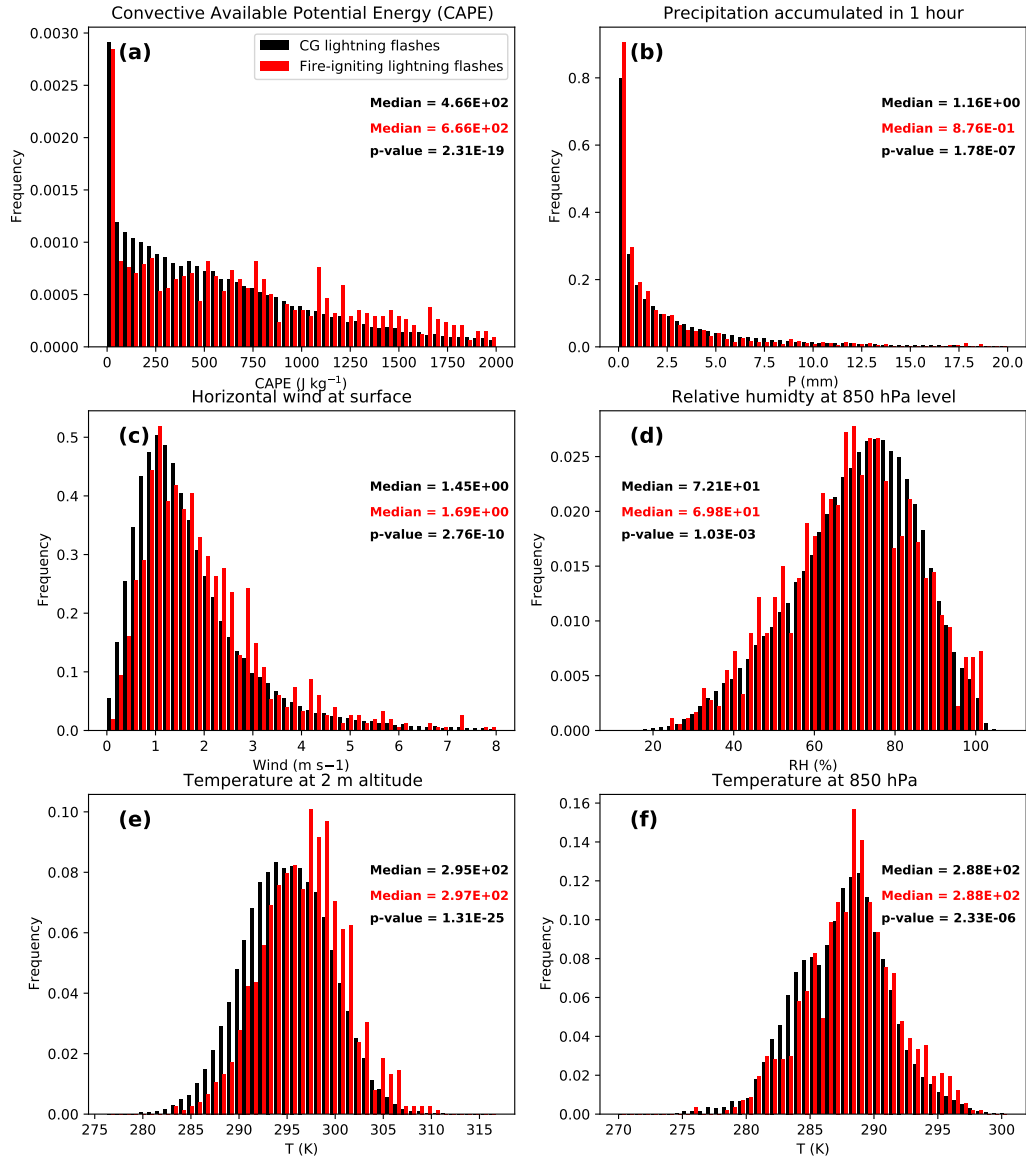


Figure 6. Frequency distribution of the Convective Available Potential Energy (CAPE), the hourly accumulated precipitation, the horizontal wind at surface, the relative humidity at 850 hPa level and the air temperature at 2 m and at 850 hPa levels for the CG lightning and the fire-igniting lightning climatologies in Greece between 2017 and 2019.

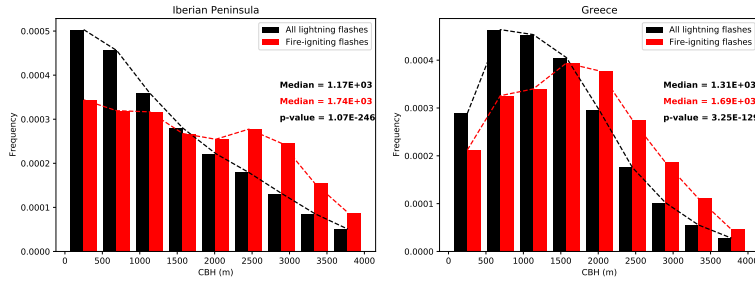


Figure 7. Frequency distribution of the CBH value for the CG lightning and the fire-igniting lightning climatologies in (left) the Iberian Peninsula between 2009 and 2015 and (right) in Greece between 2017 and 2019.

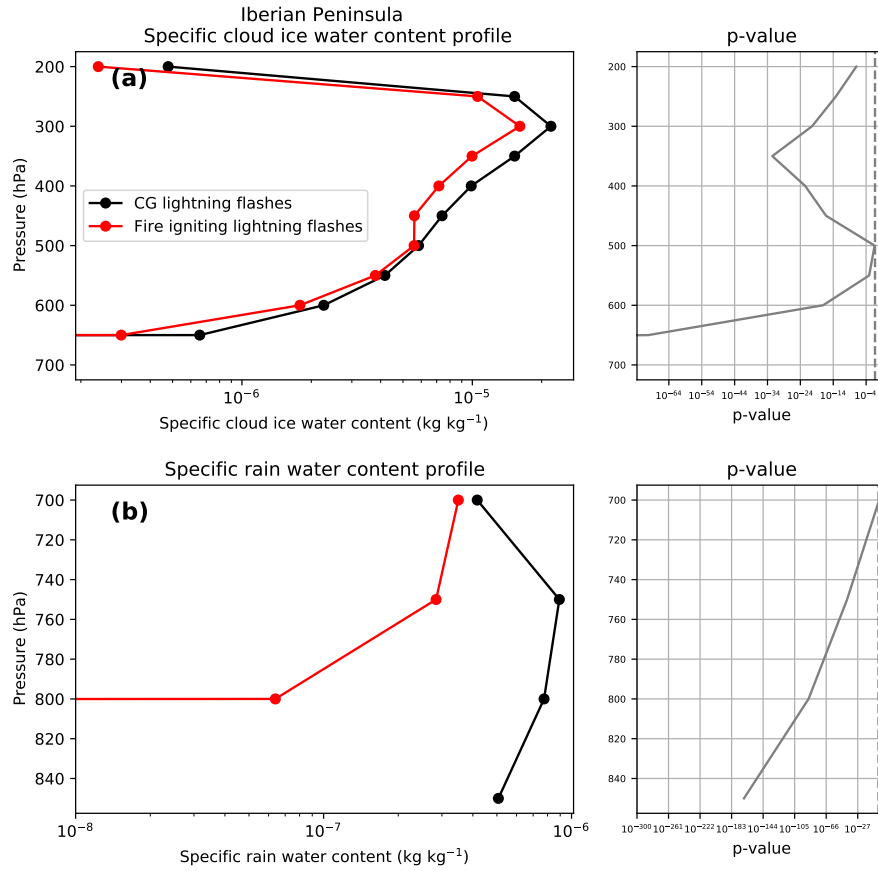


Figure 8. First column shows the vertical profiles of the specific cloud ice water content (a) and the specific rain water content (b) for the CG lightning and the fire-igniting lightning climatologies during May and September in the Iberian Peninsula between 2009 and 2015. Second column shows the p – value (solid line) for each vertical level representing the probability of equal median between both distributions and a mark showing the limit at 0.05 (dashed line).

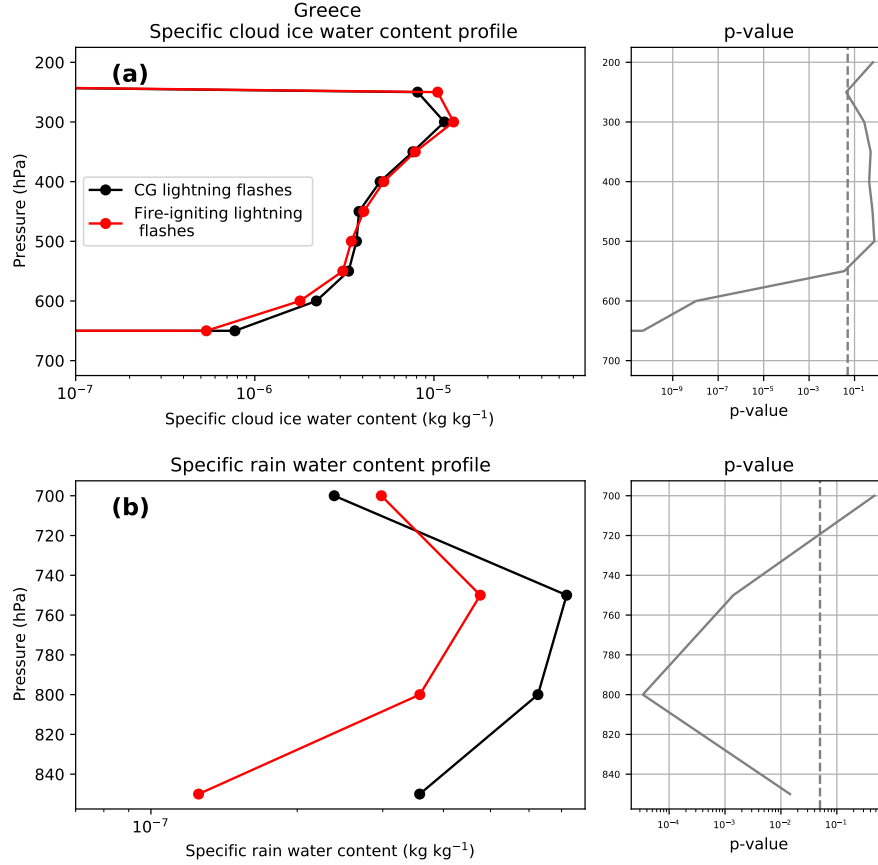


Figure 9. First column shows the vertical profiles of the specific cloud ice water content (a) and the specific rain water content (b) for the CG lightning and the fire-igniting lightning climatologies during May and September in Greece between 2017 and 2019. Second column shows the p – value (solid line) for each vertical level representing the probability of equal median between both distributions and a mark showing the limit at 0.05 (dashed line).

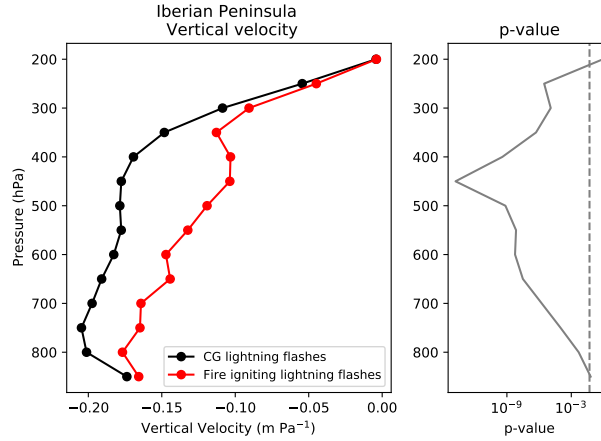


Figure 10. Median vertical velocity profile for the CG lightning and the fire-igniting lightning climatologies in the Iberian Peninsula between May and September for the period between 2009 and 2015 (left panel). p – value (solid line) representing the probability of equal median between both distributions and mark showing the limit at 0.05 (dashed line) (right panel).

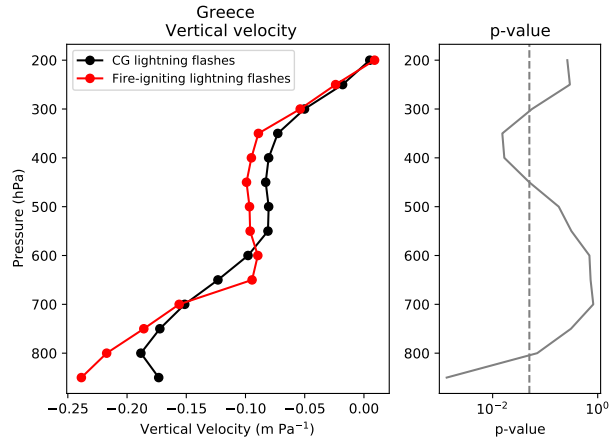


Figure 11. Median vertical velocity profile for the CG lightning and the fire-igniting lightning climatologies in Greece between May and September for the period between 2017 and 2019 (left panel). p – value (solid line) representing the probability of equal median between both distributions and mark showing the limit at 0.05 (dashed line) (right panel).

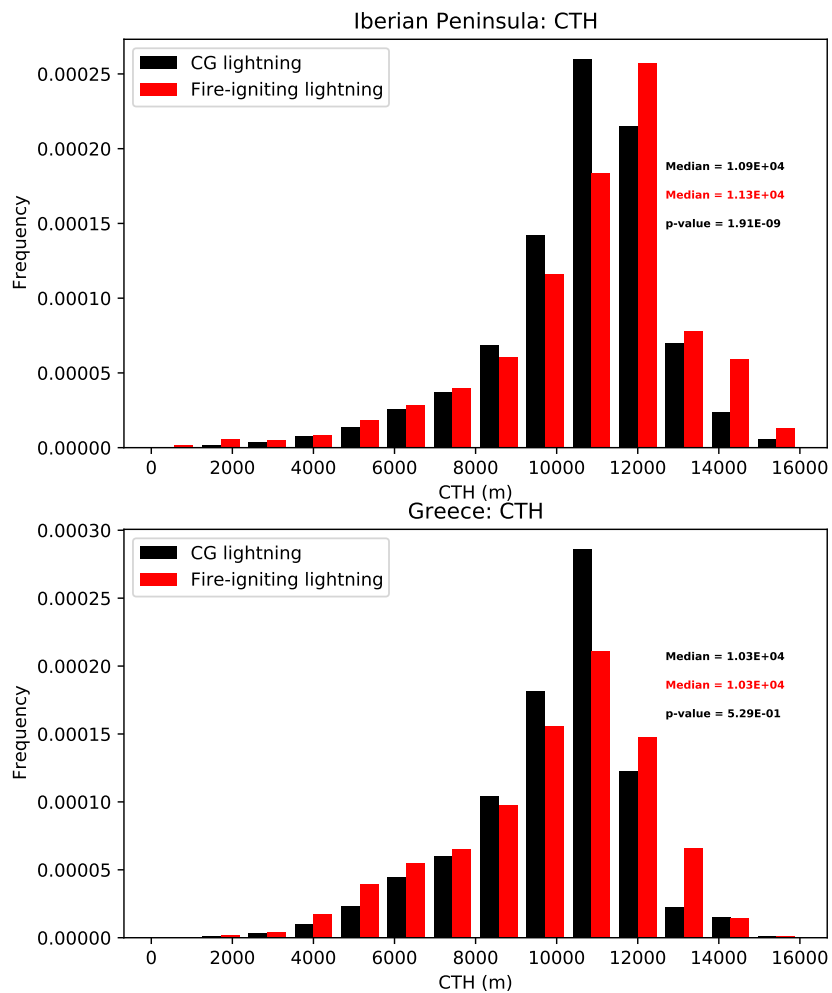


Figure 12. Frequency distribution of the CTH values reported by EUMETSAT based on measurements of the MSG satellites for fire-igniting lightning and all CG lightning over coniferous and mixed forests in the Iberian Peninsula (2012-2015) and Greece (2017-2019).

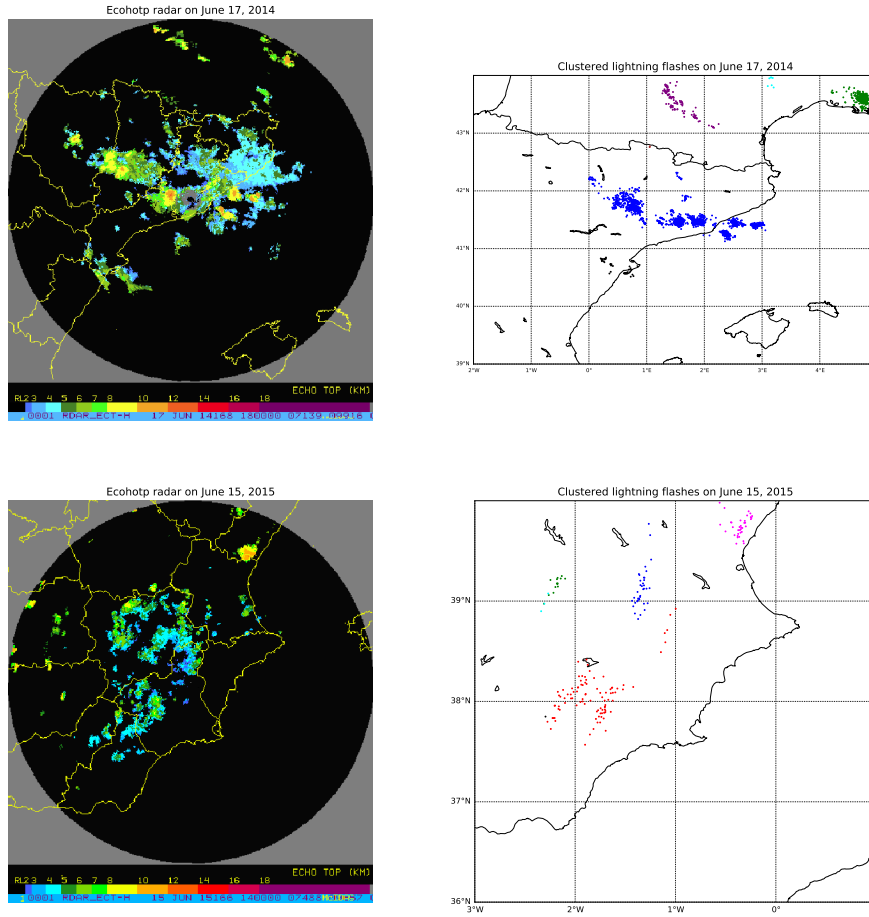


Figure 13. Echo top radar images provided by AEMET showing the maximum height in km of precipitable particle echoes at 12 dB and 15 minutes around one fire-ignited lightning on June 17, 2014 at 18:00 UTC (upper left panel) and on June 15, 2015 at 14:15 UTC (lower left panel). Lightning flashes reported by ENTNL on June 15 2014 between 17:45 and 18:15 UTC (upper right panel) and on June 15, 2015 between 14:00 and 14:30 UTC (lower right panel). Different colors indicate different lightning clusters or thunderstorms using ST-DBSCAN with the spatial and temporal parameters 0.12° and 15 minutes, respectively.

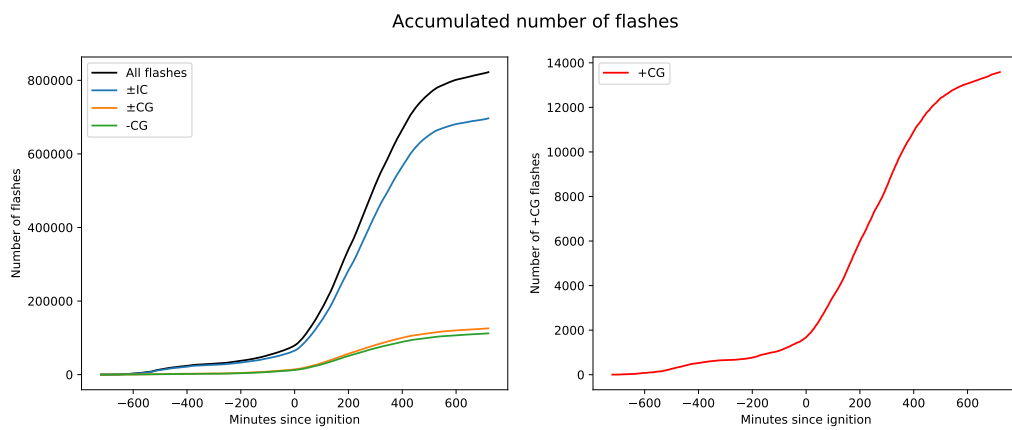


Figure 14. Cumulative number of flashes occurring in 77 fire-igniting thunderstorms over the Iberian Peninsula 1400 minutes around the ignition of a lightning-ignited fire. We plot all flashes, all IC flashes (\pm IC), all CG flashes (\pm CG) and -CG flashes in the right panel. We plot +CG flashes in the left panel.

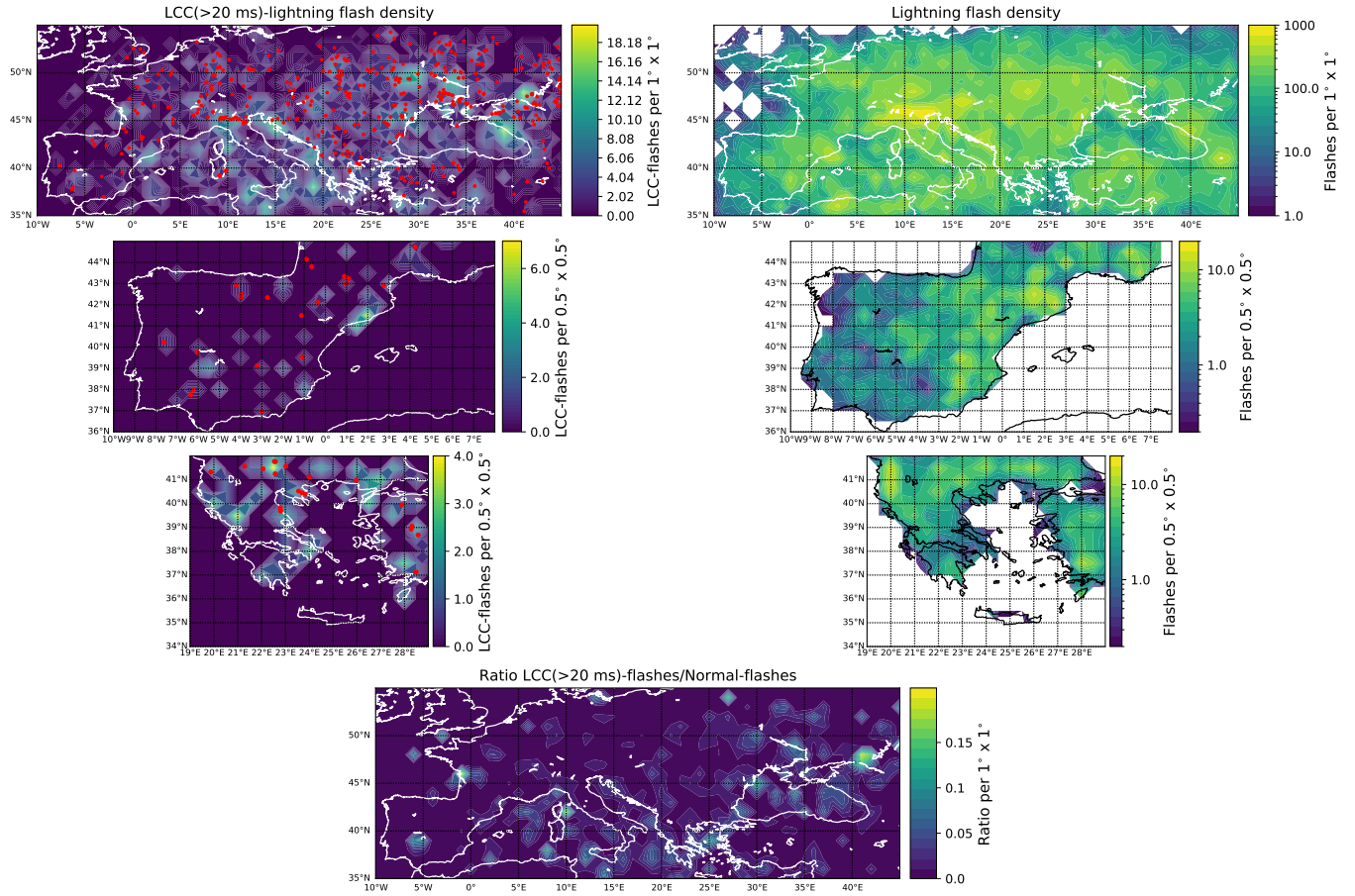


Figure 15. LCC(>20 ms)-lightning flash density (left column), total lightning flash density (right column) and ratio between them (lower center panel) from ISS-LIS lightning measurements between March 2017 and September 2020. First row shows maps over Europe with $1^\circ \times 1^\circ$, while second and third right rows show zooms over the regions of interest (only flashes over land) $0.5^\circ \times 0.5^\circ$. Red dots in the left row represent the LCC(>20 ms)-lightning flashes taking place over land and with CBH larger than 2000 m. For the sake of clarity, in the map of Europe (lower center panel) the ratio in one cell is set to zero if there are less than 10 lightning flashes and less than 2 LCC(>20 ms)-lightning flashes.

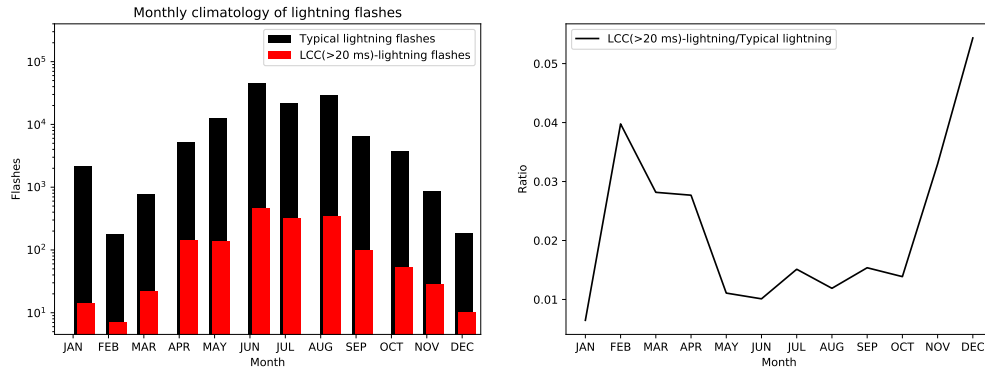


Figure 16. Left panel shows the monthly occurrence of typical lightning and LCC(>20 ms)-lightning flashes reported by ISS-LIS over land in Europe between March 2017 and September 2020. Right panel shows the monthly averaged ratio of LCC(>20 ms)-lightning flashes to all flashes.

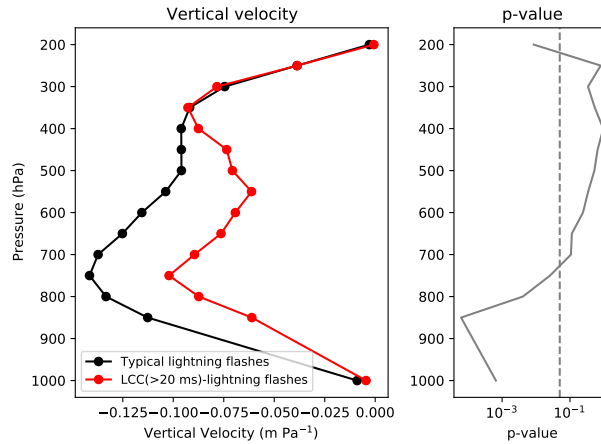


Figure 17. Median vertical velocity profile of typical lightning flashes and LCC(>20 ms)-lightning flashes reported by ISS-LIS over Europe between May and September in 2017-2020 (left panel). p – value (solid line) representing the probability of equal median between both distributions and mark showing the limit at 0.05 (dashed line) (right panel).

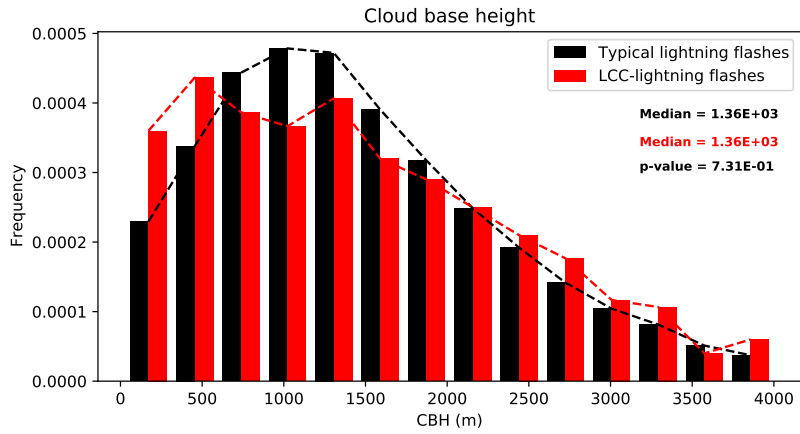


Figure 18. Frequency distribution of the CBH value for typical lightning flashes and for LCC(>20 ms)-lightning flashes reported by ISS-LIS over Europe between May and September in 2017-2020.

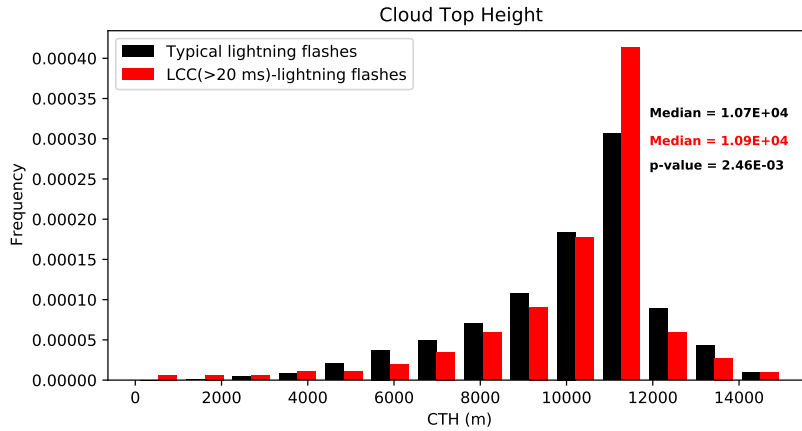


Figure 19. Frequency distribution of the CTH values reported by EUMETSAT based on measurements of the MSG satellites for typical lightning flashes and LCC(>20 ms)-lightning flashes reported by ISS-LIS over Europe between March and September in 2017-2019.

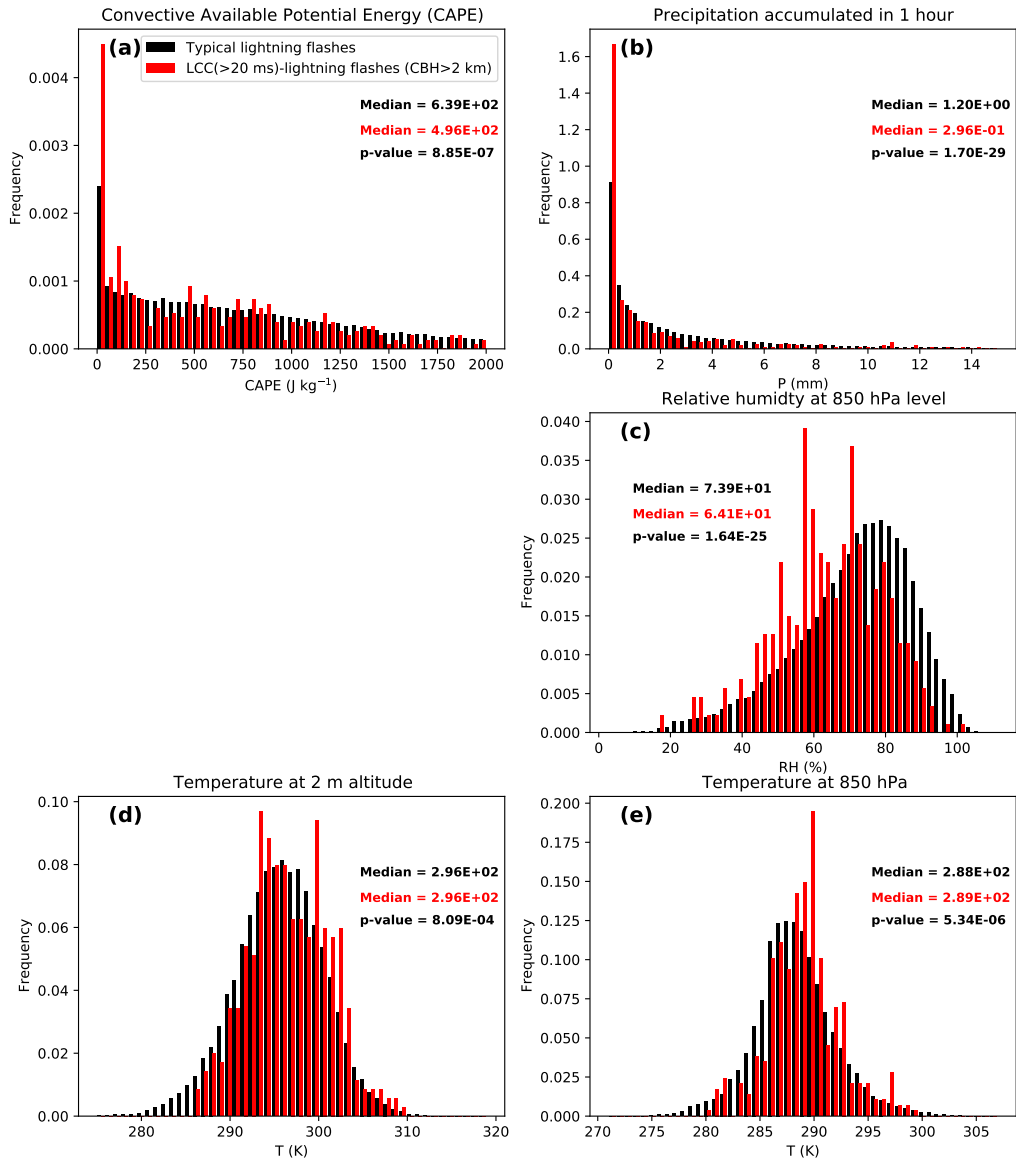


Figure 20. Frequency distribution of the Convective Available Potential Energy (CAPE), the hourly accumulated precipitation, the relative humidity at 850 hPa level and the air temperature at 2 m and at 850 hPa levels for typical lightning and LCC(>20 ms)-lightning flashes in high-based thunderclouds (CBH > 2000 m) reported by ISS-LIS over land in Europe between May and September 2017-2020.