

# Quantifying vertical wind shear effects in shallow cumulus clouds over Amazonia

Micael Amore Cecchini<sup>1,5</sup>, Marco de Bruine<sup>2</sup>, Jordi Vilà-Guerau de Arellano<sup>3,4</sup>, Paulo Artaxo<sup>1</sup>

<sup>1</sup>Institute of Physics, University of São Paulo, São Paulo, Brazil

5 <sup>2</sup>Institute for Marine and Atmospheric Research, Utrecht University, Utrecht, the Netherlands

<sup>3</sup>Meteorology and Air Quality Section, Wageningen University, Wageningen, Netherlands

<sup>4</sup>Atmospheric Chemistry Department, Max Planck Institute for Chemistry, Mainz, Germany

<sup>5</sup>Department of Atmospheric Science, Colorado State University, Fort Collins, United States of America

10 *Correspondence to:* Micael A. Cecchini (micael.cecchini@gmail.com)

**Abstract.** This study analyses and quantifies the effects of vertical wind shear (VWS) on the properties of shallow cumulus cloud fields over Central Amazonia. We perform idealized simulations with high resolution (50 m horizontally, 20 m vertically) using the Dutch Atmospheric Large Eddy Simulation (~~DALES~~) model, changing the initial conditions and large scale forcing of VWS. The resulting cloud field is analysed ~~with~~ by applying a cloud tracking algorithm to generate  
15 Lagrangian datasets of the lifecycle of individual clouds as well as their time-varying core and margins dimensions. The reference run has no wind speed or directional shear and represents a typical day in the local dry season. Numerical experiments with moderate and high wind speed shear are simulated by adding linear increases in the wind speed of  $1.2 \text{ m s}^{-1} \text{ km}^{-1}$  and  $2.4 \text{ m s}^{-1} \text{ km}^{-1}$ , respectively. Three additional runs are made by adding  $90^\circ$  wind rotation between the surface and the top of the domain (5 km) on top of the three wind speed shear conditions. We find that clouds developing in a sheared  
20 environment have horizontal equivalent diameter increased by up to 100 m on average, but the cloud depth is reduced. Our quantification shows that VWS tends to increase the size of the cloud cores, but reduce its relative area, volume, and mass fractions compared to the overall cloud dimensions. The addition of  $2.4 \text{ m s}^{-1} \text{ km}^{-1}$  of VWS decreases the relative core area by about 0.03 (about 10% of the overall average) and its volume and mass ratios by about 0.05 (10%-25% in relative terms). Relevant for the cloud transport properties is that the updraught speed ( $w$ ) and the liquid water content (LWC) are lower  
25 within the cores, and consequently so is the upward mass flux. All quantifications of mean cloud properties point to the inhibition of convective strength by VWS, therefore hampering the shallow-to-deep transition. However, open questions still remain given that ~~a~~ the individually deepest clouds were simulated under high environmental shear, even though they occur in small numbers. This could indicate other indirect effects of VWS that have opposite effects on cloud development if found to be significant in the future.

## 30 **1 Introduction**

The Amazon rainforest is a key component of the Earth's climate system, contributing to important biogeochemical, hydrologic and energy cycles (Silva Dias et al., 2002; Nobre et al., 2009; Artaxo et al., 2013). The widespread convection in the region represents one of the world's most important heat engines (Nobre et al., 2009), being responsible for large-scale energy and moisture transport. In terms of the South American regional climate, it is also a crucial heat source to maintain  
35 the Bolivian High, which is an important component of the South America monsoon system (Zhou and Lau, 1998; Vera et al., 2006). Under a changing global climate, the Amazon is likely going to suffer a paradigm shift with significant consequences for the local and global climate (Betts et al., 2008; Lovejoy and Nobre, 2018). Understanding the clouds regimes and their sensitivity to changing environmental conditions is then crucial for future climate projections.

Shallow cumulus cloud fields have an important role on the climate of the Amazon rainforest. Similar to their deeper  
40 counterparts, shallow clouds redistribute energy and humidity both horizontally as well as vertically (Riehl et al., 1951). The evaporation at the tops of shallow clouds destabilize and moisten the atmosphere and help break the inversion layer, contributing to the later development of deeper convection (Neggers et al., 2007; Stevens, 2007). Previous studies have pointed out the importance of low- and mid-tropospheric humidity to the shallow-to-deep convective transition (Schiro et al., 2016; Chakraborty et al., 2018; Schiro and Neelin, 2019).

45 Recent studies, based on aircraft and ground-based observations from the GoAmazon2014/5 (Martin et al., 2016) and ACRIDICON-CHUVA (Wendisch et al., 2016; Machado et al., 2018) experiments, have found a unique link between the natural aerosols and clouds over the forest. It was found that high concentrations of aerosol particles in the boundary layer occur right after precipitation (Wang et al., 2016). This prompted the idea that particles were being formed higher in the atmosphere and were collected by downdraughts within deep convection (Andreae et al., 2018). Andreae et al. (2018) found  
50 aerosol concentrations 1 to 2 orders of magnitude higher than in the boundary layer 5-72 hours after deep convection cases. The chemical analysis revealed distinct properties from the particles produced within the boundary layer, therefore excluding the upward transport thesis. The proposed explanation is the continuum of shallow to deep clouds transport VOCs to the UT, where they condense and produce the high number concentrations observed. The findings in Wang et al. (2016) indicate that such particles are reintroduced into the boundary layer by precipitation-related downdraughts, where they continue to grow  
55 by the condensation of biogenic VOCs (BVOCs). Machado et al. (2021), on the other hand, argues that the downdraughts within deep convection are not at high enough altitudes and suggests that there are likely other sources of aerosol particles.

Regardless of exact nature of the processes responsible for transporting and generating aerosol particles in the Amazon, it is very likely that deep convective clouds and also shallow clouds play an important role. Therefore, it is desirable to understand the conditions that favor the formation and growth of convective clouds over the region. While the primary  
60 mechanism for deep convection seems to be the column water vapor (CWV) amount (Zhuang et al., 2017; Chakraborty et al., 2018; Schiro and Neelin, 2019), VWS is another environmental control of cloud growth that has yet to be fully understood. Most often, the VWS effects are analyzed in the context of deep convection or mesoscale systems (Houze,

2018), with shallow clouds being relatively underrepresented in the literature. In addition, a significant portion of VWS studies for shallow clouds is focused on marine trade wind cumulus (e.g., Yamaguchi et al., 2019; Helfer et al., 2020; 65 Drueke et al., 2021) rather than land tropical rainforests.

Perhaps the most direct way in which VWS affects cumulus cloud growth is by tilting them vertically (Malkus, 1952; Asai, 1964). This tilting perturbs the vertical ascent of cloud parcels, usually reducing the updraught speed (e.g., Helfer et al., 2020). Recently, Drueke et al. (2021) found that VWS promotes cloud core dilution. In contrast, a monotonic increase of the background wind speed has been suggested to increase cloud depth (Nuijens and Stevens, 2012). For the Amazonian region, 70 Chakraborty et al. (2018) have found that shallow cumulus convection is more likely to occur under high low-level (up to ~3 km height) VWS ( $\geq 2.0 \text{ m s}^{-1} \text{ km}^{-1}$ ). This would be consistent to the previous findings of weaker updraughts and cloud cores under sheared environments. However, Zhuang et al. (2017) found a positive correlation between low-level VWS and the occurrence of deep convection in Amazonia during the dry season. Yamaguchi et al. (2019) shows that VWS can have different effects on cloud growth due to contrasting effects on evaporation. While cloud tilting leads to more evaporation of 75 the clouds, VWS also enhances cloud clustering and thus protect them from evaporation. Such duality indicates that the effects of VWS on cumulus cloud field can be complex and with opposite effects.

Another potential indirect effect of VWS is related to its role on the formation of the morning boundary layer (BL). Henkes et al. (2021) have analyzed this issue for the Amazonian region in the context of the shallow-to-deep convective transition and found a significant change in VWS prior to the cloud formation. In days characterized by deep convection, the 80 characteristic morning low-level jet tends to be stronger and higher (at about 1 km height) than in days with shallow-only convection. The stronger low-level jet produces more VWS that induces more mechanical turbulence within the morning BL. Such added turbulence accelerates the formation of the convective BL and later invigorate cloud growth.

In combination with the mentioned processes, VWS can also help control aerosol-cloud interactions (Fan et al., 2009). The cloud tilting due to VWS together with smaller droplets in polluted clouds combine to inhibit cloud growth by evaporation. 85 The core dilution ~~noted by Henkes et al. (2021)~~ will also affect aerosol-cloud interactions because aerosols tend to produce contrasting effects at the cores or margins of the clouds. Altaratz et al. (2014) provide a review of such contrasting effects, noting that the so-called cloud invigoration by aerosol pollution is related to cloud core processes. By limiting the cloud core development, VWS can counter the invigoration mechanism.

In this study we will quantify the effects of VWS on the physical dimensions of the clouds, their cores, and margins, over the 90 Amazonian region. We use the Dutch Atmospheric Large Eddy Simulation (DALES, Heus et al., 2010; Ouwersloot et al., 2017) model to simulate shallow cumulus clouds with high resolution, enabling the distinction of the cores and margins even in relatively small clouds. Novel in our research is the quantification of individual cloud, core and margins dimensions as function of VWS, which is enabled by a tracking algorithm. This quantification is also done as function of the cloud lifecycle. The end goal is to help understand the direct VWS effects on the development of shallow clouds in the Amazonian 95 region, paving the way to further studies of the indirect effects. This will help constrain the environmental controls of Amazonian shallow cloud properties, which are still not well represented in global climate models (Lintner et al., 2017).

In Section 2 we present the model description, the experiment designs, and the methods used to analyze model output. Section 3 presents the main findings, followed by the summary and discussion in Section 4.

## 2 Methodology

### 100 2.1 Model description

This study uses the Dutch Atmospheric Large-Eddy Simulation (DALES) model in version 4.1 to perform idealized high-resolution simulations of shallow cumulus field over the Amazonian region. This model has been used in many types of applications since its initial development as a tool to study the boundary layer and boundary layer clouds (Cuijpers and Duynkerke, 1993; Heus et al., 2010). Such applications include gas-phase chemistry (Vilà-Guerau de Arellano et al., 2011) including the influence of shallow cumulus (Vilà-Guerau de Arellano et al., 2005), aerosol-cloud interactions (de Bruine et al., 2019) and surface-cloud interactions in this case specifically to the Amazonian region (Vilà-Guerau de Arellano et al., 2020). DALES uses second-order central differences to solve most of the governing equations, except for the advective terms that use the methodology of (Piacsek and Williams, (1970). The radiation transfer is solved using the techniques described in (Fu and Liou, (1992) and; Fu et al., (1997).

110 -The code ~~itself~~ has ~~also~~ been through significant recent improvements, ~~most~~ Most notably importantly for this study is the recent addition of explicit aerosol-cloud interactions (de Bruine et al., 2019).

In short, the bulk microphysics scheme used in DALES (Seifert and Beheng, 2006) is updated, which previously used a fixed droplet number concentration combined with the classical supersaturation adjustment (Sommeria and Deardorff, 1977) for cloud liquid water. The new scheme prognoses cloud liquid water and droplet number concentration based on explicit  
115 treatment of the aerosol activation process following the  $\kappa$ -Köhler theory (Petters and Kreidenweis, 2007). The aerosol population is characterized by two lognormal size distributions, following the pristine rain forest (PR) conditions as defined in Pöhlker et al. (2018). This aerosol population is characterized by two modes at 69 nm and 157 nm, with concentrations of  $162 \text{ cm}^{-3}$  and  $86 \text{ cm}^{-3}$ , respectively. The normalized standard deviations are 0.46 and 0.44, respectively. The hygroscopicity parameter  $\kappa$  for the two modes is 0.12 and 0.18, respectively.

120 The de Bruine et al. (2019) scheme has since been further updated to incorporate a prognostic relation for supersaturation:

$$\frac{\partial S}{\partial t} = dS_{macro} - \gamma S \quad (1)$$

Where  $dS_{macro}$  represents the thermodynamic supersaturation source (linked to updraughts) and  $\gamma S$  is the supersaturation sink related to cloud microphysics. Assuming a constant  $\gamma$  within the timestep, Equation 1 can be solved to yield:

$$S(t + \delta t) = \frac{1}{\gamma} \exp(-\gamma \delta t) (dS_{macro} (\exp(\gamma \delta t) - 1) + \gamma S(t)) \quad (2)$$

125 The supersaturation sink coefficient ( $\gamma$ ) is calculated as a proportion to the total droplet surface area obtained from the second moment of the cloud droplet size distribution. The Seifert and Beheng (2006) bulk scheme utilizes a gamma size distribution for cloud and rain in the form:

$$N(x) = Ax^\nu \exp(-\lambda x^\mu) \quad (3)$$

Where  $x$  is the droplet mass and  $A$  and  $\lambda$  are proportional to the number concentration and mean droplet mass, respectively.

130 For cloud droplets,  $\nu$  and  $\mu$  are both constant and equal to 1. Converting Equation 3 from droplet mass to diameter ( $D$ ) and integrating, the total droplet surface area is given by:

$$H = \int_0^\infty \pi D^2 N(x(D)) x'(D) dD = \left(9\pi \frac{q_c^2}{N_c^2 \rho_w^2}\right)^{\frac{1}{3}} \Gamma(8/3) N_c \cong 4.58 \left(\frac{q_c}{\rho_w}\right)^{\frac{2}{3}} N_c^{\frac{1}{3}} \quad (4)$$

Where  $q_c$  and  $N_c$  are the cloud droplets specific liquid water mass and number concentration, respectively,  $\rho_w$  is the water density and  $\Gamma$  is the gamma function. From this,  $\gamma$  is then calculated as  $\gamma = \alpha H$ . By performing multiple tests,  $\alpha = 50 \text{ m}^{-2} \text{ kg}$

135 is chosen because it produces realistic droplet number concentrations as compared to the aerosol number concentration.

## 2.2 Experiments description

We perform six simulations, each changing only the vertical wind shear (VWS) of the initial profiles and large scale forcing. For all cases, the horizontal resolution is 50 m with a domain size of 21.6 km x 21.6 km and periodic boundary condition. The vertical domain goes up to 5 km, with resolution of 20 m. This results in a 3D grid with dimensions of 432x432x250.

140 The time step is adaptive, but with a maximum of 1 s, respecting the Courant-Friedrichs-Lewy (CFL) criterion. The output is done every 2 minutes, with averaged vertical profiles as well as 3D fields of selected variables mostly related to clouds, aerosols, thermodynamics, and turbulence. The simulations are centered at the latitude of  $-2.6091^\circ$  and longitude of  $-60.2093^\circ$ , corresponding to the central Amazon. The total simulation time is 12 hours, from 6:00 to 18:00 in local time, with prescribed daily cycle of surface fluxes, as shown in Figure 1. Such profiles represent an idealized location consistent with

145 the latitude and longitude of the domain center for September 10<sup>th</sup> and for a tropical rainforest with Bowen ratio mostly between 0.1 and 0.4.

The input profiles of water vapor specific humidity  $q_v$ , potential temperature  $\theta$  and the zonal and meridional wind components  $u$  and  $v$ , respectively, are presented in Figure 2. We have run DALES with six different characteristics of the input wind profiles, but with  $q_v$  and  $\theta$  profiles remaining unchanged. The  $q_v$  and  $\theta$  profiles are based on radiosonde

150 measurements performed during the GoAmazon2014/5 campaign (Martin et al., 2016) and they represent a typical dry season condition with predominant shallow cumulus formation. They were determined following Vilà-Guerau de Arellano et al. (2020).

The control simulation has no wind shear and is referred to as NS. For this simulation, the wind components are fixed to  $u = -7 \text{ m s}^{-1}$  and  $v = -1 \text{ m s}^{-1}$ , matching the predominantly southeasterly winds of the region. To simulate different levels of wind

155 shear, we apply a linear increment in the wind speed throughout the whole vertical domain. Moderate VWS conditions (MS

in Figure 2) are simulated by applying  $1.2 \text{ m s}^{-1} \text{ km}^{-1}$  wind speed increments without changing the wind direction. High VWS conditions (HS in Figure 2) have twice as high wind speed increments ( $2.4 \text{ m s}^{-1} \text{ km}^{-1}$ ). According to the observational study of Chakraborty et al. (2018), the wind shear in MS and HS corresponds to values below the 33% and around the 50% percentiles for the Amazonian region, respectively. While our values may seem small, they represent a  $6 \text{ m s}^{-1}$  and  $12 \text{ m s}^{-1}$  total wind speed increment from 0 km to 5 km. Because we increase the wind speed linearly with height, higher VWS shear values could result in unrealistic wind speeds at 5 km. In addition to the NS, MS, and HS runs, we also perform additional tests by adding rotation to the VWS. This is done by applying a  $90^\circ$  counterclockwise rotation between 0 km and 5 km, also changing linearly with height. Those runs are referred to as NSR, MSR, and HSR and have the same wind speed vertical profiles as NS, MS, and HS, respectively, with the added directional shear. Throughout the simulations, the vertical profiles of wind speed and direction remain unchanged in the free troposphere, but they do suffer deceleration within the boundary layer. Overall, the wind speed within the boundary layer is up to 1 m/s higher in HS and HSR as compared to NS and NSR.

### 2.3 Analysis of model outputs

Given the relatively large ~~domains used here~~number of clouds, we focus the analyzes on the statistical properties of the cloud fields instead of individualized case studies. We use two different approaches to analyze the outputs, which consist of domain averages of variables of interest and characterization of groups of clouds via cloud tracking algorithm. For each of the approaches, the data are also often analyzed in terms of the cloud core and margins. Heiblum et al. (2019) present three different methodologies to classify the convective cloud cores, which consist of finding pixels with either positive vertical velocity, supersaturation over 0%, or positive buoyancy. Here we will use the most restrictive definition of the cloud core, consisting of a combination of all three conditions concomitantly. This definition has significant impacts in our results, since we quantify the magnitudes of the clouds, their cores as well as their margins. Changes in the core definition will then directly affect those magnitudes. Our restrictive definition of cloud cores implies that we are focusing on the most intense part of the cloud to further differentiate it from the margin statistics. Similarly, the margins are defined as the pixels with concomitantly negative vertical velocity, subsaturated conditions, and negatively buoyant air.

#### 2.3.1 Cloud Tracking

We use the Forecasting and Tracking the Evolution of Cloud Clusters (ForTraCC) (Vila et al., 2008) algorithm to track clouds. Initially developed to track cloud clusters in satellite imagery, the code has been further developed to work with radar data (Queiroz, 2009). Specifically, the code was adapted to read and track rain cells in Constant Altitude Plan Position Indicator (CAPPI) files. Such files contain a two-dimensional grid with radar reflectivity values, where the algorithm tracks shapes with reflectivity values higher than a predetermined threshold. An example of use can be found in (Cecchini et al., 2020). This adaptation made it easier to use the tracking algorithm in other applications such as modelling. Here we produce two-dimensional fields of the cloud Liquid Water Path (LWP) between 800 m and 1500 m height to use as input to ForTraCC. The algorithm then tracks the clouds based on a LWP threshold of  $0.6 \text{ g m}^{-2}$ . With the vertical resolution of 20 m,

190 this threshold corresponds to 3 vertical pixels with  $0.01 \text{ g m}^{-3}$  of cloud Liquid Water Content (LWC), a common threshold to identify clouds in numerical models. Beyond the LWP threshold, ForTraCC is setup to track clouds that have at least 10 pixels with LWP over the threshold to minimize noise. This means that the minimum trackable area is  $25000 \text{ m}^2$ , which corresponds to a circle with an approximate diameter of 180 m. Therefore, some of the initial and final cloud life cycle beyond this length scale is missed in the tracking, especially considering the 2-minutes interval of the model output and the 50-m horizontal resolution. It is important to take those limitations in consideration when analysing the results presented here.

195 The tracking works based on the overlapping area of the trackable pixels between two different time steps. In each time step, the shapes that maximizes such overlap area with the previous time step will be considered to be part of the same clouds. Therefore, the speed of the moving shapes is important in this process because fast-moving clouds can reduce or even eliminate such overlap. For instance, the wind components of  $u = -7 \text{ m s}^{-1}$  and  $v = -1 \text{ m s}^{-1}$  defined in the NS run represents total wind speed of approximately  $7.1 \text{ m s}^{-1}$ . At such speed, the shapes could move 850 m in two minutes, which is greater than the minimum trackable area. However, the DALES simulations have a moving domain to minimize the speed of cloud displacement. We have set the domain speed to match the wind speed at 1 km height, which is close to the cloud bases. This drastically reduces cloud displacement and maximizes the overlapping areas, allowing ForTraCC to track the shapes.

200 Figure 3 presents an example of the tracking of clouds in the entire domain for the NS run. The colours represent the LWP (between 800 m and 1500 m) field at 12:00 local time, and the rectangles show up to four different time steps of the tracked clouds. The rectangles cover the area defined by the largest cloud dimensions in the West-East and South-North directions. Black rectangles represent the current time step and progressively lighter grey rectangles represent earlier time steps in order (i.e., the lightest rectangles are three time steps earlier than the current time shown in Figure 3). This confirms the area overlap between the time steps of the clouds, allowing the establishment of the Lagrangian database.

210 The area enclosed by the rectangles represent the horizontal coordinates of the individual clouds and increase and decrease as the clouds develop. From those horizontal coordinates, we define the 3D field of individual clouds by using the altitude interval from the surface to the cloud top, removing multi-layered clouds. Multi-layered clouds are defined when there are non-cloudy pixels between two cloudy pixels in the same column according to the  $0.01 \text{ g m}^{-3}$  threshold. Whenever multi-layered clouds are detected, we only use the bottom one for the remainder of the calculations. Cloud top height (CTH) is then obtained as the maximum altitude within the rectangles where  $\text{LWC} > 0.01 \text{ g m}^{-3}$ . As such, for every trackable cloud, we have a moving 3D volume of pixels for which we store properties like LWC, rate of change of LWC ( $\Delta\text{LWC}$ ), cloud droplet number concentration  $N_c$ , updraught speed  $w$ , buoyancy  $B$ , among others. This forms the basis of the cloud tracking statistical results shown here. Additionally, we classify each pixel in the 3D volumes as cloud core or margin (or none) based on the criteria discussed previously. This allows quantifications of cloud core and margin properties for the individual clouds as well.

220 Note that in Figure 3 there are no tracked clouds in the extremities of the domain rectangles close to the borders of the domain. This is because we explicitly filter out clouds that at any point in their life cycle developed outside a 10 km radius

~~circle around the domain centre had one or more pixels at the boundaries.~~ The main reason for such filter is the periodic boundary condition, where a cloud moving through one extremity would appear in the opposite one. Since we define a new cloud as the first time it attends to the ForTraCC tracking criteria, the periodic boundaries could interfere with the statistics. For instance, if an already mature cloud moves through the boundary, it would later be defined as a new cloud in the opposite extremity. Therefore, its initial characteristics would be different than clouds that form and dissipate within the ~~10-km radius borders.~~

It is possible that two different clouds have overlapping 3D fields if they are within close proximity to each other. To minimize such effect and avoid counting the same cloud multiple times in the overall statistics, we apply a filter to remove other clouds from the 3D volumes. This is done from the pixel classification done within ForTraCC. The algorithm provides an identification number for each cloud, which is then used to eliminate other clouds from the 3D volumes. For every tracked cloud, we first analyse the evolution of its LWP field, calculated from the surface up to the cloud top. In such fields, we count the number of shapes by using the same  $LWP > 0.6 \text{ g m}^{-2}$  threshold. One shape is defined by a group of adjacent pixels with  $LWP > 0.6 \text{ g m}^{-2}$ . If there are two or more shapes separated by pixels with  $LWP < 0.6 \text{ g m}^{-2}$ , we exclude such smaller shapes from the 3D volume. Whenever a different cloud is identified within the 3D volumes, we ~~This consists of setting all of its cloud variables (e.g., LWC,  $N_c$ , etc) to 0\_~~ only for ~~this the~~ 3D volume, including all vertical pixels above the smaller shapes. In this way, only the tracked cloud is left in the volume. Note that the Lagrangian cloud database is stored separately from the domain variables, therefore this process does not affect the domain-wide characteristics.

~~The same process is repeated for the vertical direction to remove stacked clouds. This is done by calculating LWP along the y direction and analysing shapes in the x-z cross sections. Instead of just removing the smaller shapes, in this analysis we prioritise both the area value as well as the height of the shape. We first check which shape has more pixels close to the cloud base altitude and then, if there is a tie, we remove the shapes with smaller areas. In this way, we keep the shape that is most likely a cumulus cloud and that has the largest vertical area in the tracked volume.~~

~~The processes described above are meant to minimize or potentially completely exclude the occurrence of multiple clouds within the moving 3D volumes. We note that the exclusion of multiple clouds is only done for the individual cloud volumes, which are stored separately from the simulation domain as a whole. Therefore, we minimize counting clouds multiple times in the individual cloud statistics, while the domain statistics remain unaffected by this process.~~

The ForTraCC algorithm also detects the occurrence of mergers and splits in the tracked shapes. Mergers occur when two or more tracked shapes have their areas joined at some point in their life cycle. Splits are defined when one shape in one time step is split into two or more shapes in a subsequent time step. In such case, ForTraCC continues tracking the split area with the largest overlap with the original shape. The shapes with smaller overlaps can start a new cloud life cycle if they adhere to the LWP threshold and minimum area requirements. The occurrence of merger and splits are stored as flags together with the 3D volumes, so we can identify it in the statistics. Here we will mostly discuss the cloud characteristics independently if they went through merger or splits throughout their life cycle. The main reason is to increase the statistical robustness, since completely isolated clouds respond to less than half of the total cloud counts. Additionally, the increased wind shear tends to



increase merger and split occasions because of larger horizontal areas overall. Therefore, for the higher-VWS runs this effect would be further intensified.

### 3 Quantifying VWS effects on the physical characteristics of clouds

#### 3.1 Overall characteristics of the experiments

260 Here we present a brief description of overall characteristics of the experiments and how the reference run compares with observations. Firstly, Figure 4 presents the evolution of domain-averaged LWP (Figure 4a), the 99% percentile of domain-wide CTH (Figure 4b) and the domain-averaged rainwater content at the surface ( $RWC_{sfc}$ ) (Figure 4c). The time series have been smoothed by 30-minutes moving averages for clarity. It shows that the cloud field properties are consistent with shallow convective clouds, with averaged LWP mostly below  $200 \text{ g m}^{-2}$ , aside from the peak at 14:30 local time in the HS simulation. This peak in LWP is due to one deeper cloud that has no equivalent in the runs with lower VWS. This cloud also brings the 99% percentile of CTH to above 4000 m and is the only one that generates significant precipitation at the surface. The amount of rainwater at the surface in the other runs are at least one order of magnitude lower if present at all. Overall, Figure 4 shows that the cloud field is mostly representative of non-precipitating shallow cumulus clouds.

265 Figure 5 presents a comparison between observed and simulated profiles of LWC alongside the cloud cover (CC) distribution with height. The observed LWC is taken from flight AC09 of the ACRIDICON-CHUVA experiment (Wendisch et al., 2016; Machado et al., 2018), which consisted of a cloud profiling mission over Northern Amazon on September 9<sup>th</sup>, 2014. We have limited the analysis to the first 3000 m to maximize the number of datapoints both from the simulations as well as from the aircraft data. The altitude of the observed data has been reduced by approximately 500 m so the minimum observed and simulated LWC are at almost the same altitude. The observed LWC is shown as round markers representing the average of different flight legs (constant altitude) as well as the standard deviation (error bars). The observations were collected between 11:30 and 14:50 local time. The simulated LWC is shown in the green continuous line and the shaded area around it. For every model time step between the 11:30-14:50 time interval, we obtain the median and interquartile range of LWC as function of altitude. This is then averaged over the period to get the pattern shown in Figure 5. Alongside this comparison, we also show the averaged profiles of cloud cover for the NS, MS and HS runs (top horizontal axis).

270 Figure 5 shows that the vertical profile of LWC is within the range of the observations in almost all of the levels between 500 m and 3000 m. There are some exceptions at altitudes close to 2300 m and 3000 m where the observed LWC is larger than the simulations. This is probably explained by the fact that the observed clouds were actively producing precipitation, while the simulated ones are non-precipitating. In turn, this could also explain the close LWC values between observations and simulation below 2000 m. In terms of cloud cover, Figure 5 shows the expected result of increasing CC as VWS increases. For a fixed altitude, the averaged difference of CC is up to about 2% between NS and HS.

275

280

285

### 3.1.2 Representativeness of the tracking algorithm

Before going into detail about the results from the cloud tracking algorithm, we present a contextualization about its representativeness of the overall cloud field. Figure 4-6 presents the normalized histogram of LWP for all pixels in the simulation domain (continuous black lines) for all six runs and all output time steps between 11:00 and 18:00 local time. Such curves represent the overall characteristic of the cloud field in the simulation domain. We replicate this calculation only for the pixels tracked by ForTraCC to infer any possible bias towards specific LWP ranges. The dashed lines represent all pixels tracked, while the dot-dashed lines represent only the pixels within clouds with no merger or split detected throughout their life cycle. The latter will be referred to as “isolated” clouds for simplicity.

When the different lines in Figure 4-6 have close proximity within each other, it means that such LWP range has approximately the same weight in the statistics associated with the whole domain or with the tracked clouds. This is the case for the  $LWP < 50 \text{ g m}^{-2}$  range, meaning that the smaller clouds have approximately the same representativeness in the whole-domain statistics as compared to the tracking algorithm. However, there is an overall trend of reduced representativeness of large values of LWP. Large LWP are likely related to deeper clouds, which are also likely larger horizontally and have longer lifecycles. For  $LWP > 200-50 \text{ g m}^{-2}$ , the normalized counts of all tracked pixels ~~represent~~ have diminishing representativeness about 80% of the whole-domain normalized counts, with this effect being even stronger for ~~while the percentage is approximately 10% for the~~ isolated clouds. Therefore, the statistics of the tracking algorithm have an overall bias towards smaller clouds as compared to whole-domain statistics, but this difference is significantly reduced if all tracked clouds are used. The main reason for this bias is because of the exclusion of clouds crossing the boundaries. Since the larger and deeper clouds have a higher chance of crossing the boundaries during their lifecycle, some of them can be excluded from the tracking results.

Some previous studies applying tracked algorithms to model outputs focus mostly on isolated clouds (e.g., Heiblum et al., 2019), which is preferred when analysing the properties of individual clouds. Here, we are mostly interested in the overall cloud field metrics, and all tracked clouds will be analysed together regardless of merger and splits occurrences. This decision is motivated by the results shown in Figure 46. If only isolated clouds were used, the VWS effects would only be valid for relatively shallow and short-lived clouds. By keeping all clouds, most of the cumulus field can be analysed together and the statistics get more statistically robust by increasing sample size. ~~In that case, the difference between the dashed and continuous lines in Figure 4 are likely explained by the 10 km radius filter discussed in Figure 3. The largest LWP values are probably located within large and long-lived clouds that have much higher chances of developing outside the 10 km radius at some point in their life cycle.~~

This comparison shows that we can use ForTraCC in combination with domain averages to analyse different aspects of the cloud field. The larger clouds usually dominate the cloud-related statistics in the domain averages, while the Lagrangian dataset from ForTraCC allows a more detailed study of the baseline shallow clouds with different physical dimensions field. Here this distinction between the baseline shallow cloud field and the deepest clouds in the domain is important for the

320 remainder of the analyses. The tracking results from ForTraCC are skewed towards the baseline shallow cloud field since  
such clouds tend to be smaller and short-lived. On the other hand, the deepest clouds develop within and are supported by  
the underlying shallow cloud field. We argue that the properties of the underlying shallow cloud field have a significant  
effect on the development of the deepest clouds. Therefore, both the underlying shallow cloud field and the deepest clouds  
will be discussed separately from now on. ~~Here we will combine both approaches to understand how VWS affects the cloud  
field properties.~~

325 For example, Figure 5-7 shows the daily cycle of total domain water for all six simulations, calculated as the 3D integration  
of the cloud and rain liquid water content over every pixel in the entire domain. This figure shows that the total domain  
water changes significantly with VWS ~~has significant impacts in the total amount of liquid water generated by the cloud  
fields~~, even though the relation is not straightforward. The time series between NS and MS are relatively similar, with only  
330 3% difference between their total water amount peak close to 14:00 local time. The patterns along the day are also similar  
with mostly 10-min gaps between the local maxima and minima. However, HS drastically differs from those patterns, having  
peak total water about 3 times higher and close to 15:00. This is because this run generated the largest cloud in this study, as  
shown in Figure 4. As will be discussed later, we argue that this largest cloud was supported by a more favourable shallow  
cloud field under high VWS. Interestingly, the directional shear interacts in different ways with the total domain water and  
335 with their non-directional wind shear counterparts. For NS and HS, the addition of wind rotation reduces the total water peak  
by approximately 20% and 40%, respectively. However, for moderate VWS conditions, the directional shear increased the  
peak by about 30%. Therefore, even under idealized simulation conditions, the VWS seems to interact in nonlinear ways  
with the cloud field. ~~Note that Figure 5 can indicate an enhancement of the cumulus field in terms of convective activity, at  
least for HS as compared to NS or MS. However, it is important to analyse this effect with the cloud tracking methodology  
to infer if this is consistent throughout the whole cloud field or the result from statistical sampling.~~

340

### 3.2.3 VWS effects on cloud external and internal dimensions

The overall diameter of the individual clouds is estimated by calculating the equivalent diameter of a circle with the same  
area as the tracked shapes. With this calculation, the effects of VWS on the horizontal cloud dimension are quantified. Figure  
6-8 shows the resulting probability density functions (PDF) of cloud equivalent diameter for the six runs for 100-m intervals  
345 between 100 m and 1800 m. Those size intervals represent most of the clouds in the domain and each datapoint in Figure 6-8  
represents at least ~~about 50~~ 130 clouds. The PDFs are shown in panel a) as function of the central diameter of the intervals,  
while the ratios of the PDFs are shown in panel b) (having the NS simulation as the reference) for comparison. The numbers  
in parenthesis in the legend of Figure 6a-8a are the total cloud count for the respective runs.

350 Firstly, there is a notable decrease of cloud count as VWS shear increases. Between the NS/NSR and the HS/HSR runs there  
is a reduction of about ~~600-900-1000~~ clouds overall. Such reduction is related to an enhanced cloud clustering similar to the  
results from Yamaguchi et al. (2019). Additionally, the cloud tilting due to VWS favour the evaporation at the cloud  
margins, potentially causing the smallest clouds to fall off the ForTraCC minimum area criteria. Figure 6-8 shows that there

is a decrease in the frequency of occurrence of clouds smaller than 400 m under high VWS conditions. Such reduction reaches up to about ~~30~~20% in frequency, as evidenced in Figure ~~6b~~8b. This could be explained by both the enhanced evaporation of smaller clouds, as well as by the overall increase in cloud area caused by the enhanced mechanical wind forcing. Clouds larger than 800 m are progressively more frequent with increased VWS, up to a maximum increase of ~~150~~190% in frequency. Such increase also leads to larger values of cloud cover (Figure 5). ~~On average, the cloud cover reaches its maximum at 1400 m altitude approximately, with value of 3% in the NS run. The maximum averaged increase in cloud cover by VWS is between 0.25% and 0.75%, increasing with altitude between 1400 m and 2000 m. In relative terms, this represents increases of 10% to 25% in cloud cover due to VWS.~~

While the sheared environments produce larger clouds horizontally, the tracking results evidence that they are also shallower. Figure ~~7-9~~ presents the same analysis as Figure ~~68~~, but for cloud depth. Here we define cloud depth as the height difference between cloud base (lowest cloud pixel height with  $LWC > 0.01 \text{ g m}^{-3}$ ) and cloud top (highest cloud pixel height with  $LWC > 0.01 \text{ g m}^{-3}$ ). In Figure ~~79~~, there is a notable decrease in the frequency of occurrence of clouds deeper than 1200 m for the sheared runs, with the opposite for shallower clouds. This indicates that the infrequent deeper clouds generating the highest total domain water peak shown in Figure ~~5-7~~ occur concomitantly with a weakening of the smaller and more numerous clouds in the field. Therefore, it shows that whole-domain properties such as the total domain water are heavily influenced by infrequent and large clouds, as should be expected.

More details about the VWS effect on the clouds can be analysed by constraining the cloud core and margins characteristics. With the tracking algorithm, we calculate the core and margins dimensions as function of both cloud lifetime as well as height. To combine multiple clouds with different depths and lifetime duration, we perform normalizations in the height and lifetime taking into account the cloud base and top heights and the initial and last time steps of the clouds. The relative cloud depth is set to 0 at cloud base and 1 at cloud top, scaling linearly with height between those extremes. Similarly, the relative lifetime ( $t_{rel}$ ) is set to 0 and 1 at the initial cloud detection and at the last tracked time step, respectively. Figure ~~8-10~~ shows the averaged dimensions of the clouds, cores, and margins as a function of the relative depth and lifetime of the clouds. ~~As before, we report the dimensions as the equivalent diameter of an equivalent-area circle.~~ The relative life cycle is split into three periods, roughly corresponding to the formation, maturation, and dissipation stages. The relative depth is split into 5 intervals centred at 0.1, 0.3, 0.5, 0.7, and 0.9. The variability around the averages is not shown for figure clarity, but the standard deviation represents about 80% of the averages close to cloud base, reducing to 50% close to cloud top.

Figure ~~8a-10a~~ shows that the clouds have averaged dimensions between ~~200-125~~ m and ~~600-550~~ m in different vertical levels, with maximums close to 0.3 relative depth. This relative depth corresponds to the maximum dimension of the cores (Figure ~~8b10b~~), ~~while the and~~ margins ~~are largest at 0.5~~ (Figure ~~8e10c~~). ~~This is consistent with the bottom-up convective cloud formation lifecycle, with bases dominated by condensation and tops dominated by evaporation. Similarly, the~~ cores tend to be larger at the early and mid-lifecycle, reducing in size at the dissipating stage. On the other hand, the cloud margins tend to be similar dimensions at the dissipating stage as compared to the early lifecycle. Overall, the cloud cores are about ~~90~~

60-150 m larger than the cloud margins at a given relative depth according to our methodology. This difference, however, is tends to be larger close to cloud base but lower close to cloud top. The VWS effect on the clouds is mostly consistent throughout the clouds' relative depth and lifecycle. On average, VWS increases the dimensions of the cloud cores and margins by up to 50-40 m each. This totals an increase in horizontal cloud dimensions by up to 100-80 m. The increase in average cloud dimensions is almost linear with the vertical wind speed shear, while the added rotations present a weaker effect. Here we note that the effects on the internal cloud dimensions are close to the resolution utilized in the simulations. Therefore, it is desirable to do simulations with finer resolutions in the future. However, the proportionality of equivalent diameters with VWS between NS, MS and HS indicates consistency in this relationship.

While Figure 8-10 shows increased cloud dimensions due to VWS, it does not reveal the relative magnitudes of the core and how it changes with VWS. Figures 9-11 and 10-12 provide calculations of relative magnitudes in terms of horizontal area (Figure 9-11) and volume (Figure 10-12). Figure 9-11 is similar to Figure 8-10, but the profiles represent the average fraction of the cloud core area (i.e., the ratio of the core and cloud areas) in horizontal slices through the clouds. Figure 9a-11a shows the actual fraction values, while Figure 9b-11b shows the differences between the MS/HS runs and NS. Since the directional shear did not have as much impact in the cloud dimensions as compared to the wind speed shear, the runs NSR, MSR, and HSR are omitted in Figure 9-11 for clarity. The standard deviation of the area fraction represents approximately 70% of the cloud-base averages, decreasing to 50% towards cloud top.

This Figure 11a shows that the cores represent between 25% and 35-45% of the horizontal area of the clouds, and can change with lifetime, height, and VWS. As expected, the relative area of the cores tends to decrease towards the dissipating stage of the clouds. In our methodology, this reduction is approximately 3% on average. Note that even in the dissipating stages (yellow curves in Figure 9-11), the core areas still represent more than 25% of the cloud area. As mentioned before, this results from the minimum area requirement for the tracking algorithm as well as the broad relative lifetime intervals used in Figure 9-11. In all lifecycle stages, the core area fraction tends to increase with relative depth, consistent with a buoyant core location close to cloud top.

Figure 9b-11b shows that moderate VWS conditions have a small effect in the core area fraction, with averaged changes mostly within 1% between MS and NS. On the other hand, high VWS present an overall reduction of 3% in the core area fraction. This reduction is in the same magnitude as the reduction throughout the tracked lifetime of the clouds, as shown in Figure 9-11a (differences between the blue and yellow curves for all runs). Therefore, it is possible to conclude that high VWS tend to both increase the absolute dimensions of the clouds and their cores as well as significantly reduce the core area fraction. This is consistent with the larger cloud sizes shown in Figure 68, with the smaller cores being responsible for the shallower clouds under high VWS as shown in Figure 79.

Figure 10-11 shows that the overall volume and mass fractions of the cores as function of the clouds' lifecycle and VWS. Every curve in this figure represents the averaged core volume (Figure 10a-12a) and mass fractions (Figure 10b-12b) of clouds with the same duration (shown in colours). Here the duration is simply calculated from the number of output time steps where a specific cloud was detected by ForTraCC. If the cloud appears in two consecutive output time steps, it is considered

420 to have 2-minutes duration. For three time steps, the duration is 4 minutes and so on. The horizontal axes represent the relative time of the clouds, in minutes, i.e., represent each time step in its lifecycle. There are at least ~~60-38~~ clouds in every duration category, with larger numbers for shorter durations. The volume and mass fractions standard deviations are relatively similar for the time steps of clouds sharing the same duration. For the volume fraction, the standard deviations reach up to approximately 0.15. For mass fractions, they have values up to 0.22 approximately.

425 The evolution of the core volume and mass fractions is consistent with the expected convective lifecycle, with growing fractions in the earlier stages followed by shrinking cores during dissipation. The core mass fractions are approximately 0.10-0.15 higher than the volume fractions because of the supersaturated conditions within the cores that cause droplet growth and, therefore, mass gain disproportionately to the volume. It is notable (and expected) the consistent relation between the volume and mass fractions and cloud duration. The more core-dominant the clouds are, the longer they take to dissipate.

430 For clouds lasting 6 minutes or more, Figure ~~40-12~~ shows a consistent tendency of reduced core volume and mass fractions for higher VWS conditions (with only ~~a few one-exception in the 16 minutes cloud exceptions~~), predominantly close to and after the peak values. It is possible that the short-lived clouds do not present such a clear pattern because the variability is of the same magnitude as the averages. For longer-living clouds, the averaged fraction values tend to be greater than the standard deviation, and this coincides with the definition of the pattern. Regardless, such reduction of core volume and mass

435 fractions is of the order of ~~0.15-05~~ and is consistent with the reduction of the area fractions as shown in Figure ~~911~~.

Beyond the magnitudes of the cores, it is also important to quantify the cloud characteristics within them. Most importantly, the amount of liquid water mass as well as the vertical motions. Figure ~~44-13~~ presents the bivariate histograms of  $w$  and LWC for the cloud cores in the NS, MS, and HS runs irrespective of height. The curves represent the number of datapoints for  $w$  and LWC intervals of  $0.2 \text{ m s}^{-1}$  and  $0.1 \text{ g m}^{-3}$ , respectively. The ~~coloureds shapes~~ and ~~black-green~~ continuous lines represent the NS run. The continuous magenta and dashed cyan lines represent the MS and HS runs, respectively. This figure shows that there is a clear relation between the core convective strength and the amount of wind shear. There is a progressive trend of lower  $w$  and LWC values as the wind shear increases. This can be seen by comparing lines representing the same number of datapoints in Figure ~~4413~~. For instance, compare the lines representing 1000 datapoints for the different runs. The MS line represents a domain closer to the low- $w$ /low-LWC region of the graph as compared to the NS run. Similarly, the 445 1000-datapoint line for HS is even closer to such region than MS. This is repeated for basically all isolines between 50 and 3000 datapoints.

This shows that the added wind shear constrains the  $w$  and LWC datapoints within a relatively limited space, with overall reductions of  $w$  and LWC. Therefore, VWS not only reduces the ~~relative~~ dimensions of the cores, but also decreases the convective intensity within it. Of course, such factors are correlated because weaker cores will result in smaller physical 450 dimensions, but there is a noticeable and consistent effect of VWS on the cloud core properties. For a given isoline in Figure ~~4413~~, its maximum LWC and  $w$  are reduced by approximately  $0.1 \text{ g m}^{-3}$  and  $0.6 \text{ m s}^{-1}$ , respectively, between NS and HS. Such reduction will affect the water mass fluxes caused by the convective clouds, therefore changing how they affect the atmosphere in return.

For instance, the shallower but larger clouds with weaker cores in the HS run will result in different profiles of latent release  
455 and consumption, which will change how they cool or warm the air around them. This, in turn, will result in different  
impacts to the vertical temperature and humidity profiles, affecting the preconditioning of the atmosphere. With the aim of  
estimating the enhanced preconditioning, we have calculated the averaged profiles of the condensation/evaporation rates for  
all cloudy pixels in all runs. This is done by averaging the cloud droplet water tendency ( $\Delta\text{LWC}$ ) for all cloudy pixels in  
every timestep. The result is a single vertical profile of  $\Delta\text{LWC}$  for every timestep in all runs. To eliminate the contribution of  
460 rain formation to  $\Delta\text{LWC}$ , we only perform the calculations for pixels with no rainwater (using the threshold of  $0.001 \text{ g m}^{-3}$ ).  
Figure 5–7 evidences that the deepest cloud in HS occurred between 14:00 and 15:00 local time, therefore the  
preconditioning mechanisms should be analysed before such timeframe.

To estimate the  $\Delta\text{LWC}$  effect on the vicinity of clouds, we integrate the averaged profiles of  $\Delta\text{LWC}$  over time between  
11:00 and 14:00 local time. This results in an averaged profile of water vapor release or removal from the atmosphere based  
465 on the evaporation and condensation within the clouds. The results are shown in Figure 12a–14a, with the different runs  
represented by different line colours. Because of the pulsating nature of convective cloud development and the resulting  
changes to  $\Delta\text{LWC}$ , the variability is very high. The standard deviation of  $\Delta\text{LWC}$  previous to the time integration is about 1–2  
orders of magnitude higher than the averages, due in large part to the variable cloud depths, lifetimes, and convective  
strengths in every time step. Nevertheless, Figure 12a–14a is consistent with our previous results because there is an  
470 enhancement of the water vapour release with higher VWS due to the larger cloud areas as well as the relatively lower core  
fractions. There is more cloud water being converted into water vapour between 1500 m and 2500 m, as seen in Figure 12b  
14b that shows the differences of the time-integrated  $\Delta\text{LWC}$  between the different runs (having NS as the reference). Figure  
12b–14b shows that higher VWS can lead up to  $0.3 \text{ g m}^{-3}$  more water vapour being released to the atmosphere on average due  
to the enhanced bulk evaporation of the clouds between 11:00 and 14:00.

475 The evaporation of cloud droplets decreases the air temperature ( $T$ ) in the vicinity due to the latent heat exchange.  
Additionally, it also increases the relative humidity (RH) by adding more water vapor to the atmosphere. Conversely, the  
water vapor condensation increases  $T$  and reduces RH. We estimate such  $T$  and RH tendencies based on the curves of Figure  
12b–14b, by assuming latent heat of condensation  $L_v$  of  $2.5 \times 10^6 \text{ J kg}^{-1}$  and specific heat of air at constant pressure  $c_p$  of  $1005 \text{ J}$   
 $\text{kg}^{-1} \text{ K}^{-1}$ . The RH results are calculated after the temperature corrections, therefore taking into account both the temperature  
480 and humidity variations. The results are shown in Figure 12e–14c,d. It shows that the enhanced evaporation with high VWS  
results in a temperature decrease of up to  $0.8 \text{ }^\circ\text{C}$  close to 2000 m height. Similarly, there can be a positive temperature  
tendency of up to  $0.6 \text{ }^\circ\text{C}$  below 1500 m or above 2500 m potentially due to the reduced number of clouds and their depths  
overall. The RH tendencies have opposite sign as the temperature tendencies and are mostly contained between -6% and  
+7%.

485 To investigate whether the estimated  $T$  and RH changes would leave the local atmosphere more or less unstable, we calculate  
the corresponding convective available potential energy difference ( $\Delta\text{CAPE}$ ) based on the curves of Figure 12e–14c,d. Firstly,



the temperature and humidity differences are converted into virtual temperature ( $T_v$ ) differences. Then, this is used to calculate  $\Delta\text{CAPE}$  as:

$$\Delta\text{CAPE} = - \int_{z=0}^{z=5000} g \frac{\Delta T_v}{T_v} dz \quad (1)$$

490 Where  $g$  is the acceleration due to gravity (fixed to  $9.8 \text{ m s}^{-2}$  here),  $\Delta T_v$  is the mentioned virtual temperature difference, and  $\bar{T}_v$  is the baseline virtual temperature profile. This baseline profile is taken from the domain averages (cloudy and non-cloudy pixels) of the NS run. The negative sign is added because negative  $\Delta T_v$  leads to an increase in CAPE for later cloud parcels developing nearby. The  $\Delta\text{CAPE}$  calculation provides the overall net effect of the  $T$  and RH differences due to higher VWS conditions. The values of  $\Delta\text{CAPE}$  are  $5.2 \text{ J kg}^{-1}$ ,  $-1.6 \text{ J kg}^{-1}$ ,  $14.1 \text{ J kg}^{-1}$ ,  $13.1 \text{ J kg}^{-1}$ , and  $18.1 \text{ J kg}^{-1}$  for the NSR, MS, MSR, 495 HS, and HSR runs, respectively. Except for MS, all simulations result in increased CAPE due to the enhanced evaporation effect, suggesting that later clouds can be invigorated. Additionally, the added directional shear seems to affect the  $\Delta\text{CAPE}$  calculations more than the wind speed shear, which is surprising considering that the rest of the results shown here point to the stronger effect of wind speed shear in the cloud dimensions. This could be related to the increased cloud cover of the runs with directional shear. Those runs have 10% higher averaged cloud cover as compared to their respective non- 500 directional-shear runs (not shown).

While most  $\Delta\text{CAPE}$  values are positive, their absolute values are relatively small, and it is inconclusive if they would be enough to generate the deepest ~~cloud~~ cloud in the HS run. Of course, the  $\Delta\text{CAPE}$  values represent an average throughout the cloudy pixels in the domain and the  $\Delta\text{LWC}$  profiles have high variability, so there can be variations depending on the cloud cover in each subsection of the domain. The higher VWS not only increases the cloud cover overall, but it also tends to 505 increase cloud clustering. Such grouping of clouds could potentially generate more instabilities in specific sections of the domain, invigorating the later clouds that form there even though the domain as a whole is not much more unstable. We note that our estimates of  $\Delta\text{CAPE}$  represent the atmosphere in the immediate vicinity of clouds and therefore do not represent the whole domain. On average, the horizontal cloud cover reaches a maximum of about ~~32.4% between 1400 m and 1500 m at 1100 m~~ (not shown Figure 5), indicating that the effects of evaporation should be small on the entire domain. There are also 510 other processes that can cause invigoration of clouds by VWS, including the intensification of turbulence at the boundary layer (Henkes et al., 2021). The identification of processes that can lead to cloud invigoration due to increased VWS in our simulations will be the subject of future studies.

#### 4 Summary and discussion

This study analysed the effects of vertical wind shear (VWS) on the properties of cumulus cloud fields over Central 515 Amazonia using idealized model simulations. The cloud fields were simulated by the Dutch Atmospheric Large Eddy Simulation (DALES) model with a domain size of  $21.6 \text{ km} \times 21.6 \text{ km}$  (horizontal, 50 m resolution)  $\times 5.0 \text{ km}$  (vertical, 20 m resolution). To this end, a suite of systematic numerical experiments was performed, differing only by the initial and large



scale VWS forcing. The reference run had no wind speed or directional VWS and is referred as NS. The vertical profiles of temperature and moisture represent a typical day during the dry season and are based on radiosondes (Vilà-Guerau de Arellano et al., 2020). Moderate (MS) and high (HS) vertical wind speed shear conditions were simulated by increasing the wind speed by factors of  $1.2 \text{ m s}^{-1} \text{ km}^{-1}$  and  $2.4 \text{ m s}^{-1} \text{ km}^{-1}$ , respectively. Three additional runs were performed by adding  $90^\circ$  wind rotation linearly between the heights of 0 km and 5 km to study the effect of directional wind shear. This rotation is added on top of the three different wind speed shear conditions. Such runs are referred to as NSR, MSR, and HSR.

A tracking algorithm allowed a Lagrangian examination of the cloud properties, enabling us to analyse how cloud properties are evolving on time and space. We find that increasing VWS leads to larger clouds horizontally, while at the same time limiting their vertical development. ~~An~~The idealized simulations of a representative day with shallow, non-precipitating cumulus development in Amazonia shows that clouds with equivalent diameter (diameter of a circle with the same horizontal area) greater than 1000 m are between ~~1.5-2~~ to 2.0 times more likely under high VWS than with no shear. Conversely, cloud depths lower than 1000 m are about 1.2 to 1.4 times more likely under high VWS. The tracking algorithm revealed that ~~The~~the increase of the clouds' horizontal dimensions is consistent throughout their vertical structure as well as their lifecycle. On average, the equivalent diameter of the clouds is increased only by up to ~~400-80~~ m by VWS, where the cloud cores and margins are increased by up to approximately ~~50-40~~ m each. This is of similar order than the horizontal resolution used in this study, indicating that small grid cells are desirable to study shallow clouds in more detail. Nonetheless, the increase in cloud dimension was shown to be proportional to VWS, where the MS run produced slightly larger clouds than NS and HS produced slightly larger clouds than MS. This indicates that there is consistency in the VWS effect in the cloud dimensions even though the averaged values are small and comparable to the grid size used.

While the cloud cores tend to be larger under higher VWS, its relative magnitudes change. Under high VWS, the core horizontal area fraction (i.e., the ratio of the core area and the cloud area) is reduced by about ~~0.93~~0.25, which represents approximately ~~406.5~~% of the overall core area fraction average in the NS run. In contrast, the cores of clouds developing in sheared environments presented lower updraught speed  $w$  and cloud droplet liquid water content LWC overall, which resulted in a reduction of up to 0.05 in the cores' mass and volume fractions. In relative terms having NS as reference, this represents a relative reduction in the range of 10%-25% approximately. It is important to stress that the sensitivity of cloud properties to the vertical wind speed shear is larger than the directional shear.

Our findings are consistent with previous studies suggesting that VWS weakens convective clouds and their cores by tilting them vertically (e.g., Helfer et al., 2020; Drueke et al., 2021). However, despite having shallower cumulus clouds with overall weaker cores, we find that the few deepest individual clouds simulated occurred under sheared environments. More specifically, the HS run have simulated the deepest clouds that resulted in a threefold increase in the total domain liquid water mass as compared to NS. This apparent contrast, where most clouds in the field are inhibited but a few may invigorate, can indicate a non-linear aspect of the VWS-clouds interactions. Changes of the early cumulus cloud field properties can feedback into the thermodynamics of the atmosphere with consequences for the later development of new clouds, a process known as preconditioning (Neggers et al., 2007). We have investigated one aspect of this possible feedback by analyzing the

total cloud field evaporation and its theoretical effect on the temperature and humidity vertical profiles. We have shown that the mostly larger but shallower clouds of the high-VWS runs result in larger total evaporation in the layer ranging from 1500 to 2500 m height. This, in turn, destabilizes the atmosphere by decreasing the temperature and increasing the humidity of such layer. The result is a local increase in the convective available potential energy (CAPE) that can affect the formation of clouds developing later in the region. While the domain-averaged CAPE increase is relatively low (up to about  $18 \text{ J kg}^{-1}$ ), it could vary significantly depending on the cloud cover of specific subsections within the domain. The subsections with more cloud development during the morning will increase the chances of developing a deeper cloud downwind in the afternoon. This localized preconditioning may be one aspect of the increased cloud clustering due to VWS as discussed in previous studies (e.g., Yamaguchi et al., 2019). The VWS influence could also represent an increase in the preconditioning effect where shallow clouds supply the low-to-mid tropospheric humidity needed for deeper convection.

~~Two Another~~ potential indirect effects of VWS on the cloud field development ~~is on the early formation of the~~ are related to the convective boundary layer formation. Recently, Henkes et al. (2021) analyzed 2 years of observations of the boundary layer (BL) conditions previous to shallow-only (ShCu) convection and to shallow-to-deep convective transition (ShDeep) in the Amazonian dry season. In their conceptual model, the wind shear close to the top of the BL plays an important role on determining the morning BL evolution and setting up the conditions for deeper convection. The authors note that the low-level jet commonly formed right over the morning BL is usually stronger and at a higher altitude in ShDeep days as compared to ShCu. This leads to stronger mechanical turbulence within the BL and helps on accelerating the onset of the convective BL. ~~(Helfer and Nuijens, (2021) suggest that increases in the VWS within the BL separates the precipitating downdrafts and the updrafts below cloud base that supports cloud formation. This process, together with a strengthened convective BL, could help explain the formation of deeper clouds under sheared environments.~~

-We therefore suggest that VWS influences the cloud field in both direct (by tilting and stretching the clouds) and indirect ways (by ~~changing the conditions of cloud formation~~ feedback mechanisms from cloud evaporation and BL formation). In our study, we have focused mostly on the quantification of the VWS in the cloud properties (i.e., direct effect), which show an overall inhibition of convective development under sheared environments. However, both our simulations and the results from Henkes et al. (2021) point to a more complex relation between VWS and convective cloud formation and growth. Of course, the natural occurrences of VWS over the region are not linear as in our simulations. Often, the VWS in the first few kilometres of the atmosphere manifests itself as the low-level jet. This type of phenomenon has a particular vertical structure where there is a specific height with peak wind speeds (usually around 0.5-1.0 km), which could have different effects on the cloud field. Other types of VWS, such as the low-level and deep VWS mentioned in Chakraborty et al. (2018), can also occur at the same time, adding more complexities to the analysis.

The idealized nature of the simulations performed here do not allow a concrete conclusion on whether VWS can support the formation of deeper clouds due to enhanced preconditioning and intensification of the morning boundary layer or if this is a sampling problem. This result can be statistical noise and appear due to non-infinite sampling comparisons. In addition, Vilà-Guerau de Arellano et al. (2020) have shown that the forest and cloud formation are intrinsically linked over the region. A

natural continuation of this current study is to replace the use of prescribed surface fluxes ~~should~~ by a more realistic surface-atmosphere interaction scheme to represent the coupling between the Amazonian clouds and the dynamics of the soil and rainforest surface turbulent fluxes. Nevertheless, the advantage of using idealized simulations is that it enables us to breakdown the complexity and systematically analyse individual processes. The convective cloud ~~field properties dimensions~~ were changed ~~significantly marginally~~ by ~~only~~ modifying the VWS initial and large-scale forcing conditions. ~~Nevertheless, this has led to changes in the cloud field as a whole, even allowing the formation of a deeper and precipitating cloud under high shear conditions. This indicating-indicates~~ that ~~this VWS~~ is an important aspect of cloud formation over the region. In particular, the direct VWS effect inhibits the shallow-to-deep transition ~~of most clouds within the field~~. This is consistent with the findings of Chakraborty et al. (2018) that relate shallow convection occurrences with high low-level VWS. On the other hand, ~~the direct VWS may generate feedbacks through cloud evaporation or changes in the BL that enable the formation of deeper clouds. This would be consistent with~~ Zhuang et al. (2017) ~~and~~ (Helfer and Nuijens, (2021) ~~that reports~~ on positive correlations between higher low-level VWS and deeper convection occurrence, indicating a non-linear relation. Some of these ~~contrasting results found in the literature inconsistencies~~ may be explained by the ~~balance between the direct and indirect VWS effects via changes in the BL and on the thermodynamic profiles as mentioned here~~. This highlights the need for further observational and high-resolution simulation studies regarding the VWS ~~effect in cumulus cloud fields-shallow cloud field relation~~.

### Code availability

All codes used in this study are available upon request to the corresponding author (Micael A. Cecchini).

### Data availability

605 All datasets used in this study are available upon request to the corresponding author (Micael A. Cecchini).

### Author contribution

610 Marco de Bruine designed the reference experiment and provided technical assistance on running the model. Micael A. Cecchini designed the other experiments, performed data analysis, and wrote most of the manuscript. Jordi Vilà-Guerau de Arellano has developed the input conditions for the reference run, supervised the experiments and reviewed the manuscript text. Paulo Artaxo has supervised the development of the manuscript and has reviewed the text.

### Competing interests

The authors declare that there is no conflict of interest regarding this publication.

## Acknowledgements

This research was supported by the Office of Science (BER), DOE under Grants DE-SC0021167. This work has been developed within the scope of FAPESP thematic project 2017/17047-0. Micael A. Cecchini was funded by FAPESP grant number 2020/13273-9.

## References

- Altaratz, O., Koren, I., Remer, L. A., and Hirsch, E.: Review: Cloud invigoration by aerosols—Coupling between microphysics and dynamics, *Atmospheric Research*, 140–141, 38–60, <https://doi.org/10.1016/j.atmosres.2014.01.009>, 2014.
- 620 Andreae, M. O., Afchine, A., Albrecht, R., Holanda, B. A., Artaxo, P., Barbosa, H. M. J., Borrmann, S., Cecchini, M. A., Costa, A., Dollner, M., Fütterer, D., Järvinen, E., Jurkat, T., Klimach, T., Konemann, T., Knote, C., Krämer, M., Krisna, T., Machado, L. A. T., Mertes, S., Minikin, A., Pöhlker, C., Pöhlker, M. L., Pöschl, U., Rosenfeld, D., Sauer, D., Schlager, H., Schnaiter, M., Schneider, J., Schulz, C., Spanu, A., Sperling, V. B., Voigt, C., Walser, A., Wang, J., Weinzierl, B., Wendisch, M., and Ziereis, H.: Aerosol characteristics and particle production in the upper troposphere over the Amazon Basin, *Atmos. Chem. Phys.*, 18, 921–961, <https://doi.org/10.5194/acp-18-921-2018>, 2018.
- 625 Artaxo, P., Rizzo, L. V., Brito, J. F., Barbosa, H. M. J., Arana, A., Sena, E. T., Cirino, G. G., Bastos, W., Martin, S. T., and Andreae, M. O.: Atmospheric aerosols in Amazonia and land use change: from natural biogenic to biomass burning conditions, *Faraday Discuss.*, 165, 203–235, <https://doi.org/10.1039/C3FD00052D>, 2013.
- Asai, T.: Cumulus Convection in the Atmosphere with Vertical, 42, 245–259, [https://doi.org/10.2151/jmsj1923.42.4\\_245](https://doi.org/10.2151/jmsj1923.42.4_245), 1964.
- 630 Betts, R. A., Malhi, Y., and Roberts, J. T.: The future of the Amazon: new perspectives from climate, ecosystem and social sciences, *Philos Trans R Soc Lond B Biol Sci*, 363, 1729–1735, <https://doi.org/10.1098/rstb.2008.0011>, 2008.
- de Bruine, M., Krol, M., Vilà-Guerau de Arellano, J., and Röckmann, T.: Explicit aerosol–cloud interactions in the Dutch Atmospheric Large-Eddy Simulation model DALES4.1-M7, *Geosci. Model Dev.*, 12, 5177–5196, <https://doi.org/10.5194/gmd-12-5177-2019>, 2019.
- 635 Cecchini, M. A., Silva Dias, M. A. F., Machado, L. A. T., Morales Rodriguez, C. A., and Biscaro, T.: Macrophysical and Microphysical Characteristics of Convective Rain Cells Observed During SOS-CHUVA, *Journal of Geophysical Research: Atmospheres*, 125, e2019JD031187, <https://doi.org/10.1029/2019JD031187>, 2020.
- Chakraborty, S., Schiro, K. A., Fu, R., and Neelin, J. D.: On the role of aerosols, humidity, and vertical wind shear in the transition of shallow-to-deep convection at the Green Ocean Amazon 2014/5 site, *Atmos. Chem. Phys.*, 18, 11135–11148, <https://doi.org/10.5194/acp-18-11135-2018>, 2018.
- 640 Cuijpers, J. W. M. and Duynkerke, P. G.: Large Eddy Simulation of Trade Wind Cumulus Clouds, *Journal of Atmospheric Sciences*, 50, 3894–3908, [https://doi.org/10.1175/1520-0469\(1993\)050<3894:LESOTW>2.0.CO;2](https://doi.org/10.1175/1520-0469(1993)050<3894:LESOTW>2.0.CO;2), 1993.
- 645 Druke, S., Kirshbaum, D. J., and Kollias, P.: Environmental sensitivities of shallow-cumulus dilution – Part 2: Vertical wind profile, *Atmos. Chem. Phys.*, 21, 14039–14058, <https://doi.org/10.5194/acp-21-14039-2021>, 2021.

- Fan, J., Yuan, T., Comstock, J. M., Ghan, S., Khain, A., Leung, L. R., Li, Z., Martins, V. J., and Ovchinnikov, M.: Dominant role by vertical wind shear in regulating aerosol effects on deep convective clouds, *Journal of Geophysical Research: Atmospheres*, 114, <https://doi.org/10.1029/2009JD012352>, 2009.
- 650 Fu, Q. and Liou, K. N.: On the Correlated k-Distribution Method for Radiative Transfer in Nonhomogeneous Atmospheres, *Journal of Atmospheric Sciences*, 49, 2139–2156, [https://doi.org/10.1175/1520-0469\(1992\)049<2139:OTCDMF>2.0.CO;2](https://doi.org/10.1175/1520-0469(1992)049<2139:OTCDMF>2.0.CO;2), 1992.
- Fu, Q., Liou, K. N., Cribb, M. C., Charlock, T. P., and Grossman, A.: Multiple Scattering Parameterization in Thermal Infrared Radiative Transfer, *Journal of the Atmospheric Sciences*, 54, 2799–2812, [https://doi.org/10.1175/1520-0469\(1997\)054<2799:MSPITI>2.0.CO;2](https://doi.org/10.1175/1520-0469(1997)054<2799:MSPITI>2.0.CO;2), 1997.
- 655 Heiblum, R. H., Pinto, L., Altaratz, O., Dagan, G., and Koren, I.: Core and margin in warm convective clouds – Part 1: Core types and evolution during a cloud’s lifetime, *Atmos. Chem. Phys.*, 19, 10717–10738, <https://doi.org/10.5194/acp-19-10717-2019>, 2019.
- Helfer, K. C. and Nuijens, L.: The Morphology of Simulated Trade-Wind Convection and Cold Pools Under Wind Shear, *Journal of Geophysical Research: Atmospheres*, 126, e2021JD035148, <https://doi.org/10.1029/2021JD035148>, 2021.
- 660 Helfer, K. C., Nuijens, L., de Roode, S. R., and Siebesma, A. P.: How Wind Shear Affects Trade-wind Cumulus Convection, *Journal of Advances in Modeling Earth Systems*, 12, e2020MS002183, <https://doi.org/10.1029/2020MS002183>, 2020.
- Henkes, A., Fisch, G., Machado, L. A. T., and Chaboureau, J.-P.: Morning boundary layer conditions for shallow to deep convective cloud evolution during the dry season in the central Amazon, *Atmos. Chem. Phys.*, 21, 13207–13225, <https://doi.org/10.5194/acp-21-13207-2021>, 2021.
- 665 Heus, T., van Heerwaarden, C. C., Jonker, H. J. J., Pier Siebesma, A., Axelsen, S., van den Dries, K., Geoffroy, O., Moene, A. F., Pino, D., de Roode, S. R., and Vilà-Guerau de Arellano, J.: Formulation of the Dutch Atmospheric Large-Eddy Simulation (DALES) and overview of its applications, *Geosci. Model Dev.*, 3, 415–444, <https://doi.org/10.5194/gmd-3-415-2010>, 2010.
- Houze, R. A.: 100 Years of Research on Mesoscale Convective Systems, *Meteorological Monographs*, 59, 17.1-17.54, <https://doi.org/10.1175/AMSMONOGRAPHS-D-18-0001.1>, 2018.
- 675 ~~J. Vilà Guerau de Arellano, J. Vilà Guerau De Arellano, X. Wang, Xabier Pedruzo Bagazgoitia, M. Sikma, A. Agusti Panareda, Anna Agusti Panareda, Souhail Boussetta, Gianpaolo Balsamo, G. Balsamo, Gianpaolo Balsamo, Luiz A. T. Machado, Thiago Biscaro, Pierre Gentine, Seot T. Martin, S. T. Martin, S.T. Martin, Seot T. Martin, Jose D. Fuentes, and Tobias Gerken: Interactions Between the Amazonian Rainforest and Cumuli Clouds: A Large Eddy Simulation, High Resolution ECMWF, and Observational Intercomparison Study, *Journal of Advances in Modeling Earth Systems*, <https://doi.org/10.1029/2019ms001828>, 2020.~~
- Lintner, B. R., Adams, D. K., Schiro, K. A., Stansfield, A. M., Rocha, A. A. A., and Neelin, J. D.: Relationships among climatological vertical moisture structure, column water vapor, and precipitation over the central Amazon in observations and CMIP5 models, 44, 1981–1989, <https://doi.org/10.1002/2016GL071923>, 2017.
- 680 Lovejoy, T. E. and Nobre, C.: Amazon Tipping Point, *Sci Adv*, 4, eaat2340, <https://doi.org/10.1126/sciadv.aat2340>, 2018.
- Machado, L. A. T., Calheiros, A. J. P., Biscaro, T., Giangrande, S., Silva Dias, M. A. F., Cecchini, M. A., Albrecht, R., Andreae, M. O., Araujo, W. F., Artaxo, P., Borrmann, S., Braga, R., Burleyson, C., Eichholz, C. W., Fan, J., Feng, Z., Fisch, G. F., Jensen, M. P., Martin, S. T., Pöschl, U., Pöhlker, C., Pöhlker, M. L., Ribaud, J.-F., Rosenfeld, D., Saraiva, J. M. B.,

- 685 Schumacher, C., Thalman, R., Walter, D., and Wendisch, M.: Overview: Precipitation characteristics and sensitivities to environmental conditions during GoAmazon2014/5 and ACRIDICON-CHUVA, *Atmos. Chem. Phys.*, 18, 6461–6482, <https://doi.org/10.5194/acp-18-6461-2018>, 2018.
- Malkus, J. S.: The slopes of cumulus clouds in relation to external wind shear, *Quarterly Journal of the Royal Meteorological Society*, 78, 530–542, <https://doi.org/10.1002/qj.49707833804>, 1952.
- 690 Martin, S. T., Artaxo, P., Machado, L. A. T., Manzi, A. O., Souza, R. A. F., Schumacher, C., Wang, J., Andreae, M. O., Barbosa, H. M. J., Fan, J., Fisch, G., Goldstein, A. H., Guenther, A., Jimenez, J. L., Pöschl, U., Silva Dias, M. A., Smith, J. N., and Wendisch, M.: Introduction: Observations and Modeling of the Green Ocean Amazon (GoAmazon2014/5), *Atmos. Chem. Phys.*, 16, 4785–4797, <https://doi.org/10.5194/acp-16-4785-2016>, 2016.
- Neggers, R. A. J., Neelin, J. D., and Stevens, B.: Impact Mechanisms of Shallow Cumulus Convection on Tropical Climate Dynamics, 20, 2623–2642, <https://doi.org/10.1175/JCLI4079.1>, 2007.
- 695 Nobre, C. A., Obregón, G. O., Marengo, J. A., Fu, R., and Poveda, G.: Characteristics of Amazonian Climate: Main Features, 149–162, <https://doi.org/10.1029/2009GM000903>, 2009.
- Nuijens, L. and Stevens, B.: The Influence of Wind Speed on Shallow Marine Cumulus Convection, *Journal of the Atmospheric Sciences*, 69, 168–184, <https://doi.org/10.1175/JAS-D-11-02.1>, 2012.
- 700 Ouwersloot, H. G., Moene, A. F., Attema, J. J., and de Arellano, J. V.-G.: Large-Eddy Simulation Comparison of Neutral Flow Over a Canopy: Sensitivities to Physical and Numerical Conditions, and Similarity to Other Representations, *Boundary-Layer Meteorology*, 162, 71–89, <https://doi.org/10.1007/s10546-016-0182-5>, 2017.
- Petters, M. D. and Kreidenweis, S. M.: A single parameter representation of hygroscopic growth and cloud condensation nucleus activity, *Atmos. Chem. Phys.*, 7, 1961–1971, <https://doi.org/10.5194/acp-7-1961-2007>, 2007.
- 705 Piacsek, S. A. and Williams, G. P.: Conservation properties of convection difference schemes, *Journal of Computational Physics*, 6, 392–405, [https://doi.org/10.1016/0021-9991\(70\)90038-0](https://doi.org/10.1016/0021-9991(70)90038-0), 1970.
- Pöhlker, M. L., Ditas, F., Saturno, J., Klimach, T., Hrabě de Angelis, I., Araùjo, A. C., Brito, J., Carbone, S., Cheng, Y., Chi, X., Ditz, R., Gunthe, S. S., Holanda, B. A., Kandler, K., Kesselmeier, J., Könemann, T., Krüger, O. O., Lavrič, J. V., Martin, S. T., Mikhailov, E., Moran-Zuloaga, D., Rizzo, L. V., Rose, D., Su, H., Thalman, R., Walter, D., Wang, J., Wolff, S., Barbosa, H. M. J., Artaxo, P., Andreae, M. O., Pöschl, U., and Pöhlker, C.: Long-term observations of cloud condensation nuclei over the Amazon rain forest – Part 2: Variability and characteristics of biomass burning, long-range transport, and pristine rain forest aerosols, *Atmos. Chem. Phys.*, 18, 10289–10331, <https://doi.org/10.5194/acp-18-10289-2018>, 2018.
- Riehl, H., Yeh, T. C., Malkus, J. S., and la Seur, N. E.: The north-east trade of the Pacific Ocean, *Quarterly Journal of the Royal Meteorological Society*, 77, 598–626, <https://doi.org/10.1002/qj.49707733405>, 1951.
- 715 Schiro, K. A. and Neelin, J. D.: Deep Convective Organization, Moisture Vertical Structure, and Convective Transition Using Deep-Inflow Mixing, *Journal of the Atmospheric Sciences*, 76, 965–987, <https://doi.org/10.1175/JAS-D-18-0122.1>, 2019.
- Schiro, K. A., Neelin, J. D., Adams, D. K., and Lintner, B. R.: Deep Convection and Column Water Vapor over Tropical Land versus Tropical Ocean: A Comparison between the Amazon and the Tropical Western Pacific, *Journal of the Atmospheric Sciences*, 73, 4043–4063, <https://doi.org/10.1175/JAS-D-16-0119.1>, 2016.

- 720 Seifert, A. and Beheng, K. D.: A two-moment cloud microphysics parameterization for mixed-phase clouds. Part 1: Model description, *Meteorology and Atmospheric Physics*, 92, 45–66, <https://doi.org/10.1007/s00703-005-0112-4>, 2006.
- Silva Dias, M. A. F., Rutledge, S., Kabat, P., Silva Dias, P. L., Nobre, C., Fisch, G., Dolman, A. J., Zipser, E., Garstang, M., Manzi, A. O., Fuentes, J. D., Rocha, H. R., Marengo, J., Plana-Fattori, A., Sá, L. D. A., Alvalá, R. C. S., Andreae, M. O., Artaxo, P., Gielow, R., and Gatti, L.: Cloud and rain processes in a biosphere-atmosphere interaction context in the Amazon Region, *Journal of Geophysical Research: Atmospheres*, 107, LBA 39-1, <https://doi.org/10.1029/2001JD000335>, 2002.
- 725 Sommeria, G. and Deardorff, J. W.: Subgrid-Scale Condensation in Models of Nonprecipitating Clouds, *Journal of Atmospheric Sciences*, 34, 344–355, [https://doi.org/10.1175/1520-0469\(1977\)034<0344:SSCIMO>2.0.CO;2](https://doi.org/10.1175/1520-0469(1977)034<0344:SSCIMO>2.0.CO;2), 1977.
- Stevens, B.: On the Growth of Layers of Nonprecipitating Cumulus Convection, 64, 2916–2931, <https://doi.org/10.1175/JAS3983.1>, 2007.
- 730 Toledo Machado, L. A., Franco, M. A., Kremper, L. A., Ditas, F., Andreae, M. O., Artaxo, P., Cecchini, M. A., Holanda, B. A., Pöhlker, M. L., Saraiva, I., Wolff, S., Pöschl, U., and Pöhlker, C.: How weather events modify aerosol particle size distributions in the Amazon boundary layer, 2021, 1–31, <https://doi.org/10.5194/acp-2021-314>, 2021.
- Vera, C., Higgins, W., Amador, J., Ambrizzi, T., Garreaud, R., Gochis, D., Gutzler, D., Lettenmaier, D., Marengo, J., Mechoso, C. R., Nogues-Paegle, J., Dias, P. L. S., and Zhang, C.: Toward a Unified View of the American Monsoon Systems, *Journal of Climate*, 19, 4977–5000, <https://doi.org/10.1175/JCLI3896.1>, 2006.
- 735 Vila, D. A., Machado, L. A. T., Laurent, H., and Velasco, I.: Forecast and Tracking the Evolution of Cloud Clusters (ForTraCC) Using Satellite Infrared Imagery: Methodology and Validation, *Weather and Forecasting*, 23, 233–245, <https://doi.org/10.1175/2007WAF2006121.1>, 2008.
- Vilà-Guerau de Arellano, J., Kim, S.-W., Barth, M. C., and Patton, E. G.: Transport and chemical transformations influenced by shallow cumulus over land, 5, 3219–3231, <https://doi.org/10.5194/acp-5-3219-2005>, 2005.
- Vilà-Guerau de Arellano, J., Patton, E. G., Karl, T., van den Dries, K., Barth, M. C., and Orlando, J. J.: The role of boundary layer dynamics on the diurnal evolution of isoprene and the hydroxyl radical over tropical forests, *Journal of Geophysical Research: Atmospheres*, 116, <https://doi.org/10.1029/2010JD014857>, 2011.
- [Vilà-Guerau de Arellano, J. Vilà-Guerau De Arellano, X. Wang, Xabier Pedruzo-Bagazgoitia, M. Sikma, A. Agusti-Panareda, Anna Agusti-Panareda, Souhail Boussetta, Gianpaolo Balsamo, G. Balsamo, Gianpaolo Balsamo, Luiz A. T. Machado, Thiago Biscaro, Pierre Gentine, Scot T. Martin, S. T. Martin, S.T. Martin, Scot T. Martin, Jose D. Fuentes, and Tobias Gerken: Interactions Between the Amazonian Rainforest and Cumuli Clouds: A Large-Eddy Simulation, High-Resolution ECMWF, and Observational Intercomparison Study, Journal of Advances in Modeling Earth Systems, https://doi.org/10.1029/2019ms001828, 2020.](#)
- 745 Wang, J., Krejci, R., Giangrande, S., Kuang, C., Barbosa, H. M. J., Brito, J., Carbone, S., Chi, X., Comstock, J., Ditas, F., Lavric, J., Manninen, H. E., Mei, F., Moran-Zuloaga, D., Pöhlker, C., Pöhlker, M. L., Saturno, J., Schmid, B., Souza, R. A. F., Springston, S. R., Tomlinson, J. M., Toto, T., Walter, D., Wimmer, D., Smith, J. N., Kulmala, M., Machado, L. A. T., Artaxo, P., Andreae, M. O., Petäjä, T., and Martin, S. T.: Amazon boundary layer aerosol concentration sustained by vertical transport during rainfall, *Nature*, 539, 416–419, <https://doi.org/10.1038/nature19819>, 2016.
- 750 Wendisch, M., Pöschl, U., Andreae, M. O., Machado, L. A. T., Albrecht, R., Schlager, H., Rosenfeld, D., Martin, S. T., Abdelmonem, A., Afchine, A., Araùjo, A. C., Artaxo, P., Aufmhoff, H., Barbosa, H. M. J., Borrmann, S., Braga, R.,

Buchholz, B., Cecchini, M. A., Costa, A., Curtius, J., Dollner, M., Dorf, M., Dreiling, V., Ebert, V., Ehrlich, A., Ewald, F., Fisch, G., Fix, A., Frank, F., Fütterer, D., Heckl, C., Heidelberg, F., Hüneke, T., Jäkel, E., Järvinen, E., Jurkat, T., Kanter, S., Kästner, U., Kenntner, M., Kesselmeier, J., Klimach, T., Knecht, M., Kohl, R., Kölling, T., Krämer, M., Krüger, M., Krisna, T. C., Lavric, J. V., Longo, K., Mahnke, C., Manzi, A. O., Mayer, B., Mertes, S., Minikin, A., Molleker, S., Münch, S., Nillius, B., Pfeilsticker, K., Pöhlker, C., Roiger, A., Rose, D., Rosenow, D., Sauer, D., Schnaiter, M., Schneider, J., Schulz, C., de Souza, R. A. F., Spanu, A., Stock, P., Vila, D., Voigt, C., Walser, A., Walter, D., Weigel, R., Weinzierl, B., Werner, F., Yamasoe, M. A., Ziereis, H., Zinner, T., and Zöger, M.: ACRIDICON–CHUVA Campaign: Studying Tropical Deep Convective Clouds and Precipitation over Amazonia Using the New German Research Aircraft HALO, *Bulletin of the American Meteorological Society*, 97, 1885–1908, <https://doi.org/10.1175/BAMS-D-14-00255.1>, 2016.

Yamaguchi, T., Feingold, G., and Kazil, J.: Aerosol-Cloud Interactions in Trade Wind Cumulus Clouds and the Role of Vertical Wind Shear, *Journal of Geophysical Research: Atmospheres*, 124, 12244–12261, <https://doi.org/10.1029/2019JD031073>, 2019.

Zhou, J. and Lau, K.-M.: Does a Monsoon Climate Exist over South America?, *Journal of Climate*, 11, 1020–1040, [https://doi.org/10.1175/1520-0442\(1998\)011<1020:DAMCEO>2.0.CO;2](https://doi.org/10.1175/1520-0442(1998)011<1020:DAMCEO>2.0.CO;2), 1998.

Zhuang, Y., Fu, R., Marengo, J. A., and Wang, H.: Seasonal variation of shallow-to-deep convection transition and its link to the environmental conditions over the Central Amazon, *Journal of Geophysical Research: Atmospheres*, 122, 2649–2666, <https://doi.org/10.1002/2016JD025993>, 2017.

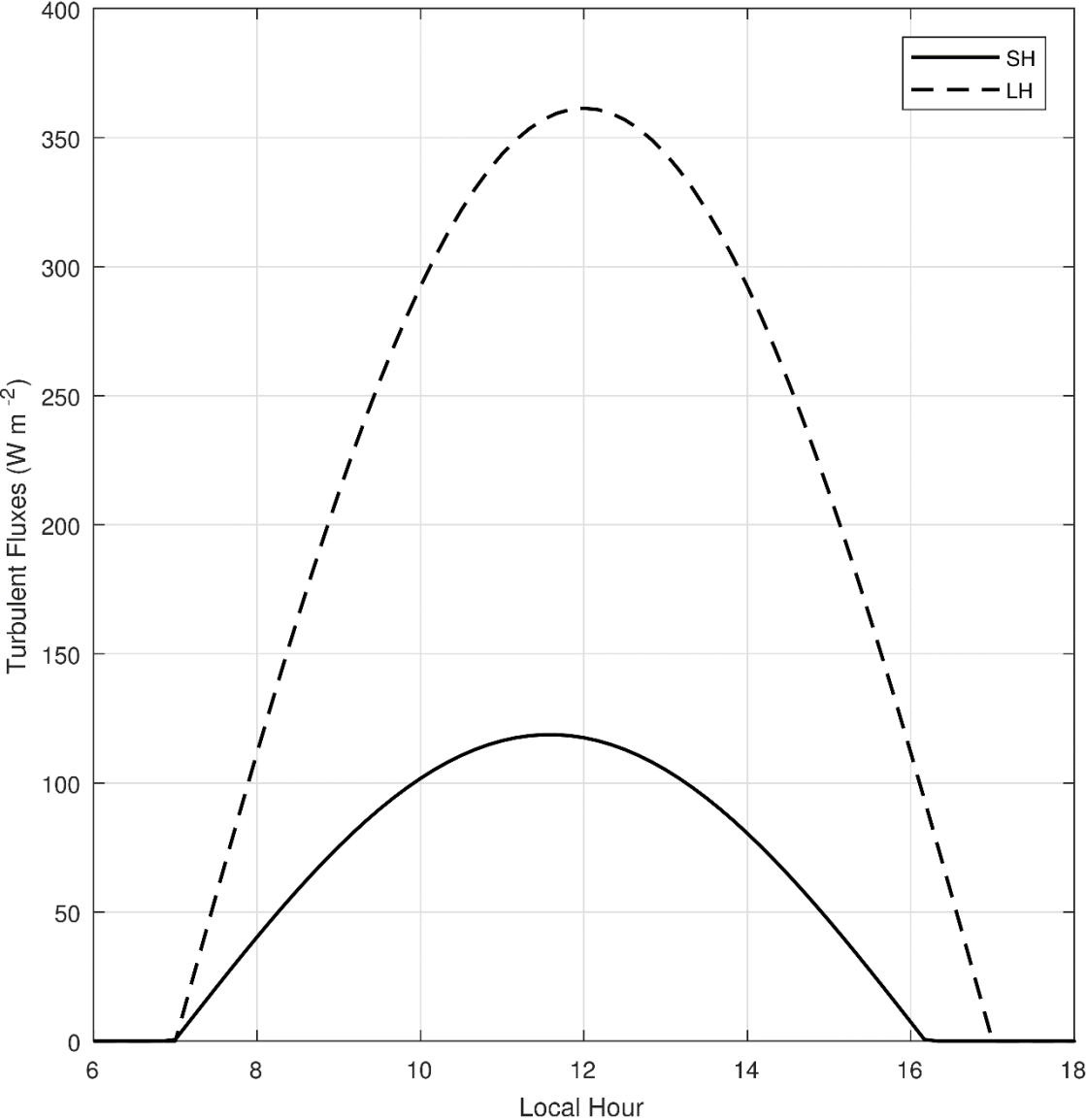
775

780

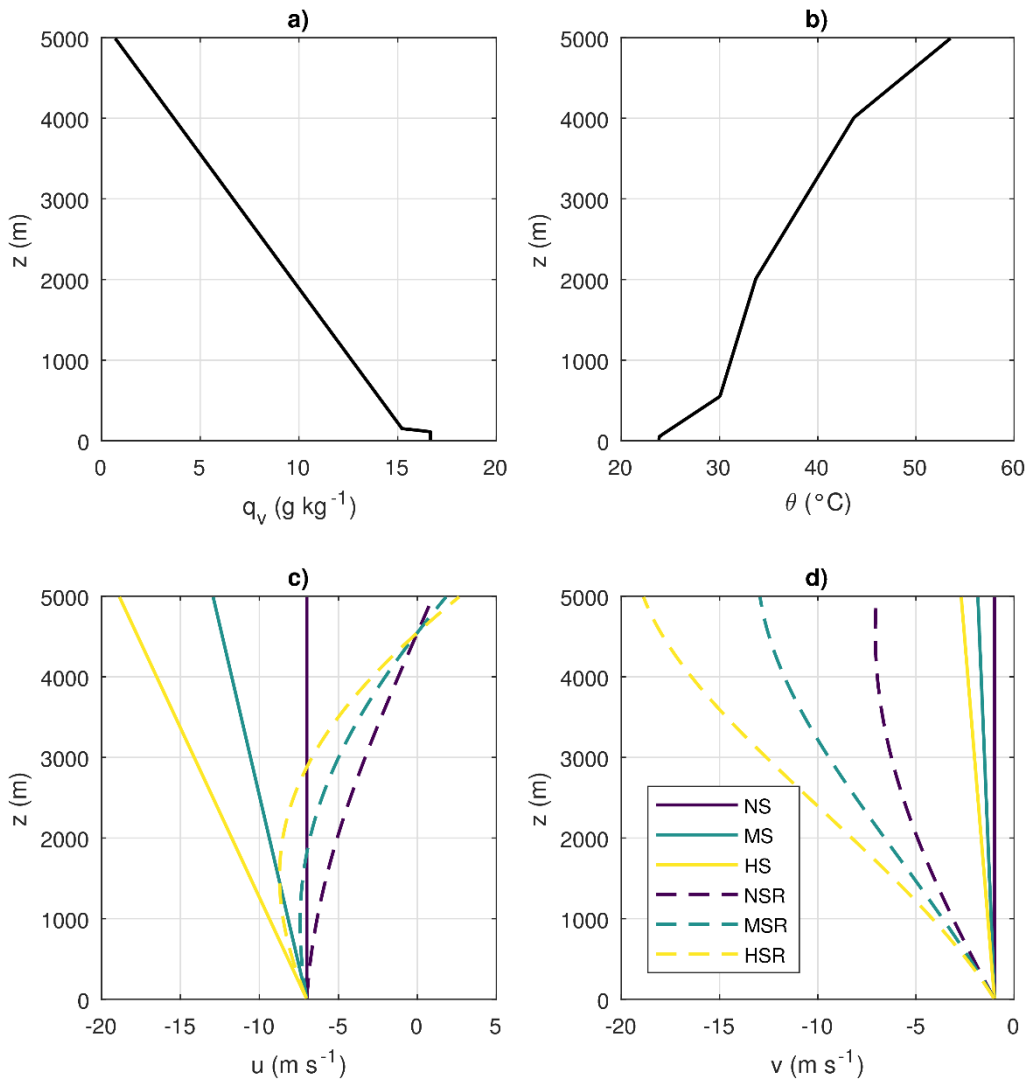
785

790





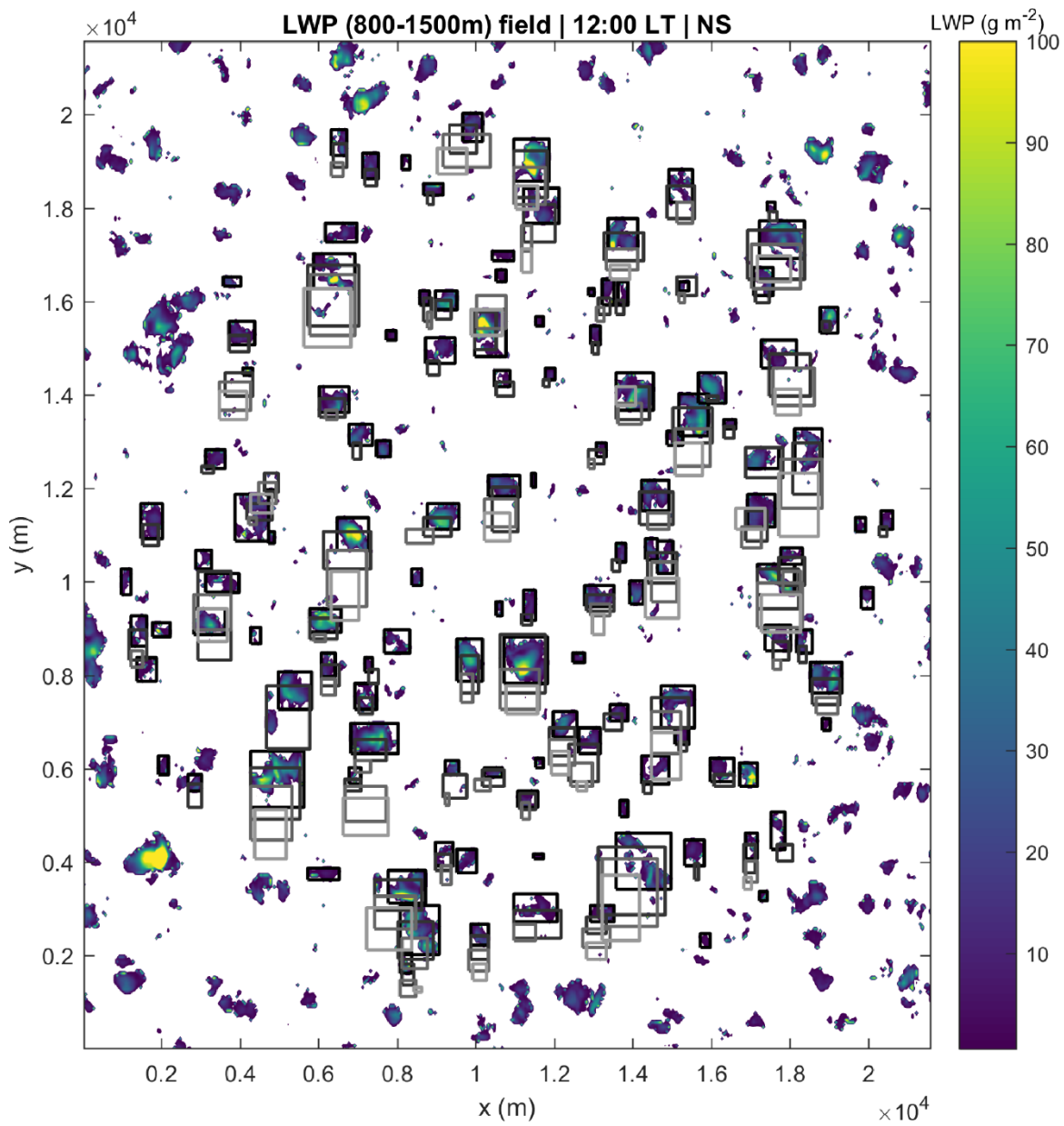
**Figure 1:** Prescribed turbulent fluxes of all DALES simulations performed in this study. SH and LH are the sensible and latent heat fluxes, respectively. The Bowen ratio SH/LH is mostly between 0.1 and 0.4, consistent with tropical rainforest environment.



800

Figure 2: Input profiles of a) water vapor specific humidity  $q_v$ , b) potential temperature  $\theta$ , c) zonal wind component  $u$  and d) meridional wind component  $v$ . The initial profiles of both  $q_v$  and  $\theta$  are the same for every run, the only difference being the vertical wind variability. Three levels of wind speed shear are defined: no wind speed shear (NS), moderate wind speed shear (MS) and high wind speed shear (HS). A counterclockwise rotation of  $90^\circ$  in wind direction between 0 km and 5 km is applied in the NSR, MSR and HSR runs, which have the same wind speed shear as NS, MS and HS, respectively.

805



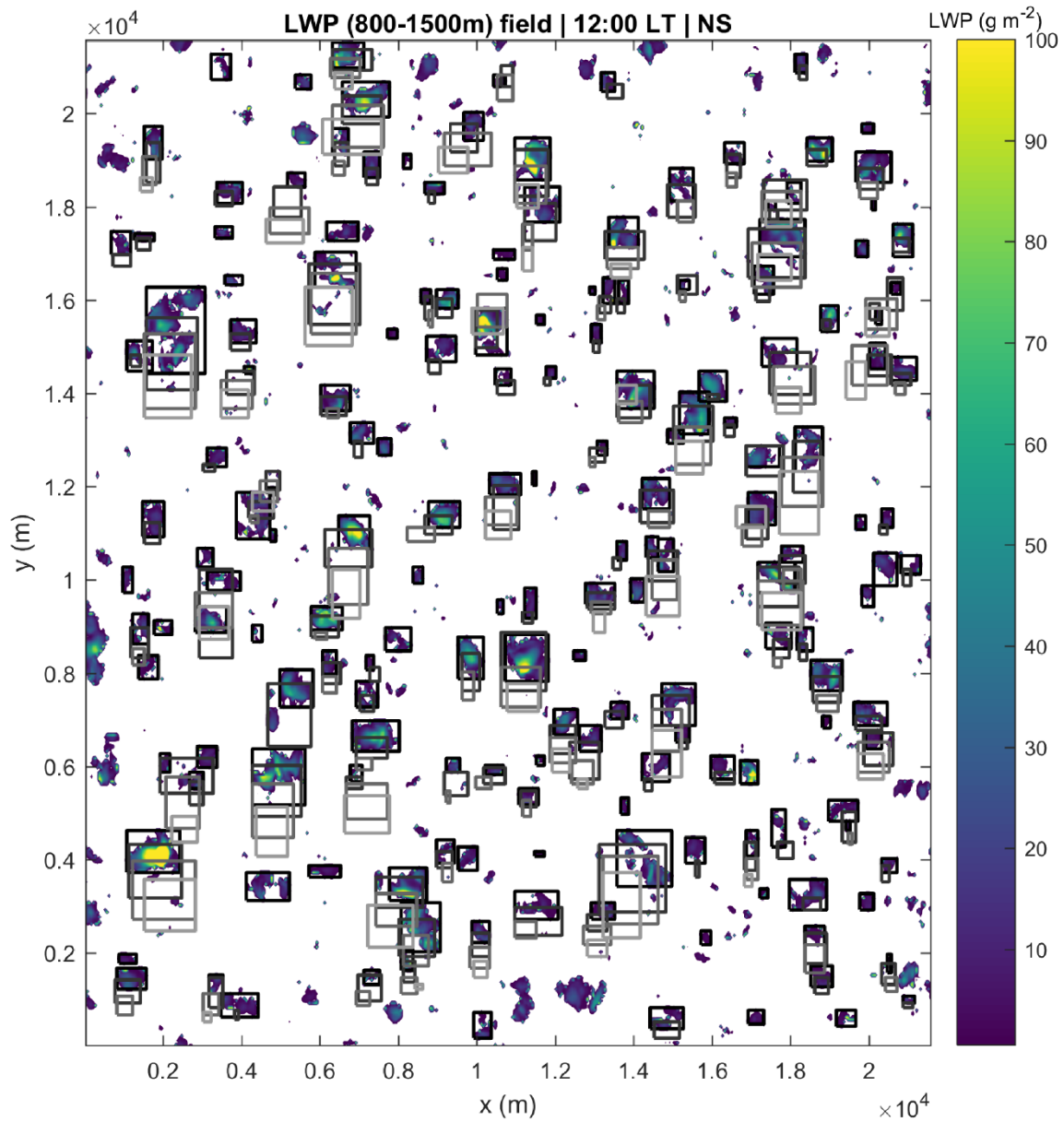
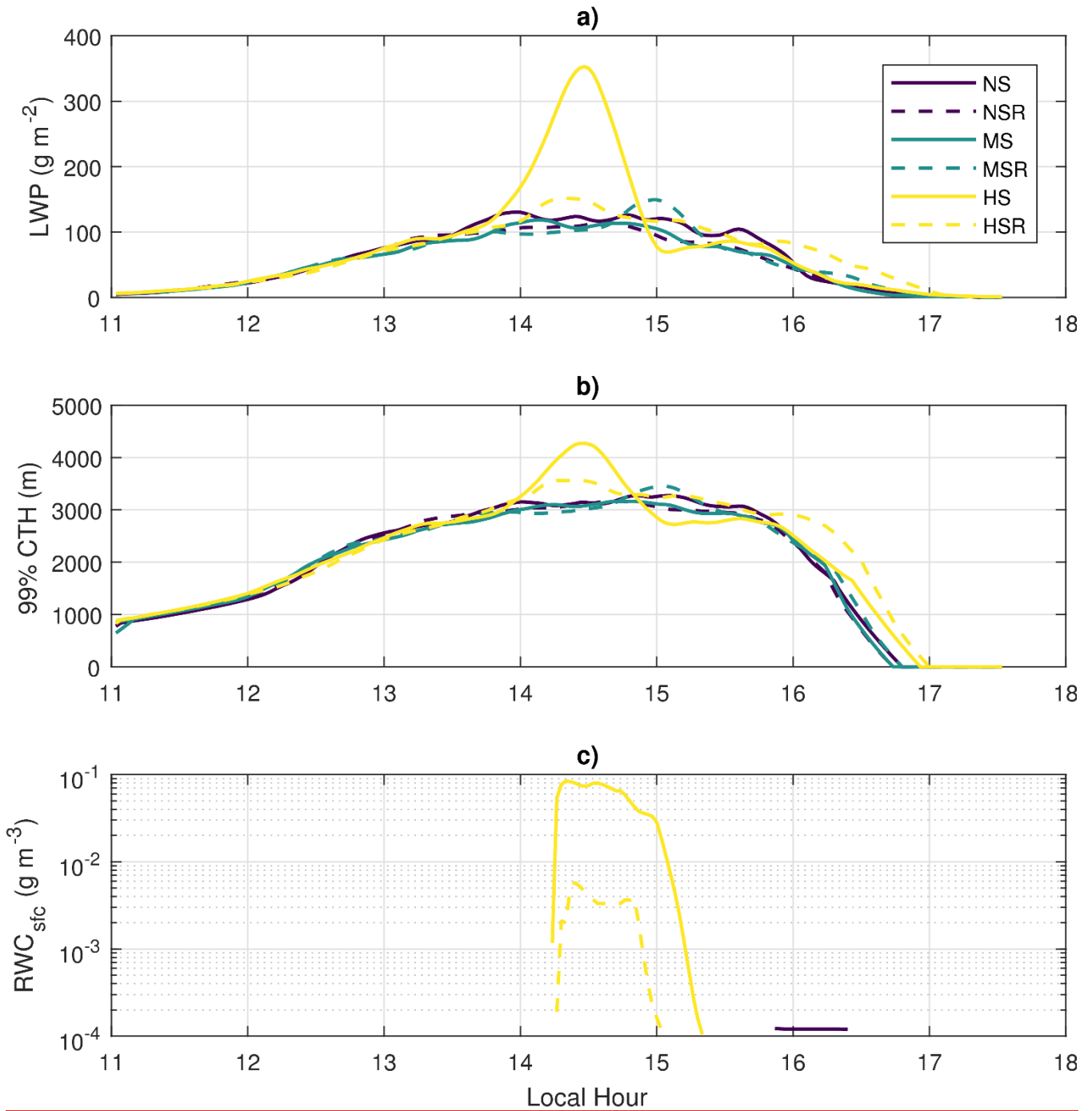


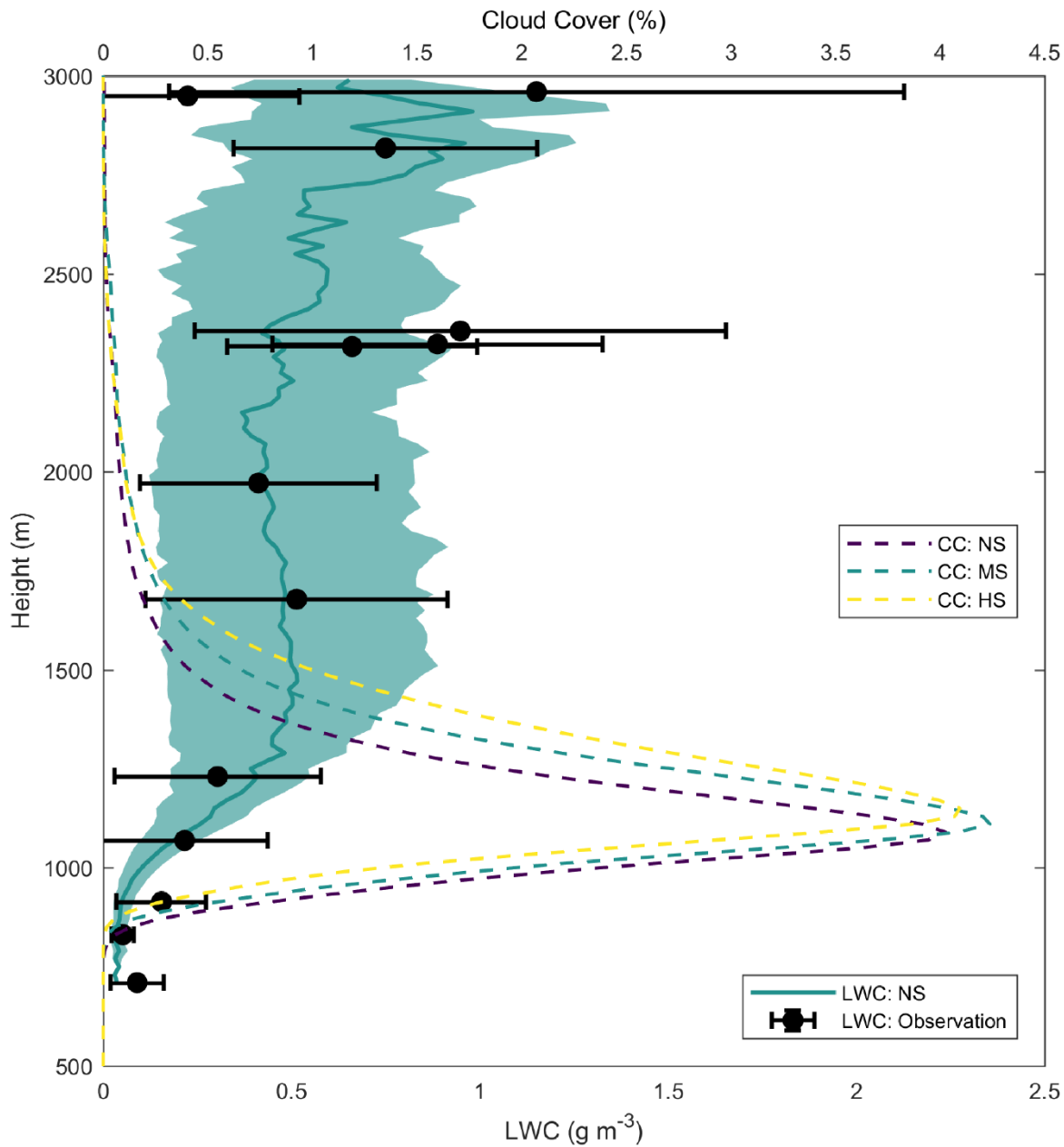
Figure 3: LWP (between 800 m and 1500 m) field at 12:00 local time for the NS simulation. The tracked clouds are highlighted by rectangles, where black lines represent the current time step and matches the LWP field. Earlier time steps are represented by progressively lighter grey colours, to a maximum of 3 time steps earlier than the LWP field.

810



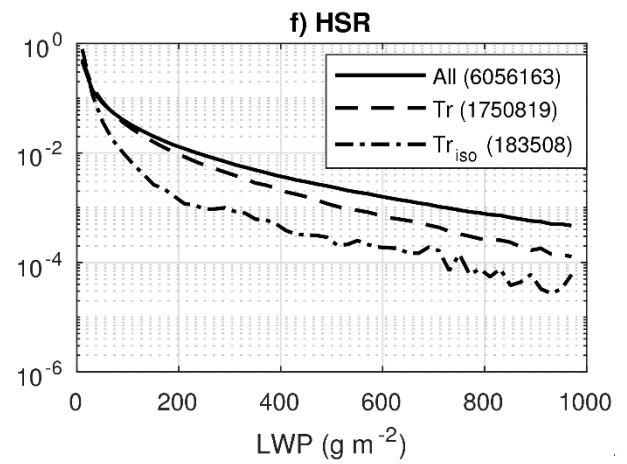
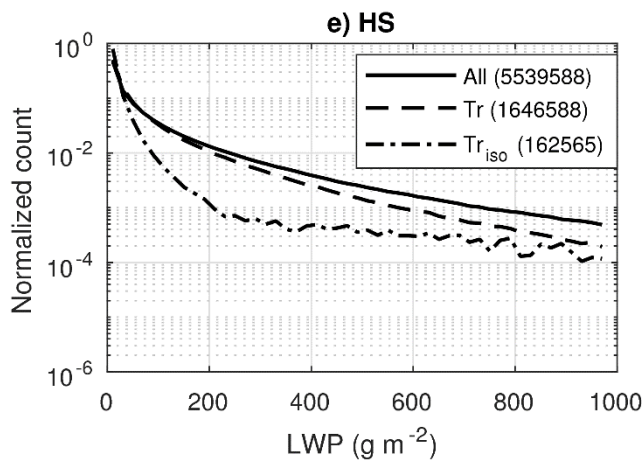
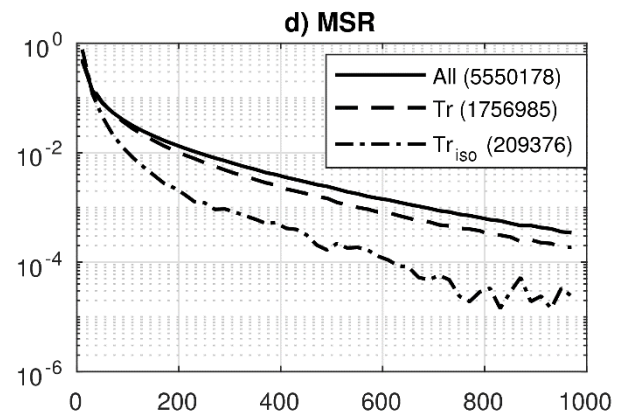
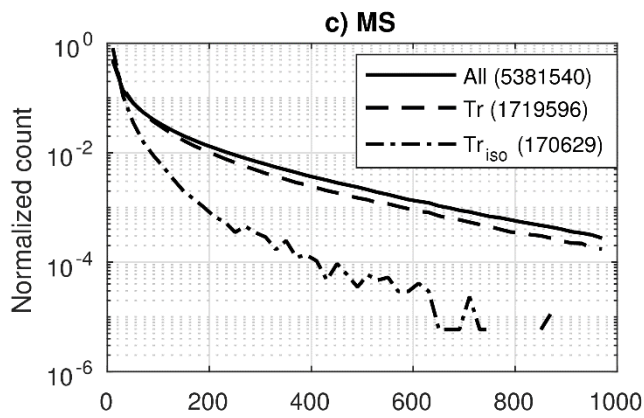
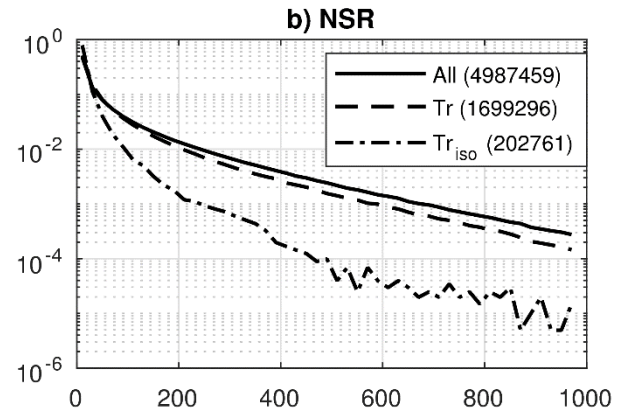
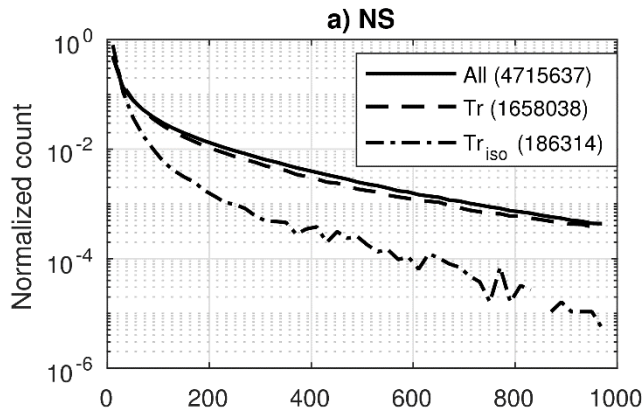
**Figure 4: Time series of domain-wide characteristics: a) averaged liquid water path (LWP), b) 99% percentile of cloud top height (CTH) and c) rainwater content at the surface ( $\text{RWC}_{\text{sfc}}$ ). The time series have been smoothed by 30-minute moving averages for clarity.**

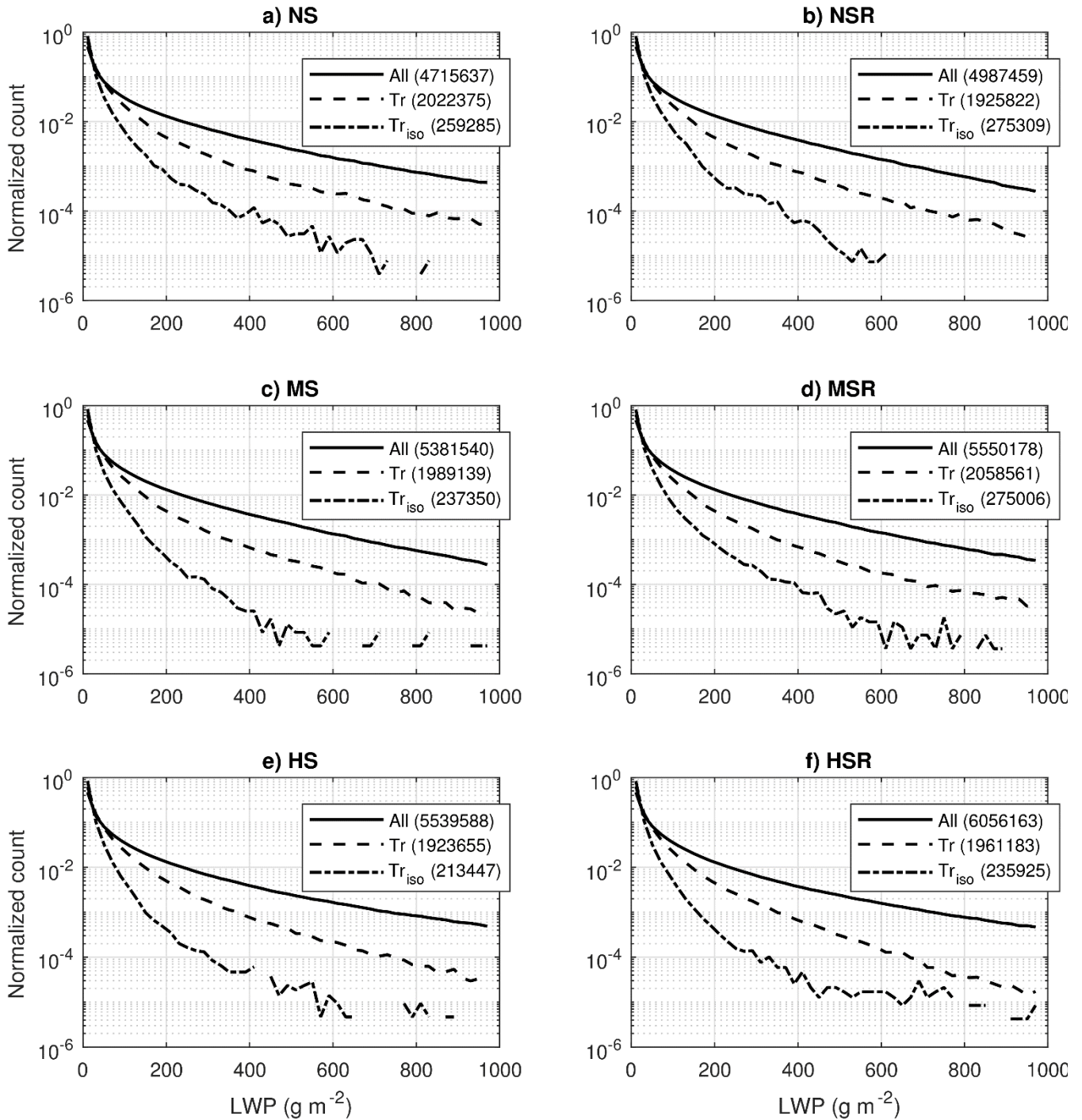
815



**Figure 5: Vertical profiles of liquid water content (LWC) and cloud cover (CC). The profiles of CC are shown in dashed lines. The profiles of LWC are shown in the green line and shading (model) and in the black data markers and error bars (observations). Observations are taken from flight AC09 during the ACRIDICON-CHUYA campaign in 2014. The model profile of LWC (green line) represent the average of the single-timestep median profiles within the flight period. The green shading was obtained in the same way, but represent instead the average interquartile range in the period.**

820



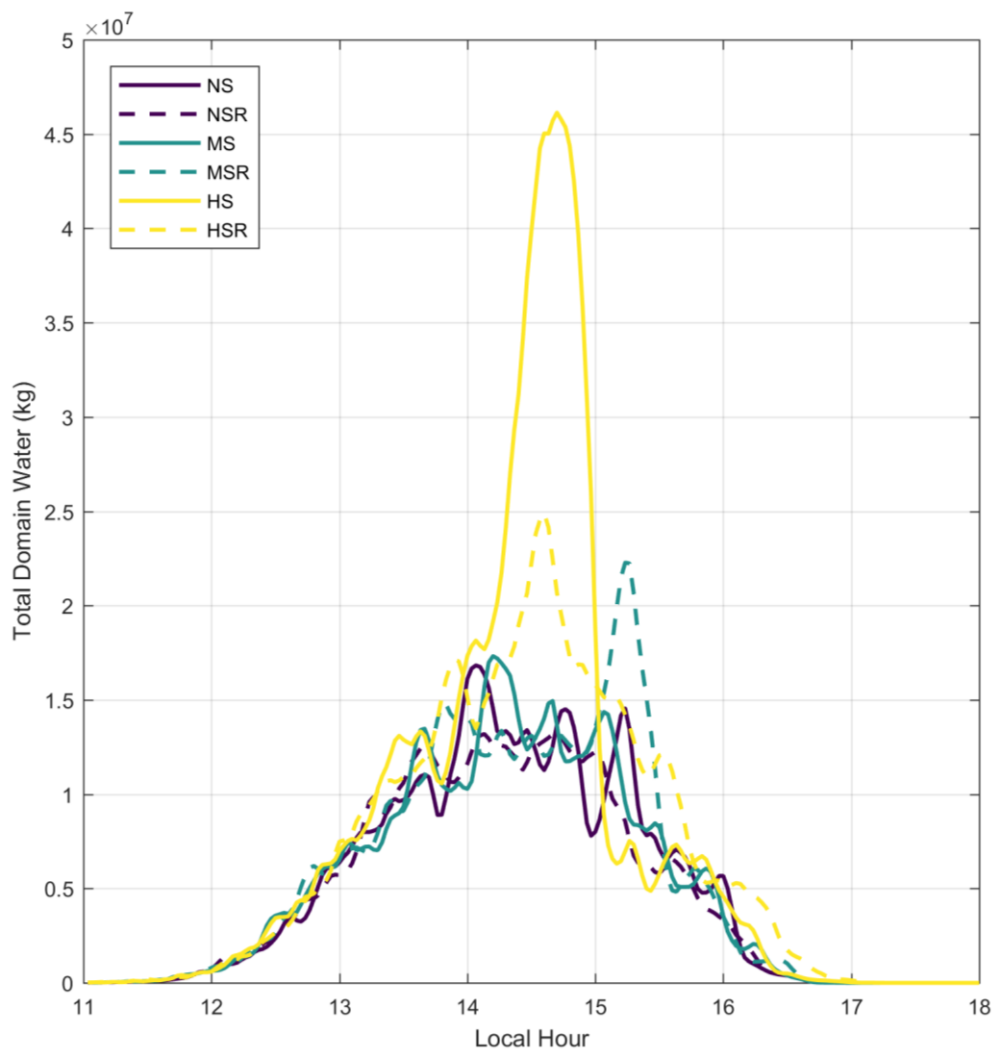


**Figure 46:** Normalized histograms of LWP for all six runs. The continuous black lines (“All” in the legend) represent the distribution for all pixels in the domain with LWP  $> 0.6 \text{ g m}^{-2}$ . The dashed lines represent the distributions only for the pixels that are tracked by ForTraCC (“Tr” in the legend). The dot-dashed lines represent the distributions only for the pixels that are tracked by ForTraCC and for which no merger or split were detected (“Tr<sub>iso</sub>” in the legend). Within the legend, the numbers in

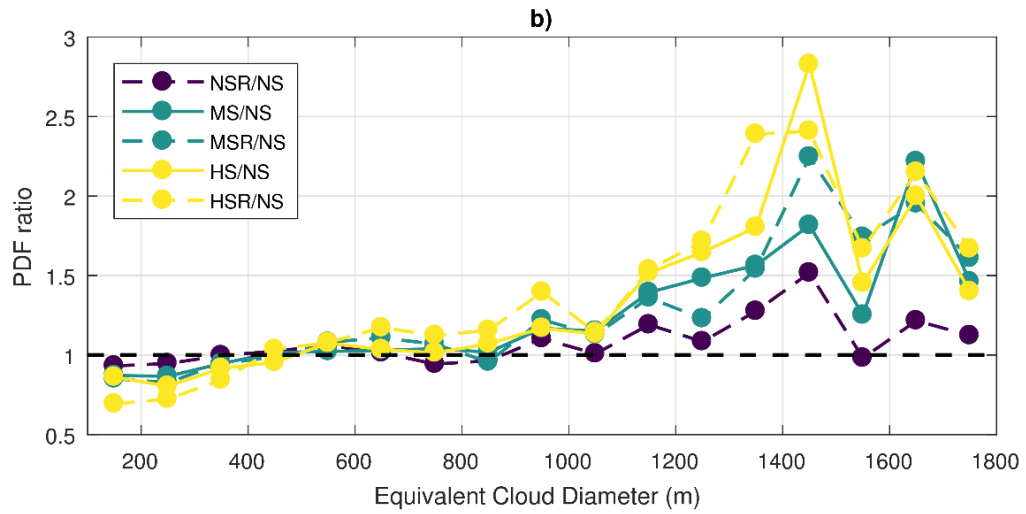
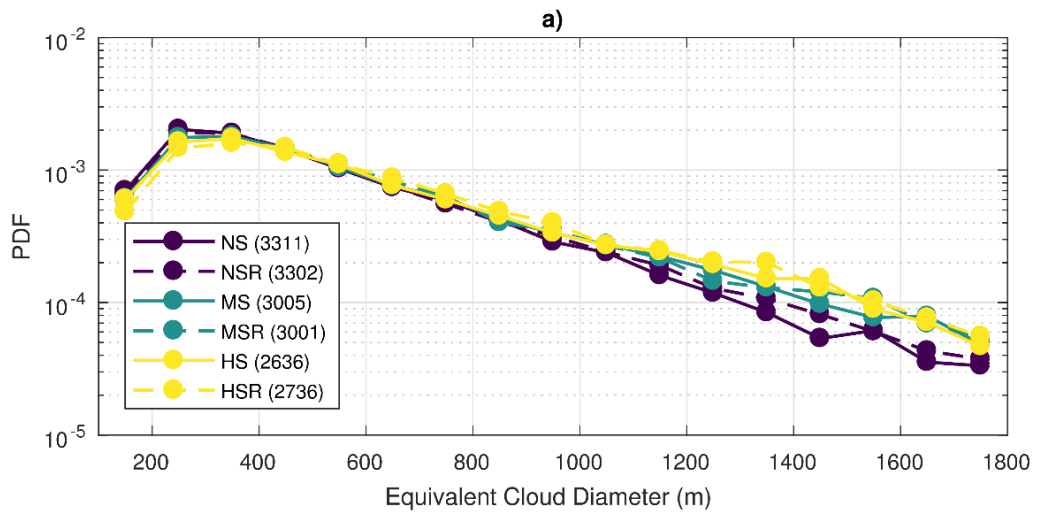
830

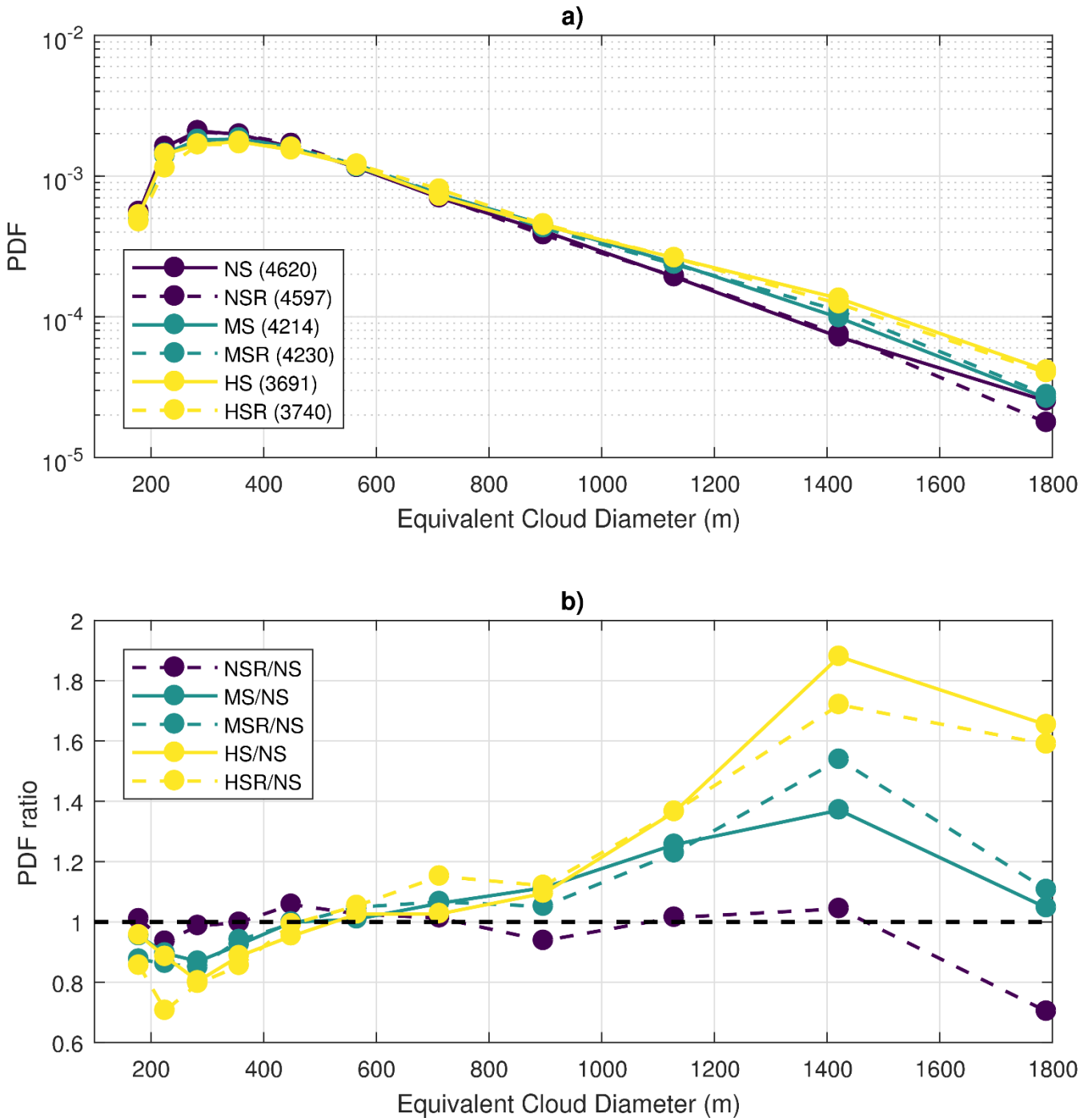


parentheses are the total number of pixels in each case. All 2-min output time steps between 11:00 and 18:00 local time are considered.

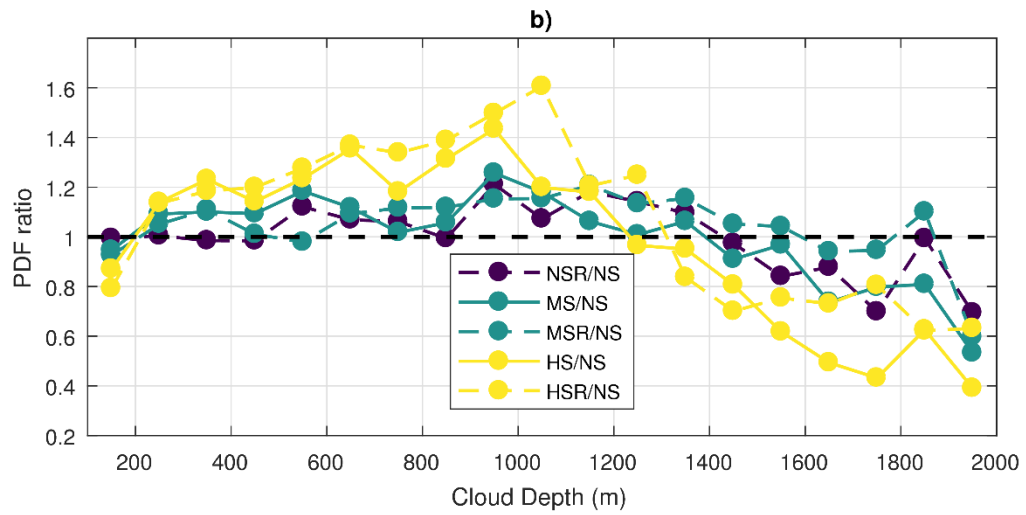
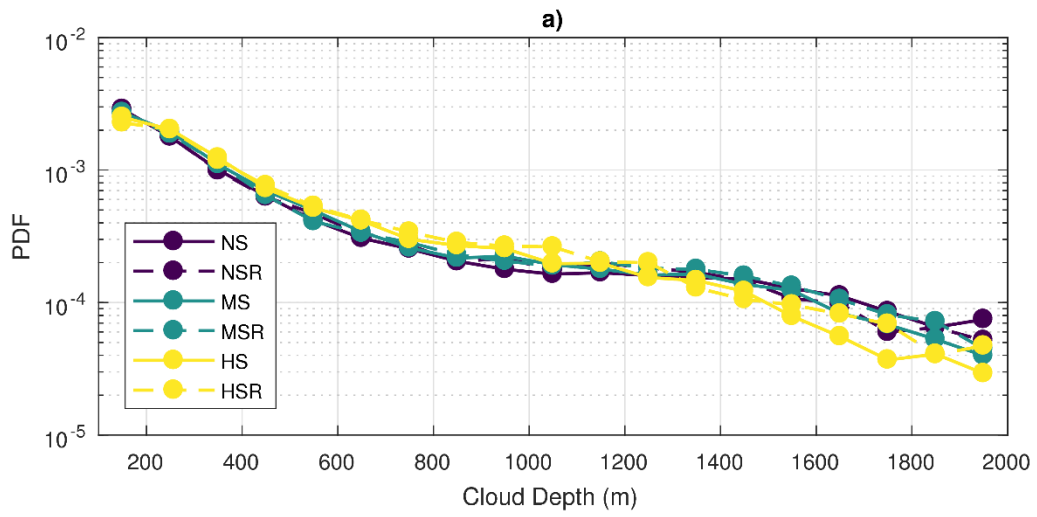


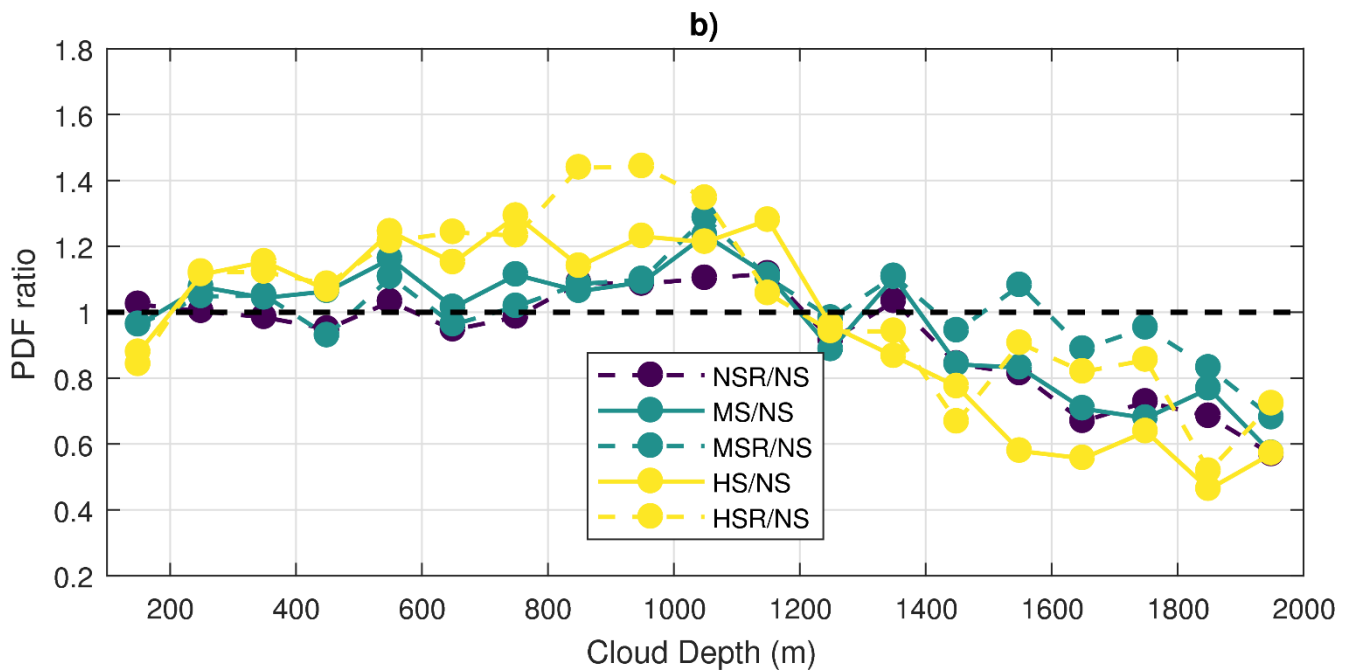
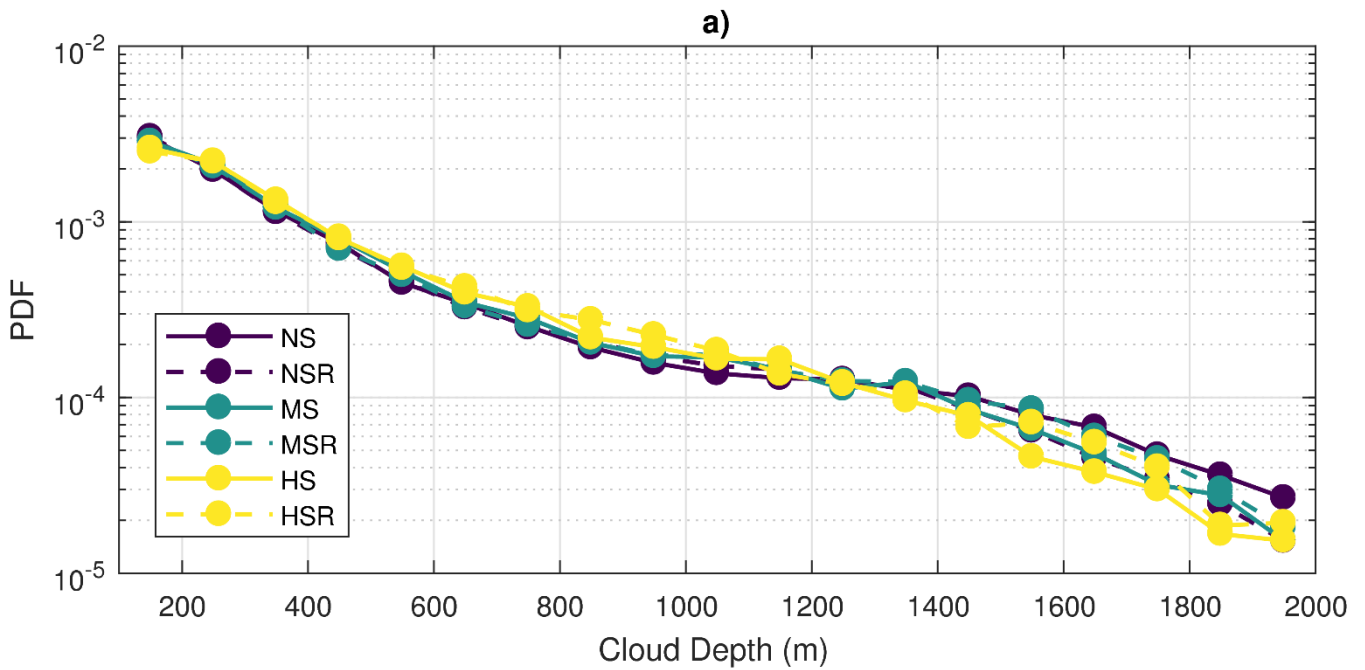
|835 **Figure 57:** Time series of the total domain water (kg), calculated as the 3D integration of the cloud and rain liquid water contents over the entire simulation domain.





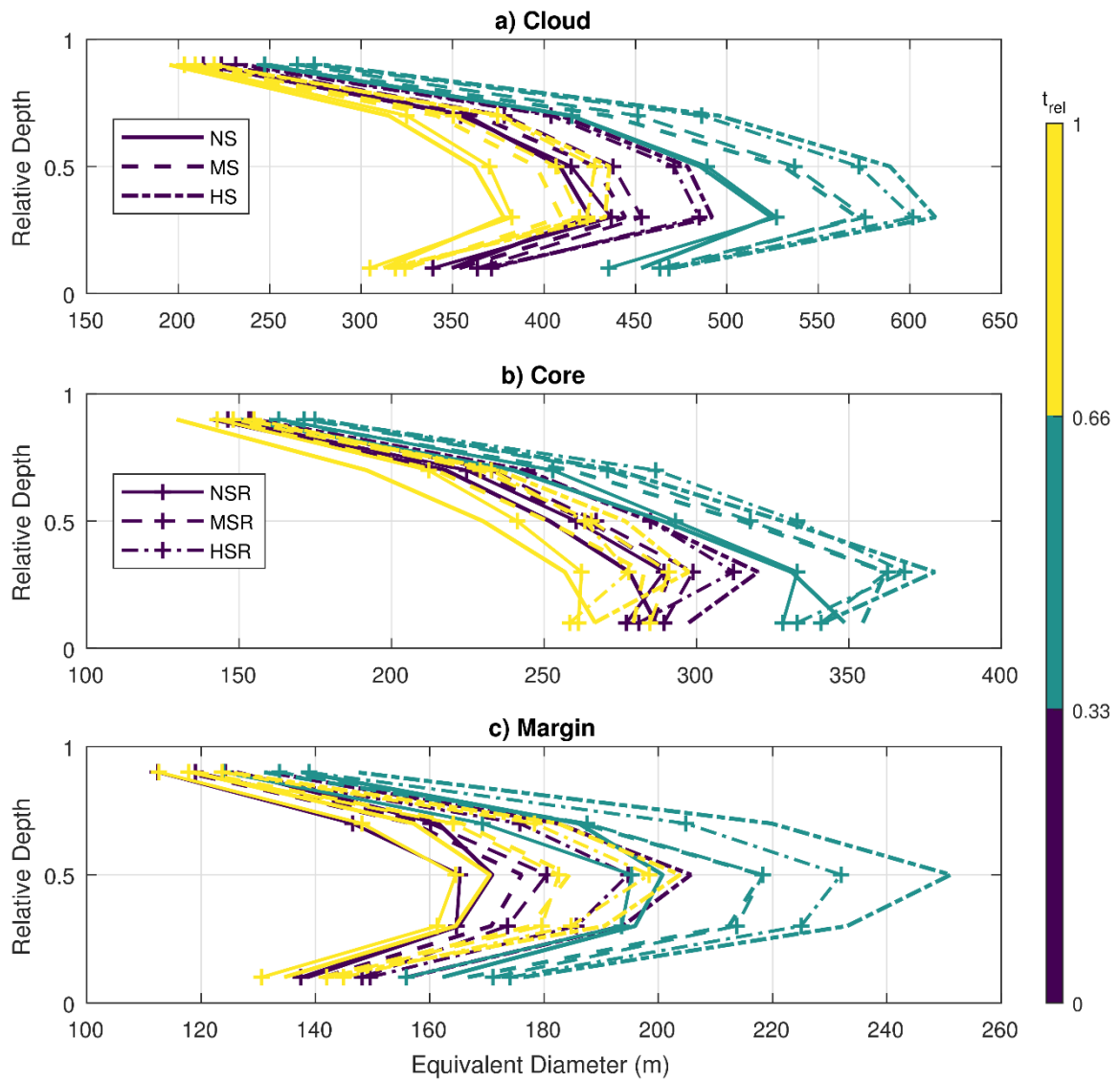
**Figure 86:** Probability density function (PDF) of equivalent cloud diameter. The equivalent diameter is calculated as the diameter of a circle having the same horizontal area as the tracked cloud shape. Panel a) shows the PDFs for all six simulations as function of the central diameter of every 100-m interval between 100 m and 1800 m. As such, the smallest trackable clouds (180 m) are in the first datapoint. The total number of clouds is shown in parenthesis in the legend of panel a). Panel b) shows the ratio of the PDFs, with the simulation NS as the reference. All datapoints represent at least about 50 clouds for statistical robustness.

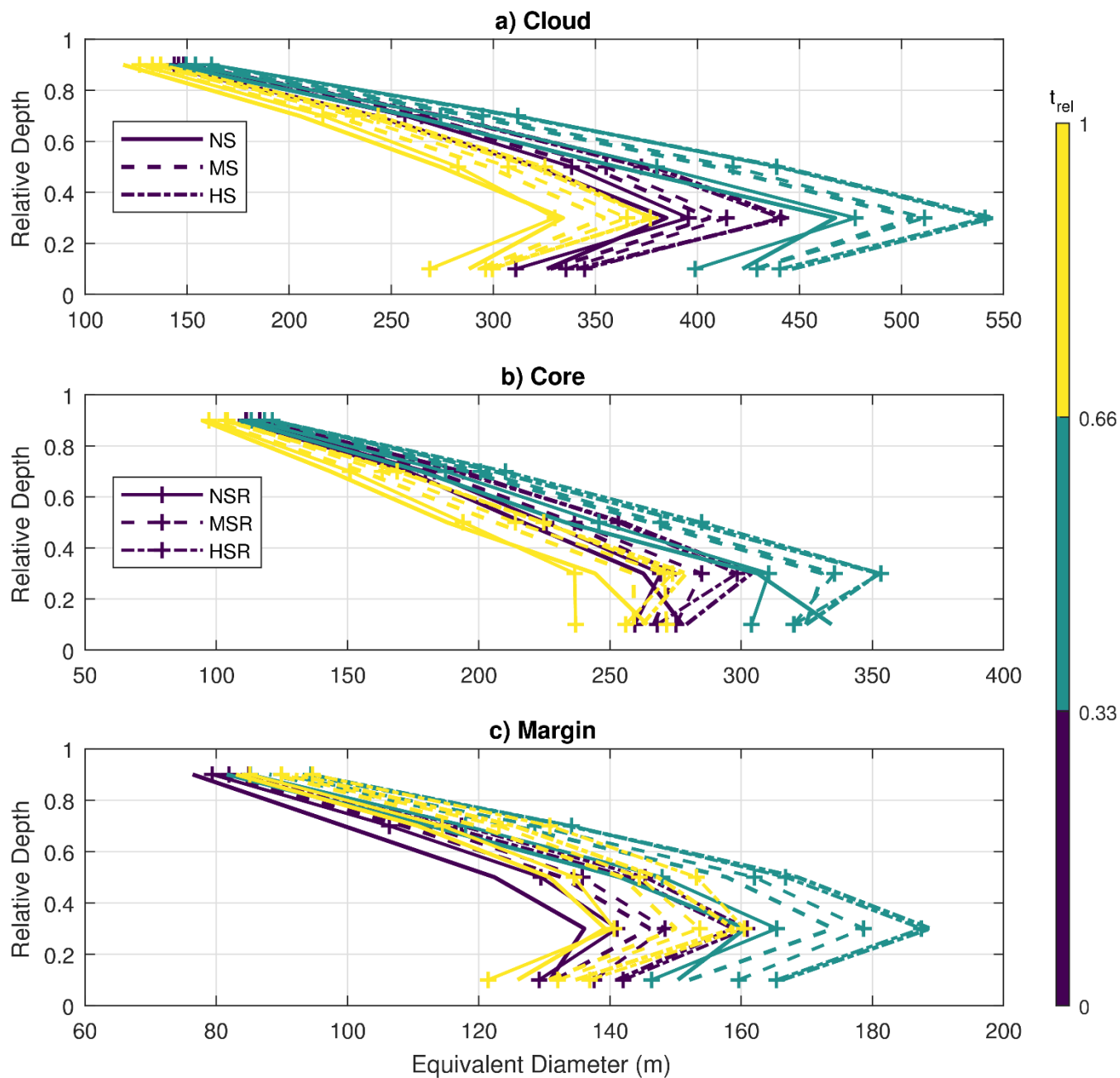




845

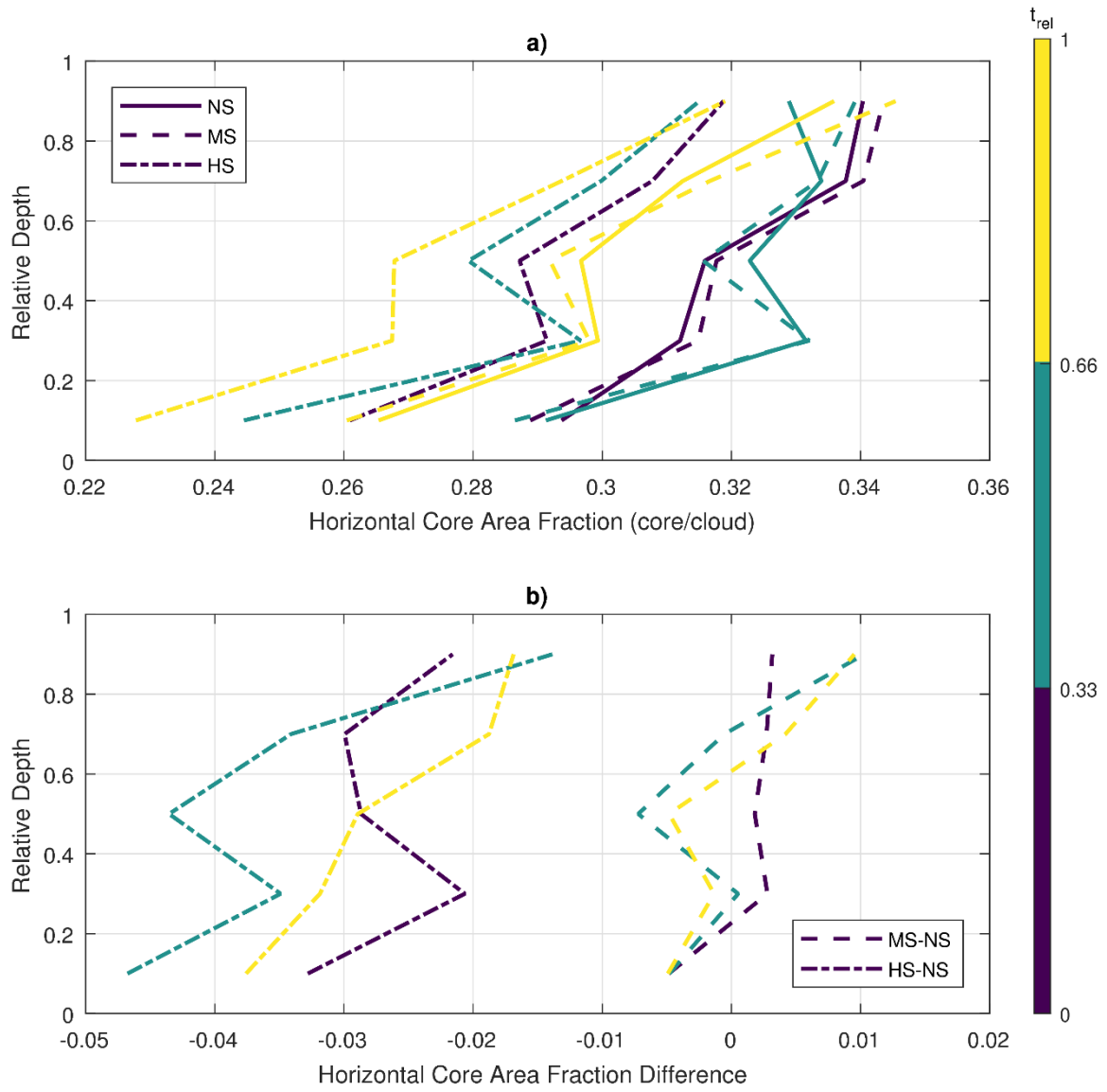
Figure 79: Same as Figure 6 but for cloud depth. Cloud depth is calculated as the height difference between cloud top and cloud base (using the maximum and minimum height with  $LWC > 0.01 \text{ g m}^{-3}$ , respectively).



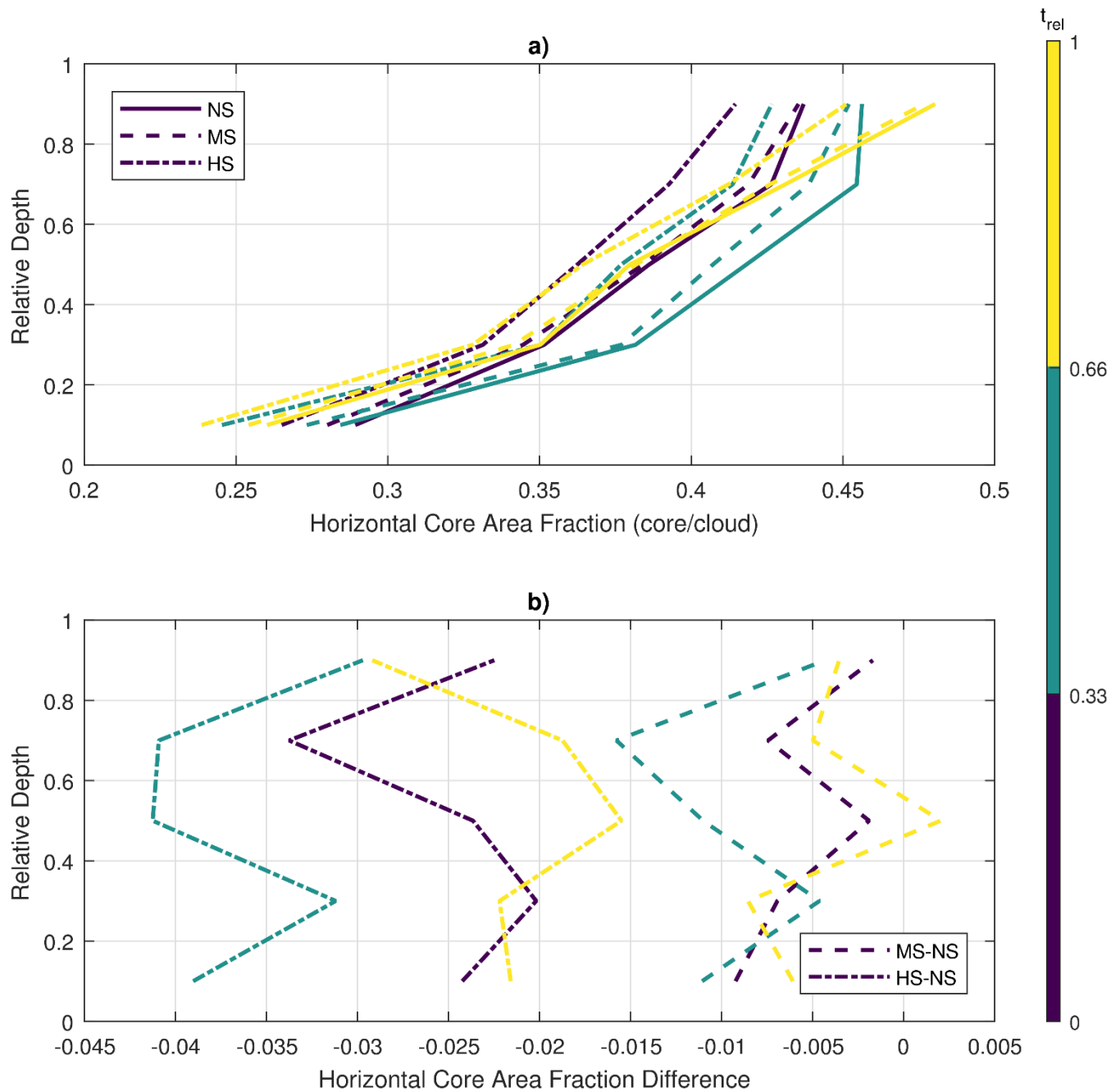


850 **Figure 108:** Averaged dimensions of the a) clouds, b) cloud cores and c) cloud margins as a function of the cloud life cycle and relative depth. The relative depth is a normalized height based on cloud base and cloud top. Values of 0 equate to the cloud base, while 1 represents cloud top. We use 5 relative depth intervals of 0.2, plotting the datapoints in the centre of them. The cloud life cycle is also normalized ( $t_{rel}$ , in colours), being 0 at the first initial detection by ForTraCC and 1 at its latest time step. We set 3 life cycle intervals, representing initial, mature, and dissipating stages. The standard deviations are omitted for figure clarity, but they represent approximately 80% of the averages in the depth interval closest to cloud base, decreasing to about 50% close to cloud top.

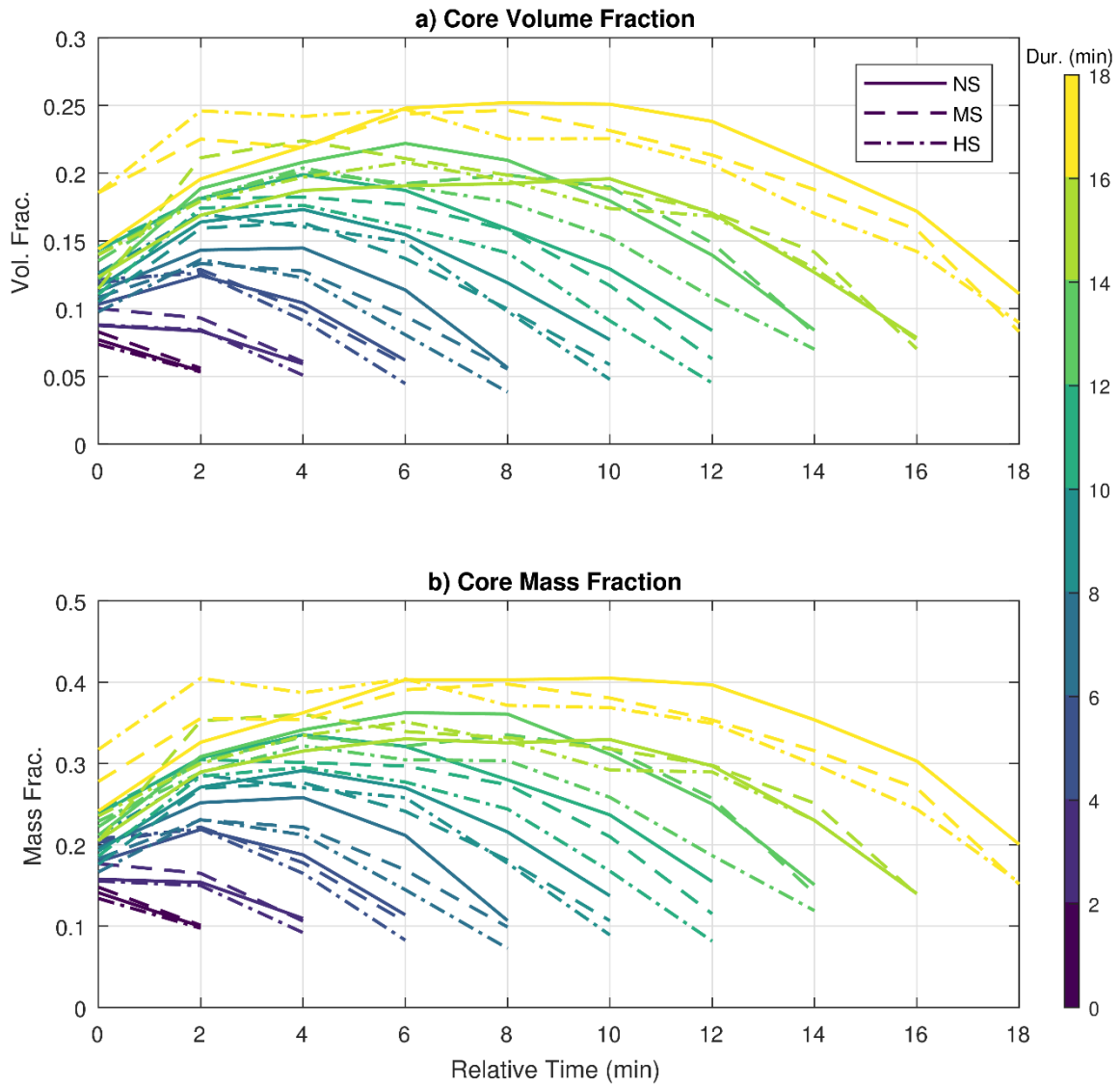
855

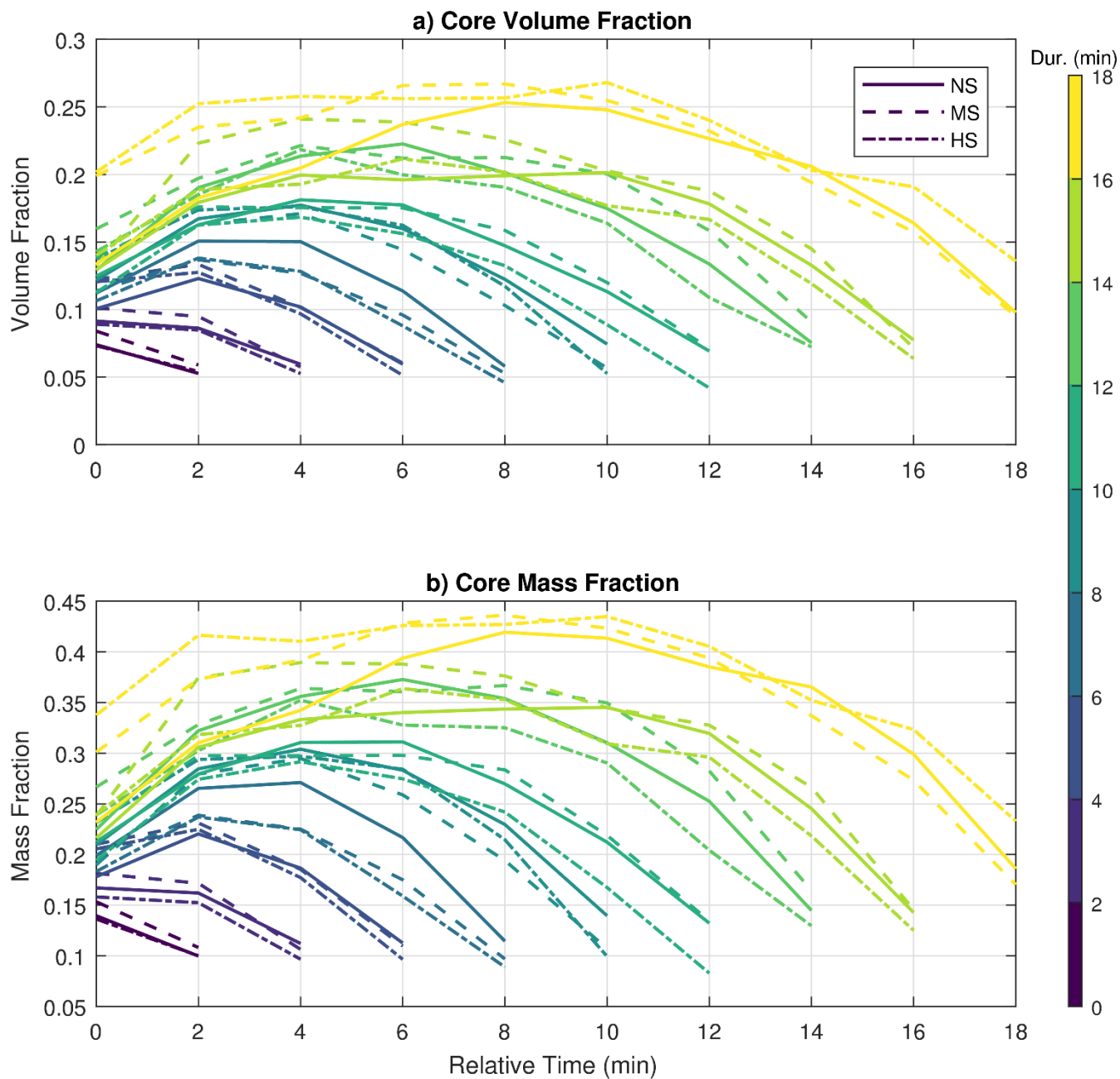






860 **Figure 119:** Similar to Figure 8, but the profiles represent the average core area fraction (i.e., the ratio of the core and cloud areas) in horizontal slices through the clouds. Panel a) shows the actual fraction values, while b) shows the differences between the MS/HS runs and NS. The standard deviation of the area fraction represents approximately 70% of the averages close to cloud base, decreasing to 50% close to cloud top.

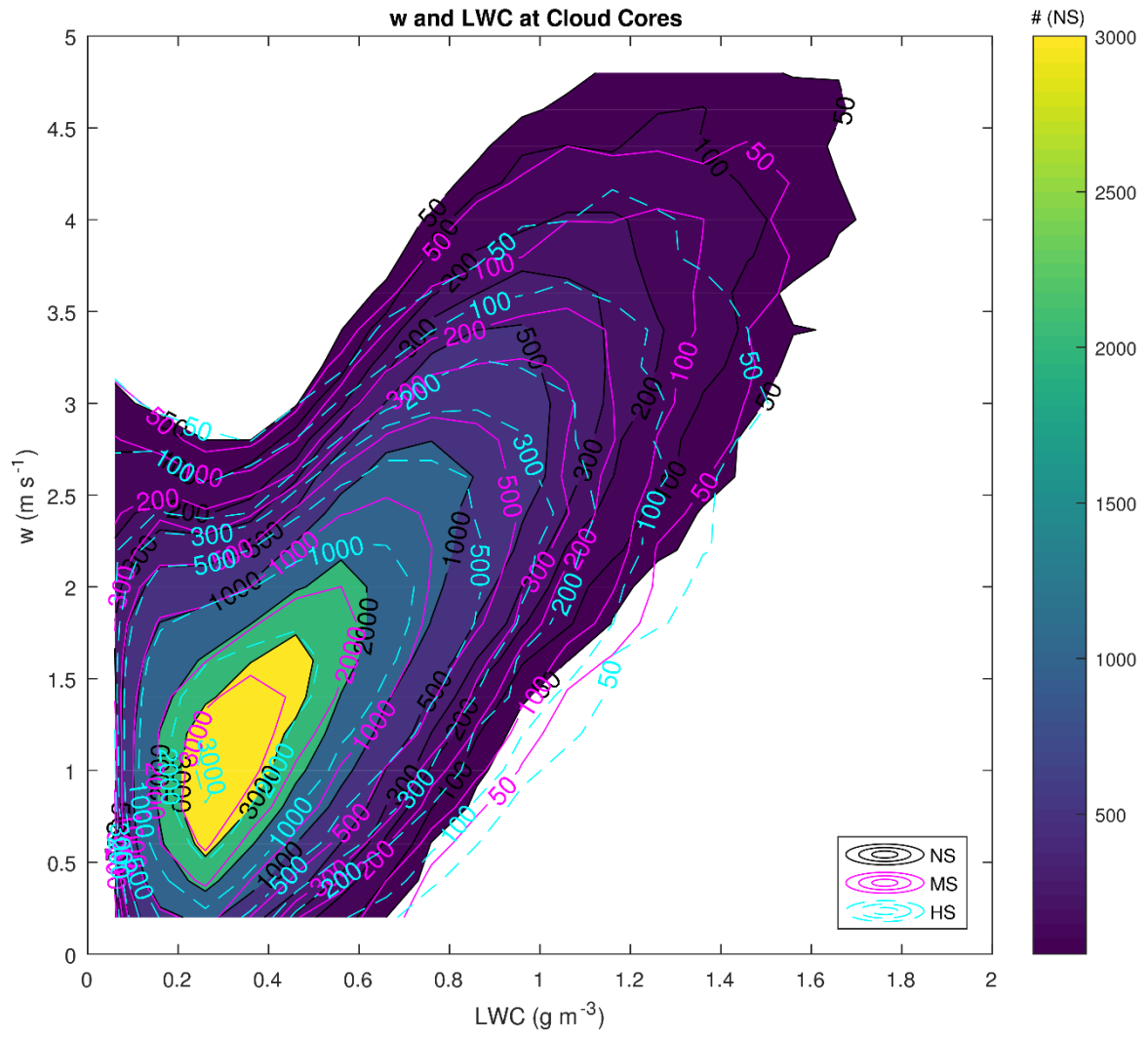


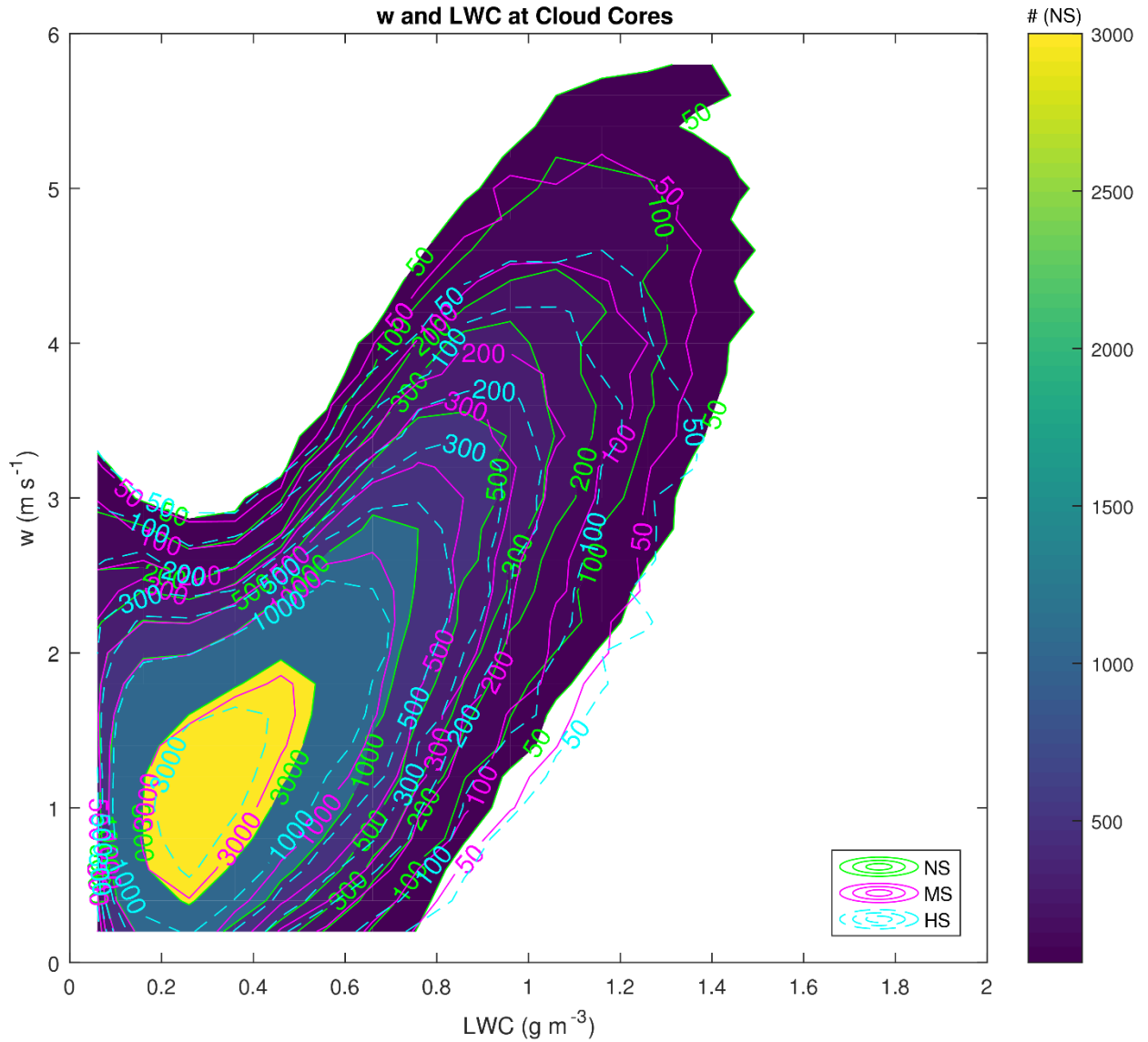


865

**Figure 12a:** Cloud core volume and mass fraction as a function of cloud life cycle and total duration. The fractions are obtained by the ratio of the total core volume or mass by the total cloud volume or mass. The total duration is given by the number of time steps representative of each tracked cloud. Clouds only present in two time steps are assumed to have 2-min duration time, three time steps equating to 4-min duration and so on. The volume and mass fractions standard deviations are relatively similar for the time steps of clouds sharing the same duration. For the volume fraction, the standard deviations reach up to approximately 0.15. For mass fractions, they have values up to 0.22 approximately.

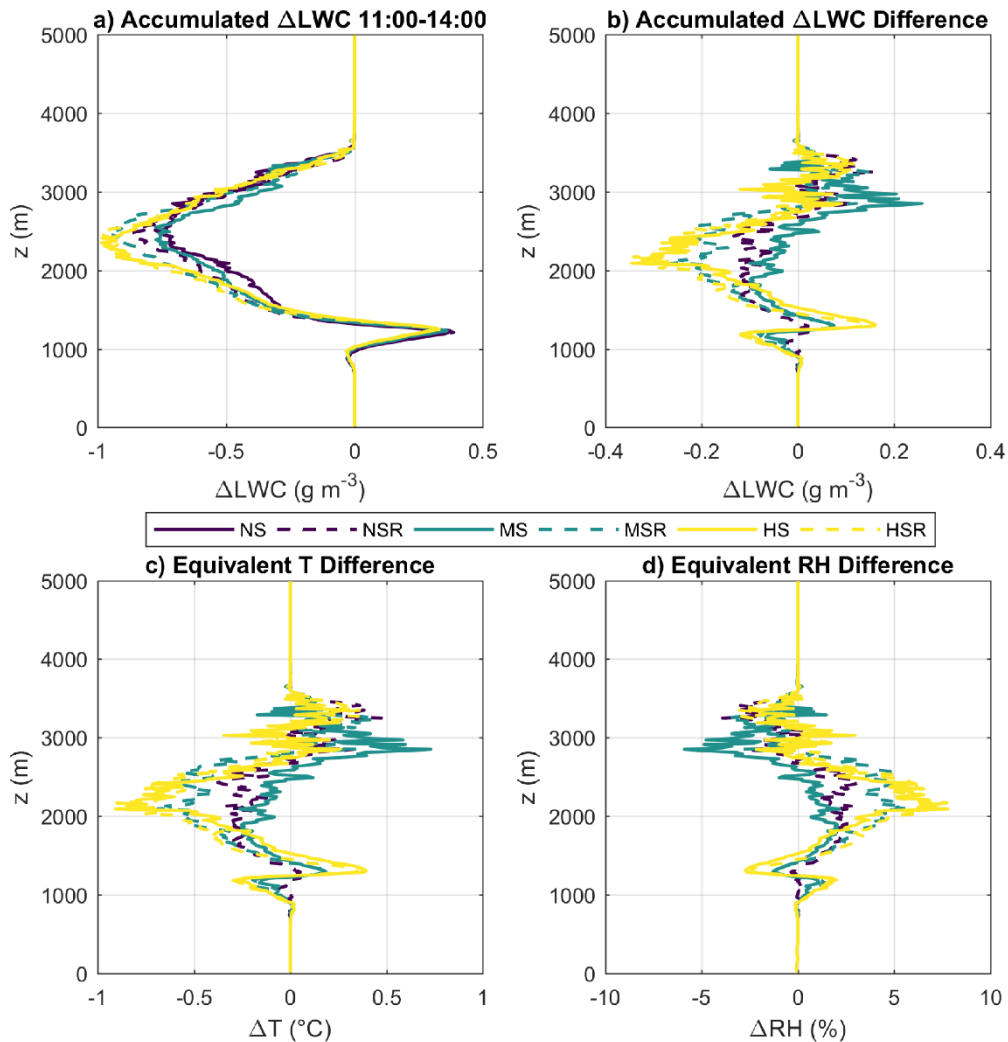
870





875

Figure 134: Distribution of the number of datapoints in the updrafts speed  $w$  – liquid water content LWC space for the cloud cores. The colours and the black continuous lines represent the NS run. The MS and HS runs are represented by continuous magenta and dashed cyan lines, respectively. The  $w$  interval is between  $0.1 \text{ m s}^{-1}$  and  $5 \text{ m s}^{-1}$ , with  $0.2 \text{ m s}^{-1}$  bins. The LWC interval is between  $0.01 \text{ g m}^{-3}$  and  $2 \text{ g m}^{-3}$ , with  $0.1 \text{ g m}^{-3}$  bins. The curves in this figure represent the datapoint numbers calculated for those bins.



880 Figure 142: Average effect of the evaporation/condensation rates on the vertical temperature (T) and relative humidity (RH)  
 profiles in the vicinity of clouds. Panel a) shows the time-integrated condensation/evaporation rates between 11:00 and 14:00 local  
 time (i.e., the total water vapor converted to cloud liquid water or the reverse). Panel b) shows the same profiles, but as differences  
 between the runs (having NS as reference). Panels c) and d) show the estimated T and RH differences as calculated from the  
 885 heat of air at constant pressure). This estimate assumes  $L_v = 2.5 \times 10^6 \text{ J kg}^{-1}$  (latent heat of condensation) and  $c_p = 1005 \text{ J kg}^{-1} \text{ K}^{-1}$  (specific

890