

# Global total ozone recovery trends attributed to ODS changes derived from five merged ozone datasets

Mark Weber<sup>1</sup>, Carlo Arosio<sup>1</sup>, Melanie Coldewey-Egbers<sup>2</sup>, Vitali E. Fioletov<sup>3</sup>, Stacey M. Frith<sup>4</sup>, Jeannette D. Wild<sup>5,6</sup>, Kleareti Tourpali<sup>7</sup>, John P. Burrows<sup>1</sup>, and Diego Loyola<sup>2</sup>

<sup>1</sup>University of Bremen, Bremen, Germany

<sup>2</sup>German Aerospace Center (DLR), Oberpfaffenhofen, Germany

<sup>3</sup>Environment and Climate Change Canada, Toronto, Canada

<sup>4</sup>Science Systems and Applications Inc., Lanham, MD, USA

<sup>5</sup>NOAA/NCEP Climate Prediction Center, College Park, MD, USA

<sup>6</sup>CISESS/ESSIC, UMD, College Park, MD, USA

<sup>7</sup>Aristotle University, Thessaloniki, Greece

**Correspondence:** Mark Weber (weber@uni-bremen.de)

**Abstract.** We report on updated trends using different merged zonal mean total ozone datasets from satellite and ground-based observations for the period from 1979 to 2020. This work is an update from the trends reported in Weber et al. (2018) using the same datasets up to 2016. Merged datasets used in this study include NASA MOD v8.7 and NOAA Cohesive Data (COH) v8.6, both based on data from the series of Solar Backscatter UltraViolet (SBUV), SBUV-2, and Ozone Mapping and Profiler Suite (OMPS) satellite instruments (1978–present) as well as the Global Ozone Monitoring Experiment (GOME)-type Total Ozone (GTO-ECV) and GOME-SCIAMACHY-GOME-2 (GSG) merged datasets (both 1995–present), mainly comprising satellite data from GOME, SCIAMACHY, OMI, GOME-2A, -2B, and TROPOMI. The fifth dataset consists of the annual mean zonal mean data from ground-based measurements collected at the World Ozone and UV Radiation Data Center (WOUDC).

Trends were determined by applying a multiple linear regression (MLR) to annual mean zonal mean data. The addition of four more years consolidated the fact that total ozone is indeed ~~on~~ slowly recovering in both hemispheres as a result of phasing out ozone depleting substances (ODS) as mandated by the Montreal Protocol. The near global ODS-related ozone trend of the median of all datasets after ~~1996 was 0.5~~1995 was 0.4 $\pm 0.2$  ( $2\sigma$ ) %/decade, which is ~~in absolute numbers~~ roughly a third of the decreasing rate of ~~1.41~~1.5 $\pm 0.6$  %/decade from 1978 until ~~1996–1995~~. The ratio of decline and increase is nearly identical to that of the EESC (equivalent effective stratospheric chlorine or stratospheric halogen) change rates before and after ~~1996 which confirms~~1995 confirming the success of the Montreal Protocol. The observed ~~trends total ozone timeseries~~ are also in very good agreement with the median of 17 chemistry climate models from ~~CCMI (Chemistry Climate Model Initiative CCMI-1 (Chemistry-Climate Model Initiative Phase 1))~~ with current ODS and GHG (greenhouse gas) scenarios (REF-C2 scenario).

The positive ODS related trends in the NH after ~~1996–1995~~ are only obtained with a sufficient number of terms in the MLR accounting properly for dynamical ozone changes (Brewer-Dobson circulation, AO, AAO). A standard MLR (limited to solar, QBO, volcanic, and ENSO) leads to zero trends showing that the small positive ODS related trends have been balanced by negative trend contributions from atmospheric dynamics resulting in nearly constant total ozone levels since 2000.

## 22 1 Introduction

The stratospheric ozone layer protects the biosphere from harmful UV radiation. How much UV reaches the surface depends, among other factors like clouds, on the overhead total ozone column. The discovery of the Antarctic ozone hole (Chubachi, 1984; Farman et al., 1985; Solomon et al., 1986) raised the awareness of the need to protect the ozone layer that culminated in the 1985 Vienna Convention and a commitment to take actions. One of the actions was the signing of the Montreal Protocol in 1987 that started the phaseout of ozone depleting substances (ODS), which are sufficiently long-lived to reach the stratosphere and release active halogens that destroy ozone (e.g. Solomon, 1999). As a consequence of the Montreal Protocol and its later amendments stratospheric halogens started to decline in the middle 1990s (e.g. Anderson et al., 2000; Solomon et al., 2006). A corresponding ozone increase has been detected from satellite and ground-based observations, particularly in the upper ~~stratopshere~~ stratosphere (Braesicke et al., 2018, and references therein).

Changes in total ozone column are representative of lower stratospheric ozone changes as the majority of ozone resides in the lower stratosphere ("ozone layer"). Lower stratospheric ozone is sufficiently long-lived to be influenced by transport and circulation changes. The rapid increase in northern hemisphere total ozone in the late 1990s (Harris et al., 2008) revealed the important role of ozone transport via the Brewer-Dobson (BD) circulation. These circulation changes also cause large variability on inter- and intra-annual time scales in lower stratospheric ozone and the total column (e.g. Fusco and Salby, 1999; Randel et al., 2002; Dhomse et al., 2006; Harris et al., 2008; Weber et al., 2011) and make detection of ozone recovery challenging. Apart from the observed variability, zonal mean total ozone levels in both hemispheres remained stable since about the year 2000 (e.g. Weber et al., 2018). The success of the Montreal Protocol ~~agreement~~ is nevertheless undisputed as the earlier decline in total ozone was successfully stopped (Mäder et al., 2010; Braesicke et al., 2018).

Global and continuous ozone observations from satellites through 2020 now span a total time period of forty-two years, of which 25 years cover the period after the stratospheric halogen peak (around ~~1996~~ 1995). The added years should help in improving the statistical significance of ozone recovery after the middle 1990s (Weatherhead et al., 2000). This paper reports on updated zonal mean total ozone trends from Weber et al. (2018) (abbreviated to W18 in the following) by adding four more years of data (2017-2020) to five merged total ozone datasets. In our earlier study ozone recovery trends in the extratropics were on the order of  $\pm 0.5\%$ /decade. The derived trends depend on the proper treatment of dynamical processes in the multi-linear regression. Changes in circulation and ozone transport, in part due to increasing greenhouse gas levels (GHG), have variability on decadal and longer time scales and can therefore mask ODS related recovery trends. Longer data records are helpful to further disentangle the various processes responsible for long-term changes in ozone. In this work we focus specifically on trend estimates directly related to ODS changes in order to evaluate the direct impact from the Montreal Protocol.

The main results from our earlier paper (W18) were latitude dependent annual mean total ozone trends from the middle 1990s to 2016, which were reported to be on average  $+0.5\%$ /decade in the extratropics and only significant in the SH (W18). Since W18 was published there were three recent studies on global and regional ozone column trends (~~Bozhkova et al., 2019; Krzyściń and Baran~~ Bozhkova et al., 2019; Krzyściń and Baranowski, 2019; Coldewey-Egbers et al., 2022). Krzyściń and Baranowski (2019) derived total ozone column trends from a multivariate linear regression (MLR) applied to the Multi-Sensor Reanalysis-2 (MSR-2)

56 total ozone dataset up to 2017 (van der A et al., 2015). In their MLR they split the entire period from 1978 to 2017 into three  
58 periods with separate trends (either independent or piecewise linear). The choice of two inflection points were chosen from fits  
60 and this study.

Bozhkova et al. (2019) applied a regression to TOMS and OMI total ozone at northern hemispheric mid-latitudes using the  
62 approach by Bloomer et al. (2010), first applied to surface ozone and temperature data at selected stations in the US. Without  
using any proxy data the regression estimates trends of the seasonality expressed as Fourier series. Attribution of physical and  
64 chemical processes to the long-term changes are therefore not possible as also stated by the authors. Latitude and longitude  
dependent total ozone trends are reported by [?Coldewey-Egbers et al. \(2022\)](#) derived from the ESA/DLR GTO-ECV dataset,  
66 which is one of the five observational datasets used in this study. They report significant positive linear trends after 1995 over  
large regions in the extratropical southern hemisphere, while in the tropics and NH they are mostly insignificant. Consequently,  
68 they only reported significant zonal mean positive trends in the SH.

In Section 2 the updates in the five merged datasets are briefly discussed. In Section 3 the multiple linear regression (MLR)  
70 as used in our trend analysis is described [and discussed](#). Section 4 presents the total ozone trend results in broad zonal bands:  
near-global, southern and northern hemispheric extratropics, and tropics. In Section 5 latitude dependent annual mean total  
72 ozone trends are presented and discussed. Polar ozone trends for the months where polar ozone losses are largest (e.g. during  
ozone hole season) are presented in Section 6. In Section 7 a summary and final remarks are given.

## 74 **2 Total ozone datasets**

Five merged total ozone datasets are used in this study of which one dataset is based upon [ground-ground-based](#) observations.  
76 All others are based on satellite observations. Two different merged datasets are derived from the series of SBUV and SBUV-2  
satellite instruments (SBUV MOD V8.7 from NASA and SBUV COH V8.6 from NOAA) operating continuously since the  
78 late 1970s. The other two merged datasets are based [in large part largely](#) upon the series of European satellite spectrometers  
GOME, SCIAMACHY, GOME-2A, and GOME-2B with different retrieval and merging algorithms applied (University of  
80 Bremen GSG and ESA/DLR GTO-ECV datasets). These datasets start in 1995.

The [ground-based-ground-based](#) dataset is the monthly mean zonal mean data from the network of [ground-based](#) Brewers,  
82 Dobsons, SAOZ (Système d'Analyse par Observations Zénithales), and filter instruments collected at the World Ozone and  
UV Data Center (WOUDC) (Fioletov et al., 2002). In addition a brief description of the model data from the CCMII [Phase 1](#)  
84 initiative is given. The sources of observational data are listed in Table 1 and brief descriptions of the datasets are given in the  
following. Annual mean timeseries of all five merged datasets are in very good agreement with each other ([see to within a few](#)  
86 [DU \(see also Fig. 2.58 in Weber et al. \(2021\)\). All datasets cover the entire earth except for months and latitudes under polar](#)  
[night conditions.](#)

**Table 1.** Source of merged total ozone datasets.

Dataset	Start year	Source
NASA SBUV MOD V8.7	1970	<a href="http://acdb-ext.gsfc.nasa.gov/Data_services/merged/">http://acdb-ext.gsfc.nasa.gov/Data_services/merged/</a>
NOAA SBUV COH V8.6	1978	<a href="ftp://ftp.cpc.ncep.noaa.gov/SBUV_CDR/">ftp://ftp.cpc.ncep.noaa.gov/SBUV_CDR/</a>
GSG	1995	<a href="http://www.iup.uni-bremen.de/gome/wfdoas">http://www.iup.uni-bremen.de/gome/wfdoas</a>
GTO	1995	<a href="http://atmos.eoc.dlr.de/gome/gto-ecv.html">http://atmos.eoc.dlr.de/gome/gto-ecv.html</a>
WOUDC	1964	<a href="http://woudc.org/archive/Projects-Campaigns/ZonalMeans/">http://woudc.org/archive/Projects-Campaigns/ZonalMeans/</a>

## 88 2.1 NASA SBUV MOD V8.7

The NASA Merged Ozone Data (MOD) time series is constructed using data from the Nimbus 4 BUV, Nimbus 7 SBUV, and six NOAA SBUV-2 instruments numbered 11, 14, and 16-19, and the Ozone Mapping and Profiler Suite Nadir Profiler (OMPS-NP) instrument aboard the Suomi-NPP satellite (Frith et al., 2014, 2022). The instruments are of similar design, and measurements from each are processed using the same V8.7 retrieval algorithm. To maintain consistency over the entire time series the individual instrument records are analyzed with respect to each other and absolute calibration adjustments are applied as needed based on comparison of radiance measurements during periods of instrument overlap (DeLand et al., 2012).

Version 8.7 uses the same core algorithm as Version 8.6 (Bhartia et al., 2013) but includes new inter-instrument calibration adjustments for instrument records since 2000 (NOAA-16 SBUV/2 ~~though~~ through OMPS NP) based on a new approach to radiance intercomparisons across overlapping instruments (Kramarova et al., 2022). Version 8.7 also incorporates an updated a-priori with improved tropospheric representation based on GMI model output, and diurnal adjustments to ensure the a-priori profile correctly reflects the local solar time of each measurement (Ziemke et al., 2021). A post-retrieval diurnal correction is applied to adjust each instrument record to an equivalent measurement time of 1:30pm (Frith et al., 2020). Remaining offsets between instruments exist (mostly below 5% for layers, below 1% for total ozone), but their cause is not understood. We therefore do not make adjustments to the data. Rather we set limitations on the data included in the merged product based on data quality analysis by the instrument team and on comparisons with independent measurements (DeLand et al., 2012; Kramarova et al., 2013, 2022). For merging, data are averaged during periods with multiple operational instruments. The Version 8.7 MOD data contains monthly zonal mean ozone profiles in mixing ratio on pressure levels and in Dobson units on layers. The total ozone is then provided as the sum of the layer data.

## 2.2 NOAA SBUV COH V8.6

The NOAA COH (cohesive) dataset is a simple extension in time of the dataset appearing in W18. The data includes v8.6 SBUV on Nimbus 7, v8.6 SBUV/2 from NOAA 9, 11, 16 to 19, and ~~v2r3~~ v2r2 OMPS Nadir Profiler (NP) on Suomi-NPP as available from NESDIS STAR. The merging approach differs from NASA MOD in two important ways. NASA MOD averages data from all relevant satellites in any time period for which the data meets certain quality criteria. NOAA COH uses data from

112 a single ‘best’ satellite in any time period. Which satellite is used depends on known data quality issues, on minimizing the  
solar zenith angle of the measurement, and on maximizing global coverage. NOAA COH does not shift to ~~a~~an equivalent  
114 measurement time (1:30pm), but performs an adjustment between data from differing satellites. For post 2000 data, where  
drift of the measurement time is minimized, the data are all adjusted to NOAA 18. For data 1999 and prior, the inter-satellite  
116 overlap is often short, the satellite drift often significant, we choose only to adjust NOAA 9 to the two branches NOAA 11 prior  
and after the NOAA 9 time period. The total ozone is calculated from the sum of the adjusted profile layer data. By vertical  
118 integration many of the layer adjustments to a large extent cancel such that the final total ozone product is altered by less than  
1%, and in most cases by less than 0.5%, from the original satellite datasets.

### 120 **2.3 University of Bremen GSG**

The merged GOME, SCIAMACHY, GOME-2A and -2B (GSG) total ozone timeseries (Kiesewetter et al., 2010; Weber et al.,  
122 2011, 2018) consists of total ozone data that were retrieved using the University of Bremen Weighting Function DOAS (WF-  
DOAS) algorithm (Coldewey-Egbers et al., 2005; Weber et al., 2005; Orfanoz-Cheuquelaf et al., 2021). The merging of the  
124 data has been described in W18. The most recent modification was to replace GOME-2A data after January 2015 with data  
from GOME-2B (2012-present) which has a better global coverage after changes in the GOME-2A scanning pattern. Latitude  
126 dependent bias corrections for GOME-2B were applied from the overlapping period 2014-2020 with GOME-2A.

### **2.4 DLR/ESA GTO-ECV**

128 The latest version of the GOME-type Total Ozone Essential Climate Variable (GTO-ECV) data record (~~Coldewey-Egbers et al., 2015; ?; Ga~~  
(Coldewey-Egbers et al., 2015, 2022; Garane et al., 2018) has been generated as part of the European Space Agency’s Climate  
130 Change Initiative+ ozone (ESA\_CCI+ ozone) project. Total columns from six sensors (GOME, SCIAMACHY, OMI, GOME-  
2A, GOME-2B, and TROPOMI), retrieved with the GOME Direct Fitting (GODFIT) version 4 algorithm (Lerot et al., 2014;  
132 Garane et al., 2018), were combined into a coherent record that covers the period 1995-2020. OMI was used as a reference  
instrument and the other sensors were adjusted by means of latitude and time dependent correction factors determined from  
134 overlap periods.

### **2.5 WOUDC data**

136 The WOUDC ~~ground-based~~ zonal mean data set (Fioletov et al., 2002) was formed from ground-based measurements by Dob-  
son, Brewer, SAOZ instruments, and filter ozonometers available from the WOUDC. The overall performance of the ground-  
138 based network was discussed by Fioletov et al. (2008) ~~-and the present state of the network is described by Garane et al. (2019)~~  
. This data set is provided by the WOUDC and updated regularly.

140 First, ground-based measurements were compared with an ozone “climatology” (monthly means for each point of the globe)  
estimated from satellite data for 1978–1989. Then, for each station and for each month the deviations from the climatology

142 were calculated, and ~~the belt's a zonal mean~~ value for a particular month was estimated as a mean of these deviations. The  
calculations were done for ~~5° latitudinal belts-~~  
144 ~~°-wide zonal bands~~. In order to take into account various densities of the network across regions, the deviations of the  
stations were first averaged over 5° by 30° cells, and then the ~~belt zonal~~ mean was calculated by averaging these first set of  
146 averages over the ~~belts~~ ~~5°-wide zonal band~~. Then the zonal averages were smoothed by approximating them using Legendre  
polynomials.

148 The WOUDC data set was compared with merged satellite time series and demonstrated a good agreement (Chiou et al.,  
2014). Estimates based on relatively sparse ground-based measurements, particularly in the tropics and southern hemisphere,  
150 may not always reproduce monthly zonal mean fluctuations well. However, seasonal (and longer) averages can be estimated  
with a precision comparable with satellite-based data sets ( $\sim 1\%$ ) (~~Chiou et al., 2014~~).

## 152 ~~2.6 Chemistry-climate~~ ~~Chemistry-climate~~ model data

In this study output from the chemistry-climate models (CCMs) and chemistry-transport models (CTMs) participating in  
154 phase 1 of CCMI (Chemistry-Climate Model Initiative) are used (Eyring et al., 2013). An overview of the models, together  
with details particular to each model and an overview of the available simulations, is given in Morgenstern et al. (2017) along  
156 with a detailed description of the full forcings used in the reference simulations (Eyring et al., 2013; Hegglin et al., 2016).  
Here we have used median total column ozone from 17 models taking part in the REF-C2 experiment, an internally consistent  
158 seamless simulation ~~from the past into the future~~ between 1960 and 2100.

## 2.7 Data preparation

160 From the zonal mean monthly mean data in 5° latitude steps (all datasets) annual means were calculated. Wider zonal bands  
(like 35°N-60°N) were averaged from the 5° data using area weights (see W18). All annual mean zonal mean timeseries were  
162 bias corrected by subtracting the difference to the mean of all datasets during the 1998-2008 period. The multi-dataset mean  
was then added back to each dataset, such that all bias corrected timeseries are provided in units of the total column amounts  
164 (W18). However, the trend results derived from them are identical to those derived using anomaly timeseries.

Like in our earlier study, the GSG and GTO-ECV timeseries were extended from 1995 back to 1979 using the bias corrected  
166 NOAA data. This way one ensures that all terms other than the trend terms are determined from the full time (1979-2020)  
period. The NOAA data was here preferred over the NASA data, as the former has shorter data gaps after the major volcanic  
168 eruption from Mt Pinatubo in 1991 and subsequent years.

## 3 Multiple linear regression

170 The standard MLR model is identical to the one used in W18 and includes two independent linear trend terms (before and after  
the ODS related turnaround year  $t_0 = 1996$  ~~1995~~), two aerosol terms (Mt. Pinatubo 1992 and El Chichón 1983), solar cycle

172 term, two QBO terms (50 and 10 hPa), and ENSO (El Niño-Southern Oscillation):

$$\begin{aligned} y(t) &= [a_1 + b_1 \cdot (t_0 - t)]X_1(t) + [a_2 + b_2 \cdot (t - t_0)]X_2(t) \\ &+ \alpha_{\text{sun}} \cdot S(t) + \alpha_{\text{qbo50}} \cdot Q_{50}(t) + \alpha_{\text{qbo10}} \cdot Q_{10}(t) + \alpha_{\text{ENSO}} \cdot E(t) \\ &+ \alpha_{\text{ElChichón}} \cdot A_1(t) + \alpha_{\text{Pinatubo}} \cdot A_2(t) + P(t) + \epsilon(t). \end{aligned} \quad (1)$$

174  $y(t)$  is the annual mean zonal mean total ozone timeseries and  $t$  the year of observations. The coefficients  $b_1$  and  $b_2$  are the linear  
trends before and after  $t_0$ . In order to make both trends independent of each other (or disjoint), two y-intercepts ( $a_1$  and  $a_2$ )  
176 are added. The multiplication of the independent variable  $t$  with  $X_i(t)$  in the first four terms of Eq. 1 describes mathematically  
that the first two terms only ~~applies~~ apply to the period before and the third and fourth terms to the period after the turnaround  
178 year.  $X_1(t)$  and  $X_2(t)$  are given by

$$X_1(t) = \begin{cases} 1 & \text{if } t \leq t_0 \\ 0 & \text{if } t > t_0 \end{cases} \quad (2)$$

180 and

$$X_2(t) = \begin{cases} 0 & \text{if } t \leq t_0 \\ 1 & \text{if } t > t_0 \end{cases}, \quad (3)$$

182 respectively. The independent trends before and after  $t_0$  are favored over the use of piecewise linear trends or the use of  
EESC as a proxy timeseries (see detailed discussions in W18). The maximum of the effective equivalent stratospheric chloro-  
184 rine (EESC) was reached at about the year  ~~$t_0 = 1996$  (Newman et al., 2007) and some years later ( $t_0 \sim 2000$ ) in the polar  
regions (Newman et al., 2006, 2007). Therefore  $t_0$  was set to 1996 globally,  $t_0 = 1995$  (Newman et al., 2007) except for the  
186 polar ~~regions, where  $t_0 = 2000$  was selected~~ region ( $> 60^\circ$ ), where  $t_0 = 2000$  (Newman et al., 2006, 2007). The contributions  
from the QBO, 11-year solar cycle, and stratospheric aerosols are standard in total ozone MLR analyses (e.g. Staehelin et al.,  
188 2001; Reinsel et al., 2005).  $\epsilon(t)$  is the residual from fitting the coefficients to match the regression model (right side) to the  
observations. By using annual mean total ozone, auto-correlation is very low here (below 0.1 in absolute value for a shift by  
190 one year) so that no further additional auto-regression term as commonly used for monthly mean ozone timeseries is needed  
(e.g. Dhomse et al., 2006; Vyushin et al., 2007).~~

192 The stratospheric aerosols are dominated by the major volcanic eruptions from El Chichón (1982) and Mt. Pinatubo (1991).  
Enhanced aerosols in the lower stratosphere lasting for a few years impact both ozone chemistry and transport (Schnadt Poberaj  
194 et al., 2011; Dhomse et al., 2015). The stratospheric aerosol optical depth (SAOD) at 550 nm from Sato et al. (1993) is used as  
the explanatory variable before 1990 (includes the El Chichón event), while newer data from the WACCM model (Mills et al.,  
196 2016) is used for the period after 1990 (includes Mt. Pinatubo major volcanic eruption and the series of more minor volcanic  
eruptions from the last decade). Missing years after 2015 were filled with background values from the late 1990s.

198 As mentioned in W18 there ~~are not~~ is not a sufficient number of months and/or  $5^\circ$  latitude bands available in the SBUV data  
records for some years and ~~thus no~~ for these years annual means were ~~calculated~~ treated as missing data. Annual means were

**Table 2.** Sources of explanatory variables / proxy timeseries used in the MLR.

Variable	Proxy	Source
$S(t)$	Bremen composite Mg II index (Snow et al., 2014)	<a href="http://www.iup.uni-bremen.de/UVSAT/Datasets/mgii">http://www.iup.uni-bremen.de/UVSAT/Datasets/mgii</a>
$QBO_{50}(t), QBO_{10}(t)$	Singapore wind speed at 50 and 10 hPa (update from Naujokat, 1986)	<a href="http://www.geo.fu-berlin.de/met/ag/strat/produkte/qbo/qbo.dat">http://www.geo.fu-berlin.de/met/ag/strat/produkte/qbo/qbo.dat</a>
$E(t)$	MEI (ENSO) Index (Wolter and Timlin, 2011)	<a href="https://www.esrl.noaa.gov/psd/enso/mei/">https://www.esrl.noaa.gov/psd/enso/mei/</a>
$AO(t), AAO(t)$	Antarctic Oscillation (AAO), Arctic Oscillation (AO)	<a href="http://www.cpc.ncep.noaa.gov/products/precip/CWlink/daily_ao_index/teleconnections.shtml">http://www.cpc.ncep.noaa.gov/products/precip/CWlink/daily_ao_index/teleconnections.shtml</a>
$A_1(t)$	stratospheric aerosol depth at 550nm ( $t < 1990$ ) (update from Sato et al., 1993)	<a href="https://data.giss.nasa.gov/modelforce/strataer/tau.line_2012.12.txt">https://data.giss.nasa.gov/modelforce/strataer/tau.line_2012.12.txt</a>
$A_2(t)$	stratospheric aerosol depth at 550nm from WACCM model ( $t \geq 1990$ ) (Mills et al., 2016)	<a href="http://dx.doi.org/10.5065/D6S180JM">http://dx.doi.org/10.5065/D6S180JM</a>

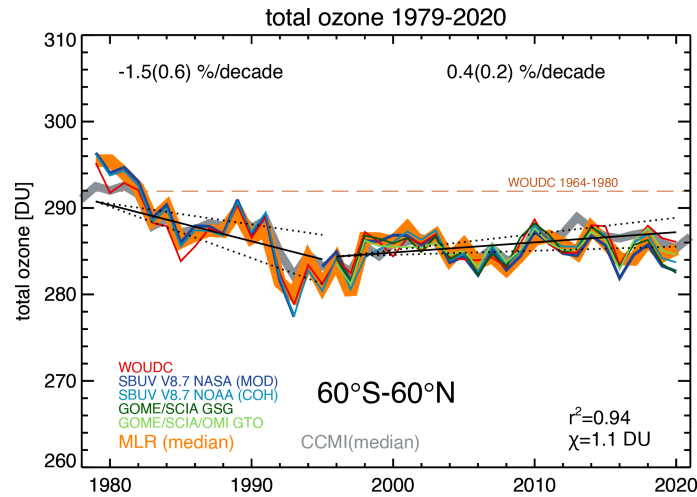
200 only used in the regression if at least 80% of the 5° bands of the data were contained in the broad zonal bands and 80% of  
 202 months available in that year. If annual means of the years 1982 and 1983 are missing, the "El Chichon" term is not used in the  
 MLR, similarly if missing all years from 1991 to 1994, the "Pinatubo" term is excluded in the MLR.

The MLR equation, Eq. 1, without the  $P(t)$  term has been commonly applied for determining trends from ozone profile data  
 204 (e.g. Bourassa et al., 2014; ?; Harris et al., 2015; Tummon et al., 2015; Sofieva et al., 2017; Steinbrecht et al., 2017)(e.g. Bourassa et al., 2014).  
 The extra term  $P(t)$  in Eq. 1 accounts for additional factors of dynamical variability that have been used in different combina-  
 206 tions and definitions (e.g. accumulated, time-lagged) in the past. It includes contributions from the Arctic (AO) and Antarctic  
 Oscillation (AAO), and the Brewer-Dobson circulation (BDC) (e.g. Reinsel et al., 2005; Mäder et al., 2007; Chehade et al.,  
 208 2014; Weber et al., 2018). The BDC terms are usually described by the eddy heat flux at 100 hPa that is considered a main  
 driver of the BDC (Fusco and Salby, 1999; Randel et al., 2002; Weber et al., 2011). The term  $P(t)$  is given as follows:

$$210 \quad P(t) = \alpha_{AO} \cdot AO(t) + \alpha_{AAO} \cdot AAO(t) + \alpha_{BDCn} \cdot BDC'n(t) + \alpha_{BDCs} \cdot BDC's(t). \quad (4)$$

In W18 the AAO term was not included. Table 2 summarises the sources of the proxy data used here. The [BDCn and BDCs](#)  
 212 [are 100 hPa eddy fluxes in the northern \(n\) and southern hemisphere \(s\). The](#) calculation of the BDC proxy from the monthly  
 mean eddy heat fluxes is described in detail in W18. In this study the eddy heat flux data [come were derived](#) from the ERA-5  
 214 reanalysis (Hersbach et al., 2020).





**Figure 1.** Near global ( $60^{\circ}\text{S}$ - $60^{\circ}\text{N}$ ) total ozone timeseries of five bias corrected merged datasets. The thick orange line is the result from applying the full MLR (Eqs. 1 and 4) to the median timeseries. The square of the correlation between observations and MLR is given by  $r^2$ .  $\chi^2$  is the sum square of the differences between median timeseries minus observational and MLR timeseries divided by the degrees of freedom (difference between the number of years,  $n$ , and number of parameters used in the MLR,  $m$ ). The solid lines indicate the linear trends before and after the ODS peak, respectively. The dotted lines indicate the  $2\sigma$  uncertainty of the MLR trend estimates. Trend numbers are indicated for the pre- and post-ODS peak period in the top part of the plot. Numbers in parentheses are the  $2\sigma$  trend uncertainty. The orange dashed line shows the mean ozone level from 1964 until 1980 from the WOUDC data. The thick grey line is the median of 17 chemistry-climate models from the CCMI initiative.

One may argue that the addition of  $P(t)$  will lead to some overfitting by the MLR. We justify this addition as it enables us to  
 216 obtain MLR fits matching the extreme events like very high annual mean ozone in the NH in 2010 and the very large warming  
 events above Antarctica in 2002 and 2019 with unusually high ozone. The better the dynamical variations are represented in  
 218 the MLR, the more likely we can separate out dynamical trend contributions and the linear trend terms best approximate EESC  
 related trends. In our previous study only selected terms from  $P(t)$  were used dependent on their significance in specific zonal  
 220 bands. Retaining all terms in all MLRs leads to smoother behavior in the latitude dependent ozone response.

The various proxy time series, in particular the atmospheric dynamics related ones, are partially correlated. One way to  
 222 improve upon this is the possibility to orthogonalize them. Doing so will not change the MLR fit results, but some contributions  
 from the original proxy terms will be redistributed among the proxies that were orthogonalized. It is also common to detrend  
 224 the proxy time series. In that case all linear changes of the various processes or proxies will be added up in the linear trend  
 term which makes attribution impossible. The For these reasons we do not detrend nor orthogonalise the proxy timeseries in  
 226 this study. Our goal here is that linear changes of all the processes as expressed by the various proxy terms shall be excluded  
 from the linear trend terms such that the linear trends can be attributed as close as possible to ODS changes.

## 228 4 Total ozone trends in broad zonal bands

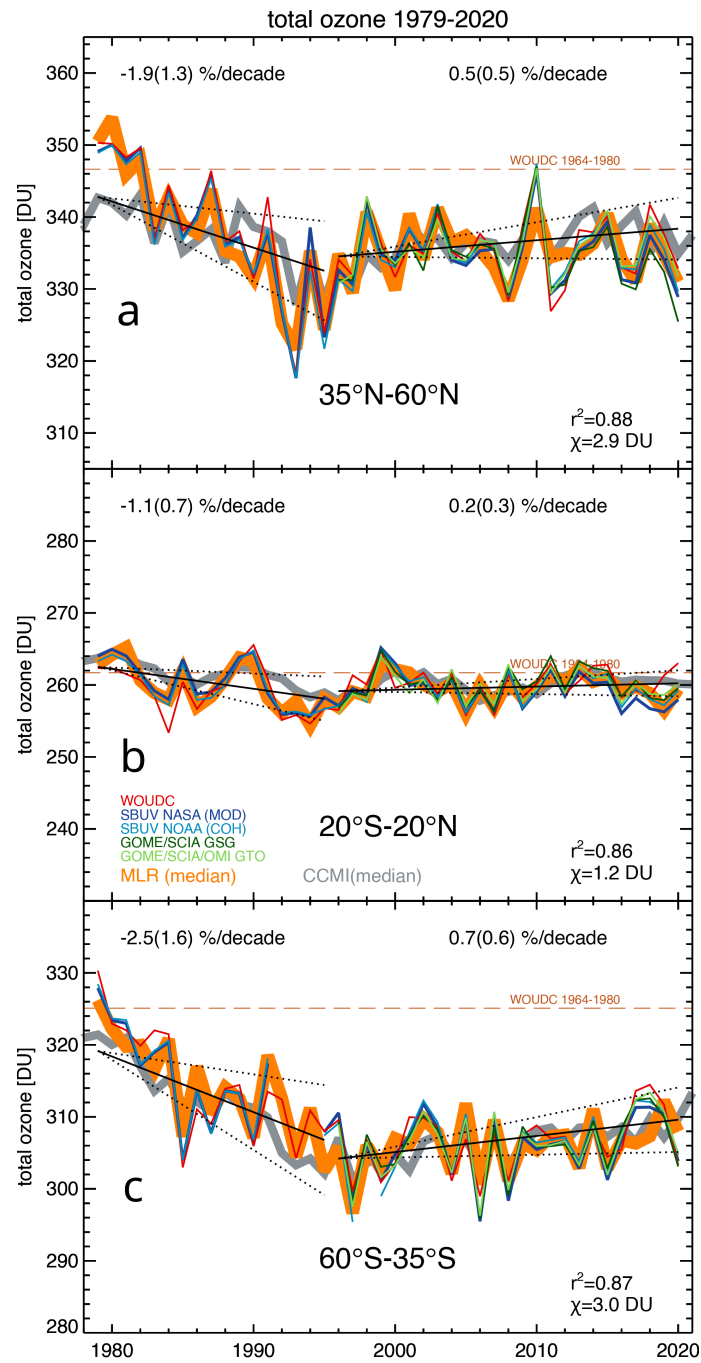
Figure 1 shows the near-global mean timeseries (60°S-60°N) of the ~~bias-corrected five~~ five bias-corrected merged datasets. The  
230 thick orange line is the MLR ~~result-timeseries~~ from applying the full regression model (Eqs. 1 and 4) to the median of the five  
timeseries. 94% of the variability in total ozone is well captured by the full MLR. A positive trend of  $+0.4 \pm 0.2(2\sigma)$  %/decade  
232 after 1996-1995 is derived. This trend is about one third of the absolute trend during the phase of increasing ODS before 1996  
1995 which is  $-1.5 \pm 0.6$  %/decade. The ratio of trends before and after 1996-1995 is very close to the ratio of rate changes in  
234 the effective equivalent stratospheric chlorine (EESC) before and after the middle 1990s (Dhomse et al., 2006; Newman et al.,  
2007). Therefore, the observed linear trend of roughly half a percent per decade up to 2020 can be ~~interpreted as the recovery~~  
236 ~~from changes attributed to reductions~~ in ODS following the Montreal Protocol. This ODS related recovery appears statistically  
robust (to within  $2\sigma$ ), even though the ozone levels have stayed more or less constant apart from the year-to-year variability  
238 since the year 2000. The magnitude of the post ODS-peak trend remained unchanged from W18. The trend results vary only  
slightly if the turnaround year (1996-1995) of the ODS change is shifted by one year back and forward. Even if the MLR fit of  
240 the post ODS-peak period is limited to years after 2000, the ~~recovery-ODS-related~~ trend remains robust at  $+0.5(0.3)$  %/decade.

The current near-global ozone level (2017-2020) is about 2.3% below the average from the 1964-1980 time period, the latter  
242 derived from the WOUDC data (see Fig. 1). Recovery of total ozone to the 1980 level is generally not expected before about the  
middle of this century (Braesicke et al., 2018). The near-global total ozone timeseries from the median of the seventeen CCMI  
244 chemistry-climate models is in very good agreement with the observations from which we conclude that the chemical and  
dynamical changes in total ozone under current ODS and greenhouse gas (GHG) scenarios are well understood and consistent  
246 with observations.

Figure 2 shows the ozone time series in the northern (NH) and southern hemisphere (SH) as well as in the tropics. Again, the  
248 current ozone levels are well below the 1964-1980 mean, specifically  $-3.6\%$  and  $-4.7\%$  in the NH and SH ( $35^\circ$ - $60^\circ$  latitudes),  
respectively. The lower value in the SH is due to the influence from the spring Antarctic ozone hole, which exhibits the largest  
250 local ozone depletion and leads to mixing of ozone depleted air into the middle latitudes (Atkinson et al., 1989; Millard et al.,  
2002). ~~Recovery-ODS-related~~ trends are  $+0.5(0.5)$  and  $+0.7(0.6)$  %/decade in the NH and SH, respectively. Within the trend  
252 uncertainty, the 1-to-3 ratio in the linear trends before and after the ODS peak in 1996-1995 are close to the ratio of the rate  
change in the EESC in both hemispheres.

254 In the tropics the linear trend after 1996-1995 is close to zero and insignificant (~~Fig. 2 and ?~~)(Fig. 2 and Coldewey-Egbers et al., 2022)  
. Table 3 summarises the MLR results in the broad zonal bands from the individual datasets and the median timeseries as well  
256 as the mean and median of the individual trends.

In most cases the results from the individual datasets are highly consistent in particular for the near-global time series. All  
258 datasets indicate significant near-global ~~recovery-ODS-related~~ trends of around half a percent per decade. The trend derived  
from the NASA data is a bit lower at  $+0.2$  %/decade. The median and mean trends of all datasets ~~agrees~~ agree here with  
260 the trends of the median timeseries as shown in Figs. 1 and 2. For the narrower zonal bands not all datasets show significant  
trends after 1996-1995. The NASA and GSG datasets show ~~low-recovery-lower~~ trends in the NH ( $+0.3$  and  $+0.1$  %/decade,



**Figure 2.** Same as Fig. 1, but for broad zonal bands, a) 35°N-60°N (northern hemisphere), b) 20°S-20°N (tropics), and c) 35°S-60°S (southern hemisphere).

262 respectively), while all others are between  $\pm 0.5$  and  $\pm 0.7$  %/decade and significant. In the SH all ~~recovery~~ trends agree to within one tenth %/decade (+0.7 %/decade), except for the NOAA dataset showing a somewhat higher trend of +1 %/decade.

264 ~~In the tropics the recovery trends are close to zero with the exception of the GSG and GTO datasets that have very small and barely significant positive recovery trends of  $+0.3 \pm 0.3$  %/decade. The variations in the trend results from the different datasets~~  
266 ~~is most likely due to some residual drifts in the datasets that are not accounted for in the data merging. With the use of the full MLR with all terms and with four years added in the timeseries', the ozone trends in the various zonal bands before and after~~  
268 ~~1996 remain quite similar to the results reported in W18, but uncertainties are slightly reduced.~~

In the tropics trends are close to zero with the exception of the GSG and GTO datasets that have very small and barely  
270 significant positive trends of  $+0.3 \pm 0.3$  %/decade. The variations in the trend results from the different datasets is most likely  
272 due to some residual drifts in the datasets that are not accounted for in the data merging. With the use of the full MLR with all  
terms and with four years added in the timeseries, the ozone trends in the various zonal bands after 1995 remain quite similar  
to the results reported in W18, but uncertainties are slightly reduced.

274 Table 4 shows different MLR settings applied to the median total ozone timeseries in broad zonal bands (as defined in  
Table 3). Here the results from the standard and full MLR are listed. In addition, we applied an iterative MLR approach where  
276 statistically insignificant terms ( $2\sigma$  criterion) from Eq. 4 and the El Niño term are successively excluded before the final MLR  
run. The inclusion of the dynamical proxies generally improved the MLR fit ( $r^2$  and chi values). Except for the NH zonal band  
278 (35N-60N) the various MLR settings yield nearly the same post ODS-peak trends for all broad zonal bands (Table 4). There  
are, however, larger changes in the trends before the middle 1990s. In the extratropics the early-period trends are lower in the  
280 standard retrieval. (-4.0 versus -1.9 %/decade in the NH and -3.1 versus -1.9 %/decade in the SH). This means that atmospheric  
dynamics and transport changes contributed to lower early-period extratropical total ozone trends in the standard regression  
282 (due to the lack of these dynamical terms in the MLR). The opposite is the case in the tropics where the early-period trends in  
the standard MLR are slightly higher than in the full MLR. This opposite behavior is consistent with ozone transport patterns  
284 due to the Brewer-Dobson circulation.

It appears that the post-ODS trends are in most cases unchanged regardless of the number of extra terms used in the MLR.  
286 The linear trend term is the only low frequency term in the MLR equations, while the dynamical proxies have some high  
frequency contributions. This makes the trend estimates rather robust and less sensitive to the various other terms used in the  
288 MLR. The only significant changes in the post ODS-peak trends are seen in the NH extratropics. In the standard MLR this  
trend is zero, while the full and iterative MLR show trends of a half percent per decade. The sum of the ODS-related trend (full  
290 MLR) and atmospheric dynamics contribution (difference in the trends between full and standard MLR) cancel to result in a  
zero trend in the standard MLR. The negative dynamical trend contribution in the NH is further discussed later in the paper. The  
292 correlation between regression and observations are substantially lower in the standard retrieval ( $r^2 = 0.74$  versus 0.88), which  
indicates that the standard MLR seems not to capture all variability and changes of total ozone. The results shown in Table 4  
294 are compared with the results from the MLR applied to the period through 2016 (same period as in W18) as shown in Table  
S1 (Supplement). Results from the shorter time period are nearly identical to those shown in Table 3. There is one notable  
296 change. The uncertainties of the NH trends from the full MLR up to 2020 are reduced such that these trends have become

298 barely significant ( $2\sigma$ ). The Post-ODS-peak trend of the standard MLR is slightly positive up to 2016 but statistically insignificant and within the uncertainties not different from the current results.

300 In order to document the changes from the MLR fits (Table 4) to results from the period up to and including 2016 (as in W18), the different MLR settings were applied to the current data for the shorter period as summarised in Table S1 (Supplement). Note that the results in Table S1 may differ from W18 as the merged datasets have been updated and data before 2017 may have changed as well. Results from the shorter time period are nearly identical to those shown in Table 4. There is one notable change. The uncertainties of the NH trends from the full MLR up to 2020 are reduced such that these trends have become barely significant ( $2\sigma$ ). The post ODS-peak trend of the standard MLR is slightly positive up to 2016 but statistically insignificant and within the uncertainties not different from the current results.

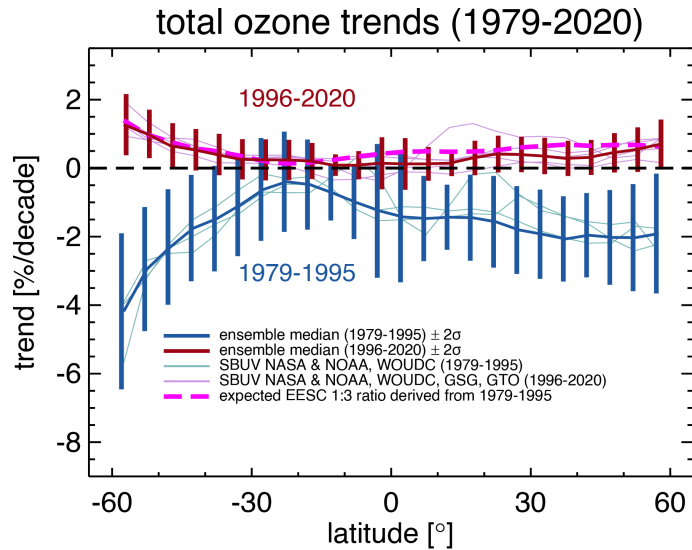
## 306 5 Latitude dependent total ozone trends

Latitude dependent trends in steps of  $5^\circ$  are shown from  $60^\circ\text{S}$  to  $60^\circ\text{N}$  for all five merged datasets (thin lines) in Fig. 3. The two thick blue and red lines are the results before and after 1996-1995 from applying the full MLR to the median timeseries including  $2\sigma$  uncertainties shown as error bars. In the extratropics the recovery-ODS-related trends are on the order of +0.5%/decade with  $2\sigma$  uncertainties of about the same magnitude. In the SH the recovery-trends continuously increase to nearly +1.3%/decade in the  $55^\circ\text{S}$ - $60^\circ\text{S}$  band while in the NH the recovery-trends remain unchanged up to the highest latitudes shown. In the tropics recovery-trends are close to zero. One notable change from W18 is that the tropical trends during the ODS rising phase are now more negative (down to  $-1\%$ /decade) while before they were mainly close to zero. This may be caused by the additional proxy terms used in this study.

After 1996-1995 all trends of all datasets are in good agreement to within  $\pm 0.3\%$ /decade. There are some notable differences in the northern subtropical and northern tropical trends for the WOUDC data (up to  $+1\%$ /decade) compared to the other datasets, which is most likely caused by larger uncertainties due to the sparsity of ground-ground-based data at these latitudes. The trend uncertainties are generally larger for the early period before 1996, which in part may be is caused by the different lengths of the periods before 1996 (17 years) and after 1996-1995 (25 years).

320 The dashed pink line shows the expected recovery-ODS-related trends when applying the 1-to-3 ratio (corresponding to the rate change of the EESC) to the trends before 1996. It agrees quite well in the extratropics with the independent linear trend estimates and therefore give us confidence that ozone is responding to the long-term ODS decline. The expected tropical recovery-ODS-related trends are slightly positive while the MLR regressions suggest rather near zero trends, but they still agree within their uncertainties. In the NH extratropics the expected ODS related trend is slightly higher than the observed trends, but also agree within the uncertainties of the observed trends.

326 In order to elucidate further on the interpretation of the independent linear trends after 1996-as-recovery-trends1995, we repeated the analyses using the standard MLR which excludes several terms responsible for changes in atmospheric dynamics and transport (Eq. 1 with  $P(t) = 0$ ). The latitude dependent trends from the standard MLR are shown in Fig. 4. While the recovery-trends observed trends for both MLRs are nearly unchanged in the SH, the NH recovery-trends are reduced to zero in

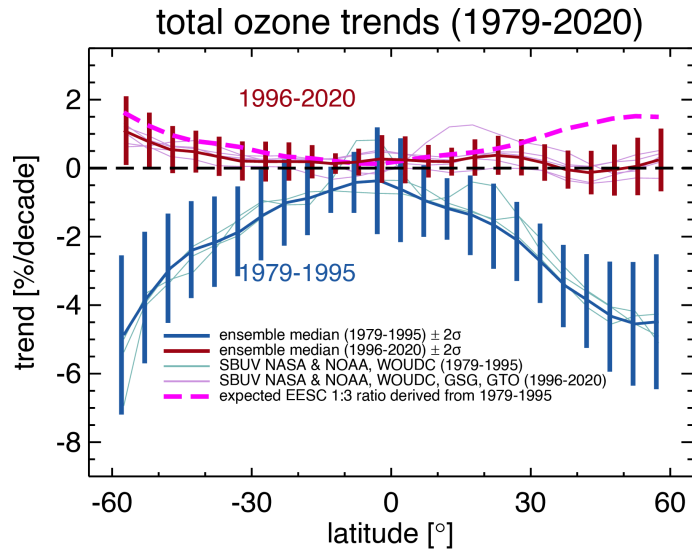


**Figure 3.** Latitude dependent ozone trends in steps of  $5^\circ$  from applying the full MLR (Eqs. 1 and 4) to the median timeseries of the five merged total ozone datasets. Trends and  $2\sigma$  standard deviations are shown in blue for the time period before 1996 and in red after 1996. The thin lines show the trends of the individual total ozone datasets. The pink dashed lines are the post-ODS peak trends as expected from the 1-to-3 ratio (corresponding to changes in the stratospheric halogen) applied to the median timeseries' trends before 1996.

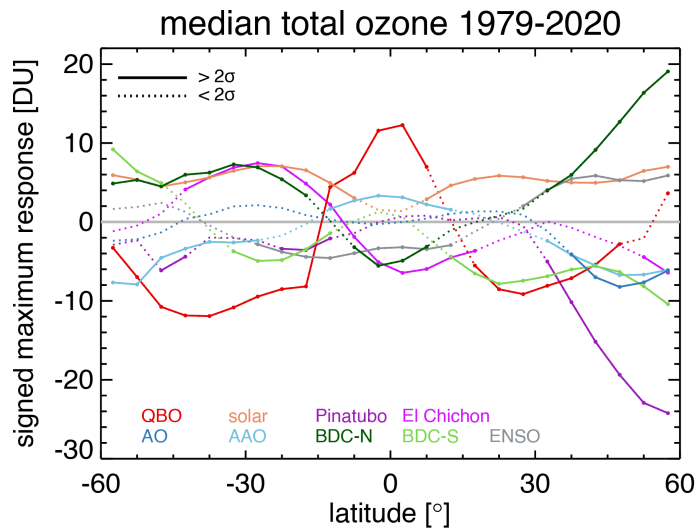
330 the NH extratropics. On the other hand the tropical trends before 1996 are closer to zero. The expected recovery-ODS-related  
 332 trends (from the 1-to-3 EESC ratio) have become larger with increases to  $+1.5\%$ /decade at the higher latitudes now in both  
 hemispheres. The most obvious result is that the independent linear trends after 1996-1995 in the NH being close to zero  
 now clearly deviate from the expected 1-to-3 ratio. It appears that the additional atmospheric dynamics terms in the regression  
 334 balance the positive recovery-trends from the full MLR which explains why total ozone in the NH appears more or less stable  
 during the last two decades (panel a of Fig. 2).

336 The declining trends in the NH before 1996 (Fig. 4a) are stronger in the standard MLR and are comparable to the SH (about  
 $-4\%$ /decade near  $60^\circ$  latitude). On the other hand ODS related trends are expected to be somewhat stronger in the SH as the  
 338 influence from polar ozone losses on mid-latitude ozone is thought to be larger in the SH, since Arctic ozone losses are more  
 sporadic and generally smaller. In that regard the trends from the full MLR seem to support this notion.

340 The comparisons of trends from the standard and full MLR reveal that the NH ODS-related ozone recovery is balanced by  
 long-term changes in atmospheric dynamics (circulation and transport changes) or in other words the near zero linear post  
 342 ODS-peak trends are caused by the combination of ODS-related recovery and dynamical changes. These two signals are more  
 clearly separated in the full MLR. Before discussing this further, we will take a look at the contributing factors or terms in the  
 344 MLR. Figure 5 shows the maximum response of the various terms in Eqs. 1 and 4 as a function of latitude (from the fit to the  
 median timeseries).



**Figure 4.** Same as Fig. 3, but from applying the standard MLR (Eq. 1 and  $P(t) = 0$ ).



**Figure 5.** Signed maximum timeseries contribution from various terms in the full MLR equation applied to the median of the five merged total ozone datasets. Solid line indicates values of fit coefficients that are larger than their  $2\sigma$  uncertainty. The sign of the BDCs proxy time series is reversed, so that in both hemispheres positive BDC term values correspond to enhanced Brewer-Dobson circulation. Negative values an anti-correlation of the ozone response to the proxy. For instance, positive solar contributions mean high solar activity leads to more ozone.

346 Well-known factors like solar activity and QBO show the expected behaviour, i.e. more ozone during solar maximum at  
 348 1989; Baldwin et al., 2001). The solar response is of similar magnitude at all latitudes, which means that the solar effect in

the lower stratosphere is mostly indirect via changes in temperature and associated atmospheric circulation changes (e.g.?)  
350 [\(e.g. Dhomse et al., 2022\)](#).

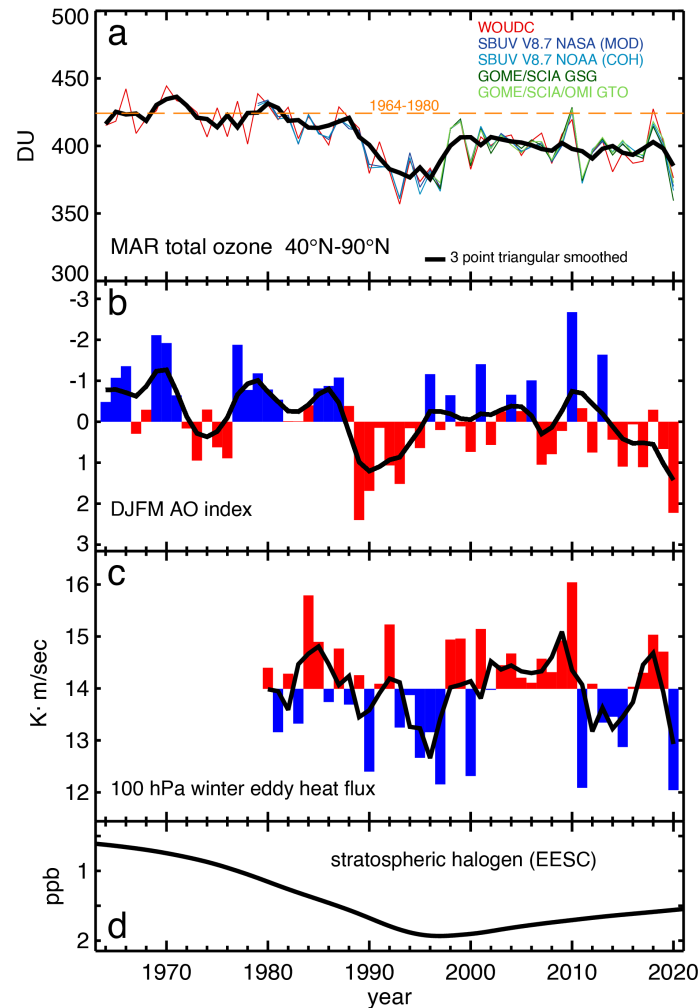
In the NH the BDC and and AO mostly contribute to ozone variability. Interestingly, there is an influence from the BDC from  
352 one hemisphere to the other in both directions. BDC-N results in opposite responses in the tropics and NH extratropics. This  
is expected from the planetary waves driving the BDC leading to ascent in the tropics (lower ozone) and descent in the polar  
354 region (higher ozone) (e.g. Randel et al., 2002; Weber et al., 2011). The correlation of ozone anomalies in the NH winter/spring  
to SH total ozone was reported by Fioletov and Shepherd (2003) and is believed to explain the positive response in SH total  
356 ozone. Somewhat surprising is the impact of the SH BDC on NH ozone with a negative ozone response, for which we have no  
explanation.

358 The major volcanic eruption of Mt. Pinatubo in 1991 had a stronger impact on the NH reducing ozone for several years  
after the event, while ozone advection apparently balanced the surface acid particle (aerosol) related ozone losses in the SH  
360 (Schnadt Poberaj et al., 2011; Aquila et al., 2013; Dhomse et al., 2015). The second large major volcanic eruption from spring  
1982 lead to aerosol related ozone loss in the tropics and NH, while surprisingly a positive ozone response in the SH is seen  
362 possibly related to some atmospheric circulation changes compensating chemical ~~effect~~ [effects](#) from the El Chichon eruption.  
In contrast to Mt. Pinatubo, which spread sulfuric acid particles into both hemispheres, enhanced aerosols from El Chichon  
364 were confined to lower latitudes in the NH (McCormick and Swissler, 1983) consistent with the region of negative ozone  
response shown in Fig. 5.

366 The main reason for stable ozone levels observed in ~~the NH at~~ [NH mid-latitudes](#) since 2000 were identified to stem from  
the balancing of the positive observed ~~recovery~~ [ODS-related](#) trend by negative trends due to circulation changes and ozone  
368 transport (see Figs. 2 and 3). The change in the BDC-n proxy and AO over the last 55 years is shown in Figure 6 along with  
March total ozone northward of 40°N. The variability in the extratropical annual mean is usually dominated by the variability  
370 in winter/spring, where BDC maximizes in the seasonal cycle. Apart from the strong drop in ozone in the 1990s related to the  
major volcanic eruption and associated circulation changes, NH total ozone has been steadily declining over the last 55 years  
372 (about 25 DU). This decline is coherent with an overall positive shift of the AO index. A weakening of the BDC is also seen  
but appears less clear than for the AO.

374 A positive shift in the AO and a weakening of the BDC results in a strengthening of the polar vortex, which is associated  
with larger polar ozone losses (Lawrence et al., 2020). Hu et al. (2018) linked a recent strengthening of the stratospheric Arctic  
376 vortex in part to a warming of sea surface temperatures in the central northern Pacific. A ~~recent~~ downward trend in [extratropical](#)  
lower stratospheric ozone has been reported by Ball et al. (2018) that could be consistent with the total ozone observations.  
378 Other studies with many different ozone profile datasets did not show significant trends in the lower stratosphere due to very  
large variability and lower accuracy of the satellite data in this altitude region (Sofieva et al., 2017; Steinbrecht et al., 2017;  
380 Arosio et al., 2019).

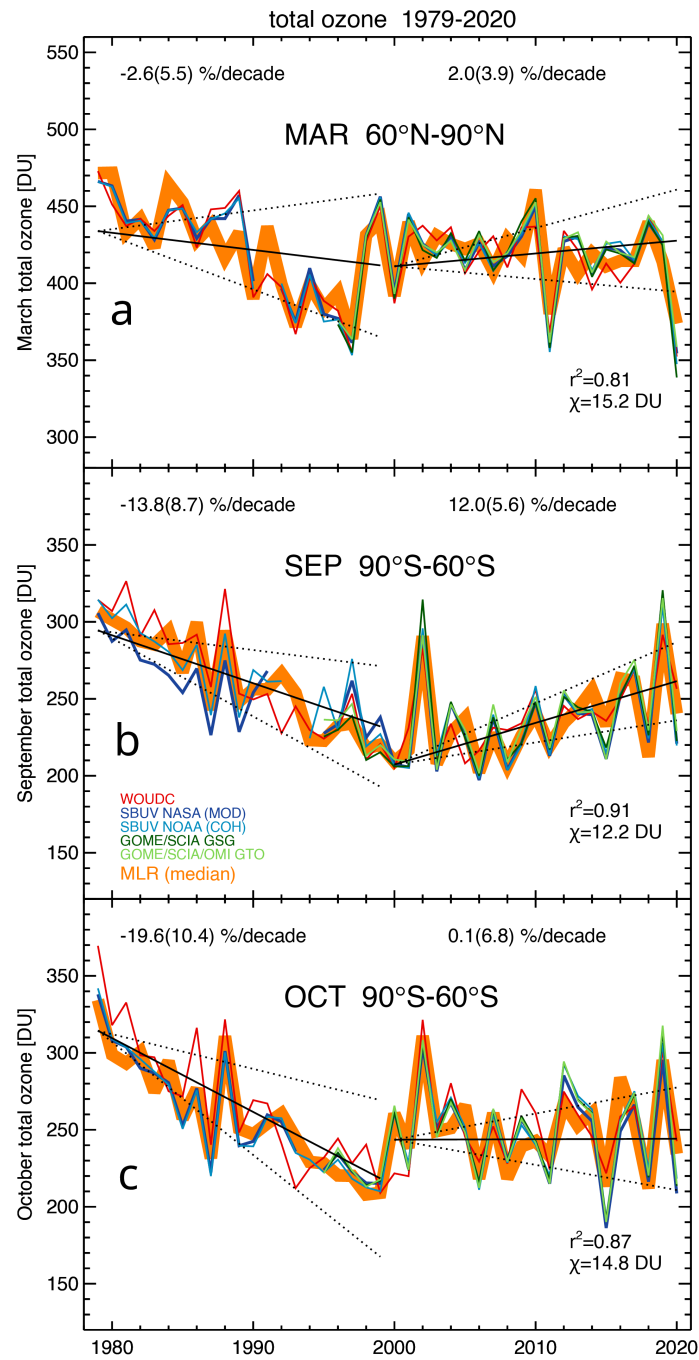




**Figure 6.** Panel a: March NH total ozone ( $40^{\circ}\text{N}$ - $90^{\circ}\text{N}$ ) from the five bias-corrected merged datasets (colored) and the smoothed median timeseries (thick black line). Panel b: DJFM Arctic oscillation (AO) index. Black lines shows the three-point triangular smoothed timeseries. Note the inverted y-scales series. Panel c: 100 hPa winter eddy heat flux September to March average (BDCn proxy) with black line showing the three-point triangular smoothed timeseries. Panel d: Inverted stratospheric halogen timeseries in ppb representative for middle latitudes (Newman et al., 2007).

## 6 Trends in polar spring

382 Earlier signs of ozone recovery ~~has been~~ were observed in September above Antarctica (Solomon et al., 2016, W18). Now, with four more years of data this recovery of about  $\pm 12\%$  /decade remains robust (see panel b of Fig. 7). During September, the Antarctic ozone hole size usually increases and reaches its maximum in late September and early October. In a typical Antarctic winter, ozone is completely destroyed in the lower stratosphere, which may explain why no recovery is yet observed



**Figure 7.** Polar ozone trends derived from the full MLR applied to the median timeseries. a) March 60°N-90°N, b) September and c) October 60°S-90°S. see Fig. 1 for more details.

386 in October over the polar cap (panel c in Fig. 7). ~~Despite the lack of recovery in the late ozone hole season, several~~ Several  
diagnostics clearly indicate a healing of Antarctic ozone as a consequence of the Montreal Protocol. Stone et al. (2021) show  
388 that the onset of the Antarctic ozone hole has been shifted to later dates despite the larger than average ozone holes observed  
in recent years (e.g. 2015 and 2020).

390 Panel a of Fig. 7 shows the March ozone timeseries above the Arctic with ~~ozone recovery~~ ODS-related ozone trends not  
statistically different from zero. The trend results in the polar regions ~~as shown in Fig. 7~~ basically confirm the results from W18  
392 and Langematz et al. (2018). Table 5 summarises the polar trends for the individual datasets and the mean timeseries. Within  
the trend uncertainties all datasets are in very good agreement.

## 394 7 Summary and conclusions

We derived globally total ozone ~~recovery~~ trends from five merged total ozone datasets using a multiple linear regression with  
396 independent linear trend (ILT) terms before and after the turnaround in stratospheric halogens in the middle 1990s (~2000 in  
the polar regions). When properly accounting for dynamical changes via atmospheric circulation and transport, these retrieved  
398 trends may be ~~interpreted as recovery trends~~ directly related to changes in the stratospheric halogens (and ODS) as a response  
to the Montreal Protocol and Amendments phasing out ozone depleting substances.

400 For the near-global average we see small ~~recovery~~ ODS-related trends of about  $\pm 0.5$  %/decade with main contributions from  
the extratropics in both hemispheres. The ratio of ozone trends after and before the turnaround year is in very good agreement  
402 with the trend ratios in stratospheric halogens or ODS.

In the tropics ~~recovery~~ trends are not statistically different from zero. In line with earlier observations (Solomon et al.,  
404 2016, W18), polar ozone recovery has been only identified in September above Antarctica, which is connected to the observed  
delay in the onset of the Antarctic ozone hole (Stone et al., 2021). In the Arctic, large interannual variability still prevents the  
406 detection of early signs of recovery.

Although we showed that ODS-related ozone recovery is evident at NH middle latitudes, the total ozone levels in the  
408 NH extratropics have been more or less stable since about 2000. Our regression results show that the ~~recovery~~ positive  
ODS-related trend here is balanced by changes in ozone transport. A long-term positive drift in the AO index over the last  
410 55 years is indicative of a strengthening of the Arctic vortex (Hu et al., 2018; Lawrence et al., 2020; von der Gathen et al.,  
2021) and reduced winter/spring transport of ozone into middle and high latitudes. This result may be consistent with the  
412 observed decline in lower stratospheric ozone in the extratropics as reported by Ball et al. (2018) and Wargan et al. (2018),  
Wargan et al. (2018) and Ball et al. (2020) mainly attribute this decline to enhanced horizontal mixing with the tropical region,  
414 where lowermost stratospheric ozone decreases (Thompson et al., 2021). Other studies and datasets, however, do so far not  
confirm the long-term decline in the lower stratosphere ~~Arosio et al. (2019); Steinbrecht et al. (2017); Sofieva et al. (2017)~~  
416 ~~(Arosio et al., 2019; Steinbrecht et al., 2017; Sofieva et al., 2017)~~, which may be in part due to the larger uncertainties of satel-  
lite observations in this altitude region. From ~~chemistry-climate models~~ chemistry-climate models it is expected that ~~the BDC~~  
418 ~~and ozone will increase as a result of greenhouse gases and~~ with a strengthening of the BDC due to increasing GHG, tropical

ozone declines and extratropical ozone increases in the lower stratosphere. Most models so far cannot explain the observed  
420 extratropical decline in lower stratospheric ozone (Dietmüller et al., 2021).

~~Another point which will be important is to show consistency between total ozone trends and both stratospheric and~~  
422 ~~tropospheric ozone trends. The ozone satellite datasets still show significant differences and opposite signs in trends (Gaudel et al., 2018)~~  
~~—~~

424 *Data availability.* The sources of the various datasets and proxy time series (explanatory variables) used in this study are summarised in  
Tables 1 and 2.

426 *Competing interests.* No competing interests are present.

*Acknowledgements.* M.C.E., D.L., and C.A. are grateful for the support by the ESA Climate Change Initiative project CCI+. M.W., C.A. and  
428 J.P.B. acknowledge the financial support of the State of Bremen and the ESA OREGANO project. S.M.F. is supported by the NASA Long  
Term Measurement of Ozone program WBS 479717. We thank the two reviewers for their very useful comments to our paper.

## 430 References

- Anderson, J., Russell, J. M., Solomon, S., and Deaver, L. E.: Halogen Occultation Experiment confirmation of stratospheric chlorine de-  
432 creases in accordance with the Montreal Protocol, *J. Geophys. Res.: Atmos.*, 105, 4483–4490, <https://doi.org/10.1029/1999JD901075>,  
2000.
- 434 Aquila, V., Oman, L. D., Stolarski, R., Douglass, A. R., and Newman, P. A.: The response of ozone and nitrogen dioxide to the eruption of  
Mt. Pinatubo at southern and northern midlatitudes, *J. Atmos. Sci.*, 70, 894–900, <https://doi.org/10.1175/JAS-D-12-0143.1>, 2013.
- 436 Arosio, C., Rozanov, A., Malinina, E., Weber, M., and Burrows, J. P.: Merging of ozone profiles from SCIAMACHY, OMPS and SAGE II  
observations to study stratospheric ozone changes, *Atmos. Meas. Tech.*, 12, 2423–2444, <https://doi.org/10.5194/amt-12-2423-2019>, 2019.
- 438 Atkinson, R. J., Matthews, W. A., Newman, P. A., and Plumb, R. A.: Evidence of the mid-latitude impact of Antarctic ozone depletion,  
*Nature*, 340, 290–294, <https://doi.org/10.1038/340290a0>, 1989.
- 440 Baldwin, M. P., Gray, L. J., Dunkerton, T. J., Hamilton, K., Haynes, P. H., Randel, W. J., Holton, J. R., Alexander, M. J., Hirota, I.,  
Horinouchi, T., Jones, D. B. A., Kinnersley, J. S., Marquardt, C., Sato, K., and Takahashi, M.: The Quasi-Biennial Oscillation, *Rev.*  
442 *Geophys.*, 39, 179–229, <https://doi.org/10.1029/1999RG000073>, 2001.
- Ball, W. T., Alsing, J., Mortlock, D. J., Staehelin, J., Haigh, J. D., Peter, T., Tummon, F., Stübi, R., Stenke, A., Anderson, J., Bourassa, A.,  
444 Davis, S. M., Degenstein, D., Frith, S., Froidevaux, L., Roth, C., Sofieva, V., Wang, R., Wild, J., Yu, P., Ziemke, J. R., and Rozanov, E. V.:  
Evidence for a continuous decline in lower stratospheric ozone offsetting ozone layer recovery, *Atmos. Chem. Phys.*, 18, 1379–1394,  
446 <https://doi.org/10.5194/acp-18-1379-2018>, 2018.
- Ball, W. T., Chiodo, G., Abalos, M., Alsing, J., and Stenke, A.: Inconsistencies between chemistry–climate models and observed lower  
448 stratospheric ozone trends since 1998, *Atmos. Chem. Phys.*, 20, 9737–9752, <https://doi.org/10.5194/acp-20-9737-2020>, 2020.
- Bhartia, P. K., McPeters, R. D., Flynn, L. E., Taylor, S., Kramarova, N. A., Frith, S., Fisher, B., and DeLand, M.: Solar Backscatter UV  
450 (SBUV) total ozone and profile algorithm, *Atmos. Meas. Tech.*, 6, 2533–2548, <https://doi.org/10.5194/amt-6-2533-2013>, 2013.
- Bloomer, B. J., Vinnikov, K. Y., and Dickerson, R. R.: Changes in seasonal and diurnal cycles of ozone and temperature in the eastern U.S.,  
452 *Atmos. Env.*, 44, 2543–2551, <https://doi.org/10.1016/j.atmosenv.2010.04.031>, 2010.
- Bourassa, A. E., Degenstein, D. A., Randel, W. J., Zawodny, J. M., Kyrölä, E., McLinden, C. A., Sioris, C. E., and Roth, C. Z.: Trends  
454 in stratospheric ozone derived from merged SAGE II and Odin-OSIRIS satellite observations, *Atmos. Chem. Phys.*, 14, 6983–6994,  
<https://doi.org/10.5194/acp-14-6983-2014>, 2014.
- 456 Bourassa, A. E., Roth, C. Z., Zawada, D. J., Rieger, L. A., McLinden, C. A., and Degenstein, D. A.: Drift corrected Odin-OSIRIS ozone  
product: algorithm and updated stratospheric ozone trends, *Atmos. Meas. Tech.*, 11, 489–498, <https://doi.org/10.5194/amt-11-489-2018>,  
458 2018.
- Bowman, K. P.: Global Patterns of the Quasi-biennial Oscillation in Total Ozone, *J. Atmos. Sci.*, 46, 3328–3343,  
460 [https://doi.org/10.1175/1520-0469\(1989\)046<3328:GPOTQB>2.0.CO;2](https://doi.org/10.1175/1520-0469(1989)046<3328:GPOTQB>2.0.CO;2), 1989.
- Bozhkova, V., Liudchik, A., and Umreiko, S.: Long-term trends of total ozone content over mid-latitudes of the Northern Hemisphere, *Int. J.*  
462 *Remote Sens.*, 40, 5216–5229, <https://doi.org/10.1080/01431161.2019.1579384>, 2019.
- Braesicke, P., Neu, J., Fioletov, V., Godin-Beekmann, S., Hubert, D., Petropavlovskikh, I., Shiotani, M., and Sinnhuber, B.-M.: Update on  
464 Global Ozone: Past, Present, and Future, in: *Scientific Assessment of Ozone Depletion: 2018*, World Meteorological Organization, Global  
Ozone Research and Monitoring Project - Report No. 58, chap. 3, World Meteorological Organization/UNEP, [https://public.wmo.int/en/  
466 resources/library/scientific-assessment-of-ozone-depletion-2018](https://public.wmo.int/en/resources/library/scientific-assessment-of-ozone-depletion-2018), 2018.

Chehade, W., Weber, M., and Burrows, J. P.: Total ozone trends and variability during 1979-2012 from merged data sets of various satellites,  
468 Atmos. Chem. Phys., 14, 7059–7074, <https://doi.org/10.5194/acp-14-7059-2014>, 2014.

Chiou, E. W., Bhartia, P. K., McPeters, R. D., Loyola, D. G., Coldewey-Egbers, M., Fioletov, V. E., Van Roozendaal, M., Spurr, R., Lerot,  
470 C., and Frith, S. M.: Comparison of profile total ozone from SBUV (v8.6) with GOME-type and ground-based total ozone for a 16-year  
period (1996 to 2011), Atmos. Meas. Tech., 7, 1681–1692, <https://doi.org/10.5194/amt-7-1681-2014>, 2014.

472 Chubachi, S.: Preliminary results of ozone observations at Syowa Station from February 1982 to January 1983, in: Proc. Sixth Symposium  
on Polar Meteorology and Glaciology, edited by Kusunoki, K., vol. 34 of *Mem. National Institute of Polar Research Special Issue*, pp.  
474 13–19, 1984.

Coldewey-Egbers, M., Weber, M., Lamsal, L. N., de Beek, R., Buchwitz, M., and Burrows, J. P.: Total ozone retrieval from GOME UV  
476 spectral data using the weighting function DOAS approach, Atmos. Chem. Phys., 5, 1015–1025, <https://doi.org/10.5194/acp-5-1015-2005>,  
2005.

478 Coldewey-Egbers, M., Loyola, D. G., Koukoulis, M., Balis, D., Lambert, J.-C., Verhoelst, T., Granville, J., van Roozendaal, M., Lerot, C.,  
Spurr, R., Frith, S. M., and Zehner, C.: The GOME-type Total Ozone Essential Climate Variable (GTO-ECV) data record from the ESA  
480 Climate Change Initiative, Atmos. Meas. Tech., 8, 3923–3940, <https://doi.org/10.5194/amt-8-3923-2015>, 2015.

Coldewey-Egbers, M., Loyola, D., Lerot, C., and van Roozendaal, M.: Global, regional and seasonal analysis of total ozone trends derived  
482 from the 1995–2020 GTO-ECV climate data record, Atmos. Chem. Phys. Discuss. [preprint], <https://doi.org/10.5194/acp-2021-1047>, in  
review, 2022.

484 DeLand, M. T., Taylor, S. L., Huang, L. K., and Fisher, B. L.: Calibration of the SBUV version 8.6 ozone data product, Atmos. Meas. Tech.,  
5, 2951–2967, <https://doi.org/10.5194/amt-5-2951-2012>, 2012.

486 Dhomse, S., Weber, M., Wohltmann, I., Rex, M., and Burrows, J. P.: On the possible causes of recent increases in northern hemispheric total  
ozone from a statistical analysis of satellite data from 1979 to 2003, Atmos. Chem. Phys., 6, 1165–1180, <https://doi.org/10.5194/acp-6->  
488 1165-2006, 2006.

Dhomse, S. S., Chipperfield, M. P., Feng, W., Hossaini, R., Mann, G. W., and Santee, M. L.: Revisiting the hemispheric asymmetry in  
490 midlatitude ozone changes following the Mount Pinatubo eruption: A 3-D model study, Geophysical Research Letters, 42, 3038–3047,  
<https://doi.org/10.1002/2015GL063052>, 2015.

492 Dhomse, S. S., Chipperfield, M. P., Feng, W., Hossaini, R., Mann, G. W., Santee, M. L., and Weber, M.: A Single-Peak-Structured Solar  
Cycle Signal in Stratospheric Ozone based on Microwave Limb Sounder Observations and Model Simulations, Atmos. Chem. Phys., 22,  
494 903–916, <https://doi.org/10.5194/acp-2021-663>, 2022.

Dietmüller, S., Garny, H., Eichinger, R., and Ball, W. T.: Analysis of recent lower-stratospheric ozone trends in chemistry climate models,  
496 Atmos. Chem. Phys., 21, 6811–6837, <https://doi.org/10.5194/acp-21-6811-2021>, 2021.

Eyring, V., Arblaster, J. M., Cionni, I., Sedláček, J., Perlwitz, J., Young, P. J., Bekki, S., Bergmann, D., Cameron-Smith, P., Collins, W. J.,  
498 Faluvegi, G., Gottschaldt, K.-D., Horowitz, L. W., Kinnison, D. E., Lamarque, J.-F., Marsh, D. R., Saint-Martin, D., Shindell, D. T.,  
Sudo, K., Szopa, S., and Watanabe, S.: Long-term ozone changes and associated climate impacts in CMIP5 simulations, J. Geophys. Res.  
500 Atmos., 118, 5029–5060, <https://doi.org/10.1002/jgrd.50316>, 2013.

Farman, J. C., Gardiner, B. G., and Shanklin, J. D.: Large losses of total ozone in Antarctica reveal seasonal ClO<sub>x</sub>/NO<sub>x</sub> interaction, Nature,  
502 315, 207–210, <https://doi.org/10.1038/315207a0>, 1985.

Fioletov, V. E. and Shepherd, T. G.: Seasonal persistence of midlatitude total ozone anomalies, Geophys. Res. Lett., 30,  
504 <https://doi.org/10.1029/2002GL016739>, 2003.

- Fioletov, V. E., Bodeker, G. E., Miller, A. J., McPeters, R. D., and Stolarski, R.: Global and zonal total ozone variations estimated from ground-based and satellite measurements: 1964–2000, *J. Geophys. Res.*, 107, 4647, <https://doi.org/10.1029/2001JD001350>, 2002.
- Fioletov, V. E., Labow, G., Evans, R., Hare, E. W., Köhler, U., McElroy, C. T., Miyagawa, K., Redondas, A., Savastiouk, V., Shalamyansky, A. M., Staehelin, J., Vanicek, K., and Weber, M.: Performance of the ground-based total ozone network assessed using satellite data, *J. Geophys. Res.*, 113, D14 313, <https://doi.org/10.1029/2008JD009809>, 2008.
- Frith, S., Kramarova, N., Bhartia, P., Huang, L.-K., Ziemke, J., McPeters, R., Labow, G., Haffner, D., Stolarski, R., and DeLand, M.: Updates to the Merged Ozone Data (MOD) total and profile ozone record based on V8.7 SBUV(/2) and V2.8 OMPS Nadir Profiler Data, to be submitted to *Atmos. Meas. Tech.*, 2022.
- Frith, S. M., Kramarova, N. A., Stolarski, R. S., McPeters, R. D., Bhartia, P. K., and Labow, G. J.: Recent changes in total column ozone based on the SBUV Version 8.6 Merged Ozone Data Set, *J. Geophys. Res. Atmos.*, 119, 9735–9751, <https://doi.org/10.1002/2014JD021889>, 2014.
- Frith, S. M., Bhartia, P. K., Oman, L. D., Kramarova, N. A., McPeters, R. D., and Labow, G. J.: Model-based climatology of diurnal variability in stratospheric ozone as a data analysis tool, *Atmos. Meas. Tech.*, 13, 2733–2749, <https://doi.org/10.5194/amt-13-2733-2020>, 2020.
- Fusco, A. C. and Salby, M. L.: Interannual Variations of Total Ozone and Their Relationship to Variations of Planetary Wave Activity, *J. Clim.*, 12, 1619–1629, [https://doi.org/10.1175/1520-0442\(1999\)012<1619:IVOTOA>2.0.CO;2](https://doi.org/10.1175/1520-0442(1999)012<1619:IVOTOA>2.0.CO;2), 1999.
- Garane, K., Lerot, C., Coldewey-Egbers, M., Verhoelst, T., Koukoulis, M. E., Zyrichidou, I., Balis, D. S., Danckaert, T., Goutail, F., Granville, J., Hubert, D., Keppens, A., Lambert, J.-C., Loyola, D., Pommereau, J.-P., Van Roozendael, M., and Zehner, C.: Quality assessment of the Ozone\_cci Climate Research Data Package (release 2017) - Part 1: Ground-based validation of total ozone column data products, *Atmos. Meas. Tech.*, 11, 1385–1402, <https://doi.org/10.5194/amt-11-1385-2018>, 2018.
- Garane, K., Koukoulis, M.-E., Verhoelst, T., Lerot, C., Heue, K.-P., Fioletov, V., Balis, D., Bais, A., Bazureau, A., Dehn, A., Goutail, F., Granville, J., Griffin, D., Hubert, D., Keppens, A., Lambert, J.-C., Loyola, D., McLinden, C., Pazmino, A., Pommereau, J.-P., Redondas, A., Romahn, F., Valks, P., Van Roozendael, M., Xu, J., Zehner, C., Zerefos, C., and Zimmer, W.: TROPOMI/S5P total ozone column data: global ground-based validation and consistency with other satellite missions, *Atmos. Meas. Tech.*, 12, 5263–5287, <https://doi.org/10.5194/amt-12-5263-2019>, 2019.
- Gaudel, A., Cooper, O. R., Ancellet, G., Barret, B., Boynard, A., Burrows, J. P., Clerbaux, C., Coheur, P.-F., Cuesta, J., Cuevas, E., Doniki, S., Dufour, G., Ebojje, F., Foret, G., Garcia, O., Granados-Muñoz, M. J., Hannigan, J. W., Hase, F., Hassler, B., Huang, G., Hurtmans, D., Jaffe, D., Jones, N., Kalabokas, P., Kerridge, B., Kulawik, S., Latter, B., Leblanc, T., Le Flochmoën, E., Lin, W., Liu, J., Liu, X., Mahieu, E., McClure-Begley, A., Neu, J. L., Osman, M., Palm, M., Petetin, H., Petropavlovskikh, I., Querel, R., Rahpoe, N., Rozanov, A., Schultz, M. G., Schwab, J., Siddans, R., Smale, D., Steinbacher, M., Tanimoto, H., Tarasick, D. W., Thouret, V., Thompson, A. M., Trickl, T., Weatherhead, E., Wespes, C., Worden, H. M., Vigouroux, C., Xu, X., Zeng, G., Ziemke, J., Helmig, D., and Lewis, A.: Tropospheric Ozone Assessment Report: Present-day distribution and trends of tropospheric ozone relevant to climate and global atmospheric chemistry model evaluation, *Elem. Sci. Anth.*, 6, <https://doi.org/10.1525/elementa.291>, 2018.
- Harris, N. R. P., Kyrö, E., Staehelin, J., Brunner, D., Andersen, S.-B., Godin-Beekmann, S., Dhomse, S., Hadjinicolaou, P., Hansen, G., Isaksen, I., Jrrar, A., Karpetchko, A., Kivi, R., Knudsen, B., Krizan, P., Lastovicka, J., Maeder, J., Orsolini, Y., Pyle, J. A., Rex, M., Vanicek, K., Weber, M., Wohltmann, I., Zanis, P., and Zerefos, C.: Ozone trends at northern mid- and high latitudes – a European perspective, *Ann. Geophys.*, 26, 1207–1220, <https://doi.org/10.5194/angeo-26-1207-2008>, 2008.
- Harris, N. R. P., Hassler, B., Tummon, F., Bodeker, G. E., Hubert, D., Petropavlovskikh, I., Steinbrecht, W., Anderson, J., Bhartia, P. K., Boone, C. D., Bourassa, A., Davis, S. M., Degenstein, D., Delcloo, A., Frith, S. M., Froidevaux, L., Godin-Beekmann, S., Jones, N.,

Kurylo, M. J., Kyrölä, E., Laine, M., Leblanc, S. T., Lambert, J.-C., Liley, B., Mahieu, E., Maycock, A., de Mazière, M., Parrish, A.,  
 544 Querel, R., Rosenlof, K. H., Roth, C., Sioris, C., Staehelin, J., Stolarski, R. S., Stübi, R., Tamminen, J., Vigouroux, C., Walker, K. A.,  
 Wang, H. J., Wild, J., and Zawodny, J. M.: Past changes in the vertical distribution of ozone – Part 3: Analysis and interpretation of trends,  
 546 *Atmos. Chem. Phys.*, 15, 9965–9982, <https://doi.org/10.5194/acp-15-9965-2015>, 2015.

Hegglin, M., Lamarque, J.-F., Duncan, B., Eyring, V., Gettelman, A., Hess, P., Myhre, G., Nagashima, T., Plummer, D., Ryerson, T., Shepherd,  
 548 T., and Waugh, D.: Report on the IGAC/SPARC Chemistry-Climate Model Initiative (CCMI) 2015 Science workshop, SPARC Newsletter,  
[http://www.sparc-climate.org/wp-content/uploads/sites/5/2017/12/SPARCnewsletter\\_No46\\_Jan2016\\_web.pdf](http://www.sparc-climate.org/wp-content/uploads/sites/5/2017/12/SPARCnewsletter_No46_Jan2016_web.pdf), 46, 37-42, 2016.

550 Hersbach, H., Bell, B., Berrisford, P., Hirahara, S., Horányi, A., Muñoz-Sabater, J., Nicolas, J., Peubey, C., Radu, R., Schepers, D., Simmons,  
 A., Soci, C., Abdalla, S., Abellan, X., Balsamo, G., Bechtold, P., Biavati, G., Bidlot, J., Bonavita, M., Chiara, G., Dahlgren, P., Dee,  
 552 D., Diamantakis, M., Dragani, R., Flemming, J., Forbes, R., Fuentes, M., Geer, A., Haimberger, L., Healy, S., Hogan, R. J., Hólm, E.,  
 Janisková, M., Keeley, S., Laloyaux, P., Lopez, P., Lupu, C., Radnoti, G., Rosnay, P., Rozum, I., Vamborg, F., Villaume, S., and Thépaut,  
 554 J.: The ERA5 global reanalysis, *Quart. J. Royal Meteor. Soc.*, 146, 1999–2049, <https://doi.org/10.1002/qj.3803>, 2020.

Hu, D., Guan, Z., Tian, W., and Ren, R.: Recent strengthening of the stratospheric Arctic vortex response to warming in the central North  
 556 Pacific, *Nat. Comm.*, 9, 1697, <https://doi.org/10.1038/s41467-018-04138-3>, 2018.

Kieseewetter, G., Sinnhuber, B.-M., Weber, M., and Burrows, J. P.: Attribution of stratospheric ozone trends to chemistry and transport: a  
 558 modelling study, *Atmos. Chem. Phys.*, 10, 12 073–12 089, <https://doi.org/10.5194/acp-10-12073-2010>, 2010.

Kramarova, N., Bhartia, P., Huang, L.-K., Ziemke, J., Frith, S. M., McPeters, R., Labow, G., Haffner, D., Stolarski, R., and DeLand, M.: A  
 560 new approach to cross-calibrate satellite instruments, to be submitted to *Atmos. Meas. Tech.*, 2022.

Kramarova, N. A., Frith, S. M., Bhartia, P. K., McPeters, R. D., Taylor, S. L., Fisher, B. L., Labow, G. J., and DeLand, M. T.: Validation  
 562 of ozone monthly zonal mean profiles obtained from the version 8.6 Solar Backscatter Ultraviolet algorithm, *Atmos. Chem. Phys.*, 13,  
 6887–6905, <https://doi.org/10.5194/acp-13-6887-2013>, 2013.

564 Krzyścin, J. W. and Baranowski, D. B.: Signs of the ozone recovery based on multi sensor reanalysis of total ozone for the period 1979–2017,  
*Atmos. Environ.*, 199, 334–344, <https://doi.org/10.1016/j.atmosenv.2018.11.050>, 2019.

566 Langematz, U., Tully, M. B., Calvo, N., Dameris, M., de Laat, A. T. J., Klekociuk, A., Müller, R., and Young, P.: Update on Polar Stratospheric  
 Ozone: Past, Present, and Future, in: *Scientific Assessment of Ozone Depletion: 2018*, World Meteorological Organization, Global Ozone  
 568 Research and Monitoring Project - Report No. 58, chap. 4, World Meteorological Organization/UNEP, <https://public.wmo.int/en/resources/library/scientific-assessment-of-ozone-depletion-2018>, 2018.

570 Lawrence, Z. D., Perlwitz, J., Butler, A. H., Manney, G. L., Newman, P. A., Lee, S. H., and Nash, E. R.: The remarkably strong Arctic  
 stratospheric polar vortex of winter 2020: Links to record-breaking Arctic Oscillation and ozone loss, *Journal of Geophysical Research:*  
 572 *Atmospheres*, <https://doi.org/10.1029/2020JD033271>, 2020.

Lerot, C., Van Roozendaal, M., Spurr, R., Loyola, D., Coldewey-Egbers, M., Kochenova, S., van Gent, J., Koukouli, M., Balis, D., Lambert, J.-  
 574 C., Granville, J., and Zehner, C.: Homogenized total ozone data records from the European sensors GOME/ERS-2, SCIAMACHY/Envisat,  
 and GOME-2/MetOp-A, *J. Geophys. Res. Atmos.*, 119, 1639–1662, <https://doi.org/10.1002/2013JD020831>, 2014.

576 Mäder, J. A., Staehelin, J., Brunner, D., Stahel, W. A., Wohltmann, I., and Peter, T.: Statistical modeling of total ozone: Selection of appro-  
 priate explanatory variables, *J. Geophys. Res.*, 112, D11 108, <https://doi.org/10.1029/2006JD007694>, 2007.

578 Mäder, J. A., Staehelin, J., Peter, T., Brunner, D., Rieder, H. E., and Stahel, W. A.: Evidence for the effectiveness of the Montreal Protocol to  
 protect the ozone layer, *Atmos. Chem. Phys.*, 10, 12 161–12 171, <https://doi.org/10.5194/acp-10-12161-2010>, 2010.



- 580 McCormick, M. P. and Swissler, T. J.: Stratospheric aerosol mass and latitudinal distribution of the El Chichon eruption cloud for October 1982, *Geophys. Res. Lett.*, 10, 877–880, <https://doi.org/10.1029/GL010i009p00877>, 1983.
- 582 Millard, G. A., Lee, A. M., and Pyle, J. A.: A model study of the connection between polar and midlatitude ozone loss in the Northern Hemisphere lower stratosphere, *J. Geophys. Res. Atmos.*, 107, SOL 66–1–SOL 66–12, <https://doi.org/10.1029/2001JD000899>, 2002.
- 584 Mills, M. J., Schmidt, A., Easter, R., Solomon, S., Kinnison, D. E., Ghan, S. J., Neely, R. R., Marsh, D. R., Conley, A., Bardeen, C. G., and Gettelman, A.: Global volcanic aerosol properties derived from emissions, 1990–2014, using CESM1(WACCM), *J. Geophys. Res. Atmos.*, 121, 2332–2348, <https://doi.org/10.1002/2015JD024290>, 2016.
- 586 Morgenstern, O., Hegglin, M. I., Rozanov, E., O'Connor, F. M., Abraham, N. L., Akiyoshi, H., Archibald, A. T., Bekki, S., Butchart, N., Chipperfield, M. P., Deushi, M., Dhomse, S. S., Garcia, R. R., Hardiman, S. C., Horowitz, L. W., Jöckel, P., Josse, B., Kinnison, D., Lin, M., Mancini, E., Manyin, M. E., Marchand, M., Maréchal, V., Michou, M., Oman, L. D., Pitari, G., Plummer, D. A., Revell, L. E., Saint-Martin, D., Schofield, R., Stenke, A., Stone, K., Sudo, K., Tanaka, T. Y., Tilmes, S., Yamashita, Y., Yoshida, K., and Zeng, G.: Review of the global models used within phase 1 of the Chemistry–Climate Model Initiative (CCMI), *Geosci. Model Dev.*, 10, 639–671, <https://doi.org/10.5194/gmd-10-639-2017>, 2017.
- 590 Naujokat, B.: An update of the observed Quasi-Biennial Oscillation of the stratospheric winds over the tropics, *J. Atmos. Sci.*, 43, 1873–1877, [https://doi.org/10.1175/1520-0469\(1986\)043<1873:AUOTOQ>2.0.CO;2](https://doi.org/10.1175/1520-0469(1986)043<1873:AUOTOQ>2.0.CO;2), 1986.
- 594 Newman, P. A., Nash, E. R., Kawa, S. R., Montzka, S. A., and Schauffler, S. M.: When will the Antarctic ozone hole recover?, *Geophys. Res. Lett.*, 33, L12 814, <https://doi.org/10.1029/2005GL025232>, 2006.
- 596 Newman, P. A., Daniel, J. S., Waugh, D. W., and Nash, E. R.: A new formulation of equivalent effective stratospheric chlorine (EESC), *Atmos. Chem. Phys.*, 7, 4537–4552, <https://doi.org/10.5194/acp-7-4537-2007>, 2007.
- 598 Orfanoz-Cheuquelaf, A., Rozanov, A., Weber, M., Arosio, C., Ladstätter-Weissenmayer, A., and Burrows, J. P.: Total ozone column from Ozone Mapping and Profiler Suite Nadir Mapper (OMPS-NM) measurements using the broadband weighting function fitting approach (WFFA), *Atmos. Meas. Tech.*, 14, 5771–5789, <https://doi.org/10.5194/amt-14-5771-2021>, 2021.
- 600 Randel, W. J., Wu, F., and Stolarski, R.: Changes in column ozone correlated with the stratospheric EP flux, *J. Meteor. Soc. Japan*, 80, 849–862, <https://doi.org/10.2151/jmsj.80.849>, 2002.
- 602 Reinsel, G. C., Miller, A. J., Weatherhead, E. C., Flynn, L. E., Nagatani, R. M., Tiao, G. C., and Wuebbles, D. J.: Trend analysis of total ozone data for turnaround and dynamical contributions, *J. Geophys. Res.*, 110, D16 306, <https://doi.org/10.1029/2004JD004662>, 2005.
- 604 Sato, M., Hansen, J. E., McCormick, M. P., and Pollack, J. B.: Stratospheric aerosol optical depths, 1850–1990, *J. Geophys. Res.*, 98, 22 987, <https://doi.org/10.1029/93JD02553>, 1993.
- 606 Schnadt Poberaj, C., Staehelin, J., and Brunner, D.: Missing stratospheric ozone decrease at Southern Hemisphere middle latitudes after Mt. Pinatubo: A dynamical perspective, *J. Atmos. Sci.*, 68, 1922–1945, <https://doi.org/10.1175/JAS-D-10-05004.1>, 2011.
- 608 Snow, M., Weber, M., Machol, J., Viereck, R., and Richard, E.: Comparison of Magnesium II core-to-wing ratio observations during solar minimum 23/24, *J. Space Weather Spac.*, 4, A04, <https://doi.org/10.1051/swsc/2014001>, 2014.
- 610 Sofieva, V. F., Kyrölä, E., Laine, M., Tamminen, J., Degenstein, D., Bourassa, A., Roth, C., Zawada, D., Weber, M., Rozanov, A., Rahpoe, N., Stiller, G., Laeng, A., von Clarmann, T., Walker, K. A., Sheese, P., Hubert, D., van Roozendaal, M., Zehner, C., Damadeo, R., Zawodny, J., Kramarova, N., and Bhartia, P. K.: Merged SAGE II, Ozone\_cci and OMPS ozone profile dataset and evaluation of ozone trends in the stratosphere, *Atmos. Chem. Phys.*, 17, 12 533–12 552, <https://doi.org/10.5194/acp-17-12533-2017>, 2017.
- 614 Solomon, P., Barrett, J., Mooney, T., Connor, B., Parrish, A., and Siskind, D. E.: Rise and decline of active chlorine in the stratosphere, *Geophysical Research Letters*, 33, L18 807, <https://doi.org/10.1029/2006GL027029>, 2006.
- 616

- 618 Solomon, S.: Stratospheric ozone depletion: A review of concepts and history, *Rev. Geophys.*, 37, 275–316, <https://doi.org/10.1029/1999RG900008>, 1999.
- 620 Solomon, S., Garcia, R. R., Rowland, F. S., and Wuebbles, D. J.: On the depletion of Antarctic ozone, *Nature*, 321, 755–758, <https://doi.org/10.1038/321755a0>, 1986.
- 622 Solomon, S., Ivy, D. J., Kinnison, D., Mills, M. J., Neely, R. R., and Schmidt, A.: Emergence of healing in the Antarctic ozone layer, *Science*, 353, 269–274, <https://doi.org/10.1126/science.aae0061>, 2016.
- 624 Staehelin, J., Harris, N. R. P., Appenzeller, C., and Eberhard, J.: Ozone trends: A review, *Rev. Geophys.*, 39, 231–290, <https://doi.org/10.1029/1999RG000059>, 2001.
- 626 Steinbrecht, W., Froidevaux, L., Fuller, R., Wang, R., Anderson, J., Roth, C., Bourassa, A., Degenstein, D., Damadeo, R., Zawodny, J., Frith, S., McPeters, R., Bhartia, P., Wild, J., Long, C., Davis, S., Rosenlof, K., Sofieva, V., Walker, K., Rahpoe, N., Rozanov, A., Weber, M., Laeng, A., von Clarmann, T., Stiller, G., Kramarova, N., Godin-Beekmann, S., Leblanc, T., Querel, R., Swart, D., Boyd, I., Hocke, K., Kämpfer, N., Maillard Barras, E., Moreira, L., Nedoluha, G., Vigouroux, C., Blumenstock, T., Schneider, M., García, O., Jones, N., Mahieu, E., Smale, D., Kotkamp, M., Robinson, J., Petropavlovskikh, I., Harris, N., Hassler, B., Hubert, D., and Tummon, F.: An update on ozone profile trends for the period 2000 to 2016, *Atmos. Chem. Phys.*, 17, 10 675–10 690, <https://doi.org/10.5194/acp-17-10675-2017>, 2017.
- 632 Stone, K. A., Solomon, S., Kinnison, D. E., and Mills, M. J.: On Recent Large Antarctic Ozone Holes and Ozone Recovery Metrics, *Geophys. Res. Lett.*, 48, <https://doi.org/10.1029/2021GL095232>, 2021.
- 634 Thompson, A. M., Stauffer, R. M., Wargan, K., Witte, J. C., Kollonige, D. E., and Ziemke, J. R.: Regional and Seasonal Trends in Tropical Ozone From SHADOZ Profiles: Reference for Models and Satellite Products, *J. Geophys. Res. Atmos.*, 126, <https://doi.org/10.1029/2021JD034691>, 2021.
- 638 Tummon, F., Hassler, B., Harris, N. R. P., Staehelin, J., Steinbrecht, W., Anderson, J., Bodeker, G. E., Bourassa, A., Davis, S. M., Degenstein, D., Frith, S. M., Froidevaux, L., Kyrölä, E., Laine, M., Long, C., Penckwitt, A. A., Sioris, C. E., Rosenlof, K. H., Roth, C., Wang, H. J., and Wild, J.: Intercomparison of vertically resolved merged satellite ozone data sets: Interannual variability and long-term trends, *Atmos. Chem. and Phys.*, 15, 3021–3043, <https://doi.org/10.5194/acp-15-3021-2015>, 2015.
- 640 van der A, R. J., Allaart, M. A. F., and Eskes, H. J.: Extended and refined multi sensor reanalysis of total ozone for the period 1970–2012, *Atmos. Meas. Tech.*, 8, 3021–3035, <https://doi.org/10.5194/amt-8-3021-2015>, 2015.
- 644 von der Gathen, P., Kivi, R., Wohltmann, I., Salawitch, R. J., and Rex, M.: Climate change favours large seasonal loss of Arctic ozone, *Nature Commun.*, 12, 3886, <https://doi.org/10.1038/s41467-021-24089-6>, 2021.
- 646 Vyushin, D. I., Fioletov, V. E., and Shepherd, T. G.: Impact of long-range correlations on trend detection in total ozone, *J. Geophys. Res.*, 112, D14 307, <https://doi.org/10.1029/2006JD008168>, 2007.
- 648 Wargan, K., Orbe, C., Pawson, S., Ziemke, J. R., Oman, L. D., Olsen, M. A., Coy, L., and Emma Knowland, K.: Recent Decline in Extratropical Lower Stratospheric Ozone Attributed to Circulation Changes, *Geophys. Res. Lett.*, 45, 5166–5176, <https://doi.org/10.1029/2018GL077406>, 2018.
- 650 Weatherhead, E. C., Reinsel, G. C., Tiao, G. C., Jackman, C. H., Bishop, L., Frith, S. M. H., DeLuisi, J., Keller, T., Oltmans, S. J., Fleming, E. L., Wuebbles, D. J., Kerr, J. B., Miller, A. J., Herman, J., McPeters, R., Nagatani, R. M., and Frederick, J. E.: Detecting the recovery of total column ozone, *J. Geophys. Res.: Atmos.*, 105, 22 201–22 210, <https://doi.org/10.1029/2000JD900063>, 2000.
- 654 Weber, M., Lamsal, L. N., Coldewey-Egbers, M., Bramstedt, K., and Burrows, J. P.: Pole-to-pole validation of GOME WFDOAS total ozone with groundbased data, *Atmos. Chem. Phys.*, 5, 1341–1355, <https://doi.org/10.5194/acp-5-1341-2005>, 2005.

- 656 Weber, M., Dikty, S., Burrows, J. P., Garny, H., Dameris, M., Kubin, A., Abalichin, J., and Langematz, U.: The Brewer-Dobson circulation  
and total ozone from seasonal to decadal time scales, *Atmos. Chem. Phys.*, 11, 11 221–11 235, <https://doi.org/10.5194/acp-11-11221-2011>,  
658 2011.
- Weber, M., Coldewey-Egbers, M., Fioletov, V. E., Frith, S. M., Wild, J. D., Burrows, J. P., Long, C. S., and Loyola, D.: Total ozone trends from  
660 1979 to 2016 derived from five merged observational datasets – the emergence into ozone recovery, *Atmos. Chem. Phys.*, 18, 2097–2117,  
<https://doi.org/10.5194/acp-18-2097-2018>, 2018.
- 662 Weber, M., Steinbrecht, W., Arosio, C., van der A, R., Frith, S. M., Anderson, J., Coldewey-Egbers, M., Davis, S., Degenstein, D., Fioletov,  
V. E., Froidevaux, L., Hubert, D., Loyola, D., Rozanov, A., Roth, C., Sofieva, V., Tourpali, K., Wang, R., and Wild, J. D.: [Global Climate]  
664 Stratospheric ozone [in "State of the Climate in 2020"], *Bull. Amer. Meteor. Soc.*, 102, S92–S95, <https://doi.org/10.1175/BAMS-D-21-0098.1>, 2021.
- 666 Wolter, K. and Timlin, M. S.: El Niño/Southern Oscillation behaviour since 1871 as diagnosed in an extended multivariate ENSO index  
(MEI.ext), *Int. J. Clim.*, 31, 1074–1087, <https://doi.org/10.1002/joc.2336>, 2011.
- 668 Ziemke, J. R., Labow, G. J., Kramarova, N. A., McPeters, R. D., Bhartia, P. K., Oman, L. D., Frith, S. M., and Haffner, D. P.: A global ozone  
profile climatology for satellite retrieval algorithms based on Aura MLS measurements and the MERRA-2 GMI simulation, *Atmos. Meas.*  
670 *Tech.*, 14, 6407–6418, <https://doi.org/10.5194/amt-14-6407-2021>, 2021.

**Table 3.** ~~1979-1996-1979-1995~~ and ~~1997-2020-1996-2020~~ annual mean total ozone trends in various broad zonal bands. Uncertainties are given as  $2\sigma$  and trends in bold are have an absolute magnitude equal or larger than  $2\sigma$ .  $r^2$  is the square Pearson correlation between timeseries of observations and MLR and  $\chi$  the residual defined as  $\chi^2 = \sum_i (\text{obs}_i - \text{mod}_i)^2 / (n - m)$ , where  $\text{obs}_i$  are the observations and  $\text{mod}_i$  the MLR model,  $n$ , the number of data (years) in the timeseries, and  $m$ , the number of parameters fitted. All results are obtained using the full MLR.

zonal bands	MLR/ (2017-2020) minus (1964 -1980)		median	NASA	NOAA	GSG	GTO	WOUDC
60°S-60°N	full	trend $\geq 1996 > 1995$ [%/dec.]	<b>+0.4(2)</b>	<b>+0.2(2)</b>	<b>+0.5(3)</b>	<b>+0.4(3)</b>	<b>+0.5(3)</b>	<b>+0.6(3)</b>
near global	-2.3%	trend $< 1996 \leq 1995$ [%/dec.]	<b>-1.5(6)</b>	<b>-1.2(7)</b>	<b>-1.5(7)</b>	—	—	<b>-1.1(7)</b>
		$r^2$	0.94	0.94	0.93	0.92	0.93	0.89
		$\chi$ [DU]	1.1	1.1	1.2	1.3	1.2	1.3
				mean trend >1995 [%/dec.]			<b>+0.4(3)</b>	
				median trend >1995 [%/dec.]			<b>+0.4(3)</b>	
35°N-60°N	full	trend $\geq 1996 > 1995$ [%/dec.]	<b>+0.5(5)</b>	+0.3(5)	<b>+0.7(5)</b>	+0.1(6)	<b>+0.6(6)</b>	<b>+0.6(6)</b>
NH	-3.6%	trend $< 1996 \leq 1995$ [%/dec.]	<b>-1.9(13)</b>	<b>-1.5(12)</b>	<b>-1.9(12)</b>	—	—	<b>-1.9(15)</b>
		$r^2$	0.88	0.90	0.89	0.88	0.87	0.85
		$\chi$ [DU]	2.9	2.7	2.7	3.0	3.0	3.3
				mean trend >1995 [%/dec.]			+0.5(6)	
				median trend >1995 [%/dec.]			<b>+0.6(6)</b>	
20°S-20°S	full	trend $\geq 1996 > 1995$ [%/dec.]	+0.2(3)	-0.2(3)	+0.1(3)	<b>+0.3(3)</b>	<b>+0.3(3)</b>	+0.4(5)
tropics	-1.1%	trend $< 1996 \leq 1995$ [%/dec.]	<b>-1.1(7)</b>	<b>-1.2(7)</b>	<b>-1.0(7)</b>	—	—	-0.6(12)
		$r^2$	0.86	0.89	0.87	0.85	0.82	<del>0.7</del> <b>0.70</b>
		$\chi$ [DU]	1.2	1.1	1.1	1.2	1.3	1.9
				mean trend >1995 [%/dec.]			+0.2(3)	
				median trend >1995 [%/dec.]			<b>+0.3(3)</b>	
35°S-60°S	full	trend $\geq 1996 > 1995$ [%/dec.]	<b>+0.7(6)</b>	<b>+0.6(6)</b>	<b>+1.0(7)</b>	<b>+0.7(7)</b>	<b>+0.8(6)</b>	<b>+0.8(7)</b>
SH	-4.7%	trend $< 1996 \leq 1995$ [%/dec.]	<b>-2.5(16)</b>	<b>-2.5(16)</b>	<b>-2.4(17)</b>	—	—	<b>-2.6(19)</b>
		$r^2$	0.87	0.88	0.89	0.87	0.88	0.82
		$\chi$ [DU]	3.0	3.0	3.1	3.1	3.0	3.6
				mean trend >1995 [%/dec.]			<b>+0.8(7)</b>	
				median trend >1995 [%/dec.]			<b>+0.8(7)</b>	

bold numbers: statistical significance at  $2\sigma$

**Table 4.** Different MLR settings applied to the broad zonal mean median ozone timeseries. For explanations of terms see Table 3. Standard MLR is based upon Eq. 1 with  $P(t) = 0$ . Iterative MLR means that only terms of  $P(t)$  and El-Nino term are fitted when they are statistically significant ( $2\sigma$ ), while full MLR includes all terms in Eq. 1 and  $P(t)$ .

zonal bands	MLR	parameters added	$r^2$	$\chi$ [DU]	trend ( $t \leq 1995$ ) [%/decade]	trend ( $t > 1996$ ) [%/decade]
60°S-60°N	full	all	0.94	1.1	<b>-1.5(6)</b>	<b>+0.4(2)</b>
	iterative	BDCs, BDCn, AAO	0.93	1.1	<b>-1.5(6)</b>	<b>+0.4(2)</b>
	standard	-	0.89	1.3	<b>-2.2(6)</b>	<b>+0.3(3)</b>
35N°S-60°N	full	all	0.88	2.9	<b>-1.9(13)</b>	<b>+0.5(5)</b>
	iterative	all	0.88	2.9	<b>-1.9(13)</b>	<b>+0.5(5)</b>
	standard	-	0.74	4.0	<b>-4.0(15)</b>	0.0(7)
20S°S-20°N	full	all	0.86	1.2	<b>-1.1(7)</b>	+0.2(3)
	iterative	BDCs, ENSO	0.84	1.2	<b>-0.7(6)</b>	<b>+0.3(3)</b>
	standard	-	0.78	1.4	<b>-0.8(7)</b>	+0.2(3)
35S°S-60°S	full	all	0.87	3.0	<b>-2.5(16)</b>	<b>+0.7(6)</b>
	iterative	AAO	0.83	3.3	<b>-3.1(13)</b>	<b>+0.8(6)</b>
	standard	-	0.86	3.1	<b>-3.1(14)</b>	<b>+0.8(7)</b>

bold numbers: statistical significance at  $2\sigma$

**Table 5.** Polar total ozone trends in March (NH), September (SH), and October (SH) before and after 2000. Uncertainties are provided for  $2\sigma$  and trends in bold indicate statistical significance.  $r^2$  is the square Pearson correlation and  $\chi$  the residual (see caption of Table 3). The results were obtained from the full MLR.

zonal bands	MLR		median	NASA	NOAA	GSG	GTO	WOUDC
60°N-90°N March	full	trend $\geq 2000$ [%/dec.]	+2.0(39)	+3.0(35)	+3.4(37)	+3.1(40)	+3.6(37)	+1.3(44)
		trend $< 2000$ [%/dec.]	-2.6(55)	-0.3(51)	0.0(54)	—	—	-2.3(61)
		$r^2$	0.81	0.85	0.85	0.84	0.84	0.76
		$\chi$ [DU]	15.2	13.2	14.0	14.9	13.6	17.0
60S°S-90°S September	full	trend $\geq 2000$ [%/dec.]	<b>+12.0(56)</b>	<b>+11.0(65)</b>	<b>+10.1(68)</b>	<b>+12.2(57)</b>	<b>+11.2(57)</b>	<b>+10.9(62)</b>
		trend $< 2000$ [%/dec.]	<b>-13.8(87)</b>	<b>-8.9(100)</b>	<b>-11.6(105)</b>	—	—	<b>-19.1(107)</b>
		$r^2$	0.91	0.85	0.87	0.92	0.91	0.89
		$\chi$ [DU]	12.2	14.2	14.6	12.2	12.1	13.3
60°S-90°S October	full	trend $\geq 2000$ [%/dec.]	+0.1(68)	-1.9(68)	+0.1(65)	+0.9(71)	+0.5(72)	+4.1(91)
		trend $< 2000$ [%/dec.]	<b>-19.6(104)</b>	<b>-19.4(104)</b>	<b>-21.0(100)</b>	—	—	<b>-18.9(138)</b>
		$r^2$	0.87	0.87	0.88	0.86	0.86	0.81
		$\chi$ [DU]	14.8	14.8	14.2	15.5	15.7	19.7

bold numbers: statistical significance at  $2\sigma$

## Supplement

**Table S1.** Different MLR settings applied to the broad zonal mean median ozone timeseries but limited to the period 1979-2016 (last four years removed compared to Table 4). For explanations of terms see Table 3. Standard MLR is based upon Eq. 1 with  $P(t) = 0$ . Iterative MLR means that only terms of  $P(t)$  and El-Nino term are fitted when they are statistically significant ( $2\sigma$ ), while full MLR includes all terms in Eq. 1 and  $P(t)$ .

zonal bands	MLR	parameters added	$r^2$	$\chi$ [DU]	trend ( $t < 1995$ ) [%/decade]	trend ( $t \geq 1996$ ) [%/decade]
60°S-60°N	full	all	0.95	1.0	<b>-1.6(6)</b>	<b>+0.4(3)</b>
	iterative	BDCs, BDCn, AAO	0.95	1.0	<b>-1.6(6)</b>	<b>+0.4(2)</b>
	standard	-	0.79	1.2	<b>-2.2(6)</b>	<b>+0.3(3)</b>
35N°S-60°N	full	all	0.88	3.0	<b>-2.0(14)</b>	+0.5(7)
	iterative	all	0.88	3.0	<b>-2.0(14)</b>	+0.5(7)
	standard	-	0.76	4.0	<b>-4.0(15)</b>	+0.3(9)
20S°S-20°N	full	all	0.87	1.2	<b>-1.1(8)</b>	+0.2(4)
	iterative	BDCs, ENSO	0.85	1.2	<b>-0.6(6)</b>	+0.2(4)
	standard	-	0.79	1.4	<b>-0.8(7)</b>	+0.2(4)
35S°S-60°S	full	all	0.92	2.6	<b>-2.7(14)</b>	<b>+0.6(6)</b>
	iterative	AAO	0.90	2.6	<b>-3.0(12)</b>	<b>+0.6(6)</b>
	standard	-	0.79	3.6	<b>-3.2(16)</b>	+0.6(7)

bold numbers: statistical significance at  $2\sigma$

~