



# Assessing the consequences of including aerosol absorption in potential Stratospheric Aerosol Injection Climate Intervention Strategies

Jim M. Haywood<sup>1,2</sup>, Andy Jones<sup>2</sup>, Ben T. Johnson<sup>2</sup>, William McFarlane Smith<sup>1,3</sup>

5 <sup>1</sup>College of Engineering, Mathematics and Physical Science, University of Exeter, Exeter, EX4 4QE, UK

<sup>2</sup> Met Office Hadley Centre, Exeter, EX1 3PB, UK

<sup>3</sup> Now at Downing College, Cambridge, CB2 1DQ, UK

Correspondence to: Jim Haywood ([j.m.haywood@exeter.ac.uk](mailto:j.m.haywood@exeter.ac.uk))

10

**Abstract.** Theoretical Stratospheric Aerosol Intervention (SAI) strategies model the deliberate injection of aerosols or their precursors into the stratosphere thereby reflecting incident sunlight back to space and counterbalancing a fraction of the warming due to increased concentrations of greenhouse gases. This cooling mechanism is known to be relatively robust through analogues from explosive volcanic eruptions which have been documented to cool the climate of the Earth. However, a practical difficulty of SAI strategies is how to deliver the injection high enough to ensure dispersal of the aerosol within the stratosphere on a global scale. Recently, it has been suggested that including a small amount of absorbing material in a dedicated 10-day intensive deployment might enable aerosols or precursor gases to be injected at significantly lower, more technologically-feasible altitudes. The material then absorbs sunlight causing a localised heating and ‘lofting’ of the particles, enabling them to penetrate into the stratosphere. Such self-lofting has recently been observed following the intensive wildfires in 2019-2020 in south east Australia, where the resulting absorbing aerosol penetrated into the stratosphere and was monitored by satellite instrumentation for many months subsequent to emission. This study uses the fully coupled UKESM1 climate model simulations performed for the Geoengineering Model Intercomparison Project (GeoMIP) and new simulations where the aerosol optical properties have been adjusted to include a moderate degree of absorption. The results indicate that partially absorbing aerosols i) reduce the cooling efficiency per unit mass of aerosol injected, ii) increase deficits in global precipitation iii) delay the recovery of the stratospheric ozone hole, iv) disrupt the Quasi Biennial Oscillation when global mean temperatures are reduced by as little as 0.1K, v) enhance the positive phase of the wintertime North Atlantic Oscillation which is associated with floods in Northern Europe and droughts in Southern Europe. While these results are dependent upon the exact details of the injection strategies and our simulations use ten times the ratio of black carbon to sulfate that is considered in the recent intensive deployment studies, they demonstrate some of the potential pitfalls of injecting an absorbing aerosol into the stratosphere to combat the global warming problem.

15  
20  
25  
30



## 1 Introduction

Global warming has accelerated swiftly over the last decade with the last seven years being warmer than any preceding years in the climatological record (<https://climate.nasa.gov/vital-signs/global-temperature/>). Global mean near-surface temperatures are currently 1.2 °C above pre-industrial levels (IPCC, 2021) and future shared socioeconomic pathway (SSP) projections universally showing continued warming for at least the next two decades. Consequently, the global mean temperature target of the Paris 21st Conference of Parties (COP21) of 1.5°C will very likely be exceeded in the next two decades and even the 2°C above pre-industrial target will be extremely difficult to achieve under conventional mitigation scenarios (e.g. Rogelj et al., 2016; Millar et al, 2017, Tollefson, 2018; IPCC, 2018; 2021). These concerns have led to less conventional mitigation strategies being considered including proposals to remove greenhouse gases from the atmosphere (frequently called Carbon Dioxide Removal, CDR) and proposals to either block sunlight from reaching the planet or increase the reflectivity of the planet to reflect more sunlight out to space (frequently called Solar Radiation Management, SRM). Stratospheric Aerosol Intervention (SAI) which proposes injecting aerosols, or their precursors, into the stratosphere where the resulting aerosols can reflect sunlight back to space thereby cooling the planet (Shepherd, 2009; Lawrence et al., 2018, National Academy of Sciences, 2021) is the most prominent of the SRM methodologies. The injection material that has most frequently been studied is sulfur dioxide as this builds on the scientific understanding from observing and modelling the climatic impacts of large volcanic eruptions which periodically inject millions of tonnes of sulfur dioxide into the stratosphere.

The Geoengineering Model Intercomparison Project (GeoMIP; Kravitz et al., 2011) provides a comprehensive multi-model assessment of the effects of SRM (e.g. Kravitz et al., 2013; Tilmes et al., 2013; Jones et al., 2013). The latest phase of GeoMIP (GeoMIP6; Kravitz et al., 2016) provides policy-relevant simulations where the global mean temperature trend for high-end warming scenarios is reduced to that of more moderate scenarios (e.g. Jones et al., 2021 a; Vioni et al., 2021). These reductions in global mean temperature are achieved by injecting sulfur dioxide gas into the stratosphere and the results have been shown to differ significantly from simulations that simply reduce the solar constant (e.g. Jones et al., 2021 a; Vioni et al., 2021).

Several systems for delivery of millions of tonnes of sulfur dioxide into the stratosphere have been conceptualised including delivery by high altitude aircraft, tethered balloons, rockets, artillery and rigid towers (Robock et al., 2009; McClellan, et al., 2012; Davidson et al., 2012), but each of these is hampered by severe technological constraints which become more testing as the altitude of delivery increases. Several model simulations have shown that the cooling impact of stratospheric aerosols is maximised for aerosol delivered at high altitudes in the tropics (e.g. Jones et al., 2017; Tilmes et al. 2017) and more complex injection strategies as a function of latitude, altitude and season have been developed to customise the climate response and minimise any residual climatic impacts (e.g. Kravitz et al., 2016; Vioni et al., 2020; Lee et al., 2021). However, these studies assume that the technological solution for delivery exists while, to date, it does not in any suitably scalable form.



65 The use of absorbing aerosols such as black carbon (BC) in stratospheric aerosol injection has also been investigated with  
models (e.g. Kravitz et al., 2012; Jones et al., 2016), but utilising BC alone as a single agent in SAI has been effectively  
discounted. Modelling results suggested that the temperature increases in the stratosphere when using BC injections to offset  
a few degrees of global warming was in the range of 60-80K, depending upon the details of the injection scenario. However,  
recently it has been suggested that including a small amount of black carbon in a tailored intensive injection strategy could  
produce ‘self-lofting’ that could at least ameliorate the need for high altitude injection of material directly into the stratosphere.  
70 The theory is that the heating caused by aerosol absorption would rapidly transfer into the surrounding air which would become  
more buoyant and rise relative to its surroundings. Gao et al. (2021) examine injections at an altitude of 13.5km including both  
2Tg of sulfur dioxide and 0.01Tg of BC as a lofting agent and conclude that, if deployed correctly, the sulfur dioxide and  
resulting sulfate/BC aerosol mixture would rise into the stratosphere resulting in a stratospheric burden as great as if sulfur  
dioxide were injected directly into the stratosphere at 20km altitude.

75

In this study, we focus on the potential impacts on key climate variables of introducing partially absorbing aerosol into the  
stratosphere. Our experiments are based on the GeoMIP G6sulfur experiments (Kravitz et al., 2015) and are performed with  
the UKESM1 climate model (Sellar et al., 2019). Under G6sulfur, the global mean near-surface temperature from the high-  
end climate change SSP5-8.5 scenario (O’Neill et al., 2014) is reduced to that of a more moderate SSP2-4.5 scenario by  
80 injecting sulfur dioxide into the stratosphere. We investigate the impacts of including a moderate amount of aerosol absorption  
by adjusting the single scattering albedo of the stratospheric aerosol at 550nm from 1 to 0.95 which is equivalent to assuming  
a stratospheric BC:sulfate mass ratio of around 2%. As such, this is a significantly higher fraction than that assumed in the  
plume rise modelling of Gao et al. (2021) who perform simulations with injections of BC and 2Tg of SO<sub>2</sub> over a ten-day period  
in the CESM2 model and then downscale the minimum BC injection rate to produce the same lifting impact within a plume  
85 model, finding a minimum injection of 0.01TgBC. Thus Gao et al. (2021) effectively assumes a BC:sulfate ratio of just 0.3%  
while we assume ratios almost ten times higher. We note not only technological challenges in the plume deployment procedure  
documented in Gao et al (2021) which might increase the BC:sulfate ratio, but also that Gao et al. (2021) suggest that more  
SO<sub>2</sub> could theoretically be lifted which might decrease the BC:sulfate ratio. Thus our simulations are not meant to directly  
follow, nor challenge the injection scenario of Gao et al. (2021), but rather to establish with current state-of-the-art model  
90 simulations what the impacts of including a moderate amount of absorption would be upon resulting climate impacts.

Section 2 provides a description of the UKESM1 model set-up and an overview of the G6sulfur simulations and new  
simulations including absorption (denoted G6abs hereafter). Section 3 compares results from the G6sulfur, G6abs and SSP2-  
4.5 simulations as appropriate, focussing on the spatial distribution of the aerosols, impacts on the induced near-surface  
95 regional and global-mean temperatures and the cooling efficiency, and impacts on precipitation and ozone. Section 4 focusses  
on the impact on the positive phase of the North Atlantic Oscillation (NAO; Jones et al., 2021a 2020b) and section 5 focusses



on the impacts on the Quasi-Biennial Oscillation (QBO; see also Jones et al., 2021b). Section 6 provides a discussion and conclusions.

## 2 The UKESM1 model and model simulations.

100 UKESM1 (Sellar et al., 2019) is a fully coupled Earth system model which has contributed to CMIP6 (Eyring et al., 2016) and  
GeoMIP6 (Kravitz et al., 2015). UKESM1 includes an atmosphere model based on the Met Office Unified Model (UM;  
Walters et al., 2019; Mulcahy et al., 2018) with a resolution of 1.25° latitude by 1.875° longitude, with 85 levels up to  
approximately 85 km which is coupled to an ocean model with 1° resolution and 75 levels (Storkey et al., 2018). It also  
includes components to model both tropospheric and stratospheric chemistry (Archibald et al., 2020), aerosols (Mann et al.,  
105 2010), sea ice (Ridley et al., 2018), the land surface and vegetation (Best et al., 2011), and ocean biogeochemistry (Yool et al.,  
2013).

The GeoMIP G6sulfur simulations that reduce global mean temperatures from the SSP5-8.5 scenario (O'Neill et al., 2016) to  
the SSP2-4.5 scenario are described in detail elsewhere (Kravitz et al., 2015, Jones et al., 2021a). Three ensemble members  
110 are run for G6sulfur, based on three ScenarioMIP SSP5-8.5 simulations which are themselves continuations of corresponding  
CMIP6 historical simulations initialized from different points in the model's pre-industrial control simulation. In G6sulfur, the  
stratospheric SO<sub>2</sub> injection is continuous between 10° N–10° S along the Greenwich meridian at 18–20 km altitude and is  
adjusted every ten years to provide a decadal global mean temperature that matches that of SSP2-4.5 within +/- 0.2K. In G6abs  
the SO<sub>2</sub> injection rate (in Tg SO<sub>2</sub> yr<sup>-1</sup>) is identical to that of G6sulfur in terms of mass, but the optical properties of the  
115 stratospheric sulfate aerosol are adjusted to simulate an internal mixture with BC making up 2% of the aerosol volume  
(assuming volume weighting of refractive indices at all wavelengths). This reduces the single scattering albedo at 550nm from  
around 1 to 0.95 at 550nm, and leads to a 40-fold increase in absorptivity when integrated across the solar spectrum but has  
minimal impact on extinction and aerosol optical depth (~4% increase). Again, a three member ensemble is performed.

## 120 3 Results: Impacts on key variables

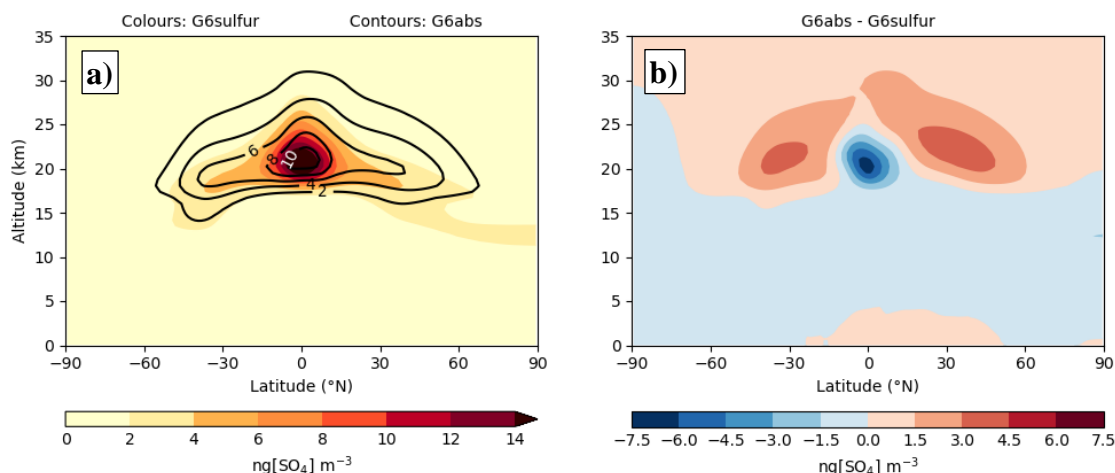
We predominantly focus our analysis on two aspects. The first of these is the evolution of global mean parameters such as  
temperature and precipitation as a function of time over the period 2020-2100. The second is the difference in the spatial  
distribution of key physical and meteorological variables between the G6abs and the G6sulfur simulations (G6abs-G6sulfur)  
125 or against present day (PD, taken as the period 2016-2025 from the SSP2-4.5 ensemble) conditions (i.e. G6abs-PD or G6sulfur-  
PD). For simplicity, we generally make comparisons against the end of the simulations over the twenty year period 2081-2100.



### 3.1 Impact on the vertical distribution of the plume and the resulting stratospheric aerosol optical depth (SAOD)

Before assessing the impacts of the plume on climate variables such as the cooling efficiency and the impact on global mean precipitation, we examine the influence that the additional absorption has on the spatial characteristics of the aerosol plume.

130 Figure 1a shows the annual mean latitude-altitude cross section of accumulation mode sulfate aerosol concentrations under G6sulfur and G6abs and the difference between the two is shown in Figure 1b.



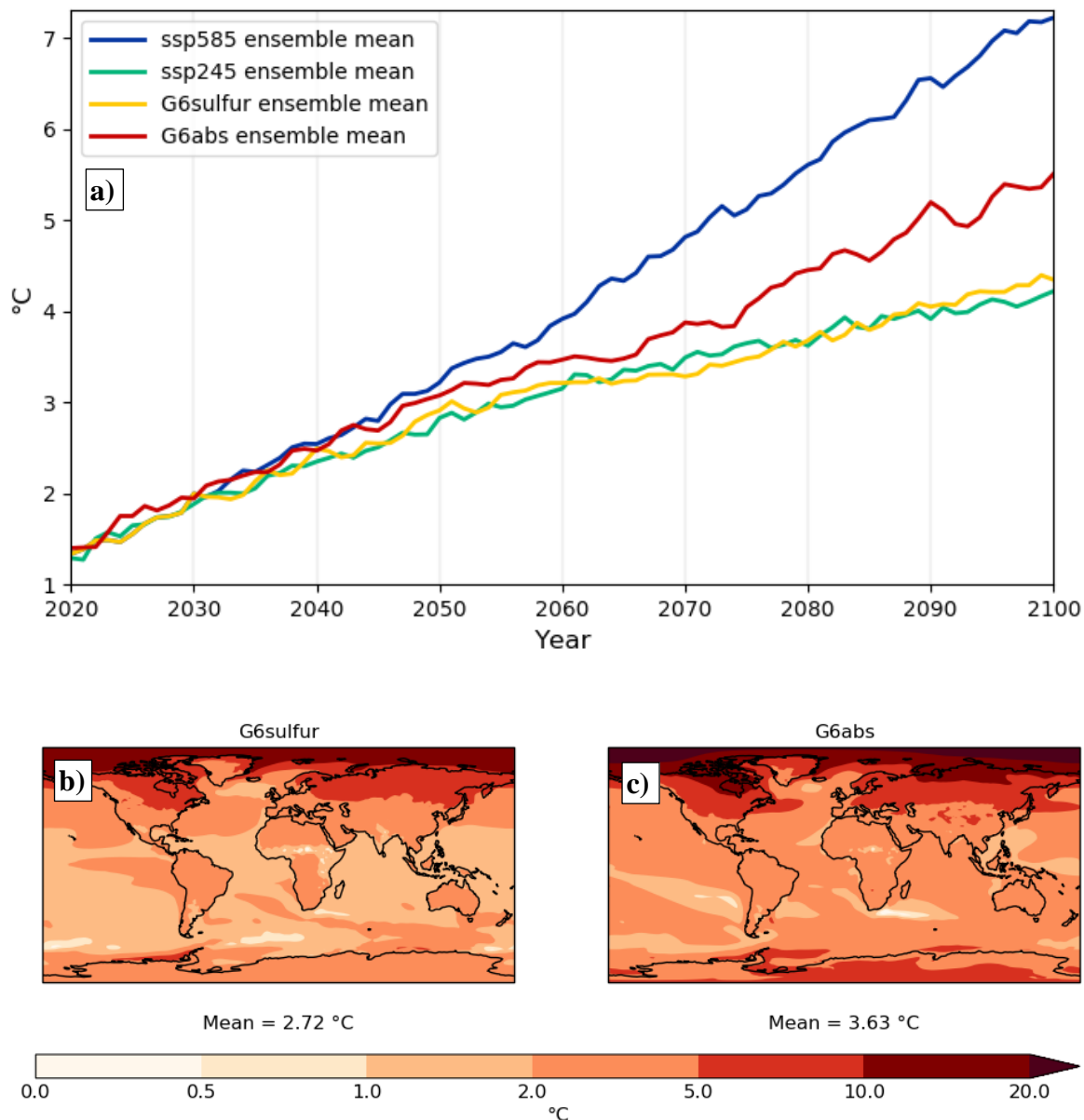
135 **Figure 1. Showing a) the accumulation mode sulfate aerosol concentrations under G6sulfur (colours) and G6abs (lines) and b) the difference in the aerosol concentrations. Simulations are for ensemble means from 2081-2100.**

In G6abs, the aerosol concentrations are less constrained to the tropics (Fig 1b), reaching higher altitudes and spreading at higher altitudes to the mid-latitudes. This increased aerosol altitude leads to an increased SAOD of 0.38 for G6abs compared to 0.29 for G6sulfur (i.e. an enhancement of a factor of around 1.3). This increased AOD is a result of additional buoyancy provided by solar lofting in G6abs which counteracts the gravitational settling of the aerosol and maintains it at higher altitudes,  
140 so reducing the flux of aerosol across the tropopause and enhancing its lifetime in the stratosphere.

### 3.2 Impacts on the cooling efficiency of the SAI particles

Figure 2 shows the resulting global mean temperatures from the SSP5-8.5 ensemble, the SSP2-4.5 ensemble, G6sulfur and G6abs.

145



150 **Figure 2.** a) The change in the global mean near surface air temperatures from pre-industrial conditions (PI) for a) the SSP5-8.5, SSP2-4.5, G6sulfur and G6abs ensembles. Each ensemble is comprised of three members. The spatial distribution of the annual mean surface temperature change for (2081-2100) compared to present day (PD) for b) G6sulfur, c) G6abs.

Figure 2a shows that, while G6sulfur is successful in reducing the SSP5-8.5 scenario temperatures to those of SSP2-4.5, G6abs results in an under-cooling. It is well established that absorbing aerosols lead to an additional heating of the stratosphere (e.g.



155 Kravitz et al., 2012, Jones et al., 2017). This leads to an increase in downward terrestrial radiation across the tropopause which leads to an additional heating of the troposphere thus reducing the aerosol cooling efficiency in the G6abs simulations.

The ratio of the cooling of G6abs to G6sulfur for the period 2081-2100 is 0.62 indicating a significantly less effective cooling efficiency for the absorbing aerosols. Over the period 2081-2100, the injection averages 19.0 Tg SO<sub>2</sub> yr<sup>-1</sup>, yielding a cooling of approximately 2.5 K in G6sulfur and a cooling efficiency of 0.13 K per Tg SO<sub>2</sub> yr<sup>-1</sup>, in agreement with the range of 0.04 to 160 0.14 K per Tg SO<sub>2</sub> yr<sup>-1</sup> from other studies performing the G6sulfur simulations (Visioni et al., 2021). For G6abs, the cooling efficiency drops to 0.08 K per Tg SO<sub>2</sub> yr<sup>-1</sup>.

The cooling efficiency per unit aerosol optical depth (AOD) is reduced even further leading to a cooling efficiency of 8.5 K per AOD for G6sulfur, but 4.1 K per AOD for G6abs indicating that under G6abs, although the SAOD is increased, this impact 165 is more than offset by the impact of reduced cooling owing to the heating of the stratosphere. These results are summarised in Table 1.

Experiment	Temperature Change (K)	AOD (550nm)	Efficiency per injection rate (K per (Tg SO <sub>2</sub> yr <sup>-1</sup> ))	Efficiency per AOD (K per AOD)	Hydro. Sensitivity (% per K)	Hydro. sensitivity (% per AOD)
G6sulfur	-2.49	0.29	-0.13	-8.54	3.01	-25.70
G6abs	-1.54	0.36	-0.08	-4.26	6.20	-26.40

**Table 1. Summarizing the global mean cooling efficiency and hydrological sensitivity for G6sulfur and G6abs compared to SSP5-8.5 over the period 2081-2100. The metrics shown are derived for injection rates of approximately 19 Tg SO<sub>2</sub> yr<sup>-1</sup>.**

170

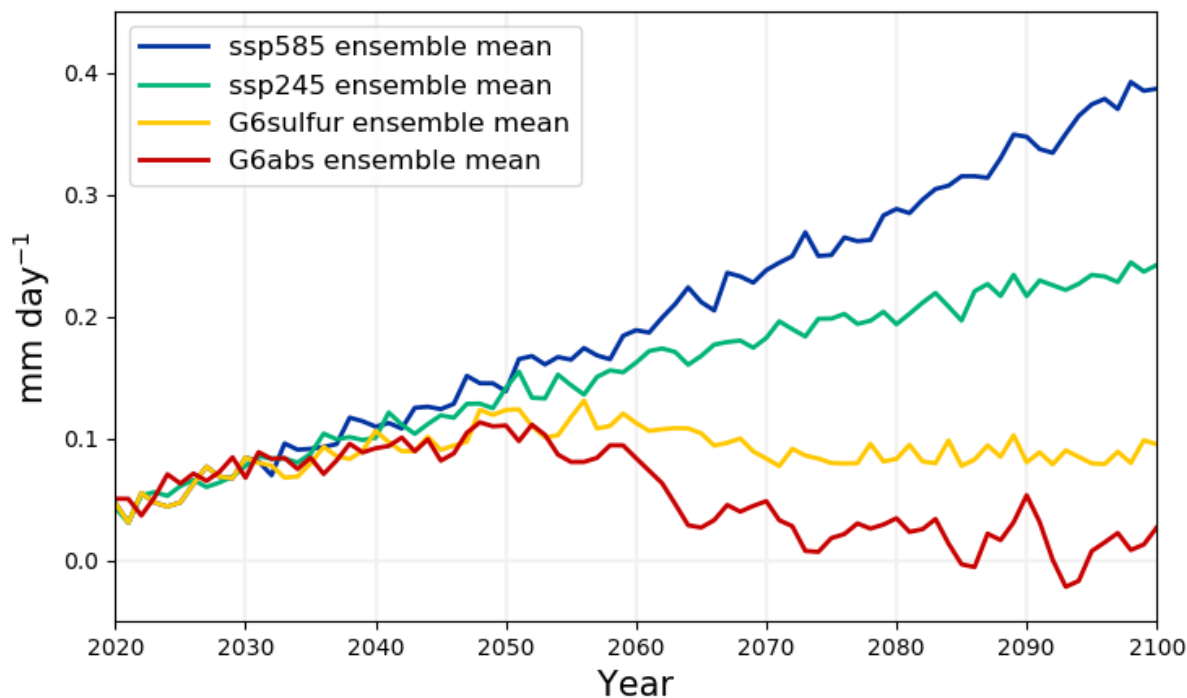
As expected, the spatial distribution of the annual mean temperature change reveals a greater temperature change at extreme polar latitudes as the G6sulfur simulations are designed to offset only a fraction of the global mean temperature change under the SSP5-8.5 simulations, so polar amplification (e.g. Holland and Bitz, 2003) remains evident (Figs. 2b & 2c).

### 175 3.3 Impact on the global mean precipitation response

A robust feature of SRM simulations is that hydrological sensitivity, defined as the percentage change in global mean precipitation per degree temperature change is stronger for perturbations to the solar forcing compared to perturbations to greenhouse gas forcings of similar magnitude. While this feature was first noted in early experiments that perturbed the solar constant (e.g. Bala 2008, Schmidt et al., 2012, Kravitz et al., 2013, Jones et al., 2013), SAI via sulfate aerosol has been shown 180 to have an even larger hydrological sensitivity (Neimeier et al., 2013, Visioni et al., 2021) with Visioni et al. (2021) diagnosing a multi-model hydrological sensitivity of  $3.79 \pm 0.76$  % by 2081-2100 under the G6sulfur scenario. Absolute values of the precipitation change with respect to pre-industrial conditions are presented in Figure 3. As in other studies, the global mean precipitation is reduced for G6sulfur when compared to SSP2-4.5, but this reduction is even more pronounced for G6abs. The higher hydrological sensitivity for G6abs is influenced both by the increased absolute reduction in precipitation and the reduced



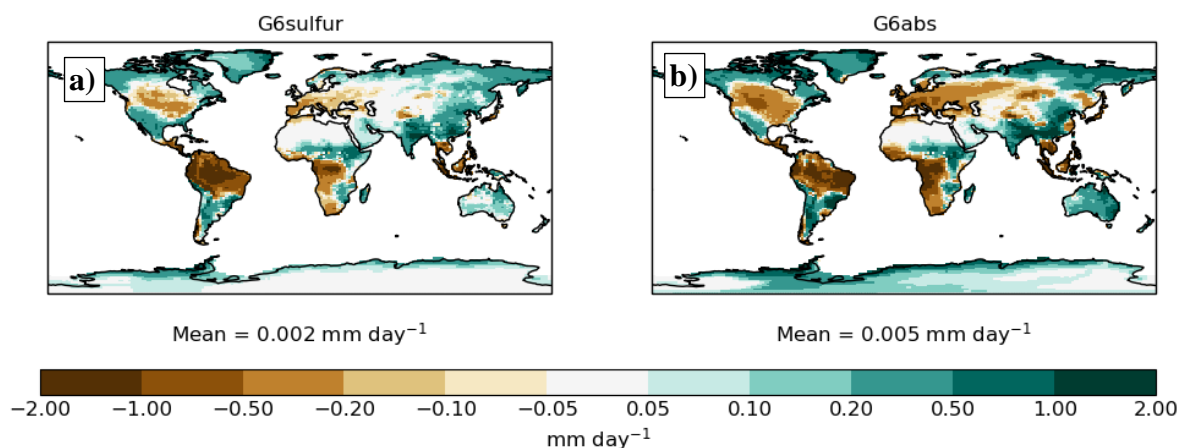
185 cooling impact (Figure 2, Table 1). Values of hydrological sensitivity of 3.01 % per K and 6.20% per K are diagnosed for G6sulfur and G6abs over 2081-2100. Table 1 shows that G6abs has an optical depth that is approximately a factor of 1.3 greater than G6sulfur and thus the hydrological sensitivity as % per AOD is similar between the G6sulfur and G6abs cases



190 **Figure 3. The mean change in the global mean precipitation from pre-industrial conditions (PI) for the ssp585, ssp245, G6sulfur and G6abs ensembles. Each ensemble is comprised of three members.**

195 Figure 4 shows the spatial distribution of precipitation changes over land areas for 2081-2100 compared with PD; while the global mean precipitation changes only a little from PD conditions, the spatial distribution of precipitation changes is quite variable. Both G6sulfur and G6abs show a similar distribution with drying over central N America, central Eurasia, Amazonia, and southern and central Africa. While the pattern of precipitation changes is similar, the changes in precipitations are stronger for G6abs compared to G6sulfur even though the temperature change is reduced.





200 **Figure 4.** The spatial distribution of the change in the precipitation distribution in the period 2081-2100 compared to PD for a) G6sulfur and b) G6abs. Note that the values quoted for the means are for land areas only; global means without the land-mask are +0.048 mm/day for G6sulfur and -0.023 mm/day for G6abs.

### 3.4 Impacts on stratospheric temperatures

205 Stratospheric temperatures are strongly impacted by the aerosol injections in both G6sulfur and G6abs. Compared to SSP5-8.5, by 2081-2100 G6sulfur shows a maximum annual mean stratospheric temperature perturbation of 5-10K centred at the equator at an altitude of around 22km (Fig 5a). This perturbation to equatorial stratospheric temperatures is much increased to 25-30K for G6abs (Fig 5b). The difference in the stratospheric temperature between G6abs and G6sulfur (Fig 5c) reveals that the maximum temperature perturbation caused by the inclusion of aerosol absorption is shifted to higher altitudes which reflects

210 the changes to the vertical distribution of the aerosol concentrations (Fig 1a).

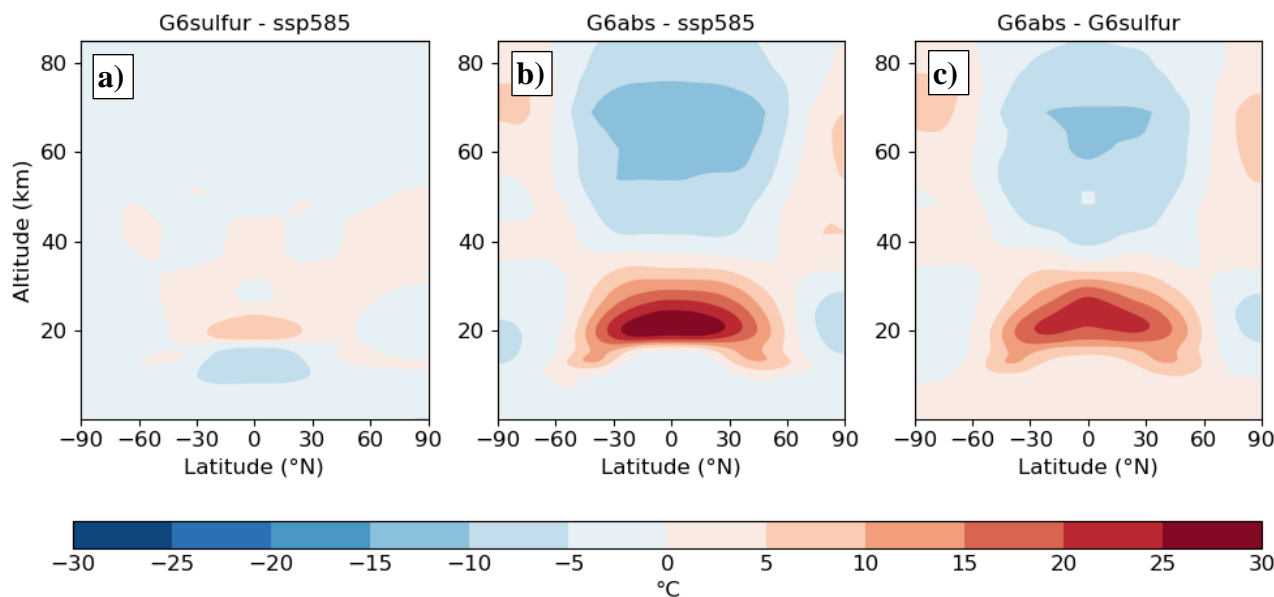


Figure 5. Showing the perturbation to atmospheric temperatures (2081-2100) under a) G6sulfur compared to SSP5-8.5, b) G6abs compared to SSP5-8.5, c) G6abs-G6sulfur.

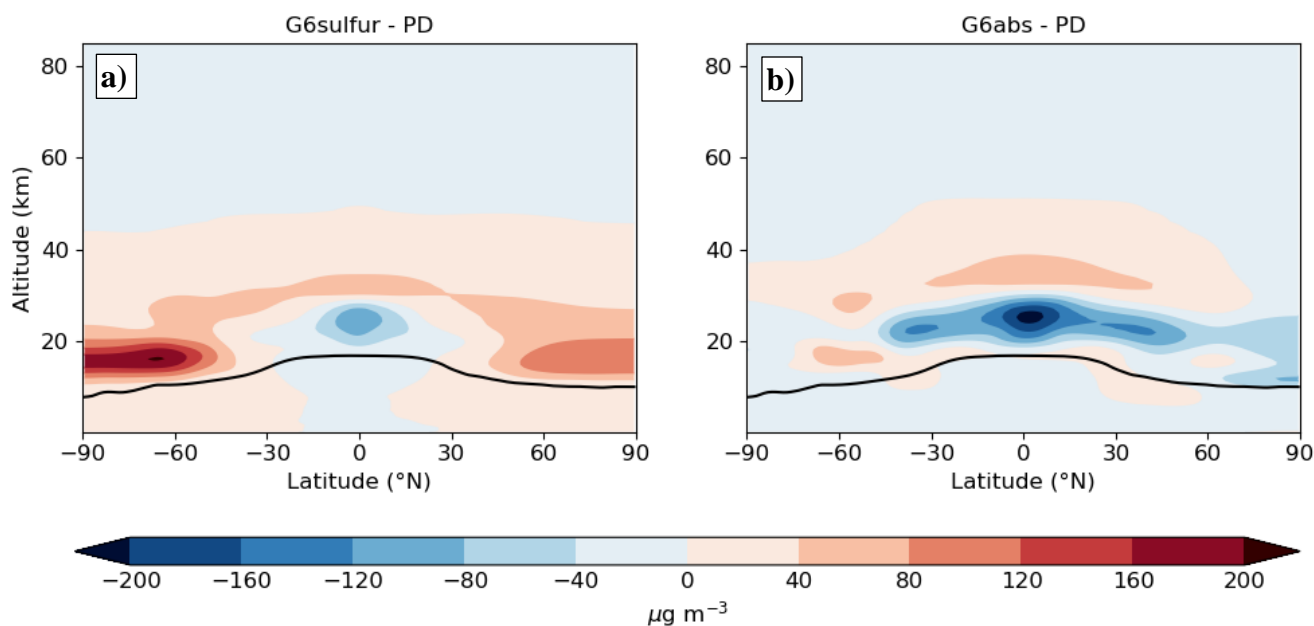
215

### 3.5 Impacts on stratospheric ozone

Stratospheric ozone may be impacted by stratospheric aerosols through heterogeneous processes (e.g. Solomon, 1999) and by changes in stratospheric dynamics that are induced by changes to the heating rates (e.g. Randall et al., 1995). Our experimental design is unable to assess impacts of any changes to heterogeneous processes between G6sulfur and G6abs because our simulations simply perturb the optical characteristics of the aerosols. However, the simulations do allow assessment of impacts on ozone through changes to the stratospheric dynamics.

We compare ozone concentrations for time period 2081-2100 for both G6sulfur and G6abs against present day (Figure 6). Results are similar to those derived when the global mean temperature perturbation is identical (i.e. 2081-2100 for G6sulfur and 2065-2084 for G6abs against the present day, not shown). Compared to PD, G6sulfur shows an increase in high latitude stratospheric ozone as ozone-depleting substances decrease in the future and the ozone hole starts to recover, and a small decrease in tropical stratospheric ozone. The G6abs simulations show that the inclusion of absorption effectively cancels out the recovery of the ozone hole at high latitudes and causes additional stratospheric ozone depletion at tropical and mid-latitudes. We stress again that our results are applicable only to the impacts of increased solar absorption of the composite aerosols. BC is not explicitly modelled here, so the impacts of heterogeneous chemistry from inclusion of BC aerosols remain an open question.

225  
230



235 **Figure 6.** Showing the perturbation to stratospheric ozone for 2081-2100 compared to the present day (PD) for a) G6sulfur, b) G6abs. The modelled tropopause is marked by the black line.

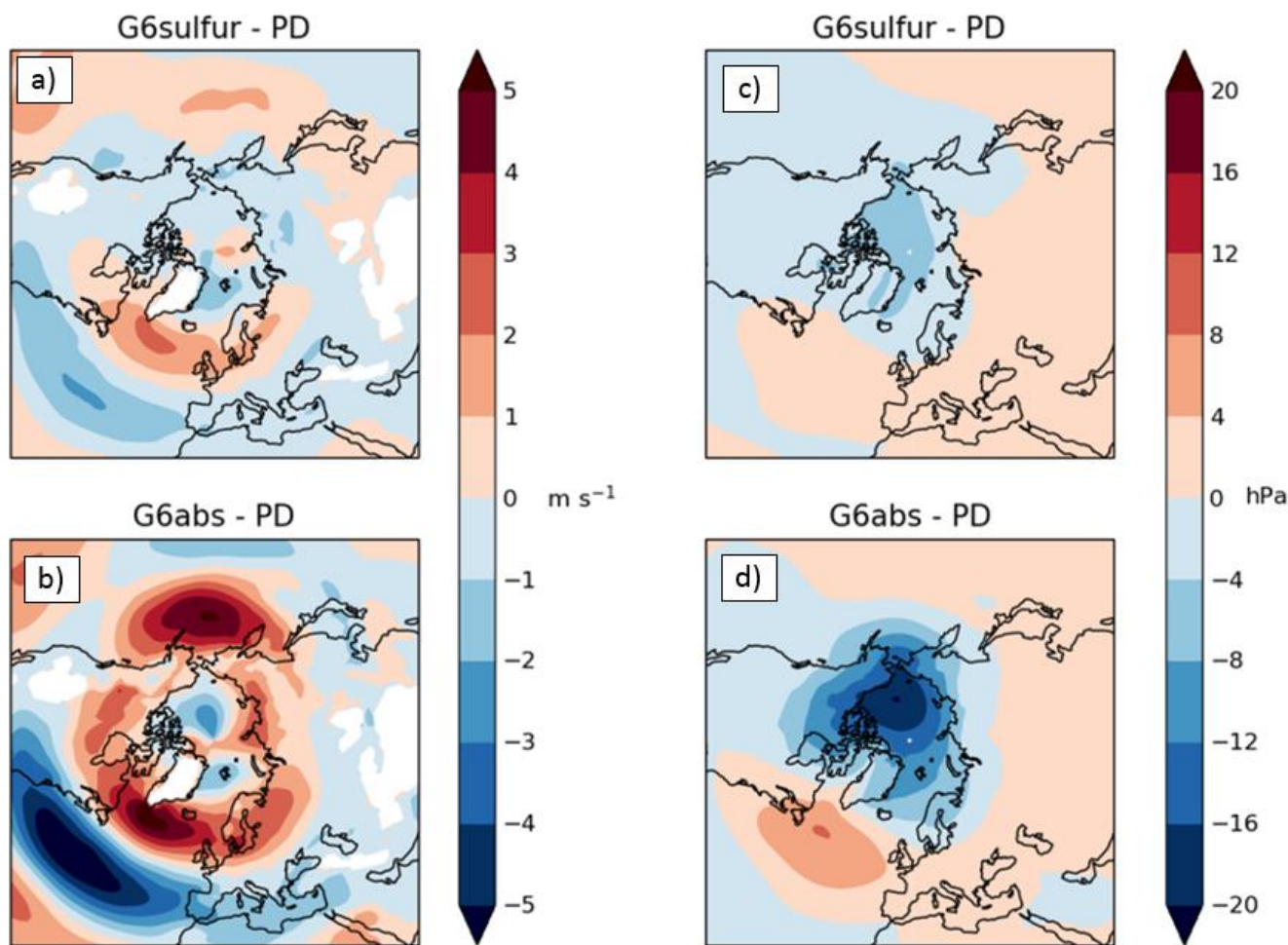
#### 4 Results: Impacts on the North Atlantic Oscillation

In essence, the North Atlantic Oscillation (NAO) is a measure of the perturbation to the pressure difference between the Icelandic low pressure and the Azores high pressure systems (e.g. Hurrell, 1995). A positive phase of the NAO during northern hemisphere wintertime (DJF) corresponds to a larger than normal pressure difference which is associated with increased rainfall in northern Europe and drying of southern Europe. Observational analyses have shown that the majority of devastating floods in northern Europe are associated with a positive NAO (Zanardo et al., 2019), while southern Europe and particularly the Iberian Peninsula is prone to disruptive droughts and water shortages (Trigo et al., 2004). Recent works have revealed potentially damaging impacts of SAI with sulfate aerosols as they can force a positive wintertime NAO phase through the following mechanism. Non-negligible absorption of sulfate aerosol at wavelengths greater than approximately  $1.3\mu\text{m}$  (Dykema et al., 2016) combine with differential insolation across the boundary of the wintertime polar night to strengthen the polar vortex via thermal wind balance. These features impact the tropospheric winds, causing a strengthening of westerly flow leading to drying across Iberia, the Mediterranean countries and the Balkans (Jones et al., 2021a, 2021b, Banerjee et al., 2021). By increasing the absorption of stratospheric aerosols, one might expect this impact to be significantly amplified (Simpson et al., 2019). We follow the approach of Stephenson et al. (2006) and Baker et al. (2018) in defining the boreal wintertime NAO as the mean DJF difference in area-mean sea-level pressure between two regions: one bounded by  $90^\circ\text{W} - 60^\circ\text{E}, 20^\circ\text{N} - 55^\circ\text{N}$  (for simplicity referred to as Azores), the other by  $90^\circ\text{W} - 60^\circ\text{E}, 55^\circ\text{N} - 90^\circ\text{N}$  (for simplicity referred to as Iceland).

240  
245  
250



Mechanistically, the reasons behind changes to the NAO are identical to those shown in Jones et al (2021a) for G6sulfur, but the magnitude of the effect is significantly greater in G6abs. In G6sulfur a strong stratospheric zonal mean DJF wind anomaly centred over Alaska develops at around 10 hPa at 60–70° N with an increase of more than 15 ms<sup>-1</sup> thereby enhancing the strength of the polar vortex. In G6abs, the increase is more than 50ms<sup>-1</sup> (not shown for brevity). This enhanced westerly flow propagates through to lower levels in the troposphere as shown by the DJF zonal mean wind perturbation at 850 hPa (Figure 7 a&b).



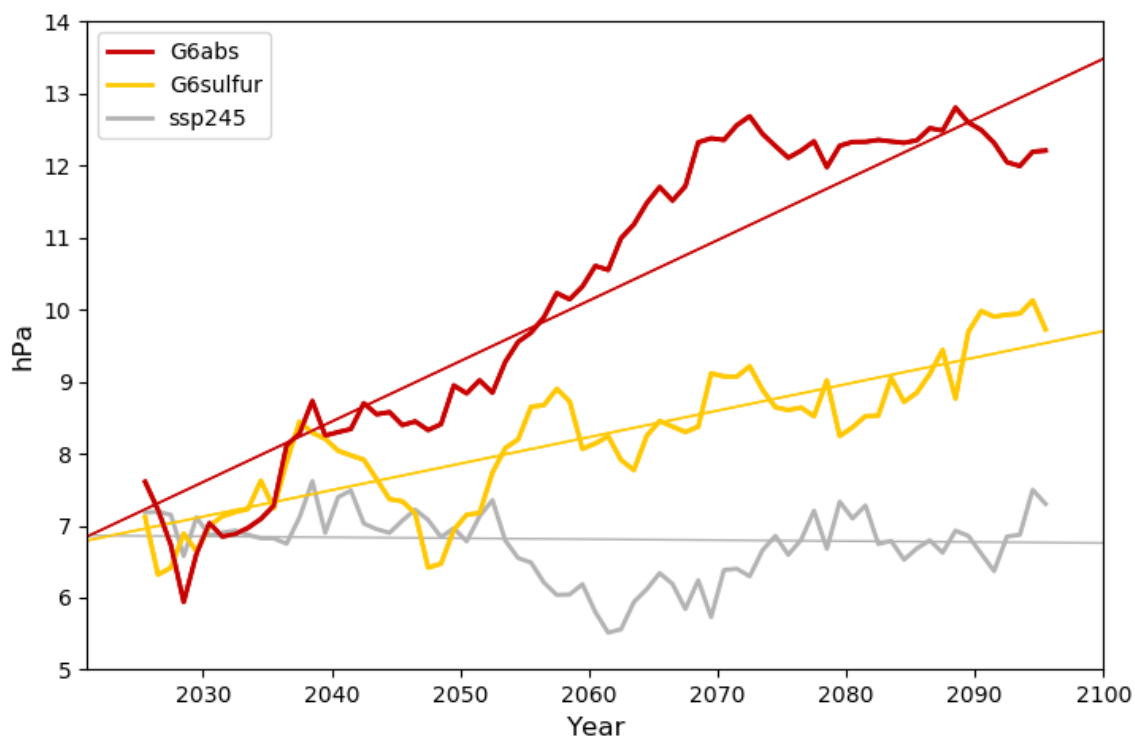
260 **Figure 7.** a-b show the spatial distribution (2081-2100 compared to present day, PD) of the perturbation to the 850hPa windspeed for DJF for a) G6sulfur, b) G6abs. White areas represent elevated areas where the surface pressure is less than 850hPa. c-d show the spatial distribution of the perturbation (2081-2100 vs. PD) to mean sea level pressure (MSLP, hPa) for c) G6sulfur, d) G6abs.

265 There is clear evidence of propagation of the enhanced westerly flow to the surface north of around 50°N, with decreased westerly flow to the south of that latitude for both G6sulfur and G6abs simulations. The patterns of the response are similar for G6sulfur (Fig 7a) and G6abs (Fig 7b), but the magnitude is increased by around a factor of two in G6abs compared with G6sulfur. In G6abs, there is evidence that the westerly flow perturbation penetrates deeper into Eurasia stretching across



270 Siberia and ‘joins up’ with the perturbation to the westerly flow that is evident over the north Pacific. Thus, in G6abs, the  
westerly perturbation over the North Pacific to the east of Kamchatka is enhanced by considerably more than a factor of two  
when compared to G6sulfur.

The perturbations to the mean sea level pressure (MSLP) show similar large-scale features between G6sulfur and G6abs (Figs.  
7c & 7d), but again, the response to G6abs is stronger than for G6sulfur leading to a more well-defined polar vortex. The  
275 resulting impact on the temporal evolution of the NAO index is shown in Figure 8 for SSP2-4.5, G6sulfur and G6abs. As  
documented by Jones et al (2021a, 2021b), there is little impact on the NAO index under SSP2-4.5, but a strong impact on the  
NAO index under G6sulfur with the pressure difference between Iceland and the Azores increasing by around 2.5hPa by 2100  
(Figure 8). In G6abs, the increase in the pressure difference is even more dramatic, exceeding 6hPa by 2100. Note that all six  
climate models that have performed G6sulfur simulations to date indicate a clear increase in the NAO for sulfate  
280 geoengineering (Jones et al., 2021b); given our understanding of drivers of the NAO mechanisms (e.g. Shindell et al., 2004,  
Jones et al., 2021a), it is reasonable to assume that all models would also show a similar increase should the aerosols applied  
in SAI be more absorbing.

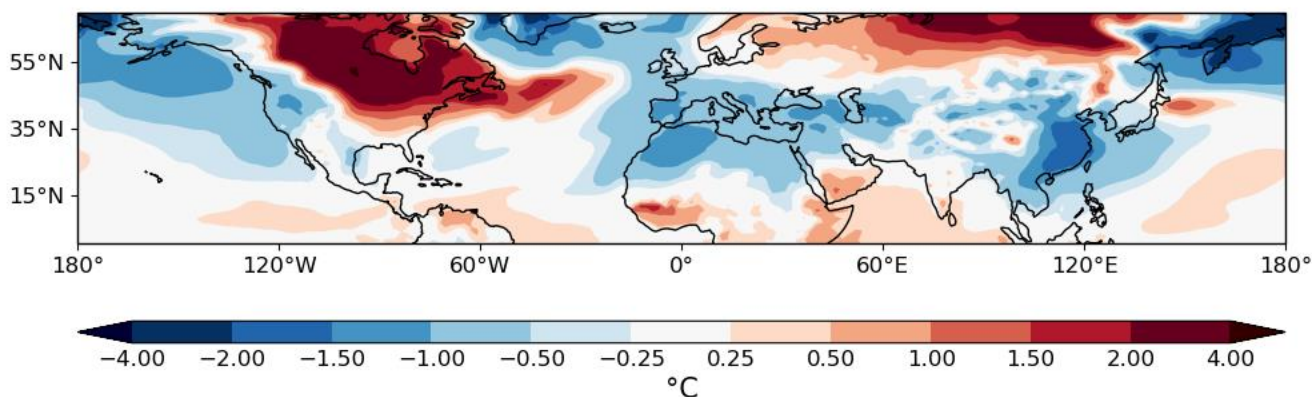




285 **Figure 8. Evolution of the NAO, defined as the DJF mean sea-level pressure difference (hPa) between regions bounded by 90° W - 60° E, 20° N - 55° N and 90° W - 60° E, 55° N - 90° N for each model in experiments ssp245 (grey), G6sulfur (yellow) and G6abs (red). All results are ensemble means and have been smoothed using a 10-year running mean; a least-squares straight line fit to each is also plotted.**

290 We now consider the impacts of the strengthening of the NAO on patterns of temperature and precipitation. We have already presented the change in the annual mean temperature compared to PD in Figure 2, which showed significantly more warming in G6abs compared with G6sulfur, particularly over northern latitudes of Siberia and continental north America. Our focus now shifts to the DJF period. To make a meaningful comparison of the changes in patterns in regional temperatures, we assess the temperatures in the periods when the global mean perturbation in temperature in G6abs is equivalent to that in G6sulfur.

295 The periods that are analysed are (2065-2084) for G6abs and (2081-2100) for G6sulfur (Figure 2a). The results are shown in (Figure 9).



300 **Figure 9. The difference (G6abs – G6sulfur) in the DJF near surface temperature between G6abs (2065-2084) and G6sulfur (2081-2100).**

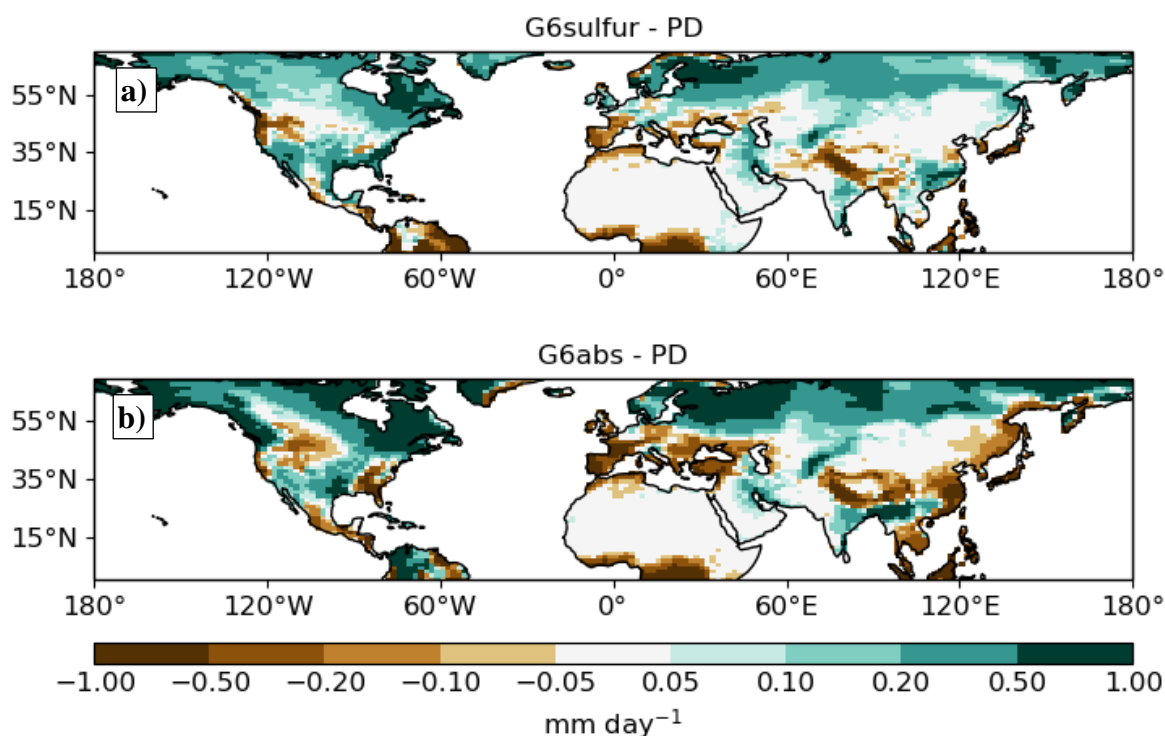
Although the 20-year annual-mean temperatures are the same, G6abs leads to warmer DJF temperatures than G6sulfur over northern Europe and cooler temperatures over southern Europe, signals that are consistent with an increase in the NAO index, which increases the penetration of mobile weather systems over northern Europe, but enhances blocking over southern Europe.

305 It is noticeable that there is enhanced warming over Siberia, but more particularly over much of northern and eastern continental north America. A multi-model assessment of model behaviour under G6sulfur suggests that all six models experience a DJF warming over Siberia (Jones et al., 2021b, their Figure 3) and it is therefore unsurprising that further enhancing the positive NAO index further enhances this warming. However, these multi-model results show little consistency



over continental north America (Banerjee et al., 2021), so any impact over continental north America inferred by this present  
310 study must be treated with caution.

The most well established impacts of an increased positive phase of the NAO during DJF is the increased precipitation and  
flooding over northern Europe and decreased precipitation and drought over southern Europe (e.g. Trigo et al., 2004; Zanardo  
et al., 2019). Again, these impacts have been clearly demonstrated in multi-model assessments of the G6sulfur simulations  
315 (Jones et al., 2021b). We show the differences between both G6sulfur and G6abs for the period 2081-2100 compared to the  
present day in Figure 10.



**Figure 10.** The difference in the DJF land precipitation rates in 2081-2100 compared to the present day for a) G6sulfur, b) G6abs.

320 It is clear that G6abs is associated with a greater positive-NAO-phase enhancement of the disruption of precipitation than  
G6sulfur even though the global-mean cooling impact is less for G6abs over this period. The impacts of such a disruption over  
many countries around the Mediterranean have been highlighted in other studies for sulfate aerosol (e.g. Jones et al., 2021a;  
2021b; Banerjee et al., 2021), with Jones et al. (2021b) showing a multi-model mean precipitation reduction for G6sulfur of  
around 22% for the Iberian Peninsula when comparing 2081-2100 against 2011-2030. Here, UKESM1 suggests a reduction  
325 over Iberia of 10.1% for G6sulfur for a similar time-frame of analysis, but 30.2% for G6abs suggesting that precipitation  
reductions over Iberia are around three times greater under G6abs than G6sulfur. Such reductions in precipitation would be

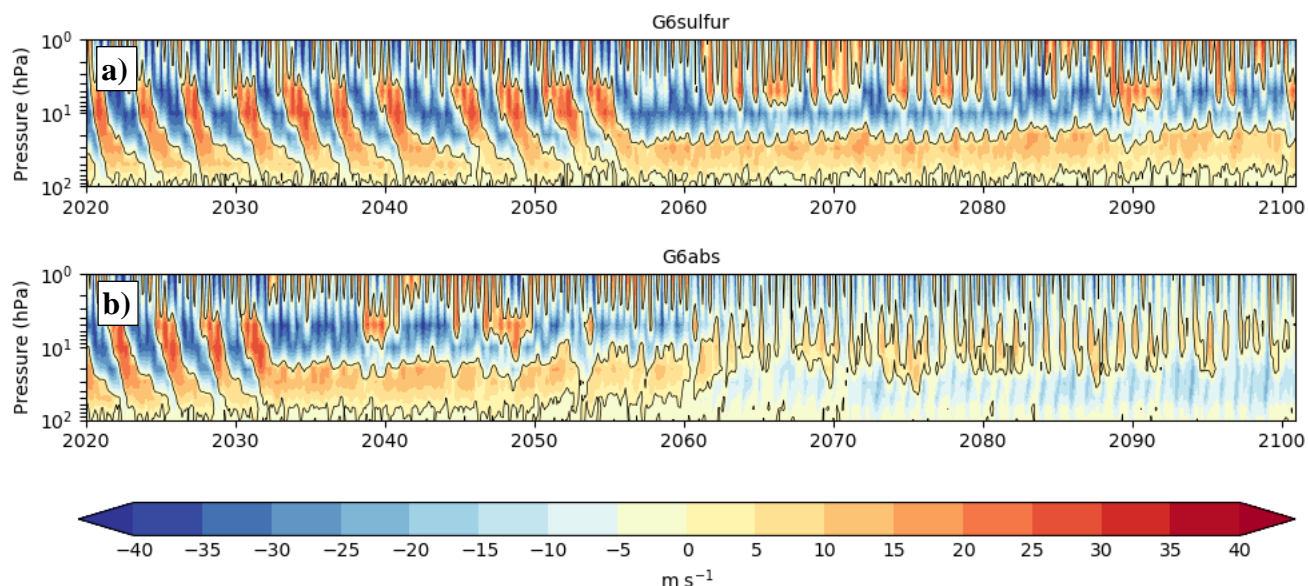


330 very detrimental in terms of water resources (López-Moreno and Vicente-Serrano, 2008). The areal extent and severity of the  
reductions in DJF precipitation become more pronounced in countries surrounding the Black Sea and the areal extent of the  
precipitation reduction under G6abs spreads from Eurasia through to eastern Asia. Reductions in precipitation are widespread  
across China and the Indo-China Peninsula. In much of coastal eastern China, including areas around Beijing and Shanghai,  
the deficits in DJF precipitation translate to reductions of greater than 20% but exceed 40% at the southern tip of the Indo-  
China Peninsula across Cambodia, Vietnam and Thailand. In contrast, precipitation in northern Europe is enhanced in G6abs  
with Finland seeing percentage increases of in excess of 60%, while the Baltic States experience precipitation increases in  
excess of 40%. Enhanced precipitation of greater than 60% is also experienced around the Great Lakes areas of North America  
335 although we note the lack of model consensus in G6sulfur noted in Jones et al. (2021b).

### 5 Results: Impacts on the Quasi-Biennial Oscillation

Jones et al. (2021b) present multi-model ensemble simulations examining the impact of SAI upon the QBO in the G6sulfur  
simulations. Of the six models analysed, UKESM1 has arguably one of the more realistic representations of QBO frequency  
340 and magnitude throughout the depth of the stratosphere (Richter et al., 2020; Jones et al., 2021b). As in previous studies (Aquila  
et al., 2014, Jones et al., 2016, Jones et al., 2021b), a shutdown of the QBO is characterised by winds in the lower stratosphere  
becoming locked into a persistent westerly phase. This behaviour is clearly evident in G6sulfur with the QBO shutdown  
commencing around 2058. In G6abs this shutdown occurs at a much earlier date, around 2033 (Figure 11), when there is  
negligible global-mean cooling impact from G6abs (Figure 2a): the cooling impact of SAI in G6abs at around 2033 is just  
345 0.1K. The cause of such an early shutdown in the QBO appears to be the intense heating of the tropical stratosphere which  
causes an increased positive vertical velocity that opposes downward propagation of zonal wind variation in the tropics. Sulfate  
aerosol only absorbs an appreciable amount of solar radiation at wavelengths longer than 1.3 $\mu$ m (Dykema et al., 2016), while  
BC absorbs solar radiation across the entire solar spectrum, resulting in much stronger heating rates and perturbations to  
stratospheric temperatures by around a factor of five (Figure 5). Thus, the intrinsic absorption of the aerosol particles, rather  
350 than any changes to the AOD appear to be the leading cause of the breakdown of the QBO which locks into a westerly phase  
for around thirty years until around 2060-2065. Subsequently, a further change in the characteristics of lower stratospheric  
tropical dynamics is noted with a transition to annually alternating easterly-westerly winds at around 10 hPa with persistent  
easterlies below.





355

**Figure 11.** The QBO diagnosed from one of the three ensemble members (all ensemble members show similar behaviour) for a) G6sulfur and b) G6abs. Plots consist of time-pressure cross-sections of  $5^{\circ}$  N -  $5^{\circ}$  S mean zonal stratospheric winds ( $\text{m s}^{-1}$ ) from a single ensemble member. Positive values indicate westerly winds and negative values indicate easterlies; the black contour is at  $0 \text{ m s}^{-1}$ .

360

## 6 Discussion and Conclusions

There is growing evidence to support the hypothesis that ‘self-lofting’ can aid the transport of absorbing aerosols into the stratosphere. Many observational studies have shown intrusions of biomass burning smoke from intense pyrocumulus events that have ascended and persisted in the stratosphere for weeks or months (e.g. Fromm and et al., 2000; 2005; Peterson et al., 2018; Christian et al., 2019; Osborne et al., 2021). For instance, plumes of absorbing biomass burning smoke from the Pacific Northwest fires of 2017 (Peterson et al., 2018; Yu et al., 2019) were detected at altitudes of 23km in the stratosphere. An even stronger injection of smoke into the stratosphere has been documented from the intense fires of December 2019-January 2020 in SE Australia, after which smoke aerosol was observed at altitudes in excess of 30km (Khaykin et al., 2021). The progressive ascent of the smoke was clearly evident in satellite retrievals of stratospheric aerosol (Kloss et al., 2021). Thus, there is little doubt that the absorption-lofting mechanism is physically plausible and could raise the altitude of partially absorbing aerosols released in theoretical SAI scenarios.

We stress again that in the suggestion by Gao et al. (2021) a smaller amount of BC aerosol was proposed to lift sulfate into the stratosphere, which assumed a ratio of BC to sulfate around ten times less than that modelled here. It would be critical to assess

375



whether the assumed BC amounts used in such proposals could achieve the efficacy of lofting that is stated. In addition, there are certainly other caveats that need to be considered in our modelling study. Under the G6sulfur protocol, the injection strategy is not optimised in terms of the injection latitudes (e.g. Kravitz et al., 2016; Tilmes et al., 2017) or seasons (Lee et al., 2021); both could help to ameliorate the impacts on the QBO and the NAO.

380

The simulations presented here investigate the influence of moderately absorbing aerosol in the stratosphere by adjusting the absorption properties of aerosols in UKESM1 simulations of the GeoMIP G6sulfur scenario. A moderate level of absorption (with an aerosol single scattering albedo of 0.95 at 0.55 $\mu\text{m}$ ) is chosen to provide a suitable signal:noise ratio in resulting physical and dynamical changes. Our results suggest that inclusion of absorption:-

- 385
- i) reduces the cooling efficiency per unit mass of aerosol injected
  - ii) increases deficits in global precipitation
  - iii) delays the recovery of the stratospheric ozone hole
  - iv) disrupts the Quasi Biennial Oscillation when applying moderately absorbing aerosols to combat a warming of just 0.1K.
- 390
- v) enhances the positive phase of the wintertime North Atlantic Oscillation, associated with floods in North Europe and droughts in Southern Europe.

We believe that the scientific understanding of the impacts of absorbing aerosols is sufficient to provide an informed scientific discourse on some of the potential pitfalls of absorbing aerosols in the stratosphere. Where the main uncertainties arise are not in the climatic response of global mean temperatures, precipitation patterns, or the impacts on dynamical features such as the QBO and NAO and their subsequent impacts on regional climate, but in uncertainties around the effectiveness of the physical deployment of such strategies (Gao et al., 2021). A quantitative uncertainty analysis of physical and logistical factors that could reduce (or enhance) the efficiency of such deployment strategies would seem like an essential first step in assessing whether such technologies could theoretically be used to combat global climate change. Besides scientific and technological factors, there are a host of other moral, philosophical, and political questions that would need to be addressed (e.g. Lawrence et al., 2018); while of critical importance, such factors are beyond the scope of this work.

### Acknowledgements

405 JMH, AJ and BTJ were supported by the Met Office Hadley Centre Climate Programme funded by BEIS. AJ and JMH, would like to acknowledge funding provided by SilverLining through its Safe Climate Research Initiative. JMH was part-funded by the National Environment Research Council Exeter-NCAR (EXTEND) collaborative development grant (NE/W003880/1).



## References

- 410 Aquila, V., Garfinkel, C. I., Newman, P. A., Oman, L. D., and Waugh, D. W.: Modifications of the quasi-biennial oscillation by a geoengineering perturbation of the stratospheric aerosol layer, *Geophys. Res. Lett.*, 41, 1738-1744, <https://doi.org/10.1002/2013GL058818>, 2014.
- Archibald, A. T., O'Connor, F. M., Abraham, N. L., Archer-Nicholls, S., Chipperfield, M. P., Dalvi, M., Folberth, G. A.,  
415 Dennison, F., Dhomse, S. S., Griffiths, P. T., Hardacre, C., Hewitt, A. J., Hill, R. S., Johnson, C. E., Keeble, J., Köhler, M. O., Morgenstern, O., Mulcahy, J. P., Ordóñez, C., Pope, R. J., Rumbold, S. T., Russo, M. R., Savage, N. H., Sellar, A., Stringer, M., Turnock, S. T., Wild, O., and Zeng, G.: Description and evaluation of the UKCA stratosphere–troposphere chemistry scheme (Strat-Trop vn 1.0) implemented in UKESM1, *Geosci. Model Dev.*, 13, 1223–1266, <https://doi.org/10.5194/gmd-13-1223-2020>, 2020.
- 420 Baker, L. H., Shaffrey, L. C., Sutton, R. T., Weisheimer, A., and Scaife, A. A.: An intercomparison of skill and overconfidence/underconfidence of the wintertime North Atlantic Oscillation in multimodel seasonal forecasts, *Geophys. Res. Lett.*, 45, 7808–7817, <https://doi.org/10.1029/2018GL078838>, 2018.
- 425 Bala, G., Duffy, P.B. and Taylor, K.E., 2008. Impact of geoengineering schemes on the global hydrological cycle. *Proceedings of the National Academy of Sciences*, 105(22), pp.7664-7669.
- Banerjee, A., Butler, A.H., Polvani, L.M., Robock, A., Simpson, I.R. and Sun, L., 2021. Robust winter warming over Eurasia under stratospheric sulfate geoengineering—the role of stratospheric dynamics. *Atmospheric Chemistry and Physics*, 21(9),  
430 pp.6985-6997.
- Best, M. J., Pryor, M., Clark, D. B., Rooney, G. G., Essery, R. L. H., Ménard, C. B., Edwards, J. M., Hendry, M. A., Porson, A., Gedney, N., Mercado, L. M., Sitch, S., Blyth, E., Boucher, O., Cox, P. M., Grimmond, C. S. B., and Harding, R. J.: The Joint UK Land Environment Simulator (JULES), model description – Part 1: Energy and water fluxes, *Geosci. Model Dev.*,  
435 4, 677–699, <https://doi.org/10.5194/gmd-4-677-2011>, 2011.
- Christian, K., Wang, J., Ge, C., Peterson, D., Hyer, E., Yorks, J. and McGill, M., 2019. Radiative forcing and stratospheric warming of pyrocumulonimbus smoke aerosols: First modeling results with multisensor (EPIC, CALIPSO, and CATS) views from space. *Geophysical Research Letters*, 46(16), pp.10061-10071.
- 440



Davidson, P., Burgoyne, C., Hunt, H. and Causier, M., 2012. Lifting options for stratospheric aerosol geoengineering: advantages of tethered balloon systems. *Philosophical Transactions of the Royal Society A: Mathematical, Physical and Engineering Sciences*, 370(1974), pp.4263-4300.

445 Dykema, J. D., D. W. Keith, and F. N. Keutsch, Improved aerosol radiative properties as a foundation for solar geoengineering risk assessment. *Geophys. Res. Lett.*, 43,7758-7766, doi:10.1002/2016GL069258, 2016.

Eyring, V., Bony, S., Meehl, G. A., Senior, C. A., Stevens, B., Stouffer, R. J., and Taylor, K. E.: Overview of the Coupled Model Intercomparison Project Phase 6 (CMIP6) experimental design and organization, *Geosci. Model Dev.*, 9, 1937–1958, <https://doi.org/10.5194/gmd-9-1937-2016>, 2016.

450

Fromm, M., Alfred, J., Hoppel, K., Hornstein, J., Bevilacqua, R., Shettle, E., & Stocks, B. (2000). Observations of boreal forest fire smoke in the stratosphere by POAM III, SAGE II, and lidar in 1998. *Geophysical Research Letters*, 27(9), 1407–1410. <https://doi.org/10.1029/1999GL011200>

455 Fromm, M., Bevilacqua, R., Servranckx, R., Rosen, J., Thayer, J. P., Herman, J., & Larko, D. (2005). Pyro-cumulonimbus injection of smoke to the stratosphere: Observations and impact of a super blowup in northwestern Canada on 34 August 1998. *Journal of Geophysical Research*, 110, D08205. <https://doi.org/10.1029/2004JD005350>

460 Gao, R.S., Rosenlof, K.H., Kärcher, B., Tilmes, S., Toon, O.B., Maloney, C. and Yu, P., 2021. Toward practical stratospheric aerosol albedo modification: Solar-powered lofting. *Science Advances*, 7(20), p.eabe3416.

Holland, M.M. and Bitz, C.M., 2003. Polar amplification of climate change in coupled models. *Climate Dynamics*, 21(3), pp.221-232.

465 Hurrell, J. W.: Decadal trends in the North Atlantic Oscillation: regional temperatures and precipitation, *Science*, **269**, 676-679, <https://doi.org/10.1126/science.269.5224.676>, 1995.

470 IPCC, 2018: Global warming of 1.5°C. An IPCC Special Report on the impacts of global warming of 1.5°C above pre-industrial levels and related global greenhouse gas emission pathways, in the context of strengthening the global response to the threat of climate change, sustainable development, and efforts to eradicate poverty [V. Masson-Delmotte, P. Zhai, H. O. Pörtner, D. Roberts, J. Skea, P.R. Shukla, A. Pirani, W. Moufouma-Okia, C. Péan, R. Pidcock, S. Connors, J. B. R. Matthews, Y. Chen, X. Zhou, M. I. Gomis, E. Lonnoy, T. Maycock, M. Tignor, T. Waterfield (eds.)].



- 475 IPCC, 2021: Climate Change 2021: The Physical Science Basis. Contribution of Working Group I to the Sixth Assessment Report of the Intergovernmental Panel on Climate Change [Masson-Delmotte, V., P. Zhai, A. Pirani, S.L. Connors, C. Péan, S. Berger, N. Caud, Y. Chen, L. Goldfarb, M.I. Gomis, M. Huang, K. Leitzell, E. Lonnoy, J.B.R. Matthews, T.K. Maycock, T. Waterfield, O. Yelekçi, R. Yu, and B. Zhou (eds.)]. Cambridge University Press. In Press.
- Jones, A., Haywood, J. M., Jones, A. C., Tilmes, S., Kravitz, B., and Robock, A.: North Atlantic Oscillation response in  
480 GeoMIP experiments G6solar and G6sulfur: why detailed modelling is needed for understanding regional implications of solar radiation management, *Atmos. Chem. Phys.*, 21, 1287–1304, <https://doi.org/10.5194/acp-21-1287-2021>, 2021a.
- Jones, A., J.M. Haywood, A.A. Scaife, O. Boucher, M. Henry, B. Kravitz, P. Nabat, U. Niemeier, R. Séférian, and D. Visioni, The impact of stratospheric aerosol intervention on the North Atlantic and Quasi-Biennial Oscillations in the Geoengineering  
485 Model Intercomparison Project (GeoMIP) G6sulfur experiment, *Atmos Chem Phys Discuss.*, acp-2021-898, 2021b.
- Jones, A., Haywood, J.M., Alterskjær, K., Boucher, O., Cole, J.N., Curry, C.L., Irvine, P.J., Ji, D., Kravitz, B., Kristjánsson, J.E. and Moore, J.C., 2013. The impact of abrupt suspension of solar radiation management (termination effect) in experiment  
490 G2 of the Geoengineering Model Intercomparison Project (GeoMIP). *Journal of Geophysical Research: Atmospheres*, 118(17), pp.9743-9752.
- Jones, A.C., Haywood, J.M., Dunstone, N., Emanuel, K., Hawcroft, M.K., Hodges, K.I. and Jones, A., 2017. Impacts of hemispheric solar geoengineering on tropical cyclone frequency. *Nature Communications*, 8(1), pp.1-10.
- 495 Jones, A.C., J.M. Haywood, A. Jones, Climatic Impacts of Stratospheric Geoengineering with Sulfate, Black Carbon and Titania Injection, *Atmos. Chem. Phys.*, 16, 2843–2862, 2016, [www.atmos-chem-phys.net/16/2843/2016/](http://www.atmos-chem-phys.net/16/2843/2016/), doi:10.5194/acp-16-2843-2016, 2016.
- Jones, A. C., Hawcroft, M. K., Haywood, J. M., Jones, A., Guo, X., & Moore, J. C. (2018). Regional Climate Impacts of  
500 Stabilizing Global Warming at 1.5 K Using Solar Geoengineering, *Earth's Future*, 6. <https://doi.org/10.1002/2017EF000720>
- Khaykin, S., Legras, B., Bucci, S., Sellitto, P., Isaksen, L., Tence, F., Bekki, S., Bourassa, A., Rieger, L., Zawada, D. and Jumelet, J., 2020. The 2019/20 Australian wildfires generated a persistent smoke-charged vortex rising up to 35 km altitude. *Communications Earth & Environment*, 1(1), pp.1-12.
- 505 Kloss, C., Berthet, G., Sellitto, P., Ploeger, F., Taha, G., Tidiga, M., Eremenko, M., Bossolasco, A., Jégou, F., Renard, J.-B., and Legras, B.: Stratospheric aerosol layer perturbation caused by the 2019 Raikoke and Ulawun eruptions and their radiative forcing, *Atmos. Chem. Phys.*, 21, 535–560, <https://doi.org/10.5194/acp-21-535-2021>, 2021.



- 510 Kravitz, B., MacMartin, D. G., Wang, H., and Rasch, P. J.: Geoengineering as a design problem, *Earth Syst. Dynam.*, 7, 469–497, <https://doi.org/10.5194/esd-7-469-2016>, 2016.
- Kravitz, B., Robock, A., Tilmes, S., Boucher, O., English, J. M., Irvine, P. J., Jones, A., Lawrence, M. G., MacCracken, M., Muri, H., Moore, J. C., Niemeier, U., Phipps, S. J., Sillmann, J., Storelvmo, T., Wang, H., and Watanabe, S.: The  
515 Geoengineering Model Intercomparison Project Phase 6 (GeoMIP6): simulation design and preliminary results, *Geosci. Model Dev.*, 8, 3379–3392, <https://doi.org/10.5194/gmd-8-3379-2015>, 2015.
- Kravitz, B., Caldeira, K., Boucher, O., Robock, A., Rasch, P.J., Alterskjær, K., Karam, D.B., Cole, J.N., Curry, C.L., Haywood, J.M. and Irvine, P.J., 2013. Climate model response from the geoengineering model intercomparison project  
520 (GeoMIP). *Journal of Geophysical Research: Atmospheres*, 118(15), pp.8320-8332.
- Kravitz, B., A. Robock, D. T. Shindell, and M. A. Miller, 2012. Sensitivity of stratospheric geoengineering with black carbon to aerosol size and altitude of injection. *J. Geophys. Res.* **117**, D09203 (2012).
- 525 Kravitz, B., Robock, A., Boucher, O., Schmidt, H., Taylor, K.E., Stenchikov, G. and Schulz, M., 2011. The geoengineering model intercomparison project (GeoMIP). *Atmospheric Science Letters*, 12(2), pp.162-167.
- Lawrence, M.G., Schäfer, S., Muri, H., Scott, V., Oeschler, A., Vaughan, N.E., Boucher, O., Schmidt, H., Haywood, J. and Scheffran, J., 2018. Evaluating climate geoengineering proposals in the context of the Paris Agreement temperature  
530 goals. *Nature communications*, 9(1), pp.1-19.
- Lee, W.R., MacMartin, D.G., Vioni, D. and Kravitz, B., 2021. High-Latitude Stratospheric Aerosol Geoengineering Can Be More Effective if Injection Is Limited to Spring. *Geophysical Research Letters*, 48(9), p.e2021GL092696.
- 535 López-Moreno, J. I., and Vicente-Serrano, S. M.: Positive and negative phases of the wintertime North Atlantic Oscillation and drought occurrence over Europe: a multitemporal-scale approach, *J. Climate*, 21, 1220–1243, <https://doi.org/10.1175/2007JCLI1739.1>, 2008.
- 540 McClellan, Justin, David W. Keith, and Jay Apt. "Cost analysis of stratospheric albedo modification delivery systems." *Environmental Research Letters* 7, no. 3 (2012): 034019.



- Mann, G. W., Carslaw, K. S., Spracklen, D. V., Ridley, D. A., Manktelow, P. T., Chipperfield, M. P., Pickering, S. J., and Johnson, C. E.: Description and evaluation of GLOMAP-mode: a modal global aerosol microphysics model for the UKCA composition-climate model, *Geosci. Model Dev.*, 3, 519–551, <https://doi.org/10.5194/gmd-3-519-2010>, 2010.
- 545
- Millar, R.J., Fuglestedt, J.S., Friedlingstein, P., Rogelj, J., Grubb, M.J., Matthews, H.D., Skeie, R.B., Forster, P.M., Frame, D.J. and Allen, M.R., 2017. Emission budgets and pathways consistent with limiting warming to 1.5 C. *Nature Geoscience*, 10(10), pp.741-747.
- 550
- Mulcahy, J. P., Jones, C., Sellar, A., Johnson, B., Boutle, I. A., Jones, A., Andrews, T., Rumbold, S. T., Mollard, J., Bellouin, N., Johnson, C. E., Williams, K. D., Grosvenor, D. P., and Mc-Coy, D. T.: Improved Aerosol Processes and Effective Radiative Forcing in HadGEM3 and UKESM1, *J. Adv. Model. Earth Sy.*, 10, 2786–2805, <https://doi.org/10.1029/2018MS001464>, 2018.
- NAS (National Academies of Sciences), Engineering, and Medicine. 2021. *Reflecting Sunlight: Recommendations for Solar Geoengineering Research and Research Governance*. Washington, DC: The National Academies Press. <https://doi.org/10.17226/25762>.
- 555
- O'Neill, B.C., Kriegler, E., Riahi, K., Ebi, K.L., Hallegatte, S., Carter, T.R., Mathur, R. and van Vuuren, D.P., 2014. A new scenario framework for climate change research: the concept of shared socioeconomic pathways. *Climatic change*, 122(3), pp.387-400.
- 560
- Osborne, M. J., de Leeuw, J., Witham, C., Schmidt, A., Beckett, F., Kristiansen, N., Buxmann, J., Saint, C., Welton, E. J., Fochesatto, J., Gomes, A. R., Bundke, U., Petzold, A., Marengo, F., and Haywood, J.: The 2019 Raikoke volcanic eruption part 2: Particle phase dispersion and concurrent wildfire smoke emissions, *Atmos. Chem. Phys. Discuss.* [preprint], <https://doi.org/10.5194/acp-2021-448>, 2021.
- 565
- Peterson, D.A., Campbell, J.R., Hyer, E.J., Fromm, M.D., Kablick, G.P., Cossuth, J.H. and DeLand, M.T., 2018. Wildfire-driven thunderstorms cause a volcano-like stratospheric injection of smoke. *NPJ climate and atmospheric science*, 1(1), pp.1-8.
- 570
- Richter, J.H., Anstey, J.A., Butchart, N., Kawatani, Y., Meehl, G.A., Osprey, S. and Simpson, I.R., 2020. Progress in simulating the quasi-biennial oscillation in CMIP models. *Journal of Geophysical Research: Atmospheres*, 125(8), p.e2019JD032362.



- 575 Ridley, J. K., Blockley, E. W., Keen, A. B., Rae, J. G. L., West, A. E., and Schroeder, D.: The sea ice model component of HadGEM3-GC3.1, *Geosci. Model Dev.*, 11, 713–723, <https://doi.org/10.5194/gmd-11-713-2018>, 2018.
- Robock, A., Marquardt, A., Kravitz, B. and Stenchikov, G., 2009. Benefits, risks, and costs of stratospheric geoengineering. *Geophysical Research Letters*, 36(19).
- 580 Rogelj, J., Den Elzen, M., Höhne, N., Fransen, T., Fekete, H., Winkler, H., Schaeffer, R., Sha, F., Riahi, K. and Meinshausen, M., 2016. Paris Agreement climate proposals need a boost to keep warming well below 2 C. *Nature*, 534(7609), pp.631-639.
- Schmidt, H., Alterskjær, K., Bou Karam, D., Boucher, O., Jones, A., Kristjánsson, J.E., Niemeier, U., Schulz, M., Aaheim, A.,  
585 Benduhn, F. and Lawrence, M., 2012. Solar irradiance reduction to counteract radiative forcing from a quadrupling of CO<sub>2</sub>: climate responses simulated by four earth system models. *Earth System Dynamics*, 3(1), pp.63-78.
- Sellar, A., Jones, C. G., Mulcahy, J. P., Tang, Y., Yool, A., Wiltshire, A., O'Connor, F. M., Stringer, M., Hill, R., Palmieri, J., Woodward, S., de Mora, L., Kuhlbrodt, T., Rumbold, S., Kelley, D. I., Ellis, R., Johnson, C. E., Walton, J., Abraham, N. L.,  
590 Andrews, M. B., Andrews, T., Archibald, A. T., Berthou, S., Burke, E., Blockley, E., Carslaw, K., Dalvi, M., Edwards, J., Folberth, G. A., Gedney, N., Griffiths, P. T., Harper, A. B., Hendry, M. A., Hewitt, A. J., Johnson, B., Jones, A., Jones, C. D., Keeble, J., Liddicoat, S., Morgenstern, O., Parker, R. J., Predoi, V., Robertson, E., Siahann, A., Smith, R. S., Swaminathan, R., Woodhouse, M., Zeng, G., and Zerroukat, M.: UKESM1: Description and evaluation of the UK Earth System Model, *J. Adv. Model. Earth Sys.*, 11, 4513–4558, <https://doi.org/10.1029/2019MS001739>, 2019.
- 595 Shepherd, John G. *Geoengineering the climate: science, governance and uncertainty*. Royal Society, 2009.
- Shindell, D.T., Schmidt, G.A., Mann, M.E. and Faluvegi, G., 2004. Dynamic winter climate response to large tropical volcanic eruptions since 1600. *Journal of Geophysical Research: Atmospheres*, 109(D5).
- 600 Simpson, I.R., Tilmes, S., Richter, J.H., Kravitz, B., MacMartin, D.G., Mills, M.J., Fasullo, J.T. and Pendergrass, A.G., 2019. The regional hydroclimate response to stratospheric sulfate geoengineering and the role of stratospheric heating. *Journal of Geophysical Research: Atmospheres*, 124(23), pp.12587-12616.
- 605 Stephenson, D. B., Pavan, V., Collins, M., Junge, M. M., Quadrelli, R., and Participating CMIP2 Modelling Groups: North Atlantic Oscillation response to transient greenhouse gas forcing and the impact on European winter climate: A CMIP2 multi-model assessment. *Clim. Dyn.*, 27, 401–420, <https://doi.org/10.1007/s00382-006-0140-x>, 2006.





- 610 Solomon, S., 1999. Stratospheric ozone depletion: A review of concepts and history. *Reviews of Geophysics*, 37(3), pp.275-316.
- 615 Storkey, D., Blaker, A. T., Mathiot, P., Megann, A., Aksenov, Y., Blockley, E. W., Calvert, D., Graham, T., Hewitt, H. T., Hyder, P., Kuhlbrodt, T., Rae, J. G. L., and Sinha, B.: UK Global Ocean GO6 and GO7: a traceable hierarchy of model resolutions, *Geosci. Model Dev.*, 11, 3187–3213, <https://doi.org/10.5194/gmd-11-3187-2018>, 2018.
- 620 Tilmes, S., Richter, J.H., Mills, M.J., Kravitz, B., MacMartin, D.G., Vitt, F., Tribbia, J.J. and Lamarque, J.F., 2017. Sensitivity of aerosol distribution and climate response to stratospheric SO<sub>2</sub> injection locations. *Journal of Geophysical Research: Atmospheres*, 122(23), pp.12-591.
- 625 Tilmes, S., Fasullo, J., Lamarque, J.F., Marsh, D.R., Mills, M., Alterskjær, K., Muri, H., Kristjánsson, J.E., Boucher, O., Schulz, M. and Cole, J.N., 2013. The hydrological impact of geoengineering in the Geoengineering Model Intercomparison Project (GeoMIP). *Journal of Geophysical Research: Atmospheres*, 118(19), pp.11-036.
- Tollefson, J., IPCC says limiting global warming to 1.5 C will require drastic action. *Nature* 562, no. 7726 (2018): 172-173.
- 630 Trigo, R. M., Pozo-Vázquez, D., Osborn, T. J., Castro-Díez, Y., Gámiz-Fortis, S., and Esteban-Parra, M. J.: North Atlantic Oscillation influence on precipitation, river flow and water resources in the Iberian Peninsula, *Int. J. Climatol.*, **24**, 925-944, <https://doi.org/10.1002/joc.1048>, 2004.
- 635 Vioni, D., MacMartin, D.G., Kravitz, B., Richter, J.H., Tilmes, S. and Mills, M.J., 2020. Seasonally modulated stratospheric aerosol geoengineering alters the climate outcomes. *Geophysical Research Letters*, 47(12), p.e2020GL088337.
- Vioni, D., MacMartin, D.G., Kravitz, B., Boucher, O., Jones, A., Lurton, T., Martine, M., Mills, M.J., Nabat, P., Niemeier, U. and Séférian, R., 2021. Identifying the sources of uncertainty in climate model simulations of solar radiation modification with the G6sulfur and G6solar Geoengineering Model Intercomparison Project (GeoMIP) simulations. *Atmospheric Chemistry and Physics Discussions*, pp.1-37.
- 640 Walters, D., Baran, A.J., Boutle, I., Brooks, M., Earnshaw, P., Edwards, J., Furtado, K., Hill, P., Lock, A., Manners, J. and Morcrette, C., 2019. The Met Office Unified Model global atmosphere 7.0/7.1 and JULES global land 7.0 configurations. *Geoscientific Model Development*, 12(5), pp.1909-1963.



Yool, A., Popova, E. E., and Anderson, T. R.: MEDUSA-2.0: an intermediate complexity biogeochemical model of the marine carbon cycle for climate change and ocean acidification studies, *Geosci. Model Dev.*, **6**, 1767–1811, <https://doi.org/10.5194/gmd-6-1767-2013>, 2013.

645

Yu, P., Toon, O.B., Bardeen, C.G., Zhu, Y., Rosenlof, K.H., Portmann, R.W., Thornberry, T.D., Gao, R.S., Davis, S.M., Wolf, E.T. and de Gouw, J., 2019. Black carbon lofts wildfire smoke high into the stratosphere to form a persistent plume. *Science*, **365**(6453), pp.587-590.

650 Zanardo, S., Nicotina, L., Hilberts, A. G. J., and Jewson, S. P.: Modulation of economic losses from European floods by the North Atlantic Oscillation, *Geophys. Res. Lett.*, **46**, 2563-2572, <https://doi.org/10.1029/2019GL081956>, 2019.

Miller, B. B. and Carter, C.: The test article, *J. Sci. Res.*, **12**, 135–147, doi:10.1234/56789, 2015.