

# Time-dependent 3D simulations of tropospheric ozone depletion events in the Arctic spring using WRF-Chem

Maximilian Herrmann<sup>1</sup>, Holger Sihler<sup>2,3</sup>, Udo Frieß<sup>3</sup>, Thomas Wagner<sup>2,3</sup>, Ulrich Platt<sup>3,4</sup>, and Eva Gutheil<sup>1,4</sup>

<sup>1</sup>Interdisciplinary Center for Scientific Computing, Heidelberg University, Heidelberg, Germany

<sup>2</sup>Max-Planck Institute for Chemistry, Mainz, Germany

<sup>3</sup>Institute of Environmental Physics, Heidelberg University, Heidelberg, Germany

<sup>4</sup>Heidelberg Center for the Environment, Heidelberg University, Heidelberg, Germany

**Correspondence:** M. Herrmann (maximilian.herrmann@iwr.uni-heidelberg.de)

**Abstract.** Tropospheric bromine release and ozone depletion events (ODEs) as they commonly occur in the Arctic spring are studied using the regional open-source software package WRF-Chem. For this purpose, the MOZART-MOSAIC chemical reaction mechanism is extended by bromine and chlorine reactions as well as an emission mechanism for reactive bromine via heterogeneous reactions on ice and snow surfaces. The simulation domain covers an area of 5,040 km x 4,960 km, centered north of Utqiagvik (formerly Barrow), Alaska, and the time interval from February through May, 2009. Several simulations for different strengths of the bromine emission are conducted and evaluated by comparison with in-situ and ozone-sonde measurements of ozone mixing ratios as well as by comparison with tropospheric BrO vertical column densities (VCDs) from the Global Ozone Monitoring Experiment-2 (GOME-2) satellite instrument. The base bromine emission scheme includes the direct emission of bromine due to bromide oxidation by ozone through the reactive surface ratio  $\beta$  of the ice/snow surface relative to a flat surface. Results of simulations with  $\beta=1.0$  with the base emission rate agree well with the observations, however, a simulation  $\beta=1.5$  with 50% faster emissions performs somewhat better. The bromine emission due to bromide oxidation by ozone is found to be important to provide an initial seed for the bromine explosion. Bromine release due to  $N_2O_5$  was found to be important from February to mid March, but irrelevant thereafter. A comparison of modeled BrO with in-situ and MAX-DOAS data hints at missing bromine release and recycling mechanisms on land or near coasts. Consideration of halogen chemistry substantially improves the prediction of the ozone mixing ratio with respect to the observations. Meteorological nudging is found to be essential for a good prediction of ODEs over the three months period.

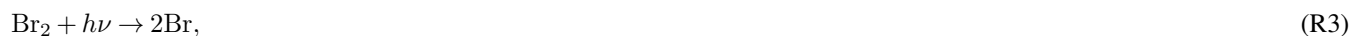
## 1 Introduction

Ozone is an important constituent of the troposphere due to its high oxidation potential. In the Arctic troposphere, ozone mainly originates from transport and photo-chemical reactions involving nitrogen oxides and volatile organic compounds, resulting in a background mixing ratio of 30 to 50 nmol/mol (ppb). During polar spring, so-called tropospheric ozone depletion events (ODEs) are regularly observed, in which ozone mixing ratios in the boundary layer drop to almost zero levels coinciding with a surge in reactive bromine levels on a time scale of hours to days (e.g. Oltmans, 1981; Bottenheim et al., 1986; Barrie

et al., 1988; Hausmann and Platt, 1994; Wagner and Platt, 1998; Frieß et al., 2004; Wagner et al., 2007; Helmig et al., 2012; Halfacre et al., 2014). ODEs strongly shorten the lifetime of ozone and organic gases, they cause the removal and deposition of mercury as well as the transport of reactive bromine into the free troposphere. During an ODE, ozone is most likely destroyed by Br atoms in the catalytic reaction cycle (e.g. Barrie et al., 1988; Wang et al., 2019b)



30



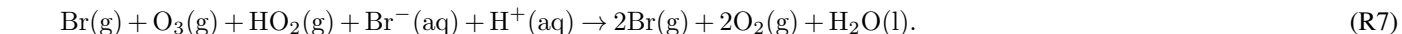
resulting in the net reaction



The rate-limiting reaction in this cycle is usually the BrO self-reaction (R2) with a reaction rate that is quadratic in the BrO concentration. The source of the reactive bromine is thought to be sea salt, i.e. aerosol, which deposits on the ice (Fan and Jacob, 1992; McConnell et al., 1992; Platt and Janssen, 1995; Pratt et al., 2013; Simpson et al., 2015; Custard et al., 2017). However, it is not fully understood how the salt bromide is oxidized and how the reactive bromine is released into the air. The most widely accepted emission mechanism is autocatalytic and termed “bromine explosion” (Platt and Janssen, 1995; Platt and Lehrer, 1997; Wennberg, 1999), which consists of the reactions (R1), (R3), and the following two reactions (R5) and (R6)



where  $\xrightarrow{\text{aq}}$  denotes [Reaction \(R6\)](#) is a heterogeneous reaction, i.e. a reaction involving gaseous components (HOBr) and liquid phase components ( $\text{H}^+$  and  $\text{Br}^-$ ). The concentration of atomic gas-phase bromine doubles in each reaction cycle as can be seen in the following net reaction



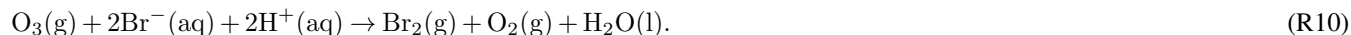
Since  $\text{H}^+$  ions are consumed, it implies the need for acidic solutions for this reaction to occur, and a pH of at most 6.5 is suggested by Fickert et al. (1999) for this reaction to efficiently occur. [A pH-dependence of the  \$\text{Br}\_2\$  production was shown by Pratt et al. \(2013\) through field-based experiments.](#)



50 Other pathways to activate bromide were suggested, involving nitrogen oxides



as well as a direct emission due to bromide oxidation by ozone (e.g. Oum et al., 1998; Artiglia et al., 2017), which are likely  
55 to need sunlight to efficiently occur (Pratt et al., 2013)



In the following discussion, the term bromine explosion mechanism includes the original reactions (R1), (R3), (R5), and (R6) as well as reaction (R9), which also generates two bromine atoms out of one gas-phase bromine atom and represents an extended bromine explosion mechanism. Reaction (R10) is considered independently of this terminology as bromide oxidation due to  
60 ozone.

A further  $\text{Br}_2$  release mechanism initiated by a reaction of the hydroxyl radical OH with bromide inside the surface layer of the snow grains under sunlight was suggested (Sjostedt and Abbatt, 2008; Pratt et al., 2013) ~~this was also found~~ Evidence for this mechanism was found in a laboratory study (Halfacre et al., 2019). The release mechanism may be summarized in the net reaction



A consequence of the reduced ozone levels during an ODE is that reactions of reactive bromine with OH or certain organic species producing chemically inert HBr are favored (essentially reactive bromine is returned to the bromide reservoir), e.g.



HBr then deposits into the ground or onto aerosols, ultimately terminating the ODE. Chlorine and iodine play a smaller role  
70 for the occurrence of ODEs (Thompson et al., 2015). The reaction of methane with chlorine atoms quickly produces chemically inert HCl. Since Cl-atoms react with  $\text{CH}_4$  (while Br- and I-atoms do not) and due to the large abundance of methane in the atmosphere, chlorine explosions cannot occur in the atmosphere. The iodine concentration ( $\text{I}^-$  and  $\text{IO}_3^-$ ) is approximately twenty times smaller than bromide in seawater (Luther et al., 1988; Grebel et al., 2010), which is likely the reason why detectable amounts of gaseous iodine were rarely found in the Arctic and the Antarctic (Wittrock et al., 2000; Schönhardt et al.,  
75 2008; Saiz-Lopez et al., 2007; Atkinson et al., 2012; Zielcke, 2015; Raso et al., 2017). Both iodine and chlorine, however, still may play a role due to interhalogen reactions



80 with  $X = \text{Cl}$  or  $\text{I}$ , that occur faster by an order of magnitude (Atkinson et al., 2007) than the  $\text{BrO}$  self reaction (R2).

Similarly, chloride can speed up bromine activation (Simpson et al., 2007a)



and aqueous  $\text{BrCl}$  can further be converted into  $\text{Br}_2$



85 ODEs are observed mostly in the polar spring. During winter, radical bromine chemistry cannot occur due to the lack of sunlight. Temperatures below  $-20^\circ\text{C}$  are likely to favor the occurrence of ODEs (Tarasick and Bottenheim, 2002; Pöhler et al., 2010). ~~-, however, ODEs were also observed at  $-6^\circ\text{C}$  (Bottenheim et al., 2009)~~ However, Bottenheim et al. (2009) observed ODEs at  $-6^\circ\text{C}$  and Halfacre et al. (2014) found no apparent temperature dependence for the presence of an ODE in ozone measurements at five buoys across the Arctic. Shallow boundary layers are also likely to be beneficial (Wagner et al., 2001; Frieß et al., 2004; Lehrer et al., 2004; Koo et al., 2012), since they increase the speed of the auto-catalytic bromine release by confining the released bromine to a smaller space. ~~The salinity of the sea ice is also an important factor. First-year (FY) ice covered by snow, which has a larger salinity than multi-year (MY) ice, is expected to be the main source of bromine (Simpsons et al., 2007).~~ The age of the sea ice is also an important factor. Snow covering First-year (FY) ice, which has more accessible salt than multi-year (MY) ice, is expected to be the main source of bromine (Simpson et al., 2007b; Abbatt et al., 2012). Despite  
95 being often depleted in bromide, snow covering MY ice may still play an active role in the release of reactive bromine (Peterson et al., 2019).  ~~$\text{Br}_2$  emissions directly from the sea ice were not observed (e.g. Pratt et al., 2013)~~ Pratt et al. (2013) did not directly observe  $\text{Br}_2$  emissions from the sea ice, which is likely due to a higher pH of the sea ice due to buffering (Wren and Donaldson, 2012). ~~The salinity of FY sea ice is larger in spring, directly after its formation. This may explain why ODEs are much less pronounced in polar fall~~ with rare measurements of partial ODEs in the Antarctic (Nasse, 2019), because most of the brine  
100 covering FY ice will have drained away during the summer melt (Simpson et al., 2007b) even though meteorological conditions are similar to those in spring time.

Snow covering land surfaces may also play an active role in the release of  $\text{Br}_2$ , as several studies suggest (Simpson et al., 2005; Peterson et al., 2018). Custard et al. (2017) simultaneously measured  $\text{Br}_2$ ,  $\text{BrCl}$ , and  $\text{Cl}_2$  in the snowpack interstitial air and also provided estimates of  $\text{Br}_2$  and  $\text{Cl}_2$  emission rates. McNamara et al. (2020) measured the release of  $\text{BrCl}$  from snow  
105 surfaces and the dominant pathways of  $\text{BrCl}$  were identified in a box model simulation. Thomas et al. (2011) extended the 1D model MISTRA with a snow pack module and validated their results with observations at Summit, Greenland. They found the solar actinic flux to be the main driver of reactive bromine release from the liquid-like layer (LLL) of the snow grain surface and a dependence of bromine release from the LLL on the  $\text{OH}$  concentration in the LLL. Wang and Pratt (2017) attributed approximately 20% of the total  $\text{Br}_2$  production to the mechanism of snow  $\text{Br}_2$  production. Wang et al. (2019b) measured atomic  
110 bromine and related it to  $\text{BrO}$  and snow-released  $\text{Br}_2$ , finding three to ten times higher levels of atomic bromine than previous estimates suggested.

From the outline above it is clear that ODEs are a complex function of chemistry and meteorology, therefore 3D simulations are useful to learn about the interaction of meteorology and chemistry in generating ODEs. Earlier studies estimated boundary

layer BrO from measurements of satellite BrO vertical column densities (VCDs) (e.g. Wagner and Platt, 1998; Zhao et al., 2008) by estimating the BrO release from sea-salt aerosols produced from abraded frost flowers (Kaleschke et al., 2004; Zhao et al., 2008) or from blowing snow events (Yang et al., 2008, 2010). Toyota et al. (2011) reproduced major features of satellite BrO VCDs and in-situ measurements using a simple parameterization of bromine emissions from bulk ice and snow with the 3D air quality model Global Environmental Multiscale model with Air Quality processes (GEM-AQ). Falk and Sinnhuber (2018) integrated this mechanism into the ECHAM/MESSy Atmospheric Chemistry (EMAC) model, investigating and reproducing important features of ODEs for a full annual cycle.

In the present study, the regional 3D online numerical weather prediction system WRF-Chem is used to investigate the ODEs during Arctic spring from February 1 through May 1, 2009 since for this period of time, extensive data from observations are available from the NOAA institute or collected as part of the Ocean-Atmosphere Sea-Ice Snowpack (OASIS) field initiative for comparison with the numerical results. The chemical reaction scheme MOZART-MOSAIC is extended by bromine and chlorine reactions to study their impact on the ODEs. The emission scheme developed by Toyota et al. (2011) is adopted and a parameter study for the reactive surface ratio (Cao et al., 2014) of the ice/snow surface is performed.

## 2 Model

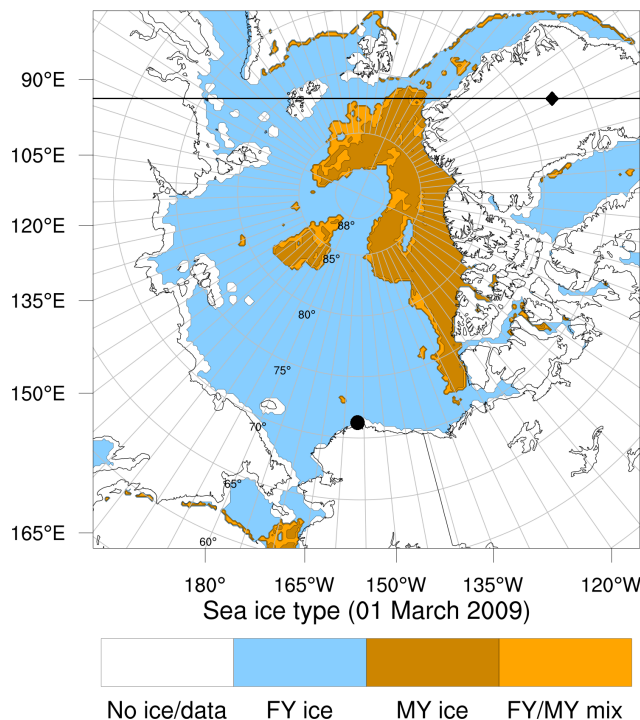
First, the configuration of WRF-Chem (Grell et al., 2005; Skamarock et al., 2008) will be presented, then the modifications to the standard configuration will be discussed and the initial and boundary conditions will be provided.

### 2.1 Configuration of WRF-Chem

The physical area (displayed in Fig. 1) of 5,040 km x 4,960 km, centered north of Utqiagvik, is modeled for the time interval of February 1, 2009 through May 1, 2009, for which GOME-2 data with a stratospheric correction for BrO VCDs (Sihler et al., 2012) as well as surface ozone and ozone sonde data are available for model evaluation.

The software Weather Research and Forecasting model coupled with Chemistry (WRF-Chem) version 3.9 is employed. WRF-Chem (Skamarock et al., 2008; Grell et al., 2005) is a state-of-the-art regional numerical weather prediction system with online computation of chemistry. Table 1 summarizes the configuration of the software. The physics modules are chosen following recommendations of the Polar WRF community (Bromwich et al., 2009; Wilson et al., 2011; Bromwich et al., 2013), the modules include the meteorology and the emission, transport, mixing, chemical reactions of trace gases as well as aerosols.

The simulation domain is centered north of Utqiagvik using the polar stereographic projection at a true latitude of 83° with a reference longitude of 156° W. A horizontal grid resolution of 20 km for the 5,040 km x 4,960 km domain is employed, allowing comparison to GOME-2 BrO satellite data (Sihler et al., 2012) with a resolution of approximately 40 km x 30 km. In vertical direction, 64 non-equidistant grid cells with a finer resolution near the ground are used, starting with approximately 25 m at the ground level. Half of the grid cells used in the present study are in the first 2 km of the atmosphere, allowing a detailed representation of the Arctic boundary layer. The vertical grid is provided in the supplement of this manuscript.



**Figure 1.** Domain of the simulations presented in this publication and sea ice type (Aaboe et al., 2017) with the locations of (●) Utqiagvik, Alaska, and (◆) Summit, Greenland, respectively. For latitudes larger than 88°, missing sea ice type data is filled up with FY ice. The horizontal line refers to the  $x$ -coordinate in Fig. 6.

145 The meteorological time step of one minute is chosen to fulfill the Courant criterion. Chemistry is updated between every meteorology time step, and radiative transfer is updated every tenth meteorological time step.

In the present model, the Mellor-Yamada-Janjic (MYJ) PBL scheme (Mellor and Yamada, 1982; Janjić, 1990) is employed, which is a 1.5-order local turbulence closure model. Prognostically determined turbulent kinetic energy is used to determine the eddy diffusion coefficients. The MYJ PBL scheme is best suited for stable to slightly unstable conditions (Mellor and Yamada, 150 1982).

## 2.2 Gas-phase chemistry

WRF-Chem offers several implementations of chemical reaction schemes. In the present study, the MOZART-MOSAIC mechanism based on MOZART-4 (Model for Ozone and Related chemical Tracers) gas-phase chemistry (Emmons et al., 2010a) is used which includes 85 gas-phase species, 237 gas-phase reactions, 49 photolysis reactions. Additional 18 gas-phase species, 155 73 gas-phase reactions, and 13 photolysis reactions (Herrmann et al., 2019) account for the bromine and chlorine chemistry (termed "full chemistry", see Tab. 2). Iodine is neglected since Observations of reactive iodine in the arctic region (Zielcke, 2015; Raso et al., 2017) suggest only low mixing ratios of iodine. Even though small mixing ratios of iodine can significantly

**Table 1.** Summary of the configuration of WRF-Chem.

Parameter	Setting
Longwave radiation	LW RRTMG scheme (Iacono et al., 2008)
Shortwave radiation	SW RRTMG scheme (Iacono et al., 2008)
Microphysics	WSM 6-class graupel scheme (Hong and Lim, 2006)
Land-surface model	Noah Land-Surface Model (Niu et al., 2011)
Surface-layer model	Monin-Obukhov (Janjic Eta) Similarity scheme (Janjić, 1996)
Boundary-layer model	Mellor-Yamada-Janjic (MYJ) scheme (Mellor and Yamada, 1982)
Cumulus parameterization	Grell 3D ensemble scheme (Grell, 1993)
Initial and boundary data	ERA-Interim (Dee et al., 2011), MOZART-4 (Emmons et al., 2010a)
Sea ice data	OSI-403-c (Aaboe et al., 2017)
Sea surface temperature data	RTG_SST high resolution (Thiébaux et al., 2003)
Time step	1 min
Simulated time range	February 1, 2009 – May 1, 2009
Nudging	included, see text
Horizontal resolution	20 km
Longitude and latitude	252 × 248 horizontal grid cells
Vertical grid size	64 eta levels
Vertical size of the first cell	≈ 25 m
Pressure at top boundary	50 hPa
Chemistry mechanism	MOZART-MOSAIC (Emmons et al., 2010b) plus bromine and chlorine reactions (see supplement)
Aerosols	MOSAIC 4 bin aerosols (Zaveri et al., 2008)
Photolysis scheme	Updated TUV (Madronich et al., 2002)
Emissions	EDGAR-HTAP (Janssens-Maenhout et al., 2012)
Bioemissions	MEGAN (Guenther et al., 2006)

enhance ozone depletion (Raso et al., 2017), iodine is neglected due to the uncertainties in the abundance of iodine in the arctic atmosphere and in snowpacks. The photolysis rates are calculated with the "Updated TUV" scheme (Madronich et al., 2002), which already contains the halogen photolysis reaction rates. The added bromine and chlorine chemical reactions are provided in the supplement.

**2.3 Aerosol-phase chemistry**

The MOZART-MOSAIC mechanism employs four-bin MOSAIC aerosols (Zaveri et al., 2008). In WRF-Chem, MOSAIC is implemented using a sectional approach, where size bins are defined by the upper and lower dry particle diameters. In MOSAIC, mass and number density for each bin are considered and the processes of nucleation, coagulation, condensation,

evaporation, and aerosol chemistry are modeled. The mass transfer rate  $k_{i,m}$  for gas species  $i$  and aerosol size section  $m$  is calculated using the parameterization (Wexler and Seinfeld, 1991)

$$k_{i,m} = 4\pi R_{p,m} D_{g,i} N_m f(\text{Kn}_m, \gamma_i), \quad (1)$$

where  $D_{g,i}$  is the gas diffusivity of species  $i$ ,  $R_{p,m}$  is the wet mean particle radius of size bin  $m$ ,  $N_m$  the number density of size bin  $m$ , and  $\text{Kn}_m = \lambda/R_{p,m}$  is the Knudsen Number of size bin  $m$  with the free mean path  $\lambda$ .  $f(\text{Kn}_m, \gamma_i)$  is the transition regime correction factor (Fuchs and Sutugin, 1971) and accounts for the interfacial mass transport limitation

$$f(\text{Kn}_m, \gamma_i) = \frac{0.75\gamma_i(1 + \text{Kn}_m)}{\text{Kn}_m(1 + \text{Kn}_m) + 0.283\gamma_i\text{Kn}_m + 0.75\gamma_i}, \quad (2)$$

where  $\gamma_i$  is the accommodation coefficient for gas-phase species  $i$  taken from the CAABA/MECCA model (Sander et al., 2011). Aerosol forms of bromine are currently not implemented in the MOSAIC framework and are treated as gas-phase species. The transfer reactions of bromine gas-phase species X to aerosol-size bin  $m$  are assumed to produce species  $X_{\text{aq},m}$  as



which may produce gas-phase  $\text{Br}_2$  (McConnell et al., 1992; Peterson et al., 2017)



Reactions (R17)-(R20) may only occur if the aerosol is in a liquid state, and in addition, reaction (R20) requires the aerosol to have a pH of 6 or less. The heterogeneous reactions and parameters required to calculate the reaction rates are listed in the supplement. [Heterogeneous BrCl production \(reactions \(R15\) and \(R16\)\) is not implemented in the model.](#)

## 2.4 Bromine emission scheme

Emissions of bromine species on ice/snow surfaces are parameterized following Toyota et al. (2011). Numerically, bromine emissions are coupled to vertical diffusion. In WRF-Chem, vertical (turbulent) diffusion for each species and horizontal grid cell is solved using a Peaceman-Rachford Alternating direction implicit method (Peaceman and Rachford, 1955). The bromine emissions are added as boundary conditions to the tridiagonal diffusion matrix. For the surface emission in reactions (R6), (R9), and (R10), the boundary flux for instance of (R6),  $F_d(\text{Br}_2|\text{HOBr})$  for  $\text{Br}_2$  due to HOBr is

$$F_d(\text{Br}_2|\text{HOBr}) = \beta \rho_{d,0} v_d(\text{HOBr}) [\text{HOBr}]_0 \quad (3)$$

where  $\rho_{d,0}$  is the dry air density of the lowest grid cell and  $[\text{HOBr}]_0$  is the HOBr mixing ratio in the lowest grid cell. The species-dependent deposition velocity  $v_d \approx 1 \text{ cm s}^{-1}$  is calculated using the WRF-CHEM Wesely deposition module (Wesely, 1989) under an additional assumption of near-zero surface resistance. Thus, the turbulent transfer resistance dominates the deposition velocity, and the bromine emissions increase with larger wind speeds.  $\beta \geq 1.0$  is the reactive surface ratio (Cao et al., 2014) of the ice/snow surface, accounting for non-flat surfaces such as ice/snow and frost flowers. For simplicity,  $\beta$  is set as a global value in this study, allowing to investigate the strength of bromine emissions in a parameter study. For the direct emission of bromine due to ozone oxidation of bromide, see reaction (R10) above, the factor  $\alpha$  is used to control the emission probability



and

$$F_d(\text{Br}_2|\text{O}_3) = \alpha \beta \rho_{d,0} v_d(\text{O}_3) [\text{O}_3]_0. \quad (5)$$

The value of  $\alpha$  is parameterized with a dependence on the solar zenith angle SZA (Toyota et al., 2011)

$$\alpha(\text{SZA}) = \begin{cases} 0.1\% & \text{if SZA} > 85^\circ \\ 7.5\% & \text{otherwise} \end{cases} \quad (6)$$

The deposition velocity for ozone is dominated by the surface resistance (Wesely, 1989), leading to  $v_d(\text{O}_3) \approx 0.01 \text{ cm s}^{-1}$ . An emission mechanism relating to the bromide oxidation by the hydroxyl radical, see reaction (R11), is currently not implemented in the model. All sea ice is assumed to be snow covered for the simulated time range. On snow covering FY ice, it is assumed that the bromide content is infinite, so that unrestricted gaseous bromine emissions are possible, and emissions of  $\text{Br}_2$  due to  $\text{O}_3$  and  $\text{N}_2\text{O}_5$  depositions are only active on snow covering FY ice. On snow covering MY ice, no bromide content but infinite chlorine is assumed. HOBr depositions only release  $\text{Br}_2$  up to the combined depositions of gaseous and aerosol HBr whereas excess HOBr depositions release  $\text{BrCl}$ . On snow-covered land, neither bromide nor chloride content is assumed, so that excess HOBr depositions are lost. A list of the depositions and emissions added to the MOZART mechanism can be found in the supplement. [Sunlit condensed-phase  \$\text{Br}\_2\$  production without any depositions of gas-phase species \(Pratt et al., 2013; Wang et al., 2019b\)](#) and oceanic emissions of very short-lived brominated species are currently not considered in the model.

## 2.5 Initial and boundary conditions

ERA-Interim (Dee et al., 2011) is used to generate both the initial and boundary meteorological and sea ice cover data. [The ERA-Interim Reanalysis was found to perform well in polar regions in various studies \(e.g. Bracegirdle and Marshall, 15 Oct. 2012; Bromwich et al., 2016\) \(e.g. Bracegirdle et al, 2012, Bromwich et al, 2016\) and was successfully used in various modeling studies in polar regions \(e.g. Hines et al., 01 Jun. 2015; Cai et al., 2018\), which is why it was chosen in the present study.](#) Nudging of temperature, horizontal wind speed, humidity, and surface fields to ERA-Interim data ensures the validity of the simulation meteorology over the simulated three month period. [The idea of the present work is not to try to make](#)

meteorological predictions (which would not be meaningful anyway on the timescale of a few months) but rather to model chemistry under meteorological conditions prevailing over a particular period of time. Nudging is active for the entire duration of the simulation and is inactive inside the boundary layer. The nudging timescale is set to one hour. MOZART-4 results driven by GEOS-5 meteorological fields are used as initial and boundary data for all non-halogen species (Emmons et al., 2010a). For most halogen species, initial and boundary conditions are set to near-zero values. The initial mixing ratio of HBr and Br<sub>2</sub> are set to 0.3 ppt in the lowest 200 m of the atmosphere. The mixing ratio of CHBr<sub>3</sub> is fixed to 3.5 ppt (Toyota et al., 2014). The bromide oxidation of ozone in the dark for an ozone deposition velocity of 0.01 cm s<sup>-1</sup>, a boundary layer height of 200 m, an emission probability of  $\Phi = 0.001$ , and 40 nmol mol<sup>-1</sup> ozone will release approximately 2 pmol mol<sup>-1</sup> Br<sub>2</sub> on FY ice per day. This emission rate is assumed to prevail for all simulations with active halogen chemistry. The chosen initial halogen concentrations and the fixed mixing ratio of CHBr<sub>3</sub> thus are irrelevant. The RTG\_SST high-resolution dataset (Thiébaux et al., 2003) is used for the sea surface temperature (SST). In the present model, it is differentiated between FY and MY sea ice in order to estimate bromine emissions. For this purpose, the OSI-403-c sea ice type dataset (Aaboe et al., 2017) is used. The original dataset does not provide values for latitudes larger than about 88° due to a lack of satellite measurements for these latitudes. In the present study, these values are filled with first year sea ice. Figure 1 shows the simulation domain and the locations of FY and MY sea ice. Grid cells with a mixed FY/MY sea ice type are treated as multi-year sea ice in the bromine emission mechanism described above. Sea ice cover, SST, and sea ice type are updated online during the numerical simulations. EDGAR-HTAP (Janssens-Maenhout et al., 2012) and MEGAN (Guenther et al., 2006) are used as anthropogenic emissions and bioemissions, respectively.

## 2.6 Conducted simulations & observations for comparison

The conducted simulations are summarized in Tab. 2. Five different observational data sets are used for comparison to the simulation results:

- ground-based in-situ ozone measurements at Utqiagvik, Alaska, and Summit, Greenland (McClure-Begley et al., 2014).
- ground-based in-situ BrO measurements at Utqiagvik, Alaska (Liao et al., 2012).
- vertical profiles of the ozone mixing ratio derived from ozone-sonde measurements at Utqiagvik (Oltmans et al., 2012).
- vertical profiles of the BrO mixing ratio derived from MAX-DOAS measurements at Utqiagvik (Frieß et al., 2011).
- maps of vertical BrO column densities from GOME-2 satellite measurements (Sihler et al., 2012).

For comparison of the observations and the simulations, three different statistical parameters are used. For model variable  $M$  and the corresponding observation variable  $O$ , the Pearson correlation  $R$ , the mean bias  $MB$ , and the root mean square error



**Table 2.** Parameter variation in the simulations.

condition	reactive surface ratio $\beta$	meteorological nudging	time period	chemistry
1	0.0	on	Feb. 1, 2009 – May 1, 2009	no halogen chemistry
2	1.0	on	Feb. 1, 2009 – May 1, 2009	full
3	1.5	on	Feb. 1, 2009 – May 1, 2009	full
4	2.0	on	Feb. 1, 2009 – May 1, 2009	full, $\alpha = \text{const} = 0.001$ , cf. Eq. (6)
5	1.5	on	March 16, 2009 – May 1, 2009	full
6	1.5	off	Feb. 1, 2009 – May 1, 2009	full

RMSE are calculated by

$$R = \frac{\langle (M - \langle M \rangle) (O - \langle O \rangle) \rangle}{\sigma_M \sigma_O} \quad (7)$$

$$MB = \langle M - O \rangle \quad (8)$$

$$RMSE = \sqrt{\langle (M - O)^2 \rangle}, \quad (9)$$

255 where  $\langle \rangle$  is the mean and  $\sigma_M$  and  $\sigma_O$  denote the standard deviations of  $M$  and  $O$ , respectively.

### 2.6.1 Retrieval of the tropospheric BrO VCD from GOME-2 observations

The tropospheric BrO vertical column density (VCD) is derived from GOME-2 observations as described in detail by Sihler et al. (2012). GOME-2 is a UV/visible/near-IR spectrometer with moderate spectral resolution aboard the MetOp-A satellite (Callies et al., 2000; Munro et al., 2006, e.g.) which was launched in 2006. With a swath-width of 1,920 km, almost global  
260 coverage is achieved every day. In polar regions, the same location is observed several times during one day. The ground pixel size is approximately 80 km  $\times$  40 km.

The atmospheric BrO absorption is analyzed in the spectral range from 336-360 nm. In order to obtain the tropospheric BrO column, the stratospheric BrO column is estimated using the simultaneously retrieved stratospheric columns of O<sub>3</sub> and NO<sub>2</sub>. In the final step, the retrieved tropospheric BrO SCD is converted into the tropospheric BrO VCD using simultaneous  
265 measurements of O<sub>4</sub> and the radiance at 372 nm. Finally, the retrieved BrO VCDs are filtered and only measurements above a chosen sensitivity threshold of 0.5 for the AMF of the lowest 500 m are used. More details on the data analysis are provided by Sihler et al. (2012).

### 2.6.2 Retrieval of BrO vertical profiles from MAX-DOAS

Vertical profiles of BrO are derived from Multi-Axis Differential Optical Absorption Spectroscopy (MAX-DOAS) measurements during the OASIS campaign at Utqiaqvik between February to April 2009 as described by Frieß et al. (2011). In brief,  
270 BrO and aerosol profiles are retrieved on a vertical layers of 100 m thickness in the lowermost 2 km of the atmosphere with a temporal resolution of 15 min using the HEIPRO algorithm (Frieß et al., 2019). HEIPRO is based on the well-established

optimal estimation method (Rodgers, 2000), with slant column densities (SCDs) of atmospheric trace gases observed at different elevation angles serving as measurement vector. In a first step, aerosol extinction vertical profiles are determined using the  
 275 observed optical thickness of the oxygen collision complex  $O_4$  as a proxy for the atmospheric light path (Frieß et al., 2006). In a second step, BrO vertical profiles are retrieved using BrO slant column densities, together with the aerosol extinction profiles retrieved in the first step. The limited information content of MAX-DOAS measurements requires the usage of appropriate a priori aerosol and BrO vertical profiles as described in Frieß et al. (2011). Averaging kernels  $A = \frac{\partial \hat{x}}{\partial x}$  quantify the sensitivity of the retrieved profile  $\hat{x}$  to the true profile  $x$ . In order to account for the limited vertical resolution of MAX-DOAS measure-  
 280 ments and to allow for a quantitative comparison of model and measurement, modeled vertical profiles are convoluted with the MAX-DOAS averaging kernels according to Rodgers and Connor (2003):

$$\tilde{x}_m = x_a + A(x_m - x_a) \quad (10)$$

Here,  $x_m$  is the modelled and  $x_a$  the a priori BrO profile. It is important to note that the vertical sensitivity strongly depends on visibility that varied strongly during the OASIS campaign due to frequent storms with blowing snow.

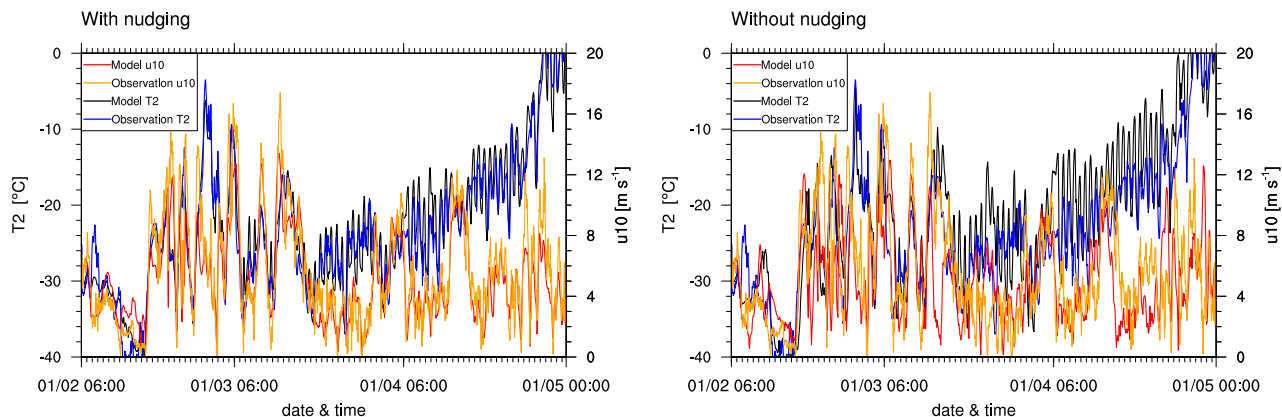
## 285 3 Results and discussion

In the following, the results of the six different simulations are compared to the measurements described in section 2.6.

### 3.1 Surface ozone and meteorology at Utqiagvik and at Summit

The NOAA and ESRL Global Monitoring Division Surface Ozone (McClure-Begley et al., 2014) measurements near Utqiagvik and Summit are compared to the simulation results for the numerical grid cell closest to the observation site under consideration  
 290 where the numerical results in the lowest grid cell are used. The temperature at 2 m, wind speed, and wind directions at 10 m of the Barrow Atmospheric Baseline Observatory (Mefford et al., 1994) are compared to the corresponding simulated surface fields.

Figure 2 shows simulated and observed temperatures,  $T$  in 2 m height and wind speeds  $u$  in 10 m height at Utqiagvik. Simulations 1-5 share the meteorology shown in the left of Fig. 2 whereas results of simulation 6 with deactivated meteorological nudging are shown in the right of Fig. 2. The first eleven days in February are very cold, reaching temperatures as  
 295 low as  $-40^\circ\text{C}$  and the wind speed is very low during this period of time, which is likely to inhibit BrO emission due to the wind dependence of the emission. Both the wind speed and the temperature increase during the following three weeks, wind speeds increase to values up to  $16 \text{ m s}^{-1}$  and temperature reaches up to  $-5^\circ\text{C}$ . On February 21, 23, and March 1, wind speed is notably under-predicted by the model with nudging. Both temperature and wind speed vary strongly during that time. From  
 300 mid March onwards, temperature increases gradually with fewer day to day variations compared to the previous weeks. Simulations 1-5 predict both temperature and wind speed very well during this time period with the exception of under-predictions of wind speed occurring on March 16-17 and in the end of April. Simulation 6 produces higher errors in the second half of

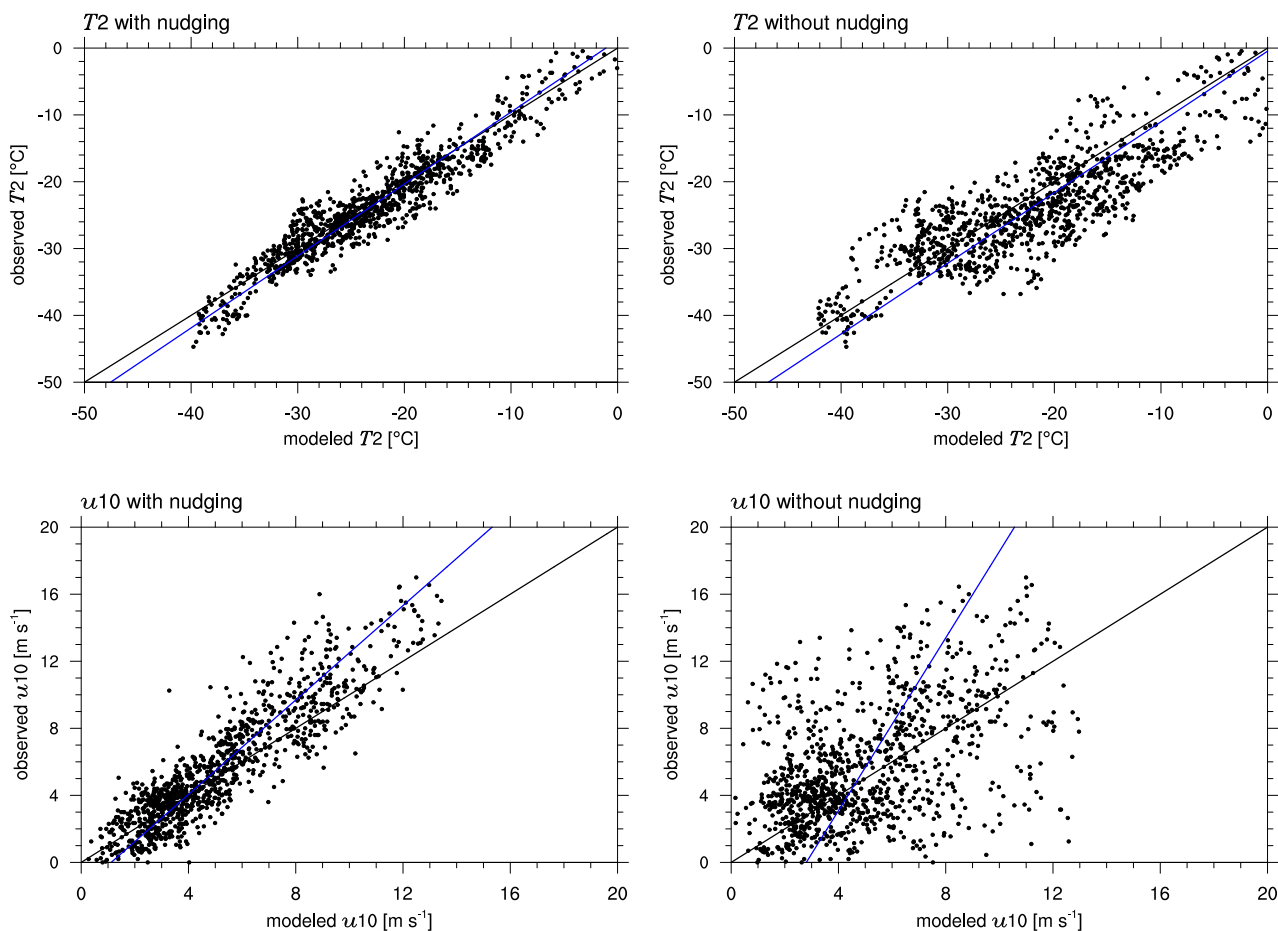


**Figure 2.** 2 m temperature and 10 m wind speed at Utqiagvik in February through May 2009. Measurements are taken from the Barrow Atmospheric Baseline Observatory (Mefford et al., 1994).

the simulation where temperature is consistently too large by several degrees in April and over-predictions of wind speed on March 18-22, April 22 and April 29. The results of simulation 6 appear not to be very realistic.

Figure 3 shows the correlation of the observed (vertical axis) and the modeled (horizontal axis) temperatures, where a correlation of unity applies if the data lie on the diagonal marked in the figure. Shown in blue is the regression line, for which the observed and measured variables are assumed to be the independent and dependent variables, respectively. The results of the entire simulation period are displayed, where the first week should be considered as spin-up period. For simulations 1-5, there is an overestimation of the temperature when it is cold, which is likely due to the lowest temperatures occurring during the spin-up time during which the modeling errors are larger compared to other times. The ERA-Interim Reanalysis is known to have a warm bias for temperatures below  $-25^{\circ}\text{C}$  (Wang et al., 2019a), which may also explain the deviations. Simulations 1-5 perform well throughout the simulation in contrast to simulation 6 with no nudging. In simulations 1-5, a maximum deviation in temperature of about  $8^{\circ}\text{C}$  occurs and in simulation 6, a stronger temperature difference of up to  $20^{\circ}\text{C}$  is observed.

The statistical parameters, cf. Eq. (9), at Utqiagvik for the entire time range are shown in Table 3. The simulations with nudging perform better in all regards, emphasizing the necessity of data assimilation. Temperature is predicted best with almost perfect correlation and relatively small mean bias and RMSE. Temperature is over-predicted in all simulations by approximately  $0.55^{\circ}\text{C}$  and  $1.71^{\circ}\text{C}$  for simulations 1-5 and 6, respectively. Colder temperatures are generally favorable for ODEs, both by changing the boundary layer configuration and affecting chemical reaction constants, which could result in an underestimation of ODEs. Both wind speed and direction are predicted less accurately, which might result in wrong source locations or times of the occurrence of ODEs; this is likely to explain some of the differences between simulations and observations. Wind speed is underestimated on average by about  $0.52\text{ m s}^{-1}$  and  $0.66\text{ m s}^{-1}$  for simulations 1-5 and 6, respectively, which may contribute to a slight underestimation of BrO emission bromine emissions due to the dependence of the deposition velocity on wind speed. The Barrow Meteorological Station (BMET) Handbook (Ritsche, 2004) mentions an instrument accuracy of  $0.17\text{ m s}^{-1}$  for wind speeds between  $0.4$  and  $75\text{ m s}^{-1}$ , a  $5.6^{\circ}$  wind direction resolution, and  $0.25^{\circ}\text{C}$  instrument accuracy for temperatures



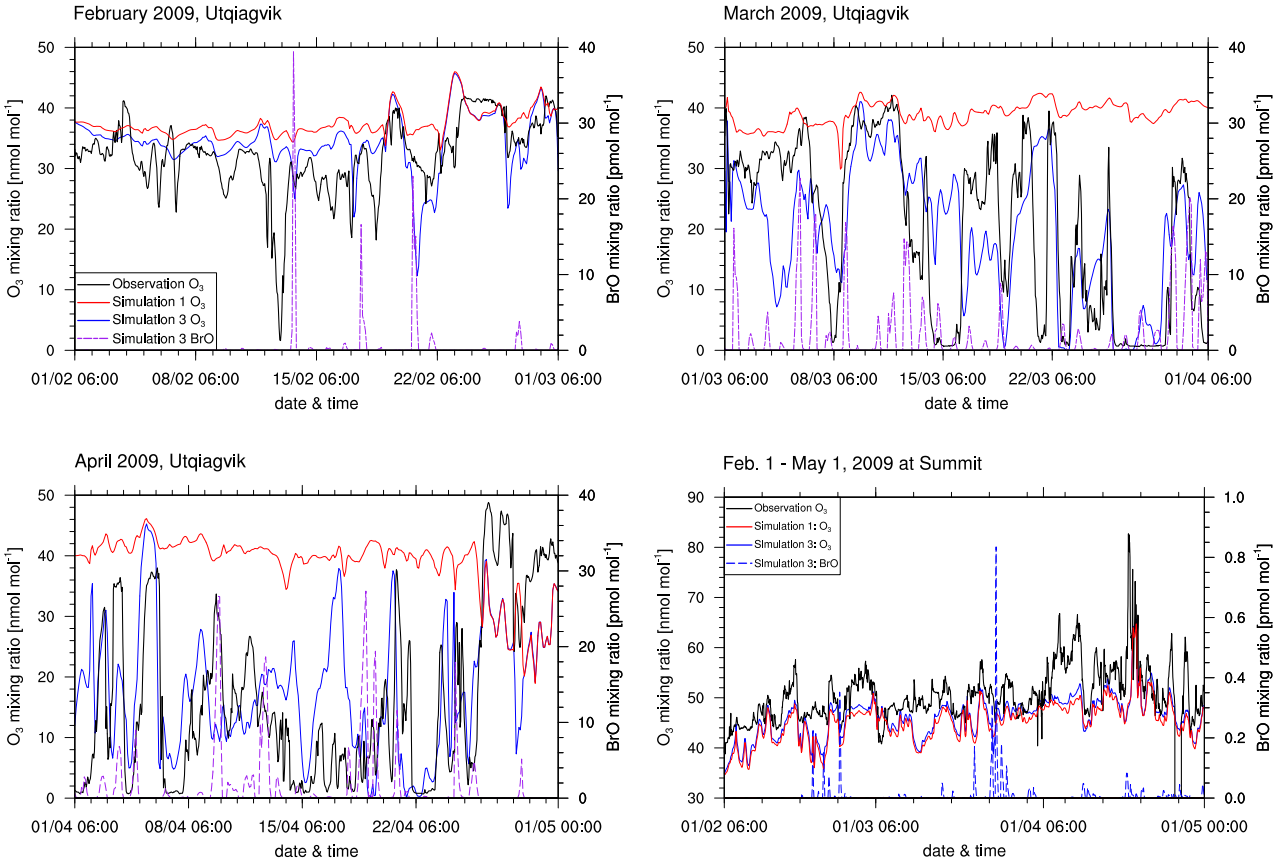
**Figure 3.** Correlation of observed and modeled temperature and wind speed at Utqiagvik for the complete time range from February 1, 2009 through May 1, 2009. The black and blue lines show perfect agreement and the regression line of the simulation and the observation, respectively.

325 between  $-65$  to  $-20^{\circ}\text{C}$ . The RMSE is at least one magnitude higher than the mentioned instrument accuracies and resolutions for all simulations, so that the errors of the observations can be neglected in comparison to the model errors.

Figure 4 shows modeled and observed surface ozone and BrO at Utqiagvik and at Summit. Only results of simulations 1 and 3 are shown for visual clarity. Figure S1 of the supplement displays ozone mixing ratios modeled by simulations 1-4 and 6. The correlations of modeled and observed ozone can be seen in Figure 5. Statistics are summarized in Table 4. Simulation 2-5 perform considerably better than simulation 1 for which halogen chemistry is turned off. Simulation 3 with enhanced emission performs best with the correlation increasing from  $-0.31$  to  $0.644$  compared to simulation 1. Quite a few ODEs are not captured by simulation 4, for which the emission probability for bromine emissions due to ozone under sunlight are reduced from  $7.5\%$  to  $0.1\%$ . Thus, direct emissions of bromine due to ozone are nearly completely turned off in simulation 4.

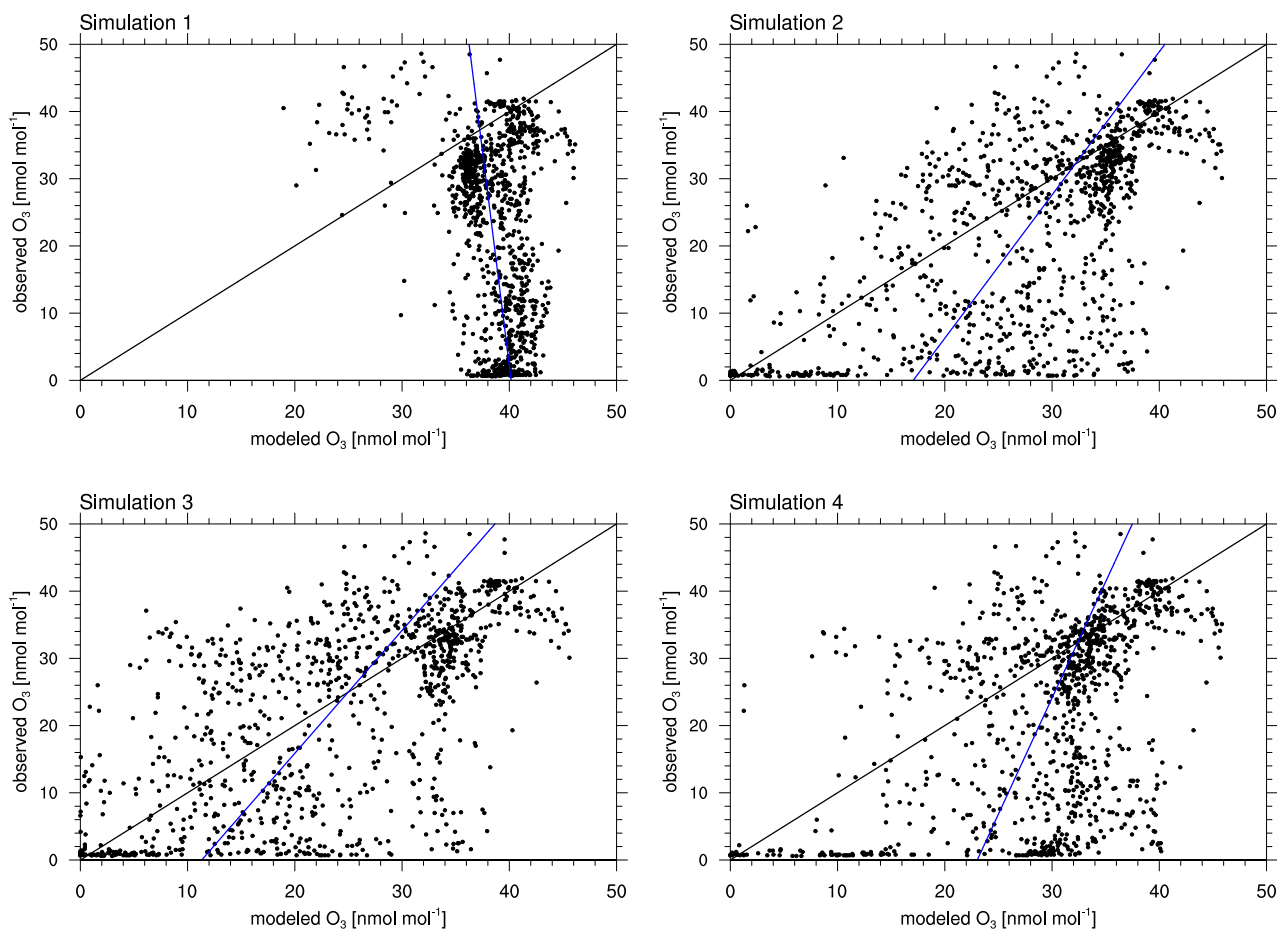
**Table 3.** Meteorology statistics at Utqiagvik.

variable	condition	R	average of the simulated variable	MB	RMSE
2m temperature	1-5	0.962	-22.7°C	0.547°C	2.51°C
2m temperature	6	0.874	-21.5°C	1.71°C	5.05°C
10m wind speed	1-5	0.903	5.13 m s <sup>-1</sup>	-0.518 m s <sup>-1</sup>	1.64 m s <sup>-1</sup>
10m wind speed	6	0.492	4.99 m s <sup>-1</sup>	-0.655 m s <sup>-1</sup>	3.28 m s <sup>-1</sup>
10m wind direction	1-5	0.801	131°	3.76°	55.4°
10m wind direction	6	0.423	157°	29.51°	100.8°



**Figure 4.** Ozone and BrO mixing ratios at Utqiagvik and at Summit from observations and simulations 1 (no halogens) and 3 (increased emissions,  $\beta = 1.5$ ). Modeled BrO mixing ratios are also shown. The figures share the legend.

This suggests a strong underestimation of BrO emission bromine emissions without a direct emission of BrO bromine due to ozone. A possible conclusion is that the bromine explosion mechanism is insufficient to explain ODEs in the Arctic, or the present bromine explosion scheme is incomplete for instance with respect to emissions of bromide containing aerosols due



**Figure 5.** Correlation of observed and modeled ozone at Utqiagvik for the complete time range of February 1, 2009 through May 1, 2009. The black and blue lines show perfect agreement and the regression line of simulation and observation, respectively.

to blowing snow and/or regions of increased  $\beta$  such as frost flowers. On March 4 a ODE is predicted by simulation 4 which, however, is not seen in the observations. The model predicts too large wind speeds for the preceding days, causing larger BrO emissions that ultimately result in a predicted ODE being advected to Utqiagvik. For the first three weeks of February, the observations and results of simulations 2-6 are similar to these of simulation 1 in which halogen reactions are turned off, but afterwards, they differ increasingly. This suggests a weak initial influence of halogen chemistry during the first three weeks of February which might be due to the low wind speeds during this time or due to the weak solar irradiation. Partial ODEs occur on February 14, 17, 19, and 22, 2009. The first full ODE in the observations occurred on the February 13, which is predicted by the model only as a partial ODE with one day of delay. The partial ODE observed on February 17 is found in simulations 2-5 with a delay of a few hours; simulations 3 and 4 find a stronger ozone depletion more consistent with the observations. On February 21, 2009, simulations 2-3 and simulations 4-5 predict partial and full ODEs, respectively, which are

not seen in the observations. The strength of the ODEs in February is underestimated by the model. A possible cause for this is an overestimation of halogen deposition over land, which can be seen in the comparison to satellite data and is discussed in section 3.3. Most of the model BrO capable of reaching Utqiagvik can only be produced at Bering Sea during February  
350 due to a lack of sunlight in the northern regions. Since BrO over land is removed too quickly in the model, ~~only trajectories that go mostly over the sea ice are able to transport BrO from Bering Sea to Utqiagvik~~ BrO can only be sustained through heterogeneous reactions while being transported from Bering Sea to Utqiagvik by trajectories that go mostly over the sea ice..

In March, both simulations and observations agree in the occurrence of at least partial ODEs during most of the month whereas times without any ozone depletion at all are rare. Around March 4, the model predicts a partial ODE in simulations 2-  
355 4, whereas simulation 6 predicts a full ODE, neither of which is found in the observations. Four days later, all simulations predict a partial ODE even though a full ODE is seen in the observations. The following ODE-free time period until March 13 is predicted in agreement with the observations, however, the full ODE on March 15 appears as partial ODE in all simulations, and the simulations with enhanced emission find the partial ODE to continue for three more days. The ODE on March 19 is found in simulations 2-6. The simulations predict a near-full recovery of ozone levels over three days, which, however, is interrupted in  
360 the observations on March 21. The following ODE episodes are captured quite well by the simulations with an over-prediction of ozone levels on March 25 and March 28. ODEs around April 1, 14, and 18 are underestimated in the simulations, whereas all other ODEs and ozone regeneration episodes are predicted quite well. At the end of April, the observations find enhanced ozone levels which are not captured by the model, not even by the simulations without the halogens. The enhanced ozone levels in the observations might be due to Arctic haze, i.e. enhanced photochemical ozone formation due to air pollution originating  
365 from lower latitudes. Walker et al. (2012) found that the decomposition of PAN, transported from lower latitudes or the upper troposphere to the arctic boundary layer, can account for up to 93% of the ozone production in the Arctic. The domain modeled in this work (see Fig. 1) does not consider the lower latitudes, so that the simulation itself cannot predict the production and transport of Arctic haze. However, pollution from the lower latitudes might be correctly modeled by the MOZART-4 model and thus be present in the lateral boundary conditions. The model does not find these enhanced ozone levels, which suggests  
370 inaccuracies in the MOZART-4 boundary conditions. Simulation 3 finds a partial ODE on April 29, which is not present in the observations. The other simulations also find a slight decrease in the ozone mixing ratio, however, for these simulations, the BrO levels are not predicted to be large enough for an ODE to happen. Summarizing the entire period of three months, simulation 1 shows two ODEs where none were observed. Twenty-two ODEs are identified in the observations, half of which are found by simulation 2. Simulation 3, however, identifies four additional ODEs compared to simulation 2 which were not  
375 found in the observations. Simulation 3 misses only six of the 22 observed ODEs.

The results of simulation 6 differ strongly from the other simulation results starting mid March and the correlation coefficient  $R$  of 0.435 compared to simulation 2 with  $R = 0.62$ . The RMSE is 14.1 nmol/mol compared to 12.1 nmol/mol. The mean bias is improved, but this is simply due to the enhanced emissions, resulting in more ODEs and not due to actually predicting the ODEs better. All statistics are worse compared to simulation 3. As discussed previously in this section, simulation 6 predicts  
380 meteorology much worse due to the lack of nudging, which also leads to wrong predictions in the ozone mixing ratio. As can be seen in the correlation plots, simulations 2 and 4 rarely find ODEs where there are none in the observations. There is a notable



**Table 4.** Statistics at Utqiagvik and Summit for the ozone mixing ratio for February 1, 2009 through May 1, 2009.

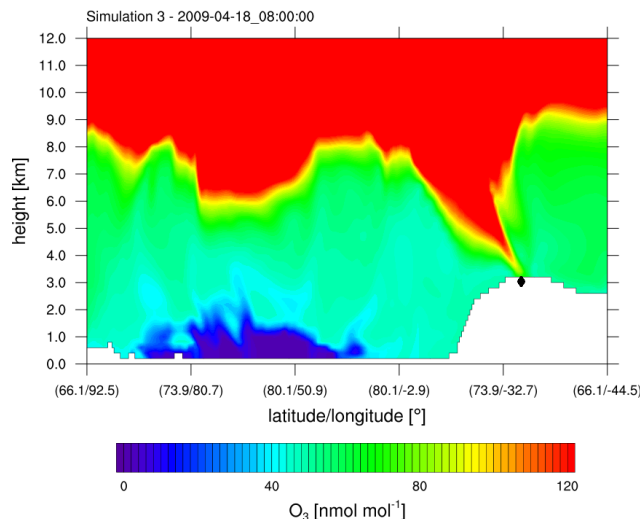
Simulation	location	R [-]	average of the simulated variable [nmol/mol]	MB [nmol/mol]	RMSE [nmol/mol]
1	Utqiagvik	-0.310	38.3	15.80	21.9
2	Utqiagvik	0.617	27.6	5.09	12.1
3	Utqiagvik	0.644	23.7	1.08	10.9
4	Utqiagvik	0.454	29.5	6.97	14.3
6	Utqiagvik	0.430	24.0	1.41	14.1
1	Summit	0.690	45.2	-5.366	6.62
3	Summit	0.683	46.2	-4.39	5.89
2	Summit	0.689	46.3	-4.31	5.80

accumulation of points in all 4 simulations at ozone mixing ratios of about 30–40 nmol mol<sup>-1</sup> for both the observations and the model. In this range of ozone mixing ratios, both the model and observations do not show any ODEs. Halogen chemistry, which has large uncertainties regarding the chemical reactions and the source of bromine, is less important in this case, which explains the high density of points in this regime. This accumulation is denser for simulations with weaker bromine emissions, since those simulations predict ODEs less often which do not exist in the observations. There is an additional accumulation of points around an ozone mixing ratio of zero in both model and observations for simulations 2-4, which are ODEs found by both model and simulation. This accumulation is less dense for simulation 4 compared to simulations 2 and 3. Simulation 4 performed worst regarding both mean bias and RMSE. In simulation 4, there is an accumulation of points at around modeled ozone values of 30 nmol mol<sup>-1</sup> and observed ozone values of zero, which are the missed ODEs by the simulation which suggests an underestimation of the occurrences of ODEs. Simulation 4 with a strongly enhanced  $\beta = 2.0$  but a reduced BrO bromine emission due to direct bromide oxidation by ozone during daytime ( $\Phi = 0.1$ ) suggests that the bromine explosion mechanism alone is insufficient to properly predict the bromine production.

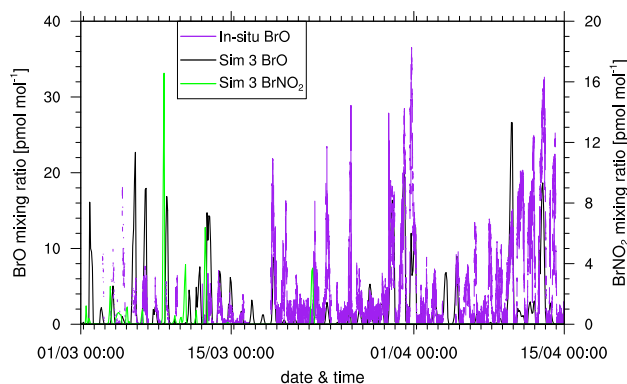
Simulations 2-4 and 6 reproduce ozone levels and ODEs much better than simulation 1, where the mean bias is smaller by at least 9 nmol/mol. For simulation 3, all statistics are improved compared to the base simulation 2, with both the correlation and RMSE being only slightly better and the mean bias being about 80% smaller (1.1 nmol mol<sup>-1</sup> vs. 5.1 nmol mol<sup>-1</sup>) than in simulation 2. Figure 5 shows a strong increase in the number of ODEs that occur in the model but not in the observations, which explains the strongly improved mean bias while the other statistics only improved slightly.

At Summit, ODEs were found by none of the simulations and not in the observations which lack data for April 29 as can be seen in Fig. 4. The differences between a simulation without halogens and with halogens are negligible. Ozone mixing ratios are under-predicted with a mean bias of -4.3 nmol/mol for simulation 2. This is in contrast to Utqiagvik, where ozone was generally over-predicted. In April, ozone levels at Summit are found to exceed 60 nmol mol<sup>-1</sup> for several time periods in the observations. This is probably due to the high elevation of 3,200 m above sea level of Summit in contrast to Utqiagvik. At Summit, the time period with the highest ozone level, is also found by the model which is due to stratospheric ozone, reaching the troposphere due to a tropopause fold event as shown in Fig. 6. At Summit, the time with the highest ozone level which





**Figure 6.** Ozone mixing ratio obtained from simulation 3 ( $\beta = 1.5$ ) against height along a horizontal line through Summit, cf. Fig. 1. A tropopause fold reaches Summit (♦).

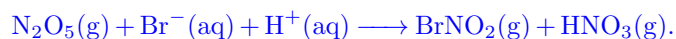


**Figure 7.** Comparison of modeled BrO and in-situ observations of BrO at Utqiagvik (Liao et al., 2011) and modeled BrNO<sub>2</sub>; the numerical results are for simulation 3.

occurs on April 18 is found by the model. The high ozone mixing ratio in the model is due to stratospheric ozone, reaching the troposphere due to a tropopause fold event as shown in Fig. 6. The other time periods of enhanced ozone levels found by the observations may also be due a tropopause fold or possibly Arctic haze events.

Figure 7 shows modeled BrNO<sub>2</sub> and BrO of simulation 3 and in-situ observations of BrO (Liao et al., 2012) at Utqiagvik. In order to improve the comparability of the observed data with a 10 min resolution and the model results which were saved every two hours, a seven-point moving average is applied on the observations, taking the average of the time point under consideration and three time points prior and after that time point. Modeled BrO is under-predicted with a mean bias of  $-1.65 \text{ pmol mol}^{-1}$  and a correlation of 0.472 is found. In early to mid March, BrO is less under-predicted with an over-prediction of BrO for some

days. For most of these days, enhanced BrO levels are due to NO<sub>x</sub>-catalyzed release of reactive bromine. NO<sub>x</sub> is emitted at Prudhoe Bay and can then produce N<sub>2</sub>O<sub>5</sub>, which further releases BrNO<sub>2</sub> on FY ice via the heterogeneous reaction

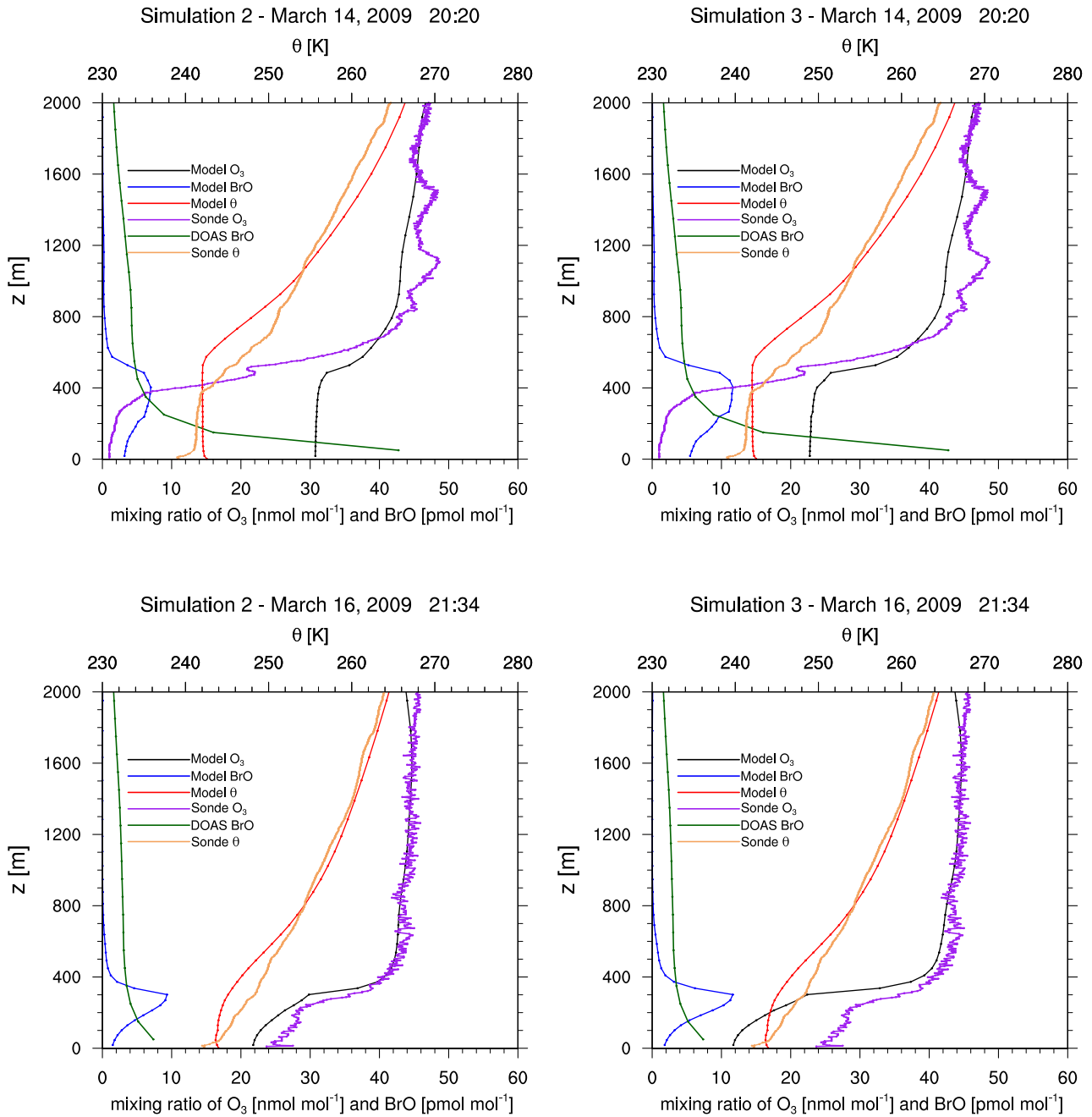


BrNO<sub>2</sub> then can photolyse to Br, which may further release bromine on FY ice through the bromine explosion mechanism. In the current model, the above heterogeneous reaction is the only source of BrNO<sub>2</sub>, so that any enhanced mixing ratios of BrNO<sub>2</sub> at Utqiagvik can be attributed to polluted air from Prudhoe Bay producing bromine on FY ice through the heterogeneous reaction with N<sub>2</sub>O<sub>5</sub>. As can be seen, for many of the days in early March, there are enhanced BrNO<sub>2</sub> mixing ratios preceding large BrO levels. Enhanced modeled BrO on February 14, 17, and 20, see Fig. 4, are coincident with large BrNO<sub>2</sub> mixing ratios caused by polluted air from Prudhoe Bay which are transported over sea ice. A similar phenomenon was found by Simpson et al. (2018), who discovered large BrO concentrations in February 2017, which are attributed to nighttime photolabile bromine production, possibly by N<sub>2</sub>O<sub>5</sub>, over sea ice. These photolabile species may be transported to lower latitudes where they might be photolyzed. A further discussion of modeled N<sub>2</sub>O<sub>5</sub> can be found in section F of the supplement. From the end of March to April 15, however, the mixing ratio of modeled BrO is smaller, whereas the BrNO<sub>2</sub> mixing ratio drops to almost zero. Due to the higher temperature and stronger sunlight, N<sub>2</sub>O<sub>5</sub> becomes less stable and its mixing ratio drops, suppressing bromine production due to N<sub>2</sub>O<sub>5</sub>. At the same time, observed BrO mixing ratios strongly increase. The under-prediction of modeled BrO for these later dates is likely due to a general under-prediction of bromine near coastal regions and on land, which will be further discussed in the following sections.

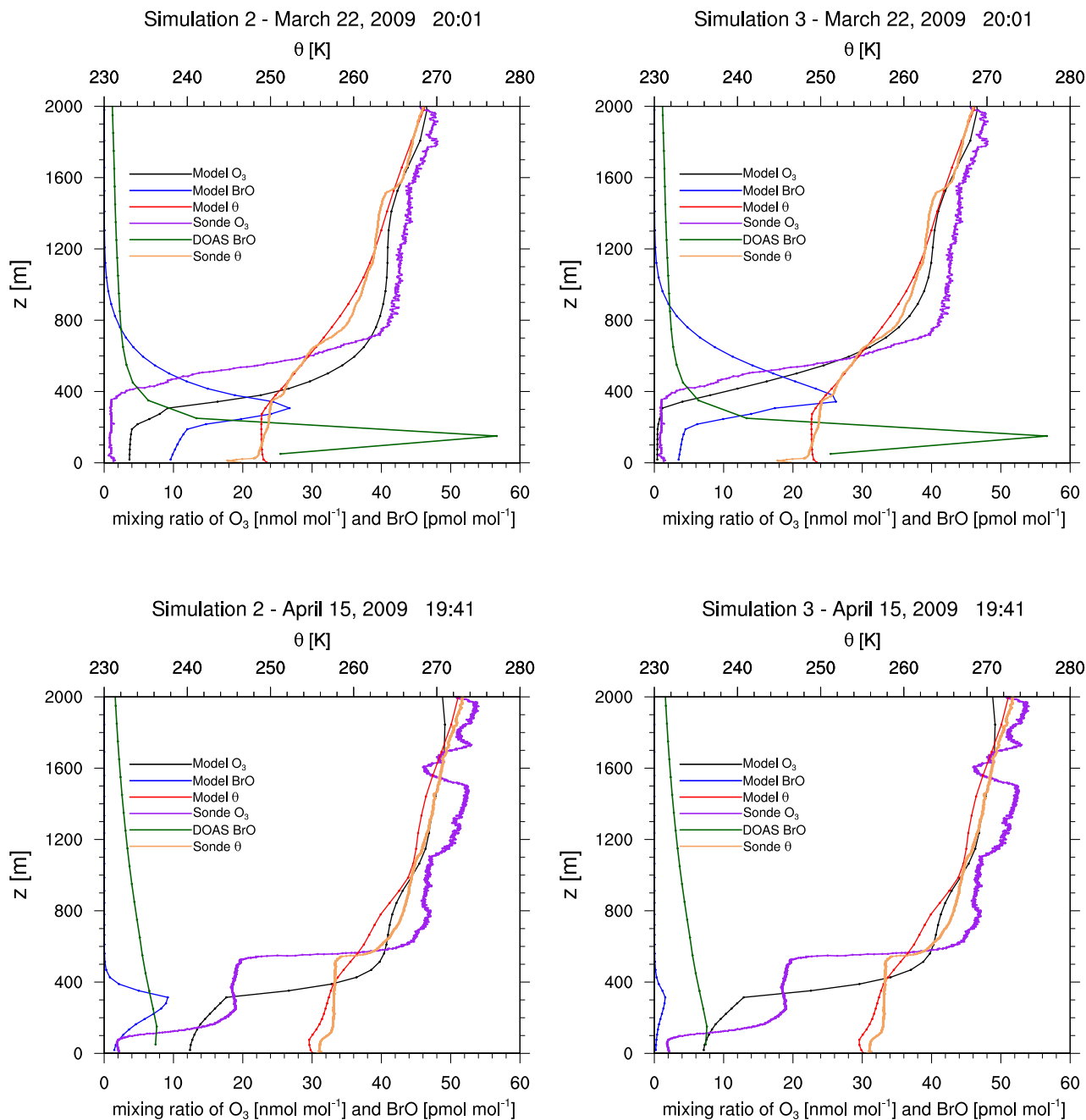
### 3.2 Vertical ozone and temperature profile at Utqiagvik

Ozone sonde sounding data (Oltmans et al., 2012) produced near Utqiagvik are used to validate vertical ozone profiles. Measured ozone and potential temperature for the upward flight of the sonde in the first 2 km are shown in Figs. 8 and 9 together with the simulation result of the column of the nearest grid cell. The simulation result is interpolated linearly in time to the starting time of the sonde flight.

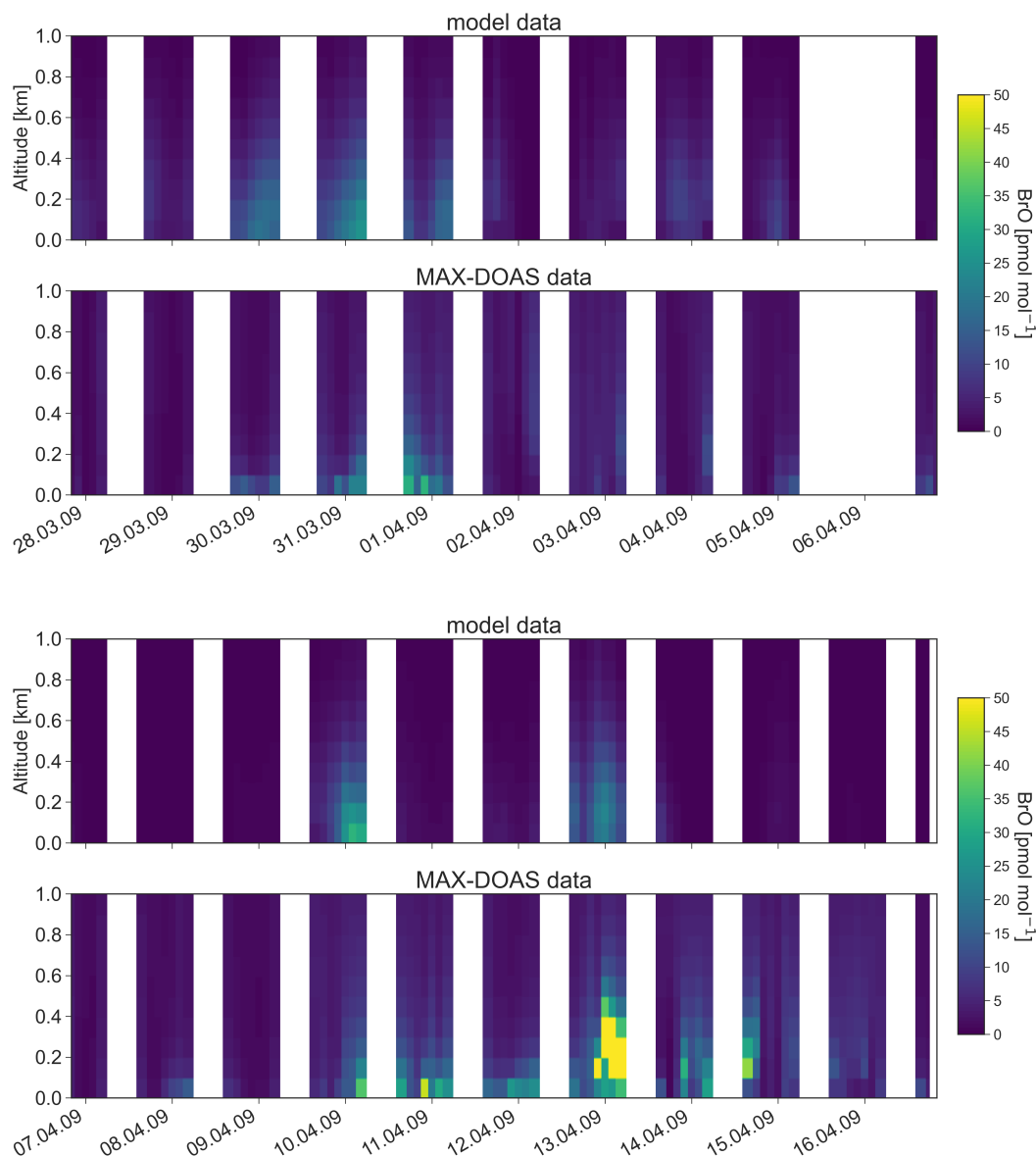
Figures 8 and 9 show vertical profiles at Utqiagvik for various dates. For March 14, the model fails to find the shallow surface inversion (boundary layer height smaller than 50 m) possibly due to a lack of vertical resolution. The boundary layer height of about 350 m in the observation is over-predicted by approximately 200 m by the model, which might also partially explain the finding of a partial ODE by the model instead of a full ODE as seen in the observations. For this day, simulation 3 performs slightly better than simulation 2. Two days later, both the observations and the simulations show partial ODEs. Simulation 2 predicts the ozone profile very well. The temperature profiles are quite different, however, both model and observations show an inversion at a similar, low height. For March 22, the enhanced emission case correctly predicts a full ODE, capturing both ozone and temperature profile quite well. The model is however unable to capture a surface inversion. On April 15, a surface inversion with a second inversion at approximately 500 m is found in the observations. The MYJ PBL scheme also predicts a surface inversion, however it fails to predict the second inversion properly, as can be seen by the lack of a second ozone plateau. While the model is unable to capture the complex boundary layers perfectly, the ozone profiles shows many similarities to the



**Figure 8.** Vertical profiles of measured and modeled ozone, of potential temperature  $\theta$ , and of BrO at Utqiagvik on March 14 (top) and on March 16 (bottom), 2009. Measurements are from upward flights using ozone sondes (Oltmans et al., 2012) and DOAS measurements (Frieß et al., 2011).

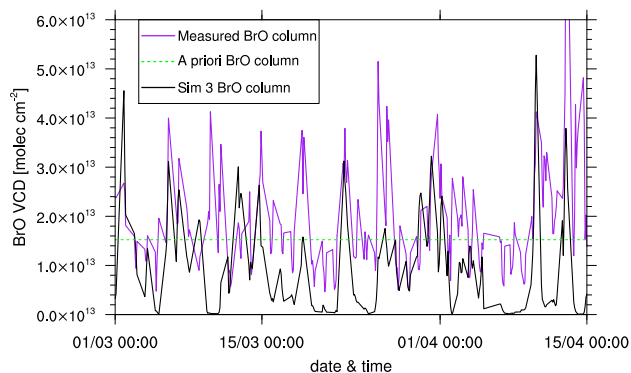


**Figure 9.** Vertical profiles of measured and modeled (simulation 2 (left) and simulation 3 (right)) ozone, of potential temperature  $\theta$ , and of  $BrO$  at Utqiagvik on March 22 (top) and April 15 (bottom), 2009. Measurements are from upward flights using ozone sondes (Oltmans et al., 2012) and DOAS measurements (Frieß et al., 2011). On April 15, only the observed  $BrO$  mixing ratio in the lowest 100 m is accurate due to very poor visibility.



**Figure 10.** Vertical profiles of BrO from March 28, 2009 to April 16, 2009 at Utqiagvik. Top: Modeled BrO convoluted with the MAX-DOAS averaging kernel, Bottom: BrO observed with MAX-DOAS

observed profile. For a better prediction, more grid levels closer to the surface and improvements to the PBL schemes might be  
 440 needed. Even that, however, might not be sufficient, since PBLs in the Arctic can be influenced by very small-scale structures  
 such as open leads, which were found to play an important role in the ozone recovery after an ODE due to down-mixing  
 of ozone-rich air from the free troposphere and which would require high-resolution sea ice data. Additionally, an accurate



**Figure 11.** Comparison of modeled (simulation 3) BrO VCDs and measured BrO VCDs from MAX-DOAS at Utqiagvik (Frieß et al., 2011). Also shown is an a-priori BrO column for days with low visibility.

modeling of surface inversions might require very high vertical resolutions which are difficult to obtain in a synoptic scale simulation.

445 Figure 10 shows modeled vertical BrO profiles convoluted with the MAX-DOAS averaging kernel from March 28, 2009 to April 16, 2009 at Utqiagvik in comparison to BrO measured with a MAX-DOAS instrument (Frieß et al., 2011). The time range from February 26, 2009 to March 27 is illustrated in section E of the supplement, Fig. S4. BrO from the same observation dataset is shown in Figs. 8 and 9. On days with good visibility, the observed data is sensitive for the first 1-2 km. As can be seen, model and observations agree on most dates on the presence of BrO. However, modeled BrO  
450 tends to be elevated in comparison to the observations, which can be seen for all days shown in Figs. 8 and 9 and on March 31 and on April 01 and 10 in Fig. 10. This is likely due to an underestimation of bromine emissions over snow-covered land, which is also discussed in the next section. Since the model assumptions only allow for partial recycling of bromine over land but not for new emissions, in the lowest grid cells, bromine is lost due to depositions, which results in the elevated modeled BrO profiles. On March 9 and 13, the model over-predicts BrO. The high BrO mixing ratio  
455 on those two dates is due to a heterogeneous reaction involving  $\text{N}_2\text{O}_5$ , see Fig. 7. Frieß et al. (2011) found correlations of the aerosol extinction and BrO, which led to the hypothesis that BrO is released in-situ during snowstorms. Currently, there is no model for blowing snow included, which may explain the under-prediction of modeled BrO at some days. Figure 11 shows vertically integrated modeled (simulation 3) and measured BrO (Frieß et al., 2011) over the first 2 km. As can be seen, the BrO column is generally under-predicted by the model with a mean bias of  $-0.98 \times 10^{13} \text{ molec cm}^{-2}$ . This may  
460 partly be attributable to the under-prediction of BrO over land in the model, however, there seems to be an offset of around  $5.0 \times 10^{12} \text{ molec cm}^{-2}$  in the measurements. A correlation of 0.427 is found.

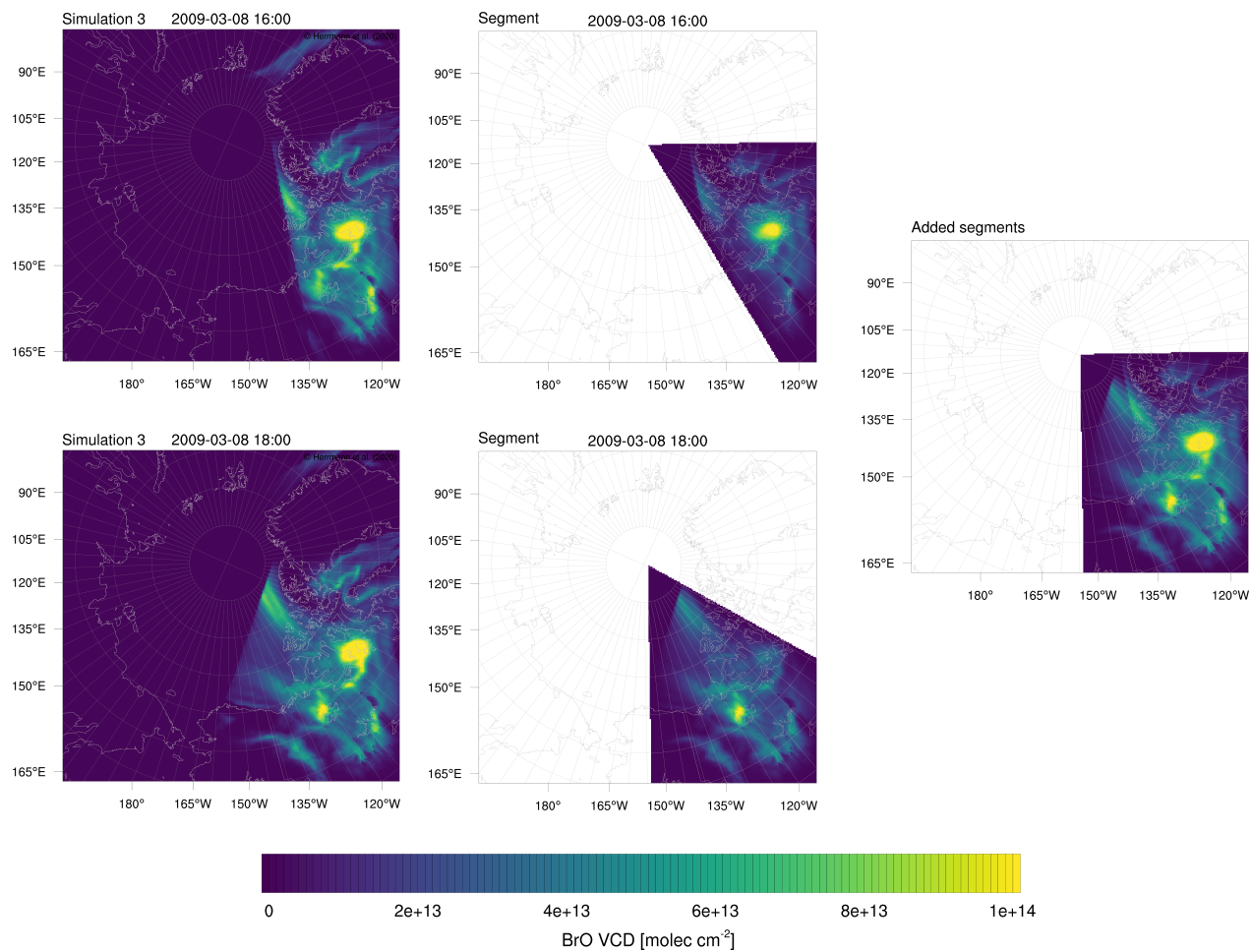
### 3.3 Tropospheric BrO VCDs

GOME-2 satellite tropospheric BrO VCDs (Sihler et al., 2012) described in section 2.6.1 are compared with BrO VCDs evaluated from the numerical simulations. All satellite BrO orbits of the same day are averaged and plotted into one figure,

465 where missing satellite data are neglected. Since stratospheric BrO is not generated in the present model, all BrO predicted by the model is of tropospheric origin. Thus, model BrO VCDs are calculated by integrating BrO concentrations vertically from the bottom to the top of the calculation domain. Simulation results are stored every two hours starting at 00:00 UTC. Each output is assigned a 60° ~~cone~~segment of a circle with its origin at the north pole. The segment is centered on a longitude, conforming to GOME-2 orbits for that time. The BrO VCDs are averaged with their neighboring ~~cone~~segments with a weight of unity at the center of the segment, and decreasing linearly to zero at the edge of the segment. This procedure is a linear time interpolation and smoothes the resulting model BrO VCDs. Figure 12 displays the simulated instantaneous BrO VCDs on March 8, 2009 16:00 UTC and 18:00 UTC. On the left there are two of the twelve full BrO VCDs saved for each day, on the middle the corresponding 60° segment multiplied by a weight of unity at the center, which linearly decreases to zero at the edges of the segment. On the right, the added segments are shown. This procedure is done each day for all twelve timepoints. 475 Thus twelve segments, not just the two segments shown in Fig. 12, are added for the average of one day, covering the whole domain.

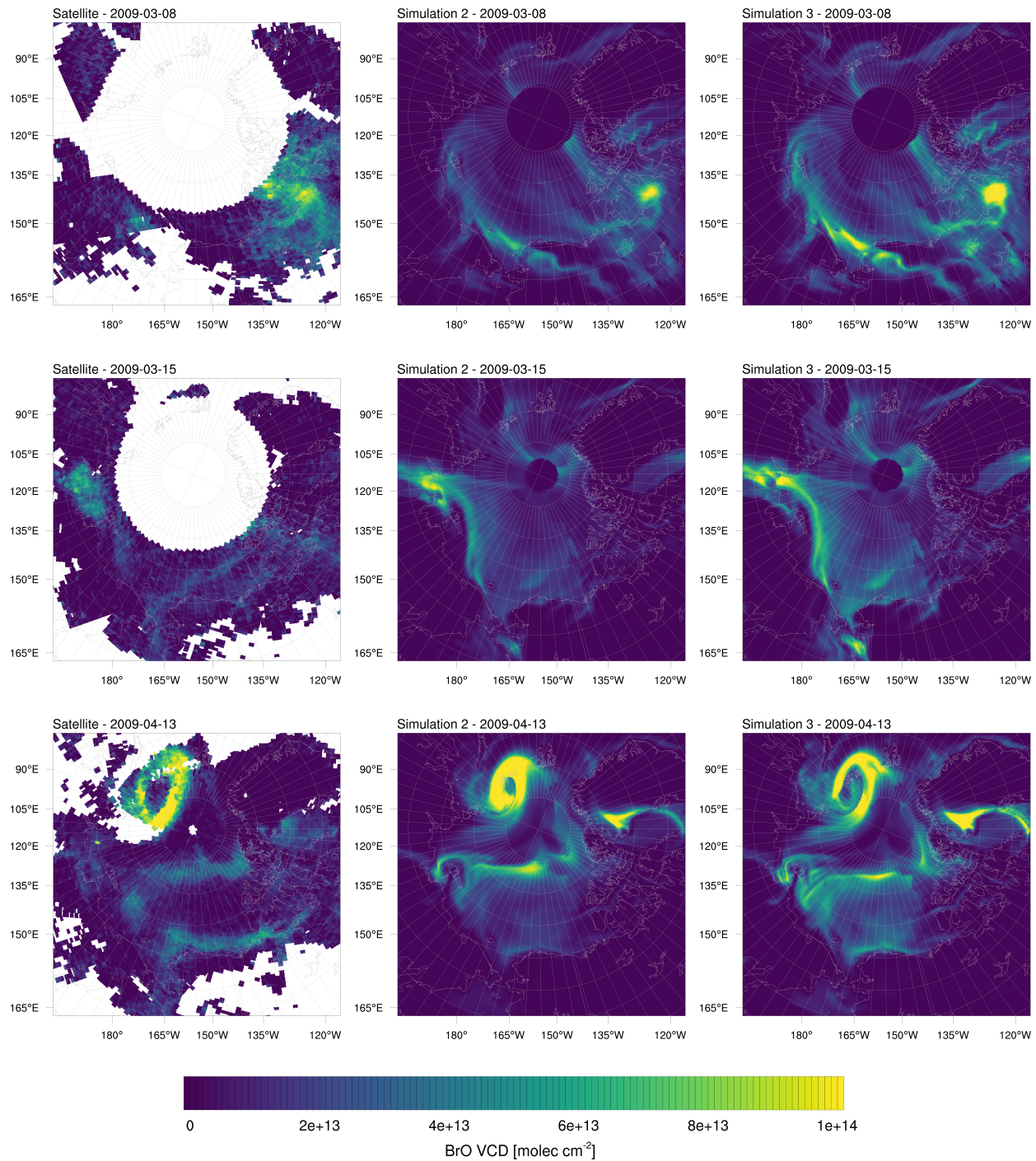
Figure 13 shows daily averages for the satellite data and simulations 2 and 3 on selected days. On March 8, both the model simulation and the observations show a high BrO VCD in Nunavut, including King William Island. However, the models predict BrO VCDs to be strongly concentrated in a small area whereas the satellite BrO cloud is spread out more and reaches 480 deeper into the Canadian mainland. On March 15, both model simulations and satellite observations find a bromine cloud over the Laptev Sea, reaching to the Siberian land mass. The modeled BrO VCDs are more pronounced, with simulation 3 having a different distribution of BrO being less consistent with the observations than simulation 2. The enhanced emissions in simulation 3 cause a stronger ODE in that region, which in turn depletes BrO in the ozone depleted area. Ozone mixes back into the ozone-depleted area from the edges of an ODE, which allows BrO to form there which is the reason for the elevated 485 BrO-levels seen at the edges of the ODE. The bromine cloud is predicted by the model to extend to Chuckchi Sea in a thin stripe, which is barely seen in the observation. In both model results, a small BrO cloud in Hudson Bay is found, which is more pronounced and less consistent with the observations for simulation 3. On April 13, a ring-like BrO structure can be seen north of Kara Sea. The BrO-free center of the ring is due to an ozone depletion. Both simulations correctly find a BrO-free area near the north pole. An enlarged ODE is predicted, resulting in a thinner ring more consistent with the observations. The 490 model, however, under-predicts BrO clouds near the Alaskan coast and finds enhanced BrO VCDs on Greenland in contrast to the observations.

In summary, both simulations 2 and 3 appear to be successful in capturing the general structures. Some of the differences might be explained by a higher model resolution,  $20\text{ km} \times 20\text{ km}$ , compared to the satellite data with a resolution of  $40\text{ km} \times 30\text{ km}$ , resulting in more detailed structures in the model. Other differences might be explained by the already discussed errors 495 in the meteorology and under-predicted of BrO over land discussed below.



**Figure 12.** Illustration of the averaging of modeled BrO VCDs. Shown is March 8, 2009 16:00 and 18:00 UTC. Left: Full instantaneous BrO VCDs. Center: Corresponding 60° segment. Right: Added ~~ones~~ segments.



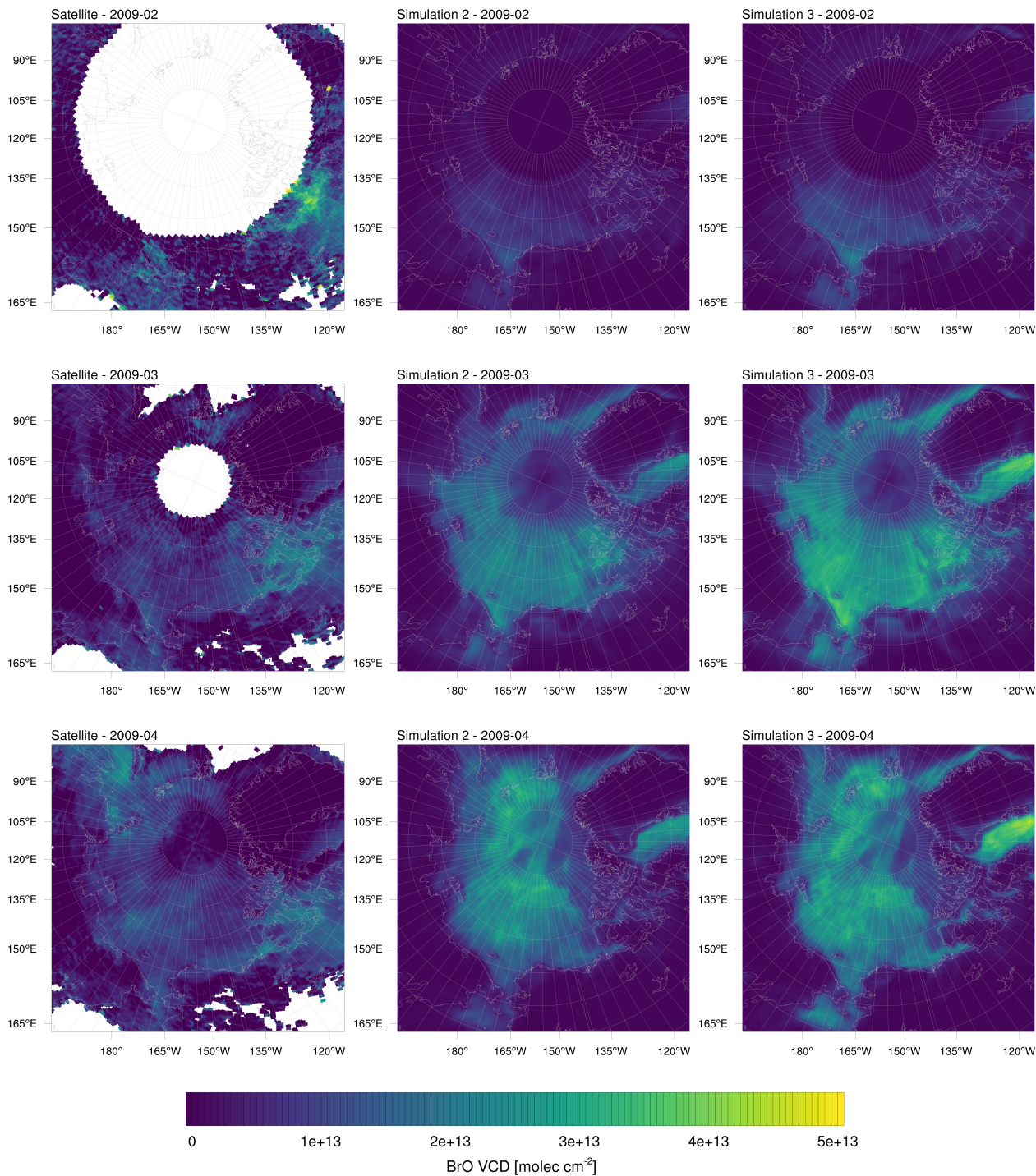


**Figure 13.** BrO VCDs on selected days in the year 2009. Left: Satellite measurements. Center: Simulation 2 ( $\beta = 1.0$ ). Right: Simulation 3 ( $\beta = 1.5$ ).

The uncertainties of the satellite data contribute to the differences between model and observations. According to Sihler et al. (2012), they are typically below 50%. Accordingly, differences in absolute values between model and satellite measurement might be to a substantial part be caused by measurement uncertainties. However, the spatial patterns found in the satellite data are hardly affected because measurements, which are strongly influenced by clouds (cloud shielding), are filtered out using the sensitivity filter of 0.5 for the air mass factor of the lowest 500 m (Sihler et al., 2012).

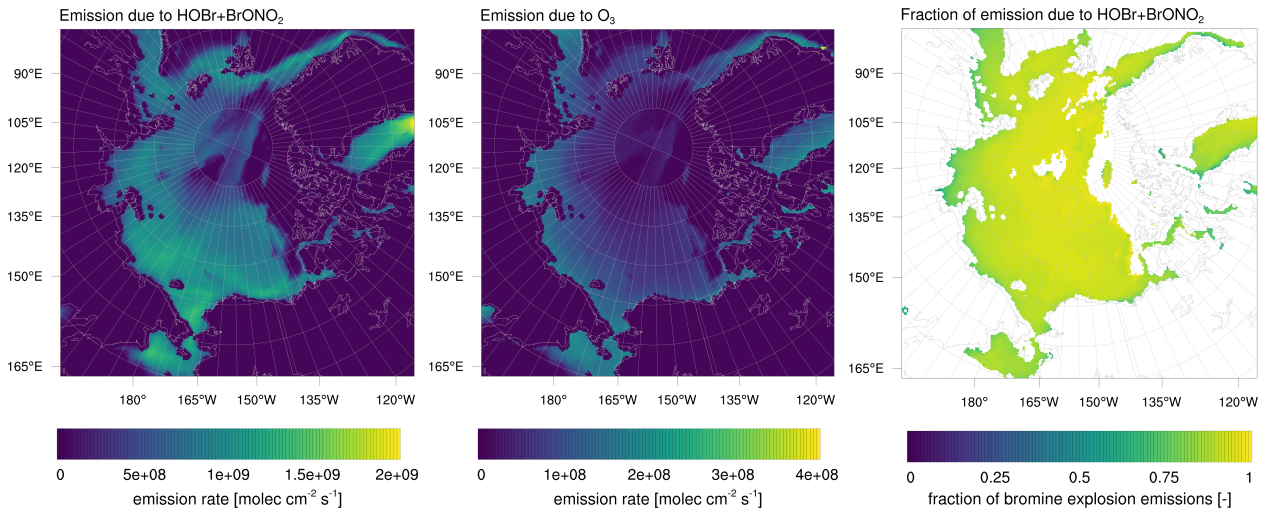
Figure 14 shows monthly averages for the satellite data and results of simulations 2 and 3. The simulations under-predict BrO over land and near coasts which is most likely due to the assumptions in the emission scheme. In the model, it is assumed that snow surfaces have no salt content, which makes depositions of bromine species (excess HOBr is lost) over land a sink, opposed to depositions over MY ice being neutral (excess HOBr is released as BrCl) and over FY (HOBr always releases Br<sub>2</sub>) being a source for bromine in most cases. With a deposition velocity of 1 cm s<sup>-1</sup> and a boundary layer height of 200 m, bromine is removed at a timescale of approximately 5 hours over land by surface depositions and possibly even faster by depositions to aerosols. The assumption of zero bromide content of snow covering land or MY ice is of course an idealization and not always correct in reality (Simpson et al., 2005; Pratt et al., 2013; Peterson et al., 2018, 2019), contributing to the under-prediction of BrO over land mentioned in this paragraph. Future simulations should aim to find ways to incorporate the salinity, pH, and the Br<sup>-</sup>/Cl<sup>-</sup> ratio of the snowpack, which were found to be important parameters for the production of Br<sub>2</sub> (Pratt et al., 2013; Wren et al., 2013; Peterson et al., 2019). BrO VCDs are also under-predicted near the boundaries, which is due to the value of zero of halogens at the boundary. The model over-predicts BrO VCDs at Baffin Bay and at most locations featuring FY sea ice with the exception of Bering Sea, probably due to its proximity to a domain boundary. The over-prediction over FY sea ice is not surprising with the assumption of unlimited BrO in FY sea ice. A relaxation of this assumption, e.g. by allowing finite salt content could solve the issues both, over snow covering FY ice by limiting the bromine emissions and over land, by allowing salt content of more than zero and storage instead of loss of deposited bromine. The model prediction for BrO in February is generally too small, which is probably due to a lack of sunlight at higher latitudes and the under-prediction of BrO over land. It should be noted that the satellite data is quite incomplete during February and biased towards the end of February, also due to a lack of sunlight necessary for satellite measurements in early February, whereas the model VCDs weights all of February equally.

The emission rate of Br<sub>2</sub> due to HOBr+BrONO<sub>2</sub> and due to bromide oxidation by ozone from the snow surface averaged over the entire simulation period is shown in Fig. 15 for simulation 3. In Fig. 16, the production of Br<sub>2</sub> from the snow is shown at coordinates 178 W, 78 N plotted against time. The location has been chosen because it is over FY sea ice and is a strong production site for the bromine that may affect ODEs at Utqiaġvik. As can be seen in these figures, most of the bromine is produced by HOBr, i.e. the bromine explosion mechanism, whereas the oxidation of bromide by ozone provides an initial seed of the bromine formation which then is enhanced by bromine explosion where BrONO<sub>2</sub> plays a smaller role than HOBr. Due to a lack of sunlight, bromine is produced only during the second half of February by the bromine explosion and after March 1, 2009, by the bromide oxidation due to ozone.



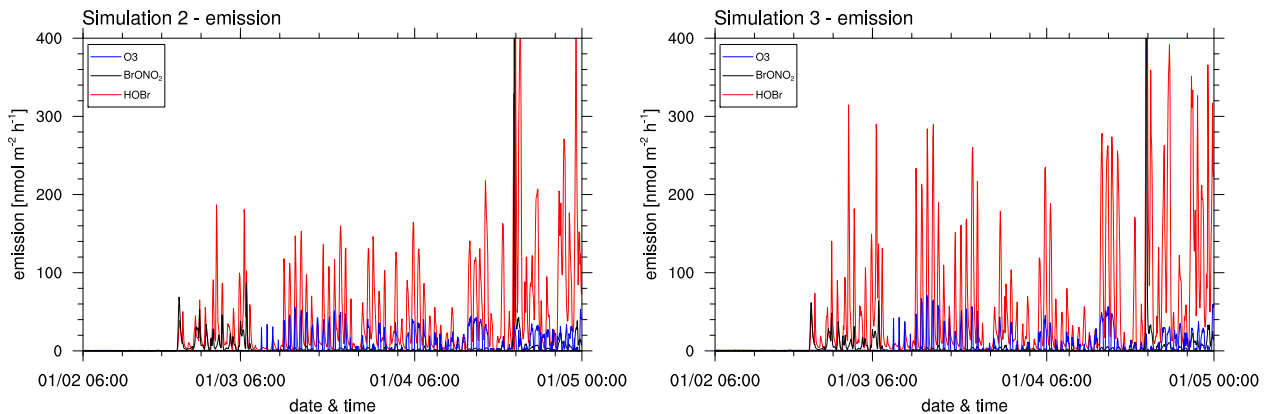
**Figure 14.** BrO VCDs in the year 2009 averaged over one month. Left: Satellite measurements. Center: Simulation 2 ( $\beta = 1.0$ ). Right: Simulation 3 ( $\beta = 1.5$ ).





**Figure 15.** Emission rate of  $\text{Br}_2$  due to  $\text{HOBr}+\text{BrONO}_2$  (left) and due to bromide oxidation by ozone (center) from the snow surface for simulation 3, averaged over the complete simulation period. Ratio of  $\text{Br}_2$  emissions due to  $\text{HOBr}$  and  $\text{BrONO}_2$  to total  $\text{Br}_2$  emissions on FY ice (right).

In the present parameterization, the latter strictly requires a SZA of less than  $85^\circ$  for a fast release, whereas the bromine explosion mechanism has a more continuous dependence on SZA. The  $\text{Br}_2$  photolysis needed by both emission mechanisms requires relatively long-waved light and may thus occur even at SZAs slightly above  $90^\circ$ . The bromine explosion additionally requires  $\text{HO}_2$  in order to produce  $\text{HOBr}$ .  $\text{HO}_2$  is mostly formed by a photolysis of various organic species with short-waved UV and thus occurs generally at smaller SZA, however, it can also be supplied by reactions involving organic compounds,  $\text{NO}_x$

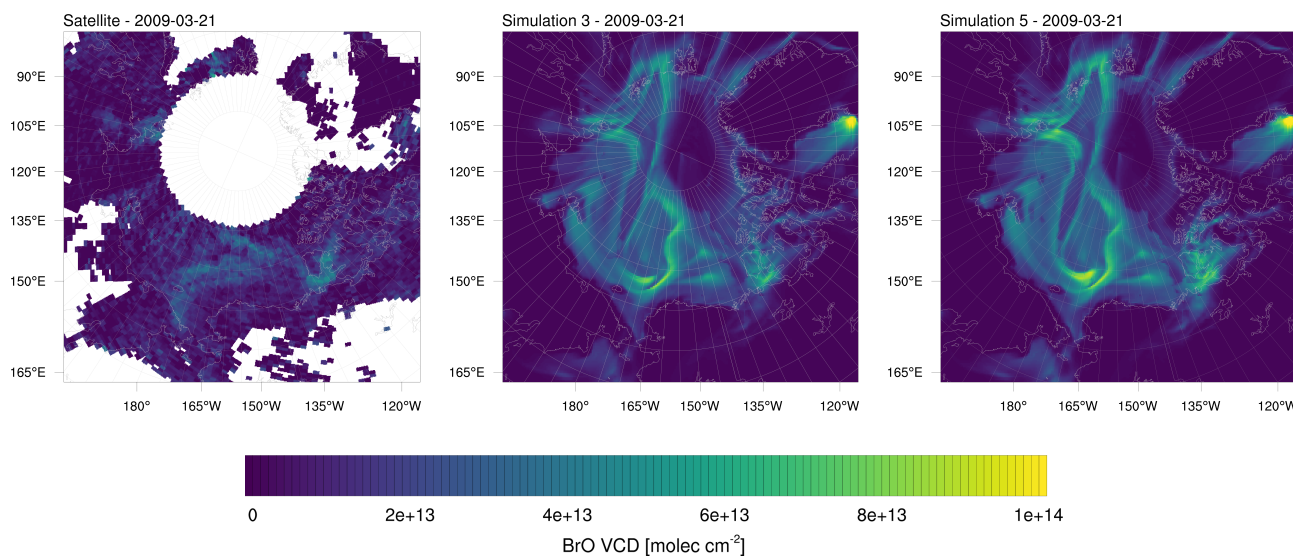


**Figure 16.** Emission rate of  $\text{Br}_2$  due to  $\text{HOBr}$  and  $\text{BrONO}_2$  and due to bromide oxidation by ozone from the snow surface at coordinates 178 W, 78 N for simulations 2 with  $\beta = 1$  (left) and simulation 3 with  $\beta = 1.5$  (right).

and/or OH or by their transportation from lower latitudes. Thus, in the present parameterization, the bromine explosion may occur locally at higher SZAs than the bromide oxidation due to ozone.

Emission rates of  $\text{Br}_2$  from other studies are as follows. In February 2014, Custard et al. (2017) measured  $\text{Br}_2$  fluxes of  $0.07\text{--}1.2 \times 10^9 \text{ molec cm}^{-2} \text{ s}^{-1}$  above the snow surface near Utqiagvik with a maximum around noon. Wang and Pratt (2017) found snowpack  $\text{Br}_2$  emissions of  $2.1 \times 10^8 \text{ molec cm}^{-2} \text{ s}^{-1}$  on March 15, 2012 and  $3.5 \times 10^6 \text{ molec cm}^{-2} \text{ s}^{-1}$  on March 24, 2012 in a modeling study. Emission fluxes due to the bromine explosion ( $\text{HOBr} + \text{BrONO}_2$ ) are typically between  $2\text{--}3 \times 10^9 \text{ molec cm}^{-2} \text{ s}^{-1}$  (simulation 2) or  $4\text{--}5 \times 10^9 \text{ molec cm}^{-2} \text{ s}^{-1}$  (simulation 3) around noon and thus are on the higher end of the mentioned values. Bromide oxidation due to ozone, which plays the role of direct snowpack emissions in the present model, are rarely larger than  $1 \times 10^9 \text{ molec cm}^{-2} \text{ s}^{-1}$  with an average of around  $2 \times 10^8 \text{ molec cm}^{-2} \text{ s}^{-1}$  near Utqiagvik, which compares quite well to the range found by Custard et al. (2017), while being larger than the values calculated by Wang and Pratt (2017).

For a simulation of three month, it should be expected that errors in the simulation pile up, especially considering the nonlinear stochastic nature of ODEs. The meteorological state should be consistent due to the data assimilation via nudging, however, the errors in the chemistry model could grow large over time. As an example, wrongly predicting an ODE probably causes a delay of an ODE at a later date due to the lack of  $\text{O}_3$ , reducing bromine emissions. A test for this is performing a new start of a simulation at a later date, where no ODEs occurred and in which the atmosphere is clean of bromine. For this purpose, simulation 5 was conducted, which is identical to simulation 3 except that the simulation starts on March 16 using ERA-Interim and MOZART-4 data as well as a near-zero bromine concentration, as described in section 2.5. These new simulation results are then compared to simulation 3 which started in February.



**Figure 17.** BrO VCDs on March 21, 2009 from observations (left) and simulations initiated on February 1 (simulation 3, center) and March 16 (simulation 5, right). The simulations differ only in the start time.

It is found that these two simulations become very similar after approximately 5 days, see Fig. 17 which shows the BrO VCDs. After approximately 8 days, the BrO VCDs become nearly indistinguishable. Average BrO concentrations in April are  
555 not shown here, but are also nearly identical for both simulations.

Reasons for the two simulations with different starting times to show so similar results after a few days is due to a combination of several factors. While there is no chemical nudging, the chemical boundary conditions strongly affect the simulation and act similar to a chemical nudging. Assuming a constant wind speed of 20 km/h (corresponding to approximately  $5.5 \text{ m s}^{-1}$ ), a chemical species can be transported from a 2,000 km distant boundary to the center of the domain on a time scale of as  
560 low as four days. Due to the meteorological nudging, chemical boundary conditions are transported in the same way in both simulations.

Chemistry boundary conditions transported over land or in the free troposphere behave similar in simulations 3 and 6, since several aspects of chemistry over land and in the free troposphere are nearly unaffected by the addition of halogen chemistry. Thus, chemical species coming from the lateral boundary condition will only be affected by the halogen chemistry once they  
565 reach the sea ice or are mixed into the boundary layer from aloft.

The emission of bromine due to bromide oxidation by  $\text{O}_3$  is independent of reactive bromine mixing ratios and not of autocatalytic nature as in the bromine explosion mechanism. While it is only responsible for small fraction of emitted bromine, it produces the initial bromine needed for a bromine explosion. The present emission scheme can be very fast, producing full ODEs in less than a day. All of these effects allow ozone coming from the lateral boundary condition to be depleted in a similar  
570 way in simulations 3 and 6 even with leftover bromine from a previous ODE.

## 4 Conclusions

Three-dimensional unsteady simulations of ozone depletion events in the Arctic from February 1, 2009 through May 1, 2009 have been performed using WRF-Chem. Simulations with different parameter settings are compared to observations from different sources at Utqiagvik, Alaska and Summit, Greenland. A simulation using standard MOZART-MOSAIC chemistry  
575 without halogen chemistry resulted in an unrealistic ozone mixing ratio at Utqiagvik, anti-correlating with observations and a strong bias for large ozone mixing ratios which demonstrates the impact of halogen chemistry on the prediction of ODEs.

~~BrO~~ Bromine may be emitted by the extended bromine explosion mechanism and/or oxidation of bromide by ozone directly from the sea ice. The reactive surface ratio  $\beta$  accounts for non-flat surfaces such as snow/ice and controls the emission strength. Both simulations with standard emission (simulation 2,  $\beta = 1.0$ ) and a simulation with enhanced emission (simulation 3),  
580  $\beta = 1.5$  perform with correlations to observations of more than 0.6 at Utqiagvik for both vertical ozone profiles and BrO VCDs. Enhancing the emission strongly improves the mean bias, whereas correlation and RMSE only improved slightly with enhanced emissions, which is likely due to an overestimation of BrO emissions which occur more frequently. Generally, ozone depletion at Utqiagvik is somewhat under-predicted by both simulations. ODEs identified by the model that are not present in the observations are rare: simulation 2 and 3 identify two and six ODEs, respectively. Simulation 2 finds half of the twenty-two

585 observed ODEs whereas simulation 3 improves this prediction to more than two third of the observed ODEs. Iodine chemistry was neglected in this study, which may contribute to the under-prediction of ODEs at Utqiagvik

At Summit, the observations and simulations agree in identifying no ODEs. A tropopause fold is found by the simulations at the end of April 2009 in agreement with the observations.

At Utqiagvik, temperature is slightly over-predicted and wind speed slightly under-predicted both of which may contribute to an under-prediction of ODEs. BrO VCDs are found to be consistent with satellite observations. However, an under-prediction of BrO VCDs over land and an over-prediction of BrO VCDs over FY ice is apparent. A good qualitative agreement of modeled BrO with in-situ and MAX-DOAS measurements at Utqiagvik was found, however the under-prediction of BrO over land was also apparent. This is probably due the assumptions of the emission scheme in the model: Snow covering FY ice is assumed to have unlimited bromide content, resulting in an overestimation of BrO emissions, whereas snow over land has no halogen content, overestimating the removal of BrO. More realistic assumptions in a future study, such as an inclusion of snow pack emissions over land or a blowing snow parameterization, may improve the results. Emissions of bromine due to  $\text{N}_2\text{O}_5$  were found to be important in February to mid March, but were of little relevance in the later months, since  $\text{N}_2\text{O}_5$  becomes less stable with growing temperatures and sunlight intensity.

The direct emission of bromine due to bromide oxidation by ozone is found to be very important throughout the entire simulation, since it provides an initial seed of bromine which then triggers the bromine explosion. Simulation 4 with deactivated bromide oxidation by ozone under sunlight strongly reduces  $\text{Br}_2$  emissions even though the value of  $\beta$  has been set to 2.0. Therefore, simulation 4 is inferior to simulations 2 and 3 with a reduced overall prediction skill of ODEs. With even a larger emission rate, the bromine explosion mechanism alone does not produce enough BrO to explain the observations which is likely due to a missing trigger of ODEs to provide the bromide oxidation by ozone. An alternative trigger of ODEs that may be worthwhile to study in future is the bromide oxidation by the hydroxyl radical.

Meteorological nudging is found to be very important. A simulation with enhanced emissions by 50% but disabled meteorological nudging (simulation 6) performs much worse compared to simulations 2 and 3. At Utqiagvik, the prediction of meteorological variables such as temperature, for which the mean bias increased by a factor of three and the RMSE by a factor of two, becomes worse during the simulation, in particular, the second half of the simulation has a strong bias to larger temperatures and a poorer skill for predicting ozone. Simulations 2 and 3 with  $\beta$  equal to 1.0 and 1.5 respectively, are found to perform best where simulation 3 is somewhat superior to simulation 2 at the cost of an over-prediction of BrO at some times. It might be worthwhile to search for an optimal setting for  $\beta$  in a future study.

In a follow-up study it is planned to simulate ODEs in the year 2019 for which the new TROPOMI BrO VCDs with a high resolution of 5.5 km x 3.5 km are available. For this purpose, the grid resolution will be increased in order to allow for a comparison of the more refined observation data.

*Code and data availability.* The software code and data may be obtained from the corresponding author upon request.

*Author contributions.* MH performed the simulations and wrote the paper draft. HS and UF contributed the observational data. TW provided additional scientific support. UP and EG devised the methodology and supervised the project and EG revised the manuscript.

*Competing interests.* The authors declare that they have no conflict of interest.

620 *Acknowledgements.* The authors gratefully acknowledge funding by the Deutsche Forschungsgemeinschaft (DFG, German Research Foundation) – Projektnummer 85276297 and through HGS Math-Comp. The authors acknowledge support by the state of Baden-Württemberg through bwHPC and the German Research Foundation (DFG) through grant INST 35/1134-1 FUGG, allowing the authors to conduct simulations using the bwForCluster MLS&WISO Development. ERA-Interim data provided courtesy ECMWF. [In-Situ and MAX-DOAS Data were obtained from the OASIS \(Ocean-Atmosphere-Sea Ice-Snowpack\) 2009 campaign.](#) GOME-2 level-1 data have been provided by  
625 ESA/EUMETSAT. In-situ data for ozone at Utqiagvik and Summit and meteorology at Utqiagvik were obtained from the NOAA/ESRL Global Monitoring Division (<https://www.esrl.noaa.gov/gmd/>). Ozone vertical profiles were obtained from the NOAA Earth System Research Laboratory (ESRL, <http://www.esrl.noaa.gov/gmd/obop/brw>). OSI-403-c sea ice type data were obtained from EUMETSAT OSI SAF (<http://www.osi-saf.org/?q=content/global-sea-ice-type-c>).



## References

- 630 Aaboe, S., Breivik, L., Sørensen, A., Eastwood, S., and Lavergne, T.: Global Sea Ice Edge (OSI-402-c) and Type (OSI-403-c) ProductUser'sManual-v2. 2. TechnicalReportSAF, Tech. rep., OSI/CDOP2/MET-Norway/TEC/MA/205, EUMETSAT OSI SAF–Ocean and Sea Ice . . . , 2017.
- Abbatt, J. P. D., Thomas, J. L., Abrahamsson, K., Boxe, C., Granfors, A., Jones, A. E., King, M. D., Saiz-Lopez, A., Shepson, P. B., Sodeau, J., Toohey, D. W., Toubin, C., von Glasow, R., Wren, S. N., and Yang, X.: Halogen activation via interactions with environmental ice and snow in the polar lower troposphere and other regions, *Atmospheric Chemistry and Physics*, 12, 6237–6271, <https://doi.org/10.5194/acp-12-6237-2012>, <http://www.atmos-chem-phys.net/12/6237/2012/>, 2012.
- Artiglia, L., Edebeli, J., Orlando, F., Chen, S., Lee, M.-T., Arroyo, P. C., Gilgen, A., Bartels-Rausch, T., Kleibert, A., Vazdar, M., et al.: A surface-stabilized ozonide triggers bromide oxidation at the aqueous solution-vapour interface, *Nature Communications*, 8, 700, 2017.
- Atkinson, H. M., Huang, R.-J., Chance, R., Roscoe, H. K., Hughes, C., Davison, B., Schönhardt, A., Mahajan, A. S., Saiz-Lopez, A., Hoffmann, T., et al.: Iodine emissions from the sea ice of the Weddell Sea, *Atmospheric Chemistry and Physics*, 12, 11 229–11 244, 2012.
- 635 Atkinson, R., Baulch, D. L., Cox, R. A., Crowley, J. N., Hampson, R. F., Hynes, R. G., Jenkin, M. E., Rossi, M. J., and Troe, J.: Evaluated kinetic and photochemical data for atmospheric chemistry: Volume III - gas phase reactions of inorganic halogens, *Atmospheric Chemistry and Physics*, 7, 981–1191, <https://doi.org/10.5194/acp-7-981-2007>, <https://www.atmos-chem-phys.net/7/981/2007/>, 2007.
- Barrie, L., Bottenheim, J., Schnell, R., Crutzen, P., and Rasmussen, R.: Ozone destruction and photochemical reactions at polar sunrise in the lower Arctic atmosphere, *Nature*, 334, 138, 1988.
- 645 Bottenheim, J., Gallant, A., and Brice, K.: Measurements of NO<sub>y</sub> species and O<sub>3</sub> at 82 N latitude, *Geophysical Research Letters*, 13, 113–116, 1986.
- Bottenheim, J., Natcheva, S., Morin, S., and Nghiem, S.: Ozone in the boundary layer air over the Arctic Ocean: measurements during the TARA transpolar drift 2006–2008, *Atmospheric Chemistry and Physics*, 9, 4545–4557, 2009.
- 650 Bracegirdle, T. J. and Marshall, G. J.: The Reliability of Antarctic Tropospheric Pressure and Temperature in the Latest Global Reanalyses, *Journal of Climate*, 25, 7138 – 7146, <https://doi.org/10.1175/JCLI-D-11-00685.1>, <https://journals.ametsoc.org/view/journals/clim/25/20/jcli-d-11-00685.1.xml>, 15 Oct. 2012.
- Bromwich, D. H., Hines, K. M., and Bai, L.-S.: Development and testing of polar weather research and forecasting model: 2. Arctic Ocean, *Journal of Geophysical Research: Atmospheres*, 114, 2009.
- 655 Bromwich, D. H., Otieno, F. O., Hines, K. M., Manning, K. W., and Shilo, E.: Comprehensive evaluation of polar weather research and forecasting model performance in the Antarctic, *Journal of Geophysical Research: Atmospheres*, 118, 274–292, 2013.
- Bromwich, D. H., Wilson, A. B., Bai, L.-S., Moore, G. W. K., and Bauer, P.: A comparison of the regional Arctic System Reanalysis and the global ERA-Interim Reanalysis for the Arctic, *Quarterly Journal of the Royal Meteorological Society*, 142, 644–658, <https://doi.org/https://doi.org/10.1002/qj.2527>, <https://rmets.onlinelibrary.wiley.com/doi/abs/10.1002/qj.2527>, 2016.
- 660 Cai, L., Alexeev, V. A., Arp, C. D., Jones, B. M., Liljedahl, A. K., and Gädeke, A.: The polar WRF downscaled historical and projected twenty-first century climate for the coast and foothills of arctic Alaska, *Frontiers in Earth Science*, 5, 111, 2018.
- Callies, J., Corpaccioli, E., Eisinger, M., Hahne, A., and Lefebvre, A.: GOME-2- Metop's second-generation sensor for operational ozone monitoring, *ESA bulletin*, 102, 28–36, 2000.
- Cao, L., Sihler, H., Platt, U., and Gutheil, E.: Numerical analysis of the chemical kinetic mechanisms of ozone depletion and halogen release in the polar troposphere, *Atmos. Chem. Phys*, 14, 377, 2014.
- 665

- Custard, K. D., Raso, A. R. W., Shepson, P. B., Staebler, R. M., and Pratt, K. A.: Production and Release of Molecular Bromine and Chlorine from the Arctic Coastal Snowpack, *ACS Earth and Space Chemistry*, 1, 142–151, <https://doi.org/10.1021/acsearthspacechem.7b00014>, <https://doi.org/10.1021/acsearthspacechem.7b00014>, 2017.
- Dee, D. P., Uppala, S. M., Simmons, A. J., Berrisford, P., Poli, P., Kobayashi, S., Andrae, U., Balmaseda, M. A., Balsamo, G., Bauer, P., Bechtold, P., Beljaars, A. C. M., van de Berg, L., Bidlot, J., Bormann, N., Delsol, C., Dragani, R., Fuentes, M., Geer, A. J., Haimberger, L., Healy, S. B., Hersbach, H., Hólm, E. V., Isaksen, I., Kållberg, P., Köhler, M., Matricardi, M., McNally, A. P., Monge-Sanz, B. M., Morcrette, J.-J., Park, B.-K., Peubey, C., de Rosnay, P., Tavolato, C., Thépaut, J.-N., and Vitart, F.: The ERA-Interim reanalysis: configuration and performance of the data assimilation system, *Quarterly Journal of the Royal Meteorological Society*, 137, 553–597, <https://doi.org/10.1002/qj.828>, <https://rmets.onlinelibrary.wiley.com/doi/abs/10.1002/qj.828>, 2011.
- Emmons, L. K., Walters, S., Hess, P. G., Lamarque, J.-F., Pfister, G. G., Fillmore, D., Granier, C., Guenther, A., Kinnison, D., Laepple, T., et al.: Description and evaluation of the Model for Ozone and Related chemical Tracers, version 4 (MOZART-4), *Geoscientific Model Development*, 3, 43–67, 2010a.
- Emmons, L. K., Walters, S., Hess, P. G., Lamarque, J.-F., Pfister, G. G., Fillmore, D., Granier, C., Guenther, A., Kinnison, D., Laepple, T., et al.: Description and evaluation of the Model for Ozone and Related chemical Tracers, version 4 (MOZART-4), 2010b.
- Falk, S. and Sinnhuber, B.-M.: Polar boundary layer bromine explosion and ozone depletion events in the chemistry-climate model EMAC v2. 52: implementation and evaluation of AirSnow algorithm., *Geoscientific Model Development*, 11, 2018.
- Fan, S.-M. and Jacob, D. J.: Surface ozone depletion in Arctic spring sustained by bromine reactions on aerosols, *Nature*, 359, 522, 1992.
- Fickert, S., Adams, J. W., and Crowley, J. N.: Activation of Br<sub>2</sub> and BrCl via uptake of HOBr onto aqueous salt solutions, *Journal of Geophysical Research: Atmospheres*, 104, 23 719–23 727, <https://doi.org/10.1029/1999JD900359>, <https://agupubs.onlinelibrary.wiley.com/doi/abs/10.1029/1999JD900359>, 1999.
- Frieß, U., Hollwedel, J., König-Langlo, G., Wagner, T., and Platt, U.: Dynamics and chemistry of tropospheric bromine explosion events in the Antarctic coastal region, *Journal of Geophysical Research: Atmospheres*, 109, 2004.
- Frieß, U., Monks, P., Remedios, J., Rozanov, A., Sinreich, R., Wagner, T., and Platt, U.: MAX-DOAS O<sub>4</sub> measurements: A new technique to derive information on atmospheric aerosols: 2. Modeling studies, *J. Geophys. Res.*, 111, D14 203, <https://doi.org/10.1029/2005JD006618>, 2006.
- Frieß, U., Sihler, H., Sander, R., Pöhler, D., Yilmaz, S., and Platt, U.: The vertical distribution of BrO and aerosols in the Arctic: Measurements by active and passive differential optical absorption spectroscopy, *Journal of Geophysical Research: Atmospheres*, 116, 2011.
- Frieß, U., Beirle, S., Alvarado Bonilla, L., Bösch, T., Friedrich, M. M., Hendrick, F., Piders, A., Richter, A., van Roozendael, M., Rozanov, V. V., Spinei, E., Tirpitz, J.-L., Vlemmix, T., Wagner, T., and Wang, Y.: Intercomparison of MAX-DOAS vertical profile retrieval algorithms: studies using synthetic data, *Atmos. Meas. Tech.*, 12, 2155–2181, <https://doi.org/10.5194/amt-12-2155-2019>, <https://www.atmos-meas-tech.net/12/2155/2019/>, 2019.
- Fuchs, N. and Sutugin, A.: High-dispersed aerosols, in: *Topics in current aerosol research*, p. 1, Elsevier, 1971.
- Grebel, J. E., Pignatello, J. J., and Mitch, W. A.: Effect of halide ions and carbonates on organic contaminant degradation by hydroxyl radical-based advanced oxidation processes in saline waters, *Environmental science & technology*, 44, 6822–6828, 2010.
- Grell, G. A.: Prognostic Evaluation of Assumptions Used by Cumulus Parameterizations, *Monthly Weather Review*, 121, 764–787, [https://doi.org/10.1175/1520-0493\(1993\)121<0764:PEOAUB>2.0.CO;2](https://doi.org/10.1175/1520-0493(1993)121<0764:PEOAUB>2.0.CO;2), [https://doi.org/10.1175/1520-0493\(1993\)121<0764:PEOAUB>2.0.CO;2](https://doi.org/10.1175/1520-0493(1993)121<0764:PEOAUB>2.0.CO;2), 1993.

- Grell, G. A., Peckham, S. E., Schmitz, R., McKeen, S. A., Frost, G., Skamarock, W. C., and Eder, B.: Fully coupled “online” chemistry within the WRF model, *Atmospheric Environment*, 39, 6957–6975, 2005.
- 705 Guenther, A., Karl, T., Harley, P., Wiedinmyer, C., Palmer, P. I., and Geron, C.: Estimates of global terrestrial isoprene emissions using MEGAN (Model of Emissions of Gases and Aerosols from Nature), *Atmospheric Chemistry and Physics*, 6, 3181–3210, <https://hal.archives-ouvertes.fr/hal-00295995>, 2006.
- Halfacre, J. W., Knepp, T. N., Shepson, P. B., Thompson, C. R., Pratt, K. A., Li, B., Peterson, P. K., Walsh, S. J., Simpson, W. R., Matrai, P. A., Bottenheim, J. W., Netcheva, S., Perovich, D. K., and Richter, A.: Temporal and spatial characteristics of ozone depletion events from measurements in the Arctic, *Atmospheric Chemistry and Physics*, 14, 4875–4894, <https://doi.org/10.5194/acp-14-4875-2014>, <https://www.atmos-chem-phys.net/14/4875/2014/>, 2014.
- 710 Halfacre, J. W., Shepson, P. B., and Pratt, K. A.: pH-dependent production of molecular chlorine, bromine, and iodine from frozen saline surfaces, *Atmospheric Chemistry and Physics*, 19, 4917–4931, <https://doi.org/10.5194/acp-19-4917-2019>, <https://acp.copernicus.org/articles/19/4917/2019/>, 2019.
- 715 Hausmann, M. and Platt, U.: Spectroscopic measurement of bromine oxide and ozone in the high Arctic during Polar Sunrise Experiment 1992, *Journal of Geophysical Research: Atmospheres*, 99, 25 399–25 413, 1994.
- Helmig, D., Boylan, P., Johnson, B., Oltmans, S., Fairall, C., Staebler, R., Weinheimer, A., Orlando, J., Knapp, D. J., Montzka, D. D., et al.: Ozone dynamics and snow-atmosphere exchanges during ozone depletion events at Barrow, Alaska, *Journal of Geophysical Research: Atmospheres*, 117, 2012.
- 720 Herrmann, M., Cao, L., Sihler, H., Platt, U., and Gutheil, E.: On the contribution of chemical oscillations to ozone depletion events in the polar spring, *Atmospheric Chemistry and Physics*, 19, 10 161–10 190, <https://doi.org/10.5194/acp-19-10161-2019>, <https://www.atmos-chem-phys.net/19/10161/2019/>, 2019.
- Hines, K. M., Bromwich, D. H., Bai, L., Bitz, C. M., Powers, J. G., and Manning, K. W.: Sea Ice Enhancements to Polar WRF, *Monthly Weather Review*, 143, 2363 – 2385, <https://doi.org/10.1175/MWR-D-14-00344.1>, <https://journals.ametsoc.org/view/journals/mwre/143/6/mwr-d-14-00344.1.xml>, 01 Jun. 2015.
- 725 Hong, S.-Y. and Lim, J.-O. J.: The WRF single-moment 6-class microphysics scheme (WSM6), *Asia-Pacific Journal of Atmospheric Sciences*, 42, 129–151, 2006.
- Iacono, M. J., Delamere, J. S., Mlawer, E. J., Shephard, M. W., Clough, S. A., and Collins, W. D.: Radiative forcing by long-lived greenhouse gases: Calculations with the AER radiative transfer models, *Journal of Geophysical Research: Atmospheres*, 113, <https://doi.org/10.1029/2008JD009944>, <https://agupubs.onlinelibrary.wiley.com/doi/abs/10.1029/2008JD009944>, 2008.
- 730 Janjić, Z.: The surface layer in the NCEP Eta Model, in: Eleventh Conference on Numerical Weather Prediction, pp. 19–23, Amer. Meteor. Soc. Norfolk, VA, 1996.
- Janjić, Z. I.: The step-mountain coordinate: Physical package, *Monthly Weather Review*, 118, 1429–1443, 1990.
- Janssens-Maenhout, G., Dentener, F., Van Aardenne, J., Monni, S., Pagliari, V., Orlandini, L., Klimont, Z., Kurokawa, J.-i., Akimoto, H., Ohara, T., et al.: EDGAR-HTAP: a harmonized gridded air pollution emission dataset based on national inventories, European Commission Publications Office, Ispra (Italy). JRC68434, EUR report No EUR, 25, 299–2012, 2012.
- 735 Kaleschke, L., Richter, A., Burrows, J., Afe, O., Heygster, G., Notholt, J., Rankin, A., Roscoe, H., Hollwedel, J., Wagner, T., et al.: Frost flowers on sea ice as a source of sea salt and their influence on tropospheric halogen chemistry, *Geophysical research letters*, 31, 2004.

- Koo, J.-H., Wang, Y., Kurosu, T., Chance, K., Rozanov, A., Richter, A., Oltmans, S., Thompson, A., Hair, J., Fenn, M., et al.: Characteristics of tropospheric ozone depletion events in the Arctic spring: analysis of the ARCTAS, ARCPAC, and ARCIONS measurements and satellite BrO observations, *Atmospheric Chemistry and Physics*, 12, 9909–9922, 2012.
- Lehrer, E., Hönninger, G., and Platt, U.: A one dimensional model study of the mechanism of halogen liberation and vertical transport in the polar troposphere, *Atmos. Chem. Phys.*, 4, 2427–2440, 2004.
- Liao, J., Sihler, H., Huey, L. G., Neuman, J. A., Tanner, D. J., Friess, U., Platt, U., Flocke, F. M., Orlando, J. J., Shepson, P. B., Beine, H. J., Weinheimer, A. J., Sjostedt, S. J., Nowak, J. B., Knapp, D. J., Staebler, R. M., Zheng, W., Sander, R., Hall, S. R., and Ullmann, K.: A comparison of Arctic BrO measurements by chemical ionization mass spectrometry and long path-differential optical absorption spectroscopy, *Journal of Geophysical Research: Atmospheres*, 116, <https://doi.org/https://doi.org/10.1029/2010JD014788>, <https://agupubs.onlinelibrary.wiley.com/doi/abs/10.1029/2010JD014788>, 2011.
- Liao, J., Huey, L., Tanner, D., Flocke, F., Orlando, J., Neuman, J., Nowak, J., Weinheimer, A., Hall, S., Smith, J., et al.: Observations of inorganic bromine (HOBr, BrO, and Br<sub>2</sub>) speciation at Barrow, Alaska, in spring 2009, *Journal of Geophysical Research: Atmospheres*, 117, 2012.
- Luther, G. W., Swartz, C. B., and Ullman, W. J.: Direct determination of iodide in seawater by cathodic stripping square wave voltammetry, *Analytical Chemistry*, 60, 1721–1724, 1988.
- Madronich, S., Flocke, S., Zeng, J., Petropavlovskikh, I., and Lee-Taylor, J.: Tropospheric Ultraviolet-Visible Model (TUV) version 4.1, National Center for Atmospheric Research, PO Box, 3000, 2002.
- McClure-Begley, A., Petropavlovskikh, I., and Oltmans, S.: NOAA Global Monitoring Surface Ozone Network, 1973–2014, National Oceanic and Atmospheric Administration, Earth Systems Research Laboratory Global Monitoring Division, Boulder, CO, doi, 10, V57P8WBF, 2014.
- McConnell, J., Henderson, G., Barrie, L., Bottenheim, J., Niki, H., Langford, C., and Templeton, E.: Photochemical bromine production implicated in Arctic boundary-layer ozone depletion, *Nature*, 355, 150, 1992.
- McNamara, S. M., Garner, N. M., Wang, S., Raso, A. R. W., Thanekar, S., Barget, A. J., Fuentes, J. D., Shepson, P. B., and Pratt, K. A.: Bromine Chloride in the Coastal Arctic: Diel Patterns and Production Mechanisms, *ACS Earth and Space Chemistry*, 4, 620–630, <https://doi.org/10.1021/acsearthspacechem.0c00021>, <https://doi.org/10.1021/acsearthspacechem.0c00021>, 2020.
- Mefford, T., Bieniulis, M., Halter, B., and Peterson, J.: Meteorological Measurements, CMDL Summary Report, 1995, 1994.
- Mellor, G. L. and Yamada, T.: Development of a turbulence closure model for geophysical fluid problems, *Reviews of Geophysics*, 20, 851–875, 1982.
- Munro, R., Eisinger, M., Anderson, C., Callies, J., Corpaccioli, E., Lang, R., Lefebvre, A., Livschitz, Y., and Albinana, A. P.: GOME-2 on MetOp, in: Proc. of The 2006 EUMETSAT Meteorological Satellite Conference, Helsinki, Finland, vol. 12–16 June 2006, ISBN 92-9110-076-5, EUMETSAT, p. 48, 2006.
- Nasse, J.-M.: Halogens in the coastal boundary layer of Antarctica, Ph.D. thesis, (Ruperto-Carola University, Heidelberg, <https://archiv.ub.uni-heidelberg.de/volltextserver/26489/>), 2019.
- Niu, G.-Y., Yang, Z.-L., Mitchell, K. E., Chen, F., Ek, M. B., Barlage, M., Kumar, A., Manning, K., Niyogi, D., Rosero, E., et al.: The community Noah land surface model with multiparameterization options (Noah-MP): 1. Model description and evaluation with local-scale measurements, *Journal of Geophysical Research: Atmospheres*, 116, 2011.
- Oltmans, S.: Surface ozone measurements in clean air, *Journal of Geophysical Research: Oceans*, 86, 1174–1180, <https://doi.org/10.1029/JC086iC02p01174>, <https://agupubs.onlinelibrary.wiley.com/doi/abs/10.1029/JC086iC02p01174>, 1981.

- Oltmans, S. J., Johnson, B. J., and Harris, J. M.: Springtime boundary layer ozone depletion at Barrow, Alaska: Meteorological influence, year-to-year variation, and long-term change, *Journal of Geophysical Research: Atmospheres*, 117, <https://doi.org/https://doi.org/10.1029/2011JD016889>, <https://agupubs.onlinelibrary.wiley.com/doi/abs/10.1029/2011JD016889>, 2012.
- 780 Oum, K., Lakin, M., and Finlayson-Pitts, B.: Bromine activation in the troposphere by the dark reaction of O<sub>3</sub> with seawater ice, *Geophysical Research Letters*, 25, 3923–3926, 1998.
- Peaceman, D. W. and Rachford, Jr, H. H.: The numerical solution of parabolic and elliptic differential equations, *Journal of the Society for industrial and Applied Mathematics*, 3, 28–41, 1955.
- Peterson, P. K., Pöhler, D., Sihler, H., Zielcke, J., General, S., Frieß, U., Platt, U., Simpson, W. R., Nghiem, S. V., Shepson, P. B., Stirm, B. H., Dhaniyala, S., Wagner, T., Caulton, D. R., Fuentes, J. D., and Pratt, K. A.: Observations of bromine monoxide transport in the Arctic sustained on aerosol particles, *Atmospheric Chemistry and Physics*, 17, 7567–7579, <https://doi.org/10.5194/acp-17-7567-2017>, <https://acp.copernicus.org/articles/17/7567/2017/>, 2017.
- 785 Peterson, P. K., Pöhler, D., Zielcke, J., General, S., Frieß, U., Platt, U., Simpson, W. R., Nghiem, S. V., Shepson, P. B., Stirm, B. H., and Pratt, K. A.: Springtime Bromine Activation over Coastal and Inland Arctic Snowpacks, *ACS Earth and Space Chemistry*, 2, 1075–1086, <https://doi.org/10.1021/acsearthspacechem.8b00083>, <https://doi.org/10.1021/acsearthspacechem.8b00083>, 2018.
- 790 Peterson, P. K., Hartwig, M., May, N. W., Schwartz, E., Rigor, I., Ermold, W., Steele, M., Morison, J. H., Nghiem, S. V., and Pratt, K. A.: Snowpack measurements suggest role for multi-year sea ice regions in Arctic atmospheric bromine and chlorine chemistry, *Elementa* (Washington, DC), 7, 2019.
- Platt, U. and Janssen, C.: Observation and role of the free radicals NO<sub>3</sub>, ClO, BrO and IO in the troposphere, *Faraday Discussions*, 100, 175–198, 1995.
- 795 Platt, U. and Lehrer, E.: Arctic tropospheric ozone chemistry, ARCTOC, no. 64 in Air pollution research report, European Commission Directorate-General, Science, Research and Development, Luxembourg, 1997.
- Pöhler, D., Vogel, L., Frieß, U., and Platt, U.: Observation of halogen species in the Amundsen Gulf, Arctic, by active long-path differential optical absorption spectroscopy, *Proceedings of the National Academy of Sciences*, 107, 6582–6587, 2010.
- 800 Pratt, K. A., Custard, K. D., Shepson, P. B., Douglas, T. A., Pöhler, D., General, S., Zielcke, J., Simpson, W. R., Platt, U., Tanner, D. J., et al.: Photochemical production of molecular bromine in Arctic surface snowpacks, *Nature Geoscience*, 6, 351, 2013.
- Raso, A. R., Custard, K. D., May, N. W., Tanner, D., Newburn, M. K., Walker, L., Moore, R. J., Huey, L. G., Alexander, L., Shepson, P. B., et al.: Active molecular iodine photochemistry in the Arctic, *Proceedings of the National Academy of Sciences*, 114, 10 053–10 058, 2017.
- Ritsche, M.: Barrow Meteorological Station (BMET) Handbook, Tech. rep., DOE Office of Science Atmospheric Radiation Measurement (ARM) Program . . . , 2004.
- 805 Rodgers, C. and Connor, B.: Intercomparison of remote sounding instruments, *J. Geophys. Res.*, 108, 4116–4229, <https://doi.org/10.1029/2002JD002299>, 2003.
- Rodgers, C. D.: Inverse methods for atmospheric sounding, theory and practice, Series on Atmospheric, Oceanic and Planetary Physics, World Scientific, 2000.
- 810 Saiz-Lopez, A., Mahajan, A. S., Salmon, R. A., Bauguitte, S. J.-B., Jones, A. E., Roscoe, H. K., and Plane, J. M.: Boundary layer halogens in coastal Antarctica, *Science*, 317, 348–351, 2007.
- Sander, R., Baumgaertner, A., Gromov, S., Harder, H., Jöckel, P., Kerkweg, A., Kubistin, D., Regelin, E., Riede, H., Sandu, A., Taraborrelli, D., Tost, H., and Xie, Z.-Q.: The atmospheric chemistry box model CAABA/MECCA-3.0, *Geoscientific Model Development*, 4, 373–380, <https://doi.org/10.5194/gmd-4-373-2011>, <https://www.geosci-model-dev.net/4/373/2011/>, 2011.

- 815 Schönhardt, A., Richter, A., Wittrock, F., Kirk, H., Oetjen, H., Roscoe, H. K., and Burrows, J. P.: Observations of iodine monoxide columns from satellite, *Atmospheric Chemistry and Physics*, 8, 637–653, <https://doi.org/10.5194/acp-8-637-2008>, <https://acp.copernicus.org/articles/8/637/2008/>, 2008.
- Sihler, H., Platt, U., Beirle, S., Marbach, T., Kühl, S., Dörner, S., Verschaeve, J., Frieß, U., Pöhler, D., Vogel, L., Sander, R., and Wagner, T.: Tropospheric BrO column densities in the Arctic derived from satellite: retrieval and comparison to ground-based measurements, *Atmospheric Measurement Techniques*, 5, 2779–2807, <https://doi.org/10.5194/amt-5-2779-2012>, <https://www.atmos-meas-tech.net/5/2779/2012/>, 2012.
- 820 Simpson, W., Glasow, R. v., Riedel, K., Anderson, P., Ariya, P., Bottenheim, J., Burrows, J., Carpenter, L., Frieß, U., Goodsite, M. E., et al.: Halogens and their role in polar boundary-layer ozone depletion, *Atmospheric Chemistry and Physics*, 7, 4375–4418, 2007a.
- Simpson, W. R., Alvarez-Aviles, L., Douglas, T. A., Sturm, M., and Domine, F.: Halogens in the coastal snow pack near Barrow, Alaska: Evidence for active bromine air-snow chemistry during springtime, *Geophysical research letters*, 32, 2005.
- 825 Simpson, W. R., Carlson, D., Hönninger, G., Douglas, T. A., Sturm, M., Perovich, D., and Platt, U.: First-year sea-ice contact predicts bromine monoxide (BrO) levels at Barrow, Alaska better than potential frost flower contact, *Atmospheric Chemistry and Physics*, 7, 621–627, <https://doi.org/10.5194/acp-7-621-2007>, <https://www.atmos-chem-phys.net/7/621/2007/>, 2007b.
- Simpson, W. R., Brown, S. S., Saiz-Lopez, A., Thornton, J. A., and von Glasow, R.: Tropospheric halogen chemistry: Sources, cycling, and impacts, *Chemical reviews*, 115, 4035–4062, 2015.
- 830 Sjostedt, S. J. and Abbatt, J. P. D.: Release of gas-phase halogens from sodium halide substrates: heterogeneous oxidation of frozen solutions and desiccated salts by hydroxyl radicals, *Environmental Research Letters*, 3, 045 007, <https://doi.org/10.1088/1748-9326/3/4/045007>, <https://doi.org/10.1088%2F1748-9326%2F3%2F4%2F045007>, 2008.
- Skamarock, W. C., Klemp, J. B., Dudhia, J., Gill, D. O., Barker, D. M., Wang, W., and Powers, J. G.: A description of the Advanced Research WRF version 3. NCAR Technical note-475+ STR, <https://doi.org/10.5065/D68S4MVH>, 2008.
- 835 Tarasick, D. and Bottenheim, J.: Surface ozone depletion episodes in the Arctic and Antarctic from historical ozonesonde records, *Atmospheric Chemistry and Physics*, 2, 197–205, 2002.
- Thiébaux, J., Rogers, E., Wang, W., and Katz, B.: A New High-Resolution Blended Real-Time Global Sea Surface Temperature Analysis, *Bulletin of the American Meteorological Society*, 84, 645–656, <https://doi.org/10.1175/BAMS-84-5-645>, <https://doi.org/10.1175/BAMS-84-5-645>, 2003.
- 840 Thomas, J. L., Stutz, J., Lefer, B., Huey, L. G., Toyota, K., Dibb, J. E., and von Glasow, R.: Modeling chemistry in and above snow at Summit, Greenland – Part 1: Model description and results, *Atmospheric Chemistry and Physics*, 11, 4899–4914, <https://doi.org/10.5194/acp-11-4899-2011>, <https://acp.copernicus.org/articles/11/4899/2011/>, 2011.
- Thompson, C. R., Shepson, P. B., Liao, J., Huey, L. G., Apel, E. C., Cantrell, C. A., Flocke, F., Orlando, J., Fried, A., Hall, S. R., Hornbrook, R. S., Knapp, D. J., Mauldin III, R. L., Montzka, D. D., Sive, B. C., Ullmann, K., Weibring, P., and Weinheimer, A.: Interactions of bromine, chlorine, and iodine photochemistry during ozone depletions in Barrow, Alaska, *Atmospheric Chemistry and Physics*, 15, 9651–9679, <https://doi.org/10.5194/acp-15-9651-2015>, <https://acp.copernicus.org/articles/15/9651/2015/>, 2015.
- 845 Toyota, K., McConnell, J. C., Lupu, A., Neary, L., McLinden, C. A., Richter, A., Kwok, R., Semeniuk, K., Kaminski, J. W., Gong, S.-L., Jarosz, J., Chipperfield, M. P., and Sioris, C. E.: Analysis of reactive bromine production and ozone depletion in the Arctic boundary layer using 3-D simulations with GEM-AQ: inference from synoptic-scale patterns, *Atmospheric Chemistry and Physics*, 11, 3949–3979, <https://doi.org/10.5194/acp-11-3949-2011>, <https://www.atmos-chem-phys.net/11/3949/2011/>, 2011.
- 850

- Toyota, K., McConnell, J. C., Staebler, R. M., and Dastoor, A. P.: Air–snowpack exchange of bromine, ozone and mercury in the springtime Arctic simulated by the 1-D model PHANTAS - Part 1: In-snow bromine activation and its impact on ozone, *Atmospheric Chemistry and Physics*, 14, 4101–4133, <https://doi.org/10.5194/acp-14-4101-2014>, <https://www.atmos-chem-phys.net/14/4101/2014/>, 2014.
- 855 Wagner, T. and Platt, U.: Satellite mapping of enhanced BrO concentrations in the troposphere, *Nature*, 395, 486–490, 1998.
- Wagner, T., Leue, C., Wenig, M., Pfeilsticker, K., and Platt, U.: Spatial and temporal distribution of enhanced boundary layer BrO concentrations measured by the GOME instrument aboard ERS-2, *Journal of Geophysical Research: Atmospheres*, 106, 24 225–24 235, 2001.
- Wagner, T., Ibrahim, O., Sinreich, R., Frieß, U., von Glasow, R., and Platt, U.: Enhanced tropospheric BrO over Antarctic sea ice in mid winter observed by MAX-DOAS on board the research vessel Polarstern, *Atmospheric Chemistry and Physics*, 7, 3129–3142, <https://doi.org/10.5194/acp-7-3129-2007>, <https://www.atmos-chem-phys.net/7/3129/2007/>, 2007.
- 860 Walker, T. W., Jones, D. B. A., Parrington, M., Henze, D. K., Murray, L. T., Bottenheim, J. W., Anlauf, K., Worden, J. R., Bowman, K. W., Shim, C., Singh, K., Kopacz, M., Tarasick, D. W., Davies, J., von der Gathen, P., Thompson, A. M., and Carouge, C. C.: Impacts of midlatitude precursor emissions and local photochemistry on ozone abundances in the Arctic, *Journal of Geophysical Research: Atmospheres*, 117, <https://doi.org/https://doi.org/10.1029/2011JD016370>, <https://agupubs.onlinelibrary.wiley.com/doi/abs/10.1029/2011JD016370>, 2012.
- 865 Wang, C., Graham, R. M., Wang, K., Gerland, S., and Granskog, M. A.: Comparison of ERA5 and ERA-Interim near-surface air temperature, snowfall and precipitation over Arctic sea ice: effects on sea ice thermodynamics and evolution, *The Cryosphere*, 13, 1661–1679, <https://doi.org/10.5194/tc-13-1661-2019>, <https://tc.copernicus.org/articles/13/1661/2019/>, 2019a.
- Wang, S. and Pratt, K. A.: Molecular Halogens Above the Arctic Snowpack: Emissions, Diurnal Variations, and Recycling Mechanisms, *Journal of Geophysical Research: Atmospheres*, 122, 11,991–12,007, <https://doi.org/https://doi.org/10.1002/2017JD027175>, <https://agupubs.onlinelibrary.wiley.com/doi/abs/10.1002/2017JD027175>, 2017.
- 870 Wang, S., McNamara, S. M., Moore, C. W., Obrist, D., Steffen, A., Shepson, P. B., Staebler, R. M., Raso, A. R. W., and Pratt, K. A.: Direct detection of atmospheric atomic bromine leading to mercury and ozone depletion, *Proceedings of the National Academy of Sciences*, 116, 14 479–14 484, <https://doi.org/10.1073/pnas.1900613116>, <https://www.pnas.org/content/116/29/14479>, 2019b.
- 875 Wennberg, P.: Atmospheric chemistry: Bromine explosion, *Nature*, 397, 299, 1999.
- Wesely, M.: Parameterization of surface resistances to gaseous dry deposition in regional-scale numerical models, *Atmospheric Environment* (1967), 23, 1293–1304, 1989.
- Wexler, A. S. and Seinfeld, J. H.: Second-generation inorganic aerosol model, *Atmospheric Environment. Part A. General Topics*, 25, 2731–2748, 1991.
- 880 Wilson, A. B., Bromwich, D. H., and Hines, K. M.: Evaluation of Polar WRF forecasts on the Arctic System Reanalysis domain: Surface and upper air analysis, *Journal of Geophysical Research: Atmospheres*, 116, 2011.
- Wittrock, F., Müller, R., Richter, A., Bovensmann, H., and Burrows, J. P.: Measurements of iodine monoxide (IO) above Spitsbergen, *Geophysical Research Letters*, 27, 1471–1474, <https://doi.org/https://doi.org/10.1029/1999GL011146>, <https://agupubs.onlinelibrary.wiley.com/doi/abs/10.1029/1999GL011146>, 2000.
- 885 Wren, S. N. and Donaldson, D. J.: How does deposition of gas phase species affect pH at frozen salty interfaces?, *Atmospheric Chemistry and Physics*, 12, 10 065–10 073, <https://doi.org/10.5194/acp-12-10065-2012>, <https://acp.copernicus.org/articles/12/10065/2012/>, 2012.
- Wren, S. N., Donaldson, D., and Abbatt, J.: Photochemical chlorine and bromine activation from artificial saline snow, *Atmospheric Chemistry and Physics*, 13, 9789–9800, 2013.

- Yang, X., Pyle, J. A., and Cox, R. A.: Sea salt aerosol production and bromine release: Role of snow on sea ice, *Geophysical Research Letters*, 35, n/a–n/a, <https://doi.org/10.1029/2008GL034536>, <http://dx.doi.org/10.1029/2008GL034536>, 116815, 2008.
- Yang, X., Pyle, J. A., Cox, R. A., Theys, N., and Van Roozendaal, M.: Snow-sourced bromine and its implications for polar tropospheric ozone, *Atmospheric Chemistry and Physics*, 10, 7763–7773, <https://doi.org/10.5194/acp-10-7763-2010>, <https://www.atmos-chem-phys.net/10/7763/2010/>, 2010.
- Zaveri, R. A., Easter, R. C., Fast, J. D., and Peters, L. K.: Model for simulating aerosol interactions and chemistry (MOSAIC), *Journal of Geophysical Research: Atmospheres*, 113, 2008.
- Zhao, T. L., Gong, S. L., Bottenheim, J. W., McConnell, J. C., Sander, R., Kaleschke, L., Richter, A., Kerkweg, A., Toyota, K., and Barrie, L. A.: A three-dimensional model study on the production of BrO and Arctic boundary layer ozone depletion, *Journal of Geophysical Research: Atmospheres*, 113, <https://doi.org/10.1029/2008JD010631>, <https://agupubs.onlinelibrary.wiley.com/doi/abs/10.1029/2008JD010631>, 2008.
- Zielcke, J.: Observations of reactive bromine, iodine and chlorine species in the Arctic and Antarctic with differential optical absorption spectroscopy, Ph.D. thesis, (Ruperto-Carola University, Heidelberg, 2015).