



SO₂ and BrO emissions of Masaya volcano from 2014–2020

Florian Dinger^{1,2}, Timo Kleinbek², Steffen Dörner¹, Nicole Bobrowski^{1,2}, Ulrich Platt^{1,2},
Thomas Wagner^{1,2}, Martha Ibarra³, and Eveling Espinoza³

¹Max Planck Institut for Chemistry, Mainz, Germany

²Institute for Environmental Physics, University of Heidelberg, Germany

³Instituto Nicaragüense de Estudios Territoriales, Managua, Nicaragua

Correspondence: Florian Dinger (florian.dinger@mpic.de)

Abstract. Masaya volcano (Nicaragua, 12.0°N, 86.2°W, 635 m a.s.l.) is one of the few volcanoes hosting a lava lake, today. We present continuous time series of SO₂ emission fluxes and BrO/SO₂ molar ratios in the gas plume of Masaya from March 2014 to March 2020. This study has two foci: (1) discussing the state of the art of long-term SO₂ emission flux monitoring on the example of Masaya and (2) the provision and discussion of a continuous dataset on volcanic gas data unique in its temporal coverage, which poses a major extension of the empirical data base for studies on the volcanologic as well as atmospheric bromine chemistry.

Our SO₂ emission flux retrieval is based on a comprehensive investigation of various aspects of the spectroscopic retrievals, the wind conditions, and the plume height. Our retrieved SO₂ emission fluxes are on average a factor of 1.4 larger than former estimates based on the same data. We furthermore observed a correlation between the SO₂ emission fluxes and the wind speed when several of our retrieval extensions are not applied. We make plausible that such a correlation is not expected and present a partial correction of this artefact via applying dynamic estimates for the plume height as a function of the wind speed (resulting in a vanishing correlation for wind speeds larger than 10 m/s).

Our empirical data set covers the three time periods (1) before the lava lake elevation, (2) period of high lava lake activity (December 2015 – May 2018), (3) after the period of high lava lake activity. For these three time periods, we report average SO₂ emission fluxes of $1000 \pm 200 \text{ t d}^{-1}$, $1000 \pm 300 \text{ t d}^{-1}$, and $700 \pm 200 \text{ t d}^{-1}$ and average BrO/SO₂ molar ratios of $(2.9 \pm 1.5) \cdot 10^{-5}$, $(4.8 \pm 1.9) \cdot 10^{-5}$, and $(5.5 \pm 2.6) \cdot 10^{-5}$. These variations indicate that the two gas proxies provide complementary information: the BrO/SO₂ molar ratios were susceptible in particular for the transition between the two former periods while the SO₂ emission fluxes were in particular susceptible for the transition between the two latter time periods.

We observed an extremely significant annual cyclicity for the BrO/SO₂ molar ratios (amplitudes between $1.4\text{--}2.6 \cdot 10^{-5}$) with a weak semi-annual modulation. We suggest that this cyclicity might be a manifestation of meteorological cycles. We found an anti-correlation between the BrO/SO₂ molar ratios and the atmospheric water concentration (correlation coefficient of -47%) but in contrast to that neither a correlation with the ozone mixing ratio ($+21\%$) nor systematic dependencies between the BrO/SO₂ molar ratios and the atmospheric plume age for an age range of 2–20 min after the release from the volcanic edifice. The two latter observations indicate an early stop of the autocatalytic partial transformation of bromide Br[−] solved in aerosol particles to atmospheric BrO.

Further patterns in the BrO/SO₂ time series were (1) a step increase by $0.7 \cdot 10^{-5}$ in late 2015, (2) a linear trend of $1.2 \cdot 10^{-5}$



per year from December 2015 to March 2018, and (3) a linear trend of $-0.8 \cdot 10^{-5}$ per year from June 2018 to March 2020. The step increase in 2015 coincided with the elevation of the lava lake and was thus most likely caused by a change in the magmatic system. The linear trend between late 2015 and early 2018 may indicate the evolution of the magmatic gas phase during the ascent of juvenile gas-rich magma whereas the linear trend from June 2018 on may indicate a decreasing bromine abundance in the magma.

1 Introduction

Volcanic gas emissions consist predominantly of water (H_2O), followed in abundance by carbon dioxide (CO_2) and sulphur dioxide (SO_2), as well as by a large number of trace gases such as halogen compounds (Giggenbach, 1996; Aiuppa, 2009; Oppenheimer et al., 2014; Bobrowski and Platt, 2015).

Monitoring magnitude or chemical composition of volcanic gas emissions can help to forecast volcanic eruptions (Carroll and Holloway, 1994; Oppenheimer et al., 2014). SO_2 emission fluxes, carbon to sulphur ratios, and halogen to sulphur ratios turned out to be powerful tools enabling the detection of events of magma influx at depth, and respectively the arrival of magma in shallow zones of the magmatic system (e.g. Edmonds et al., 2001; Métrich et al., 2004; Allard et al., 2005; Aiuppa et al., 2005; Burton et al., 2007; Bobrowski and Giuffrida, 2012).

Monitoring of volcanic gas emissions furthermore allows a quantification of the global volcanic volatile emission fluxes (e.g. Carn et al., 2017; Fischer et al., 2019), is thus an important tool for the validation of satellite data (e.g. Theys et al., 2019), provides empirical data on the impact of volcanoes on the chemistry in the local atmosphere (e.g. Bobrowski and Platt, 2015), and is one of the rare possibilities to learn something about the interior of the Earth (e.g. Oppenheimer et al., 2014, <https://deepcarbon.net/>).

The magnitude of volcanic gas emissions can be determined by passive remote sensing techniques such as Differential Optical Absorption Spectroscopy (DOAS) (Platt et al., 1980; Platt and Stutz, 2008; Kern, 2009) which allow the recording of semi-continuous (only during daytime) long-term time series (e.g. Galle et al., 2010). In particular, SO_2 emission fluxes are considered to be relatively easy to obtain because of the high spectroscopic selectivity for SO_2 , the typically negligible atmospheric SO_2 background, and a typical atmospheric lifetime of SO_2 of at least 1 day. The accuracy of the SO_2 emission fluxes depends, however, strongly on the accuracy of the available information on the wind conditions and the altitude of the volcanic plume as well as on the radiative transport conditions. The emission fluxes of other volcanic gas species are usually retrieved by scaling the SO_2 emission fluxes with the abundance of these species relative to SO_2 .

The chemical composition of volcanic gas plumes can be determined for many different gas species by in-situ sampling and subsequent sample analysis in the laboratory. More recently, automated in-situ "Multi-Gas" sensors are installed in the field, which measure and transmit the concentration of volcanic gases in the ambient atmosphere with an hourly to daily resolution (e.g. Shinohara, 2005; Aiuppa et al., 2006; Roberts et al., 2017). Chemical composition data retrieved by in-situ methods may, however, not be representative for the bulk gas emissions. Furthermore, in-situ methods are rather labour-intensive and dangerous for the scientist and the instruments due to the vulnerability to destruction by a volcanic explosion and the permanent



60 contact with poisonous and corrosive volcanic gases.




A retrieval of variations in the chemical composition directly via remote sensing overcomes these limitations. For the remote sensing of a molar ratio at least one additional gas species besides SO_2 is required. The desired candidates are H_2O and CO_2 , however, it has not yet been possible to retrieve their volcanic contributions by remote sensing routinely due to their rather high atmospheric backgrounds—although some recent developments succeeded for special conditions (La Spina et al., 2013; Kern et al., 2017; Butz et al., 2017; Queisser et al., 2017). Other obvious candidates are chlorine and fluorine compounds. Remote sensing techniques allow a retrieval of hydrogen chloride (HCl) and hydrogen fluoride (HF) via Fourier Transform InfraRed (FTIR) spectroscopy (e.g. Mori and Notsu, 1997; Mori et al., 2002), and chlorine dioxide (OCIO) via UV-DOAS (e.g. Bobrowski et al., 2007; Donovan et al., 2014; Glib et al., 2015; Kern and Lyons, 2018). FTIR systems, however, require strong light sources than passive DOAS (i.e. usually diffuse solar radiation is not sufficient) and are significantly more expensive, which is the reason why no continuous monitoring of chlorine or fluorine species has been established, except for the remote-controlled FTIR scanner systems installed at Stromboli volcano since 2009 and at Popocatepetl volcano since 2012 (La Spina et al., 2013; Taquet et al., 2019).

A further emitted halogen—but with a much lower abundance—is hydrogen bromine (HBr). HBr is rapidly converted in the atmosphere by photochemistry to several bromine species by the so called bromine explosion process (Platt and Lehrer, 1997; Wennberg, 1999; von Glasow, 2010). One of these secondary species is bromine monoxide (BrO), which can be retrieved from the same UV-spectra used for the retrieval of the SO_2 emission fluxes. BrO/ SO_2 time series are thus in principle available or retrievable for all volcanoes which are monitored for SO_2 emission fluxes by UV-spectrometers. In consequence, although BrO is not on the list of the most desired plume constituent species, time series of the BrO/ SO_2 molar ratios in volcanic gas plumes are the best accessible gas proxy for volcanic processes so far (besides the SO_2 emission fluxes).

80 The volcanological interpretation of BrO/ SO_2 molar ratios is yet difficult and much work is still required in order to use them as a fully reliable proxy for volcanic activity variations. The challenge is the interplay of the manifold physical and chemical behaviour of bromine causing the relative Br/S abundance ratio to be significantly altered by virtually any involved compartment of the volcanic system. The two major sources of uncertainty are the bromine partitioning between the magmatic melt phase and the magmatic gas phase and the bromine chemistry in the volcanic gas plume. With respect to the latter, a robust understanding of the quantitative link between the emitted HBr and the observed BrO is crucial in order to quantify the total volcanic bromine emissions. This link has been studied by empirical observations (Oppenheimer et al., 2006; Bobrowski and Giuffrida, 2012; Glib et al., 2015; Roberts, 2018; Rüdiger et al., 2020), theoretical models and simulations (Bobrowski et al., 2007; Roberts et al., 2009, 2014; Roberts, 2018; von Glasow, 2010), and lab experiments (Rüdiger et al., 2018). Gutmann et al. (2018) summarised the current state of the art in their review article. The $\text{HBr} \rightleftharpoons \text{BrO}$ conversion rate and the stationary equilibrium HBr/BrO ratio may depend on the chemical plume composition and on the atmospheric conditions such as the solar irradiance, the absolute/relative humidity, the tropospheric background ozone level, and the in-mixing rate of air in the volcanic plume. Based on empirical observations, the equilibrium of the $\text{HBr} \rightleftharpoons \text{BrO}$ conversion is typically reached within the first 2–10 min after the release of HBr to the atmosphere and remains constant for the next at least 30 min (Bobrowski and Giuffrida, 2012; Lübcke et al., 2014; Platt and Bobrowski, 2015; Glib et al., 2015). Model simulations have proposed relative




95 BrO equilibrium fractions between $\text{BrO}/\text{Br}_{\text{total}} = 10\text{--}50\%$ (von Glasow, 2010; Roberts et al., 2014).

 Masaya volcano (12.0°N, 86.2°W, 635 m a.s.l.) is located on the Nicaraguan portion of the Central American Volcanic Arc. Its volcanic complex consists of an older shield volcano now hosting a 6 km x 11 km caldera created by three highly explosive basaltic eruptions during the last 6,000 years: a VEI6 eruption at ~ 6 ka, a VEI5 eruption at 2.1 ka, and a VEI5 eruption at ~ 1.8 ka. (VEI: volcanic explosivity index, Williams, 1983; Pérez et al., 2009, Smithsonian Institution). There is a nearly
100 continuous historic record of its activity since the arrival of the Spanish conquistadors in 1524 (de Oviedo, 1855; McBirney, 1956; Rymer et al., 1998). The Smithsonian Institution lists two major eruptions which occurred in 1670 (VEI3) and 1772 (VEI2) and 28 eruptions (mainly VEI1 and some VEI2) since 1852. Masaya's currently active Santiago pit crater formed in 1858/1859 and hosted since occasionally incandescence vents and lava lakes usually lasting several years (McBirney, 1956; Rymer et al., 1998). Masaya's most recent lava lake cycle started in late 2015 when its lava lake elevated to  lower levels
105 (Aiuppa et al., 2018) and stopped in May 2018 when Masaya's thermal activity decreased back to relatively low levels (Smithsonian Institution, 2018). Masaya is one of the  best degassing volcanoes in the Central American Volcanic Arc (Martin et al., 2010; Aiuppa et al., 2014, 2018). The volcanic gas plume often hovers close to the ground causing serious issues to the local agriculture and health conditions of the local population (Baxter et al., 1982; Delmelle et al., 2002; van Manen, 2014). This manuscript reports and discusses time series of the SO_2 emission fluxes and BrO/SO_2 molar ratios in the gas plume of
110 Masaya volcano from 2014–2020. We present a comprehensive investigation of frequently ignored topics in the SO_2 emission flux retrieval and propose a set of technical extensions which aim to reduce the impact of these systematics. Next, we discuss the impact of the meteorology on the bromine chemistry in the volcanic gas plume. Finally, we compare the retrieved gas data with the general volcanic changes from 2014–2020.

2 Measurement and meteorology

115 The SO_2 and BrO emissions of Masaya are monitored by the Instituto Nicaragüense de Estudios Territoriales (INETER) which is part of the Network for Observation of Volcanic and Atmospheric Change (NOVAC, Galle et al., 2010). The NOVAC instruments are automated remote-sensing UV-spectrometers whose design is simplistic in order to reduce their power consumption, costs, and maintenance (e.g. the spectrometers are not actively temperature-controlled). First NOVAC measurements were conducted at Masaya from April–June 2007 and from September 2008 to February 2009 (these data are not presented
120 in this manuscript but listed for completeness in Table 4). From March 2014 to March 2020 (end of this study), the NOVAC station “Caracol” (instrument: D2J2124_0, see Figure 1 and Table 1) operated continuously, except for two data gaps of several months. From March–October 2014, a second NOVAC station “Nancital” (D2J2375_0) operated quite close to Caracol (Figure 1).

No direct measurements of the meteorological conditions in the volcanic gas plume were available (except for the plume
125 heights and the wind directions from March–October 2014 retrieved from the NOVAC data via a triangulation, see next section). Therefore, we accessed the meteorological conditions at Masaya as a  guess by European Centre for Medium-Range Weather Forecasts (ECMWF) ERA-Interim model data for an altitude of 700 m a.s.l. (Figure 3), by operational ECMWF re-

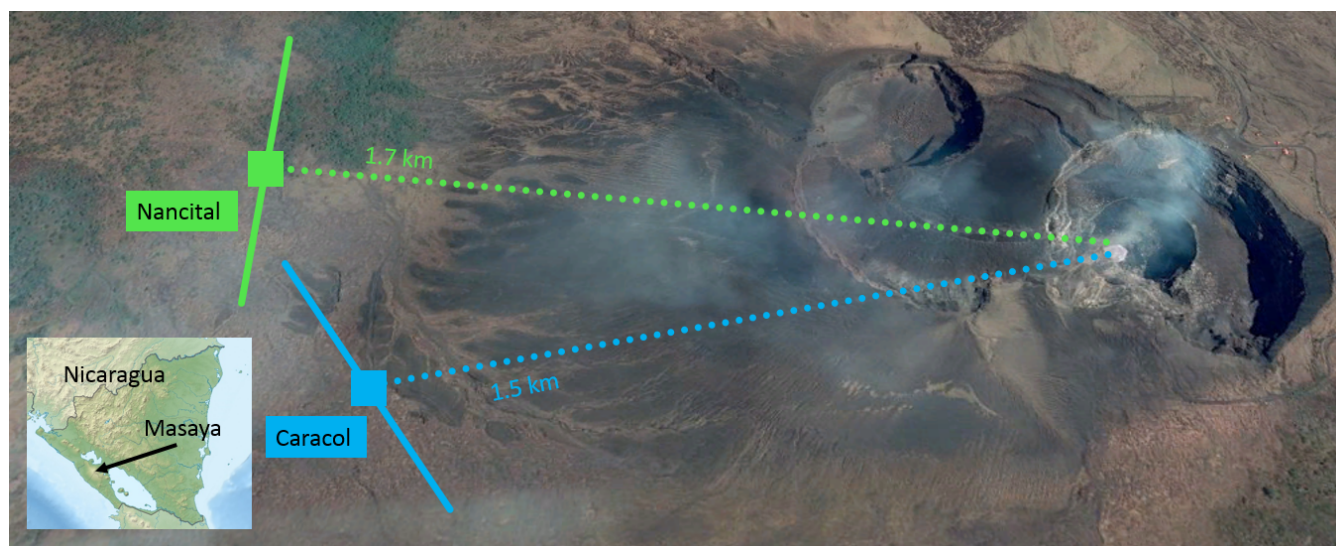


Figure 1. Location and scan geometries of the NOVAC stations Caracol and Nancital at Masaya volcano. Coloured squares indicate the station locations and solid lines the scan direction. For further parameters see Table 1. The map was created with graphical material from https://commons.wikimedia.org/wiki/File:Nicaragua_relief_location_map.jpg and from © Google Earth.

analysis data for an altitude of 700 m a.s.l. (Figure 4), and by ground-based data from Managua airport, which is located 15 km north of Masaya (Figure B3, data from <https://mesonet.agron.iastate.edu>).

Table 1. Spatial set-up of the NOVAC stations at Masaya: altitude A , horizontal distance D to and angular orientation σ to the volcanic edifice, orientation of the scan plane β (see Figures 1 and 2).

station	coordinates	A	D	σ	β
Caracol	11.98, -86.18	382 m a.s.l.	1.5 km	75°	54°
Nancital	11.99, -86.18	340 m a.s.l.	1.7 km	95°	100°

130 ECMWF ERA-Interim data

The ECMWF ERA-Interim dataset has an original spatial resolution of about $0.7^\circ \times 0.7^\circ$ (at and close to the equator), a temporal resolution of 6 h (0:00, 6:00, 12:00, and 18:00 UTC), and 60 hybrid pressure layers which follow the terrain close to ground and in the lower atmosphere and are constant in the higher atmosphere. They reach up to 10 Pa, i.e. about 66 km. The presented ECMWF data are vertically interpolated to an altitude of 700 m a.s.l. and horizontally gridded on a $1^\circ \times 1^\circ$ grid (i.e. about 110 km x 110 km at 12° N). The preparation of the ERA-Interim data on such a grid has been chosen for in general better compatibility with other global data. For local studies using the original $0.7^\circ \times 0.7^\circ$ data may be more appropriate though this distinction

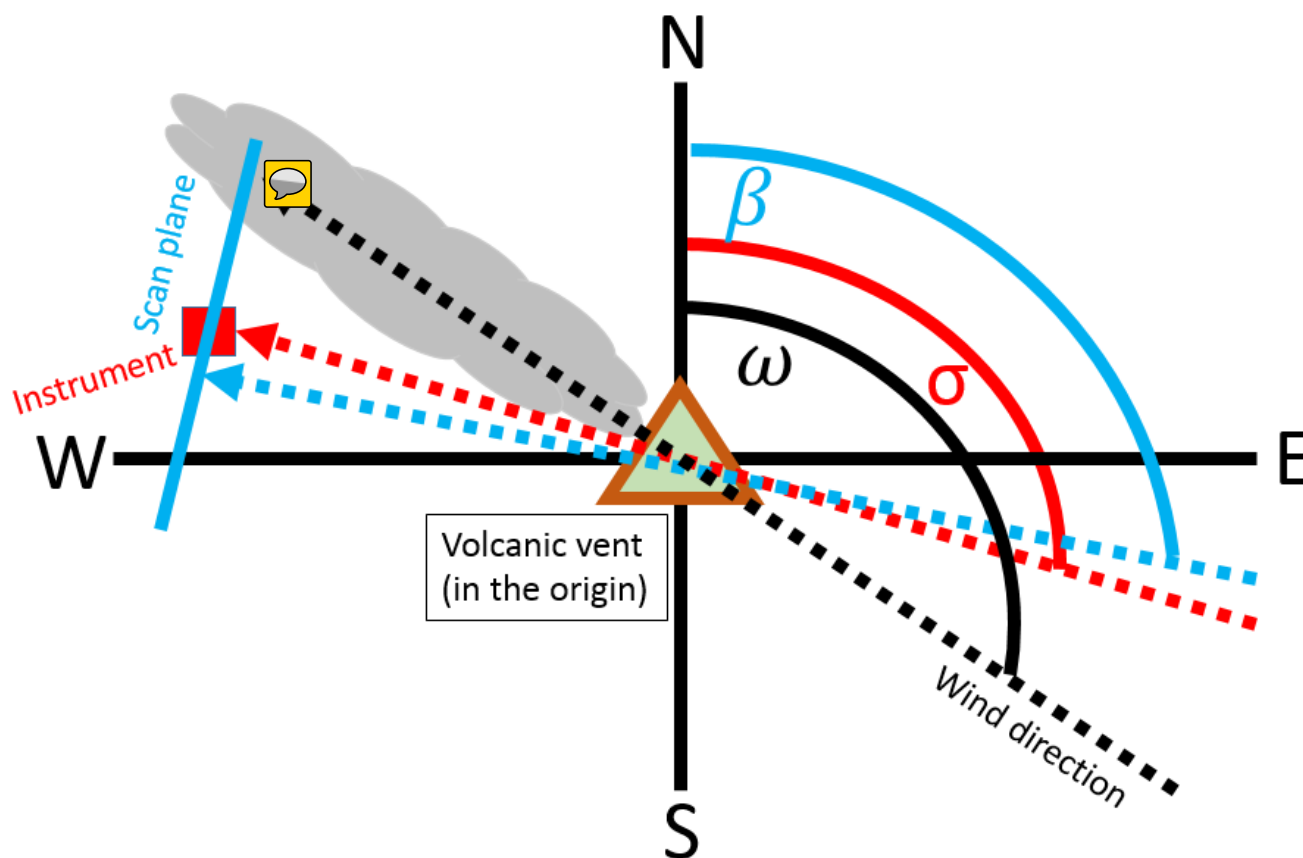


Figure 2. Sketch of the geometric relations which are used to calculate the SO_2 emission fluxes, to conduct the plume centre triangulation, and to estimate the plume age.

becomes mostly obsolete due to our local calibration approach (see below).

The following meteorological parameters are presented and discussed in this study: (1) the wind speed and (2) the wind direction in order to reconstruct the plume propagation (3) the barometric pressure, (4) the ambient air temperature, (5) the water vapour concentration, (6) the relative humidity, and (7) the ozone mixing ratio in order to investigate possible influence on the plume chemistry, and (8) the total cloud cover (i.e. the fraction of the ground pixel area hidden from direct solar irradiation by visible clouds anywhere between ground and the top of the model domain) as a proxy for the radiative conditions.

The following quantitative discussion focuses on the two-weekly moving average of ECMWF data around noon time, though a discussion of the unfiltered time series comes to similar results (see red and blue lines in Figure 3). The time series indicate for all analysed parameters annual cycles, however, with different timing and spacing of their extrema and different significance of their amplitudes. The total cloud cover varied between two clearly distinguishable plateaus with mostly clear skies (values of 0.1 ± 0.1) from December–March and predominantly dense coverage (values of 0.8 ± 0.1) from May–October, indicating that

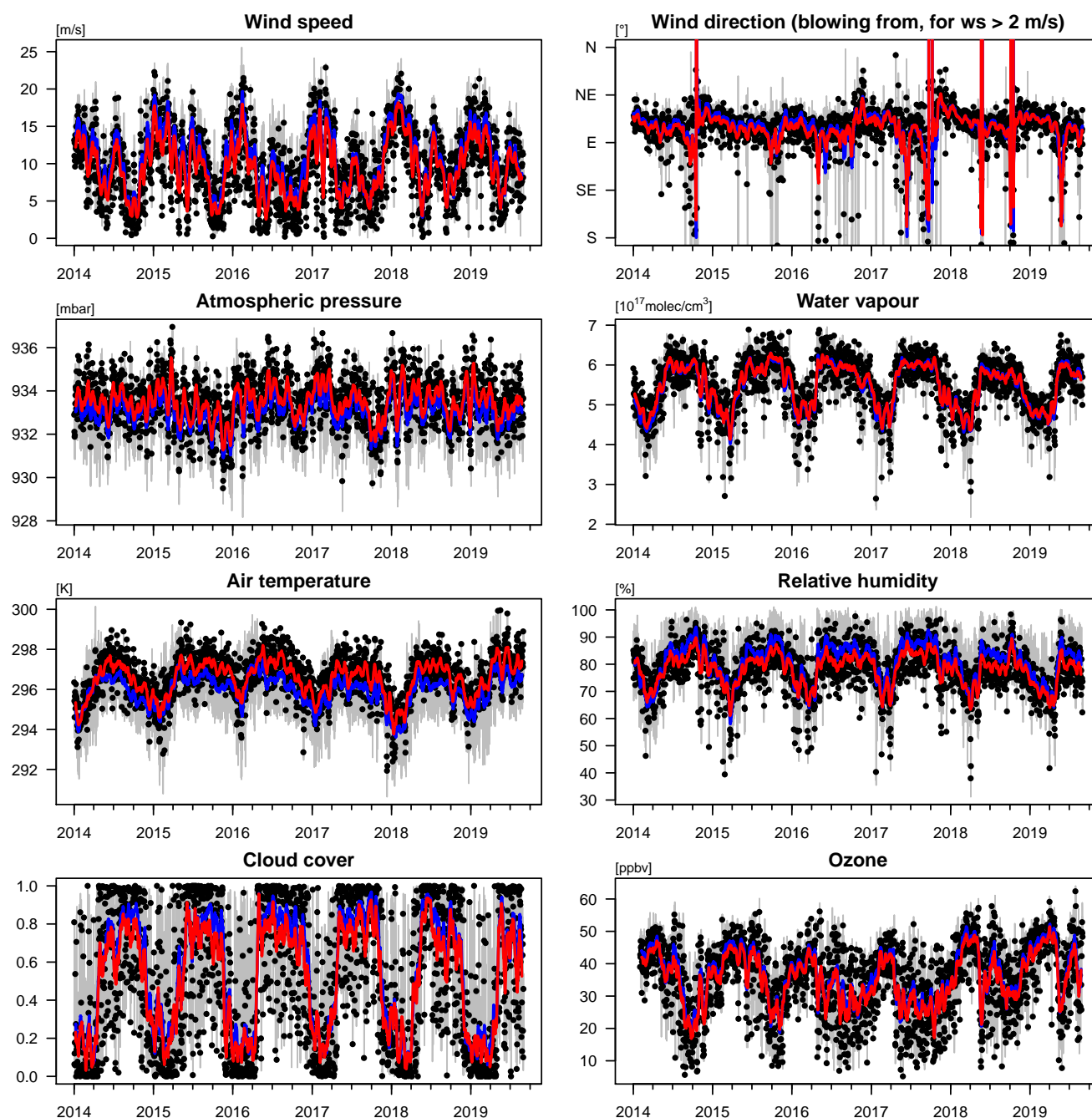


Figure 3. Meteorological conditions at Masaya volcano retrieved from ECMWF ERA-Interim data with resolutions of 6 h and $1^\circ \times 1^\circ$ and interpolated to an altitude of 700 m a.s.l. **Grey lines:** 6-hourly data. **Blue lines:** running means over the 6-hourly data with an averaging window of ± 7 days. **Black dots:** around noon (18:00 UTC) data. **Red lines:** running means over the around noon data with an averaging window of ± 7 days. Absolute variations are almost the same for the full data set and the around noon data only, except for the air temperature and the relative humidity which follow their expected diurnal cycles.

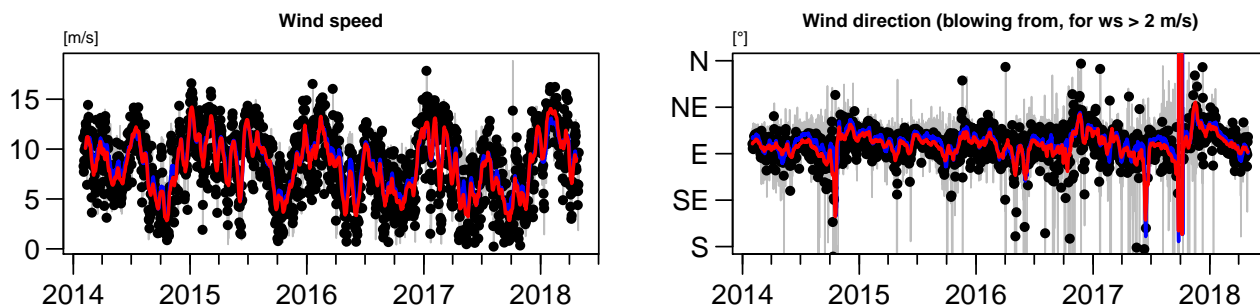


Figure 4. Meteorological conditions at Masaya volcano retrieved from the operational ECMWF reanalysis data. See Figure 3 for details.

Masaya is affected by the intertropical convergence zone (ITCZ) during that latter time interval. The wind speed varied between 3–17 $\frac{\text{m}}{\text{s}}$, with maxima in January/February, and weaker secondary maxima in July, and with minima in June and in October. The average of the wind direction mainly indicates easterlies $(75 \pm 28)^\circ$ subject to an about linear trend every year with a step change every year towards east-northeasterly in October followed an about linear trend towards easterly in September. In addition, the wind conditions are rather unstable every year in June and in October (which corresponds to the times when Masaya is located at the edge of the ITCZ). When those exceptions are ignored by limiting the circular statistics to $40\text{--}110^\circ$ (which contains 88% of the raw data), the wind conditions were rather stable with almost exclusively east–northeasterly winds from $(75 \pm 10)^\circ$ almost all the year. The barometric pressure varied between 931–935 mbar, with weak minima in October/November. The ambient air temperature varied between 294–298 K with maxima in April and minima in January. The water vapour concentration and the relative humidity varied between $4\text{--}6 \cdot 10^{17} \frac{\text{molec}}{\text{cm}^3}$ and 60–90%, respectively, with minima in February/March and maxima from June–October. The ozone mixing ratio varied between 20–50 ppbv with minima usually around October and maxima in March.

160 Operational ECMWF reanalysis data

The accuracy of weather data especially in the mountainous regions around the volcano is directly related to the accuracy of the model topography. Therefore an enhanced (fundamental) model resolution should result in general in more representative data. For this purpose, we investigated the meteorological conditions at Masaya also by using the operational ECMWF reanalysis data with a higher spatial resolution of $0.14^\circ \times 0.14^\circ$ (modelled in spectral domain with a truncation of T1279, interpolated to the Gaussian grid N640). The underlying model of the operational ECMWF reanalysis data is, however, updated frequently (e.g. since March 8 2016 the model uses a finer horizontal resolution of 0.07° instead of 0.14°) and thus there are potentially artificial jumps in its time series. Because this study analysis a long time series, such artificial changes in the model setup are not suitable for direct application. A full list of modifications to the model setup in addition to the change in horizontal model resolution can be found at <https://www.ecmwf.int/en/forecasts/documentation-and-support/changes-ecmwf-model>.



170 Ground-based data from Managua airport

The ground-based data from Managua airport are recorded at an altitude of 59 m a.s.l. and thus their quantitative values are expected to differ from the meteorological data modelled for 700 m a.s.l. Nevertheless, the ground base data agree with the ERA-Interim data in the general patterns and relative variations, with variations in the ambient temperature between 302–307 K, variations in the relative humidity between 40–70%, variations in the wind speeds between $2\text{--}8 \frac{\text{m}}{\text{s}}$, and a mean wind direction
 175 of $(86 \pm 31)^\circ$ (Figure B3). The wind directions differ significantly with $(102 \pm 29)^\circ$ when considering all times of the day.

3 Methods

We derived semi-continuous (only during daytime) time series of the differential slant column densities (dSCD) of SO_2 and BrO via Multi-Axis Differential Optical Absorption Spectroscopy (MAX-DOAS) applied on UV-spectra of the diffuse solar irradiation recorded by the NOVAC stations (e.g. Edmonds et al., 2003; Galle et al., 2003; Bobrowski et al., 2003). The SO_2
 180 emission fluxes and the BrO/ SO_2 molar ratios in the volcanic plume were then derived from the dSCD data.

The spectroscopic retrieval of the SO_2 and BrO dSCDs as well as the spectroscopic and post-spectroscopic retrieval of the BrO/ SO_2 molar ratios applied in this manuscript follow in large parts the evaluation described by Dinger (2019) which itself follows mainly Lübcke et al. (2014) and Dinger et al. (2018).

Our retrieval of the SO_2 emissions fluxes is based on the standard NOVAC approach described by Johansson et al. (2009) but
 185 (1) extended by a set of data filters which aim to reduce the amount of potentially problematic measurement conditions, (2) information on the plume height and the wind conditions has been assessed partially via a triangulation of NOVAC observations, and (3) the spectroscopic retrieval has been adapted to the high SO_2 emission fluxes at Masaya. One of these filters uses the absolute SO_2 background calibration method described by Lübcke et al. (2016).

In this section, we describe the applied retrieval steps and data filters (see Table 2). A summary and critical assessment of our
 190 retrieval steps can be found in the discussion section of this manuscript.

Spectroscopic retrieval of the SO_2 dSCD distribution

The NOVAC data were recorded by UV-spectrometers which scan across the sky from horizon to horizon in steps of 3.6° by means of a small field-of-view telescope yielding a mean temporal resolution of about 5–15 min per scan. Each scan
 195 consists of 53 spectra: an initial zenith spectrum, a dark current spectrum, and 51 measurement spectra (Galle et al., 2010). Prior to the spectroscopic retrieval, the individual spectra of a scan were checked for their spectroscopic quality. A scan was rejected if its initial zenith spectra was either over- or underexposed (accept only spectra whose channel with the highest number of counts has recorded within 12–88% of the maximum possible count number, where the lower boundary is assessed after the dark current correction) or the single exposure time was unreliable (less than 20 ms or more than 2 s). For a passing scan, all its measurement spectra were checked for over- or underexposure and individually rejected if necessary. Furthermore,
 200 all spectra recorded at angles ε larger than $|\varepsilon| > 76^\circ$ were rejected in order to avoid large light paths or spectroscopic



Table 2. Applied filters in chronological order (if condition fulfilled, reject data). See text for details. For comparison, the standard NOVAC retrieval applies the five following filter conditions (Johansson et al., 2009): (1) overexposure of (any) spectrum by more than 99%, (2) underexposure of (any) spectrum by less than 2.5%, (3) $\chi^2_{\text{SO}_2} > 0.9$ for a measurement spectrum, (4) number of passing spectra < 10 , (5) a “plume completeness filter” which rejects a scan if most of the large dSCDs are close to the margin of the effective angle range.

Filter	Filter condition
Zenith spectrum	
exposure time	$< 20 \text{ ms}$ or $> 2 \text{ s}$
overexposure	$> 88\%$ in any channel
underexposure	$< 12\%$ in any channel
Measurement spectra	
overexposure	$> 88\%$ in any channel
underexposure	$< 12\%$ in any channel
zenith angle	$ \varepsilon > 76^\circ$
SO₂ VCD distribution	
number of spectra	< 30
maximum VCD	at margin of effective angle range
relative background	$> 2 \cdot 10^{17} \frac{\text{molec}}{\text{cm}^2}$
Gaussian fit ($b = 0$)	did not converge or negative amplitude
Gaussian fit (b free)	$b < -1 \cdot 10^{17} \frac{\text{molec}}{\text{cm}^2}$
Gauss vs. Discrete	$I_{\text{SO}_2}^{\text{discr}} \notin 0.8\text{--}1.6 \cdot I_{\text{SO}_2}^{\text{fit}}$
absolute background	$> 5 \cdot 10^{17} \frac{\text{molec}}{\text{cm}^2}$
Meteorological conditions	
wind speed	$< 5 \text{ m/s}$

artefacts due to obstacles in the light path. Accordingly, at most 43 measurement spectra could pass the quality filters. The scan was entirely rejected if less than 30 spectra passed.

For every scan passing the filters, SO₂ DOAS fits were applied on each of the passing spectra where the initial zenith spectrum of the respective scan was used as reference spectrum (the DOAS fit scenarios are summarised in Table 3). The result was a distribution of SO₂ dSCDs with the zenith spectrum depending on the viewing direction. The SO₂ distributions were used for three purposes: (1) the calculation of the SO₂ emission fluxes, (2) the triangulation of the plume centre position for a retrieval of the plume height and the wind direction, and (3) the identification of the plume region as a preparation for the BrO/SO₂ retrieval.



Table 3. Applied DOAS fit scenarios. The two lowest lines give the parameter ranges of the Levenberg–Marquardt fit routine.

	SO ₂ fit	BrO fit
Fit range	314.8–326.8 nm	330.6–352.75 nm
<i>(Pseudo-)Absorption cross sections:</i>		
SO ₂	Vandaele et al. (2009), @298 K	(same)
O ₃	Burrows et al. (1999), @221 K	(same)
BrO		Fleischmann et al. (2004), @298 K
O ₄		Hermans et al. (2003)
NO ₂		Vandaele et al. (1998), @294 K
CH ₂ O		Meller and Moortgat (2000), @298 K
Ring spectrum (Grainer and Ring, 1962) calculated from the particular reference spectrum		
Ring spectrum multiplied with the wavelength ⁴ (see Wagner et al., 2009)		
<i>Further DOAS fit parameters:</i>		
Polynomial of order $n = 3$ in the optical depth space		
Stray light polynomial of order $n = 0$ in the intensity space		
Reference spectrum (Ring spectra): $a_{\text{shift}} \in \pm 0.2 \text{ nm}$ and $a_{\text{squeeze}} \in 1 \pm 0.02$		
Absorption cross sections (linked together): $a_{\text{shift}} \in \pm 0.2 \text{ nm}$ and $a_{\text{squeeze}} \in \pm 0.02$		

Choice of the wavelength range in the SO₂ DOAS fit

- 210 The choice of the wavelength range (and in particular its lower limit) used in the SO₂ DOAS fit can cause major deviations in the spectroscopic results. The standard NOVAC evaluation routine uses 310 nm for the lower limit because this value is optimal to detect low SO₂ dSCDs of several $10^{17} \frac{\text{molec}}{\text{cm}^2}$ (which is the case for volcanoes with a low to moderate degassing strength or considerable distances of the DOAS instrument to the emission source). As a drawback, such a short wavelength for the lower limit makes the SO₂ DOAS fit susceptible to saturation effects resulting in an underestimations of SO₂ dSCDs larger than
- 215 $1 \cdot 10^{18} \frac{\text{molec}}{\text{cm}^2}$ (see Figure 5a and e.g. Bobrowski et al., 2010). In contrast to that, our choice of 314.9–326.8 nm can be considered to be hardly affected by saturation effects up to SO₂ SCDs of $1\text{--}2 \cdot 10^{18} \frac{\text{molec}}{\text{cm}^2}$ and still of acceptable accuracy at SO₂ SCDs of $3 \cdot 10^{18} \frac{\text{molec}}{\text{cm}^2}$ (less than 10% underestimation, see Figure 5b). We observed at Masaya, nevertheless, a significant amount of data with SO₂ SCDs above $3 \cdot 10^{18} \frac{\text{molec}}{\text{cm}^2}$ which were underestimated also by our retrieval (Figure 5b and 9). A separated retrieval of those data with an alternative fit range starting, e.g., at 319 nm would in general result in more accurate estimates for these
- 220 particularly large SO₂ SCDs. Fickel and Delgado Granados (2017) proposed such an approach for Popocatepetl volcano using even three wavelength ranges at 310–322 nm, 314.7–326.7 nm, and 322–334 nm. The risk of such a compound retrieval would be, however, artificial jumps along the chosen thresholds. We therefore hesitated to use such an approach but encourage further investigations, e.g., whether an interpolation between the results retrieved by several fit ranges could avoid this risk while

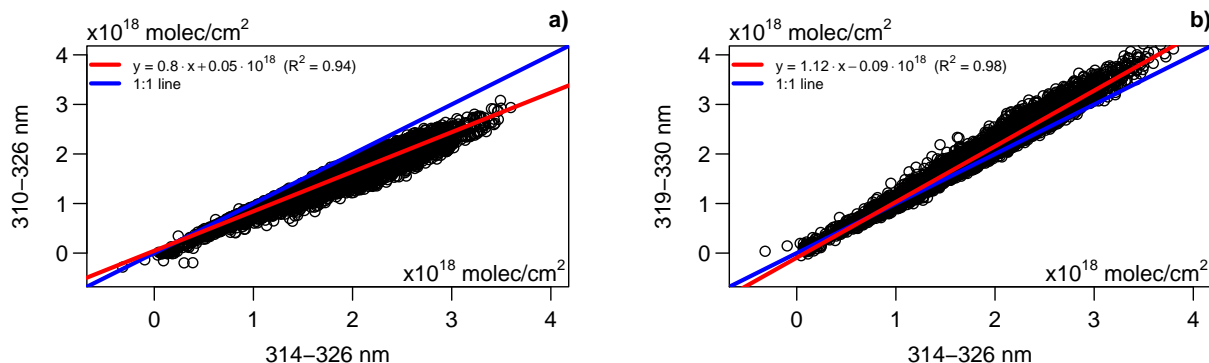


Figure 5. Comparison of the chosen wavelength range (x-axis) with two other wavelength ranges as retrieved for Caracol station from 2014–2020. For statistical interpretation of the 314–326 nm data: 9% of the SO₂ dSCDs were lower than $1 \cdot 10^{18} \frac{\text{molec}}{\text{cm}^2}$, 63% were between $1\text{--}2 \cdot 10^{18} \frac{\text{molec}}{\text{cm}^2}$, 26% were between $2\text{--}3 \cdot 10^{18} \frac{\text{molec}}{\text{cm}^2}$, 2% were larger than $3 \cdot 10^{18} \frac{\text{molec}}{\text{cm}^2}$.

enhancing the accuracy of large SO₂ SCDs (see Theys et al., 2017, for the implementation of such an approach in satellite observations).

Retrieval of the background SO₂ slant column density

The subsequent data analysis requires the absolute SO₂ slant column density (SCD) distribution rather than the SO₂ dSCD distribution, where $\text{SO}_2 \text{ SCD} = \text{SO}_2 \text{ dSCD} + \text{SCD}_{\text{SO}_2, \text{ref}}$. An accurate estimate for the absolute slant column density $\text{SCD}_{\text{SO}_2, \text{ref}}$ of the reference spectrum (here: of the initial zenith spectrum) is non-trivial.

A pragmatic approach is the assumption that the scan included viewing directions which were not at all affected by a contamination with volcanic gases. Following this assumption, for the background direction ε_{bg} $\text{dSCD}_{\text{SO}_2}(\varepsilon_{bg}) = -\text{SCD}_{\text{SO}_2, \text{ref}}$. In order to be less susceptible to negative outliers, we calculated $\text{SCD}_{\text{SO}_2, \text{ref}}$ as the mean of the 8 lowest dSCDs (orange squares in Figure 6).

It has been observed, however, that the assumption of a non-contaminated background direction is not always justified (e.g. Lübcke et al., 2016). Another approach which does not rely on that assumption is the direct retrieval of $\text{SCD}_{\text{SO}_2, \text{ref}}$ via a SO₂ DOAS fit of the zenith spectrum against a solar-atlas spectrum (see Salerno et al., 2009; Lübcke et al., 2016; Chance and Kurucz, 2010). This approach requires, however, to retrieve the instrument characteristics (e.g., via a principal component analysis of the residual spectroscopic structure), which is not only a time expensive procedure but also prone to introducing systematics when not carefully applied.

A third approach is the hybrid of these two approaches with the following subsequent steps: (1) apply the first approach to identify the viewing directions of the 8 lowest SO₂ dSCDs, (2) co-add these 8 spectra, (3) apply the second approach (i.e. evaluate against a solar-atlas spectrum) on this “added-reference-spectrum” (instead of on the zenith spectrum, see Appendix A for details). In comparison to the pure second approach, the absolute retrieval step in this hybrid approach faces in general



low—and mostly negligible—SO₂ SCDs. Therefore, the SO₂ DOAS fit of the absolute calibration retrieval can start at a wave-
 245 length of 310 nm or even lower, resulting in general in lower statistical fit errors and weaker effects from possible spectroscopic
 interferences of the SO₂ absorption cross section with, e.g., the imperfect estimation of the instrument characteristics. The re-
 sults of the hybrid approach could be used either as a filter or for correcting the SCD data w.r.t. the retrieved background SO₂
 SCD.

A fourth approach extends the third approach by (1) checking for a background contamination but then (2) using a reference
 250 spectrum from another time where a background contamination has been ruled out (e.g. from the previous day at the same time)
 for a subsequent iteration of the SO₂ fits. Both, the third and the fourth approach, have in common that the chosen reference
 spectrum has not been recorded under the same conditions as the measurement spectrum. The advantage of the fourth approach
 w.r.t. the third approach would be that the chosen reference spectra are expected to be recorded at least under similar conditions
 as the measurement spectra (at least when the time-of-day and the ambient temperature have been considered for the selection).
 255 The drawback of the fourth approach is the temporal variation of these systematics while the third approach would cause the
 same systematics to all contaminated scans.

We applied the third approach to the data but used the results of the absolute calibration only for a rather conservative data
 filtering: the absolute background SO₂ VCD which was derived as the product of the absolute background SO₂ SCD times
 the mean air mass factor $\overline{m}(\cos(\varepsilon_{i \in \text{bg}}))$ but corrected by $-5 \cdot 10^{16} \frac{\text{molec}}{\text{cm}^2}$ for Caracol station and $+5 \cdot 10^{16} \frac{\text{molec}}{\text{cm}^2}$ for Nancital
 260 station (such that the peaks of the histograms match zero SO₂, see Figure 8). A scan was rejected if its (corrected) absolute
 background SO₂ VCD exceeded $5 \cdot 10^{17} \frac{\text{molec}}{\text{cm}^2}$.

Calculation of the SO₂ emission fluxes

The retrieval of the background SO₂ SCD allows the calculation of the vertical SO₂ column densities

$$V_{\text{SO}_2}(\varepsilon) = \cos(\varepsilon) \cdot [\text{dSCD}_{\text{SO}_2}(\varepsilon) + \text{SCD}_{\text{SO}_2, \text{ref}}] \quad (1)$$

265 associated to the coordinates within the scan plane where the horizontal distance w.r.t. the instrument is $H(\varepsilon) \cdot \tan(\varepsilon)$ and
 the mean plume height $H(\varepsilon)$ (above the horizon of the instrument) can in general vary horizontally. We highlight that eq. 1
 assumes geometric air mass factors while the real air mass factors could deviate due to angle-dependent atmospheric radiative
 transport effects (e.g. Mori et al., 2006; Kern et al., 2010). Examples for retrieved SO₂ VCD distributions are shown in the
 Figures 6 and B2.

270 Precise information on the plume height is usually not available—not to mention spatially resolved variations of the plume
 height. A commonly applied pragmatic approach is thus the assumption of a plume height constant in space and time. Assuming
 that the plume height $H(\varepsilon) = H$ is constant at least in space, the SO₂ emission fluxes F_{SO_2} for a particular time can be
 calculated via

$$F_{\text{SO}_2} = M_{\text{SO}_2} \cdot v \cdot \cos(\omega - \beta) \cdot H \cdot \int_{-\infty}^{\infty} V_{\text{SO}_2}(\varepsilon) d(\tan(\varepsilon)) \quad (2)$$



275 with the molar mass of SO_2 $M_{\text{SO}_2} = 64 \text{ g/mol}$, the absolute wind speed v , and the relative angle $|\omega - \beta| < \frac{\pi}{2}$ between the wind direction and the scan plane (see Figure 2). We highlight that the integral can be understood as a spatial integral which integrates along a straight horizontal line by steps of $d(H \cdot |\tan(\varepsilon)|)$.

The angular integral $I_{\text{SO}_2} = \int_{-\infty}^{\infty} V_{\text{SO}_2}(\varepsilon) d(\tan(\varepsilon))$ can be calculated in good approximation by a discrete summation of the spectroscopically retrieved SO_2 VCD distribution via

$$280 \quad I_{\text{SO}_2} \approx \sum_{i=1}^{n-1} \frac{V_i + V_{i+1}}{2} \cdot [\tan(\varepsilon_{i+1}) - \tan(\varepsilon_i)] \quad (3)$$

where n is the number of all individual spectra (i.e. individual viewing directions) which passed the filters discussed above and the V_i are the vertical column densities calculated according to eq. 1 and associated to the horizontal coordinates $H \cdot \tan(\varepsilon_i)$ as explained above.

Up to here, the paragraph followed the standard NOVAC approach (Johansson et al., 2009). This approach tacitly assumes
 285 that the measurement conditions have not changed significantly during one scan. This assumption could be frequently not justified for several causes, e.g. unstable wind conditions or intra-minute variations in the volcanic degassing source strength (e.g. Pering et al., 2019). In the next paragraph, we present a set of filters which reject data which is potentially influenced by unstable measurement conditions. Our approaches to estimate the wind conditions as well as the plume height are discussed starting in the next but one paragraph.

290 Filtering of unstable conditions

For stable meteorological and radiative conditions as well as a constant SO_2 emission strength, the horizontal broadening of a volcanic plume is caused predominantly by turbulent diffusion. Under such ideal measurement conditions, the SO_2 VCD distribution would be a Gaussian distribution w.r.t. the relative distance $H \cdot \tan(\varepsilon_i)$. A Gaussian shape is indeed observed in good approximation for the large part of the scans where exactly one plume has been identified (e.g. Figures 6 and B2d).
 295 However, there is also a significant amount of scans where the retrieved SO_2 VCD distribution differs significantly from an ideal Gaussian shape. The predominant reason for such deviations is an apparent secondary plume (presumably either because there is another plume or because the wind direction has changed during the scan) but also less well defined, rather random shapes have been observed (see Figure B2a–c).

As motivated above, scans with unstable conditions should be rejected. For this purpose, we fitted Gaussian distributions

$$300 \quad V_i(\varepsilon_i) = a \cdot \exp \left[- \left(\frac{\tan(\varepsilon_i) - \mu}{w} \right)^2 \right] + b \quad (4)$$

as a function of $\tan(\varepsilon)$ to the SO_2 VCD distribution (with the fit parameters a , μ , w , b) as a tool to semi-quantitatively assess the “degree of stability” during that scan. Actually, two Gaussian distributions have been fitted to the SO_2 VCD distribution, with a fixed $b = 0$ and with a free parameter b (see the solid and dashed lines in Figure B2, while both lines perfectly overlap in Figure 6).

305 The Gaussian fits (and other criteria) were used to filter the data in six subsequent steps (F1)–(F6), a scan was rejected if:



(F1) its highest SO₂ VCD was retrieved at the margin of the effective angle range (which is usually at $\pm 75.6^\circ$) because in such a case at least half of the plume area was not included, (F2) the discrete SO₂ VCD offset exceeded $2 \cdot 10^{17} \frac{\text{molec}}{\text{cm}^2}$ because for stable conditions that offset should be negative by construction, (F3) the Gaussian fit with fixed $b = 0$ did not converge or proposed a negative amplitude (20% and 5% of the scans were rejected by these filters for Caracol station and Nancital station, respectively).

Next, we highlight that the Gaussian fit would tend to propose a positive offset parameter $b > 0$, e.g. if a secondary plume elevates the apparent background level. In contrast to that, significant negative values for b indicate that the effective scan range does not include the gas-free background. Accordingly, a scan was rejected if (F4) $b < -1 \cdot 10^{17} \frac{\text{molec}}{\text{cm}^2}$ (3% and 1% of scans rejected).

Next, we compared the Gaussian integral $I_{\text{SO}_2}^{\text{fit}} = \sqrt{2 \cdot \pi} \cdot a \cdot w$ (retrieved for $b = 0$) and the discrete integral $I_{\text{SO}_2}^{\text{discr}}$. On the one hand, the Gaussian integral is also for $b = 0$ usually smaller than the discrete integral (e.g. because of a secondary peak or an asymmetric plume shape). On the other hand, our filtering of data with $|\varepsilon_i| > 76^\circ$ implies the tacit assumption of $V_i = 0$ for $|\varepsilon_i| > 76^\circ$ for eq. 3. When this assumption does not hold true, the discrete integral underestimates the overall SO₂ amount while the Gaussian integral could correctly include those contributions. Furthermore, a scan was rejected if its two integrals differed rather strongly, that is, a scan passed only if (F5) $I_{\text{SO}_2}^{\text{discr}} \in 0.8\text{--}1.6 \cdot I_{\text{SO}_2}^{\text{fit}}$ (20% and 10% of scans rejected, with 12% and 5% due to the lower threshold and 8% and 5% due to the upper threshold). Furthermore, for a passing scan the higher value $I_{\text{SO}_2}^{\text{finally}} = \max(I_{\text{SO}_2}^{\text{discr}}, I_{\text{SO}_2}^{\text{fit}})$ of the two integrals was chosen (where $I_{\text{SO}_2}^{\text{fit}}$ was chosen for 28% and 23% of the scans). As a last filter (F6), a scan was rejected when its absolute SO₂ background VCD exceeded $5 \cdot 10^{17} \frac{\text{molec}}{\text{cm}^2}$ (see above, 8% and 3% of scans rejected).

In total, 57% and 82% of the scans passed the filters for Caracol station and Nancital station, respectively. We consider this a good compromise between the lack of temporal resolution and reducing the risk of systematics due to unstable measurement conditions.

Triangulation of the plume centre position

When the volcanic gas plume is observed simultaneously by two NOVAC stations, the two associated viewing directions towards the plume centre can be used for a triangulation of the spatial position of the plume centre. The relationship between the plume height H_s above the horizon of the NOVAC station s and the wind direction ω is given by

$$H_s + A_s = D_s \cdot \left| \frac{\sin(\omega - \sigma_s)}{\cos(\omega - \beta_s) \cdot \tan(\varepsilon_s)} \right| \quad (5)$$

where the fixed station geometry parameters A , D , σ , β are summarised in Table 1 and the horizontal geometrical considerations are sketched in Figure 2. We highlight that the total plume altitude $H_s + A_s$ is the same for both instruments. If NOVAC station s observes $\varepsilon_s = 0^\circ$, the wind direction is trivially given by $\omega = \sigma_s$ and the plume height can be retrieved by applying eq. 5 on the other station.

We used the peak positions of the above introduced Gaussian fits (with $b = 0$) as estimates for the plume centre position. A practical limitation of the triangulation was that the NOVAC stations did not measure exactly simultaneously. Therefore a tem-

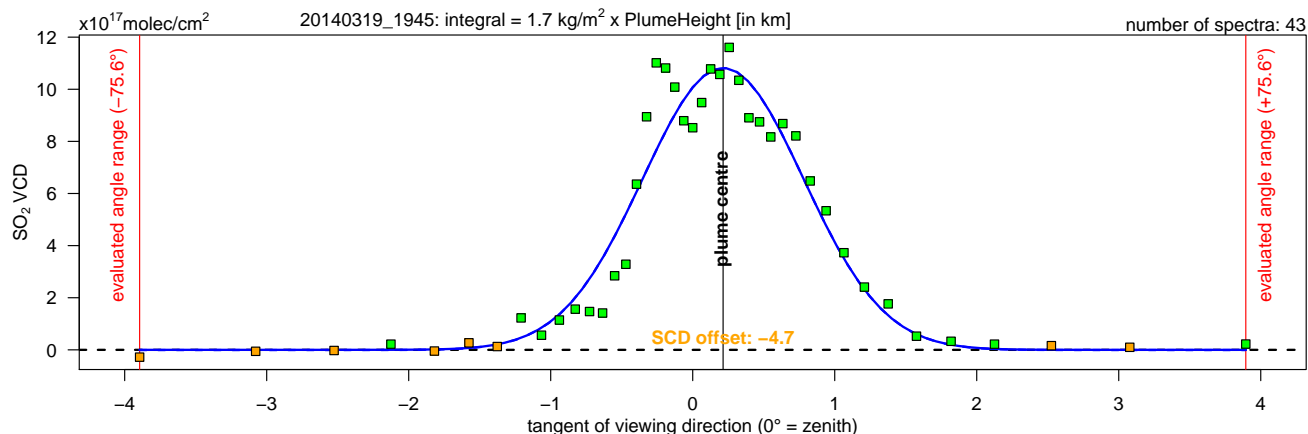


Figure 6. SO_2 VCD distribution retrieved from the scan starting at 2014-03-19 19:45 UTC recorded at Caracol station. The green and orange squares give the retrieved angular SO_2 VCD distribution. Only data for zenith angles between -75.6° and $+75.6^\circ$ are considered. The orange squares are used for the retrieval of the background SCD (the set of the lowest SCDs does not necessarily match perfectly with the set of the lowest VCDs). The (negative) background SCD is given in orange. The plume centre is retrieved via the Gaussian fit (solid blue line).

poral binning of their data was required. We calculated bins of 30 min. A bin was rejected if the plume centre varied for one
 340 instrument such that the standard deviation exceeded 20° (within these 30 min).

The plume centre triangulation proposed an average wind direction of $(84 \pm 3)^\circ$ and average total plume altitudes of $H + A_s = (755 \pm 102)$ m which implied an average plume height above horizon of (373 ± 102) m for Caracol station and (415 ± 102) m for Nancital station (Figure 7).

Estimates for the wind speed and the wind direction

345 We based our analysis in general on the meteorological parameters from the ECMWF ERA-Interim data because this dataset allows an analysis consistent in time, i.e. without potential jumps in the time series. Nevertheless, the ERA-Interim data have to be expected to provide only limited accuracy in particular in the complex topology around volcanoes. Therefore, we applied the following local calibrations of the ERA-Interim data.

We compared the wind speeds v_{era} provided by the ERA-Interim dataset and v_{oad} provided by the operational ECMWF re-
 350 analysis data. We consider the latter to be in general more accurate estimates due to its higher spatial resolution. Despite that the wind speeds of both datasets are highly correlated (coefficient of 89%), their scatter plot significantly deviates from a proportional relationship with

$$v_{\text{oad}} = 0.53 \cdot v_{\text{era}} + \sqrt{v_{\text{era}}} \quad (\equiv v_{\text{calibrated}}) \quad (6)$$

being apparently a good fit (Figure 8b). All wind speed data used in our further evaluation steps were retrieved from the ERA-
 355 Interim data but calibrated according to eq. 6.

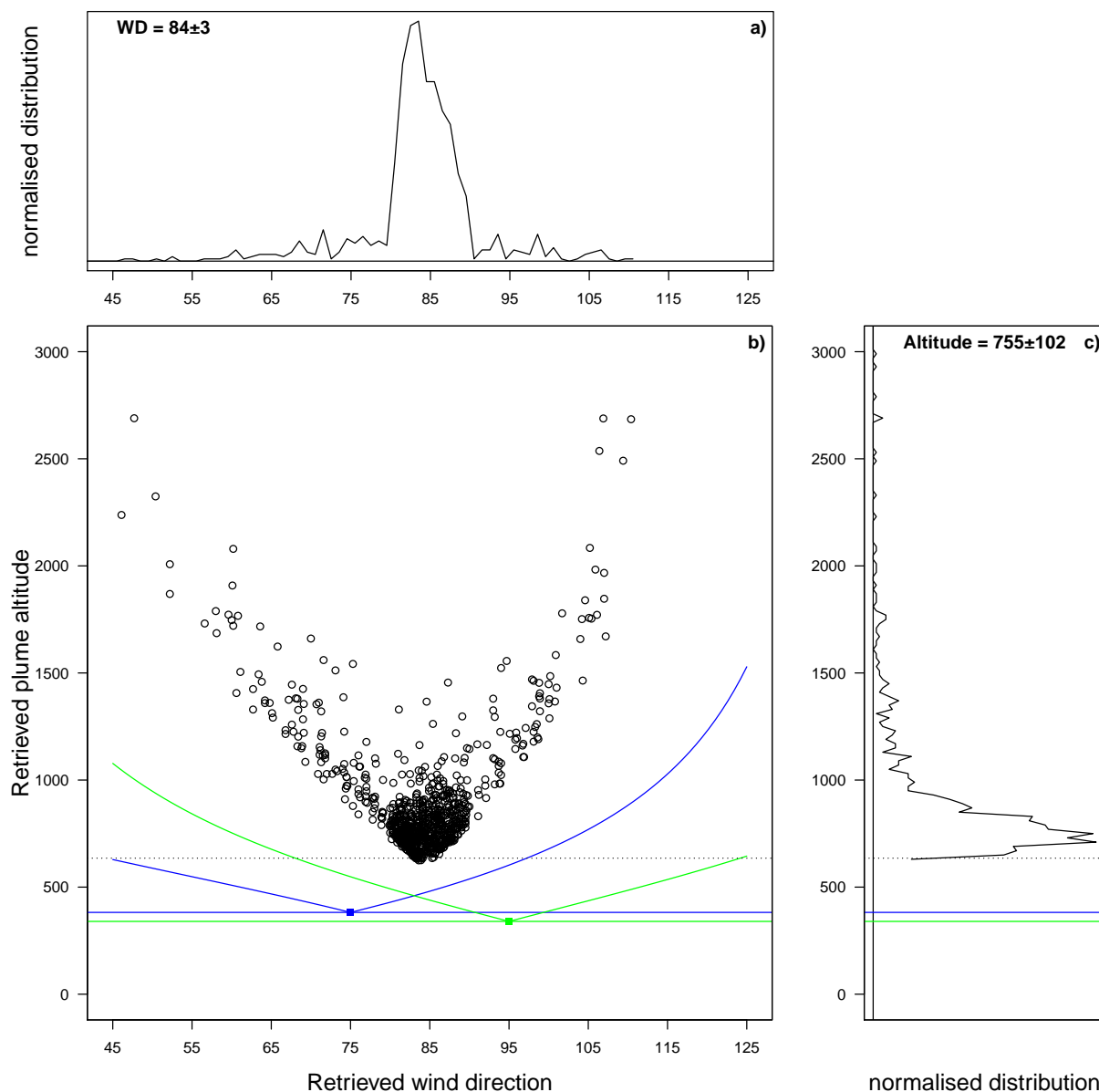


Figure 7. Results of the plume centre triangulation. Data has been binned in 30 min intervals and the means of the plume centre have been compared. A bin has been rejected if the plume centre varied for one instrument such that the standard deviation exceeded 20° . **a)** Histograms of the retrieved wind directions. **b)** Scatter plot of the retrieved plume altitudes and the retrieved wind directions. The altitudes of the Caracol and Nancital stations and of the volcanic edifice are marked by blue, green, and grey lines. The effective field of view $|\epsilon| < 76^\circ$ of the two instruments is given by the curvy blue and green lines. The dominant bulk of observations centred at approximately $(84^\circ, 756$ m a.s.l.) refers to observations when both instruments nearly simultaneously recorded the sample plume while the “wings” to the upper left and upper right corners refer to observation where both instruments recorded at the same time different plumes. The wings are presumably artefacts caused by the simplicity of the triangulation approach given in equation 5. **c)** Histogram of the retrieved plume altitudes.

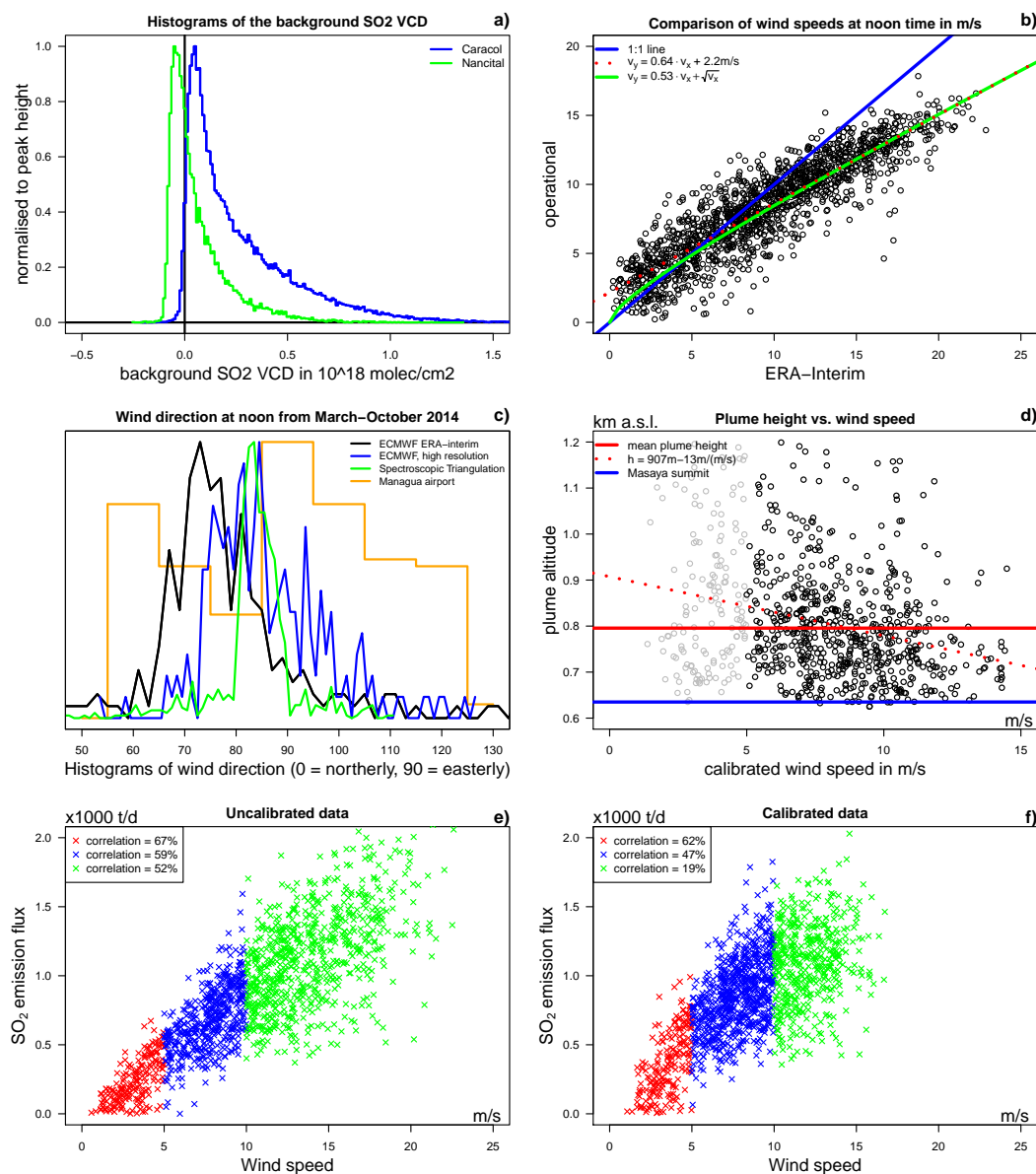


Figure 8. Summary of several empirical observations used for filtering and estimations. **a)** Histograms of the absolute SO₂ SCD of the background spectrum for both instruments for their respective total time series. **b)** Comparison of the wind speeds from the ECMWF ERA-Interim data and the operational ECMWF reanalysis data. **c)** Comparison of the distribution of the wind directions estimated by four different methods. **d)** Scatter plot of the triangulated plume height and the calibrated wind speed. The red dotted line indicates the relationship between wind speed and plume height. **e+f)** Correlation between the retrieved SO₂ emission fluxes and the wind speed. The plots compare daily SO₂ means and the means of the wind speed at the respective measurement times. **e)** Original ERA-Interim wind speeds versus the non-calibrated SO₂ emission fluxes calculated with original ERA-Interim wind conditions and a fixed plume altitude of 635 m a.s.l. **f)** Calibrated wind speeds versus the SO₂ emission fluxes calculated with the calibrated wind conditions and a dynamic plume altitude as a function of the wind speed.



We consider the wind directions retrieved via the triangulation of the NOVAC results as the “ground truth”. The operational ECMWF reanalysis data matches well with these data, which further supports this assumption. The ERA-Interim data, however, provides wind directions which are further to the East-Northeast by 11° (Figure 8c). All wind direction data used in our further evaluation steps were retrieved from the ERA-Interim data but calibrated according to eq. 7:

$$\omega_{\text{calibrated}} = \omega_{\text{era}} + 11^\circ \quad (7)$$

(that is a shift from east-northeasterly towards easterly).

These two calibrations could not be expected to improve the accuracy for every single data point but result arguably in average in a more accurate data set.

Estimates for the plume height

The plume altitude is a major source of uncertainty in the calculation of the SO_2 emission fluxes. When lacking visual observations, the plume altitude is usually assumed to be fixed to the altitude level of the volcano summit or the expected effective plume height of the volcanic plume.

The plume height can be considered to vary significantly and depending on the wind conditions. The initial buoyancy of the volcanic plume is just one mechanism which links the plume height and the wind speed. The volcanic plume is usually hotter than the ambient atmosphere and thus rises until its temperature is equilibrated due to adiabatic cooling and mixing with ambient air. Accordingly, higher wind speeds should result in average in lower observed plume heights for at least two reasons: First, the higher the wind speed the larger is the atmospheric turbulence, the larger is the cooling rate of the plume, and thus the lower is the effective plume height. Second, the higher the (horizontal) wind speed, the smaller has been the propagation time between release and observation, and thus the lower is the probability that measured plume has already reached its effective plume height.

The comparison of the triangulated plume height with the wind speed (calibrated as explained above) confirmed such a causal link between the plume height and the wind speed with a weak linear relationship of (Figure 8d)

$$H_s[\text{in m}] + A_s[\text{in m}] = 907\text{m} - 13\text{m} \cdot v_{\text{calibrated}}[\text{in m/s}] \quad (8)$$

We used this relationship for dynamic estimates of the plume height as a function of the wind speed. We are aware that this relationship is subject to a large scatter, though we consider it a better best guess than applying a fixed plume height. In particular, using a fixed plume height could result in apparent seasonal variations in the SO_2 emission fluxes which are, however, possibly only inherited artefacts due to seasonal variations of the wind speed (see next paragraph).

Correlation of SO_2 emission fluxes and wind speeds

We observed a strong correlation between the SO_2 emission fluxes and the wind speeds when none of our estimation approaches for the wind speed, the wind direction, or the plume height were applied (correlation coefficient of 0.6 when all wind speeds are considered and of 53% when only wind speeds larger than 10 m/s are considered, Figure 8e). This correlation was lower for



the calibrated data (correlation coefficient of 69% when all wind speeds are considered) and in particular basically vanished for wind speeds larger than 10 m/s (correlation coefficient of 19%, Figure 8f).

The SO₂ emission fluxes are of magmatic origin and thus no causal link to the meteorological conditions would be expected.

390 For better readability, we postponed the discussion of this observation to section 5 “Discussion of the SO₂ emission flux retrieval”. There our conclusions were that the observed correlation between the SO₂ emission fluxes and the wind speed is rather not a real observation but is more likely caused by misestimations of the SO₂ emission fluxes and in particular due to neglecting the variations in the plume height.

On the one hand, our proposed retrieval extension were able to correct this spurious correlation for wind speeds larger than 395 10 m/s (Figure 8f). On the other hand, we were not able to explain or correct for that correlation for wind speeds smaller than 10 m/s. Accordingly, it could be appropriate to reject all data with wind speeds smaller than 10 m/s but this would massively reduce our dataset. As a compromise between data reliability and temporal resolution we thus applied a more conservative filter and reject only those data with wind speeds smaller than 5 m/s. This subsequent filter rejected 15% and 22% of the remaining scans for Caracol and Nancital station, respectively (but 2% and 78% when rejecting all data with wind speeds smaller than 400 10 m/s).

Retrieval of the BrO/SO₂ molar ratios

The optical density of BrO in a volcanic gas plume is at least one order of magnitude smaller than for SO₂ and thus a higher photon statistic is required for sufficiently precise BrO results beyond the detection limit. Annually controlled measurements, this is realised by a sufficiently large number of consecutive exposures (and besides, typical state-of-the-art campaign 405 instruments are much more precise than NOVAC instruments due to better spectrometers and an active temperature stabilisation). For NOVAC data optimised w.r.t. the SO₂ retrieval requirements, the required larger number of exposures per spectrum can be realised by a subsequent spectral adding of spectra which are recorded in the temporal proximity and in the same or at least similar viewing direction.

For this purpose, the retrieved SO₂ dSCD distribution was used to identify all spectra which were predominantly part of the 410 volcanic plume and then these spectra are added in order to get one “added-plume-spectrum” per scan. Analogously, the spectra which were associated with the 10 lowest SO₂ dSCDs are added in order to get one “added-reference-spectrum”. The drawback of this method is the loss of spatial information because the retrieval derives only one averaged value for the BrO dSCDs and thus for the BrO/SO₂ molar ratios. Accordingly, this approach does not allow to investigate possible variations of the BrO/SO₂ molar ratio as a function of, e.g., the distance to the plume centre.

415 As mentioned above, a volcanic gas plume can be expected to have an about Gaussian shaped angular gas distribution embedded in a flat, gas-free reference region. We retrieved the plume region by a Gaussian distribution fitted on the SO₂ dSCD distribution as a function of the zenith angles. The standard deviation range of the Gaussian distribution ($\alpha_{\text{peak}} \pm \sigma_{\text{Gauss}}$) was then defined as the plume region. The applied filters of the BrO/SO₂ retrieval were less strict than for the SO₂ emission flux retrieval: A scan was rejected from the further analysis only if the Gaussian fit failed to converge or if $\sigma_{\text{Gauss}} < 5^\circ$. Furthermore, 420 if σ_{Gauss} was rather large the so defined plume region may have overlapped with the reference region. To avoid this inconsis-



tency, if the spectroscopically defined (Gaussian) plume region included more than 10 spectra, the plume region was instead defined as the angle range with the highest running mean value over 10 spectra for the SO_2 dSCD. The spectra associated to the plume region were spectroscopically added to one “added-plume-spectrum”.

We highlight that it would be more consistent to fit the Gaussian distribution on the SO_2 VCD distribution as a function of the tangent of the zenith angles (instead of a fit on the SO_2 dSCD distribution as a function of the zenith angles). Nevertheless, the maximum possible effect would be that ± 1 spectrum is included to the plume region. We used the fit in the dSCD–angle space for practical and historical reasons but encourage to fit in the VCD–tangent space instead for maximum consistency with the SO_2 flux retrieval.

The added-plume-spectra and added-reference-spectra per scan were used for a second iteration of the spectroscopic retrieval in order to retrieve SO_2 and BrO dSCDs representative of the plume center. From this set of scans, all scans with sufficiently reliable BrO fits (here: scans with $\text{BrO} < 2 \cdot 10^{-3}$) were used for a third iteration: the added-plume-spectra and added-reference-spectra of 4 consecutive scans were spectroscopically added and again SO_2 and BrO DOAS fits were applied. An I_0 -correction was applied to these final data, which had not been done beforehand in order to save evaluation time.

The SO_2 and BrO dSCDs and the BrO/ SO_2 molar ratios discussed in this manuscript refer to the results of the third spectroscopic iteration (Figure 9). We highlight that these dSCDs are not absolutely calibrated for a background contamination (see above) because no reliable method for a absolute calibration of a background contamination with BrO has been developed. The interpretation of the BrO/ SO_2 molar ratios thus tacitly assumes that a possible background contamination has the same BrO/ SO_2 molar ratio as the main plume. For first investigations of this assumption and possible advances towards a correction of a BrO contamination see Wilken (2018).

We highlight that the retrieval of the BrO/ SO_2 molar ratios is hardly affected by the numerous potential sources of systematic effects as it is the case for the SO_2 emission fluxes. For instance, the BrO/ SO_2 molar ratio is not affected by assumptions on the air mass factor and on the plume height. In addition, the BrO/ SO_2 molar ratio appears to be hardly susceptible to systematic effects in the radiative transport because the quantitative effects are similar for BrO and SO_2 and thus cancel in good approximation (Lübcke et al., 2014).

4 SO_2 and BrO time series at Masaya

In this section, we present the SO_2 and BrO time series retrieved from the NOVAC data. General volcanological observations of the lava lake activity suggested a separated discussion of three time intervals: (1) “prior to the lava lake elevation (until late 2015)”, (2) “period of high lava lake activity (from December 2015 to May 2018)”, and (3) “period of low lava lake activity (from May 2018 on)”. The transition between these three activity periods were unfortunately coinciding by chance with the two major data gaps in the NOVAC time series from September 9 to November 16 2015 and from March 21 to June 23 2018. The statistical analysis results discussed in the following, therefore, refers to the time intervals (1) March 2014 – September 2015, (2) November 2015 – March 2018, (3) June 2018 – March 2020. Accordingly, the analysis assumed that the volcanic activity was enhanced already in mid November 2015 or earlier.



Table 4. Main statistical properties of the spectroscopic results for Caracol station. Early BrO/SO₂ NOVAC observations between 2007–2009 are listed for completeness. For both time intervals the average BrO/SO₂ molar ratios peaked around March with monotonous increasing trends else, indicating that the BrO/SO₂ molar ratios were also from 2007–2009 affected by a similar annual cyclicality.

time interval	SO ₂ emission fluxes (in 1000 t d ⁻¹)			BrO/SO ₂ molar ratios (in 10 ⁻⁵)			“BrO emission fluxes” (in kg d ⁻¹)
	daily means	daily variation	daily maxima	daily means	annual trend (in 10 ⁻⁵ a ⁻¹)	amplitude of annual cycle	
<i>Apr 2007 – Jun 2007</i>				3.3 ± 0.9			
<i>Sep 2008 – Feb 2009</i>				4.9 ± 1.4			
(1) Mar 2014 – Oct 2015	1.0 ± 0.2	0.3 ± 0.1	1.8 ± 0.4	2.9 ± 1.5	−0.1 ± 0.1	±1.4	44 ± 14
(2) Nov 2015 – Mar 2018	1.0 ± 0.3	0.3 ± 0.1	1.7 ± 0.6	4.8 ± 1.9	1.2 ± 0.1	±1.8	72 ± 18
(3) Jun 2018 – Mar 2020	0.7 ± 0.2	0.2 ± 0.1	1.1 ± 0.3	5.5 ± 2.6	−0.8 ± 0.2	±2.6	56 ± 18

The consistent patterns in the gas data observed from November 2015 – March 2018 (see below) supports this assumption and may furthermore indicate that the elevation of the lava lake level lagged by several weeks behind the actual onset of activity in the shallow magmatic system. The long-term averages of these time intervals were retrieved for intervals spanning over exact multiples of a year in order to avoid biases due to the seasonal modulation, namely September 1 2014 – September 1 2015, January 1 2016 – January 1 2018 (i.e. this was not affected whether the time intervals (1) and (2) were separated in December 2015 or already in November 2015), and January 1 2019 – January 1 2020.

SO₂ and BrO dSCDs

The data from Caracol station and Nancital station were in general in good agreement (correlation coefficients of 0.82 and 0.77 for daily averages of SO₂ and BrO dSCDs). The Caracol station observed in average higher dSCDs with a relative factor of 1.18 ± 0.21 for SO₂ and 1.06 ± 0.24 for BrO (when neglecting data with BrO dSCDs below $5 \cdot 10^{13} \frac{\text{molec}}{\text{cm}^2}$). Analogously, relative factors of 1.12 ± 0.20 and 0.99 ± 0.19 were observed for the daily averages of the SO₂ emission fluxes (see section 5 and Figure 10) and of the BrO/SO₂ molar ratios, respectively.

In the following, we discuss the typical variations observed by Caracol station. From March 2014 to September 2015, the SO₂ dSCDs varied between $1\text{--}3 \cdot 10^{18} \frac{\text{molec}}{\text{cm}^2}$ and the BrO dSCDs had daily maxima of about $1.5 \cdot 10^{14} \frac{\text{molec}}{\text{cm}^2}$ but with peaks of up to $3 \cdot 10^{14} \frac{\text{molec}}{\text{cm}^2}$. From November 2015 to March 2018 (period of high lava lake activity), the SO₂ dSCDs varied predominantly between $1\text{--}4 \cdot 10^{18} \frac{\text{molec}}{\text{cm}^2}$ but with 9% of the data varying between $4\text{--}8 \cdot 10^{18} \frac{\text{molec}}{\text{cm}^2}$ and the BrO dSCDs had doubled with daily maxima of about $3 \cdot 10^{14} \frac{\text{molec}}{\text{cm}^2}$ with peaks of up to $6 \cdot 10^{14} \frac{\text{molec}}{\text{cm}^2}$. From June 2018 to March 2020, the SO₂ dSCDs were lower again and varied between $1\text{--}2 \cdot 10^{18} \frac{\text{molec}}{\text{cm}^2}$ and the BrO dSCDs had daily maxima of about $1.5 \cdot 10^{14} \frac{\text{molec}}{\text{cm}^2}$. In summary, the SO₂ and BrO dSCDs time series showed for the second time interval enhanced long-term averages but also a significantly larger variability.

Furthermore a Lomb-Scargle periodicity analysis indicated that the SO₂ dSCDs followed an annual cycle with pronounced

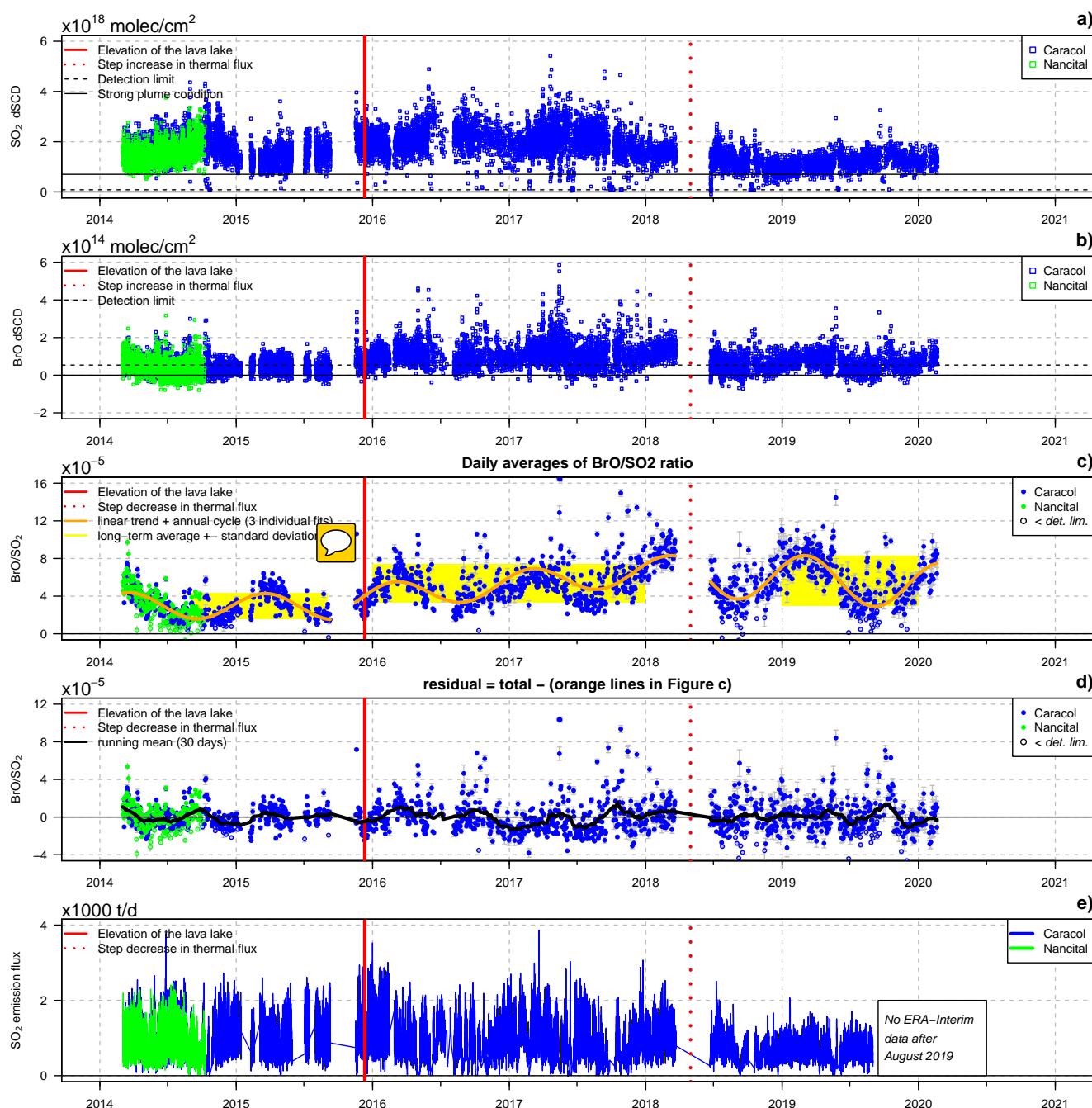


Figure 9. a-c) Time series of the differential slant column densities of SO_2 and BrO and calculated daily means of the BrO/SO_2 molar ratios in the gas plume emitted from Masaya (tick marks indicate first day of the particular eruption). The two NOVAC stations are indicated by the different colours. c) Best fits of the long-term pattern are given for three individual time intervals (orange lines). The yellow bands indicate the long-term averages and the standard deviations. d) Residual BrO/SO_2 time series when subtracting the best fits from the three individual parts of the BrO/SO_2 time series. e) Daily means of the SO_2 emission fluxes.



475 minima during January of each year (false alarm probability of $3 \cdot 10^{-211}$) and that the BrO dSCDs followed an annual cycle ($3 \cdot 10^{-213}$) with an additional semi-annual modulation ($2 \cdot 10^{-110}$).

Patterns in the BrO/SO₂ time series

Considering the whole time series from 2014–2020, the average BrO/SO₂ molar ratios were $(4.4 \pm 2.3) \cdot 10^{-5}$ and subject to characteristic variations between $1\text{--}10 \cdot 10^{-5}$. The BrO/SO₂ molar ratios strongly differed between the three periods of volcanic
 480 activity with average BrO/SO₂ molar ratios of $(2.9 \pm 1.5) \cdot 10^{-5}$, $(4.8 \pm 1.9) \cdot 10^{-5}$, and $(5.5 \pm 2.6) \cdot 10^{-5}$ (see yellow bars in Figure 9c).

In addition to the variations described in the previous section, the BrO/SO₂ time series indicated an extremely significant annual cycle with maxima in early March accompanied by a semi-annual modulation (indicated by a Lomb-Scargle analysis, false alarm probability of $9 \cdot 10^{-74}$) as well as a varying long-term trend. These patterns were investigated for each of the three
 485 time intervals separately by fitting linear trends plus a sinusoidal variation with a period of one year to the respective BrO/SO₂ time series. For all three time intervals the timing of the annual cycle remained basically the same but the average amplitude of the cycle varies between the three time intervals being $1.4 \cdot 10^{-5}$, $1.8 \cdot 10^{-5}$, $2.6 \cdot 10^{-5}$, respectively. The accompanying linear trends in the BrO/SO₂ time series were $(-0.07 \pm 0.11) \cdot 10^{-5}$, $(1.22 \pm 0.09) \cdot 10^{-5}$, $(-0.84 \pm 0.17) \cdot 10^{-5}$ per year for the three time intervals (see Table 4). An extrapolation of the trends of the two earlier time intervals to December 11 2015, that is the
 490 date of the lava lake elevation, implied an apparent step increase by $0.7 \cdot 10^{-5}$ in the average BrO/SO₂ molar ratios.

The residual patterns were investigated by subtracting the fitted variations (annual cycle and trend) from the respective time series for the three time intervals. Most residual variations spanned between $\pm 2 \cdot 10^{-5}$ subject to a standard deviation of $1.3 \cdot 10^{-5}$ and some outliers of up to $9 \cdot 10^{-5}$ (Figure 9d). A Lomb-Scargle periodicity analysis indicated a weak semi-annual modulation with an amplitude of $0.5 \cdot 10^{-5}$ of the dominant annual periodicity with maxima in each March and September
 495 (false alarm probability of $9 \cdot 10^{-16}$).

SO₂ and minimum bromine emission fluxes

For Caracol station and separated for the three time intervals (a) the mean daily averages of the SO₂ emission fluxes, (b) the average daily variability, and (c) the averages of the daily maximum SO₂ emission fluxes are listed in Table 4. From March 2014 – March 2018, the daily means of the SO₂ emission fluxes were in general constant at $(1.0 \pm 0.3) \cdot 10^3 \text{ t d}^{-1}$ with the
 500 exception of December 2015 – February 2016 (i.e. in the three months after the eruption) when they were enhanced at $(1.3 \pm 0.3) \cdot 10^3 \text{ t d}^{-1}$. Furthermore, a Lomb-Scargle analysis indicated a weak semi-annual cyclicity in the SO₂ emission fluxes (false alarm probability of $1 \cdot 10^{-22}$). The product of the SO₂ emission fluxes and the BrO/SO₂ molar ratios $R_{\text{BrO/SO}_2}$ allowed the calculation of the apparent BrO emission fluxes $F_{\text{BrO}} = F_{\text{SO}_2} \cdot R_{\text{BrO/SO}_2} \cdot \frac{M_{\text{BrO}}}{M_{\text{SO}_2}}$ (with the molar masses M_i). The according apparent BrO emission fluxes would be 44, 72, and 56 kg d⁻¹ for the three time intervals. The apparent BrO emission fluxes
 505 multiplied with $\frac{M_{\text{Br}}}{M_{\text{BrO}}} = 0.83$ can be considered as lower limits for the total bromine emission fluxes, because not all emitted bromine would have been transformed into BrO. Arguing that the total bromine emission fluxes were at least a factor of 2 larger than the derived apparent BrO emission fluxes (von Glasow, 2010; Roberts et al., 2014).



5 Discussion of SO₂ emission flux retrieval

Intrinsic uncertainty in the SO₂ emission fluxes

510 The simultaneous observation of basically the same volcanic gas plumes by two close NOVAC stations was a rare opportunity to retrieve empirically the lower limit of the uncertainty of the SO₂ emission fluxes. For ideal measurements, both stations would observe identical SO₂ emission fluxes. Under real measurement conditions systematic as well as statistical deviations can be expected.

It is important to remark that the two stations usually did not record the exactly same plume but their telescopes pointed at different times to the volcanic plume, with time differences of several minutes between their “simultaneous” observations. 515 Pering et al. (2019) reported for SO₂ camera measurements at the crater rim, however, that the SO₂ emission fluxes frequently vary by more than 100% within minutes. We observed a similar variability when we analysed the SO₂ emission fluxes retrieved by the two stations with only several minutes between their observations. Accordingly, the higher the temporal resolution of the compared data, the larger is the expected scatter of the comparison.

520 We calculated the ratios of the SO₂ emission fluxes retrieved by Caracol station divided by the SO₂ emission fluxes retrieved by Nancital station using several temporal bin sizes. The relative factor and standard deviation of the scatter were 1.22 ± 0.55 for a 10-min binning, 1.19 ± 0.40 for a 1-hour binning, 1.13 ± 0.21 for daily means, and 1.11 ± 1.15 for weekly means (the 1-hourly data and the daily means are shown in Figure 10). Our observations confirmed the significant reduction in the scatter with increasing bin size. In contrast to that, we observed a rather persistent relative factor of 1.1–1.2 for all bin sizes, with 525 nevertheless a weakly decreasing trend as a function of the bin size.

The observed relative factor of 1.13 for daily means is relatively small in view of the uncertainties in the estimates of the meteorological conditions but also other measurement uncertainties. There are four obvious candidates which may have contributed to that factor: (i) wrong geometric parameters of the NOVAC stations, (ii) misestimations of the wind direction or the plume height, (iii) systematic deviations in the spectroscopic retrieval, and (iv) radiative transport effects.

530 (i) The most mundane cause for the observed offset would be wrong information on the viewing directions of the telescopes of the NOVAC instruments. For instance, w.r.t. a wind direction of 84° a variation of the scan plane orientation β by $\pm 15^\circ$ would result in a systematic miscalculation of the SO₂ emission fluxes by a factor of 0.92–1.01 for the Caracol station or 0.92–1.02 for the Nancital station, i.e. up to a relative factor of 1.11. Analogously, a misalignment of the zenith angle by as little as $\pm 5^\circ$ can cause a systematic miscalculation of the VCDs (and thus the SO₂ emission fluxes) by a factor of 0.9–1.1 when the volcanic 535 plume is observed at $\pm 50^\circ$. If both stations are affected, such apparently negligible misalignments of the zenith angle can cause a relative factor of about 1.2 between both stations.

(ii) A misestimation of the plume altitude can not only result in an absolute misestimation of the SO₂ emission fluxes but can also contribute to the observed relative factor because the stations are installed at different altitudes. For instance and for the particular conditions at Masaya, using a mean plume altitude of 1000 m a.s.l. instead of 635 m a.s.l. would cause a relative 540 factor of 1.09.

(iii) A more subtle source for the observed relative factor and scatter could be the relation between an underestimation of the

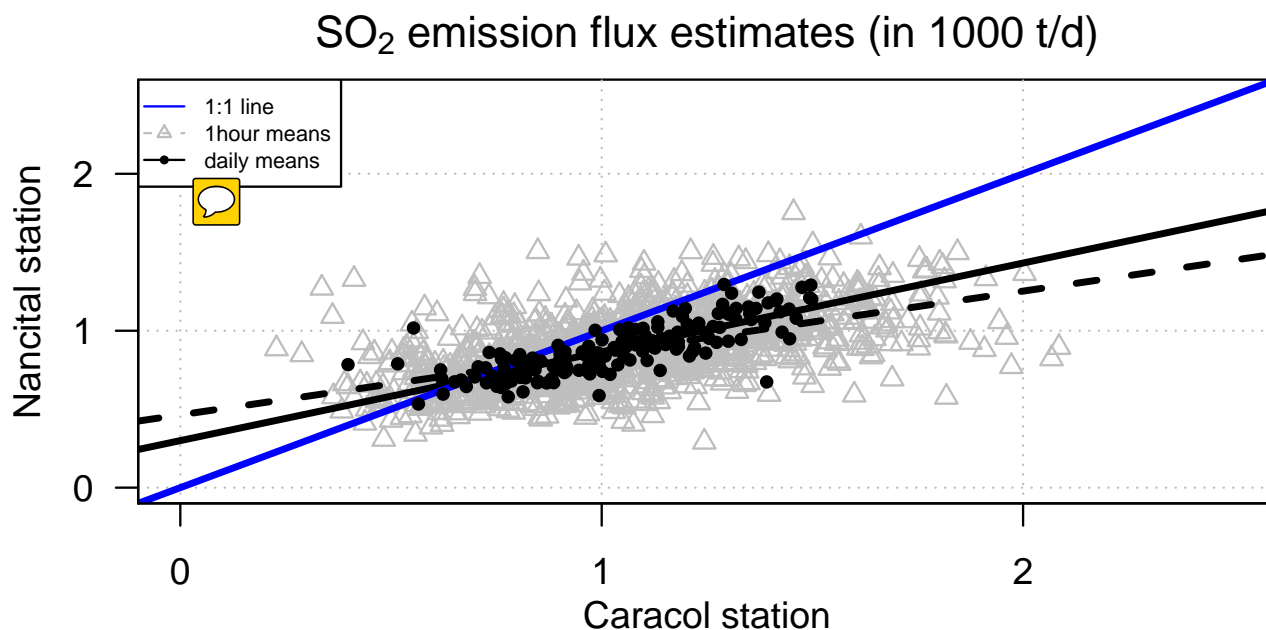


Figure 10. Comparison of the SO_2 emission flux estimates when both NOVAC stations observed volcanic plumes within the same time bin of hourly means (grey triangles) and daily means (black circles). Data compares the bin averages and only data for wind speeds larger than 5 m/s were considered.

SO_2 VCD and the absolute zenith angle: given a fixed SO_2 VCD, the larger the absolute zenith angle, the larger is the observed SO_2 dSCD, and thus the larger is the probability of a significant underestimation of the SO_2 VCD. Accordingly, if one of the instruments systematically more often records shallow plumes than the other instrument, this instrument would thus retrieve systematically lower SO_2 emission fluxes. Both instruments, nevertheless, observed the volcanic plumes in average at the same (absolute) zenith angles and thus this possible source appears to be irrelevant here.

(iv) There could be significant deviations in the SO_2 emission fluxes recorded by the two stations due to different radiative transport effects. For Masaya, the radiative transport effects associated to the relative position of the sun were, however, presumably rather similar for both NOVAC stations because for March–October the sun was for most of the day close to the zenith. Relative differences in the radiative transport caused, e.g. when there were systematically more clouds either to the North or the South of the NOVAC stations, could be nevertheless not ruled out as a source for a relative factor.

Correlation of SO_2 emission fluxes and wind speeds

We observed a strong correlation between the SO_2 emission fluxes and the wind speeds when none of our estimation approaches for the wind speed, the wind direction, or the plume height were applied (correlation coefficient of 82% when all wind speeds are considered and of 53% when only wind speeds larger than 10 m/s are considered, Figure 8e). This correlation was lower for



the calibrated data (correlation coefficient of 69% when all wind speeds are considered) and in particular basically vanished for wind speeds larger than 10 m/s (correlation coefficient of 19%, Figure 8f).

The SO₂ emission fluxes are of magmatic origin and thus no causal link to the meteorological conditions would be expected. There are three groups of possible causes for this observation: (1) a chance coincidence of shared long-term patterns (e.g. an annual cyclicality), (2) causal links between the wind speed and the “volcanic” (in contrast to “magmatic”) gas emission flux, and (3) a systematically wrong calculation of the SO₂ emission fluxes. In the following the plausibility of these options is discussed.

(1) The wind speed followed a seasonal annual cyclicality with strong maxima in January/February and weaker maxima in July. If the observed correlation is caused by a chance coincidence this would imply an annual cyclicality in the volcanic degassing behaviour with maxima in January/February. Such an annual cycle would be arguably caused by an astronomical forcing. The both best candidates, the solar irradiance and the Earth tidal potential, are indeed at Masaya minimum in December/January and June/July. Nevertheless, it is still far from obvious that these forcings can cause such a strong annual modulation of the SO₂ emission flux.

(2) There is indeed a plausible mechanism which links the wind speed and the SO₂ emission flux: Volcanic gas emissions often accumulate in the crater of Masaya. The larger the wind speed, the higher is the atmospheric turbulence and thus the lower is the accumulation. Accordingly and if the wind speed is subject to significant short-term fluctuations, over-proportionally much volcanic gas gets effectively released from the volcanic edifice to the atmosphere during high wind speed peaks. However, the observed correlation is based on long-term variations in the wind speeds but not on short-term fluctuations. While the temporal variability of our SO₂ time series could be partially caused by this mechanism, our wind data is insensitive for short-term effects and that causal link can be ruled out as a cause for the observed correlation. We highlight that this mechanism may partially explain the high variability in the SO₂ emission fluxes as observed by Pering et al. (2019).

(3) There is a number of possibilities how the observed correlation could be caused by systematics in the retrieval of the SO₂ emission fluxes: the plume height estimate could systematically depend (a) on the wind speed or (b) on the SO₂ emission flux, (c) the retrieval of the background SO₂ SCD, or (d) an observational bias caused by the applied filters.

(a) As discussed above, we expected and indeed observed a weak anti-correlation between the plume height and the wind speeds (Figure 8d) which can explain the observed correlation for wind speeds larger than 10 m/s (Figure 8f). We therefore conclude that this mechanism is one of the predominant causes of the observed correlation.

(b) The stronger the absolute volcanic gas emission fluxes (i.e. in particular of H₂O), the slower is the cooling of the volcanic plume due to in-mixing of air, and thus the higher is the effective plume height of the buoyant gas plume. Combined with the general expectation that the wind speed is larger with increasing height above ground, we conclude that the higher the SO₂ emission flux (when assuming that it is proportional to the absolute gas emission flux), the higher is the wind speed at plume propagation altitude. Using only wind speeds for a fixed altitude level to calculate the SO₂ emission fluxes, we can then expect an anti-correlation between the SO₂ emission flux estimates and the applied wind speed. The opposite effect has not been observed.

(c) Lübcke et al. (2016) reported for Nevado del Ruiz and Tungaragua that the probability of a background contamination is

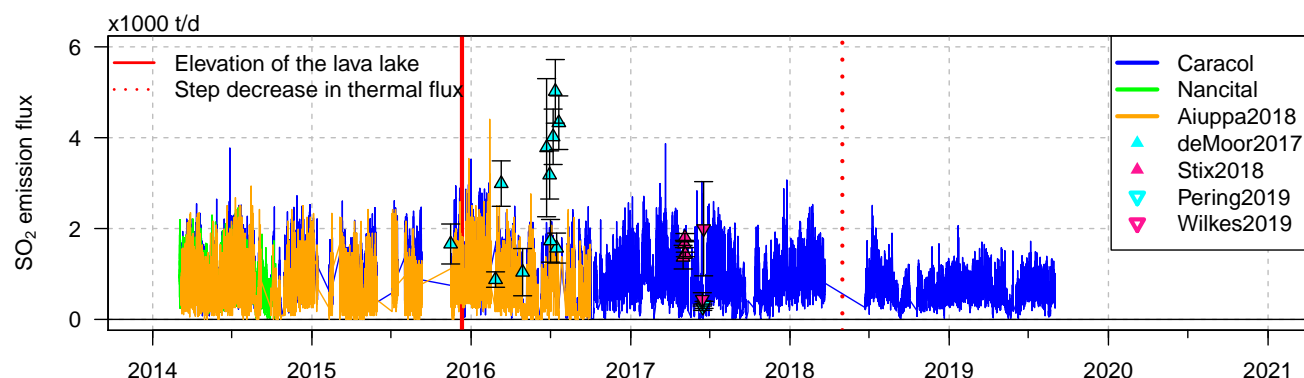


Figure 11. Comparison of the SO₂ emission fluxes reported in this and other studies.

higher for low wind speeds. Thus, at low wind speeds the SO₂ SCD (and hence the SO₂ emission flux) is more likely to be underestimated than at high wind speeds. Nevertheless, subtracting the proposed absolute background SO₂ SCD had hardly an effect on the correlation coefficient indicating that the background contamination has not been the major cause.

(d) The stronger the observed plume shape deviates from an ideal Gaussian shape, the larger is the probability that the scan gets rejected from the applied data filters. The plume shape is arguably better confined for larger wind speeds because then the relatively short time interval prior to the observation implies a smaller horizontal plume dispersion. Nevertheless, we would neither expect nor some data checks supported that such observation biases could have caused the observed correlation.

Comparison with reported SO₂ emission fluxes

For 2014–2017, Aiuppa et al. (2018) retrieved from the same NOVAC data and ERA-Interim data mean SO₂ emission fluxes of (700 ± 400) t d⁻¹ subject to variations between 0–2600 t d⁻¹ (Figure 11). Our and their SO₂ time series show a good agreement in relative variability but we observed considerably higher values with average relative factors of 1.42 ± 0.46 (Figure 12). This relative factor can be partly explained by the combination of the deviations in (1) the SO₂ dSCD retrieval, (2) the plume height estimates, and (3) the wind speeds estimates, as detailed in the following.

(1) Aiuppa et al. (2018) used the standard NOVAC SO₂ dSCD retrieval whose fit range starts as low as 310 nm. As motivated above, we argue that they therefore may have underestimated the SO₂ dSCDs at Masaya by up to a factor of 2 (or to be more precise: their underestimation relative to our underestimation was up to a factor of 1.25, see Figure 5a+b).

(2) The different estimates in the plume height explain another relative factor of $\frac{374\text{m}}{253\text{m}} = 1.48$ (we applied in average a plume altitude of 756 m a.s.l. implying an average plume height of 374 m above Caracol station while Aiuppa et al. (2018) applied a constant plume altitude of 635 m a.s.l. implying a plume height of 253 m above Caracol station).

(3) Aiuppa et al. (2018) provided their wind data as an upload what allowed a direct comparison with our wind data. They interpolated the ERA-Interim data to the location of the volcano and used only data where the plume propagated in the proximity of the Caracol station (pers. comm. Santiago Arellano, Chalmers University of Technology). The seasonality in their wind speed

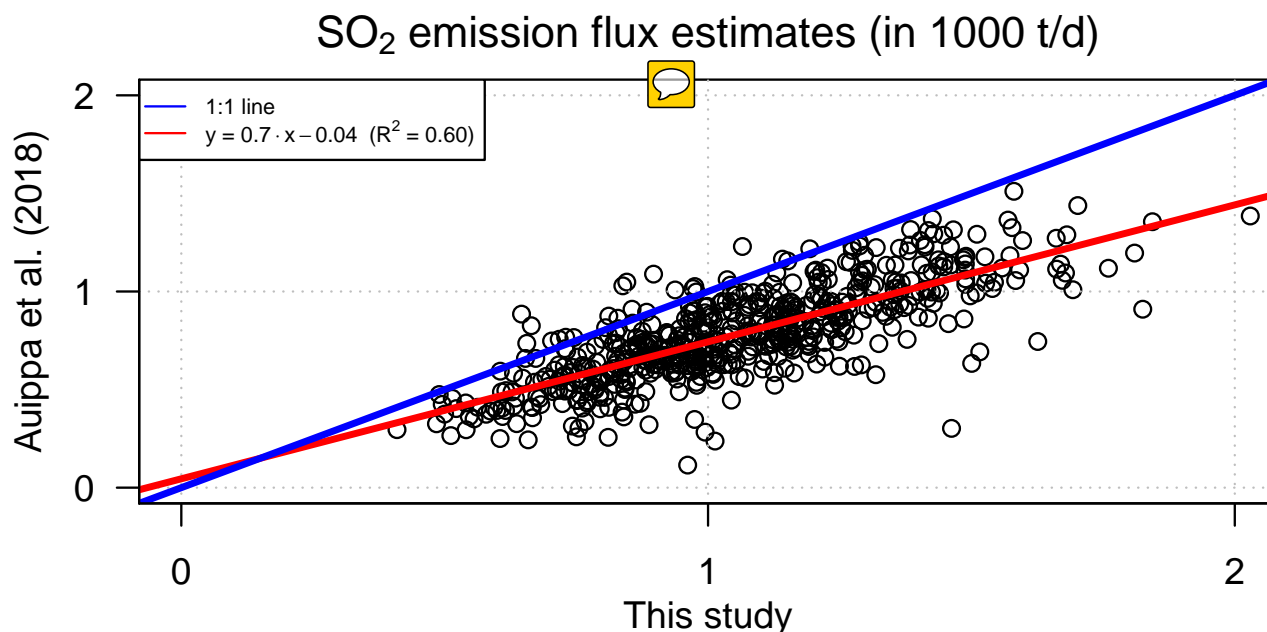


Figure 12. Comparison of the SO₂ emission fluxes from Caracol station reported in this study and by Aiuppa et al. (2018).

data is in good agreement with our data. The long-term ratio (from March 2014 to October 2016) between their wind speed data (interpolated to 635 m a.s.l.) and our ERA-Interim data or our operational ECMWF reanalysis data (both interpolated to 700 m a.s.l.) was 1.02 or 1.28, respectively. We remark that in contrast to that actually a factor of less than 1 would be expected because of their lower retrieval altitude of 635 m a.s.l. instead of our 700 m a.s.l. Following the expectation that the operational ECMWF reanalysis data are the more accurate estimates, we argue that they overestimated the wind speed in average by more than a factor 1.28 (see also Figure 8c).

For a complete record, there are further deviations between both retrievals which manifest predominantly in the extended filtering for unstable measurement conditions in our retrieval (see section 3).

We highlight nevertheless that the conditions at Masaya are rather an exception than the rule. Most NOVAC stations are usually more than 4 km away from the volcanic edifice and their altitudes are usually more than 1 km below the altitude of the volcanic summit. In consequence, a given absolute uncertainty in the plume height of, e.g. 100 m, results usually in relative uncertainties in the plume height of less than 10%. Accordingly, for other volcanoes the uncertainty in the SO₂ emission fluxes may be dominated by other sources of uncertainty. Similar considerations hold for the proposed weak anti-correlation of the plume height and the wind speed.

Besides the NOVAC long-term time series, the SO₂ emission fluxes of Masaya were also determined episodically by short-term (at most several weeks) measurement campaigns. From 1976–2010, the SO₂ emission fluxes varied between (300 ± 100) and (2100 ± 900) t d⁻¹ with all-time averages of roughly 800 t d⁻¹ (Nadeau and Williams-Jones, 2009; Martin et al., 2010;



de Moor et al., 2013). Since 2014, SO₂ emission fluxes spanning between 1000–5000 t d⁻¹ were reported, determined via DOAS traverse measurements (de Moor et al., 2017) or via SO₂ camera measurements (Stix et al., 2018; Pering et al., 2019; Wilkes et al., 2019) (Figure 11). Those campaign data match in general well with our observed range of SO₂ emission fluxes, with the exception of most of the June 2017 data from de Moor et al. (2017).

Critical assessment of our SO₂ emission flux retrieval

This paragraph summarises the extensions implemented in our retrieval as well as a set of possible future advances which have not yet been investigated. Furthermore, the justifications for some retrieval steps introduced in section 2 of this manuscript are motivated. The main findings are summarised in Table 5.







1. Spectroscopic retrieval: We documented the possibility for an underestimation of the SO₂ dSCDs when the SO₂ DOAS fit range is not chosen appropriately (Figure 5a+b). For strongly degassing volcanoes, we recommend to use a fit ranges which starts at least at 314 nm (see Table 3). Furthermore, we encourage to investigate the possibility of a hybrid retrieval using an interpolation of the dSCDs retrieved from two or more fit ranges. Another source of possible errors can be a missing *I*₀-correction of the absorption cross section of a strongly absorbing gas species. We highlight that, nevertheless, the *I*₀-correction appears to be relevant to reduce the fit errors but usually of negligible importance for the accuracy of the retrieved SO₂ dSCD. For instance, even for SO₂ dSCDs of about $4 \cdot 10^{18} \frac{\text{molec}}{\text{cm}^2}$ the difference in the retrieved dSCDs was usually less than 1% but the peak-to-peak range of the residual structures were reduced by about 10–15%. Because precision is quite relevant for the BrO retrieval but not for the SO₂ retrieval, we apply the *I*₀-correction routinely to the final data of the BrO/SO₂ retrieval but not to the final data of the SO₂ flux retrieval. The reason for this is the pragmatic decision to save run time: the effective number of spectra is more than two orders of magnitude lower for the BrO/SO₂ retrieval than for the SO₂ flux retrieval—and so is the run time required for the *I*₀-correction. Nevertheless, we encourage to use the *I*₀-correction when aiming for a spectroscopically optimal retrieval.

2. Filter unstable conditions: We documented unstable measurement conditions for a significant amount of the scans. We recommend to filter for unstable conditions but our filters should be understood as first proposals. A logical advance would be for instance the additional check via a two-modal Gaussian fit or to apply filter thresholds which more dynamically adjust to the conditions of the investigated NOVAC station. Another filter whose potential is clearly not yet exhausted is the absolute SO₂ background calibration—neither w.r.t. its spectroscopically optimisation nor in the use of its results. Here, we need to highlight that these filters for unstable conditions have been applied only in the SO₂ flux retrieval but not transferred to the BrO/SO₂ retrieval. The investigation of such a filtering in the BrO/SO₂ retrieval is a logical extension of the current retrieval.

3. Wind conditions: Lacking measurement data for the wind conditions, the best proxy for wind data are usually weather model data. We compared the wind conditions proposed by the ECMWF ERA-Interim data (1°x1° resolution) with operational ECMWF reanalysis data (up to 0.125°x0.125° resolution). We documented that the ERA-Interim data proposed for Masaya were in average systematically larger wind speeds with deviations of up to 30% for wind speeds of 20 m/s (or respectively 15 m/s) and wind directions which were 11° further to east-northeasterly (in contrast to easterly) than both, the operational ECMWF reanalysis data and the triangulation results. We hesitated, however, to exclusively use the operational ECMWF re-



Table 5. Applied and possible future advances in the SO₂ and BrO analysis. See text for details.

Status	Description
Spectroscopic retrieval	
done	$\lambda_{\text{lower limit}} > 314 \text{ nm}$ required for strong emissions 
to do	always apply I_0 -correction?! 
Filter unstable conditions	
done	SO ₂ fluxes: 5 filters summaries in Table 2 BrO/SO ₂ : 2 filters see section in “3. Methods”
to do	further optimise the filter conditions apply more filters on BrO/SO ₂ retrieval 
Wind conditions	
done	ERA-Interim data (1°x1°) as consistent long-term data base but calibrated with operational data (0.14°x0.14°)
to do	investigate a direct use of operational data
Plume height estimate	
done	plume height retrieved via triangulation plume height as function of wind speed
to do	optimise the triangulation algorithm 
SO₂ emission flux versus wind speed	
<i>strong correlation observed for un-calibrated data, not expected!</i>	
done	no more correlation for > 10 m/s with our calibrations
to do	improve calibration  for < 10 m/s establish such checks as benchmark for good estimates
Instrument line function (only a side note)	
done	provide empirical evidence for long-term stability
to do	direct retrieval from the recorded spectra 



analysis data due to the frequent jumps in the model set-up. As a cautious compromise, we calibrated the ERA-Interim data such that they match the operational ECMWF reanalysis data in the long-term average and used these calibrated ERA-Interim data in all further evaluation steps (see Figure 8b+c). We encourage, nevertheless, a comprehensive investigation of the jumps in the operational data set-up with the possible finding that an exclusive use of the operational data is the best available proxy for the wind data.

4. Plume height estimate: The triangulation results documented a standard deviation about 100 m which corresponds to a relative error of the plume height estimate of 30–40%. As long as no temporally resolved information on the plume height is available, this has to be seen as a fundamental lowest limit for the uncertainty of the retrieved SO₂ emission fluxes at Masaya. Furthermore, the retrieved mean plume height deviated just 100 m from the plausible best guess used by Aiuppa et al. (2018) but this deviation in the applied plume height resulted directly in a deviation a factor of 1.5. While these numbers are extreme for Masaya and presumably less drastic for most other NOVAC volcanoes, it is obvious that the estimate of the plume height is one of the major intrinsic sources of uncertainty in the SO₂ emission flux retrieval. Furthermore, we observed a weak anti-correlation between the wind speed and the plume height, which is also expected because of the buoyancy of the initially hot gas plume. Ignoring this relationship could cause a spurious correlation of the SO₂ emission fluxes with the wind speed (see below). We highlight that the applied triangulation algorithm has been rather simple and several advances are desired, e.g. a filter when both instruments simultaneously see different plumes (see “wings” in Figure 7).

5. Correlation of SO₂ emission flux and wind speed?: We observed a strong correlation between the original ERA-Interim wind data and the SO₂ emission fluxes when these were calculated without our proposed retrieval advances (82% when all wind speeds are considered, Figure 8e). This correlation is weaker when our retrieval advances are applied (69% when all wind speeds are considered) and basically vanishes for wind speeds larger than 10 m/s (then only 19%, Figure 8f). As mentioned above, this apparent correlation is most likely caused by systematics in the SO₂ emission flux calculation and namely the influence of the variations in the plume height. Correlation checks like this should be used to validate under which measurement conditions the applied assumptions are justified. Considering Figure 8f, we highlight that our proposed retrieval advances were able to correct this spurious correlation only for high wind speeds larger than 10 m/s.

6. Instrument line function: We retrieved the instrument line function (ILF) from a mercury emission spectrum recorded prior to the installation of the instrument in the field (this is the standard approach for NOVAC data). The ILF varies, however, in general with temperature and due to ageing and such variations of the ILF could be another major limitation of the accuracy of gas data from NOVAC (and presumably of most automated measurement platforms). A frequent recording of the ILF could reduce ILF-related uncertainties, but this is not always feasible at each location. Another approach would be the retrieval of the ILF directly from the recorded spectra. Such retrievals have been developed, e.g. for satellite data (Sun et al., 2017), and are for example available in the QDOAS software package (<http://uv-vis.aeronomie.be/software/QDOAS/>). However, as today none of those retrievals has been optimised for the specifications of NOVAC instruments (i.e. rather low quality of recorded spectra and no active temperature stabilisation). First steps in this direction have been made by Kleinbek (2020) using the HeiDOAS software package (currently under development by Udo Frieß, University of Heidelberg). Nevertheless, we highlight that both instruments enjoyed a surprisingly good long-term stability which may indicate that also their ILFs were rather stable (see



variations of their wavelength-to-pixel calibration in Figure B1). Furthermore, Dinger (2019) investigated the effect of the variations in the ILF for a NOVAC instrument installed at Nevado del Ruiz. That exemplary study concluded that for the BrO/SO₂ molar ratios the ILF-related uncertainties are an order of magnitude smaller than the typical measurement error. While such exemplary findings can not be adopted directly for other instruments, this has been another hint that the ILF-related effects may be in reality not as problematic as they could be.

7. *Network design:* The triangulation results gave a rare opportunity to validate the use of weather model data as a proxy for the meteorological conditions at a volcano. While similar results could be retrieved also by a single NOVAC station using the optional “flux measurement mode” (Galle et al., 2010), this mode has hardly been used in the past indicating that maintaining two rather active stations is apparently more likely to happen than actively including the NOVAC measurements. Accordingly, it could be rather beneficial to install two NOVAC stations close to each other in order to retrieve the wind direction and plume height directly. While there are of course financial and maintenance limitations in adding another station, we highlight that there is a significant number of NOVAC volcanoes with at least three NOVAC stations where a re-positioning of one of the stations may be beneficial in the long run. As an even further advance, McGonigle et al. (2005) demonstrated that installing three instruments in the main plume direction would also allow a direct retrieval of the wind speed.

6 Discussion of SO₂ and BrO time series

Correlations between gas data and meteorology

We investigated the NOVAC data and ERA-Interim data for correlations. For this purpose the daily means of the SO₂ dSCDs, of the BrO dSCDs, of the BrO/SO₂ molar ratios, and of the SO₂ emissions fluxes and the about noon-time ERA-Interim data are compared (Figure 13).

A correlation analysis of the ERA-Interim parameters with each other indicates: (1) The barometric pressure is basically not correlated to any of the other parameters. (2) All remaining ERA-Interim parameters (except the wind direction) are correlated with the total cloud cover (absolute correlation coefficients between 35–56%). This is presumably mainly a manifestation of the shared general seasonality of the weather conditions with extrema roughly in March and in October where the total cloud cover represents the seasonality apparently most clearly. (3) As expected, the three water related parameters (water vapour concentration, relative humidity, total cloud cover) are strongly correlated and the atmospheric water vapour concentration correlates with the temperature. (4) The ozone mixing ratio is anti-correlated with the water vapour concentration (–55%), however, this is presumably first of all the shared seasonality. (5) The wind speed and the wind direction are correlated (–44%).

A correlation of the NOVAC parameters with each other indicates: (1) The variability in the BrO/SO₂ time series originates almost exclusively from the variability in the BrO dSCDs (81%) and not at all from the variability in the SO₂ dSCDs (–15%). (2) The correlation between the SO₂ and BrO dSCDs was far from proportional (41%) indicating that these two parameters are sufficiently independent from each other (i.e. the BrO data is an independent proxy for magmatic or atmospheric processes). (3) The SO₂ emission fluxes were only relatively weakly correlated with the daily average of the SO₂ dSCDs in the plume centre (33%). This can be explained by the two processes which presumably predominantly control the variability in the SO₂

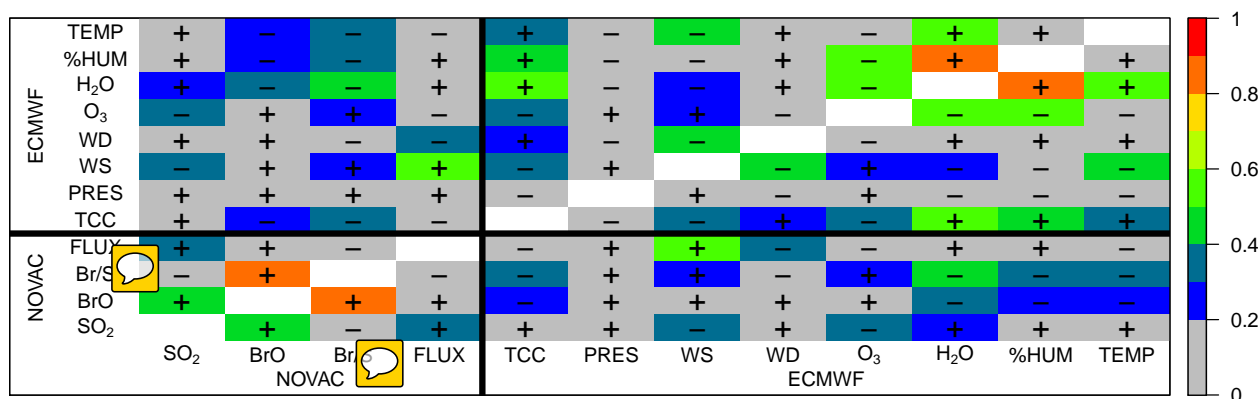


Figure 13. Correlation matrix between the different NOVAC parameters and the original ECMWF ERA-Interim parameters. The colour bar indicates the absolute value of the correlation coefficient and the plus and minus signs indicate the sign of the correlation coefficient. The abbreviated parameters are from left to right: daily means of SO₂ dSCDs, BrO dSCDs, BrO/SO₂ molar ratios, and SO₂ emission fluxes, and a noon-time time series of total cloud cover, pressure, wind speed, wind direction, ozone mixing ratio, water vapour concentration, relative humidity, and ambient temperature. The auto-correlation pixels are removed for better readability.

dSCDs: On the one hand, strong long-term variations in the SO₂ emission flux should manifest proportionally in the long-term means of the SO₂ dSCDs, but on the other hand, the variability of the SO₂ dSCDs in the plume centre is also significantly controlled by the horizontal plume dispersion and thus the wind speed (see also Figure 13). Given that the SO₂ emission fluxes of Masaya have been basically constant for several years, the observed absence of such a correlation hints towards the latter reasoning.

A cross correlation between the NOVAC data and the ERA-Interim data indicates two strong correlations: (1) A correlation between the SO₂ emission fluxes and the wind speed (57%) and (2) an anti-correlation of the BrO/SO₂ molar ratios with the water vapour concentration (-47%). As explained above, this correlation between the SO₂ emission fluxes and the wind speed is most likely predominantly an artefact because in this correlation analysis the original ERA-Interim data have been used for consistency within the comparison of the meteorological data. The correlation is basically vanishing (19%) when the wind speeds are calibrated and only wind speeds larger than 10 m/s are considered (see Figure 8e+f).

We highlight that the BrO/SO₂ molar ratios are at most weakly correlated with the other meteorological parameters (except the water vapour concentration). In particular, the correlation coefficient w.r.t. the wind speed of 25% and w.r.t. the ozone mixing ratio of 21% were remarkably small. The correlations between the BrO/SO₂ molar ratios and the three highlighted meteorological parameters are discussed in the next three paragraphs.



BrO/SO₂ and atmospheric humidity

The oxidation of bromide ions (Br⁻) to BrO in a volcanic gas plume is an autocatalytic process, thus it is plausible that the HBr
→ Br⁻ ⇌ BrO formation rate in a volcanic gas plume should be positively correlated with the Br⁻ concentration in the aerosol
phase. A slower BrO formation rate also implies a lower BrO equilibrium level because the equilibrium level of BrO/Br_{total} is
reached once the BrO formation rate is equalled by the rate of the BrO destruction mechanisms.

A higher humidity level could cause a smaller Br⁻ concentration and thus a slower BrO formation rate, as supported by
model simulations and experimental results (Rüdiger et al., 2018, and pers. comm. with Stefan Schmitt). As a remark, H⁺
concentration in the aerosol phase (i.e. its pH-value) should be affected similarly, however, it can be expected that the H⁺
concentration far exceeds the Br⁻ concentration and thus this effect on the pH-value is presumably negligible.

The observed anti-correlation between the BrO/SO₂ molar ratios and the humidity supports this hypothesis for the rather
humid conditions at Masaya. Accordingly, the BrO conversion at Masaya is humidity-limited in summer and autumn when the
atmospheric humidity is rather high while this mechanism is much weaker in spring when the atmospheric humidity is in its
annual minimum.

BrO/SO₂ and wind conditions

The NOVAC stations at Masaya were located in close proximity to the volcanic edifice, thus they almost exclusively observed
volcanic gas plumes with an atmospheric plume age between 2–8 min (see Figure 14 where the calibrated wind data were
used). Furthermore, almost all outliers in the BrO/SO₂ time series were associated with plume ages larger than 10 min or with
measurements when the plume had allegedly not transited the scan planes at all.

The BrO/SO₂ molar ratio apparently reached a maximum within the first 2 min after the release from the volcanic edifice,
decreased to a slightly lower value within the 3rd minute, and remained on this long-term equilibrium level for at least the first
20 min. We highlight that the very young plumes, whose observation proposed the early peak in the BrO/SO₂ molar ratio, were
observed almost exclusively in spring when by coincidence also the atmospheric humidity is minimum and the wind speeds are
maximum (Figure 14b). This early peak may thus not necessarily imply a “fundamental overshoot” in the BrO formation but
could be explained entirely as a manifestation of higher BrO equilibrium level at times of relatively low atmospheric humidity
or enhanced ozone in-mixing.

The BrO/SO₂ molar ratios were not correlated with the plume altitude for March–October 201

BrO/SO₂ and ozone mixing ratio

The bromide to BrO conversion requires ozone and its destruction is catalysed by BrO. If insufficient atmospheric ozone is
mixed into the volcanic plume, the BrO formation stops. The amount of ozone mixed into the plume depends on the ambient
ozone background concentration and on the degree of turbulent mixing. A comparison of the BrO/SO₂ data with the ERA-
Interim ozone time series (Figure 3) does not allow a detailed investigation of the chemical processes in the volcanic gas plume.
Nevertheless, the ERA-Interim data allows an investigation of the Br⁻ to BrO conversion in the context the temporal variations

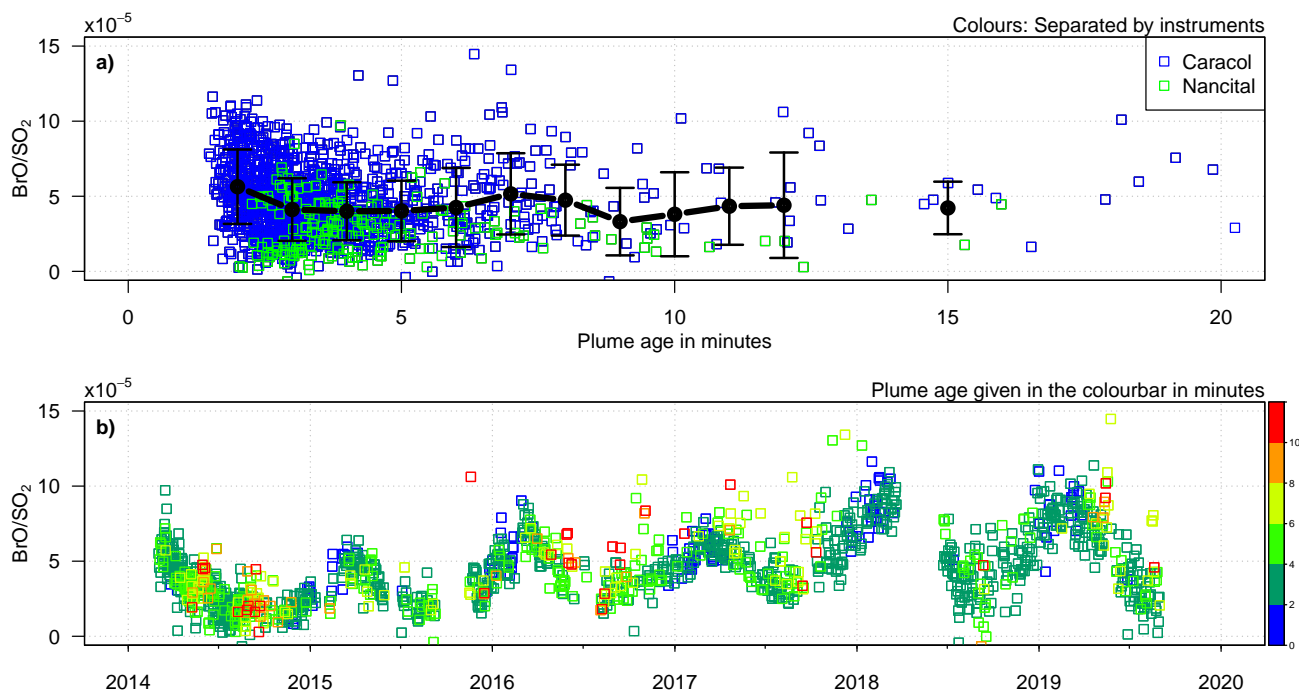


Figure 14. BrO/SO₂ molar ratios in the gas plume of Masaya depending on the plume age. The wind data imply for some data that the plumes did not transacted the scan planes; these data are excluded from the plot. The red-coloured data span plume age between 10–20 min.

in the general ozone availability.

On the one hand, the observed correlation coefficients between the BrO/SO₂ molar ratios and the atmospheric ozone mixing ratio and the wind speeds were both rather small, indicating that the BrO conversion is not predominantly controlled by the background ozone mixing ratio or the air in-mixing rate. On the other hand, the maxima in the BrO/SO₂ molar ratios coincide with the observed maxima in the wind speeds as well as in the ozone mixing ratio. Accordingly and despite of the low general correlation coefficient, strong Br⁻ to BrO conversion rates may be nevertheless only possible for relatively large wind speeds and/or ozone background concentrations.

BrO/SO₂ and magmatic processes

The elevation of the lava lake level was most likely caused by the arrival of juvenile (thus gas-rich) magma in the shallow system. Long-term variations in the gas data were thus for the presented time interval most likely linked to the magma dynamics connected to the lava lake.






The elevation of the lava lake level did not result in significant long-term changes in the SO₂ emissions fluxes but in a step increase in the BrO/SO₂ molar ratios. This change in the gas composition was thus caused by variations in the volcanic



bromine emissions rather than in the sulphur emissions, either because the juvenile magma had a higher initial Br/S volatile ratio than the older magma or because the older magma was already relatively bromine-poor, where the latter possibility would indicate that bromine degassed earlier than sulphur from the (old) magma at Masaya.

795 The increasing trend in the BrO/SO₂ molar ratios from November 2015 – March 2018 could indicate the general degassing evolution of the hypothetical batch of juvenile magma since its arrival in the shallow magmatic system in late 2015. The increasing BrO/SO₂ molar ratios would thus indicate that bromine degasses later than sulphur from this juvenile magma.

The decrease in the lava lake activity in mid 2018 resulted in a significant decrease in the SO₂ emission fluxes while the BrO/SO₂ molar ratios hardly changed. This decrease of the SO₂ emission fluxes indicates a major change in the physico-chemical conditions of the magma (e.g. in the pressure or temperature at the degassing depth) which is also plausible considering the superficial changes observed. The about constant BrO/SO₂ molar ratios would then imply that the bromine and sulphur partitioning from the magmatic melt phase to the magmatic gas phase were independent of the physico-chemical conditions in the magma, at least for this magma and this time.

800 The decreasing  since June 2018 could indicate either that the bromine content of the juvenile magma became progressively exhausted (while there were still massive amounts of sulphur ) or that the relatively  cooler conditions  resulted in a relatively enhanced  bromine solubility in the magma.

7 Conclusions

This study contributes to three independent fields of research: a comprehensive discussion of a reliable retrieval of SO₂ emission fluxes from ground-based remote sensing data, a dataset for the bromine chemistry in volcanic gas plumes unique in its temporal coverage and resolution, and an investigation of the BrO/SO₂ molar ratio as a proxy for magmatic processes.

SO₂ emission flux retrieval

An important conclusion of our study is the reminder that calculating reliable SO₂ emission fluxes requires a careful investigation of the local conditions. This holds true not only for their accuracy but also for the patterns in the data.

We reported suggestions for the retrieval of SO₂ emission fluxes from ground-based remote sensing data and retrieved SO₂ emission fluxes which are in average a factor of 1.4 larger than those retrieved by Aiuppa et al. (2018) from the same spectroscopic data. This factor is an accumulation of three major differences between the two retrieval approaches: the SO₂ fit range, the wind speed estimate, and the plume height estimate. (1) The different choices of the SO₂ fit ranges (our range starts at 314 nm, theirs starts at 310 nm) causes a relative factor of 1.25, indicating their systematic underestimation of the rather strong SO₂ SCDs in Masaya's gas plume. (2) Both studies estimated the wind speeds based on ERA-Interim data but we calibrated those wind speeds to the local conditions by using the higher resolved operational ECMWF reanalysis data. In consequence, our estimates for the wind speeds are in average a factor of 0.8 smaller than theirs. (3) Aiuppa et al. (2018) assumed a plume height fixed at Masaya's summit altitude while we used a dynamic estimate of the plume height based on our triangulation results and the observed weak dependency on the wind speed. In consequence, our estimates for the plume height were in





average a factor of 1.5 larger than theirs.

825 When it comes to spurious patterns, we observed a strong correlation between the SO_2 emission fluxes and the wind speeds
when several of our retrieval extensions are not applied (correlation coefficient of 82% when all wind speeds are considered
and of 53% for wind speeds larger than 10 m/s). We discussed that no such correlation is expected and that it is most likely
an artefact, e.g., due to the assumed fixed plume height. In consequence, the SO_2 emission fluxes would then falsely inherit
patterns from the variability of the wind speeds and thus conclusions drawn from the variability of the SO_2 emissions fluxes
830 would be only of limited reliability. Using our retrieval this correlation was reduced in general (69%) and in particular basi-
cally vanished for wind speeds larger than 10 m/s (19%). Another conclusion is thus that low wind speeds can result in rather
unreliable results.

We encourage for future publications on SO_2 emission fluxes to state detailed information on the used SO_2 emission retrieval
algorithm. The investigation strategy presented in this study may provide a framework for that task. We nevertheless highlight
835 the large set of further possible advances which can be still applied and highlight that the choice and setting of the filters may
vary significantly for different volcanoes.



Atmospheric bromine chemistry

We observed an extremely significant annual cyclicity in the BrO/SO_2 time series. This annual cyclicity is most likely a
manifestation of the meteorological seasonality. In particular, an anti-correlation (coefficient of -47%) has been observed
840 between the BrO/SO_2 molar ratios and the atmospheric water vapour concentration. In contrast to that, no clear correlation
has been observed between the BrO/SO_2 molar ratios and the atmospheric ozone mixing ratio (coefficient of 21%) or the wind
speed (coefficient of 25%). A comparison of the BrO/SO_2 molar ratio and the atmospheric age of the volcanic plume suggests
that the BrO/SO_2 reached in the long-term average maximum values within the first 2 min after the release from the volcanic
edifice, dropped to a lower level within the 3rd minute, and remained at this level for at least the next 20 min. The apparent
845 enhancement prior to the 3rd minute could be explained by an observational bias. We conclude that the BrO formation rate at
Masaya may be partly controlled by the rather high ambient humidity with higher humidity leading to dilution of the bromide
concentration in the aerosol phase, and thus a lower BrO conversion rate.

Volcanological findings

We observed a complementary sensitivity of the SO_2 emission fluxes and the BrO/SO_2 molar ratios on magmatic processes.
850 The long-term trend of the SO_2 emission fluxes was hardly affected by the initial lava lake level elevation but dropped in mid
2018, when the lava lake activity ceased, to significantly lower SO_2 emissions fluxes. In contrast to that, the BrO/SO_2 molar
ratios doubled due to the lava lake level elevation but showed only a weak response to the reduced lava lake activity since mid
2018. Accordingly, the combination of SO_2 emission fluxes and BrO/SO_2 molar ratios is highly recommended for monitoring.
When corrected for the annual cyclicity, we observed an almost linearly increasing trend in the BrO/SO_2 molar ratios during the
855 period for high lava lake activity (November 2015 until March 2018) and an almost linearly decreasing trend in the BrO/SO_2
molar ratios since May 2018. The isolated interpretation of these observation did not provide clear information on, e.g., the



 degassing order of sulphur and bromine of the juvenile magma at Masaya. The provided data may help to double-check and enhance models on the magmatic processes at Masaya 

Competing interests. The authors declare that they have no conflict of interest.

860 *Acknowledgements.* We express our thanks to Santiago Arellano for critically reading our manuscript and for helpful discussions. FD wants to thank Stefan Schmitt (IUP Heidelberg) for fruitful discussions on the bromine chemistry in volcanic gas plumes.

Appendix A: Absolute calibration of background SCD

We checked for an SO₂ contamination of the background by applying the absolute calibration algorithm described by Lübcke et al. (2016). This algorithm performs SO₂ DOAS fits where the recorded added-reference-spectrum is used as the measure-
865 ment spectrum and the solar atlas provided by Chance and Kurucz (2010)—convoluted with the instrument line function—is used as the reference spectrum. Such a fit results in large residual spectroscopic structures because the solar atlas does not contain information on the instrument characteristics. These characteristics can, nevertheless, be determined from the fit residual structures via a principal component analysis applied on a time series of the residual structures. Hereby, it is important that the principal components do not contain structures caused by an interference with the major absorbers in the investigated wave-
870 length range. Accordingly, we used only those residual structures for the principal component analysis (1) where the retrieved SO₂ SCD was smaller than two times the (individual) SO₂ fit error, (2) where the solar elevation angle was > 30° to avoid large tropospheric ozone columns, and (3) where the SO₂ fit had a $\chi^2 < 0.1$ to avoid potentially problematic spectra. We retrieved a unique fixed first principal component for the total 6 years time series and added it as a pseudo-absorbers to the DOAS fit. This second iteration of the DOAS retrieval gave the absolute SO₂ SCD of the added-reference-spectrum (see histograms of these
875 results in Figure 8a). We highlight that the second principal component for the total 6 years time series explain only 1% of the residual structures and thus adding also this component to the fit scenario would not have improved the spectroscopic retrieval.

Appendix B: Additional supportive figures

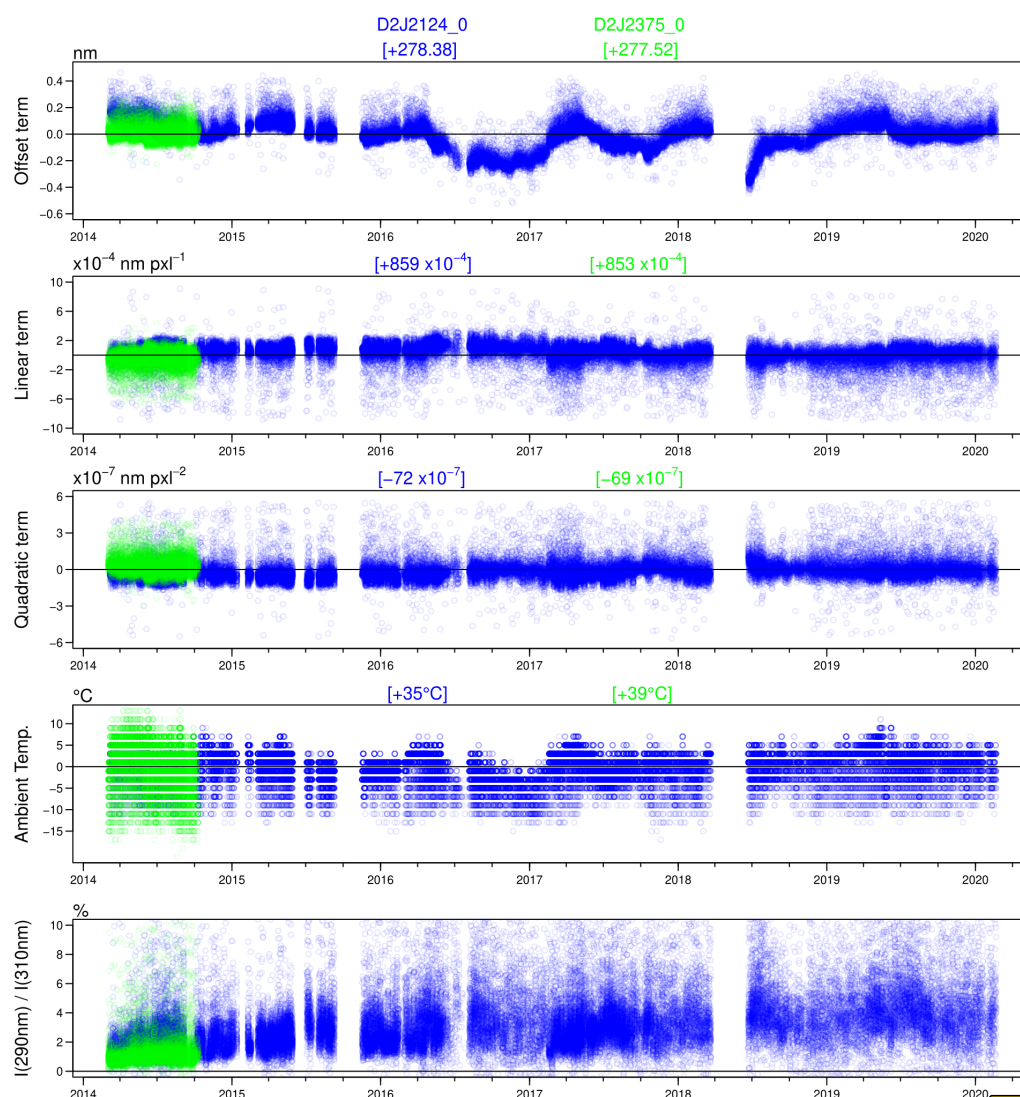


Figure B1. Variation of the $I(290\text{nm}) / I(310\text{nm})$ ratio of the instrument and ambient temperature. For each parameter, the total values are given by the rough estimate for the mean value (given for each instrument in blue and green above the particular panel) and the variation shown in the plots. The zero lines are chosen arbitrarily and should not be confused with mean values. **a-c)** All spectra have been calibrated by matching their Fraunhofer lines with the Fraunhofer lines of a solar-atlas and the wavelength calibration has been given by a calibration polynomial of 2nd order (see e.g. Dinger et al., 2019, for details). The three panels give for each scan the three coefficients of the wavelength calibration polynomial. The variability is already as displayed rather low and but is actually much lower (most of the indicated scatter is predominantly caused by the first scans in the morning when the temperature is significantly lower than for the rest of the day). **d)** Variation of the ambient temperature. **e)** Ratio of the intensity at around 290 nm and 310 nm (each time average over 10 channels) as a proxy for the magnitude and variation of the stray light.

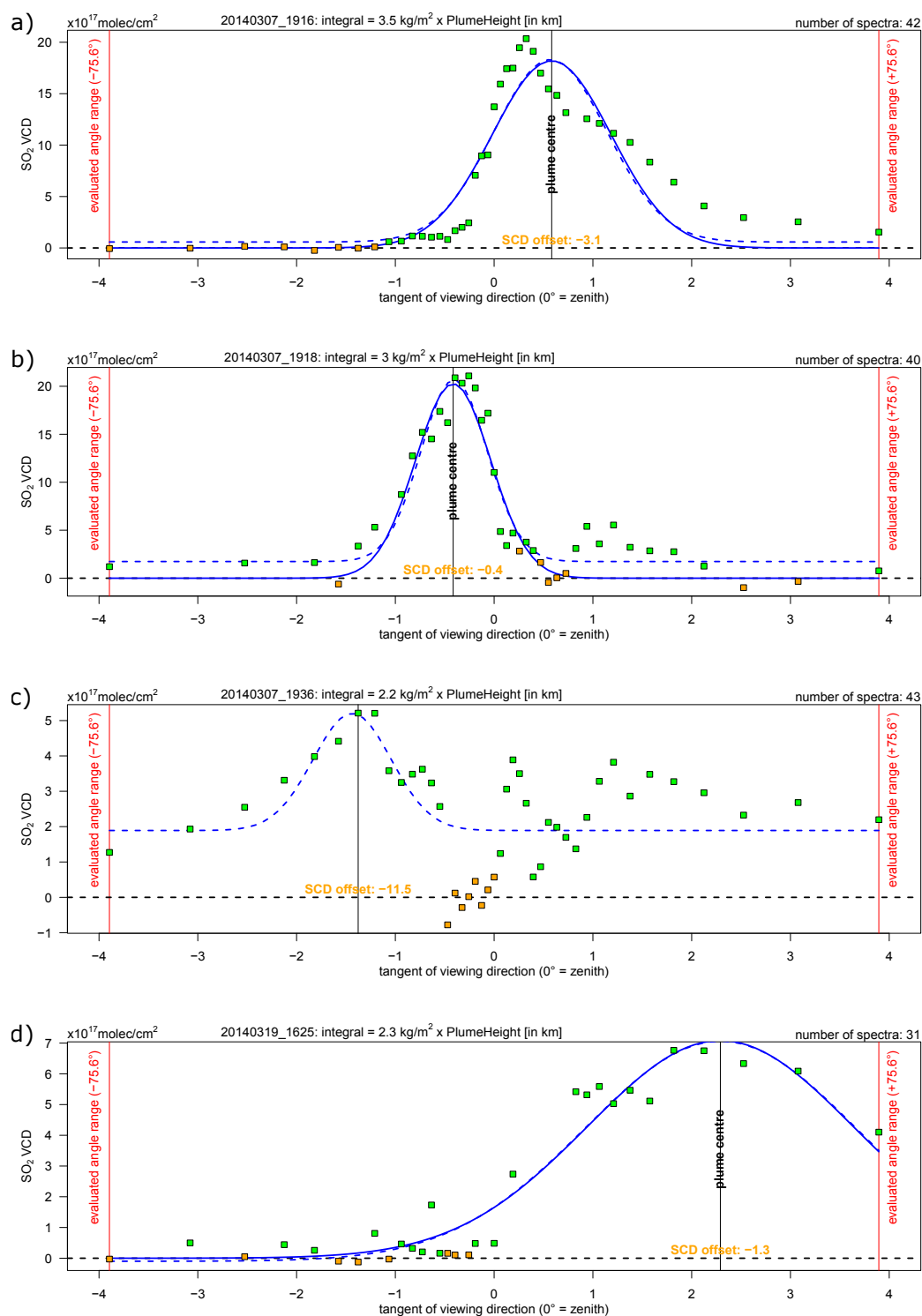


Figure B2. SO₂ distribution retrieved **a)** from the scan starting at 2014-03-07 19:16 UTC recorded at Nancital station and **b-d)** from the scan starting at 2014-03-07 19:18, 2014-03-07 19:36, and 2014-03-19 16:25 UTC recorded at Caracol station.

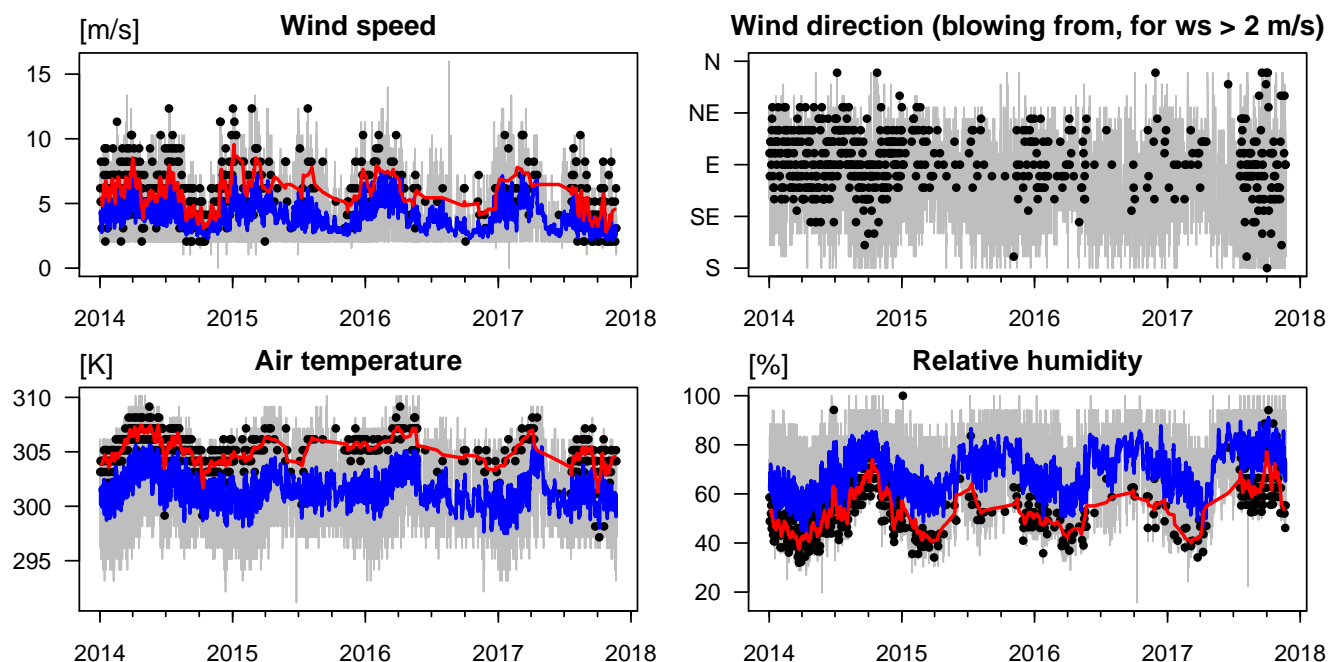


Figure B3. Meteorological conditions retrieved from a ground-based station at Managua airport (15 km north of Masaya volcano). **Grey lines:** hourly data. **Blue lines:** sliding average over the hourly data (± 2 weeks window). **Black dots:** around noon (18:00 UTC) data. **Red lines:** sliding average but over the around noon data.

References

- Aiuppa, A.: Degassing of halogens from basaltic volcanism: Insights from volcanic gas observations, *Chemical Geology*, 263, 99 – 109, <https://doi.org/http://dx.doi.org/10.1016/j.chemgeo.2008.08.022>, <http://www.sciencedirect.com/science/article/pii/S0009254108003781>, halogens in Volcanic Systems and Their Environmental Impacts, 2009.
- Aiuppa, A., Federico, C., Franco, A., Giudice, G., Gurrieri, S., Inguaggiato, S., Liuzzo, M., McGonigle, A. J. S., and Valenza, M.: Emission of bromine and iodine from Mount Etna volcano, *Geochemistry, Geophysics, Geosystems*, 6, <https://doi.org/10.1029/2005GC000965>, <https://agupubs.onlinelibrary.wiley.com/doi/abs/10.1029/2005GC000965>, 2005.
- Aiuppa, A., Federico, C., Giudice, G., Gurrieri, S., Liuzzo, M., Shinohara, H., Favara, R., and Valenza, M.: Rates of carbon dioxide plume degassing from Mount Etna volcano, *Journal of Geophysical Research: Solid Earth*, 111, <https://doi.org/10.1029/2006JB004307>, <https://doi.org/10.1029/2006JB004307>, 2006.
- Aiuppa, A., Robidoux, P., Tamburello, G., Conde, V., Galle, B., Avard, G., Bagnato, E., De Moor, J. M., Martínez, M., and Muñoz, A.: Gas measurements from the Costa Rica–Nicaragua volcanic segment suggest possible along-arc variations in volcanic gas chemistry, *Earth and Planetary Science Letters*, 407, 134–147, <http://www.sciencedirect.com/science/article/pii/S0012821X14006049>, 2014.
- Aiuppa, A., de Moor, J. M., Arellano, S., Coppola, D., Francoforte, V., Galle, B., Giudice, G., Liuzzo, M., Mendoza, E., Saballos, A., Tamburello, G., Battaglia, A., Bitetto, M., Gurrieri, S., Laiolo, M., Mastrolia, A., and Moretti, R.: Tracking Formation of a



- Lava Lake From Ground and Space: Masaya Volcano (Nicaragua), 2014–2017, *Geochemistry, Geophysics, Geosystems*, 19, 496–515, <https://doi.org/10.1002/2017GC007227>, <https://agupubs.onlinelibrary.wiley.com/doi/abs/10.1002/2017GC007227>, 2018.
- 895 Allard, P., Burton, M., and Muré, F.: Spectroscopic evidence for a lava fountain driven by previously accumulated magmatic gas, *Nature*, 433, 407 EP –, <http://dx.doi.org/10.1038/nature03246>, 2005.
- Baxter, P., Stoiber, R., and Williams, S.: VOLCANIC GASES AND HEALTH: MASAYA VOLCANO, NICARAGUA, *The Lancet*, 320, 150–151, <http://www.sciencedirect.com/science/article/pii/S0140673682911096>, 1982.
- Bobrowski, N. and Giuffrida, G.: Bromine monoxide / sulphur dioxide ratios in relation to volcanological observations at Mt. Etna
 900 2006–2009, *Solid Earth*, 3, 433–445, <https://doi.org/10.5194/se-3-433-2012>, <http://www.solid-earth.net/3/433/2012/>, 2012.
- Bobrowski, N. and Platt, U.: Quantification of volcanic reactive halogen emissions, chap. 24, Cambridge University Press, 2015.
- Bobrowski, N., Hönninger, G., Galle, B., and Platt, U.: Detection of bromine monoxide in a volcanic plume, *Nature*, 423, 273–276, <https://doi.org/10.1038/nature01625>, <https://doi.org/10.1038/nature01625>, 2003.
- Bobrowski, N., von Glasow, R., Aiuppa, A., Inguaggiato, S., Louban, I., Ibrahim, O. W., and Platt, U.: Reactive halogen chemistry in volcanic
 905 plumes, *Journal of Geophysical Research: Atmospheres*, 112, n/a–n/a, <https://doi.org/10.1029/2006JD007206>, <http://dx.doi.org/10.1029/2006JD007206>, d06311, 2007.
- Bobrowski, N., Kern, C., Platt, U., Hörmann, C., and Wagner, T.: Novel SO₂ spectral evaluation scheme using the 360–390 nm wavelength range, *Atmospheric Measurement Techniques*, 3, 879–891, <https://doi.org/10.5194/amt-3-879-2010>, <https://www.atmos-meas-tech.net/3/879/2010/>, 2010.
- 910 Burrows, J. P., Richter, A., Dehn, A., Deters, B., Himmelmann, S., Voigt, S., and Orphal, J.: Atmospheric remote-sensing reference data from GOME. 2. Temperature dependent absorption cross sections of O₃ in the 231–794 nm range., *Journal of Quantitative Spectroscopy and Radiative Transfer*, 61, 509–517, [https://doi.org/10.1016/S0022-4073\(98\)00037-5](https://doi.org/10.1016/S0022-4073(98)00037-5), 1999.
- Burton, M., Mader, H., and Polacci, M.: The role of gas percolation in quiescent degassing of persistently active basaltic volcanoes, *Earth and Planetary Science Letters*, 264, 46 – 60, <https://doi.org/https://doi.org/10.1016/j.epsl.2007.08.028>, <http://www.sciencedirect.com/science/article/pii/S0012821X07005493>, 2007.
- 915 Butz, A., Dinger, A. S., Bobrowski, N., Kostinek, J., Fieber, L., Fischerkeller, C., Giuffrida, G. B., Hase, F., Klappenbach, F., Kuhn, J., Lübcke, P., Tirpitz, L., and Tu, Q.: Remote sensing of volcanic CO₂, HF, HCl, SO₂, and BrO in the downwind plume of Mt. Etna, *Atmospheric Measurement Techniques*, 10, 1–14, <https://doi.org/10.5194/amt-10-1-2017>, <https://www.atmos-meas-tech.net/10/1/2017/>, 2017.
- 920 Carn, S. A., Fioletov, V. E., McLinden, C. A., Li, C., and Krotkov, N. A.: A decade of global volcanic SO₂ emissions measured from space, *Scientific Reports*, 7, 44 095 EP –, <http://dx.doi.org/10.1038/srep44095>, article, 2017.
- Carroll, M. R. and Holloway, J. R., eds.: *Volatiles in Magma*, De Gruyter, 1994.
- Chance, K. and Kurucz, R.: An improved high-resolution solar reference spectrum for earth's atmosphere measurements in the ultraviolet, visible, and near infrared, *Journal of Quantitative Spectroscopy and Radiative Transfer*, 111, 1289 – 1295, <https://doi.org/http://dx.doi.org/10.1016/j.jqsrt.2010.01.036>, <http://www.sciencedirect.com/science/article/pii/S0022407310000610>, special Issue Dedicated to Laurence S. Rothman on the Occasion of his 70th Birthday., 2010.
- 925 de Moor, J. M., Fischer, T. P., Sharp, Z. D., King, P. L., Wilke, M., Botcharnikov, R. E., Cottrell, E., Zelenski, M., Marty, B., Klimm, K., Rivard, C., Ayalew, D., Ramirez, C., and Kelley, K. A.: Sulfur degassing at Erta Ale (Ethiopia) and Masaya (Nicaragua) volcanoes: Implications for degassing processes and oxygen fugacities of basaltic systems, *Geochemistry, Geophysics, Geosystems*, 14, 4076–4108, <https://doi.org/10.1002/ggge.20255>, <https://doi.org/10.1002/ggge.20255>, 2013.
- 930



- de Moor, J. M., Kern, C., Averd, G., Muller, C., Aiuppa, A., Saballos, A., Ibarra, M., LaFemina, P., Protti, M., and Fischer, T. P.: A New Sulfur and Carbon Degassing Inventory for the Southern Central American Volcanic Arc: The Importance of Accurate Time-Series Data Sets and Possible Tectonic Processes Responsible for Temporal Variations in Arc-Scale Volatile Emissions, *Geochemistry, Geophysics, Geosystems*, 18, 4437–4468, <https://doi.org/10.1002/2017GC007141>, <https://doi.org/10.1002/2017GC007141>, 2017.
- 935 de Oviedo, G. F.: *Historia general y natural de las Indias*, JosS Amador de los Rios., 1855.
- Delmelle, P., Stix, J., Baxter, P., Garcia-Alvarez, J., and Barquero, J.: Atmospheric dispersion, environmental effects and potential health hazard associated with the low-altitude gas plume of Masaya volcano, Nicaragua, *Bulletin of Volcanology*, 64, 423–434, <https://doi.org/10.1007/s00445-002-0221-6>, <https://doi.org/10.1007/s00445-002-0221-6>, 2002.
- Dinger, F.: On long-term variations in the BrO/SO₂ molar ratios in volcanic gas plumes, Ph.D. thesis, Johannes Gutenberg University of
 940 Mainz, Germany, 2019.
- Dinger, F., Bobrowski, N., Warnach, S., Bredemeyer, S., Hidalgo, S., Arellano, S., Galle, B., Platt, U., and Wagner, T.: Periodicity in the BrO/SO₂ molar ratios in the volcanic gas plume of Cotopaxi and its correlation with the Earth tides during the eruption in 2015, *Solid Earth*, 9, 247–266, <https://doi.org/10.5194/se-9-247-2018>, <https://www.solid-earth.net/9/247/2018/>, 2018.
- Dinger, F., Bredemeyer, S., Arellano, S., Bobrowski, N., Platt, U., and Wagner, T.: On the link between Earth tides and volcanic degassing,
 945 *Solid Earth*, 10, 725–740, <https://doi.org/10.5194/se-10-725-2019>, <https://www.solid-earth.net/10/725/2019/>, 2019.
- Donovan, A., Tsanev, V., Oppenheimer, C., and Edmonds, M.: Reactive halogens (BrO and ClO) detected in the plume of Soufrière Hills Volcano during an eruption hiatus, *Geochemistry, Geophysics, Geosystems*, 15, 3346–3363, <https://doi.org/10.1002/2014GC005419>, <https://doi.org/10.1002/2014GC005419>, 2014.
- Edmonds, M., Pyle, D., and Oppenheimer, C.: A model for degassing at the Soufrière Hills Volcano, Montserrat, West Indies, based on
 950 geochemical data, *Earth and Planetary Science Letters*, 186, 159 – 173, [https://doi.org/http://dx.doi.org/10.1016/S0012-821X\(01\)00242-4](https://doi.org/http://dx.doi.org/10.1016/S0012-821X(01)00242-4), <http://www.sciencedirect.com/science/article/pii/S0012821X01002424>, 2001.
- Edmonds, M., Herd, R. A., Galle, B., and Oppenheimer, C. M.: Automated, high time-resolution measurements of SO₂ flux at Soufrière Hills Volcano, Montserrat, *Bulletin of Volcanology*, 65, 578–586, <https://doi.org/10.1007/s00445-003-0286-x>, <http://dx.doi.org/10.1007/s00445-003-0286-x>, 2003.
- 955 Fickel, M. and Delgado Granados, H.: On the use of different spectral windows in DOAS evaluations: Effects on the estimation of SO₂ emission rate and mixing ratios during strong emission of Popocatepetl volcano, *Chemical Geology*, 462, 67–73, <http://www.sciencedirect.com/science/article/pii/S0009254117302681>, 2017.
- Fischer, T. P., Arellano, S., Carn, S., Aiuppa, A., Galle, B., Allard, P., Lopez, T., Shinohara, H., Kelly, P., Werner, C., Cardellini, C., and Chiodini, G.: The emissions of CO₂ and other volatiles from the world's subaerial volcanoes, *Scientific Reports*, 9, 18 716,
 960 <https://doi.org/10.1038/s41598-019-54682-1>, <https://doi.org/10.1038/s41598-019-54682-1>, 2019.
- Fleischmann, O. C., Hartmann, M., Burrows, J. P., and Orphal, J.: New ultraviolet absorption cross-sections of BrO at atmospheric temperatures measured by time-windowing Fourier transform spectroscopy, *Journal of Photochemistry and Photobiology A: Chemistry*, 168, 117 – 132, <https://doi.org/http://dx.doi.org/10.1016/j.jphotochem.2004.03.026>, <http://www.sciencedirect.com/science/article/pii/S1010603004001522>, 2004.
- 965 Galle, B., Oppenheimer, C., Geyer, A., McGonigle, A. J., Edmonds, M., and Horrocks, L.: A miniaturised ultraviolet spectrometer for remote sensing of SO₂ fluxes: a new tool for volcano surveillance, *Journal of Volcanology and Geothermal Research*, 119, 241 – 254, [https://doi.org/https://doi.org/10.1016/S0377-0273\(02\)00356-6](https://doi.org/https://doi.org/10.1016/S0377-0273(02)00356-6), <http://www.sciencedirect.com/science/article/pii/S0377027302003566>, 2003.



- Galle, B., Johansson, M., Rivera, C., Zhang, Y., Kihlman, M., Kern, C., Lehmann, T., Platt, U., Arellano, S., and Hidalgo, S.: Network for Observation of Volcanic and Atmospheric Change (NOVAC)—A global network for volcanic gas monitoring: Network layout and instrument description, *Journal of Geophysical Research: Atmospheres*, 115, n/a–n/a, <https://doi.org/10.1029/2009JD011823>, <http://dx.doi.org/10.1029/2009JD011823>, d05304, 2010.
- Giggenbach, W. F.: *Chemical Composition of Volcanic Gases*, pp. 221–256, Springer Berlin Heidelberg, Berlin, Heidelberg, https://doi.org/10.1007/978-3-642-80087-0_7, https://doi.org/10.1007/978-3-642-80087-0_7, 1996.
- 975 Gliß, J., Bobrowski, N., Vogel, L., Pöhler, D., and Platt, U.: OClO and BrO observations in the volcanic plume of Mt. Etna – implications on the chemistry of chlorine and bromine species in volcanic plumes, *Atmospheric Chemistry and Physics*, 15, 5659–5681, <https://doi.org/10.5194/acp-15-5659-2015>, <http://www.atmos-chem-phys.net/15/5659/2015/>, 2015.
- Grainer, J. F. and Ring, J.: Anomalous Fraunhofer Line Profiles, *Nature*, 193, 762–762, <https://doi.org/10.1038/193762a0>, <http://dx.doi.org/10.1038/193762a0>, 1962.
- 980 Gutmann, A., Bobrowski, N., Roberts, T. J., Rüdiger, J., and Hoffmann, T.: Advances in Bromine Speciation in Volcanic Plumes, *Frontiers in Earth Science*, 6, 213, <https://doi.org/10.3389/feart.2018.00213>, <https://www.frontiersin.org/article/10.3389/feart.2018.00213>, 2018.
- Hermans, C., Vandaele, A. C., Fally, S., Carleer, M., Colin, R., Coquart, B., Jenouvrier, A., and Merienne, M.-F.: Absorption Cross-section of the Collision-Induced Bands of Oxygen from the UV to the NIR, pp. 193–202, Springer Netherlands, Dordrecht, https://doi.org/10.1007/978-94-010-0025-3_16, http://dx.doi.org/10.1007/978-94-010-0025-3_16, 2003.
- 985 Johansson, M., Galle, B., Zhang, Y., Rivera, C., Chen, D., and Wyser, K.: The dual-beam mini-DOAS technique—measurements of volcanic gas emission, plume height and plume speed with a single instrument, *Bulletin of Volcanology*, 71, 747–751, <https://doi.org/10.1007/s00445-008-0260-8>, <https://doi.org/10.1007/s00445-008-0260-8>, 2009.
- Kern, C.: Spectroscopic measurements of volcanic gas emissions in the ultra-violet wavelength region, Ph.D. thesis, Ruperto Carola University of Heidelberg, Germany, 2009.
- 990 Kern, C. and Lyons, J. J.: Spatial Distribution of Halogen Oxides in the Plume of Mount Pagan Volcano, Mariana Islands, *Geophysical Research Letters*, 45, 9588–9596, <https://doi.org/10.1029/2018GL079245>, <https://doi.org/10.1029/2018GL079245>, 2018.
- Kern, C., Deutschmann, T., Vogel, L., Wöhrbach, M., Wagner, T., and Platt, U.: Radiative transfer corrections for accurate spectroscopic measurements of volcanic gas emissions, *Bulletin of Volcanology*, 72, 233–247, <https://doi.org/10.1007/s00445-009-0313-7>, <https://doi.org/10.1007/s00445-009-0313-7>, 2010.
- 995 Kern, C., Masias, P., Apaza, F., Reath, K. A., and Platt, U.: Remote measurement of high preeruptive water vapor emissions at Sabancaya volcano by passive differential optical absorption spectroscopy, *Journal of Geophysical Research: Solid Earth*, 122, 3540–3564, <https://doi.org/10.1002/2017JB014020>, <https://agupubs.onlinelibrary.wiley.com/doi/abs/10.1002/2017JB014020>, 2017.
- Kleinbek, T.: Retrieval of SO₂ and BrO slant column densities from Network for Observation of Volcanic and Atmospheric Change data with the software HeiDOAS, Bachelor Thesis, Ruperto Carola University of Heidelberg, Germany, 2020.
- 1000 La Spina, A., Burton, M., Harig, R., Mure, F., Rusch, P., Jordan, M., and Caltabiano, T.: New insights into volcanic processes at Stromboli from Cerberus, a remote-controlled open-path FTIR scanner system, *Journal of Volcanology and Geothermal Research*, 249, 66 – 76, <https://doi.org/https://doi.org/10.1016/j.jvolgeores.2012.09.004>, <http://www.sciencedirect.com/science/article/pii/S0377027312002806>, 2013.
- Lübcke, P., Bobrowski, N., Arellano, S., Galle, B., Garzón, G., Vogel, L., and Platt, U.: BrO/SO₂ molar ratios from scanning DOAS measurements in the NOVAC network, *Solid Earth*, 5, 409–424, <https://doi.org/10.5194/se-5-409-2014>, <http://www.solid-earth.net/5/409/2014/>, 2014.



- Lübcke, P., Lampel, J., Arellano, S., Bobrowski, N., Dinger, F., Galle, B., Garzón, G., Hidalgo, S., Chacón Ortiz, Z., Vogel, L., War-
 nach, S., and Platt, U.: Retrieval of absolute SO₂ column amounts from scattered-light spectra: implications for the evaluation of
 data from automated DOAS networks, *Atmospheric Measurement Techniques*, 9, 5677–5698, <https://doi.org/10.5194/amt-9-5677-2016>,
 1010 <https://www.atmos-meas-tech.net/9/5677/2016/>, 2016.
- Martin, R. S., Sawyer, G. M., Spampinato, L., Salerno, G. G., Ramirez, C., Ilyinskaya, E., Witt, M. L. I., Mather, T. A., Watson, I. M.,
 Phillips, J. C., and Oppenheimer, C.: A total volatile inventory for Masaya Volcano, Nicaragua, *Journal of Geophysical Research: Solid*
Earth, 115, <https://doi.org/10.1029/2010JB007480>, <https://doi.org/10.1029/2010JB007480>, 2010.
- McBirney, A. R.: The Nicaraguan volcano Masaya and its caldera, *Eos, Transactions American Geophysical Union*, 37, 83–96,
 1015 <https://doi.org/10.1029/TR037i001p00083>, <https://doi.org/10.1029/TR037i001p00083>, 1956.
- McGonigle, A. J. S., Hilton, D. R., Fischer, T. P., and Oppenheimer, C.: Plume velocity determination for volcanic SO₂ flux measurements,
Geophysical Research Letters, 32, <https://doi.org/10.1029/2005GL022470>, <https://doi.org/10.1029/2005GL022470>, 2005.
- Meller, R. and Moortgat, G. K.: Temperature dependence of the absorption cross sections of formaldehyde between 223 and 323 K in the
 wavelength range 225–375 nm, *Journal of Geophysical Research: Atmospheres*, 105, 7089–7101, <https://doi.org/10.1029/1999JD901074>,
 1020 <http://dx.doi.org/10.1029/1999JD901074>, 2000.
- Mori, T. and Notsu, K.: Remote CO, COS, CO₂, SO₂, HCl detection and temperature estimation of volcanic gas, *Geophysical Research*
Letters, 24, 2047–2050, <https://doi.org/10.1029/97GL52058>, <https://agupubs.onlinelibrary.wiley.com/doi/abs/10.1029/97GL52058>, 1997.
- Mori, T., Sato, M., Shimoike, Y., and Notsu, K.: High SiF₄/HF ratio detected in Satsuma-Iwojima volcano's plume by remote FT-IR obser-
 vation, *Earth, Planets and Space*, 54, 249–256, <https://doi.org/10.1186/BF03353024>, <https://doi.org/10.1186/BF03353024>, 2002.
- 1025 Mori, T., Mori, T., Kazahaya, K., Ohwada, M., Hirabayashi, J., and Yoshikawa, S.: Effect of UV scattering on SO₂ emission rate mea-
 surements, *Geophysical Research Letters*, 33, n/a–n/a, <https://doi.org/10.1029/2006GL026285>, <http://dx.doi.org/10.1029/2006GL026285>,
 117315, 2006.
- Métrich, N., Allard, P., Spilliaert, N., Andronico, D., and Burton, M.: 2001 flank eruption of the alkali- and volatile-rich primi-
 tive basalt responsible for Mount Etna's evolution in the last three decades, *Earth and Planetary Science Letters*, 228, 1 – 17,
 1030 <https://doi.org/https://doi.org/10.1016/j.epsl.2004.09.036>, <http://www.sciencedirect.com/science/article/pii/S0012821X04005916>, 2004.
- Nadeau, P. A. and Williams-Jones, G.: Apparent downwind depletion of volcanic SO₂ flux—lessons from Masaya Volcano, Nicaragua,
Bulletin of Volcanology, 71, 389–400, <https://doi.org/10.1007/s00445-008-0251-9>, <https://doi.org/10.1007/s00445-008-0251-9>, 2009.
- Oppenheimer, C., Tsanev, V. I., Braban, C. F., Cox, R. A., Adams, J. W., Aiuppa, A., Bobrowski, N., Delmelle, P., Barclay, J., and McGonigle,
 A. J.: BrO formation in volcanic plumes, *Geochimica et Cosmochimica Acta*, 70, 2935–2941, [http://www.sciencedirect.com/science/](http://www.sciencedirect.com/science/article/pii/S0016703706001669)
 1035 [article/pii/S0016703706001669](http://www.sciencedirect.com/science/article/pii/S0016703706001669), 2006.
- Oppenheimer, C., Fischer, T., and Scaillet, B.: Volcanic Degassing: Process and Impact, in: *Treatise on Geochemistry (Second Edition)*, pp.
 111–179, Elsevier, <https://doi.org/10.1016/B978-0-08-095975-7.00304-1>, <https://hal-insu.archives-ouvertes.fr/insu-00904186>, 2014.
- Pering, T. D., Ilanko, T., Wilkes, T. C., England, R. A., Silcock, S. R., Stanger, L. R., Willmott, J. R., Bryant, R. G., and
 McGonigle, A. J. S.: A Rapidly Convecting Lava Lake at Masaya Volcano, Nicaragua, *Frontiers in Earth Science*, 6, 241,
 1040 <https://doi.org/10.3389/feart.2018.00241>, <https://www.frontiersin.org/article/10.3389/feart.2018.00241>, 2019.
- Platt, U. and Bobrowski, N.: Quantification of volcanic reactive halogen emissions, in: *Volcanism and Global Environmental Change*, edited
 by Schmidt, A., Fristad, K. E., and Elkins-Tanton, L. T., Cambridge University Press, <https://doi.org/10.1017/CBO9781107415683.011>,
 2015.
- Platt, U. and Lehrer, E.: ARCTOC final report, Tech. rep., European Union, 1997.



- 1045 Platt, U. and Stutz, J.: Differential Optical Absorption Spectroscopy, Springer Berlin Heidelberg, 2008.
- Platt, U., Perner, D., Harris, G. W., Winer, A. M., and Pitts, J. N.: Observations of nitrous acid in an urban atmosphere by differential optical absorption, *Nature*, 285, 312–314, <https://doi.org/10.1038/285312a0>, <http://dx.doi.org/10.1038/285312a0>, 1980.
- Pérez, W., Freundt, A., Kutterolf, S., and Schmincke, H.-U.: The Masaya Triple Layer: A 2100 year old basaltic multi-episodic Plinian eruption from the Masaya Caldera Complex (Nicaragua), *Journal of Volcanology and Geothermal Research*, 179, 191 – 205, <https://doi.org/https://doi.org/10.1016/j.jvolgeores.2008.10.015>, <http://www.sciencedirect.com/science/article/pii/S0377027308005659>, 2009.
- 1050 Queisser, M., Burton, M., Allan, G. R., and Chiarugi, A.: Portable laser spectrometer for airborne and ground-based remote sensing of geological CO₂ emissions, *Opt. Lett.*, 42, 2782–2785, <https://doi.org/10.1364/OL.42.002782>, <http://ol.osa.org/abstract.cfm?URI=ol-42-14-2782>, 2017.
- 1055 Roberts, T., Braban, C., Martin, R., Oppenheimer, C., Adams, J., Cox, R., Jones, R., and Griffiths, P.: Modelling reactive halogen formation and ozone depletion in volcanic plumes, *Chemical Geology*, 263, 151 – 163, <https://doi.org/https://doi.org/10.1016/j.chemgeo.2008.11.012>, <http://www.sciencedirect.com/science/article/pii/S0009254108005366>, halogens in Volcanic Systems and Their Environmental Impacts, 2009.
- Roberts, T. J.: Ozone Depletion in Tropospheric Volcanic Plumes: From Halogen-Poor to Halogen-Rich Emissions, *Geosciences*, 8, <https://doi.org/10.3390/geosciences8020068>, <http://www.mdpi.com/2076-3263/8/2/68>, 2018.
- 1060 Roberts, T. J., Martin, R. S., and Jourdain, L.: Reactive bromine chemistry in Mount Etna's volcanic plume: the influence of total Br, high-temperature processing, aerosol loading and plume–air mixing, *Atmospheric Chemistry and Physics*, 14, 11 201–11 219, <https://doi.org/10.5194/acp-14-11201-2014>, <http://www.atmos-chem-phys.net/14/11201/2014/>, 2014.
- Roberts, T. J., Lurton, T., Giudice, G., Liuzzo, M., Aiuppa, A., Coltelli, M., Vignelles, D., Salerno, G., Couté, B., Chartier, M., Baron, R., Saffell, J. R., and Scaillet, B.: Validation of a novel Multi-Gas sensor for volcanic HCl alongside H₂S and SO₂ at Mt. Etna, *Bulletin of Volcanology*, 79, 36, <https://doi.org/10.1007/s00445-017-1114-z>, <https://doi.org/10.1007/s00445-017-1114-z>, 2017.
- 1065 Rüdiger, J., Schmitt, S., Pitton, D., Tirpitz, J.-L., Gutmann, A., Gutiérrez, X., Pöhler, D., Lampel, J., Horbanski, M., Sander, R., Zetzsch, C., Hoffmann, T., Held, A., Platt, U., and Bobrowski, N.: HALVIRE: HALogen activation in Volcanic plumes In Reaction chamber Experiments, in: EGU General Assembly Conference Abstracts, vol. 20 of *EGU General Assembly Conference Abstracts*, p. 14827, 2018.
- 1070 Rüdiger, J., Gutmann, A., Bobrowski, N., Liotta, M., de Moor, J. M., Sander, R., Dinger, F., Tirpitz, J.-L., Ibarra, M., Saballos, A., Martínez, M., Mendoza, E., Ferrufino, A., Stix, J., Valdés, J., Castro, J. M., and Hoffmann, T.: Halogen activation in the plume of Masaya volcano: field observations and box model investigations, *Atmospheric Chemistry and Physics Discussions*, 2020, 1–39, <https://doi.org/10.5194/acp-2020-284>, <https://www.atmos-chem-phys-discuss.net/acp-2020-284/>, 2020.
- Rymer, H., van Wyk de Vries, B., Stix, J., and Williams-Jones, G.: Pit crater structure and processes governing persistent activity at Masaya Volcano, Nicaragua, *Bulletin of Volcanology*, 59, 345–355, <https://doi.org/10.1007/s004450050196>, <https://doi.org/10.1007/s004450050196>, 1998.
- 1075 Salerno, G., Burton, M., Oppenheimer, C., Caltabiano, T., Randazzo, D., Bruno, N., and Longo, V.: Three-years of SO₂ flux measurements of Mt. Etna using an automated UV scanner array: Comparison with conventional traverses and uncertainties in flux retrieval, *Journal of Volcanology and Geothermal Research*, 183, 76 – 83, <https://doi.org/http://dx.doi.org/10.1016/j.jvolgeores.2009.02.013>, <http://www.sciencedirect.com/science/article/pii/S0377027309000791>, 2009.
- 1080 Shinohara, H.: A new technique to estimate volcanic gas composition: plume measurements with a portable multi-sensor system, *Journal of Volcanology and Geothermal Research*, 143, 319–333, <http://www.sciencedirect.com/science/article/pii/S0377027304004238>, 2005.



- Smithsonian Institution: Report on Masaya (Nicaragua), Tech. rep., Global Volcanism Program, <https://doi.org/https://doi.org/10.5479/si.GVP.BGVN201811-344100>, 2018.
- 1085 Stix, J., de Moor, J. M., Rüdiger, J., Alan, A., Corrales, E., D'Arcy, F., Diaz, J. A., and Liotta, M.: Using Drones and Miniaturized Instrumentation to Study Degassing at Turrialba and Masaya Volcanoes, Central America, *Journal of Geophysical Research: Solid Earth*, 123, 6501–6520, <https://doi.org/10.1029/2018JB015655>, <https://doi.org/10.1029/2018JB015655>, 2018.
- Sun, K., Liu, X., Huang, G., González Abad, G., Cai, Z., Chance, K., and Yang, K.: Deriving the slit functions from OMI solar observations and its implications for ozone-profile retrieval, *Atmospheric Measurement Techniques*, 10, 3677–3695, [https://doi.org/10.5194/amt-10-](https://doi.org/10.5194/amt-10-3677-2017)
 1090 3677-2017, <https://amt.copernicus.org/articles/10/3677/2017/>, 2017.
- Taquet, N., Stremme, W., Grutter, M., Baylón, J., Bezanilla, A., Schiavo, B., Rivera, C., Campion, R., Boulesteix, T., Nieto-Torres, A., Espinasa-Pereña, R., Blumenstock, T., and Hase, F.: Variability in the Gas Composition of the Popocatepetl Volcanic Plume, *Frontiers in Earth Science*, 7, 114, <https://doi.org/10.3389/feart.2019.00114>, <https://www.frontiersin.org/article/10.3389/feart.2019.00114>, 2019.
- Theys, N., De Smedt, I., Yu, H., Danckaert, T., van Gent, J., Hörmann, C., Wagner, T., Hedelt, P., Bauer, H., Romahn, F., Pedernana, M., Loyola, D., and Van Roozendaal, M.: Sulfur dioxide retrievals from TROPOMI onboard Sentinel-5 Precursor: algorithm theoretical
 1095 basis, *Atmospheric Measurement Techniques*, 10, 119–153, <https://doi.org/10.5194/amt-10-119-2017>, <https://www.atmos-meas-tech.net/10/119/2017/>, 2017.
- Theys, N., Hedelt, P., De Smedt, I., Lerot, C., Yu, H., Vlietinck, J., Pedernana, M., Arellano, S., Galle, B., Fernandez, D., Carlito, C. J. M., Barrington, C., Taisne, B., Delgado-Granados, H., Loyola, D., and Van Roozendaal, M.: Global monitoring of volcanic SO₂ degassing
 1100 with unprecedented resolution from TROPOMI onboard Sentinel-5 Precursor, *Scientific Reports*, 9, 2643, <https://doi.org/10.1038/s41598-019-39279-y>, <https://doi.org/10.1038/s41598-019-39279-y>, 2019.
- van Manen, S.: Perception of a chronic volcanic hazard: persistent degassing at Masaya volcano, Nicaragua, *Journal of Applied Volcanology*, 3, 9, <https://doi.org/10.1186/s13617-014-0009-3>, <https://doi.org/10.1186/s13617-014-0009-3>, 2014.
- Vandaele, A., Hermans, C., Simon, P., Carleer, M., Colin, R., Fally, S., Mérienne, M., Jenouvrier, A., and Coquart, B.: Measurements of the
 1105 NO₂ absorption cross-section from 42 000 cm⁻¹ to 10 000 cm⁻¹ (238–1000 nm) at 220 K and 294 K, *Journal of Quantitative Spectroscopy and Radiative Transfer*, 59, 171 – 184, [https://doi.org/http://dx.doi.org/10.1016/S0022-4073\(97\)00168-4](https://doi.org/http://dx.doi.org/10.1016/S0022-4073(97)00168-4), <http://www.sciencedirect.com/science/article/pii/S0022407397001684>, 1998.
- Vandaele, A., Hermans, C., and Fally, S.: Fourier transform measurements of {SO₂} absorption cross sections: II.: Temperature dependence in the 29 000–44 000 cm⁻¹ (227–345 nm) region, *Journal of Quantitative Spectroscopy and Radiative Trans-*
 1110 *fer*, 110, 2115 – 2126, <https://doi.org/http://dx.doi.org/10.1016/j.jqsrt.2009.05.006>, <http://www.sciencedirect.com/science/article/pii/S0022407309001800>, 2009.
- von Glasow, R.: Atmospheric chemistry in volcanic plumes, *Proceedings of the National Academy of Sciences of the United States of America*, 107, 6594–6599, <http://www.jstor.org/stable/25665222>, 2010.
- Wagner, T., Beirle, S., and Deutschmann, T.: Three-dimensional simulation of the Ring effect in observations of scattered sun light using
 1115 Monte Carlo radiative transfer models, *Atmospheric Measurement Techniques*, 2, 113–124, <https://doi.org/10.5194/amt-2-113-2009>, <http://www.atmos-meas-tech.net/2/113/2009/>, 2009.
- Wennberg, P.: Atmospheric chemistry: Bromine explosion, *Nature*, 397, 299–301, <https://doi.org/10.1038/16805>, <http://dx.doi.org/10.1038/16805>, 1999.
- Wilken, E.: Retrieval Advances of BrO/SO₂ Molar Ratios from NOVAC, Master's thesis, Ruperto Carola University of Heidelberg, Germany,
 1120 2018.



Wilkes, T. C., Pering, T. D., McGonigle, A. J. S., Willmott, J. R., Bryant, R., Smalley, A. L., Mims, F. M., Parisi, A. V., and England, R. A.: The PiSpec: A Low-Cost, 3D-Printed Spectrometer for Measuring Volcanic SO₂ Emission Rates, *Frontiers in Earth Science*, 7, 65, <https://doi.org/10.3389/feart.2019.00065>, <https://www.frontiersin.org/article/10.3389/feart.2019.00065>, 2019.

Williams, S.: *Geology and eruptive mechanisms of Masaya Caldera Complex, Nicaragua*, 1983.