

1 **Supplementary Information**

2

3 **Molecular Insights into New Particle Formation in Barcelona, Spain**

4

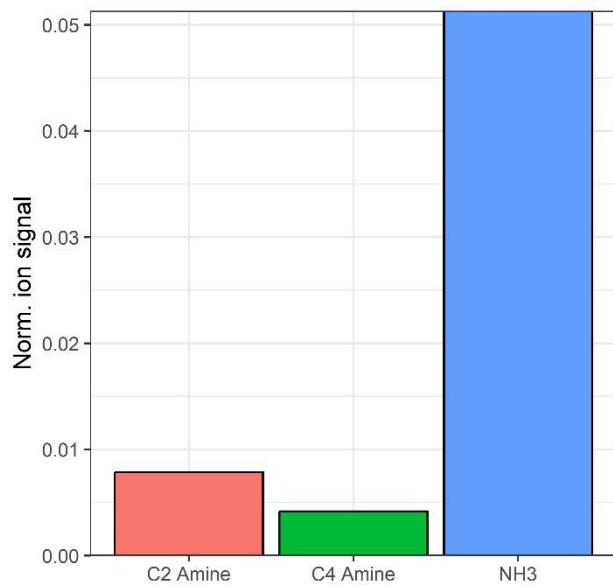
5 **James Brean, David C.S. Beddows, Zongbo Shi, Brice Temime-**

6 **Roussel, Nicolas Marchand, Xavier Querol, Andrés Alastuey,**

7 **María Cruz Minguillón, and Roy M. Harrison**

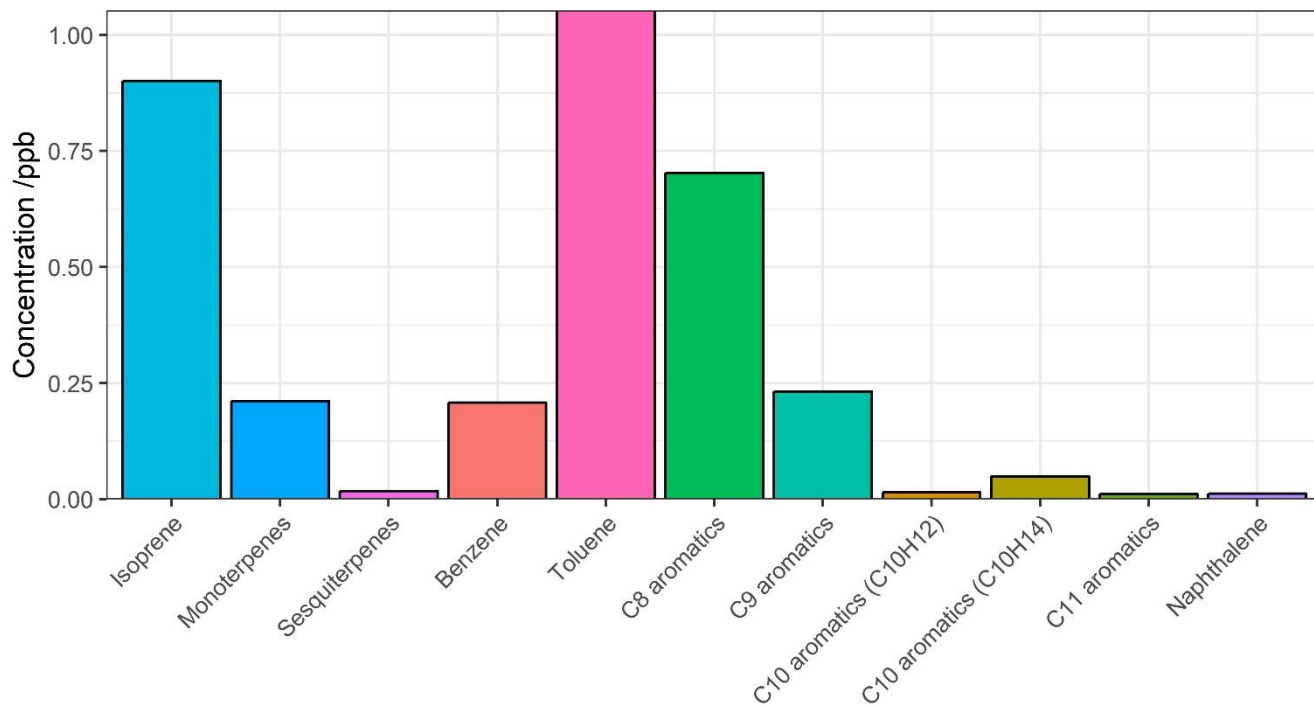
8

9



10

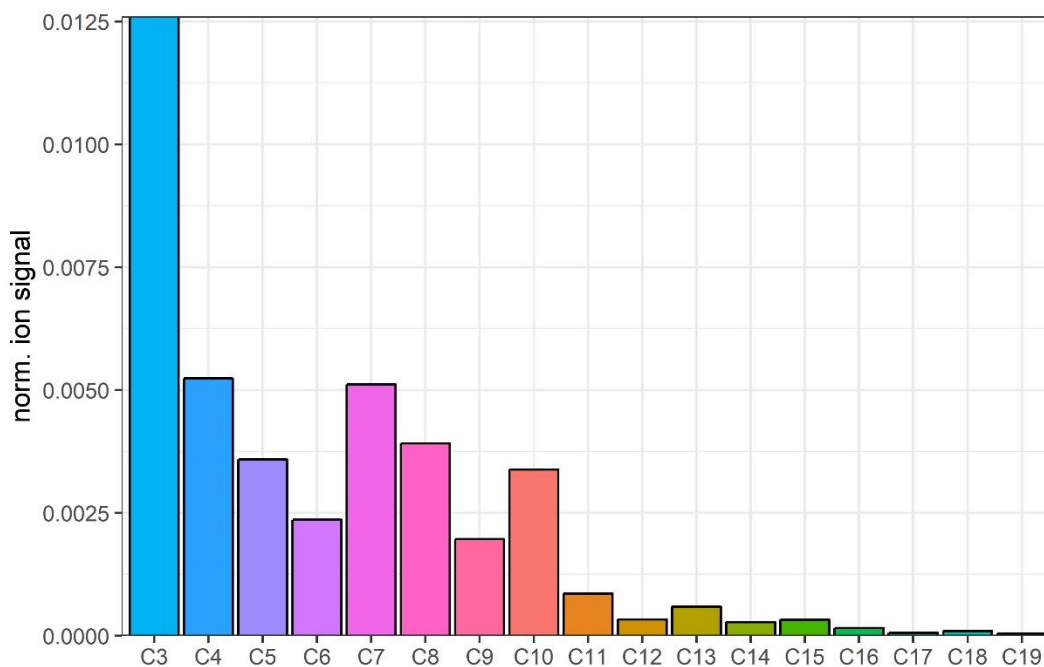
11 **Figure S1:** Mean ammonia and amine signals across the campaign as measured by CI-APi-ToF.
12 Units of normalised ion counts.



13

14 **Figure S2:** Mean selected VOC concentrations across the campaign as measured by PTR-ToF-MS.

15

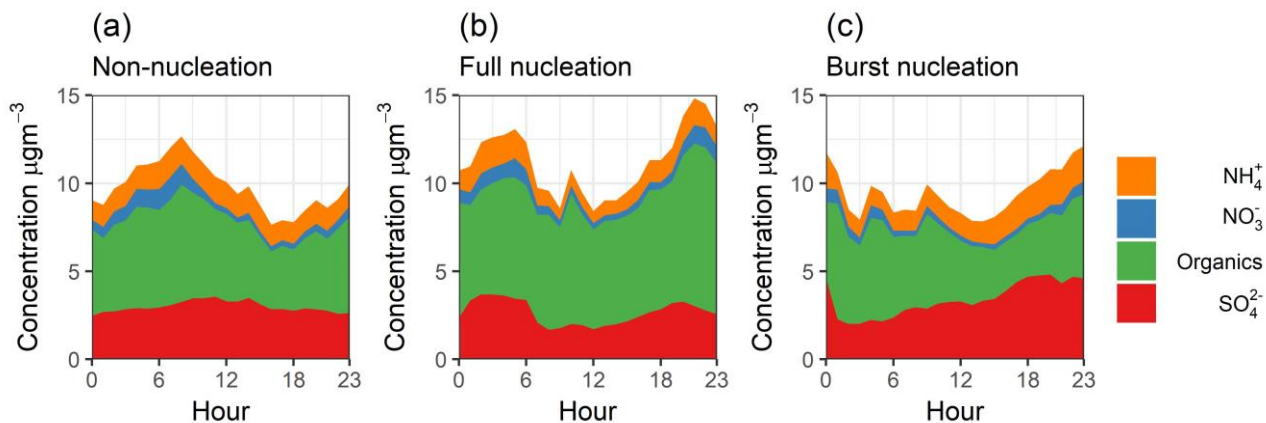


16

17 **Figure S3:** Mean ion signals per carbon number across the campaign as measured by CI-APi-ToF.
 18 Units of normalised

19

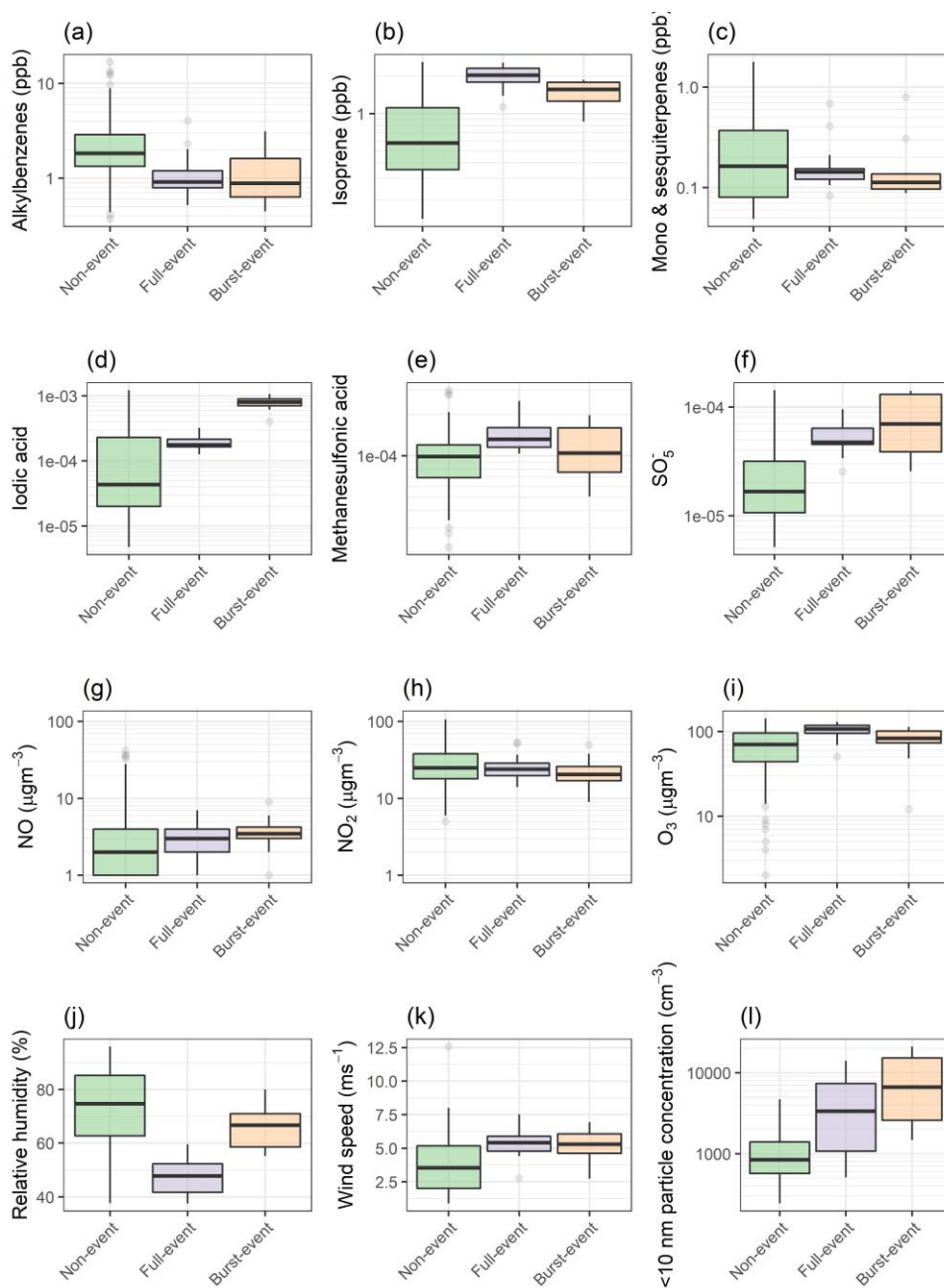
ion counts.



20

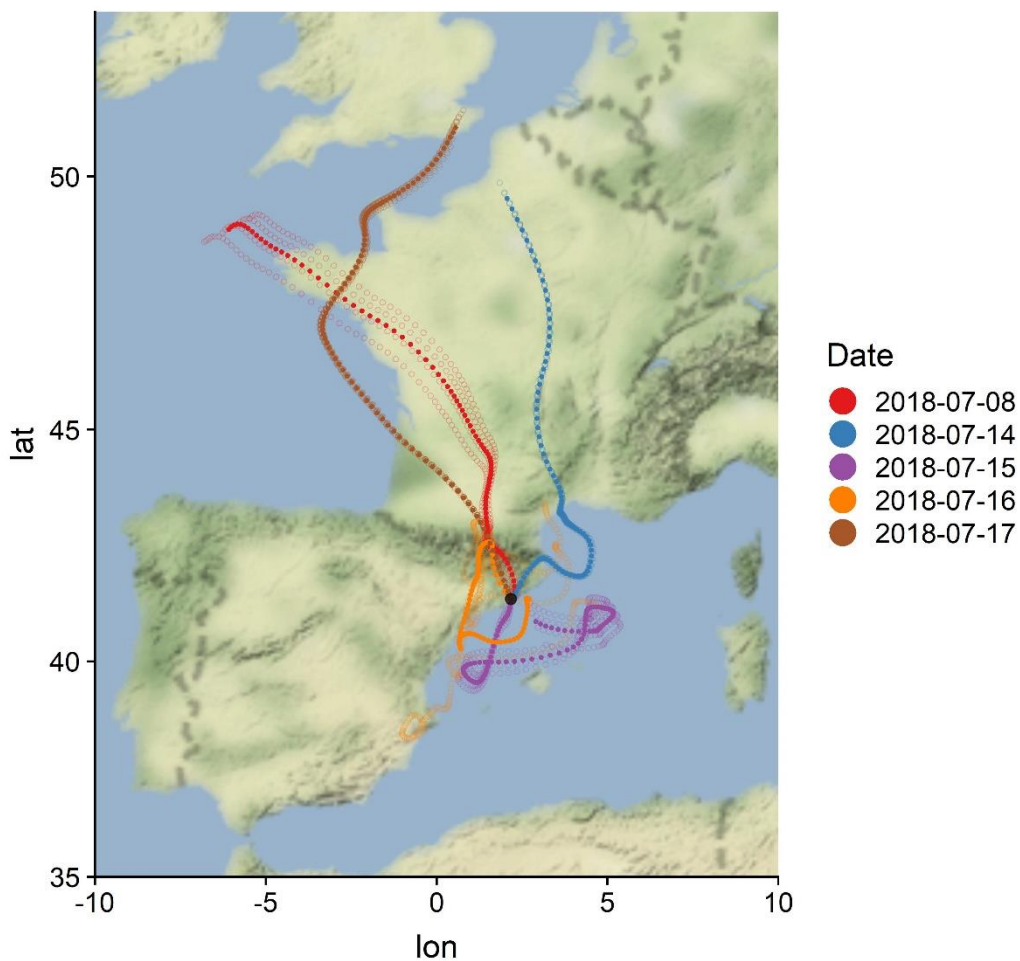
21 **Figure S4:** Average diurnals of particle composition as measured by ACSM on (a) non-nucleation,
 22 (b) full-nucleation and (c) burst-nucleation days.

23



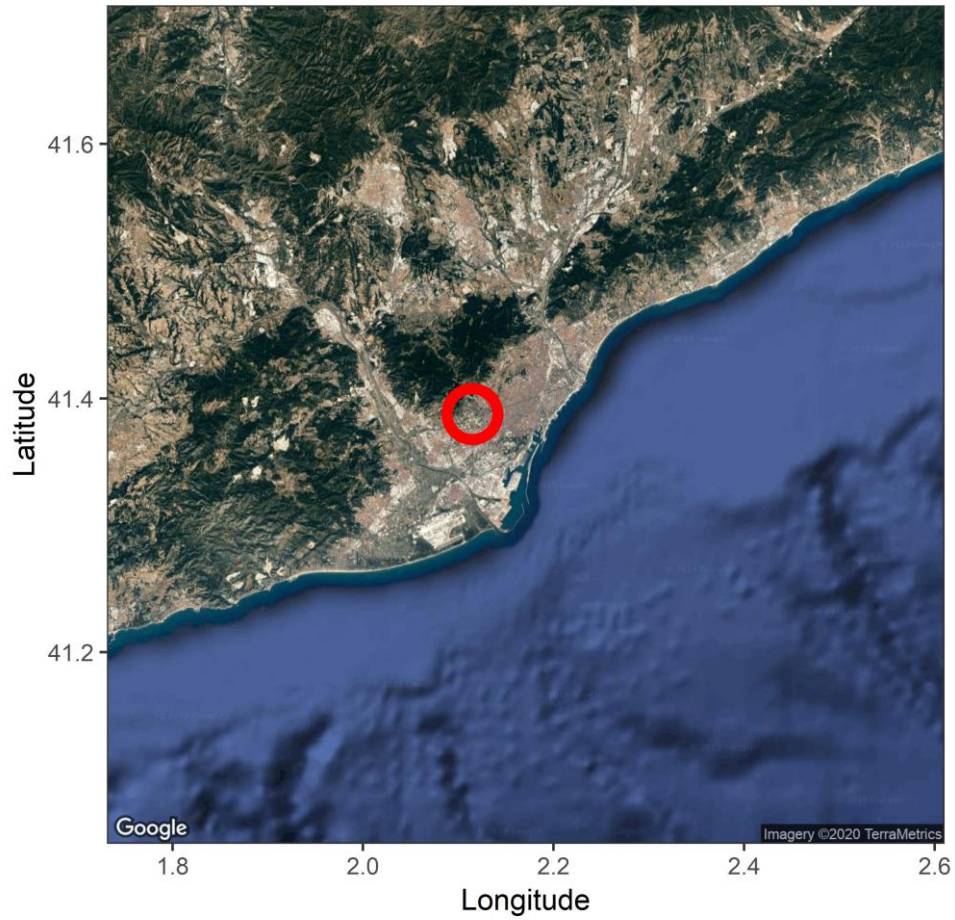
24

25 **Figure S5:** Box plots as figures 2 & 3 for (a-c) VOCs as measured by PTR-ToF-MS, (d-f) other
 26 ions as measured by CI-APi-ToF (units of norm. counts) (g-i) trace gases, and (j-l) meteorological
 27 and <10 nm particle count parameters.



28

29 **Figure S6:** HYSPLIT 96 hour back trajectories per nucleation event. Dark dashed lines show mean
 30 trajectory per event, light dashed lines show hourly trajectories from which mean is calculated.



31

32 **Figure S7:** Location of sampling site.