



Quantitative assessment of changes in surface particulate matter concentrations over China during the COVID-19 pandemic and their implications for Chinese economic activity

Hyun Cheol Kim^{1,2,*}, Soontae Kim³, Mark Cohen¹, Changhan Bae⁴, Dasom Lee⁵, Rick Saylor¹, Minah Bae³, Eunhye Kim³, Byeong-Uk Kim⁶, Jin-Ho Yoon⁵, and Ariel Stein¹

¹ Air Resources Laboratory, National Oceanic and Atmospheric Administration, College Park, MD, USA

² Cooperative Institute for Satellite Earth System Studies, University of Maryland, College Park, MD, USA

³ Department of Environmental and Safety Engineering, Ajou University, Suwon, South Korea

⁴ National Air Emission Inventory and Research Center, Sejong, South Korea

⁵ School of Earth Sciences and Environmental Engineering, Gwangju Institute of Science and Technology, Gwangju, South Korea

⁶ Georgia Environmental Protection Division, Atlanta, GA, USA

Correspondence to: Hyun Cheol Kim (hyun.kim@noaa.gov)

Abstract. Sixty days after the lockdown of Hubei province, where the coronavirus was first reported, China's true recovery from the pandemic remained an outstanding question. This study investigates how human activity changed during this period using observations of surface pollutants. By combining surface data with a three-dimensional chemistry model, the impacts of meteorological variations and variations in yearly emissions control are minimized, demonstrating how pollutant levels over China changed before and after the Lunar New Year from 2017 to 2020. The results show that the reduction in NO₂ concentrations, an indicator of emissions in the transportation sector, was clearly deeper and longer in 2020 than in normal years, and started to recover after February 15. By contrast, PM_{2.5} emissions had not yet recovered by the end of March, showing a reduction around 30% compared with normal years. SO₂ emissions had not affected significantly by the pandemic. Additional model study using a top-down emissions adjustment still confirms a reduction around 25% in unknown surface PM_{2.5} emissions over the same period, even after realistically updating SO₂ and NO_x emissions. This evidence suggests that different economic sectors in China may be recovering at different rates, with the fastest recovery in transportation and a slower recovery likely in agriculture. The apparent difference between the recovery timelines of NO₂ and PM_{2.5} implies that monitoring a single pollutant alone (e.g. NO_x emissions) is insufficient to draw conclusions on the overall recovery of the Chinese economy.

1. Introduction

Measuring pollutants can provide empirical and immediate information on human activity compared with traditional survey-based measures, although interpreting spatial and temporal trends in such data is complex. The novel coronavirus SARS-CoV-2 has struck globally since it was first reported in December 2019 in China, the first country to be affected. After strong efforts by the Chinese government, including the lockdown of Hubei province, the outbreak seems to have eased as of the end of March 2020. New daily infections in Hubei have significantly reduced, with reported new cases dropping to zero from the thousands of new cases reported daily in February (Worldometer, 2020), and lockdown restrictions have been eased. As countries around the world struggle to slow outbreaks of the pandemic disease, it becomes important to observe and analyze signals of recovery in economic and public activity in China.

A large proportion of the surface pollutants in China originate from anthropogenic emissions by five major economic sectors: transportation, industry, power generation, residential (cooking and heating), and agriculture (Li et al., 2017). Emissions changes



for different economic sectors can be approximately inferred based on changes in ambient concentrations of specific pollutants if
40 uncertainties associated with real-world emissions and meteorological variations can be reduced or accounted for. NO₂
concentration is strongly associated with nitrogen oxide (NO_x = NO + NO₂) emissions (Beirle et al., 2011; Georgoulias et al.,
2019), and, since mobile sources (transportation) account for a large proportion of NO_x emissions, NO₂ concentrations can offer
a good proxy for traffic in urban areas (Li et al., 2017). Meanwhile, SO₂ emissions are strongly related to the industrial and
residential sectors. The agricultural sector plays a critical role in tropospheric chemistry, providing most of the ammonia
45 emissions that contribute to the formation of inorganic aerosols (Pinder et al., 2007).

Surface observations of pollutants provide an independent dataset that can be compared with socioeconomic data based on
surveys. Three main components affect variations in pollutant concentrations: (1) interannual natural variations, (2) long-term
trends due to emissions control, and (3) sporadic socioeconomic events (Kim et al., 2017b). The coronavirus offers a case of an
emissions change caused by an unprecedented, isolated social event. Therefore, signals from these first two components—
50 meteorological variations and year-on-year emissions controls—must be minimized to isolate the true signal of the impact of the
pandemic on air pollutant concentrations. A state-of-the-art three-dimensional atmospheric chemistry model can help to separate
these confounding factors. This study attempts to estimate the impact of the pandemic on Chinese regional air quality, thus
inferring changes in social activity based on observations of surface pollutants.

Although early studies have reported Chinese air quality during the period in question (Bao and Zhang, 2020; Chauhan and
55 Singh, 2020; He et al., 2020; Huang et al., 2020; Li et al., 2020; F. Liu et al., 2020; Q. Liu et al., 2020; Wang et al., 2020, 2020;
Wang and Su, 2020; Xu et al., 2020), it remains very challenging to fully isolate the impact of the pandemic on the region's air
quality. To quantitatively assess changes in major surface pollutants and their precursor emissions over China during the
pandemic period, we conducted a series of analyses using surface observations and atmospheric chemistry models, with
simulations based on a bottom-up emissions inventory and top-down assimilated emissions. Section 2 describes the observational
60 data recorded from surface monitors and satellite, as well as the baseline modeling methodology. Section 3 describes the
methodology for processing time-series data, estimating top-down emissions, and assessing sectoral impacts of emissions.
Section 4 presents and discusses the results. Finally, Section 5 summarizes the findings and their implications.

2. Data

2.1 Observations

65 Surface observation data were obtained from the China National Environmental Monitoring Center (CNEMC; data available at
<http://www.pm25.in>). Hourly ambient air concentration data for PM₁₀, PM_{2.5}, CO, NO₂, O₃, and SO₂ were available for 1,571
sites (over China) and 1,459 sites (within the study domain; **Figure 1**). After removing sites with less than 80% data availability,
the analysis used observations from 1,332 sites. Data processing procedures are explained in Section 3.1 and further discussed in
Section 4.4.

70 2.2 Satellite

The TROPospheric Monitoring Instrument (TROPOMI) NO₂ vertical column-density, level-2 data (S5P_L2_NO2) were
obtained from NASA GES DISC (<http://tropomi.gesdisc.eosdis.nasa.gov>). TROPOMI is a hyperspectral spectrometer onboard
the Sentinel-5P satellite, with wavelength coverage over ultraviolet to visible (270 nm to 495 nm), near infrared (675–775 nm),
and shortwave infrared (2305–2385 nm) wavelengths (Eskes et al., 2019; van Geffen et al., 2019). High-quality pixels from
75 level-2 data (3.5×7 km resolution at the nadir) were selected using the quality flags provided by the product (qa_value > 0.75)



and then spatially regridded into the study domain using a conservative spatial-regridding method that preserves mass during interpolation (Kim et al., 2018, 2020, 2016).

2.3 Model

Meteorological and atmospheric chemistry transport models were used over East Asia with 27-km horizontal resolution. The
80 Weather Research and Forecasting Model (WRF, version 3.4.1) was used for meteorological simulations (Skamarock and
Klemp, 2008). The National Oceanic and Atmospheric Administration (NOAA) National Centers for Environmental Protection
(NCEP) Final Analysis (FNL) product (NCEP, 2000) provided the initial and boundary conditions for the WRF simulations. For
chemistry simulations, CMAQ (version 4.7.1) (Byun and Schere, 2006), the Meteorology–Chemistry Interface Processor (MCIP,
version 3.6) (Otte and Pleim, 2010), and the Sparse Matrix Operator Kernel Emission (SMOKE) modeling framework were
85 used, employing the meteorological inputs provided by the WRF simulations. **Table 1** details the modeling configurations, and
Figure S1 compares models with observations. The models provide a reasonably realistic simulation of atmospheric chemical
and physical processes over the considered domain, especially in terms of their daily variations from 2017 to 2019 (e.g., $R =$
 $0.91\sim 0.94$ for $PM_{2.5}$, see Emery et al. (2017) for general model performance guidance). However, in 2020, as the effects of the
pandemic began to take hold, the chemical model’s predictions—based on typical (as opposed to pandemic-influenced)
90 emissions—systematically overpredict pollutant concentrations, consistent with a pandemic-influenced reduction in emissions.

2.4 Emissions inventory

This study used two sets of emissions inventories, the Comprehensive Regional Emissions Inventory for Atmospheric Transport
Experiment (CREATE, version 2.3) (Jang et al., 2019) and the Model Inter-Comparison Study for Asia (MICS-Asia) emissions
inventory (MIX inventory, 2010) (Li et al., 2017). While the CREATE inventory is based on the latest information, including the
95 2016 KORUS-AQ campaign (<https://espo.nasa.gov/korus-aq>), the MIX inventory has been tested in many diverse applications
(J. Li et al., 2019; K. Li et al., 2019; Zhang et al., 2017). The time series analysis in **Figure 2** (discussed below) was based on the
CREATE emissions inventory, but the results of the analysis did not depend in any significant way on a choice between these
two base inventories. The CREATE inventory is provided as an annual mean for each Chinese province for the year 2016 and the
SMOKE preprocessor was used to convert the inventory to hourly model-ready inputs. The base model simulations use these
100 2016 emissions for the entire 2017-2020 modeling period.

3. Method

This section describes the following aspects of the analysis: (1) data-processing procedures for analyzing the time series, (2)
emissions-adjustment procedures to update SO_2 and NO_x emissions to near real-time, and (3) brute-force modeling procedures to
estimate Chinese emissions by sector.

3.1 Time-series analysis

Four types of variation (meteorological, weekly, yearly, and the Chinese spring festival) were reduced or accounted for in the
surface observations, as follows. Meteorological influences were reduced by combining surface data with output from a three-
dimensional chemistry model to calculate estimated emissions. Weekly variations, a unique feature of anthropogenic emissions,
were removed by using a seven-day moving average. The impact of the Chinese spring festival, the biggest traditional holiday
110 celebrating Lunar New Year (LNY), was normalized by rearranging the time series to center on the LNY in each solar year.



Finally, yearly emission variations were removed by setting a base period (-60 to -10 days before LNY) and calculating relative changes from the average of the base period.

We followed the data-processing procedures suggested by Bae et al. (2020) for their emissions-updating system (hereafter BAE2020). First, the observational and modeled data were paired and tested, and observation sites with more than 20% of values missing were discarded. To avoid over-weighting dense urban sites, observations occurring within the same model grid cell were averaged. Second, weekly variations were removed using seven-day moving averages, and the impact of the Chinese spring festival was normalized by rearranging the time series to center on LNY in each year. Third, meteorological variations were removed by applying the ratio between observed and modeled concentrations. Using a simple linear assumption, observed pollutant concentrations were combined with the results of the chemical model to create estimates of actual emissions that are less sensitive to meteorological variations. Use of the linear assumption in the concentration-to-emission conversion is further discussed in Section 4.4 The total estimated emissions, E_{est} , and their relative variations, rE_{est} , were calculated as:

$$E_{est}(t) = E_{mod} \cdot \frac{C_{obs}(t)}{C_{mod}(t)} \quad (1)$$

$$rE_{est}(t) = \frac{E_{est}(t)}{\sum_{t=base} E_{est}(t)/n_{base}} \times 100\% \quad (2)$$

where C is the daily pollutant concentration; t is days from LNY; $base$ and n_{base} are the pre-LNY base period (shown in **Figure 2**) and its number of days, respectively; and E_{mod} is the model emissions. To normalize the yearly changes, a base period (-60 to -10 days before LNY) was set, with relative changes calculated from the average of that base period (i.e., $rE_{est}(t)$). The impact of the pandemic was inferred by calculating the difference in estimated emissions between normal years and 2020. Since the model uses a fixed emissions inventory for each year, E_{mod} cancels out in the comparison.

For the spatial analyses of the data (e.g. **Figure 3**), points data were converted to area format. Similar to the time series data processing, the observational and modeled data were paired and tested. Considering location of each paired data set, we assigned point data to their corresponding Chinese prefecture. By averaging all concentrations in each prefecture, we constructed the prefecture-level concentration data set (for each prefecture polygon), which were then converted into domain grids using a conservative spatial-regridding technique. Section 4.4 further discusses the data-processing procedures.

3.2 Top-down emissions adjustment

To incorporate a realistic change in emissions from 2016 to 2020, we applied observation-based emissions adjustment factors to the 2016 CREATE emissions inventory to reproduce emissions in 2020. In general, model emissions can be adjusted based on the ratios between observed and modeled surface concentrations:

$$\frac{E_{adj}}{E_{mod}} = \beta \cdot \frac{C_{obs}}{C_{mod}} \quad (3)$$

where β is a sensitivity factor in the emission-to-concentration conversion. β is close to 1 if less secondary chemical reactions are involved. BAE2020 assumed a fixed $\beta = 1$ to update SO_2 emissions, and they demonstrated that the adjusted emissions effectively reproduced surface SO_2 concentrations over China.

We extend the approach of BAE2020, offering two major enhancements. First, we calculate daily emissions-adjustment factors to represent the rapid changes in emissions under the pandemic situation. We applied 14-day moving averages to avoid uncertainties caused by insufficient data points day to day. Second, we calculated spatial and temporal variations in β and then applied these to the emissions-adjustment factors. **Table 2** compare the data-processing steps used in this study with those used in BAE2020.



The β values are calculated as follows. In the real world, the sensitivity of concentration to changes in emissions is not unique or spatially homogeneous (i.e., $\beta \neq 1$), especially for NO_x emissions and NO_2 concentrations. Previous studies have calculated β values for a model by using changes in concentration caused by a certain amount of perturbed emissions (e.g., Lamsal et al., 2011 used a 15% emissions perturbation). Similarly, we calculated β values using outputs of simple emissions adjustment run (i.e., $\beta = 1$). For this simulation, *adj1*, we applied adjusted emissions by using the ratio of observed and modeled concentrations,

$$\frac{E_{adj1}}{E_{base}} = \frac{C_{obs}}{C_{base}} \quad (4)$$

where *base* and *adj1* runs denote CMAQ simulations using the CREATE emissions and adjusted emissions inventories, respectively. As Equation (3) can be written for *adj1* simulation,

$$\frac{E_{adj1}}{E_{base}} = \beta \cdot \frac{C_{adj1}}{C_{base}} \quad (5)$$

From equations (4) and (5), β values are calculated as, $\beta = C_{obs}/C_{adj1}$. The newly calculated β values are used to find emission-adjustment factors in the next simulation (*adj2*):

$$\frac{E_{adj2}}{E_{base}} = \beta \cdot \frac{C_{obs}}{C_{base}} = \frac{C_{obs}}{C_{adj1}} \cdot \frac{C_{obs}}{C_{base}} \quad (6)$$

where *adj2* indicates the second and final simulation for the top-down emissions-adjustment method.

From here, β can be interpreted as an addition-adjustment factor. If emissions modification in *adj1* resulted in the same percentage change in concentrations, $C_{obs} / C_{adj1} = 1$, we do not need the secondary adjustment. If the simulated concentration from *adj1* is smaller (larger) than the observations, we need to increase (reduce) the amount of emissions. This procedure was applied to create new 2020 emissions of both SO_2 and NO_x emissions.

In most cases, calculated β values are close to one (**Figure S4**), implying that the simple assumption $\beta = 1$ in BAE2020 remains effective. β values for NO_x emissions are slightly higher than those for SO_2 emissions (**Figure S5**), which implies that more secondary reactions are involved in tropospheric NO_x chemistry.

Both enhancements to the top-down simulations— β values and the daily application of emission-adjustment factors—clearly improved the model's performance, especially in the pre-LNY periods. While the monthly emissions adjustments failed to represent the rapid changes in NO_2 concentrations after January 25, 2020 (**Figure S6**), the daily adjustment method successfully modeled these changes (**Figure 4**). General underestimation of NO_2 concentrations was corrected using the β values (**Figure 4**). The improved model performance is confirmed by comparing spatial distributions and scatter plots before and after these adjustments (**Figure S7-9**).

3.3 Estimation of sectoral contributions

The contributions of emissions from each sector to surface $\text{PM}_{2.5}$ concentrations over China were estimated using the brute-force method (BFM), an approach that uses changes in modeled outputs as a result of perturbed emission inputs (Burr and Zhang, 2011). The MIX emissions inventory provides information on five sectors: residential, industry, power generation, transportation, and agriculture. Sectoral contributions were calculated by applying the perturbed emissions for each sector:

$$\text{Contr. (sector)} = \frac{(C_{base} - C_{\Delta E, \text{sector}}) / \Delta E}{C_{base}} \times 100 \% \quad (7)$$



where C is the surface $PM_{2.5}$ concentration and ΔE is the ratio of the emissions perturbations. A 50% reduction was chosen to perturb emissions for each individual sector. Application of the BFM to East Asian air quality models and a discussion of its uncertainties has been presented elsewhere (Kim et al., 2017a).

4. Results

4.1 Time-series analysis

Reducing meteorological, weekly, and yearly variations, as well as variations resulting from the Chinese spring festival made the comparison of pandemic-influenced surface observations to normal conditions more robust and useful. Estimated NO_x emissions (Figure 2) display variations from the spring festival season. From 2017–2019, the estimated NO_x emissions demonstrate a clear reduction during the festival period (by up to 45% between -10 and +20 days from LNY). In 2020, this reduction is slightly deeper and continues longer, implying that the coronavirus outbreak further reduced traffic in China. The difference between the estimated emissions in the 2017–2019 time series and those in the 2020 time series in Figure 2 reflects the relative significance of the impact of the coronavirus ($p < 0.01$ for t-test of comparison after LNY).

Interestingly, the 2020 time series (that is, the combined effect of the spring festival and the coronavirus) remains flat from the LNY to February 15. As both effects likely overlapped, they appear inseparable during the period. The maximum impact from the coronavirus seen in the data is a 58% reduction on February 15, 2020 from that seen in prior, baseline years (2017–2019). The level of NO_x emissions from February 1 to 15 (close to a 50% reduction) might suggest a floor level for reduced emissions under current conditions in terms of technology and infrastructure. This might have important implications for chemical modeling and emissions control, perhaps implying a floor for emissions reductions that China can realistically reach under current conditions. The blue line represents a time series from Hubei only (46 sites), showing, as would be expected, that the impact in Hubei has been more significant and sustained.

The reduced NO_x emissions began to increase after February 15, almost recovering to their normal level by the end of March 2020. Hence, the impact of the coronavirus pandemic on NO_x emissions in China lasted almost two months. Figure 3 shows the spatial distribution of the estimated changes in NO_x emissions from the base period to the period of maximum impact, January 25–February 14, 2020, and the recovery period, February 24–March 15, 2020. Just after LNY, NO_x emissions strongly reduce across China, but their inferred recovery is spatially inhomogeneous. As shown in Figure 3, Hubei province continued to show a strong reduction (by more than 50%) compared with the pre-LNY level, even in the recovery phase (period 2). Other regions show various patterns in NO_x levels compared with previous years. These observations are consistent with space-borne, remote-sensing measurements from the TROPOMI (Figure S1). Similar to the surface observations in Figure 3, the spatial distributions of NO_2 column densities during the period of maximum impact (January 25 – February 14) and the recovery period (February 24 – March 15) were generated as changes from the baseline period (November 26, 2019 – January 15, 2020).

The impact of the virus may actually have begun before the spring festival. In normal years (2017–2019), variation in estimated pre-LNY baseline period (-60 to -10 days) NO_x emissions is relatively small, because the model uses fixed emissions and weekly variations have already been removed. However, the estimated emissions in 2020 are relatively low starting from about 15 days before LNY, and this relative reduction is more pronounced in Hubei. This suggests that our baseline period in 2020 already includes a partial coronavirus impact. If this is true, the impact of the pandemic would be even stronger than inferred here, as it is based on a year-by-year comparison of concentrations during and after the typical-year base-period.

Unlike the temporal trend in NO_x emissions and their spatial distribution, comparison of changes in the $PM_{2.5}$ level suggests a different story (Figure 2b). Contrary to NO_x emissions, $PM_{2.5}$ concentrations typically show a slight increase near LNY, likely



220 due to increased $PM_{2.5}$ emissions from fireworks, a long-held tradition in China (Kong et al., 2015), and show only a relatively moderate reduction from typical levels (by 10–20%) over the remainder of the spring festival. Unlike NO_x emissions, the case of $PM_{2.5}$ involves both direct emissions of particulate matter and gas-to-particle conversion of emitted precursors (e.g., SO_2 , NO_x , NH_3 , VOCs) mediated by atmospheric chemical transformations. As discussed in the Methods section, we assume the same approximate relationship for $PM_{2.5}$ as with NO_x between the ambient observations and their associated emissions. This approach suggests that emissions decreased by roughly 30% from normal levels through the end of March to reach $72.7 \pm 6.6\%$ of the 2017–2019 level from February 4 to March 25, 2020. Interestingly, the pandemic does not seem to have significantly affected SO_2 emissions (see **Figure S3**), suggesting that the pandemic's effects on the power generation and industrial sectors have been relatively small.

225 4.2 Experiment with updated SO_2 & NO_x emissions

As discussed in Section 3.2 above, we used an alternative approach to investigate unidentified $PM_{2.5}$ emissions, specifically applying more realistic SO_2 and NO_x emissions adjustments. Using this methodology, we repeated CMAQ simulations with SO_2 and NO_x emissions adjusted based on surface measurements. Daily and prefecture-level emission-adjustment factors were calculated and applied to the baseline emissions inventory. The two CMAQ simulations—a baseline simulation with the CREATE emissions inventory and an adjustment simulation with updated emissions—were both compared with observations from surface-monitoring sites (**Figure 4**).

For both SO_2 and NO_2 concentrations, the CMAQ simulation with adjusted emissions performed well, reproducing observed variations in surface concentrations. It should be noted that the CREATE v2.3 emissions inventory we used was constructed for 2016 and applied to a 2020 simulation. Before LNY, simulated NO_2 concentrations with both the baseline and adjusted emissions inventory agreed well with observations, implying that there were no significant changes in the NO_x emissions level between 2016 and 2020. Near LNY, the baseline NO_2 simulations differ significantly from observations, while the simulation with adjusted emissions successfully reproduced the huge reductions of the LNY and pandemic period. The difference between the baseline and adjusted simulations almost disappears at the end of March, consistent with the result of the time-series analysis (**Figure 2**). On the other hand, the baseline SO_2 simulations greatly overestimate observations by two or three times, implying that nominal, real-world SO_2 emissions in 2020 are much smaller than those reflected in the 2016 emissions inventory. By applying the top-down adjustment described here, simulations could successfully reproduce surface SO_2 concentrations, reducing RMSE by 93% from 9.19 to 0.62 ppb. The updated SO_2 and NO_x emissions inventories appear to successfully reproduce variations in surface $PM_{2.5}$ concentrations, even after the start of LNY celebrations. However, in early February, as the impact of the COVID pandemic became more significant, the baseline run (with the CREATE emissions inventory) does not simulate a sudden drop in $PM_{2.5}$ observations, while the adjusted emissions run does so.

A closer look, however, reveals that the real trend in $PM_{2.5}$ emissions cannot be explained by the change of two major inorganic aerosol precursors, SO_2 and NO_x . **Figure 5** depicts the time series of normalized mean biases (NMB) of surface $PM_{2.5}$ concentrations. Before LNY, $PM_{2.5}$ NMB is mostly negative, showing the adjusted emission simulation slightly underestimates particulate matter. After LNY, $PM_{2.5}$ NMB changes prominently, showing the simulation clearly overestimates by about 20% NMB in $PM_{2.5}$ concentration. Before and after LNY, $PM_{2.5}$ NMB moves by 25.1%, from -4.1% to 21.0%, implying that the model suddenly overestimates $PM_{2.5}$ concentrations by 25% after LNY. In other words, unknown, non-modeled emissions (that is, non- SO_2 and non- NO_x emissions) clearly reduce during the pandemic period (February and March) enough to account for 25% of total $PM_{2.5}$ concentration at baseline. This result is consistent with findings (Section 4.1) that changes in SO_2 and NO_x emissions alone cannot explain the reduced $PM_{2.5}$ concentrations in March.



255 4.3 Sectoral contributions to emissions

One remaining question is why the recovery of NO_x emissions and unchanged SO_2 emissions at the end of March did not lead to the recovery of $\text{PM}_{2.5}$, which might be explained by considering the time-varying emissions contribution of each economic sector. Sensitivity tests using the CMAQ model reveal that the residential and agricultural sectors are most dominant in the early months of the year (**Figure 6**), accounting for more than 60% of surface $\text{PM}_{2.5}$ concentration over China. As emissions in the residential sector are primarily from cooking and heating with anthracite coal and wood, emissions which continue even during a pandemic, one possible explanation is that emissions from the agricultural sector reduced as a result of pandemic-related delays in planting and fertilizing.

February is the start of the spring-crop planting period in southern China. The coronavirus outbreak could have impacted both field crops and livestock farms. Inputs, such as fertilizer and animal feed, have reportedly been scarce as a result of transportation disruptions, and seasonal workers have reportedly been lacking due to quarantine controls or fears (Quanying, 2020; Yu, 2020; Zhang and Xiong, 2020). Agricultural activities that generate particulate matter, such as biomass burning to clear debris and the generation of airborne dust during tilling, are reduced in intensity during the pandemic. Reduced NH_3 emissions as a result of diminished livestock farming activities might also be a factor leading to lower $\text{PM}_{2.5}$ concentrations.

4.4 Further discussion of data processing

We further discuss data-processing procedures here. **Figure 7** presents a time series of surface pollutants proceeding through data-processing steps. Even in raw format, NO_2 exhibits clear impacts from the pandemic. Impacts on other pollutants (CO , PM_{10} , and $\text{PM}_{2.5}$), however, are not easily recognizable until confounding signals are fully removed. Interpreting SO_2 concentration data is particularly illuminating. While 2020 SO_2 concentrations are substantially lower than those of previous years, the time series obtained after the data processing described here suggests that SO_2 emissions are mostly consistent before and after LNY. That is, lower SO_2 concentrations in 2020 seem to be a continuation of year-over-year reductions and not a result of the pandemic.

Note that the various instances of linear assumptions used in this analysis should be interpreted with caution especially considering its spatiotemporal resolution and chemical characteristics. Variations in emissions and in chemical and physical processes, including chemical reactions, transport, and dispersion, can create large gradients on local scales that are likely poorly represented in the WRF and CMAQ modeling performed here, even as their importance is somewhat smoothed over regional and nationwide scales. Observed concentrations of a pollutant are generally proportional to the emissions associated with that pollutant; conceptually, a simple linear relationship between emissions and pollutants is assumed. For the pollutants NO_2 and SO_2 , these are NO_x and SO_2 emissions, respectively. BAE2020 demonstrated that this concentration-to-emission conversion method can be used effectively at the Chinese prefecture level. Discussion of the spatial representativeness of Chinese surface-monitoring data and associated uncertainties is also presented in BAE2020. For inferring $\text{PM}_{2.5}$ -related emissions, the analysis is more complicated, because $\text{PM}_{2.5}$ results from both primary and secondary (precursor) emissions. While the pollutant–emissions relation for $\text{PM}_{2.5}$ is nonlinear, especially over relatively small spatial and temporal scales, it is still approximately valid over larger geographical regions and longer time periods.

The validity of the linear assumption was tested through a model sensitivity analysis. A CMAQ simulation with 50% reduced emissions yielded approximately 50% reduction in surface $\text{PM}_{2.5}$ concentrations over most regions in China (**Table S1**). Taken as a whole, surface $\text{PM}_{2.5}$ concentrations are roughly proportional to overall emissions. Thus, the simplifying assumption of linearity appears reasonable for the more complex $\text{PM}_{2.5}$ case, generating a time series of estimated pollutant emissions without meteorological variations. Nevertheless, $\text{PM}_{2.5}$ emissions estimated with this analysis are necessarily more uncertain than are



NO_x emissions. Notably, **Table S1** also shows that CMAQ simulations with adjustments in SO₂, NO_x, and NH₃ individually showed disproportionately lower responses, suggesting that surface PM_{2.5} concentrations are influenced by other emissions (e.g., elemental carbon and organic carbon emissions) and/or nonlinear processes that likely vary with atmospheric chemistry regime.

5. Summary

We investigated changes in observed surface-pollutant concentrations over China and inferred changes in human activity as a result of the coronavirus pandemic. The analysis has shown that NO_x emissions across China recovered to almost normal levels two months after LNY. However, considering the estimated changes in emissions associated with PM_{2.5}, some emissions remain missing, as of the end of March 2020, compared with normal years. An alternative modeling approach using updated real-time SO₂ and NO_x emissions also suggested that about 25% of PM_{2.5} emissions are likely missing from the period.

The surface observations of pollutants across China suggest that the country is greatly recovering, as evidenced by the apparent resumption of near-normal transportation-related emissions. The pandemic appears not to have strongly affected the industrial sector; continued depression in estimated PM_{2.5}-associated emissions may be due to effects on the agricultural sector. If the sustained reduction in PM_{2.5} is due to reduced activity in the agricultural sector, agricultural production could be affected, at least in the short term. This could hold important implications for China's path to recovery and, potentially, for broader parts of the world, if similar types of agricultural impacts occur elsewhere.

The data analysis approach used here has attempted to isolate the ambient data signal due to the coronavirus from other sources of variation. The apparent difference between the recovery timelines for NO₂ and PM_{2.5} suggests that estimating NO_x emissions alone is insufficient to draw conclusions about the overall recovery of the Chinese economy. Overall, changes in concentrations of atmospheric pollutants can provide useful information about the spatial and temporal economic impacts of the coronavirus pandemic, a serious global issue.

References

- Bae, C., Kim, H.C., Kim, B.-U., Kim, Y., Woo, J.-H., Kim, S., 2020. Updating Chinese SO₂ emissions with surface observations for regional air-quality modeling over East Asia. *Atmos. Environ.* 228, 117416. <https://doi.org/10.1016/j.atmosenv.2020.117416>
- Bao, R., Zhang, A., 2020. Does lockdown reduce air pollution? Evidence from 44 cities in northern China. *Sci. Total Environ.* 731, 139052. <https://doi.org/10.1016/j.scitotenv.2020.139052>
- Beirle, S., Boersma, K.F., Platt, U., Lawrence, M.G., Wagner, T., 2011. Megacity Emissions and Lifetimes of Nitrogen Oxides Probed from Space. *Science* (80-.). 333, 1737–1739. <https://doi.org/10.1126/science.1207824>
- Burr, M.J., Zhang, Y., 2011. Source apportionment of fine particulate matter over the Eastern U.S. Part I: source sensitivity simulations using CMAQ with the Brute Force method. *Atmos. Pollut. Res.* 2, 300–317. <https://doi.org/10.5094/APR.2011.036>
- Byun, D., Schere, K.L., 2006. Review of the Governing Equations, Computational Algorithms, and Other Components of the Models-3 Community Multiscale Air Quality (CMAQ) Modeling System. *Appl. Mech. Rev.* 59, 51. <https://doi.org/10.1115/1.2128636>
- Chauhan, A., Singh, R.P., 2020. Decline in PM_{2.5} concentrations over major cities around the world associated with COVID-19. *Environ. Res.* 187, 109634. <https://doi.org/10.1016/j.envres.2020.109634>
- Emery, C., Liu, Z., Russell, A.G., Odman, M.T., Yarwood, G., Kumar, N., 2017. Recommendations on statistics and benchmarks to assess photochemical model performance. *J. Air Waste Manage. Assoc.* 67, 582–598. <https://doi.org/10.1080/10962247.2016.1265027>



- Eskes, H., van Geffen, J., Boersma, K.F., Eichmann, K.-U., Apituley, A., Pedernana, M., Sneep, M., Veeffkind, P.J., Loyola, D., 2019. Sentinel-5 precursor/TROPOMI Level 2 Product User Manual Nitrogen dioxide [WWW Document]. URL <https://sentinel.esa.int/documents/247904/2474726/Sentinel-5P-Level-2-Product-User-Manual-Nitrogen-Dioxide>
- Georgoulias, A.K., van der A, R.J., Stammes, P., Boersma, K.F., Eskes, H.J., 2019. Trends and trend reversal detection in 2
335 decades of tropospheric NO₂ satellite observations. *Atmos. Chem. Phys.* 19, 6269–6294. <https://doi.org/10.5194/acp-19-6269-2019>
- He, G., Pan, Y., Tanaka, T., 2020. The short-term impacts of COVID-19 lockdown on urban air pollution in China. *Nat. Sustain.* <https://doi.org/10.1038/s41893-020-0581-y>
- Huang, X., Ding, A., Gao, J., Zheng, B., Zhou, D., Qi, X., Tang, R., Wang, J., Ren, C., Nie, W., Chi, X., Xu, Z., Chen, L., Li, Y.,
340 Che, F., Pang, N., Wang, H., Tong, D., Qin, W., Cheng, W., Liu, W., Fu, Q., Liu, B., Chai, F., Davis, S.J., Zhang, Q., He, K., 2020. Enhanced secondary pollution offset reduction of primary emissions during COVID-19 lockdown in China. *Natl. Sci. Rev.* <https://doi.org/10.1093/nsr/nwaa137>
- Jang, Y., Lee, Y., Kim, J., Kim, Y., Woo, J.-H., 2019. Improvement China Point Source for Improving Bottom-Up Emission Inventory. *Asia-Pacific J. Atmos. Sci.* <https://doi.org/10.1007/s13143-019-00115-y>
- 345 Kim, H., Lee, S.-M., Chai, T., Ngan, F., Pan, L., Lee, P., 2018. A Conservative Downscaling of Satellite-Detected Chemical Compositions: NO₂ Column Densities of OMI, GOME-2, and CMAQ. *Remote Sens.* 10, 1001. <https://doi.org/10.3390/rs10071001>
- Kim, H.C., Kim, E., Bae, C., Cho, J.H., Kim, B.-U., Kim, S., 2017a. Regional contributions to particulate matter concentration in the Seoul metropolitan area, South Korea: seasonal variation and sensitivity to meteorology and emissions inventory. *Atmos.*
350 *Chem. Phys.* 17, 10315–10332. <https://doi.org/10.5194/acp-17-10315-2017>
- Kim, H.C., Kim, S., Kim, B.-U., Jin, C.-S., Hong, S., Park, R., Son, S.-W., Bae, C., Bae, M., Song, C.-K., Stein, A., 2017b. Recent increase of surface particulate matter concentrations in the Seoul Metropolitan Area, Korea. *Sci. Rep.* 7, 4710. <https://doi.org/10.1038/s41598-017-05092-8>
- Kim, H.C., Kim, S., Lee, S.H., Kim, B.U., Lee, P., 2020. Fine - Scale Columnar and Surface NO_x Concentrations over South
355 Korea: Comparison of Surface Monitors , TROPOMI , CMAQ and CAPSS Inventory 11010101. <https://doi.org/10.3390/atmos11010101>
- Kim, H.C., Lee, P., Judd, L., Pan, L., Lefer, B., 2016. OMI NO₂ column densities over North American urban cities: the effect of satellite footprint resolution. *Geosci. Model Dev.* 9, 1111–1123. <https://doi.org/10.5194/gmd-9-1111-2016>
- Kong, S.F., Li, L., Li, X.X., Yin, Y., Chen, K., Liu, D.T., Yuan, L., Zhang, Y.J., Shan, Y.P., Ji, Y.Q., 2015. The impacts of
360 firework burning at the Chinese Spring Festival on air quality: insights of tracers, source evolution and aging processes. *Atmos. Chem. Phys.* 15, 2167–2184. <https://doi.org/10.5194/acp-15-2167-2015>
- Lamsal, L.N., Martin, R. V., Padmanabhan, A., van Donkelaar, A., Zhang, Q., Sioris, C.E., Chance, K., Kurosu, T.P., Newchurch, M.J., 2011. Application of satellite observations for timely updates to global anthropogenic NO_x emission inventories. *Geophys. Res. Lett.* 38, n/a-n/a. <https://doi.org/10.1029/2010GL046476>
- 365 Li, J., Nagashima, T., Kong, L., Ge, B., Yamaji, K., Fu, J.S., Wang, X., Fan, Q., Itahashi, S., Lee, H.-J., Kim, C.-H., Lin, C.-Y., Zhang, M., Tao, Z., Kajino, M., Liao, H., Li, M., Woo, J.-H., Kurokawa, J., Wang, Zhe, Wu, Q., Akimoto, H., Carmichael, G.R., Wang, Zifa, 2019. Model evaluation and intercomparison of surface-level ozone and relevant species in East Asia in the context of MICS-Asia Phase III – Part 1: Overview. *Atmos. Chem. Phys.* 19, 12993–13015. <https://doi.org/10.5194/acp-19-12993-2019>
- Li, K., Jacob, D.J., Liao, H., Shen, L., Zhang, Q., Bates, K.H., 2019. Anthropogenic drivers of 2013–2017 trends in summer
370 surface ozone in China. *Proc. Natl. Acad. Sci.* 116, 422–427. <https://doi.org/10.1073/pnas.1812168116>



- Li, L., Li, Q., Huang, L., Wang, Q., Zhu, A., Xu, J., Liu, Ziyi, Li, H., Shi, L., Li, R., Azari, M., Wang, Y., Zhang, X., Liu, Zhiqiang, Zhu, Y., Zhang, K., Xue, S., Ooi, M.C.G., Zhang, D., Chan, A., 2020. Air quality changes during the COVID-19 lockdown over the Yangtze River Delta Region: An insight into the impact of human activity pattern changes on air pollution variation. *Sci. Total Environ.* 732, 139282. <https://doi.org/10.1016/j.scitotenv.2020.139282>
- 375 Li, M., Zhang, Q., Kurokawa, J., Woo, J.-H., He, K., Lu, Z., Ohara, T., Song, Y., Streets, D.G., Carmichael, G.R., Cheng, Y., Hong, C., Huo, H., Jiang, X., Kang, S., Liu, F., Su, H., Zheng, B., 2017. MIX: a mosaic Asian anthropogenic emission inventory under the international collaboration framework of the MICS-Asia and HTAP. *Atmos. Chem. Phys.* 17, 935–963. <https://doi.org/10.5194/acp-17-935-2017>
- Liu, F., Page, A., Strode, S.A., Yoshida, Y., Choi, S., Zheng, B., Lamsal, L.N., Li, C., Krotkov, N.A., Eskes, H., van der A, R., 380 Veeffkind, P., Levelt, P.F., Hauser, O.P., Joiner, J., 2020. Abrupt decline in tropospheric nitrogen dioxide over China after the outbreak of COVID-19. *Sci. Adv.* 6, eabc2992. <https://doi.org/10.1126/sciadv.abc2992>
- Liu, Q., Sha, D., Liu, W., Houser, P., Zhang, L., Hou, R., Lan, H., Flynn, C., Lu, M., Hu, T., Yang, C., 2020. Spatiotemporal Patterns of COVID-19 Impact on Human Activities and Environment in Mainland China Using Nighttime Light and Air Quality Data. *Remote Sens.* 12, 1576. <https://doi.org/10.3390/rs12101576>
- 385 NCEP, 2000. NCEP FNL Operational Model Global Tropospheric Analyses, continuing from July 1999. Research Data Archive at the National Center for Atmospheric Research, Computational and Information Systems Laboratory. <https://doi.org/10.5065/D6M043C6>
- Otte, T.L., Pleim, J.E., 2010. The Meteorology-Chemistry Interface Processor (MCIP) for the CMAQ modeling system: updates through MCIPv3.4.1. *Geosci. Model Dev.* 3, 243–256. <https://doi.org/10.5194/gmd-3-243-2010>
- 390 Pinder, R.W., Adams, P.J., Pandis, S.N., 2007. Ammonia Emission Controls as a Cost-Effective Strategy for Reducing Atmospheric Particulate Matter in the Eastern United States. *Environ. Sci. Technol.* 41, 380–386. <https://doi.org/10.1021/es060379a>
- Quanying, Z., 2020. Covid-19 is making it harder to grow food in China [WWW Document]. *Econ.* URL <https://www.economist.com/china/2020/03/14/covid-19-is-making-it-harder-to-grow-food-in-china>
- 395 Skamarock, W.C., Klemp, J.B., 2008. A time-split nonhydrostatic atmospheric model for weather research and forecasting applications. *J. Comput. Phys.* 227, 3465–3485. <https://doi.org/10.1016/j.jcp.2007.01.037>
- van Geffen, J.H.G.M., Eskes, H.J., Boersma, K.F., Maasackers, J.D., Veeffkind, J.P., 2019. TROPOMI ATBD of the total and tropospheric NO₂ data products, S5P-KNMI-L2-0005-RP, issue 1.4.0, 6 February 2019. S5P-Knmi-L2-0005-Rp 1–76.
- Wang, Pengfei, Chen, K., Zhu, S., Wang, Peng, Zhang, H., 2020. Severe air pollution events not avoided by reduced 400 anthropogenic activities during COVID-19 outbreak. *Resour. Conserv. Recycl.* 158, 104814. <https://doi.org/10.1016/j.resconrec.2020.104814>
- Wang, Q., Su, M., 2020. A preliminary assessment of the impact of COVID-19 on environment – A case study of China. *Sci. Total Environ.* 728, 138915. <https://doi.org/10.1016/j.scitotenv.2020.138915>
- Worldometer, 2020. COVID-19 Coronavirus Pandemic [WWW Document]. URL <https://www.worldometers.info/coronavirus/>
- 405 Xu, K., Cui, K., Young, L.-H., Wang, Y.-F., Hsieh, Y.-K., Wan, S., Zhang, J., 2020. Air Quality Index, Indicatory Air Pollutants and Impact of COVID-19 Event on the Air Quality near Central China. *Aerosol Air Qual. Res.* 20, 1204–1221. <https://doi.org/10.4209/aaqr.2020.04.0139>
- Yu, S., 2020. China's farmers fear food shortages after coronavirus restrictions [WWW Document]. *Financ. Times.* URL <https://www.ft.com/content/cafb828e-6423-11ea-b3f3-fe4680ea68b5>



- 410 Zhang, Q., Jiang, X., Tong, D., Davis, S.J., Zhao, H., Geng, G., Feng, T., Zheng, B., Lu, Z., Streets, D.G., Ni, R., Brauer, M., van
Donkelaar, A., Martin, R. V., Huo, H., Liu, Z., Pan, D., Kan, H., Yan, Y., Lin, J., He, K., Guan, D., 2017. Transboundary health
impacts of transported global air pollution and international trade. *Nature* 543, 705–709. <https://doi.org/10.1038/nature21712>
Zhang, W., Xiong, T., 2020. The coronavirus will delay agricultural export surges promised in trade deal with China [WWW
Document]. *Conversat.* URL [https://theconversation.com/the-coronavirus-will-delay-agricultural-export-surges-promised-in-](https://theconversation.com/the-coronavirus-will-delay-agricultural-export-surges-promised-in-trade-deal-with-china-132227)
415 [trade-deal-with-china-132227](https://theconversation.com/the-coronavirus-will-delay-agricultural-export-surges-promised-in-trade-deal-with-china-132227)

Acknowledgements

This research is supported by the National Strategic Project-Fine Particle of the National Research Foundation of Korea (NRF)
funded by the Ministry of Science and ICT (MSIT), the Ministry of Environment (ME), and the Ministry of Health and Welfare
420 (MOHW) (2017M3D8A1092015).

Disclaimer

The scientific results and conclusions, as well as any views or opinions expressed herein, are those of the author(s) and do not
necessarily reflect the views of NOAA or the Department of Commerce.

425

 Copernicus Publications
The Innovative Open Access Publisher



Table 1. Physical options for meteorological and chemical simulations

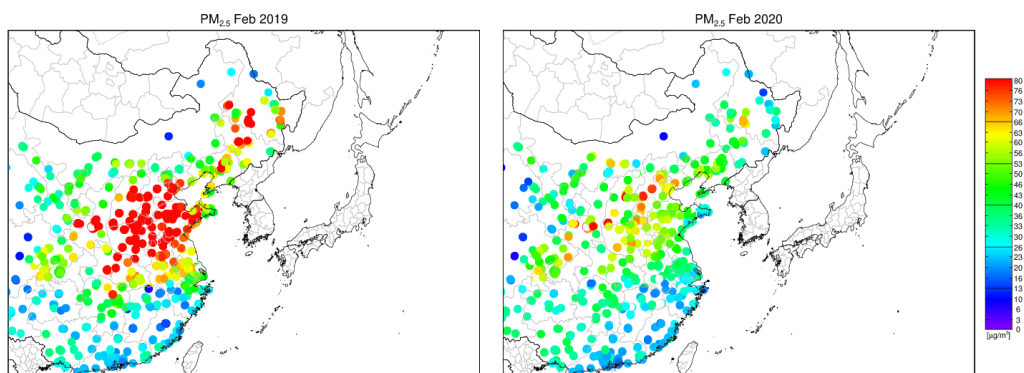
Model	Physical options	Descriptions
WRF v3.4.1	Initial field	FNL (NCEP, 2000)
	Microphysics	WSM6 (Hong et al., 2004)
	Cumulus scheme	Kain-Fritsch (Kain, 2004)
	Land surface model scheme	NOAH (Chen and Dudhia, 2001)
	Planetary boundary layer scheme	YSU (Hong et al., 2006)
CMAQ v4.7.1	Chemical mechanism	SAPRC99 (Carter, 2003)
	Chemical solver	EBI (Hertel et al., 1993)
	Aerosol module	AERO5 (Binkowski and Roselle, 2003)
	Advection scheme	YAMO (Yamartino, 1993)
	Horizontal diffusion	Multiscale (Louis, 1979)
	Vertical diffusion	Eddy (Louis, 1979)
Cloud scheme	RADM (Chang et al., 1987)	

430

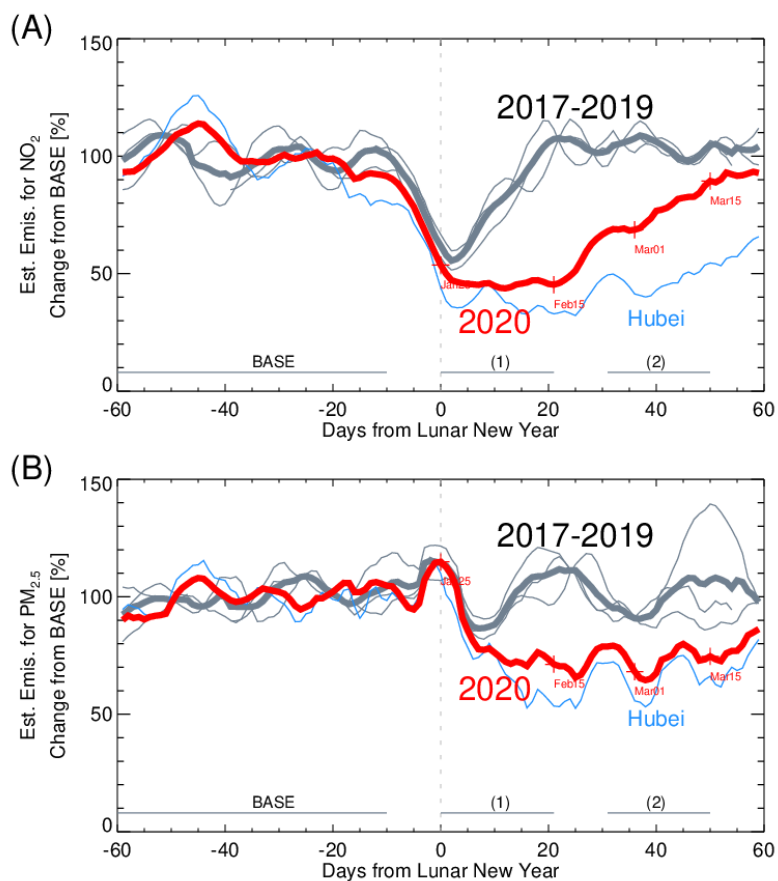


Table 2. Comparison of data-processing steps in the emissions-adjustment methods used in BAE2020 and this study

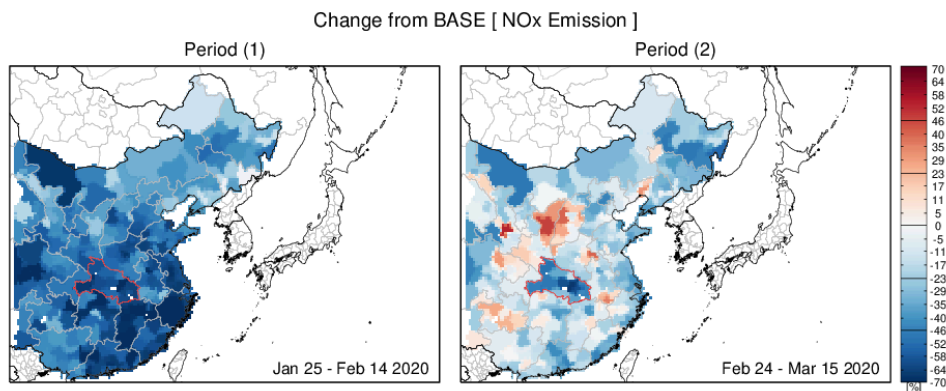
Data-processing steps	BAE2020	This study
Spatial processing	Prefecture-level	Prefecture-level
Temporal processing	Monthly	Daily (14-day moving average)
Emission-to-concentration conversion factor (β)	$\beta = 1$	Varying (Daily & prefecture-level)
CMAQ simulations	1 (adj1)	2 (adj1 & adj2)
Emissions adjusted	SO ₂	SO ₂ , NO _x
Note		Results of ‘adj1’ simulations were used to calculate beta values for ‘adj2’ simulation



435 **Figure 1. Geographical coverage of modeling domain and surface-monitoring sites. Monthly mean surface PM_{2.5} concentrations in February 2019 and February 2020 are shown.**



440 **Figure 2.** Time series of estimated emissions for (a) NO₂ and (b) PM_{2.5} using 1,332 surface monitoring sites across China. The gray lines indicate 2017–2019 variations, with their average in the thick gray line, whereas the red line indicates the 2020 variation. The blue line indicates the 2020 variations in Hubei province (46 sites). BASE is used as the pre-LNY period, and (1) and (2) denote the period of maximum impact and the recovery period, respectively.



445

Figure 3. Spatial distribution of the change in estimated NO_x emissions from the baseline period (Figure 2) during the period of maximum impact (January 25 – February 14, 2020) and the recovery period (February 24 – March 15, 2020). Hubei province is marked in red.



450

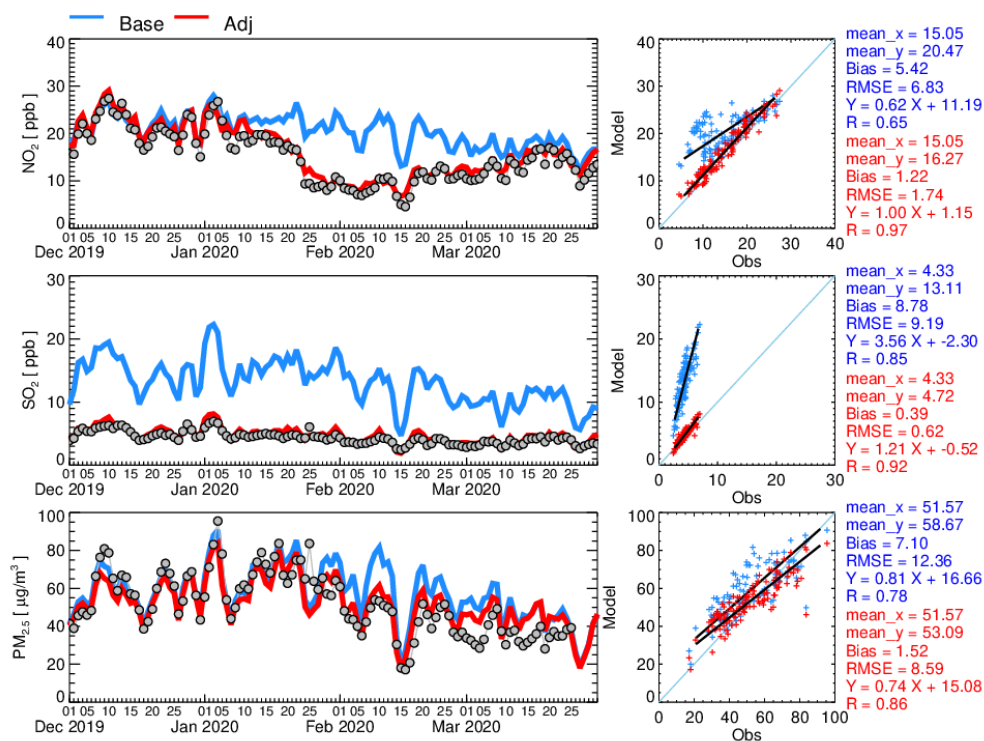


Figure 4. Time series and scatter plots of observed and modeled surface concentrations of SO₂, NO₂, and PM_{2.5} from Chinese surface-monitoring sites during the pandemic period. Model simulations using the baseline emissions inventory (CREATE) and top-down adjusted emissions are shown in blue and red, respectively. Observations are represented by gray circles.

455

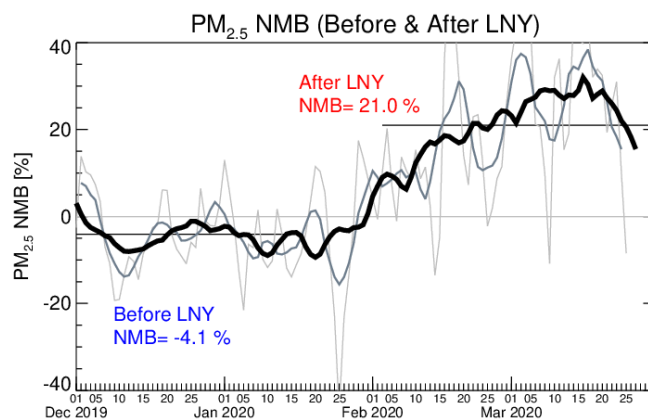


Figure 5. Time series of surface PM_{2.5} normalized mean bias during the pandemic period between observed and modeled data with adjusted emissions (i.e., SO₂ and NO_x emissions adjusted). Mean NMB before and after LNY are also marked. Raw, 7-day, and 14-day moving average NMBs are shown in thin, medium-thin and thick lines, respectively.

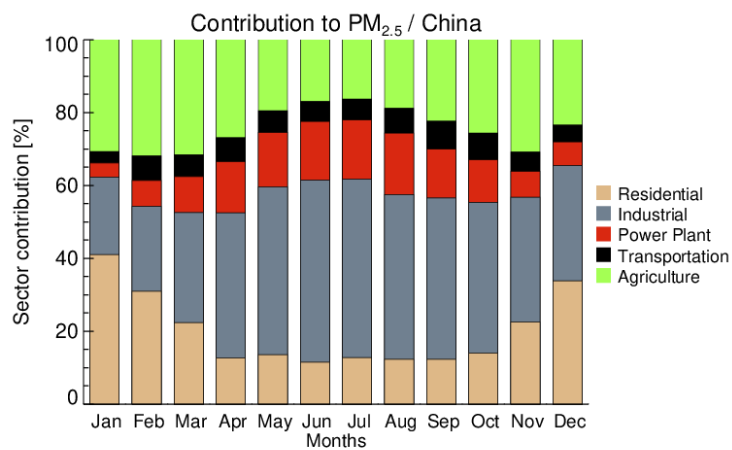


Figure 6. Monthly variations in emission contributions to surface PM_{2.5} concentrations over China by sector. The contributions from the five sectors (residential, industry, power generation, transportation, and agriculture) were estimated using a brute force perturbation method.

465

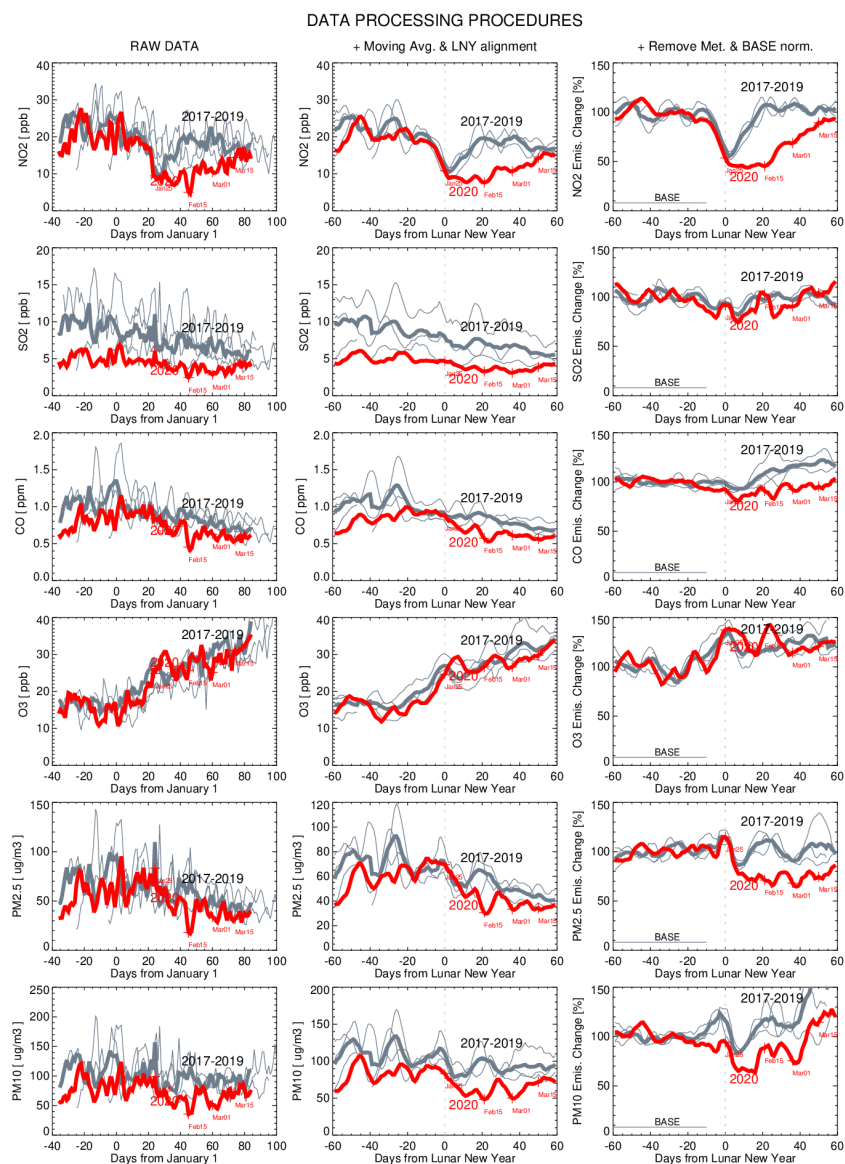


Figure 7. Time series of surface NO₂, SO₂, CO, O₃, PM_{2.5}, and PM₁₀ concentrations over China following the data-processing procedures step by step. Raw data (left column), data after applying a seven-day moving average and an LNY alignment (middle column), and data after removing meteorological variations and calculating variations from the baseline periods (right column) are all shown.

470