

Interactive comment on “Formation of a bottomside secondary sodium layer associated with the passage of multiple mesospheric frontal systems” by Viswanathan Lakshmi Narayanan et al.

Viswanathan Lakshmi Narayanan et al.

narayananvlwins@gmail.com

Received and published: 2 December 2020

Response to the reviewer comments on “Formation of a bottomside secondary sodium layer associated with the passage of multiple mesospheric frontal systems”

We thank the reviewer for the time spent on the review and very useful suggestions for further improvement of the manuscript. Below, we give our responses to the reviewer's comments. Reviewer's comments are given between double backslashes and our responses follow below the comments.

[Printer-friendly version](#)

[Discussion paper](#)



(i.e. \\ Reviewer Comment \\

Our replies).

\\ This paper reports the observation of a secondary Na layer which formed around 85 km in the mesosphere during the passage a frontal system. The study involved a Na wind-temperature lidar which made measurements in the vertical and at 4 cardinal points, as well as an all-sky OH airglow imager. The imager was used to record the passage of four frontal events, and the lidar measured Na, wind and temperature. This data was combined to show that the front caused a marked temperature increase in a layer between 80 and 85 km, where the secondary Na layer then appeared. The wind and temperature data were also used to calculate the static and shear instability surrounding the passage of each front. The Na increase is interpreted to be caused by release of atomic Na from its reservoir NaHCO_3 , due to the higher temperatures which activate the reaction $\text{NaHCO}_3 + \text{H}$, as well as downward transport of H and O from above 85 km and a corresponding decrease in O_3 . This interpretation seems quite plausible. Overall, this is a very nice piece of work which illustrates the importance of using multi-instrumented observations. \\

We thank the reviewer for the assessment of our work and the positive remark.

\\ The first is there must be a statement somewhere acknowledging the limitations of making observations in a Eulerian framework. That is, you are not observing the same air mass over 8 hours. This means that your interpretation of events requires that the atmosphere is horizontally homogeneous over roughly 2000 km. Whereas, in fact you only know the degree of homogeneity over about 35 km (the distance between the off-zenith lidar beams), with some additional information over a larger scale from the all-sky imager. There is nothing you can do about this, but it should be stated in the paper. \\

We agree with this point and as mentioned by the reviewer this is an unavoidable issue with ground based measurements. At the end of section 2, we have added the following

paragraph (revised manuscript will be uploaded after receiving all the comments during open discussion).

‘Being ground based measurements made in the Eulerian framework, we cannot observe the same air mass for an extended period. Though we can observe the small-scale structures and their movements in the airglow images, they are also superposed with the background wind, which is derived from the lidar measurements in this work. While this is an unavoidable drawback in studying the atmosphere using ground based measurements, we assume that the processes occurring are sufficiently homogeneous in the horizontal directions.’

\\ The second issue is about the downward transport of H and O to below 85 km. From the way you describe this, the reader will imagine that the NaHCO₃ reservoir is left unchanged below 85 km, to be joined by O and H from aloft. However, the NaHCO₃ below 85 km will also be transported downwards. So it is actually a parcel of air containing NaHCO₃, H and O from above 85 km that is transported downwards and heats adiabatically, releasing Na. Note that the mixing ratio of total Na increases with height up to the ablation peak of Na which is above 90 km (see recent papers e.g. Carrillo-Sanchez et al., (2020), Icarus, 335, art. no. 113395). So downward transport will also increase the total Na concentration (i.e. Na + reservoir species) below 85 km. \\

Thanks for rising this issue. We have included this in many parts of the discussion section. Now we mention ‘downward flux of minor species’ in many places and retain downflux of H and O only where they are particularly discussed. The downward flux of NaHCO₃, Na and O₃ are also mentioned in the discussion part. The recent reference Carrillo-Sanchez et al., (2020) is also included.

\\ A third issue is that you list a large number of temperature-dependent rate coefficients, but do not do anything quantitative with them. That looks a little odd. For example, at line 390 you provide the rate coefficient for H + O₃, and state that this

increases with temperature. But why not say how much? For example: "the rate coefficient increases by 40% when T increases from 200 to 230 K". That gives the reader some quantitative understanding of the point you are making. \\

In the revised version, we include Table 3 (attached at the end of this reply as a figure), which contains the values of the rate constants from 200 to 230 K in steps of 10 K and indicate the percentage increase in the rate constants. We believe that this will give a better understanding on the increased release of sodium atoms and a reduction in their reconversion to reservoir species. We also refer to the extent of variations in some parts of the Discussion section.

\\ One other point - although the paper is well written and straightforward to read, there are many grammatical errors - particularly the absence of the definite article "the" and indefinite article "a". It is not the job of a reviewer to correct these basic errors. \\

We are sorry for the grammatical errors. In the revised version, we have tried our level best to correct them and we are certain that most of the mistakes are corrected, if not all.

Minor corrections:

\\ line 23: change to: "...as a consequence of meteoric ablation (e.g. Plane)" \\

Changed.

\\ line 24: the statement "In high latitude winters, the peak altitudes are close to 88 km due to atmospheric circulation." is not really correct - it is chemistry which determines the height of the Na layer; the role of circulation is principally in changing the local temperature profile. \\

While it is true that the chemistry determines the equilibrium height of the Na layer not only in the high latitudes but in all the latitudes, the particular subsidence of peak height in winter polar region is believed to be due to the circulation and is observed with satellite based measurements (Fussen et al., ACP, 2010, in particular Figure 12).

\\ line 41: "occur at lower altitudes" \\

Corrected.

\\ line 73: "sodium lidar and airglow imaging observations from a high latitude location"
\\

Corrected.

\\ line 79: in what way is the lidar "state of the art"? Please specify. The performance parameters you mention sound fairly standard. \\

The lidar is operated maintenance-free and uses a solid state laser diode end pumped Nd:Yag laser system to achieve high stability. The lidar functions without any manual adjustments required at the laser or telescope systems for the whole season as explained in Kawahara et al., Opt. Express, 2017. However, the lidar is being operated for the past 10 years and hence we remove the term 'state of the art' in the revised version. Instead, we include the above mentioned sentences to highlight the speciality of the lidar hardware.

\\ line 200: "This is further confirmed by the ..." \\

Changed.

\\ line 225: "...UT. The front continued ..." \\

Modified as suggested.

\\ line 269: "above 93 km before..." \\

Modified as suggested.

\\ line 314: "thermal ducting was possible" \\

Changed.

\\ line 319: "m and k stand for" \\

Corrected.

\\ line 384: "would have been initiated" \\

Changed.

\\ line 399: in fact, the Na compounds (NaOH, NaHCO₃ etc.) photolyse in the near-UV above 200 nm. So change EUV to UV. \\

Changed. Thank you for this information.

\\ line 446: "have led to " \\

Changed.

\\ The References need to be sorted out and checked. They are not all in alphabetical order, and the same author appears with different initials in difference references! \\

We apologize for this mistake. We have extracted the references in bibtex format from the journal websites and created the list. We have checked and corrected the mistakes in the revised version (will be uploaded after the discussion closes).

We once again thank the reviewer for the evaluation of the work and useful suggestions that led to its improvement.

Interactive comment on Atmos. Chem. Phys. Discuss., <https://doi.org/10.5194/acp-2020-803>, 2020.

Printer-friendly version

Discussion paper



Reaction	Rates from 200 to 230 K				% increase with respect to 200 K			
	200 K	210 K	220 K	230 K	200 K	210 K	220 K	230 K
R1	1.34×10^{-11}	1.49×10^{-11}	1.65×10^{-11}	1.81×10^{-11}	0	12	24	36
R2	7.09×10^{-14}	9.38×10^{-14}	1.21×10^{-13}	1.53×10^{-13}	0	32	71	116
R3	2.56×10^{-12}	2.91×10^{-12}	3.28×10^{-12}	3.66×10^{-12}	0	14	28	43
R4	2.20×10^{-10}	2.25×10^{-10}	2.31×10^{-10}	2.36×10^{-10}	0	2	5	7
R5	6.16×10^{-10}	6.33×10^{-10}	6.49×10^{-10}	6.64×10^{-10}	0	3	5	8
R6	5.00×10^{-30}	4.71×10^{-30}	4.45×10^{-30}	4.22×10^{-30}	0	-6	-11	-16
R7	1.59×10^{-33}	1.41×10^{-33}	1.26×10^{-33}	1.14×10^{-33}	0	-11	-20	-28
R8	2.69×10^{-16}	4.39×10^{-16}	6.86×10^{-16}	1.03×10^{-15}	0	63	155	283

Fig. 1. Table 3

Printer-friendly version

Discussion paper



Interactive comment on “Formation of a bottomside secondary sodium layer associated with the passage of multiple mesospheric frontal systems” by Viswanathan Lakshmi Narayanan et al.

Viswanathan Lakshmi Narayanan et al.

narayananvlwins@gmail.com

Received and published: 7 December 2020

Response to the reviewer 2 comments on the manuscript ‘Formation of a bottomside secondary sodium layer associated with the passage of multiple mesospheric frontal systems’

We thank the reviewer for going through our work and providing suggestions on the same. Here we address the concerns raised by the reviewer and indicate the necessary modifications made in the revised version of the manuscript. Reviewer’s com-

[Printer-friendly version](#)

[Discussion paper](#)



ments are given between double backslashes and our responses are below the comments. (i.e. \\ Reviewer Comment \\ Our replies).

\\ This paper studies the formation mechanism of the secondary Na peak that appears within the altitude range of the main Na layer but below the main peak and near the bottomside of the main layer. The data quality (both lidar and airglow imager near Tromsø) is high, and the analyses connecting the lidar-observed secondary Na peak below its main layer peak with the OH-imager-observed mesospheric bore event are extensive. The topic is interesting to the middle atmosphere science community. On this aspect, the paper is worth considering for publication in ACP after extensive reviews and revisions.

However, there are three major issues with the current manuscript: 1) The paper title is misleading or improper, 2) its Abstract reads badly with the first sentence distract people's attention, and 3) its Introduction contains misunderstanding of metal layer sciences.

All these issues likely stem from authors' misunderstanding of the meteoric metal layers. The main Na layer ranges from ~75 to 110 km, and the layer (below 85 km) they reported here is well within the main Na layer. Therefore, it is NOT an extra layer to the main layer, but an extra peak to the main layer peak. We have seen many times that Na layers go well below 85 km forming variable peaks during wintertime in the polar region, most likely caused by various wave activity. Therefore, what authors observed isn't new, but their studies of connecting such Na peaks to bore/frontal events are new and worth publishing. \\

We thank the reviewer for the positive opening remark. Though the peaks of sodium layer occasionally form below 85 km, in this case we find a clear separation between the main peak and the lower peak and hence referred it as layer. Now the terminology is changed to 'peak'. The reviewer may also note that we never claimed that the observation of lower altitude sodium layer is new. Below we have addressed the three

issues pointed by the reviewer.

\\ 1) Paper title: First, as written above it's not a new Na layer, but it's the secondary Na peak within the main Na layer; second, "in lower altitudes" has a grammar issue – lower than what? Therefore, such a paper title is not acceptable. Authors may consider to change the paper title to "Formation of an extra Na peak below the main layer peak associated with passage of multiple mesospheric frontal system" or something better.\\

The reviewer may note that, while the sodium layer exists between the altitude region of 75 and 110 km, it does not fill the whole range of altitudes. Often, more than one peak is observed within the altitude range. When the different peaks are well separated, they can be referred as 'layers' in our opinion. The reviewer may kindly note that the term 'layer' is used for clearly distinguishable peaks in the sodium concentration in the context of sporadic sodium layers, most of which occur within the altitude range of 75 to 110 km. Nevertheless, respecting the opinion of the reviewer and following the suggestion to change the title, we have changed the title of the manuscript as 'Formation of an additional density peak in the bottomside sodium layer associated with the passage of multiple mesospheric frontal systems'.

Regarding 'in lower altitudes': There is no such term in the title. In the updated version of the manuscript, we clearly mention in the text that: 'We refer to the peak occurring below the main sodium layer peak at 90 km as 'lower altitude sodium peak' in this work'. The updated manuscript version will be uploaded in a few days.

\\ 2) Abstract: The first sentence in the Abstract is very misleading and it is frustrating to read it. Your paper is on the secondary Na peak below the main layer peak, but you started with mentioning something that is non-relevant to your subject. Please remove this sentence to avoid misleading readers. Also, change "additional sodium layer" to "additional Na peak". \\

The first sentence of the abstract is changed following the reviewer's suggestion as

'We present a detailed investigation of the formation of an additional sodium density peak at altitudes of 79-85 km below the main peak of sodium layer based on sodium lidar and airglow imager measurements made at Ramfjordmoen near Tromsø, Norway on the night of 19 December 2014.'

While we believe that it is not a mistake to call such a separated peak as an additional layer, we understand the concern of the reviewer that on many other occasions, there are peaks below 85 km that are not separated from the main layer to the extent of the present case. Therefore, we change the terminology from 'lower altitude sodium layer' to 'lower altitude sodium peak' as suggested. As mentioned in the response of previous comment, we also explain in the manuscript text what is 'lower altitude' in the context of this work.

\\ 3) Introduction: There is some lack of understanding of the thermosphere-ionosphere metal (TIMt) layers (mentioned in review paper by Plane et al. (2015)) in the Introduction, including thermosphere-ionosphere Fe and Na (TIFe and TINa) layers that were discovered to reach the altitudes of lower F region (Chu et al., GRL, 2011, 2020; Tsuda et al., GRL, 2015; Raizada et al., 2015; Chu and Yu, 2017). None of these pioneering papers were acknowledged. Instead, authors referenced Collins et al. (1996) and Wang et al. (2012), and adapted a bad phrase "double sodium layers". This "double sodium layers" phrase is improper and misleading, thereby it has been discarded by the field. Therefore, the current paragraph (the 3rd one in Introduction) is totally not acceptable. However, these TIMt layers aren't the focus of this manuscript, so authors may choose to remove this paragraph entirely and focus on the main Na layer. If authors want to include TIMt layers in the introduction, then they should update their understanding of the TIMt layers and cite proper references \\

We are sorry but we do not find this comment relevant to the present manuscript. We believe this comment was already addressed during the access peer review stage of the manuscript. The third paragraph of previous version was already removed before the manuscript was put in to discussion. The third paragraph of the current manuscript

[Printer-friendly version](#)[Discussion paper](#)

explains the research problem addressed in the work. We never use the term 'double sodium layer' in the whole manuscript. Moreover, we note that all the references except Chu et al., 2020 and Chu and Yu, 2017 are already present in the manuscript. We now include Chu et al., 2020 which is recent and we were unaware of earlier. The reference Chu and Yu, 2017 discusses only about Fe/Fe⁺ in the thermosphere while our manuscript discusses about Na in the mesosphere. Therefore, we are unable to include the reference and sorry about that.

We once again thank the reviewer for assessing the work and providing suggestions for the improvement of the manuscript. We hope we have satisfactorily addressed the concerns.

Interactive comment on Atmos. Chem. Phys. Discuss., <https://doi.org/10.5194/acp-2020-803>, 2020.

Printer-friendly version

Discussion paper



Track changed version of the manuscript

The important changes made as per review comments (except minor grammatical corrections and format changes) are highlighted with red color text and striked out text in the manuscript that follow from next page.

One to one changes including minor corrections and format changes can be seen in the following link <https://draftable.com/compare/qWZNmvpkGhqG>

Formation of an additional density peak in the bottomside of sodium layer associated with the passage of multiple mesospheric frontal systems

~~Formation of a bottomside secondary sodium layer associated with the passage of multiple mesospheric frontal systems~~

Viswanathan Lakshmi Narayanan¹, Satanori Nozawa², Shin-Ichiro Oyama^{2,3,4}, Ingrid Mann¹, Kazuo Shiokawa², Yuichi Otsuka², Norihito Saito⁵, Satoshi Wada⁵, Takuya D. Kawahara⁶, and Toru Takahashi^{7,8}

¹Department of Physics and Technology, UiT – The Arctic University of Norway, Tromsø, Norway

²Institute for Space-Earth Environmental Research, Nagoya University, Nagoya, Japan

³Space Physics and Astronomy Research Unit, University of Oulu, Finland

⁴National Institute of Polar Research, Japan

⁵RIKEN Center for Advanced Photonics, RIKEN, Saitama, Japan

⁶Shinshu University, Japan

⁷Department of Physics, University of Oslo, Norway

⁸Electronic Navigation Research Institute, National Institute of Maritime, Port, and Aviation Technology, Tokyo, Japan

Correspondence: VL Narayanan (narayananvlwins@gmail.com)

Abstract. ~~We present a detailed investigation of the formation of a secondary sodium layer at altitudes of 79–85 km below the main sodium layer~~ We present a detailed investigation of the formation of an additional sodium density peak at altitudes

of 79–85 km below the main peak of the sodium layer based on sodium lidar and airglow imager measurements made at

5 Ramfjordmoen near Tromsø, Norway on the night of 19 December 2014. The airglow imager observations of OH emission revealed four passing frontal systems that resembled mesospheric bores which typically occur in ducting regions of the upper mesosphere. For about 1.5 hours, the lower altitude sodium peak had densities similar to that of the main peak of the layer around 90 km. The lower altitude sodium peak weakened and disappeared soon after the fourth front had passed. The fourth front had weakened in intensity by the time it approached the region of lidar beams and disappeared soon afterwards. The

10 column integrated sodium densities increased gradually during the formation of the lower altitude sodium peak. Temperatures measured with the lidar indicate that there was a strong thermal duct structure between 87 and 93 km. Furthermore, the temperature was enhanced below 85 km. Horizontal wind magnitudes estimated from the lidar showed strong wind shears above 93 km. We conclude that the combination of an enhanced stability region due to the temperature profile and intense wind shears have provided ideal conditions for evolution of multiple mesospheric bores revealed as frontal systems in the OH

15 images. The downward motion associated with the fronts appeared to have brought air rich in *H* and *O* from higher altitudes into the region below 85 km wherein the temperatures were also relatively high. This would have liberated sodium atoms from the reservoir species and suppressed the re-conversion of atomic sodium into reservoir species so that the lower altitude

sodium peak could form and the column abundance could increase. The presented observations also reveal the importance of mesospheric frontal systems in bringing about significant variation of minor species over shorter temporal intervals.

20 Copyright statement. TEXT

1 Introduction

Metal layers exist in the upper mesosphere - lower thermosphere region of the Earth's atmosphere as a consequence of meteoric ablation (Plane et al., 2015; Carrillo-Sánchez et al., 2020). One of the metal layers studied extensively is the sodium layer existing between 75 and 110 km altitudes. The altitudes of peak sodium density vary between 88 and 93 km depending on latitudes. In high latitude winters, the peak altitudes are close to 88 km due to atmospheric circulation (Fussen et al., 2010). On occasions, additional layers referred to as sporadic sodium layers (SSLs) are found in addition to the main sodium layer. On occasions, profound intensification of sodium densities referred to as sporadic sodium layers (SSLs) are found along with the main sodium layer (Plane et al., 2015; Clemesha et al., 1996, 2004; Heinrich et al., 2008; Tsuda et al., 2015b; Takahashi et al., 2015; Miyagawa et al., 1999). The SSLs are defined as thin layers with peak densities at least twice that of peak density of main sodium layer. Generally, SSLs are observed above the peak of the main sodium layer.

Two important mechanisms that are proposed for the formation of SSLs are briefly mentioned below. The sporadic E (E_S) layers are intense accumulation of plasma in the lower E region ionosphere. They form due to the wind shears collecting metal ion species in a narrow altitude range (Axford and Cunnold, 1966; Whitehead, 1970; Mathews, 1998). The neutralization of sodium ions from sporadic E layers is believed to be one of the foremost mechanisms in generation of SSLs. This appears to be particularly effective in the high latitudes (Cox and Plane, 1998; Kirkwood and Nilsson, 2000; Qiu et al., 2016). The other important mechanism attributes the formation of SSLs to existence of higher temperatures. In elevated temperatures the chemical reactions occur faster liberating more sodium atoms from the reservoirs like sodium bicarbonate ($NaHCO_3$) and sodium hydroxide ($NaOH$) (Zhou et al., 1993; Zhou and Mathews, 1995; Plane, 2004). Often, the temperature enhancement is caused by breaking of gravity waves in the upper mesospheric heights (Ramesh and Sridharan, 2012). Apart from the SSLs, on occasions the existence of sodium and other metal species extends well into the thermosphere (Collins et al., 1996; Chu et al., 2011; Wang et al., 2012; Raizada et al., 2015; Tsuda et al., 2015a; Chu et al., 2020).

In this work, we present a case study investigating rare occurrence of an additional bottomside sodium density peak in the altitudes of 79 to 85 km below the main sodium layer peak. The structure of the peak appears like an additional bottomside layer below the main sodium layer. We refer to the peak occurring below the main peak of the sodium layer at 90 km as 'lower altitude sodium peak' in this work. While secondary layers such peaks are sometimes noticed to occur at lower altitudes (Clemesha et al., 2004; Wang et al., 2012), they are not studied in detail to our knowledge. The sodium layer formed below 85 km and its formation of lower altitude sodium peak was consistent with passage of multiple mesospheric frontal systems. The

frontal systems resembled mesospheric bores (described below) with an enhancement of OH airglow intensities behind their passage. A total of four frontal systems were observed.

The mesospheric frontal systems are relatively infrequent waves exhibiting a boundary like feature in airglow images (Brown et al., 2004). They are often identified as mesospheric bores, which are nonlinear solitary type waves associated with a sharp discontinuity at the leading edge (Taylor et al., 1995; Dewan and Picard, 1998; Smith et al., 2003; She et al., 2004; Narayanan et al., 2009a, 2012; Dalin et al., 2013; Pautet et al., 2018). Usually there are phase locked undulations behind the leading bore front. Both theoretical and experimental studies indicate that the bores are similar to nonlinear waveforms generated due to the trapping and steepening of a long wavelength disturbance in a duct channel (Seyler, 2005; Yue et al., 2010; Narayanan et al., 2012; Grimshaw et al., 2015). There are also observations in which the leading bore front is followed by turbulence (known as foaming bores or turbulent bores). This may happen when the amplitude of the bore is large such that it leads to wave breaking and formation of turbulence behind the leading bore front (She et al., 2004). In the mesospheric altitudes evidence for existence of bores in presence of both thermal and Doppler ducts are found (She et al., 2004; Narayanan et al., 2009a; Fecine et al., 2009).

Airglow images often reveal either an enhancement or reduction of airglow intensities across the bore front. The bores are referred to as 'bright bores' ('dark bores') when the front is followed by an enhanced (reduced) airglow intensity. The airglow enhancements (reductions) are attributed to the movement of the emission layer altitudes to higher (lower) temperature region (Dewan and Picard, 1998; Medeiros et al., 2005). Another interesting aspect of the bores when observed in multiple airglow layers is the 'complementarity effect' between the upper and the lower airglow emissions. Complementarity effect is the observation of intensity enhancements behind the front in the lower airglow layers with simultaneous intensity reductions in the upper airglow layers. This in phase and anti phase relationship between the airglow layers appears to support the notion of bore jump occurring symmetrically with centroid situated between the lower and the upper airglow layers. The complementarity phase relations between different airglow layers depend on the location of the bore occurrence with respect to the airglow emission regions as discussed in Dewan and Picard (1998) and Medeiros et al. (2005).

Sometimes, the mesospheric fronts are interpreted as leading edges of intense gravity waves that bring about noticeable changes in the upper mesosphere (Swenson et al., 1998; Batista et al., 2002; Li et al., 2007; Bageston et al., 2011). Such fronts are known as mesospheric wall waves. Such fronts do not necessarily show the nonlinear solitary type waves and further there can be considerable phase delays observed between the frontal passage in different airglow layers unlike mesospheric bores. However, when the wave signatures are available in only one emission, it becomes difficult to identify whether the observed feature is a mesospheric bore or a wall wave. Hence the term 'mesospheric fronts' is preferred.

As mentioned before, we show the formation of a **lower altitude sodium peak** concurrent with passage of multiple mesospheric fronts by comparing the sodium lidar and airglow imaging **observations from a high latitude location**. Next section provides information on datasets used. Results section explains the observations in detail which are discussed and concluded in the subsequent sections.

2 Data Used

2.1 Sodium lidar

We are going to discuss the optical observations made on the night of 19 December 2014 from Ramfjordmoen (69.6°N, 19.2°E) EISCAT radar site near Tromsø, Norway. A sodium temperature/wind lidar is operated during the winter periods from 2010. The lidar is operated maintenance-free and uses a solid state laser diode end pumped Nd:Yag laser system to achieve high stability. The lidar functions without any manual adjustments required at the laser or telescope systems for the whole season as explained in Kawahara et al. (2017). The lidar simultaneously transmits five beams and receives photons from the mesospheric sodium by resonant scattering. The minimum temporal resolution of the data is 3 minutes with 96 m range resolution. In order to reduce noise level, the data are averaged at 1 km vertical spacing. Further analysis is carried out based on the data with 3 min temporal and 1 km altitude intervals. Detailed information on the system is available in Nozawa et al. (2014) and Kawahara et al. (2017). On the night of observations the off-vertical beams were tilted at 12.5 degrees from the zenith. It may be noted that the East - West and the North - South beams are horizontally separated only by 35 to 45 km in the altitude range of 80 to 100 km, respectively. These beam separations are of the order of the horizontal wavelengths of high frequency gravity waves. Moreover, many of the high frequency waves propagate with velocities in excess of 50 m/s and their periods are typically less than few 10s of minutes (Pautet et al., 2005; Narayanan and Gurubaran, 2013; Suzuki et al., 2009, 2011). All these factors make the studies of the high frequency fast moving features from different beam measurements very difficult.

On the night of 19 December 2014, the lidar observations started first in the vertical beam by 13:35 UT (14:35 Central European Time) and finished by 08:00 UT on 20 December 2014. Intense clouds affected the measurements after 23:00 UT. The sodium densities are measured based on the resonant back scattering signal from individual beams along with an error estimate. We consider only those measurements with density errors less than 3% of the measured value. Except in the boundaries of the sodium layer the density error is less than 2% of the measured value. We have used the sodium density data with temporal resolution of 3 min. We mostly use the measurements from the vertical beam and their column integrated values as will be discussed in the later sections.

The temperatures are estimated individually from each of the beam. A corresponding error estimate is also made. We consider only those temperature values with errors less than 3% of the measured value. The temperature errors are generally less than 3 K except in the bottom- and top-most regions. We consider the average of all the temperatures from the five beams within 20 minute time duration and 1 km altitude interval as the background temperature in this work. This is done to smooth the fluctuations.

From the background temperature profiles we calculate the buoyancy frequency (N) at any altitude z as given below.

$$N = \sqrt{\frac{g}{T} \left(\frac{dT}{dz} + \frac{g}{C_P} \right)} \quad (1)$$

where the acceleration due to gravity g is taken as 9.54 m/s^2 , T represents the temperature and C_P is the specific heat at constant pressure taken as $1005 \text{ J/kg}^{-1}\text{K}^{-1}$. The temperature gradient in the above equation is calculated using the center difference method. The Buoyancy frequency is also known as Brunt-Väisälä frequency and is a complex quantity. An imaginary value of

115 N indicates that the atmosphere is convectively or statically unstable. A region of higher buoyancy frequencies bounded by the lower values both above and below is a potential thermal ducting zone. Gravity waves with vertical wavelengths nearly twice of the duct width are supposed to get trapped and intensified with constructive interference. This is typical gravity wave ducting due to temperature profiles and known as thermal ducting (Hecht et al., 2001; Snively et al., 2010). However, in addition to the above wave ducting, intense thermal duct zones appear to produce nonlinear solitary type waves resulting in internal bores
 120 (Dewan and Picard, 2001; Grimshaw et al., 2015). The latter process leads to the formation of bores or fronts in the mesosphere. Hence, the existence of thermal ducting regions is important in the context of present work. Since N is a complex value, we use N^2 to identify thermal ducts. Negative values of N^2 indicate regions of convective instability.

The most important reason for operating the lidar with five beams is to measure the horizontal winds along with the vertical winds using Doppler shift of the signal received. Line of sight winds and corresponding error estimates are made from the
 125 Doppler shift of the received signal. We consider only those measurements with error values less than 5 m/s for the calculation of zonal, meridional and vertical winds. Values with larger error are neglected. The horizontal winds are estimated from the line of sight winds measured by the off-vertical beams in the following way.

$$V_{mer} = (V_N - V_S)/2\sin\theta_Z \quad ; \quad V_{zon} = (V_E - V_W)/2\sin\theta_Z \quad (2)$$

In the equations, V_{mer} and V_{zon} respectively correspond to the meridional and the zonal winds, V_N , V_S , V_E , V_W represent
 130 the line of sight winds from the north, the south, the east and the west beams, respectively. θ_Z stands for the zenith angle of the beams. Positive corresponds to the eastward zonal and the northward meridional winds while negative corresponds to the westward zonal and the southward meridional winds. Since the zonal and the meridional winds are measured from off-vertical beams separated by about 35 to 45 km in the altitude region of interest, it is assumed that the winds are spatially uniform over the region covered by the lidar beams. Similar to the temperatures, we consider 20 minute averages of the zonal and
 135 the meridional winds in 1 km vertical spacing as the background winds. From the estimated zonal and meridional winds in each altitude, we calculated the vertical shears of the zonal and the meridional winds respectively using the central difference method. Positive (negative) wind shear values in the zonal or the meridional directions indicate an increase of the eastward or the northward (the westward or the southward) wind magnitudes with height.

The vertical winds are obtained from the measured Doppler shifts in the vertical beam. The positive values correspond to the
 140 upward and negative to the downward components. Since the vertical winds are smaller in magnitude and are often believed to be the result of waves, instabilities and turbulence, we do not make 20 minute averages for vertical winds. We consider the vertical winds in 3 minute temporal resolution with 1 km vertical resolution.

Another parameter we have estimated with the wind and temperature is the Richardson Number (R_i) given by the following equation:

$$145 \quad R_i = \frac{N^2}{\left(\frac{dV_{zon}}{dz}\right)^2 + \left(\frac{dV_{mer}}{dz}\right)^2} \quad (3)$$

here, R_i is the ratio between the static stability of the atmosphere given by N^2 and the wind shears given by the denominator of equation 3. It determines whether the atmosphere is stable or susceptible to the formation of instabilities. R_i becomes negative

only if the N^2 is negative and it indicates that the atmosphere is convectively unstable (or statically unstable). When R_i is negative it indicates the definite presence of convective instabilities. Theoretical studies (Miles, 1961) showed that when R_i is less than 0.25, dynamical instabilities (also referred to as Kelvin-Helmholtz or shear instabilities) can occur and turbulence can be maintained when R_i is less than 1 (Hecht, 2004). This is due to the destabilization by the wind shears. However, the upper limit for initiation of the instability is being debated (Hines, 1971; Majda and Shefter, 1998) and it is quite possible for the dynamical instabilities to form when R_i is less than 0.5 (Li et al., 2005; Narayanan et al., 2012). Moreover, the existence of low positive values of R_i is only a necessary condition and in itself does not guarantee the existence of dynamical instabilities. We have calculated R_i to check whether the shears are large enough to create the dynamical instabilities. Since the instabilities are usually short lived, we use data with 3 minute time resolution and 1 km vertical resolution to calculate R_i .

2.2 Airglow Imager

A collocated airglow imager is operated concurrently at the same location as a part of the Optical Mesosphere Thermosphere Imagers (OMTI) network (Shiokawa et al., 1999). The imager has a deep cooled 512 x 512 pixel CCD sensor and is equipped with a six position filter wheel with optical interference filters to study the following emissions: *OI* 557.7 nm, *OI* 630.0 nm, *OI* 732.0 nm, *OH* Meinel bands in the near infrared, *Na* 589.3 nm and background sky intensity from 572.5 nm. All the emissions are measured with an exposure time of 30 s except for *OH* and *OI* 630.0 nm that are observed with 1 s and 45 s, respectively. Of interest to the mesospheric studies are the emissions from *OH* Meinel bands, *Na* and *OI* 557.7 nm nightglow. These airglow layers are known to emanate from a region of approximately 10 km thickness with peak altitudes around ~86 km, ~90 km and ~96 km respectively for *OH*, *Na* and *OI* 557.7 nm. On the night of 19 December 2014, *Na* images were not acquired. The *OI* 557.7 nm emission did not reveal any clear wave signatures. Therefore we are left with images from *OH* emissions that are analyzed in detail. The *OH* airglow images are available approximately once in every 2.5 or 3 minutes.

The *OH* airglow images are 2 x 2 binned resulting in an image size of 256 x 256 pixels. While binning increases the signal to noise ratio in the images, the spatial resolution is compromised in the lower elevations. Therefore, we consider the region within 130° field of view for our analysis. The raw airglow images will be curved in the off-zenith regions because they are captured with a fisheye lens in the front end. There are well established unwarping procedures (Garcia et al., 1997; Narayanan et al., 2009b). We have unwarping the airglow images and projected them in equidistance grids so that the wave parameters can be properly estimated. For unwarping, we assumed that the centroid altitude of *OH* emission is at 86 km. Before unwarping, we created percentage difference images (I_P) by subtracting and normalizing each individual image (I) with one hour running average of the images centered on the individual image (\bar{I}) as given below.

$$I_P = \frac{I - \bar{I}}{\bar{I}} \times 100 \quad (4)$$

The wave events are visually identified and cross sections are extracted across the wave events. A strip of 25 pixel width is extracted across the wave signatures in the direction of their propagation. The strip is extracted from a region wherein the waves are clearly seen and the average of the 25 pixels in each row of the strip results in the intensity cross section which is detrended afterwards. For a particular wave event, the same region is used for extracting the cross section from different images

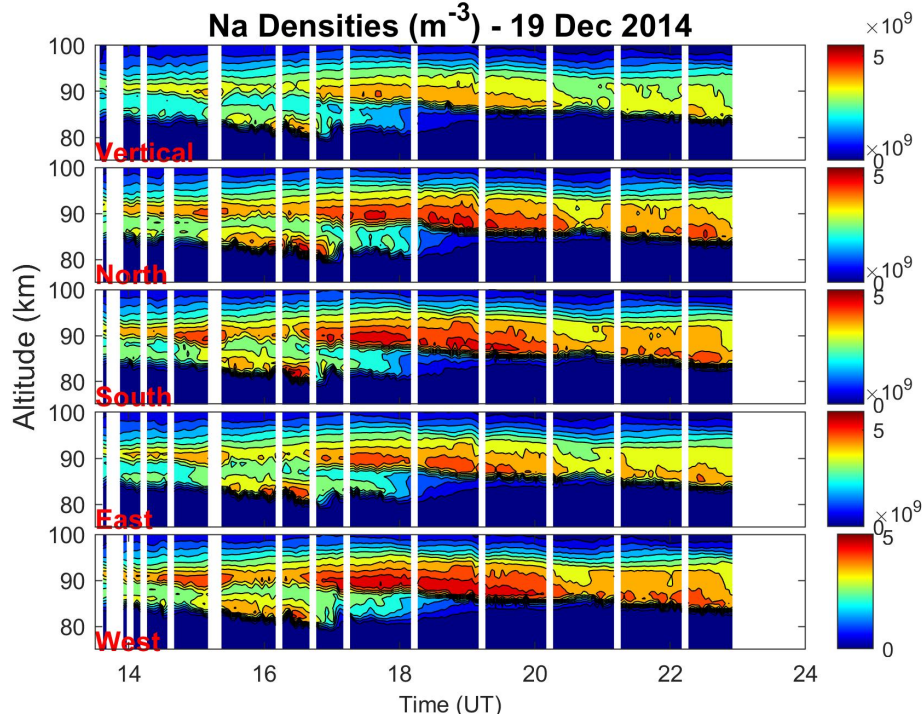


Figure 1. The sodium density measurements from five beam lidar showing formation of a ~~secondary sodium layer~~ sodium density peak below 85 km (Intense from 15:00 to 17:00 UT). The white regions indicate data gaps.

so that they can be used to estimate the phase velocities of the events. The distances along the cross section are obtained from the spatial coordinates of the pixels corresponding to the center of the strip. The distance value of the last point behind the location of wave events are subtracted so that the distances monotonically increase along the propagation direction of the wave. The wavelength and the phase velocity are obtained from the cross sections extracted from multiple images. The mean values of multiple estimations for the wavelengths and the phase velocities are provided with standard deviations as the errors. The propagation direction is measured within an accuracy of 2 degrees. The north is assumed as 0 and the east as 90 degree azimuths.

On the night of 19 December 2014, the airglow imaging observations were started at 14:40 UT and continued until 06:40 UT on 20 December 2014. However, useful mesospheric measurements were available only until 17:20 UT on 19 December 2014 as intense aurora occurred afterwards. The observations after 23:00 UT was hindered by the presence of clouds similar to the lidar measurements.

Our observations being ground based in the Eulerian framework, we cannot observe the same air mass for an extended period. Though we can observe the small-scale structures and their movements in the airglow images, they are also superposed with the background wind, which is derived from the lidar measurements in this work. While this is an unavoidable drawback in studying

195 the atmosphere using ground based measurements, we assume that the processes occurring are sufficiently homogeneous in the horizontal directions.

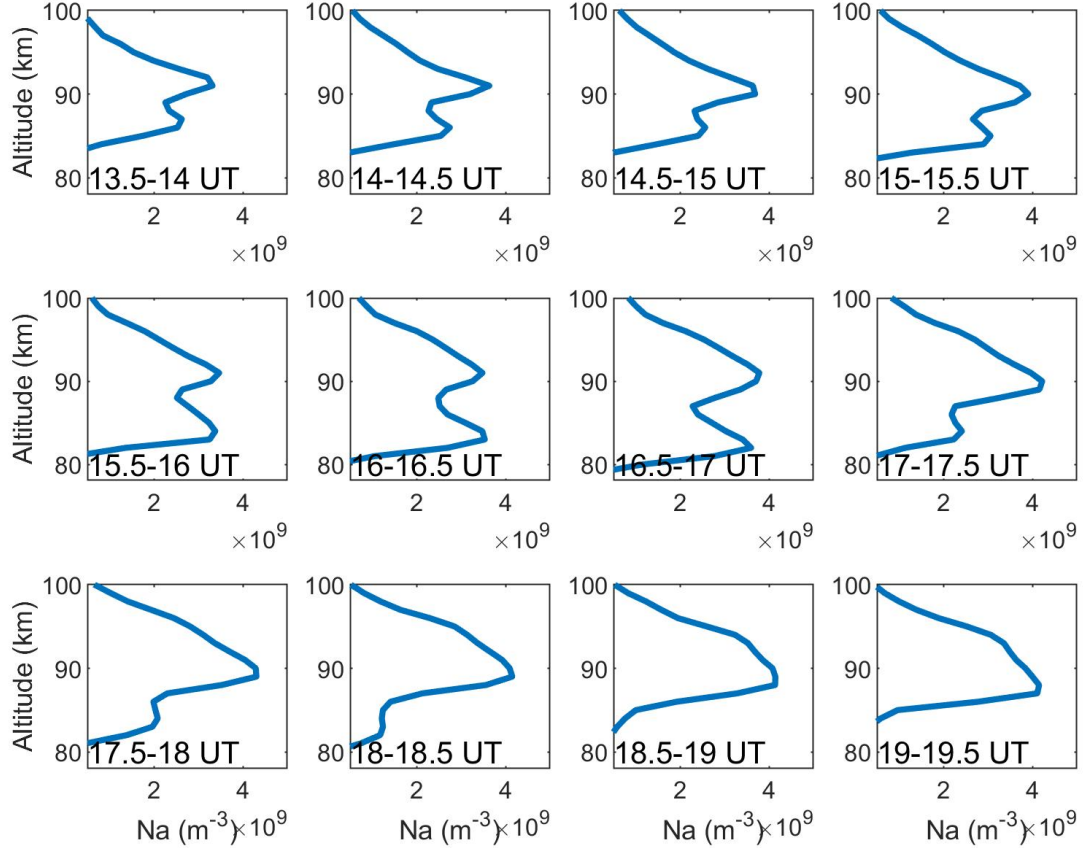


Figure 2. 30 minute averages of sodium densities from the vertical beam.

3 Results

3.1 Additional bottomside peak of the sodium layer

Figure 1 shows the sodium density measurements from the lidar. Note the occurrence of an intense lower altitude sodium density peak between 15:00 and 17:00 UT, which almost disappeared by about 18:00 UT. This pattern is similar in all the five beams and hence it is clear that the **lower altitude sodium peak** formed in an area larger than 35 square km, the minimum distance between the oppositely directed beams. To better investigate the time evolution of the **lower altitude sodium peak**, we

show the 30 minute averages of sodium density profiles from the vertical beam in Figure 2. By the time of start of the lidar measurements at 13:35 UT, a secondary peak can be noticed already and it was located closer to the main peak of the sodium layer. Table 1 lists the altitudes and densities of the main peak and the lower altitude peak. The **lower altitude sodium peak** was initially at 87 km, separated by 4 km below the main sodium layer peak height. With time, both the separation and intensity of the **lower altitude sodium peak** increased noticeably. After 15:30 UT, the density of the **lower altitude sodium peak** was nearly as intense as the main peak at 91 km and its peak altitude has descended to 82 km, with a separation of 9 km to the main peak of the sodium layer. After 17:00 UT, the **lower altitude sodium peak** started to weaken and rapidly disappeared by about 18:00 UT. Figure 2 clearly indicates that the **lower altitude sodium peak** was intense and well separated between 15:00 and 17:00 UT, **resembling an additional layer**, as already seen from the range-time-density maps of Figure 1.

Table 1. The altitudes and densities of the main and the **lower altitude sodium peaks**

Time (UT)	Main sodium peak		lower altitude sodium peak	
	Altitude (km)	Peak density $\times 10^9$ (m^{-3})	Altitude (km)	Peak density $\times 10^9$ (m^{-3})
13.5-14.0	91	3.3	87	2.6
14.0-14.5	91	3.6	86	2.8
14.5-15.0	90	3.7	86	2.6
15.0-15.5	90	3.9	85	3.1
15.5-16.0	91	3.5	84	3.4
16.0-16.5	91	3.5	83	3.5
16.5-17.0	91	3.8	82	3.6
17.0-17.5	90	4.2	84	2.4
17.5-18.0	89	4.3	84	2.1
18.0-18.5	89	4.2	83	1.2
18.5-19.0	89	4.1	—	—
18.5-19.0	88	4.2	—	—

The variation of column abundance of sodium atoms is shown in Figure 3 along with the range-time-density plot from the vertical lidar beam. There was a gradual increase in the column abundance during the formation and intensification of the **lower altitude sodium peak**. This indicates that the **lower altitude sodium peak** is formed due to the creation of sodium atoms from some reservoirs instead of from mere redistribution within the existing sodium layer. This is **further confirmed by the** observation that the column abundance was reduced after the disappearance of the **lower altitude sodium peak**. An increase in column integrated density of 1.85×10^{13} atoms per m^2 occurred during the formation of the **lower altitude sodium peak**. There was approximately 50% increase in the total column abundance by 16:40 UT compared to the earlier hours around 14:00 UT.

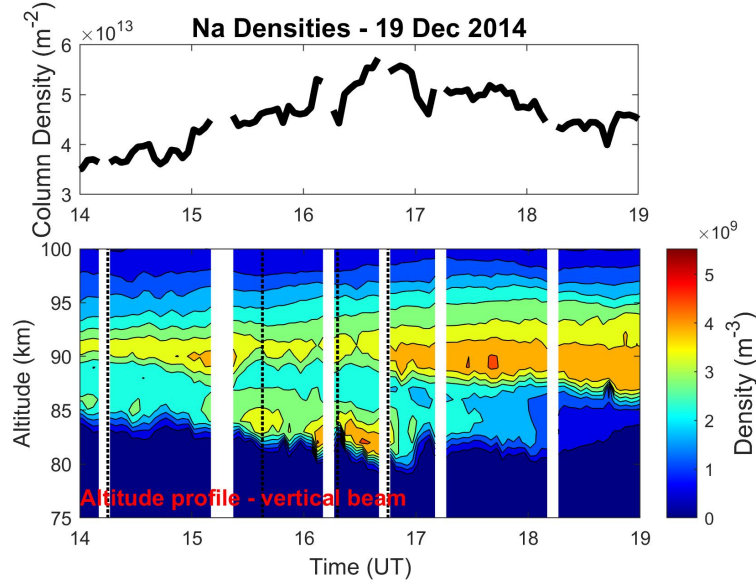


Figure 3. Sodium densities measured by the vertical beam. (Top) column abundance of sodium atoms, (Bottom) Range-time-density plot showing coincidence of the column abundance variations with the **lower altitude sodium peak**. The black dotted lines in the bottom panel indicate the estimated times of zenith passage of the fronts.

3.2 Passage of mesospheric frontal systems

220 The airglow imaging of *OH* emission shows the passage of multiple mesospheric frontal systems as discussed below. The airglow imaging started at 14:40 UT, approximately one hour after the start of the lidar observations. The passage of an intense mesospheric front can be seen right from the first image acquired. A set of selected images on this night are shown in Figure 4. In the figure the fronts and the wave observed on the night are marked with arrows indicating their direction of propagation. A corresponding movie is added as supplementary material showing the propagation of successive mesospheric

225 fronts approximately towards the top of the image frame corresponding to the North.

As seen from Figure 4, the first front (F1) resembled an undular bright mesospheric bore with phase locked undulations behind the leading front. F1 was moving towards the North at an azimuth of ~ 3 degrees. It has already crossed the zenith region of the observation site wherein the locations of lidar beams fall as indicated by yellow dots in the images. The estimated wavelength and propagation velocity of the feature are ~ 23 km and ~ 63 m/s respectively. Since the observations were started

230 at a later time, the probable time of zenith passage of F1 is estimated as 14:15 UT based on the calculated phase velocity. Figure 5(left) shows the cross sections extracted across F1 along its propagation direction. The F1 with trailing undulations can be seen clearly. Further, this front showed the formation of additional wave fronts which is known to be a characteristic of the mesospheric bores (Dewan and Picard, 1998; Smith et al., 2003). As seen from Figure 5, the leading edge has reached the horizon around 15:00 UT.

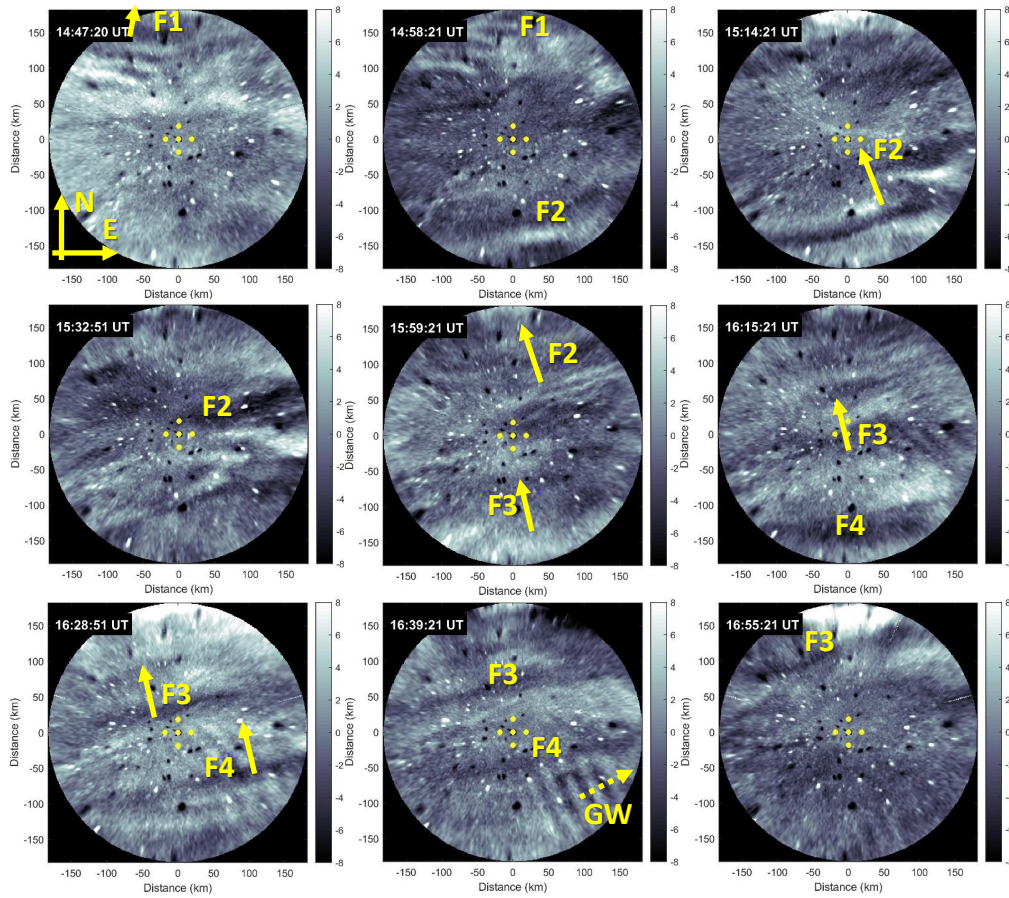


Figure 4. Selected *OH* airglow images from 19 December 2014. Intensities represent the percentage perturbations according to equation 4. The yellow dots near the zenith indicate the location of the lidar beams. The fronts are marked as F and their propagation direction is indicated by an arrow. The gravity wave is indicated as GW with a dashed arrow.

235 The second front (F2) entered the imager field of view from the southern edge around 14:55 UT and it was also propagating predominantly towards the north with wave normal directed at $\sim 345^\circ$. There was an enhancement in the *OH* brightness behind F2. While F2 possessed trailing wave crests, the crests were not as defined as in F1. From the images at 15:14 UT and 15:32 UT in Figure 4, it appears like F2 shows some wave breaking signatures before 15:40 UT. Nevertheless, the cross sections enabled wavelength determination with a value of ~ 31 km in the earlier part of its observation. F2 showed the formation of waves with a smaller wavelength of ~ 14 km after 15:45 UT. **The front continued** to propagate in the same direction with an estimated phase velocity of ~ 47 m/s. F2 has crossed the zenith region around 15:38 UT. Figure 5(middle) shows the cross sections across F2. The cross sections also reveal that the trailing undulations are **initially having larger wavelengths and after**

240

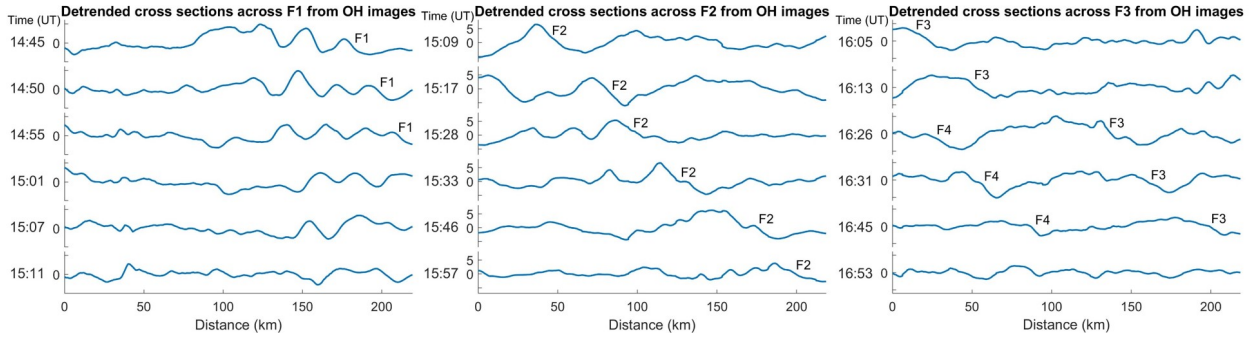


Figure 5. Cross sections extracted and detrended across the fronts from the percentage differenced *OH* images. (Left) Cross sections across F1, (middle) across F2, (right) across F3 and F4.

15:40 UT having smaller wavelengths with a larger wavelength and with a smaller wavelength features after 15:40 UT (see the last two rows in the middle panel of Figure 5).

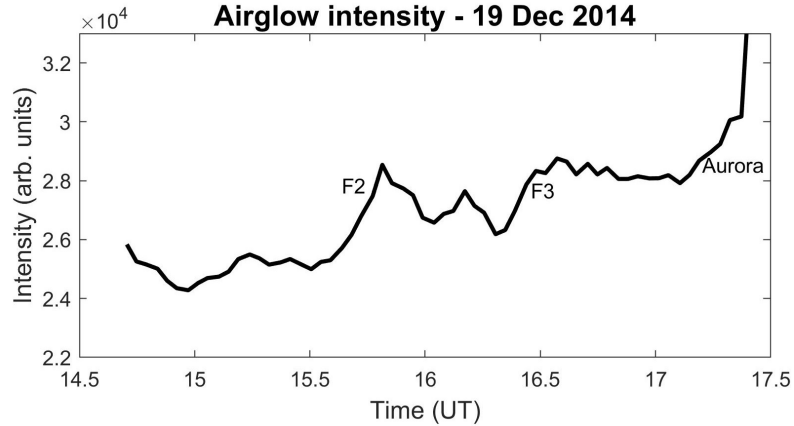


Figure 6. Zenith intensity time series from the average of 16 x 16 pixels over the zenith of the raw *OH* images.

245 The third front (F3) entered the images from the south around 15:56 UT and propagated across the zenith region by 16:23 UT. No clearly discernable phase locked undulations were found behind the front. The estimated phase velocity of this front is ~ 87 m/s towards the north at an azimuth of $\sim 350^\circ$. F3 was the fastest of the observed fronts on this night. The fourth and final front (F4) observed on this night appears to follow the F3 along $\sim 350^\circ$ azimuth. However, it was showing few weak phase locked undulations behind and was moving relatively slow. The estimated wavelength and phase velocity are ~ 19 km
250 and ~ 63 m/s, respectively. Because of the differing phase velocities, the distance between F3 and F4 has increased as can be verified visually from images at 16:15 UT and 16:40 UT in Figure 4 and from cross sections in Figure 5(right). F4 became weak and almost unidentifiable in images after 16:45 UT, close to its passage over the zenith. Table 2 lists the characteristics

of the fronts. The apparent time periods of the fronts given in the table are obtained as the ratio between the wavelengths and the phase velocities.

Table 2. The physical parameters of the observed fronts

Fronts	Zenith crossing time (UT)	Direction (0° - North, 90° - East)	Wavelength (km)	Phase velocity (m/s)	Apparant time period (s)	Remarks
F1	14:15	3	23±4	63±11	365	Imaging started by 14:40 UT. Zenith crossing estimated based on the phase velocity
F2	15:38	345	31±3 14±3	47±11	660 298	The front was strong with some breaking signatures in the earlier times. After 15:45 UT, small scale waves evolved. Phase velocity appeared to decrease with time
F3	16:18	350	–	87±17	–	No clear and consistent wave signatures behind the leading front to measure the wavelength
F4	16:44	350	19±3	63±16	301	The front weakened close to the zenith by 16:44 UT and not seen afterwards

255 In addition to these four fronts, an east-northeastward propagating gravity wave is also noticed between 16:10 and 16:50 UT. In Figure 4, it is marked by GW with a dashed arrow indicating its propagation at 16:39 UT. Aurora started to intensify from the northern horizon in the *OH* images from around 16:55 UT. However, most parts of the images were clear to reveal wave signatures till about 17:20 UT. The auroral features extended southward and completely masked any wave signatures that could have occurred afterwards. This can clearly be seen from Figure 6 showing the zenith intensity time series. The intensities
260 are averages of 16 x 16 pixels surrounding the zenith region of the raw *OH* images. From Figure 6, it may be further verified that both F2 and F3 are accompanied by brightness enhancements in *OH* images indicating that they are bright bores. The sharp increase in intensity associated with aurora are seen from about 17:20 UT. It may be noted that there is no evidence in the past that the aurora enhances *OH* Meinel band brightness directly. The observed enhancement is due to the entry of auroral light intensities through the broadband filter used to measure the *OH* Meinel band emissions. Nevertheless, it is worth noting
265 that the signatures of the fronts and the gravity wave weakened significantly by 16:50 UT, well before the aurora masked *OH* observations. This may also be seen from the last image in Figure 4.

3.3 Background temperature and wind conditions

Now we discuss the background temperature and wind conditions during the above mentioned observations. Figure 7(top) shows the background temperatures. The temperature profile shows a downward phase progression at the rate of ~ 1 km/hr

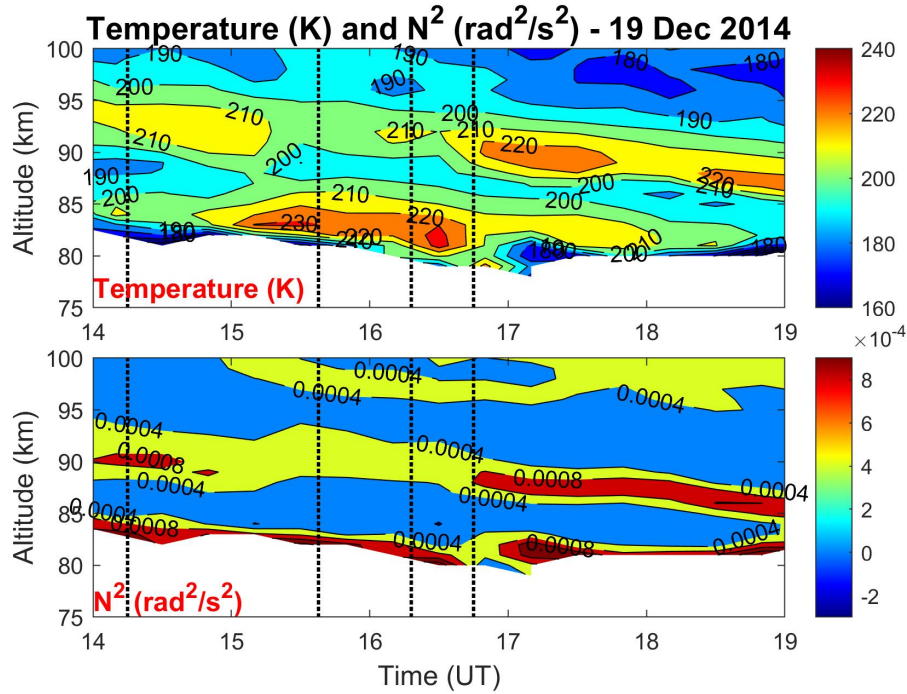


Figure 7. (Top) Background temperature structure, (Bottom) square of buoyancy frequency (N^2). The black dotted lines indicate the estimated times of zenith passage of the fronts.

270 which might be due to the tidal effects. Of greater interest are the existence of an inversion layer close to 90 km and enhanced temperatures in the lower altitudes coinciding with that of the **lower altitude sodium peak**. The temperature enhancement was particularly intense below 85 km in the duration between 15:00 and 17:00 UT. The square of buoyancy frequency profiles (N^2) estimated from the temperature profiles are shown in Figure 7(bottom). This profile clearly illustrates existence of an enhanced N^2 region bounded by lower values above and below. This region matches with the altitudes of the thermal inversion. The enhanced N^2 region also shows a downward progression in concurrence with the downward progression in the temperature profiles, which is expected. Importantly, Figure 7 shows the existence of a stable thermal ducting region on the night of 19 December 2014. Such regions can support the formation of mesospheric bores as mentioned in the introduction section. It may be seen that the width of the ducting region decreased after 17:00 UT. The location of the ducting region covers the peak region of main sodium layer prior to 17:00 UT.

280 The zonal and the meridional winds during the observation period are respectively shown in the top and the bottom panels of Figure 8. Since all the observed fronts propagated approximately to the north, the meridional winds approximately represent the background wind conditions along the propagation direction of the fronts. In the lower altitudes the wind velocities were within a magnitude of 40 m/s in both the zonal and the meridional directions. The meridional winds reversed from southward to northward around 16:00 UT in the altitudes between 83 and 93 km. There was a significant rise in the wind velocities with

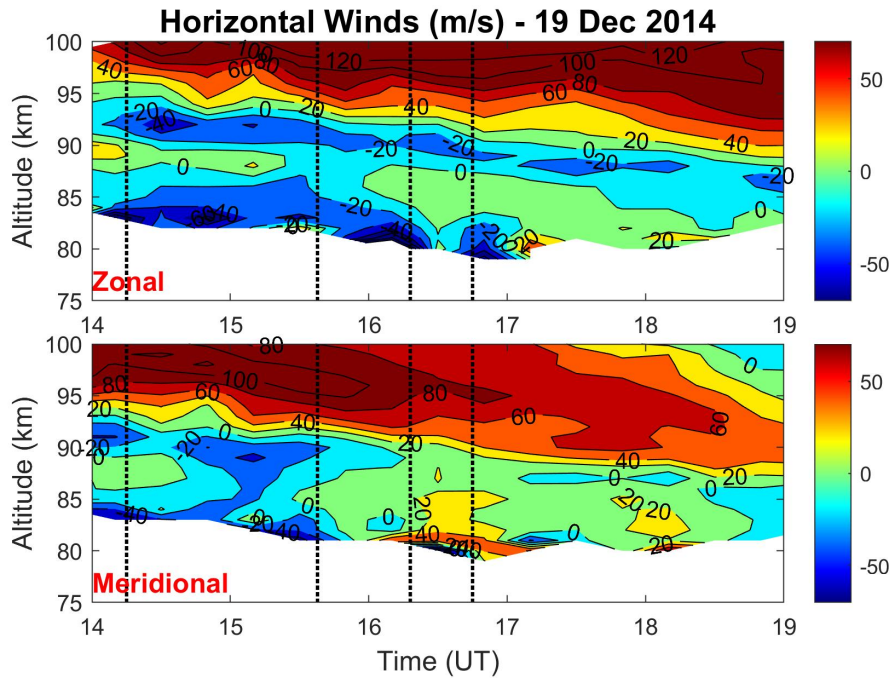


Figure 8. Measured winds. (Top) Zonal, (Bottom) Meridional. The black dotted lines show the estimated times of zenith passage of the fronts.

height, particularly above 93 km before 17:00 UT. The wind magnitudes increased by at least three times within a narrow altitude region of about 4 km indicating existence of very high wind shears. The wind shears are shown in Figure 9. The shears in the meridional wind were much stronger than those in the zonal wind. Both Figures 8 and 9 show a downward phase progression very much similar to that seen in the temperature profiles. These large scale downward phase propagating features might be the result of tides.

Figure 10(top) shows the vertical wind measurements and Figure 10(bottom) shows the R_i calculated from equation 3. As mentioned in the previous section, the vertical winds and R_i are shown in three minute temporal resolutions and only R_i values below 0.25 are shown. Red dots indicate R_i between 0 and 0.25 and blue dots indicate R_i less than 0. Thus, red indicates probability for existence of the dynamical instabilities and blue indicates the definite occurrence of convective instabilities in the respective times and altitudes. Figure 10(top) also shows that the vertical winds were alternating frequently between positive and negative values, probably as a result of high frequency perturbations including the passage of fronts. We are unable to isolate the contributions of the fronts from the vertical wind data. The vertical winds are expected to be upward directed in the regions of convective instability. A good match between the regions of convective instability in R_i profile and higher values of vertical velocities can be noticed, for example around 14:45 UT near 85 km.

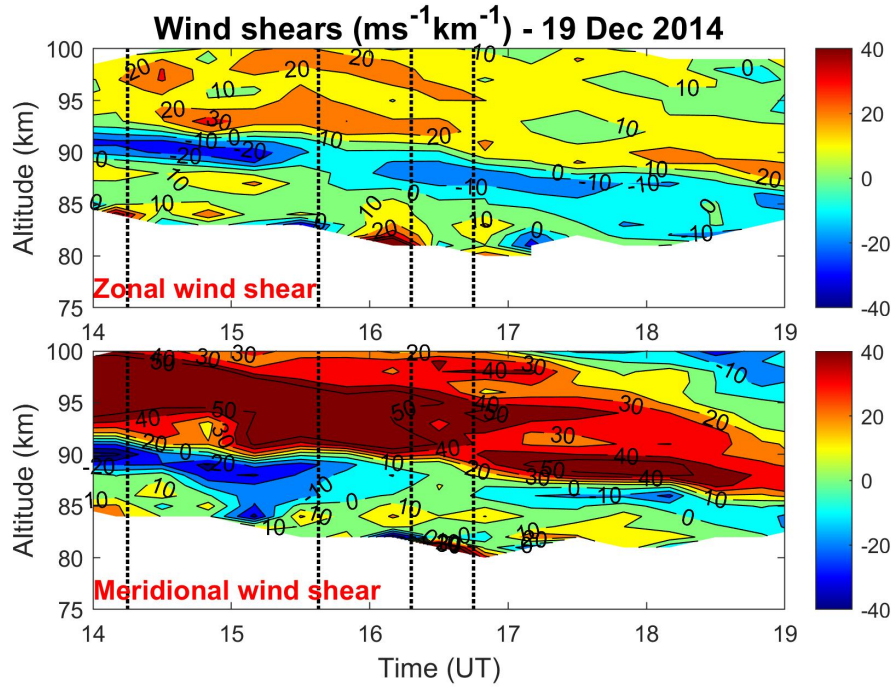


Figure 9. Vertical shears of the horizontal wind. (Top) Zonal, (Bottom) Meridional. The black dotted lines indicate the estimated times of zenith passage of the fronts.

4 Discussion

The results described above lead to the following important observations that have to be explained. 1) There was a rare formation of **intense sodium density peak** in the altitudes below 85 km, 2) There was an enhancement in the column abundance of sodium atoms during the formation of this **layer lower altitude sodium peak** and the column abundance started to decline after its disappearance, 3) There were four consecutive mesospheric fronts observed with *OH* images but not with *OI*557.7 nm images coinciding with the duration of this **lower altitude sodium peak**, 4) The mesospheric fronts were associated with enhanced *OH* airglow intensities behind their passages and resembled bright mesospheric bores, 5) Temperatures were relatively higher in the region of the **lower altitude sodium peak**, 6) There was a higher stability region indicating a thermal ducting structure matching with the altitudes of main peak of sodium layer located above the altitudes of **lower altitude sodium peak**, and 7) The horizontal winds had intense shears above 93 km along with a reversal in the meridional winds around 16:00 UT in the lower altitudes.

We have seen in Figures 4, 5 and 6 that the observed fronts were followed by regions of increased *OH* airglow intensity indicating that they might be mesospheric bores. F1 showed formation of new undulations as well. However, no clear signatures of the fronts were seen in the *OI* 557.7 nm emission images. This is surprising given their intense signatures in the *OH*

Vertical wind (m/s) and R_i (only <0.25 shown)- 19 Dec 2014

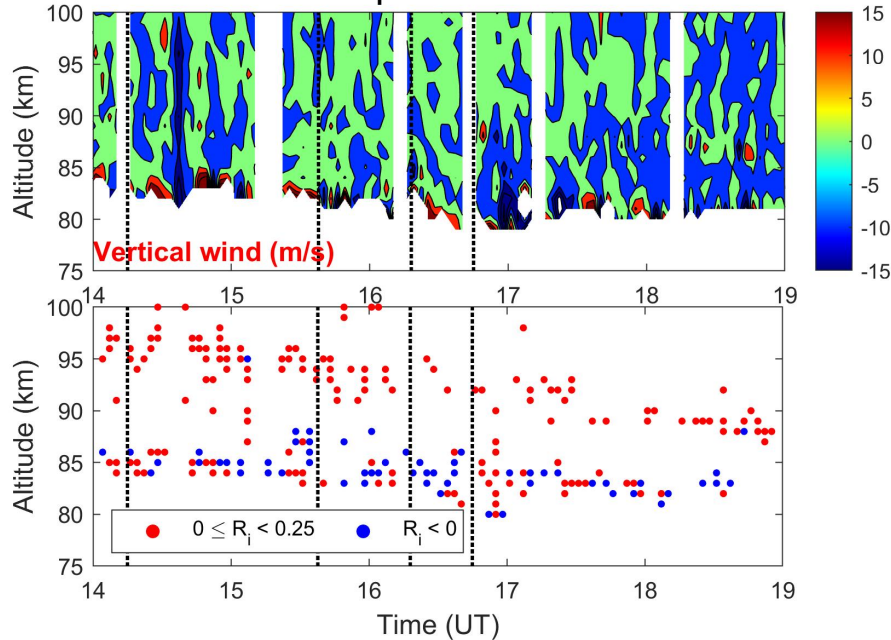


Figure 10. (Top) The vertical winds, (Bottom) Richardson number showing values between 0 and 0.25 as red dots and below 0 as blue dots. The black dotted lines in both the panels show the estimated times of zenith passage of the fronts.

emission region. The reason appears to be the existence of large wind shear in the region between *OH* and *OI* 557.7 nm emission layers as indicated by Figures 8 and 9. The fronts appeared to have disappeared owing to the critical level interaction
 315 between 93 and 95 km wherein the background wind speeds surpassed the speed of the observed fronts. This can be seen better with the help of Figure 11.

Figure 11 shows the horizontal winds measured by the lidar in 3 km intervals at the altitudes between 84 and 96 km in every hour. Since we use 20 minute averaged data, each height shows three points within every hour. This plot enables to identify the magnitude and direction of each of the 20 minute wind estimates within every hour in the respective altitudes. Also included
 320 are the observed velocities of the fronts in the corresponding hours when they were observed. The figure clearly illustrates that the background wind speeds were smaller than the speed of F1 below 93 km but were faster at 96 km. Therefore critical level would have occurred in the region between 93 and 96 km restricting F1 from perturbing the higher altitudes. Similarly for the case of F2, F3 and F4, the background wind speeds surpassed the fronts at ~ 93 km altitudes resulting in their filtering from reaching the higher heights. Particularly interesting is the case of F2. As mentioned earlier, F2 showed breaking signatures
 325 and after 15:45 UT revealed the evolution of smaller wavelengths (see Figure 4 and corresponding discussion in section 3). The small scale features evolved on the crests of the front shortly after its zenith passage. It is likely that these features are the result of dynamical instabilities. Figure 10(bottom) shows the regions with R_i less than 0.25 in the altitudes of 90 to 95 km

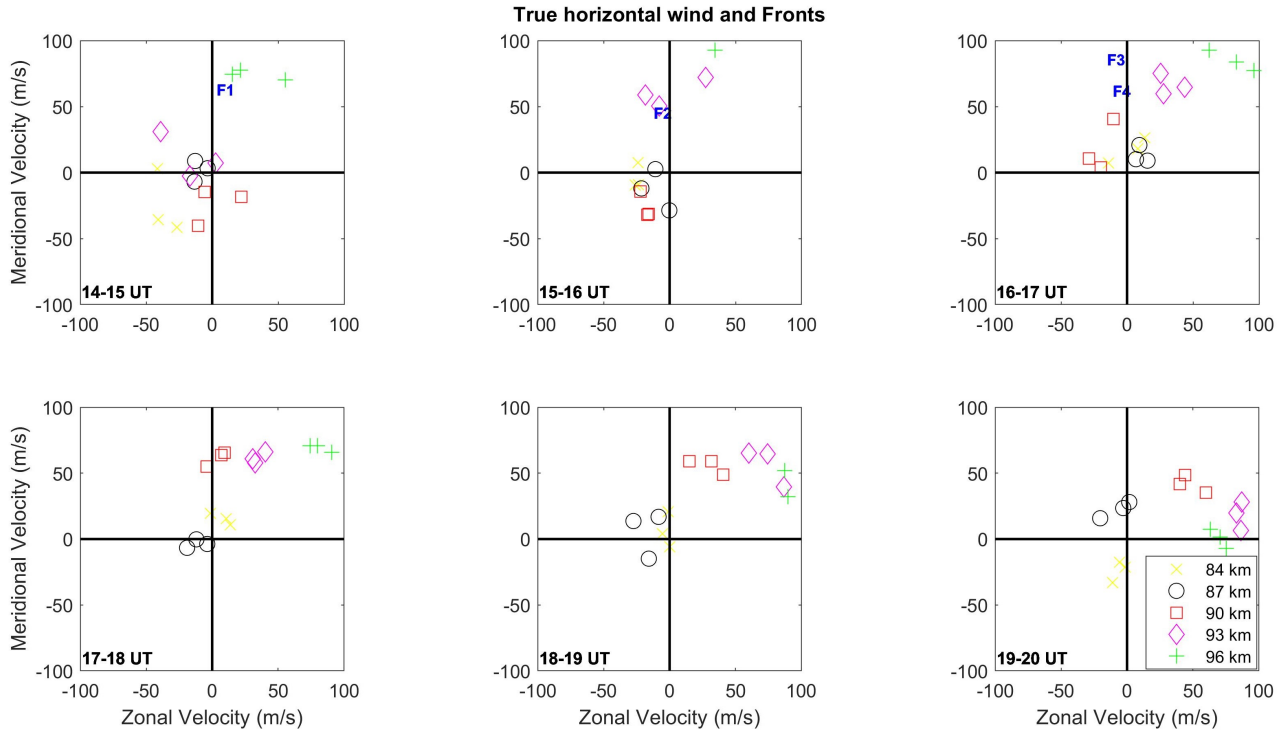


Figure 11. Horizontal wind measurements between 84 and 96 km in 3 km intervals along with the phase velocity of the observed fronts in the respective hours.

during this time. Therefore, dynamical instability would have occurred there resulting in the billow structures that could have perturbed the upper portion of *OH* airglow layer. The existence of strong winds in the propagation direction of the fronts show the probable reason for not finding them in the *OI* 557.7 nm images.

The temperature profiles indicate that a **thermal ducting** was possible (Figure 7) and the wind profiles indicate presence of critical levels immediately above them (Figure 8). To check the possibility of ducting for the observed fronts, we calculate the vertical wavenumber profiles during their passage over the zenith with the following gravity wave dispersion relation (e.g. Narayanan and Gurubaran, 2013)

$$m^2 = \frac{N^2}{(u-c)^2} - \frac{u_{zz}}{(u-c)} + \frac{u_z}{H(u-c)} - \frac{1}{4H^2} - k^2 \quad (5)$$

In the above equation, m and k stand for the vertical and horizontal wave numbers respectively, N is the buoyancy frequency, u and c denote the background wind along the wave propagation direction and the phase velocity of the wave respectively, u_{zz} and u_z indicates d^2u/dz^2 and du/dz respectively and H is the scale height. Figure 12 shows the calculated m^2 profiles for each of the fronts with background conditions corresponding to the time of their passage over the zenith. Also lines at m^2

340 values indicating the vertical wavelengths of 3 km, 5 km and ∞ are shown. Since we do not know the horizontal wavenumber k for F3, the last term in equation 5 is left out when calculating its vertical wavenumber m .

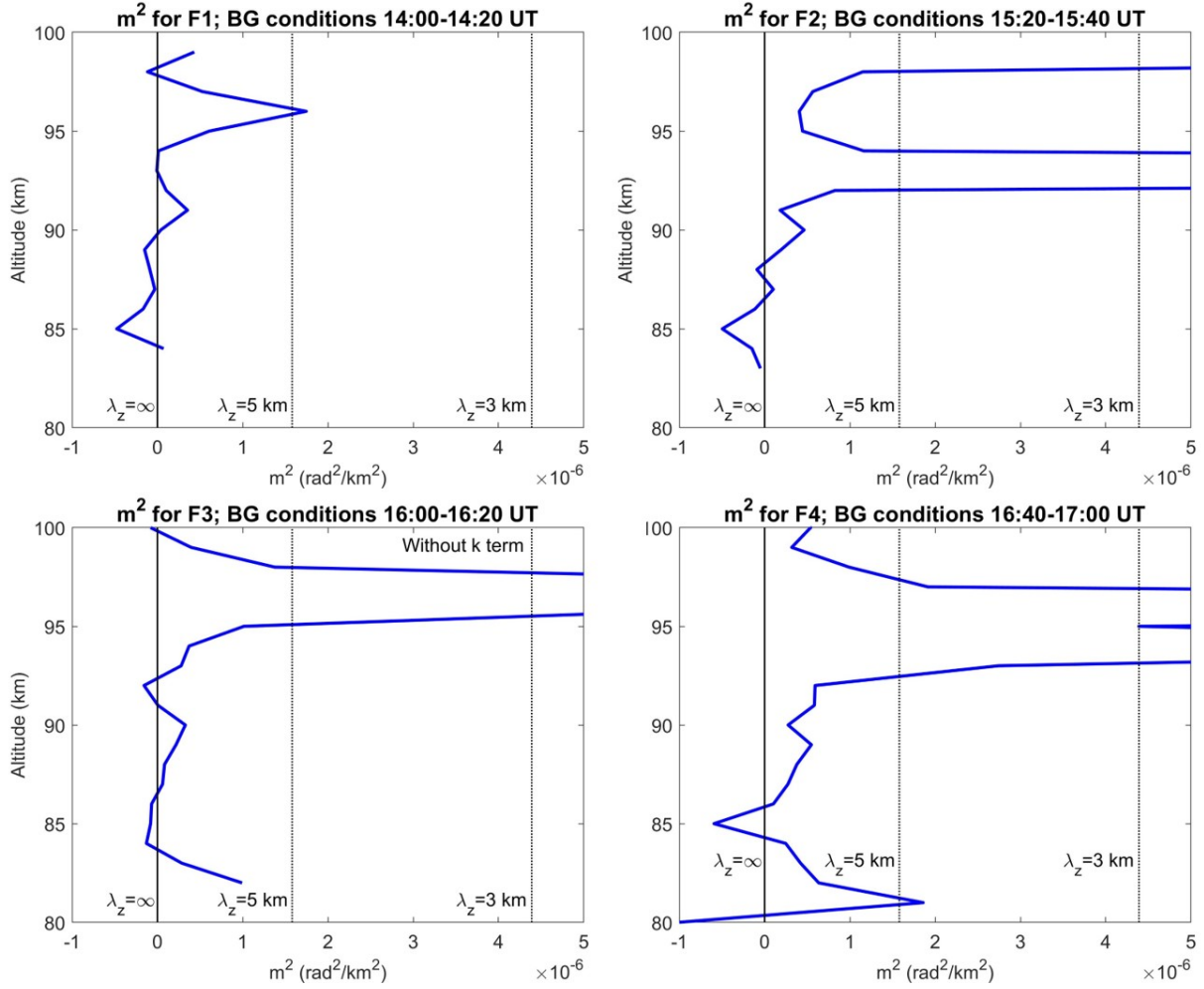


Figure 12. The m^2 profile for the four fronts. Since F3 was not having trailing undulations, its m^2 is calculated leaving k term in equation 5. The solid vertical line shows the 0 value and the dotted vertical lines show m^2 values corresponding to 5 km and 3 km vertical wavelengths.

345 Generally, a wave undergoes reflection when the m^2 turns negative in a region. When there is a region of positive m^2 bounded by the regions of negative m^2 above and below, the wave becomes ducted. A critical level occurs when the vertical wavelength of a wave approaches 0 and this will be seen as a sharp increase in the m^2 profile. The critical levels ensure that the wave energy does not propagate beyond the level but they also contribute to stronger ducting at times. Strong wave reflection may happen when the critical level exist just above a region of stronger stability. In essence, existence of a critical level at the top of a duct results in a stronger duct because the leakage of energy through the duct is strongly restricted by the critical level wave reflection (Lindzen and Barker, 1985; Skillingstad, 1991; Ramamurthy et al., 1993). This has happened in the present

case as can be inferred from Figure 12. In the altitudes below 86 km (90 km for F1), m^2 values become negative indicating the lower boundary of the ducting region. On the upper region, there is a very steep increase in the m^2 values indicating that strong winds cause the critical levels. By comparing this figure with Figures 7 and 8, one can see that the lower boundary is mainly due to the temperature profile and the upper boundary is caused by a combination of the wind and temperature profiles (A similar case was observed for a lower atmospheric bore by Ramamurthy et al. (1993)). Hence, the important conditions required for formation of the bores were present on the night and the characteristics like enhanced airglow behind the fronts imply that these fronts were bores associated with a sudden downward push causing brightness enhancements in the underlying OH airglow.

The increase of the column abundance of sodium during the formation of the lower altitude sodium peak is clearly seen from Figures 1 and 3. To investigate this further, we show in Figure 13 the total sodium column abundance along with the column integrated densities from 81 to 88 km corresponding to the region of the lower altitude sodium peak, from 88 to 95 km corresponding to the main sodium peak and from 95 to 102 km on the topmost region of atomic sodium layer in the upper atmosphere. All the densities shown are from the vertical lidar beam. As can be seen from the figure, the shape of the variations in the total column abundance clearly matches with those of the integrated densities of the lower altitude sodium peak. The lower altitude sodium peak contributed to about 65% of the enhancement in the total column abundance. Remaining enhancement was due to the increase in sodium concentration in the higher altitudes. This is also revealed by the red and green lines in Figure 13. Interestingly, there was a reduction in the sodium densities around 15:30 UT in the altitude range of 88 to 95 km corresponding to the main layer peak. This time matches closely with the passage of F2 over the lidar beams.

The positive correspondence between the sodium density and the temperature variations is already well known (Zhou et al., 1993; Zhou and Mathews, 1995). While there was relatively higher temperature in the region of the lower altitude sodium peak below 85 km, it does not occur only on this day. Temperatures in the range of 220 to 250 K are fairly common below 85 km in the winter months (Lübken and von Zahn, 1991; Nozawa et al., 2014; Takahashi et al., 2015; Hildebrand et al., 2017). To study the role of temperature in further detail, we show the sodium densities and averaged temperatures separately for the height regions corresponding to the lower altitude sodium peak (81-88 km) and the main sodium peak (88-95 km) in Figure 14. Note that we have used temperature data with 3 minute temporal resolution herein so that we can effectively compare them with the sodium density variations. Both densities and temperatures are 3 point smoothed in the plots. Figure 14(left) shows the integrated sodium densities and average temperatures for the region of the lower altitude sodium peak from 81 to 88 km. The temperatures below 83 km are noisy resulting in large fluctuations. While there are some matching regions between the densities and temperatures, the overall temperature variations differ from that of the sodium density in the lower altitude peak region. For instance, the sodium densities continued to decrease while temperatures were nearly stable after 17:00 UT. This further indicates that the lower altitude sodium peak was not merely due to the temperature enhancement. However, the existence of higher temperatures in the lower altitudes is indisputable (see Figure 7(top)).

Figure 14(right) shows similar plots as above between the altitude region of 88 and 95 km corresponding to the main sodium layer peak. Note that there was a temperature reduction just before 15:30 UT in this altitude region which is coincident with the density reduction. F2 has crossed the zenith region around 15:35 UT. It is highly likely that this temperature reduction

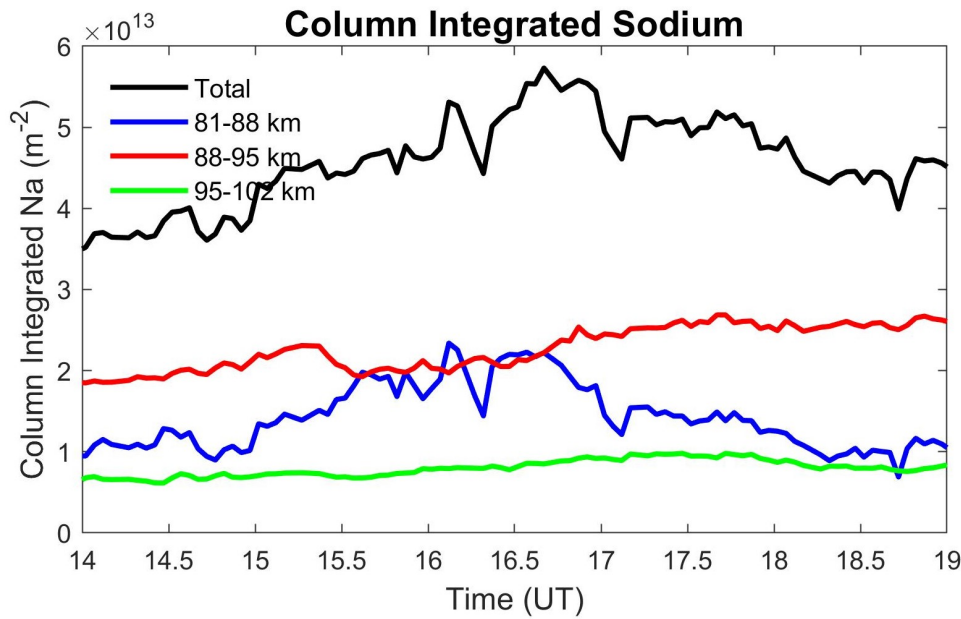


Figure 13. Column integrated sodium densities in selected altitude regions (blue, red and green lines) to compare with the total column abundance (black line)

corresponded to the signature of the passage of F2. The density reduction in the main sodium peak altitudes might therefore
 385 be due to the sudden reduction in temperature associated with passage of F2 and downward transport of some of the sodium
 atoms associated with the bore. It is known that there may be phase delays between the temperature and airglow intensity
 variations during the passage of mesospheric bores (Taylor et al., 1995; Pautet et al., 2018). For example, the very first report
 of a mesospheric bore by Taylor et al. (1995) had a temperature signature 15 minutes prior to the passage of the bore.

There was supposedly a downward force associated with the bright bores seen as fronts, which brings the minor constituents
 390 from the higher altitudes to the lower altitudes. This is important for constituents like *O* and *H* whose mixing ratios increase
 with altitude. The downward transport will increase the concentrations of minor species whose mixing ratios increase with
 altitude. This will affect the chemistry of the region. Indeed such a downward force and associated movement is proposed as
 a reason for sudden intensity variations following the bore jumps (Dewan and Picard, 1998). It is believed that these bores
 become bright in *OH* emission because the *OH* emission peak moves to lower heights where temperatures are higher (Dewan
 395 and Picard, 1998; Medeiros et al., 2005). In addition, such a downward movement also brings in *O* and *H* from upper altitudes
 to lower altitudes thereby increasing their concentrations. This is because the mixing ratios of *O* and *H* increase with altitude
 in this region, as mentioned above. In this case, the bores are supposed to have occurred in the region between 86 and 93
 km (F1 appeared to have occurred a few km higher). The start of the enhanced stability region associated with the temperature
 inversion around 86 km seems to determine the lower boundary of the duct channel (see Figure 7). The upper boundary appears
 400 to be a combination of the temperature duct along with intense wind shears causing critical level to the propagating wavelike

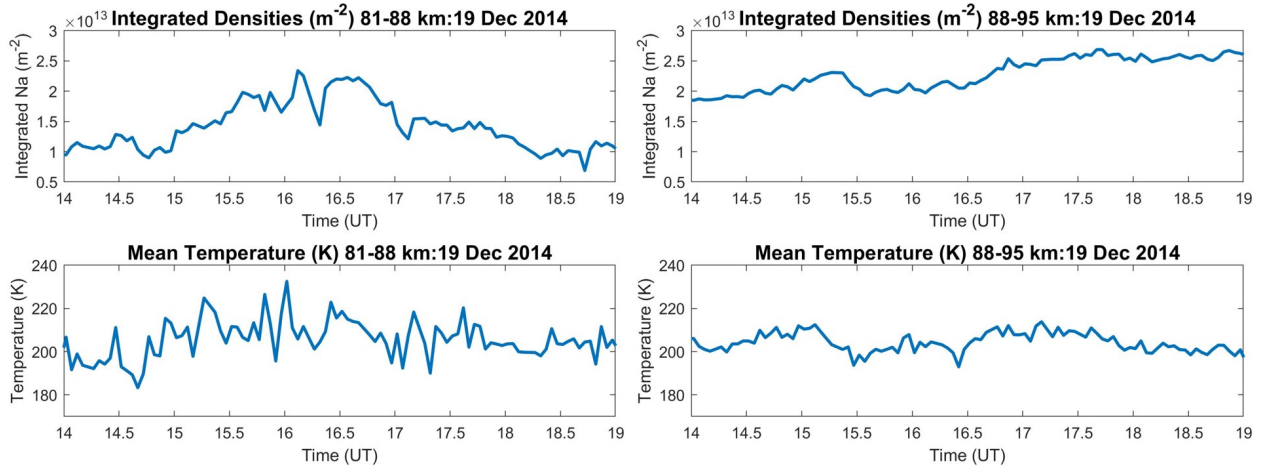
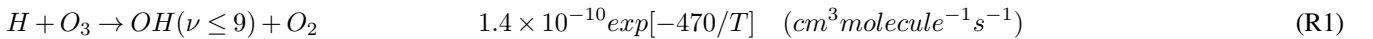


Figure 14. (Left) Integrated sodium densities and averaged temperatures from 81 to 88 km, (Right) Same as the previous one but from 88 to 95 km.

structures. The bores would have occurred near the center of the duct at ~ 90 km from where the downward movement **would have been initiated**. It may be noted that the enhanced temperatures shown in Figure 7(top) at altitudes below 85 km also match well with the duration of observation of the fronts. There may be a contribution from adiabatic compression immediately below the altitudes of the duct due to the downward push caused by the bores. However, a detailed investigation on this aspect is beyond the scope of present work. **In addition, such a downward movement also transports minor species, in particular O and H , from the upper altitudes thereby increasing their concentrations in the lower altitudes. This is because the mixing ratios of O and H increase with altitude in this region, as mentioned above. Not only O and H , but also species like Na , O_3 and $NaHCO_3$ experience a downward transport. For example, part of Na below 90 km would have been transported downwards and contributed to the density decrease along with the reduced temperatures seen in the main peak altitudes around 15:30 UT in association with the passage of F2 (see Figure 14(right)).**

It is known that higher H concentration occurring in the region with relatively higher temperature results in higher OH emission rates as per the following reaction.



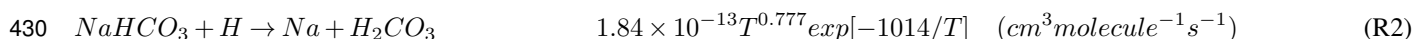
The reaction R1 and its rate constant are taken from Smith and Marsh (2005). It can be seen that reaction R1 depends on the temperature and higher temperatures result in higher reaction rates. **Table 3 contains the values of the reaction rates for R1 and the other reactions that will be given below. We have given the reaction rates from 200 K to 230 K in steps of 10 K. Also indicated are the percentage increases of the reaction rates from 200 K to 230 K. As seen from the Table, there will be 36% increase in the reaction rate of R1 when the temperature rises from 200 K to 230 K. Noteworthy is the fact that** Therefore, a downward push explains an enhancement in the OH airglow. On 19 December 2014, existence of the strong thermal ducting

420 region coincident with the altitudes of main sodium layer peak would have favored formation of a mesospheric bore resulting in such a downward force and transport of minor species.

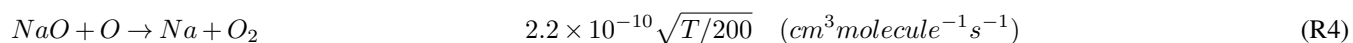
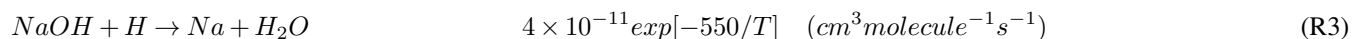
Table 3. Values of the reaction rates and their percentage increases for temperatures from 200 K to 230 K (units of the reaction rates are given in the respective rate expressions)

Reaction	Rates from 200 to 230 K				% increase with respect to 200 K			
	200 K	210 K	220 K	230 K	200 K	210 K	220 K	230 K
R1	1.34×10^{-11}	1.49×10^{-11}	1.65×10^{-11}	1.81×10^{-11}	0	12	24	36
R2	7.09×10^{-14}	9.38×10^{-14}	1.21×10^{-13}	1.53×10^{-13}	0	32	71	116
R3	2.56×10^{-12}	2.91×10^{-12}	3.28×10^{-12}	3.66×10^{-12}	0	14	28	43
R4	2.20×10^{-10}	2.25×10^{-10}	2.31×10^{-10}	2.36×10^{-10}	0	2	5	7
R5	6.16×10^{-10}	6.33×10^{-10}	6.49×10^{-10}	6.64×10^{-10}	0	3	5	8
R6	5.00×10^{-30}	4.71×10^{-30}	4.45×10^{-30}	4.22×10^{-30}	0	-6	-11	-16
R7	1.59×10^{-33}	1.41×10^{-33}	1.26×10^{-33}	1.14×10^{-33}	0	-11	-20	-28
R8	2.69×10^{-16}	4.39×10^{-16}	6.86×10^{-16}	1.03×10^{-15}	0	63	155	283

Now, we discuss how the sodium chemistry is affected by an increased concentration of minor species, particularly *H* and *O*, due to the downward transport. Though all the minor species existing below 90 km would have experienced a downward push due to the bore passages, we discuss the chemistry with focus on *O* and *H* because they are the principal minor species
 425 **connecting different reactions.** At altitudes above 90 km, the densities and collisions are so low that formation of complex multi atomic molecules are often difficult. Further, during the daytime higher EUV-UV photon flux contributes to the dissociation of complex larger molecules. In the lower altitudes, a larger portion of the sodium atoms react with other atoms and molecules and form reservoir species. The most important reservoir species for sodium is *NaHCO*₃, which liberates sodium atoms when interacting with *H* (Plane, 2004; Plane et al., 2015).



In addition *NaOH* and *NaO* can also liberate sodium as given below while interacting with *H* and *O*, respectively.



435 The reactions R2-R4 and corresponding rate constants are taken from Plane (2004); Gómez Martín et al. (2016). While the reactions R2-R4 are all dependent on temperature, the temperature dependence is weak for the reaction R4. The reaction R2 has a significant activation energy and hence is strongly dependent on temperature as can be seen from its rate expression. **For example, a 30 K increase in temperature from 200 K will increase the reaction rate by 116% as given in Table 3.**

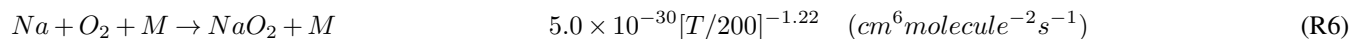
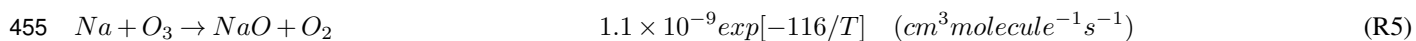
Reactions R2 and R3 clearly show that more sodium can be liberated when atomic H is transported from the higher altitudes.

440 There is sufficient atomic H in the region between 80 and 90 km (e.g. Plane et al., 2015, Figure 4) so that a downward flux increases the concentration and mixing ratio of H in heights below 85 km. The mixing ratio of $NaHCO_3$ decreases with altitude in the region between 85 and 90 km and increases at lower altitudes with peak concentration occurring around 84 km. The lower altitude sodium peak forms in the region where the concentration of $NaHCO_3$ is supposed to peak (Plane, 2004, Figure 5). Therefore, there will be sufficient concentrations of reservoir species in the region and the rate with which the

445 sodium liberating reactions occur will be higher when the temperature is higher. Since the temperatures were comparatively higher below 85 km more sodium atoms would have liberated resulting in a pronounced lower altitude sodium peak which appears like a secondary sodium layer in the lower altitudes. Due to relatively lower values of temperature in the altitudes between 84 and 88 km, the amount of liberated sodium will be smaller in spite of the fact that the downward transport of minor species H flux was supposed to be present in those altitudes as well. In addition, in those heights the downward transport

450 occurs in the region of decreasing mixing ratio of $NaHCO_3$, the most important reservoir species of sodium. This explains an apparent gap between the main peak and the lower altitude peak of the sodium layer.

The principle loss of sodium atoms below 85 km is through the formation of $NaHCO_3$, $NaOH$, NaO , NaO_2 and meteoric smoke particles. However, atomic sodium undergoes only the following two reactions directly, whose products further react with minor species in the mesosphere to produce more stable reservoirs like $NaHCO_3$.

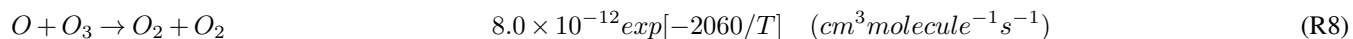
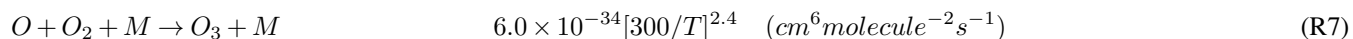


The reactions and corresponding rates are taken from Plane et al. (2015). The reaction R6 decreases with increase in temperature (see Table 3) and is of secondary importance compared to reaction R5. Therefore, in the region of lower altitude sodium

460 peak wherein the temperatures were higher, the removal of sodium atoms by O_2 was weaker.

The reaction R5 depends on O_3 concentration. The O_3 concentration peaks between 90 and 95 km in the mesosphere and hence the mixing ratio increases with altitude in the region of downward transport (Smith and Marsh, 2005). This indicates that some of the O_3 will also be transported downwards. However, the concentration of O_3 depends on the concentrations of H , O and temperature. The production of O_3 is through the three body reaction given in reaction R7 which is inversely dependent on

465 temperature. The generated O_3 is removed by H through reaction R1 and O through reaction R8. Both these reactions are faster in higher temperatures. Reaction R1 is the major sink for O_3 during night times and rate of reaction R8 increases enormously with temperature.



470 The two reactions above and corresponding rates are from (Smith and Marsh, 2005). Reaction R1 is the major sink for O_3 during night times and the rate of reaction R8 increases enormously with temperature as given in Table 3, thereby further reducing the O_3 concentration. Therefore, the downflux of H and O to the relatively higher temperature regions result in larger removal of O_3 despite its downflux. This reduction of O_3 in turn affects the effectiveness of removal of the liberated sodium atoms through reaction R5 in the lower altitudes. The above discussion indicates that sodium densities can increase when H and O are transported downwards along with other minor species when the temperatures in the lower altitudes are relatively high.

As mentioned earlier, we have seen from reaction R1 that the OH airglow intensity also increases when there is a downward flux along with higher temperatures and this also coincides with the destruction of O_3 . All these observations indicate that the temperature and wind structure in the 86 to 93 km region lead to an intense ducting region wherein the observed mesospheric bores could have formed. The associated downward transport of H and O minor species caused by the bores have lead to the liberation of fresh sodium atoms in the lower altitudes from corresponding reservoirs according to reactions R2-R4. Further, the re-conversion of sodium to reservoir species would have been restricted due to the reduction in O_3 concentrations and relatively higher temperatures. This can explain the link between the observation of multiple mesospheric bores, formation of lower altitude sodium peak and enhancement in the column integrated sodium densities in the same duration. After the weakening and disappearance of the fronts, the downward transport of H and O minor species would have stopped resulting in the removal of sodium by regeneration of the reservoir species from atomic sodium in the lower altitudes. Further, it may be noted that the temperatures below 85 km also decreased after the disappearance of the fronts.

Because we did not have airglow imaging observations before 14:40 UT and aurorae appeared after 17:15 UT, we are unable to probe the origins of the mesospheric fronts identified as bores. Moreover, the focus of the present work is towards understanding the unusual formation of bottomside lower altitude sodium peak and its relation to the observed mesospheric fronts rather than studying the formation and characteristics of the mesospheric fronts themselves. The lower altitude sodium peak occurred at altitudes that are too low for the ion chemistry to play any important role and hence we did not discuss the ion chemistry associated with the sodium production.

5 Conclusions

495 In this work, we discuss the sodium lidar and airglow imaging observations made on 19 December 2014 from Ramfjordmoen (69.6°N, 19.2°E) near Tromsø, Norway. An unusual occurrence of a lower altitude sodium peak below 85 km was noticed following the passage of four successive mesospheric frontal events observed in the OH airglow images (Figures 1-3). The fronts resembled bright mesospheric bores showing an enhancement in the OH airglow intensity following their passage (Figures 4-6). The existence of a favorable ducting region for formation of the bores was present (Figure 12). Both the temperature and the wind profiles (Figures 7 and 8) contributed to the duct. The horizontal winds showed intense shearing region from ~93 km altitudes (Figure 9). The critical levels occurring in this region restricted the propagation of the fronts to the OI 557.7 nm airglow altitudes. The temperatures in the lower altitudes were in the range of 220 to 250 K during the formation of lower

altitude sodium peak (Figure 7). While this magnitude of temperatures is not uncommon in the altitudes below 85 km, on this night the temperature enhancement coincided with the duration of the fronts. An enhancement in the column abundance of sodium was also seen to occur coincidentally with the formation of the lower altitude sodium peak (Figures 3 and 13). Further analysis showed that the temperature alone cannot explain the formation of the lower altitude sodium peak (Figure 14). We explain the observations consistently as follows.

The strong ducting appears to have provided favorable condition for formation of multiple mesospheric bores that are observed as frontal features in the *OH* images. The downward transport of air rich in minor species like *H* and *O* associated with the mesospheric bores appeared to result in an enhancement of *OH* airglow intensity and the release of atomic sodium from the reservoir species in the lower altitudes. The existence of relatively higher temperature region below 85 km compared to the temperatures in the higher altitudes could have led to increased reaction rates enabling larger release of sodium atoms from the reservoir species like $NaHCO_3$ and $NaOH$. Further the removal of atomic sodium by re-formation of reservoir species seemed to have reduced under the conditions of enhanced temperature with downflux of *H* and *O*. After 16:45 UT, the fronts weakened and disappeared thereby reducing the downward supply of the *H*, *O* and other minor species like $NaHCO_3$. The temperatures below 85 km were also decreased after the weakening of the fourth front. Coincidentally, the temperatures below 85 km also lowered. This could have resulted in re-conversion of the atomic sodium to sodium reservoir species which was seen as reduction in the column abundance of sodium and disappearance of the lower altitude sodium peak.

This event brings interesting new insights as below. 1) On rare occasions intense sodium peaks form below the main sodium layer peak. 2) The mesospheric bores play important role in altering the minor species concentrations in the mesospheric region within short temporal duration. 3) Multiple mesospheric bores can form with different phase velocities within a few hours.

6 Data availability

The sodium lidar data used in this work is present in the website <https://www.isee.nagoya-u.ac.jp/~nozawa/indexlidardata.html> of ISEE, Nagoya University. Person responsible for the sodium lidar data is Dr. Satonori Nozawa. The all-sky airglow images used in this study are available at ISEE, Nagoya University from the website https://ergsc.isee.nagoya-u.ac.jp/data_info/ground.shtml.en. Person responsible for the airglow imager data is Dr. Kazuo Shiokawa. The 3 minute time resolution and 1 km altitude averaged lidar data used for the calculations and illustrations in this work and the percentage differenced, equidistance projected *OH* airglow images are available in UiT website <https://dataverse.no/dataset.xhtml?persistentId=doi:10.18710/C8MQ7V>. A movie of processed *OH* airglow images is also provided in the webpage.

Video supplement. The time lapse of *OH* airglow images processed according to equation 4 in the manuscript is shown as a video in <https://dataverse.no/dataset.xhtml?persistentId=doi:10.18710/C8MQ7V>. The times of individual frames are shown as well. The colorbar denote % perturbations.

Author contributions. VLN identified the event, carried out much of the analysis and prepared the manuscript. SN operated the sodium lidar and extracted the parameters from lidar measurement. SO supported operations of airglow imager and contributed to part of airglow image analysis. IM took part in the discussions and initiated the work along with discussions between VLN and SN. KS and YO are responsible for the airglow experiments and they took part in the discussion. NS, SW, TK and TT helped in setting up of the lidar experiment, supported the maintenance and ensured its successful operation. All the authors took part in the discussion.

Competing interests. Authors have no competing interests

Acknowledgements. This work is supported by the Research Council of Norway through the grant NFR 275503. This study is partly supported by Grants-in-Aid for Scientific Research (17H02968) of Japan Society for the Promotion of Science (JSPS). A part of this work is carried out while VLN visited Institute for Space-Earth Environmental Research (ISEE) under the International Joint Research program of ISEE, Nagoya University. SO is supported by JSPS KAKENHI JP 16H06286, 15H05747, JPJSBP120194814 and Academy of Finland 314664. TT is supported by JSPS Overseas Research Fellowship. The sodium lidar has been operated at Ramfjordmoen, Tromsø, Norway under collaborations between ISEE, Nagoya University, RIKEN, Shinshu University, The University of Electro-Communications, EISCAT and Tromsø Geophysical Observatory, UiT. The airglow imager is operated at Ramfjordmoen, Tromsø, Norway by ISEE, Nagoya University. The instrumentation facilities are being supported by EISCAT facility at Ramfjordmoen, near Tromsø, Norway. The help of Dr. V. Subha in the proof reading of the manuscript and the correction of some errors is duly acknowledged.

References

- Axford, W. I. and Cunnold, D. M.: The Wind-Shear Theory of Temperate Zone Sporadic E, *Radio Science*, 1, 191–197, <https://doi.org/10.1002/rds196612191>, 1966.
- Bageston, J. V., Wrasse, C. M., Hibbins, R. E., Batista, P. P., Gobbi, D., Takahashi, H., Fritts, D. C., Andrioli, V. F., Fechine, J., and Denardini, C. M.: Case study of a mesospheric wall event over Ferraz station, Antarctica (62° S), *Annales Geophysicae*, 29, 209–219, <https://doi.org/10.5194/angeo-29-209-2011>, 2011.
- Batista, P. P., Clemesha, B. R., Simonich, D. M., Taylor, M. J., Takahashi, H., Gobbi, D., Batista, I. S., Buriti, R. A., and De Medeiros, A. F.: Simultaneous lidar observation of a sporadic sodium layer, a "wall" event in the OH and OI5577 airglow images and the meteor winds, *Journal of Atmospheric and Solar-Terrestrial Physics*, 64, 1327–1335, [https://doi.org/10.1016/S1364-6826\(02\)00116-5](https://doi.org/10.1016/S1364-6826(02)00116-5), 2002.
- Brown, L. B., Gerrard, A. J., Meriwether, J. W., and Makela, J. J.: All-sky imaging observations of mesospheric fronts in OI 557.7 nm and broadband OH airglow emissions: Analysis of frontal structure, atmospheric background conditions, and potential sourcing mechanisms, *Journal of Geophysical Research D: Atmospheres*, 109, 1–19, <https://doi.org/10.1029/2003JD004223>, 2004.
- Carrillo-Sánchez, J. D., Gómez-Martín, J. C., Bones, D. L., Nesvorný, D., Pokorný, P., Benna, M., Flynn, G. J., and Plane, J. M. C.: Cosmic dust fluxes in the atmospheres of Earth, Mars, and Venus, *Icarus*, 335, 113–139, <https://doi.org/https://doi.org/10.1016/j.icarus.2019.113395>, 2020.
- Chu, X., Yu, Z., Gardner, C. S., Chen, C., and Fong, W.: Lidar observations of neutral Fe layers and fast gravity waves in the thermosphere (110–155 km) at McMurdo (77.8°S, 166.7°E), Antarctica, *Geophysical Research Letters*, 38, <https://doi.org/10.1029/2011GL050016>, 2011.
- Chu, X., Nishimura, Y., Xu, Z., Yu, Z., Plane, J. M. C., Gardner, C. S., and Ogawa, Y.: First Simultaneous Lidar Observations of Thermosphere-Ionosphere Fe and Na (TIFe and TINa) Layers at McMurdo (77.84°S, 166.67°E), Antarctica With Concurrent Measurements of Aurora Activity, Enhanced Ionization Layers, and Converging Electric Field, *Geophysical Research Letters*, 47, e2020GL090181, <https://doi.org/https://doi.org/10.1029/2020GL090181>, e2020GL090181 2020GL090181, 2020.
- Clemesha, B. R., Batista, P. P., and Simonich, D. M.: Formation of sporadic sodium layers, *Journal of Geophysical Research: Space Physics*, 101, 19 701–19 706, <https://doi.org/10.1029/96ja00824>, 1996.
- Clemesha, B. R., Batista, P. P., Simonich, D. M., and Batista, I. S.: Sporadic structures in the atmospheric sodium layer, *Journal of Geophysical Research D: Atmospheres*, 109, 1–8, <https://doi.org/10.1029/2003JD004496>, 2004.
- Collins, R. L., Hallinan, T. J., Smith, R. W., and Hernandez, G.: Lidar observations of a large high-altitude sporadic Na layer during active aurora, *Geophysical Research Letters*, 23, 3655–3658, <https://doi.org/10.1029/96GL03337>, 1996.
- Cox, R. M. and Plane, J. M. C.: An ion-molecule mechanism for the formation of neutral sporadic Na layers, *Journal of Geophysical Research*, 103, 6349–6359, 1998.
- Dalin, P., Connors, M., Schofield, I., Dubietis, A., Pertsev, N., Perminov, V., Zalcik, M., Zadorozhny, A., McEwan, T., McEachran, I., Grønne, J., Hansen, O., Andersen, H., Frandsen, S., Melnikov, D., Romejko, V., and Grigoryeva, I.: First common volume ground-based and space measurements of the mesospheric front in noctilucent clouds, *Geophysical Research Letters*, 40, 6399–6404, <https://doi.org/10.1002/2013GL058553>, 2013.
- Dewan, E. M. and Picard, R. H.: Mesospheric bores, *Journal of Geophysical Research Atmospheres*, 103, 6295–6305, <https://doi.org/10.1029/97JD02498>, 1998.

- Dewan, E. M. and Picard, R. H.: On the origin of mesospheric bores, *Journal of Geophysical Research Atmospheres*, 106, 2921–2927, <https://doi.org/10.1029/2000JD900697>, 2001.
- 585 Fechine, J., Wrasse, C. M., Takahashi, H., Medeiros, A. F., Batista, P. P., Clemesha, B. R., Lima, L. M., Fritts, D., Laughman, B., Taylor, M. J., Pautet, P. D., Mlynczak, M. G., and Russell, J. M.: First observation of an undular mesospheric bore in a Doppler duct, *Annales Geophysicae*, 27, 1399–1406, <https://doi.org/10.5194/angeo-27-1399-2009>, 2009.
- Fussen, D., Vanhellemont, F., Tétard, C., Mateshvili, N., Dekemper, E., Loodts, N., Bingen, C., Kyrölä, E., Tamminen, J., Sofieva, V.,
590 Hauchecorne, A., Dalaudier, F., Bertaux, J. L., Barrot, G., Blanot, L., Fanton D’Andon, O., Fehr, T., Saavedra, L., Yuan, T., and She, C. Y.: A global climatology of the mesospheric sodium layer from GOMOS data during the 2002–2008 period, *Atmospheric Chemistry and Physics*, 10, 9225–9236, <https://doi.org/10.5194/acp-10-9225-2010>, 2010.
- Garcia, F. J., Taylor, M. J., and Kelley, M. C.: Two-dimensional spectral analysis of mesospheric airglow image data, *Applied Optics*, 36, 7374, <https://doi.org/10.1364/ao.36.007374>, 1997.
- 595 Gómez Martín, J. C., Garraway, S. A., and Plane, J. M. C.: Reaction Kinetics of Meteoric Sodium Reservoirs in the Upper Atmosphere, *The Journal of Physical Chemistry A*, 120, 1330–1346, <https://doi.org/10.1021/acs.jpca.5b00622>, 2016.
- Grimshaw, R., Broutman, D., Laughman, B., and Eckermann, S. D.: Solitary waves and undular bores in a mesosphere duct, *Journal of the Atmospheric Sciences*, 72, 4412–4422, <https://doi.org/10.1175/JAS-D-14-0351.1>, 2015.
- Hecht, J. H.: Instability layers and airglow imaging, *Reviews of Geophysics*, 42, RG1001, <https://doi.org/10.1029/2003RG000131>, 2004.
- 600 Hecht, J. H., Walterscheid, R. L., Hickey, M. P., and Franke, S. J.: Climatology and modeling of quasi-monochromatic atmospheric gravity waves observed over Urbana Illinois, *Journal of Geophysical Research Atmospheres*, 106, 5181–5195, <https://doi.org/10.1029/2000JD900722>, 2001.
- Heinrich, D., Nesse, H., Blum, U., Acott, P., Williams, B., and Hoppe, U. P.: Summer sudden Na number density enhancements measured with the ALOMAR Weber Na Lidar, *Annales Geophysicae*, 26, 1057–1069, <https://doi.org/10.5194/angeo-26-1057-2008>, 2008.
- 605 Hildebrand, J., Baumgarten, G., Fiedler, J., and Lübken, F.-J.: Winds and temperatures of the Arctic middle atmosphere during January measured by Doppler lidar, *Atmospheric Chemistry and Physics*, 17, 13 345–13 359, <https://doi.org/10.5194/acp-17-13345-2017>, 2017.
- Hines, C. O.: Generalizations of the Richardson criterion for the onset of atmospheric turbulence, *Quarterly Journal of the Royal Meteorological Society*, 97, 429–439, <https://doi.org/10.1002/qj.49709741405>, 1971.
- Kawahara, T. D., Nozawa, S., Saito, N., Kawabata, T., Tsuda, T. T., and Wada, S.: Sodium temperature/wind lidar based on laser-diode-pumped Nd:YAG lasers deployed at Tromsø, Norway (696°N, 192°E), *Optics Express*, 25, A491, <https://doi.org/10.1364/oe.25.00a491>,
610 2017.
- Kirkwood, S. and Nilsson, H.: High-latitude sporadic-E and other thin layers - The role of magnetospheric electric fields, *Space Science Reviews*, 91, 579–613, <https://doi.org/10.1023/A:1005241931650>, 2000.
- Li, F., Liu, A. Z., Swenson, G. R., Hecht, J. H., and Robinson, W. A.: Observations of gravity wave breakdown into ripples associated with
615 dynamical instabilities, *Journal of Geophysical Research: Atmospheres*, 110, <https://doi.org/10.1029/2004JD004849>, 2005.
- Li, F., Swenson, G. R., Liu, A. Z., Taylor, M., and Zhao, Y.: Investigation of a "wall" wave event, *Journal of Geophysical Research Atmospheres*, 112, 1–13, <https://doi.org/10.1029/2006JD007213>, 2007.
- Lindzen, R. S. and Barker, J. W.: Instability and wave over-reflection in stably stratified shear flow, *Journal of Fluid Mechanics*, 151, 189–217, <https://doi.org/10.1017/S0022112085000921>, 1985.
- 620 Lübken, F.-J. and von Zahn, U.: Thermal structure of the mesopause region at polar latitudes, *Journal of Geophysical Research: Atmospheres*, 96, 20 841–20 857, <https://doi.org/10.1029/91JD02018>, <https://agupubs.onlinelibrary.wiley.com/doi/abs/10.1029/91JD02018>, 1991.

- Majda, A. J. and Shefter, M. G.: Elementary stratified flows with instability at large Richardson number, *Journal of Fluid Mechanics*, 376, 319–350, <https://doi.org/10.1017/S0022112098003085>, 1998.
- Mathews, J. D.: Sporadic E: Current views and recent progress, *Journal of Atmospheric and Solar-Terrestrial Physics*, 60, 413–435, [https://doi.org/10.1016/S1364-6826\(97\)00043-6](https://doi.org/10.1016/S1364-6826(97)00043-6), 1998.
- Medeiros, A. F., Fechine, J., Buriti, R. A., Takahashi, H., Wrasse, C. M., and Gobbi, D.: Response of OH, O₂ and OI5577 airglow emissions to the mesospheric bore in the equatorial region of Brazil, *Advances in Space Research*, 35, 1971–1975, <https://doi.org/10.1016/j.asr.2005.03.075>, 2005.
- Miles, J. W.: On the stability of heterogeneous shear flows, *Journal of Fluid Mechanics*, 10, 496–508, <https://doi.org/10.1017/S0022112061000305>, 1961.
- Miyagawa, H., Nakamura, T., Tsuda, T., Abo, M., Nagasawa, C., Kawahara, T. D., Kobayashi, K., Kitahara, T., and Nomura, A.: Observations of mesospheric sporadic sodium layers with the MU radar and sodium lidars, *Earth, Planets and Space*, 51, 785–797, <https://doi.org/10.1186/BF03353237>, 1999.
- Narayanan, V. L. and Gurubaran, S.: Statistical characteristics of high frequency gravity waves observed by OH airglow imaging from Tirunelveli (8.7°N), *Journal of Atmospheric and Solar-Terrestrial Physics*, 92, 43–50, <https://doi.org/10.1016/j.jastp.2012.09.002>, 2013.
- Narayanan, V. L., Gurubaran, S., and Emperumal, K.: A case study of a mesospheric bore event observed with an all-sky airglow imager at Tirunelveli (8.7°N), *Journal of Geophysical Research Atmospheres*, 114, 1–9, <https://doi.org/10.1029/2008JD010602>, 2009a.
- Narayanan, V. L., Gurubaran, S., and Emperumal, K.: Imaging observations of upper mesospheric nightglow emissions from Tirunelveli (8.7°N), *Indian Journal of Radio and Space Physics*, 38, 150–158, 2009b.
- Narayanan, V. L., Gurubaran, S., and Emperumal, K.: Nightglow imaging of different types of events, including a mesospheric bore observed on the night of February 15, 2007 from Tirunelveli (8.7°N), *Journal of Atmospheric and Solar-Terrestrial Physics*, 78–79, 70–83, <https://doi.org/10.1016/j.jastp.2011.07.006>, 2012.
- Nozawa, S., Kawahara, T. D., Saito, N., Hall, C. M., Tsuda, T. T., Kawabata, T., Wada, S., Brekke, A., Takahashi, T., Fujiwara, H., Ogawa, Y., and Fujii, R.: Variations of the neutral temperature and sodium density between 80 and 107 km above Tromsø during the winter of 2010–2011 by a new solid-state sodium lidar, *Journal of Geophysical Research: Space Physics*, 119, 441–451, <https://doi.org/10.1002/2013JA019520>, 2014.
- Pautet, P. D., Taylor, M. J., Liu, A. Z., and Swenson, G. R.: Climatology of short-period gravity waves observed over northern Australia during the Darwin Area Wave Experiment (DAWEX) and their dominant source regions, *Journal of Geophysical Research D: Atmospheres*, 110, 1–13, <https://doi.org/10.1029/2004JD004954>, 2005.
- Pautet, P. D., Taylor, M. J., Snively, J. B., and Solorio, C.: Unexpected Occurrence of Mesospheric Frontal Gravity Wave Events Over South Pole (90°S), *Journal of Geophysical Research: Atmospheres*, 123, 160–173, <https://doi.org/10.1002/2017JD027046>, 2018.
- Plane, J. M. C.: A time-resolved model of the mesospheric Na layer: constraints on the meteor input function, *Atmospheric Chemistry and Physics*, 4, 627–638, <https://doi.org/10.5194/acp-4-627-2004>, 2004.
- Plane, J. M. C., Feng, W., and Dawkins, E. C.: The Mesosphere and Metals: Chemistry and Changes, *Chemical Reviews*, 115, 4497–4541, <https://doi.org/10.1021/cr500501m>, 2015.
- Qiu, S., Tang, Y., Jia, M., Xue, X., Dou, X., Li, T., and Wang, Y.: A review of latitudinal characteristics of sporadic sodium layers, including new results from the Chinese Meridian Project, *Earth-Science Reviews*, 162, 83–106, <https://doi.org/10.1016/j.earscirev.2016.07.004>, 2016.

- Raizada, S., Brum, C. M., Tepley, C. A., Lautenbach, J., Friedman, J. S., Mathews, J. D., Djuth, F. T., and Kerr, C.: First simultaneous measurements of Na and K thermospheric layers along with TILs from Arecibo, *Geophysical Research Letters*, 42, 10,106–10,112, <https://doi.org/10.1002/2015GL066714>, 2015.
- Ramamurthy, M. K., Rauber, R. M., Collins, B. P., and Malhotra, N. K.: A Comparative Study of Large-Amplitude Gravity-Wave Events, *Monthly Weather Review*, 121, 2951–2974, [https://doi.org/10.1175/1520-0493\(1993\)121<2951:ACSOLA>2.0.CO;2](https://doi.org/10.1175/1520-0493(1993)121<2951:ACSOLA>2.0.CO;2), 1993.
- Ramesh, K. and Sridharan, S.: Large mesospheric inversion layer due to breaking of small-scale gravity waves: Evidence from rayleigh lidar observations over Gadanki (13.5°N, 79.2°E), *Journal of Atmospheric and Solar-Terrestrial Physics*, pp. 90–97, <https://doi.org/10.1016/j.jastp.2012.08.011>, 2012.
- Seyler, C. E.: Internal waves and undular bores in mesospheric inversion layers, *Journal of Geophysical Research D: Atmospheres*, 110, 1–10, <https://doi.org/10.1029/2004JD004685>, 2005.
- She, C. Y., Li, T., Williams, B. P., Yuan, T., and Picard, R. H.: Concurrent OH imager and sodium temperature/wind lidar observation of a mesopause region undular bore event over Fort Collins/Platteville, Colorado, *Journal of Geophysical Research D: Atmospheres*, 109, 1–8, <https://doi.org/10.1029/2004JD004742>, 2004.
- Shiokawa, K., Katoh, Y., Satoh, M., Ejiri, M. K., Ogawa, T., Nakamura, T., Tsuda, T., and Wiens, R. H.: Development of Optical Mesosphere Thermosphere Imagers (OMTI), *Earth, Planets and Space*, 51, 887–896, <https://doi.org/10.1186/BF03353247>, 1999.
- Skyllingstad, E. D.: Critical Layer Effects on Atmospheric Solitary and Cnoidal Waves, *Journal of the Atmospheric Sciences*, 48, 1613–1624, [https://doi.org/10.1175/1520-0469\(1991\)048<1613:CLEOAS>2.0.CO;2](https://doi.org/10.1175/1520-0469(1991)048<1613:CLEOAS>2.0.CO;2), 1991.
- Smith, A. K. and Marsh, D. R.: Processes that account for the ozone maximum at the mesopause, *Journal of Geophysical Research Atmospheres*, 110, 1–11, <https://doi.org/10.1029/2005JD006298>, 2005.
- Smith, S. M., Taylor, M. J., Swenson, G. R., She, C. Y., Hocking, W., Baumgardner, J., and Mendillo, M.: A multidagnostic investigation of the mesospheric bore phenomenon, *Journal of Geophysical Research: Space Physics*, 108, 1–18, <https://doi.org/10.1029/2002JA009500>, 2003.
- Snively, J. B., Pasko, V. P., and Taylor, M. J.: OH and OI airglow layer modulation by ducted short-period gravity waves: Effects of trapping altitude, *Journal of Geophysical Research: Space Physics*, 115, 1–13, <https://doi.org/10.1029/2009JA015236>, 2010.
- Suzuki, S., Shiokawa, K., Liu, A. Z., Otsuka, Y., Ogawa, T., and Nakamura, T.: Characteristics of equatorial gravity waves derived from mesospheric airglow imaging observations, *Annales Geophysicae*, 27, 1625–1629, <https://doi.org/10.5194/angeo-27-1625-2009>, 2009.
- Suzuki, S., Tsutsumi, M., Palo, S. E., Ebihara, Y., Taguchi, M., and Ejiri, M.: Short-period gravity waves and ripples in the South Pole mesosphere, *Journal of Geophysical Research Atmospheres*, 116, 1–6, <https://doi.org/10.1029/2011JD015882>, 2011.
- Swenson, G. R., Qian, J., Plane, J. M. C., Espy, P. J., Taylor, M. J., Turnbull, D. N., and Lowe, R. P.: Dynamical and chemical aspects of the mesospheric Na 'wall' event on October 9, 1993 during the Airborne Lidar and Observations of Hawaiian Airglow (ALOHA) campaign, *Journal of Geophysical Research Atmospheres*, 103, 6361–6380, <https://doi.org/10.1029/97JD03379>, 1998.
- Takahashi, T., Nozawa, S., Tsuda, T. T., Ogawa, Y., Saito, N., Hidemori, T., Kawahara, T. D., Hall, C., Fujiwara, H., Matuura, N., Brekke, A., Tsutsumi, M., Wada, S., Kawabata, T., Oyama, S., and Fujii, R.: A case study on generation mechanisms of a sporadic sodium layer above Tromsø (69.6° N) during a night of high auroral activity, *Annales Geophysicae*, 33, 941–953, <https://doi.org/10.5194/angeo-33-941-2015>, 2015.
- Taylor, M. J., Turnbull, D. N., and Lowe, R. P.: Spectrometric and imaging measurements of a spectacular gravity wave event observed during ALOHA-93 campaign, *Geophysical Research Letters*, 22, 2849–2852, 1995.

- Tsuda, T. T., Chu, X., Nakamura, T., Ejiri, M. K., Kawahara, T. D., Yukimatu, A. S., and Hosokawa, K.: A thermospheric Na layer event observed up to 140 km over Syowa Station (69.0°S, 39.6°E) in Antarctica, *Geophysical Research Letters*, 42, 3647–3653, <https://doi.org/10.1002/2015GL064101>, 2015a.
- 700 Tsuda, T. T., Nozawa, S., Kawahara, T. D., Kawabata, T., Saito, N., Wada, S., Hall, C. M., Tsutsumi, M., Ogawa, Y., Oyama, S., Takahashi, T., Ejiri, M. K., Nishiyama, T., Nakamura, T., and Brekke, A.: A sporadic sodium layer event detected with five-directional lidar and simultaneous wind, electron density, and electric field observation at Tromsø, Norway, *Geophysical Research Letters*, 42, 9190–9196, <https://doi.org/10.1002/2015GL066411>, 2015b.
- Wang, J., Yang, Y., Cheng, X., Yang, G., Song, S., and Gong, S.: Double sodium layers observation over Beijing, China, *Geophysical Research Letters*, 39, L15 801, <https://doi.org/10.1029/2012GL052134>, 2012.
- 705 Whitehead, J. D.: Production and prediction of sporadic E, *Reviews of Geophysics*, 8, 65–144, <https://doi.org/10.1029/RG008i001p00065>, 1970.
- Yue, J., She, C. Y., Nakamura, T., Harrell, S., and Yuan, T.: Mesospheric bore formation from large-scale gravity wave perturbations observed by collocated all-sky OH imager and sodium lidar, *Journal of Atmospheric and Solar-Terrestrial Physics*, 72, 7–18, <https://doi.org/10.1016/j.jastp.2009.10.002>, 2010.
- 710 Zhou, Q. and Mathews, J. D.: Generation of sporadic sodium layers via turbulent heating of the atmosphere?, *Journal of Atmospheric and Terrestrial Physics*, 57, [https://doi.org/10.1016/0021-9169\(95\)97298-I](https://doi.org/10.1016/0021-9169(95)97298-I), 1995.
- Zhou, Q., Mathews, J. D., and Tepley, C. A.: A proposed temperature dependent mechanism for the formation of sporadic sodium layers, *Journal of Atmospheric and Terrestrial Physics*, 55, 513–521, [https://doi.org/10.1016/0021-9169\(93\)90085-D](https://doi.org/10.1016/0021-9169(93)90085-D), 1993.