

The response of mesospheric H₂O and CO to solar irradiance variability in models and observations

Arseniy Karagodin-Doyennel^{1,2,*}, Eugene Rozanov^{1,2,*}, Ales Kuchar^{3,*}, William Ball^{4,*}, Pavle Arsenovic⁵, Ellis Remsberg⁶, Patrick Jöckel⁷, Markus Kunze⁸, David A. Plummer⁹, Andrea Stenke¹, Daniel Marsh^{10,11}, Doug Kinnison¹⁰, and Thomas Peter¹

¹The Institute for Atmospheric and Climate Science (IAC) ETH, Zurich, Switzerland

²The Physikalisch-Meteorologisches Observatorium Davos/World Radiation Center (PMOD/WRC), Davos, Switzerland

³Leipzig Institute for Meteorology (LIM), Leipzig, Germany

⁴Department of Geoscience and Remote Sensing, TU Delft, Delft, Netherlands

⁵Swiss Federal Laboratories for Materials Science and Technology (EMPA), Dübendorf, Switzerland

⁶Science Directorate NASA Langley Research Center Hampton, Virginia, USA

⁷Deutsches Zentrum für Luft- und Raumfahrt (DLR), Institut für Physik der Atmosphäre, Oberpfaffenhofen, Germany

⁸Institut für Meteorologie, Freie Universität Berlin, 12165 Berlin, Germany

⁹Climate Research Division, Environment and Climate Change Canada, Montreal, Canada

¹⁰National Center for Atmospheric Research, Boulder, Colorado, USA

¹¹Priestley International Centre for Climate, University of Leeds, UK

*These authors contributed equally to this work.

Correspondence: Arseniy Karagodin-Doyennel (darseni@student.ethz.ch)

Abstract.

Water vapor (H₂O) is the source of reactive hydrogen radicals in the middle atmosphere, whereas carbon monoxide (CO), being formed by CO₂ photolysis, is suitable as a dynamical tracer. In the mesosphere, both H₂O and CO are sensitive to solar irradiance variability because of their destruction/production by solar radiation. This enables to analyze the solar signal in both, models and observed data. Here, we evaluate the mesospheric H₂O and CO response to solar irradiance variability using the Chemistry-Climate Model Initiative (CCMI-1) simulations and satellite observations. We analyzed the results of four CCMI models (CMAM, EMAC-L90MA, SOCOLv3, CESM1-WACCM 3.5) operated in CCMI reference simulation REF-C1SD in specified dynamics mode, covering the period from 1984 to 2017. Multiple linear regression analysis shows a pronounced and statistically robust response of H₂O and CO to solar irradiance variability, and to the annual and semiannual cycles. For periods with available satellite data, we compared the simulated solar signal against satellite observations, namely GOZCARDS composite for 1992-2017 for H₂O and Aura/MLS measurements for 2005-2017 for CO. The model results generally agree with observations and reproduce an expected negative and positive correlation for H₂O and CO, respectively, with solar irradiance. However, the magnitude of the response and patterns of the solar signal varies among the considered models, indicating differences in the applied chemical reaction and dynamical schemes including the representation of photolyzes. We suggest that there is no dominating thermospheric influence of solar irradiance in CO, as reported in previous studies because the response to solar variability is comparable with observations in both, low-top and high-top models. We stress the importance

of this work for improving our understanding of the current ability and limitations of state-of-the-art models to simulate a solar signal in the chemistry and dynamic of the middle atmosphere.

1 Introduction

20 H₂O plays an important role in atmospheric chemistry as a source of the hydrogen oxide radicals (HO_x), which are important for ozone loss. There are two main sources of water vapor in the middle atmosphere. The first is a direct carry-over of H₂O through the tropopause tropical cold trap (~ 2-3 ppmv), where strong dehydration of air occurs (Nicolet, 1981). The second is indirect, namely the upward stratospheric transport of CH₄ and its subsequent oxidation. The main chemical reaction leading to H₂O formation throughout the atmosphere is from methane oxidation (Wofsy et al., 1972):

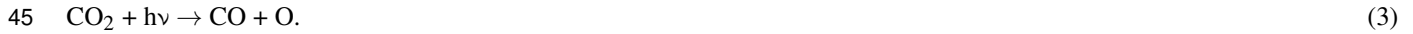


Middle atmospheric trends in H₂O are largely determined by changes in the tropospheric content of CH₄ and temperature at the tropical tropopause (Nedoluha et al., 2013). The amount of H₂O in the middle atmosphere can reach the value of up to 10 ppmv (Brasseur and Solomon, 2005). In the mesosphere where the CH₄ is fully oxidized, the H₂O can have the amount of about 6.6 ppmv. Nevertheless, the highest mixing ratio of H₂O is in the lower atmosphere with 10-100 ppm in the upper
30 and more than ten thousand ppm in the lower troposphere (Palchetti et al., 2008). With increasing altitude in the mesosphere, photodissociation of H₂O is caused by solar irradiance at the Ly- α (121.25 nm) spectral line of hydrogen and within the spectral range of the oxygen Schumann-Runge continuum (175-200 nm; Frederick and Hudson, 1980). The photodissociation lifetime of water vapor in the presence of the solar Ly- α radiation below mesopause is estimated to be less than 200 hours (Kingston, 1987) because $J_{(\text{Ly}-\alpha)}$ of (H₂O) = $1.6 \times 10^{-6} \text{ s}^{-1}$ for a total number of O₂ molecules of about 10^{20} cm^{-2} . Products of H₂O
35 photolysis are atomic hydrogen and hydroxyl radicals:



As such, an anti-correlation of water vapor with solar irradiance, with the strongest response in the mesosphere, is expected (Chandra et al., 1997; Hervig and Siskind, 2006; Shapiro et al., 2012) and the strength of this effect depends upon the intensity of solar irradiance in the Ly- α line and the Schumann-Runge band.

40 Carbon monoxide (CO) is widely present in the lower thermosphere and mesosphere and due to its chemical lifetime of more than one month, it can be used for investigating transport processes in the middle atmosphere. CO can react with some species (e.g. OH \cdot), which would otherwise destroy ozone and CH₄, enhancing its radiative forcing (Ryan et al., 2018). Contrary to H₂O, CO is positively correlated with solar irradiance as it is primarily formed through the photolysis of CO₂ in the lower thermosphere and upper mesosphere at Ly- α (Wofsy et al., 1972) as follows:



In the troposphere, the main source of CO is the oxidation of hydrocarbons (Minschwaner et al., 2010). However, in the mesosphere the amount of CO from the oxidation of CH₄ and isoprene is so much smaller compared to the CO₂ photodissociation (Eq 3) that this process can be neglected at high altitudes (Garcia et al., 2014). Chemical loss of CO in the atmosphere occurs by oxidation (Levy, 1971):



The amount of CO in the mesosphere is estimated to be within 30ppb-10 ppm (Brasseur and Solomon, 2005), and 50-100 ppb in the uncontaminated air in the troposphere (Minschwaner et al., 2010), having a strong vertical gradient. Mesospheric concentrations of H₂O and CO are strongly determined by the solar irradiance. Since the processes leading to H₂O/CO destruction/production are much faster than changes in solar irradiance on all timescales, we can assume they are essentially linear. Therefore, an attribution approach using multiple linear regression (MLR) analysis is reasonable to estimate the impact of solar irradiance on H₂O and CO variability in the middle atmosphere. We apply this linear statistical tool to different model and satellite data. One major goal of this study is to compare the modeled solar signal in mesospheric H₂O and CO to observations. Recently, the photochemical H₂O loss by Ly- α radiation in UARS/HALOE measurements was estimated to be about 35% at 0.01 hPa (~ 80 km altitude) at 50°N using MLR (Remsberg et al., 2018). Tropical tendencies in mesospheric water vapor using MLR analysis of Aura/MLS observations for the 2004-2015 period were presented by Nath et al. (2018). Their analysis showed a pronounced trend in water vapor throughout the whole considered period, as well as a strong negative correlation with the F10.7 solar index that maximizes at 0.01 hPa (-0.56 ppmv/ 1% of Ly- α). A solar signal in lower stratospheric H₂O was investigated by Schieferdecker et al. (2015). Using MLR they showed a negative correlation between H₂O and solar activity with a phase-shift of about 2 years in composite data of HALOE and MIPAS over 60°N-60°S. Lee et al. (2013) presented a study of the middle atmospheric CO variation caused by solar irradiance changes using MLS and solar irradiance measurements from the Solar Radiation and Climate Experiment (SORCE). Their results reveal a significant positive correlation of up to 0.6 between solar irradiance and CO variation in the mesosphere, as well as downward transport of the CO anomaly induced by solar irradiance over high latitudes with a descent rate of about 1.3 km/day. Lee et al. (2018) expanded their previous work and investigated the solar cycle variation in CO using MLS measurements for 2004-2017, as well as free-running WACCM simulations using two different solar spectral irradiance datasets. The updated results have a higher correlation (up to 0.8) and show that 68% of upper mesospheric CO variation is caused by solar irradiance changes as well as pronounced downwelling of the signal within the polar vortex regions. The results simulated with WACCM (3.5) underestimate the CO variation in the upper mesosphere by a factor of three compared to the Aura/MLS observations. However, here it should be mentioned that the applied WACCM version does not employ the extreme ultraviolet (EUV) photolysis and reaction by CO₂ with O⁺ as an additional CO production mechanism in the thermosphere. The modeled CO distribution with

the WACCM version 4.0 shows CO in better agreement with the MIPAS and ACE-FTS observations (Garcia et al., 2014). This also could cause some issues when comparing the results of models where this production mechanism is not included. Thus, the results of previous studies revealed issues in the modeling of the influence of solar irradiance and motivate an inter-comparison analysis of multiple models and observations. So far, an MLR analysis using multiple chemistry-climate models (CCMs) and observations of both CO and H₂O had not been conducted.

In this work, we present an MLR analysis of simulations with several chemistry-climate models in specified dynamics mode for the period 1984-2017, as well as available observations from UARS/HALOE (1992-2005) and Aura/MLS (2005-2017), which provide data for 26 years with a good resolution and without serious gaps. The combined UARS/HALOE and Aura/MLS records provide observations of CO (only for the Aura/MLS period) and H₂O (for the whole 1992-2017 period), which makes these data suited for our analysis. The MLR method is used to retrieve H₂O and CO responses to solar irradiance variability, and to estimate the consistency of the solar signal in CCMs to that found in observations, and between CCMs. Analyzing the differences in the solar responses can reveal potential model limitations, such as the dynamics of the middle atmosphere (weak or strong transport), presence of thermospheric sources (important since some models have an upper boundary at 0.01 hPa), and photochemistry and chemical production or loss of the species considered here. H₂O and CO were chosen as they are very sensitive to solar irradiance variations in the mesosphere (Remsberg et al., 2018; Lee et al., 2018) making them good candidates for this kind of analysis.

In Section 2, we describe the data sets used in this study. Section 3 briefly describes the MLR model set-up used to retrieve the solar signal response. The results of the MLR analysis of the models CMAM, EMAC-L90MA (hereinafter will be denoted as EMAC), SOCOLv3 (hereinafter will be denoted as SOCOL), and WACCM REF-C1SD runs for the entire period 1984-2017, as well as the comparison with H₂O measurements from UARS/HALOE and Aura/MLS for the 1992-2017 period and CO measurements from Aura/MLS for the 2005-2017 period, are presented in Section 4. The discussion and overall summary can be found in Sections 5 and 6.

2 Data sets

For our study chose four global climate models involved in the Chemistry–Climate Model Initiative (CCMI-1) project. The CCMI project aims at carrying out the inter-model comparison and validation of model results with observations¹. For the analysis, we used the results of the REF-C1SD experiment which was performed using boundary conditions extracted from observations including the atmospheric level of greenhouse gases and ozone-depleting substances (ODSs), as well as sea surface temperature and sea ice concentration (Morgenstern et al., 2017). Specified dynamics (SD) here means that meteorological fields in the model experiments are nudged toward reanalysis datasets. The nudging is applied in CCMI-1 models for different atmospheric regions as well as using different reanalysis data (see Table 1; Chrysanthou et al., 2019). The selection of models was based on the inspection of the simulated H₂O and CO time series for the presence of the solar signal in the mesosphere and on data reliability. Careful analysis of the CCMI-1 results showed that only CMAM, EMAC, SOCOL, and WACCM CCMs are

¹More information on CCMI activities can be found here: <https://www.sparc-climate.org/activities/ccm-initiative>

suitable for the intended analysis, while other models involved in CCMI-1 were either in an unusable format, did not extend high enough, or lack any solar signal in H₂O and CO. The REF-C1SD simulations of the four chosen models were extended to 2017 (CCMI-1 is until 2011) to overlap with the recent satellite measurements.

Table 1: CCMI-1 model set up

| Name | Spatial resolution | Model top height | Nudging region | Nudging data | Reference |
|-----------------|---------------------------|--------------------------|---------------------------------------|---------------------|--|
| CMAM | T47, L71 | 0.0008 hPa | Surface–1 hPa | ERA-Interim | Scinocca et al. (2008) |
| EMAC-L90MA | T42, L90MA | 0.01hPa | 10–90 hPa | ERA-Interim | Jöckel et al. (2010); Jöckel et al. (2016) |
| SOCOLv3 | T42, L39 | 0.01 hPa | Surface–0.01 hPa | ERA-Interim | Stenke et al. (2012); Revell et al. (2015) |
| CESM1-WACCM 3.5 | 1.9 x 2.5, L66 | 5.1x10 ⁻⁶ hPa | Surface–50 km (fades out 40–50 km) | MERRA | Marsh et al. (2013); Verronen et al. (2016) |

We focus on mesospheric altitudes for the examination of the solar signal response in atmospheric chemistry. Thus, differences in nudging setups play no role, as the mesosphere does not undergo direct nudging. There is an exception for SOCOL that the only one model where the whole model atmosphere is nudged up to the 0.01 hPa level. Additionally, in the frame of this work, it is important to describe the lower limit of the wavelength for photolysis and photoionization in CCMI-1 models presented in Table 1.

In EMAC, for the simulation considered in this work, the photolysis rates have been calculated with the submodel JVAL (Sander et al., 2014), which uses 8 wavelength bands, bands ranging from 178.6 nm to 682.5 nm (Landgraf and Crutzen, 1998) and includes a parametrization for Ly- α photolysis (Chabrillat and Kockarts, 1997). In SOCOL, photolysis rates are calculated using a look-up-table approach (Rozanov et al., 1999), including effects of the solar irradiance variability with the lower limit for photolysis at 120 nm. In the CMAM model, the shortest wavelength is 121.0 nm. Also, the parameterization for NO photolysis from Minschwaner and Siskind (1993) is used, however, there is no effect of solar variability included on this rate. In WACCM, the photolysis of H₂O starts at Ly- α (121.5 nm). Fluxes at that wavelength are calculated using the Chabrillat and Kockarts (1998) scheme. For Equation 3, cross-sections from 0.5 to 105.0 nm in the XUV/X-ray wavelength region are used. Solar fluxes are calculated with Solomon and Qian (2005). Additionally, in WACCM, an ion chemistry loss for CO₂ is included: CO₂ + O⁺ → O₂⁺ + CO. In the other models (EMAC, CMAM, and SOCOL) considered here, ion chemistry is not included.

Since time series of H₂O and CO from CMAM, SOCOL, WACCM, and EMAC SD simulations are available until 2017, we compare the solar response with observations from Aura/MLS CO for the available period of 2005-2017 and H₂O for

130 1992-2017. However, to extend the REF-C1SD simulations of SOCOL and EMAC the NRLSSI data (Lean et al., 2005) for REF-C1 was used only until 2011, and onward the models used the boundary conditions (GHGs and ODSs) of the RCP6.0 scenario (REF-C2). In EMAC the conditions of the year 2011 have been cyclically repeated for the years 2012-2017. In the case of solar forcing, EMAC uses the adapted solar forcing according to the one used in HadGEM2-ES CMIP5 6.0 simulation (Jones et al., 2011). The CMAM data for the considered period was from a different specified dynamics simulation than the
135 one submitted to CCM1-1, produced using a method identical to that of nudging with reanalysis but with specified stratospheric aerosols, extra-terrestrial solar flux, and emissions from datasets specified for CMIP6 (Eyring et al., 2016). For the extension of the WACCM time series of both H₂O and CO, the NRLSSI2 model (Coddington et al., 2016) is used from 2015 onward.

To compare simulated results, the observations of H₂O from the Halogen Occultation Experiment HALOE (1992-2005) onboard of the Upper Atmosphere Research Satellite (UARS), and the observations of H₂O and CO from Microwave Limb
140 Sounder (MLS) (2005-2017) instrument on board of the Aura satellite were analyzed. HALOE measured the reduction in the intensity of solar energy that passes through the atmosphere to obtain the gas concentration of important atmospheric trace gases. A detailed HALOE instrument description can be found in Russell et al. (1993). The principal method used with the MLS instrument is the measurement of microwave thermal emissions from the atmosphere to remotely obtain profiles of different atmospheric constituents. More information on MLS can be found in Waters et al. (2006). For the analysis of H₂O,
145 we used a combination of the GOZCARDS merged data set consisting of all available data for the 1992-2004 period (Anderson et al., 2013) and data from ongoing missions of MLS (Waters et al., 2006) and ACE-FTS (Atmospheric Chemistry Experiment - Fourier Transform Spectrometer), (Bernath et al., 2005) for 2005-2017 obtained using an averaging procedure based on overlap periods. Carbon monoxide time series are available only for the period 2005-2017 (Bernath et al., 2005; Waters et al., 2006). Both datasets of observations are binned into 20 latitude zones, as data of observations (especially HALOE) are rather
150 noisy and a linear gap-filling procedure was applied to produce a continuous time series.

Figure 1 shows the time series of H₂O and CO averaged over the tropics (30°N-30°S) at 0.01 hPa from CCM1-1 REF-C1SD simulations and observations from the GOZCARDS composite and Aura/MLS instruments.

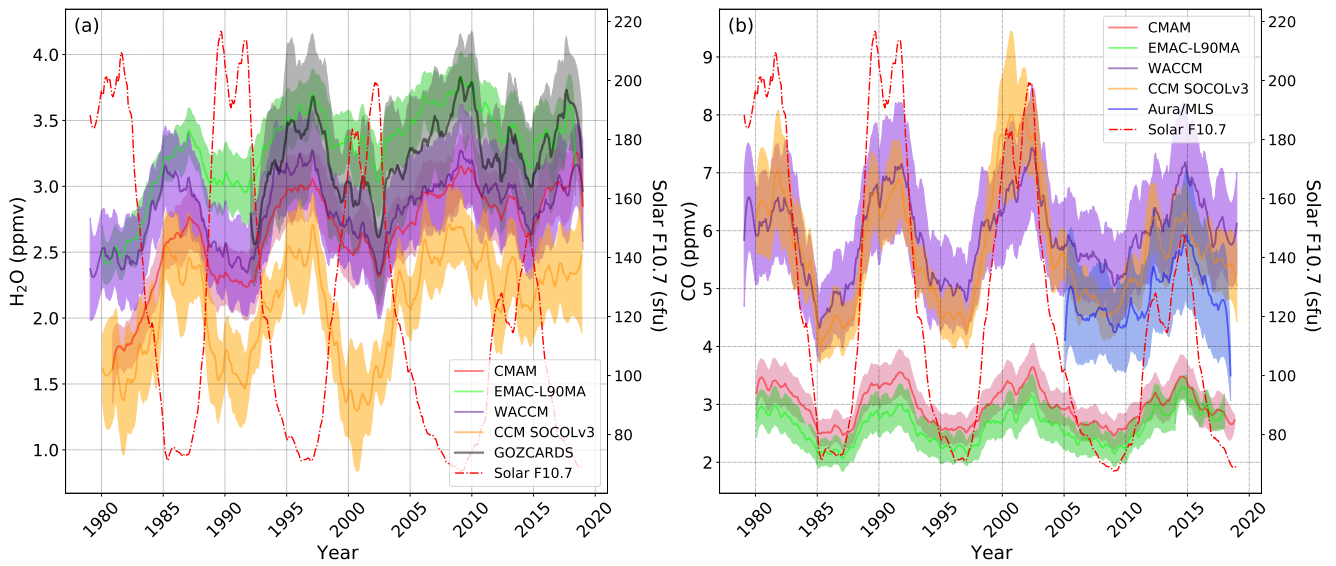


Figure 1. Time series of monthly mean (a) H₂O and (b) CO mixing ratio from CCM1-1 models as well as GOZCARDs observational composite (grey line and shading in (a), starting in 1992) and Aura/MLS observations (blue line and shading in (b), starting in 2005) at 0.01 hPa averaged over the tropics (30°N-30°S). Shadings: 1 σ standard deviation. The red dash-dotted line indicates the F10.7 solar index.

It should be mentioned that the upper boundary for SOCOL and EMAC at 0.01 hPa belongs to the sponge layer where high diffusion is used to avoid excessive wave amplitudes. The importance for chemistry is that a zero-flux condition is applied for SOCOL and EMAC, which means that H₂O and CO concentrations are not prescribed at 0.01 hPa level. For WACCM and CMAM, the model top-level is above 0.01 hPa (at 5.1×10^{-6} hPa and 0.0008 hPa, respectively) and the influx of the air with rather high CO and low H₂O concentrations from the lower thermosphere could play an important role. For visualization purposes, we smooth H₂O and CO time series presented in Figure 1 using the third-order polynomial interpolation with a 2-year length of the averaging window, however, data used later for MLR analysis are taken in original form without smoothing.

As it is shown in Figure 1, there is a pronounced response of H₂O and CO to solar irradiance variability, represented here as the F10.7 solar radio flux (right vertical axis). In the case of H₂O, there is a decrease in mixing ratio during solar activity maximum, and the opposite for CO, which is enhanced during the solar maximum. Obviously, the amplitude of the solar signal in H₂O and CO and their mean values are not the same in different models and observations. The comparison of H₂O mixing ratios in Figure 1 during the 1984-2017 period reveals that all models except SOCOL are within the standard deviation of the merged observational data. The observed H₂O mixing ratio is slightly overestimated by EMAC and underestimated by CMAM and WACCM. A substantial overestimation of the water vapor loss by photolysis in SOCOL may lead to an underestimation of the mixing ratio by up to 50% (Sukhodolov et al., 2017). This can have implications for the simulations of HO_x and ozone loss in the mesosphere. In the case of CO, SOCOL, and WACCM results are almost identical and in good correspondence with Aura/MLS observations during 2005-2017. This agreement suggests that the influx of CO from the thermosphere in

170 WACCM does not substantially contribute to CO in the tropics. However, in SOCOL the lacking of downward transport from the thermosphere might hypothetically be compensated by erroneous, for instance too strong in-situ production in the upper mesosphere. On the other hand, the absolute values of the CO mixing ratio in EMAC and CMAM are very similar. They are underestimated by a factor of 2 though, in comparison to Aura/MLS data, which might be due to an underestimated production. Thus, it is obvious that H₂O and CO behave differently in models and observations, subject of the exact treatment of chemistry and radiation in the models. In the following, a detailed MLR analysis of modeled H₂O and CO as well as of the observational data sets will be presented.

3 Description of the MLR model

The multiple linear regression (MLR) model used in this study is based on the x-regression tool (Kuchar, 2016) consisting of the Python statistical models library *statsmodels* (Seabold and Perktold, 2010) coupled with the *xarray* package dealing with multi-dimensional arrays (Hoyer and Hamman, 2017). This model configuration adopts a well-established attribution methodology already used in previous studies (Ball et al., 2016; Kuchar et al., 2017). In this version, the MLR model uses 9 explanatory/predictor variables and one response variable which is either H₂O or CO, respectively. As predictors, we use the solar F10.7 index (in solar flux units), the El Niño–Southern Oscillation (ENSO) ERSST v5 Nino4 index (in Kelvin), zonal winds at 30 and 50 hPa (in m/s) as proxies of Quasi-biennial oscillation (QBO) assuming their orthogonality (Crooks and Gray, 2005), stratospheric aerosol optical depth (SAOD), (dimensionless) as well as two annual (AO) and two semi-annual (SAO) oscillation harmonics. To remove the residual autocorrelation, a second-order autocorrelation (AR2) model is used in an iterative way. The time series of the monthly mean response variables Y(t) (in ppmv) reconstructed as a function of time (t) by the MLR model for every single cell (latitude x pressure level) is:

$$Y(t) = \alpha + \beta \text{SOLAR}(t) + \gamma \text{ENSO}(t) + \delta_1 \text{QBO30}(t) + \delta_2 \text{QBO50}(t) + \varepsilon \text{SAOD}(t) + 2 - \zeta \text{AO}(t) + 2 - \eta \text{SAO}(t) + \vartheta \text{TREND}(t) + e(t). \quad (5)$$

190 To estimate the statistical significance of the derived regression coefficients to approximate Y(t), we use a t-test with 95% confidential level taking into account the residual autocorrelation. e(t) in the equation 5 means the stochastic noise of the model where AR2 is included. All explanatory variables with monthly resolution were taken from the KNMI Climate Explorer database². In our study, the regression coefficients for the solar proxy (β) are estimated using the MLR model as a latitude-altitude matrix, and they are used to calculate the solar signal as $(Y_s/\bar{Y}) \times 100\%$, where \bar{Y} is an averaged H₂O/CO (ppmv) for the whole considered period and $Y_s = \beta * 100$ is H₂O/CO change (ppmv) caused by F10.7 change by 100 units. As such we estimate the percentage change in H₂O and CO induced by solar irradiance changes from the minimum to the maximum of the 11-year solar cycle. To check how much of the total variability is represented by the solar variability and whether our choice of regressors is justified, we calculate the relative importance (RI) of each regressor. We use the Lindeman-Merenda-Gold measure (LMG, Lindeman et al., 1980) to decompose R² (coefficient of determination) and to determine RI, which refers to the proportionate contribution each predictor variable makes to the total predicted criterion variance. Figure 2 shows

²KNMI Climate Explorer database, generously made available freely under <https://climexp.knmi.nl>

RI distributions of zonally averaged time-series of CO and H₂O at 0.01 hPa between 30°S and 30°N for the period 2005-2017 and 1992–2017, respectively. Our MRL model, including annual and semiannual harmonics, can assess 70-90% of the total variability (shown as "total" on the right-hand side of both panels in Figure 2). The solar variability represents around 10% of the total variance and it is the strongest after the SAO (~50%) driver of CO and H₂O variability in all model data and observations around the equator at 0.01 hPa. While the solar RI in the CO time-series of EMAC agrees well with the Aura/MLS observations, CMAM and SOCOL overestimate and WACCM underestimates the solar variability. It is worth saying that in some models AO and SAO in the upper mesosphere may experience some issues, as much of the variability on those timescales comes from the residual circulation that would not be fully resolved. In terms of the solar RI in the H₂O time-series, EMAC agrees well with the GOZCARDS dataset. SOCOL together with CMAM overestimates and WACCM rather underestimates the solar variability. Even larger model spread is revealed in terms of SAO. A significant amount of the SAO variance, much larger than for the AO at 0.01 hPa, is consistent with a general understanding of the mesospheric variability (Baldwin et al., 2001). This may be related to the gravity wave drag imposed in the mesosphere and/or its damping (Rind et al., 2014), or the mesospheric QBO (MQBO) is not as robust as SAO in the mesospheric region as previously thought (Pramitha et al., 2019). The SAO dominance at 0.01 hPa cautions us against using deseasonalizing methods only with annual cycle (Deng and Fu, 2019). Therefore, in this study, we exclude the deseasonalization procedure from the MLR set-up. Only in this way, our model can assess 70-90% of the total variability.

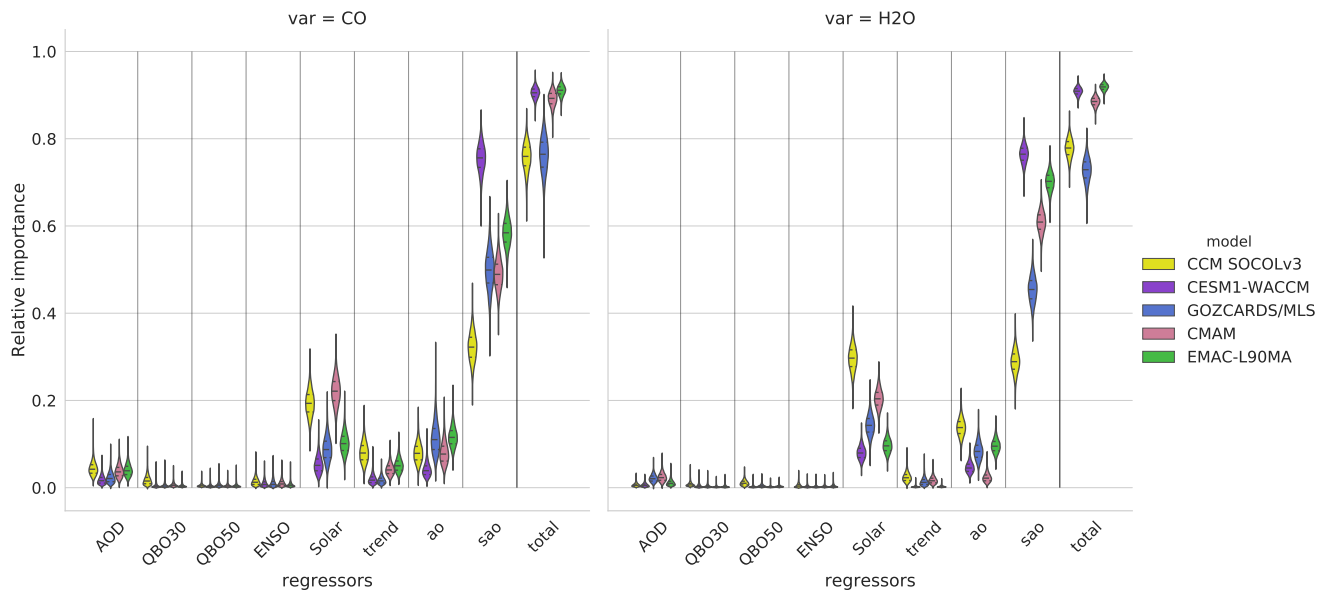


Figure 2. The full decomposition of R^2 from MLR of equatorial (30°N - 30°S) CO for the period 2005–2017 and H_2O for the period 1992–2017 at 0.01 hPa in a form of violin plots. For CO observations the Aura/MLS data are used, for H_2O the GOZCARDS composite. Distributions were calculated from 10000 bootstrapped samples using the LMG measure. Horizontal dashed lines represent quartiles of the distributions. Note that to quantify relative importance of the annual (AO) and semiannual (SAO) oscillation, we do not use deseasonalized time-series.

4 Results

4.1 Simulated H_2O and CO responses to solar irradiance variability for the 1984-2017 period

Results of the MLR analysis of the H_2O time series from the four CCMs under consideration are presented in Figure 3 for the full investigated time, 1984-2017, while comparisons with observations are shown in Figure 5 for a restricted period.

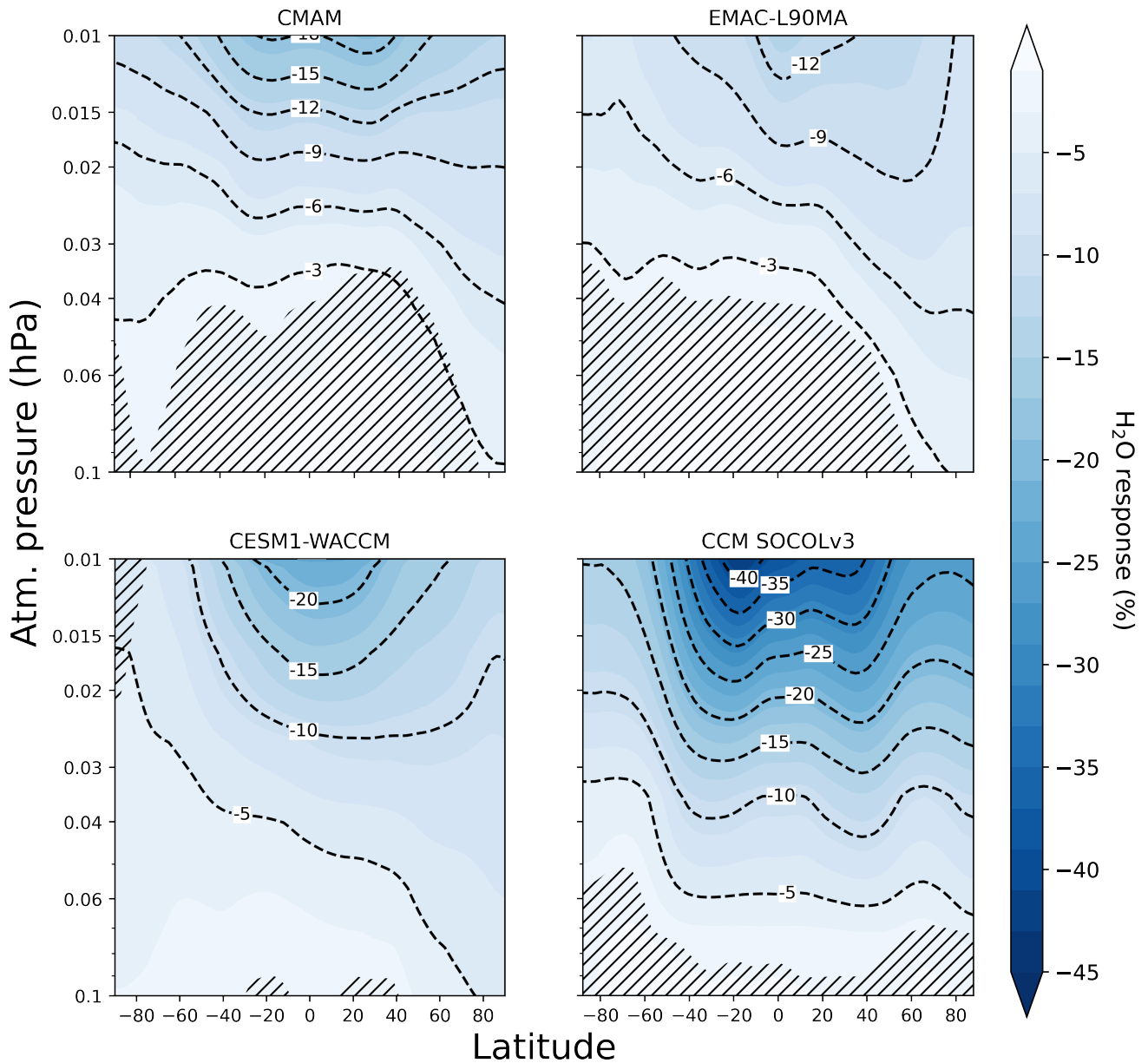


Figure 3. The relative importance of the solar signal in H₂O from CCM1 models (1984-2017) presented as a percentage of the mean. Model names are indicated at top of each panel. Inclined hatches: area with statistical significance less than 95%.

The most pronounced effect in H₂O is seen in SOCOL and WACCM over the 30°N-30°S latitude band, which appears in the most sunlit region. The effect in SOCOL exceeds those from any other models, with up to a 45% H₂O response to solar irradiance variability. Such a large relative response in SOCOL can be explained by the low background water vapor mixing

ratio (see Figure 1), wider nudging region, or by the photolysis by Ly- α implemented in the model that is too intense. The H₂O
225 responses simulated with CMAM and EMAC are smaller and do not exceed 20%. The maximum of the response is slightly
shifted towards the north in CMAM, EMAC, and WACCM models as well as the second maximum in SOCOL, which may
be connected to an enhanced residual circulation modulated by the solar cycle (Cullens et al., 2016). The increased downward
propagation of the solar signal can also be found in the WACCM results, where the maximum is also a bit displaced to the
north along with a strengthened descending motion over the north pole. The response of H₂O to solar irradiance variability
230 disappears below 0.1 hPa in all models because solar irradiance of the Ly- α line cannot penetrate to this depth in the atmosphere
and the influence of the Schumann-Runge band is less substantial.

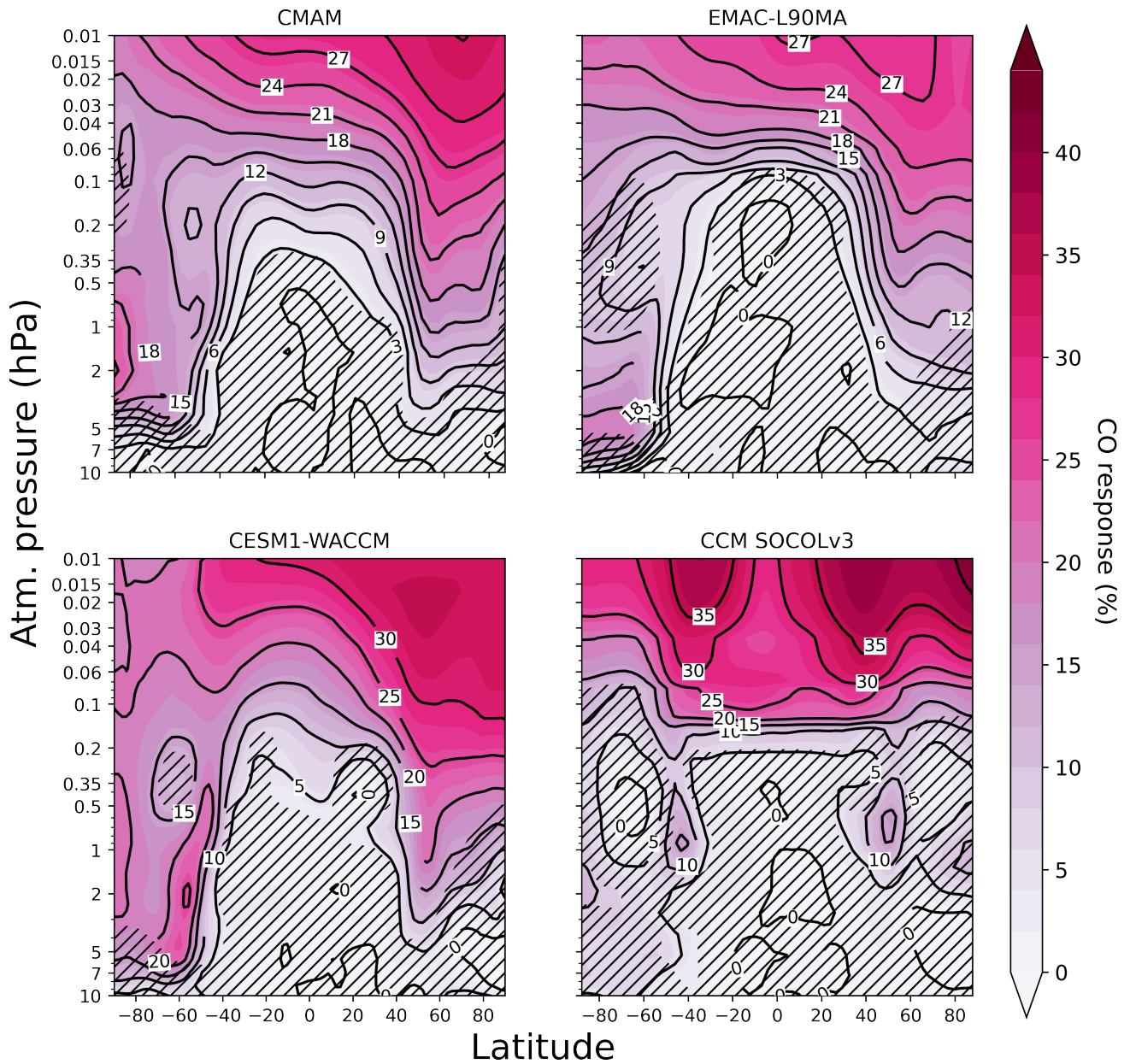


Figure 4. The relative importance of the solar signal in CO from CCM1-1 models (1984-2017) presented as a percentage of the mean. Model names are indicated at top of each panel. Inclined hatches: area with statistical significance less than 95%.

Figure 4 shows the estimated CO response to solar irradiance variability in the models for the full period 1984-2017. The similar behavior in CMAM, EMAC, and WACCM suggests a decent of air enriched in CO and a large correlation with solar irradiance over the high latitudes. The penetration is deeper over the southern hemisphere where a stronger southern polar

235 vortex provides more intensive downward motion and stronger isolation from the middle latitudes. A stronger meridional transport induced by enhanced atmospheric wave-breaking appears to suggest a maximum CO response over middle and high latitudes in the northern upper mesosphere (Cullens et al., 2016; Lee et al., 2018). In contrast, SOCOL generates three maxima of CO (40°S, 40°N, and 80–90°N) in the upper mesosphere between 0.01-0.1 hPa, which are not seen in the other models. Below we will see that this feature depends on the exact period chosen for comparison (see Figure 7 below). SOCOL also
240 shows two regions at southern and northern midlatitudes with a stronger response and statistical significance above 95%. Again, the exact appearance of this feature depends on the exact years chosen for averaging (see Figure 7 below). In SOCOL a sharp boundary in the CO response is seen between 0.1-0.2 hPa due to the lower lifetime of CO there (the OH concentration is higher) that is too short to allow mesospheric CO to be transported down. This effect can be found in the other models as well, but only in the 40°S-40°N latitude band. The shape of the solar signal in CO is characterized by a much deeper propagation
245 over the middle and high latitudes, and it substantially differs from the solar signal in H₂O, which is mostly confined to the area above 0.1 hPa exposed to solar UV in the Ly- α line (dissociating H₂O according to Reaction 2). The reason for the difference in patterns of H₂O and CO could be a longer chemical lifetime of CO produced by Ly- α in the mesosphere over middle and high latitudes that allows for transport down through atmospheric circulation.

4.2 Simulated and observed H₂O and CO responses to solar irradiance variability

250 To evaluate the model performance, the simulated solar signals in H₂O and CO are compared with satellite measurements. As the observations are not available for the full-time period described in the previous sections, we repeated the MLR calculations using the GOZCARDS merged H₂O data for the 1992-2017 and MLS CO time series for the 2005-2017 periods. The solar signals in H₂O extracted from the slightly shorter period are illustrated in Figure 5. For none of the models, the simulated results depend strongly on the period. The solar signal in H₂O extracted from the satellite data does not show a strong equatorial
255 response in H₂O, as it is visible in most of the model results. Instead, more pronounced effects are shifted to mid-latitude zones where strong downwelling propagates the solar cycle signal to lower levels. The effects are very similar to those presented by Remsberg et al. (2018), who also obtained maximum responses shifted to the middle latitudes. The reason for such a pattern in UARS/HALOE could be related to the sampling issue over the low-tropical region. The same but with a less pronounced shape appears in the SOCOL results. In this case, the southern maximum is shifted to approximately 20°S and the northern maximum
260 is shifted to high latitudes in the northern hemisphere. Nevertheless, in terms of percentage, WACCM, CMAM, and EMAC H₂O results are closest-to-observations over the tropical zone. However, over the middle latitudes, only SOCOL shows a slight poleward shift of the maximum H₂O response, similar to but not quite the same as in the observations, possibly resulting from the full-atmosphere nudging applied in SOCOL).

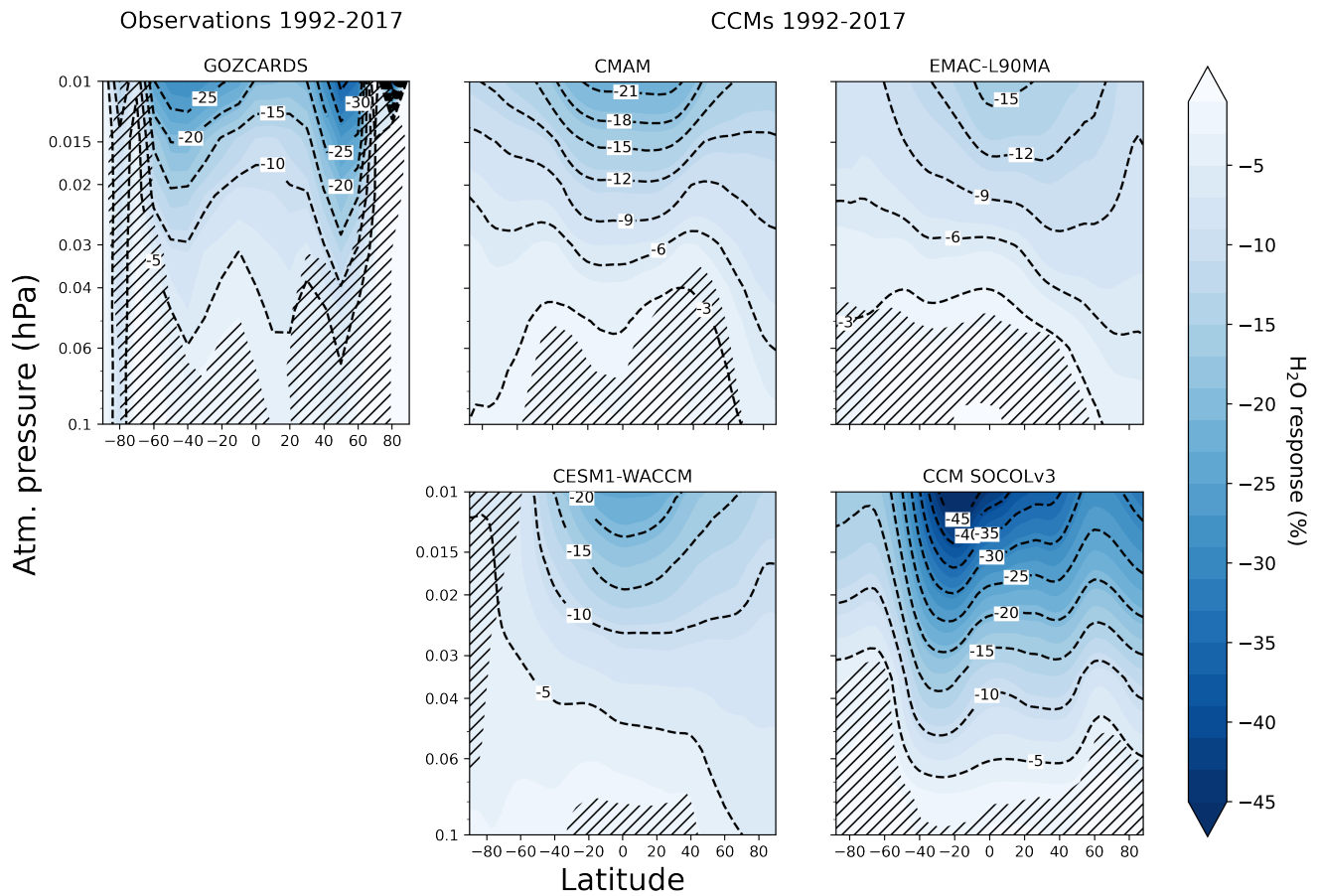


Figure 5. The relative importance of the solar signal in H₂O from CCM1-1 models and observations collected by GOZCARDS for the period 1992-2017 presented as a percentage of the mean. Model and observations names are indicated at top of each panel. Inclined hatches: area with statistical significance less than 95%.

Because the latitudinal distribution can be related to the peculiarities of the satellite observations such as gaps and measurement inaccuracies, the tropical averaged plot could be more instructive for the evaluation of the model performance. Figure 6 shows the tropical response in H₂O as a percentage of the mean, and the change in mixing ratio (in ppmv) averaged over 30°S–30°N. The effect of solar irradiance variability is the largest in the tropics. Moreover, the H₂O response is less sensitive to thermospheric processes since there is no downwelling over the tropics. To make a better comparison of model results and observations, we present them not only as a ratio to the mean but also as absolute values of solar regression coefficients, since the background water vapor concentrations in the considered datasets are different.

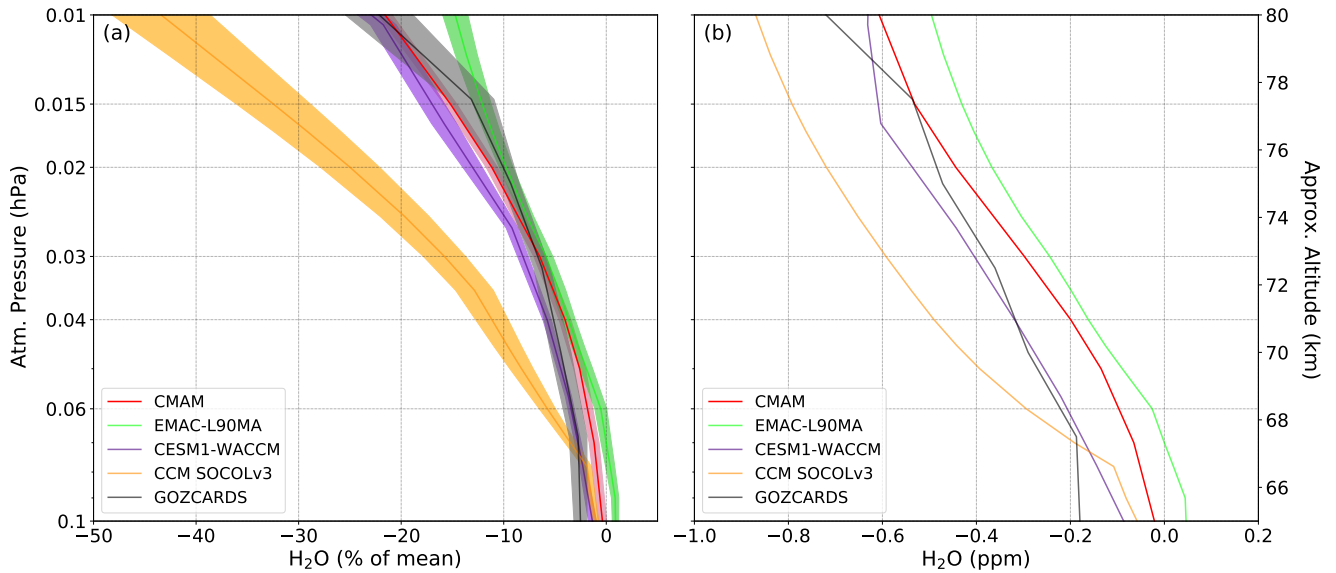


Figure 6. Vertical profiles of solar irradiance response in H_2O from CCM1-1 models and GOZCARDS observational composite for 1992-2017 at tropical latitudes (30°N - 30°S). (a) The relative importance of the solar signal in H_2O presented as a percentage of the mean; (b) H_2O regression coefficient at the solar proxy (β) in mixing ratio (ppmv). Shadings: standard deviation.

In the tropics, the observations show a steady increase of the H_2O sensitivity to the solar irradiance from 0.1 to 0.01 hPa where it reaches the maximum for both, relative (23%) and absolute (0.75 ppmv) values. Our results agree rather well with the results presented by Remsberg et al. (2018) and Nath et al. (2018). The simulated relative sensitivity values agree well with the observations. However, the SOCOL model shows a much stronger (up to 43%) water vapor sensitivity to solar irradiance (compared with the observed 23%). EMAC results slightly underestimate the observed values, while WACCM and CMAM show a slightly larger sensitivity. Almost the same pattern is visible for absolute sensitivity values. CMAM and WACCM show the best agreement, while SOCOL and EMAC sensitivities are too strong or too weak, respectively. In EMAC, the relative values of the solar signal in H_2O over tropics are well agreed with observations between 0.03 -0.015 hPa but the deviation with the solar signal in observations becomes noticeable above where EMAC underestimates observations. For absolute values, EMAC underestimates solar signal in H_2O for the whole presented area. Contrary to EMAC, SOCOL overestimates solar signal in H_2O similarly for both relative and absolute values after about 0.05 hPa but underestimates it below 0.03 hPa. In WACCM, the solar signal in H_2O is mostly located within the observational uncertainty but for relative signal, WACCM shows the pronounced deviation from observations within 0.04 and 0.013 hPa, correspondingly. For 0.01 hPa, the WACCM and CMAM correspond well with observations in both relative and absolute value of the solar signal, however showing underestimation in absolute value within the observational uncertainty, though. In the case of absolute values, CMAM agrees well with observations above and underestimates them below 0.02 hPa but in the relative meaning, CMAM H_2O underestimates observed solar signal below 0.04 hPa and shows overestimation between 0.25 and 0.015 hPa, respectively.

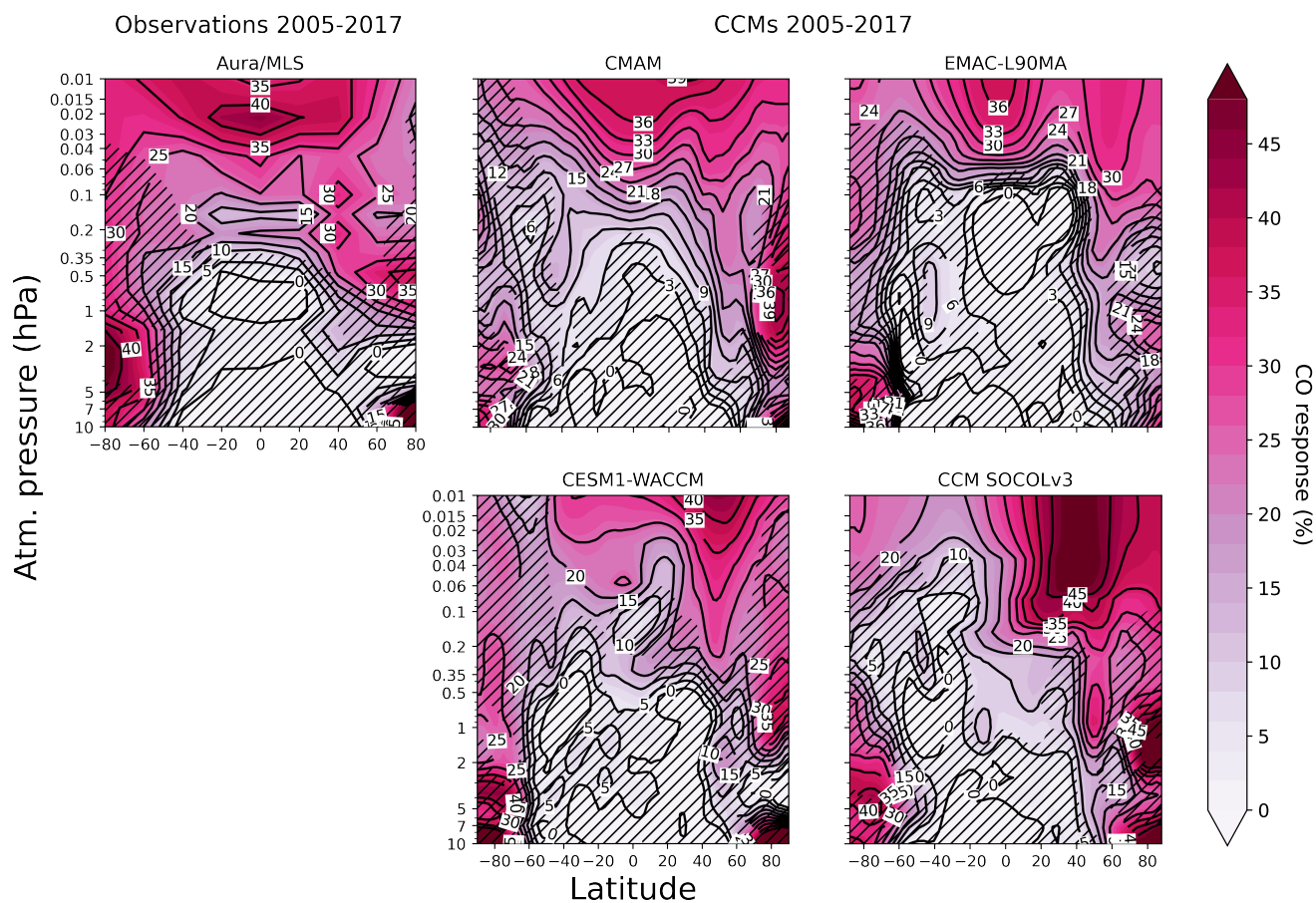


Figure 7. The relative importance of the solar signal in CO from CCMs and Aura/MLS for the 2005-2017 period presented as a percentage of the mean. Model and observations names are indicated at top of each panel. Inclined hatching: area with statistical significance less than 95%.

The solar signals in CO extracted from the REF-C1SD simulations and observed by MLS data for the 2005-2017 period are illustrated in Figure 7. Opposite to the H₂O case, the influence of the time interval is substantial. The comparison of the results from Figure 4 and Figure 7 reveals that the southern mesospheric maximum of the CO response to solar irradiance variability in SOCOL disappeared, while the northern one became more pronounced. The downward propagation in SOCOL is also intensified and a large and statistically significant solar signal is visible in the upper and middle stratosphere. In CMAM and EMAC, the maximum mesospheric response is shifted from the northern mid-latitudes to the equatorial area. There are two peaks of the signal in EMAC, the stronger one is over the equator, but the second one is similarly shifted as in SOCOL and WACCM, showing a maximum at the same pressure levels (from 0.01 hPa to the bottom of the mesosphere) and placed at the same latitude, but both less intensive than in SOCOL. The downward propagation is visible only over the high northern latitudes in CMAM and almost disappears in EMAC. The shape of the solar signal simulated with WACCM does not change the location;

it has a stronger maximum over the middle latitudes, and downward propagation is only marginally significant. This can either be explained by the shortening of the period that emphasizes some unexplored change or by different circulation patterns during the 2005-2017 period. The Aura/MLS data shows a maximum in the equatorial middle mesosphere and middle stratosphere over the high southern and northern latitudes. In the mesosphere, Aura/MLS data are in a better agreement with CMAM and EMAC, while below 0.1 hPa all models equally resemble Aura/MLS observations. Some similarity of the stratospheric response in all considered models and MLS probably results from the applied nudging and therefore it is dynamically induced, contrary to the mesosphere, where the dynamic is only partly nudged, and the models differ substantially.

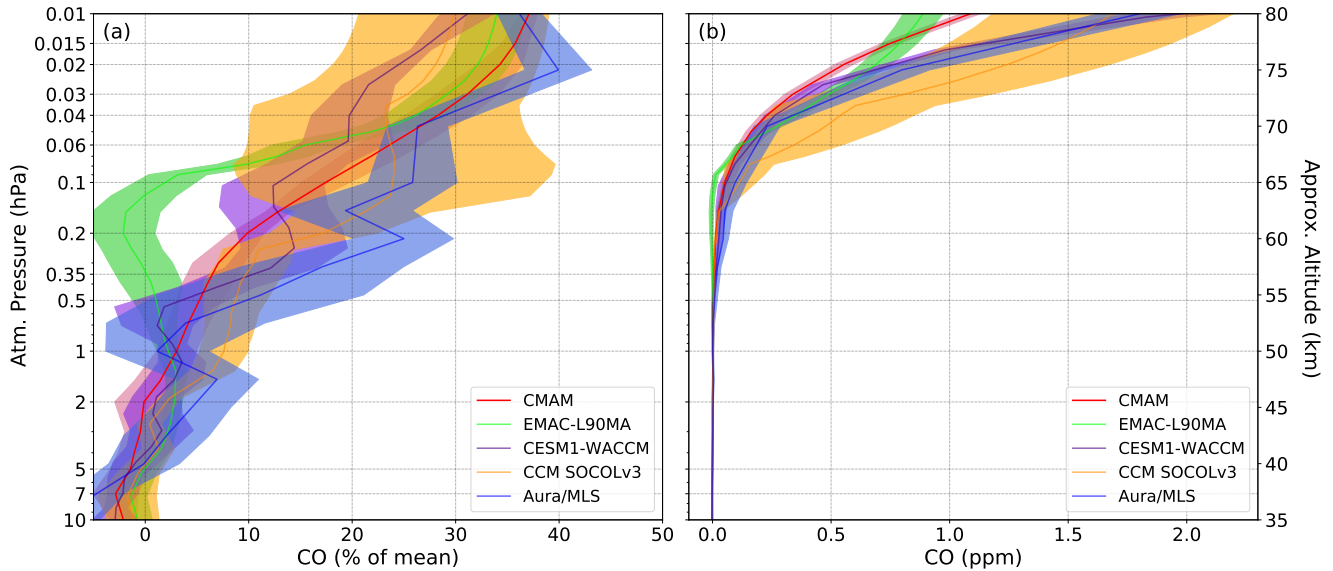


Figure 8. Vertical profiles of solar irradiance response in CO from CCMI-1 models and Aura/MLS observations for 2005-2017 at tropical latitudes (30°N-30°S). a) The relative importance of the solar signal in CO presented as a percentage of the mean; b) CO regression coefficient at the solar proxy (β) in mixing ratio (ppmv). Shadings: standard deviation.

Figure 8 shows the tropical response in CO as relative change (in the percentage of the mean), and the mixing ratio (in ppmv) averaged over 30°N-30°S. The relative CO sensitivity to the solar irradiance variability averaged over the tropical area from the Aura/MLS data shows a positive correlation from 10 to 0.01 hPa with a magnitude of up to 40% at the mesopause. The simulated sensitivity is within the uncertainty range of the observations for all models except EMAC between 0.35 and 0.06 hPa and except WACCM that show underestimation between 0.3-0.01 hPa in case of relative change. The observed absolute sensitivity in the tropical area reaches almost 2 ppmv at the mesopause and is better reproduced by SOCOL and WACCM.

5 Discussion

The comparison of absolute values (mixing ratio) of the solar signal in H₂O from models and merged UARS/HALOE and Aura/MLS (GOZCARDS) observations with previous studies reveals higher values in our study for almost all datasets. Comparing the tropical profile plot of H₂O with one from Nath et al. (2018) over the same tropical region (30°S–30°N), it is seen that only EMAC shows a similar magnitude of the solar signal of -0.56 ppm in H₂O from Nath et al. (2018), while all other profiles show stronger responses, including GOZCARDS, which shows -0.73 ppm at 0.01 hPa. However, Nath et al. (2018) used only Ly- α as a solar forcing, yet in the mesosphere, other wavelengths contribute significantly to H₂O photolysis and the solar signal in H₂O. The latitude-height distribution of the solar signal in H₂O from GOZCARDS and its magnitudes are in good agreement with Figure 11 of Remsberg et al. (2018), showing similar mesospheric maxima of about 35% over 50°–60°N and a minor maximum of about 25% around 40°S. A comparison with Remsberg et al. (2018) also showed similar features revealed by the MLR setup in our study. Our MLR analysis of Aura/MLS CO shows a weak solar signal of about 40% in the mesospheric CO over the tropics, compared to the solar signal in CO of 68% from Lee et al. (2018). Also, our results show a better representation of the CO solar signal in WACCM for the period 2005–2017 in comparison with the one from Lee et al. (2018). Our results suggest that there is no dominating thermospheric influence of solar irradiance on CO as stated by Lee et al. (2018), because the signal in SOCOL CO shows reasonable results compared to WACCM CO and Aura/MLS observations. However, as it was mentioned above, in SOCOL the absence of a thermospheric source of CO could be compensated by overproduction of CO in the upper mesosphere.

However, our MLR analysis revealed a peculiar shift of the solar signal in SOCOL and WACCM, as well as a secondary peak in the same place in EMAC CO for the same period as for Aura/MLS. The nature of this probably reflects the peculiarities of the model dynamics in the Northern hemisphere, which are in some way changed in SOCOL, WACCM, and EMAC during 2005–2017 compared to the longer 1984–2017 period. For the longer period, all models show a similar stronger signal to be shifted northward and downward, and only in SOCOL, the solar signal in CO does not reach levels below 0.02 hPa. Among the reasons we suggest, we categorize variations on decadal timescales that may have been attributed as the solar signal, such as global warming, accelerated Brewer-Dobson circulation (BDC), or even changes through sudden stratospheric warmings that facilitate a downward transport of air from the mesosphere. Also, as it was mentioned above, in SOCOL, the nudging is applied for the whole model atmosphere (1000–0.01 hPa) that could make the representation of a dynamical effect on solar signal more reliable. The period is also could play a role as the 2005–2017 period is rather short for MLR analysis of solar signal since this period is equal to the duration of only one solar cycle. It is important to mention that the signal in Aura/MLS does not show this shift, which makes it more difficult to understand its nature. The latitude-height distributions of the solar signal in H₂O and CO from CMAM, SOCOL, EMAC, and WACCM for different periods show that the patterns are very different. The impact of the period on our results should not be related to the aliasing of regressors, as reported in previous studies (Chiodo et al., 2014; Kuchar et al., 2017), because of the absence of any major volcanic eruptions after 2005.

Our analysis revealed deviations of simulation results from observations showing the weakness of current models in the representation of the solar signal. We hypothesize that the major problem is the model dynamics; this issue can be addressed

345 by the application of more accurate dynamics and transport routines in models. Also, the MLR analysis revealed some inconsistencies in the solar signal presented in both, absolute and relative changes compared to observations. For example, SOCOL shows a higher tropical solar signal in H₂O compared to GOZCARDS (Figure 6), but H₂O time series (Figure 1) show lower absolute values by about 2 ppm compared to observations.

One possible reason for the underestimation of H₂O in SOCOL is that only the H₂O + hν → H+OH photolysis reaction
350 is considered. It is known that H₂ + O products are also possible with about 10% quantum yield, although the much longer lifetime of H₂ should rather lead to less intensive recombination of the products and even smaller H₂O concentration.

However, in the case of CO, SOCOL shows reasonably good absolute values and solar signals in both presented forms compared with the Aura/MLS CO in Figure 8. In the case of EMAC, a weaker solar signal in H₂O, despite acceptable absolute values as seen in Figure 1, is simulated. CMAM and EMAC CO show smaller absolute values as presented in Figure 1, and
355 weak solar signals in CO in both, absolute values and % of the mean view, as shown in Figure 8. WACCM simulates a lower absolute value of H₂O and higher CO compared to the observations, showing a higher solar signal in CO and a lower solar signal in H₂O at 0.01 hPa, correspondingly. Our results show that the transport of CO from the thermosphere, where CO is formed by EUV/soft X-rays photodissociation of CO₂, is not much of importance; this is seen by comparing absolute values of CO and the results of our MLR analysis between SOCOL and WACCM, in which thermospheric sources of CO are included.
360 Surely, this is fair to say only for the periods considered here and for the used MLR set-up. CO₂ is photolyzed by the Shuman-Runge continuum (SRC) too, but for SOCOL and EMAC, it does not have an impact since SRC plays a role in the thermosphere that is neither included in SOCOL nor in EMAC, which both have an upper model border at 80 km.

Any impact of volcanic activity upon CO in the upper mesosphere is not likely. However, the large eruptions that occurred around solar maxima, e.g. El Chichón in 1982 and Mt. Pinatubo in 1991, could have some minor effect on the solar signal in
365 CO due to the aliasing effects (Chiodo et al., 2014; Kuchar et al., 2017), however, this should not be a problem after 1996.

As such, these issues inspire moderate corrections to model radiation and chemical modules, but which corrections are needed strongly depends on each model, as evidenced by our MLR analysis. We assume that an in-depth comparison of these modules will be needed to find all differences between the CCM set-ups. It might be an option to combine the different approaches of the simulation of the solar signal in one selected model for further analyses. Moreover, it is needed to use the
370 MLR analysis (or more advanced methods of regression analysis) to check the results of simulations from this MLR analysis. The comparison of these results between themselves and with available observations could help much to identify the potential ways for model corrections. Also, as a way to reveal problems, especially in dynamic, the comparison of the solar signal from observations can be undertaken with not only model simulations in SD mode but also with free-running model simulations.

6 Summary

375 Using an MLR model, this work extracted and investigated the solar signal in the time series of monthly averaged mixing ratio of H₂O and CO from CMAM, EMAC-L90MA, SOCOLv3, and CESM1-WACCM 3.5 REF-C1SD model simulations as well as from UARS/HALOE and Aura/MLS measurements. The solar signal was obtained for three periods: for the 1984-2017 period

to compare models between themselves, for the 1992-2017 period to compare the solar signal in H₂O from models against one from merged UARS/HALOE and Aura/MLS (GOZCARDS) observations, and for 2005-2017 to compare the solar signal in CO from models against one from Aura/MLS. As expected, the results of our analysis show that the intensity of the signal increases upward throughout the mesosphere with a maximum at 0.01 hPa in model data and observations of H₂O and CO. However, as our analysis is limited to 0.01 hPa, the actual maximum could be higher. Thus, the variability of H₂O and CO in the mesosphere is strongly determined by the solar irradiance variability over the 11-year solar cycle, with a decrease in H₂O and an increase in CO at solar maximum, and vice versa during solar minimum. Also, our results suggest that atmospheric transport is important for the latitudinal distribution of the considered species with a high sensitivity to solar irradiance variability. The comparison of the latitude-pressure distribution of the solar signal in H₂O for the 1992-2017 period between models and observations shows that the SOCOL model demonstrates a good agreement with the signal of the GOZCARDS observations, yet with different signal strength. In the case of CO for 2005-2017, the better representation is given by the CMAM model since WACCM and SOCOL show an unexpected shift of the signal to the North. The solar signal in EMAC CO is close to Aura/MLS but has a second peak in the same latitude range as WACCM and SOCOL. The line plots over the tropics in Figures 6 and 8, both in absolute and relative terms, show similar model results compared to observations in CMAM and WACCM H₂O as well as in SOCOL and WACCM CO.

Overall, our analysis of the solar signal in H₂O and CO shows that the solar signal response in the tropics is confined to the mesosphere as we analyzed the solar signal up to 80 km. The H₂O and CO solar signals over the tropics decay with decreasing altitude and become negligible close to the stratopause in all considered data sets. Besides 10% of the variance attributed to the solar signal variability, the semiannual oscillation dominates the tropical mesosphere.

To sum up, our study demonstrates how state-of-the-art models represent solar signal responses, but also what the weak points of model simulations are. The inter-comparison showed limitations in current simulations, which require a process-oriented validation involving the model teams. These findings strongly suggest continuing the model inter-comparison studies as those within SPARC, IGAC, and SOLARIS-HEPPA to improve the representation of the solar signal in global CCMs.

Data availability

We provide all LMG results on the Mendeley Data portal (Kuchar, 2020). The CCM results are generally available at the CCMI-1 data archive (<http://data.ceda.ac.uk/>), except for CMAM, which is available here:

ftp://crd-data-donnees-rdc.ec.gc.ca/pub/CCCMA/dplummer/CMAM39-SD_month/.

The SOCOLv3-SD data used in this study are not available at the British Atmospheric Data Centre (BADC), they are in general not publicly available. At the BADC, CCMI-1 SOCOLv3 data can only be found.

Acknowledgements. AK-D, ER, and WB acknowledge support from the Swiss National Science Foundation under grant 200020-182239 (POLE). AK acknowledges support from Deutsche Forschungsgemeinschaft under grant JA836/43-1 (VACILT). MK acknowledges sup-

port by the Deutsche Forschungsgemeinschaft (DFG) through grant KU 3632/2-1. EMAC-L90MA simulations have been performed at the
410 German Climate Computing Centre (DKRZ) through support from the Bundesministerium für Bildung und Forschung (BMBF). SOCOLv3
simulations were performed on ETH's Linux cluster Euler, partially supported by C2SM grant. DKRZ and its scientific steering committee
are gratefully acknowledged for providing the HPC and data archiving resources for this consortial project ESCiMo (Earth System Chemistry
integrated Modelling). This material is based in part upon work supported by the National Center for Atmospheric Research, which is a ma-
415 SOLARIS-HEPPA project for the possibility to present and discuss the results of this work during the meeting held during 18-19.09.2019 at
Instituto de Astrofísica de Andalucía in Granada, Spain. We thank all anonymous reviewers for their insightful comments.

References

- Anderson, J. L., Froidevaux, R. A., Fuller, P. F., Bernath, N. J., Livesey, H. C., Pumphrey, W. G., Read, J. M., III, R., and Walker, K. A.:
GOZCARDS Merged Water Vapor 1 month L3 10 degree Zonal Means on a Vertical Pressure Grid V1, Greenbelt, MD, USA, Goddard
420 Earth Sciences Data and Information Services Center (GES DISC), <https://doi.org/https://doi.org/10.5194/acp-15-10471-2013>, 2013.
- Baldwin, M. P., Gray, L. J., Dunkerton, T. J., Hamilton, K., Haynes, P. H., Randel, W. J., Holton, J. R., Alexander, M. J., Hirota, I., Horinouchi,
T., Jones, D. B. A., Kinnersley, J. S., Marquardt, C., Sato, K., and Takahashi, M.: The quasi-biennial oscillation, *Reviews of Geophysics*,
39, 179–229, <https://doi.org/10.1029/1999RG000073>, <https://agupubs.onlinelibrary.wiley.com/doi/abs/10.1029/1999RG000073>, 2001.
- Ball, W. T., Haigh, J. D., Rozanov, E. V., Kuchar, A., Sukhodolov, T., Tummon, F., Shapiro, A. V., and Schmutz, W.: High solar cycle spectral
425 variations inconsistent with stratospheric ozone observations, *Nature Geoscience*, 9, 206–209, <https://doi.org/10.1038/ngeo2640>, 2016.
- Bernath, P. F., McElroy, C. T., Abrams, M. C., Boone, C. D., Butler, M., Camy-Peyret, C., Carleer, M., Clerbaux, C., Coheur, P. F., Colin, R.,
DeCola, P., DeMazière, M., Drummond, J. R., Dufour, D., Evans, W. F. J., Fast, H., Fussen, D., Gilbert, K., Jennings, D. E., Llewellyn,
E. J., Lowe, R. P., Mahieu, E., McConnell, J. C., McHugh, M., McLeod, S. D., Michaud, R., Midwinter, C., Nassar, R., Nichitiu, F.,
Nowlan, C., Rinsland, C. P., Rochon, Y. J., Rowlands, N., Semeniuk, K., Simon, P., Skelton, R., Sloan, J. J., Soucy, M. A., Strong,
430 K., Tremblay, P., Turnbull, D., Walker, K. A., Walkty, I., Wardle, D. A., Wehrle, V., Zander, R., and Zou, J.: Atmospheric Chemistry
Experiment (ACE): Mission overview, , 32, L15S01, <https://doi.org/10.1029/2005GL022386>, 2005.
- Brasseur, G. P. and Solomon, S.: *Aeronomy of the Middle Atmosphere*, Springer, 3300 AA Dordrecht, Netherlands, third revised and enlarged
edition, 2005.
- Chabrilat, S. and Kockarts, G.: Simple parameterization of the absorption of the solar Lyman-alpha line, , 24, 2659–2662,
435 <https://doi.org/10.1029/97GL52690>, 1997.
- Chabrilat, S. and Kockarts, G.: Correction to “Simple parameterization of the absorption of the solar Lyman-alpha line”, , 25, 79–79,
<https://doi.org/10.1029/97GL03569>, 1998.
- Chandra, S., Jackman, C. H., Fleming, E. L., and Russell, J. M., I.: The Seasonal and Long Term Changes in Mesospheric Water Vapor, , 24,
639–642, <https://doi.org/10.1029/97GL00546>, 1997.
- 440 Chiodo, G., Marsh, D. R., Garcia-Herrera, R., Calvo, N., and García, J. A.: On the detection of the solar signal in the tropical stratosphere,
Atmospheric Chemistry and Physics, 14, 5251–5269, <https://doi.org/10.5194/acp-14-5251-2014>, <http://www.atmos-chem-phys.net/14/5251/2014/>, 2014.
- Chrysanthou, A., Maycock, A. C., Chipperfield, M. P., Dhomse, S., Garny, H., Kinnison, D., Akiyoshi, H., Deushi, M., Garcia, R. R., Jöckel,
P., Kirner, O., Pitari, G., Plummer, D. A., Revell, L., Rozanov, E., Stenke, A., Tanaka, T. Y., Visioni, D., and Yamashita, Y.: The effect
445 of atmospheric nudging on the stratospheric residual circulation in chemistry-climate models, *Atmospheric Chemistry & Physics*, 19,
11 559–11 586, <https://doi.org/10.5194/acp-19-11559-2019>, 2019.
- Coddington, O., Lean, J. L., Pilewskie, P., Snow, M., and Lindholm, D.: A Solar Irradiance Climate Data Record, *Bulletin of the American
Meteorological Society*, 97, 1265, <https://doi.org/10.1175/BAMS-D-14-00265.1>, 2016.
- Crooks, S. A. and Gray, L. J.: Characterization of the 11-Year Solar Signal Using a Multiple Regression Analysis of the ERA-40 Dataset,
450 *Journal of Climate*, 18, 996–1015, <https://doi.org/10.1175/JCLI-3308.1>, <http://journals.ametsoc.org/doi/abs/10.1175/JCLI-3308.1>, 2005.
- Cullens, C. Y., England, S. L., and Garcia, R. R.: The 11 year solar cycle signature on wave-driven dynamics in WACCM, *Journal of
Geophysical Research: Space Physics*, 121, 3484–3496, <https://doi.org/10.1002/2016JA022455>, <https://agupubs.onlinelibrary.wiley.com/doi/abs/10.1002/2016JA022455>, 2016.

- Deng, Q. and Fu, Z.: Comparison of methods for extracting annual cycle with changing amplitude in climate series, *Climate Dynamics*, 52, 455 5059–5070, <https://doi.org/10.1007/s00382-018-4432-8>, <http://link.springer.com/10.1007/s00382-018-4432-8>, 2019.
- Eyring, V., Bony, S., Meehl, G. A., Senior, C. A., Stevens, B., Stouffer, R. J., and Taylor, K. E.: Overview of the Coupled Model Intercomparison Project Phase 6 (CMIP6) experimental design and organization, *Geoscientific Model Development*, 9, 1937–1958, <https://doi.org/10.5194/gmd-9-1937-2016>, 2016.
- Frederick, J. E. and Hudson, R. D.: Atmospheric opacity in the Schumann-Runge bands and the aeronomic dissociation of water vapor, 460 *Journal of Atmospheric Sciences*, 37, 1088–1098, [https://doi.org/10.1175/1520-0469\(1980\)037<1088:AOITSR>2.0.CO;2](https://doi.org/10.1175/1520-0469(1980)037<1088:AOITSR>2.0.CO;2), 1980.
- Garcia, R. R., López-Puertas, M., Funke, B., Marsh, D. R., Kinnison, D. E., Smith, A. K., and González-Galindo, F.: On the distribution of CO₂ and CO in the mesosphere and lower thermosphere, *Journal of Geophysical Research (Atmospheres)*, 119, 5700–5718, <https://doi.org/10.1002/2013JD021208>, 2014.
- Hervig, M. and Siskind, D.: Decadal and inter-hemispheric variability in polar mesospheric clouds, water vapor, and temperature, *Journal of Atmospheric and Solar-Terrestrial Physics*, 68, 30–41, <https://doi.org/10.1016/j.jastp.2005.08.010>, 2006.
- Hoyer, S. and Hamman, J.: xarray: N-D labeled Arrays and Datasets in Python, *Journal of Open Research Software*, p. 10, <https://doi.org/10.5334/jors.148>, 2017.
- Jöckel, P., Kerkweg, A., Pozzer, A., Sander, R., Tost, H., Riede, H., Baumgaertner, A., Gromov, S., and Kern, B.: Development cycle 2 of the 470 Modular Earth Submodel System (MESSy2), *Geoscientific Model Development*, 3, 717–752, <https://doi.org/10.5194/gmd-3-717-2010>, 2010.
- Jöckel, P., Tost, H., Pozzer, A., Kunze, M., Kirner, O., Brenninkmeijer, C. A. M., Brinkop, S., Cai, D. S., Dyroff, C., Eckstein, J., Frank, F., Garny, H., Gottschaldt, K.-D., Graf, P., Grewe, V., Kerkweg, A., Kern, B., Matthes, S., Mertens, M., Meul, S., Neumaier, M., Nützel, M., Oberländer-Hayn, S., Ruhnke, R., Runde, T., Sander, R., Scharffe, D., and Zahn, A.: Earth System Chemistry integrated Modelling (ESCiMo) with the Modular Earth Submodel System (MESSy) version 2.51, *Geoscientific Model Development*, 9, 1153–1200, 475 <https://doi.org/10.5194/gmd-9-1153-2016>, 2016.
- Jones, C. D., Hughes, J. K., Bellouin, N., Hardiman, S. C., Jones, G. S., Knight, J., Liddicoat, S., O'Connor, F. M., Andres, R. J., Bell, C., Boo, K. O., Bozzo, A., Butchart, N., Cadule, P., Corbin, K. D., Doutriaux-Boucher, M., Friedlingstein, P., Gornall, J., Gray, L., Halloran, P. R., Hurtt, G., Ingram, W. J., Lamarque, J. F., Law, R. M., Meinshausen, M., Osprey, S., Palin, E. J., Parsons Chini, L., Raddatz, T., Sanderson, M. G., Sellar, A. A., Schurer, A., Valdes, P., Wood, N., Woodward, S., Yoshioka, M., and Zerroukat, M.: The HadGEM2-ES 480 implementation of CMIP5 centennial simulations, *Geoscientific Model Development*, 4, 543–570, <https://doi.org/10.5194/gmd-4-543-2011>, 2011.
- Kingston, A. E.: *Recent Studies in Atomic and Molecular Processes*, Part of the Physics of Atoms and Molecules book series (PAMO), <https://doi.org/https://doi.org/10.1007/978-1-4684-5398-0>, 1987.
- Kuchar, A.: kuchaale/X-regression: X-regression: First release kuchaale/X-regression: X-regression: First release, 485 <https://doi.org/10.5281/zenodo.159817>, 2016.
- Kuchar, A.: Accompanying LMG data to "The response of mesospheric H₂O and CO to solar irradiance variability in the models and observations", Mendeley Data, <https://doi.org/10.17632/mvkpt8vk3s.1>, <http://dx.doi.org/10.17632/mvkpt8vk3s.1>, 2020.
- Kuchar, A., Ball, W. T., Rozanov, E. V., Stenke, A., Revell, L., Miksovsky, J., Pisoft, P., and Peter, T.: On the aliasing of the solar cycle in the lower stratospheric tropical temperature, *Journal of Geophysical Research: Atmospheres*, 122, 9076–9093, 490 <https://doi.org/10.1002/2017JD026948>, <http://doi.wiley.com/10.1002/2017JD026948>, 2017.

- Landgraf, J. and Crutzen, P. J.: An Efficient Method for Online Calculations of Photolysis and Heating Rates., *Journal of Atmospheric Sciences*, 55, 863–878, [https://doi.org/10.1175/1520-0469\(1998\)055<0863:AEMFOC>2.0.CO;2](https://doi.org/10.1175/1520-0469(1998)055<0863:AEMFOC>2.0.CO;2), 1998.
- Lean, J., Rottman, G., Harder, J., and Kopp, G.: *SORCE Contributions to New Understanding of Global Change and Solar Variability*, pp. 27–53, Springer New York, New York, NY, https://doi.org/10.1007/0-387-37625-9_3, https://doi.org/10.1007/0-387-37625-9_3, 2005.
- 495 Lee, J. N., Wu, D. L., and Ruzmaikin, A.: Interannual variations of MLS carbon monoxide induced by solar cycle, *Journal of Atmospheric and Solar-Terrestrial Physics*, 102, 99–104, <https://doi.org/10.1016/j.jastp.2013.05.012>, 2013.
- Lee, J. N., Wu, D. L., Ruzmaikin, A., and Fontenla, J.: Solar cycle variations in mesospheric carbon monoxide, *Journal of Atmospheric and Solar-Terrestrial Physics*, 170, 21–34, <https://doi.org/10.1016/j.jastp.2018.02.001>, 2018.
- Levy, H., I.: Normal Atmosphere: Large Radical and Formaldehyde Concentrations Predicted, *Science*, 173, 141–143, <https://doi.org/10.1126/science.173.3992.141>, 1971.
- 500 Lindeman, R. H., Merenda, P., and Gold, R. Z.: *Introduction to bivariate and multivariate analysis*, Glenview, IL, Scott: Foresman and company, 119, 1980.
- Marsh, D. R., Mills, M. J., Kinnison, D. E., Lamarque, J.-F., Calvo, N., and Polvani, L. M.: Climate Change from 1850 to 2005 Simulated in CESM1(WACCM), *Journal of Climate*, 26, 7372–7391, <https://doi.org/10.1175/JCLI-D-12-00558.1>, 2013.
- 505 Minschwaner, K. and Siskind, D. E.: A new calculation of nitric oxide photolysis in the stratosphere, mesosphere, and lower thermosphere, *JGR*, 98, 20,401–20,412, <https://doi.org/10.1029/93JD02007>, 1993.
- Minschwaner, K., Manney, G. L., Livesey, N. J., Pumphrey, H. C., Pickett, H. M., Froidevaux, L., Lambert, A., Schwartz, M. J., Bernath, P. F., Walker, K. A., and Boone, C. D.: The photochemistry of carbon monoxide in the stratosphere and mesosphere evaluated from observations by the Microwave Limb Sounder on the Aura satellite, *Journal of Geophysical Research (Atmospheres)*, 115, D13303, <https://doi.org/10.1029/2009JD012654>, 2010.
- 510 Morgenstern, O., Hegglin, M. I., Rozanov, E., O'Connor, F. M., Abraham, N. L., Akiyoshi, H., Archibald, A. T., Bekki, S., Butchart, N., Chipperfield, M. P., Deushi, M., Dhomse, S. S., Garcia, R. R., Hardiman, S. C., Horowitz, L. W., Jöckel, P., Josse, B., Kinnison, D., Lin, M., Mancini, E., Manyin, M. E., Marchand, M., Marécal, V., Michou, M., Oman, L. D., Pitari, G., Plummer, D. A., Revell, L. E., Saint-Martin, D., Schofield, R., Stenke, A., Stone, K., Sudo, K., Tanaka, T. Y., Tilmes, S., Yamashita, Y., Yoshida, K., and Zeng, G.: Review of the global models used within phase 1 of the Chemistry-Climate Model Initiative (CCMI), *Geoscientific Model Development*, 10, 639–671, <https://doi.org/10.5194/gmd-10-639-2017>, 2017.
- 515 Nath, O., Sridharan, S., and Naidu, C. V.: Seasonal, interannual and long-term variabilities and tendencies of water vapour in the upper stratosphere and mesospheric region over tropics (30°N-30°S), *Journal of Atmospheric and Solar-Terrestrial Physics*, 167, 23–29, <https://doi.org/10.1016/j.jastp.2017.07.009>, 2018.
- 520 Nedoluha, G. E., Michael Gomez, R., Allen, D. R., Lambert, A., Boone, C., and Stiller, G.: Variations in middle atmospheric water vapor from 2004 to 2013, *Journal of Geophysical Research (Atmospheres)*, 118, 11,285–11,293, <https://doi.org/10.1002/jgrd.50834>, 2013.
- Nicolet, M.: The photodissociation of water vapor in the mesosphere, *JGR*, 86, 5203–5208, <https://doi.org/10.1029/JC086iC06p05203>, 1981.
- Palchetti, L., Bianchini, G., Carli, B., Cortesi, U., and Del Bianco, S.: Measurement of the water vapour vertical profile and of the Earth's outgoing far infrared flux, *Atmospheric Chemistry & Physics*, 8, 2885–2894, 2008.
- 525 Pramitha, M., Kishore Kumar, K., Venkat Ratnam, M., Rao, S. V. B., and Ramkumar, G.: Meteor Radar Estimations of Gravity Wave Momentum Fluxes: Evaluation Using Simulations and Observations Over Three Tropical Locations, *Journal of Geophysical Research: Space Physics*, 124, 7184–7201, <https://doi.org/10.1029/2019JA026510>, <https://agupubs.onlinelibrary.wiley.com/doi/abs/10.1029/2019JA026510>, 2019.

- 530 Remsberg, E., Damadeo, R., Natarajan, M., and Bhatt, P.: Observed Responses of Mesospheric Water Vapor to Solar Cycle and Dynamical Forcings, *Journal of Geophysical Research: Atmospheres*, 123, 3830–3843, <https://doi.org/10.1002/2017JD028029>, <https://agupubs.onlinelibrary.wiley.com/doi/abs/10.1002/2017JD028029>, 2018.
- Revell, L. E., Tummon, F., Salawitch, R. J., Stenke, A., and Peter, T.: The changing ozone depletion potential of N₂O in a future climate, *gri*, 42, 10,047–10,055, <https://doi.org/10.1002/2015GL065702>, 2015.
- 535 Rind, D., Jonas, J., Balachandran, N. K., Schmidt, G. A., and Lean, J.: The QBO in two GISS global climate models: 1. Generation of the QBO, *Journal of Geophysical Research: Atmospheres*, 119, 8798–8824, <https://doi.org/10.1002/2014JD021678>, <https://agupubs.onlinelibrary.wiley.com/doi/abs/10.1002/2014JD021678>, 2014.
- Rozanov, E. V., Zubov, V. A., Schlesinger, M. E., Yang, F., and Andronova, N. G.: The UIUC three-dimensional stratospheric chemical transport model: Description and evaluation of the simulated source gases and ozone, *JGR*, 104, 11,755–11,781, <https://doi.org/10.1029/1999JD900138>, 1999.
- 540 Russell, James M., I., Gordley, L. L., Park, J. H., Drayson, S. R., Hesketh, W. D., Cicerone, R. J., Tuck, A. F., Frederick, J. E., Harries, J. E., and Crutzen, P. J.: The Halogen Occultation Experiment, *JGR*, 98, 10,777–10,797, <https://doi.org/10.1029/93JD00799>, 1993.
- Ryan, N. J., Kinnison, D. E., Garcia, R. R., Hoffmann, C. G., Palm, M., Raffalski, U., and Notholt, J.: Assessing the ability to derive rates of polar middle-atmospheric descent using trace gas measurements from remote sensors, *Atmospheric Chemistry & Physics*, 18, 1457–1474, <https://doi.org/10.5194/acp-18-1457-2018>, 2018.
- 545 Sander, R., Jöckel, P., Kirner, O., Kunert, A. T., Landgraf, J., and Pozzer, A.: The photolysis module JVAL-14, compatible with the MESSy standard, and the JVal PreProcessor (JVPP), *Geoscientific Model Development*, 7, 2653–2662, <https://doi.org/10.5194/gmd-7-2653-2014>, 2014.
- Schieferdecker, T., Lossow, S., Stiller, G. P., and von Clarmann, T.: Is there a solar signal in lower stratospheric water vapour?, *Atmospheric Chemistry & Physics*, 15, 9851–9863, <https://doi.org/10.5194/acp-15-9851-2015>, 2015.
- 550 Scinocca, J. F., McFarlane, N. A., Lazare, M., Li, J., and Plummer, D.: The CCCma third generation AGCM and its extension into the middle atmosphere, *Atmospheric Chemistry & Physics Discussions*, 8, 7883–7930, 2008.
- Seabold, S. and Perktold, J.: Statsmodels: Econometric and statistical modeling with python, *Proceedings of the 9th Python in Science Conference*, [https://doi.org/\[Available at https://conference.scipy.org/proceedings/scipy2010/pdfs/seabold.pdf\]](https://doi.org/[Available at https://conference.scipy.org/proceedings/scipy2010/pdfs/seabold.pdf]), 2010.
- Shapiro, A. V., Rozanov, E., Shapiro, A. I., Wang, S., Egorova, T., Schmutz, W., and Peter, T.: Signature of the 27-day solar rotation 555 cycle in mesospheric OH and H₂O observed by the Aura Microwave Limb Sounder, *Atmospheric Chemistry & Physics*, 12, 3181–3188, <https://doi.org/10.5194/acp-12-3181-2012>, 2012.
- Solomon, S. C. and Qian, L.: Solar extreme-ultraviolet irradiance for general circulation models, *Journal of Geophysical Research (Space Physics)*, 110, A10306, <https://doi.org/10.1029/2005JA011160>, 2005.
- 560 Stenke, A., Schraner, M., Rozanov, E., Egorova, T., Luo, B., and Peter, T.: The SOCOL version 3.0 chemistry-climate model: description, evaluation, and implications from an advanced transport algorithm, *Geoscientific Model Development Discussions*, 5, 3419–3467, <https://doi.org/10.5194/gmdd-5-3419-2012>, 2012.
- Sukhodolov, T., Usoskin, I., Rozanov, E., Asvestari, E., Ball, W. T., Curran, M. A. J., Fischer, H., Kovaltsov, G., Miyake, F., Peter, T., Plummer, C., Schmutz, W., Severi, M., and Traversi, R.: Atmospheric impacts of the strongest known solar particle storm of 775 AD, *Scientific Reports*, 7, 45257, <https://doi.org/10.1038/srep45257>, 2017.

- 565 Verronen, P. T., Andersson, M. E., Marsh, D. R., Kovács, T., and Plane, J. M. C.: WACCM-D—Whole Atmosphere Community Climate Model with D-region ion chemistry, *Journal of Advances in Modeling Earth Systems*, 8, 954–975, <https://doi.org/10.1002/2015MS000592>, 2016.
- Waters, J. W., Froidevaux, L., Harwood, R. S., Jarnot, R. F., Pickett, H. M., Read, W. G., Siegel, P. H., Cofield, R. E., Filipiak, M. J., Flower, D. A., Holden, J. R., Lau, G. K., Livesey, N. J., Manney, G. L., Pumphrey, H. C., Santee, M. L., Wu, D. L., Cuddy, D. T., Lay, R. R.,
- 570 Loo, M. S., Perun, V. S., Schwartz, M. J., Stek, P. C., Thurstans, R. P., Boyles, M. A., Chand ra, K. M., Chavez, M. C., Chen, G. S., Chudasama, B. V., Dodge, R., Fuller, R. A., Girard, M. A., Jiang, J. H., Jiang, Y., Knosp, B. W., Labelle, R. C., Lam, J. C., Lee, A. K., Miller, D., Oswald, J. E., Patel, N. C., Pukala, D. M., Quintero, O., Scaff, D. M., Vansnyder, W., Tope, M. C., Wagner, P. A., and Walch, M. J.: The Earth Observing System Microwave Limb Sounder (EOS MLS) on the Aura Satellite, *IEEE Transactions on Geoscience and Remote Sensing*, 44, 1075–1092, <https://doi.org/10.1109/TGRS.2006.873771>, 2006.
- 575 Wofsy, S. C., McConnell, J. C., and McElroy, M. B.: Atmospheric CH₄, CO, and CO₂, *JGR*, 77, 4477, <https://doi.org/10.1029/JC077i024p04477>, 1972.