

Supplement of

A foehn-induced haze front in Beijing: observations and implications

Li et al.

Correspondence to : Ju Li (jl@ium.cn)

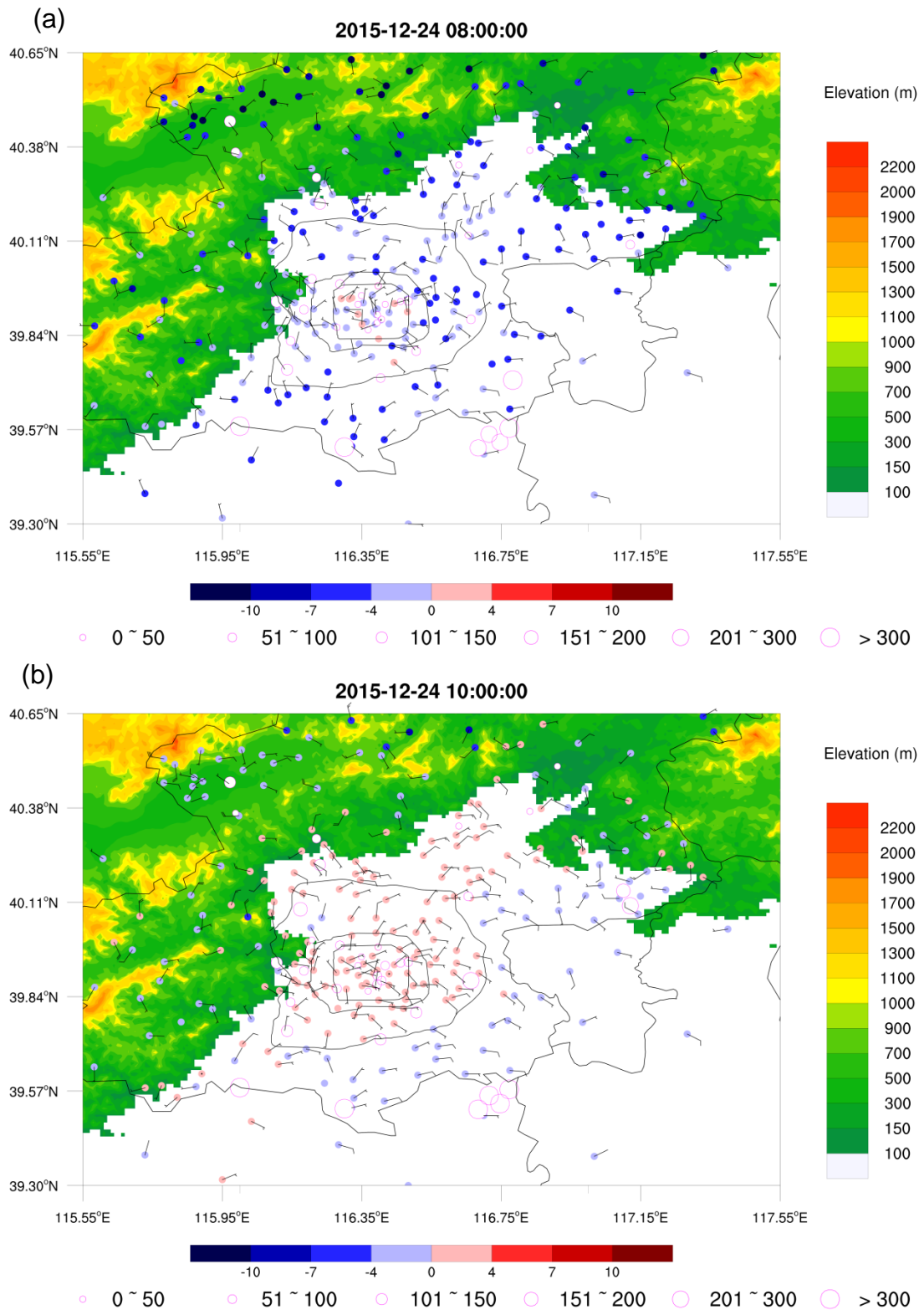


Fig S1. Temperature (color filled dots coded according to the bottom color bar), wind vectors (2 m s⁻¹ is one full bar) and PM_{2.5} concentrations (purple circles; the size of the circle represents concentration values) in the plain area within and around Beijing at (a) 08:00 LST and (b) 10:00 LST.

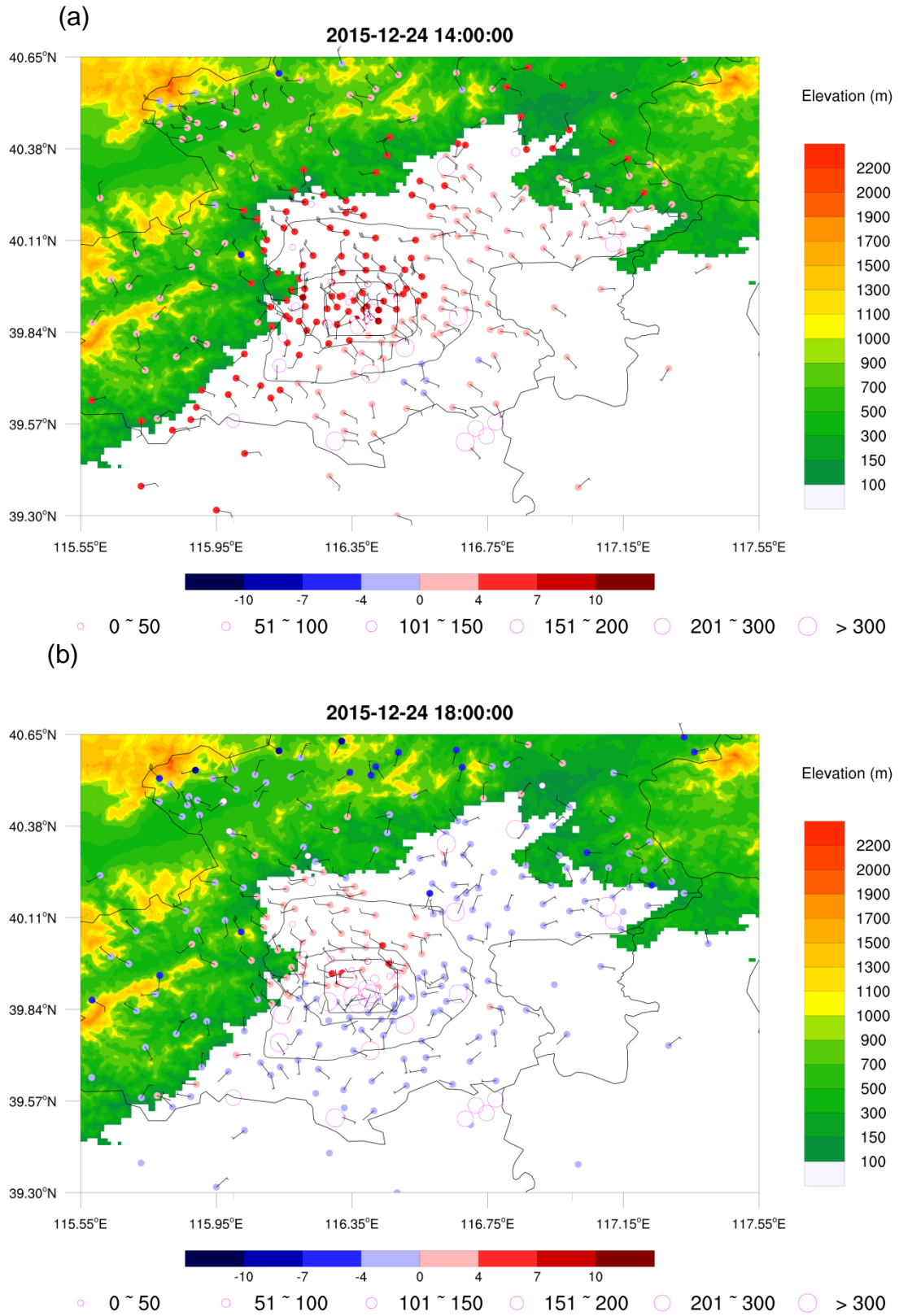


Fig S2. Same as Fig S1, but at (a) 14:00 LST and (b) 18:00 LST.

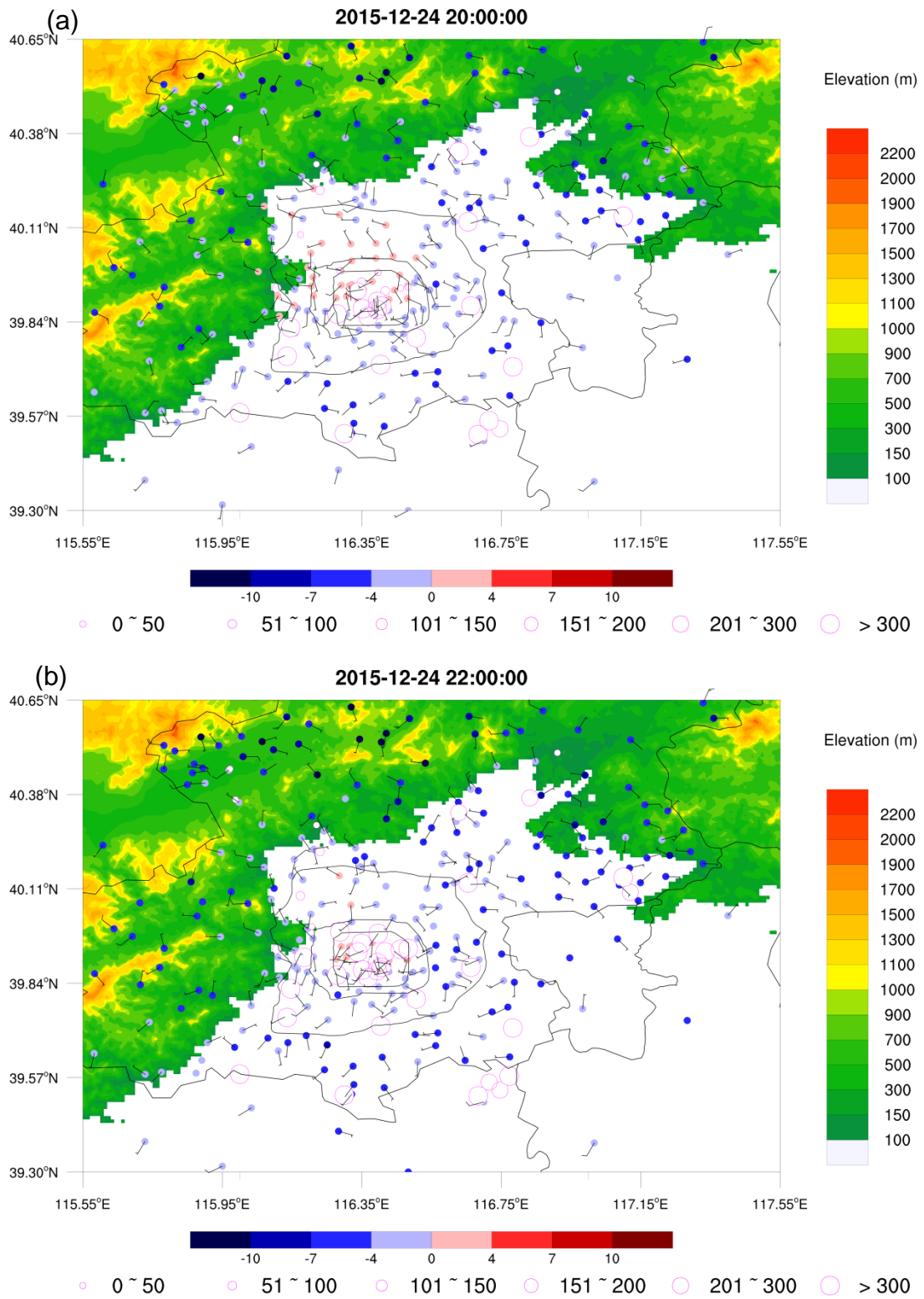


Fig S3. Same as Fig S1, but at (a) 20:00 LST and (b) 22:00 LST.

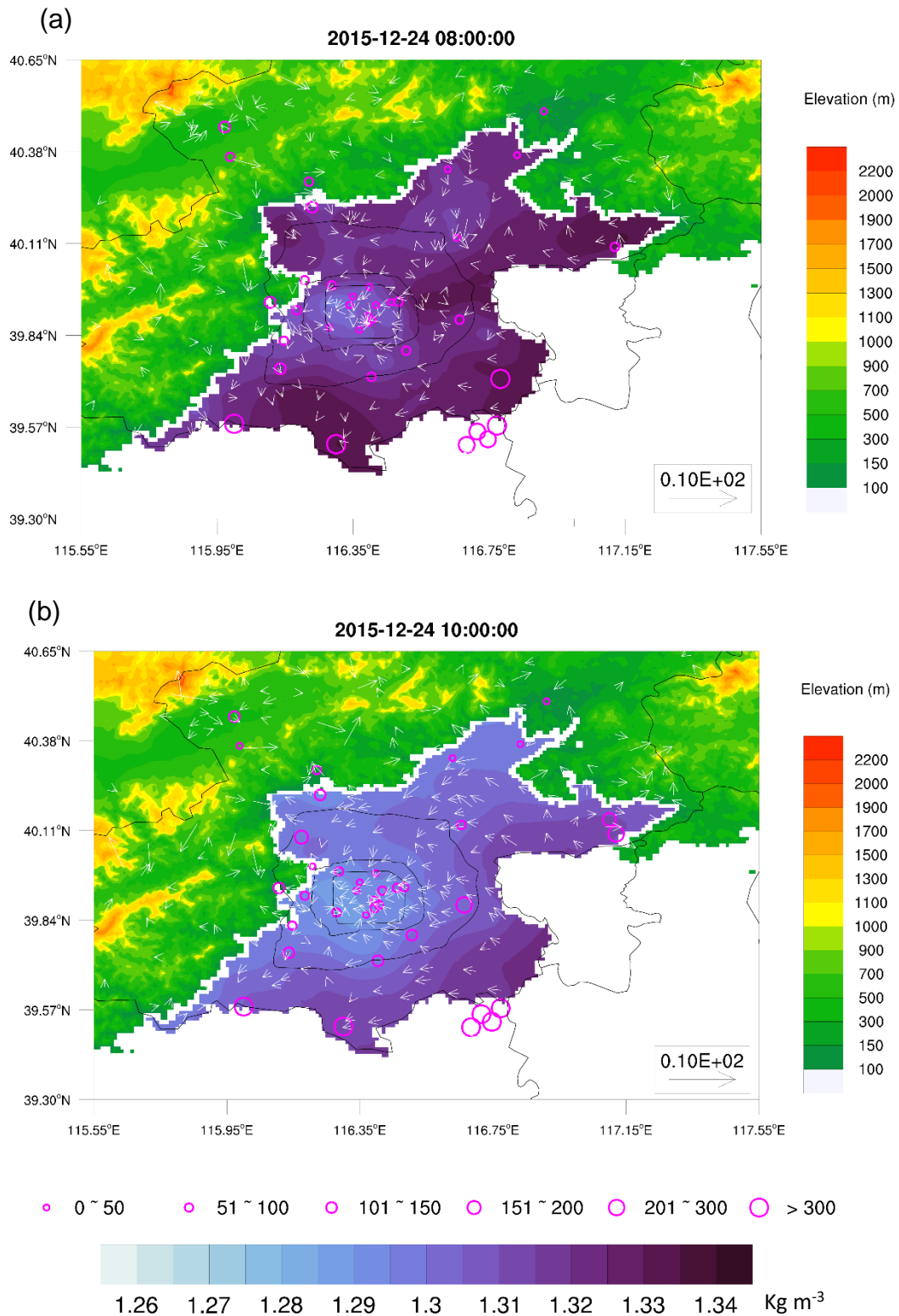


Fig S4. Air density (color filled contour map according to the bottom color bar), wind vectors (10 m s^{-1} is one full arrow) and $\text{PM}_{2.5}$ concentrations (purple circles; the size of the circle represents concentration values) in the plain area within and around Beijing at (a) 08:00 LST and (b) 10:00 LST.

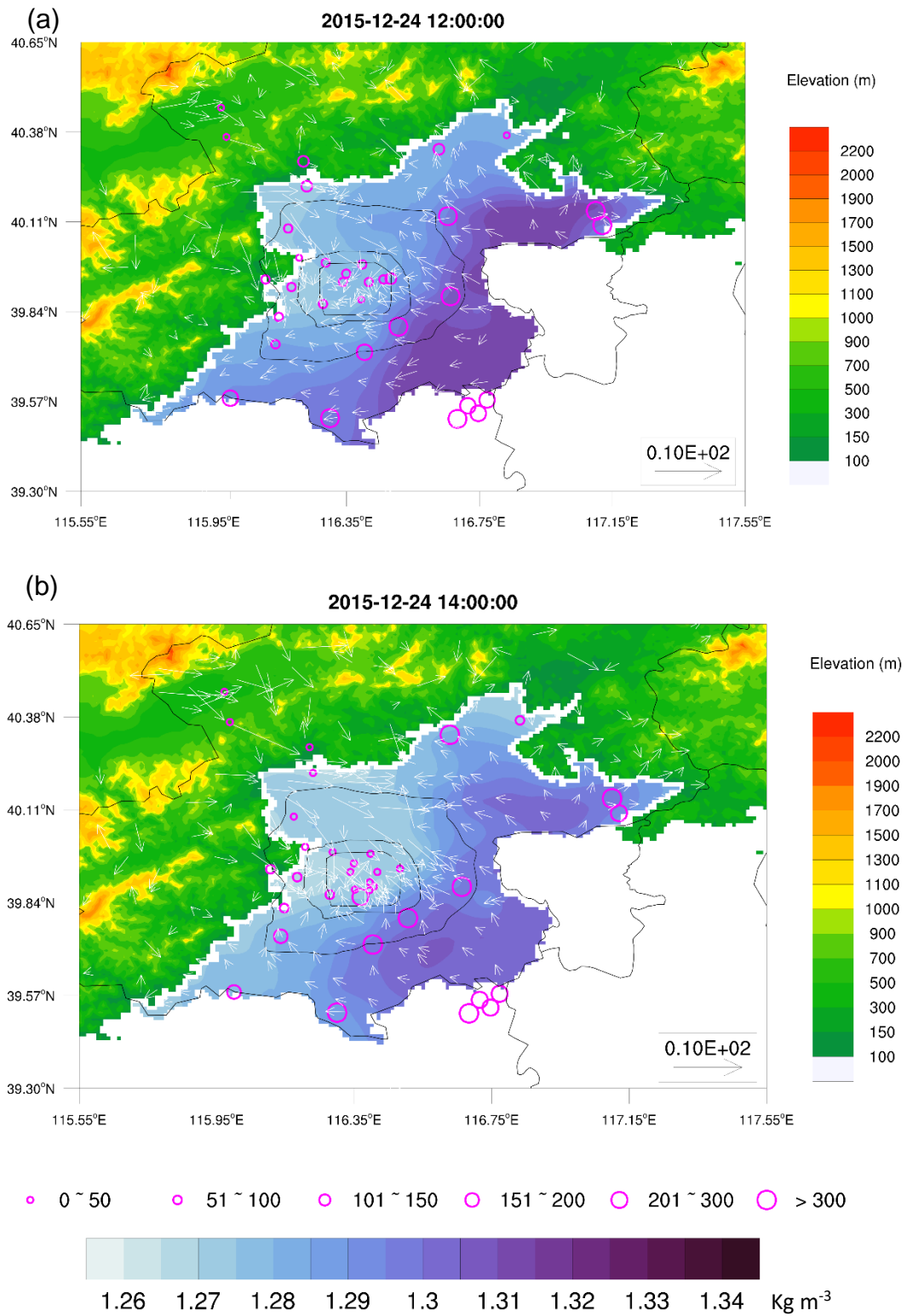


Fig S5. Same as Fig S4, but at (a) 12:00 LST and (b) 14:00 LST.

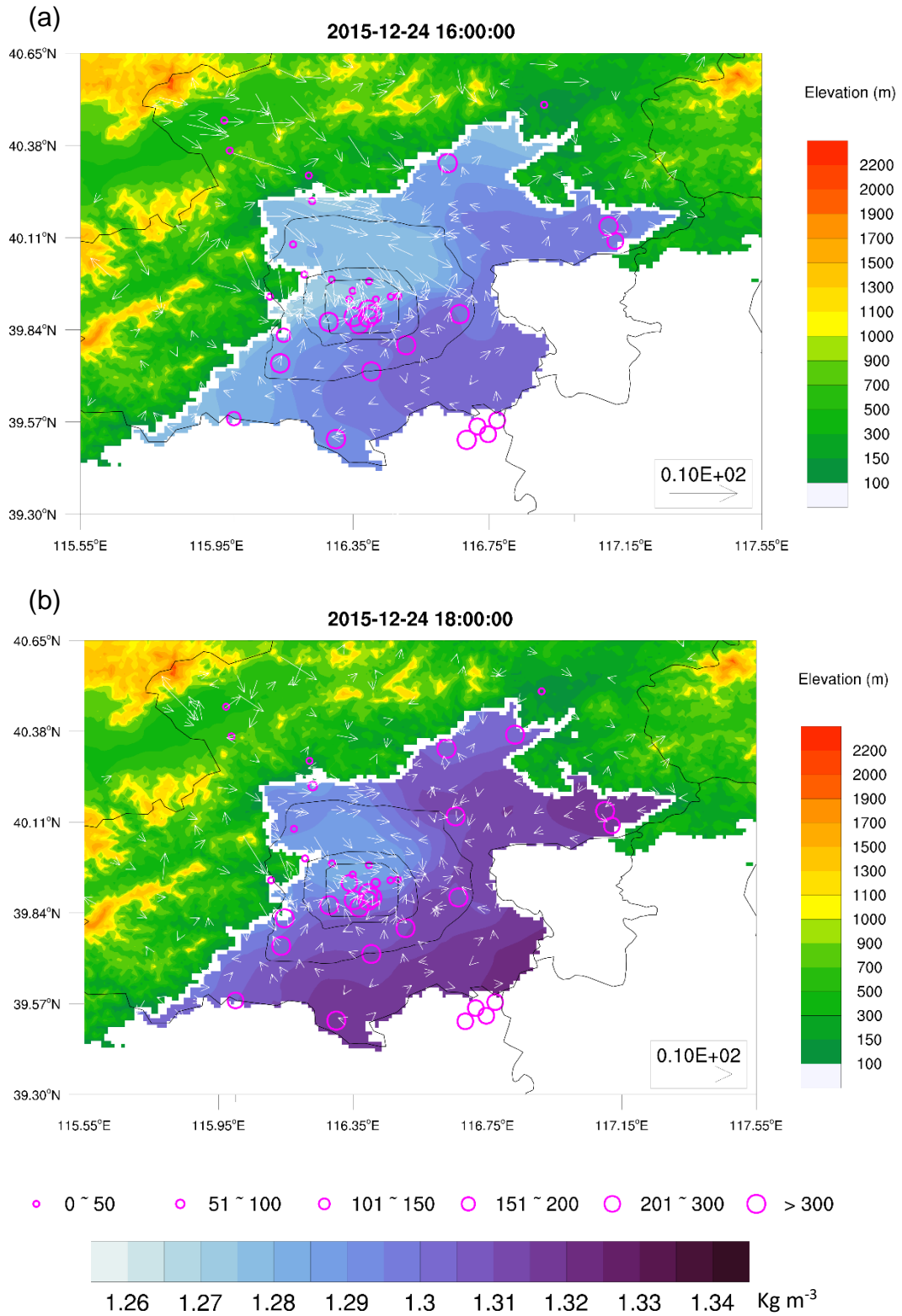


Fig S6. Same as Fig S4, but at (a) 16:00 LST and (b) 18:00 LST.

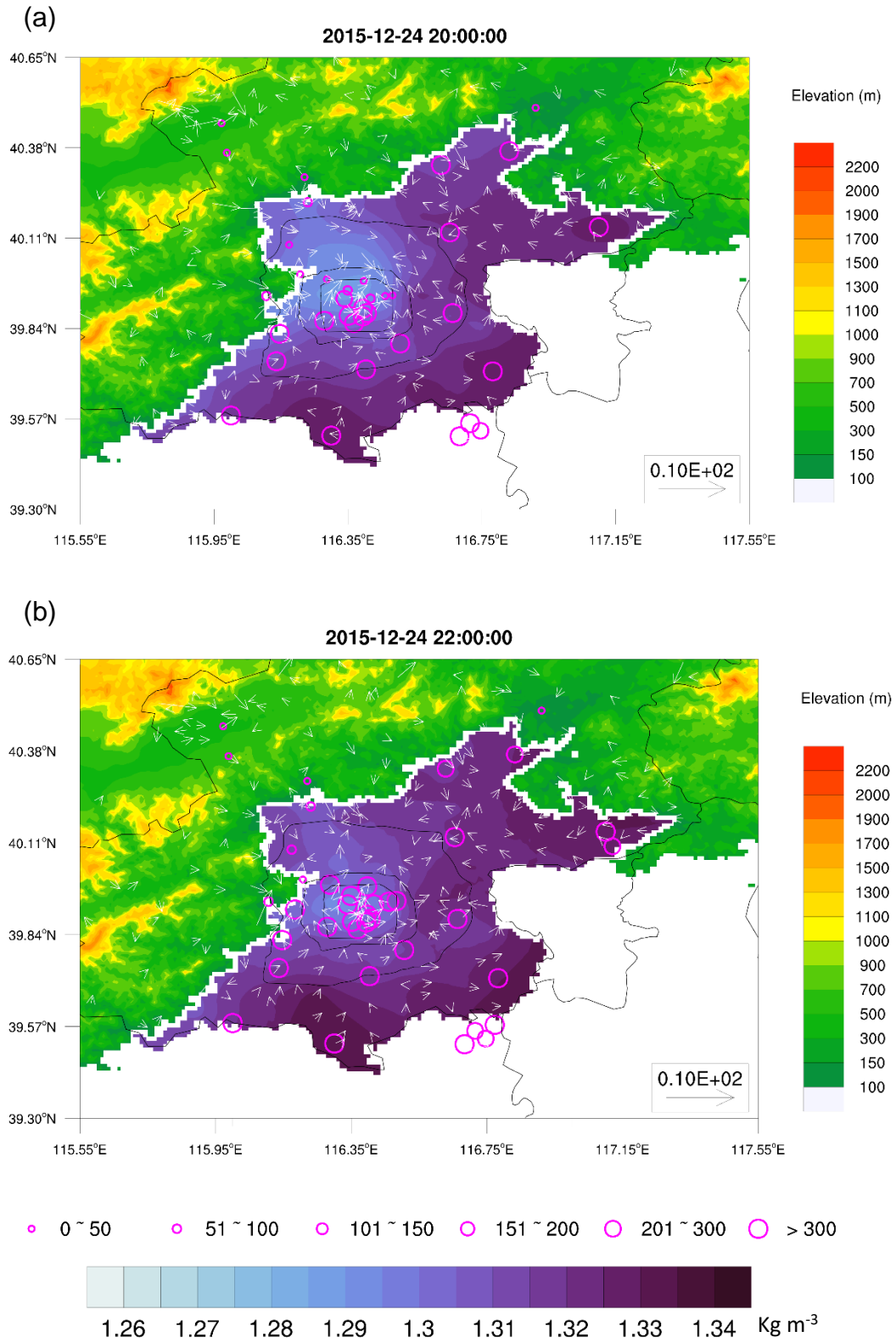


Fig S7. Same as Fig S4, but at (a) 20:00 LST and (b) 22:00 LST.