

Effects of prescribed CMIP6 ozone on simulating the Southern Hemisphere atmospheric circulation response to ozone depletion

Ioana Ivanciu¹, Katja Matthes^{1,2}, Sebastian Wahl¹, Jan Harlaß¹, and Arne Biastoch^{1,2}

¹GEOMAR Helmholtz Centre for Ocean Research Kiel, Kiel, Germany

²Faculty of Mathematics and Natural Sciences, Christian-Albrechts Universität zu Kiel, Kiel, Germany

Correspondence: Ioana Ivanciu (iivanciu@geomar.de)

Abstract. The Antarctic ozone hole has led to substantial changes in the Southern Hemisphere atmospheric circulation, such as the strengthening and poleward shift of the mid-latitude westerly jet. Ozone recovery during the twenty-first century is expected to continue to affect the jet's strength and position, leading to changes in the opposite direction compared to the twentieth century and competing with the effect of increasing greenhouse gases. Simulations of the Earth's past and future climate, such as those performed for the Coupled Model Intercomparison Project Phase 6 (CMIP6), require an accurate representation of these ozone effects. Climate models that use prescribed ozone fields lack the important feedbacks between ozone chemistry, radiative heating, dynamics, as well as transport. In addition, when the prescribed ozone field was not generated by the same model to which it is prescribed, the imposed ozone hole is inconsistent with the simulated dynamics. These limitations ultimately affect the climate response to ozone depletion. This study investigates the impact of prescribing the ozone field recommended for CMIP6 on the simulated effects of ozone depletion in the Southern Hemisphere. We employ a new, state-of-the-art coupled climate model, FOCI, to compare simulations in which the CMIP6 ozone is prescribed with simulations in which the ozone chemistry is calculated interactively. At the same time, we compare the roles played by ozone depletion and by increasing concentrations of greenhouse gases in driving changes in the Southern Hemisphere atmospheric circulation, using a series of historical sensitivity simulations. FOCI captures the known effects of ozone depletion, simulating an austral spring and summer intensification of the mid-latitude westerly winds and of the Brewer-Dobson circulation in the Southern Hemisphere. Ozone depletion is the primary driver of these historical circulation changes in FOCI. The austral spring cooling of the polar cap in the lower stratosphere in response to ozone depletion is weaker in the simulations that prescribe the CMIP6 ozone field. We attribute this weaker response to a prescribed ozone hole which is different to the model dynamics and is not collocated with the simulated polar vortex, altering the strength and position of the planetary wavenumber one. As a result, the dynamical contribution to the ozone-induced austral spring lower stratospheric cooling is suppressed, leading to a weaker cooling trend. Consequently, the intensification of the polar night jet is also weaker in the simulations with prescribed CMIP6 ozone. In contrast, the differences in the tropospheric westerly jet response to ozone depletion fall within the internal variability present in the model. The persistence of the Southern Annular Mode is shorter in the prescribed ozone chemistry simulations. The results obtained with the FOCI model suggest that climate models which prescribe the CMIP6 ozone field still simulate a weaker Southern Hemisphere stratospheric response to ozone depletion compared to models that calculate the ozone chemistry interactively.

1 Introduction

Anthropogenic emissions of ozone depleting substances (ODS), in particular Chlorofluorocarbons (CFCs), led to a steep decline in stratospheric ozone concentrations since the 1980s. The strongest ozone depletion occurred in austral spring above Antarctica. There, the particularly low temperatures inside the winter polar vortex enable the formation of polar stratospheric clouds (PSC). Upon the arrival of sunlight in spring, heterogeneous chlorine photochemistry on the surface of PSC makes chlorine particularly effective at destroying ozone (e.g., Solomon, 1999). As a result, the ozone hole develops every spring in the Antarctic stratosphere, with profound impacts for the Southern Hemisphere (SH) climate. Observations (e.g., Randel and Wu, 1999; Thompson and Solomon, 2002; Randel et al., 2009; Young et al., 2013) and model simulations (Mahlman et al., 1994; Arblaster and Meehl, 2006; Gillett and Thompson, 2003; Stolarski et al., 2010; Perlwitz et al., 2008; Son et al., 2010; McLandress et al., 2010; Polvani et al., 2011; Young et al., 2013; Eyring et al., 2013; Keeble et al., 2014) consistently show a cooling of the Antarctic lower stratosphere in austral spring and summer during the last decades of the twentieth century due to decreased radiative heating as a result of ozone depletion. This cooling led to important changes in the dynamics of the SH. Lower polar cap temperatures resulted in an increased meridional temperature gradient between the cold polar cap and the relatively warmer mid-latitudes. Consequently, the spring stratospheric polar vortex strengthened (Thompson and Solomon, 2002; Gillett and Thompson, 2003; Arblaster and Meehl, 2006; McLandress et al., 2010; Thompson et al., 2011; Keeble et al., 2014) and its breakdown was delayed by about two weeks (Vaugh et al., 1999; Langematz et al., 2003; McLandress et al., 2010; Previdi and Polvani, 2014; Keeble et al., 2014). This enabled an intensification of the planetary wave activity propagating into the stratosphere, resulting in an enhancement of the Brewer-Dobson circulation (BDC) in austral summer (Li et al., 2008, 2010; Oberländer-Hayn et al., 2015; Polvani et al., 2018; Abalos et al., 2019).

At the same time, the strengthening of the stratospheric westerlies extended downward affecting the tropospheric jet, which intensified with a lag of one to two months, in austral summer (Thompson and Solomon, 2002; Gillett and Thompson, 2003; Perlwitz et al., 2008; Son et al., 2010; Eyring et al., 2013). The intensification of the stratospheric and tropospheric jets was accompanied by a concurrent positive trend in the Southern Annular Mode (SAM, Thompson and Solomon, 2002; Gillett and Thompson, 2003; Marshall, 2003; Perlwitz et al., 2008; Fogt et al., 2009; Thompson et al., 2011). The surface westerlies strengthened on their poleward side and weakened on their equatorward side, therefore shifting towards higher latitudes during the austral summer (Polvani et al., 2011). This resulted in the poleward displacement of the SH storm track and led to changes in cloud cover (Grise et al., 2013) and precipitation, not only at the high and mid-latitudes (Polvani et al., 2011; Previdi and Polvani, 2014), but also in the subtropics (Kang et al., 2011). The formation of the ozone hole also affected the Antarctic surface temperatures, with large regional variations in the temperature trend over the continent. Significant warming over the Antarctic Peninsula and Patagonia was reported by Thompson and Solomon (2002). Other consequences of the ozone hole formation include the elevation of the SH polar tropopause (Son et al., 2009; Polvani et al., 2011) and the poleward expansion of the Hadley Cell (Garfinkel et al., 2015; Vaugh et al., 2015; Polvani et al., 2011; Min and Son, 2013; Previdi and Polvani, 2014) in austral summer. The wind stress over the Southern Ocean, associated with the westerlies, has also experienced a significant strengthening and poleward shift (Yang et al., 2007; Swart and Fyfe, 2012), with implications for the SH ocean circulation.

Ocean circulation changes due to the formation of the Antarctic ozone hole include the intensification and poleward shift of the SH supergyre, which connects the subtropical Pacific, Atlantic and Indian Oceans (Cai, 2006), an increase in the transport of salty and warm waters from the Indian into the Atlantic Ocean, known as the Agulhas Leakage (Biaostoch et al., 2009, 2015; Durgadoo et al., 2013), and changes in the Ekman transport and upwelling in the Southern Ocean (Thompson et al., 2011 and references therein).

As ozone depletion had such profound implications for the SH climate, accurate model simulations of past and future climate change require a correct representation of stratospheric ozone changes and their associated impacts. Multiple lines of evidence suggest that the method used to specify stratospheric ozone in models affects their response to ozone depletion (Gabriel et al., 2007; Crook et al., 2008; Gillett et al., 2009; Waugh et al., 2009; Haase and Matthes, 2019). Ozone concentrations can be calculated interactively (e.g., Haase and Matthes, 2019), as it is the case in chemistry climate models (CCMs) or can be prescribed, either as zonal means or three-dimensionally (3D, e.g., Crook et al., 2008), as monthly-means or at daily resolution. Ozone asymmetries, the temporal resolution of the prescribed ozone field, as well as feedbacks between ozone, temperature, dynamics and transport all impact the way in which changes driven by decreasing ozone concentrations are simulated. This paper investigates how prescribing the ozone field recommended for the Coupled Model Intercomparison Project Phase 6 (CMIP6) affects the atmospheric circulation response to ozone depletion, by drawing a comparison with simulations that calculate the ozone chemistry interactively.

The position of the Antarctic ozone hole is not centered above the South Pole, but varies with that of the polar vortex, being displaced towards the Atlantic sector in the climatological mean (e.g., Grytsai et al., 2007). As a result, the ozone field is characterized by asymmetries in the zonal direction, henceforth referred to as zonal asymmetries in ozone or ozone waves. The effect of zonal asymmetries in ozone was previously investigated for both hemispheres (e.g., Gabriel et al., 2007; Crook et al., 2008). In the Northern Hemisphere winter, zonally asymmetric ozone alters the structure of the stationary wave one, resulting in temperature changes in the stratosphere and mesosphere (Gabriel et al., 2007; Gillett et al., 2009). Ozone waves were also found to affect the number of sudden stratospheric warmings (SSWs), but studies disagree about the sign of the change (Peters et al., 2015; Haase and Matthes, 2019). Peters et al. (2015) reported an increased number of SSWs and a weakening of the Arctic Oscillation between the mid-1980s and mid-1990s in a simulation with specified zonal asymmetries in ozone compared to one in which zonal mean ozone was prescribed. In contrast, Haase and Matthes (2019) found that fewer SSWs occurred between 1955 and 2019 when zonal asymmetries in ozone were prescribed and even less SSWs occurred when the ozone chemistry was calculated interactively. In a recent study, Oehrlein et al. (2020) found no significant difference in the number of midwinter SSWs between their 200-year time-slice simulations with interactive and with prescribed zonally symmetric ozone.

In the SH, the largest zonal asymmetries in ozone occur in spring (Gillett et al., 2009; Waugh et al., 2009), when the stratospheric polar vortex is disturbed by the flux of wave activity from the troposphere and when the ozone hole develops. Model simulations that do not include zonal asymmetries in ozone exhibit a warmer lower stratosphere above Antarctica in austral spring and weaker westerly winds during the decades characterized by strong ozone depletion (Crook et al., 2008; Gillett et al., 2009). The effect of zonal asymmetries in ozone on stratospheric temperature, and hence on the polar vortex, is mediated through changes in stratospheric dynamics and cannot be explained solely by changes in radiative heating associated

with the ozone field (Crook et al., 2008; Li et al., 2016). In addition to differences in the mean state, trends in temperature and in the strength of the stratospheric and tropospheric westerly jets are underestimated in both past (Vaugh et al., 2009; Li et al., 2016; Haase et al., 2020) and future (Vaugh et al., 2009) simulations that do not include zonal asymmetries in ozone. Furthermore, as the ocean circulation is sensitive to changes in the surface wind stress, it is also affected by the stratospheric zonal asymmetries in ozone. Weaker spring and summer surface westerlies trends in simulations that prescribe zonal mean monthly mean ozone therefore translate into weaker changes in the SH Ekman transport and in the Meridional Overturning Circulation (Li et al., 2016).

Besides zonal asymmetries in ozone, prescribing monthly mean ozone values that are then linearly interpolated to obtain a higher temporal resolution also leads to differences in atmospheric dynamics compared to simulations using interactive chemistry (Sassi et al., 2005; Neely et al., 2014). Linearly interpolating between prescribed monthly ozone values results in an underestimation of ozone depletion compared to interactive chemistry simulations, as the rapid ozone changes during austral spring cannot be fully captured. The weaker ozone hole, in turn, leads to a warmer lower stratosphere and smaller changes in both the stratospheric and the tropospheric westerly winds. Neely et al. (2014) found that these differences greatly diminish if daily ozone is prescribed instead of monthly mean ozone and concluded that the coarse temporal resolution of the prescribed ozone accounts for the majority of the difference in the austral spring stratospheric temperature and the austral summer stratospheric westerly jet between simulations with prescribed and interactive ozone.

Feedbacks between stratospheric ozone, temperature and dynamics can only occur in models that calculate the ozone chemistry interactively, i.e. in CCMs. The importance of such feedbacks in both hemispheres was previously shown in the studies by Haase and Matthes (2019), Haase et al. (2020) and Oehrlein et al. (2020). Changes in temperature caused by ozone depletion, either directly through radiative cooling or indirectly through changes in dynamics, feed back onto ozone concentrations by altering the rate of the catalytic ozone destruction reactions. At the same time, cooling of the polar caps due to ozone loss enhances the meridional temperature gradient in the stratosphere and, as dictated by the thermal wind balance, strengthens the polar vortices. The stronger westerlies, in turn, impact the upward propagation of planetary waves from the troposphere and therefore lead to changes in the BDC, which transports ozone to high latitudes. Changes in stratospheric dynamics due to ozone depletion thus also feed back onto the ozone concentrations. Haase and Matthes (2019) described one such feedback in the Northern Hemisphere spring, during the break-up of the polar vortex. At this time of the year the westerlies are weak and decreasing ozone levels lead to increased planetary wave forcing. This results in dynamical heating and enhanced ozone transport from the low latitudes, both of which lead to an increase in the ozone concentrations, forming a negative feedback loop. This feedback only occurred in the model simulation in which interactive chemistry was used, and not in the simulations in which either zonal mean or three-dimensional ozone was prescribed, showing the importance of calculating the ozone chemistry interactively. A similar feedback also operates in the SH (Lin et al., 2017, Haase et al., 2020). In addition, a positive feedback was reported in the lower stratosphere for the SH by (Haase et al., 2020). A new study investigating historical SAM trends in the CMIP6 models and their drivers found that an indirect effect of increasing greenhouse gases (GHG) on the SAM due to GHG-induced changes in ozone offsets the direct effect of GHG on the SAM (Morgenstern, 2021). The study showed

130 that models that do not use interactive chemistry therefore overestimate the contribution of the GHG to the historical SAM strengthening.

Previous research conducted using the same model to test the sensitivity of simulations to the method used to represent ozone thus points to climate models that include interactively calculated ozone chemistry as the preferred choice for studies of past and future climate. In contrast, the tropospheric jet's response to ozone depletion is not significantly different between
135 models with and without ozone chemistry in studies that used different models to assess the sensitivity of the response to how the ozone is imposed (Eyring et al., 2013; Seviour et al., 2017; Son et al., 2018). In the study of Eyring et al. (2013), however, some of the models categorized as including ozone chemistry actually prescribed the ozone field. The difference to the models without chemistry was, in the case of several models, that the ozone field was produced by the interactive chemistry version of the same model. In addition, using different models to evaluate the impact of the method used to impose ozone changes makes
140 it difficult to assess how other differences between those models, such as the strength of the stratosphere-troposphere coupling, affect the results.

The computational cost of coupled climate models with interactive chemistry is still very high, especially when long climate simulations are needed, as for CMIP6. Therefore, not all climate models participating in CMIP6 use interactive chemistry (Keeble et al., 2020), but instead use atmospheric chemistry data sets obtained from simulations with CCMs. The new atmo-
145 spheric ozone field recommended for use in CMIP6 (Hegglin et al., 2016) is 3D and has monthly temporal resolution. The issue of smoothing ozone extremes by linearly interpolating from monthly values to the model time step still remains in CMIP6. Additionally, the prescribed ozone field, which was generated by averaging the output of two different CCMs (Keeble et al., 2020), is not consistent with the dynamics of the models to which it is prescribed and, furthermore, feedbacks between ozone, temperature and dynamics cannot occur. Moreover, Hardiman et al. (2019) showed that a mismatch between the tropopause
150 height present in the prescribed ozone dataset and the tropopause height in the climate model that uses the prescribed ozone dataset can cause erroneous heating rates around the tropopause. These limitations suggest that there are still differences in atmospheric dynamics between climate models using the prescribed CMIP6 ozone and fully interactive CCMs. In this study, we test this hypothesis for the first time by comparing two ensembles of simulations with the new coupled climate model FOCI (Flexible Ocean Climate Infrastructure, Matthes et al., 2020): one ensemble in which the model uses interactive ozone
155 chemistry and one ensemble in which the CMIP6 ozone is prescribed. We investigate differences in atmospheric dynamics with respect to both the mean state and multi-decadal trends over the second half of the twentieth century. Details about the climate model FOCI and our methodology can be found in Sect. 2. As the increase in anthropogenic GHG was also reported to lead to changes in the SH circulation (Fyfe et al., 1999; Kushner et al., 2001), we first assess the extent to which the formation of the ozone hole and the increase in GHG contribute to the changes simulated in FOCI in Sect. 3 and we verify the model's ability
160 to simulate the effects of ozone depletion. We then compare the two ensemble simulations and evaluate the performance of the model with prescribed CMIP6 ozone against the interactive chemistry version of the model in Sect 4. Finally, Sect. 5 presents the discussion of the results, together with our conclusion.

2 Model description and methodology

2.1 Model description and experimental design

165 The coupled climate model employed in this study is the new Flexible Ocean Climate Infrastructure (FOCI, Matthes et al., 2020). FOCI consists of the high-top atmospheric model ECHAM6.3 (Stevens et al., 2013) coupled to the NEMO3.6 ocean model (Madec and the NEMO team, 2016). Land surface processes and sea ice are simulated by the JSBACH (Brovkin et al., 2009; Reick et al., 2013) and LIM2 (Fichefet and Maqueda, 1997) modules, respectively. We use the T63L95 setting of ECHAM6, corresponding to 95 vertical hybrid sigma-pressure levels up to the model top at 0.01 hPa and approximately 1.8°
170 by 1.8° horizontal resolution in the atmosphere. The ocean model, in the ORCA05 configuration (Biaostoch et al., 2008), has a nominal global resolution of 1/2° and 46 z-levels in the vertical. FOCI has an internally generated Quasi-Biennial Oscillation (QBO) and includes variations in solar activity according to the recommendations of the SOLARIS-HEPPA project (Matthes et al., 2017) for CMIP6. For the interactive chemistry simulations used in this study, chemical processes were simulated using the Model for Ozone and Related Chemical Tracers (MOZART3, Kinnison et al., 2007), implemented in ECHAM6 (ECHAM6-
175 HAMMOZ, Schultz et al., 2018). A detailed description of FOCI, including the configuration of ECHAM6-HAMMOZ and its chemical mechanism, can be found in the paper by Matthes et al. (2020). A 1500-year long pre-industrial control simulation with FOCI, allowing for the proper spin-up of the model, serves as the starting point for the simulations described below.

Table 1 gives an overview of the simulations used in this study. Three ensembles, each consisting of three simulations differing only in their initial conditions, were conducted in order to distinguish between the effects of ozone depletion and
180 those of increasing GHG concentrations on the SH climate. The first ensemble (REF) comprises of transient simulations in which surface volume mixing ratios of both GHG and ODS are prescribed and vary as a function of time according to the historical CMIP6 forcing data set (Meinshausen et al., 2017). Therefore, this ensemble captures the combined effects of ozone depletion and GHG increase. In the second ensemble (NoODS), CO₂ and CH₄ surface volume mixing ratios are prescribed and vary according to the historical forcing, but the ODS follow a perpetual seasonal cycle representative of the 1960 conditions,
185 computed for each ODS by taking the mean annual cycle between 1955 and 1965. This ensemble was designed to simulate the effects of increasing GHG in the absence of ozone depletion. Here, we use GHG to refer to CO₂ and CH₄ only, while the other anthropogenic GHG, including N₂O, fall under the ODS category. In the third ensemble (NoGHG), the ODS vary according to the historical forcing, while GHG follow a perpetual 1960 seasonal cycle, meaning that there is no increase in GHG past this date. This experimental design allows us to quantify the impact of the formation of the ozone hole by taking
190 the difference between REF and NoODS and that of climate change by taking the difference between REF and NoGHG. All of these sensitivity simulations use the FOCI configuration that includes interactive chemistry, such that the chemical-radiative-dynamical feedbacks are captured and the ozone field is consistent with the simulated dynamics. Additionally, the high resolution ocean nest INALT10X (Schwarzkopf et al., 2019) was used for these simulations. Therefore, the REF ensemble differs from the INTERACT O₃ ensemble discussed below. The INALT10X nest enhances the ocean resolution to 1/10° over
195 the South Atlantic Ocean, the western part of the Indian Ocean and over the corresponding Southern Ocean sectors, resolving

the mesoscale eddies found in these regions and allowing us to assess, in a follow-up study, the influence of climate change and of ozone depletion on the ocean circulation around the tip of South Africa.

In order to analyze the differences between simulations with interactive ozone chemistry and simulations with prescribed CMIP6 ozone, two further ensembles were performed, each consisting of three simulations differing only in their initial conditions. For the INTERACT O₃ ensemble, FOCI was ran in the configuration with interactive chemistry, such that the chemical reactions that are necessary to represent stratospheric chemical processes were included. Therefore, the feedbacks between the stratospheric ozone, temperature and dynamics occur in INTERACT O₃ and the simulated ozone field is consistent with the dynamics. A comparison of the ozone field simulated in INTERACT O₃ with observations can be found in the work of Matthes et al. (2020). For the FIXED O₃ ensemble, the ozone field recommended for CMIP6 (Hegglin et al., 2016) was prescribed. The CMIP6 ozone field was generated by two CCMs and includes solar variations from the SOLARIS-HEPPA project (Matthes et al., 2017). It is a monthly-mean, three-dimensional field and therefore includes zonal asymmetries in ozone. The monthly mean values were linearly interpolated and prescribed at each model time step. The comparison of the INTERACT O₃ and FIXED O₃ ensembles sheds light on the impact of prescribing the CMIP6 chemistry on the climate simulated by the coupled climate model FOCI.

2.2 Observational data

The Integrated Global Radiosonde Archive (IGRA) version 2 (Durre et al., 2006) temperature was used in order to compare the temperature trends simulated by the FOCI ensembles with observational estimates. Data from eleven Antarctic stations located south of 65°S and offering sufficient coverage for the period 1958-2002 was averaged for each day and pressure level up to 30 hPa. As only the South Pole station is located south of 80°S, a trend computed for the entire polar cap is biased towards the lower latitudes and only the trend derived from the spatial average over the 65°S-80°S latitude band is shown in Fig. 10. The full polar cap IGRA temperature trend is shown in the supplement in Fig. S5. In addition, the temperature and wind from the ERA5 reanalysis (Hersbach et al., 2020) was used to further verify the trends obtained from our model.

2.3 Methodology

We used the transformed Eulerian mean framework (Andrews et al., 1987) to calculate the residual circulation and its forcing. According to the downward control principle of Haynes et al. (1991), the residual downward velocity $\overline{w^*}$ at a certain level is driven by the wave dissipation at the levels above. The divergence of the Eliassen-Palm (EP) flux, $(a \cos \phi)^{-1} \nabla \cdot F$, gives a measure of the dissipation of resolved waves, where

$$\nabla \cdot F = \frac{1}{a \cos \phi} \frac{\partial (F_\phi \cos \phi)}{\partial \phi} + \frac{\partial F_p}{\partial p} \quad (1)$$

The components of the EP flux are given by

$$F_\phi = -a \cos \phi \overline{\phi v' u'} \quad (2)$$

$$F_p = f a \cos \phi \overline{\frac{v' \theta'}{\theta_p}} \quad (3)$$

The notation is the same as in Andrews et al. (1987): the overbars denote the zonal mean and the primes denote departures from the zonal mean, a is the radius of the Earth, ϕ is the latitude, u and v are the zonal and meridional velocity components, respectively, f is the Coriolis parameter, θ is the potential temperature and θ_p is the partial derivative of θ with respect to pressure. The residual vertical velocity was calculated from the streamfunction, as in McLandress and Shepherd (2009):

$$\overline{w^*} = \frac{gH}{pa \cos \phi} \frac{\partial \Psi}{\partial \phi} \quad (4)$$

where the streamfunction is given by

$$\Psi = -\frac{\cos \phi}{g} \int_p^0 \overline{v^*}(\phi, p) dp \quad (5)$$

and the meridional residual velocity is given by

$$\overline{v^*} = \overline{v} - \frac{\partial}{\partial p} \left(\frac{\overline{v' \theta'}}{\theta_p} \right) \quad (6)$$

with g being the gravitational acceleration and H the scale height taken as 7000 m. The short wave (SW) and long wave (LW) heating rates are part of the standard FOCI output and the total radiative heating rate was obtained by taking the sum of the two. The dynamical heating rate was calculated as the difference between the temperature tendency at daily resolution and the total radiative heating rate.

The SAM was computed as the first empirical orthogonal function (EOF) of the daily, zonal mean geopotential height anomalies at each pressure level, following the method outlined in Gerber et al. (2010). To obtain the geopotential height anomalies, the weighted global mean geopotential height was first subtracted for each day and at each level and latitude. A slowly varying climatology was then removed, to ensure that the resulting SAM index does not exhibit any long-term trend driven by external climate forcing, such that it only reflects internal variability. The slowly varying climatology was obtained by applying a 60-day low pass filter to the geopotential height anomalies from the global mean. Then, timeseries were created for each day of the year and at each location from the filtered anomalies and each timeseries was smoothed using a 30-year low pass filter. The smoothed timeseries were subtracted from the anomalies with respect to the global mean for each respective day and location. The anomalies thus obtained were multiplied by the square root of the cosine of latitude in order to account for the convergence of the meridians towards the poles (North et al., 1982) and only the anomalies for the SH were retained. The first EOF of these anomalies was calculated at each pressure level and the expansion coefficients (principle component timeseries) were obtained by projecting the anomalies onto the first EOF pattern. The expansion coefficients give the SAM index, normalized to have zero mean and unit variance.

The SAM e-folding timescale was computed for each day of the year at each pressure level using the method of Simpson et al. (2011). The autocorrelation function (ACF) was obtained by correlating the timeseries for a particular day of the year with the timeseries for the days lagging and leading it. The ACF was smoothed at each lag and pressure level by applying a Gaussian filter with a full width at half maximum of 42 days over a 181 day window. An exponential function was then fitted to the smoothed ACF up to a lag of 50 days using the least squares method and the SAM timescale was obtained by taking the lag at which the exponential function drops to $1/e$.

Linear trends were calculated over the 1958-2002 period for the analyzed fields at each level and location and the significance of the trends was assessed based on a Mann-Kendall test. Where differences between simulations are shown, a two-sided t -test was used to test for significance. The significance is always given at the 95% confidence interval. The differences between the REF and the NoODS or NoGHG ensembles were computed over the 1978-2002 period, as this is the period characterized by the strongest ozone depletion.

3 Impacts of ozone depletion and climate change on the Southern Hemisphere dynamics

The radiative effects of increasing GHG concentrations lead to cooling of the stratosphere and warming of the troposphere, enhancing the meridional temperature gradient at the tropopause levels, in a similar manner to ozone depletion. While some older studies argued that rising levels of GHG are the driver of the historical dynamical changes in the SH (Fyfe et al., 1999; Kushner et al., 2001; Marshall et al., 2004), at present the general consensus is that the formation of the Antarctic ozone hole is the main cause of these dynamical changes in austral spring and summer and that increasing GHG played only a secondary role (Arblaster and Meehl, 2006; McLandress et al., 2011; Polvani et al., 2011; Keeble et al., 2014; Previdi and Polvani, 2014; World Meteorological Organization, 2018). In this section, we separate the effects of ozone depletion from those of increasing GHG in FOCI and we verify the ability of the model to correctly simulate the dynamical response to ozone loss.

Figure 1 shows the reduction in ozone above the Antarctic polar cap caused by ODS (panel a) together with the accompanying changes in the SW heating rate (panel b). There is a strong decrease in the ozone volume mixing ratio in the lower stratosphere in austral spring, peaking in October, in agreement with previous studies (Perlwitz et al., 2008; Son et al., 2010; Polvani et al., 2011; Eyring et al., 2013). This leads to a significant radiative cooling due to decreased absorption of SW radiation (Fig. 1b). An even stronger SW cooling can be seen above 5 hPa between September and April, in line with the results of Langematz et al. (2003), who found a reduction of the SW heating rate in the upper stratosphere in response to decreasing ozone concentrations. A significant SW warming appears in December and January between 50 and 10 hPa, related to an increased ozone mixing ratio. As will be shown later in this section, these latter changes are attributed to a dynamical response to the spring ozone loss.

Figure 1c shows the ozone changes caused by increasing GHG. There are two regions of statistically significant ozone increase: the upper stratosphere in austral spring and summer and the region of the ozone hole. The SW heating rate (Fig. 1d) exhibits warming in response to increased GHG in the same two regions. As the direct effect of GHG on the SW heating rate is small (Langematz et al., 2003), this warming is likely caused by the higher ozone levels arising in response to the GHG increase, and not directly by the GHG themselves. Higher levels of GHG lead to increased emission of LW radiation (not shown) and have a net cooling effect in the stratosphere. In the upper stratosphere, lower temperatures slow down ozone depletion (Haigh and Pyle, 1982; Jonsson et al., 2004; Stolarski et al., 2010; Chiodo et al., 2018), explaining the simulated increase in ozone. The ozone increase in the lower stratosphere is more surprising. Here, colder conditions facilitate the formation of PSCs and are therefore expected to enhance ozone loss. Solomon et al. (2015) showed that a cooling of 2 K results in 30 DU more total column ozone loss over Antarctica. Therefore, it does not seem likely that the elevated ozone levels are caused by the radiative

effects of GHG. Instead, we find a small but significant enhancement of the downwelling over the polar cap between 50 hPa and 200 hPa in the second half of October, which is associated with increased wave forcing between 20 hPa and 100 hPa (not shown). This suggests that changes in dynamics are responsible for transporting more ozone into the polar lower stratosphere, in agreement with previous studies that linked a GHG-induced acceleration of the BDC to a decrease in lower stratospheric ozone in the tropics and an increase at high latitudes (Dietmüller et al., 2014; Nowack et al., 2015; Chiodo et al., 2018). As a result, the stratospheric ozone depletion is stronger in the absence of increased GHG (NoGHG experiments) than in their presence (REF experiments). The ozone increase related to GHG, about 0.2 ppmv, is, however, small compared to the ozone loss due to ODS, which exceeds 1.4 ppmv in the region of strongest depletion.

The polar cap temperature response to ozone depletion (Fig. 2a) is closely related to the changes in the SW heating rate shown in Figure 1b. A statistically significant cooling occurs in the lower stratosphere in austral spring and in the upper stratosphere in summer. Additionally, there is a warming above the ozone hole in late spring. It should be noted that the maximum temperature increase above the ozone hole occurs about one month earlier than the maximum shortwave warming, hinting to the fact that it is not a direct radiative effect of the increase in ozone. The temperature decreases are a direct response to ozone depletion. The spring cooling in the lower stratosphere represents the well-known signature of the ozone hole. In contrast to the impact of the ozone hole, there is no significant cooling in the polar lower stratosphere due to increased GHG (Fig. 2c). The cooling resulting from enhanced LW emissions is confined to the upper levels of the stratosphere. The lower stratosphere warms in November in response to GHG. At these levels the SW warming (Fig. 1d) due to the elevated ozone concentrations dominates the LW cooling (not shown) due to GHG, resulting in a net radiative warming.

The zonal wind changes associated with ozone depletion (Fig. 2b) and increasing GHG (Fig. 2d) obey the thermal wind balance. The polar night jet accelerates from October onwards as a consequence of the enhanced meridional temperature gradient caused by ozone loss. The maximum acceleration occurs between November and December (Fig. 2b), concomitant with the strongest cooling (Fig. 2a). This westerly acceleration propagates downwards to the tropospheric eddy-driven jet and reaches the surface in November and December. Figure 3a shows the ozone-induced change in the surface zonal wind for these months. The surface westerlies strengthen on their poleward side and weaken on their equatorward side, shifting poleward. This shift is accompanied by changes in sea level pressure (SLP). The pressure over Antarctica drops significantly and the mid-latitude SLP increases in response to ozone depletion (Fig. 3c), signaling a change towards the positive phase of the SAM. All these changes in the SH dynamics simulated in FOCI in response to ozone depletion, both in the stratosphere and in the troposphere are in good agreement with the results of previous studies that isolated the impacts of ozone loss from those of the increase in GHG (Arblaster and Meehl, 2006; McLandress et al., 2010, 2011; Polvani et al., 2011; Keeble et al., 2014), as well as with the trends from observations and the ERA5 reanalysis presented in Sect. 4. This demonstrates that FOCI is able to capture the effects of ozone depletion and is therefore suited to study how prescribing the CMIP6 ozone affects the simulated climate response to ozone loss.

The response of the stratospheric westerlies to higher GHG concentrations is markedly different from that to ozone depletion (Fig. 2b, d). Driven by the warming over the polar cap, the polar night jet weakens in November south of 60°S (supplementary Fig. S1). This change is much weaker compared to that resulting from ozone loss and is confined to the stratosphere. While

GHG do not cause an acceleration of the polar night jet in FOI, there is a significant positive change in the zonal wind strength centered around 30°S, extending from the top of the eddy-driven jet into the middle stratosphere (supplementary Fig. S1). This westerly change implies a strengthening of the upper flank of the tropospheric jet, in agreement with the findings of McLandress et al. (2010). Figure 3b shows a map of the annual mean GHG-induced changes in the surface zonal winds. We show the annual mean change due to GHG and not the November-December change, as it was the case for ozone depletion because, unlike the effects of ozone loss, the effects of increasing GHG do not exhibit any seasonality. Although the GHG-induced pattern of zonal wind change is similar to that caused by ozone depletion, the changes are much weaker and mostly insignificant. This indicates that the magnitude of GHG increase was not large enough to induce a strong strengthening or poleward shift of the surface westerly winds. The SLP response to increasing GHG exhibits a significant increase in the mid-latitudes, over the South Pacific Ocean, but the magnitude of this increase is less than a quarter of that due to ozone loss and there is no significant SLP decrease over the polar cap.

Our sensitivity experiments confirm that the changes in the SH polar night jet (Fig. 2b, d) and eddy-driven jet (Fig. 3a, b) during the later part of the twentieth century were mainly driven by ozone depletion. Increasing GHG have played only a minor role, acting to enhance the effect of the ozone hole in the troposphere and to partially counteract the impact of ozone loss on the polar night jet. In addition, we found that the upper stratosphere has cooled significantly and the troposphere has warmed significantly in response to increasing concentrations of GHG.

Having distinguished the contributions of ozone loss and rising GHG levels to the changes in the westerly winds, we now turn our attention to the impacts of ozone depletion on the BDC. Figure 4 shows the November ozone-induced changes in the residual circulation, which is commonly used as a proxy for the BDC. The residual circulation is primarily forced by the dissipation of vertically propagating planetary waves from the troposphere. Therefore, we also present in Figure 4 the changes in eddy heat and momentum fluxes, which reveal the direction of wave propagation, and the changes in the divergence of the EP flux, which measures the wave forcing. The EP flux divergence (Fig. 4c) is characterized by a significant negative change above 10 hPa (stronger convergence) and a significant positive change (weaker convergence) in the lower stratosphere, below 50 hPa. This implies a reduction of wave dissipation in the lower stratosphere and an increase above, suggesting that atmospheric waves propagating from the troposphere reach higher into the stratosphere. This is confirmed by the strengthening of the eddy heat flux above 50 hPa (Fig. 4a). The eddy heat flux is equivalent to the vertical component of the EP flux and gives a measure of the vertical propagation of resolved waves. This strengthening entails increased wave propagation in the middle and upper stratosphere. Similarly, the eddy momentum flux exhibits a negative change, implying increased equatorward wave propagation (Fig. 4b). The ability of the waves to propagate deeper into the stratosphere is related to the strengthening of the polar night jet in response to ozone depletion. Enhanced westerly velocities in November lead to a delay in the breakdown of the polar vortex (e.g., Waugh et al., 1999; Langematz et al., 2003) and sustain wave activity. McLandress et al. (2010) showed that, as a result of ozone depletion, 1) the height of the transition between westerly and easterly velocities has increased, implying that waves can propagate higher at the end of spring, and 2) the date of this transition has been delayed by 10 to 15 days, implying that the period during which waves can penetrate into the stratosphere has been prolonged. As a result, the wave drag due to the dissipation of resolved waves increased in the upper stratosphere and decreased in the lower stratosphere in

November (Fig. 4c), while it increased in the middle stratosphere in December (supplementary Fig. S2), driving similar changes in the residual circulation. In November, the residual meridional velocity (Fig. 4d) shows a significant poleward intensification above 20 hPa and a significant weakening below 50 hPa, in good agreement with the changes in the EP flux divergence. The downwelling over the polar cap is enhanced above 50 hPa (Fig. 4e). Associated with this intensification is a large dynamical warming (Fig. 4f) that increases the temperature above the ozone hole, as shown in Fig. 2a, consistent with the results of Mahlman et al. (1994), Li et al. (2008), Stolarski et al. (2010), Keeble et al. (2014) and Ivy et al. (2016). At the same time, the strengthening of the residual circulation transports more ozone to the polar regions, leading to the increase in ozone seen in December between 50 hPa and 10 hPa in Fig. 1a. The residual vertical velocity in the lower stratosphere is expected to weaken in response to the decreased wave drag seen in Fig. 4c below 50 hPa. Such a weakening is simulated in FOCI at 200 hPa (Fig. 4e), accompanied by a decrease in dynamical heating (Fig. 4f). However, the lower stratospheric change in downwelling is not significant at the 95% confidence interval and the change in the dynamical heating is only partly significant. The decrease in austral spring lower stratosphere downwelling was previously reported by Li et al. (2008), McLandress et al. (2010) and Lubis et al. (2016), while the decrease in dynamical heating was shown by Keeley et al. (2007), Orr et al. (2013) and Lubis et al. (2016). Consistent with our results, McLandress et al. (2010) also attributed their weaker downwelling to reduced wave drag in the austral spring. We note that Figure 4 displays changes averaged for the entire month of November. However, the analysis of Orr et al. (2012, 2013) using 15-day averages showed that, at this time of the year, changes in the lower stratosphere wave driving and dynamical heating due to ozone depletion occur over a shorter time. Therefore, it is likely that our November averaging is applied over periods exhibiting changes of different sign, consequently diminishing the magnitude of the change and rendering it insignificant. At the same time, the large internal variability in FOCI makes it hard to discern this change using fields with higher temporal resolution and more ensemble members would be needed to clearly detect the weakening in downwelling.

The temporal evolution of the ozone-driven changes in wave forcing and, as a result, in the residual circulation can be seen by comparing Fig. 4 with supplementary Fig. S2, which shows the same quantities, but for December. It is clear that there is a downward propagation of the changes in all quantities from November to December. As the polar vortex breaks down at the upper levels, the zonal velocities remain westerly below 50 hPa (contours in Fig. 2b) and are still able to support the remnant wave propagation. Stronger westerlies in the lower stratosphere in December imply enhanced wave dissipation. As a result, the downwelling is accelerated in the lower stratosphere, driving dynamical warming there. These results are consistent with those of McLandress et al. (2010) and explain the reason behind the change in the sign of the residual vertical velocity trends in the lower stratosphere between spring and summer.

Our results clearly show that ozone depletion had a significant influence on the SH BDC in austral spring and summer. FOCI simulates little significant residual circulation changes in the SH due to increasing GHG. Therefore, we conclude that the historical changes in the SH residual circulation over the period of ozone depletion are a consequence of the formation of the ozone hole, in line with the findings of Keeble et al. (2014), Oberländer-Hayn et al. (2015), Polvani et al. (2018), Li et al. (2018), Abalos et al. (2019) and the most recent Scientific Assessment of Ozone Depletion (World Meteorological Organization, 2018). Consistent with these studies, FOCI simulates a strengthening of the SH residual circulation in response

to enhanced wave forcing at the end of the spring and the beginning of summer. At the same time, a weakening of the spring lower stratosphere residual circulation is simulated, as found by the few studies that investigated springtime changes in the BDC (Li et al., 2008; McLandress et al., 2010; Lubis et al., 2016). The good agreement with previous studies demonstrates that the interactive chemistry configuration of FOCI adequately simulates the impact of ozone depletion on the residual circulation.

4 Effects of prescribing the CMIP6 ozone field

We aim to understand how prescribing the ozone field recommended for CMIP6 affects the SH atmospheric circulation response to ozone depletion. To this end, we compare an ensemble of simulations using prescribed CMIP6 ozone with an ensemble of simulations that use fully interactive chemistry. The use of an ozone field that differs from that internally simulated by the model and that is not consistent with the model dynamics, the lack chemical-radiative-dynamical feedbacks and the temporal interpolation from the monthly prescribed values to the model time step can all lead to differences between the two ensembles. With a view on these deficiencies, we begin by analyzing the differences in the mean state in Sect. 4.1 and we then compare the simulated SH variability in Sect. 4.2 and the persistence of the SAM in Sect. 4.3.

4.1 Effects on the mean state

Figure 5 shows the difference between INTERACT O_3 and FIXED O_3 in October average ozone and November average temperature, geopotential height and zonal wind at 70 hPa. The CMIP6 ozone field was used for FIXED O_3 . FOCI simulates significantly lower ozone levels above the Antarctic Peninsula and the Bellingshausen Sea in October compared to the CMIP6 ozone (Fig. 5a). As a consequence, the November temperature (Fig. 5b) and the geopotential height (Fig. 5c) are also lower in this region in INTERACT O_3 compared to FIXED O_3 . We note that the pattern of the temperature difference between INTERACT O_3 and FIXED O_3 is markedly different to the pattern reported by Crook et al. (2008) and Gillett et al. (2009), which arises due to zonal asymmetries in ozone. The CMIP6 ozone field prescribed in FIXED O_3 includes ozone asymmetries and their effects are therefore captured in FIXED O_3 . Despite this, spatial temperature and geopotential height differences still remain between simulations with prescribed ozone asymmetries and simulations with fully interactive ozone chemistry, because the prescribed ozone field differs from the simulated one and it is not consistent with the simulated dynamics.

The differences between the FOCI and the CMIP6 ozone fields are not confined just to the ozone hole itself. Outside of the polar vortex, INTERACT O_3 exhibits significantly higher ozone levels at all longitudes. The difference in ozone maximizes in the eastern hemisphere, as the polar vortex, and hence the ozone hole, is not centered over the pole, but displaced towards the Atlantic Ocean and South America (contours in Fig. 5a). This significant positive difference was found in the mid- to high-latitudes of both hemispheres and in all seasons (not shown). We hypothesize that it is the result of a stronger BDC in FOCI compared to the models used to generate the CMIP6 ozone field, leading to increased ozone transport from the tropics. Associated with the higher ozone levels, the November mid-latitude temperature and geopotential height are also elevated in INTERACT O_3 compared to FIXED O_3 . In the Atlantic and Indian sectors, the higher temperature outside of the polar vortex in INTERACT O_3 enhances the meridional pressure gradient between the polar low and the mid-latitude high. In the Pacific

sector, the meridional pressure gradient is stronger in INTERACT O₃ due to the lower temperature above West Antarctica and the Bellingshausen Sea. As a result, the November polar night jet is circumpolarly stronger in INTERACT O₃ compared to FIXED O₃ (Fig. 5d).

To better understand the cause of the lower ozone levels above the Antarctic Peninsula and the Bellingshausen Sea in INTERACT O₃, Fig. 6c shows the October average ozone anomalies from the zonal mean in INTERACT O₃ at 70 hPa, as well the difference to FIXED O₃. A zonal wavenumber one pattern is clearly visible, with the ridge at the edge of Antarctica towards New Zealand and the trough over the tip of the Antarctic Peninsula. The ozone wave simulated in FOCI is consistent with that inferred from satellite observations by Lin et al. (2009) and Grytsai et al. (2007), from reanalyses by Crook et al. (2008) and with that simulated by Gillett et al. (2009). This wave pattern confirms that the simulated ozone hole is not centered on the south pole. While the CMIP6 ozone hole is also displaced from the pole, its location and extent is not the same as that simulated by FOCI (compare contours in Fig. 7a and d). The difference shown in Fig. 6c reveals that, on the one hand, the trough of the wave is shifted towards South America and reaches deeper into the Pacific sector in INTERACT O₃. On the other hand, the amplitude of the wave is significantly greater in INTERACT O₃ (compare also contours in Fig. 8a and b). Figure 6c thus demonstrates that the prescribed CMIP6 ozone field is not spatially consistent with the polar vortex simulated in FOCI.

Figures 6a and 6b show the time evolution of the ozone wave averaged between 60°S and 70°S for the month of October for INTERACT O₃ and FIXED O₃, respectively. Despite considerable interannual variability, the westward shift of the wave in INTERACT O₃ compared to that in FIXED O₃ is clearly discernable. This can be attributed to different evolutions of the wave trough in the two ensembles. Figures 6f and 6g show the timeseries of the longitudes at which the ozone maximum occurs within the ridge of the wave and at which the ozone minimum occurs within the trough of the wave, respectively, together with their corresponding trends. While the FIXED O₃ trough exhibits a significant eastward shift of $14.75 \pm 4.45^\circ \text{dec}^{-1}$, the INTERACT O₃ trough does not exhibit a significant shift. In the time mean, this results in the INTERACT O₃ ozone trough being located more to the west than the FIXED O₃ trough. The ridge of the wave shifts eastwards in both ensembles (Fig. 6f). Although the magnitude of the shift is stronger in FIXED O₃, the trends are not significantly different, as they fall within each other's 95% confidence intervals. Both ozone fields exhibit a deepening of the wave pattern over time, in particular in the 1980s, as the ozone hole becomes stronger, in agreement with the increase in the ozone wave amplitude reported by Grytsai et al. (2007) and Crook et al. (2008). In addition, the slow eastward shift of the wave with time is consistent with the phase shift based on temperature observations reported by Lin et al. (2009). An eastwards shift of the ozone zonal wave one was also inferred from satellite observations by Grytsai et al. (2007), accompanied by a westward shifting zonal wave number two. Due to the superposition of the two wave numbers, only the through of the wave sum shifted eastward, while the ridge remained stationary. Dennison et al. (2017) fitted an ellipse to the ozone hole and showed that the central longitude of the ellipse moves westward as the ozone is depleted. Due to the use of different methods, it is not straightforward to compare the results of Dennison et al. (2017) with the results presented here, or in the studies of Lin et al. (2009) and Grytsai et al. (2007). In our analysis, both the through and the peak exhibit a phase shift in FIXED O₃, but only the ridge exhibits a eastward shift in INTERACT O₃. This results in the shift being stronger in FIXED O₃ (Fig. 6b) and less evident in INTERACT O₃ (Fig. 6a).

The consequences of prescribing an ozone field that is not consistent with the model dynamics are depicted in Fig. 6d and e. The wave one pattern can be seen in both temperature and geopotential height anomalies from the zonal means in October. In both fields there are significant differences between INTERACT O₃ and FIXED O₃. Consistent with the ozone anomalies, the temperature trough is shifted westward in INTERACT O₃ and the amplitude of the wave is stronger. The radiative effects of a prescribed ozone hole that is not collocated with the polar vortex appear to alter the location of the wave, while the weaker amplitude of the prescribed ozone wave affects the amplitude of the temperature response. The westward shift of the INTERACT O₃ wave is also seen in the geopotential height field (Fig. 6e). We thus conclude that prescribing the CMIP6 ozone field, which is not consistent with the model dynamics in general and with the simulated stratospheric polar vortex in particular, gives rise to significant differences in the spatial structure and the amplitude of the springtime lower stratospheric wave one, as well as to significant differences in the springtime climatological strength of the polar night jet. Although we presented here evidence for the 70 hPa level, the results hold true for levels throughout the lower and middle stratosphere.

4.2 Effects on the simulated Southern Hemisphere variability

4.2.1 Temperature

We now turn our attention to the differences in the trends simulated by the two ensembles in response to ozone depletion. First, we compare the October and November 100 hPa ozone trends between INTERACT O₃ and FIXED O₃ (Fig. 7a, d, g, j), as they are at the root of the polar stratospheric temperature changes. We also examine the eddy contribution to the October trends, i.e. the trends in the anomalies from the zonal mean (Fig. 8a, b). The FIXED O₃ ozone is given by the prescribed CMIP6 ozone field.

The total spatial extent of ozone depletion is greater in INTERACT O₃ compared to FIXED O₃, but in both cases, in October, the ozone trend maximizes over East Antarctica (Fig. 7a, d). In contrast, in November the FIXED O₃ trend maximum covers most of the Antarctic continent, while the INTERACT O₃ trend maximum is located over East Antarctica (Fig. 7g, j). The maximum ozone depletion is stronger in FIXED O₃ than in INTERACT O₃ during both October and November (Fig. 7a, d, g, j). The trends in ozone anomalies from the zonal mean exhibit a wave one structure, but the wave is shifted eastwards compared to its climatological position in both ensembles (Fig. 8a, b). This implies a progressive eastward migration of the wave structure over time and an increase in the amplitude of the wave, in agreement with Fig. 6. The locations of the October trend minimum over the Atlantic sector and of the trend maximum over the Pacific sector are consistent with observations (Lin et al., 2009).

There are notable differences between the eddy component of the ozone trends in INTERACT O₃ and FIXED O₃. The position of the trough is farther east in FIXED O₃, while the ridge extends more towards the Drake Passage. In INTERACT O₃, the trend trough is strong and significant over the Drake Passage, but in FIXED O₃ it has the opposite sign and it is not significant. The pattern of the trend trough in INTERACT O₃, which extends into the Pacific, to the west of the time mean trough, explains the lack of an eastward shift of the ozone wave trough in this ensemble, as shown in Fig. 6g. In addition, the ridge of the trend wave is stronger in INTERACT O₃ than in FIXED O₃. These differences in the trends of the ozone fields passed to the radiation scheme in the two ensembles translate into differences in temperature trends between them. Similarly

to the trend in ozone, the eddy component of the temperature trend exhibits a wave one structure which is shifted eastward in FIXED O₃ compared to INTERACT O₃, albeit less than in the case of ozone (Fig. 8c, d). In agreement with the stronger ozone trend ridge in INTERACT O₃, the temperature trend ridge is also stronger than in FIXED O₃, with the latter not being statistically significant. The eastward displacement of the temperature trend pattern in FIXED O₃ shows that prescribing an
500 ozone field inconsistent with the dynamics of the model to which it is prescribed alters the spatial structure of the temperature trend. We also note that the ozone and temperature trend wave patterns are not properly collocated in FIXED O₃, as it is the case in INTERACT O₃, further highlighting the discrepancies between the prescribed ozone field and the simulated dynamics.

Even larger differences appear when the full polar temperature trends are compared (Fig. 7b, e, h, k). Despite its stronger ozone trend (Fig. 7a, d, g, j), FIXED O₃ displays a considerably weaker temperature trend over the entire Antarctic continent.
505 This is true for each of the individual ensemble members in FIXED O₃ and INTERACT O₃ (Fig. 10c and supplementary Fig. S3), indicating that the spring lower stratospheric temperature trends are significantly different in simulations with prescribed CMIP6 ozone and with interactive ozone chemistry. The trend in the SW heating rate (Fig. 10b and supplementary Fig. S4) is stronger in FIXED O₃ than in INTERACT O₃, consistent with the trends in the respective ozone fields (Fig. 7a, d, g, j). The net radiative contribution to the temperature trend is weaker in both experiments due to the partial cancelation of the SW
510 cooling and LW warming trends (not shown). Nevertheless, the stronger SW heating trend in FIXED O₃ demonstrates that the temperature trend differences between INTERACT O₃ and FIXED O₃ cannot be explained by the differences in the trends of the imposed ozone fields, nor can they be explained by the linear interpolation of the monthly CMIP6 ozone field to the model time step, as it was the case in the studies by Sassi et al. (2005) and Neely et al. (2014). If that were the case, the smaller ozone extremes resulting from the interpolation would also reduce the FIXED O₃ SW heating rate trend, not just the temperature
515 trend. Anomalies from the daily climatology of the polar cap SW heating rate (supplementary Fig. S7) show more strong positive extremes in the 1960s and 1970s and more strong negative extremes after 1990 in FIXED O₃ than in INTERACT O₃, further confirming that differences in the SW heating rate variations cannot explain the stronger temperature trend in INTERACT O₃. The key to the different temperature trends in INTERACT O₃ and FIXED O₃ lies instead in the dynamical heating rate trends (Fig. 7c, f, i, l). In INTERACT O₃, there is a strong and significant dynamical cooling trend in October over
520 the majority of the Antarctic continent, peaking and becoming significant over East Antarctica (Fig. 7f). This dynamical cooling trend becomes stronger in November (Fig. 7i) and moves away from the Pacific, while a dynamical warming trend appears south of Australia and New Zealand. The dynamical cooling trend greatly amplifies the lower stratospheric temperature trend due to the radiative heating rate in INTERACT O₃. In FIXED O₃, the October dynamical cooling trend over East Antarctica is much weaker and it is not significant, while a warming trend is visible over parts of the continent (Fig. 7c). A strong and
525 significant warming trend appears over the Ross Sea during November in FIXED O₃. Consequently, the dynamical heating rate in FIXED O₃ brings a negligible contribution to the temperature trend in October and it acts to offset the radiative cooling trend in November, explaining the considerably weaker cooling in this ensemble. The strongest dynamical cooling trend in FIXED O₃ occurs over the Atlantic sector of the Southern Ocean during October. The dynamical heating rate is closely related to the polar downwelling, which is, in turn, controlled by the wave dissipation above. Therefore, the different October and November
530 dynamical cooling trend patterns in Figs. 7c, i and f, l have two implications: 1) that wave dissipation is suppressed and 2) that

the downwelling weakens in completely different regions in the two ensembles. The cause of these spatial discrepancies is the spatial inconsistency between the prescribed ozone hole and the simulated polar vortex in FIXED O₃. The stronger temperature trend in INTERACT O₃ compared to FIXED O₃ can be explained by the different lower stratospheric dynamical responses to ozone depletion in the two ensembles.

535 The temperature trends are weaker in FIXED O₃ throughout the lower stratosphere (Fig. 9a, b). The spread among the individual ensemble members is shown in supplementary Fig. S5 and all three INTERACT O₃ members exhibit stronger cooling in the lower stratosphere during spring compared to all three FIXED O₃ members, confirming that the difference between the ensemble mean trends is significant. Figure 9c shows the seasonal evolution of the temperature trends from the ERA5 reanalysis. Like INTERACT O₃ and FIXED O₃, ERA5 exhibits the maximum cooling in November at 100 hPa. The
540 maximum cooling is stronger in ERA5 than in FIXED O₃ and it is closer in magnitude to the INTERACT O₃ cooling, but its vertical extent, as well as its duration, are reduced compared to INTERACT O₃. Figure 10c shows the November 100 hPa temperature trend for the individual members of INTERACT O₃ and FIXED O₃, as well as the trends from the ERA5 reanalysis and the IGRA radiosonde observations. As the IGRA temperature data contains only one station located south of 80°S, the temperature trend in Fig. 10c is given for 65°S-80°S, in order not to bias the IGRA trend towards the lower latitudes.
545 The trends for the entire polar cap can be compared in Figs. 9 and S5. Despite considerable spread among the individual ensemble members, all INTERACT O₃ members exhibit stronger temperature trends compared to the FIXED O₃ members. This contrasts the trends in ozone (Fig. 10a) and SW heating rate (Fig. 10b), which are stronger in FIXED O₃, in agreement with Figs. 7 and S4. The lack of spread in the SW heating rate trend among the FIXED O₃ members seen in Fig. 10b is a consequence of imposing the same ozone field in each of these members. The ERA5 and IGRA temperature trends fall in the
550 lower end of the INTERACT O₃ trend range, but are stronger than the trends in all of the FIXED O₃ members (Fig. 10c). The apparent disagreement between the weaker ozone and SW heating rate trends (Fig. 10a, b) and the stronger temperature trend (Fig. 10c) in INTERACT O₃ compared to FIXED O₃ can be explained by the dynamical cooling trend present in the first ensemble (Fig. 13e). Comparing the spring lower stratospheric temperature trends in INTERACT O₃ and FIXED O₃ with trends from the ERA5 reanalysis and from the observations shows that FIXED O₃ tends to underestimate the ozone-induced
555 cooling, while INTERACT O₃ tends to overestimate it, although individual ensemble members can simulate trends that are close to those observed.

The lack of observations in the middle and upper stratosphere, particularly before the satellite era, casts doubt on the reliability of the ERA5 temperature trends at these levels (Fig 9c). The very strong cooling seen between April and September above 20 hPa is likely spurious. A significant warming trend can be seen between 50 hPa and 10 hPa above the ozone hole during
560 November and December, in agreement with the FOCI simulations. This warming is weaker in FIXED O₃ and ERA5 than in INTERACT O₃. As shown in Sect. 3, this warming is attributed to changes in the strength of the BDC. Its different magnitude between INTERACT O₃ and FIXED O₃ thus points to the role played by the dynamics in setting the different responses to ozone depletion in the two model configurations. In contrast, the magnitude of the cooling at the stratopause levels in winter and fall is similar between INTERACT O₃ and FIXED O₃, as this cooling is a purely radiative effect of ozone loss and increase
565 in GHG (Sect. 3).

4.2.2 Zonal winds

The magnitude of the stratospheric circumpolar westerly winds trends in INTERACT O₃ and FIXED O₃ is consistent with the magnitude of the temperature trends. A stronger lower stratosphere cooling in INTERACT O₃ implies a more pronounced enhancement of the meridional temperature gradient and hence a stronger acceleration of the westerly winds (Fig. 9d, e). All
570 INTERACT O₃ members simulate a stronger acceleration of the stratospheric westerlies compared to all FIXED O₃ members (Figs. 10d and S6), confirming that the trends are significantly different between the two ensembles. Similar to the temperature trends, the magnitude of the maximum stratospheric westerlies acceleration in ERA5 lies between that in the INTERACT O₃ and the FIXED O₃ ensemble means (Figs. 9d, e, f). However, unlike the temperature trends, the ERA5 wind trend falls within the range of the FIXED O₃ trends and is smaller than all the INTERACT O₃ trends (Fig. 10d). The zonal wind trend in
575 INTERACT O₃ is not only stronger, but it also occurs about half a month earlier than in FIXED O₃ and ERA5, from the end of September onwards. Although there are pronounced differences between the ERA5 and both the INTERACT O₃ and the FIXED O₃ upper stratospheric wind trends, the reliability of the ERA5 trends is questionable due to a lack of observations at these levels.

The timing of the downward propagation of the zonal wind trends to the troposphere also differs between the two ensembles.
580 Figure 11 shows the seasonal cycle of the 850 hPa zonal wind trends as a function of latitude. A significant poleward intensification of the tropospheric westerlies can be seen from late November through January in INTERACT O₃, accompanied by a deceleration on the equatorward side. In contrast, the westerly winds in FIXED O₃ exhibit significant trends on both flanks only starting in late December and the trends remain significant throughout February. The timing of the ERA5 850 hPa westerlies strengthening agrees better with FIXED O₃, although there is a large number of days with insignificant trends between December
585 ber and February (Fig. 11e). The weakening of the westerlies on their equatorward side is not significant in the zonal mean in ERA5. Figure 11 also shows maps of the zonal wind trends at 850 hPa averaged over December and January, the two months in which both ensembles exhibit significant trends in the troposphere. The trends are a circumpolar feature and are characterized by strengthening on the poleward side and a weakening on the equatorward side of the tropospheric jet, implying that the jet has shifted poleward in both ensembles. The maximum magnitude of the poleward strengthening is similar in INTERACT O₃
590 and FIXED O₃, but there are clear spatial differences between the two ensembles. Figure 10e shows the shift in the latitude of the zonal mean jet maximum for December and January separately. The poleward shift in the ensemble mean westerlies is significant in December for INTERACT O₃ and in both December and January for FIXED O₃, although not all ensemble members exhibit a significant shift. ERA5 exhibits a significant poleward shift of the westerlies only in January. The positive and the negative wind trends in ERA5 are less zonal than in FOCI (Fig.11f), with the positive trend reaching equatorward of
595 40°S in the Pacific sector. This could partly explain the lack of a significant equatorward weakening of the westerlies when the zonal mean trends are considered (Fig.11e), as trends of opposite sign cancel each other out in the zonal mean.

Figure 10f shows the December and January westerly wind trends for the latitude band where the trend is positive (45°S-70°S). We chose to average the winds over this latitude band as opposed to taking the trends at the latitude where the westerlies maximize because the westerlies maximum is located in the transition zone between positive and negative trends and therefore

600 exhibits weak trends that are not significant (Fig. 11). FIXED O₃ exhibits trends of comparable magnitude in both months. Although the FIXED O₃ ensemble mean trend is significant, only one member shows a significant trend in December, while two members show significant trends in January. The ensemble mean exhibits significant trends when the individual members do not because the ensemble averaging is reducing the interannual variability, which is large in the individual members. All INTERACT O₃ members exhibit a significant strengthening of the westerlies in December, but this ensemble does not show a
605 significant zonal mean trend in January. The zonal mean ERA5 westerlies strengthening is not significant in either December or January, although certain regions show significant trends, as seen in Fig. 11f.

The tropospheric westerly jet trends in INTERACT O₃ and FIXED O₃ cannot be clearly differentiated, as it is the case for the stratospheric jet. Both the poleward shift of the jet as well as its strengthening appear stronger in INTERACT O₃ in December, but the ranges of the trends given by the individual ensemble members overlap. In contrast, in January the INTERACT O₃
610 trends tend to be weaker than the FIXED O₃ trends and they are not significant, with one member showing trends in the opposite direction. However, there is a large overlap between the range of the trends in the two ensembles. The maps of the December-January averaged trends (Fig. 11b, d) show maxima of similar magnitude, albeit at different locations. Therefore, we conclude that the differences in the tropospheric westerly jet trends in INTERACT O₃ and FIXED O₃ are within the range of internal variability, in agreement with the results of Eyring et al. (2013), Seviour et al. (2017) and Son et al. (2018).

615 4.2.3 Mechanisms for the different responses to ozone depletion

To obtain a clear understanding of the dynamical mechanisms responsible for the temperature and zonal wind trend differences between INTERACT O₃ and FIXED O₃, we investigate the trends in the residual circulation and its drivers. Figure 12 shows vertical profiles of the November trend in the eddy heat flux, the divergence of the EP flux, the vertical and the meridional components of the residual circulation. Trends for October and December have additionally been examined, but are not shown.
620 The October and November dynamical heating rate trends are illustrated in supplementary Fig. S8. Figure 13 shows the spread of the November trends in these fields between the individual ensemble members. We selected the pressure levels where the trends tend to maximize. In choosing the pressure levels, we took care that the trends in the divergence of the EP flux and in the meridional residual velocity are given at a height above the trends in the vertical residual velocity, as the downward control principle (Haynes et al., 1991) states that the vertical residual velocity is driven by wave dissipation above. In the lower
625 stratosphere, we show dynamical heating and vertical meridional velocity trends at 100 hPa, where the temperature trends maximize.

We first focus on the different onset dates of the westerly wind trends. A significant positive trend can be seen in the middle and upper stratosphere in INTERACT O₃ already at the beginning of October (Fig. 9d), but it only appears in the second half of October in FIXED O₃ (Fig. 9e). There is also a significant cooling visible in the polar cap middle stratosphere at the
630 beginning of October in INTERACT O₃ (Fig. 9a). As this trend occurs above the ozone hole, it is likely the result of dynamical rather than radiative changes. At the beginning of October, the westerly velocities in the polar night jet (contours in Fig. 9d, e) are close to the critical velocity for Rossby wave propagation (Charney and Drazin, 1961). The positive trend (Fig. 9d) is enhancing the winds past this critical velocity and it inhibits wave propagation in INTERACT O₃. A significant decrease in

wave dissipation in the lower and middle stratosphere occurs in October in INTERACT O₃, but not in FIXED O₃ (not shown).

635 This October reduction in wave forcing in INTERACT O₃ is consistent with the findings of McLandress et al. (2010), who also used a CCM in their study. The reduced wave forcing has two effects: first, less easterly momentum is deposited through wave dissipation, further enhancing the westerly winds. Second, the polar cap downwelling in the lower stratosphere is weakened due to the decreased wave forcing above, leading to a significant dynamical cooling. A significant October polar cap dynamical cooling trend occurs in the lower stratosphere only in INTERACT O₃ and it is absent in FIXED O₃ (Figs. 7c, f and S8a, b).

640 The lack of a dynamical cooling trend in FIXED O₃ is explained by a prescribed ozone hole that is not consistent with the dynamics, which alters the propagation of planetary waves, as demonstrated above. The dynamical cooling in INTERACT O₃ reinforces the negative temperature trend due to the radiative effects of ozone loss and further strengthens the westerly winds via the thermal wind balance, resulting in stronger temperature and zonal wind trends compared to FIXED O₃.

In November, the polar vortex breaks down and climatological easterly winds occur in the upper and middle stratosphere

645 (contours in Fig. 9d, e). The positive zonal wind trend prolongs the life of the polar vortex, delaying its breakdown (e.g. McLandress et al., 2010) and allowing planetary waves to propagate higher into the stratosphere, as shown by the negative trend in the eddy heat flux (Fig. 12a, e). Wave dissipation is enhanced in the middle and upper stratosphere and decreased in the lower stratosphere in both FIXED O₃ and INTERACT O₃ (Fig. 12b, f), but the magnitude of the INTERACT O₃ trends is larger. As shown in Fig. 13a and b, the upper stratospheric negative trends in both the eddy heat flux and the divergence

650 of the EP flux are stronger in all the INTERACT O₃ simulations than in all the FIXED O₃ simulations. The positive EP flux divergence trends in the lower stratosphere are not as clearly separated between the two ensembles, but two of the INTERACT O₃ simulations exhibit significant trends, while none of the FIXED O₃ simulations, nor the ensemble mean do. The region of enhanced wave dissipation extends farther down in FIXED O₃, confining the region of reduced wave dissipation to the levels below 100 hPa. This has important implications for the residual circulation trends. In FIXED O₃, the negative trend in the polar

655 cap downwelling reaches all the way into the lower stratosphere (Fig. 12c). The accompanying polar cap dynamical warming trend (Figs. 7i and S8d) partly offsets the radiative cooling trend due to ozone depletion, resulting in the weaker temperature trend seen in Fig. 9b. In contrast, the polar downwelling in INTERACT O₃ strengthens only above 50 hPa and exhibits an insignificant weakening below (Fig. 12g). The meridional residual velocity follows a similar pattern, strengthening in the upper stratosphere and weakening in the lower stratosphere (Fig. 12h). There is a clear distinction between the INTERACT O₃ and

660 FIXED O₃ ensembles regarding the magnitude of the residual circulation and dynamical heating trends in the middle and upper stratosphere, with INTERACT O₃ exhibiting a stronger intensification of the residual circulation (Fig. 13c, d, e). In the lower stratosphere, only the dynamical heating trends can be separated. Two out of three INTERACT O₃ members simulate a significant cooling, while the FIXED O₃ ensemble mean simulates a significant warming, despite the fact that the warming in the individual members is not significant (Fig 13e). This warming is consistent with the enhanced polar cap downwelling

665 simulated by the FIXED O₃ simulations (Fig 13d). In contrast to the weakening of the meridional residual velocity and to the dynamical warming simulated by INTERACT O₃, this ensemble does not exhibit a weakening of the polar cap downwelling in the lower stratosphere. While this is surprising, it is possible that the zonally asymmetric nature of the polar downwelling results in trends of opposite signs canceling each other out when averaged over the polar cap. The constraints of the zonal mean

fields obtained through the transformed Eulerian mean framework does not allow us to investigate this issue. Nevertheless, the dynamical changes in the lower stratosphere drive a dynamical cooling trend over the polar cap (Figs. 7l, 13e and S8c) that, as in October, adds to the radiative cooling trend due to ozone depletion to produce a stronger negative temperature trend in INTERACT O₃. The dynamical warming in the middle and upper polar stratosphere is also stronger in INTERACT O₃, explaining the stronger warming trend in Fig. 9a.

The residual circulation in the lower stratosphere thus exhibits a different response to the formation of the ozone hole in FIXED O₃ compared to INTERACT O₃. These different residual circulation changes are the consequence of the fact that the prescribed ozone hole is not consistent with the simulated dynamics. They are at the core of the stratospheric temperature and westerly winds differences between the two ensembles, as they drive the dynamical heating contribution to the temperature changes.

4.3 Effects on the SAM timescale

Dennison et al. (2015) showed that ozone depletion increases the persistence of the SAM in the stratosphere. This raises the question of whether prescribing the CMIP6 ozone affects the impact of the ozone hole on the SAM persistence. Figure 14 shows the seasonal evolution of the ensemble mean SAM timescale for INTERACT O₃ and FIXED O₃. The SAM timescale was first computed for the individual ensemble members and then averaged to obtain the ensemble means. While both INTERACT O₃ and FIXED O₃ capture the peak SAM persistence in austral spring and summer (Gerber et al., 2008, 2010), there are marked differences between the timescales in the two ensembles. The middle stratosphere SAM is more persistent in INTERACT O₃ between August and January, bringing the amplitude and the seasonal structure of the SAM timescale in INTERACT O₃ closer to that exhibited in reanalyses (compare Fig. 14 with Fig. 8b in the study by Gerber et al., 2010). In contrast, FIXED O₃ is characterized by a more vertical structure of the maximum persistence, focused in December, and, overall, by a shorter timescale. The inconsistent evolution of the ozone hole and the polar vortex in FIXED O₃ dampens the dynamical response to ozone depletion and reduces the SAM timescale. At the same time, the chemical-dynamical feedbacks present only in INTERACT O₃ reinforce the ozone-induced anomalies and lead to more persistent polar vortex anomalies, reflected in the longer SAM timescale in this ensemble. In a parallel study conducted with a different CCM by Haase et al. (2020), an ensemble of experiments with prescribed daily zonally asymmetric ozone consistent with the dynamics still exhibits shorter SAM timescales compared to the interactive chemistry experiment. This highlights the role of the feedbacks with the ozone chemistry in prolonging the SAM persistence. The same study additionally shows that the effect of zonal asymmetries in ozone is also to enhance the SAM timescale.

In the troposphere, both INTERACT O₃ and FIXED O₃ overestimate the SAM timescale and exhibit a peak persistence that is too broad when compared to the SAM timescale derived from reanalyses by Gerber et al. (2010) or Simpson et al. (2011). This is a common problem of climate models reported by Gerber et al. (2008) for the CMIP3 models and by Gerber et al. (2010) for CCMs and it appears to persist in the current generation of climate models. Simpson et al. (2011) attempted to identify the sources of the exaggerated tropospheric SAM persistence and found that the stratospheric SAM persistence contributes about half of the bias, while the other half is of tropospheric origin. The authors cite an equatorward-biased position of the

705 tropospheric jet as a possible reason for the tropospheric contribution to the overestimation of the SAM timescale. This also holds true in our model, since the tropospheric jet in FOCI is located closer to the equator compared to observations, as it is common in climate models (Swart and Fyfe, 2012). Overall, the use of interactive chemistry improves the representation of the stratospheric SAM timescale in FOCI, but the tropospheric issues common to climate models still remain.

5 Discussion and conclusion

710 The ocean-atmosphere coupled climate model FOCI was used in this study to 1) separate the effects of ozone depletion on the SH temperature and dynamics from those arising from increasing concentrations of GHG and 2) compare these effects between an ensemble of simulations where the CMIP6 ozone field is prescribed and an ensemble of simulations that use interactive chemistry. We found the following:

- 715 – The formation of the Antarctic ozone hole is the primary driver of the dynamical changes in the atmosphere that occurred in the SH spring and summer during the last decades. These changes comprise of an acceleration of the polar night jet, which propagated to the surface, where the surface westerlies shifted poleward and the SAM shifted toward its high index polarity.
- The increase in anthropogenic GHG partly offset the November polar night jet response to ozone depletion in the stratosphere. At the surface, it resulted in a similar response of the westerlies and of the SAM, but this response was much weaker compared to that driven by ozone loss and it is generally not statistically significant.
- 720 – Ozone depletion drove an intensification of the SH BDC in the middle stratosphere in November and in the lower stratosphere in December. In contrast, a decrease in wave dissipation driven by ozone loss led to the weakening of the residual circulation in the lower stratosphere in November.
- 725 – The CMIP6 ozone field is not consistent with the dynamics simulated by FOCI and the ozone hole is not collocated with the polar vortex. Consequently, the austral spring zonal wavenumber one is weaker in FIXED O₃ and shifted eastwards compared to INTERACT O₃. The austral spring climatological polar night jet is weaker in FIXED O₃ than in INTERACT O₃.
- The dynamical response to ozone depletion enhanced the radiatively-driven austral spring lower stratospheric cooling. A novel result of this study is that this effect only occurs in INTERACT O₃ and it is suppressed in FIXED O₃. Furthermore, the November lower stratosphere was dynamically warmed in FIXED O₃, which partly offset the radiative cooling effect of ozone depletion.
- 730 – Prescribing the CMIP6 ozone field, which is not consistent with the dynamics in FOCI, alters the propagation of planetary waves from the troposphere and changes the location of suppressed wave breaking induced by the ozone hole.

- The ozone-induced austral spring polar cap cooling in the lower stratosphere is weaker in FIXED O₃ than in INTERACT O₃. The cooling trends estimated from the IGRA radiosonde observations and from the ERA5 reanalysis are stronger than those obtained from the FIXED O₃ simulations and fall at the lower end of the range of trends simulated by INTERACT O₃.
- The acceleration of the stratospheric jet in response to ozone depletion is also weaker in FIXED O₃ than in INTERACT O₃ and it agrees better with the estimate from the ERA5 reanalysis. In contrast, the tropospheric jet trend differences between FIXED O₃ and INTERACT O₃ fall within the range of internal variability.
- The persistence of the SAM is reduced in FIXED O₃ due to the dynamically-inconsistent prescribed ozone field, which represents another new result.

The temperature and dynamical response to ozone depletion simulated by FOCI is in good agreement with previous studies. The austral spring lower stratospheric cooling is the signature of the formation of the Antarctic ozone hole, a direct radiative effect also reported by Mahlman et al. (1994); Li et al. (2008); Stolarski et al. (2010); Keeble et al. (2014); Ivy et al. (2016) and Lubis et al. (2016). The November-December warming above the ozone hole represents a dynamical response to ozone loss and is in agreement with the findings of Mahlman et al. (1994); Li et al. (2008); Stolarski et al. (2010); Keeble et al. (2014) and Ivy et al. (2016). This confirms the ability of the model to accurately capture the stratospheric temperature response to ozone depletion. The strong and significant intensification of the polar night jet in austral spring and that of the surface westerlies in austral summer simulated by FOCI as a result of Antarctic ozone loss, combined with the weak and insignificant response of the surface westerlies to the increase in GHG, bring robustness to the conclusions of previous studies (Arblaster and Meehl, 2006; McLandress et al., 2010; Polvani et al., 2011; Previdi and Polvani, 2014; World Meteorological Organization, 2018) that ozone depletion is the main driver of SH stratospheric and tropospheric dynamical changes over the later part of the twentieth century. This is likely to change in the twenty first century, as even higher GHG levels will increase the GHG impact on the atmospheric circulation, while the ban on CFCs emissions following the Montreal protocol is expected to result in a recovery of the ozone hole, driving circulation changes in the opposite direction to those that occurred over the historical period (Perlwitz et al., 2008; Son et al., 2008; McLandress et al., 2010; Eyring et al., 2013).

The strengthening of the westerly winds in response to ozone depletion delayed the breakdown of the polar vortex, which allowed planetary waves to propagate higher into the stratosphere in November and for a longer period of time in December. This resulted in stronger wave dissipation in the upper stratosphere in November and in the middle stratosphere in December, leading to the concomitant intensification of the residual circulation, in agreement with the findings of previous studies that used CCMs (Li et al., 2008; McLandress et al., 2010; Li et al., 2010; Keeble et al., 2014; Oberländer-Hayn et al., 2015; Polvani et al., 2018; Abalos et al., 2019). A new result of this study is that the intensification of the residual circulation is weaker when the CMIP6 ozone field is prescribed and, furthermore, it extends farther down in the lower stratosphere in November. FIXED O₃ is not able to reproduce the November lower stratosphere residual circulation weakening found in INTERACT O₃ in agreement with other CCMs (Li et al., 2008; McLandress et al., 2010; Lubis et al., 2016). This is an essential aspect in explaining the weaker lower stratospheric cooling in response to ozone depletion in FIXED O₃. The enhanced lower stratospheric polar

cap downwelling results in dynamical warming, which reduces the radiative cooling due to ozone loss in November. The consequence is that FIXED O₃ exhibits a weaker spring lower stratospheric cooling compared to INTERACT O₃.

The performance of simulations prescribing the CMIP6 ozone field was tested here for the first time against simulations using the same model, but in the version that includes interactive ozone chemistry. We found significant differences in the response of the stratospheric temperature and dynamics to ozone depletion in INTERACT O₃ and FIXED O₃, by comparing the spread of the individual ensemble member trends. Each ensemble member represents one realization of the impacts of ozone depletion using the two methods of imposing ozone changes. Their spread gives an estimate of the range of trends that can be expected from each ensemble, taking into account the internal variability in the model. The caveat of this approach is that we are restricted to only three simulations per ensemble, due to the large computational costs of such simulations. In contrast to the trends in the stratospheric westerly jet, the difference in the tropospheric jet trends between FIXED O₃ and INTERACT O₃ falls within the internal variability of the model.

Several factors can potentially explain the differences in the ozone-induced stratospheric temperature and circulation trends between INTERACT O₃ and FIXED O₃. 1) The CMIP6 and FOCI ozone fields exhibit different climatologies, as discussed in Sect. 4.1. Neither the climatological CMIP6 ozone hole, nor its variability are consistent with FOCI's dynamics. The fact that the prescribed ozone hole is displaced in relation to the simulated polar vortex alters the propagation of planetary waves from the troposphere to the stratosphere and therefore leads to changes in the dynamical response to ozone depletion. This results in different dynamical heating rate trends in FIXED O₃ and INTERACT O₃. 2) The CMIP6 and FOCI ozone fields exhibit different trends. The austral spring polar cap ozone and, consequently, the SW heating rate trends are stronger in FIXED O₃ than in INTERACT O₃. In contrast, the temperature trends are weaker in FIXED O₃ than in INTERACT O₃. We therefore conclude that the difference in the imposed ozone trends cannot explain the difference in the temperature trends. 3) The CMIP6 ozone field is interpolated from monthly values to the model time step and the studies of Sassi et al. (2005) and Neely et al. (2014) showed that this can lead to lower temperature trends when monthly ozone fields are prescribed. In this case, the SW heating rate trend would also be weaker in FIXED O₃ than in INTERACT O₃. However, the FIXED O₃ SW heating rate trend is stronger in our study, in line with the stronger ozone trend. Therefore, the monthly resolution of the prescribed CMIP6 ozone field cannot explain the weaker temperature trend in FIXED O₃. 4) Feedbacks between ozone, radiation and dynamics cannot occur in FIXED O₃. In a recent study with a different model, Haase et al. (2020) used the daily three-dimensional ozone from the interactive chemistry version and prescribed it to the version without interactive chemistry. Despite the fact that the ozone and SW heating rates were the same in their two ensembles, they still found differences between the SH polar cap lower stratospheric temperature and dynamical heating rate trends and attributed these differences to the missing ozone-related feedbacks when ozone is prescribed. These ozone-radiative-dynamical feedbacks are also missing in our FIXED O₃ ensemble and might therefore contribute to the differences in the stratospheric temperature and dynamics trends between FIXED O₃ and INTERACT O₃.

Although the results presented here were obtained using a single model, FOCI, they suggest that prescribing the CMIP6 ozone field leads to weaker simulated effects of ozone depletion in the Southern Hemisphere stratosphere compared to computing the ozone chemistry interactively. This is because the features of the prescribed ozone field are likely to differ in position

and variability from the simulated dynamics, particularly in models that were not involved in the generation of the CMIP6 ozone field. While the effects of prescribing the CMIP6 ozone field on the tropospheric westerly jet cannot be distinguished from internal variability in the current study, they might get more important in the twenty-first century when ozone recovery occurs.

805 *Data availability.* The model data used in this study can be found at <https://zenodo.org/record/3931507>. The CMIP6 ozone field prescribed to the simulations that do not calculate the ozone chemistry interactively is publically available at <http://blogs.reading.ac.uk/ccmi/forcing-databases-in-support-of-cmip6/>. The IGRA radiosonde observations are publically available at <https://www1.ncdc.noaa.gov/pub/data/igra/>. The ERA5 dataset is available for public use at <https://cds.climate.copernicus.eu#!/search?text=ERA5>.

Author contributions. II, KM and AB designed the study and the experimental set up. SW, II and JH carried out the model simulations. II
810 carried out the analysis and all authors discussed the results. II wrote the manuscript with contributions from all co-authors.

Competing interests. The authors declare that they have no conflict of interest.

Acknowledgements. This study was funded by the German Federal Ministry of Education and Research (Bundesministerium für Bildung und Forschung - BMBF) through the SPACES-II CASISAC project, grant number 03F0796A. The model simulations were performed with resources provided by the North-German Supercomputing Alliance (HLRN). We thank Isla Simpson for her help in the calculation of the
815 Southern Annular Mode timescale.

References

- Abalos, M., Polvani, L., Calvo, N., Kinnison, D., Ploeger, F., Randel, W., and Solomon, S.: New Insights on the Impact of Ozone-Depleting Substances on the Brewer-Dobson Circulation, *Journal of Geophysical Research: Atmospheres*, 124, 2435–2451, <https://doi.org/10.1029/2018JD029301>, 2019.
- 820 Andrews, D. G., Holton, J. R., and Leovy, C. B.: *Middle Atmosphere Dynamics*, vol. 40 of *International Geophysics Series*, Academic Press, 1987.
- Arblaster, J. M. and Meehl, G. A.: Contributions of External Forcings to Southern Annular Mode Trends, *Journal of Climate*, 19, 2896–2905, <https://doi.org/10.1175/JCLI3774.1>, 2006.
- Biastoch, A., Böning, C. W., Getzlaff, J., Molines, J.-M., and Madec, G.: Causes of Interannual–Decadal Variability in the Meridional Over-
825 turning Circulation of the Midlatitude North Atlantic Ocean, *Journal of Climate*, 21, 6599–6615, <https://doi.org/10.1175/2008JCLI2404.1>, 2008.
- Biastoch, A., Böning, C. W., Schwarzkopf, F. U., and Lutjeharms, J. R. E.: Increase in Agulhas leakage due to poleward shift of Southern Hemisphere westerlies, *Nature*, 462, 495–498, <https://doi.org/10.1038/nature08519>, 2009.
- Biastoch, A., Durgadoo, J. V., Morrison, A. K., van Sebille, E., Weijer, W., and Griffies, S. M.: Atlantic multi-decadal oscillation covaries
830 with Agulhas leakage, *Nature Communications*, 6, 10 082, <https://doi.org/10.1038/ncomms10082>, 2015.
- Brovkin, V., Raddatz, T., Reick, C. H., Claussen, M., and Gayler, V.: Global biogeophysical interactions between forest and climate, *Geophysical Research Letters*, 36, <https://doi.org/10.1029/2009GL037543>, 2009.
- Cai, W.: Antarctic ozone depletion causes an intensification of the Southern Ocean super-gyre circulation, *Geophysical Research Letters*, 33, <https://doi.org/10.1029/2005GL024911>, 2006.
- 835 Charney, J. G. and Drazin, P. G.: Propagation of planetary-scale disturbances from the lower into the upper atmosphere, *Journal of Geophysical Research (1896-1977)*, 66, 83–109, 1961.
- Chiodo, G., Polvani, L. M., Marsh, D. R., Stenke, A., Ball, W., Rozanov, E., Muthers, S., and Tsigaridis, K.: The Response of the Ozone Layer to Quadrupled CO₂ Concentrations, *Journal of Climate*, 31, 3893 – 3907, <https://doi.org/10.1175/JCLI-D-17-0492.1>, 2018.
- Crook, J. A., Gillett, N. P., and Keeley, S. P. E.: Sensitivity of Southern Hemisphere climate to zonal asymmetry in ozone, *Geophysical
840 Research Letters*, 35, <https://doi.org/10.1029/2007GL032698>, 2008.
- Dennison, F., McDonald, A., and Morgenstern, O.: The evolution of zonally asymmetric austral ozone in a chemistry–climate model, *Atmospheric Chemistry and Physics*, 17, 14 075–14 084, <https://doi.org/10.5194/acp-17-14075-2017>, 2017.
- Dennison, F. W., McDonald, A. J., and Morgenstern, O.: The effect of ozone depletion on the Southern Annular Mode and stratosphere-troposphere coupling, *Journal of Geophysical Research: Atmospheres*, 120, 6305–6312, <https://doi.org/10.1002/2014JD023009>, 2015.
- 845 Dietmüller, S., Ponater, M., and Sausen, R.: Interactive ozone induces a negative feedback in CO₂-driven climate change simulations, *Journal of Geophysical Research: Atmospheres*, 119, 1796–1805, <https://doi.org/10.1002/2013JD020575>, 2014.
- Durgadoo, J. V., Loveday, B. R., Reason, C. J. C., Penven, P., and Biastoch, A.: Agulhas Leakage Predominantly Responds to the Southern Hemisphere Westerlies, *Journal of Physical Oceanography*, 43, 2113–2131, <https://doi.org/10.1175/JPO-D-13-047.1>, 2013.
- Durre, I., Vose, R. S., and Wuertz, D. B.: Overview of the Integrated Global Radiosonde Archive, *Journal of Climate*, 19, 53 – 68,
850 <https://doi.org/10.1175/JCLI3594.1>, 2006.
- Eyring, V., Arblaster, J. M., Cionni, I., Sedláček, J., Perlwitz, J., Young, P. J., Bekki, S., Bergmann, D., Cameron-Smith, P., Collins, W. J., Faluvegi, G., Gottschaldt, K.-D., Horowitz, L. W., Kinnison, D. E., Lamarque, J.-F., Marsh, D. R., Saint-Martin, D., Shindell, D. T., Sudo,

- K., Szopa, S., and Watanabe, S.: Long-term ozone changes and associated climate impacts in CMIP5 simulations, *Journal of Geophysical Research: Atmospheres*, 118, 5029–5060, <https://doi.org/10.1002/jgrd.50316>, 2013.
- 855 Fichefet, T. and Maqueda, M. A. M.: Sensitivity of a global sea ice model to the treatment of ice thermodynamics and dynamics, *Journal of Geophysical Research: Oceans*, 102, 12 609–12 646, <https://doi.org/10.1029/97JC00480>, 1997.
- Fogt, R. L., Perlwitz, J., Monaghan, A. J., Bromwich, D. H., Jones, J. M., and Marshall, G. J.: Historical SAM Variability. Part II: Twentieth-Century Variability and Trends from Reconstructions, Observations, and the IPCC AR4 Models, *Journal of Climate*, 22, 5346–5365, <https://doi.org/10.1175/2009JCLI2786.1>, 2009.
- 860 Fyfe, J. C., Boer, G. J., and Flato, G. M.: The Arctic and Antarctic oscillations and their projected changes under global warming, *Geophysical Research Letters*, 26, 1601–1604, <https://doi.org/10.1029/1999GL900317>, 1999.
- Gabriel, A., Peters, D., Kirchner, I., and Graf, H.-F.: Effect of zonally asymmetric ozone on stratospheric temperature and planetary wave propagation, *Geophysical Research Letters*, 34, <https://doi.org/10.1029/2006GL028998>, 2007.
- Garfinkel, C. I., Waugh, D. W., and Polvani, L. M.: Recent Hadley cell expansion: The role of internal atmospheric variability in reconciling
865 modeled and observed trends, *Geophysical Research Letters*, 42, 10,824–10,831, <https://doi.org/10.1002/2015GL066942>, 2015.
- Gerber, E. P., Polvani, L. M., and Ancukiewicz, D.: Annular mode time scales in the Intergovernmental Panel on Climate Change Fourth Assessment Report models, *Geophysical Research Letters*, 35, <https://doi.org/10.1029/2008GL035712>, 2008.
- Gerber, E. P., Baldwin, M. P., Akiyoshi, H., Austin, J., Bekki, S., Braesicke, P., Butchart, N., Chipperfield, M., Dameris, M., Dhomse, S., Frith, S. M., Garcia, R. R., Garny, H., Gettelman, A., Hardiman, S. C., Karpechko, A., Marchand, M., Morgenstern, O., Nielsen,
870 J. E., Pawson, S., Peter, T., Plummer, D. A., Pyle, J. A., Rozanov, E., Scinocca, J. F., Shepherd, T. G., and Smale, D.: Stratosphere-troposphere coupling and annular mode variability in chemistry-climate models, *Journal of Geophysical Research: Atmospheres*, 115, <https://doi.org/10.1029/2009JD013770>, 2010.
- Gillett, N. P. and Thompson, D. W. J.: Simulation of Recent Southern Hemisphere Climate Change, *Science*, 302, 273–275, <https://doi.org/10.1126/science.1087440>, 2003.
- 875 Gillett, N. P., Scinocca, J. F., Plummer, D. A., and Reader, M. C.: Sensitivity of climate to dynamically-consistent zonal asymmetries in ozone, *Geophysical Research Letters*, 36, <https://doi.org/10.1029/2009GL037246>, 2009.
- Grise, K. M., Polvani, L. M., Tselioudis, G., Wu, Y., and Zelinka, M. D.: The ozone hole indirect effect: Cloud-radiative anomalies accompanying the poleward shift of the eddy-driven jet in the Southern Hemisphere, *Geophysical Research Letters*, 40, 3688–3692, <https://doi.org/10.1002/grl.50675>, 2013.
- 880 Grytsai, A. V., Evtushevsky, O. M., Agapitov, O. V., Klekociuk, A. R., and Milinevsky, G. P.: Structure and long-term change in the zonal asymmetry in Antarctic total ozone during spring, *Annales Geophysicae*, 25, 361–374, 2007.
- Haase, S. and Matthes, K.: The importance of interactive chemistry for stratosphere–troposphere coupling, *Atmospheric Chemistry and Physics*, 19, 3417–3432, <https://doi.org/10.5194/acp-19-3417-2019>, 2019.
- Haase, S., Fricke, J., Kruschke, T., Wahl, S., and Matthes, K.: Sensitivity of the Southern Hemisphere circumpolar jet response
885 to Antarctic ozone depletion: prescribed versus interactive chemistry, *Atmospheric Chemistry and Physics*, 20, 14 043–14 061, <https://doi.org/10.5194/acp-20-14043-2020>, 2020.
- Haigh, J. D. and Pyle, J. A.: Ozone perturbation experiments in a two-dimensional circulation model, *Quarterly Journal of the Royal Meteorological Society*, 108, 551–574, <https://doi.org/https://doi.org/10.1002/qj.49710845705>, 1982.
- Hardiman, S. C., Andrews, M. B., Andrews, T., Bushell, A. C., Dunstone, N. J., Dyson, H., Jones, G. S., Knight, J. R., Neisinger,
890 E., O'Connor, F. M., Ridley, J. K., Ringer, M. A., Scaife, A. A., Senior, C. A., and Wood, R. A.: The Impact of Prescribed

- Ozone in Climate Projections Run With HadGEM3-GC3.1, *Journal of Advances in Modeling Earth Systems*, 11, 3443–3453, <https://doi.org/https://doi.org/10.1029/2019MS001714>, 2019.
- Haynes, P. H., McIntyre, M. E., Shepherd, T. G., Marks, C. J., and Shine, K. P.: On the “Downward Control” of Extratropical Diabatic Circulations by Eddy-Induced Mean Zonal Forces, *Journal of the Atmospheric Sciences*, 48, 651–678, [https://doi.org/10.1175/1520-0469\(1991\)048<0651:OTCOED>2.0.CO;2](https://doi.org/10.1175/1520-0469(1991)048<0651:OTCOED>2.0.CO;2), 1991.
- Hegglin, M., Kinnison, D., Lamarque, J.-F., and Plummer, D.: CCMI ozone in support of CMIP6 - version 1.0, <https://doi.org/10.22033/ESGF/input4MIPs.1115>, 2016.
- Hersbach, H., Bell, B., Berrisford, P., Hirahara, S., Horányi, A., Muñoz-Sabater, J., Nicolas, J., Peubey, C., Radu, R., Schepers, D., Simmons, A., Soci, C., Abdalla, S., Abellan, X., Balsamo, G., Bechtold, P., Biavati, G., Bidlot, J., Bonavita, M., De Chiara, G., Dahlgren, P., Dee, D., Diamantakis, M., Dragani, R., Flemming, J., Forbes, R., Fuentes, M., Geer, A., Haimberger, L., Healy, S., Hogan, R. J., Hólm, E., Janisková, M., Keeley, S., Laloyaux, P., Lopez, P., Lupu, C., Radnoti, G., de Rosnay, P., Rozum, I., Vamborg, F., Villaume, S., and Thépaut, J.-N.: The ERA5 global reanalysis, *Quarterly Journal of the Royal Meteorological Society*, 146, 1999–2049, <https://doi.org/https://doi.org/10.1002/qj.3803>, 2020.
- Ivy, D. J., Solomon, S., and Rieder, H. E.: Radiative and Dynamical Influences on Polar Stratospheric Temperature Trends, *Journal of Climate*, 29, 4927 – 4938, <https://doi.org/10.1175/JCLI-D-15-0503.1>, 2016.
- Jonsson, A. I., de Grandpré, J., Fomichev, V. I., McConnell, J. C., and Beagley, S. R.: Doubled CO₂-induced cooling in the middle atmosphere: Photochemical analysis of the ozone radiative feedback, *Journal of Geophysical Research: Atmospheres*, 109, <https://doi.org/https://doi.org/10.1029/2004JD005093>, 2004.
- Kang, S. M., Polvani, L. M., Fyfe, J. C., and Sigmond, M.: Impact of Polar Ozone Depletion on Subtropical Precipitation, *Science*, 332, 951–954, <https://doi.org/10.1126/science.1202131>, 2011.
- Keeble, J., Braesicke, P., Abraham, N. L., Roscoe, H. K., and Pyle, J. A.: The impact of polar stratospheric ozone loss on Southern Hemisphere stratospheric circulation and climate, *Atmospheric Chemistry and Physics*, 14, 13 705–13 717, <https://doi.org/10.5194/acp-14-13705-2014>, 2014.
- Keeble, J., Hassler, B., Banerjee, A., Checa-Garcia, R., Chiodo, G., Davis, S., Eyring, V., Griffiths, P. T., Morgenstern, O., Nowack, P., Zeng, G., Zhang, J., Bodeker, G., Cugnet, D., Danabasoglu, G., Deushi, M., Horowitz, L. W., Li, L., Michou, M., Mills, M. J., Nabat, P., Park, S., and Wu, T.: Evaluating stratospheric ozone and water vapor changes in CMIP6 models from 1850–2100, *Atmospheric Chemistry and Physics Discussions*, 2020, 1–68, <https://doi.org/10.5194/acp-2019-1202>, 2020.
- Keeley, S. P. E., Gillett, N. P., Thompson, D. W. J., Solomon, S., and Forster, P. M.: Is Antarctic climate most sensitive to ozone depletion in the middle or lower stratosphere?, *Geophysical Research Letters*, 34, <https://doi.org/10.1029/2007GL031238>, 2007.
- Kinnison, D. E., Brasseur, G. P., Walters, S., Garcia, R. R., Marsh, D. R., Sassi, F., Harvey, V. L., Randall, C. E., Emmons, L., Lamarque, J. F., Hess, P., Orlando, J. J., Tie, X. X., Randel, W., Pan, L. L., Gettelman, A., Granier, C., Diehl, T., Niemeier, U., and Simmons, A. J.: Sensitivity of chemical tracers to meteorological parameters in the MOZART-3 chemical transport model, *Journal of Geophysical Research: Atmospheres*, 112, <https://doi.org/10.1029/2006JD007879>, 2007.
- Kushner, P. J., Held, I. M., and Delworth, T. L.: Southern Hemisphere Atmospheric Circulation Response to Global Warming, *Journal of Climate*, 14, 2238–2249, [https://doi.org/10.1175/1520-0442\(2001\)014<0001:SHACRT>2.0.CO;2](https://doi.org/10.1175/1520-0442(2001)014<0001:SHACRT>2.0.CO;2), 2001.
- Langematz, U., Kunze, M., Krüger, K., Labitzke, K., and Roff, G. L.: Thermal and dynamical changes of the stratosphere since 1979 and their link to ozone and CO₂ changes, *Journal of Geophysical Research: Atmospheres*, 108, ACL 9–1–ACL 9–13, <https://doi.org/10.1029/2002JD002069>, 2003.

- Li, F., Austin, J., and Wilson, J.: The Strength of the Brewer-Dobson Circulation in a Changing Climate: Coupled Chemistry-Climate Model
930 Simulations, *Journal of Climate*, 21, 40–57, <https://doi.org/10.1175/2007JCLI1663.1>, 2008.
- Li, F., Newman, P. A., and Stolarski, R. S.: Relationships between the Brewer-Dobson circulation and the southern annular mode during austral summer in coupled chemistry-climate model simulations, *Journal of Geophysical Research: Atmospheres*, 115, <https://doi.org/10.1029/2009JD012876>, 2010.
- Li, F., Vikhliaev, Y. V., Newman, P. A., Pawson, S., Perlwitz, J., Waugh, D. W., and Douglass, A. R.: Impacts of Interactive Stratospheric
935 Chemistry on Antarctic and Southern Ocean Climate Change in the Goddard Earth Observing System, Version 5 (GEOS-5), *Journal of Climate*, 29, 3199–3218, <https://doi.org/10.1175/JCLI-D-15-0572.1>, 2016.
- Li, F., Newman, P., Pawson, S., and Perlwitz, J.: Effects of Greenhouse Gas Increase and Stratospheric Ozone Depletion on Stratospheric Mean Age of Air in 1960–2010, *Journal of Geophysical Research: Atmospheres*, 123, 2098–2110, <https://doi.org/10.1002/2017JD027562>, 2018.
- 940 Lin, P., Fu, Q., Solomon, S., and Wallace, J. M.: Temperature Trend Patterns in Southern Hemisphere High Latitudes: Novel Indicators of Stratospheric Change, *Journal of Climate*, 22, 6325–6341, <https://doi.org/10.1175/2009JCLI2971.1>, 2009.
- Lin, P., Paynter, D., Polvani, L., Correa, G. J. P., Ming, Y., and Ramaswamy, V.: Dependence of model-simulated response to ozone depletion on stratospheric polar vortex climatology, *Geophysical Research Letters*, 44, 6391–6398, <https://doi.org/10.1002/2017GL073862>, 2017.
- Lubis, S. W., Omrani, N.-E., Matthes, K., and Wahl, S.: Impact of the Antarctic Ozone Hole on the Vertical Coupling of the Strato-
945 sphere–Mesosphere–Lower Thermosphere System, *Journal of the Atmospheric Sciences*, 73, 2509–2528, <https://doi.org/10.1175/JAS-D-15-0189.1>, 2016.
- Madec, G. and the NEMO team: NEMO ocean engine - version 3.6, Note du Pôle de modélisation, Institut Pierre-Simon Laplace (IPSL), 2016.
- Mahlman, J. D., Umscheid, L. J., and Pinto, J. P.: Transport, Radiative, and Dynamical Effects of the Antarctic Ozone
950 Hole: A GFDL “SKYHI” Model Experiment, *Journal of the Atmospheric Sciences*, 51, 489–508, [https://doi.org/10.1175/1520-0469\(1994\)051<0489:TRADEO>2.0.CO;2](https://doi.org/10.1175/1520-0469(1994)051<0489:TRADEO>2.0.CO;2), 1994.
- Marshall, G. J.: Trends in the Southern Annular Mode from Observations and Reanalyses, *Journal of Climate*, 16, 4134–4143, [https://doi.org/10.1175/1520-0442\(2003\)016<4134:TITSAM>2.0.CO;2](https://doi.org/10.1175/1520-0442(2003)016<4134:TITSAM>2.0.CO;2), 2003.
- Marshall, G. J., Stott, P. A., Turner, J., Connolley, W. M., King, J. C., and Lachlan-Cope, T. A.: Causes of exceptional atmospheric circulation
955 changes in the Southern Hemisphere, *Geophysical Research Letters*, 31, <https://doi.org/10.1029/2004GL019952>, 2004.
- Matthes, K., Funke, B., Andersson, M. E., Barnard, L., Beer, J., Charbonneau, P., Clilverd, M. A., Dudok de Wit, T., Haberreiter, M., Hendry, A., Jackman, C. H., Kretzschmar, M., Kruschke, T., Kunze, M., Langematz, U., Marsh, D. R., Maycock, A. C., Misios, S., Rodger, C. J., Scaife, A. A., Seppälä, A., Shangguan, M., Sinnhuber, M., Tourpali, K., Usoskin, I., van de Kamp, M., Verronen, P. T., and Versick, S.: Solar forcing for CMIP6 (v3.2), *Geoscientific Model Development*, 10, 2247–2302, <https://doi.org/10.5194/gmd-10-2247-2017>, 2017.
- 960 Matthes, K., Biastoch, A., Wahl, S., Harlaß, J., Martin, T., Brücher, T., Drews, A., Ehlert, D., Getzlaff, K., Krüger, F., Rath, W., Scheinert, M., Schwarzkopf, F. U., Bayr, T., Schmidt, H., and Park, W.: The Flexible Ocean and Climate Infrastructure Version 1 (FOCI1): Mean State and Variability, *Geoscientific Model Development Discussions*, 2020, 1–53, <https://doi.org/10.5194/gmd-13-2533-2020>, 2020.
- McLandress, C. and Shepherd, T. G.: Simulated Anthropogenic Changes in the Brewer–Dobson Circulation, Including Its Extension to High Latitudes, *Journal of Climate*, 22, 1516–1540, <https://doi.org/10.1175/2008JCLI2679.1>, 2009.

- 965 McLandress, C., Jonsson, A. I., Plummer, D. A., Reader, M. C., Scinocca, J. F., and Shepherd, T. G.: Separating the Dynamical Effects of Climate Change and Ozone Depletion. Part I: Southern Hemisphere Stratosphere, *Journal of Climate*, 23, 5002–5020, <https://doi.org/10.1175/2010JCLI3586.1>, 2010.
- McLandress, C., Shepherd, T. G., Scinocca, J. F., Plummer, D. A., Sigmond, M., Jonsson, A. I., and Reader, M. C.: Separating the Dynamical Effects of Climate Change and Ozone Depletion. Part II: Southern Hemisphere Troposphere, *Journal of Climate*, 24, 1850–1868, <https://doi.org/10.1175/2010JCLI3958.1>, 2011.
- 970 Meinshausen, M., Vogel, E., Nauels, A., Lorbacher, K., Meinshausen, N., Etheridge, D. M., Fraser, P. J., Montzka, S. A., Rayner, P. J., Trudinger, C. M., Krummel, P. B., Beyerle, U., Canadell, J. G., Daniel, J. S., Enting, I. G., Law, R. M., Lunder, C. R., O’Doherty, S., Prinn, R. G., Reimann, S., Rubino, M., Velders, G. J. M., Vollmer, M. K., Wang, R. H. J., and Weiss, R.: Historical greenhouse gas concentrations for climate modelling (CMIP6), *Geoscientific Model Development*, 10, 2057–2116, [https://doi.org/10.5194/gmd-10-2057-](https://doi.org/10.5194/gmd-10-2057-2017)
- 975 2017, 2017.
- Min, S.-K. and Son, S.-W.: Multimodel attribution of the Southern Hemisphere Hadley cell widening: Major role of ozone depletion, *Journal of Geophysical Research: Atmospheres*, 118, 3007–3015, <https://doi.org/10.1002/jgrd.50232>, 2013.
- Morgenstern, O.: The Southern Annular Mode in 6th Coupled Model Intercomparison Project Models, *Journal of Geophysical Research: Atmospheres*, 126, e2020JD034 161, <https://doi.org/https://doi.org/10.1029/2020JD034161>, 2021.
- 980 Neely, R. R., Marsh, D. R., Smith, K. L., Davis, S. M., and Polvani, L. M.: Biases in southern hemisphere climate trends induced by coarsely specifying the temporal resolution of stratospheric ozone, *Geophysical Research Letters*, 41, 8602–8610, <https://doi.org/10.1002/2014GL061627>, 2014.
- North, G. R., Bell, T. L., Cahalan, R. F., and Moeng, F. J.: Sampling Errors in the Estimation of Empirical Orthogonal Functions, *Monthly Weather Review*, 110, 699–706, [https://doi.org/10.1175/1520-0493\(1982\)110<0699:SEITEO>2.0.CO;2](https://doi.org/10.1175/1520-0493(1982)110<0699:SEITEO>2.0.CO;2), 1982.
- 985 Nowack, P. J., Luke Abraham, N., Maycock, A. C., Braesicke, P., Gregory, J. M., Joshi, M. M., Osprey, A., and Pyle, J. A.: A large ozone-circulation feedback and its implications for global warming assessments, *Nature Climate Change*, 5, 41–45, <https://doi.org/10.1038/nclimate2451>, 2015.
- Oberländer-Hayn, S., Meul, S., Langematz, U., Abalichin, J., and Haenel, F.: A chemistry-climate model study of past changes in the Brewer-Dobson circulation, *Journal of Geophysical Research: Atmospheres*, 120, 6742–6757, <https://doi.org/10.1002/2014JD022843>, 2015.
- 990 Oehrlein, J., Chiodo, G., and Polvani, L. M.: The effect of interactive ozone chemistry on weak and strong stratospheric polar vortex events, *Atmospheric Chemistry and Physics*, 20, 10 531–10 544, <https://doi.org/10.5194/acp-20-10531-2020>, 2020.
- Orr, A., Bracegirdle, T. J., Hosking, J. S., Jung, T., Haigh, J. D., Phillips, T., and Feng, W.: Possible Dynamical Mechanisms for Southern Hemisphere Climate Change due to the Ozone Hole, *Journal of the Atmospheric Sciences*, 69, 2917–2932, <https://doi.org/10.1175/JAS-D-11-0210.1>, 2012.
- 995 Orr, A., Bracegirdle, T. J., Hosking, J. S., Feng, W., Roscoe, H. K., and Haigh, J. D.: Strong Dynamical Modulation of the Cooling of the Polar Stratosphere Associated with the Antarctic Ozone Hole, *Journal of Climate*, 26, 662–668, <https://doi.org/10.1175/JCLI-D-12-00480.1>, 2013.
- Perlwitz, J., Pawson, S., Fogt, R. L., Nielsen, J. E., and Neff, W. D.: Impact of stratospheric ozone hole recovery on Antarctic climate, *Geophysical Research Letters*, 35, 10.1029/2008GL033 317, 2008.
- 1000 Peters, D. H. W., Schneidereit, A., Bügelmayer, M., Zülicke, C., and Kirchner, I.: Atmospheric Circulation Changes in Response to an Observed Stratospheric Zonal Ozone Anomaly, *Atmosphere-Ocean*, 53, 74–88, <https://doi.org/10.1080/07055900.2013.878833>, 2015.

- Polvani, L. M., Waugh, D. W., Correa, G. J. P., and Son, S.-W.: Stratospheric Ozone Depletion: The Main Driver of Twentieth-Century Atmospheric Circulation Changes in the Southern Hemisphere, *Journal of Climate*, 24, 795–812, <https://doi.org/10.1175/2010JCLI3772.1>, 2011.
- 1005 Polvani, L. M., Abalos, M., Garcia, R., Kinnison, D., and Randel, W. J.: Significant Weakening of Brewer-Dobson Circulation Trends Over the 21st Century as a Consequence of the Montreal Protocol, *Geophysical Research Letters*, 45, 401–409, <https://doi.org/10.1002/2017GL075345>, 2018.
- Previdi, M. and Polvani, L. M.: Climate system response to stratospheric ozone depletion and recovery, *Quarterly Journal of the Royal Meteorological Society*, 140, 2401–2419, <https://doi.org/10.1002/qj.2330>, 2014.
- 1010 Randel, W. J. and Wu, F.: Cooling of the Arctic and Antarctic Polar Stratospheres due to Ozone Depletion, *Journal of Climate*, 12, 1467–1479, [https://doi.org/10.1175/1520-0442\(1999\)012<1467:COTAAA>2.0.CO;2](https://doi.org/10.1175/1520-0442(1999)012<1467:COTAAA>2.0.CO;2), 1999.
- Randel, W. J., Shine, K. P., Austin, J., Barnett, J., Claud, C., Gillett, N. P., Keckhut, P., Langematz, U., Lin, R., Long, C., Mears, C., Miller, A., Nash, J., Seidel, D. J., Thompson, D. W. J., Wu, F., and Yoden, S.: An update of observed stratospheric temperature trends, *Journal of Geophysical Research: Atmospheres*, 114, <https://doi.org/10.1029/2008JD010421>, 2009.
- 1015 Reick, C. H., Raddatz, T., Brovkin, V., and Gayler, V.: Representation of natural and anthropogenic land cover change in MPI-ESM, *Journal of Advances in Modeling Earth Systems*, 5, 459–482, <https://doi.org/10.1002/jame.20022>, 2013.
- Sassi, F., Boville, B. A., Kinnison, D., and Garcia, R. R.: The effects of interactive ozone chemistry on simulations of the middle atmosphere, *Geophysical Research Letters*, 32, <https://doi.org/10.1029/2004GL022131>, 2005.
- Schultz, M. G., Stadtler, S., Schröder, S., Taraborrelli, D., Franco, B., Krefting, J., Henrot, A., Ferrachat, S., Lohmann, U., Neubauer, D., Siegenthaler-Le Drian, C., Wahl, S., Kokkola, H., Kühn, T., Rast, S., Schmidt, H., Stier, P., Kinnison, D., Tyndall, G. S., Orlando, J. J., and Wespes, C.: The chemistry-climate model ECHAM6.3-HAM2.3-MOZ1.0, *Geoscientific Model Development*, 11, 1695–1723, <https://doi.org/10.5194/gmd-11-1695-2018>, 2018.
- 1020 Schwarzkopf, F. U., Biastoch, A., Böning, C. W., Chanut, J., Durgadoo, J. V., Getzlaff, K., Harlaß, J., Rieck, J. K., Roth, C., Scheinert, M. M., and Schubert, R.: The INALT family – a set of high-resolution nests for the Agulhas Current system within global NEMO ocean/sea-ice configurations, *Geoscientific Model Development*, 12, 3329–3355, <https://doi.org/10.5194/gmd-12-3329-2019>, 2019.
- 1025 Seviour, W. J. M., Waugh, D. W., Polvani, L. M., Correa, G. J. P., and Garfinkel, C. I.: Robustness of the Simulated Tropospheric Response to Ozone Depletion, *Journal of Climate*, 30, 2577 – 2585, <https://doi.org/10.1175/JCLI-D-16-0817.1>, 2017.
- Simpson, I. R., Hitchcock, P., Shepherd, T. G., and Scinocca, J. F.: Stratospheric variability and tropospheric annular-mode timescales, *Geophysical Research Letters*, 38, <https://doi.org/10.1029/2011GL049304>, 2011.
- 1030 Solomon, S.: Stratospheric ozone depletion: A review of concepts and history, *Reviews of Geophysics*, 37, 275–316, <https://doi.org/10.1029/1999RG900008>, 1999.
- Solomon, S., Kinnison, D., Bandoro, J., and Garcia, R.: Simulation of polar ozone depletion: An update, *Journal of Geophysical Research: Atmospheres*, 120, 7958–7974, <https://doi.org/10.1002/2015JD023365>, 2015.
- Son, S.-W., Polvani, L. M., Waugh, D. W., Akiyoshi, H., Garcia, R., Kinnison, D., Pawson, S., Rozanov, E., Shepherd, T. G., and Shibata, K.: The Impact of Stratospheric Ozone Recovery on the Southern Hemisphere Westerly Jet, *Science*, 320, 1486–1489, <https://doi.org/10.1126/science.1155939>, 2008.
- 1035 Son, S.-W., Polvani, L. M., Waugh, D. W., Birner, T., Akiyoshi, H., Garcia, R. R., Gettelman, A., Plummer, D. A., and Rozanov, E.: The Impact of Stratospheric Ozone Recovery on Tropopause Height Trends, *Journal of Climate*, 22, 429–445, <https://doi.org/10.1175/2008JCLI2215.1>, 2009.

- 1040 Son, S.-W., Gerber, E. P., Perlwitz, J., Polvani, L. M., Gillett, N. P., Seo, K.-H., Eyring, V., Shepherd, T. G., Waugh, D., Akiyoshi, H., Austin, J., Baumgaertner, A., Bekki, S., Braesicke, P., Brühl, C., Butchart, N., Chipperfield, M. P., Cugnet, D., Dameris, M., Dhomse, S., Frith, S., Garny, H., Garcia, R., Hardiman, S. C., Jöckel, P., Lamarque, J. F., Mancini, E., Marchand, M., Michou, M., Nakamura, T., Morgenstern, O., Pitari, G., Plummer, D. A., Pyle, J., Rozanov, E., Scinocca, J. F., Shibata, K., Smale, D., Teyssèdre, H., Tian, W., and Yamashita, Y.: Impact of stratospheric ozone on Southern Hemisphere circulation change: A multimodel assessment, *Journal of Geophysical Research: Atmospheres*, 115, <https://doi.org/10.1029/2010JD014271>, 2010.
- Son, S.-W., Han, B.-R., Garfinkel, C. I., Kim, S.-Y., Park, R., Abraham, N. L., Akiyoshi, H., Archibald, A. T., Butchart, N., Chipperfield, M. P., Dameris, M., Deushi, M., Dhomse, S. S., Hardiman, S. C., Jöckel, P., Kinnison, D., Michou, M., Morgenstern, O., O'Connor, F. M., Oman, L. D., Plummer, D. A., Pozzer, A., Revell, L. E., Rozanov, E., Stenke, A., Stone, K., Tilmes, S., Yamashita, Y., and Zeng, G.: Tropospheric jet response to Antarctic ozone depletion: An update with Chemistry-Climate Model Initiative (CCMI) models, *Environmental Research Letters*, 13, 054 024, <https://doi.org/10.1088/1748-9326/aabf21>, 2018.
- 1050 Stevens, B., Giorgetta, M., Esch, M., Mauritsen, T., Crueger, T., Rast, S., Salzmann, M., Schmidt, H., Bader, J., Block, K., Brokopf, R., Fast, I., Kinne, S., Kornblueh, L., Lohmann, U., Pincus, R., Reichler, T., and Roeckner, E.: Atmospheric component of the MPI-M Earth System Model: ECHAM6, *Journal of Advances in Modeling Earth Systems*, 5, 146–172, <https://doi.org/10.1002/jame.20015>, 2013.
- Stolarski, R. S., Douglass, A. R., Newman, P. A., Pawson, S., and Schoeberl, M. R.: Relative Contribution of Greenhouse Gases and Ozone-Depleting Substances to Temperature Trends in the Stratosphere: A Chemistry–Climate Model Study, *Journal of Climate*, 23, 28–42, <https://doi.org/10.1175/2009JCLI2955.1>, 2010.
- 1055 Swart, N. C. and Fyfe, J. C.: Observed and simulated changes in the Southern Hemisphere surface westerly wind-stress, *Geophysical Research Letters*, 39, <https://doi.org/10.1029/2012GL052810>, 2012.
- Thompson, D. W. J. and Solomon, S.: Interpretation of Recent Southern Hemisphere Climate Change, *Science*, 296, 895–899, <https://doi.org/10.1126/science.1069270>, 2002.
- 1060 Thompson, D. W. J., Solomon, S., Kushner, P. J., England, M. H., Grise, K. M., and Karoly, D. J.: Signatures of the Antarctic ozone hole in Southern Hemisphere surface climate change, *Nature Geoscience*, 4, 741–749, <https://doi.org/10.1038/ngeo1296>, 2011.
- Waugh, D. W., Randel, W. J., Pawson, S., Newman, P. A., and Nash, E. R.: Persistence of the lower stratospheric polar vortices, *Journal of Geophysical Research: Atmospheres*, 104, 27 191–27 201, <https://doi.org/10.1029/1999JD900795>, 1999.
- 1065 Waugh, D. W., Oman, L., Newman, P. A., Stolarski, R. S., Pawson, S., Nielsen, J. E., and Perlwitz, J.: Effect of zonal asymmetries in stratospheric ozone on simulated Southern Hemisphere climate trends, *Geophysical Research Letters*, 36, <https://doi.org/10.1029/2009GL040419>, 2009.
- Waugh, D. W., Garfinkel, C. I., and Polvani, L. M.: Drivers of the Recent Tropical Expansion in the Southern Hemisphere: Changing SSTs or Ozone Depletion?, *Journal of Climate*, 28, 6581–6586, <https://doi.org/10.1175/JCLI-D-15-0138.1>, 2015.
- 1070 World Meteorological Organization: Scientific Assessment of Ozone Depletion: 2018, Global Ozone Research and Monitoring Project–Report No. 58, Geneva, Switzerland, 2018.
- Yang, X.-Y., Huang, R. X., and Wang, D. X.: Decadal Changes of Wind Stress over the Southern Ocean Associated with Antarctic Ozone Depletion, *Journal of Climate*, 20, 3395–3410, <https://doi.org/10.1175/JCLI4195.1>, 2007.
- Young, P. J., Butler, A. H., Calvo, N., Haimberger, L., Kushner, P. J., Marsh, D. R., Randel, W. J., and Rosenlof, K. H.: Agreement in late twentieth century Southern Hemisphere stratospheric temperature trends in observations and CCMVal-2, CMIP3, and CMIP5 models, *Journal of Geophysical Research: Atmospheres*, 118, 605–613, <https://doi.org/10.1002/jgrd.50126>, 2013.

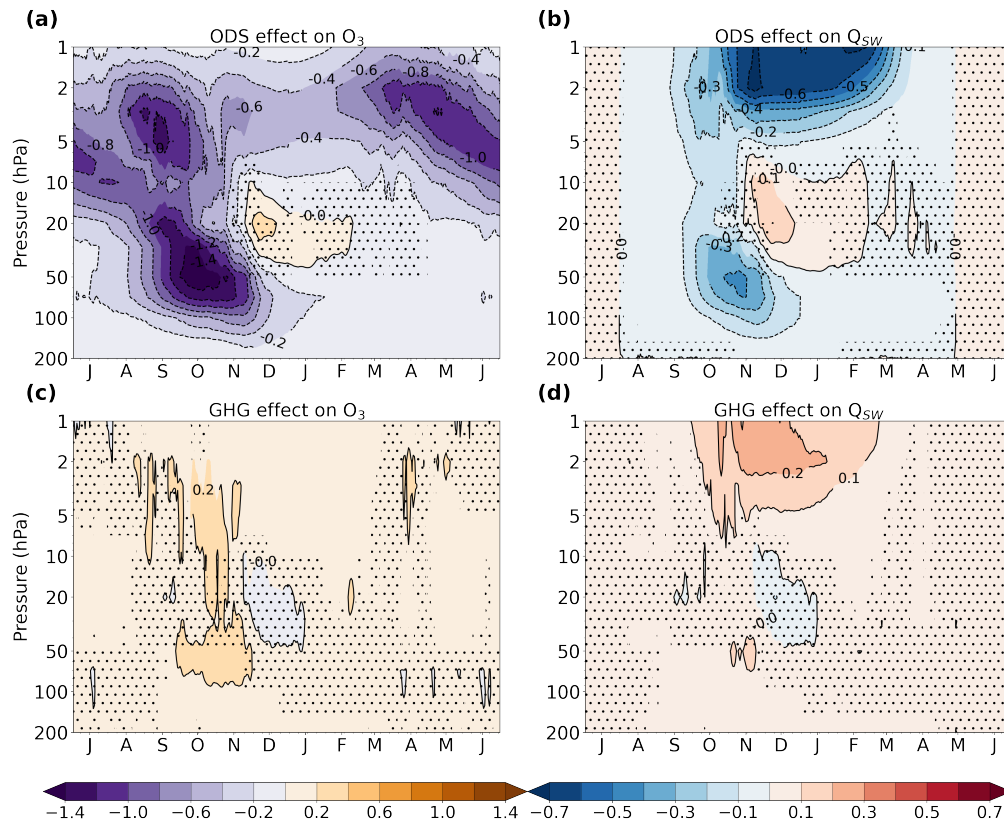


Figure 1. Seasonal cycle of the difference between REF and NoODS (a and b) and between REF and NoGHG (c and d) in the ozone volume mixing ratio (a and c, in ppmv) and the SW heating rate (b and d, in $K day^{-1}$) averaged over the polar cap ($70^{\circ}S-90^{\circ}S$) for the period 1978 – 2002. Stippling masks values that are not significant at the 95% confidence interval. The letter corresponding to each month marks the middle of that month.

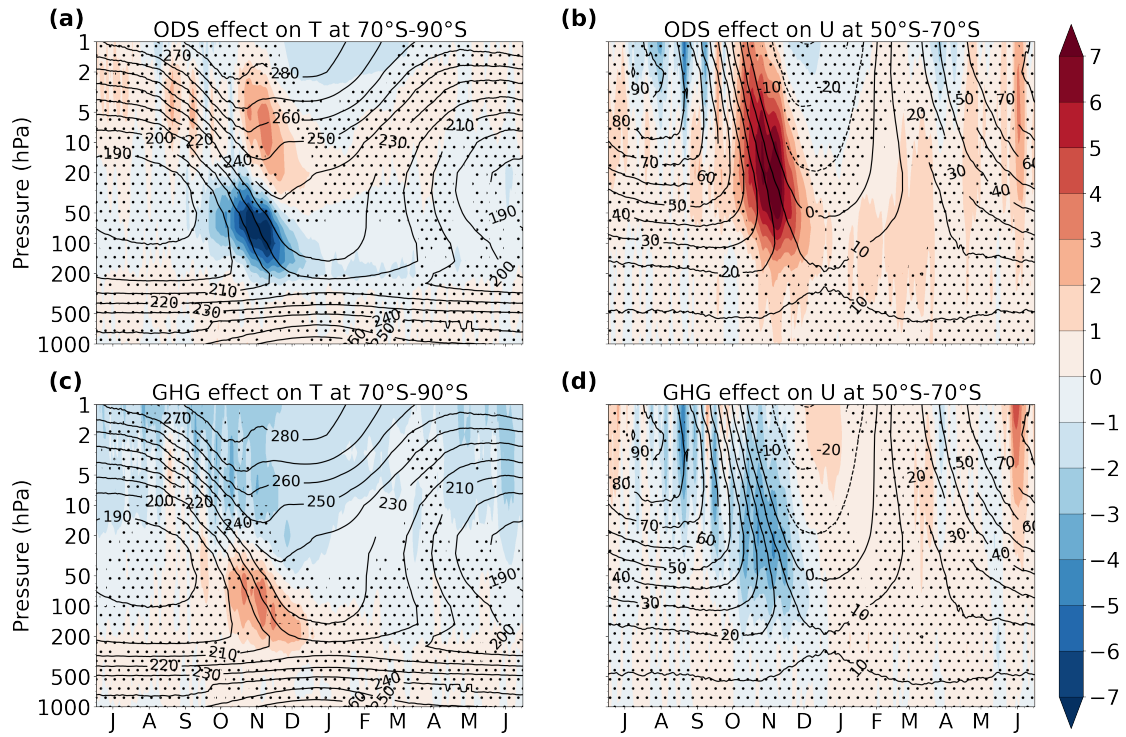


Figure 2. Seasonal cycle of the difference between REF and NoODS (a and b) and between REF and NoGHG (c and d) in the polar cap (70°S-90°S) temperature (a and c, in K) and in the mid-latitude (50°S-70°S) zonal wind (b and d, in m s^{-1}) for the period 1978 – 2002 (color shading). Stippling masks values that are not significant at the 95% confidence interval. Contours show the corresponding climatological temperature and zonal wind from REF. The letter corresponding to each month marks the middle of that month.

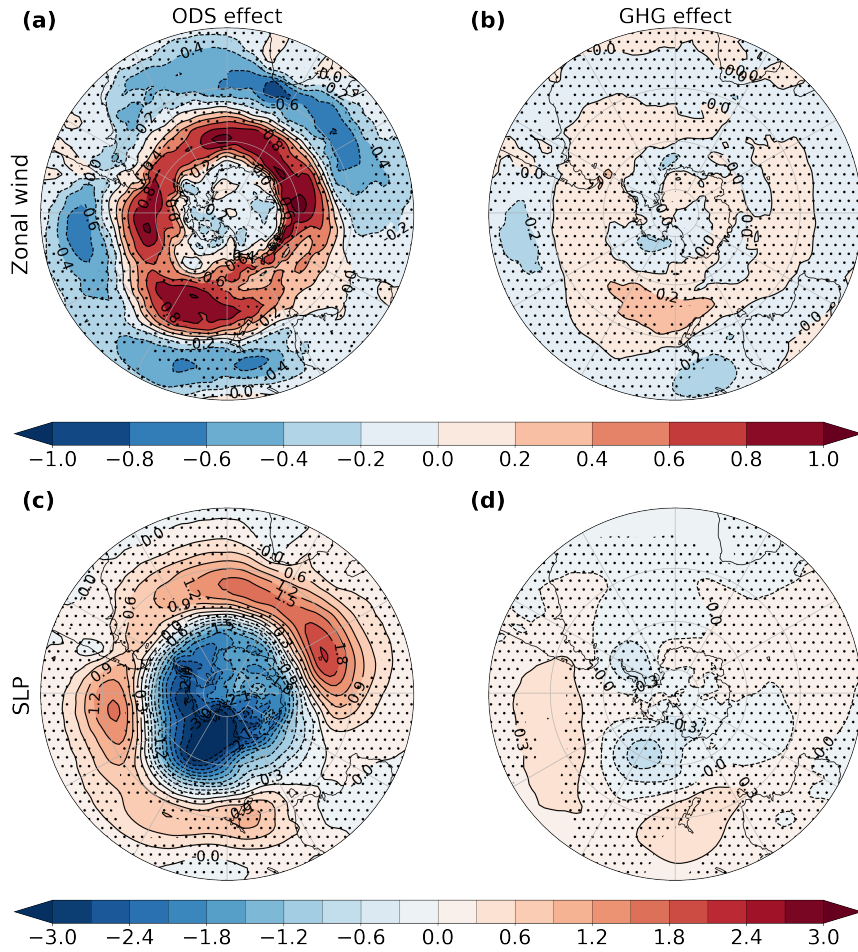


Figure 3. Polar stereographic maps of the November-December difference between REF and NoODS (a and c) and the annual mean difference between REF and NoGHG (b and d) in the surface zonal wind (a and b, in m s^{-1}) and in sea level pressure (c and d, in hPa) for the period 1978 – 2002. Stippling masks values that are not significant at the 95% confidence interval.

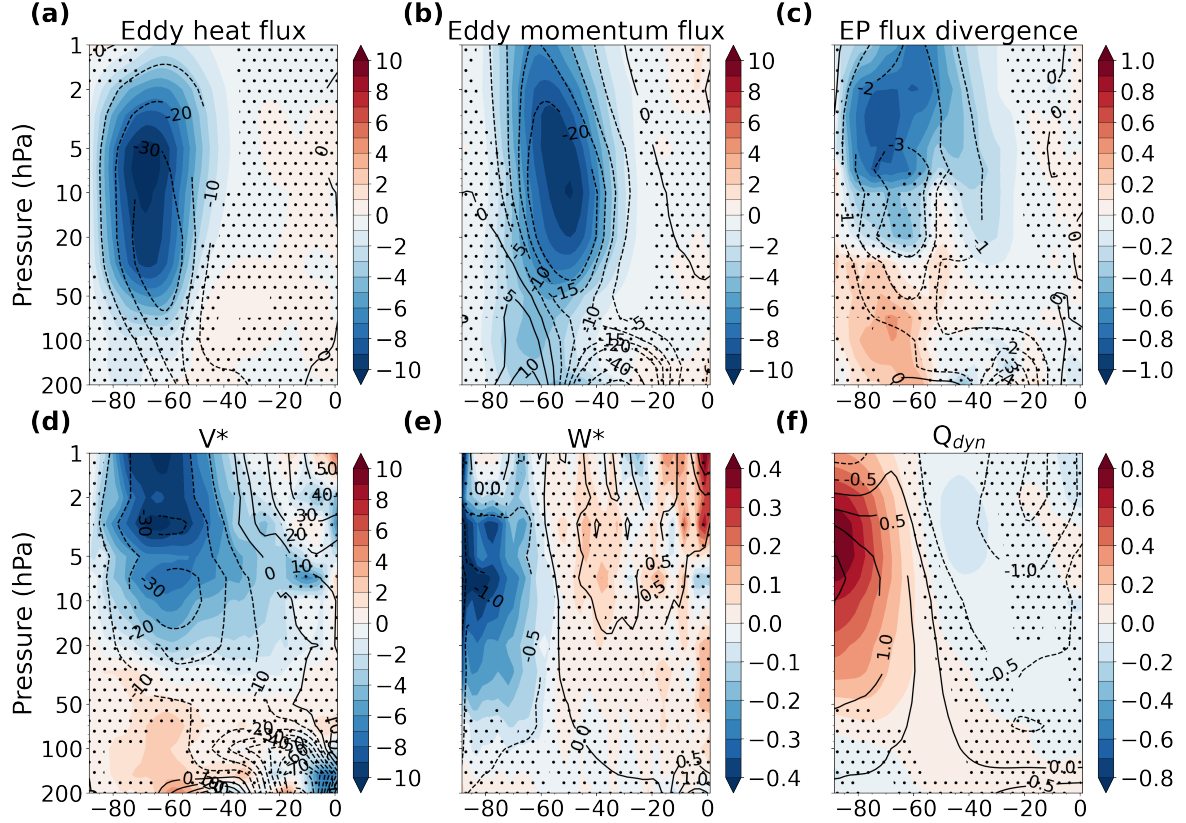


Figure 4. Latitude-height November difference between REF and NoODS in the eddy heat flux (a, in K m s^{-1}), the eddy momentum flux (b, in $\text{m}^2 \text{s}^{-2}$), the divergence of the EP flux (c, in $\text{m s}^{-1} \text{day}^{-1}$), the meridional residual velocity (d, in cm s^{-1}), the vertical residual velocity (e, in mm s^{-1}) and in the dynamical heating rate (f, in K day^{-1}) for the period 1978 – 2002 (color shading). Contours in each panel show the corresponding climatology from REF. Stippling masks values that are not significant at the 95% confidence interval.

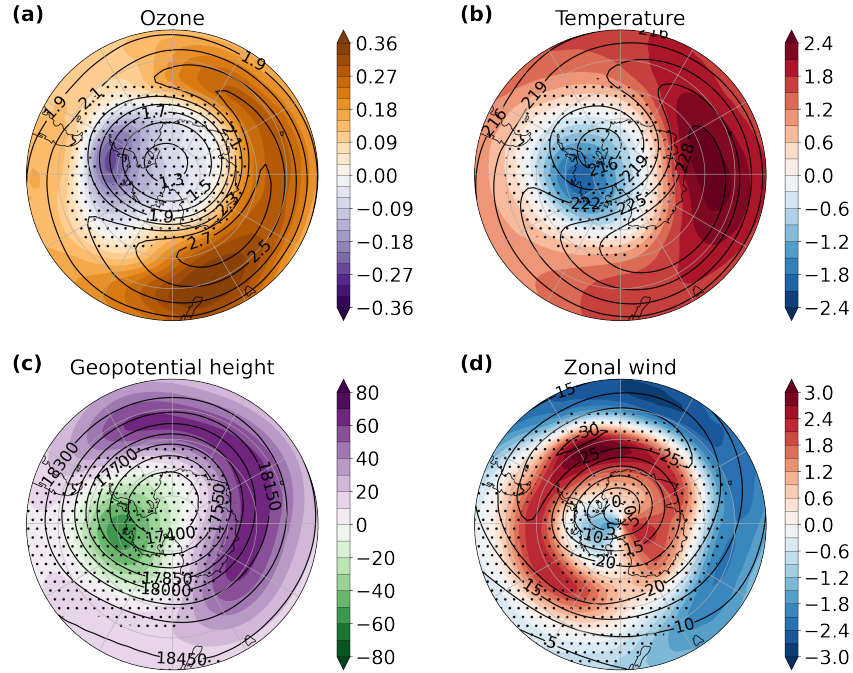


Figure 5. Polar stereographic maps of the difference between INTERACT O₃ and FIXED O₃ in the October mean ozone (a, in ppmv) and the November mean temperature (b, in K), geopotential height (c, in m) and zonal wind (d, in m s⁻¹) at 70 hPa (color shading). The stippling masks regions that are not significant at the 95% confidence interval. The overlaying contours mark the 1958-2013 INTERACT O₃ climatology of each respective variable and month.

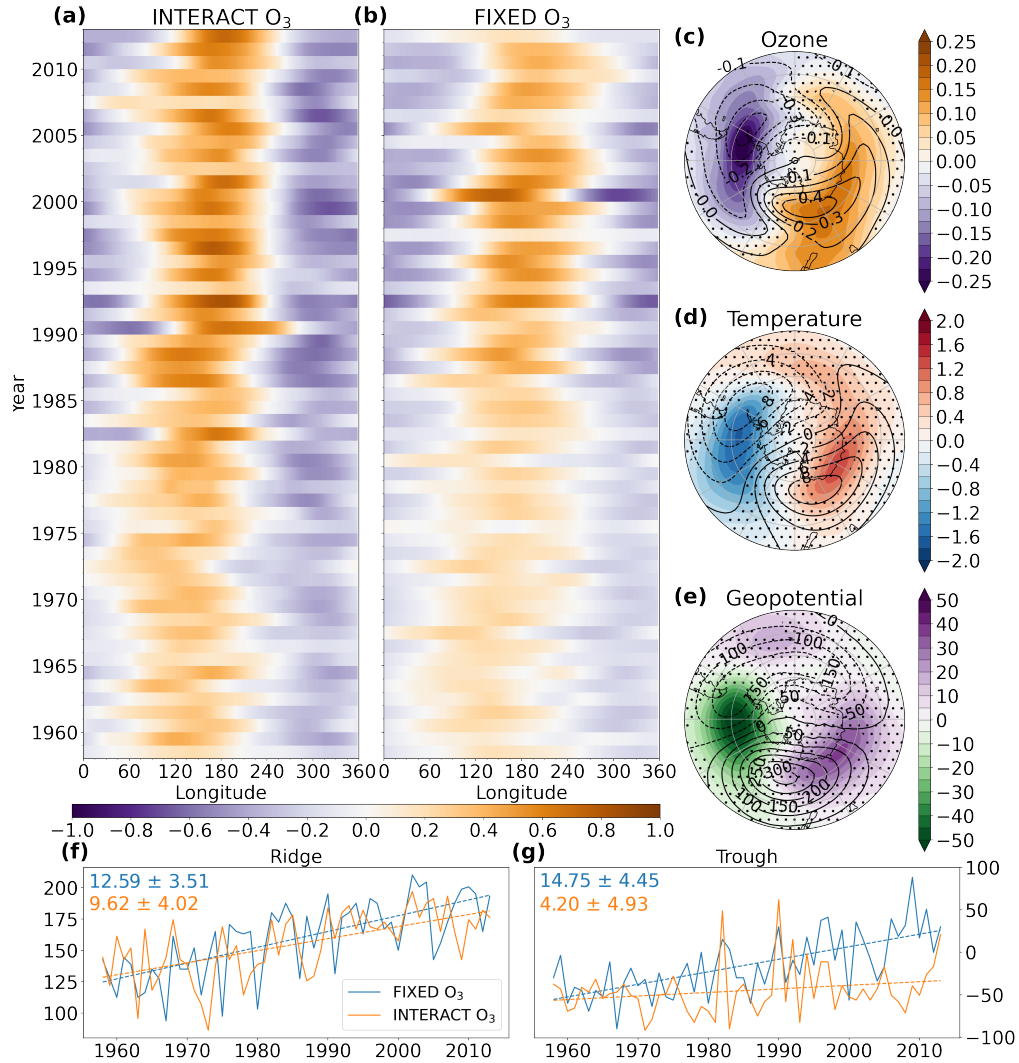


Figure 6. Hovmöller diagram of the October anomalies from the zonal mean ozone volume mixing ratio (in ppmv) in INTERACT O₃ (a) and FIXED O₃ (b) averaged over 60°S-70°S and maps of the October difference between INTERACT O₃ and FIXED O₃ in the anomalies from the zonal mean ozone volume mixing ratio (c, in ppmv), temperature (d, in K) and geopotential height (e, in m) at 70hPa for the period 1958-2013 (color shading). The stippling in panels c-e masks regions that are not significant at the 95% confidence interval. The overlaying contours mark the INTERACT O₃ 1958-2013 average anomalies from the zonal mean for each respective variable. Timeseries of the longitude of the ozone ridge maximum (f) and of the ozone trough minimum (g) for INTERACT O₃ (solid orange lines) and FIXED O₃ (solid blue lines), together with their corresponding trends for the period 1958-2013 (dashed lines). The values of the trends is in units of ° of longitude per decade and their 95% confidence interval according to a two-tailed t-test is given in the upper left corner of each panel.

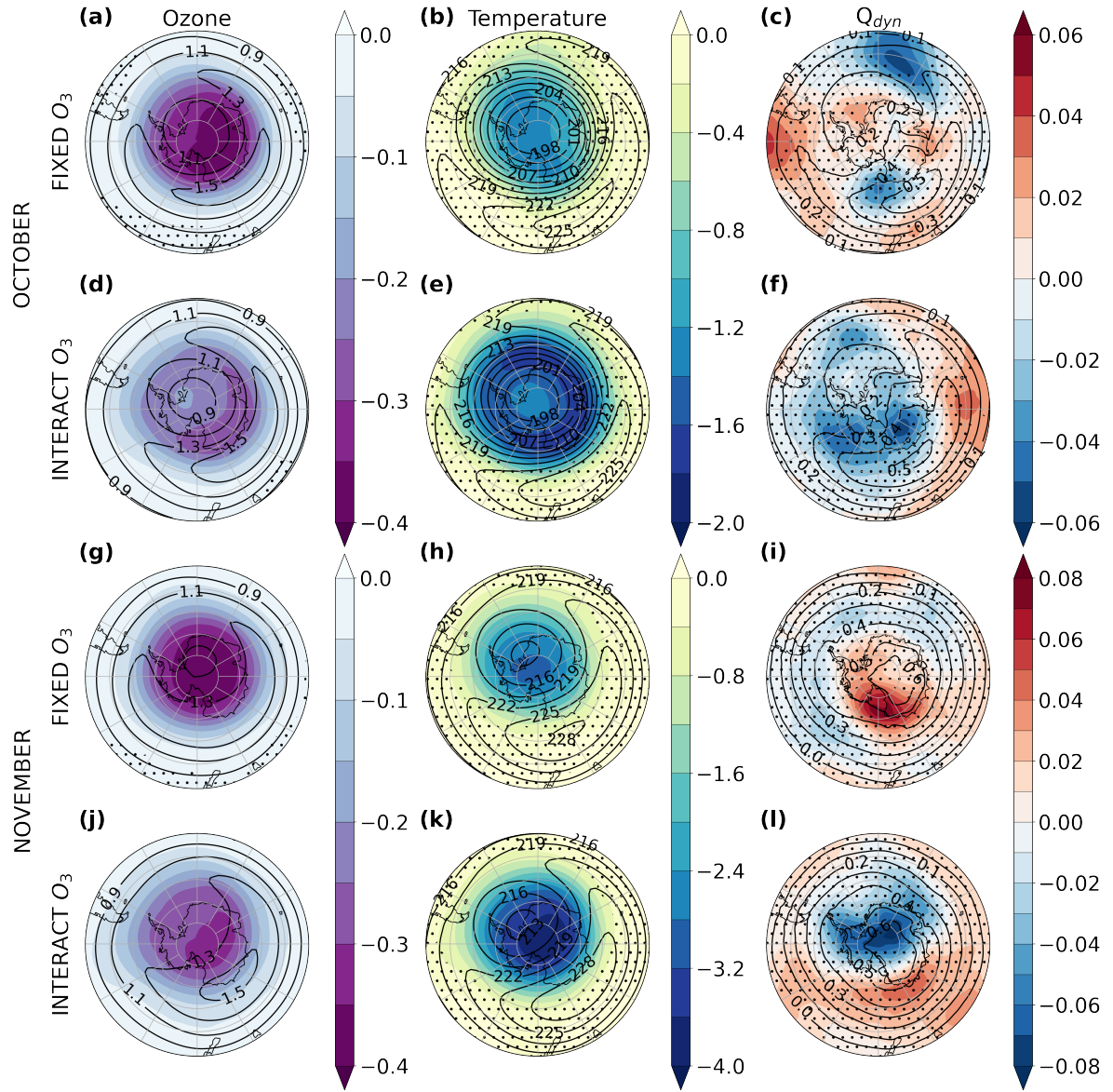


Figure 7. Polar stereographic maps of the October (a-f) and November (g-l) trends in ozone (a, d, g, j, in ppmv per decade), temperature (b, e, h, k, in K per decade) and dynamical heating rate (c, f, i, l, in K day⁻¹ per decade) at 100 hPa for FIXED O₃ (a-c and g-i) and INTERACT O₃ (d-f and j-l) over 1958-2002 (color shading). Stippling masks regions where the trends are not significant at the 95% confidence level. The overlaying contours show the respective climatologies for 1958-2002.

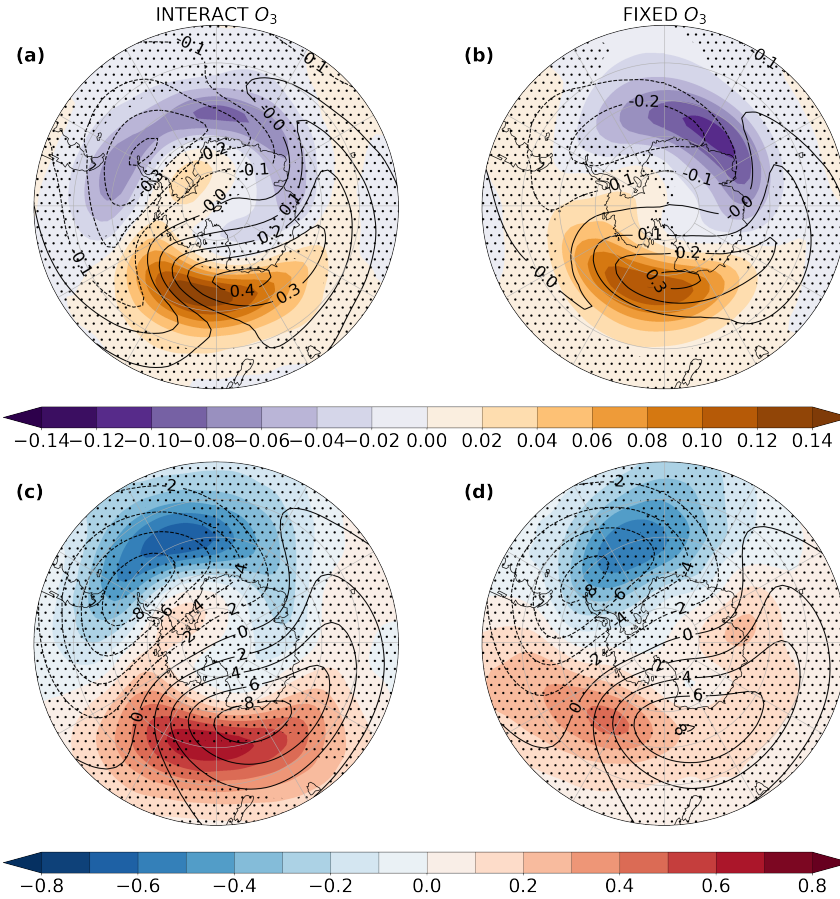


Figure 8. Polar stereographic maps of the October 70 hPa trends in INTERACT O_3 (a and c) and FIXED O_3 (b and d) ozone (a and b, in ppbv per decade) and temperature (c and d, in K per decade) anomalies from the zonal mean for the period 1958-2002 (color shading). Stippling masks regions where the trends are not significant at the 95% confidence level. The overlaying contours show the corresponding October climatologies.

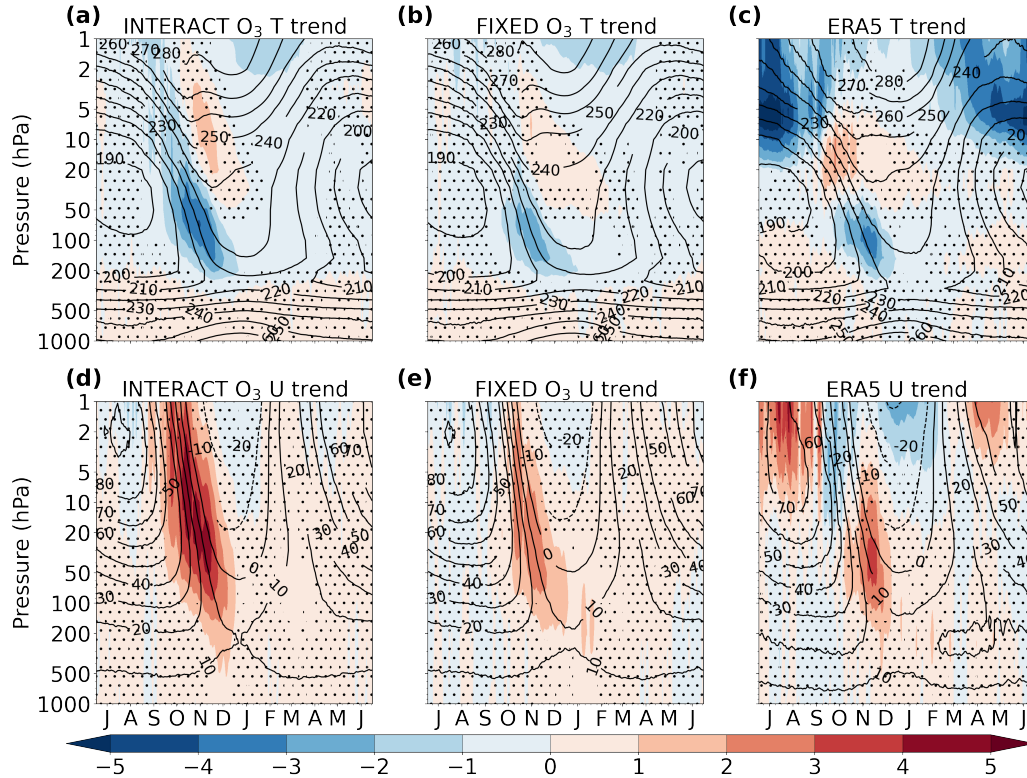


Figure 9. Seasonal cycle of the INTERACT O₃ (a and d), FIXED O₃ (b and e) and ERA5 (c and f) trends in polar cap (65°S-90°S) temperature (a-c, in K per decade) and in the mid-latitude (50°S-70°S) zonal wind (d-f, in m s⁻¹ per decade) for the period 1958 – 2002 (color shading). Stippling masks regions where the trends are not significant at the 95% confidence level. The overlaying contours show the corresponding climatological seasonal cycle for 1958-2002. The letter corresponding to each month marks the middle of that month.

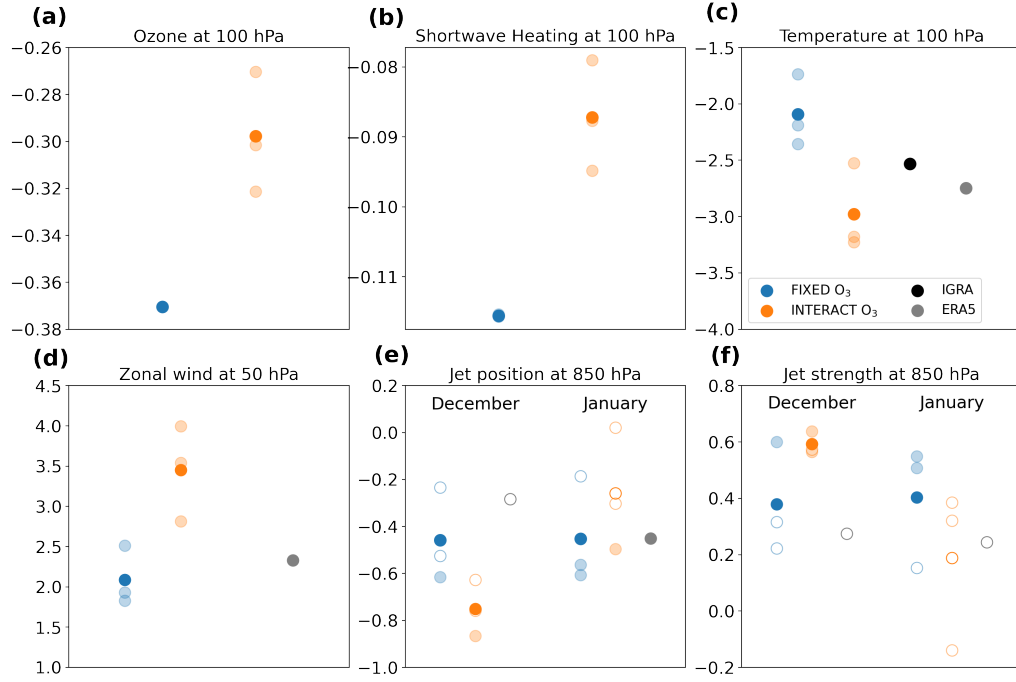


Figure 10. Trends in November 100 hPa ozone (a, in ppmv per decade), SW heating rate (b, in K day⁻¹ per decade), temperature (c, in K per decade), 50 hPa zonal wind (d, in m s⁻¹ per decade) and December and January 850 hPa jet position (e, in ° per decade) and strength (f, in m s⁻¹ per decade). The ozone and SW heating rate are averaged over 65°S-90°S, the temperature is averaged over 65°S-80°S, the zonal wind is averaged over 50°S-70°S and the jet's position is given as the latitude where the zonal mean maximum occurs. FIXED O₃ trends are shown in blue, INTERACT O₃ trends are shown in orange, ERA5 trends are shown in grey and the IGRA temperature trend is shown in black. Ensemble mean trends are depicted by the dark-colored circles, while the individual members' trends are depicted in faded colors. Trends that are significant at the 95% confidence level are marked by filled circles.

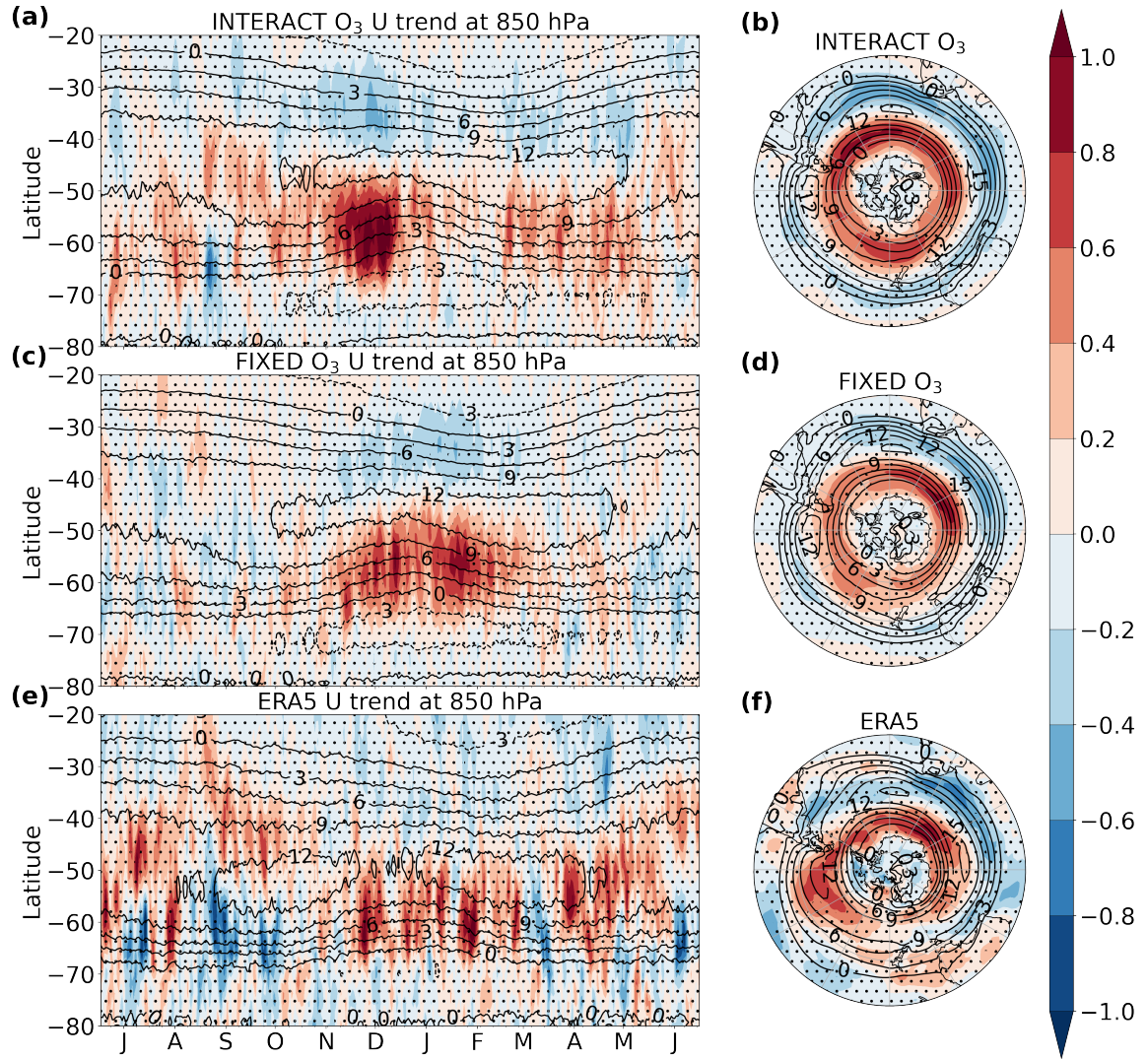


Figure 11. Seasonal cycle (a, c and e) and December-January polar stereographic maps (b, d and f) of the 850 hPa zonal wind trend (in m s^{-1} per decade) in INTERACT O_3 (a and b), FIXED O_3 (c and d) and ERA5 (e and f) for the period 1958-2002 (color shading). Stippling masks regions where the trends are not significant at the 95% confidence level. The overlaying contours show the corresponding climatologies for 1958-2002. The letter corresponding to each month marks the middle of that month.

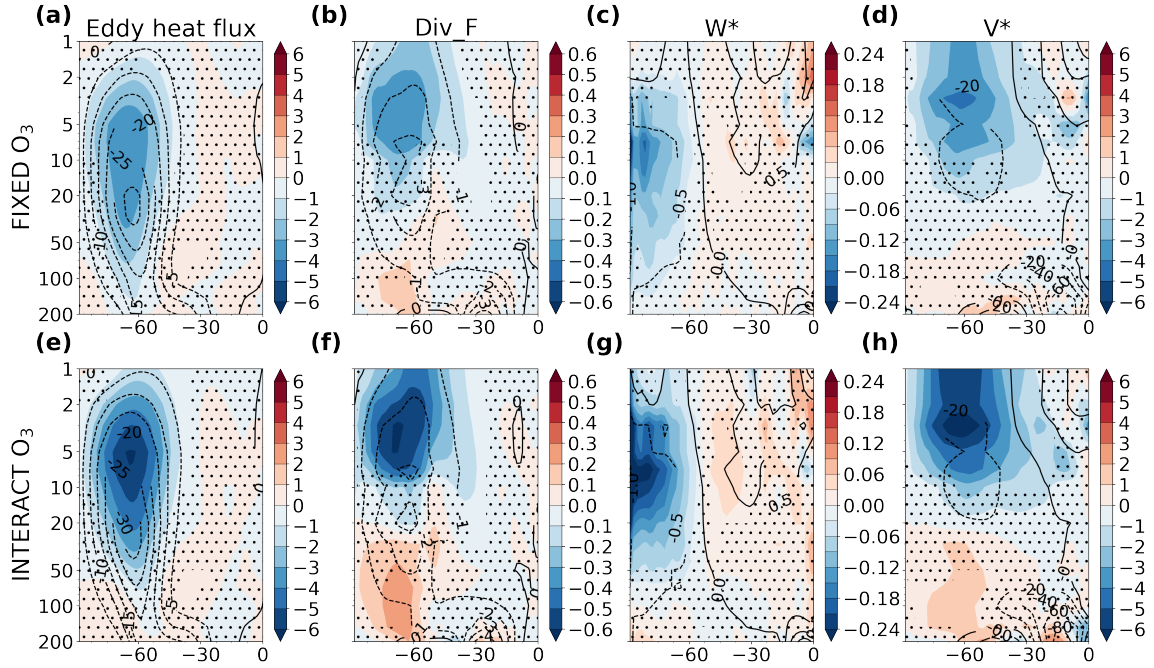


Figure 12. Latitude-height November trends in the eddy heat flux (a and e, in K m s^{-1} per decade), the divergence of the EP flux (b and f, in $\text{m s}^{-1} \text{day}^{-1}$ per decade), the vertical residual velocity (c and g, in mm s^{-1} per decade and the meridional residual velocity (d and h, in cm s^{-1} per decade) for the period 1958-2002 in FIXED O₃ (a-d) and INTERACT O₃ (e-h). The overlaying contours in each panel show the corresponding climatologies. Stippling masks the trends that are not significant at the 95% confidence interval.

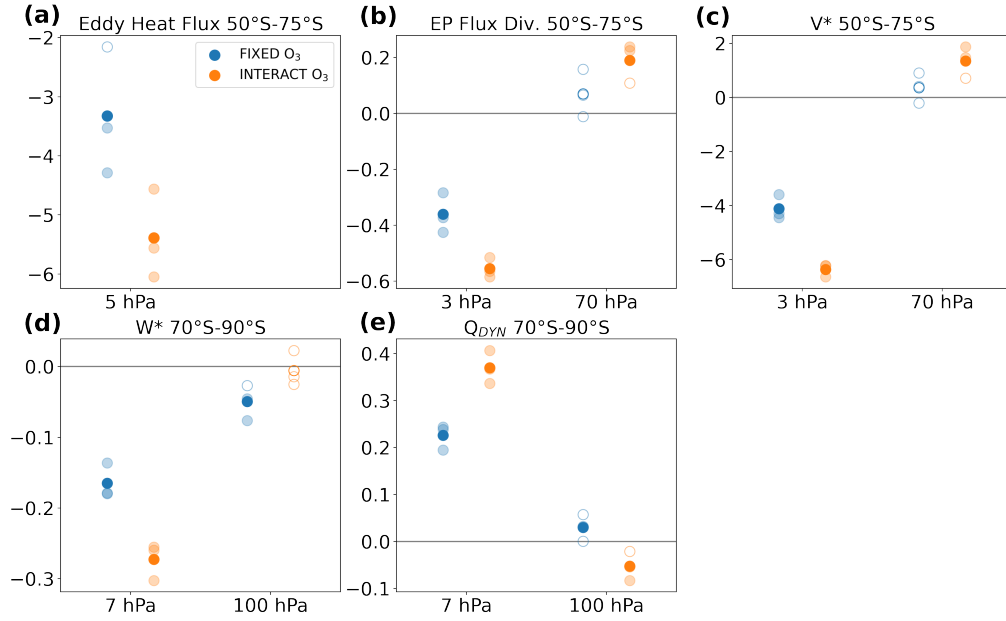


Figure 13. Trends in November eddy heat flux (a, in K m s^{-1} per decade), EP flux divergence (b, in $\text{m s}^{-1}\text{day}^{-1}$ per decade), meridional residual velocity (c, in cm s^{-1} per decade), vertical residual velocity (d, in mm s^{-1} per decade) and dynamical heating rate (e, in K day^{-1} per decade). The eddy heat flux, EP flux divergence and meridional residual velocity are averaged over 50°S-75°S and the vertical residual velocity and the dynamical heating rate are averaged over 70°S-90°S. FIXED O₃ trends are shown in blue and INTERACT O₃ trends are shown in orange. Ensemble mean trends are depicted by the dark-colored circles, while the individual members' trends are depicted in faded colors. Trends that are significant at the 95% confidence level are marked by filled circles.

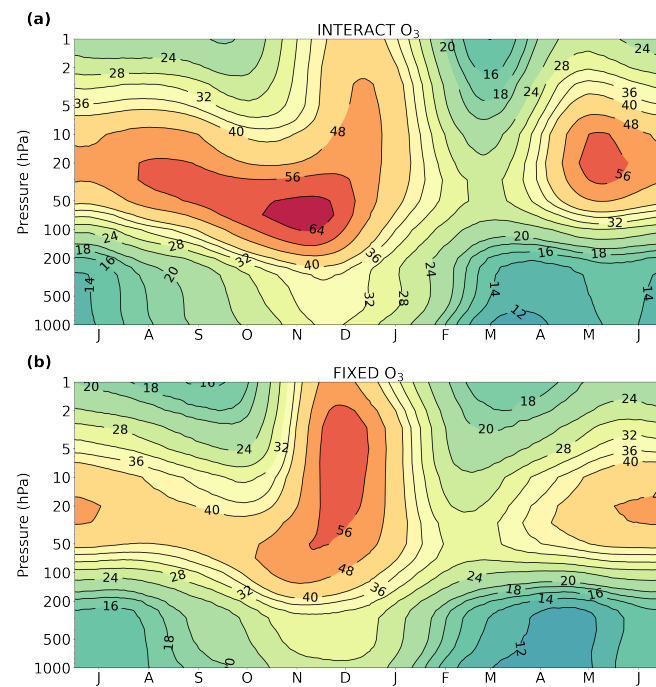


Figure 14. Seasonal cycle of the SAM timescale in INTERACT O_3 (a) and FIXED O_3 (b). Note that the contour interval is non-linear.

Table 1. Overview of the FOCI ensembles used in this study. Each ensemble consists of 3 simulations which vary in their initial conditions.

Ensemble	Ozone chemistry	GHG	ODS	Analysis period
FIXED O ₃	prescribed CMIP6	historical CMIP6	historical CMIP6	1958-2002
INTERACT O ₃	interactive	historical CMIP6	historical CMIP6	1958-2002
REF	interactive	historical CMIP6	historical CMIP6	1978-2002
NoODS	interactive	historical CMIP6	fixed at 1960s level	1978-2002
NoGHG	interactive	fixed at 1960s level	historical CMIP6	1978-2002