

# Inverse modelling of carbonyl sulfide: implementation, evaluation and implications for the global budget

Jin Ma<sup>1</sup>, Linda M. J. Kooijmans<sup>2</sup>, Ara Cho<sup>2</sup>, Stephen A. Montzka<sup>3</sup>, Norbert Glatthor<sup>4</sup>, John R. Worden<sup>5</sup>, Le Kuai<sup>5</sup>, Elliot L. Atlas<sup>6</sup>, and Maarten C. Krol<sup>1,2</sup>

<sup>1</sup>Institute for Marine and Atmospheric Research, Utrecht University, Utrecht, The Netherlands

<sup>2</sup>Meteorology and Air Quality, Wageningen University & Research, Wageningen, The Netherlands

<sup>3</sup>National Oceanic and Atmospheric Administration (NOAA), Boulder, CO, USA

<sup>4</sup>Institute of Meteorology and Climate Research, Karlsruhe Institute of Technology, Karlsruhe, Germany

<sup>5</sup>Jet Propulsion Laboratory, California Institute of Technology, Pasadena, California, USA

<sup>6</sup>Rosenstiel School of Marine and Atmospheric Science, University of Miami, Miami, USA

**Correspondence:** Jin Ma (j.ma@uu.nl)

## Abstract.

Carbonyl sulfide (COS) has the potential to be used as a climate diagnostic due to its close coupling to the biospheric uptake of CO<sub>2</sub> and its role in the formation of stratospheric aerosol. The current understanding of the COS budget, however, lacks COS sources, which have previously been allocated to the tropical ocean. This paper presents a first attempt of global inverse  
5 modelling of COS within the 4-Dimensional variational data-assimilation system of the TM5 chemistry transport model (TM5-4DVAR) and a comparison of the results with various COS observations. We focus on the global COS budget, including COS production from its precursors carbon disulfide (CS<sub>2</sub>) and dimethyl sulfide (DMS). To this end, we implemented COS uptake by soil and vegetation from an updated biosphere model (SiB4). In the calculation of these fluxes, a fixed atmospheric mole fraction of 500 pmol mol<sup>-1</sup> was assumed. We also used new inventories for anthropogenic and biomass burning emissions.  
10 The model framework is capable of closing the COS budget by optimizing for missing emissions using NOAA observations in the period 2000–2012. The addition of 432 Gg a<sup>-1</sup> (as S equivalents) COS is required to obtain a good fit with NOAA observations. This missing source shows little year-to-year variations, but considerable seasonal variations. We found that the missing sources are likely located in the tropical regions, and an overestimated biospheric sink in the tropics cannot be ruled out due to missing observations in the tropical continental boundary layer. Moreover, high latitudes in the Northern  
15 Hemisphere require extra COS uptake or reduced emissions. HIPPO aircraft observations, NOAA airborne profiles from an ongoing monitoring program, and several satellite data sources are used to evaluate the optimized model results. This evaluation indicates that COS mole fractions in the free troposphere remain underestimated after optimization. Assimilation of HIPPO observations slightly improves this model bias, which implies that additional observations are urgently required to constrain sources and sinks of COS. We finally find that the biosphere flux dependency on surface COS mole fraction (which was not  
20 accounted for in this study) may substantially lower the fluxes of the SiB4 biosphere model over strong uptake regions. Using COS mole fractions from our inversion, the prior biosphere flux reduces from 1053 Gg a<sup>-1</sup> to 851 Gg a<sup>-1</sup>, which is closer to 738 Gg a<sup>-1</sup> as was found by Berry et al. (2013). In planned further studies we will implement this biosphere dependency, and

additionally assimilate satellite data with the aim to better separate the role of the oceans and the biosphere in the global COS budget.

## 25 1 Introduction

Carbonyl sulfide (COS or OCS) is a low abundant trace gas in the atmosphere with a lifetime of about 2 years and a tropospheric mole fraction of about  $484 \text{ pmol mol}^{-1}$  (Montzka et al., 2007). COS is regarded as a promising diagnostic tool for constraining photosynthetic gross primary production (GPP) of  $\text{CO}_2$  through similarities in their stomatal control (Montzka et al., 2007; Campbell et al., 2017; Berry et al., 2013; Whelan et al., 2018; Kooijmans et al., 2017, 2019; Wang et al., 2016). COS also contributes to stratospheric sulfur aerosols, which have a cooling effect on climate and hence mitigate climate warming (Crutzen, 1976; Andreae and Crutzen, 1997; Brühl et al., 2012; Kremser et al., 2016). In the recent decades, COS mole fractions in the troposphere have remained relatively constant, which implies that sources and sinks of COS are balanced. Whelan et al. (2018) reviewed the state of current understanding of the global COS budget and the applications of COS to ecosystem studies of the carbon cycle. The most pressing challenge currently is to reconcile the balance of COS sources and sinks, given the small global atmospheric trends.

Previous studies show that substantial emissions of COS are coming from oceanic, anthropogenic, and biomass burning sources, and the largest sinks are uptake by plants and soils (Watts, 2000; Kettle et al., 2002; Berry et al., 2013). Oceanic emissions are thought to be the largest source of COS, both directly and indirectly, due to emissions of  $\text{CS}_2$  and possibly DMS (Lennartz et al., 2017, 2020), which can be quickly oxidized to COS in the atmosphere (Sze and Ko, 1980). There are considerable uncertainties related to this indirect COS source, with reported yields to COS being  $(83 \pm 8)\%$  from  $\text{CS}_2$  (Stickel et al., 1993), and  $(0.7 \pm 0.2)\%$  from DMS under  $\text{NO}_x$ -free conditions at 298 K (Barnes et al., 1996). Blake et al. (2004) reported anthropogenic Asian emissions for COS and  $\text{CS}_2$ , which appear to have been underestimated by 30–100% due to underestimated coal burning in China (Du et al., 2016). Zumkehr et al. (2018) recently presented a new global anthropogenic emission inventory for COS. The new anthropogenic emission estimates are, with  $406 \text{ Gg a}^{-1}$  (as S equivalents)<sup>1</sup> in 2012, substantially larger than the previous estimate of  $180.5 \text{ Gg a}^{-1}$  by (Berry et al., 2013). Another recent study (Stinecipher et al., 2019) concluded that it is unlikely that biomass burning accounts for the balance between sources and sinks of COS, due to the relatively small contribution of biomass burning to the total emissions ( $(60 \pm 37) \text{ Gg a}^{-1}$ ).

Suntharalingam et al. (2008) made a first attempt to simulate the global COS budget using the GEOS-Chem model and global-scale surface measurements from NOAA. In order to fit the observed seasonal cycle of COS mole fraction, they had to double the terrestrial vegetation uptake estimated in (Kettle et al., 2002), reduce the southern extra-tropical ocean source, and assume an additional COS source of  $235 \text{ Gg a}^{-1}$ . Campbell et al. (2008) found that this upward revision could be validated using direct observations from the continental boundary layer from the intensive INTEX-NA airborne campaign. Berry et al. (2013) implemented COS in the global biosphere model SiB3. They inferred that, in order to compensate for updated COS

---

<sup>1</sup>In convention, the unit of COS sources or sinks is written as  $\text{Gg S a}^{-1}$  to account for mass of sulfur. To avoid misunderstanding and keep clarity of physical unit, we use  $\text{Gg a}^{-1}$  throughout the paper, but only account for mass of sulfur in COS,  $\text{CS}_2$  or DMS.

55 biosphere and soil sinks of  $1093 \text{ Gg a}^{-1}$ , there must be additional COS sources of  $600 \text{ Gg a}^{-1}$ , which was allocated to the ocean. Glatthor et al. (2015) and Launois et al. (2015) estimated direct COS emissions from the ocean as  $992$  and  $813 \text{ Gg a}^{-1}$ , respectively, and also Kuai et al. (2015) hinted to underestimated COS sources from tropical oceans by optimizing sources using one month of COS satellite observations by TES-Aura. However, Lennartz et al. (2017, 2019) used COS measurements in ocean water to show that the direct oceanic emissions were much lower ( $130 \text{ Gg a}^{-1}$ ) than top-down studies suggested. It is therefore not resolved whether ocean emissions account for the missing source.

60 In this paper, we address several important open questions concerning the COS budget using inverse modelling techniques, employing the TM5-4DVAR modelling system. We focus on the closure of the COS budget, the contributions of the potential COS precursors  $\text{CS}_2$  and DMS, and evaluation of the results with aircraft and satellite observations. In Section 2 we will describe the observations, the implementation of COS,  $\text{CS}_2$ , and DMS in TM5, and the inverse modelling system TM5-4DVAR. In Section 3, we will analyze the results of various inverse model calculations, which are discussed further in Section 65 4.

## 2 Method

This study aims to close the gap in the global COS budget by so-called flux inversions. This technique employs atmospheric measurements to optimize sources and sinks of trace gases such that mismatches between simulations and observations are minimized. In Section 2.1 the observations used in this study are introduced. Section 2.2 will subsequently describe our modelling system, including new emission data sets that have been coupled to the modelling system. The inverse modelling framework is discussed in Section 2.3.

### 2.1 Measurements

#### 2.1.1 NOAA flask data

75 The NOAA surface flask network provides long-term measurements of COS mole fraction at 14 locations at weekly–monthly frequencies. Most of the stations are located in the Northern Hemisphere (NH), as shown in Figure 1. Although the number of sampling sites is modest, their locations cover most latitudinal regions, and sample over both land and coastal area. It is worth to note that there is a lack of observations in the tropical continental boundary layer. The observational error for each sample is relatively small ( $< 7 \text{ pmol mol}^{-1}$ ), therefore we have taken inter-annual variability of COS from Table 1 in Montzka et al. (2007) to represent a fixed observational error upper-limit at each site. In general, the observational error defined in this way 80 varies between  $4\text{--}10 \text{ pmol mol}^{-1}$  in the NH, and between  $2\text{--}4 \text{ pmol mol}^{-1}$  in the Southern Hemisphere (SH). This error is used in the inverse modelling as will be described in Section 2.4.

### 2.1.2 HIPPO aircraft and NOAA airborne data

Flask data of the HIAPER Pole-to-Pole Observations (HIPPO) experiments (Wofsy, 2011; Wofsy et al., 2017) is used to validate the results of the inverse modelling. There are five HIPPO campaigns conducted from 2009 to 2011 that sampled  
85 the COS mole fraction from the North Pole to the South Pole, and from the lower troposphere up to the stratosphere. Three different instruments were used to make measurements of COS during HIPPO. Instrument 2 was used by NOAA to measure COS, and instrument 1 was calibrated consistently with the NOAA calibration standard. Results of instrument 3 were scaled to be consistent with that of instrument 2, such that results from all three instruments on HIPPO are referenced to the same NOAA scale. The probability distribution function of the mole fractions confirms that the three instruments report consistent values,  
90 with similar averages (see Figure S1). Thus, HIPPO data provides valuable data to check the consistency of the optimized COS budget. The flight routes of the five campaigns are shown in Figure 1. In some numerical experiments, HIPPO data are additionally assimilated to investigate their impact on the optimized COS budget. To investigate this impact on the vertical distribution of COS, we compared to 2008–2011 NOAA airborne data that are mainly available over North America (Figure 1). The number of aircraft sites used is 19, and the upper altitude that was typically reached is 8 km.

### 95 2.1.3 Satellite data

Our inverse modelling results are compared to three independent satellite data sources: TES-Aura, ACE-FTS, and MIPAS. We have selected the period 2008–2011 for the comparison.

NASA’s Tropospheric Emission Spectrometer (TES) is a both nadir and limb viewing instrument that flies on the AURA satellite, which was launched in 2004 (Beer et al., 2001). TES measures the infrared radiation emitted from the Earth and  
100 atmosphere in high spectral resolution for 16 orbits every other day. From these spectra, abundances of tropospheric trace gases are retrieved. The COS product used in this study is described in Kuai et al. (2014). The COS retrievals cover the whole vertical column and have less than 1 degree of freedom (DOF) and show maximum sensitivity in the 300–500 hPa region. We will therefore focus our comparisons on total COS columns. To account for the non-uniform vertical sensitivity, we use the Averaging Kernel (AK) in the model–satellite comparison. As described in Kuai et al. (2014), the AK included in the TES data  
105 files is defined in log-space, and should be applied as:

$$\ln(\chi_{con}) = \ln(\chi_p) + \mathbf{A}[\ln(\chi_m) - \ln(\chi_p)], \quad (1)$$

where  $\chi_{con}$ ,  $\chi_p$ , and  $\chi_m$  are respectively the convolved, prior, and modeled profiles, and  $\mathbf{A}$  is the AK. In Section 3.4 the modeled profiles are convolved with the TES AK ( $\chi_{con}$ ), vertically integrated, and compared to the TES columns.

The Atmospheric Chemistry Experiment Fourier Transform Spectrometer (ACE-FTS) is a high spectral resolution infrared  
110 FTS instrument that performs solar occultation measurements, with the aim to sample stratospheric and upper tropospheric profiles of trace gases (Boone et al., 2013). The instrument flies on SCISAT, a Canadian satellite mission for remote sensing of the Earth’s atmosphere that was launched in 2003. Its orbit covers tropical, mid-latitude, and polar regions. COS is one of the atmospheric trace gases measured by the ACE-FTS instrument (Koo et al., 2017). ACE-FTS profiles have been compared

to balloon observations and generally showed good agreement, with underestimations smaller than 20% (Krysztofiak et al., 2015). We use product version 3.6 and only observations with quality flag of zero are used. ACE-FTS measures COS within 0–150 km vertically, but the data quality is only sufficient in the upper troposphere and lower stratosphere (UTLS).

The Michelson Interferometer for Passive Atmospheric Sounding (MIPAS) is a Fourier transform spectrometer for detection of the radiative emission of various molecules in limb observation mode in the middle and upper atmosphere (Fischer et al., 2008). MIPAS flew on ESA’s Envisat platform that operated between 2002–2012. MIPAS delivers global atmospheric COS profiles in the upper troposphere and stratosphere (Glatthor et al., 2015, 2017). Similar to TES, the MIPAS data product contains representative AKs and prior profiles to facilitate comparison to modelled profiles, but not in log-space, since MIPAS COS is evaluated by a linear retrieval:

$$\chi_{con} = \chi_p + \mathbf{A}[\chi_m - \chi_p], \quad (2)$$

where  $\chi_m$  has to be resampled on the MIPAS retrieval grid in advance.

As for most other gases, the prior profile for MIPAS COS retrievals is a zero profile. Eq .2 thus becomes a simple multiplication of the AK with the modelled profiles. A detailed description of the application of MIPAS AKs on other datasets can be found in Stiller et al. (2012).

The MIPAS product has been compared to modelled COS distributions (Glatthor et al., 2015) and ACE-FTS (Glatthor et al., 2017). The latter comparison showed that MIPAS retrieves higher mole fractions around the tropopause compared to ACE-FTS. The MIPAS product has also been compared to airborne measurements of the HIPPO, ARCTAS and INTEX-B campaigns (Supplement of Glatthor et al. 2015). Finally, MIPAS has been compared to MkIV and SPIRALE profiles (Glatthor et al., 2017).

The retrievals of TES, MIPAS and ACE-FTS v3.6 are provided on 14, 60, and 150 vertical levels in the atmosphere, respectively. We map our modelled COS profiles to these levels using a mass conserving interpolation scheme.

#### 2.1.4 Seasonal decomposition

In Section 3.1 we apply a simple seasonal decomposition method to our calculated exchange fluxes. The seasonal decomposition is performed using Python module StatsModels version 0.10. The time series are decomposed into trend, seasonality and noise:

$$\mathbf{y}(t) = \mathbf{y}_t(t) + \mathbf{y}_s(t) + \mathbf{y}_r(t), \quad (3)$$

with  $\mathbf{y}(t)$  the monthly exchange fluxes, and  $\mathbf{y}_t$ ,  $\mathbf{y}_s$ , and  $\mathbf{y}_r$  the trend, seasonal, and residual components, respectively.

## 2.2 Model description

### 2.2.1 Anthropogenic emissions

We have implemented the anthropogenic emissions based on a recent global gridded emission inventory of COS (Campbell et al., 2015; Zumkehr et al., 2018). Since we aim to model COS, CS<sub>2</sub> and DMS as separated tracers, we disentangled the

145 reported COS emissions into COS and CS<sub>2</sub> contributions. Here, we applied an assumed yield of 0.87 (Zumkehr et al., 2018),  
which means that 1 mole CS<sub>2</sub> yields 0.87 mole COS. As a precursor of COS, CS<sub>2</sub> reacts with OH to produce COS, and has  
an atmospheric lifetime of about 12 days (Khalil and Rasmussen, 1984). We applied a detailed anthropogenic emission budget  
for COS and CS<sub>2</sub> from Table 1 in (Lee and Brimblecombe, 2016). This allows us to roughly estimate the ratio of this budget  
and hence the direct and indirect COS anthropogenic emissions. The converted emissions averaged over the period 2000–2012  
150 are summarized in Table 1.

The total anthropogenic COS emissions are on average 343.3 Gg a<sup>-1</sup>, split between direct COS emissions of 147.5 Gg a<sup>-1</sup>  
and CS<sub>2</sub> emissions of 450.2 Gg a<sup>-1</sup>. This indicates that CS<sub>2</sub> is an important precursor of COS. Figure 2 shows time-series of  
COS and CS<sub>2</sub> anthropogenic emissions. COS emissions are dominated by industrial and residential coal sources, while CS<sub>2</sub>  
emissions are dominated by rayon industry and TiO<sub>2</sub> production. Moreover, while COS emissions remained relatively constant  
155 in the 2007–2012 period, CS<sub>2</sub> emissions show an increasing trend.

While Zumkehr et al. (2018) assumed a molar yield of CS<sub>2</sub> to COS of 87%, other reported yields are (83 ± 8)% (Stickel  
et al., 1993) and 81% (Chin and Davis, 1993). We decided to use a yield of 83% in our modelling, while we used the reported  
yield of 87% to produce the numbers listed in Table 1. This implies that we introduce slightly less COS in the atmosphere  
compared to using the Zumkehr et al. (2018) data as direct COS emissions. Note that we apply all categorical emissions or  
160 fluxes with a monthly time resolution. It is also worth noting that the uncertainty in the anthropogenic inventory is much larger  
than the uncertainty in molar yield.

### 2.2.2 Biomass burning emissions

We estimated biomass burning emissions based on the widely used GFED V.4.1 data set (Randerson et al., 2018) for six of the  
seven emissions categories listed in Table 2. In converting dry mass burned to COS emissions, we used the updated emission  
165 factors reported in Andreae (2019). For biofuel use, we base our estimates on the Community Emission Data System (CEDS)  
(Hoesly et al., 2018). We calculated COS emissions by first converting CO emissions to dry mass burned, which were converted  
to COS emissions in a second step. Emission factors are listed in Table 2. In this process we made a distinction between biofuel  
with and without dung. Dung burning is mainly employed in South Asia (Fernandes et al., 2007) and we applied the dung  
emission ratios only in the region 60–100°E and 0–40°N. Our biomass burning emissions in the 2000–2012 period are in the  
170 range 118–154 Gg a<sup>-1</sup> (Figure 2), similar to the emissions used in Berry et al. (2013) (135 Gg a<sup>-1</sup>) and estimates reported  
in Campbell et al. (2015) (116±52 Gg a<sup>-1</sup>). The more recent biomass burning estimate from Stinecipher et al. (2019) based  
on GFED 1997–2016 data reports global emissions of 60±37 Gg a<sup>-1</sup>. Note, however, that biofuel use is not included in  
this estimate. The spatial and seasonal distribution of the biomass burning emissions averaged over the period 2000–2012 is  
presented in Supplementary Figure S2.

### 175 2.2.3 Biosphere flux

Our biosphere fluxes are based on simulations with the Simple Biosphere model, version 4 (SiB4) (Berry et al., 2013; Haynes  
et al., 2019). Currently, soil uptake is scaled to the CO<sub>2</sub> soil respiration term, and the implementation of specific COS soil

models (Sun et al., 2015; Ogee et al., 2016) is ongoing. The SiB4 model was constrained by a prescribed COS mole fraction of 500 pmol mol<sup>-1</sup> outside the canopy. This 500 pmol mol<sup>-1</sup> is merely as a placeholder, and probably leads to too large fluxes over active biosphere, where COS mole fractions decline because of strong uptake. This is further discussed in Section 3.5. Meteorological data that are used as forcing for the SiB4 model are taken from the Modern Era Retrospective Analysis for Research and Applications (MERRA) and are available from 1980 onwards (Rienecker et al., 2011). A spin-up of the model was performed for the period 1850-1979 to reach an equilibrium of the carbon pools. As no MERRA data were available for the spin-up period, the climatological average of MERRA data over the period 1980-2018 was used as meteorological input for the spin-up period. A final simulation was performed for 1980–2018 with the actual MERRA driver data. The 2000–2018 average flux to the biosphere (vegetation plus soil) amounts to -1053 Gg a<sup>-1</sup>, in line with estimates using SiB3 (-951 Gg a<sup>-1</sup> (Kuai et al., 2015)) and (Berry et al., 2013). The spatial and seasonal distribution of the biosphere uptake is shown in Figure S3. The uptake shows a large seasonal cycle in the NH and large uptake over tropical forests. The biosphere fluxes were deployed on a monthly timescale.

#### 190 2.2.4 Ocean emissions

Climatological ocean emissions of COS and the COS precursors CS<sub>2</sub> and DMS are based on Suntharalingam et al. (2008) and Kettle et al. (2002). Large quantities of COS, DMS, and CS<sub>2</sub> are emitted from open oceans. The estimated DMS emissions are about 22 Tg a<sup>-1</sup>, and we note that even if the COS yield from oxidation of DMS is as small as 0.7 % (Barnes et al., 1996), already 156 Gg a<sup>-1</sup> COS is formed. The CS<sub>2</sub> direct emission from oceans is roughly 195 Gg a<sup>-1</sup>, yielding 81 Gg a<sup>-1</sup> of COS. When the ocean water is cold enough, oceans can turn into a sink of COS instead of a source (Lennartz et al., 2017). Supplementary Figure S4 shows the spatial distribution of the January and July direct and indirect ocean emissions of COS. Note that our estimates of all COS oceanic emissions as 277 Gg a<sup>-1</sup> are substantially smaller than the estimates of 813 Gg a<sup>-1</sup> by Launois et al. (2015).

### 2.3 TM5-4DVAR inverse modelling system

200 We have implemented three tracers (COS, CS<sub>2</sub>, and DMS) in the inverse modelling framework TM5-4DVAR (Krol et al., 2005, 2008; Meirink et al., 2008). In brief, the TM5 model is used to convert fluxes, collected in state vector  $\mathbf{x}$ , to observations  $\mathbf{y}$ :

$$\mathbf{y} = \mathbf{H}(\mathbf{x}), \quad (4)$$

where  $\mathbf{H}$  represents the global chemistry transport model TM5. Since the relation between fluxes and observations is currently linear,  $\mathbf{y} = \mathbf{H}(\mathbf{x})$  can be written as  $\mathbf{y} = \mathbf{H}\mathbf{x}$ . In a flux inversion a cost function is minimized. The cost function has the form:

205

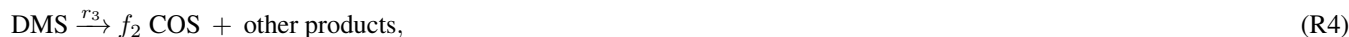
$$J(\mathbf{x}) = \frac{1}{2}(\mathbf{x} - \mathbf{x}_b)^T \mathbf{B}^{-1}(\mathbf{x} - \mathbf{x}_b) + \frac{1}{2}(\mathbf{y} - \mathbf{H}\mathbf{x})^T \mathbf{R}^{-1}(\mathbf{y} - \mathbf{H}\mathbf{x}), \quad (5)$$

where  $\mathbf{x}_b$  represents the prior state of the fluxes, and  $\mathbf{B}$  and  $\mathbf{R}$  are the error covariance matrices of the fluxes and observations, respectively.  $\mathbf{B}$  contains the errors assigned to the fluxes, as well as their correlations in space and time (i.e.  $\mathbf{B}$  is a non-diagonal

matrix).  $\mathbf{R}$  contains the errors assigned to  $(\mathbf{y} - \mathbf{H}\mathbf{x})$ . These errors are assumed to be uncorrelated and they include, next to  
 210 the observational errors, also errors related to the process of mapping coarse-scale fluxes  $\mathbf{x}$  to localized observations  $\mathbf{y}$ . The  
 adjoint of the TM5 model (Krol et al., 2008; Meirink et al., 2008) is used to calculate the gradient of this cost function with  
 respect to all elements in the state vector:

$$\nabla J(\mathbf{x}) = \mathbf{B}^{-1}(\mathbf{x} - \mathbf{x}_b) + \mathbf{H}^T \mathbf{R}^{-1}(\mathbf{H}\mathbf{x} - \mathbf{y}). \quad (6)$$

In all inversions,  $\mathbf{y}$  is represented by COS observations from the NOAA flask network data (Montzka et al., 2007). Our flux  
 215 space, however, in addition to COS emissions, may represent  $\text{CS}_2$  and DMS emissions from anthropogenic activity and oceans.  
 To map their influence on simulated COS observations  $\mathbf{y}$ , we need to consider chemical conversions of  $\text{CS}_2$  and DMS to COS.  
 $\text{CS}_2$  and DMS are short-lived trace gases, with atmospheric lifetimes of approximately 12 days (Khalil and Rasmussen, 1984)  
 and 1.2 days (Khan et al., 2016; Boucher et al., 2003; Breider et al., 2010), respectively. For  $\text{CS}_2$  we implemented OH-initiated  
 conversion to COS, while for DMS we simply apply exponential decay with a lifetime of 1.2 days. COS itself is also destroyed  
 220 by OH in the troposphere and by photolysis in the stratosphere. For OH, we use monthly varying climatological OH fields  
 (Spivakovsky et al., 2000), and applied a correction factor of 0.92 (Naus et al., 2019). In summary, the chemistry that is  
 implemented therefore consists of the following four reactions:



230 where  $j_1$  is the stratospheric photolysis frequency, and  $r_1$  and  $r_2$  are the rate constants of COS and  $\text{CS}_2$  OH-oxidation, respec-  
 tively. The fractions  $f_1$  and  $f_2$  represent the molar yields of COS from  $\text{CS}_2$  (taken as 0.83 (Stickel et al., 1993)) and DMS  
 (taken as 0.007 (Barnes et al., 1996)). The rate  $r_1$  is calculated according to the Arrhenius equation:

$$r_1 = A e^{\frac{-1200\text{K}}{T}}, \quad (7)$$

where  $T$  is temperature in K, and  $A$  is  $1.13 \times 10^{-12} \text{ cm}^3 \text{ s}^{-1} \text{ molecule}^{-1}$  (Cheng and Lee, 1986). The rate  $r_2$  is  $2.0 \times 10^{-12}$   
 235  $\text{ cm}^3 \text{ s}^{-1} \text{ molecule}^{-1}$  (Jones et al., 1983). Note that this rate expression is independent of temperature and slightly different



from Sander et al. (2006). This latter rate was used in Khan et al. (2017), and resulted in a short CS<sub>2</sub> lifetime of 2.8–3.4 days. However, when we implement the Sander et al. (2006) are in TM5, we find a CS<sub>2</sub> lifetime of 6.2 days. This might be due to the fact that we ignore CS<sub>2</sub> deposition (15% of the loss according to Khan et al. (2017)) or that we use lower OH or higher emissions. Rate  $r_2 = 2.0 \times 10^{-12} \text{ cm}^3 \text{ s}^{-1} \text{ molecule}^{-1}$  leads to an atmospheric CS<sub>2</sub> lifetime of 9.4 days in TM5. Rate  $r_3$  represents an exponential decay of 1.2 days for DMS ( $r_3 = 9.6 \times 10^{-6} \text{ s}^{-1}$ ).

COS photolysis frequencies are calculated based on troposphere ultraviolet and visible (TUV) radiation model (Madronich et al., 2003). Based on monthly climatologies of ozone profiles and temperatures, monthly-averaged photolysis frequencies are calculated on a 1 km grid spanning 0 – 120 km and on 180 latitude bands. Implemented in TM5, COS loss in the stratosphere amounts to about 40 Gg a<sup>-1</sup>. This estimate is in line with earlier estimates of (50±15) Gg a<sup>-1</sup> (Brühl et al., 2012; Barkley et al., 2008; Chin and Davis, 1995; Engel and Schmidt, 1994; Weisenstein, 1997; Krysztofiak et al., 2015; Turco et al., 1980; Crutzen and Schmailzl, 1983; Crutzen, 1976).

## 2.4 Model-data mismatch errors

The diagonal elements of the error covariance matrix  $\mathbf{R}$  in Eq. 5 contain contributions from observational errors, representation errors and errors related to applying large fluxes in the planetary boundary layer (Bergamaschi et al., 2010):

$$\sigma_t = \sqrt{(\sigma_o^2 + \sigma_r^2 + \sigma_f^2)}, \quad (8)$$

where  $\sigma_t$  is the total error,  $\sigma_o$  the observational error,  $\sigma_r$  the representation error, and  $\sigma_f$  an error related to applying large surface fluxes. The assumed observational error is shown in Figure 3. It is worth to note that observational errors are usually overwhelmed by the representation and flux errors. The representation error is calculated by sampling the modelled gradients in the vicinity of the sampled station (Bergamaschi et al., 2010). Finally, the flux error in each cell is linked to the magnitude of the monthly surface flux  $f$  (kg m<sup>-2</sup> s<sup>-1</sup> in each cell) applied in the model as:

$$\sigma_f = \frac{fgM_{\text{air}}\Delta t}{M_S\Delta p}. \quad (9)$$

Here,  $f$  represent the sum of all COS prior flux components. In this sum, the biosphere flux is dominant over regions with strong biosphere uptake. Further,  $g$  is gravitational acceleration (9.8 m s<sup>-2</sup>),  $M_{\text{air}}$  is molar mass of dry air (28.9 kg kmol<sup>-1</sup>),  $M_S$  is molar mass of sulfur (32.1 kg kmol<sup>-1</sup>),  $\Delta p$  (Pa) is the thickness of the first model layer, and  $\Delta t$  is the time (s) over which the COS flux accumulates (we use 1 hour). Note that  $\sigma_f$  is unit-less and is multiplied by  $1 \times 10^{12}$  to obtain units of pmol mol<sup>-1</sup>.

Based on the total error, we define a  $\chi^2$  metric to quantify how well the observations are reproduced by the model (e.g. at a particular station).

$$\chi^2 = \frac{\sum_{i=1}^N (\mathbf{H}\mathbf{x} - \mathbf{y})^2}{N\sigma_t^2}, \quad (10)$$

where  $N$  is the number of individual observations. We can calculate this metric before optimization (prior) and after optimization (posterior).  $\chi^2$  is used to diagnose whether inversions are over-fitting or under-fitting the information contained in

the measurement network. A value  $\chi^2 \approx 1.0$  indicates that the inverse system is able to fit the data within the error setting (Hooghiemstra et al., 2011). A large posterior  $\chi^2$  indicates that the state does not have enough degrees of freedom to fit the observations properly (or the error settings are too small). A small posterior  $\chi^2$  indicates over-fitting of the observations (or too wide error settings).

## 2.5 Model settings

In this study, the TM5-4DVAR system is employed on a global resolution of  $6^\circ \times 4^\circ$  (longitude  $\times$  latitude). Flux fields are coarsened from a resolution of  $1^\circ \times 1^\circ$ . To create a reasonable start field for the inversions, we initially performed an 11-year forward simulation starting with zero initial mole fractions and baseline surface fluxes augmented by  $432 \text{ Gg a}^{-1}$ , distributed uniformly to close a gap in the global budget. After 11 years, sources and sinks are roughly in balance, with atmospheric mole fractions of about  $500 \text{ pmol mol}^{-1}$ . Note that fluxes are used as zero-order terms, while the COS removal by OH and photolysis are first order removal terms that grow as the atmospheric COS increases.

We will present the results of four inversions. Firstly, we optimized the missing emissions, which amount to  $432 \text{ Gg a}^{-1}$ . This inversion will be denoted by  $S_u$  throughout the paper. The aim of this inversion is to investigate the spatial structure and temporal variability of the missing COS emissions. This is the first time that a formal 4DVAR approach is applied to the COS budget. To this end, we start from an emission field of  $432 \text{ Gg a}^{-1}$  that is uniformly distributed globally. We optimize emissions on a monthly timescale, and assign a grid-scale prior error of 100%, which is an arbitrary number to give fluxes enough freedom to adjust. In a three-year inversion, the total number of state vector elements amounts to 97200 (36 months  $\times$  45 latitudinal bins  $\times$  60 longitudinal bins). The total number of NOAA observations is much smaller, thus rendering the inversion under-determined. We therefore also use inversion  $S_u$  to explore different settings of the temporal and spatial correlation lengths, which control the degrees of freedom of the state vector. We explore spatial correlation lengths of 1000 km, 4000 km, 6000 km, 10000 km, and 20000 km, and temporal correlation lengths of 5.5, 7, 9.5, 12 months.

Secondly, we explore the optimization of specific categories in inversions S1–S3. In S1 we attempt to perform an "objective" inversion, in which we assign grid-scale errors of 50% to the biosphere and ocean (we optimize both COS and  $\text{CS}_2$ ), and 10% to the anthropogenic COS and  $\text{CS}_2$  emissions, and to the biomass burning emissions. Furthermore, in S2 we only optimise ocean exchange, and in S3 we only optimise the biosphere exchange. The aim of inversions S1–S3 is to explore whether either ocean fluxes or the biosphere fluxes (or both) should be used to close the gap in the COS budget. Note that DMS ocean emissions are not optimized. The names and setting of the inversions are summarized in Table 3.

The cost function is minimized with Congrad, an efficient numerical algorithm for solving linear systems (Lanczos, 1950). This minimizer was also used in previous inverse modelling studies with the TM5-4DVAR system (Basu et al., 2013; Monteil et al., 2011, 2013; Houweling et al., 2014; Pandey et al., 2015). For convergence, we request a gradient norm reduction of  $1 \times 10^5$ , and this reduction is usually achieved within 40 iterations.

We perform flux inversions for the period 2000–2012. To decrease computational costs, we adopt the strategy to run parallel 3-year inversions, and we discard the optimized fluxes of the first 6 months (spin-up) and the last 6 months (spin-down). For example, the first inversion targets the period 1-1-2000 to 1-1-2003, the second inversion 1-1-2002 to 1-1-2005, and so on. In

the spin-up period the fluxes in the first 6 months are used to adjust the imperfect initial condition. In the spin-down period, fluxes are less reliable, because they have not been well constrained by observations. The optimized fluxes in the overlapping years are used to check the inversion results for consistency. In general, it is found that the optimized fluxes in the overlapping periods are highly consistent.

## 305 3 Results

### 3.1 Closing a gap in the COS budget

In this section, we consider inversion  $S_u$ , in which a uniform field emitting  $432 \text{ Gg a}^{-1}$  is optimized. We use different settings for the spatial and temporal correlation lengths of this field in the inversion, and quantify the posterior goodness-of-fit using the  $\chi^2$  metric (Eq. 10). As presented in more detail in Supplementary Figure S5 we find, as expected, that  $\chi^2$  decreases with  
310 increasing degrees of freedom (smaller correlations).

Overall, the posterior fit to NOAA surface observations from 14 sites does not improve significantly for smaller correlation lengths. If we analyse the posterior fit to the short-term sampling program from HIPPO, however, we find that the  $\chi^2$  reaches a minimum (see supplement Figure S5). After this minimum,  $\chi^2$  values increase again, a possible sign of over-fitting. We therefore select 4000 km and 12 months for respectively the spatial and temporal correlation length, and use these values in the  
315 remainder of this study.

Figure 4 presents the fit to observations of the prior and posterior simulation, for the inversion with temporal and spatial correlation lengths of 12 months and 4000 km, respectively. Corresponding  $\chi^2$  metrics per station are listed as labels in Figure 4. Posterior fits are by design much better than prior fits. Only for NOAA stations THD and NWR the posterior  $\chi^2$  remains larger than 3, indicating insufficient degrees of freedom to resolve remaining discrepancies, underestimated model  
320 errors, or the influence of outliers (see Figure 4 g, h). THD is a coastal site (107 m a.s.l.) and NWR is a tundra site above treeline (3526 m a.s.l.) in the US (Figure 1), and thus the model resolution of  $6^\circ \times 4^\circ$  is likely too coarse to represent these sites. The local coastal effect might be another reason why THD yields a larger  $\chi^2$  (Riley et al., 2005). It is worth to note that the posterior simulation does not exhibit jumps in overlapping years from the parallel running inversions, indicating that our inversion strategy works well.

The correlation settings have a large impact on the optimized fluxes. Figure 5 shows the spatial distribution of the posterior flux field calculated with two different correlation settings. For correlations of 1000 km and 5.5 months (panel (a)) we detect a typical pattern that signals over-fitting of the observations. In such a pattern, the optimized flux displays hot spots close to measurement locations (e.g. THD, MLO, SMO). For very long spatial correlations, e.g., 20000 km, posterior fits are poor ( $\chi^2 > 6$ , see Figure S5) and optimized flux patterns show irregular behaviour (Figure S6). Our best inversion (4000 km and  
330 12 months) produces a smooth optimized flux without apparent spatial patterns near observational stations (Figure 5b). This pattern confirms the missing COS sources in the tropics (Suntharalingam et al., 2008; Berry et al., 2013) and also requires more uptake at high latitudes, especially in the NH.

To investigate the variation in the optimized fluxes of inversion  $S_u$ , we decompose the flux components as described in Section 2.1.4. The monthly fluxes and derived long-term trend are shown in Supplementary Figure S7. The global flux was subsequently split into 8 regions, and the regional COS  $S_u$  fluxes analyzed for these regions are shown in (Figure 6). Region NH1 (North America plus part of Pacific and Atlantic Oceans, orange) shows a negative "unknown" flux, indicating that more sinks are needed. This likely points to an underestimation of the biosphere uptake in the prior, since this region (that is well constrained by observations) depicts a clear seasonal cycle in the optimized "unknown" flux. A larger sink is also needed in NH2 (Europe, green) and NH3 (Asia, red), but of smaller magnitude than NH1. Tropical regions TR0–TR3 have similar trend and seasonality, and generally show a positive flux signal, with little seasonal cycle. This could represent an oceanic signal (underestimated emissions of COS or COS precursors in the prior), a signal from biomass burning, or an overestimated biosphere sink. The ocean-dominated region SH (blue) has a near neutral flux, with a seasonal cycle that shows higher emissions in local fall and early winter. In the next section, we will explore the optimization of the ocean and biosphere fluxes.

### 3.2 Objective inversions

In this section we will discuss the results of inversions S1, S2, and S3. The resulting global budgets are compared to literature values in Table 4. In addition,  $\chi^2$  metrics and biases of the various inversions are reported in Table 5 for the NOAA surface network, the HIPPO campaigns, and the NOAA airborne profiles. Note that we also report results for optimizations that assimilated the HIPPO observations next to the NOAA surface data. The period of the analysed inversions is 2008–2010. The prior and posterior emission errors and error reduction of the different inversion scenarios are listed and discussed in Supplement Table S1.

The three inversions are all able to close the gap in the global COS budget, however, with very different budget terms (Table 4). Inversions S1 and S3 close the gap in the budget by a drastic reduction of the biosphere uptake in the tropics and more biosphere uptake at high latitudes. When the biosphere is not optimized (S2), the inversion enhances the  $CS_2$  tropical oceanic source and reduces direct COS emissions from the high latitude oceans (Table 4). Both patterns lead to reduced tropical biospheric uptake and more uptake at high latitudes, as was found for inversion  $S_u$ .

Concerning the posterior fit to observations, none of the S1–S3 inversions performed like inversion  $S_u$ . The statistics in Table 5 show that  $S_u$  leads to the best fit to the assimilated observations, and only a small remaining bias. Inversions S1 and S3 show better  $\chi^2$  statistics and smaller biases than inversion S2, because it is difficult to fit continental NOAA stations (LEF, HFM, NWR, THD) only by optimizing ocean fluxes. However, S1 and S3 show a tendency to turn the tropical biosphere sink into a source, as shown in Figure 7, which depicts the posterior biosphere flux and flux increment for inversion S1. Note that while the uptake over high NH latitudes is enhanced, fluxes over regions in South America and over Indonesia have turned into a source. This behaviour can be explained by the under-determined nature of the inverse problem: there are simply not enough observations in the tropics to constrain the tropical fluxes. Fast mixing in the tropics further complicates the detection of signals from the tropical biosphere using the NOAA surface network. Without additional observations it is therefore hard to unequivocally close the gap in the tropical COS budget. Currently, inversion S1 mostly assigns the missing sources to reduced biosphere uptake in the tropics, but the superior  $S_u$  inversion assigns the missing COS sources to a broad band in the tropics,

without strong preference for land or ocean. Note that the behaviour of inversions S1, S2, and S3 is strongly driven by the predefined spatio-temporal patterns in the prior flux fields. In section 3.4, we will revisit this issue.

370 Although we currently cannot close the gap in the global COS budget with one specific known flux, it is instructive to explore the information content of a separate set of COS observations. In the next section, we will therefore evaluate the results of our inversions with HIPPO and NOAA airborne observations (Figure 1).

### 3.3 Evaluation with HIPPO and NOAA airborne profiles

From Table 5 it is clear that for all inversions the comparison to HIPPO observations is not very favourable. Most notably, the simulations with optimized fluxes show strong negative biases, and poor  $\chi^2$  statistics. However, Figure 8 shows that the inversions S1 and  $S_u$  (blue lines) largely improve the correspondence to HIPPO campaign 1 observations (red), relative to the prior simulation (black). The posterior simulations do capture the HIPPO observations much better. The remaining differences in the middle panels of Figure 8 show the general underestimation of the model. However, inversion S1 overestimates HIPPO in the southern tropics, likely caused by too large flux adjustments over South America, the region sampled by HIPPO campaign 1.

380 Interestingly, when the HIPPO observations are additionally assimilated in the inversion, biases are largely removed (Figure 8, lower panels) while the correspondence to the NOAA surface network deteriorates only slightly (Table 5). Posterior  $\chi^2$  values for the HIPPO campaigns remain relatively poor, however, signalling too strict error settings or processes that are not properly modeled.

From the comparison with HIPPO we find that our state vector has enough flexibility to fit additional observations, and that the inversions are strongly observation-limited. Moreover, we find that the inversions based on only observations from the NOAA surface network tend to underestimate COS in the free troposphere. This is corroborated by observations from the NOAA airborne profiles, which are mostly collected over the US (see Figure 1). Figure 9 shows a comparison between profiles using results of inversion S1. Although most posterior profiles (blue) improve considerably compared to the prior simulation (black), they still underestimate observations (red) in the free troposphere. Note that the simulations based on inversion S1 correctly predict the draw-down of COS towards the surface for most measured profiles, and especially the match with the LEF site is very good at the surface, which confirms the performance of the inversion. If HIPPO observations are additionally assimilated (green), the agreement in the free troposphere slightly improves. For S1,  $\chi^2$  for the profile comparison reduces from 27.7 to 20.1, and the bias reduces from -13.9 to -9.7 pmol mol<sup>-1</sup> (Table 5). This confirms the low bias of the free troposphere COS mole fractions in simulations with fluxes that are optimized using both NOAA surface and HIPPO observations.

395 It is now clear that inversions using surface data from the available NOAA network sites will not be able to separate various source categories, and specifically not in the data-void tropics. In the next section we will therefore investigate the prospects of using satellite data to constrain fluxes.

### 3.4 Satellite validation

In Figure 10 we present a comparison between MIPAS, ACE-FTS, and co-sampled TM5 COS profiles. The latitude–height  
400 distributions of MIPAS, TM5 (convolved with the MIPAS AK) and ACE-FTS are shown in Figure 10(a-c). In Figure 10(d)  
we show averaged ACE-FTS, MIPAS and TM5 profiles, the latter two resulting from collocations with respect to ACE-FTS.  
The TM5 profiles shown are from the prior simulation (black), from inversion S1 (blue), and from inversion S1 with additional  
assimilation of HIPPO profiles (green). They are all convolved with the MIPAS AK.

In general, TM5 reproduces the observed pattern of COS well, but with lower values in the tropical up-welling region around  
405 25 km altitude. The comparison between ACE-FTS and MIPAS is consistent with findings of Glatthor et al. (2017), who found  
that ACE-FTS is systematically lower in the UTLS region. Moreover, they found that MIPAS data showed no bias compared  
to MkIV and SPIRALE COS balloon profiles, which also exhibit higher COS values than ACE-FTS (Krysztofiak et al., 2015;  
Velazco et al., 2011). TM5 profiles, after convolution with the MIPAS AK, are in between MIPAS and ACE-FTS. Prior TM5  
profiles (black) show highest values around the tropopause. Again, TM5 profiles optimized by HIPPO and NOAA observation  
410 (green dashed line in Figure 10d) show a slight increase in the upper troposphere compared to the optimization with only  
NOAA surface-site data (blue dashed line).

To compare the different inversions with respect to the simulated latitude–longitude distribution, Figure 11 shows a compar-  
ison of COS between TM5 inversions and MIPAS on 250 hPa in June to August. Similar results on 250 hPa from September to  
November and on 150 hPa from June to August are shown in supplement (Figure S8 and Figure S9). MIPAS COS represents  
415 a 2002–2011 average taken from Glatthor et al. (2017). TM5 results have been averaged over 2008–2010. The distributions  
of COS in all inversions match relatively well with MIPAS. Note, however, that we adjusted the TM5 results by +25 pmol  
mol<sup>-1</sup> to match the colorscale of MIPAS. The COS distribution from the prior simulation correctly simulates low COS over  
the Amazon and Africa, but is clearly too high over Northern latitudes. This latter aspect is partly solved by the inversions.  
If we concentrate on the observed COS minimum over the Atlantic, Africa and the Amazon, inversions S1 and S3 shift this  
420 minimum to the east, consistent with the COS biosphere flux increment shown in Figure 7 for S1. Inversions S<sub>u</sub> and S2 exhibit  
a better comparison with MIPAS, suggesting that the large increments of the tropical biosphere over South America (Figure 7)  
are unrealistic. However, assigning the missing tropical source totally to ocean emissions (S2) appears to overestimate the COS  
drawdown over the Amazon.

TM5 results are also compared to the nadir viewing TES instrument. To this end, COS columns of TM5 (convolved with  
425 the TES AK, see Equation 1) and TES are averaged in 20 latitudinal bins between 32°S and 32°N. Outside this latitude  
band, TES observations become too noisy for a reasonable comparison. Comparisons are shown for the months March, June,  
September and December in Figure 12, based on inversion S1, and averaged over the years 2008–2011. This comparison  
shows that the prior simulation is too high in the tropical latitudes and on the NH (e.g., June, September, and December).  
After assimilation, the agreement with TES improves, but now a general underestimate can be observed. The inversion in  
430 which also the HIPPO observations are assimilated bring the simulated mole fractions closer to TES (except for September),  
confirming our earlier findings based on the airborne observation. Thus, although the TES-derived columns are rather noisy,

they offer good perspective to better constrain the COS budget in the tropics. Due to the sensitivity of TES to COS in the middle troposphere (Kuai et al., 2015), the assimilation of TES in our 4DVAR system might be able to differentiate between the biosphere and ocean signal, something that turned out to be difficult using NOAA surface observations only.

### 435 3.5 Discussion

In this study we have presented inversions focused on the closure of the global COS budget. In general, our inversion modelling framework based on the TM5-4DVAR system is quite well capable to close the gap in the global budget (e.g., inversion  $S_u$ , S1 and S3) and to optimize flux fields such that surface observations are well reproduced. However, due to the lack of observations, we are unable to unambiguously assign the missing COS sources to either missing ocean emissions or to reduced tropical  
440 uptake by the biosphere. Firstly, the total number of observations remains relatively small, which leads to an under-determined inversion problem. Secondly, there are no observational sites that sample air masses from tropical Africa, South America, and South East Asia, which are regions with important COS fluxes. An important next step will therefore be the utilization of satellite data in future inverse modelling studies. In the current study, we did not include all exchange fluxes that are reported in literature (Whelan et al., 2018). In general, we find that our inversions still underestimate COS in the free troposphere. Here,  
445 there might be a role for volcanic emissions (25-42 Gg a<sup>-1</sup> (Whelan et al., 2018)), or 'unnoticed' tropical sources like wetland exchange (-150 to 290 Gg a<sup>-1</sup> (Whelan et al., 2018)). Volcanic emissions are important to mitigate the stratospheric aerosol loading in the stratosphere (Sheng et al., 2015) and might be able to reduce the gap between modelled COS by TM5 and measurements. Alternatively, missing COS could come from an atmospheric oxidation process that converts CS<sub>2</sub> or DMS to COS. We did not find strong evidence for enhanced CS<sub>2</sub> emissions from tropical oceans in our S1 inversion, although inversion  
450 S2 produced reasonable COS simulations by optimizing only COS and CS<sub>2</sub> emissions from the ocean. Moreover, our "best"  $S_u$  inversion produced a flux field that indicated enhanced tropical sources over both land and ocean (Figure 5). Thus, field studies that address tropical COS exchange processes are urgently needed (Lennartz et al., 2020).

We have also considered some variations in our modelling setup. A unique approach of our study is the inclusion of CS<sub>2</sub> and DMS as COS precursors. We tested the effect of emitting CS<sub>2</sub> ocean and anthropogenic sources directly as COS in an  
455 additional forward model simulation. As shown in Figure S10, COS mole fractions would become significantly larger close to CS<sub>2</sub> emission hot spots in Asia, Europe and the US. At selected stations (LEF in the US and MHD in Europe, Figure S10 a and b), we observe COS mole fractions that are up to 40 pmol mol<sup>-1</sup> higher during events where emitted CS<sub>2</sub> is advected to the station. Some ambiguity has been introduced about the CS<sub>2</sub> lifetime (Khan et al., 2017). In our  $S_u$  inversion, the lifetime of CS<sub>2</sub> is estimated as 9.4 days (CS<sub>2</sub> burden divided by CS<sub>2</sub> loss by OH), substantially longer than the  $\approx$  3 day lifetime  
460 mentioned in Khan et al. (2017). Future work should be based on the rate recommendations in Sander et al. (2006). Thus, we conclude that inclusion of CS<sub>2</sub> as a separate tracer is important if we want to understand emissions of CS<sub>2</sub> and COS, which have distinctly different spatial patterns (e.g. see Supplementary Figure S4). Regarding DMS as COS precursor, we have evaluated its importance by performing a NO-DMS inversion, in which DMS as a tracer was removed and the 162 Gg a<sup>-1</sup> DMS source was added to the COS "unknown flux" in inversion  $S_u$ . In Supplement Figure S11, it can be seen that the NO-DMS inversion  
465 shows larger adjustment over both oceans and continents, but that the pattern remains comparable to inversion  $S_u$ .

The use of COS as a proxy for gross primary productivity on a global scale needs a better level of understanding of the biosphere flux. Here we used monthly prior flux fields calculated with the SiB4 model (Berry et al., 2013) in which soil exchange and vegetation uptake are combined. In future studies, we might need a better prior description of this important global COS sink. For instance, recent studies (Ogée et al., 2016; Sun et al., 2018; Meredith et al., 2019; Spielmann et al., 2020) stress the importance of the soil-atmosphere COS exchange. Our inversions S1 and S3 calculate large increments in the biosphere exchange (Figure 7), with general less uptake in the tropics (turning the flux even into a COS source) and enhanced uptake in the NH high latitudes. Quantitatively, the COS uptake is reduced from a prior value of 1053 Gg a<sup>-1</sup> to 557 Gg a<sup>-1</sup> to close the gap in the COS budget. While we seriously question the validity of this result given the fact that most flux adjustments are projected in the data-void tropics, it is still instructive to consider the feedback of the atmospheric COS mole fractions on COS uptake. Since biosphere models operate mostly uncoupled to atmospheric transport models, we used a fixed mole fraction of 500 pmol mol<sup>-1</sup> to construct the prior biosphere fluxes. However, observations clearly show a large drawdown of COS near the surface (Campbell et al., 2008; Hilton et al., 2017; Spielmann et al., 2020; Berkelhammer et al., 2020). We therefore explored the calculations in SiB4 and found that biosphere flux should scale linearly with atmospheric COS mole fractions (Berry et al., 2013). To estimate the potential impact of reduced mole fractions at the surface on the biosphere flux, we corrected the monthly SiB4 fluxes as:

$$f_{\text{biosp,cor}} = f_{\text{biosp}} \frac{y(\text{COS})}{500 \text{ pmol mol}^{-1}}, \quad (11)$$

where  $f_{\text{biosp}}$  and  $f_{\text{biosp,cor}}$  are the original and corrected monthly biosphere fluxes on the TM5 grid, and  $y(\text{COS})$  is the monthly mean COS mole fractions (pmol mol<sup>-1</sup>) in the first model layer (approximately 50 m) from inversion  $S_u$ . This simple correction, based on monthly mean fields, changes the biosphere sink from 1053 Gg a<sup>-1</sup> to 851 Gg a<sup>-1</sup>, an update of 202 Gg a<sup>-1</sup> (Supplementary Figures S12, S13 and S14), and closer to the 738 Gg a<sup>-1</sup> reported by Berry et al. (2013). Interestingly, the corrected flux is strongly reduced over regions with an active tropical biosphere, in line with results from inversions S1 and S3. This indicates that uptake of COS should be treated as a first order loss process, and that the SiB4 prior fields based on fixed atmospheric mole fractions of 500 pmol mol<sup>-1</sup> likely overestimate COS uptake. However, such an approach makes the optimization problem non-linear. This, and the challenge of assimilating satellite observations, will be the subject of future studies.

## 4 Conclusions

In this study, we have implemented an inverse modelling framework for COS, coupled to the budgets of CS<sub>2</sub> and DMS. Inversions using the NOAA surface observation network have been evaluated with observations from HIPPO, airborne observations, and satellite products. Conclusions are:

- In line with earlier studies, our inversions point to missing sources in the tropics and missing sinks at high latitudes. With seasonal decomposition of the optimized unknown COS flux, it is found that the missing sources show regional



seasonality, indicating regional source or sink impacts. Whether the missing sources in the tropics originate from the land or ocean cannot be determined currently because of a lack of observations in the tropics.

- 500 – Simulations that are optimized by only NOAA surface observations from 14 sites lack information about COS in the free troposphere. When the short-term HIPPO aircraft sampling program is used as an additional data source in the inversions, the comparison to NOAA airborne observations and satellite products generally improves.
- 505 – Comparison between TM5 inversions and satellite data shows that COS in the model is systematically lower than MIPAS or TES, and inversions reproduced the tropospheric COS spatial distribution well, specifically for inversions  $S_u$  and S2. These comparisons indicate that the missing tropical source likely originates from a combination of underestimated ocean emissions, and overestimated biosphere uptake. Part of the tropical sources can be explained by the dependence of COS uptake on atmospheric mole fractions.
- Future improvements are expected from the assimilation of satellite data and better prior descriptions of the ocean and biosphere fluxes.

510 Our future plan is therefore to assimilate satellite data into our 4DVAR inverse modelling system to have better constraints on COS in the free troposphere and lower stratosphere. Other developments target the coupling of COS and CO<sub>2</sub> in a shared inverse modelling system, with the aim to better constrain gross primary productivity.

*Code and data availability.* Codes and data are available on request from authors.

515 *Author contributions.* JM and MK designed the study. JM implemented the method and carried out numerical experiments. LMJK and AC performed SiB4 model experiments. SM and EA provided observations from the NOAA surface network, HIPPO and airborne observations. JW and LK provided the TES–Aura satellite product and helped with the technical discussion on the use of satellite products. NG provided the MIPAS satellite data product with averaging kernel and helped with the discussion. JM and MK wrote the manuscript with contributions from all co-authors.

*Competing interests.* There is no competing interests from authors.

520 *Acknowledgements.* We thank the NOAA team providing the data and help from Dr. Lei Hu for providing the airborne profiles. We thank Dr. Fred Moore for assistance with providing flask samples during the HIPPO campaign and Dr. Colm Sweeney for his role in leading the ongoing NOAA aircraft program and C. Siso for her assistance in providing NOAA flask data from NOAA ongoing programs and from NOAA's flask samples collected during HIPPO. We thank the MIPAS research team for providing MIPAS satellite data product. We thank for

data support from the HIPPO team, and the TES and ACE-FTS satellite data teams. Elliot Atlas acknowledges support from NSF AGS Grant 0959853. This research project has been supported by funding from the European Research Council (ERC) under the European Union's  
525 Horizon 2020 research and innovation program under grant agreement No 742798 (<http://cos-ocs.eu>).

## References

- Andreae, M. O.: Emission of trace gases and aerosols from biomass burning - An updated assessment, *Atmospheric Chemistry and Physics*, 19, 8523–8546, <https://doi.org/10.5194/acp-19-8523-2019>, <https://www.atmos-chem-phys-discuss.net/acp-2019-303/acp-2019-303.pdf>, 2019.
- 530 Andreae, M. O. and Crutzen, P. J.: Atmospheric aerosols: Biogeochemical sources and role in atmospheric chemistry, *Science*, 276, 1052–1058, <https://doi.org/10.1126/science.276.5315.1052>, 1997.
- Barkley, M. P., Palmer, P. I., Boone, C. D., Bernath, P. F., and Suntharalingam, P.: Global distributions of carbonyl sulfide in the upper troposphere and stratosphere, *Geophysical Research Letters*, 35, L14 810, <https://doi.org/10.1029/2008GL034270>, <http://doi.wiley.com/10.1029/2008GL034270>, 2008.
- 535 Barnes, I., Becker, K. H., and Patroescu, I.: FTIR product study of the OH initiated oxidation of dimethyl sulphide: Observation of carbonyl sulphide and imethyl sulphoxide, *Atmospheric Environment*, 30, 1805–1814, [https://doi.org/10.1016/1352-2310\(95\)00389-4](https://doi.org/10.1016/1352-2310(95)00389-4), <https://www.sciencedirect.com/science/article/pii/1352231095003894>, 1996.
- Basu, S., Guerlet, S., Butz, A., Houweling, S., Hasekamp, O., Aben, I., Krummel, P., Steele, P., Langenfelds, R., Torn, M., Biraud, S., Stephens, B., Andrews, A., and Worthy, D.: Global CO<sub>2</sub> fluxes estimated from GOSAT retrievals of total column CO<sub>2</sub>, *Atmospheric Chemistry and Physics*, 13, 8695–8717, <https://doi.org/10.5194/acp-13-8695-2013>, <https://www.atmos-chem-phys.net/13/8695/2013/>, 2013.
- 540 Beer, R., Glavich, T. A., and Rider, D. M.: Tropospheric emission spectrometer for the Earth Observing System’s Aura satellite, *Applied optics*, 40, 2356–2367, 2001.
- Bergamaschi, P., Krol, M., Meirink, J. F., Dentener, F., Segers, A., Van Aardenne, J., Monni, S., Vermeulen, A. T., Schmidt, M., Ramonet, M., Yver, C., Meinhardt, F., Nisbet, E. G., Fisher, R. E., O’Doherty, S., and Dlugokencky, E. J.: Inverse modeling of European CH<sub>4</sub> emissions 2001-2006, *Journal of Geophysical Research Atmospheres*, 115, <https://doi.org/10.1029/2010JD014180>, <https://agupubs.onlinelibrary.wiley.com/doi/abs/10.1029/2010JD014180>, 2010.
- 545 Berkelhammer, M., Alsip, B., Matamala, R., Cook, D., Whelan, M., Joo, E., Bernacchi, C., Miller, J., and Meyers, T.: Seasonal Evolution of Canopy Stomatal Conductance for a Prairie and Maize Field in the Midwestern United States from Continuous Carbonyl Sulfide Fluxes, *Geophysical Research Letters*, 47, e2019GL085 652, 2020.
- 550 Berry, J., Wolf, A., Campbell, J. E., Baker, I., Blake, N., Blake, D., Denning, A. S., Kawa, S. R., Montzka, S. A., Seibt, U., Stimler, K., Yakir, D., and Zhu, Z.: A coupled model of the global cycles of carbonyl sulfide and CO<sub>2</sub>: A possible new window on the carbon cycle, *Journal of Geophysical Research: Biogeosciences*, 118, 842–852, <https://doi.org/10.1002/jgrg.20068>, <http://doi.wiley.com/10.1002/jgrg.20068>, 2013.
- Blake, N. J., Streets, D. G., Woo, J. H., Simpson, I. J., Green, J., Meinardi, S., Kita, K., Atlas, E., Fuelberg, H. E., Sachse, G., Avery, M. A., Vay, S. A., Talbot, R. W., Dibb, J. E., Bandy, A. R., Thornton, D. C., Rowland, F. S., and Blake, D. R.: Carbonyl sulfide and carbon disulfide: Large-scale distributions over the western Pacific and emissions from Asia during TRACE-P, *Journal of Geophysical Research D: Atmospheres*, 109, D15S05, <https://doi.org/10.1029/2003JD004259>, <http://doi.wiley.com/10.1029/2003JD004259>, 2004.
- 555 Boone, C. D., Walker, K. A., and Bernath, P. F.: Version 3 retrievals for the atmospheric chemistry experiment Fourier transform spectrometer (ACE-FTS), *The Atmospheric Chemistry Experiment ACE at*, 10, 103–127, 2013.
- 560 Boucher, O., Moulin, C., Belviso, S., Aumont, O., Bopp, L., Cosme, E., Von Kuhlmann, R., Lawrence, M. G., Pham, M., Reddy, M. S., Sciare, J., and Venkataraman, C.: DMS atmospheric concentrations and sulphate aerosol indirect radiative forcing: A sensitivity study

- to the DMS source representation and oxidation, *Atmospheric Chemistry and Physics*, 3, 49–65, <https://doi.org/10.5194/acp-3-49-2003>, 2003.
- 565 Breider, T. J., Chipperfield, M. P., Richards, N. A., Carslaw, K. S., Mann, G. W., and Spracklen, D. V.: Impact of BrO on dimethylsulfide in the remote marine boundary layer, *Geophysical Research Letters*, 37, <https://doi.org/10.1029/2009GL040868>, 2010.
- Brühl, C., Lelieveld, J., Crutzen, P. J., and Tost, H.: The role of carbonyl sulphide as a source of stratospheric sulphate aerosol and its impact on climate, *Atmospheric Chemistry and Physics*, 12, 1239–1253, <https://doi.org/10.5194/acp-12-1239-2012>, <https://www.atmos-chem-phys.net/12/1239/2012/>, 2012.
- 570 Campbell, J., Whelan, M., Seibt, U., Smith, S. J., Berry, J., and Hilton, T. W.: Atmospheric carbonyl sulfide sources from anthropogenic activity: Implications for carbon cycle constraints, *Geophysical research letters*, 42, 3004–3010, 2015.
- Campbell, J. E., Carmichael, G. R., Chai, T., Mena-Carrasco, M., Tang, Y., Blake, D., Blake, N., Vay, S. A., Collatz, G. J., Baker, I., et al.: Photosynthetic control of atmospheric carbonyl sulfide during the growing season, *Science*, 322, 1085–1088, 2008.
- Campbell, J. E., Berry, J. A., Seibt, U., Smith, S. J., Montzka, S. A., Launois, T., Belviso, S., Bopp, L., and Laine, M.: Large historical growth in global terrestrial gross primary production, *Nature*, 544, 84–87, <https://doi.org/10.1038/nature22030>, <https://www.nature.com/articles/nature22030>, 2017.
- 575 Cheng, B.-M. and Lee, Y.-P.: Rate constant of OH+ OCS reaction over the temperature range 255–483 K, *International journal of chemical kinetics*, 18, 1303–1314, 1986.
- Chin, M. and Davis, D. D.: Global sources and sinks of carbonyl sulfide and carbon disulfide and their distributions., *Global Biogeochemical Cycles*, 7, 321–337, <https://doi.org/10.1029/93GB00568>, <https://agupubs.onlinelibrary.wiley.com/doi/pdf/10.1029/93GB00568>, 1993.
- 580 Chin, M. and Davis, D. D.: A reanalysis of carbonyl sulfide as a source of stratospheric background sulfur aerosol, *Journal of Geophysical Research*, 100, 8993–9005, <https://doi.org/10.1029/95JD00275>, 1995.
- Crutzen, P. J.: The possible importance of CSO for the sulfate layer of the stratosphere, *Geophysical Research Letters*, 3, 73–76, <https://doi.org/10.1029/GL003i002p00073>, 1976.
- Crutzen, P. J. and Schmailzl, U.: Chemical budgets of the stratosphere, *Planetary and Space Science*, 31, 1009–1032, [https://doi.org/10.1016/0032-0633\(83\)90092-2](https://doi.org/10.1016/0032-0633(83)90092-2), <https://www.sciencedirect.com/science/article/pii/0032063383900922>, 1983.
- 585 Du, Q., Zhang, C., Mu, Y., Cheng, Y., Zhang, Y., Liu, C., Song, M., Tian, D., Liu, P., Liu, J., Xue, C., and Ye, C.: An important missing source of atmospheric carbonyl sulfide: Domestic coal combustion, *Geophysical Research Letters*, 43, 8720–8727, 2016.
- Engel, A. and Schmidt, U.: Vertical profile measurements of carbonylsulfide in the stratosphere, *Geophysical Research Letters*, 21, 2219–2222, <https://doi.org/10.1029/94GL01461>, 1994.
- 590 Fernandes, S. D., Trautmann, N. M., Streets, D. G., Roden, C. A., and Bond, T. C.: Global biofuel use, 1850-2000, *Global Biogeochemical Cycles*, 21, n/a–n/a, <https://doi.org/10.1029/2006GB002836>, <http://doi.wiley.com/10.1029/2006GB002836>, 2007.
- Fischer, H., Birk, M., Blom, C., Carli, B., Carlotti, M., Clarmann, T. v., Delbouille, L., Dudhia, A., Ehhalt, D., Endemann, M., et al.: MIPAS: an instrument for atmospheric and climate research, *Atmospheric Chemistry and Physics*, 8, 2151–2188, <https://doi.org/10.5194/acp-8-2151-2008>, 2008.
- 595 Glatthor, N., Höpfner, M., Baker, I. T., Berry, J., Campbell, J. E., Kawa, S. R., Krysztofiak, G., Leyser, A., Sinnhuber, B. M., Stiller, G. P., Stinecipher, J., and Von Clarmann, T.: Tropical sources and sinks of carbonyl sulfide observed from space, *Geophysical Research Letters*, 42, 10 082–10 090, <https://doi.org/10.1002/2015GL066293>, <http://doi.wiley.com/10.1002/2015GL066293>, 2015.
- Glatthor, N., Höpfner, M., Leyser, A., Stiller, G. P., Von Clarmann, T., Grabowski, U., Kellmann, S., Linden, A., Sinnhuber, B. M., Krysztofiak, G., and Walker, K. A.: Global carbonyl sulfide (OCS) measured by MIPAS/Envisat during 2002-2012, *Atmospheric Chem-*

- 600 istry and Physics, 17, 2631–2652, <https://doi.org/10.5194/acp-17-2631-2017>, <https://hal-insu.archives-ouvertes.fr/insu-01557680/https://www.atmos-chem-phys.net/17/2631/2017/>, 2017.
- Haynes, K. D., Baker, I. T., Denning, A. S., Wolf, S., Wohlfahrt, G., Kiely, G., Minaya, R. C., and Haynes, J. M.: Representing grasslands using dynamic prognostic phenology based on biological growth stages: Part 2. Carbon cycling, *Journal of Advances in Modeling Earth Systems*, 2019.
- 605 Hilton, T. W., Whelan, M. E., Zumkehr, A., Kulkarni, S., Berry, J. A., Baker, I. T., Montzka, S. A., Sweeney, C., Miller, B. R., and Elliott Campbell, J.: Peak growing season gross uptake of carbon in North America is largest in the Midwest USA, *Nature Climate Change*, 7, 450–454, <https://doi.org/10.1038/nclimate3272>, <http://www.nature.com/articles/nclimate3272>, 2017.
- Hoesly, R. M., Smith, S. J., Feng, L., Klimont, Z., Janssens-Maenhout, G., Pitkanen, T., Seibert, J. J., Vu, L., Andres, R. J., Bolt, R. M., Bond, T. C., Dawidowski, L., Kholod, N., Kurokawa, J. I., Li, M., Liu, L., Lu, Z., Moura, M. C., O'Rourke, P. R., and Zhang, Q.: Historical  
610 (1750-2014) anthropogenic emissions of reactive gases and aerosols from the Community Emissions Data System (CEDS), *Geoscientific Model Development*, 11, 369–408, <https://doi.org/10.5194/gmd-11-369-2018>, <https://www.geosci-model-dev.net/11/369/2018/>, 2018.
- Hooghiemstra, P. B., Krol, M. C., Meirink, J. F., Bergamaschi, P., Van Der Werf, G. R., Novelli, P. C., Aben, I., and Röckmann, T.: Optimizing global CO emission estimates using a four-dimensional variational data assimilation system and surface network observations, *Atmospheric Chemistry and Physics*, 11, 4705–4723, <https://doi.org/10.5194/acp-11-4705-2011>, <https://www.atmos-chem-phys.net/11/4705/2011/>, 2011.
- 615 Houweling, S., Krol, M., Bergamaschi, P., Frankenberg, C., Dlugokencky, E. J., Morino, I., Notholt, J., Sherlock, V., Wunch, D., Beck, V., Gerbig, C., Chen, H., Kort, E. A., Röckmann, T., and Aben, I.: A multi-year methane inversion using SCIAMACHY, accounting for systematic errors using TCCON measurements, *Atmospheric Chemistry and Physics*, 14, 3991–4012, <https://doi.org/10.5194/acp-14-3991-2014>, 2014.
- 620 Jones, B., Cox, R., and Penkett, S.: Atmospheric chemistry of carbon disulphide, *Journal of Atmospheric Chemistry*, 1, 65–86, 1983.
- Kettle, A. J., Kuhn, U., Von Hobe, M., Kesselmeier, J., and Andreae, M. O.: Global budget of atmospheric carbonyl sulfide: Temporal and spatial variations of the dominant sources and sinks, *Journal of Geophysical Research Atmospheres*, 107, 4658, <https://doi.org/10.1029/2002JD002187>, <http://doi.wiley.com/10.1029/2002JD002187><https://onlinelibrary.wiley.com/doi/pdf/10.1029/2002JD002187>, 2002.
- 625 Khalil, M. A. and Rasmussen, R. A.: Global sources, lifetimes and mass balances of carbonyl sulfide (OCS) and carbon disulfide (CS<sub>2</sub>) in the earth's atmosphere, *Atmospheric Environment* (1967), 18, 1805–1813, [https://doi.org/10.1016/0004-6981\(84\)90356-1](https://doi.org/10.1016/0004-6981(84)90356-1), <https://www.sciencedirect.com/science/article/pii/0004698184903561>, 1984.
- Khan, A., Razis, B., Gillespie, S., Percival, C., and Shallcross, D.: Global analysis of carbon disulfide (CS<sub>2</sub>) using the 3-D chemistry transport model STOCHEM, *AIMS Environmental Science*, 4, 484–501, <https://doi.org/10.3934/environsci.2017.3.484>, <http://www.aimspress.com/article/10.3934/environsci.2017.3.484>[https://research-information.bristol.ac.uk/files/113735086/environ\\_{\\_}04\\_{\\_}00484.pdf](https://research-information.bristol.ac.uk/files/113735086/environ_{_}04_{_}00484.pdf), 2017.
- 630 Khan, M. A., Gillespie, S. M., Razis, B., Xiao, P., Davies-Coleman, M. T., Percival, C. J., Derwent, R. G., Dyke, J. M., Ghosh, M. V., Lee, E. P., and Shallcross, D. E.: A modelling study of the atmospheric chemistry of DMS using the global model, STOCHEM-CRI, *Atmospheric Environment*, 127, 69–79, <https://doi.org/10.1016/j.atmosenv.2015.12.028>, 2016.
- Koo, J. H., Walker, K. A., Jones, A., Sheese, P. E., Boone, C. D., Bernath, P. F., and Manney, G. L.: Global climatology based on the  
635 ACE-FTS version 3.5 dataset: Addition of mesospheric levels and carbon-containing species in the UTLS, *Journal of Quantitative Spectroscopy and Radiative Transfer*, 186, 52–62, <https://doi.org/10.1016/j.jqsrt.2016.07.003>, <https://www.sciencedirect.com/science/article/pii/S0022407316301066>, 2017.

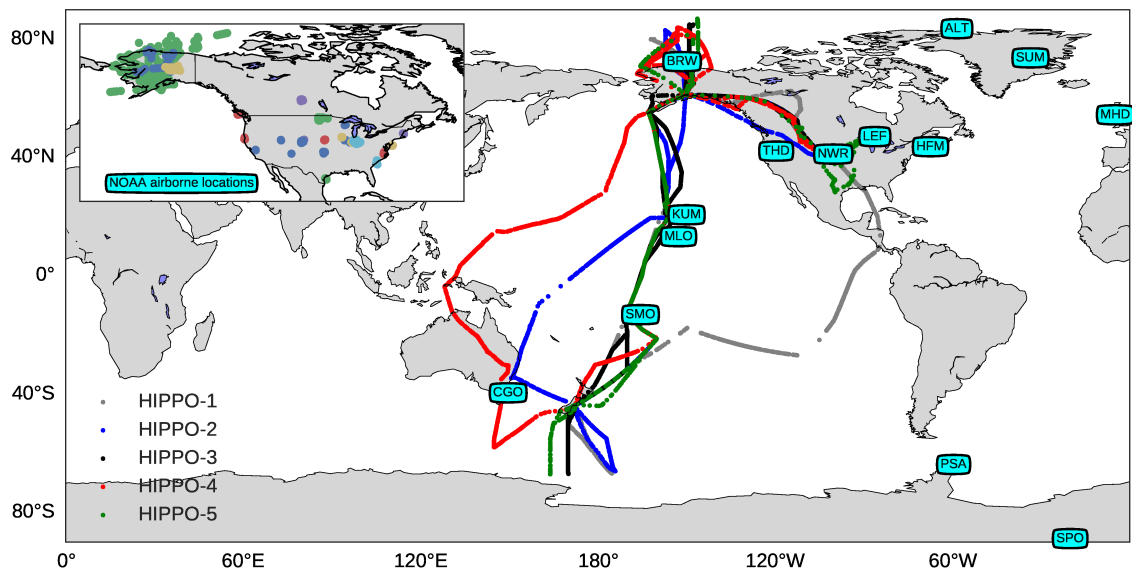
- Kooijmans, L. M., Maseyk, K., Seibt, U., Sun, W., Vesala, T., Mammarella, I., Kolari, P., Aalto, J., Franchin, A., Vecchi, R., Valli, G., and Chen, H.: Canopy uptake dominates nighttime carbonyl sulfide fluxes in a boreal forest, *Atmospheric Chemistry and Physics*, 17, 11 453–11 465, <https://doi.org/10.5194/acp-17-11453-2017>, <https://doi.org/10.5194/acp-17-11453-2017>, 2017.
- 640 Kooijmans, L. M. J., Sun, W., Aalto, J., Erkkilä, K.-M. M., Maseyk, K., Seibt, U., Vesala, T., Mammarella, I., and Chen, H.: Influences of light and humidity on carbonyl sulfide-based estimates of photosynthesis, *Proceedings of the National Academy of Sciences of the United States of America*, 116, 2470–2475, <https://doi.org/10.1073/pnas.1807600116>, <http://www.ncbi.nlm.nih.gov/pubmed/30683727><http://www.pubmedcentral.nih.gov/articlerender.fcgi?artid=PMC6377472>, 2019.
- 645 Kremser, S., Thomason, L. W., von Hobe, M., Hermann, M., Deshler, T., Timmreck, C., Toohey, M., Stenke, A., Schwarz, J. P., Weigel, R., Fueglistaler, S., Prata, F. J., Vernier, J. P., Schlager, H., Barnes, J. E., Antuña-Marrero, J. C., Fairlie, D., Palm, M., Mahieu, E., Notholt, J., Rex, M., Bingen, C., Vanhellefont, F., Bourassa, A., Plane, J. M., Klocke, D., Carn, S. A., Clarisse, L., Trickl, T., Neely, R., James, A. D., Rieger, L., Wilson, J. C., and Meland, B.: Stratospheric aerosol—Observations, processes, and impact on climate, <https://doi.org/10.1002/2015RG000511>, <http://doi.wiley.com/10.1002/2015RG000511>, 2016.
- 650 Krol, M., Houweling, S., Bregman, B., van den Broek, M., Segers, A., van Velthoven, P., Peters, W., Dentener, F., and Bergamaschi, P.: The two-way nested global chemistry-transport zoom model TM5: algorithm and applications, *Atmospheric Chemistry and Physics*, 5, 417–432, <https://doi.org/10.5194/acp-5-417-2005>, <http://www.atmos-chem-phys.net/5/417/2005/>, 2005.
- Krol, M. C., Meirink, J. F., Bergamaschi, P., Mak, J. E., Lowe, D., Jöckel, P., Houweling, S., and Röckmann, T.: What can <sup>14</sup>C CO measurements tell us about OH?, *Atmospheric Chemistry and Physics*, 8, 5033–5044, <https://doi.org/10.5194/acp-8-5033-2008>, <https://www.atmos-chem-phys.net/8/5033/2008/>, 2008.
- 655 Krzstofiak, G., Té, Y. V., Catoire, V., Berthet, G., Toon, G. C., Jégou, F., Jeseck, P., and Robert, C.: Carbonyl sulphide (OCS) variability with latitude in the atmosphere, *Atmosphere-Ocean*, 53, 89–101, 2015.
- Kuai, L., Worden, J., . . . , S. K. A., 2014, U., Kulawik, S. S., Montzka, S. A., and Liu, J.: Characterization of aura TES carbonyl sulfide retrievals over ocean, *Atmospheric Measurement Techniques*, 7, 163–172, <https://doi.org/10.5194/amt-7-163-2014>, <https://www.atmos-meas-tech.net/7/163/2014/><https://www.atmos-meas-tech.net/7/163/2014/amt-7-163-2014.html>, 2014.
- 660 Kuai, L., Worden, J. R., Campbell, J. E., Kulawik, S. S., Li, K.-F. F., Lee, M., Weidner, R. J., Montzka, S. A., Moore, F. L., Berry, J. A., Baker, I., Denning, A. S., Bian, H., Bowman, K. W., Liu, J., and Yung, Y. L.: Estimate of carbonyl sulfide tropical oceanic surface fluxes using aura tropospheric emission spectrometer observations, *Journal of Geophysical Research*, 120, 11,012–11,023, <https://doi.org/10.1002/2015JD023493>, <https://onlinelibrary.wiley.com/doi/pdf/10.1002/2015JD023493><http://doi.wiley.com/10.1002/2015JD023493>, 2015.
- 665 Lanczos, C.: An iteration method for the solution of the eigenvalue problem of linear differential and integral operators, *Journal of Research of the National Bureau of Standards*, 45, 255, <https://doi.org/10.6028/jres.045.026>, <http://www.cs.umd.edu/~oleary/lanczos1950.pdf>, 1950.
- Launois, T., Belviso, S., Bopp, L., Fichot, C. G., and Peylin, P.: A new model for the global biogeochemical cycle of carbonyl sulfide - Part 1: Assessment of direct marine emissions with an oceanic general circulation and biogeochemistry model, *Atmospheric Chemistry and Physics*, 15, 2295–2312, <https://doi.org/10.5194/acp-15-2295-2015>, <https://www.atmos-chem-phys.net/15/2295/2015/acp-15-2295-2015.pdf>, 2015.
- 670 Lee, C. L. and Brimblecombe, P.: Anthropogenic contributions to global carbonyl sulfide, carbon disulfide and organosulfides fluxes, <https://doi.org/10.1016/j.earscirev.2016.06.005>, <https://linkinghub.elsevier.com/retrieve/pii/S0012825216301210><https://www.sciencedirect.com/science/article/pii/S0012825216301210>, 2016.
- 675

- Lennartz, S. T., Marandino, C. A., Von Hobe, M., Cortes, P., Quack, B., Simo, R., Booge, D., Pozzer, A., Steinhoff, T., Arevalo-Martinez, D. L., Kloss, C., Bracher, A., Atlas, E., and Krüger, K.: Direct oceanic emissions unlikely to account for the missing source of atmospheric carbonyl sulfide, *Atmospheric Chemistry and Physics*, 17, 385–402, <https://doi.org/10.5194/acp-17-385-2017>, <https://www.atmos-chem-phys.net/17/385/2017/acp-17-385-2017.pdf>, 2017.
- 680 Lennartz, S. T., Von Hobe, M., Booge, D., Bittig, H., Fischer, T., Gonçalves-Araujo, R., Ksionzek, K. B., Koch, B. P., Bracher, A., Röttgers, R., et al.: The influence of dissolved organic matter on the marine production of carbonyl sulfide (OCS) and carbon disulfide (CS<sub>2</sub>) in the Peruvian upwelling, *Ocean Science*, 15, 1071–1090, 2019.
- Lennartz, S. T., Marandino, C. A., Von Hobe, M., Andreae, M. O., Aranami, K., Atlas, E., Berkelhammer, M., Bingemer, H., Booge, D., Cutter, G., Cortes, P., Kremser, S., Law, C. S., Marriner, A., Simó, R., Quack, B., Uher, G., Xie, H., and Xu, X.: Marine carbonyl sulfide (OCS) and carbon disulfide (CS<sub>2</sub>): a compilation of measurements in seawater and the marine boundary layer, *Earth System Science Data*, 12, 591–609, 2020.
- 685 Madronich, S., Flocke, S., Zeng, J., and Petropavlovskikh, I.: Tropospheric ultraviolet and visible (TUV) radiation model, 2003.
- Meirink, J. F., Bergamaschi, P., Frankenberg, C., D’Amelio, M. T., Dlugokencky, E. J., Gatti, L. V., Houweling, S., Miller, J. B., Röckmann, T., Villani, M. G., and Krol, M. C.: Four-dimensional variational data assimilation for inverse modeling of atmospheric methane emissions: Analysis of SCIAMACHY observations, *Journal of Geophysical Research Atmospheres*, 113, D17 301, <https://doi.org/10.1029/2007JD009740>, <http://doi.wiley.com/10.1029/2007JD009740>, 2008.
- 690 Meredith, L. K., Ogée, J., Boye, K., Singer, E., Wingate, L., von Sperber, C., Sengupta, A., Whelan, M., Pang, E., Keiluweit, M., Brüggemann, N., Berry, J. A., and Welander, P. V.: Soil exchange rates of COS and CO<sub>18</sub>O differ with the diversity of microbial communities and their carbonic anhydrase enzymes, *The ISME Journal*, 13, 290–300, 2019.
- 695 Monteil, G., Houweling, S., Dlugokencky, E. J., Maenhout, G., Vaughn, B. H., White, J. W., and Rockmann, T.: Interpreting methane variations in the past two decades using measurements of CH<sub>4</sub> mixing ratio and isotopic composition, *Atmospheric Chemistry and Physics*, 11, 9141–9153, <https://doi.org/10.5194/acp-11-9141-2011>, [www.atmos-chem-phys.net/11/9141/2011/](http://www.atmos-chem-phys.net/11/9141/2011/), 2011.
- Monteil, G., Houweling, S., Butz, A., Guerlet, S., Schepers, D., Hasekamp, O., Frankenberg, C., Scheepmaker, R., Aben, I., and Röckmann, T.: Comparison of CH<sub>4</sub> inversions based on 15 months of GOSAT and SCIAMACHY observations, *Journal of Geophysical Research Atmospheres*, 118, 11 807–11 823, <https://doi.org/10.1002/2013JD019760>, 2013.
- 700 Montzka, S. A., Hall, B. D., Elkins, J. W., Miller, L., Watson, A., Sweeney, C. S., Tans, P. P., Calvert, P., Hall, B. D., Elkins, J. W., Conway, T. J., Tans, P. P., and Sweeney, C. S.: On the global distribution, seasonality, and budget of atmospheric carbonyl sulfide (COS) and some similarities to CO<sub>2</sub>, *Journal of Geophysical Research Atmospheres*, 112, D09 302, <https://doi.org/10.1029/2006JD007665>, <http://doi.wiley.com/10.1029/2006JD007665><https://agupubs.onlinelibrary.wiley.com/doi/abs/10.1029/2006JD007665>, 2007.
- 705 Naus, S., Montzka, S. A., Pandey, S., Basu, S., Dlugokencky, E. J., and Krol, M.: Constraints and biases in a tropospheric two-box model of OH, *Atmospheric Chemistry and Physics*, 19, 407–424, <https://doi.org/10.5194/acp-19-407-2019>, <https://www.atmos-chem-phys.net/19/407/2019/acp-19-407-2019-discussion.html>, 2019.
- Ogée, J., Sauze, J., Kesselmeier, J., Genty, B., Van Diest, H., Launois, T., and Wingate, L.: A new mechanistic framework to predict OCS fluxes from soils, *Biogeosciences*, 13, 2221–2240, <https://doi.org/10.5194/bg-13-2221-2016>, <https://www.biogeosciences.net/13/2221/2016/>, 2016.
- 710 Pandey, S., Houweling, S., Krol, M., Aben, I., and Röckmann, T.: On the use of satellite-derived CH<sub>4</sub> : CO<sub>2</sub> columns in a joint inversion of CH<sub>4</sub> and CO<sub>2</sub> fluxes, *Atmospheric Chemistry and Physics*, 15, 8615–8629, <https://doi.org/10.5194/acp-15-8615-2015>, [www.atmos-chem-phys.net/15/8615/2015/](http://www.atmos-chem-phys.net/15/8615/2015/), 2015.

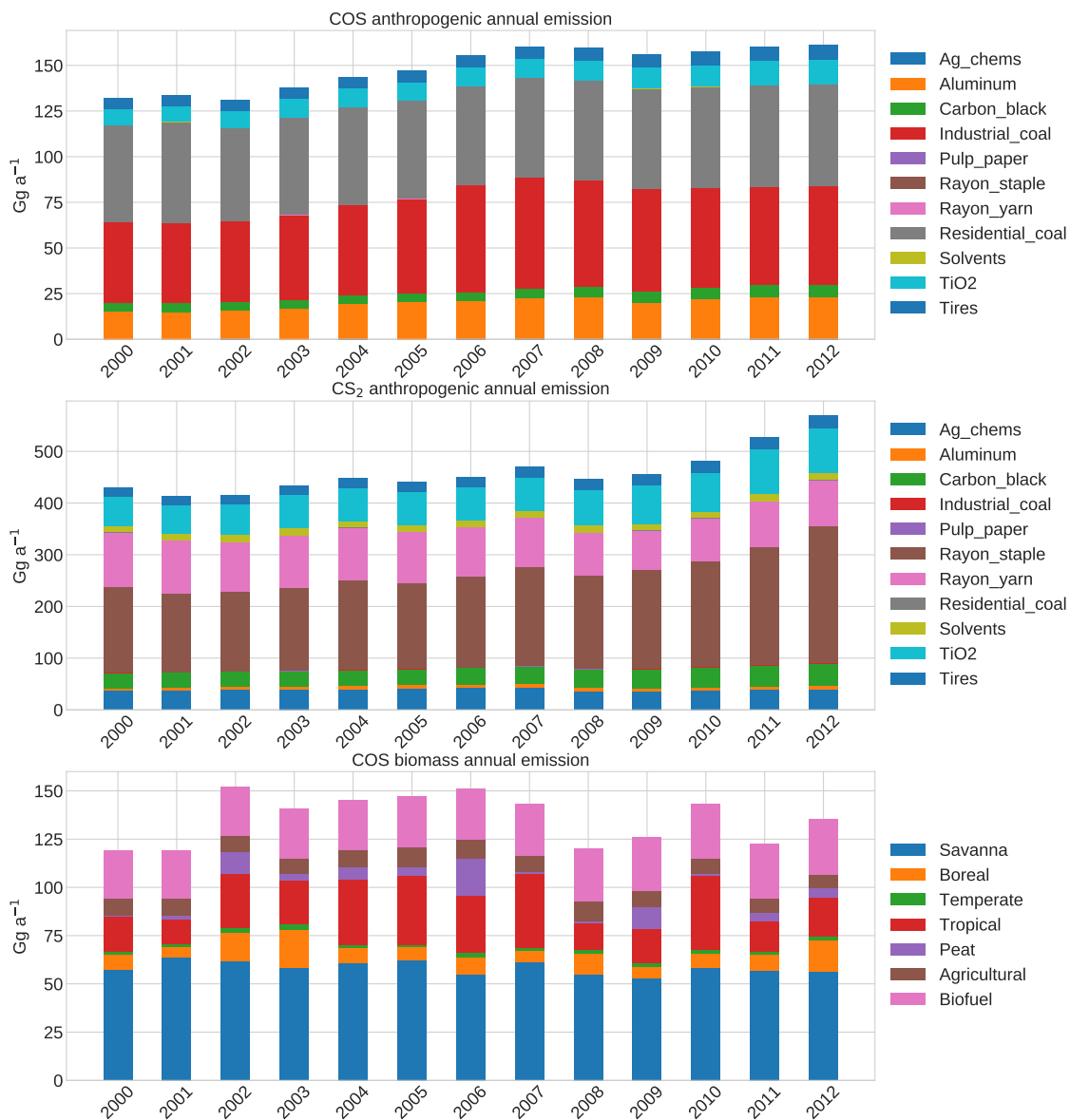
- Randerson, J., van der Werf, G., Giglio, L., Collatz, G., and Kasibhatla, P.: Global Fire Emissions Database, Version 4.1 (GFEDv4)., <https://doi.org/10.3334/ORN LDAAC/1293>, 2018.
- 715
- Rienecker, M. M., Suarez, M. J., Gelaro, R., Todling, R., Bacmeister, J., Liu, E., Bosilovich, M. G., Schubert, S. D., Takacs, L., Kim, G.-K., et al.: MERRA: NASA's modern-era retrospective analysis for research and applications, *Journal of climate*, 24, 3624–3648, 2011.
- Riley, W., Randerson, J., Foster, P., and Lueker, T.: Influence of terrestrial ecosystems and topography on coastal CO<sub>2</sub> measurements: A case study at Trinidad Head, California, *Journal of Geophysical Research: Biogeosciences*, 110, 2005.
- 720
- Sander, S. P., Friedl, R. R., Golden, D. M., Kurylo, M. J., Moortgat, G. K., Keller-Rudek, H., Wine, P. H., Ravishankara, A. R., Kolb, C. E., Molina, M. J., Finlayson-Pitts, B. J., Huie, R. E., and Orkin, V. L.: Chemical Kinetics and Photochemical Data for Use in Atmospheric Studies Evaluation Number 15, Tech. rep., 2006.
- Sheng, J. X., Weisenstein, D. K., Luo, B. P., Rozanov, E., Stenke, A., Anet, J., Bingemer, H., and Peter, T.: Global atmospheric sulfur budget under volcanically quiescent conditions: Aerosol-chemistry-climate model predictions and validation, *Journal of Geophysical Research*, 725 120, 256–276, <https://doi.org/10.1002/2014JD021985>, 2015.
- Spielmann, F. M., Hammerle, A., Kitz, F., Gerdel, K., and Wohlfahrt, G.: Seasonal dynamics of the COS and CO<sub>2</sub> exchange of a managed temperate grassland, New products for a better characterisation of smoke plume and gas/aerosol dispersion from boreal eurasian forest fires: the ALANIS Smoke Plume project, 2020, 1–19, 2020.
- Spivakovsky, C. M., Logan, J. A., Montzka, S. A., Balkanski, Y. J., Foreman-Fowler, M., Jones, D. B., Horowitz, L. W., Fusco, A. C., 730 Brenninkmeijer, C. A., Prather, M. J., Wofsy, S. C., and McElroy, M. B.: Three-dimensional climatological distribution of tropospheric OH: Update and evaluation, <https://doi.org/10.1029/1999JD901006>, <http://doi.wiley.com/10.1029/1999JD901006>, 2000.
- Stickel, R. E., Chin, M., Daykin, E. P., Hynes, A. J., Wine, P. H., and Wallington, T. J.: MECHANISTIC STUDIES OF THE OH-INITIATED OXIDATION OF CS<sub>2</sub> IN THE PRESENCE OF O-2, *Journal of Physical Chemistry*, 97, 13 653–13 661, <https://pubs.acs.org/sharingguidelines>, 1993.
- 735
- Stiller, G. P., Kiefer, M., Eckert, E., Von Clarmann, T., Kellmann, S., García-Comas, M., Funke, B., Leblanc, T., Fetzer, E., Froidevaux, L., Gomez, M., Hall, E., Hurst, D., Jordan, A., Kämpfer, N., Lambert, A., McDermid, I. S., McGee, T., Miloshevich, L., Nedoluha, G., Read, W., Schneider, M., Schwartz, M., Straub, C., Toon, G., Twigg, L. W., Walker, K., and Whiteman, D. N.: Validation of MIPAS IMK/IAA temperature, water vapor, and ozone profiles with MOHAVE-2009 campaign measurements, *Atmospheric Measurement Techniques*, 5, 289–320, <https://doi.org/10.5194/amt-5-289-2012>, [www.atmos-meas-tech.net/5/289/2012/](http://www.atmos-meas-tech.net/5/289/2012/), 2012.
- 740
- Stinecipher, J. R., Cameron-Smith, P. J., Blake, N. J., Kuai, L., Lejeune, B., Mahieu, E., Simpson, I. J., and Campbell, J. E.: Biomass Burning Unlikely to Account for Missing Source of Carbonyl Sulfide, *Geophysical Research Letters*, <https://doi.org/10.1029/2019GL085567>, 2019.
- Sun, W., Maseyk, K., Lett, C., and Seibt, U.: A soil diffusion-reaction model for surface COS flux: COSSM v1, *Geoscientific Model Development*, 8, 3055–3070, <https://doi.org/10.5194/gmd-8-3055-2015>, <https://www.geosci-model-dev.net/8/3055/2015/>, 2015.
- 745
- Sun, W., Kooijmans, L. M., Maseyk, K., Chen, H., Mammarella, I., Vesala, T., Levula, J., Keskinen, H., and Seibt, U.: Soil fluxes of carbonyl sulfide (COS), carbon monoxide, and carbon dioxide in a boreal forest in southern Finland, *Atmospheric Chemistry and Physics*, 18, 1363–1378, <https://doi.org/10.5194/acp-18-1363-2018>, <https://doi.org/10.5194/acp-18-1363-2018>, 2018.
- Suntharalingam, P., Kettle, A. J., Montzka, S. M., and Jacob, D. J.: Global 3-D model analysis of the seasonal cycle of atmospheric carbonyl sulfide: Implications for terrestrial vegetation uptake, *Geophysical Research Letters*, 35, L19 801, <https://doi.org/10.1029/2008GL034332>, 750 <http://doi.wiley.com/10.1029/2008GL034332>, 2008.



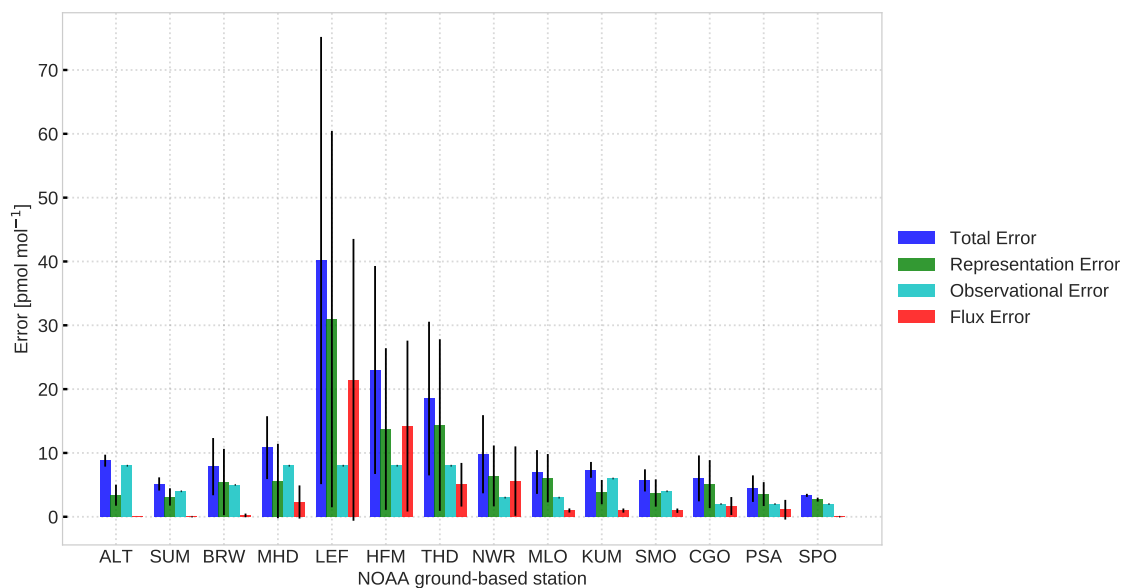
- Sze, N. D. and Ko, M. K. W.: Photochemistry of COS, CS<sub>2</sub>, CH<sub>3</sub>SCH<sub>3</sub> and H<sub>2</sub>S: Implications for the atmospheric sulfur cycle, *Atmospheric Environment* (1967), 14, 1223–1239, [https://doi.org/10.1016/0004-6981\(80\)90225-5](https://doi.org/10.1016/0004-6981(80)90225-5), <https://www.sciencedirect.com/science/article/pii/0004698180902255>, 1980.
- 755 Turco, R. P., Whitten, R. C., Toon, O. B., Pollack, J. B., and Hamill, P.: OCS, stratospheric aerosols and climate [8], <https://doi.org/10.1038/283283a0>, <https://www.nature.com/articles/283283a0>, 1980.
- Velasco, V. A., Toon, G. C., Blavier, J.-F. L., Kleinboehl, A., Manney, G. L., Daffer, W. H., Bernath, P. F., Walker, K. A., and Boone, C.: Validation of the Atmospheric Chemistry Experiment by noncoincident MkIV balloon profiles, *Journal of Geophysical Research: Atmospheres*, 116, 2011.
- 760 Wang, Y., Deutscher, N. M., Palm, M., Warneke, T., Notholt, J., Baker, I., Berry, J., Suntharalingam, P., Jones, N., Mahieu, E., Lejeune, B., Hannigan, J., Conway, S., Mendonca, J., Strong, K., Elliott Campbell, J., Wolf, A., and Kremser, S.: Towards understanding the variability in biospheric CO<sub>2</sub> fluxes: Using FTIR spectrometry and a chemical transport model to investigate the sources and sinks of carbonyl sulfide and its link to CO<sub>2</sub>, *Atmospheric Chemistry and Physics*, 16, 2123–2138, <https://doi.org/10.5194/acp-16-2123-2016>, <https://www.atmos-chem-phys.net/16/2123/2016/>, 2016.
- 765 Watts, S. F.: The mass budgets of carbonyl sulfide, dimethyl sulfide, carbon disulfide and hydrogen sulfide, *Atmospheric Environment*, 34, 761–779, [https://doi.org/10.1016/S1352-2310\(99\)00342-8](https://doi.org/10.1016/S1352-2310(99)00342-8), <http://faculty.ucmerced.edu/ecampbell3/loik/Watts-COS-SourceSinks-2000.pdf> <https://www.sciencedirect.com/science/article/pii/S1352231099003428>, 2000.
- Weisenstein, D. K.: A two-dimensional model of sulfur species and aerosols, *Journal of Geophysical Research Atmospheres*, 102, 13 019–13 035, <https://doi.org/10.1029/97JD00901>, 1997.
- 770 Whelan, M. E., Lennartz, S. T., Gimeno, T. E., Wehr, R., Wohlfahrt, G., Wang, Y., Kooijmans, L. M., Hilton, T. W., Belviso, S., Peylin, P., Commane, R., Sun, W., Chen, H., Kuai, L., Mammarella, I., Maseyk, K., Berkelhammer, M., Li, K. F., Yakir, D., Zumkehr, A., Katayama, Y., Oge, J., Spielmann, F. M., Kitz, F., Rastogi, B., Kesselmeier, J., Marshall, J., Erkkila, K. M., Wingate, L., Meredith, L. K., He, W., Bunk, R., Launois, T., Vesala, T., Schmidt, J. A., Fichot, C. G., Seibt, U., Saleska, S., Saltzman, E. S., Montzka, S. A., Berry, J. A., and Elliott Campbell, J.: Reviews and syntheses: Carbonyl sulfide as a multi-scale tracer for carbon and water cycles, *Biogeosciences*, 15, 3625–3657, <https://doi.org/10.5194/bg-15-3625-2018>, <http://oro.open.ac.uk/56080/>, 2018.
- 775 Wofsy, S., Daube, B., Jimenez, R., and Kort, E.: HIPPO Combined Discrete Flask and GC Sample GHG, Halocarbon, and Hydrocarbon Data. Version 1.0. UCAR/NCAR - Earth Observing Laboratory, [https://doi.org/https://doi.org/10.3334/CDIAC/HIPPO\\_012](https://doi.org/https://doi.org/10.3334/CDIAC/HIPPO_012), 2017.
- Wofsy, S. C.: HIAPER Pole-to-Pole Observations (HIPPO): Fine-grained, global-scale measurements of climatically important atmospheric gases and aerosols, *Philosophical Transactions of the Royal Society A: Mathematical, Physical and Engineering Sciences*, 369, 2073–2086, <https://doi.org/10.1098/rsta.2010.0313>, 2011.
- 780 Zumkehr, A., Hilton, T. W., Whelan, M., Smith, S., Kuai, L., Worden, J., and Campbell, J. E.: Global gridded anthropogenic emissions inventory of carbonyl sulfide, *Atmospheric Environment*, 183, 11–19, <https://doi.org/10.1016/j.atmosenv.2018.03.063>, <https://www.sciencedirect.com/science/article/pii/S1352231018302255>, 2018.



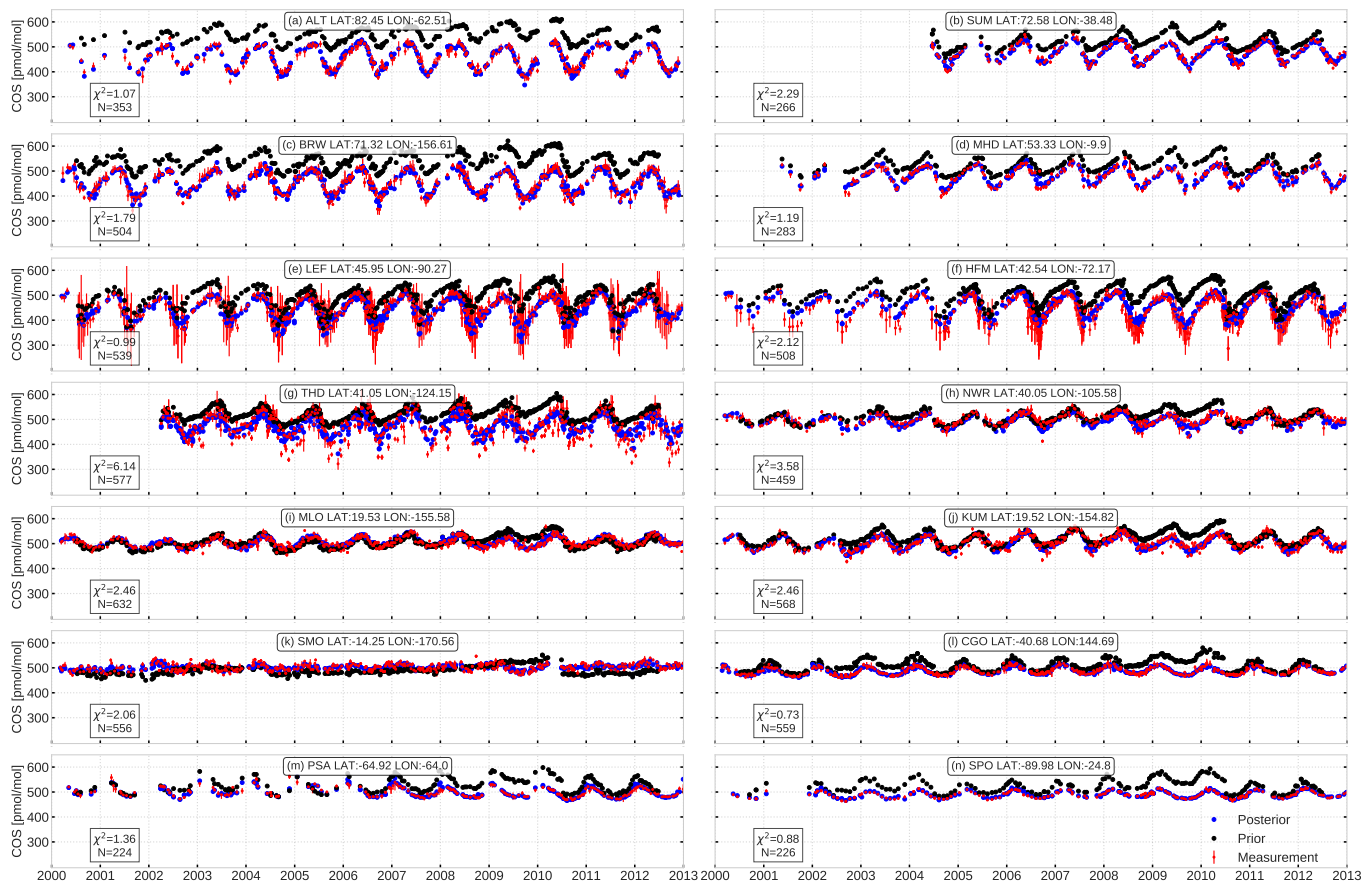
**Figure 1.** Geographical locations of the NOAA ground-based observations (shown in boxes), the five HIPPO campaign tracks, and the NOAA profile program (inset). Note that there are no NOAA surface stations located in Asia, South America, or Africa.



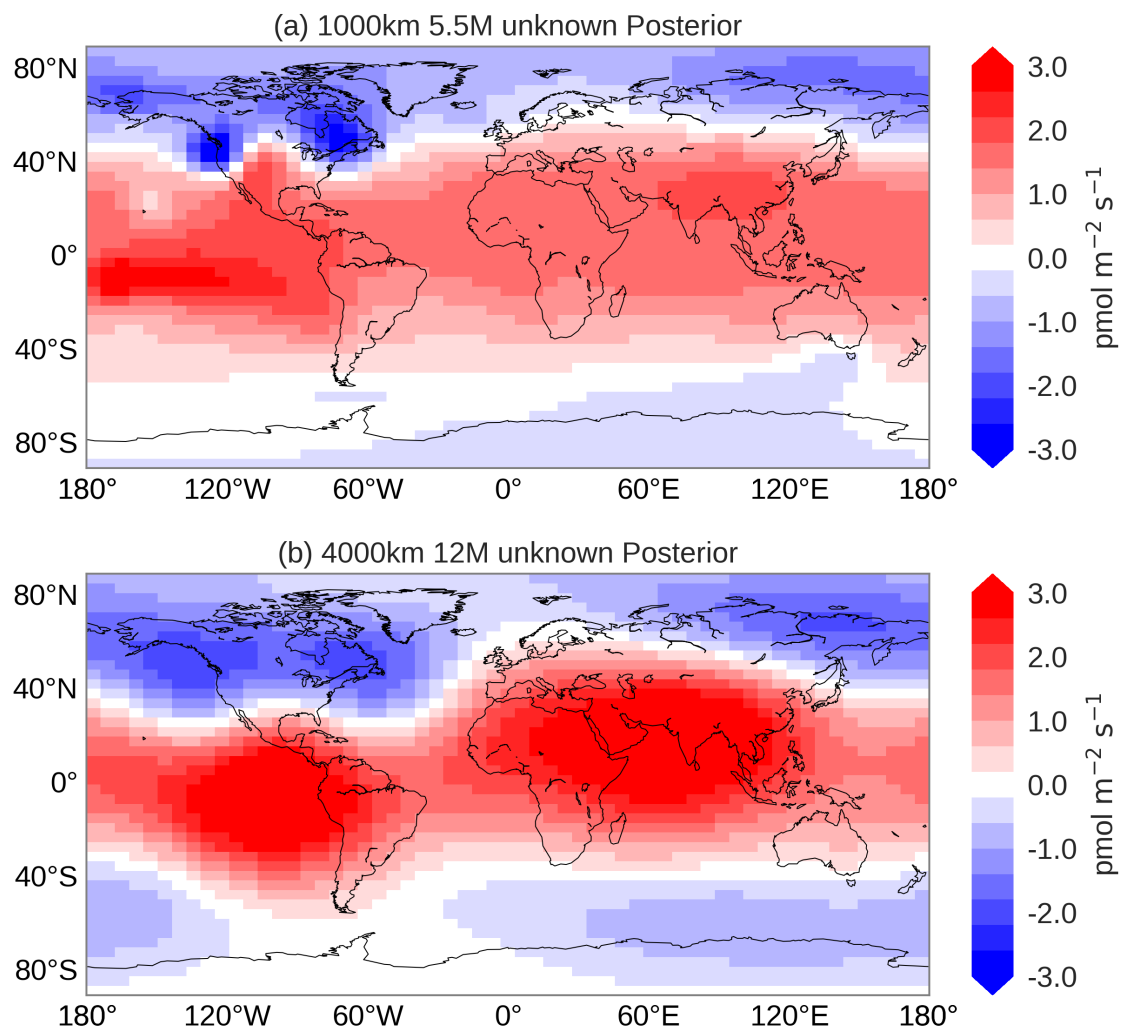
**Figure 2.** Yearly anthropogenic emissions of COS and CS<sub>2</sub> and COS biomass burning emissions in the period 2000 to 2012. We disentangled the emissions reported in Zumkehr et al. (2018) into COS and CS<sub>2</sub> emissions using their reported yield of 0.87 (see main text). Biomass burning emissions are calculated based on the GFED 4.1 biomass burning inventory and the CEDS biofuel emission inventory (see main text).



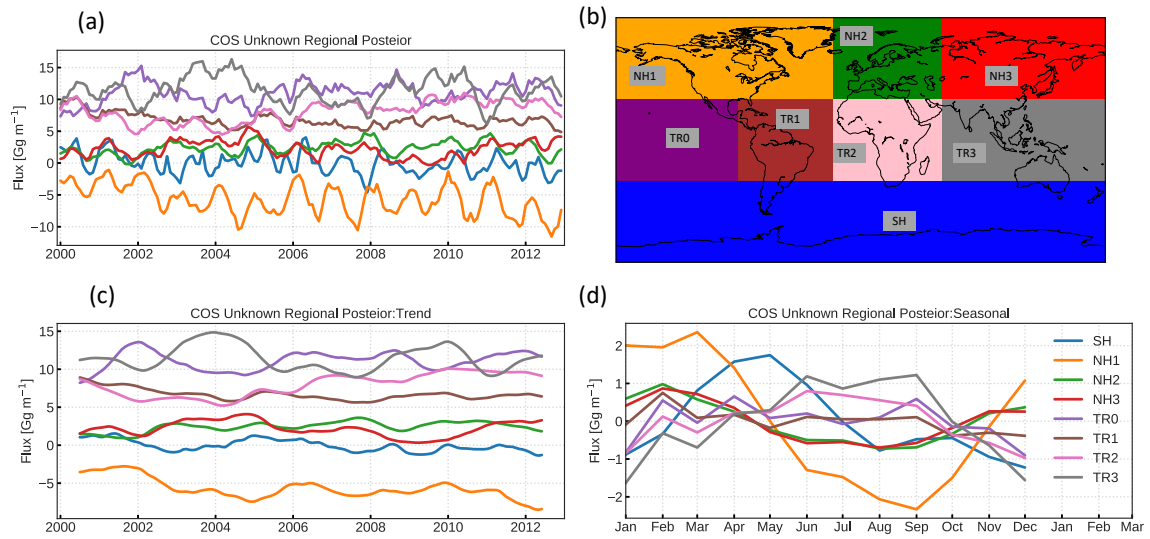
**Figure 3.** Error analysis for NOAA stations. Black error bars represent the time-variations of the errors over a 3-year period (2008–2010). For ALT, SPO and SUM, the flux-related errors are close to zero and not shown. Stations are ordered from the North Pole to the South Pole.



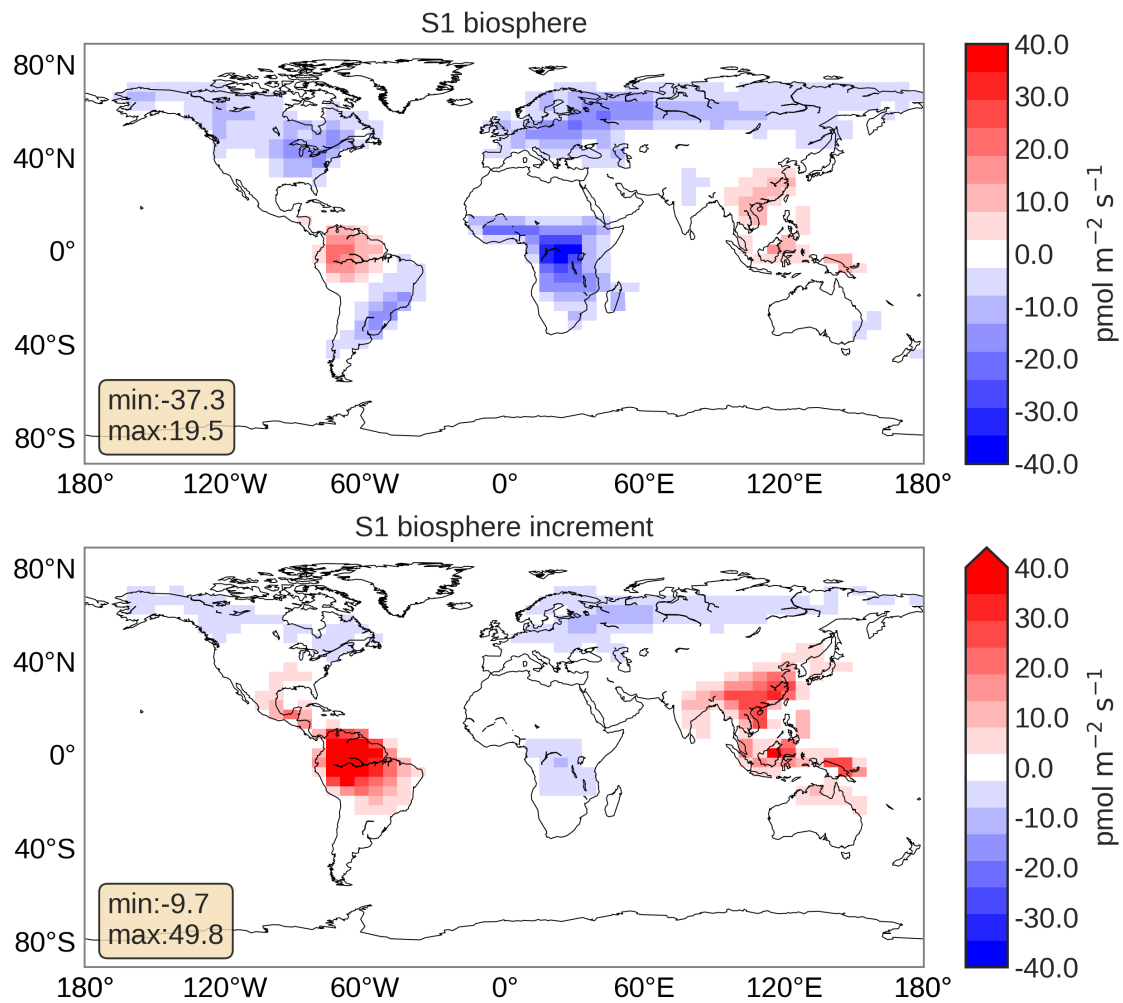
**Figure 4.** COS prior and posterior comparison at NOAA stations. Red dots and bars are NOAA measurements with errors. Blue and black dots represent the posterior and prior simulation, respectively. Results are shown for inversion  $S_u$  in which only the "unknown" emission category is optimized.



**Figure 5.** Optimized emission pattern of the "unknown" field of inversion  $S_u$  for different settings of the spatio-temporal correlation lengths (a) Spatial correlation of 1000 km and temporal correlation of 5.5 months (b) Spatial correlation of 4000 km and temporal correlation of 12 months. Results are averages over 2008–2011.

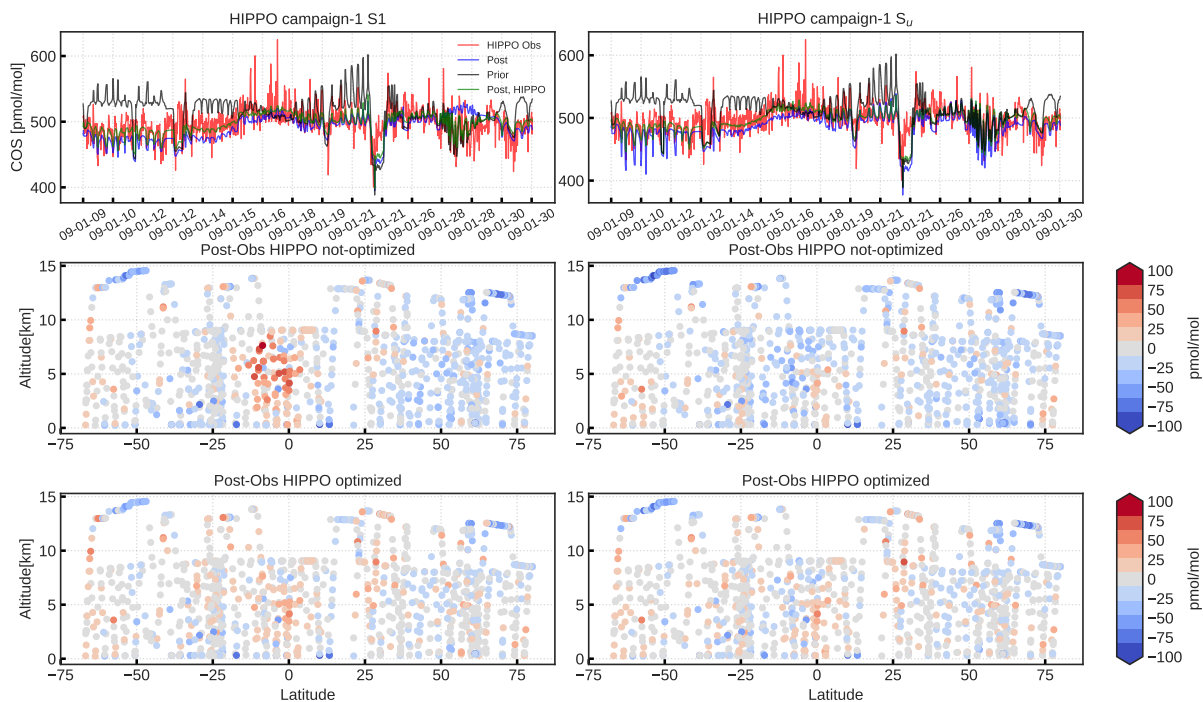


**Figure 6.** Regional analysis of multi-year optimized COS fluxes of inversion  $S_u$ : (a) posterior flux per region (b) regions over which the posterior flux is analysed (c) trend in the decomposed signal (d) seasonal signal in the decomposed signal. Note that region colors in (b) are used in panels (a), (c) and (d).

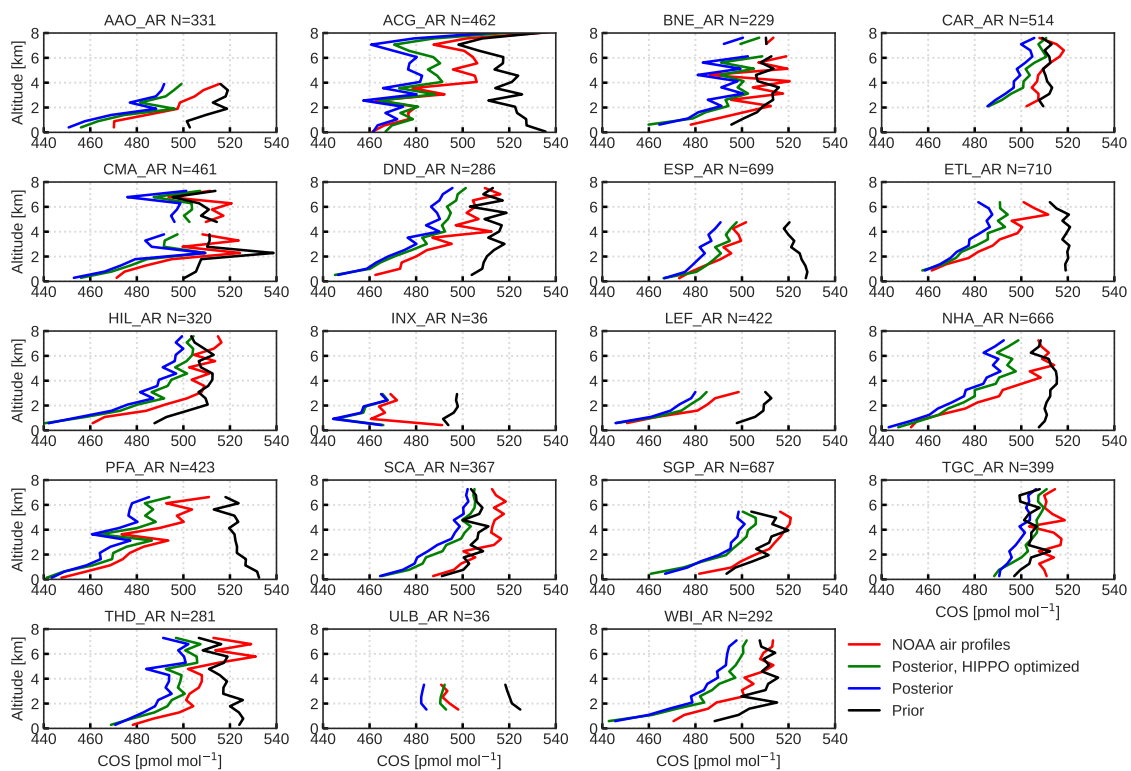


**Figure 7.** Posterior biosphere flux from inversion S1 and increment (posterior-prior). The fluxes represent 3-year (2008–2010) averages with removal of 6 month spin-up and spin-down periods. The maximum and minimum flux values are given in the boxes.

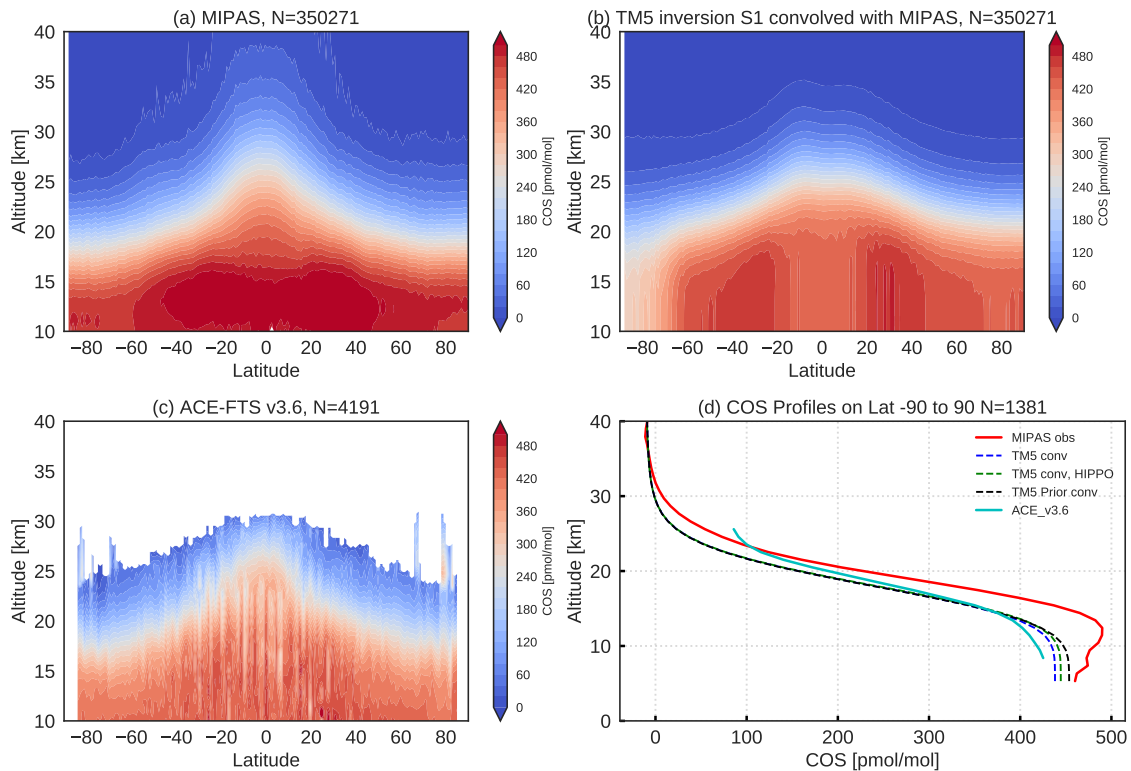




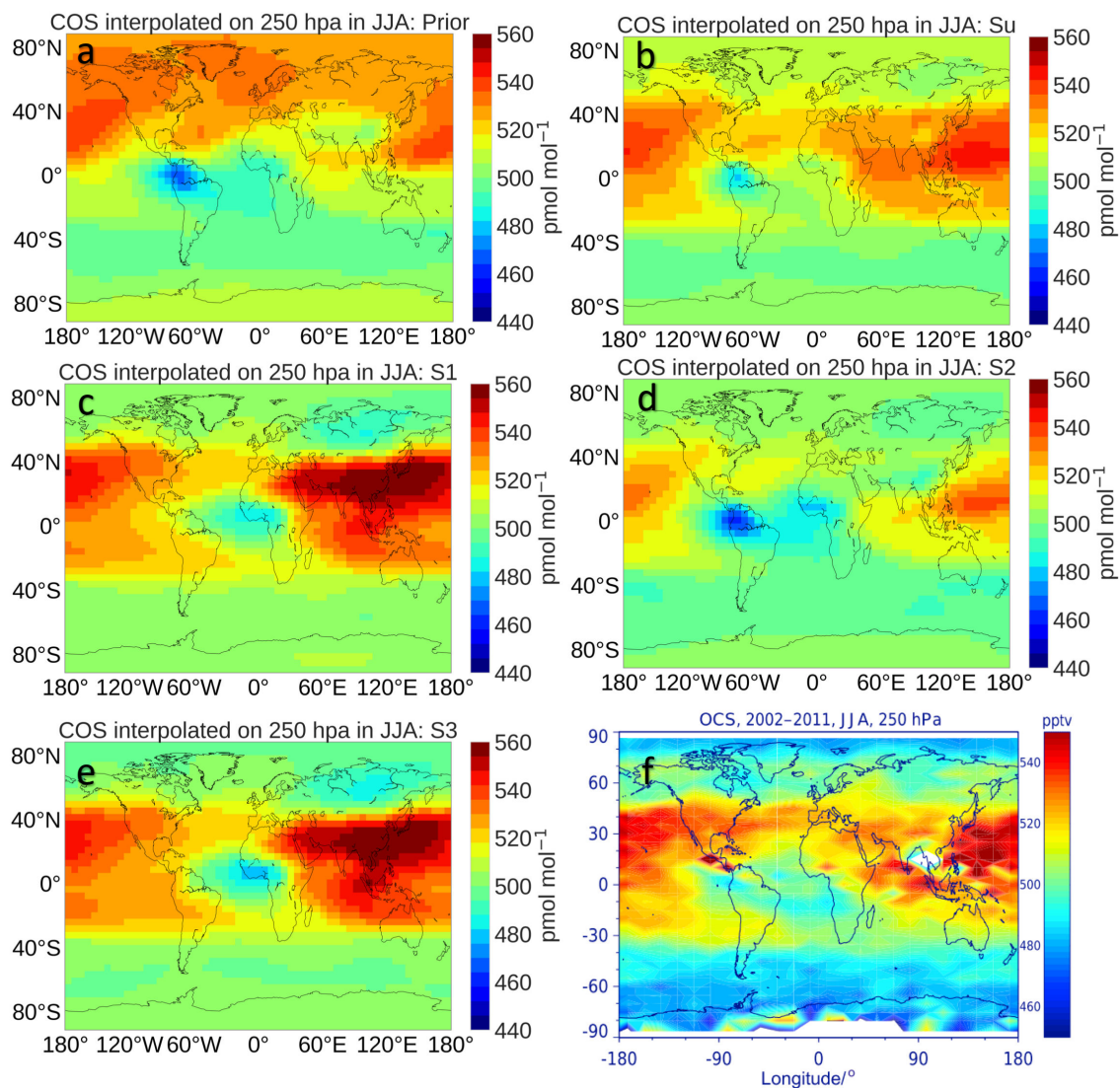
**Figure 8.** HIPPO campaign 1 COS observations compared to results from inversions  $S_1$  (left) and  $S_u$  (right). The first row shows time series of HIPPO observations (red), prior (black), posterior (blue), and posterior with HIPPO observations assimilated (green). The middle and bottom rows show model minus observations in a latitude-height plot for inversions with and without assimilating HIPPO observations, respectively.



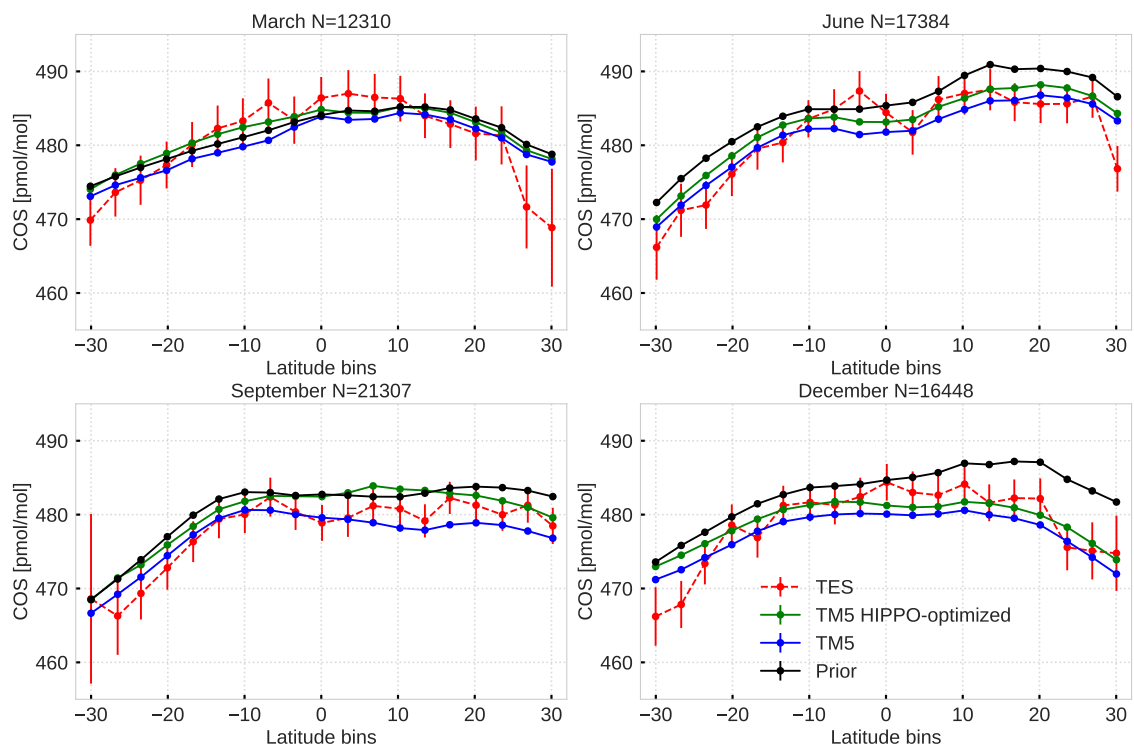
**Figure 9.** Prior (black) and posterior (blue) profiles of inversion S1, compared to NOAA aircraft profiles (red). Location (see Figure 1) and number of observations are mentioned in the caption. The green lines are results from an inversion in which, next to NOAA surface observations, also HIPPO observations are assimilated. Note that the profiles are from all seasons.



**Figure 10.** Comparison of MIPAS and ACE-FTS v3.6 with TM5 results from inversions for 2009. (a) latitude–height contour plot of MIPAS; (b) TM5 S1 convolved with the MIPAS AK; (c) ACE-FTS profiles; (d) average of collocated profiles for MIPAS (red), TM5 convolved with MIPAS AK from inversion S1 (blue), TM5 convolved from inversion S1 (with HIPPO observations assimilated) (green), TM5 convolved prior (black), and ACE-FTS. In (d) TM5 and MIPAS profiles are collocated with respect to ACE-FTS profiles within a temporal offset of 6 hr and a spatial distance within 5 degrees. The number of collocated profiles is 1381.



**Figure 11.** COS mole fraction comparison of MIPAS and TM5 inversions on 250 hPa in June to August. (a–e) are TM5 prior, and inversions  $S_u$ ,  $S_1$ ,  $S_2$ ,  $S_3$ , respectively. (f) is captured from figure 11 in (Glatthor et al., 2017). TM5 results represent a 2008–2010 average, and MIPAS is averaged over 2002–2011. Because TM5 results are systematically lower than MIPAS, 25  $\text{pmol mol}^{-1}$  is added to the TM5 results for a better visual comparison.



**Figure 12.** Column averaged COS mole fractions sampled by TES (red), model prior (black), model posterior (blue) and posterior with HIPPO observations assimilated (green) for March, June, September and December. The columns are averaged over 2008–2010 in 20 latitudinal bins from 32°S to 32°N. The result of inversion S1 is shown. Error bars on TES represent variability in the measurements and the number of observations is given in the caption. Variability is mostly determined by measurement noise.

**Table 1.** The split of anthropogenic emissions in the different categories and between COS and CS<sub>2</sub> based on Zumkehr et al. (2018). Note that we used a CS<sub>2</sub> to COS molar yield of 0.87 and that CS<sub>2</sub> contains two S atoms. Averages over 2000–2012 are presented.

Emission Type	Total COS	Fraction COS <sup>a</sup>	Direct COS	Direct CS <sub>2</sub>
	Gg a <sup>-1</sup>	%	Gg a <sup>-1</sup>	Gg a <sup>-1</sup>
Agricultural Chemicals	16.9	0.0	0.0	38.9
Aluminum Smelting	22.2	88.2	19.6	6.0
Industrial Coal	52.1	99.5	51.8	0.7
Residential Coal	54.0	100.0	54.0	0.0
Industrial Solvents	5.4	0.0	0.0	12.5
Carbon Black	19.7	26.5	5.2	33.3
Titanium Dioxide	39.4	26.5	10.5	66.6
Pulp & Paper	0.1	3.2	0.0	0.3
Rayon Yarn	41.1	0.0	0.0	94.6
Rayon Staple	77.3	0.0	0.0	177.7
Tires	15.1	43.0	6.5	19.8
Total Anthropogenic	343.3	-	147.5	450.2

<sup>a</sup> The fraction of COS is calculated based on the COS to CS<sub>2</sub> emission ratio reported in Table 1 of Lee and Brimblecombe (2016).

**Table 2.** Biomass burning emission factors used in converting COS emissions. EF COS denotes the COS emission factor from dry mass in units  $\text{g kg}^{-1}$  COS per dry mass, and EF CO denotes the CO emission factor in  $\text{g kg}^{-1}$  CO per dry mass. Emission factors were taken from Andreae (2019).

	EF COS $\text{g kg}^{-1}$ COS per dry mass	EF CO $\text{g kg}^{-1}$ CO per dry mass
Savanna and grassland	0.038	-
Tropical forest	0.078	-
Temperate forest	0.035	-
Boreal forest	0.058	-
Peat fires	0.110	-
Agricultural waste burning	0.059	-
Biofuel burning without dung	0.017	83
Biofuel burning with dung	0.210	89

**Table 3.** Names and error settings of the inversions performed in this study. The values correspond to grid-scale errors. Monthly flux fields are optimized using spatial and temporal correlation lengths of 4000 km and 12 months, except for inversion  $S_u$ , in which multiple settings are explored.

	Biosphere	Ocean COS	Ocean CS <sub>2</sub>	Biomass burning	Anthropogenic COS and CS <sub>2</sub>	"Unknown"
$S_u$	-	-	-	-	-	100%
S1	50%	50%	50%	10%	10%	-
S2	-	50%	50%	-	-	-
S3	50%	-	-	-	-	-



**Table 4.** Results from inversions  $S_u$ ,  $S_1$ ,  $S_2$ , and  $S_3$  compared to published global COS budgets

COS Budget ( $\text{Gg a}^{-1}$ )	Kettle2002 <sup>a</sup>	Montzka2007 <sup>b</sup>	Berry2013 <sup>c</sup>	Kuai2015 <sup>d</sup>	Our prior	$S_u$	$S_1$	$S_2$	$S_3$
Direct oceanic COS	41	40	39	41	40	40	-18	22	40
Indirect oceanic $\text{CS}_2$ as COS	84	240	81	83	81	81	96	499	81
Indirect oceanic DMS as COS	154		156	155	156	156	156	156	156
Direct anthropogenic COS	64	64	64	62	155	155	153	156	155
Indirect anthropogenic $\text{CS}_2$ as COS	116	-	116	113	188	188	188	189	188
Indirect anthropogenic DMS as COS	1	-	1	0	6	6	6	6	6
Biomass burning	38	106	136	49	136	136	124	136	128
Additional ocean flux	-	-	600	559	-	-	-	-	-
Anoxic soils	26	66	-	-	-	-	-	-	-
<i>Sources</i>	523	516	1193	1062	762	762	705	1163	754
Destruction by OH	-94	-96	-101	-111	-101	-101	-103	-101	-101
Destruction by O	-11	-11	-	-	-	-	-	-	-
Destruction by photolysis	-16	-16	-	-	-40	-40	-40	-40	-40
Uptake by plants	-238	-1115	-738	-775	-1053	-1053	-557	-1053	-613
Uptake by soil	-130	-127	-355	-176					
<i>Sinks</i>	-489	-1365	-1194	-1062	-1194	-1194	-700	-1194	-754
<i>Unknown</i>	-	-	-	-	432	425	-	-	-
<i>Net total</i>	34	-849	-2	0	0	-6	5	-31	0

<sup>a</sup> Kettle et al. (2002)

<sup>b</sup> Table 2 from Montzka et al. (2007)

<sup>c</sup> Berry et al. (2013)

<sup>d</sup> Kuai et al. (2015)

**Table 5.**  $\chi^2$  metrics and mean biases for the different inversion scenarios. Statistics are shown for the NOAA surface stations, the HIPPO campaigns, and the NOAA airborne profiles. Biases are given in  $\text{pmol mol}^{-1}$ .

Inversion scenario	HIPPO optimized <sup>a</sup>	Metric	HIPPO	NOAA surface	NOAA airborne
$S_u$	No	$\chi^2$	40.7	1.9	26.0
	No	Bias	-13.9	0.0	-12.4
	Yes	$\chi^2$	4.7	2.5	17.3
	Yes	Bias	-1.1	1.5	-8.3
S1	No	$\chi^2$	43.8	2.4	27.7
	No	Bias	-12.0	-0.4	-13.8
	Yes	$\chi^2$	4.8	2.9	20.1
	Yes	Bias	-1.3	1.3	-9.7
S2	No	$\chi^2$	54.2	4.9	48.2
	No	Bias	-19.4	1.5	-16.7
	Yes	$\chi^2$	6.3	5.9	27.0
	Yes	Bias	-4.6	7.5	-5.9
S3	No	$\chi^2$	43.3	2.5	27.5
	No	Bias	-12.3	-0.2	-14.3
	Yes	$\chi^2$	5.0	3.2	21.1
	Yes	Bias	-1.4	1.6	-10.5

<sup>a</sup> If HIPPO is not optimized, only NOAA surface data is assimilated in inversions. If HIPPO is optimized, both NOAA surface data and HIPPO are assimilated in inversions. NOAA airborne data is only used for validation.