

# Volatile Organic Compound fluxes in a subarctic peatland and lake

Roger Seco<sup>1,2</sup>, Thomas Holst<sup>1,3</sup>, Mikkel Sillesen Matzen<sup>1</sup>, Andreas Westergaard-Nielsen<sup>2</sup>, Tao Li<sup>1,2</sup>, Tihomir Simin<sup>1,2</sup>, Joachim Jansen<sup>4,5</sup>, Patrick Crill<sup>4,5</sup>, Thomas Friborg<sup>2</sup>, Janne Rinne<sup>3</sup>, Riikka Rinnan<sup>1,2</sup>

5 <sup>1</sup>Terrestrial Ecology Section, Department of Biology, University of Copenhagen, Copenhagen, Denmark

<sup>2</sup>Center for Permafrost (CENPERM), Department of Geosciences and Natural Resource Management, University of Copenhagen, Copenhagen, Denmark

<sup>3</sup>Department of Physical Geography & Ecosystem Science, Lund University, Lund, Sweden

<sup>4</sup>Department of Geological Sciences, Stockholm University, Stockholm, Sweden

10 <sup>5</sup>Bolin Centre for Climate Research, Stockholm, Sweden

*Correspondence to:* Roger Seco (email@rogerseco.cat)

## Abstract

Ecosystems exchange climate-relevant trace gases with the atmosphere, including volatile organic compounds (VOCs) that are a small but highly reactive part of the carbon cycle. VOCs have important ecological functions and implications for atmospheric chemistry and climate. We measured the ecosystem-level surface-atmosphere VOC fluxes using the eddy covariance technique at a shallow subarctic lake and an adjacent graminoid-dominated fen in Northern Sweden during two contrasting periods: the peak growing season (mid July) and the senescent period post-growing season (September-October). In July, the fen was a net source of methanol, acetaldehyde, acetone, DMS, isoprene, and monoterpenes. All of these VOCs showed a diel cycle of emission with maxima around noon and isoprene dominated the fluxes ( $93 \pm 22 \mu\text{mol m}^{-2} \text{day}^{-1}$ , mean  $\pm$  SE). Isoprene emission was strongly stimulated by temperature and presented a steeper response to temperature ( $Q_{10} = 14.5$ ) than that typically assumed in biogenic emission models, supporting the high temperature sensitivity of arctic vegetation. In September, net emissions of methanol and isoprene were drastically reduced, while acetaldehyde and acetone were deposited to the fen, with rates of up to  $-6.7 \pm 2.8 \mu\text{mol m}^{-2} \text{day}^{-1}$  for acetaldehyde.

Remarkably, the lake was a sink for acetaldehyde and acetone during both periods, with average fluxes up to  $-19 \pm 1.3 \mu\text{mol m}^{-2} \text{day}^{-1}$  of acetone in July and up to  $-8.5 \pm 2.3 \mu\text{mol m}^{-2} \text{day}^{-1}$  of acetaldehyde in September. The deposition of both carbonyl compounds correlated with their atmospheric mixing ratios, with deposition velocities of  $-0.23 \pm 0.01$  and  $-0.68 \pm 0.03 \text{ cm s}^{-1}$  for acetone and acetaldehyde, respectively.

Even though these VOC fluxes represented less than 0.5% and less than 5% of the  $\text{CO}_2$  and  $\text{CH}_4$  net carbon ecosystem exchange, respectively, VOCs alter the oxidation capacity of the atmosphere. Thus, understanding the response of their emissions to climate change is important for accurate prediction of the future climatic conditions in this rapidly warming area of the planet.

## 1 Introduction

Arctic climate is warming twice as fast as the global average (Post et al., 2019). This is due to a number of climate system  
35 feedbacks, including albedo change due to retreating snow cover and sea ice, and the forest cover expansion to the open tundra  
(Overland et al., 2014; Post et al., 2009). Northern ecosystems are known to exchange climate-relevant trace gases with the  
atmosphere, not only long-lived greenhouse gases such as carbon dioxide (CO<sub>2</sub>) or methane (CH<sub>4</sub>) but also hundreds of  
different volatile organic compounds (VOCs) that are a highly reactive part of the carbon cycle (Rinnan et al., 2014). Trace  
gases originate from sources as diverse as soils, peats, vegetation and lakes, and currently several of them show a trend towards  
40 greater emission rates with climate warming (Kramshøj et al., 2019; Lindwall et al., 2016a; Wik et al., 2016). At the same  
time, the warming-induced expansion of woody shrubs into tundra ecosystems (Myers-Smith and Hik, 2018) could enhance  
the photosynthetic uptake of CO<sub>2</sub> and offset concurrent increases in heterotrophic respiration (Mekonnen et al., 2018). Indeed,  
CO<sub>2</sub> and CH<sub>4</sub> have been extensively surveyed in high latitudes due to a potential increase in their atmospheric concentrations  
and connected climatic effects as permafrost thaws (Natali et al., 2019; Schuur et al., 2015). In contrast, far less research has  
45 been devoted to VOC emissions in these areas.

VOCs play essential ecological roles: they can mediate the communication between living organisms and protect plants from  
biotic and abiotic stresses (Baldwin et al., 2006; Filella et al., 2013; Kessler and Baldwin, 2001; Peñuelas et al., 2005b;  
Pichersky and Gershenzon, 2002; Seco et al., 2011b; Velikova et al., 2005). In addition, biogenic VOCs engage in chemical  
reactions that substantially modify the oxidation capacity of the atmosphere. For example, VOCs enhance the lifetime of  
50 methane by competing for its atmospheric oxidants, promote the formation of tropospheric ozone, and ultimately contribute  
to aerosol formation in the atmosphere, which has climatic consequences (Atkinson, 2000; Liu et al., 2016; Seco et al., 2011a;  
Tunved et al., 2006). Meanwhile, climate change is affecting the fundamental functions of VOCs and altering their emission  
rates in northern ecosystems, directly via warming and indirectly by inducing changes in vegetation composition (Faubert et  
al., 2010a; Li et al., 2019; Lindwall et al., 2016a; Valolahti et al., 2015). Moreover, the atmospheric impact of VOCs emitted  
55 from natural sources may be comparatively more important in northern latitudes than in more populated territories due to the  
relatively low presence of anthropogenic VOC emissions (Paasonen et al., 2013).

VOC studies over the last few years have reported strong increases in arctic and subarctic vegetation emissions in response to  
moderate warming (Faubert et al., 2010a; Kramshøj et al., 2016; Lindwall et al., 2016a), highlighting the capacity of Arctic  
plants to respond to increasing temperature. However, these studies have been conducted using enclosure techniques with a  
60 range of unwanted side effects, such as temperature and humidity rise inside the enclosure and interactions with chamber  
materials (Ortega and Helmig, 2008). Micrometeorological techniques such as eddy covariance (EC) can overcome many of  
those undesirable side effects and, in addition, provide a more representative ecosystem-level VOC exchange quantification  
by minimizing potential sampling error when upscaling from a small number of enclosures to ecosystem fluxes. However,  
instrumental challenges have limited the number of ecosystem-level VOC studies using EC and only two such datasets over  
65 short time periods are available for high latitude ecosystems (Holst et al., 2010; Potosnak et al., 2013). Moreover, there are

few or no air-water direct VOC flux measurements from northern lakes. Arctic latitudes possess one of the highest concentration and area of inland water bodies of our planet (Verpoorter et al., 2014). Despite being acknowledged as important regional and global sources of carbon dioxide and methane (Tranvik et al., 2009; Wik et al., 2016), the role of northern lakes in the VOC budget is largely unexplored. It is therefore vital to assess the lake and vegetation VOC fluxes in these high latitude areas exposed to large environmental changes to be able to estimate their impacts on the regional carbon cycle, atmospheric chemistry and climate.

We report here ecosystem-level VOC fluxes measured by EC from a subarctic shallow post glacial lake, a common lake form in the Arctic (Wik et al., 2016), and its adjacent fen dominated by tall graminoids. We aimed to identify which compounds were released at significant rates from the lake, which from the fen, during two contrasting periods: the peak of the growing season (mid July) and the senescent period post-growing season (September-October). Further, we assessed the deposition of compounds to the two ecosystems. In addition, we included here the EC fluxes of carbon dioxide and methane from both fen and lake, which have been discussed elsewhere (Jammet et al., 2015, 2017; Jansen et al., 2019), to provide a more thorough overview of the trace gas fluxes during our study.

## 2 Materials and methods

### 2.1 Site description and field campaign outline

Stordalen Mire is a subarctic palsa mire complex underlain by discontinuous permafrost (Johansson et al., 2006). It is located ca. 10 km east of Abisko in northern Sweden (68°20' N, 19°03' E). Local meteorology has been monitored at the Abisko Scientific Research Station (ANS) with records since 1913 (Callaghan et al., 2010). The average air temperature at ANS during the period 1981-2010 was 0.1 °C and average annual rainfall 332 mm; the mean annual air temperature and precipitation at Stordalen in 2018 were -0.04 °C and 340 mm, respectively. The Stordalen Mire was not affected by the drought that occurred in large parts of central and northern Europe during 2018 (Buras et al., 2020; Rinne et al., 2020).

Our measurements took place during the 2018 growing season from a 2.92 meter-tall eddy covariance mast located on the shore of a shallow post glacial lake, Villasjön. The geomorphological setting within the Torneträsk catchment determines a bimodal distribution to the surface wind flow of roughly ESE and WNW (Fig. 1). The lake edge mast is influenced by Villasjön to the east and by fen to the west. The fen is a permafrost-free, minerotrophic wetland with vegetation dominated by tall graminoids, mainly *Carex rostrata* and *Eriophorum angustifolium* (Palace et al., 2018). The lake is 0.17 km<sup>2</sup> in area, the largest of the 27 lakes that constitute the 15 km<sup>2</sup> Stordalen catchment (Lundin et al., 2013). It has a maximum depth of 1.5 m and it usually freezes close to the bottom in winter (Jansen et al., 2019). The bidirectional flow pattern throughout the year allows a clear distinction of the surface source or sink influences of the surface boundary layer. Thus, depending on the prevailing wind direction, the measured VOC flux data were assigned to either the lake or the fen (e.g. Jammet et al., 2015). Flux data originating outside of these wind directions, usually at very low wind speeds, contributed only a minor part of the total fluxes

and were excluded from analysis. The average EC flux footprint used in our study (Fig. 1) was calculated with a two-dimensional model (Kljun et al., 2015), see the supplementary material for further details.

100 Several major instrumental issues precluded us from obtaining a season-long dataset of VOC fluxes. With the available data, when the instruments were operational, we present measurements from two distinct periods: the peak of vegetation activity (15-22 July) and the senescent period post-growing season (20 September-13 October). We determined the relative seasonal status of the vegetation at this site based on greenness data captured by an automatic camera installed on the EC mast (see Sect. 2.3 and Fig. S1). For the sake of simplicity, in this article we will refer to the season peak period as July and to the post growing season as September.

105 Considering the wind direction partitioning and the two periods for which we have data, the maximum number of half-hour EC fluxes in July were 64 and 246 for lake and fen, respectively. In September, we had a maximum of 429 EC fluxes for lake and 619 for fen. However, since some VOC fluxes were discarded according to strict quality assurance procedures recommended for EC measurements (see section 2.2), the actual number of valid half-hour VOC fluxes was smaller for individual chemical species (e.g., for isoprene in July, 22 and 161 valid data points for lake and fen, respectively). VOC fluxes  
110 from the lake for July were only available for some hours of the day (between 03:00 and 14:00 UTC+1).

## 2.2 VOC measurements

Mixing ratios of VOCs were measured with a Proton Transfer Reaction – Time of Flight – Mass Spectrometer (PTR-TOF-MS). This particular model (PTR-TOF 1000ultra, Ionicon Analytik, Innsbruck, Austria) was equipped with an ion funnel at  
115 the end of the drift tube that provided a higher sensitivity, and had a compound (diiodobenzene) added continuously to the air sample that provided a constant signal at high mass-to-charge ratio ( $m/z$ ) for accurate TOF mass scale calibration. The drift tube was operated at 60 °C, 550 V, and 2.3 mbar. Multipoint sensitivity calibration was performed at least once a month (including at the end of the July period and before, midway and at the end of the September period) by diluting a blend of several VOCs (e.g., methanol, acetaldehyde, acetone, isoprene, alpha-pinene, benzene, among others, in nitrogen at a VOC  
120 mixing ratio of  $1 \times 10^{-6}$  mol mol<sup>-1</sup> each, manufactured by Ionicon Analytik) into clean nitrogen. The dilution (range  $1-40 \times 10^{-9}$  mol mol<sup>-1</sup>) was achieved with a Liquid Calibration Unit (Ionicon Analytik). The background signal of the PTR-TOF-MS was checked for 1 hour every night by sampling VOC-scrubbed air produced by passing ambient air through a zero air generator (Parker Hannifin 75-83-220, Lancaster NY, USA). The PTR-TOF-MS instrument was sheltered inside a hut located approximately 15 meters from the eddy covariance mast. Air was sampled from the top of the mast, very close to an R3-50  
125 ultrasonic anemometer (Gill Instruments, United Kingdom), at a flow rate of 20 liters per minute through a PFA (perfluoroalkoxy) line (1/4'' ID, 3/8'' OD) inlet that was heated when ambient temperatures were below 20 °C to minimize VOC and water condensation onto the inlet walls. The PFA line and its heating wire were inserted into a plastic pipe to shelter them from the environment.

Raw PTR-TOF-MS data were processed with the *PTRwid* software (Holzinger, 2015). PTRwid corrected the mass scale  
130 calibration, and then detected, fitted and quantified ion peaks present in the measured spectrum. In this study, we focus on  
several VOCs that were assigned to known protonated ions (Yáñez-Serrano et al., 2021) detected with the PTR-TOF-MS:  
methanol (m/z 33.03), acetaldehyde (m/z 45.03), acetone (m/z 59.05), dimethyl sulfide (DMS, m/z 63.03) isoprene (m/z 69.07),  
and monoterpenes (m/z 81.07 and 137.13).

Fluxes of VOCs were calculated with the eddy covariance technique using the *InnFLUX* software tool by Striednig et al.  
135 (2020), which was run in Matlab version R2018b (The Mathworks, Natick MA, USA). In short, InnFLUX first detrended the  
Reynolds averages of the raw data. Then, for each half hour EC flux calculation, it time-aligned the VOC mixing ratio time  
series for each m/z with the vertical wind data from the sonic anemometer by shifting one time series relative to the other until  
the absolute maximum covariance between the two time-series was determined. This time alignment also corrected for the  
variable time difference between the computer recording the PTR-TOF-MS data and the data logger recording the wind data.  
140 Previously, the wind data had been rotated according to the directional planar fit method, a correction dependent on wind  
direction that applies the planar fit method (Wilczak et al., 2001) to each wind direction (1 degree steps) using a rotational  
matrix computed with wind data of the  $\pm 15$  degrees around that wind direction. Calculated fluxes were excluded from further  
analysis if turbulence was low ( $u^* < 0.15$ ) or if results of the stationarity test (Foken et al., 2004) were higher than 30%. Of  
the total calculated half-hour EC fluxes, those excluded by these conditions represented 34% for isoprene, 40% for  
145 monoterpenes, 43% for acetone and DMS, 44% for methanol, and 62% for acetaldehyde.

Even though VOC measurements were made at 10 Hz, the damping of the turbulence inside the long inlet line and other  
possible losses of high frequency contributions to the VOC flux required the application of spectral corrections to the calculated  
fluxes. We chose the empirical method proposed by Aubinet et al. (2001), which derives a cospectral transfer function of the  
EC system based on the comparison of the covariance of the vertical wind speed with a non-attenuated signal (i.e. the  
150 temperature measured directly by the sonic anemometer) to that with an attenuated signal (i.e. the VOC; Fig. S2). Since the  
flux mast setup did not change during the measurement campaign, the spectral correction factor (i.e. number to be multiplied  
by the attenuated flux to obtain the corrected flux) was simply a function of the wind speed (Aubinet et al., 2001). The  
correction factor determined for isoprene was used for all reported compounds and ranged from 1 to 1.6, and on average was  
1.2, which corresponded to a wind speed of  $4 \text{ m s}^{-1}$ . In addition, the EC system response time ( $\tau_c=0.21 \text{ s}$ ), including the PTR-  
155 TOF-MS and the inlet tubing, was calculated by fitting the same cospectral transfer function to the equation by Horst (1997;  
Eq 5 therein).

### 2.3 Ancillary measurements

Simultaneously with VOCs, and at the same mast, we measured EC fluxes of  $\text{CH}_4$  and  $\text{CO}_2$ . The setup as well as the data  
160 processing procedures are detailed in Jammet et al. (2015, 2017) and Jansen et al. (2019). This EC system used the same Gill  
R3-50 sonic anemometer as the PTR-TOF-MS. For the  $\text{CH}_4$  fluxes, a tube inlet (8 mm ID Synflex), mounted just below the

anemometer, was connected to a closed path cavity ring-down spectrometer (FGGA, Los Gatos Research, San Jose CA, USA). For CO<sub>2</sub> and H<sub>2</sub>O fluxes we used an open path sensor (LI7500a, LI-COR Biosciences, Lincoln NE, USA) mounted at 2.5m height. Digital data streams from the instruments were sampled at 10 Hz and stored on a CR3000 datalogger (Campbell Scientific Inc., Logan UT, USA). Raw data processing, flux calculations and spectral corrections were done in EddyPro version 6.2 (open source software hosted by LI-COR).

A second mast was set up ca. 10 m from the bank of the lake equipped with instrumentation for ancillary data. Air temperature and humidity (CS215 probe with passively-ventilated radiation shield, Campbell Scientific) were measured at 2 m above ground level (a.g.l.). Incoming and reflected photosynthetic active radiation (PAR) were recorded at 1.5 m a.g.l. using two Li-190 probes (LI-COR Biosciences). All these data were recorded as 10 min-averages and stored using a CR1000 datalogger (Campbell Scientific).

The vegetation greenness was measured throughout the growing season (Fig. S1) for a general assessment of vegetation phenology and growing season dynamics. The greenness was derived as the green chromatic coordinate (GCC; Westergaard-Nielsen et al., 2017), based on images acquired every second hour with an automated Canon G7 X Mark II camera. We visually selected four regions in the images dominated by *Betula pubescens* var. *pumila* L., *Betula nana* L., *Salix* spp., and graminoids (*Carex* spp. and *Eriophorum* spp.), respectively, and averaged the GCC within each region, based on the average of four daily images from approx. 10:00 to 16:00. Water temperature in Villasjön was measured with self-contained loggers (HOBO Water Temp Pro v2, Onset Computer) at 0.1, 0.3, 0.5 and 1.0m depth, at 5-minute intervals. The loggers were intercalibrated in a well-mixed water tank prior to deployment to achieve a measurement precision of < 0.05 °C.

We used the vegetation surface temperature, retrieved with an infrared radiometer (SI-111, Apogee Instruments, Logan UT, USA), from the nearby ICOS (Integrated Carbon Observation System) Sweden measurements within the same Stordalen Mire complex (Fig. 1). A technology used for decades (Fuchs and Tanner, 1966), the infrared radiometer measured non-invasively the vegetation surface temperature integrated over its field of view (4.8 m<sup>2</sup>). Even though these radiation readings took place a couple of hundred meters away from our flux footprint, it was the best available proxy of the temperature experienced by the vegetation surface of the fen. Indeed, previous studies have shown that solar radiation can warm Arctic plants several degrees above their surrounding air temperature (Lindwall et al., 2016a; Wilson, 1957).

### 3 Results and discussion

#### 3.1 Meteorological conditions

PAR and air temperature were much higher in July than in September (Fig. 2). Maximum hourly average PAR in September was one fifth of that in July (ca. 250 and 1200  $\mu\text{mol m}^{-2} \text{s}^{-1}$ , respectively). Average air temperature at 2 m height was higher when the wind was blowing from the east, especially in July, with hourly averages ranging from 14 to 28 °C (11 to 19 °C with

wind from the west). In September, hourly average air temperatures ranged between 1 and 4 °C, and at the end of this period  
195 (second week of October) the first snowfall and the first freezing nights of the season occurred. The water temperature at 10  
cm depth did not vary as much in July as the temperature of the air blowing over the lake did, fluctuating between 19.5 and 22  
°C on average, whereas in September the water temperature closely resembled the air temperature and had minimal variations  
along the day, staying between 1.9 and 3 °C (Fig. 2). In contrast, the vegetation surface temperature did oscillate much more  
than the air temperature, ranging between 10 °C at midnight and 26 °C at noontime in July. In September, the surface  
200 temperature showed a similar diurnal pattern but its hourly average range was limited between -1.2 and 3.3 °C (Fig. 2).

### 3.2 Fen VOC fluxes

In July, the fen was a net source of methanol, acetaldehyde, acetone, DMS, isoprene, and monoterpenes (Table 1), with a clear  
dominance of isoprene ( $93 \pm 22 \mu\text{mol m}^{-2} \text{day}^{-1}$  on average  $\pm$  standard error of the mean). These VOCs showed a typical diurnal  
205 cycle with maximum emission around midday (Fig. 3). In September, fen emissions of methanol, isoprene and monoterpenes  
were drastically reduced, reaching mean net emissions of  $1 \mu\text{mol m}^{-2} \text{day}^{-1}$  or less, and none of them followed a discernible  
diel pattern. Acetaldehyde, acetone, and DMS, in contrast, were deposited to the fen ecosystem with net average rates of  $-6.7$   
 $\pm 2.8$ ,  $-2.5 \pm 0.3$ , and  $-0.2 \pm 0.1 \mu\text{mol m}^{-2} \text{day}^{-1}$ , respectively (Table 1). Thus, acetaldehyde and acetone deposition represented  
the bulk of VOC flux in the fen after the growing season.

210 Several biogenic VOC studies in recent years have revealed that isoprene is the major compound in VOC emissions of many  
arctic and subarctic ecosystems (Holst et al., 2010; Potosnak et al., 2013; Tiiva et al., 2007), including leaf-level measurements  
of two of the dominant sedge species of our fen: *C. rostrata* and *E. angustifolium* (Ekberg et al., 2009). Only two studies,  
though, measured the ecosystem-scale emissions with EC, one nearby in the Stordalen Mire fen and the other in an Alaskan  
moist acidic tundra (Holst et al., 2010; Potosnak et al., 2013). They published maximum hourly isoprene fluxes that were in  
215 the range of 1 to  $5.5 \text{ nmol m}^{-2} \text{ s}^{-1}$  at the peak of the growing season, comparable in magnitude to our July fen measurements  
(Fig. 3). A third study that relied on micrometeorology (relaxed eddy accumulation, in this case) was carried out at a boreal  
fen in southern Finland dominated by *Sphagnum* spp. mosses. The summer isoprene emissions there were also comparable to  
our results, with daily average emissions in the range of  $35\text{-}88 \mu\text{mol m}^{-2} \text{day}^{-1}$  (Haapanala et al., 2006).

Most of the other published studies derived ecosystem-scale isoprene fluxes with measurement chambers attached to the  
220 ground, enclosing the vegetation and the soil surface together. Pioneering VOC work started in boreal *Sphagnum* fens of  
Sweden and Finland with static chambers, finding isoprene fluxes of up to  $9 \text{ nmol m}^{-2} \text{ s}^{-1}$ , which is in range with our  
measurements (Janson et al., 1999; Janson and De Serves, 1998). At a subarctic fen dominated by *Eriophorum* spp. and located  
close to our site in the same Stordalen mire complex, Bäckstrand et al. (2008) measured semi-continuously with automatic  
chambers and found average total non-methane volatile organic compound (NMVOC) fluxes of  $18.5 \text{ mgC m}^{-2} \text{day}^{-1}$ . Assuming  
225 most of the NMVOCs were isoprene, this would equal  $309 \mu\text{mol m}^{-2} \text{day}^{-1}$ , which is approximately three times our result  
(Table 1). Several other push-pull chamber studies have published results from manipulative experiments and, in most cases,

the non-manipulated control plots showed substantially lower isoprene emissions than the EC and chamber studies mentioned above. For instance, emissions in a Finnish subarctic peatland dominated by the moss *Warnstorffia exannulata* and the sedges *Eriophorum russeolum* and *Carex limosa* were in general at least one order of magnitude lower than ours but showed great year to year variation with some higher fluxes measured as well (Faubert et al., 2010b; Tiiva et al., 2007). At a fen in Greenland, dominated by the graminoids *Carex rariflora* and *E. angustifolium*, isoprene emissions were also at least one order of magnitude smaller than our results (Lindwall et al., 2016b). At an experimental site in a heath near Abisko, dominated by evergreen and deciduous dwarf shrubs, graminoids and forbs and with soil covered by *Sphagnum warnstorffii*, the average isoprene fluxes were one or two orders of magnitude lower than ours as well (Tiiva et al., 2008; Valolahti et al., 2015).

Research on isoprene emissions from plant leaves has established that the instantaneous isoprene emission rate depends on the short-term (seconds to hours) light and temperature conditions (Monson et al., 2012). To assess the relative contribution of light and temperature in controlling the isoprene emissions measured at the fen, we used the light ( $C_L$ ) and temperature ( $C_T$ ) activity factors of the G93 empirical leaf-level isoprene emission model (Guenther et al., 1993). We applied the G93 model to our ecosystem-level emissions assuming that the fen vegetation is a single big leaf (e.g. Geron et al., 1997; Seco et al., 2015, 2017). In addition, with the G93 model we could also estimate the standard isoprene emission potential of the fen (at standard conditions:  $1000 \mu\text{mol m}^{-2} \text{s}^{-1}$  of PAR and surface temperature of  $30 \text{ }^\circ\text{C}$ ), which was  $5.8 \pm 0.13 \text{ nmol m}^{-2} \text{s}^{-1}$  (Supplement Fig. S5), almost double that calculated for a boreal *Sphagnum*-dominated fen in southern Finland (Haapanala et al., 2006). The evaluation of the relative contribution of light and temperature to the control of isoprene emissions revealed that, even though light is required for isoprene biosynthesis and subsequent emission,  $C_L$  did not play a prominent role in driving the short-term variations of the isoprene fluxes and most of the actual emission regulation was in response to temperature (Fig. S5). However, our highest isoprene fluxes did not follow the expected  $C_T$  temperature relationship and fell above the regression line (Fig. S5), suggesting a stronger response of our highest isoprene fluxes to temperature. The  $C_T$  algorithm defines an exponential increase of isoprene emission with temperature until it reaches a maximum at an optimal temperature ( $35$  to  $40 \text{ }^\circ\text{C}$ ) and beyond that emission decays when denaturation of enzymes occurs (Guenther et al., 1993). At the relatively low temperatures of the Stordalen Mire, where vegetation surface temperatures exceed  $35 \text{ }^\circ\text{C}$  just on three half-hour periods during our campaign, only the increasing part of the response described by  $C_T$  was observable. We thus fitted an exponential relationship between our measured isoprene flux and both the air and surface temperatures and calculated their respective  $Q_{10}$  temperature coefficients (Fig. 5). In this case, the  $Q_{10}$  coefficient represents the factor by which isoprene emission increases for every 10-degree rise in temperature. The  $Q_{10}$  of the G93  $C_T$  activity factor is 3.3, comparable to similar biogenic VOC emission models with  $Q_{10}$  values between 3 and 6 (Peñuelas and Staudt, 2010). These values over 3 are an indication of the synergy, as temperature rises, between the metabolic processes underlying isoprene emissions, namely isoprene synthase activity and availability of its substrate dimethylallyl diphosphate, that each have  $Q_{10} \approx 2$  like biochemical reactions in general (Sharkey and Monson, 2014). For our calculation, we used only emission data points for which light was not a limiting factor (i.e.  $\text{PAR} \geq 1000 \mu\text{mol m}^{-2} \text{s}^{-1}$ ) to avoid interference from the correlation between light and temperature when fitting the temperature response. The  $Q_{10}$  of isoprene emission in response to vegetation surface temperature was 14.5 and the  $Q_{10}$  in response to air temperature was much



higher, 131 (Fig. 5). Including in our calculation emission data points measured at  $\text{PAR} \geq 800 \mu\text{mol m}^{-2} \text{s}^{-1}$  increased the number of data points involved (from 52 to 66 at  $\text{PAR} \geq 1000$  and  $\geq 800 \mu\text{mol m}^{-2} \text{s}^{-1}$ , respectively) at the expense of potential light-response interference, although according to the G93 model the light-response effect would be small ( $C_L > 0.96$  at  $\text{PAR} = 800 \mu\text{mol m}^{-2} \text{s}^{-1}$ ). The lower-PAR  $Q_{10}$  for the surface temperature was 10.3, still above the range 3-6 of the G93 and other biogenic models. The  $Q_{10}$  for the air temperature was 18.6, much lower than for the higher PAR, probably due to the less direct relationship of isoprene emissions with air temperature. Altogether, these calculations suggest a robust, strong response of isoprene fluxes to temperature.

Summarizing the results from an experimentally-warmed site, Tang et al. (2016) calculated the isoprene emission temperature response of a subarctic permafrost-free heath ecosystem in Abisko using an Arrhenius-type exponential algorithm, obtaining a  $Q_{10}$  coefficient of 10. Kramshøj et al. (2016) performed similar warming experiments at a dry Arctic tundra heath in Greenland, obtaining a  $Q_{10}$  of 22. These two  $Q_{10}$  coefficients are higher than that of the  $C_T$  algorithm ( $Q_{10} = 3.3$ ) and closer to our result using the vegetation surface temperature ( $Q_{10} = 14.5$ ; red squares in Fig. 5). Both studies used air temperature inside the chambers for their calculations, which is typically higher than the ambient air temperature, considering that the combined effect of solar radiation and limited air circulation normally heats up the inside of the chambers. Details about where the temperature is measured —temperature that later is used to derive temperature responses— can be important because Arctic vegetation exhibits a large discrepancy between its surface temperature and that of the air. For example, the vegetation surface was on average 8 °C, and up to 21 °C, warmer than the air at a heath in Greenland (Lindwall et al., 2016a), which coincides with our Stordalen temperature readings (Fig. 2, Fig. 5). Indeed, the response of our isoprene emissions to air temperature was even steeper ( $Q_{10} = 131$ ; blue triangles in Fig. 5) than to surface temperature. At the same Stordalen wetland as our study, Holst et al. (2010) found a steep temperature response to air temperatures above 15 °C, in agreement with our results (Fig. 5) and previous high-latitude studies (Kramshøj et al., 2016; Lindwall et al., 2016b, 2016a; Rinnan et al., 2014). Hence, our high  $Q_{10}$  values corroborate that Arctic vegetation can have a stronger temperature sensitivity compared to plants from lower latitudes, which underpin the most used biogenic emission models (Guenther et al., 2006).

There are few accounts of non-isoprene fluxes from subarctic wetland ecosystems. Monoterpene emissions from chamber experiments in an Abisko heath showed great variability: sometimes in the range of our fen measurements (we found average hourly maximum of  $0.06 \text{ nmol m}^{-2} \text{ s}^{-1}$ ; Fig. 3) while sometimes one order of magnitude lower (Faubert et al., 2010a; Valolahti et al., 2015). Even lower (three orders of magnitude) were the monoterpene fluxes from a subarctic fen in Finland (Faubert et al., 2010b), while a boreal *Sphagnum* fen in Finland had comparable or higher fluxes (averages between 0.05 and 0.2  $\text{nmol m}^{-2} \text{ s}^{-1}$ ) than our subarctic fen (Janson et al., 1999).

Regarding methanol, EC fluxes investigated at the Stordalen Mire wetland by Holst et al. (2010) reached a noontime average hourly maximum of  $1.3 \text{ nmol m}^{-2} \text{ s}^{-1}$  in early August, which is higher than our  $0.2 \text{ nmol m}^{-2} \text{ s}^{-1}$  in July (Fig. 3). They measured net methanol deposition clearly at night, whereas we observed a net zero flux at the end of the day (Fig. 3). Deposition of methanol to vegetation during nighttime has been linked to dissolution into dew droplets because methanol is highly soluble in water (Seco et al., 2007). At our site, the wet surface of the fen could potentially play an important role, but our data do not

295 show any significant methanol deposition. The net methanol fluxes observed at our subarctic fen in July are lower than most  
of the published methanol fluxes from a diverse array of ecosystem-scale studies, which also confirmed the widespread  
importance of methanol deposition (Seco et al., 2007; Wohlfahrt et al., 2015). Acetaldehyde and acetone net emissions in July  
were also smaller than other published fluxes from terrestrial vegetation (Seco et al., 2007), and in September they were mainly  
deposited. DMS showed the same behaviour as methanol, with mainly emission in July and deposition after the growing season  
300 (Fig. 3).

All these non-isoprenoid VOCs followed a diffuse relationship with temperature and/or light (Fig. S3), reflecting the complex  
nature of the controls over their fluxes at the ecosystem level (Seco et al., 2007). DMS can be emitted by plants (Fall et al.,  
1988; Geng and Mu, 2006; Jardine et al., 2010) and also, driven by temperature, from soils (Staubes et al., 1989; Yang et al.,  
1996). Methanol can be emitted constitutively by plants throughout their growing season, with increased release linked to leaf  
305 expansion (Aalto et al., 2014; Hüve et al., 2007) and emission bursts elicited by herbivore feeding (Peñuelas et al., 2005a).  
Methanol emissions have also been associated with soils. For example, methanol was one of the main compounds released  
from subalpine forest floor (Gray et al., 2014) and thawing permafrost (Kramshøj et al., 2018). Acetaldehyde is produced in  
flooded roots (Fall, 2003), which is potentially an important source in a waterlogged fen for species not adapted to this growth  
condition, like shrubs. The graminoids, in contrast, transport air down to their roots through a specialized tissue in their leaves  
310 and stems, and do not suffer from anoxia (Schütz et al., 1991). The exchange of acetone, acetaldehyde and methanol between  
plants and the atmosphere is controlled by the stomatal conductance due to their water solubility and, furthermore, their  
atmospheric mixing ratios can have influence on the fluxes to some extent (Filella et al., 2009; Jardine et al., 2008; Niinemets  
and Reichstein, 2003; Seco et al., 2007). In addition, the peat and its microbial communities are also a potential source and  
sink for many volatiles that can be exchanged between the soil and the atmosphere from many biogeochemical processes  
315 (Albers et al., 2018; Kramshøj et al., 2018; Woodcroft et al., 2018).

Lastly, our analytical system did not capture any sesquiterpene fluxes. We know from chamber measurements that vegetation  
present at the Stordalen Mire emits sesquiterpenes. For example, the mountain birch (*B. pubescens* var. *pumila*), which covers  
an area of almost 600 000 ha in the Scandinavian subarctic, can emit important amounts of sesquiterpenes (Haapanala et al.,  
2009). Other experiments in nearby Abisko heaths, mentioned above, documented sesquiterpene flux rates similar to those of  
320 monoterpenes measured in the same study (Faubert et al., 2010a; Valolahti et al., 2015). Most recently, sesquiterpenes have  
been detected as the main terpenoid emissions after isoprene at a subarctic wetland in Finland (Hellén et al., 2020). One obvious  
reason for our lack of sesquiterpene signal is that our flux footprint did not include a significant amount of high-emitting  
species since, for example, most of the nearby birch patches were outside of it. Equally important is the fact that, due to their  
high reactivity, sesquiterpenes are lost through fast chemical reactions and through interactions with our long inlet tubing wall,  
325 so presumably they never made it to our PTR-TOF-MS to be detected. Therefore, the measurement of ecosystem-wide fluxes  
of sesquiterpenes with EC remains a challenge for future field campaigns.

### 3.3 Lake VOC fluxes

The number of available lake half-hour fluxes in July was low ( $n \approx 20$ ) due to technical issues, wind direction partitioning, and  
330 fluxes discarded by EC quality assurance criteria. These reasons and the consequent lack of data for half of the hours of the  
day (Fig. 3) justify that we consider these results exploratory. In particular, compounds such as DMS and monoterpenes had  
mean daily fluxes dominated by one or two hourly average data points that were not actually hourly averages, since they were  
based on only one measurement during that hour (i.e. data points without standard deviation shading in Fig. 3). However, there  
are so few observations of lake VOC fluxes that it is important that we document the sparse data we have.

335 VOC fluxes assigned to the lake wind direction could potentially have some influence from the vegetation of the island in the  
lake, because under certain conditions the edge of the EC tower footprint reached that far. A previous study at this site described  
CO<sub>2</sub> uptake during the day from the lake EC measurements in summertime (Jammet et al., 2017). Such uptake was later  
interpreted as a result of the photosynthetic activity on the island, since water sampling indicated the surface water of lake  
Villasjön was consistently supersaturated with respect to atmospheric CO<sub>2</sub> (Jansen et al., 2019). During our weeklong July  
340 measurements, we only observed lake CO<sub>2</sub> uptake in the early morning (Fig. 4) when VOC emissions were small (Fig. 3).  
Hence, we assume that the vegetation of the island did not substantially bias our lake VOC fluxes although some influence  
cannot be entirely ruled out.

The most striking feature of the lake ecosystem is that it was a sink for acetaldehyde and acetone in both studied periods (Fig.  
3, Table 1). Similar to the fen, the deposition of these compounds accounted for most of the VOC flux in the lake in September.  
345 Acetone deposition peaked in July with an average of  $-19 \pm 1.3 \mu\text{mol m}^{-2} \text{day}^{-1}$ , while that of acetaldehyde was highest in  
September with  $-8.5 \pm 2.3 \mu\text{mol m}^{-2} \text{day}^{-1}$  (Table 1). There was a correlation of the acetaldehyde and acetone deposition rates  
with their corresponding atmospheric mixing ratios (Fig. 6), with increasing deposition at higher mixing ratios, resulting in  
average deposition velocities of  $-0.23 \pm 0.01$  and  $-0.68 \pm 0.03 \text{ cm s}^{-1}$  for acetone and acetaldehyde, respectively. The high  
water solubility of these short-chain oxygenated VOCs helps their deposition from the air to the water, and may partly explain  
350 the correlation of the deposition rate with their atmospheric mixing ratios (Fig. 6). The flux of these two carbonyl VOCs  
showed a relationship to air temperature as well, that might very well be coincidental and dependent on atmospheric mixing  
ratios. Acetone deposition was more intense at higher air temperatures, in July, when its mixing ratios were also higher (Fig.  
6). In contrast to acetone, acetaldehyde did not present a clear relationship with air temperature but its strongest deposition  
rates occurred at air temperatures below 3 °C, concurrent with higher mixing ratios (Fig. 6).

355 These carbonyl compounds have not only natural sources such as emission from vegetation and soil: they also originate from  
human activities and from atmospheric degradation of other precursor VOCs (Seco et al., 2007). The limited reactivity of  
acetone in the troposphere makes it relatively long-lived, typically up to 15 days (Singh et al., 2004), which means that the  
deposited acetone can be advected from far away (Patokoski et al., 2015). We have not found studies in the literature on air-  
water fluxes of acetaldehyde or acetone in freshwater environments, only a few in marine environments. Yet those marine  
360 studies have contradictory results on whether the ocean is a net sink or a source of acetone (Fischer et al., 2012), suggesting a

location-dependent behaviour where tropical and productive areas are a net source while high latitude oligotrophic oceans are either in an air-water equilibrium (i.e. zero net flux) or act as net sinks of acetone (Beale et al., 2013, 2015; Lawson et al., 2020; Marandino, 2005; Schlundt et al., 2017; Taddei et al., 2009; Tanimoto et al., 2014). Villasjön, as an oligotrophic high latitude lake, would fit in that conceptual framework as a sink of acetone, in agreement with our observations. The direction of the acetaldehyde flux in seawater has been reported to vary along the year during an annual study in UK shelf waters (Beale et al., 2015) and also to be mostly emission during short-term measurements in a Norwegian fjord mesocosm experiment (Sinha et al., 2007). Further, the lake sink of acetaldehyde and acetone detected with our measurements in the snow-free season may be reversed to a source once the valley is covered in snow, as release of acetaldehyde, acetone and other carbonyl compounds from snow has been documented (Couch et al., 2000).

365  
370 Interestingly, even though methanol is more soluble in water than acetone or acetaldehyde (Sander, 2015), its deposition to the lake did not reach the intensity displayed by the two carbonyl compounds (Fig. 3). Instead, average methanol fluxes showed little to no flux, either deposition or emission, along the day during both seasons. Again, given the dearth of published observations, we can only compare our methanol fluxes to marine studies. In contrast to acetone and acetaldehyde and their variable flux direction, methanol has been reported to be consistently deposited to the ocean surface, where it could represent a supply of energy and carbon for marine microbes (Beale et al., 2015; Sinha et al., 2007; Yang et al., 2013).

375  
380 Like the fen, the lake also emitted isoprene in July, although without a visible diel pattern given the incomplete dataset (Fig. 3). Nevertheless, our available data showed maximum hourly average net emissions of  $1 \text{ nmol m}^{-2} \text{ s}^{-1}$ , and a daily average net rate of  $0.24 \pm 0.12 \text{ nmol m}^{-2} \text{ s}^{-1}$  (equivalent to  $20 \pm 10 \text{ } \mu\text{mol m}^{-2} \text{ day}^{-1}$ ; Table 1). These numbers are two to three orders of magnitude higher than isoprene emissions calculated at the large temperate oligotrophic lake Constance (Germany) in the month of July, with maximum hourly average emission rates of  $0.004 \text{ nmol m}^{-2} \text{ s}^{-1}$  (Steinke et al., 2018). Based on the data from lake Constance, Steinke et al. (2018) suggested that Arctic lakes could rival terrestrial vegetation emissions in these zones where lake areal coverage is high and terrestrial isoprene sources are small. Our numbers do not fully support that suggestion for the peak of the season at our site, since the fen net emission was roughly 4.5 times that of the lake (Table 1), albeit it may hold in zones with a ratio of lake to vegetation coverage over five. For instance, the Stordalen catchment has 4.5% of lake coverage and 3.9% of fen coverage (Lundin et al., 2016), so the lake to vegetation ratio is 1.2, and much lower if we include other types of vegetation. Still, their suggestion may be valid for other periods. For example, in our case during the senescent period in September, even though the flux magnitudes were much smaller than in July, the lake average isoprene emission was double that of the fen ( $0.6 \pm 0.4$  and  $0.3 \pm 0.3 \text{ } \mu\text{mol m}^{-2} \text{ day}^{-1}$ , respectively; Table 1). We found no other report of isoprene fluxes from lakes, despite the likely existence of many sources analogous to those known in seawater such as phytoplankton, seaweeds, bacteria, and cyanobacteria (Broadgate et al., 2004; Exton et al., 2013; Fall and Copley, 2000; Shaw et al., 2003, 2010). A number of available publications suggest that ocean waters are sources of isoprene to the atmosphere at rates comparable to those calculated for Lake Constance, i.e. two orders of magnitude lower than ours (Broadgate et al., 1997; Kameyama et al., 2014; Li et al., 2017; Sinha et al., 2007).

385  
390

DMS is a commonly studied marine trace gas because of its role in aerosol and cloud nucleation chemistry (Carpenter et al., 2012) but there are far fewer observations in freshwater environments. As far as we know, no EC measurements of DMS from lakes exist, so the few published studies that report a DMS flux employed alternative techniques to calculate the fluxes, for example using the DMS concentration difference between water and air with an air-water transfer model to calculate the fluxes. DMS emissions calculated by Steinke et al. (2018) for the 252 meter-deep lake Constance were, as for isoprene, two orders of magnitude smaller (maximum hourly average emission rates of  $0.003 \text{ nmol m}^{-2} \text{ s}^{-1}$ ) than our July fluxes. A study in Canadian boreal lakes estimated DMS emissions up to a few  $\mu\text{mol m}^{-2} \text{ day}^{-1}$  for shallow lakes, which is on the lower range of the July fluxes in the shallow Villasjön. That study also noted that emissions from deeper lakes were smaller than from shallow or medium-depth lakes (Sharma et al., 1999), while a similar study in the same geographical area found average DMS fluxes of around  $1 \mu\text{mol m}^{-2} \text{ day}^{-1}$  from lakes ranging in depths from 1.5 to 20 m but with a 5 meter-deep lake showing much higher emissions of up to  $4 \mu\text{mol m}^{-2} \text{ day}^{-1}$  on average (Richards et al., 1991). Other authors measured DMS concentrations in a stratified lake in North America, at different depths down to 13 m, and concluded that DMS fluxes to the atmosphere must have been insignificant given that DMS was not present in surface and near surface water (Hu et al., 2007). Another study took a different approach and utilized the phytoplankton biomass and its content of DMS precursors in lake Kinneret (Israel) to estimate an average DMS emission of  $3.3 \mu\text{mol m}^{-2} \text{ day}^{-1}$  (Ginzburg et al., 1998), similar to our July average of  $4.7 \pm 3.1 \mu\text{mol m}^{-2} \text{ day}^{-1}$  (Table 1). In contrast, DMS fluxes from the ocean have been directly measured by EC in different places around the globe, with reported emissions as high as  $97 \mu\text{mol m}^{-2} \text{ day}^{-1}$  (Bell et al., 2013; Marandino et al., 2007, 2009; Smith et al., 2018), even up to  $300 \mu\text{mol m}^{-2} \text{ day}^{-1}$  during an unicellular phytoplankton bloom (Marandino et al., 2008), but in many cases with average emissions in the same range as our lake July average flux (Huebert et al., 2004; Tanimoto et al., 2014; Yang et al., 2011b, 2011a).

### 415 **3.4 CO<sub>2</sub>, CH<sub>4</sub>, and H<sub>2</sub>O fluxes**

The fluxes of CO<sub>2</sub> and CH<sub>4</sub> (as well as H<sub>2</sub>O) were not the focus of this study and, moreover, their temporal patterns and environmental drivers over several years at the same site have been examined in detail elsewhere (Jammet et al., 2015, 2017; Jansen et al., 2019, 2020). Here, we mainly included them to contextualize the VOC fluxes and thus provide a broader overview of the trace gas exchange of our fen and Villasjön during our two measurement periods. Furthermore, as in the case of the July VOC fluxes, the limited data availability from the lake in July (36 and 51 half-hourly fluxes for CO<sub>2</sub> and CH<sub>4</sub>, respectively) advises to consider the presented lake trace gas exchanges with prudence.

Net molar fluxes of CO<sub>2</sub>, CH<sub>4</sub>, and H<sub>2</sub>O were at least two, and up to seven, orders of magnitude higher than the VOC fluxes (Table 1). Water vapour and CH<sub>4</sub> showed net average daily emission in both lake and fen and during both periods, while CO<sub>2</sub> showed net uptake in July and net release in September, in both lake and fen (Table 1).

425 Uptake of CO<sub>2</sub> and evapotranspiration in the fen followed a well-defined diel cycle likely due to the physiological activity of the vegetated surface, with maxima around noontime, notably in July (Fig. 4). In September, a similar pattern was apparent in

the fen's diel cycles (Fig. 4), but the magnitude of the daytime fluxes was much smaller. It was so much smaller that the weaker CO<sub>2</sub> uptake during daylight hours did not compensate for the CO<sub>2</sub> release during the rest of the day, resulting in a 24-hour aggregate mean flux that represented a net release of CO<sub>2</sub> to the atmosphere from the fen (Table 1). CH<sub>4</sub> emissions from the fen in July were on average 3.5 times higher than in September (Table 1), and their diel emission cycle showed an overall flat pattern in both periods (Fig. 4).

The lake was a net sink of CO<sub>2</sub> in July, especially due to stronger uptake during the early hours of the day, and a net source in September, during which there was no diel cycle (Table 1, Fig. 4). Evaporation from the lake was approximately 10-fold higher in July than in September on a 24-hour basis, and compared to the evapotranspiration from the fen, it was higher in July as well (Table 1, Fig. 4). Daily CH<sub>4</sub> emissions from the lake were smaller than from the fen during both periods (Table 1).

A comparison of the VOC carbon fluxes with the fluxes in the form of CO<sub>2</sub> and CH<sub>4</sub> (Table 1) reveals that the average net VOC emission of the fen in July, summing the six VOC species reported in this manuscript, represented 0.16 % of the fen net carbon uptake as CO<sub>2</sub> (of which isoprene alone was 0.15 %) and 4.2 % of the net carbon release as CH<sub>4</sub> (isoprene alone, 3.9 %). In September, the absolute VOC net carbon flux at the fen, i.e. the total net amount of carbon exchanged in the form of VOCs, including both the VOCs with net emission and those with net uptake, added up 0.06 % of the net CO<sub>2</sub> carbon and 0.76 % of the net CH<sub>4</sub> carbon emitted from the fen.

The same comparison for the lake (Table 1) shows that the aggregate absolute VOC net exchange amounts to 0.32 % of the CO<sub>2</sub> and 3.2 % of the CH<sub>4</sub> net carbon fluxes of the lake. In September, the absolute VOC net carbon flux in the lake was equivalent to 0.13 % of the net CO<sub>2</sub> carbon release flux and 3.8 % of the net CH<sub>4</sub> carbon emission flux.

#### 445 **4 Concluding remarks**

Here we presented an eddy-covariance dataset measured from two distinct common subarctic landscape types: a permafrost-free fen and a shallow post-glacial lake. Isoprene dominated by far the VOC fluxes from the fen at the peak of the season, while after the growing season the fen was characterized by deposition of acetaldehyde and acetone (Fig. 3, Table 1). Furthermore, the isoprene emissions from the fen in July were strongly stimulated by temperature and, in agreement with previous arctic and subarctic VOC measurements (Holst et al., 2010; Tang et al., 2016), exhibited a higher temperature sensitivity ( $Q_{10} = 14.5$ ) than described by the temperature response curves typically used in biogenic emission models ( $3 \leq Q_{10} \leq 6$ ), which are based on measurements made in lower latitudes (Guenther et al., 2006). Our measurements also displayed the disparity between the temperature of the air and that of the vegetation surface, the latter being several degrees warmer during daytime (Figs. 2 and 5). Consequently, it is advisable that future VOC studies measure accurately and precisely the vegetation temperatures that represent the thermal conditions controlling the VOC production and release processes. Furthermore, while we do not suggest taking these  $Q_{10}$  values as true coefficients to be directly implemented into modelling, it is worth mentioning that care should be taken when applying  $Q_{10}$  values in models. Otherwise, a mismatch could translate into erroneous results,

for instance when using a  $Q_{10}$  derived from the response to air temperature in models that drive VOC emissions with leaf temperature and vice versa.

460 Our lake VOC fluxes can be considered exploratory due to the low amount of data available. Despite this, they are valuable given the lack of observations of freshwater fluxes. We showed that the lake was a sink of acetone and acetaldehyde in both July and September with average deposition velocities of  $-0.23 \pm 0.01$  and  $-0.68 \pm 0.03$   $\text{cm s}^{-1}$  for acetone and acetaldehyde, respectively (Fig. 3, Fig. 6, Table 1).

The carbon exchanged as VOC net fluxes from both fen and lake constituted less than 0.5% and less than 5% of the  $\text{CO}_2$  and  
465  $\text{CH}_4$  net carbon ecosystem exchange, respectively. These low proportions are probably one of the reasons, together with technical and logistical challenges (Rinne et al., 2016), of the limited amount of existing VOC studies in lakes or high latitude ecosystems. However, technological advances are gradually removing practical obstacles and, in addition, growing concern about climate change repercussions warrants more research in this rapidly warming area of the world, especially given the importance of VOCs as precursors for aerosols (Paasonen et al., 2013; Svenningsson et al., 2008).  $\text{CO}_2$  and  $\text{CH}_4$  fluxes are  
470 already under intense investigation to quantify the strength of their sinks and sources (e.g. Jeong et al., 2018; Oh et al., 2020). Recently, arctic VOCs have received increased attention (e.g. Kramshøj et al., 2016, 2018, 2019) and this study is another contribution towards the understanding of VOC budgets in northern wetlands and inland waters.

### **Data availability**

475 VOC flux data used in this article, together with PAR, air temperature, and vegetation surface temperature are available for download at <https://doi.org/10.5281/zenodo.3886457> (Seco et al., 2020).  $\text{CO}_2$ ,  $\text{H}_2\text{O}$  and  $\text{CH}_4$  fluxes, and wind direction and speed can be downloaded from <http://www.icos-etc.eu/home/site-details?id=SE-St1>. Villasjön water temperatures are available at <https://bolin.su.se/data/crill-2019>.

### **Author contributions**

480 RS, TH, MSM, AWN, TL, TS, and JJ performed measurements and contributed data. RR conceptualized and supervised the study and acquired funding to support this research. RS analysed the data and wrote the original draft. All authors contributed to manuscript writing and revision, and read and approved the submitted version.

### **Competing interests**

The authors declare that they have no conflict of interest.

## 485 **Acknowledgements**

This work was supported by the European Research Council (ERC) under the European Union's Horizon 2020 research and innovation programme (grant agreement No 771012), the Independent Research Fund Denmark | Natural Sciences, the Swedish Research Council (VR) (ref. 2013-5562), the Marie Skłodowska-Curie actions under the European Union's Horizon 2020 research and innovation programme (grant agreement No. 751684), the European Commission under the Seventh  
490 Framework Programme project PAGE21 (ref. 282700) and by the Danish National Research Foundation (CENPERM DNRF100).

We are grateful to ICOS Sweden and the Abisko Scientific Research Station for providing excellent logistics for the work. ICOS Sweden is co-funded by the Swedish Research Council.

## 495 **References**

- Aalto, J., Kolari, P., Hari, P., Kerminen, V.-M., Schiestl-Aalto, P., Aaltonen, H., Levula, J., Siivola, E., Kulmala, M. and Bäck, J.: New foliage growth is a significant, unaccounted source for volatiles in boreal evergreen forests, *Biogeosciences*, 11(5), 1331–1344, doi:10.5194/bg-11-1331-2014, 2014.
- Albers, C. N., Kramshøj, M. and Rinnan, R.: Rapid mineralization of biogenic volatile organic compounds in temperate and  
500 Arctic soils, *Biogeosciences*, 15(11), 3591–3601, doi:10.5194/bg-15-3591-2018, 2018.
- Atkinson, R.: Atmospheric chemistry of VOCs and NO<sub>x</sub>, *Atmos. Environ.*, 34(12–14), 2063–2101, doi:10.1016/S1352-2310(99)00460-4, 2000.
- Aubinet, M., Chermanne, B., Vandenhaute, M., Longdoz, B., Yernaux, M. and Laitat, E.: Long term carbon dioxide exchange above a mixed forest in the Belgian Ardennes, *Agric. For. Meteorol.*, 108(4), 293–315, doi:10.1016/S0168-1923(01)00244-1,  
505 2001.
- Bäckstrand, K., Crill, P. M., Mastepanov, M., Christensen, T. R. and Bastviken, D.: Non-methane volatile organic compound flux from a subarctic mire in Northern Sweden, *Tellus B Chem. Phys. Meteorol.*, 60(2), 226–237, doi:10.1111/j.1600-0889.2007.00331.x, 2008.
- Baldwin, I. T., Halitschke, R., Paschold, A., von Dahl, C. C. and Preston, C. A.: Volatile signaling in plant-plant interactions: "Talking trees" in the genomics era, *Science* (80-. ), 311(5762), 812–815, doi:10.1126/science.1118446, 2006.
- Beale, R., Dixon, J. L., Arnold, S. R., Liss, P. S. and Nightingale, P. D.: Methanol, acetaldehyde, and acetone in the surface waters of the Atlantic Ocean, *J. Geophys. Res. Ocean.*, 118(10), 5412–5425, doi:10.1002/jgrc.20322, 2013.
- Beale, R., Dixon, J. L., Smyth, T. J. and Nightingale, P. D.: Annual study of oxygenated volatile organic compounds in UK shelf waters, *Mar. Chem.*, 171, 96–106, doi:10.1016/j.marchem.2015.02.013, 2015.
- 515 Bell, T. G., De Bruyn, W., Miller, S. D., Ward, B., Christensen, K. H. and Saltzman, E. S.: Air–sea dimethylsulfide (DMS) gas transfer in the North Atlantic: evidence for limited interfacial gas exchange at high wind speed, *Atmos. Chem. Phys.*,



- 13(21), 11073–11087, doi:10.5194/acp-13-11073-2013, 2013.
- Broadgate, W. ., Malin, G., Küpper, F. ., Thompson, A. and Liss, P. .: Isoprene and other non-methane hydrocarbons from seaweeds: a source of reactive hydrocarbons to the atmosphere, *Mar. Chem.*, 88(1–2), 61–73, doi:10.1016/j.marchem.2004.03.002, 2004.
- 520 Broadgate, W. J., Liss, P. S. and Penkett, S. A.: Seasonal emissions of isoprene and other reactive hydrocarbon gases from the ocean, *Geophys. Res. Lett.*, 24(21), 2675–2678, doi:10.1029/97GL02736, 1997.
- Buras, A., Rammig, A. and Zang, C. S.: Quantifying impacts of the 2018 drought on European ecosystems in comparison to 2003, *Biogeosciences*, 17(6), 1655–1672, doi:10.5194/bg-17-1655-2020, 2020.
- 525 Callaghan, T. V., Bergholm, F., Christensen, T. R., Jonasson, C., Kokfelt, U. and Johansson, M.: A new climate era in the sub-Arctic: Accelerating climate changes and multiple impacts, *Geophys. Res. Lett.*, 37(14), L14705, doi:10.1029/2009GL042064, 2010.
- Carpenter, L. J., Archer, S. D. and Beale, R.: Ocean-atmosphere trace gas exchange, *Chem. Soc. Rev.*, 41(19), 6473, doi:10.1039/c2cs35121h, 2012.
- 530 Couch, T. L., Sumner, A. L., Dassau, T. M., Shepson, P. B. and Honrath, R. E.: An investigation of the interaction of carbonyl compounds with the snowpack, *Geophys. Res. Lett.*, 27(15), 2241–2244, doi:10.1029/1999GL011288, 2000.
- Ekberg, A., Arneeth, A., Hakola, H., Hayward, S. and Holst, T.: Isoprene emission from wetland sedges, *Biogeosciences*, 6(4), 601–613, doi:10.5194/bg-6-601-2009, 2009.
- Exton, D. A., Suggett, D. J., McGenity, T. J. and Steinke, M.: Chlorophyll-normalized isoprene production in laboratory 535 cultures of marine microalgae and implications for global models, *Limnol. Oceanogr.*, 58(4), 1301–1311, doi:10.4319/lo.2013.58.4.1301, 2013.
- Fall, R.: Abundant oxygenates in the atmosphere: A biochemical perspective, *Chem. Rev.*, 103(12), 4941–4951, 2003.
- Fall, R. and Copley, S. D.: Bacterial sources and sinks of isoprene, a reactive atmospheric hydrocarbon, *Environ. Microbiol.*, 2(2), 123–130, doi:10.1046/j.1462-2920.2000.00095.x, 2000.
- 540 Fall, R., Albritton, D. L., Fehsenfeld, F. C., Kuster, W. C. and Goldan, P. D.: Laboratory studies of some environmental variables controlling sulfur emissions from plants, *J. Atmos. Chem.*, 6(4), 341–362, doi:10.1007/BF00051596, 1988.
- Faubert, P., Tiiva, P., Rinnan, Å., Michelsen, A., Holopainen, J. K. and Rinnan, R.: Doubled volatile organic compound emissions from subarctic tundra under simulated climate warming, *New Phytol.*, 187(1), 199–208, doi:10.1111/j.1469-8137.2010.03270.x, 2010a.
- 545 Faubert, P., Tiiva, P., Rinnan, Å., Räsänen, J., Holopainen, J. K., Holopainen, T., Kyrö, E. and Rinnan, R.: Non-Methane Biogenic Volatile Organic Compound Emissions from a Subarctic Peatland Under Enhanced UV-B Radiation, *Ecosystems*, 13(6), 860–873, doi:10.1007/s10021-010-9362-1, 2010b.
- Filella, I., Peñuelas, J. and Seco, R.: Short-chained oxygenated VOC emissions in *Pinus halepensis* in response to changes in water availability, *Acta Physiol. Plant.*, 31(2), 311–318, doi:10.1007/s11738-008-0235-6, 2009.
- 550 Filella, I., Primante, C., Llusà, J., Martín González, A. M., Seco, R., Farré-Armengol, G., Rodrigo, A., Bosch, J. and Peñuelas,

- J.: Floral advertisement scent in a changing plant-pollinators market., *Sci. Rep.*, 3, 3434, doi:10.1038/srep03434, 2013.
- Fischer, E. V., Jacob, D. J., Millet, D. B., Yantosca, R. M. and Mao, J.: The role of the ocean in the global atmospheric budget of acetone, *Geophys. Res. Lett.*, 39(1), n/a-n/a, doi:10.1029/2011GL050086, 2012.
- Foken, T., Göckede, M., Mauder, M., Mahrt, L., Amiro, B. and Munger, W.: Post-Field Data Quality Control, in *Handbook of Micrometeorology*, edited by X. Lee, W. Massman, and B. Law, pp. 181–208, Kluwer Academic Publishers, Dordrecht, Netherlands., 2004.
- Fuchs, M. and Tanner, C. B.: Infrared Thermometry of Vegetation, *Agron. J.*, 58(6), 597–601, doi:10.2134/agronj1966.00021962005800060014x, 1966.
- Geng, C. and Mu, Y.: Carbonyl sulfide and dimethyl sulfide exchange between trees and the atmosphere, *Atmos. Environ.*, 560 40(7), 1373–1383, doi:10.1016/j.atmosenv.2005.10.023, 2006.
- Geron, C. D., Nie, D., Arnts, R. R., Sharkey, T. D., Singaas, E. L., Vanderveer, P. J., Guenther, A., Sickles, J. E. and Kleindienst, T. E.: Biogenic isoprene emission: Model evaluation in a southeastern United States bottomland deciduous forest, *J. Geophys. Res.*, 102(D15), 18889, doi:10.1029/97JD00968, 1997.
- Ginzburg, B., Chalifa, I., Gun, J., Dor, I., Hadas, O. and Lev, O.: DMS Formation by Dimethylsulfoniopropionate Route in 565 Freshwater, *Environ. Sci. Technol.*, 32(14), 2130–2136, doi:10.1021/es9709076, 1998.
- Gray, C. M., Monson, R. K. and Fierer, N.: Biotic and abiotic controls on biogenic volatile organic compound fluxes from a subalpine forest floor, *J. Geophys. Res. Biogeosciences*, 119(4), 547–556, doi:10.1002/2013JG002575, 2014.
- Guenther, A., Zimmerman, P. R., Harley, P., Monson, R. K. and Fall, R.: Isoprene and Monoterpene Emission Rate Variability - Model Evaluations and Sensitivity Analyses, *J. Geophys. Res.*, 98(D7), 12609–12617, doi:10.1029/93JD00527, 1993.
- 570 Guenther, A., Karl, T., Harley, P., Wiedinmyer, C., Palmer, P. I. and Geron, C.: Estimates of global terrestrial isoprene emissions using MEGAN (Model of Emissions of Gases and Aerosols from Nature), *Atmos. Chem. Phys.*, 6, 3181–3210, doi:10.5194/acp-6-3181-2006, 2006.
- Haapanala, S., Rinne, J., Pystynen, K.-H., Hellén, H., Hakola, H. and Riutta, T.: Measurements of hydrocarbon emissions from a boreal fen using the REA technique, *Biogeosciences*, 3(1), 103–112, doi:10.5194/bg-3-103-2006, 2006.
- 575 Haapanala, S., Ekberg, A., Hakola, H., Tarvainen, V., Rinne, J., Hellén, H. and Arneth, A.: Mountain birch – potentially large source of sesquiterpenes into high latitude atmosphere, *Biogeosciences*, 6(11), 2709–2718, doi:10.5194/bg-6-2709-2009, 2009.
- Hellén, H., Schallhart, S., Praplan, A. P., Tykkä, T., Aurela, M., Lohila, A. and Hakola, H.: Sesquiterpenes dominate monoterpenes in northern wetland emissions, *Atmos. Chem. Phys.*, 20(11), 7021–7034, doi:10.5194/acp-20-7021-2020, 2020.
- 580 Holst, T., Arneth, A., Hayward, S., Ekberg, A., Mastepanov, M., Jackowicz-Korczynski, M., Friborg, T., Crill, P. M. and Backstrand, K.: BVOC ecosystem flux measurements at a high latitude wetland site, *Atmos. Chem. Phys.*, 10(4), 1617–1634, 2010.
- Holzinger, R.: PTRwid: A new widget tool for processing PTR-TOF-MS data, *Atmos. Meas. Tech.*, 8(9), 3903–3922, doi:10.5194/amt-8-3903-2015, 2015.

- 585 Horst, T. W.: A simple formula for attenuation of eddy fluxes measured with first-order-response scalar sensors, *Boundary-Layer Meteorol.*, 82(2), 219–233, doi:10.1023/A:1000229130034, 1997.
- Hu, H., Mylon, S. E. and Benoit, G.: Volatile organic sulfur compounds in a stratified lake, *Chemosphere*, 67(5), 911–919, doi:10.1016/j.chemosphere.2006.11.012, 2007.
- Huebert, B. J., Blomquist, B. W., Hare, J. E., Fairall, C. W., Johnson, J. E. and Bates, T. S.: Measurement of the sea-air DMS  
590 flux and transfer velocity using eddy correlation, *Geophys. Res. Lett.*, 31(23), doi:10.1029/2004GL021567, 2004.
- Hüve, K., Christ, M. M., Kleist, E., Uerlings, R., Niinemets, Ü., Walter, A. and Wildt, J.: Simultaneous growth and emission measurements demonstrate an interactive control of methanol release by leaf expansion and stomata, *J. Exp. Bot.*, 58(7), 1783–1793, doi:10.1093/jxb/erm038, 2007.
- Jammet, M., Crill, P., Dengel, S. and Friborg, T.: Large methane emissions from a subarctic lake during spring thaw:  
595 Mechanisms and landscape significance, *J. Geophys. Res. Biogeosciences*, 120(11), 2289–2305, doi:10.1002/2015JG003137, 2015.
- Jammet, M., Dengel, S., Kettner, E., Parmentier, F.-J. W., Wik, M., Crill, P. and Friborg, T.: Year-round CH<sub>4</sub> and CO<sub>2</sub> flux dynamics in two contrasting freshwater ecosystems of the subarctic, *Biogeosciences*, 14(22), 5189–5216, doi:10.5194/bg-14-5189-2017, 2017.
- 600 Jansen, J., Thornton, B. F., Jammet, M. M., Wik, M., Cortés, A., Friborg, T., MacIntyre, S. and Crill, P. M.: Climate-Sensitive Controls on Large Spring Emissions of CH<sub>4</sub> and CO<sub>2</sub> From Northern Lakes, *J. Geophys. Res. Biogeosciences*, 2019JG005094, doi:10.1029/2019JG005094, 2019.
- Jansen, J., Thornton, B. F., Cortés, A., Snöälöv, J., Wik, M., MacIntyre, S. and Crill, P. M.: Drivers of diffusive CH<sub>4</sub> emissions from shallow subarctic lakes on daily to multi-year timescales, *Biogeosciences*, 17(7), 1911–1932, doi:10.5194/bg-17-1911-  
605 2020, 2020.
- Janson, R. and De Serves, C.: Isoprene emissions from boreal wetlands in Scandinavia, *J. Geophys. Res. Atmos.*, 103(D19), 25513–25517, doi:10.1029/98JD01857, 1998.
- Janson, R., de Serves, C. and Romero, R.: Emission of isoprene and carbonyl compounds from a boreal forest and wetland in Sweden, *Agric. For. Meteorol.*, 98–9, 671–681, 1999.
- 610 Jardine, K., Harley, P., Karl, T., Guenther, A., Lerdau, M. and Mak, J. E.: Plant physiological and environmental controls over the exchange of acetaldehyde between forest canopies and the atmosphere, *Biogeosciences*, 5(6), 1559–1572, doi:10.5194/bg-5-1559-2008, 2008.
- Jardine, K., Abrell, L., Kurc, S. A., Huxman, T., Ortega, J. and Guenther, A.: Volatile organic compound emissions from *Larrea tridentata* (creosotebush), *Atmos. Chem. Phys.*, 10(24), 12191–12206, doi:10.5194/acp-10-12191-2010, 2010.
- 615 Jeong, S.-J., Bloom, A. A., Schimel, D., Sweeney, C., Parazoo, N. C., Medvigy, D., Schaepman-Strub, G., Zheng, C., Schwalm, C. R., Huntzinger, D. N., Michalak, A. M. and Miller, C. E.: Accelerating rates of Arctic carbon cycling revealed by long-term atmospheric CO<sub>2</sub> measurements, *Sci. Adv.*, 4(7), eaao1167, doi:10.1126/sciadv.aao1167, 2018.
- Johansson, T., Malmer, N., Crill, P. M., Friborg, T., Åkerman, J. H., Mastepanov, M. and Christensen, T. R.: Decadal

- vegetation changes in a northern peatland, greenhouse gas fluxes and net radiative forcing, *Glob. Chang. Biol.*, 12(12), 2352–2369, doi:10.1111/j.1365-2486.2006.01267.x, 2006.
- 620 Kameyama, S., Yoshida, S., Tanimoto, H., Inomata, S., Suzuki, K. and Yoshikawa-Inoue, H.: High-resolution observations of dissolved isoprene in surface seawater in the Southern Ocean during austral summer 2010–2011, *J. Oceanogr.*, 70(3), 225–239, doi:10.1007/s10872-014-0226-8, 2014.
- Kessler, A. and Baldwin, I. T.: Defensive function of herbivore-induced plant volatile emissions in nature, *Science* (80-. ), 291(5511), 2141–2144, 2001.
- 625 Kljun, N., Calanca, P., Rotach, M. W. and Schmid, H. P.: A simple two-dimensional parameterisation for Flux Footprint Prediction (FFP), *Geosci. Model Dev.*, 8(11), 3695–3713, doi:10.5194/gmd-8-3695-2015, 2015.
- Kramshøj, M., Vedel-Petersen, I., Schollert, M., Rinnan, Å., Nymand, J., Ro-Poulsen, H. and Rinnan, R.: Large increases in Arctic biogenic volatile emissions are a direct effect of warming, *Nat. Geosci.*, 9(5), 349–352, doi:10.1038/ngeo2692, 2016.
- 630 Kramshøj, M., Albers, C. N., Holst, T., Holzinger, R., Elberling, B. and Rinnan, R.: Biogenic volatile release from permafrost thaw is determined by the soil microbial sink, *Nat. Commun.*, 9(1), 3412, doi:10.1038/s41467-018-05824-y, 2018.
- Kramshøj, M., Albers, C. N., Svendsen, S. H., Björkman, M. P., Lindwall, F., Björk, R. G. and Rinnan, R.: Volatile emissions from thawing permafrost soils are influenced by meltwater drainage conditions, *Glob. Chang. Biol.*, 25(5), 1704–1716, doi:10.1111/gcb.14582, 2019.
- 635 Lawson, S. J., Law, C. S., Harvey, M. J., Bell, T. G., Walker, C. F., de Bruyn, W. J. and Saltzman, E. S.: Methanethiol, dimethyl sulfide and acetone over biologically productive waters in the southwest Pacific Ocean, *Atmos. Chem. Phys.*, 20(5), 3061–3078, doi:10.5194/acp-20-3061-2020, 2020.
- Li, J.-L., Zhang, H.-H. and Yang, G.-P.: Distribution and sea-to-air flux of isoprene in the East China Sea and the South Yellow Sea during summer, *Chemosphere*, 178, 291–300, doi:10.1016/j.chemosphere.2017.03.037, 2017.
- 640 Li, T., Holst, T., Michelsen, A. and Rinnan, R.: Amplification of plant volatile defence against insect herbivory in a warming Arctic tundra, *Nat. Plants*, 5(6), 568–574, doi:10.1038/s41477-019-0439-3, 2019.
- Lindwall, F., Schollert, M., Michelsen, A., Blok, D. and Rinnan, R.: Fourfold higher tundra volatile emissions due to arctic summer warming, *J. Geophys. Res. Biogeosciences*, 121(3), 895–902, doi:10.1002/2015JG003295, 2016a.
- Lindwall, F., Svendsen, S. S., Nielsen, C. S., Michelsen, A. and Rinnan, R.: Warming increases isoprene emissions from an arctic fen, *Sci. Total Environ.*, 553, 297–304, doi:10.1016/j.scitotenv.2016.02.111, 2016b.
- 645 Liu, Y., Brito, J., Dorris, M. R., Rivera-Rios, J. C., Seco, R., Bates, K. H., Artaxo, P., Duvoisin, S., Keutsch, F. N., Kim, S., Goldstein, A. H., Guenther, A. B., Manzi, A. O., Souza, R. A. F., Springston, S. R., Watson, T. B., McKinney, K. A. and Martin, S. T.: Isoprene photochemistry over the Amazon rainforest, *Proc. Natl. Acad. Sci.*, 113(22), 6125–6130, doi:10.1073/pnas.1524136113, 2016.
- 650 Lundin, E. J., Giesler, R., Persson, A., Thompson, M. S. and Karlsson, J.: Integrating carbon emissions from lakes and streams in a subarctic catchment, *J. Geophys. Res. Biogeosciences*, 118(3), 1200–1207, doi:10.1002/jgrg.20092, 2013.
- Lundin, E. J., Klaminder, J., Giesler, R., Persson, A., Olefeldt, D., Heliasz, M., Christensen, T. R. and Karlsson, J.: Is the

- subarctic landscape still a carbon sink? Evidence from a detailed catchment balance, *Geophys. Res. Lett.*, 43(5), 1988–1995, doi:10.1002/2015GL066970, 2016.
- 655 Marandino, C. A.: Oceanic uptake and the global atmospheric acetone budget, *Geophys. Res. Lett.*, 32(15), L15806, doi:10.1029/2005GL023285, 2005.
- Marandino, C. A., De Bruyn, W. J., Miller, S. D. and Saltzman, E. S.: Eddy correlation measurements of the air/sea flux of dimethylsulfide over the North Pacific Ocean, *J. Geophys. Res.*, 112(D3), D03301, doi:10.1029/2006JD007293, 2007.
- Marandino, C. A., De Bruyn, W. J., Miller, S. D. and Saltzman, E. S.: DMS air/sea flux and gas transfer coefficients from the  
660 North Atlantic summertime coccolithophore bloom, *Geophys. Res. Lett.*, 35(23), L23812, doi:10.1029/2008GL036370, 2008.
- Marandino, C. A., De Bruyn, W. J., Miller, S. D. and Saltzman, E. S.: Open ocean DMS air/sea fluxes over the eastern South Pacific Ocean, *Atmos. Chem. Phys.*, 9(2), 345–356, doi:10.5194/acp-9-345-2009, 2009.
- Mekonnen, Z. A., Riley, W. J. and Grant, R. F.: 21st century tundra shrubification could enhance net carbon uptake of North America Arctic tundra under an RCP8.5 climate trajectory, *Environ. Res. Lett.*, 13(5), 054029, doi:10.1088/1748-9326/aabf28,  
665 2018.
- Monson, R. K., Grote, R., Niinemets, U. and Schnitzler, J.-P.: Modeling the isoprene emission rate from leaves., *New Phytol.*, 195(3), 541–59, doi:10.1111/j.1469-8137.2012.04204.x, 2012.
- Myers-Smith, I. H. and Hik, D. S.: Climate warming as a driver of tundra shrubline advance, edited by R. Aerts, *J. Ecol.*, 106(2), 547–560, doi:10.1111/1365-2745.12817, 2018.
- 670 Natali, S. M., Watts, J. D., Rogers, B. M., Potter, S., Ludwig, S. M., Selbmann, A.-K., Sullivan, P. F., Abbott, B. W., Arndt, K. A., Birch, L., Björkman, M. P., Bloom, A. A., Celis, G., Christensen, T. R., Christiansen, C. T., Commane, R., Cooper, E. J., Crill, P., Czimeczik, C., Davydov, S., Du, J., Egan, J. E., Elberling, B., Euskirchen, E. S., Friborg, T., Genet, H., Göckede, M., Goodrich, J. P., Grogan, P., Helbig, M., Jafarov, E. E., Jastrow, J. D., Kalhori, A. A. M., Kim, Y., Kimball, J. S., Kutzbach, L., Lara, M. J., Larsen, K. S., Lee, B.-Y., Liu, Z., Lorant, M. M., Lund, M., Lupascu, M., Madani, N., Malhotra, A., Matamala,  
675 R., McFarland, J., McGuire, A. D., Michelsen, A., Minions, C., Oechel, W. C., Olefeldt, D., Parmentier, F.-J. W., Pirk, N., Poulter, B., Quinton, W., Rezanezhad, F., Risk, D., Sachs, T., Schaefer, K., Schmidt, N. M., Schuur, E. A. G., Semenchuk, P. R., Shaver, G., Sonntag, O., Starr, G., Treat, C. C., Waldrop, M. P., Wang, Y., Welker, J., Wille, C., Xu, X., Zhang, Z., Zhuang, Q. and Zona, D.: Large loss of CO<sub>2</sub> in winter observed across the northern permafrost region, *Nat. Clim. Chang.*, 9(11), 852–857, doi:10.1038/s41558-019-0592-8, 2019.
- 680 Niinemets, Ü. and Reichstein, M.: Controls on the emission of plant volatiles through stomata: Differential sensitivity of emission rates to stomatal closure explained, *J. Geophys. Res.*, 108(D7), 4208, doi:10.1029/2002JD002620, 2003.
- Oh, Y., Zhuang, Q., Liu, L., Welp, L. R., Lau, M. C. Y., Onstott, T. C., Medvigy, D., Bruhwiler, L., Dlugokencky, E. J., Hugelius, G., D’Imperio, L. and Elberling, B.: Reduced net methane emissions due to microbial methane oxidation in a warmer Arctic, *Nat. Clim. Chang.*, doi:10.1038/s41558-020-0734-z, 2020.
- 685 Ortega, J. and Helmig, D.: Approaches for quantifying reactive and low-volatility biogenic organic compound emissions by vegetation enclosure techniques – Part A, *Chemosphere*, 72(3), 343–364, doi:10.1016/j.chemosphere.2007.11.020, 2008.

- Overland, J. E., Wang, M., Walsh, J. E. and Stroeve, J. C.: Future Arctic climate changes: Adaptation and mitigation time scales, *Earth's Futur.*, 2(2), 68–74, doi:10.1002/2013EF000162, 2014.
- Paasonen, P., Asmi, A., Petäjä, T., Kajos, M. K., Äijälä, M., Junninen, H., Holst, T., Abbatt, J. P. D., Arneth, A., Birmili, W.,  
690 van der Gon, H. D., Hamed, A., Hoffer, A., Laakso, L., Laaksonen, A., Richard Leaitch, W., Plass-Dülmer, C., Pryor, S. C.,  
Räisänen, P., Swietlicki, E., Wiedensohler, A., Worsnop, D. R., Kerminen, V.-M. and Kulmala, M.: Warming-induced increase  
in aerosol number concentration likely to moderate climate change, *Nat. Geosci.*, 6(6), 438–442, doi:10.1038/ngeo1800, 2013.
- Palace, M., Herrick, C., DelGreco, J., Finnell, D., Garnello, A., McCalley, C., McArthur, K., Sullivan, F. and Varner, R.:  
Determining Subarctic Peatland Vegetation Using an Unmanned Aerial System (UAS), *Remote Sens.*, 10(9), 1498,  
695 doi:10.3390/rs10091498, 2018.
- Patokoski, J., Ruuskanen, T. M., Kajos, M. K., Taipale, R., Rantala, P., Aalto, J., Ryyppö, T., Nieminen, T., Hakola, H. and  
Rinne, J.: Sources of long-lived atmospheric VOCs at the rural boreal forest site, SMEAR II, *Atmos. Chem. Phys.*, 15(23),  
13413–13432, doi:10.5194/acp-15-13413-2015, 2015.
- Peñuelas, J. and Staudt, M.: BVOCs and global change, *Trends Plant Sci.*, 15(3), 133–144, doi:10.1016/j.tplants.2009.12.005,  
700 2010.
- Peñuelas, J., Filella, I., Stefanescu, C. and Llusia, J.: Caterpillars of *Euphydryas aurinia* (Lepidoptera: Nymphalidae) feeding  
on *Succisa pratensis* leaves induce large foliar emissions of methanol, *New Phytol.*, 167(3), 851–857, 2005a.
- Peñuelas, J., Llusia, J., Asensio, D. and Munné-Bosch, S.: Linking isoprene with plant thermotolerance, antioxidants and  
monoterpene emissions, *Plant Cell Environ.*, 28(3), 278–286, 2005b.
- 705 Pichersky, E. and Gershenzon, J.: The formation and function of plant volatiles: perfumes for pollinator attraction and defense,  
*Curr. Opin. Plant Biol.*, 5(3), 237–243, 2002.
- Post, E., Forchhammer, M. C., Bret-Harte, M. S., Callaghan, T. V., Christensen, T. R., Elberling, B., Fox, A. D., Gilg, O., Hik,  
D. S., Hoyer, T. T., Ims, R. A., Jeppesen, E., Klein, D. R., Madsen, J., McGuire, A. D., Rysgaard, S., Schindler, D. E., Stirling,  
I., Tamstorf, M. P., Tyler, N. J. C., van der Wal, R., Welker, J., Wookey, P. A., Schmidt, N. M. and Aastrup, P.: Ecological  
710 Dynamics Across the Arctic Associated with Recent Climate Change, *Science* (80-. ), 325(5946), 1355–1358,  
doi:10.1126/science.1173113, 2009.
- Post, E., Alley, R. B., Christensen, T. R., Macias-Fauria, M., Forbes, B. C., Gooseff, M. N., Iler, A., Kerby, J. T., Laidre, K.  
L., Mann, M. E., Olofsson, J., Stroeve, J. C., Ulmer, F., Virginia, R. A. and Wang, M.: The polar regions in a 2°C warmer  
world, *Sci. Adv.*, 5(12), eaaw9883, doi:10.1126/sciadv.aaw9883, 2019.
- 715 Potosnak, M. J., Baker, B. M., LeSturgeon, L., Disher, S. M., Griffin, K. L., Bret-Harte, M. S. and Starr, G.: Isoprene  
emissions from a tundra ecosystem, *Biogeosciences*, 10(2), 871–889, doi:10.5194/bg-10-871-2013, 2013.
- Richards, S. R., Kelly, C. A. and Rudd, J. W. M.: Organic volatile sulfur in lakes of the Canadian Shield and its loss to the  
atmosphere, *Limnol. Oceanogr.*, 36(3), 468–482, doi:10.4319/lo.1991.36.3.0468, 1991.
- Rinnan, R., Steinke, M., McGenity, T. and Loreto, F.: Plant volatiles in extreme terrestrial and marine environments, *Plant*  
720 *Cell Environ.*, 37(8), 1776–1789, doi:10.1111/pce.12320, 2014.

- Rinne, J., Karl, T. and Guenther, A.: Simple, stable, and affordable: Towards long-term ecosystem scale flux measurements of VOCs, *Atmos. Environ.*, 131, 225–227, doi:10.1016/j.atmosenv.2016.02.005, 2016.
- Rinne, J., Tuovinen, J.-P., Klemmedtsson, L., Aurela, M., Holst, J., Lohila, A., Weslien, P., Vestin, P., Łakomicz, P., Peichl, M., Tuittila, E.-S., Heiskanen, L., Laurila, T., Li, X., Alekseychik, P., Mammarella, I., Ström, L., Crill, P. and Nilsson, M. B.:  
725 Effect of the 2018 European drought on methane and carbon dioxide exchange of northern mire ecosystems, *Philos. Trans. R. Soc. B Biol. Sci.*, 375(1810), 20190517, doi:10.1098/rstb.2019.0517, 2020.
- Sander, R.: Compilation of Henry's law constants (version 4.0) for water as solvent, *Atmos. Chem. Phys.*, 15(8), 4399–4981, doi:10.5194/acp-15-4399-2015, 2015.
- Schlundt, C., Tegmeier, S., Lennartz, S. T., Bracher, A., Cheah, W., Krüger, K., Quack, B. and Marandino, C. A.: Oxygenated  
730 volatile organic carbon in the western Pacific convective center: ocean cycling, air–sea gas exchange and atmospheric transport, *Atmos. Chem. Phys.*, 17(17), 10837–10854, doi:10.5194/acp-17-10837-2017, 2017.
- Schütz, H., Schröder, P. and Rennenberg, H.: Role of Plants in Regulating the Methane Flux to the Atmosphere, in *Trace Gas Emissions by Plants*, pp. 29–63, Elsevier., 1991.
- Schuur, E. A. G., McGuire, A. D., Schädel, C., Grosse, G., Harden, J. W., Hayes, D. J., Hugelius, G., Koven, C. D., Kuhry,  
735 P., Lawrence, D. M., Natali, S. M., Olefeldt, D., Romanovsky, V. E., Schaefer, K., Turetsky, M. R., Treat, C. C. and Vonk, J. E.: Climate change and the permafrost carbon feedback, *Nature*, 520(7546), 171–179, doi:10.1038/nature14338, 2015.
- Seco, R., Peñuelas, J. and Filella, I.: Short-chain oxygenated VOCs: Emission and uptake by plants and atmospheric sources, sinks, and concentrations, *Atmos. Environ.*, 41(12), 2477–2499, doi:10.1016/j.atmosenv.2006.11.029, 2007.
- Seco, R., Peñuelas, J., Filella, I., Llusia, J., Molowny-Horas, R., Schallhart, S., Metzger, A., Müller, M. and Hansel, A.:  
740 Contrasting winter and summer VOC mixing ratios at a forest site in the Western Mediterranean Basin: the effect of local biogenic emissions, *Atmos. Chem. Phys.*, 11(24), 13161–13179, doi:10.5194/acp-11-13161-2011, 2011a.
- Seco, R., Filella, I., Llusia, J. and Peñuelas, J.: Methanol as a signal triggering isoprenoid emissions and photosynthetic performance in *Quercus ilex*, *Acta Physiol. Plant.*, 33(6), 2413–2422, doi:10.1007/s11738-011-0782-0, 2011b.
- Seco, R., Karl, T., Guenther, A., Hosman, K. P., Pallardy, S. G., Gu, L., Geron, C., Harley, P. and Kim, S.: Ecosystem-scale  
745 volatile organic compound fluxes during an extreme drought in a broadleaf temperate forest of the Missouri Ozarks (central USA), *Glob. Chang. Biol.*, 21(10), 3657–3674, doi:10.1111/gcb.12980, 2015.
- Seco, R., Karl, T., Turnipseed, A., Greenberg, J., Guenther, A., Llusia, J., Peñuelas, J., Dicken, U., Rotenberg, E., Kim, S. and Yakir, D.: Springtime ecosystem-scale monoterpene fluxes from Mediterranean pine forests across a precipitation gradient, *Agric. For. Meteorol.*, 237–238, 150–159, doi:10.1016/j.agrformet.2017.02.007, 2017.
- 750 Seco, R., Holst, T., Matzen, M. S., Westergaard-Nielsen, A., Li, T., Simin, T., Jansen, J., Crill, P., Friborg, T., Rinne, J. and Rinnan, R.: Dataset: Volatile Organic Compound fluxes in a subarctic peatland and lake, Dataset on Zenodo, doi:10.5281/zenodo.3886457, 2020.
- Sharkey, T. D. and Monson, R. K.: The future of isoprene emission from leaves, canopies and landscapes, *Plant. Cell Environ.*, 37(8), 1727–1740, doi:10.1111/pce.12289, 2014.

- 755 Sharma, S., Barrie, L. A., Hastie, D. R. and Kelly, C.: Dimethyl sulfide emissions to the atmosphere from lakes of the Canadian boreal region, *J. Geophys. Res. Atmos.*, 104(D9), 11585–11592, doi:10.1029/1999JD900127, 1999.
- Shaw, S. L., Chisholm, S. W. and Prinn, R. G.: Isoprene production by *Prochlorococcus*, a marine cyanobacterium, and other phytoplankton, *Mar. Chem.*, 80(4), 227–245, doi:10.1016/S0304-4203(02)00101-9, 2003.
- Shaw, S. L., Gantt, B. and Meskhidze, N.: Production and Emissions of Marine Isoprene and Monoterpenes: A Review, *Adv. Meteorol.*, 2010, 1–24, doi:10.1155/2010/408696, 2010.
- 760 Singh, H. B., Salas, L. J., Chatfield, R. B., Czech, E., Fried, A., Walega, J., Evans, M. J., Field, B. D., Jacob, D. J., Blake, D., Heikes, B., Talbot, R., Sachse, G., Crawford, J. H., Avery, M. A., Sandholm, S. and Fuelberg, H.: Analysis of the atmospheric distribution, sources, and sinks of oxygenated volatile organic chemicals based on measurements over the Pacific during TRACE-P, *J. Geophys. Res.*, 109(D15), D15S07-D15S07, doi:10.1029/2003JD003883, 2004.
- 765 Sinha, V., Williams, J., Meyerhöfer, M., Riebesell, U., Paulino, A. I. and Larsen, A.: Air-sea fluxes of methanol, acetone, acetaldehyde, isoprene and DMS from a Norwegian fjord following a phytoplankton bloom in a mesocosm experiment, *Atmos. Chem. Phys.*, 7(3), 739–755, doi:10.5194/acp-7-739-2007, 2007.
- Smith, M. J., Walker, C. F., Bell, T. G., Harvey, M. J., Saltzman, E. S. and Law, C. S.: Gradient flux measurements of sea–air DMS transfer during the Surface Ocean Aerosol Production (SOAP) experiment, *Atmos. Chem. Phys.*, 18(8), 5861–5877, doi:10.5194/acp-18-5861-2018, 2018.
- 770 Staubes, R., Georgii, H.-W. and Ockelmann, G.: Flux of COS, DMS and CS<sub>2</sub> from various soils in Germany, *Tellus B*, 41B(3), 305–313, doi:10.1111/j.1600-0889.1989.tb00309.x, 1989.
- Steinke, M., Hodapp, B., Subhan, R., Bell, T. G. and Martin-Creuzburg, D.: Flux of the biogenic volatiles isoprene and dimethyl sulfide from an oligotrophic lake, *Sci. Rep.*, 8(1), 630, doi:10.1038/s41598-017-18923-5, 2018.
- 775 Striednig, M., Graus, M., Märk, T. D. and Karl, T. G.: InnFLUX – an open-source code for conventional and disjunct eddy covariance analysis of trace gas measurements: an urban test case, *Atmos. Meas. Tech.*, 13(3), 1447–1465, doi:10.5194/amt-13-1447-2020, 2020.
- Svenningsson, B., Arneth, A., Hayward, S., Holst, T., Massling, A., Swietlicki, E., Hirsikko, A., Junninen, H., Riipinen, I., Vana, M., Maso, M. D., Hussein, T. and Kulmala, M.: Aerosol particle formation events and analysis of high growth rates observed above a subarctic wetland–forest mosaic, *Tellus B Chem. Phys. Meteorol.*, 60(3), 353–364, doi:10.1111/j.1600-0889.2008.00351.x, 2008.
- 780 Taddei, S., Toscano, P., Gioli, B., Matese, A., Miglietta, F., Vaccari, F. P., Zaldei, A., Custer, T. and Williams, J.: Carbon Dioxide and Acetone Air–Sea Fluxes over the Southern Atlantic, *Environ. Sci. Technol.*, 43(14), 5218–5222, doi:10.1021/es8032617, 2009.
- 785 Tang, J., Schurgers, G., Valolahti, H., Faubert, P., Tiiva, P., Michelsen, A. and Rinnan, R.: Challenges in modelling isoprene and monoterpene emission dynamics of Arctic plants: a case study from a subarctic tundra heath, *Biogeosciences*, 13(24), 6651–6667, doi:10.5194/bg-13-6651-2016, 2016.
- Tanimoto, H., Kameyama, S., Iwata, T., Inomata, S. and Omori, Y.: Measurement of Air-Sea Exchange of Dimethyl Sulfide



- and Acetone by PTR-MS Coupled with Gradient Flux Technique, *Environ. Sci. Technol.*, 48(1), 526–533, doi:10.1021/es4032562, 2014.
- 790 Tiiva, P., Rinnan, R., Faubert, P., Räsänen, J., Holopainen, T., Kyrö, E. and Holopainen, J. K.: Isoprene emission from a subarctic peatland under enhanced UV-B radiation, *New Phytol.*, 176(2), 346–355, doi:10.1111/j.1469-8137.2007.02164.x, 2007.
- Tiiva, P., Faubert, P., Michelsen, A., Holopainen, T., Holopainen, J. K. and Rinnan, R.: Climatic warming increases isoprene  
795 emission from a subarctic heath, *New Phytol.*, 180(4), 853–863, doi:10.1111/j.1469-8137.2008.02587.x, 2008.
- Tranvik, L. J., Downing, J. A., Cotner, J. B., Loiselle, S. A., Striegl, R. G., Ballatore, T. J., Dillon, P., Finlay, K., Fortino, K., Knoll, L. B., Kortelainen, P. L., Kutser, T., Larsen, S., Laurion, I., Leech, D. M., McCallister, S. L., McKnight, D. M., Melack, J. M., Overholt, E., Porter, J. A., Prairie, Y., Renwick, W. H., Roland, F., Sherman, B. S., Schindler, D. W., Sobek, S., Tremblay, A., Vanni, M. J., Verschoor, A. M., von Wachenfeldt, E. and Weyhenmeyer, G. A.: Lakes and reservoirs as  
800 regulators of carbon cycling and climate, *Limnol. Oceanogr.*, 54(6part2), 2298–2314, doi:10.4319/lo.2009.54.6\_part\_2.2298, 2009.
- Tunved, P., Hansson, H. C., Kerminen, V. M., Strom, J., Dal Maso, M., Lihavainen, H., Viisanen, Y., Aalto, P. P., Komppula, M. and Kulmala, M.: High natural aerosol loading over boreal forests, *Science* (80-. ), 312(5771), 261–263, doi:10.1126/science.1123052, 2006.
- 805 Valolahti, H., Kivimäenpää, M., Faubert, P., Michelsen, A. and Rinnan, R.: Climate change-induced vegetation change as a driver of increased subarctic biogenic volatile organic compound emissions, *Glob. Chang. Biol.*, 21(9), 3478–3488, doi:10.1111/gcb.12953, 2015.
- Velikova, V., Pinelli, P., Pasqualini, S., Reale, L., Ferranti, F. and Loreto, F.: Isoprene decreases the concentration of nitric oxide in leaves exposed to elevated ozone, *New Phytol.*, 166(2), 419–426, 2005.
- 810 Verpoorter, C., Kutser, T., Seekell, D. A. and Tranvik, L. J.: A global inventory of lakes based on high-resolution satellite imagery, *Geophys. Res. Lett.*, 41(18), 6396–6402, doi:10.1002/2014GL060641, 2014.
- Westergaard-Nielsen, A., Lund, M., Pedersen, S. H., Schmidt, N. M., Klosterman, S., Abermann, J. and Hansen, B. U.: Transitions in high-Arctic vegetation growth patterns and ecosystem productivity tracked with automated cameras from 2000 to 2013, *Ambio*, 46(S1), 39–52, doi:10.1007/s13280-016-0864-8, 2017.
- 815 Wik, M., Varner, R. K., Anthony, K. W., MacIntyre, S. and Bastviken, D.: Climate-sensitive northern lakes and ponds are critical components of methane release, *Nat. Geosci.*, 9(2), 99–105, doi:10.1038/ngeo2578, 2016.
- Wilczak, J. M., Oncley, S. P. and Stage, S. A.: Sonic Anemometer Tilt Correction Algorithms, *Boundary-Layer Meteorol.*, 99(1), 127–150, doi:10.1023/A:1018966204465, 2001.
- Wilson, J. W.: Observations on the Temperatures of Arctic Plants and Their Environment, *J. Ecol.*, 45(2), 499,  
820 doi:10.2307/2256933, 1957.
- Wohlfahrt, G., Amelynck, C., Ammann, C., Arneth, A., Bamberger, I., Goldstein, A. H., Gu, L., Guenther, A., Hansel, A., Heinesch, B., Holst, T., Hörtnagl, L., Karl, T., Laffineur, Q., Neftel, A., McKinney, K., Munger, J. W., Pallardy, S. G., Schade,

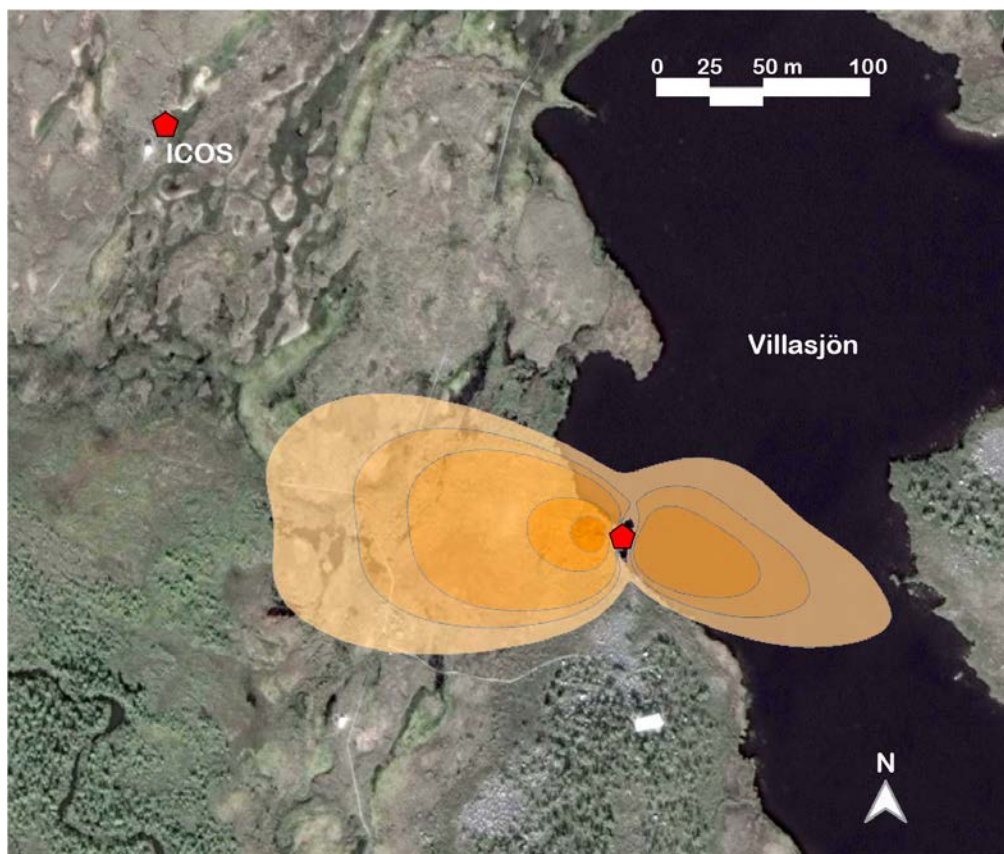
- G. W., Seco, R. and Schoon, N.: An ecosystem-scale perspective of the net land methanol flux: synthesis of micrometeorological flux measurements, *Atmos. Chem. Phys.*, 15(13), 7413–7427, doi:10.5194/acp-15-7413-2015, 2015.
- 825 Woodcroft, B. J., Singleton, C. M., Boyd, J. A., Evans, P. N., Emerson, J. B., Zayed, A. A. F., Hoelzle, R. D., Lamberton, T. O., McCalley, C. K., Hodgkins, S. B., Wilson, R. M., Purvine, S. O., Nicora, C. D., Li, C., Frohling, S., Chanton, J. P., Crill, P. M., Saleska, S. R., Rich, V. I. and Tyson, G. W.: Genome-centric view of carbon processing in thawing permafrost, *Nature*, 560(7716), 49–54, doi:10.1038/s41586-018-0338-1, 2018.
- Yáñez-Serrano, A. M., Filella, I., LLusià, J., Gargallo-Garriga, A., Granda, V., Bourtsoukidis, E., Williams, J., Seco, R.,  
830 Cappellin, L., Werner, C., de Gouw, J. and Peñuelas, J.: GLOVOCS - Master compound assignment guide for proton transfer reaction mass spectrometry users, *Atmos. Environ.*, 244, 117929, doi:10.1016/j.atmosenv.2020.117929, 2021.
- Yang, M., Blomquist, B. W., Fairall, C. W., Archer, S. D. and Huebert, B. J.: Air-sea exchange of dimethylsulfide in the Southern Ocean: Measurements from SO GasEx compared to temperate and tropical regions, *J. Geophys. Res.*, 116, C00F05, doi:10.1029/2010JC006526, 2011a.
- 835 Yang, M., Huebert, B. J., Blomquist, B. W., Howell, S. G., Shank, L. M., McNaughton, C. S., Clarke, A. D., Hawkins, L. N., Russell, L. M., Covert, D. S., Coffman, D. J., Bates, T. S., Quinn, P. K., Zagorac, N., Bandy, A. R., de Szoeke, S. P., Zuidema, P. D., Tucker, S. C., Brewer, W. A., Benedict, K. B. and Collett, J. L.: Atmospheric sulfur cycling in the southeastern Pacific – longitudinal distribution, vertical profile, and diel variability observed during VOCALS-REx, *Atmos. Chem. Phys.*, 11(10), 5079–5097, doi:10.5194/acp-11-5079-2011, 2011b.
- 840 Yang, M., Nightingale, P. D., Beale, R., Liss, P. S., Blomquist, B. and Fairall, C.: Atmospheric deposition of methanol over the Atlantic Ocean, *Proc. Natl. Acad. Sci.*, 110(50), 20034–20039, doi:10.1073/pnas.1317840110, 2013.
- Yang, Z., Kanda, K., Tsuruta, H. and Minami, K.: Measurement of biogenic sulfur gases emission from some Chinese and Japanese soils, *Atmos. Environ.*, 30(13), 2399–2405, doi:10.1016/1352-2310(95)00247-2, 1996.

845

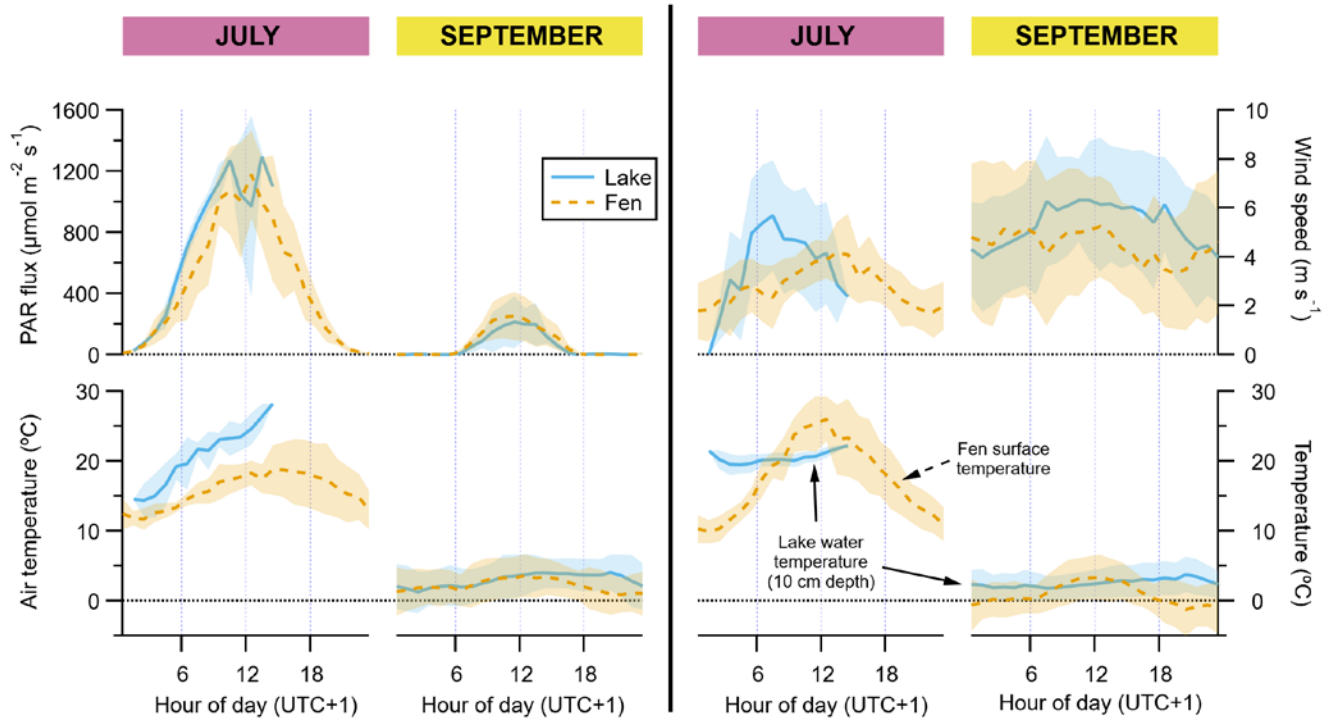
**Table 1: Average ( $\pm$  standard error of the mean) daily net exchange rates ( $\mu\text{mol m}^{-2} \text{day}^{-1}$ ) of VOCs,  $\text{CO}_2$ ,  $\text{H}_2\text{O}$  and  $\text{CH}_4$ . Negative values represent net deposition or uptake by the ecosystem, and positive values represent net emission. These daily averages were calculated from the hourly averages shown in Figs. 3 and 4.**

Compound	LAKE ( $\mu\text{mol m}^{-2} \text{day}^{-1}$ )		FEN ( $\mu\text{mol m}^{-2} \text{day}^{-1}$ )	
	July*	September	July	September
methanol	1.8 ( $\pm 2.1$ )	-0.2 ( $\pm 0.3$ )	7.7 ( $\pm 1.1$ )	1.1 ( $\pm 0.3$ )
acetaldehyde	-3.8 ( $\pm 2.4$ )	-8.5 ( $\pm 2.3$ )	2.6 ( $\pm 0.9$ )	-6.7 ( $\pm 2.8$ )
acetone	-19 ( $\pm 1.3$ )	-4.4 ( $\pm 0.2$ )	1.9 ( $\pm 1$ )	-2.5 ( $\pm 0.3$ )
isoprene	20 ( $\pm 10$ )	0.6 ( $\pm 0.4$ )	93 ( $\pm 22$ )	0.3 ( $\pm 0.3$ )
monoterpenes	2.8 ( $\pm 2.2$ )	0.3 ( $\pm 0.1$ )	2.2 ( $\pm 0.3$ )	0.3 ( $\pm 0.04$ )
DMS	4.7 ( $\pm 3.1$ )	-0.2 ( $\pm 0.1$ )	1.1 ( $\pm 0.4$ )	-0.2 ( $\pm 0.1$ )
$\text{CO}_2$	-6.3E+04 ( $\pm 3.7\text{E}+04$ )	2.7E+04 ( $\pm 9.8\text{E}+03$ )	-3.1E+05 ( $\pm 7.3\text{E}+04$ )	4.6E+04 ( $\pm 1.2\text{E}+04$ )
$\text{H}_2\text{O}$	3E+08 ( $\pm 2.7\text{E}+07$ )	3.2E+07 ( $\pm 3.4\text{E}+06$ )	1.2E+08 ( $\pm 2\text{E}+07$ )	4.6E+07 ( $\pm 4.7\text{E}+06$ )
$\text{CH}_4$	6,400 ( $\pm 1,400$ )	950 ( $\pm 110$ )	1.2E+04 ( $\pm 2.8\text{E}+02$ )	3,500 ( $\pm 90$ )

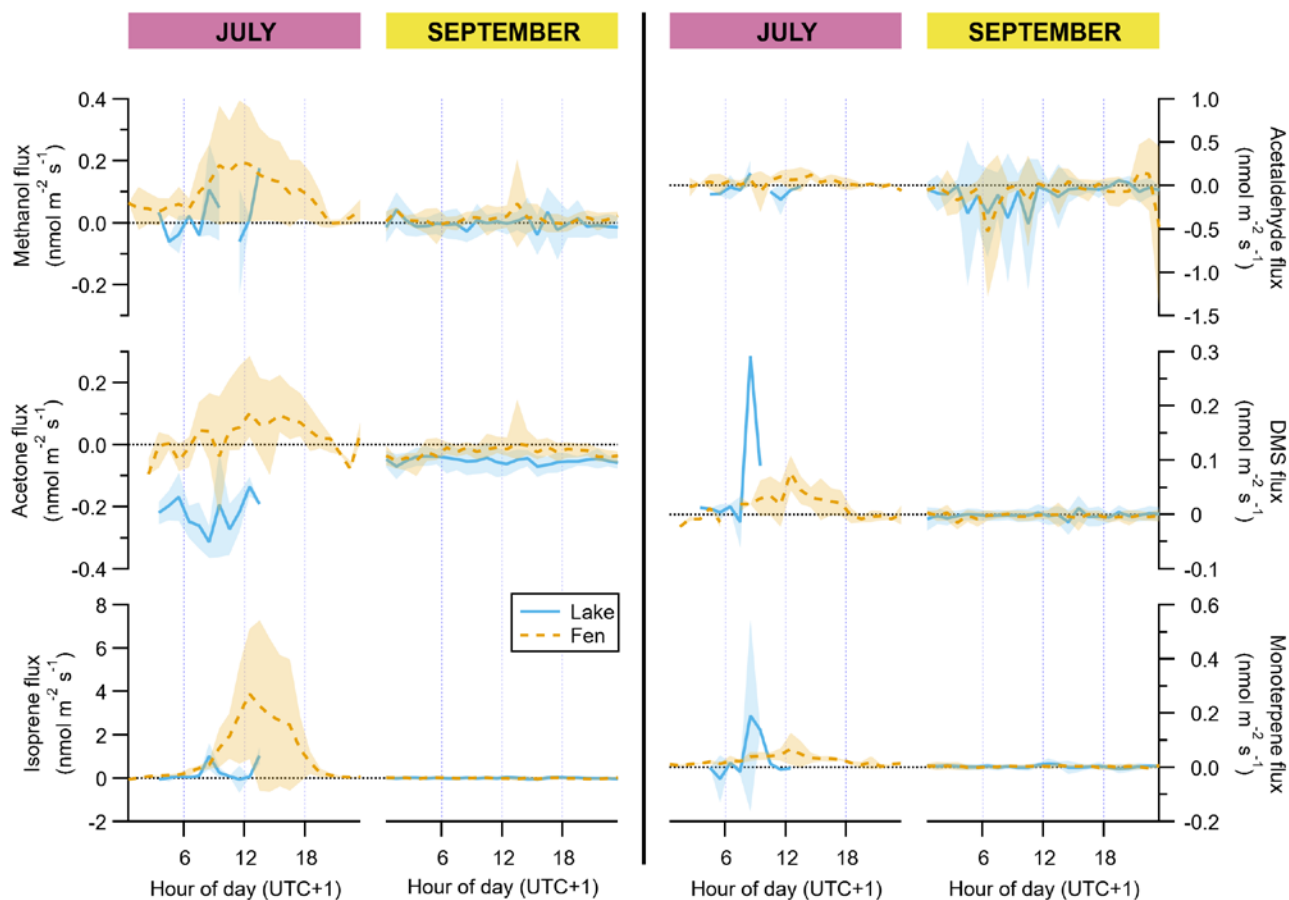
\*based on a limited dataset from 03:00 to 14:00 hours (UTC+1)



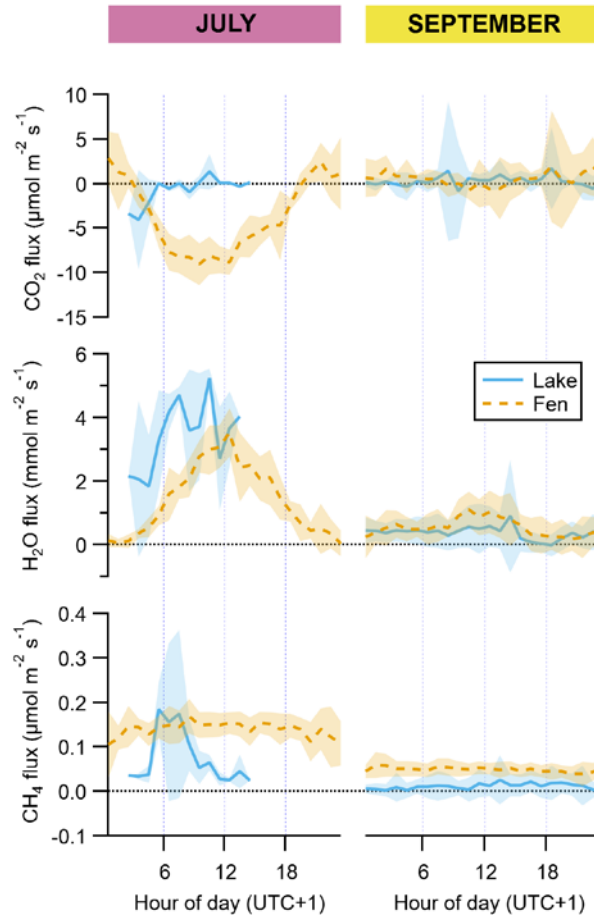
860 **Figure 1: Map of the Stordalen Mire study area, showing our EC tower by the shore of Villasjön, and the nearby ICOS station location that provided the vegetation surface temperature data. The shaded area represents the combined fen and lake footprint for the July EC measurements, at flux contribution intervals of 85%, 80%, 75%, 50% and 25%. The base map image is © Google Earth (image provided by DigitalGlobe).**



870 **Figure 2: Diel cycles of hourly averages of meteorological data, for July and September and for both lake (blue solid lines) and fen (dashed orange lines). Peak of growing season (July) is on the left panels of each graph pair, and the post growing season (September) is on the right panels, as indicated on top of the panels. Shaded areas represent  $\pm 1$  standard deviation. Each vertical axis has a different scaling, but all of them feature a horizontal dotted line showing where the value zero is located.**



880 **Figure 3: Diel cycles of hourly averages of VOC fluxes, for July and September and for both lake (blue solid lines) and fen (dashed orange lines). Peak of growing season (July) is on the left panels of each graph pair, and the post growing season (September) is on the right panels, as indicated on top of the panels. Shaded areas represent  $\pm 1$  standard deviation. Each vertical axis has a different scaling, but all of them feature a horizontal dotted line showing where the value zero is located.**



885

**Figure 4: Diel cycles of hourly averages of fluxes of CO<sub>2</sub>, H<sub>2</sub>O and CH<sub>4</sub>, for July and September and for both lake (blue solid lines) and fen (dashed orange lines). Peak of growing season (July) is on the left panels of each graph pair, and the post growing season (September) is on the right panels, as indicated on top of the panels. Shaded areas represent  $\pm 1$  standard deviation. Each vertical axis has a different scaling, but all of them feature a horizontal dotted line showing where the value zero is located.**

890

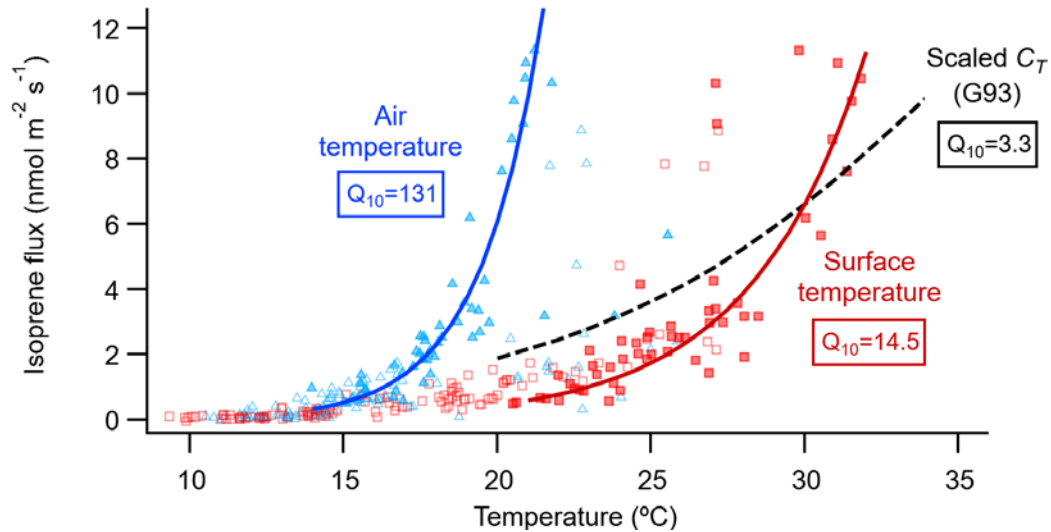
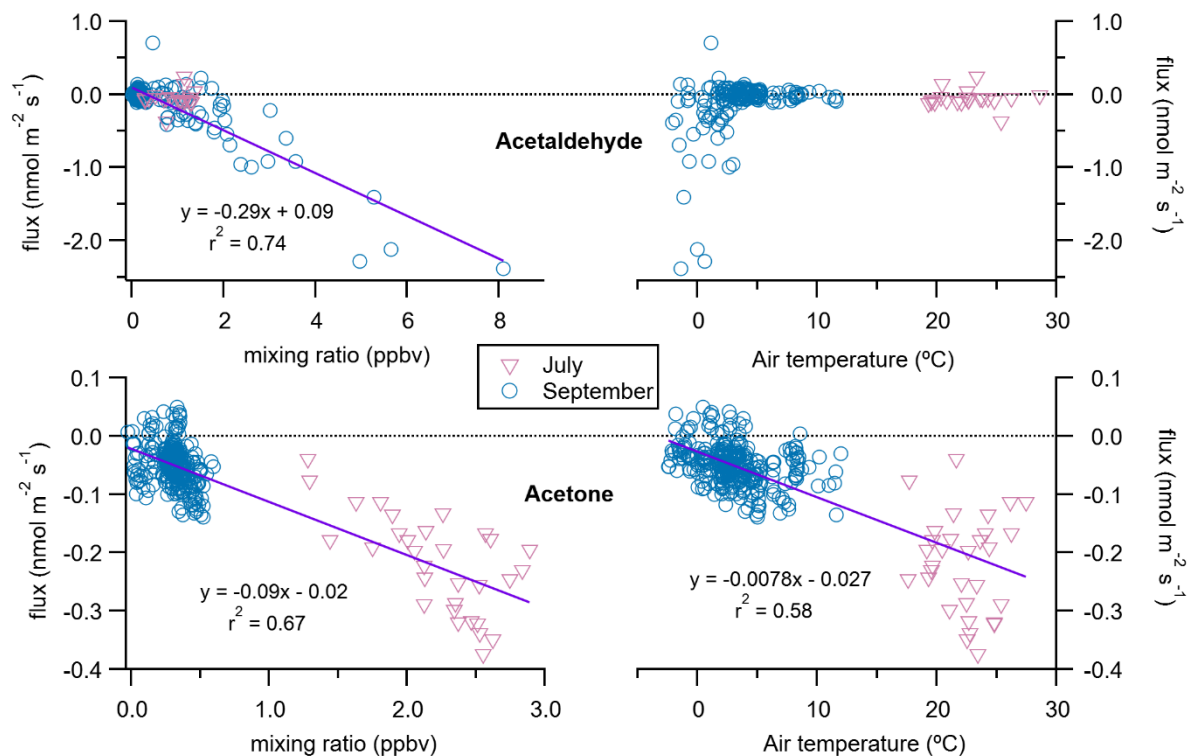


Figure 5: Relationship of the isoprene flux from the fen with the air temperature (blue triangles) measured at 2 m height on the EC mast, and with the vegetation surface temperature (red squares) measured at the nearby ICOS station. The data points shown are all the July 30-minute fluxes that passed the EC quality criteria (n=161; open and closed symbols). Solid lines show the exponential equation  $F = F_0 \cdot Q_{10}^{(T-T_0)/10}$ , where  $F_0$  is the isoprene flux rate at temperature  $T_0$  ( $=0$  °C),  $F$  is the flux rate at temperature  $T$  (°C), and  $Q_{10}$  is the temperature coefficient.  $F_0$  and  $Q_{10}$  were calculated by fitting the data to the linear equation  $\log(F) = T \cdot \log(Q_{10})/10 + a_0$ , where  $a_0$  is the intercept at  $T=0$  °C. For the fit, only fluxes not limited by light (when PAR was  $1000 \mu\text{mol m}^{-2} \text{s}^{-1}$  or more; n=52; closed symbols) were binned into 1-degree bins (not shown). Then the average fluxes of the bins, excluding bins containing a single flux value, were used to perform an orthogonal distance regression weighed by the standard deviation of each bin average. As a reference, the dashed black line shows the relationship with leaf temperature of the temperature activity factor ( $C_T$ ) of the G93 model (Guenther et al., 1993), scaled to coincide with the surface temperature fit at 30 °C.





**Figure 6:** Relationship of lake fluxes of acetaldehyde (top panels) and acetone (bottom panels) with their respective atmospheric mixing ratios (left panels) and the air temperature (right panels). Each solid line and corresponding equation represent an orthogonal distance regression to all 30-minute flux data points for both July and September ( $n=191$  for acetaldehyde and  $n=338$  for acetone).