

Friagem Event in Central Amazon and its Influence on Micrometeorological Variables and Atmospheric Chemistry

Guilherme F. Camarinha-Neto¹, Julia C. P. Cohen^{1,2}, Cléo Q. Dias-Júnior³, Matthias Sörgel^{4,a}, José Henrique Cattanio^{1,2}, Alessandro Araújo⁵, Stefan Wolff^{4,b}, Paulo A. F. Kuhn¹, Rodrigo A. F. Souza⁶, Luciana V. Rizzo⁷, and Paulo Artaxo⁸

¹Federal University of Pará (UFPA), Postgraduate Program on Environmental Sciences - PPGCA, Belém, AM, Brazil

²Faculty of Meteorology, Federal University of Pará (UFPA), Belém, PA, Brazil

³Department of Physics, Federal Institute of Pará (IFPA), Belém, PA, Brazil

⁴Biogeochemistry Department, Max Planck Institute for Chemistry, P.O. Box 3060, 55020 Mainz, Germany

⁵Empresa Brasileira de Pesquisa Agropecuária (EMBRAPA), Belém, PA, Brazil

⁶Department of Meteorology, Amazonas State University (UEA), Manaus, Amazonas, Brazil

⁷Department of Environmental Sciences, Institute of Environmental, Chemical and Pharmaceutics Sciences, Universidade Federal de São Paulo (UNIFESP), São Paulo, São Paulo, Brazil

⁸Institute of Physics, University of São Paulo (USP), São Paulo, São Paulo, Brazil

^acurrently at: Atmospheric Chemistry Department, Max Planck Institute for Chemistry, P.O. Box 3060, 55020 Mainz, Germany

^bcurrently at: Multiphase Chemistry Department, Max Planck Institute for Chemistry, P.O. Box 3060, 55020 Mainz, Germany

Correspondence: Cléo Q. Dias-Júnior (cleo.quaresma@ifpa.edu.br)

Abstract. In the period between July 9th and 11th, 2014 a Friagem event reached the Amazon region. On July 11th, the southwest flow related to the Friagem converged with the easterly winds in the central Amazon. The interaction between these two distinct air masses formed a convection band, which intensified over the Manaus region and the Amazon Tall Tower Observatory (ATTO) site. The satellite images show the evolution of convective activity on July 11th, which lead to 21 mm of precipitation in the ATTO site. Moreover, the arrival of the Friagem caused a sudden drop in temperature and a predominance of southerly winds, which could be seen in Porto Velho between July 7th and 8th and in Manaus and ATTO site from July 9th to 11th. The results of ERA-Interim reanalysis and Brazilian developments on the Regional Atmospheric Modeling System (BRAMS) simulations show that this Friagem event coming from the southwest, carries a mass of air with higher O₃ and NO₂ mixing ratios and lower CO mixing ratio compared to the airmasses present at the central Amazon. At lake Balbina the Friagem intensifies the local circulations, such as the breeze phenomena. At the Manaus region and ATTO site, the main effects of the Friagem event are: a decrease in the incoming solar radiation (due to intense cloud formation), a large temperature drop and a distinct change in surface O₃ and CO₂ mixing ratios. As the cold air of the Friagem was just in the lower 500 m the most probable cause of this change is that a cold pool above the forest prevented vertical mixing causing accumulation of CO₂ from respiration and very low O₃ mixing ratio due to photochemistry reduction and limited mixing within the boundary layer.

1 Introduction

The Amazon region suffers from the incursion of cold waves from the high latitudes of the Southern hemisphere (SH), with a relatively common occurrence mainly in the less rainy season, between June and September. These events are denominated locally and in literature as Friagem and about 70% of the cases of Friagem occur in this period of the year (Brinkmann and
20 Ribeiro, 1972; Marengo et al., 1997; Fisch et al., 1998; de Oliveira et al., 2004; Caraballo et al., 2014; Ricarte et al., 2015; Viana and Herdies, 2018). Brinkmann and Ribeiro (1972) observed 2 to 3 Friagem events per year, preferably in the less rainy season, in the central Amazon. This was one of the first studies to explore frontal system (FS) interference in central Amazon.

Silva Dias et al. (2004) showed that the arrival of a Friagem event in the West of the Amazon generates a pressure gradient force whose direction is opposite to the trade winds, thus causing a weakening of these winds. These authors observed that the
25 weakening of the trade winds enables the development of vigorous local circulations in the region of Santarém - PA.

Moura et al. (2004), who used data collected at the shores of Lake Balbina (central Amazon), concluded that without the influence of large-scale flow it is possible to observe the dynamics of breeze circulations influencing the ozone (O_3) mixing ratio with more clarity. According to these authors, the O_3 -mixing ratio changes are larger when the flow occurs in the direction from the lake to the forest, that is, during the occurrence of the lake breeze. Trebs et al. (2012), using data from central Amazon
30 region, concluded that the transport and dispersion of O_3 -mixing ratio are strongly affected by local wind systems, such as the breeze.

Marengo et al. (1997) compared the effects of the Friagem at Manaus (central Amazon) and Ji-Parana (south of the Amazon River), that are around 1,200 km apart. They observed that the Friagem was strongly modified during its passage over the Amazon basin. For example, the lower temperatures in Ji-Parana could be associate to cold air advection, whereas in Manaus
35 they were mainly caused by reduced solar radiation due to increased cloudiness (Viana and Herdies, 2018).

Several studies have already shown the effect of the Friagem on the surface meteorological components (Fisch, 1996; Marengo et al., 1997; Fisch et al., 1998; Moura et al., 2004; Silva Dias et al., 2004). However, we are not aware of any study investigating the accompanied changes in trace gas concentrations and atmospheric chemistry in the Amazon Basin. Besides that, it is know that the presence of the Friagem phenomenon can alter the conditions of the local microclimate, allows
40 the opportunity to better understand the dynamics of local circulations pattern and, consequently, influence local measurements carried out in Amazonian ecosystems, since they also cause the weakening of the predominant large-scale (trade) winds blowing from the East in the study region (Silva Dias et al., 2004).

Therefore, the objective of this study is to investigate the effects of Friagem on micrometeorological variables measured in the Manaus region and in the forest region of the Amazon Tall Tower Observatory (ATTO) site (Andreae et al., 2015), as well
45 as to evaluate the influence of this phenomenon on the local circulation dynamics and its role in the dispersion of trace gases at ATTO site and Balbina lake.

2 Data and Methodology

2.1 Study area

The Sustainable Development Reserve (SDR) of Uatumã, São Sebastião do Uatumã county where the ATTO site is located (02° 08' 38" S - 59° 00' 07" W) is about 140 km northeast of Manaus in the state of Amazonas, Brazil. The village of Balbina, in Presidente Figueiredo county as well as the Balbina dam lake (01° 52' S - 59° 30' W), are located to the northwest of the ATTO site (Fig. 1). The ATTO site is structured in a dense terra firme forest, where plateaus prevail, with a maximum elevation of 138 m (Andreae et al., 2015). The artificial lake of Balbina is a flooded area of approximately 1,700 km², with an average depth of 10 m (Kemenes et al., 2007).

Additionally, near surface measurements of O₃ made at T2 (03.1392° S - 60.1315° W), T3 (03.2133° S - 60.5987° W) and the forest site T0z (02.6091° S - 60.2093° W) experimental sites, at a distance of 8, 70, and 60 km from Manaus, respectively, were used (Fig. 1). These sites were deployed in the Observations and Modeling of the Green Ocean Amazon (GoAmazon2014/5) experiment (Martin et al., 2016). Due to its location, site T2 is heavily impacted by the Manaus urban plume as well as emissions from brick factories and to a minor extent by local pollution sources such as shipping or burning of household waste and wood near the site (Martin et al., 2016). The site T3 is typically downwind of Manaus city, influenced by urban air masses in 38.5% of time (Trebs et al., 2012; Martin et al., 2016; Thalman et al., 2017). The site T0z, typically upwind Manaus (Rizzo et al., 2013), is situated in the Cuieiras Biological Reserve ("ZF2") that has been a central part of Amazonian ecology and climate studies for over 20 years (Araújo et al., 2002). Differently T2 and T3, the T0z site is subject to minimal antropogenic interference. These five sites will enable us to better understand the role of Friagem at near surface O₃-levels in different parts of the central Amazon, some of them in the Manaus pollution plume (Cirino et al., 2018).

2.2 Data

A Friagem event that occurred between July 9th and July 11th, 2014 in the region of the ATTO experimental site was identified and used as a case study. The two main motivations for choosing this period were: i) July is one of the months with the largest number of cold fronts that arrive in the South-Southeastern region of Brazil and consequently, July is also a month with high number of Friagem events in the Amazon region (Prince and Evans, 2018). ii) Throughout 2014, the intensive activities of the GoAmazon (Observations and Modeling of the Green Ocean Amazon) project took place (Martin et al., 2016), that is, measurements of gases and thermodynamics of the atmosphere were carried out in various sites investigated in this work (T2, T3 and T0z). We also emphasize that the month of July 2014 did not show significant changes in precipitation and air temperature in relation to other years' july. In addition, in 2014 there were no El Nino and La Nina phenomena (<http://climanalise.cptec.inpe.br/~rclimanl/boletim/pdf/pdf14/jul14.pdf>).

The data were collected at the ATTO site and at the international airports of Manaus (03° 02' 08" S - 60° 02' 47" W) and Porto Velho (08° 42' 50" S - 63° 53' 54" W), for July 2014. Air temperature data, as well as wind direction and wind speed, in 30 min intervals were obtained from airport weather stations. The cities of Porto Velho (about 930 km southwest of ATTO)



Figure 1. Google Earth map of the location of the ATTO site, Balbina lake, T2, T3 and T0z (white circles). The dashed red line indicates the distance from the ATTO site in relation to the Balbina lake and the city of Manaus (copyright: © Google Maps). The yellow lines represent the roads and the blue lines represent the network of the rivers in this region.

and Manaus (about 150 *km* southwest of ATTO) were chosen with the purpose of evaluating the impacts of the advance of the
80 Friagem towards the region of the ATTO site.

The ATTO site air temperature, wind speed, wind direction, incident short-wave radiation and precipitation were measured at
the 81 *m* high walk up tower (02° 08.6470' *S* - 58° 59.9920' *W*) at different heights (see table 1). CO₂ and O₃ measurements
were taken at 81 and 79 *m* above ground, respectively. The measurements of CO₂ and O₃ mixing ratios were conceived
respectively by an infrared gas analyzer (IRGA, LI-7500A model, LI-COR inc., USA) and (TEI 49i model, Thermo Electron
85 Corp, USA).

The data acquisition at the tower was performed by data loggers CR1000 and CR3000 (Campbell Scientific inc., USA), with
instantaneous measurements taken every minute for meteorological variables and at high frequency for CO₂ (10 *Hz*) and O₃
(30 *s*) mixing ratio, subsequently processed every 30 min. The variables used in this study and their respective sensors are
presented in more detail in Table 1.

90 The O₃ data at T3 site were obtained as part of the U.S. Department of Energy Atmospheric Radiation Measurement Program
(ARM, <http://www.arm.gov/measurements>) during the GoAmazon 2014/5 project (Martin et al., 2016). O₃-mixing ratios were
measured with an ultra violet gas analyzer (TEI 49i model, Thermo Electron Corp, USA). The instrument was installed at a
height of 3.5 *m* above the ground (Dias-Júnior et al., 2017). At T2 and T0z, O₃-mixing ratios were also measured with the
same analyzer model (Thermo 49i) at a height of 12 *m* a.g.l. and 39 *m* a.g.l., respectively.

Table 1. Variables used in this study, their respective measuring instruments and height in the micrometeorological tower at ATTO site.

VARIABLES	INSTRUMENTS	HEIGHT
Air Temperature	Thermo-hygrometer (CS215, Campbell Scientific, USA)	81 m
Wind Speed and Direction	2D Sonic Anemometer (Windsonic, Gill Instruments Ltd., UK)	73 m
Incident Short Wave Radiation	Pyranometer (CMP21, Kipp and Zone, Netherlands)	75 m
Rainfall	Pluviometer (TB4, Hydrological Services Pty. Ltd., Australia)	81 m
CO ₂ -mixing ratio	Infrared Gas Analyzer (IRGA, LI-7500/LI-7200, LI-COR inc., USA)	81 m
O ₃ -mixing ratio	Ultraviolet Gas Analyzer (TEI 49i, Thermo Electron Corp, USA)	79 m

95 The O₃ measurements were performed at different heights in the sites investigated here. These heights may affect the observed O₃ concentrations in some cases, due to the process of dry deposition onto available surfaces and stomatal uptake by vegetation. In the case of T2 and T3 sites, which are not forest sites, the measurement height may not have a significant influence on O₃ concentrations during the day in a well mixed boundary layer. At forest sites, previous studies have shown a significant O₃ vertical gradient inside the canopy, especially in its lowest half part (Rummel et al., 2007; Freire et al., 2017).
100 However, the reported O₃ measurements at T0z and ATTO were taken above the canopy, where vertical gradients are expected to be close to zero if the boundary layer is well mixed.

The European Center for Medium-Range Weather Forecasts (ECMWF) ERA-Interim reanalysis was used at intervals of 6 h, with the objective of evaluating the evolution of the Friagem event investigated in this work. The ERA-interim model and the ECMWF reanalysis system present spatial resolution with 60 vertical levels, harmonic spherical representation for the
105 basic dynamic fields, and reduced Gaussian grid with uniform spacing of approximately 79 km for the surface (Berrisford et al., 2011). Furthermore, enhanced images of the infrared channel of the GOES-13 satellite were used, with the purpose of analyzing the formation and passage of convective systems in the study area.

2.3 Experimental design

The numerical simulations of the present study were made using the BRAMS (Brazilian Regional Atmospheric Modeling
110 System) mesoscale model version 5.3 (Freitas et al., 2017). BRAMS represents a Brazilian version of the Regional Atmospheric Modeling System (RAMS) (Cotton et al., 2003) adapted to tropical conditions. This version of BRAMS contains the coupling of the JULES (Joint UK Land Environment Simulator) (Best et al., 2011; Clark et al., 2011) and CCATT (Coupled Chemistry-

Aerosol-Tracer Transport) models (Longo et al., 2010; Freitas et al., 2009), making BRAMS a new and fully-coupled numerical system of atmosphere-biosphere-chemical modeling, called JULES-CCATT-BRAMS (Moreira et al., 2013).

115 The integration time of the model was 72 hours, starting at 00 UTC on July 9th, 2014. The numerical experiment was performed using only a grid whose horizontal resolution was 1.5 km, with 185 points on x , 140 points on y , and 39 points on z . The vertical grid resolution was variable with the initial vertical spacing of 50 m, increasing by a factor of 1.1 up to the 1.2 km level, and from that point forward this spacing was constant to the top of the model (around 16 km). The domain covered by this grid, the distribution of the main rivers and topography can be observed in Fig. 2.

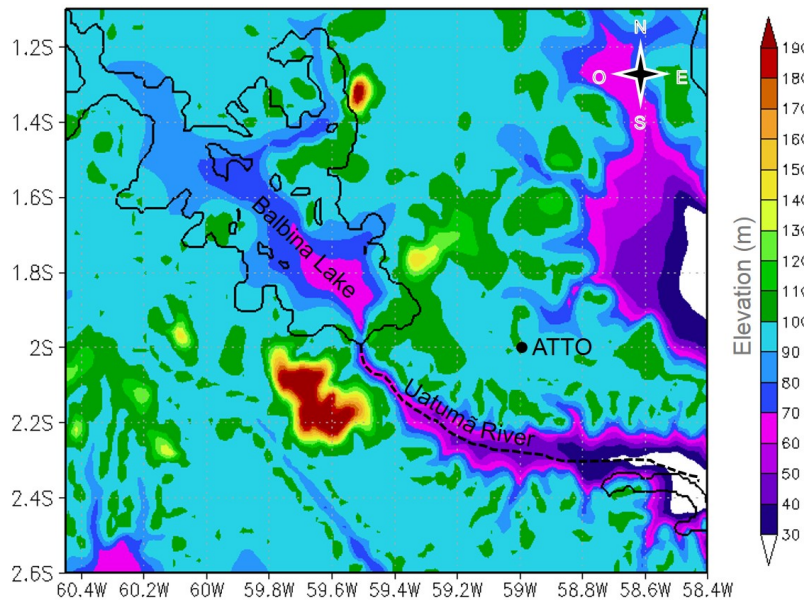


Figure 2. Domain of the grid used in JULES-CCATT-BRAMS simulation showing the distribution of the topography (m) and location of the Balbina lake (black line), ATTO site (black point) and Uatuma river (dashed line)

120 The initialization of the model was heterogeneous, using the ECMWF- ERA Interim reanalyses (www.ecmwf.int/en/forecasts/datasets/reanalysis) every 6 hours in a quarter-degree spatial resolution. Seven soil layers were defined up to the depth of 12.25 m and the assumed soil humidity was heterogeneous, as described in Freitas and Freitas (2006). Soil texture data were originally obtained from the Food and Agriculture Organization of the United Nations (UN FAO) and were adapted for the Brazilian territory by INPE (Rossato et al., 2004).

125 In this simulation, cloud microphysics uses the Thompson cloud water single-moment formulation, which consists of the separate treatment of five classes of water that are then mixed in a single treatment for each type of cloud (Thompson et al., 2008; Thompson and Eidhammer, 2014). In addition, it includes the activation of aerosols in the cloud condensation nuclei (CCN) and ice nuclei (IN), thus, it predicts the concentration of the number of water droplets in the clouds, as well as the concentrations of two new aerosol variables, one for CCN and one for IN. These variables are grouped into hygroscopic
130 aerosols called “water friendly” and non-hygroscopic aerosols are “ice friendly” (Freitas et al., 2017).

The parameterization of the long and short wave radiation used was the Carma (Community Aerosol and Radiation Model for Atmospheres) (Toon et al., 1989). This scheme solves the radiative transfer using the two-flux method and includes the main molecular absorbers (water vapor, CO₂, O₃ and O₂) and treats the gas absorption coefficients using an exponential sum formula (Toon et al., 1989). The JULES-CCATT-BRAMS radiation schemes are coupled online with the cloud and aerosol
135 microphysics models to provide simulations of aerosol-cloud-radiation interactions (Freitas et al., 2017). The physical and optical properties of the cloud in the radiative scheme of Carma were parameterized according to Sun and Shine (1994) and Savijärvi et al. (1997); Savijärvi and Räisänen (1998) using liquid and ice water content profiles provided by the JULES-CCATT-BRAMS cloud microphysics scheme (Freitas et al., 2017).

3 Results and discussion

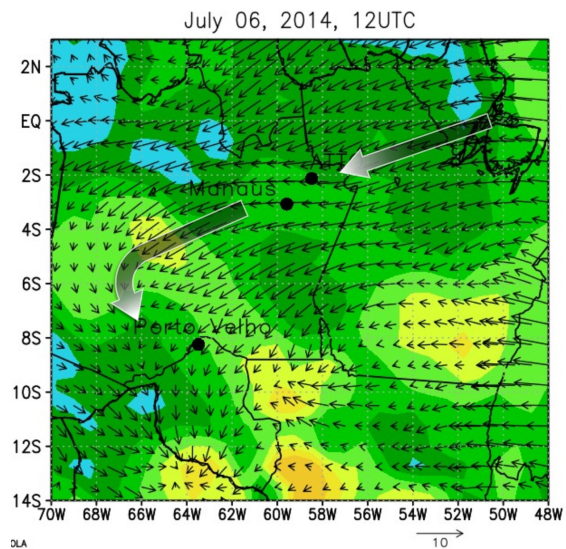
140 3.1 Environmental characteristics in the Amazon basin scale

From the ECMWF ERA-interim reanalysis the evolution of the horizontal wind and air temperature near the surface, in the north region of Brazil, between July 6th and 11th, 2014, at 12 UTC (Local Time = UTC - 4 h) (Fig.3) can be obtained. On the 6th it is observed that the mean temperature was of the order of 24 °C in three places of interest of this work, being: Porto Velho; Manaus and ATTO site (Fig. 3a). The dominant wind direction was from East in practically the entire Amazon region.
145 The surface temperature and wind direction represent the standard normally found in this region (Fisch et al., 1998; Pöhlker et al., 2019). However, on July 7th, the dominant wind direction becomes South-Southeast in the region of Porto Velho, as is evidenced by the presence of a mass of air with a lower temperature (around 18 °C) approaching this city (Fig. 3b).

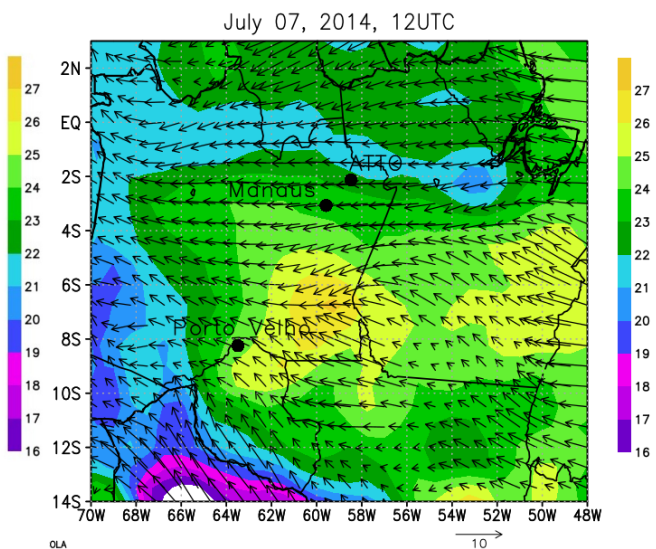
In the course of the days, between July 8th and 9th, the mass of cold air advanced even more towards Porto Velho, just as the dominant wind direction changed to South in all western regions of the state of Amazonas, as well as to the southern
150 regions of Manaus and the ATTO site (Fig. 3c, d). On July 10th, the southerly winds arrive in the Manaus region and the ATTO site, characterizing the arrival of Friagem in the area of interest of this work (Fig. 3e, f). For this period, the CPTEC technical bulletin reported the penetration of a polar air mass in the subtropical and tropical Brazilian region that advanced in the Southeast-Northwest of Brazil, giving origin to the cold waves of the South, as well as causing the Friagem phenomenon in the Amazon (<http://tempo.cptec.inpe.br/boletimtecnico/pt>).

155 Therefore, the arrival of the Friagem phenomenon in the Amazon region is characterized by the change in the wind direction in the Southwest and central regions of the Amazon and by abrupt drops in the values of temperature, especially in the Southwest. Similar results were also found by other authors (Fisch, 1996; Marengo et al., 1997; Fisch et al., 1998; de Oliveira et al., 2004; Ricarte et al., 2015; Viana and Herdies, 2018).

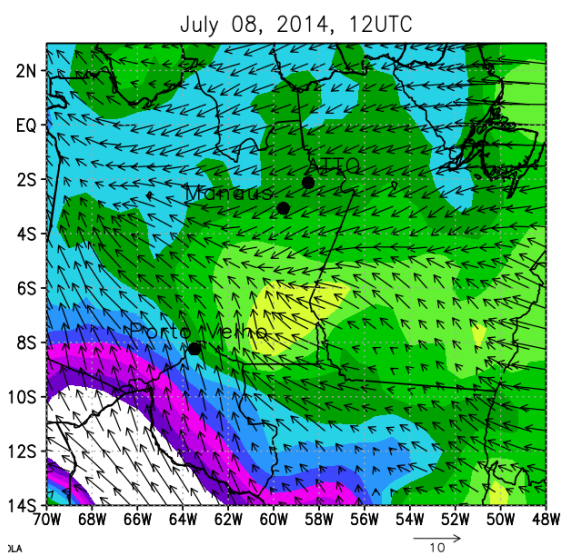
The wind behavior throughout the Amazon basin before and during the Friagem event is represented in Fig. 3a and 3f, respectively. Interestingly, at the time the Friagem was present in the Manaus and ATTO site region, there was convergence
160 of the easterly winds with the westerly flow associated to the Friagem (Fig. 3f). The easterly flow carries humidity from the Atlantic coast to the central region of the Amazon, while the southerly flow, associated with the Friagem event, transports masses of dry and cold air from high latitudes to the Amazon region (Marengo et al., 1997).



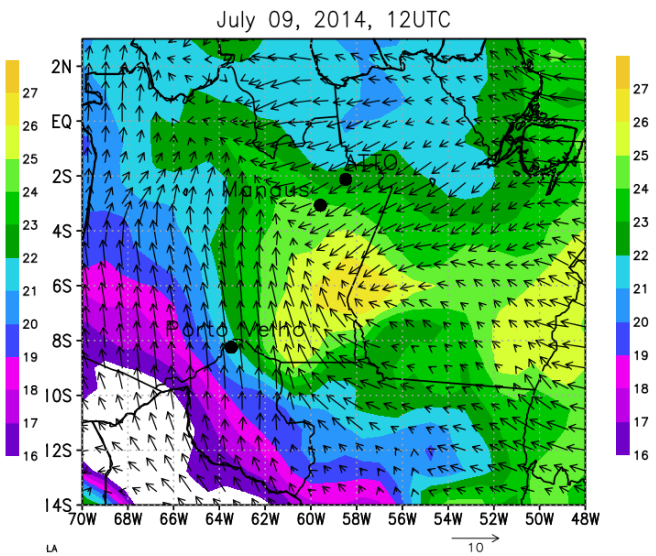
(a)



(b)



(c)



(d)

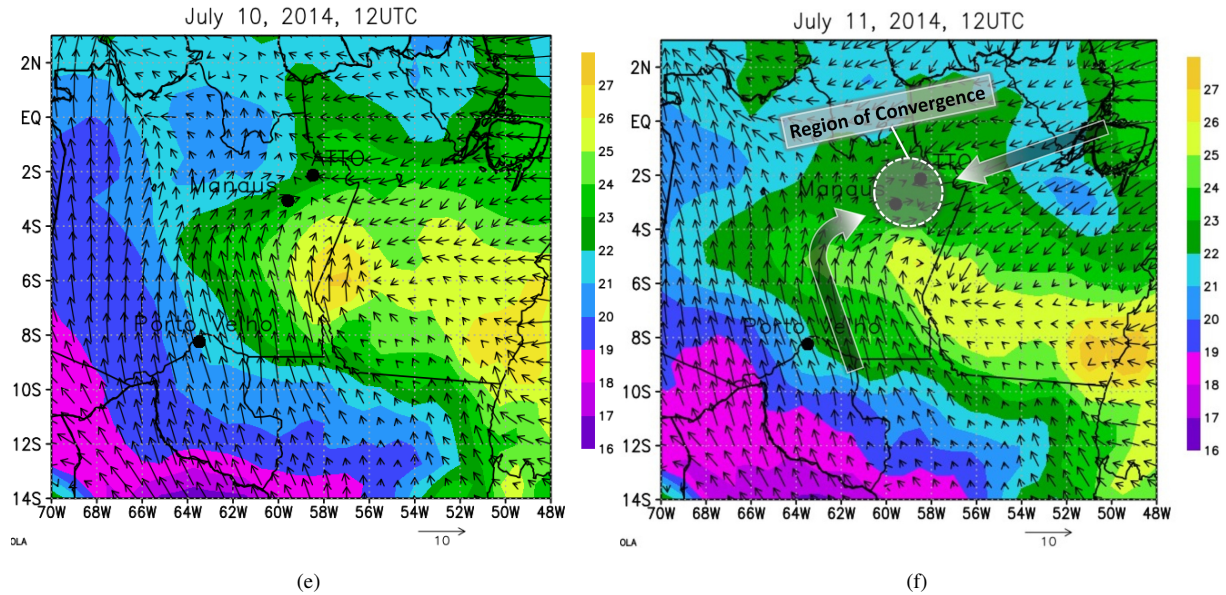
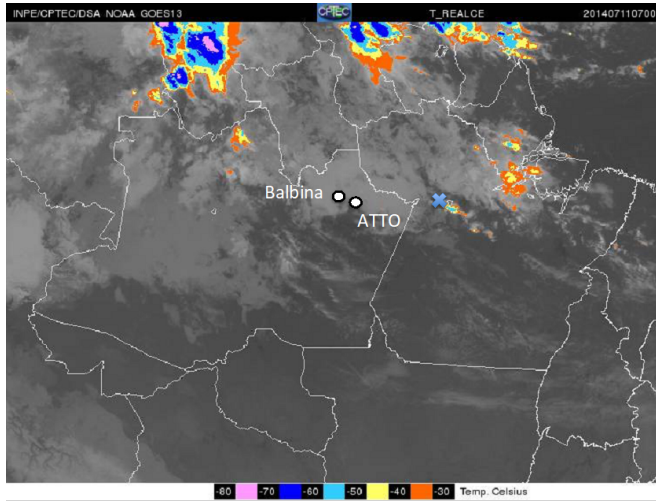


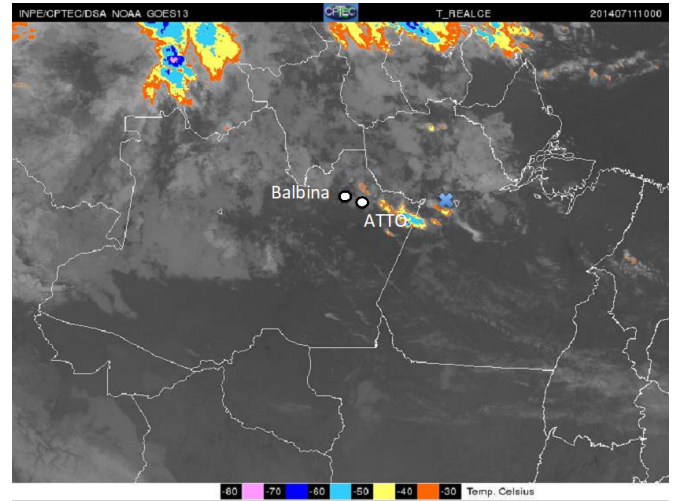
Figure 3. Distribution of air temperature ($^{\circ}\text{C}$, shaded) and wind (ms^{-1} , vector) at the surface, in the localities of Porto Velho, Manaus and ATTO site, at 12 UTC between days 6th and 11th of July 2014 obtained with the ERA-interim reanalysis. Grey arrows indicate the predominant wind flow and the dashed circle highlights the region of convergence of the winds in the Manaus and ATTO region.

Figure 4 shows the satellite images before and during the Friagem event in the central Amazon. Convection in the confluence
 165 between Amazonas and Tapajós rivers region was observed at dawn, on July 11 at 07 UTC (Fig 4a). This convection propagated
 in the West direction, arriving in the ATTO site region at 13 UTC (Fig 4c). Since this convective system is not associated to the
 squall lines that form along the coast (Cohen et al., 1995; Alcântara et al., 2011; Melo et al., 2019) it is possible to state that
 this convection has its formation associated with the convergence of these two air masses with different properties (Fig 3f). It
 is noteworthy that during the propagation of this convection on July 11th, it intensified and caused the highest rainfall (starting
 170 at 12:30 UTC) registered at the ATTO site during the month of July 2014, with a record rainfall of 21 mm.

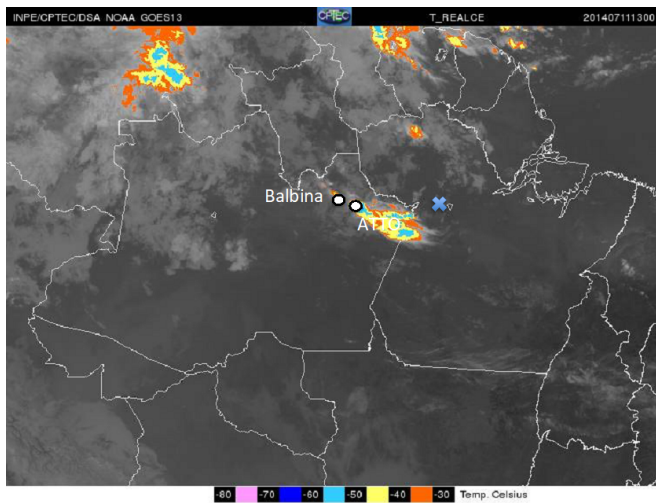
The evolution of the horizontal wind and O_3 -mixing ratio near the surface (both from ECMWF ERA-interim reanalysis),
 during July 7th and 11th, 2014, at 18 UTC can be seen in Fig. 5. On July 7th onward the Friagem event carries air rich in O_3
 from Southeastern of the Brazil (not shown here) to northwards (Fig. 5a). This air mass reaches the state of the Amazonas on
 July 8th (not show here). On July 11th at 12 UTC (not shown here) the air mass influenced by the Friagem has the shortest
 175 distance from the study region (ATTO-site). On July 11th at 18 UTC the Friagem begins to dissipate (Fig. 5b). However, it
 should be noted that this mass of air rich in O_3 did not reach the Manaus region and the ATTO-site. It is believed that the
 presence of the cloud cover in central Amazonia on 11th, July (Fig. 4), formed by the convergence of air (Friagem and Eastern
 winds), has an inhibitory effect on O_3 formation (Betts et al., 2002). As O_3 deposition prevails, a net loss of ozone is expected
 during transport under conditions of limited photochemical production. The rain forest canopy is a strong sink for ozone (Jacob



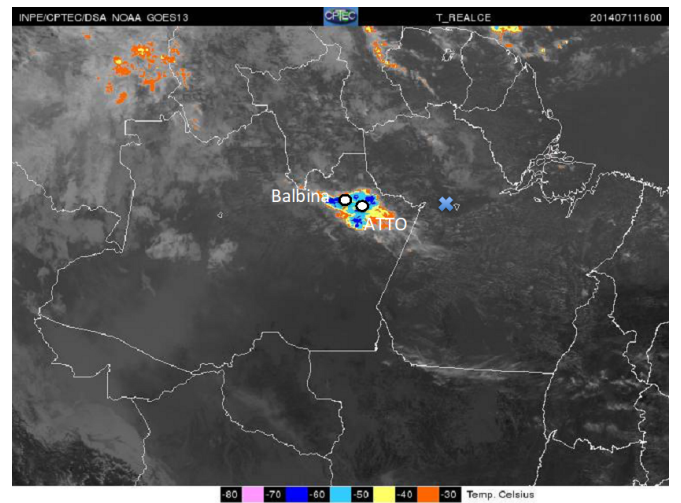
(a)



(b)



(c)



(d)

Figure 4. Enhanced images of the GOES 13 satellite in the infrared channel on July 11th, 2014 at: (a) 07 UTC, (b) 11 UTC, (c) 13 UTC and (d) 16 UTC, which is openly accessible (<http://satellite.cptec.inpe.br/acervo/goes.formulario.logic?i=br>). Including the approximate locations of the ATTO site and Balbina lake (white circles) and the confluence region of the Amazon and Tapajós rivers (blue X).

180 and Wofsy, 1990; Fan et al., 1990; Rummel et al., 2007). Therefore, the low O_3 mixing ratio in the Manaus region and the ATTO-site during the 11th July (Fig. 5-f) would be associated with cloudiness and prolonged transport over forested regions.

Marengo et al. (1997) investigated the two strongest Friagem events that occurred during the year 1994, being: June 26th and July 10th. They did not show the impact of Friagem on O_3 levels but showed that for both events the main consequence of the Friagem in the city of Manaus was greater cloud cover and consequently less solar radiation reaching the surface, which
 185 was the main cause of the fall in air temperature, corroborating part of the results find here (Figs. 3, 4 and 6)

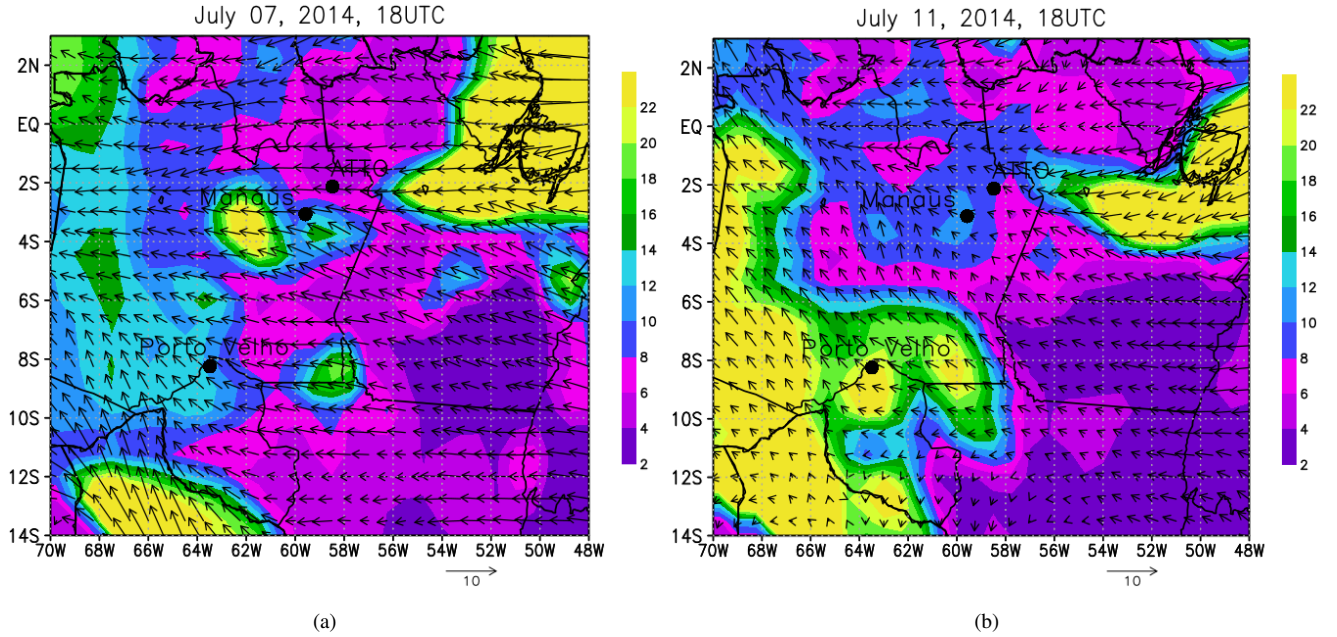


Figure 5. Surface wind ($m s^{-1}$, vectors) and ozone (ppbv, contour) on days: (a) 7th and (b) 11th of July, 2014 at 18 UTC, highlighting Porto Velho, Manaus and ATTO site obtained with the ERA-interim reanalysis.

3.2 Air temperature during the Friagem event

Figure 7 shows the air temperature values near the surface at Porto Velho (Fig 6a), Manaus region (Fig 6b) and above the forest canopy at the ATTO site (Fig 6c), between July 6th and 11th, 2014 (black line) together with the air temperature hourly average for the month of July 2014 (orange line). At Porto Velho the difference between the maximum mean air temperature
 190 (maximum average daily cycle value) and the maximum air temperature during the Friagem (July 8th) was 7 °C (from 31 to 24 °C), whilst in Manaus region and at ATTO site the differences were in the order of 4 °C (from 30 to 26 °C and 29 to 25 °C, respectively) during July 11th. The temperature starts to fall in Manaus region and ATTO around one day after the temperature fall observed in Porto Velho.

At Porto Velho, both the maximum and minimum values of air temperature were substantially reduced during the presence
 195 of the Friagem. However, at Manaus region and the ATTO site, the decrease was mainly observed in the maximum temperature

values. Although the decrease was not so evident at the time of the diurnal minimum (at least on the 10th and 11th) the whole diurnal cycle was disturbed with (much lower) minima than the average at different times of the day.

Similar behavior was observed by Marengo et al. (1997) for the Southwest and Central Amazon regions during an episode of Friagem. Therefore, it is noted that due to the occurrence of the Friagem, the southernmost regions of the Amazon present
200 more intense reductions in temperature values, compared to the regions located more in the center of the Amazon basin.

Additionally, the ATTO site is located in a forest region, 58 km from the Balbina dam lake and Manaus region is under the influence of intense urbanization (de Souza and Alvalá, 2014) and is located in the proximity of rivers. Thus, there is evidence that both the ATTO site and Manaus region may be under the influence of lake (Moura et al., 2004) and rivers breezes (dos Santos et al., 2014), respectively, which could offer them a greater thermal inertia.

205 3.3 ATTO site wind direction

In addition to the changes observed in the daily air temperature cycle at the ATTO site, changes were also observed in the local wind direction during the Friagem period (Fig 7). Before the arrival of this phenomenon, between July 6th and 8th, it was observed that the direction of the horizontal wind was predominantly Southeast and Northeast. On the other hand, on July 9th the wind direction was well distributed among the four cardinal points, and on July 10th and 11th the wind flow had higher
210 frequencies of West, North and Southwest, when the Friagem arrived at ATTO site. The general wind directions before and after the Friagem are consistent with long term observations at ATTO (Andreae et al., 2015). The low frequency of observed wind directions from the westerly directions (based on 2.5 years of data) led to the conclusion that effects of local circulation (due to Uatumã River \approx 12 km and Balbina Lake \approx 58 km) are not important or could not be observed (Andreae et al., 2015). At least not on regular basis.

215 Silva Dias et al. (2004) showed that during the period from 24th to 31th July 2001, the arrival of a cold air mass in the western region of the Amazon. The main consequences of this Friagem in the region were: increased atmospheric pressure to sea level, decrease the air temperature around 5 °C, reduction in wind speed, confluence of a cold and dry air mass coming from the South region with a hot and humid air mass coming eastern Amazon. We emphasize that part of our results are corroborated by Silva Dias et al. (2004). The increased atmospheric pressure to sea level resulting in a pressure gradient force pointing in
220 the opposite direction than the trade winds, which would be consistent with a slowdown of the easterly winds. In this way, these authors were able to observe with greater clarity the occurrence of river breeze circulations in this region. Following this hypothesis, the behavior of the wind at the ATTO site was analyzed every two hours, during the period in which the Friagem was active in this region (Fig. 8).

On the 9th of July it is observed that the direction of the wind was essentially from East until the end of the morning (14-16
225 UTC), when the wind changed to Southeast and Southwest directions until the late afternoon and early evening (22-00 UTC), which corresponds to the flow associated with the arrival of Friagem in this region. From 00 UTC of July 10th to 14 UTC it is observed that the prevailing wind was from the West, indicating a deviation from the general flow, which would normally be from the East. In the early afternoon (16 UTC), the wind changed to the North direction until the early morning (12 UTC) of July 11th. This change in wind direction to the West and to the North observed during the morning of July 10th and 11th,

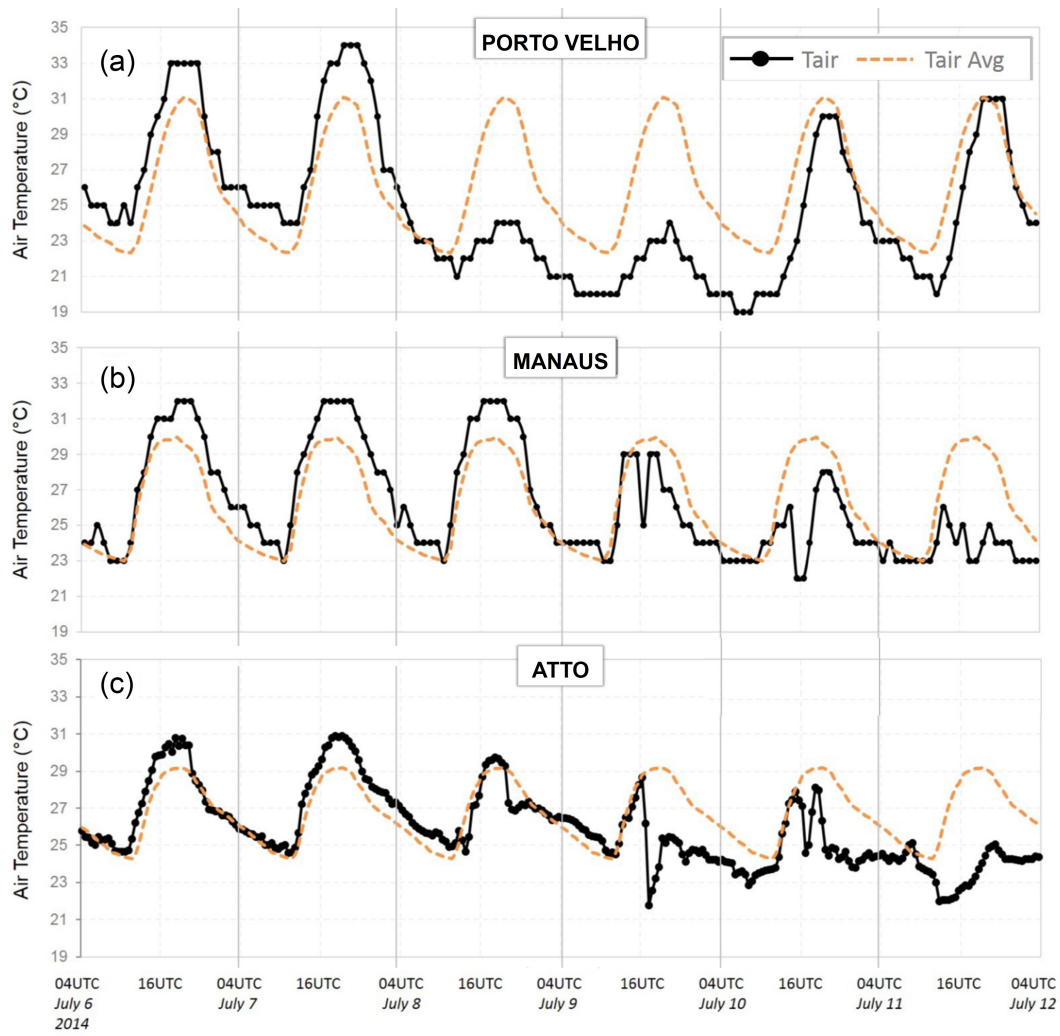


Figure 6. Daily cycle (black line) and monthly average (orange line) of the observational air temperature data from July 6th to 11th, 2014, at: (a) Porto Velho, (b) Manaus region and (c) ATTO site.

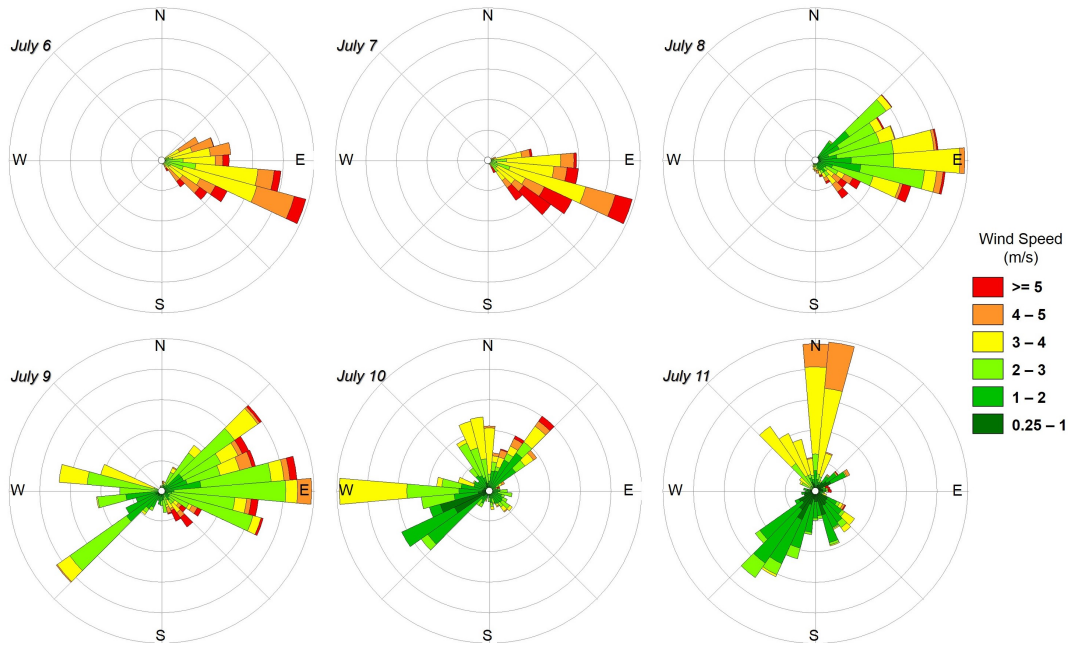


Figure 7. Experimental horizontal wind speed and direction at 73 *m* above ground measured at the ATTO site between July 6th and 11th, 2014

230 respectively, does not correspond to the expected direction during the occurrence of the forest breeze towards Lake Balbina, which should be from East-Southeast. Therefore, it is believed that the flow related to the Friagem phenomenon overlapped with that of the breeze circulation observed by Moura et al. (2004), or that the forest-lake breeze circulation does not present the capacity to reach the micrometeorological tower of the ATTO site in 58 *km* distance (In line with results from Andreae et al. (2015)). This aspect will be discussed in the next section where the results of the simulation with JULES-CCATT-BRAMS
235 model will be analyzed.

3.4 Radiation, ozone and CO₂ during the Friagem event

Figure 9 shows the values of incident short wave radiation (SW_{in}), O₃ and CO₂ measured at the ATTO site, between July 6th and 11th, 2014, respectively (black line). The SW_{in} values decrease during the morning of July 11th when Friagem arrives at the ATTO site (Fig 9a). Moreover, the maximum value ($\approx 450 \text{ W m}^{-2}$) of SW_{in} occurred at approximately 19 UTC (15 LT),
240 whereas the average monthly daily maximum SW_{in} (orange line) usually occurs at 16 UTC ($\approx 800 \text{ W m}^{-2}$).

Before the arrival of Friagem at ATTO site region, between July 6th and 8th, it is observed that the values of O₃ (black line) were close to the monthly average (orange line), with minimum values occurring around 10 UTC (06 LT) and maximum around 17 UTC (Fig 9b). This result is consistent with those observed in other studies conducted in the Amazon (Betts et al., 2002; Gerken et al., 2016; Dias-Júnior et al., 2017; Melo et al., 2019). However, during the occurrence of Friagem, between

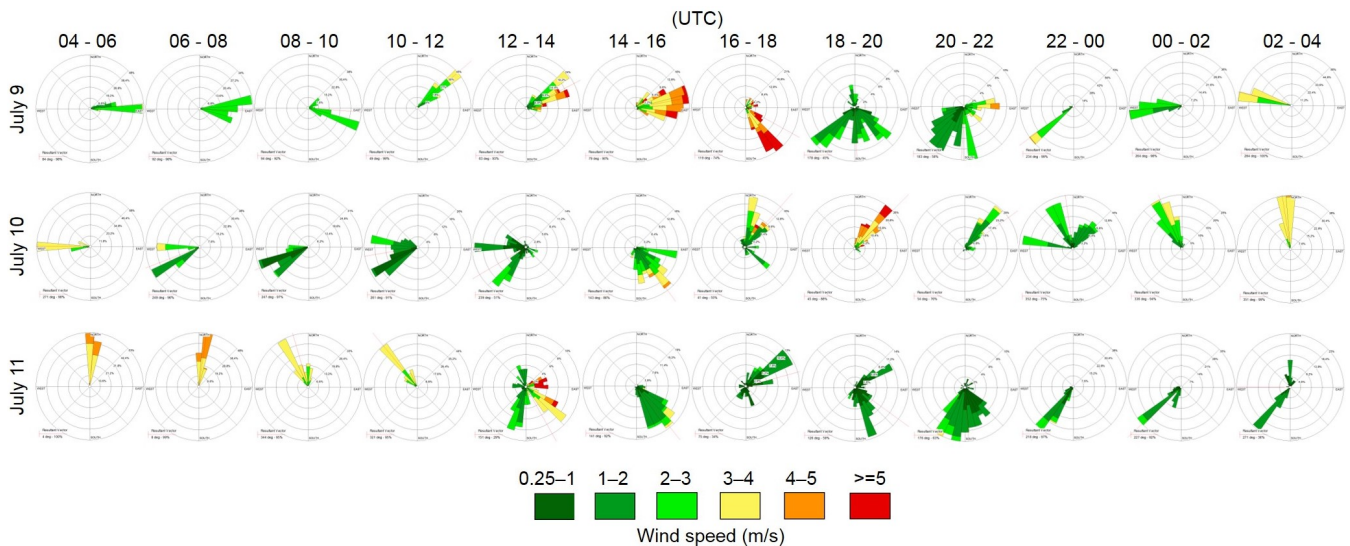


Figure 8. Experimental wind speed and direction at the 73 m above ground measured at the ATTO site, in 2 hour intervals, between July 9th and 11th, 2014.

245 July 09th and 11th, there was a sharp drop in O₃ mixing ratio at the times when the highest mixing ratio of this trace gas were expected (17 UTC).

Figure 10 shows the O₃ mixing ratio data from 4 different stations around the city of Manaus. All stations show reduced O₃ values during the passage of the Friagem event (black dotted rectangle). Furthermore, stations affected directly by the pollution of the city of Manaus (Iranduba - T2, Manacapuru - T3) show clear influence of increased O₃ formation compared to ATTO and ZF2-T0z. These differences are much smaller during the Friagem event, probably due to reduced photochemistry (Fig. 9a)

250 in this region.

The reduction of the incident short-wave radiation values observed on the 11th (Fig 9a) was possibly associated to the presence of convective systems in this region, as shown in Fig 4. It is known that cloudiness is a determinant meteorological factor in the daily O₃ cycle (Gerken et al., 2016).

255 It is interesting to note that the rain event during July 11th did not result in an increase of near surface O₃ as observed by others authors (Betts et al., 2002; Gerken et al., 2016; Dias-Júnior et al., 2017). It is believed that the convective cloud formed during the Friagem event was not as deep as the clouds investigated by Betts et al. (2002) and Gerken et al. (2016), which, through their downdrafts, transport O₃ from the high troposphere to the surface.

The values of CO₂ mixing ratio between July 06th and 11th are shown in Fig 9c. It is observed that between July 06th and 10th, CO₂ values for the daily cycle (black line) were very close to the monthly average values (orange line), with a maximum molar fraction around 420 ppm approximately at 10 UTC and minimum of less than 390 ppm (de Araújo et al., 2010). However, on July 11th at 14 UTC, a significant increase of CO₂ (≈ 470 ppm) was observed in relation to the monthly average. This increase may be related to the incident radiation attenuation due to increased cloudiness which reduces the efficiency of the

260

forest in absorbing CO_2 gas via photosynthesis (Ruimy et al., 1995). Also limited vertical mixing as discussed below is a
 265 potential reason.

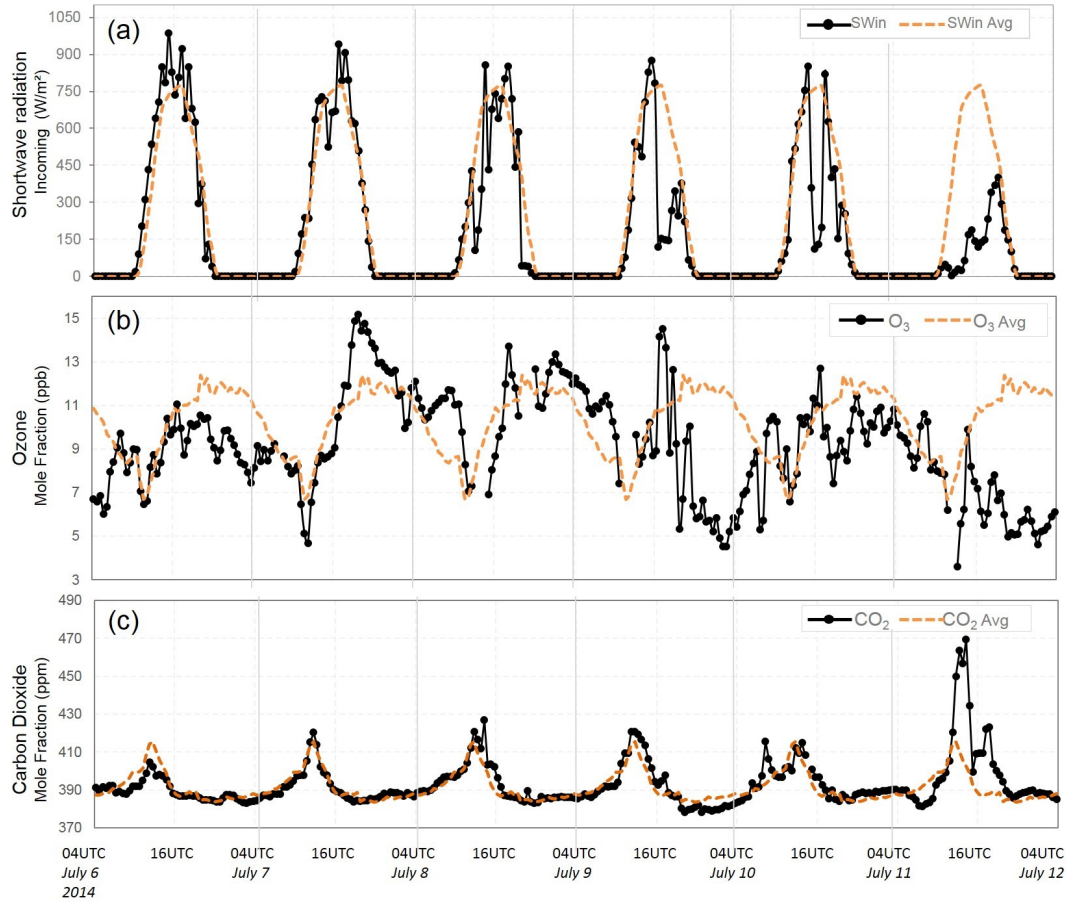


Figure 9. Daily behavior (black line) and monthly average (orange line) of the experimental data : (a) incident short wave radiation (SW_{in}), (b) Ozone (O_3) and (c) Carbon Dioxide (CO_2) mixing ratio from July 6th to 11th, 2014 at the ATTO site.

3.5 Simulation of local circulation and its effect at the ATTO site

In order to better understand the local circulation and its role on the measurements made at ATTO site region, this section presents the results of a numerical simulation made with JULES-CCATT-BRAMS coupled model. Figure 11a shows the vertical profile of the horizontal wind at a grid point near the ATTO site ($02^\circ \text{ S} - 59^\circ \text{ W}$) during model integration. At low levels
 270 (near 80 m), the Easterly wind is observed until the first hours of July 10th. Then the wind has a predominant West-Northwest direction until the afternoon of July 11th and afterwards the wind comes from the South. Therefore, it is observed that the simulation captured the horizontal wind behavior measured at a height of 73 m at the ATTO site, as shown in Fig 8. In addition,

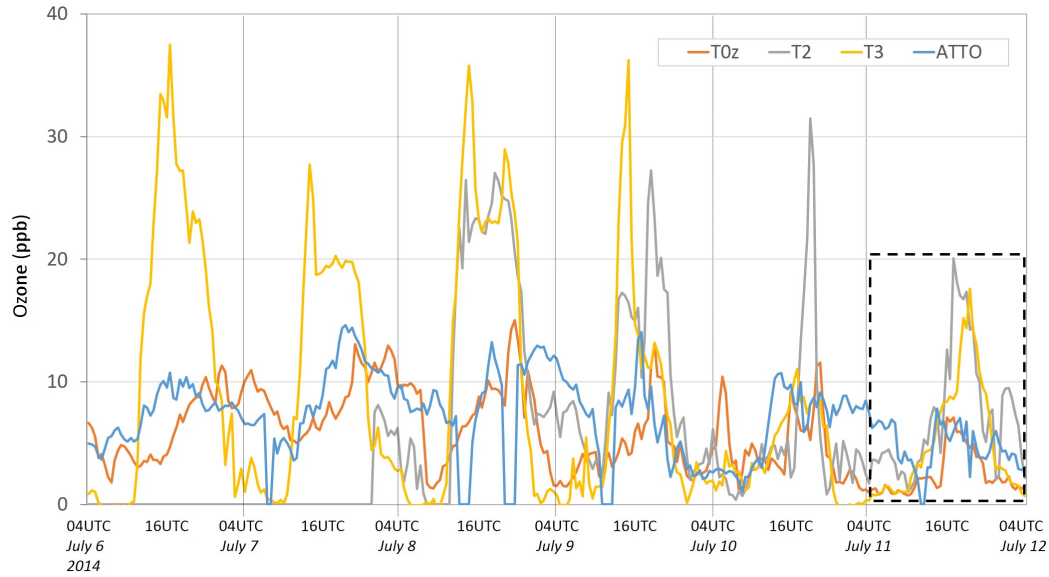


Figure 10. O₃-mixing ratio [ppbv] from 4 different stations around Manaus: ATTO-site (blue line), ZF2 forest - T0z (red line), Iranduba - T2 (grey line), Manacapuru - T3 (yellow line). The black rectangle indicate the occurrence of the Friagem event. T2 are affected directly by the polluted air from the city of Manaus.

above 500 *m* the flow is essentially from the East during the whole period of integration of the model. Apparently, the Friagem changes only the flow within a small layer adjunct to the ground. Figure 11b shows the values of the boundary layer height (BLH) obtained from ERA5 at a grid point near the ATTO site (02.10° S - 59.06° W). It is possible to note that before the Friagem event the maximum BLH values were greater than 1000 *m*. However, during the Friagem event, the maximum BLH value was around 600 *m*.

The large temperature drop Fig. 6a together with the information that the cold air of the Friagem was just in the lower 500 *m* (Fig. 11), points to the formations of a cold pool above the forest that prevents vertical mixing. As incoming solar radiation was low (Fig. 9a) the surface heating might not be sufficient to break the inversion or at least a very shallow boundary layer was formed as evidenced by the ERA5 data (Fig. 11b). This would explain high CO₂ (accumulation of soil emissions) and very low O₃ (limited transport from aloft) at the same time at the ATTO site in addition to the reduced radiation (see section 3.3).

Figure 12 shows the evolution of the temperature at 76.8 *m* (°C, shaded) and horizontal wind (*m s*⁻¹, vector) at 134.5 *m* on July 11th. Between 03 and 11 UTC, the air temperature is higher on Balbina Lake compared to that above the forest area. This temperature gradient induces the formation of a forest breeze towards the lake with the wind converging towards the center of the lake (Fig 12a-e). At 13 UTC the temperature gradient reverses its direction and induces the formation of the lake breeze towards the forest that at 15 UTC is more clearly defined along the southeastern shores of Balbina Lake (Fig 12g).

Another interesting aspect is the entry of cooler air through the Northwest quadrant starting at 03 UTC, which is transported in Southeast direction. From 3 to 11 UTC a corridor of warmer air is established from Lake Balbina to the Southeast quadrant

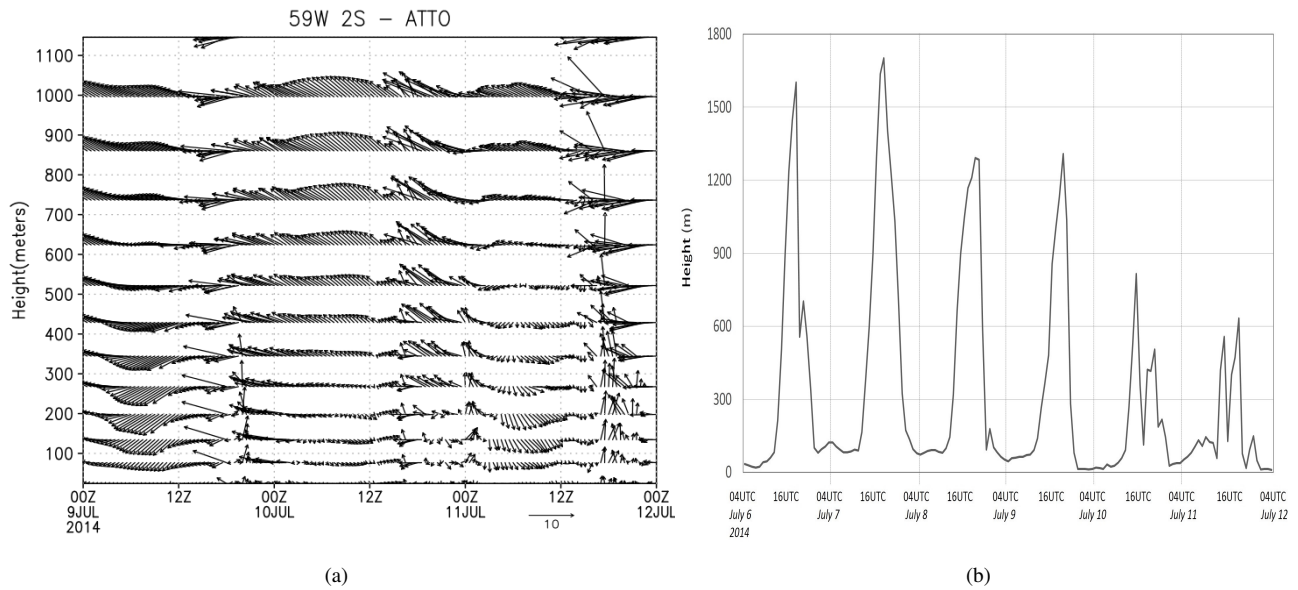


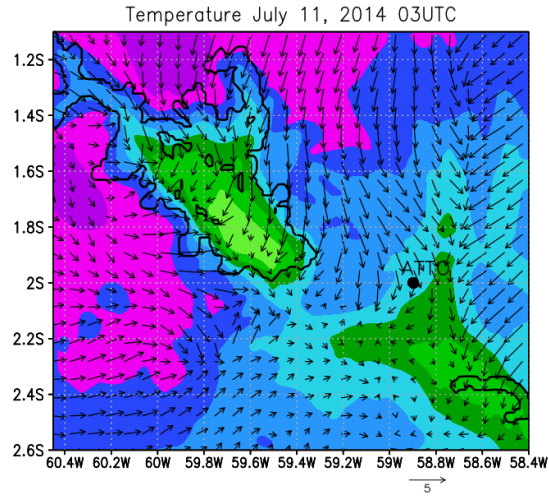
Figure 11. (a) Vertical profile of the horizontal wind ($m s^{-1}$) obtained by JULLES-CCATT-BRAMS simulation for the ATTO site from 00 UTC from the 9th to 00 UTC of July 12th, 2014. (b) Boundary layer height (m) obtained from ERA5 for the ATTO site from 04 UTC - July 6th to 04 UTC - July 12th, 2014.

290 of the domain along the Uatumã River whose width is less than 1 km and can not be captured by the horizontal resolution in this simulation. The gradual drop in temperature and predominance of Northwest winds shown in this simulation at the grid points near the ATTO site agree with the observational data from this site (Fig. 6 and 7).

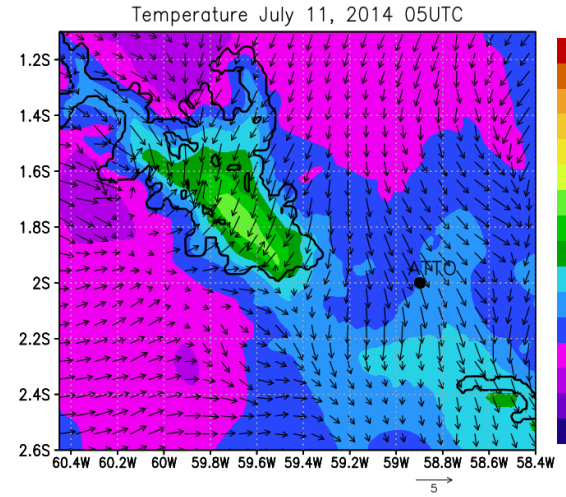
Although the Balbina lake breeze was established, it did not reach the ATTO site until 15 UTC (Fig 12g). In addition, precipitation in the simulation occurred in the following hours, similar to that observed in satellite images (Fig 4), which in turn
 295 disrupts the environment propitious to vigorous breezes that could reach the ATTO site. Although the Friagem phenomenon causes the weakening of the trade winds, which in turn would allow the establishment of more intense breezes as proposed by Silva Dias et al. (2004), the cooler and drier air mass flow of Friagem in the central region of the Amazon was dominant over the lake and forest breeze circulation. Possibly, the establishment of more vigorous river breeze circulations observed by Silva Dias et al. (2004) is possible due to the Friagem phenomenon not reaching that region and interfering with the signal of
 300 the breeze and causing intense rainfall.

Figure 13 shows the behavior of modeled water vapor, O_3 , CO and NO_2 on July 11th, 2014, at the moment of incursion (a, c, f, g) and dissipation (b, d, f, h) of the Friagem in the study area. The mixing ratios of water vapor near the surface at 02 UTC (Fig. 13a) were lower in the regions where cooler air was observed entering this domain, indicating that the Friagem brought cold and dry air to the ATTO site and Balbina Lake.

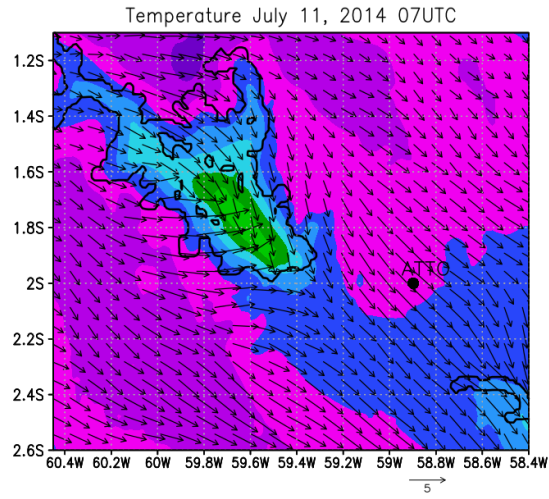
305 O_3 -mixing ratios are higher above the lake and its surroundings, for both times shown (Fig. 13c and d). The O_3 -mixing ratio within the limits of the simulation domain are mostly below 11 ppbv, whereas above the lake these mixing ratios exceed 20



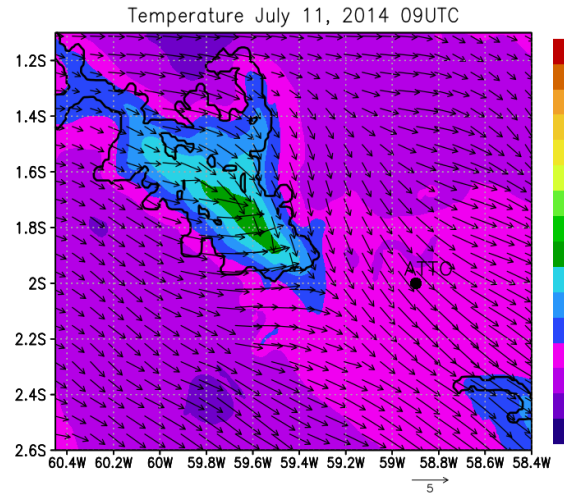
(a)



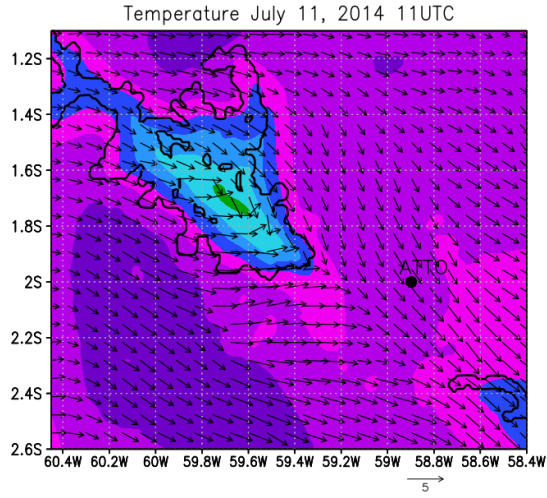
(b)



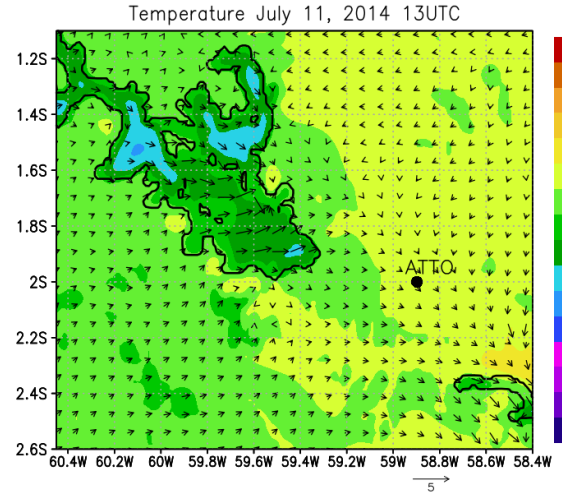
(c)



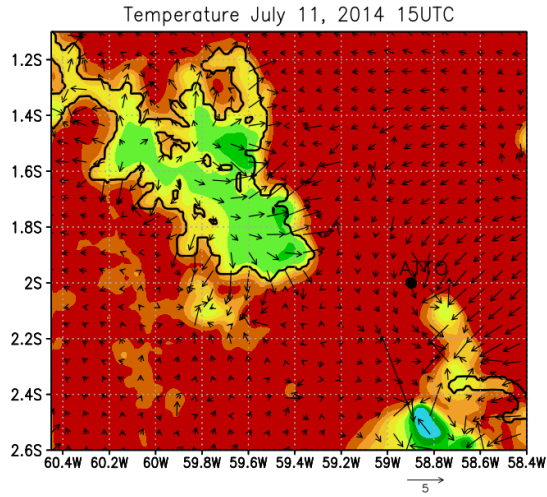
(d)



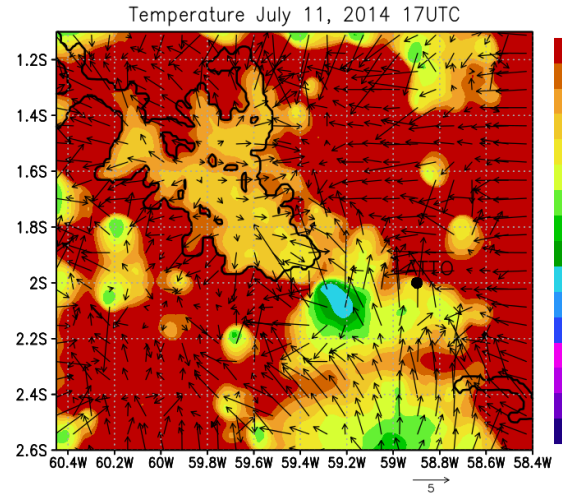
(e)



(f)

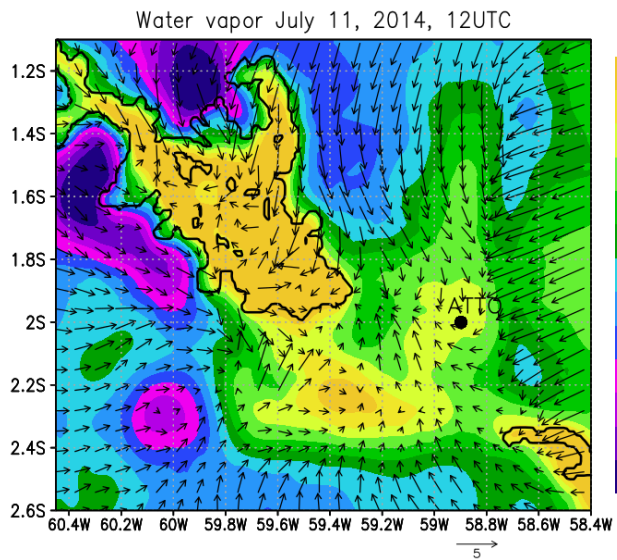


(g)

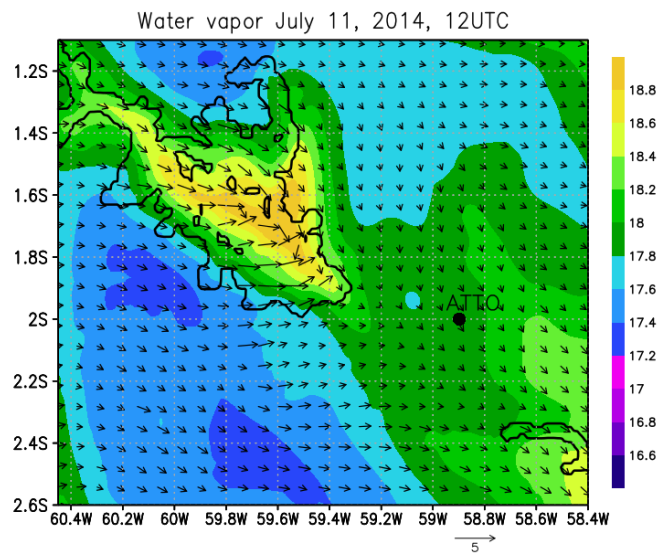


(h)

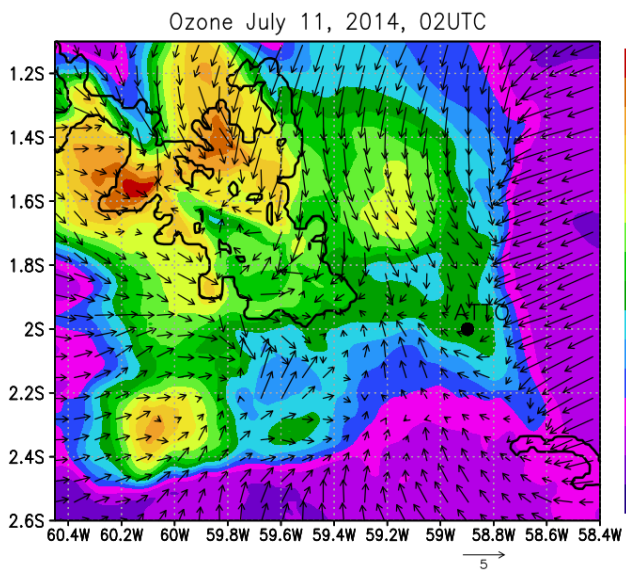
Figure 12. Evolution of modeled air temperature ($^{\circ}\text{C}$, shaded) at 76.8 m and horizontal wind (m s^{-1} , vector) at 134.5 m, on July 11th, 2014 at: (a) 03 UTC, (b) 05 UTC, (c) 07 UTC, (d) 09 UTC, (e) 11 UTC, (f) 13 UTC, (g) 15 UTC and (h) 17 UTC. Balbina Lake (black contour) and ATTO site (black dot) are indicated.



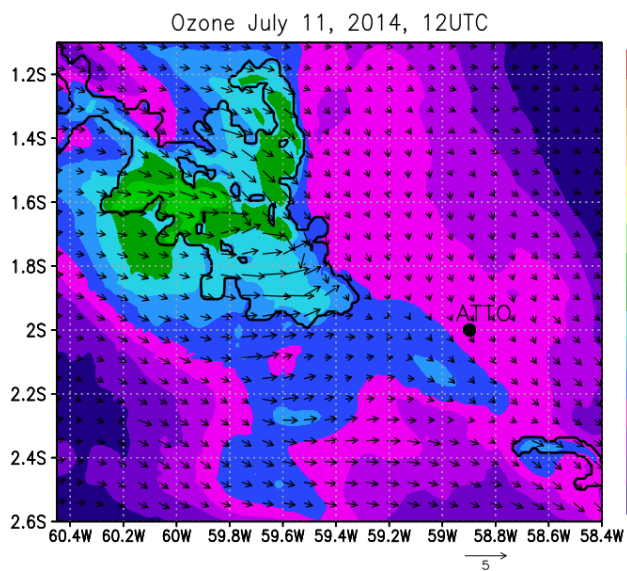
(a)



(b)



(c)



(d)

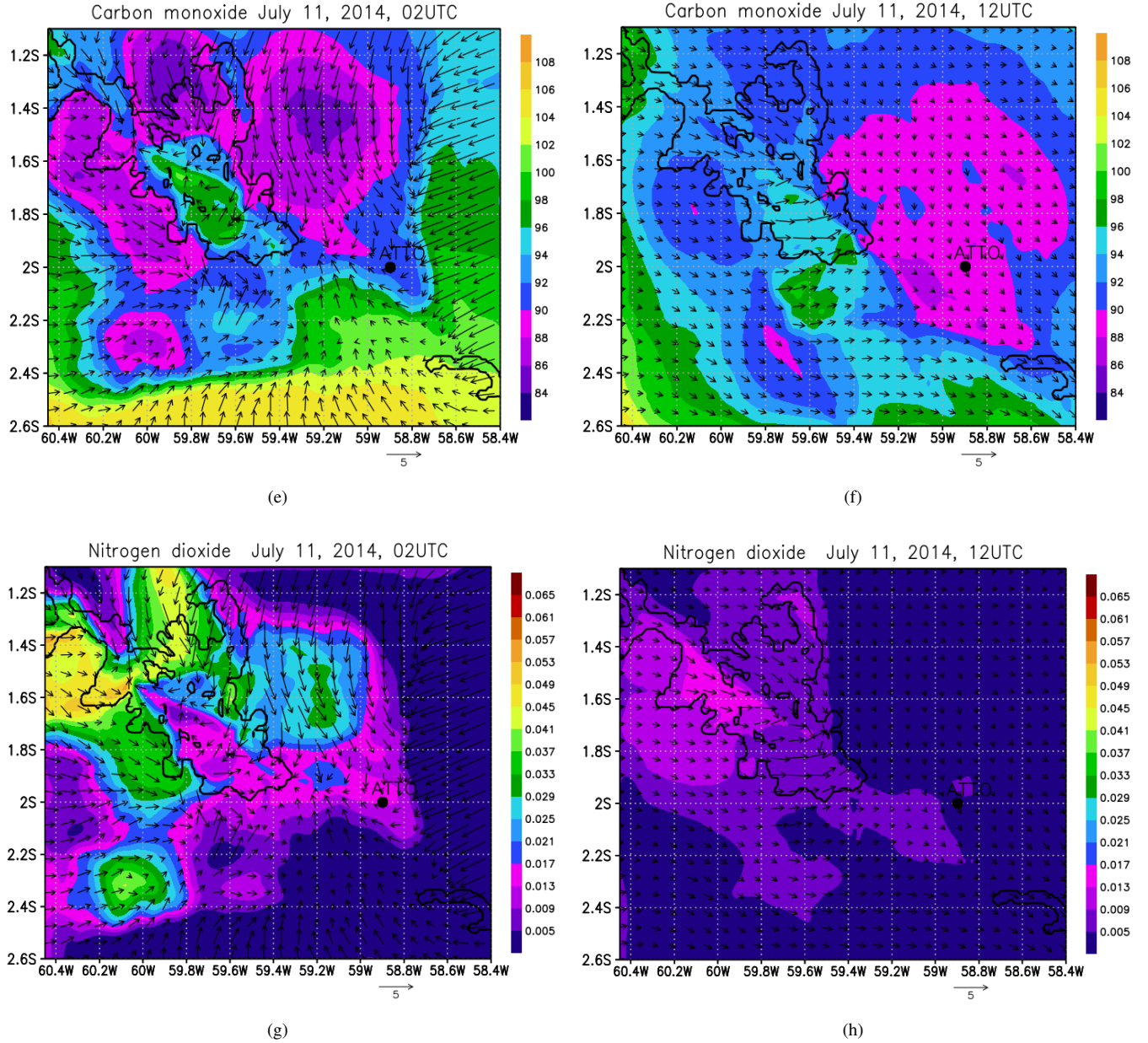


Figure 13. simulated horizontal wind at 134.5 m on July 11th, 2014 for: (a, b) water vapor mixture ratio ($g\ kg^{-1}$, shaded); (c, d) ozone mixing ratio (ppbv, shaded); (e, f) carbon monoxide mixing ratio (ppbv, shaded) and (g, h) nitrogen dioxide mixing ratio (ppbv, shaded) at 24.4 m, when the Friagem was arriving at the study area (a, c, e, g) and at the moment of its dissipation (b, d, f, g). Balbina Lake (black outline) and ATTO site (black dot) are indicated

ppbv at certain points, especially at 02 UTC. The effect responsible for higher O_3 -mixing ratio both during the day e night may be associated with the fact that deposition is very much reduced over the open water compared to the forest (Ganzeveld et al., 2009). It can also be seen that the Friagem extended in the direction of ATTO, but probably due to the onset of rain (Fig. 4) was not clearly detected at ATTO.

In regards of CO gas, it can be observed that its concentration on the center of the lake at 02 UTC (Fig. 13e) is higher than in the regions near the margins of the lake, however, calls attention at this time the transport of CO arriving with the South and Northeast winds, approaching the ATTO site. However, it is noted that the entire region of the simulation domain presents low CO mixing ratio at the time the Friagem is dissipated (Fig. 13f). Apparently, the Friagem event “expels” the polluted air mass in the South and Southeast of the ATTO site (around Manaus city), “cleaning” the atmosphere, or preventing this pollution from reaching ATTO site and Balbina lake.

NO_2 gas is an important precursor of O_3 , and is mainly related to emissions from fires and vehicles. The emission of precursor gases in the formation of O_3 mixing ratio can increase of this trace gas to levels harmful to the forest, since the ozone can damage the stomatal functions of the leaves (Pacífico et al., 2015). In spite of this, it is observed that the higher NO_2 mixing ratio at 02 UTC (Fig. 13g) seem to have their origin in the region where higher O_3 mixing ratios are found and presented lower NO_2 during the time of dissipation of the Friagem (Fig. 13h).

4 Conclusion

In the period of July 9th to 11th, 2014 a Friagem phenomenon reached the central region of the Amazon. Through the ECMWF ERA-interim reanalysis it was possible to verify that this phenomenon ventured the Amazon region from Southwest to Northeast, bringing a strong cold, dry, ozone-rich air mass in the West quadrant, which dominated the wind field in the central region of the Amazon.

Through the observational data it was possible to verify that the passage of the Friagem in central Amazon had its most significant effects on July 11th, in region of the Manaus city, such as: Balbina Lake; ATTO site and others sites (T2, T3 and T0z).

From the observational data collected at the ATTO site, it was observed that the 11th was marked by a sudden fall in air temperature, a weakening of the typical East flow and a predominance of South, West and North winds. In addition, on the 11th the interaction between the Friagem air mass and the trade winds flow gave origin to convection bands, which in turn caused a significant reduction of the incident short wave radiation, besides a record rain of the month. With the BRAMS simulations we found that the cold air of the Friagem was just in the lower 500 m. These information leads us to the conclusion that there is a cold pool above the forest that prevents vertical mixing and consequently contributes to a increase in CO_2 mixing ratio and abrupt drop in O_3 mixing ratio above the forest canopy.

Also, through the simulations of the JULES-CCATT-BRAMS it was possible to evaluate the main impacts that the Friagem phenomenon caused both in the thermodynamic characteristics and in the atmospheric chemistry of the central region of the

Amazon. In addition, the breeze circulations between Lake Balbina and the forest were well represented in the simulations,
340 however, it was not possible to verify the influence of this breeze in trace gas concentrations at the ATTO site.

With the observational results and the simulations, it can be concluded that the Friagem phenomenon can interfere deeply in the microclimatic conditions and the chemical composition of the atmosphere, in a region of dense forest, in the center of the Amazon.

Data availability. The ATTO data used in these study are stored in the ATTO databases at the Max Planck Institute for chemistry and
345 the Instituto Nacional de Pesquisas da Amazônia. Data access can be requested from Stefan Wolff, who maintains the O₃ mixing ratios dataset (stefan.wolff@mpic.de) and Alessandro Araújo who maintains the micrometeorology dataset (alessandro.araujo@gmail.com). The GoAmazon data used in these study can be requested from Luciana Rizzo (luvarizzo@gmail.com)

Author contributions. GFCN, JCPC and CQDJ designed the study and wrote the article with the assistance of MS and JHC. SW, RAFS and PA maintain the greenhouse gas measurement system at ATTO and provided the CO₂ and O₃ data. AA and MS operate and maintain
350 the micrometeorology equipment at ATTO and provided the data which was fundamental for this study. LVR provided the O₃ data from GoAmazon sites. PAFK and JCPC assisted with BRAMS simulations.

Competing interests. The authors declare that they have no conflict of interest

Acknowledgements. This work has been supported by the Max Planck Society (MPG). For the operation of the ATTO site, we acknowl-
edge the support by the German Federal Ministry of Education and Research (BMBF contract nos. 01LB1001A and 01LK1602B) and the
355 Brazilian Ministério da Ciência, Tecnologia e Inovação (MCTI/FINEP contract 01.11.01248.00) as well as the Amazon State University (UEA), FAPEAM, LBA/INPA, and SDS/CEUC/RDS-Uatumã. We also thank the European Centre for Medium-Range Weather Forecasts (ECMWF) for the reanalysis data, and the Center for Weather Prediction and Climate Studies (Centro de Previsão de Tempo e Estudos Climáticos (CPTEC/INPE)) for providing the JULES-CCATT-BRAMS model. Furthermore, the authors thank the Amazon Modeling Laboratory (Laboratório de Modelagem da Amazônia, LAMAZ) for the technical help given, and also the Brazilian Research Council (CNPq (Conselho
360 Nacional de Desenvolvimento Científico e Tecnológico)) for the Masters scholarship. ERA-5 data are courtesy of Benedikt Steil

References

- Alcântara, C. R., Dias, M. A. S., Souza, E. P., and Cohen, J. C.: Verification of the role of the low level jets in Amazon squall lines, *Atmos. Res.*, 100, 36 – 44, <https://doi.org/https://doi.org/10.1016/j.atmosres.2010.12.023>, 2011.
- Andreae, M. O., Acevedo, O. C., Araújo, A., Artaxo, P., Barbosa, C. G. G., Barbosa, H. M. J., Brito, J., Carbone, S., Chi, X., Cintra, B.
365 B. L., da Silva, N. F., Dias, N. L., Dias-Júnior, C. Q., Ditas, F., Ditz, R., Godoi, A. F. L., Godoi, R. H. M., Heimann, M., Hoffmann, T., Kesselmeier, J., Könemann, T., Krüger, M. L., Lavric, J. V., Manzi, A. O., Lopes, A. P., Martins, D. L., Mikhailov, E. F., Moran-Zuloaga, D., Nelson, B. W., Nölscher, A. C., Santos Nogueira, D., Piedade, M. T. F., Pöhlker, C., Pöschl, U., Quesada, C. A., Rizzo, L. V., Ro, C.-U., Ruckteschler, N., Sá, L. D. A., de Oliveira Sá, M., Sales, C. B., dos Santos, R. M. N., Saturno, J., Schöngart, J., Sörgel, M., de Souza, C. M., de Souza, R. A. F., Su, H., Targhetta, N., Tóta, J., Trebs, I., Trumbore, S., van Eijck, A., Walter, D., Wang, Z.,
370 Weber, B., Williams, J., Winderlich, J., Wittmann, F., Wolff, S., and Yáñez Serrano, A. M.: The Amazon Tall Tower Observatory (ATTO): overview of pilot measurements on ecosystem ecology, meteorology, trace gases, and aerosols, *Atmos. Chem. Phys.*, 15, 10 723–10 776, <https://doi.org/10.5194/acp-15-10723-2015>, 2015.
- Araújo, A. C., Nobre, A. D., Kruijt, B., Elbers, J. A., Dallarosa, R., Stefani, P., von Randow, C., Manzi, A. O., Culf, A. D., Gash, J. H. C., Valentini, R., and Kabat, P.: Comparative measurements of carbon dioxide fluxes from two nearby towers in a central Amazonian
375 rainforest: The Manaus LBA site, *J. of Geophys. Res.-Atmos.*, 107, LBA 58–1–LBA 58–20, <https://doi.org/10.1029/2001JD000676>, 8090, 2002.
- Berrisford, P., Dee, D., Poli, P., Brugge, R., Fielding, K., Fuentes, M., Kallberg, P., Kobayashi, S., Uppala, S., and Simmons, A.: The ERA-Interim archive, version 2.0, ERA Report Series, 1, 2011.
- Best, M. J., Pryor, M., Clark, D. B., Rooney, G. G., Essery, R. L. H., Ménard, C. B., Edwards, J. M., Hendry, M. A., Porson, A., Gedney, N.,
380 Mercado, L. M., Sitch, S., Blyth, E., Boucher, O., Cox, P. M., Grimmond, C. S. B., and Harding, R. J.: The Joint UK Land Environment Simulator (JULES), model description–Part 1: Energy and water fluxes, *Geosci. Model. Dev.*, 4, 677–699, <https://doi.org/10.5194/gmd-4-677-2011>, 2011.
- Betts, A. K., Gatti, L. V., Cordova, A. M., Dias, M. A. S., and Fuentes, J. D.: Transport of ozone to the surface by convective downdrafts at night, *J. of Geophys. Res.-Atmos.*, 107, LBA–13, 2002.
- 385 Brinkmann, W. and Ribeiro, M.: Air temperatures in Central Amazonia. III.-Vertical Temperature Distribution on a Clearcut Area and in a Secondary Forest near Manaus (Cold Front Conditions July 10 th. 1969), *Acta Amazon.*, 2, 25–29, 1972.
- Caraballo, P., Forsberg, B. R., Almeida, F. F. d., and Leite, R. G.: Diel patterns of temperature, conductivity and dissolved oxygen in an Amazon floodplain lake: description of a friagem phenomenon, *Acta Limnologica Brasiliensia*, 26, 318–331, 2014.
- Cirino, G., Brito, J., Barbosa, H. M., Rizzo, L. V., Tunved, P., de S. S., Jimenez, J. L., Palm, B. B., Carbone, S.,
390 Lavric, J. V., Souza, R. A., Wolff, S., Walter, D., Tota, J., Oliveira, M. B., Martin, S. T., and Artaxo, P.: Observations of Manaus urban plume evolution and interaction with biogenic emissions in GoAmazon 2014/5, *Atmos. Environ.*, 191, 513–524, <https://doi.org/https://doi.org/10.1016/j.atmosenv.2018.08.031>, <http://www.sciencedirect.com/science/article/pii/S1352231018305466>, 2018.
- Clark, D. B., Mercado, L. M., Sitch, S., Jones, C. D., Gedney, N., Best, M. J., Pryor, M., Rooney, G. G., Essery, R. L. H., Blyth, E., Boucher,
395 O., Harding, R. J., Huntingford, C., and Cox, P. M.: The Joint UK Land Environment Simulator (JULES), model description–Part 2: Carbon fluxes and vegetation dynamics, *Geosci. Model. Dev.*, 4, 701–722, <https://doi.org/10.5194/gmd-4-701-2011>, 2011.

- Cohen, J. C. P., Dias, M. A. F. S., and Nobre, C. A.: Environmental Conditions Associated with Amazonian Squall Lines: A Case Study, *Mon. Weather Rev.*, 123, 3163–3174, [https://doi.org/10.1175/1520-0493\(1995\)123<3163:ECAWAS>2.0.CO;2](https://doi.org/10.1175/1520-0493(1995)123<3163:ECAWAS>2.0.CO;2), 1995.
- Cotton, W. R., Pielke Sr, R., Walko, R., Liston, G., Tremback, C., Jiang, H., McAnelly, R., Harrington, J., Nicholls, M., Carrio, G., et al.: RAMS 2001: Current status and future directions, *Meteorol. Atmos. Phys.*, 82, 5–29, <https://doi.org/10.1007/s00703-001-0584-9>, 2003.
- de Araújo, A., Dolman, A., Waterloo, M., Gash, J., Kruijt, B., Zanchi, F., De Lange, J., Stoevelaar, R., Manzi, A., Nobre, A., et al.: The spatial variability of CO₂ storage and the interpretation of eddy covariance fluxes in central Amazonia, *Agric. For. Meteorol.*, 150, 226–237, <https://doi.org/10.1016/j.agrformet.2009.11.005>, 2010.
- de Oliveira, P. J., da Rocha, E. J. P., Fisch, G., Kruijt, B., and Ribeiro, J. B. M.: Efeitos de um evento de friagem nas condições meteorológicas na Amazônia: um estudo de caso, *Acta Amazon.*, 34, 613–619, <https://doi.org/10.1590/S0044-59672004000400013>, 2004.
- de Souza, D. O. and Alvalá, R. C. d. S.: Observational evidence of the urban heat island of Manaus City, Brazil, *Meteorol. Appl.*, 21, 186–193, <https://doi.org/10.1002/met.1340>, 2014.
- Dias-Júnior, C. Q., Dias, N. L., Fuentes, J. D., and Chamecki, M.: Convective storms and non-classical low-level jets during high ozone level episodes in the Amazon region: An ARM/GOAMAZON case study, *Atmos. Environ.*, 155, 199–209, <https://doi.org/https://doi.org/10.1016/j.atmosenv.2017.02.006>, 2017.
- dos Santos, M. J., Silva Dias, M. A., and Freitas, E. D.: Influence of local circulations on wind, moisture, and precipitation close to Manaus City, Amazon Region, Brazil, *J. of Geophys. Res.-Atmos.*, 119, 13–233, <https://doi.org/10.1002/2014JD021969>, 2014.
- Fan, S.-M., Wofsy, S. C., Bakwin, P. S., Jacob, D. J., and Fitzjarrald, D. R.: Atmosphere-biosphere exchange of CO₂ and O₃ in the central Amazon forest, *J. of Geophys. Res.-Atmos.*, 95, 16 851–16 864, <https://doi.org/10.1029/JD095iD10p16851>, 1990.
- Fisch, G.: Camada Limite Amazônica: Aspectos Observacionais e de Modelagem, 180 f. tese (doutorado em meteorologia), Instituto Nacional de Pesquisas Espaciais, São José dos Campos, 1996.
- Fisch, G., Marengo, J. A., and Nobre, C. A.: Uma revisão geral sobre o clima da Amazônia, *Acta Amazon.*, 28, 101–126, <https://doi.org/10.1590/1809-43921998282126>, 1998.
- Freire, L. S., Gerken, T., Ruiz-Plancarte, J., Wei, D., Fuentes, J. D., Katul, G. G., Dias, N. L., Acevedo, O. C., and Chamecki, M.: Turbulent mixing and removal of ozone within an Amazon rainforest canopy, *J. of Geophys. Res.-Atmos.*, 122, 2791–2811, <https://doi.org/10.1002/2016JD026009>, 2016JD026009, 2017.
- Freitas, R. G. and Freitas, S.: Estimativa operacional da umidade do solo para iniciação de modelos de previsão numérica da atmosfera parte I: descrição da metodologia e validação, *Revista Brasileira de Meteorologia*, 21, 1–15, 2006.
- Freitas, S., Longo, K., Silva Dias, M., Chatfield, R., Silva Dias, P., Artaxo, P., Andreae, M., Grell, G., Rodrigues, L., Fazenda, A., and Panetta, J.: The coupled aerosol and tracer transport model to the Brazilian developments on the regional atmospheric modeling system (CATT-BRAMS)–Part 1: Model description and evaluation, *Atmos. Chem. Phys.*, 9, 2843–2861, <https://doi.org/doi.org/10.5194/acp-9-2843-2009>, 2009.
- Freitas, S. R., Panetta, J., Longo, K. M., Rodrigues, L. F., Moreira, D. S., Rosário, Nilton, E., Silva Dias, Pedro, L., Maria A F Silva, D., Souza, E. P., Freitas, E. D., Longo, M., Frassoni, A., Fazenda, A. L., Cláudio M Santos, e. S., Pavani, C. A. B., Eiras, D., França, Daniela, A., Massaru, D., Silva, F. B., Santos, F. C., Pereira, G., Camponogara, G., Ferrada, G. A., Campos Velho, Haroldo, F., Menezes, I., Freire, J. L., Alonso, M. F., Gácita, Madeleine, S., Zarzur, M., Fonseca, R. M., Lima, R. S., Siqueira, R. A., Braz, R., Tomita, S., Oliveira, V., and Martins, L. D.: The Brazilian developments on the Regional Atmospheric Modeling System (BRAMS 5.2): an integrated environmental model tuned for tropical areas, *Geosci. Model. Dev.*, 10, 189–222, <https://doi.org/10.5194/gmd-10-189-2017>, 2017.

- Ganzeveld, L., Helmig, D., Fairall, C. W., Hare, J., and Pozzer, A.: Atmosphere-ocean ozone exchange: A global modeling study of biogeochemical, atmospheric, and waterside turbulence dependencies, *Global Biogeochem. Cy.*, 23, <https://doi.org/10.1029/2008GB003301>, 2009.
- Gerken, T., Wei, D., Chase, R. J., Fuentes, J. D., Schumacher, C., Machado, L. A., Andreoli, R. V., Chamecki, M., de Souza, R. A. F., Freire, L. S., Jardine, A. B., Manzi, A. O., dos Santos, R. M. N., von Randow, C., dos Santos Costa, P., Stoy, P. C., Tóta, J., and Trowbridge, A. M.: Downward transport of ozone rich air and implications for atmospheric chemistry in the Amazon rainforest, *Atmos. Environ.*, 124, Part A, 64 – 76, <https://doi.org/10.1016/j.atmosenv.2015.11.014>, 2016.
- Jacob, D. J. and Wofsy, S. C.: Budgets of reactive nitrogen, hydrocarbons, and ozone over the Amazon forest during the wet season, *J. of Geophys. Res.-Atmos.*, 95, 16 737–16 754, <https://doi.org/10.1029/JD095iD10p16737>, 1990.
- Kemenes, A., Forsberg, B. R., and Melack, J. M.: Methane release below a tropical hydroelectric dam, *Geophys. Res. Lett.*, 34, <https://doi.org/10.1029/2007GL029479>, 2007.
- Longo, K. M., Freitas, S. R., Andreae, M. O., Setzer, A., Prins, E., and Artaxo, P.: The Coupled Aerosol and Tracer Transport model to the Brazilian developments on the Regional Atmospheric Modeling System (CATT-BRAMS) Part 2: Model sensitivity to the biomass burning inventories, *Atmos. Chem. Phys.*, 10, 5785–5795, <https://doi.org/10.5194/acp-10-5785-2010>, 2010.
- Marengo, J. A., Nobre, C. A., and Culf, A. D.: Climatic impacts of “friagens” in forested and deforested areas of the Amazon basin, *J. Appl. Meteorol.*, 36, 1553–1566, [https://doi.org/10.1175/1520-0450\(1997\)036<1553:CIOFIF>2.0.CO;2](https://doi.org/10.1175/1520-0450(1997)036<1553:CIOFIF>2.0.CO;2), 1997.
- Martin, S. T., Artaxo, P., Machado, L. A. T., Manzi, A. O., Souza, R. A. F., Schumacher, C., Wang, J., Andreae, M. O., Barbosa, H. M. J., Fan, J., Fisch, G., Goldstein, A. H., Guenther, A., Jimenez, J. L., Poschl, U., Silva Dias, M., Smith, J. N., and Wendisch, M.: Introduction: Observations and Modeling of the Green Ocean Amazon (GoAmazon2014/5), *Atmos. Chem. Phys.*, 16, 4785–4797, <https://doi.org/10.5194/acp-16-4785-2016>, 2016.
- Melo, A. M., Dias-Junior, C. Q., Cohen, J. C., Sá, L. D., Cattanio, J. H., and Kuhn, P. A.: Ozone transport and thermodynamics during the passage of squall line in Central Amazon, *Atmos. Environ.*, 206, 132–143, <https://doi.org/10.1016/j.atmosenv.2019.02.018>, 2019.
- Moreira, D. S., Freitas, S. R., Bonatti, J. P., Mercado, L. M., Rosário, N. M. E., Longo, K. M., Miller, J. B., Gloor, M., and Gatti, L. V.: Coupling between the JULES land-surface scheme and the CCATT-BRAMS atmospheric chemistry model (JULES-CCATT-BRAMS1.0): applications to numerical weather forecasting and the CO₂ budget in South America, *Geosci. Model. Dev.*, 6, 1243–1259, <https://doi.org/10.5194/gmd-6-1243-2013>, 2013.
- Moura, M. A. L., Meixner, F. X., Trebs, I., Lyra, R. F. d. F., Andreae, M. O., and Nascimento Filho, M. F. d.: Evidência observacional das brisas do lago de Balbina (Amazonas) e seus efeitos sobre a concentração do ozônio, *Acta Amazônica*, 34, 605–611, <https://doi.org/10.1590/S0044-59672004000400012>, 2004.
- Pacifico, F., Folberth, G., Sitch, S., Haywood, J., Rizzo, L., Malavelle, F., and Artaxo, P.: Biomass burning related ozone damage on vegetation over the Amazon forest: a model sensitivity study, *Atmos. Chem. Phys.*, 15, 2791–2804, <https://doi.org/10.5194/acp-15-2791-2015>, 2015.
- Pöhlker, C., Walter, D., Paulsen, H., Könemann, T., Rodríguez-Caballero, E., Moran-Zuloaga, D., Brito, J., Carbone, S., Degrendele, C., Després, V. R., Ditas, F., Holanda, B. A., Kaiser, J. W., Lammel, G., Lavrič, J. V., Ming, J., Pickersgill, D., Pöhlker, M. L., Praß, M., Löbs, N., Saturno, J., Sörgel, M., Wang, Q., Weber, B., Wolff, S., Artaxo, P., Pöschl, U., and Andreae, M. O.: Land cover and its transformation in the backward trajectory footprint region of the Amazon Tall Tower Observatory, *Atmos. Chem. Phys.*, 19, 8425–8470, <https://doi.org/10.5194/acp-19-8425-2019>, 2019.
- Prince, K. C. and Evans, C.: A Climatology of Extreme South American Andean Cold Surges, *J. Appl. Meteorol. and Climatol.*, 57, 2297–2315, <https://doi.org/10.1175/JAMC-D-18-0146.1>, 2018.

- Ricarte, R. M. D., Herdies, D. L., and Barbosa, T. F.: Patterns of atmospheric circulation associated with cold outbreaks in southern Amazonia, *Meteorological Applications*, 22, 129–140, 2015.
- Rizzo, L., Artaxo, P., Müller, T., Wiedensohler, A., Paixao, M., Cirino, G., Arana, A., Swietlicki, E., Roldin, P., Fors, E., et al.:
 475 Long term measurements of aerosol optical properties at a primary forest site in Amazonia, *Atmos. Chem. Phys.*, 13, 2391–2413,
<https://doi.org/doi.org/10.5194/acp-13-2391-2013>, 2013.
- Rossato, L., Alvalá, R. d. S., and Tomasella, J.: Variação espaço-temporal da umidade do solo no Brasil: análise das condições médias para
 o período de 1971-1990, *Revista Brasileira de Meteorologia*, 19, 113–122, 2004.
- Ruimy, A., Jarvis, P., Baldocchi, D., and Saugier, B.: CO₂ fluxes over plant canopies and solar radiation: a review, in: *Adv. Ecol. Res.*, vol. 26,
 480 pp. 1–68, [https://doi.org/10.1016/S0065-2504\(08\)60063-X](https://doi.org/10.1016/S0065-2504(08)60063-X), 1995.
- Rummel, U., Ammann, C., Kirkman, G., Moura, M., Foken, T., Andreae, M., and Meixner, F.: Seasonal variation of ozone deposition to a
 tropical rain forest in southwest Amazonia, *Atmos. Chem. Phys.*, 7, 5415–5435, <https://doi.org/10.5194/acp-7-5415-2007>, 2007.
- Savijärvi, H. and Räisänen, P.: Long-wave optical properties of water clouds and rain, *Tellus A*, 50, 1–11,
<https://doi.org/10.3402/tellusa.v50i1.14508>, 1998.
- 485 Savijärvi, H., Arola, A., and Räisänen, P.: Short-wave optical properties of precipitating water clouds, *Q. J. R. Meteorol. Soc.*, 123, 883–899,
<https://doi.org/10.1002/qj.49712354005>, 1997.
- Silva Dias, M., Dias, P. S., Longo, M., Fitzjarrald, D. R., and Denning, A. S.: River breeze circulation in eastern Amazonia: observations and
 modelling results, *Theor. Appl. Climatol.*, 78, 111–121, <https://doi.org/10.1007/s00704-004-0047-6>, 2004.
- Sun, Z. and Shine, K. P.: Studies of the radiative properties of ice and mixed-phase clouds, *Q. J. R. Meteorol. Soc.*, 120, 111–137,
 490 <https://doi.org/10.1002/qj.49712051508>, 1994.
- Thalman, R., de Sá, S. S., Palm, B. B., Barbosa, H. M. J., Pöhlker, M. L., Alexander, M. L., Brito, J., Carbone, S., Castillo, P., Day, D. A.,
 Kuang, C., Manzi, A., Ng, N. L., Sedlacek III, A. J., Souza, R., Springston, S., Watson, T., Pöhlker, C., Pöschl, U., Andreae, M. O.,
 Artaxo, P., Jimenez, J. L., Martin, S. T., and Wang, J.: CCN activity and organic hygroscopicity of aerosols downwind of an urban
 region in central Amazonia: seasonal and diel variations and impact of anthropogenic emissions, *Atmos. Chem. Phys.*, 17, 11 779–11 801,
 495 <https://doi.org/10.5194/acp-17-11779-2017>, 2017.
- Thompson, G. and Eidhammer, T.: A Study of Aerosol Impacts on Clouds and Precipitation Development in a Large Winter Cyclone, *Journal
 of the Atmospheric Sciences*, 71, 3636–3658, <https://doi.org/10.1175/JAS-D-13-0305.1>, <https://doi.org/10.1175/JAS-D-13-0305.1>, 2014.
- Thompson, G., Field, P. R., Rasmussen, R. M., and Hall, W. D.: Explicit Forecasts of Winter Precipitation Using an Improved
 Bulk Microphysics Scheme. Part II: Implementation of a New Snow Parameterization, *Mon. Weather Rev.*, 136, 5095–5115,
 500 <https://doi.org/10.1175/2008MWR2387.1>, 2008.
- Toon, O. B., McKay, C., Ackerman, T., and Santhanam, K.: Rapid calculation of radiative heating rates and photodissociation rates in inho-
 mogeneous multiple scattering atmospheres, *J. of Geophys. Res.-Atmos.*, 94, 16 287–16 301, <https://doi.org/10.1029/JD094iD13p16287>,
 1989.
- Trebs, I., Mayol-Bracero, O. L., Pauliquevis, T., Kuhn, U., Sander, R., Ganzeveld, L., Meixner, F. X., Kesselmeier, J., Artaxo, P., and
 505 Andreae, M. O.: Impact of the Manaus urban plume on trace gas mixing ratios near the surface in the Amazon Basin: Implications for the
 NO-NO₂-O₃ photostationary state and peroxy radical levels, *J. of Geophys. Res.-Atmos.*, 117, 2012.
- Viana, L. P. and Herdies, D. L.: Estudo de caso de um evento extremo de incursão de ar frio em julho de 2013 sobre a bacia amazônica
 brasileira, *Revista Brasileira de Meteorologia*, 33, 27–39, 2018.