

Systematic detection of local CH₄ ~~emissions~~ anomalies combining satellite measurements and high-resolution forecasts.

Jérôme Barré¹, Ilse Aben², Anna Agustí-Panareda¹, Gianpaolo Balsamo¹, Nicolas Bousserez¹, Peter Dueben¹, Richard Engelen¹, Antje Inness¹, Alba Lorente², Joe McNorton¹, Vincent-Henri Peuch¹, Gabor Radnoti¹, Roberto Ribas¹

¹ECMWF, European Centre for Medium Range Weather Forecasts, Shinfield Park, Reading, United Kingdom

²SRON, Netherlands Institute for Space Research, Utrecht, Netherlands

10 *Correspondence to:* Jérôme Barré (jerome.barre@ecmwf.int)

Abstract. In this study we present a novel monitoring methodology combining satellite retrievals and forecasts to detect local CH₄ concentration anomalies worldwide that are related to rapidly changing anthropogenic emissions that significantly contribute to the CH₄ atmospheric budget but also that are related to biases in the satellite retrieval data. The method uses high resolution (7 km x 7 km) retrievals of total column CH₄ from the Tropospheric Monitoring Instrument (TROPOMI) onboard the Sentinel 5 Precursor satellite. Observations are combined with high resolution CH₄ forecasts (~9 km) produced by the Copernicus Atmosphere Monitoring Service (CAMS) to provide departures (observations minus forecasts) close to the native satellite resolution at appropriate time. Investigating the departures is an effective way to link satellite measurements and emission inventory data in a quantitative manner. We perform filtering on the departures to remove the synoptic-scale and meso-alpha-scale biases on both forecasts and satellite observations. We then use a simple classification on the filtered departures to detect anomalies and plumes coming from CAMS emissions that are missing (e.g., pipeline or facility leaks), under-reported or over-reported (e.g., depleted drilling fields). ~~Additionally, the classification~~ method also shows some limitations to solely focus on emissions detection helps to detect due to local satellite retrieval ~~biases errors due linked with to~~ land surface albedo and scattering issues.

1. Introduction

25 Atmospheric methane (CH₄) is the second most important anthropogenic greenhouse gas after carbon dioxide and contributes significantly to changes in radiative forcing and climate change. CH₄ is estimated to account for at least a quarter of the present-day warming (Myhre et al., 2013) and has a near-term global warming potential that is 84 times larger than CO₂ per unit mass (IPCC 2013). There are numerous natural and anthropogenic CH₄ sources, which vary in location and areal extent. The anthropogenic emissions related such as oil and gas production and coal mining and biomass burning tends to be

30 geographically localised, e.g., over a plant facility, a pipeline or a field of extraction. Methane emissions however related to biological fluxes such as livestock, landfills and rice fields which can also be either geographically localised over narrow areas or more widespread. For example, microbial respiration in wetlands showing more extensive patterns over the globe (Saunio et al., 2016). Atmospheric methane concentrations have more than doubled since the pre-industrial times because of the imbalance between methane sources and sinks (IPCC, 2013), due to an increase of oil and gas production, rice crops, livestock and landfills. Methane has a relatively short atmospheric lifetime (with respect to climate scales) of around 9 years, meaning 35 targeted emission reductions could be an effective way to limit the rate of warming over the upcoming decades (Shoemaker et al., 2013).

Greenhouse gases emission inventories are generated using aggregation and extrapolation of regional and national specific data. These data are reported individually by countries using the guidelines provided by the United Nations Framework on 40 Climate Change (UNFCCC) and the Intergovernmental Panel for Climate Change (IPCC). The reporting follows a bottom-up approach, which utilises activity data and emission factors of individual emissions sectors. Official reporting and processing of this data to build these bottom-up inventories can cause significant lag and information can be out of date for certain sectors once publicly released. This can become an issue in the context of rapidly changing emissions from large point sources, for example in the oil and gas sectors (Alvarez et al., 2018). In the case of atmospheric composition modelling, emission 45 inventories are used for input surface fluxes to simulate atmospheric concentrations. Within the Copernicus Atmosphere Monitoring Service (CAMS) these simulations are used to provide routine real-time forecasts of greenhouse gases concentrations. The CAMS greenhouse gas forecasting system integrates satellite observations (Massart et al., 2014, 2016) to generate initial conditions for high-resolution forecasts at about 10 km (Agusti-Panareda et al., 2019). The lack of up-to-date emission inventories will impact and likely degrade simulated CH₄ concentrations in areas where the local contribution of 50 anthropogenic emissions is significant.

Many studies have shown the rapidly changing and event-based nature of CH₄ anthropogenic emissions, especially in the case of identifying the location of 'super-emitter' point source locations. Conley et al. (2016) used aircraft measurements to characterise a blowout of a well connected to the Aliso Canyon gas storage facility in California from October 2015 to February 2016. Pandey et al. (2019) showcased detection of large methane emission from a gas well blowout in Ohio during February 55 to March 2018 using satellite measurements. More recently, Varon et al. (2019) detected an anomalously large CH₄ source using a combination of satellite instruments over Central Asia (western Turkmenistan) associated with a gas compression station. Those types of suddenly occurring CH₄ emissions cannot be or are not reported/detected in time to be included in the bottom-up inventories but are seen from space. Other studies showed the capability of satellite measurements to detect CH₄ emissions related to extensive drilling and fracking areas. Kort et al. (2014) identified a large methane anomaly over the Four 60 Corners region of the USA and more recently de Gouw et al. (2020), Zhang et al. (2020) and Schneising et al. (2020) showed satellite detection of large and extended enhancements in [different US oil and gas production regions such as the Permian basin, the San Juan, Uintah and Permian basin in the USA](#). While these satellite-based studies focused on specific events and locations, none of them systematically detected such anomalies at global scale, nor did they provide a method to do so.

65 Systematic detection of large point sources of anthropogenic CH₄ emissions using a combination of satellite observations
and modelling could enable rapid action to reduce emissions from the oil and gas sectors. Two recent developments allow for
systematic detection of unreported CH₄ atmospheric anomalies linked to small scale and point sources emissions. Firstly,
newly available high resolution (7 km x 7 km) satellite observations from the TROPospheric Monitoring Instrument
(TROPOMI, Veeffkind et al., 2012) on board the Sentinel-5p platform. Secondly, improved real-time forecasting at high-
resolution (~9 km) provided by CAMS (Agusti-Panareda et al., 2019). In this paper we present a novel methodology to
70 routinely compare the satellite observations with the model forecasts in order to perform a systematic detection of atmospheric
CH₄ anomalies related to emission changes from small scale and point sources emissions that are not reported or lack timely
update. The paper is organised as follows: Section 2 describes the setup that includes the TROPOMI observations, the
forecasting and monitoring configurations, Section 3 presents the detection method, Section 4 discusses several case studies
to showcase the capabilities but also the limitations of the detection method. This is followed by conclusions where we discuss
75 briefly the benefit of our approach with coarse resolution inverse modelling.

2. Setup

2.1. TROPOMI CH₄ observations

The TROPOMI (Veeffkind et al., 2012) instrument was launched 13 October 2017 onboard the Sentinel-5 Precursor
satellite, a low Earth orbiter with a Sun-synchronous orbit that overpasses at 13:30 local solar time. Currently operational since
80 the end of April 2018, the instrument is an imaging spectrometer with a wide spectral range: ultraviolet, visible, ~~near-~~
~~infrared~~~~near infrared~~ and short-wave infrared. This allows TROPOMI to measure a variety of atmospheric chemical
species such as: ozone, nitrogen dioxide, carbon monoxide, sulphur dioxide, formaldehyde, aerosol and methane (Hu et al.,
2018). Current CH₄ observations, which are available for the inner two thirds of the swath and only over land, are vertically
integrated columns sensitive to the troposphere (surface to 200 hPa). With a swath of around 1,750 km (normally 2,600 km)
85 wide from the along track position and a ground pixel size of 7 km x 7 km, TROPOMI CH₄ data can provide near global daily
coverage at high horizontal resolution over land but is limited by cloud cover and retrieval quality. In this study, we use the
bias corrected version of the product and we apply the most stringent quality flagging possible, selecting only pixels that have
the *qa_value* = 1.0 (see Product Readme Methane V01.03.02, <https://sentinel.esa.int/documents/247904/3541451/Sentinel-5P-Methane-Product-Readme-File>).
90 ~~In the later document it is stated that an overall bias of -0.3% is found with comparison against independent data, and is well within the mission requirements of < 1.5% (24 ppb). The scatter of the data around this bias also complies with mission requirements of < 1.0% (18 ppb). In the later document it is stated that the overall the instrument precision is less than or equal to 2.5% of the total column which is within the mission requirements for both random error and bias (1.0% and 1.5% respectively).~~ Figure 1 illustrates the CH₄ satellite observation coverage that TROPOMI provides over a year, a month and a day.

Formatted: Font: 10 pt

Formatted: Font: 10 pt

Formatted: Font: 10 pt

95 The measurements show clear geographical variation of the CH₄ column-averaged dry-air mixing ratios (XCH₄) that
are driven by the atmospheric transport but most importantly by the spatial and temporal variability of the surface fluxes and
emissions variations. Figure 2 shows the 2019 annual average zoomed over the Middle East region and the western USA
regions. Over these regions, spatial variability results in XCH₄ enhancements of up to 50 ppb over emission
hotspots. Differences in the average concentrations from region to region are also significant, from approximately 1825 ppb
100 over the USA to 1875 ppb over the Middle East. The strong local enhancements are an indication of strong local surface fluxes
and emissions of CH₄ from oil and gas activities, mining, agriculture or wetlands. XCH₄ retrievals can also be prone to some
systematic residual errors especially related to surface albedo (Hasekamp et al., 2019). De Gouw et al. (2020) for instance
mentioned the possibility of retrieval biases due to low surface albedo in the ~~short-wave~~short-wave infrared spectral bands in
the winter. Such retrieval biases, even though mostly reduced by the bias corrected product, need further investigation ([see](#)
105 [section 4.3](#)) and are outside the scope of this paper. Nevertheless, the TROPOMI data are sufficiently accurate to show local
enhancements linked (but not limited) to oil and gas production. We show in section 3 how to isolate these small-scale signals
of interest and how to remove the contribution of synoptic-scale (more than 2000 km) and meso-alpha-scale (between 2000
km and 200 km) biases. In the rest of the paper, we define large-scale as the combination of synoptic-scale and meso-alpha-
scale.

110 2.2. CAMS high-resolution CH₄ forecasting suite

In this study we use the ECMWF Integrated Forecasting System (IFS), which is used in different configurations for the
operational Numerical Weather Prediction (NWP) system as well as for the Copernicus Atmosphere Monitoring Service
(CAMS) atmospheric composition analyses and forecasts ([e.g. Flemming et al., 2015](#)). As part of the CAMS greenhouse gases
services, the IFS is used to provide 5 days CO₂ and CH₄ forecasts (Agusti-Panareda et al., 2019) jointly with other species
115 relevant for air-quality (Flemming et al., 2015).

The IFS model cycle used in this paper is CY45R1 and is run routinely with a TC01279 horizontal resolution which is a
cubic octahedral reduced Gaussian grid at approximately 9 km (Holm et al., 2016) with 137 vertical levels from the surface to
0.01hPa [and a time step of 450 seconds](#). Details about the transport and meteorological configuration can be found in Agusti-
Panareda et al. (2019). The CAMS greenhouse gases (GHG) operational suite is composed of an analysis and forecasts at
120 medium and high resolution (see Fig. 3). The analysis is based on the IFS 4D-Var assimilation system which was adapted to
assimilate retrieved columns-averaged mole fractions of CO₂ and CH₄ together with all the operational meteorological
observations (Engelen et al., 2009, Massart et al., 2014, 2016). The analyses are produced every 12hours (00:00UTC and
12:00UTC). A 4-day forecast is then issued daily after the 00:00UTC analysis on a TC0399, a cubic octahedral grid
corresponding to approximately 25 km x 25 km with the same 137 model level configuration. Two satellite observation streams
125 are currently assimilated, the Infrared Atmospheric Sounding Interferometer (IASI) for CH₄ on the MetOp satellites and the
Thermal And Near-infrared Sensor for carbon Observations (TANSO) on the GOSAT satellite for both CO₂ and CH₄ (see

Massart et al. (2014) for further details). In this configuration only the concentrations are corrected by the assimilation, the emissions and surface fluxes remain unchanged. The processing and acquisition of the level 2 data in 2019 provided the satellite XCH₄ data 4 days behind real time. The high-resolution forecast is then coupled to the analysis experiment by merging the 4-day lower resolution forecast from the CO₂ and CH₄ analysis with the previous 1-day high resolution forecast (Fig. 3) in order to preserve the fine-scale features of the high-resolution forecast. Additionally, the high-resolution forecast coming from the operational NWP runs is used to reset the initial meteorological conditions in order to ensure the best possible accuracy of the transport. In this paper we will focus on using the CH₄ forecasts at high-resolution coming from the setup described above. The high-resolution forecasts are run on a TCo1279 L137 grid of approximately 9 km x 9 km for a 5-day period and are initialized approximately 4 hours behind real-time every day from 00:00UTC. [The impact of the TANSO and IASI CH₄ retrievals assimilation is not strong close to the surface \(see Fig. 8 in Massart et al., 2014\). Analyses performed at 25km of resolution are not correcting the emissions and hence will mainly provide a correction in the forecast initial condition concentrations in the free troposphere and above. At lower altitudes the influence of the emissions in the forecast is dominating during the 4-day forecast at 25 km that is used to initialise the high-resolution forecast at 9 km that does not include data assimilation.](#)

Both high resolution forecasts and analysis use prescribed CH₄ surface fluxes. The anthropogenic emissions including fossil fuel emissions, agriculture and landfill/waste emissions are from the annual EDGARv4.2FT2010 data set (Olivier and G. Janssens-Maenhout, 2012) for 2010 with 0.1°x0.1° resolution and monthly resolution for the rice emissions (Matthews et al., 1991). Monthly mean wetland emissions come from a climatology (1990-2008) based on the LPJ-WHyMe model constrained by SCIAMACHY observations during the HYMN project (Spahni et al., 2011) with a resolution of 1° x 1° degree. The biomass burning emissions are from GFASv1.2 (Kaiser et al., 2012). Other sources and sinks include a monthly soil sink (Ridgwell et al., 1999), annual mean oceanic fluxes (Houweling et al., 1999, Lambert and Schmidt, 1993), and monthly mean fluxes from termites (Sanderson, 1996) and wild animals (Houweling et al., 1999). The chemical sink in the troposphere and the stratosphere is represented by a climatological monthly mean chemical loss rate (Bergamaschi et al., 2009). This is based on OH fields optimised with methyl chloroform using the TM5 model (Krol et al., 2005) with prescribed concentrations of the stratospheric radicals using the 2-D photochemical Max Planck Institute model. Figure 4 shows the geographical and seasonal structure of the surface fluxes. Large-scale and smoother structures are representative of the wetland, soil and agriculture fluxes, whereas the finer-scale and shaper structures are representative of the anthropogenic and fire emissions. Figure 5 shows the capability of the high-resolution forecasts at global and regional scales. Global seasonal cycles and synoptic scale concentrations are represented as well as concentrations at smaller scales such as plumes from point source emissions and orographic effects. Large point sources and associated plumes can be seen over Europe, for example over Madrid, Paris and Tours (western France). Inventory estimates suggest the modelled hotspot region near Tours is probably the result of solid waste landfill emissions. Other possibilities include emissions from both the enteric fermentation and wastewater treatment

sectors, all of which may be linked to a landfill site. Over the Middle East region zoom, sharp point sources are seen in
160 Teheran and Southern Iran as well as over Pakistan (Karachi) and also closer to the Himalayan region.

2.3. Monitoring suite

To monitor and compare the TROPOMI XCH₄ retrievals with the IFS CH₄ 9 km forecasts we re-use a part of the IFS
assimilation system in a so-called monitoring mode. The system recomputes a high-resolution trajectory at 9 km ([which is a
model integration](#)) initialised from the forecasts over a 12-hour monitoring window to calculate so-called first guess departures
165 (difference between the observation and the model forecast) with the observations at the appropriate [model time step](#). At each
observation location the departure can be written as follows,

$$d = y - \mathbf{HM}(x_i) \quad (1)$$

where d is the departure, y the observation, \mathbf{H} the observation operator, \mathbf{M} the model integration or trajectory and x_i the initial
170 CH₄ condition at the beginning of the monitoring window. If we inject the retrieval equation (Rodgers, 2000) the departure
becomes,

$$d = \mathbf{A}x_t + (\mathbf{I} - \mathbf{A})x_a + \epsilon - \mathbf{AM}(x_i) - (\mathbf{I} - \mathbf{A})x_a \quad (2)$$

where x_t is the true CH₄ concentration state (which is never exactly known), \mathbf{A} is the averaging kernel matrix which represents
the sensitivity of the retrieval on the vertical profile with respect to the true state, \mathbf{I} the identity matrix, x_a the a priori
175 information used in the retrieval and ϵ the retrieval error term. The equation then simplifies to,

$$d = \mathbf{A}(x_t - \mathbf{M}(x_i)) + \epsilon \quad (3)$$

which is the difference between the true state and the forecast smoothed by the averaging kernel function plus the retrieval
error term. Those departure values are thus strongly dependent on the averaging kernel function shape. For the TROPOMI
XCH₄ retrievals the mean averaging kernel function shows a homogenous sensitivity to the entire [atmosphere troposphere up
to 200hPa](#) where the sensitivity [slightly](#) decreases in the stratosphere ([see Fig. 2 in Hu et al., 2016](#)[Schneising et al., 2020](#)). The
180 averaging kernel function is not very variable between pixels or between different regions of the globe (not shown). Figure 6
shows the departures over various time scales (yearly, monthly and daily) for the global domain. Overall, the departures
(observation minus forecast) show a global positive bias of around 25 ppb (meaning observation values are above the model
values) which could be attributed to model biases (Ramonet et al., 2019) and/or observation biases (Langerock et al.,
185 2019). Ramonet et al. (2019) compared the CAMS CH₄ forecasts with independent total column data. Results showed that the
forecasts continuously underestimate the CH₄ total columns by 5-20 ppb. Langerock et al. (2019) showed that the averaged
total column bias for the TROPOMI CH₄ retrievals bias is -0.32% (i.e., around -5ppb) but with respect to ground-based
measurements.

Regional-scale error structures are evident from the observation-model comparison. For example, boreal regions are
190 showing a band of negatives values, potentially attributed to systematic errors caused by surface albedo values during winter

(see section 2.1) in the TROPOMI retrieval algorithm. Alternatively, they could be caused by CH₄ biases at tropopause and lower stratosphere levels in the IFS model. Also, a possible time lag in the wetland emissions, which are calculated offline and provide boundary conditions in the IFS forecasting chain (see section 2.2) could cause such bias. The attribution of this type of large-scale error seen in the departures is not fully understood yet and is beyond the scope of this paper, although an understanding of these biases is crucial to further improve the quality of the CAMS CH₄ forecasts and TROPOMI retrievals. At finer scales, structures are seen on the yearly average comparison and become more evident on the monthly timescales. Local differences are even stronger on a daily basis but recognising fine scale structures is challenging due to the lack of daily coverage. For those reasons a spatial filtering and temporal averaging of the departures is performed to extract and use the small-scale features seen in the departures.

3. Detection method

3.1. Filtering the signal

To remove the large-scale features seen in the departures we have implemented a high pass Gaussian filtering. The filter uses a convolution of a 2D Gaussian kernel on a given averaged and binned departure field. In this study we use a 0.1° latitude-longitude binning. Due to ocean, cloud cover and quality control flagging a number of bins of the departure will show missing values that will jeopardize the convolution. This problem is solved technically by creating two auxiliary matrices that have missing values replaced by 0. The two auxiliary matrices are then defined as

$$\mathbf{D} = \begin{cases} d_m, & \text{if } n > N \\ 0, & \text{otherwise} \end{cases} \quad (4)$$

$$\mathbf{C} = \begin{cases} 1, & \text{if } n > N \\ 0, & \text{otherwise} \end{cases} \quad (5)$$

where d_m (with the subscript m standing for mean) is the average departure in the given bin, N the threshold of minimum number of observations in a given bin. In this study, we have chosen $N = 2$ in order to avoid smoothing with very isolated pixels that can be faulty but also keep as much data as possible. Replacing the missing values by zeros in \mathbf{D} introduces an error after convolving (inducing low values due to smoothing out with zeros) in the filtered departures d_{hp} (with the subscript hp standing for high pass). This can be compensated by applying the same Gaussian filter on a matrix \mathbf{C} representing the selected bins for filtering (where number of counts are above N) and using the ratio of the two filtered matrices to compensate for the missing value errors. Then a high pass filtering on a given observation space field (here departures) can be formulated as follows,

$$d_{hp} = d_m - \frac{G(\sigma) * \mathbf{D}}{G(\sigma) * \mathbf{C}} \quad (6)$$

220 where $G(\sigma)$ is a 2D Gaussian kernel function with a σ length scale. The same filtering is also applied on the observation values y and the first guess values $HM(x_n)$ as this will be used for classification in section 3.2. Figure 7 shows the effect of the filtering on the observation-space data using a 30-day window and a length-scale of 2° . Firstly, we can see that the large-scale features in the departures such as the overall bias and regional variations are removed. Secondly, the departures, observations and first guess distributions are put towards gaussianity, centred around zero and displaying more a symmetrical shape and tails. This then makes the processing and the classification of the data much easier (see section 3.2).

To decide on the appropriate window length and Gaussian kernel length scale we have conducted sensitivity tests with different length scales ($\sigma = [0.5, 1.0, 2.0, 5.0]$ degrees) and a window length of 10, 30 and 90 days. Figure 8 shows the resulting filtered departures normalized by the instrument precision for the 12 possible sensitivity tests. For tests with Gaussian kernel sizes of 0.5 and 1.0 degree the filtered signal is mostly weaker than the measurement precision and very few to no detections of local anomalies will be made. Conversely, if the kernel is large the relative signal over the instrument precision is stronger but to the risk of picking up larger patterns than the targeted features, i.e., features that are directly related to local emissions in the CH_4 atmospheric distribution. For these reasons we found that a kernel of 2.0 degrees performs best. If the time window is short, e.g., 10 days, lower coverage could limit a correct detection of outliers especially in the case of isolated data points. Isolated data points that are spotting possible outliers could be filtered out towards 0 as the convolution do not have neighbouring points to use within the kernel range. The shorter the window and the narrower the kernel, the more likely this can occur. Conversely, if the time window is long, i.e., 90 days, this will maximise the chances to have a good observation coverage for the convolution filter to run best. But the this would reduce the ability to provide information on temporal variability. Also, the sharp spatial structures that correspond to more recent or sporadic emission events are smoothed in the time averaging effect decreasing the filtered departure over instrument precision ratio. For those reasons, we found that a time window of 30 days provides the most reasonable results.

3.2. Outlier classification

The final step is an outlier detection of the filtered departures. We choose to retain the values which have a filtered departure absolute value superior to the TROPOMI CH_4 measurement precision. If the filtered departures absolute values are lower than the measurement precision, they are then considered as noise and ruled out. Further refinements to the current methodology could be done to find more optimal method for outlier detection using more advanced statistical methodologies. In the present study we found that the provided measurement precision with the satellite product provides suitable results. In addition to the outlier detection, we perform a classification given the relative values and sign of the filtered observations and forecast first guess values. This allows us to define the following four categories:

- **high observations (red in Fig. 9):** where positive filtered observations values are higher than filtered forecast first guess absolute values. This class is representative of high XCH_4 values detected by TROPOMI that are not seen as high or at all in the forecasts. These are likely originating from emissions that are not reported or under-estimated in the inventories.

Formatted: Font colour: Text 1

Formatted: Font colour: Text 1

Formatted: Font colour: Text 1

However, high observation categorisation may also be caused by poor quality observations due to albedo and scattering issues-category (see section 4.3).

- **high forecasts (green in Fig. 9):** where ~~negative~~-filtered forecast~~first-guess~~ values are higher than filtered observations absolute values. This class is representative of high CH₄ values in the forecasts but not seen as strong or at all in the TROPOMI XCH₄ retrievals. High forecasts categorized data points are likely originating from emissions that are over-estimated or no longer being produced or even mis-located in the emission inventory.
- **low observations (blue in Fig. 9):** where ~~negative~~-filtered observations values are lower than filtered forecast~~first-guess~~ absolute values. This class is representative of locally low XCH₄ values detected by TROPOMI but are not seen to be as low or at all in the forecasts. Poor-quality observations influenced by low surface albedo likely fall in that category (see section 4.3).
- **low forecasts (gold in Fig. 9):** where ~~positive~~ filtered forecast~~first-guess~~ values are lower than filtered observations absolute values. This class is representative of low XCH₄ values in the forecasts but not seen as low or at all in the TROPOMI XCH₄ retrievals. This category has generally much fewer data points very sparsely distributed. Orography could be a reason for data points to fall in that category, i.e., model surface height value that are higher than the observation value. Further developments of the method will likely use orography to improve the filtering.

In the maps of Fig 9., shades of the colours indicate the intensity of the offset, i.e., how far from perfectly matching observation versus forecasts the filtered departure is. The size of the points indicates the number of samples. A larger dot indicates more data points within the 30-day window to compute the statistics hence is more robust. Fig 9. gives an overview of such detections globally and cases are many and various. In the next section we will focus on specific cases studies using the under-reported or missed plumes (red) category and the over-reported ~~or under-reported~~-plumes (green) category to showcase the usefulness of the method but also its current limitations.

4. Case studies

4.1. Under-estimation of local sources in the forecasts

South Western USA and Mexico: In figure 10, the method detects under-predicted local CH₄ concentrations (in red) in the forecast system in three areas. This occurs in the Permian Basin region, located around the Texas-New Mexico border, where multiple oil drilling sites are currently operating. Those enhancements have been documented by de Gouw et al. (2020) and Zhang et al, (2020) showing the reliability of the presented method. Two other regions with a smaller bias and extent can be identified around the southern tip of Nevada by lake Meade and northern Baja California close to the US-Mexican border.

To our knowledge those two cases have not been investigated or documented yet and need further investigation. We did not identify a facility responsible for those enhancements and we also did not find ~~Those two cases could be due to local~~matching

land surface albedo features ~~albedo properties~~ that could create local biases in the retrievals (see section 4.3) ~~in visible satellite imagery. In the case of the northern Baja California enhancements correlations of the enhancement with scattering parameters such as the aerosol optical thickness (AOT) are seen (not shown) and needs to be considered for further investigation to improve the method. A case study of the influence of the AOT on the detection method is described in section 4.3, as we did not identify a facility responsible for those enhancements. This needs further investigation.~~

Western Turkmenistan: To confirm the ability of this methodology for the detection of large point-source emitters we also showcase very strong detection of anomalous concentrations over the western Turkmenistan. Our system detects strong enhancement during most of 2019 (Fig. 11) that change in intensity and shape. The filtered departures can be very large (above 50 ppb) with a high number count in the bins (large size of the dots). As mentioned earlier in this paper, anomalously large CH₄ sources from oil and gas production in this location have been documented and detected using TROPOMI combined with private sector satellite data by Varon et al. (2019).

4.2. Over estimation of local sources in the forecasts

Western Russia: Our detection system shows two local point sources, that show large ~~forecast~~~~first-guess~~ values that are not seen by TROPOMI XCH₄ (green dots in Fig. 12). The features do not show large sampling (small dots) in time but do exhibit the shape of plumes, with strong departures near the point sources. One is very close to Moscow and corresponds to the Domodedovo airport surroundings. The other source detection is near the Volga river with a location matching small drilling fields seen in visible satellite images. In these two locations the detection method suggests that emission inventories are over-estimating local sources, which in reality are now producing reduced emissions or are no longer active emitters (at least during the period of monitoring).

Los Angeles: Similar features can occur in the area of Los Angeles. Figure 10 shows significant over-prediction of CH₄ (green dots) specifically over San Bernardino and Palmdale. Both towns have industrial facilities and regional airports. The detection is stronger in the 2019-09-01 and 2019-10-01 windows than in the 2019-07-01 and 2019-08-01 windows. Differences in intensity could be attributed to the monthly emission changes but also attributed to seasonal atmospheric transport changes due to different meteorological situation between windows. For example, if the overall windspeed increases near the source less accumulation of CH₄ would be seen leading to smaller departures and less detection.

Such cases in very different locations show the capability of the method to detect not only missing or underreported point sources but also overreported cases. This can only be achieved with combining numerical models forecasts and satellite measurements at close-matching high horizontal resolution (9 km and 7 km respectively). It is also important to mention that the method presented here is subject to uncertainties due to both model transport errors and representation error, although the error associated to emission generally dominate. Further work is needed to account for atmospheric transport and more generally to account for the weather variability in the detection method. Techniques as described in Barré et al., 2020 show interesting potential to be used for this topic.

4.3. Local retrieval issues

315 The TROPOMI XCH_4 retrieval can be affected by albedo-albedosurface issues (see section 2) and. The filtering is not
able to remove features with geographical extent smaller than the size of the Gaussian kernel (see section 3.1). Figure 13 shows
patterns in the outlier detections where filtered observations values are lower than filtered forecast (low observations category
in blue). Similar patterns are repeated over two months. In figure 14 the TROPOMI albedo in the near infrared (NIR) and the
320 short-wave infrared (SWIR) bands are displayed with the XCH_4 column retrieval. Variations of the albedo in the two spectral
bands are strong in this area and this affects the XCH_4 columns. The patterns between the albedo and the XCH_4 columns are
clearly matching. Depending on the structure of the pattern and how narrow or small it is, the filtering algorithm will not be
able to remove this effect. This is currently affecting the outlier detection method.

Another example is provided over the Siberian region in figure 15 where the same pattern is seen repeatedly in the outlier
325 detection. In this case, the filtered observations values are higher than filtered forecast (high observation category in red). The
patterns detected are matching with the variations of the SWIR albedo in figure 16. Here the features seen in the SWIR albedo
produces consistently higher TROPOMI XCH_4 values than its surroundings and the patterns are narrow enough to be missed
by the filter. Thus, great care should be taken when diagnosing such filtered departures. Features with a consistent distinctive
shape and intensity are potential retrieval error artefacts as in most cases atmospheric methane signals would show more
330 variability as a result of meteorological dynamics and not a consistently distinctive shape over months (8 and 10 weeks in Fig.
13 and Fig. 15, respectively). In the further evolution of our detection method, albedo information should be included to try to
account for such systematic local biases.

However, in certain cases, the identification of such biases can be more complex than just correcting outlier detections
335 using albedo information. Figure 13 and figure 14 presents examples of such issues where the same pattern is seen repeatedly
in the outlier detection. In figure 13, the persistent pattern in shape and intensity corresponds to a land surface feature seen in
visible satellites images that produces consistently higher TROPOMI XCH_4 values than its surroundings. The inverse can be
true as well displaying local areas with consistently lower local XCH_4 retrievals (not shown). Thus, great care should be taken
when diagnosing such filtered departures. Features with a consistent shape and intensity are retrieval error artefacts, as
340 atmospheric plumes would show more variability and not a consistent shape over months as illustrated in Fig. 13 and in Fig.
14. In Fig. 13 the pattern clearly corresponds to a change in the land surface type in visible satellite images (e.g. google maps)
and the same shape is seen for the span of more than 10 weeks (four 30-days windows that are around 6 weeks apart). In Fig.
14 the shape of the anomaly is also consistent over 4 months using a 30-days windows but, no clear correlated visible
345 feature change in the NIR and SWIR albedo land surface is standing out seen in that case. Investigations showed that this feature
is associated with scattering parameters such as the aerosol optical thickness (AOT). In this case the feature is correlating well
with both NIR and SWIR bands of the AOT. As an example, Figure 18 shows the presence of the AOT feature in the NIR
band that correlates to the detection high XCH_4 observation against the forecasts. Similar feature is seen in the SWIR band
AOT as well (not shown). Such issue is showing that more investigation work is needed by the retrieval identify provider to

Formatted: Subscript

Formatted: Subscript

Formatted: Subscript

350 ~~understand this~~ systematic local biases that are not only caused by albedo variations. ~~Additionally, However, there is still~~
~~potential impact of temporally and spatially variable small-scale albedo features. (e.g. due to snow cover).~~ For example, not
temporally persistent biases can arise with snow coverage. More research will be needed to consider an automatic local biases
detection for less persistent biases issues.

355 ~~Currently the method presented here helps identifying retrieval biases but do not systematically do so. Further~~
~~improvements of the method could be implemented in the future with pattern shape recognition to automatically discard or~~
~~classify persistent shapes over time using jointly albedo and scattering parameters to perform additional filtering correction and~~
~~flagging. Having such retrieval bias automatic detection feature available would help improving the quality of the retrieval~~
product. Satellite retrieval providers could be notified about of such biases, in order to improve the quality of the satellite
product. ~~However, there is still potential impact of temporally and spatially variable small-scale albedo features (e.g. due to~~
~~snow cover). Such transient features would still go undetected by a possible detection of persistent shape features.~~

Formatted: Indent: First line: 0 cm

5. Conclusions

Formatted: No bullets or numbering

360 In this paper we have shown the potential of systematic detection of anthropogenic CH₄ point and local source emissions
relative to known emission inventory data using the TROPOMI satellite measurements in combination with high resolution
CH₄ forecasts. While many studies have shown detailed analysis of a few case studies using TROPOMI observations, this is
the first ~~step to provide time that~~ a systematic way to detect strong anthropogenic local emitters of CH₄ and to compare results
with emission inventories ~~is presented~~. The method presented here does not only ~~show the potential allow~~ for ~~the~~ detection
365 of unreported or missing sources but also targets over-reported sources in the inventories. The method also has the potential
of ~~identifying detecting~~ systematic local retrieval errors which ~~could an~~ help to improve the satellite product ~~in return~~. ~~The~~
~~current method however has some limitations as it requires additional correlative analysis with albedo and scattering~~
~~parameters to account for local biases in the retrieval values. Complications could arise if land surface induced biases and local~~
~~emission detected features would be collocated. The case of multiple type of emissions collocated (i.e., anthropogenic plus~~
370 ~~wetland emissions) will also further increase in complexity as emission patterns could show albedo correlations. We however~~
~~have~~ demonstrated the potential of the methodology by focusing on several case studies ~~and but~~ further work is required to
provide a global assessment using several years from this dataset.

375 Our method is novel by combining information from multiple sources (emission inventory, modelled surface fluxes, and
observations) in a data assimilation framework to detect and analyse observed anomalies. We have used global emission
inventories and fluxes that were the best possible global estimates we had available at the time when running our system. Using
different emission inventories from research specific activities that are more specific to local regions, for instance, could
provide different answers. In that way our methodology could provide an efficient way to validate improvements in sector-
specific emission inventories. For example, using revised CH₄ inventories such as presented by Maasakers et al. (2016) over

the USA or more recently by Scrapelli et al., 2020 globally could lead to different detection patterns. Bottom-up inventories will always lag in time and therefore cannot track rapid emission changes such as pipeline and gas facility blowouts. Satellite measurements have a clear added value for timely detection in the case of large emissions.

Combining satellite measurements, forecasts and emission inventories partially using a data assimilation system paves the way to estimate the emissions themselves. Inverse modelling studies to estimate CH₄ emissions have been done with SCIAMACHY and GOSAT CH₄ satellite data generally performed at rather low resolution and focus specific study sites (e.g., Jacob et al., 2016). To our knowledge no published studies showed global inversions using TROPOMI data updating emissions close to the 10 km scale globally. Inverse modelling is computationally expensive and in the case of running operations beyond 10 km scales to close-match satellite observations is a challenge that needs to be overcome over the next decade. Efforts are underway to implement a sector-specific inverse high-resolution modelling monitoring system as part of the CAMS service evolution at ECMWF and the future Copernicus CO₂ service at global and regional scales (e.g., Barré et al., 2019, Bousserez et al., 2019, Pinty et al., 2019, Janssens-Maenhout et al., 2020). Approaches combining global and regional modelling could be adopted to perform inversion at fine scales but at the cost of missing fine-scale detection outside the regional domains. Large and local CH₄ emissions events could occur in very remote areas, which are typically not considered in regional modelling setups (e.g., West Turkmenistan, Varon et al., 2019). Systematic detection will then require setting up many regional subdomains leading again to computational burden for a single monitoring entity. We have demonstrated that monitoring of satellite XCH₄ departures at high resolution at global scale using already existing parts of a forecasting chain remains an affordable solution to develop a much-needed capability: tracking rapidly changing CH₄ sources across the world and support the urgently needed effort on developing climate policies for reducing anthropogenic CH₄ emissions.

References

- 400 Agustí-Panareda, A., Diamantakis, M., Massart, S., Chevallier, F., Muñoz-Sabater, J., Barré, J., Curcoll, R., Engelen, R., Langerock, B., Law, R. M., Loh, Z., Morguí, J. A., Parrington, M., Peuch, V.-H., Ramonet, M., Roehl, C., Vermeulen, A. T., Warneke, T., and Wunch, D.: Modelling CO₂ weather – why horizontal resolution matters, *Atmos. Chem. Phys.*, 19, 7347–7376, <https://doi.org/10.5194/acp-19-7347-2019>, 2019.
- 405 Alvarez, R. A., Zavala-Araiza, D., Lyon, D. R., Allen, D. T., Barkley, Z. R., Brandt, et al. (2018). Assessment of methane emissions from the U.S. oil and gas supply chain. *Science*, 361, 186–188. <https://doi.org/10.1126/science.aar7204>
- Bergamaschi, P., Frankenberg, C., Meirink, J. F., Krol, M., Villani, M. G., Houweling, S., Dentener, F., Dlugokencky, E. J., Miller, J. B., Gatti, L. V., Engel, A., and Levin, I. (2009). Inverse modeling of global and regional CH₄ emissions using SCIAMACHY satellite retrievals. *J. Geophys. Res.*, 114.

410

- Barré J., Massart S., Ades M., Jones L., and Engelen R. (2019), Emission optimisations first attempt based on Ensemble of DA for atmospheric composition, ECMWF technical memoranda, <https://doi.org/10.21957/4grkg5ga0>
- 415 Barré, J., Petetin, H., Colette, A., Guevara, M., Peuch, V.-H., Rouil, L., Engelen, R., Inness, A., Flemming, J., Pérez García-Pando, C., Bowdalo, D., Meleux, F., Geels, C., Christensen, J. H., Gauss, M., Benedictow, A., Tsyro, S., Friese, E., Struzewska, J., Kaminski, J. W., Douros, J., Timmermans, R., Robertson, L., Adani, M., Jorba, O., Joly, M., and Kouznetsov, R.: Estimating lockdown induced European NO₂ changes, *Atmos. Chem. Phys. Discuss.*, <https://doi.org/10.5194/acp-2020-995>, in review, 2020.
- 420 Bousserez, N., 2019. Towards a Prototype Global CO₂ Emissions Monitoring System for Copernicus. *arXiv preprint arXiv:1910.11727*.
- Conley, S., Franco, G., Faloona, I., Blake, D. R., Peischl, J., & Ryerson, T. B. (2016). Methane emissions from the 2015 Aliso Canyon blowout in Los Angeles, CA. *Science*, 351, 1317– 1320. <https://doi.org/10.1126/science.aaf2348>
- 425 de Gouw, J.A., Veeffkind, J.P., Roosenbrand, E. et al. Daily Satellite Observations of Methane from Oil and Gas Production Regions in the United States. *Sci Rep* 10, 1379 (2020). <https://doi.org/10.1038/s41598-020-57678-4>
- Engelen, R. J., Serrar, S., and Chevallier, F. (2009), Four-dimensional data assimilation of atmospheric CO₂ using AIRS
430 observations, *J. 114*, D03303, doi:[10.1029/2008JD010739](https://doi.org/10.1029/2008JD010739).
- Flemming, J., Huijnen, V., Arteta, J., Bechtold, P., Beljaars, A., Blechschmidt, A.-M., Diamantakis, M., Engelen, R. J., Gaudel, A., Inness, A., Jones, L., Josse, B., Katragkou, E., Marecal, V., Peuch, V.-H., Richter, A., Schultz, M. G., Stein, O., and Tsikerdekis, A.: Tropospheric chemistry in the Integrated Forecasting System of ECMWF, *Geosci. Model Dev.*, 8, 975–1003,
435 <https://doi.org/10.5194/gmd-8-975-2015>, 2015.
- Hasekamp, O., Lorente, A., Hu, H., Butz, A., aan de Brugh, J., and Landgraf, J., Algorithm Theoretical Baseline Document for Sentinel-5 Precursor Methane retrieval, SRON-S5P-LEV2-RP-001, <https://sentinel.esa.int/documents/247904/2476257/Sentinel-5P-TROPOMI-ATBD-Methane-retrieval>, 2019
- 440 Holm, E., Forbes, R., Lang, S., Magnusson, L., and Malardel, S.: New model cycle brings higher resolution, ECMWF Newsletter, No. 147, available at: <https://www.ecmwf.int/en/elibrary/16299-newsletter-no-147-spring-2016> (last access: 30 May 2019), 2016. a, b

- 445 Houweling, S., Kaminski, T., Dentener, F., Lelieveld, J., and Heimann, M.: Inverse modeling of methane sources and sinks using the adjoint of a global transport model, *J. Geophys. Res.*, 104, 26137–26160, doi:10.1029/1999JD900428, 1999
- Hu, H., Landgraf, J., Detmers, R., Borsdorff, T., Aan de Brugh, J., Aben, I., et al. (2018). Toward global mapping of methane with TROPOMI: First results and intersatellite comparison to GOSAT. *Geophysical Research Letters*, 45, 3682–3689. <https://doi.org/10.1002/2018GL077259>
- 450 [Hu, H., Hasekamp, O., Butz, A., Galli, A., Landgraf, J., Aan de Brugh, J., Borsdorff, T., Scheepmaker, R., and Aben, I.: The operational methane retrieval algorithm for TROPOMI, *Atmos. Meas. Tech.*, 9, 5423–5440, <https://doi.org/10.5194/amt-9-5423-2016>, 2016.](#)
- 455 IPCC. Observations: Atmosphere and Surface (2013).
- Jacob, D. J., Turner, A. J., Maasakkers, J. D., Sheng, J., Sun, K., Liu, X., Chance, K., Aben, I., McKeever, J., & Frankenberg, C. (2016). Satellite observations of atmospheric methane and their value for quantifying methane emissions. *Atmospheric Chemistry and Physics*, 16(22), 14,371–14,396. <https://doi.org/10.5194/acp-16-14371-2016>
- 460 Janssens-Maenhout, G., B. Pinty, M. Dowell, H. Zunker, E. Andersson, G. Balsamo, J.-L. Bézy, T. Brunhes, H. Bösch, B. Bojkov, D. Brunner, M. Buchwitz, D. Crisp, P. Ciais, P. Counet, D. Dee, H. Denier van der Gon, H. Dolman, M. Drinkwater, O. Dubovik, R. Engelen, T. Fehr, V. Fernandez, M. Heimann, K. Holmlund, S. Houweling, R. Husband, O. Juvyns, A. Kentarchos, J. Landgraf, R. Lang, A. Löscher, J. Marshall, Y. Meijer, M. Nakajima, P.I. Palmer, P. Peylin, P. Rayner, M. Scholze, B. Sierk, J. Tamminen, P. Veefkind, Towards an operational anthropogenic CO2 emissions monitoring and verification support capacity, *Bulletin of the American Meteorological Society* (accepted), 2020, doi: 10.1175/BAMS-D-19-0017.1
- 470 Kaiser, J. W., Heil, A., Andreae, M. O., Benedetti, A., Chubarova, N., Jones, L., Morcrette, J.-J., Razinger, M., Schultz, M. G., Suttie, M., and van der Werf, G. R.: Biomass burning emissions estimated with a global fire assimilation system based on observed fire radiative power, *Biogeosciences*, 9, 527–554, <https://doi.org/10.5194/bg-9-527-2012>, 2012.
- Kirschke, S., Bousquet, P., Ciais, P. et al. Three decades of global methane sources and sinks. *Nature Geosci* 6, 813–823 (2013). <https://doi.org/10.1038/ngeo1955>
- 475 Kort, E. A., Frankenberg, C., Costigan, K. R., Lindenmaier, R., Dubey, M. K., and Wunch, D. (2014), Four corners: The largest US methane anomaly viewed from space, *Geophys. Res. Lett.*, 41, 6898–6903, doi:10.1002/2014GL061503.

Formatted: Font colour: Text 1

Formatted: Font colour: Text 1

Formatted: Font colour: Text 1

Formatted: Font: Times New Roman, 10 pt, Font colour: Text 1

Formatted: Left, Line spacing: single

Formatted: Font colour: Text 1

- Krol, M., Houweling, S., Bregman, B., van den Broek, M., Segers, A., van Velthoven, P., Peters, W., Dentener, F., and Bergamaschi, P.: The two-way nested global chemistry-transport zoommodel TM5: algorithm and applications, *Atmos. Chem. Phys.*, 5, 417–432, doi:10.5194/acp-5-417-2005, 2005.
- 480 Lambert, G. and Schmidt, S.: Reevaluation of the oceanic flux of methane: uncertainties and long term variations, *Chemosph. Global Change Sci.*, 26, 579–589, 1993
- Langerock B., Kumar M., Lambert J., Lorente A. and Landgraf J., First comparison results for the S5P CH₄ product based on
485 correlative reference measurements acquired by FTIR instruments contributing to NDACC and TCCON networks. http://mpc-vdaf.tropomi.eu/ProjectDir/reports/pdf/S5P-MPC-VDAF-VWA-L2_CH4_20190301.pdf
- Maasakkers, Joannes D., Daniel J. Jacob, Melissa P. Sulprizio, Alexander J. Turner, Melissa Weitz, Tom Wirth, Cate Hight, Mark Degrep ueiredo, Mausami Desai, Rachel Schmeltz, Leif Hockstad, Anthony A. Bloom, Kevin W. Bowman, Seongeun
490 Jeong, and Marc L. Fischer: Gridded National Inventory of U.S. Methane Emissions *Environmental Science & Technology* 2016 50 (23), 13123-13133, DOI: 10.1021/acs.est.6b02878
- Massart, S., Agustí-Panareda, A., Aben, I., Butz, A., Chevallier, F., Crevoisier, C., Engelen, R., Frankenberg, C., and Hasekamp, O.: Assimilation of atmospheric methane products into the MACC-II system: from SCIAMACHY to TANSO and
495 IASI, *Atmos. Chem. Phys.*, 14, 6139–6158, <https://doi.org/10.5194/acp-14-6139-2014>, 2014.
- Massart, S., Agustí-Panareda, A., Heymann, J., Buchwitz, M., Chevallier, F., Reuter, M., Hilker, M., Burrows, J. P., Deutscher, N. M., Feist, D. G., Hase, F., Sussmann, R., Desmet, F., Dubey, M. K., Griffith, D. W. T., Kivi, R., Petri, C., Schneider, M., and Velasco, V. A.: Ability of the 4-D-Var analysis of the GOSAT BESD XCO₂ retrievals to characterize atmospheric CO₂ at
500 large and synoptic scales, *Atmos. Chem. Phys.*, 16, 1653–1671, <https://doi.org/10.5194/acp-16-1653-2016>, 2016.
- Mathews, E., Fung, I., and Lerner, J.: Methane emission from rice cultivation: geographic and seasonal distribution of cultivated areas and emissions, *Global Biogeochem. Cy.*, 5, 3–24, doi:10.1029/90GB02311, 1991
- 505 Myhre G. et al., “Anthropogenic and natural radiative forcing” in *Climate Change 2013: The Physical Science Basis. Contribution of Working Group I to the Fifth Assessment Report of the Intergovernmental Panel on Climate Change*, T. F. Stocker et al., Eds. (Cambridge University Press, Cambridge, United Kingdom, 2013), pp. 659–740.
- Olivier and G. Janssens-Maenhout, *CO₂ Emissions from Fuel Combustion -- 2012 Edition*, IEA CO₂ report 2012, Part III,
510 *Greenhouse-Gas Emissions*, ISBN 978-92-64-17475-7

Pandey S., Ritesh Gautam, Sander Houweling, Hugo Denier van der Gon, Pankaj Sadavarte, Tobias Borsdorff, Otto Hasekamp, Jochen Landgraf, Paul Tol, Tim van Kempen, Ruud Hoogeveen, Richard van Hees, Steven P. Hamburg, Joannes D. Maasakkers and Ilse Aben, Satellite observations reveal extreme methane leakage from a natural gas well blowout, *Proceedings of the National Academy of Sciences*, <https://doi.org/10.1073/pnas.1908712116>, (201908712), (2019).
515

Pinty B., P. Ciais, D. Dee, H. Dolman, M. Dowell, R. Engelen, K. Holmlund, G. Janssens-Maenhout, Y. Meijer, P. Palmer, M. Scholze, H. Denier van der Gon, M. Heimann, O. Juvyns, A. Kentarchos and H. Zunker (2019) An Operational Anthropogenic CO₂ Emissions Monitoring & Verification Support Capacity – Needs and high level requirements for in situ measurements, doi: 10.2760/182790, European Commission Joint Research Centre, EUR 29817 EN.
520

Ramonet, M., A. Wagner, M. Schulz, Y. Christophe, H. J. Eskes, S. Basart, A. Benedictow, Y. Bennouna, A.-M. Blechschmidt, S. Chabrillat, E. Cuevas, A. ElYazidi, H. Flentje, K.M. Hansen, U. Im, J. Kapsomenakis, B. Langerock, A. Richter, N. Sudarchikova, V. Thouret, T. Warneke, C. Zerefos, Validation report of the CAMS near-real-time global atmospheric composition service: Period June - August 2019, Copernicus Atmosphere Monitoring Service (CAMS) report, CAMS84_2018SC1_D1.1.1_JJA2019_v1.pdf, November 2019, doi:10.24380/def9-na43.
525

Ridgwell, A. J., Marshall, S. J., and Gregson, K.: Consumption of atmospheric methane by soils: a process-based model, *Global Biogeochem. Cy.*, 13, 59–70, doi:10.1029/1998GB900004, 1999
530

Sanderson, M. G.: Biomass of termites and their emissions of methane and carbon dioxide: a global database, *Global Biogeochem. Cy.*, 10, 543–557, doi:10.1029/96GB01893

Saunio, M., Bousquet, P., Poulter, B., Peregon, A., Ciais, P., Canadell, J. G., Dlugokencky, E. J., Etiope, G., Bastviken, D., Houweling, S., Janssens-Maenhout, G., Tubiello, F. N., Castaldi, S., Jackson, R. B., Alexe, M., Arora, V. K., Beerling, D. J., Bergamaschi, P., Blake, D. R., Brailsford, G., Brovkin, V., Bruhwiler, L., Crevoisier, C., Crill, P., Covey, K., Curry, C., Frankenberg, C., Gedney, N., Höglund-Isaksson, L., Ishizawa, M., Ito, A., Joos, F., Kim, H. S., Kleinen, T., Krummel, P., Lamarque, J. F., Langenfelds, R., Locatelli, R., Machida, T., Maksyutov, S., McDonald, K. C., Marshall, J., Melton, J. R., Morino, I., Naik, V., O'Doherty, S., Parmentier, F. J. W., Patra, P. K., Peng, C., Peng, S., Peters, G. P., Pison, I., Prigent, C., Prinn, R., Ramonet, M., Riley, W. J., Saito, M., Santini, M., Schroeder, R., Simpson, I. J., Spahni, R., Steele, P., Takizawa, A., Thornton, B. F., Tian, H., Tohjima, Y., Viovy, N., Voulgarakis, A., vanWeele, M., van der Werf, G. R., Weiss, R., Wiedinmyer, C., Wilton, D. J., Wiltshire, A., Worthy, D., Wunch, D., Xu, X., Yoshida, Y., Zhang, B., Zhang, Z., & Zhu, Q. (2016). The global methane budget 2000–2012. *Earth System Science Data*, 8(2), 697–751. <https://doi.org/10.5194/essd-8-697-2016>
535
540

545

Scarpelli, T. R., Jacob, D. J., Maasackers, J. D., Sulprizio, M. P., Sheng, J.-X., Rose, K., Romeo, L., Worden, J. R., and Janssens-Maenhout, G.: A global gridded ($0.1^\circ \times 0.1^\circ$) inventory of methane emissions from oil, gas, and coal exploitation based on national reports to the United Nations Framework Convention on Climate Change, *Earth Syst. Sci. Data*, 12, 563–575, <https://doi.org/10.5194/essd-12-563-2020>, 2020.

550

Schneising, O., Buchwitz, M., Reuter, M., Vanselow, S., Bovensmann, H., and Burrows, J. P.: Remote sensing of methane leakage from natural gas and petroleum systems revisited, *Atmos. Chem. Phys.*, 20, 9169–9182, <https://doi.org/10.5194/acp-20-9169-2020>, 2020.

555

Shoemaker J. K., D. P. Schrag, M. J. Molina, V. Ramanathan, Climate change. What role for short-lived climate pollutants in mitigation policy? *Science* 342, 1323–1324 (2013).

560

Spahni, R., Wania, R., Neef, L., van Weele, M., Pison, I., Bousquet, P., Frankenberg, C., Foster, P. N., Joos, F., Prentice, I. C., and van Velthoven, P.: Constraining global methane emissions and uptake by ecosystems, *Biogeosciences*, 8, 1643–1665, <https://doi.org/10.5194/bg-8-1643-2011>, 2011.

565

Varon, D. J., Jacob, D. J., McKeever, J., Jervis, D., Durak, B. O. A., Xia, Y., & Huang, Y. (2018). Quantifying methane point sources from fine-scale satellite observations of atmospheric methane plumes. *Atmospheric Measurement Techniques*, 11, 5673–5686. <https://doi.org/10.5194/amt-11-5673-2018>

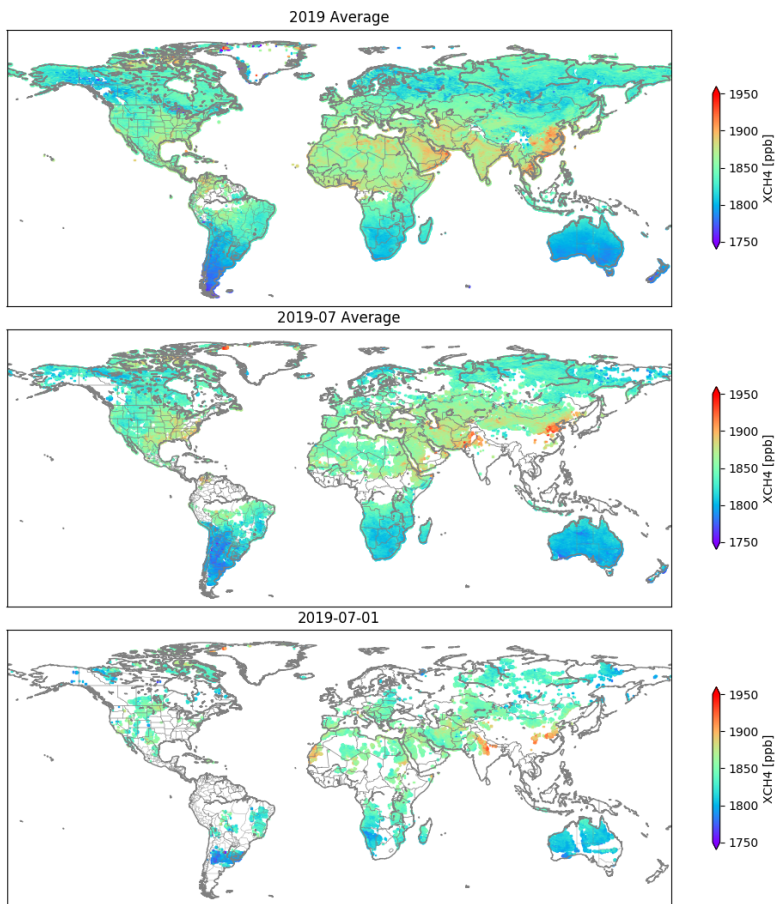
570

Varon, D. J., McKeever, J., Jervis, D., Maasackers, J. D., Pandey, S., Houweling, S., et al. (2019). Satellite discovery of anomalously large methane point sources from oil/gas production. *Geophysical Research Letters*, 46, 13507–13516. <https://doi.org/10.1029/2019GL083798>

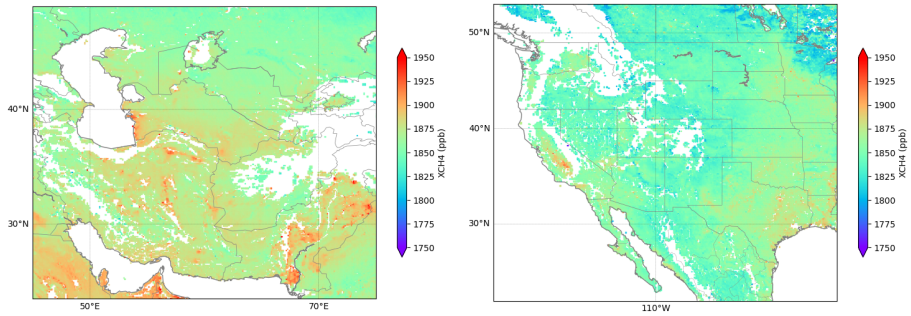
Veefkind, J. P., Aben, I., McMullan, K., Förster, H., de Vries, J., Otter, G., et al. (2012). TROPOMI on the ESA Sentinel-5 Precursor: A GMES mission for global observations of the atmospheric composition for climate, air quality and ozone layer applications. *Remote Sensing of Environment*, 120, 70–83. <https://doi.org/10.1016/j.rse.2011.09.027>

575

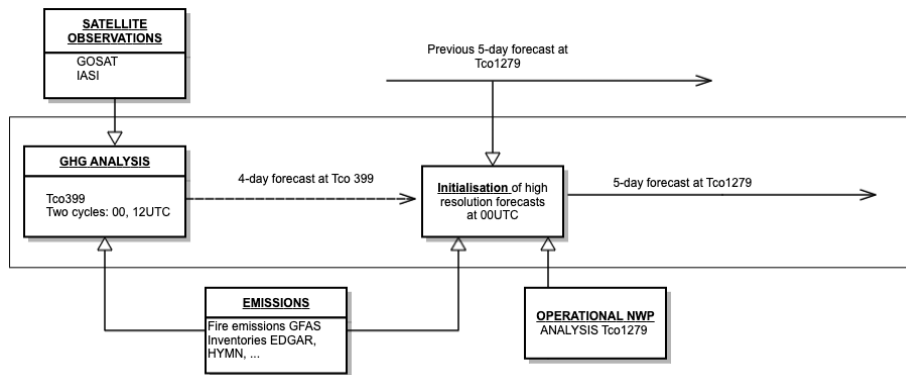
Zhang, Y., Gautam, R., Pandey, S., Omara, M., Maasackers, J. D., Sadavarte, P., et al, Quantifying methane emissions from the largest oil-producing basin in the United States from space, *Science Advances*, doi: 10.1126/sciadv.aaz5120 (2020)



580 **Figure 1. Global average of TROPOMI XCH₄ column-averaged dry-air mixing ratios for the full year 2019, July 2019 and July 1st, 2019 (top to bottom).**



585 **Fig 2. Regional zooms of TROPOMI XCH₄ columns for the full year 2019. Middle East (left) and Central-Western North America (right).**



590 **Figure 3. Flow chart of the CAMS greenhouse gas analysis and forecast system.**

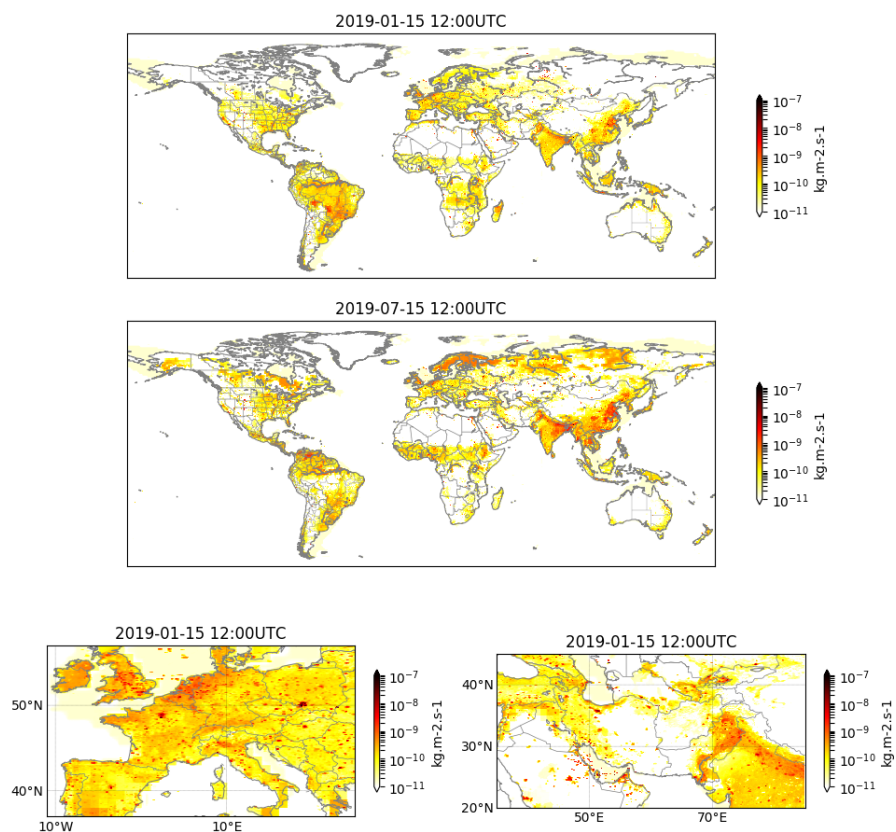
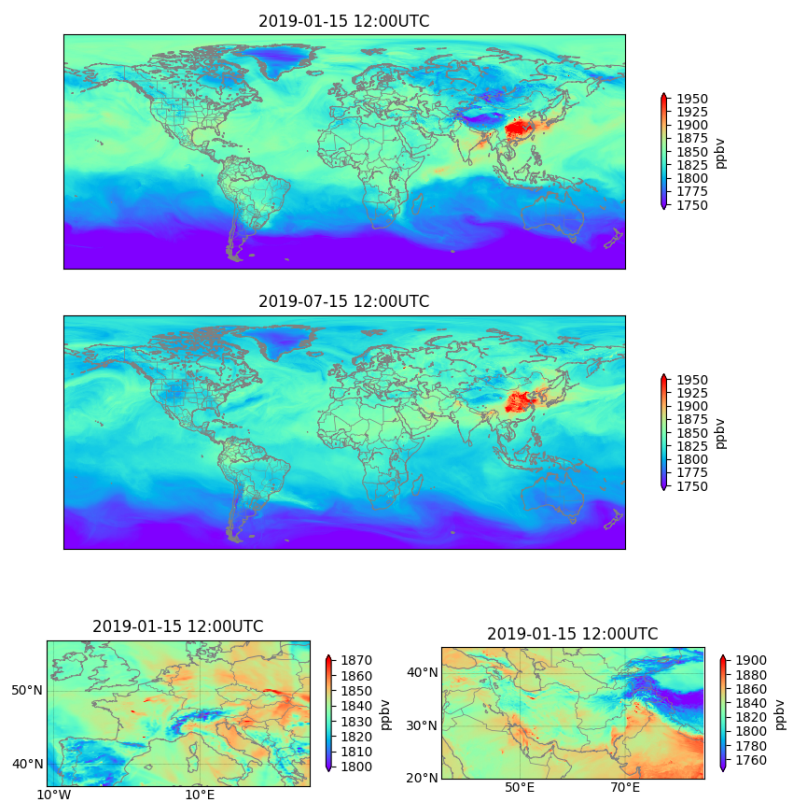
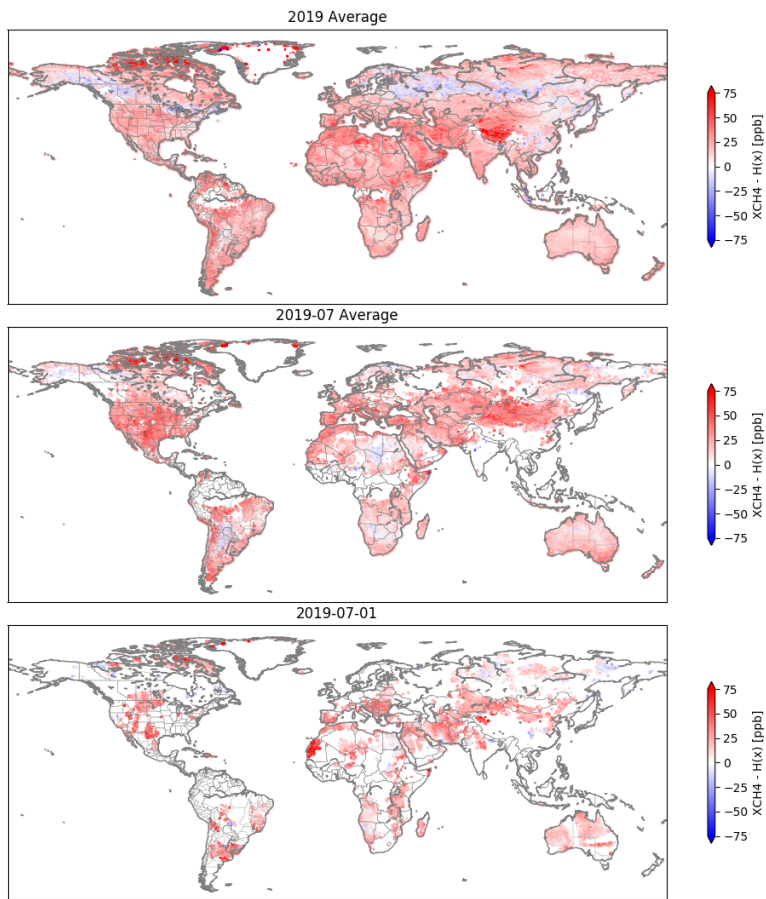


Figure 4. Examples of combined net fluxes (positive only shown due to the logarithmic scale) that constitute the surface boundary conditions of the IFS high resolution CH₄ forecast. Global and regional scale examples for 2019-01-15 and 2019-07-05 at 12:00 UTC.



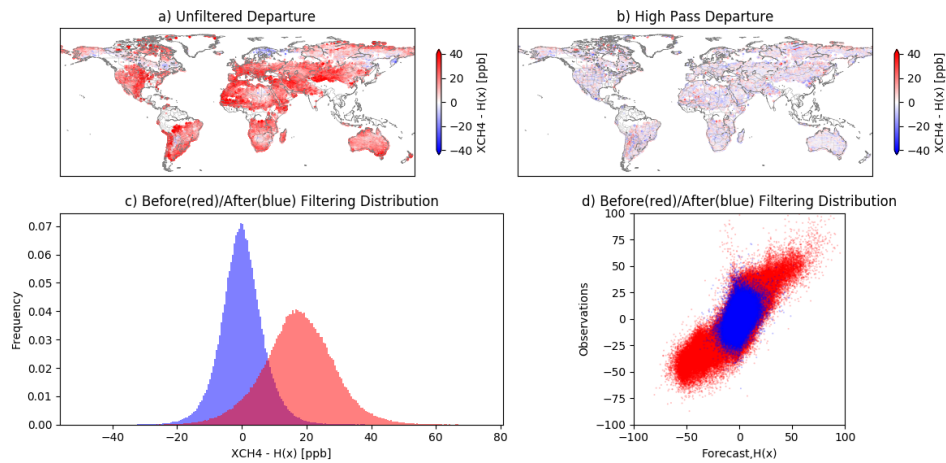
595

Figure 5. Examples of outputs of the IFS high resolution CH₄ forecasts displaying snapshots at global and regional scale of the total column mean molar fractions for 2019-01-15 and 2019-07-15 at 12:00 UTC. Lower panels show parts of Europe (left) and Middle East (right).



600

Figure 6. Departures values computed with the observation displayed in figure 1, for the full year 2019, July 2019 and July 1st, 2019.



605 **Figure 7.** Example of the high pass filtering effect over a 30-day window ending 2019-07-01 with a 2° Gaussian kernel
length scale. a) The unfiltered departures, b) the filtered departures, c) histograms comparing unfiltered (red) versus
the filtered (blue) departures and d) 2D distributions in the observation and forecast~~first-guess~~ space for unfiltered
(red) and filtered (blue) data points. Note that the unfiltered data points have been centred around the mean for this
plot to make it comparable to the filtered distribution.

610

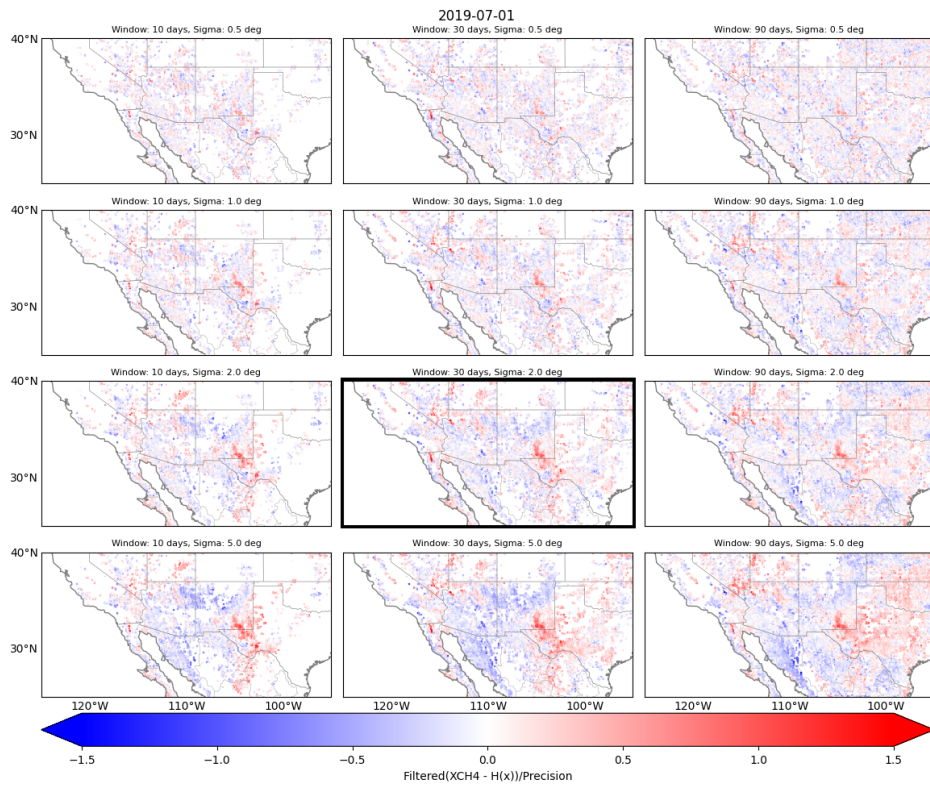
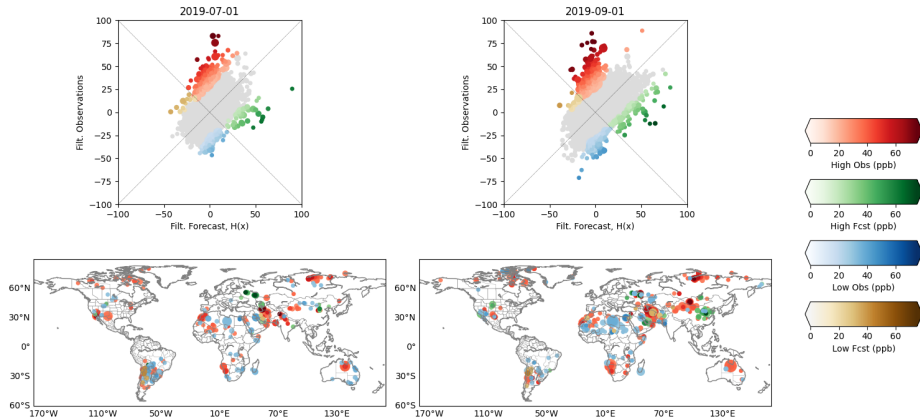


Figure 8. High pass filtering sensitivity tests on the departures normalized by the instrument precision using 10, 30 and 90 days on the window length (columns) and 0.5, 1.0, 2.0 and 5.0 degrees on the kernel size (rows). The outlined plot shows the selected filter parameter values.

615



620

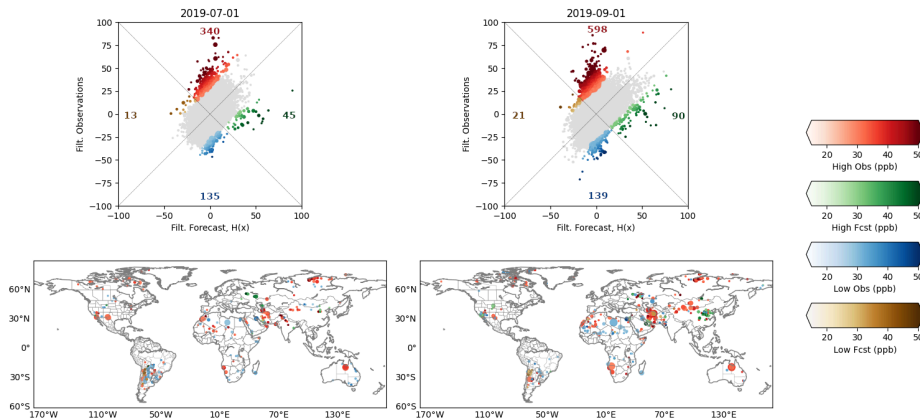
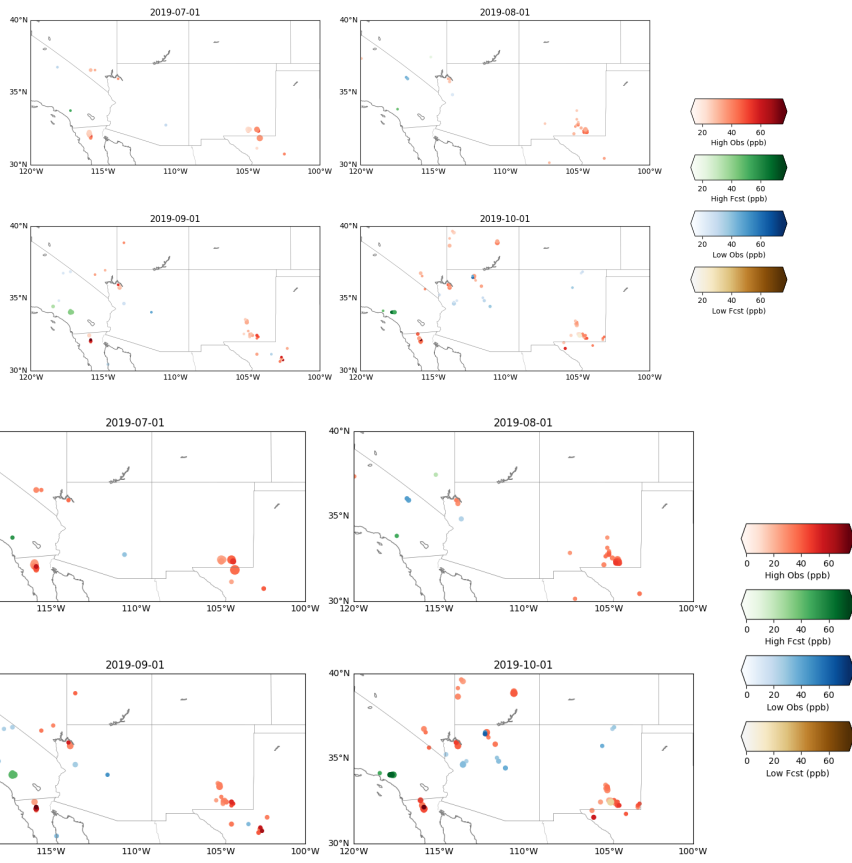
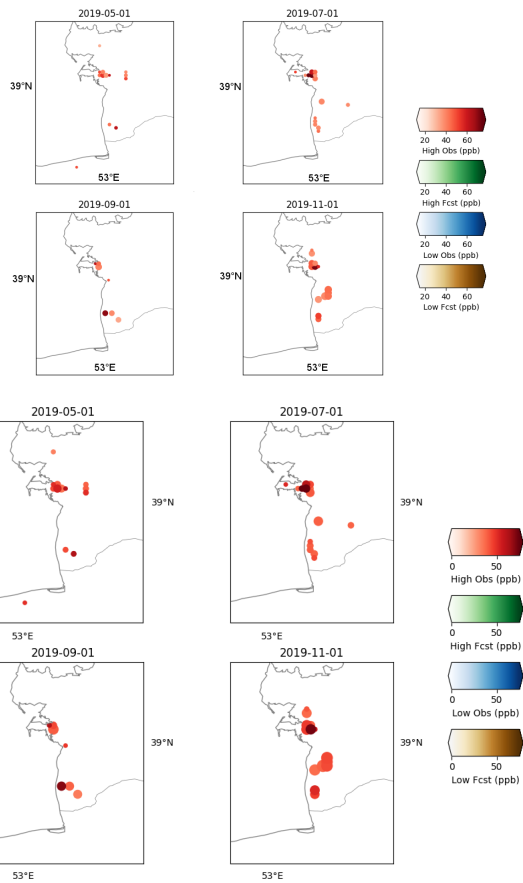


Figure 9. Examples of the outlier classification. Top panels: global distributions in the observation-first guess space for two different end dates of 30-day window (July 1st 2019 and September 1st 2019). Colours illustrate the four different data classes with number indicating the amount of outliers. Bottom panels: outlier classes localisation example over the globe. Darker dots show larger departures. Larger dots indicate that more occurrences have been detected in the bin and time window.



625 **Figure 10. Outlier detection and classification over south western US region. Dates indicate the end date of the 30-day time window.**



630 **Figure 11. Outlier detection and classification over Turkmenistan. Dates indicate the end date of the 30-day time window.**

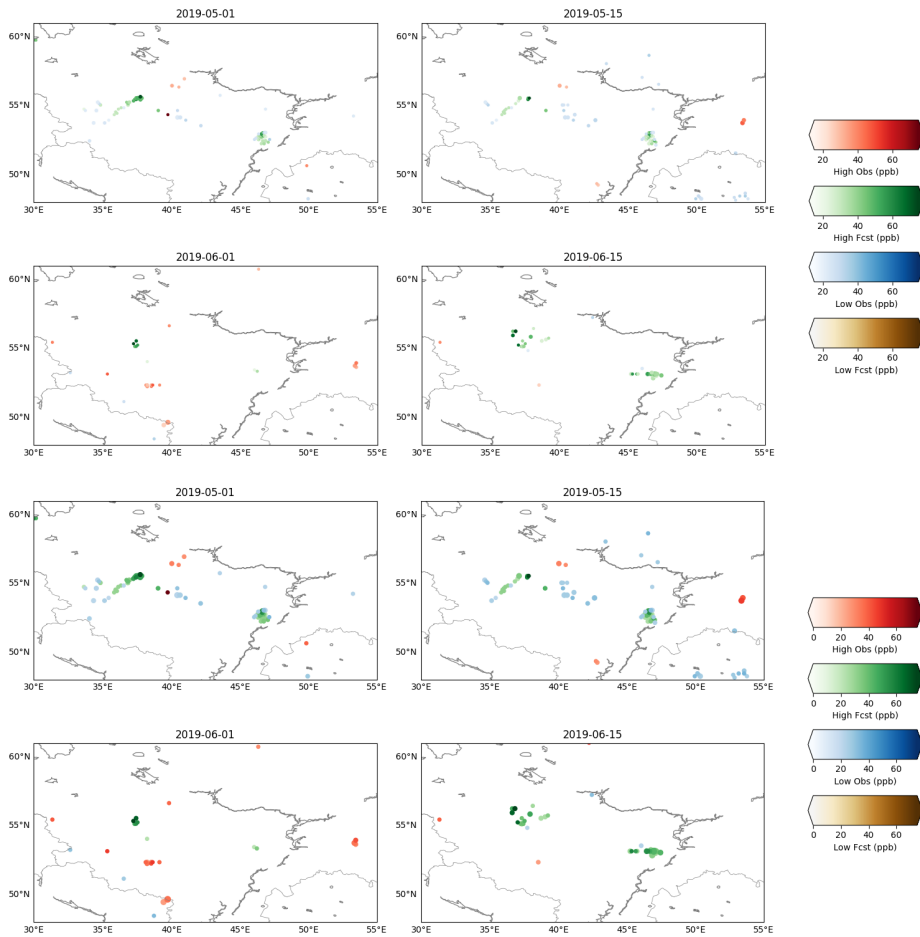


Figure 12. Outlier detection and classification over western Russia. Dates indicate the end date of the 30-day time window.

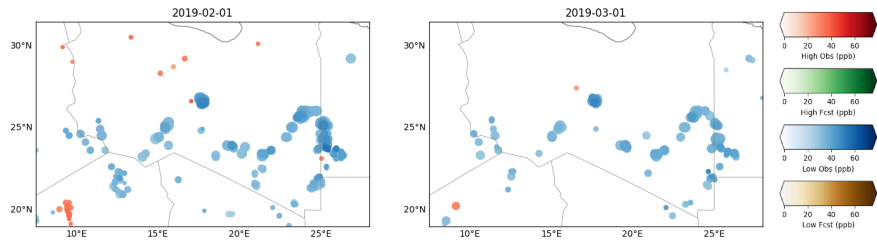


Figure 13. Outlier detection and classification over Lybia, Egypt and Niger. Dates indicate the end date of the 30-day time window.

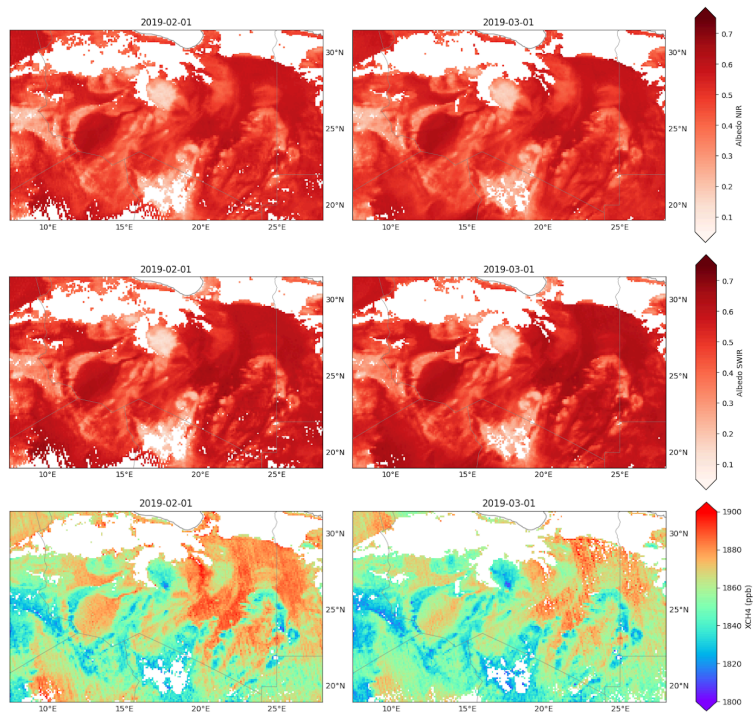
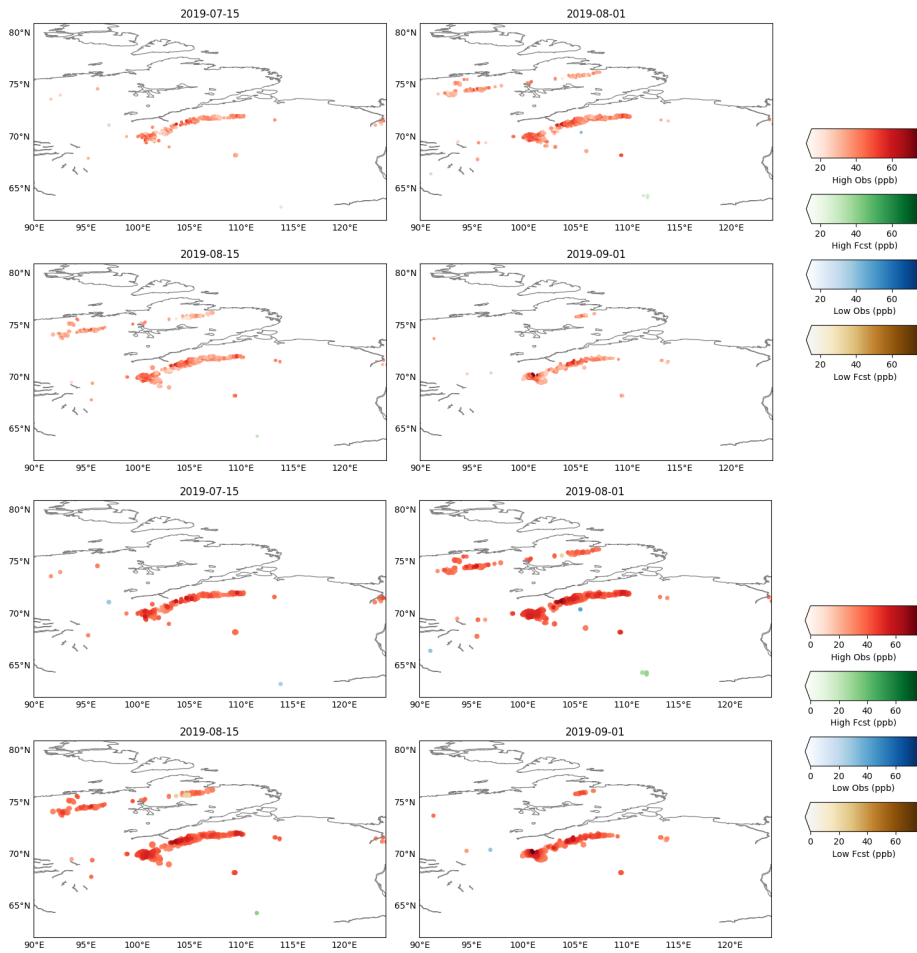


Figure 14. First row: TROPOMI albedo in the near infrared (NIR) band, second row: TROPOMI albedo in the short-wave infrared (SWIR) band, third row: TROPOMI XCH₄ columns. Maps display averages for the same windows as in Fig. 13.

Formatted: Subscript



645

Figure 153. Outlier detection and classification over Siberia. Dates indicate the end date of the 30-day time window.

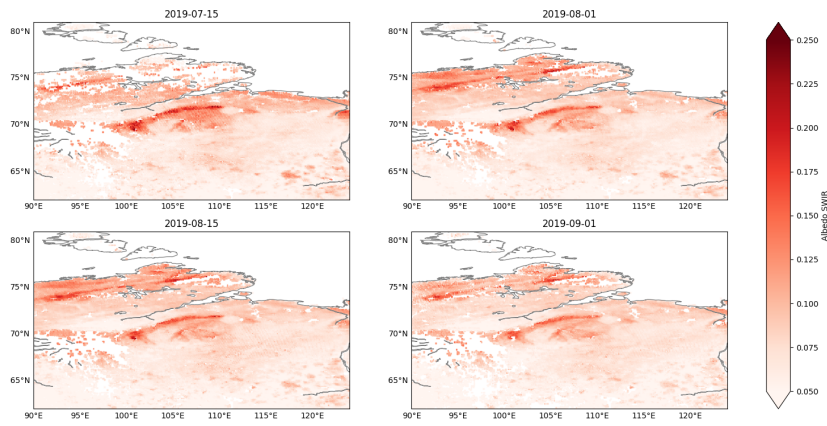


Fig 16. Albedo in the short-wave infrared (SWIR) band provided by TROPOMI over Siberia. Maps display averages for the same windows as in Fig. 13.

650

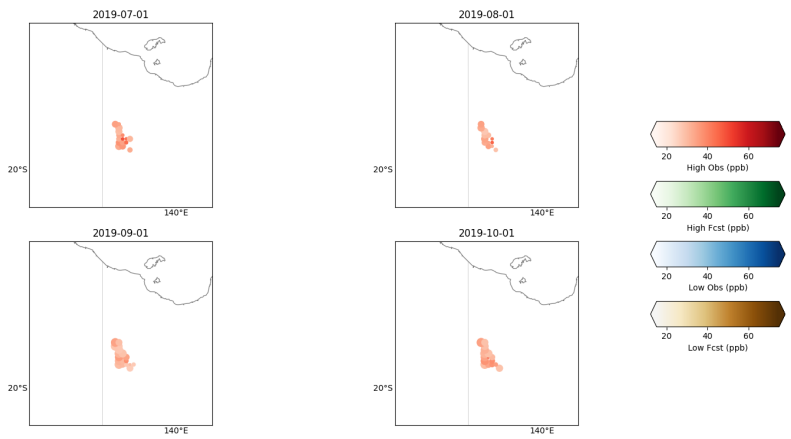


Figure 174. Outlier detection and classification over Australia. Dates indicate the end date of the 30-day time window.

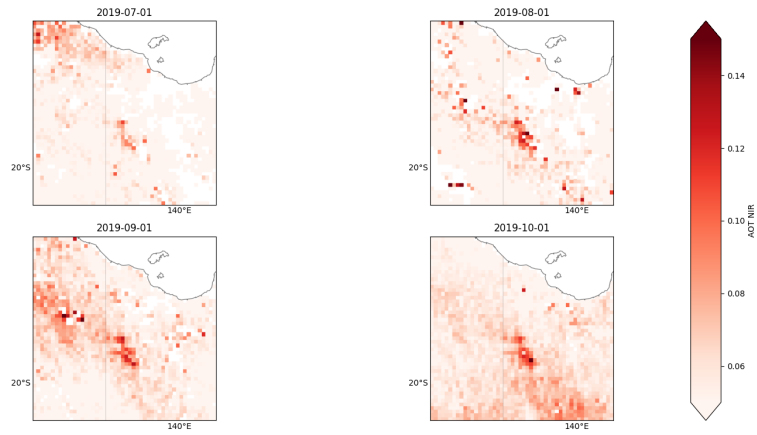


Fig 18. Aerosol optical thickness (AOT) in the near infrared (NIR) band provided by TROPOMI over Australia.
Maps display averages for the same windows as in Fig. 15.