



Meteorology-normalized impact of COVID-19 lockdown upon NO₂ pollution in Spain

Hervé Petetin¹, Dene Bowdalo¹, Albert Soret¹, Marc Guevara¹, Oriol Jorba¹, Kim Serradell¹, and Carlos Pérez García-Pando^{1,2}

¹Barcelona Supercomputing Center, Barcelona, Spain

²ICREA, Passeig Lluís Companys 23, 08010 Barcelona, Spain

Correspondence: Hervé Petetin (herve.petetin@bsc.es)

Abstract. The spread of the new coronavirus (COVID-19) forced the Spanish Government to implement extensive lockdown measures to reduce the number of hospital admissions, starting on March 14th 2020. Over the following days and weeks, strong reductions of nitrogen dioxide (NO₂) pollution were reported in many regions of Spain. A substantial part of these reductions is obviously due to decreased local and regional anthropogenic emissions. Yet, the confounding effect of meteorological variability hinders a reliable quantification of the lockdown impact upon the observed pollution levels. Our study uses machine learning (ML) models fed by meteorological data along with other time features to estimate the "business-as-usual" NO₂ mixing ratios that would have been observed in the absence of the lockdown. We then quantify the so-called meteorology-normalized NO₂ reductions induced by the lockdown measures by comparing the business-as-usual with the actually observed NO₂ mixing ratios. We applied this analysis for a selection of urban background and traffic stations covering the more than 50 Spanish provinces and islands.

The ML predictive models were found to perform remarkably well in most locations. During the period of study, going from the enforcement of the state of alarm in Spain on March 14th to April 23rd, we found the lockdown measures to be responsible for a 50% reduction of NO₂ levels on average over all provinces and islands. The lockdown in Spain has gone through several phases with different levels of severity in the mobility restrictions. As expected the meteorology-normalized change of NO₂ was found to be stronger during the phases II (the most stringent one) and III than during phase I. In the largest agglomerations where both urban background and traffic stations were available, a stronger meteorology-normalized NO₂ change is highlighted at traffic stations compared to urban background ones. Our results are consistent with foreseen (although still uncertain) changes in anthropogenic emissions induced by the lockdown. We also show the importance of taking into account meteorological variability for accurately assessing the impact of the lockdown on NO₂ levels, in particular at fine spatial and temporal scales.

Meteorology-normalized estimates such as the ones presented here are crucial to reliably quantify the health implications of the lockdown due to reduced air pollution .



1 Introduction

The rapid spread of the new coronavirus (COVID-19) has led numerous countries worldwide to put their citizens on various forms of lockdown, with measures ranging from light social distancing to almost complete restrictions on mobility (Anderson et al., 2020). Spain has been among the countries most severely affected by COVID-19, and where proportional (and therefore drastic) containment measures have been implemented. Spanish authorities declared the constitutional state of alarm on March 13th 2020, to be enforced on the 14th. During this period (phase I) residents had to remain in their primary residences except for purchasing food and medicines, work or attend emergencies. Non-essential shops and businesses, including bars, restaurants, and commercial businesses had to close. Due to the persistent rise in hospital admissions, an even more severe second phase (phase II) of the lockdown was implemented between March 30th and April 9th, when only essential activities including food trade, pharmacy, and some industries were authorized. A third phase (phase III) started on April 10th, when some non-essential sectors, including construction and industry, were allowed to return to work.

The shutdown of both social and economic activities in Spain has reduced anthropogenic pollutant emissions. Among the sectors presumably most affected, road transport, which is a dominant source of air pollution in urban areas, and air traffic have fallen to unprecedentedly low levels. The impact on the industrial sector is likely more contrasted, as some essential industries (e.g. fuel and energy related, petrochemical) were authorized to continue their production, while some others were forced to halt their activity.

While such an extraordinary situation has obviously impacted the levels of air pollution in the country (Tobías et al., 2020), the extent of such reductions remains uncertain. Besides emissions, air pollution is strongly influenced by meteorological conditions driving their dispersion and short- to long-range transport, and affecting their removal and chemical evolution. As highlighted by Tobías et al. (2020) in Barcelona, this makes the quantification of air pollution reductions during the lockdown unreliable when solely based on the analysis of in-situ observations. Chemistry-transport models (CTMs) are an essential tool for investigating both actual and alternative states of the atmosphere under different emission scenarios. Actually, the lockdown offers unique opportunities for so-called dynamical CTM evaluations (Rao et al., 2011), i.e., testing the ability of CTMs to reproduce the observed changes of concentrations under unusually different emissions (Guevara, in preparation). However, given the difficulty of accurately estimating the changes in emissions induced by the lockdown along with the inherent limitations of CTMs, particularly in urban areas, estimating the reductions with this method remains a complex task sullied by substantial uncertainties that are difficult to quantify.

The need for attributing changes in pollutant concentrations to changes in emissions recently motivated the development of so-called weather normalisation techniques based on machine learning (ML) algorithms (Grange et al., 2018; Grange and Carslaw, 2019). The idea consists in training ML models to predict pollutant concentrations at air quality (AQ) monitoring stations based a set of features including meteorological data and other time variables. This allows for the building of ML models that learn the influence of meteorology upon pollutant concentrations under a given average emission forcing. These ML models can then be used for predicting pollutant concentrations under a range of meteorological conditions, with the associated average referred to as meteorology-normalized time series in Grange et al. (2018) and Grange and Carslaw (2019). In addition, such



ML models can be used for predicting business-as-usual pollutant concentrations during periods with presumably different emissions, i.e., estimating the pollutant concentrations that would have been experienced without the change in emissions.

60 Following the ideas introduced in Grange et al. (2018) and Grange and Carslaw (2019), the present study uses ML models to investigate the reduction of nitrogen dioxide (NO₂) concentrations in Spain due to the COVID-19 lockdown. Since road transport and industry are major sources of NO₂ emissions, the impact of the lockdown on this primary pollutant is expected to be strong and thus easier to detect and quantify. Due to its short lifetime and relatively simple chemistry, NO₂ is likely more directly impacted by meteorological conditions than other pollutants like particulate matter that depend upon more numerous and complex processes.

65

2 Data and methods

2.1 NO₂ data

This study primarily relies on hourly NO₂ measurements performed routinely in Spanish AQ surface monitoring stations. We considered the time period going from 2013/01/01 to 2020/04/23. We used the NO₂ data available through the GHOST
70 (Globally Harmonised Observational Surface Treatment) project developed at the Earth Sciences Department of the Barcelona Supercomputing Center. GHOST is a project dedicated to the harmonisation of global surface atmospheric observations and metadata, for the purpose of facilitating quality-assured comparisons between observations and models within the atmospheric chemistry community (Bowdalo, in preparation). GHOST ingests numerous publicly available AQ observational datasets. In this study, we used the NO₂ data from the European Environmental Agency (EEA) AQ e-Reporting (EEA, 2020). We prioritized
75 the validated data (E1a) and used the near-real time data (E2a) only when necessary. (Nearly all the 2013-2019 NO₂ data are E1a and data in 2020 are E2a.) All NO₂ measurements taken into account here are operated using chemiluminescence with an internal Molybdenum converter, the dominant European methodology for measuring NO₂. GHOST provides a wide range of harmonized metadata and quality assurance (QA) flags for all pollutant measurements. In this study, we took benefit of these flags to apply an exhaustive QA screening. More details on the QA flags used can be found in Appendix A.

80 NO₂ measurements are available over the period 2013 to 2020 in 551 stations in Spain. This study aims at investigating the reduction of NO₂ over a variety of environments and geographical locations. We thus designed an algorithm for automatically selecting (when possible) one urban/suburban background station and one traffic station in each Nomenclature of Territorial Units for Statistics level 3 (NUTS-3) (Ceuta and Melilla excluded), which corresponds to Spanish provinces over mainland and individual islands over the Balearic and Canary Islands (hereafter referred to as provinces for convenience). After the QA
85 screening of NO₂ data, we set different thresholds for minimum data availability over different periods of interest, namely 50% of daily data over the entire period of study, 50% over the period 2017/01/01-2019/01/01 (used for training the ML models, see below), 25% over the period 2020/01/01-2020/03/13 (used for testing the ML models) and 10% during the lockdown period. Stations in each province were then selected to maximize the surrounding population density (within a geodesic radius of 5 km) and the data availability (both before and during the lockdown). The population density at AQ monitoring stations was retrieved



90 through GHOST, which ingests the Gridded Population of the World (GPW) version 4 dataset (Center for International Earth
Science Information Network - CIESIN - Columbia University, 2018). Stations fulfilling the different criteria were identified
in 50 provinces of Spain and are considered in this study (38 provinces with urban background stations and 37 provinces with
traffic stations). No appropriate stations were found in Palencia, Ávila and some islands (La Palma, La Gomera, El Hierro,
Lanzarote, Eivissa and Formentera). A map of the entire NO₂ monitoring network is shown in Fig. 1 together with the stations
95 selected in each Spanish province. Names and geographical locations of the stations are reported in Table A1 in Appendix.

2.2 Meteorological data

Meteorological data are taken from the ERA5 reanalysis dataset (Copernicus Climate Change Service (C3S), 2017). ERA5
data have a spatial resolution of about 31 km. At all AQ monitoring surface stations, we extracted the following variables at
the daily scale : daily mean 2-m temperature, minimum and maximum 2-m temperature, surface wind speed, normalized 10-m
100 zonal and meridian wind speed components, surface pressure, total cloud cover and boundary layer height.

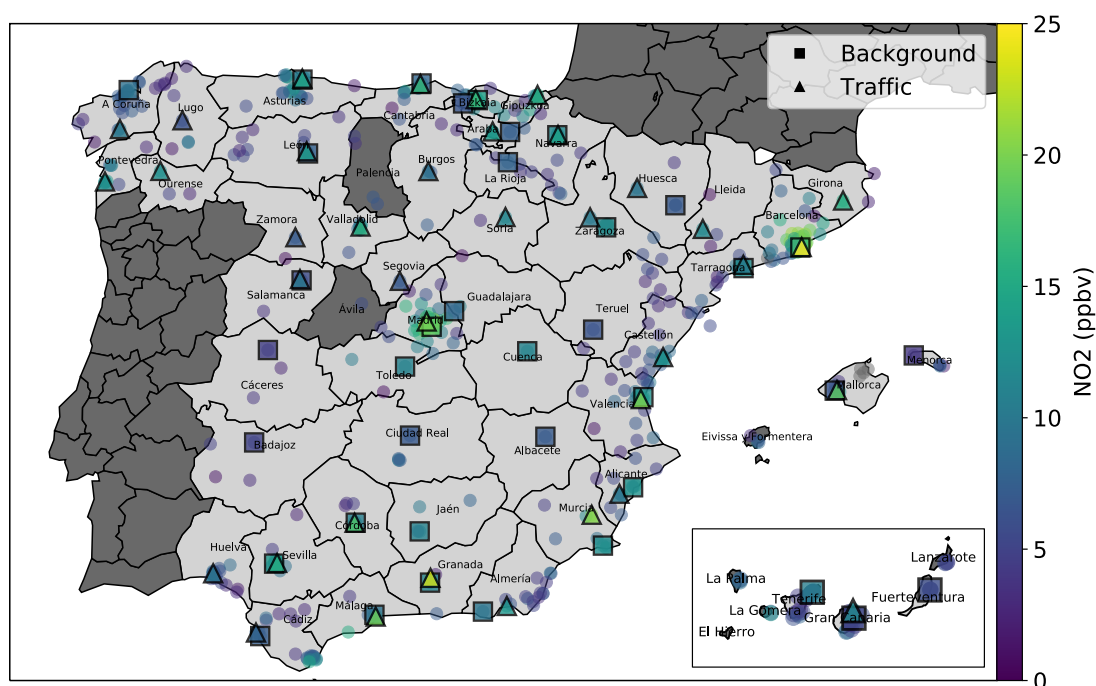


Figure 1. Mean NO₂ mixing ratios [ppbv] (2013-2020) at all (circles) and selected (squares and triangles) stations. Administrative borders show the NUTS-3 administrative units, which correspond to the Spanish provinces over mainland and to individual islands. Dark gray areas indicate provinces and islands with a lack of stations that fulfill the selection criteria.



2.3 Methodology

We implement and train ML models to estimate the daily NO₂ mixing ratios that would have been observed without the implementation of the lockdown in each selected station, i.e. under business-as-usual emission forcing. Hereafter, we will refer to these mixing ratios as business-as-usual NO₂.

105 2.3.1 Machine learning model

In this study, we retain the Gradient Boosting Machine (GBM), a popular decision tree-based ensemble method belonging to the boosting family (Friedman, 2001). More information on this model is given in Appendix B. ML models based on decision trees offer several interesting attributes. First, they internally handle the process of feature selection, which allows including potentially useless features without strong deterioration of the prediction skills. Second, they provide useful information about the importance of the different features. Third, in contrast to most parametric methods that derive a unique (more or less sophisticated) function supposedly valid over the whole features' space, non-parametric methods based on decision trees internally rely on successive splitting operations (a mother branch being divided into two daughter branches), which may be convenient for designing one single model able to work efficiently under different seasons and weather regimes.

2.3.2 Choice of features and modelling strategy

115 Following the work of Grange and Carslaw (2019), the idea here is to use past recent data to train a ML model able to reproduce the NO₂ mixing ratios based on a combination of meteorological features and other time features. The features used in this study are : daily mean 2-m temperature, minimum and maximum 2-m temperature, surface wind speed, normalized 10-m zonal and meridian wind speed components, surface pressure, total cloud cover, boundary layer height, date index (days since 2013/01/01), Julian date and weekday. All the data used in this study are daily. Some pollutant concentrations are known to
120 strongly vary depending on the season, day of week and hour of the day, notably due to the variability of emissions and chemistry. The two last time features act as proxies for these processes and aim at representing their climatological variations. Over longer (multi-annual) time scales, typically air pollutant concentrations cannot be considered as stationary due to substantial trends (especially in emissions), which is intrinsically problematic for training ML models. Following Grange et al. (2018) and Grange and Carslaw (2019), we introduced the date index as a proxy for this potential trend. Including such a feature with
125 unique values is not expected to directly help the ML model to learn about NO₂ variability. However, it allows us to train one single ML model over a relatively long and thus potentially non-stationary time series. In contrast to linear regression, GBM does not learn equations relating the target variable to the different features, but rather builds non-parametric relationships between target and features. As a consequence, such a model will always make NO₂ predictions within the range of NO₂ values used in the training, regardless of the inclusion of the aforementioned date index feature or the feature values it takes for
130 making the predictions. However, if NO₂ strongly increases (decreases) with time in the training dataset, the GBM model is able to split the data using the trend feature and therefore predict NO₂ in the range of the higher (lower) mixing ratios reached by the end of the training period. We note that even with a trend feature, such a model is not expected to stay valid very far in



time relative to the training data when the training data is following a too strong trend. Our sensitivity tests have clearly shown that the behaviour of the ML models substantially improves when including the trend feature.

135 In our study, the GBM models are trained over the 3 last full years, namely 2017-2019 and then used for predicting business-as-usual NO₂ mixing ratios over the 4 following months, from January to April 2020. Such a duration is expected to allow capturing a substantial part of the inter-annual variability of NO₂ mixing ratios and meteorological conditions and ensures some past data is available for quantifying the uncertainties of our ML modelling strategy (as explained later in Sect. 2.3.3). Note that no improvement was found with extended training periods of 4 or 5 years. Although our interest is to predict NO₂
140 during the lockdown period, the two and half preceding months were kept to test the validity of our predictions and uncertainty estimates.

The machine learning modeling in this study is performed using the *scikit-learn* Python package (Pedregosa et al., 2011). The GBM model comprises a number of hyperparameters to be tuned. Since features are temporal variables, instances cannot be considered as independent due to autocorrelation. We thus tuned our ML models using the so-called time series cross-validation
145 with five splits, which corresponds to a rolling-origin cross-validation in which data used for the validation is always posterior to the data used for the training (*TimeSeriesSplit* in *scikit-learn*). Over a selection of the most important hyperparameters, we applied a so-called *randomized search* over a range of possible hyperparameter values. Compared to the so-called *grid search* in which all combinations of hyperparameters are tested, the randomized approach tests only a certain number (20 in our case) of tuning configurations chosen randomly. This allows to explore a large part of the hyperparameters space at a greatly reduced
150 computational cost, and tends to be less prone to overfitting. More details on the tuning of the GBM model can be found in Appendix C.

2.3.3 Uncertainty estimation

In order to quantify our prediction uncertainty, we replicated four similar experiments over the past years since 2013, i.e., training ML models over 2013-2015, 2014-2016, 2015-2017 and 2016-2018, and testing them over the 4 first months of 2016,
155 2017, 2018 and 2019, respectively. We obtained on average 538 daily residuals (predicted minus observed NO₂ daily mixing ratios) for each station and we took the associated 5th and 95th percentiles as the uncertainty interval for our ML-based predictions of daily NO₂ mixing ratios. Therefore, for each station, we obtained a fixed asymmetric 90% confidence interval used to characterize the uncertainty of our predictions during the first 4 months of 2020. Averaged over all Spanish provinces, the uncertainty interval is [-5.5, +5.2] ppbv at urban background stations, and [-6.7, +6.6] ppbv at traffic stations.

160 In 2020, the period before the lockdown, namely January 1st to March 13th, is used to check the performance of the ML models trained over 2017-2019 against the observed NO₂ mixing ratios, given the aforementioned uncertainty. Ideally, we expect the differences between observed and predicted NO₂ mixing ratios to remain within the estimated uncertainty during that period. Conversely, after April 14th, due to the reduction of NO₂ emissions caused by the lockdown, we expect the observed NO₂ mixing ratios to quickly decrease compared to the business-as-usual NO₂ mixing ratios predicted by the ML model, eventually
165 down to a level at which the differences are statistically significant.



170 These uncertainties are suited for our ML-based daily NO₂ predictions. Since daily uncertainties are at least partly uncorrelated, predictions averaged over longer time periods are expected to have smaller uncertainties. We estimated the uncertainty affecting our ML predictions at the weekly scale. We used a similar approach than previously described for the daily uncertainty, but based on the 7-day running average of the daily residuals (by requiring a minimum of 5 over 7 days with available data). The 5th and 95th percentiles were computed based on the entire set of residuals (514 residuals on average at each station over 2016-2019). On average over all provinces, the weekly uncertainty interval obtained are [-4.2, +3.5] ppbv at urban background stations, and [-4.9, +4.5] ppbv at traffic stations, which represents a reduction of 27 and 30%, respectively, with respect to the daily uncertainties.

175 Our main interest in this study is to quantify the mean NO₂ changes during the lockdown period. We decided to keep the weekly scale uncertainties for the predictions of business-as-usual NO₂ mixing ratios averaged over its different phases (10-13 days each) and over the entire lockdown period (41 days). The use of weekly uncertainties is likely conservative when used for the entire lockdown average, but accounts for potential data gaps, particularly when estimating the shorter phases therein.

3 Results and Discussion

180 In this section, we first evaluate the ML-based predictions of business-as-usual NO₂ mixing ratios (Sect. 3.1). We then illustrate our methodology in the two provinces with largest population density, namely Madrid and Barcelona (Sect. 3.2). We then analyze the meteorology-normalized changes of NO₂ obtained in all Spanish provinces (Sect. 3.3). We discuss in Sect. 3.4 the potential relationships with emission reductions. Finally, we discuss in Sect. 3.5 the advantages of our ML-based approach for estimating the baseline NO₂ pollution compared to the climatological approach.

185 3.1 Evaluation of ML predictions

The performance of the ML predictions is shown in Fig. 2, and the statistics averaged over all Spanish provinces reported in Table 1. Results are evaluated using the following metrics, calculated based on daily NO₂ mixing ratios : mean bias (MB), normalized mean bias (nMB), root mean square error (RMSE), normalized root mean square error (nRMSE) and Pearson correlation coefficient (PCC).

190 For information purposes, we included the statistical results obtained over the training dataset (2017/01/01-2019/12/31). Checking results over the training data may be useful for highlighting obvious situations of overfitting, when the performance is almost perfect. At urban background stations, results show no bias, low RMSE (always below 30%, 20% on average over all provinces), and a high PCC (0.91 on average). Similar results are obtained at traffic stations. Although such a performance obtained is very good, there are no clear signs of too prejudicial overfitting at this stage.

195 On the test dataset (2020/01/01-2020/03/13, before the lockdown), the performance remains reasonably good in most provinces. On average over the different provinces, the bias increases to +2 and +7%, the RMSE to 32 and 28%, and the PCC is reduced to 0.71 and 0.75, at urban background and traffic stations, respectively. Results highlight some inter-regional variability of the performance, with poorer statistics in some provinces, at least for one type of station. At most stations, the bias remains below



Table 1. Performance of the ML predictions of NO₂ mixing ratios on the test dataset (2020/01/01-2020/03/13), averaged over all Spanish provinces (the standard deviation among the provinces is also indicated).

Dataset	Type of station	MB [ppbv] (nMB [%])	RMSE [ppbv] (nRMSE [%])	PCC	N
Training	Urban background	-0.0±0.0 (-0%)	1.8±0.7 (20%)	0.91±0.06	957
Training	Traffic	+0.0±0.0 (+0%)	2.4±1.0 (18%)	0.91±0.05	990
Test	Urban background	+0.1±1.5 (+2%)	3.4±1.2 (32%)	0.71±0.11	62
Test	Traffic	+0.8±1.9 (+7%)	4.0±1.5 (28%)	0.75±0.10	66

±20% while nRMSE ranges between 15 and 45% (highest nRMSE around 50% in Teruel and Tenerife). Most provinces show
200 PCC around 0.6-0.9, with only a few exceptions below 0.6 (urban background sites in Bizkaia, Fuerteventura, Huesca, La Rioja
and traffic site in Granada and Gran Canaria).

Several factors may explain the poorer statistical results obtained at some stations. First and foremost, it may be due to
deficiencies in the ML modelling, and in particular to some overfitting. This seems to be the case of Fuerteventura and Huesca,
given the good performances obtained with the training data. Since we are considering numerous stations in this study, we need
205 a fixed procedure applied similarly to all ML models to be trained. As described in Sect. 2.3.2, we designed our training and
tuning procedure in order to limit as much as possible this common issue, through rolling-origin cross-validation and random-
ized search in the hyperparameters space. Overall results are satisfactory but some overfitting can still persist in some cases.

Second, although moderately, some of the biases and errors may be partly due to trends and/or inter-annual variability of NO₂.
As previously explained (Sect. 2.3.2), by model design, if NO₂ levels in the first months of 2020 are outside of the NO₂ range
210 in the 2017-2019 training dataset, our predictions over the lockdown period could be equally biased. The different NO₂ time
series indeed show some cases where NO₂ mixing ratios are lower than in the past years (since 2013). In the frame of our
study, it is important to mention that, although the lockdown was officially implemented on March 14th, the COVID-19 started
to perturb the business-as-usual situation in the days/weeks before, first through the cancellation of numerous events and, later,
through unusual movements of a part of the population (e.g. to second homes). Although complicated to assess more precisely
215 in each of the Spanish provinces, this likely explains part of the biases noticed in the second half of the test period.

Third, poor performances at some stations may be due to weaker relationships between meteorological input data and NO₂
mixing ratios. This points to uncertainties in the ERA5 meteorology data. For example, the relatively coarse spatial resolution
(31 km) of ERA5 data may only capture part of the meteorological variability existing at a given station. This is especially true
when considering stations located in urban areas where the complex urban morphology (e.g. presence of buildings, canyon
street) is known to locally distort the mesoscale circulation. Decision-tree based ML methods like GBM offer some inter-
220 pretability by providing a measure of the importance of the different features included as input data. In our case, on average
over all ML models, the most important feature is the boundary layer height (22±7%) followed by the surface wind speed
(12±5%). These two parameters drive the ventilation and dispersion of the pollutants emitted at the surface, and their variabil-



ity at some stations may be only partly captured by the ERA5 data at some urban stations. Also, the ERA5 data may poorly
225 capture the meteorological conditions in some stations located on small islands with complex orography, like in the Canary
islands (e.g. Tenerife and Fuerteventura).

The chosen training and tuning procedures applied in this study were designed to limit some of these different sources of
uncertainty, but persistent errors cannot be excluded. This is why we added another layer of analysis in which we estimated
230 the uncertainties of our ML predictions by replicating exactly the same procedure over the past years since 2013 (as explained
in Sect. 2.3.3). Computed as the 5th and 95th percentiles of the daily residuals obtained over a large test period extending over
several years (2016-2019), the uncertainty intervals are expected to cover most (90%) of the errors caused by these different
sources of uncertainties. Indeed, considering all stations, our results indicate that 88% (3966 points over 4523) of the NO₂
observations in 2020 before the lockdown fall within the corresponding prediction uncertainty interval at each station, thus
235 very close to 90%. This demonstrates that the daily uncertainty estimated in this study is well quantified.

All in all, we have shown that our ML predictions and associated uncertainties are qualified for estimating the business-as-usual
NO₂ mixing ratios during the lockdown.

3.2 Illustration of the results in Madrid and Barcelona

3.2.1 Madrid

240 The daily NO₂ mixing ratios observed and predicted in the province of Madrid are shown in Fig. 3 for both the urban back-
ground station and the traffic station, with station codes-names ES1941A-*Ensanche de Vallecas* and ES1938A-*Castellana*,
respectively. The NO₂ mixing ratios observed over the past years since 2013 are also included. Since days of week are not
consistent from one year to the other, we also show the NO₂ 7-day running mean time series where a minimum of 5 over 7
days is required to compute the average.

245 In Madrid, the ML reproduces remarkably well the variability of NO₂ mixing ratios at the urban background and traffic stations
before the lockdown (nMB of -4 and +3%, nRMSE of 19 and 21%, PCC of 0.87 and 0.84, respectively). Importantly, prediction
errors remain within the uncertainty interval. The two sub-periods with lower NO₂ mixing ratios, during the second half of
January and early March occur concomitantly with strong wind speeds in Madrid, above 6 m s⁻¹ on a daily average (above the
95th percentile of the ERA5 daily wind speed over 2013-2020 during this season), and relatively high boundary layer heights
250 (up to 1000-1500 m on a daily average). It is worth mentioning that a low emission zone (LEZ) with relatively strict vehicle
restrictions applied for entering a limited area of about 5 km² corresponding to the heart of the city center was implemented
in early January 2020. Such a change in emissions may in principle directly impact the performance of the ML predictions by
inducing a positive bias (since the ML models are designed precisely for highlighting such events). In our case, considering
that the LEZ was still in its transition phase (offending motorists were not yet receiving fines) and that the two stations selected
255 in Madrid province are located outside this LEZ (at 9 and 3 km from the city center), a limited impact is expected.

After the implementation of the lockdown, the observed NO₂ mixing ratios decreased down to about 11 and 7 ppbv on aver-

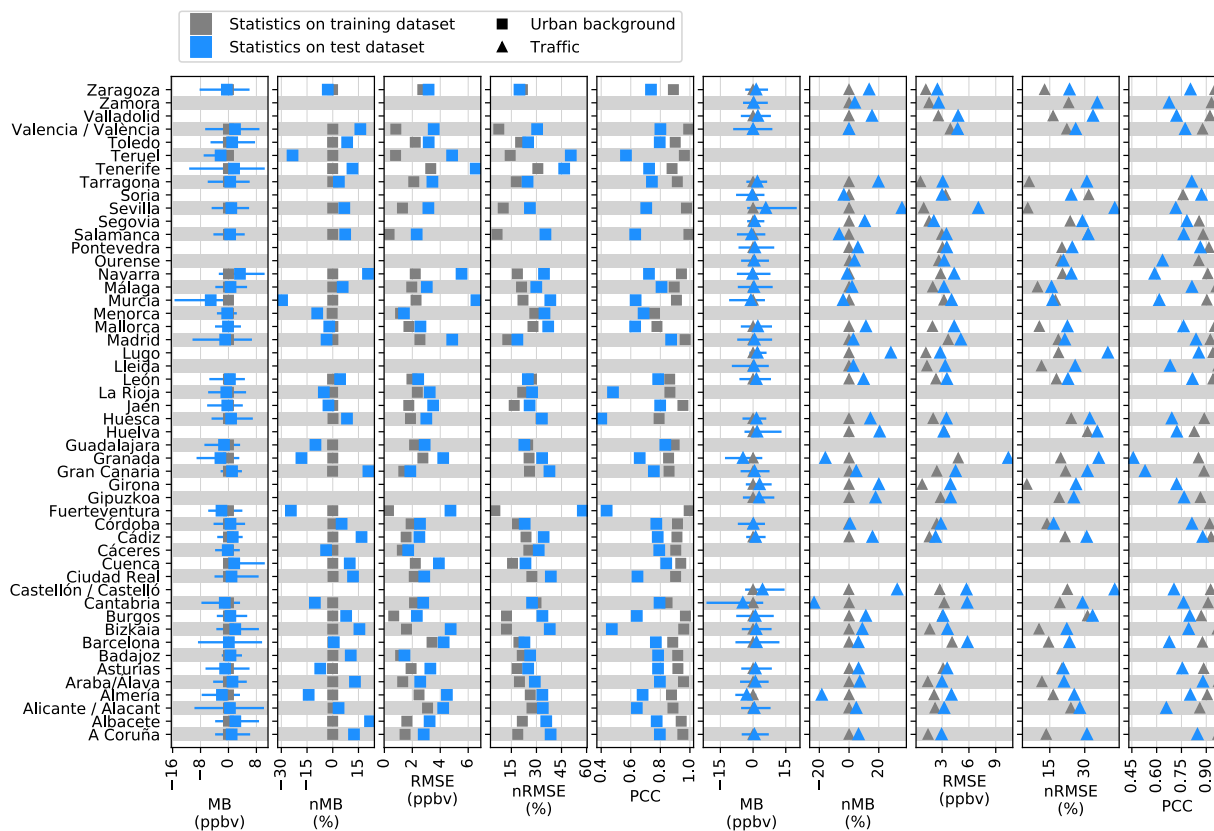


Figure 2. Statistical results of the ML-predicted business-as-usual NO_2 mixing ratios over training dataset (2017–2019, in grey) and test dataset before lockdown (2020/01/01–2020/03/13, in blue). Metrics are mean bias (MB), normalized mean bias (nMB), root mean square error (RMSE), normalized root mean square error (nRMSE), Pearson correlation coefficient (PCC) and number of points (N, only shown for the test dataset). The horizontal bars added to MB correspond to the uncertainty (90% confidence interval) at the daily scale.

age, and reached daily minimum mixing ratios of 6 and 3 ppbv, respectively, over the entire period. Compared to the previous years, the NO_2 mixing ratios at the urban background site are clearly in the lower tail of the distribution. In the traffic site, never NO_2 levels had been so low for such an extended period of time at least since 2013. In comparison, business-as-usual NO_2 mixing ratios at these two sites would have remained around 17–18 ppbv on average. After the lockdown, the differences between the observed and business-as-usual NO_2 are found to progressively increase, becoming more and more statistically significant. This demonstrates unambiguously that the lockdown considerably reduced the NO_2 pollution in Madrid, regardless of the meteorological conditions, which points to a drastic decrease of the business-as-usual emission forcing.

We computed the meteorology-normalized change of NO_2 during the lockdown period covered by this study (from March 14th to April 23th) as the mean difference between ML-based business-as-usual and observed NO_2 daily mixing ratios. The uncertainty at weekly scale is here used as an estimate of the uncertainty (at 90% confidence level) affecting the mean NO_2



270

change. On average over the entire lockdown period, NO₂ levels have decreased by -7[-12,-1] ppbv at the urban background station, which corresponds to -40[-66,-3]% in relative terms. The impact is faster, stronger and more statistically significant at the traffic station than in the urban background one, with a mean NO₂ reduction of -9[-14,-4] ppbv, or -56[-86,-24]% in relative terms. This result is consistent with a lockdown affecting most strongly the sector of traffic emissions. At the daily scale, the reduction of NO₂ in Madrid reached its maximum at the end of the second and more stringent lockdown phase, while a strong reduction persisted during the third phase.

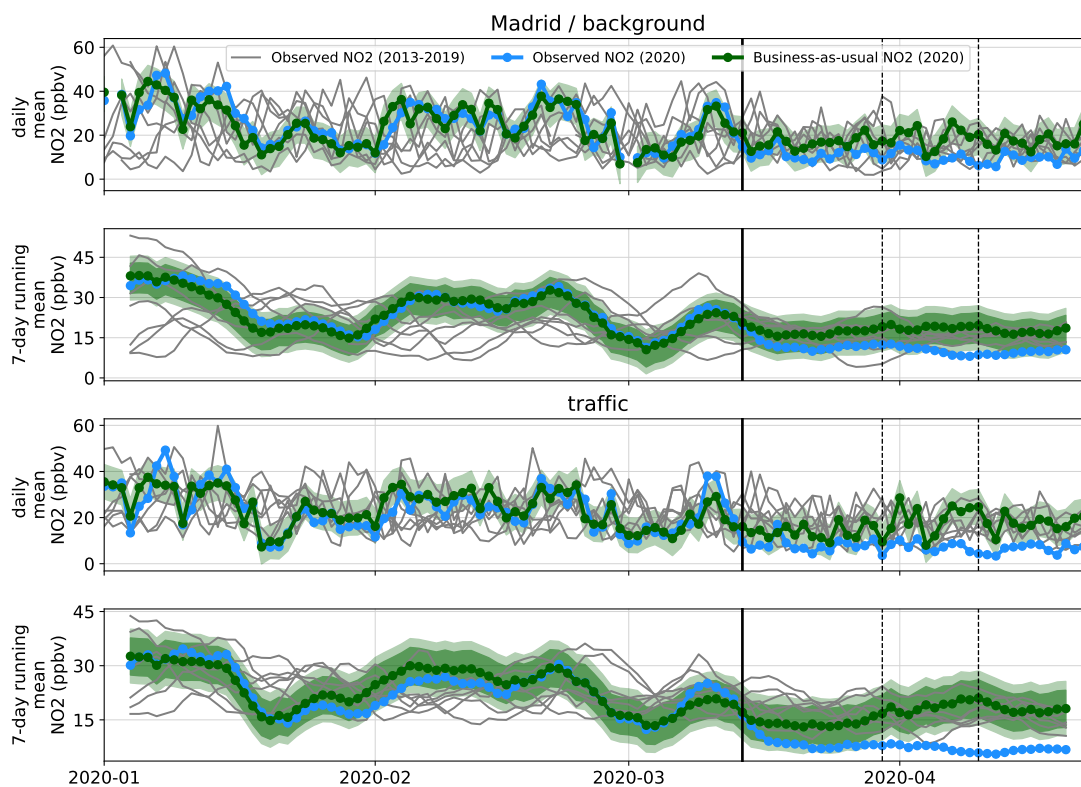


Figure 3. NO₂ mixing ratios in Madrid province. The two top panels show the daily mean and 7-day running mean at the urban background station, respectively. The two bottom panels show the time series at the traffic station. Each panel displays the NO₂ mixing ratios observed in 2020 (in blue) and during the past years (2013-2019, in grey), and predicted in 2020 by the ML model (in green). The uncertainties of the ML predictions are given at a 90% confidence level at the daily (light green) and weekly scales (medium green). The vertical black line identifies the beginning of the lockdown, the next dotted lines separate the different lockdown phases (phase I : 2020/03/14-2020/03/29, phase II : 2020/03/30-2020/04/09, phase III : 2020/04/10-2020/04/24).



3.2.2 Barcelona

Figure 4 presents the results in Barcelona for both the urban background and traffic stations, with station codes-*names*
275 ES1396A-*Sants* and ES1480A-*L'Eixample*, respectively. Compared to Madrid, the ML predictions in Barcelona have rela-
tively similar errors (nRMSE of 23%) and correlations (PCC of 0.77 and 0.82, respectively). The bias is very low at the urban
background station (+1%), and reaches +12% at the traffic station, which largely remains within the uncertainty interval. The
positive bias in the traffic station started in late January and persisted during the following weeks, particularly after the second
week of February. The ML model failed at reproducing these low NO₂ mixing ratios notably because some of the observed
280 NO₂ mixing ratios during that period were lower than during the previous years. As in Madrid, a LEZ was implemented in
Barcelona, starting in early January 2020, with less stringent vehicle restrictions but over a larger area (95 km²). Both the
urban background and traffic stations selected in Barcelona are included in this LEZ. The potentially stronger effect of the LEZ
at traffic stations could explain at least partly this positive bias. As in the case of Madrid, fines for non-compliance with the
LEZ restrictions were not planned to start before April. Therefore the effect of the LEZ is expected to be progressive, which is
285 consistent with the absence of bias in the beginning of the period. In addition, the 2020th edition of the World Mobile Congress
(the largest annual event in Barcelona, with 109.000 visitors in 2019) that takes place every year by the end of February was
officially canceled by the organizers due to the risks posed by the emerging COVID-19 pandemic. We therefore hypothesize
this cancellation contributed to the reduction of NO₂ levels in the city and to the slight positive bias of the ML prediction before
the lockdown.

290 After the lockdown, NO₂ mixing ratios decreased down to 8 and 11 ppbv on average at the urban background and traffic
stations, respectively, both reaching minimum daily mixing ratios of 4 ppbv. Results highlight strong and statistically signif-
icant differences with the business-as-usual situation in which NO₂ levels would have remained around 15-21 ppbv during
that period. As in Madrid, the strongest differences are found in April, during the phases II and III of the lockdown. Note that
these differences exceed by large the aforementioned positive bias encountered after February. Interestingly, besides the strong
295 reduction, observed NO₂ mixing ratios followed a very similar variability than business-as-usual NO₂, which highlights the
major influence of meteorological conditions on the levels of pollution, as previously mentioned by Tobías et al. (2020). For
instance, the increase of NO₂ mixing ratios between April 6th and April 9th appears linked to unusually low wind speeds over
Barcelona, 1.7 m.s⁻¹ on average over these days, which is slightly below the climatological (2013-2020) 5th percentile of wind
speed in April (1.8 m.s⁻¹). Without the lockdown, this stagnant situation associated with the business-as-usual emission forc-
300 ing would have increased NO₂ by about 5-10 ppbv, according to the ML predictions. Observed NO₂ also slightly increased
during the episode of stagnant meteorological conditions, but due to the lockdown, NO₂ remained at very low levels. This
event illustrates the usefulness of considering a ML model fed by meteorological data for quantifying the baseline air pollution
during the lockdown.

Over the entire lockdown period, NO₂ in Barcelona decreased by -6[-12,-1] ppbv (-43[-78,-5]%) at the urban background
305 station, regardless of the meteorological conditions. As in Madrid, a stronger reduction is found at the traffic station, with



-14[-19,-8] ppbv (-57[-80,-32]%). Therefore, in relative terms, the lockdown has induced a relatively similar decrease of NO₂ in both Madrid and Barcelona.

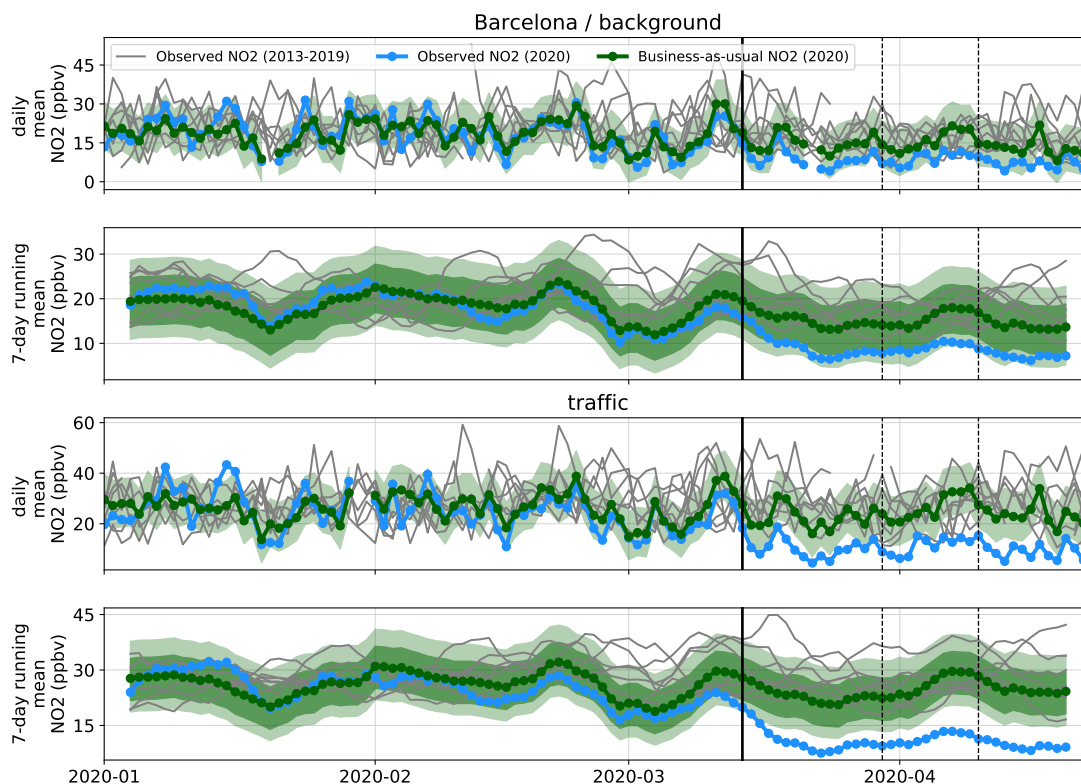


Figure 4. Similar to Fig. 3 in Barcelona province.

3.3 Meteorology-normalized changes of NO₂ mixing ratios over Spain

We computed the meteorology-normalized changes of NO₂ for all the selected stations. Results are presented in Fig. 5, together with the weekly uncertainty of our ML predictions (colored lines). For information purposes, we also display the daily uncertainty (black lines). Results are colored as a function of their degree of significance, here computed as the distance between the NO₂ change best estimate and the upper limit of the weekly uncertainty interval, normalized by the distance between the best estimate and zero. A degree of significance of 1 thus indicates a NO₂ change significant at a 90% confidence level. Statistics over the changes of NO₂ obtained in all provinces are reported in Table 2. A map of best estimates of NO₂ changes at each station is also given in Fig. 6.

Results highlight that the reduction previously described in Madrid and Barcelona extends to most Spanish provinces, although with some inter-regional variability in the extent of the change and the degree of statistical significance. On average over all



urban background stations during the entire lockdown period, NO₂ has decreased by -4[-8,+0] ppbv (-50[-94,+3]% in relative terms), independently from the meteorological conditions. The 5th and 95th percentiles (computed based on the mean NO₂ changes obtained in all provinces) are -7 ppbv (-65%) and -2 ppbv (-36%). The NO₂ change is significant with more than 90% confidence in 20 out of 38 provinces, with many of the remaining ones being relatively close to that confidence level. A similar, yet more statistically significant reduction is found at traffic stations, with a mean NO₂ decrease of -6[-11,-1] ppbv (or -50[-88,-8]%), and 28 out of 37 stations exceeding the 90% confidence level. The spread of NO₂ change between the different provinces is also quite similar between the two types of stations, with 5th and 95th percentiles of -66 and -28%, respectively. Generally, the meteorology-normalized NO₂ reductions in the provinces of the southern half of the country appear stronger and in more cases statistically significant.

As previously observed in Madrid and Barcelona, results in Table 2 highlight noticeable differences between the different phases of the lockdown. The corresponding figures (with both absolute and relative changes) can be found in the Appendix (Figs. A1, A2, A3 and A4). The mean reduction of NO₂ during phase I was about -40% at both station types, and further increased to about -55% during phases II and III. The lower reduction during the first phase is partly explained by the fact that NO₂ concentrations started at their business-as-usual levels and took a few days to reach their minimum. During the two last phases, NO₂ was found to be reduced in many more provinces, as shown by the 95th percentile that ranges between -33 and -45% depending on the type of station during phases II and III, compared to only -12 to -19% during phase I.

3.4 Relationship to emission reductions

We contrasted our results with a detailed NO_x anthropogenic emission inventory at 4km x 4km resolution over Spain available through the bottom-up module of the HERMESv3 emission model, developed at the Earth Sciences Department of the Barcelona Supercomputing Center (Guevara et al., 2020). Averaged over the different stations considered in this study, road transport emissions are the dominant source, with 66 and 69% of the total NO_x emissions in the vicinity of urban background and traffic stations, respectively. The other emission sources are the residential/commercial combustion sector (14 and 15%), industrial point sources (8 and 13%) and shipping and port activities (11 and 3%). In Spain, the public agency in charge of monitoring traffic (*Dirección General del Tráfico*) reported progressive reductions in total traffic down to levels about -60 to -90% lower than usual, with substantial day-to-day variability and strongest reductions during weekends. Assuming to first order a linear relationship between NO₂ urban background mixing ratios and local surrounding NO_x emissions (within a 4km x 4km cell) and applying a 70% (80%) reduction of road transport would lead to a NO₂ reduction of about 47% (54%), which is consistent with our findings. Our knowledge about the impact of the lockdown on the other emission sectors remains at this stage quite limited. NO_x emissions from industry likely also decreased but quantifying this reduction, even roughly, is more complex as some industries were considered as essential and thus not affected by the lockdown. Although 9-13% of the surrounding emissions (in the 4km x 4km cell of the inventory) are associated to this sector, the impact of idling industrial activities on the pollution levels observed at the selected stations may be relatively small considering that none of these stations are classified as "industrial". The residential/commercial emission sector represents another unknown since the expected emission increment caused by a population spending more time at home may be compensated by the closure of most shops, schools



Table 2. Meteorology-normalized changes of NO₂ mixing ratios in Spain during the lockdown (phase I : 2020/03/14-2020/03/29, phase II : 2020/03/30-2020/04/09, phase III : 2020/04/10-2020/04/24). Statistics are computed based on the mean NO₂ changes in the different Spanish provinces.

Change	Metric	Phases I+II+III		Phase I		Phase II		Phase III	
		Background	Traffic	Background	Traffic	Background	Traffic	Background	Traffic
absolute (ppbv)	mean	-4.1	-6.3	-3.2	-5.4	-5.2	-7.3	-4.3	-6.8
		[-7.7,0.1]	[-10.8,-1.4]	[-6.8,1.0]	[-9.8,-0.5]	[-8.7,-1.0]	[-11.8,-2.3]	[-7.9,-0.1]	[-11.1,-1.9]
	std	1.7	3.0	1.7	3.1	2.1	3.2	2.0	3.1
	min	-9.6	-14.2	-8.0	-14.0	-11.1	-15.3	-10.3	-14.8
	p05	-6.7	-12.0	-6.1	-11.0	-8.9	-13.3	-8.0	-12.8
	p10	-6.3	-10.7	-5.3	-9.8	-7.3	-11.4	-6.9	-11.5
	p25	-5.3	-7.2	-4.4	-6.4	-6.6	-8.5	-5.3	-9.0
	p50	-3.6	-5.6	-2.8	-5.0	-4.8	-7.0	-4.1	-6.0
	p75	-3.0	-4.2	-2.2	-3.8	-4.0	-5.1	-2.8	-4.7
	p90	-2.2	-3.4	-1.5	-1.9	-3.0	-3.8	-2.0	-3.9
	p95	-2.1	-2.9	-1.1	-1.0	-2.8	-2.8	-1.7	-2.8
max	-1.1	-1.3	0.6	0.5	-1.1	-1.3	-1.4	-2.5	
relative (%)	mean	-50	-50	-40	-42	-57	-53	-54	-56
		[-94,3]	[-88,-8]	[-87,17]	[-80,-0]	[-96,-8]	[-89,-14]	[-100,2]	[-95,-13]
	std	11	11	15	16	9	11	14	9
	min	-68	-71	-64	-69	-72	-71	-77	-74
	p05	-65	-66	-58	-62	-71	-71	-73	-70
	p10	-63	-61	-58	-59	-69	-67	-70	-68
	p25	-58	-57	-50	-52	-66	-59	-65	-64
	p50	-50	-50	-41	-43	-55	-56	-55	-55
	p75	-41	-43	-31	-38	-49	-48	-44	-51
	p90	-38	-37	-23	-19	-45	-39	-38	-47
	p95	-36	-28	-19	-12	-43	-33	-33	-45
max	-23	-23	10	4	-40	-23	-18	-25	

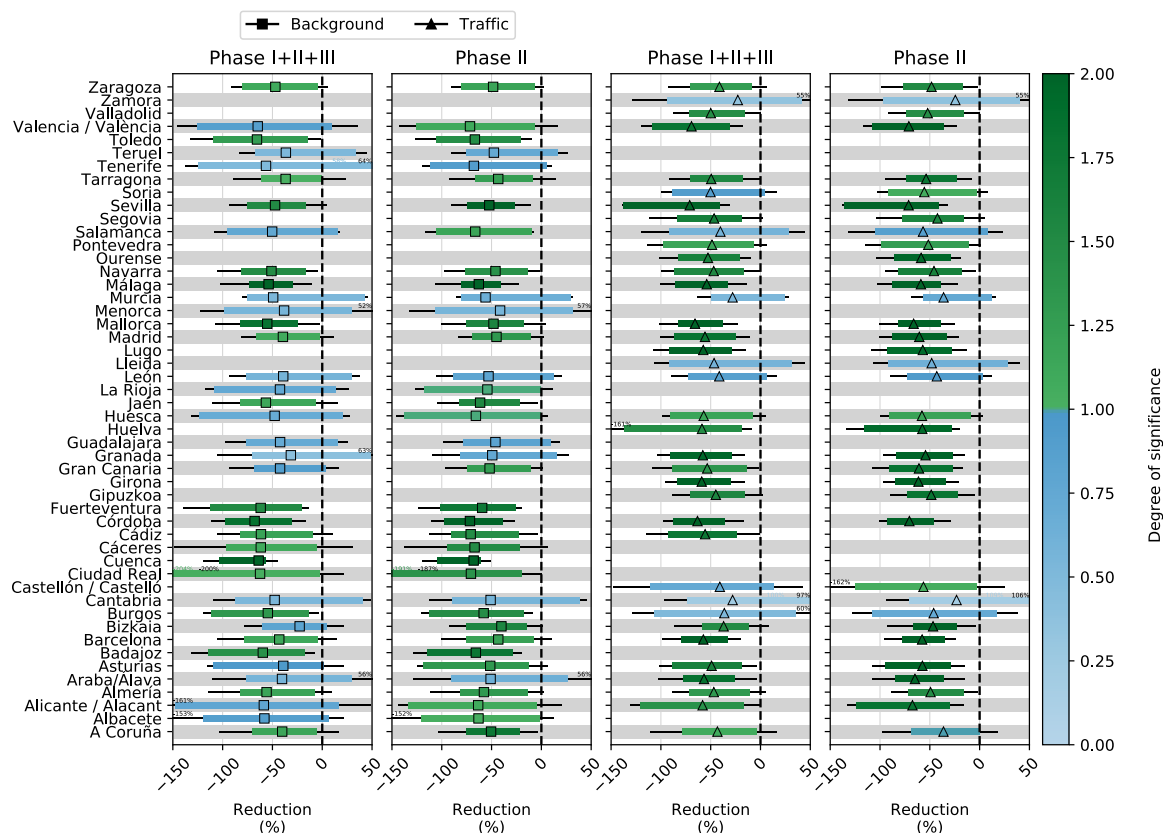


Figure 5. Meteorology-normalized mean NO_2 changes at urban background and traffic stations during the COVID-19 lockdown. Changes are shown during the entire lockdown period and during the second and most stringent phase. Best estimates and weekly uncertainties are colored according to the degree of significance (a value of 1 indicates a change statistically significant at a 90% confidence level, see text for more details). For information purposes, daily uncertainties are also indicated (in black).

and offices. A more detailed analysis of the activity data in these different emission sectors is required to better quantify how the emission forcing has been modified by the lockdown (Guevara, in preparation) and to understand the reductions of NO_2 obtained in this study.

- 355 Concerning traffic stations, although HERMESv3 gives a quite similar contribution of the different emission sectors compared to urban background stations, a larger contribution of road transport emissions is evidently expected since measurement instruments are deployed under the direct influence of vehicles. As a consequence, assuming that road transport is the emission sector most impacted by the lockdown (together with air traffic, but this last sector does not emit strong amounts of NO_x around our set of stations), we could expect a stronger relative reduction of NO_2 at traffic stations, compared to urban background stations.
- 360 At first glance, Table 2 does not highlight such a difference between the two types of stations. This seems to be due to the fact that we here gather urban background and traffic stations not always collocated in the same cities, and/or located in cities of

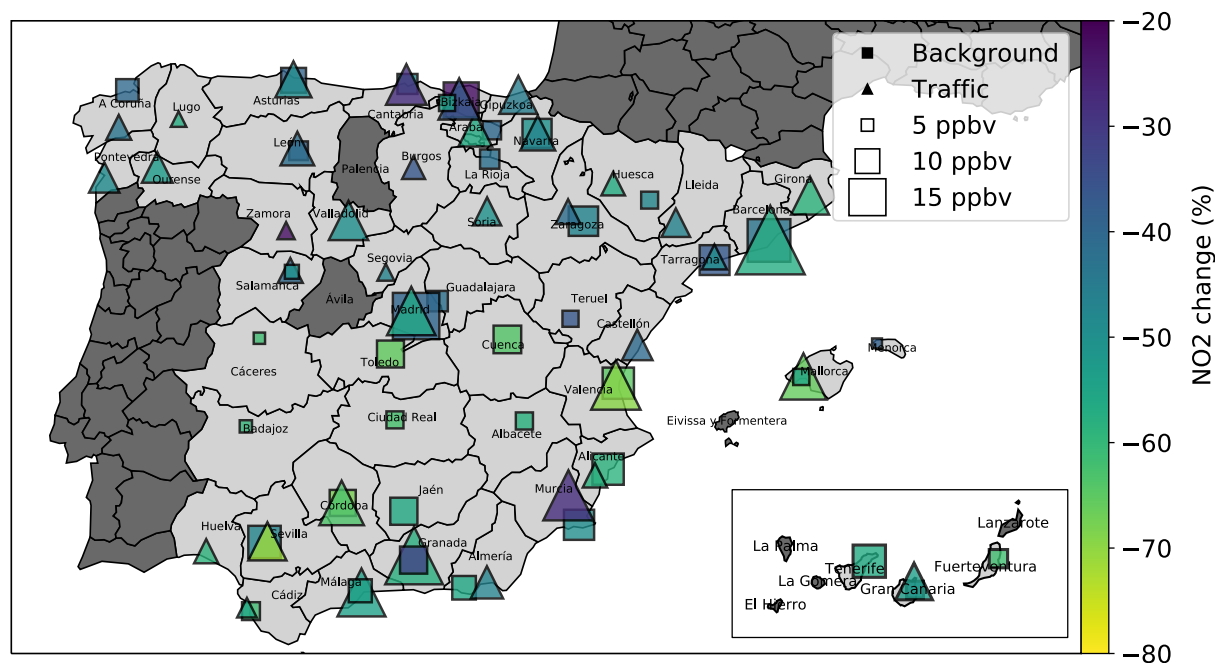


Figure 6. Meteorology-normalized mean NO_2 changes at selected urban background and traffic stations during the COVID-19 lockdown in Spain. The size of symbols is proportional to the annual average NO_2 mixing ratio (over 2013-2020).

very different sizes. In both Madrid and Barcelona provinces, the two selected stations are located in the same agglomeration, and results do highlight substantial differences of NO_2 reductions (Sect. 3.2). In total, urban background and traffic stations are collocated in the same agglomeration in 15 provinces. On average over this set of provinces, the NO_2 reduction is -49 and
365 -54% at the two types of stations, thus showing a noticeable but still relatively small difference. Focusing on the 6 largest cities within this group of provinces (Madrid, Barcelona, Valencia, Sevilla, Málaga and Mallorca), the difference of NO_2 reductions increases, with -51 and -62% at urban background and traffic stations, respectively. Focusing on the 2 largest cities, namely Madrid and Barcelona, the discrepancy further increases, with the NO_2 reductions of -41 and -57%, respectively. Therefore, results suggest that the lockdown has impacted more strongly the business-as-usual NO_2 levels at traffic stations than at urban
370 background ones, and that this difference tends to be stronger in the largest cities.

3.5 ML-based business-as-usual NO_2 versus climatological average NO_2

We developed the ML-based approach arguing that it allows avoiding a potentially erroneous assessment of the lockdown-related NO_2 changes caused by the variability of meteorological conditions. In this section, we illustrate quantitatively the benefits of our method. Besides the business-as-usual NO_2 daily concentrations obtained with our ML-based approach, we
375 consider here the mean NO_2 concentrations observed in 2017-2019 at this period of the year (this approach being hereafter



referred to as the climatological average approach). We compared the mean NO₂ concentrations obtained in each province with both approaches during the different phases of the lockdown. Taking the ML-based approach as the reference, we computed the bias of the climatological average approach. In this frame, in a given province, a small bias between the two approaches should indicate that the meteorological conditions prevailing during a given phase of the lockdown are relatively close to their climatological values at this time of the year. For convenience, both urban background and traffic stations are gathered in this analysis.

Considering the entire lockdown period, the mean business-as-usual NO₂ mixing ratios predicted by the ML models averaged over all provinces is 10.3 ppbv, in close agreement with the corresponding climatological mean NO₂ that is 10.6 ppbv. This corresponds to a mean bias (of the climatological average approach) of only +0.3 ppbv (or +2% in relative terms). This shows that under a business-as-usual scenario, the NO₂ concentrations during the lockdown period should have been close to the values typically observed at this time of the year. However, this holds at a relatively large temporal (the entire lockdown period in this case, i.e. 41 days) and spatial (all Spanish provinces) scale. Among the different provinces, the relative bias of the climatological approach ranges between -41 and +33%, with 5th and 95th percentiles of -22 and +27%, thus greatly larger than its average of +2%. This highlights the presence of substantial departures from the climatology at the province scale.

For instance, in Barcelona province, the ML-based business-as-usual and climatological mean NO₂ mixing ratios during the lockdown period are 15 and 19 ppbv, respectively, which corresponds to a climatological approach positively biased by +30%. Such a result is not surprising since encountering climatological conditions simultaneously in all Spanish provinces is very unlikely.

Higher when considered at the province scale, the bias of the climatological approach can also further increase when computed over shorter time periods. Indeed, during the 3 phases of the lockdown, it gets to +12, +1.2 and +2.5%, respectively, when averaged over all provinces. Among the different provinces, the corresponding 5th/95th percentiles reach -17/+48, -29/+34 and -30/+37% during phases I, II and III, respectively. For the case of Barcelona province, these relative biases are +39, +25 and 30%.

This analysis demonstrates the need to take into account (with ML or other techniques) the meteorological variability to accurately estimate the baseline pollution and assess the changes of pollution induced by an altered emission forcing, which appears all the more crucial when pollution changes are investigated at a fine temporal and/or spatial scale.

4 Conclusions

The fast spread of the COVID-19 coronavirus pushed Spanish authorities to implement a severe lockdown of the population, with drastic restrictions of social and economic activities starting on March 14th 2020. Such a situation had an impact on the anthropogenic emissions from numerous activity sectors, some of them unambiguously (road transport and air traffic, and to a lesser extent the industrial sector), others with still unclear response (residential/commercial sector). Concomitantly, a reduction of NO₂ mixing ratios was reported in many locations, based on in-situ NO₂ measurements operated by air quality monitoring stations or space-based remote sensing (e.g. TROPOMI). Part of the reduction of NO₂ pollution is likely explained



410 by the modified emission forcing caused by the lockdown. However, the potential confounding impact of the meteorologi-
cal variability (a major driver of the NO_2 variability) prevents to directly relate the reduction of NO_2 mixing ratios to the
lockdown-related reduction of emissions.

To tackle this issue, we used ML models fed by meteorological data to estimate the NO_2 mixing ratios that would have been
normally observed during the COVID-19 lockdown period under a business-as-usual emission forcing and meteorological
conditions prevailing during that period. We also estimated (conservative) uncertainties affecting our ML predictions. This
415 allowed us to quantify the changes of NO_2 during the lockdown that are not directly related to the variability of meteorological
conditions. On average over Spain, NO_2 mixing ratios at urban background and traffic stations were found to decrease by about
-50% due to the lockdown, with stronger reductions in phases II and III (about -55%) than in phase I (about -40%).

Due to the peculiarities of NO_2 (e.g. primary pollutant, short chemical lifetime, simple chemistry), we expect these changes to
be mainly driven by the reduction of NO_x anthropogenic emissions. Considering that the lockdown also impacted the emissions
420 of numerous other chemical compounds, an alteration of the business-as-usual chemical fate of NO_2 (through a modification
of its oxidation into nitric acid) cannot be excluded. However, we are considering here urban stations located close to the NO_x
emission sources, where this effect is likely small compared to the reduction of direct emissions.

Regarding our methodology, we note that the COVID-19 lockdown and the associated changes of pollutants like particu-
late matter should have also altered the meteorological conditions by perturbing the radiative fluxes and clouds. Indeed, this
425 methodology precludes the remote and local influences of lockdown-related air pollution changes upon local weather. In any
case, given the chaotic nature of the atmosphere and the long duration of the lockdown, it would be indeed impossible to know
the weather conditions that would had been observed during the lockdown in a business-as-usual scenario.

It is also worth noting that the quality of the ERA5 meteorological data may have deteriorated due to the lockdown through the
strong reduction of air traffic. Indeed, although satellites remain the dominant provider of meteorological observations, com-
430 mercial aircraft provide valuable amounts of in-situ meteorological observations in the troposphere and lower stratosphere,
especially for wind speed. However, some meteorological services are currently operating additional atmospheric soundings to
compensate this loss of data. In any case, the impact on the meteorological conditions close to the surface is probably limited.
In this work, we analyzed the NO_2 data available in Spain over the first 41 days of lockdown, which includes the phase of
most stringent lockdown in early April. At the date of submission of this study, the lockdown was still on-going in Spain, with
435 restrictions planned to be progressively relaxed until late June at least. Indeed, the impact of the lockdown upon air pollution
levels will likely extend way beyond the period considered in this study. Besides the direct effects of the lockdown-related
restrictions, the foreseen economic downturn whose size, length and characteristics are still uncertain may also substantially
affect the levels of NO_2 pollution, as already observed following the 2008-2009 economic recession, with one-year recession-
driven NO_2 reductions of 10-30% across Spain and Europe (Castellanos and Boersma, 2012).

440 In a separate study, our meteorology-normalized estimates are used to quantify the circumstantial reduction in the mortality
attributable to the short-term effects of NO_2 during the lockdown (Achebak et al., submitted).



Code and data availability. The EEA AQ eReporting, ERA5 and Gridded Population of the World (GPW) version 5 datasets used in this study are publicly available. The HERMESv3_BU (Bottom-Up) code package with its documentation is publicly available at the following gitlab repository: https://earth.bsc.es/gitlab/es/hermesv3_bu (<https://doi.org/10.5281/zenodo.3521897>, Guevara et al., 2019).

445 **Appendix A: Quality Assurance (QA) applied to NO₂ dataset**

Using the information provided by GHOST (Globally Harmonised Observational Surface Treatment; Bowdalo, in preparation), we applied numerous QA screening to the NO₂ dataset, in order to remove : missing measurements (flag 0), infinite values (flag 1), negative measurements (flag 2), zero measurements (flag 4), measurements associated with data quality flags given by the data provider which have been decreed by the GHOST project architects to suggest the measurements are associated with substantial uncertainty or bias (flag 6), measurements for which no valid data remains to average in temporal window after screening by key QA flags (flag 8), measurements showing persistently recurring values (rolling 7 out of 9 data points; flag 10), concentrations greater than a scientifically feasible limit (above 5000 ppbv) (flag 12), measurements detected as distributional outliers using adjusted boxplot analysis (flag 13), measurements manually flagged as too extreme (flag 14), data with too coarse reported measurement resolution (above 1.0 ppbv) (flag 17), data with too coarse empirically derived measurement resolution (above 1.0 ppbv) (flag 18), measurements below the reported lower limit of detection (flag 22), measurements above the reported upper limit of detection (flag 25), measurements with inappropriate primary sampling for preparing NO₂ for subsequent measurement (flag 40), measurements with inappropriate sample preparation for preparing NO₂ for subsequent measurement (flag 41) and measurements with erroneous measurement methodology (flag 42).

Appendix B: Decision tree-based ensemble methods

460 Among the myriad of ML models available nowadays, we opted for decision tree-based ensemble methods. The general idea of ensemble methods is to combine an ensemble of independent base learners (or weak learners). Base learners here designate simple models that perform only slightly better than a random guessing. Decision trees are currently the base learner most commonly used in ML ensemble methods (but other types of learners could be possible). Given a training dataset and a regression problem, one characteristic of decision trees lies in the fact that it is always possible to reach a high accuracy (by growing a large enough tree) but at the cost of very poor generalization skills. In ML terminology, such large trees are said to have a small bias but a large variance. To be appropriate base learners, decision trees used in ensemble methods are thus constrained to have a low number of branches (sometimes referred to as trunks), which increases the bias but reduces the variance. The strength of ensemble methods then stems out from the fact that combining a sufficiently large number of base learners (of quite poor performance individually) allows to reach an enhanced performance in addition to better generalization skills, the corresponding ensemble being less unstable to the addition of new data.

Once the form of the base learner is chosen, a strategy is required for building this ensemble of *independent* base learners. Three main approaches have been proposed over the past: (i) bagging, (ii) boosting, (iii) random forests (RF). Bagging consists in aggregating base learners trained on a bootstrap sample of the training dataset. Boosting consists in aggregating base learners



trained on different labels: the first base learner is trained on the dataset, the second on the errors left by the previous one, the
475 third on the errors left by the two previous ones, and so on. RF (used by Grange et al. (2018) and Grange and Carslaw (2019))
consists in aggregating base learners trained on random subsets of the training dataset based on a random subset of features.

Appendix C: Tuning of the GBM model

The training of the model is conducted together with a search of the optimal hyperparameter tuning. We retained a so-called
randomized search in which a range of values is given for each hyperparameter of interest and a total number of hyperparame-
480 ters combinations to test (20 in our case). Compared to the so-called *grid search* in which all combinations of hyperparameters
are tested, this choice allows to explore a large part of the hyperparameters space for a greatly reduced computational cost, and
is less prone to overfitting.

We used the *scikit-learn* Python package. The learning rate was fixed to 0.05 and the number of features to consider when look-
ing for the best split is fixed to the square root of the number of features (*max_features* in *scikit-learn*, set to "sqrt"). Besides
485 that, the tuning of the GBM model was done over the following set of hyperparameters: the tree maximum depth (*max_depth*
in the *scikit-learn* Python package: values from 1 to 5 by 1), the subsample (*subsample* : from 0.3 to 1.0 by 0.1), the number of
trees (*n_estimators*: from 50 to 1000 by 50) and the minimum sample in terminal leaves (*min_samples_leaf*: from 1 to 30). The
maximum depth (or the maximum number of subsequent splits in the individual decision trees) controls how much interaction
between the features can be taken into account. The subsample hyperparameter represents the fraction of samples to be used for
490 fitting an individual base learner. Values below unity correspond to the so-called *stochastic gradient boosting* and usually allow
to decrease the variance at the cost of an increased bias (low values also allow to speed up the training phase). The minimum
sample leaf hyperparameter controls the minimum number of samples to allow in a terminal node (larger values limiting the
risk of overfitting).

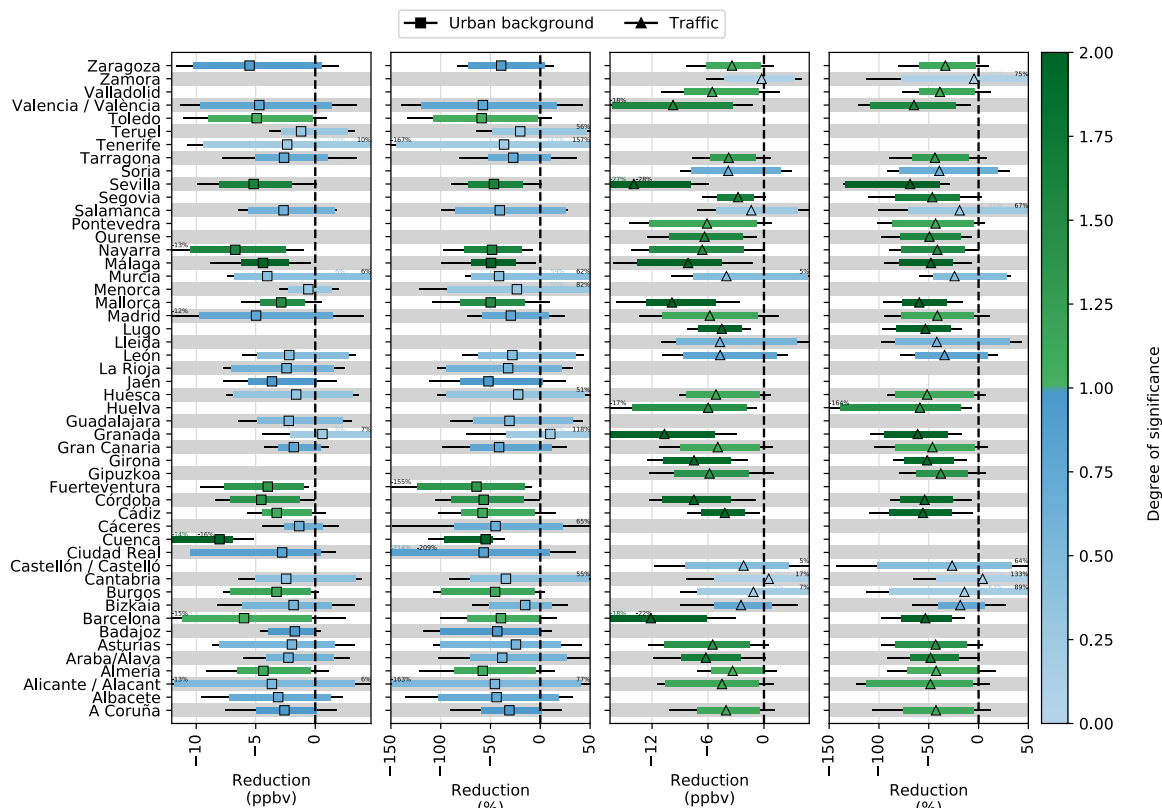


Figure A1. Absolute and relative meteorology-normalized NO₂ changes during phase I of the lockdown (2020/03/14-2020/03/29), at urban background (left panels) and traffic stations (right panels). The uncertainties shown with colored bars correspond here to the 90% confidence level interval computed at the weekly scale. For information purposes, the uncertainties affecting the ML-based daily predictions are also shown (black bars).

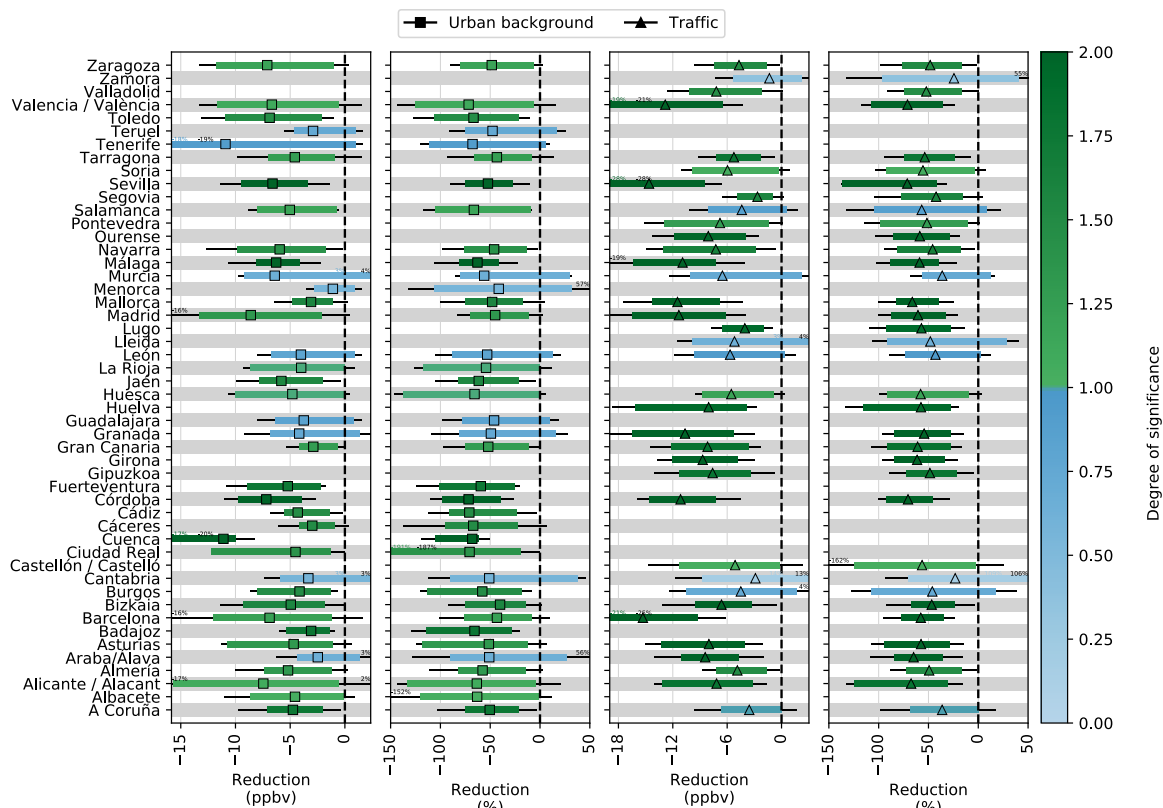


Figure A2. Similar to Fig. A1 for the phase II of the lockdown (2020/03/30-2020/04/09).

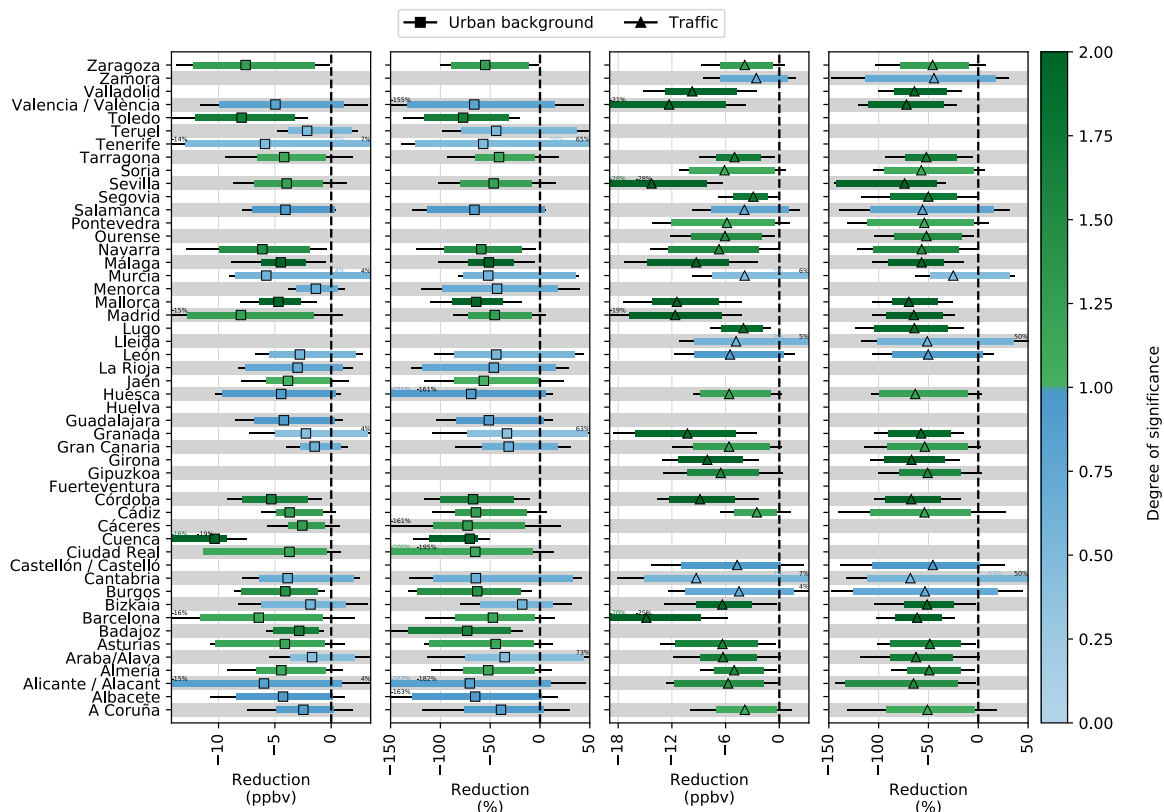


Figure A3. Similar to Fig. A1 for the phase III of the lockdown (2020/04/10-2020/04/23).

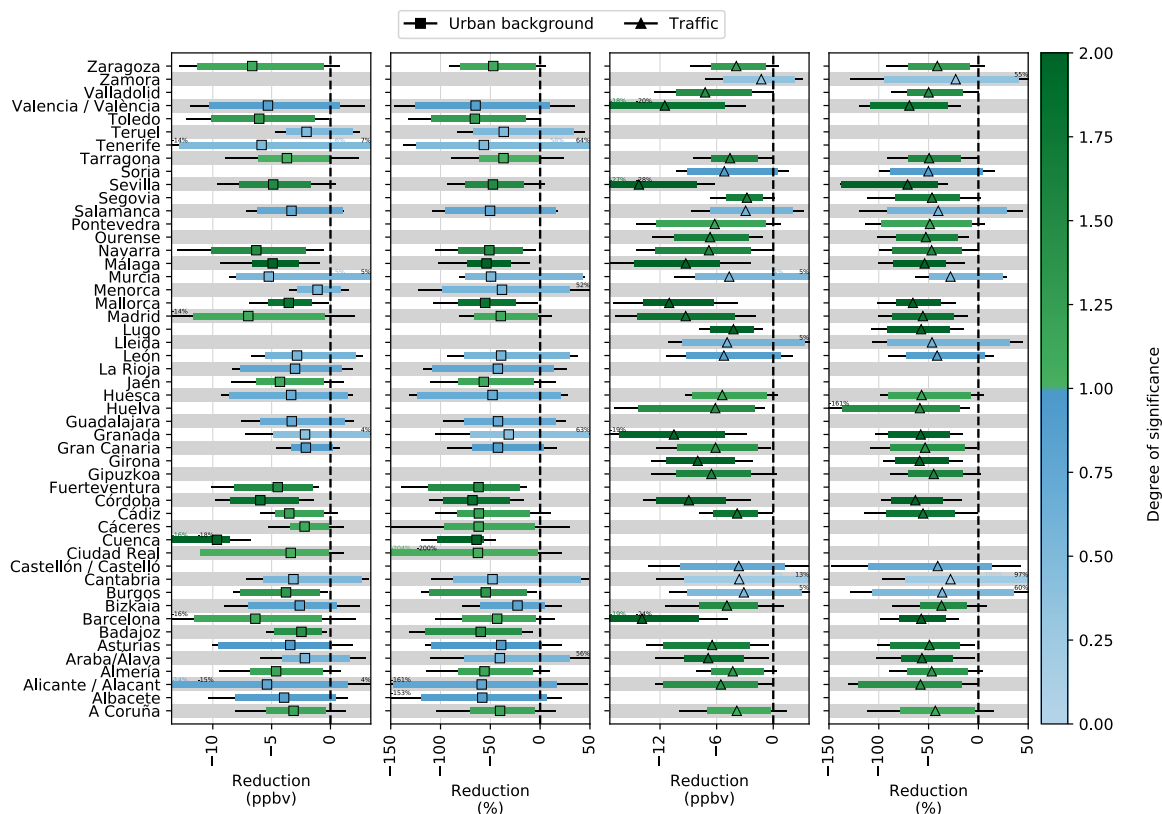


Figure A4. Similar to Fig. A1 for the entire lockdown period (2020/04/13-2020/04/23).



Table A1. Stations selected in each Spanish province.

Province	Urban background station	Traffic station
A Coruña	ES1957A Torre De Hércules (43.382800, -8.409200)	ES1901A San Caetano (42.887800, -8.531100)
Albacete	ES1535A Albacete (38.979300, -1.852100)	-
Alicante / Alacant	ES1915A Alacant-Florida-Babel (38.340278, -0.506667)	ES1849A Elx-Parc De Bombers (38.259167, -0.717500)
Almería	ES1549A El Ejido (36.769720, -2.810970)	ES1393A Mediterráneo (36.841330, -2.446720)
Araba/Álava	ES1544A Agurain (42.849000, -2.393700)	ES1492A Tres Marzo (42.856070, -2.667790)
Asturias	ES1974A Montevil (43.516600, -5.670700)	ES1272A Constitución (43.529900, -5.673500)
Badajoz	ES1819A Merida (38.907500, -6.338060)	-
Barcelona	ES1396A Barcelona (Sants) (41.378803, 2.133098)	ES1438A Barcelona (L'Eixample) (41.385343, 2.153822)
Bizkaia	ES1713A Parque Europa (43.254900, -2.902300)	ES1244A Mazarredo (43.267500, -2.935200)
Burgos	ES1598A Zalla (43.212910, -3.134400)	ES1160A Burgos 1 (42.350830, -3.675560)
Cantabria	ES1529A Tetuán (43.467780, -3.790280)	ES1580A Santander Centro (43.460560, -3.808610)
Castellón / Castelló	-	ES1834A Castelló-Patronat D'Esports (39.988889, -0.026111)
Ciudad Real	ES1857A Ciudad Real (38.993900, -3.937800)	-
Cuenca	ES1858A Cuenca (40.061900, -2.129700)	-
Cáceres	ES1997A Plasencia (40.077780, -6.147220)	-
Cádiz	ES1593A San Fernando (36.460590, -6.203070)	ES1479A Avda. Marconi (36.506020, -6.268570)
Córdoba	ES1799A Lepanto (37.892610, -4.762340)	ES2047A Avda. Al-Nasir (37.892600, -4.780100)
Fuerteventura	ES1978A Casa Palacio-Puerto Del Rosario (28.498380, -13.860830)	-
Gipuzkoa	-	ES1494A Ategorrieta (43.322000, -1.960700)
Girona	-	ES1999A Girona (Escola De Música) (41.976386, 2.816547)
Gran Canaria	ES1919A Parque De San Juan-Telde (28.003645, -15.411851)	ES1573A Mercado Central (28.133732, -15.432823)
Granada	ES1973A Ciudad Deportiva (37.135560, -3.619250)	ES1560A Granada - Norte (37.196100, -3.612660)
Guadalajara	ES1536A Azuqueca De Henares (40.571000, -3.264600)	-
Huelva	-	ES1340A Pozo Dulce (37.253360, -6.935140)
Huesca	ES2041A Monzón Centro (41.916140, 0.191101)	ES1417A Huesca (42.136110, -0.403890)
Jaén	ES1656A Ronda Del Valle (37.782550, -3.781570)	-
La Rioja	ES1602A La Cigüeña (42.464000, -2.428000)	-
León	ES1988A León 4 (42.575278, -5.566389)	ES1161A Barrio Pinilla (42.603889, -5.587222)
Lleida	-	ES1225A Lleida (Iruirita - Pius Xii) (41.615795, 0.615726)
Lugo	-	ES1905A Lugo-Fingoy (42.997900, -7.550900)
Madrid	ES1941A Ensanche De Vallecas (40.372778, -3.611944)	ES1938A Castellana (40.439722, -3.690278)
Mallorca	ES1604A Bellver (39.563320, 2.620550)	ES1610A Foners (39.570080, 2.655830)
Menorca	ES1828A Ciudadella De Menorca (40.009440, 3.856480)	-
Murcia	ES1921A Mompean (37.603056, -0.975278)	ES1633A San Basilio (37.993611, -1.144722)
Málaga	ES1751A El Atabal (36.729560, -4.465530)	ES2031A Avenida Juan Xxiii (36.707300, -4.446000)
Navarra	ES1472A Iturrama (42.807220, -1.651390)	ES1740A Plaza De La Cruz (42.812220, -1.640000)
Ourense	-	ES1096A Gomez Franqueira (42.353000, -7.877900)
Pontevedra	-	ES1137A Arenal (42.219000, -8.742100)
Salamanca	ES1889A Salamanca 6 (40.960833, -5.639722)	ES1618A Salamanca 5 (40.979167, -5.665278)
Segovia	-	ES1967A Segovia 2 (40.955556, -4.110556)
Sevilla	ES1425A Principes (37.375250, -6.005580)	ES0817A La Ramilla (37.384250, -5.959620)
Soria	-	ES1643A Soria (41.766667, -2.466667)
Tarragona	ES1666A Tarragona (Parc De La Ciutat) (41.117388, 1.241650)	ES1124A Tarragona (Sant Salvador) (41.159450, 1.239704)
Tenerife	ES1975A Depósito Tristán-Sta Cruz De Tf (28.458160, -16.278776)	-
Teruel	ES1421A Teruel (40.336390, -1.106670)	-
Toledo	ES1818A Toledo2 (39.868100, -4.020800)	-
Valencia / València	ES1885A València-Politécnico (39.480300, -0.336400)	ES1239A València-Pista De Silla (39.456111, -0.375833)
Valladolid	-	ES1631A Arco De Ladrillo Ii (41.645556, -4.730278)
Zamora	-	ES1927A Zamora 2 (41.509722, -5.746389)
Zaragoza	ES1641A Renovales (41.635280, -0.893610)	ES1418A Alagón (41.762780, -1.143330)



495 *Author contributions.* Contributed to conception and design: HP, CPG-P. Contributed to acquisition of data: DB, KS. Contributed to analysis and interpretation of data: HP, DB, CPG-P, MG, AS, OJ. Drafted the article: HP, CPG-P.

Competing interests. The authors declare that they have no conflict of interest.

500 *Acknowledgements.* This project has received funding from the European Union's Horizon 2020 research and innovation programme under the Marie Skłodowska-Curie grant agreement H2020-MSCA-COFUND-2016-754433. We also acknowledge support by the European Research Council (grant no. 773051, FRAGMENT), the AXA Research Fund, the Spanish Ministry of Science, Innovation and Universities (RYC-2015-18690, CGL2017-88911-R, RTI2018-099894-B-I00 and Red Temática ACTRIS España CGL2017-90884-REDT), the BSC-CNS "Centro de Excelencia Severo Ochoa 2015-2019" Program (SEV-2015-0493), PRACE for awarding us access to Marenostrum Supercomputer in the Barcelona Supercomputing Center, and H2020 ACTRIS IMP (871115).



References

- Achebak, H., Petetin, H., Quijal-Zamorano, M., Bowdalo, D., García-Pando, C. P., and Ballester, J.: Quantification of the reduction in air pollution and attributable mortality due to the COVID-19 lockdown in Spain, submitted.
- 505 Anderson, R. M., Heesterbeek, H., Klinkenberg, D., and Hollingsworth, T. D.: How will country-based mitigation measures influence the course of the COVID-19 epidemic?, *The Lancet*, 395, 931–934, [https://doi.org/10.1016/S0140-6736\(20\)30567-5](https://doi.org/10.1016/S0140-6736(20)30567-5), <https://linkinghub.elsevier.com/retrieve/pii/S0140673620305675>, 2020.
- Bowdalo, D.: Globally Harmonised Observational Surface Treatment: Database of global surface gas observations, in preparation.
- 510 Castellanos, P. and Boersma, K. F.: Reductions in nitrogen oxides over Europe driven by environmental policy and economic recession, *Scientific Reports*, 2, 265, <https://doi.org/10.1038/srep00265>, <http://www.nature.com/articles/srep00265>, 2012.
- Center for International Earth Science Information Network - CIESIN - Columbia University: Gridded Population of the World, Version 4 (GPWv4): Population Density, Revision 11 [data set], Tech. rep., Palisades, NY: NASA Socioeconomic Data and Applications Center (SEDAC), <https://doi.org/10.7927/H49C6VHW>, 2018.
- 515 Copernicus Climate Change Service (C3S): ERA5: Fifth generation of ECMWF atmospheric reanalyses of the global climate, 2017.
- EEA: Air Quality e-Reporting Database, European Environment Agency (<http://www.eea.europa.eu/data-and-maps/data/aqereporting-8>) (accessed 1 May 2020), 2020.
- Friedman, J. H.: Greedy function approximation: A gradient boosting machine., *The Annals of Statistics*, 29, 1189–1232, <https://doi.org/10.1214/aos/1013203451>, <http://projecteuclid.org/euclid.aos/1013203451>, 2001.
- 520 Grange, S. K. and Carslaw, D. C.: Using meteorological normalisation to detect interventions in air quality time series, *Science of The Total Environment*, 653, 578–588, <https://doi.org/10.1016/j.scitotenv.2018.10.344>, <https://linkinghub.elsevier.com/retrieve/pii/S004896971834244X>, 2019.
- Grange, S. K., Carslaw, D. C., Lewis, A. C., Boleti, E., and Hueglin, C.: Random forest meteorological normalisation models for Swiss PM 10 trend analysis, *Atmospheric Chemistry and Physics*, 18, 6223–6239, <https://doi.org/10.5194/acp-18-6223-2018>, <https://www.atmos-chem-phys.net/18/6223/2018/>, 2018.
- 525 Guevara, M.: Modelling the impact of COVID-19 on European emissions and air quality levels, in preparation.
- Guevara, M., Tena, C., Jorba, O., and García-Pando, C. P.: HERMESv3_BU model (Version v0.1.1), Zenodo, <https://doi.org/10.5281/zenodo.3521897>, 2019.
- Guevara, M., Tena, C., Porquet, M., Jorba, O., and Pérez García-Pando, C.: HERMESv3, a stand-alone multi-scale atmospheric emission modelling framework - Part 2: The bottom-up module, *Geoscientific Model Development*, 13, 873–903, <https://doi.org/10.5194/gmd-13-873-2020>, <https://www.geosci-model-dev.net/13/873/2020/>, 2020.
- 530 Pedregosa, F., Varoquaux, G., Gramfort, A., Michel, V., Thirion, B., Grisel, O., Blondel, M., Prettenhofer, P., Weiss, R., Dubourg, V., Vanderplas, J., Passos, A., Cournapeau, D., Brucher, M., Perrot, M., and Duchesnay, E.: Scikit-learn: Machine Learning in Python, *Journal of Machine Learning Research*, 12, 2825–2830, 2011.
- 535 Rao, S. T., Galmarini, S., and Puckett, K.: Air Quality Model Evaluation International Initiative (AQMEII): Advancing the State of the Science in Regional Photochemical Modeling and Its Applications, *Bulletin of the American Meteorological Society*, 92, 23–30, <https://doi.org/10.1175/2010BAMS3069.1>, <http://journals.ametsoc.org/doi/abs/10.1175/2010BAMS3069.1>, 2011.



Tobías, A., Carnerero, C., Reche, C., Massagué, J., Via, M., Minguillón, M. C., Alastuey, A., and Querol, X.: Changes in air quality during the lockdown in Barcelona (Spain) one month into the SARS-CoV-2 epidemic, *Science of The Total Environment*, 726, 138 540, 540 <https://doi.org/10.1016/j.scitotenv.2020.138540>, <https://linkinghub.elsevier.com/retrieve/pii/S0048969720320532>, 2020.