

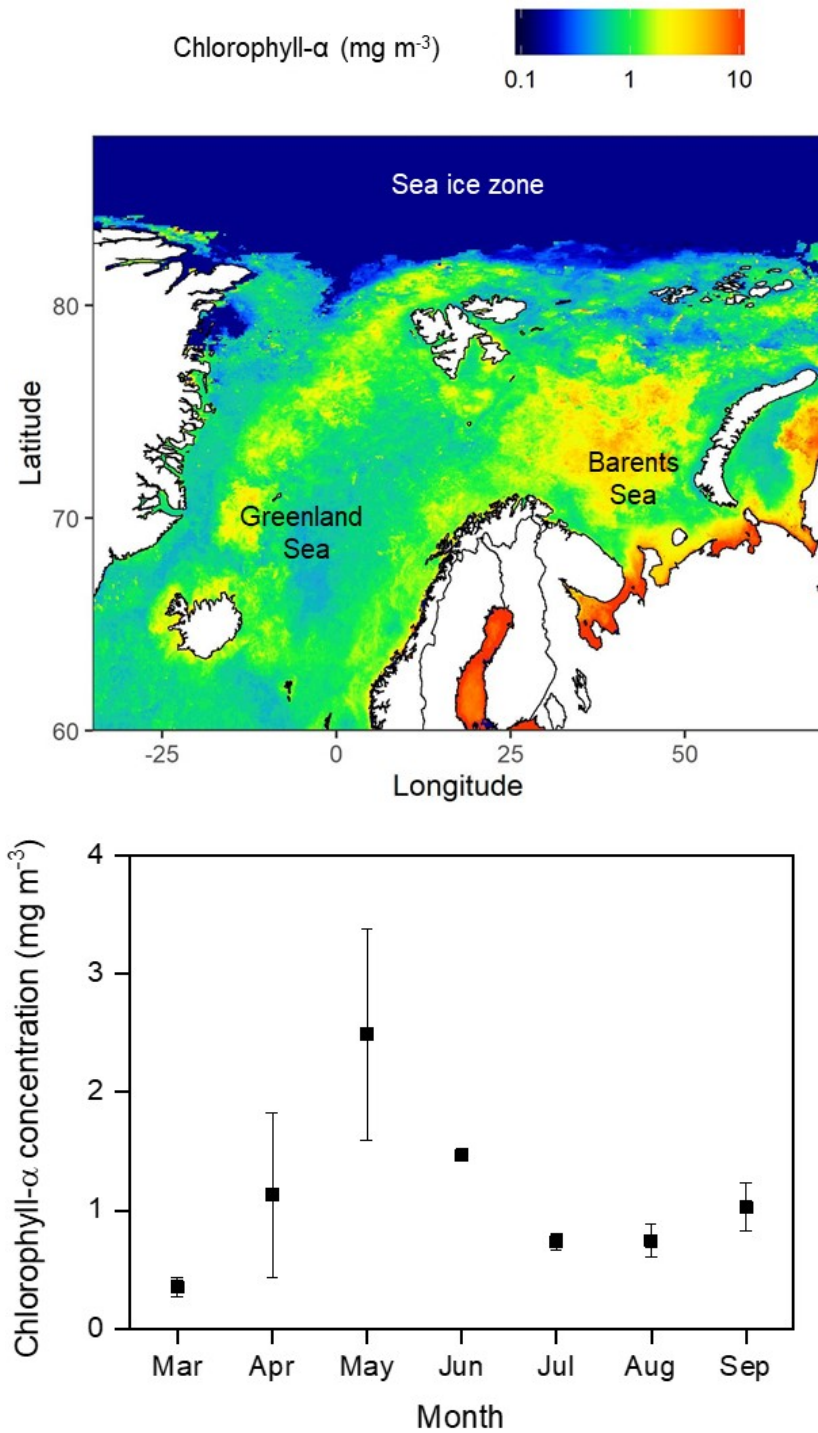
Supplement of

Atmospheric new particle formation characteristics in the Arctic as measured at Mount Zeppelin, Svalbard, from 2016 to 2018

Haebum Lee et al.

5

Correspondence to: Kihong Park (kpark@gist.ac.kr) and Young-Jun Yoon (yjyoon@kopri.re.kr)



10

Figure S1. MODIS monthly mean satellite-derived chlorophyll- α concentration map at 4 km resolution (top) and values (bottom) around Svalbard from March to September, 2016 to 2018. Error bars indicate one standard deviation from the mean.

Table S1. Average concentrations of ionic species (Na^+ , Mg^{2+} , K^+ , NH_4^+ , NO_3^- , SO_4^{2-} , and Cl^-) in particulate matter in different seasons from 2016 to 2018.

Mass concentration ($\mu\text{g m}^{-3}$)	Spring	Summer	Fall	Winter
Na^+	0.19±0.15	0.13±0.15	0.18±0.17	0.25±0.18
Mg^{2+}	0.03±0.02	0.02±0.02	0.03±0.02	0.04±0.03
K^+	0.03±0.02	0.03±0.02	0.02±0.02	0.02±0.02
NH_4^+	0.04±0.03	0.03±0.02	0.02±0.01	0.02±0.02
NO_3^-	0.08±0.05	0.06±0.04	0.06±0.04	0.07±0.04
SO_4^{2-}	0.43±0.27	0.21±0.17	0.22±0.21	0.28±0.21
Cl^-	0.26±0.25	0.18±0.24	0.28±0.28	0.38±0.28

15