

Authors' response to: Comments on the revised manuscript 'Surface-atmosphere fluxes of volatile organic compounds in Beijing' by Acton et al.

Reviewer: Erik Velasco

This reviewer appreciates the corrections and additions made to this second draft. The reading improved, and many of the questions pointed out in the original revision were properly answered. However, there are still four major concerns that need to be addressed before the manuscript can be considered for publication:

Response: We thank the reviewer for taking the time to provide additional comments on this manuscript and set out responses to their comments below.

- **A thorough analysis of the observed fluxes needs a complete description of the monitored footprint. The current description is still incomplete. An updated description of the neighborhood characteristics is needed. The information on the aerodynamic characteristics and land cover corresponds to assessments of 10-20 years ago. Are those assessments still valid considering the accelerated changes in Beijing's urban morphology in recent years?**

Similarly, more information on the economic activities, vehicular traffic volume and composition, population density, number of trees and characteristics, etc. is needed to put in context the observed fluxes. This information will help to identify the error sources in the emission estimates of the gridded inventory.

Response: The description of the site given by Liu et al. (2012) was consistent with the neighbourhood we observed during the fields campaign. This is supported by Cheng et al. (2018) who stated that "By the beginning of the current century, the overall height of the buildings around the meteorological tower had a fixed value, and the roughness length and the displacement height have since remained consistent.". Reference to Cheng et al. (2018) has been added to the manuscript.

As far as we are aware detailed economic activity, population and traffic data for Beijing is not publicly available. Economic activity surrounding the site is described in section 2.1 as shops and restaurants, data isn't available to add further detail to this, but we feel this is sufficient to enable the reader to interpret the data. As suggested, we have added more detailed descriptions of population density, traffic and the trees present has been added to the manuscript as quoted below.

"The population density in the Chaoyang district is 7500 people km⁻¹ (Amir Siddique et al., 2020)."

"Jing et al. (2016) classified the major roads present in the footprint as "Artery Roads". The average speed of roads in this classification peaked at ~43 km h⁻¹ at 04:00. Day time average speeds peak at ~33 km h⁻¹ (12:00) with a minimum average speed of ~28 km h⁻¹ (18:00). Average traffic volume on artery roads peaked at ~3100 vehicles h⁻¹ (07:00) with a minimum average flow of ~250 vehicles h⁻¹ (03:00)."

"In 2002 dominant tree species in Beijing were *Sophora japonica*, *Populus tomentosa* and *Juniperus chinensis* (Yang et al., 2005). Large scale tree planting occurred between 2012 and 2015 increasing forest cover by 10% with the main species planted being *Pinus tabulaeformis*, *Sophora japonica*, *Fraxinus chinensis*, *Salix spp.* and *Populus spp.* (Yao et al., 2019)."

- The manuscript reports fluxes collected during two field campaigns, a 28-day campaign in winter and a 40-day campaign in summer. However, after removing the averaging periods affected by lack of turbulence and instruments maintenance, as well as periods not meeting the stationarity criteria, only 25% and 70% of the data, respectively, were used for further analysis. This means that results are based on 7 and 27 net days of flux measurements. For the summer case, an almost one month of flux data might be enough for an initial assessment, but for the winter case, 7 days of data (for some VOC species even less) are not sufficient.

The authors may consider the relevance of including results of the winter campaign in this article. In an urban set up, like Beijing, seven days of flux data may represent nothing else than noise. In addition, many of the analysis performed in this study were limited to the flux data collected during the summer campaign.

Response: We agree with the reviewer that the winter data has a high uncertainty, for this reason it was excluded from further analysis.

As eddy covariance flux measurements of VOCs have not previously been made in Beijing we feel it is worth while to include the winter data here for reference but owing to the uncertainties highlighted we do not draw any firm conclusions from this data set, this has been highlighted in section 4.

- The impact of regional sources of VOCs in the observed fluxes deserves further analysis and discussion. The authors need to investigate under which synoptic conditions the loss of VOCs (i.e., negative fluxes) was observed. The use of back trajectories may help to this assessment.

Did the APHH project include measurements or modeling of the hydroxyl radical? Information on the levels of OH, NO and O₃ would make possible to estimate the residence time of each individual VOC species, and would support the proposed loss of VOCs. Also, it would help to evaluate the capacity of the eddy covariance system to measure fluxes of highly reactive VOCs. As indicated in the original revision, the time taken by an air parcel to reach the top of the tower could be higher than the time needed for the oxidation of such compounds, and thus the measured fluxes would not faithfully represent the emissions from the urban surface.

The OH concentration of 1×10^6 molecules cm⁻³ used to estimate the oxidation time of the assessed species is too low for a highly polluted atmosphere (see Shirley et al., 2006, for the case of Mexico City, www.atmos-chem-phys.net/6/2753/2006). A higher concentration would reduce the lifetime of the VOCs, and therefore, the eddy covariance flux system mounted at 102 m of height might not be able of measuring fluxes of reactive VOCs.

Response:

In the summer campaign all VOCs showed a net positive flux (line 410 in acpd manuscript) with few averaging period showing deposition. These usually occurred at night time when the magnitude of the flux was low. Deposition was more frequently observed in the winter campaign but as discussed above the high uncertainty in the winter data means that for detailed analysis (for example an analysis of back trajectories) could lead to false conclusions being drawn.

OH, NO and O₃ were measured during the APHH campaigns (Slater et al., 2020; Squires et al., 2020 and Whalley et al., 2020). OH was higher in the summer campaign than in the winter campaign, peaking at 2.8×10^7 molecule cm⁻³ (Whalley et al., 2020). Using this value, the

monoterpene lifetime would be expected to be ~11 mins. Given the average time for an air parcel to reach the inlet is ~68s this would equate to a ~10% loss of the most reactive species measured. The manuscript has been updated to use the measured OH value.

“The OH concentration in the summer campaign reached 2.8×10^7 molecules cm^{-3} (Whalley et al., 2020) and the ozone concentration 2.6×10^{12} molecules cm^{-3} , at these concentrations ~10% of monoterpenes (the most reactive species recorded) would have reacted before the measurement height.”

- **A final section providing conclusions and final remarks is missing. Scientific articles are expected to close with a short answer to the hypothesis to test. For example, is the eddy covariance a suitable method to measure urban fluxes of VOCs in Beijing? does the emission inventory is accurate for that particular sector of the city? What is needed to improve the inventory's accuracy?**

Response: Section 4 provides both a summary of the findings and conclusions and has been retitled to make this clear. The conclusions of this work are presented in this section:

- Despite high mixing ratios of VOCs emission from the city centre is of comparable magnitude to cities in the UK where VOC mixing ratios are comparatively low. This suggests that the elevated mixing ratios are driven by transport from outside the city.
- The inventory does not accurately predict VOC emission at local scales.
- In the summer biogenic emissions make a large contribution to atmospheric chemistry. This will grow more significant as anthropogenic emissions are reduced by policy interventions so modelling studies need to include biogenic emissions from the city centre.

As suggested a short description of what would be needed to improve the accuracy of the inventory has been added:

“Comparison of measured VOC fluxes with those predicted by the emissions inventory showed that the inventory failed to capture VOC emission at this local scale. This failure to predict local scale emission is most likely caused by the scaling of city level activity data to the local scale. In order to accurately predict VOC emissions at a local scale higher resolution activity data will be required.”

Specific comments

39-40. Eddy covariance flux towers provide invaluable insight to evaluate the accuracy of gridded emission inventories, but they do not validate emission inventories.

Response: “validate” removed and changed to “evaluate the accuracy of”

40-49. The abstract does indicate flux measurements conducted on summer and winter, but results from the latter season are not included.

Response: As discussed above the winter data set is comparatively small and is not included in the more detailed analysis so was not included here.

58. ‘... particulate matter of size smaller than $2.5 \mu\text{m}$...’.

Response: This has been added to the text

62-63. This statement needs a reference.

Response: Reference to Rinsky et al. (1987) added

78. I would say 'challenging' instead of 'difficult'.

Response: "difficult" changed to "challenging"

96. 'Cityscape scale' is a confusing term. Eddy covariance flux towers measure fluxes at neighborhood or district scale.

Response: "cityscape scale" changed to "district scale"

97. PTR-TOF has not been defined in the text. Define acronyms the first time they are used in the manuscript.

Response: "PTR-TOF technology" changed to "proton transfer reaction-time of flight mass spectrometers"

98. Eddy covariance flux towers measures fluxes, do not estimate fluxes.

Response: "estimate" changed to "measurements"

110. See previous comment about the use of flux towers to evaluate the accuracy of emission inventories

Response: "assess the validity of" changed to "evaluate the accuracy of"

120. The description of the monitored sector of the city is still incomplete. More information on the economic activities, vehicular traffic volume and composition, population density, number of trees and characteristics, distribution and variability of building heights, etc., is needed to put in context the observed fluxes, and then be able to improve the emission estimates of the gridded emissions inventory.

Response: See response to previous comment.

121-123. This sentence is confusing. A 325-m tall tower was used as measuring platform, but the eddy covariance flux system was mounted at a height of 102 m.

Response: "325 m high" removed

124. Include the height above sea level of the location where the tower was located.

Response: the base of the tower is 49 m above sea level, this has been added to the text.

158. Explain the purpose of the system to evaluate the vertical gradient of VOC concentrations. I may be wrong, but the text does not indicate it had been used for the flux data analysis or discussion.

Response: The gradient system was designed to monitor VOC gradients at the IAP site. These data do not form part of this study, but a description of the gradient switching system was included as it forms part of the PTR-MS set up.

289. Do you mean that flux data were flagged if $u^* < 0.175 \text{ m s}^{-1}$?

Response: Yes, this has been made clearer in the text.

"files were also flagged if the mean frictional velocity (u^*) was less than 0.175 m s^{-1} "

340-345. Footprints at day and night are quite different. For a thorough assessment of the hourly emissions reported in the gridded emissions inventory is mandatory to evaluate the footprint across the diurnal cycle. Do not ask readers search for such information in another article. The

background map provides little information. I cannot identify which sectors correspond to residential estates, and which to commercial and institutional buildings, for instance. Also, I cannot identify which are primary and secondary roads. Can you mark the 3rd and 4th rings surrounding the location?

Response: The footprints presented in Fig. 4 are campaign averages for the winter and summer campaigns and are intended to give the reader an overview of the flux footprint in both campaigns. We agree that for a proper assessment of the inventory an assessment of the hourly emissions is needed. This was performed and is discussed in section 3.5:

“First, the footprint for each flux aggregation period and the inventory grid for the corresponding hour of day were aligned by transforming the flux footprint into the coordinate reference system of the inventory.”

We don't feel it adds to the manuscript to include maps of the flux footprint across the diurnal cycle as this would add a lot of figures which convey little new information to the reader.

The background map has been changed to a satellite image to provide more information. Major roads are highlighted in yellow and the 4th ring road is labelled. Commercial properties in this area are mainly shops and restaurants situated amongst residential buildings rather than clear residential or commercial estates. From a map view large enough to display the flux footprint it is difficult to show the use (residential or commercial) of individual buildings but the area is described in section 2.1.

“The campus is situated north of central Beijing between the 3rd and 4th ring roads, with parkland to the east and west and a mix of dense residential and commercial (restaurants and shops) buildings to the north and south.”

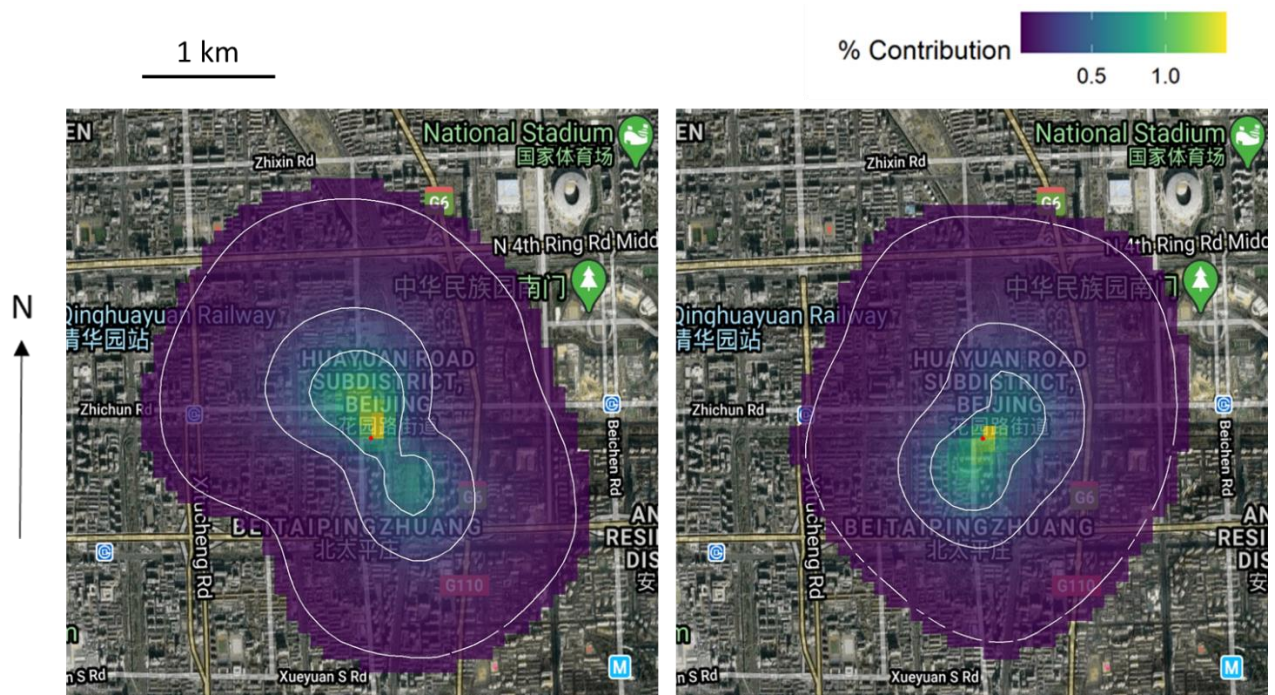
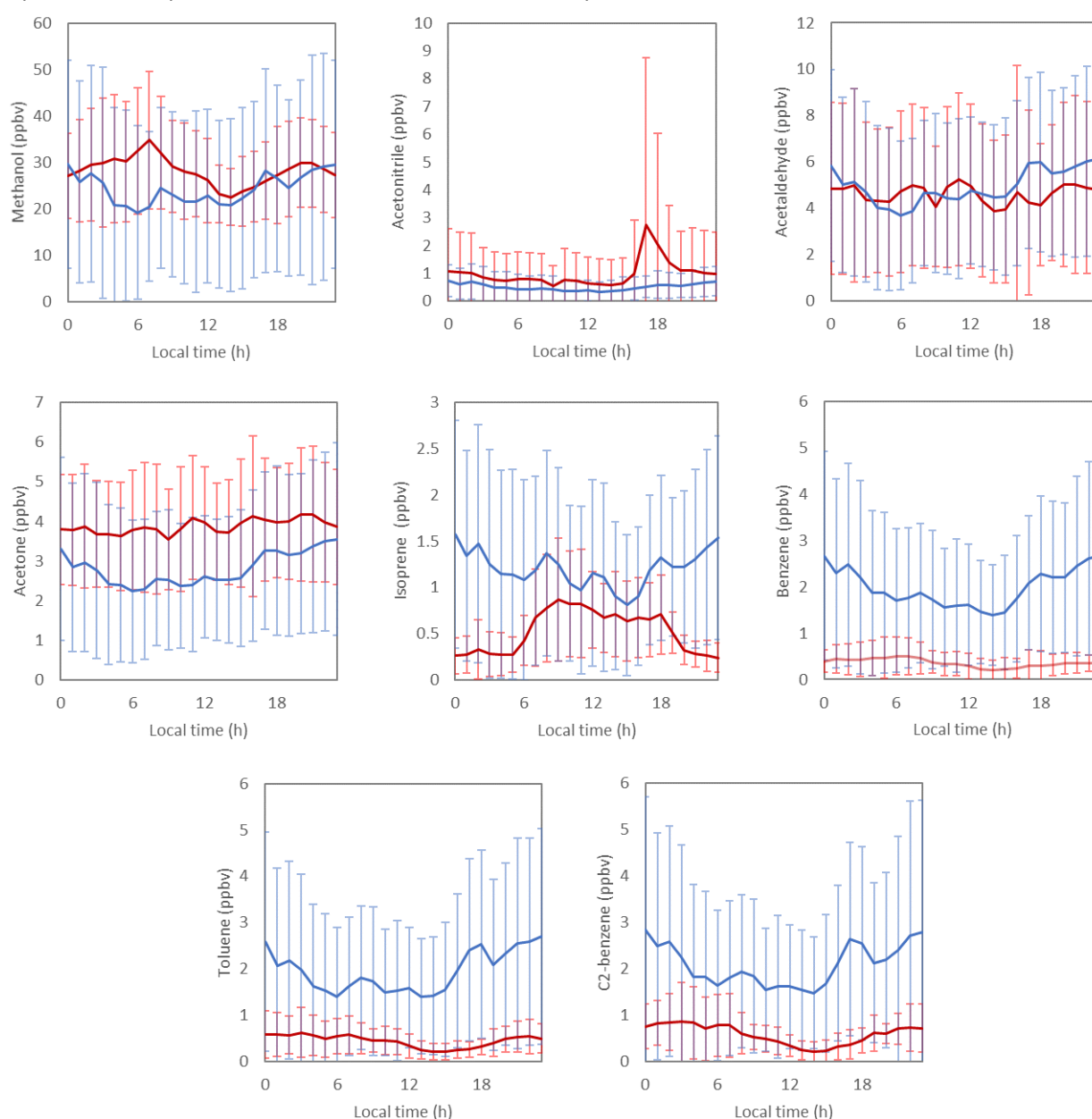


Figure 4. The campaign mean flux footprint climatologies for the winter (left) and summer (right) field campaigns. The IAP meteorological tower is represented by the red dot and surrounding 100×100 m cells are coloured by their mean contribution to the flux. The contour lines correspond to the

distances from the tower where the surface contributions to the measured fluxes cumulate to 30, 60 and 90% respectively. Map tile sets are © Google. Map data @ 2020 Imagery @ 2020, CNES/Airbus, Landsat/Copernicus, Maxar Technologies.

Table 1. Plots showing the diurnal variability of these VOC species would provide better insight in the context of the study. It does not matter, if a more detailed analysis is presented somewhere else.

Response: These plots have been added to the manuscript



“Figure 5. Diurnal profiles of the dominant VOCs observed in Beijing during APHH-Beijing winter (blue) and summer (red) campaigns (in ppbv). Error bars show standard deviation across the measurement period.”

422-425. This point deserves further discussion. I would say '... loss of VOCs by chemical reactions in the presence of fresh emitted NO ...', instead of '... deposition of VOCs ...'. Did the APHH project

include measurements/modeling estimates of OH? Knowing the levels of OH, NO, O₃, etc. would make possible to estimate the residence time of each individual VOC species.

Response: The lifetime of two anthropogenic compounds (benzene and butene) in winter conditions has been assessed and the following text added to the manuscript:

“In the winter campaign OH concentrations peaked at $8 \times 10^6 \text{ cm}^{-3}$ (Slatter et al., 2020) and the average O₃ concentration was $16.4 \mu\text{g m}^{-3}$ (Shi et al., 2019). Using rate coefficients from Atkinson and Arey (2003) the expected atmospheric lifetimes of benzene and 1-butene with respect to OH would be 1.2 days and 1.1 h, respectively. The lifetimes of benzene and monoterpenes with respect to O₃ would be over a year and 6 days, respectively. The lifetime of less reactive compounds such as aromatics is therefore long enough to allow for transportation from outside the flux footprint.”

426-428. I do not understand this statement. Do you mean that people cook and clean less during the winter?

Response: We mean that indoor activities such as cooking and cleaning may impact the external environment less in the winter when people have windows closed than in the summer when ventilation is higher.

“Sources such as cooking and solvents in cleaning products, cosmetics and paints contribute to urban VOC emission (Karl et al., 2018) and these sources are likely to be reduced in the winter when cold weather causes ventilation of buildings to be reduced.”

443. It would be useful to include in the text the variability observed in the fluxes (e.g. ± 1 standard deviation) for comparisons to fluxes reported in the literature.

Response: As suggested this has been added

Figure 5. I cannot observe any dashed line, and hardly observed the dotted ones.

Response: The dashed lines (flux without the storage term) and dotted lines (u^* filtered fluxes including the storage term and gap filled with the average flux above the u^* threshold for that hour) agree very well with the measured flux including the storage term (solid line) so in many places only the solid line is visible. We feel it is helpful to include these lines to show the small impact these the storage term and gap filling data u^* flagged data have on the total flux.

637. More information about how the emission inventory was built is needed. It will help to understand the inventory's overestimations. Does the inventory estimate emissions based on activity data at city scale or use data for each individual grid? Which is the source of the emission factors used to estimate traffic emissions? Were the emission factors locally derived? How were the emission profiles determined? How were the evaporative emission estimated? Are there emission estimates for summer and winter?

Response: The inventory is based on city scale activity data which is downscaled using proxies such as population and traffic flow data (Zheng et al., 2017). While MEIC is intended as a regional inventory. It's valuable to use it here as it is the most widely used inventory in China, and it has previously been downscaled to the resolutions needed here (Zheng et al., 2017).

The inventory provides monthly emissions data with emissions assumed to be consistent across each month. A diurnal cycle based on local activity data is applied to each emission sector to give a diurnal profile. Emission factors are locally derived with multiple studies reporting VOC emission factors from traffic and evaporative sources in China, these are summarised in a review by Li et al. (2017b) from which the inventory draws data (Zheng et al., 2018).

Further details have been added to the manuscript to make this clearer:

“The emission factors used by the inventory are drawn from a broad range of studies (Li et al., 2014; Zheng et al., 2018) with locally derived emission factors used where possible. These emission factors have been summarised by Li et al. (2017b).”

“Monthly emissions data are provided with emissions assumed to be consistent across each month. A diurnal cycle based on local activity data is applied to each emission sector to give a diurnal profile.”

338. No need to repeat the website hosting the emissions inventory. It was done in the introduction.

Response: This has been removed

667-671. Check these two sentences. An overestimation of 3-4% is not equal to overestimate by a factor of 3-4.

Response: The units here were correct but the values reported by Squires et al. have been updated to give mean values and to provide summer CO values.

“Measured emissions of aromatic compounds were 3% and 4% of those predicted by the inventory for TOL and XYL (low mass and high mass aromatics). Squires et al. (2020) compared NO_x and CO fluxes recorded during the APHH-Beijing campaigns with the MEIC inventory and also observed a similar overestimation of emissions by the inventory, with the inventory overestimating the measured flux 11 and 10 times respectively”

References

- Amir Siddique M., Dongyun L., Li P., Rasool U., Ullah Khan T., Javaid Aini Farooqi T., Wang L., Fan B., Rasool M.A.: Assessment and simulation of land use and land cover change impacts on the land surface temperature of Chaoyang District in Beijing, China, *PeerJ*, 8:e9115 <https://doi.org/10.7717/peerj.9115>, 2020.
- Cheng X. L., Liu X. M., Liu Y. J., & Hu F.: Characteristics of CO₂ concentration and flux in the Beijing urban area. *Journal of Geophysical Research: Atmospheres*, 123, 1785–1801., 2018.
- Li M., Zhang Q., Streets D.G., He K.B., Cheng Y.F., Emmons L.K., Huo H., Kang S.C., Lu Z., Shao M., Su H., Yu X., and Zhang Y.: Mapping Asian anthropogenic emissions of non-methane volatile organic compounds to multiple chemical mechanisms, *Atmospheric Chemistry and Physics*, 14, 5617–5638, 2014.
- Li M., Liu H., Geng G., Hong C., Liu F., Song Y., Tong D., Zheng B., Cui H., Man H., Zhang Q., and He K.: Anthropogenic emission inventories in China: a review, *National Science Review*, 4, 834–866, 2017b.
- Rinsky R. A., Smith A. B., Hornung R., Filloon T. G., Young R. J., Okun A. H., and Landrigan P. J.: Benzene and Leukemia – An epidemiologic risk assessment, *New England Journal of Medicine*, 316, 1044–1050, 1987.
- Slater E.J., Whalley L.K., Woodward-Massey R., Ye C., Lee J.D., Squires F., Hopkins J.R., Dunmore R.E., Shaw M., Hamilton J.F., Lewis A.C., Crilley L.R., Kramer L., Bloss W., Vu T., Sun Y., Xu W., Yue S., Ren L., Acton W.J.F., Hewitt C.N., Wang X., Fu P. and Heard D.E.: Elevated levels of OH observed in haze

events during wintertime in central Beijing, *Atmospheric Chemistry and Physics Discussions*, in review, 2020.

Whalley L.K., Slater E.J., Woodward-Massey R., Ye C., Lee J.D., Squires F., Hopkins J.R., Dunmore R.E., Shaw M., Hamilton J.F., Lewis A.C., Mehra A., Worrall S.D., Bacak A., Bannan T.J., Coe H., Ouyang B., Jones R.L., Crilley L.R., Kramer L.J., Bloss W.J., Vu T., Kotthaus S., Grimmond S., Sun Y., Xu W., Yue S., Ren L., Acton W.J.F., Hewitt C.N., Wang X., Fu P., and Heard D.E.: Evaluating the sensitivity of radical chemistry and ozone formation to ambient VOCs and NO_x in Beijing, *Atmospheric Chemistry and Physics Discussions*, in review, 2020.

Yao N., Konijnendijk van den Bosch C.C., Yang J., Devisscher T., Wirtz Z., Jia L., Duan J. and Ma L.: Beijing's 50 million new urban trees: Strategic governance for large-scale urban afforestation, *Urban Forestry and Urban Greening*, 44, <https://doi.org/10.1016/j.ufug.2019.126392>, 2019.

Yang J., McBride J., Zhou J. and Sun Z.: The urban forest in Beijing and its role in air pollution reduction, *Urban Forestry and Urban Greening*, 3, 65–78, 2005.

Zheng B., Zhang Q., Tong D., Chen C., Hong C., Li M., Geng G., Lei Y., Huo H. and He K.: Resolution dependence of uncertainties in gridded emission inventories: a case study in Hebei, China, *Atmospheric Chemistry and Physics*, 17, 921–933, 2017.

Zheng B., Tong D., Li M., Liu F., Hong C., Geng G., Li H., Li X., Peng L., Qi J., Yan L., Zhang Y., Zhao H., Zheng Y., He K., and Zhang Q.: Trends in China's anthropogenic emissions since 2010 as the consequence of clean air actions, *Atmospheric Chemistry and Physics*, 18, 14095–14111, 2018.

A marked-up version of the manuscript is presented below with changes highlighted in yellow. In addition to the changes discussed above table 2 was corrected to show stationarity filtered fluxes including the storage term.

Surface-atmosphere fluxes of volatile organic compounds in Beijing

W. Joe. F. Acton ¹^a, Zhonghui Huang ²^{ab}, Brian Davison ¹, Will S. Drysdale ^{3,4}, Pingqing Fu ⁵, Michael Hollaway ^{1,6}, Ben Langford ⁷; James Lee ^{3,4}, Yanhui Liu ^{8,9}, Stefan Metzger ^{10,11}, Neil Mullinger ⁷, Eiko Nemitz ⁷, Claire E. Reeves ⁸, Freya A. Squires ³; Adam R. Vaughan ³, Xinming Wang ², Zhaoyi Wang ², Oliver Wild ¹; Qiang Zhang ¹², Yanli Zhang ²; C. Nicholas Hewitt ¹

1. Lancaster Environment Centre, Lancaster University, Lancaster, LA1 4YQ, UK
2. State Key Laboratory of Organic Geochemistry and Guangdong Key Laboratory of Environmental Protection and Resources Utilization, Guangzhou Institute of Geochemistry, Chinese Academy of Sciences, Guangzhou 510640, China
3. Wolfson Atmospheric Chemistry Laboratories, Department of Chemistry, University of York, York, YO10 5DD, UK
4. National Centre for Atmospheric Science, University of York, York.
5. Institute of Atmospheric Physics, Chinese Academy of Sciences, Huayanli 40, Chaoyang District, Beijing 100029, China
6. UK Centre for Ecology & Hydrology, Library Ave, Bailrigg, Lancaster LA1 4AP, UK
7. UK Centre for Ecology & Hydrology, Bush Estate, Penicuik, Midlothian, EH26 0QB, UK
8. Centre for Ocean and Atmospheric Sciences, School of Environmental Sciences, University of East Anglia, Norwich, Norfolk, NR4 7TJ, UK
9. Peking University, 5 Yiheyuan Road, Haidian District, Beijing 100871, China
10. National Ecological Observatory Network Program, Battelle, 1685 38th Street, Boulder, CO 80301, USA
11. Department of Atmospheric and Oceanic Sciences, University of Wisconsin - Madison, 1225 West Dayton Street, Madison, WI 53706, USA
12. Ministry of Education Key Laboratory for Earth System Modelling, Department of Earth System Science, Tsinghua University, Beijing, China

a. Now at: School of Geography Earth and Environmental Sciences, the University of Birmingham, Birmingham, UK

b. Now at: State Environmental Protection Key Laboratory of Environmental Pollution Health Risk Assessment, South China Institute of Environmental Science, Ministry of Ecology and Environment, Guangzhou 510655, China

Correspondence to: W. Joe F. Acton (W.J.F.Acton@bham.ac.uk)

Abstract. Mixing ratios of volatile organic compounds (VOCs) were recorded in two field campaigns in central Beijing as part of the Air Pollution and Human Health in a Chinese Megacity (APHH) project. These data were used to calculate, for the first time in Beijing, the surface-atmosphere fluxes of VOCs using eddy covariance, giving a top-down estimation of VOC emissions from a central area of the city. The results were then used to validate evaluate the accuracy of the Multi-resolution Emission Inventory for China (MEIC). The APHH winter and summer campaigns took place in November and December 2016 and May and June 2017 respectively. The largest VOC fluxes observed were of small oxygenated compounds such as methanol, ethanol + formic acid and acetaldehyde, with average emission rates of 8.0231 ± 8.5 , 3.8897 ± 3.9 and 1.7683 ± 2.0 nmol m⁻² s⁻¹ respectively in the summer. A large flux of isoprene was observed in the summer with an average emission rate of $4.635.31 \pm 7.7$ nmol m⁻² s⁻¹. While oxygenated VOCs made up 60% of the molar VOC flux measured, when fluxes were scaled by ozone formation potential and peroxyacyl nitrate (PAN) formation potential the high reactivity of isoprene and monoterpenes meant that these species represented 30 and 28% of the flux contribution to ozone and PAN formation potential respectively. Comparison of measured fluxes with the emission inventory showed that the inventory failed to capture the magnitude of VOC emissions at the local scale.

1. Introduction

Air quality in urban areas is a pressing issue worldwide and is becoming the subject of much scientific, political and media focus. The Chinese capital Beijing is a megacity situated on the north China plain with a population of 22 million. Beijing suffers from periods of severe air pollution resulting from pollutant emissions occurring both within the city and from sources in the wider North China Plain region (Wehner et al., 2008). This pollution has a substantial impact on human health and economic output due to the large exposed population and the commercial and political importance of the city. For example, Gao et al. (2015) estimated that a single pollution event in January 2013, when the maximum hourly particulate matter of size smaller than 2.5 µm (PM_{2.5}) concentration in Beijing reached 650 µg m⁻³, caused 690 premature deaths and ~250 million USD in economic losses.

Volatile organic compounds (VOCs) play an important role in local and regional air quality as they can oxidize and condense to form secondary organic aerosol (SOA) (Hallquist et al., 2009; Ehn et al., 2014) and because they take part in chemical reactions in the presence of NO_x that can form ozone (Fehsenfeld et al., 1992). In addition, some VOCs, e.g. benzene, have direct detrimental impacts on humans and animals (e.g. Rinsky et al. (1987)). Urban areas, especially major cities, are important sources of these compounds into the atmosphere (Langford et al., 2009; Valach et al., 2015; Karl et al., 2018).

Several studies have reported VOC concentrations in Beijing, identifying alkanes, aromatics and oxygenated VOCs (Shao et al., 2009; Yuan et al., 2012; Wang et al., 2015). Comparison of air pollutant emissions between megacities (Parrish et al., 2009) showed that gasoline-fuelled vehicles were a major source of hydrocarbon emission and in countries such as China industrial sources may also have a strong influence on hydrocarbon emission (von Schneidmesser et al., 2010). A positive matrix factorization (PMF) model applied by Wang et al.

(2015) identified four major sources of VOCs in Beijing: two transportation factors denoted “gasoline evaporation and vehicular exhaust no. 1 (containing pentanes, acetylene, benzene, and toluene)” and “vehicular exhaust no. 2 (acetylene and C2-C4 alkanes)”, “natural gas and liquid petroleum gas use and background” and “paint and solvent use and industry”. Biogenic VOCs (BVOCs) represent an additional source of VOCs into the urban environment, the relative importance of which varies from city to city and from season to season. Ghirardo et al. (2016) used leaf-level emission measurements to estimate BVOC emissions in Beijing, including sesquiterpenes, benzenoids and fatty acid derivatives.

In most cities of the world it is **difficult-challenging** to directly observe the effectiveness of pollution control measures on ambient concentrations in real time. However, in Beijing the strict short-term emission controls applied during the 2008 Olympic Games (Liu et al., 2015) and the 2014 Asia-Pacific Economic Cooperation (APEC) summit (Li et al., 2017a) allowed the impact of pollution control measures in Beijing and the surrounding area on VOC concentrations to be investigated. Liu et al. (2015) reported that the emission controls during the 2008 Olympic Games caused a concentration reduction of 13 – 20% in a range of oxygenated VOC species but that acetone concentrations remained unaffected. Li et al. (2017a) found that when emission controls were applied to Beijing alone only a small decrease in VOC concentrations was observed but when controls also covered surrounding cities a large decrease (>40%) in most anthropogenic VOC concentrations was observed. This suggests that the atmospheric transport of pollutants from surrounding areas makes a large contribution to VOC concentrations in Beijing.

The impact of VOC emissions on local and regional air quality is examined using atmospheric chemistry and transport models, which rely on accurate estimates of the surface – atmosphere emission rates of pollutants. Much of the air quality modelling in Beijing relies on the Multi-resolution Emission Inventory for China (MEIC; available at <http://www.meicmodel.org/>; Qi et al. 2017) developed at Tsinghua University (e.g. Zhang et al., 2015; Hu et al., 2016). This relies on estimates of both source-specific emission factors and activity data and is hence a “bottom-up” estimation of emissions within a defined grid square. Validation of such an inventory is important in order to ensure they accurately represent real world emissions (Zhao et al. 2017).

Until comparatively recently it was very difficult to **validate assess the accuracy of** VOC emissions inventories at the **cityscape district** scale, but the development of **the-proton transfer reaction-time of flight mass spectrometers PTR-TOF technology** now allows VOCs to be measured with sufficient time resolution for flux **estimates measurements** to be made using the method of eddy covariance based on simultaneous micrometeorological measurements. Although the conditions under which eddy covariance can be applied in the heterogeneous city environment are somewhat limited by flow interferences from neighbouring buildings, night-time boundary layer stability and other considerations, the method has been successfully used for estimating both CO₂ fluxes (e.g. Song and Wang, 2012; Liu et al., 2012a; Song et al., 2013) and VOC fluxes (e.g. Velasco et al., 2005; 2009; Langford et al., 2009; Valach et al., 2015; Vaughan et al., 2017; Karl et al. 2018). However, VOC flux measurements have not previously been attempted in Beijing.

The work presented here was carried out as part of the “Sources and Emissions of Air Pollutants in Beijing” (AIRPOLL) project, itself part of the joint UK-Chinese “Air Pollution and Human Health in a Chinese Megacity” (APHH) programme, described by Shi et al. (2019). The objectives of the study were to measure the surface-to-

atmosphere fluxes of VOCs using the method of eddy covariance at a site in Beijing where a very comprehensive suite of atmospheric, physical and chemical parameters were assessed by the wider APHH-Beijing project team, and to use these data to ~~assess the~~ evaluate the accuracy of validity of a widely used emissions inventory. In this paper we therefore present the results of two intensive measurement campaigns covering both summer and winter conditions in Beijing. VOC mixing ratios were recorded using a proton transfer reaction time-of-flight mass spectrometer (PTR-ToF-MS) at a location in central Beijing. These data were then used, with three-dimensional wind velocity data, to calculate emission rates (fluxes) of VOCs, using the eddy covariance method (e.g. Müller et al., 2010) for the first time in Beijing. The calculated fluxes were then compared with the MEIC emissions inventory estimates for the measurement location.

2. Methodology

2.1. Site description

Measurements of VOC mixing ratios and fluxes were made during two intensive measurement campaigns (winter: 12/11/2016 - 10/12/2016; and summer: 15/05/2017 - 24/06/2017) from a 325 m high meteorological mast located on the campus of the Institute of Atmospheric Physics, Chinese Academy of Sciences (IAP) in Beijing (39°58'33"N 116°22'41"E), 49 m above sea level. This site was used as the main sampling site for all APHH-Beijing programme activities (see Shi et al., 2019). The campus is situated north of central Beijing between the 3rd and 4th ring roads, with parkland to the east and west and a mix of dense residential and commercial (restaurants and shops) buildings to the north and south. The population density in the Chaoyang district is 7500 people km⁻¹ (Amir Siddique et al., 2020). Busy roads are situated 120 m north and 300 m east of the mast. Jing et al. (2016) classified the major roads present in the footprint as “Artery Roads”. The average speed of roads in this classification peaked at ~43 km h⁻¹ at 04:00. Day time average speeds peak at ~33 km h⁻¹ (12:00) with a minimum average speed of ~28 km h⁻¹ (18:00). Average traffic volume on artery roads peaked at ~3100 vehicles h⁻¹ (07:00) with a minimum average flow of ~250 vehicles h⁻¹ (03:00). In 2002 dominant tree species in Beijing were *Sophora japonica*, *Populus tomentosa* and *Juniperus chinensis* (Yang et al., 2005). Large scale tree planting occurred between 2012 and 2015 increasing forest cover by 10% with the main species planted being *Pinus tabulaeformis*, *Sophora japonica*, *Fraxinus chinensis*, *Salix spp.* and *Populus spp.* (Yao et al., 2019). For comparative purposes, the sampling location can therefore be described as being an “urban background” site with respect to ambient concentrations for central Beijing with the main sampling inlet being significantly elevated above ground level.

Flux measurements of CO₂ have been made previously at this site (Song and Wang, 2012; Liu et al., 2012a; Song et al., 2013). The fractional land cover within 2 km of the tower was assessed by Song and Wang (2012) and found to be buildings (0.65), vegetation (0.23) and roads (0.12). Using the local climate zone (LCZ) classification system described by Stewart and Oke, (2012) this area can be classified as LCZ2 “compact mid-rise” becoming LCZ1 “compact high-rise” to the south west. The aerodynamic roughness lengths were calculated by Li et al. (2003) as cited by Liu et al. (2012) and found to be 2.5, 3.0, 5.3 and 2.8 m from the north east, south east, south west and north west respectively with the zero-plane displacement heights of 12.3, 15.0, 26.4, and 13.2 m respectively. The roughness length and displacement height at this site has remained consistent over the last ~20

years (Cheng et al., 2018b). The flux inlet was located at 102 m; this is over twice the mean height (45 m) of the tall residential building to the southwest (Liu et al., 2012a) and is below the mixing layer height (Squires et al., 2020) positioning the inlet in the constant flux layer.

2.2. Instrumental setup

A PTR-ToF-MS 2000 (Ionicon Analytik GmbH, Innsbruck) was housed in an air-conditioned container ~10 m from the base of the mast. The core operating principle of the instrument is described in detail by Jordan et al. (2009). The PTR-ToF-MS subsampled from two inlet systems, a common flux inlet line and a gradient switching system. The common flux inlet was 0.5 inch O.D. (I.D. 3/8 inch) PFA and sampled air from ~50 cm below a sonic anemometer (Gill R3, Gill Instruments, Lymington, UK) which was mounted on a 3 m horizontal boom positioned on the mast at a height of 102 m above ground level. Air was drawn through the inlet line using a rotary vane pump (Model VT4.8; Becker, Hull, UK). The flow rate in the inlet line was recorded using a mass flow meter (TSI Mass Flowmeter 4043, TSI, Shoreview, USA) and remained in the range 90 - 103 L min⁻¹ during both campaigns. At 90 L min⁻¹ the Reynolds number in the inlet line is 12900, indicating turbulent flow. Particulates were removed from the air flow by a 90 mm Teflon filter installed near the inlet. This filter was replaced each day.

To minimise the impact of the tower on flux measurements, the sonic anemometer was positioned so that air from the prevailing wind directions would not be disturbed by the tower. The sonic anemometer was installed on the north west side of the tower in the winter and the south east in the summer. Analysis of the turbulence characteristics (Squires et al., 2020) did not show an impact from the structure even when the air flow passed through the tower. This is likely due to the open lattice construction of the tower and the predominance of larger eddy scales at 102 m.

Gradient measurements were made by switching between five sampling heights (3, 15, 32, 64 and 102 m) and zero air. Air was drawn down five separate 0.25 inch O.D. (I.D. 1/8 inch) PFA lines using a common second rotary vane pump (Model VT4.8; Becker, Hull, UK). For each height, the flow was sampled at 3.3 L min⁻¹ of which ~300 ml min⁻¹ was drawn through a 10 L stainless steel container and an additional bypass flow of 3 L min⁻¹ was used to reduce the residence time in each line (Fig. 1). The five containers were heated to 30 °C to limit adsorption/desorption effects and had a turn-over time of approximately 30 minutes. For two minutes each hour the PTR-ToF-MS sequentially subsampled from the flow exiting each container via a manifold valve, providing hourly 30-minute average mixing ratio at each of the five heights. The PTR-ToF-MS was operated in an hourly cycle switching between the flux and gradient measurements. The PTR-ToF-MS sampled from the gradient system for the first twenty minutes of each hour and from the flux line for the final 40 minutes of the hour. A zero air generator was built in house and made up of a platinum catalyst heated to 260 °C, and zero air was sampled for 5 minutes each hour at the end of the gradient cycle.

The PTR-ToF-MS was operated with an inlet flow rate of 30 sccm and an E/N ratio (where E is the electric field strength; N is the buffer gas density) of 130 Td. To achieve this, the drift tube was maintained at 60 °C with a pressure 1.9 mbar and a voltage of 490 V applied across it. Data were acquired by the PTR-ToF-MS at a 5 Hz time resolution, allowing VOC fluxes to be calculated using the eddy covariance method. In order to facilitate mass calibration, trichlorobenzene was introduced by diffusion through a needle valve into the inlet stream.

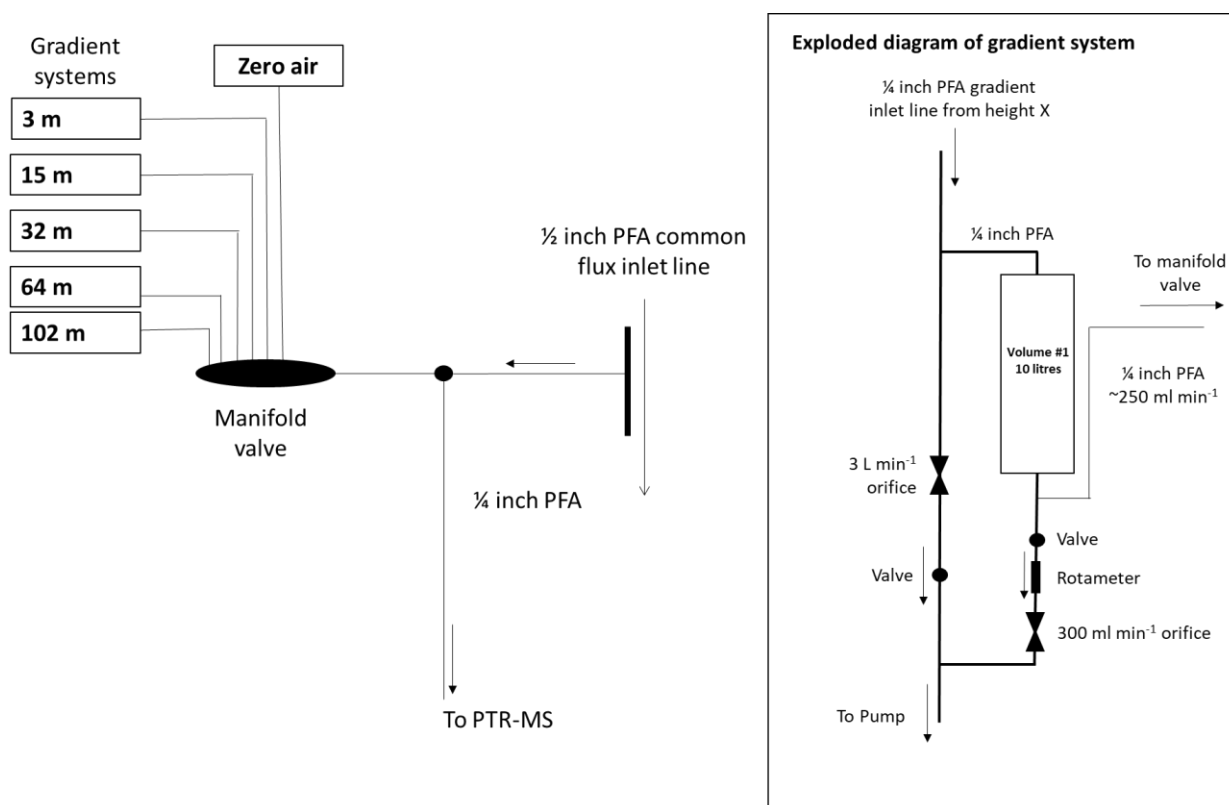


Figure 1: Schematic of the gradient sampling system. The PTR-ToF-MS inlet was switched between a common flux inlet line (40 min) and a gradient switching manifold (20 min) in an hourly cycle. The gradient system sampled from five heights into 10 stainless steel containers.

2.3. Calibration

The PTR-ToF-MS was calibrated twice weekly using a 15 component VOC standard (National Physical Laboratory, Teddington, UK) during both the winter and summer campaigns. This standard contained methanol, acetonitrile, ethanol, 1,3-butadiene, acetone, isoprene, butenone, butan-2-one, benzene, toluene, m-xylene and 1,2,4-trimethylbenzene at 1 ± 0.1 ppmv each. The standard was dynamically diluted in zero air to provide a six point calibration. The sensitivities to these compounds in the winter and summer campaigns are summarised in the supplementary information.

During the winter campaign, the instrument was also calibrated three times using a second independent 15 component VOC standard (Ionicon Analytik, Innsbruck, Austria) containing methanol, acetonitrile, acetaldehyde, ethanol, acrolein, acetone, isoprene, crotonaldehyde, butan-2-one, benzene, toluene, o-xylene, chlorobenzene, α -pinene and 1,2-dichlorobenzene at 1 ± 0.05 ppmv each. At the end of the campaign the PTR-ToF-MS was also calibrated using an aldehyde standard (Ionicon Analytik, Innsbruck, Austria) made up of formaldehyde, acetaldehyde, acrolein, propanal, crotonaldehyde, butanal, pentanal, hexanal, heptanal and octanal at 1 ± 0.05 ppmv each, nonanal at 600 ± 0.07 ppbv and decanal at 500 ± 0.08 ppbv. Calibration using both Ionicon standards was performed following dynamic dilution in zero air to give a six point calibration. In the summer campaign, four point calibrations were performed using both Ionicon VOC standards once a week.

Over the course of the winter campaign 29 h (6% of the PTR-ToF-MS operational period) were lost to instrument maintenance and calibration and 133 h (16% of the PTR-ToF-MS operational period) were lost to instrument maintenance and calibration in the summer.

2.4. Volume mixing ratio calculation

PTR-ToF-MS mass calibration and peak fitting was performed on the 5 Hz data using PTRMS Viewer 3 (Ionicon Analytik, Innsbruck). VOC mixing ratios were then calculated using the method based on that previously applied by Acton et al. (2016), Tani et al. (2004) and Taipale et al. (2010). Counts per second (cps) of each protonated VOC species (RH^+) were normalized against the primary ions (H_3O^+ and the $H_2O.H_3O^+$ cluster ion) and background counts were subtracted to give background corrected normalised count rates $I(RH^+)_{norm}$:

$$I(RH^+)_{norm} = I(RH^+) \left(\frac{I_{norm}}{I(H_3O^+) + I(H_3O^+H_2O)} \right) \quad (1)$$

$$- \frac{1}{n} \sum_{i=1}^n I(RH^+)_{zero,i} \left(\frac{I_{norm}}{I(H_3O^+)_{zero,i} + I(H_3O^+H_2O)_{zero,i}} \right),$$

where $I(H_3O^+)$ and $I(H_3O^+H_2O)$ represent the measured count rate for H_3O^+ and the $H_3O^+H_2O$ cluster, respectively. Zero air measurements were labelled using the subscript zero and the number of zero air measurements was represented by n . The total reagent ion count rate (H_3O^+ and $H_3O^+H_2O$) was normalised to a count rate of 10^6 cps (I_{norm}).

Following calculation of the background corrected normalised count rate, the volume mixing ratio (VMR) was calculated, as a wet mass fraction, as:

$$VMR_{VOC} = \frac{I(RH^+)_{norm}}{S_{norm}}, \quad (2)$$

where S_{norm} is the normalised sensitivity (ncps/ppbv) for each mass calculated using a transmission curve as described by Taipale et al. (2008). Mixing ratios of specific compounds were then determined by summing parent ion and fragment ion mixing ratios. For direct comparison with the molar flux, the volume mixing ratio was converted to a molar concentration (χ_{VOC}) using equation 3.

$$\chi_{VOC} = \frac{P \times VMR_{VOC}}{R \times T}, \quad (3)$$

where P is the atmospheric pressure, T is atmospheric temperature and R is the molar gas constant ($8.314 \text{ J K}^{-1} \text{ mol}^{-1}$). Note that in the following presentation of results and discussion, the abundance of VOCs in air are described in terms of volume mixing ratio (parts per billion; ppbv) although strictly speaking they should be described as the wet mass fraction (with the same units).

2.5. Flux calculation

The continuous fast measurement of PTR-ToF-MS for all compounds allows the estimation of fluxes using direct eddy covariance rather than the virtual disjunct eddy covariance methods that had to be applied when using older PTR-quad-MS instruments (e.g. Karl et al., 2002; Langford et al., 2009; Velasco et al., 2005; 2009). Eddy covariance fluxes of VOCs using PTR-ToF-MS were first made by Müller et al. (2010). A detailed description of

flux measurement using eddy covariance and its limitations is provided by Aubinet et al. (2012). Here fluxes were calculated using the eddy4R routines (Metzger et al., 2017; R Core Team, 2019) with further analysis performed using the open air and ggmap packages (Carslaw and Ropkins 2012; Kahle and Wickham, 2013). The flux (F_x) of each compound was determined by calculating the covariance function between the vertical wind velocity (w) and the VOC concentration (χ_x ; nmol m⁻³):

$$F_x(\Delta t) = \frac{1}{N} \sum_{i=1}^N w'(i - \Delta t / \Delta t_w) \chi_x'(i), \quad (4)$$

where w' and χ' represent momentary deviations from the mean concentration or vertical wind speed (i.e. $w' = w - \bar{w}$). N is the number of PTR-ToF-MS measurements in our half hour averaging window (9000 for 5 Hz measurements), Δt_w is the sampling interval between wind measurements (0.2 s) and Δt is the lag time between the vertical wind measurements recorded by the sonic anemometer at 102 m and the concentrations recorded using the PTR-ToF-MS instrument at ground level.

The lag time between the vertical wind velocity measurement and VOC concentration measurement is primarily controlled by the inlet line length and the flow rate in the line. However, small variations in temperature, pressure, humidity and pump performance, and also horizontal displacement between anemometer and inlet coupled with changes in wind speed and direction can all cause deviation in the lag time. The lag time can be determined by assessing the covariance between w and χ as a function of time. The lag time can then be identified by selecting the maximum of this covariance function (Taipale et al., 2010). For many of compounds recorded in this study only a weak flux was observed. This results in a low signal-to-noise ratio, introducing a large uncertainty into the identification of the cross-covariance maximum. Adsorption and desorption rates to the inlet line are compound specific and dependent on polarity. Therefore, the lag times for more polar compounds such as oxygenated VOCs will differ slightly from pure hydrocarbons but weak covariance peaks made the identification of the lag-times difficult for many masses. Lag times were therefore determined by calculating the lag for compounds where a strong covariance peak was observed (isoprene and C2-benzene (C₈H₁₀) in the summer and winter campaigns respectively) and applying their modal lag times as a fixed value to all masses. The calculation of lag time for eddy covariance data with low signal-to-noise ratio is described in detail by Langford et al. (2015).

The effect of storage below the measurement height was calculated for flux averaging period t as:

$$\text{Storage } F_{x,t} = h \frac{\chi_{x,t-1} - \chi_{x,t+1}}{3600} . \quad (5)$$

Where $\chi_{x,t-1}$ and $\chi_{x,t+1}$ are the concentration (nmol m⁻³) of compound X in the averaging periods before and after flux averaging period, t , and h represents the measurement height in meters (102 m). This method was chosen so as to be comparable with the other flux measurements made during this project (e.g. Squires et al. 2020). This storage term was then added to the calculated turbulent flux term.

At the 102 m measurement height, large eddies mean that some of the flux may not be captured in the 30 min flux averaging period used here. This loss of low frequency flux was investigated by Squires et al. (2020) who found that at the 102 m measurement height the flux loss was ca. 7%. Due to similarity of the transport mechanisms underlying the low frequency flux loss (e.g., Mauder et al., 2020) we assume this estimate to apply also to the simultaneously measured VOC fluxes presented here. We did not correct the fluxes presented in this paper for

low frequency flux loss. We further investigated the effect of high-frequency spectral loss on the VOC fluxes using a wavelet-based methodology (Nordbo and Katul, 2013). Loss of high frequency flux due to measuring at 5 Hz was estimated to be less than 10%, which we did not correct for in the presented fluxes. Fluctuations in air density caused by changes in temperature and humidity can impact fluxes (Webb et al., 1980). As a closed path system was used in this study, the impact of air density variations caused by changes in sensible heat flux are negligible but variations in air density caused by changes in the latent heat flux may impact the VOC flux calculation. The impact of changes in latent heat flux on the NO_x flux at this site was assessed by Squires et al. (2020) and found to be significantly less than 1% throughout both campaigns. As the sensitivity of a trace gas flux to density fluctuations is controlled by the ratio of its constituent density over its flux (Pattey et al., 1992) this ratio was assessed for the measured VOC species. This ratio was found to be comparable to that observed for NO_x by Squires et al. (2020), suggesting that the uncertainty in VOC flux as a result of changes in latent heat flux was less than 1%. Therefore the Webb-Pearman-Leuning correction (WPL: Webb et al., 1980) for changes in the density of air to the calculation of fluxes was not applied. Squires et al. (2020) estimated that the average time taken for an air parcel to reach the inlet point at 102 m was ~ 68 s. The Assuming a OH concentration in the summer campaign reached $\sim 2.8 \times 10^7$ molecules cm^{-3} (Whalley et al., 2020) and the ozone concentration of $\sim 2.6 \times 10^{12}$ molecules cm^{-3} , at these concentrations only $\sim 10\%$ of monoterpenes (the most reactive species recorded) would have reacted before the measurement height.

Half hour averages were quality-assessed using three tests after a 2-dimensional coordinate rotation to correct for tilting of the sonic anemometer. The limit of detection was calculated for each mass by determining the cross-covariance between 150-180 s, a region outside the expected time lag range (Spirig et al., 2005). In order to calculate a reliable flux, the averaging period must meet stationarity requirements such that this period is shorter than the time scale at which changes in atmospheric conditions occur. The stationarity of the flux across the half hour averaging period was assessed using the method described by Foken and Wichura (1996). The half hour averaged fluxes were filtered where the stationarity criterion (the difference between average flux and mean average flux of its components) exceeded 60% and were above the limit of detection as for fluxes below the limit of detection a robust statement on their stationarity could not be made. Lastly, files were also flagged if the mean frictional velocity (u_*) fell below was less than 0.175 m s^{-1} , this threshold was derived from assessment of the u_* dependence of the sensible heat flux. Data falling below this threshold were substituted by the campaign average value for that hour so as not to introduce a positive bias to the VOC flux. The random error of each half hour flux average was assessed using the method described by Lenschow et al. (1994) and fluxes with a relative random error greater than 150%, averaged across the campaign, were discarded.

In the winter campaign, 25% of the flux averaging periods fell below the u_* filter. Of the masses contributing more than 0.75% to the total flux, the average percentage of flux files filtered for failing the stationarity test is 69%. This ranged from 73% for methyl vinyl ketone and methacrolein formaldehyde to 62% for acetaldehyde. In the summer field campaign 12% of the flux averaging periods fell below the u_* filter. Of the masses contributing more than 0.75% to the total flux, the average percentage of flux files filtered for failing the stationarity test is 25%. This ranged from 52% for formaldehyde to 13% for methanol.

3. Results and Discussion

3.1 Meteorology

During the winter measurement campaign (7th November to 10th December), wind speeds were low, ranging between 0.3 and 9.7 m s⁻¹, with a mean value of 2.4 m s⁻¹, and with the highest wind speeds observed from the North West (Fig. 2). The predominant wind directions were southerly and north westerly. Temperatures, measured at 102 m on the IAP tower, ranged from -7 to 15 °C with a mean value of 3.6 °C. Relative humidity ranged from 15 to 92% with a mean value of 45% (Fig. 3). Precipitation was small during the campaign period with light rain on 20th November and snow on 21st November.

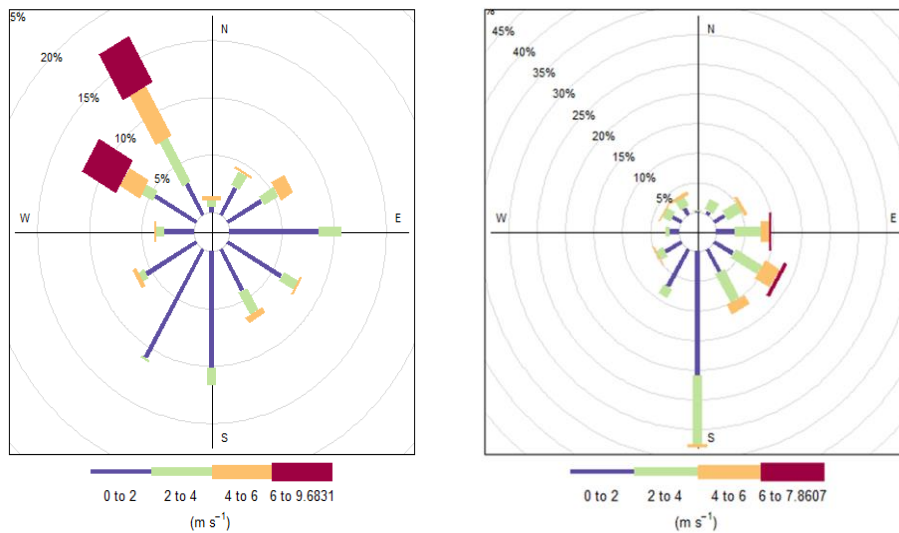


Figure 2: Wind conditions during the winter campaign (left) and summer campaign (right). The plots show the percentage of time the wind was from each direction and are coloured by wind speed.

During the summer measurement campaign (20th May - 22nd June 2017) wind speed ranged between 0.5 and 7.9 m s⁻¹, with a mean value of 2.3 m s⁻¹. The predominant wind direction was south-easterly (Fig. 2). Temperatures at 102 m ranged from 15 to 37 °C with a mean value of 25 °C and the relative humidity ranged from 13 to 93% with a mean value of 44% (Fig. 3). Precipitation was low during the campaign period with light rain observed on 22nd and 30th May and on 2nd, 6th, 18th and 21st – 23rd June.

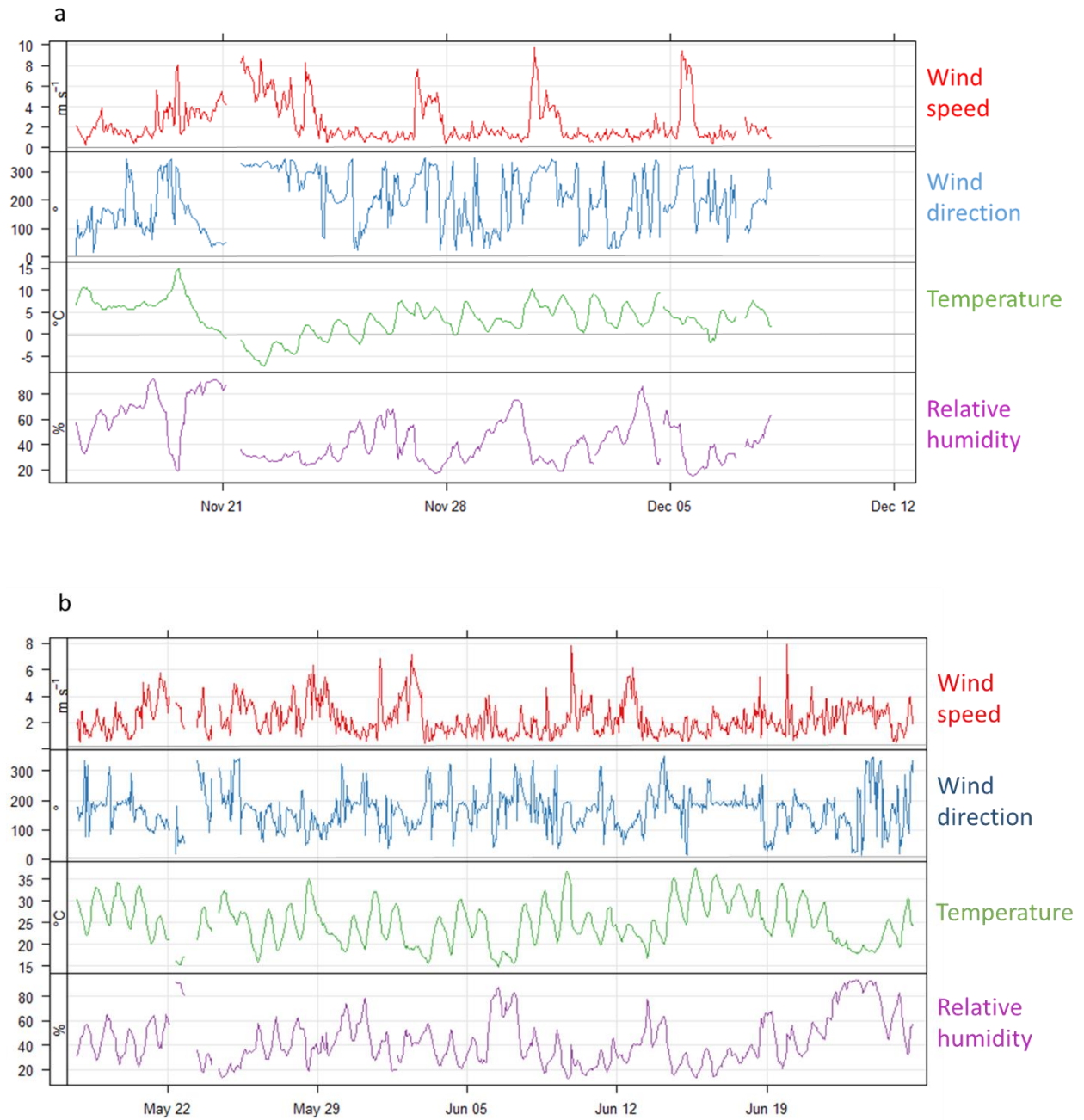
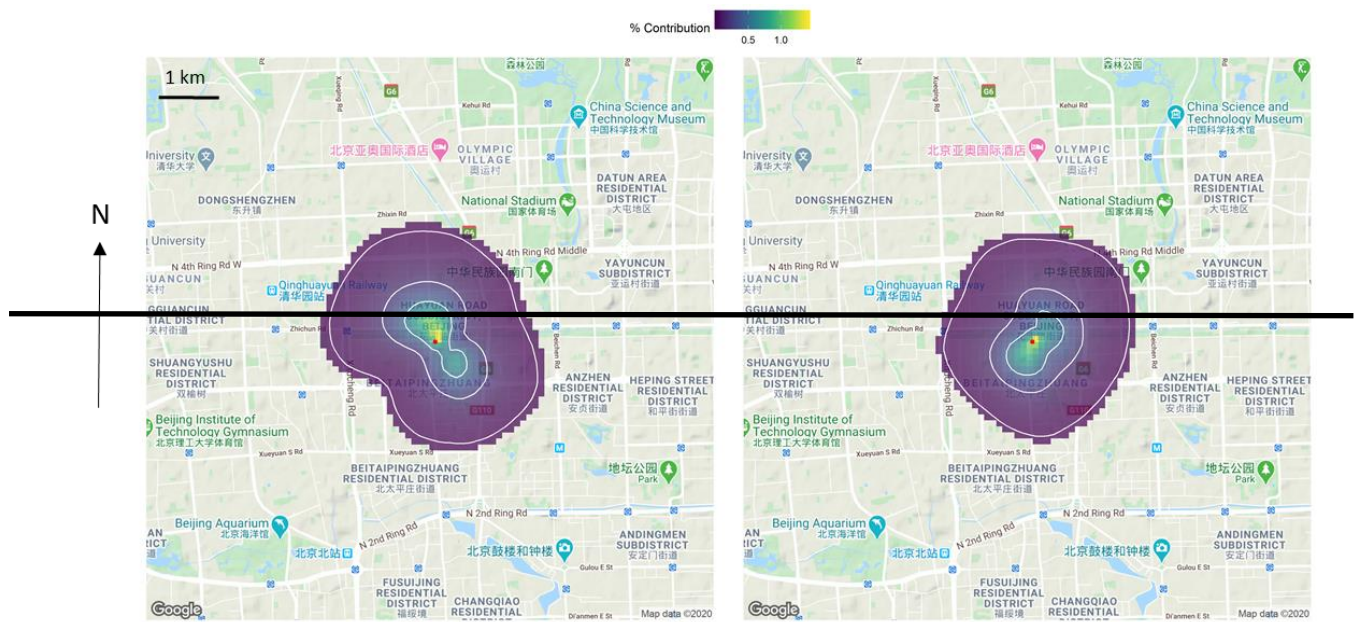


Figure 3: Summary of meteorological data in winter measurement campaign (a) and summer measurement campaign (b).

3.2 Flux footprint

The flux footprint was calculated for each half hour flux averaging period of both field campaigns using the method described by Kljun et al. (2004) and Metzger et al. (2012). The calculation of the flux footprint for this campaign is described in detail by Squires et al. (2020). During both the summer and winter field campaigns 90% of the measured flux originated from an area within 7 km of the IAP tower; however, 90% of the contribution to the campaign average flux footprint extended just 2 km from the tower. Mean flux footprint climatologies for the

summer and winter campaigns are displayed in Fig. 4, with contour lines showing the distances from the tower where the surface contributions to the measured fluxes cumulate to 30, 60 and 90%, respectively. In the winter campaign the main contribution to the average flux was predominantly from the northwest and southeast, encompassing two large roads: the Jingzang Expressway and the Beitucheng West Road and a mix of commercial and residential buildings, and urban park land. In the summer campaign, the largest contribution to the flux came from regions approximately 1 km south west of the tower and approximately 1 km north east of the tower now encompassing different sections of the Jingzang Expressway, Beitucheng West Road, residential buildings, commercial buildings (shops and restaurants) and a larger contribution from urban park land compared to the winter campaign.



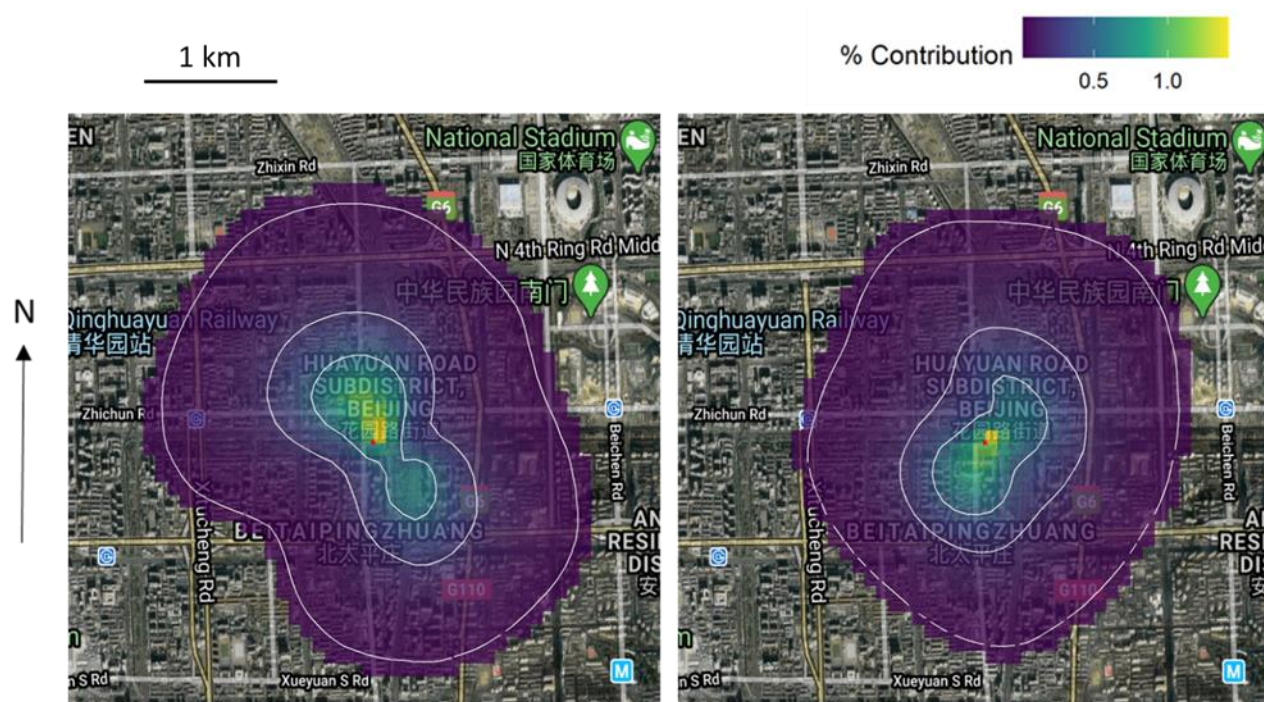


Figure 4. The campaign mean flux footprint climatologies for the winter (left) and summer (right) field campaigns. The IAP meteorological tower is represented by the red dot and surrounding 100×100 m cells are coloured by their mean contribution to the flux. The contour lines correspond to the distances from the tower where the surface contributions to the measured fluxes cumulate to 30, 60 and 90% respectively. Map tile sets are © Google. **Map data @ 2020 Imagery @ 2020, CNES/Airbus, Landsat/Copernicus, Maxar Technologies.**

3.3. VOC mixing ratios

In the winter campaign the detected VOC species with the largest mixing ratios were the small oxygenated VOCs (OVOCs) methanol, acetaldehyde and acetone, with median mixing ratios of 19.29, 4.59 and 2.57 ppbv, respectively. Large mixing ratios of aromatic compounds were also observed, with median mixing ratios between 1.5 and 2.0 ppbv for each of benzene, toluene and C_2 -benzenes. Mixing ratios of these compounds tracked the pollution events in a distinctive “sawtooth cycle” described by Jia et al. (2008) where mixing ratios increased over a period of 3 - 4 days when the wind speed was low and prevailing wind direction was southerly before dropping rapidly when the wind direction moved to the North West. In the summer campaign, the dominant VOC species observed were again methanol, acetaldehyde and acetone (26.39, 3.50 and 3.67 ppbv respectively), but the mixing ratios of aromatic compounds were lower, with median values of 0.30, 0.37 and 0.47 ppbv observed for benzene, toluene and C_2 -benzenes respectively. Methanol and ethanol + formic acid together account for approximately one third of the total oxygenated VOC mixing ratio. These compounds have been observed at high concentrations in many cities (Langford et al., 2009 (Manchester; summer); Shao et al., 2009 (Beijing; summer); Valach et al. 2015 (London; August-September); Sahu and Saxena 2015 (Ahmedabad; winter)) with ethanol reported to be the most abundant VOC in London with a mean mixing ratio of 5 ppbv in summer and winter (Dunmore et al., 2016).

Isoprene, which has both biogenic and vehicular sources (Borbon et al., 2001; Jaimes-Palomera et al., 2016), had median mixing ratios of 1.08 and 0.38 ppbv in the winter and summer campaigns respectively. High winter

isoprene concentrations have been observed previously in Beijing (Li et al., 2019) where an average value of 1.01 ppbv was observed as well as during haze periods (Sheng et al., 2018). High winter isoprene has also been reported in other Asian countries with isoprene mixing ratios of 1.6 and 1.1 ppbv recorded in Ahmedabad (Sahu and Saxena 2015) and Kathmandu (Sarkar et al., 2016). These studies are all characterised by the use of a PTR-MS, it is possible that an isomer of isoprene contributes to the high winter time concentrations observed in Asian cities. In contrast, other studies have reported higher summer time isoprene concentrations in Beijing (e.g. Cheng et al., 2018a). In the winter, isoprene mixing ratios peaked during haze events and correlated well with anthropogenic and oxygenated VOCs. R^2 values of 0.82, 0.77 and 0.74 were observed for the correlation of isoprene with propenal, benzene and toluene respectively.

In contrast to the winter campaign, VOC mixing ratios of most compounds during the summer campaign showed a clear diurnal cycle with mixing ratios peaking at night and dropping during the day as the planetary boundary layer expanded during the day-time and contracted at night-time (Fig. 5). A summary of VOC mixing ratios for the principal VOC species observed during the two campaigns are displayed in Table 1. For a more detailed discussion of VOC mixing ratios recorded during this campaign see Zhang et al. (2020).

Table 1. Summary of VOC mixing ratio for the dominant VOCs observed in Beijing during APHH-Beijing winter and summer campaigns (in ppbv).

	<i>Methanol</i>	<i>Acetonitrile</i>	<i>Acetaldehyde</i>	<i>Acetone</i>	<i>Isoprene</i>	<i>Benzene</i>	<i>Toluene</i>	<i>C₂- Benzenes</i>
<i>Winter campaign</i>								
<i>Max</i>	93.98	2.13	17.42	9.66	4.50	9.11	9.43	13.07
<i>Min</i>	0.00	0.00	0.22	0.00	0.00	0.00	0.00	0.00
<i>Median</i>	19.29	0.38	4.59	2.57	1.08	1.59	1.65	1.65
<i>Mean</i>	24.32	0.51	4.92	2.80	1.21	2.00	1.94	2.08
<i>Standard deviation</i>	20.83	0.51	3.66	2.00	1.03	1.74	1.87	2.07
<i>Summer campaign</i>								
<i>Max</i>	73.75	24.44	26.92	11.76	3.24	1.89	2.74	3.41
<i>Min</i>	7.10	0.00	0.00	0.70	0.00	0.00	0.00	0.00
<i>Median</i>	26.39	0.29	3.50	3.67	0.38	0.30	0.37	0.47
<i>Mean</i>	28.39	0.97	4.64	3.86	0.56	0.37	0.46	0.60
<i>Standard deviation</i>	11.02	1.86	3.57	0.44	0.55	0.31	0.37	0.52

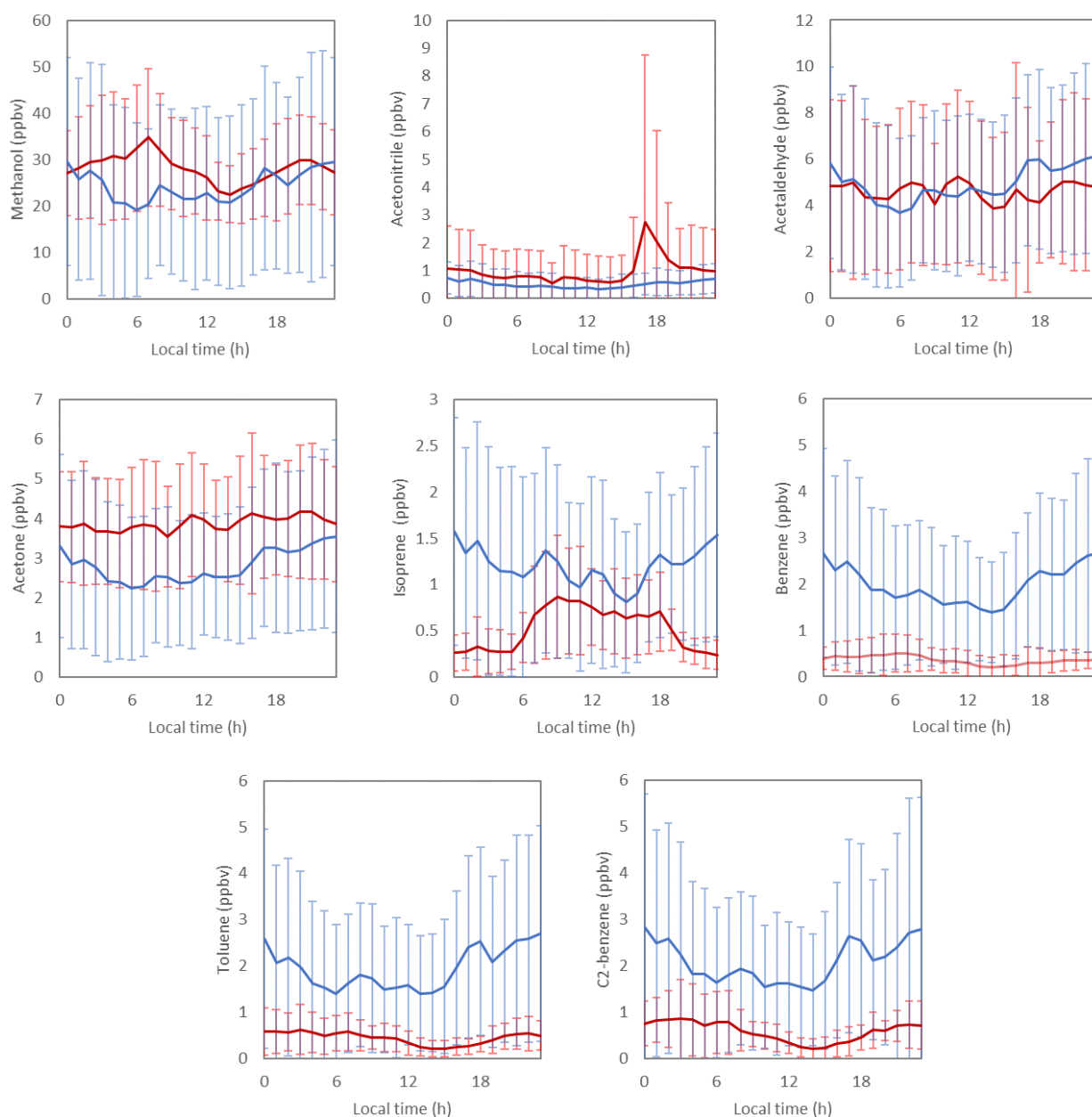


Figure 5. Diurnal profiles of the dominant VOCs observed in Beijing during APHH-Beijing winter (blue) and summer (red) campaigns (in ppbv). Error bars show standard deviation across the measurement period.

3.4 VOC fluxes

The mixing ratio values represent the ambient concentrations observed at the sample inlet averaged over the sampling period. However, by combining these mixing ratios with the three dimensional wind vector, the eddy covariance flux calculation method allowed for quantification of the net exchange (flux) of the observed compounds from a surface “footprint” to the point of sampling. The size of this footprint depends on the height of measurement and surface roughness as well as a number of meteorological factors including wind speed and atmospheric stability. Under the conditions in Beijing, 90% of the campaign average measured flux originated from an area within 1-2 km of the tower (see Fig. 4). The fluxes observed at 102 m are therefore predominantly controlled by local emissions, unlike the mixing ratios observed at the same point which are influenced by both

local and more distant emissions, chemical processing and meteorology. Fluxes of CO₂ have been previously recorded at the IAP field site (Liu et al., 2012a; Song and Wang, 2012; Song et al., 2013). Liu et al. (2012a) reported four years of CO₂ eddy covariance measurements showing a seasonal variation in emissions driven by winter heating and uptake of CO₂ by vegetation in the summer. Spatial variation in emission was shown to be determined by the surface cover and the diurnal profile of emissions was largely dependent on traffic volumes.

Greater surface solar heating in the summer led to stronger turbulence than was observed in the winter, with median u^* values of 0.41 and 0.26 m s⁻¹ respectively. This meant turbulent transport was more easily measured, allowing the fluxes of a larger number of compounds to be quantified in summer than in the winter. Of the 179 masses observed in the summer campaign, 64 masses gave a flux with a median relative random error of less than 150%. These masses all showed a net positive flux with no masses showing net deposition. Molecular formulae were assigned to 50 of these masses using their exact mass, while 15 masses with a small negative mass defect could not be allocated a formula, based on the combination of C, H, N, O, S and Cl within 0.1 mDa of the recorded mass. Mass spectral peaks observed at m/z 47.019 and 47.053, assigned to formic acid and ethanol, respectively, could not be sufficiently resolved so these compounds were considered together.

Diurnal cycles of the six compounds with the largest fluxes are shown in Fig. 65 (solid lines), showing the large VOC flux observed in the summer campaign, in comparison to the much smaller fluxes observed in the winter campaign. This figure also displays fluxes without the storage term applied (dashed lines) and the gap-filled u^* filtered flux (dotted lines). As shown, these corrections have only a small impact on the fluxes calculated. The fluxes of these six compounds are summarised in Table 2. As shown in Table 2, fluxes of all compounds were larger in the summer than in the winter. This was not the case for NO_x and CO which were larger in the winter than in the summer (Squires et al., 2020). There may be several reasons why the measured VOC fluxes were lower in winter than summer. In the winter, the high concentrations of VOCs at this site, mainly resulting from advection from outside the city, might lead to deposition of VOCs. This would have the effect of suppressing the net VOC emission rate measured at the site. In the winter campaign OH concentrations peaked at 8×10^6 cm⁻³ (Slatter et al., 2020) and the average O₃ concentration was 16.4 µg m⁻³ (Shi et al., 2019). Using rate coefficients from Atkinson and Arey (2003) the expected atmospheric lifetimes of benzene and 1-butene with respect to OH would be 1.2 days and 1.1 h, respectively. The lifetimes of benzene and monoterpenes with respect to O₃ would be over a year and 6 days, respectively. The lifetime of less reactive compounds such as aromatics is therefore long enough to allow for transportation from outside the flux footprint. The average temperature in the winter campaign was 3.6 °C compared to 25 °C in the summer, and this would result in lower volatilisation of liquid VOCs (for example in gasoline), suppressing the emission rates. Sources such as cooking and solvents in cleaning products, cosmetics and paints contribute to urban VOC emission (Karl et al., 2018) and these sources are likely to be reduced in the winter when cold weather causes ventilation of buildings to be reduced. Measured VOC emissions from indoor and outdoor sources may therefore be lower in winter. In addition the lower atmospheric turbulence in winter and generally lower fluxes resulting in greater uncertainty in our winter fluxes compared to summer fluxes. Our detailed analysis, therefore, focuses on the fluxes recorded during the summer campaign.

Table 2: Summary of (storage-corrected) stationarity filtered fluxes (including the storage term) of VOCs displayed in Table 1 including the six dominant VOC fluxes recorded in Beijing during APHH-Beijing winter and summer campaigns (in nmol m⁻² s⁻¹).

	Methanol	Acetonitrile	Acetaldehyde	Formic acid + Ethanol	Butene	Acetone	Acetic acid	Isoprene	Benzene	Toluene	C ₂ -Benzene
Winter campaign											
Max	56.37	1.22	11.45	8.45	2.58	3.87	11.2402	24.4226.012	4.49	3.710	4.60
Min	-48.63	-0.7162	-7.21	-8.35 7.05	-1.77	-2.24	-8.71 6.77	-8.17	-2.93	-2.64	-2.5481
Median	1.5812	0.058	0.4004	0.3757	0.0910	0.0203	0.43.07	0.2151	0.0741	0.169	0.0049
Mean	2.151.87	0.104	0.5453	0.5786	0.4213	0.4215	0.4429	0.6779	0.2347	0.223	0.1726
Standard deviation	9.9213.33	0.274	1.89 2.24	1.922.24	0.4964	0.6878	2.3756	3.332.34	0.9672	0.7764	0.9380
Summer campaign											
Max	55.36	10.64	11.89	53.67	16.42	7.65	14.245	59.5245.83	2.798	18.16	12.76
Min	-21.33	-17.63	-3.57	-4.19	-1.23	-1.81	-3.0720	-2.041.92	-1.05	-0.76	-0.9980
Median	6.2140	0.165	1.434	3.002.98	1.007	0.754	1.282	2.2000	0.25	0.514	0.5155
Mean	8.3102	0.2247	1.8376	3.9788	1.57	0.974	1.6756	5.314.63	0.334	0.865	0.8483
Standard deviation	78.49.79	1.5608	1.9679	4.9057	2.014.86	1.060.96	2.151.85	7.696.60	0.3329	1.5037	1.331.20

3.4.1 Total measured VOC flux

In the summer campaign, the total measured VOC flux was strongly positive with the city centre acting as a net source of VOCs into the atmosphere. In the winter campaign there was a small net positive flux of most identified VOC species but at times deposition of VOCs was also observed (Fig. 65). The total measured VOC fluxes and concentrations during the summer field campaign, coloured by compound class, are displayed in Figs. 6a and 6b respectively, with the total measured VOC flux peaking at $90-80 \pm 24$ nmol m⁻² s⁻¹ at mid-day. As alkanes have a proton affinity less than that of water these compounds cannot be measured using PTR-MS so are not included here.

Methanol and ethanol + formic acid together also make up one third of the total molar flux. The mean methanol flux recorded in the summer campaign was comparable to that observed in two spring time (April and March) campaigns in Mexico City where 9.1 and 12.8 nmol m⁻² s⁻¹ of methanol were observed respectively (Velasco et al. 2005; 2009). The winter methanol flux was closer to the 2.5 nmol m⁻² s⁻¹ reported by Valach et al. (2015) in

London (August-December). Other oxygenated compounds (grouped as oxygenated VOCs in Fig. 67) together make up another 31% of the summer flux. This is consistent with the large flux of oxygenated VOCs observed by Karl et al. (2018) from the urban canopy in Innsbruck, Austria. Fluxes of acetone were also recorded in London ($1.5 \text{ nmol m}^{-2} \text{ s}^{-1}$; Valach et al. 2015) and Mexico City ($1.9 \text{ nmol m}^{-2} \text{ s}^{-1}$; Velasco et al. 2005) both of which were higher than the 0.4215 ± 0.78 and $0.9497 \pm 1.06 \text{ nmol m}^{-2} \text{ s}^{-1}$ measured in the summer and winter campaigns in this study. Unclassified compounds, labelled “other chemical groups” in Fig. 76 were made up primarily of masses corresponding to compounds containing nitrogen, sulphur and halogens and make up 15% of the total concentration but contribute only 9% to the total flux. The largest fluxes in this group were an unidentified mass at m/z 40.96 and m/z 87.03 ($[\text{C}_4\text{H}_6\text{S}]^+\text{H}^+$). The (non-oxygenated) hydrocarbons have been divided into three categories: predominantly-biogenic compounds (isoprene and monoterpenes), aromatic compounds and alkenes. Together these compounds make up 15% of the total VOC mixing ratio observed but make up 31% of the total measured VOC flux, with predominantly-biogenic compounds the largest contributors.

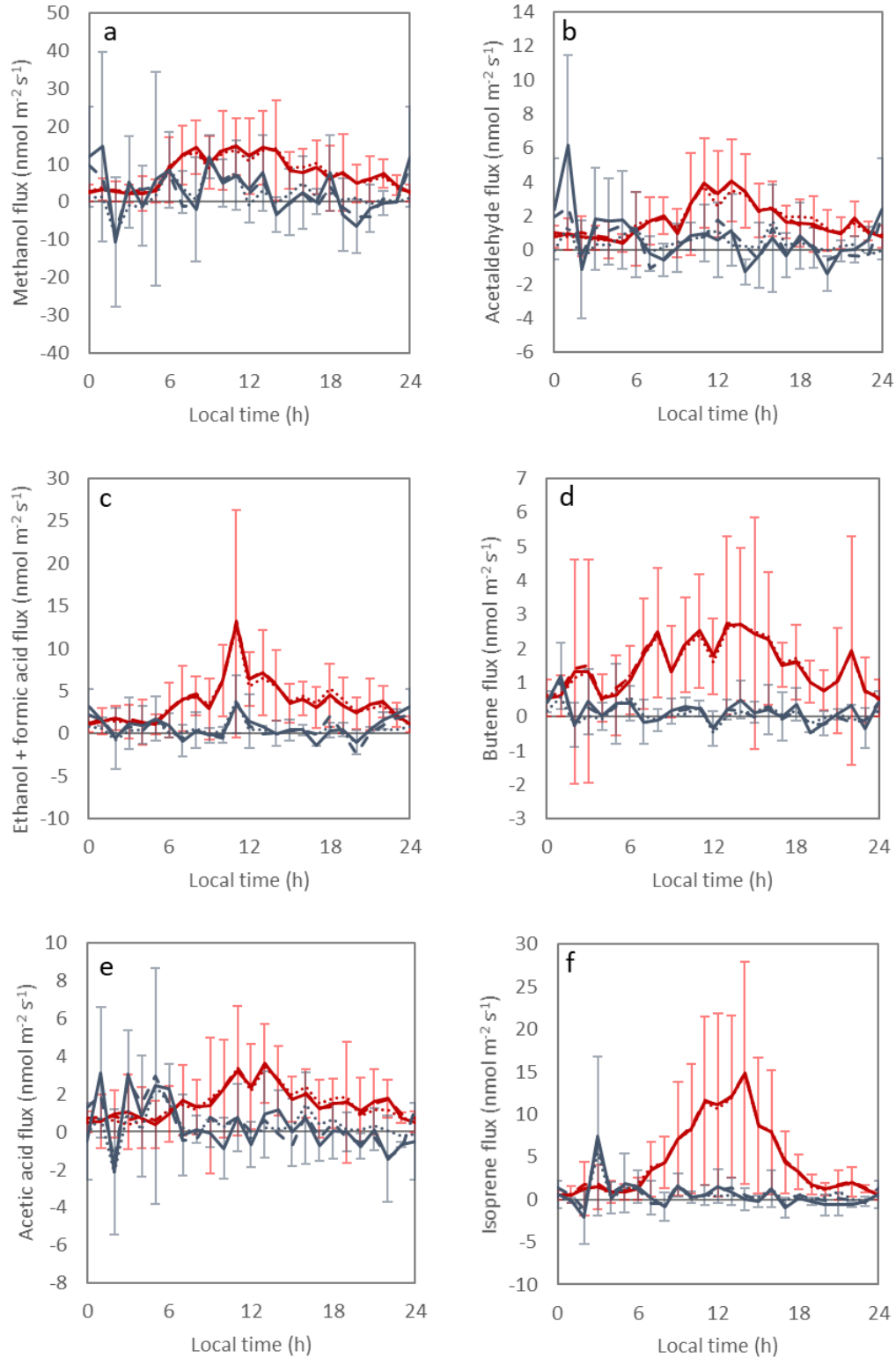


Figure 56: Diurnal cycles of the fluxes of six compounds with the largest observed fluxes for the summer (red) and winter (blue) campaigns, with error bars showing standard deviation of the stationarity filtered and fluxes including the storage term (solid lines). Dashed lines represent the flux without the storage term and dotted lines are u^* filtered fluxes including the storage term and gap filled with the average flux above the u^* threshold for that hour.

3.4.2 Anthropogenic VOC fluxes

Combustion products are a major source of anthropogenic VOCs in urban areas. The correlation between (a) the NO_x flux and (b) those VOC species contributing more than 0.75% to the total measured VOC flux is shown in Fig. 87. NO_x fluxes during the campaigns have previously been reported by Squires et al. (2020). In urban areas NO_x is almost exclusively produced by combustion sources of which motor vehicles are the main source. The NO_x flux is therefore used here as proxy for vehicular emissions. The fluxes of the aromatic VOCs toluene, C_2 -benzenes (the sum of xylenes and ethyl benzene which cannot be separated using PTR-MS) and C_3 -benzenes (the sum of all compounds featuring a benzene ring and three methyl groups) show a good correlation with the fluxes of NO_x , with R^2 values of 0.75, 0.64 and 0.61, respectively. Fluxes of toluene, C_2 and C_3 benzenes all follow a similar diurnal profile: after a small peak in the early morning emissions increase from 06:00 and peak between 10:00 and 15:00 and then decrease in the evening with another small peak at 22:00. As shown in Fig. 7-8 the fluxes of aromatic compounds were closely correlated, suggesting that they are emitted from the same source. Beijing operates a motor vehicle emissions control program which only allows non-local heavy duty vehicles to enter the city between 00:00 and 6:00 (Yang et al., 2015) and this may explain the peak in aromatic emission observed at 02:00 (Fig. 76). These compounds are known to be combustion products and are also emitted by evaporation. These fluxes are discussed in detail by Squires et al. (2020) who found that while the winter benzene and toluene fluxes (0.0123 ± 0.96 and 0.0322 ± 0.77 $\text{nmol m}^{-2} \text{s}^{-1}$, respectively) were smaller than those observed in London and Manchester, the Beijing summer fluxes (0.1833 ± 0.33 and 0.8664 ± 1.50 $\text{nmol m}^{-2} \text{s}^{-1}$ for benzene and toluene, respectively) were comparable to those reported in Europe (Langford et al., 2009; Langford et al., 2010; Valach et al., 2015; Vaughan et al., 2017). The toluene flux is, however, significantly lower than the 2.5 and 9.2 $\text{nmol m}^{-2} \text{s}^{-1}$ recorded at two sites in Mexico City (Velasco et al. 2005; 2009). Velasco et al. (2009) identified both exhaust emissions and evaporative sources contributing to the toluene flux. The addition of these evaporative sources in Mexico City as well as differences in vehicle fleets may explain why these fluxes were larger than those recorded in this study and in the UK. Squires et al. (2020) also concluded that the benzene/toluene ratio was within the range expected for primary exhaust emissions with values for concentrations of 0.89 and 0.73 in the winter and summer respectively. These values are, however, higher than the 0.6 calculated by Barletta et al. (2005) for Beijing. For fluxes, the benzene/toluene ratio was 0.72 in winter and 0.31 in summer (Squires et al. 2020). The summer value is lower than expected for primary exhaust emissions, suggesting that fuel evaporative loss contributes to aromatic VOC emission in summer (Squires et al. 2020).

The fluxes of propene and methanol were shown to correlate with the flux of NO_x with R^2 values of 0.63 and 0.71. Propene is known to be emitted by vehicular traffic (Velasco et al. 2005; 2009) and the correlation with NO_x suggests that traffic is the main source at this site. Propene has also been recorded in plumes of VOCs released from industrial activity (Karl et al., 2003), but no large industrial sites were present within the flux footprint of the IAP tower. Large fluxes of propene were recorded, with average emissions of 0.6475 ± 3.2 and 0.93 ± 1.1 $\text{nmol m}^{-2} \text{s}^{-1}$ in the winter and summer, respectively. In the winter the strongest emission occurred early in the morning with little emission later in the day. In the summer measurement period, emissions increased from 06:00 before peaking at mid-day and decreasing in the late afternoon. Methanol is emitted from plants and industry and is formed by oxidation reactions in the atmosphere (Jacob et al., 2005). It is also present in many consumer goods products (Steinemann, 2015). The close correlation with the NO_x flux suggests a combustion source contributes to the total methanol flux but the summer methanol flux also correlates well with small oxygenated VOCs such

as acetaldehyde (Fig. 87). Methanol had the largest molar flux of any VOC species recorded in the summer (Fig. 56), with average emissions of 2.45 ± 1.87 and 8.02 ± 8.5 nmol m⁻² s⁻¹ in the winter and summer, respectively. These methanol emissions are comparable to those observed in London and Mexico City with 2.5 nmol m⁻² s⁻¹ (August to December) recorded by Valach et al. (2015), 8.2 nmol m⁻² s⁻¹ (October) reported by Langford et al. (2010) in London, and 9.1 and 12.8 nmol m⁻² s⁻¹ (April and March respectively) reported in Mexico City (Velasco et al., 2005; 2009). Methanol mixing ratios were, however, significantly higher in Beijing than in London with average mixing ratios in Beijing 28.2 and 24.3 ppbv in the winter and summer compared with 7.5 and 19.4 ppbv reported by Valach et al. (2015) and Langford et al. (2010) at 61 and 200 m, respectively.

Acetonitrile is considered a tracer for biomass burning (de Gouw et al., 2003), but can also be produced by the burning of fossil fuels (Holzinger et al., 2001). Acetonitrile fluxes in the summer field campaign were low, with a median value of 0.45 ± 1.6 nmol m⁻² s⁻¹, but regularly peaked between 16:00 and 18:00 in the evening with a maximum value of 10.6 nmol m⁻² s⁻¹, potentially indicating a cooking source. In the winter the median acetonitrile flux was small (0.44 ± 0.3 nmol m⁻² s⁻¹) with peaks of up to 1.24 nmol m⁻² s⁻¹ observed in the early hours of the morning. As cooking rates are likely to be comparable in the summer and winter, the reduced winter acetonitrile flux could be explained by reduced ventilation of homes in the winter.

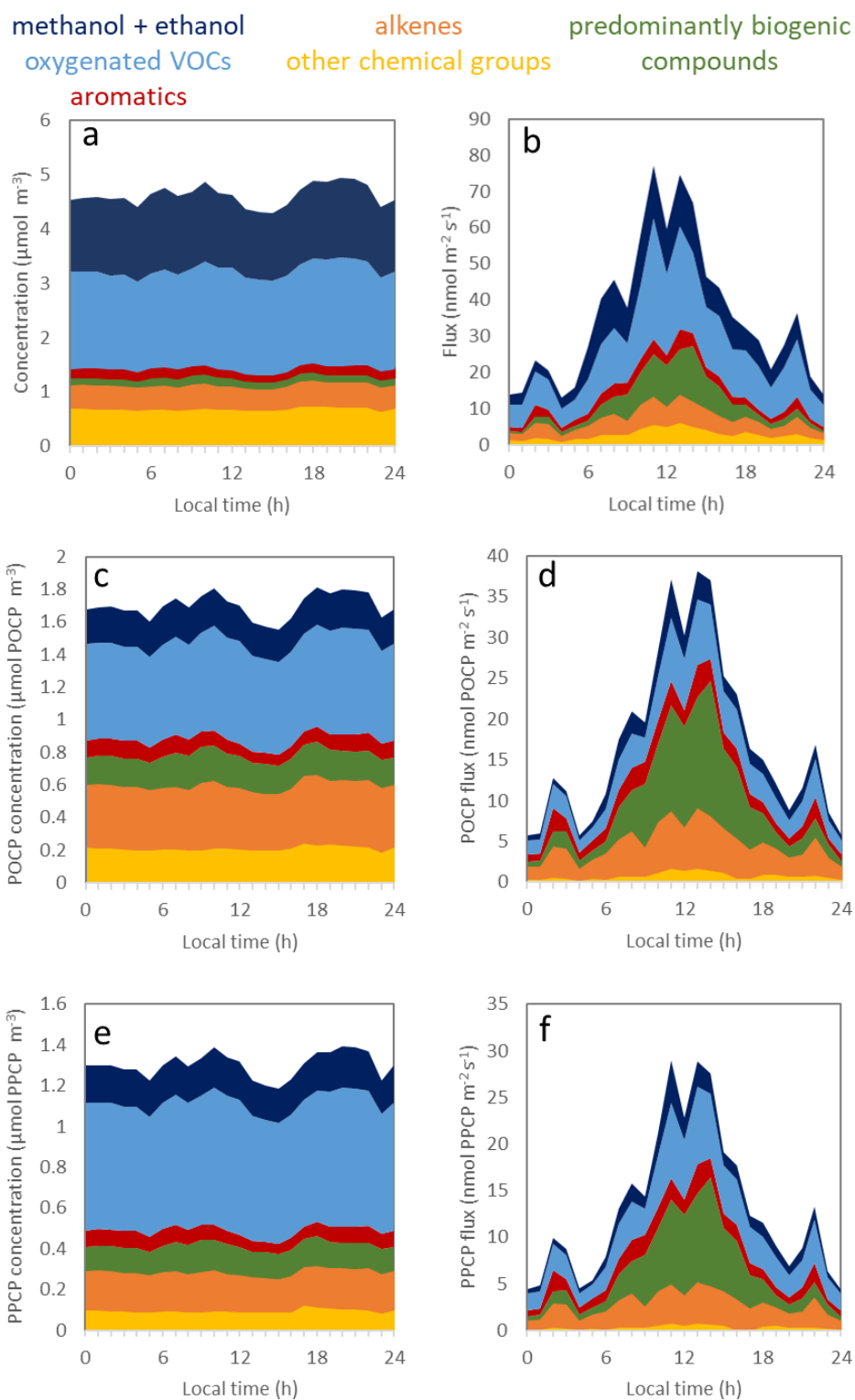


Figure 67. Total observed VOC concentration (a) and flux (b) measured during the summer field campaign, scaled using photochemical ozone creation potentials (POCPs) (c, d) and photochemical PAN creation potentials (PPCPs) (e, f).

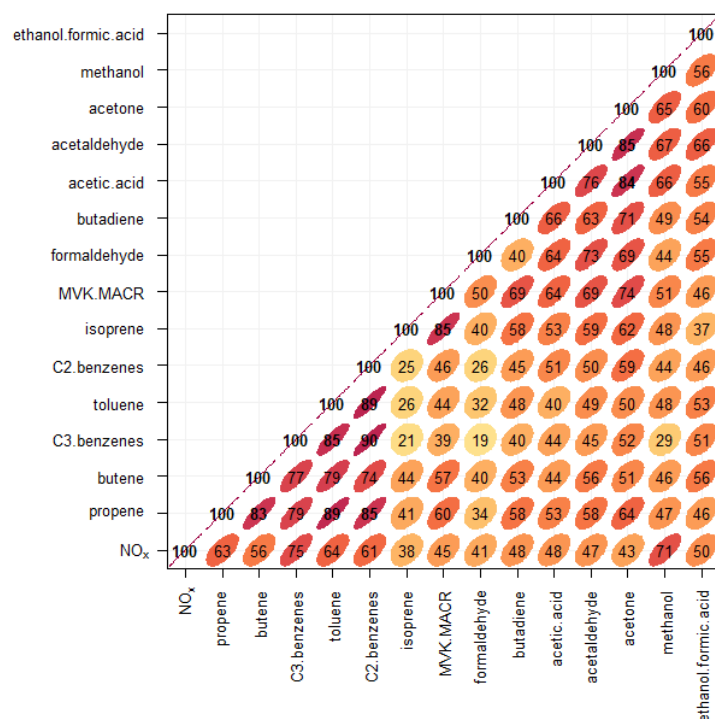


Figure 78. Correlation plot showing the relationship between the fluxes of all identified compounds that contribute more than 0.75% to the total measured VOC flux in the summer measurement campaign as well as the NO_x flux. Numbers and colour represent the % R² value of each correlation.

3.4.3 Biogenic fluxes

Globally, plants are the main source of VOCs into the atmosphere, with isoprene and monoterpenes the main VOC species emitted (Guenther et al., 1995; 2012). However, in urban areas, isoprene is present from both biogenic and vehicular sources (e.g. Borbon et al., 2001; Langford et al., 2010; Valach et al., 2015; Jaimes-Palomera et al., 2016). In the current study, significant BVOC emissions were observed in the summer campaign, with average emissions of $4.63 \pm 5.31 \pm 7.69$ nmol m⁻² s⁻¹ for isoprene and $0.45 \pm 0.21 \pm 0.18$ nmol m⁻² s⁻¹ for monoterpenes. At night-time, emissions of both monoterpenes and isoprene were close to zero with mixing ratios dropping to 0.3 ppbv from a mid-day peak of 0.7 ppbv. Emissions began to increase at 06:00 before peaking at mid-day and returning to zero at around 20:00 (isoprene emissions are displayed in Fig. 65). The summer isoprene flux correlated well (R² 0.85) with the flux of the isoprene oxidation products methyl vinyl ketone and methacrolein (MVK+MACR) and poorly with traffic tracers such as toluene, C₂-benzenes (R² 0.26 and 0.25) and NO_x (R² 0.38) (Fig. 87). This suggests that the contribution from traffic emissions to the summer isoprene flux is low compared to the biogenic source. In the winter campaign, emissions of both isoprene and monoterpenes were comparatively small with average fluxes of $0.67 \pm 3.33 \pm 7.9$ and 0.06 ± 0.22 nmol m⁻² s⁻¹, respectively. Despite the weak isoprene flux, mixing ratios were larger in winter than in summer with mixing ratios consistent through the day at an average value of 1.21 ppbv. The high isoprene mixing ratio in the winter suggests transport of anthropogenic isoprene from outside of the flux footprint together with a lower rate of photochemical loss than in the summer. The low winter isoprene flux suggested a small contribution of anthropogenic isoprene to the total

flux. Sesquiterpenes were also recorded in the summer with a mean mixing ratio of 0.04 ppbv but a flux was not detected. The summer isoprene flux is larger than that recorded in London (Valach et al., 2015) where an average emission of $0.53 \text{ nmol m}^{-2} \text{ s}^{-1}$ was observed between August and December. This is likely to be due to the London emissions being reduced by the generally lower temperatures and radiation levels, both due to the difference in latitude and also the inclusion of autumn and winter flux data. In the summer campaign predominantly-biogenic compounds accounted for 13% of the total molar VOC flux and 42% of non-oxygenated hydrocarbon emission.

Isoprene emission from biogenic sources is commonly modelled using the Model of Emissions of Gases and Aerosols from Nature (MEGAN, Guenther et al., 2006). Emission of isoprene in MEGAN is calculated as:

$$\text{Emission} = \varepsilon \times \gamma \times \rho, \quad (6)$$

where ε is an emission factor ($\text{nmol m}^{-2} \text{ s}^{-1}$) representative of the isoprene emission from a plant canopy under standard conditions, γ is a dimensionless emission activity factor representing deviation from standard conditions and ρ is a factor (normalised ratio) accounting for loss within the canopy. By default, the emission factor used by MEGAN for Beijing is $11.04 \text{ nmol m}^{-2} \text{ s}^{-1}$. The expected isoprene flux from Beijing was modelled using MEGAN together with photosynthetic photon flux density (PPFD) and atmospheric temperature recorded at the IAP metrological tower. The leaf area index (LAI) for Beijing was 1.0 for May and 1.7 in June with these values taken from the MERRA-2 reanalysis data set for 2017. The flux predicted by MEGAN over-estimated the observed flux with the modelled mean diurnal isoprene flux peaking at $21 \text{ nmol m}^{-2} \text{ s}^{-1}$ compared to the measured isoprene flux which peaked at $14 \text{ nmol m}^{-2} \text{ s}^{-1}$ (Fig. 8b9b).

The measured isoprene flux together with the product of the emission activity factor and loss factor ($\gamma \times \rho$) can be used to optimise the emission factor (ε) for the flux footprint. Langford et al. (2017) used a weighted mean to determine the isoprene emission factor which ensures that the modelled isoprene emission has the same average as the measured flux. This approach gives an emission factor of $10.16 \text{ nmol m}^{-2} \text{ s}^{-1}$ for the summer campaign. Using this emission factor MEGAN estimates a diurnal flux peaking at $18 \text{ nmol m}^{-2} \text{ s}^{-1}$. This value is elevated by the low, anthropogenic, night-time flux observed in Beijing. Alternatively, an optimised isoprene emission factor can be calculated using the least-square regression between the measured isoprene flux and ($\gamma \times \rho$) (Fig. 8a9a). This gave an isoprene emission factor of $7.57 \text{ nmol m}^{-2} \text{ s}^{-1}$, representing an optimised emission factor for central Beijing. When using this emission factor, the mean diurnal isoprene flux predicted by MEGAN peaked at $14 \text{ nmol m}^{-2} \text{ s}^{-1}$ (Fig. 8b9b). This compares well with the measured isoprene flux and represents a more appropriate emission factor than that calculated using the weighted mean approach. This optimised emission factor is 69% of the default MEGAN emission factor value for Beijing.

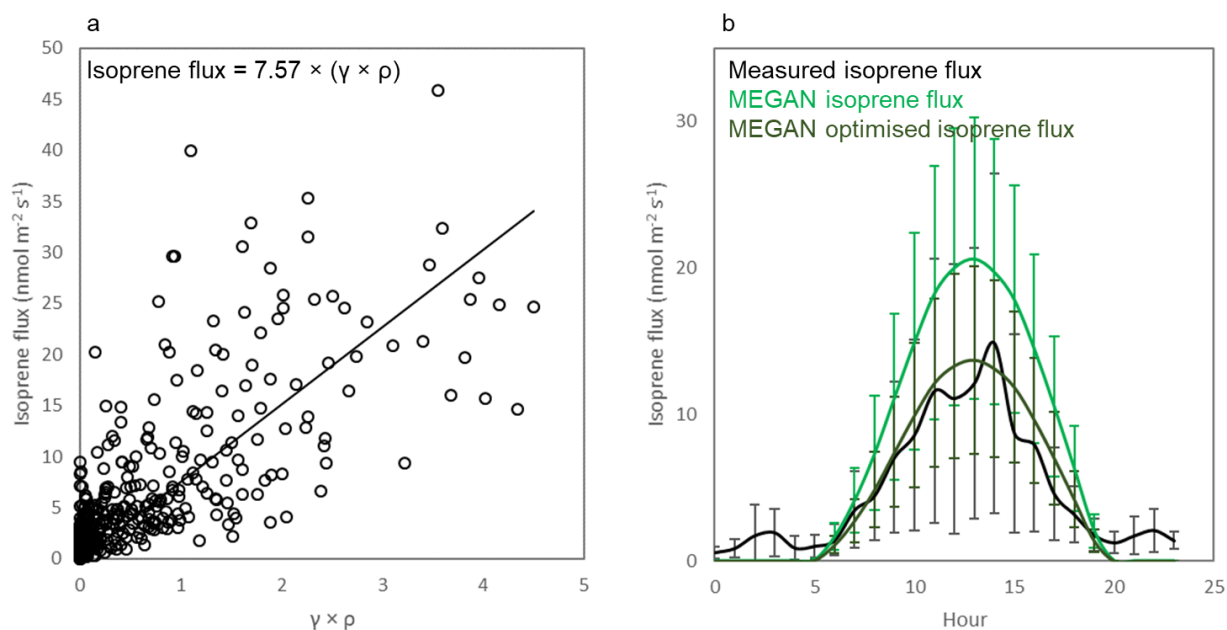


Figure 89. (a) Measured isoprene flux plotted against the product of the emission activity factor (γ), and the canopy loss and production factor (ρ). (b) Diurnal profiles of the isoprene flux predicted by MEGAN using the default and optimised emission factors together with the measured isoprene flux. Error bars represent standard deviation across the measurement period.

3.4.4 Impact on atmospheric chemistry

The relative impact of individual VOCs on ozone and peroxyacyl nitrates (PAN) formation can be determined by considering the photochemical ozone creation potentials (POCPs) and the photochemical PAN creation potentials (PPCPs) of the observed compounds. The POCP represents the increment in ground-level ozone production due to the photochemistry of that compound relative to the ozone increment due to ethane. PPCP represents the PAN increment due to the photochemistry of that compound relative to that of propene. The POCPs and PPCPs of 120 organic compounds were reported by Derwent et al. (1998) for UK conditions of the 1990s, and in the absence of more Beijing-specific data these were used to scale both the mixing ratios and the fluxes emitted within the flux footprint of the individual observed VOCs. Derwent et al. (1998) used NO_x concentrations of 0.014 mg m^{-3} as the base case when determining POCPs and tested the POCP calculation at half and double these concentrations. The median NO_x concentration observed in the Beijing summer campaign was 0.0213 mg m^{-3} (Squires et al., 2020), within Derwent's twice base case range. Where a measured mass was not reported by Derwent et al. (1998) the average POCP and PPCP for the appropriate chemical class were applied. It should be noted that as alkanes cannot be detected using PTR-ToF-MS these compounds are not included here. Due to their low POCP and PPCP relative to alkenes and many oxygenated compounds, alkanes are likely to have a limited impact on ozone and PAN formation. However, at large concentrations they can still have a significant impact (Jaimes-Palomera et al., 2016).

Figures 6c and 6d show the concentrations and fluxes scaled by POCP, respectively. Of those compounds resolved by PTR-ToF-MS, predominantly-biogenic compounds were the largest source of POCP making up 34% of the total POCP-scaled flux. Oxygenated compounds were also a significant source of POCP due to the large molar

flux of these compounds, with methanol and ethanol + formic acid making up 13% of the POCP-scaled flux and other oxygenated VOCs 18%. The PPCP-scaled fluxes and concentrations are shown in Figs. 6e and 6f respectively and show that, as with the POCP, oxygenated and predominantly-biogenic VOCs are likely to make the largest contribution to photochemical PAN formation. The large contribution of alkenes, grouped here as alkenes and predominantly biogenic compounds, to ozone formation was also observed in Mexico City where Velasco et al. (2007) found that despite making up 5% of the measured VOC mixing ratio alkenes made the largest contribution to ozone formation.

The influence of VOCs on OH and ozone reactivity was determined by the VOC reaction rate with the OH radical and ozone, relative to that of ethane. VOC reaction rates with the OH radical and ozone were taken from Atkinson and Arey (2003) and references therein. Predominantly-biogenic compounds dominate the OH reactivity scaled VOC flux making up 51% of the potential OH reactivity emitted (Fig. 9b10b). Oxygenated VOCs and non-aromatic hydrocarbons (predominantly butene and propene) represent 22% and 17% of the VOC flux scaled by OH reactivity respectively. The VOC concentrations scaled by OH reactivity (Fig. 9a10a) shows that of the VOCs measured using PTR-ToF-MS oxygenated compounds have the largest impact on OH reactivity. This is caused by the very high mixing ratios of these compounds relative to other chemical groups in the atmosphere. However once scaled by OH reactivity predominantly-biogenic compounds, which only make up 4% of the total measured VOC concentration (Fig. 9a10a), are shown to contribute 21% to the total measured VOCs scaled by OH. Ozone reactivity is dominated by alkenes with predominantly-biogenic compounds and non-aromatic hydrocarbons (predominantly butane, C_6H_{10} and C_7H_{12}) making up 31 and 61% of the potential ozone reactivity emitted respectively (Fig. 9d10d).

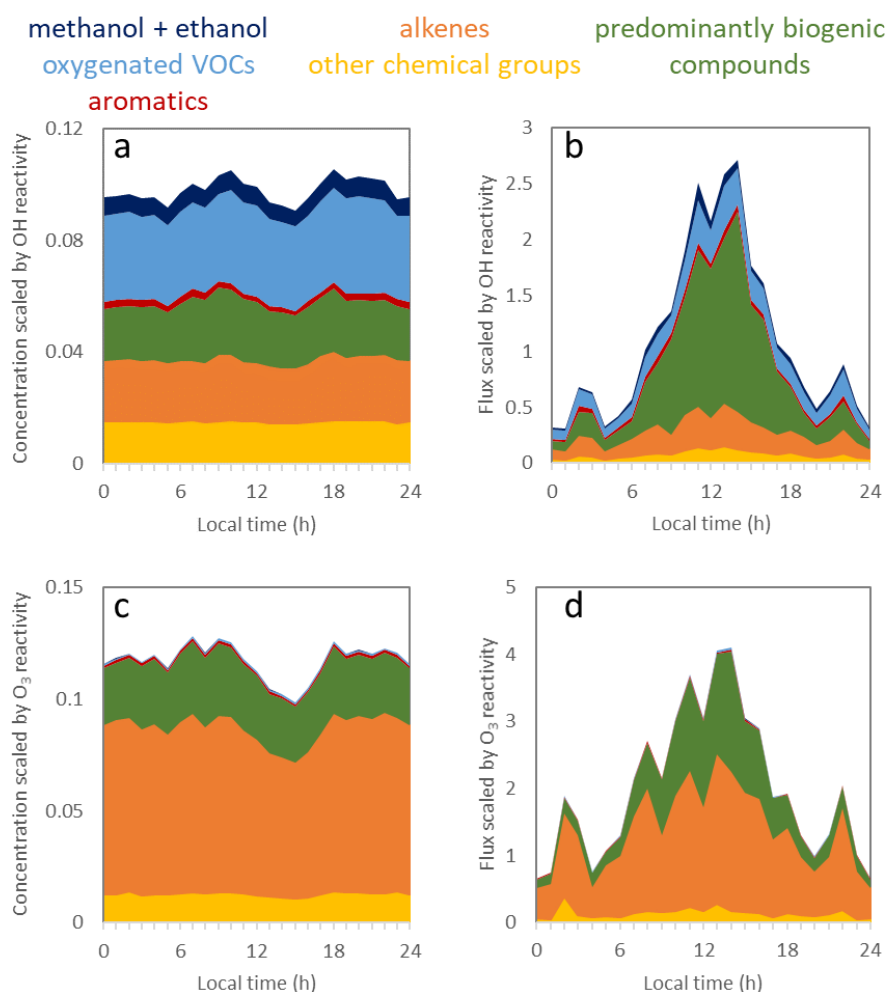


Figure 910. Total observed VOC concentration and flux measured during the summer field campaign scaled using by OH (a, b) and O₃ (c, d) reactivity relative to ethane.

3.5 Emission factor analysis and validation evaluation

The Multi-resolution Emissions Inventory for China (MEIC, Li et al., 2017b; Qi et al. 2017; <http://www.meimodel.org/>) is a comprehensive inventory of the emission of atmospheric pollutants across China and provides the emissions input to many modelling studies (e.g. Hu et al. 2016). Inventories such as MEIC use emissions estimates from individual sources scaled by activity to provide a “bottom-up” emissions estimate. The emission factors used by the inventory are drawn from a broad range of studies (Li et al., 2014; Zheng et al., 2018) with locally derived emission factors used where possible. These emission factors have been summarised by Li et al. (2017c). Whilst activity data is often relatively well constrained at national level, its spatial disaggregation often relying on simplified proxies such as population density adds significant additional uncertainty for the estimate of the emission for a given location. The VOC flux measurements presented here provide a “top-down” measurement at the cityscale-scale which can be used to evaluate the accuracy of validate the emissions inventory encompassed by the flux footprint. Zhao et al. (2017) assessed the uncertainties in emissions inventories for China and recommended that field studies were used to improve emission estimates.

The MEIC includes emissions from five sectors: power plants, transportation, industrial, agricultural and residential sources with VOC emissions collated by functional group. As no agricultural land was present within the flux footprint, agricultural emissions are not considered here. Monthly emissions data are provided with emissions assumed to be consistent across each month. A diurnal cycle based on local activity data is applied to each emission sector to give a diurnal profile. Within the MEIC inventory VOCs are grouped into classes. Nine of these groupings were considered but those containing alkanes were not considered as alkanes have a proton affinity less than that of water and could not be detected using PTR-MS. The groupings, based on the speciation used by the RADM2 chemical mechanism, are summarised in Table 3. The emission ratio of different VOC species present within each grouping could represent a source of error in the inventory.

VOC emissions estimates for the summer campaign period were calculated through combination of the flux footprint (100 m × 100 m) and high resolution (3 km × 3 km) MEIC v1.3 inventory for 2013. First, the footprint for each flux aggregation period and the inventory grid for the corresponding hour of day were aligned by transforming the flux footprint into the coordinate reference system of the inventory. Subsequently the inventory values were extracted at the centre of each footprint grid cell, creating a pseudo 100 m × 100 m inventory. This was multiplied by the footprint grid, weighting each cell by their contribution to the measured flux. There was little variation between VOC emission factors from the main four emissions inventory cells contributing to the flux observed at the IAP tower site.

Table 3. The measured compounds used to evaluate the accuracy of ~~validate~~ the MEIC VOC groupings.

<i>MEIC VOC grouping</i>	<i>Definition</i>	<i>Measured compounds</i>
<i>HCHO</i>	formaldehyde	formaldehyde
<i>ALD</i>	acetaldehyde and higher saturated aldehydes	acetaldehyde; butanal
<i>CH3OH</i>	methanol	methanol
<i>C2H5OH</i>	ethanol	ethanol + formic acid
<i>TOL</i>	toluene and less reactive aromatics	toluene; benzene
<i>XYL</i>	xylene and more reactive aromatics	C2 benzenes; C3 benzenes; C4 benzenes; naphthalene; C11H14
<i>KET</i>	ketones	acetone; pentanone
<i>ISO</i>	isoprene	isoprene
<i>ORA2</i>	acetic acid and higher acids	acetic acid; propionic acid

Fig. 4011 shows the comparison between measured VOC emission (summer campaign) and the VOC emission predicted by the MEIC inventory for this period with the percentage contribution of each group to the total flux displayed in Fig. 121. Measured emissions of aromatic compounds were 3% and 4% of those predicted by the inventory for TOL and XYL (low mass and high mass aromatics). Squires et al. (2020) compared NO_x and CO fluxes recorded during the APHH-Beijing campaigns with the MEIC inventory and also observed a similar overestimation of emissions by the inventory, for the fluxes of NO_x with the inventory overestimating the

measured flux 11 and 10 times respectively, by a factor of 4.2 to 25 and of CO by a factor of 1.6 to 9.7 in summer.

Industrial emissions make the largest contribution to aromatic VOC emission in the inventory. However, inspection of the flux footprint reveals few potential industrial sources with the footprint encompassing roads and residential building as well as shops and restaurants. At a coarser resolution of 9×9 km the TOL emission peaked at $25 \text{ nmol m}^{-2} \text{ s}^{-1}$, 9 times higher than the measured flux indicating that the overestimate was in part caused by the proxies used to downscale the inventory to 3 km. Previous studies have shown that the inventory underestimates aromatic emission at the Chinese scale (Liu et al., 2012b; Cao et al., 2018), again indicating that the overestimation observed here is a result of the downscaling of the inventory. The allocation of industrial emissions to this residential area is likely a result of downscaling the emissions using proxies such as population (Zheng et al., 2017). Even discounting the industrial emissions, the predicted emissions of TOL and XYL are still 8 times larger than the measured flux at the 3 by 3 km resolution. The inventory does capture the diurnal cycle in emissions with a rapid increase in aromatic VOC emissions at 07:00, emissions remaining high throughout the day before decreasing after 17:00.

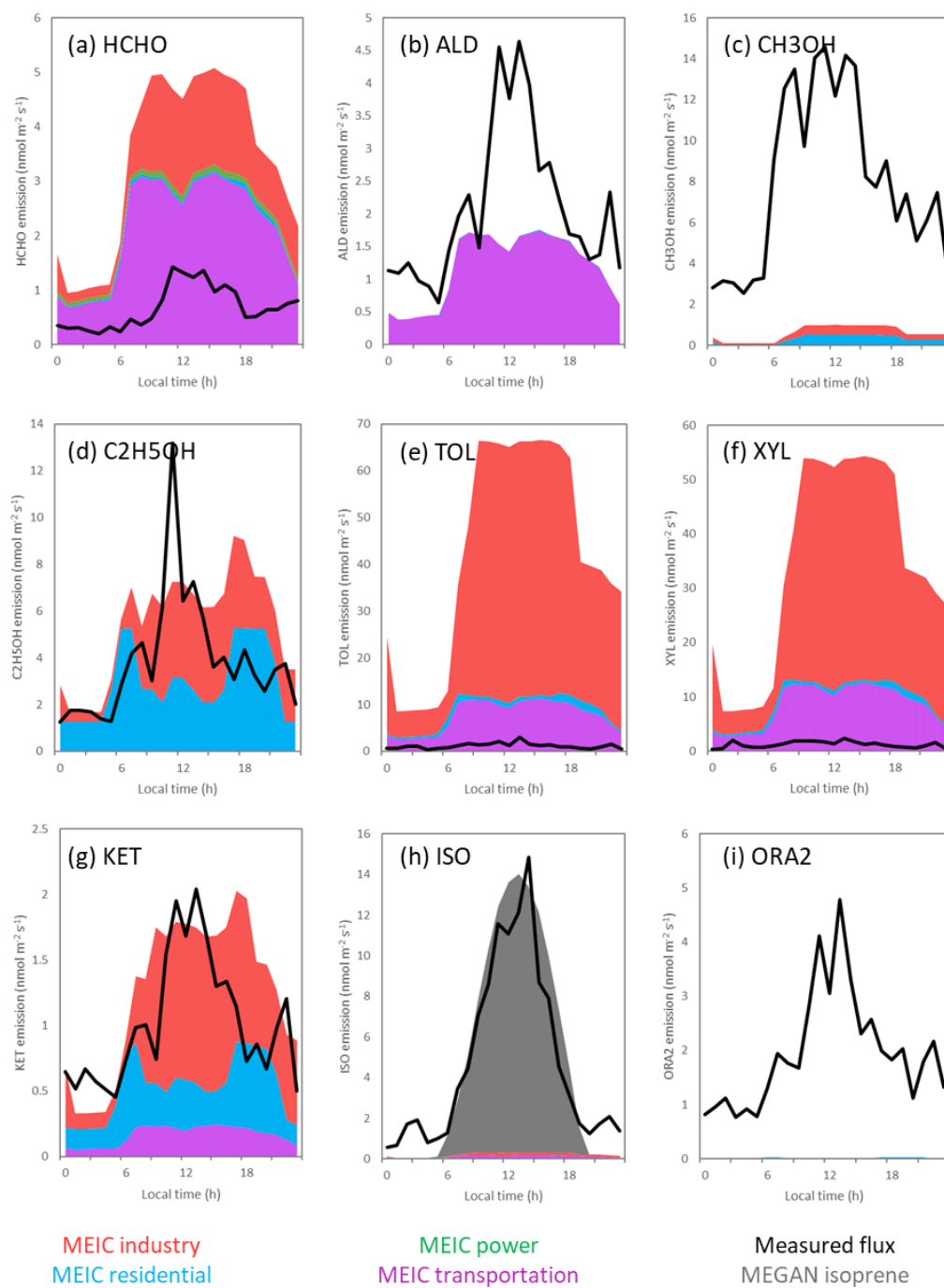


Figure 110. Comparison of 9 VOC classes from the MEIC emissions inventory (Table 3) with measured VOC flux (black line). The diurnal profiles of the isoprene emission predicted by MEGAN using the optimised emission factor is shown in grey (h).

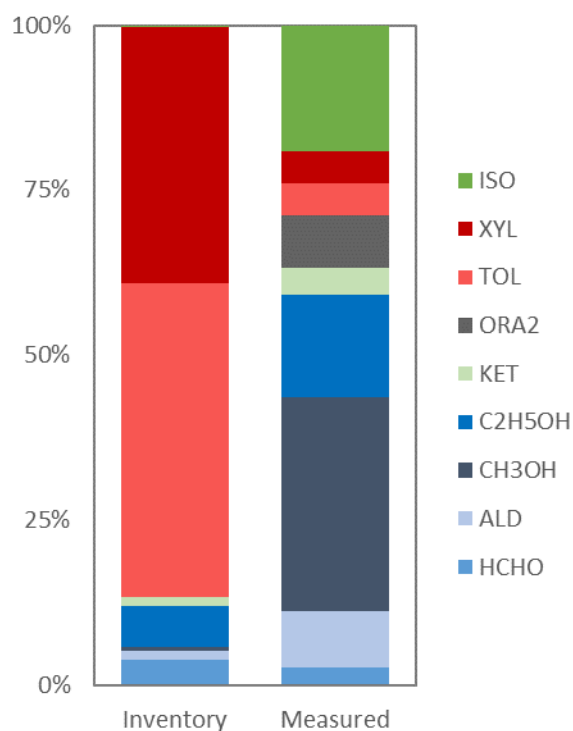


Figure 142. The percentage contribution of the MEIC VOC groupings to the total emission.

Isoprene emissions are significantly underrepresented in the inventory with measured fluxes 20 times higher than inventory emissions. This is expected as the inventory only considers anthropogenic emission and in the summer isoprene emissions are dominated by predominantly-biogenic isoprene. Adding the isoprene emission predicted by MEGAN to the MEIC emission (Fig. 119h) shows that the inclusion of biogenic isoprene enables a more accurate estimate of total isoprene emission. The park at the base of the tower means that a larger biogenic source may be present at the IAP site than would be expected for Beijing on average.

The performance of the inventory in relation to oxygenated VOCs varied considerably between chemical classes. The inventory was more accurate when estimating emissions of ethanol, formaldehyde and ketones with measured emissions 71, 20 and 81% of inventory emissions. When industrial emissions are removed these increase to 132, 30 and 194% of the inventory emissions suggesting that, despite the PTR-ToF-MS only capturing two ketones, ketone emissions are significantly underestimated from residential and transport sources. Measured methanol, aldehydes and organic acid fluxes were also underestimated by the inventory with the measured flux 13, 1.8 and 107 times higher than the inventory, respectively.

It is possible that some underestimation of methanol, aldehydes and organic acid fluxes can be explained by their formation on surfaces following the oxidation of primary-emitted predominantly-biogenic (e.g. Lee et al. 2006; Acton et al., 2018) or anthropogenic compounds (Atkinson, 2000). However, given the ~68 s time taken for an air parcel to reach the inlet point it is not likely that formation in the atmosphere contributes significantly to the flux of these compounds. Consumer goods are known to be a large source of oxygenated VOCs (Dinh et al., 2015; Nematollahi et al., 2019). The use of these products is likely to vary considerably between households, making bottom-up emission hard to estimate.

4 Summary and conclusions

Fluxes of speciated VOCs at district scale were measured for the first time in central Beijing with emissions dominated by small oxygenated compounds methanol, acetaldehyde, and ethanol and formic acid which could not be separated. Mixing ratios of most species were significantly higher in the winter than in the summer with VOCs following the “saw tooth pattern” driven by meteorology that has been reported for other pollutants (e.g. Jia et al. 2008). Mixing ratios of aromatic compounds were lower in the summer than in the winter but mixing ratios of small oxygenated VOCs such as methanol were higher, possibly as a result of increased photochemistry but also consistent with their larger emission fluxes.

Stable atmospheric conditions in the winter led to weak turbulent transport making it more difficult to determine their surface emission rate using the micrometeorological eddy covariance method. The observed VOC fluxes in the winter were weaker than those recorded in the summer, probably due to low volatilisation of VOCs and deposition of VOCs transported from outside the city. However, the small data set available for the winter campaign once non-stationary periods are removed prevents firm conclusions from being drawn. The flux in both seasons was dominated by small oxygenated compounds: methanol, acetaldehyde and ethanol + formic acid. These compounds are known to be oxidation products but are also present in many consumer goods products. Fluxes of aromatic compounds in the summer campaign were comparable to those observed over London and Manchester (Langford et al., 2009; Valach et al., 2016; Vaughan et al., 2017) despite the mixing ratios being larger than those observed in those cities. This suggests that the elevated mixing ratios are driven by transport from outside the city. Both fluxes and mixing ratios of toluene were lower than those recorded in Mexico City (Velasco et al., 2009). Comparison of measured VOC fluxes with those predicted by the emissions inventory showed that the inventory failed to capture VOC emission at this local scale. This failure to predict local scale emission is most likely caused by the scaling of city level activity data to the local scale. In order to accurately predict VOC emissions at a local scale higher resolution activity data will be required.

Isoprene and monoterpenes, compounds predominantly emitted from biogenic sources, contributed 13% to the measured molar flux of VOCs but just 3% of the total recorded VOC mixing ratio. Comparatively, oxygenated compounds made up 60% of the molar flux of the compounds resolved by PTR-MS, aromatic compounds made up 7% and other alkenes contributed a further 11%. However, the high reactivity of isoprene and monoterpenes means that their contribution to ozone and PAN formation was greater, with predominantly-biogenic VOCs representing 30 and 28% of the flux contribution to ozone and PAN formation potential, respectively. This effect is even larger in respect to the OH reactivity, where predominantly-biogenic VOCs represent 50% of the total potential OH reactivity of the VOCs emitted and 21% of the mixing ratio when scaled by OH reactivity. Establishing local scale activity data and improved proxies for the scaling of emissions should therefore be a priority when further developing emission inventories for Beijing.

The relatively small emissions of anthropogenic VOC species from central Beijing compared to the large mixing ratios observed suggest that the scope for policy interventions focusing on VOC emission from central Beijing is limited and that the focus must therefore be on emissions controls on all VOC sources, but particularly on vehicles, in regions surrounding the megacity. Predominantly-biogenic compounds make significant contribution to the

photochemical ozone creation potential (POCP), photochemical peroxyacyl nitrates (PAN) creation potential (PPCP) and potential OH reactivity emitted from the city but currently contribute only a small proportion of total reactivity in the atmosphere. However, as transport of VOCs from outside the city is reduced in the future by policy interventions, biogenic sources within the city are likely to become increasingly important to atmospheric chemistry. It is therefore important that emission inventories of VOCs in Beijing should also include an estimate of biogenic VOC emissions, using a tool such as MEGAN with appropriate leaf area index and emission factor values.

Data availability. Data are available at <https://catalogue.ceda.ac.uk/uuid/7ed9d8a288814b8b85433b0d3fec0300> (last access: 08/04/2020). Specific data are available from the authors on request (wangxm@gig.ac.cn).

Author contributions. WJFA made VOC concentration measurements, calculated VOC fluxes and performed VOC data analysis. WJFA prepared the manuscript with contributions from co-authors. ZH, ZW and BD assisted with VOC concentration measurements. FAS made NO_x concentration measurements, calculated their flux and reviewed the manuscript. EN, BL and NM set up instrumentation on the IAP tower, measured wind vector data, provided advice on flux calculations and reviewed the manuscript. WSD, ARV and SM provided support calculating fluxes using eddy4R software and reviewed manuscript. YL performed MEGAN analysis. QZ provided high resolution emissions data. MH processed the raw emissions data into gridded format for comparison with the measured fluxes. OW assisted with interpretation of the inventory emissions data and provided a detailed review of the manuscript. XW and YZ prepared the PTR-MS instrument and calibration system. PF maintained the tower and site necessary for this work. CER and JL reviewed the manuscript. CNH obtained funding, interpreted data, helped prepare the manuscript and reviewed the manuscript.

Competing interests. The authors declare that they have no conflict of interest.

Acknowledgements

We thank Lisa Whalley from the University of Leeds for providing photosynthetic photon flux density data. We acknowledge the support from Zifa Wang, Jie Li and Yele Sun from IAP for hosting the APHH-Beijing campaign at IAP. We thank Zongbo Shi, Di Liu, Roy Harrison, Tuan Vu and Bill Bloss from the University of Birmingham, Siyao Yue, Liangfang Wei, Hong Ren, Qiaorong Xie, Wanyu Zhao, Linjie Li, Ping Li, Shengjie Hou, Qingqing Wang from IAP, Rachel Dunmore and Ally Lewis from the University of York, Kebin He and Xiaoting Cheng from Tsinghua University, and James Allan and Hugh Coe from the University of Manchester for providing logistic and scientific support for the field campaigns. Funding was provided by the UK Natural Environment Research Council, UK Medical Research Council and the National Science Foundation of China under the framework of the Newton Innovation Fund (grant NE/N006976/1 to Lancaster University and grant 41571130031 to the Guangzhou Institute of Geochemistry). A full list of other grants that directly and indirectly supported this work is given in Shi et al. (2019). The National Ecological Observatory Network is a project sponsored by the

National Science Foundation and managed under cooperative agreement by Battelle. This material is based upon work supported by the National Science Foundation (Grant DBI-0752017). Any opinions, findings, and conclusions or recommendations expressed in this material are those of the author and do not necessarily reflect the views of the National Science Foundation.

References

Acton W.J.F., Schallhart S., Langford B., Valach A., Rantala P., Fares S., Carriero G., Tillmann R., Tomlinson S.J., Dragosits U., Gianelle D., Hewitt C.N. and Nemitz E.: Canopy-scale flux measurements and bottom-up emission estimates of volatile organic compounds from a mixed oak and hornbeam forest in northern Italy, 16(11), 7149-7170, 2016.

Acton W.J.F., Jud W., Ghirardo A., Wohlfahrt G., Hewitt C.N., Taylor J.E., Hansel A.: The effect of ozone fumigation on the above- and below-ground emissions of biogenic volatile organic compounds (BVOCs) from *Brassica napus*, PloS one, 1-28, 2018.

Amir Siddique M., Dongyun L., Li P., Rasool U., Ullah Khan T., Javaid Aini Farooqi T., Wang L., Fan B., Rasool M.A.: Assessment and simulation of land use and land cover change impacts on the land surface temperature of Chaoyang District in Beijing, China, PeerJ, 8:e9115 <https://doi.org/10.7717/peerj.9115>, 2020.

Atkinson R.: Atmospheric chemistry of VOCs and NOx, Atmospheric Environment, 34, 2063-2101, 2000.

Aubinet M., Vesala T., and Papale D. (Eds.): Eddy covariance: A practical guide to measurement and data analysis, Springer, Dordrecht, Heidelberg, London, New York, 438 pp., 2012.

Barletta B., Meinardi S., Rowland F.S., Chan C.-Y., Wang X., Zou S., Chan L.Y. and Blake D.R.: Volatile organic compounds in 43 Chinese cities, Atmospheric Environment, 39, 5979–5990, 2005.

Borbon A., Fontaine H., Veillerot M., Locoge N., Galloo J. C., and Guillermo R.: An investigation into the traffic-related fraction of isoprene at an urban location, Atmospheric Environment, 35, 3749– 3760, 2001.

Cao, H., Fu T.-M., Zhang L., Henze D.K., Chan Miller C., Lerot C., Gonzalez Abad G., De Smedt I., Zhang Q., van Roosendaal M., Chance K., Li J., Zheng J. and Zhao Y.: Adjoint inversion of Chinese non-methane volatile organic compound emissions using space-based observations of formaldehyde and glyoxal, Atmospheric Chemistry and Physics, 18, 2018.

Carslaw D.C. and Ropkins K.: openair --- an R package for air quality data analysis, Environmental Modelling & Software. Volume 27-28, 52-61, 2012.

Cheng X., Li H., Zhang Y., Li Y., Zhang W., Wang X., Bi F., Zhang H., Gao J., Chai F., Lun X., Chen Y. and Lv J.: Atmospheric isoprene and monoterpenes in a typical urban area of Beijing: Pollution characterization, chemical reactivity and source identification. Journal of Environmental Sciences, 71, 150-167, 2018a.

Cheng X. L., Liu X. M., Liu Y. J., & Hu F.: Characteristics of CO₂ concentration and flux in the Beijing urban area. *Journal of Geophysical Research: Atmospheres*, 123, 1785–1801., 2018b.

de Gouw J.A., Warneke C., Parrish D.D., Holloway J.S., Trainer M. and Fehsenfeld F.C.: Emission sources and ocean uptake of acetonitrile (CH₃CN) in the atmosphere, *Journal of Geophysical Research*, 108(D11), 4329, 2003.

Derwent R.G., Jenkin M.E., Saunders S.M. and Pilling M.J.: Photochemical ozone creation potentials for organic compounds in northwest Europe calculated with a master chemical mechanism, *Atmospheric Environment*, 32(14-15), 2429-2441, 1998.

Dinh T.-V., Kim S.-Y., Son Y.-S., Choi I.-Y., Park S.-R., Sunwoo Y. and Kim J.-C.: Emission characteristics of VOCs emitted from consumer and commercial products and their ozone formation potential, *Environmental Science and Pollution Research*, 22, 9345-9355, 2015.

Dunmore R.E., Whalley L.K., Sherwen T., Evans M.J., Heard D.E., Hopkins J.R., Lee J.D., Lewis A.C., Lidster R.T., Rickard A.R. and Hamilton J.F.: Atmospheric ethanol in London and the potential impacts of future fuel formulations, *Faraday Discussions*, 189, 105, 120, 2016.

Ehn M., Thornton J.A., Kleist E., Sipilä M., Junninen H., Pullinen I., Springer M., Rubach F., Tillmann R., Lee B., Lopez-Hilfiker F., Andres S., Acir I.-H., Rissanen M., Jokinen T., Schobesberger S., Kangasluoma J., Kontkanen J., Nieminen T., Kurtén T., Nielsen L.B., Jørgensen S., Kjaergaard H.G., Canagaratna M., Maso M.D., Berndt T., Petäjä T., Wahner A., Kerminen V.-M., Kulmala M., Worsnop D.R., Wildt J., and Mentel T.F.: A large source of low-volatility secondary organic aerosol, *Nature*, 506, 476–479, 2014.

Fehsenfeld F., Calvert J., Fall R., Goldan P., Guenther A.B., Hewitt C.N., Lamb B., Liu S., Trainer M., Westberg H., and Zimmerman P.: Emissions of volatile organic compounds from vegetation and the implications for atmospheric chemistry, *Global Biogeochemical Cycles*, 6, 389–430, 1992.

Foken T. and Wichura B.: Tools for quality assessment of surface- based flux measurements, *Agricultural and Forest Meteorology*, 78, 83–105, 1996.

Gao M., Guttikunda S.K., Carmichael G.R., Wang Y., Liu Z., Stanier C.O., Saide P.E. and Yu M.: Health impacts and economic losses assessment of the 2013 severe haze event in Beijing area, *Science of the Total Environment*, 511, 553-561, 2015.

Ghirardo A., Xie J., Zheng X., Wang Y., Grote R., Block K., Wildt J., Mentel T., Kiendler-Scharr A., Hallquist M., Butterbach-Bahl K. and Schnitzler J.-P.: Urban stress-induced biogenic VOC emissions and SOA-forming potentials in Beijing, *Atmospheric Chemistry and Physics*, 16, 2901-2920, 2016.

Guenther A., Karl T., Harley P., Wiedinmyer C., Palmer P.I., Geron C.: Estimates of global terrestrial isoprene emissions using MEGAN (Model of Emissions of Gases and Aerosols from Nature), *Atmospheric Chemistry and Physics*, 6, 3181-3210, 2006.

Guenther A.B., Jiang X., Heald C.L., Sakulyanontvittaya T., Duhl T., Emmons L.K. and Wang X.: The model of emissions of gases and aerosols from nature version 2.1 (MEGAN2.1): An extended and updated framework for modeling biogenic emissions, *Geoscientific Model Development*, 5, 1471-1492, 2012.

Hallquist M., Wenger J.C., Baltensperger U., Rudich Y., Simpson D., Claeys M., Dommen J., Donahue N.M., George C., Goldstein A.H., Hamilton J.F., Herrmann H., Hoffmann T., Iinuma Y., Jang M., Jenkin M.E., Jimenez J.L., Kiendler-Scharr A., Maenhaut W., McFiggans G., Mentel Th.F., Monod A., Prévôt A.S.H., Seinfeld J.H., Surratt J.D., Szmigielski R., and Wildt J.: The formation, properties and impact of secondary organic aerosol: current and emerging issues, *Atmospheric Chemistry and Physics*, 9, 5155–5236, 2009.

Hartmann J., Gehrman M., Kohnert K., Metzger S., and Sachs T.: New calibration procedures for airborne turbulence measurements and accuracy of the methane fluxes during the AirMeth campaigns, *Atmospheric Measurement Techniques*, 11, 4567-4581, 2018.

Holzinger R., Jordan A., Hansel A. and Lindinger W.: Automobile emissions of acetonitrile: Assessment of its contribution to the global source, *Journal of Atmospheric Chemistry*, 38(2), 187-193, 2001.

Hu J., Chen J., Ying Q. and Zhang H.: One-year simulation of ozone and particulate matter in China using WRF/CMAQ modeling system, *Atmospheric Chemistry and Physics*, 16, 10333-10350, 2016.

Jacob D.J., Field B.D., Li Q., Blake D.R., de Gouw J., Warneke C., Hansel A., Wisthaler A., Singh H.B. Guenther A.: Global budget of methanol: Constraints from atmospheric observations. *Journal of Geophysical Research*, 110, D08303, 2005.

Jia Y.T., Rahn K.A., He K.B., Wen T.X., and Wang Y.S.: A novel technique for quantifying the regional component of urban aerosol solely from its sawtooth cycles, *Journal of Geophysical Research-Atmospheres*, 113, D21309, 2008.

Jing B., Wu L., Mao H., Gong S., He J., Zou C., Song G., Li X. and Wu Z.: Development of a vehicle emission inventory with high temporal–spatial resolution based on NRT traffic data and its impact on air pollution in Beijing – Part 1: Development and evaluation of vehicle emission inventory, *Atmospheric Chemistry and Physics*, 16, 3161–3170, 2016.

Jaimes-Palomera M., Retama A., Elias-Castro G., Neria-Hernández A., Rivera-Hernández O. and Velasco E.: Non-methane hydrocarbons in the atmosphere of Mexico City: Results of the 2012 ozone-season campaign. *Atmospheric environment*, 132, 258-275, 2016.

Jordan A., Haidacher S., Hanel G., Hartungen E., Märk L., Seehauser H., Schottkowsky R., Sulzer P. and Märk T.D.: A high resolution and high sensitivity proton-transfer-reaction time-of-flight mass spectrometer (PTR-TOF-MS), *286(2-3)*, 122-128, 2009.

Kahle D. and Wickham H.: ggmap: Spatial Visualization with ggplot2. *The R Journal*, 5(1), 144-161, 2013.

Karl T.G., Spirig C., Rinne J., Stroud C., Prevost P., Greenberg J., Fall R., and Guenther A.: Virtual disjunct eddy covariance measurements of organic compound fluxes from a subalpine forest using proton transfer reaction mass spectrometry, *Atmospheric Chemistry and Physics*, 2, 279–291, 2002.

Karl T., Jobson T., Kuster W.C., Williams E., Stutz J., Shetter R., Hall S.R., Goldan P. and Fehsenfeld F.: Use of proton-transfer-reaction mass spectrometry to characterize volatile organic compound sources at the La Porte super site during the Texas Air Quality Study 2000, *Journal of Geophysical Research*, 108(D16), 4508, 2003.

Karl T., Striednig M., Graus M., Hammerle A., Wohlfahrt G.: Urban flux measurements reveal a large pool of oxygenated volatile organic compound emissions. *Proceedings of the National Academy of Sciences*, 115(6), 1186-1191, 2018.

Kljun N., Calanca P., Rotach M.W., and Schmid H.P.: A simple parameterisation for flux footprint predictions, *Boundary-Layer Meteorology*, 112, 503–523, 2004.

Langford B., Davison B., Nemitz E. and Hewitt C.N.: Mixing ratios and eddy covariance flux measurements of volatile organic compounds from an urban canopy (Manchester, UK), *Atmospheric Chemistry and Physics*, 9, 1971-1987, 2009.

Langford B., Misztal P. K., Nemitz E., Davison B., Helfter C., Pugh T. A. M., MacKenzie A. R., Lim S. F., and Hewitt C. N.: Fluxes and concentrations of volatile organic compounds from a South-East Asian tropical rainforest, *Atmospheric Chemistry and Physics*, 10, 8391–8412, 2010.

Langford B., Nemitz E., House E., Phillips G.J., Famulari D., Davison B., Hopkins J.R., Lewis A.C. and Hewitt C.N.: Fluxes and concentrations of volatile organic compounds above central London, UK, *Atmospheric Chemistry and Physics*, 10, 627–645, 2010.

Langford B., Acton W., Ammann C., Valach A., and Nemitz E.: Eddy-covariance data with low signal-to-noise ratio: time-lag determination, uncertainties and limit of detection, *Atmospheric Measurement Techniques*, 8, 4197–4213, 2015.

Langford B., Cash J., Acton W.J.F., Valach A.C., Hewitt C.N., Fares S., Goded I., Gruening C., House E., Kalogridis A.-C., Gros V., Schafer R., Thomas R., Broadmeadow M. and Nemitz E.: Isoprene emission potentials from European oak forests derived from canopy flux measurements: An assessment of uncertainties and inter-algorithm variability, *Biogeosciences*, 14, 5571-5594, 2017.

Lee A., Goldstein A.H., Keywood M.D., Gao S., Varutbangkul V., Bahreini R., Ng N.L., Flagan R.C. and Seinfeld J.H.: Gas-phase products and secondary aerosol yields from the ozonolysis of ten different terpenes, *Journal of Geophysical Research Atmospheres*, 111(7), 1-18, 2007.

Lenschow D.H., Mann J. and Kristensen L.: How long is long enough when measuring fluxes and other turbulence statistics, *Journal of Atmospheric and Ocean Technology*, 11, 661-673, 1994.

Li Q., Liu H. Z., Hu F, Hong Z. X., and Li A. G.: The determination of the aero dynamical parameters over urban land surface (in Chinese), *Climatic and Environmental Research*, 8, 443-450, 2003.

Li K., Li J., Wang W., Tong S., Liggio J. and Ge M.: Evaluating the effectiveness of joint emission control policies on the reduction of ambient VOCs: Implications from observation during the 2014 APEC summit in suburban Beijing, *Atmospheric Environment*, 164, 117-127, 2017a.

Li M., Zhang Q., Kurokawa J.-I., Woo J.-H., He K., Lu Z., Ohara T., Song Y., Streets D.G., Carmichael G.R., Cheng Y., Hong C., Huo H., Jiang X., Kang S., Liu F., Su H., and Zheng B.: MIX: a mosaic Asian anthropogenic emission inventory under the international collaboration framework of the MICS-Asia and HTAP, *Atmospheric Chemistry and Physics*, 17, 935–963, 2017.

Li M., Liu H., Geng G., Hong C., Liu F., Song Y., Tong D., Zheng B., Cui H., Man H., Zhang Q., and He K.: Anthropogenic emission inventories in China: a review, *National Science Review*, 4, 834–866, 2017c.

Li K., Li J., Tong S., Wang W., Huang R.J., Ge M.: Characteristics of wintertime VOCs in suburban and urban Beijing: Concentrations, emission ratios, and festival effects. *Atmospheric Chemistry and Physics*, 19, 8021–8036, 2019.

Liu H.Z., Feng J.W., Jarvi L. and Vesala T.: Four-year (2006–2009) eddy covariance measurements of CO₂ flux over an urban area in Beijing. *Atmospheric Chemistry and Physics*, 12(17), 2012a.

Liu Z., Wang Y., Vrekoussis M., Richter A., Wittrock F., Burrows J. P., Shao M., Chang C.-C., Liu S.-C., Wang H., and Chen C.: Exploring the missing source of glyoxal (CHOCHO) over China, *Geophysical Research Letters*, 39, L10812, 2012b.

Li M., Zhang Q., Streets D.G., He K.B., Cheng Y.F., Emmons L.K., Huo H., Kang S.C., Lu Z., Shao M., Su H., Yu X., and Zhang Y.: Mapping Asian anthropogenic emissions of non-methane volatile organic compounds to multiple chemical mechanisms, *Atmospheric Chemistry and Physics*, 14, 5617–5638, 2014.

Liu Y., Yuan B., Li X., Shao M., Lu S., Li Y., Chang C.C., Wang Z., Hu W., Huang X., He L., Zeng L., Hu M. and Zhu T.: Impact of pollution controls in Beijing on atmospheric oxygenated volatile organic compounds (OVOCs) during the 2008 Olympic Games: Observation and modeling implications, *Atmospheric Chemistry and Physics*, 15, 3045–3062, 2015.

Mauder M., Foken T. and Cuxart J.: Surface-Energy-Balance Closure over Land: A Review. *Boundary-Layer Meteorology*, doi: <https://doi.org/10.1007/s10546-020-00529-6>, 2020.

Metzger S., Junkermann W., Mauder M., Beyrich F., Butterbach-Bahl K., Schmid H.P., and Foken, T.: Eddy-covariance flux measurements with a weight-shift microlight aircraft, *Atmospheric Measurement Techniques*, 5, 1699–1717, 2012.

Metzger S., Durden D., Sturtevant C., Luo H., Pingingtha-Durden N., Sachs T., Serafimovich A., Hartmann J., Li J.H., Xu K., and Desai A.R.: eddy4R 0.2.0: a DevOps model for community-extensible processing and analysis of eddy-covariance data based on R, Git, Docker, and HDF5, *Geoscientific Model Development*, 10, 3189–3206, 2017.

Müller M., Graus M., Ruuskanen T.M., Schnitzhofer R., Bamberger I., Kaser L., Titzmann T., Hörtnagl L., Wohlfahrt G., Karl T. and Hansel A.: First eddy covariance flux measurements by PTR-TOF, *Atmospheric Measurement Techniques*, 3, 387–395, 2010.

Müller M., Mikoviny T., Jud W., D'Anna B. and Wisthaler A.: A new software tool for the analysis of high resolution PTR-TOF mass spectra, 127, 158–165, 2013.

Nematollahi N., Kolev S.D. and Steinemann A.: Volatile chemical emissions from 134 common consumer products, *Air Quality, Atmosphere & Health*, <https://doi.org/10.1007/s11869-019-00754-0>, 2019.

Nordbo A. and Katul G.: A Wavelet-Based Correction Method for Eddy-Covariance High-Frequency Losses in Scalar Concentration Measurements. *Boundary-Layer Meteorology*, 146, 81-102, 2013.

Parrish D.D., Kuster W.C., Shao M., Yokouchi Y., Kondo Y., Goldan P.D., de Gouw J.A., Koike M. and Shirai T.: Comparison of air pollutant emissions among mega-cities. *Atmospheric Environment*, 43(40), 6435-6441, 2009.

Pattey E., Desjardins R.L., Boudreau F., and Rochette P.: Impact of density fluctuations on flux measurements of trace gases: Implications for the relaxed eddy accumulation technique. *Boundary Layer Meteorology*, 59, 195–203, 1992.

Qi J., Zheng B., Li M., Yu F., Chen C., Liu F., Zhou X., Yuan J., Zhang Q., and He K.: A high-resolution air pollutants emission inventory in 2013 for the Beijing-Tianjin-Hebei region, China, *Atmospheric Environment*, 170, 156–168, 2017.

R Core Team: R: A language and environment for statistical computing. R Foundation for Statistical Computing, Vienna, Austria, 2019. URL <https://www.R-project.org/>.

Ren Y., Qu Z., Du Y., Xu R., Ma D., Yang G., Shi Y., Fan X., Tani A., Guo P., Ge Y. and Chang J.: Air quality and health effects of biogenic volatile organic compounds emissions from urban green spaces and the mitigation strategies, *Environmental Pollution*, 230, 849-861, 2017.

Rinsky R. A., Smith A. B., Hornung R., Filloon T. G., Young R. J., Okun A. H., and Landrigan P. J.: Benzene and Leukemia – An epidemiologic risk assessment, *New England Journal of Medicine*, 316, 1044–1050, 1987.

Sahu L.K. and Saxena P.: High time and mass resolved PTR-TOF-MS measurements of VOCs at an urban site of India during winter: Role of anthropogenic, biomass burning, biogenic and photochemical sources. *Atmospheric Research*, 164-165, 84-94, 2015.

Sarkar C., Sinha V., Kumar V., Rupakheti M., Panday A., Mahata K.S., Rupakheti D., Kathayat B. and Lawrence M.G.: Overview of VOC emissions and chemistry from PTR-TOF-MS measurements during the SusKat-ABC campaign: High acetaldehyde, isoprene and isocyanic acid in wintertime air of the Kathmandu Valley. *Atmospheric Chemistry and Physics*, 16(6), 3979-4003, 2016.

Shao M., Lu S., Liu Y., Xie X., Chang C., Huang S. and Chen Z.: Volatile organic compounds measured in summer in Beijing and their role in ground-level ozone formation, *Journal of Geophysical Research Atmospheres*, 114(D00G06), 1-13, 2009.

Sheng J., Zhao D., Ding D., Li X., Huang M., Gao Y., Quan J. and Zhang Q.: Characterizing the level, photochemical reactivity, emission, and source contribution of the volatile organic compounds based on PTR-TOF-MS during winter haze period in Beijing, China. *Atmospheric Research* 212, 54–63, 2018.

Shi Z., Vu T., Kotthaus S., Harrison R.M., Grimmond S., Yue S., Zhu T., Lee J., Han Y., Demuzere M., Dunmore R.E., Ren L., Liu D., Wang Y., Wild O., Allan J., Acton W.J., Barlow J., Barratt B., Beddows D.,

Bloss W.J., Calzolari G., Carruthers D., Carslaw D.C., Chan Q., Chatzidiakou L., Chen Y., Crilley L., Coe H., Dai T., Doherty R., Duan F., Fu P., Ge B., Ge M., Guan D., Hamilton J.F., He K., Heal M., Heard D., Hewitt C.N., Hollaway M., Hu M., Ji D., Jiang X., Jones R., Kalberer M., Kelly F.J., Kramer L., Langford B., Lin C., Lewis A.C., Li J., Li W., Liu H., Liu J., Loh M., Lu K., Lucarelli F., Mann G., Mcfiggans G., Miller M.R., Mills G., Monk P., Nemitz E., Ouyang B., Palmer P.I., Percival C., Popoola O., Reeves C., Rickard A.R., Shao L., Shi G., Spracklen D., Stevenson D., Sun Y., Sun Z., Tao S., Tong S., Wang Q., Wang W., Wang X., Wang X., Wang Z., Wei L., Whalley L., Wu X., Wu Z., Xie P., Yang F., Zhang Q., Zhang Y., Zhang Y., and Zheng M.: Introduction to the special issue "In-depth study of air pollution sources and processes within Beijing and its surrounding region (APHH-Beijing)", *Atmospheric Chemistry and Physics*, 19, 7519–7546, 2019.

Slater E.J., Whalley L.K., Woodward-Massey R., Ye C., Lee J.D., Squires F., Hopkins J.R., Dunmore R.E., Shaw M., Hamilton J.F., Lewis A.C., Crilley L.R., Kramer L., Bloss W., Vu T., Sun Y., Xu W., Yue S., Ren L., Acton W.J.F., Hewitt C.N., Wang X., Fu P. and Heard D.E.: Elevated levels of OH observed in haze events during wintertime in central Beijing, *Atmospheric Chemistry and Physics Discussions*, in review, 2020.

Song, T. and Wang, Y. Carbon dioxide fluxes from an urban area in Beijing. *Atmospheric Research* 106, 139–149, 2012.

Song, T., Sun, Y. and Wang, Y.: Multilevel measurements of fluxes and turbulence over an urban landscape in Beijing. *Tellus B: Chemical and Physical Meteorology*, 65(1), 20421, 2013.

Spirig C., Neftel A., Ammann C., Dommen J., Grabmer W., Thielmann A., Schaub A., Beauchamp J., Wisthaler A., and Hansel A.: Eddy covariance flux measurements of biogenic VOCs during ECHO 2003 using proton transfer reaction mass spectrometry, *Atmospheric Chemistry and Physics*, 5, 465–481, 2005.

Squires F.A., Nemitz E., Langford B., Wild O., Drysdale W.S., Acton W.J.F., Fu P., Grimmond C.S.B., Hamilton J.F., Hewitt C.N., Hollaway M., Kotthaus S., Lee J., Metzger S., Pinguha-Durden N., Shaw M., Vaughan A.R., Wang X., Wu R., Zhang Q. and Zhang Y.: Measurements of traffic dominated pollutant emissions in a Chinese megacity. *Atmospheric Chemistry and Physics*, 20, 8737–8761, 2020.

Steinemann A.: Volatile emissions from common consumer products, *Air Quality, Atmosphere & Health*, 8, 273–281, 2015.

Stewart I.D. and Oke T.R.: Local climate zones for urban temperature studies. *The Bulletin of the American Meteorological Society*, 93, 1879–1900, 2012.

Taipale R., Ruuskanen T.M., Rinne J., Kajos M.K., Hakola H., Pohja T. and Kulmala M.: Technical Note: Quantitative long-term measurements of VOC concentrations by PTR-MS – measurement, calibration, and volume mixing ratio calculation methods, *Atmospheric Chemistry and Physics*, 8, 9435–9475, 2008.

Taipale R., Ruuskanen T.M., and Rinne J.: Lag time determination in DEC measurements with PTR-MS, *Atmospheric Measurement Techniques*, 3, 853–862, 2010.

Tani A., Hayward S., Hansel A. and Hewitt C.N.: Effect of water vapour pressure on monoterpene measurements using proton transfer reaction-mass spectrometry (PTR-MS), *International Journal of Mass Spectrometry*, 239, 161–169, 2004.

Valach A.C., Langford B., Nemitz E., Mackenzie A.R. and Hewitt C.N.: Seasonal and diurnal trends in concentrations and fluxes of volatile organic compounds in central London, *Atmospheric Chemistry and Physics*, 15, 7777–7796, 2015.

Vaughan A.R., Lee J.D., Shaw M.D., Misztal P.K., Metzger S., Vieno M., Davison B., Karl T.G., Carpenter L.J., Lewis A.C., Purvis R.M., Goldstein A.H. and Hewitt C.N.: VOC emission rates over London and South East England obtained by airborne eddy covariance, *Faraday Discussions*, 200, 599–620, 2017.

Velasco E., Lamb B., Pressley S., Allwine E., Westberg H., Jobson B.T., Alexander M., Prazeller P., Molina L., Molina M.: Flux measurements of volatile organic compounds from an urban landscape, *Geophysical Research Letters*, 32, L20802, 2005.

Velasco E., Lamb B., Westberg H., Allwine E., Sosa G., Arriaga-Colina J. L., Jonson B. T., Alexander M. L., Prazeller P., Knighton W. B., Rogers T. M., Grutter M., Herndon S. C., Kolb C. E., Zavala M., de Foy B., Volkamer R., Molina L. T. and Molina M. J.: Distribution, magnitudes, reactivities, ratios and diurnal patterns of volatile organic compounds in the Valley of Mexico during the MCMA 2002 & 2003 field campaigns, *Atmospheric Chemistry and Physics*, 7, 329–353, 2007.

Velasco E., Pressley S., Grivicke R., Allwine E., Coons T., Foster W., Jobson B.T., Westberg H., Ramos R., Hernández F., Molina L.T.: Eddy covariance flux measurements of pollutant gases in urban Mexico City. *Atmospheric Chemistry and Physics*, 9, 7325–7342, 2009.

von Schneidemesser E., Monks P.S. and Plass-Duelmer C.: Global comparison of VOC and CO observations in urban areas. *Atmospheric Environment*, 44(39), 5053–5064, 2010.

Whalley L.K., Slater E.J., Woodward-Massey R., Ye C., Lee J.D., Squires F., Hopkins J.R., Dunmore R.E., Shaw M., Hamilton J.F., Lewis A.C., Mehra A., Worrall S.D., Bacak A., Bannan T.J., Coe H., Ouyang B., Jones R.L., Crilley L.R., Kramer L.J., Bloss W.J., Vu T., Kotthaus S., Grimmond S., Sun Y., Xu W., Yue S., Ren L., Acton W.J.F., Hewitt C.N., Wang X., Fu P., and Heard D.E.: Evaluating the sensitivity of radical chemistry and ozone formation to ambient VOCs and NO_x in Beijing, *Atmospheric Chemistry and Physics Discussions*, in review, 2020.

Wang M., Shao M., Chen W., Lu S., Liu Y., Yuan B., Zhang Q., Zhang Q., Chang C.C., Wang B., Zeng L., Hu M., Yang Y. and Li Y.: Trends of non-methane hydrocarbons (NMHC) emissions in Beijing during 2002–2013, *Atmospheric Chemistry and Physics*, 15, 1489–1502, 2015.

Webb E.K., Pearman G. I., and Leuning, R.: Correction of flux measurements for density effects due to heat and water vapour transfer. *Quarterly Journal of the Royal Meteorological Society*, 106, 85–100, 1980.

Wehner B., Birmili W., Ditas F., Wu Z., Hu M., Liu X., Mao J., Sugimoto N. and Wiedensohler A.: Relationships between submicrometer particulate air pollution and air mass history in Beijing, China, 2004–2006, *Atmospheric Chemistry and Physics*, 8, 6155–6168, 2008.

Yao N., Konijnendijk van den Bosch C.C., Yang J., Devisscher T., Wirtz Z., Jia L., Duan J. and Ma L.: Beijing's 50 million new urban trees: Strategic governance for large-scale urban afforestation, *Urban Forestry and Urban Greening*, 44, <https://doi.org/10.1016/j.ufug.2019.126392>, 2019.

Yang J., McBride J., Zhou J. and Sun Z.: The urban forest in Beijing and its role in air pollution reduction, *Urban Forestry and Urban Greening*, 3, 65–78, 2005.

Yang Z., Wang H., Shao Z., and Muncrief R.: Review of Beijing's Comprehensive Motor Vehicle Emission Control Programs, International Council on Clean Transportation Europe, Berlin, 2015.

Yuan B., Shao M., de Gouw J., Parrish D.D., Lu S., Wang M., Zeng L., Zhang Q., Song Y., Zhang, J. and Hu M.: Volatile organic compounds (VOCs) in urban air: How chemistry affects the interpretation of positive matrix factorization (PMF) analysis, *Journal of Geophysical Research Atmospheres*, 117(D24302),1-17, 2012.

Zhang, H.N., Zhang, Y.L., Huang, Z.H., Wang, Z.Y., Acton, W., Nemitz, E., Langford, B., Mullinger, N., Davison, B., Shi, Z.B., Liu, D., Yang, W.Q., Zeng, J.Q., Wu, Z.F., Fu, P.Q., Zhang, Q., Wang, X.M.: Vertical profiles of BVOCs observed by proton transfer reaction-time of flight-mass spectrometry at the 325-meter IAP tower in Beijing. *Journal of Environmental Science*, 95, 33–42, 2020.

Zhang L., Wang T., Lv M. and Zhang Q.: On the severe haze in Beijing during January 2013: Unraveling the effects of meteorological anomalies with WRF-Chem, *Atmospheric Environment*, 104, 11-21, 2015.

Zhao Y., Zhou Y.D., Qiu L.P. and Zhang J.: Quantifying the uncertainties of China's emission inventory for industrial sources: From national to provincial and city scales, *Atmospheric Environment*, 165, 207–221, 2017.

Zheng B., Zhang Q., Tong D., Chen C., Hong C., Li M., Geng G., Lei Y., Huo H. and He K.: Resolution dependence of uncertainties in gridded emission inventories: a case study in Hebei, China, *Atmospheric Chemistry and Physics*, 17, 921-933, 2017.

Zheng B., Tong D., Li M., Liu F., Hong C., Geng G., Li H., Li X., Peng L., Qi J., Yan L., Zhang Y., Zhao H., Zheng Y., He K., and Zhang Q.: Trends in China's anthropogenic emissions since 2010 as the consequence of clean air actions, *Atmospheric Chemistry and Physics*, 18, 14095–14111, 2018.