

# Long-term trends in air quality in major cities in the UK and India: A view from space

Karn Vohra<sup>1</sup>, Eloise A. Marais<sup>2,a</sup>, Shannen Suckra<sup>1,b</sup>, Louisa Kramer<sup>1,c</sup>, William J. Bloss<sup>1</sup>, Ravi Sahu<sup>3</sup>,  
5 Abhishek Gaur<sup>3</sup>, Sachchida N. Tripathi<sup>3</sup>, Martin Van Damme<sup>4</sup>, Lieven Clarisse<sup>4</sup>, Pierre F. Coheur<sup>4</sup>

<sup>1</sup>School of Geography, Earth and Environmental Sciences, University of Birmingham, Birmingham, UK

<sup>2</sup>School of Physics and Astronomy, University of Leicester, Leicester, UK

<sup>3</sup>Department of Civil Engineering, Indian Institute of Technology Kanpur, Kanpur, India

10 <sup>4</sup>Université libre de Bruxelles (ULB), Spectroscopy, Quantum Chemistry and Atmospheric Remote Sensing (SQUARES),  
Brussels, Belgium

<sup>a</sup>Now at: Department of Geography, University of College London, London, UK

<sup>b</sup>Now at: National Environment & Planning Agency, Kingston, Jamaica

<sup>c</sup>Now at: Ricardo Energy & Environment, Harwell, UK

15

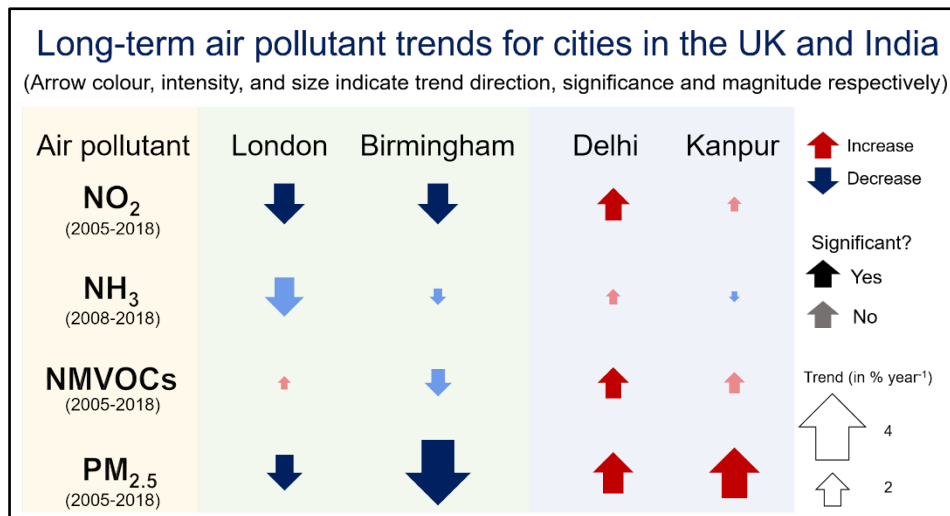
*Correspondence to:* Eloise A. Marais (e.marais@ucl.ac.uk)

## Abstract

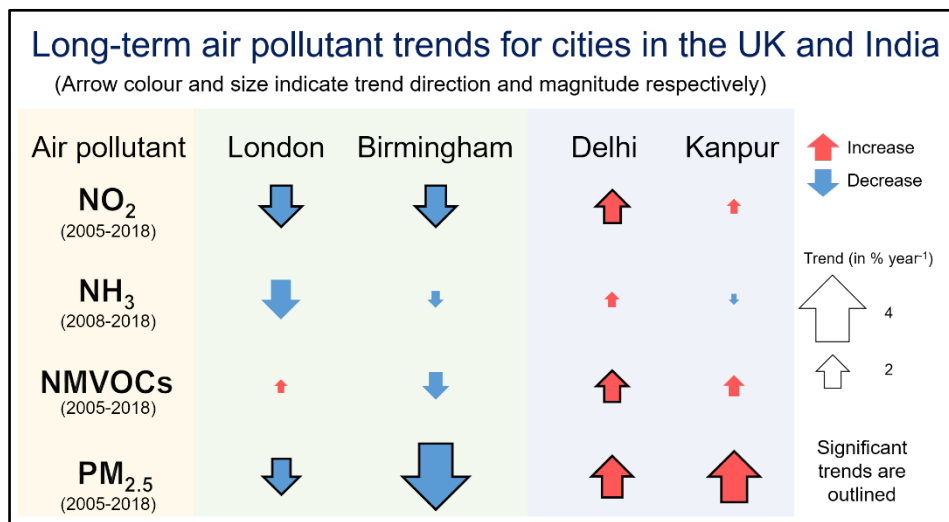
Air quality networks in cities ~~are~~can be costly, inconsistent, and ~~only~~typically monitor a few pollutants. Space-based  
instruments provide global coverage spanning more than a decade to determine trends in air quality ~~and address deficiencies~~  
20 ~~in~~, augmenting surface networks. Here we target cities in the UK (London and Birmingham) and India (Delhi and Kanpur)  
and use observations of nitrogen dioxide (NO<sub>2</sub>) from the Ozone Monitoring Instrument (OMI), ammonia (NH<sub>3</sub>) from the  
Infrared Atmospheric Sounding Interferometer (IASI), formaldehyde (HCHO) from OMI as a proxy for non-methane volatile  
organic compounds (NMVOCs), and aerosol optical depth (AOD) from the Moderate Resolution Imaging Spectroradiometer  
(MODIS) for PM<sub>2.5</sub>. We assess the skill of these products at reproducing monthly variability in surface concentrations of air  
25 pollutants where available. We find temporal consistency between column and surface NO<sub>2</sub> in cities in the UK and India (R =  
0.5-0.7) and NH<sub>3</sub> at two of three ~~UK supersites~~rural sites in the UK (R = 0.5-0.7), but not between AOD and surface PM<sub>2.5</sub> (R  
< 0.4). MODIS AOD is consistent with AERONET at sites in the UK and India (R ≥ 0.8) and reproduces significant decline  
in surface PM<sub>2.5</sub> in London (2.7 % a<sup>-1</sup>) and Birmingham (3.7 % a<sup>-1</sup>) since 2009. We derive long-term trends in the four cities  
for 2005-2018 from OMI and MODIS and for 2008-2018 from IASI. ConcentrationsTrends of all pollutants ~~increase~~are  
30 positive in Delhi, suggesting no air quality improvements there, despite rollout of controls on industrial and transport sectors.

Kanpur, identified by the WHO as the most polluted city in the world in 2018, experiences a significant and substantial (3.1 % a<sup>-1</sup>) increase in PM<sub>2.5</sub>. ~~Concentrations of~~ NO<sub>2</sub>, NH<sub>3</sub> and PM<sub>2.5</sub> decline in London and Birmingham are likely due in large part to emissions controls on vehicles. Trends are significant only for NO<sub>2</sub> and PM<sub>2.5</sub>. Reactive NMVOCs decline in Birmingham, but the trend is not significant, ~~and there~~. There is a recent (2012-2018) steep (> 9 % a<sup>-1</sup>) increase in reactive NMVOCs in London. ~~This~~ The cause for this rapid increase is uncertain, but may reflect increased contribution of oxygenated VOCs from household products, the food and beverage industry, and domestic wood burning, with implications for formation of ozone in a VOC-limited city.

### Abstract/Table-of-Contents Image



40



## 1. Introduction

More than 55 % of people live in urban areas. ~~This and this~~ is projected to increase to 68 % by 2050 (UN, 2019). Air pollution in cities routinely exceeds levels safe for human health (Landrigan et al., 2018). Regulatory air quality monitoring networks, such as those employed in cities in the UK and India, provide detailed data concerning individual species and specific locations, but are labour intensive to operate and maintain, with potential gaps in spatial coverage and discontinuities hindering longer-term trend discovery. The current surface network of air quality monitors is sparse in time and space and often only includes instruments to monitor a handful of pollutants. Here we assess the ability to use the long record of satellite observations of atmospheric composition to monitor long-term variability and trends in surface concentrations of multiple air pollutants quality in four cities in the UK (London, Birmingham) and India (Delhi, Kanpur) of variable size and, at a range of development stages using the long record of measurements from instruments in space, and with air pollutant concentrations that pose greater risk to health than previously thought (Vodanos et al., 2018; Vohra et al., 2021).

Our study focuses on two large cities in the UK (London and Birmingham) and two in India (Delhi and Kanpur). Each is at a different stage of development: London is well developed, Birmingham is undergoing urban renewal, Delhi is experiencing rapid development, ~~and Kanpur is a rapidly industrialising city.~~ (Singh and Grover, 2015), and Kanpur is a rapidly

[industrialising city \(World Bank, 2014\)](#). Air quality policy is well established in the UK and the rapid decline in regulated air pollutants and their precursors has been monitored since 1970. According to the National Atmospheric Emission Inventory (NAEI), precursor emissions of fine particles with aerodynamic diameter  $< 2.5 \mu\text{m}$  ( $\text{PM}_{2.5}$ ) decreased in 1970-2017 by 1.5 %  $\text{a}^{-1}$  for nitrogen oxides ( $\text{NO}_x \equiv \text{NO} + \text{NO}_2$ ), 2.0 %  $\text{a}^{-1}$  for sulfur dioxide ( $\text{SO}_2$ ), and 1.4 %  $\text{a}^{-1}$  for non-methane volatile organic compounds (NMVOCs). Primary  $\text{PM}_{2.5}$  emissions decreased by 1.6 %  $\text{a}^{-1}$  over the same time period compared to a decline of just 0.2 %  $\text{a}^{-1}$  for ammonia ( $\text{NH}_3$ ) emissions during 1980-2017 (Defra, 2019a). In UK cities, vehicles make a large contribution to air pollution year-round, with seasonal contributions from residential fuelwood burning, agricultural activity, and construction, and sporadic contributions from long-range transport of Saharan dust (Fuller et al., 2014; Crilley et al., 2015; 2017; Harrison et al., 2018; Ots et al., 2018; Carnell et al., 2019). Despite the decline in emissions, many areas in the UK still exceed the legal annual mean limit of  $\text{NO}_2$  of  $40 \mu\text{g m}^{-3}$  (Barnes et al., 2018), a threshold that may not adequately protect against health effects of long-term exposure to  $\text{NO}_2$  (Lyons et al., 2020). Many areas will also exceed the annual mean  $\text{PM}_{2.5}$  standard, if updated from 25 to  $10 \mu\text{g m}^{-3}$  ~~following the~~ [WHO recommendations guideline](#) (Defra, 2019b). Reported annual mean  $\text{PM}_{2.5}$  in 2016, obtained as the surface monitoring network average, is  $12 \mu\text{g m}^{-3}$  for London and  $10 \mu\text{g m}^{-3}$  for Birmingham (WHO, 2018). There is increasing concern over emissions of the important  $\text{PM}_{2.5}$  precursor,  $\text{NH}_3$ , as there are no direct controls on the agricultural sector, the dominant  $\text{NH}_3$  source (Carnell et al., 2019). There has even been a recent increase in  $\text{NH}_3$  emissions of 1.9 %  $\text{a}^{-1}$  in 2013-2017 (Defra, 2019a), attributed to agriculture (Carnell et al., 2019).

Air quality policy in India is in its infancy compared to the UK. The first air pollution act was passed in 1981; 30 years after the equivalent in the UK. There has been a steady rollout of European-style (Euro VI) vehicle emission standards, starting with Delhi in 2018 and scaling up to the whole country by 2020 (Govt. of India, 2016). Strict controls on coal-fired power plants have been in place since December 2015, but most power plants are non-compliant (Sugathan et al., 2018). National  $\text{PM}_{2.5}$  concentration targets have been set at 20-30 % reductions by 2024 relative to 2017 levels (Govt. of India, 2019), but in 2016 measured annual mean  $\text{PM}_{2.5}$  in Delhi and Kanpur exceeded the national standard ( $40 \mu\text{g m}^{-3}$ ) by about a factor of 4:  $143 \mu\text{g m}^{-3}$  for Delhi;  $173 \mu\text{g m}^{-3}$  for Kanpur (WHO, 2018). In Delhi and Kanpur year-round emissions are dominated by vehicles, construction and household biofuel use in the city and industrial activity and coal combustion nearby (Guttikunda and Jawahar,

2014; Venkataraman et al., 2018). Seasonal enhancements come from intense agricultural fires along the Indo-Gangetic Plain (IGP) north of Delhi, frequent firework festivals, and dust storms originating from the Thar Desert and Arabian Peninsula (Ghosh et al., 2014; Parkhi et al., 2016; Yadav et al., 2017; Cusworth et al., 2018; Liu et al., 2018). Like the UK, the agricultural sector is not directly regulated and intense agricultural activity in the IGP contributes to the largest global NH<sub>3</sub> hotspot (Warner et al., 2017; Van Damme et al., 2018; Wang et al., 2019).

Surface monitoring networks in cities in the UK and India needed to evaluate city-wide trends in air pollutant concentrations and precursor emissions ~~arecan be~~ exceedingly sparse and ~~are~~ often short term. To illustrate this, we show in Figure 1 the coverage ~~of surface sites~~ in the four cities ~~of continuous surface monitoring of that continuously monitor~~ NO<sub>2</sub>, the most widely monitored air pollutant in both countries. There are also diffusion tubes and emerging technologies that measure NO<sub>2</sub> at low cost, but these are susceptible to biases (Heal et al., 1999; Castell et al., 2017) and so are excluded. The points in Figure 1 show sites established and maintained by national agencies, local city councils, and academic institutions. These are coloured by multi-year mean NO<sub>2</sub> around the satellite midday overpass (12h00-15h00 local time or LT) for our period of interest (2005-2018). London has the most extensive ~~surface~~ coverage. There can be more than 100 sites operating simultaneously, but many of these are ~~periodic, most short-term. Most~~ long-term sites are in central London, and southeast London is devoid of stations. Birmingham has eight monitoring stations, but only two operated for the majority of 2005-2018. There are recently established comprehensive ~~supersitesair quality monitoring sites~~ in London and Birmingham, but these started operating ~~after the analysis period of interest here in late 2018.~~ More than 40 % of ~~the~~ NO<sub>2</sub> monitoring stations in Delhi were ~~only~~ established in 2018 and there are concerns over data access and quality (Cusworth et al., 2018). Fewer stations ~~in the four cities~~ monitor PM<sub>2.5</sub> than NO<sub>2</sub>. ~~Measurements and measurements~~ of NMVOCs are limited to a few short-term intensive campaigns ~~that measure a range of NMVOCs or to and~~ long-term sites that only measure light (~~short-chain~~) non-methane hydrocarbons. Long-term continuous monitoring of NH<sub>3</sub> ~~in the UK~~ is limited ~~in the UK to~~ hourly measurements at rural European Monitoring and Evaluation Programme (EMEP) ~~supersites (Figure 1-)~~ and monthly measurements at UK Eutrophying and Acidifying Pollutants (UKEAP) Network sites.

Satellite observations of atmospheric composition (Earth observations) provide consistent, long records (> 10 years) and global coverage of ~~atmospheric concentrations of a dynamic range of air pollutants~~ multiple air pollutants to complement and address spatial, temporal and air pollutant gaps in surface monitoring networks (Streets et al., 2013; Duncan et al., 2014). These have been used extensively as constraints on temporal changes in surface concentrations of air pollutants and precursor emissions (Kim et al., 2006; Lamsal et al., 2011; Zhu et al., 2014), but typically just targeting 1-2 pollutants. In this work, we consider Earth observations of NO<sub>2</sub>, formaldehyde (HCHO), NH<sub>3</sub>, and aerosol optical depth (AOD). HCHO is a prompt, high-yield, ubiquitous oxidation product of NMVOCs used as a constraint on NMVOCs emissions (Miller et al., 2008; De Smedt et al., 2010; Marais et al., 2012; 2014b; 2014a). AOD has been used to derive surface concentrations of PM<sub>2.5</sub> for global assessment of the impact of air pollution on health (van Donkelaar et al., 2006; 2010; Brauer et al., 2016; Anenberg et al., 2019).

Here we conduct a systematic evaluation of the ability of satellite observations of NO<sub>2</sub>, NH<sub>3</sub>, HCHO and AOD to reproduce temporal variability of surface air pollution in the UK and India before going on to apply these satellite observations to estimate long-term changes in air pollution to assess the efficacy of air quality policies in the four cities of interest.

## 2. Space-Based and Surface Air Quality Observations

Earth observations of NO<sub>2</sub> and HCHO are from the Ozone Monitoring Instrument (OMI), NH<sub>3</sub> from the Infrared Atmospheric Sounding Interferometer (IASI), and AOD from the Moderate Resolution Imaging Spectroradiometer (MODIS). There are also observations of SO<sub>2</sub> and the secondary pollutant ozone from OMI, but SO<sub>2</sub> is below or close to the detection limit year-round for all cities, except in some months in Delhi, and UV measurements of tropospheric column ozone have limited sensitivity to ozone in the boundary layer (Zoogman et al., 2011). TROPospheric Monitoring Instrument (TROPOMI) sensitivity to SO<sub>2</sub> is 4-fold better than OMI, but the observation record is short (October 2017 launch) (Theys et al., 2019). We use hourly observations of NO<sub>2</sub> and PM<sub>2.5</sub> from the network of surface sites in the four target cities and NH<sub>3</sub> from the rural EMEP ~~supersites~~ in the UK, to assess whether satellite observations of NO<sub>2</sub>, AOD, and NH<sub>3</sub> reproduce temporal variability of

surface air quality. There are no direct reliable measurements of HCHO in the UK and measurements of NMVOCs are limited to a few sites that only measure light ( $\leq C9$ ) hydrocarbons.

Figure 1 shows locations of EMEP ~~supersites~~ in Harwell, England, south of Oxford (51.57° N, 1.32° W), Chilbolton Observatory, England, 40 miles south of Harwell (51.15° N, 1.44° W) and Auchencorth Moss, Scotland, south of Edinburgh (55.79° N, 3.24° W) (Malley et al., 2015; 2016; Walker et al., 2019). Instruments at the Harwell site were relocated to Chilbolton Observatory in 2016, providing the opportunity to assess the satellite data at sites with distinct agricultural activity and anthropogenic influence (Walker et al., 2019). There are also passive NH<sub>3</sub> samplers in the UK, but these have coarse temporal (monthly) resolution (Tang et al., 2018) and no temporal correlation ( $R < 0.1$ ) with ~~an earlier~~ previous version of the IASI NH<sub>3</sub> product ~~used here~~ (Van Damme et al., 2015).

## 2.1 Surface Monitoring Networks in the UK and India

Surface sites in the UK with continuous (hourly) observations of air pollutants typically use chemiluminescence instruments for NO<sub>2</sub>, ion chromatography instruments for NH<sub>3</sub> (Stieger et al., 2018), and a range of reference instruments for PM<sub>10</sub> and PM<sub>2.5</sub>. Sites used here in London and Birmingham are from the national Department for Environment, Food and Rural Affairs (Defra) Automatic Urban and Rural Network (AURN) ([https://uk-air.defra.gov.uk/data/data\\_selector](https://uk-air.defra.gov.uk/data/data_selector); last accessed 28 January 2020) with additional sites in London from the King's College London Air Quality Network (LAQN) (<https://www.londonair.org.uk/london/asp/datadownload.asp>; last accessed 9 March 2019), and in Birmingham from Ricardo Energy & Environment ([https://www.airqualityengland.co.uk/local-authority/data?la\\_id=407](https://www.airqualityengland.co.uk/local-authority/data?la_id=407); last accessed 24 January 2020) and Birmingham City Council. Observations at the UK EMEP ~~supersites~~ are from the EMEP Chemical Coordinating Centre (<http://ebas.nilu.no/>; last accessed 9 March 2019). Measurements in India are limited to NO<sub>2</sub>, PM<sub>10</sub> and PM<sub>2.5</sub> monitoring sites maintained in Delhi by the Central Pollution Control Board (CPCB), India Meteorological Department (IMD) and Delhi Pollution Control Committee (DPCC), and in Kanpur by the Uttar Pradesh Pollution Control Board (UPPCB) and the Indian Institute of Technology (IIT) Kanpur (Gaur et al., 2014). PM<sub>2.5</sub> measurements at IIT Kanpur form part of the international Surface Particulate Matter Network (SPARTAN) (Snider et al., 2015; Weagle et al., 2018). Data from CPCB, IMD, DPCC,

and UPPCB were downloaded from the CPCB site (<https://app.cpcbcr.com/ccr/#/caaqm-dashboard/caaqm-landing>; last accessed 5 February 2020). NASA AErosol RObotic NETwork (AERONET) sun photometer AOD measurements (version 3.0, Level 2.0; <https://aeronet.gsfc.nasa.gov/>; last accessed 5 February 2020) are used to validate MODIS AOD at Chilbolton (UK) and Kanpur (India) (Holben et al., 1998; Giles et al., 2019).

160

## 2.2 Earth Observations of Air Pollution

OMI onboard the NASA Aura satellite, launched in October 2004, has a nadir spatial resolution of 13 km × 24 km, a swath width of 2600 km, and ~~an Equator crossing time of 13h30 LT passes overhead twice each day. OMI is a UV-visible spectrometer and so only provides daytime observations (13h30 LT).~~ Global coverage was daily in 2005-2009 and is every 2  
165 days thereafter due to the row anomaly (<http://projects.knmi.nl/omi/research/product/rowanomaly-background.php>). We use the operational NASA OMI Level 2 product of tropospheric column NO<sub>2</sub> for 2005-2018 (version 3.0; doi:[10.5067/Aura/OMI/DATA2017](https://doi.org/10.5067/Aura/OMI/DATA2017); last accessed 29 February 2020) (Krotkov et al., 2017). Total columns of HCHO are from the Quality Assurance for Essential Climate Variables (QA4ECV) OMI Level 2 product for 2005-2018 (version 1.1; <http://doi.org/10.18758/71021031>; last accessed 15 February 2020) (De Smedt et al., 2018). We remove OMI NO<sub>2</sub> scenes with  
170 cloud radiance fraction ≥ 50 %, terrain reflectivity ≥ 30 % and solar zenith angle (SZA) ≥ 85° (Lamsal et al., 2010) and OMI HCHO scenes with processing errors and processing quality flags not equal to zero (De Smedt et al., 2017). This removes scenes with cloud radiance fraction > 60 % and SZA > 80°. We apply additional filtering to remove scenes with cloud radiance fraction ≥ 50 % to be consistent with the threshold applied to OMI NO<sub>2</sub>. This additional filtering removes 16 % of the data for London, 19 % for Birmingham, 7 % for Delhi, and 8 % for Kanpur.

175

IASI on the polar sun-synchronous Metop-A satellite, launched in October 2006, ~~makes is an infrared instrument with a morning (09h30 LT) and nighttime (21h30 LT) observations, providing overpass. It provides~~ global coverage twice a day with circular 12 km diameter pixels at nadir and a swath width of 2200 km. We use observations for the morning only, when the thermal contrast and sensitivity to the boundary layer is greatest (Clarisse et al., 2010; Van Damme et al., 2014). We use the  
180 Level 2 reanalysis product of total column NH<sub>3</sub> (version 3R) obtained with consistent meteorology (ERA5) for clear-sky



conditions (cloud fraction < 10 %) (~~Van Damme et al., 2017~~). ~~The earlier version (version 2R) was shown to be consistent with global ground-based measurements of total column NH<sub>3</sub> (Van Damme et al., 2020). The earlier IASI NH<sub>3</sub> product version (version 2R) was shown to be consistent with ground-based measurements of total column NH<sub>3</sub> at 9 global sites (Dammers et al., 2016).~~

185

The MODIS sensor onboard NASA's Aqua satellite, launched in May 2002, has a swath width of 2330 km, crosses the Equator at 13h30 LT and provides near-daily global coverage. We use the Level 2 Collection 6.1 Dark Target daily AOD product at 550 nm and 3 km resolution (Remer et al., 2013; Wei et al., 2019) (<https://ladsweb.modaps.eosdis.nasa.gov/>; last accessed 29 February 2020). We use only the highest quality AOD data (quality assurance flag of 3) (Munchak et al., 2013; Remer et al., 2013; Gupta et al., 2018).

190

### 3. Consistency between Earth Observations and Surface Air Pollution

Earth observation products retrieve ~~concentrations~~ column densities of pollutants throughout the atmospheric column (total for HCHO, AOD and NH<sub>3</sub>; troposphere for NO<sub>2</sub>), and are compared in what follows to surface concentrations from the surface monitoring network sites. This is to evaluate whether monthly variability in the column reproduces variability in surface concentrations before going on to use the satellite observations to quantify long-term trends in air pollution in the four cities. The majority of the enhancement in the column, with the exception of events like long-range transport, is near the surface (Fishman et al., 2008; Duncan et al., 2014). Sources of errors in ~~the~~ retrieval of HCHO and NO<sub>2</sub> column densities include uncertainties in simulated vertical profiles ~~of HCHO<sub>2</sub> and NO<sub>2</sub>~~ presence of clouds and aerosols (Boersma et al., 2004; Lin et al., 2015; Zhu et al., 2016; Silvern et al., 2018), ~~reliance~~ Retrieval of NH<sub>3</sub> column densities from IASI relies on thermal contrast between the Earth's surface and atmosphere and a sufficiently large training dataset ~~for IASI NH<sub>3</sub>~~ (Whitburn et al., 2016; Van Damme et al., 2017), ~~and~~ Errors in retrieval of AOD include uncertainties in aerosol properties and atmospheric conditions ~~to estimate AOD by~~ in matching simulated and observed top-of-atmosphere radiances from single viewing angle instruments like MODIS (Remer et al., 2005; Levy et al., 2007; 2013). To the extent that errors are random, these are reduced with temporal and spatial averaging.

200

In what follows, city-average OMI NO<sub>2</sub> and MODIS AOD are compared to representative city-average surface concentrations of NO<sub>2</sub> in all four cities, and PM<sub>2.5</sub> in London and Birmingham. IASI NH<sub>3</sub> is compared to coincident surface observations of NH<sub>3</sub> at UK EMEP ~~supersites~~ (Figure 1).

### 210 3.1 Assessment of OMI NO<sub>2</sub>

Data for NO<sub>2</sub> in the UK include 152 monitoring sites in London, 8 in Birmingham, 37 in Delhi, and 2 in Kanpur (Figure 1). The data we use for London and Birmingham have been independently ratified, but we still find and remove spurious NO<sub>2</sub> observations. These include persistent (> 24 hours) low (< 1 µg m<sup>-3</sup>) values that do not exhibit diurnal variability. This occurs at fewer than 10 % of the sites and accounts for at most 1 % of the data at these sites. We identified that NO<sub>2</sub> data from DPCC and CPCB (Delhi) and from UPPCB (Kanpur) ~~is~~networks are inconsistently reported in either ppbv or µg m<sup>-3</sup>, but the corresponding units are reported as µg m<sup>-3</sup>. As information on the units of the individual data are not provided. ~~We distinguish data, we determine whether NO<sub>2</sub> is~~ reported in ~~either~~ ppbv or µg m<sup>-3</sup> by regressing total NO<sub>x</sub> (reported throughout in ppbv, following the CPCB protocol (CPCB, 2015)) against the sum of the reported NO and NO<sub>2</sub>. We identify that NO<sub>2</sub> reported in ppbv ~~as the (29 % of DPCC, 10 % of CPCB and 74 % of UPPCB data that)~~ populates along the 1:1 line and so we convert these to µg m<sup>-3</sup> using 1.88 µg m<sup>-3</sup> ppbv<sup>-1</sup>. ~~All~~The same unit inconsistency does not exist for the IMD NO<sub>2</sub> data. These are reported throughout in ppbv and so ~~the same conversion factor is applied~~are converted to these µg m<sup>-3</sup>.

We only consider surface observations coincident with the OMI record (2005-2018), around the satellite overpass (12h00-15h00 LT). We find that NO<sub>2</sub> declines at most sites in London (ranging from -0.8 to -3.6 % a<sup>-1</sup>) and Birmingham (-1.1 to -3.8  
225 % a<sup>-1</sup>), with the exception of a few sites influenced by local sources. These include Marylebone Road in central London and Moor Street in Birmingham City Centre. Both are impacted by dense traffic and development projects (Carslaw et al., 2016; Harrison and Beddows, 2017). We find that NO<sub>2</sub> increases in Moor Street by 6.8 % a<sup>-1</sup> from 2013 to 2017. There are too few long-term sites in Delhi and Kanpur to determine trends at individual sites. ~~We remove sites in London and Birmingham~~We do not filter out sites based on site classification, as this information is not readily available for sites in India. Instead, we

230 ~~remove sites~~ influenced by local effects and not consistent with month-to-month variability representative of the city. This we do by detrending surface NO<sub>2</sub> at each site, cross-correlating the detrended data for each site, and selecting sites with consistent month-to-month variability ( $R > 0.5$ ) in the detrended data. The original surface NO<sub>2</sub> (including the trend) at the selected sites are then used to obtain city-average monthly mean NO<sub>2</sub> for comparison ~~with~~to OMI NO<sub>2</sub>.

235 The selected sites are shown as triangles in Figure 1. Filtering for spurious data and selection of consistent sites leads to 14 years of data at 46 sites in London, 5.5 years of data at 6 sites in Birmingham, and 8 years of data at 5 sites in Delhi. There are only 2 sites in Kanpur, but these are not consistent for the brief period of overlap ( $R < 0.5$  for 2011-2012), so we choose the site with the longest record (2011-2018). For the period of overlap for London and Birmingham (2011-2016), mean city-average midday NO<sub>2</sub> is 42.8  $\mu\text{g m}^{-3}$  for London and 26.5  $\mu\text{g m}^{-3}$  for Birmingham. For Delhi and Kanpur (2011-2018 overlap),  
240 mean city-average midday NO<sub>2</sub> is 91.9  $\mu\text{g m}^{-3}$  for Delhi and 48.4  $\mu\text{g m}^{-3}$  for Kanpur.

We sample satellite observations within the administrative boundaries of the four cities (Figure 1) to capture the domain that policymakers would target and assess. This is extended a few km beyond the administrative boundary for Birmingham; as otherwise there are too few observations due to frequent clouds and small city size ( $\sim 300 \text{ km}^2$ ). Error-weighted OMI NO<sub>2</sub>  
245 monthly means are estimated for individual pixels centred within the administrative boundaries (including 6.5 km beyond for Birmingham). Months with  $< 5$  observations are removed. The number of months retained is 77 % for Birmingham,  $> 90$  % for London, and  $> 95$  % for Delhi and Kanpur.

Figure 2 compares OMI and surface NO<sub>2</sub>. The comparison for London and Birmingham is divided into months excluding  
250 winter (December-February) and ~~for~~ winter months only. Factors that contribute to seasonality in the relationship between tropospheric column and surface NO<sub>2</sub> in locations with large seasonal shifts in temperature and solar insolation include ~~a longer NO<sub>x</sub> lifetime in winter than summer (Shah et al., 2020) and a lower mixed layer height in winter than summer. reduced photolysis rates leading to longer NO<sub>x</sub> lifetime in winter than summer (Boersma et al., 2009; Kenagy et al., 2018; Shah et al., 2020) and a lower mixed layer height in winter than summer contributing to accumulation of pollution.~~ Maximum mixed layer

255 height for London is 900 m in winter compared to 1500 m in summer (Kotthaus and Grimmond, 2018). The slope for Birmingham in winter ( $0.43 \times 10^{15}$  molecules  $\text{cm}^{-2}$  ( $\mu\text{g m}^{-3}$ ) $^{-1}$ ) is steeper than that for non-winter months ( $0.27 \times 10^{15}$  molecules  $\text{cm}^{-2}$  ( $\mu\text{g m}^{-3}$ ) $^{-1}$ ), but the difference is not significant. The surface  $\text{NO}_2$  measurements are also susceptible to interferences (positive biases) from thermal decomposition of  $\text{NO}_x$  reservoir compounds such as peroxyacetyl nitrates in chemiluminescence instruments that use heated molybdenum catalysts (Dunlea et al., 2007; Reed et al., 2016). The effect is worse in winter than  
260 summer in London and Birmingham due to abundance of  $\text{NO}_x$  reservoir compounds in winter (Lamsal et al., 2010). OMI and surface  $\text{NO}_2$  monthly variability is consistent ( $R = 0.51$ - $0.71$ ), except for London in winter ( $R = 0.33$ ). The correlation degrades ( $R = 0.40$  for London,  $R = 0.54$  for Birmingham) if all months are considered. The seasonal dependence of the relationship between satellite and surface  $\text{NO}_2$  affects the ability to use OMI  $\text{NO}_2$  to infer seasonality in the underlying  $\text{NO}_x$  emissions. The same consistency in monthly mean OMI and surface  $\text{NO}_2$  in non-winter months ( $R \geq 0.6$ ) has also been found over the UK  
265 city Leicester (surface area  $73 \text{ km}^2$ ) (Kramer et al., 2008). Data for all months are used for Delhi and Kanpur, as there is less variability in mixed layer height in India than the UK. Seasonal mean maximum planetary boundary layer height in Delhi varies from 1200 m in winter to 1400 m during monsoon months (Nakoudi et al., 2019). Month-to-month variability in tropospheric column and surface  $\text{NO}_2$  (Figure 2) is consistent in Delhi ( $R = 0.55$ ) and Kanpur ( $R = 0.52$ ). OMI  $\text{NO}_2$  exhibits much greater variability for an increment change in surface  $\text{NO}_2$  in the UK than in India, resulting in order-of-magnitude lower  
270 slopes for Delhi and Kanpur ( $0.033$  and  $0.039 \times 10^{15}$  molecules  $\text{cm}^{-2}$  ( $\mu\text{g m}^{-3}$ ) $^{-1}$ ) than for London and Birmingham ( $0.35$  and  $0.27 \times 10^{15}$  molecules  $\text{cm}^{-2}$  ( $\mu\text{g m}^{-3}$ ) $^{-1}$ ) (Figure 2). This difference is likely due to a combination of representativeness of surface sites and systematic biases in the OMI  $\text{NO}_2$  retrieval. In Delhi, the proportion of sites used in Figure 2 that measure the relatively lower concentration range of  $\text{NO}_2$  (annual mean  $\text{NO}_2 < 50 \mu\text{g m}^{-3}$ ) is just 20 % compared to 74 % for London, leading to a positive bias in city-average surface  $\text{NO}_2$  in Delhi. In Kanpur, we use only one site located 600 m from a national highway.  
275 Aerosols are not explicitly accounted for in the OMI  $\text{NO}_2$  retrieval (Krotkov et al., 2017). For very polluted cities like Delhi and Kanpur, this can lead to ~20% underestimate in OMI  $\text{NO}_2$  (Choi et al., 2020; Vasilkov et al., 2020).

### 3.2 Assessment of IASI NH<sub>3</sub>

Figure 3 compares monthly mean IASI and surface NH<sub>3</sub> at the three UK EMEP supersites. IASI is sampled up to 20 km around the surface site following the approach of Dammers et al. (2016) and surface observations are sampled around the IASI morning overpass (08h00-11h00 LT) on days with coincident IASI observations. As with NO<sub>2</sub>, only months with more than 5 observations are used. 38 % of months are retained for Auchencorth Moss, 62 % for Harwell and 61 % for Chilbolton Observatory. For the months retained, average NH<sub>3</sub> is 1.6 µg nitrogen (N) m<sup>-3</sup> for Auchencorth Moss, 2.5 µg N m<sup>-3</sup> for Harwell and 6.1 µg N m<sup>-3</sup> for Chilbolton Observatory. Chilbolton is southwest of mixed farmland, contributing to levels of NH<sub>3</sub> about 3 times higher than at Harwell (Walker et al., 2019). Harwell has more dynamic range in NH<sub>3</sub> and stronger correlation (R = 0.69) than the other two sites (R = 0.37 for Auchencorth Moss; R = 0.50 for Chilbolton Observatory). ~~The variability in the slopes also suggests that IASI overestimates NH<sub>3</sub> at low concentrations (Auchencorth Moss) and vice versa (Harwell and Chilbolton Observatory).~~ This Weak correlation at Auchencorth Moss may be because surface NH<sub>3</sub> concentrations are near the instrument detection limit (monthly mean NH<sub>3</sub> < 2.0 µg N m<sup>-3</sup>) and also because of low thermal contrast between the surface and overlying atmosphere (Van Damme et al., 2015; Dammers et al., 2016). The slope for Auchencorth Moss ( $4.02 \times 10^{15}$  molecules cm<sup>-2</sup> (µg N m<sup>-3</sup>)<sup>-1</sup>) is steeper than the slopes observed at sites with greater surface concentrations of NH<sub>3</sub> (Harwell =  $2.23 \times 10^{15}$  molecules cm<sup>-2</sup> (µg N m<sup>-3</sup>)<sup>-1</sup> and Chilbolton =  $2.07 \times 10^{15}$  molecules cm<sup>-2</sup> (µg N m<sup>-3</sup>)<sup>-1</sup>). Steeper slopes for sites with relatively low NH<sub>3</sub> concentrations is consistent with assessment of earlier IASI NH<sub>3</sub> product versions (Van Damme et al., 2015; Dammers et al., 2016).

### 3.3 Assessment of MODIS AOD

Figure 4 compares city-average monthly means of MODIS AOD and PM<sub>2.5</sub> for London in 2009-2018 and for Birmingham in 2009-2017. We use PM<sub>2.5</sub> data from 24 sites in London and 8 sites in Birmingham. We add 2 more Birmingham sites by deriving PM<sub>2.5</sub> from PM<sub>10</sub> at 2 sites with only PM<sub>10</sub> measurements. We use a conversion factor of 0.85 (PM<sub>2.5</sub> = 0.85 × PM<sub>10</sub>) that we obtain from the slope of SMA regression of hourly PM<sub>2.5</sub> and PM<sub>10</sub> at 6 sites in Birmingham with both measurements. We use a similar approach as applied to NO<sub>2</sub> to assess AOD. Only surface observations around the satellite overpass (12h00-15h00 LT) and with consistent detrended month-to-month variability (R > 0.5) are retained to obtain city-wide monthly mean

PM<sub>2.5</sub>. This results in 20 sites in London for 2009-2018 and 5 sites in Birmingham for 2009-2017. Mean midday city-average PM<sub>2.5</sub> for the period of overlap (2009-2017) is 13.7 µg m<sup>-3</sup> in London and 11.3 µg m<sup>-3</sup> in Birmingham. MODIS AOD monthly means are estimated for London by averaging the pixels centred within its administrative boundary and for Birmingham within and 6.5 km beyond the administrative boundary, as with OMI NO<sub>2</sub> (Section 3.1). We remove months with < 160 observations; equivalent in spatial coverage to 5 OMI pixels at nadir (the threshold used for OMI). After filtering, 53 % of months are removed for London and 72 % for Birmingham, mostly in winter. Fewer months than OMI are retained, as MODIS uses stricter cloud filtering. The correlations in Figure 4 are weak (R = 0.34 for London, R = 0.23 for Birmingham) and do not improve if we apply a less strict threshold for the number of observations required to calculate monthly means. The poor correlation may be due to environmental factors that complicate the relationship between AOD and surface PM<sub>2.5</sub>, such as variability in meteorological conditions ~~and~~, aerosol composition, ~~and~~ enhancements in aerosols above the boundary layer, and the aerosol radiative properties (Schaap et al., 2009; van Donkelaar et al., 2016; Shaddick et al., 2018; Sathe et al., 2019). We find that the same assessment is not feasible for Delhi or Kanpur as the record of surface PM<sub>2.5</sub> and PM<sub>10</sub> in these cities is too short.

315

Figure 5 compares time series of monthly mean city-average MODIS AOD and surface PM<sub>2.5</sub> in London (2009-2018) and Birmingham (2009-2017) to assess whether the weak correlation in Figure 4 affects agreement in trends of the two quantities. PM<sub>2.5</sub> is longer lived than NO<sub>2</sub>, so trends in PM<sub>2.5</sub> (lifetime order weeks) for the limited number of sites mostly located in central London should be more representative of variability across the city than the surface sites of NO<sub>2</sub> (lifetime order hours against conversion to temporary reservoirs). The steeper decline in surface PM<sub>2.5</sub> in Birmingham (3.7 % a<sup>-1</sup>) than in London (2.7 % a<sup>-1</sup>) is reproduced in the AOD record (3.7 % a<sup>-1</sup> in Birmingham; 2.5 % a<sup>-1</sup> in London), although the AOD trends are not significant. In the two UK cities, surface PM<sub>2.5</sub> peaks in spring, whereas AOD peaks in the summer, determined from multiyear monthly means (not shown). There are too few PM<sub>2.5</sub> measurements in Delhi and Kanpur to compare long-term trends.

325

~~There are too few PM<sub>2.5</sub> measurements in Delhi and Kanpur to~~ We compare long-term trends. Instead, we assess consistency of the MODIS AOD product with against ground-truth AOD from long-term AERONET at long-term sites in Kanpur and Chilbolton to assess whether errors in satellite retrieval of AOD contribute to the weak temporal correlation between MODIS

AOD and surface PM<sub>2.5</sub>. Daily AERONET AOD at 550 nm is estimated by interpolation using the second-order polynomial relationship between the logarithmic AOD and logarithmic wavelengths at 440, 500, 675 and 870 nm (Kaufman, 1993; Eck et al., 1999; Levy et al., 2010; Li et al., 2012; Georgoulias et al., 2016). AERONET is sampled 30 minutes around the MODIS overpass and MODIS is sampled 27.5 km around the AERONET site (Levy et al., 2010; Petrenko et al., 2012; Georgoulias et al., 2016; McPhetres and Aggarwal, 2018). Months with fewer than 160 MODIS observations are removed.

Figure 6 compares coincident AOD monthly means from MODIS and AERONET for Kanpur and Chilbolton. Monthly variability in MODIS and AERONET AOD is consistent at both sites ( $R \geq 0.8$ ). MODIS exhibits no appreciable bias at Kanpur, but has. There is positive variance (slope = 1.4) at Chilbolton that may result from sensitivity to errors in surface reflectivity at low AOD (Remer et al., 2013; Bilal et al., 2018). Mhawish et al. (2017)(Remer et al., 2013; Bilal et al., 2018) and residual cloud contamination (Wei et al., 2018; 2020). Mhawish et al. (2017) obtained similarly strong correlation ( $R = 0.8$ ), but positive bias (26 %), of MODIS AOD at Kanpur from an earlier 3 km MODIS AOD product (Collection 6).

340

#### 4. Air Quality Trends in London, Birmingham, Delhi, and Kanpur

The consistency we find between satellite and ground-based monthly mean city-average NO<sub>2</sub> (Figure 2) and rural NH<sub>3</sub> (Figure 3), and trends in city-average PM<sub>2.5</sub> (Figure 5) supports the use of the satellite record as constraints onto constraint surface air quality. Variability in NO<sub>2</sub>, HCHO, and NH<sub>3</sub> concentrations columns can also be related to precursor emissions of NO<sub>x</sub>, NMVOCs, and NH<sub>3</sub> (Martin et al., 2003; Lamsal et al., 2011; Marais et al., 2012; Zhu et al., 2014; Dammers et al., 2019), as their lifetimes against conversion to temporary or permanent sinks are relatively short, varying from 1-12 hours depending on photochemical activity, abundance of pre-existing acidic aerosols, and proximity to large sources (Jones et al., 2009; Richter, 2009; Paulot et al., 2017; Van Damme et al., 2018). We. We adopt the same sampling approach as used to evaluate OMI NO<sub>2</sub>. That is, we sample the satellite observations within the city administrative boundaries for London, Delhi and Kanpur, and extend the sampling domain for Birmingham beyond the administrative boundary by 6.5 km for OMI and MODIS and 10 km for IASI.

350

We apply the Theil-Sen single median estimator to the time series and also test the effect of fitting a non-linear function (Weatherhead et al., 1998; van der A et al., 2006; Pope et al., 2018) to account explicitly for seasonality:

355

$$Y_m = A + BX_m + C \sin(\omega X_m + \phi) \quad (1)$$

$Y_m$  is city-average satellite observations for month  $m$ ,  $X_m$  is the number of months from the start month (January 2005 for OMI and MODIS, and January 2008 for IASI), and  $A, B, C$  and  $\phi$  are fit parameters.  $A$  is the city-average satellite observations in the start month,  $B$  is the linear trend, and  $[C \sin(\omega X_m + \phi)]$  is the seasonal component that includes the amplitude  $C$ , frequency  $\omega$  (fixed to 12 months) and phase shift  $\phi$ . We only show the fit in Equation (1) if the trend  $B$  is different to that obtained with the Theil-Sen approach. TrendsThe confidence intervals (CIs) for the Theil-Sen trends are estimated using bootstrap resampling and trends are considered significant for p-value < 0.05, that is, if the 95 % CI range does not intersect zero.

365

Figure 7 shows the time series of monthly means of city-average OMI NO<sub>2</sub> in the four cities for 2005-2018. Decline in OMI NO<sub>2</sub> in both London and Birmingham is 2.5 % a<sup>-1</sup> and is significant. In Delhi, the OMI NO<sub>2</sub> increase is 2.0 % a<sup>-1</sup> and is significant (p-value = 0.003), whereas the increase in Kanpur of 0.9 % a<sup>-1</sup> is not (p-value = 0.06). The relationship between tropospheric column and surface NO<sub>2</sub> in London and Birmingham exhibits seasonality (Figure 2). This is in part due to seasonality in mixing depth, ~~but we~~. We find that excluding the winter months in the time series has only a small effect on the trend. NO<sub>2</sub> should exhibit seasonality in all cities due to ~~seasonality~~seasonal variability in its lifetime and sources (van der A et al., 2008). The fit in Equation (1) yields significant seasonality for all cities (p-value < 0.05 for the amplitude of the seasonality,  $C$ ), but the linear trends are similar to those in Figure 7: -2.4 % a<sup>-1</sup> for London and Birmingham; unchanged for Delhi and Kanpur.

375

Comparison of the OMI NO<sub>2</sub> trends in Figure 7 to surface observations is only possible for London, where there are 46 sites with consistent month-to-month variability representative of the city that operated continuously from 2005 to 2018. The trend



obtained for OMI NO<sub>2</sub> in London (-2.5 % a<sup>-1</sup>) is steeper than we estimate with the surface monitoring sites shown as triangles in Figure 1 (1.8 % a<sup>-1</sup> for 2005-2018). Most sites are in central London, and NO<sub>2</sub> trends in outer London are 1.6 times steeper than in central London (Carslaw et al., 2011). The decline in NO<sub>2</sub> in the two UK cities is less than the rate of decline in national NO<sub>x</sub> emissions (3.8 % a<sup>-1</sup>) for 2005-2017 from the national bottom-up emission inventory (Defra, 2019a). This may reflect a combination of factors. There is less steep decline in NO<sub>x</sub> emissions in London compared to the national total that may in part be due to discrepancies between real-world and reported diesel NO<sub>x</sub> emissions (Fontaras et al., 2014), sustained heavy traffic in central London, and an increase in NO<sub>2</sub>-to-NO<sub>x</sub> emission ratios dampening decline in NO<sub>2</sub> (Grange et al., 2017). There is also weakened sensitivity of the tropospheric column to changes in surface NO<sub>2</sub> due to ana gradual increase in the relative contribution of the free tropospheric background to the tropospheric column, ~~though this effect may be greater in locations with large free tropospheric sources like lightning (Silvern et al., 2019)(Silvern et al., 2019). The positive trends in Delhi and Kanpur likely reflect a 2-fold increase in vehicle ownership in Delhi (GoD, 2019), rapid industrialisation in Kanpur (Nagar et al., 2019), and limited effect of air quality policies on pollution sources. This is corroborated by NO<sub>x</sub> emissions compliance failures at more than 50 % of coal fired power plants in Delhi and the surrounding area (Pathania et al., 2018). The lack of trend reversal in Delhi, despite implementation of air quality policies, is consistent with the lack of trend reversal reported by Georgoulas et al. (2019). They used a 21-year record (1996-2017) of multiple space based sensors to estimate a significant and sustained increase in NO<sub>2</sub> of 3.1 % a<sup>-1</sup> in Delhi. By the end of 2018, tropospheric column NO<sub>2</sub> is similar in London and Delhi ( $5.7 \times 10^{15}$  molecules cm<sup>-2</sup>; Figure 7), though we estimate, using the regression lines in Figure 2, that surface NO<sub>2</sub> in Delhi is 3-fold (80 µg m<sup>-3</sup>) more than in London.~~

~~The direction of the trends for all four cities is consistent with other trend studies, with differences in the absolute size of the trend due to differences in instruments, time periods, and sampling domains. Pope et al. (2018) observed declines in OMI NO<sub>2</sub> for 2005-2015 of  $2.3 \pm 0.5 \times 10^{14}$  molecules cm<sup>-2</sup> a<sup>-1</sup> for London and  $1.1 \pm 0.5 \times 10^{14}$  molecules cm<sup>-2</sup> a<sup>-1</sup> for Birmingham. We obtain a similar trend for Birmingham but a steeper decline for London of  $2.6 \times 10^{14}$  molecules cm<sup>-2</sup> a<sup>-1</sup> using our sampling domain for 2005-2015, though the difference is not significant. Schneider et al. (2015) obtained less steep and non-significant changes in NO<sub>2</sub> in London ( $-1.7 \pm 1.2$  % a<sup>-1</sup>) and Delhi ( $1.4 \pm 1.2$  % a<sup>-1</sup>) from the SCanning Imaging Absorption spectroMeter~~

for Atmospheric CHartographyY (SCIAMACHY) for 2002-2013. Trends in OMI NO<sub>2</sub> for 2005-2014 from ul-Haq et al. (2015) are similar to ours for Delhi (2.0 % a<sup>-1</sup>) but lower for Kanpur (0.2 % a<sup>-1</sup>). Studies have also combined multiple instruments to derive trends since the mid 1990s. These find decreases in NO<sub>2</sub> over London of 0.7 % a<sup>-1</sup> for 1996-2006 (van der A et al., 2008) and 1.7 % a<sup>-1</sup> for a longer observing period (1996-2011) (Hilboll et al., 2013), and the same increase for Delhi of 7.4 % a<sup>-1</sup> in 1996-2006 (van der A et al., 2008) and 1996-2011 (Hilboll et al., 2013); much steeper than ours in Figure 7.

Figure 8 shows time series of monthly means of city average IASI NH<sub>3</sub> in the four cities for 2008-2018. This weakening of the trend in the tropospheric column will likely be less in London than in Birmingham, due to greater local surface emissions in large cities such as London (Zara et al., 2021). The positive trends in Delhi and Kanpur likely reflect a 2-fold increase in vehicle ownership in Delhi (Govt. of Delhi, 2019), rapid industrialisation in Kanpur (Nagar et al., 2019), and limited effect of air quality policies on pollution sources. This is corroborated by NO<sub>x</sub> emissions compliance failures at more than 50 % of coal-fired power plants in Delhi and the surrounding area (Pathania et al., 2018). The lack of trend reversal in Delhi, despite implementation of air quality policies, is consistent with the lack of trend reversal reported by Georgoulas et al. (2019). They used a 21-year record (1996-2017) of multiple space-based sensors to estimate a significant and sustained increase in NO<sub>2</sub> of 3.1 % a<sup>-1</sup> in Delhi. By the end of 2018, tropospheric column NO<sub>2</sub> is similar in London and Delhi ( $5.7 \times 10^{15}$  molecules cm<sup>-2</sup>; Figure 7) but OMI NO<sub>2</sub> over India may be biased low, due to the presence of optically thick aerosols (AOD > 0.4; Figure 6) that are not explicitly accounted for in the retrieval (Section 3.1).

The direction of the trends for all four cities is consistent with other trend studies, with differences in the absolute size of the trend due to differences in instruments, time periods, and sampling domains. Pope et al. (2018) observed declines in OMI NO<sub>2</sub> for 2005-2015 of  $2.3 \pm 0.5 \times 10^{14}$  molecules cm<sup>-2</sup> a<sup>-1</sup> for London and  $1.1 \pm 0.5 \times 10^{14}$  molecules cm<sup>-2</sup> a<sup>-1</sup> for Birmingham. We obtain a similar trend for Birmingham but a steeper decline for London of  $2.6 \times 10^{14}$  molecules cm<sup>-2</sup> a<sup>-1</sup> using our sampling domain for 2005-2015, though the difference is not significant. Schneider et al. (2015) obtained less steep and non-significant changes in NO<sub>2</sub> in London ( $-1.7 \pm 1.2$  % a<sup>-1</sup>) and Delhi ( $1.4 \pm 1.2$  % a<sup>-1</sup>) from the SCanning Imaging Absorption spectromETER for Atmospheric CHartographyY (SCIAMACHY) for 2002-2013. Trends in OMI NO<sub>2</sub> for 2005-2014 from ul-Haq et al. (2015)

are similar to ours for Delhi ( $2.0\% \text{ a}^{-1}$ ) but lower for Kanpur ( $0.2\% \text{ a}^{-1}$ ). Studies have also combined multiple instruments to derive trends since the mid-1990s. These find decreases in  $\text{NO}_2$  over London of  $0.7\% \text{ a}^{-1}$  for 1996-2006 (van der A et al., 2008) and  $1.7\% \text{ a}^{-1}$  for a longer observing period (1996-2011) (Hilboll et al., 2013), and a consistent increase for Delhi of  $7.4\% \text{ a}^{-1}$  in 1996-2006 (van der A et al., 2008) and 1996-2011 (Hilboll et al., 2013); much steeper than ours in Figure 7.

Figure 8 shows time series of monthly means of city-average IASI  $\text{NH}_3$  in the four cities for 2008-2018. Mean IASI  $\text{NH}_3$  is

15-20 times more in Delhi and Kanpur than in London and Birmingham due to larger emissions of  $\text{NH}_3$  in the IGP, higher ambient temperatures promoting volatilization of  $\text{NH}_3$ , and greater sensitivity of IASI to  $\text{NH}_3$  due to greater thermal contrast between the surface and the atmosphere over India (Van Damme et al., 2015; Dammers et al., 2016; Wang et al., 2019). IASI  $\text{NH}_3$  decreases by  $0.1\% \text{ a}^{-1}$  in Kanpur,  $0.6\% \text{ a}^{-1}$  in Birmingham and  $2.4\% \text{ a}^{-1}$  in London, and increases by  $0.5\% \text{ a}^{-1}$  in Delhi. None of the trends are significant. Measurements of surface  $\text{NH}_3$  from continuous monitors deployed in Delhi in April 2010 to July 2011 exhibit the same seasonality as IASI  $\text{NH}_3$ , peaking in the monsoon season (July-September) (Singh and Kulshrestha, 2012). We investigated the effect of  $\text{NH}_3$  seasonality on the trend using Equation (1) (grey solid lines in Figure 8). Similar to  $\text{NO}_2$ , all four cities show significant seasonality ( $p$ -value  $< 0.05$  for the amplitude of the seasonality,  $C$ ). The linear trends (grey dashed lines in Figure 8) are more positive than those obtained with Theil-Sen for all four cities, but are still not significant. This leads to a trend reversal in Kanpur ( $+1.0\% \text{ a}^{-1}$ ) and Birmingham ( $+2.1\% \text{ a}^{-1}$ ), steeper increase in Delhi ( $+3.7\% \text{ a}^{-1}$ ), and a less negative trend in London ( $-0.6\% \text{ a}^{-1}$ ).

Relating trends in  $\text{NH}_3$  concentrations to trends in  $\text{NH}_3$  emissions is complicated by partitioning of  $\text{NH}_3$  to aerosols to form ammonium and dependence of this process on pre-existing aerosols that have declined in abundance across the UK due largely to controls on precursor emissions of  $\text{SO}_2$  (Vieno et al., 2014). Harwell and Auchencorth Moss include measurements of gas-phase  $\text{NH}_3$  and aerosol-phase ammonium in  $\text{PM}_{2.5}$ . These exhibit large and distinct seasonality, so we use Equation (1) to estimate changes of  $-0.096 \mu\text{g N m}^{-3} \text{ a}^{-1}$  for ammonium and  $+0.031 \mu\text{g N m}^{-3} \text{ a}^{-1}$  for  $\text{NH}_3$  at Auchencorth Moss in 2008-2012 and similar changes at Harwell in 2012-2015 of  $-0.10 \mu\text{g N m}^{-3} \text{ a}^{-1}$  for ammonium and  $+0.035 \mu\text{g N m}^{-3} \text{ a}^{-1}$  for  $\text{NH}_3$ . Only the decline in ammonium at Auchencorth Moss is significant. This suggests the increase in rural  $\text{NH}_3$  includes contributions from

unregulated agricultural emissions and reduced partitioning of  $\text{NH}_3$  to pre-existing aerosols. The opposite trend (decline) in  $\text{NH}_3$  in London obtained with Theil-Sen and Equation (1) (Figure 8) may be because decline in local vehicular emissions of  $\text{NH}_3$  with a shift in catalytic converter technology (Richmond et al., 2020) ~~outweighs the increase in  $\text{NH}_3$  from agriculture in London and offsets reduced aerosol partitioning of  $\text{NH}_3$  with decline in sulfate~~ outweighs the increase in  $\text{NH}_3$  from waste and domestic combustion (Defra, 2019a), and nearby agriculture (Vieno et al., 2016) and offsets reduced partitioning of  $\text{NH}_3$  to acidic aerosols with decline in sulfate. The opposite effect would be expected in Delhi due to nation-wide increases in  $\text{SO}_2$  emissions and sulfate abundance (Klimont et al., 2013; Aas et al., 2019). That is, the increase in  $\text{NH}_3$  emissions may be steeper than the increase in  $\text{NH}_3$  ~~concentrations~~ columns in Figure 8 due to a corresponding increase in partitioning of  $\text{NH}_3$  to pre-existing aerosols as these become more abundant.

Figure 9 shows the time series of city-average monthly mean OMI HCHO for the four cities for 2005-2018 after removing the background contribution from oxidation of methane and other long-lived VOCs to isolate variability in the column due to reactive NMVOCs (Zhu et al., 2016). A representative background is obtained as monthly mean OMI HCHO over the remote Atlantic Ocean (25-35° N, 35-45° W) for the UK and the remote Indian Ocean (10-20° S, 70-80° E) for India. The non-linear function in Equation (1) is fit to these background HCHO values and used to subtract the background contribution, as in Marais et al. (2012), from the city-average monthly means. OMI HCHO columns from oxidation of reactive NMVOCs in Delhi and Kanpur are almost twice those in London and Birmingham due to a combination of unregulated sources (Venkataraman et al., 2018) and high temperatures enhancing emissions of isoprene, a dominant HCHO precursor in India (Surl et al., 2018; Chalilyakunnel et al., 2019). The trends suggest reactive NMVOCs emissions have decreased in Birmingham (1.6 % a<sup>-1</sup>) and increased in London (0.5 % a<sup>-1</sup>), Delhi (1.9 % a<sup>-1</sup>) and Kanpur (1.0 % a<sup>-1</sup>). Only Delhi has a significant trend. The spread in values increases for Delhi and Kanpur from 19-24 % relative to the trend line in 2005 to 31-40 % in 2018. The change in the spread of values does not appear to be due to loss of data resulting from the row anomaly, as the change in the spread of HCHO over time is similar if we remove all pixels affected by the row anomaly for the entire data record (2005-2018). OMI HCHO slant columns (HCHO along the instrument viewing path) remain relatively stable throughout the OMI record (Zara et al., 2018), so the increase in variability may reflect more extreme emissions from seasonal sources like open fires in the IGP (Jethva et al., 2019). The trends from satellite observations of HCHO in megacities obtained by De Smedt et al. (2010) using

multiple instruments for 1997-2009 are consistent with ours for Delhi ( $1.6 \pm 0.7 \% a^{-1}$ ), but opposite for London ( $-0.4 \pm 2.1 \% a^{-1}$ ). There is a shift in the magnitude of the HCHO trend for London around 2011 (Figure 9) from an increase of  $0.3 \% a^{-1}$  (p-value = 0.9) in 2005-2011 to a rapid increase of  $9.3 \% a^{-1}$  (95% CI:  $0-26\% a^{-1}$ ) in 2012-2018. Visually the data suggest a decline in OMI HCHO in 2005-2011, as in De Smedt et al. (2010), but our trend estimate for 2005-2011 is affected by a limited analysis period and large interannual variability.

485 According to the UK bottom-up emission inventory, national NMVOCs emissions decreased by  $2.4 \% a^{-1}$  from 2005 to 2017 (Defra, 2019a). This is supported by decline in short-chain hydrocarbons measured at Harwell from  $2-3 \mu g m^{-3}$  in 2008 to  $0.8-0.9 \mu g m^{-3}$  in 2015. These include hydrocarbons from vegetation (isoprene and monoterpenes) and vehicles (light alkanes and aromatics), but exclude oxygenated VOCs (OVOCs) that in the UK include increasing contributions from domestic combustion, the food and beverage industry, and household products (Defra, 2019a). OVOCs have relatively high HCHO  
490 yields (Millet et al., 2006) and VOC concentrations measured during field campaigns in London and cities in India, including Delhi, are dominated by OVOCs ( $> 60 \%$  in London) (Valach et al., 2014; Sahu et al., 2016; Wang et al., 2020). In London, OVOCs also dominate inferred fluxes of VOCs (Langford et al., 2010) and reactivity of VOCs with the main atmospheric oxidant, OH (Whalley et al., 2016). The rapid increase in HCHO also has implications for ozone air pollution and the radical budget in London, as ozone formation is VOC-limited and HCHO photolysis is the second largest source of hydrogen oxide  
495 radicals ( $HO_x \equiv OH + HO_2$ ) in London (Whalley et al., 2018).

Figure 10 shows the time series of city-average MODIS AOD monthly means ~~of MODIS AOD~~ in the four cities for 2005-2018. Trends in AOD are significant in all four cities and range from a decline of  $4.2 \% a^{-1}$  in Birmingham to an increase of  $3.1 \% a^{-1}$  in Kanpur. Mean AOD in Delhi and Kanpur is on average 5-6 times more than in London and Birmingham, due to  
500 large local anthropogenic emissions, nearby agricultural emissions of  $PM_{2.5}$  and its precursors in the IGP, and long-range transport of desert dust (David et al., 2018). Our results, as absolute AOD trends for London ( $-0.004 a^{-1}$ ) and Birmingham ( $-0.007 a^{-1}$ ) for 2005-2018, are similar to trends obtained by Pope et al. (2018) for 2005-2015 ( $-0.006 a^{-1}$  for London;  $-0.005 a^{-1}$  for Birmingham). Our trends for both cities in India are less steep than the increase for Delhi ( $4.9 \% a^{-1}$ ) obtained for 2000-

2010 with the MODIS 10 km [AOD](#) product (Ramachandran et al., 2012) and for Kanpur (10.3 % a<sup>-1</sup>) obtained for 2001-2010  
505 with AERONET AOD at the Kanpur AERONET site (Kaskaoutis et al., 2012). This may reflect a recent dampening of the trend or differences in data products and sampling domain/period. Sulfate from coal-fired power plants in India makes a large contribution to PM<sub>2.5</sub> (Weagle et al., 2018) and emissions from these nearly doubled from 2004 to 2015 (Fioletov et al., 2016).

## 5. Conclusions

510 Satellite observations of atmospheric composition provide long-term and consistent global coverage of air pollutants. We assessed the ability of satellite observations of [nitrogen dioxide \(NO<sub>2</sub>\)](#) and formaldehyde (HCHO) from OMI for 2005-2018, ammonia (NH<sub>3</sub>) from IASI for 2008-2018, and aerosol optical depth (AOD) from MODIS for 2005-2018 to provide constraints on long-term changes in city-average NO<sub>2</sub>, reactive NMVOCs, NH<sub>3</sub>, and PM<sub>2.5</sub>, respectively in four cities: 2 in the UK (London and Birmingham) and 2 in India (Delhi and Kanpur).

515

Assessment of satellite observations against ground-based measurements followed careful screening of the in-situ measurements for poor quality data, correcting NO<sub>2</sub> data reported in inconsistent units at monitoring sites in Delhi and Kanpur, and removing sites influenced by local sources. OMI NO<sub>2</sub> reproduces monthly variability in surface concentrations of NO<sub>2</sub> in cities, whereas satellite AOD reproduces trends, but not monthly variability, in PM<sub>2.5</sub> in cities. MODIS and AERONET AOD  
520 are consistent at long-term monitoring sites in Kanpur and a [supersiteUK EMEP site](#) in southern England. IASI NH<sub>3</sub> is consistent with monthly variability in surface NH<sub>3</sub> concentrations at two of three rural UK [supersitesEMEP sites](#). There were no appropriate measurements of reactive NMVOCs to compare to OMI HCHO.

According to the long-term record from Earth observations, ~~concentrations of~~ NO<sub>2</sub>, PM<sub>2.5</sub>, and NMVOCs increased in Delhi  
525 and Kanpur. There is no reversal in the increase in NO<sub>2</sub> or PM<sub>2.5</sub> in Delhi or Kanpur, as would be expected from successful implementation of air pollution mitigation measures. In all four cities, the magnitude and direction of trends in NH<sub>3</sub> is sensitive to treatment of NH<sub>3</sub> seasonality and none of the NH<sub>3</sub> trends are significant. In London and Birmingham, NO<sub>2</sub> and PM<sub>2.5</sub>

decrease, and HCHO, a proxy for reactive NMVOCs emissions, decreases in Birmingham, but exhibits a recent (2012-2018) sharp ( $> 9\% \text{ a}^{-1}$ ) increase in London. This may reflect increased emissions of oxygenated VOCs and long-chain hydrocarbons from household products, the food and beverage industry, and residential fuelwood burning. This would have implications for formation of secondary organic aerosols (SOA) contributing to  $\text{PM}_{2.5}$ , the radical ( $\text{HO}_x$ ) budget that includes large contribution from HCHO photolysis, and formation of surface ozone that is VOC-limited in London.

### Data availability

Corrected hourly  $\text{NO}_2$  data for Delhi and Kanpur ~~is~~ are available at <https://github.com/karnvoh/India-NO2-data>. Data from IIT Kanpur can be obtained by contacting SNT ([snt@iitk.ac.in](mailto:snt@iitk.ac.in)). Data for Birmingham not publicly available can be obtained by request from the Birmingham City Council. IASI  $\text{NH}_3$  data ~~can be requested directly from ULB ([lelariss@ulb.ac.be](mailto:lelariss@ulb.ac.be); [mvdamme1@ulb.ac.be](mailto:mvdamme1@ulb.ac.be))~~ are available at <https://iasi.aeris-data.fr/nh3/>.

### Author contributions

KV analysed and interpreted the data and prepared the manuscript, EAM assisted in the writing and provided supervisory guidance, with co-supervision from WJB. LK provided data analysis and usage guidance. SS derived the relationship between hourly  $\text{PM}_{10}$  and  $\text{PM}_{2.5}$  for Birmingham. Observations are from RS, AG, and SNT for the surface site in Kanpur, and MVD, LC, and PFC for IASI  $\text{NH}_3$ .

### Competing interests

The authors declare that they have no conflict of interest.

### Acknowledgements

This work was funded by a University of Birmingham Global Challenges Studentship awarded to KV, a NERC/EPSC grant (EP/R513465/1) awarded to EAM, a Chevening Scholarship from the Foreign and Commonwealth Office and partner organisations awarded to SS, and a DBT grant (BT/IN/UK/APHH/41/KB/2016-17) and CPCB grant (AQM/Source

apportionment\_EPC Project/2017) awarded to SNT. We thank the NERC Field Spectroscopy Facility, principal investigators  
550 and their staff for establishing and maintaining the AERONET sites at Kanpur and Chilbolton, and Peter Porter from  
Birmingham City Council for providing the surface network data for Birmingham. URLs and DOIs (if available) of the data  
used in this study are given in Section 2. ULB research by MVD, LC and PFC was supported by the Belgian State Federal  
Office for Scientific, Technical and Cultural Affairs (Prodex arrangement IASI.FLOW).

## 555 **References**

- ~~Aas, W., Mortier, A., Bowersox, V., Cherian, R., Faluvegi, G., Fagerli, H., Hand, J., Klimont, Z., Galy-Lacaux, C.,  
560 Lehmann, C. M. B., Myhre, C. L., Myhre, G., Olivie, D., Sato, K., Quaas, J., Rao, P. S. P., Schulz, M., Shindell, D., Skeie,  
R. B., Stein, A., Takemura, T., Tsyro, S., Vet, R., and Xu, X. B., Global and regional trends of atmospheric sulfur, *Sci. Rep.-  
Uk*, *9*, doi:10.1038/s41598-018-37304-0, 2019.~~
- ~~Anenberg, S. C., Aehakulwisut, P., Brauer, M., Moran, D., Apte, J. S., and Henze, D. K., Particulate matter attributable  
mortality and relationships with carbon dioxide in 250 urban areas worldwide, *Sci. Rep.-Uk*, *9*, doi:10.1038/s41598-019-  
48057-9, 2019.~~
- 565 ~~Barnes, J. H., Hayes, E. T., Chatterton, T. J., and Longhurst, J. W. S., Policy disconnect: A critical review of UK air quality  
policy in relation to EU and LAQM responsibilities over the last 20 years, *Environ. Sci. Policy*, *85*, 28-39,  
doi:10.1016/j.envsci.2018.03.024, 2018.~~
- ~~Bilal, M., Qiu, Z. F., Campbell, J. R., Spak, S. N., Shen, X. J., and Nazeer, M., A New MODIS C6 Dark Target and Deep  
570 Blue Merged Aerosol Product on a 3 km Spatial Grid, *Remote Sens. Basel*, *10*, doi:10.3390/rs10030463, 2018.~~
- ~~Brauer, M., Freedman, G., Frostad, J., van Donkelaar, A., Martin, R. V., Dentener, F., van Dingenen, R., Estep, K., Amini,  
H., Apte, J. S., Balakrishnan, K., Barregard, L., Broday, D., Feigin, V., Ghosh, S., Hopke, P. K., Knibbs, L. D., Kokubo, Y.,  
Liu, Y., Ma, S. F., Morawska, L., Sangrador, J. L. T., Shaddick, G., Anderson, H. R., Vos, T., Forouzanfar, M. H., Burnett,  
575 R. T., and Cohen, A., Ambient Air Pollution Exposure Estimation for the Global Burden of Disease 2013, *Environ. Sci.-  
Technol.*, *50*, 79-88, doi:10.1021/acs.est.5b03709, 2016.~~



- 580 Carnell, E., Vieno, M., Vardoulakis, S., Beck, R., Heaviside, C., Tomlinson, S., Dragosits, U., Heal, M. R., and Reis, S.,  
Modelling public health improvements as a result of air pollution control policies in the UK over four decades—1970 to  
2010, *Environ. Res. Lett.*, 14, doi:10.1088/1748-9326/ab1542, 2019.
- Carslaw, D. C., Beevers, S. D., Westmoreland, E., Williams, M. L., Tate, J. E., Murrells, T., Stedman, J., Li, Y., Grice, S.,  
Kent, A., and Tsagatakis, I., Trends in NO<sub>x</sub> and NO<sub>2</sub> emissions and ambient measurements in the UK, 2011.
- 585 Carslaw, D. C., Murrells, T. P., Andersson, J., and Keenan, M., Have vehicle emissions of primary NO<sub>2</sub> peaked?, *Faraday  
Discuss.*, 189, 439–454, doi:10.1039/c5fd00162e, 2016.
- Castell, N., Dauge, F. R., Schneider, P., Vogt, M., Lerner, U., Fishbain, B., Broday, D., and Bartonova, A., Can commercial  
low-cost sensor platforms contribute to air quality monitoring and exposure estimates?, *Environ. Int.*, 99, 293–302,  
590 doi:10.1016/j.envint.2016.12.007, 2017.
- Chalilyakunnel, S., Millet, D. B., and Chen, X., Constraining emissions of volatile organic compounds over the Indian  
subcontinent using spacebased formaldehyde measurements, *J. Geophys. Res.*, 124, 10525–10545,  
doi:10.1029/2019JD031262, 2019.
- 595 Clarisse, L., Shephard, M. W., Dentener, F., Hurtmans, D., Cady Pereira, K., Karagulian, F., Van Damme, M., Clerbaux, C.,  
and Coheur, P. F., Satellite monitoring of ammonia: A case study of the San Joaquin Valley, *J. Geophys. Res. Atmos.*, 115,  
doi:10.1029/2009jd013291, 2010.
- 600 CPCB; Central Pollution Control Board, India, Protocol for Data Transmission from CAAQM Stations Existing as on Date,  
[https://app.epebeer.com/ceer\\_docs/Protocol\\_CAAQM.pdf](https://app.epebeer.com/ceer_docs/Protocol_CAAQM.pdf), 2015.
- Crilley, L. R., Bloss, W. J., Yin, J., Beddows, D. C. S., Harrison, R. M., Allan, J. D., Young, D. E., Flynn, M., Williams, P.,  
Zotter, P., Prevot, A. S. H., Heal, M. R., Barlow, J. F., Halios, C. H., Lee, J. D., Szidat, S., and Mohr, C., Sources and  
605 contributions of wood smoke during winter in London: assessing local and regional influences, *Atmos. Chem. Phys.*, 15,  
3149–3171, doi:10.5194/acp-15-3149-2015, 2015.
- Crilley, L. R., Lucarelli, F., Bloss, W. J., Harrison, R. M., Beddows, D. C., Calzolari, G., Nava, S., Valli, G., Bernardoni, V.,  
and Vecchi, R., Source apportionment of fine and coarse particles at a roadside and urban background site in London during  
610 the 2012 summer ClearfLo campaign, *Environ. Pollut.*, 220, 766–778, doi:10.1016/j.envpol.2016.06.002, 2017.

Cusworth, D. H., Mickley, L. J., Sulprizio, M. P., Liu, T. J., Marlier, M. E., DeFries, R. S., Guttikunda, S. K., and Gupta, P., Quantifying the influence of agricultural fires in northwest India on urban air pollution in Delhi, India, *Environ. Res. Lett.*, **13**, doi:10.1088/1748-9326/aab303, 2018.

615

Dammers, E., Palm, M., Van Damme, M., Vigouroux, C., Smale, D., Conway, S., Toon, G. C., Jones, N., Nussbaumer, E., Warneke, T., Petri, C., Clarisse, L., Clerbaux, C., Hermans, C., Lutsch, E., Strong, K., Hannigan, J. W., Nakajima, H., Morino, I., Herrera, B., Stremme, W., Grutter, M., Schaap, M., Kruit, R. J. W., Notholt, J., Coheur, P. F., and Erisman, J. W., An evaluation of IASI NH<sub>3</sub> with ground-based Fourier transform infrared spectroscopy measurements, *Atmos. Chem. Phys.*, **16**, 10351–10368, doi:10.5194/acp-16-10351-2016, 2016.

620

Dammers, E., McLinden, C. A., Griffin, D., Shephard, M. W., Van der Graaf, S., Lutsch, E., Schaap, M., Gainairu Matz, Y., Fioletov, V., Van Damme, M., Whitburn, S., Clarisse, L., Cady Pereira, K., Clerbaux, C., Coheur, P. F., and Erisman, J. W., NH<sub>3</sub> emissions from large point sources derived from CrIS and IASI satellite observations, *Atmos. Chem. Phys.*, **19**, 12261–12293, doi:10.5194/acp-19-12261-2019, 2019.

625

David, L. M., Ravishankara, A. R., Kodros, J. K., Venkataraman, C., Sadavarte, P., Pierce, J. R., Chaliyakunnel, S., and Millet, D. B., Aerosol Optical Depth Over India, *J. Geophys. Res. Atmos.*, **123**, 3688–3703, doi:10.1002/2017jd027719, 2018.

630

De Smedt, I., Stavroukou, T., Muller, J. F., van der A, R. J., and Van Roozendaal, M., Trend detection in satellite observations of formaldehyde tropospheric columns, *Geophys. Res. Lett.*, **37**, doi:10.1029/2010gl044245, 2010.

635

De Smedt, I., van Geffen, J., Richter, A., Beirle, S., Yu, H., Vlietinck, J., Roozendaal, M. V., A, R. v. d., Lorente, A., Seanlon, T., Compernelle, S., Wagner, T., Eskes, H., and Boersma, F., Product User Guide for HCHO (Version 1.0), doi:10.18758/71021031, 2017.

640

De Smedt, I., Theys, N., Yu, H., Danckaert, T., Lerot, C., Compernelle, S., Van Roozendaal, M., Richter, A., Hilboll, A., Peters, E., Pedergnana, M., Loyola, D., Beirle, S., Wagner, T., Eskes, H., van Geffen, J., Boersma, K. F., and Veefkind, P., Algorithm theoretical baseline for formaldehyde retrievals from S5P TROPOMI and from the QA4ECV project, *Atmos. Meas. Tech.*, **11**, 2395–2426, doi:10.5194/amt-11-2395-2018, 2018.

Defra; Department for Environment Food & Rural Affairs, United Kingdom, Emissions of air pollutants in the UK, 1970 to 2017,

- 645 [https://assets.publishing.service.gov.uk/government/uploads/system/uploads/attachment\\_data/file/778483/Emissions\\_of\\_air\\_pollutants\\_1990\\_2017.pdf](https://assets.publishing.service.gov.uk/government/uploads/system/uploads/attachment_data/file/778483/Emissions_of_air_pollutants_1990_2017.pdf), 2019a.
- Defra; Department for Environment Food & Rural Affairs, United Kingdom, Clean Air Strategy, [https://assets.publishing.service.gov.uk/government/uploads/system/uploads/attachment\\_data/file/770715/clean-air-strategy-2019.pdf](https://assets.publishing.service.gov.uk/government/uploads/system/uploads/attachment_data/file/770715/clean-air-strategy-2019.pdf), 2019b.
- 650 Duncan, B. N., Prados, A. I., Lamsal, L. N., Liu, Y., Streets, D. G., Gupta, P., Hilsenrath, E., Kahn, R. A., Nielsen, J. E., Beyersdorf, A. J., Burton, S. P., Fiore, A. M., Fishman, J., Henze, D. K., Hostetler, C. A., Krotkov, N. A., Lee, P., Lin, M. Y., Pawson, S., Pfister, G., Pickering, K. E., Pierce, R. B., Yoshida, Y., and Ziemba, L. D., Satellite data of atmospheric pollution for US air quality applications: Examples of applications, summary of data end-user resources, answers to FAQs, and common mistakes to avoid, *Atmos. Environ.*, 94, 647–662, doi:10.1016/j.atmosenv.2014.05.061, 2014.
- 655 Dunlea, E. J., Herndon, S. C., Nelson, D. D., Volkamer, R. M., San Martini, F., Sheehy, P. M., Zahniser, M. S., Shorter, J. H., Wormhoudt, J. C., Lamb, B. K., Allwine, E. J., Gaffney, J. S., Marley, N. A., Grutter, M., Marquez, C., Blanco, S., Cardenas, B., Retama, A., Villegas, C. R. R., Kolb, C. E., Molina, L. T., and Molina, M. J., Evaluation of nitrogen dioxide chemiluminescence monitors in a polluted urban environment, *Atmos. Chem. Phys.*, 7, 2691–2704, doi:10.5194/acp-7-2691-2007, 2007.
- 660 Eek, T. F., Holben, B. N., Reid, J. S., Dubovik, O., Smirnov, A., O'Neill, N. T., Slutsker, I., and Kinne, S., Wavelength dependence of the optical depth of biomass burning, urban, and desert dust aerosols, *J. Geophys. Res. Atmos.*, 104, 31333–31349, doi:10.1029/1999jd900923, 1999.
- 665 Fioletov, V. E., McLinden, C. A., Krotkov, N., Li, C., Joiner, J., Theys, N., Carn, S., and Moran, M. D., A global catalogue of large SO<sub>2</sub> sources and emissions derived from the Ozone Monitoring Instrument, *Atmos. Chem. Phys.*, 16, 11497–11519, doi:10.5194/acp-16-11497-2016, 2016.
- 670 Fishman, J., Bowman, K. W., Burrows, J. P., Richter, A., Chance, K. V., Edwards, D. P., Martin, R. V., Morris, G. A., Pierce, R. B., Ziemke, J. R., Al Saadi, J. A., Creilson, J. K., Schaack, T. K., and Thompson, A. M., Remote sensing of tropospheric pollution from space, *B. Am. Meteorol. Soc.*, 89, 805–821, doi:10.1175/2008bams2526.1, 2008.
- 675 Fontaras, G., Franco, V., Dilara, P., Martini, G., and Manfredi, U., Development and review of Euro 5 passenger car emission factors based on experimental results over various driving cycles, *Sci. Total Environ.*, 468, 1034–1042, doi:10.1016/j.scitotenv.2013.09.043, 2014.

- 680 Fuller, G. W., Tremper, A. H., Baker, T. D., Yttri, K. E., and Butterfield, D., Contribution of wood burning to PM<sub>10</sub> in London, *Atmos. Environ.*, **87**, 87–94, doi:10.1016/j.atmosenv.2013.12.037, 2014.
- Gaur, A., Tripathi, S. N., Kanawade, V. P., Tare, V., and Shukla, S. P., Four year measurements of trace gases (SO<sub>2</sub>, NO<sub>x</sub>, CO, and O<sub>3</sub>) at an urban location, Kanpur, in Northern India, *J. Atmos. Chem.*, **71**, 283–301, doi:10.1007/s10874-014-9295-8, 2014.
- 685
- Georgoulas, A. K., Alexandri, G., Kourtidis, K. A., Lelieveld, J., Zanis, P., Poschl, U., Levy, R., Amiridis, V., Marinou, E., and Tsikerdekis, A., Spatiotemporal variability and contribution of different aerosol types to the aerosol optical depth over the Eastern Mediterranean, *Atmos. Chem. Phys.*, **16**, 13853–13884, doi:10.5194/acp-16-13853-2016, 2016.
- 690
- Georgoulas, A. K., van der A, R. J., Stammes, P., Boersma, K. F., and Eskes, H. J., Trends and trend reversal detection in 2 decades of tropospheric NO<sub>2</sub> satellite observations, *Atmos. Chem. Phys.*, **19**, 6269–6294, doi:10.5194/acp-19-6269-2019, 2019.
- 695
- Ghosh, S., Gupta, T., Rastogi, N., Gaur, A., Misra, A., Tripathi, S. N., Paul, D., Tare, V., Prakash, O., Bhattu, D., Dwivedi, A. K., Kaul, D. S., Dalai, R., and Mishra, S. K., Chemical Characterization of Summertime Dust Events at Kanpur: Insight into the Sources and Level of Mixing with Anthropogenic Emissions, *Aerosol Air Qual. Res.*, **14**, 879–891, doi:10.4209/aaqr.2013.07.0240, 2014.
- 700
- Giles, D. M., Sinyuk, A., Sorokin, M. G., Schafer, J. S., Smirnov, A., Slutsker, I., Eck, T. F., Holben, B. N., Lewis, J. R., Campbell, J. R., Welton, E. J., Korkin, S. V., and Lyapustin, A. I., Advancements in the Aerosol Robotic Network (AERONET) Version 3 database—automated near real time quality control algorithm with improved cloud screening for Sun photometer aerosol optical depth (AOD) measurements, *Atmos. Meas. Tech.*, **12**, 169–209, doi:10.5194/amt-12-169-2019, 2019.
- 705
- GoD; Planning Department, Delhi, Economic Survey of Delhi, 2018–2019, 2019.
- GoI; Ministry of Road Transport and Highways, India, Notification, <http://egazette.nic.in/WriteReadData/2016/168300.pdf>, 2016.
- 710
- GoI; Ministry of Environment Forest & Climate Change, India, National Clean Air Program, 2019.

Grange, S. K., Lewis, A. C., Moller, S. J., and Carslaw, D. C., Lower vehicular primary emissions of NO<sub>2</sub> in Europe than assumed in policy projections, *Nat. Geosci.*, 10, 914–918, doi:10.1038/s41561-017-0009-0, 2017.

715

Gupta, P., Remer, L. A., Levy, R. C., and Matteo, S., Validation of MODIS 3 km land aerosol optical depth from NASA's EOS Terra and Aqua missions, *Atmos. Meas. Tech.*, 11, 3145–3159, doi:10.5194/amt-11-3145-2018, 2018.

Guttikunda, S. K., and Jawahar, P., Atmospheric emissions and pollution from the coal-fired thermal power plants in India, *Atmos. Environ.*, 92, 449–460, doi:10.1016/j.atmosenv.2014.04.057, 2014.

720

Harrison, R. G., Nicoll, K. A., Marlton, G. J., Ryder, C. L., and Bennett, A. J., Saharan dust plume charging observed over the UK, *Environ. Res. Lett.*, 13, doi:10.1088/1748-9326/aabed9, 2018.

725

Harrison, R. M., and Beddows, D. C., Efficacy of Recent Emissions Controls on Road Vehicles in Europe and Implications for Public Health, *Sci. Rep. Uk*, 7, doi:10.1038/s41598-017-01135-2, 2017.

Heal, M. R., O'Donoghue, M. A., and Cape, J. N., Overestimation of urban nitrogen dioxide by passive diffusion tubes: a comparative exposure and model study, *Atmos. Environ.*, 33, 513–524, doi:10.1016/S1352-2310(98)00290-8, 1999.

730

Hilboll, A., Richter, A., and Burrows, J. P., Long-term changes of tropospheric NO<sub>2</sub> over megacities derived from multiple satellite instruments, *Atmos. Chem. Phys.*, 13, 4145–4169, doi:10.5194/acp-13-4145-2013, 2013.

Holben, B. N., Eck, T. F., Slutsker, I., Tanre, D., Buis, J. P., Setzer, A., Vermote, E., Reagan, J. A., Kaufman, Y. J., Nakajima, T., Lavenu, F., Jankowiak, I., and Smirnov, A., AERONET—A federated instrument network and data archive for aerosol characterization, *Remote Sens. Environ.*, 66, 1–16, doi:10.1016/S0034-4257(98)00031-5, 1998.

735

Jethva, H., Torres, O., Field, R. D., Lyapustin, A., Gautam, R., and Kayetha, V., Connecting Crop Productivity, Residue Fires, and Air Quality over Northern India, *Sci. Rep. Uk*, 9, doi:10.1038/s41598-019-52799-x, 2019.

740

Jones, N. B., Riedel, K., Allan, W., Wood, S., Palmer, P. I., Chance, K., and Notholt, J., Long-term tropospheric formaldehyde concentrations deduced from ground-based fourier transform solar infrared measurements, *Atmos. Chem. Phys.*, 9, 7131–7142, doi:10.5194/acp-9-7131-2009, 2009.

- 745 Kaskaoutis, D. G., Singh, R. P., Gautam, R., Sharma, M., Kosmopoulos, P. G., and Tripathi, S. N., Variability and trends of aerosol properties over Kanpur, northern India using AERONET data (2001–10), *Environ. Res. Lett.*, 7, doi:10.1088/1748-9326/7/2/024003, 2012.
- Kaufman, Y. J., Aerosol Optical Thickness and Atmospheric Path Radiance, *J. Geophys. Res. Atmos.*, 98, 2677–2692, doi:10.1029/92jd02427, 1993.
- 750 Kim, S. W., Heckel, A., McKeen, S. A., Frost, G. J., Hsie, E. Y., Trainer, M. K., Richter, A., Burrows, J. P., Peckham, S. E., and Grell, G. A., Satellite-observed US power plant NO<sub>x</sub> emission reductions and their impact on air quality, *Geophys. Res. Lett.*, 33, doi:10.1029/2006gl027749, 2006.
- 755 Klimont, Z., Smith, S. J., and Cofala, J., The last decade of global anthropogenic sulfur dioxide: 2000–2011 emissions, *Environ. Res. Lett.*, 8, doi:10.1088/1748-9326/8/1/014003, 2013.
- Kotthaus, S., and Grimmond, C. S. B., Atmospheric boundary layer characteristics from ceilometer measurements. Part 2: Application to London's urban boundary layer, *Q. J. Roy. Meteor. Soc.*, 144, 1511–1524, doi:10.1002/qj.3298, 2018.
- 760 Kramer, L. J., Leigh, R. J., Remedios, J. J., and Monks, P. S., Comparison of OMI and ground-based in situ and MAX-DOAS measurements of tropospheric nitrogen dioxide in an urban area, *J. Geophys. Res. Atmos.*, 113, doi:10.1029/2007jd009168, 2008.
- 765 Krotkov, N. A., Lamsal, L. N., Celarier, E. A., Swartz, W. H., Marchenko, S. V., Bucsela, E. J., Chan, K. L., Wenig, M., and Zara, M., The version 3 OMI NO<sub>2</sub> standard product, *Atmos. Meas. Tech.*, 10, 3133–3149, doi:10.5194/amt-10-3133-2017, 2017.
- 770 Lamsal, L. N., Martin, R. V., van Donkelaar, A., Celarier, E. A., Bucsela, E. J., Boersma, K. F., Dirksen, R., Luo, C., and Wang, Y., Indirect validation of tropospheric nitrogen dioxide retrieved from the OMI satellite instrument: Insight into the seasonal variation of nitrogen oxides at northern midlatitudes, *J. Geophys. Res. Atmos.*, 115, doi:10.1029/2009jd013351, 2010.
- 775 Lamsal, L. N., Martin, R. V., Padmanabhan, A., van Donkelaar, A., Zhang, Q., Sioris, C. E., Chance, K., Kurosu, T. P., and Newchurch, M. J., Application of satellite observations for timely updates to global anthropogenic NO<sub>x</sub> emission inventories, *Geophys. Res. Lett.*, 38, doi:10.1029/2010gl046476, 2011.

780 Landrigan, P. J., Fuller, R., Acosta, N. J. R., Adeyi, O., Arnold, R., Basu, N., Balde, A. B., Bertollini, R., Bose O'Reilly, S.,  
Boufford, J. I., Breyse, P. N., Chiles, T., Mahidol, C., Coll Seck, A. M., Cropper, M. L., Fobil, J., Fuster, V., Greenstone,  
M., Haines, A., Hanrahan, D., Hunter, D., Khare, M., Krupnick, A., Lanphear, B., Lohani, B., Martin, K., Mathiasen, K. V.,  
McTeer, M. A., Murray, C. J. L., Ndahimananjara, J. D., Perera, F., Potoenik, J., Preker, A. S., Ramesh, J., Rockstrom, J.,  
785 Salinas, C., Samson, L. D., Sandilya, K., Sly, P. D., Smith, K. R., Steiner, A., Stewart, R. B., Suk, W. A., van Schayek, O. C.  
P., Yadama, G. N., Yumkella, K., and Zhong, M., The Lancet Commission on pollution and health, *Lancet*, 391, 462–512,  
doi:10.1016/S0140-6736(17)32345-0, 2018.

Langford, B., Nemitz, E., House, E., Phillips, G. J., Famulari, D., Davison, B., Hopkins, J. R., Lewis, A. C., and Hewitt, C.  
N., Fluxes and concentrations of volatile organic compounds above central London, UK, *Atmos. Chem. Phys.*, 10, 627–645,  
doi:10.5194/acp-10-627-2010, 2010.

790 Levy, R. C., Remer, L. A., and Dubovik, O., Global aerosol optical properties and application to Moderate Resolution  
Imaging Spectroradiometer aerosol retrieval over land, *J. Geophys. Res. Atmos.*, 112, doi:10.1029/2006jd007815, 2007.

795 Levy, R. C., Remer, L. A., Kleidman, R. G., Mattoo, S., Ichoku, C., Kahn, R., and Eck, T. F., Global evaluation of the  
Collection 5 MODIS dark target aerosol products over land, *Atmos. Chem. Phys.*, 10, 10399–10420, doi:10.5194/acp-10-  
10399-2010, 2010.

800 Levy, R. C., Mattoo, S., Munchak, L. A., Remer, L. A., Sayer, A. M., Patadia, F., and Hsu, N. C., The Collection 6 MODIS  
aerosol products over land and ocean, *Atmos. Meas. Tech.*, 6, 2989–3034, doi:10.5194/amt-6-2989-2013, 2013.

Li, Q., Li, C. C., and Mao, J. T., Evaluation of Atmospheric Aerosol Optical Depth Products at Ultraviolet Bands Derived  
from MODIS Products, *Aerosol Sci. Tech.*, 46, 1025–1034, doi:10.1080/02786826.2012.687475, 2012.

805 Liu, T. J., Marlier, M. E., DeFries, R. S., Westervelt, D. M., Xia, K. R., Fiore, A. M., Mickle, L. J., Cusworth, D. H., and  
Milly, G., Seasonal impact of regional outdoor biomass burning on air pollution in three Indian cities: Delhi, Bengaluru, and  
Pune, *Atmos. Environ.*, 172, 83–92, doi:10.1016/j.atmosenv.2017.10.024, 2018.

Lyons, R., Doherty, R., Reay, D., and Shackley, S., Legal but lethal: Lessons from NO<sub>2</sub>-related mortality in a city compliant  
with EU limit value, *Atmos. Pollut. Res.*, doi:10.1016/j.apr.2020.02.016, 2020.

810

- Malley, C. S., Braban, C. F., Dumitrean, P., Cape, J. N., and Heal, M. R., The impact of speciated VOCs on regional ozone increment derived from measurements at the UK EMEP supersites between 1999 and 2012, *Atmos. Chem. Phys.*, 15, 8361–8380, doi:10.5194/acp-15-8361-2015, 2015.
- 815 Malley, C. S., Heal, M. R., Braban, C. F., Kentisbeer, J., Leeson, S. R., Malcolm, H., Lingard, J. J. N., Ritchie, S., Maggs, R., Beccaceci, S., Quincey, P., Brown, R. J. C., and Twigg, M. M., The contributions to long term health relevant particulate matter at the UK EMEP supersites between 2010 and 2013: Quantifying the mitigation challenge, *Environ. Int.*, 95, 98–111, doi:10.1016/j.envint.2016.08.005, 2016.
- 820 Marais, E. A., Jacob, D. J., Kurosu, T. P., Chance, K., Murphy, J. G., Reeves, C., Mills, G., Casadio, S., Millet, D. B., Barkley, M. P., Paulot, F., and Mao, J., Isoprene emissions in Africa inferred from OMI observations of formaldehyde columns, *Atmos. Chem. Phys.*, 12, 6219–6235, doi:10.5194/acp-12-6219-2012, 2012.
- Marais, E. A., Jacob, D. J., Wecht, K., Lerot, C., Zhang, L., Yu, K., Kurosu, T. P., Chance, K., and Sauvage, B.,  
825 Anthropogenic emissions in Nigeria and implications for atmospheric ozone pollution: A view from space, *Atmos. Environ.*, 99, 32–40, doi:10.1016/j.atmosenv.2014.09.055, 2014a.
- Marais, E. A., Jacob, D. J., Guenther, A., Chance, K., Kurosu, T. P., Murphy, J. G., Reeves, C. E., and Pye, H. O. T.,  
830 Improved model of isoprene emissions in Africa using Ozone Monitoring Instrument (OMI) satellite observations of formaldehyde: implications for oxidants and particulate matter, *Atmos. Chem. Phys.*, 14, 7693–7703, doi:10.5194/acp-14-7693-2014, 2014b.
- Martin, R. V., Jacob, D. J., Chance, K., Kurosu, T. P., Palmer, P. I., and Evans, M. J., Global inventory of nitrogen oxide emissions constrained by space based observations of NO<sub>2</sub> columns, *J. Geophys. Res. Atmos.*, 108, doi:10.1029/2003jd003453, 2003.  
835
- McPhetres, A., and Aggarwal, S., An Evaluation of MODIS Retrieved Aerosol Optical Depth over AERONET Sites in Alaska, *Remote Sens. Basel*, 10, doi:10.3390/rs10091384, 2018.
- 840 Mhawish, A., Banerjee, T., Broday, D. M., Misra, A., and Tripathi, S. N., Evaluation of MODIS Collection 6 aerosol retrieval algorithms over Indo-Gangetic Plain: Implications of aerosols types and mass loading, *Remote Sens. Environ.*, 201, 297–313, doi:10.1016/j.rse.2017.09.016, 2017.



- 845 Miller, S. M., Matross, D. M., Andrews, A. E., Millet, D. B., Longo, M., Gottlieb, E. W., Hirsch, A. I., Gerbig, C., Lin, J. C.,  
Daube, B. C., Hudman, R. C., Dias, P. L. S., Chow, V. Y., and Wofsy, S. C., Sources of carbon monoxide and formaldehyde  
in North America determined from high resolution atmospheric data, *Atmos. Chem. Phys.*, **8**, 7673–7696, doi:10.5194/acp-8-  
7673-2008, 2008.
- 850 Millet, D. B., Jacob, D. J., Turquety, S., Hudman, R. C., Wu, S. L., Fried, A., Walega, J., Heikes, B. G., Blake, D. R., Singh,  
H. B., Anderson, B. E., and Clarke, A. D., Formaldehyde distribution over North America: Implications for satellite  
retrievals of formaldehyde columns and isoprene emission, *J. Geophys. Res. Atmos.*, **111**, doi:10.1029/2005jd006853, 2006.
- 855 Munchak, L. A., Levy, R. C., Mattoo, S., Remer, L. A., Holben, B. N., Schafer, J. S., Hostetler, C. A., and Ferrare, R. A.,  
MODIS 3 km aerosol product: applications over land in an urban/suburban region, *Atmos. Meas. Tech.*, **6**, 1747–1759,  
doi:10.5194/amt-6-1747-2013, 2013.
- Nagar, P. K., Sharma, M., and Das, D., A new method for trend analyses in PM<sub>10</sub> and impact of crop residue burning in  
Delhi, Kanpur and Jaipur, India, *Urban Clim.*, **27**, 193–203, doi:10.1016/j.uclim.2018.12.003, 2019.
- 860 Nakoudi, K., Giannakaki, E., Dandou, A., Tombrou, M., and Komppula, M., Planetary boundary layer height by means of  
lidar and numerical simulations over New Delhi, India, *Atmos. Meas. Tech.*, **12**, 2595–2610, doi:10.5194/amt-12-2595-  
2019, 2019.
- 865 Ots, R., Heal, M. R., Young, D. E., Williams, L. R., Allan, J. D., Nemitz, E., Di Marco, C., Detournay, A., Xu, L., Ng, N. L.,  
Coe, H., Herndon, S. C., Mackenzie, I. A., Green, D. C., Kuenen, J. J. P., Reis, S., and Vieno, M., Modelling carbonaceous  
aerosol from residential solid fuel burning with different assumptions for emissions, *Atmos. Chem. Phys.*, **18**, 4497–4518,  
doi:10.5194/acp-18-4497-2018, 2018.
- 870 Parkhi, N., Chate, D., Ghude, S. D., Peshin, S., Mahajan, A., Srinivas, R., Surendran, D., Ali, K., Singh, S., Trimbake, H.,  
and Beig, G., Large inter annual variation in air quality during the annual festival 'Diwali' in an Indian megacity, *J. Environ.  
Sci. China*, **43**, 265–272, doi:10.1016/j.jes.2015.08.015, 2016.
- 875 Pathania, R., Phadke, P., Gupta, R. K., and Ramanathan, S., Centre for Science and Environment, New Delhi, Off Target  
Status of Thermal Power Stations in Delhi NCR, [http://www.indiaenvironmentportal.org.in/files/file/Off-Target-Status-of-  
Power-Stations-Report.pdf](http://www.indiaenvironmentportal.org.in/files/file/Off-Target-Status-of-Power-Stations-Report.pdf), 2018.

- 880 Paulot, F., Paynter, D., Ginoux, P., Naik, V., Whitburn, S., Van Damme, M., Clarisse, L., Coheur, P. F., and Horowitz, L. W., Gas aerosol partitioning of ammonia in biomass burning plumes: Implications for the interpretation of spaceborne observations of ammonia and the radiative forcing of ammonium nitrate, *Geophys. Res. Lett.*, *44*, 8084–8093, doi:10.1002/2017gl074215, 2017.
- Petrenko, M., Ichoku, C., and Leptoukh, G., Multi-sensor Aerosol Products Sampling System (MAPSS), *Atmos. Meas. Tech.*, *5*, 913–926, doi:10.5194/amt-5-913-2012, 2012.
- 885 Pope, R. J., Arnold, S. R., Chipperfield, M. P., Latter, B. G., Siddans, R., and Kerridge, B. J., Widespread changes in UK air quality observed from space, *Atmos. Sci. Lett.*, *19*, doi:10.1002/asl.817, 2018.
- Ramachandran, S., Kedia, S., and Srivastava, R., Aerosol optical depth trends over different regions of India, *Atmos. Environ.*, *49*, 338–347, doi:10.1016/j.atmosenv.2011.11.017, 2012.
- 890 Reed, C., Evans, M. J., Di Carlo, P., Lee, J. D., and Carpenter, L. J., Interferences in photolytic NO<sub>2</sub> measurements: explanation for an apparent missing oxidant?, *Atmos. Chem. Phys.*, *16*, 4707–4724, doi:10.5194/acp-16-4707-2016, 2016.
- 895 Remer, L. A., Kaufman, Y. J., Tanre, D., Mattoo, S., Chu, D. A., Martins, J. V., Li, R. R., Ichoku, C., Levy, R. C., Kleidman, R. G., Eck, T. F., Vermote, E., and Holben, B. N., The MODIS aerosol algorithm, products, and validation, *J. Atmos. Sci.*, *62*, 947–973, doi:10.1175/Jas3385.1, 2005.
- Remer, L. A., Mattoo, S., Levy, R. C., and Munchak, L. A., MODIS 3 km aerosol product: algorithm and global perspective, *Atmos. Meas. Tech.*, *6*, 1829–1844, doi:10.5194/amt-6-1829-2013, 2013.
- 900 Richmond, B., Misra, A., Brown, P., Karagianni, E., Murrells, T., Pang, Y., Passant, N., Pepler, A., Stewart, R., Thistlethwaite, G., Turtle, L., Wakeling, D., Walker, C., Wiltshire, J., Hobson, M., Gibbs, M., Misselbrook, T., Dragosit, U., and Tomlinson, S.; Environment, R. E., United Kingdom, UK Informative Inventory Report (1990 to 2018), [https://uk-air.defra.gov.uk/assets/documents/reports/cat07/2003131327\\_GB\\_IIR\\_2020\\_v1.0.pdf](https://uk-air.defra.gov.uk/assets/documents/reports/cat07/2003131327_GB_IIR_2020_v1.0.pdf), 2020.
- 905 Richter, A., Nitrogen oxides in the troposphere—What have we learned from satellite measurements?, *Ereca: From the Human Dimensions of Global Environmental Change to the Observation of the Earth from Space*, Vol 8, WOS:000268062600011, 2009.

- 910 Sahu, L. K., Yadav, R., and Pal, D., Source identification of VOCs at an urban site of western India: Effect of marathon events and anthropogenic emissions, *J. Geophys. Res. Atmos.*, 121, 2416–2433, doi:10.1002/2015jd024454, 2016.
- Sathe, Y., Kulkarni, S., Gupta, P., Kaginalkar, A., Islam, S., and Gargava, P., Application of Moderate Resolution Imaging Spectroradiometer (MODIS) Aerosol Optical Depth (AOD) and Weather Research Forecasting (WRF) model meteorological data for assessment of fine particulate matter (PM<sub>2.5</sub>) over India, *Atmos. Pollut. Res.*, 10, 418–434, doi:10.1016/j.apr.2018.08.016, 2019.
- 915
- Schaap, M., Apituley, A., Timmermans, R. M. A., Koelemeijer, R. B. A., and de Leeuw, G., Exploring the relation between aerosol optical depth and PM<sub>2.5</sub> at Cabauw, the Netherlands, *Atmos. Chem. Phys.*, 9, 909–925, doi:10.5194/acp-9-909-2009, 920 2009.
- Schneider, P., Lahoz, W. A., and van der A, R., Recent satellite-based trends of tropospheric nitrogen dioxide over large urban agglomerations worldwide, *Atmos. Chem. Phys.*, 15, 1205–1220, doi:10.5194/acp-15-1205-2015, 2015.
- 925
- Shah, V., Jacob, D. J., Li, K., Silvern, R. F., Zhai, S., Liu, M., Lin, J., and Zhang, Q., Effect of changing NO<sub>x</sub> lifetime on the seasonality and long-term trends of satellite-observed tropospheric NO<sub>2</sub> columns over China, *Atmos. Chem. Phys.*, 20, 1483–1495, doi:10.5194/acp-20-1483-2020, 2020.
- 930
- Silvern, R. F., Jacob, D. J., Travis, K. R., Sherwen, T., Evans, M. J., Cohen, R. C., Laughner, J. L., Hall, S. R., Ullmann, K., Crounse, J. D., Wennberg, P. O., Peischl, J., and Pollack, I. B., Observed NO/NO<sub>2</sub> Ratios in the Upper Troposphere Imply Errors in NO-NO<sub>2</sub>-O<sub>3</sub>-Cycling Kinetics or an Unaccounted NO<sub>x</sub> Reservoir, *Geophys. Res. Lett.*, 45, 4466–4474, doi:10.1029/2018gl077728, 2018.
- 935
- Silvern, R. F., Jacob, D. J., Mickley, L. J., Sulprizio, M. P., Travis, K. R., Marais, E. A., Cohen, R. C., Laughner, J. L., Choi, S., Joiner, J., and Lamsal, L. N., Using satellite observations of tropospheric NO<sub>2</sub> columns to infer long-term trends in US NO<sub>x</sub> emissions: the importance of accounting for the free tropospheric NO<sub>2</sub> background, *Atmos. Chem. Phys.*, 19, 8863–8878, doi:10.5194/acp-19-8863-2019, 2019.
- 940
- Singh, S., and Kulshrestha, U. C., Abundance and distribution of gaseous ammonia and particulate ammonium at Delhi, India, *Biogeosciences*, 9, 5023–5029, doi:10.5194/bg-9-5023-2012, 2012.
- Snider, G., Weagle, C. L., Martin, R. V., van Donkelaar, A., Conrad, K., Cunningham, D., Gordon, C., Zwiiker, M., Akoshile, C., Artaxo, P., Anh, N. X., Brook, J., Dong, J., Garland, R. M., Greenwald, R., Griffith, D., He, K., Holben, B. N.,

- 945 Kahn, R., Koren, I., Lagrosas, N., Lestari, P., Ma, Z., Martins, J. V., Quel, E. J., Rudich, Y., Salam, A., Tripathi, S. N., Yu, C., Zhang, Q., Zhang, Y., Brauer, M., Cohen, A., Gibson, M. D., and Liu, Y., SPARTAN: a global network to evaluate and enhance satellite-based estimates of ground level particulate matter for global health applications, *Atmos. Meas. Tech.*, **8**, 505–521, doi:10.5194/amt-8-505-2015, 2015.
- 950 Stieger, B., Spindler, G., Fahlbusch, B., Müller, K., Gruner, A., Poulain, L., Thoni, L., Seitler, E., Wallasch, M., and Herrmann, H., Measurements of PM<sub>10</sub>-ions and trace-gases with the online system MARGA at the research station Melpitz in Germany—A five-year study, *J. Atmos. Chem.*, **75**, 33–70, doi:10.1007/s10874-017-9361-0, 2018.
- 955 Streets, D. G., Canty, T., Carmichael, G. R., de Foy, B., Dickerson, R. R., Duncan, B. N., Edwards, D. P., Haynes, J. A., Henze, D. K., Houyoux, M. R., Jacobi, D. J., Krotkov, N. A., Lamsal, L. N., Liu, Y., Lu, Z. F., Martini, R. V., Pfister, G. G., Pinder, R. W., Salawitch, R. J., and Wechti, K. J., Emissions estimation from satellite retrievals: A review of current capability, *Atmos. Environ.*, **77**, 1011–1042, doi:10.1016/j.atmosenv.2013.05.051, 2013.
- 960 Sugathan, A., Bhangale, R., Kansal, V., and Hulke, U., How can Indian power plants cost-effectively meet the new sulfur emission standards? Policy evaluation using marginal abatement cost curves, *Energ. Policy*, **121**, 124–137, doi:10.1016/j.enpol.2018.06.008, 2018.
- Surl, L., Palmer, P. I., and Abad, G. G., Which processes drive observed variations of HCHO columns over India?, *Atmos. Chem. Phys.*, **18**, 4549–4566, doi:10.5194/acp-18-4549-2018, 2018.
- 965 Tang, Y. S., Braban, C. F., Dragosits, U., Dore, A. J., Simmons, I., van Dijk, N., Poskitt, J., Pereira, G. D., Keenan, P. O., Conolly, C., Vincent, K., Smith, R. I., Heal, M. R., and Sutton, M. A., Drivers for spatial, temporal and long-term trends in atmospheric ammonia and ammonium in the UK, *Atmos. Chem. Phys.*, **18**, 705–733, doi:10.5194/acp-18-705-2018, 2018.
- 970 Theys, N., Hedelt, P., De Smedt, I., Lerot, C., Yu, H., Vlietinck, J., Pedergnana, M., Arellano, S., Galle, B., Fernandez, D., Carlito, C. J. M., Barrington, C., Taisne, B., Delgado-Granados, H., Loyola, D., and Van Roozendaal, M., Global monitoring of volcanic SO<sub>2</sub> degassing with unprecedented resolution from TROPOMI onboard Sentinel-5 Precursor, *Sci. Rep. Uk*, **9**, doi:10.1038/s41598-019-39279-y, 2019.
- 975 ul-Haq, Z., Tariq, S., and Ali, M., Tropospheric NO<sub>2</sub> Trends over South Asia during the Last Decade (2004–2014) Using OMI Data, *Adv. Meteorol.*, doi:10.1155/2015/959284, 2015.

UN; Department of Economic and Social Affairs—Population Division, New York, World Urbanization Prospects: The 2018 Revision, [https://population.un.org/wup/Publications/Files/WUP2018\\_Report.pdf](https://population.un.org/wup/Publications/Files/WUP2018_Report.pdf), 2019.

980 Valach, A. C., Langford, B., Nemitz, E., MacKenzie, A. R., and Hewitt, C. N., Concentrations of selected volatile organic compounds at kerbside and background sites in central London, *Atmos. Environ.*, 95, 456–467, doi:10.1016/j.atmosenv.2014.06.052, 2014.

985 Van Damme, M., Clarisse, L., Heald, C. L., Hurtmans, D., Ngadi, Y., Clerbaux, C., Dolman, A. J., Erisman, J. W., and Coheur, P. F., Global distributions, time series and error characterization of atmospheric ammonia (NH<sub>3</sub>) from IASI satellite observations, *Atmos. Chem. Phys.*, 14, 2905–2922, doi:10.5194/acp-14-2905-2014, 2014.

990 Van Damme, M., Clarisse, L., Dammers, E., Liu, X., Nowak, J. B., Clerbaux, C., Flechard, C. R., Galy-Lacaux, C., Xu, W., Neuman, J. A., Tang, Y. S., Sutton, M. A., Erisman, J. W., and Coheur, P. F., Towards validation of ammonia (NH<sub>3</sub>) measurements from the IASI satellite, *Atmos. Meas. Tech.*, 8, 1575–1591, doi:10.5194/amt-8-1575-2015, 2015.

995 Van Damme, M., Whitburn, S., Clarisse, L., Clerbaux, C., Hurtmans, D., and Coheur, P. F., Version 2 of the IASI NH<sub>3</sub> neural network retrieval algorithm: near real time and reanalysed datasets, *Atmos. Meas. Tech.*, 10, 4905–4914, doi:10.5194/amt-10-4905-2017, 2017.

Van Damme, M., Clarisse, L., Whitburn, S., Hadji-Lazaro, J., Hurtmans, D., Clerbaux, C., and Coheur, P. F., Industrial and agricultural ammonia point sources exposed, *Nature*, 564, 99–110, doi:10.1038/s41586-018-0747-1, 2018.

1000 van der A, R. J., Peters, D. H. M. U., Eskes, H., Boersma, K. F., Van Roozendaal, M., De Smedt, I., and Kelder, H. M., Detection of the trend and seasonal variation in tropospheric NO<sub>2</sub> over China, *J. Geophys. Res. Atmos.*, 111, doi:10.1029/2005jd006594, 2006.

1005 van der A, R. J., Eskes, H. J., Boersma, K. F., van Noije, T. P. C., Van Roozendaal, M., De Smedt, I., Peters, D. H. M. U., and Meijer, E. W., Trends, seasonal variability and dominant NO<sub>x</sub> source derived from a ten year record of NO<sub>2</sub> measured from space, *J. Geophys. Res. Atmos.*, 113, doi:10.1029/2007jd009021, 2008.

van Donkelaar, A., Martin, R. V., and Park, R. J., Estimating ground level PM<sub>2.5</sub> using aerosol optical depth determined from satellite remote sensing, *J. Geophys. Res. Atmos.*, 111, doi:10.1029/2005jd006996, 2006.

- 1010 van Donkelaar, A., Martin, R. V., Brauer, M., Kahn, R., Levy, R., Verduceo, C., and Villeneuve, P. J., Global Estimates of Ambient Fine Particulate Matter Concentrations from Satellite Based Aerosol Optical Depth: Development and Application, *Environ. Health Persp.*, 118, 847–855, doi:10.1289/ehp.0901623, 2010.
- Venkataraman, C., Brauer, M., Tibrewal, K., Sadavarte, P., Ma, Q., Cohen, A., Chaliyakunnel, S., Frostad, J., Klimont, Z.,  
1015 Martin, R. V., Millet, D. B., Philip, S., Walker, K., and Wang, S. X., Source influence on emission pathways and ambient PM<sub>2.5</sub> pollution over India (2015–2050), *Atmos. Chem. Phys.*, 18, 8017–8039, doi:10.5194/acp-18-8017-2018, 2018.
- Vieno, M., Heal, M. R., Hallsworth, S., Famulari, D., Doherty, R. M., Dore, A. J., Tang, Y. S., Braban, C. F., Leaver, D.,  
1020 Sutton, M. A., and Reis, S., The role of long range transport and domestic emissions in determining atmospheric secondary inorganic particle concentrations across the UK, *Atmos. Chem. Phys.*, 14, 8435–8447, doi:10.5194/acp-14-8435-2014, 2014.
- Walker, H. L., Heal, M. R., Braban, C. F., Ritchie, S., Conolly, C., Sanoeka, A., Dragosits, U., and Twigg, M. M., Changing supersites: assessing the impact of the southern UK EMEP supersite relocation on measured atmospheric composition, *Environ. Res. Comm.*, 1, doi:10.1088/2515-7620/ab1a6f, 2019.
- 1025 Wang, L., Slowik, J. G., Tripathi, N., Bhattu, D., Rai, P., Kumar, V., Vats, P., Satish, R., Baltensperger, U., Ganguly, D., Rastogi, N., Sahu, L. K., Tripathi, S. N., and Prévôt, A. S. H., Source characterization of volatile organic compounds measured by PTR-ToF MS in Delhi, India, *Atmos. Chem. Phys.*, doi:10.5194/acp-2020-11, 2020.
- 1030 Wang, T., Song, Y., Xu, Z., Liu, M., Xu, T., Liao, W., Yin, L., Cai, X., Kang, L., Zhang, H., and Zhu, T., Why the Indo-Gangetic Plain is the region with the largest NH<sub>3</sub> column in the globe during summertime?, *Atmos. Chem. Phys.*, doi:10.5194/acp-2019-1026, 2019.
- Warner, J. X., Dickerson, R. R., Wei, Z., Strow, L. L., Wang, Y., and Liang, Q., Increased atmospheric ammonia over the  
1035 world's major agricultural areas detected from space, *Geophys. Res. Lett.*, 44, 2875–2884, doi:10.1002/2016gl072305, 2017.
- Weagle, C. L., Snider, G., Li, C., van Donkelaar, A., Philip, S., Bissonnette, P., Burke, I., Jackson, J., Latimer, R., Stone, E.,  
Abboud, I., Akoshile, C., Anh, N. X., Brook, J. R., Cohen, A., Dong, J. L., Gibson, M. D., Griffith, D., He, K. B., Holben, B. N.,  
1040 Kahn, R., Keller, C. A., Kim, J. S., Lagrosas, N., Lestari, P., Khian, Y. L., Liu, Y., Marais, E. A., Martins, J. V., Misra, A., Muliane, U., Pratiwi, R., Quel, E. J., Salam, A., Segey, L., Tripathi, S. N., Wang, C., Zhang, Q., Brauer, M., Rudich, Y., and Martin, R. V., Global Sources of Fine Particulate Matter: Interpretation of PM<sub>2.5</sub> Chemical Composition Observed by SPARTAN using a Global Chemical Transport Model, *Environ. Sci. Technol.*, 52, 11670–11681, doi:10.1021/acs.est.8b01658, 2018.

- 1045 Weatherhead, E. C., Reinsel, G. C., Tiao, G. C., Meng, X. L., Choi, D. S., Cheang, W. K., Keller, T., DeLuisi, J., Wuebbles, D. J., Kerr, J. B., Miller, A. J., Oltmans, S. J., and Frederick, J. E., Factors affecting the detection of trends: Statistical considerations and applications to environmental data, *J. Geophys. Res. Atmos.*, 103, 17149–17161, doi:10.1029/98jd00995, 1998.
- 1050 Wei, J., Li, Z. Q., Peng, Y. R., and Sun, L., MODIS Collection 6.1 aerosol optical depth products over land and ocean: validation and comparison, *Atmos. Environ.*, 201, 428–440, doi:10.1016/j.atmosenv.2018.12.004, 2019.
- Whalley, L. K., Stone, D., Bandy, B., Dunmore, R., Hamilton, J. F., Hopkins, J., Lee, J. D., Lewis, A. C., and Heard, D. E., Atmospheric OH reactivity in central London: observations, model predictions and estimates of in situ ozone production, *Atmos. Chem. Phys.*, 16, 2109–2122, doi:10.5194/acp-16-2109-2016, 2016.
- 1055 Whalley, L. K., Stone, D., Dunmore, R., Hamilton, J., Hopkins, J. R., Lee, J. D., Lewis, A. C., Williams, P., Kleffmann, J., Laufs, S., Woodward-Masse, R., and Heard, D. E., Understanding in situ ozone production in the summertime through radical observations and modelling studies during the Clean air for London project (ClearfLo), *Atmos. Chem. Phys.*, 18, 2547–2571, doi:10.5194/acp-18-2547-2018, 2018.
- 1060 Whitburn, S., Van Damme, M., Clarisse, L., Bauduin, S., Heald, C. L., Hadji-Lazaro, J., Hurtmans, D., Zondlo, M. A., Clerbaux, C., and Coheur, P. F., A flexible and robust neural network IASI NH<sub>3</sub> retrieval algorithm, *J. Geophys. Res. Atmos.*, 121, 6581–6599, doi:10.1002/2016jd024828, 2016.
- 1065 WHO; World Health Organization, WHO Global Urban Ambient Air Pollution Database, [https://www.who.int/phe/health\\_topics/outdoorair/databases/cities/en/](https://www.who.int/phe/health_topics/outdoorair/databases/cities/en/), 2018.
- 1070 Yadav, R., Sahu, L. K., Beig, G., Tripathi, N., and Jaaffrey, S. N. A., Ambient particulate matter and carbon monoxide at an urban site of India: Influence of anthropogenic emissions and dust storms, *Environ. Pollut.*, 225, 291–303, doi:10.1016/j.envpol.2017.01.038, 2017.
- 1075 Zara, M., Boersma, K. F., De Smedt, I., Richter, A., Peters, E., van Geffen, J. H. G. M., Beirle, S., Wagner, T., Van Roozendaal, M., Marchenko, S., Lamsal, L. N., and Eskes, H. J., Improved slant column density retrieval of nitrogen dioxide and formaldehyde for OMI and GOME 2A from QA4ECV: intercomparison, uncertainty characterisation, and trends, *Atmos. Meas. Tech.*, 11, 4033–4058, doi:10.5194/amt-11-4033-2018, 2018.

- 1080 [Zhu, L., Jacob, D. J., Mickley, L. J., Marais, E. A., Cohan, D. S., Yoshida, Y., Duncan, B. N., Abad, G. G., and Chance, K. V., Anthropogenic emissions of highly reactive volatile organic compounds in eastern Texas inferred from oversampling of satellite \(OMI\) measurements of HCHO columns, \*Environ. Res. Lett.\*, \*\*9\*\*, doi:10.1088/1748-9326/9/11/114004, 2014.](#)
- 1085 [Zhu, L., Jacob, D. J., Kim, P. S., Fisher, J. A., Yu, K., Travis, K. R., Mickley, L. J., Yantosca, R. M., Sulprizio, M. P., De Smedt, I., González Abad, G., Chance, K., Li, C., Ferrare, R., Fried, A., Hair, J. W., Haniseo, T. F., Richter, D., Jo Scarino, A., Walega, J., Weibring, P., and Wolfe, G. M., Observing atmospheric formaldehyde \(HCHO\) from space: validation and intercomparison of six retrievals from four satellites \(OMI, GOME2A, GOME2B, OMPS\) with SEAC<sup>4</sup>RS aircraft observations over the southeast US, \*Atmos. Chem. Phys.\*, \*\*16\*\*, 13477–13490, doi:10.5194/acp-16-13477-2016, 2016.](#)
- 1090 [Zoogman, P., Jacob, D. J., Chance, K., Zhang, L., Le Sager, P., Fiore, A. M., Eldering, A., Liu, X., Natraj, V., and Kulawik, S. S., Ozone air quality measurement requirements for a geostationary satellite mission, \*Atmos. Environ.\*, \*\*45\*\*, 7143–7150, doi:10.1016/j.atmosenv.2011.05.058, 2011.](#)
- 1095 [Aas, W., Mortier, A., Bowersox, V., Cherian, R., Faluvegi, G., Fagerli, H., Hand, J., Klimont, Z., Galy-Lacaux, C., Lehmann, C. M. B., Myhre, C. L., Myhre, G., Olivie, D., Sato, K., Quaas, J., Rao, P. S. P., Schulz, M., Shindell, D., Skeie, R. B., Stein, A., Takemura, T., Tsyro, S., Vet, R., and Xu, X. B., Global and regional trends of atmospheric sulfur, \*Sci. Rep.-Uk\*, \*\*9\*\*, doi:10.1038/s41598-018-37304-0, 2019.](#)
- 1100 [Anenberg, S. C., Achakulwisut, P., Brauer, M., Moran, D., Apte, J. S., and Henze, D. K., Particulate matter-attributable mortality and relationships with carbon dioxide in 250 urban areas worldwide, \*Sci. Rep.-Uk\*, \*\*9\*\*, doi:10.1038/s41598-019-48057-9, 2019.](#)
- 1105 [Barnes, J. H., Hayes, E. T., Chatterton, T. J., and Longhurst, J. W. S., Policy disconnect: A critical review of UK air quality policy in relation to EU and LAQM responsibilities over the last 20 years, \*Environ. Sci. Policy\*, \*\*85\*\*, 28-39, doi:10.1016/j.envsci.2018.03.024, 2018.](#)
- 1110 [Boersma, K. F., Eskes, H. J., and Brinksma, E. J., Error analysis for tropospheric NO<sub>2</sub> retrieval from space, \*J. Geophys. Res.-Atmos.\*, \*\*109\*\*, doi:10.1029/2003jd003962, 2004.](#)
- 1115 [Boersma, K. F., Jacob, D. J., Trainic, M., Rudich, Y., DeSmedt, I., Dirksen, R., and Eskes, H. J., Validation of urban NO<sub>2</sub> concentrations and their diurnal and seasonal variations observed from the SCIAMACHY and OMI sensors using in situ surface measurements in Israeli cities, \*Atmos. Chem. Phys.\*, \*\*9\*\*, 3867-3879, doi:10.5194/acp-9-3867-2009, 2009.](#)
- 1120 [Brauer, M., Freedman, G., Frostad, J., van Donkelaar, A., Martin, R. V., Dentener, F., van Dingenen, R., Estep, K., Amini, H., Apte, J. S., Balakrishnan, K., Barregard, L., Broday, D., Feigin, V., Ghosh, S., Hopke, P. K., Knibbs, L. D., Kokubo, Y., Liu, Y., Ma, S. F., Morawska, L., Sangrador, J. L. T., Shaddick, G., Anderson, H. R., Vos, T., Forouzanfar, M. H., Burnett, R. T., and Cohen, A., Ambient Air Pollution Exposure Estimation for the Global Burden of Disease 2013, \*Environ. Sci. Technol.\*, \*\*50\*\*, 79-88, doi:10.1021/acs.est.5b03709, 2016.](#)



- Carnell, E., Vieno, M., Vardoulakis, S., Beck, R., Heaviside, C., Tomlinson, S., Dragosits, U., Heal, M. R., and Reis, S., Modelling public health improvements as a result of air pollution control policies in the UK over four decades—1970 to 2010, *Environ. Res. Lett.*, 14, doi:10.1088/1748-9326/ab1542, 2019.
- 1125 Carslaw, D. C., Beevers, S. D., Westmoreland, E., Williams, M. L., Tate, J. E., Murrells, T., Stedman, J., Li, Y., Grice, S., Kent, A., and Tsigataki, I., Trends in NO<sub>x</sub> and NO<sub>2</sub> emissions and ambient measurements in the UK, 2011.
- Carslaw, D. C., Murrells, T. P., Andersson, J., and Keenan, M., Have vehicle emissions of primary NO<sub>2</sub> peaked?, *Faraday Discuss.*, 189, 439-454, doi:10.1039/c5fd00162e, 2016.
- 1130 Castell, N., Dauge, F. R., Schneider, P., Vogt, M., Lerner, U., Fishbain, B., Broday, D., and Bartonova, A., Can commercial low-cost sensor platforms contribute to air quality monitoring and exposure estimates?, *Environ. Int.*, 99, 293-302, doi:10.1016/j.envint.2016.12.007, 2017.
- 1135 Chalilyakunnel, S., Millet, D. B., and Chen, X., Constraining emissions of volatile organic compounds over the Indian subcontinent using spacebased formaldehyde measurements, *J. Geophys. Res.*, 124, 10525-10545, doi:10.1029/2019JD031262, 2019.
- 1140 Choi, S., Lamsal, L. N., Follette-Cook, M., Joiner, J., Krotkov, N. A., Swartz, W. H., Pickering, K. E., Loughner, C. P., Appel, W., Pfister, G., Saide, P. E., Cohen, R. C., Weinheimer, A. J., and Herman, J. R., Assessment of NO<sub>2</sub> observations during DISCOVER-AQ and KORUS-AQ field campaigns, *Atmos. Meas. Tech.*, 13, 2523-2546, doi:10.5194/amt-13-2523-2020, 2020.
- 1145 Clarisse, L., Shephard, M. W., Dentener, F., Hurtmans, D., Cady-Pereira, K., Karagulian, F., Van Damme, M., Clerbaux, C., and Coheur, P. F., Satellite monitoring of ammonia: A case study of the San Joaquin Valley, *J. Geophys. Res.-Atmos.*, 115, doi:10.1029/2009jd013291, 2010.
- CPCB; Central Pollution Control Board, India, Protocol for Data Transmission from CAAQM Stations Existing as on Date, [https://app.cpcbcr.com/ccr\\_docs/Protocol\\_CAAQM.pdf](https://app.cpcbcr.com/ccr_docs/Protocol_CAAQM.pdf), 2015.
- 1150 Crilley, L. R., Bloss, W. J., Yin, J., Beddows, D. C. S., Harrison, R. M., Allan, J. D., Young, D. E., Flynn, M., Williams, P., Zotter, P., Prevot, A. S. H., Heal, M. R., Barlow, J. F., Halios, C. H., Lee, J. D., Szidat, S., and Mohr, C., Sources and contributions of wood smoke during winter in London: assessing local and regional influences, *Atmos. Chem. Phys.*, 15, 3149-3171, doi:10.5194/acp-15-3149-2015, 2015.
- 1155 Crilley, L. R., Lucarelli, F., Bloss, W. J., Harrison, R. M., Beddows, D. C., Calzolari, G., Nava, S., Valli, G., Bernardoni, V., and Vecchi, R., Source apportionment of fine and coarse particles at a roadside and urban background site in London during the 2012 summer ClearfLo campaign, *Environ. Pollut.*, 220, 766-778, doi:10.1016/j.envpol.2016.06.002, 2017.
- 1160 Cusworth, D. H., Mickley, L. J., Sulprizio, M. P., Liu, T. J., Marlier, M. E., DeFries, R. S., Guttikunda, S. K., and Gupta, P., Quantifying the influence of agricultural fires in northwest India on urban air pollution in Delhi, India, *Environ. Res. Lett.*, 13, doi:10.1088/1748-9326/aab303, 2018.
- 1165 Dammers, E., Palm, M., Van Damme, M., Vigouroux, C., Smale, D., Conway, S., Toon, G. C., Jones, N., Nussbaumer, E., Warneke, T., Petri, C., Clarisse, L., Clerbaux, C., Hermans, C., Lutsch, E., Strong, K., Hannigan, J. W., Nakajima, H., Morino, I., Herrera, B., Stremme, W., Grutter, M., Schaap, M., Kruit, R. J. W., Notholt, J., Coheur, P. F., and Erisman, J. W., An evaluation of IASI-NH<sub>3</sub> with ground-based Fourier transform infrared spectroscopy measurements, *Atmos. Chem. Phys.*, 16, 10351-10368, doi:10.5194/acp-16-10351-2016, 2016.

- 1170 Dammers, E., McLinden, C. A., Griffin, D., Shephard, M. W., Van der Graaf, S., Lutsch, E., Schaap, M., Gainairu-Matz, Y., Fioletov, V., Van Damme, M., Whitburn, S., Clarisse, L., Cady-Pereira, K., Clerbaux, C., Coheur, P. F., and Erisman, J. W., NH<sub>3</sub> emissions from large point sources derived from CrIS and IASI satellite observations, *Atmos. Chem. Phys.*, 19, 12261-12293, doi:10.5194/acp-19-12261-2019, 2019.
- 1175 David, L. M., Ravishankara, A. R., Kodros, J. K., Venkataraman, C., Sadavarte, P., Pierce, J. R., Chaliyakunnel, S., and Millet, D. B., Aerosol Optical Depth Over India, *J. Geophys. Res.-Atmos.*, 123, 3688-3703, doi:10.1002/2017jd027719, 2018.
- 1180 De Smedt, I., Stavrakou, T., Muller, J. F., van der A, R. J., and Van Roozendael, M., Trend detection in satellite observations of formaldehyde tropospheric columns, *Geophys. Res. Lett.*, 37, doi:10.1029/2010gl044245, 2010.
- De Smedt, I., van Geffen, J., Richter, A., Beirle, S., Yu, H., Vlietinck, J., Roozendael, M. V., A, R. v. d., Lorente, A., Scanlon, T., Compernelle, S., Wagner, T., Eskes, H., and Boersma, F., Product User Guide for HCHO (Version 1.0), doi:10.18758/71021031, 2017.
- 1185 De Smedt, I., Theys, N., Yu, H., Danckaert, T., Lerot, C., Compernelle, S., Van Roozendael, M., Richter, A., Hilboll, A., Peters, E., Pederagnana, M., Loyola, D., Beirle, S., Wagner, T., Eskes, H., van Geffen, J., Boersma, K. F., and Veefkind, P., Algorithm theoretical baseline for formaldehyde retrievals from S5P TROPOMI and from the QA4ECV project, *Atmos. Meas. Tech.*, 11, 2395-2426, doi:10.5194/amt-11-2395-2018, 2018.
- 1190 Defra; Department for Environment Food & Rural Affairs, United Kingdom, Emissions of air pollutants in the UK, 1970 to 2017, [https://assets.publishing.service.gov.uk/government/uploads/system/uploads/attachment\\_data/file/778483/Emissions\\_of\\_air\\_pollutants\\_1990\\_2017.pdf](https://assets.publishing.service.gov.uk/government/uploads/system/uploads/attachment_data/file/778483/Emissions_of_air_pollutants_1990_2017.pdf), 2019a.
- 1195 Defra; Department for Environment Food & Rural Affairs, United Kingdom, Clean Air Strategy, [https://assets.publishing.service.gov.uk/government/uploads/system/uploads/attachment\\_data/file/770715/clean-air-strategy-2019.pdf](https://assets.publishing.service.gov.uk/government/uploads/system/uploads/attachment_data/file/770715/clean-air-strategy-2019.pdf), 2019b.
- 1200 Duncan, B. N., Prados, A. I., Lamsal, L. N., Liu, Y., Streets, D. G., Gupta, P., Hilsenrath, E., Kahn, R. A., Nielsen, J. E., Beyersdorf, A. J., Burton, S. P., Fiore, A. M., Fishman, J., Henze, D. K., Hostetler, C. A., Krotkov, N. A., Lee, P., Lin, M. Y., Pawson, S., Pfister, G., Pickering, K. E., Pierce, R. B., Yoshida, Y., and Ziemba, L. D., Satellite data of atmospheric pollution for US air quality applications: Examples of applications, summary of data end-user resources, answers to FAQs, and common mistakes to avoid, *Atmos. Environ.*, 94, 647-662, doi:10.1016/j.atmosenv.2014.05.061, 2014.
- 1205 Dunlea, E. J., Herndon, S. C., Nelson, D. D., Volkamer, R. M., San Martini, F., Sheehy, P. M., Zahniser, M. S., Shorter, J. H., Wormhoudt, J. C., Lamb, B. K., Allwine, E. J., Gaffney, J. S., Marley, N. A., Grutter, M., Marquez, C., Blanco, S., Cardenas, B., Retama, A., Villegas, C. R. R., Kolb, C. E., Molina, L. T., and Molina, M. J., Evaluation of nitrogen dioxide chemiluminescence monitors in a polluted urban environment, *Atmos. Chem. Phys.*, 7, 2691-2704, doi:10.5194/acp-7-2691-2007, 2007.
- 1210 Eck, T. F., Holben, B. N., Reid, J. S., Dubovik, O., Smirnov, A., O'Neill, N. T., Slutsker, I., and Kinne, S., Wavelength dependence of the optical depth of biomass burning, urban, and desert dust aerosols, *J. Geophys. Res.-Atmos.*, 104, 31333-31349, doi:10.1029/1999jd900923, 1999.
- 1215 Fioletov, V. E., McLinden, C. A., Krotkov, N., Li, C., Joiner, J., Theys, N., Carn, S., and Moran, M. D., A global catalogue of large SO<sub>2</sub> sources and emissions derived from the Ozone Monitoring Instrument, *Atmos. Chem. Phys.*, 16, 11497-11519, doi:10.5194/acp-16-11497-2016, 2016.

- 1220 Fishman, J., Bowman, K. W., Burrows, J. P., Richter, A., Chance, K. V., Edwards, D. P., Martin, R. V., Morris, G. A., Pierce, R. B., Ziemke, J. R., Al-Saadi, J. A., Creilson, J. K., Schaack, T. K., and Thompson, A. M., Remote sensing of tropospheric pollution from space, *B. Am. Meteorol. Soc.*, 89, 805-821, doi:10.1175/2008bams2526.1, 2008.
- 1225 Fontaras, G., Franco, V., Dilara, P., Martini, G., and Manfredi, U., Development and review of Euro 5 passenger car emission factors based on experimental results over various driving cycles, *Sci. Total Environ.*, 468, 1034-1042, doi:10.1016/j.scitotenv.2013.09.043, 2014.
- 1230 Fuller, G. W., Tremper, A. H., Baker, T. D., Yttri, K. E., and Butterfield, D., Contribution of wood burning to PM<sub>10</sub> in London, *Atmos. Environ.*, 87, 87-94, doi:10.1016/j.atmosenv.2013.12.037, 2014.
- Gaur, A., Tripathi, S. N., Kanawade, V. P., Tare, V., and Shukla, S. P., Four-year measurements of trace gases (SO<sub>2</sub>, NO<sub>x</sub>, CO, and O<sub>3</sub>) at an urban location, Kanpur, in Northern India, *J. Atmos. Chem.*, 71, 283-301, doi:10.1007/s10874-014-9295-8, 2014.
- 1235 Georgoulias, A. K., Alexandri, G., Kourtidis, K. A., Lelieveld, J., Zanis, P., Poschl, U., Levy, R., Amiridis, V., Marinou, E., and Tsikerdekis, A., Spatiotemporal variability and contribution of different aerosol types to the aerosol optical depth over the Eastern Mediterranean, *Atmos. Chem. Phys.*, 16, 13853-13884, doi:10.5194/acp-16-13853-2016, 2016.
- 1240 Georgoulias, A. K., van der A, R. J., Stammes, P., Boersma, K. F., and Eskes, H. J., Trends and trend reversal detection in 2 decades of tropospheric NO<sub>2</sub> satellite observations, *Atmos. Chem. Phys.*, 19, 6269-6294, doi:10.5194/acp-19-6269-2019, 2019.
- 1245 Ghosh, S., Gupta, T., Rastogi, N., Gaur, A., Misra, A., Tripathi, S. N., Paul, D., Tare, V., Prakash, O., Bhattu, D., Dwivedi, A. K., Kaul, D. S., Dalai, R., and Mishra, S. K., Chemical Characterization of Summertime Dust Events at Kanpur: Insight into the Sources and Level of Mixing with Anthropogenic Emissions, *Aerosol Air Qual. Res.*, 14, 879-891, doi:10.4209/aaqr.2013.07.0240, 2014.
- 1250 Giles, D. M., Sinyuk, A., Sorokin, M. G., Schafer, J. S., Smirnov, A., Slutsker, I., Eck, T. F., Holben, B. N., Lewis, J. R., Campbell, J. R., Welton, E. J., Korokin, S. V., and Lyapustin, A. I., Advancements in the Aerosol Robotic Network (AERONET) Version 3 database - automated near-real-time quality control algorithm with improved cloud screening for Sun photometer aerosol optical depth (AOD) measurements, *Atmos. Meas. Tech.*, 12, 169-209, doi:10.5194/amt-12-169-2019, 2019.
- 1255 Govt. of Delhi; Planning Department, Delhi, Economic Survey of Delhi, 2018-2019, 2019.
- Govt. of India; Ministry of Road Transport and Highways, India, Notification, <http://egazette.nic.in/WriteReadData/2016/168300.pdf>, 2016.
- 1260 Grange, S. K., Lewis, A. C., Moller, S. J., and Carslaw, D. C., Lower vehicular primary emissions of NO<sub>2</sub> in Europe than assumed in policy projections, *Nat. Geosci.*, 10, 914-918, doi:10.1038/s41561-017-0009-0, 2017.
- Gupta, P., Remer, L. A., Levy, R. C., and Mattoo, S., Validation of MODIS 3 km land aerosol optical depth from NASA's EOS Terra and Aqua missions, *Atmos. Meas. Tech.*, 11, 3145-3159, doi:10.5194/amt-11-3145-2018, 2018.
- 1265 Guttikunda, S. K., and Jawahar, P., Atmospheric emissions and pollution from the coal-fired thermal power plants in India, *Atmos. Environ.*, 92, 449-460, doi:10.1016/j.atmosenv.2014.04.057, 2014.
- Harrison, R. G., Nicoll, K. A., Marlton, G. J., Ryder, C. L., and Bennett, A. J., Saharan dust plume charging observed over the UK, *Environ. Res. Lett.*, 13, doi:10.1088/1748-9326/aabcd9, 2018.

1270

Harrison, R. M., and Beddows, D. C., Efficacy of Recent Emissions Controls on Road Vehicles in Europe and Implications for Public Health, *Sci. Rep.-Uk*, 7, doi:10.1038/s41598-017-01135-2, 2017.

1275

Heal, M. R., O'Donoghue, M. A., and Cape, J. N., Overestimation of urban nitrogen dioxide by passive diffusion tubes: a comparative exposure and model study, *Atmos. Environ.*, 33, 513-524, doi:10.1016/S1352-2310(98)00290-8, 1999.

Hilboll, A., Richter, A., and Burrows, J. P., Long-term changes of tropospheric NO<sub>2</sub> over megacities derived from multiple satellite instruments, *Atmos. Chem. Phys.*, 13, 4145-4169, doi:10.5194/acp-13-4145-2013, 2013.

1280

Holben, B. N., Eck, T. F., Slutsker, I., Tanre, D., Buis, J. P., Setzer, A., Vermote, E., Reagan, J. A., Kaufman, Y. J., Nakajima, T., Lavenu, F., Jankowiak, I., and Smirnov, A., AERONET - A federated instrument network and data archive for aerosol characterization, *Remote Sens. Environ.*, 66, 1-16, doi:10.1016/S0034-4257(98)00031-5, 1998.

1285

Jethva, H., Torres, O., Field, R. D., Lyapustin, A., Gautam, R., and Kayetha, V., Connecting Crop Productivity, Residue Fires, and Air Quality over Northern India, *Sci. Rep.-Uk*, 9, doi:10.1038/s41598-019-52799-x, 2019.

1290

Jones, N. B., Riedel, K., Allan, W., Wood, S., Palmer, P. I., Chance, K., and Notholt, J., Long-term tropospheric formaldehyde concentrations deduced from ground-based fourier transform solar infrared measurements, *Atmos. Chem. Phys.*, 9, 7131-7142, doi:10.5194/acp-9-7131-2009, 2009.

Kaskaoutis, D. G., Singh, R. P., Gautam, R., Sharma, M., Kosmopoulos, P. G., and Tripathi, S. N., Variability and trends of aerosol properties over Kanpur, northern India using AERONET data (2001-10), *Environ. Res. Lett.*, 7, doi:10.1088/1748-9326/7/2/024003, 2012.

1295

Kaufman, Y. J., Aerosol Optical-Thickness and Atmospheric Path Radiance, *J. Geophys. Res.-Atmos.*, 98, 2677-2692, doi:10.1029/92jd02427, 1993.

1300

Kenagy, H. S., Sparks, T. L., Ebben, C. J., Wooldrige, P. J., Lopez-Hilfiker, F. D., Lee, B. H., Thornton, J. A., McDuffie, E. E., Fibiger, D. L., Brown, S. S., Montzka, D. D., Weinheimer, A. J., Schroder, J. C., Campuzano-Jost, P., Day, D. A., Jimenez, J. L., Dibb, J. E., Campos, T., Shah, V., Jaegle, L., and Cohen, R. C., NO<sub>x</sub> Lifetime and NO<sub>y</sub> Partitioning During WINTER, *J. Geophys. Res.-Atmos.*, 123, 9813-9827, doi:10.1029/2018jd028736, 2018.

1305

Kim, S. W., Heckel, A., McKeen, S. A., Frost, G. J., Hsie, E. Y., Trainer, M. K., Richter, A., Burrows, J. P., Peckham, S. E., and Grell, G. A., Satellite-observed US power plant NO<sub>x</sub> emission reductions and their impact on air quality, *Geophys. Res. Lett.*, 33, doi:10.1029/2006gl027749, 2006.

Klimont, Z., Smith, S. J., and Cofala, J., The last decade of global anthropogenic sulfur dioxide: 2000-2011 emissions, *Environ. Res. Lett.*, 8, doi:10.1088/1748-9326/8/1/014003, 2013.

1310

Kotthaus, S., and Grimmond, C. S. B., Atmospheric boundary-layer characteristics from ceilometer measurements. Part 2: Application to London's urban boundary layer, *Q. J. Roy. Meteor. Soc.*, 144, 1511-1524, doi:10.1002/qj.3298, 2018.

1315

Kramer, L. J., Leigh, R. J., Remedios, J. J., and Monks, P. S., Comparison of OMI and ground-based in situ and MAX-DOAS measurements of tropospheric nitrogen dioxide in an urban area, *J. Geophys. Res.-Atmos.*, 113, doi:10.1029/2007jd009168, 2008.

Krotkov, N. A., Lamsal, L. N., Celarier, E. A., Swartz, W. H., Marchenko, S. V., Bucsela, E. J., Chan, K. L., Wenig, M., and Zara, M., The version 3 OMI NO<sub>2</sub> standard product, *Atmos. Meas. Tech.*, 10, 3133-3149, doi:10.5194/amt-10-3133-2017, 2017.

- 1320 Lamsal, L. N., Martin, R. V., van Donkelaar, A., Celarier, E. A., Bucsela, E. J., Boersma, K. F., Dirksen, R., Luo, C., and Wang, Y., Indirect validation of tropospheric nitrogen dioxide retrieved from the OMI satellite instrument: Insight into the seasonal variation of nitrogen oxides at northern midlatitudes, *J. Geophys. Res.-Atmos.*, 115, doi:10.1029/2009jd013351, 2010.
- 1325 Lamsal, L. N., Martin, R. V., Padmanabhan, A., van Donkelaar, A., Zhang, Q., Sioris, C. E., Chance, K., Kurosu, T. P., and Newchurch, M. J., Application of satellite observations for timely updates to global anthropogenic NO<sub>x</sub> emission inventories, *Geophys. Res. Lett.*, 38, doi:10.1029/2010gl046476, 2011.
- 1330 Landrigan, P. J., Fuller, R., Acosta, N. J. R., Adeyi, O., Arnold, R., Basu, N., Balde, A. B., Bertollini, R., Bose-O'Reilly, S., Boufford, J. I., Breyse, P. N., Chiles, T., Mahidol, C., Coll-Seck, A. M., Cropper, M. L., Fobil, J., Fuster, V., Greenstone, M., Haines, A., Hanrahan, D., Hunter, D., Khare, M., Krupnick, A., Lanphear, B., Lohani, B., Martin, K., Mathiasen, K. V., McTeer, M. A., Murray, C. J. L., Ndahimananjara, J. D., Perera, F., Potocnik, J., Preker, A. S., Ramesh, J., Rockstrom, J., Salinas, C., Samson, L. D., Sandilya, K., Sly, P. D., Smith, K. R., Steiner, A., Stewart, R. B., Suk, W. A., van Schayck, O. C. P., Yadama, G. N., Yumkella, K., and Zhong, M., The Lancet Commission on pollution and health, *Lancet*, 391, 462-512, doi:10.1016/S0140-6736(17)32345-0, 2018.
- 1335 Langford, B., Nemitz, E., House, E., Phillips, G. J., Famulari, D., Davison, B., Hopkins, J. R., Lewis, A. C., and Hewitt, C. N., Fluxes and concentrations of volatile organic compounds above central London, UK, *Atmos. Chem. Phys.*, 10, 627-645, doi:10.5194/acp-10-627-2010, 2010.
- Levy, R. C., Remer, L. A., and Dubovik, O., Global aerosol optical properties and application to Moderate Resolution Imaging Spectroradiometer aerosol retrieval over land, *J. Geophys. Res.-Atmos.*, 112, doi:10.1029/2006jd007815, 2007.
- 1345 Levy, R. C., Remer, L. A., Kleidman, R. G., Mattoo, S., Ichoku, C., Kahn, R., and Eck, T. F., Global evaluation of the Collection 5 MODIS dark-target aerosol products over land, *Atmos. Chem. Phys.*, 10, 10399-10420, doi:10.5194/acp-10-10399-2010, 2010.
- 1350 Levy, R. C., Mattoo, S., Munchak, L. A., Remer, L. A., Sayer, A. M., Patadia, F., and Hsu, N. C., The Collection 6 MODIS aerosol products over land and ocean, *Atmos. Meas. Tech.*, 6, 2989-3034, doi:10.5194/amt-6-2989-2013, 2013.
- Li, Q., Li, C. C., and Mao, J. T., Evaluation of Atmospheric Aerosol Optical Depth Products at Ultraviolet Bands Derived from MODIS Products, *Aerosol Sci. Tech.*, 46, 1025-1034, doi:10.1080/02786826.2012.687475, 2012.
- 1355 Lin, J. T., Liu, M. Y., Xin, J. Y., Boersma, K. F., Spurr, R., Martin, R., and Zhang, Q., Influence of aerosols and surface reflectance on satellite NO<sub>2</sub> retrieval: seasonal and spatial characteristics and implications for NO<sub>x</sub> emission constraints, *Atmos. Chem. Phys.*, 15, 11217-11241, doi:10.5194/acp-15-11217-2015, 2015.
- 1360 Liu, T. J., Marlier, M. E., DeFries, R. S., Westervelt, D. M., Xia, K. R., Fiore, A. M., Mickley, L. J., Cusworth, D. H., and Milly, G., Seasonal impact of regional outdoor biomass burning on air pollution in three Indian cities: Delhi, Bengaluru, and Pune, *Atmos. Environ.*, 172, 83-92, doi:10.1016/j.atmosenv.2017.10.024, 2018.
- Lyons, R., Doherty, R., Reay, D., and Shackley, S., Legal but lethal: Lessons from NO<sub>2</sub> related mortality in a city compliant with EU limit value, *Atmos. Pollut. Res.*, doi:10.1016/j.apr.2020.02.016, 2020.
- 1365 Malley, C. S., Braban, C. F., Dumitrean, P., Cape, J. N., and Heal, M. R., The impact of speciated VOCs on regional ozone increment derived from measurements at the UK EMEP supersites between 1999 and 2012, *Atmos. Chem. Phys.*, 15, 8361-8380, doi:10.5194/acp-15-8361-2015, 2015.

- 1370 Malley, C. S., Heal, M. R., Braban, C. F., Kentisbeer, J., Leeson, S. R., Malcolm, H., Lingard, J. J. N., Ritchie, S., Maggs, R., Beccaceci, S., Quincey, P., Brown, R. J. C., and Twigg, M. M., The contributions to long-term health-relevant particulate matter at the UK EMEP supersites between 2010 and 2013: Quantifying the mitigation challenge, *Environ. Int.*, 95, 98-111, doi:10.1016/j.envint.2016.08.005, 2016.
- 1375 Marais, E. A., Jacob, D. J., Kurosu, T. P., Chance, K., Murphy, J. G., Reeves, C., Mills, G., Casadio, S., Millet, D. B., Barkley, M. P., Paulot, F., and Mao, J., Isoprene emissions in Africa inferred from OMI observations of formaldehyde columns, *Atmos. Chem. Phys.*, 12, 6219-6235, doi:10.5194/acp-12-6219-2012, 2012.
- 1380 Marais, E. A., Jacob, D. J., Wecht, K., Lerot, C., Zhang, L., Yu, K., Kurosu, T. P., Chance, K., and Sauvage, B., Anthropogenic emissions in Nigeria and implications for atmospheric ozone pollution: A view from space, *Atmos. Environ.*, 99, 32-40, doi:10.1016/j.atmosenv.2014.09.055, 2014a.
- 1385 Marais, E. A., Jacob, D. J., Guenther, A., Chance, K., Kurosu, T. P., Murphy, J. G., Reeves, C. E., and Pye, H. O. T., Improved model of isoprene emissions in Africa using Ozone Monitoring Instrument (OMI) satellite observations of formaldehyde: implications for oxidants and particulate matter, *Atmos. Chem. Phys.*, 14, 7693-7703, doi:10.5194/acp-14-7693-2014, 2014b.
- 1390 Martin, R. V., Jacob, D. J., Chance, K., Kurosu, T. P., Palmer, P. I., and Evans, M. J., Global inventory of nitrogen oxide emissions constrained by space-based observations of NO<sub>2</sub> columns, *J. Geophys. Res.-Atmos.*, 108, doi:10.1029/2003jd003453, 2003.
- McPhetres, A., and Aggarwal, S., An Evaluation of MODIS-Retrieved Aerosol Optical Depth over AERONET Sites in Alaska, *Remote Sens.-Basel*, 10, doi:10.3390/rs10091384, 2018.
- 1395 Mhawish, A., Banerjee, T., Broday, D. M., Misra, A., and Tripathi, S. N., Evaluation of MODIS Collection 6 aerosol retrieval algorithms over Indo-Gangetic Plain: Implications of aerosols types and mass loading, *Remote Sens. Environ.*, 201, 297-313, doi:10.1016/j.rse.2017.09.016, 2017.
- 1400 Miller, S. M., Matross, D. M., Andrews, A. E., Millet, D. B., Longo, M., Gottlieb, E. W., Hirsch, A. I., Gerbig, C., Lin, J. C., Daube, B. C., Hudman, R. C., Dias, P. L. S., Chow, V. Y., and Wofsy, S. C., Sources of carbon monoxide and formaldehyde in North America determined from high-resolution atmospheric data, *Atmos. Chem. Phys.*, 8, 7673-7696, doi:10.5194/acp-8-7673-2008, 2008.
- 1405 Millet, D. B., Jacob, D. J., Turquety, S., Hudman, R. C., Wu, S. L., Fried, A., Walega, J., Heikes, B. G., Blake, D. R., Singh, H. B., Anderson, B. E., and Clarke, A. D., Formaldehyde distribution over North America: Implications for satellite retrievals of formaldehyde columns and isoprene emission, *J. Geophys. Res.-Atmos.*, 111, doi:10.1029/2005jd006853, 2006.
- 1410 Munchak, L. A., Levy, R. C., Mattoo, S., Remer, L. A., Holben, B. N., Schafer, J. S., Hostetler, C. A., and Ferrare, R. A., MODIS 3 km aerosol product: applications over land in an urban/suburban region, *Atmos. Meas. Tech.*, 6, 1747-1759, doi:10.5194/amt-6-1747-2013, 2013.
- Nagar, P. K., Sharma, M., and Das, D., A new method for trend analyses in PM<sub>10</sub> and impact of crop residue burning in Delhi, Kanpur and Jaipur, India, *Urban Clim.*, 27, 193-203, doi:10.1016/j.uclim.2018.12.003, 2019.
- 1415 Nakoudi, K., Giannakaki, E., Dandou, A., Tombrou, M., and Komppula, M., Planetary boundary layer height by means of lidar and numerical simulations over New Delhi, India, *Atmos. Meas. Tech.*, 12, 2595-2610, doi:10.5194/amt-12-2595-2019, 2019.

- 1420 Ots, R., Heal, M. R., Young, D. E., Williams, L. R., Allan, J. D., Nemitz, E., Di Marco, C., Detournay, A., Xu, L., Ng, N. L., Coe, H., Herndon, S. C., Mackenzie, I. A., Green, D. C., Kuenen, J. J. P., Reis, S., and Vieno, M., Modelling carbonaceous aerosol from residential solid fuel burning with different assumptions for emissions, *Atmos. Chem. Phys.*, 18, 4497-4518, doi:10.5194/acp-18-4497-2018, 2018.
- 1425 Parkhi, N., Chate, D., Ghude, S. D., Peshin, S., Mahajan, A., Srinivas, R., Surendran, D., Ali, K., Singh, S., Trimbake, H., and Beig, G., Large inter annual variation in air quality during the annual festival 'Diwali' in an Indian megacity, *J. Environ. Sci.-China*, 43, 265-272, doi:10.1016/j.jes.2015.08.015, 2016.
- 1430 Pathania, R., Phadke, P., Gupta, R. K., and Ramanathan, S.; Centre for Science and Environment, New Delhi, Off-Target Status of Thermal Power Stations in Delhi NCR, <http://www.indiaenvironmentportal.org.in/files/file/Off-Target---Status-of-Power-Stations-Report.pdf>, 2018.
- 1435 Paulot, F., Paynter, D., Ginoux, P., Naik, V., Whitburn, S., Van Damme, M., Clarisse, L., Coheur, P. F., and Horowitz, L. W., Gas-aerosol partitioning of ammonia in biomass burning plumes: Implications for the interpretation of spaceborne observations of ammonia and the radiative forcing of ammonium nitrate, *Geophys. Res. Lett.*, 44, 8084-8093, doi:10.1002/2017gl074215, 2017.
- Petrenko, M., Ichoku, C., and Leptoukh, G., Multi-sensor Aerosol Products Sampling System (MAPSS), *Atmos. Meas. Tech.*, 5, 913-926, doi:10.5194/amt-5-913-2012, 2012.
- 1440 Pope, R. J., Arnold, S. R., Chipperfield, M. P., Latter, B. G., Siddans, R., and Kerridge, B. J., Widespread changes in UK air quality observed from space, *Atmos. Sci. Lett.*, 19, doi:10.1002/asl.817, 2018.
- 1445 Ramachandran, S., Kedia, S., and Srivastava, R., Aerosol optical depth trends over different regions of India, *Atmos. Environ.*, 49, 338-347, doi:10.1016/j.atmosenv.2011.11.017, 2012.
- Reed, C., Evans, M. J., Di Carlo, P., Lee, J. D., and Carpenter, L. J., Interferences in photolytic NO<sub>2</sub> measurements: explanation for an apparent missing oxidant?, *Atmos. Chem. Phys.*, 16, 4707-4724, doi:10.5194/acp-16-4707-2016, 2016.
- 1450 Remer, L. A., Kaufman, Y. J., Tanre, D., Mattoo, S., Chu, D. A., Martins, J. V., Li, R. R., Ichoku, C., Levy, R. C., Kleidman, R. G., Eck, T. F., Vermote, E., and Holben, B. N., The MODIS aerosol algorithm, products, and validation, *J. Atmos. Sci.*, 62, 947-973, doi:10.1175/Jas3385.1, 2005.
- 1455 Remer, L. A., Mattoo, S., Levy, R. C., and Munchak, L. A., MODIS 3 km aerosol product: algorithm and global perspective, *Atmos. Meas. Tech.*, 6, 1829-1844, doi:10.5194/amt-6-1829-2013, 2013.
- 1460 Richmond, B., Misra, A., Brown, P., Karagianni, E., Murrells, T., Pang, Y., Passant, N., Pepler, A., Stewart, R., Thistlethwaite, G., Turtle, L., Wakeling, D., Walker, C., Wiltshire, J., Hobson, M., Gibbs, M., Misselbrook, T., Dragosit, U., and Tomlinson, S.; Environment, R. E., United Kingdom, UK Informative Inventory Report (1990 to 2018), [https://uk-air.defra.gov.uk/assets/documents/reports/cat07/2003131327\\_GB\\_IIR\\_2020\\_v1.0.pdf](https://uk-air.defra.gov.uk/assets/documents/reports/cat07/2003131327_GB_IIR_2020_v1.0.pdf), 2020.
- Richter, A., Nitrogen oxides in the troposphere - What have we learned from satellite measurements?, *Erca: From the Human Dimensions of Global Environmental Change to the Observation of the Earth from Space*, Vol 8, WOS:000268062600011, 2009.
- 1465 Sahu, L. K., Yadav, R., and Pal, D., Source identification of VOCs at an urban site of western India: Effect of marathon events and anthropogenic emissions, *J. Geophys. Res.-Atmos.*, 121, 2416-2433, doi:10.1002/2015jd024454, 2016.

- 1470 Sathe, Y., Kulkarni, S., Gupta, P., Kaginalkar, A., Islam, S., and Gargava, P., Application of Moderate Resolution Imaging Spectroradiometer (MODIS) Aerosol Optical Depth (AOD) and Weather Research Forecasting (WRF) model meteorological data for assessment of fine particulate matter (PM<sub>2.5</sub>) over India, *Atmos. Pollut. Res.*, 10, 418-434, doi:10.1016/j.apr.2018.08.016, 2019.
- 1475 Schaap, M., Apituley, A., Timmermans, R. M. A., Koelemeijer, R. B. A., and de Leeuw, G., Exploring the relation between aerosol optical depth and PM<sub>2.5</sub> at Cabauw, the Netherlands, *Atmos. Chem. Phys.*, 9, 909-925, doi:10.5194/acp-9-909-2009, 2009.
- Schneider, P., Lahoz, W. A., and van der A, R., Recent satellite-based trends of tropospheric nitrogen dioxide over large urban agglomerations worldwide, *Atmos. Chem. Phys.*, 15, 1205-1220, doi:10.5194/acp-15-1205-2015, 2015.
- 1480 Shaddick, G., Thomas, M. L., Amini, H., Broday, D., Cohen, A., Frostad, J., Green, A., Gumy, S., Liu, Y., Martin, R. V., Pruss-Ustun, A., Simpson, D., van Donkelaar, A., and Brauer, M., Data Integration for the Assessment of Population Exposure to Ambient Air Pollution for Global Burden of Disease Assessment, *Environ. Sci. Technol.*, 52, 9069-9078, doi:10.1021/acs.est.8b02864, 2018.
- 1485 Shah, V., Jacob, D. J., Li, K., Silvern, R. F., Zhai, S., Liu, M., Lin, J., and Zhang, Q., Effect of changing NO<sub>x</sub> lifetime on the seasonality and long-term trends of satellite-observed tropospheric NO<sub>2</sub> columns over China, *Atmos. Chem. Phys.*, 20, 1483-1495, doi:10.5194/acp-20-1483-2020, 2020.
- 1490 Silvern, R. F., Jacob, D. J., Travis, K. R., Sherwen, T., Evans, M. J., Cohen, R. C., Laughner, J. L., Hall, S. R., Ullmann, K., Crounse, J. D., Wennberg, P. O., Peischl, J., and Pollack, I. B., Observed NO/NO<sub>2</sub> Ratios in the Upper Troposphere Imply Errors in NO-NO<sub>2</sub>-O<sub>3</sub> Cycling Kinetics or an Unaccounted NO<sub>x</sub> Reservoir, *Geophys. Res. Lett.*, 45, 4466-4474, doi:10.1029/2018gl077728, 2018.
- 1495 Silvern, R. F., Jacob, D. J., Mickley, L. J., Sulprizio, M. P., Travis, K. R., Marais, E. A., Cohen, R. C., Laughner, J. L., Choi, S., Joiner, J., and Lamsal, L. N., Using satellite observations of tropospheric NO<sub>2</sub> columns to infer long-term trends in US NO<sub>x</sub> emissions: the importance of accounting for the free tropospheric NO<sub>2</sub> background, *Atmos. Chem. Phys.*, 19, 8863-8878, doi:10.5194/acp-19-8863-2019, 2019.
- 1500 Singh, R. B., and Grover, A., Sustainable Urban Environment in Delhi Mega City: Emerging Problems and Prospects for Innovative Solutions [https://sustainabledevelopment.un.org/content/documents/6494108\\_Singh%20and%20Grover\\_Sustainable%20Urban%20Environment%20in%20Delhi.pdf](https://sustainabledevelopment.un.org/content/documents/6494108_Singh%20and%20Grover_Sustainable%20Urban%20Environment%20in%20Delhi.pdf) 2015.
- 1505 Singh, S., and Kulshrestha, U. C., Abundance and distribution of gaseous ammonia and particulate ammonium at Delhi, India, *Biogeosciences*, 9, 5023-5029, doi:10.5194/bg-9-5023-2012, 2012.
- 1510 Snider, G., Weagle, C. L., Martin, R. V., van Donkelaar, A., Conrad, K., Cunningham, D., Gordon, C., Zwicker, M., Akoshile, C., Artaxo, P., An, N. X., Brook, J., Dong, J., Garland, R. M., Greenwald, R., Griffith, D., He, K., Holben, B. N., Kahn, R., Koren, I., Lagrosas, N., Lestari, P., Ma, Z., Martins, J. V., Quer, E. J., Rudich, Y., Salam, A., Tripathi, S. N., Yu, C., Zhang, Q., Zhang, Y., Brauer, M., Cohen, A., Gibson, M. D., and Liu, Y., SPARTAN: a global network to evaluate and enhance satellite-based estimates of ground-level particulate matter for global health applications, *Atmos. Meas. Tech.*, 8, 505-521, doi:10.5194/amt-8-505-2015, 2015.
- 1515 Stieger, B., Spindler, G., Fahlbusch, B., Muller, K., Gruner, A., Poulain, L., Thoni, L., Seitler, E., Wallasch, M., and Herrmann, H., Measurements of PM<sub>10</sub> ions and trace gases with the online system MARGA at the research station Melpitz in Germany - A five-year study, *J. Atmos. Chem.*, 75, 33-70, doi:10.1007/s10874-017-9361-0, 2018.



- Streets, D. G., Canty, T., Carmichael, G. R., de Foy, B., Dickerson, R. R., Duncan, B. N., Edwards, D. P., Haynes, J. A., Henze, D. K., Houyoux, M. R., Jacobi, D. J., Krotkov, N. A., Lamsal, L. N., Liu, Y., Lu, Z. F., Martini, R. V., Pfister, G. G., Pinder, R. W., Salawitch, R. J., and Wechti, K. J., Emissions estimation from satellite retrievals: A review of current capability, *Atmos. Environ.*, 77, 1011-1042, doi:10.1016/j.atmosenv.2013.05.051, 2013.
- 1520
- Sugathan, A., Bhangale, R., Kansal, V., and Hulke, U., How can Indian power plants cost-effectively meet the new sulfur emission standards? Policy evaluation using marginal abatement cost-curves, *Energ. Policy*, 121, 124-137, doi:10.1016/j.enpol.2018.06.008, 2018.
- 1525
- Surl, L., Palmer, P. I., and Abad, G. G., Which processes drive observed variations of HCHO columns over India?, *Atmos. Chem. Phys.*, 18, 4549-4566, doi:10.5194/acp-18-4549-2018, 2018.
- Tang, Y. S., Braban, C. F., Dragosits, U., Dore, A. J., Simmons, I., van Dijk, N., Poskitt, J., Pereira, G. D., Keenan, P. O., Conolly, C., Vincent, K., Smith, R. I., Heal, M. R., and Sutton, M. A., Drivers for spatial, temporal and long-term trends in atmospheric ammonia and ammonium in the UK, *Atmos. Chem. Phys.*, 18, 705-733, doi:10.5194/acp-18-705-2018, 2018.
- 1530
- Theys, N., Hedelt, P., De Smedt, I., Lerot, C., Yu, H., Vlietinck, J., Pedergnana, M., Arellano, S., Galle, B., Fernandez, D., Carlito, C. J. M., Barrington, C., Taisne, B., Delgado-Granados, H., Loyola, D., and Van Roozendael, M., Global monitoring of volcanic SO<sub>2</sub> degassing with unprecedented resolution from TROPOMI onboard Sentinel-5 Precursor, *Sci. Rep.-Uk*, 9, doi:10.1038/s41598-019-39279-y, 2019.
- 1535
- ul-Haq, Z., Tariq, S., and Ali, M., Tropospheric NO<sub>2</sub> Trends over South Asia during the Last Decade (2004-2014) Using OMI Data, *Adv. Meteorol.*, doi:10.1155/2015/959284, 2015.
- 1540
- UN; Department of Economic and Social Affairs - Population Division, New York, World Urbanization Prospects: The 2018 Revision, <https://population.un.org/wup/Publications/Files/WUP2018-Report.pdf>, 2019.
- 1545
- Valach, A. C., Langford, B., Nemitz, E., MacKenzie, A. R., and Hewitt, C. N., Concentrations of selected volatile organic compounds at kerbside and background sites in central London, *Atmos. Environ.*, 95, 456-467, doi:10.1016/j.atmosenv.2014.06.052, 2014.
- Van Damme, M., Clarisse, L., Heald, C. L., Hurtmans, D., Ngadi, Y., Clerbaux, C., Dolman, A. J., Erisman, J. W., and Coheur, P. F., Global distributions, time series and error characterization of atmospheric ammonia (NH<sub>3</sub>) from IASI satellite observations, *Atmos. Chem. Phys.*, 14, 2905-2922, doi:10.5194/acp-14-2905-2014, 2014.
- 1550
- Van Damme, M., Clarisse, L., Dammers, E., Liu, X., Nowak, J. B., Clerbaux, C., Flechard, C. R., Galy-Lacaux, C., Xu, W., Neuman, J. A., Tang, Y. S., Sutton, M. A., Erisman, J. W., and Coheur, P. F., Towards validation of ammonia (NH<sub>3</sub>) measurements from the IASI satellite, *Atmos. Meas. Tech.*, 8, 1575-1591, doi:10.5194/amt-8-1575-2015, 2015.
- 1555
- Van Damme, M., Whitburn, S., Clarisse, L., Clerbaux, C., Hurtmans, D., and Coheur, P. F., Version 2 of the IASI NH<sub>3</sub> neural network retrieval algorithm: near-real-time and reanalysed datasets, *Atmos. Meas. Tech.*, 10, 4905-4914, doi:10.5194/amt-10-4905-2017, 2017.
- 1560
- Van Damme, M., Clarisse, L., Whitburn, S., Hadji-Lazarou, J., Hurtmans, D., Clerbaux, C., and Coheur, P. F., Industrial and agricultural ammonia point sources exposed, *Nature*, 564, 99-110, doi:10.1038/s41586-018-0747-1, 2018.
- Van Damme, M., Clarisse, L., Franco, B., Sutton, M. A., Erisman, J. W., Kruit, R. J. W., van Zanten, M., Whitburn, S., Hadji-Lazarou, J., Hurtmans, D., Clerbaux, C., and Coheur, P. F., Global, regional and national trends of atmospheric ammonia derived from a decadal (2008-2018) satellite record, *Environ. Res. Lett.*, doi:10.1088/1748-9326/abd5e0, 2020.
- 1565

- 1570 van der A, R. J., Peters, D. H. M. U., Eskes, H., Boersma, K. F., Van Roozendael, M., De Smedt, I., and Kelder, H. M., Detection of the trend and seasonal variation in tropospheric NO<sub>2</sub> over China, *J. Geophys. Res.-Atmos.*, 111, doi:10.1029/2005jd006594, 2006.
- 1575 van der A, R. J., Eskes, H. J., Boersma, K. F., van Noije, T. P. C., Van Roozendael, M., De Smedt, I., Peters, D. H. M. U., and Meijer, E. W., Trends, seasonal variability and dominant NO<sub>x</sub> source derived from a ten year record of NO<sub>2</sub> measured from space, *J. Geophys. Res.-Atmos.*, 113, doi:10.1029/2007jd009021, 2008.
- van Donkelaar, A., Martin, R. V., and Park, R. J., Estimating ground-level PM<sub>2.5</sub> using aerosol optical depth determined from satellite remote sensing, *J. Geophys. Res.-Atmos.*, 111, doi:10.1029/2005jd006996, 2006.
- 1580 van Donkelaar, A., Martin, R. V., Brauer, M., Kahn, R., Levy, R., Verduzco, C., and Villeneuve, P. J., Global Estimates of Ambient Fine Particulate Matter Concentrations from Satellite-Based Aerosol Optical Depth: Development and Application, *Environ. Health Persp.*, 118, 847-855, doi:10.1289/ehp.0901623, 2010.
- 1585 van Donkelaar, A., Martin, R. V., Brauer, M., Hsu, N. C., Kahn, R. A., Levy, R. C., Lyapustin, A., Sayer, A. M., and Winker, D. M., Global Estimates of Fine Particulate Matter using a Combined Geophysical-Statistical Method with Information from Satellites, Models, and Monitors, *Environ. Sci. Technol.*, 50, 3762-3772, doi:10.1021/acs.est.5b05833, 2016.
- 1590 Vasilkov, A., Krotkov, N., Yang, E.-S., Lamsal, L., Joiner, J., Castellanos, P., Fasnacht, Z., and Spurr, R., Explicit and consistent aerosol correction for visible wavelength satellite cloud and nitrogen dioxide retrievals based on optical properties from a global aerosol analysis, *Atmos. Meas. Tech. Discuss.*, doi:10.5194/amt-2019-458, 2020.
- 1595 Venkataraman, C., Brauer, M., Tibrewal, K., Sadavarte, P., Ma, Q., Cohen, A., Chaliyakunnel, S., Frostad, J., Klimont, Z., Martin, R. V., Millet, D. B., Philip, S., Walker, K., and Wang, S. X., Source influence on emission pathways and ambient PM<sub>2.5</sub> pollution over India (2015-2050), *Atmos. Chem. Phys.*, 18, 8017-8039, doi:10.5194/acp-18-8017-2018, 2018.
- Vieno, M., Heal, M. R., Hallsworth, S., Famulari, D., Doherty, R. M., Dore, A. J., Tang, Y. S., Braban, C. F., Leaver, D., Sutton, M. A., and Reis, S., The role of long-range transport and domestic emissions in determining atmospheric secondary inorganic particle concentrations across the UK, *Atmos. Chem. Phys.*, 14, 8435–8447, doi:10.5194/acp-14-8435-2014, 2014.
- 1600 Vieno, M., Heal, M. R., Williams, M. L., Carnell, E. J., Nemitz, E., Stedman, J. R., and Reis, S., The sensitivities of emissions reductions for the mitigation of UK PM<sub>2.5</sub>, *Atmos. Chem. Phys.*, 16, 265-276, doi:10.5194/acp-16-265-2016, 2016.
- 1605 Vodonos, A., Abu Awad, Y., and Schwartz, J., The concentration-response between long-term PM<sub>2.5</sub> exposure and mortality; A meta-regression approach, *Environ. Res.*, 166, 677-689, doi:10.1016/j.envres.2018.06.021, 2018.
- 1610 Vohra, K., Vodonos, A., Schwartz, J., Marais, E. A., Sulprizio, M. P., and Mickley, L. J., Global mortality from outdoor fine particle pollution generated by fossil fuel combustion: Results from GEOS-Chem, *Environ. Res.*, 195, doi:10.1016/j.envres.2021.110754, 2021.
- Walker, H. L., Heal, M. R., Braban, C. F., Ritchie, S., Conolly, C., Sanocka, A., Dragosits, U., and Twigg, M. M., Changing supersites: assessing the impact of the southern UK EMEP supersite relocation on measured atmospheric composition, *Environ. Res. Comm.*, 1, doi:10.1088/2515-7620/ab1a6f, 2019.
- 1615 Wang, L., Slowik, J. G., Tripathi, N., Bhattu, D., Rai, P., Kumar, V., Vats, P., Satish, R., Baltensperger, U., Ganguly, D., Rastogi, N., Sahu, L. K., Tripathi, S. N., and Prévôt, A. S. H., Source characterization of volatile organic compounds measured by PTR-ToF-MS in Delhi, India, *Atmos. Chem. Phys.*, doi:10.5194/acp-2020-11, 2020.

- 1620 Wang, T., Song, Y., Xu, Z., Liu, M., Xu, T., Liao, W., Yin, L., Cai, X., Kang, L., Zhang, H., and Zhu, T., Why the Indo-Gangetic Plain is the region with the largest NH<sub>3</sub> column in the globe during summertime?, *Atmos. Chem. Phys.*, doi:10.5194/acp-2019-1026, 2019.
- 1625 Weagle, C. L., Snider, G., Li, C., van Donkelaar, A., Philip, S., Bissonnette, P., Burke, I., Jackson, J., Latimer, R., Stone, E., Abboud, I., Akoshile, C., Anh, N. X., Brook, J. R., Cohen, A., Dong, J. L., Gibson, M. D., Griffith, D., He, K. B., Holben, B. N., Kahn, R., Keller, C. A., Kim, J. S., Lagrosas, N., Lestari, P., Khian, Y. L., Liu, Y., Marais, E. A., Martins, J. V., Misra, A., Muliane, U., Pratiwi, R., Quel, E. J., Salam, A., Segey, L., Tripathi, S. N., Wang, C., Zhang, Q., Brauer, M., Rudich, Y., and Martin, R. V., Global Sources of Fine Particulate Matter: Interpretation of PM<sub>2.5</sub> Chemical Composition Observed by SPARTAN using a Global Chemical Transport Model, *Environ. Sci. Technol.*, 52, 11670-11681, doi:10.1021/acs.est.8b01658, 2018.
- 1630 Weatherhead, E. C., Reinsel, G. C., Tiao, G. C., Meng, X. L., Choi, D. S., Cheang, W. K., Keller, T., DeLuisi, J., Wuebbles, D. J., Kerr, J. B., Miller, A. J., Oltmans, S. J., and Frederick, J. E., Factors affecting the detection of trends: Statistical considerations and applications to environmental data, *J. Geophys. Res.-Atmos.*, 103, 17149-17161, doi:10.1029/98jd00995, 1998.
- 1635 Wei, J., Sun, L., Peng, Y. R., Wang, L. C., Zhang, Z. Y., Bilal, M., and Ma, Y. C., An Improved High-Spatial-Resolution Aerosol Retrieval Algorithm for MODIS Images Over Land, *J. Geophys. Res.-Atmos.*, 123, 12291-12307, doi:10.1029/2017jd027795, 2018.
- 1640 Wei, J., Li, Z. Q., Peng, Y. R., and Sun, L., MODIS Collection 6.1 aerosol optical depth products over land and ocean: validation and comparison, *Atmos. Environ.*, 201, 428-440, doi:10.1016/j.atmosenv.2018.12.004, 2019.
- 1645 Wei, J., Li, Z. Q., Sun, L., Peng, Y. R., Liu, L., He, L. J., Qin, W. M., and Cribb, M., MODIS Collection 6.1 3 km resolution aerosol optical depth product: global evaluation and uncertainty analysis, *Atmos. Environ.*, 240, doi:ARTN 117768 10.1016/j.atmosenv.2020.117768, 2020.
- 1650 Whalley, L. K., Stone, D., Bandy, B., Dunmore, R., Hamilton, J. F., Hopkins, J., Lee, J. D., Lewis, A. C., and Heard, D. E., Atmospheric OH reactivity in central London: observations, model predictions and estimates of in situ ozone production, *Atmos. Chem. Phys.*, 16, 2109-2122, doi:10.5194/acp-16-2109-2016, 2016.
- 1655 Whalley, L. K., Stone, D., Dunmore, R., Hamilton, J., Hopkins, J. R., Lee, J. D., Lewis, A. C., Williams, P., Kleffmann, J., Laufs, S., Woodward-Massey, R., and Heard, D. E., Understanding in situ ozone production in the summertime through radical observations and modelling studies during the Clean air for London project (ClearfLo), *Atmos. Chem. Phys.*, 18, 2547-2571, doi:10.5194/acp-18-2547-2018, 2018.
- 1660 Whitburn, S., Van Damme, M., Clarisse, L., Bauduin, S., Heald, C. L., Hadji-Lazaro, J., Hurtmans, D., Zondlo, M. A., Clerbaux, C., and Coheur, P. F., A flexible and robust neural network IASI-NH<sub>3</sub> retrieval algorithm, *J. Geophys. Res.-Atmos.*, 121, 6581-6599, doi:10.1002/2016jd024828, 2016.
- 1665 WHO; World Health Organization, WHO Global Urban Ambient Air Pollution Database, [https://www.who.int/phe/health\\_topics/outdoorair/databases/cities/en/](https://www.who.int/phe/health_topics/outdoorair/databases/cities/en/), 2018.
- World Bank, Leveraging Spatial Development Options for Uttar Pradesh, <http://documents1.worldbank.org/curated/en/751141468269412833/pdf/889670WP0URGEN00Box385254B00PUBLIC0.pdf> 2014.

- 1670 Yadav, R., Sahu, L. K., Beig, G., Tripathi, N., and Jaaffrey, S. N. A., Ambient particulate matter and carbon monoxide at an urban site of India: Influence of anthropogenic emissions and dust storms, *Environ. Pollut.*, 225, 291-303, doi:10.1016/j.envpol.2017.01.038, 2017.
- 1675 Zara, M., Boersma, K. F., De Smedt, I., Richter, A., Peters, E., van Geffen, J. H. G. M., Beirle, S., Wagner, T., Van Roozendaal, M., Marchenko, S., Lamsal, L. N., and Eskes, H. J., Improved slant column density retrieval of nitrogen dioxide and formaldehyde for OMI and GOME-2A from QA4ECV: intercomparison, uncertainty characterisation, and trends, *Atmos. Meas. Tech.*, 11, 4033-4058, doi:10.5194/amt-11-4033-2018, 2018.
- 1680 Zara, M., Boersma, F., Eskes, H., van der Gon, H. D., de Arellano, J. V.-G., Krol, M., van der Swaluw, E., Schuch, W., and Velders, G. J. M., Reductions in nitrogen oxides over the Netherlands between 2005 and 2018 observed from space and on the ground: Decreasing emissions and increasing O<sub>3</sub> indicate changing NO<sub>x</sub> chemistry, *Atmos. Environ.*, doi:10.1016/j.aeaoa.2021.100104, 2021.
- Zhu, L., Jacob, D. J., Mickley, L. J., Marais, E. A., Cohan, D. S., Yoshida, Y., Duncan, B. N., Abad, G. G., and Chance, K. V., Anthropogenic emissions of highly reactive volatile organic compounds in eastern Texas inferred from oversampling of satellite (OMI) measurements of HCHO columns, *Environ. Res. Lett.*, 9, doi:10.1088/1748-9326/9/11/114004, 2014.
- 1685 Zhu, L., Jacob, D. J., Kim, P. S., Fisher, J. A., Yu, K., Travis, K. R., Mickley, L. J., Yantosca, R. M., Sulprizio, M. P., De Smedt, I., González Abad, G., Chance, K., Li, C., Ferrare, R., Fried, A., Hair, J. W., Hanisco, T. F., Richter, D., Jo Scarino, A., Walega, J., Weibring, P., and Wolfe, G. M., Observing atmospheric formaldehyde (HCHO) from space: validation and intercomparison of six retrievals from four satellites (OMI, GOME2A, GOME2B, OMPS) with SEAC<sup>4</sup>RS aircraft observations over the southeast US, *Atmos. Chem. Phys.*, 16, 13477–13490, doi:10.5194/acp-16-13477-2016, 2016.
- 1690 Zoogman, P., Jacob, D. J., Chance, K., Zhang, L., Le Sager, P., Fiore, A. M., Eldering, A., Liu, X., Natraj, V., and Kulawik, S. S., Ozone air quality measurement requirements for a geostationary satellite mission, *Atmos. Environ.*, 45, 7143-7150, doi:10.1016/j.atmosenv.2011.05.058, 2011.

1695

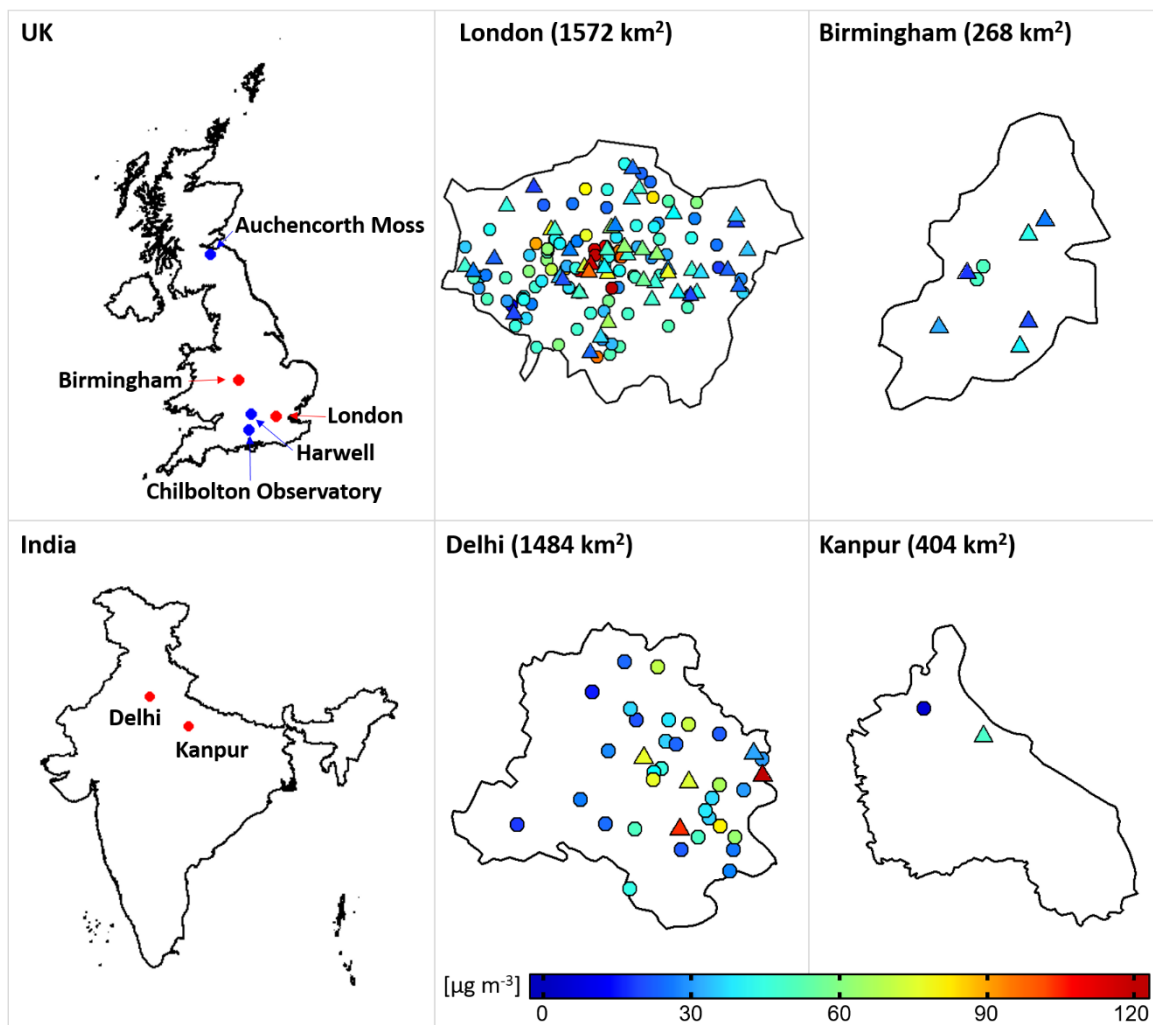


Figure 1 Spatial extent of surface NO<sub>2</sub> monitoring stations in London, Birmingham, Delhi, and Kanpur. The left panel shows the location of the target cities (red) and UK supersites that are part of the European Monitoring and Evaluation Programme (EMEP) (blue). The centre and right panels show the locations of local authority regulatory NO<sub>2</sub> monitoring stations within the administrative boundaries of each city, coloured by mean midday NO<sub>2</sub> for 2005-2018, and separated into sites used (triangles) and not used (circles) to assess satellite observations of NO<sub>2</sub> (see text for details). The surface area of each city is indicated.

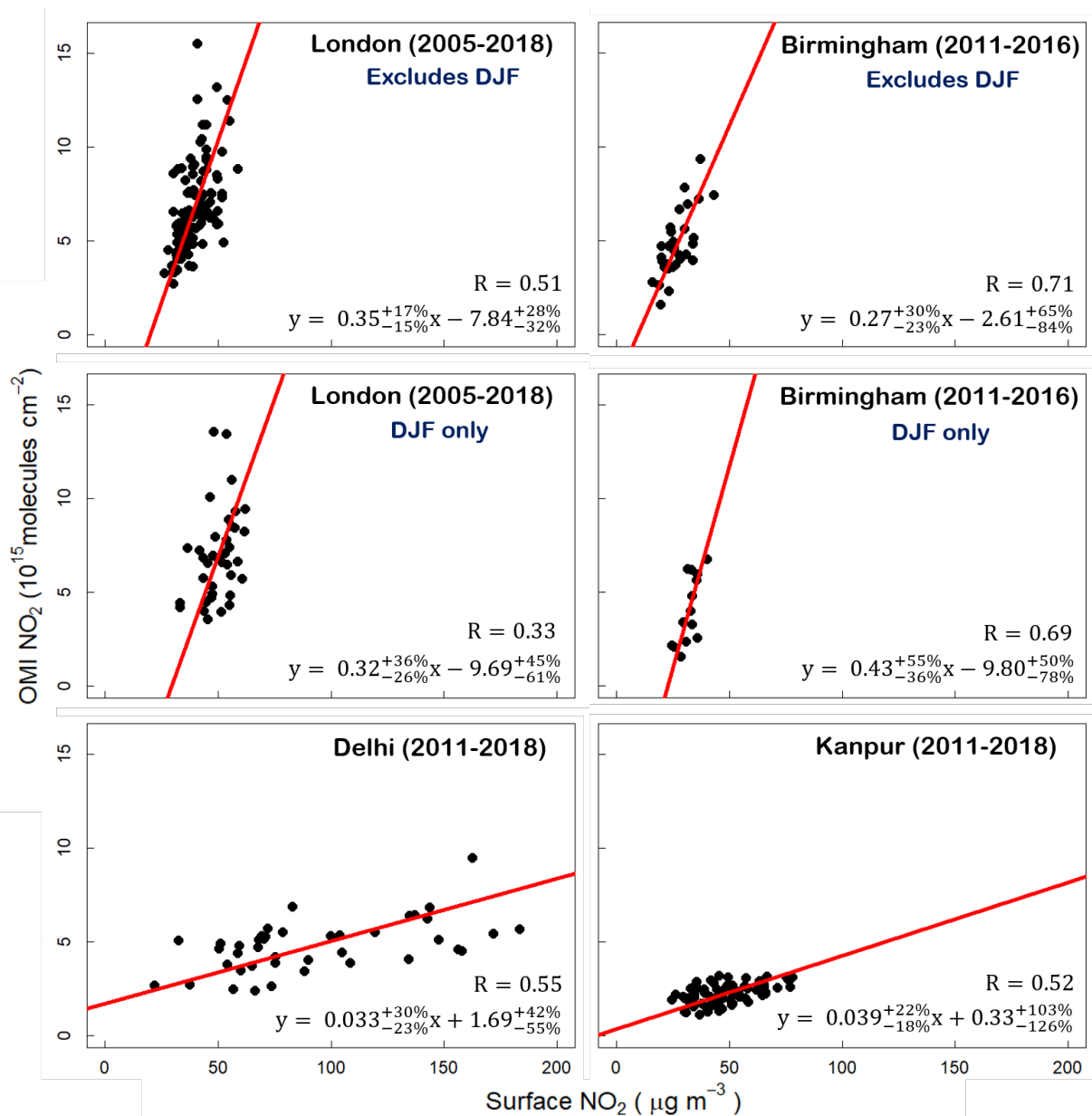
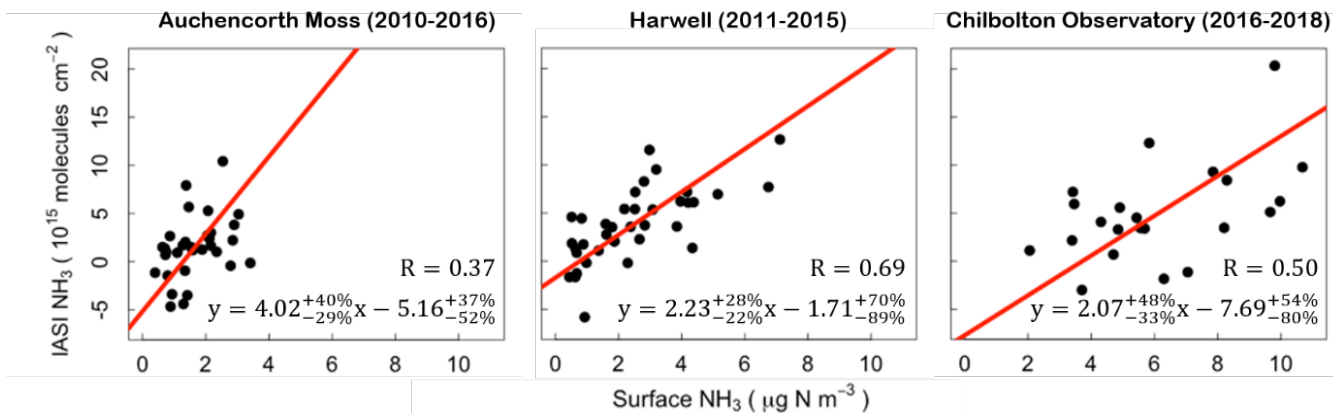
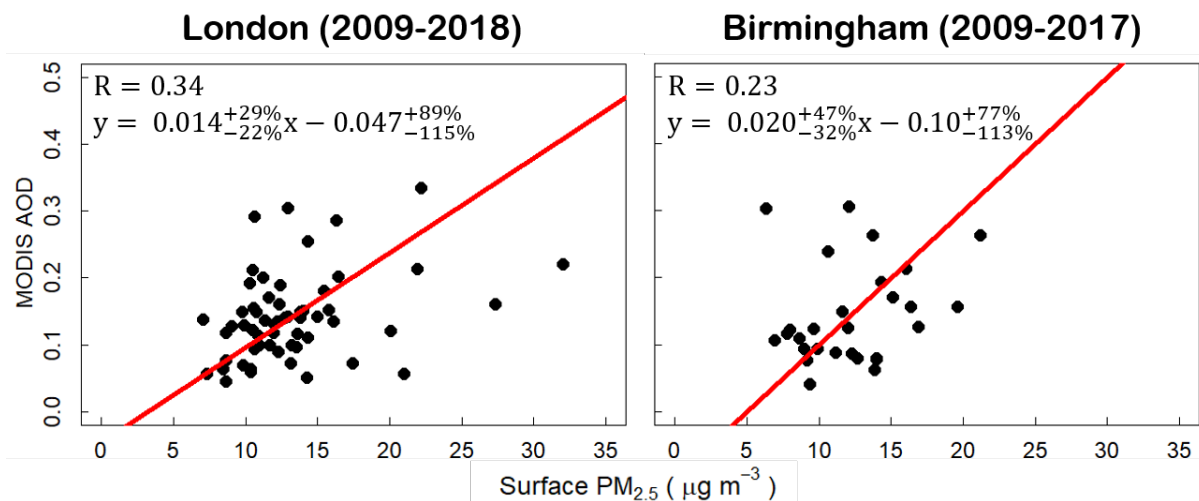


Figure 2 Assessment of OMI NO<sub>2</sub> with ground-based NO<sub>2</sub>. Points are monthly means of city-average NO<sub>2</sub> from OMI and the surface networks for London (top and centre left), Birmingham (top and centre right), Delhi (bottom left), and Kanpur (bottom right). UK cities include panels with all months except December-February (DJF) (top) and DJF only (centre). Data for all months are given for cities in India. The red line is the standard major axis (SMA) regression. Values inset are Pearson's correlation coefficients and regression statistics. Relative errors on the slopes and intercepts are the 95 % confidence intervals (CI).

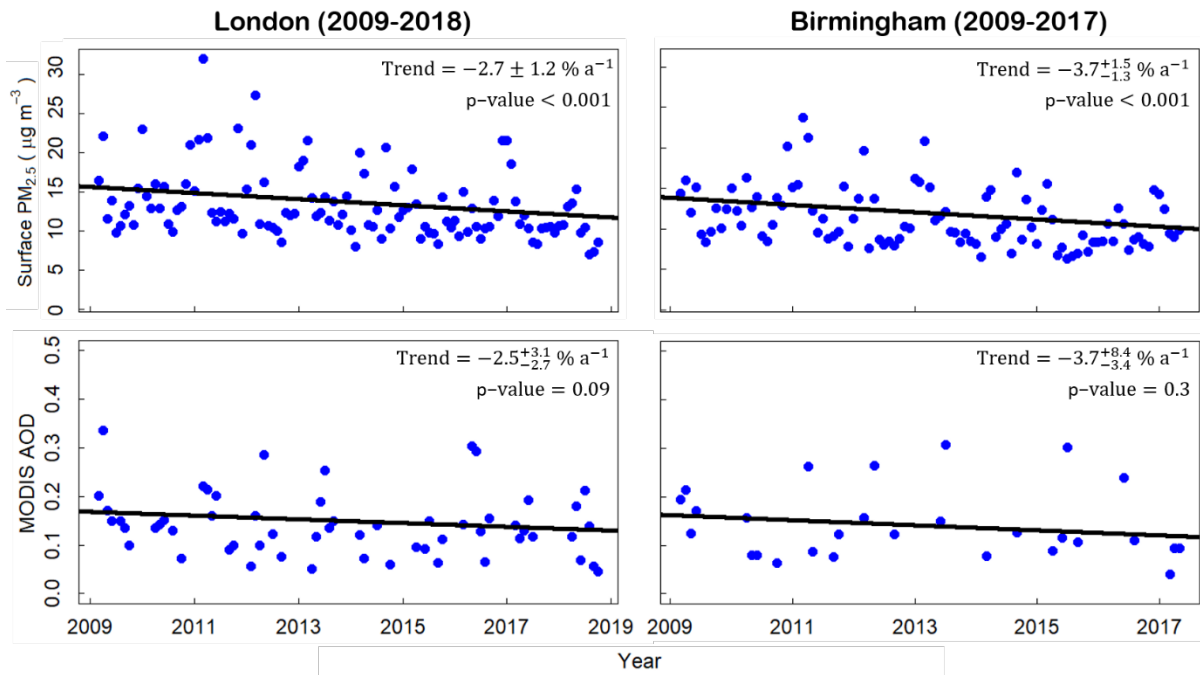
1705



1710 **Figure 3** Assessment of IASI  $\text{NH}_3$  with ground-based  $\text{NH}_3$  at UK [supersites](#)[EMEP sites](#). Points are monthly means from IASI and the surface sites Auchencorth Moss (left), Harwell (middle) and Chilbolton Observatory (right). The red line is the SMA regression. Values inset are Pearson's correlation coefficients and regression statistics. Relative errors on the slope and intercept are the 95 % CI. Locations of UK [supersites](#)[EMEP sites](#) are indicated in Figure 1.

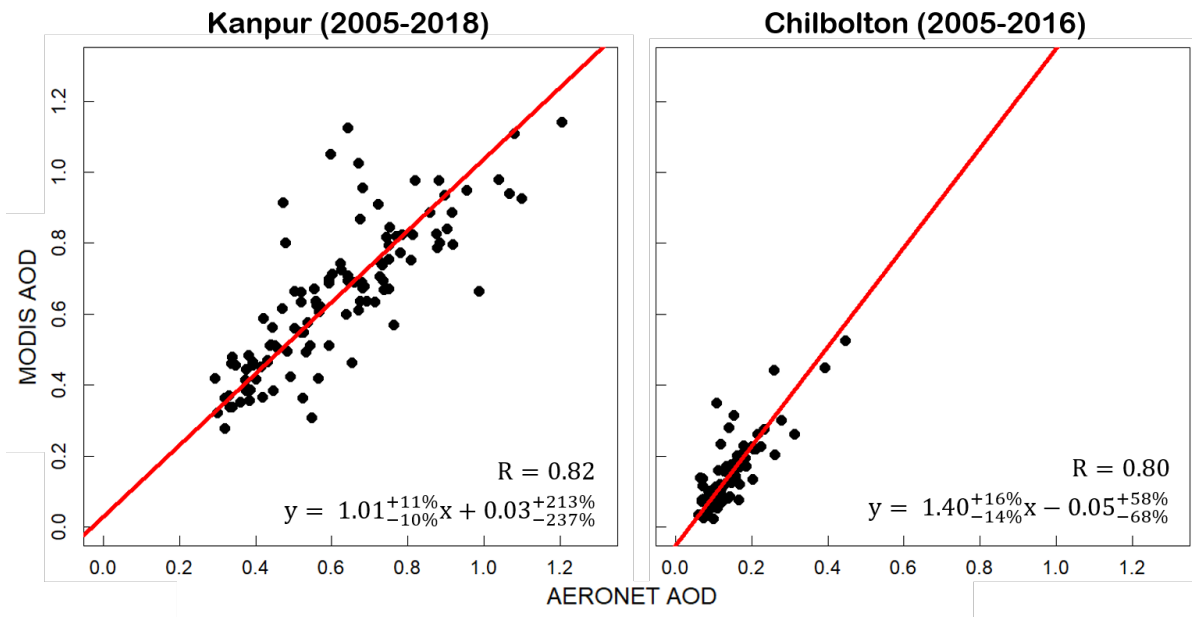


1715 **Figure 4** Assessment of MODIS AOD with surface  $\text{PM}_{2.5}$  in London and Birmingham. Points are monthly means of city-average AOD from MODIS and  $\text{PM}_{2.5}$  from surface networks for London (left) and Birmingham (right). The red line is the SMA regression. Values inset are Pearson's correlation coefficients and regression statistics. Relative errors on the slopes and intercepts are the 95 % CI.



1720 Figure 5 Time series of surface  $PM_{2.5}$  and MODIS AOD in 2009-2018 for London (left) and 2009-2017 for Birmingham (right). Points are city-average monthly means of  $PM_{2.5}$  from the surface network (top) and AOD from MODIS (bottom). Black lines are trends obtained with the Theil-Sen single median estimator. Values inset are annual trends and p-values. Absolute errors on the trends are 95 % CI. **Trends are considered significant at the 95 % CI (p-value < 0.05).**





1725 **Figure 6 Validation of MODIS AOD with AERONET AOD in Kanpur and Chilbolton. Points are monthly means of MODIS and AERONET AOD for Kanpur (left) and Chilbolton (right). The red line is the SMA regression. Values inset are Pearson's correlation coefficients and regression statistics. Relative errors on the slopes and intercepts are the 95 % CI.**

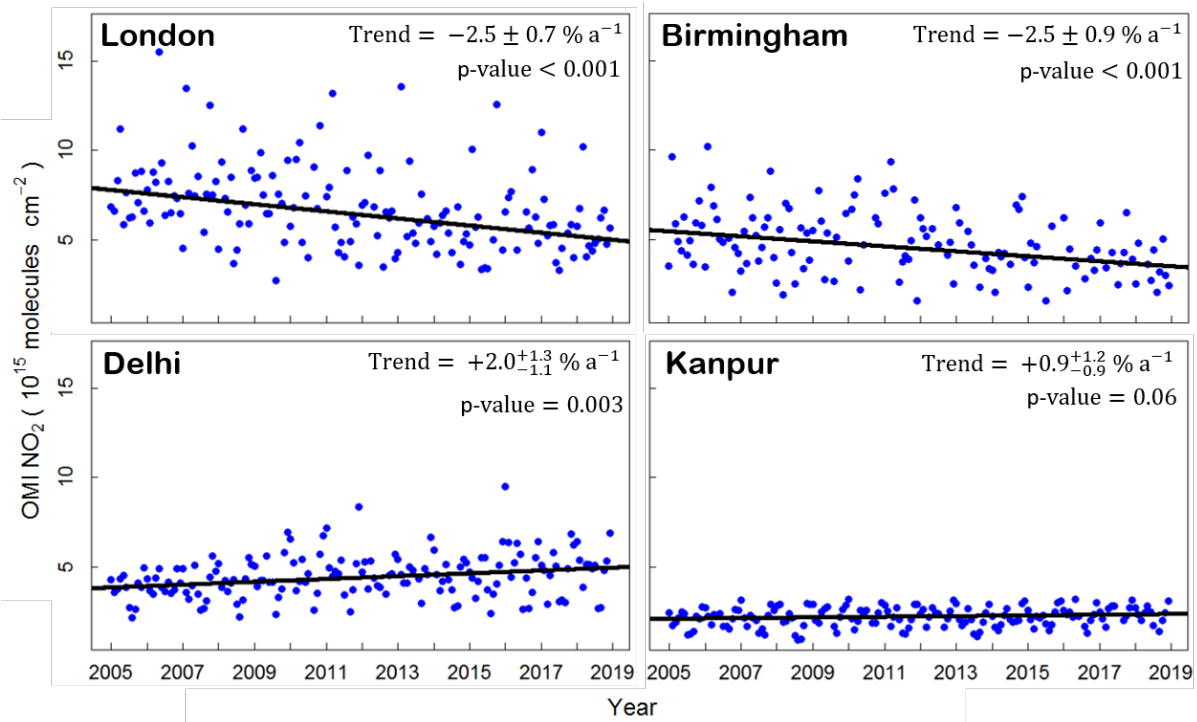


Figure 7 Time series of OMI NO<sub>2</sub> in 2005-2018 for London, Birmingham, Delhi and Kanpur. Points are city-average monthly means. Black lines are trends obtained with the Theil-Sen single median estimator. Values inset are annual trends and p-values. Absolute errors on the trends are 95 % CI.

1730

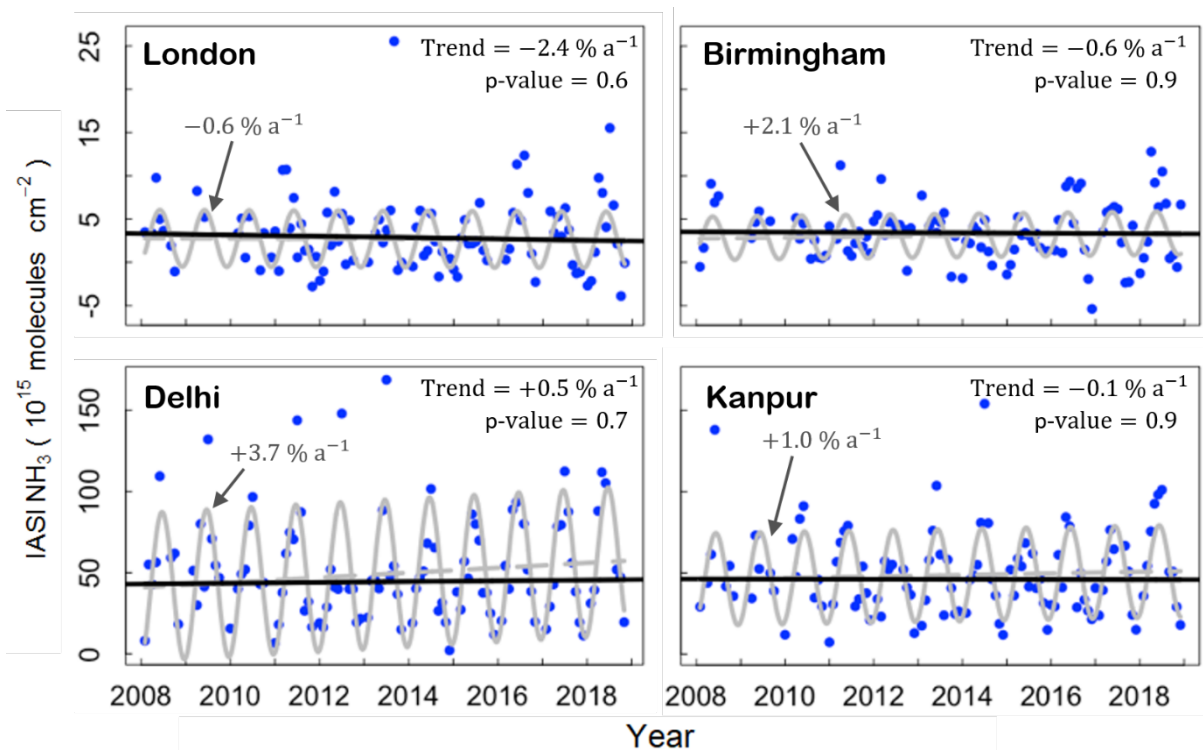
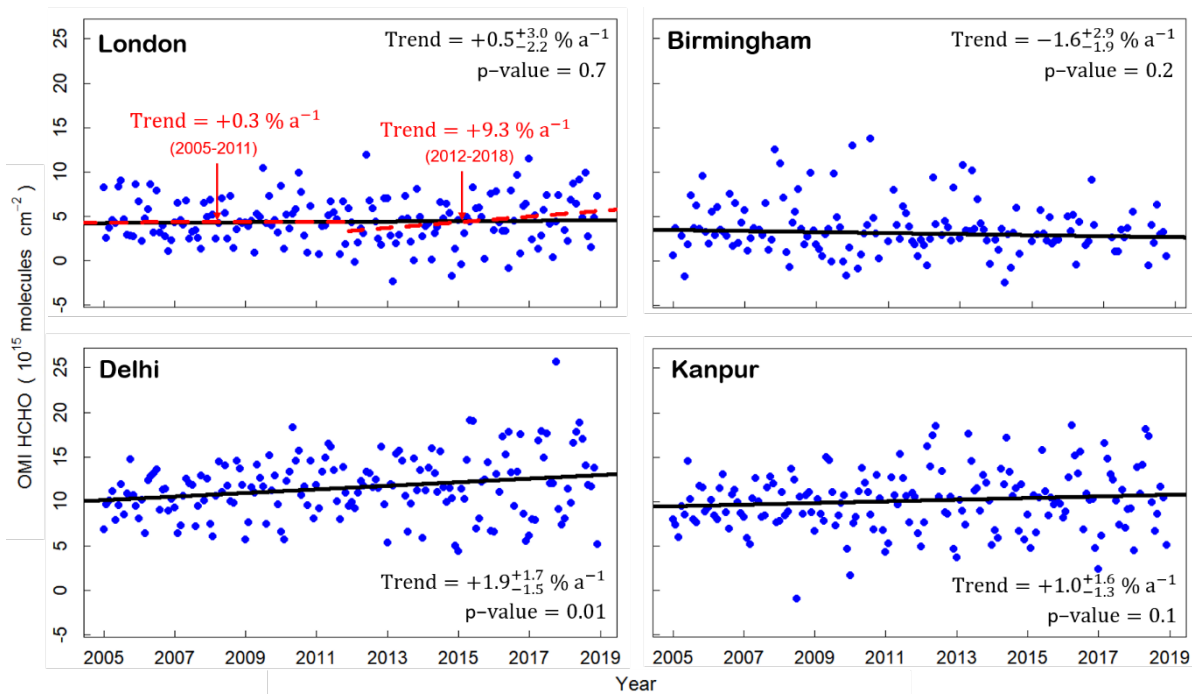
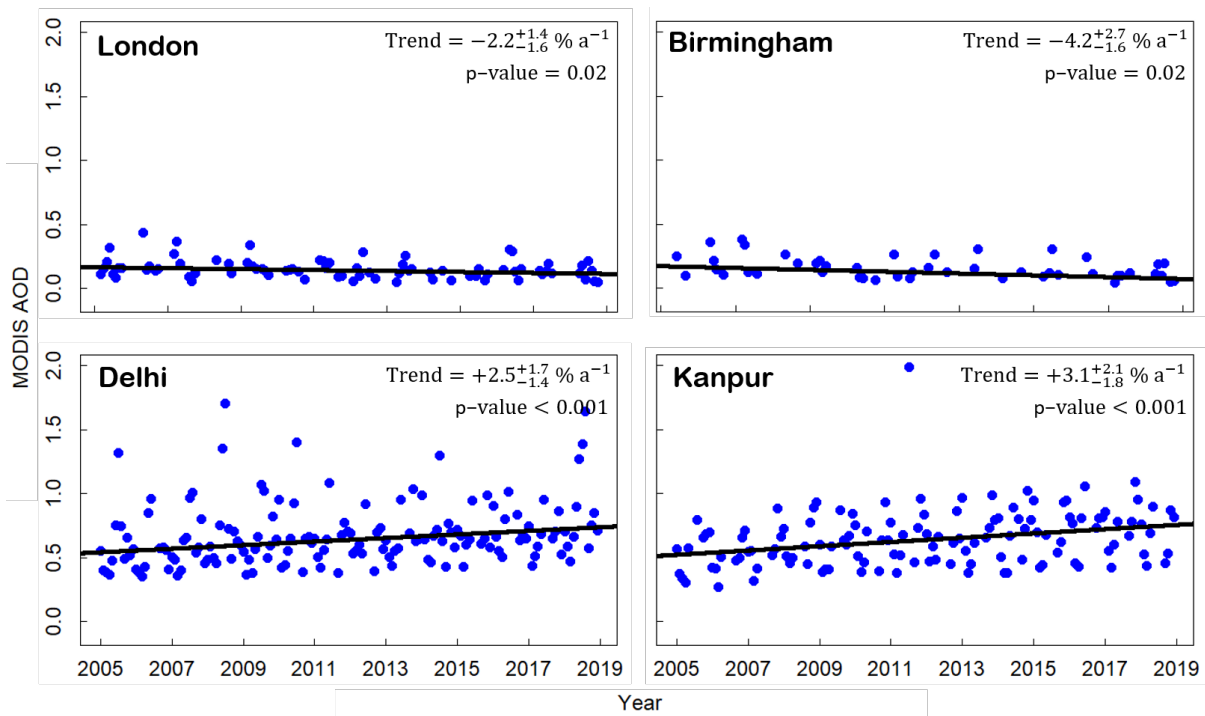


Figure 8 Time series of IASI  $\text{NH}_3$  in 2008-2018 for London, Birmingham, Delhi and Kanpur. Points are city-average monthly means. Black lines are trends obtained with the Theil-Sen single median estimator. The grey lines are the fit (solid) and trend component ( $B$ ) (dashed) obtained with Equation (1). Values inset are annual trends and p-values for the Theil-Sen fit (in black) and annual trends obtained with Equation (1) (grey). ~~Absolute Trend errors on the Theil-Sen trend (95 % CI) are large ( $> 150\%$ ) and (not shown) exceed  $\pm 150\%$  in all cities.~~

1735



1740 **Figure 9** Time series of OMI HCHO for London, Birmingham, Delhi and Kanpur. Points are city-average monthly means of OMI HCHO after removing the background contribution (see text for details). Solid black lines are trends for 2005-2018 obtained with the Theil-Sen single median estimator. Values inset are annual trends and p-values. Absolute errors on the trends are 95 % CI. Dashed red lines show trend lines for London in 2005-2011 and 2012-2018 and red text are corresponding annual trends.



**Figure 10** Time series of MODIS AOD for London, Birmingham, Delhi and Kanpur. Points are city-average monthly means. Black lines are trends obtained with the Theil-Sen single median estimator. Values inset are annual trends and p-values. Absolute errors on the trends are 95 % CI.

1745