

Response to Reviewers

We thank both reviewers for their comments, which have helped us to improve the paper. Below, we include a point-by-point response to the reviewer's comments and describe the corresponding changes we have made to the manuscript.

Reviewer: 1

This analysis uses several observational data sets, including aircraft observations from ORACLES, as well as CLAIPSO and CloudSat, to identify and quantify mid-level clouds off the coast of South Africa. Although low-level clouds (stratocumulus) in this region have received considerable attention, particularly in relation to smoke aerosols, mid-level clouds have not been properly investigated. The authors find that the occurrence of such mid-level clouds is relatively common, and go on to explore the meteorological causes, which includes synoptically-modulated continental moisture outflow. Finally, the authors quantify the corresponding radiative impacts of the south Atlantic mid-level clouds.

Comments

Overall, the paper is very well written and the analysis is comprehensive and novel. My only comments pertain to model simulations, which were not part of this analysis. How well do models simulate these observed mid-level south Atlantic clouds? Can the results of this paper be used to understand possible model biases, and ultimately, improve model simulations in regard to this feature?

Reply:

We thank the reviewer for the comment. Indeed, we did not emphasize the potential implication of our results to model simulations of mid-level clouds. For example, our result that showed the mid-level clouds are liquid-water clouds is useful to accurately simulate the phases of multi-layer clouds over the region. In addition, we also recognize that our results are useful for remote-sensing retrieval of both cloud and aerosols properties over the region. To highlight these points, we have added the paragraph to the Discussion & Conclusion section, which reads as follows:

“To that end, the prevalence of the multi-layer cloud system over the southeast Atlantic highlighted in this study could provide the needed guidance for future remote-sensing retrieval and any modeling efforts over the region. For example, the presence of the mid-level clouds must be accounted for in the observed top-of-the-atmosphere radiance received by the passive remote-sensing platforms (e.g., Peers et al., 2019), as well as the resulting retrieval of low-level cloud properties, including the low-level cloud-top heights over the region. In addition, the result that the southeast Atlantic mid-level clouds are supercooled liquid-water

clouds could help reduce potential bias that may be associated with the mixed-phase representation of mid-level clouds in the models (e.g., Zhang et al., 2005; Barrett et al., 2017). Overall, the knowledge of the mid-level cloud properties over southeast Atlantic could be useful to accurately simulate its radiative effects in the mid-troposphere, its impact on the underlying low-level clouds, the aerosol-cloud interaction, and, consequently, the regional cloud radiative budget.”

Reviewer: 2

The authors describe the occurrence, physical and optical properties, diurnal and seasonal variability, radiative impact on low-level clouds and the meteorology of mid-level clouds in the southeast Atlantic. For this purpose, they mostly used satellite observations and the in situ ORACLES 2016 campaign. The paper is clear and well written, and it makes good use of the observations. It is in particular of interest for the community that focuses on the southeast Atlantic region and it confirms the very few previous studies on the mid-level clouds. Therefore, I would recommend this paper for publication after a minor revision.

Minor comments:

Line 12: “no study” I find this statement a bit strong. It might be true that there are no studies about mid-level clouds in the southeast Atlantic region but there are mid-level cloud studies in the tropics (that you cited) that have similar findings as yours.

Reply:

Thank you for the comments. We have re-phrased the sentence as follows:

*“While **much** attention has focused on the interactions between the low-level clouds and the overlying aerosols, **few studies** have focused on the mid-level clouds that also occur over the region.”*

Line 13 & 423: “attribution” I do not find this word correct in both these sentences. I would rather write “estimation”, “evaluation” or “calculation”.

Reply:

Thank you for the comment. We have replaced the word in both places with “evaluation”.

Line 13: “of the cloud radiation budget, as well as . . . retrievals” I would write first the retrieval and then the cloud radiation budget because first, the cloud properties are observed/retrieved and then, their radiation budget is evaluated.

Reply:

I have rephrased the sentence. The new sentence now reads:

“The presence of mid-level clouds over the region complicates space-based remote-sensing retrievals of cloud properties and the evaluation of the cloud radiation budget.”

Line 29: “to reducing” seems weird. Wouldn’t be “to reduce” better?

Reply:

Yes. We have changed this part of the sentence. The sentence now reads:

“Clouds over the southeast Atlantic, as one of the world's major subtropical stratocumulus clouds (Klein and Hartmann, 1993), contribute importantly to the uncertainties in global climate change projections (Soden and Vecchi, 2011).

Line 52-53: “Sub-tropical mid-level clouds have received little to no attention when. . .” To me, the subtropical region is the region between the tropics (23.5°) and the midlatitudes. In this definition, southeast Atlantic as you defined it (5°S-20°S) is not in the subtropics. However, you might have a different definition. If so, please clarify because it is not clear to me. In addition, Riihimaki’s paper focuses on Darwin (12°S) so it looks like it is the same latitude region as yours and Bourgeois’s paper (2016) focuses on the tropics (23.5°N-23.5°S) so your region is encompassed in it. Therefore, I would not write that mid-level clouds described in your study have received no attention in the past but I would definitely agree with little attention. Same remark for the conclusion.

Reply:

Thank you for the comment. We recognize that our phrasing of the sentence may be too strong. We agree with the reviewer that other studies have broadly highlighted the mid-level clouds over latitudes that are comparable to that of the southeast Atlantic, although no major study (to our knowledge) focused specifically on this region.

*To clarify the sentence, we have removed “to no”, and it now reads: “Sub-tropical mid-level clouds have received **less attention** when. . .”.*

Line 101-102: “Despite the focus. . .” I do not really understand what the authors mean here. Do they speculate that their study applies to a larger region than the region they focus on? If so, why?

Reply:

We thank the reviewer for the comment. Our study relies mainly on measurements that were taken during ORACLES campaign in 2016, which only covers a subset of the southeast Atlantic region. In order to give a broader context, we consider the mid-level clouds over the entire basin using satellite measurements. We have re-written the sentence to clarify this point as follows:

“Since this delimited area is part of the larger southeast Atlantic region, our analysis thus considers the entire southeast Atlantic region to provide a broader context for the occurrence of mid-level clouds beyond the area covered by ORACLES.”

Line 107 & 431: Please write the altitude in international units first. Feet should not be used in research.

Thank you. We have changed this to kilometers in both places.

Line 138: Typo, “the the”.

Thank you. This has been corrected.

Line 165: CALIPO => CALIPSO.

Thank you. This has been corrected.

Line 174: infra-red => infrared.

Thank you. All occurrence of this in the manuscript has been changed.

Line 184: It looks to me that “Therefore” is misused here.

We have removed it from the sentence.

Line 217: “southeast Atlantic”.

Thank you. This has been corrected.

Line 220: Write “5°S-20°S” for consistency.

Thank you. This has been corrected.

Line 250: Typo, “Figure 5c & d”.

Thank you. This has been corrected.

Line 322: Typo, “for for”.

Thank you. This has been corrected.

Please, be consistent when you write longitudes, latitudes or temperatures. Use ° everywhere. Also, either you write e.g., 5km or 5 km. Several times, it is written “cloud” instead of “clouds”. References: Check them carefully. There are several mistakes. Non-exhaustive examples: - Adebiyi A A A A A - Hobbs - Kacarab - Klein – Palikonda

We have looked through the references and made necessary corrections

Caption 4: CALPSO => CALIPSO (x2).

Thank you. This has been corrected.

Caption 6: Verb missing in the last sentence.

Thank you. This has been corrected.

References:

Barrett, A. I., Hogan, R. J. and Forbes, R. M.: Why are mixed-phase altocumulus clouds poorly predicted by large-scale models? Part 1. Physical processes, *J. Geophys. Res. Atmos.*, 122(18), 9903–9926, doi:10.1002/2016JD026321, 2017.

Peers, F., Francis, P., Fox, C., Abel, S. J., Szpek, K., Cotterell, M. I., Davies, N. W., Langridge, J. M., Meyer, K. G., Platnick, S. E. and Haywood, J. M.: Observation of absorbing aerosols above clouds over the south-east Atlantic Ocean from the geostationary satellite SEVIRI – Part 1: Method description and sensitivity, *Atmos. Chem. Phys.*, 19(14), 9595–9611, doi:10.5194/acp-19-9595-2019, 2019.

Zhang, M. H., Lin, W. Y., Klein, S. A., Bacmeister, J. T., Bony, S., Cederwall, R. T., Del Genio, a. D., Hack, J. J., Loeb, N. G., Lohmann, U., Minnis, P., Musat, I., Pincus, R., Stier, P., Suarez, M. J., Webb, M. J., Wu, J. B., Xie, S. C., Yao, M. S. and Zhang, J. H.: Comparing clouds and their seasonal variations in 10 atmospheric general circulation models with satellite measurements, *J. Geophys. Res. D Atmos.*, 110(15), 1–18, doi:10.1029/2004JD005021, 2005.

Mid-level clouds are frequent above the southeast Atlantic stratocumulus clouds

Adeyemi A. Adebiyi¹, Paquita Zuidema², Ian Chang³, Sharon P Burton⁴, and Brian Cairns⁵

¹Department of Atmospheric and Oceanic Sciences, University of California Los Angeles.

²Rosenstiel School of Marine and Atmospheric Sciences, University of Miami, FL.

5 ³School of Meteorology, University of Oklahoma, Norman, OK

⁴NASA Langley Research Center, Hampton, Virginia 23681, USA

⁵NASA Goddard Institute for Space Studies, New York, NY, USA

Correspondence to: Adeyemi A. Adebiyi (aadebiy@ucla.edu)

Abstract.

10

Shortwave-absorbing aerosols seasonally overlay extensive low-level stratocumulus clouds over the southeast Atlantic. While much attention has focused on the interactions between the low-level clouds and the overlying aerosols, few studies have focused on the mid-level clouds that also occur over the region. The presence of mid-level clouds over

15

the region complicates the space-based remote-sensing retrievals of cloud properties and the evaluation of cloud radiation budgets. Here we characterize the mid-level clouds over the southeast Atlantic using lidar- and radar-based

20

satellite cloud retrievals and observations collected in September 2016 during the ORACLES (ObseRvations of Aerosols above CLouds and their intEractionS) field campaign. We find that mid-level clouds over the southeast Atlantic are relatively common, with the majority of the clouds occurring between altitudes of 5 and 7 km, at temperatures between 0 and -20 °C. The mid-level clouds occur at the top of a moist mid-tropospheric smoke aerosol

25

layer, most frequently between August and October, and closer to the southern African coast than farther offshore, and they occur more frequently during the night than during the day. Between July and October, approximately 64% of the mid-level clouds have a geometric cloud thickness less than 1 km, corresponding to a cloud optical depth of less than 4. A lidar-based depolarization-backscatter relationship for September 2016 indicates that the mid-level clouds are liquid-only clouds with no evidence of the existence of ice. In addition, a polarimeter-derived cloud droplet size

30

distribution indicates that approximately 85 % of the September-2016 mid-level clouds have an effective radius less than 7 μm, which could further discourage the ability of the clouds to glaciate. These clouds are mostly associated with synoptically-modulated mid-tropospheric moisture outflow that can be linked to the detrainment from the continental-based clouds. Overall, the supercooled mid-level clouds reduce the radiative cooling rates of the underlying low-altitude cloud tops by approximately 10 K/day, thus influencing the regional cloud radiative budget.

30

1 Introduction

Clouds over the southeast Atlantic, as one of the world's major subtropical stratocumulus clouds (Klein and Hartmann, 1993), contribute importantly to the uncertainties in global climate change projections (Soden and Vecchi, 2011).

35 Alone, these stratocumulus clouds cool the global climate system because they predominantly reflect the incoming shortwave radiation, and exert a small effect on the outgoing longwave radiation (Wood, 2012). The stratocumulus clouds over the southeast Atlantic are different from others because they are accompanied by the presence of elevated smoke aerosol layers in September and October when free-tropospheric zonal winds emanating off of continental Africa are a maximum (Adebiyi and Zuidema, 2016). This aerosol circulation pattern can strengthen the underlying low cloud deck through either meteorological or aerosol influences (Johnson et al., 2004; Wilcox, 2010; Adebiyi and 40 Zuidema, 2018; Gordon et al., 2018; Deaconu et al., 2019). The interaction between the elevated smoke aerosols and stratocumulus clouds has received substantial attention in recent years from the research community, because of its unique impact on the regional climate (Boucher et al., 2013). While the aerosol-stratocumulus-cloud interactions over southeast Atlantic complicate the estimation of the cloud radiative forcing, a recent study also highlights the presence of high moisture content that accompanies the smoke transport above the southeast Atlantic low-level clouds (Adebiyi 45 et al., 2015). The occurrence of this high mid-tropospheric moisture points to the likelihood of mid-level clouds over the southeast Atlantic, which has not been highlighted in previous literature. The recent ORACLES (ObseRvations of Aerosols above CLouds and their intEractionS) field campaign (Redemann et al., 2020) observed such mid-level clouds (Figure 1). Their location within and at the top of the smoke layer suggests potential interaction with the smoke aerosols (e.g., Lohmann and Feichter, 2005) that could further complicate the estimation of the cloud radiative forcing over the 50 region. Whereas stratocumulus clouds tend to cool the regional climate, mid-level clouds with colder cloud tops and warming cloud radiative effects may likely offset the cooling effect associated with the stratocumulus clouds (Christensen et al., 2013; Bourgeois et al., 2016). Therefore, an accurate picture of the multi-layer cloud system occurring in the presence of an elevated smoke layer is necessary to fully understand the complexity of the radiative interactions over the region.

55 Sub-tropical mid-level clouds have received less attention compared to those over equatorial or mid-latitude regions (Fleishauer et al., 2002; Riley and Mapes, 2009; Stein et al., 2011; Riihimaki et al., 2012; Bourgeois et al., 2016, 2018). Globally, mid-level clouds cover about 25% of the Earth's surface (Sassen and Wang, 2012) and account for about 30% of all clouds (Zhang et al., 2010). With significant land-ocean contrast, the cross-section of the mid-level cloud fraction generally increases from the tropical oceans to the mid-latitude regions (Zhang et al., 2005, 2010; Bourgeois 60 et al., 2016). In contrast to the mid-latitude region, there is a higher occurrence of nighttime mid-level clouds than daytime over the tropics (Zhang et al., 2010). Regardless of the clouds' location in the tropics or the mid-latitude, mid-level clouds mostly consist of supercooled liquid water, with most studies placing the temperature at the top of the clouds between $\sim 0^{\circ}\text{C}$ and -15°C , with cloud thicknesses typically less than 2 km, and cloud-top heights between 4-8 km (Riley and Mapes, 2009; Stein et al., 2011; Riihimaki et al., 2012; Bourgeois et al., 2018). With ice particles likely 65 forming at a temperature less than -6°C (Hobbs and Rangno, 1985), the 0 – to -15°C temperature range of the

optically-thin mid-level clouds suggests mixed-phase microphysics are possible (Zhang et al., 2010), with potential impact on both the shortwave and longwave spectrum, and cloud longevity.

70 Despite its significance, climate models have found it difficult to accurately simulate the distribution and properties of these mid-level clouds, and observational constraints by passive satellite sensors can be biased in multi-layer cloud regions. Specifically, models consistently underestimate the mid-level clouds by simulating less than 40% of the observed global distribution (Zhang et al., 2005). One reason for this underestimation is the misrepresentation of potential mixed-phase processes, whereby liquid-water droplets and ice crystals may coexist and persist for long periods, thus presenting a unique challenge for global model parameterizations (e.g., Liu and Krueger, 1998). Another reason for the underestimation of mid-level clouds is because most models find it difficult to simulate multi-type multi-75 layer cloud systems (Tselioudis and Kollias, 2007), thus overestimating high clouds due to their lack of detrainment of moisture by convection schemes at the mid-troposphere (Bodas-Salcedo et al., 2008). While cloud retrievals from space-based passive satellite sensors are often used as validation and opportunity to improve these models, they also suffer in regions with multi-layer cloud scenes (Holz et al., 2009). For passive sensors such as SEVIRI (Spinning Enhanced Visible and Infrared Imager) aboard the Meteosat-10 satellite or MODIS (Moderate Resolution Imaging Spectroradiometer) aboard the Terra satellite, multi-layer cloud scenes often provide top-of-atmosphere radiances that are either too cold to be considered a lower-level cloud, or too warm for the upper-level clouds retrievals (Davis et al., 80 2009), thus introducing uncertainties in the retrieved cloud properties.

In contrast, active remote-sensing measurements such as those from lidar and radar instruments can more easily identify the mid-level clouds and their properties in multi-layer cloud scenes (Figure 2a). These active sensors can be part of a 85 ground-based station, mounted on an aircraft or a space-borne satellite. Over the southeast Atlantic, lidar measurements of clouds and aerosol vertical distributions were made from a high-altitude aircraft during the NASA ORACLES field campaign in September 2016 (Redemann et al., 2020). Passive shortwave spectral measurements made by the accompanying Research Scanning Polarimeter (RSP; Alexandrov et al., 2016) are furthermore novel, in that properties of the mid-level cloud can be determined independently of those from the underlying low clouds. These measurements 90 provided the first airborne observations of the mid-level cloud over the southeast Atlantic and confirmed the cloud's prevalence. However, these measurements only covered a short period and made it difficult to characterize the climatological state of the clouds over the region. Space-borne lidar and radar instruments aboard the CALIPSO (Cloud-Aerosol Lidar and Infrared Pathfinder Satellite Observations; Winker et al., 2003) and CloudSat (Stephens et al., 2002) satellites respectively provide continuous spatial coverage and useful retrievals of clouds and aerosols over 95 the southeast Atlantic. The combined information from CALIPSO and CloudSat provides a unique dataset that gives a reliable detection of the multi-layer cloud system and its properties over the southeast Atlantic (Mace and Zhang, 2014). In this study, we use the aircraft measurements taken during the September 2016 ORACLES field campaign

along with the CALIPSO-only, and the CloudSat-CALIPSO merged datasets to document the characteristics and properties of the mid-level clouds above the southeast Atlantic stratocumulus clouds.

100 2. Data and Methods

We define the mid-level clouds as clouds between 3 km and 8 km, which are above the low-level clouds over the southeast Atlantic. These altitude levels correspond to the standard pressure of approximately 700 to 350 hPa. Our definition of the mid-level cloud is consistent with previous studies (e.g., Riihimaki et al., 2012; Bourgeois et al., 2016, 2018), and we use it here also because the inversion-capped low-level clouds are generally topped below ~3km over the southeast Atlantic (e.g., Painemal et al., 2014; Adebisi et al., 2015). We focus our analysis primarily on the region between 10°W-10°E and 5°-20°S, which is approximately the region that was covered by the 2016 ORACLES field campaign and is also the region dominated by climatological low-level clouds between July and October over the southeast Atlantic (Zuidema et al., 2016). Since this delimited area is part of the larger southeast Atlantic region, our analysis thus considers the entire southeast Atlantic region to provide a broader context for the occurrence of mid-level clouds beyond the area covered by ORACLES.

We primarily use the cloud information measured by the second generation airborne High Spectral Resolution Lidar (HSRL-2) aboard the NASA ER-2 aircraft during the September 2016 ORACLES field campaign (hereafter called ORACLES-2016). ORACLES-2016 was conducted out of Walvis Bay in Namibia. Unlike other ORACLES subsequent deployments in August 2017 and October 2018 that operated out of São Tomé and Príncipe, only ORACLES-2016 deployed the ER-2 aircraft, capable of reaching above 20 km in altitude (Redemann et al., 2020). HSRL-2 measures backscatter, extinction, and depolarization ratio of atmospheric constituents at 355 and 532 nm and also the backscattering and depolarization ratio at 1064 nm (Burton et al., 2018). The vertically-resolved multi-wavelength and depolarization measurements of mid-level clouds are invaluable for accurately distinguishing the altitude and phase of the mid-level clouds, providing a unique view of the multi-layer cloud and aerosol system over the southeast Atlantic. Details of the instrument, calibrations, and algorithms can be found in Burton et al. (2015, 2018) and the references therein. Of the twelve ER-2 flight-days conducted during ORACLES-2016, each between 7–9 h in duration, HSRL-2 was active for seven days. We use the HSRL-2 version R7 data with a vertical resolution of 15 m and a horizontal resolution of 10 seconds or approximately 1.8 km. Therein, we primarily use the HSRL-2 cloud-top heights, aerosol extinction, particulate backscatter, and particulate depolarization ratio information at 532 nm. We also use the temperature information included in the dataset and from the Modern-Era Retrospective analysis for Research and Applications, Version 2 (MERRA-2; Gelaro et al., 2017) reanalysis that is collocated to the HSRL-2 measurements.

A secondary source of information on mid-level clouds comes from the Research Scanning Polarimeter (RSP), which was also aboard the NASA ER-2 during ORACLES-2016. RSP was active on all twelve ER-2 flight-days, and we use RSP V003 data with a horizontal resolution of approximately 200 m for cloud screening and 1 km for cloud retrievals. The RSP measures the Stokes parameters I , Q and U simultaneously at nine wavelengths while scanning through $\pm 60^\circ$ along the aircraft ground track providing multi-angle views of each ground/cloud pixel (Cairns et al., 1999). The spectral bands at 865 and 1880 nm are of particular relevance to detecting and characterizing the droplet size

distributions of mid and low-level clouds. Measurements in the 1880 nm spectral band are essentially insensitive to the low-level Marine Boundary Layer (MBL) clouds because of strong water vapor absorption in this spectral band (Gao et al., 2004) and the fact that there is a moist layer above the MBL. For example, with the sun overhead and a viewing angle of 60°, the two-pass transmission at 1880 nm from the sun to the MBL cloud and back to the RSP is ~ 0.001 for one precipitable cm of column water vapor. This allows for the robust detection of mid-level clouds using the 1880 nm band even when there are underlying MBL clouds. Observations of the polarized cloud bow at 865 and 1880 nm can then be used to determine the parameters (effective radius and variance; Hansen and Travis, 1974) of a cloud Droplet Size Distribution (DSD) and at 865 nm a non-parametric DSD can also be retrieved through the use of a Rainbow Fourier Transform (RFT; Alexandrov et al., 2012). When there are multiple cloud layers, such as when mid-level clouds overlie MBL clouds, the RFT can be used to distinguish the effective radius and variance of multiple layers through a modal decomposition (Alexandrov et al., 2016). In this work, a mid-level cloud effective radius and variance are assigned when only a mid-level cloud is present and also when there is an underlying MBL cloud. In both cases, the modal decomposition of the RFT is used, with the mode assigned to the mid-level cloud having an effective radius that is closest to that determined from a parametric DSD retrieval using 1880 nm cloud bow observations. This approach is taken because the cloud bow observed at 1880 nm for a given size distribution is broader and weaker than that at 865 nm, which reduces the accuracy of the parametric DSD estimate. In addition, the mid-level cloud bow signal at 1880 nm is often quite weak because the clouds are optically thin and/or embedded in the moist layer above the MBL. Since cloud modes are generally separated in effective radius by 5-10 μm , the use of the effective radius derived at 1880 nm only provides a categorical assignment of mode that mitigates against these issues. Further ancillary datasets used to characterize the mid-level cloud properties are *in-situ* measurements gathered by the P-3 plane within and below the mid-level clouds on 4 September (depicted in Figure 1) and 24 September 2016 (see the supplementary document).

A regional climatology of the mid-level cloud properties over the southeast Atlantic was developed from the cloud retrievals from the CloudSat and CALIPSO products (Stephens et al., 2002; Winker et al., 2003). Both CloudSat and CALIPSO are part of the A-train constellation, with footprints overlapping by more than 90 % of the time (Stephens et al., 2008). While CloudSat carries a 94 GHz Cloud Profiling Radar (CPR), CALIPSO carries the Cloud-Aerosol Lidar with Orthogonal Polarization (CALIOP). Although the instruments are built differently, both are able to observe the atmospheric vertical distributions, with the CALIOP lidar more sensitive to the aerosols and optically-thin clouds than the CPR radar (Mace and Zhang, 2014). In contrast, the CPR radar is suitable for an optically-thick cloud layer, and it is able to determine the phase and other microphysical properties of the cloud better than the CALIOP lidar (Sassen and Wang, 2008). The combined product thus provides unique data useful to understand the macro- and micro-physical characteristics of the mid-level clouds above the optically-thick stratocumulus clouds.

In this study, we use the CALIOP-only retrievals to determine the height level of the mid-level clouds, including the cloud-top heights, and we use the CloudSat-CALIPSO merged dataset to analyze the essential cloud properties. We obtain the mid-level cloud-top heights and aerosol extinction at 532 nm wavelength from version-3 of level-2 CALIOP *Layer_Top_Altitude* and *Extinction_Coefficient_532* products. Although there were some improvements in the version 4 cloud-aerosol discrimination algorithm, most of them were specifically focused on aerosol lofted into the upper

170 atmosphere or the lower stratosphere (Liu et al., 2019). As a result, more than 95% of all aerosol and cloud layers
detected within the troposphere remain largely unchanged between versions 3 and 4 (Liu et al., 2019). Using the
Layer_Top_Altitude product, we determine the cloud-top height (km) as the mid-level cloud layer top and the frequency
of occurrence of mid-level cloud as the number of CALIOP profiles with observed mid-level clouds to the total number
of observations over the regions. Furthermore, we also **rely on** three products from the merged CloudSat-CALIPSO
175 datasets: *2B-GEOPROF-LIDAR* which provides the fraction of hydrometeor in each layer (Mace and Zhang, 2014),
2B-TAU which provides the cloud optical depth, and *2B-FLXHR-LIDAR* which provides estimates of broadband fluxes
and radiative heating rates in the atmospheric column (L'Ecuyer et al., 2008; Henderson et al., 2013). Specifically, the
LayerTop and *LayerBase* variables from *2B-GEOPROF-LIDAR* product determine the heights, frequency of
occurrence, and the geometric thickness (top minus base) of the mid-level cloud layers defined between 3 km and 8
180 km; the *layer_optical_depth_2B_TAU* variable from the *2B-TAU* product **indicates** the optical depth for the identified
mid-level cloud layer, and *QR_2B_FLXHR_LIDAR* from the *2B-FLXHR-LIDAR* product **indicates** the heating rates
at the top of the low-level clouds. For the latter, the underlying low-level clouds are defined for cloud layers identified
below ~ 3 km. In addition, the low-level cloud-top heating rates are assessed for cases when there are collocated
overlying mid-level clouds, and when there are none.

185 While the level-2 CALIOP products are reported at a horizontal resolution of 5 km and vertical resolution between 60
and 360 m (Hunt et al., 2009), the combined products have a horizontal resolution of approximately 1.3 km by 1.7 km,
and the effective vertical resolution at nadir is 240 m (Stephens et al., 2008). Although CALIOP retrievals extend up
to the present day, we analyze the mid-level cloud properties only between 2006 and 2010, where both sensors measure
the atmospheric volume within 15 seconds from each other, and high-quality products are available for both the
190 CALIOP-only and CloudSat-CALIPSO merged products. We ignore data after 2010 because of a battery anomaly that
caused the CloudSat satellite to stop collecting data and eventually lost formation with the A-train constellation in 2011
(Nayak et al., 2012). While CloudSat rejoined A-train in June 2012, it is positioned in a different satellite constellation
such that its observing time is 100 seconds different from CALIOP. Furthermore, CloudSat only acquired
measurements during the daytime in the post-anomaly period, resulting in about a 50% reduction in the sampling size
195 compared to the pre-anomaly period (Mace and Zhang, 2014).

In addition to the cloud information from ORACLES and CloudSat-CALIPSO merged datasets, other datasets helped
characterize the variability of the mid-level clouds and their large-scale environment. We obtain the temperature,
moisture, and wind information over the southeast Atlantic region from the European Centre for Medium-Range
Weather Forecasts (ECMWF) ERA-Interim reanalysis (Dee et al., 2011), in addition to ECMWF auxiliary data that is
200 interpolated to CloudSat-CALIPSO bins (Partain, 2007). We also obtain additional cloud and aerosol information of
daily-averaged retrievals from the Moderate Resolution Imaging Spectroradiometer (MODIS) and the Meteosat-10
Second Generation (MET10) satellites. Specifically, we obtained the MODIS-*Terra* low-level cloud fraction and
aerosol optical depth retrievals (King et al., 2013) as well as cloud-top heights and brightness temperature from the
Spinning Enhanced Visible and Infrared Imager (SEVIRI) instrument aboard MET10 satellite (Schmetz et al., 2002).
205 In particular, we use the cloud information from SEVIRI to assess the diurnal and spatial variability of the mid-level
clouds. Although a passive instrument such as SEVIRI has difficulty accurately capturing the cloud top heights when

a mid-level cloud is above an optically-thick low-level cloud (Figure 3; see also fig. S-1), they are useful because of their broad swaths and high temporal resolution. SEVIRI aboard the geostationary MET10 satellite sits at 35,786 km altitude centered at approximately 9.5° E longitude, with cloud observation at a temporal resolution of 15 min and 3 km spatial resolution at the sub-satellite point. We use both the brightness temperature directly retrieved at 10.8 μm infrared channel and the cloud-top heights retrieved using the NASA-Langley cloud product algorithm. While details can be found in Minnis et al. (1995), this algorithm combines techniques that use the information which spans from visible (0.65 μm) to infrared (10.8 μm) channels to obtain improved retrieval accuracies (Palikonda et al., 2006).

3. Results

An example of the vertical profile of the total attenuated backscatter from CALIPSO shows that the southeast Atlantic features not only the presence of the elevated smoke and the low-level clouds but also the mid-level clouds (Figure 2a). For this example, these mid-level clouds are between 12°S-18°S, and they significantly attenuate the lidar signal directly below them (see more CALIPSO images in supplementary fig. S-2). We document here the occurrences (section 3.1), the properties (section 3.2), the associated large-scale meteorology (section 3.3), the radiative impacts on the low-level clouds (section 3.4), and the diurnal variability (section 3.5) of the mid-level clouds to provide a full picture of the complicated cloud-aerosol system over the southeast Atlantic.

3.1. Occurrence of mid-level clouds over the southeast Atlantic

During the ORACLES-2016 campaign, mid-level clouds were observed in 5 out of 7 days that the HSRL-2 was active over the southeast Atlantic (Figure 2b). Although the observation of mid-level clouds occurs over most parts of the campaign region, their cloud-top heights are generally below 7 km (see inset in Figure 2b). To better understand what the preferred altitude levels are for the mid-level clouds, we estimate the probability distributions of the HSRL-2 cloud-top heights and compare that with those from CALIOP during September over the campaign region (Figure 2b). We found that the majority of the HSRL-2 mid-level cloud top heights occur between 5-7 km, with the median value at approximately 5.4 km and the probability distribution collectively reaching up to about 25 %. Although CALIPSO overpasses in September 2016 do not directly correspond to the locations and time of the HSRL-2-inferred mid-level clouds, they similarly show that the clouds appear to have a preferred altitude between the 5-7 km range. In fact, the CALIOP distribution of the mid-level cloud climatology for all September between 2006-2010 agrees remarkably well with the distribution that uses only the values in September 2016 or for the few days of the HSRL-2 observations. Overall, about 93% of the mid-level cloud-top heights measured during ORACLES-2016 are above 5km, compared to ~77% and ~61% from the CALIOP-derived mid-level clouds respectively for September 2016 and September 2006-2010.

The mid-level clouds typically occur in the presence of smoke aerosols over the southeast Atlantic. As the CALIOP attenuated backscatter example shows in Figure 2a, the smoke aerosols are typically found immediately below the mid-level clouds, although there are cases where the clouds form inside the elevated smoke aerosol layer (see also Figure 1 and fig. S-2). Indeed, further analysis of HSRL-2 and CALIOP extinction profiles in September shows that the averaged aerosol extinction coefficients over a 1-km layer immediately below the mid-level clouds are about 0.21 and 0.14 km^{-1}

¹, respectively (Figure 2c). While humidity can increase the aerosols scattering (e.g., Magi and Hobbs, 2003), these values are markedly higher than the 0.03 and 0.10 km⁻¹ for the corresponding 1-km layer above the clouds for HSRL-2 and CALIOP respectively. The HSRL-2 profiles in September 2016 indicate a cleaner layer above the mid-level clouds, with aerosol extinction coefficient decreasing to zero faster than those observed from CALIOP (Figure 2c). As the CALIOP image in Figure 2a also suggests, the mid-level clouds and the smoke layer also occur over a region that is usually covered by underlying warm-liquid clouds during September (e.g., Adebisi et al., 2015).

While the ORACLE-2016 and CALIPSO observations shown in Figure 2 are for September, the mid-level clouds over the southeast Atlantic are also present in other months. Figure 4a shows that the mid-level clouds are more prevalent between August and October compared to other months. The frequency of occurrence – estimated hereafter as the number of profiles the mid-level clouds are observed to the total number of observations – shows a minimum of about 2 % in June and a maximum of about 15 % in September when averaged over the ORACLES-2016 campaign region (5°-20°S and 10°W-10°E; inset in Figure 2b). Furthermore, the seasonal cycle of the mid-level clouds overlaps with that of the smoke aerosol loading, further highlighting the co-occurrence of the smoke aerosols with the mid-level clouds. Of particular interest is the time period between July and October because that is when the smoke aerosol loading and the underlying low-level cloud fraction simultaneously reach their climatological maximum (Figure 4a). Therefore, we examine the spatial distribution of the mid-level cloud regional climatology between July and October (Figure 4b & c). We find that the mid-level clouds are common near the coast, with a frequency of occurrence of up to 30 % that gradually decreases westward (Figure 4b). For those above the climatologically high low-level cloud region north of 20°S (black contour in Figure 4b), the mean mid-level cloud-top heights are overwhelmingly between 5 and 6 km. In contrast to the north of ~20°S, the mid-level clouds south of 20°S occur less frequently at about 10-15 %, and are higher, with mean cloud-top heights increase of about 1 km (Figure 4b & c). This contrast between the mid-level clouds north and south of ~20°S highlights the complexity and variability of the cloud systems over the southeast Atlantic. Unlike north of 20°S, which is dominated by separated low-level and mid-level clouds, the cloud system south of 20°S often occurs as a unified deep-convective cloud system extending from low- to upper-level atmosphere as part of the eastward-traveling mid-latitude disturbances (Adebisi and Zuidema, 2018). As a result, the isolated mid-level cloud is not as common south of 20°S as it is north of 20°S.

3.2. Properties of the mid-level clouds

We focus on the region north of 20°S and examine the properties of the mid-level clouds using the observations during the ORACLES-2016 campaign and the merged CloudSat-CALIPSO datasets. We analyze the probability and the cumulative distributions (Figure 5a-c) of the mid-level cloud optical depth, its geometric thickness (km), and cloud temperature (°C). Similar to the CALIPSO-only analysis, the majority of the mid-level cloud-top heights for the merged CloudSat-CALIPSO datasets between July and October is also between 5-7 km (compare Figure 2 & fig. S-3a). Furthermore, the cloud geometric thickness and the cloud optical depth are predominantly less than 1 km and 4, respectively (Figure 5a & b). Specifically, approximately 64% of the mid-level clouds have a cloud thickness that is less than 1 km (85% for a thickness of less than 1.5 km), and about 60 % have a cloud optical depth that is less than 4 (72 % for an optical depth of 6). For comparison, the same thickness in stratocumulus clouds could have a cloud optical

depth greater than 20 (e.g., Szczodrak et al., 2001; Haywood et al., 2004). These results thus suggest that the mid-level clouds over southeast Atlantic are geometrically and optically-thin clouds.

280 In addition to the southeast Atlantic mid-level clouds being optically-thin, these mid-level clouds also have distributions that span warm to cold temperatures. Figure 5c & d show the temperature distribution of the mid-level clouds, respectively, obtained for the CloudSat-CALIPSO merged dataset between July and October (2006-2010) and for the mid-level clouds observed during ORACLES-2016. For both cases, the temperature distributions generally extend from -20°C to about 4°C , with the majority of the mid-level clouds colder than 0°C . Specifically, about 98 %
285 and 87 % of the mid-level clouds obtained from the field campaign and merged CloudSat-CALIPSO datasets respectively **have cloud top temperatures** below 0°C (grey lines in Figure 5c & d). In addition, the majority of the cold mid-level clouds are observed above 5 km, evident in the CloudSat-CALIPSO (Figure 5c), and in the HSRL-2 datasets with observed mid-level clouds generally above 5 km (Figure 5d and Figure 2b). Furthermore, the mid-level clouds also show double peaks in the probability distribution for both CloudSat-CALIPSO and HSRL-2 datasets: one around
290 -4°C and the other around -9°C . For the CloudSat-CALIPSO dataset, the warmer peak ($\sim -4^{\circ}\text{C}$) corresponds to mid-level cloud-top heights less than 6 km, while the colder peak ($\sim -9^{\circ}\text{C}$) corresponds to cloud-top heights higher than 6 km (Figure 5c). This double peak in temperature distribution over the southeast Atlantic is similar to those documented for tropical and mid-latitude mid-level clouds (e.g., Riihimaki et al., 2012; Riley and Mapes, 2009). However, one notable difference is that our second temperature peak ($\sim -9^{\circ}\text{C}$) is markedly warmer than previously reported for other
295 regions (which is typically between -12.5°C and -20°C). Potential reasons for this difference are explored in section 3.3.

Regardless of the temperature, mid-level clouds over the southeast Atlantic are dominated by supercooled liquid water. Figure 6a & b show the relationship between the 532 nm lidar depolarization ratio and backscatter for mid-level clouds obtained from HSRL2 and CALIOP in September 2016 (blue dots). The depolarization-backscatter relationship has
300 previously been used for cloud phase discrimination (Hu et al., 2007, 2009), because of its distinct relationship for ice (high-level clouds; cloud-top heights greater than 8 km; green dots in Figure 6) and liquid-water clouds (low-level clouds; cloud-top heights less than 3 km; red dots in Figure 6). Unlike the high-level clouds, the relationship between the depolarization and backscatter for low-level cloud is largely positively correlated, since they are predominantly spherical liquid-water clouds. We find that the mid-level clouds observed during the ORACLES-2016 (Figure 6a)
305 follow the depolarization-backscatter signature of a low-level cloud, indicating that the mid-level clouds are liquid-water only with no presence of ice. Although these observations are obtained at the mid-level cloud tops, the layer-mean observations from CALIOP also show a similar depolarization-backscatter relationship (Figure 6b). Lidars have difficulty detecting very low concentrations of the ice crystals in a high liquid-water environment (e.g., Bühl et al., 2013). Nevertheless, the few mid-level cloud observations consistent with the depolarization-backscatter relationship
310 of high-level clouds are likely due to uncertainties in the off-nadir measurements by CALIOP (e.g., Hu et al., 2009).

Overall, the depolarization-backscatter relationship suggests that the mid-level clouds over the southeast Atlantic are optically-thin, supercooled liquid-water clouds.

315 In addition, the mid-level cloud effective radius obtained from the Research Scanning Polarimeter (RSP) instrument during ORACLES-2016 indicates smaller cloud droplets than occur when ice is present. Figure 6c & d show the distribution of these mid-level cloud effective radii for individual days (except 09/16) and as a function of the mid-level cloud-top heights. The majority (about 85 %) of the mid-level clouds have an effective radius less than 7 μm , with an overall median value of approximately 5.2 μm . In comparison, more than 70 % of the low-level clouds (with cloud-top less than 3 km) have an effective radius greater than 7 μm . Furthermore, the cloud droplet sizes indicate no particular change as a function of the mid-level cloud-top heights (Figure 6d), thus suggesting no dependency on cloud
320 temperature or cloud dynamics (see section 3.3). Although the preferred mode for the size of these mid-level cloud droplets is largely between 5-6 μm , regardless of temperature, the size-height relationship also suggests a second mode around 8-9 μm , which is still smaller than the droplet sizes of most low-level clouds. Overall, the combination of small cloud droplets and the lack of dependency on temperature discourages the interpretation that the mid-level clouds glaciate. This further suggests that the optically-thin mid-level clouds, which mostly occur in the presence of smoke
325 aerosols over southeast Atlantic, likely also do not precipitate.

In addition to the remotely-sensed measurements aboard ER-2 during ORACLES, the mid-level clouds were also sampled *in-situ* during the research flights by the lower-altitude P-3 aircraft on 4 and 24 September 2016. The *in-situ* measurements from both days occurred within clouds with top temperatures too warm to support primary ice nucleation (e.g., Pruppacher and Klett, 2010). The mid-level cloud sampled at 16.2°S and 6°E, on 13:30 UTC of 4 September, also
330 shown in Figure 1, possessed a cloud top temperature of approximately -2°C (fig. S-4d). No cloud microphysical data are available from this flight. The mid-level cloud sampled on 24 September 2016, at approximately 11.35°S and 11°E, had a measured cloud top temperature of -1°C (fig. S-5d), slightly warmer than discerned from the HSRL-2 data (Figure 5). No ice was detected on the Cloud Imager Probe. The clouds in both cases were embedded with the anticyclonic outflow of continental moisture, with the cloud on 4 (24) September occurring within predominantly southward
335 (westward) winds of 10 m s^{-1} (Figs. S-4g-i and S-5k-m, respectively).

Aerosol concentrations from the smoke plumes within which the clouds were embedded are consistent with cloud nucleating activity capable of supporting the small effective radii retrieved by the RSP. On September 4, the aerosol concentrations measured below the cloud at approximately 13:35 UTC by the Passive Cavity Aerosol Spectrometer Probe (PCASP; responsive to particle diameters between 0.1 to 3.0 micron), indicate values of approximately 700 cm^{-3}
340 cm^{-3} (fig. S-4f). Particles in this size range activate readily into cloud condensation nuclei based on size alone. Biomass-burning aerosol mass is furthermore primarily composed of organic aerosols that, above the southeast Atlantic, are known to be hygroscopic (Zuidema et al., 2018; Kacarab et al., 2020). Sub-cloud organic aerosol mass concentrations near the clouds reached approximately 20-25 micrograms m^{-3} on the two days (fig. S-4e and S-5e), supporting cloud condensation nuclei concentrations reaching 1500 cm^{-3} (fig. S-5j). Cloud droplet number concentrations (N_d) derived
345 from the Cloud Aerosol Spectrometer (CAS; measuring all particles between 3 to 50 micron), reached 300 cm^{-3} (fig. S-5j), with an effective radius of at most 4 microns (fig. S-5h) and maximum liquid water content from the King probe

of 0.12 g m^{-3} (fig. S-5f). The elevated N_d will increase the cloud optical depth for the same cloud liquid water, and, residing underneath a dry upper troposphere, help support turbulence from cloud top longwave cooling combined with aerosol shortwave heating. This may help explain the cloud turrets visible in Fig. 1.

350 3.3. Large-scale meteorology associated with the mid-level clouds.

Over the southeast Atlantic region, both large-scale subsidence and the presence of shortwave-absorbing smoke aerosols will warm the free troposphere during the July-October period, and any presence of mid-level cloud must be supported by a large-scale environment that is conducive for its development. Unlike the semi-permanent low-level clouds that consistently receive a steady supply of moisture from the underlying ocean, the mid-level clouds lack a consistent moisture source and are more susceptible to variations in environmental conditions. Observational evidence from either CALIPSO or CloudSat may not be sufficient to capture the dynamical impacts of the large-scale environment because of the poor spatial coverage (e.g., CloudSat footprint is $\sim 1.4 \text{ km}$ by 2.5 km) and temporal resolution (16 days return period). In contrast, geostationary satellites, such as the Meteosat-10 satellite, provide broader coverage of the southeast Atlantic with higher temporal resolution (~ 15 minutes). One major problem with passive sensors on geostationary satellites, however, is that in multi-layer cloud systems, the retrieved mid-level cloud-top height is typically lower than observed by lidar-based satellites (e.g., Hamann et al., 2014). For example, the cloud-top height retrieved using SEVIRI aboard Meteosat-10 satellite on 22nd September 2016 is approximately 1-2 km lower than that from the nearby CALIPSO overpass (compare Figure 2a and Figure 3). However, SEVIRI captures occurrences of the mid-level clouds over the southeast Atlantic that are not within the CALIPSO footprint. Despite the inaccuracies in identifying the mid-level cloud-top heights, we nonetheless use the observations from SEVIRI because of their broader coverage and higher temporal resolution.

We explore the possible mechanisms for the occurrence of mid-level clouds north of 20°S , by considering the coupling of the offshore mid-level clouds to the adjacent southern African continent. Unlike south of 20°S , where the mid-level clouds are associated with the mid-latitude westerly disturbance of the southern hemisphere storm tracks (e.g., Hoskins et al., 2005), the large-scale dynamical regime associated with the mid-level clouds north of 20°S is expected to be different (e.g., Adebisi and Zuidema, 2018). Figure 7a shows a Hovmöller diagram of mid-level clouds identified by the SEVIRI's brightness temperature for 11-20 September 2016 and overlaid with moisture flux (black contour) and easterly zonal wind speed (grey contour) calculated using ERA-Interim reanalysis values averaged between 3-8 km. The figure indicates occasional offshore mid-level clouds over the ocean that are accompanied by strong westward-propagating moisture flux pulses (see also fig. S-6). For this example, two major moisture outflow events occur between approximately 11-16th and after the 18th of September 2016. In both cases, the moisture fluxes reaching more than $30 \text{ g m kg}^{-1} \text{ s}^{-1}$ and are accompanied by zonal winds reaching more than 6 m s^{-1} . This anecdotal evidence is useful to understand the large-scale progression that highlights the connection between the offshore mid-level clouds and the continental moisture outflow.

380 Between July and October, the climatology of this mid-tropospheric moisture flux further indicates that the southeast Atlantic mid-level clouds are associated with the deep-layer moisture of the convective regime over the Congo-Zaire

basin (Figure 7b). The spatial region of maximum mid-level moisture flux corresponds to the maximum region of the southern African easterly jet (compare Figure 7b to Fig. 4 in Adebisi and Zuidema, 2016). Furthermore, the moisture flux divergence over land north of 20°S (blue shade in Figure 7c) can be associated with the moisture convergence occurring directly offshore (red shade in Figure 7c), where the mid-level clouds occur most frequently between July and October (compare Figure 7c with Figure 4b). This suggests that the offshore mid-level clouds are likely either detrained from convective system over land or generated at the top of a continental boundary layer previously moistened by convection, before advecting offshore under the influence of the strong zonal winds.

The advection of moisture not yet reaching a relative humidity of 100% can also generate an isolated mid-level cloud through radiative cooling. High relative humidity within the mid-troposphere can result in increased longwave cooling for the upper part of the layer and contemporaneous warming in the lower part of the layer (e.g., Larson et al., 2006). This differential heating can set-off a process that results in turbulent mixing, which can redistribute moisture to the upper part of the layer, and in turn, strengthen radiative cooling, thus leading to the development of mid-level clouds. Figure 7d shows the vertical distribution of the offshore moisture flux convergence. Strong convergence of moisture and the potential for strong turbulence and instability directly below 0°C level can promote the development of mid-level clouds with tops between the 0°C and the -20°C isotherm (cf. Figure 5c & d). Furthermore, it is noteworthy that a smoke layer almost always co-occurs with the mid-level clouds observed during ORACLES-2016 (see Figure 1, Figure 2, and fig. S-2). The presence of the smoke can aid the development of the mid-level cloud through preferential warming in the lower part of the layer (e.g., Adebisi et al., 2015), thereby strengthening the turbulent mixing within the layer. As a result, the co-occurrence of the moisture and smoke aerosols within the layer serves as an ideal recipe for generating an isolated mid-level cloud characterized by strong mixing within the layer and strong radiative cooling at the top. Whether the cause of particular mid-level clouds is moisture advection, or it is turbulent mixing induced by longwave cooling of moisture and shortwave absorption by smoke aerosol layers, is beyond the scope of this study. Nevertheless, it is clear that the presence of a high-humidity environment and the associated effect of longwave radiative cooling likely contribute to the development and the eventual sustainability of the mid-level clouds over the southeast Atlantic.

3.4. Radiative impact of the mid-level clouds on the low-level clouds

Because low-level clouds also dominate the southeast Atlantic between July and October, it is useful to examine the radiative impact of the mid-level clouds on the underlying low-level clouds during the same period. Figure 8 shows the low-level cloud-top instantaneous heating rates obtained from the merged CloudSat-CALIPSO dataset between July and October (2006-2010) when the mid-level cloud is present above the low-level clouds, and when they are not. Details of how the heating rates are estimated for the CloudSat-CALIPSO datasets can be found in Henderson et al. (2013), and references therein. Typically the longwave cooling exceeds the shortwave heating near the tops of the low-level clouds when no other higher-altitude clouds are present. Over the southeast Atlantic between July and October,

415 the mean shortwave radiative heating rate at low-cloud top is 5 K/day, which combines with a longwave cooling rate of -21 K/day for a net cooling rate of ~ -16 K/day (Figure 8a).

The presence of mid-level clouds over the southeast Atlantic, however, reduces the net radiative cooling substantially at the top of these low-level clouds. In the shortwave, this reduction is due primarily to the decrease in the downwelling radiation reaching the low-level cloud top as a result of the mid-level cloud. Consequently, this leads to an overall
420 reduction in the shortwave heating rate near the top of the low-level cloud of approximately 2 K/day. In the longwave, the presence of the mid-level clouds increases the downwelling radiation that reaches the top of the low-level cloud, reducing the longwave low-cloud-top cooling rate more substantially, by approximately 12.5 K/day. Thus, the presence of mid-level clouds reduces the net cooling rate near the top of the low-level cloud by approximately 10.5 K/day, which is approximately a 65 % reduction in the net radiative cooling rates (Figure 8a).

425 There is potentially a chance that the mid-level clouds lead to overall warming at the top of the low-level cloud. That is because the downwelling longwave flux reaching the top of the low-level cloud is largely proportional to the mid-level cloud optical depth, as long as the cloud is not yet opaque in the infrared. Thus, increases in the mid-level cloud optical depth result in increases in the downwelling longwave fluxes and in decreases in the net radiative cooling rates at the top of the low-level cloud (Figure 8b). For a sufficiently high mid-level cloud optical depth (~ 11), the shortwave
430 heating surpasses the longwave cooling, resulting in net radiative heating rates, rather than cooling, at the top of the low-level clouds. This is mitigated by the contrasting circulation patterns for the two cloud levels, and further work is required to indicate if a lasting effect is present on the underlying cloud development.

3.5. Diurnal variations of the mid-level clouds

The impacts of longwave radiative cooling, while always present, are more obvious at night when shortwave warming
435 is not occurring. In addition, the indication that the offshore mid-level clouds are associated with moisture detrainment from convection over land, which has a separate distinctive diurnal cycle (Bourgeois et al., 2016), motivates an examination of the diurnal variability of the offshore mid-level cloud and its relationship to that of clouds over land. Figure 9 shows the frequency of occurrence of the mid-level clouds averaged over the ocean ($0-10^{\circ}\text{E}$) and over the land ($10^{\circ}\text{E}-20^{\circ}\text{E}$) obtained from CALIOP and SEVIRI. Over both the ocean and land, more mid-level clouds are
440 observed during the nighttime than daytime. This result is consistent for both CALIOP and SEVIRI, although the frequency of occurrence is significantly lower in the case of SEVIRI because of the difficulty of observing the mid-level clouds (e.g., Figure 3). Nevertheless, as in the case of Figure 7a and because of the fine 15-min temporal resolution of the mid-level clouds, we use SEVIRI here only to capture the structure of diurnal variability and not its magnitude. The frequency of occurrence derived from CALIPSO is ~ 8 % (~ 28 %) during daytime (nighttime) over land, and ~ 7
445 % (~ 12 %) over the ocean. When accessed at the approximate overpass time of CALIPSO, which is between 12:30-13:30 UTC during the day and 00:30-1:30 UTC during the night, the ratio of the daytime occurrence to the nighttime occurrence from SEVIRI is approximately 39 % over the ocean. SEVIRI further indicates that the mid-level cloud coverage maximizes between 03-05 UTC in the morning and is minimal between 11-13 UTC in the afternoon (Figure 9b). Furthermore, despite the difference in the frequency of occurrence between daytime and nighttime, the probability

450 distribution of the mid-level cloud-top heights obtained from CALIPSO are largely similar **between day and night** (see supplementary fig. S-7).

Overall, the diurnal variability in the amplitude of mid-level cloud occurrence is modulated by the competing influence of the longwave and shortwave radiative heating. The cloud-top longwave cooling and the associated instability are expected to dominate during the night, while the shortwave heating, subsidence, and cloud dissipation are expected to
455 compete with the longwave cooling and possibly dominate during the day. The weaker diurnal cycle over the ocean, coupled with a lower occurrence of the mid-level cloud is consistent with **the presence of** less free tropospheric moisture over the ocean than over land and affirms the continent as the source of the offshore moisture.

4 Discussions and Conclusions

The southeast Atlantic is an important region because it features one of the major subtropical stratocumulus clouds
460 below one of the most extensive elevated smoke-aerosol layers in the world. While **much** attention has focused on the low-level stratocumulus clouds due to their **spatial extent**, persistence **through the annual cycle**, and regional climate impacts, as well as the aerosol-cloud interactions that are associated with the elevated smoke aerosols, no study has yet **focused on the characteristics of** the mid-level clouds that also occur over the southeast Atlantic. The presence of mid-level clouds over this region could complicate the **evaluation** of regional cloud radiative effects and the region's
465 contribution to the global radiative budget. Previous studies have mostly focused on the characteristics of mid-level clouds over the equatorial and mid-latitude regions, with little attention given to mid-level clouds over the sub-tropical regions. Here we document the characteristics of the mid-level clouds over the southeast Atlantic stratocumulus cloud region, using a combination of aircraft and satellite observations, as well as reanalysis datasets.

Our analysis primarily relies on the observations of the mid-level cloud collected during September 2016 of the NASA
470 ORACLES field campaign aboard the NASA ER-2 aircraft. The ER-2 aircraft, capable of reaching **above 20 km** in altitude, **hosted a High Spectral Resolution Lidar -2** able to observe the entire vertical column of the atmosphere **as well as a scanning polarimeter from whose retrievals the mid-level clouds could be characterized separately from the underlying low clouds. In tandem, these** provided a unique view of the multi-layer cloud over the southeast Atlantic. This dataset was extended with satellite observations that include the retrievals of cloud properties from CALIPSO-
475 only and CloudSat-CALIPSO merged datasets between 2006 and 2010, as well as cloud observations from the Meteosat-10 Second Generation (MET10) geostationary satellites and environmental variables from the ERA-Interim dataset.

Our result shows that the mid-level clouds over the southeast Atlantic are relatively common, with cloud-top heights typically placed between 5 and 7 km. Measurements from the HSRL-2 indicate that about 93% of the mid-level clouds
480 observed during the ORACLES campaign are above 5km. Between 2006 and 2010, the CALIOP-derived mid-level clouds indicate that the majority (about 61 %) of the mid-level cloud-top heights are similarly found between 5-7 km altitude, **indicating the** preferred altitude layer for the mid-level clouds. In addition, the monthly-averaged CALIOP frequency of occurrence indicates that the mid-level clouds are **most** prevalent between August and October, with the maximum occurring in September (approximately 15 % of the time) and the minimum in June (~2 % of the time). The

485 results further indicate that the frequency of occurrence over the southeast Atlantic is highest near the coastal region, of up to ~30 %, with a gradual decrease westward when averaged between July and October (2006-2010). This period of maximum occurrence of the mid-level clouds also corresponds to the period when the elevated smoke aerosol loading and the low-level cloud fraction maximizes over the southeast Atlantic. This co-occurrence thus highlights the significance of mid-level clouds in influencing the radiative impacts both within the smoke layer and on the underlying
490 low-level clouds over the region. Furthermore, our analysis shows that the aerosol extinctions immediately below the mid-level cloud are typically markedly higher than those above it, showing that the mid-level clouds tend to mostly occur at the top of the moist, smoke-aerosol layer.

Between July and October, our results indicate that the mid-level clouds over the southeast Atlantic are optically-thin and are characterized by supercooled liquid-water clouds. Specifically, about 64% of the mid-level clouds have a cloud
495 thickness that is less than 1 km (about 85% for a thickness of less than 1.5 km), and about 60 % have a cloud optical depth that is less than 4 (72 % for an optical depth of 6). In addition, the probability distribution of the temperature of the mid-level clouds shows that they occur predominantly between 0 °C and -20°C. Indeed, the temperature distribution collocated with HSRL2-observed mid-level clouds during the September-2016 ORACLES campaign indicates that more than 98 % of the clouds have a temperature between 0 °C and -20°C, which is also comparable with the percentage
500 of mid-level clouds below 0°C (87 %) that are collocated with the merged CloudSat-CALIPSO datasets between July and October (2006-10). Despite the cold temperature range, mid-level clouds observed by HSRL-2 and CALIOP-only instruments during September 2016 places the 532 nm depolarization-backscatter relationships within the signature expected for liquid-water clouds, suggesting no presence of ice in the mid-level clouds over the southeast Atlantic. Furthermore, the effective radius obtained from the Research Scanning Polarimeter (RSP) instrument on the ER-2
505 aircraft shows that the mid-level cloud droplet sizes are small (median effective radius of ~5.2 μm) – smaller than those obtained for underlying low-level liquid-water clouds – and with no dependency on the mid-level cloud-top heights, thus discouraging the likelihood of precipitation, either ice or liquid, from within the mid-level clouds.

The mid-level clouds over the southeast Atlantic are mostly associated with synoptically-modulated continental moisture outflow, which can be linked to the detrainment from the continental convective clouds. Analysis of ERA-
510 Interim reanalysis indicates a strong moisture convergence offshore that can be associated with the deep-layer moisture of the convective regime over the Congo-Zaire basin, and a strong mid-tropospheric zonal wind associated with the southern African easterly jet (Adebiyi and Zuidema, 2016) over the southeast Atlantic. In addition, we also highlighted the possibility that the mid-tropospheric high-humidity layer, in the presence of smoke aerosols, over the southeast Atlantic can generate an isolated mid-level cloud due to turbulent mixing within the layer encouraged by
515 longwave radiative cooling at the top of the layer. The impacts of radiative cooling, while always present, are more obvious at night when shortwave warming is not occurring. Indeed, the merged CloudSat-CALIPSO dataset shows that the mid-level cloud frequency of occurrence averages ~12 % during nighttime over the ocean (5°S-20°S, 0-10°E), compared to only about 7 % during the daytime. The overall diurnal variability over the ocean is consistent with that

over land, with the maximum occurring between 03-05 UTC in the morning and minimum occurring between 11-13
520 UTC in the afternoon.

The presence of these mid-level clouds impacts the radiation reaching the top of the underlying low-level clouds. Between July and October, our analysis shows the presence of the mid-level clouds results in approximately a 2 K/day reduction in the shortwave heating rates and ~12.5 K/day reduction in the longwave cooling rates near the top of the underlying low-level clouds. The reduction in **the net cooling** rate is mainly due to the **increase in** downwelling
525 longwave radiation from the mid-level clouds. Overall, a ~10.5 K/day reduction in the net radiative cooling rates associated with the presence of the mid-level clouds accounts for approximately a 65 % reduction when compared to the case without overlying mid-level clouds. The radiative impact of mid-level clouds on the underlying low-level clouds depends on many factors, including the mid-level cloud-top heights, the cloud-base heights, cloud optical depth, temperature, and the microphysical compositions of the mid-level clouds. It also depends on the concentration of smoke
530 aerosols that is between the mid-level and low-level clouds. The low cloud-top radiative cooling rates decrease almost proportionally with increases in the mid-level cloud optical depth. Beyond a mid-level cloud optical depth of ~11, the shortwave heating rates surpass the longwave cooling rates, leading to net radiative heating rather than cooling, near the top of the low-level clouds. The implication of the reduced net radiative cooling, or the net radiative warming, near the top of the low-level clouds, is that the presence of mid-level clouds should facilitate a decrease in turbulent mixing
535 within the boundary layer, **all else equal**. This must be weighted by the amount of time the mid-level cloud is present over a particular low cloud scene.

The radiation reaching the surface or the top of the atmosphere will be impacted by the presence of the mid-level clouds, despite the presence of the elevated smoke and the low-level clouds. Furthermore, while our analysis highlighted that the aerosol extinction coefficients **are higher** below the mid-level clouds than above it, it does not
540 examine the potential influence of the smoke-induced shortwave warming on the development, dissipation, or lifetime of the mid-level clouds over the region. The presence of elevated smoke aerosol below (or around) the mid-level clouds strongly points to the potential for aerosol-cloud interaction in the cold environment, **consistent with the small effective radii retrieved from the RSP measurements**.

**The prevalence of the multi-layer cloud system over the southeast Atlantic highlighted in this study could provide the
545 needed guidance for future remote-sensing retrieval and any modeling efforts over the region. For example, the presence of the mid-level clouds must be accounted for in the observed top-of-the-atmosphere radiance received by the passive remote-sensing platforms (e.g., Peers et al., 2019), as well as in the resulting retrieval of low-level cloud properties, including the low-level cloud-top heights over the region. In addition, the result that the southeast Atlantic mid-level clouds are supercooled liquid-water clouds could help reduce potential uncertainty associated with the cloud
550 phase representation within models (e.g., Zhang et al., 2005; Barrett et al., 2017). The mid-level clouds occur within a coupled land-atmosphere-ocean system and provide insight into the regional dynamics. Overall, the knowledge of the mid-level cloud properties over southeast Atlantic could be useful to accurately simulate its radiative effects in the**

mid-troposphere, its impact on the underlying low-level clouds, as a natural laboratory for aerosol-cloud interaction, and the regional cloud radiative budget.

555

Data availability

All HSRL-2 and RSP data can be found at the ORACLES ESPO archives

(<https://espoarchive.nasa.gov/archive/browse/oracles/id8/ER2>). The *in-situ* data for 4 and 24 September 2016 are publicly available from files mrg1_P3_20160904_R34.nc and mrg1_P3_20160924_R34.nc located on URL:

560 <http://www.espo.nasa.gov/oracles/>. We obtain the CALIOP data from the Atmospheric Science Data Center (ASDC) accessible at https://eosweb.larc.nasa.gov/project/calipso/calipso_table. The merged CloudSat-CALIPSO data, including the ECMWF auxiliary dataset, can be obtained directly from CloudSat Data Processing Center (<http://www.cloudsat.cira.colostate.edu/>). The SEVIRI datasets are obtained from the Satellite Cloud and Radiation Property retrieval System (SatCORPS) as part of the NASA Langley support for the 2016 ORACLES campaign
565 (<https://satcorps.larc.nasa.gov/cgi-bin/site/showdoc?docid=4&cmd=field-experiment-homepage&exp=ARM-ORACLES>).

Author contribution.

A.A.A designed the project. A.A.A performed the analysis with contributions from P.Z., I.C., and C.B. A.A.A also
570 wrote the paper with contribution from P.Z. and I.C. All authors discussed the results and commented on the manuscript.

Competing interests.

The authors declare that they have no conflict of interest.

575

Acknowledgements.

This work was developed with support from the University of California President's Postdoctoral Fellowship awarded to A.A.A., and the NASA Earth Venture Suborbital-2 ORACLES grant NNX15AF98G awarded to P.Z. We thank Leonhard Pfister for helpful comments and discussion. We also thank the HSRL team for making the HSRL-2
580 datasets available and the RSP team for making their datasets available for use in this paper. We also thank Patrick Minnis for providing access to the SEVIRI datasets as part of the NASA Langley for the ORACLES campaign. We thank the leadership of the ORACLES 2016 campaign for the opportunity to be part of this project. Finally, we thank two anonymous reviewers whose comments greatly improve this paper.

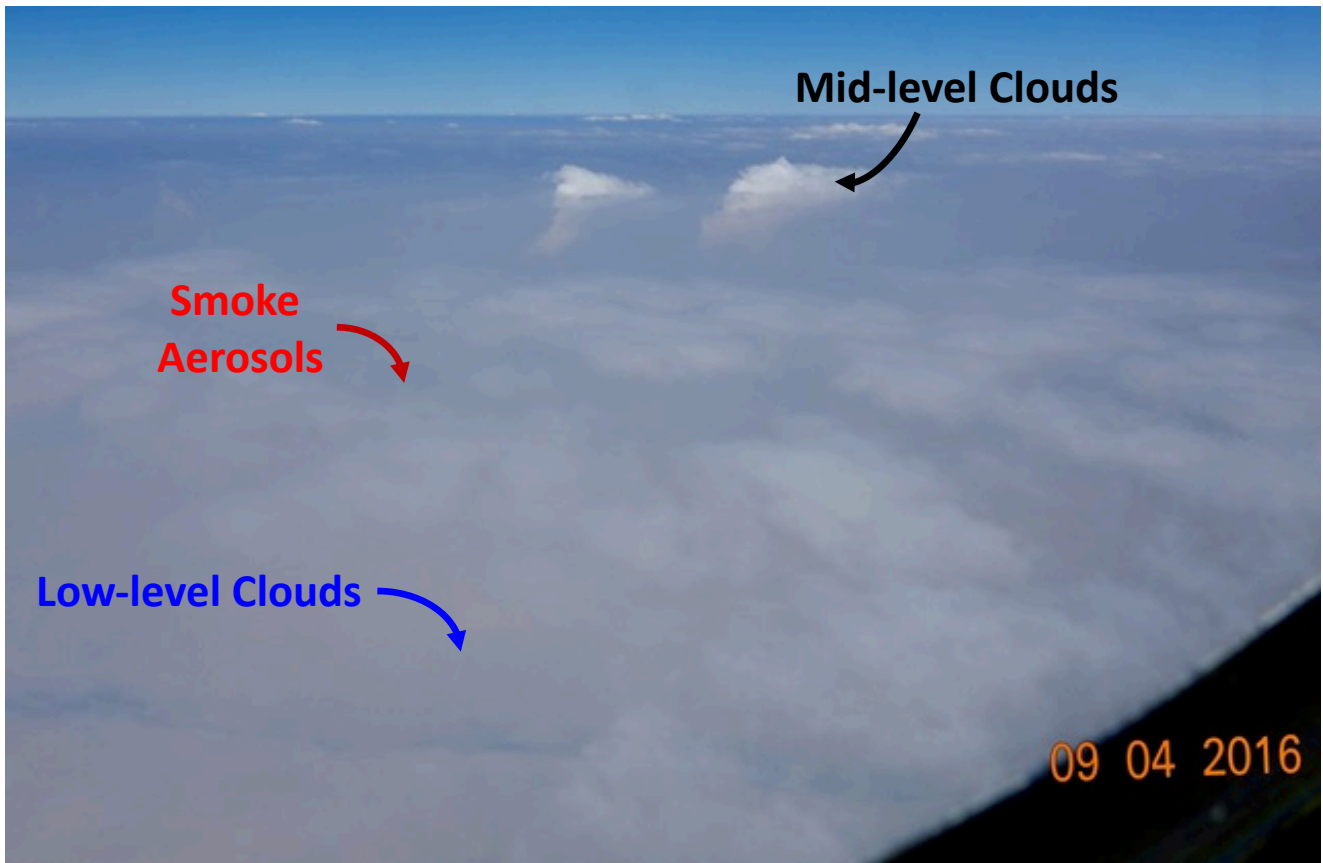
References

- 585 Adebisi, A. A., Zuidema, P. and Abel, S. J.: The Convolution of Dynamics and Moisture with the Presence of Shortwave Absorbing Aerosols over the Southeast Atlantic, *J. Clim.*, 28(5), 1997–2024, doi:10.1175/JCLI-D-14-00352.1, 2015.
- Adebisi, A. A. and Zuidema, P.: The role of the southern African easterly jet in modifying the southeast Atlantic aerosol and cloud environments, *Q. J. R. Meteorol. Soc.*, 142(697), 1574–1589, doi:10.1002/qj.2765, 2016.
- 590 Adebisi, A. A. and Zuidema, P.: Low Cloud Cover Sensitivity to Biomass-Burning Aerosols and Meteorology over the Southeast Atlantic, *J. Clim.*, 31(11), 4329–4346, doi:10.1175/JCLI-D-17-0406.1, 2018.
- Alexandrov, M. D., Cairns, B. and Mishchenko, M. I.: Rainbow Fourier transform, *J. Quant. Spectrosc. Radiat. Transf.*, 113(18), 2521–2535, doi:10.1016/j.jqsrt.2012.03.025, 2012.
- Alexandrov, M. D., Cairns, B., van Diedenhoven, B., Ackerman, A. S., Wasilewski, A. P., McGill, M. J., Yorks, J. E., Hlavka, D. L., Platnick, S. E. and Arnold, G. T.: Polarized view of supercooled liquid water clouds, *Remote Sens. Environ.*, 181, 96–110, doi:10.1016/j.rse.2016.04.002, 2016.
- 595 Barrett, A. I., Hogan, R. J. and Forbes, R. M.: Why are mixed-phase altocumulus clouds poorly predicted by large-scale models? Part 1. Physical processes, *J. Geophys. Res. Atmos.*, 122(18), 9903–9926, doi:10.1002/2016JD026321, 2017.
- 600 Bodas-Salcedo, A., Webb, M. J., Brooks, M. E., Ringer, M. A., Williams, K. D., Milton, S. F. and Wilson, D. R.: Evaluating cloud systems in the Met Office global forecast model using simulated CloudSat radar reflectivities, *J. Geophys. Res.*, 113(D8), D00A13, doi:10.1029/2007JD009620, 2008.
- Boucher, O., Randall, D., Artaxo, P., Bretherton, C., Feingold, G., Forster, P., Kerminen, V.-M. V.-M., Kondo, Y., Liao, H., Lohmann, U., Rasch, P., Satheesh, S. K., Sherwood, S., Stevens, B., Zhang, X. Y. and Zhan, X. Y.: Clouds and Aerosols, *Clim. Chang. 2013 Phys. Sci. Basis. Contrib. Work. Gr. I to Fifth Assess. Rep. Intergov. Panel Clim. Chang.*, 571–657, doi:10.1017/CBO9781107415324.016, 2013.
- 605 Bourgeois, E., Bouniol, D., Couvreur, F., Guichard, F., Marsham, J. H., Garcia-Carreras, L., Birch, C. E. and Parker, D. J.: Characteristics of mid-level clouds over West Africa, *Q. J. R. Meteorol. Soc.*, 144(711), 426–442, doi:10.1002/qj.3215, 2018.
- 610 Bourgeois, Q., Ekman, A. M. L. L., Igel, M. R. and Krejci, R.: Ubiquity and impact of thin mid-level clouds in the tropics, *Nat. Commun.*, 7, 12432, doi:10.1038/ncomms12432, 2016.
- Bühl, J., Ansmann, A., Seifert, P., Baars, H. and Engelmann, R.: Toward a quantitative characterization of heterogeneous ice formation with lidar/radar: Comparison of CALIPSO/CloudSat with ground-based observations, *Geophys. Res. Lett.*, 40(16), 4404–4408, doi:10.1002/grl.50792, 2013.
- 615 Burton, S. P., Hair, J. W., Kahnert, M., Ferrare, R. A., Hostetler, C. A., Cook, A. L., Harper, D. B., Berkoff, T. A., Seaman, S. T., Collins, J. E., Fenn, M. A. and Rogers, R. R.: Observations of the spectral dependence of linear particle depolarization ratio of aerosols using NASA Langley airborne High Spectral Resolution Lidar, *Atmos. Chem. Phys.*, 15(23), 13453–13473, doi:10.5194/acp-15-13453-2015, 2015.
- 620 Burton, S. P., Hostetler, C. A., Cook, A. L., Hair, J. W., Seaman, S. T., Scola, S., Harper, D. B., Smith, J. A., Fenn, M. A., Ferrare, R. A., Saide, P. E., Chemyakin, E. V. and Müller, D.: Calibration of a high spectral resolution lidar using a Michelson interferometer, with data examples from ORACLES, *Appl. Opt.*, 57(21), 6061, doi:10.1364/AO.57.006061, 2018.
- Cairns, B., Russell, E. E. and Travis, L. D.: Research Scanning Polarimeter: calibration and ground-based measurements</title>, in *Polarization: Measurement, Analysis, and Remote Sensing II*, vol. 3754, edited by D. H. Goldstein and D. B. Chenault, pp. 186–196, SPIE., 1999.
- 625 Christensen, M. W., Carrió, G. G., Stephens, G. L. and Cotton, W. R.: Radiative Impacts of Free-Tropospheric Clouds on the Properties of Marine Stratocumulus, *J. Atmos. Sci.*, 70(10), 3102–3118, doi:10.1175/JAS-D-12-0287.1, 2013.
- Davis, S. M., Avallone, L. M., Kahn, B. H., Meyer, K. G. and Baumgardner, D.: Comparison of airborne in situ measurements and Moderate Resolution Imaging Spectroradiometer (MODIS) retrievals of cirrus cloud optical and microphysical properties during the Midlatitude Cirrus Experiment (MidCiX), *J. Geophys. Res.*, 114(D2), D02203, doi:10.1029/2008JD010284, 2009.
- 630 Deaconu, L. T., Ferlay, N., Waquet, F., Peers, F., Thieuleux, F. and Goloub, P.: Satellite inference of water vapour and above-cloud aerosol combined effect on radiative budget and cloud-top processes in the southeastern Atlantic Ocean, *Atmos. Chem. Phys.*, 19(17), 11613–11634, doi:10.5194/acp-19-11613-2019, 2019.
- 635 Dee, D. P., Uppala, S. M., Simmons, a. J., Berrisford, P., Poli, P., Kobayashi, S., Andrae, U., Balmaseda, M. a., Balsamo, G., Bauer, P., Bechtold, P., Beljaars, a. C. M., van de Berg, L., Bidlot, J., Bormann, N., Delsol, C., Dragani, R., Fuentes, M., Geer, a. J., Haimberger, L., Healy, S. B., Hersbach, H., Hólm, E. V., Isaksen, L., Kållberg,

- P., Köhler, M., Matricardi, M., McNally, a. P., Monge-Sanz, B. M., Morcrette, J. J., Park, B. K., Peubey, C., de Rosnay, P., Tavolato, C., Thépaut, J. N. and Vitart, F.: The ERA-Interim reanalysis: Configuration and performance of the data assimilation system, *Q. J. R. Meteorol. Soc.*, 137(656), 553–597, doi:10.1002/qj.828, 2011.
- 640 Fleishauer, R. P., Larson, V. E., Vonder Haar, T. H., Collins, F., Group, A. S. and Collins, F.: Observed Microphysical Structure of Midlevel, Mixed-Phase Clouds, *J. Atmos. Sci.*, 59(11), 1779–1804, doi:10.1175/1520-0469(2002)059<1779:OMSOMM>2.0.CO;2, 2002.
- 645 Gao, B. C., Meyer, K. and Yang, P.: A new concept on remote sensing of cirrus optical depth and effective ice particle size using strong water vapor absorption channels near 1.38 and 1.88 μm , *IEEE Trans. Geosci. Remote Sens.*, 42(9), 1891–1899, doi:10.1109/TGRS.2004.833778, 2004.
- Gelaro, R., McCarty, W., Suárez, M. J., Todling, R., Molod, A., Takacs, L., Randles, C. A., Darmenov, A., Bosilovich, M. G., Reichle, R., Wargan, K., Coy, L., Cullather, R., Draper, C., Akella, S., Buchard, V., Conaty, A., da Silva, A. M., Gu, W., Kim, G.-K., Koster, R., Lucchesi, R., Merkova, D., Nielsen, J. E., Partyka, G., Pawson, S., Putman, W., Rienecker, M., Schubert, S. D., Sienkiewicz, M., Zhao, B., Gelaro, R., McCarty, W., Suárez, M. J., Todling, R., Molod, A., Takacs, L., Randles, C. A., Darmenov, A., Bosilovich, M. G., Reichle, R., Wargan, K., Coy, L., Cullather, R., Draper, C., Akella, S., Buchard, V., Conaty, A., Silva, A. M. da, Gu, W., Kim, G.-K., Koster, R., Lucchesi, R., Merkova, D., Nielsen, J. E., Partyka, G., Pawson, S., Putman, W., Rienecker, M., Schubert, S. D., Sienkiewicz, M. and Zhao, B.: The Modern-Era Retrospective Analysis for Research and Applications, Version 2 (MERRA-2), *J. Clim.*, 30(14), 5419–5454, doi:10.1175/JCLI-D-16-0758.1, 2017.
- 650 Gordon, H., Field, P. R., Abel, S. J., Dalvi, M., Grosvenor, D. P., Hill, A. A., Johnson, B. T., Miltenberger, A. K., Yoshioka, M. and Carslaw, K. S.: Large simulated radiative effects of smoke in the south-east Atlantic, *Atmos. Chem. Phys.*, 18(20), 15261–15289, doi:10.5194/acp-18-15261-2018, 2018.
- 660 Hamann, U., Walther, A., Baum, B., Bennartz, R., Bugliaro, L., Derrien, M., Francis, P. N., Heidinger, A., Joro, S., Kniffka, A., Le Gléau, H., Lockhoff, M., Lutz, H.-J., Meirink, J. F., Minnis, P., Palikonda, R., Roebeling, R., Thoss, A., Platnick, S., Watts, P. and Wind, G.: Remote sensing of cloud top pressure/height from SEVIRI: analysis of ten current retrieval algorithms, *Atmos. Meas. Tech.*, 7(9), 2839–2867, doi:10.5194/amt-7-2839-2014, 2014.
- Hansen, J. E. and Travis, L. D.: Light scattering in planetary atmospheres, *Sp. Sci. rev.*, 16, 527–610, 1974.
- 665 Haywood, J. M., Osborne, S. R. and Abel, S. J.: The effect of overlying absorbing aerosol layers on remote sensing retrievals of cloud effective radius and cloud optical depth, , 779–800, doi:10.1256/qj.03.100, 2004.
- Henderson, D. S., L’Ecuyer, T., Stephens, G., Partain, P. and Sekiguchi, M.: A Multisensor Perspective on the Radiative Impacts of Clouds and Aerosols, *J. Appl. Meteorol. Climatol.*, 52(4), 853–871, doi:10.1175/JAMC-D-12-025.1, 2013.
- 670 Hobbs, P. V. and Rangno, A. L.: Ice Particle Concentrations in Clouds, *J. Atmos. Sci.*, 42(23), 2523–2549, doi:10.1175/1520-0469(1985)042<2523:IPCIC>2.0.CO;2, 1985.
- Holz, R. E., Ackerman, S. A., Nagle, F. W., Frey, R., Dutcher, S., Kuehn, R. E., Vaughan, M. A. and Baum, B.: Global Moderate Resolution Imaging Spectroradiometer (MODIS) cloud detection and height evaluation using CALIOP, *J. Geophys. Res. Atmos.*, 114(8), 1–17, doi:10.1029/2008JD009837, 2009.
- 675 Hoskins, B. J., Hodges, K. I., Hoskins, B. J. and Hodges, K. I.: A New Perspective on Southern Hemisphere Storm Tracks, *J. Clim.*, 18(20), 4108–4129, doi:10.1175/JCLI3570.1, 2005.
- Hu, Y., Vaughan, M., Liu, Z., Lin, B., Yang, P., Flittner, D., Hunt, B., Kuehn, R., Huang, J., Wu, D., Rodier, S., Powell, K., Trepte, C. and Winker, D.: The depolarization - attenuated backscatter relation: CALIPSO lidar measurements vs. theory, *Opt. Express*, 15(9), 5327, doi:10.1364/oe.15.005327, 2007.
- 680 Hu, Y., Winker, D., Vaughan, M., Lin, B., Omar, A., Trepte, C., Flittner, D., Yang, P., Nasiri, S. L., Baum, B., Holz, R., Sun, W., Liu, Z., Wang, Z., Young, S., Stamnes, K., Huang, J. and Kuehn, R.: CALIPSO/CALIOP Cloud Phase Discrimination Algorithm, *J. Atmos. Ocean. Technol.*, 26(11), 2293–2309, doi:10.1175/2009JTECHA1280.1, 2009.
- Hunt, W. H., Winker, D. M., Vaughan, M. A., Powell, K. A., Lucker, P. L. and Weimer, C.: *CALIPSO Lidar Description and Performance Assessment*, *J. Atmos. Ocean. Technol.*, 26(7), 1214–1228, doi:10.1175/2009JTECHA1223.1, 2009.
- 685 Johnson, B. T., Shine, K. P. and Forster, P. M.: The semi-direct aerosol effect: Impact of absorbing aerosols on marine stratocumulus, , 1407–1422, doi:10.1256/qj.03.61, 2004.
- Kacarab, M., Thornhill, K. L., Dobracki, A., Howell, S. G., O& J. R., apos, Brien, Freitag, S., Poellot, M. R., Wood, R., Zuidema, P., Redemann, J. and Nenes, A.: Biomass burning aerosol as a modulator of the droplet number in the southeast Atlantic region, *Atmos. Chem. Phys.*, 20(5), 3029–3040, doi:10.5194/acp-20-3029-2020, 2020.
- 690 King, M. D., Platnick, S., Menzel, W. P., Ackerman, S. a. and Hubanks, P. a.: Spatial and temporal distribution of clouds observed by MODIS onboard the terra and aqua satellites, *IEEE Trans. Geosci. Remote Sens.*, 51(7), 3826–3852, doi:10.1109/TGRS.2012.2227333, 2013.
- Klein, S. A. and Hartmann, D. L.: The Seasonal Cycle of Low Stratiform Clouds, *J. Clim.*, 6(8), 1587–1606, doi:10.1175/1520-0442(1993)006<1587:TSCOLS>2.0.CO;2, 1993.
- 695

- L'Ecuyer, T. S., Wood, N. B., Haladay, T., Stephens, G. L. and Stackhouse, P. W.: Impact of clouds on atmospheric heating based on the R04 CloudSat fluxes and heating rates data set, *J. Geophys. Res.*, 113(8), D00A15, doi:10.1029/2008JD009951, 2008.
- 700 Larson, V. E., Smith, A. J., Falk, M. J., Kotenberg, K. E. and Golaz, J.-C.: What determines altocumulus dissipation time?, *J. Geophys. Res.*, 111(D19), D19207, doi:10.1029/2005JD007002, 2006.
- Liu, S. and Krueger, S. K.: Numerical simulations of altocumulus using a cloud resolving model and a mixed layer model, *Atmos. Res.*, 47–48, 461–474, doi:10.1016/S0169-8095(98)00034-9, 1998.
- Liu, Z., Kar, J., Zeng, S., Tackett, J., Vaughan, M., Avery, M., Pelon, J., Getzewich, B., Lee, K.-P., Magill, B., Omar, A., Lucker, P., Trepte, C. and Winker, D.: Discriminating between clouds and aerosols in the CALIOP version 4.1 data products, *Atmos. Meas. Tech.*, 12(1), 703–734, doi:10.5194/amt-12-703-2019, 2019.
- 705 Lohmann, U. and Feichter, J.: Global indirect aerosol effects: a review, *Atmos. Chem. Phys.*, 5(6), 715–737, doi:10.5194/acpd-4-7561-2004, 2005.
- Mace, G. G. and Zhang, Q.: The CloudSat radar-lidar geometrical profile product (RL-GeoProf): Updates, improvements, and selected results, *J. Geophys. Res. Atmos.*, 119(15), 9441–9462, doi:10.1002/2013JD021374, 710 2014.
- Magi, B. I. and Hobbs, P. V.: Effects of Humidity on Aerosols in Southern Africa during the Biomass Burning Season, , 108, 1–12, doi:10.1029/2002JD002144, 2003.
- Minnis, P., Kratz, D. P., Coakley Jr, J. A., King, M. D., Garber, D., Heck, P., Mayor, S., Young, D. F. and Arduini, R.: Cloud optical property retrieval (subsystem 4.3), *Clouds Earth's Radiant Energy Syst. algorithm Theor. basis Doc.*, 3, 135–176, 1995.
- 715 Nayak, M., Witkowski, M., Vane, D., Livermore, T., Rokey, M., Barthuli, M., Gravseth, I. J., Pieper, B., Rodzinak, A. and Silva, S.: CloudSat Anomaly Recovery and Operational Lessons Learned, [online] Available from: <https://apps.dtic.mil/docs/citations/ADA568401> (Accessed 2 October 2019), 2012.
- Painemal, D., Xu, K. M., Cheng, A., Minnis, P. and Palikonda, R.: Mean Structure and Diurnal Cycle of Southeast Atlantic Boundary Layer Clouds : Insights from Satellite Observations and Multiscale Modeling Framework Simulations, *J. Chromatogr.*, 28(1), 324–341, doi:10.1175/JCLI-D-14-00368.1, 2014.
- 720 Palikonda, R., Minnis, P., Spangenberg, D. a., Khaiyer, M. M., Nordeen, M. L., Ayers, J. K., Nguyen, L., Yi, Y., Chan, P. K., Trepte, Q. Z., Chang, F.-L. and Smith, Jr., W. L.: NASA-Langley web-based operational real-time cloud retrieval products from geostationary satellites, in *Remote Sensing of the Atmosphere and Clouds*, vol. 6408, edited by S.-C. Tsay, T. Nakajima, R. P. Singh, and R. Sridharan, p. 64081P., 2006.
- 725 Partain, P.: CloudSat ECMWF-AUX Auxiliary Data Process Description and Interface Control Document, Fort Collins. [online] Available from: ftp://ftp.cira.colostate.edu/ftp/CloudSat/Docs/ECMWF-AUX_PDICD.P_R01.20040730.pdf, 2007.
- Peers, F., Francis, P., Fox, C., Abel, S. J., Szpek, K., Cotterell, M. I., Davies, N. W., Langridge, J. M., Meyer, K. G., 730 Platnick, S. E. and Haywood, J. M.: Observation of absorbing aerosols above clouds over the south-east Atlantic Ocean from the geostationary satellite SEVIRI – Part 1: Method description and sensitivity, *Atmos. Chem. Phys.*, 19(14), 9595–9611, doi:10.5194/acp-19-9595-2019, 2019.
- Pruppacher, H. R. and Klett, J. D.: *Microphysics of Clouds and Precipitation*, Springer Netherlands, Dordrecht., 2010.
- 735 Redemann, J., Wood, R., Zuidema, P., Doherty, S. J. and et al.: An overview of the ORACLES (ObseRvations of Aerosols above CLouds and their intERactionS) project: aerosol-cloud-radiation interactions in the Southeast Atlantic basin., *Atmos. Chem. Phys. Disc.*, manuscript, doi:10.5194/acp-2020-449, 2020.
- Riihimaki, L. D., Mcfarlane, S. A. and Comstock, J. M.: Climatology and formation of tropical midlevel clouds at the Darwin ARM Site, *J. Clim.*, 25(19), 6835–6850, doi:10.1175/JCLI-D-11-00599.1, 2012.
- 740 Riley, E. M. and Mapes, B. E.: Unexpected peak near -15??C in CloudSat echo top climatology, *Geophys. Res. Lett.*, 36(9), 1–5, doi:10.1029/2009GL037558, 2009.
- Sassen, K. and Wang, Z.: Classifying clouds around the globe with the CloudSat radar: 1-year of results, *Geophys. Res. Lett.*, 35(4), doi:10.1029/2007GL032591, 2008.
- 745 Sassen, K. and Wang, Z.: The Clouds of the Middle Troposphere: Composition, Radiative Impact, and Global Distribution, *Surv. Geophys.*, 33(3–4), 677–691, doi:10.1007/s10712-011-9163-x, 2012.
- Schmetz, J., Pili, P., Tjemkes, S., Just, D., Kerkmann, J., Rota, S. and Ratier, A.: An introduction to Meteosat Second Generation (MSG), *Bull. Amer. Meteor. Soc.*, 83, 977–992, 2002.
- Soden, B. J. and Vecchi, G. a.: The vertical distribution of cloud feedback in coupled ocean-atmosphere models, *Geophys. Res. Lett.*, 38(12), 1–6, doi:10.1029/2011GL047632, 2011.
- 750 Stein, T. H. M., Parker, D. J., Delanoë, J., Dixon, N. S., Hogan, R. J., Knippertz, P., Maidment, R. I. and Marsham, J. H.: The vertical cloud structure of the West African monsoon: A 4 year climatology using CloudSat and CALIPSO, *J. Geophys. Res. Atmos.*, 116(22), 1–13, doi:10.1029/2011JD016029, 2011.

- Stephens, G. L., Vane, D. G., Boain, R. J., Mace, G. G., Sassen, K., Wang, Z., Illingworth, A. J., O'connor, E. J., Rossow, W. B., Durden, S. L., Miller, S. D., Austin, R. T., Benedetti, A., Mitrescu, C., Team, the C. S., Stephens, G. L., Vane, D. G., Boain, R. J., Mace, G. G., Sassen, K., Wang, Z., Illingworth, A. J., O'connor, E. J., Rossow, W. B., Durden, S. L., Miller, S. D., Austin, R. T., Benedetti, A., Mitrescu, C. and Team, the C. S.: THE CLOUDSAT MISSION AND THE A-TRAIN, *Bull. Am. Meteorol. Soc.*, 83(12), 1771–1790, doi:10.1175/BAMS-83-12-1771, 2002.
- 755 Stephens, G. L., Vane, D. G., Tanelli, S., Im, E., Durden, S., Rokey, M., Reinke, D., Partain, P., Mace, G. G., Austin, R. and others: CloudSat mission: Performance and early science after the first year of operation, *J. Geophys. Res.*, 113(null), 2008.
- 760 Szczodrak, M., Austin, P. H. and Krummel, P. B.: Variability of Optical Depth and Effective Radius in Marine Stratocumulus Clouds, *J. Atmos. Sci.*, 58(19), 2912–2926, doi:10.1175/1520-0469(2001)058<2912:VOODAE>2.0.CO;2, 2001.
- 765 Tselioudis, G. and Kollias, P.: Evaluation of ECMWF cloud type simulations at the ARM Southern Great Plains site using a new cloud type climatology, *Geophys. Res. Lett.*, 34(3), L03803, doi:10.1029/2006GL027314, 2007.
- Wilcox, E. M.: Stratocumulus cloud thickening beneath layers of absorbing smoke aerosol, *Atmos. Chem. Phys.*, 10(23), 11769–11777, doi:10.5194/acp-10-11769-2010, 2010.
- 770 Winker, D. M., Pelon, J. R. and McCormick, M. P.: The CALIPSO mission: spaceborne lidar for observation of aerosols and clouds, vol. 4893, edited by U. N. Singh, T. Itabe, and Z. Liu, p. 1, International Society for Optics and Photonics., 2003.
- Wood, R.: Stratocumulus Clouds, *Mon. Weather Rev.*, 140(8), 2373–2423, doi:10.1175/MWR-D-11-00121.1, 2012.
- Zhang, D., Wang, Z. and Liu, D.: A global view of midlevel liquid-layer topped stratiform cloud distribution and phase partition from CALIPSO and CloudSat measurements, *J. Geophys. Res. Atmos.*, 115(4), 1–10, doi:10.1029/2009JD012143, 2010.
- 775 Zhang, M. H., Lin, W. Y., Klein, S. A., Bacmeister, J. T., Bony, S., Cederwall, R. T., Del Genio, a. D., Hack, J. J., Loeb, N. G., Lohmann, U., Minnis, P., Musat, I., Pincus, R., Stier, P., Suarez, M. J., Webb, M. J., Wu, J. B., Xie, S. C., Yao, M. S. and Zhang, J. H.: Comparing clouds and their seasonal variations in 10 atmospheric general circulation models with satellite measurements, *J. Geophys. Res. D Atmos.*, 110(15), 1–18, doi:10.1029/2004JD005021, 2005.
- 780 Zuidema, P., Redemann, J., Haywood, J., Wood, R., Piketh, S., Hipondoka, M. and Formenti, P.: Smoke and Clouds above the Southeast Atlantic: Upcoming Field Campaigns Probe Absorbing Aerosol's Impact on Climate, *Bull. Am. Meteorol. Soc.*, 160129100143006, doi:10.1175/BAMS-D-15-00082.1, 2016.
- Zuidema, P., Sedlacek, A. J., Flynn, C., Springston, S., Delgado, R., Zhang, J., Aiken, A. C., Koontz, A. and Muradyan, P.: The Ascension Island Boundary Layer in the Remote Southeast Atlantic is Often Smoky, *Geophys. Res. Lett.*, 45(9), 4456–4465, doi:10.1002/2017GL076926, 2018.
- 785



790

Figure 1: An Image taken during the NASA ORACLES Field campaign on September 4, 2016, showing mid-level clouds and smoke above the low-level clouds. Image taken by Paquita Zuidema.

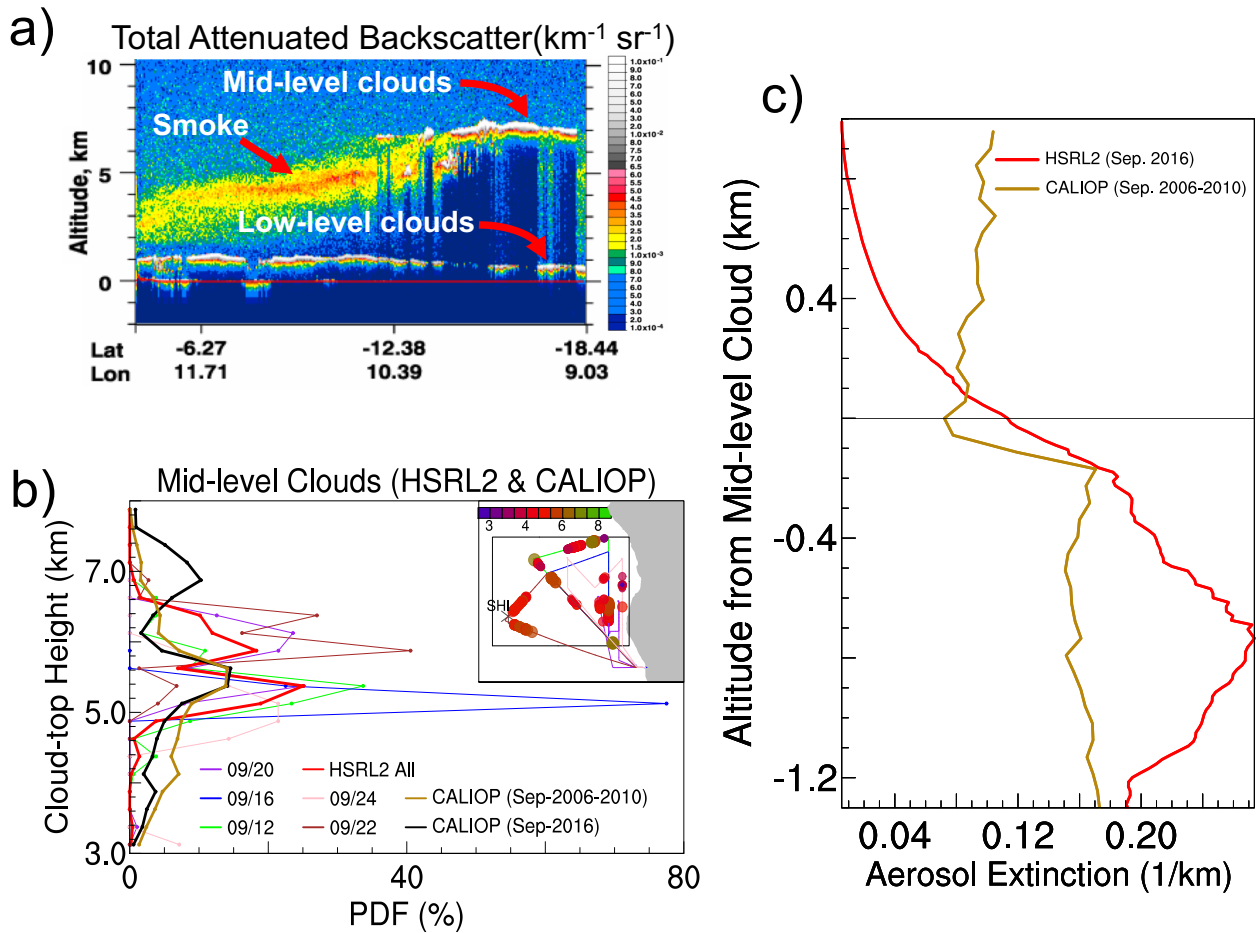
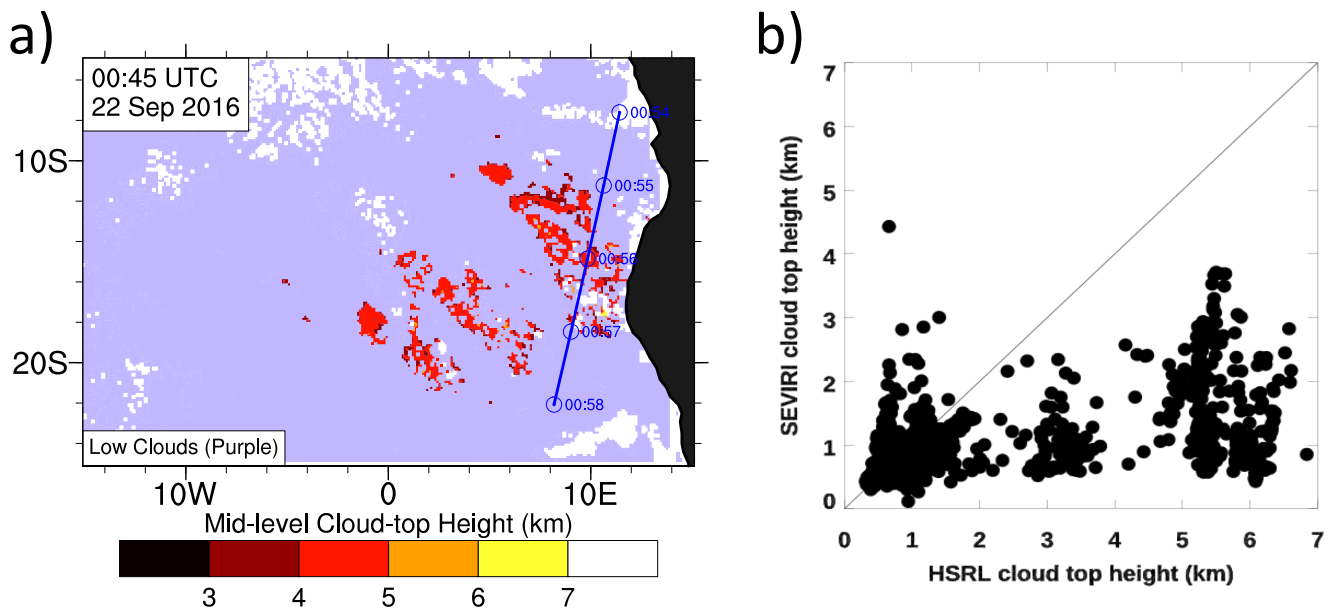
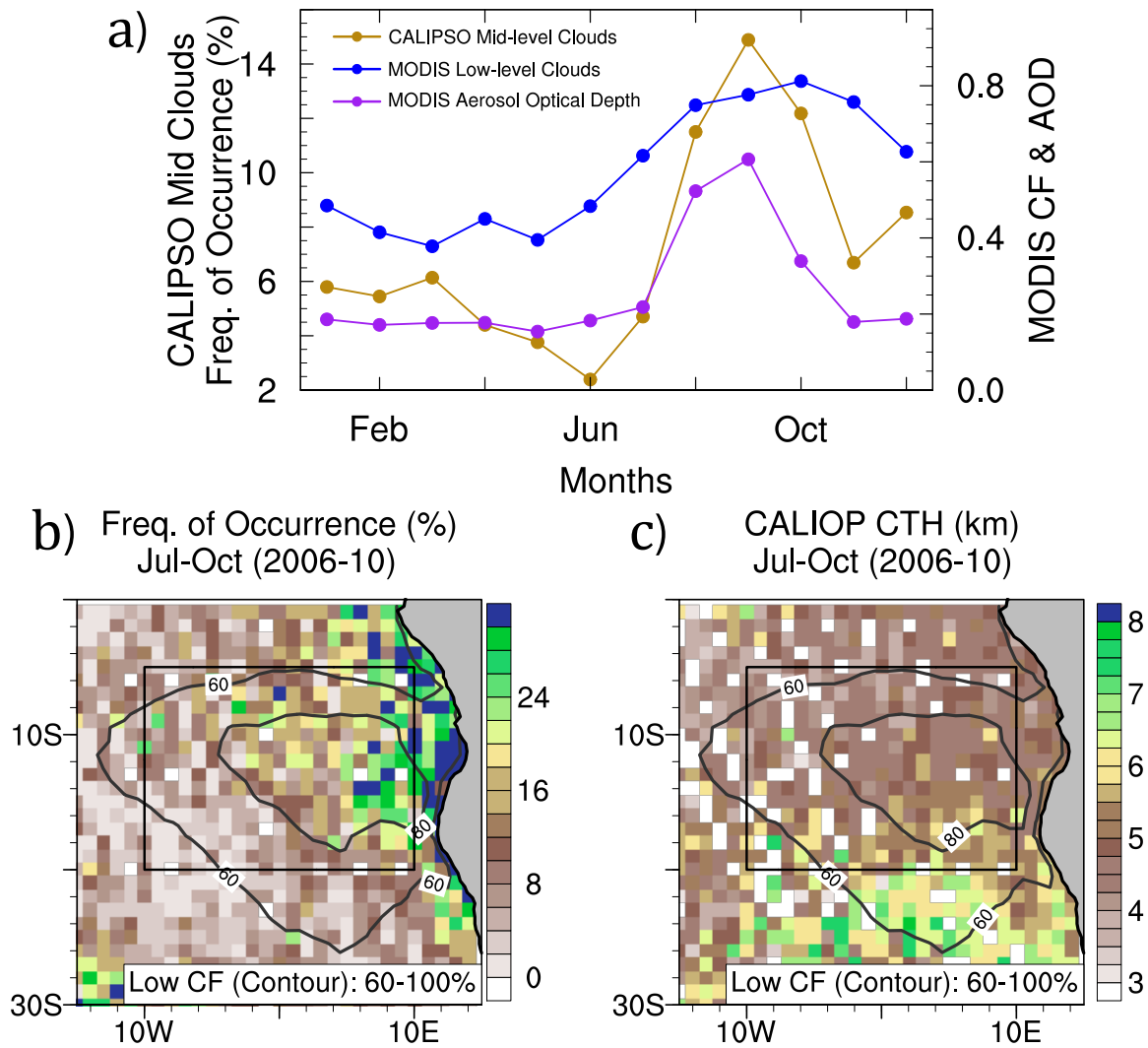


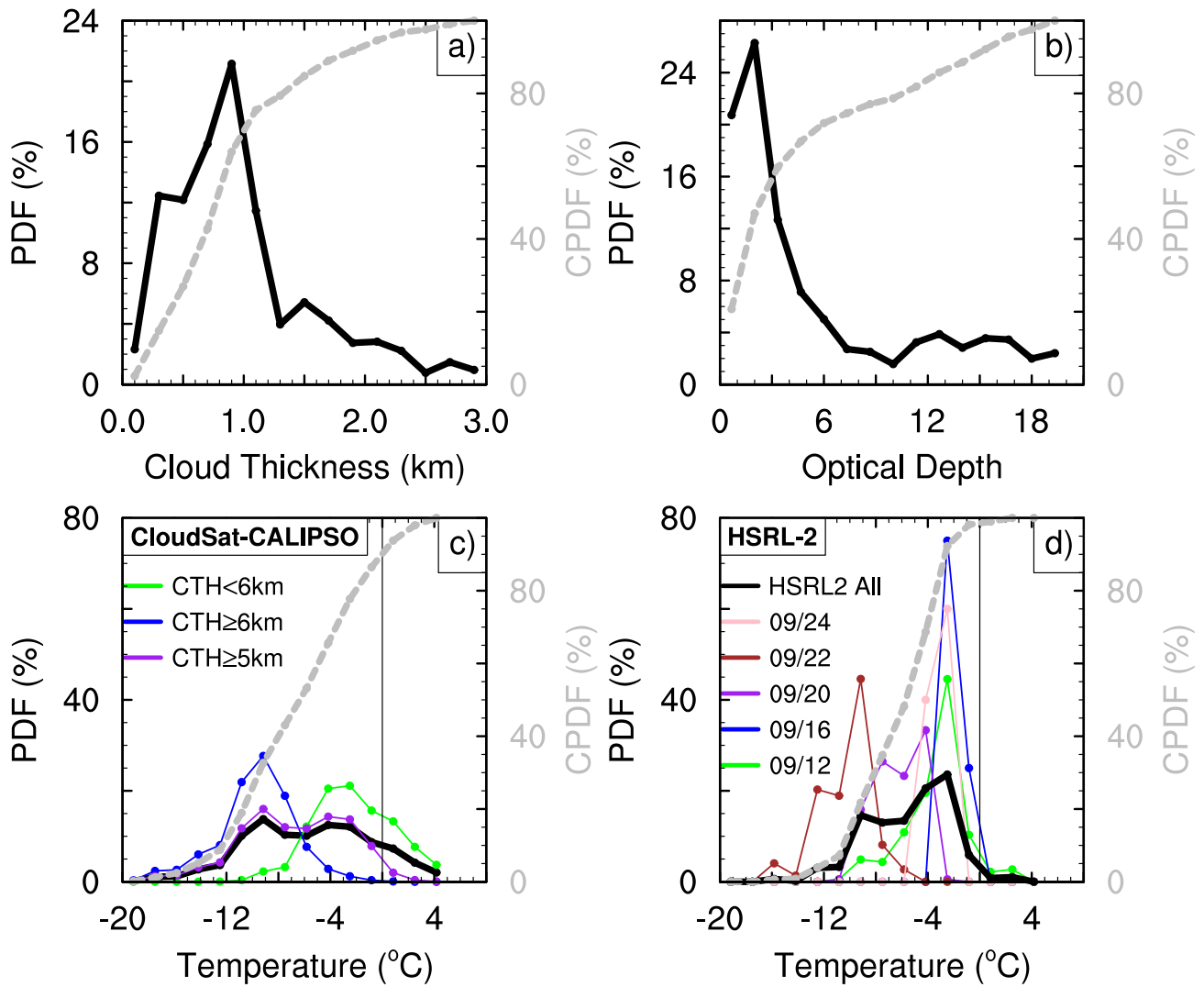
Figure 2: (a) An example image from CALIPSO showing CALIOP 532-nm total attenuated backscatter ($\text{km}^{-1} \text{sr}^{-1}$) with identifiable mid-level clouds, smoke, and low-level clouds on 22 September 2016 between $\sim 00:54$ UTC and $\sim 00:57$ UTC over the southeast Atlantic. (b) The probability distribution of mid-level cloud-top heights (km) measured by the HSRL-2 aboard the ER-2 high-altitude aircraft during ORACLES in September 2016. The combined distribution from HSRL-2 is shown by the thick red line, while the CALIOP distribution for all available CALIPSO overpasses for September 2016 and September 2006-2010 are shown by the thick black and brown lines respectively. The inset in (b) shows the spatial locations and heights (km) of the HSRL-2 mid-level cloud measurements, as well as the region for the CALIOP distribution (5° - 20° S and 10° W- 12° E). (c) The 532-nm aerosol extinction coefficients (km^{-1}) averaged for 0.2 -degree grid box above and below the mid-level cloud top obtained from HSRL-2 (red line; September 2016) and from CALIOP (brown line; September 2006-2010).



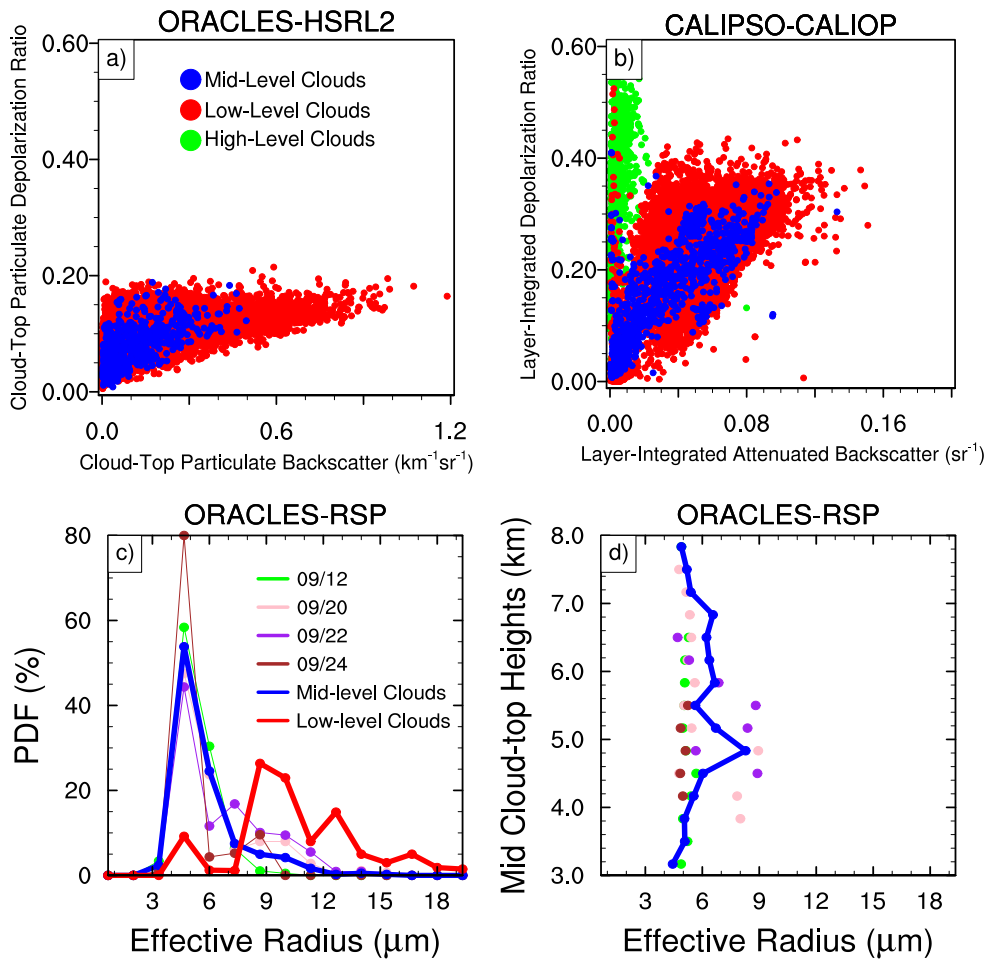
810 Figure 3: Comparison between mid-level clouds observed by SEVIRI and lidar-based instruments. (a) Image from
 SEVIRI instrument corresponding to the CALIPSO image in Figure 2a. This was taken 00:45 UTC, 22 September
 2016 and it shows the mid-level cloud-top heights (km, red-yellow shade), and the low-level clouds (purple; defined
 by cloud-top heights less than 3 km) over the southeast Atlantic. The blue line is the CALIPSO cross-over track for
 the image in Figure 2a, although it occurs 9 mins after the satellite image. (b) Comparison between SEVIRI and
 815 HSRL-2 cloud top height collocated within +/- 15 minutes of each other during ORACLES-2016.



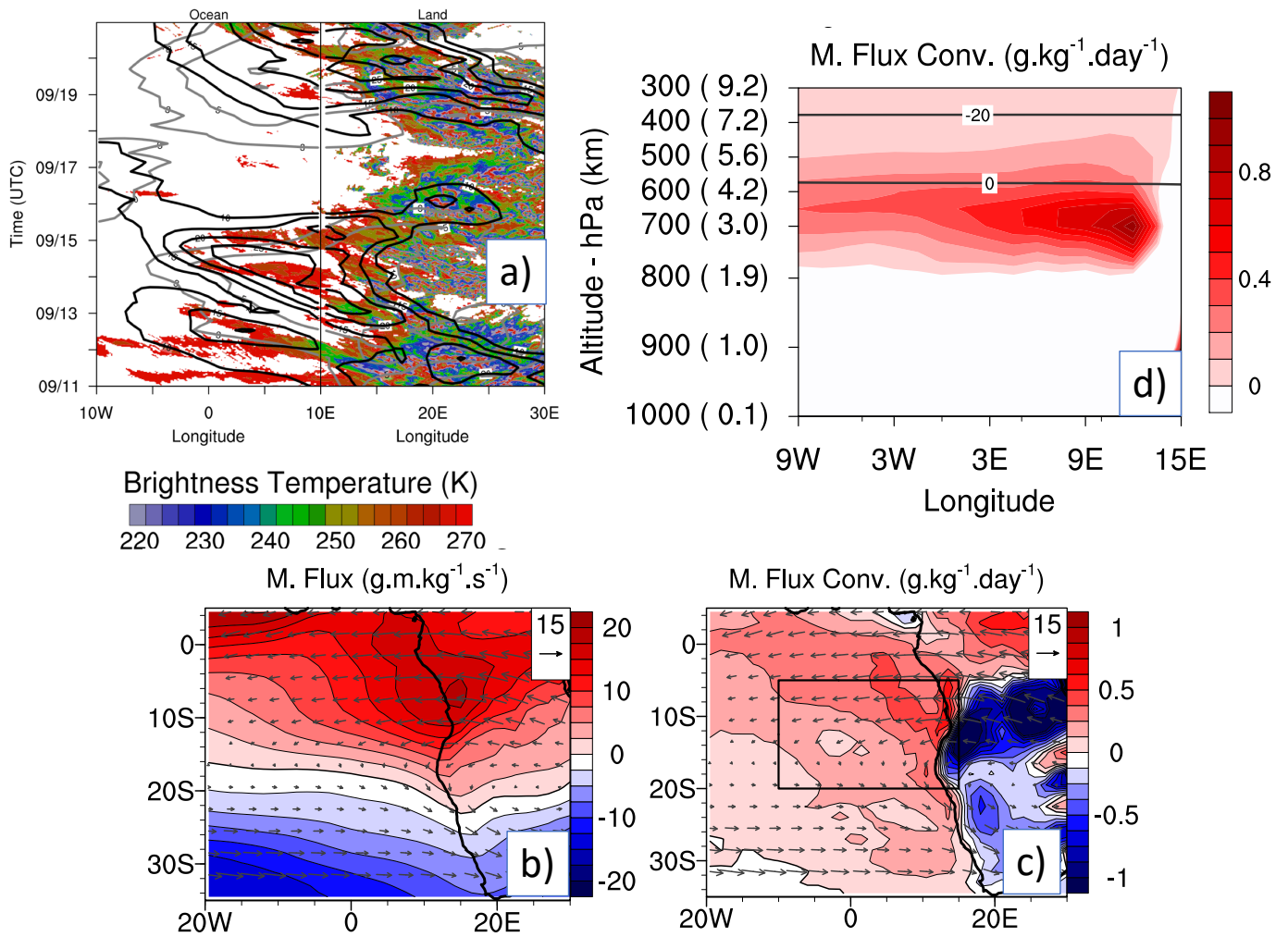
820 Figure 4: (a) Monthly averages (2006-2010) of the CALIPSO mid-level cloud frequency of occurrence (%; brown
 825 line), MODIS low-level cloud fraction and aerosol optical depth (CF & AOD; right axis), all averaged over the
 ORACLES-2016 campaign region (defined here as 5°20'S and 10°W-10°E; black boxes in Figure 3b & c). (b) The
 spatial distribution of the July–October average for the CALIPSO mid-level cloud frequency of occurrence (%), and
 (c) the corresponding cloud-top heights (km). The black contours in both Figure 3b & c are the MODIS liquid-water
 low-level cloud fraction (%) for the same period. The CALIPSO mid-level clouds are identified as cloud-layer top
 between 3–8 km, while the MODIS low-level clouds are averages of grid-boxes with cloud-top temperatures greater
 than 273 K.



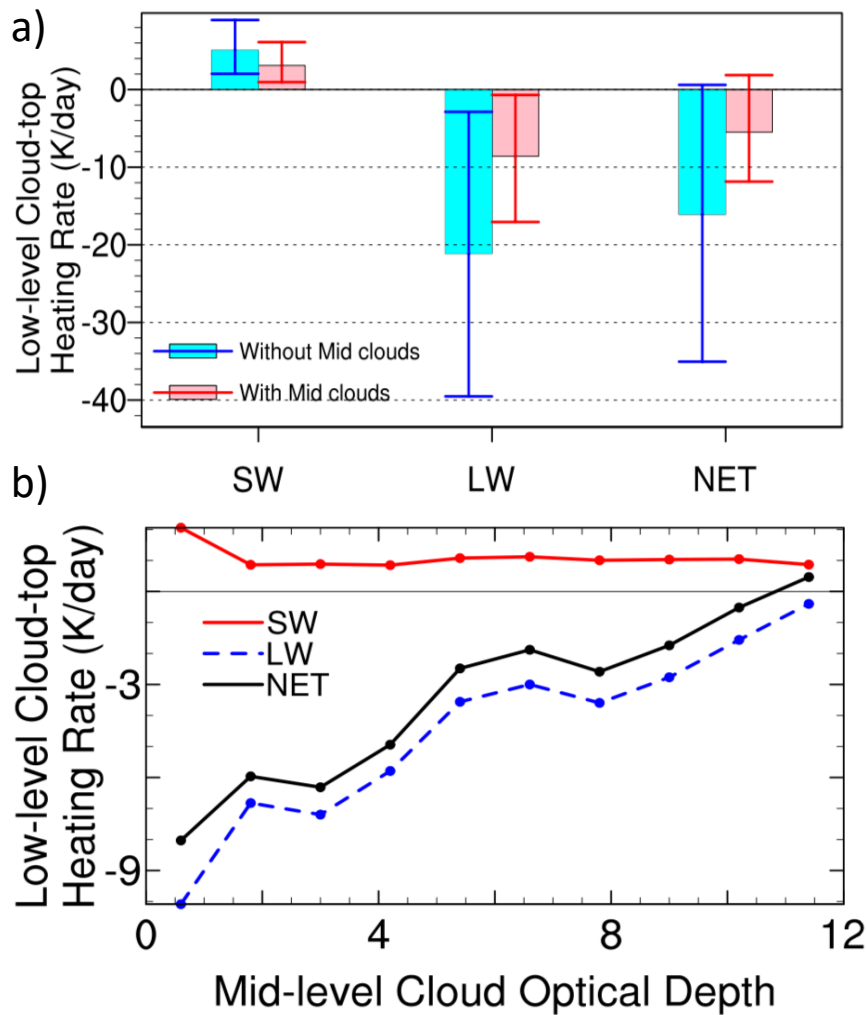
830 Figure 5: The probability (PDF; solid black lines) and cumulative (CPDF; grey dash lines) distributions of mid-level
 835 cloud properties. These distributions are obtained for mid-level (a) cloud thickness (km), (b) cloud optical depth, and
 (c) cloud temperature (°C) from the CloudSat-CALIPSO merged dataset between 3–8 km altitude, July and October
 (2006-2010) averaged over the southeast Atlantic (black boxes shown in Figure 3). (c) also shows the temperature
 distribution subset into different cases of mid-level cloud-top heights. (d) Cloud temperature distribution (°C)
 collocated with HSRL-2-derived mid-level clouds (see Figure 2b) and obtained for the individual days (colored lines)
 and the campaign period (HSRL2 All; black line for PDF and grey line for CPDF) during ORACLES in September
 2016. The thin vertical line in (c) and (d) shows the 0°C temperature.



840 Figure 6: Identifying the phase of southeast Atlantic mid-level clouds. (a) The relationship between the particulate
 845 depolarization ratio and the particulate backscatter ($\text{km}^{-1}\text{sr}^{-1}$) at the cloud top obtained from HSRL-2 during
 ORACLES-2016; and (b) the volume depolarization ratio and the attenuated backscatter (sr^{-1}) integrated over the
 cloud layer obtained from CALIOP aboard CALIPSO. Both figures are estimated using available data during
 September 2016 and over the ORACLES-2016 campaign region (inset in Figure 2b). The low-level clouds (red dots)
 and high-level clouds (green dots) are respectively the observed clouds with cloud tops less than 3 km and greater
 than 8 km, while the mid-level clouds (blue dots) are the observed clouds with cloud tops between 3 and 8 km. (c)
 The probability distribution (PDF, %) of RSP-derived cloud effective radius (μm) for mid-level clouds (solid blue
 line) and the underlying low-level clouds (solid red line) obtained during ORACLES-2016. (d) The mid-level cloud
 850 effective radius (μm) as a function of the mid-level cloud-top heights (km). The solid blue line in (d) indicates the
 median effective radius for each height level. The colored dots (in c & d) and thin lines (in c) are for individual days
 when reliable observations were available.

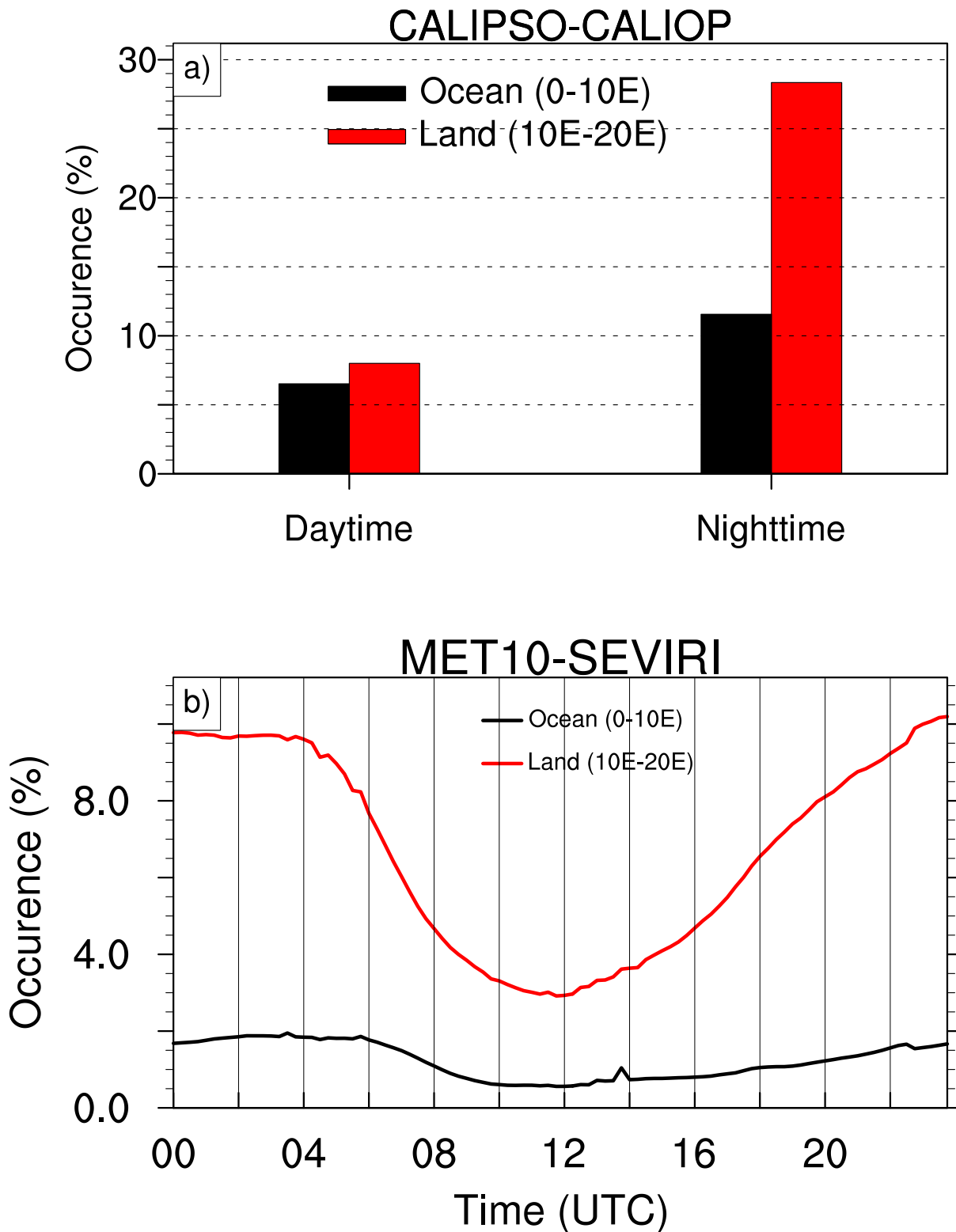


855 Figure 7: (a) An example showing the longitude-time cross-section of brightness temperature (K; shaded), easterly
 860 zonal wind speed (grey contours between 3-15 m s⁻¹ at 2 m s⁻¹ interval) and moisture flux (black contours between 10-
 30 g m kg⁻¹ s⁻¹ at 5 g m kg⁻¹ s⁻¹ interval) between 3–8 km and latitude range of 5°S-20°S for 11-20 September 2016.
 The July–October (2006-2010) ERA-Interim (b) moisture flux (g.m.kg⁻¹.s⁻¹), and (c) moisture flux convergence
 (g.kg⁻¹.day⁻¹), averaged between 3–8 km. Positive is convergence and negative is divergence. The arrows are the
 moisture flux vectors, referenced at 15 g.m.kg⁻¹.s⁻¹. (d) The longitude-height transect of the moisture flux convergence
 averaged between 5°S-20°S (black box in (b)). The horizontal lines in (d) represent the 0°C and -20°C isotherms
 averaged over the same period.



865 Figure 8: The radiative impact of mid-level cloud on the low-level cloud-top heating rates. (a) The instantaneous heating rates at the top of low-level clouds with (pink bars/red lines) and without (cyan bars/blue lines) the presence of collocated mid-level clouds. (b) The instantaneous heating rates at the top of the low-level clouds as a function of the overlying mid-level cloud optical depth. All data are obtained from the CALIPSO-CloudSat merged dataset between July and October (2006-2010), and over the ORACLES-2016 campaign region (black boxes shown in Figure 4) and separated into the shortwave (SW) and longwave (LW) components, as well as the NET (=SW+LW).

870



875 Figure 9: Diurnal variations of the mid-level cloud frequency of occurrence (%) between 3 and 8 km and 01-30 September 2016 averaged for 5°S-20°S, over the ocean (black bar/line – 0-10°E) and the land (red bar/line – 10°E-20°E) for observations obtained from (a) CALIOP instrument aboard CALIPSO and (b) SEVIRI instruments aboard MET-10 satellite. CALIPSO overpass over the southeast Atlantic occurs between approximately 12:30-13:30 UTC during the day and 00:30-1:30 UTC during the night. Despite SEVIRI’s difficulty in identifying mid-level clouds, SEVIRI’s higher temporal sampling (15 min) provides insight into the diurnal variability that is otherwise not available.