

On the role of trend and variability of hydroxyl radical (OH) in the global methane budget

Yuanhong Zhao¹, Marielle Saunois¹, Philippe Bousquet¹, Xin Lin^{1*}, Antoine Berchet¹, Michaela I. Hegglin², Josep G. Canadell³, Robert B. Jackson⁴, Makoto Deushi⁵, Patrick Jöckel⁶, Douglas Kinnison⁷, Ole Kirner⁸, Sarah Strode^{9,10}, Simone Tilmes¹¹, Edward J. Dlugokencky¹², and Bo Zheng¹

5

¹ Laboratoire des Sciences du Climat et de l'Environnement, LSCE-IPSL (CEA-CNRS-UVSQ), Université Paris-Saclay, 91191 Gif-sur-Yvette, France

² Department of Meteorology, University of Reading, Earley Gate, Reading RG6 6BB, United Kingdom

10 ³ Global Carbon Project, CSIRO Oceans and Atmosphere, Canberra, Australian Capital Territory 2601, Australia

⁴ Earth System Science Department, Woods Institute for the Environment, and Precourt Institute for Energy, Stanford University, Stanford, CA 94305, USA

⁵ Meteorological Research Institute, 1-1 Nagamine, Tsukuba, Ibaraki, 305-0052, Japan

15 ⁶ Deutsches Zentrum für Luft- und Raumfahrt (DLR), Institut für Physik der Atmosphäre, Oberpfaffenhofen, Germany

⁷ Atmospheric Chemistry Observations and Modeling Laboratory, National Center for Atmospheric Research, 3090 Center Green Drive, Boulder, CO, 80301, USA

⁸ Steinbuch Centre for Computing, Karlsruhe Institute of Technology, Karlsruhe, Germany

⁹ NASA Goddard Space Flight Center, Greenbelt, MD, USA

20 ¹⁰ Universities Space Research Association (USRA), GESTAR, Columbia, MD, USA

¹¹ National Center for Atmospheric Research, Boulder, CO, USA

¹² Global Monitoring Division, NOAA Earth System Research Laboratory, Boulder, CO,

* Now at: Climate and Space Sciences and Engineering, University of Michigan, Ann Arbor, MI 48109, USA

25

Correspondence to: Yuanhong Zhao (yuanhong.zhao@lsce.ipsl.fr) and Bo Zheng (bo.zheng@lsce.ipsl.fr)

Abstract

30 Decadal trends and interannual variations in the hydroxyl radical (OH), while poorly constrained at present, are critical for understanding the observed evolution of atmospheric methane (CH₄). Through analyzing the OH fields simulated by the model ensemble of the Chemistry-Climate Model Initiative (CCMI), we find (1) the negative OH anomalies during the El Niño years mainly corresponding to the enhanced carbon monoxide (CO) emissions from biomass burning and (2) a positive OH trend during 35 1980-2010 dominated by the elevated primary production and the reduced loss of OH due to decreasing CO after 2000. Both two-box model inversions and variational 4D inversions suggest that ignoring the negative anomaly of OH during the El Niño years leads to a large overestimation of the increase in global CH₄ emissions by up to $10 \pm 3 \text{Tg yr}^{-1}$ to match the observed CH₄ increase over these years. Not accounting for the increasing OH trends given by the CCMI models leads to an underestimation of the CH₄ emission 40 increase by $23 \pm 9 \text{Tg yr}^{-1}$ from 1986 to 2010. The variational inversion estimated CH₄ emissions show that the tropical regions contribute most to the uncertainties related to OH. This study highlights the significant impact of climate and chemical feedbacks related to OH on the top-down estimates of the global CH₄ budget.

45 **1 Introduction**

Methane (CH₄) in the Earth's atmosphere is a major anthropogenic greenhouse gas that has resulted in a 0.62 W m⁻² additional radiative forcing from 1750 to 2011 (Etminan et al., 2016). The tropospheric CH₄ mixing ratio has more than doubled between pre-industrial and the present day, mainly attributed to increasing anthropogenic CH₄ emissions (Etheridge et al., 1998; Turner et al. 2019). Although the centennial and inter-decadal trends and the drivers of CH₄ growth are fairly clear, it is still challenging to understand the trends and the associated interannual variations on a time scale of 1-30 years. For example, the mysterious stagnation in CH₄ mixing ratios during 2000-2007 (Dlugokencky, NOAA/ESRL, 2020) is still under debate, highlighting the need for closing gaps in the global CH₄ budget on decadal time scales (e.g. Turner et al., 2019).

55 One of the barriers to understanding atmospheric CH₄ changes is the CH₄ sink, which is mainly the chemical reaction with the hydroxyl radical (OH) (Saunio et al., 2016; 2017; 2020; Zhao et al., 2020) that determines the tropospheric CH₄ lifetime. The burden of atmospheric OH is determined by complex and coupled atmospheric chemical cycles influenced by anthropogenic and natural emissions of multiple atmospheric reactive species, and also by climate change (Murray et al., 2013; Turner et al., 2018, Nicely et al., 2018), making it difficult to diagnose OH temporal changes from a single process. The OH source mainly include the primary production from the reaction of excited oxygen atoms (O(¹D)) with water vapor (H₂O) and the secondary production mainly from the reaction of nitrogen oxide (NO) or ozone (O₃) with hydroperoxyl radical (HO₂) or organic peroxy radicals (RO₂). The OH sinks mainly include the reaction of OH with carbon monoxide (CO), CH₄, or non-methane volatile organic compounds (NMVOCs).

65 Based on inversions of *1-1-1 trichloroethane* (methyl chloroform, MCF) atmospheric observations, some previous studies have attributed part of the observed CH₄ changes to the temporal variation in OH

70 concentrations ([OH]) but report large uncertainties in their estimates (McNorton et al 2016; Rigby et al. 2008, 2017; Turner et al., 2017). Such proxy approaches based on MCF inversions also have limitations in their accuracy, both due to uncertainties in MCF emissions before the 1990s, and the weakening of inter-hemispheric MCF gradients after the 1990s (Krol et al., 2003, Bousquet et al., 2005; Montzka et al., 2011; Prather and Holmes, 2017).

75

The OH variations have been explored with atmospheric chemistry models in terms of climate change (Nicely et al., 2018), anthropogenic emissions (Gaubert et al. 2017), and lightning NO_x emissions (Murray et al., 2013; Turner et al., 2018). The El Niño-Southern Oscillation (ENSO) has proven to influence [OH] by perturbing CO emissions from biomass burning (Rowlinson et al. 2019) and NO_x emissions from lightning (Turner et al., 2018), but the detailed mechanisms behind present OH variations and their impact on the CH₄ budget remain poorly understood. Nguyen et al. (2020) estimated the impact of the chemical feedback induced by CO and CH₄ changes on the top-down estimates of CH₄ emissions using a box model approach. However, they account neither for the heterogeneous distribution of atmospheric reactive species in space nor for the chemical feedback related to OH production processes that vary over time.

80

85 Understanding the influences of the chemical feedback related to OH on CH₄ emissions as estimated by atmospheric inversions is urgently needed and can benefit from better incorporating 3D simulations from atmospheric chemistry models.

Here we continue our former studies (Zhao et al., 2019; 2020), in which we have quantified the impact of OH on top-down estimates of CH₄ emissions during the 2000s. This work aims to better understand the production and loss processes of OH and quantitatively assess their influence on the temporal changes of CH₄ lifetime and the global CH₄ budget on decadal-scale since the 1980s. We first analyze the trends and year-to-year variations of nine independent OH fields covering the period of 1980-2010 simulated by the phase 1 of the International Global Atmospheric Chemistry (IGAC)/Stratosphere-troposphere Processes

95 and their Role in Climate (SPARC) Chemistry-Climate Model Initiative (CCMI) models (Hegglin and
Lamarque, 2015; Morgenstern et al., 2017) and then assess the contribution of different chemical
processes to the OH budget by estimating the main OH production and loss processes. We finally estimate
the impact of OH year-to-year variations and trends on the top-down estimation of global CH₄ emissions
between 1986 and 2010. Two-box model inversions and the variational 4D inversions are both used to
100 assess how the nonlinear chemical feedback related to OH influences our understanding of the trends and
drivers of the global CH₄ budget.

2 Method

2.1 CCMI OH fields

105 In this study, we analyze the OH fields simulated by five models (CESM1-CAM4Chem, CESM1-
WACCM, EMAC-L90MA, GEOSCCM, MRI-ESM1r1), which include detailed tropospheric ozone
chemistry and multiple primary VOC emissions. All five models conducted the REF-C1 experiments
(free-running simulations driven by state-of-the-art historical forcings including sea surface temperature
and sea ice concentrations) for 1960-2010, and four of them (excluding GEOSCCM) conducted the
110 REFC-1SD experiments (similar to REF-C1 but nudged to the reanalysis meteorology data) for 1980-
2010. Thus, we have nine OH fields generated by models with different chemistry, physics, and dynamics
covering the period 1980-2010. A detailed description of these CCMI models, experiments, and
characteristics of the OH fields can be found in Morgenstern et al. (2017) and Zhao et al. (2019).

115 To eliminate the influence of different magnitudes of global OH burden simulated by those models, we
scale all OH fields to the same CH₄ loss for the year 2000 based on the reaction with OH used in the
TransCom-CH₄ inter-comparison exercise (Patra et al., 2011). The inferred global mean scaling factors
are calculated for the year 2000 and each OH field and then applied to the whole period (1980-2010). The
production (O(¹D)+H₂O, NO+HO₂, O₃+HO₂) and loss processes (removal of OH by CO, CH₄,

120 formaldehyde (CH₂O), and isoprene) for each OH field are estimated using the CCMI database (Section S1). For each OH field, we separate trends and year-to-year variations of the global tropospheric mean CH₄ reaction weighted OH concentration ($[\text{OH}]_{\text{GM-CH}_4}$, weighting factor = reaction rate of OH with CH₄ × dry air mass, Lawrence et al., 2001) as well as of its production and loss rates.

125 **2.2 Atmospheric inversion systems**

To evaluate the influences of OH temporal variations on the top-down estimation of CH₄ emissions, we have conducted Bayesian atmospheric inversions using: 1) a two-box model similar to that described by Turner et al. (2017) and 2) a 4D variational inversion system based on the version LMDz5B of the LMDz atmospheric transport model under the PYVAR-SACS framework (Chevallier et al., 2007; Pison et al., 130 2009) as described by Locatelli et al. (2015) and Zhao et al. (2020). The two-box model inversions allow us to easily conduct multiple long-term global scale inversions (1984-2012) with each of the nine OH fields to estimate the global CH₄ emission variations caused by various OH fields. The 4D variational inversions allow us to better represent the atmospheric transport, account for the variation of meteorological conditions, and address regional CH₄ emission distributions. Thus, we have conducted 135 both, two-box model inversions with each of the nine OH fields, and variational inversions with the multi-model mean OH field (average of the nine OH fields).

Both the box model and the variational inversions optimize the CH₄ emissions and initial mixing ratios by assimilating the observation data from the Earth System Research Laboratory of the US National 140 Oceanic and Atmospheric Administration (Dlugokencky, NOAA/ESRL, 2020). The OH concentrations are prescribed and not optimized in both inversion systems. A detailed description of the two-box model, the LMDz atmospheric transport model, and the variational inversion method used here are provided in the supplementary material (Section S2).

145 **2.3 Ensemble of different inversions**

We have designed an ensemble of inversion experiments as listed in Table 1 using the two-box model with each OH field. Here, Inv_OH_std uses the aforementioned scaled OH fields; Inv_OH_cli uses a climatology of each OH field, which is constant over the years and correspond to an average over 1980-2010; Inv_OH_var stands for the inversion using the detrended OH (only keeping the year-to-year variations); Inv_OH_trend uses the OH without the year-to-year variability (retaining only the trend). By comparing Inv_OH_cli with Inv_OH_std, Inv_OH_var, and Inv_OH_trend, it is possible to assess the influence of total OH temporal changes, year-to-year variations, and OH trends on the overall CH₄ changes, respectively. The box model inversions are conducted from 1984 to 2012 (2010 OH fields are used for 2011 and 2012). The first and last two years are treated as spin-up and spin-down, and we only analyze the inversion results over 1986-2010.

We have conducted two 4D variational inversions, Inv_OH_std and Inv_OH_cli, using the multi-model mean OH field to test the influence of OH temporal variations on the top-down estimates of global to regional CH₄ emissions. The LMDz inversions are conducted for four time periods (1994-1997, 1996-1999, 2000-2004, and 2006-2010; Sect.3.4). We only spin-up/spin-down the 4D variational inversions for one year to save computing time. The four time periods are chosen to represent the transition from La Niña (1995-1996) to El Niño (1997-1998) years and the years of stagnated (2001-2003) and renewed growth (2007-2009) of observed CH₄.

165 **3 Results**

3.1 Decadal OH trends and year-to-year variability

All CCMI models simulate positive OH trends from 1980 to 2010 after removing the year-to-year variability (Fig.1, top panel), consistent with previous analyses of CCMI OH fields (Zhao et al., 2019; Nicely et al., 2020) and model results of the Aerosol and Chemistry Model Intercomparison Project

170 (Stevenson et al., 2020). The multi-model mean $[\text{OH}]_{\text{GM-CH}_4}$ increased by $0.7 \times 10^5 \text{ molec cm}^{-3}$ from 1980 to 2010. The growth rates in $[\text{OH}]_{\text{GM-CH}_4}$ are estimated as $\sim 0.03 \times 10^5 \text{ molec cm}^{-3} \text{ yr}^{-1}$ (0.3% yr^{-1}) during the early 1980s, $\sim 0.01 \times 10^5 \text{ molec cm}^{-3} \text{ yr}^{-1}$ (0.1% yr^{-1}) between the mid-1980s and the late-1990s, and $0.03\text{-}0.05 \times 10^5 \text{ molec cm}^{-3} \text{ yr}^{-1}$ (0.3%-0.5% yr^{-1}) since the 2000s. This continuous increases in $[\text{OH}]$ is different from the results based on the MCF inversions using the two-box model approach (Turner et al.,
175 2017; Rigby et al., 2017), which yield increases in $[\text{OH}]$ from the 1990s to the early 2000s and a decreases in OH afterward.

The ensemble of the anomaly of detrended $[\text{OH}]_{\text{GM-CH}_4}$ (middle panel of Fig.1) shows a strong anti-correlation ($r = -0.50$) with the bi-monthly Multivariate ENSO Index Version 2 (MEI, the bottom panel
180 of Fig.1 and Section S3) (Zhang et al., 2019), with higher $[\text{OH}]_{\text{GM-CH}_4}$ during La Niña and lower $[\text{OH}]_{\text{GM-CH}_4}$ during El Niño. From 1980 to 2010, the CCMi model simulations show several negative anomalies of $[\text{OH}]_{\text{GM-CH}_4}$, the three largest reaching as high as $-0.4 \pm 0.2 \times 10^5 \text{ molec cm}^{-3}$ ($-4 \pm 2\%$) during 1982-1983 and 1991-1992, and $-0.5 \pm 0.4 \times 10^5 \text{ molec cm}^{-3}$ ($-5 \pm 4\%$) during 1997-1998. The negative $[\text{OH}]_{\text{GM-CH}_4}$ anomalies during 1982-1983 and 1997-1998 correspond to the two strongest El Niño events ($\text{MEI} > 2.5$).
185 During 1991-1992, the negative $[\text{OH}]_{\text{GM-CH}_4}$ anomaly corresponds to both, the weaker El Niño event (MEI up to 2.0), and the eruption of Mount Pinatubo. During other weak El Niño events (1986-1987, 2002-2003, 2004-2005, and 2006-2007), the multi-model mean $[\text{OH}]_{\text{GM-CH}_4}$ shows smaller negative anomalies of 1-2%. Only the negative OH anomaly during 2006-2007 ($2 \pm 1\%$) is simulated by all models during the four weak El Niño events. The negative anomalies are consistent with an up to 9% reduction of $[\text{OH}]$
190 during 1997-1998 simulated by TOMCAT-GLOMAP as shown by Rowlinson et al. (2019), as well as a 5% reduction of $[\text{OH}]$ over tropical regions during 1991-1993 constrained by MCF observations (Bousquet et al, 2006). During La Niña events, the $[\text{OH}]_{\text{GM-CH}_4}$ shows $\sim 2\%$ positive anomalies, resulting in more than a 6% increase in OH (max – min) during 1983-1985, 1992-1994, and 1998-2000.

195 The negative $[\text{OH}]_{\text{GM-CH}_4}$ anomalies during strong El Niño events correspond to the highest growth rates of the CH_4 mixing ratio from the surface observations (Dlugokencky, NOAA/ESRL, 2020), which are $14 \pm 0.6 \text{ppbv yr}^{-1}$ in 1991, and $12 \pm 0.8 \text{ppbv yr}^{-1}$ in 1998 (Fig.S1). The positive anomalies of $[\text{OH}]_{\text{GM-CH}_4}$ during La Niña events correspond to a much smaller CH_4 growth (e.g. $4 \pm 0.6 \text{ppbv yr}^{-1}$ in 1993 and $2 \pm 0.8 \text{ppbv yr}^{-1}$ in 1999) compared with that during the adjacent El Niño years (Fig. S1).

200

3.2 Factors controlling OH trends and year-to-year variability

The changes in tropospheric $[\text{OH}]$ are due to changes in the balance of production and loss. Here we assess the drivers of OH year-to-year variations and trend by calculating the OH production and loss processes listed in Table 2 following Murray et al. (2013; 2014) and Lelieveld et al. (2016). The multi-
205 model calculated OH production/loss in the troposphere averaged over 1980-2010 is $209 \pm 12 \text{Tmol yr}^{-1}$, similar to that $\sim 200 \text{Tmol yr}^{-1}$ reported by Murray et al. (2014). Of the total OH production, 46% ($96 \pm 2 \text{Tmol yr}^{-1}$) are from primary production ($\text{O}(^1\text{D}) + \text{H}_2\text{O}$). Two main secondary productions, $\text{NO} + \text{HO}_2$, and $\text{O}_3 + \text{HO}_2$ account for 30% ($63 \pm 4 \text{Tmol yr}^{-1}$) and 13% ($26 \pm 2 \text{Tmol yr}^{-1}$), respectively. For the OH loss, reactions with CO and CH_4 account for 39% ($82 \pm 4 \text{Tmol yr}^{-1}$) and 15% ($32 \pm 1 \text{Tmol yr}^{-1}$), respectively. We
210 have also calculated the OH loss by reactions with isoprene (C_5H_8) and formaldehyde (CH_2O), which both remove 6% of OH, reflecting the influences of NMVOCs from natural and anthropogenic sources, respectively. Besides, there are 12% of OH production and 33% of OH loss not analyzed here due to lack of data in the CCMI model outputs (e.g. output of OH loss due to reaction with NMVOCs included in different models).

215

Fig.2 shows the changes in the trends of OH production and loss processes (year-to-year variations are removed) with respect to the year 1980. The OH primary production ($\text{O} (^1\text{D}) + \text{H}_2\text{O}$) shows a large increase of $10 \pm 1 \text{Tmol yr}^{-1}$ from 1980 to 2010, as the dominant driver of the positive OH trend. The increase in OH primary production is due to an increase in both tropospheric O_3 burden (producing $\text{O} (^1\text{D})$) and water

220 vapor (Dentener et al 2003; Zhao et al., 2019; Nicely et al., 2020). The OH loss from CO increased by $7 \pm 0.7 \text{ Tmol yr}^{-1}$ from 1980 to 2001 but then decreased by $4 \pm 2 \text{ Tmol yr}^{-1}$ from 2001 to 2010. The negative trend of CO simulated by CCMI models during 2000-2010 is consistent with MOPITT observations over most of the regions (Strode et al., 2016). We find that the decrease in OH loss by CO can explain the accelerated OH increase after 2000, despite a stagnated OH primary production and a slight decrease of the OH secondary production. The OH loss by CH_4 , which shows a continuous increase of $6 \pm 0.5 \text{ Tmol yr}^{-1}$ from 1980 to 2010, buffers the increase in OH production by NO ($5 \pm 1 \text{ Tmol yr}^{-1}$). The OH production by $\text{O}_3 + \text{HO}_2$, as well as OH loss by CH_2O and isoprene, show smaller changes of $2 \pm 1 \text{ Tmol yr}^{-1}$, $2 \pm 0.3 \text{ Tmol yr}^{-1}$, and $1 \pm 0.6 \text{ Tmol yr}^{-1}$, respectively, during 1980-2010. By comparing the magnitude of the production and loss processes, we conclude that an enhanced OH primary production and changes in OH loss by CO are the most important factors leading to the increased OH trend inferred by CCMI models from 1980 to 2010.

Fig.3 and Fig.S2 show the year-to-year variations of the global total OH production and loss due to several processes (calculated after trends have been removed). Year-to-year variations of global [OH] are mainly determined by the primary ($\text{O}(^1\text{D}) + \text{H}_2\text{O}$) and secondary production ($\text{NO} + \text{HO}_2$; $\text{O}_3 + \text{HO}_2$) and by OH loss due to CO (Fig.3). Other OH loss processes, including reactions with CH_4 , CH_2O , and isoprene, show much smaller year-to-year variations but larger uncertainties (Fig.S2), revealing a larger model spread for these processes.

240 As shown in Fig.3, negative anomalies of [OH] during El Niño events are dominated by increased OH loss through the reaction with CO in response to enhanced biomass burning (Fig.S3), similar to the conclusions of Rowlinson et al. (2019) and Nicely et al. (2020). During the strong El Niño events in 1982-1983, 1991-1992, and 1997-1998, the OH loss by CO increased by up to $3 \pm 0.4 \text{ Tmol yr}^{-1}$, $5 \pm 0.6 \text{ Tmol yr}^{-1}$, and $8 \pm 0.5 \text{ Tmol yr}^{-1}$, respectively, compared to the mean value of 1980-2010. The increase of OH loss

245 by CO can be partly offset by an increase in OH production. Indeed, in 1998, the OH primary production ($O(^1D)+H_2O$), OH produced by $NO+RO_2$, and O_3+RO_2 increased by $3\pm 0.7Tmol\ yr^{-1}$, $3\pm 0.5Tmol\ yr^{-1}$, and $2\pm 0.3Tmol\ yr^{-1}$, respectively, offsetting most of the OH loss increase. The increase in OH primary production is mainly due to an increase in tropospheric water vapor and O_3 burden during El Niño events (Fig.S3 and S12 in Nicely et al. (2020)), while the increase in OH secondary production is caused by enhanced NO_x emissions (Fig.S3) and O_3 formation (Nicely et al. (2020) related to biomass burning as well as more HO_2 formation by $CO+OH$. As a result, the OH year-to-year variations found here are much smaller than those estimated by Nguyen et al. (2020), who mainly considered the response of OH to enhanced CO emissions during the El Niño events. The positive anomaly in OH primary production ($0.2\pm 0.5Tmol\ yr^{-1}$) is not significant during the 1991-1992 El Niño event, maybe due to the absorption of ultraviolet (UV) by volcanic SO_2 and scattering of UV by sulfate aerosols as well as reduction of tropospheric water vapor after the eruption of Mount Pinatubo (Bândă et al., 2016; Soden et al., 2020). Thus, the negative [OH] anomaly during the weak El Niño event in 1991-1992 is potentially being enhanced by the eruption of Mount Pinatubo. Previous studies have shown that NO_x emissions from lightning can contribute to the OH interannual variability (Murray et al., 2013; Turner et al. 2018). In addition, soil NO_x emissions depend on temperature and soil humidity (Yienger and Levy, 1995), which vary during the El Niño events. The year-to-year variations of NO_x emissions from lightning show large differences among CCM models (Fig. S4), and only EMAC and GEOSCCM apply interactive soil NO_x emissions that vary with meteorology conditions (Morgenstern et al., 2017) based on Yienger and Levy (1995). Thus NO_x emissions from lightning and soil mainly contribute to inter-model differences instead of showing a consistent response to El Niño.

Using a machine learning method, Nicely et al. (2020) attributed the positive [OH] trend simulated by the CCM models mainly to the increase of tropospheric O_3 , $J(O^1D)$, NO_x , and H_2O , and attributed [OH] interannual variations to CO changes. Overall, the explanations of the drivers of OH year-to-year

270 variations and trends found in our process analysis are broadly consistent with those reported by Nicely et al. (2020), and we emphasize that the decrease of CO emission and concentrations after 2000 (Zheng et al., 2019) is important for determining the accelerated positive OH trend.

3.3 Impact of OH variation on the top-down estimation of CH₄ budget

275 Fig.4a shows the anomaly of global total CH₄ emission estimated by inv_OH_std (nine scaled OH fields; yellow line) and inv_OH_cli (nine climatological OH; blue line) using the two-box model during 1986-2010. With the climatological OH fields (blue line), the top-down estimated CH₄ emissions show no clear trend before 2005, with large positive anomalies during strong El Niño years. There are two peaks of positive CH₄ emission anomalies during this period, 10Tg yr⁻¹ in 1991, and 14Tg yr⁻¹ in 1998. From 2005 to 2008, the CH₄ emissions show a large increase of 26Tg yr⁻¹. The CH₄ emissions averaged over 2006-2010 is 20Tg yr⁻¹ higher than over 2000-2005, consistent with 17–22Tg yr⁻¹ estimated by an ensemble of inversions in Kirschke et al. (2013).

285 The OH temporal variations are found to largely influence the interannual changes of top-down estimated CH₄ emissions (yellow line of Fig. 4a), with differences between the two inversions reaching up to more than 15Tg yr⁻¹ (Fig.4b). The contribution from the OH year-to-year variations and trends are also shown in Fig.4. The negative anomalies of OH during El Niño years reduce the unusually high top-down estimated CH₄ emissions in 1991-1992 by 7 ± 3 Tg yr⁻¹, and in 1998 by 10 ± 3 Tg yr⁻¹ (Fig.4c). As a result, the high emission peaks to match the observed CH₄ mixing ratio growth in 1991 (14ppb yr⁻¹) and 1998 (12ppbv yr⁻¹), as estimated using the climatological OH are largely reduced.

290 The identified positive OH trend leads to an additional 23 ± 9 Tg yr⁻¹ increase in CH₄ emissions from 1986 to 2010 (Fig.4d). During 1986-2005, the mean CH₄ emissions, as estimated with the scaled OH, show a positive trend of 0.6 ± 0.4 Tg yr⁻² ($P < 0.05$). Increased CH₄ emissions offset the increase in the OH sink to

295 match the observations. From 2005 to 2008, in contrast to previous studies, which attribute the increased observed CH₄ mixing ratios to decreased OH based on MCF inversions (Turner et al., 2017, Rigby et al., 2017), the increasing OH trend simulated by CCM1 models results in an additional $5 \pm 2 \text{Tg yr}^{-1}$ CH₄ emission increase in the inversion to match the observations.

300 We compare the inversion using the two-box model (“**x**” in Fig.5) with the results from the variational approach (bars in Fig.5), using the multi-model mean OH field, to evaluate the performance of the simplified two-box model inversions. Despite the limitations inherent to two-box model inversions, such as treatment of inter-hemispheric transport, stratospheric loss, and the impact of spatial variability (Naus et al., 2019), the two-box model inversion estimates similar temporal changes of CH₄ emissions and losses
305 compare to the variational approach for the four periods, as well as their response to OH changes (Fig.5), on a global scale. Such comparisons reinforce the reliability of the conclusions made from the two-box model inversions regarding changes in the global total CH₄ budget.

The variational inversions allow us to assess the regional contribution of the drivers to observed
310 atmospheric CH₄ mixing ratio changes. Here, as a synthesis, we focus on four latitude bands (Fig.5 and Table S2), including the southern extra-tropical regions (90 °-30 °S), the tropical regions (30 °S-30 °N), and the northern temperate (30 °-60 °N) and boreal (60 °-90 °N) regions. On average, OH over the tropical and northern temperate regions removes 74% and 14% of global total atmospheric CH₄, respectively.

315 Between the periods 1995-1996 and 1997-1998, if one does not consider the OH temporal variations (Inv_OH_cli), the CH₄ loss by OH shows a slight increase of 2Tg yr^{-1} due to an increase of atmospheric CH₄ mixing ratios. The main driver of observed atmospheric CH₄ mixing ratio changes is the 10Tg yr^{-1} increase of CH₄ emission over the Tropics and the 7Tg yr^{-1} increase over the northern temperate regions (right panel of Fig.5 and Table S2). When the multi-model mean OH temporal variations are included

320 (Inv_OH_std), the negative anomaly of OH in 1997-1998 led to a 9Tg yr^{-1} decrease in CH_4 loss in 1997-1998 compared to 1995-1996, of which 7Tg yr^{-1} (78%) are contributed by the tropical regions (left panel of Fig.5). As a result, the decrease of CH_4 loss by OH contributes a bit more to match the observed CH_4 mixing ratios increase during the El Niño periods than the changes in CH_4 emissions (a global increase of 8Tg yr^{-1}). The emission increases from 1995-1996 to 1997-1998 over the Tropics and the northern temperate regions are reduced to 3Tg yr^{-1} and 5Tg yr^{-1} (left panel of Fig.5, Inv_OH_std), respectively, similar to the inversion results given by Bousquet et al. (2006).

From the period 2001-2003 to 2007-2009, positive OH trends lead to a 13Tg yr^{-1} increase of the CH_4 loss, of which 10Tg yr^{-1} (76%) originates from the Tropics (Inv_OH_std, left panel of Fig.5). In response to increased CH_4 losses, the increase of optimized emissions over tropical regions (16Tg yr^{-1} , Inv_OH_std) is more than twice that of the inversion using climatological OH (7Tg yr^{-1} , Inv_OH_cli). The emission increases during the two periods over the northern region show a smaller change of 2Tg yr^{-1} (12Tg yr^{-1} estimated by Inv_OH_std versus 10Tg yr^{-1} by Inv_OH_cli, Fig. 5). The variational inversions show that the OH temporal variations are most critical for top-down estimates of CH_4 budgets over the tropical regions since OH over tropical regions shows larger interannual variations and trend than mid to high latitude regions (Fig.S5) and most of the CH_4 (74%) is removed from the atmosphere by OH over the tropical regions.

4 Conclusion and discussion

340 Based on the simulations from the CCMI, we explore the response of OH fields to changes in climate, anthropogenic and natural emissions and their impact on the top-down estimates of CH_4 emissions during 1980-2010 based on a model perspective. We find that although CCMI models simulated rather different global total burdens of OH (Zhao et al., 2019), they show very similar patterns in temporal variations, including (1) negative anomalies during El Niño years, which are mainly driven by an elevated OH loss

345 by reaction with CO from enhanced biomass burning, despite a partial buffering through enhanced OH production, and (2) a continuous increasing in OH from 1980, which is mostly contributed by OH primary production, and accelerating after 2000 due to reduced CO emissions. By conducting inversions using a two-box model and a variational approach together with the ensemble of CCMI OH fields, we find that (1) the OH year-to-year variations can largely reduce the CH₄ emission increase (by up to 10Tg yr⁻¹)
350 needed to match the observed CH₄ increase during El Niño years, and (2) the positive OH trend results in 23±9Tg yr⁻¹ additional increase in optimized emissions from 1986 to 2010 compared to the inversions using constant OH. The variational inversions also show that OH temporal variations mainly influence top-down estimates of CH₄ emissions over tropical regions.

355 The responses of OH to changes in biomass burning, ozone, water vapor, and lightning NO_x emissions during El Niño years have been recognized by previous studies (Holmes et al., 2013; Murray et al., 2014; Turner et al., 2018; Rowlinson et al., 2019; Nguyen et al., 2020). Here, the consistent temporal variations of CCMI OH fields increase our confidence in the model simulated response of OH to ENSO as a result of several nonlinear chemical processes. We estimated that the negative OH anomaly in 1998 reduces the
360 high top-down estimated CH₄ emissions by 10±3Tg yr⁻¹, ~40% smaller than the reduction estimated by Butler et al. (2005) (16Tg yr⁻¹), which only include the OH reduction response to enhanced biomass burning CO emissions. The smaller CH₄ emission reduction (OH anomaly) estimated with CCMI OH fields may reflect the significance of considering multiple chemical processes as included in the 3D atmospheric chemistry model in capturing OH variations and inverting for CH₄ emissions. One of the
365 largest uncertainties is NO_x emissions from lightning, which have been proven to contribute to year-to-year variations in OH (Murray et al., 2013; Turner et al., 2018), but here show a large spread among CCMI models. In addition, NO_x emissions from soil may also change during El Niño years. Improving estimates of NO_x emissions from lightning based on satellite observations (Murray et al., 2013) and a better representation of the interactive NO_x emissions from the soil are critical for improving the model

370 simulation of OH temporal variability and for top-down estimates of year-to-year variations of CH₄ emissions.

The positive trend of OH after the mid-2000s, which results in enhanced top-down estimated CH₄ emissions over the Tropics, is opposite to those constrained by MCF inversions (Turner et al., 2017; Rigby et al., 2017). The processes that control the model simulated positive OH trend discussed in this study are supported by current studies based on observations, including decreased CO emissions (Zheng et al., 2019), small variations of global NO_x emissions (Miyazaki et al., 2017), and an increase in tropospheric ozone (Ziemke et al., 2019) and water vapor (Chung et al., 2014). However, the CCMII models still show biases that are related to OH production and loss. For example, these include an underestimation of CO especially over the northern hemisphere compared with the surface and satellite observations (Naik et al., 2013; Strode et al., 2016) and bias in atmospheric total O₃ column (Zhao et al. 2019). In addition, changes in aerosols (Tang et al., 2003) and atmospheric circulation such as the Hadley cell expansion (Nicely et al., 2018) are not discussed in this study. Given the uncertainties in both the atmospheric chemistry model simulated (Naik et al., 2013; Zhao et al., 2019) and MCF-constrained OH (Bousquet et al., 2005; Prather and Holmes, 2017; Naus et al. et al., 2019), and the large discrepancy between the two methods, the OH trend after the mid-2000s remains an open problem and more effort is required in both methods to close the gap.

The temporal variations of OH, which are generally not well constrained in current top-down estimates of CH₄ emissions, imply potential additional uncertainties in the global CH₄ budget (Saunois et al., 2017; Zhao et al., 2020). The tropical regions, where top-down estimated CH₄ emissions show the largest sensitivity to OH changes, represent more than 60% of CH₄ emissions worldwide (Saunois et al., 2016). The tropical CH₄ emissions are dominated by wetland emissions, of which large uncertainties exist in both bottom-up and top-down studies (Saunois et al., 2016; 2017). The variational inversions using OH

395 with temporal variations attribute the observed rising CH₄ growth during El Niño to the reduction of CH₄
loss instead of enhanced emissions over the Tropics, which are consistent with process-based wetland
models that estimated wetland CH₄ emission reductions at beginning of the El Niño event (Hodson et al.,
2011; Zhang et al., 2018). Also, the negative OH anomaly can reduce the top-down estimated biomass
burning CH₄ emission spikes during El Niño events, consistent with that given by Bousquet et al. (2006).
400 Future climate projections show that the extreme El Niño events will be more frequent under a warmer
climate (Berner et al., 2020), which may enhance the fluctuations in [OH]. Furthermore, the changes in
anthropogenic emissions, e.g. such as expected decreases in NO_x emissions (Lamarque et al., 2013), can
also affect the OH trends. Our research emphasizes the importance of considering climate changes and
chemical feedbacks related to OH in future CH₄ budget research.

405

Data availability

The CCMI OH fields are available at the Centre for Environmental Data Analysis
(CEDA; <http://data.ceda.ac.uk/badc/wcrp-ccmi/data/CCMI-1/output>; last access: December 2019,
Hegglin and Lamarque, 2015), the Natural Environment Research Council's Data Repository for
410 Atmospheric Science and Earth Observation. The CESM1-WACCM outputs for CCMI are available
at <http://www.earthsystemgrid.org> (Climate Data Gateway at NCAR, last access: December 2019). The
surface observations for CH₄ inversions are available at the World Data Centre for Greenhouse Gases
(WDCGG, <https://gaw.kishou.go.jp/>, last access: December 2019). Other datasets can be accessed by
contacting the corresponding author.

415

Author contributions

YZ, BZ, MS, and PB designed the study, analyzed data, and wrote the manuscript. AB developed the
LMDz code for variational CH₄ inversions. XL helped with data preparation. JC and RJ provided input
420 into the study design and discussed the results. ED provided the atmospheric in situ data. MH, MD, PJ,
DK, OK, SS, and ST provided CCMI model outputs. All co-authors commented on the manuscript.

Acknowledgements

This work benefited from the expertise of the Global Carbon Project methane initiative.

425 We acknowledge the modeling groups for making their simulations available for this analysis, the joint WCRP SPARC/IGAC Chemistry–Climate Model Initiative (CCMI) for organizing and coordinating the model simulations and data analysis activity, and the British Atmospheric Data Centre (BADC) for collecting and archiving the CCMI model output.

The EMAC model simulations have been performed at the German Climate Computing Centre (DKRZ) through support from the Bundesministerium für Bildung und Forschung (BMBF). DKRZ and its scientific steering committee are gratefully acknowledged for providing the HPC and data archiving resources for the consortial project ESCiMo (Earth System Chemistry integrated Modelling).

Makoto Deushi was partly supported by JSPS KAKENHI grant no. JP19K12312.

Yuanhong Zhao acknowledges helpful discussions with Zhen Zhang, Yilong Wang, and Lin Zhang.

435 **Competing interests**

The authors declare that they have no conflicts of interest.

Financial support

This research has been supported by the Gordon and Betty Moore Foundation (grant no. GBMF5439), “Advancing Understanding of the Global Methane Cycle”.

Reference

- Bândă, N., Krol, M., van Weele, M., van Noije, T., Le Sager, P., and Röckmann, T.: Can we explain the observed methane variability after the Mount Pinatubo eruption?, *Atmos. Chem. Phys.*, 16, 195-214, 10.5194/acp-16-195-2016, 2016.
- 445 Berner, J., Christensen, H. M., and Sardeshmukh, P. D.: Does ENSO Regularity Increase in a Warming Climate?, *Journal of Climate*, 33, 1247-1259, 10.1175/jcli-d-19-0545.1, 2020.
- Bousquet, P., Hauglustaine, D. A., Peylin, P., Carouge, C., and Ciais, P.: Two decades of OH variability as inferred by an inversion of atmospheric transport and chemistry of methyl chloroform, *Atmos. Chem. Phys.*, 5, 2635-2656, 10.5194/acp-5-2635-2005, 2005.
- 450 Bousquet, P., Ciais, P., Miller, J. B., Dlugokencky, E. J., Hauglustaine, D. A., Prigent, C., Van der Werf, G. R., Peylin, P., Brunke, E. G., Carouge, C., Langenfelds, R. L., Lathiere, J., Papa, F., Ramonet, M., Schmidt, M., Steele, L. P., Tyler, S. C., and White, J.: Contribution of anthropogenic and natural sources to atmospheric methane variability, *Nature*, 443, 439-443, 10.1038/nature05132, 2006.

- 455 Butler, T. M., Rayner, P. J., Simmonds, I., and Lawrence, M. G.: Simultaneous mass balance inverse modeling of methane and carbon monoxide, *Journal of Geophysical Research: Atmospheres*, 110, 10.1029/2005jd006071, 2005.
- Chevallier, F., Brón, F.-M., and Rayner, P. J.: Contribution of the Orbiting Carbon Observatory to the estimation of CO₂ sources and sinks: Theoretical study in a variational data assimilation framework, *Journal of Geophysical Research: Atmospheres*, 112, 10.1029/2006jd007375, 2007.
- 460 Chung, E.-S., Soden, B., Sohn, B. J., and Shi, L.: Upper-tropospheric moistening in response to anthropogenic warming, *Proceedings of the National Academy of Sciences*, 111, 11636-11641, 10.1073/pnas.1409659111, 2014.
- Dentener, F., Peters, W., Krol, M., van Weele, M., Bergamaschi, P., and Lelieveld, J.: Interannual variability and trend of CH₄ lifetime as a measure for OH changes in the 1979–1993 time period, *Journal of Geophysical Research: Atmospheres*, 108, 4442, 10.1029/2002jd002916, 2003.
- 465 Dlugokencky, NOAA/ESRL, www.esrl.noaa.gov/gmd/ccgg/trends_ch4/ (last access: January 2020).
- Etheridge, D. M., Steele, L. P., Francey, R. J., and Langenfelds, R. L.: Atmospheric methane between 1000 A.D. and present: Evidence of anthropogenic emissions and climatic variability, *Journal of Geophysical Research: Atmospheres*, 103, 15979-15993, 10.1029/98jd00923, 1998.
- 470 Etminan, M., Myhre, G., Highwood, E. J., and Shine, K. P.: Radiative forcing of carbon dioxide, methane, and nitrous oxide: A significant revision of the methane radiative forcing, *Geophysical Research Letters*, 43, 614-612, 623, doi:10.1002/2016GL071930, 2016.
- Gaubert, B., Worden, H. M., Arellano, A. F. J., Emmons, L. K., Tilmes, S., Barré J., Martinez Alonso, S., Vitt, F., Anderson, J. L., Alkemade, F., Houweling, S., and Edwards, D. P.: Chemical Feedback From Decreasing Carbon Monoxide Emissions, *Geophysical Research Letters*, 44, 9985-9995, 10.1002/2017gl074987, 2017.
- 475 Hegglin, M. I. and Lamarque, J.-F.: The IGAC/SPARC Chemistry-Climate Model Initiative Phase-1 (CCMI-1) model data output, NCAS British Atmospheric Data Centre, [ADD ACCESS DATE], available at: <http://catalogue.ceda.ac.uk/uuid/9cc6b94df0f4469d8066d69b5df879d5> (last access: December 2019),
- 480 2015.
- Hodson, E. L., Poulter, B., Zimmermann, N. E., Prigent, C., and Kaplan, J. O.: The El Niño–Southern Oscillation and wetland methane interannual variability, *Geophysical Research Letters*, 38, 10.1029/2011gl046861, 2011.
- Holmes, C. D., Prather, M. J., Søvde, O. A., and Myhre, G.: Future methane, hydroxyl, and their uncertainties: key climate and emission parameters for future predictions, *Atmospheric Chemistry and Physics*, 13, 285-302, 10.5194/acp-13-285-2013, 2013.
- 485 Kirschke, S., Bousquet, P., Ciais, P., Saunois, M., Canadell, J. G., Dlugokencky, E. J., Bergamaschi, P., Bergmann, D., Blake, D. R., Bruhwiler, L., Cameron-Smith, P., Castaldi, S., Chevallier, F., Feng, L., Fraser, A., Heimann, M., Hodson, E. L., Houweling, S., Josse, B., Fraser, P. J., Krummel, P. B., Lamarque, J.-F., Langenfelds, R. L., Le Quééré C., Naik, V., O'Doherty, S., Palmer, P. I., Pison, I., Plummer, D.,
- 490

- Poulter, B., Prinn, R. G., Rigby, M., Ringeval, B., Santini, M., Schmidt, M., Shindell, D. T., Simpson, I. J., Spahni, R., Steele, L. P., Strode, S. A., Sudo, K., Szopa, S., van der Werf, G. R., Voulgarakis, A., van Weele, M., Weiss, R. F., Williams, J. E., and Zeng, G.: Three decades of global methane sources and sinks, *Nature Geoscience*, 6, 813-823, <https://doi.org/10.1038/ngeo1955>, 2013.
- 495 Krol, M. C., Lelieveld, J., Oram, D. E., Sturrock, G. A., Penkett, S. A., Brenninkmeijer, C. A. M., Gros, V., Williams, J., and Scheeren, H. A.: Continuing emissions of methyl chloroform from Europe, *Nature*, 421, 131-135, 10.1038/nature01311, 2003.
- Lamarque, J. F., Shindell, D. T., Josse, B., Young, P. J., Cionni, I., Eyring, V., Bergmann, D., Cameron-Smith, P., Collins, W. J., Doherty, R., Dalsoren, S., Faluvegi, G., Folberth, G., Ghan, S. J., Horowitz, L. W., Lee, Y. H., MacKenzie, I. A., Nagashima, T., Naik, V., Plummer, D., Righi, M., Rumbold, S. T., 500 Schulz, M., Skeie, R. B., Stevenson, D. S., Strode, S., Sudo, K., Szopa, S., Voulgarakis, A., and Zeng, G.: The Atmospheric Chemistry and Climate Model Intercomparison Project (ACCMIP): overview and description of models, simulations and climate diagnostics, *Geoscientific Model Development*, 6, 179-206, 10.5194/gmd-6-179-2013, 2013.
- 505 Lawrence, M. G., Jöckel, P., and von Kuhlmann, R.: What does the global mean OH concentration tell us?, *Atmos. Chem. Phys.*, 1, 37-49, 10.5194/acp-1-37-2001, 2001.
- Lelieveld, J., Gromov, S., Pozzer, A., and Taraborrelli, D.: Global tropospheric hydroxyl distribution, budget and reactivity, *Atmos. Chem. Phys.*, 16, 12477-12493, 10.5194/acp-16-12477-2016, 2016.
- Locatelli, R., Bousquet, P., Hourdin, F., Saunio, M., Cozic, A., Couvreux, F., Grandpeix, J. Y., Lefebvre, 510 M. P., Rio, C., Bergamaschi, P., Chambers, S. D., Karstens, U., Kazan, V., van der Laan, S., Meijer, H. A. J., Moncrieff, J., Ramonet, M., Scheeren, H. A., Schlosser, C., Schmidt, M., Vermeulen, A., and Williams, A. G.: Atmospheric transport and chemistry of trace gases in LMDz5B: evaluation and implications for inverse modelling, *Geosci. Model Dev.*, 8, 129-150, 10.5194/gmd-8-129-2015, 2015.
- McNorton, J., Chipperfield, M. P., Gloor, M., Wilson, C., Feng, W., Hayman, G. D., Rigby, M., Krummel, 515 P. B., amp, apos, Doherty, S., Prinn, R. G., Weiss, R. F., Young, D., Dlugokencky, E., and Montzka, S. A.: Role of OH variability in the stalling of the global atmospheric CH₄ growth rate from 1999 to 2006, *Atmospheric Chemistry and Physics*, 16, 7943-7956, 10.5194/acp-16-7943-2016, 2016.
- Miyazaki, K., Eskes, H., Sudo, K., Boersma, K. F., Bowman, K., and Kanaya, Y.: Decadal changes in 520 global surface NO_x emissions from multi-constituent satellite data assimilation, *Atmos. Chem. Phys.*, 17, 807-837, 10.5194/acp-17-807-2017, 2017.
- Montzka, S. A., Krol, M., Dlugokencky, E., Hall, B., Jöckel, P., and Lelieveld, J.: Small Interannual Variability of Global Atmospheric Hydroxyl, *Science*, 331, 67-69, 10.1126/science.1197640, 2011.
- Morgenstern, O., Hegglin, M. I., Rozanov, E., amp, apos, Connor, F. M., Abraham, N. L., Akiyoshi, H., 525 Archibald, A. T., Bekki, S., Butchart, N., Chipperfield, M. P., Deushi, M., Dhomse, S. S., Garcia, R. R., Hardiman, S. C., Horowitz, L. W., Jöckel, P., Josse, B., Kinnison, D., Lin, M., Mancini, E., Manyin, M. E., Marchand, M., Mar écal, V., Michou, M., Oman, L. D., Pitari, G., Plummer, D. A., Revell, L. E., Saint-

- 530 Martin, D., Schofield, R., Stenke, A., Stone, K., Sudo, K., Tanaka, T. Y., Tilmes, S., Yamashita, Y.,
Yoshida, K., and Zeng, G.: Review of the global models used within phase 1 of the Chemistry–Climate
Model Initiative (CCMI), *Geoscientific Model Development*, 10, 639-671, 10.5194/gmd-10-639-2017,
2017.
- Multivariate ENSO Index Version 2, available at <https://www.esrl.noaa.gov/psd/enso/mei/>, 2020
- 535 Murray, L. T., Logan, J. A., and Jacob, D. J.: Interannual variability in tropical tropospheric ozone and
OH: The role of lightning, *Journal of Geophysical Research: Atmospheres*, 118, 4114-4148,
10.1002/jgrd.50857, 2013.
- Murray, L. T., Mickley, L. J., Kaplan, J. O., Sofen, E. D., Pfeiffer, M., and Alexander, B.: Factors
controlling variability in the oxidative capacity of the troposphere since the Last Glacial Maximum,
Atmospheric Chemistry and Physics, 14, 3589-3622, 10.5194/acp-14-3589-2014, 2014.
- 540 Naus, S., Montzka, S. A., Pandey, S., Basu, S., Dlugokencky, E. J., and Krol, M.: Constraints and biases
in a tropospheric two-box model of OH, *Atmos. Chem. Phys.*, 19, 407-424, 10.5194/acp-19-407-2019,
2019.
- Nguyen, N. H., Turner, A. J., Yin, Y., Prather, M. J., and Frankenberg, C.: Effects of Chemical Feedbacks
on Decadal Methane Emissions Estimates, *Geophysical Research Letters*, 47, e2019GL085706,
10.1029/2019gl085706, 2020.
- 545 Nicely, J. M., Canty, T. P., Manyin, M., Oman, L. D., Salawitch, R. J., Steenrod, S. D., Strahan, S. E., and
Strode, S. A.: Changes in Global Tropospheric OH Expected as a Result of Climate Change Over the Last
Several Decades, *Journal of Geophysical Research: Atmospheres*, 123, 774-795,
doi:10.1029/2018JD028388, 2018.
- 550 Nicely, J. M., Duncan, B. N., Hanisco, T. F., Wolfe, G. M., Salawitch, R. J., Deushi, M., Haslerud, A. S.,
Jöckel, P., Josse, B., Kinnison, D. E., Klekociuk, A., Manyin, M. E., Maréchal, V., Morgenstern, O., Murray,
L. T., Myhre, G., Oman, L. D., Pitari, G., Pozzer, A., Quaglia, I., Revell, L. E., Rozanov, E., Stenke, A.,
Stone, K., Strahan, S., Tilmes, S., Tost, H., Westervelt, D. M., and Zeng, G.: A machine learning
examination of hydroxyl radical differences among model simulations for CCMI-1, *Atmos. Chem. Phys.*,
20, 1341-1361, 10.5194/acp-20-1341-2020, 2020.
- 555 Soden, B. J., Wetherald, R. T., Stenchikov, G. L., and Robock, A.: Global Cooling After the Eruption of
Mount Pinatubo: A Test of Climate Feedback by Water Vapor, *Science*, 296, 727-730,
10.1126/science.296.5568.727, 2002.
- 560 Stevenson, D. S., Zhao, A., Naik, V., O'Connor, F. M., Tilmes, S., Zeng, G., Murray, L. T., Collins, W. J.,
Griffiths, P., Shim, S., Horowitz, L. W., Sentman, L., and Emmons, L.: Trends in global tropospheric
hydroxyl radical and methane lifetime since 1850 from AerChemMIP, *Atmos. Chem. Phys. Discuss.*,
2020, 1-25, 10.5194/acp-2019-1219, 2020.
- Patra, P. K., Houweling, S., Krol, M., Bousquet, P., Belikov, D., Bergmann, D., Bian, H., Cameron-Smith,
P., Chipperfield, M. P., Corbin, K., Fortems-Cheiney, A., Fraser, A., Gloor, E., Hess, P., Ito, A., Kawa, S.
R., Law, R. M., Loh, Z., Maksyutov, S., Meng, L., Palmer, P. I., Prinn, R. G., Rigby, M., Saito, R., and

- 565 Wilson, C.: TransCom model simulations of CH₄ and related species: linking transport, surface flux and chemical loss with CH₄ variability in the troposphere and lower stratosphere, *Atmospheric Chemistry and Physics*, 11, 12813-12837, 10.5194/acp-11-12813-2011, 2011.
- Pison, I., Bousquet, P., Chevallier, F., Szopa, S., and Hauglustaine, D.: Multi-species inversion of CH₄, CO and H₂ emissions from surface measurements, *Atmos. Chem. Phys.*, 9, 5281-5297, 10.5194/acp-9-5281-2009, 2009.
- 570 Prather, M. J., and Holmes, C. D.: Overexplaining or underexplaining methane's role in climate change, *Proceedings of the National Academy of Sciences*, 114, 5324-5326, 10.1073/pnas.1704884114, 2017.
- Rigby, M., Prinn, R. G., Fraser, P. J., Simmonds, P. G., Langenfelds, R. L., Huang, J., Cunnold, D. M., Steele, L. P., Krummel, P. B., Weiss, R. F., O'Doherty, S., Salameh, P. K., Wang, H. J., Harth, C. M.,
- 575 Mühle, J., and Porter, L. W.: Renewed growth of atmospheric methane, *Geophysical Research Letters*, 35, L22805, 10.1029/2008gl036037, 2008.
- Rigby, M., Montzka, S. A., Prinn, R. G., White, J. W. C., Young, D., O'Doherty, S., Lunt, M. F., Ganesan, A. L., Manning, A. J., Simmonds, P. G., Salameh, P. K., Harth, C. M., Muhle, J., Weiss, R. F., Fraser, P. J., Steele, L. P., Krummel, P. B., McCulloch, A., and Park, S.: Role of atmospheric oxidation in recent
- 580 methane growth, *Proc Natl Acad Sci U S A*, 114, 5373-5377, 10.1073/pnas.1616426114, 2017.
- Rowlinson, M. J., Rap, A., Arnold, S. R., Pope, R. J., Chipperfield, M. P., McNorton, J., Forster, P., Gordon, H., Pringle, K. J., Feng, W., Kerridge, B. J., Latter, B. L., and Siddans, R.: Impact of El Niño–Southern Oscillation on the interannual variability of methane and tropospheric ozone, *Atmos. Chem. Phys.*, 19, 8669-8686, 10.5194/acp-19-8669-2019, 2019.
- 585 Saunio, M., Bousquet, P., Poulter, B., Peregón, A., Ciais, P., Canadell, J. G., Dlugokencky, E. J., Etiope, G., Bastviken, D., Houweling, S., Janssens-Maenhout, G., Tubiello, F. N., Castaldi, S., Jackson, R. B., Alexe, M., Arora, V. K., Beerling, D. J., Bergamaschi, P., Blake, D. R., Brailsford, G., Brovkin, V., Bruhwiler, L., Crevoisier, C., Crill, P., Covey, K., Curry, C., Frankenberg, C., Gedney, N., Höglund-Isaksson, L., Ishizawa, M., Ito, A., Joos, F., Kim, H. S., Kleinen, T., Krummel, P., Lamarque, J. F.,
- 590 Langenfelds, R., Locatelli, R., Machida, T., Maksyutov, S., McDonald, K. C., Marshall, J., Melton, J. R., Morino, I., Naik, V., O'Doherty, S., Parmentier, F. J. W., Patra, P. K., Peng, C., Peng, S., Peters, G. P., Pison, I., Prigent, C., Prinn, R., Ramonet, M., Riley, W. J., Saito, M., Santini, M., Schroeder, R., Simpson, I. J., Spahni, R., Steele, P., Takizawa, A., Thornton, B. F., Tian, H., Tohjima, Y., Viovy, N., Voulgarakis, A., van Weele, M., van der Werf, G. R., Weiss, R., Wiedinmyer, C., Wilton, D. J., Wiltshire, A., Worthy, D., Wunch, D., Xu, X., Yoshida, Y., Zhang, B., Zhang, Z., and Zhu, Q.: The global methane budget 2000–2012, *Earth Syst. Sci. Data*, 8, 697-751, 10.5194/essd-8-697-2016, 2016.
- Saunio, M., Bousquet, P., Poulter, B., Peregón, A., Ciais, P., Canadell, J. G., Dlugokencky, E. J., Etiope, G., Bastviken, D., Houweling, S., Janssens-Maenhout, G., Tubiello, F. N., Castaldi, S., Jackson, R. B., Alexe, M., Arora, V. K., Beerling, D. J., Bergamaschi, P., Blake, D. R., Brailsford, G., Bruhwiler, L.,
- 600 Crevoisier, C., Crill, P., Covey, K., Frankenberg, C., Gedney, N., Höglund-Isaksson, L., Ishizawa, M., Ito, A., Joos, F., Kim, H. S., Kleinen, T., Krummel, P., Lamarque, J. F., Langenfelds, R., Locatelli, R., Machida,

- T., Maksyutov, S., Melton, J. R., Morino, I., Naik, V., O'Doherty, S., Parmentier, F. J. W., Patra, P. K., Peng, C., Peng, S., Peters, G. P., Pison, I., Prinn, R., Ramonet, M., Riley, W. J., Saito, M., Santini, M., Schroeder, R., Simpson, I. J., Spahni, R., Takizawa, A., Thornton, B. F., Tian, H., Tohjima, Y., Viovy, N., Voulgarakis, A., Weiss, R., Wilton, D. J., Wiltshire, A., Worthy, D., Wunch, D., Xu, X., Yoshida, Y., Zhang, B., Zhang, Z., and Zhu, Q.: Variability and quasi-decadal changes in the methane budget over the period 2000–2012, *Atmos. Chem. Phys.*, 17, 11135-11161, 10.5194/acp-17-11135-2017, 2017.
- Saunois, M., Stavert, A. R., Poulter, B., Bousquet, P., Canadell, J. G., Jackson, R. B., Raymond, P. A., Dlugokencky, E. J., Houweling, S., Patra, P. K., Ciais, P., Arora, V. K., Bastviken, D., Bergamaschi, P., Blake, D. R., Brailsford, G., Bruhwiler, L., Carlson, K. M., Carrol, M., Castaldi, S., Chandra, N., Crevoisier, C., Crill, P. M., Covey, K., Curry, C. L., Etiope, G., Frankenberg, C., Gedney, N., Hegglin, M. I., Höglund-Isaksson, L., Hugelius, G., Ishizawa, M., Ito, A., Janssens-Maenhout, G., Jensen, K. M., Joos, F., Kleinen, T., Krummel, P. B., Langenfelds, R. L., Laruelle, G. G., Liu, L., Machida, T., Maksyutov, S., McDonald, K. C., McNorton, J., Miller, P. A., Melton, J. R., Morino, I., Müller, J., Murguia-Flores, F., Naik, V., Niwa, Y., Noce, S., O'Doherty, S., Parker, R. J., Peng, C., Peng, S., Peters, G. P., Prigent, C., Prinn, R., Ramonet, M., Regnier, P., Riley, W. J., Rosentretter, J. A., Segers, A., Simpson, I. J., Shi, H., Smith, S. J., Steele, L. P., Thornton, B. F., Tian, H., Tohjima, Y., Tubiello, F. N., Tsuruta, A., Viovy, N., Voulgarakis, A., Weber, T. S., van Weele, M., van der Werf, G. R., Weiss, R. F., Worthy, D., Wunch, D., Yin, Y., Yoshida, Y., Zhang, W., Zhang, Z., Zhao, Y., Zheng, B., Zhu, Q., Zhu, Q., and Zhuang, Q.: The Global Methane Budget 2000–2017, *Earth Syst. Sci. Data*, 12, 1561-1623, 10.5194/essd-12-1561-2020, 2020.
- Strode, S. A., Worden, H. M., Damon, M., Douglass, A. R., Duncan, B. N., Emmons, L. K., Lamarque, J. F., Manyin, M., Oman, L. D., Rodriguez, J. M., Strahan, S. E., and Tilmes, S.: Interpreting space-based trends in carbon monoxide with multiple models, *Atmos. Chem. Phys.*, 16, 7285-7294, 10.5194/acp-16-7285-2016, 2016.
- Tang, Y., Carmichael, G. R., Uno, I., Woo, J.-H., Kurata, G., Lefer, B., Shetter, R. E., Huang, H., Anderson, B. E., Avery, M. A., Clarke, A. D., and Blake, D. R.: Impacts of aerosols and clouds on photolysis frequencies and photochemistry during TRACE-P: 2. Three-dimensional study using a regional chemical transport model, *Journal of Geophysical Research: Atmospheres*, 108, 8822, 10.1029/2002jd003100, 2003.
- Turner, A. J., Frankenberg, C., Wennberg, P. O., and Jacob, D. J.: Ambiguity in the causes for decadal trends in atmospheric methane and hydroxyl, *Proc Natl Acad Sci U S A*, 114, 5367-5372, 10.1073/pnas.1616020114, 2017.
- Turner, A. J., Fung, I., Naik, V., Horowitz, L. W., and Cohen, R. C.: Modulation of hydroxyl variability by ENSO in the absence of external forcing, *Proceedings of the National Academy of Sciences*, 115, 8931-8936, 10.1073/pnas.1807532115, 2018.
- Turner, A. J., Frankenberg, C., and Kort, E. A.: Interpreting contemporary trends in atmospheric methane, *Proceedings of the National Academy of Sciences*, 116, 2805-2813, 10.1073/pnas.1814297116, 2019.

- 640 Wolter, K., and Timlin, M. S.: El Niño/Southern Oscillation behaviour since 1871 as diagnosed in an extended multivariate ENSO index (MEI.ext), *International Journal of Climatology*, 31, 1074-1087, 10.1002/joc.2336, 2011.
- Yienger, J. J., and Levy II, H.: Empirical model of global soil-biogenic NO_x emissions, *Journal of Geophysical Research: Atmospheres*, 100, 11447-11464, 10.1029/95jd00370, 1995.
- 645 Zhang, T., Hoell, A., Perlwitz, J., Eischeid, J., Murray, D., Hoerling, M., and Hamill, T. M.: Towards Probabilistic Multivariate ENSO Monitoring, *Geophysical Research Letters*, 46, 10532-10540, 10.1029/2019gl083946, 2019.
- Zhang, Z., Zimmermann, N. E., Calle, L., Hurtt, G., Chatterjee, A., and Poulter, B.: Enhanced response of global wetland methane emissions to the 2015–2016 El Niño-Southern Oscillation event, *Environmental Research Letters*, 13, 074009, 10.1088/1748-9326/aac939, 2018.
- 650 Zhao, Y., Saunio, M., Bousquet, P., Lin, X., Berchet, A., Hegglin, M. I., Canadell, J. G., Jackson, R. B., Hauglustaine, D. A., Szopa, S., Stavert, A. R., Abraham, N. L., Archibald, A. T., Bekki, S., Deushi, M., Jöckel, P., Josse, B., Kinnison, D., Kirner, O., Maréchal, V., O'Connor, F. M., Plummer, D. A., Revell, L. E., Rozanov, E., Stenke, A., Strode, S., Tilmes, S., Dlugokencky, E. J., and Zheng, B.: Inter-model comparison of global hydroxyl radical (OH) distributions and their impact on atmospheric methane over the 2000–2016 period, *Atmos. Chem. Phys.*, 19, 13701-13723, 10.5194/acp-19-13701-2019, 2019.
- 655 Zhao, Y., Saunio, M., Bousquet, P., Lin, X., Berchet, A., Hegglin, M. I., Canadell, J. G., Jackson, R. B., Dlugokencky, E. J., Langenfelds, R. L., Ramonet, M., Worthy, D., and Zheng, B.: Influences of hydroxyl radicals (OH) on top-down estimates of the global and regional methane budgets, *Atmos. Chem. Phys.*, 20, 9525-9546, 10.5194/acp-20-9525-2020, 2020.
- 660 Zheng, B., Chevallier, F., Yin, Y., Ciais, P., Fortems-Cheiney, A., Deeter, M. N., Parker, R. J., Wang, Y., Worden, H. M., and Zhao, Y.: Global atmospheric carbon monoxide budget 2000–2017 inferred from multi-species atmospheric inversions, *Earth Syst. Sci. Data*, 11, 1411-1436, 10.5194/essd-11-1411-2019, 2019.
- 665 Ziemke, J. R., Oman, L. D., Strode, S. A., Douglass, A. R., Olsen, M. A., McPeters, R. D., Bhartia, P. K., Froidevaux, L., Labow, G. J., Witte, J. C., Thompson, A. M., Haffner, D. P., Kramarova, N. A., Frith, S. M., Huang, L. K., Jaross, G. R., Seftor, C. J., Deland, M. T., and Taylor, S. L.: Trends in global tropospheric ozone inferred from a composite record of TOMS/OMI/MLS/OMPS satellite measurements and the MERRA-2 GMI simulation, *Atmos. Chem. Phys.*, 19, 3257-3269, 10.5194/acp-19-3257-2019, 2019.
- 670

Table 1. Two-box model inversion experiments.

Inversion experiments	OH variability
Inv_OH_std	Full temporal changes (scaled OH fields)
Inv_OH_cli	Climatology OH (average of 1980-2010)
Inv_OH_var	Year-to-year variation only (detrend OH fields)
Inv_OH_trend	Trend only (remove OH year-to-year variation)

680 **Table 2.** Multi-model mean \pm standard deviation (SD) of annual total OH production (P) and loss (L) in Tmol yr⁻¹ and percentage contribution of each production and loss processes to total OH production and loss estimated with multi-model mean OH fields¹.

Chemical reaction	Mean \pm SD	%
Production	209 \pm 12	/
O(¹D)+H₂O	96 \pm 2	46%
NO+HO₂	63 \pm 4	30%
O₃+HO₂	26 \pm 3	13%
Other	24 \pm 7	12%
Loss¹	209 \pm 12	/
CO+OH	82 \pm 4	39%
CH₄+OH	32 \pm 1	15%
CH₂O+OH	12 \pm 1	6%
Isoprene+OH	13 \pm 1	6%
Other	70 \pm 5	33%

¹ The OH production and loss of the EMAC model are not included in the table since total OH production and loss are not given by the EMAC model.

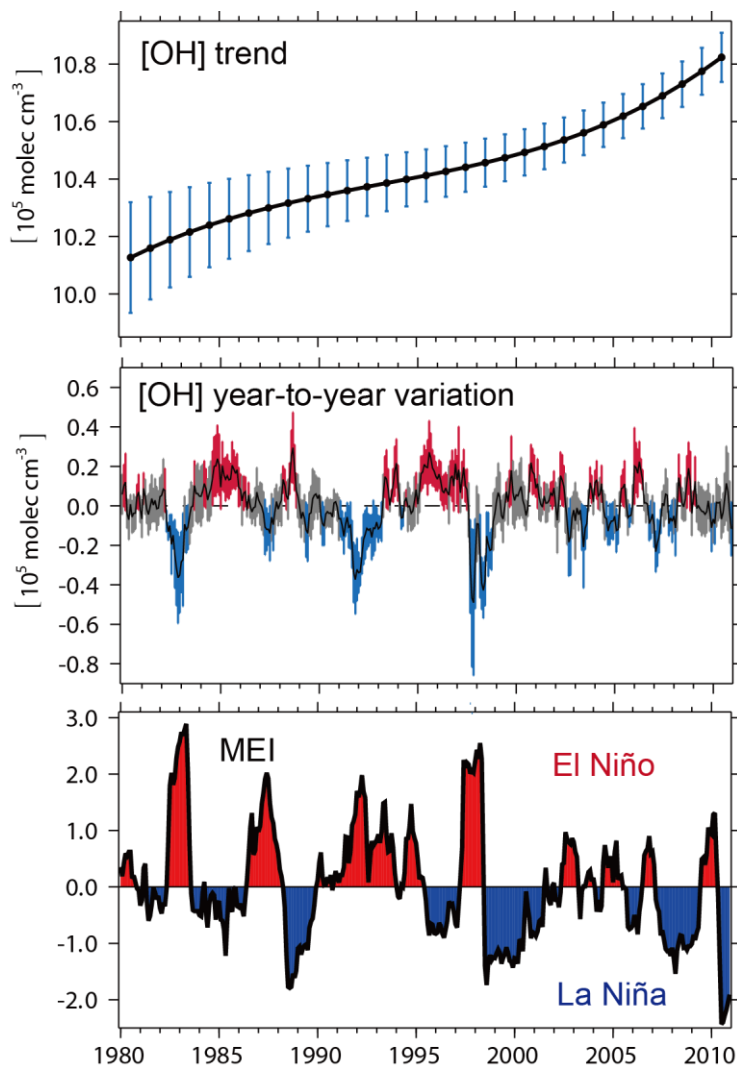
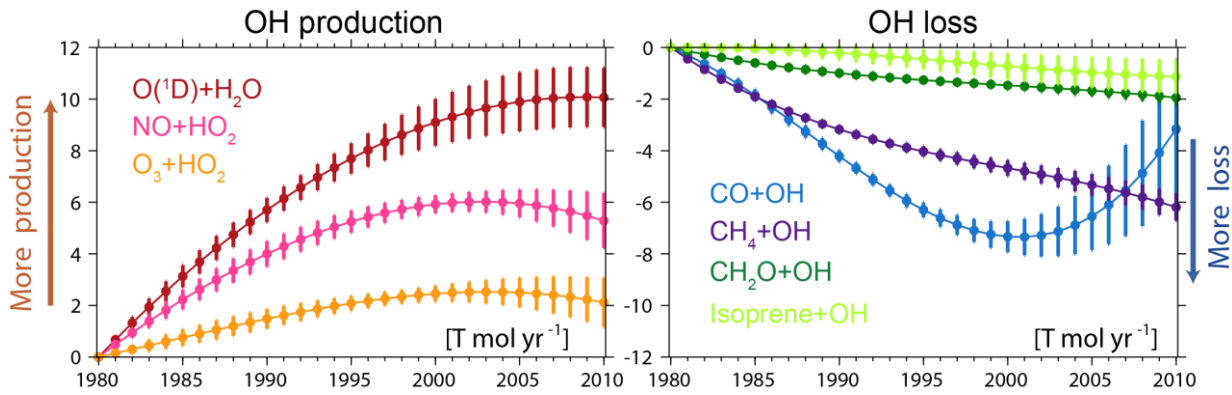


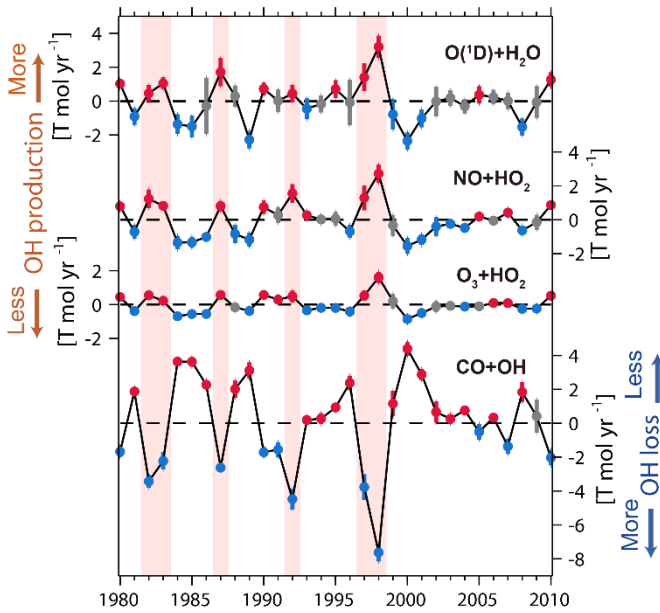
Figure 1. Top panel: Annual global tropospheric mean OH concentration ($[\text{OH}]_{\text{GM-CH}_4}$, CH_4 reaction weighted) with year-to-year variations removed (represents the OH trend) simulated by CCMi models. The black line is the multi-model mean and associated error bars are standard deviations of different model results (also for the middle panel). Middle panel: Anomaly of detrended and deseasonalized monthly mean $[\text{OH}]_{\text{GM-CH}_4}$ (represents the year-to-year variations of OH). Red bars indicate that the multi-model simulated $[\text{OH}]_{\text{GM-CH}_4}$ are statistically significant ($P < 0.05$) positive anomalies, blue bars indicate statistically significant negative anomalies, and grey bars indicate statistically non-significant anomalies. Bottom panel: Bi-monthly Multivariate ENSO Index (MEI).

690

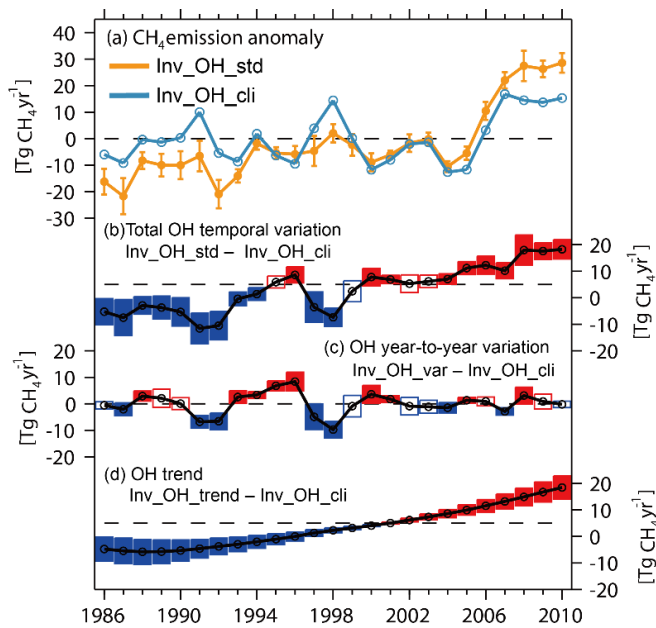
695



700 **Figure 2.** Annual total OH tendency (Tmol yr^{-1}) from chemical reactions with respect to the year 1980 with year-to-year variations removed. The positive and negative tendencies represent OH production (left) and loss processes (right), respectively.



705 **Figure 3.** Anomaly of the detrended annual global total OH tendency from reactions $\text{O}(^1\text{D})+\text{H}_2\text{O}$, $\text{NO}+\text{HO}_2$, O_3+HO_2 , and $\text{CO}+\text{OH}$. Black lines are multi-model means and the error bars are the standard deviations of all CCM1 model results. The red, blue, and grey dots and error bars show statistically significant ($P < 0.05$) positive anomalies, negative anomalies, and statistically non-significant anomalies, respectively. Shaded areas represent the El Niño years with more than 5 months of $\text{MEI} > 1.0$.



710

Figure 4. (a) Anomaly of global total CH₄ emissions using scaled CCMI OH fields (yellow line, Inv_OH_std), and climatological OH (blue, Inv_OH_cli) estimated by a two-box model inversion. The anomalies are calculated by comparing to the climatological mean CH₄ emissions of Inv_OH_cli over 1986-2010. (b-d) Influences of (b) total OH temporal variations (OH year-to-year variation and trend, Inv_OH_std minus Inv_OH_cli), (c) OH year-to-year variations (Inv_OH_var minus Inv_OH_cli), and (d) OH trend (Inv_OH_trend minus Inv_OH_cli) on box-model estimated global total CH₄ emissions. The black lines are the mean of inversion results with different OH fields and the boxes are \pm one standard deviation. The boxes with filled blue/red show OH lead to statistically significant ($P < 0.05$) differences between the two inversions.

715

720

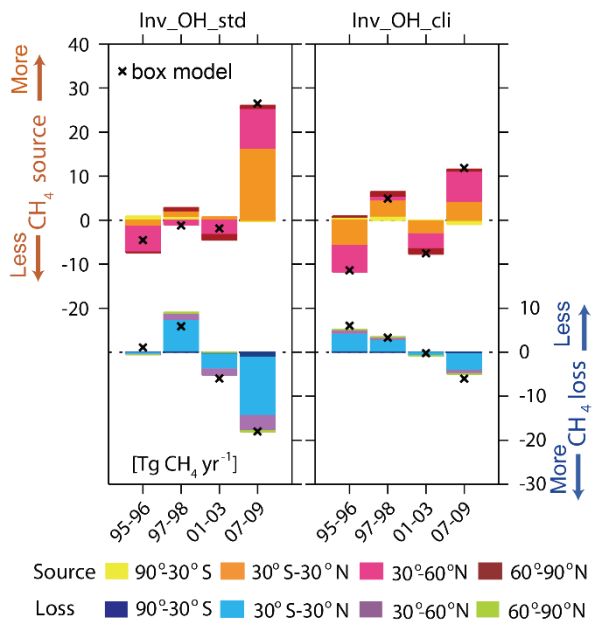


Figure 5. Anomaly of CH₄ emissions and losses estimated by variational 4D inversions (bars) and by two-box model inversions (“x”) using a multi-model mean scaled OH (Inv_OH_std, left) and climatological OH (right) during four time periods. The anomalies are calculated by comparing to the mean CH₄ emissions of Inv_OH_cli over the four time period (494Tg). The total emissions and loss over southern extra-tropical regions (90 °-30 °S), the Tropics (30 °S-30 °N), the northern temperate (30 °-60 °N), and the northern boreal (60 °-90 °N) regions are shown by different colors within each bar.

725

730

735

740