

Reformulating the Bromine Alpha Factor and EESC: Evolution of Ozone Destruction Rates of Bromine and Chlorine in Future Climate Scenarios

J. Eric Klobas¹, Debra K. Weisenstein¹, Ross J. Salawitch², and David M. Wilmouth¹

¹Harvard John A. Paulson School of Engineering and Applied Sciences, Harvard University, Cambridge MA, USA

²Department of Atmospheric and Oceanic Science, Department of Chemistry and Biochemistry, and Earth System Science Interdisciplinary Center, University of Maryland, College Park, MD, USA

Correspondence: J. Eric Klobas (klobas@huarp.harvard.edu)

Abstract. Future trajectories of the stratospheric trace gas background will alter the rates of bromine- and chlorine-mediated catalytic ozone destruction via changes in the partitioning of inorganic halogen reservoirs and the underlying temperature structure of the stratosphere. The current formulation of the bromine alpha factor, the ozone-destroying power of stratospheric bromine atoms relative to stratospheric chlorine atoms, is invariant with climate state. Here, we refactor the bromine alpha factor, introducing normalization to a benchmark chemistry/climate state, and formulate Equivalent Effective Stratospheric Benchmark-normalized Chlorine (EESBnC) to reflect changes in the rates of both bromine- and chlorine-mediated ozone loss catalysis with time. We show that the ozone-processing power of the extrapolar stratosphere is significantly perturbed by future climate assumptions. Furthermore, we show that our EESBnC-based estimate of the extrapolar ozone-recovery date is in closer agreement with extrapolar ozone recovery dates predicted using more sophisticated 3-D chemistry/climate models than predictions made using Equivalent Effective Stratospheric Chlorine (EESC).

1 Introduction

Anthropogenic emissions of ozone-destroying halocarbons have declined significantly since the implementation of the Montreal Protocol on Substances that Deplete the Ozone Layer (and its subsequent amendments); however, stratospheric inorganic halogen inventories still remain elevated relative to levels prior to the first observations of the seasonal Antarctic ozone hole due to the exceptionally long lifetimes of the precursor compounds for inorganic halogen. Recovery of the halogen content of the stratosphere to the levels representative of the benchmark year 1980 is estimated to occur some time around the year 2060 in the extrapolar regions (Newman et al., 2006; Engel et al., 2018a, b); however, 3-D CCM simulations predict ozone recovery dates up to two decades sooner (Dhomse et al., 2018; Braesicke et al., 2018) as halogen inventory recovery is an imperfect proxy for ozone recovery.

The vast majority of inorganic chlorine in the lower stratosphere is present in the reservoir forms HCl and ClONO₂. The gas-phase reaction of these two reservoirs is too slow to be of atmospheric importance; however, heterogeneous reactions on the surfaces of stratospheric aerosols (Solomon et al., 1986; Brasseur et al., 1990) can be fast enough to enable chlorine activation

and ClO_x-mediated ozone-depletion cycling. It is typical that only a few percent of inorganic chlorine is present in the active forms in the lower stratosphere because conversion of the Cl radical back to the inorganic reservoir can be quite fast, limiting the chain length (and it follows, extent of ozone loss) of mechanisms involving chlorine alone in this region of the stratosphere.

Mechanisms of BrO_x-mediated ozone depletion are much less sensitive to the surrounding environment than mechanisms mediated by ClO_x. This is because inorganic reservoirs of bromine are significantly less stable, enhancing the quantity of reactive halogen available for ozone processing. Bromine is up to two orders of magnitude more likely to be found in its active form than chlorine, depending on the physicochemical environment (Wofsy et al., 1975; Salawitch et al., 2005). Additionally, unlike the catalytic cycles of chlorine, in which the extent of ozone loss following the addition of chlorine atoms is limited by the relatively short chain length of the catalytic center, catalytic processing of ozone facilitated by the addition of bromine is potentiated due to its greater (up to orders-of-magnitude in difference) chain effectiveness (Lary, 1997). The bromine interfamily ozone destruction cycles are responsible for a similarly-sized fraction of global lower stratospheric ozone loss as the chlorine cycles (Salawitch et al., 2005; World Meteorological Organization, 2018; Koenig et al., 2020). This large fractional share of ozone destruction chemistry occurs despite the fact that bromine is approximately two orders of magnitude less abundant than chlorine as a consequence of (a) the larger fraction of reactive bromine available at a given mixing ratio and (b) the catalytic reaction channels made accessible by the weaker bromine-oxygen molecular bond (Yung et al., 1980; McElroy et al., 1986; Brune and Anderson, 1986).

The bromine alpha factor, α_{Br} , is a metric that quantifies the ozone-depleting efficiency of a bromine atom relative to chlorine. This quantity is defined either as the ratio of ozone loss processing rates, as in Eq. (1) or as the ratio of the overall change in ozone abundance on a per-halogen-atom basis per Eq (2). In both formulations, α_{Br} is computed as a function of calendar date, t , and location in the atmosphere, ρ . Daniel et al. (1999) demonstrate that both equations provide identical results when changes in ozone are dominated by chemical rather than dynamical processes.

$$\alpha_{\text{Br}}(t, \rho) = \frac{\frac{\Delta O_3(t, \rho)}{\Delta t} (\text{Br rxns}) / \Delta \text{Br}(t, \rho)}{\frac{\Delta O_3(t, \rho)}{\Delta t} (\text{Cl rxns}) / \Delta \text{Cl}(t, \rho)} \quad (1)$$

$$\alpha_{\text{Br}}(t, \rho) = \frac{\Delta O_3(t, \rho) / \Delta \text{Br}(t, \rho)}{\Delta O_3(t, \rho) / \Delta \text{Cl}(t, \rho)} \quad (2)$$

Values of α_{Br} vary strongly as a function of pressure, latitude, and season. This variance is primarily a function of (a) chemical environment, (b) prevailing actinic flux, (c) aerosol surface area, and (d) temperature (Solomon et al., 1992; Danilin et al., 1996; Ko et al., 1998; Daniel et al., 1999). Frequently, α_{Br} is reported as an effective value for the stratospheric column, computed in a similar manner as in Eq. (1) or Eq. (2), the key difference being that ρ represents the position of the stratospheric column. Likewise, it is common to provide a regional-annual average column α_{Br} , which is computed as the average of column α_{Br} values for all locations within a specified region across a calendar year. Global-annual average column values for α_{Br} are currently estimated between 60 – 65, depending on the model employed and the chemistry/climate boundary conditions (Engel et al., 2018b; Sinnhuber et al., 2009). Values of α_{Br} tend toward a minimum at the equator, maximizing in the boreal summer.

55 Denitrification and heterogeneous activation produce a minimum in α_{Br} during the austral springtime. In vertical profiles, α_{Br} tends to maximize in the lower stratosphere where reactive chlorine is less prevalent than in the middle stratosphere.

The quantity α_{Br} is especially useful for the determination of parameterized estimates of the budget of reactive inorganic halogens given a mixture of halogen-containing halocarbons of an arbitrary mean age, as in the metric of Equivalent Effective Stratospheric Chlorine (EESC). This quantity expresses the ozone-depleting power of a parcel of well-mixed stratospheric trace
60 gases as a function of mean stratospheric age of the parcel, Γ , and the trace gas background of the stratosphere at time t (Daniel et al., 1995; Newman et al., 2007). Equation 3 provides the most recently suggested formulation of EESC, in which $\bar{f}_i(\Gamma)$ is the trend-independent fractional release factor for species i for a parcel of air with mean age Γ , which contains $n_{i,\text{Cl}}$ chlorine atoms and $n_{i,\text{Br}}$ bromine atoms, scaled by $\alpha_{\text{Br}}(t, \Gamma)$, where it is assumed that Γ can serve as a proxy for ρ (Ostermüller et al.,
65 spectrum and normalized to the contribution of that element to the age spectrum. The tropospheric mixing ratio of species i , $\chi_{0,i}$ is adjusted to account for transit time within the stratosphere, t' , and multiplied by the normalized release-weighted transit time distribution, $G_{N,i}^\#(\Gamma^\#, t')$, where $\Gamma_i^\#$ is the mean age of halogen-atom release.

$$\text{EESC}(t, \Gamma) = \sum_i \bar{f}_i(\Gamma) [n_{i,\text{Cl}} + \alpha_{\text{Br}}(t, \Gamma) \cdot n_{i,\text{Br}}] \int_0^\infty \chi_{0,i}(t - t') G_{N,i}^\#(t', \Gamma_i^\#) dt' \quad (3)$$

EESC is frequently employed to constrain the date of stratospheric ozone recovery, often by using graph theory to determine
70 when stratospheric chlorine levels will return to the levels observed in 1980 as a benchmark (Newman et al., 2006; Engel et al., 2018b). The technique is fast and simple: EESC is calculated as a function of location in the stratosphere (for which Γ is a proxy) and future date, following which a horizontal line is propagated in time at the value of EESC in 1980, and the intercept of the two traces is interpreted as the date of halogen recovery (and, it follows, an approximate date of ozone recovery). The extrapolation is built on the assumptions that, as the climate evolves: (1) the alpha factor remains constant and
75 (2) the amount of ozone destroyed by chlorine, on a per-chlorine-atom basis, also remains constant. However, projections of the future physicochemical state of the stratosphere do not necessarily provide for these two assumptions to be true. Indeed, the envelope of future projections (e.g., RCP and SSP scenarios) of emissions of CH_4 , N_2O , CO_2 , among other relevant species, indicate that it is nearly certain that these two assumptions will not be true, especially in the extrapolar stratosphere.

Significant variations between different climate models and possible states of the future atmosphere limit the skill level of
80 model simulations in predicting ozone recovery dates (Charlton-Perez et al., 2010). These large uncertainties notwithstanding, it is understood that there may be a super-recovery of global stratospheric ozone in the future as EESC declines, the Brewer-Dobson circulation accelerates, and the stratosphere cools (Austin and Wilson, 2006; Li et al., 2009; Eyring et al., 2013; Banerjee et al., 2016; Chiodo et al., 2018). The extent of super-recovery can be attributed to both photochemical and dynamical factors. Future ozone abundance is expected to be controlled by photochemical factors in the middle-to-upper stratosphere.
85 The degrees by which photochemical rates of bimolecular ozone-loss processes are slowed and the rate of the termolecular formation of ozone is increased are a result of (a) local radiative cooling due to the enhancement of the stratospheric burden of anthropogenic greenhouse gases and (b) chemical suppression of ozone loss cycling due to reactive anthropogenic greenhouse

gas emission (Rosenfield et al., 2002; Waugh et al., 2009; Oman et al., 2010; Eyring et al., 2013). In the lower stratosphere, where the photochemical lifetime of ozone is large, the expected super-recovery is dominated by dynamical factors, such as the model response of the Brewer-Dobson circulation to greenhouse gas perturbation, which alters both the stratospheric lifetime of long-lived inorganic halogen precursors and the transport of ozone from the tropics where it is produced (Butchart et al., 2006; Plummer et al., 2010; Zubov et al., 2013).

Dhomse et al. (2018) provide constraints on the dates stratospheric ozone might recover to year 1980 benchmark thickness using a comprehensive multi-model framework (20 models, 155 simulations) spanning multiple greenhouse gas emissions scenarios, finding that while the date of Antarctic springtime recovery is most sensitive to Cl_y inventories, extrapolar column recovery dates (and to a lesser extent, the Arctic springtime recovery date) are highly sensitive to the greenhouse gas forcing applied. In their analysis, Dhomse et al. (2018) indicate that mid-latitude ozone recovery will occur sooner in both hemispheres for scenarios with greater radiative forcing. When greenhouse gases are fixed, the dates projected for midlatitude recovery (~ 2060) are in close agreement with the EESC-based estimates provided in Engel et al. (2018a) of 2059; however, greenhouse gas perturbations hasten projected midlatitude recovery dates in 3-D models by ~ 10 years in the northern hemisphere and ~ 20 years in the southern hemisphere (Eyring et al., 2010, 2013; Dhomse et al., 2018).

In this work, we present the first assessment of column α_{Br} in future climate change scenarios. Additionally, we evaluate the sensitivity of column α_{Br} to prescribed perturbations of reactive greenhouse gases while anthropogenic halocarbons slowly decay as the century progresses. We then refactor α_{Br} such that parameterized estimates of ozone recovery can more accurately be related to the ozone-destroying power of the inorganic halogen content of the stratosphere given a particular benchmark date. Finally, we show that this method provides much better agreement with 3-D CCM estimates of ozone recovery to the 1980 benchmark date than EESC-based estimates.

2 Model, Experiment, and Validation

The AER-2D chemical transport model was employed with 19 latitudes (90°S – 90°N) and 51 levels (1000–0.2 hPa) for this work (Weisenstein et al., 1997, 2007). The model includes 104 chemical species, accounting for F_y , Cl_y , Br_y , I_y , NO_y , HO_x , O_x , SO_x , and CHO_x chemistry. Chemical reactions (314 kinetic reactions and 108 photochemical reactions) were computed using rate constants and cross sections as recommended in the most recent (2015) JPL data evaluation (Burkholder et al., 2015). Additionally, the model features fully-prognostic aerosol microphysics and chemistry (e.g., nucleation, coagulation, condensation/evaporation, sedimentation, and heterogeneous chemical interactions in 40 sectional size bins). Future emissions of greenhouse gases were informed by the Representative Concentration Pathway framework (Van Vuuren et al., 2011; Meinshausen et al., 2011). Future climatological boundary conditions were obtained from the corresponding RCP experiments of MIROC-CHEM-ESM, an Earth System Model with stratospheric chemistry. Future halocarbon inventories were informed by Table 6-4 of the 2018 WMO Scientific Assessment of Ozone Depletion (World Meteorological Organization, 2018) with an additional 5 pptv stratospheric bromine from very-short lived bromocarbons (Wales et al., 2018). Experiments performed in the historical past were informed by historical climatologies obtained from Fleming et al. (1999). Specified dynamics corre-

Table 1. Experiment Schedule^a

experiment prefix	decades ^b	climatology	CFCl ₃ A (pptv)	CFBr ₃ (pptv)
bkg	[1980–2010]	historical ^c	0	0
bkg	[2020–2100]	RCP[2.6,4.5,6.0,8.5] ^d	0	0
Cl	[1980–2010]	historical ^c	260	0
Cl	[2020–2100]	RCP[2.6,4.5,6.0,8.5] ^d	260	0
Br	[1980–2010]	historical ^c	0	2.6
Br	[2020–2100]	RCP[2.6,4.5,6.0,8.5] ^d	0	2.6

^aAll permutations of bracketed parameters were evaluated.

^bConstant year for each decade (e.g., 1980, 1990, 2000)

^cInformed by Fleming et al. (1999)

^dInformed by Meinshausen et al. (2011) and Watanabe et al. (2011)

sponding to the 1978 – 2004 climatological average were employed for all historical and future experiments and were prepared using data obtained from Fleming et al. (1999).

Halogen perturbation scenarios were prepared in the manner of Daniel et al. (1999). Specifically, bromine alpha factors were determined per Eq. (2), in which ozone deficits were computed by column difference between control and halogen gas perturbation scenarios. CFC-11 proxy molecules (CFCl₃A and CFBr₃) were constructed to provide identical transport and release of a known quantity of halogen atoms (Br or Cl, depending on the prescribed perturbation) between runs. For bookkeeping purposes, this was done for both chlorine and bromine delivery (e.g., the molecule labeled as CFCl₃A has the same chemical kinetics and photolysis rates as CFC-11, providing 3 chlorine atoms upon decomposition, but can be perturbed in the model separately from CFC-11). Experiments were performed as outlined in Table 1, in which each permutation of the bracketed parameters were evaluated resulting in a total of 108 model realizations (2160 model years). Experiments of a certain scenario (e.g., for the year 2100 RCP 8.5 experiment: bkg2100RCP8.5, Cl2100RCP8.5, Br2100RCP8.5) were initialized from identical 20-year chemical-climatological spun-up boundary conditions. Evaluations were conducted at constant chemical and climatological conditions (i.e., time-slice boundary conditions) corresponding to the last year of each decade (e.g., 1980, 1990, ..., 2100). Perturbation and control experiments were evaluated over the course of 20 model years, a duration determined to be an appropriate period for the perturbation gas to reach chemical-dynamical steady-state. Data analysis was conducted on the final 12 months of each experiment and control run. Perturbation gas surface mixing ratios were selected to produce global and local ozone depletion of less than 1% in each climate state relative to the unperturbed condition to prevent instability in the chemical Jacobian.

The model performance and experiment design were validated using calculations of α_{Br} in a chemistry/climate state representative of the year 2006. This climate condition has previously been evaluated for α_{Br} (Sinnhuber et al., 2009) using the JPL-2006 photochemical-kinetics recommendations (Sander et al., 2006). Validation runs for this work were informed by either JPL-2006 or JPL-2015 photochemical-kinetics packages. A comparison of the two model evaluations is presented in Figure 1

in which there is little qualitative difference in the annual variation in α_{Br} between JPL-2006 and JPL-2015 photochemical-kinetics packages. Implementation of JPL-2015 chemistry results in a general increase in column α_{Br} of ~ 10 relative to JPL-2006 contours in both polar and extrapolar regions. Our annually/globally averaged α_{Br} of 67 in the JPL-2006 instance compares favorably to the results of Sinnhuber et al. (2009), who report an annually/globally averaged α_{Br} of 64 in their analysis of the same chemistry/climate state using the same photochemistry and kinetics package. For the JPL-2015 evaluation, the annually/globally averaged α_{Br} is 74, which is larger than previously reported values. These differences are likely the result of a combination of changes in chemical rates between JPL-2006 and JPL-2015, such as: (a) 2% increase in rate of $\text{Cl} + \text{CH}_4$ at 200 K, (b) 8% increase in formation rate of NO by $\text{N}_2\text{O} + \text{O}(^1\text{D})$ at 200 K, (c) 4% increase in the rate of $\text{Br} + \text{O}_3$ at 200 K, (d) 121% increase in the rate of $\text{CHBr}_3 + \text{OH}$ at 200 K, and (e) 5% increase in the rate of $\text{Cl} + \text{ClOOCl}$ at 200 K.

3 Results and Discussion

3.1 Refactoring α_{Br} : a new definition of EESC

Prior evaluations of α_{Br} were computed with static chemistry/climate states. Because the relative ozone-processing rate of bromine to chlorine is likely to change with time, and also between chemistry/climate scenarios at the same point in time, we add a dependence on the chemistry/climate state, ξ , to the definition of α_{Br} (Eq. (4)).

$$\alpha_{\text{Br}}(t, \rho, \xi) = \frac{\Delta\text{O}_3(t, \rho, \xi)/\Delta\text{Br}(t, \rho, \xi)}{\Delta\text{O}_3(t, \rho, \xi)/\Delta\text{Cl}(t, \rho, \xi)} \quad (4)$$

We can then replace the climate-invariant $\alpha_{\text{Br}}(t, \Gamma)$ in Eq. (3) with $\alpha_{\text{Br}}(t, \Gamma, \xi)$ to produce a climate-sensitive EESC that accounts for changes in the relative ozone-destroying efficiency of bromine to chlorine (Eq. (5)).

$$\text{EESC}(t, \Gamma, \xi) = \sum_i \bar{f}_i(\Gamma) [n_{i, \text{Cl}} + \alpha_{\text{Br}}(t, \Gamma, \xi) \cdot n_{i, \text{Br}}] \int_0^\infty \chi_{0,i}(t-t') \cdot G_{N,i}^\#(t', \Gamma_i^\#) dt' \quad (5)$$

Furthermore, we recognize that the ozone-processing power of chlorine and bromine are independently sensitive to changes in the physicochemical background of the stratosphere. The two variables must be separated in order to understand the evolution of the change in the processing power of chlorine and bromine as a function of chemistry/climate state. To accomplish this, we define the eta factor, η_{Cl} and η_{Br} , in Eq. (6) and Eq. (7) as the ratio of the change in ozone following the addition of chlorine or bromine at time t , location ρ , and climate state ξ to the change in ozone following the same perturbation in a benchmark chemistry/climate state, Ξ . The eta factor thus expresses the ozone-depleting efficiency of a chlorine or bromine atom in an arbitrary chemistry/climate state relative to the ozone-depleting efficiency of a chlorine atom in the benchmark chemistry/climate state.

$$\eta_{\text{Cl}}(t, \rho, \xi, \Xi) = \frac{\Delta\text{O}_3(t, \rho, \xi)/\Delta\text{Cl}(t, \rho, \xi)}{\Delta\text{O}_3(t, \rho, \Xi)/\Delta\text{Cl}(t, \rho, \Xi)} \quad (6)$$

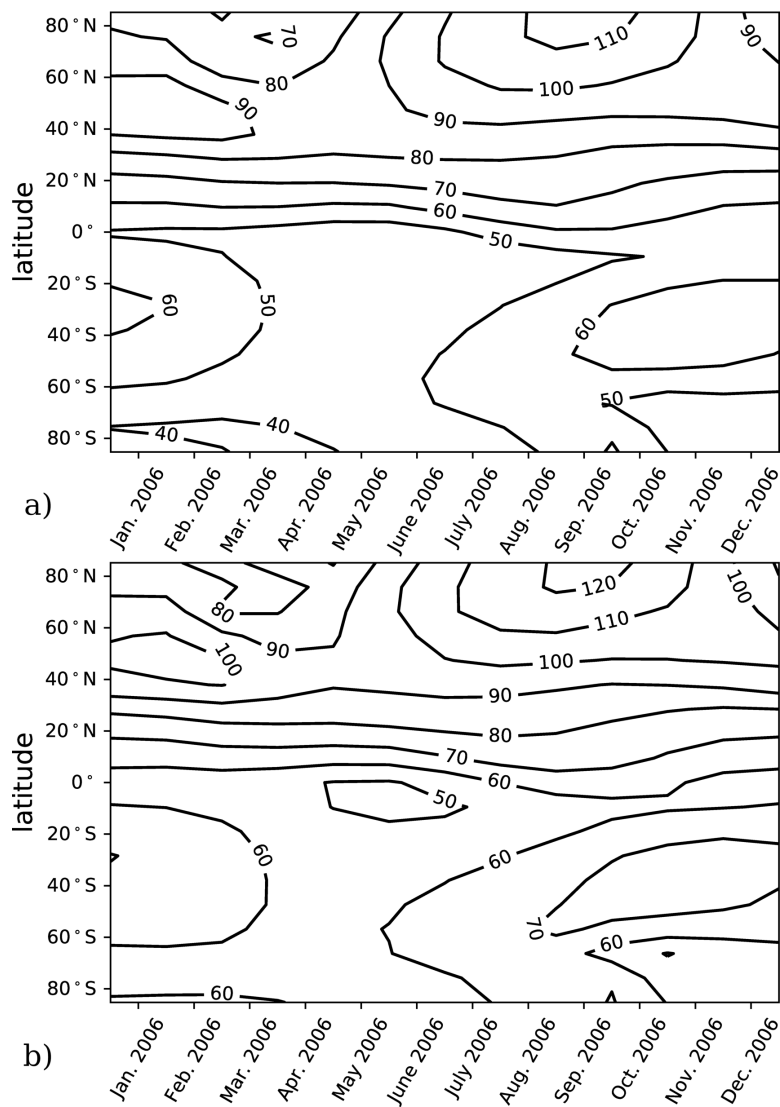


Figure 1. Column α_{Br} as a function of latitude and season for the year 2006. (a) Model results computed using JPL-2006 photochemistry and kinetics (Sander et al., 2006) for the year 2006. (b) Model results computed using JPL-2015 photochemistry and kinetics (Burkholder et al., 2015) for the year 2006.

$$\eta_{\text{Br}}(t, \rho, \xi, \Xi) = \frac{\Delta\text{O}_3(t, \rho, \xi) / \Delta\text{Br}(t, \rho, \xi)}{\Delta\text{O}_3(t, \rho, \Xi) / \Delta\text{Cl}(t, \rho, \Xi)} \quad (7)$$

It is apparent that the definition of α_{Br} given in Eq. (4) can be derived from η_{Br} and η_{Cl} provided that the benchmark chemistry/climate state is identical between the two expressions (Eq. (8)).

$$\alpha_{\text{Br}}(t, \rho, \xi) = \frac{\eta_{\text{Br}}(t, \rho, \xi, \Xi)}{\eta_{\text{Cl}}(t, \rho, \xi, \Xi)} \quad (8)$$

175 By substituting this refactored definition of α_{Br} into Eq. (5) for the computation of EESC, we can now quantify the Equivalent Effective Stratospheric Benchmark-normalized Chlorine (EESBnC) (Eq. (9)). The difference between EESC and EESBnC is significant; whereas EESC considers "the *relative* efficiency of chlorine and bromine for ozone depletion" (World Meteorological Organization, 2018), EESBnC accounts for the *overall* efficiency of chlorine and bromine relative to a benchmark chemistry/climate state. Thus, EESBnC provides the ozone-depleting power of an air parcel in the stratosphere propagated
180 independent of changes in the rates of chlorine or bromine ozone-loss catalysis.

$$\text{EESBnC}(t, \Gamma, \xi, \Xi) = \eta_{\text{Cl}}(t, \Gamma, \xi, \Xi) \cdot \text{EESC}(t, \Gamma, \xi) =$$

$$\sum_i \bar{f}_i(\Gamma) [\eta_{\text{Cl}}(t, \Gamma, \xi, \Xi) \cdot n_{i,\text{Cl}} + \eta_{\text{Br}}(t, \Gamma, \xi, \Xi) \cdot n_{i,\text{Br}}] \int_0^\infty \chi_{0,i}(t-t') \cdot G_{N,i}^\#(t', \Gamma_i^\#) dt' \quad (9)$$

3.2 Calculation of Future RCP scenario α and η

185 Packaged within the definitions of α and η are both local (e.g., photochemical catalytic processing) and non-local influences on ozone abundance (e.g., dynamical effects, ozone layer self-healing effect, etc.), as illustrated in Eq. (10). These non-local factors do not cancel out in the evaluation of η_{Cl} per Eq. (6) or η_{Br} per Eq. (7) as they do in the calculation of α_{Br} per Eq. (1) or Eq. (2), because the non-local factors at time t in some evolved climate state are not likely to be the same as they were during the benchmark time period.

$$190 \frac{\Delta\text{O}_3(t, \rho, \xi)}{\Delta\text{O}_3(t, \rho, \Xi)} \simeq \frac{(\Delta\text{O}_3(t, \rho, \xi)_{\text{photochem.}} + \Delta\text{O}_3(t, \rho, \xi)_{\text{dyn.}})}{(\Delta\text{O}_3(t, \rho, \Xi)_{\text{photochem.}} + \Delta\text{O}_3(t, \rho, \Xi)_{\text{dyn.}})} \quad (10)$$

To avoid this complication, we employ specified dynamics corresponding to the 1978 – 2004 climatological average in order to calculate only the photochemical component of the ozone tendency. These dynamics tend to produce less seasonal variation in α_{Br} in the extrapolar southern hemisphere than in the extrapolar northern hemisphere, as depicted in Figure 1. Because of the carefully controlled magnitude of the imposed ozone deficit ($\sim 1\%$), changes in ozone between experiment and control
195 scenarios from all other effects can be assumed to be insignificant relative to the ozone changes produced by the chemical perturbation.

The temporal dependencies of the well-mixed greenhouse gases employed in the climatological perturbations are illustrated in Figure 2, constructed from data provided by Meinshausen et al. (2011). Prescribed mixing ratios of CO_2 , which is chemically

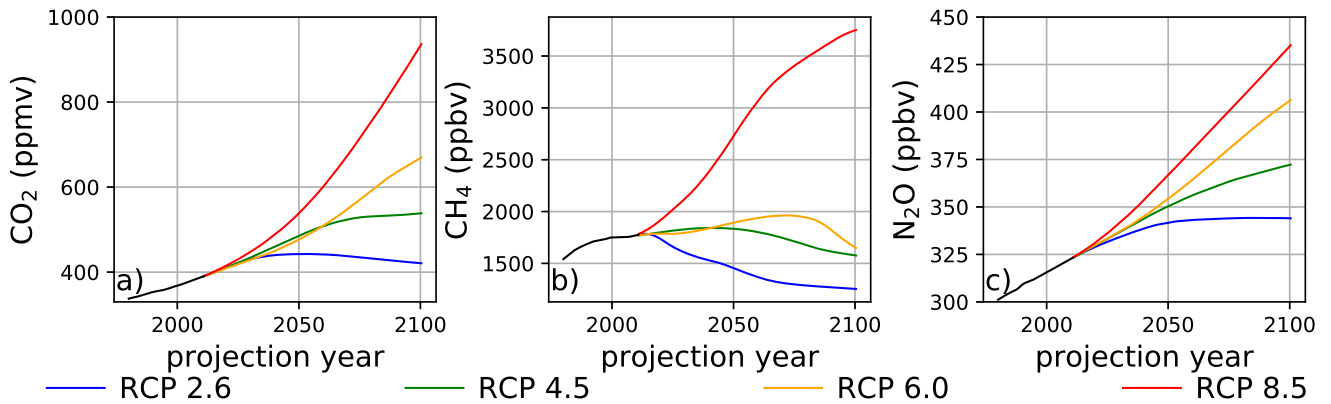


Figure 2. Surface mixing ratios of (a) CO₂, (b) CH₄, and (c) N₂O as a function of time and RCP scenario. Data obtained from Meinshausen et al. (2011).

inert in this model and only perturbs ozone chemistry via thermal effects, are provided in panel (a). The trajectories of CH₄ in panel (b) and N₂O in panel (c) are particularly noteworthy because these species are closely coupled with the ozone steady-state via changes in inorganic halogen reservoir inventories. In the instance of RCP 8.5, CH₄ increases nearly 2.5 times by the year 2100 from the 1980 mixing ratio, and N₂O increases by a factor of 1.4 during the same time period. The reactive greenhouse gas situation in RCP 2.6 is significantly different: CH₄ mixing ratios decline by 19% and N₂O mixing ratios increase by 14% during the period spanning the year 1980 and the year 2100. The intermediate scenarios, RCP 4.5 and RCP 6.0, both feature small end-of-century increases in CH₄ mixing ratios of less than 10% relative to the year 1980 value, but with modest increases during the middle-half of the 21st century. For RCP 4.5 and RCP 6.0, prescribed N₂O emissions increase by 24% and 35% respectively over the same time interval.

Values of annually-averaged extrapolar η_{Cl} and η_{Br} (60°S – 60°N) were computed on a decadal basis for every decade between 1990 – 2010 using historical data, and for each decade between 2020 – 2100, for each RCP scenario. For all results reported in this work, the chemistry-climatology corresponding to the year 1980 was selected as the benchmark state ($\Xi = 1980$). These values are presented, along with the corresponding alpha factors, in Table 2 for the historical period and for future scenarios. These results are also visualized in Figure 3 for (a) extrapolar α_{Br} , (b) extrapolar η_{Cl} , and (c) extrapolar η_{Br} . It is immediately apparent that, while α_{Br} deviates by less than 10% from its 1980 value for all evaluated future atmospheres as presented in panel (d), that the corresponding η_{Cl} and η_{Br} values are generally observed to decline by a much more significant extent in panels (e) and (f), respectively.

We highlight the clear qualitative trends of decreasing η_{Cl} and η_{Br} with climatological forcing scenario severity. Particular notice should be directed to results corresponding to RCP 8.5, in which α_{Br} does not demonstrate a significant coefficient of variation throughout the 21st century ($\text{CV}(\alpha_{\text{Br}}) = 2.1\%$), but η factors decline precipitously as the century progresses ($\text{CV}(\eta_{\text{Cl}}) = 14.3\%$ and $\text{CV}(\eta_{\text{Br}}) = 14.5\%$). This behavior follows the sensitivity expected when there is a large increase in N₂O and CH₄. A downward trend in α_{Br} is observed as time propagates in RCP scenarios 2.6, 4.5, and 6.0. This effect is dominated by the

Table 2. Values of extrapolar (60°S – 60°N) α_{Br}^a , η_{Cl}^b , and η_{Br}^b for historical and future scenarios

Year	Historical			Year	RCP 2.6			RCP 4.5			RCP 6.0			RCP 8.5		
	α_{Br}	η_{Cl}	η_{Br}		α_{Br}	η_{Cl}	η_{Br}	α_{Br}	η_{Cl}	η_{Br}	α_{Br}	η_{Cl}	η_{Br}	α_{Br}	η_{Cl}	η_{Br}
1980	70	1.0	70	2020	75	0.96	72	75	0.94	71	74	0.93	69	73	0.91	67
1990	74	0.99	74	2030	75	0.94	70	75	0.92	69	72	0.95	69	72	0.93	67
2000	76	0.97	73	2040	73	0.94	69	73	0.90	66	71	0.96	68	71	0.91	65
2010	75	0.94	71	2050	72	0.95	68	72	0.89	64	70	0.93	65	72	0.84	60
				2060	70	0.96	67	71	0.88	63	70	0.90	63	72	0.78	56
				2070	69	0.96	67	70	0.87	61	69	0.89	61	72	0.74	54
				2080	67	0.98	66	69	0.88	61	69	0.85	58	73	0.70	51
				2090	66	0.98	65	68	0.88	60	67	0.85	57	73	0.67	49
				2100	65	0.99	64	66	0.87	57	67	0.84	57	73	0.65	47

^a α_{Br} calculated per Eq. (4).

^b η_{Cl} calculated per Eq. (6) and η_{Br} calculated per Eq. (7), $\Xi = 1980$.

Historical temperature fields obtained from Fleming et al. (1999).

Historical and future greenhouse gas emissions specified per Meinshausen et al. (2011).

Future temperature fields derived from Watanabe et al. (2011).

declining availability of ClO_x as a result of the slow decay of long-lived ozone-depleting substances. In the case of RCP 2.6, a slight increase in η_{Cl} occurs after the year 2040, driven by the continuous decline in the CH_4 mixing ratio and the stabilization of the N_2O mixing ratio in the scenario prescription.

A sensitivity analysis was conducted on α_{Br} , η_{Cl} , and η_{Br} in order to clarify the differences presented in Figure 3. In this analysis, α_{Br} , η_{Cl} , and η_{Br} were calculated in the manner previously described, but with the chemistry/climate perturbation, ξ , identical to the chemistry/climate benchmark, Ξ , except for a single perturbed parameter. Four variables were perturbed separately: (a) N_2O , (b) CH_4 , (c) Br_y/Cl_y ratio, and (d) temperature profile. For each perturbation experiment, all factors except for the perturbed factor were constrained to their year 1980 value(s). Perturbation values were intentionally selected to induce large variations in model response. For N_2O and CH_4 , mixing ratios were scaled between pre-industrial values and twice the RCP 8.5 year 2100 value. Br_y/Cl_y ratios were selected to range between low values representative of the year 1990, moderate values representative of the year 2000, and high values representative of the year 2100 WMO Table 6-4 projections. Stratospheric temperature profile perturbations spanned a minimum as parameterized by the RCP 8.5 year 2100 projection to a maximum value representative of the climatological average of the years 1978-2004.

Panel (a) of Figure 4 demonstrates that α_{Br} is only slightly sensitive to changes in the mixing ratio of N_2O between pre-industrial and 2x RCP 8.5 year 2100 levels. Unlike α_{Br} , both η_{Cl} and η_{Br} , as shown in panels (e) and (i), decline monotonically and with nearly identical gradients, as both the bromine and chlorine cycles are suppressed through reactions with NO_x . This suppression arises primarily via the direct formation of the halogen nitrate.

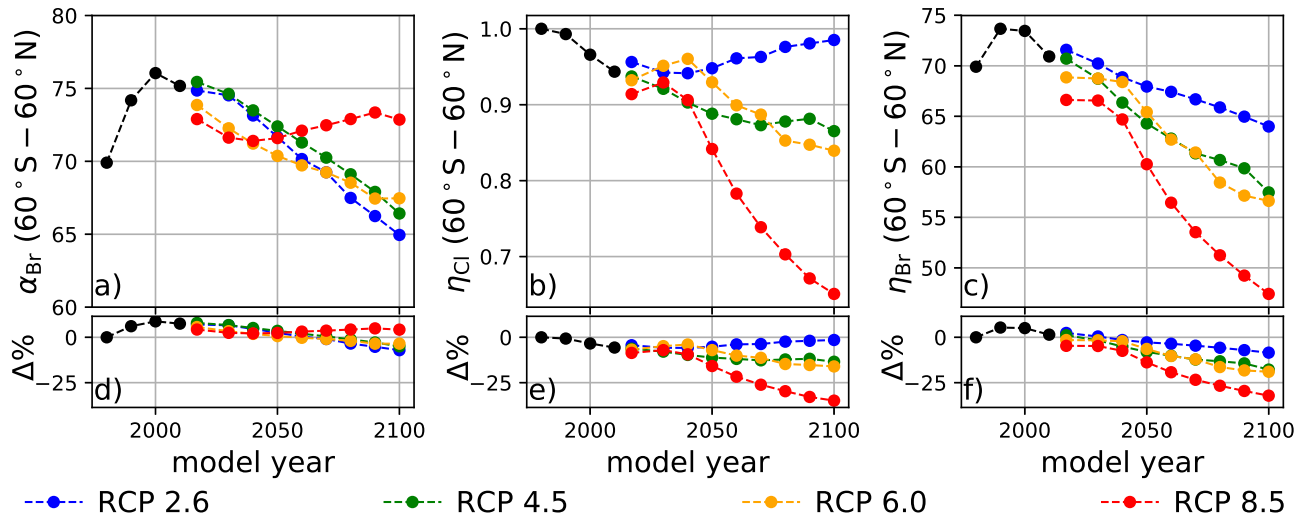


Figure 3. Extrapolar α and η computed on a decadal basis as a function of RCP scenario. Black traces were calculated using historical boundary conditions. (a) α_{Br} , (b) η_{Cl} , and (c) η_{Br} . Percent differences of values in (a), (b), and (c) relative to the year 1980 are presented in panels (d), (e), and (f) respectively.

Variation in the model output as a function of the mixing ratio of CH_4 is presented in Figure 4 panels (b),(f), and (j). Unlike the case of N_2O , α_{Br} , panel (b), is a strong function of CH_4 , increasing as the mixing ratio is increased from the pre-industrial value to 2x RCP 8.5 year 2100 quantities. The reason for this behavior is made evident upon evaluation of η_{Cl} and η_{Br} in panels (f) and (j). The reaction of Cl with CH_4 is fast, forming the inorganic reservoir HCl, but the analogous reaction of Br with CH_4 does not effectively occur. Despite these factors, some suppression of the bromine cycle does occur as a result of competition with enhanced HO_x (from the oxidation of CH_4) for a reduced quantity of ClO_x reaction partners.

The effect of changing Br_y/Cl_y ratios was investigated over the range of 0.0057 – 0.0093. This range encapsulates the minimum and maximum ratios expected between the years 1980 – 2100 according to WMO 2018 Table 6-4. These values were computed according to Eq. (11) using the trend-independent fractional release factors of Engel et al. (2018a). The values of α_{Br} , η_{Cl} , and η_{Br} are presented in Figure 4 panels (c), (g), and (k), respectively. Values of α_{Br} are generally expected to decrease as the ratio of Br_y/Cl_y increases.

$$\frac{Br_y}{Cl_y}(t, \Gamma) = \frac{\sum_i \bar{f}_i(\Gamma) n_{i,Br} \cdot \chi_{0,i}(t)}{\sum_i \bar{f}_i(\Gamma) n_{i,Cl} \cdot \chi_{0,i}(t)} \quad (11)$$

Both Chipperfield and Pyle (1998) and Danilin et al. (1996) demonstrated that α_{Br} in the polar vortex is highly dependent on the relative mixing ratios of available bromine and chlorine, maximizing at low Br_y/Cl_y because of the enhanced abundance of ClO reaction partners for each BrO radical in those conditions. Within the polar vortex the fraction of ozone loss due to the chlorine peroxide cycle declines as Br_y/Cl_y increases; however, the extent of ozone depletion following the addition of bromine

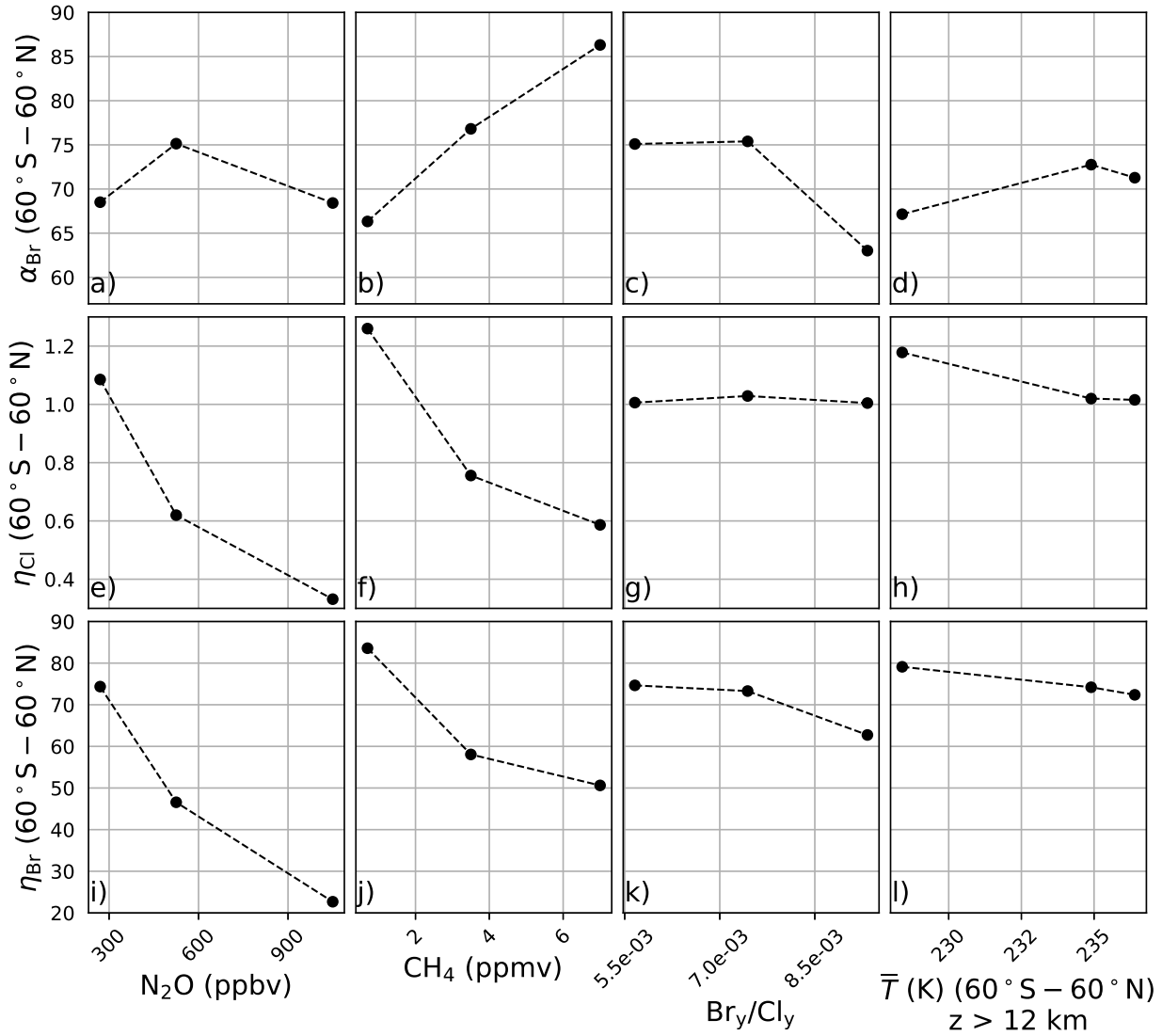


Figure 4. Extrapolar α and η sensitivity to perturbation parameters. N_2O : (a) α_{Br} , (e) η_{Cl} , (i) η_{Br} . CH_4 : (b) α_{Br} , (f) η_{Cl} , (j) η_{Br} . Br_y/Cl_y : (c) α_{Br} , (g) η_{Cl} , (k) η_{Br} . Temperature: (d) α_{Br} , (h) η_{Cl} , (l) η_{Br} .

does not increase proportionately because the system is controlled by the chlorine abundance. While the same relationship
255 between α_{Br} and Br_y/Cl_y exists in the extrapolar stratosphere, the chemistry responsible for this effect is different. The higher
temperatures of the extrapolar stratosphere render the chlorine peroxide cycle ineffective for the loss of ozone. We find that the
extent of ozone loss following the addition of bromine increases significantly due to $\text{BrO}_x\text{-ClO}_x$ and $\text{BrO}_x\text{-HO}_x$ cycles, and we
derive extrapolar α_{Br} values as function of Br_y/Cl_y qualitatively consistent with the extrapolar results of Chipperfield and Pyle
(1998).

260 Evaluations of the model in which stratospheric temperature profiles were varied between RCP 8.5 year 2100 (low), RCP 2.6
year 2030 (medium), and 1978 – 2004 climatological averages (high) demonstrate a dampened sensitivity of α_{Br} , as presented
in Figure 4 panel (d), in which α_{Br} increases by only 6% from the coldest scenario to the warmest scenario. Heterogeneous
activation of chlorine in the coldest scenario boosts η_{Cl} by about 17%, as shown in panel (h). The heterogeneous conversion
of bromine reservoirs to active bromine is much less temperature-sensitive than the analogous reactions for chlorine, and this
265 insensitivity is indicated in panel (l); however, η_{Br} does respond to the temperature perturbation primarily as a function of
changes in the partitioning of Cl_y , as in the sensitivity studies of CH_4 and Br_y/Cl_y .

3.3 Future EESC

Propagation of EESC using climate-invariant α_{Br} per Eq. (3) or climate-varying α_{Br} per Eq. (5) produces significantly different
dates of extrapolar halogen recovery than propagation of EESBnC using η -factor normalization as in Eq. (9). EESC and
270 EESBnC values are presented in Table 3 for historical and future chemistry/climate scenarios. In all cases, the computations
were informed by the trend-independent fractional release factors provided in Table 1 of Engel et al. (2018a); though fractional
release factors are likely to vary as the climate evolves (Leedham-Elvidge et al., 2018), these factors correlate with the specified
dynamics employed in this analysis. The EESC and EESBnC calculations are visualized in Figure 5.

In panel (a) of Figure 5, EESC is computed per Eq. (3) for static $\alpha_{\text{Br}} = 60$ (grey dashed line) and $\alpha_{\text{Br}} = 70$ (magenta dashed
275 line) and per Eq. (5) using climate-varying α_{Br} for the four RCP scenarios (colored solid lines). Values of α_{Br} were interpolated
between values indicated in Table 2. For reference, the black dots indicate 1980 EESC mixing ratios with $\alpha_{\text{Br}}=70$. Notably,
there exists very little variation between the RCP scenarios computed using Eq. (5), with maximum deviation of 1.5 years
(spanning January 2062 – June 2063) for recovery to 1980 EESC values, as shown in Table 4. Scenarios of climate-invariant
 $\alpha_{\text{Br}}=60$ or $\alpha_{\text{Br}}=70$ provide EESC recovery dates (June 2061 and March 2062, respectively) in close agreement with the RCP
280 scenarios. Note that for clarity, the 1980 EESC reference line for $\alpha_{\text{Br}}=60$ is not plotted in Figure 5 panel (a).

Taking chemistry/climate changes into account (when Eq. (9) is used for EESBnC computation) results in significant varia-
tions in future EESBnC between the RCP scenarios, as shown in panel (b) of Figure 5. For comparison purposes, as in panel
(a), the black dots provide the 1980 chemistry/climate benchmark EESC mixing ratio with $\alpha_{\text{Br}}=70$, and the dashed magenta
line shows EESC propagated with climate-invariant $\alpha_{\text{Br}} = 70$ (equivalently calculated here with $\eta_{\text{Cl}}=1$ and $\eta_{\text{Br}}=70$). The range
285 of values for the return of EESBnC to 1980 levels between the RCP scenarios in panel (b) spans a decade, 2048 to 2058, as
shown in Table 4. For all RCP scenarios, the expected recovery date of the inorganic halogen content of the stratosphere to the
ozone-depleting equivalent of the year 1980 is significantly sooner than the date expected using EESC. Importantly, the earlier

Table 3. EESC (pptv) and EESBnC (pptv) for historical and future chemistry/climate states^a

Year	previous method ^b		Historical ^{c,d}		Year	previous method ^b		RCP 2.6 ^{c,d}		RCP 4.5 ^{c,d}		RCP 6.0 ^{c,d}		RCP 8.5 ^{c,d}		
	$\alpha_{\text{Br}} = 60$	$\alpha_{\text{Br}} = 70$	α_{Br}	η		$\alpha_{\text{Br}} = 60$	$\alpha_{\text{Br}} = 70$	α_{Br}	η	α_{Br}	η	α_{Br}	η	α_{Br}	η	α_{Br}
1980	1067	1115	1115	1115	2020	1614	1694	1733	1653	1737	1623	1723	1611	1716	1572	1572
1990	1575	1642	1664	1663	2030	1478	1550	1582	1493	1583	1460	1567	1488	1562	1450	1450
2000	1911	2003	2056	1992	2040	1335	1399	1420	1337	1423	1287	1408	1351	1408	1279	1279
2010	1757	1848	1896	1793	2050	1198	1257	1268	1201	1272	1132	1260	1175	1267	1074	1074
					2060	1084	1139	1140	1094	1146	1011	1137	1026	1150	907	907
					2070	990	1042	1039	1000	1049	917	1039	922	1055	784	784
					2080	914	964	952	928	960	843	957	819	978	691	691
					2090	851	899	881	864	889	784	887	752	915	617	617
					2100	798	845	822	810	829	719	833	700	859	561	561

^aStratospheric mean age-of-air = 3 years.

^bEESC using static α_{Br} , calculated per Eq. (3).

^cClimate-variant EESC (column indicated by α_{Br}) calculated per Eq. (5).

^dEESBnC (column indicated by η) calculated per Eq. (9) and benchmarked to $\Xi=1980$.

Table 4. Date of EESC and EESBnC recovery to 1980 Benchmark Value^a

previous method ^b		RCP 2.6 ^{c,d}		RCP 4.5 ^{c,d}		RCP 6.0 ^{c,d}		RCP 8.5 ^{c,d}	
$\alpha_{Br} = 60$	$\alpha_{Br} = 70$	α_{Br}	η	α_{Br}	η	α_{Br}	η	α_{Br}	η
2061.6	2062.2	2062.3	2057.9	2063.0	2051.1	2062.0	2053.7	2063.5	2047.9

^aStratospheric mean age-of-air = 3 years. Fractional years provided to better demonstrate sensitivity of perturbation parameters.

^bEESC using static α_{Br} calculated per Eq. (3)

^cClimate-variant EESC (column indicated by α_{Br}) calculated per Eq. (5).

^dEESBnC (column indicated by η) calculated per Eq. (9) and benchmarked to $\Xi=1980$.

ozone recovery dates predicted by EESBnC using Eq. (9) are in closer agreement with the 3-D CCM results of Dhomse et al. (2018) than recovery dates calculated using EESC. We note that this analysis does not include the impact of an accelerated Brewer-Dobson circulation, which would further hasten our projected date of recovery.

The divergences of expected values between the calculation techniques are even more pronounced as the century unfolds. Panel (c) of Figure 5 provides the differences between EESC calculated with Eq. (5) and EESBnC calculated using Eq. (9). As the century ends, the EESBnC method shows that there is a difference exceeding 300 pptv equivalent stratospheric Cl in the RCP 8.5 scenario relative to a calculation of EESC. These discrepancies are negligible in the RCP 2.6 scenario because the greenhouse gas inventory of the RCP 2.6 year 2100 scenario is very similar to the greenhouse gas inventory of the contemporary stratosphere. Intermediate GHG scenarios lie in between these two extremes.

4 Conclusions

The future stratosphere will be very different than the stratosphere of today in terms of trace gas loading, temperature structure, and radiative-dynamical transport. In this work, we used a 2-D chemical-transport/aerosol model to evaluate how differences in the trace gas loading and the temperature structure of the future atmosphere might influence the relative rates at which inorganic halogen species destroy ozone. These differences can be quite large and are very sensitive to the chemistry/climate boundary conditions imposed.

We provide the framework for adjusting EESC to accommodate changes in the ozone processing rates of both chlorine and bromine driven by climate and chemistry. Current formulations of the bromine alpha factor obfuscate the fact that rates of ozone destruction by chlorine are changing alongside rates of ozone destruction by bromine. In some cases, as in RCP 8.5, these rates change in concert, producing a largely time-invariant α_{Br} over the course of the twenty-first century; however, the actual rates of ozone destruction facilitated by chlorine and bromine would have changed significantly, declining to about 65% of their 1980 values. For this reason, we have refactored the bromine alpha factor in terms of a climate normalization using new eta factors, which provide an indication of the ozone-processing power of the atmosphere relative to a benchmark chemistry/climate state.

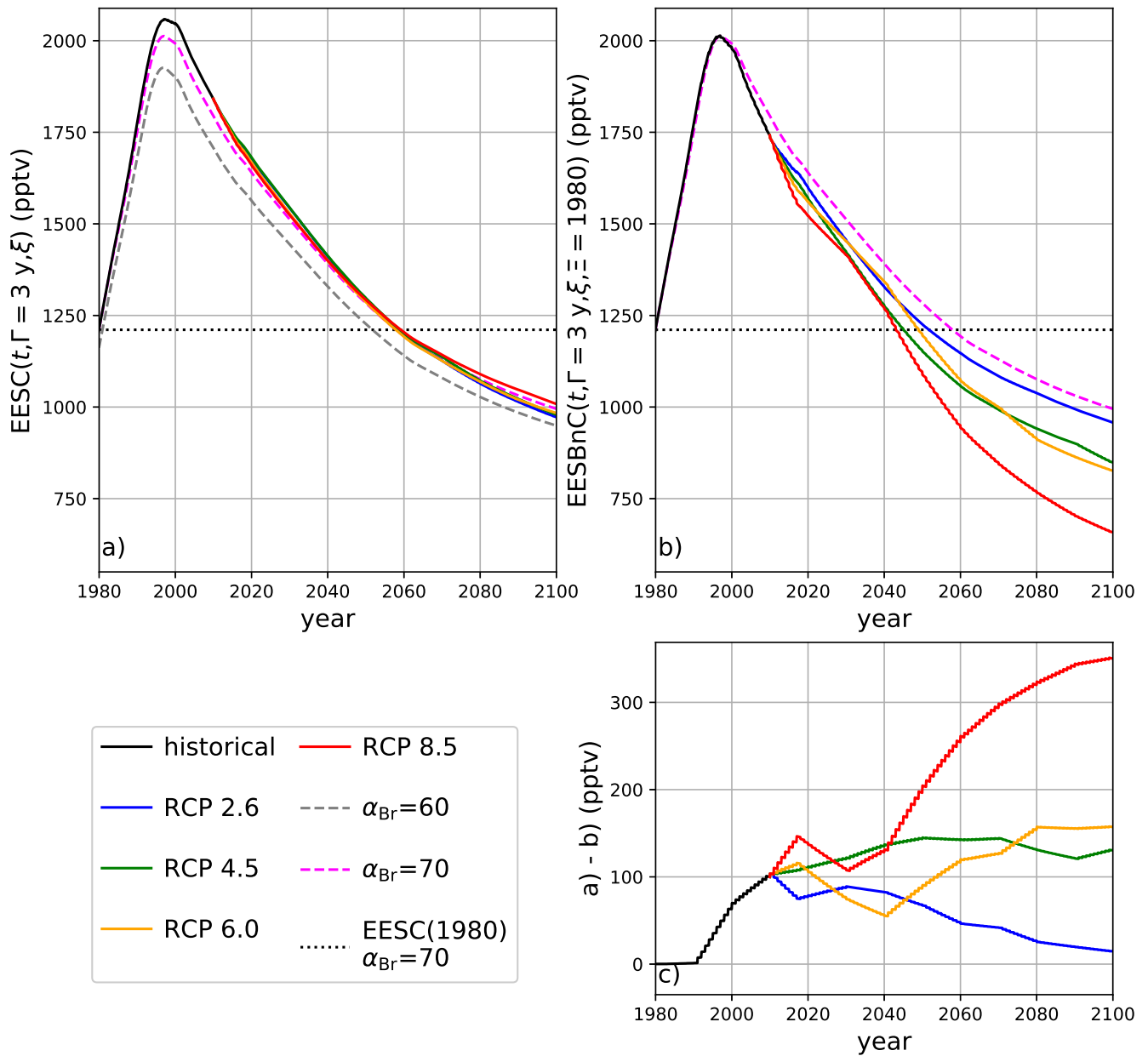


Figure 5. Calculations of EESC and EESBnC from 1980 – 2100 using 3-year stratospheric mean age. (a) EESC calculated per Eq. (3) and Eq. (5). Dashed traces: constant α_{Br} as indicated in the legend. Solid traces: α_{Br} interpolated as a function of time from values indicated in Table 2. Dotted black line: EESC corresponding to the year 1980 with $\alpha_{Br}=70$. (b) Calculation of EESBnC per Eq. (9) with benchmark chemistry/climate state $\Xi = 1980$. Solid lines: η_{Cl} and η_{Br} interpolated as a function of time from values indicated in Table 2. Magenta dashed line: EESBnC propagated with static $\eta_{Cl}=1$ and $\eta_{Br}=70$ (equivalent to EESC calculated per Eq. (3) with $\alpha_{Br}=70$, as in panel (a)). Dotted black line: EESC corresponding to the year 1980 with $\alpha_{Br}=70$. (c) RCP scenario differences between panel (a) and panel (b).

When we insert η_{Cl} and η_{Br} into the formulation for the time-propagation of EESC (Eq. (9)), we obtain EESBnC. This metric teases out differences in the capability of the inorganic halogen background of the stratosphere to destroy ozone as a function of future chemistry/climate scenario. Using this treatment, we find that the emission of large quantities of CH_4 and N_2O , as in the RCP 8.5 emission scenario, decreases the ozone-processing power of the end-of-century future atmosphere by 36% relative to what would be expected by calculating EESC (as in Eq. (5)). Using EESBnC, the recovery of the stratospheric ozone layer to the thickness observed in 1980 is predicted to be 14 years earlier than the date obtained using EESC in the RCP 8.5 scenario, bringing parameterized estimates of the extrapolar ozone recovery date into closer agreement with more costly 3-D CCM simulations.

Data availability. Replication data for this work may be obtained from the Harvard Dataverse repository: Replication Data for: Reformulating the Bromine Alpha Factor and EESC: Evolution of Ozone Destruction Rates of Bromine and Chlorine in Future Climate Scenarios (Klobas, 2020).

Author contributions. Concept: JEK and DMW. Experiment Design: JEK, DKW, RJS, and DMW. Implementation and data reduction: JEK and RJS. All authors discussed the results and developed the manuscript.

Competing interests. The authors declare they have no conflict of interest.

Acknowledgements. Work conducted at Harvard University was supported by the National Science Foundation under Grant No. 1764171. Work conducted at the University of Maryland was supported by the National Aeronautics and Space Administration Atmospheric Composition and Modeling Program (ACMAP) under Grant No. 80NSSC19K0983 . JEK thanks N. Allen, J. G. Anderson, W. T. Ball, G. Chiodo, J. Hansen, and T. Peter for helpful discussion of the work. For our use of RCP temperature fields, we acknowledge the World Climate Research Programme's Working Group on Coupled Modelling, which is responsible for CMIP, and we thank the Japan Agency for MarineEarth Science and Technology, Atmosphere and Ocean Research Institute (The University of Tokyo), and National Institute for Environmental Studies.

References

- Austin, J. and Wilson, R. J.: Ensemble simulations of the decline and recovery of stratospheric ozone, *Journal of Geophysical Research: Atmospheres*, 111, <https://doi.org/10.1029/2005JD006907>, 2006.
- 335 Banerjee, A., Maycock, A. C., Archibald, A. T., Abraham, N. L., Telford, P., Braesicke, P., and Pyle, J. A.: Drivers of changes in stratospheric and tropospheric ozone between year 2000 and 2100, *Atmospheric Chemistry and Physics*, 16, 2727–2746, <https://doi.org/10.5194/acp-16-2727-2016>, 2016.
- Braesicke, P., Neu, J., Fioletov, V., Godin-Beekmann, S., Hubert, D., Petropavlovskikh, I., Shiotani, M., and Sinnhuber, B.-M.: Update on Global Ozone: Past, Present, and Future, chap.3, in *Scientific Assessment of Ozone Depletion: 2018, Global Ozone Research and*
- 340 *Monitoring Project - Report No.58*, World Meteorological Association, Geneva, 2018.
- Brasseur, G. P., Granier, C., and Walters, S.: Future changes in stratospheric ozone and the role of heterogeneous chemistry, *Nature*, 348, 626–628, <https://doi.org/10.1038/348626a0>, 1990.
- Brune, W. H. and Anderson, J. G.: In situ observations of midlatitude stratospheric ClO and BrO, *Geophysical research letters*, 13, 1391–1394, <https://doi.org/10.1029/GL013i013p01391>, 1986.
- 345 Burkholder, J. B., Sander, S. P., Abbatt, J. P. D., Barker, J. R., Huie, R. E., Kolb, C. E., Kurylo, M. J., Orkin, V. L., Wilmouth, D. M., and Wine, P. H.: Chemical kinetics and photochemical data for use in atmospheric studies, evaluation no. 18, JPL Publication 15-10, Jet Propulsion Laboratory, Pasadena, 2015.
- Butchart, N., Scaife, A., Bourqui, M., De Grandpré, J., Hare, S., Kettleborough, J., Langematz, U., Manzini, E., Sassi, F., Shibata, K., et al.: Simulations of anthropogenic change in the strength of the Brewer–Dobson circulation, *Climate Dynamics*, 27, 727–741,
- 350 <https://doi.org/10.1007/s00382-006-0162-4>, 2006.
- Charlton-Perez, A. J., Hawkins, E., Eyring, V., Cionni, I., Bodeker, G. E., Kinnison, D. E., Akiyoshi, H., Frith, S. M., Garcia, R., Gettelman, A., et al.: The potential to narrow uncertainty in projections of stratospheric ozone over the 21st century, *Atmospheric Chemistry and Physics*, 10, 9473–9486, <https://doi.org/10.5194/acp-10-9473-2010>, 2010.
- Chiodo, G., Polvani, L. M., Marsh, D. R., Stenke, A., Ball, W., Rozanov, E., Muthers, S., and Tsigaridis, K.: The response of the ozone layer
- 355 to quadrupled CO₂ concentrations, *Journal of Climate*, 31, 3893–3907, <https://doi.org/10.1175/JCLI-D-17-0492.1>, 2018.
- Chipperfield, M. and Pyle, J.: Model sensitivity studies of Arctic ozone depletion, *Journal of Geophysical Research: Atmospheres*, 103, 28 389–28 403, <https://doi.org/10.1029/98JD01960>, 1998.
- Daniel, J. S., Solomon, S., and Albritton, D. L.: On the evaluation of halocarbon radiative forcing and global warming potentials, *Journal of Geophysical Research: Atmospheres*, 100, 1271–1285, <https://doi.org/10.1029/1999JD900381>, 1995.
- 360 Daniel, J. S., Solomon, S., Portmann, R., and Garcia, R.: Stratospheric ozone destruction: The importance of bromine relative to chlorine, *Journal of Geophysical Research: Atmospheres*, 104, 23 871–23 880, <https://doi.org/10.1029/1999JD900381>, 1999.
- Danilin, M. Y., Sze, N.-D., Ko, M. K., Rodriguez, J. M., and Prather, M. J.: Bromine-chlorine coupling in the Antarctic Ozone Hole, *Geophysical research letters*, 23, 153–156, <https://doi.org/10.1029/95GL03783>, 1996.
- Dhomse, S. S., Kinnison, D., Chipperfield, M. P., Salawitch, R. J., Cionni, I., Hegglin, M. I., Abraham, N. L., Akiyoshi, H., Archibald, A. T.,
- 365 Bednarz, E. M., et al.: Estimates of ozone return dates from Chemistry–Climate Model Initiative simulations, *Atmospheric Chemistry and Physics*, 18, 8409–8438, <https://doi.org/10.5194/acp-18-8409-2018>, 2018.
- Engel, A., Bönisch, H., Ostermüller, J., Chipperfield, M. P., Dhomse, S., and Jöckel, P.: A refined method for calculating equivalent effective stratospheric chlorine, *Atmospheric Chemistry and Physics*, 18, 601–619, <https://doi.org/10.5194/acp-18-601-2018>, 2018a.

- Engel, A., Rigby, M., B, B. J., Fernandez, R. P., Froidevaux, L., D, H. B., Hossaini, R., Saito, T., Vollmer, M. K., and Yao, B.: Update
370 on Ozone-Depleting Substances (ODS) and Other Gases of Interest to the Montreal Protocol, chap.1, in Scientific Assessment of Ozone
Depletion: 2018, Global Ozone Research and Monitoring Project - Report No.58, World Meteorological Association, Geneva, 2018b.
- Eyring, V., Cionni, I., Bodeker, G. E., Charlton-Perez, A., Kinnison, D. E., Scinocca, J. F., Waugh, D. W., Akiyoshi, H., Bekki, S., Chip-
perfield, M. P., et al.: Multi-model assessment of stratospheric ozone return dates and ozone recovery in CCMVal-2 models, *Atmospheric
Chemistry and Physics*, 10, 9451–9472, <https://doi.org/10.5194/acp-10-9451-2010>, 2010.
- 375 Eyring, V., Arblaster, J. M., Cionni, I., Sedláček, J., Perlwitz, J., Young, P. J., Bekki, S., Bergmann, D., Cameron-Smith, P., Collins, W. J.,
et al.: Long-term ozone changes and associated climate impacts in CMIP5 simulations, *Journal of Geophysical Research: Atmospheres*,
118, 5029–5060, <https://doi.org/10.1002/jgrd.50316>, 2013.
- Fleming, E. L., Jackman, C. H., Stolarski, R. S., and Considine, D. B.: Simulation of stratospheric tracers using an improved em-
pirically based two-dimensional model transport formulation, *Journal of Geophysical Research: Atmospheres*, 104, 23 911–23 934,
380 <https://doi.org/10.1029/1999JD900332>, 1999.
- Klobas, J. E.: Replication Data for: Reformulating the Bromine Alpha Factor and EESC: Evolution of Ozone Destruction Rates of Bromine
and Chlorine in Future Climate Scenarios, <https://doi.org/10.7910/DVN/EMKTTM>, 2020.
- Ko, M. K., Sze, N. D., Scott, C., Rodríguez, J. M., Weisenstein, D. K., and Sander, S. P.: Ozone depletion potential of CH₃Br, *Journal of
Geophysical Research: Atmospheres*, 103, 28 187–28 195, <https://doi.org/10.1029/98JD02537>, 1998.
- 385 Koenig, T. K., Baidar, S., Campuzano-Jost, P., Cuevas, C. A., Dix, B., Fernandez, R. P., Guo, H., Hall, S. R., Kinnison, D.,
Nault, B. A., et al.: Quantitative detection of iodine in the stratosphere, *Proceedings of the National Academy of Sciences*,
<https://doi.org/10.1073/pnas.1916828117>, 2020.
- Lary, D.: Catalytic destruction of stratospheric ozone, *Journal of Geophysical Research: Atmospheres*, 102, 21 515–21 526,
<https://doi.org/10.1029/97JD00912>, 1997.
- 390 Leedham-Elvidge, E., Brenninkmeijer, C. A., Gallagher, E., Engel, A., Bönisch, H., Fraser, P. J., Gallacher, E., Langenfelds, R., Mühle, J.,
Oram, D. E., et al.: Evaluation of stratospheric age of air from CF₄, C₂F₆, C₃F₈, CHF₃, HFC-125, HFC-227ea and SF₆; implications for
the calculations of halocarbon lifetimes, fractional release factors and ozone depletion potentials, *Atmospheric Chemistry and Physics*,
18, 3369–3385, <https://doi.org/10.5194/acp-18-3369-2018>, 2018.
- Li, F., Stolarski, R., and Newman, P.: Stratospheric ozone in the post-CFC era, *Atmospheric Chemistry and Physics*, 9, 2207–2213,
395 <https://doi.org/10.5194/acp-9-2207-2009>, 2009.
- McElroy, M. B., Salawitch, R. J., Wofsy, S. C., and Logan, J. A.: Reductions of Antarctic ozone due to synergistic interactions of chlorine
and bromine, *Nature*, 321, 759–762, <https://doi.org/10.1038/321759a0>, 1986.
- Meinshausen, M., Smith, S. J., Calvin, K., Daniel, J. S., Kainuma, M., Lamarque, J.-F., Matsumoto, K., Montzka, S., Raper, S.,
Riahi, K., et al.: The RCP greenhouse gas concentrations and their extensions from 1765 to 2300, *Climatic change*, 109, 213,
400 <https://doi.org/10.1007/s10584-011-0156-z>, 2011.
- Newman, P. A., Nash, E. R., Kawa, S. R., Montzka, S. A., and Schauffler, S. M.: When will the Antarctic ozone hole recover?, *Geophysical
Research Letters*, 33, <https://doi.org/10.1029/2005GL025232>, 2006.
- Newman, P. A., Daniel, J. S., Waugh, D. W., and Nash, E. R.: A new formulation of equivalent effective stratospheric chlorine (EESC),
Atmospheric Chemistry and Physics, 7, 4537–4552, <https://doi.org/10.5194/acp-7-4537-2007>, 2007.
- 405 Oman, L., Waugh, D., Kawa, S., Stolarski, R., Douglass, A., and Newman, P.: Mechanisms and feedback causing changes in upper strato-
spheric ozone in the 21st century, *Journal of Geophysical Research: Atmospheres*, 115, <https://doi.org/10.1029/2009JD012397>, 2010.

- Ostermüller, J., Bönisch, H., Jöckel, P., and Engel, A.: A new time-independent formulation of fractional release., *Atmospheric Chemistry & Physics*, 17, <https://doi.org/10.5194/acp-17-3785-2017>, 2017.
- 410 Plummer, D., Scinocca, J., Shepherd, T., Reader, M., and Jonsson, A.: Quantifying the contributions to stratospheric ozone changes from ozone depleting substances and greenhouse gases, *Atmospheric Chemistry and Physics*, 10, 8803–8820, <https://doi.org/10.5194/acp-10-8803-2010>, 2010.
- Rosenfield, J. E., Douglass, A. R., and Considine, D. B.: The impact of increasing carbon dioxide on ozone recovery, *Journal of Geophysical Research: Atmospheres*, 107, ACH–7, <https://doi.org/10.1029/2001JD000824>, 2002.
- 415 Salawitch, R. J., Weisenstein, D. K., Kovalenko, L. J., Sioris, C. E., Wennberg, P. O., Chance, K., Ko, M. K., and McLinden, C. A.: Sensitivity of ozone to bromine in the lower stratosphere, *Geophysical research letters*, 32, <https://doi.org/10.1029/2004GL021504>, 2005.
- Sander, S. P., Ravishankara, A. R., Golden, D. M., Kolb, C. E., Kurylo, M. J., Molina, M. J., Moortgat, G. K., Finlayson-Pitts, B. J., Wine, P. H., and Huie, R. E.: Chemical kinetics and photochemical data for use in atmospheric studies, evaluation no. 15, JPL Publication 06-2, Jet Propulsion Laboratory, Pasadena, 2006.
- 420 Sinnhuber, B.-M., Sheode, N., Sinnhuber, M., Chipperfield, M., and Feng, W.: The contribution of anthropogenic bromine emissions to past stratospheric ozone trends: a modelling study, *Atmospheric Chemistry and Physics*, 9, 2863–2871, <https://doi.org/10.5194/acp-9-2863-2009>, 2009.
- Solomon, S., Garcia, R. R., Rowland, F. S., and Wuebbles, D. J.: On the depletion of Antarctic ozone, *Nature*, 321, 755–758, <https://doi.org/10.1038/321755a0>, 1986.
- 425 Solomon, S., Mills, M., Heidt, L., Pollock, W., and Tuck, A.: On the evaluation of ozone depletion potentials, *Journal of Geophysical Research: Atmospheres*, 97, 825–842, <https://doi.org/10.1029/94JD02028>, 1992.
- Van Vuuren, D. P., Edmonds, J., Kainuma, M., Riahi, K., Thomson, A., Hibbard, K., Hurtt, G. C., Kram, T., Krey, V., Lamarque, J.-F., et al.: The representative concentration pathways: an overview, *Climatic change*, 109, 5, <https://doi.org/10.1007/s10584-011-0148-z>, 2011.
- 430 Wales, P. A., Salawitch, R. J., Nicely, J. M., Anderson, D. C., Canty, T. P., Baidar, S., Dix, B., Koenig, T. K., Volkamer, R., Chen, D., et al.: Stratospheric injection of brominated very short-lived substances: Aircraft observations in the Western Pacific and representation in global models, *Journal of Geophysical Research: Atmospheres*, 123, 5690–5719, <https://doi.org/10.1029/2017JD027978>, 2018.
- Watanabe, S., Hajima, T., Sudo, K., Nagashima, T., Takemura, T., Okajima, H., Nozawa, T., Kawase, H., Abe, M., Yokohata, T., et al.: MIROC-ESM 2010: Model description and basic results of CMIP5-20c3m experiments, *Geoscientific Model Development*, 4, 845, <https://doi.org/10.5194/gmd-4-845-2011>, 2011.
- 435 Waugh, D., Oman, L., Kawa, S., Stolarski, R., Pawson, S., Douglass, A., Newman, P., and Nielsen, J.: Impacts of climate change on stratospheric ozone recovery, *Geophysical Research Letters*, 36, <https://doi.org/10.1029/2008GL036223>, 2009.
- Weisenstein, D., Penner, J., Herzog, M., and Liu, X.: Global 2-D intercomparison of sectional and modal aerosol modules, *Atmospheric Chemistry and Physics*, 7, 2339–2355, <https://doi.org/10.5194/acp-7-2339-2007>, 2007.
- Weisenstein, D. K., Yue, G. K., Ko, M. K., Sze, N.-D., Rodriguez, J. M., and Scott, C. J.: A two-dimensional model of sulfur species and aerosols, *Journal of Geophysical Research: Atmospheres*, 102, 13 019–13 035, <https://doi.org/10.1029/97JD00901>, 1997.
- 440 Wofsy, S. C., McElroy, M. B., and Yung, Y. L.: The chemistry of atmospheric bromine, *Geophysical Research Letters*, 2, 215–218, <https://doi.org/10.1029/GL002i006p00215>, 1975.
- World Meteorological Organization: Scientific Assessment of Ozone Depletion: 2018, World Meteorological Organization, Global Ozone Research and Monitoring Project - Report No. 58, World Meteorological Organization, Geneva, 2018.

- 445 Yung, Y., Pinto, J., Watson, R., and Sander, S.: Atmospheric bromine and ozone perturbations in the lower stratosphere, *Journal of the Atmospheric Sciences*, 37, 339–353, [https://doi.org/10.1175/1520-0469\(1980\)037<0339:ABAOPI>2.0.CO;2](https://doi.org/10.1175/1520-0469(1980)037<0339:ABAOPI>2.0.CO;2), 1980.
- Zubov, V., Rozanov, E., Egorova, T., Karol, I., and Schmutz, W.: Role of external factors in the evolution of the ozone layer and stratospheric circulation in 21st century, *Atmospheric Chemistry and Physics*, 13, 4697–4706, <https://doi.org/10.5194/acp-13-4697-2013>, 2013.