

# Scant evidence for a volcanically forced winter warming over Eurasia following the Krakatau eruption of August 1883

Lorenzo M. Polvani<sup>1,2,3</sup> and Suzana J. Camargo<sup>2,3</sup>

<sup>1</sup>Department of Applied Physics and Applied Mathematics, Columbia University, New York, NY 10027, USA

<sup>2</sup>Department of Earth and Environmental Sciences, Columbia University, New York, NY 10027, USA

<sup>3</sup>Lamont-Doherty Earth Observatory, Columbia University, Palisades, NY 10964, USA

**Correspondence:** Lorenzo M. Polvani (LMP@COLUMBIA.EDU)

**Abstract.** A recent study has presented compelling new evidence suggesting that the observed Eurasian warming in the winter following the 1992 Pinatubo eruption was, in all likelihood, unrelated to the presence of volcanic aerosols in the stratosphere. Building on that study, we here turn our attention to the only other low-latitude eruption in the instrumental period with a comparably large magnitude: the Krakatau eruption of August 1883. We study in detail the temperature anomalies in the first winter following that eruption, analyzing (1) observations, (2) reanalyses, and (3) models. Three findings emerge from our analysis. First, the observed post-Krakatau winter warming over Eurasia was unremarkable (only between 1- and 2- $\sigma$  of the distribution from 1850 to present). Second, reanalyses based on assimilating surface pressure alone indicate the existence of very large uncertainties, so much so that a Eurasian cooling is not incompatible with those reanalyses. Third, models robustly show the complete absence of a volcanically forced Eurasian winter warming: we here analyze both a 100-member initial-condition ensemble, and 140 simulations from the Phase 5 of Coupled Model Intercomparison Project. This wealth of evidence strongly suggests that, as in the case of Pinatubo, the observed warming over Eurasia in the winter of 1883/84 was, in all likelihood, unrelated to the Krakatau eruption. This, taken together with a similar result for Pinatubo, leads us to conclude that if volcanically forced Eurasian winter warming exists at all an eruption with a magnitude far exceeding these two events would be needed to produce a detectable surface warming.

15 *Copyright statement.* ©Author(s) 2020

## 1 Introduction

The vexed question of whether large, low-latitude volcanic eruptions are able to cause a winter warming of the continents in the Northern Hemisphere is receiving renewed attention. As the extant literature is quite confusing and often contradictory, a brief summary of how this topic has evolved will help set the stage for the present study.

20 The surprising idea of a post-eruption *warming*, obviously at odds with the naive expectation of a surface cooling from additional reflection of incoming short-wave radiation by the volcanic aerosols, was championed by a series of early observational studies (Groisman, 1992; Robock and Mao, 1992, 1995). These were accompanied by modeling studies (Graf et al., 1993;

Kirchner et al., 1999) which reported a causal relationship between strong eruptions and a positive phase of the North Atlantic Oscillation (NAO) in winter. These early studies were highly influential because they proposed a cogent physical mechanism linking low-latitude eruptions to high-latitude surface temperatures anomalies. In a nutshell: the lower stratospheric tropical warming associated with the absorption of long-wave radiation by the volcanic aerosols increases the equator-to-pole stratospheric temperature gradients, resulting in an anomalously strong polar vortex leading, in turn, to a positive NAO phase, and eventually a surface warming over Eurasia in the winter months (Kodera, 1994; Perlwitz and Graf, 1995). We will refer to this mechanism as the “stratospheric pathway”.

While such a mechanism appears plausible, these early observational and modeling claims have not stood the test of time. For instance, analyzing 15 eruptions in one temperature reconstruction extending back to 1586, Fischer et al. (2007) found that the largest winter warming over Europe seems to occur in the second post-eruption winter, not the first. If confirmed by other reconstructions, this result would obviously negate the stratospheric pathway mechanism, as the amount of aerosol left in stratosphere in the second post-eruption winter is a small fraction of the amount present in the first winter, and no physical process has been proposed that would provide a multi-year long memory in the polar stratosphere and the NAO. Even more perplexing are the numerous studies (Thomas et al., 2009a; Driscoll et al., 2012; Toohey et al., 2014; Bittner, 2015; Wunderlich and Mitchell, 2017, just to cite the most recent ones), which have analyzed, literally, dozens of state-of-the art climate remodels and repeatedly failed to replicate the early modeling results. Averaging over many different low-latitude eruptions, over many models, and over many runs, these more recent studies have consistently reported the lack of a statistically significant post-eruption surface winter warming over Eurasia. This begs the question: how could the later, better models fail to simulate the causal connection reported with the earlier, simpler models?

A resolution to this conundrum was recently proposed by Polvani et al. (2019), hereafter PBS19, who showed that much of the earlier literature had failed to properly account for the large internal variability associated with the stratospheric polar vortex and with the NAO. Focusing primarily on the 1991 Pinatubo eruption, PBS19 analyzed three “large ensembles” of model runs, and showed how tiny initial perturbations of the *same* model forced with the *same* volcanic aerosols result vastly different winter temperature anomalies over Eurasia. They also showed that, averaging over many runs, i.e. computing the “forced” response, yields insignificant post-eruption anomalies, in agreement with most recent studies. The early modeling studies, it so happens, simply lacked the vertical and horizontal resolution to properly simulate the internal variability of the Northern Hemisphere circulation, and thus yielded spurious results. PBS19, therefore, concluded that the observed Eurasian surface warming in the winter of 1991/1992 was, very likely, *not* caused by the preceding eruption of Mt Pinatubo.

That conclusion appears unassailable, since PBS19 merely corroborated the lack of a forced post-eruption winter warming already reported by many previous studies with many other models. Nonetheless, one might argue that the 1991 Pinatubo eruption was somehow peculiar, and thus unrepresentative of most, large, low-latitude eruptions. To determine if this is so different eruptions need to be examined. PBS19 did, in fact, examine the 1982 El Chichón eruption (Robock, 1983) with the same three large ensembles, and again concluded that the winter warming over Eurasia in the winter 1982/83 was, in all likelihood, *unrelated* to El Chichón. But this is perhaps unsurprising, as the El Chichón eruption was of smaller magnitude than

the Pinatubo eruption. What is really needed, it should be clear, is a low-latitude eruption at least comparable in magnitude, if not larger, than the last Pinatubo eruption.

Hence this study: building on PBS19, we here examine the eruption of Mt. Krakatau in August of 1883. There are several reasons for focusing on that eruption. First, it is the only low-latitude eruption that occurred during the instrumental period with a magnitude comparable to the 1991 Pinatubo eruption (Robock, 2000), in both volcanic explosivity index (VEI) and dust veil index (DVI=1000): this means that we can establish, with some confidence, whether Eurasia was anomalously warm or cold in the first winter after the eruption. Second, the Twentieth Century Reanalysis (Compo et al., 2006) starts in 1851, and thus includes that eruption. In fact, not a single reanalysis, but a 56-member ensemble of that reanalysis is now available, so that the observational uncertainties can be quantified. Third, the historical integrations of dozens of models participating in Phase 5 of the Coupled Model Intercomparison Project (hereafter CMIP5; Taylor et al., 2012) also start at 1850: there is, therefore, a wealth of model output that covers that eruption, and we will examine both a large initial condition ensemble (100 members), and the multi-model CMIP5 ensemble.

As we will show in detail below, this wealth of data allows us to establish the three facts: 1) that Eurasia was indeed warmer than average in the winter following the 1883 eruption of Mt. Krakatau, but 2) that the anomalous warming that winter was in no way exceptional, and 3) that it is unlikely that volcanic aerosols were the *cause* of, or even substantially contributed to, that warming. After a brief section on methods, each of these facts will be discussed in detail in Sections 3-5. The paper will close with a summary and discussion.

## 2 Methods

### 2.1 Definitions

For each of the datasets detailed in the following subsection, we quantify the potential impact of the 1883 Krakatau eruption by computing a *winter temperature anomaly*, defined as the difference between the surface temperature in the winter 1883/84 (i.e the average of December 1883, January 1884, and February 1884) and the mean over a reference period, chosen to be five previous winters (i.e. from 1878/89 to 1882/1883). For brevity we will sometime refer to this quantity as “the post-Krakatau anomaly”, or simply “the anomaly.” Unless otherwise stated, the length of five seasons is chosen for the reference period throughout this paper; this is done to remain consistent with PBS19, so that the post-Krakatau anomalies may be quantitatively<sup>1</sup> compared with the post-Pinatubo anomalies. In the figures, we will use  $\Delta T_s$  to refer to these temperature anomalies.

Furthermore, as explained in detail in PBS19, and also suggested by Zambri and Robock (2016) and Bittner et al. (2016a), there is no plausible reason to consider the second winter after the eruption, as no study to date has proposed a credible

---

<sup>1</sup>Stenchikov et al. (2006), Driscoll et al. (2012), Bittner et al. (2016a) and most other studies, opted to use reference periods of different lengths for different eruptions. We understand their motivation for doing so: compositing the longest possible number of unperturbed years prior to each eruption. Our goal, however, is a little different: we are trying to validate the Pinatubo findings of PBS19 with a different eruption. Hence, we prefer to use the same reference period as PBS19, to avoid introducing a source of potential confusion. In any case; we shown below that the results are largely insensitive to the length of the reference period.

85 mechanism that would allow anomalies caused by the volcanic aerosols to affect the stratospheric polar vortex and the NAO  
beyond the first winter. Finally, to compute time series and probability distribution functions, the average Eurasian anomaly  
is computed as the mean over the region (40-70°N, 0-150°W), as in PBS19. We will refer to this as the “Eurasian box.” Our  
results are insensitive to this choice, as one can see from the actual anomaly maps, shown throughout the paper.

## 2.2 Datasets

90 To construct a comprehensive and convincing picture of potential impact of the 1883 Krakatau eruption on wintertime Eurasian  
temperatures, we here analyze three different types of surface temperature data: observational reconstructions, reanalyses and  
model output. We describe each one in detail in the following subsections.

### 2.2.1 Observations

Three distinct datasets which have constructed observational estimates of monthly-averaged temperatures are here analyzed:

- 95 1. The NOAA merged Global Surface Temperature (NOAAGlobalTemp) dataset, version 4.00, spanning the period January  
1880 to present (Smith et al., 2008; Vose et al., 2012). We will refer to this as the NOAA anomalies.
2. The GISS Surface temperature analysis, version 4, spanning the period January 1880 to present (Lenssen et al., 2019).  
We will refer to this as the GISTEMP anomalies.
3. The Climate Research Unit (CRU) air temperature anomalies, version 4, spanning the period January 1850 to present  
100 (Jones et al., 2012). We will refer to this as the CRUTEM anomalies.

While all three cover the 1883 Krakatau eruption, both the NOAA and GISTEMP products start at 1880, so only three  
winters are available to define a pre-eruption reference period. We test the robustness of the estimated anomalies as a function  
of the reference period in Section 3 below.

### 2.2.2 Reanalyses

105 At the time of this writing, the majority of available reanalyses reach back to 1979, the start of the satellite era, or a little  
earlier (e.g. JRA-55, Kobayashi et al., 2015, which starts at 1958), with only a few extending back to the beginning of the  
20th century (e.g. ERA-20C, Poli et al., 2016): unfortunately, none of these serve our purposes. However, the NOAA-CIRES  
Twenty Century Reanalysis, Version 2c (hereafter 20CR, Compo et al., 2011) extends back to January 1851, and can thus be  
used to study the 1883 Krakatau eruption. Recall that 20CR only assimilates sea level pressure measurements (Compo et al.,  
110 2006), while the underlying atmospheric model is forced with sea surface temperature reconstructions (Rayner et al., 2003)  
and time varying CO<sub>2</sub> concentrations, incoming solar radiation and volcanic aerosols. More importantly, we here analyze a 56-  
member ensemble of 20CR: this allows us to quantify the uncertainties associated with the post-eruption Eurasian temperature  
anomalies.

### 2.2.3 Models

115 It so happens that a huge amount of model output is available to study the 1883 Krakatau eruption. To a large degree, this is due to the fact that the CMIP5 project recommended that all so-called “historical” integrations should be initialized at the year 1850. Over that period, the CMIP5 also specified how models ought to be forced, with both natural (i.e., solar and volcanic) and anthropogenic (e.g., CO<sub>2</sub>) forcings, in order to be directly comparable with observations. Specifically, we here analyze two distinct datasets.

120 1. First, we consider the 100-member of historical simulations of the so-called “MPI Grand Ensemble” produced by the Max Planck Institute for Meteorology (hereafter MPI, Maher et al., 2019). The atmospheric component of that model (MPI-ESM-LR) has a horizontal resolution of 1.9° (approximately, at the equator), and 47 vertical levels with a model top at 0.01 hPa. As such it is a so-called “high-top” model, with a good representation of the stratospheric circulation and, more importantly, of its variability. We note, in passing, that the other widely analyzed large ensemble (Kay et al.,  
125 2015) was initialized at the year 1920, and therefore cannot be used for the purposes of this study. All simulations in this ensemble are performed with an identical model configuration and with identical forcings, following the CMIP5 protocol: they only differ in their initial conditions. This ensemble of runs allows us to unambiguously quantify the importance of internal variability, and contrast it with the forced response.

130 2. Next, we consider the CMIP5 historical (1850-2005) integrations: the output of 40 distinct models is available, with many groups contributing small ensembles of runs (typically 3 to 10 members), for a total of 140 historical runs. The specific models analyzed here, and the number of integrations available, are listed in Table 1. We examine all available simulations from these models, sorting the models into two categories: high-top and low-top, following the classification in Charlton-Perez et al. (2013) and Rea et al. (2018). If, as argued in the early studies, the stratospheric pathway is indeed operative, one should be able to see a clear difference between the models with a good representation of the stratosphere  
135 and those with a poorer representation.

## 3 Observations

We start by determining whether, in the first winter after the Krakatau eruption of August 1883, Eurasia was anomalously warm or anomalously cold. It is important to stress that for most eruptions occurring before the 19th century, not only is the strength of the eruption difficult to estimate, but even the surface temperature anomalies over Eurasia are only known with considerable  
140 uncertainties, as those eruptions predate the instrumental period. Hence the 1883 Krakatau eruption offers the only opportunity – other than the 1991 Pinatubo eruption – to examine a large, low-latitude event for which the surface temperature anomalies can be determined robustly.

The post-Krakatau wintertime anomalies, for the CRUTEM dataset are illustrated in the top row of Fig. 1. Focusing first on the middle column, where the December to February (DJF) mean is shown, we see a clear warming of the Eurasian continent.  
145 This independently confirms the result shown in Fig. 1 of Robock and Mao (1992), and again in Fig. 1 of Shindell et al.

(2004), obtained with an earlier versions of the CRU temperature reconstruction, and with slightly different methodologies. The post-Krakatau warming in DJF is further corroborated by the other two reconstructions we have analyzed, the NOAA and GISTEMP datasets, shown in the middle column of the bottom two rows of Fig. 1, respectively. Note, however, that the reference period for those two datasets is shorter (only 3 winters) than the standard 5-winter period used throughout this paper, as those reconstructions do not extend far enough into the past.

One might then legitimately wonder to what degree these anomalies might depend on the length of the reference period used. To address that concern, in Fig. 2 we show the post-Krakatau anomalies computed with respect to a 3-, 5- and 10-winter reference period from the CRUTEM product, the only one for which this calculation can be performed. As one can see, the warming in DJF is very robust: averaged over the Eurasian box, we obtain a mean warming of 1.75°C, 1.89°C and 1.91°C for, respectively 3-, 5- and 10-winter reference periods. We conclude, therefore, that the post-Krakatau DJF temperature anomaly is robust in the observations, irrespective of the dataset and reference period one uses.

Having established that a relative warming over Eurasia did, in fact, occur in the first winter following the 1883 Krakatau eruption, we now ask two important questions: (1) how persistent was that anomaly, and (2) how unusual was it? To shed some light on the persistence, we have plotted in left and right columns of Fig. 1, respectively, the November to January (NDJ) and January to March (JFM) anomalies. While Eurasian warming is present in NDJ, one can see that it turns into a cooling in JFM, notably to the east of the Ural Mountains. Examination of individual months (not shown) reveal a clear cooling over the Urals starting in February, and becoming large enough in March to dominate the JFM average. This suggests that, at least for this event, the warming anomalies over Eurasia did not persist into the late winter. Note that the seasonal polar vortex breakdown typically occurs around April 15 (as estimated from reanalyses, over the period 1981-2016, by Butler et al., 2019): hence the presumed stratospheric pathway would be operative in the month of March, but it does not appear to be persistent.

Finally, focusing again on the DJF months, we address the question of whether the post-Krakatau winter warming anomalies over Eurasia were, in some way, exceptional. Recall that the 1883 eruption of Mt. Krakatau was a cataclysmic event, causing over 36,000 deaths and producing a global cooling that lasted for several years, with temperatures not returning to normal until 1888 (Simkin and Fiske, 1983). And two modeling studies have even claimed that Krakatau may have so strongly impacted Southern Ocean temperatures as to alter ocean heat uptake for many decades (Fyfe, 2006; Gleckler et al., 2006). In such a context, one might expect the 1883/84 Eurasian temperature anomalies to clearly stand out.

It is perhaps disappointing, therefore, to discover that the post-Krakatau anomalies are far from exceptional, when compared to all the winters available in the instrumental record, as shown in Fig. 3a. In that figure we plot the probability distribution function (PDF) of wintertime (DJF) anomalies averaged over the Eurasian box, computed using all the available winters in the CRUTEM datasets (from 1850 to present), with the post-Krakatau winter highlighted by the blue vertical line. Notice how that line falls almost evenly between the one- $\sigma$  and two- $\sigma$  (dashed) lines: with a mean value at 1.89°C, the winter 1883/84 falls within the 85th percentile of the distribution. This is confirmed by the PDFs computed from the NOAA and GISTEMP dataset, using the shorter 3-winter reference period, shown in Fig. 3b and c, respectively. In those datasets too, the anomalies fall between one and two  $\sigma$  of the PDF. So, whereas the months (and years) following the 1883 Krakatau eruption may have been memorable in many respects, that adjective does not apply to the Eurasian wintertime anomalies. We emphasize that

this result does not rely on the use of any climate models: it is a *purely observational* result, and is robust across all three temperature reconstructions analyzed here.

#### 4 Reanalyses

Next we turn to examining the 20CR reanalysis, for which a 56-member ensemble is available, starting from the year 1850. The top row of Fig. 4 shows the *ensemble mean* post-Krakatau Eurasian anomalies in 20CR, for NDJ, DJF and JFM, and can be directly compared with the top row in Fig. 1. Although only sea level pressure measurements are assimilated into 20CR, its temperature anomalies are in good agreement with the observations. Note, in particular, how warming in NDJ and DJF gives way to a cooling in JFM over a large portion of Eurasia. This good agreement is perhaps not surprising, since an accurate reanalysis is expected to capture the observations.

Surprising, perhaps, is what can be seen by examining individual members of the ensemble. The anomalies for member #42 are shown in the middle row of Fig. 3: this is the member with the minimum temperature anomalies in DJF across the ensemble. Note the strong cooling in NDJ and DJF over most of Eurasia, which is diametrically opposite to the ensemble mean. It is important to stress that member #42 is driven by the *same* natural and anthropogenic forcings (including volcanic aerosols and CO<sub>2</sub>), and constrained by the *same* sea level pressure measurements, as all the other members of the ensemble. Its Eurasian cooling anomalies, therefore, are entirely consistent with those forcings and observations.

For completeness, in the bottom row of Fig. 3 we show the member with the maximum Eurasian temperature anomalies in DJF (member #7). The contrast with member #42 is remarkable. The key point here is that, driven with identical forcings and observations, these two members give diametrically opposite results. The conclusion, therefore, is that the observational uncertainties are large and that, while its occurrence is unlikely (only 3 of 56 members), a post-Krakatau cooling over Eurasian is not incompatible with the 20CR reanalysis.

#### 5 Models

Finally, to quantify the *volcanically forced* post-Krakatau Eurasian wintertime surface temperature anomaly (if any), i.e. to separate it from the large internal variability, and to establish whether the stratospheric pathway mechanism may have been operative in the first winter following that eruption, we turn to climate models. We start by examining the 100-member ensemble of historical simulations made available by the Max Plank Institute for Meteorology (hereafter MPI, Maher et al., 2019). We are aware that several large, initial-condition ensembles of historical simulations are now available (Deser et al., 2020). We have here chosen to focus on the MPI ensemble for two reasons. First, with 100 members, it is the largest ensembles currently available. Second, and more importantly: the atmospheric component is a so-called “high-top” model, with a good representation of the stratospheric circulation and, more importantly, of its variability. This is important if one is trying to evaluate whether the stratospheric pathway mechanism is indeed affecting the post-eruption Eurasian winter surface temperatures.

We start by examining the tropical, lower-stratospheric, post-eruption, temperature anomalies in the historical MPI simulations, to ensure that the volcanic aerosols in that model do indeed produce a noticeable warming in that region after each large, low-latitude eruption. The time series of tropical 50 hPa temperature anomalies, from 1850 to 2015, are shown in Fig. 5. Comparison with Fig. 3 of Driscoll et al. (2012) should reassure the reader that these simulations are comparable<sup>2</sup> with those of the CMIP5 models. Note that the 1883/84 ensemble mean MPI anomaly in the tropical lower stratosphere is close to 8°C, with some members showing an anomaly as large<sup>3</sup> as 10°C. Note, in addition, that the post-Krakatau tropical warming is in this model is similar the one for the 1991 Pinatubo eruption.

With this in mind, we now examine the *forced* wintertime Eurasian temperature response to the 1883 Krakatau eruption, as simulated by the MPI ensemble, obtained by averaging all 100 members. It is shown in the top row of Fig. 6 and, as expected, it is basically zero. We emphasize that this result is consistent with the findings of PBS19 for the 1991 Pinatubo eruption, and with the above cited papers which have shown that there is *no statistically significant volcanically forced* surface winter warming in the CMIP3 and CMIP5 models. In the spirit of PBS19, and unlike most previous studies on this subject, we here also examine individual ensemble members. In the middle and bottom rows of Fig. 6, we show the wintertime anomalies for the coldest and warmest member, respectively, of the MPI ensemble. We emphasize that these two members are subjected to an identical volcanic aerosol forcing, which causes a very large warming in the tropical lower stratosphere in both cases (see Fig. 5). And yet, member #37 simulates a large winter cooling while member #38 simulates a large winter warming over Eurasia. Confirming the results of PBS19, this clearly indicates that the large internal variability of the midlatitude circulation completely overwhelms any potential impact from volcanic aerosols in the stratosphere for eruptions of this magnitude.

The inability of the proposed stratospheric pathway to affect wintertime Eurasian surface temperatures in a significant way, even after a very major event such as the 1883 Krakatau eruption, is further illustrated in Fig. 7, where the zonal mean zonal wind anomalies at 60N and 10 hPa (a standard measure of the strength of the stratospheric polar vortex; see e.g. Charlton and Polvani, 2007) are plotted against the surface temperature anomalies over the Eurasian box in the DJF months following the 1883 Krakatau eruption, one dot for each of the 100 members of the ensemble. Let us start by noting that, in the ensemble mean, the model simulates a stratospheric polar vortex acceleration of nearly 5 m/s. This independently confirms the finding of Bittner et al. (2016a): analyzing the same ensemble using a slightly different metric, they reported that “12 ensemble members are necessary to identify the mean polar vortex anomaly of approximately 4.5 m/s”, when considering the Krakatau eruption alone. In other words, given a sufficiently large ensemble, a small but statistically significant acceleration of the polar vortex *forced* by the Krakatau eruption can be established.

However, and this is the key point of our paper: a polar vortex acceleration of a few m/s does *not* translate into a statistically significant Eurasian surface temperature anomaly. Bittner et al. (2016a) did not address that important point, which we here make explicit. As one can see in Fig. 7, the ensemble mean (i.e. the volcanically forced) surface temperature anomaly is tiny

---

<sup>2</sup>Unlike Driscoll et al. (2012), we do not detrend the time series in Fig. 5, as the stratospheric cooling is *not linear* over the long 1850-2005 period. Note how the cooling rate increases substantially in the second half of the 20th century, as a consequence of ozone depletion.

<sup>3</sup>We are well aware that most current-generation models are believed to overestimate the amplitude of volcanic forcing of the climate system, notably in the winter seasons. For a recent appraisal of this issue, the reader may consult Chylek et al. (2020), and references therein. It should, however, be clear to the reader that this bias – if it exists – does not invalidate the main conclusion of our study: in fact, it makes it considerably *stronger*.



and actually negative but, most importantly, it is *not* statistically significant in this ensemble (cf. the top row of Fig. 6) and it is uncorrelated with the strength of the stratospheric polar vortex ( $r \sim 0.3$ , implying that 90% of the surface temperature variance is not explained by the polar vortex strength). This fact corroborates the finding of PBS19 for the 1991 Pinatubo eruption: 245 for that event too models simulate a small polar vortex acceleration in the first post-eruption winter but, again, that does not translate into a significant surface warming.

Now, one might try argue that MPI model analyzed is flawed in some way, rendering it incapable of capturing the surface response to a small polar vortex acceleration. Our reply to that objection is threefold. First, the MPI model has been used extensively, for many years, to study stratosphere-troposphere dynamical coupling and the effect of volcanic eruptions on 250 climate (e.g., Zanchettin et al., 2019; Illing et al., 2018; Timmreck et al., 2016; Bittner et al., 2016a, b, just to cite the most recent papers): to our knowledge, nobody has suggested a specific and demonstrable flaw that would render it inappropriate to simulate the 1883 Krakatau eruption. Second, we have separately analyzed the 1991 Pinatubo eruption in the MPI 100-member ensemble (not shown), and found its results nearly identical to those reported in PBS19 using different models: this suggests that there is every reason to believe that the MPI results are robust. Third: the lack of a post-Krakatau surface warming 255 response over Eurasia, is completely consistent with the many recent studies cited above showing a lack of forced Eurasia winter warming after large volcanic eruptions. Can all these models be so uniformly wrong?

Finally, to complete the picture, we analyze 140 CMIP5 historical simulations (from 40 different models), in an attempt to determine the role (if any) of the stratospheric pathway mechanism. For purposes of understanding Eurasian wintertime post-volcanic warming, analysis of the CMIP5 models has already been performed by several studies (e.g., Driscoll et al., 260 2012; Wunderlich and Mitchell, 2017) which, nearly<sup>4</sup> unanimously, have reported the absence of a volcanically forced winter Eurasian warming, in agreement with results from the CMIP3 (Stenchikov et al., 2006) and many other single-model studies.

Here, we take a different approach to examine the CMIP5 simulations: focusing exclusively on the 1883 Krakatau eruption, we separately analyze the so-called “high-top” models, which have a much better representation of the stratosphere and of its variability, and the remaining “low-top” models (see Methods). One might naively expect that if the stratospheric pathway 265 matters at all, some difference might emerge between these two group of models. As it happens, no such difference exists.

This is illustrated in Fig. 8, which compactly summarizes the findings of our study including, (1) the good agreement between observations and the 20CR reanalysis, (2) the large uncertainties in 20CR and (3) the non-existent forced response in the MPI ensemble. The CMIP5 models are shown in the two left-most box-and-whisker plots, where the anomalies for the high-top and low-top models have been separately averaged: note that for both types, the multi-model mean post-Krakatau 270 anomaly is *statistically insignificant*, and no obvious difference can be seen between the two types. Thus, the CMIP5 models

---

<sup>4</sup>A single dissenting voice, Zambri and Robock (2016), concluded that the CMIP5 models show evidence for a Eurasian wintertime post-volcanic warming. However, that conclusion was reached by lowering the confidence level to 90%, and the areas of significance were found to be small and did not include central Europe. Also, that result was obtained by averaging together the Pinatubo and Krakatau eruptions, so it is not directly comparable with the present study. Finally, we simply note that the findings of that study have not, to date, been independently reproduced.

give no<sup>5</sup> evidence of a stratospheric pathway playing a role in affecting Eurasian surface temperatures in the first post-Krakatau winter.

## 6 Summary and Discussion

275 Building on a recent study of Eurasian winter temperature anomalies following the 1991 Pinatubo eruption (PBS19), we have here investigated those anomalies following the 1883 Krakatau eruption, examining observational reconstructions, reanalyses and model output (including one large ensemble and hundreds of CMIP5 simulations). Several key points have emerged from our analysis (see Fig. 8):

- 280 1. Observations indicate that from November 1883 to January 1884, Eurasian surface temperatures were warmer than in the preceding winters, with a DJF mean anomaly between 1.5 and 2°C when averaged over the Eurasian continent. Such seasonal anomalies, however, fall in the 1- $\sigma$  to 2- $\sigma$  range (of the 1850-present PDF), and are therefore unexceptional.
2. A 56-member ensemble of reanalyses (20CR) reveals a very large spread in post-Krakatau Eurasian wintertime surface temperatures anomalies, with a few members showing cooling. Given such large uncertainties, therefore, we conclude that colder than normal post-Krakatau winter conditions are not incompatible with observations.
- 285 3. Analysis of hundreds of state-of-the-art model simulations reveals the *complete absence of a volcanically forced response* over Eurasia in the first post-Krakatau winter. Furthermore, we find no evidence for a stratospheric pathway, which could (in theory) link tropical lower-stratosphere anomalies from volcanic aerosols to Eurasian surface temperature anomalies.

These new findings regarding the 1883 Krakatau eruption strongly corroborate the findings regarding the 1991 Pinatubo eruption, reported in PBS19. This is perhaps not surprising, since these two eruptions are of comparable magnitude. Nonetheless, we submit that it is important to document each eruption individually, as each one offers an independent observational data point. Each eruption is unique, in some way: the state of El Niño-Southern Oscillation (ENSO) and the quasi-biennial oscillation (QBO) indices, the specific location and month of the eruption, the vertical penetration of the volcanic gas and dust into the stratosphere, the rate and extent of latitudinal spreading of the aerosol cloud are specific to each event, and could affect how the eruption impacts surface temperatures<sup>6</sup> at higher latitudes. We believe, therefore, that it is important to examine each eruption individually.

290  
295

---

<sup>5</sup>Charlton-Perez et al. (2013) also explored the possible existence of post-volcanic difference between the high-top and low-top models, although they examined a small subset of the CMIP5 models analyzed here (about half). Averaging together the first two winters following the 1991 Pinatubo and the 1982 El Chichón eruptions, they also found no difference in winter polar vortex anomalies between the mean of the high-top and of the low-top models.

<sup>6</sup>For instance, the 1902 eruption of Santa María was also a powerful (VEI=6) low-latitude event, but the volcanic stratospheric sulfur injection (VSSI) from that eruption was only a fraction of the Pinatubo and Krakatau values (Toohey and Sigl, 2017), with the expectation of a comparably smaller impact at high latitudes. In contrast, the 1883 Krakatau eruption stands together with the 1991 Pinatubo eruption as the only other recent, large (VEI=6), low-latitude, eruption with considerable stratospheric sulfur injection (for both, VSSI~ 9 Tg[S]).

Given these potential influences, one might wonder whether the strong similarity between the results reported here for the 1883 Krakatau eruption and those reported in PBS19 for the 1992 Pinatubo eruption might stem from some environmental conditions common to both eruptions which would, in some sense, make them exceptional and thus non-representative of most large, low-latitude eruptions. In particular, the impacts of the QBO (see, e.g., Rao et al., 2020) and of ENSO (see, e.g., Calvo et al., 2008) on the polar stratosphere are well documented, and have been studied in some detail in the context of the Pinatubo eruption (Thomas et al., 2009b, a). As for the QBO: while it well known that the QBO was in an easterly phase in the first winter following the Pinatubo eruption (see, e.g., Toohey et al., 2014, and the discussion therein) no data is available as to the QBO state in the winter 1883/84. As for ENSO: the first post-Pinatubo winter occurred during an El Niño event, whereas ENSO was in a neutral state in the first post-Krakatau winter. Finally, to the best of our knowledge, no study has advocated that these two eruptions are peculiar in any particular, and should thus be discarded as non-representative.

We now ask, therefore: how do the findings reported above for Krakatau, taken together with the findings reported in PBS19 for Pinatubo, reshape our understanding of whether large, low-latitude eruptions can cause a winter warming over Eurasia? First, it interesting to note that an anomalous warming was indeed observed following both eruptions. However, as we have here shown, those anomalies ( $\sim 1\text{-}2^\circ\text{C}$  in DJF) are far from exceptional. Second, analysis of a wealth of state-of-the-art model simulations leaves no doubt that for VEI=6 eruptions – such as Krakatau and Pinatubo – there is *no statistically significant forced* Eurasian surface winter warming in climate models. And this despite the fact that most models considerably overestimate<sup>7</sup> the lower stratospheric tropical warming that follows these eruptions. Third, we stress that the stratospheric pathway fails to produce a significant Eurasian warming not because it is physically implausible, but because the amplitude of the polar vortex acceleration that accompanies the warming of the lower-stratospheric by volcanic aerosols (a few meters per second, for both Pinatubo and Krakatau) is simply insufficient to overcome the very large internal variability of the midlatitude circulation.

We submit that, at this point, the evidence is overwhelming: low-latitude eruptions as large as Pinatubo or Krakatau are unable to cause a forced surface temperature anomaly over Eurasia that can be distinguished from unforced variability. As explained in detail in PBS19 (we refer to reader to Section 5, specifically), the early claims of a causal connection were based on low resolution models with poor stratospheric resolution and little stratospheric variability, and on a few observational studies which often commingled high- and low-latitude eruptions as well as the first and second post-eruption winters (we note that none of these observational studies was independently validated). The situation, therefore, is now reversed: rather than taking for granted that large, low-latitude eruptions cause Eurasian winter warming (and seeking to explain the lack of causal evidence in models as, e.g., in Driscoll et al., 2012), the onus has now shifted to presenting evidence in support of the claim that a causal connection exists at all.

Where might one look for that evidence? If there is any hope left for the stratospheric pathway mechanism to communicate the impact of low latitude eruptions to Eurasia in winter, we need to look at larger eruptions. A few of those are well known, and the next best candidate might be the 1815 Tambora eruption. Note, however, that its VSSI index is only three times larger

---

<sup>7</sup>In the case of Pinatubo, observations indicate a lower stratospheric warming of the order of  $2.5^\circ\text{C}$  (Labitzke and McCormick, 1992; Free and Lanzante, 2009), whereas models often show anomalies of the order of  $6$  to  $8^\circ\text{C}$ , as seen, e.g., in Fig. 5.

than Krakatau and Pinatubo (Toohey and Sigl, 2017), so even that event may not be large enough. One might then be tempted  
330 to look further back in time, e.g. at the 1257 Samalas eruption. Doing so, however, raises additional questions. Perhaps the  
most troublesome is the following: dendrochronological records constitute the bulk of proxy observations used to produce  
temperature reconstructions, and those are mostly found in summer (the growing season). As a consequence, the robustness of  
winter reconstructions remains unclear (Steiger et al., 2018, for instance, show that the DJF skill scores in their reconstruction  
are much weaker than for the other seasons). And yet, the stratospheric pathway is fundamentally a winter mechanism, as  
335 it requires the presence of the stratospheric polar vortex (which disappears in the summer months). Hence, annual-mean  
temperatures, which are typical of many, perhaps most, reconstructions (e.g. the recent Last Millennium Climate Reanalysis  
Project, Hakim et al., 2016) are fundamentally inadequate for the task.

All things considered, establishing the existence of a volcanically forced winter warming over Eurasia, and of an accompa-  
nying stratospheric pathway (if any), appears to be a truly daunting challenge.

340 *Code and data availability.* All code and data are can be made available upon reasonable request.

*Author contributions.* LMP originally conceived of the study, and designed it together with SJC. SJC performed the analysis and produced the figures. LMP wrote the manuscript, in close consultation with SJC. Both authors contributed to the interpretation of the results.

*Competing interests.* The authors are not aware of competing interests.

*Acknowledgements.* LMP is grateful to the US National Science Foundation for its continued support (AGS-1914569), and wishes to thank  
345 Alexandro Tejedor-Vargas for several enlightening conversations, and Alan Robock for many friendly discussions and for unsolicited, yet very helpful, comments on an earlier version of the manuscript.

## References

- Bittner, M.: On the discrepancy between observed and simulated dynamical responses of Northern Hemisphere winter climate to large tropical volcanic eruptions, Ph.D. thesis, University of Hamburg, Reports on Earth System Science, no. 173, 2015.
- 350 Bittner, M., Schmidt, H., Timmreck, C., and Sienz, F.: Using a large ensemble of simulations to assess the Northern Hemisphere stratospheric dynamical response to tropical volcanic eruptions and its uncertainty, *Geophysical Research Letters*, 43, 9324–9332, <https://doi.org/10.1002/2016GL070587>, 2016a.
- Bittner, M., Timmreck, C., Schmidt, H., Toohey, M., and Krüger, K.: The impact of wave-mean flow interaction on the Northern Hemisphere polar vortex after tropical volcanic eruptions, *Journal of Geophysical Research: Atmospheres*, 121, 5281–5297, 355 <https://doi.org/10.1002/2015JD024603>, 2016b.
- Butler, A. H., Charlton-Perez, A., Domeisen, D. I., Simpson, I. R., and Sjöberg, J.: Predictability of Northern Hemisphere final stratospheric warmings and their surface impacts, *Geophysical Research Letters*, 46, 10 578–10 588, <https://doi.org/10.1029/2019GL083346>, 2019.
- Calvo, N., García-Herrera, R., and Garcia, R. R.: The ENSO signal in the stratosphere, *Annals of the New York Academy of Sciences*, 1146, 16–31, 2008.
- 360 Charlton, A. J. and Polvani, L. M.: A new look at stratospheric sudden warmings. Part I: Climatology and modeling benchmarks, *Journal of Climate*, 20, 449–469, <https://doi.org/10.1175/JCLI3996.1>, 2007.
- Charlton-Perez, A. J., Baldwin, M. P., Birner, T., Black, R. X., Butler, A. H., Calvo, N., Davis, N. A., Gerber, E. P., Gillett, N., Hardiman, S., Kim, J., Krüger, K., Lee, Y., Manzini, E., McDaniel, B. A., Polvani, L., Reichler, T., Shaw, T. A., Sigmond, M., Son, S., Toohey, M., Wilcox, L., Yoden, S., Christiansen, B., Lott, F., Shindell, D., Yukimoto, S., and Watanabe, S.: On the lack of stratospheric dynamical 365 variability in low-top versions of the CMIP5 models, *J. Geophys. Res.*, 118, 2494–2505, <https://doi.org/10.1002/jgrd.50125>, 2013.
- Chylek, P., Folland, C., Klett, J. D., and Dubey, M. K.: CMIP5 climate models overestimate cooling by volcanic aerosols, *Geophysical Research Letters*, p. e2020GL087047, <https://doi.org/10.1029/2020GL087047>, 2020.
- Compo, G. P., Whitaker, J. S., and Sardeshmukh, P. D.: Feasibility of a 100 year reanalysis using only surface pressure data, *Bull. Amer. Meteor. Soc.*, 87, 175–190, <https://doi.org/10.1175/BAMS-87-2-175>, 2006.
- 370 Compo, G. P., Whitaker, J. S., Sardeshmukh, P., Matsui, N., Allan, R., Gleason, X. Y. B., Vose, R., Rutledge, G., Bessemoulin, P., Broennimann, S., Brunet, M., Crouthamel, R., Grant, A., Groisman, P., Jones, P., Kruk, M., Kruger, A., Marshall, G., Maugeri, M., Mok, H., Nordli, O., Ross, T., Trigo, R., Wang, X., Woodruff, S., , and Worley, S.: The Twentieth Century Reanalysis Project, *Q. J. Roy. Meteorol. Soc.*, 137, 1–128, <https://doi.org/10.1002/qj.776>, 2011.
- Deser, C., Lehner, F., Rodgers, K., Ault, T., Delworth, T., DiNezio, P., Fiore, A., Frankignoul, C., Fyfe, J., Horton, D., Kay, J., Knutti, R., 375 Lovenduski, N., Marotzke, J., McKinnon, K. A., Minobe, S., Randerson, J., Screen, J., Simpson, I., and Ting, M.: Insights from Earth system model initial-condition large ensembles and future prospects, *Nature Geoscience*, in press, <https://doi.org/10.1038/s41558-020-0731-2>, 2020.
- Driscoll, S., Bozzo, A., Gray, L. J., Robock, A., and Stenchikov, G.: Coupled Model Intercomparison Project 5 (CMIP5) simulations of climate following volcanic eruptions, *J. Geophys. Res.*, 117, D17 105, <https://doi.org/10.1029/2012JD017607>, 2012.
- 380 Fischer, E. M., Luterbacher, J., Zorita, E., Tett, S., Casty, C., and Wanner, H.: European climate response to tropical volcanic eruptions over the last half millennium, *Geophysical Research Letters*, 34, <https://doi.org/10.1029/2006GL027992>, 2007, 2007.
- Free, M. and Lanzante, J.: Effect of volcanic eruptions on the vertical temperature profile in radiosonde data and climate models, *Journal of climate*, 22, 2925–2939, <https://doi.org/10.1175/2008JCLI2562.1>, 2009.

- Fyfe, J. C.: Southern Ocean warming due to human influence, *Geophysical Research Letters*, 33, <https://doi.org/10.1029/2006GL027247>, 385 2006.
- Gleckler, P., AchutaRao, K., Gregory, J., Santer, B., Taylor, K., and Wigley, T.: Krakatoa lives: The effect of volcanic eruptions on ocean heat content and thermal expansion, *Geophysical Research Letters*, 33, <https://doi.org/10.1029/2006GL026771>, 2006.
- Graf, H., Kirchner, I., Robock, A., and Schult, I.: Pinatubo eruption winter climate effects: Model versus observations, *Climate Dynamics*, 9, 81–93, <https://doi.org/10.1007/BF00210011>, 1993.
- 390 Groisman, P. Y.: Possible regional climate consequences of the Pinatubo eruption: An empirical approach, *Geophysical Research Letters*, 19, 1603–1606, <https://doi.org/10.1029/92GL01474>, 1992.
- Hakim, G. J., Emile-Geay, J., Steig, E. J., Noone, D., Anderson, D. M., Tardif, R., Steiger, N., and Perkins, W. A.: The last millennium climate reanalysis project: Framework and first results, *Journal of Geophysical Research: Atmospheres*, 121, 6745–6764, <https://doi.org/10.1002/2016JD024751>, 2016.
- 395 Illing, S., Kadow, C., Pohlmann, H., and Timmreck, C.: Assessing the impact of a future volcanic eruption on decadal predictions, *Earth System Dynamics*, 9, 701–715, <https://doi.org/10.5194/esd-9-701-2018>, 2018.
- Jones, P. D., Lister, D. H., Osborn, T. J., Harpham, C., Salmon, M., and Morice, C. P.: Hemispheric and large-scale land surface air temperature variations: an extensive revision and an update to 2010, *J. Geophys. Res.*, 117, D05 127, <https://doi.org/10.1029/2011JD017139>, 2012.
- 400 Kay, J. E., Deser, C., Phillips, A., Mai, A., Hannay, C., Strand, G., Arblaster, J. M., Bates, S. C., Danabasoglu, G., Edwards, J., Holland, M., Kushner, P., Lamarque, J.-F., Lawrence, D., Lindsay, K., Middleton, A., Munoz, E., Neale, R., Oleson, K., Polvani, L., and Vertenstein, M.: The Community Earth System Model (CESM) Large Ensemble Project: A community resource for studying climate change in the presence of internal climate variability, *Bull. Amer. Meteor. Soc.*, 96, 1333–1349, <https://doi.org/10.1175/JCLI-D-11-00015.1>, 2015.
- Kirchner, I., Stenchikov, G. L., Graf, H.-F., Robock, A., and Antuña, J. C.: Climate model simulation of winter warming and summer 405 cooling following the 1991 Mount Pinatubo volcanic eruption, *Journal of Geophysical Research: Atmospheres*, 104, 19 039–19 055, <https://doi.org/10.1029/1999JD900213>, 1999.
- Kobayashi, S., Ota, Y., Harada, Y., Ebata, A., Moriya, M., Onoda, H., Onogi, K., Kamahori, H., Kobayashi, C., Endo, H., Miyaoka, K., and Takahashi, K.: The JRA-55 Reanalysis: General Specifications and Basic Characteristics, *Journal of the Meteorological Society of Japan. Ser. II*, 93, 5–48, <https://doi.org/10.2151/jmsj.2015-001>, 2015.
- 410 Kodera, K.: Influence of volcanic eruptions on the troposphere through stratospheric dynamical processes in the northern hemisphere winter, *Journal of Geophysical Research: Atmospheres*, 99, 1273–1282, <https://doi.org/10.1029/93JD02731>, 1994.
- Labitzke, K. and McCormick, M.: Stratospheric temperature increases due to Pinatubo aerosols, *Geophysical Research Letters*, 19, 207–210, <https://doi.org/10.1029/91GL02940>, 1992.
- Lenssen, N., Schmidt, G., Hansen, J., Menne, M., Persin, A., Ruedy, R., and Zyss, D.: Improvements in the GISTEMP uncertainty model, *J. Geophys. Res. Atmos.*, 124, 6307–6326, <https://doi.org/10.1029/2018JD029522>, 2019.
- 415 Maher, N., Milinski, S., Suarez-Gutierrez, L., Botzet, M., Dobrynin, M., Kornblue, L., Kröger, J., Takano, Y., Ghosh, R., Hedemann, C., Li, C., Li, H., Manzini, E., Notz, N., Putrasahan, D., Boysen, L., Claussen, M., Ilyina, T., Olonscheck, D., Raddatz, T., Stevens, B., and Marotzke, J.: The Max Planck Institute Grand Ensemble: Enabling the Exploration of Climate System Variability, *J. Adv. Model. Earth Sys.*, 11, 1–21, <https://doi.org/10.1029/2019MS001639>, 2019.
- 420 Perlwitz, J. and Graf, H.-F.: The statistical connection between tropospheric and stratospheric circulation of the Northern Hemisphere in winter, *Journal of Climate*, 8, 2281–2295, [https://doi.org/10.1175/1520-0442\(1995\)008<2281:TSCBTA>2.0.CO;2](https://doi.org/10.1175/1520-0442(1995)008<2281:TSCBTA>2.0.CO;2), 1995.

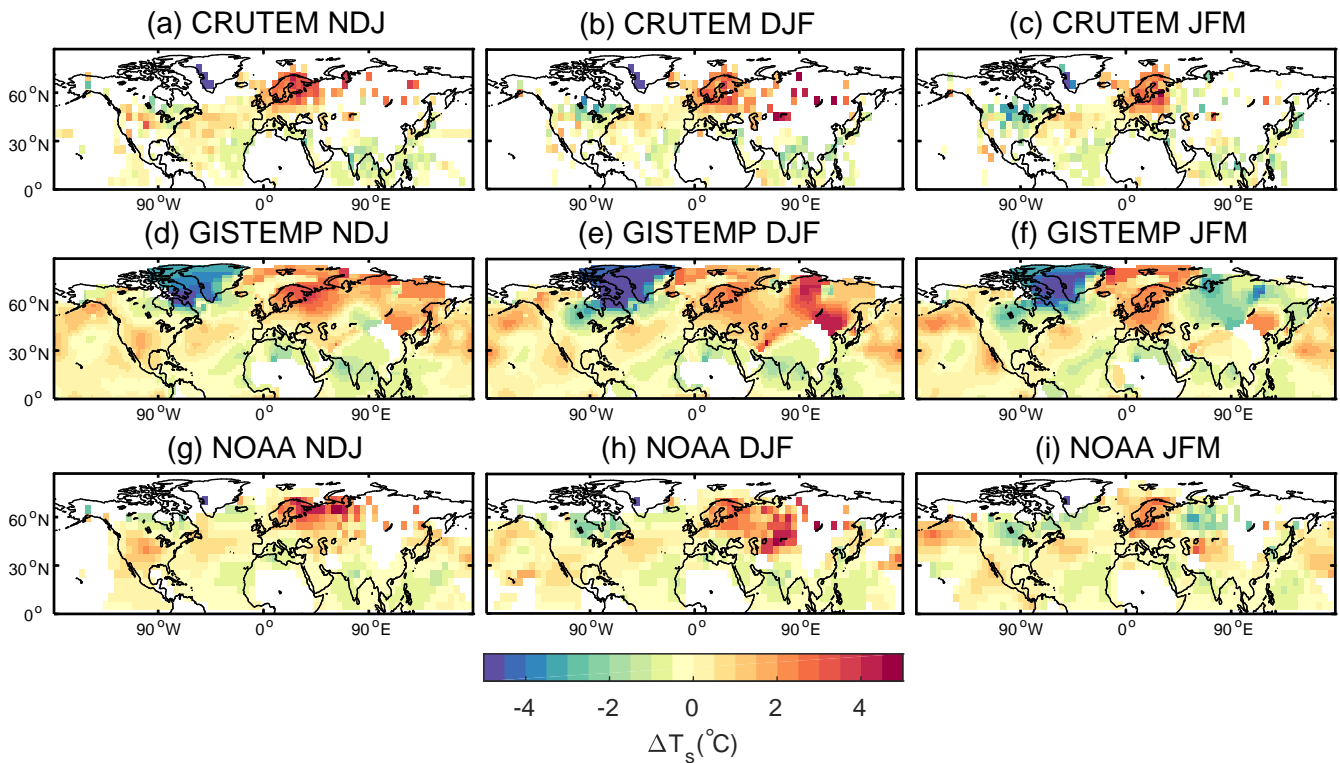
- Poli, P., Hersbach, H., Dee, D. P., Berrisford, P., Simmons, A. J., Vitart, F., Laloyaux, P., Tan, D. G., Peubey, C., Thépaut, J.-N., et al.: ERA-20C: An atmospheric reanalysis of the twentieth century, *Journal of Climate*, 29, 4083–4097, <https://doi.org/10.1175/JCLI-D-15-0556.1>, 2016.
- 425 Polvani, L. M., Banerjee, A., and Schmidt, A.: Northern Hemisphere continental winter warming following the 1991 Mt. Pinatubo eruption: reconciling models and observations, *Atmospheric Chemistry and Physics*, 19, 6351–6366, <https://doi.org/10.5194/acp-19-6351-2019>, 2019.
- Rao, J., Garfinkel, C. I., and White, I. P.: Impact of the Quasi-Biennial Oscillation on the Northern Winter Stratospheric Polar Vortex in CMIP5/6 Models, *Journal of Climate*, 33, 4787–4813, 2020.
- 430 Rayner, N., Parker, D. E., Horton, E., Folland, C. K., Alexander, L. V., Rowell, D., Kent, E., and Kaplan, A.: Global analyses of sea surface temperature, sea ice, and night marine air temperature since the late nineteenth century, *Journal of Geophysical Research: Atmospheres*, 108, <https://doi.org/10.1029/2002JD002670>, 2003.
- Rea, G., Riccio, A., Fierli, F., Cairo, F., and Cagnazzo, C.: Stratosphere-resolving CMIP5 models simulate different changes in the Southern Hemisphere, *Clim. Dyn.*, 50, 2239–2255, <https://doi.org/10.1007/s00382-017-3746-2>, 2018.
- 435 Robock, A.: El Chichón eruption: The dust cloud of the century, *Nature*, 301, 373, <https://doi.org/10.1038/301373a0>, 1983.
- Robock, A.: Volcanic eruptions and climate, *Reviews of Geophysics*, 38, 191–219, <https://doi.org/10.1029/1998RG000054>, 2000.
- Robock, A. and Mao, J.: Winter warming from large volcanic eruptions, *Geophysical Research Letters*, 19, 2405–2408, <https://doi.org/10.1029/92GL02627>, 1992.
- Robock, A. and Mao, J.: The volcanic signal in surface temperature observations, *Journal of Climate*, 8, 1086–1103, [https://doi.org/10.1175/1520-0442\(1995\)008<1086:TVSIST>2.0.CO;2](https://doi.org/10.1175/1520-0442(1995)008<1086:TVSIST>2.0.CO;2), 1995.
- 440 Shindell, D. T., Schmidt, G. A., Mann, M. E., and Faluvegi, G.: Dynamic winter climate response to large tropical volcanic eruptions since 1600, *Journal of Geophysical Research: Atmospheres*, 109, <https://doi.org/10.1029/2003JD004151>, 2004.
- Simkin, T. and Fiske, R.: Krakatau, 1883: the volcanic eruption and its effects, Smithsonian Institution Press, Washington, D.C., 1983.
- Smith, T. M., Reynolds, R. W., Peterson, T. C., and Lawrimore, J.: Improvements to NOAA’s historical merged land – ocean surface temperature analysis (1880–2006), *J. Climate*, 21, 2283–2296, <https://doi.org/10.1175/2007JCLI2100.1>, 2008.
- 445 Steiger, N. J., Smerdon, J. E., Cook, E. R., and Cook, B. I.: A reconstruction of global hydroclimate and dynamical variables over the Common Era, *Scientific data*, 5, 180 086, <https://doi.org/10.1038/sdata.2018.86>, 2018.
- Stenchikov, G., Hamilton, K., Stouffer, R. J., Robock, A., Ramaswamy, V., Santer, B., and Graf, H.-F.: Arctic Oscillation response to volcanic eruptions in the IPCC AR4 climate models, *Journal of Geophysical Research: Atmospheres*, 111, <https://doi.org/10.1029/2005JD006286>, 450 2006.
- Taylor, K. E., Stouffer, R. J., and Meehl, G. A.: An overview of CMIP5 and the experiment design, *Bull. Amer. Meteor. Soc.*, 93, 485–498, <https://doi.org/10.1175/BAMS-D-11-00094.1>, 2012.
- Thomas, M., Giorgetta, M., Timmreck, C., Graf, H.-F., and Stenchikov, G.: Simulation of the climate impact of Mt. Pinatubo eruption using ECHAM5–Part 2: Sensitivity to the phase of the QBO, *Atmospheric Chemistry and Physics*, 9, 3001–3009, 2009a.
- 455 Thomas, M., Timmreck, C., Giorgetta, M., Graf, H.-F., and Stenchikov, G.: Simulation of the climate impact of Mt. Pinatubo eruption using ECHAM5–Part 1: Sensitivity to the modes of atmospheric circulation and boundary conditions, *Atmospheric Chemistry and Physics*, 9, 757–769, <https://doi.org/10.5194/acp-9-757-2009>, 2009b.
- Timmreck, C., Pohlmann, H., Illing, S., and Kadow, C.: The impact of stratospheric volcanic aerosol on decadal-scale climate predictions, *Geophysical Research Letters*, 43, 834–842, <https://doi.org/10.1002/2015GL067431>, 2016.



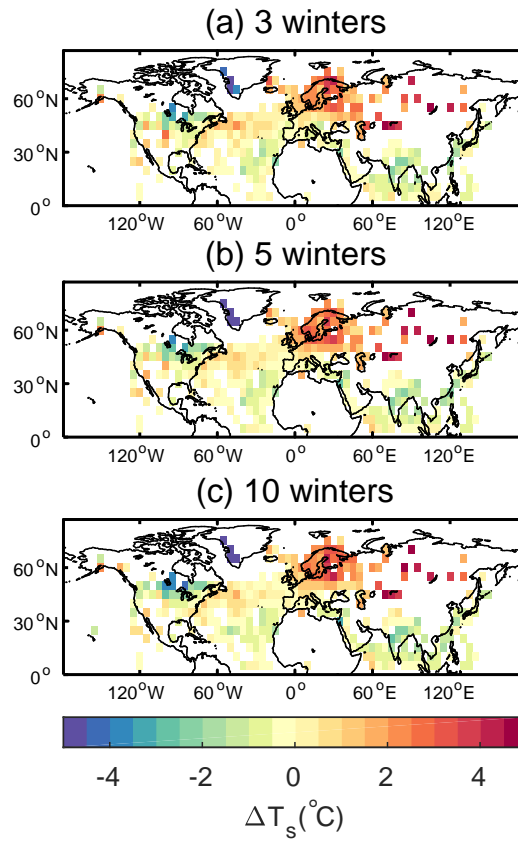
- 460 Toohey, M. and Sigl, M.: Volcanic stratospheric sulphur injections and aerosol optical depth from 500 BCE to 1900 CE, *Earth System Science Data*, 9, 809–831, <https://doi.org/10.5194/essd-9-809-2017>, 2017.
- Toohey, M., Krüger, K., Bittner, M., Timmreck, C., and Schmidt, H.: The impact of volcanic aerosol on the Northern Hemisphere stratospheric polar vortex: mechanisms and sensitivity to forcing structure, *Atmospheric Chemistry and Physics*, 14, 13 063–13 079, <https://doi.org/10.5194/acp-14-13063-2014>, 2014.
- 465 Vose, R. S., Arndt, D., Banzon, V. F., Easterling, D. R., Gleason, B., Huang, B., Lawrimore, J. H., Menne, M. J., Peterson, T. C., Reynolds, R. W., Smith, T. M., Jr., C. N. W., and Wuertz, D. L.: NOAA's merged land-ocean surface temperature analysis, *Bull. Amer. Meteor. Soc.*, 21, 2283–2296, <https://doi.org/10.1175/BAMS-D-11-00241.1>, 2012.
- Wunderlich, F. and Mitchell, D. M.: Revisiting the observed surface climate response to large volcanic eruptions, *Atmospheric Chemistry and Physics*, 17, 485–499, <https://doi.org/10.5194/acp-17-485-2017>, 2017.
- 470 Zambri, B. and Robock, A.: Winter warming and summer monsoon reduction after volcanic eruptions in Coupled Model Intercomparison Project 5 (CMIP5) simulations, *Geophysical Research Letters*, 43, <https://doi.org/10.1002/2016GL070460>, 2016.
- Zanchettin, D., Timmreck, C., Toohey, M., Jungclaus, J. H., Bittner, M., Lorenz, S. J., and Rubino, A.: Clarifying the relative role of forcing uncertainties and initial-condition unknowns in spreading the climate response to volcanic eruptions, *Geophysical Research Letters*, 46, 1602–1611, <https://doi.org/10.1029/2018GL081018>, 2019.

**Table 1.** Acronym, number of simulations, and high-top/low-top classification (based on Rea et al., 2018) for the historical integrations of the CMIP5 models analyzed in this paper. Information on model forcings and experimental design can be found in Taylor et al. (2012).

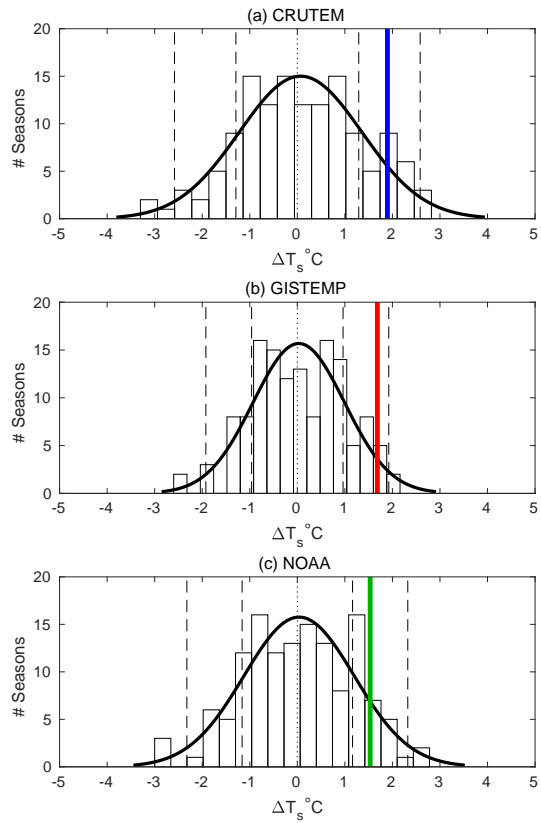
model name	members	type	model name	members	type
ACCESS1.0	1	LT	GISS-E2-H-CC	1	HT
ACCESS1.3	1	LT	GISS-E2-R	16	HT
bcc-csm1-1	3	LT	GISS-E2-R-CC	1	HT
bcc-csm1-1-m	3	LT	HadCM3	10	LT
BNU-ESM	1	LT	HadGEM2-CC	1	HT
CCSM4	6	LT	HadGEM2-ES	4	LT
CESM1-BGC	1	LT	inmcm4	1	LT
CESM1-CAM5	3	LT	IPSL-CM5A-LR	5	HT
CESM1-FASTCHEM	3	LT	IPSL-CM5A-MR	3	HT
CESM1-WACCM	1	HT	IPSL-CM5B-LR	1	HT
CMCC-CESM	1	HT	MIROC-ESM	3	HT
CMCC-CM	1	LT	MIROC-ESM-CHEM	1	HT
CMCC-CMS	1	HT	MIROC5	5	LT
CNRM-CM5	10	LT	MPI-ESM-LR	3	HT
CSIRO-Mk3-6-0	10	LT	MPI-ESM-MR	3	HT
FGOALS-g2	4	LT	MPI-ESM-P	2	HT
FIO-ESM	3	LT	MRI-CGCM3	5	HT
GFDL-CM3	5	HT	MRI-ESM1	1	HT
GFDL-ESM2G	3	LT	NorESM1-M	3	LT
GISS-E2-H	10	HT	NorESM1-ME	1	LT



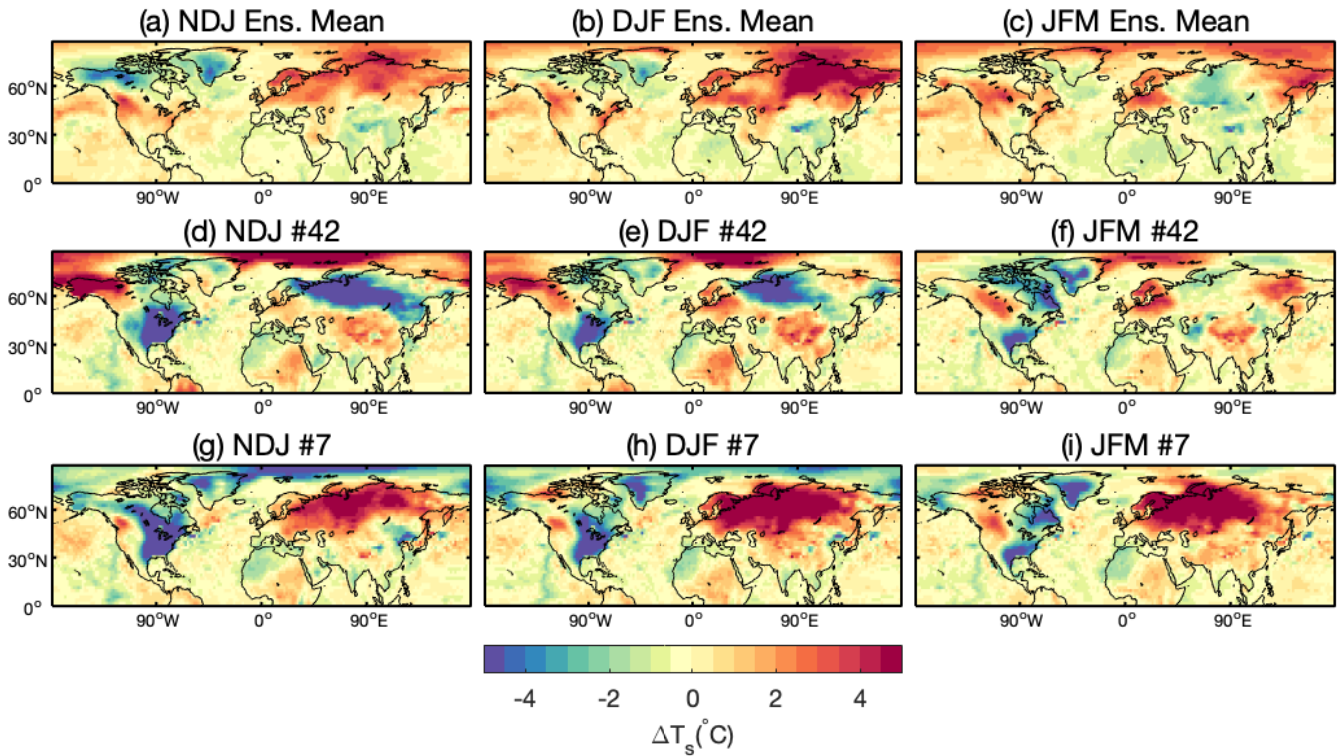
**Figure 1.** Top row: CRUTEM post-Krakatau surface temperature anomalies ( $\Delta T_s$ ) averaged over (a) November to January (b) December to February and (c) January to March. Middle and bottom row: as top row, but for GISTEMP and NOAA. Due to data availability, the anomalies in the middle and bottom rows are computed using a shorter 3-winter reference period.



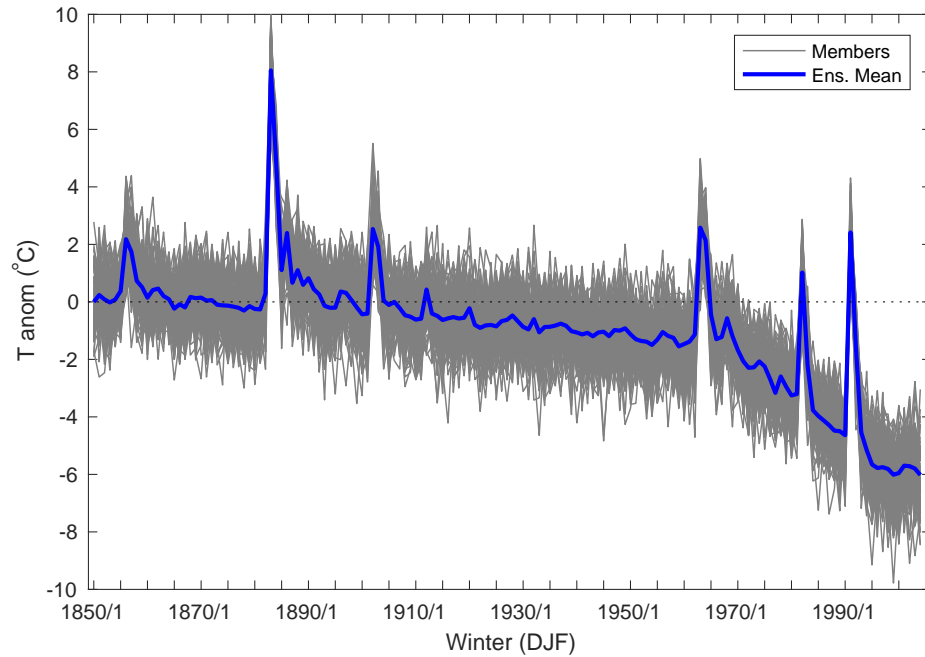
**Figure 2.** Post-Krakatau CRUTEM surface temperature anomalies ( $\Delta T_s$ ) in DJF, using (a) three (b) five and (c) ten winters for the reference period.



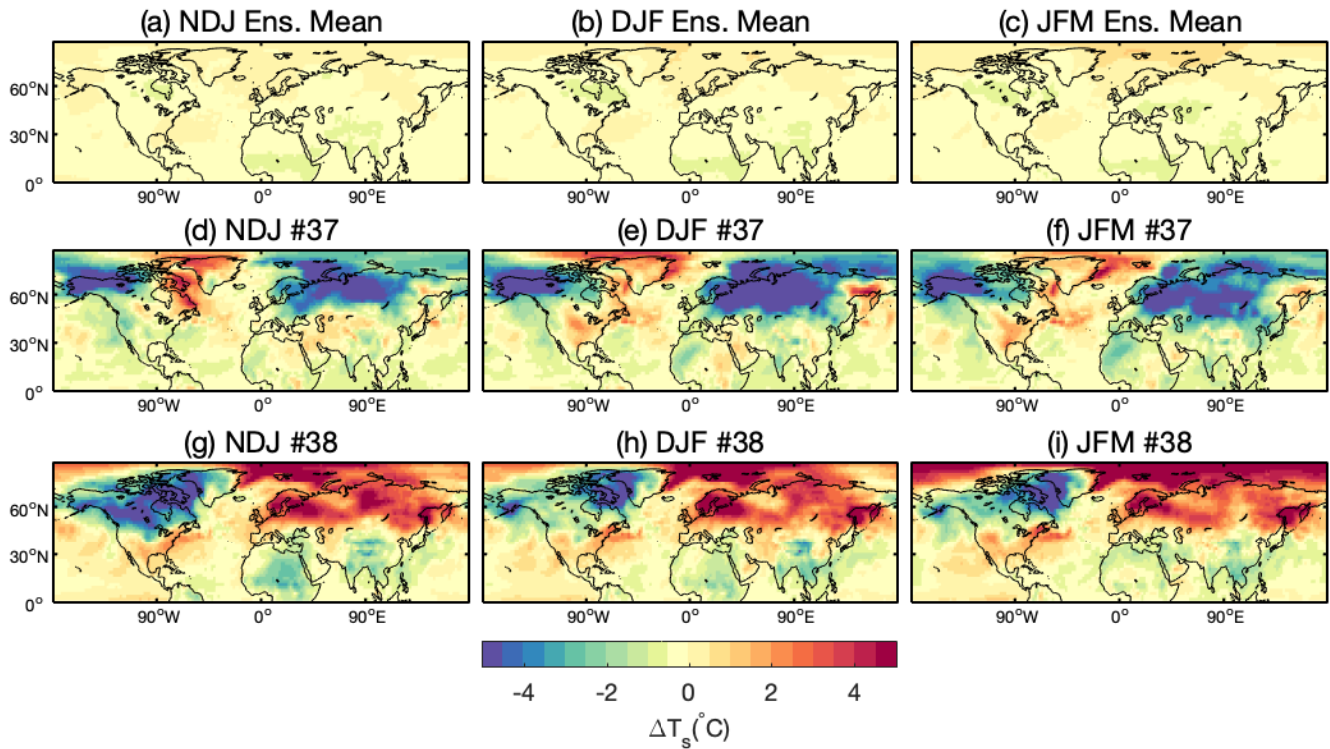
**Figure 3.** (a) Black boxes: histogram of CRUTEM post-Krakatau Eurasian temperature anomalies ( $\Delta T_s$ ) in DJF, over the period 1850 to present. Colored bar: the 1883/84 post-Krakatau anomalies. Solid black line: Gaussian fit; dashed black lines: the 1- $\sigma$  and 2- $\sigma$  intervals. (b) and (c): as in (a) but for GISTEMP and NOAA, respectively, using the shorter 3-winter reference period.



**Figure 4.** Top row: 20CR ensemble mean, post-Krakatau, surface temperature anomalies ( $\Delta T_s$ ) averaged over (a) November to January (b) December to February and (c) January to March. Middle row: as in the top row, but for ensemble member #42. Bottom row: as in the top row, but for ensemble member #7. Members 42 and 7 have, respectively, the minimum and maximum post-Krakatau Eurasian DJF anomalies across the 56-member 20CR ensemble.

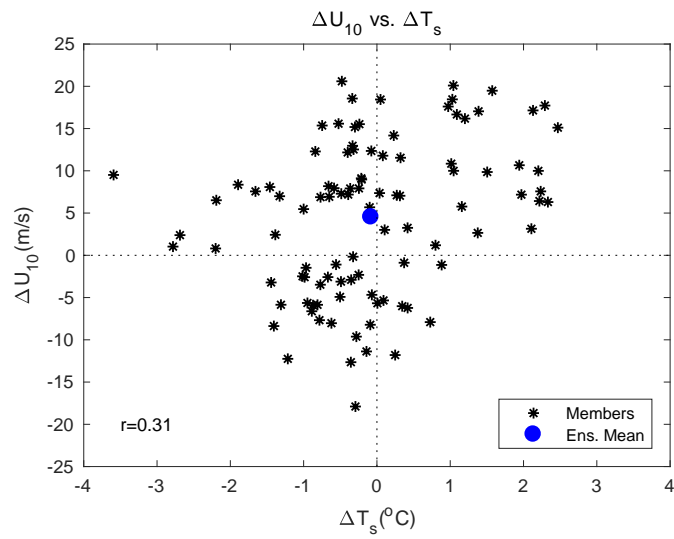


**Figure 5.** Tropical ( $30^{\circ}\text{S}$ - $30^{\circ}\text{N}$ ) temperature anomalies in DJF at 50hPa, in the MPI historical runs simulations, from 1850/51 to 2004/5. Grey line: individual members; blue line: ensemble mean. Anomalies are here defined based on the 1861-1880 period.

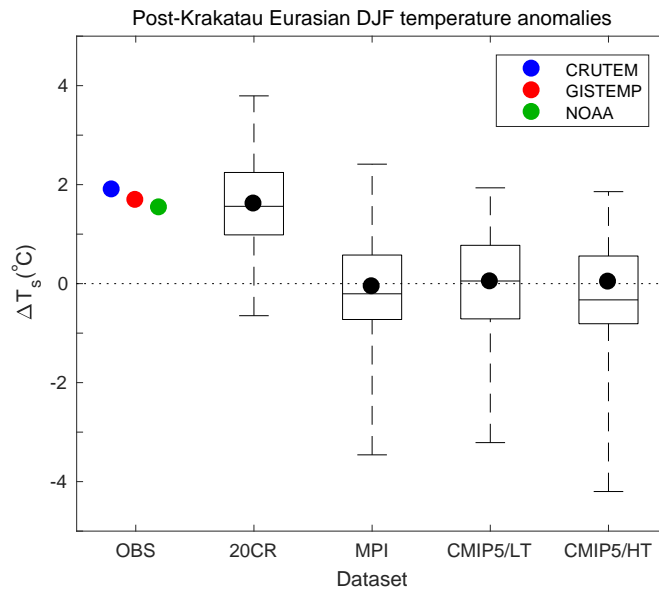


**Figure 6.** Top row: MPI ensemble mean, post-Krakatau, surface temperature anomalies ( $\Delta T_s$ ) averaged over (a) November to January (b) December to February and (c) January to March. Middle row: as in the top row, but for ensemble member #37. Bottom row: as in the top row, but for ensemble member #38. Members 37 and 28 simulated, respectively, the minimum and maximum post-Krakatau Eurasian DJF anomalies across the 100-member MPI ensemble.





**Figure 7.** Post-Krakatau, DJF, zonal mean, zonal wind anomalies at 10 hPa and 60°N ( $\Delta U_{10}$ ) in the 100-member MPI ensemble vs the Eurasian surface temperature anomalies ( $\Delta T_s$ ). Blue dot: ensemble mean; black asterisks: individual members.



**Figure 8.** Eurasian surface temperature anomalies in the first post-Krakatau DJF season. Colored dots: observed values from CRUTEM, GISTEMP and NOAA anomalies (for the latter 2, a shorter only 3 reference period was used, owing data availability). The box plots show the median, the 25th and 75th percentiles in each dataset, while the whiskers show the spread of the ensembles for each dataset. For 20CR, a 56-member ensemble was analyzed; for the MPI model, a 100-member ensemble; for the CMIP5 low-top (LT) models 68 simulations from 21 LT models, and for the high-top (HT) models, 62 simulations from 19 HT models. See Table 1 for the list of CMIP5 HT and LT models, and the respective simulations.