

Dear editors

We received following suggestion to introduce needed correction to manuscript:

Before publishing, however, the manuscript should be carefully read and corrected for spelling and grammar. Specifically, there are many missing indefinite articles („a“ or „an“) as well as missing definite articles („the“) that need to be added. An example is in line 15 „The use of high-resolution atmospheric transport in global CO₂ flux inversion“, were „a“ should be in front of „inversion“, or it should be „inversions“. As there are quite a number of such missing articles in the manuscript, may be one of the native english speaking coauthors can help with this.

We are sorry for failing to make a better effort on the earlier stage. The manuscript has been checked by coauthors and needed improvements are made as highlighted in following manuscript. We made corrections whenever we find problems with grammar, use of articles, punctuation, plural/single forms, orthography and missing words (without altering the logic and meaning of the text). We are grateful to editorial team for kind assistance with our manuscript.

In behalf of authors

Shamil Maksyutov, Rajesh Janardanan

Technical note: A high-resolution inverse modelling technique for estimating surface CO₂ fluxes based on the NIES-TM - FLEXPART coupled transport model and its adjoint.

5 Shamil Maksyutov¹, Tomohiro Oda², Makoto Saito¹, Rajesh Janardanan¹, Dmitry Belikov^{1,3}, Johannes W. Kaiser⁴, Ruslan Zhuravlev⁵, Alexander Ganshin⁵, Vinu K. Valsala⁶, Arlyn Andrews⁷, Lukasz Chmura⁸, Edward Dlugokencky⁷, László Haszpra⁹, Ray L. Langenfelds¹⁰, Toshinobu Machida¹, Takakiyo Nakazawa¹¹, Michel Ramonet¹², Colm Sweeney⁷, Douglas Worthy¹³

10 ¹National Institute for Environmental Studies, Tsukuba, Japan

²NASA Goddard Space Flight Center, Greenbelt, MD, USA/Universities Space Research Association, Columbia, MD, USA

³now at Chiba University, Chiba, Japan

⁴Deutscher Wetterdienst, Offenbach, Germany

15 ⁵Central Aerological Observatory, Dolgoprudny, Russia

⁶Indian Institute for Tropical Meteorology, Pune, India

⁷Earth System Research Laboratory, NOAA, Boulder, CO, USA

⁸AGH University of Science and Technology, Krakow, Poland

⁹Research Centre for Astronomy and Earth Sciences, Sopron, Hungary

20 ¹⁰Climate Science Centre, CSIRO Oceans and Atmosphere, Aspendale, VIC, Australia

¹¹Tohoku University, Sendai, Japan

¹²Laboratoire des Sciences du Climat et de l'Environnement, LSCE-IPSL, Gif-sur-Yvette, France

¹³Environment and Climate Change Canada, Toronto, Canada

Correspondence to: S. Maksyutov (shamil@nies.go.jp)

25 Abstract

We developed a high-resolution surface flux inversion system based on the global Lagrangian-Eulerian coupled tracer transport model composed of the National Institute for Environmental Studies Transport Model (NIES-TM) and the FLEXible PARTicle dispersion model (FLEXPART). The inversion system is named NTFVAR (NIES-TM-FLEXPART-variational) as it applies a variational ~~optimisation~~optimization to estimate surface fluxes. We tested the system by
30 estimating optimized corrections to natural surface CO₂ fluxes to achieve the best fit to atmospheric CO₂ data collected by the global in-situ network, as a necessary step towards the capability of estimating anthropogenic CO₂ emissions. We ~~employ~~employed the Lagrangian particle dispersion model (LPDM) FLEXPART to calculate ~~the~~ surface flux footprints of

CO₂ observations at a ~~0.1° × 0.1°~~ spatial resolution- of 0.1° × 0.1°. The LPDM is coupled ~~to~~with a global atmospheric tracer transport model (NIES-TM). Our inversion technique uses an adjoint of the coupled transport model in an iterative optimization procedure. The flux error covariance operator ~~is being~~was implemented via implicit diffusion. Biweekly flux corrections to prior flux fields were estimated for the years 2010-2012 from in-situ CO₂ data included in the Observation Package (ObsPack) dataset. High-resolution prior flux fields were prepared using the Open-Data Inventory for Anthropogenic Carbon dioxide (ODIAC) for fossil fuel combustion, the Global Fire Assimilation System (GFAS) for biomass burning, the Vegetation Integrative SIMulator for Trace gases (VISIT) model for terrestrial biosphere exchange, and the Ocean Tracer Transport Model (OTTM) for oceanic exchange. The terrestrial biospheric flux field was constructed using a vegetation mosaic map and a separate simulation of CO₂ fluxes at a daily time step by the VISIT model for each vegetation type. The prior flux uncertainty for the terrestrial biosphere was scaled proportionally to the monthly mean Gross Primary Production (GPP) by the Moderate Resolution Imaging Spectroradiometer (MODIS) MOD17 product. The inverse system calculates flux corrections to the prior fluxes in the form of a relatively smooth field multiplied by high-resolution patterns of the prior flux uncertainties for land and ocean, following the coastlines and fine-scale vegetation productivity gradients. The resulting flux estimates ~~improve~~improved the fit to the observations taken at continuous ~~observations~~observation sites, reproducing both the seasonal ~~variation~~ and short-term concentration ~~variability~~variabilities, including high CO₂ concentration events associated with anthropogenic emissions. The use of a high-resolution atmospheric transport in global CO₂ flux ~~inversion~~inversions has the advantage of better resolving the ~~transport~~transported mixed signals from the ~~mix of the~~ anthropogenic and biospheric sources in densely populated continental regions ~~and shows~~. Thus it has a potential for achieving better separation between fluxes from terrestrial ecosystems and strong ~~localised~~localized sources, such as anthropogenic emissions and forest fires. Further improvements in the modelling system are needed as ~~the our~~ posterior fit ~~is~~was better than that ~~by of~~ the National Oceanic and Atmospheric Administration (NOAA)'s CarbonTracker only for a fraction of the monitoring sites, mostly at coastal and island locations ~~experiencing mix of where~~ background and local flux signals are mixed.

1 Introduction

Inverse modelling of the surface fluxes is implemented by using chemical transport model simulations to match atmospheric observations of greenhouse gases- (GHGs). CO₂ flux inversions studies started from addressing large scale flux distributions (Enting and Mansbridge, 1989; Tans et al., 1990; Gurney et al., 2002; Peylin et al., 2013 and others) using background monitoring site data and global transport models at low and medium spatial resolutions, targeting extraction of the information on large and highly variable fluxes of ~~carbon dioxide~~CO₂ from terrestrial ecosystems and oceans. Merits of improving the spatial resolutions of global transport simulations to 9-25 km, which this study aims to

demonstrate, have been also discussed by previous studies, such as Agusti-Panareda et al. (2019) and Maksyutov et al. (2008). However, global inverse modelling studies have never been conducted at these spatial resolutions. On the other hand, regional-scale fluxes, such as national emissions of non-CO₂ ~~greenhouse gases (GHGs)~~, have been estimated using inverse modelling tools ~~relying that rely~~ on regional (mostly Lagrangian) transport algorithms which are capable of resolving surface flux contributions to atmospheric concentrations at resolutions from 1 to 100 km (Vermeulen et al., 1999; Manning et al., 2011; ~~-~~Stohl et al., 2009; Rodenbeck et al., 2009; Henne et al., 2016; He et al., 2018; Schuh et al., 2013; Lauvaux et al., 2016 ~~-and others~~). Extension of the regional Lagrangian inverse modelling to the global scale based on the combination of three-dimensional (3-D) global Eulerian model and Lagrangian model have has been implemented in several studies (Rugby et al., 2011; Zhuravlev et al., 2013; Shirai et al., 2017) ~~, which~~. They have demonstrated an enhanced capability of resolving the regional and local concentration ~~variability~~ variabilities driven by fine-scale surface emission patterns, while using the inverse ~~modeling~~ modelling schemes ~~relying rely~~ on regional and global basis functions that yield concentration responses of regional fluxes at observational sites. A disadvantage of using regional basis functions in inverse ~~modeling~~ modelling is the flux aggregation errors, as noted by Kaminski et al. (2001). This is has been addressed by developing grid-based inversion schemes based on variational assimilation algorithms that yield flux corrections that are not tied to aggregated flux regions (Rodenbeck et al., 2003; Chevallier et al., 2005; Baker et al., 2006, and others). In order to implement a grid-based inversion scheme that is suitable for optimizing surface fluxes using a high-resolution atmospheric transport capability of the Lagrangian model, an adjoint of a coupled Eulerian-Lagrangian model is needed, ~~such as one~~ reported by Belikov et al. (2016).

In this study, we applied an adjoint of the coupled Eulerian-Lagrangian transport model, which is a revised version of Belikov et al. (2016), to the problem of surface flux inversion based on a coupled transport model with a spatial resolution of the Lagrangian model at 0.1° longitude-latitude. While global higher resolution transport runs can be ~~tried~~ implemented with coupled Eulerian-Lagrangian models (e.g. Ganshin et al., 2012), the choice of the model resolution in our inversion system is was dictated mostly by the availability of the prior surface CO₂ fluxes.

~~A~~The practical need for running high-resolution atmospheric transport simulations at the global scale is currently driven by expanding GHG observing capabilities towards quantifying anthropogenic emissions by observing ~~CO₂~~ GHGs at the vicinity of emission sources (Nassar et al., 2017; Lauvaux et al., 2020) ~~, including~~. These include observations in both background and urban sites, with tall towers, commercial airplanes, and satellites. At the same time, the focus of inverse ~~modeling~~ modelling is evolving towards studies of the anthropogenic emissions, with a target of making better estimates of regional and national emissions in support of national and regional GHG emission reporting and control measures (Manning et al., 2011; Henne et al., 2016; Lauvaux et al., 2020). In that context, global-scale high-resolution inverse ~~modeling~~ modelling approaches have the advantage in closing global budgets, while regional and national scale inverse

~~modeling~~modelling approaches with limited area models require boundary conditions normally provided by global model simulations with optimized fluxes. Often there is an additional degree of freedom introduced by allowing corrections to the boundary concentration distribution to improve a fit at the observation sites (Manning et al., 2011). As a result, the global total of regional emission estimates does not necessarily match the balance constrained by global mean concentration trends. A global coupled Eulerian-Lagrangian model (~~e.g., such as~~ Ganshin et al., (2012), has the potential for addressing both the objectives, that is closing the global balance and operating at the range of scales from a single city (Lauvaux et al., 2016) to a large country or continental scale. Here we report ~~developing the development of~~ a high-resolution inverse ~~modeling~~modelling technique that is suitable for application at a broad range of spatial scales ~~and apply~~. We applied it to the problem of estimating the distribution of CO₂ fluxes over the globe that provides the best model fit to the observations. In separate studies, the same inversion system was applied to inverse ~~modeling~~modelling of methane emissions (Wang et al., 2019; Janardanan et al., 2020).

The objective of this study is ~~optimizing to optimize~~ the natural CO₂ fluxes in order to provide ~~a~~-background CO₂ concentration fields for estimating ~~the~~ fossil CO₂ emissions where the advantage of the high-resolution approach is more evident. The paper is composed as follows: ~~this~~ Section 1 provides ~~Introduction an introduction~~; Section 2, the transport model and its adjoint; Section 3 introduces the Prior fluxes, observational dataset, and gridded flux uncertainties; Section 4 gives the formulation of the inverse ~~modeling~~modelling problem and numerical solution; Section 5 presents simulation results and discussion, which is followed by the Summary and Conclusions.

2 The coupled tracer transport model, its adjoint and the implementation

For the simulation of the CO₂ transport in the atmosphere, we used ~~a~~the coupled Eulerian-Lagrangian model NIES-TM-FLEXPART, which is a ~~further modification~~modified version of the model described by Belikov et al. (2016). ~~Coupled~~The coupled transport model is computationally more efficient in comparison to the Eulerian model ~~operating at if both models are run on~~ the same spatial resolution. ~~It was confirmed by~~ Belikov et al., (2016) confirmed that the coupled model with a Lagrangian model ~~run at~~ resolution of 1°×1° performs similarly when coupled with Eulerian model at either 1.25°×1.25° or 2.5°×2.5° resolution, and ~~only can see~~ performance degradation was only seen when using a 10°×10° -resolution Eulerian model. The coupled model ~~combines~~consists of NIES-TM v08.1i with a horizontal resolution of 2.5°×2.5° and 32 hybrid-isentropic vertical levels (Belikov et al., 2013) and the FLEXPART model v.8.0 (Stohl et al., 2005) run in backward mode with a surface flux resolution of 0.1°×0.1°. Both models use the Japan 25-year reanalysis (JRA-25)/JMA Climate Data Assimilation System (JCDAS) meteorology (Onogi et al., 2007), with 40 vertical levels interpolated to a 1.25°×1.25° grid. The use of low-resolution wind fields for high-resolution transport is better justified for cases of nearly

geostrophic flow over flat terrain, as discussed by Ganshin et al., (2012). It should be useful in the future to adapt this ~~modeling~~modelling framework to using reanalyses recently made available at 0.25°–0.3° resolution, even if the tests with higher resolution winds by Ware et al., (2019) did not show large improvement over lower resolution.

The coupled transport model was derived from the Global Eulerian-Lagrangian Coupled Atmospheric transport model (GELCA) (Ganshin et al., 2012; Zhuravlev et al., 2013; Shirai et al., 2017). To facilitate model application in our iterative inversion algorithm, all the components of the model – Eulerian model and the coupler are integrated ~~into~~ one executable (online coupling) as described in Belikov et al., (2016), while the original GELCA model implements Eulerian and Lagrangian components sequentially, and then applies the coupler (off-line coupling). -The changes in the current version with respect to the version presented by Belikov et al. (2016) include an adjoint code derivation for model components using the adjoint code compiler Tapenade (Hascoet and Pascual, 2013), instead of using the TAF compiler (Giering and Kaminski, 2003). Additionally, the indexing and sorting algorithms for the transport matrix were revised to allow ~~an~~ efficient memory use for processing large matrices of LPDM-driven responses to surface fluxes arising in the case of high-resolution surface fluxes and a large number of observations, especially when using satellite data. A manually derived adjoint of the NIES-TM v08.1i is used as in Belikov et al. (2016), due to its computational efficiency. In the version of the model that includes manually coded adjoint, only the second-order van Leer algorithm (van Leer, 1977) is implemented, as opposed to the third-order algorithm typically used in forward ~~model~~models (Belikov et al., 2013).

3 Prior fluxes, flux uncertainties and observations

Prior CO₂ fluxes, were prepared as a combination of monthly-varying fossil fuel emissions by the Open-Data Inventory for Anthropogenic Carbon dioxide (ODIAC), available at a global 30 arc second resolution (e. g. Oda et al., 2018), ocean-atmosphere ~~exchange~~exchanges by the Ocean Tracer Transport Model (OTTM) 4D-var assimilation system, available at a 1° resolution (Valsala and Maksyutov, 2010), daily CO₂ emissions by biomass burning by the Global Fire Assimilation System (GFAS) dataset provided by the Copernicus services at a 0.1° resolution (Kaiser et al., 2012), and a daily varying climatology of terrestrial biospheric CO₂ exchange simulated by the optimized Vegetation Integrative Simulator for Trace gases (VISIT) model (Ito, 2010; Saito et al., 2014). Figure 1 presents samples of the four prior flux components (fossil, vegetation, biomass burning and ocean) used in the forward simulation.

3.1 Emissions from fossil fuel

For ~~the~~ fossil fuel CO₂ emissions (emissions due to ~~of~~ fossil fuel combustion and cement manufacturing), we used ~~the~~ ODIAC data product (Oda and Maksyutov, 2011, 2015; Oda et al., 2018) at ~~a~~ 0.1° × 0.1° resolution on monthly basis. The version 2016 of the ODIAC ~~2016~~ data product (ODIAC2016, Oda et al., 2018) is based on global and national emission estimates and monthly estimates made ~~at monthly resolution~~ by the Carbon Dioxide Information Analysis Center (CDIAC) (Boden et al., 2016; Andres et al., 2011). For spatial disaggregation it uses the emission data for powerplant emissions by the CARbon Monitoring and Action (CARMA) database (Wheeler and Ummel, 2008), while the rest of the national total emissions on land were distributed using spatial patterns provided by night-time lights data collected by the Defence Meteorological Satellite Program (DMSP) satellites (Elvidge et al., 1999). The ODIAC fluxes were aggregated to a 0.1° resolution from the high-resolution ODIAC data- ~~(1×1 km)~~. The ODIAC emission product is suitable for this ~~type~~ kind of ~~studies~~ study because the global total emission is constrained by updated estimates while providing a high-resolution emission estimate. Thus, it can be applied to carbon budget problems across different scales.

3.2 Terrestrial biosphere fluxes

CO₂ fluxes by the terrestrial biosphere at a resolution of 0.1° were constructed using a vegetation mosaic approach, combining the vegetation map data by synergetic land cover product (SYNMAP) dataset (Jung et al., 2006), available at a 30 arc second resolution, with terrestrial biospheric CO₂ exchanges simulated by optimized VISIT model (Saito et al., 2014) for each vegetation type in every 0.5° grid at ~~a~~ daily time step. The area fraction of each vegetation type is derived from SYNMAP data for each 0.1° grid. The CO₂ net ecosystem exchange (NEE) fluxes on ~~a~~ 0.1° grid were prepared by combining the vegetation type-specific fluxes with vegetation area fraction data on ~~a~~ 0.1° grid. By averaging the daily flux data for ~~the~~ period of 2000-2005 the flux climatology was derived for use in the recent years (after 2010~~7~~) when the VISIT model simulation based on JRA-25-JCDAS reanalysis data is not available. Although the use of climatology in place of original fluxes degrades the prior, the posterior fluxes show significant departures from prior, thus reducing the impact of missing the prior variations. The diurnal cycle was not resolved as it requires producing additionally the gross primary production and ecosystem respiration. To estimate the effect of excluding the diurnal cycle in the prior fluxes, for our selected time of sampling the observations, we compared CO₂ concentrations simulated with diurnally varying fluxes at hourly time step with those made with daily mean fluxes produced by ~~SiB~~ the Simple Biosphere model (SiB) model for 2002-2003 (Denning et al, 1996) as used in Transcom continuous intercomparison (Law et al, 2008). The results show that~~7~~ for background monitoring sites the difference is not significant (below 0.1 ppm), ~~same~~ similar to the result ~~as~~ by Denning et al, (1996). For continental sites, the difference between the two simulations ~~were~~ was combined into four seasonal values,

and the data for the season with the largest difference were shown in Figure A1. Positive bias by simulation with daily constant flux with respect to diurnally varying fluxes is in the order of 0.5 to 1 ppm, and it is larger during the middle of the growing season. Inclusion of the diurnally varying fluxes in place of daily mean has the potential to change seasonality of posterior fluxes by inversion in a favourable direction, as there are regions where flux seasonality is somewhat stronger than expected (Section 5.2).

3.3 Emissions from biomass burning

Daily biomass burning CO₂ emissions by the Global Fire Assimilation System (GFAS) dataset ~~reliably~~ on assimilating Fire Radiative Power (FRP) observations from the MODIS instruments onboard the Terra and Aqua satellites (Kaiser et al., 2012). The fire emissions at 0.1° resolution are calculated from FRP with land cover-specific conversion factors compiled from a literature survey. The GFAS system adds corrections for observation gaps in the observations, and filters spurious FRP observations of volcanoes, gas flares, and other sources. The fluxes are input to the model at the surface, which may lead to underestimation of the injection height for strong burning events and occasional overestimation of biomass burning ~~signals~~ simulated at surface stations.

3.4 Oceanic exchange flux

The air-sea CO₂ flux component for the flux inversion used an optimized estimate of oceanic CO₂ fluxes by Valsala and Maksyutov (2010). The dataset ~~is~~was constructed with ~~a~~ variational assimilation of the observed partial pressure of surface ocean CO₂ (pCO₂) available in Takahashi et al. (2017) database into the OTTM (Valsala et al., 2008), coupled with a simple one-component ecosystem model. The assimilation consists of a variational optimization method ~~which~~that minimizes the model ~~to~~ observation differences ~~in~~of the surface ocean dissolved inorganic carbon (DIC) (or pCO₂) within the two-month time window. ~~The~~ OTTM model fluxes produced on a 1° × 1° grid at monthly time step ~~are~~were interpolated to a 0.1° × 0.1° grid, taking into account ~~the~~ land fraction map derived from the 1 km resolution MODIS landcover product.

3.5 Flux uncertainties for land and ocean.

CO₂ flux uncertainties are needed for both land and ocean regions. Climatological, monthly-varying flux uncertainties for land were set to 20% of the MODIS gross primary productivity (GPP) ~~by MOD17A2~~ product (MOD17A2) available on a 0.05° grid at a monthly resolution (Running et al., 2004). Oceanic flux uncertainties ~~are assigned~~were based on the sum of standard deviation of the OTTM assimilated flux from climatology by Takahashi et al. (2009), ~~plus~~and the monthly variance of the interannually-varying OTTM fluxes (Valsala and Maksyutov, 2010), with a minimum value of 0.02 gCm⁻²

2day^{-1} , in the same way as in the lower spatial resolution inverse model by Maksyutov et al. (2013). Oceanic flux uncertainties were first estimated on a $1^\circ \times 1^\circ$ resolution at a monthly time step, and then interpolated to a $0.1^\circ \times 0.1^\circ$ grid, with the same procedure as for the oceanic fluxes.

3.6 Atmospheric CO₂ observations.

5 We used CO₂ observation data distributed as the ObsPack-CO₂ GLOBALVIEWplus v2.1 (Cooperative Global Atmospheric Data Integration Project, 2016). The data from the flask sites were used as an average concentration for a pair of flasks. Afternoon (15:00 to 16:00 local time) average concentrations were used for continuous observations over land and for remote background observation sites. For the continuous mountain top observations, we used early morning observations (05:00 to 06:00 local time). ~~Geographical~~The geographical local time ~~is~~was used, as defined by UTC ~~time~~
10 with a longitude-dependent offset. The list of the observation locations, with ObsPack site ID, site names, data providers, and data references ~~appear~~appears in ~~the~~ Table A1 in the Appendix, accompanied by a site map ~~on~~in Figure A2. ~~Aircraft~~The aircraft observational data collected by NOAA Aircraft Program at Briggsdale, Colorado (CAR), Cape May, New Jersey (CMA), Dahlen, North Dakota (DND), Homer, Illinois (HIL), Worcester, Massachusetts, (NHA), Poker Flats, Alaska (PFA), Rarotonga, (RTA), Charleston, South Carolina (SCA), Sinton, Texas (TGC) (Sweeney et al., 2015), and also by the
15 Comprehensive Observation Network for TRace gases by AirLiner (CONTRAIL) project over West Pacific (CON) (Machida et al., 2008) were grouped into averages for each 1 km altitude bin, altitude counted from sea level. Within the 1 km altitude range, the average value of both concentration and the altitude ~~are~~was taken. Aircraft observations were not assimilated, only intended for use in the validation of the results.

20 4 Inverse modelling algorithm

4.1 Flux optimization problem

Inverse problem of atmospheric transport is formulated by Enting (2002) as finding the surface fluxes that minimize misfit between the transport model simulation $-y_f + H \cdot (x_p + x)$ and the vector of observations y , ~~where~~ y_f ~~is~~ the forward simulation without the surface fluxes, $-x_p$ ~~is~~ the known prior flux, x is the unknown flux correction, and H represents the
25 transport model. The equation $-y = y_f + H \cdot (x_p + x)$ has to be solved for the unknown flux correction x , and x is solved for at the transport model grid scale (Kaminski et al., 2001). By introducing the residual misfit vector $-r = y - (y_f + H \cdot x_p)$, the problem can be formulated as minimizing a norm of difference $(r - H \cdot x)$ weighted by the data uncertainties.

As the observation data alone are not sufficient to uniquely define the solution x , an additional regularization is required. By introducing additional constraints on the amplitude and smoothness of the solution, the inverse modelling problem is formulated (Tarantola, 2005) as solving for the optimal value of the vector x at the minimum of a cost function $J(x)$:

$$J(x) = \frac{1}{2}(H \cdot x - r)^T \cdot R^{-1} \cdot (H \cdot x - r) + \frac{1}{2}x^T \cdot B^{-1} \cdot x \quad (1)$$

where x is ~~optimised~~the optimized flux, R is ~~a~~the covariance matrix for observations and B is ~~a~~the covariance matrix for surface fluxes. By introducing a decomposition of B as $B = L \cdot L^T$ (construction of matrix L explained in detail in Section 4.2) and a variable substitution $x = L \cdot z$ the second term in Eq. (1) is simplified. At the same time, by assuming that R can be decomposed into $R = \sigma^T \cdot \sigma$, where σ is a vector of data uncertainties, and introducing expressions $b = \sigma^{-1} \cdot (r - H \cdot x)$, and $A = \sigma^{-1} \cdot H \cdot L$, the new form of Eq. (1) is introduced:

$$J(z) = \frac{1}{2}((A \cdot z - b)^T(A \cdot z - b) + z^T \cdot z) \quad (2)$$

The solution minimizing $J(z)$ can be obtained by forcing the derivative $\partial J(z)/\partial z = A^T(A \cdot z - b) + z$ to be zero, which results in

$$-(A^T A + I) \cdot z = A^T b \quad (3)$$

An optimal solution z at the minimum of the cost function $J(z)$ is found iteratively with the Broyden–Fletcher–Goldfarb–Shanno (~~BGFS~~BFGS) algorithm (Broyden, 1969; Nocedal, 1980), as implemented by Gilbert and Lemarechal (1989). The method requires the ability to accurately estimate the cost function $J(z)$ and its gradient $A^T(A \cdot z - b) + z$, and has modest memory storage demands. Given the solution z , the flux correction vector x is then found by reversing the variable substitution as $x = L \cdot z$.

The convergence of the solution may be affected by the accuracy of the adjoint. The result of the duality test defined as the norm of the difference between NIES-TM-FLEXPART forward and adjoint modes estimated as $-(\langle y, H \cdot x \rangle - \langle H^T \cdot y, x \rangle)/(\langle y, H \cdot x \rangle)$ was found to be in the order of 10^{-9} , while for the Lagrangian component based on the receptor sensitivity matrices prepared with FLEXPART, it is about 10^{-15} when calculated in double precision ~~is used in calculations~~, (same as in ~~Belikov et al., 2016~~). The formulation of the minimization problem as presented by Eq. (2) is convenient for the derivation of the flux uncertainties, as it is possible to solve Eq. (3) via the truncated singular value decomposition (SVD) and estimate the regional flux uncertainties based on the derived singular vectors (Meirink et al., 2008). Alternatively, as mentioned by Fisher and Courtier (1995), it is also possible to use the flux increments derived at each iteration of the BFGS algorithm in place of the singular vectors. Although we did not use SVD for constructing the posterior covariances in this study, we tested solving the ~~optimisation~~optimization problem with SVD. We derived SVD of $A^T A$

using a computer code by Wu and Simon (2000), which implements an algorithm proposed by Lanczos (1950) and confirmed that we get our approach yields practically the same solution as the one obtained with the BFGS algorithm. Lanczos (1950) algorithm is a commonly used SVD technique applied in case of large sparse matrix or a linear operator, when it is impractical to directly make SVD of $-A$. A truncated SVD of A is given by the expression $A \approx U\Sigma V^T$, where Σ is the diagonal matrix of n singular values, while U and V are the matrices of left and right singular vectors. Variable substitutions

$$z = V^T s, d = U^T b, - \quad (4)$$

~~transform~~transform z into a space of singular vectors s and reduces Eq. (3) to $(\Sigma^T \Sigma + I) \rightarrow s = \Sigma^T d$, resulting in a solution

$$-s = \Sigma^T d / (\Sigma^T \Sigma + I), \quad (5)$$

which is evaluated directly, as Σ is diagonal. In case of having only n largest singular values, the elements of the solution s are given by $s_i = \lambda_i d_i / (\lambda_i^2 + 1) \rightarrow$ for all $-i \leq n$. Once the solution (5) is found, it is taken back to the space of the dimensional fluxes z by applying variable substitutions (4). For fluxes, we have $x = L \cdot z, z = V^T s, d = U^T b$, thus the solution is provided by

$$15 \quad x = LV \cdot \frac{\Sigma^T}{(\Sigma^T \Sigma + I)} \cdot U^T b. \quad (6)$$

Another variant of the SVD approach may be more memory efficient in the case of a very large dimension of a flux vector, then applying SVD to AA^T instead of $A^T A$ can save some memory as in a representer method (Bennett, 1992). It gives the same solution as SVD of $A^T A$ using less intermediate memory storage when the dimension of the observation vector y is lower compared to that of the flux vector x .

The forward and adjoint mode simulations with the transport model needed to implement the iterative optimization are composed of several steps:

1. Running the Lagrangian model FLEXPART to produce the source-receptor sensitivity matrices. For each observation event, a backward transport simulation with the FLEXPART model is implemented, to produce the surface flux footprints at a $0.1^\circ \times 0.1^\circ$ latitude-longitude resolution and the 3-D concentration field footprint, taken at the end of the backward simulation run (ending at the coupling time of 00:00 GMT). The coupling time is set to be within 2 to 3 days before the observation event. The surface flux sensitivity data are recorded in the unit of $\text{ppm} \cdot (\text{gCm}^{-2}\text{day}^{-1})^{-1}$. The flux footprints are saved at a daily or hourly timestep, depending on available surface fluxes.

2. Running the coupled transport model forward, which includes:

- a. Running the 3-D Eulerian model NIES-TM from the 3-D initial concentration field, with the prescribed surface fluxes. Sampling the 3-D field at model coupling times for each observation according to 3-D concentration field footprints, calculated at the first step by FLEXPART. NIES-TM reads the same 0.1° fluxes as the Lagrangian transport model, and remaps them onto its $2.5^\circ \times 2.5^\circ$ grid, before including them in the simulation. For each observation event, the fluxes used in Eulerian and Lagrangian components are separated by the coupling time, so that there is no double-counting of fluxes for the same date in the coupled model simulation.
 - b. Use the two-dimensional (2-D) surface flux footprints prepared with the Lagrangian model to calculate the surface flux contribution to the simulated concentrations for the last 3 days.
 - c. Combining the concentration contributions produced by Eulerian (a) and Lagrangian (b) ~~component~~components to give the total simulated concentration.
3. In the inverse modelling, the transport model is run in three modes:
- a. The forward model is first run with prescribed prior fluxes, starting from the 3-D initial CO_2 concentration field, to calculate ~~difference~~the residual misfit (difference between the observation and the model simulation ~~(residual misfit)~~.
 - b. ~~at~~At the inverse modelling/optimization step, only the flux corrections are propagated in the forward model runs, which are optimized to ~~fit~~minimize the observation-model misfit. The prescribed prior fluxes are not used (switched off) at this step. The model starts from a zero 3-D initial concentration field and runs forward with flux corrections updated by the optimization algorithm at every iteration, to produce simulated concentrations. Corrections to the 3-D initial concentration field are not estimated, and thus not included ~~into~~in the control vector. Instead, the model is given ~~three months of a~~ spin-up period of three months before the target flux estimation period to adjust the simulated concentration to the observations.
 - c. ~~in~~In the adjoint mode, the adjoint mode atmospheric transport is simulated backward in time starting from the vector of residuals to produce a gradient of the cost function (defined as eq. (1)) with respect to the surface fluxes. Given the gradient, the optimization algorithm provides the new flux corrections field. For convenience, the transport model and its adjoint are implemented as callable procedures suitable for direct communication mode.

Steps 1 is carried out the same way as in other versions of the coupled transport model (Zhuravlev et al., 2013; Shirai et al., 2017). ~~At~~In steps 2 and 3, the procedure of running the forward and adjoint model is organised differently. At the

beginning of the transport model runs, all the data prepared by the Lagrangian model are stored in the computer memory, in order to save the time required for reading and re-sorting the data at each iteration. -The fraction of the CPU time spent on running the Eulerian component of the coupled transport model is 82%, on the Lagrangian component 1%, and on covariance 17%.

- 5 To create the initial concentration field, we used a 3-D snapshot of CO₂ concentration for the same day from a simulation of the previous year, which ~~are is~~ already ~~optimised~~optimized (usually Oct 1st, or Jan 1st), ~~or, when~~). When such simulation is not available, ~~take we took~~ snapshot from an available year and correct it globally for the concentration difference between these years using the NOAA monthly mean data for the South Pole as representative for the global mean concentration. -When the ~~optimised~~optimized fields are not available, the output of the multiyear spin-up simulation is
10 used, with the same adjustment to the South Pole observations.

4.2 Implementation of covariance matrices *L* and *B*.

- We optimized surface flux fields separately for two sets of fluxes in every grid globally, for land and ocean regions, following the approaches ~~done~~ by Meirink et al. (2008) and Basu et al. (2013), who suggested optimizing for global surface
15 flux fields separately for each optimized flux category. Separating the total flux into independent flux categories, each with its own flux uncertainty pattern, results in using homogenous spatial covariance matrices, significantly simplifying the coding of the matrix *B*. The matrix *B* can be given as ~~a the~~ product of a diagonal matrix of flux uncertainties and a matrix with 1.0 as diagonal elements, while non-diagonal elements are exponentially declining with the squared distance between grid points (Meirink et al., 2008). In practice, an extra scaling of the uncertainty is needed for balancing the constraint on
20 fluxes with the data uncertainty, which also impacts the regional flux uncertainties. Several empirical methods are in use, where the tuning parameters are a horizontal scale (Meirink et al., 2008) and an uncertainty multiplier (Chevallier et al., 2005; Rodenbeck, 2005). In our *B* matrix design, we follow Meirink et al. (2008) in representing *B* matrix as the multiple of the non-dimensional covariance matrix *C* and the diagonal matrix of the flux uncertainty *D* as $B = D^T \cdot C \cdot D$. *C* matrix is commonly implemented as a band matrix with non-diagonal elements declining as $\sim \exp(-x^2/l^2)$ -with the distance *x*
25 between the grid cells, as in 2-D spline algorithms (Wahba and Wendelberger, 1980). ~~Applying multiplication~~Multiplication by the matrix *C* becomes computationally costly at a high spatial resolution in ~~the~~ cases ~~when where~~ the correlation distance *l* is much larger than the size of the model grid. The correlation distance used here is 500 km for land and ocean, and two weeks in time. The rationale of applying a correlation distance of 500 km in the case of a regional inversion over the continental USA with a model grid size of 40 km was discussed by Schuh et al. (2010). In

that case, the use of an implicit diffusion with a directional splitting to approximate the Gaussian shape appears to be computationally more efficient than the direct application of the Gaussian-shaped smoothing function, as the number of floating-point operations per grid point ~~does~~ not grow with the ratio of the correlation distance l to the grid size. The covariance matrix based on the diffusion operator is popular in many ocean data assimilation systems, as a convenient way

to deal with coastlines (e.g. Derber and Rosati, 1989; Weaver and Courtier, 2001). The idea of using the solution of the diffusion equation ~~in place~~ instead of multiplying a vector by the covariance matrix can be presented briefly in a 1-D case. Consider a discrete problem of multiplying a vector representing a function $-g(\lambda)$ on a grid with spacing $\Delta\lambda$ by a symmetric matrix which has diagonal elements equal to one, and non-diagonal ones declining as $\exp(-\frac{1}{2}(i\Delta\lambda)^2/d^2)$ -with distance of i points from the diagonal, where d is covariance length. Its continuous analogue

is an application of a Gaussian-shaped smoother in the form $G(\lambda, \lambda') = \exp(-\frac{1}{2}(\lambda - \lambda')^2/d^2)$ to a function $g(\lambda)$ as:

$$\tilde{g}(\lambda) = \int_{-l}^l \exp(-\frac{1}{2}(\lambda - \lambda')^2/d^2) g(\lambda') d\lambda', \quad (7)$$

where the smoothing window size l should be several times larger than d . The expression in Eq. (7) looks exactly like the solution of a one-dimensional diffusion equation

$$\frac{\partial g}{\partial t} - D \frac{\partial^2 g}{\partial \lambda^2} = 0, \quad (8)$$

where D is the diffusivity. The solution of Eq. (8) is given by $\hat{g}(\lambda) = \frac{1}{\sqrt{2\pi p^2}} \int_{-l}^l \exp(-\frac{1}{2}(\lambda - \lambda')^2/p^2) g(\lambda') d\lambda'$, where $p^2 = 2D\Delta t$, $g(\lambda)$ is the initial distribution, and Δt is the time step (Crank, 1975). Based on this equivalence, instead of multiplying a vector by the covariance matrix, we solve the discrete form of Eq. (8) by backward-in-time, central-in-space implicit method.

Applying the diffusion operator for the covariance matrix helps ~~achieving to achieve~~ the spatial homogeneity between polar and equatorial regions, as diffusion produces a theoretically uniform effect on flux ~~fieldfields~~ regardless of the polar singularity. The diffusion operator works as a low-pass filter, selectively suppressing all the wavelengths shorter than the covariance length scale. As we need to construct the covariance matrix B in the form $B = L \cdot L^T$, we choose to construct L first and then derive its transpose L^T . The factorization of L is given by $L = u_F \cdot (L_{xy} \otimes L_t) \cdot m$, where L_t is the one-dimensional covariance matrix for time dimension, \otimes is a Kronecker product. We approximate the two-dimensional covariance L_{xy} by splitting it into two dimensions, latitude and longitude, as in Chua and Bennett, (2001), and apply several iterations of this process. The horizontal covariance $-L_{xy}$ is implemented in $N = 3$ iterations of one-dimensional diffusion so that $-L_{xy} = (L_x \otimes L_y)^N$, where L_x and L_y are covariance operators for longitude and latitude directions respectively, while u_F is the diagonal matrix of flux uncertainty for each grid cell and each flux category (land and ocean), and m is

~~a~~the diagonal matrix of a map factor which is introduced to scale the contributions to the cost function by model grid area, with diagonal elements given by $m = \cos^{-1/2} \theta$ (where θ is latitude).

This design of covariance operator helps ~~preserving to preserve the~~ high-resolution structure of the resultant flux corrections, given by $x = L \cdot z = u_F \cdot \text{---}(L_{xy} \cdot (L_{xy} \otimes L_t) \cdot m \cdot z\text{---}$, as it can be factored into a multiple of uncertainty u_F

5 and scaling factor $S = (L_{xy} \otimes L_t) \cdot m \cdot z$ -as $x = u_F \cdot S$ -. While the scaling factor S is smoothed with a covariance length of 500 km, the original structure of the spatial heterogeneity of surface flux uncertainty u_F is still ~~present~~preserved at the original high-resolution in the ~~optimised~~optimized flux corrections x .

The adjoint operators L_x^T ~~-and~~ L_y^T are derived by applying the adjoint code compiler Tapenade (Hascoet and Pascual, 2013) to the Fortran code of modules ~~approximating that approximate the~~ operators $-L_x$ and $-L_y$ by implicit diffusion. L_t and its transpose L_t^T are of lower dimension and are designed as in Meirink et al. (2008) by deriving athe square root of the Gaussian-shaped time covariance matrix with direct SVD (Press et al., 1992).

~~The important~~A notable merit of the algorithm is that it ~~makes minimal~~minimizes the use of the computer memory, avoiding allocation of the memory space larger than several times the dimension of the observation and flux vectors, making it suitable for ingesting large ~~amount~~amounts of surface and space-based observations. It should be mentioned that

15 the computer memory demand for accommodating the surface flux sensitivity matrices for massive space-based observations can ~~become~~be a limiting factor as discussed by Miller et al. (2020).

4.3 Inversion setup

~~Combination~~The combination of the coupled transport model NIES-TM-FLEXPART (as described in Section 2) with the

20 variational optimization algorithm (Sections 4.1-4.2) constitutes the inverse ~~modeling~~modelling system NIES-TM-FLEXPART-VAR (NTFVAR). We ~~test~~tested the inversion algorithm presented in previous sections ~~on a~~with the problem of finding athe best fit to the CO₂ observations provide by ObsPack dataset by optimizing the corrections to the land and ocean fluxes. By the design of our inverse ~~modeling~~modelling system, we ~~produce~~produced smoothed fields of scaling factors that are multiplied by the fine-resolution flux uncertainty fields to give flux corrections. We ~~derive~~derived the

25 surface CO₂ flux corrections at a 0.1° resolution and ~~half month~~biweekly time step. Our purpose is to demonstrate that we can optimize fluxes to improve the fit to the observations using iterative optimization procedure, based on high-resolution coupled transport model and its adjoint. Our report is limited to the technical development towards achieving the capability of estimating anthropogenic CO₂ emissions based on atmospheric observations, and we do not elaborate on the impact of ~~improvement in~~ simulating the tracer transport at a high resolution on the quality of the optimized natural fluxes, which

requires an additional study. The flux optimization ~~is was~~ applied ~~into~~ a short time-window of 18 months, for each optimized year, and the simulation starts on October 1st, three months ahead of the target year. ~~Three months~~ A spin-up period ~~of three months~~ is given to let the inversion adjust the modeled concentration to the observations; so that ~~the a~~ balance is achieved between fluxes, concentrations and concentration trends. The simulation is continued until reaching the limit of 45 cost function gradient calls, by that time M1QN3 procedure by Gilbert and Lamarechal (1989) is able to complete 30 iterations. Figure A3 in the Appendix presents the cost function reduction in the case of optimizing fluxes for 2011 and completing 61 gradient calls. The cost function reduction declines nearly exponentially, by almost 3 times for each 10 gradient calls completed. ~~Relative~~ The relative improvement between 41 and 61 gradient calls is 1.5% of the total reduction from the first to the 61 gradient calls. ~~We optimize~~ optimized fluxes for three years from 2010 to 2012; and ~~analyze~~ analyzed the simulated concentration fit at the observation sites. The average root mean squared misfits (RMSE) between the optimized ~~concentration~~ concentrations and the observations are compared ~~between~~ with a forward simulation with prior fluxes and optimized simulation; ~~while for~~ For evaluation, we ~~used~~ statistics of the optimized simulations by the operational NOAA's CarbonTracker inverse ~~modeling~~ modelling system (ObsPack_co2_1_CARBONTRACKER_CT2017_2018-05-02; Peters et al., 2007).

5 Results and discussion.

5.1 Analysis of the posterior model fit to the observations

We compared the results of the forward simulation with prior and optimized fluxes with the processed observations for ground observation sites, as shown in Table A1, and ~~for~~ airborne vertical profiles; were used for an independent validation (Table A2). Figure 2 shows the observations with forward (prior) and optimized simulations at Barrow (BRW), Jungfraujoch (JFJ), Wisconsin (LEF), Pallas (PAL), Yonagunijima (YON), and Syowa (SYO). ~~Optimization leads to~~ The optimization yielded improved seasonal ~~variation~~ variations of the simulated concentration, including the phase and the amplitude at most sites. At SYO we ~~find~~ found synoptic scale variations with an amplitude in the order of few tenths of a ppm, that were to a large extent, captured by the model. Plots for BRW and JFJ show the ability of the inversion to correct the seasonal cycle, while the difference between model and observations in the southern hemisphere (SYO) is contributed by interannual variations of the carbon cycle. The model-observation mismatch (RMSE) for surface sites included in the ObsPack is presented in Figure 3 for forward and optimized simulation and mean bias for optimized data. The model was able to reduce the model to observation mismatch for most background sites, where the seasonal cycle is affected mostly by natural terrestrial and oceanic fluxes, while the average reduction of the mismatch from forward to optimized simulation is 14%, defined as the mean ratio of optimized mismatch to forward mismatch taken for each site. The reason for the

relatively small reduction is the addition of climatological flux corrections to the prior, estimated by inverse ~~modeling~~modelling of two years of data, 2009 and 2010. As a result, the inversion starts from the initial flux distributions already adjusted to fit the seasonal cycle of the observed concentration. The correction for the difference in global concentration trend between years is not made, thus there are visible differences between prior and optimized simulations in the southern hemispheric background sites. – At most of the Antarctic sites, the mean posterior (after optimization) mismatch (reported as RMSE) is ~~at~~in the ~~level~~order of 0.2 ppm. Over the land, closer to anthropogenic sources, there is a less relative reduction of mismatch on ~~average~~at an annual mean scale. One of the reasons for seeing little improvement is keeping fossil CO₂ emissions fixed and optimizing only the natural fluxes (while the strong signal from fossil emission is not affected by flux corrections). Another possible contributor to the large mismatch over land is neglecting the diurnal cycle under the assumption of using only observations at well-mixed ~~condition~~conditions, and also the limited ability of the low-resolution reanalysis dataset to capture frontal processes in the extratropical continental atmosphere, as discussed by Parazzoo et al. (2011). The mean mismatch ~~is~~was reduced from 2.60 ppm to 2.42 ppm by the flux optimization, while the mean mismatch to uncertainty ratio decreases after optimization by 19% from 0.94 to 0.78. The mean correlation between modelled and observed data improves from $r^2 = 0.43$ (r^2 - coefficient of determination) for the simulation driven by prior fluxes to $r^2 = 0.59$ for the optimized simulation. To remove the effect of the interannual CO₂ growth on CO₂ ~~variability~~variabilities, the mean growth trend was subtracted from data before estimating the r^2 .

Figure 3 also shows, for a comparison purpose, the statistics of the average misfit for the optimized simulation by CarbonTracker, for the same period and same monitoring stations. The comparison is useful for understanding the strength and weaknesses of the inversion system presented here. Over the background monitoring sites, the high-resolution model does not show any advantage over CarbonTracker in terms of the fit between optimized model simulation and observations, which may indicate ~~a~~a better performance by the Eulerian model TM5 used in CarbonTracker. On the other hand, several sites where the high-resolution model shows better fits to observations over CarbonTracker are located inland or near the coast, closer to anthropogenic and biogenic sources. ~~Lower~~A smaller misfit ~~is~~was achieved by the high-resolution model at Key Biscaine (KEY), Baring Head (BHD), Marianna island (GMI)~~),~~), and Cape Kumukahi (KUM-), among others, which can be attributed to coastal/island locations, while there is little or no advantage at mountain sites like Mauna Loa (MLO) or Jungfraujoch (JFJ). This result may be influenced by differences in the model physics between NIES-TM-FLEXPART and TM5 in the lower troposphere, near the top of the boundary layer, and in shallow cumuli. The mismatch (RMSE) between our optimized model and observations for the 102 sites used in the inversion is only 4% lower on average than that by CarbonTracker. It is not yet clear if there is a systematic advantage of one or ~~another~~the other system in any particular site category, other than for coastal/island sites mentioned above. For the average misfit comparison, all data, both assimilated and not assimilated, are included for sites shown in Figure 3. The results for CGO were not counted, due

to the use of different datasets, as our system used only the NOAA flask data, which underwent background selection (by wind direction) at the time of sampling.

~~For~~As an independent validation, a comparison of the unoptimized and optimized simulation to the vertical profile data is shown in Figure 4. For each vertical profile site, the observations were grouped ~~according to~~by altitude ~~range~~, at a 1 km ~~steps~~. ~~Altitude interval~~. ~~The altitude~~ code (e.g. 005, 015, 025, 035, ...) to be added to the site ~~the~~ identifier ~~is~~was constructed as the altitude of midlevel multiplied by 10. The observations at PFA (Poker Fat Alaska) between the surface and 1 km ~~are~~were grouped as PFA005 (mid altitude 0.5 km), while those in 5 to 6 km range ~~are~~were designated as PFA055 (mid-altitude 5.5 km). As for optimized surface data in Figure 3, we show RMSE for forward simulation with prior fluxes, optimized simulation, and CarbonTracker, and mean bias for optimized data. CarbonTracker shows a better fit at most ~~altitudes of the altitude ranges~~ except for the lowest 1 km where the results shown by the two systems ~~are~~were similar. Concurrently, the mean correlation between modelled and observed data ~~does~~did not improve from prior ($r^2 = 0.70$) to optimized simulation ($r^2 = 0.63$), while mean RMSE ~~declines~~declined a little from 1.86 ppm to 1.85 ppm. ~~Comparison~~The comparison to CarbonTracker (CT2017), with a mean RMSE of 1.53 ppm, suggests that the free tropospheric performance of our system can be improved by implementing more detailed vertical mixing processes in the Lagrangian and Eulerian component models.

5.2 Comparison of prior and posterior fluxes

As mentioned in section 4.2, the flux corrections estimated by the inverse model ~~appear as high-resolution~~showed fine scale features despite using large covariance length, because those ~~are~~were made of the high-resolution data uncertainty multiplied by the smooth fields of scaling factor, estimated separately for each of the optimized flux categories - land biosphere and ocean. Examples of the flux ~~correction~~corrections and posterior fluxes (excluding fossil emissions) are presented ~~on~~in Figure 5. The flux corrections and fluxes are shown ~~on~~in Figure 5 for one month (Aug 2011) as an illustration, and they are not representative of a seasonal or climatological mean. The sign of the flux ~~correction~~changes~~corrections changed~~ from positive (source) in the eastern side (continental China) to negative (sink) over the Russian coast and Japanese islands, while the posterior fluxes ~~show~~appeared as a terrestrial sink all over the area. The flux adjustment ~~is~~was driven by the fit to nearby observations made over Korea and Japan.

To illustrate the change of fluxes from prior to posterior estimate by the inversion at the scale of large aggregated regions, the monthly mean fluxes (excluding fossil emissions) averaged for 3 years 2010-2012 are plotted in Figure 6 for eight selected Transcom regions (as defined by Gurney et al. 2002, see map in Figure A2). The plots include prior, optimized, and, for reference, optimized fluxes by CarbonTracker (CT2017). For some regions, the posterior is close to the prior, which is often the case when there are too few observations in the region to drive the corrections to prior fluxes. Boreal

North America (region 1), Temperate North America (2), and Europe (11) are better constrained by observations, while North Africa (5), South Africa (6), Temperate Asia (8), ~~South-EastTropical~~ Asia (9) and Boreal Asia (7) are less constrained. The optimized flux is similar to the prior for Africa (5, 6), ~~South-EastTropical~~ Asia (~~40~~9), and Temperate Asia (8), while there is a substantial adjustment for Boreal Asia (7), which seems to be adjusted to fit the observations outside the region. For both boreal regions, the prior flux seasonality appears weaker than in both posterior and CarbonTracker, which could indicate a problem with vegetation type mapping in higher resolution version of the prior flux model. For regions 1, 6, 7, and 11, the corrected fluxes are closer to CarbonTracker, and for Temperate North America, Temperate Asia, and North Africa the amplitude of flux seasonality is estimated to be stronger, which can be caused by stronger vertical/horizontal mixing in transport model as compared to the transport in CarbonTracker. ~~MoreA more~~ detailed comparison with other inverse model results and independent estimates (e.g. by Jung et al., 2020) should be made after improving the inversion setup, notably, improving the transport model meteorology, seasonality, and diurnal cycle in prior fluxes and seasonality in prior flux uncertainties.

6 Summary and conclusions

A grid-based CO₂ flux inversion system ~~was developed, which that~~ is suitable for inverse estimation of the surface fluxes at a biweekly time step and a 0.1° spatial resolution, ~~was developed~~. To implement the high-resolution simulation capability, several developments were completed. High-resolution prior fluxes were prepared for three surface flux categories: fossil emissions by the ODIAC dataset are based on the point source database and nightlights, biomass burning emissions (GFAS) are based on MODIS observations of fire radiative power and biosphere exchange is based on the mosaic representation of landcover and process-based VISIT model simulation. ~~HighA high~~-resolution atmospheric transport for a global set of observations ~~iswas~~ achieved by combining short-term simulations with the high-resolution Lagrangian model FLEXPART with a global three-dimensional simulation with the medium-resolution Eulerian model NIES-TM. ~~UseThe use~~ of variational optimization with a gradient-based method in the inversion helps ~~avoidingto avoid~~ the need ~~to invertfor inverting~~ large matrices with dimensions dictated by the number of optimized grid fluxes or the number of the observations. Accordingly, the adjoint of the coupled transport model was developed to apply the variational optimization. ~~ComputationallyA computationally~~ efficient implementation of flux error covariance operator is achieved by using an implicit diffusion algorithm. Overall, the presented algorithm ~~demonstratesdemonstrated the~~ feasibility of the high-resolution inverse ~~modelingmodelling~~ at the global scale, extending the capabilities achieved by regional high-resolution ~~modelingmodelling~~ approaches used for estimating the national greenhouse gas emissions for comparison ~~to~~with the national greenhouse gas inventories. ~~ComparisonA comparison~~ of the optimized simulation to the observations

~~shows~~showed some ~~improvement~~improvements over lower resolution CarbonTracker model for some continental and coastal observation sites, located closer to anthropogenic emissions and strong biospheric fluxes, but also demonstrates the need for further improvement of the inverse ~~modeling~~modelling system components. Transport model errors can be reduced by improving transport ~~modeling~~modelling algorithms in ~~the~~ Eulerian and Lagrangian ~~model~~models and using a combination of recent higher resolution reanalysis data with high-resolution wind data simulations by regional models in the regions of interest. ~~Inverse modeling~~Our inverse modelling algorithm can be ~~further~~ improved by tuning the uncertainty scaling, and spatial and temporal covariance distances. Prior fluxes can be improved by developing high-resolution diurnally varying biospheric fluxes, developing a more detailed fossil emission inventory, and ~~developing updates to~~updating estimates of biomass burning and oceanic fluxes.

10 Code and data availability.

The inverse model and forward transport model code can be made available to ~~potential~~ research collaborators. ~~Observed CO₂ concentrations upon reasonable request. The~~ ObsPack dataset is available from NOAA/ESRL (<https://www.esrl.noaa.gov/gmd/ccgg/obspack/>). ~~The~~ ODIAC fossil fuel ~~emissions—emission dataset is available from the Global Environmental Database hosted by~~ CGER/NIES ~~database~~ (<http://db.cger.nies.go.jp/dataset/ODIAC/>).

15 Author contributions.

SM developed the inverse and transport model algorithms and model codes, ran the model, analysed the results, and wrote the manuscript. TO developed the anthropogenic emission inventory, MS developed biospheric flux dataset, JK provided the biomass burning emission fluxes, VV prepared the oceanic CO₂ fluxes. RJ contributed to model testing and data preparation, DB contributed to the development of the NIES transport model, coupled model and coupled adjoint, RZ and AG developed the Lagrangian response simulation system based on FLEXPART model. AA, LC, ED, LH, TM, TN, MR, RL, CS, DR contributed the observational data. All the authors contributed to the development of the manuscript.

Competing interests.

The authors declare no competing interests.

Acknowledgements

The authors acknowledge the use of computing resources at the National Institute for Environmental Studies (NIES) super-computer facility and support from the GOSAT project, project leaders Tatsuya Yokota and Tsuneo Matsunaga, the Ministry of the Environment (MOE) Japan, MRV grant to NIES, grants by the Ministry of Education, Culture, Sports, Science and Technology (MEXT) of Japan to GRENE and ArCS projects. The model development benefitted from fruitful discussions with Frederic Chevallier, David Baker, Peter Rayner, Aki Tsuruta, Fenjuan Wang, Prabir Patra, John Miller, Misa Ishizawa, Tomoko Shirai and the members of the TRANSCOM project. Lorna Nayagam provided her technical assistance to our model testing and dataset developments. Authors appreciate contribution of NOAA CarbonTracker data provided by Andy Jacobson and colleagues. The ObsPack was compiled and distributed by NOAA/ESRL. The authors are grateful to the ObsPack data contributors at NOAA GMD, the Environment and Climate Change Canada and other institutions worldwide, including Tuula Aalto, Shuji Aoki, Gordon Brailsford, Marc L. Fischer, Grant Forster, Angel J. Gomez-Pelaez, Juha Hatakka, Arjan Hensen, Casper Labuschagne, Ralph Keeling, Paul Krummel, Markus Leuenberger, Andrew Manning, Kathryn McKain, Frank Meinhardt, Harro Meijer, Shinji Morimoto, Jaroslaw Necki, Paul Steele, Britton Stephens, Atsushi Takizawa, Pieter Tans, Kirk Thoning and their colleagues.

Appendix

Table A1. List of the observation [sites](#) included in the ObsPack dataset

Site ID	Lat	Lon.	Site name	Lab name	Sampling	Reference
ALT	82.45	-62.51	Alert	EC	insitu	Worthy et al. 2003
ALT	82.45	-62.51	Alert	NOAA	flask	Conway et al. 1994
AMS	-37.8	77.54	Amsterdam Island	LSCE	insitu	Gaudry et al. 1991
AMT	45.03	-68.68	Argyle	NOAA	insitu	Andrews et al. 2014
ARA	-23.86	148.47	Arcturus	CSIRO	flask	Francey et al. 2003
ASC	-7.97	-14.40	Ascension Island	NOAA	flask	Conway et al. 1994
ASK	23.26	5.63	Assekrem	NOAA	flask	Conway et al. 1994
AZR	38.77	-27.38	Terceira Island	NOAA	flask	Conway et al. 1994
BAO	40.05	-105.00	Boulder Atmospheric Observatory	NOAA	insitu	Andrews et al. 2014
BCK	-116.1	62.80	Bechoko	EC	insitu	Worthy et al. 2003
BHD	-41.41	174.87	Baring Head Station	NOAA	flask	Conway et al. 1994

BHD	-41.41	174.87	Baring Head Station	NIWA	insitu	Brailsford et al. 2012
BMW	32.27	-64.88	Tudor Hill	NOAA	flask	Conway et al. 1994
BRA	51.2	-104.7	Bratt's Lake Saskatchewan	EC	insitu	Worthy et al. 2003
BRW	71.32	-156.61	Barrow	NOAA	flask	Conway et al. 1994
BRW	71.32	-156.61	Barrow	NOAA	insitu	Peterson et al. 1986
CBA	55.21	-162.72	Cold Bay	NOAA	flask	Conway et al. 1994
CES	51.97	4.93	Cesar	ECN	insitu	Vermeulen et al. 2011
CGO	-40.68	144.69	Cape Grim	NOAA	flask	Conway et al. 1994
CHL	58.75	-94.07	Churchill	EC	insitu	Worthy et al. 2003
CHR	1.70	-157.15	Christmas Island	NOAA	flask	Conway et al. 1994
CIB	41.81	-4.93	Centro de Investigacion de la Baja Atmosfera	NOAA	flask	Conway et al. 1994
CPT	-34.35	18.49	Cape Point	NOAA	flask	Conway et al. 1994
CPT	-34.35	18.49	Cape Point	SAWS	insitu	Brunke et al. 2004
CRI	15.08	73.83	Cape Rama	CSIRO	flask	Francey et al. 2003
CRZ	-46.43	51.85	Crozet Island	NOAA	flask	Conway et al. 1994
CYA	-66.28	110.52	Casey	CSIRO	flask	Francey et al. 2003
DRP	-59.12	-63.63	Drake Passage	NOAA	ship flask	Conway et al. 1994
EGB	44.23	-79.78	Egbert	EC	insitu	Worthy et al. 2003
EIC	-27.15	-109.45	Easter Island	NOAA	flask	Conway et al. 1994
ESP	49.38	-126.54	Estevan Point	EC	insitu	Worthy et al. 2003
EST	51.66	-110.21	Esther	EC	insitu	Worthy et al. 2003
ETL	54.35	-104.98	East Trout Lake	EC	insitu	Worthy et al. 2003
FSD	49.88	-81.57	Fraserdale	EC	insitu	Worthy et al. 2003
GMI	13.39	144.66	Mariana Islands	NOAA	flask	Conway et al. 1994
GPA	-12.25	131.04	Gunn Point	CSIRO	flask	Francey et al. 2003
HBA	-75.61	-26.21	Halley Station	NOAA	flask	Conway et al. 1994
HDP	40.56	-111.65	Hidden Peak (Snowbird)	NCAR	insitu	Stephens et al. 2011
HPB	47.80	11.02	Hohenpeissenberg	NOAA	flask	Conway et al. 1994
HUN	46.95	16.65	Hegyhatsal	HMS	insitu	Haszpra et al. 2001

HUN	46.95	16.65	Hegyhatsal	NOAA	flask	Conway et al. 1994
INX	-86.02	39.79	INFLUX (Indianapolis Flux Experiment)	NOAA	flask	Conway et al. 1994
IZO	28.31	-16.50	Izana	NOAA	flask	Conway et al. 1994
IZO	28.31	-16.50	Izana	AEMET	insitu	Gomez-Pelaez et al. 2011
JFJ	46.55	7.99	Jungfrauoch	KUP	insitu	Uglietti et al. 2011
KAS	49.23	19.98	Kasprowy Wierch	AGH	insitu	Necki et al. 2003
KEY	25.66	-80.16	Key Biscayne	NOAA	flask	Conway et al. 1994
KUM	19.52	-154.82	Cape Kumukahi	NOAA	flask	Conway et al. 1994
LEF	45.95	-90.27	Park Falls	NOAA	insitu	Andrews et al. 2014
LJO	32.87	-117.26	La Jolla	SIO	flask	Keeling et al. 2005
LLB	54.95	-112.45	Lac La Biche	EC	insitu	Worthy et al. 2003
LLB	54.95	-112.45	Lac La Biche	NOAA	flask	Conway et al. 1994
LMP	35.52	12.62	Lampedusa	NOAA	flask	Conway et al. 1994
LUT	53.4	6.35	Lutjewad	RUG	insitu	van der Laan et al. 2009
MAA	-67.62	62.87	Mawson Station	CSIRO	flask	Francey et al. 2003
MEX	18.98	-97.31	High Altitude Global Climate Observation Center	NOAA	flask	Conway et al. 1994
MHD	53.33	-9.9	Mace Head	NOAA	flask	Conway et al. 1994
MHD	53.33	-9.9	Mace Head	LSCE	insitu	Ramonet et al. 2010
MID	28.21	-177.38	Sand Island	NOAA	flask	Conway et al. 1994
MLO	19.54	-155.58	Mauna Loa	NOAA	flask	Conway et al. 1994
MLO	19.54	-155.58	Mauna Loa	NOAA	insitu	Thoning et al. 1989
MNM	24.28	153.98	Minamitorishima	JMA	insitu	Tsutsumi et al. 2005
MQA	-54.48	158.97	Macquarie Island	CSIRO	flask	Francey et al. 2003
NAT	-5.51	-35.26	Farol De Mae Luiza Lighthouse	NOAA	flask	Conway et al. 1994
NMB	-23.58	15.03	Gobabeb	NOAA	flask	Conway et al. 1994
NWR	40.05	-105.59	Niwot Ridge	NOAA	flask	Conway et al. 1994

NWR	40.05	-105.59	Niwot Ridge	NCAR	insitu	Stephens et al. 2011
OTA	-38.52	142.82	Otway	CSIRO	flask	Francey et al. 2003
O XK	50.03	11.81	Ochsenkopf	NOAA	flask	Conway et al. 1994
PAL	67.97	24.12	Pallas-Sammaltunturi	NOAA	flask	Conway et al. 1994
PAL	67.97	24.12	Pallas-Sammaltunturi	FMI	insitu	Hatakka et al. 2003
POC			Pacific Ocean Cruise	NOAA	flask	Conway et al. 1994
PSA	-64.92	-64	Palmer Station	NOAA	flask	Conway et al. 1994
RPB	13.16	-59.43	Ragged Point	NOAA	flask	Conway et al. 1994
RYO	39.03	141.82	Ryori	JMA	insitu	Tsutsumi et al. 2005
SCT	33.41	-81.83	Beech Island	NOAA	insitu	Andrews et al. 2014
SEY	-4.68	55.53	Mahe Island	NOAA	flask	Conway et al. 1994
SGP	36.8	-97.5	Southern Great Plains	NOAA	flask	Conway et al. 1994
SHM	52.72	174.1	Shemya Island	NOAA	flask	Conway et al. 1994
SMO	-14.25	-170.56	Tutuila	NOAA	flask	Conway et al. 1994
SMO	-14.25	-170.56	Tutuila	NOAA	insitu	Halter et al. 1988
SNP	38.62	-78.35	Shenandoah National Park	NOAA	insitu	Andrews et al. 2014
SPL	40.45	-106.73	Storm Peak Laboratory (Desert Research Institute)	NCAR	insitu	Stephens et al. 2011
SPO	-89.98	-24.8	South Pole	NOAA	flask	Conway et al. 1994
SPO	-89.98	-24.8	South Pole	NOAA	insitu	Gillette et al. 1987
STR	37.76	-122.45	Sutro Tower	NOAA	flask	Andrews et al. 2014
SUM	72.6	-38.42	Summit	NOAA	flask	Conway et al. 1994
SYO	-69.01	39.59	Syowa Station	NOAA	insitu	Morimoto et al. 2003
TAP	36.73	126.13	Tae-ahn Peninsula	NOAA	flask	Conway et al. 1994
THD	41.05	-124.15	Trinidad Head	NOAA	flask	Conway et al. 1994
USH	-54.85	-68.31	Ushuaia	NOAA	flask	Conway et al. 1994
UTA	39.9	-113.72	Wendover	NOAA	flask	Conway et al. 1994
UUM	44.45	111.1	Ulaan Uul	NOAA	flask	Conway et al. 1994
WAO	52.95	1.12	Weybourne	UEA	insitu	Forster and Bandy, 2006

WBI	41.73	-91.35	West Branch	NOAA	insitu	Andrews et al. 2014
WGC	38.27	-121.49	Walnut Grove	NOAA	insitu	Andrews et al. 2014
WIS	30.86	34.78	Weizmann Institute of Science	NOAA	flask	Conway et al. 1994
WKT	31.32	-97.33	Moody	NOAA	insitu	Andrews et al. 2014
WLG	36.29	100.9	Mt. Waliguan	NOAA	flask	Conway et al. 1994
WSA	43.93	-60.02	Sable Island	EC	insitu	Worthy et al. 2003
YON	24.47	123.02	Yonagunijima	JMA	insitu	Tsutsumi et al. 2005
ZEP	78.91	11.89	Ny-Alesund	NOAA	flask	Conway et al. 1994

Table A2. Validation sites. Aircraft data collected by NOAA/ESRL (Sweeney et al., 2015) and NIES (Machida et al., 2008)

5

Site ID	Lat.	Lon.	Site/project name	Territory	Lab name
ACG	68	-165	Alaska Coast Guard	Alaska	NOAA
CAR	41	-104	Briggsdale	Colorado	NOAA
CMA	39	-74	Offshore Cape May	New Jersey	NOAA
CON			CONTRAIL	West Pacific	NIES
DND	47	-99	Dahlen	North Dakota	NOAA
ESP	49	-127	Estevan Point	British Columbia	NOAA
ETL	54	-105	East Trout Lake	Saskatchewan	NOAA
INX	40	-86	Indianapolis Flux Experiment	Indianapolis	NOAA
LEF	46	-90	Park Falls	Wisconsin	NOAA
HIL	40	-88	Homer	Illinois	NOAA
NHA	43	-71	Offshore Portsmouth	New Hampshire	NOAA
PFA	65	-148	Poker Flat	Alaska	NOAA
RTA	-21	-160	Rarotonga	Rarotonga	NOAA
SCA	33	-79	Offshore Charleston	South Carolina	NOAA
SGP	37	-98	Southern Great Plains	Oklahoma	NOAA
TGC	28	-97	Offshore Corpus Christi	Texas	NOAA

References

- Agustí-Panareda, A., Diamantakis, M., Massart, S., Chevallier, F., Muñoz-Sabater, J., Barré, J., Curcoll, R., Engelen, R., Langerock, B., Law, R. M., Loh, Z., Morguí, J. A., Parrington, M., Peuch, V. H., Ramonet, M., Roehl, C., Vermeulen, A.
- 5 T., Warneke, T., and Wunch, D.: Modelling CO₂ weather – why horizontal resolution matters, *Atmos. Chem. Phys.*, 19, 7347-7376, 10.5194/acp-19-7347-2019, 2019.
- Andres, R., Gregg, J., Losey, L., Marland, G., and Boden, T.: Monthly, global emissions of carbon dioxide from fossil fuel consumption, *Tellus Series B-Chemical and Physical Meteorology*, 63, 309-327, 10.1111/j.1600-0889.2011.00530.x, 2011.
- 10 Andrews, A. E., Kofler, J. D., Trudeau, M. E., Williams, J. C., Neff, D. H., Masarie, K. A., Chao, D. Y., Kitzis, D. R., Novelli, P. C., Zhao, C. L., Dlugokencky, E. J., Lang, P. M., Crotwell, M. J., Fischer, M. L., Parker, M. J., Lee, J. T., Baumann, D. D., Desai, A. R., Stanier, C. O., De Wekker, S. F. J., Wolfe, D. E., Munger, J. W., and Tans, P. P.: CO₂, CO, and CH₄ measurements from tall towers in the NOAA Earth System Research Laboratory's Global Greenhouse Gas Reference Network: instrumentation, uncertainty analysis, and recommendations for future high-accuracy greenhouse gas
- 15 monitoring efforts, *Atmos. Meas. Tech.*, 7, 647-687, 10.5194/amt-7-647-2014, 2014.
- Baker, D., Doney, S., and Schimel, D.: Variational data assimilation for atmospheric CO₂, *Tellus Series B-Chemical and Physical Meteorology*, 58, 359-365, 10.1111/j.1600-0889.2006.00218.x, 2006.
- Basu, S., Guerlet, S., Butz, A., Houweling, S., Hasekamp, O., Aben, I., Krummel, P., Steele, P., Langenfelds, R., Torn, M., Biraud, S., Stephens, B., Andrews, A., and Worthy, D.: Global CO₂ fluxes estimated from GOSAT retrievals of total
- 20 column CO₂, *Atmospheric Chemistry and Physics*, 13, 8695-8717, 10.5194/acp-13-8695-2013, 2013.
- Belikov, D. A., Maksyutov, S., Sherlock, V., Aoki, S., Deutscher, N. M., Dohe, S., Griffith, D., Kyro, E., Morino, I., Nakazawa, T., Notholt, J., Rettinger, M., Schneider, M., Sussmann, R., Toon, G. C., Wennberg, P. O., and Wunch, D.: Simulations of column-averaged CO₂ and CH₄ using the NIES TM with a hybrid sigma-isentropic (sigma-theta) vertical coordinate, *Atmospheric Chemistry and Physics*, 13, 1713-1732, 10.5194/acp-13-1713-2013, 2013.
- 25 Belikov, D. A., Maksyutov, S., Yaremchuk, A., Ganshin, A., Kaminski, T., Blessing, S., Sasakawa, M., Gomez-Pelaez, A. J., and Starchenko, A.: Adjoint of the global Eulerian-Lagrangian coupled atmospheric transport model (A-GELCA v1.0): development and validation, *Geoscientific Model Development*, 9, 749-764, 10.5194/gmd-9-749-2016, 2016.
- Bennett, A. F.: *Inverse Methods in Physical Oceanography*, Cambridge Monographs on Mechanics, Cambridge University Press, Cambridge, 1992.

- Brailsford, G., Stephens, B., Gomez, A., Riedel, K., Fletcher, S., Nichol, S., and Manning, M.: Long-term continuous atmospheric CO₂ measurements at Baring Head, New Zealand, *Atmospheric Measurement Techniques*, 5, 3109-3117, 10.5194/amt-5-3109-2012, 2012.
- Broyden, C.: A New Double-Rank Minimisation Algorithm. Preliminary Report, *Notices of the American Mathematical Society*, 16, 670-670, 1969.
- Brunke, E., Labuschagne, C., Parker, B., Scheel, H., and Whittlestone, S.: Baseline air mass selection at Cape Point, South Africa: application of Rn-222 and other filter criteria to CO₂, *Atmospheric Environment*, 38, 5693-5702, 10.1016/j.atmosenv.2004.04.024, 2004.
- Chevallier, F., Fisher, M., Peylin, P., Serrar, S., Bousquet, P., Breon, F., Chedin, A., and Ciais, P.: Inferring CO₂ sources and sinks from satellite observations: Method and application to TOVS data, *Journal of Geophysical Research-Atmospheres*, 110, 10.1029/2005JD006390, 2005.
- Chua, B., and Bennett, A.: An inverse ocean modeling system, *Ocean Modelling*, 3, 137-165, 10.1016/S1463-5003(01)00006-3, 2001.
- Conway, T. J., Tans, P. P., Waterman, L. S., Thoning, K. W., Kitzis, D. R., Masarie, K. A., and Zhang, N.: Evidence for interannual variability of the carbon cycle from the National Oceanic and Atmospheric Administration/Climate Monitoring and Diagnostics Laboratory Global Air Sampling Network, *Journal of Geophysical Research: Atmospheres*, 99, 22831-22855, 10.1029/94jd01951, 1994.
- Cooperative Global Atmospheric Data Integration Project: Multi-laboratory compilation of atmospheric carbon dioxide data for the period 1957-2015; *ObsPack_co2_1_GLOBALVIEWplus_v2.1_2016-09-02*. NOAA Earth System Research Laboratory, Global Monitoring Division, 2016.
- Crank, J.: *The Mathematics of Diffusion*, 2nd edition, Oxford Univ. Press, 414, 1975
- Denning, A. S., Randall, D. A., Collatz, G. J., and Sellers, P. J.: Simulations of terrestrial carbon metabolism and atmospheric CO₂ in a general circulation model, *Tellus B: Chemical and Physical Meteorology*, 48, 543-567, 10.3402/tellusb.v48i4.15931, 1996.
- Derber, J., and Rosati, A.: A Global Oceanic Data Assimilation System, *Journal of Physical Oceanography*, 19, 1333-1347, 10.1175/1520-0485(1989)019<1333:AGODAS>2.0.CO;2, 1989.
- Elvidge, C., Baugh, K., Dietz, J., Bland, T., Sutton, P., and Kroehl, H.: Radiance calibration of DMSP-OLS low-light imaging data of human settlements, *Remote Sensing of Environment*, 68, 77-88, 10.1016/S0034-4257(98)00098-4, 1999.
- Enting, I. G., and Mansbridge, J. V.: Seasonal sources and sinks of atmospheric CO₂ Direct inversion of filtered data, *Tellus B*, 41B, 111-126, 10.3402/tellusb.v41i2.15056, 1989.

- Enting, I. G.: Inverse Problems in Atmospheric Constituent Transport, Cambridge Atmospheric and Space Science Series, Cambridge University Press, Cambridge, 2002.
- Fisher, M., and Courtier, P.: Estimating the covariance matrices of analysis and forecast error in variational data assimilation, ECMWF, Shinfield Park, Reading, 26, 1995.
- 5 Forster, G., and Bandy, B.: Weybourne Atmospheric Observatory (WAO): surface meteorology and atmospheric chemistry data. NCAS British Atmospheric Data Centre, (accessed 03/10/2020), <http://catalogue.ceda.ac.uk/uuid/36517548500e1e4e85c97d99457e268a>, 2006
- Ganshin, A., Oda, T., Saito, M., Maksyutov, S., Valsala, V., Andres, R. J., Fisher, R. E., Lowry, D., Lukyanov, A., Matsueda, H., Nisbet, E. G., Rigby, M., Sawa, Y., Toumi, R., Tsuboi, K., Varlagin, A., and Zhuravlev, R.: A global coupled
- 10 Eulerian-Lagrangian model and 1x1 km CO₂ surface flux dataset for high-resolution atmospheric CO₂ transport simulations, *Geoscientific Model Development*, 5, 231-243, 10.5194/gmd-5-231-2012, 2012.
- Gaudry, A., Monfray, P., Polian, G., Bonsang, G., Ardouin, B., Jegou, A., and Lambert, G.: Non-seasonal variations of atmospheric CO₂ concentrations at Amsterdam Island, *Tellus B: Chemical and Physical Meteorology*, 43, 136-143, 10.3402/tellusb.v43i2.15258, 1991.
- 15 Giering, R., and Kaminski, T.: Applying TAF to generate efficient derivative code of Fortran 77-95 programs, *PAMM*, 2, 54-57, 10.1002/pamm.200310014, 2003.
- Gilbert, J., and Lemarechal, C.: Some numerical experiments with variable-storage quasi-newton algorithms, *Mathematical Programming*, 45, 407-435, 10.1007/BF01589113, 1989.
- Gillette, D. A., Komhyr, W. D., Waterman, L. S., Steele, L. P., and Gammon, R. H.: The NOAA/GMCC continuous CO₂
- 20 record at the South Pole, 1975–1982, *Journal of Geophysical Research: Atmospheres*, 92, 4231-4240, 10.1029/JD092iD04p04231, 1987.
- Gurney, K., Law, R., Denning, A., Rayner, P., Baker, D., Bousquet, P., Bruhwiler, L., Chen, Y., Ciais, P., Fan, S., Fung, I., Gloor, M., Heimann, M., Higuchi, K., John, J., Maki, T., Maksyutov, S., Masarie, K., Peylin, P., Prather, M., Pak, B., Randerson, J., Sarmiento, J., Taguchi, S., Takahashi, T., and Yuen, C.: Towards robust regional estimates of CO₂ sources
- 25 and sinks using atmospheric transport models, *Nature*, 415, 626-630, 10.1038/415626a, 2002.
- Halter, B. C., Harris, J. M., and Conway, T. J.: Component signals in the record of atmospheric carbon dioxide concentration at American Samoa, *Journal of Geophysical Research: Atmospheres*, 93, 15914-15918, 10.1029/JD093iD12p15914, 1988.
- Hascoet, L., and Pascual, V.: The Tapenade Automatic Differentiation Tool: Principles, Model, and Specification, *Acm*
- 30 *Transactions on Mathematical Software*, 39, 10.1145/2450153.2450158, 2013.

- Haszpra, L., Barcza, Z., Bakwin, P. S., Berger, B. W., Davis, K. J., and Weidinger, T.: Measuring system for the long-term monitoring of biosphere/atmosphere exchange of carbon dioxide, *Journal of Geophysical Research: Atmospheres*, 106, 3057-3069, 10.1029/2000jd900600, 2001.
- He, W., van der Velde, I. R., Andrews, A. E., Sweeney, C., Miller, J., Tans, P., van der Laan-Luijkx, I. T., Nehrkorn, T.,
5 Mountain, M., Ju, W., Peters, W., and Chen, H.: CTDAS-Lagrange v1.0: a high-resolution data assimilation system for regional carbon dioxide observations, *Geosci. Model Dev.*, 11, 3515-3536, 10.5194/gmd-11-3515-2018, 2018.
- Henne, S., Brunner, D., Oney, B., Leuenberger, M., Eugster, W., Bamberger, I., Meinhardt, F., Steinbacher, M., and Emmenegger, L.: Validation of the Swiss methane emission inventory by atmospheric observations and inverse modelling, *Atmospheric Chemistry and Physics*, 16, 3683-3710, 2016.
- 10 Ito, A.: Changing ecophysiological processes and carbon budget in East Asian ecosystems under near-future changes in climate: implications for long-term monitoring from a process-based model, *Journal of Plant Research*, 123, 577-588, 10.1007/s10265-009-0305-x, 2010.
- Janardanan, R., Maksyutov, S., Tsuruta, A., Wang, F., Tiwari, Y. K., Valsala, V., Ito, A., Yoshida, Y., Kaiser, J. W., Janssens-Maenhout, G., Arshinov, M., Sasakawa, M., Tohjima, Y., Worthy, D. E. J., Dlugokencky, E. J., Ramonet, M.,
15 Arduini, J., Lavric, J. V., Piacentino, S., Krummel, P. B., Langenfelds, R. L., Mammarella, I., and Matsunaga, T.: Country-Scale Analysis of Methane Emissions with a High-Resolution Inverse Model Using GOSAT and Surface Observations, *Remote Sensing*, 12, 375, 2020.
- Jung, M., Henkel, K., Herold, M., and Churkina, G.: Exploiting synergies of global land cover products for carbon cycle modeling, *Remote Sensing of Environment*, 101, 534-553, 10.1016/j.rse.2006.01.020, 2006.
- 20 Jung, M., Schwalm, C., Migliavacca, M., Walther, S., Camps-Valls, G., Koirala, S., Anthoni, P., Besnard, S., Bodesheim, P., Carvalhais, N., Chevallier, F., Gans, F., Goll, D. S., Haverd, V., Köhler, P., Ichii, K., Jain, A. K., Liu, J., Lombardozzi, D., Nabel, J. E. M. S., Nelson, J. A., O'Sullivan, M., Pallandt, M., Papale, D., Peters, W., Pongratz, J., Rödenbeck, C., Sitch, S., Tramontana, G., Walker, A., Weber, U., and Reichstein, M.: Scaling carbon fluxes from eddy covariance sites to globe: synthesis and evaluation of the FLUXCOM approach, *Biogeosciences*, 17, 1343-1365, 10.5194/bg-17-1343-2020,
25 2020.
- Kaiser, J. W., Heil, A., Andreae, M. O., Benedetti, A., Chubarova, N., Jones, L., Morcrette, J. J., Razinger, M., Schultz, M. G., Suttie, M., and van der Werf, G. R.: Biomass burning emissions estimated with a global fire assimilation system based on observed fire radiative power, *Biogeosciences*, 9, 527-554, 10.5194/bg-9-527-2012, 2012.
- Kaminski, T., Rayner, P., Heimann, M., and Enting, I.: On aggregation errors in atmospheric transport inversions, *Journal*
30 *of Geophysical Research-Atmospheres*, 106, 4703-4715, 10.1029/2000JD900581, 2001.

- Keeling, C. D., Piper, S. C., Bacastow, R. B., Wahlen, M., Whorf, T. P., Heimann, M., and Meijer, H. A.: Atmospheric CO₂ and ¹³CO₂ Exchange with the Terrestrial Biosphere and Oceans from 1978 to 2000: Observations and Carbon Cycle Implications, in: A History of Atmospheric CO₂ and Its Effects on Plants, Animals, and Ecosystems, edited by: Baldwin, I. T., Caldwell, M. M., Heldmaier, G., Jackson, R. B., Lange, O. L., Mooney, H. A., Schulze, E. D., Sommer, U., Ehleringer, J. R., Denise Dearing, M., and Cerling, T. E., Springer New York, New York, NY, 83-113, 2005.
- Lanczos, C.: An Iteration Method For The Solution Of The Eigenvalue Problem Of Linear Differential And Integral Operators, *Journal of Research of the National Bureau of Standards*, 45, 255-282, 10.6028/jres.045.026, 1950.
- Lauvaux, T., Miles, N., Deng, A., Richardson, S., Cambaliza, M., Davis, K., Gaudet, B., Gurney, K., Huang, J., O'Keefe, D., Song, Y., Karion, A., Oda, T., Patarasuk, R., Razlivanov, I., Sarmiento, D., Shepson, P., Sweeney, C., Turnbull, J., and Wu, K.: High-resolution atmospheric inversion of urban CO₂ emissions during the dormant season of the Indianapolis Flux Experiment (INFLUX), *Journal of Geophysical Research-Atmospheres*, 121, 5213-5236, 10.1002/2015JD024473, 2016.
- Lauvaux, T., Gurney, K. R., Miles, N. L., Davis, K. J., Richardson, S. J., Deng, A., Nathan, B. J., Oda, T., Wang, J. A., Hutrya, L., and Turnbull, J.: Policy-Relevant Assessment of Urban CO₂ Emissions, *Environmental Science & Technology*, 54, 10237-10245, 10.1021/acs.est.0c00343, 2020.
- Law, R. M., Peters, W., Roedenbeck, C., Aulagnier, C., Baker, I., Bergmann, D. J., Bousquet, P., Brandt, J., Bruhwiler, L., Cameron-Smith, P. J., Christensen, J. H., Delage, F., Denning, A. S., Fan, S., Geels, C., Houweling, S., Imasu, R., Karstens, U., Kawa, S. R., Kleist, J., Krol, M. C., Lin, S.-J., Lokupitiya, R., Maki, T., Maksyutov, S., Niwa, Y., Onishi, R., Parazoo, N., Patra, P. K., Pieterse, G., Rivier, L., Satoh, M., Serrar, S., Taguchi, S., Takigawa, M., Vautard, R., Vermeulen, A. T., and Zhu, Z.: TransCom model simulations of hourly atmospheric CO₂: Experimental overview and diurnal cycle results for 2002, *Global Biogeochemical Cycles*, 22, 10.1029/2007GB003050, 2008.
- Machida, T., Matsueda, H., Sawa, Y., Nakagawa, Y., Hirofani, K., Kondo, N., Goto, K., Nakazawa, T., Ishikawa, K., and Ogawa, T.: Worldwide Measurements of Atmospheric CO₂ and Other Trace Gas Species Using Commercial Airlines, *Journal of Atmospheric and Oceanic Technology*, 25, 1744-1754, 10.1175/2008JTECHA1082.1, 2008.
- Maksyutov, S., Takagi, H., Valsala, V. K., Saito, M., Oda, T., Saeki, T., Belikov, D. A., Saito, R., Ito, A., Yoshida, Y., Morino, I., Uchino, O., Andres, R. J., and Yokota, T.: Regional CO₂ flux estimates for 2009-2010 based on GOSAT and ground-based CO₂ observations, *Atmospheric Chemistry and Physics*, 13, 9351-9373, 10.5194/acp-13-9351-2013, 2013.
- Maksyutov S., Patra, P. K., Onishi, R., Saeki, T., and Nakazawa, T.: NIES/FRCGC global atmospheric tracer transport model: description, validation, and surface sources and sinks inversion, *Journal of Earth Simulator* 9, 3-18, 2008.
- Manning, A., O'Doherty, S., Jones, A., Simmonds, P., and Derwent, R.: Estimating UK methane and nitrous oxide emissions from 1990 to 2007 using an inversion modeling approach, *Journal of Geophysical Research-Atmospheres*, 116, 10.1029/2010JD014763, 2011.

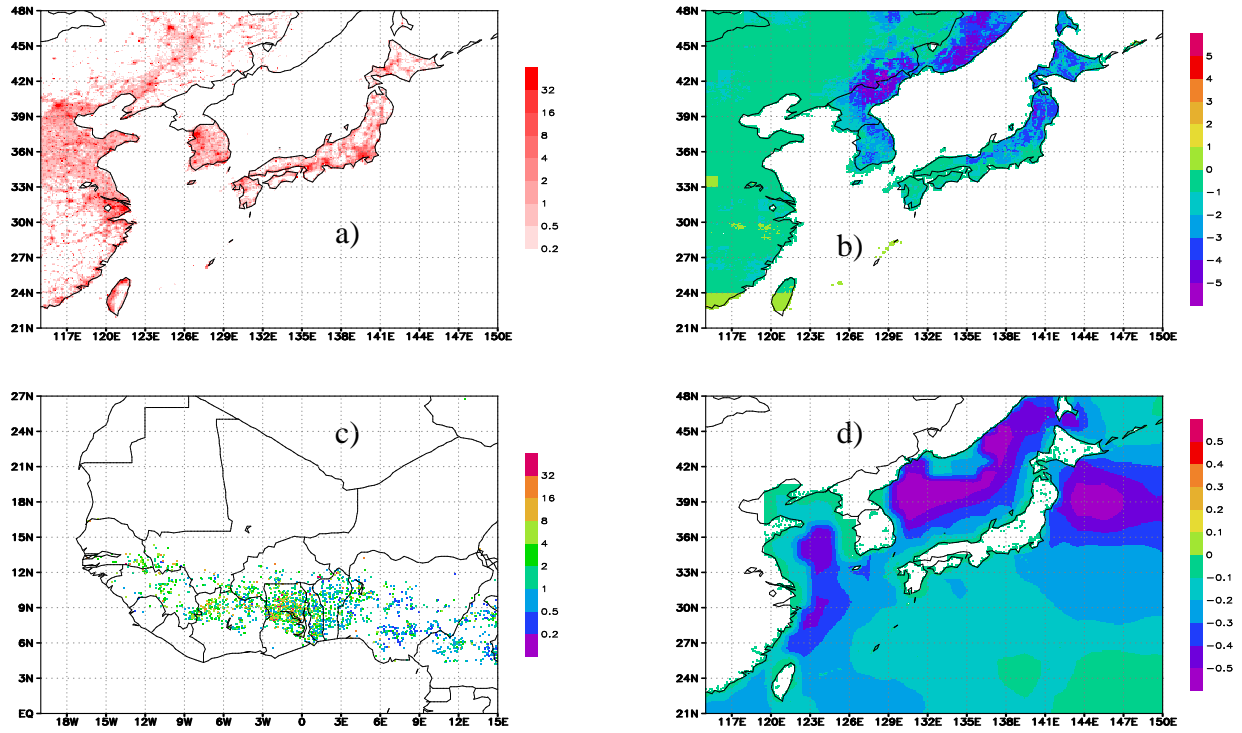
- Morimoto, S., Nakazawa, T., Aoki, S., Hashida, G., and Yamanouchi, T.: Concentration variations of atmospheric CO₂ observed at Syowa Station, Antarctica from 1984 to 2000, *Tellus Series B-Chemical and Physical Meteorology*, 55, 170-177, 10.1034/j.1600-0889.2003.01471.x, 2003.
- Meirink, J., Bergamaschi, P., and Krol, M.: Four-dimensional variational data assimilation for inverse modelling of atmospheric methane emissions: method and comparison with synthesis inversion, *Atmospheric Chemistry and Physics*, 8, 6341-6353, 10.5194/acp-8-6341-2008, 2008.
- Miller, S. M., Saibaba, A. K., Trudeau, M. E., Mountain, M. E., and Andrews, A. E.: Geostatistical inverse modeling with very large datasets: an example from the OCO-2 satellite, *Geosci. Model Dev.*, 13, 1771–1785, 10.5194/gmd-13-1771-2020, 2020.
- 10 Nassar, R., Hill, T., McLinden, C., Wunch, D., Jones, D., and Crisp, D.: Quantifying CO₂ Emissions From Individual Power Plants From Space, *Geophysical Research Letters*, 44, 10045-10053, 10.1002/2017GL074702, 2017.
- Necki, J., Schmidt, M., Rozanski, K., Zimnoch, M., Korus, A., Lasa, J., Graul, R., and Levin, I.: Six-year record of atmospheric carbon dioxide and methane at a high-altitude mountain site in Poland, *Tellus B*, 55, 94-104, 10.1034/j.1600-0889.2003.01446.x, 2003.
- 15 Nocedal, J.: Updating Quasi-Newton Matrices With Limited Storage, *Mathematics of Computation*, 35, 773-782, 10.2307/2006193, 1980.
- Oda, T., Maksyutov, S., and Andres, R.: The Open-source Data Inventory for Anthropogenic CO₂, version 2016 (ODIAC2016): a global monthly fossil fuel CO₂ gridded emissions data product for tracer transport simulations and surface flux inversions, *Earth System Science Data*, 10, 87-107, 10.5194/essd-10-87-2018, 2018.
- 20 Parazoo, N. C., Denning, A. S., Berry, J. A., Wolf, A., Randall, D. A., Kawa, S. R., Pauluis, O., and Doney, S. C.: Moist synoptic transport of CO₂ along the mid-latitude storm track, *Geophysical Research Letters*, 38, 10.1029/2011gl047238, 2011.
- Peters, W., Jacobson, A., Sweeney, C., Andrews, A., Conway, T., Masarie, K., Miller, J., Bruhwiler, L., Petron, G., Hirsch, A., Worthy, D., van der Werf, G., Randerson, J., Wennberg, P., Krol, M., and Tans, P.: An atmospheric perspective on North American carbon dioxide exchange: CarbonTracker, *Proceedings of the National Academy of Sciences of the United States of America*, 104, 18925-18930, 10.1073/pnas.0708986104, 2007.
- 25 Peterson, J. T., Komhyr, W. D., Waterman, L. S., Gammon, R. H., Thoning, K. W., and Conway, T. J.: Atmospheric CO₂ variations at Barrow, Alaska, 1973–1982, *Journal of Atmospheric Chemistry*, 4, 491-510, 10.1007/bf00053848, 1986.
- Peylin, P., Law, R., Gurney, K., Chevallier, F., Jacobson, A., Maki, T., Niwa, Y., Patra, P., Peters, W., Rayner, P., Rodenbeck, C., van der Laan-Luijkx, I., and Zhang, X.: Global atmospheric carbon budget: results from an ensemble of atmospheric CO₂ inversions, *Biogeosciences*, 10, 6699-6720, 10.5194/bg-10-6699-2013, 2013.
- 30

- Ramonet, M., Ciais, P., Aalto, T., Aulagnier, C., Chevallier, F., Cipriano, D., Conway, T. J., Haszpra, L., Kazan, V., Meinhardt, F., Paris, J.-D., Schmidt, M., Simmonds, P., Xueref-Rémy, I., and Necki, J. N.: A recent build-up of atmospheric CO₂ over Europe. Part 1: observed signals and possible explanations, *Tellus B*, 62, 1-13, 10.1111/j.1600-0889.2009.00442.x, 2010.
- 5 Rigby, M., Manning, A., and Prinn, R.: Inversion of long-lived trace gas emissions using combined Eulerian and Lagrangian chemical transport models, *Atmospheric Chemistry and Physics*, 11, 9887-9898, 10.5194/acp-11-9887-2011, 2011.
- Rodenbeck, C., Houweling, S., Gloor, M., and Heimann, M.: Time-dependent atmospheric CO₂ inversions based on interannually varying tracer transport, *Tellus Series B-Chemical and Physical Meteorology*, 55, 488-497, 10.1034/j.1600-0889.2003.00033.x, 2003.
- 10 Rodenbeck, C., Gerbig, C., Trusilova, K., and Heimann, M.: A two-step scheme for high-resolution regional atmospheric trace gas inversions based on independent models, *Atmospheric Chemistry and Physics*, 9, 5331-5342, 2009.
- Rodenbeck, C.: Estimating CO₂ sources and sinks from atmospheric concentration measurements using a global inversion of atmospheric transport, *Technical Reports - MPI Biogeochemistry*, 6, 53 pp, 2005.
- 15 Running, S., Nemani, R., Heinsch, F., Zhao, M., Reeves, M., and Hashimoto, H.: A continuous satellite-derived measure of global terrestrial primary production, *Bioscience*, 54, 547-560, 10.1641/0006-3568(2004)054[0547:ACSMOG]2.0.CO;2, 2004.
- Saito, M., Ito, A., and Maksyutov, S.: Optimization of a prognostic biosphere model for terrestrial biomass and atmospheric CO₂ variability, *Geosci. Model Dev.*, 7, 1829-1840, 10.5194/gmd-7-1829-2014, 2014.
- 20 Schmidt, M., Graul, R., Sartorius, H., and Levin, I.: The Schauinsland CO₂ record: 30 years of continental observations and their implications for the variability of the European CO₂ budget, *Journal of Geophysical Research: Atmospheres*, 108, 10.1029/2002jd003085, 2003.
- Schuh, A. E., Denning, A. S., Corbin, K. D., Baker, I. T., Uliasz, M., Parazoo, N., Andrews, A. E., and Worthy, D. E. J.: A regional high-resolution carbon flux inversion of North America for 2004, *Biogeosciences*, 7, 1625-1644, <https://doi.org/10.5194/bg-7-1625-2010>, 2010.
- 25 Schuh, A., Lauvaux, T., West, T., Denning, A., Davis, K., Miles, N., Richardson, S., Uliasz, M., Lokupitiya, E., Cooley, D., Andrews, A., and Ogle, S.: Evaluating atmospheric CO₂ inversions at multiple scales over a highly inventoried agricultural landscape, *Global Change Biology*, 19, 1424-1439, 10.1111/gcb.12141, 2013.
- Shirai, T., Ishizawa, M., Zhuravlev, R., Ganshin, A., Belikov, D., Saito, M., Oda, T., Valsala, V., Gomez-Pelaez, A. J.,
 30 Langenfelds, R., and Maksyutov, S.: A decadal inversion of CO₂ using the Global Eulerian-Lagrangian Coupled

- Atmospheric model (GELCA): sensitivity to the ground-based observation network, *Tellus Series B-Chemical and Physical Meteorology*, 69, 10.1080/16000889.2017.1291158, 2017.
- Stephens, B. B., Miles, N. L., Richardson, S. J., Watt, A. S., and Davis, K. J.: Atmospheric CO₂ monitoring with single-cell NDIR-based analyzers, *Atmos. Meas. Tech.*, 4, 2737-2748, 10.5194/amt-4-2737-2011, 2011.
- 5 Stohl, A., Forster, C., Frank, A., Seibert, P., and Wotawa, G.: Technical note: The Lagrangian particle dispersion model FLEXPART version 6.2, *Atmospheric Chemistry and Physics*, 5, 2461-2474, 10.5194/acp-5-2461-2005, 2005.
- Stohl, A., Seibert, P., Arduini, J., Eckhardt, S., Fraser, P., Grealley, B., Lunder, C., Maione, M., Muhle, J., O'Doherty, S., Prinn, R., Reimann, S., Saito, T., Schmidbauer, N., Simmonds, P., Vollmer, M., Weiss, R., and Yokouchi, Y.: An analytical inversion method for determining regional and global emissions of greenhouse gases: Sensitivity studies and application
10 to halocarbons, *Atmospheric Chemistry and Physics*, 9, 1597-1620, 2009.
- Sweeney, C., Karion, A., Wolter, S., Newberger, T., Guenther, D., Higgs, J. A., Andrews, A. E., Lang, P. M., Neff, D., Dlugokencky, E., Miller, J. B., Montzka, S. A., Miller, B. R., Masarie, K. A., Biraud, S. C., Novelli, P. C., Crotwell, M., Crotwell, A. M., Thoning, K., and Tans, P. P.: Seasonal climatology of CO₂ across North America from aircraft measurements in the NOAA/ESRL Global Greenhouse Gas Reference Network, *Journal of Geophysical Research: Atmospheres*, 120, 5155-5190, 10.1002/2014JD022591, 2015.
15
- Takahashi, T., Sutherland, S., Wanninkhof, R., Sweeney, C., Feely, R., Chipman, D., Hales, B., Friederich, G., Chavez, F., Sabine, C., Watson, A., Bakker, D., Schuster, U., Metzl, N., Yoshikawa-Inoue, H., Ishii, M., Midorikawa, T., Nojiri, Y., Kortzinger, A., Steinhoff, T., Hoppema, M., Olafsson, J., Arnarson, T., Tilbrook, B., Johannessen, T., Olsen, A., Bellerby, R., Wong, C., Delille, B., Bates, N., and de Baar, H.: Climatological mean and decadal change in surface ocean pCO₂, and
20 net sea-air CO₂ flux over the global oceans, *Deep-Sea Research Part II-Topical Studies in Oceanography*, 56, 554-577, 10.1016/j.dsr2.2008.12.009, 2009.
- Takahashi, T., Sutherland, S. C., and Kozyr, A.: Global Ocean Surface Water Partial Pressure of CO₂ Database: Measurements Performed During 1957–2016 (LDEO Database Version 2016) (NCEI Accession 0160492) Version 3.3., Information, N. N. C. f. E. (Ed.), NOAA National Centers for Environmental Information, 2017.
- 25 Tarantola, A.: Inverse Problem Theory and Methods for Model Parameter Estimation, *Inverse Problem Theory and Methods for Model Parameter Estimation*, SIAM, 2005.
- Thoning, K. W., Tans, P. P., and Komhyr, W. D.: Atmospheric carbon dioxide at Mauna Loa Observatory: 2. Analysis of the NOAA GMCC data, 1974–1985, *Journal of Geophysical Research: Atmospheres*, 94, 8549-8565, 10.1029/JD094iD06p08549, 1989.

- Uglietti, C., Leuenberger, M., and Brunner, D.: European source and sink areas of CO₂ retrieved from Lagrangian transport model interpretation of combined O₂ and CO₂ measurements at the high alpine research station Jungfraujoch, *Atmos. Chem. Phys.*, 11, 8017-8036, 10.5194/acp-11-8017-2011, 2011.
- Valsala, V., and Maksyutov, S.: Simulation and assimilation of global ocean pCO₂ and air-sea CO₂ fluxes using ship observations of surface ocean pCO₂ in a simplified biogeochemical offline model, *Tellus Series B-Chemical and Physical Meteorology*, 62, 821-840, 10.1111/j.1600-0889.2010.00495.x, 2010.
- van der Laan, S., Neubert, R. E. M., and Meijer, H. A. J.: A single gas chromatograph for accurate atmospheric mixing ratio measurements of CO₂, CH₄, N₂O, SF₆ and CO, *Atmos. Meas. Tech.*, 2, 549-559, 10.5194/amt-2-549-2009, 2009.
- van Leer, B.: Towards the ultimate conservative difference scheme. IV. A new approach to numerical convection, *Journal of Computational Physics*, 23, 276-299, 10.1016/0021-9991(77)90095-X, 1977.
- Vermeulen, A. T., Eisma, R., Hensen, A., and Slanina, J.: Transport model calculations of NW-European methane emissions, *Environmental Science & Policy*, 2, 315-324, [https://doi.org/10.1016/S1462-9011\(99\)00021-0](https://doi.org/10.1016/S1462-9011(99)00021-0), 1999.
- Vermeulen, A. T., Hensen, A., Popa, M. E., van den Bulk, W. C. M., and Jongejan, P. A. C.: Greenhouse gas observations from Cabauw Tall Tower (1992–2010), *Atmos. Meas. Tech.*, 4, 617-644, 10.5194/amt-4-617-2011, 2011.
- Wahba, G., and Wendelberger, J.: Some New Mathematical-Methods For Variational Objective Analysis Using Splines And Cross Validation, *Monthly Weather Review*, 108, 1122-1143, 10.1175/1520-0493(1980)108<1122:SNMMFV>2.0.CO;2, 1980.
- Wang, F., Maksyutov, S., Tsuruta, A., Janardanan, R., Ito, A., Sasakawa, M., Machida, T., Morino, I., Yoshida, Y., Kaiser, J. W., Janssens-Maenhout, G., Dlugokencky, E. J., Mammarella, I., Lavric, J. V., and Matsunaga, T.: Methane Emission Estimates by the Global High-Resolution Inverse Model Using National Inventories, *Remote Sensing*, 11, 2489, 2019.
- Ware, J., Kort, E. A., Duren, R., Mueller, K. L., Verhulst, K., and Yadav, V.: Detecting Urban Emissions Changes and Events With a Near-Real-Time-Capable Inversion System, *Journal of Geophysical Research: Atmospheres*, 124, 5117-5130, 10.1029/2018jd029224, 2019.
- Wheeler, D., and Ummel, K.: Calculating CARMA: Global Estimation of CO₂ Emissions From the Power Sector, 2008.
- Worthy, D. E. J., Higuchi, K., and Chan, D.: North American influence on atmospheric carbon dioxide data collected at Sable Island, Canada, *Tellus B: Chemical and Physical Meteorology*, 55, 105-114, 10.3402/tellusb.v55i2.16731, 2003.
- Wu, K., and Simon, H.: Thick-restart Lanczos method for large symmetric eigenvalue problems, *SIAM Journal on Matrix Analysis and Applications*, 22, 602-616, 10.1137/S0895479898334605, 2000.
- Zhuravlev, R. V., Ganshin, A. V., Maksyutov, S. S., Oshchepkov, S. L., and Khattatov, B. V.: Estimation of global CO₂ fluxes using ground-based and satellite (GOSAT) observation data with empirical orthogonal functions, *Atmospheric and Oceanic Optics*, 26, 507-516, 10.1134/S1024856013060158, 2013.

Figures



5 Figure 1: Examples of prior CO₂ fluxes (unit: gCm⁻²day⁻¹): a) emissions from fossil fuel burning by ODIAC (Jan 2011), b) -fluxes from terrestrial biosphere by optimized VISIT model (day 160, Jun 9), c) emissions from biomass burning by GFAS in Africa (Jan 10, 2011) and d) fluxes due to ocean-atmosphere exchange by the OTTM assimilation model (Jan 2011).

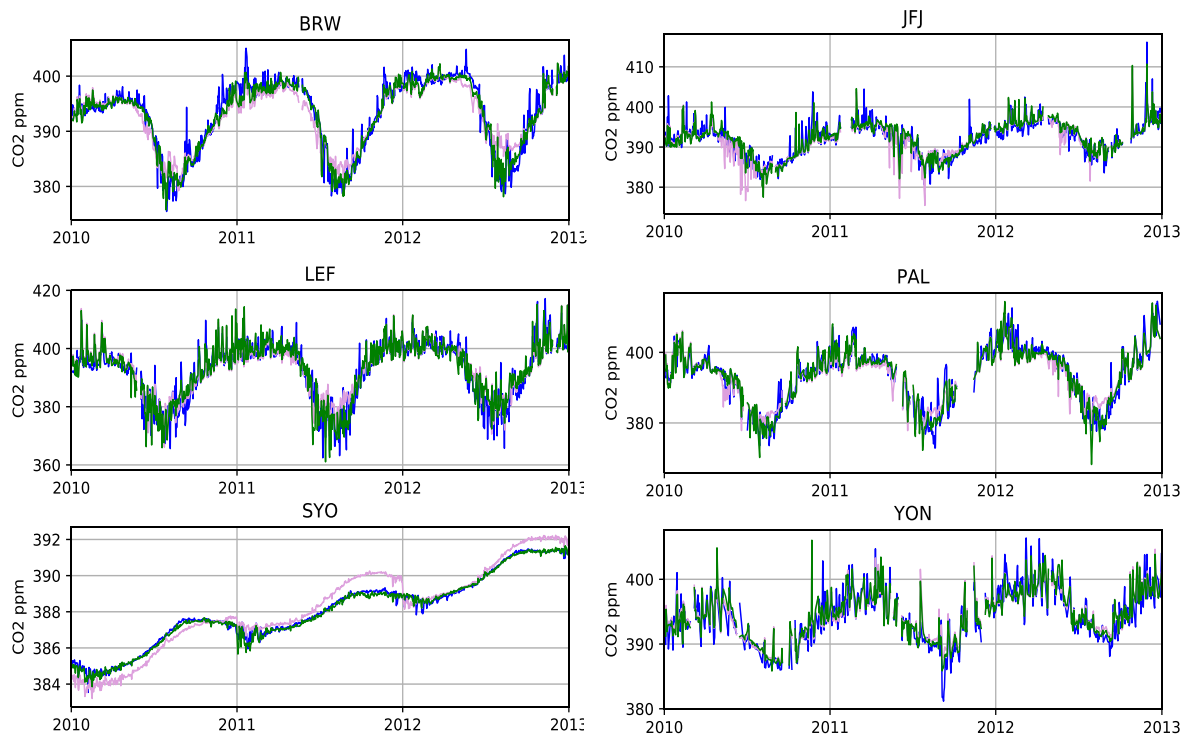


Figure 2: Time series of simulated and observed concentrations (blue - observed, plum -forward (unoptimized), green – optimized) at Barrow (BRW), Jungfraujoch (JFJ), Wisconsin (LEF), Pallas (PAL), Syowa (SYO), and Yonagunijima (YON).

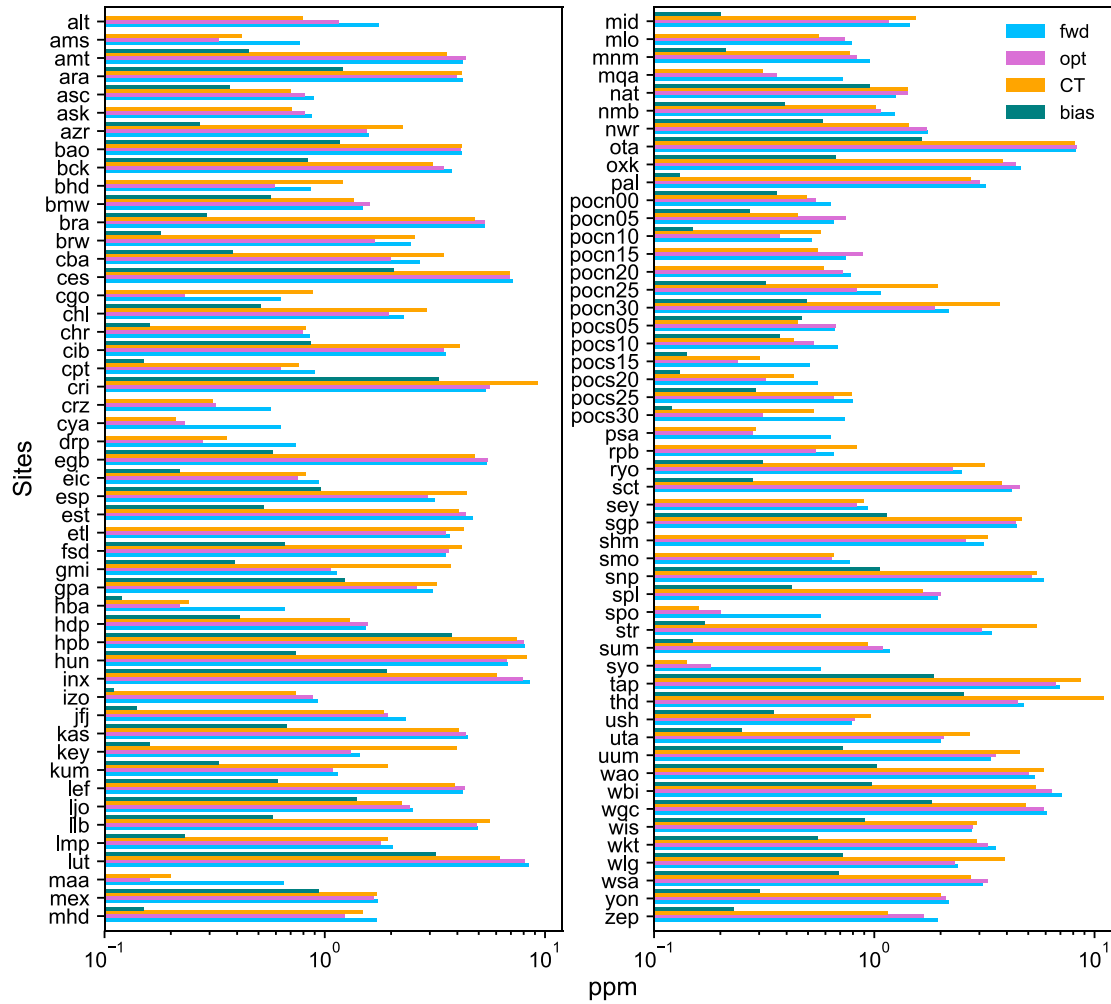


Figure 3: RMS difference between model and observations and absolute bias in 2010-2012 for (surface) sites included in inversion (blue – prior, pink – optimized, orange – CT2017, green – absolute value of mean difference (bias)) for optimized

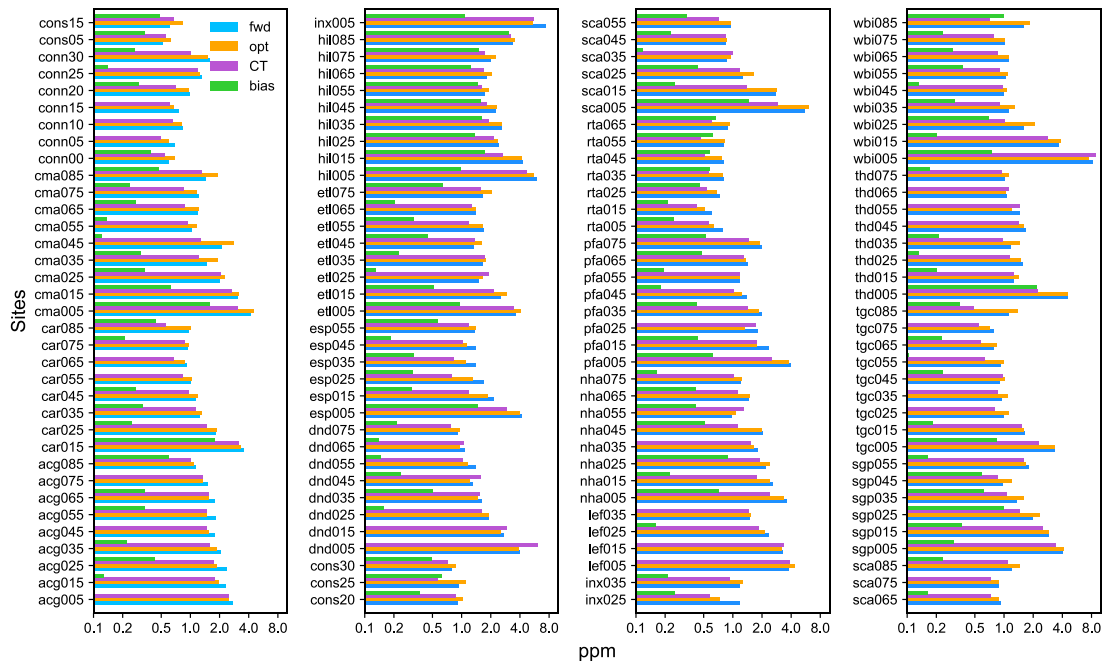


Figure 4: RMS difference between model and observations and absolute bias in 2010-2012 for aircraft sites, not included in inversion (blue – prior, orange – optimized, magenta – CT2017, green – absolute value of mean difference (bias)) for optimized)

5

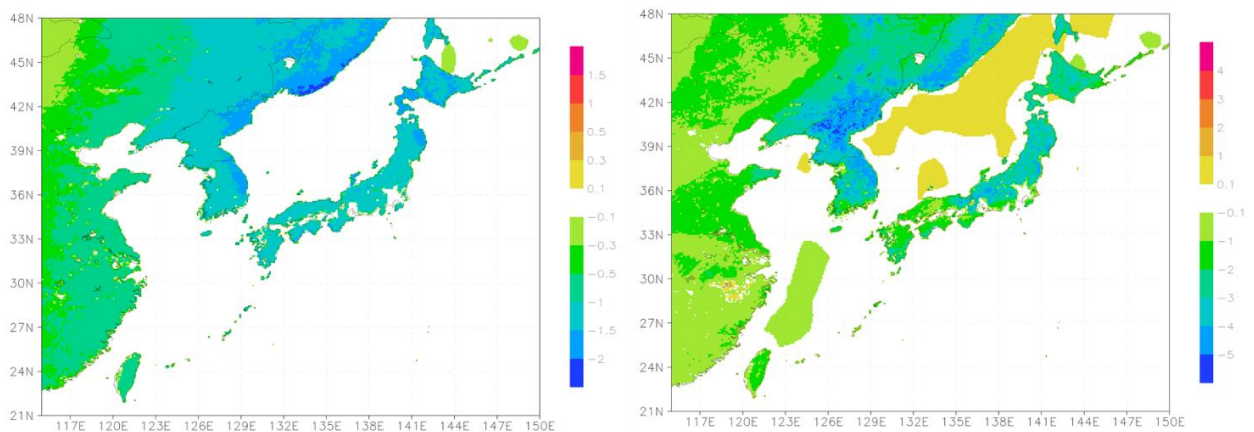


Figure 5: Optimized flux correction (left) and posterior flux (right) maps for August 2011 (units $\text{gCm}^{-2}\text{day}^{-1}$, fossil emissions excluded)

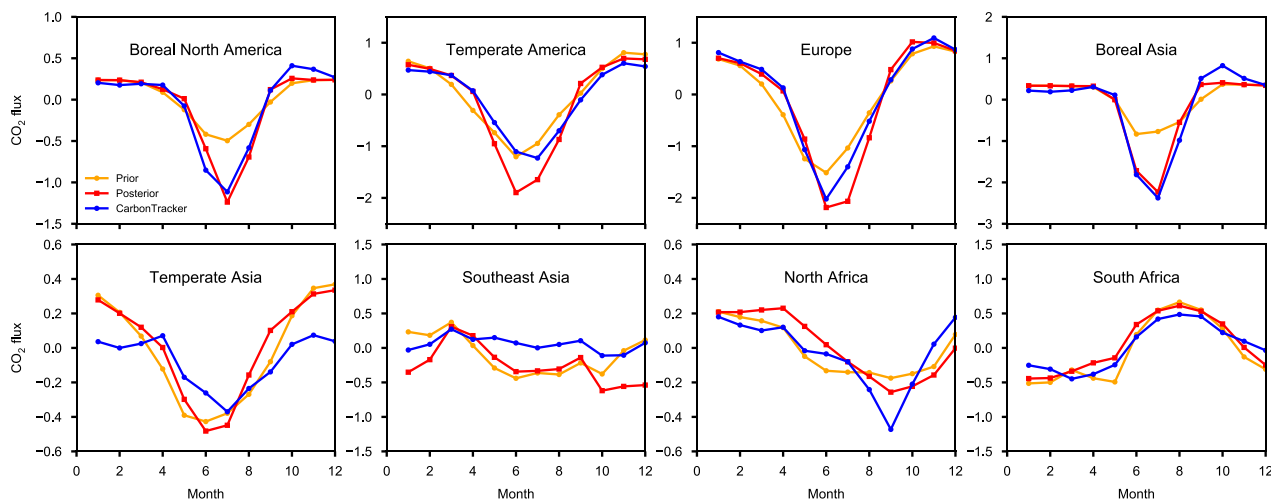


Figure 6: Monthly mean regional prior, optimized and CarbonTracker fluxes (fossil emissions excluded), average averaged for 2010-2012. Prior, optimized and CarbonTracker for selected Transcom-3 regions (units $\text{gCm}^{-2}\text{day}^{-1}$).

Appendix figures.

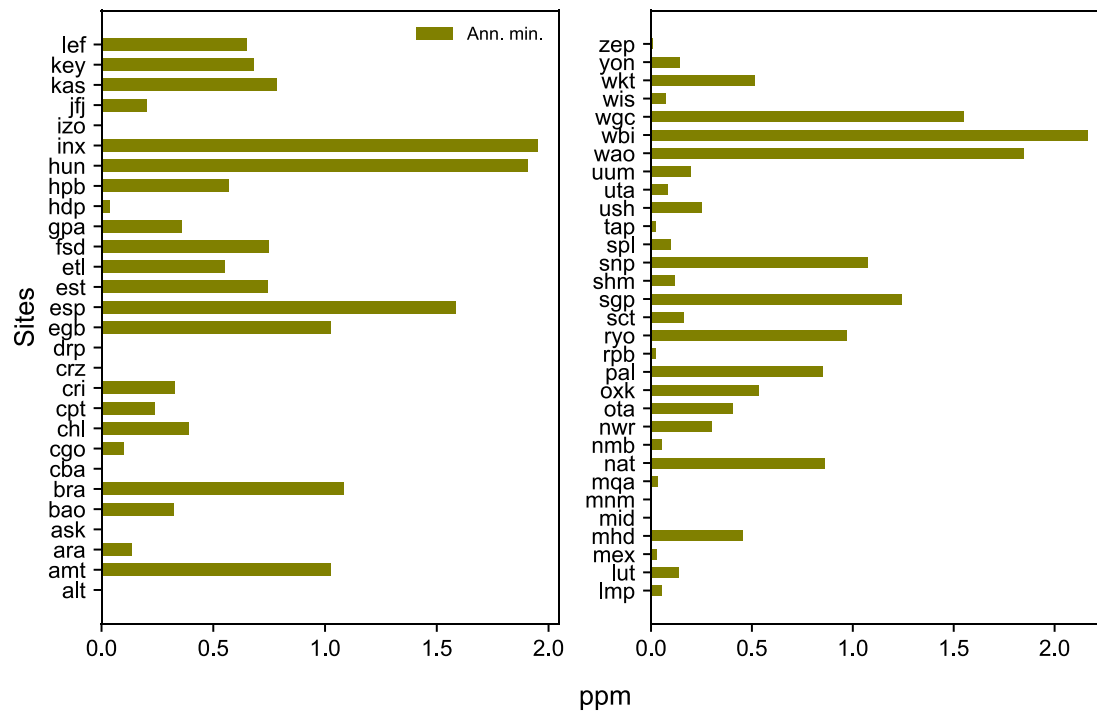


Figure A1: Simulated diurnal cycle bias, 3-month mean in the growing season (units ppm).

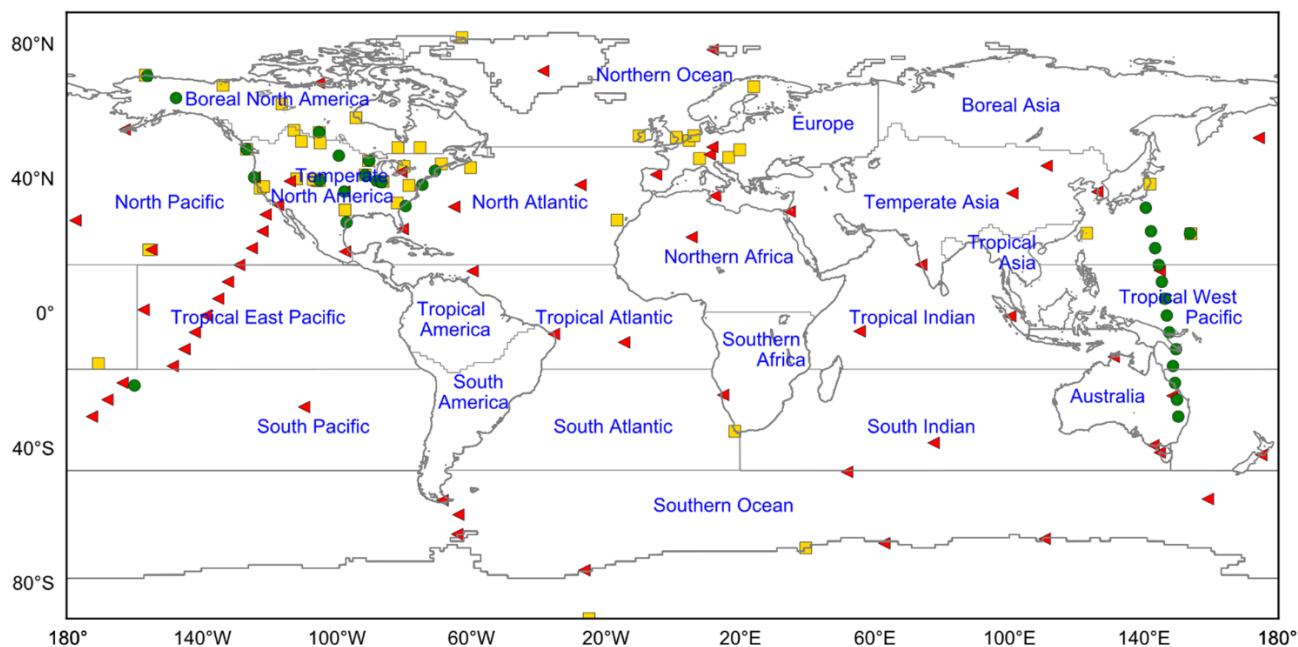
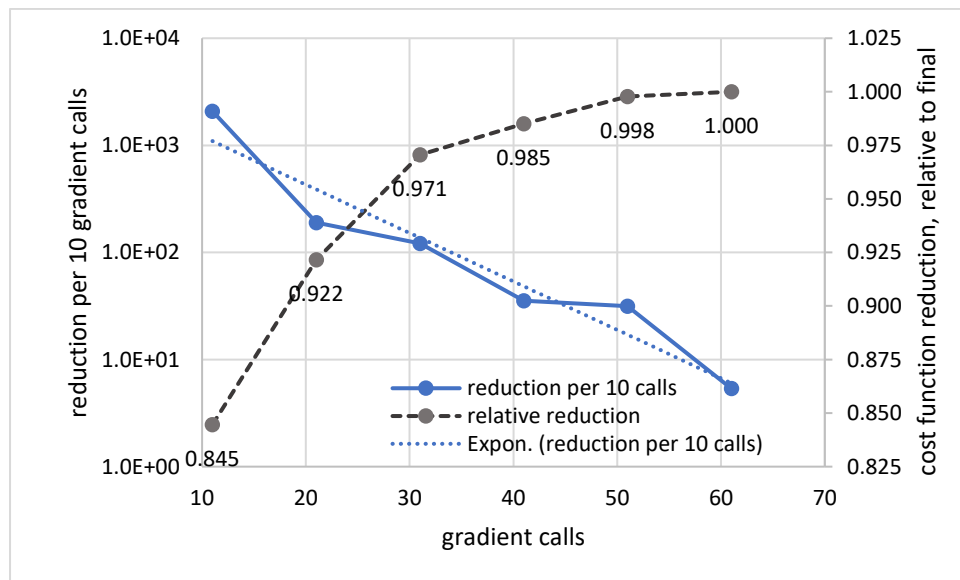


Figure A2: Map of observation sites and Transcom regions (triangles - surface flask sites, squares - continuous, circles – aircraft) used in this study.



5 Figure A3: Rate of cost function decline with gradient calls for the extended year 2011 inversion and reduction relative to 61 gradient calls.