

Figure S1. The sensitivity of tropospheric NO₂ columns to VOC emission estimated by CMAQ-DDM over May-June 2016 at 1:30 local time.

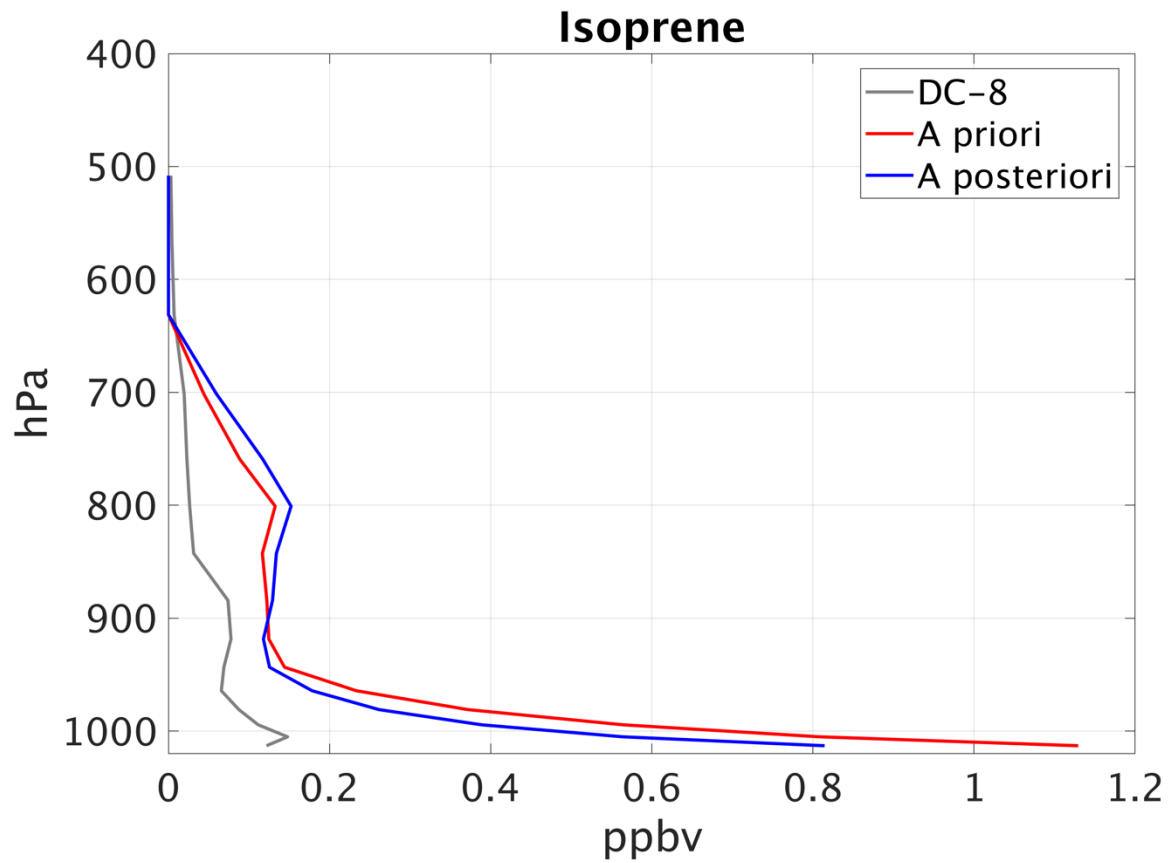


Figure S2. Comparison of the simulated model using the prior/posterior emissions and DC-8 measurements in terms of isoprene.

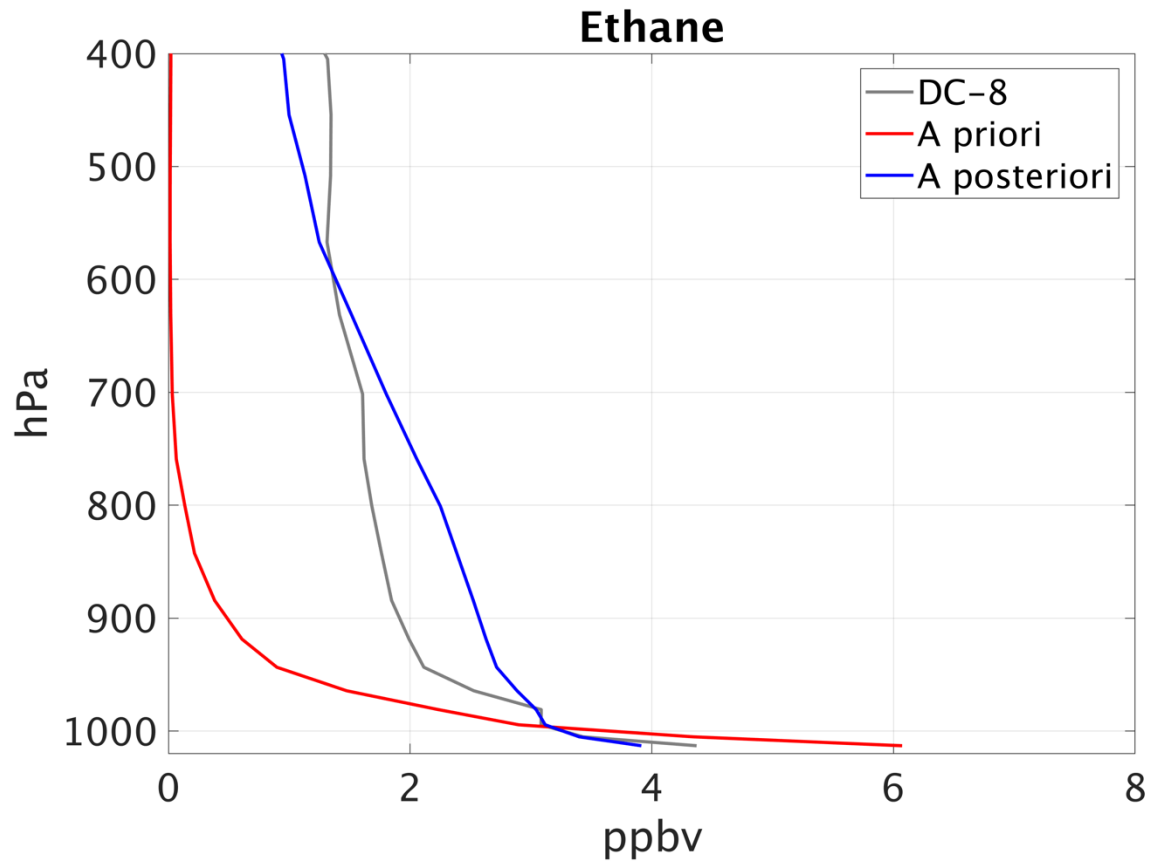


Figure S3. Comparison of the simulated model using the prior/posterior emissions and DC-8 measurements in terms of ethane.

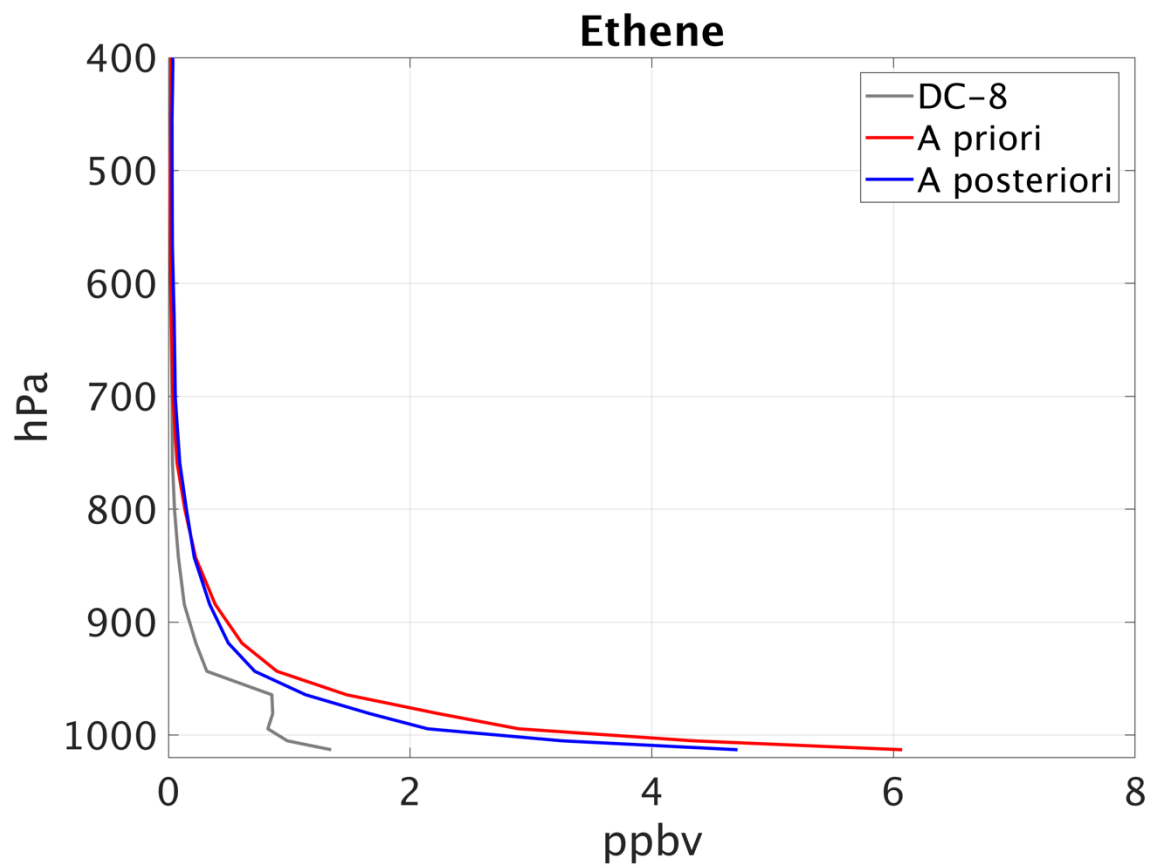


Figure S4. Comparison of the simulated model using the prior/posterior emissions and DC-8 measurements in terms of ethene.

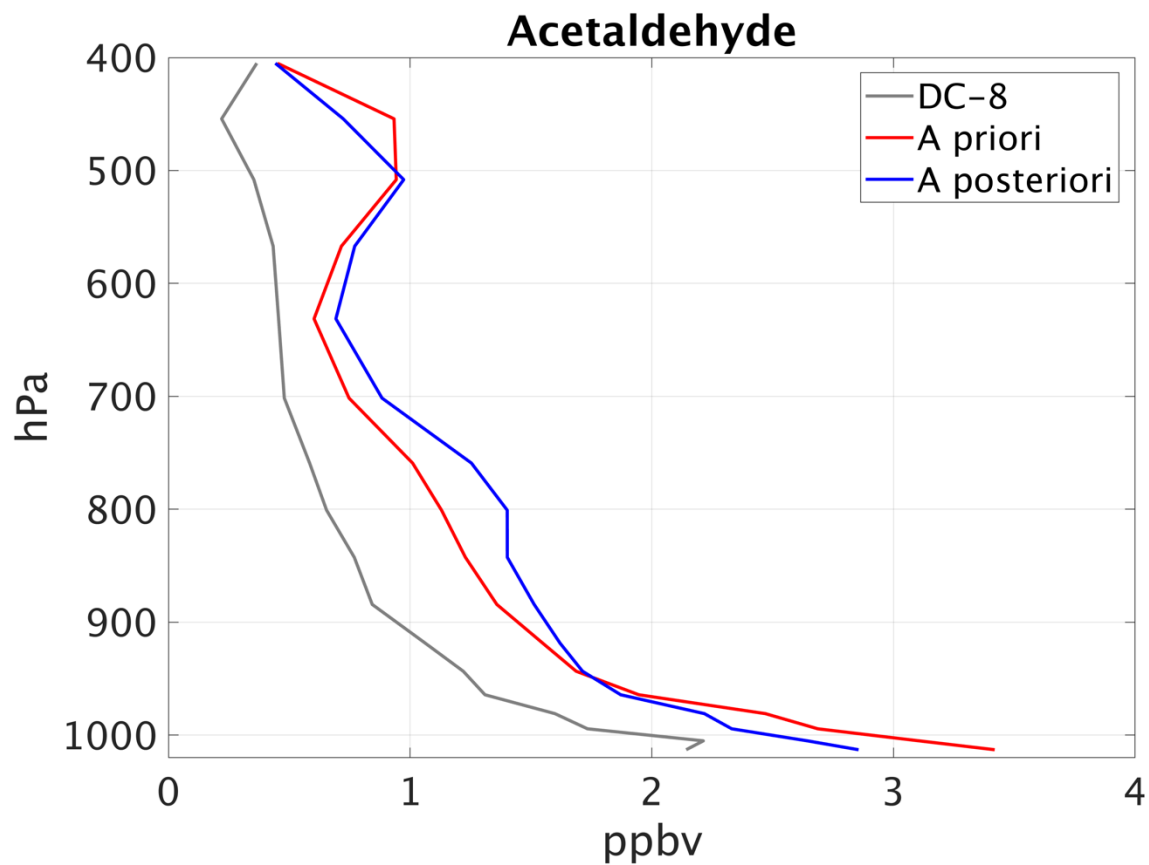


Figure S5. Comparison of the simulated model using the prior/posterior emissions and DC-8 measurements in terms of acetaldehyde.

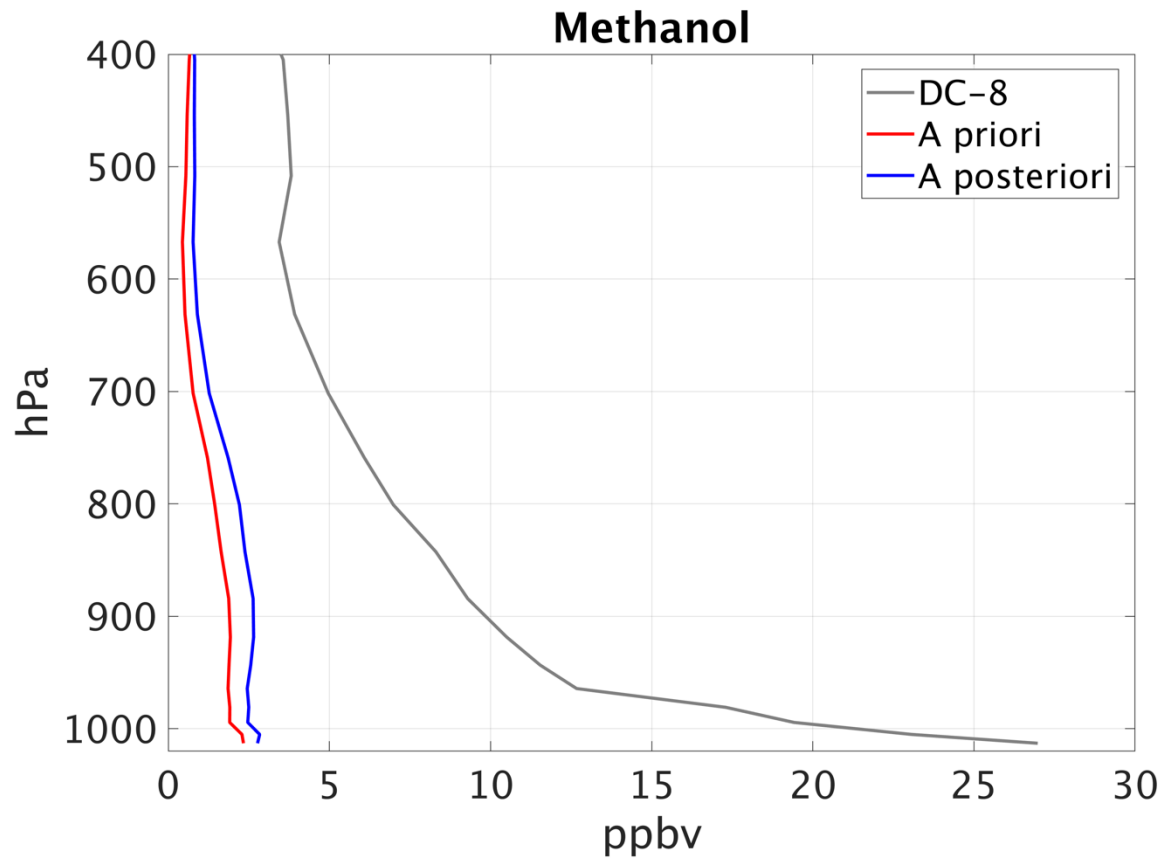


Figure S6. Comparison of the simulated model using the prior/posterior emissions and DC-8 measurements in terms of methanol.

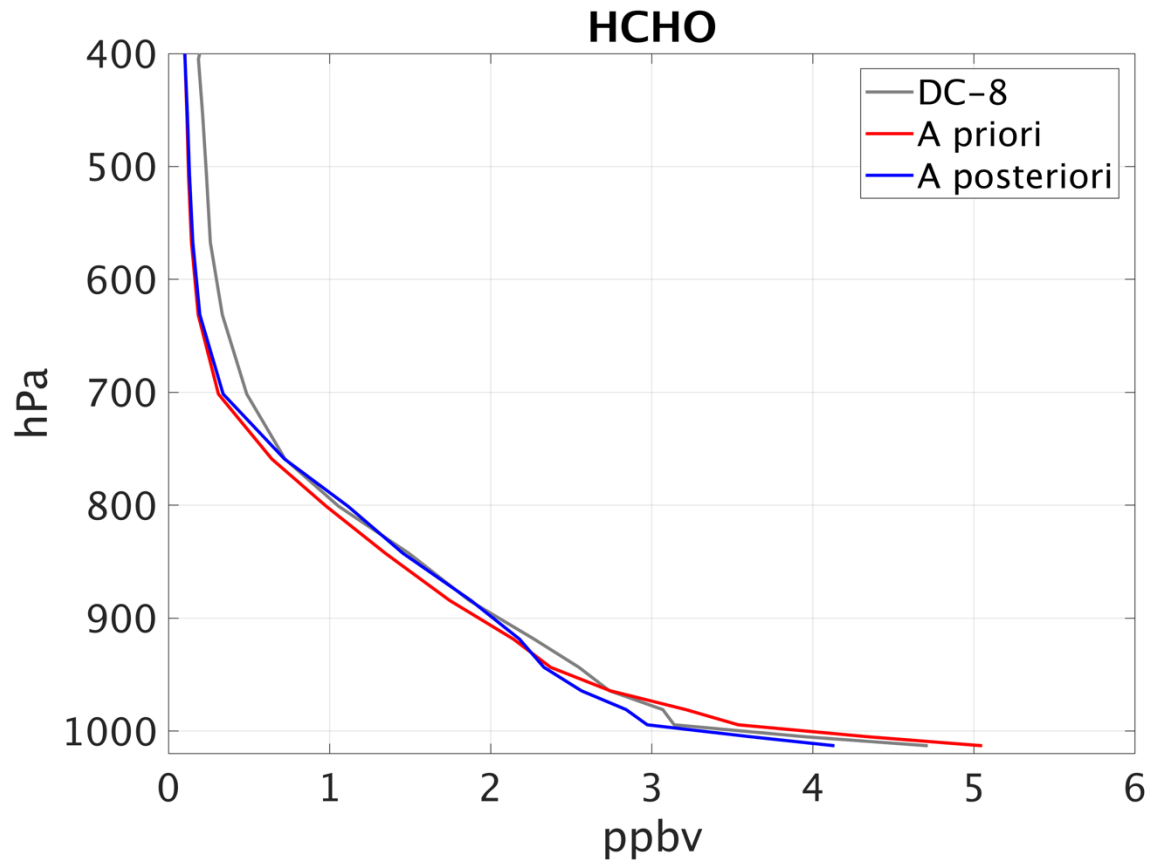


Figure S7. Comparison of the simulated model using the prior/posterior emissions and DC-8 measurements in terms of HCHO.

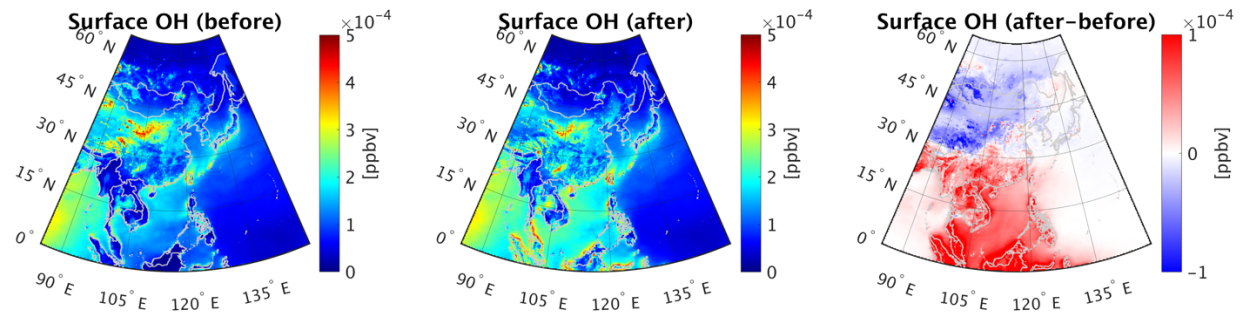


Figure S8. The simulations of surface OH before and after the inversion at 1200-1600 CST.

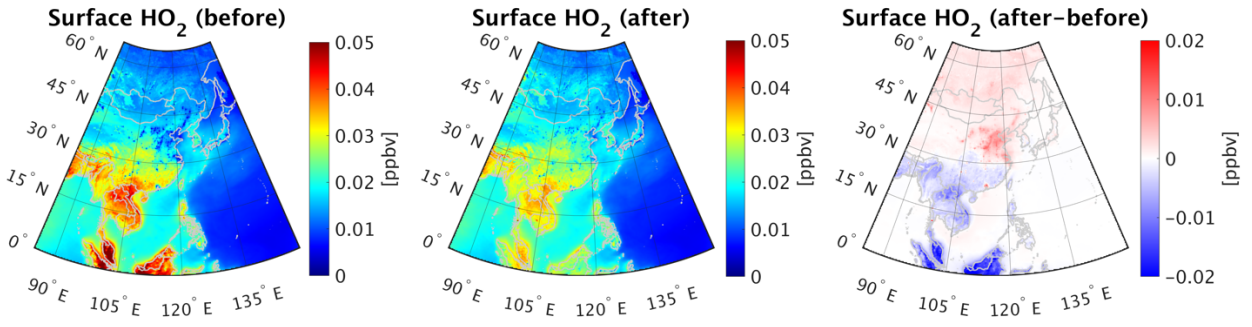


Figure S9. The simulations of surface HO₂ before and after the inversion at 1200-1600 CST.