

How aerosols and greenhouse gases influence the diurnal temperature range

Camilla W. Stjern¹, Bjørn H. Samset¹, Olivier Boucher², Trond Iversen³, Jean-François Lamarque⁴,
Gunnar Myhre¹, Drew Shindell⁵, Toshihiko Takemura⁶

5 ¹CICERO Center of International Climate Research, Oslo, Norway

²Institut Pierre-Simon Laplace, Sorbonne Université / CNRS, Paris, France

³Norwegian Meteorological Institute, Oslo, Norway

⁴NCAR/UCAR, Boulder, USA

⁵Nicholas School of the Environment, Duke University, Durham, NC, USA

10 ⁶Kyushu University, Fukuoka, Japan

Correspondence to: Camilla W. Stjern, camilla.stjern@cicero.oslo.no

Abstract. The diurnal temperature range (DTR), or difference between the maximum and minimum temperature within one day, is one of many climate parameters that affects health, agriculture, and society. Understanding how DTR evolves under global warming is therefore crucial. Physically different drivers of climate change, such as greenhouse gases and aerosols, have distinct influences on global and regional climate. Therefore, predicting the future evolution of DTR requires knowledge of the effects of individual climate forcings, as well as of the future emissions mix, in particular in high emission regions. Using global climate model simulations from the Precipitation Driver and Response Model Intercomparison Project (PDRMIP), we investigate how idealized changes in the atmospheric levels of a greenhouse gas (CO₂) and aerosols (black carbon and sulfate) influence DTR, globally and in selected regions. We find broad geographical patterns of annual mean change that are similar between climate drivers, pointing to a generalized response to global warming which is not defined by the individual forcing agents. Seasonal and regional differences, however, are substantial, which highlights the potential importance of local background conditions and feedbacks. While differences in DTR responses among drivers are minor in Europe and North America, there are distinctly different DTR responses to aerosols and greenhouse gas perturbations over India and China, where present aerosol emissions are particularly high. BC induces substantial reductions in DTR, which we attribute to strong modelled BC-induced cloud responses in these regions.

15
20
25

1 Introduction

As the global climate warms (Hartmann et al., 2013), changes are not only observed in the daily mean temperature, but in a variety of parameters relevant to society. One such parameter is the diurnal temperature range (DTR), which is a measure of the difference between the maximum and the minimum temperature over a 24-hour period. Variations in the magnitude of the

30

DTR have been found to influence mortality and morbidity (Cheng et al., 2014; Kim et al., 2016; Lim et al., 2012), parasite infection and transmission (Paaijmans et al., 2010), and crop failure (Hernandez-Barrera et al., 2017; Lobell, 2007). Future changes in DTR is therefore a potential driver of climate impacts, especially in vulnerable regions, affecting risk assessments associated with health and agriculture.

- 35 A range of geophysical processes contribute to the land surface DTR of a given region. Ultimately, DTR changes are driven by differential changes to daily maximum and minimum temperatures. Maximum temperatures (T_{\max}) are reached during daytime, due to the excess of incoming shortwave (SW, or solar) radiation. Minimum temperatures (T_{\min}) occur at night, primarily due to cooling by longwave (LW, or heat) radiation. As LW cooling is active during both daytime and night-time, factors affecting primarily LW radiation will have an effect on both T_{\min} and T_{\max} , reducing the potential influence on DTR.
- 40 Thus, greenhouse gases such as CO_2 or water vapor, which have a particularly strong effect on LW radiation fluxes throughout the day (e.g., Lagouarde and Brunet, 1993), are not initially expected to have the strongest direct radiative influence on DTR. Dai et al. (1999) showed that changes in water vapor had a relatively small effect on DTR. Aerosols, on the other hand, primarily have climate interactions affecting the shortwave (SW) spectrum. They tend to lower the amount of downwelling SW radiation at the surface through scattering and absorption, initially reducing the daytime T_{\max} and thus reducing DTR.
- 45 In addition to the direct interactions with SW and, to a lesser extent, LW radiation, greenhouse gases and aerosols alike have a range of indirect (radiative and non-radiative) influences on climate. These effects can cause further changes to T_{\min} and T_{\max} . For instance, sulfate aerosols can interact microphysically with clouds to make them more reflective (Twomey, 1974), or increase the general cloud cover by increasing cloud lifetime (Albrecht, 1989). Cloud changes have been shown to have a strong influence on DTR, mainly by blocking SW radiation and hence reducing T_{\max} (e.g., Dai et al., 1999). Increased cloud
- 50 thickness or cloud cover will also affect the surface energy budget, by increasing downwelling LW radiation. This effect operates during both day and night.

- The strong atmospheric absorption by BC and CO_2 can cause rapid adjustments in both cloudiness and precipitation through their influence on atmospheric stability (Hansen et al., 1997; Richardson et al., 2018; Stjern et al., 2017). An increase in precipitation, for instance, may induce changes in soil moisture, which could in turn influence DTR through a reduced T_{\min}
- 55 due to enhanced evaporation (Zhou et al., 2007). On a longer time scale, feedback responses following a warming climate can cause changes to DTR via associated changes in cloud cover (Dai et al., 1999), atmospheric circulation, precipitation (Karl et al., 1993), soil moisture (Zhou et al., 2007), surface heat storage capacity (Kleidon and Renner, 2017), land use (Mohan and Kandy, 2015), and the turbulent fluxes of sensible and latent heat in the atmospheric boundary layer (Davy et al., 2017). Finally, each process and its effect on DTR may be modified by non-linear effects such as, e.g., local hydrological conditions
- 60 or atmospheric stratification.

Observations show a general reduction in DTR over the twentieth century, typically mediated by a stronger increase in the daily minimum temperature than in the daily maximum temperature (Dai et al., 1999; Karl et al., 1993; Vose et al., 2005). This trend in DTR has been linked to anthropogenic emissions, but whether greenhouse gases or aerosols are the dominating influence, and what roles these respective climate drivers will play to future DTR changes, is not clear. For instance, Vose et al. (2005) showed that while the overall trend in DTR was negative for western US and central Europe for the period of 1950-2005, it reverses to a positive trend in these regions when considering the later 1979-2005 period which saw reductions in aerosol emissions. China, however, saw a DTR reduction also for this later period – but is also located at lower latitudes.

Over the coming decades, we can expect continued emissions of both greenhouse gases and aerosols, but with amounts and a relative balance that is determined by future socioeconomic and political developments. The global backdrop of increased greenhouse gas induced forcing will be combined with an aerosol influence that has regionally heterogeneous patterns and potentially strong trends. As an example, the global burden of aerosol loading has recently shifted from Europe to Asia (Myhre et al., 2017b). These aerosol trends have been designated as potential causes of the ongoing drying of the Mediterranean region (Tang et al., 2017), and of changes to the South and East Asian Monsoon circulations (Wilcox et al., 2020). However, the future balance between the different climate forcers is highly uncertain, and differs markedly between the various Shared Socioeconomic Pathways currently in use by the projection and climate impact communities (Lund et al., 2019; Rao et al., 2017). In particular, they include a wide range of possible emission combinations of BC and SO₄ from India and China, some of which lead to a strong dipole pattern in regional, aerosol induced radiative forcing over the coming decades. (Samset et al., 2019).

Given the uncertainty in future emission trends, disentangling the individual responses of DTR to these two aerosol species and how their influence differs from that of CO₂, when taking into account both direct and indirect effects and their climate feedbacks, is of high relevance. Such understanding is an important prerequisite for understanding how regional DTR will evolve over the coming decades. The purpose of this work is to contribute to such an understanding, based on a sample of common, idealized experiments performed by nine coupled climate models. Model studies investigating effects of greenhouse gases and aerosols on DTR have typically used historical simulations (Lewis and Karoly, 2013; Liu et al., 2016). However, such simulations include trends in greenhouse gases as well as trends in both scattering and absorbing aerosols, with opposite effects on global mean temperature and, possibly, on DTR. To disentangle the role of different climate drivers to the DTR changes, model responses to idealized experiments where individual drivers are perturbed separately provide a separate line of evidence.

In the present study we compare idealized instantaneous perturbations of CO₂, BC and SO₄ in nine global climate models from the Precipitation Driver Response Model Intercomparison Project (PDRMIP) (Myhre et al., 2017a). This unique data sets allows us to investigate whether differing changes to DTR can be expected from trends in greenhouse gases, sulfate or black carbon, and can shed light on results from more comprehensive, multi-forcer simulations, such as those in the Coupled Model

Intercomparison Project Phase 6 (CMIP6) (Eyring et al., 2016). While the size of the dataset precludes detailed process-level investigations of the output from each model, any significant changes found based on the median response of the model sample should represent physically robust expectations based on the geophysical understanding underlying the generation of climate models participating here (which are mostly similar to their CMIP5 configurations; Myhre et al. (2017a)).

In the next section, we give a brief overview of data and methods used in this paper. Section 3 describes the main results of this study, starting with a comparison between PDRMIP baseline DTR values to observations, to show how the specific PDRMIP models capture regional DTR. The results are summarized in Section 4.

2 Methods

In the Precipitation Driver and Response Multimodel Intercomparison Project (PDRMIP), nine global climate models have performed idealized simulations of instantaneous perturbations in different climate drivers. Here, we analyze experiments involving a doubling of CO₂ (CO₂x2), a tenfold increase in black carbon (BCx10) and a fivefold increase in sulfate (SO₄x5), relative to a climatology consistent with year 2000 conditions. See Table 1 and (Myhre et al., 2017a; Samset et al., 2016; Stjern et al., 2017) for details and a list of models. The geographical distribution of the baseline BC and SO₄ aerosol burden fields can be found in Fig. 1, which shows that India and eastern China are regions of particularly high current aerosol loading.

Using step perturbations rather than transient simulations means that climate responses will be different to those seen in the real world. The advantage is that signals more rapidly emerge from the noise of internal variability, provided that the forcing applied is of sufficient strength. In PDRMIP, the experiments were designed to produce such clear and robust climate signals. The experiments are however not identical in effective radiative forcing, which necessitates some normalization if the results are to be fully comparable. Here, we have chosen to divide climate responses (e.g., the DTR change) by the global, annual mean temperature change for each driver and model. Our comparisons therefore show the response expected for a 1°C surface warming due to perturbations in the given climate driver.

Model median global temperature change and model spread for the three drivers are 2.6 [1.5 to 3.7] K (CO₂x2), 0.7 [0.2 to 1.7] K (BCx10) and -1.65 [-0.9 to -6.6] K (SO₄x), respectively (see Samset et al. (2016) for core analysis of all PDRMIP experiments and models). For SO₄, which cools the climate, normalization by a negative global mean temperature change switches the sign of the change and shows in principle the result of a reduced SO₄ level, as opposed to the other drivers. Note that even a tenfold increase in BC yielded a weak impact on global temperatures (Stjern et al., 2017). This has the implication that normalization leads to particularly large normalized changes for the BCx10 experiment. However, as seen by comparing absolute DTR changes for BCx10 in Fig. S2 to those of CO₂x2 and SO₄x5 (Figs. S1 and S3), the absolute DTR change for BCx10 is also large in itself: an annual mean model median DTR change of -0.03 K (compared to -0.05 K for CO₂x2) is substantial given that the doubling of CO₂ causes a four times stronger response in the global mean temperature.

CO₂ concentrations were prescribed in all models. For the aerosol perturbations, four of the ten models perturbed
125 concentrations while the rest changed their emissions. This leads to some additional inter-model differences in forcing and
response patterns. For instance, in concentration-driven simulations, climate dynamics (e.g., a change in precipitation and thus
wet deposition) will not influence BC concentrations, while feedbacks between BC and other climate processes can operate in
emission-driven simulations. However, a previous PDRMIP study found the difference between climate responses in emission-
driven versus concentration-driven experiments to be highly model dependent (Stjern et al., 2017). At least for the BCx10
130 simulations, two of the emission-driven models (CESM-CAM5 and MIROC-SPRINTARS) showed responses very similar to
the concentration-driven models, while the two others (HadGEM2-ES and CanESM2) had slightly stronger responses that
might be related to the nature of the experiment set-up.

All the simulations were 100 years long. Data for the simulation years 51-100 were used in the analyses, and changes were
defined as the average of these years for a perturbed simulation minus the corresponding average for the baseline simulation.
135 In a comparison between PDRMIP data and gridded observational data from the Climate Research Unit (CRU) TS v. 4.03
(Harris et al., 2014), we compare baseline PDRMIP values (averaged over simulation years 51-100) to observational data
averaged over years 1991-2010.

DTR was calculated based on daily minimum and maximum temperature values and averaged into monthly and seasonal
means. To determine whether a given DTR change is significantly different from zero, regional mean monthly mean DTR
140 values over a 50-year period, for perturbed versus baseline climates, were tested for each model and experiment using Student's
t-test ($p < 0.05$). As the multi-model but single-realization simulations performed here will be sensitive to the timing of internal
variability among model simulations, this will likely cause some of the inter-model differences. However, the model spread is
not sensitive to the exact time period used. As a sensitivity test, we picked out 20-year periods from the 50 years of the baseline
simulations, moving 5 years at a time (giving 7 20-year periods within the 50 years of data), and found that inter-model standard
145 deviations of DTR for these periods ranged between 2.555 and 2.564 K. While this indicates that model differences are more
likely related to actual differences in model formulations and parametrizations, we note that internal variations in regional
clouds and precipitation – which strongly influence DTR – can affect trends over periods up to 60 years (Deser et al., 2012),
making it difficult to compare changes in DTR both among models and between models and observations.

We present results for all land regions aggregated (LND), and the populated, high (present or previous) aerosol emission
150 regions of the continental United States (USA), central Europe (EUR), India (IND), and eastern China (CHI). In addition, we
study changes in the Arctic (ARC), which is a region known to be sensitive to remote emissions but where the mediating
processes are not fully explored. As an example, potential drivers of regional impacts such as melt ponds and sea ice loss may
depend on summertime Arctic DTR, which may in turn depend on diurnal variations in, e.g., photochemical particle production
or transport into the region (Deshpande and Kamra, 2014). Our main focus is however on the major aerosol emission regions.

155 3 Results and Discussion

This section presents the global, annual land mean modelled DTR changes in response to the PDRMIP perturbations, as well as regionally and seasonally resolved results. As earlier work has demonstrated a tendency in CMIP5-generation models to underestimate DTR relative to observations, with a bias that differs strongly between models and regions (Sillmann et al., 2013), we also compare the PDRMIP baseline DTR values to surface temperature observations.

160 3.1 Comparison to observations

Figure 2a shows the annual mean DTR (average of 1991-2010) calculated from CRU TS.4, as well as the underlying T_{\min} and T_{\max} values. The DTR in these observations averages 11.2 °C globally. Typically, the DTR is relatively narrow (<10 °C) at northern high latitudes as well as around the tropics, and higher in the subtropics and mid latitudes. The world's highest overland DTR (>20 °C) can be found in northern and southern parts of Africa, along the western parts of North America, in
165 Australia, and in the region around the Arabian Peninsula.

Figures 2b compare PDRMIP DTR, T_{\min} and T_{\max} to CRU, showing differences between the two. To ensure that only grid cells with values for both PDRMIP and CRU are compared, we regrid all data sets to 1x1 degree resolution prior to the comparison. We find that PDRMIP models underestimate the DTR over much of the global land area. This is generally linked to minimum temperatures being on the warm side, often (see, e.g., western USA) enhanced by a tendency for
170 maximum temperatures that are too cold. Notable exceptions to the low DTR bias are North Africa and the Arabian Peninsula, which were among the regions with the world's highest DTR (Fig. 2a). Figure 2b shows that models simulate too cold minimum temperatures here – conceivably linked to insufficiencies in model estimates of soil moisture or clouds.

Figure 2c shows regionally averaged model-observation biases for the PDRMIP model median as well as for the individual models. While the multi-model median land annual mean DTR has a negative bias of 1.9 °C compared to CRU values,
175 individual model-observation differences have a standard deviation of 2.6 °C and range from -3.3 to 4.4 °C. HadGEM3, NCAR-CESM-CAM4 and CanESM2 have consistently high DTR values and thus positive biases, while GISS-E2-R, NorESM1-M and NCAR-CESM-CAM5 have the lowest values. HadGEM2 has been omitted here since it used a preindustrial baseline. The models that stand out with a positive bias in DTR tend to instead to strongly overestimate the maximum temperatures.

180 Too warm minimum temperatures are particularly prominent in high-latitude regions, where all models have a positive T_{\min} bias in USA, EUR and ARC. One known issue in atmospheric models is the representation of the atmospheric boundary layer at high latitudes (e.g., Steeneveld, 2014), where wintertime minimum temperatures are often determined by a very thin and stable boundary layer.

Inter-model spread is in all regions larger for T_{\max} than T_{\min} . Note, however, that this is much due to the very strong positive
185 T_{\max} bias of particularly HadGEM3 and NCAR-CESM-CAM4, which for all regions contrast the negative T_{\max} bias of the majority of the other models.

Overall, the PDRMIP models perform similarly to CMIP5 models (Sillmann et al., 2013), with a general underestimation of
DTR, but with large differences between models as well as between regions. Although no direct comparison between historical
DTR changes and the idealized simulations in this study will be made, the caveats noted above should be kept in mind in
190 interpretations of the analyses below.

3.2 DTR change in response to different forcing mechanisms

Figure 3 shows how the three drivers CO_2 , BC and SO_4 influence annual mean (large upper panels) and seasonal (small panels)
DTR. Recall that results are normalized by the global mean temperature change for each given model and experiment. All the
195 drivers cause a reduction in annual mean DTR at high latitudes, increased DTR in mid-latitudes (see, e.g. USA and central/southern Europe), increased DTR over the Amazon and southern Africa, and reduced DTR over northern/central Africa. As mentioned above, however, these three drivers influence DTR through different processes that may be seasonally dependent. The small panels in Fig. 3 indicate that for each individual driver, the largest seasonal differences in DTR responses are found between summer (JJA) and winter (DJF). Spring (MAM) and fall (SON) show patterns of change that reflect
200 transitions between the typical summertime and wintertime responses. In the next sections we will therefore take a closer look at how DTR is influenced during summer and winter – first for the high and mid northern latitude regions USA, EUR and ARC, and finally for the Asian regions IND and CHI.

3.2.1 Wintertime DTR responses in USA, EUR and ARC

As visible in Fig. 3, all three climate drivers induce a strong reduction in DTR over northern high and mid latitudes in winter.
205 In Fig. 4 we quantify these changes by taking a closer look at regional averages. Colored bars indicate high inter-model consistency, defined as cases where 80% of models with data have changes of the same sign. In winter the DTR reduction is particularly robust (colored bars for all drivers) over Europe and the Arctic (Fig. 4a). Numbers below the bars indicate for how many of the nine models these changes are statistically significant, and the number is high for both these regions. A similar reduction is seen over USA, but here there is lower model agreement on the BC-induced DTR reduction. The hatching on the
210 DJF BCx10 map in Fig. 3, indicating low model agreement, shows that this true for the entirety of the USA region.

For all drivers (but most strongly so for BC and SO_4) the wintertime DTR reductions in these northern mid and high latitudes are driven by an increase in T_{\min} that is stronger than the increase in T_{\max} (Fig. S4). Previous studies have shown that while a general global warming of the climate can be expected to increase both T_{\min} and T_{\max} , an increase in cloud cover can

substantially dampen the increase in T_{\max} (e.g., Dai et al., 1999), resulting in a DTR reduction. We therefore take a closer look
215 at how greenhouse gases and aerosols influence the cloud cover in these regions.

In Europe, we do find a slight wintertime increase in cloud cover for both $\text{CO}_2 \times 2$ and $\text{SO}_4 \times 5$ (Fig. 6 and Table S1). Combined
with statistically significant negative correlations between cloud cover changes and DTR changes (Table S2), these are
indications that these climate drivers reduce DTR through their influence on cloud cover. For $\text{BC} \times 10$, however, we find a
reduction in clouds over Europe. We find statistically significant correlations between DTR change and the change in clear-
220 sky downwelling radiation for these two experiments (Table S2), and for $\text{BC} \times 10$ the reduction in this variable is particularly
strong (Table S3) – almost $11 \text{ W/m}^2\text{K}$. This is likely enough to dampen T_{\max} despite the slight reduction in cloud cover.

In the Arctic region (recall that our regional averages only land areas in this study), the lack of incoming solar radiation in
winter means that the increase in T_{\max} will be dampened to a lesser degree, and the difference between the changes in T_{\min} and
 T_{\max} will be smaller. This can be seen in Fig. S4, where the wintertime slopes between T_{\min} and T_{\max} are much weaker for the
225 ARC region than, e.g. for EUR, manifesting in a weaker DTR change (Fig. 4). The absence of short wave radiation during the
polar night make potential driver differences as the one seen over Europe less prominent. As we will see in the next section,
drivers influence DTR more differently in the Arctic summer.

All in all, a prominent wintertime feature in the EUR, USA and ARC regions is a consistency between drivers in terms of
changes to T_{\min} and T_{\max} , ultimately all causing a reduction in DTR. We see, however, that although greenhouse gases and
230 aerosols influence DTR in the same manner, the underlying processes differ between drivers.

3.2.2 Summertime DTR responses in USA, EUR and ARC

The reduced wintertime DTR in mid-latitudes is contrasted by a strong summertime increase, as seen by the orange colors on
the JJA maps in Fig. 3. Europe stands out as the region with the best inter-model agreement (Fig. 4; all bars are colored), with
a clear summertime DTR increase for all three drivers. This is caused by a much stronger increase in T_{\max} than in T_{\min} (Fig.
235 S4). The same can be seen for USA, albeit with less agreement between models for the CO_2 response. In both these regions,
all three drivers induce substantial reductions in summertime cloud cover (Fig. 6), inducing the strong increase in T_{\max} . The
link between DTR and cloud changes is supported by strong and statistically significant correlations between the two (Tables
S2 and S4). There are also corresponding correlations to sensible heat flux and the amount of downwelling SW radiation,
which we expect to increase as the cloud cover diminishes. A reduction in summertime precipitation in this region (not shown)
240 contributes to the T_{\max} enhancement as a drier climate tends to involve less clouds and a drier surface with less evaporation.
These are conditions that lower the night-time temperatures and increase daytime temperatures, thus contributing to increased
DTR. It is well known from observations that the last decades have seen a marked drying of Europe in the summer (Manabe
and Wetherald, 1987; Rowell and Jones, 2006; Vautard et al., 2014; Leduc et al., 2019), potentially as a result of an expanding
Hadley cell (Lau and Kim, 2015) or due to weaker lapse-rate changes over the Mediterranean region than over northern Europe
245 (Brogli et al., 2019).

Based on observations, Makowski et al. (2008) found a strong increase in European DTR in the period of strong SO₂ mitigations in the region, and suggested a causal relationship. Although natural variability and other forcing mechanisms have likely contributed to these trends, the increase in DTR over Europe seen in the SO₄x5 experiment (recall the normalization by temperature change, meaning that this experiment corresponds to a SO₄ reduction) is consistent with the findings of Makowski et al. (2008). However, our SO₄ perturbation experiment causes DTR increases that are comparable with what is caused by perturbations of BC and CO₂. Therefore, it seems that the DTR change in Europe is not a driver specific response, but rather linked to the surface temperature change resulting from the aerosol induced forcing, and the resulting large-scale circulation changes.

During the Arctic summer, processes dependent on short wave radiation may operate both day and night, and the potential for driver-specific responses is more present than during the polar night. CO₂ causes a stronger Arctic increase in T_{max} than in T_{min} and thus an increased DTR for all models, while BC for most models causes a stronger increase in T_{min} and thus DTR reduction (Fig. S4). The reason is that CO₂ induces a reduction in the summertime Arctic cloud cover, consistent with the increase in T_{max}, while BC enhances the cloud cover, thus hindering the strong T_{max} increase. As a further step, we calculate SW and LW cloud radiative effects (CRE, Fig. 7) as the difference between clear-sky and all-sky top-of-atmosphere radiative fluxes (see, e.g., Dessler and Zelinka, 2015). As expected, we see a strong summertime SW cloud radiative cooling over Arctic land masses for BCx10 (-7.0 Wm⁻²K⁻¹), contrasting a small positive CRE (+0.2 Wm⁻²K⁻¹) for CO₂x2. The BCx10 SW CRE effect is much stronger than the LW CRE effect, thus indicating that the change is primarily to low clouds.

3.2.3 Driver-specific DTR changes over India and China

A visual comparison of the IND and CHI regions in the maps of Fig. 4 hints of interesting differences between drivers and between the two regions. Regionally averaged, CO₂ causes reduced DTR in winter and increased DTR in summer (except for in IND), as we saw for EUR, USA and ARC (Fig. 4). While the DTR response to the SO₄ perturbation is associated with large model spread in both seasons, it does produce a significant reduction in DTR over India in summer. What really stands out, however, is the strong response to BC. There is a high level of agreement between models on the sign of the DTR changes (Fig. 4; bars representing BC changes are mostly colored, indicating model agreement). This is striking, as BC-induced climate changes have been shown repeatedly to be associated with higher levels of model disagreement than changes driven by CO₂ and SO₄ (Richardson et al., 2018; Samset et al., 2016). While we found that BC caused reduced DTR in winter and increased DTR in summer over Europe, India and China experience severe DTR reductions in both seasons. In these regions, where baseline aerosol concentrations (Fig. 1) and thus the absolute magnitude of the aerosol perturbations are so high, the distribution of which processes dominate the response may be different.

Changes in aerosol concentrations have been suggested as a cause of the DTR changes in China (Dai et al., 1999; Liu et al., 2004). Here, we find weak correlations between the DTR changes and changes in the BC burden (Pearson's correlation coefficient of 0.26 and 0.38 in summer in India in DJF and JJA, respectively, and 0.12 and 0.29 in China). While correlations

between both BCx10 and SO4x5 DTR changes and changes in downwelling clear-sky SW radiation (Tables S5 and S6) are strong and significant, at least in India, we find significant correlations also in the CO2x2 case.

280 Interestingly, for both BCx10 and SO4x5, the aerosol perturbations are stronger in China than in India (see baseline concentrations in Fig. 1). Table S3 shows that the magnitude of the change in downwelling clear-sky SW radiation in summer is also strongest in China. Still, the link between these changes and DTR are strongest in India. We find that in the BASE simulations, India tends towards a slightly drier climate with less precipitation, less surface evaporation, less cloud cover and a stronger sensible heat flux than China (not shown) – properties typically associated with warmer maximum and colder
285 minimum temperatures. India therefore has a higher DTR to begin with (Fig. 2a), and thus a larger potential for change in the DTR.

In winter, the strongest DTR changes can be seen for BCx10 in the China region, for which the increase in T_{\max} is weak (Fig. 5), likely due to a simulated increase in clouds for this experiment (Fig. 6). In summer BC also causes DTR to go down and cloud levels to go up. Correlations between the two are strong and significant in both seasons; -0.73 and -0.78 in DJF and JJA,
290 respectively (Tab. S6).

In India, models disagree strongly on the relative responses of T_{\min} and T_{\max} (and thus DTR) in general, see Fig. 5. In winter, we find a slight DTR reduction for CO2x2 as mentioned above, and a stronger reduction for BCx10. In summer, the majority of the models simulate reduced DTR for the SO4x5 experiment, due to a strong increase in T_{\min} and a lesser increase in T_{\max} . In the same season DTR is reduced by more than 2 K for BCx10. Figure 5 shows that this extremely strong DTR reduction
295 occurs because T_{\min} is slightly enhanced while T_{\max} is actually reduced. The reduction in T_{\max} is seen for all models but IPSL-CM5A, which is the only model for which cloud cover decreases over India in this season. For the other models, the increase in summertime cloud cover in the BCx10 experiment is substantial over India (Fig. 6). In particular, there is a strong reduction in the SW CRE in this region (Fig. 7), likely responsible for the reduction in summertime T_{\max} . Oppositely, the increase in summertime T_{\min} (nighttime temperatures are influenced only by the LW spectrum) is enhanced by the positive change in LW
300 CRE over India. In fact, regions which have both a negative change in the SW CRE and a positive change in the LW CRE can be recognized as the regions with the strongest reductions in DTR in the BCx10 JJA map of Fig. 3 (most importantly India and Central Africa).

A previous analysis of the PDRMIP BCx10 experiment by Stjern et al. (2017) found that the BC-induced cloud cover increases in these regions were mainly driven by rapid cloud adjustments (including the so-called semi-direct effect), but were also a
305 part of the longer-term response to increased global surface temperatures. They found cloud cover increases to be stronger in India than in China, particularly for low clouds which have the strongest influence on T_{\max} .

All in all, while we do see that aerosol-radiation interactions have likely contributed to the regions' DTR changes through reduction in downwelling SW radiation and thus surface heating, the strongest driver of DTR changes seems to be clouds. Greenhouse gases and aerosols cause distinctly different responses in DTR in the regions – not primarily through their direct

310 radiative effect, but via their specific influence on cloud cover. As the magnitude of the BC-induced cloud response is particularly strong over India, this is where we see the most substantial DTR reduction.

Given the strong role of clouds in the DTR response, estimates of DTR change will be sensitive to the way that specific climate forcers influence clouds in different climate models, and to their baseline cloud representations. Model responses to CO₂ perturbations have been shown to vary greatly between individual models, and responses to aerosols have even larger
315 uncertainties, partly due to additional variations in parametrizations of indirect and semidirect effects. For instance, both a previous PDRMIP analysis of the BCx10 experiment (Stjern et al., 2017), and an idealized single-model study (Samset and Myhre 2015), suggest that increased BC concentrations lead to rapid adjustments in the form of increased fractions of low clouds and reduced fractions of high clouds. These cloud changes occurred over large areas of the globe, with a global mean cooling effect. In a recent study, however, Allen et al. (2019) find indications that the heating rate induced by BC is less “top
320 heavy” than what is calculated in many climate models (i.e., the vertical profile of short wave heating rates is too uniform). They claim that if the overestimated upper-level cloud response is corrected for, it could instead produce rapid adjustments that warm the climate, on average. These nuances are relevant to the accuracy of DTR simulations as a BC-induced reduction in high clouds will cause LW cooling and likely lower T_{\min} , while increased low clouds will cause SW cooling and also lower T_{\max} , with effects on the DTR depending on which is influenced the most. If, on the other hand, BC causes strong reductions
325 in low clouds (increases T_{\max}) and also weak reductions in high clouds (reduces T_{\min} slightly), this will contribute to an increase in DTR. More research is needed on modelled cloud responses and the vertical distribution on BC, but we note that both Stjern et al. (2017) and Allen et al. (2019) find that in the high-emission regions of India, China and North/Central Africa, the rapid adjustments produce an increase throughout all cloud layers with a total cooling effect (compare to Fig. 7, where the SW CRE is stronger than the LW CRE in these regions) and likely with similar effects on the DTR.

330 **4 Summary and Conclusion**

We have analyzed a multi-model set of idealized simulations to investigate how changes to the atmospheric levels of CO₂, BC and SO₄ influence the diurnal temperature range, through alterations of global mean surface temperature, cloud cover and other climate parameters. For northern mid- and high-latitude regions, we find DTR changes that are broadly similar between drivers. The cause of the DTR change, as apparent from patterns of T_{\min} and T_{\max} changes, is not always the same for all drivers.
335 However, the resulting change is consistently an increase in DTR in summer, in EUR, USA and ARC, and a decrease in winter. This similarity may partly be the result of general atmospheric response to changes in surface temperature, rather than the distinct processes through which the drivers operate. Thus, while the strong DTR reductions over Europe have been linked to the massive mitigation effort of SO₄ over the past decades, our similar responses of SO₄ perturbations to perturbations of CO₂ and BC indicate that this is not necessarily an aerosol-specific response.

340 Over India and China there is less agreement between drivers, with BC causing a strong DTR reduction in both regions in all seasons. The inter-model spread is large, but all models agree on the sign of this change. Although the strong short-wave atmospheric absorption induced by BC particles is predominantly active in daytime, thus impacting the maximum (daytime) temperature more than the minimum (nighttime) temperature, we find that the direct aerosol effect is likely not the leading cause of the DTR response. Rather, it is the strong cloud response to BC in these regions, shown in previous studies (Stjern et al., 2017) to result from aerosol-induced changes to atmospheric stability and relative humidity, that drive the response in DTR. All models have stronger correlations to cloud related variables than to clear-sky radiative fluxes or changes in BC burden. Hence, the very high BC concentrations in this region have a strong influence on clouds, and thus on DTR.

Although these high-emission regions seem to have driver-specific responses in the DTR, in some seasons, e.g. during autumn over India, CO₂ and SO₄ produce DTR-changes of the same sign as BC, again indicating the existence of an underlying, driver-independent DTR response tied to the general warming of the climate. This supports the work of Vinnarasi et al. (2017), who stressed that observed DTR changes over India are a result of both local and global factors working in tandem.

Disentangling the role of aerosols and greenhouse gases to DTR changes is a crucial step towards prediction of future changes in regional DTR. This is particularly true in regions such as India and East Asia ((Vinnarasi et al., 2017), in which risk factors are aggravated by agriculture-dependent economies and dense populations, and where future trends in aerosol emissions are highly uncertain but likely to be strong. Understanding how greenhouse gases, absorbing aerosols and scattering aerosols individually influence the DTR may help these regions prepare for future changes.

Data availability

The PDRMIP model output is publicly available; for data access, visit <http://www.cicero.uio.no/en/PDRMIP/PDRMIP-data-access>.

Author contribution

CWS, BHS and GM designed the analyses, and CWS carried them out. BHS, OB, JFL and TT performed model simulations. CWS prepared the manuscript with contributions from all co-authors.

Competing interests

The authors declare that they have no conflict of interest.

Acknowledgements

370 PDRMIP is partly funded through the Norwegian Research Council project NAPEX (project number 229778). CWS and BHS were funded through the Norwegian Research Council project NetBC (project number 244141). T. T. was supported by JSPS KAKENHI Grant Number JP19H05669. O.B. acknowledges HPC resources from TGCC under the genmip6 allocation provided by GENCI (Grand Equipement National de Calcul Intensif).

References

- Albrecht, B. A.: Aerosols, Cloud Microphysics, and Fractional Cloudiness, *Science*, 245, 1227-1230, 10.1126/science.245.4923.1227, 1989.
- 380 Allen, R. J., Amiri-Farahani, A., Lamarque, J.-F., Smith, C., Shindell, D., Hassan, T., and Chung, C. E.: Observationally constrained aerosol–cloud semi-direct effects, *npj Climate and Atmospheric Science*, 2, 16, 10.1038/s41612-019-0073-9, 2019.
- Brogli, R., Kröner, N., Sørland, S. L., Lüthi, D., and Schär, C.: The Role of Hadley Circulation and Lapse-Rate Changes for the Future European Summer Climate, *Journal of Climate*, 32, 385-404, 10.1175/jcli-d-18-0431.1, 2019.
- 385 Cheng, J., Xu, Z., Zhu, R., Wang, X., Jin, L., Song, J., and Su, H.: Impact of diurnal temperature range on human health: a systematic review, *International Journal of Biometeorology*, 58, 2011-2024, 10.1007/s00484-014-0797-5, 2014.
- Dai, A., Trenberth, K. E., and Karl, T. R.: Effects of Clouds, Soil Moisture, Precipitation, and Water Vapor on Diurnal Temperature Range, *Journal of Climate*, 12, 2451-2473, 10.1175/1520-0442(1999)012<2451:Eocsmg>2.0.Co;2, 1999.
- Davy, R., Esau, I., Chernokulsky, A., Outten, S., and Zilitinkevich, S.: Diurnal asymmetry to the observed global warming, *International Journal of Climatology*, 37, 79-93, 10.1002/joc.4688, 2017.
- 390 Deser, C., Knutti, R., Solomon, S., and Phillips, A. S.: Communication of the role of natural variability in future North American climate, *Nature Climate Change*, 2, 775-779, 10.1038/nclimate1562, 2012.
- Deshpande, C. G., and Kamra, A. K.: Physical properties of the arctic summer aerosol particles in relation to sources at Ny-Alesund, Svalbard, *Journal of Earth System Science*, 123, 201-212, 10.1007/s12040-013-0373-0, 2014.
- Dessler, A. E., and Zelinka, M. D.: CLIMATE AND CLIMATE CHANGE | Climate Feedbacks, in: *Encyclopedia of Atmospheric Sciences (Second Edition)*, edited by: North, G. R., Pyle, J., and Zhang, F., Academic Press, Oxford, 18-25, 2015.
- 395 Eyring, V., Bony, S., Meehl, G. A., Senior, C. A., Stevens, B., Stouffer, R. J., and Taylor, K. E.: Overview of the Coupled Model Intercomparison Project Phase 6 (CMIP6) experimental design and organization, *Geosci. Model Dev.*, 9, 1937-1958, 10.5194/gmd-9-1937-2016, 2016.
- Hansen, J., Sato, M., and Ruedy, R.: Radiative forcing and climate response, *Journal of Geophysical Research: Atmospheres*, 102, 6831-6864, 10.1029/96jd03436, 1997.
- 400 Harris, I., Jones, P. D., Osborn, T. J., and Lister, D. H.: Updated high-resolution grids of monthly climatic observations – the CRU TS3.10 Dataset, *International Journal of Climatology*, 34, 623-642, 10.1002/joc.3711, 2014.
- Hartmann, D. L., Klein Tank, A. M. G., Rusticucci, M., Alexander, L. V., Brönnimann, S., Charabi, Y., Dentener, F. J., Dlugokencky, E. J., Easterling, D. R., Kaplan, A., Soden, B. J., Thorne, P. W., Wild, M., and Zhai, P. M.: Observations: Atmosphere and Surface, in: *Climate Change 2013: The Physical Science Basis. Contribution of Working Group I to the Fifth Assessment Report of the Intergovernmental Panel on Climate Change*, edited by: Stocker, T. F., Qin, D., Plattner, G.-K., Tignor, M., Allen, S. K., Boschung, J., Nauels, A., Xia, Y., Bex, V., and Midgley, P. M., Cambridge University Press, Cambridge, United Kingdom and New York, NY, USA, 159–254, 2013.
- Hernandez-Barrera, S., Rodriguez-Puebla, C., and Challinor, A. J.: Effects of diurnal temperature range and drought on wheat yield in Spain, *Theoretical and Applied Climatology*, 129, 503-519, 10.1007/s00704-016-1779-9, 2017.
- 410 Karl, T. R., Jones, P. D., Knight, R. W., Kukla, G., Plummer, N., Razuvayev, V., Gallo, K. P., Lindsey, J., Charlson, R. J., and Peterson, T. C.: A New Perspective on Recent Global Warming: Asymmetric Trends of Daily Maximum and Minimum Temperature, *Bulletin of the American Meteorological Society*, 74, 1007-1024, 10.1175/1520-0477(1993)074<1007:Anporg>2.0.Co;2, 1993.
- 415 Kim, J., Shin, J., Lim, Y.-H., Honda, Y., Hashizume, M., Guo, Y. L., Kan, H., Yi, S., and Kim, H.: Comprehensive approach to understand the association between diurnal temperature range and mortality in East Asia, *Science of The Total Environment*, 539, 313-321, <https://doi.org/10.1016/j.scitotenv.2015.08.134>, 2016.
- Kleidon, A., and Renner, M.: An explanation for the different climate sensitivities of land and ocean surfaces based on the diurnal cycle, *Earth Syst. Dynam.*, 8, 849-864, 10.5194/esd-8-849-2017, 2017.
- 420 Lagouarde, J. P., and Brunet, Y.: A simple model for estimating the daily upward longwave surface radiation flux from NOAA-AVHRR data, *International Journal of Remote Sensing*, 14, 907-925, 10.1080/01431169308904386, 1993.

- Lau, W. K. M., and Kim, K.-M.: Robust Hadley Circulation changes and increasing global dryness due to CO₂ warming from CMIP5 model projections, *Proceedings of the National Academy of Sciences*, 112, 3630-3635, 10.1073/pnas.1418682112, 2015.
- 425 Leduc, M., Mailhot, A., Frigon, A., Martel, J.-L., Ludwig, R., Brietzke, G. B., Giguère, M., Brissette, F., Turcotte, R., Braun, M., and Scinocca, J.: The ClimEx Project: A 50-Member Ensemble of Climate Change Projections at 12-km Resolution over Europe and Northeastern North America with the Canadian Regional Climate Model (CRCM5), *Journal of Applied Meteorology and Climatology*, 58, 663-693, 10.1175/jamc-d-18-0021.1, 2019.
- 430 Lewis, S. C., and Karoly, D. J.: Evaluation of Historical Diurnal Temperature Range Trends in CMIP5 Models, *Journal of Climate*, 26, 9077-9089, 10.1175/jcli-d-13-00032.1, 2013.
- Lim, Y.-H., Hong, Y.-C., and Kim, H.: Effects of diurnal temperature range on cardiovascular and respiratory hospital admissions in Korea, *Science of The Total Environment*, 417-418, 55-60, <https://doi.org/10.1016/j.scitotenv.2011.12.048>, 2012.
- 435 Liu, B., Xu, M., Henderson, M., Qi, Y., and Li, Y.: Taking China's Temperature: Daily Range, Warming Trends, and Regional Variations, 1955–2000, *Journal of Climate*, 17, 4453-4462, 10.1175/3230.1, 2004.
- Liu, L., Li, Z., Yang, X., Gong, H., Li, C., and Xiong, A.: The long-term trend in the diurnal temperature range over Asia and its natural and anthropogenic causes, *Journal of Geophysical Research: Atmospheres*, 121, 3519-3533, 10.1002/2015jd024549, 2016.
- 440 Lobell, D. B.: Changes in diurnal temperature range and national cereal yields, *Agricultural and Forest Meteorology*, 145, 229-238, <https://doi.org/10.1016/j.agrformet.2007.05.002>, 2007.
- Lund, M. T., Myhre, G., and Samset, B. H.: Anthropogenic aerosol forcing under the Shared Socioeconomic Pathways, *Atmos. Chem. Phys.*, 19, 13827-13839, 10.5194/acp-19-13827-2019, 2019.
- Makowski, K., Wild, M., and Ohmura, A.: Diurnal temperature range over Europe between 1950 and 2005, *Atmos. Chem. Phys.*, 8, 6483-6498, 10.5194/acp-8-6483-2008, 2008.
- 445 Manabe, S., and Wetherald, R. T.: Large-Scale Changes of Soil Wetness Induced by an Increase in Atmospheric Carbon Dioxide, *Journal of the Atmospheric Sciences*, 44, 1211-1236, 10.1175/1520-0469(1987)044<1211:lscosw>2.0.co;2, 1987.
- Mohan, M., and Kandy, A.: Impact of urbanization and land-use/land-cover change on diurnal temperature range: A case study of tropical urban airshed of India using remote sensing data, *Science of The Total Environment*, 506-507, 453-465, <https://doi.org/10.1016/j.scitotenv.2014.11.006>, 2015.
- 450 Myhre, G., Samset, B. H., Schulz, M., Balkanski, Y., Bauer, S., Bernsten, T. K., Bian, H., Bellouin, N., Chin, M., Diehl, T., Easter, R. C., Feichter, J., Ghan, S. J., Hauglustaine, D., Iversen, T., Kinne, S., Kirkevåg, A., Lamarque, J. F., Lin, G., Liu, X., Lund, M. T., Luo, G., Ma, X., van Noije, T., Penner, J. E., Rasch, P. J., Ruiz, A., Seland, Ø., Skeie, R. B., Stier, P., Takemura, T., Tsigaridis, K., Wang, P., Wang, Z., Xu, L., Yu, H., Yu, F., Yoon, J. H., Zhang, K., Zhang, H., and Zhou, C.: Radiative forcing of the direct aerosol effect from AeroCom Phase II simulations, *Atmos. Chem. Phys.*, 13, 1853-1877, 10.5194/acp-13-1853-2013, 2013.
- 455 Myhre, G., Forster, P. M., Samset, B. H., Hodnebrog, Ø., Sillmann, J., Aalbergsjø, S. G., Andrews, T., Boucher, O., Faluvegi, G., Fläschner, D., Kasoar, M., Kharin, V., Kirkevåg, A., Lamarque, J.-F., Oliví, D., Richardson, T., Shindell, D., Shine, K. P., Stjern, C. W., Takemura, T., Voulgarakis, A., and Zwiers, F.: PDRMIP: A Precipitation Driver and Response Model Intercomparison Project, Protocol and preliminary results, *Bulletin of the American Meteorological Society*, 98, 1185-1198, doi: 10.1175/BAMS-D-16-0019.1, 2017a.
- 460 Myhre, G., Aas, W., Cherian, R., Collins, W., Faluvegi, G., Flanner, M., Forster, P., Hodnebrog, Ø., Klimont, Z., Lund, M. T., Mülmenstädt, J., Lund Myhre, C., Oliví, D., Prather, M., Quaas, J., Samset, B. H., Schnell, J. L., Schulz, M., Shindell, D., Skeie, R. B., Takemura, T., and Tsyro, S.: Multi-model simulations of aerosol and ozone radiative forcing due to anthropogenic emission changes during the period 1990–2015, *Atmos. Chem. Phys.*, 17, 2709-2720, 10.5194/acp-17-2709-2017, 2017b.
- 465 Paaijmans, K. P., Blanford, S., Bell, A. S., Blanford, J. I., Read, A. F., and Thomas, M. B.: Influence of climate on malaria transmission depends on daily temperature variation, *Proceedings of the National Academy of Sciences*, 107, 15135-15139, 10.1073/pnas.1006422107, 2010.
- 470 Rao, S., Klimont, Z., Smith, S. J., Van Dingenen, R., Dentener, F., Bouwman, L., Riahi, K., Amann, M., Bodirsky, B. L., van Vuuren, D. P., Aleluia Reis, L., Calvin, K., Drouet, L., Fricko, O., Fujimori, S., Gernaat, D., Havlik, P., Harmsen, M., Hasegawa, T., Heyes, C., Hilaire, J., Luderer, G., Masui, T., Stehfest, E., Strefler, J., van der Sluis, S., and Tavoni, M.: Future

- air pollution in the Shared Socio-economic Pathways, *Global Environmental Change*, 42, 346-358, <https://doi.org/10.1016/j.gloenvcha.2016.05.012>, 2017.
- Richardson, T. B., Forster, P. M., Andrews, T., Boucher, O., Faluvegi, G., Fläschner, D., Hodnebrog, Ø., Kasoar, M., Kirkevåg, A., Lamarque, J.-F., Myhre, G., Olivie, D., Samset, B. H., Shawki, D., Shindell, D., Takemura, T., and Voulgarakis, A.: Drivers of Precipitation Change: An Energetic Understanding, *Journal of Climate*, 31, 9641-9657, 10.1175/jcli-d-17-0240.1, 2018.
- 475 Rowell, D. P., and Jones, R. G.: Causes and uncertainty of future summer drying over Europe, *Climate Dynamics*, 27, 281-299, 10.1007/s00382-006-0125-9, 2006.
- Samset, B. H., Myhre, G., Schulz, M., Balkanski, Y., Bauer, S., Bernsten, T., Bian, H., Bellouin, N., Diehl, T., Easter, R. C., Ghan, S. J., Iversen, T., Kinne, S., Kirkevåg, A., Lamarque, J. F., Lin, G., Liu, X., Penner, J. E., Seland, Ø., Skeie, R. B., Stier, P., Takemura, T., Tsigaridis, K., and Zhang, K.: Black carbon vertical profiles strongly affect its radiative forcing uncertainty, *Atmos. Chem. Phys.*, 13, 2423-2434, 10.5194/acp-13-2423-2013, 2013.
- 480 Samset, B. H., Myhre, G., Forster, P. M., Hodnebrog, Ø., Andrews, T., Faluvegi, G., Fläschner, D., Kasoar, M., Kharin, V., Kirkevåg, A., Lamarque, J. F., Olivie, D., Richardson, T., Shindell, D., Shine, K. P., Takemura, T., and Voulgarakis, A.: Fast and slow precipitation responses to individual climate forcings: A PDRMIP multimodel study, *Geophysical Research Letters*, 43, 2782-2791, 10.1002/2016GL068064, 2016.
- 485 Samset, B. H., Lund, M. T., Bollasina, M., Myhre, G., and Wilcox, L.: Emerging Asian aerosol patterns, *Nature Geoscience*, 12, 582-584, 10.1038/s41561-019-0424-5, 2019.
- Sillmann, J., Kharin, V. V., Zhang, X., Zwiers, F. W., and Bronaugh, D.: Climate extremes indices in the CMIP5 multimodel ensemble: Part 1. Model evaluation in the present climate, *Journal of Geophysical Research: Atmospheres*, 118, 1716-1733, doi:10.1002/jgrd.50203, 2013.
- 490 Steeneveld, G.-J.: Current challenges in understanding and forecasting stable boundary layers over land and ice, *Frontiers in Environmental Science*, 2, 10.3389/fenvs.2014.00041, 2014.
- Stjern, C. W., Samset, B. H., Myhre, G., Forster, P. M., Hodnebrog, Ø., Andrews, T., Boucher, O., Faluvegi, G., Iversen, T., Kasoar, M., Kharin, V., Kirkevåg, A., Lamarque, J. F., Olivie, D., Richardson, T., Shawki, D., Shindell, D., Smith, C. J., Takemura, T., and Voulgarakis, A.: Rapid Adjustments Cause Weak Surface Temperature Response to Increased Black Carbon Concentrations, *Journal of Geophysical Research: Atmospheres*, 122, 11,462-411,481, doi:10.1002/2017JD027326, 2017.
- 495 Tang, T., Shindell, D., Samset, B. H., Boucher, O., Forster, P., Hodnebrog, Ø., Myhre, G., Sillman, S., Voulgarakis, A., Aalbergstjø, S. G., and Stjern, C. W.: Contribution of Black Carbon Aerosol to Drying of the Mediterranean, Submitted to *Journal of Geophysical Research - Atmosphere*, 2017.
- 500 Twomey, S.: Pollution and the planetary albedo, *Atm. Env.*, 8, 1251-1256, doi:10.1016/0004-6981(74)90004-3, 1974.
- Vautard, R., Gobiet, A., Sobolowski, S., Kjellström, E., Stegehuis, A., Watkiss, P., Mendlik, T., Landgren, O., Nikulin, G., Teichmann, C., and Jacob, D.: The European climate under a 2 °C global warming, *Environmental Research Letters*, 9, 034006, 10.1088/1748-9326/9/3/034006, 2014.
- Vinnarasi, R., Dhanya, C. T., Chakravorty, A., and AghaKouchak, A.: Unravelling Diurnal Asymmetry of Surface Temperature in Different Climate Zones, *Scientific Reports*, 7, 7350, 10.1038/s41598-017-07627-5, 2017.
- 505 Vose, R. S., Easterling, D. R., and Gleason, B.: Maximum and minimum temperature trends for the globe: An update through 2004, *Geophysical Research Letters*, 32, 10.1029/2005gl024379, 2005.
- Wilcox, L. J., Liu, Z., Samset, B. H., Hawkins, E., Lund, M. T., Nordling, K., Undorf, S., Bollasina, M., Ekman, A. M. L., Krishnan, S., Merikanto, J., and Turner, A. G.: Accelerated increases in global and Asian summer monsoon precipitation from future aerosol reductions, *Atmos. Chem. Phys. Discuss.*, 2020, 1-30, 10.5194/acp-2019-1188, 2020.
- 510 Zhou, L., Dickinson, R. E., Tian, Y., Vose, R. S., and Dai, Y.: Impact of vegetation removal and soil aridation on diurnal temperature range in a semiarid region: Application to the Sahel, *Proceedings of the National Academy of Sciences*, 104, 17937-17942, 10.1073/pnas.0700290104, 2007.

520

525

530

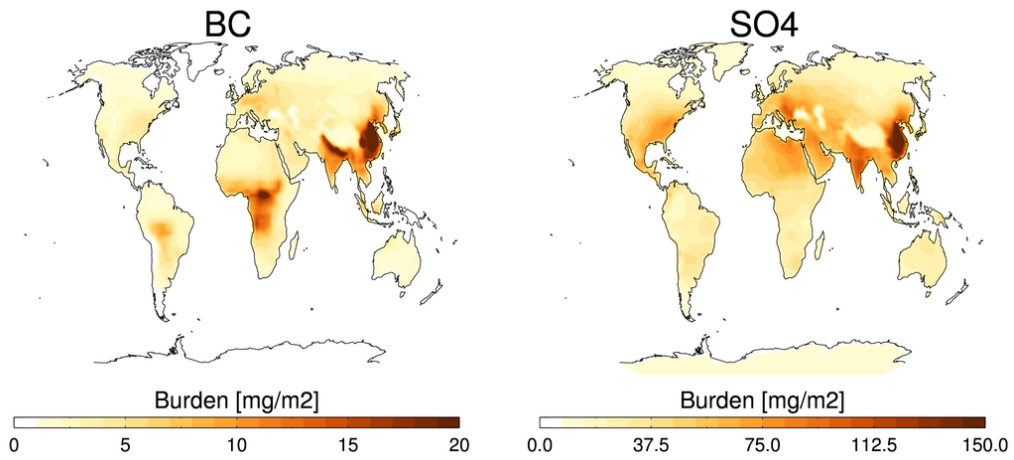
Tables and Figures

535

Table 1: Overview of models and experiments

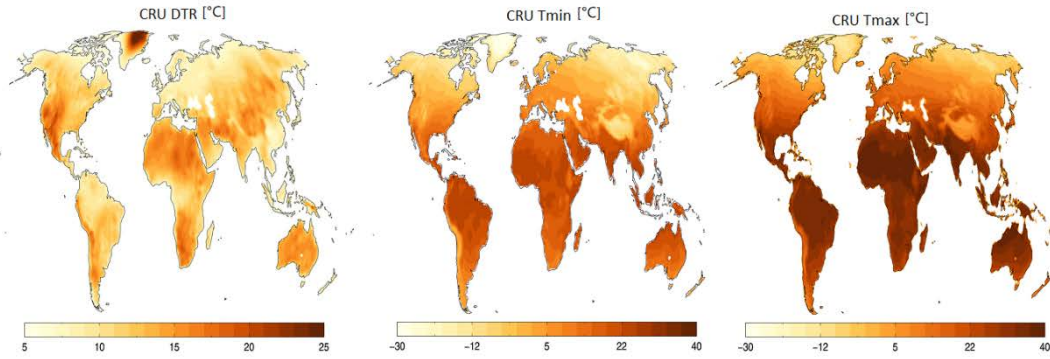
Experiments		
<i>BASE</i>	Present-day conditions, with solar constant and CO ₂ emissions for year 2000 (Lamarque et al., 2010). Five models ran the aerosol simulations in concentration-based mode, where BC or SO ₄ concentrations were fixed at the monthly multi-model mean present-day concentrations from AeroCom Phase II (Myhre et al., 2013; Samset et al., 2013). The remaining models (indicated below) ran emission-based simulations where the BASE simulation used present-day emissions of BC or SO ₄ .	
<i>CO2x2</i>	A global instantaneous doubling of the BASE CO ₂ emissions.	
<i>BCx10</i>	A global instantaneous tenfold increase in the BASE BC concentrations (for the concentration-based models) or emissions (for the emission-based models).	
<i>SO4x5</i>	Like BCx10, only for SO ₄ . For models doing emission-based perturbations, SO ₂ (not SO ₄) was perturbed.	
Models	<i>Aerosol simulation type</i>	<i>No. of lon x lat x lev grid cells</i>
<i>CanESM2</i>	Emission-based	128 x 68 x 22
<i>NCAR-CESM1-CAM4</i>	Concentration-based	144 x 96 x 17
<i>NCAR-CESM1-CAM5</i>	Emission-based	144 x 96 x 17
<i>GISS-E2-R</i>	Concentration-based	144 x 90 x 40
<i>HadGEM2</i>	Emission-based	192 x 144 x 17
<i>HadGEM3</i>	Concentration-based	192 x 144 x 17
<i>IPSL-CM5A</i>	Concentration-based	96 x 96 x 39
<i>NorESM1</i>	Concentration-based	144 x 96 x 26
<i>MIROC-SPRINTARS</i>	Emission-based	256 x 128 x 40

540

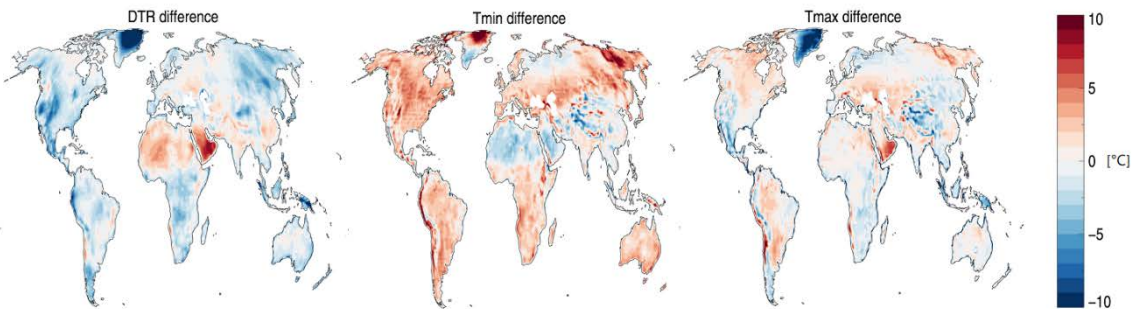


545 **Figure 1: Geographical distribution of the baseline burden of BC and SO₄, as used in the BASE simulations, and as multiplied by 10 and 5 in the BCx10 and SO₄x5 simulations, respectively.**

a)



b)



c)

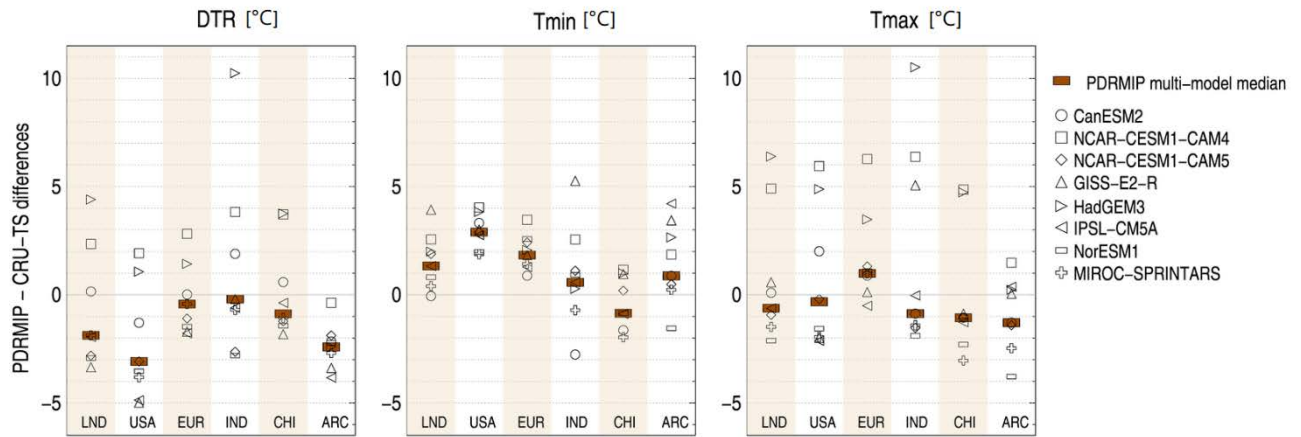


Figure 2: For DTR, Tmin and Tmax, respectively, the figure shows a) geographical distribution of CRU TS values, averaged over years 1991-210, b) geographical distribution of differences between the PDRMIP model-median baseline (mean of years no. 51-100 of 100-year fully coupled simulations) and CRU TS, and c) regionally averaged differences for the model median and for individual models. Note that as HadGEM2 has a preindustrial baseline in the PDRMIP simulations (Samset et al., 2016) we have omitted this model here.

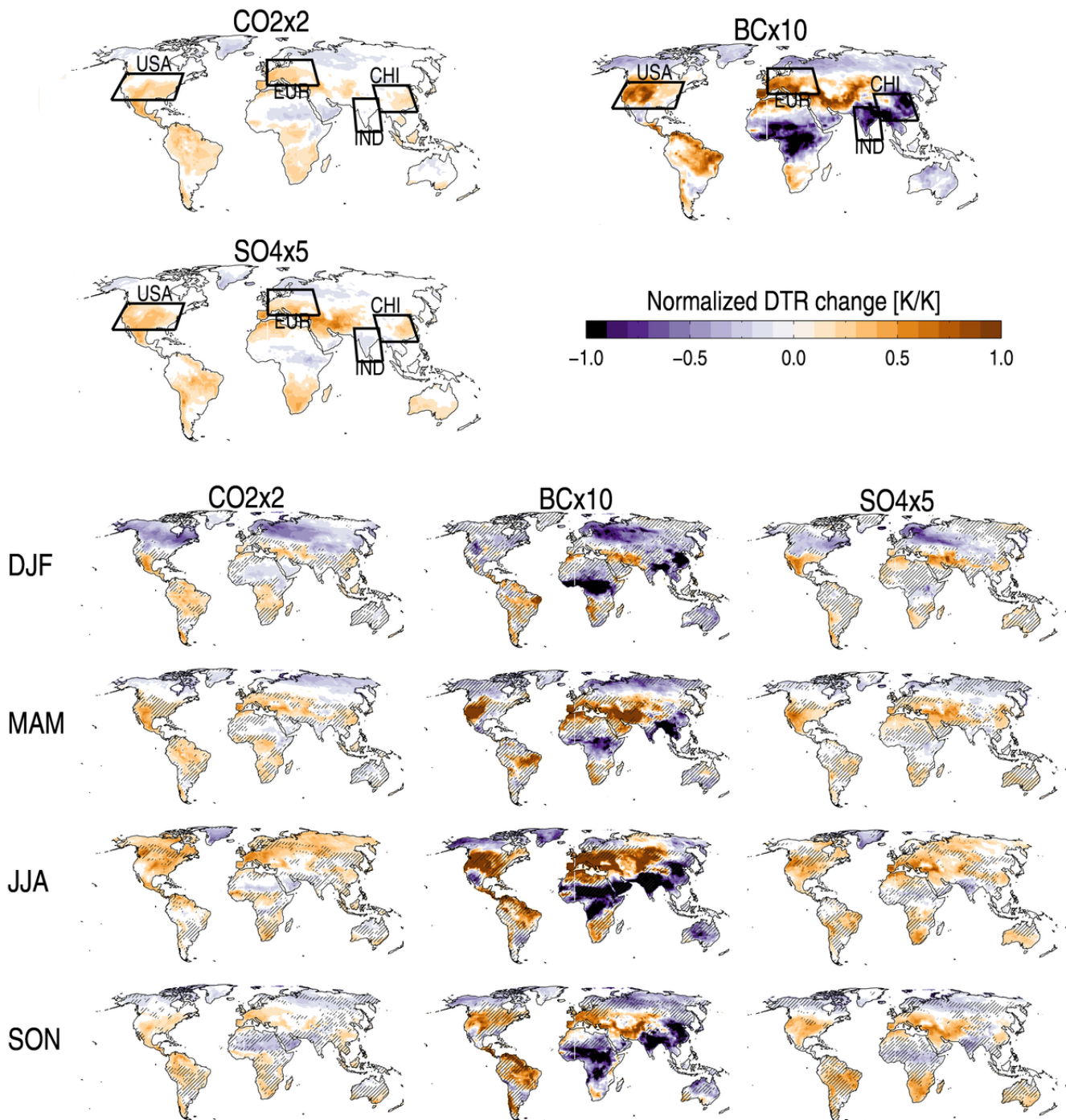
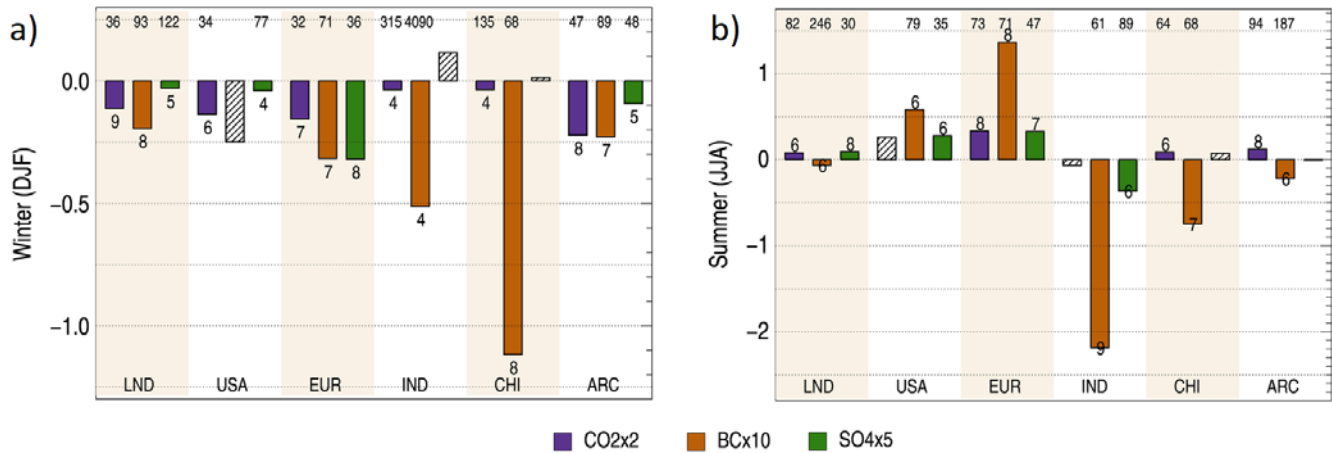


Figure 3: Multi-model median change in DTR, normalized by the global mean temperature change [K/K], for the three experiments. Large upper maps show annual mean changes, while smaller maps show seasonal changes. Hatching indicates areas where less than 75% of the models agree on the sign of the change. Annual maps include indications of the focus regions of this study. The region called “LND” throughout the manuscript is the average of all land regions on the globe.

560

565



570 **Figure 4: Multi-model median change in DTR for the different drivers and seasons, normalized by the global mean temperature change [K/K]. Cases for which 80 % of models with data have DTR changes of the same sign are marked with colors, whereas hatched bars indicate larger model disagreement. The numbers associated with the colored bars shows the number of models for which the change is statistically significant (Student's t-test p-value of less than 0.05). The coefficient of variation [std.dev/mean, %] is shown as numbers on the top.**

575

580

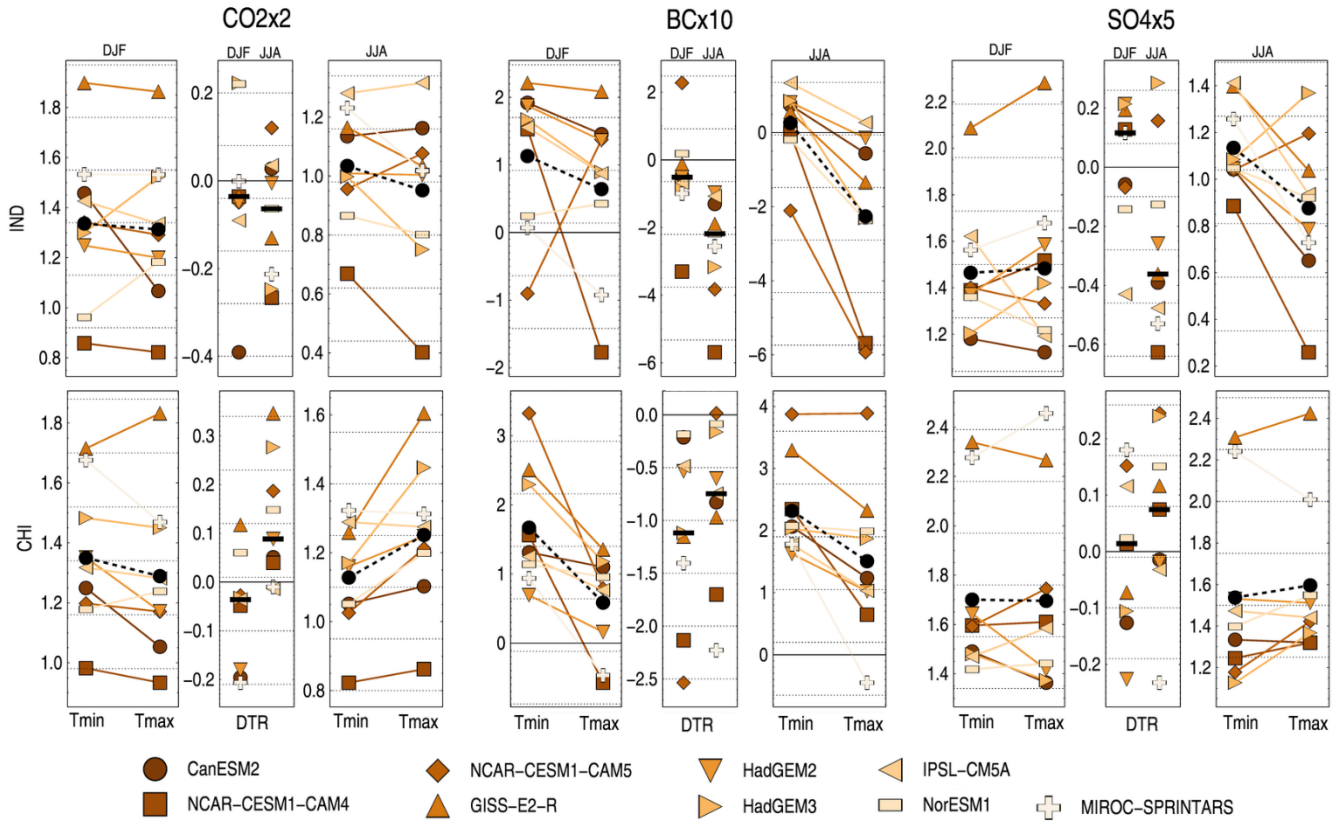


Figure 5: Regional changes in DTR, Tmin and Tmax for the three drivers (columns) in the two Asian regions IND and CHI (rows). For each driver and region subpanels show, respectively, wintertime changes in Tmin and Tmax, wintertime and summertime changes in DTR, and summertime changes in Tmin and Tmax. The black horizontal bars and circles show the multi-model median changes.

605

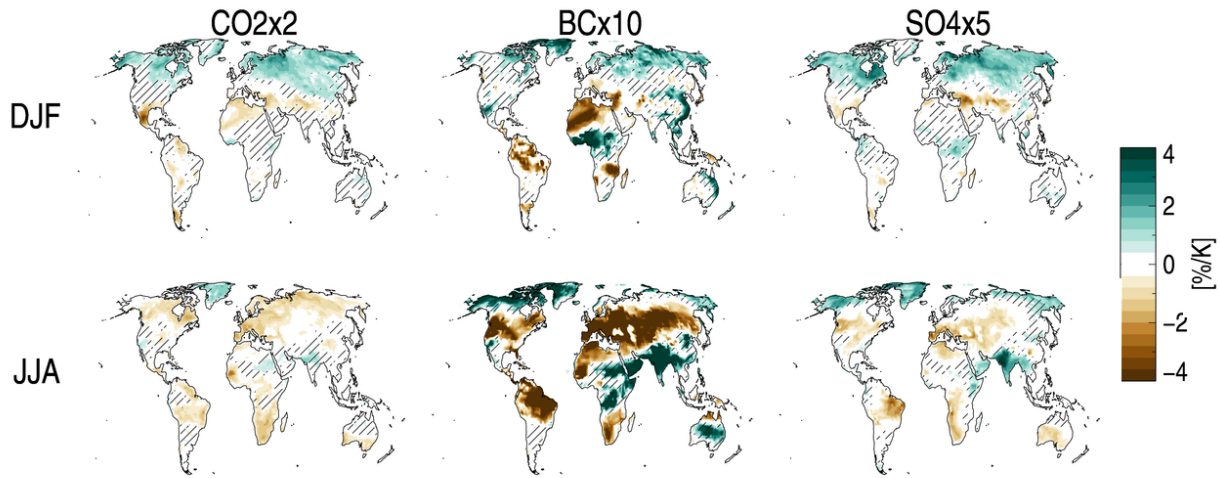


Figure 6: Multi-model median seasonal cloud cover change for the three drivers, normalized by the global annual mean temperature change. Hatching indicates that less than 75% of the models agree on the sign of the change.

610

615

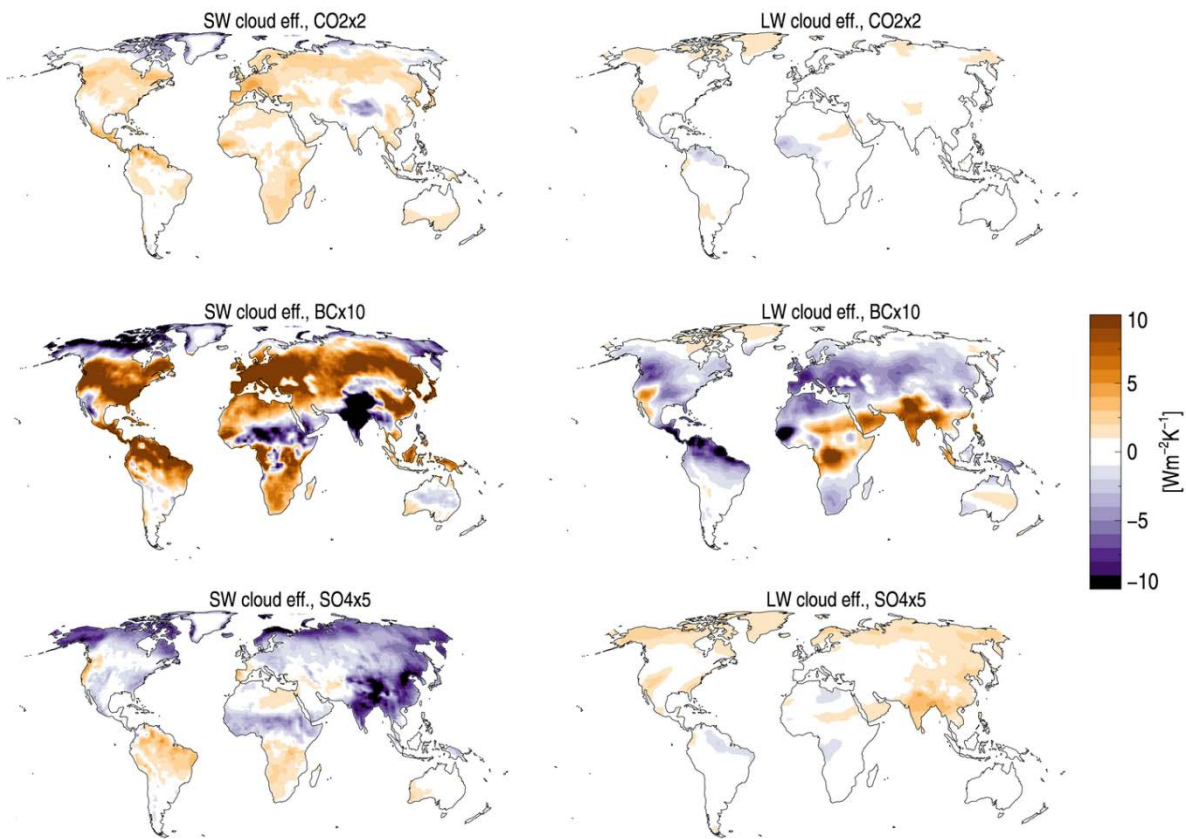


Figure 7: Multi-model median change in short-wave (SW) and long-wave (LW) cloud radiative effects $[\text{Wm}^{-2}]$ for the JJA months, for the BCx10 experiment. See supplementary figures for maps of all seasons and experiments.