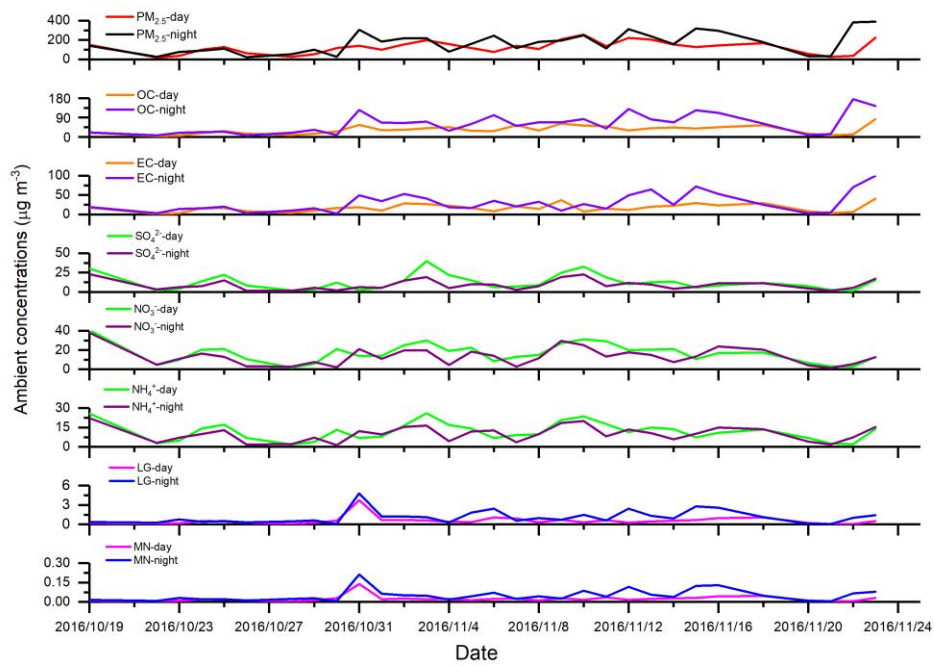
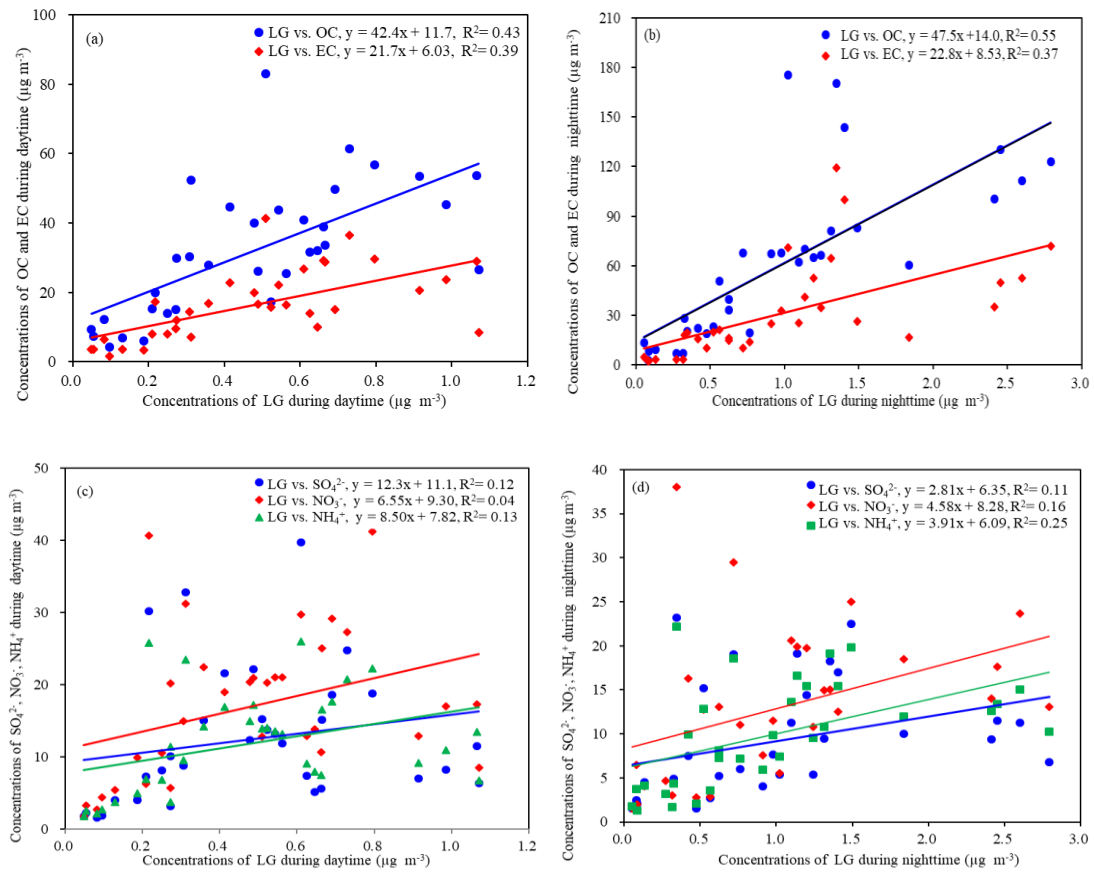




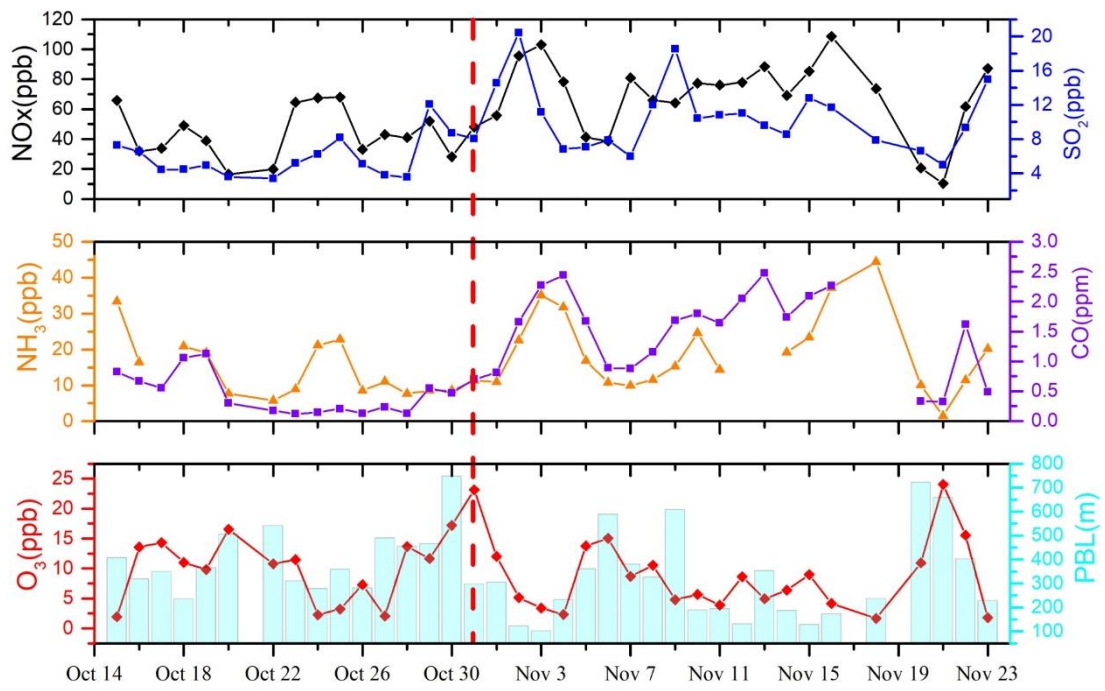
**Figure S1.** Location of Gucheng measurement station (red star) and the surrounding provinces.



**Figure S2.** Time-series variation obtained for  $PM_{2.5}$  and its major components ( $OC$ ,  $EC$ ,  $SO_4^{2-}$ ,  $NO_3^-$  and  $NH_4^+$ ), biomass burning tracers ( $LG$  and  $MN$ ) in daytime and nighttime at GC site during the sampling period.



**Figure S3.** Correlations between LG and OC as well as EC during (a) daytime and (b) nighttime, and scatter plot of LG versus SNA (i.e.,  $\text{SO}_4^{2-}$ ,  $\text{NO}_3^-$  and  $\text{NH}_4^+$ ) during (c) daytime and (d) nighttime.



**Figure S4.** Concentrations of reactive gases and PBL collected at GC site during the observation period

from 15 Oct to 23 Nov 2016.