

Response to referees on “Determination and climatology of diurnal cycle of atmospheric mixing layer height over Beijing 2013-2018: Lidar measurements and implication for air pollution” by Haofei Wang et al.

Haofei Wang^{1,2}, Zhengqiang Li^{1*}, Yang Lv^{1,2}, Ying Zhang¹, Hua Xu¹, Jianping Guo³, Philippe Goloub⁴

1. State Environmental Protection Key Laboratory of Satellite Remote Sensing, Aerospace Information Research Institute, Chinese Academy of Sciences, Beijing, 100101, China

2. University of Chinese Academy of Sciences, Beijing, 100101, China

3. State Key Laboratory of Severe Weather, Chinese Academy of Meteorological Sciences, Beijing, 100081, China

4. Laboratoire d’Optique Atmosphérique, UMR8518, CNRS – Université de Lille 1, Villeneuve d’Ascq, Lille, 59000, France

We appreciate the reviewers’ comments on the manuscript. All comments are highly valuable and helpful for us to improve our manuscript. We have studied them carefully and have addressed them in the revised manuscript, which includes additional investigations. The modification corresponding to Referee #1 is marked in red color, while that responding to Matthias Wiegner and Referee #2 are shown in blue color. The content present in green color is rephrased according to the similarity report. Below are point-by point responses to the referee’s comments. The referees’ comments below are marked in grey, followed by authors’ response in black.

Reply to Anonymous Referee #1:

General comments:

This manuscript analyses long-term measurements of mixed layer height (MLH) over Beijing. Authors describe and evaluate the techniques, derive climatological diurnal variation, and presents an application towards the estimation of fine particulate matter. Several comments and suggestions are offered for authors to consider while revising the manuscript for ACP.

Major points:

1. Introduction section should provide more background, based on studies comparing mixed layer measurements, not limited to LIDAR but also from RADAR and other instruments. Some discussion has been made on the importance of MLH in context of air pollution mixing and dispersion, which should be corroborated with relevant recent references (e.g. Singh et al., 2016; Mues et al., 2017).

A1: Thank you to mention the question from this perspective. The measurement of RADAR, microwave radiometer, ceilometer is added in the revised manuscript. “Singh et al.(2016) investigate the evolution of the Local Boundary Layer in the central Himalayan region, using a radar wind profiler detecting wind components based on signal to-noise ratio profile. Collaud et al. (2014) compared the MLH measurement of microwave radiometer from atmospheric

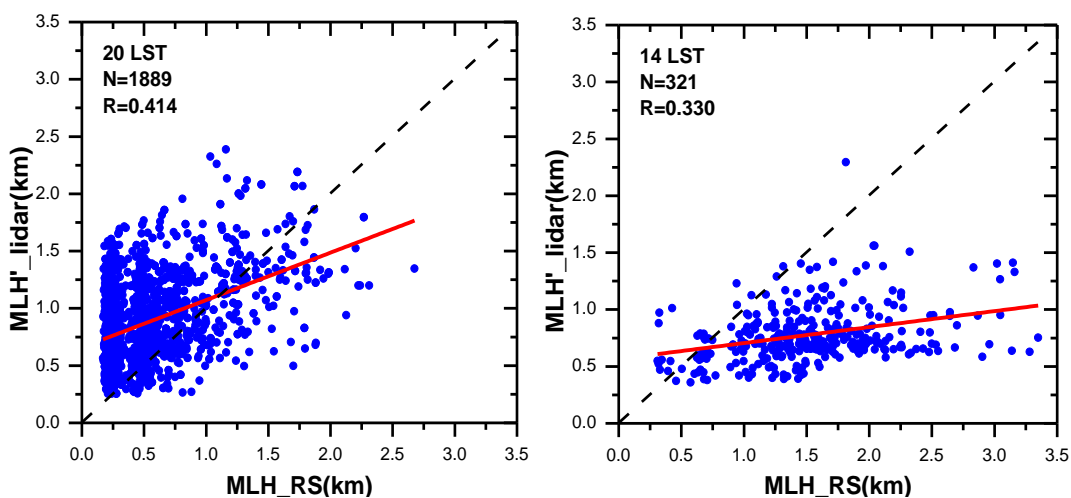
temperature profile with other measurement in Swiss plateau. Mues et al. (2017) used the ceilometer to retrieve the MLH based on aerosol backscatter signal in the Kathmandu Valley.” (P18L42) “Recent studies compared remote sensing measurements (lidar, radar wind profiler, microwave radiometer) with radiosonde (RS) (Milroy et al., 2012; Sawyer and Li, 2013; Cimini et al., 2013; Tang et al, 2016; Singh et al., 2016; Mues et al., 2017; Su et al, 2019)”(P18L70).The relevant recent references (Singh et al., 2016; Mues et al., 2017) is added when talk about air pollution mixing and dispersion in the first paragraph.(P18L37)

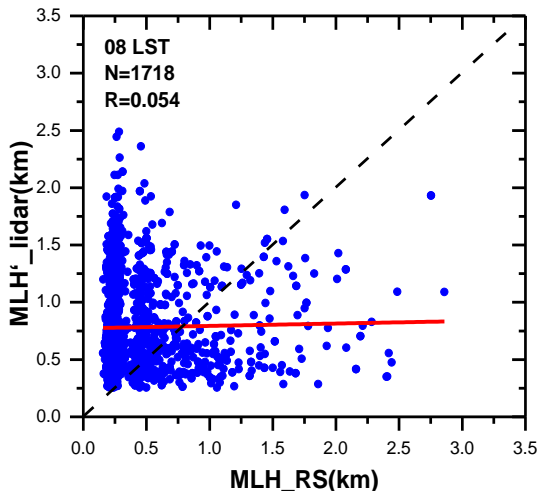
2. Stronger correlations between LIDAR and Radiosonde are seen during afternoon but such correlations are absent in morning and evening. Besides poor correlation, values of MLH also do not match with radiosonde in morning and evening. There should be more deeper analysis and discussions on these aspects with references to previous studies.

A2: It is necessary. Discussions is added as “The poor agreement between MLH (MLH’) from lidar and MLH_RS is also reported in the study of Su et al. (2019), in which shows that the correlation of PBLH measurement between lidar and radiosonde is 0.14 at 0630 LST. The significant scatter in the morning and evening is associated with complicated structure of boundary layer, as indicated by the existence of stable boundary layer and residual layer (Su et al., 2019; Tang et al., 2016). In this study, more than 35% measurement of SBL height is not within the scope of the lidar detection. Additionally, under stable conditions, it is difficult to estimate the MHL from lidar data in some cases, due to the weak vertical gradients in the aerosol content. In the evening and early morning, problems arise from finding a sufficiently clear change in the backscatter profile at the top of the SBL, within the previously well-mixed layer (Russell et al., 1974; Seibert et al., 2000).” (P26L253)

3. The correlation analysis between MLH’ and radiosonde should be shown for all three times in the supplement.

A3: It is added as Fig. S4 in the supplementary.





- Section 3.1 describes mostly the variations as retrieved with limited new insights into boundary layer evolution. Additionally, several general statements are made e.g. “MLH’ sometime agree well with SBL”. Remove general statements and provide more specific discussions based on analysis.

A4: General statements is removed from Section 3.1, and add some description of boundary layer evolution, as well as some specific discussions based on analysis, see the revised manuscript.

- Figure 8 shows significant reduction in MLH after sunrise, particularly during summer (I.245). This should be elaborated. How do the horizontal winds change during this time of minimum MLH? Have any other studies reported such variability in Beijing or elsewhere?

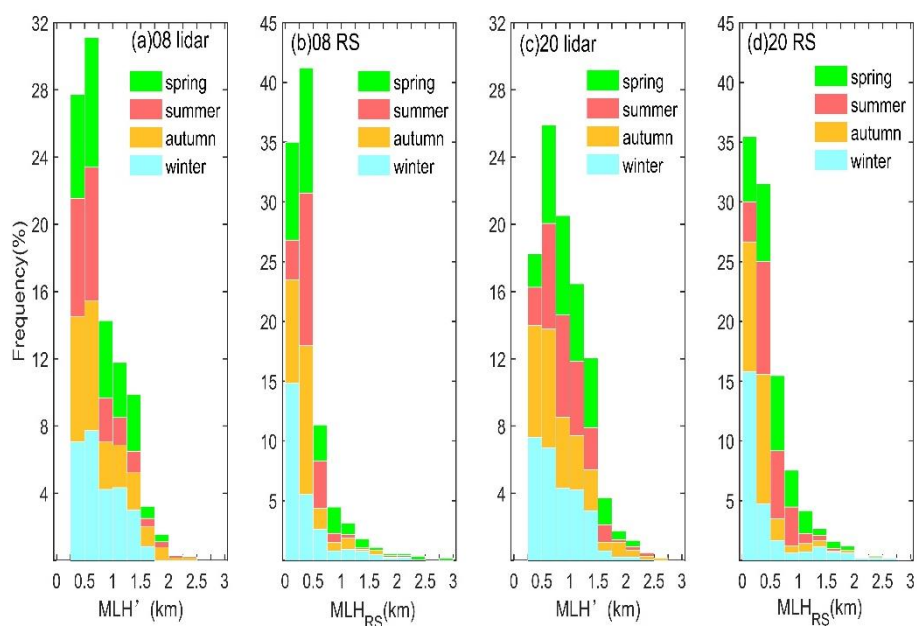
A5: Deep analysis is added, as well as the study in Beijing of Tang et al. (2016). “It should be noted that summer exists the biggest amplitude of diurnal variation, with the deepest valley (0.93 km) increasing to the peak value of 1.51 km. Tang et al. (2016) indicate that the lower MLH value for summer nights and early mornings is contributed to the effect of the mountain plain wind. Beijing is located in the North China Plain, with Taihang Mountain in the west and Yanshan Mountain in the north. When the local mountain breeze from the northeast in the summer night superimposes the surface cooling, leading to the increase the thickness of the inversion layer, the height of the mixed layer gradually decreases. After sunrise, with the drive of thermal turbulence, the residual layer height observed by lidar is gradually replaced by a convective boundary layer height, with MLH increasing rapidly, and after 12:00 LT, the plain wind from the south-westerly direction gradually dominates.”(P28L318)

- Interannual variation – It seems that some of the years have data limited to particular season (s). it will be appropriate to compare the years which have consistency in the seasonal coverage. Otherwise better to analyze a particular season among different years. In any case it is not clear what new is learnt by this analyses. There should be supporting analyses of temperature /winds and /or aerosol changes to explain observed inter-annual variations.

A6: Except for the MLH data from lidar of 2013 mainly existing in winter and spring, the measurement of 2014-2018 are all annual continued observations, covering all the seasons (**P20L110**). From 2014 to 2018, the magnitude of diurnal cycle of MLH increase year by year, indicating the volume available for the dispersion of pollutants extend, which is beneficial to the mitigation of surface pollution(**P28L337**). Correlation of MLH and wind speed, relative humidity, temperature and AOD are calculated (**P29L347**). The observed inter-annual variations can be explained by the aerosol change, the detail please see the manuscript (**P29L353**). The statistic of interannual variation of the average, maximum and minimum of MLH, as well as CBL, is presented in the revised manuscript. (**P28334**)

- There are several variables defined MLH, MLH', MLH_RS etc. Try to use these variables-consistently. For example in discussions MLH_RS is used but in Fig S3 -axis title -it is written as MLH.

A7: Thank you for mentioning this question. It is easy to be confused. In the revised manuscript, “MLH_L” indicates the biggest local maximum from lidar, and “MLH_L” indicates the first local maximum from lidar, and “MLH_{RS}” presents MLH from radiosonde. All the content of the manuscript and figure has been revised.



- Correlations are very weak $r = 0.01$ between radiosonde and lidar at 8LST (Fig S4) and data has significant scatter. Add some inter-comparison studies from literature to elaborate on this.

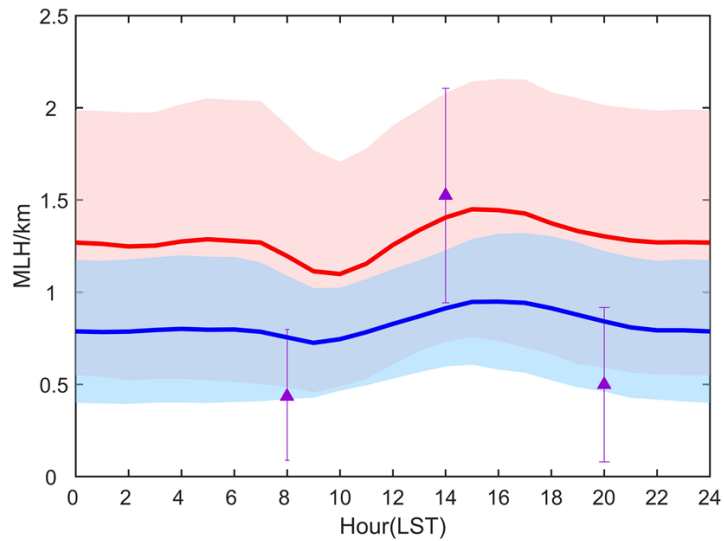
A8: As far as we can see, this comment is similar as comment 2. Please infer the author comment of comment 2.

- Computation of PM_{2.5} should be part of the main manuscript, instead of supplementary material.

A9: Computation of PM_{2.5} is transferred from supplementary to the main manuscript. (**P23L177**)

10. Fig 7: show variability in RS data too.

A10: The variability is added as standard deviation in Fig. 7 below.



Minor changes

11. Manuscript needs careful proofreading for language as various places. e.g. l.69: change consistent” to “consistency” l.107: “MHL” to “MLH” l.118: check the sentence: “..where was located”, probably it should be “which was located” l.195: change “collapse” to “collapsed” and “develop” to “developed” l.203: “shown” to “shows”

A11: All the cacography mentioned is corrected, as well as other spelling errors.

Reply to Matthias Wiegner:

General comments:

For the time being there is one reviewer’s comment available. I agree with his/her general comments and suggestions so it is not necessary to repeat their remarks. Below please find a few additional comments focusing on selected technical or scientific details. As I am not an assigned reviewer I have only focused on the air quality aspect and the meaning of MLH’. Anyway, I hope that they can contribute to improve the paper.

1. Title: Mentioning "implications for air pollution" in the manuscript’s title is a little bit misleading. The authors describe a methodology to derive the mixing layer height (convective, stable, residual layer (CBL, SL, RL)) from lidar measurements. They demonstrate that the agreement with radiosonde based retrievals is often quite limited. MLH is used as input for a numerical model (i.e. one equation) to estimate ground-based PM2.5 concentrations. The agreement with in-situ measurements is also limited. Consequently the whole procedure

results in a rough estimate of PM_{2.5} only. Having this uncertainty and the heterogeneity of local sources of pollutants in mind (see also comments below), I feel that mentioning it in the title of the paper is somewhat exaggerated.

A1: The content is added to try to response to the comment. “The vertical structure of the mixing layer is important for the concentrations at the surface due to its impact on the volume into which pollutants are mixed. Mues et al., (2017) reported that black carbon concentrations show a clear anticorrelation with MLH measurements. Hu et al., (2014) found an anticorrelation between near-surface O₃ and MLH for seven cities in the North China Plain. In the study, as shown in Fig. 11, the correlation between MLH_L and observed PM_{2.5} data from the same observatory shows high negative correlation (R=-0.569) with the four years measurement (2014-2017). Actually, the pollutant concentration near surface is affected by the overall effect of the local emission and meteorological condition, with variation of different spatio-temporal distribution. MLH is just one of these influencing factor. Geiß et al., (2017) indicates that when MLH and near-surface concentrations are linked, it is necessary to take the locations, i.e., meteorological conditions and local sources, and the details of the MLH retrieval into account. In fact, all the data used in our study is observed from the same observatory, and PMRS model used to calculate the surface PM_{2.5} concentration includes the parameters of the emission (AOD) and meteorological condition (RH) into account.”(P29L361)

As to the agreement with the in-situ, “Considering the uncertainty of the series of parameters used in the model, the agreement between calculated PM_{2.5_lidar} and in-situ measurement is reasonable good.”(P30L384)

2. L28: "...identification of pollutant emissions and sources": This statement seems to be misleading. The MLH (among others) has an influence of the dispersion of pollutants, but how sources can be identified from the MLH is not obvious and must be explained if the authors insist on that statement.

A2: The sentence is rephrased by “quantification of pollutant emissions (Haeffelin et al., 2012; Seibert et al., 2000; Baars et al., 2008; Liu and Liang, 2010; Bruine et al., 2017).” (P18L32) With the knowledge of MLH and the surface pollutant concentration, the total pollutant emissions can be calculated when it is well mixed.

3. L33: "contributes to the assessment of the pollutant concentration near the surface": I agree that MLH "contributes" to concentrations of pollutants but it must be kept in mind that the spatio-temporal distribution of sources plays a dominating role; see Geiß et al., (2017).

A3: Yes, you are right. The pollutant concentration near surface is affected by the overall effect of the local emission and meteorological, with variation of different spatio-temporal distribution. MLH is just one of these influencing factor. In fact, all the data used in our study is observed from the same observatory, and the surface pollutant model used take the emission (AOD) and meteorology (RH) into account. (P29L366)

4. L38: "MLH can be estimated by ... the concentration of PBL constituents". It is rather the other way around (having in mind the inherent problems already mentioned).

A4: The sentence is rephrased as "MLH can be estimated by the measurement of variance of the mechanical turbulence, of the temperature enabling convection or of the substance content in the low troposphere." **(P18L40)**

5. L59: Here ceilometers should be explicitly mentioned. Lidars are comparably rare instruments, and only a few can be operated unattendedly and fully automatic (MPL is one of them, so often called a ceilometer or an "automated low power lidar, ALC"). Ceilometers are available as networks, e.g. in Europe. I don't know the situation in China but this option should be mentioned. It has been demonstrated that most ceilometers are capably to determine the MLH.

A5: The comment is added as "With recent upgrades of the hardware, ceilometer, an known as automated low power lidar, or automated lidars and ceilometers, has been demonstrated that be capably to determine the MLH." **(P19L68)**

6. L66: "only in the morning...". This statement is not true for all places in the world.

A6: Yes, the statement is not all true, taking into consideration that additional RS may be launched in other time. 08:00 LT and 20:00 LT is the universal launch time (Collaud et al., 2014; Guo et al., 2016; Su et al., 2019). The sentence has been rephrased as "The meteorological radiosondes usually acquire the MLH in the morning (08:00 LT) and at night (20:00 LT), when the diurnal cycle of ML combined with stable and convective PBL cannot be well characterized." **(P19L75)**

7. L68: "the low vertical resolution": Most of the ceilometers (and lidars) provide a 15 m resolution that is fully sufficient to determine the CBL. In the framework of Ceilinex2015 we have compared instruments from Vaisala, Lufft, and Campbell. In particular for Lufft CHM15k and Vaisala CL51 no problems appeared (the corresponding AMT-paper was mainly on water vapor absorption corrections).

A7: The description is removed.

8. L70: "low SBL height is not evaluated". I assume this is due to the overlap problem. The reader is not aware of this at this point of the manuscript. So a short explanation should be added or the sentence should be moved to the next section.

A8: It is moved the next section. **(P21L138)**

9. L85: Here the period of the measurements should be explicitly mentioned, and the time resolution, and the gaps in the measurement schedule if any. The coordinates of the location should be given with more decimal places.

A9: The corresponding content has been added “The period of the measurements is from 2013 to 2018, nearly six years. Except for the MLH data from lidar of 2013 mainly existing in winter and spring, the measurement of 2014-2018 are all annual continued observations.”(P20L110) “CE370 can detect a long range profile up to 30 km every 1 second. For the enhancement of signal noise ratio, 60 profiles are averaged to restore as one with the time resolution of 1 minute.”(P20L99) “the observation site (116.379° E, 40.005° N) in Beijing city” (P20L95)

10. L89: "correction of overlap". As this is an essential point, it would be nice to read a few detail, at least the height of the lowest "useful" range bin should be given here (actually it is mentioned later, sometimes called "gate", sometimes "range").

A10: The descriptions of overlap is present in the revised manuscript as “Due to the design of the lidar, the received view close to the ground does not completely coincide with transmitted view. There exist a detection blind area of lidar and a geometric overlap factor is used to correct the mismatch of field of view.”(P20L104) and “Due to the limitation of algorithm and insufficient lidar overlap, the minimum range of the MLH calculation is on the order of 250 m.”(P22L146)

11. L94: To my knowledge Baars et al. (2008) were (one of) the first who applied the Haar-wavelet technique to continuous lidar measurements (de Haij et al. used the very old LD-40 with a limited vertical measurement range) including a detailed sensitivity analysis. This paper could be cited as well.

A11: It has been added. (P20L114)

12. L99: When mentioning "attenuated backscattering profile $f(z)$ " here, this quantity should be defined previously. But in L89 only RCS and "then logarithm calculation" ($\ln(\beta'_{532})$) are mentioned, but not $f(z)$.

A12: It is added as “RCS is also expressed as $f(z)$, with z the measurement height.” (P20L107)

13. L103: The interpretation of the wavelet approach may have some pitfalls: to associate the largest maximum of Wf to the MLH (CBL) is obvious (though exceptions may occur), however, the interpretation of the first local maximum is critical (MLH'). Often the aerosols are structured and several internal layers appear making the allocation of a local maximum to an atmospheric feature very difficult. In the last years a lot of research has been devoted to estimate MLH resulting in a number of papers that should be mentioned here, e.g. Kotthaus et al., Geiß et al., Morille et al., de Bruine et al., Poltera et al. and many more.

A13:It is added as “Actually, every local maximum corresponds an aerosol layer and several internal layers appear making the allocation of a local maximum to an atmospheric feature very difficult (Morille et al., 2008; Geiß et al., 2017; Poltera et al., 2017; Kotthaus et al., 2018).”(P21L127) And “However, the interpretation of the first local maximum (MLH') is critical. To form a diurnal cycle of MLH from these several layers, a geodesic approach was applied to pathfinderTURB (Poltera et al., 2017), while COBOLT (Geiß et al., 2017) uses a time–height-tracking approach with moving windows. Nevertheless, these method all are based on the

selection of the lowest detected aerosol. The height of the lowest detected aerosol layer was regarded as the daytime MLH and the nocturnal stable boundary layer, respectively, as reported by Mues et al. (2017) and Kotthaus et al. (2018). Su et al. (2019) developed a DTDS algorithm, started with the lowest point and tracked depending time and stability, but the nocturnal MLH is not evaluated. Detection of nocturnal boundary-layer heights, in contrast to the residual layer, is a major challenge (Haeffelin et al., 2012; Lotteraner and Piringer, 2016; de Bruine et al., 2017). SBL seems to be more relevant for the accumulation of pollutants close to the surface than the RL in the evening and early morning. Thus, one of the objective of this study is to investigate the usefulness of MLH_L from CE-370 to capture the SBL height over Beijing.”(P21L132)

14. L113: It is stated that the temporal resolution of the MLH is one hour. In Figs. 1–4 the resolution seems to be better. Is this a inconsistency?

A14: You are right. The resolution of Figs. 1-4 is one minute, according to the primary MLH_{lidar} result. The description of “For the enhancement of signal noise ratio, 60 profiles are averaged to restore as one thus with the time resolution of 1 minute.” (P20L100)

15. L114: "eliminating ...false value and peak value": Please give a short hint, what is meant. L133: The description of the PMRS-model is quite relevant, so I suggest to move S2 to the main text. In particular the uncertainty of PM_{2.5} depending on the uncertainty of the MLH should be highlighted as the MLH and its (large) uncertainty is the main outcome of their study. Fig. 10 reveals extreme differences in case of the RS-retrieval.

A15: Due to incomplete screen of cloud and rainfall, it can be misjudged as the MLH, leading to some false and very large value, which should be eliminated. Now the sentence has been rephrased by “unrealistic outliers are deleted”. (P22L145)

RMRS-model is moved to the main text. (P23L177)

“The correlations at 12, 13, 14, and 15 LST were 0.894, 0.922, 0.927, and 0.900, respectively. The higher accuracy may be due to the completed mixing of the aerosol at noon and the vertical distribution of the aerosol tend to be uniform. The correlation between 8, 9 and 17 LST is less than 0.8, and the relatively poor accuracy is related to the complex boundary layer structure in the morning and evening. It is difficult to achieve fully mixing of the aerosol in the stable boundary layer or the residual layer. The daily variation of calculated surface pollutant accuracy using MLH retrieval by lidar vary with the daily variation of aerosol mixing uniformity at different times during the daytime.”(P30L386)

The calculated PM_{2.5}_RS from MLH_{RS} and in-situ measurement shows great discrepancy, as the reason that “above MLH_{RS} there still exist a large amount of aerosol. The discrepancy makes sense using the method with the determinate total amount of pollutant of the column atmosphere. The gap may be narrowed if the total emission from surface is used.”(P30L378)

16. L139: What type of sunphotometer is used? Give a few comments on these measurements.

A16: The comment is added as “All the parameter is observed by the instruments employed in the same observatory of lidar. The optical parameters of the column aerosols (AOD and FMF.) are obtained by a sky-sun photometer (CE318-DP, CIMEL, France), which is affiliated with the Aerosol RObotic NETwork (AERONET) (Holben et al., 1998; Dubovik, 2000). Measurements are automatically scheduled with direct sun irradiance measurements each of about 15 min and angular sky radiance scanning of about 1 h each (Li et al., 2015; Che et al., 2014; Wang et al., 2019). Atmospheric meteorological data (relative humidity-RH, wind speed-WS, wind direction-WD, etc.) are obtained by automatic meteorological monitoring station (BLJW-4). PM_{2.5} mass concentration is obtained by PM_{2.5} monitor (BAM-1020, MetOne, USA), which shows good agreement with the measurement of national monitoring network near the observatory. All the data is quality controlled and calculated as one hour averaged and the measurement period is from 2014 to 2018.”(P23L184)

17. Section 3.1: "case study" is mentioned in the caption, but it is not very clear, what this is. Four case studies each covering a period of 3 days corresponding to Figs.1-4?

A17: “case study” in the caption is removed in the revised manuscript.(P24L196)

18. Figs. 1–4: The triangles cover a vertical range of 300 m or so. What part of the symbol indicates the RS-retrieval? The top, the center, the bottom? In many cases the MLH seems to be zero.

A18: The top of the triangle indicats the RS-retrieval.

19. L151: "the aerosol layer height keep...": This sentence should be rephrased.

A19: It has been rephrased.(P24L202)

20. L152: "MLH is always higher than MLH_RS,...": this seems to be in contradiction to the findings in L204. Please check all conclusions carefully.

A20: The sentence of “MLH is always higher than MLH_RS,...” is removed, while “MLH_RS tends to be larger than MLH” is rephrased as “MLH_RS tends to be larger than MLH in the afternoon”. (P26L263) Actually, we want to express that MLH tend to be higher than MLH_RS in the evening and early morning, while MLH is lower than MLH_RS in the afternoon.

21. L175: "...RS is its very good precision". This should be explained. Why is the method conceptually superior to a ceilometer/lidar retrieval? The criteria involved for estimating the MLH from RS or lidars both have their "free parameters" (thresholds).

A21: The paper focus the measurement of lidar. Indeed, it is improper to emphasize the precision of RS. Yet, from my perspective ,in view of the definition of MLH inferring “convection or mechanical turbulence” (COST action 710 – Final report, 1998), RS measurement is likely to close to the two parameter, “due to their ability to characterize the thermodynamic and dynamic states of the boundary layer”.(P22L154) And, a lot of study has been done to evaluate the precision of remote sensing measurement, with the comparison with RS (Wiegner et al., 2006; Milroy et al.,

2012; Sawyer and Li, 2013; Cimini et al., 2013; Tang et al, 2016; Singh et al., 2016; Mues et al., 2017; Su et al, 2019).(P19L71) And, in section 2.3, there is the statement of “In most cases, the exact threshold value has only a small impact on the PBL height due to the large slope of Ri_b in this interval (Collaud et al., 2014).”(P23L169)

Nevertheless, the sentence has been rephrase as “The temporal resolution (usually two or three measurements per day) of PBL detection by RS is not able to provide the mixing layer height diurnal cycle, no matter its good precision.”(P31L400)

22. L190: The histograms should be explained in much more detail to avoid confusion. The reader might expect that the columns (e.g. for winter) add up to 100 % (for the lidar and the RS retrieval). However, it seems that the total column is the annual relative frequency and the different colors indicate the contribution of each season to the total. If so, the seasonal distribution should be discussed as well. The overall agreement between the two data sets is actually low – neither the absolute values nor the shape of the distribution agree. Moreover, as stated by the authors, in 35 % of the cases no intercomparison is possible due to the overlap problem. This mainly occurs in spring – any idea why?

A22: Yes, It is added that “the total column is the annual relative frequency and the different colors indicate the contribution of each season to the total.”(P25L238) The description of Fig. 5 is rephrased that “Fig. 5. Comparison of frequency distribution of all MLH (2013-2018) retrieved from lidar and radiosonde with the supplementary information of seasonal variation. Noted that for presenting the detail distribution, MLH_L adds up to 20%, while MLH_{RS} add up to 45%.”(P43L661)

Actually, the seasonal distribution was discussed in the manuscript, as “As to the seasonal variation of both lidar and RS measurement at 0800 LST, the frequency of larger MLH_L value in summer is minimal, indicating summer MLH is lower than other season. As for radiosonde, MLH_L lower than 0.25 km mostly distributes in winter, with the rate of around 15% for both 0800 and 2000 LST, and the frequency decreases rapidly when MLH_L gets larger than 0.25 km.”(P25L249)

It is added that “This lower values mainly occurs in winter and autumn, when it tends to present lower MLH (Tang et al., 2016).”(P25L241)

23. Figs. 7 and 8: to compare these two figures (basically it is the same information, however, in Fig. 7 the annual mean and in Fig. 8 the seasonal means are shown?) relevant minimum/maximum values of the MLH should explicitly be given in the text. Then, it can be seen if the numbers are consistent. What is the "shaded area" in Fig. 7: from 550 m to 2000 m in case of MLH at 0000 hours? What are the consequences of such a large range for the significance of differences (in the course of the day, for inter-annual changes)?

A23: Besides the annual mean diurnal cycle, Fig. 7 also compared the mean MLH with MLH and MLH_{RS} , revealing that MLH shows overall good CBL height and MLH' generally cannot indicate SBL well. In the revised manuscript, Fig. 7 has been remove to the section of comaparising of different MLH approach. The seasonal and annual variation is presented mainly based on MLH .

The content and table is added. “The maximum in summer is 1.526 ± 0.581 km, and the maximum in autumn is 1.445 ± 0.837 km. From the all-day average of the four seasons, the averages in spring, summer, autumn and winter are 1.409 km, 1.261 km, 1.297 km and 1.228 km, respectively.”(P27L310)

Table 1 Statistics of boundary layer height seasonal change (P50L700)

MLH/km	Spring	summer	autumn	winter
mean	1.409	1.261	1.297	1.228
maximum	1.647	1.526	1.445	1.404
minimum	1.126	0.932	1.117	1.098

The "shaded area" in Fig. 7 indicates the standard deviation of MLH and MLH'. In statistics, mean \pm standard deviation is commonly used to indicate the average and degree of dispersion of a set of data, referred Su et al. (2019) and Geiß et al., (2017). The inter-annual changes is analyzed based on the mean result, even if the data dispersion is large, it still has statistical significance.

24. L228: According to the authors MLH' could be the residual layer or the stable layer (or any internal layer). So, the implications for the dispersion of pollutants are hard to infer. The benefit of MLH' should be clearly described in the paper (see comment above, and the conclusions of the manuscript).

A24: It is added in the conclusions that “MLH_L' have the potential to describe the stable layer height at night sometime, even though the capability is limited due to the high incomplete overlap of CE-370. The stable layer height detected by MLH_L' in the nighttime is the layer in which ground-emitted atmospheric pollutants are trapped, it contributes to the assessment of the surface pollutant concentration when there is emission in the nocturnal time using the numerical models.”(P31L403)

25. L236: The authors explain the "valley" in the diurnal cycle from the domination of the developing CBL over the RL (in terms of the signal gradient) after sunrise. In many publications the complete diurnal cycle is considered as the combination of the SL and the CBL. Then, a much smoother curve can be found. Moreover, the SL seems to be more relevant for the accumulation of pollutants close to the surface than the RL.

A25: The application of height of SL and RL may be different, as discussed in the conclusion section that “The stable layer height detected by MLH_L' in the nighttime is the layer in which ground-emitted atmospheric pollutants are trapped, it contributes to the assessment of the surface pollutant concentration when there is emission in the nocturnal time using the numerical models.”(P27L291) “Whilst the residual layer height corresponding to trapped atmospheric constituents discharged some hours before, which can be employed to convert column-mean optical depths into near-surface air quality information from remote sensing.”(P27L301)

26. L259: "...into near-surface air quality information". It has been shown by Geiß et al. (2017) that the near-surface air quality does not only depend on the MLH (see also comment L33, and manuscript L275).

A26: Please see the response to the comment 3.

27. Fig. 9: Are the inter-annual differences of the annual cycles significant in view of the very large uncertainty ranges (see also comment above)?

A27: The inter-annual changes is analyzed based on the mean result, even if the data dispersion is large, it still has statistical significance.

28. L262: A short description of the in-situ measurements should be added: where have they been made, what is their temporal resolution/coverage, and their accuracy. Is one site or an average over many sites considered? The differences between MLH_RS and the in-situ seem to be indeed too large for any air quality application.

A28: It is added that "All the parameter is observed by the instruments employed in the same observatory of lidar. The optical parameters of the column aerosols (AOD and FMF.) are obtained by sky-sun photometer (CE318-DP, CIMEL, France), which is affiliated with the Aerosol RObotic NETwork (AERONET) (Holben et al., 1998; Dubovik, 2000). Measurements are automatically scheduled with direct sun irradiance measurements each of about 15 min and angular sky radiance scanning of about 1 h each (Li et al., 2015; Che et al., 2014; Wang et al., 2019). Atmospheric meteorological data (relative humidity-RH, wind speed-WS, wind direction-WD, etc.) are obtained by automatic meteorological monitoring station (BLJW-4). PM_{2.5} mass concentration is obtained by PM_{2.5} monitor (BAM-1020, MetOne, USA), which shows good agreement with the measurement of national monitoring network near the observatory. All the data is quality controlled and calculated as one hour averaged and the measurement period is from 2014 to 2018." **(P23L184)**

Like to the response of comment 15, the calculated PM_{2.5_RS} from MLH_{RS} and in-situ measurement shows great discrepancy, as the reason that "above MLH_{RS} there still exist a large amount of aerosol. The discrepancy makes sense using the method with the determinate total amount of pollutant of the column atmosphere. The gap may be narrow if the total emission from surface is used." **(P30L378)**

29. L297: Last sentence: the authors should be aware that many sophisticated methods to retrieve the diurnal cycle has been published recently. They should be cited (many references in the manuscript are quite old), see suggestions.

A29: The reference of "Wiegner et al., 2006; de Bruine et al., 2017; Morille et al., 2017; Kotthaus et al., 2018" is cited.**(P32L428)**

Reply to Anonymous Referee #2:

General comments:

This manuscript reports climatological values of mixing layer height (MLH) over Beijing for from Lidar measurements, their evaluation against radiosonde based MLH calculation and argues that MLH values derived from Lidar is better than that from RS for estimation of PM_{2.5} at surface. The manuscript needs a lot of improvement before publication. Please see comments and suggestions below:

1. The first part of the results and discussion, where the comparison of the various approaches to estimate MLH is presented is not satisfactory. First, the English language is poorly written which makes it hard to understand what is being conveyed. Also, the text corresponding to Figures 2-4 lacks any discussion of the features seen in them. More detailed discussion and language improvement is needed.

A1: This part has been rephrased, please see the revised manuscript.

2. Fig 3d: why is MLH_{RS} detected at 0.6 km? it should be 2km as seen in Fig 3c.

A2: The vertical profile present is actually indicated by “the white edge triangle in the upper picture”, also the measurement time can be seen on the top of Fig. 3c (20170606-14) and Fig. 3d (20170606-20). Fig. 3d show MLH_{RS} (0.6 km) at 2000 LST, while Fig.3c indicates (2 km) at 1400 LST. Due to the different time, MLH_{RS} varies.

3. Actually, the whole context of the first 4 figures is not understood. Why are these days shown here? why not any other day? Is it meant to show seasonal variability i.e one for one season? If the figures are introduced to show various types of differences between the 3 methods, then the discussion show be organized in that manner and the inter comparison figure 5 should be discussed in context of features seen in these figures 1-4. Better organization is needed.

A3: Fig. 1-Fig. 4 present as case study is aimed to show the evolution of the MLH and comparisons of lidar measurement (MLH_L and MLH_{L'}) and RS measurement (MLH_{RS}). The four cases is almost all cloud free to present continuous retrievals. Fig.1 shows obvious separated layers in the evening (spring without 1400LST measurement). Fig.2 shows low aerosol load, in which condition lidar can still capture the small gradient (summer with 1400 LST data). Fig. 3 relative high aerosol load and MLHL and MLHL' show obvious difference in the afternoon (summer with 1400 LST data).Fig. 4 keep stable though the whole day. The information delivered of the figure are discussed in the following context in the revised manuscript.

4. Please give more details about the cloud screen/flag used (Line 111). How was cloud detected, at what resolution etc?

A4: The content is added that “a threshold is selected to distinguish between clouds and aerosol layers.”(P22L144) and the lidar “can detect a long range profile up to 30 km every 1 second. For

the enhancement of signal noise ratio, 60 profiles are averaged to restore as one with the time resolution of 1 minute.”(P20L99)

5. Fig 1a, 2a,3a,4a all are stretched, the fonts are of different sizes compared to other panels and should be made consistent. Figure 1b have an undefined variable MLH2 in the figure label?

A5: The layout of the sub figure is based on requirement of clarity, expressiveness and artistry. In our view of Fig. 1a-4a, the information conveyed changes nothing. In Figure 1b, MLH2 has been revised to MLH_L' , which indicates the first local maximum of lidar MLH.

6. Evaluation of MLH_lidar is essential for second half of this manuscript. Hence, more detailed comparison and discussion is necessary. scatter plots in supplementary should be presented in main and discussed in detail. Moreover, as seasonal variability is significant on MLH, the comparison in Figure 6 should include and discuss scatter plots for all the seasons, separately.

A6: The comparisons of MLH from lidar (MLH_L and MLH_L') and MLH_{RS} is the one of objective of the study. From Fig. 5, we can see that about 35% SBL is not at the lidar detection range for 0800 and 2000 LST. It can be concluded that the agreement of MLH from lidar (MLH_L and MLH_L') and MLH_{RS} is poor, even though the scatter plots is not shown. The comparisons between MLH_L' and MLH_{RS} in the afternoon can be seen from the case study and the diurnal cycle, which indicates MLH_L' is much lower than MLH_{RS} . Please see the revised manuscript. Actually, the data of radiosonde is only available in summer, so the comparisons of the other seasons cannot be conducted.

7. From Fig 1-5, MLH from Lidar is termed as MLH but in Fig 6, it is termed as MLH_Lidar. Please be consistent.

A7: All the biggest local maximum MLH of lidar is represented by MLH_L , while the first local maximum is indicated by MLH_L' and radiosonde result by MLH_{RS} . They are consistent in through the revised manuscript.

8. Fig 9: Is the MLH from RS also showing yearly variability similar to the MLH derived from Lidar? Please include the same from RS also in this figure and discuss.

A8: From 2014 to 2018, MLH_{RS} at 0800 LST is 0.402, 0.412, 0.453, 0.444, 0.451 km, respectively. MLH_{RS} at 2000 LST is 0.445, 0.501, 0.512, 0.515, 0.480 km, respectively. Both of the two measurement time show increasing trend. Due the availability of RS measurement is only in summer, it cannot compare with the annual mean value of lidar. We can see the annual variation of RS is not exactly the same as lidar. Actually, in the revised manuscript, the comparison of lidar and RS measurement is discussed in the prior section, and in the section, we focus to present the annual variation of diurnal cycle of MLH from lidar, while the RS measurements is just time points result.

9. In Figure 10d shows that correlations are highest when RMSE is also highest, this is non intuitive, please describe this feature. Also, the comparison in Figure 10 should be presented separately for each season as MLH has strong seasonal variations.

A9: The comment is added in the revised manuscript that “The smaller RMSE is related to the limited samples.” (P30L390) And “larger RMSE is associated to the larger amount of samples into statistic.”(P30L381) In the revised manuscript, there is already a lot of content. The seasonal variations of calculated PM2.5 and in-situ can be shown in the next paper.

10. Throughout the manuscript standard deviation and RMSE is used interchangeable, which should be corrected. They are not same.

A10: Thank you for reminding, and the standard deviation has been revised to RMSE.

11. Please check carefully for the typos in the manuscript. The title itself has one “airpollution”

A11: Thank you for reminding and I have noticed the typos. Hope the staff member of ACP could help to correct it. Actually, in my manuscript, it is right “air polllution”.

Determination and climatology of diurnal cycle of atmospheric mixing layer height over Beijing 2013-2018: Lidar measurements and implication for air pollution

Haofei Wang^{1,2}, Zhengqiang Li^{1*}, Yang Lv^{1,2}, Ying Zhang¹, Hua Xu¹, Jianping Guo³, Philippe Goloub⁴

1. State Environmental Protection Key Laboratory of Satellite Remote Sensing, Aerospace Information Research Institute, Chinese Academy of Sciences, Beijing, 100101, China

2. University of Chinese Academy of Sciences, Beijing, 100101, China

3. State Key Laboratory of Severe Weather, Chinese Academy of Meteorological Sciences, Beijing, 100081, China

4. Laboratoire d'Optique Atmosphérique, UMR8518, CNRS – Université de Lille 1, Villeneuve d'Ascq, Lille, 59000, France

* Correspondence to: Zhengqiang Li (Email: lizq@radi.ac.cn)

Abstract. The atmospheric mixing layer height (MLH) determines the space where pollutants diffuse and thus is conducive to the estimation of the pollutant concentration near the surface. The study evaluates the capability of lidar to describe the evolution of atmospheric mixing layer and then presents a long term observed climatology of MLH diurnal cycle. Detection of the mixing layer heights (MLH_L and MLH_L') using wavelet method based on lidar observations was operated from January 2013 to December 2018 in the Beijing urban area. The two dataset results are compared with radiosonde as case studies and statistical forms. MLH_L shows good performance to calculate the convective layer height at daytime and the residual layer height at night. While MLH_L' has the potential to describe the stable layer height as radiosonde at night, the performance is limited due to the high range gate of lidar. A nearly six year climatology for diurnal cycle of MLH is calculated for convective and stable conditions using the dataset of MLH_L from lidar. The maximum MLH_L characteristics of seasonal change in Beijing indicate that it is low in winter (1.404 ± 0.751 km) and autumn (1.445 ± 0.837 km), and high in spring (1.647 ± 0.754 km) and summer (1.526 ± 0.581 km). A significant phenomenon is found that from 2014 to 2018, the magnitude of diurnal cycle of MLH_L increase year by year, with the values of 1.291 ± 0.646 km, 1.435 ± 0.755 km, 1.577 ± 0.739 km, 1.597 ± 0.701 km, and 1.629 ± 0.751 km, respectively. It may partly benefit from the improvement of air quality. As to converting the column optical depth to the surface pollution, the calculated $PM_{2.5}$ using MLH_L data from lidar shows better accuracy than that from radiosonde, compared with observational $PM_{2.5}$. Additionally, the accuracy of calculated $PM_{2.5}$ using MLH_L shows a diurnal cycle in the daytime, with the peak at time of 14 LST. The study provides a significant dataset of MLH_L based on measurement and could be an effective reference to atmospheric models for surface air pollution calculation and analysis.

30 **1. Introduction**

The height of mixing layer (MLH) is a crucial parameter for near-surface air quality forecast, pollutants dispersion and quantification of pollutant emissions (Haeffelin et al., 2012; Seibert et al., 2000; Baars et al., 2008; Liu and Liang, 2010; Bruine et al., 2017). The pollutants discharged in the boundary layer diffuses vertically under the drive of turbulence (Gan et al., 2011; Monks et al., 2009; Guo et al, 2016) , and finally becomes completely mixed over this layer if sufficient time is given (Emeis et al., 2008). The MLH determines the space where pollutants diffuse and thus is conducive to the estimation of the pollutant concentration near the surface which might be detrimental to health of human and ecosystems (Emeis et al., 2007; Collaud et al., 2014; Singh et al., 2016; Mues et al., 2017).

Within the planetary boundary layer (PBL) the height of the mixing layer (ML) is defined as the height up to which vertical dispersion by turbulent mixing of air pollutants takes place due to the thermal structure of the PBL (Seibert et al., 2000; Schafer et al., 2006; Emeis et al., 2007).MLH depends largely on the synoptic weather situation (Emeis et al., 2008). MLH can be estimated by the detection of variance of the mechanical turbulence, of the temperature enabling convection or of the substance content in the low troposphere. Singh et al. (2016) investigated the evolution of the Local Boundary Layer in the central Himalayan region, using a radar wind profiler detecting wind components based on signal to-noise ratio profile. Collaud et al. (2014) compared the MLH measurement of microwave radiometer from atmospheric temperature profile with other measurement in Swiss plateau. Mues et al. (2017) used the ceilometer to retrieve the MLH based on aerosol backscatter signal in the Kathmandu Valley. These measurement are based on different atmospheric parameters, different measuring instruments and various analysis algorithms, leading to MLH results obtained by different methods inconsistent (Collaud et al., 2014).

In order to realize from the general definition to practical measurements, it is necessary to consider separately the structure of the convective boundary layer (CBL) and the stable boundary layer (SBL). In the case of fair weather days, the PBL height has a well-defined structure and diurnal cycle (Collaud et al., 2014. See Fig.S1 in the supplementary information). The PBL development under strong convection driven mainly by solar heating is called CBL (Collaud et al., 2014). The nocturnal SBL shows a more complex internal structure, including a stable layer caused by radiative cooling from the ground and gradually merges into a neutral layer called the residual layer (RL) (Stull, 1988; Mahrt et al., 1998; Salmond and McKendry, 2005; Collaud et al., 2014). The RL height is the top of the neutral layer and the beginning of the stable free troposphere. The pollutants discharged from the surface at night are restricted to the SBL, while the pollutants emissions on past day tend to stay in the RL. In addition to the dominance of CBL in the afternoon, the SBL and neutral

boundary layer may be formed under certain weather conditions (Stull 1988; Poulos et al. 2002; Medeiros et al. 2005; Zhang et al., 2018)

60 Since most atmospheric column aerosol particles are usually present in atmosphere below MLH, MLH can be used to convert aerosol optical thickness of the column observed by sunphotometer and satellite to the concentration of near-surface pollutants (Sifakis et al., 1998; Emeis et al., 2007). Particulate can be used as an important indicator of atmospheric layering because their vertical distribution is strongly affected by the thermal structure of the atmosphere (Neff and Coulter, 1986). Provided the vertical aerosol distribution adapts rapidly to the variational thermal-dynamic of the boundary layer, MLH
65 can thus be retrieved from the analysis of this aerosol distribution (Emeis et al., 2008) .

By the measurement of profile of aerosol, lidar offers a direct and continuous way to monitor the diurnal cycle of the different layers constituting the PBL (Seibert et al., 2000; De Haij et al., 2006; Emeis et al., 2008; Liu and Liang 2010; Tang et al, 2016; Su et al, 2017, 2019). With recent upgrades of the hardware, ceilometer, as known as automated low power lidar, or automated lidar and ceilometer (ALC), has been demonstrated be capably to determine the MLH (Wiegner
70 et al., 2006; Geiß et al., 2017; Kotthaus et al., 2017; Mues et al., 2017). Recent studies compared remote sensing measurements (lidar, radar wind profiler, microwave radiometer) with radiosonde (RS) (Wiegner et al., 2006; Milroy et al., 2012; Sawyer and Li, 2013; Cimini et al., 2013; Tang et al, 2016; Singh et al., 2016; Mues et al., 2017; Su et al, 2019), of which convection weather cases has good correlation with differences of 100–300 m, while non-convective weather conditions leads to much larger difference in the MLH estimations if the approaches are supposed to measured different
75 structure of ML such as CBL, SBL or RL (Collaud et al., 2014). The meteorological radiosondes usually acquire the MLH in the morning (08:00 LT) and at night (20:00 LT), when the diurnal cycle of ML combined with stable and convective PBL cannot be well characterized.

In the existing studies, numerical simulations, ground-based remote sensing, or meteorological radiosonde are used to obtain the characterization of MLH during short time periods in Beijing, mainly focusing on heavy pollution event (Yang
80 et al., 2005; Quan et al., 2013; Hu et al., 2014; Zhang et al., 2015), which underscores the scarceness of continuous high-resolution measurement for a long time period. Depending on the measured atmospheric parameters and observational uncertainties, different measurement approaches may reveal different aspects of PBL structure (Seibert et al., 2000; Seidel et al., 2010; Beyrich and Leps, 2012). Thus, it is of great significance to apply consistent algorithm to consistent types of atmospheric structure parameter when comparing MLH from different times.

85 The main aim of this study, therefore, is aimed to present a long term observed climatology of the MLH diurnal cycle based on lidar observations. For that, the capability of lidar to describe the diurnal evolution of mixing layer height is evaluated first. The data and methods used are described in Section 2. Sect. 3 is the result and discussion, which consist of the

comparison of lidar-derived MLH with radiosonde measurements, the climatology of MLH in Beijing and implication for surface pollution retrieval. Then, it is concluded in Sect. 4.

90 2. Data and methods

2.1. Site and lidar measurements

Beijing is the capital of China with about 20 000 000 citizens. Beijing city is located on flat terrain in the North China Plain (altitude of 20 m -60 m), with Taihang Mountain in the west and Yanshan Mountain in the north (altitude of 1000 m- 1500 m). Similar to many other metropolitan areas, Beijing suffers from episodes of poor air quality, in particular the fine particulate matter ($PM_{2.5}$). In the study, the observatory ($116.379^\circ E$, $40.005^\circ N$) in the metropolitan area of Beijing is located on the building roof (59 m a.s.l.) of the Institute of Remote Sensing and Digital Earth, Chinese Academy of Sciences. A micro pulse lidar (CE370, CIMEL, France) was used to detect the atmospheric aerosol structure at this site. The laser used is frequency-doubled Nd:YAG with pulse repetition frequency 4.7 kHz and energy 8-20 μJ . CE370 operates at wavelength of 532nm with the vertical resolution of 15 m and can detect a long range profile up to 30 km every 1 second. For the enhancement of signal noise ratio, 60 profiles are averaged to restore as one thus with the time resolution of 1 minute. The signal received from lidar is processed by subtraction of atmospheric background first, using the averaged value of the signal received from the height between 22 km and 30 km. There is remnants of the previous signal in the system in the absence of optical signal reception, and these signals is called after-pulse. It is monitored every week, and removed from in the receive signal. Due to the design of the lidar, the received view close to the ground does not completely coincide with transmitted view. There exist a detection blind area of lidar and a geometric overlap factor is used to correct the mismatch of field of view. Then, the correction of range (range corrected signal, RCS) is used to retrieve MLH. The profile of RCS is expressed as $f(z)$, with z the measurement height. Logarithm calculation of RCS (expressed in $\ln(\beta'_{532})$) is presented in the lidar image (Campbell et al. 2003; Yan et al., 2014; Su et al., 2019). MLH estimation from lidar systems is based on the measurement of the sudden drop in aerosol backscatter at top of the mixing layer (Seibert et al., 2000). The period of lidar measurements is from 2013 to 2018, nearly six years. Except for the lidar data of 2013 mainly existing in winter and spring (the month of 1-4 and 11-12), the measurement of 2014-2018 are all annual continued observations.

2.2. MLH derived from Lidar

Wavelet transforms are commonly used in many studies for MLH determination from lidar observations (Cohn and Angevine, 2000; Davis et al., 2000; Brooks, 2003; De Haij et al., 2006; Baars et al. 2008; Su et al., 2019). When it is the

115 maximum value of attenuated backscattering profile convolved with Haar function, the corresponding height is MLH. The equation of wavelet is defined as follows:

$$h\left(\frac{z-b}{a}\right) = \begin{cases} 1, & b - \frac{a}{2} \leq z \leq b; \\ -1, & b < z \leq b + \frac{a}{2} \\ 0, & \text{else} \end{cases} \quad (1)$$

Where b is the transformation of the equation, where the equation is centered, and a is the expansion of the equation. The equation of wavelet covariance transformation $W_f(a, b)$, namely, the convolution of $f(z)$ with wavelet function is defined
120 as follows:

$$W_f(a, b) = \frac{1}{a} \int_{z_b}^{z_t} f(z) h\left(\frac{z-b}{a}\right) dz \quad (2)$$

Where $f(z)$ represents RCS in different height, z_b denotes the lower limit of the height of the profile, and z_t represents the upper limit of the height. A valid MLH_L is detected corresponding to the value b when $W_f(a, b)$ reaches the biggest local maximum with a coherent scale of a (Brooks, 2003; De Haij et al., 2006; Emeis et al., 2008). In this study, the
125 expansion a is selected as 420 m, 435 m, 450 m, respectively, and final $W_f(a, b)$ is calculated from the averaged corresponding values. Another layer, named MLH_L' is detected simultaneously by the first local maximum $W_f(a, b)$ from z_b , which is assumed to be smaller than or equal to MLH_L (De Haij et al., 2006; Mues et al., 2017). *Actually, every local maximum corresponds an aerosol layer and several internal layers appear making the allocation of a local maximum to an atmospheric feature very difficult (Morille et al., 2008; Gei ß et al., 2017; Poltera et al., 2017; Kotthaus et al., 2018).*
130 Since the absolute maximum in the vertical gradient of the lidar profiles is characterized by the rapid decrease in pollutants concentration, the MLH_L can be associated with the CBL height during daytime (Haeffelin et al., 2012; Poltera et al., 2017) and the RL height during nighttime (Collaud et al., 2014). *However, the interpretation of the first local maximum (MLH') is critical.*

To form a diurnal cycle of MLH from these several layers, a geodesic approach was applied to pathfinderTURB (Poltera
135 et al., 2017), while COBOLT (Gei ß et al., 2017) uses a time–height-tracking approach with moving windows. Nevertheless, these method are all based on the selection of the lowest detected aerosol layer. The height of the lowest detected aerosol layer was regarded as the daytime MLH and the nocturnal stable boundary layer, respectively, as reported by Mues et al. (2017) and Kotthaus et al. (2018). Su et al. (2019) developed a DTDS algorithm, started with the lowest point and tracked depending time and stability, but the nocturnal MLH with SBL height is not evaluated. Detection of nocturnal boundary-
140 layer heights, in contrast to the residual layer, is a major challenge (Haeffelin et al., 2012; Lotteraner and Piringer, 2016;

de Bruine et al., 2017). Thus, one of the objective of this study is to investigate the usefulness of MLH_L from CE-370 to capture the SBL height over Beijing.

MLH retrievals are eliminated if a cloud flag is marked when the cloud base is found within 6 km from the surface, and a threshold is selected to distinguish between clouds and aerosol layers. To improve the retrieval, a Gaussian filter is applied to retrievals to smooth the temporal variability, and unrealistic outliers are deleted. Due to the limitation of algorithm and insufficient lidar overlap, the minimum range of the MLH calculation from CE-370 is on the order of 250 m, which is higher than the order of 50 m of ceilometer. It is due to the optical design of ceilometer using the same lens for the emitter and the receiver optical paths, which suffers low signal noise ratio when providing the lower overlap with the limited power transmitted from the optical design. Detecting significant vertical gradients of attenuated backscatter can be challenging (Eresmaa et al., 2012; Haeffelin et al., 2012). Compared to CE-370, ceilometer usually need to a large scale of temporal and vertical averaged, in the cost of reduction of retrieval in relatively clean atmospheric conditions (de Bruine et al., 2017; Kotthaus et al., 2018).

2.3. MLH from Radiosonde

Radiosonde (RS) measurements are one of most widely used methods, especially in China, to derive SBL height and CBL height due to their ability to characterize the thermodynamic and dynamic states of the boundary layer (Piringer et al., 2007; Seidel et al., 2010; Guo et al., 2019). The meteorological radiosondes are measured at the international standard weather station (39.484 ° N, 116.282 ° E), which was located nearly 11 km far from lidar station. It includes two categories: conventional observations around the year, which are performed at 0000 UTC (0800 LST) in the morning and at 1200 UTC (2000 LST) in the evening each day; and intensified observations only in summer, which are operated at 0600 UTC (1400 LT) in the afternoon. The observed meteorological parameters includes atmospheric pressure (P), temperature (T), relative humid (RH), wind speed (WS), wind direction (WD), and so on.

The bulk Richardson number (Ri_b) is a dimensionless parameter combining the thermal energy and the vertical wind shear, and is widely used in MLH climatology (Seidel et al., 2012; Collaud et al., 2014). Ri_b is defined as the ratio of turbulence associated with buoyancy to that induced by mechanical shear, which is expressed as

$$Ri_b = \frac{gz(\theta(z) - \theta(z_s))}{\theta_{z_s}(U^2(z) + V^2(z))} \quad (3)$$

where z is the height ($z > z_s$, subscript 's' denote the surface), θ characters virtual potential temperature, U and V indicates the two horizontal wind velocity components, g presents the Earth gravitational constant. The MLH_{RS} corresponds to the first elevation z with Ri_b greater than a critical threshold taken as 0.25 (Stull, 1988; Seidel et al. 2012; Guo et al., 2016,

2019). In most cases, the exact threshold value has only a small impact on the PBL height due to the large slope of Ri_b in this interval (Collaud et al., 2014).

2.4 Air pollution model

The data of MLH is usually combined within the atmospheric model to obtain the surface air pollutant concentration. For example, $PM_{2.5}$ remote sensing (PMRS) model, derived by Zhang and Li (2015), have the ability to calculate the mass concentration of $PM_{2.5}$ above ground. The PMRS method is designed to employ currently available remote sensing parameters, including aerosol optical depth (AOD), fine mode fraction (FMF), planetary boundary layer height (PBL height) and atmospheric relative humidity (RH), to derive $PM_{2.5}$ from instantaneous remote sensing measurements under different pollution levels (Zhang and Li, 2015; Li et al., 2016; Yan et al., 2017). $PM_{2.5}$ is calculated following PMRS model as:

$$PM_{2.5} = \frac{AOD}{PBLH} \cdot \frac{FMF \cdot VE_f(FMF) \cdot \rho_{2.5,dry}}{f_0(RH)},$$

Where AOD indicates aerosol optical depth and FMF represents fine mode fraction; VE_f is the ratio of volume and extinction of fine mode aerosol, which can be calculated from FMF, following as $VE_f(FMF) = 0.2887FMF^2 - 0.4663FMF + 0.356$. The parameter $\rho_{2.5,dry}$ indicates the density of dry $PM_{2.5}$, while $f_0(RH)$ presents the particle hygroscopic growth function, which is $f_0(RH) = (1 - RH/100)^{-1}$. PBL height can be derived from remote sensing and radiosonde measurement.

All the parameter is observed by the instruments employed in the same observatory of lidar. The optical parameters of the column aerosols (AOD and FMF) are obtained by sky-sun photometer (CE318-DP, CIMEL, France), which is affiliated with the Aerosol RObotic NETwork (AERONET) (Holben et al., 1998; Dubovik, 2000). Measurements are automatically scheduled with direct sun irradiance measurements each of about 15 min and angular sky radiance scanning of about 1 h each (Li et al., 2015; Che et al., 2014; Wang et al., 2019). Atmospheric meteorological data (relative humidity-RH, wind speed-WS, wind direction-WD, etc.) are obtained by automatic meteorological monitoring station (BLJW-4). $PM_{2.5}$ mass concentration is obtained by $PM_{2.5}$ monitor (BAM-1020, MetOne, USA), which shows good agreement with the measurement of national monitoring network near the observatory. All the data is quality controlled and calculated as one hour averaged and the measurement period is from 2014 to 2018. The MLH obtained both from lidar and radiosonde within the period is used in the model to calculate the surface $PM_{2.5}$. For convenient comparison with air quality and meteorological parameters, all MLH results are one hour averaged.

3.1. MLH operational measurement

A selection of typical atmospheric conditions included in the data set of lidar measurement are plotted in Fig. 1 - Fig. 4. The heights of the mixing layer, MLH_L and MLH_L' , are obtained from different criteria using the wavelet covariance transform method. As shown in Fig.1, the development of a convective mixing layer could clearly be observed, with a sharp decrease in aerosol backscatter between the mixing layer and the free atmosphere. MLH_{RS} is also presented accompany with the evolution of MLH_L and MLH_L' .

As Fig.1a shown, MLH_L and MLH_L' increase when sunrise. In 20170302, MLH_L and MLH_L' shows obvious diurnal cycle, with maximum up to 1.0 km. During the evening of 20170303 and the early morning of 20170304, the aerosol layers presents visually obvious two layers, and MLH_L' characterizes the first layer height and MLH_L retrieves the upper layer top. In the next day, due to the existence of cloud, the MLH results is discrete. In the evening and early morning MLH_L' deviated from MLH_L and approached to MLH_{RS} . As shown as the vertical profile of lidar (RCS, wavelet) and radiosonde (RH, T) at 2000 (LST) of 20170303(Fig.1b), both MLH_L' and MLH_{RS} demonstrates 0.53 km, while MLH_L shows 1.22 km. Fig.1c indicates that MLH_L' (0.86 km) approaches to MLH_{RS} (0.61 km), albeit a little 0.25 km higher, and much lower than MLH_L (1.62 km). In this cases, the result of MLH_L' , present by first local maximal aerosol gradient, agree well with MLH_{RS} . However, it would not always true, just like Fig.1d. MLH_L' (0.752 km) is much higher than MLH_{RS} (0.243 km), but equal to MLH_L . It is related to that the stable layer height obtained from radiosonde in the case is out of the range of lidar detection (0.255 km), in which, that is, MLH_L' from lidar is disabled to determine the stable layer height.

In the summer time (JJA) when the radiosonde is additionally launched at 1400 LST to detect the convective boundary layer, it can provide the comparison between lidar and RS measurement in the afternoon. As shown in Fig.2a, MLH_L undergoes a rapid increase in the morning and reach the peak in the afternoon, while MLH_L' grow with a smaller magnitude. In 20140825 and 20140826, the aerosol load is relative low, and MLH_L reaches the peak around 3.0 km in the afternoon, while a lower MLH_L peak in 20140827 with a high aerosol content. In the afternoon of these three days, MLH_L shows consistent with MLH_{RS} , while MLH_L' is frequently under MLH_{RS} . The measurement of RS in the evening and early morning presents very low value, with the order of 0.2 km – 0.3 km. The detailed information represented in Fig.2b shows that MLH_L is equal to MLH_{RS} , which reaches up to 2.95km, while MLH_L' is only 1.24 km. Under clear convective conditions of 20140825 and 20140826, when vertical gradients in the aerosol load, indicated by RCS, is weak, lidar can still catch the good MLH result compared to radiosonde, as shown in Fig.2c and 2d that MLH_L (2.25 km and 2.18 km) approaches to MLH_{RS} (2.96 km and 2.50 km). The a little lower value of MLH_{RS} is associated with that aerosol within the

225 mixing layer needs some time to adjust to the thermal structure, and exist a delay to reach the thermodynamics PBL height (Stull, 1988; Collaud et al., 2014).

As Fig.3a shown that the peaks of the three days gradually increase, with the value of 1.0 km, 2.0 km and 2.5 km. Due to high temporal variability of the distribution of aerosol, MLH_L presents incontinuity in 20170617. MLH_L present good evolution of mixing layer height in 20170615 and 20170617 compared to MLH_{RS} . MLH_L' corresponds to MLH_{RS} for most time in the morning and evening from 20170615 to 20170617. But when stable layer height from radiosonde is around or below 0.25 km, for example 0800 LST on 20170616 with the RS measurement of 0.27 km (Fig.3b), MLH_L' misses the height of SBL, but point to the height of residual layer (0.61 km). When stable layer height is higher than 0.25 km, MLH_L' (0.62 km) tend to approach to MLH_{RS} (0.62 km) (Fig.3d.). However, in the afternoon MLH_L is used to be close to MLH_{RS} than MLH_L' (Fig.3c.). As Fig.4a shown, MLH_L (MLH_L') presents the diurnal cycle with the maximum of 1.2 km, while the next two days stays stable in the whole day, and the height of SBL is missed by MLH_L' (Fig. 4b- Fig. 4d).

235 3.2. Inter-comparison of different MLH approaches

A comparison of MLH estimated by lidar and radiosonde of 0800 and 2000 LST, is shown in Figure 5. The same observation period of nearly six year (2013-2018) is considered, of which the data is continued except for 2013. As shown in the histograms of Fig.5, the total column is the annual relative frequency and the different colors indicate the contribution of each season to the total. There is a wide discrepancy between MLH_L and MLH_{RS} at the time of 0800 and 2000 LST. The frequency of MLH from radiosonde lower than 0.25 km is nearly 35%, where it is no data for MLH_L from lidar due to the limited detection range. This lower values mainly occurs in winter and autumn, when it tends to present lower MLH (Tang et al., 2016). Specifically, the rate of MLH_L from lidar smaller than 0.5 km is nearly 18% and 12%, respectively, at 0800 LST and 2000 LST, while the corresponding frequency of radiosonde is beyond 75% and 66%. The frequency of larger MLH_L value at the time of 2000 LST is bigger than that of 0800 LST, both from lidar and radiosonde. It is reasonable that the residual layer have not yet collapsed entirely at 2000 LST, while the CBL have not developed well in the early morning. As for the MLH_L' , its distribution trend is more similar to MLH_{RS} than MLH_L (See Fig.S2), and that the correlation between MLH_L' and MLH_{RS} is a little higher than that between MLH_L and MLH_{RS} , in spite that it is still not good (See Fig.S3 and Fig.S4). It indicates that MLH_L' have the potential to determine the SBL height as radiosonde does.

As to the seasonal variation of both lidar and RS measurement at 0800 LST, the frequency of larger MLH_L value in summer is minimal, indicating summer MLH is lower than other season. As for radiosonde, MLH_L lower than 0.25 km mostly distributes in winter, with the rate of around 15% for both 0800 and 2000 LST, and the frequency decreases rapidly when MLH_L gets larger than 0.25 km.

The poor agreement between MLH from lidar and MLH_{RS} is also reported in the study of Su et al. (2019), in which shows that the correlation of PBL height measurement between lidar and radiosonde is 0.14 at 0630 LST. The significant scatter in the morning and evening is associated with complicated structure of boundary layer, as indicated by the existence of stable boundary layer and residual layer (Su et al., 2019; Tang et al., 2016). In this study, no matter MLH_L and MLH_L' , more than 35% measurement of SBL height is not within the scope of the lidar detection. Additionally, in the evening and early morning of some cases, a sufficiently clear variety cannot be found in the backscatter profile at the top of the SBL, within the previously well-mixed layer (Russell et al., 1974; Seibert et al., 2000).

The comparison of MLH_L and MLH_{RS} at time of 1400 LST in summer is presented in Fig.6, both of them mainly indicating the CBL height. MLH_L shows very good agreement with MLH_{RS} , with correlation coefficient of 0.692 and RMSE of 0.573 km. It is noted that the slope of linear fitting line is smaller than 1:1 line, indicating that MLH_{RS} tends to be larger than MLH_L in the afternoon, which is consistent with the case study. Although the comparison only exist in summer, it can be generally concluded that MLH_L from lidar in the afternoon characters the CBL height with good accuracy. As shown in the Fig.S4, the correlation of MLH_L' and MLH_{RS} at 1400 LST is 0.330 and the value of MLH' is generally lower than MLH_{RS} , indicating overall improper for MLH' to describe the CBL height in the afternoon.

In fact, it would not exist complete agreement between MLH_L (MLH_L') derived from lidar and MLH_{RS} from radiosonde associated with several reasons. First, the two systems measure different atmospheric parameters (aerosol for lidar and temperature, humidity, wind for radiosonde) with varying height resolution and accuracy and these parameters are influenced in different way by the processes occurring within PBL (Seibert et al., 2000). Additionally, it is difficult to identify a clear upper boundary of the mixing layer because the measured parameter is actually not a fixed point but rather a transition layer between two atmospheric states (Stull, 1988; Garratt, 1992; Collaud et al., 2014).

A data set containing nearly six years measurement in Beijing is used for assessment of the overall performance of the Wavelet MLH algorithm (MLH_L and MLH_L') with respect to the diurnal availability, as shown in Fig. 7. It can be seen that the expected shape presenting the growth of a convective mixing layer is observed. Owing to solar heating of the surface, when convective layer begin to rise due to upward convection in the early morning and nocturnal residual layer tends to collapse, MLH_L from lidar presents the minimal value. After that, MLH_L grows continuously and reaches its maximum height around 1500, with the value of 1.449, similar to results found for Vienna (Lotteraner and Piringer, 2016) and Berlin (Geiß et al., 2017). The shaded areas indicate the temporal variability as calculated from the standard deviation of MLH_L (MLH_L'). It is on the order of 600 m for MLH_L (300 m for MLH_L') during 0900 -1500 LST, while the other period is on the order of 700 km (400 m for MLH_L'). The larger standard deviation is attributed to the variability of residual layer.

The diurnal cycles derived from MLH_L match well with RS results in the afternoon, but larger than MLH_{RS} in the early morning and evening. Contrarily, MLH_L' tend to approach to MLH_{RS} in the early morning and evening, but keep far from MLH_{RS} in the afternoon. The difference between MLH_L (1.405 ± 0.675 km, mean \pm standard deviation of the mean) and MLH_{RS} (1.524 ± 0.582 km) at 1400 is around 0.120 km. It is reasonable considering that RS data is acquired at 1400 only from summer time, when MLH_L is usually larger around the year. However, the discrepancy between MLH_L' (0.912 ± 0.315 km) and MLH_{RS} (1.524 ± 0.582 km) at 1400 is around 0.612 km. Actually, MLH_L is nearly 0.46 km larger than MLH_L' throughout the day, and with bigger standard deviation. As to the measurement at 0800 LST, the difference between MLH_L (1.196 ± 0.710 km) and MLH_{RS} (0.434 ± 0.364 km) is around 0.762 km, which is larger than the difference between MLH_L' (0.755 ± 0.334 km) and MLH_{RS} (0.434 ± 0.364 km). The discrepancy of lidar and RS measurements at 2000 LST is similar.

Overall, MLH_L' can catches the high SBL height in the nocturnal time, when it is larger than 300 m. The stable layer height detected by MLH_L' in the night time is the layer in which ground-emitted atmospheric pollutants are trapped, it contributes to the assessment of the surface pollutant concentration when there is emission in the nocturnal time using the numerical models. (Collaud et al., 2014). Due to incomplete optical overlap, in some case the point derived from MLH_L' is residual layer height rather than the low nocturnal SBL height. And in the daytime, MLH_L' tends to be lower than CBL height. In the study of Mues et al. (2017) and Kotthaus et al. (2018), the MLH in the daytime is usually assigned as the lowest layer detected by ceilometer. Using the higher-power lasers (CE-370) with increasing SNR and small gradient detected, attribution of the lowest layer in the daytime may remain open, since the first local maximum gradient (MLH_L') not always corresponds to the biggest local maximum (MLH_L). Our study indicates that MLH_L retrieves the consistent RL height during the night following the CBL diurnal maximal. The RL height corresponds to trapped atmospheric constituents discharged some hours before, which can be employed to convert column-mean optical depths into near-surface air quality information from remote sensing. And, the SBL height provided by radiosonde at 0800 and 2000 LST can be considered as complementary to the lidar approaches.

3.3. Climatology of MLH in Beijing

3.3.1. Seasonal variation

The seasonal mean diurnal cycle of the MLH_L from lidar is shown in Fig. 8. An evident seasonal variation of magnitude of the diurnal cycle is observed. As shown in Table 1 and Fig. 8, the smallest MLH_L magnitude is found in winter with the peak value of 1.404 ± 0.751 km at 1500 LST, whereas spring demonstrates the maximum magnitude with 1.647 ± 0.754 km at 1500 LST. The maximum in summer is 1.526 ± 0.581 km, and the maximum in autumn is 1.445 ± 0.837 km. From

the all-day average of the four seasons, the averages in spring, summer, autumn and winter are 1.409 km, 1.261 km, 1.297 km and 1.228 km, respectively. In summer, MLH_L acquired by lidar at 1400 LST and 1500 LST is 1.430 km and 1.507 km, respectively, while MLH_{RS} at 1400 LST is 1.524 km. The measurement of MLH_L at 1500 LST is closer to MLH_{RS} at 1400 LST. This is consistent to the case study that it takes some time for aerosol to diffuse upward with the drive of thermal turbulence. As the statistic variation, the values of autumn MLH_L vary most nearly at each hour with the bigger standard deviation, indicating the great fluctuations in the long measurement period, while variation of summer MLH_L values for most hours is relative stable.

It should be noted that summer exists the biggest amplitude of diurnal variation of MLH_L , with the deepest valley (0.93 km) increasing to the peak value of 1.51 km. Tang et al. (2016) indicate that the lower MLH_L value for summer nights and early mornings is contributed to effect of the mountain plain wind. When the local mountain breeze from the northeast in the summer night superimposes the surface cooling, leading to the increase the thickness of the inversion layer, the height of the mixed layer gradually decreases. After sunrise, with the drive of thermal turbulence, the residual layer height observed by lidar is gradually replaced by a convective boundary layer height, with MLH_L increasing rapidly, and after 12:00 LT, the plain wind from the south-westerly direction gradually dominates. Previous studies have suggested that the seasonal variation in the MLH_L may be associated with radiation flux (Stull, 1988; Kamp and McKendry, 2010; Munoz and Undurraga, 2010), which was consistent with our results. The observational data from Tang et al. (2016) indicated that radiation flux of spring is more than that in summer. The relatively low values in autumn and winter are likely to relate to the low radiation flux.

3.3.2. Interannual variation

Interannual variations of MLH_L diurnal cycle are investigated in Beijing from 2013 to 2018, as shown in Fig. 9. Diurnal variations of MLH_L in different years all have same patterns, but with the different magnitude. Clearly, from 2013-2018, the values of diurnal circle MLH_L increase year by year, including both the RL height at night and CBL height at daytime. Since the data of 2013 is mainly from winter and spring, the MLH_L seems stable, not like the amplitude of other years. As shown in the Fig. 9 and Table 2, from 2014 to 2018, the MLH_L all-day maximum values around 1500 LST grow year by year, with the value of 1.291 ± 0.646 km, 1.435 ± 0.755 km, 1.577 ± 0.739 km, 1.597 ± 0.701 km and 1.629 ± 0.751 km, respectively. The all-day average of MLH_L are 1.110 km, 1.216 km, 1.352 km, 1.391 km and 1.502 km, respectively, also showing an increasing trend. It indicates the volume available for the dispersion of pollutants extending, which is beneficial to the mitigation of surface pollution. As shown in Figure S5, from 2014 to 2018, the cumulative increase of the mean MLH_L of the whole day was 0.392 km, the total increase of the maximum is 0.338 km. As for annual increase of MLH_L ,

340 the average of all-day increments in 2016 is the largest (0.136 km), while the average of all-day increments in 2017 is the smallest (0.039 km).

In particular, the interannual variation of MLH_L in the period from 10:00 LST to 15:00 LST is calculated, when PBL is characterized by obvious convective boundary layer. From 2014 to 2018, the average CBL height show a significant increasing trend, which are 1.075 km, 1.212 km, 1.324 km, 1.351 km and 1.533 km, respectively. The total increase in the average CBL height is 0.458 km. As for annual increase in CBL height, the average increase in CBL height in 2018 is the largest (0.182 km), while the average increment of the whole day in 2017 is the smallest (0.027 km).

It is found that, based on the measurement of 2014 to 2017, MLH_L has a strong negative correlation with AOD ($R = -0.41$) and with relative humidity ($R = -0.21$), while MLH_L presents a positive correlation with wind speed ($R = 0.43$) and shows no correlation with temperature (Fig. 10). As the study of Wang et al. (2019), from 2014 to 2017 in Beijing, AOD and surface $PM_{2.5}$ has a tendency to decrease year by year, while MLH_L increases gradually. The reduction of AOD and surface $PM_{2.5}$ is revealed to relate to pollution emission control in recent years (Zhang et al., 2019). Compared with 2016, relative humidity has increased in 2017 and wind speed has weakened, showing no good to the development of MLH, which is consistent with the small increase in MLH_L (0.027 km) in 2017. In addition to the effects of meteorological conditions, the increase of the MLH_L benefits from the improvement of air quality in Beijing in recent years (Wang et al., 2019). Due to the scattering and absorbing of aerosol, the solar radiation received from ground decreases. It is thermal buoyancy generated from surface radiation that drive the PBL to develop. Thus, the development of MLH is suppressed under high aerosol load. Hence, with the relief of radiation effect by aerosol during these years, the turbulence increases, thus leading to larger PBL height (Ding et al., 2016; Li et al., 2017; Wang et al., 2019). MLH affects the concentration of pollutant near the surface, while total radiation of aerosol within the column atmosphere in turn influences the MLH.

360 **3.4. Implication for surface pollution retrieval**

The vertical structure of the ML is important for the pollution concentrations at the surface due to its impact on the volume into which pollutants are mixed. Mues et al. (2017) reported that black carbon concentrations show a clear anti-correlation with MLH measurements. Hu et al. (2014) found a negative correlation between near-surface O_3 and MLH for seven cities in the North China Plain. In the study, as shown in Fig. 11, the correlation between MLH_L and observed $PM_{2.5}$ data from the same observatory shows high negative correlation ($R=-0.569$) with the four years measurement (2014-2017). Actually, the pollutant concentration near surface is affected by the overall effect of the local emission and meteorological condition, with variation of different spatio-temporal distribution. MLH is just one of these influencing factor. Geiß et al., (2017) indicated that when MLH and near-surface concentrations are linked, it is necessary to take the locations, i.e.,

meteorological conditions and local sources, and the details of the MLH retrieval into account. In fact, all the data used in
370 our study is observed from the same observatory. And, PMRS model is used to calculate the surface PM_{2.5} concentration
includes the parameters of the emission (AOD) and meteorological condition (RH) into account.

Due to the difference in the source of the MLH, lidar and radiosonde, the comparison of derived PM_{2.5_lidar} and PM_{2.5_RS}
with the in-situ observational PM_{2.5} data at 0800 LST is presented in Fig. 12a and 12b. MLH from lidar shows reasonably
good performance for the retrieval of PM_{2.5} in the morning, with the correlation coefficients of 0.741 and RMSE 46.69
375 $\mu\text{g}/\text{m}^3$. However, the calculated PM_{2.5} from MLH_{RS} obviously overestimate the surface pollution, with lower correlation
coefficients and larger standard deviation. The large overestimation should be contributed to the underrating of aerosol
layer height. In the morning when the PBL is not well developed, above MLH_{RS} there still exist a large amount of aerosol,
referring the lidar images of Fig. 1- Fig. 4. The discrepancy makes sense using the method with the observed total amount
of pollutant of the column atmosphere, including the emission from surface and the residual aerosol from the day before.
380 Therefore, MLH_L from lidar, as the good indicator of the aerosol layer height, is more suitable for estimating the surface
air pollution from the column-mean optical depths.

As presented in Fig.12c, the calculated PM_{2.5_lidar} data of daytime period (0800-1700 LST) shows higher correlation
(0.846) than that of only the early morning, and the little larger RMSE (55.58 $\mu\text{g}/\text{m}^3$) is associated to the larger amount of
samples into statistic. Considering the uncertainty of the series of parameters used in the model, the agreement between
385 calculated PM_{2.5_lidar} and in-situ measurement is reasonable good. Actually, the accuracy also shows a diurnal cycle, with
the peak of correlation coefficients (0.927) at 14 LST (Fig.12d). The correlations at 12, 13, 14, and 15 LST were 0.894,
0.922, 0.927, and 0.900, respectively. The higher accuracy may be due to the completed mixing of the aerosol at noon and
the vertical distribution of the aerosol tend to be uniform. The correlation between 8, 9 and 17 LST is less than 0.8, which
is related to the complex boundary layer structure in the morning and nightfall. It is difficult to achieve fully mixing of the
390 aerosol in the stable boundary layer or the residual layer. The smaller RMSE is related to the limited samples. Therefore,
the daily variation of calculated surface pollutant accuracy using MLH retrieval by lidar vary with the daily variation of
aerosol mixing uniformity at different times during the daytime. Based on the observational data, PM_{2.5} tends to peak in
the morning and evening. In contrast, afternoon usually witnessed lower mass concentration due to rapid vertical diffusion
of aerosols (Guo et al., 2016). Thus, MLH_L from lidar can offer the significant contribution to retrieve the diurnal circle of
395 the surface air pollution.

4. Summary and conclusions

To acquire the high-resolution observations of MLH diurnal variation, a study using lidar was performed from January 2013 to December 2018 in the Beijing urban area. Detection of the MLH based on two wavelet methods (MLH_L and MLH_L') applied to lidar observations is operated. The two data results are compared with radiosonde as case studies and statistical forms. The temporal resolution (two or three measurements per day) of PBL detection by RS is not able to provide the mixing layer height diurnal cycle, no matter its good precision. MLH shows good performance for the convective layer height at daytime and the residual layer height at night. MLH_L' have the potential to describe the stable layer height at night sometime, even though the capability is limited due to the high incomplete overlap of lidar used in the study. The stable layer height detected by MLH_L' in the nighttime is the layer in which ground-emitted atmospheric pollutants are trapped, it contributes to the assessment of the surface pollutant concentration when there is emission in the nocturnal time using the numerical models. Whilst the residual layer height corresponding to trapped atmospheric constituents discharged some hours before, which can be employed to convert column-mean optical depths into near-surface air quality information from remote sensing. And, MLH_L' does not always work out to catch the convective layer height as MLH_L in the afternoon. Nevertheless, MLH_L' could be a useful complementary as stable layer height for dataset of MLH_L in some cases.

Nearly six year climatology for MLH_L diurnal cycle is calculated for convective and stable conditions. It is true that the height of mixing layer obtained by different approaches may be different. We focus on the temporal change of aerosol layer height with a consistent method using the dataset of MLH_L . The maximum MLH_L characteristics of seasonal change in Beijing indicate that it is low in winter (1.404 ± 0.751 km) and autumn (1.445 ± 0.837 km), and high in spring (1.647 ± 0.754 km) and summer (1.526 ± 0.581 km). A significant phenomenon is found that from 2014 to 2018, the magnitude of diurnal cycle of MLH_L increase year by year. The cumulative increase of the mean MLH_L of the whole day is 0.392 km, and the total increase of the maximum is 0.338 km. It may partly benefit from the improvement of air quality. As to converting the column optical depth to the surface pollution, the calculated $PM_{2.5}$ using MLH_L data from lidar shows better accuracy than that from radiosonde, compared with observational $PM_{2.5}$. Additionally, the accuracy of calculated $PM_{2.5}$ using MLH_L shows a diurnal cycle in the daytime, with the peak at time of 14 LST. For the operational measurement of PBL height, MLH from lidar has the capability to mark the diurnal circle of mixing layer height, and can be used as an effective parameter for the vertical distribution of aerosols, providing an important reference to obtain near-ground pollutant concentrations for remote sensing.

Actually, interpreting data from aerosol lidar is often not straightforward, because the detected aerosol layers are not always the result of ongoing vertical mixing, but may originate from advective transport or past accumulation processes (Russell

425 et al., 1974; Coulter, 1979; Baxter, 1991; Batchvarova et al., 1999; Tang et al., 2016). Each detection method has good performances only for defined ML structures and under specific meteorological conditions. Therefore, combination of several methods and instruments may contribute to characterize the complete diurnal cycle of the complex ML structure (Wiegner et al., 2006; de Bruine et al., 2017; Morille et al., 2017; Kotthaus et al., 2018).

References

- 430 Baars, H., Ansmann, A., Engelmann, R., and Althausen, D.: Continuous monitoring of the boundary-layer top with lidar, *Atmos. Chem. Phys.*, 8, 7281-7296, <https://doi.org/10.5194/acp-8-7281-2008>, 2008.
- Barbaro E , J. Vil àGuerau de Arellano, Krol M C , et al. Impacts of Aerosol Shortwave Radiation Absorption on the Dynamics of an Idealized Convective Atmospheric Boundary Layer. *Bound.-Lay. Meteorol.*, 2013, 148(1):31-49.
- Batchvarova, E., Cai, X., Gryning, S.E., Steyn, D., 1999. Modelling internal boundary layer development in a region with 435 complex coastline. *Boundary-Layer Meteorology* 90,1-20.
- Baxter, R.A., 1991. Determination of mixing heights from data collected during the 1985 SCCAMP field program. *Journal of Applied Meteorology* 30, 598-606.
- Bbooks, I.M., 2003: Finding boundary layer top: application of a wavelet covariance transform to lidar backscatter profiles. *J. Atmos. Oceanic. Technol.* 20, 1092–1105.
- 440 Beyrich F , Leps J P . An operational mixing height data set from routine radiosoundings at Lindenberg: Methodology[J]. *Meteorologische Zeitschrift*, 2012, 21(4):337-348.
- Campbell, J.R., Welton, E.J., Spinhirne, J.D., Ji, Q., Tsay, S.C., Piketh, S.J., Barenbrug, M., Holben, B.N., 2003. Micropulse lidar observations of tropospheric aerosols over northeastern South Africa during the ARREX and SAFARI 2000 dry season experiments. *J. Geophysics. Res. Atmos.* 108.
- 445 Che, H., Xia, X., Zhu, J., Li, Z., Dubovik, O., Holben, B., Goloub, P., Chen, H., Estelles, V., Cuevas-Agullo, E., Blarel, L., Wang, H., Zhao, H., Zhang, X., Wang, Y., Sun, J., Tao, R., Zhang, X., and Shi, G.: Column aerosol optical properties and aerosol radiative forcing during a serious haze-fog month over North China Plain in 2013 based on ground-based sunphotometer measurements, *Atmos Chem Phys*, 14, 2125-2138, 10.5194/acp-14-2125-2014, 2014.
- Cimini, D., De Angelis, F., Dupont, J.-C., Pal, S., and Haeffelin, M.: Mixing layer height retrievals by multichannel 450 microwave radiometer observations, *Atmos. Meas. Tech. Discuss.*, 6, 4971–4998, doi:10.5194/amtd-6-4971-2013, 2013.

- Cohn, S.A., W.M. Angevine, 2000: Boundary Layer Height and Entrainment Zone Thickness Measured by Lidars and Wind-Profiling Radars. *J. Appl. Meteor.* 39,1233–1247.
- Collaud Coen M, Praz C, Haeefe A, et al. Determination and climatology of the planetary boundary layer height above the Swiss plateau by in situ and remote sensing measurements as well as by the COSMO-2 model. *Atmos. Chem. Phys.*, 14,23(2014-12-11), 2014, 14(23): 13205-13221.
- 455
- Coulter, R.L., 1979. A comparison of three methods for measuring mixing layer height. *Journal of Applied Meteorology* 18, 1495-1499.
- Dandou, A., E. Bossioli, M. Tombrou, N. Sifakis, D. Paronis, N. Soulakellis, D. Sarigiannis, 2002: The importance of mixing height in characterizing pollution levels from aerosol optical thickness derived by satellite. *Water Air Soil Poll. Focus* 2, 17–28.
- 460
- Davis, K.J., N. Gamage, C.R. Hagelberg, C. Kiemle, D.H. Lenschow, P.P. Sullivan, 2000: An objective method for deriving atmospheric structure from airborne lidar observations. *J. Atmos. Oceanic. Technol.* 17, 1455–1468.
- de Bruine, M., Apituley, A., Donovan, D. P., Klein Baltink, H., and de Haij, M. J.: Pathfinder: applying graph theory to consistent tracking of daytime mixed layer height with backscatter lidar. *Atmos. Meas. Tech.* 10, 1893–1909, doi:10.5194/amt-10-1893-2017.
- 465
- De Haij, M., W. Wauben, H. Klein Baltink, 2006: Determination of mixing layer height from ceilometer backscatter profiles. *Proceedings of SPIE - The International Society for Optical Engineering*, 2006, 6362.
- Ding, A. J., Huang, X., Nie, W., Sun, J. N., Kerminen, V. M., Petäjä T., et al. (2016). Enhanced haze pollution by black carbon in megacities in China. *Geophys. Res. Lett.*, 43(6), 2873–2879. <https://doi.org/10.1002/2016GL067745>.
- 470
- Dubovik, O., Smirnov, A., Holben, B.N., King, M.D., Kaufman, Y.J., Eck, T.F., Slutsker, I., 2000. Accuracy assessments of aerosol optical properties retrieved from Aerosol Robotic Network (AERONET) Sun and sky radiance measurements. *J. Geophys. Res.-Atmos.* 105, 9791–9806.
- Emeis, S., C. Jahn, C. Munkel, C. Munsterer, K. Schäfer, 2007: Multiple atmospheric layering and mixing-layer height in the Inn valley observed by remote sensing. – *Meteorol. Z.* 16, 415–424.
- 475
- Emeis, S., Schäfer, K., and Münkkel, C.: Surface-based remote sensing of the mixing-layer height – a review, *Meteorol. Z.*, 17, 621– 630, 2008.
- Eresmaa, N., Härkönen, J., Joffe, S.M., Schultz, D.M., Karppinen, A. and Kukkonen, J. (2012) A three-step method for estimating the mixing height using ceilometer data from the Helsinki testbed. *Journal of Applied Meteorology and Climatology*, 51, 2172–2187. <https://doi.org/10.1175/JAMC-D-12-058.1>.
- 480

- Gan, C.M., Wu, Y.H., Madhavan, B.L., Gross, B., Moshary, F., 2011. Application of active optical sensors to probe the vertical structure of the urban boundary layer and assess anomalies in air quality model PM_{2.5} forecasts. *Atmos. Environ.* 45, 6613–6621.
- Garratt, J. R., 1992: *The Atmospheric Boundary Layer*. Cambridge University Press, 316 pp.
- 485 Geiß A., Wiegner, M., Bonn, B., Schäfer, K., Forkel, R., von Schneidmesser, E., Münkler, C., Chan, K. L., and Nothard, R.: Mixing layer height as an indicator for urban air quality?, *Atmos. Meas. Tech.*, 10, 2969-2988, <https://doi.org/10.5194/amt-10-2969-2017>, 2017.
- Guo J, Miao Y, Zhang Y, et al. The climatology of planetary boundary layer height in China derived from radiosonde and reanalysis data. *Atmos. Chem. Phys.*, 2016, 16(20):13309-13319.
- 490 Guo J, Xia F, Zhang Y, et al. Impact of diurnal variability and meteorological factors on the PM_{2.5} - AOD relationship: Implications for PM_{2.5} remote sensing. *Environ. Pollut.*, 2017, 221(94):94.
- Guo, J., Li, Y., Cohen, J. B., Li, J., Chen, D., Xu, H., et al. (2019). Shift in the temporal trend of boundary layer height in China using long - term (1979–2016) radiosonde data. *Geophysical Research Letters*, 46, 6080–6089. <https://doi.org/10.1029/2019GL082666>
- 495 Haeffelin, M., Angelini, F., Morille, Y., Martucci, G., Frey, S., Gobbi, G.P., Lolli, S., O'Dowd, C.D., Sauvage, L., Xueref-Remy, I., Wastine, B., Feist, D.G., 2012. Evaluation of mixing-height retrievals from automatic profiling lidars and ceilometers in view of future integrated networks in europe. *Boundary-Layer Meteorol.* 143, 49–75.
- Holben, B.N., Eck, T.F., Slutsker, I., Tanré D., Buis, J.P., Setzer, A., Vermote, E., Reagan, J.A., Kaufman, Y.J., Nakajima, T., 1998. AERONET—A a federated instrument network and data archive for aerosol characterization. *Remote Sens. Environ.* 66, 1–16.
- 500 Hu, X., Ma, Z., Lin, W., Zhang, H., Hu, J., Wang, Y., Xu, X., Fuentes, J. D., and Xue, M.: Impact of the Loess Plateau on the atmospheric boundary layer structure and air quality in the North China Plain: a case study, *Sci. Total Environ.*, 499, 228–237, doi:10.1016/j.scitotenv.2014.08.053, 2014.
- Kamp, D. and McKendry, I.: Diurnal and seasonal trends in convective mixed-layer heights estimated from two years of continuous ceilometer observations in Vancouver, BC, *Bound.-Lay. Meteorol.*, 137, 459–475, 2010.
- 505 Kotthaus, S. and Grimmond, C. S. B.: Atmospheric Boundary Layer Characteristics from Ceilometer Measurements Part 1: A new method to track mixed layer height and classify clouds, *Quart. J. RMetS*, <https://doi.org/10.1002/qj.3299>, 2018.
- Lammeret, A., J. Bosenberg, 2006: Determination of the Convective Boundary-Layer Height with Laser Remote Sensing. *Bound.-Lay. Meteor.* 119, 159–170.
- 510

- Li, Z. Q., Guo, J. P., Ding, A. J., Liao, H., Liu, J. J., Sun, Y. L., et al. (2017). Aerosol and boundary-layer interactions and impact on air quality. *National Science Review*, 4(6), 810–833. <https://doi.org/10.1093/nsr/nwx117>.
- Li, Z., Zhang, Y., Shao, J., et al., 2016. Remote sensing of atmospheric particulate mass of dry PM_{2.5} near the ground: Method validation using ground-based measurements. *Remote Sensing of Environment*, 173, 59-68.
- 515 Li, Z.Q., Li, D.H., Li, K.T., Xu, H., Chen, X.F., Chen, C., Xie, Y.S., Li, L., Li, L., Li, W., 2015. Sun-sky radiometer observation network with the extension of multi-wavelength polarization measurements. *J. Remot. Sens.* 19, 495–519.
- Liu, S., and X.-Z. Liang, 2010: Observed diurnal cycle climatology of planetary boundary layer height. *J. Climate*, 23, 5790–5809, <https://doi.org/10.1175/2010JCLI3552.1>.
- Lotteraner, C. and Piringer, M.: Mixing-Height Time Series from Operational Ceilometer Aerosol-Layer Heights, *Bound.-Lay. Meteorol.*, 161, 265–287, <https://doi.org/10.1007/s10546-016-0169-2>, 2016.
- 520 Mahrt, L., Sun, J., Blumen, W., Delany, T., and Oncley, S.: Nocturnal boundary-layer regimes, *Bound.-Lay. Meteorol.*, 88, 255–278, 1998.
- Martucci, G., Matthey, R., Mitev, V., and Richner, H.: Comparison between backscatter lidar and radiosonde measurements of the diurnal and nocturnal stratification in the lower troposphere, *J. Atmos. Ocean. Technol.*, 24, 1231–1244, 2007.
- 525 [Martucci, G., Milroy, C. and O’Dowd, C.D. \(2010\) Detection of cloud-base height using Jenoptik CHM15K and Vaisala CL31 ceilometers. *Journal of Atmospheric and Oceanic Technology*, 27, 305–318. <https://doi.org/10.1175/2009JTECHA1326.1>](#)
- Medeiros, B., A. Hall, and B. Stevens, 2005: What controls the mean depth of the PBL? *J. Climate*, 18, 3157–3172, <https://doi.org/10.1175/JCLI3417.1>.
- 530 Miao Y, Liu S, Guo J, et al. Unraveling the relationships between boundary layer height and PM_{2.5} pollution in China based on four-year radiosonde measurements. *Environ. Pollut.*, 2018, 243:1186-1195.
- Milroy, C., Martucci, G., Lolli, S., Loaec, S., Sauvage, L., Xueref-Remy, I., Lavri`c, J. V., Ciais, P., Feist, D. G., Biavati, G., and O’Dowd, C. D.: An Assessment of Pseudo-Operational Ground-Based Light Detection and Ranging Sensors to Determine the Boundary-Layer Structure in the Coastal Atmosphere, *Advances in Meteorology*, 18 pp., [doi:10.1155/2012/929080](https://doi.org/10.1155/2012/929080), 2012.
- 535 Monks, P.S., Granier, C., Fuzzi, S., et al., 2009. Atmospheric composition change - global and regional air quality. *Atmos. Environ.* 43, 5268–5350.
- [Morille, Y., Haeffelin, M., Drobinski, P., and Pelon, J.: STRAT: An automated algorithm to retrieve the vertical structure of the atmosphere from single-channel lidar data, *JTech*, 24\(5\), 761-775, <https://doi.org/10.1175/JTECH2008.1>, 2007.](#)

- 540 Mues, A., Rupakheti, M., Mönkel, C., Lauer, A., Bozem, H., Hoor, P., Butler, T., and Lawrence, M. G.: Investigation of the mixing layer height derived from ceilometer measurements in the Kathmandu Valley and implications for local air quality, *Atmos. Chem. Phys.*, 17, 8157–8176, <https://doi.org/10.5194/acp-17-8157-2017>, 2017.
- Munoz, R. C. and Undurraga, A. A.: Daytime mixed layer over the Santiago Basin: Description of two years of observations with a lidar ceilometer, *J. Appl. Meteorol. Clim.*, 49, 1728–1741, 2010.
- 545 Neff, W.D., R.L. Coulter, 1986: Acoustic remote sensing. Probing the Atmospheric Boundary Layer. – In: D.H. LENSCHOW (Ed.), *Amer. Meteor. Soc. Boston, MA*, 201–239.
- Piringer, M., Joffre, S., Baklanov, A., Christen, A., Deserti, M., Ridder, K., Emeis, S., Mestayer, P., Tombrou, M., Middleton, D., Baumann-Stanzer, K., Dandou, A., Karppinen, A. and Burzynski, J. (2007) The surface energy balance and the mixing height in urban areas – activities and recommendations of COST-Action 715. *Boundary-Layer Meteorology*, 124, 3–24. <https://doi.org/10.1007/s10546-007-9170-0>.
- 550 Poltera, Y., Martucci, G., Collaud Coen, M., Hervo, M., Emmenegger, L., Henne, S., Brunner, D., and Haeefe, A.: PathfinderTURB: an automatic boundary layer algorithm. Development, validation and application to study the impact on in situ measurements at the Jungfraujoeh. *Atmos. Chem. Phys.* 2017, 17, 10051-10070, doi:10.5194/acp-17-10051-2017.
- 555 Poulos, G. S., and Coauthors, 2002: CASES-99: A comprehensive investigation of the stable nocturnal boundary layer. *Bull. Amer. Meteor. Soc.*, 83, 555–581, [https://doi.org/10.1175/1520-0477\(2002\)083<0555](https://doi.org/10.1175/1520-0477(2002)083<0555).
- Quan, J., Gao, Y., Zhang, Q., Tie, X., Cao, J., Han, S., Meng, J., Chen, P., and Zhao, D.: Evolution of planetary boundary layer under different weather conditions, and its impact on aerosol concentrations, *Particuology*, 11, 34–40, doi:10.1016/j.partic.2012.04.005, 2013.
- 560 Russell, P.B., Uthe, E.E., Ludwig, F.L., Shaw, N.A., 1974. A comparison of atmospheric structure as observed with monostatic acoustic sounder and lidar techniques. *Journal of Geophysical Research* 79, 5555-5566.
- Salmond, J. A. and McKendry, J. A.: A review of turbulence in the very stable nocturnal boundary layer and its implications for air quality, *Prog. Phys. Geog.*, 29, 171–188, 2005.
- Sawyer, V. and Li, Z.: Detection, variations and intercomparison of the planetary boundary layer depth from radiosonde, lidar and infrared spectrometer, *Atmos. Environ.*, 79, 518–528, 2013.
- 565 Schafer, K., S. Emeis, H. Hoffmann, C. Jahn, 2006: Influence of mixing layer height upon air pollution in urban and sub-urban area. *Meteorol. Z.* 15, 647-658. DOI:10.1127/0941-2948/2006/0116.
- Seibert, P., Beyrich, F., Gryning, S.E., Joffre, S., Rasmussen, A., Tercier, P., 2000. Review and intercomparison of operational methods for the determination of the mixing height. *Atmos. Environ.* 34, 1001–1027.

- 570 Seidel, D. J., Ao, C. O., & Li, K. (2010). Estimating climatological planetary boundary layer heights from radiosonde observations: Comparison of methods and uncertainty analysis. *Journal of Geophysical Research*, 115, D16113. <https://doi.org/10.1029/2009JD013680>
- Seidel, D. J., Zhang, Y., Beljaars, A., Golaz, J. - C., Jacobson, A. R., & Medeiros, B. (2012). Climatology of the planetary boundary layer over the continental United States and Europe. *Journal of Geophysical Research*, 117, D17106.
- 575 <https://doi.org/10.1029/2012JD018143>
- Sifakis, N., N. Soulakellis, D. Paronis, 1998: Quantitative mapping of air pollution density using Earth observations: a new processing method and application to an urban area. – *Intern. J. Rem. Sens.* 19, 3289–3300.
- Singh, N., Solanki, R., Ojha, N., Janssen, R. H. H., Pozzer, A., and Dhaka, S. K.: Boundary layer evolution over the central Himalayas from radio wind profiler and model simulations, *Atmos. Chem. Phys.*, 16, 10559–10572,
- 580 <https://doi.org/10.5194/acp-16-10559-2016>, 2016.
- Stull, R. B., 1988: *An Introduction to Boundary Layer Meteorology*. Kluwer Academic, 666 pp.
- Su, T., J. Li, C. Li, P. Xiang, A. K.-H. Lau, J. Guo, D. Yang, and Y. Miao (2017), An intercomparison of long-term planetary boundary layer heights retrieved from CALIPSO, ground-based lidar, and radiosonde measurements over Hong Kong, *J. Geophys. Res.-Atmos.*, 122, doi:10.1002/2016JD025937.
- 585 Su, T., Z. Li, and R. Kahn, 2019: A new method to retrieve the diurnal variability of planetary boundary layer height from lidar under different thermodynamic stability conditions, *Remote Sens. Environ.*, 237, doi:10.1016/j.rse.2019.111519.
- Tang, G., Zhang, J., Zhu, X., Song, T., Münkkel, C., Hu, B., Schäfer, K., Liu, Z., Zhang, J., Wang, L., Xin, J., Suppan, P., and Wang, Y.: Mixing layer height and its implications for air pollution over Beijing, China, *Atmos. Chem. Phys.*, 16, 2459–2475, <https://doi.org/10.5194/acp-16-2459-2016>, 2016.
- 590 Wang H. F., Li Z. Q., Lv Y., et al., Observational study of aerosol-induced impact on planetary boundary layer based on lidar and sunphotometer in Beijing, *Environmental Pollution*, 252, 897-906, 2019. <https://doi.org/10.1016/j.envpol.2019.05.070>.
- Wang, X., Dickinson, R. E., Su, L., Zhou, C., and Wang, K.: PM2.5 pollution in China and how it has been exacerbated by terrain and meteorological conditions, *B. Am. Meteorol. Soc.*, <https://doi.org/10.1175/BAMS-D-16-0301.1>, 2017.
- 595 Wiegner, M., Emeis, S., Freudenthaler, V., Heese, B., Junkermann, W., Münkkel, C., Schäfer, K., Seefeldner, M., and Vogt, S.: Mixing Layer Height over Munich, Germany: Variability and comparisons of different methodologies, *J. Geophys. Res.-Atmos.*, 111, D13201, <https://doi.org/10.1029/2005JD006593>, 2006.

- Wiegner, M., Emeis, S., Freudenthaler, V., Heese, B., Junkermann, W., Münkler, C., Schäfer, K., Seefeldner, M., and Vogt, S.: Mixing Layer Height over Munich, Germany: Variability and comparisons of different methodologies, *J. Geophys. Res.-Atmos.*, 111, D13201, <https://doi.org/10.1029/2005JD006593>, 2006.
- 600 Yan, H.R., Li, Z.Q., Huang, J.P., Cribb, M., Liu, J.J., 2014. Long-term aerosol-mediated changes in cloud radiative forcing of deep clouds at the top and bottom of the atmosphere over the Southern Great Plains. *Atmos. Chem. Phys.* 14, 7113–7124.
- 605 Yan, X., Shi, W., Li, Z., Li, Z., Luo, N., Zhao, W., Wang, H., Yu, X., Satellite-based PM_{2.5} estimation using fine-mode aerosol optical thickness over China, *Atmospheric Environment* (2017), doi: 10.1016/j.atmosenv.2017.09.023.
- Yang, H., Liu, W., Lu, Y., Xie, P., Xu, L., Zhao, X., Yu, T., and Yu, J.: PBL observations by lidar at Peking, *Optical Tech.*, 31, 221–226, 2005.
- Zhang, Q., Quan, J., Tie, X., Li, X., Liu, Q., Gao, Y., and Zhao, D.: Effects of meteorology and secondary particle formation on visibility during heavy haze events in Beijing, China, *Sci. Total Environ.*, 502, 578–584, doi:10.1016/j.scitotenv.2014.09.079, 2015.
- 610 Zhang, Q., Zheng, Y., Tong, D., et al.: Drivers of improved PM_{2.5} air quality in China from 2013 to 2017, *Proceedings of the National Academy of Sciences*, 116, 49, 24463.
- Zhang, W.C., Guo, J.P., Miao, Y.C., Liu, H., Song, Y., Fang, Z., He, J., Lou, M.Y., Yan, Y., Li, Y., Zhai, P.M., 2018. On the summertime planetary boundary layer with different thermodynamic stability in China: a radiosonde perspective. *J. Clim.* 31, 1451–1465.
- 615 Zhang, Y., & Li, Z. (2015). Remote sensing of atmospheric fine particulate matter (PM_{2.5}) mass concentration near the ground from satellite observation. *Remote Sensing of Environment*, 160, 252-262.

620 **Data availability.** The lidar data used in this study can be requested from the corresponding author (lizq@radi.ac.cn).

Author contributions. ZL conceived and designed the study. JG collected and processed the radiosonde data. YL, HX and PG collected the lidar data. HW improved the MLH retrieval algorithm from lidar. HW processed and analyzed the data and prepared the manuscript.

625 **Competing interests.** The authors declare no competing interests.

Acknowledge. The authors acknowledge the assistance of acquisition of radiosonde data by Dr. Guo J. P.. The authors would like to acknowledge China Meteorological Administration for obtaining the radiosonde data in Beijing. The authors thank Dr. Tang G. Q. for helpful discussions on algorithm improvement. This work was supported by National Natural Science Foundation of China (Grant No. 41671367, No. 41925019) and the program of 305090306.

630

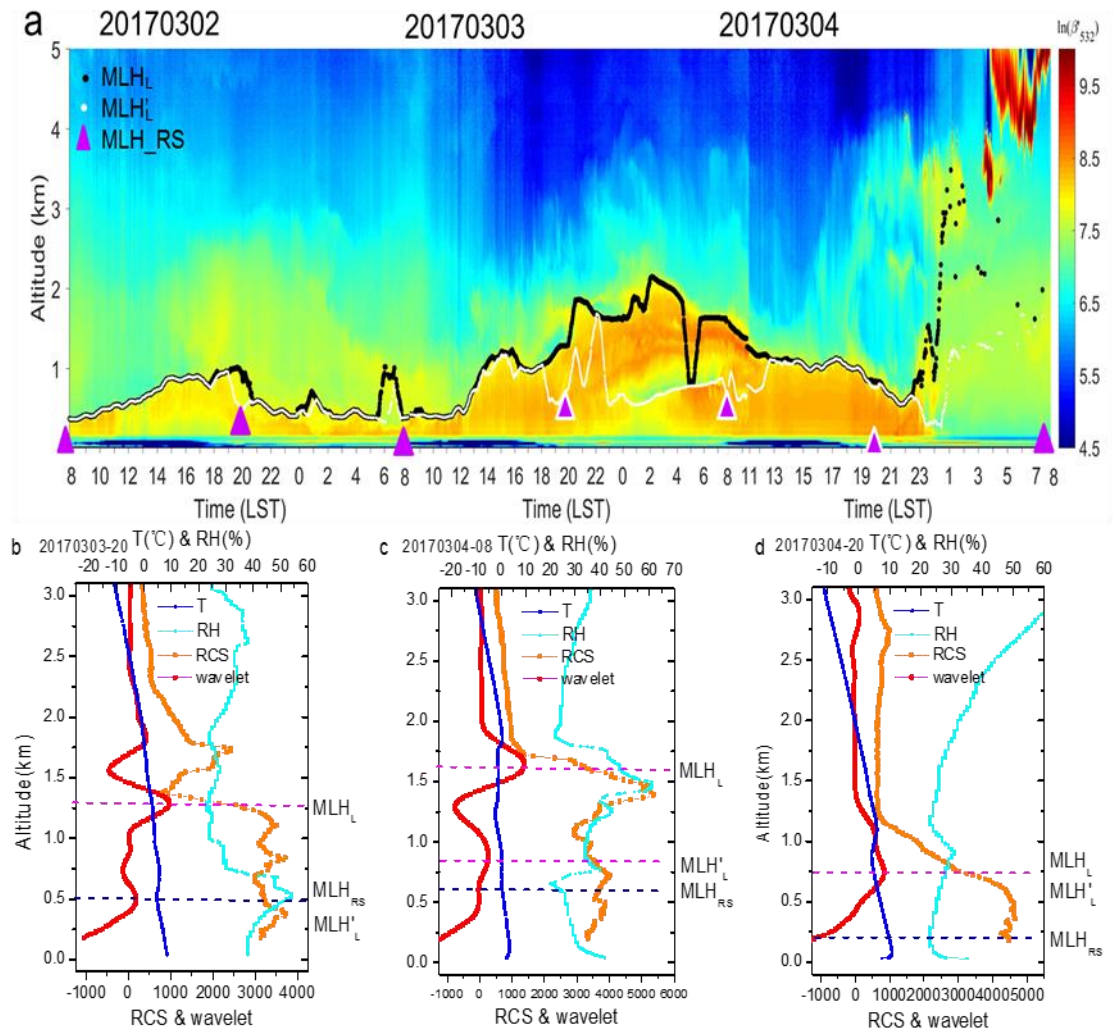


Fig. 1. Upper: (a) Daily backscatter profiles from lidar for 20170302-20170304 cases. The lines connected by black dots
 635 in the figure represent the retrieved MLH_L , while white dots line indicate the MLH'_L and the top of purple triangle indicate
 the MLH_{RS} identified from radiosonde. The horizontal axis represents the local standard time (LST) and the vertical axis
 represents the height. Colorbar denotes the logarithm of the attenuated backscattering coefficient ($\ln(\beta'_{532})$).
 Lower: The vertical profile of RCS (orange curve) from lidar and wavelet coefficient (red curve) of RCS, as well as the
 vertical profile of temperature (T) (blue curve) and relative humidity (RH) (cyan curve) for time of (b)20170303-20,
 640 (c)20170304-08 and (d)20170304-20 indicated by the white edge triangle in the upper picture (a).

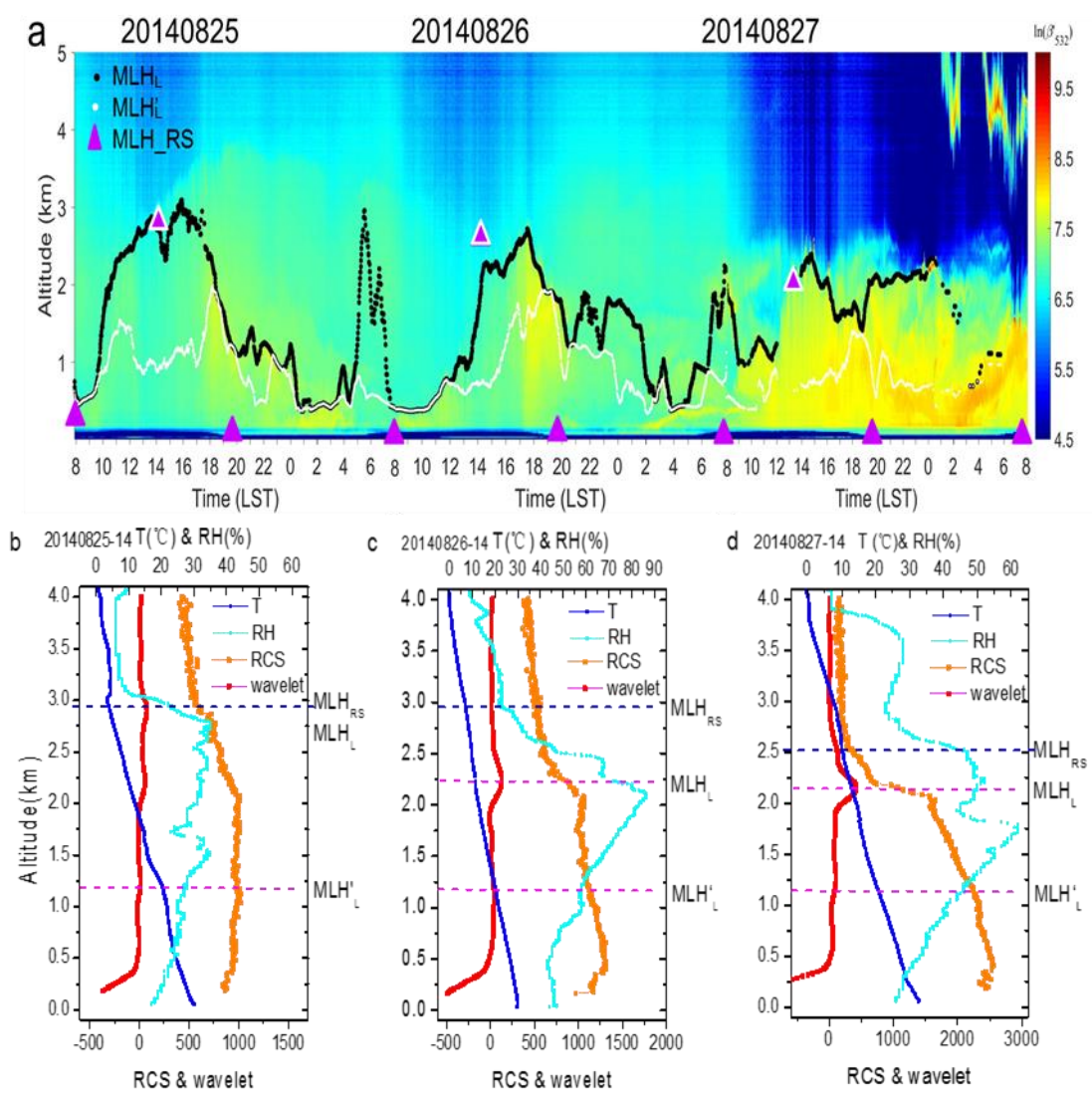


Fig. 2. Similar as Fig.1, but for (a)20140825-20140827 case, and vertical profile for (b)20140825-14、(c)20140827-14 and (d)20140827-20.

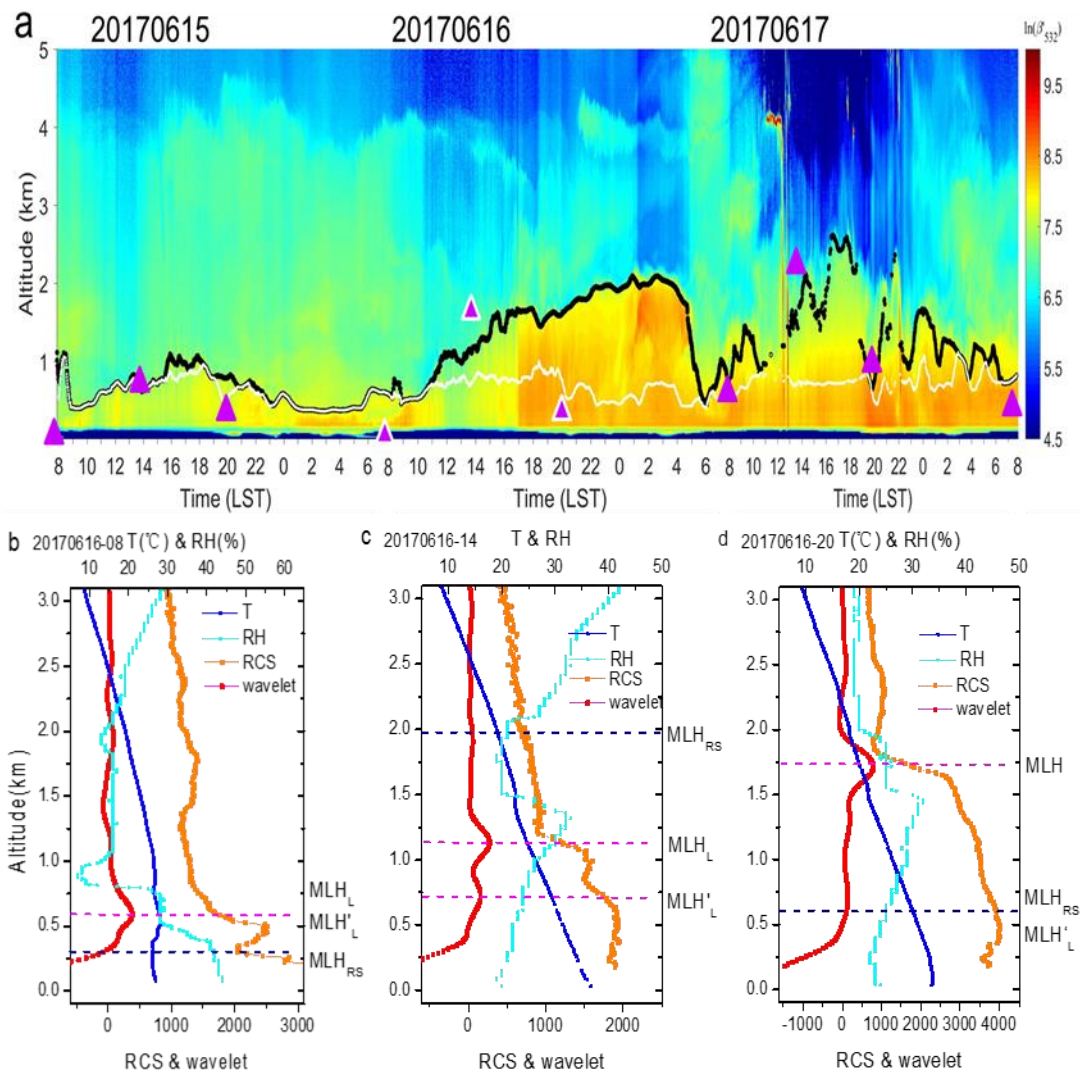


Fig. 3. Similar as Fig.1, but for (a)20170615-20170617 case, and vertical profile for (b)20170616-08、(c)20170616-14 and (d)20170616-20.

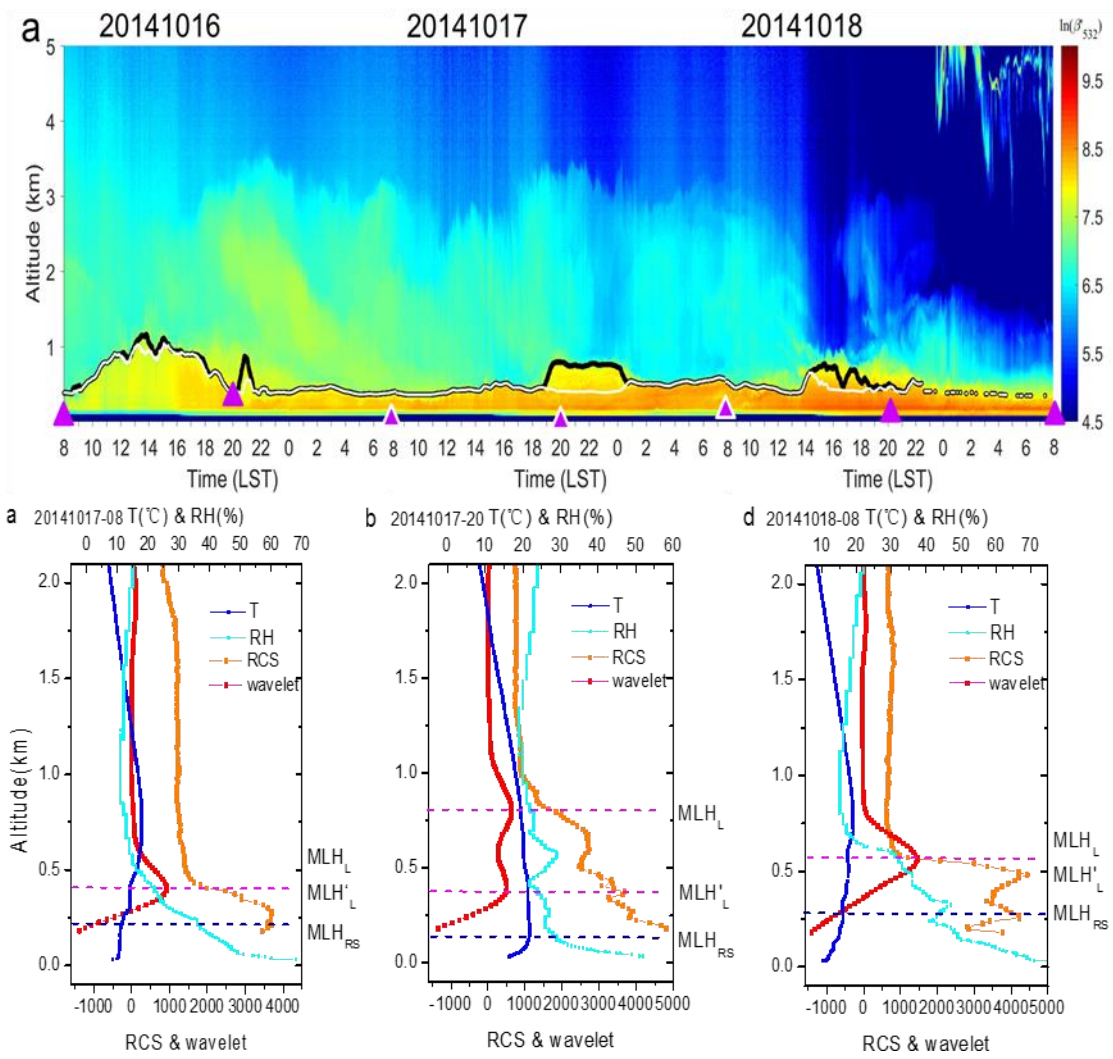


Fig. 4. Similar as Fig.1, but for (a)20141016-20141018 case, and vertical profile for (b)20141017-08、(c)20141017-20 and (d)20141018-08.

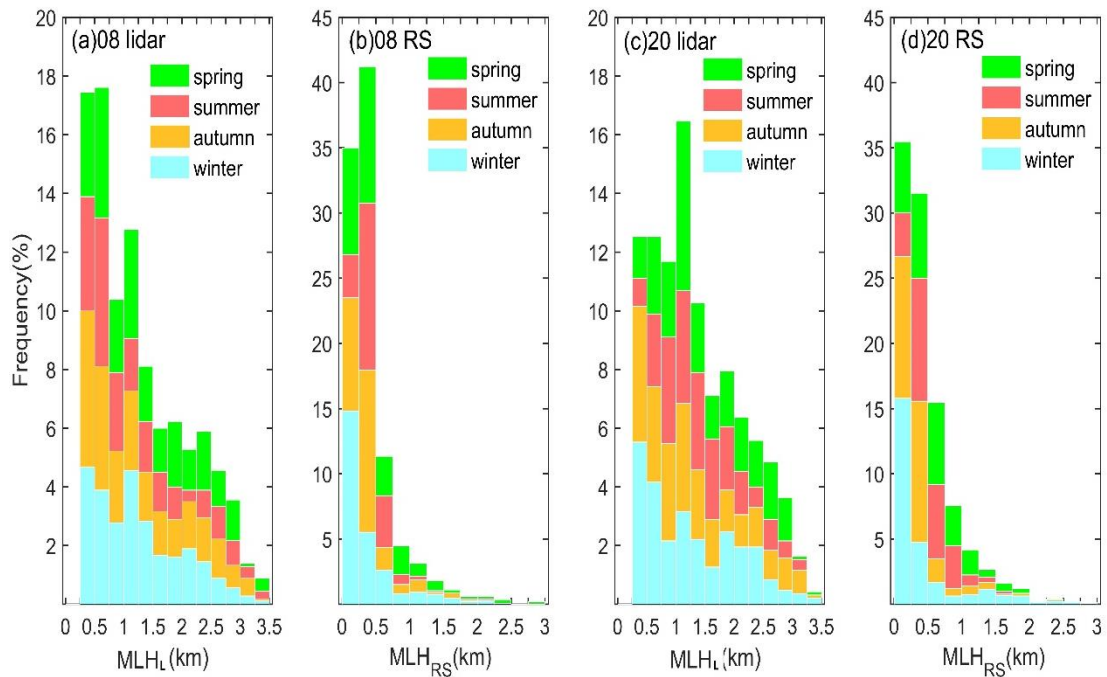
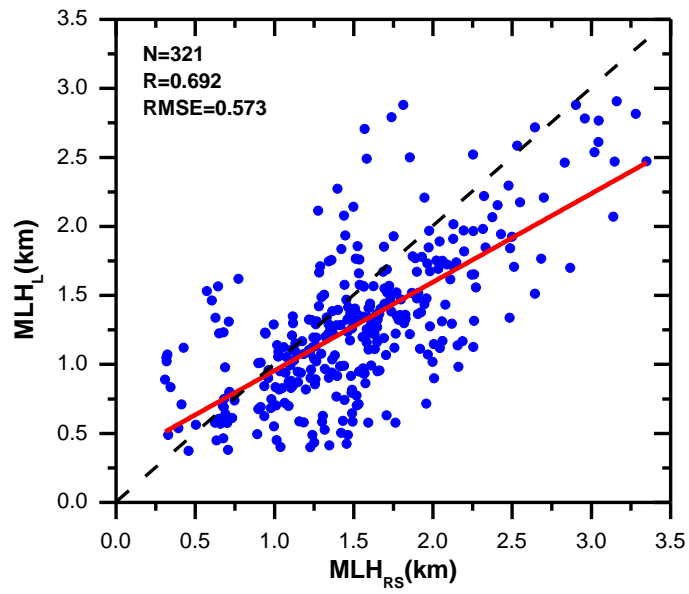


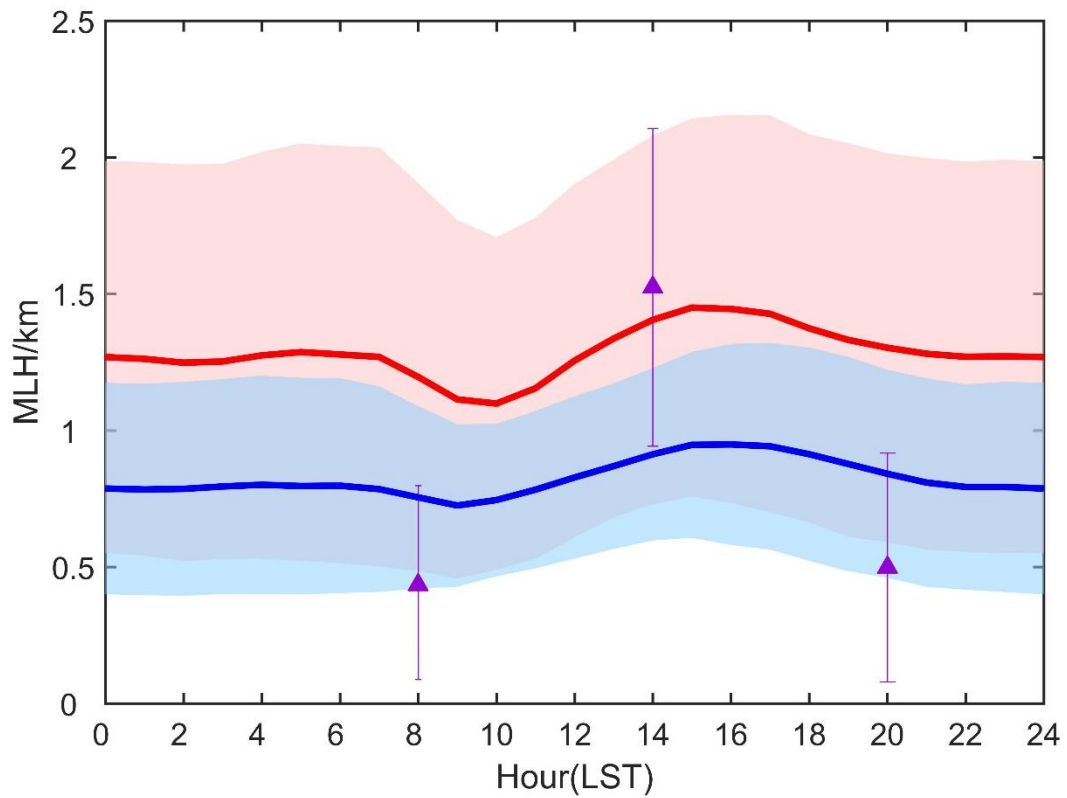
Fig. 5. Comparison of frequency distribution of all MLH_L (2013-2018) retrieved from lidar and MLH_{RS} from radiosonde with the supplementary information of seasonal variation. MLH from (a) lidar and (b) radiosonde at time of 08 (LST), (c) lidar and (d) radiosonde at time of 20 (LST) are presented. Noted that for presenting the detail distribution, MLH_L adds up to 20%, while MLH_{RS} add up to 45%.

660



665

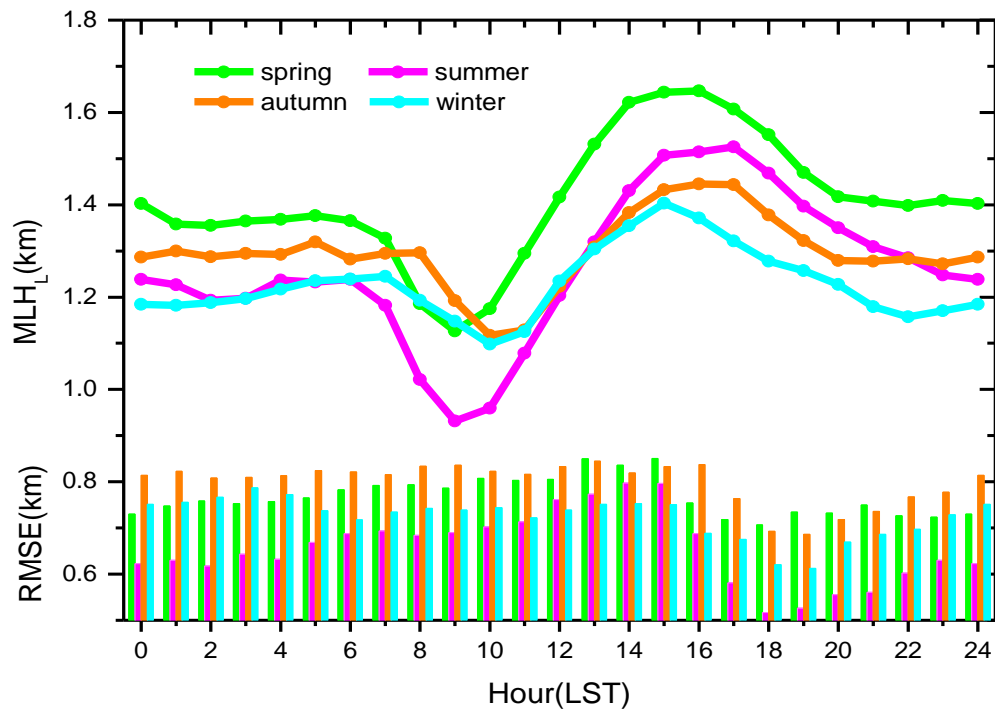
Fig. 6. Comparisons between MLH_L in summer derived from lidar and MLH_{RS} from radiosonde at time of 14 (LST). Red line indicates the linear fitting of 321 samples, while the black dash line represents the 1:1 line.



670

Fig. 7. Diurnal cycles of mixing layer height. The red line indicates the MLH_L retrieved from lidar, and the blue line represent the MLH_L' from lidar. The shaded areas show the standard deviation of MLH_L and MLH_L' . Purple triangles indicate the MLH_{RS} averaged from routine RS data at 08 and 20 time (LST), and from summer radiosonde at time of 14 (LST). The purple lined indicate the standard deviation of MLH_{RS} .

675



680 Fig. 8. Seasonal variation of diurnal cycles of MLH_L retrieved from lidar (dot lines), as well as the standard deviation of MLH_L (histograms). The red triangle indicates the MLH_{RS} measured at 1400 LST by radiosonde.

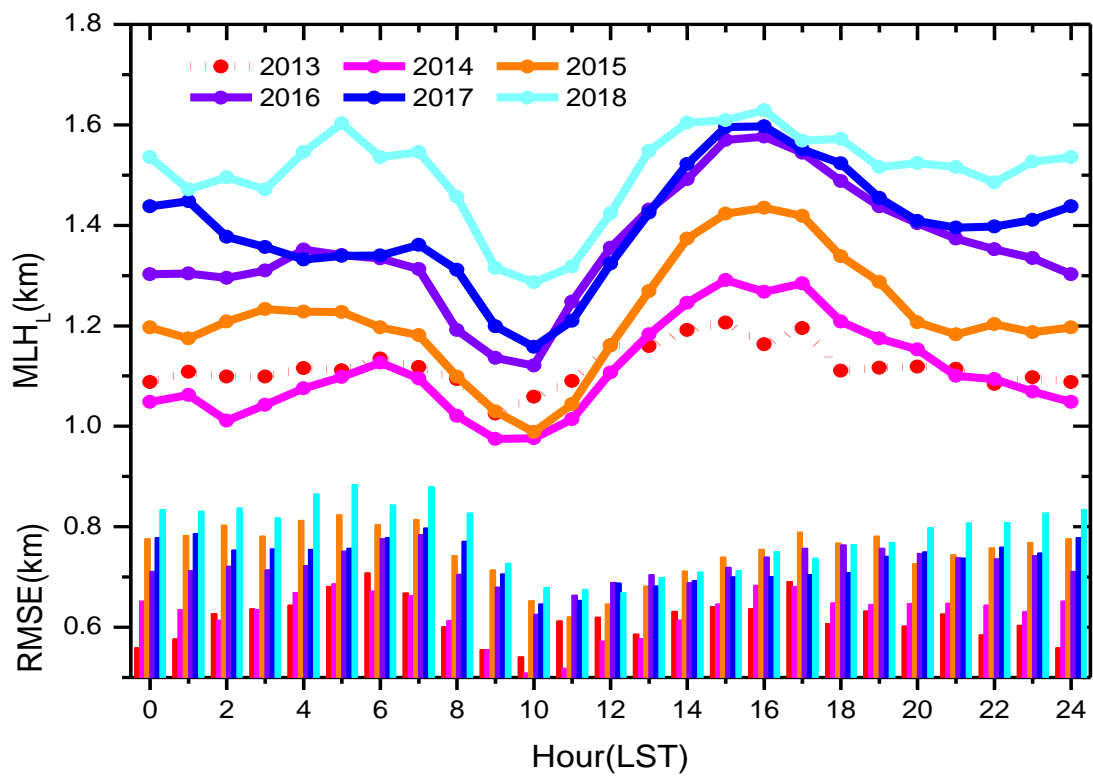


Fig. 9. Interannual variation of diurnal cycles of averaged MLH_L retrieved from lidar (dot lines), as well as the standard deviation of MLH_L (histograms). Due to the incomplete data of 2013, the MLH_L data of 2013 is presented as dot line to be noted.

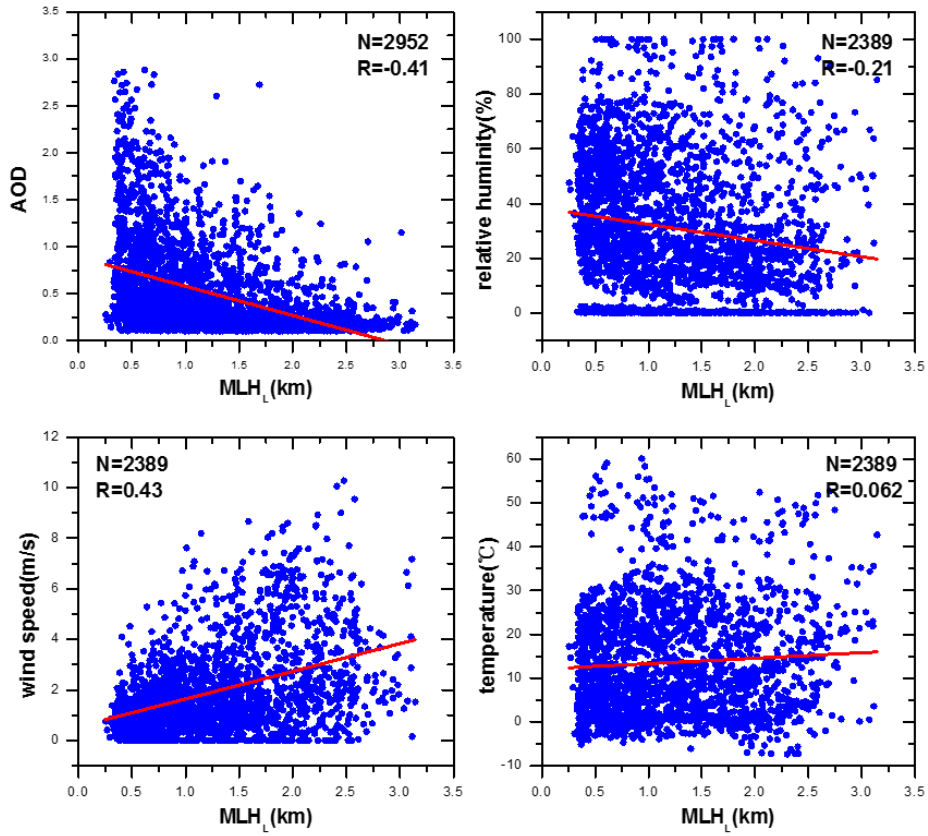


Fig.10. The correlation between MLH_L and AOD, relative humidity, wind speed and temperature with the measurement from 2014 to 2017.

690

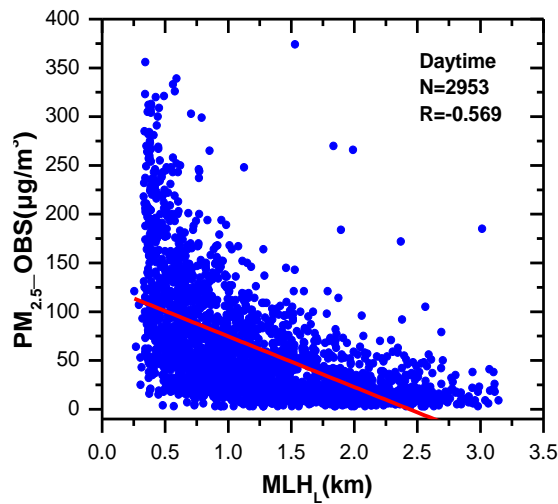
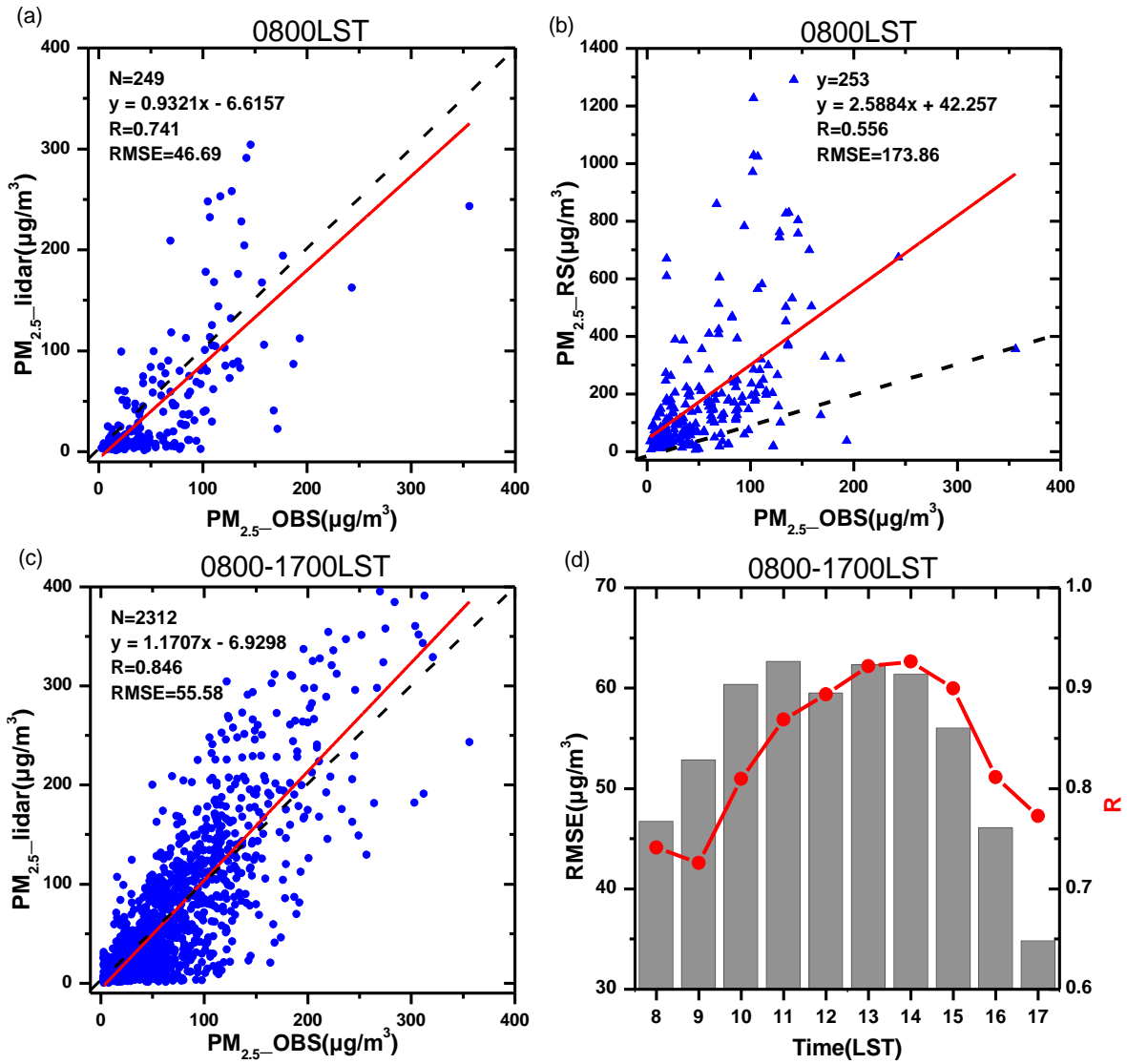


Fig.11. The correlation between MLH_L and PM_{2.5}_OBS with the measurement from 2014 to 2017.



695

Fig. 12. Comparisons between observed PM_{2.5} and PM_{2.5} calculated from PMRS model using (a) MLH_L and (b) MLH_{RS} at time of 0800(LST), and (c) MLH_L for the period of 0800-1700(LST), and (d) correlation coefficient and RMSE between observed PM_{2.5} and PM_{2.5} calculated from PMRS model using MLH_L for each hour from 0800 to 1700 LST.

Table 1 Statistics of boundary layer height seasonal change

MLH _L /km	Spring	summer	autumn	winter
mean	1.409	1.261	1.297	1.228
maximum	1.647	1.526	1.445	1.404
minimum	1.126	0.932	1.117	1.098

Table 2 Statistics of boundary layer height interannual change

MLH _L /km	2013	2014	2015	2016	2017	2018
mean	1.118	1.110	1.216	1.352	1.391	1.502
maximum	1.207	1.291	1.435	1.577	1.597	1.629
minimum	1.025	0.975	0.989	1.121	1.158	1.287