

Interactive comment on “Opposite Effects of Aerosols on Daytime Urban Heat Island Intensity between Summer and Winter” by Wenchao Han et al.

Wenchao Han et al.

hwc9028@163.com

Received and published: 17 April 2020

General comments: This study showed that that aerosols have very different effects on daytime UHI in different seasons: reducing the UHI in summer, but increasing the UHI in winter. It also found that the seasonal contrast in the spatial distribution of aerosols between the urban centers and the suburbs lead to a spatial discrepancy in aerosol radiative effect. Different mechanisms are analyzed for different seasons. The manuscript has well-presented some interesting findings. However, there are still some major concerns that need to be addressed.

Response: We would like to thank you very much for providing so many insightful

Printer-friendly version

Discussion paper



comments. Following your comments and suggestions, we have made many changes. The manuscript was also more carefully edited. The responses are highlighted in red; the changes in manuscript are highlighted in blue in this response file.

Comment 1.I suggest the authors combine the first paragraph with the second paragraph. And remove the sentence in the second paragraph, “It is well established that cities are the largest sources of anthropogenic heat emissions as by-products from industrial and human activities. Human activities can also generate large amounts of aerosols that can reduce air quality, change the physical and chemical properties of the atmosphere, and endanger human health (Sanap and Pandithurai 2015, Cohen et al. 2017, Wei et al. 2019a, b).” to the beginning of the third paragraph.

Response: Done per the suggestion.

Comment 2.The sentence “The effect of urbanization on clouds and precipitation has been the focus of many studies (Changnon et al. 1977, Ackerman et al. 1978, Changnon et al. 1991, Shepherd et al. 2002, Shepherd and Burian 2003)” looks very abrupt here.

Response: We have moved this sentence to line 79 and revised this sentence to “The effect of urbanization on clouds and precipitation has also been the focus of many studies (Changnon et al., 1977; Ackerman et al., 1978; Changnon et al., 1991; Shepherd et al., 2002; Shepherd and Burian, 2003)”.

Comment 3.Overall, illustrations with more logics are needed for introduction Section.

Response: Thank you for this suggestion. Figure 1 is a newly added figure showing the relationship between urbanization, urban heat island, aerosols, local and regional weather and climate. Moreover, to be more logical, we moved the sentence “With increasing urbanization in the future, cities are likely to influence local and regional weather and climate to greater and greater degrees.” to line 82.

Comment 4.Section 2 is suggested to be “Data and methods”. The data, method of

Extracting urban impervious surfaces and urban contours, model description should be included separately by three parts. I suggest the authors combine the “research windows” into “method of Extracting urban impervious surfaces and urban contours”. And combine the “Aerosol parameters” to the part of “data” together with some data in the present part “Study areas and data”. “Study areas” can be removed to the beginning of result analysis. Additionally, the method of calculating USII should be mentioned.

Response: Done per your suggestion. The method of calculating UHII is added to section 2.2 on lines 190 to 194: “The UHII is the temperature difference between the average temperature of the urban core window and the average temperature of rural windows, calculated as $UHII = \Delta T = T_u - T_r$, (3) where T_u is the average temperature of an urban area, and T_r is the average temperature of the neighboring rural area.”

Comment 5. Figure 1 need some modifications, for example, the city name “Changchun” has been divided into 2 rows.

Response: We have redrawn this figure.

Comment 6. Figure 2 should mark the result of confidence test. The impact factors are more than aerosol. The atmospheric humidity should be included. Here, the relation between USII and visibility may be one-sided. Moreover, the result of urban heat island does not just include the changes in aerosol. In Figure 3, the details of “severe air pollution condition” should be shown, including the data used here, definition of severe air pollution and period of severe air pollution event. It is not clear whether the $MUHII = (\sum_{i=1}^n (UHII_{(m \sim i)} - \bar{UHII}_{(p \sim i)})^2) / n$ is calculated based on several severe air pollution event or not. The details should be addressed and added.

Response: We did the confidence test (95%) and added this information to Figure 3 on line 252. We agree with you that aerosols are not the only factor affecting UHII, so we added the relationship between UHII and relative humidity (RH) to Figure 3. Figure 3b shows that there is a positive correlation between RH and UHII, but it is less significant

[Printer-friendly version](#)
[Discussion paper](#)


than the correlation between UHII and visibility (p-value of visibility > RH).

The new figure updates the previous figure, and the following sentence was added (lines 242 to 246): “Also analyzed was the relationship between RH and UHII. Figure 3b shows that there is a positive correlation between RH and UHII, but it is less significant than the correlation between UHII and visibility (p-value of visibility > RH). Note that not only these two factors affect UHII. Many other factors affect UHII, but this study mainly focuses on the aerosol effect.”

We have added information about “polluted days” in the upper right corner of Figure 4a. In Figures 4 and S4, we directly compared UHII under polluted conditions and UHII for all days. We deleted the previous version of the figure and the following sentence:
$$MUHII = \frac{\sum_{i=1}^n (UHII_{(m \sim i)} - UHII_{(p \sim i)})}{n}, \quad (3)$$
 where MUHII is the difference between the UHII under severe air pollution conditions and the average UHII, n is number of years from 2001 to 2015, i represents a specific year during 2001–2015, $UHII_{(m \sim i)}$ is the average UHII in year i, and $UHII_{(p \sim i)}$ is the UHII under severe air pollution conditions in a year i. Figure S3 shows the MUHII at each city under polluted conditions and for all days.

Comment 7. Figure 5, “red curves” should be changed to “red curve”, “black curves” to “black curve”. How did the PM2.5 concentration bins get? And was the urban-rural PM2.5 difference corresponded to the PM2.5 concentration bins? Some descriptions should be added. Same information for AOD is also needed.

Response: Done per your suggestion. Here we divided PM2.5 concentration into four bins, and calculated the PM2.5 concentration difference in each bin, the method was shown in lines 302 to 303. Therefore, the PM2.5 difference is corresponded to each PM2.5 concentration bins. We also added more information about AOD (lines 305 to 307): “Five zones were selected based on the distance to the urban geometric center of all cities: Zone 1: 0–10 km, Zone 2: 11–20 km, Zone 3: 21–30 km, Zone 4: 31–40 km, and Zone 5: 41–50 km, then the average AOD for each zone was calculated.”

Comment 8. A better quality of combination figure is needed for Fig. 8. The meaning of arrows in Fig. 9 should be given.

Response: We have redrawn Figure 9. Regarding Figure 10 (lines 365 to 367): “The red arrows mean the change ranges from clean conditions to polluted conditions, the blue arrow mean the change range from summer-polluted condition to winter-polluted condition.”

Comment 9. Page 19, Line 368, “In summer (Figure 11 a), aerosols reduce UHII throughout all day; but in winter (Figure 11 b), aerosols enhance UHII in the afternoon. These results are consistent with the observational results shown in Figure 3”. Figure 3 cannot provide the consistent result. Figure 3 shows the result at annual scale. However, Figure 11 is the simulation for an event for three days.

Response: Figure 4 shows that aerosols reduce UHII in summer and enhance UHII in winter. Figure 12 shows similar results on a daily scale. To express this more accurately, we changed the sentence “These results are consistent with the observational results shown in Figure 4” to “This shows the effect of aerosols on UHII on a daily scale, supporting Fig. 4.” on line 394.

Interactive comment on Atmos. Chem. Phys. Discuss., <https://doi.org/10.5194/acp-2020-162>, 2020.

[Printer-friendly version](#)[Discussion paper](#)

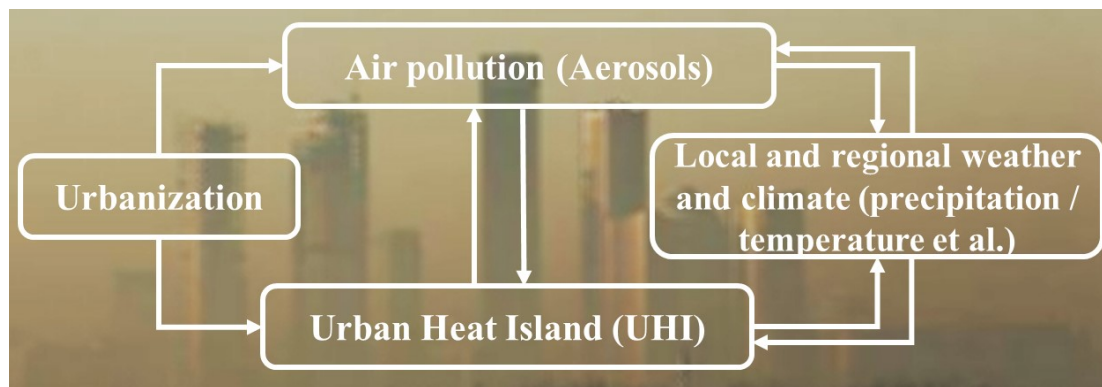


Fig. 1. Figure 1. Illustration of the relationship between urbanization, urban heat island, aerosols, local and regional weather and climate. Solid arrows denote the effect.

[Printer-friendly version](#)[Discussion paper](#)

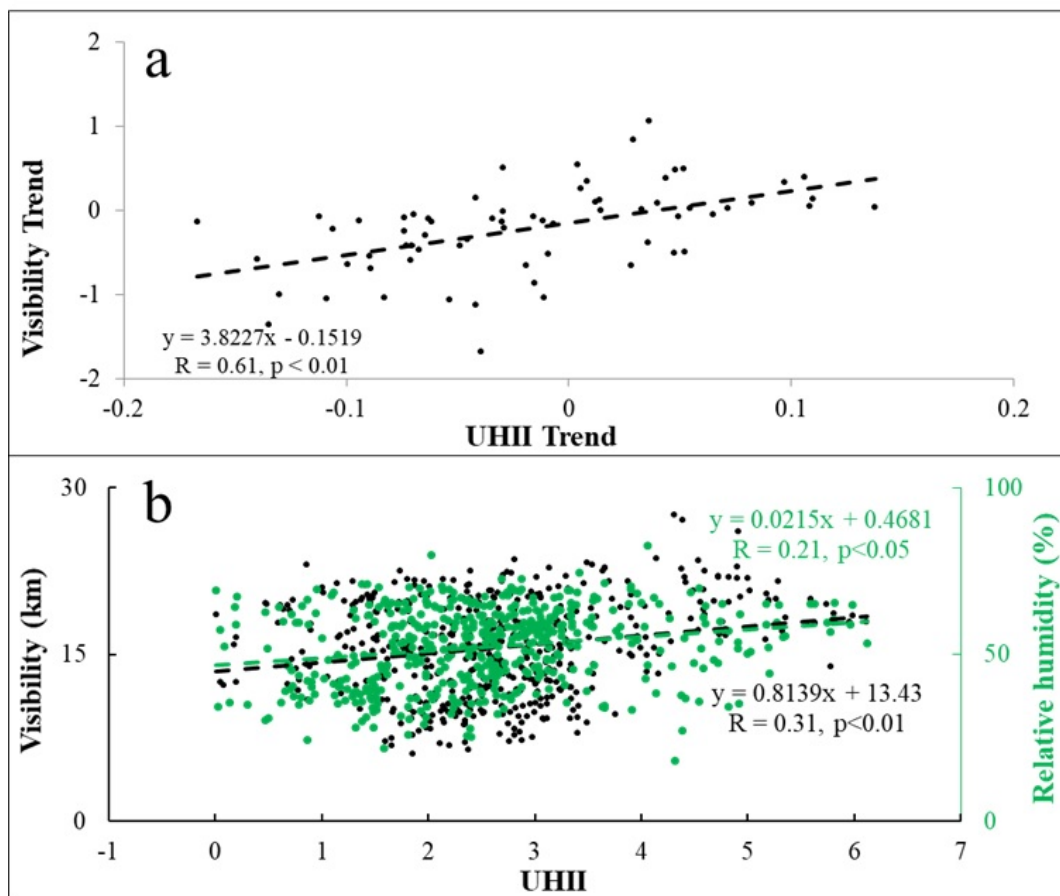


Fig. 2. Figure 3. (a) Clear-day visibility trend (unit: km yr⁻¹) shown as a function of the UHI trend (K yr⁻¹), and (b) clear-day visibility (unit: km) and relative humidity shown as a function of UHI (unit

[Printer-friendly version](#)
[Discussion paper](#)
