

Measurement report: Leaf-scale gas exchange of atmospheric reactive trace species (NO₂, NO, O₃) at a northern hardwood forest in Michigan

Wei Wang¹, Laurens Ganzeveld², Samuel Rossabi¹, Jacques Hueber¹, Detlev Helmig¹

5 ¹Institute of Arctic and Alpine Research, University of Colorado, Boulder, CO 80309, USA

²Wageningen University, Meteorology and Air Quality Section, Wageningen, the Netherlands

Correspondence: Wei Wang (wei.wang-3@Colorado.edu)

Abstract. During the Program for Research on Oxidants: PHotochemistry, Emissions, and Transport (PROPHET) campaign from July 21 to August 3, 2016, field experiments of leaf-level trace gas exchange of nitric oxide (NO), nitrogen dioxide (NO₂), and ozone (O₃) were conducted for the first time on the native American tree species *Pinus strobus* (eastern white pine), *Acer rubrum* (red maple), *Populus grandidentata* (bigtooth aspen), and *Quercus rubra* (red oak) in a temperate hardwood forest in Michigan, USA. We measured the leaf-level trace gas exchange rates and investigated the existence of an NO₂ compensation point, hypothesized based on a comparison of a previously observed average diurnal cycle of NO_x (NO₂ + NO) concentrations with that simulated using a multi-layer canopy exchange model. Known amounts of trace gases were introduced into a tree branch enclosure and a paired blank reference enclosure. The trace gas concentrations before and after the enclosures were measured, as well as the enclosed leaf area (single-sided) and gas flow rate to obtain the trace gas fluxes with respect to leaf surface. There was no detectable NO uptake for all tree types. The foliar NO₂ and O₃ uptake largely followed a diurnal cycle, correlating with that of the leaf stomatal conductance. NO₂ and O₃ fluxes were driven by their concentration gradient from ambient to leaf internal space. The NO₂ loss rate at the leaf surface, equivalently, the foliar NO₂ deposition velocity toward the leaf surface, ranged 0–3.6 mm s⁻¹ for bigtooth aspen, and 0–0.76 mm s⁻¹ for red oak, both of which are ~90% of the expected values based on the stomatal conductance of water. The deposition velocities for red maple and white pine ranged 0.3–1.6 mm s⁻¹ and 0.01–1.1 mm s⁻¹, respectively, and were lower than predicted from the stomatal conductance, implying a mesophyll resistance to the uptake. Additionally, for white pine, the extrapolated velocity at zero stomatal conductance was 0.4 ± 0.08 mm s⁻¹, indicating a non-stomatal uptake pathway. The NO₂ compensation point was ≤60 ppt for all four tree species and indistinguishable from zero at the 95% confidence level. This agrees with recent reports for several European and California tree species but contradicts some earlier experimental results where the compensation points were found to be on the order of 1 ppb or higher. Given that the sampled tree types represent 80-90% of the total leaf area at this site, these results negate the previously hypothesized important role of a leaf-scale NO₂ compensation point. Consequently, to reconcile these findings, further detailed comparisons between the observed and the simulated in- and above-canopy NO_x concentrations, and the leaf- and canopy-scale NO_x fluxes, using the multi-layer canopy exchange model with consideration of the leaf-scale NO_x deposition velocities as well as stomatal conductances reported here, are recommended.

1 Introduction

The reactive nitrogen species nitric oxide (NO) and nitrogen dioxide (NO₂) are key components in tropospheric oxidation chemistry, affecting air quality by triggering the production of ground-level ozone, secondary organic aerosol, and acid rain.

35 Forests cover 27% of the world's land surface, and 34% of the land area of the United States (FAO, 2016), and are an important land cover type in the continental cycling of NO and NO₂ (collectively termed NO_x). In remote and relatively unpolluted forests, the main source of NO is biogenic emission from soil microbial nitrification and denitrification processes. Once it escapes the soil, NO is transported through the canopy by turbulent mixing that is coupled to the atmosphere above the forest. During this time, NO participates in chemical reactions with trace species present in ambient air, primarily with ozone to form
40 NO₂. This happens on a relatively short time scale of tens to a few hundred seconds. During daytime, additional reactions may further transform NO₂ to other oxidized nitrogen species, but on a longer time scale (Min et al., 2014). Physical loss pathways of NO_x within the canopy include dry deposition and leaf stomatal and cuticular uptake. The relative differences in the time scales of the turbulent mixing and the chemical and physical sink processes determine the amount of NO_x removed within the canopy, with the remaining NO_x being released into the boundary layer.

45 The effect of leaf stomatal and cuticular uptake on the release of soil-emitted NO_x through forest canopy to the atmosphere is described using an empirical parameter, the canopy reduction factor (CRF), introduced by Yienger and Levy (1995) for application in large-scale atmospheric chemistry studies that generally rely on the so-called “big-leaf” approach to represent atmosphere-biosphere exchange without considering the inhomogeneity of the loss processes within the canopy. Based on a parameterization using leaf area index and stomatal area index, it was estimated that 25–55% of soil-emitted NO_x is lost within
50 forest canopies annually or seasonally depending on forest type. Those estimates of the effective release of soil NO_x were further corroborated in a study by Ganzeveld et al. (2002) using, instead of the big-leaf approach, a multi-layer canopy exchange model in a chemistry-climate model. Additionally, by including the influences of wind speed, turbulence, and canopy structure when calculating the CRF, Wang et al. (1998) estimated that up to 70% of NO_x was removed within the canopy in Amazon in April, agreeing with earlier results (Jacob and Wofsy, 1990). Accounting for both forests and other types of
55 ecosystems, Wang et al. (1998) also estimated the global average canopy reduction at 20%, versus 50% by Yienger and Levy (1995). More recently, Delaria et al. (2018) investigated NO_x exchange with the leaves of *Quercus agrifolia* (California live oak) and obtained deposition velocities of NO₂ and NO under light and dark conditions. Implementing these results in a multi-layer single-column model, it was calculated that California oak woodland canopy removes 15-30% of soil-emitted NO_x, and other forests in California and Michigan, close to 60% (Delaria and Cohen, 2020).

60 Similarly, vegetation and plant surfaces also affect ozone levels through dry deposition (Clifton et al., 2019, 2020; Silva and Heald, 2018; Kavassalis and Murphy, 2017). In forested areas, ozone dry deposition occurs through leaf stomata as well as non-stomatal pathways including cuticular uptake, and wet or dry leaf surface reactions, while some O₃ is also removed by gas-phase chemical reactions e.g. with biogenic volatile organic compounds (BVOCs) and NO. Though these processes have been identified, the exact partitioning between the dry deposition pathways (and in-canopy chemical destruction) has not been

65 unequivocally determined, hindering the ability to correctly assess ground-level ozone. Thus, forest canopy plays a significant role in regulating the trace gas compositions in the atmosphere. Direct observations of NO_x exchange with a wide variety of plants and in various ecosystems are necessary to achieve a better understanding of their overall impacts.

There have been over a dozen field and laboratory studies aimed at understanding leaf-level NO_x uptake conducted since the 1990s, but primarily on European tree species (Raivonen et al., 2009, and references therein). From direct measurements of
70 foliar NO_x uptake, a reasonably detailed understanding of the gas exchange processes between NO_x and O₃ and plant leaves has been developed. Plants absorb NO₂ and O₃ mainly through leaf stomata, but also by leaf cuticular uptake (Chaparro-Suarez et al., 2011; Geßler et al., 2002; Coe, 1995; Rondón et al., 1993). The uptake efficiency varies across plants and is influenced by environmental conditions. Studies at leaf level and within leaves have found that after entering the stomata, NO₂ is metabolized through dissolution and enzyme-catalyzed reactions (Hu et al., 2014; Vallano and Sparks, 2008; Weber et al.,
75 1998; Nussbaum et al., 1993). Unlike NO₂ and O₃, foliar exchange of NO is small to insignificant (Hereid and Monson, 2001; Rondón et al., 1993), except for herbicide-treated soybeans (Klepper, 1979) and nutrient-fed sugar cane, sunflower, corn, spinach, and tobacco plants (Wildt et al., 1997), where NO emission was observed. Results from (Delaria et al., 2018) are consistent with these earlier findings.

In addition to NO_x and O₃ deposition fluxes, NO₂ compensation points have also been obtained by extrapolating the linear
80 relationship between NO₂ flux and the ambient NO₂ concentration over the leaf surface (Raivonen et al., 2009; Slovik et al., 1996). The compensation point is the specific NO₂ ambient mole fraction or concentration at which NO₂ uptake by the plant leaves or NO₂ flux toward the leaf surface becomes zero. Reported values for this NO₂ compensation point ranged from 0.3 to over 3 ppb, depending on tree type and the conditions under which the measurements were made. The existence of such a point implies that when ambient NO₂ is below these thresholds, for example, in remote, unpolluted forest areas where it is usually
85 less than 1 ppb, the soil-emitted NO_x would not be efficiently removed by the forest canopy necessary for balancing the NO_x budget in the overlying atmosphere above the forest. In fact, for those relatively clean conditions, the forest foliar would provide an additional atmospheric NO_x source.

This conundrum, discussed by Lerdau et al. (2000), seemed to be resolved in the past decade when additional leaf-scale experiments were made using a new chemiluminescent NO_x detector equipped with a highly NO₂ specific blue light converter
90 (Breuninger et al., 2012, 2013; Chaparro-Suarez et al., 2011). The improved NO₂ detection specificity of the instrument prevented artifacts caused by augmentation of the NO₂ signal from other nitrogen compounds such as nitrous acid (HONO), nitric acid (HNO₃), and peroxyacyl nitrates (PANs). These artifacts may have caused an observed reduction of NO_x uptake that led to the conclusion of an (inferred) compensation point. The above work, on several native European trees, showed either a lower NO₂ compensation point than previously measured, at 0.05 to 0.65 ppb, or values not significantly different
95 from zero at the 95% confidence interval, and do not support the possibility of a foliar NO_x source. However, when analyzing the observed NO_x and O₃ concentrations in a North American hardwood forest at the University of Michigan Biological Station (UMBS) research site using a multi-layer canopy exchange model, Seok et al. (2013) found that the best agreement between simulated and measured NO_x concentrations was obtained when a 1 ppb NO₂ compensation point was invoked. Further analysis

to assess the sensitivity of the simulated NO_x mixing ratios to the representation of soil NO emission, leaf surface photolysis
100 of nitrate, or advection was not able to reproduce the observations especially regarding the diurnal cycle of NO_x.

In order to verify these findings regarding the potential role of an NO₂ compensation point for the UMBS site, we conducted
further field experiments on leaf-level gas exchange in summer 2016. This work is the first direct observation of foliar gas
exchange of NO_x and O₃ on mature trees growing naturally in a North American forest. To our knowledge, there has been one
early study on young seedlings of several American tree species (Hanson et al., 1989), and one recent study on seedlings of
105 California live oak (Delaria et al., 2018). In this work, we used a branch enclosure technique to measure mainly NO₂, as well
as NO, and O₃ exchange rates at the leaf surface of four locally dominant tree species, *Pinus strobus* (eastern white pine), *Acer*
rubrum (red maple), *Populus grandidentata* (bigtooth aspen), and *Quercus rubra* (red oak). Results obtained from these
measurements provide information to reassess the possibility of a foliar NO₂ source and the role of the canopy on NO_x and O₃
cycling at this forest site. In this paper, we use both “uptake” and “foliar deposition” when describing trace gas exchange at
110 the foliar level. Both terms refer to the process of trace gas loss upon contact with the leaf surface; but generally, the subject
of “uptake” is the plant whereas the subject of “deposition” is the trace gas.

2 Experiment

2.1 Site description

The experiments were carried out at the Program for Research on Oxidants: PHotochemistry, Emissions, and Transport
115 (PROPHET) research site at UMBS, which occupies about 10,000 acres on the northern tip of the Lower Michigan Peninsula
(45.56° N, 84.71° W, Fig. 1). The area was heavily logged until the end of the 19th century. It also experienced several severe
wildfires from 1880 to 1920. Natural reforestation started when the location was acquired for the research station in 1909.
Today, bigtooth aspen, trembling aspen (*Populus tremuloides*), red maple, red oak, and white pine dominate within about a 1-
km radius of the PROPHET site, whereas within a 60-m radius of the site, there are more white pine trees and almost no
120 trembling aspen.

The northern part of the peninsula is fairly remote. The air is free from anthropogenic pollutants unless meteorological
conditions result in the advection of air masses from surrounding major cities: to the southwest, Chicago, IL and Milwaukee,
WI; to the southeast, Detroit, MI; and to the east, Toronto, ON. During the field experiments, about 35% of the time, air masses
were coming from these directions. However, since the enclosures were purged with scrubbed ambient air (see Methods
125 section), the direct influence of pollutants on the enclosed plant material was minimal.

The enclosure measurements were carried out from July 20 to August 3, 2016. Sky conditions were sunny to mixed sun and
clouds most of the time. The average ambient temperature measured in the canopy (~2 m from the ground) was 24°C during
daylight, and 18°C at night, with maximum and minimum temperatures of 31°C and 12°C, respectively. There were two main
rainfall events, with the most recent being two days prior to the start of the enclosure experiments. The average soil temperature

130 was near 19°C throughout the experiment period, and the soil moisture decreased gradually after the rainfall. These conditions are within the normal ranges for this site in July.

2.2 Methods

Branch enclosure experiments were conducted sequentially on branches of white pine, red maple, bigtooth aspen, and red oak. The estimated ages of the white pine, red maple, and red oak trees were about 15 to 20 years, and the bigtooth aspen, 5–10
135 years. All tree branches were selected based on their sun exposure, accessibility, and size. The height of the enclosed branches ranged from 3 to 10 m above the ground.

The enclosure system was composed of three parts: the enclosures, the airflow system, and the trace gas measurement instruments (Fig. 2). The enclosure, essentially a flow chamber, was constructed using a 61 x 91 cm bag made of Tedlar® (polyvinyl fluoride) (Jensen Inert Products, Florida, USA) with three factory-installed 0.95 cm diameter ports to attach tubing
140 and sensor wires. The branch was carefully enclosed by the bag so that it was situated as close to the middle of the bag as possible. The open end of the bag was then closed around and tied onto the main stem of the branch, tight enough to secure the enclosure when it was inflated by the purge air, but also with enough leakage to allow air to escape during purging. Each branch enclosure was paired with an identical enclosure assembly without any plant material as the background reference to account for wall effects and other factors that may affect trace gas concentrations. The reference enclosure was placed adjacent
145 to the branch enclosure but without obstructing the sunlight to the enclosed tree leaves.

Air delivery and air sample lines (polytetrafluoroethylene or PTFE), each about 30 m long, were connected to the enclosures and to the instruments housed in an air-conditioned trailer at the site. Between the trailer and the enclosures, the air and sample lines were bundled together and sheathed inside black flexible insulation hoses linked together end to end. The hoses were wrapped in aluminum foil to keep the sample lines from absorbing heat from sunlight.

150 Ambient air from outside the trailer and scrubbed free of dust, O₃, and NO_x was used as the purge gas. An oil-free air compressor (Medo USA, now Nitto Kohki USA) was used to pull the ambient air through an organic vapor/acid gas respirator cartridge (Magid, Illinois, USA), which functioned as a dust filter. Downstream of the compressor, the air was further filtered by an ozone scrubber (Thermo Fisher Scientific), activated charcoal, and a NO_x scrubber (Purafil, Inc., Georgia, USA). After the filters, polytetrafluoroethylene (PTFE) tubing (12.7 mm OD and 9.52 mm OD) was used to carry the air to the enclosure
155 chambers. The tubing was connected to the port on the Tedlar bag at the end near the tip of the enclosed branch, opposite the bag opening. Inside the bag connected to the same port was an air distributor made from a loop of tubing (9.52 mm OD) with pinholes (~1.5 mm diameter) about 1 cm apart drilled along its entire length. This allowed even distribution and mixing of the purge air inside the enclosure. The flow rate of the purge air was maintained at 37 L m⁻¹. The volume of the inflated enclosure was ~57 L, giving the air a residence time of ~1.5 min. Additional resident time of sample air due to the sample line (30 m,
160 3.175 mm ID) was ~ 6 sec.

For the trace gas exchange experiments, known amounts of NO₂, NO, or O₃ were added into the scrubbed air stream. NO₂ and NO were from compressed standard gas cylinders (Scott-Marrin, Inc., California, USA), and O₃ was made in situ using a

mercury Pen-Ray lamp O₃ generator (UVP, California, USA) and compressed zero air. A KOFLO® type mixer was placed just downstream of the trace gas inlet to ensure even mixing of the added trace component with the scrubbed air.

165 NO, NO₂, O₃, CO₂, and H₂O mixing ratios before and after the enclosures were measured, with the air sample selected using a set of solenoid valves. The concentrations of these gases were calculated using the ideal gas law and the measured air temperature. The time for each sample was five minutes, alternating between the enclosure inlet and outlet. The reference enclosure inlet and outlet were sampled once an hour. The environmental conditions were also recorded, including ambient and enclosure temperatures (S-THB, Onset Computer Corp., Massachusetts, USA), leaf temperatures (thermocouple wire
170 sensors, Omega Engineering, Connecticut, USA), relative humidity (S-THB, Onset), leaf wetness (for qualitative assessment of leaf conditions only) (S-LWA, Onset), and photosynthetically active radiation (PAR) (S-LIA, Onset). Standard commercially available instruments were used for O₃ (Model 49i, Thermo Fisher Scientific, USA) and CO₂/H₂O (LiCor 840, Li-Cor Corp., Nebraska, USA). NO and NO₂ were measured using a home-built chemiluminescence detector that utilizes the light-emitting reaction of NO with O₃ (Ryerson et al., 2000).

175 The NO_x instrument was programmed to run on 5-minute cycles, each with a one-minute measurement of zero air (UHP, Airgas, USA), followed by a 2-min measurement of NO, and a 2-min measurement of NO₂. In NO₂ mode, NO₂ was first converted to NO, then measured the same as in the NO mode. The conversion was done using an LED UV light source (L11921-500, Hamamatsu Photonics). The peak light emission of this LED was at 385 ± 5 nm, matching the absorption peak of NO₂ and minimizing the interference from the unwanted photolysis of HONO. The NO₂ to NO conversion efficiency was
180 ~ 0.68 . Because the ambient air was scrubbed to remove O₃ (and other trace gases) before entering the enclosures, the effect of ambient O₃ on NO_x measurements was negligible. A high-concentration (1.5 ppm) NO standard dynamically diluted with ultra-high purity zero air (Airgas, USA) was used to calibrate the NO measurement. For the NO₂ calibration, NO in the same diluted standard was partially converted to NO₂ by adding a controlled amount of ozone (generated in situ using a Pen-Ray ozone generator and 99.98% oxygen). The instrument calibration runs were initiated automatically about every 7 hours during
185 regular operation. The overall 1 σ -precision for a 5-minute measurement cycle was ~ 2 ppt for NO and ~ 4 ppt for NO₂. The accuracy of the NO and NO₂ measurements was ~ 30 ppt.

Water vapor at the enclosure inlet and outlet was measured using a LiCor 840. The instrument was calibrated using a LiCor dew point generator. The ambient relative humidity results from the Onset sensors were compared with the data from a nearby AmeriFlux tower (within 100 m) (Vogel, 2016a), and the agreement was within 3%. It was noticed that on particularly hot and
190 humid afternoons, there was condensation of water in the sample line leading to the instruments. The condensed water was removed promptly with gentle warming of the affected section of the sample line. The data recorded during these times were excluded.

After installation, each set of branch and reference enclosures was first purged with scrubbed ambient air at least overnight and through the early morning hours (up to $\sim 10:00$ local time) to allow the branches to acclimate, and also to reduce the amount
195 of any possible surface-deposited photochemically labile compounds that might interfere with the measurements (Raivonen et al., 2006). The gas exchange experiments were then started and carried out for the following 2 to 4 days. A known amount of

the trace gas was introduced into the purge air flow. This included zero concentration, i.e. purging with scrubbed air between the trace gas additions. The maximum mixing ratios of the trace gases in the purge air were kept within the range of typically observed ambient measurements, i.e. $\text{NO}_2 < 1.2$ ppb, $\text{NO} < 300$ ppt, and $\text{O}_3 < 60$ ppb.

200 The enclosed leaves were harvested after the completion of the measurements and immediately placed in an oven to be air-dried at 65°C . The leaf area was then measured by forming a monolayer of the dried leaves on graph paper. The enclosed single-sided leaf area for white pine, red maple, bigtooth aspen, and red oak was 0.35, 0.26, 0.11, and 0.44 m^2 , respectively.

Leaf-level uptake or emission of the trace gas leads to a trace gas concentration difference between the enclosure inlet and outlet. In the enclosure, the flux of the trace gas with respect to the leaf surface is:

205
$$F_x = \frac{Q}{A} (c_o - c_i) , \quad (1)$$

where F_x ($\text{pmol m}^{-2} \text{ s}^{-1}$) is the flux of the trace gas x ; c_i and c_o , in pmol m^{-3} , are the trace gas concentration measured at the enclosure inlet and outlet, respectively. Q ($\text{m}^3 \text{ s}^{-1}$) is the purge air flow rate. A (m^2) is the one-sided area of the enclosed leaves, as the stomata, the part of leaf anatomy most relevant to gas exchange, generally are located on the underside of tree leaves (Kirkham, 2014). A resulting flux with a negative sign reflects the loss of the trace gas at the leaf surface, and a positive flux, emission from the foliage. All the trace gas concentration changes through the branch enclosure ($c_o - c_i$) were corrected against the background obtained from the reference enclosure before the fluxes were determined according to Eq. (1). The detection limit of flux, i.e. the minimum absolute value above which the flux is significantly non-zero ($p < 0.05$, or at the 95% confidence level), was determined using the flux data obtained during the scrubbed air purge at nighttime when no emission from the leaves was expected because generally the leaf stomata are closed at night. These detection limits (Table 1) reflect the measurement precision of the instruments, variations of the actual enclosure conditions over time, and fluctuation of the purge air flow rate. Nighttime transpiration in trees and shrubs has been measured in prior work, with reports of nighttime transpiration rates ranging from 0 to as much as 25% of the daytime value (Dawson et al., 2007), suggesting that leaf stomata may remain open at night for some plants. However, this possibility did not affect the above results as there was no evidence of a consistent concentration difference above zero between the enclosure outlet and inlet measurements.

220 2.3 Tree branch samples

The representative tree species were determined based on the basal and leaf area coverage within the 60 m radius of the research site. Tree branches for the enclosure experiments were selected for their accessibility from the ground. Preferences were given to those with adequate sun exposure and to mature trees whenever possible. Enclosed branches of white pine (*Pinus strobus*) and red maple (*Acer rubrum*) were ~ 7 m above ground and from trees that were over 10 m in height. The enclosed branches of red oak (*Quercus rubra*, ~ 6 m) and bigtooth aspen (*Populus grandidentata*, ~ 4.5 m) were ~ 3 m above ground.

3. Results

We first examine the results obtained when only scrubbed air (without any addition of NO_x or O₃) flowed through the enclosures. The NO and NO₂ fluxes during the scrubbed air purge are shown in Fig. 3 along with the PAR and leaf temperature measured at the same time. Each data point represents a 5-minute measurement. The data points in gray are indistinguishable from zero within the 95% confidence interval based on the detection limits listed in Table 1. Those outside this confidence interval are marked by black symbols. It is expected that after the plant enclosures are conditioned with the hours-long scrubbed air purge, there will be no signal of NO_x at the enclosure outlet unless there is a source within the enclosure to supply a detectable amount of NO_x. Indeed, for most of the day, there was no detectable amount of NO_x (or O₃) at the enclosure outlet. However, besides a few scattered data points that are outside the confidence interval, there also appear to be some consistent positive fluxes of NO₂ lasting around 30 min or less occurring around noon or early afternoon. Because of the relatively short duration of this NO₂ emission during the brightest time of the day, it is unclear whether the flux was due to emission from leaves, or due to the photolysis of any oxidized nitrogen substrate remaining on the leaf surface even after the initial overnight and morning purging. The mixing ratios corresponding to the observed fluxes were less than 30 ppt in each of the enclosures. Below we present the results from each of the trace gas addition experiments.

3.1 NO₂

Nitrogen dioxide (NO₂) was introduced into the purge air at different concentrations between zero to 40 nmol m⁻³ (~1 ppb). Generally, when NO₂ was added to the enclosure, there was a negative flux, indicating uptake of the trace gas by the plant material (Fig. 4, top panel). The magnitude of the flux was proportional to the input NO₂ concentration. In addition, when the input concentration was held constant for several hours or overnight, the flux had a diurnal pattern, e.g. bigtooth aspen on July 30 to July 31. It was lowest at night, increased through the morning hours and peaked around midday before diminishing again toward nighttime. This behavior strongly suggests that the NO₂ uptake by these trees is in large part controlled by leaf stomatal aperture and, at the same time, driven by the NO₂ concentration gradient from the air around the leaf surface to the leaf internal space.

There are a couple of factors that complicated the NO₂ gas exchange experiment. First, the NO₂ standard used for delivering NO₂ to the enclosure contains about 5% NO that was unavoidably added to the enclosure. Secondly, when there was intense direct sunlight, some NO₂ in the enclosure was photolyzed. While corrections for these interferences were done using the measurements from the reference enclosure, it is difficult to completely remove the artifact caused by NO₂ photolysis. This is because the sunlight exposure of the two enclosures, although situated side-by-side, was often uneven, and the measurements of the enclosures were done not simultaneously but sequentially. This problem is particularly pronounced for clear sky conditions with strong contrasts in sunlit and shaded conditions inside the canopy. The branch enclosure was always positioned to get more sun exposure than the reference enclosure if choices needed to be made. Therefore, the branch enclosure likely received more sunlight overall, even though it might be more shaded during some measurement cycles. Generally, for the

periods of strong sunlight, there is residual NO after the correction against the reference enclosure is made. If we assume all this is due to an underestimation of NO₂ photolysis and make a further correction by combining the changes of NO and NO₂, the data quality is not improved while more noise is introduced to the data. Because of this and because we are not absolutely certain about all possible sources of NO_x from the branch enclosures, we prefer to adhere with the correction using only the reference enclosure measurements and view the resulting NO₂ flux as an upper bound, with possibly as much as 20% overestimation under direct sunlight conditions, which accounts for ~16% of all data during the NO₂ exchange experiments. The size of the stomatal aperture, regulated by the plant's need to optimize photosynthesis and simultaneously minimize water loss, can be gauged by stomatal conductance of water using Eq. (2) (Weber and Rennenberg, 1996):

$$g_{H_2O} = F_{H_2O} / (C_{H_2O_leaf} - C_{H_2O_enclosure}), \quad (2)$$

in which the flux of water (F_{H_2O} , in mmol m⁻² s⁻¹) due to plant transpiration is calculated by applying the measured water concentration difference at the inlet and outlet of the enclosure to Eq. (1). $C_{H_2O_leaf}$ (mmol m⁻³), the water concentration inside the leaf air space, is calculated using the measured temperature of the enclosed leaves, assuming the air in the leaf internal space is saturated with water vapor. $C_{H_2O_enclosure}$ (mmol m⁻³), the water concentration of the branch enclosure, is evaluated using the measured enclosure relative humidity and temperature data. The resulting stomatal conductance of water, g_{H_2O} (mm s⁻¹), for the four enclosed branches is shown in Fig. 5a. The stomatal conductance has a clear diurnal pattern, mainly following the daily cycles of sunlight and photosynthesis. The magnitude varies from tree to tree. The conductance of the white pine and the red maple branches were similar, ranging from near zero at night to about 3 mm s⁻¹, while the conductance of red oak was 0 to ~1 mm s⁻¹, and the bigtooth aspen, 0 to ~6 mm s⁻¹. When the conditions are such that the difference between the leaf and air temperatures is small and the enclosure humidity is high, the difference between $C_{H_2O_leaf}$ and $C_{H_2O_enclosure}$ is also reduced, increasing the uncertainty in g_{H_2O} . In our measurements, this happened mostly from dawn to sunrise, accounting for ~10% of the total data points, where the $(C_{H_2O_leaf} - C_{H_2O_enclosure})$ was within one standard deviation from zero.

Knowing the stomatal conductance of water, the expected rate of NO₂ deposition through the plant stomata can be calculated. Across the stomata, the deposition is a diffusion-controlled process (Weber et al., 1998; Weber and Rennenberg, 1996), where the expected rate is the product of the stomatal conductance of water multiplied by the square root of the ratio of the molecular weight of water to the molecular weight of NO₂:

$$g_x = g_{H_2O} \times \sqrt{\frac{MW_{H_2O}}{MW_x}}, \quad (3)$$

where g_x (mm s⁻¹) represents the expected stomatal uptake rate for the trace gas species x (here $x = \text{NO}_2$); g_{H_2O} (mm s⁻¹) is the stomatal conductance of water; and MW (g mol⁻¹) represents molecular weight.

From the measurements, the leaf-level NO₂ deposition velocity, v_{dNO_2} (mm s⁻¹), is the NO₂ flux toward leaf surface (F_{NO_2} , in pmol m⁻² s⁻¹) normalized to the corresponding NO₂ concentration in the enclosure (c_{o,NO_2} , in pmol m⁻³):

$$v_{dNO_2} = F_{NO_2} / c_{o,NO_2}. \quad (4)$$

If NO₂ deposition is exclusively controlled by stomatal uptake, agreement between the measured deposition velocity and the
290 calculated stomatal uptake rate is expected, i.e. $v_{dNO_2} = g_{NO_2}$. If not, additional factors, such as internal mesophyll resistance
(Gut, 2002; Thoene et al., 1996), or leaf cuticular adsorption (Geßler et al., 2002; Coe, 1995; Rondón et al., 1993), may also
play a role with the former decreases and the latter increases the overall foliar deposition velocity.

In Fig. 5b, the measured foliar deposition velocity of NO₂ is plotted together with the calculated stomatal uptake rate for
comparison. The agreement is generally good for all experiments, suggesting that the foliar deposition of NO₂ for these tree
295 species is indeed closely related to stomatal aperture. This also suggests that the effects of internal mesophyll resistance and
cuticular uptake of NO₂ are relatively minor. The strength of correlation between NO₂ deposition and stomatal conductance is
evaluated using the Pearson correlation coefficient, ρ , which has a possible value between -1 to 1, with a value of 0 indicating
no correlation and a value that is away from zero indicating increasing positive or negative correlation. In Fig. 6, the foliar
NO₂ deposition velocity is plotted against the stomatal conductance for each tree. The correlation coefficient for bigtooth aspen
300 is 0.96 and for red oak is 0.85, both showing a strong positive correlation between the deposition velocity and stomatal
conductance. The correlation is also evident but relatively weaker for the white pine ($\rho = 0.73$) and the red maple ($\rho = 0.71$).

The relationship between the deposition velocity and stomatal conductance is also examined using linear regression analysis.
If NO₂ deposition is entirely controlled by stomata, the deposition rate at zero conductance ($g_{H_2O} = 0$), when the stomata are
closed, should be zero; and the slope of the deposition rate vs. stomatal conductance should be equal to $\sqrt{\frac{MW_{H_2O}}{MW_{NO_2}}}$, or 0.62 (recall
305 Eq. (2)). This relationship is shown in Fig. 6 with the solid blue line. The best fit and the 95% confidence bounds are represented
by the red solid and dashed lines. Also listed in the figure are the slope (m), the intercept (b), and the r^2 value of each fit. The
linear relationship for bigtooth aspen appears to be the tightest, with over 90% of the data variation can be explained by the
fit. The intercept is nearly zero, and the slope of 0.56 is close to 0.62, making it reasonable to conclude that for the bigtooth
aspen, stomatal uptake dominates NO₂ loss at the leaf surface. A similar conclusion can be made for red oak, where r^2 is 0.72,
310 the slope and the intercept are 0.54 and 0.03, respectively.

The red maple is different. The slope of NO₂ deposition rate to stomatal conductance is 0.25, far less than 0.62. The data also
appear to have more scatter. On the time series plot (Fig. 5a), the stomatal conductance on the morning of July 25 (from 8:30
to 12:30) shows high variability that is not reflected by the NO₂ deposition rate at the same time. Possibly an unknown
measurement issue for water concentration during this time or sources of water exchange at leaf surface other than stomata
315 (see Discussion section 4.1) led to the high variability. However, excluding this portion of the observations and using only the
data obtained prior to this time window, from 13:00 on July 24 to 8:00 on July 25, resulted in a modestly improved linear fit
with a slope still below 0.3. For white pine, the slope of v_{dNO_2} vs. g_{H_2O} is 0.40, also lower than the expected value of 0.62
based on stomatal-controlled diffusion. These lower than expected slopes imply there may exist mesophyll resistance to NO₂
uptake for these tree species. Such resistance to stomatal uptake of NO₂ has previously been observed on some trees such as
320 European *Picea abies* (Norway spruce) seedlings (Thoene et al., 1996), and Amazonian *Laetia corymbulosa* and *Pouteria*
glomerate (Gut, 2002). However, in a separate study of Norway spruce seedlings (Rondón and Granat, 1994), no evidence of

internal resistance to NO₂ stomatal uptake was found. Researches on CO₂ diffusion and H₂O transport into leaf internal spaces have revealed that mesophyll resistance is subject to environmental perturbations, and the responses among and within species can vary (Xiao and Zhu, 2017). It is reasonable to assume that the mesophyll resistance to NO₂ uptake may also be subject to environmental conditions, and systematic observations under different conditions are needed to obtain more general conclusions.

The y-intercept of the fitted line accounts for any possible additional foliar deposition when the stomata are closed and consequently the stomatal conductance is zero. Of all four trees studied, only white pine has an intercept significantly larger than zero at $0.43 \pm 0.09 \text{ mm s}^{-1}$, indicating a possible role of wet leaf surfaces and/or cuticular uptake. See Discussion section 4.1 below. The nighttime stomatal conductance of white pine is relatively high, with a median value at 0.57 mm s^{-1} , compared to $0.05\text{-}0.19 \text{ mm s}^{-1}$ for the other trees, probably due to incomplete stomatal closure at night (Dawson et al., 2007). There is corresponding nighttime deposition of NO₂, with a higher rate for white pine relative to the other trees (Fig. 5).

3.1.1 Compensation point of NO₂

To determine at what concentration the NO₂ flux becomes zero, we plot the NO₂ flux vs the enclosure NO₂ concentration in Fig. 7. The amplitude of the stomatal conductance for each data point is represented by the color scale, with cool to warm colors corresponding to stomatal conductance from low to high in each enclosure. As expected, the flux increases with increasing NO₂ concentration in the air surrounding the leaves; and at a given concentration, the flux increases with stomatal conductance. For each enclosure, we selected the data points taken when the stomatal conductance was at least 50–60% of its maximum measured during the experiments, indicated by the large, warm-colored symbols in Fig. 7. These data were then fit with linear regression for flux vs NO₂ concentration. The intercepts of the best-fit regression line and the zero-flux line, representing the compensation point, are listed in Table 2. For all four tree types within the range of stomatal conductance considered, the inferred NO₂ compensation point is well below 100 ppt, and not distinguishable from zero within measurement uncertainties.

3.2 NO

Nitric oxide (NO) was added to the purge air at concentrations up to $\sim 10 \text{ nmol m}^{-3}$ ($\sim 250 \text{ ppt}$) to the white pine, red maple, and bigtooth aspen enclosures (Fig. 4b). Red oak was not included in this experiment. No significant NO flux toward the leaf surface was observed. This agrees with observations made on Scots pine (Rondón et al., 1993), corn leaves (Hereid and Monson, 2001), and *Quercus agrifolia* (Delaria et al., 2018). On the contrary, for the white pine, a positive flux up to $2.7 \text{ pmol m}^{-2} \text{ s}^{-1}$ from the enclosure was measured when NO was added (Fig. 4b, White Pine), indicating emission from the enclosed plant material. This flux also appears to increase with the enclosure NO mixing ratio. Although the photolysis of surface deposited nitrogen oxides may cause such positive NO flux, during the scrubbed air purge prior to the addition of NO, there was no significant NO emission from the pine enclosure. That said, this experiment was done only once in a span of five hours

from late morning to early afternoon. We cannot absolutely rule out possible interference from nitrogen containing chemical components in the system.

355 3.3 O₃

Up to 2.2 μmol m⁻³ (~55 ppb) of ozone (O₃) was introduced to the enclosures. As in the case of NO₂, there was an O₃ loss within the enclosure, and it increased with input O₃ concentration (Fig. 4c). Shown in Fig. 5c is the comparison of the measured foliar O₃ deposition velocity to the expected stomatal uptake rate calculated using leaf stomatal conductance and the square root of the ratio of the O₃ and H₂O molecular weight, $\sqrt{\frac{MW_{H_2O}}{MW_{O_3}}}$. For red maple, bigtooth aspen, and red oak, these two values

360 agree reasonably well, implying that foliar ozone loss is mainly through leaf stomatal and closely related to stomatal conductance. Correlation analyses were not performed here due to the limited number of data points.

For white pine, the measured leaf-level O₃ deposition velocity is significantly greater than the expected stomatal uptake rate by a factor of 2 or more. It is known that on average up to 60% of ozone deposition in vegetated areas is through non-stomatal pathways (Clifton et al., 2019). Within a branch enclosure, non-stomatal pathways can include deposition to wet leaf surfaces (Zhou et al., 2017; Altimir et al., 2004), cuticular uptake, chemical reactions at the leaf surface (Jud et al., 2016; Fares et al., 2010) and in the gas phase with biogenic organic compounds (BVOCs). Estimation of the possible contribution from gas-phase reactions with BVOCs was made as follows. The upper bounds of typical emission rates at 30 °C and PAR level at 1000 μmol m⁻² s⁻¹ for monoterpenes and other BVOCs (excluding isoprene) are 3 and 5 μg C g⁻¹ h⁻¹, respectively (Guenther et al., 1994). The speciation of major BVOCs emitted by white pine at UMBS is based on Kim et al. (2011), including α- and β-pinene, limonene, linalool, α-humulene, and β-caryophyllene. Using the rate constants of the BVOCs with ozone reactions (Burkholder et al., 2015), and the residence time of 1.5 min in the enclosure plus ~6 sec in the sample line before reaching the detector, the estimated ozone loss due to gas-phase chemical reactions was less than 1%. Even with optimal light and temperature conditions for BVOC emission, the estimated gas-phase chemical removal would only be on the order of a few percent.

375 4 Discussion

4.1 Foliar trace gas exchange: NO₂ and O₃

For two weeks during the summer PROPHET2016 campaign, we examined the leaf-level NO₂, NO, and O₃ gas exchange of four different tree species. This work provided a first insight into the general characteristics of the gas exchange of these North American trees in their natural habitat. The trees used in the enclosure measurement represent 80% of the total leaf area within a 1000 m radius of the research site, and 90% within the 60 m radius. It is evident from the results that bidirectional foliar gas exchange depends on the trace gas in question and tree type, and is influenced by diverse and complex environmental conditions, similar to the findings from previous studies mainly on European tree species and on annual plants (grasses and

crops). The foliar uptake rates of NO_2 and O_3 vary from tree to tree and even within the same tree. Leaf stomatal conductance of H_2O emerges as a strong indicator of the uptake efficiency. The foliar NO_2 deposition of bigtooth aspen and red oak is almost entirely controlled by stomatal aperture. For red maple and white pine, the correlation coefficient is over 0.7, even though the measured NO_2 foliar deposition velocity is 40–50% of the predicted stomatal uptake rate. Except for white pine, the O_3 foliar deposition velocities of all the studied trees also covary with stomatal conductance (Fig. 5c). Generally, the leaf-level NO_2 and O_3 deposition velocity can largely be inferred from the stomatal conductance of water only, as also concluded from earlier studies of European tree species (Breuninger et al., 2013; Rondón and Granat, 1994).

Thus, the factors controlling leaf stomatal conductance would in turn greatly influence NO_2 and O_3 deposition in a forested environment. These factors include PAR level, ambient temperature, moisture, and soil conditions, as well as ambient CO_2 (Jarvis, 1976). Further, the capability of the foliar uptake of trace gases would also depend on the intrinsic characteristics of leaf stomata, such as their size and density on the leaf surface, determined by plant species and stage of maturity, and factors such as growth history, leaf age, tree height and the vertical location of the leaf on the tree (Kirkham, 2014; Sparks et al., 2001; Schäfer et al., 2000). In this work, the stomatal conductance of the bigtooth aspen was 3–5 times higher than that of the other trees. Biological features, such as plant and leaf age, stomatal density, may have contributed to this difference. Compared with the other three trees in this work, the aspen was younger and smaller. The enclosed branch was in the upper part of the crown containing developing new leaves. Past measurements, albeit on different species, have shown that for the same species under similar environmental conditions, leaves of young trees generally have higher stomatal conductance than old ones (Niinemets, 2002; Hubbard et al., 1999; Fredericksen et al., 1995; Yoder et al., 1994). Another possible reason for the observed high $g_{\text{H}_2\text{O}}$, while direct evidence has yet to be found, is the number of stomata. Many trees have stomata on only the lower (abaxial) leaf surface; however, trees that belong to the genus *Populus*, which includes aspen, are an exception. They have stomata on both sides (amphistomatous), a feature that allows increased photosynthetic rate and fast growth (Kirkham, 2014). If the bigtooth aspen leaves are indeed amphistomatous, a relatively high $g_{\text{H}_2\text{O}}$ can be expected. We compared the environmental conditions of the enclosures. The integrated PAR exposure levels were similar. The daily variation of the relative humidity in the bigtooth aspen enclosure was not significantly different from the others. In contrast, the average daily temperature was 19.2 °C, cooler than the temperatures (23.9 °C, 22.6 °C, and 21.6 °C) in the other enclosures, similar to the average ambient air temperature outside the enclosure during the same time, 19.1 °C, and 23.6 °C, 22.4 °C, and 21.3 °C. The combined conditions of moisture and temperature led to a relatively low vapor pressure deficit (VPD) in the aspen enclosure, 0.8 kPa, compared to 1.2 kPa (white pine), 1.0 kPa (red maple), and 1.4 kPa (red oak) in the others. Generally, VPD and $g_{\text{H}_2\text{O}}$ are inversely correlated and a low VPD corresponds to a relatively high $g_{\text{H}_2\text{O}}$ (Urban et al., 2017a, 2017b; Hubbard et al., 1999). However, because here we are comparing different tree species, we consider the observed results to stem from the combination of biological and environmental factors. Further examination of these factors is beyond the scope of this paper, nevertheless, it would be beneficial to take this temporal and spatial variability and inhomogeneity into account in model parameterizations of trace gas dynamics since plant stomata are the main conduit of NO_x and O_3 deposition over vegetation.

When extrapolated to zero stomatal conductance, the deposition velocity of NO_2 to white pine was 0.43 mm s^{-1} (Figure 6a), implying deposition unrelated to leaf stomata, possibly to wet leaf surfaces and/or to leaf cuticula. This observation does not exclude the possible existence of these pathways when the stomata are open. A deposition velocity higher than expected based on the stomatal conductance would result if there is significant non-stomatal deposition. On the other hand, mesophyll resistance renders a lower deposition velocity than the expected value. There is no mechanistic reason why the deposition velocity associated with either a non-stomatal pathway or mesophyll resistance should remain constant or vary linearly with stomatal conductance. The relationship of deposition velocity, $v_{d\text{NO}_2}$, and stomatal conductance, $g_{\text{H}_2\text{O}}$, would remain essentially linear as long as stomatal deposition dominates or the non-stomatal deposition term is constant while mesophyll resistance is small. However, if mesophyll resistance is significant, it would limit the increase of $v_{d\text{NO}_2}$ with stomatal conductance.

To assess the role of wet leaf surfaces to non-stomatal deposition, we calculated the white pine enclosure dew point using the temperature and relative humidity data and compared it to the measured leaf temperature. The leaf temperature was always higher than the dew point during the experiments, excluding the possibility of a wet leaf surface from the condensation of pure water. However, a microscopic water film may nevertheless form at a relative humidity as low as 50% if there are hygroscopic deposits on the leaf surface (Sun et al., 2016; Burkhardt and Hunsche, 2013; Burkhardt and Eiden, 1994). The microscopic water film could potentially modify gas exchange rates of water-soluble trace gases in the air. Data from this work do not contain information that can be used to delineate the possibilities of trace gas dissolution into microscopic water films or cuticular uptake. Further investigations with appropriately designed experiments, better measurement precisions, longer observation time, and under different environmental conditions are necessary to delineate the various possible deposition pathways and their dependencies.

To put our results in perspective, we compare our measured daytime maximum foliar deposition velocity of NO_2 with the results from previous studies on American trees (Table 3). Although the development stages of the trees, PAR, humidity and temperature conditions are different, the results are comparable, ranging from 0.76 to 1.6 mm s^{-1} from this work and 0.4 – 1.8 mm s^{-1} from earlier work. We also compare our results to those of several native European trees - scots pine, evergreen oak, common oak, European beech, and silver birch, measured under the conditions of $\text{PAR} = 900 \mu\text{mol m}^{-2} \text{ s}^{-1}$, maximum temperature 27.7°C , and relative humidity 31.2–99.9% (Breuninger et al., 2013). The maximum NO_2 deposition rates were ~ 0.5 – 1 mm s^{-1} for all but the birch tree, which was $\sim 1.5 \text{ mm s}^{-1}$. These numbers are also fairly similar to those of pine, maple and oak reported here. What stands out but without a direct or closely related comparison is the high rate of trace gas uptake by the aspen leaves. Although the comparisons show reasonable agreement, it is evident that the NO_2 (and O_3) foliar uptake is highly variable depending on a myriad of conditions, both environmental and intrinsic to tree species and developmental stage. Measurement results and comparisons from different studies are probably also sensitive to experimental protocols and environmental conditions. These factors should be taken into consideration if more comparisons are to be made in future work.

4.1.1 NO₂ compensation point

Measured fluxes of NO₂ toward the leaf surface while the stomatal conductance was at least 50% of the observed maximum value were used to assess the possible existence of an NO₂ compensation point. It would have been indicated by a zero or positive NO₂ flux at significantly non-zero NO₂ concentrations defined by the measurement system detection limit (Table 1). We found no such evidence of an NO₂ compensation point for all the tree species measured in this work. Indeed, this lack of evidence of a compensation point is also supported by the fact that no significant, sustained NO₂ emission was observed while the enclosures were purged with the scrubbed air only. For all four trees in this study, the compensation point, if it exists at all, would be well below 150 ppt. Thus, this finding does not support the existence of a 1 ppb NO₂ compensation point as suggested in the previously mentioned combined NO_x concentration measurement and canopy exchange model study (Seok et al., 2013) to reach the best agreement between the simulated and observed NO_x concentrations above and within the forest canopy at the UMBS site. We would like to point out that the NO₂ flux may approach zero even at high NO₂ concentrations if the stomata are not adequately open and the stomatal conductance is lower than the values used above (Fig. 7). However, because here the NO₂ uptake is mainly through stomata, such zero flux at relatively high NO₂ mixing ratios is not indicative of a compensation point; rather, it is from the reduced capacity of absorbing NO₂ under reduced stomatal conductance. Our result agrees with recent reports on several other tree species that an NO₂ compensation point is not observed above the detection limit of the measurement using improved NO₂-specific instruments with minimal interference from other nitrogen compounds (Breuninger et al., 2013; Chaparro-Suarez et al., 2011).

4.2 NO

There was no significant leaf-level deposition of NO for all the tree species studied here. Instead, relatively small NO emissions were detected from white pine when up to ~250 ppt NO was added to the enclosure. Delaria et al (2018) reached the same conclusion from their study on *Quercus agrifolia*. We searched for possible errors that might have led to the results but could not find an obvious explanation. Certainly, additional measurements are necessary to verify this observation. Using the leaf area index of white pine at UMBS, 0.11 m²/m² (Vogel, 2016b) and the maximum measured flux, 2.7 pmol m⁻² s⁻¹, we estimated the potential canopy-wide NO flux from this emission to be 0.3 pmol m⁻² s⁻¹, less than 10% of the reported minimum soil NO emission flux of 4–10 pmol m⁻² s⁻¹ at UMBS (Nave et al., 2011).

Although this observation seems counterintuitive, in previous publications, emission of NO has been reported from leaves of individual corn plants exposed to 0.1–0.3 ppb NO (Hereid and Monson, 2001), from leaves of California live oak exposed to air containing NO (Delaria et al., 2018), from several nitrate-nourished plant species (Wildt et al., 1997) as well as pesticide-treated soybean leaves (Klepper, 1979). Additionally, recent plant physiological studies have started to reveal the mechanism of plant NO production and its importance for regulating growth and development, immunity, and signaling (Astier et al., 2017; Río, 2015; Yu et al., 2014), as well as for responding to pollutants and stress (Bison et al., 2018; Farnese et al., 2017;

Velikova et al., 2008). In light of these advances, more targeted observations of foliar NO exchange probably should be
480 conducted while taking these biological factors into consideration.

5 Summary and Conclusions

Using a branch enclosure technique and with controlled addition of trace gases, we obtained data on NO, NO₂, and O₃ leaf-level gas exchange from field experiments on several native tree species in a northern hardwood forest in Michigan, USA. To our knowledge, this is the first time such experiments have been done on North American tree species in a field study. The
485 results provided a new dataset of NO_x and O₃ leaf-scale fluxes and have allowed comparisons of the gas exchange characteristics of mature trees compared to seedlings of these species in the lab and to mature European tree species in the field. The data also provide information, including an upper bound on NO₂ compensation points for these trees, to models of NO_x and O₃ dynamics at the canopy level, particularly for the forest at the PROPHET research site.

A brief survey of the foliar O₃ loss found that uptake by the deciduous trees also closely followed stomatal conductance,
490 while the O₃ foliar deposition velocity for white pine was much larger than expected from leaf stomatal uptake alone. Removal via gas-phase chemical reactions was calculated to be negligible based on estimates of known BVOC emission rates and speciation, implying other non-stomatal pathways - cuticular uptake, dissolution to wet leaf surfaces, and/or chemical reactions at the leaf surface - are responsible for the additional ozone deposition, with their relative importance to be determined.

The trace gas exchange characteristics of NO, NO₂, and O₃ at the leaf level varied depending on tree type and environmental
495 conditions. For NO, there was no measurable foliar uptake from any of the trees studied here. On the contrary, there appeared to be a small emission of NO from white pine when NO was added to the enclosure. Leaf-level NO₂ uptake of bigtooth aspen and red oak was mainly through leaf stomata, with the leaf-level deposition velocity of NO₂ closely following predicted values based on the stomatal conductance of water and molecular diffusivity. The stomatal conductance of aspen was ~5 times higher than that of red oak (and thus the foliar NO₂ deposition velocity for aspen was also much higher). Because stomatal
500 conductance is subject to a variety of factors including those intrinsic to plants, further investigation is needed to determine whether this difference is generally associated with the plant species or is environmentally driven. For white pine and red maple, the foliar NO₂ deposition velocity correlated with stomatal conductance, but there were additional factors that prevented deposition from increasing as much as expected with increasing conductance, suggesting the existence of internal mesophyll resistance to uptake. Furthermore, for white pine, there was foliar NO₂ deposition when stomatal conductance was zero,
505 suggesting a non-stomatal NO₂ loss pathway such as cuticular uptake.

The possible existence of an NO₂ compensation point was inferred by examining the linear relationship between NO₂ flux and ambient NO₂ concentration when the stomata were open, and the stomatal conductance was at least 60% of the maximum measured value. The results showed that the compensation point was ≤ 60 ppt for all trees and was statistically indistinguishable from zero within the measurement sensitivity. This finding does not support the suggested 1 ppb

510 compensation point needed to reconcile the observed and model-simulated NO_x mixing ratios by Seok et al. (2013). Neither does it support any significant foliar NO₂ emission from these tree species at low ambient NO₂ conditions.

It is noteworthy that, beyond the findings in Seok et al. (2013), inclusion of an NO₂ compensation point not only provided the best agreement in terms of NO_x concentrations, but also gave the best agreement between simulated and observed atmosphere-biosphere NO_x fluxes at UMBS in summer 2016 (J. Murphy, personal communications, 2018). Evaluations of
515 these simulations with the Multi-Layer Canopy CHemistry Exchange Model (MLC-CHEM), which was used in Seok (2013) have not yet included a direct comparison with the leaf-scale NO_x and O₃ fluxes reported here. Such a comparison could address both the observed large differences in the magnitude of the stomatal conductance for specific trees and its diurnal cycle, focusing on the early morning onset of stomatal opening and uptake. This would further confirm whether there is a leaf-scale NO_x emission flux due to an NO₂ compensation point, or if a strongly reduced NO_x uptake might partially explain the
520 observed dynamics in the above- and in-canopy NO_x concentrations. This analysis would also benefit from more detailed temporally and vertically resolved NO_x concentration gradient observations compared to the Seok et al. (2013) study, which we measured in conjunction with the leaf-level work described here. This comparison is an essential next step in attempting to reconcile the findings of this study with previous studies of NO_x exchange at the UMBS forest, and will be presented in a follow-up publication.

525 Our findings confirmed that the main conduit of trace gas foliar uptake is leaf stomata. A thorough grasp of the trace gas uptake efficiency hinges on an understanding of the leaf stomatal properties, which depend on the genetic makeup and developmental stage of the plant, as well as the environmental conditions of sunlight, water vapor, ambient temperature, soil, and nutrients. Meanwhile, the additional factors affecting foliar trace gas exchange, such as mesophyll resistance, cuticular uptake, and stress responses, are also subject to plant intrinsic and external conditions and remain to be better understood.

530
Acknowledgments. This research was funded by the National Science Foundation (NSF Grant AGS-1561755). Three anonymous reviewers gave thoughtful comments and questions that helped to improve the manuscript. We thank Professor S. Bertman of Western Michigan University for providing training and access to equipment that made it possible to reach canopy-level tree branches for the enclosure work. We also thank Dr. T. Ryerson of NOAA Chemical Science Division for advice on
535 NO_x measurement instrumentation, and Dr. C. Vogel of the University of Michigan Biological Station (UMBS) for help with housing and calibrations of our instruments during the campaign. Last but not least, we appreciate the support and help from all PROPHET-AMOS 2016 participants and the staff at UMBS.

Data availability. The data from this work are archived at <https://umich.box.com/v/PROPHETAMOS2016>.

540
Author contributions. WW, SR, and JH constructed the enclosure chambers, deployed the instruments, and carried out the field experiments. WW performed the data analysis and prepared the manuscript. LG and DH provided extensive comments and

suggestions for the manuscript. LG and DH initiated this project based on previous fieldwork at UMBS and model analysis regarding leaf-level gas exchange.

545

Competing interests. The authors declare that they have no conflict of interest.

References

- Altimir, N., Tuovinen, J.-P., Vesala, T., Kulmala, M. and Hari, P.: Measurements of ozone removal by Scots pine shoots: calibration of a stomatal uptake model including the non-stomatal component, *Atmos. Environ.*, 38(15), 2387–2398, doi:10.1016/j.atmosenv.2003.09.077, 2004.
- 550 Astier, J., Gross, I. and Durner, J.: Nitric oxide production in plants: an update, *J. Exp. Bot.*, 69(14), 3401–3411, doi:10.1093/jxb/erx420, 2017.
- Bison, J. V., Cardoso-Gustavson, P., Moraes, R. M. de, Silva Pedrosa, G. da, Cruz, L. S., Freschi, L. and Souza, S. R. de: Volatile organic compounds and nitric oxide as responses of a Brazilian tropical species to ozone: the emission profile of young and mature leaves, *Environ. Sci. Pollut. Res.*, 25(4), 3840–3848, doi:10.1007/s11356-017-0744-1, 2018.
- 555 Breuninger, C., Oswald, R., Kesselmeier, J. and Meixner, F. X.: The dynamic chamber method: trace gas exchange fluxes (NO, NO₂, O₃) between plants and the atmosphere in the laboratory and in the field, *Atmos. Meas. Tech.*, 5(5), 955–989, doi:10.5194/amt-5-955-2012, 2012.
- Breuninger, C., Meixner, F. X. and Kesselmeier, J.: Field investigations of nitrogen dioxide (NO₂) exchange between plants and the atmosphere, *Atmos. Chem. Phys.*, 13(2), 773–790, doi:10.5194/acp-13-773-2013, 2013.
- 560 Burkhardt, J. and Eiden, R.: Thin water films on coniferous needles, *Atmospheric Environment*, 28(12), 2001–2011, doi:10.1016/1352-2310(94)90469-3, 1994.
- Burkhardt, J. and Hunsche, M.: "Breath figures" on leaf surfaces—formation and effects of microscopic leaf wetness, *Frontiers in Plant Science*, 4, doi:10.3389/fpls.2013.00422, 2013.
- 565 Burkholder, J. B., Sander, S. P., Abbatt, J. P. D., R. Barker, j., Huie, R. E., Kolb, C. E., Kurylo, M. J., Orkin, V. L., Wilmouth, D. M. and Wine, P. H.: *Chemical Kinetics and Photochemical Data for Use in Atmospheric Studies: evaluation number 18*, Pasadena, CA: Jet Propulsion Laboratory, National Aeronautics and Space Administration. [online] Available from: <http://hdl.handle.net/2014/45510>, 2015.
- Chaparro-Suarez, I. G., Meixner, F. X. and Kesselmeier, J.: Nitrogen dioxide (NO₂) uptake by vegetation controlled by atmospheric concentrations and plant stomatal aperture, *Atmos. Environ.*, 45(32), 5742–5750, doi:10.1016/j.atmosenv.2011.07.021, 2011.
- 570 Clifton, O. E., Fiore, A. M., Munger, J. W. and Wehr, R.: Spatiotemporal Controls on Observed Daytime Ozone Deposition Velocity Over Northeastern U.S. Forests During Summer, *Journal of Geophysical Research: Atmospheres*, 124(10), 5612–5628, doi:10.1029/2018jd029073, 2019.

- 575 Clifton, O. E., Fiore, A. M., Massman, W. J., Baublitz, C. B., Coyle, M., Emberson, L., Fares, S., Farmer, D. K., Gentine, P., Gerosa, G., Guenther, A. B., Helmig, D., Lombardozzi, D. L., Munger, J. W., Patton, E. G., Pusede, S. E., Schwede, D. B., Silva, S. J., Sörgel, M., Steiner, A. L. and Tai, A. P. K.: Dry Deposition of Ozone Over Land: Processes, Measurement, and Modeling, *Reviews of Geophysics*, 58(1), doi:10.1029/2019rg000670, 2020.
- Coe, H.: Canopy scale measurements of stomatal and cuticular O₃ uptake by sitka spruce, *Atmos. Environ.*, 29(12), 1413–
580 1423, doi:10.1016/1352-2310(95)00034-v, 1995.
- Dawson, T. E., Burgess, S. S. O., Tu, K. P., Oliveira, R. S., Santiago, L. S., Fisher, J. B., Simonin, K. A. and Ambrose, A. R.: Nighttime transpiration in woody plants from contrasting ecosystems, *Tree Physiology*, 27(4), 561–575, doi:10.1093/treephys/27.4.561, 2007.
- Delaria, E. R. and Cohen, R. C.: A model-based analysis of foliar NO_x deposition, *Atmospheric Chemistry and Physics*, 20(4),
585 2123–2141, doi:10.5194/acp-20-2123-2020, 2020.
- Delaria, E. R., Vieira, M., Cremieux, J. and Cohen, R. C.: Measurements of NO and NO₂ exchange between the atmosphere and *Quercus agrifolia*, *Atmos. Chem. Phys.*, 18(19), 14161–14173, doi:10.5194/acp-18-14161-2018, 2018.
- Fares, S., McKay, M., Holzinger, R. and Goldstein, A. H.: Ozone fluxes in a *Pinus ponderosa* ecosystem are dominated by non-stomatal processes: Evidence from long-term continuous measurements, *Agric. For. Meteorol.*, 150(3), 420–431,
590 doi:10.1016/j.agrformet.2010.01.007, 2010.
- Farnese, F. S., Oliveira, J. A., Paiva, E. A. S., Menezes-Silva, P. E., Silva, A. A. da, Campos, F. V. and Ribeiro, C.: The Involvement of Nitric Oxide in Integration of Plant Physiological and Ultrastructural Adjustments in Response to Arsenic, *Front. Plant Sci.*, 8, doi:10.3389/fpls.2017.00516, 2017.
- Fredericksen, T. S., Joyce, B. J., Skelly, J. M., Steiner, K. C., Kolb, T. E., Kouterick, K. B., Savage, J. E. and Snyder, K. R.:
595 Physiology, morphology, and ozone uptake of leaves of black cherry seedlings, saplings, and canopy trees, *Environmental Pollution*, 89(3), 273–283, doi:10.1016/0269-7491(94)00077-q, 1995.
- Ganzeveld, L. N., Lelieveld, J., Dentener, F. J., Krol, M. C., Bouwman, A. J. and Roelofs, G.-J.: Global soil-biogenic NO_x emissions and the role of canopy processes, *J. Geophys. Res.*, 107(D16), doi:10.1029/2001jd001289, 2002.
- Gebler, A., Rienks, M. and Rennenberg, H.: Stomatal uptake and cuticular adsorption contribute to dry deposition of NH₃ and
600 NO₂ to needles of adult spruce (*Picea abies*) trees, *New Phytol.*, 156(2), 179–194, doi:10.1046/j.1469-8137.2002.00509.x, 2002.
- Guenther, A., Zimmerman, P. and Wildermuth, M.: Natural volatile organic compound emission rate estimates for U.S. woodland landscapes, *Atmospheric Environment*, 28(6), 1197–1210, doi:10.1016/1352-2310(94)90297-6, 1994.
- Gut, A.: Exchange fluxes of NO₂ and O₃ at soil and leaf surfaces in an Amazonian rain forest, *J. Geophys. Res.*, 107(D20),
605 doi:10.1029/2001jd000654, 2002.
- Hanson, P. J., Rott, K., Taylor, G. E., Gunderson, C. A., Lindberg, S. E. and Ross-Todd, B. M.: NO₂ deposition to elements representative of a forest landscape, *Atmos. Environ.*, 23(8), 1783–1794, doi:10.1016/0004-6981(89)90061-9, 1989.

- Hereid, D. P. and Monson, R. K.: Nitrogen oxide fluxes between corn (*Zea mays* L.) leaves and the atmosphere, *Atmos. Environ.*, 35(5), 975–983, doi:10.1016/s1352-2310(00)00342-3, 2001.
- 610 Hu, Y., Fernández, V. and Ma, L.: Nitrate transporters in leaves and their potential roles in foliar uptake of nitrogen dioxide, *Front. Plant Sci.*, 5, doi:10.3389/fpls.2014.00360, 2014.
- Hubbard, R. M., Bond, B. J. and Ryan, M. G.: Evidence that hydraulic conductance limits photosynthesis in old *Pinus ponderosa* trees, *Tree Physiology*, 19(3), 165–172, doi:10.1093/treephys/19.3.165, 1999.
- Jacob, D. J. and Wofsy, S. C.: Budgets of reactive nitrogen, hydrocarbons, and ozone over the Amazon forest during the wet
615 season, *J. Geophys. Res.*, 95(D10), 16737, doi:10.1029/jd095id10p16737, 1990.
- Jarvis, P. G.: The Interpretation of the Variations in Leaf Water Potential and Stomatal Conductance Found in Canopies in the Field, *Philos. Trans. Royal Soc. B*, 273(927), 593–610, doi:10.1098/rstb.1976.0035, 1976.
- Jud, W., Fischer, L., Canaval, E., Wohlfahrt, G., Tissier, A. and Hansel, A.: Plant surface reactions: an opportunistic ozone
620 defence mechanism impacting atmospheric chemistry, *Atmos. Chem. Phys.*, 16(1), 277–292, doi:10.5194/acp-16-277-2016, 2016.
- Kavassalis, S. C. and Murphy, J. G.: Understanding ozone-meteorology correlations: A role for dry deposition, *Geophysical Research Letters*, 44(6), 2922–2931, doi:10.1002/2016gl071791, 2017.
- Kim, S., Guenther, A., Karl, T. and Greenberg, J.: Contributions of primary and secondary biogenic VOC to total OH reactivity during the CABINEX (Community Atmosphere-Biosphere INteractions Experiments)-09 field campaign, *Atmospheric
625 Chemistry and Physics*, 11(16), 8613–8623, doi:10.5194/acp-11-8613-2011, 2011.
- Kirkham, M. B.: Stomatal Anatomy and Stomatal Resistance, in *Principles of Soil and Plant Water Relations*, pp. 431–451, Elsevier., 2014.
- Klepper, L.: Nitric oxide (NO) and nitrogen dioxide (NO₂) emissions from herbicide-treated soybean plants, *Atmos. Environ.*, 13(4), 537–542, doi:10.1016/0004-6981(79)90148-3, 1979.
- 630 Lerdau, M. T., Munger, J. W. and Jacob, D. J.: The NO₂ Flux Conundrum, *Science*, 289(5488), 2291–2293, doi:10.1126/science.289.5488.2291, 2000.
- Min, K.-E., Pusede, S. E., Browne, E. C., LaFranchi, B. W. and Cohen, R. C.: Eddy covariance fluxes and vertical concentration gradient measurements of NO and NO₂ over a ponderosa pine ecosystem: observational evidence for within-canopy chemical removal of NO_x, *Atmos. Chem. Phys.*, 14(11), 5495–5512, doi:10.5194/acp-14-5495-2014, 2014.
- 635 Nave, L. E., Gough, C. M., Maurer, K. D., Bohrer, G., Hardiman, B. S., Moine, J. L., Munoz, A. B., Nadelhoffer, K. J., Sparks, J. P., Strahm, B. D., Vogel, C. S. and Curtis, P. S.: Disturbance and the resilience of coupled carbon and nitrogen cycling in a north temperate forest, *J. Geophys. Res.*, 116(G4), doi:10.1029/2011jg001758, 2011.
- Niinemets, U.: Stomatal conductance alone does not explain the decline in foliar photosynthetic rates with increasing tree age and size in *Picea abies* and *Pinus sylvestris*, *Tree Physiology*, 22(8), 515–535, doi:10.1093/treephys/22.8.515, 2002.

- 640 Nussbaum, S., Ballmoos, P. von, Gfeller, H., Schlunegger, U. P., Fuhrer, J., Rhodes, D. and Brunold, C.: Incorporation of atmospheric $^{15}\text{NO}_2$ -nitrogen into free amino acids by Norway spruce *Picea abies* (L.) Karst., *Oecologia*, 94(3), 408–414, doi:10.1007/bf00317117, 1993.
- Raivonen, M., Bonn, B., Josesanz, M., Vesala, T., Kulmala, M. and Hari, P.: UV-induced NO_y emissions from Scots pine: Could they originate from photolysis of deposited HNO_3 ?, *Atmos. Environ.*, 40(32), 6201–6213, doi:10.1016/j.atmosenv.2006.03.063, 2006.
- 645 Raivonen, M., Vesala, T., Pirjola, L., Altimir, N., Keronen, P., Kulmala, M. and Hari, P.: Compensation point of NO_x exchange: Net result of NO_x consumption and production, *Agric. For. Meteorol.*, 149(6-7), 1073–1081, doi:10.1016/j.agrformet.2009.01.003, 2009.
- Río, L. A. del: ROS and RNS in plant physiology: an overview, *J. Exp. Bot.*, 66(10), 2827–2837, doi:10.1093/jxb/erv099, 650 2015.
- Rondón, A. and Granat, L.: Studies on the dry deposition of NO_2 to coniferous species at low NO_2 concentrations, *Tellus B*, 46(5), 339–352, doi:10.1034/j.1600-0889.1994.t01-4-00001.x, 1994.
- Rondón, A., Johansson, C. and Granat, L.: Dry deposition of nitrogen dioxide and ozone to coniferous forests, *J. Geophys. Res.-Atmos.*, 98(D3), 5159–5172, doi:10.1029/92jd02335, 1993.
- 655 Ryerson, T. B., Williams, E. J. and Fehsenfeld, F. C.: An efficient photolysis system for fast-response NO_2 measurements, *J. Geophys. Res.-Atmos.*, 105(D21), 26447–26461, doi:10.1029/2000jd900389, 2000.
- Schäfer, K. V. R., Oren, R. and Tenhunen, J. D.: The effect of tree height on crown level stomatal conductance, *Plant Cell Environ.*, 23(4), 365–375, doi:10.1046/j.1365-3040.2000.00553.x, 2000.
- Seok, B., Helmig, D., Ganzeveld, L., Williams, M. W. and Vogel, C. S.: Dynamics of nitrogen oxides and ozone above and 660 within a mixed hardwood forest in northern Michigan, *Atmos. Chem. Phys.*, 13(15), 7301–7320, doi:10.5194/acp-13-7301-2013, 2013.
- Silva, S. J. and Heald, C. L.: Investigating Dry Deposition of Ozone to Vegetation, *Journal of Geophysical Research: Atmospheres*, 123(1), 559–573, doi:10.1002/2017jd027278, 2018.
- Slovik, S., Siegmund, A., Fuhrer, H.-W. and Heber, U.: Stomatal uptake of SO_2 , NO_x and O_3 by spruce crowns (*Picea abies*) 665 and canopy damage in Central Europe, *New Phytol.*, 132(4), 661–676, doi:10.1111/j.1469-8137.1996.tb01884.x, 1996.
- Sparks, J. P., Monson, R. K., Sparks, K. L. and Lerdau, M.: Leaf uptake of nitrogen dioxide (NO_2) in a tropical wet forest: implications for tropospheric chemistry, *Oecologia*, 127(2), 214–221, doi:10.1007/s004420000594, 2001.
- Sun, S., Moravek, A., Trebs, I., Kesselmeier, J. and Sörgel, M.: Investigation of the influence of liquid surface films on O_3 and PAN deposition to plant leaves coated with organic/inorganic solution, *Journal of Geophysical Research: Atmospheres*, 670 121(23), 14,239–14,256, doi:10.1002/2016jd025519, 2016.
- Thoene, B., Rennenberg, H. and Weber, P.: Absorption of atmospheric NO_2 by spruce (*Picea abies*) trees. II. Parameterization of NO_2 fluxes by controlled dynamic chamber experiments, *New Phytol.*, 134(2), 257–266, doi:10.1111/j.1469-8137.1996.tb04630.x, 1996.

- Urban, J., Ingwers, M. W., McGuire, M. A. and Teskey, R. O.: Increase in leaf temperature opens stomata and decouples net
675 photosynthesis from stomatal conductance in *Pinus taeda* and *Populus deltoides* x *nigra*, *J. Exp. Bot.*, 68(7), 1757–1767,
doi:10.1093/jxb/erx052, 2017a.
- Urban, J., Ingwers, M., McGuire, M. A. and Teskey, R. O.: Stomatal conductance increases with rising temperature, *Plant
Signal. Behav.*, 12(8), e1356534, doi:10.1080/15592324.2017.1356534, 2017b.
- Vallano, D. M. and Sparks, J. P.: Quantifying foliar uptake of gaseous nitrogen dioxide using enriched foliar $\delta^{15}\text{N}$ values,
680 *New Phytol.*, 177(4), 946–955, doi:10.1111/j.1469-8137.2007.02311.x, 2008.
- Velikova, V., Fares, S. and Loreto, F.: Isoprene and nitric oxide reduce damages in leaves exposed to oxidative stress, *Plant
Cell Environ.*, 31(12), 1882–1894, doi:10.1111/j.1365-3040.2008.01893.x, 2008.
- Vogel, C.: Data from AmeriFlux Tower measurement,, 2016a.
- Vogel, C.: Personal Communication,, 2016b.
- 685 Wang, Y., Jacob, D. J. and Logan, J. A.: Global simulation of tropospheric O_3 - NO_x -hydrocarbon chemistry: 1. Model
formulation, *J. Geophys. Res.-Atmos.*, 103(D9), 10713–10725, doi:10.1029/98jd00158, 1998.
- Weber, P. and Rennenberg, H.: Exchange of NO and NO_2 between wheat canopy monoliths and the atmosphere, *Plant Soil*,
180(2), 197–208, doi:10.1007/bf00015303, 1996.
- Weber, P., Thoene, B. and Rennenberg, H.: Absorption of Atmospheric NO_2 by Spruce (*Picea abies*) Trees. III. Interaction
690 with Nitrate Reductase Activity in the Needles and Phloem Transport, *Botanica Acta*, 111(5), 377–382, doi:10.1111/j.1438-
8677.1998.tb00722.x, 1998.
- Wildt, J., Kley, D., Rockel, A., Rockel, P. and Segschneider, H. J.: Emission of NO from several higher plant species, *J.
Geophys. Res.-Atmos.*, 102(D5), 5919–5927, doi:10.1029/96jd02968, 1997.
- Xiao, Y. and Zhu, X.-G.: Components of mesophyll resistance and their environmental responses: A theoretical modelling
695 analysis, *Plant Cell Environ.*, 40(11), 2729–2742, doi:10.1111/pce.13040, 2017.
- Yienger, J. J. and Levy, H.: Empirical model of global soil-biogenic NO_x emissions, *J. Geophys. Res.*, 100(D6), 11447,
doi:10.1029/95jd00370, 1995.
- Yu, M., Lamattina, L., Spoel, S. H. and Loake, G. J.: Nitric oxide function in plant biology: a redox cue in deconvolution, *New
Phytol.*, 202(4), 1142–1156, doi:10.1111/nph.12739, 2014.
- 700 Zhou, P., Ganzeveld, L., Rannik, A., Zhou, L., Gierens, R., Taipale, D., Mammarella, I. and Boy, M.: Simulating ozone
dry deposition at a boreal forest with a multi-layer canopy deposition model, *Atmos. Chem. Phys.*, 17(2), 1361–1379,
doi:10.5194/acp-17-1361-2017, 2017.
- Altimir, N., Tuovinen, J.-P., Vesala, T., Kulmala, M. and Hari, P.: Measurements of ozone removal by Scots pine shoots:
705 calibration of a stomatal uptake model including the non-stomatal component, *Atmos. Environ.*, 38(15), 2387–2398,
doi:10.1016/j.atmosenv.2003.09.077, 2004.

- Astier, J., Gross, I. and Durner, J.: Nitric oxide production in plants: an update, *J. Exp. Bot.*, 69(14), 3401–3411, doi:10.1093/jxb/erx420, 2017.
- Bison, J. V., Cardoso-Gustavson, P., Moraes, R. M. de, Silva Pedrosa, G. da, Cruz, L. S., Freschi, L. and Souza, S. R. de:
710 Volatile organic compounds and nitric oxide as responses of a Brazilian tropical species to ozone: the emission profile of young and mature leaves, *Environ. Sci. Pollut. Res.*, 25(4), 3840–3848, doi:10.1007/s11356-017-0744-1, 2018.
- Breuninger, C., Oswald, R., Kesselmeier, J. and Meixner, F. X.: The dynamic chamber method: trace gas exchange fluxes (NO, NO₂, O₃) between plants and the atmosphere in the laboratory and in the field, *Atmos. Meas. Tech.*, 5(5), 955–989, doi:10.5194/amt-5-955-2012, 2012.
- 715 Breuninger, C., Meixner, F. X. and Kesselmeier, J.: Field investigations of nitrogen dioxide (NO₂) exchange between plants and the atmosphere, *Atmos. Chem. Phys.*, 13(2), 773–790, doi:10.5194/acp-13-773-2013, 2013.
- Burkhardt, J. and Eiden, R.: Thin water films on coniferous needles, *Atmospheric Environment*, 28(12), 2001–2011, doi:10.1016/1352-2310(94)90469-3, 1994.
- Burkhardt, J. and Hunsche, M.: "Breath figures" on leaf surfaces—formation and effects of microscopic leaf wetness, *Frontiers in Plant Science*, 4, doi:10.3389/fpls.2013.00422, 2013.
- 720 Burkholder, J. B., Sander, S. P., Abbatt, J. P. D., R. Barker, j., Huie, R. E., Kolb, C. E., Kurylo, M. J., Orkin, V. L., Wilmoth, D. M. and Wine, P. H.: Chemical Kinetics and Photochemical Data for Use in Atmospheric Studies: evaluation number 18, Pasadena, CA: Jet Propulsion Laboratory, National Aeronautics and Space Administration. [online] Available from: <http://hdl.handle.net/2014/45510>, 2015.
- 725 Chaparro-Suarez, I. G., Meixner, F. X. and Kesselmeier, J.: Nitrogen dioxide (NO₂) uptake by vegetation controlled by atmospheric concentrations and plant stomatal aperture, *Atmos. Environ.*, 45(32), 5742–5750, doi:10.1016/j.atmosenv.2011.07.021, 2011.
- Clifton, O. E., Fiore, A. M., Munger, J. W. and Wehr, R.: Spatiotemporal Controls on Observed Daytime Ozone Deposition Velocity Over Northeastern U.S. Forests During Summer, *Journal of Geophysical Research: Atmospheres*, 124(10), 5612–
730 5628, doi:10.1029/2018jd029073, 2019.
- Clifton, O. E., Fiore, A. M., Massman, W. J., Baublitz, C. B., Coyle, M., Emberson, L., Fares, S., Farmer, D. K., Gentine, P., Gerosa, G., Guenther, A. B., Helmig, D., Lombardozzi, D. L., Munger, J. W., Patton, E. G., Pusede, S. E., Schwede, D. B., Silva, S. J., Sörgel, M., Steiner, A. L. and Tai, A. P. K.: Dry Deposition of Ozone Over Land: Processes, Measurement, and Modeling, *Reviews of Geophysics*, 58(1), doi:10.1029/2019rg000670, 2020.
- 735 Coe, H.: Canopy scale measurements of stomatal and cuticular O₃ uptake by sitka spruce, *Atmos. Environ.*, 29(12), 1413–1423, doi:10.1016/1352-2310(95)00034-v, 1995.
- Dawson, T. E., Burgess, S. S. O., Tu, K. P., Oliveira, R. S., Santiago, L. S., Fisher, J. B., Simonin, K. A. and Ambrose, A. R.: Nighttime transpiration in woody plants from contrasting ecosystems, *Tree Physiology*, 27(4), 561–575, doi:10.1093/treephys/27.4.561, 2007.

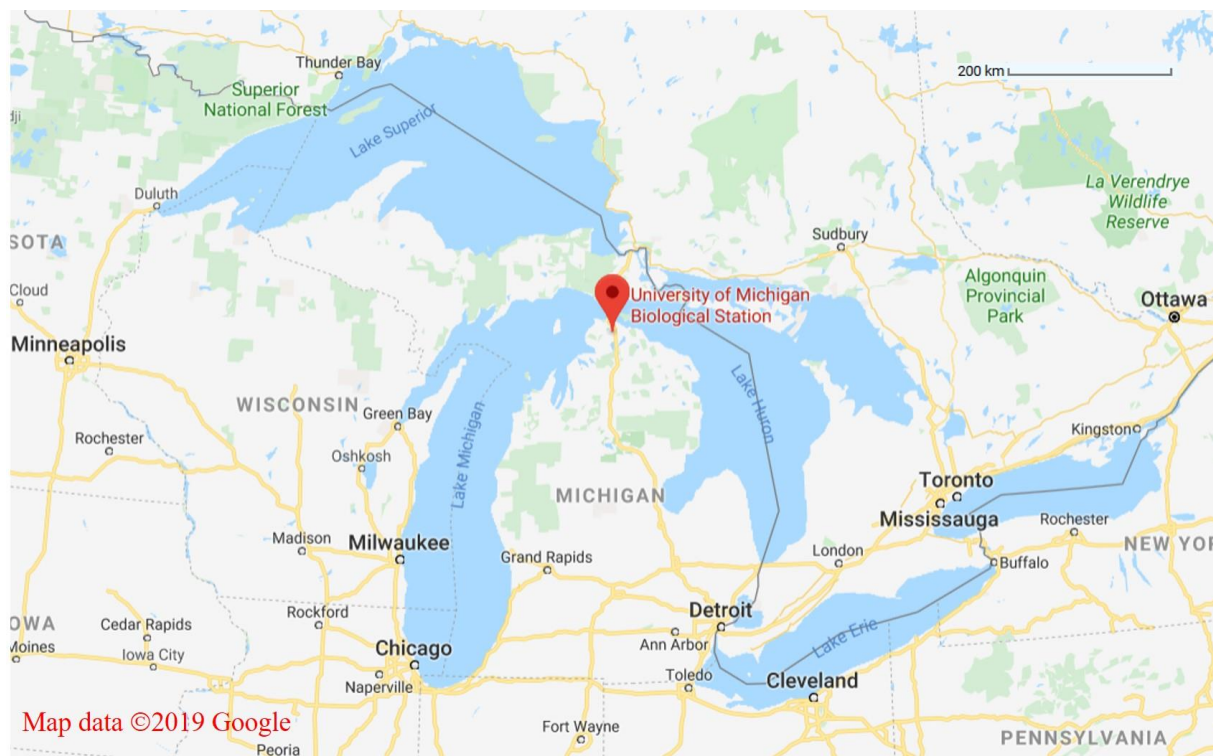
- 740 Delaria, E. R. and Cohen, R. C.: A model-based analysis of foliar NO_x deposition, *Atmospheric Chemistry and Physics*, 20(4), 2123–2141, doi:10.5194/acp-20-2123-2020, 2020.
- Delaria, E. R., Vieira, M., Cremieux, J. and Cohen, R. C.: Measurements of NO and NO₂ exchange between the atmosphere and *Quercus agrifolia*, *Atmos. Chem. Phys.*, 18(19), 14161–14173, doi:10.5194/acp-18-14161-2018, 2018.
- Fares, S., McKay, M., Holzinger, R. and Goldstein, A. H.: Ozone fluxes in a *Pinus ponderosa* ecosystem are dominated by
745 non-stomatal processes: Evidence from long-term continuous measurements, *Agric. For. Meteorol.*, 150(3), 420–431, doi:10.1016/j.agrformet.2010.01.007, 2010.
- Farnese, F. S., Oliveira, J. A., Paiva, E. A. S., Menezes-Silva, P. E., Silva, A. A. da, Campos, F. V. and Ribeiro, C.: The Involvement of Nitric Oxide in Integration of Plant Physiological and Ultrastructural Adjustments in Response to Arsenic, *Front. Plant Sci.*, 8, doi:10.3389/fpls.2017.00516, 2017.
- 750 Fredericksen, T. S., Joyce, B. J., Skelly, J. M., Steiner, K. C., Kolb, T. E., Kouterick, K. B., Savage, J. E. and Snyder, K. R.: Physiology, morphology, and ozone uptake of leaves of black cherry seedlings, saplings, and canopy trees, *Environmental Pollution*, 89(3), 273–283, doi:10.1016/0269-7491(94)00077-q, 1995.
- Ganzeveld, L. N., Lelieveld, J., Dentener, F. J., Krol, M. C., Bouwman, A. J. and Roelofs, G.-J.: Global soil-biogenic NO_x emissions and the role of canopy processes, *J. Geophys. Res.*, 107(D16), doi:10.1029/2001jd001289, 2002.
- 755 Geßler, A., Rienks, M. and Rennenberg, H.: Stomatal uptake and cuticular adsorption contribute to dry deposition of NH₃ and NO₂ to needles of adult spruce (*Picea abies*) trees, *New Phytol.*, 156(2), 179–194, doi:10.1046/j.1469-8137.2002.00509.x, 2002.
- Guenther, A., Zimmerman, P. and Wildermuth, M.: Natural volatile organic compound emission rate estimates for U.S. woodland landscapes, *Atmospheric Environment*, 28(6), 1197–1210, doi:10.1016/1352-2310(94)90297-6, 1994.
- 760 Gut, A.: Exchange fluxes of NO₂ and O₃ at soil and leaf surfaces in an Amazonian rain forest, *J. Geophys. Res.*, 107(D20), doi:10.1029/2001jd000654, 2002.
- Hanson, P. J., Rott, K., Taylor, G. E., Gunderson, C. A., Lindberg, S. E. and Ross-Todd, B. M.: NO₂ deposition to elements representative of a forest landscape, *Atmos. Environ.*, 23(8), 1783–1794, doi:10.1016/0004-6981(89)90061-9, 1989.
- Hereid, D. P. and Monson, R. K.: Nitrogen oxide fluxes between corn (*Zea mays* L.) leaves and the atmosphere, *Atmos.*
765 *Environ.*, 35(5), 975–983, doi:10.1016/s1352-2310(00)00342-3, 2001.
- Hu, Y., Fernández, V. and Ma, L.: Nitrate transporters in leaves and their potential roles in foliar uptake of nitrogen dioxide, *Front. Plant Sci.*, 5, doi:10.3389/fpls.2014.00360, 2014.
- Hubbard, R. M., Bond, B. J. and Ryan, M. G.: Evidence that hydraulic conductance limits photosynthesis in old *Pinus ponderosa* trees, *Tree Physiology*, 19(3), 165–172, doi:10.1093/treephys/19.3.165, 1999.
- 770 Jacob, D. J. and Wofsy, S. C.: Budgets of reactive nitrogen, hydrocarbons, and ozone over the Amazon forest during the wet season, *J. Geophys. Res.*, 95(D10), 16737, doi:10.1029/jd095id10p16737, 1990.
- Jarvis, P. G.: The Interpretation of the Variations in Leaf Water Potential and Stomatal Conductance Found in Canopies in the Field, *Philos. Trans. Royal Soc. B*, 273(927), 593–610, doi:10.1098/rstb.1976.0035, 1976.

- Jud, W., Fischer, L., Canaval, E., Wohlfahrt, G., Tissier, A. and Hansel, A.: Plant surface reactions: an opportunistic ozone
775 defence mechanism impacting atmospheric chemistry, *Atmos. Chem. Phys.*, 16(1), 277–292, doi:10.5194/acp-16-277-2016,
2016.
- Kavassalis, S. C. and Murphy, J. G.: Understanding ozone-meteorology correlations: A role for dry deposition, *Geophysical
Research Letters*, 44(6), 2922–2931, doi:10.1002/2016gl071791, 2017.
- Kim, S., Guenther, A., Karl, T. and Greenberg, J.: Contributions of primary and secondary biogenic VOC total OH reactivity
780 during the CABINEX (Community Atmosphere-Biosphere INteractions Experiments)-09 field campaign, *Atmospheric
Chemistry and Physics*, 11(16), 8613–8623, doi:10.5194/acp-11-8613-2011, 2011.
- Kirkham, M. B.: Stomatal Anatomy and Stomatal Resistance, in *Principles of Soil and Plant Water Relations*, pp. 431–451,
Elsevier., 2014.
- Klepper, L.: Nitric oxide (NO) and nitrogen dioxide (NO₂) emissions from herbicide-treated soybean plants, *Atmos. Environ.*,
785 13(4), 537–542, doi:10.1016/0004-6981(79)90148-3, 1979.
- Lerdau, M. T., Munger, J. W. and Jacob, D. J.: The NO₂ Flux Conundrum, *Science*, 289(5488), 2291–2293,
doi:10.1126/science.289.5488.2291, 2000.
- Min, K.-E., Pusede, S. E., Browne, E. C., LaFranchi, B. W. and Cohen, R. C.: Eddy covariance fluxes and vertical
concentration gradient measurements of NO and NO₂ over a ponderosa pine ecosystem: observational evidence for within-
790 canopy chemical removal of NO_x, *Atmos. Chem. Phys.*, 14(11), 5495–5512, doi:10.5194/acp-14-5495-2014, 2014.
- Nave, L. E., Gough, C. M., Maurer, K. D., Bohrer, G., Hardiman, B. S., Moine, J. L., Munoz, A. B., Nadelhoffer, K. J., Sparks,
J. P., Strahm, B. D., Vogel, C. S. and Curtis, P. S.: Disturbance and the resilience of coupled carbon and nitrogen cycling in a
north temperate forest, *J. Geophys. Res.*, 116(G4), doi:10.1029/2011jg001758, 2011.
- Niinemets, U.: Stomatal conductance alone does not explain the decline in foliar photosynthetic rates with increasing tree age
795 and size in *Picea abies* and *Pinus sylvestris*, *Tree Physiology*, 22(8), 515–535, doi:10.1093/treephys/22.8.515, 2002.
- Nussbaum, S., Ballmoos, P. von, Gfeller, H., Schlunegger, U. P., Fuhrer, J., Rhodes, D. and Brunold, C.: Incorporation of
atmospheric ¹⁵NO₂-nitrogen into free amino acids by Norway spruce *Picea abies* (L.) Karst., *Oecologia*, 94(3), 408–414,
doi:10.1007/bf00317117, 1993.
- Raivonen, M., Bonn, B., Josesanz, M., Vesala, T., Kulmala, M. and Hari, P.: UV-induced NO_y emissions from Scots pine:
800 Could they originate from photolysis of deposited HNO₃?, *Atmos. Environ.*, 40(32), 6201–6213,
doi:10.1016/j.atmosenv.2006.03.063, 2006.
- Raivonen, M., Vesala, T., Pirjola, L., Altimir, N., Keronen, P., Kulmala, M. and Hari, P.: Compensation point of NO_x
exchange: Net result of NO_x consumption and production, *Agric. For. Meteorol.*, 149(6-7), 1073–1081,
doi:10.1016/j.agrformet.2009.01.003, 2009.
- 805 Ríó, L. A. del: ROS and RNS in plant physiology: an overview, *J. Exp. Bot.*, 66(10), 2827–2837, doi:10.1093/jxb/erv099,
2015.

- Rondón, A. and Granat, L.: Studies on the dry deposition of NO₂ to coniferous species at low NO₂ concentrations, *Tellus B*, 46(5), 339–352, doi:10.1034/j.1600-0889.1994.t01-4-00001.x, 1994.
- Rondón, A., Johansson, C. and Granat, L.: Dry deposition of nitrogen dioxide and ozone to coniferous forests, *J. Geophys. Res.-Atmos.*, 98(D3), 5159–5172, doi:10.1029/92jd02335, 1993.
- 810 Ryerson, T. B., Williams, E. J. and Fehsenfeld, F. C.: An efficient photolysis system for fast-response NO₂ measurements, *J. Geophys. Res.-Atmos.*, 105(D21), 26447–26461, doi:10.1029/2000jd900389, 2000.
- Schäfer, K. V. R., Oren, R. and Tenhunen, J. D.: The effect of tree height on crown level stomatal conductance, *Plant Cell Environ.*, 23(4), 365–375, doi:10.1046/j.1365-3040.2000.00553.x, 2000.
- 815 Seok, B., Helmig, D., Ganzeveld, L., Williams, M. W. and Vogel, C. S.: Dynamics of nitrogen oxides and ozone above and within a mixed hardwood forest in northern Michigan, *Atmos. Chem. Phys.*, 13(15), 7301–7320, doi:10.5194/acp-13-7301-2013, 2013.
- Silva, S. J. and Heald, C. L.: Investigating Dry Deposition of Ozone to Vegetation, *Journal of Geophysical Research: Atmospheres*, 123(1), 559–573, doi:10.1002/2017jd027278, 2018.
- 820 Slovik, S., Siegmund, A., Fuhrer, H.-W. and Heber, U.: Stomatal uptake of SO₂, NO_x and O₃ by spruce crowns (*Picea abies*) and canopy damage in Central Europe, *New Phytol.*, 132(4), 661–676, doi:10.1111/j.1469-8137.1996.tb01884.x, 1996.
- Sparks, J. P., Monson, R. K., Sparks, K. L. and Lerdau, M.: Leaf uptake of nitrogen dioxide (NO₂) in a tropical wet forest: implications for tropospheric chemistry, *Oecologia*, 127(2), 214–221, doi:10.1007/s004420000594, 2001.
- Sun, S., Moravek, A., Trebs, I., Kesselmeier, J. and Sörgel, M.: Investigation of the influence of liquid surface films on O₃ and PAN deposition to plant leaves coated with organic/inorganic solution, *Journal of Geophysical Research: Atmospheres*, 121(23), 14,239–14,256, doi:10.1002/2016jd025519, 2016.
- 825 Thoene, B., Rennenberg, H. and Weber, P.: Absorption of atmospheric NO₂ by spruce (*Picea abies*) trees. II. Parameterization of NO₂ fluxes by controlled dynamic chamber experiments, *New Phytol.*, 134(2), 257–266, doi:10.1111/j.1469-8137.1996.tb04630.x, 1996.
- 830 Urban, J., Ingwers, M. W., McGuire, M. A. and Teskey, R. O.: Increase in leaf temperature opens stomata and decouples net photosynthesis from stomatal conductance in *Pinus taeda* and *Populus deltoides* x *nigra*, *J. Exp. Bot.*, 68(7), 1757–1767, doi:10.1093/jxb/erx052, 2017a.
- Urban, J., Ingwers, M., McGuire, M. A. and Teskey, R. O.: Stomatal conductance increases with rising temperature, *Plant Signal. Behav.*, 12(8), e1356534, doi:10.1080/15592324.2017.1356534, 2017b.
- 835 Vallano, D. M. and Sparks, J. P.: Quantifying foliar uptake of gaseous nitrogen dioxide using enriched foliar $\delta^{15}\text{N}$ values, *New Phytol.*, 177(4), 946–955, doi:10.1111/j.1469-8137.2007.02311.x, 2008.
- Velikova, V., Fares, S. and Loreto, F.: Isoprene and nitric oxide reduce damages in leaves exposed to oxidative stress, *Plant Cell Environ.*, 31(12), 1882–1894, doi:10.1111/j.1365-3040.2008.01893.x, 2008.
- Vogel, C.: Data from AmeriFlux Tower measurement,, 2016a.
- 840 Vogel, C.: Personal Communication,, 2016b.

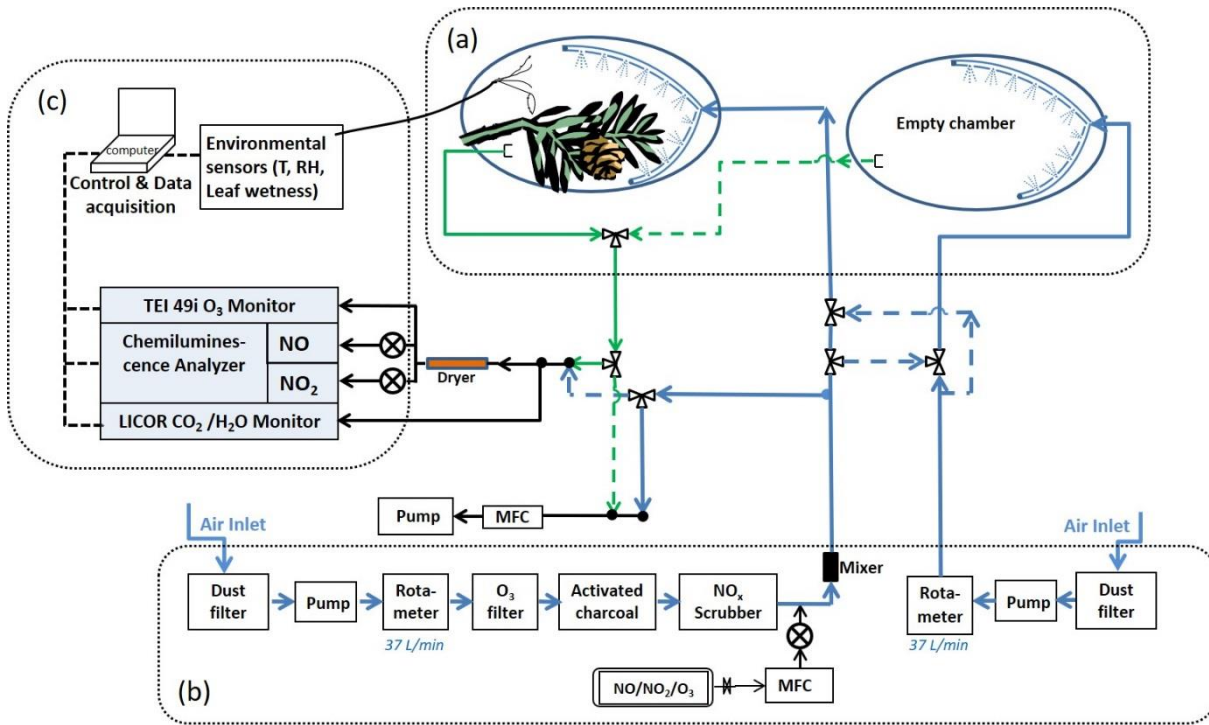
- Wang, Y., Jacob, D. J. and Logan, J. A.: Global simulation of tropospheric O₃-NO_x-hydrocarbon chemistry: 1. Model formulation, *J. Geophys. Res.-Atmos.*, 103(D9), 10713–10725, doi:10.1029/98jd00158, 1998.
- Weber, P. and Rennenberg, H.: Exchange of NO and NO₂ between wheat canopy monoliths and the atmosphere, *Plant Soil*, 180(2), 197–208, doi:10.1007/bf00015303, 1996.
- 845 Weber, P., Thoene, B. and Rennenberg, H.: Absorption of Atmospheric NO₂ by Spruce (*Picea abies*) Trees. III. Interaction with Nitrate Reductase Activity in the Needles and Phloem Transport, *Botanica Acta*, 111(5), 377–382, doi:10.1111/j.1438-8677.1998.tb00722.x, 1998.
- Wildt, J., Kley, D., Rockel, A., Rockel, P. and Segschneider, H. J.: Emission of NO from several higher plant species, *J. Geophys. Res.-Atmos.*, 102(D5), 5919–5927, doi:10.1029/96jd02968, 1997.
- 850 Xiao, Y. and Zhu, X.-G.: Components of mesophyll resistance and their environmental responses: A theoretical modelling analysis, *Plant Cell Environ.*, 40(11), 2729–2742, doi:10.1111/pce.13040, 2017.
- Yienger, J. J. and Levy, H.: Empirical model of global soil-biogenic NO_x emissions, *J. Geophys. Res.*, 100(D6), 11447, doi:10.1029/95jd00370, 1995.
- Yu, M., Lamattina, L., Spoel, S. H. and Loake, G. J.: Nitric oxide function in plant biology: a redox cue in deconvolution, *New*
- 855 *Phytol.*, 202(4), 1142–1156, doi:10.1111/nph.12739, 2014.
- Zhou, P., Ganzeveld, L., Rannik, Ä. Äç., Zhou, L., Gierens, R., Taipale, D., Mammarella, I. and Boy, M.: Simulating ozone dry deposition at a boreal forest with a multi-layer canopy deposition model, *Atmos. Chem. Phys.*, 17(2), 1361–1379, doi:10.5194/acp-17-1361-2017, 2017.

Figures and Tables



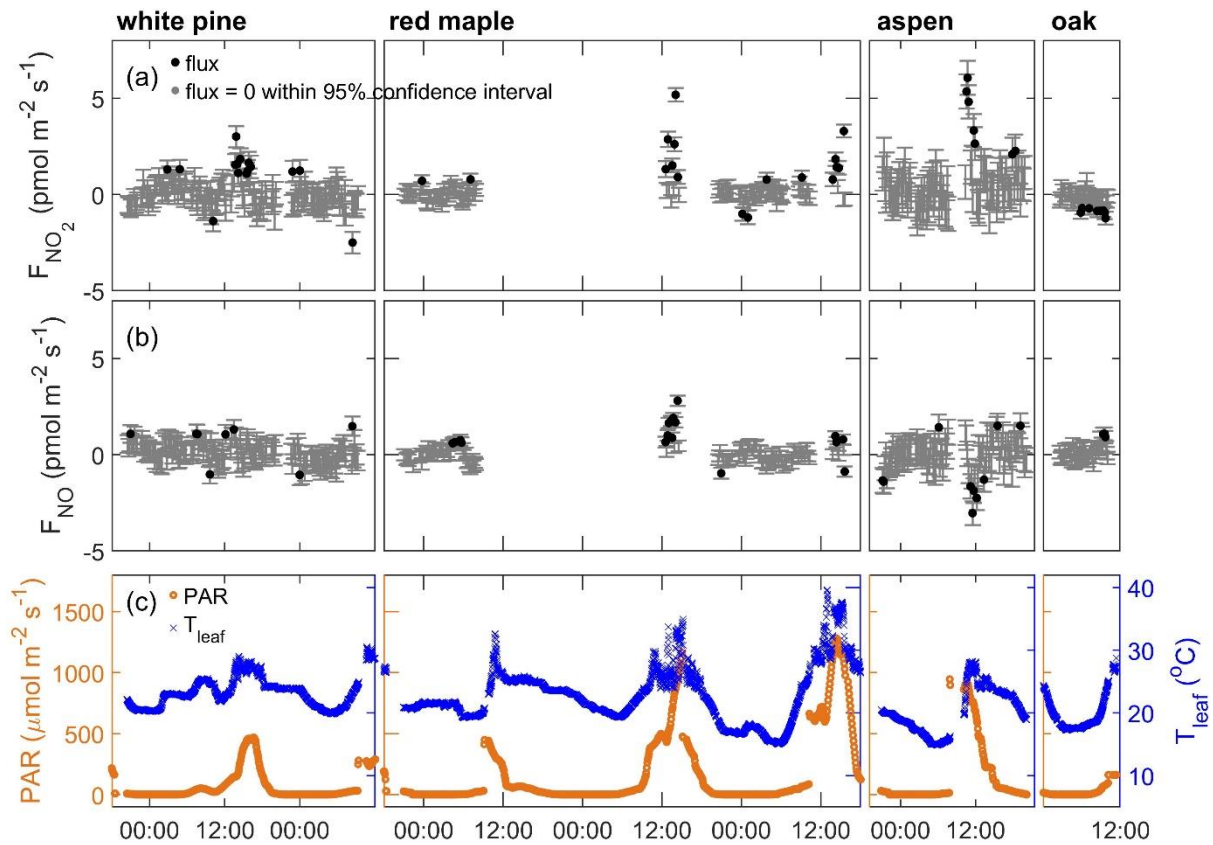
860

Figure 1. Location of the University of Michigan Biological Station, (45.56°N, 84.71°W), indicated by the red pin on the map. The map scale is shown in the upper right corner. (Map data ©2019 Google).

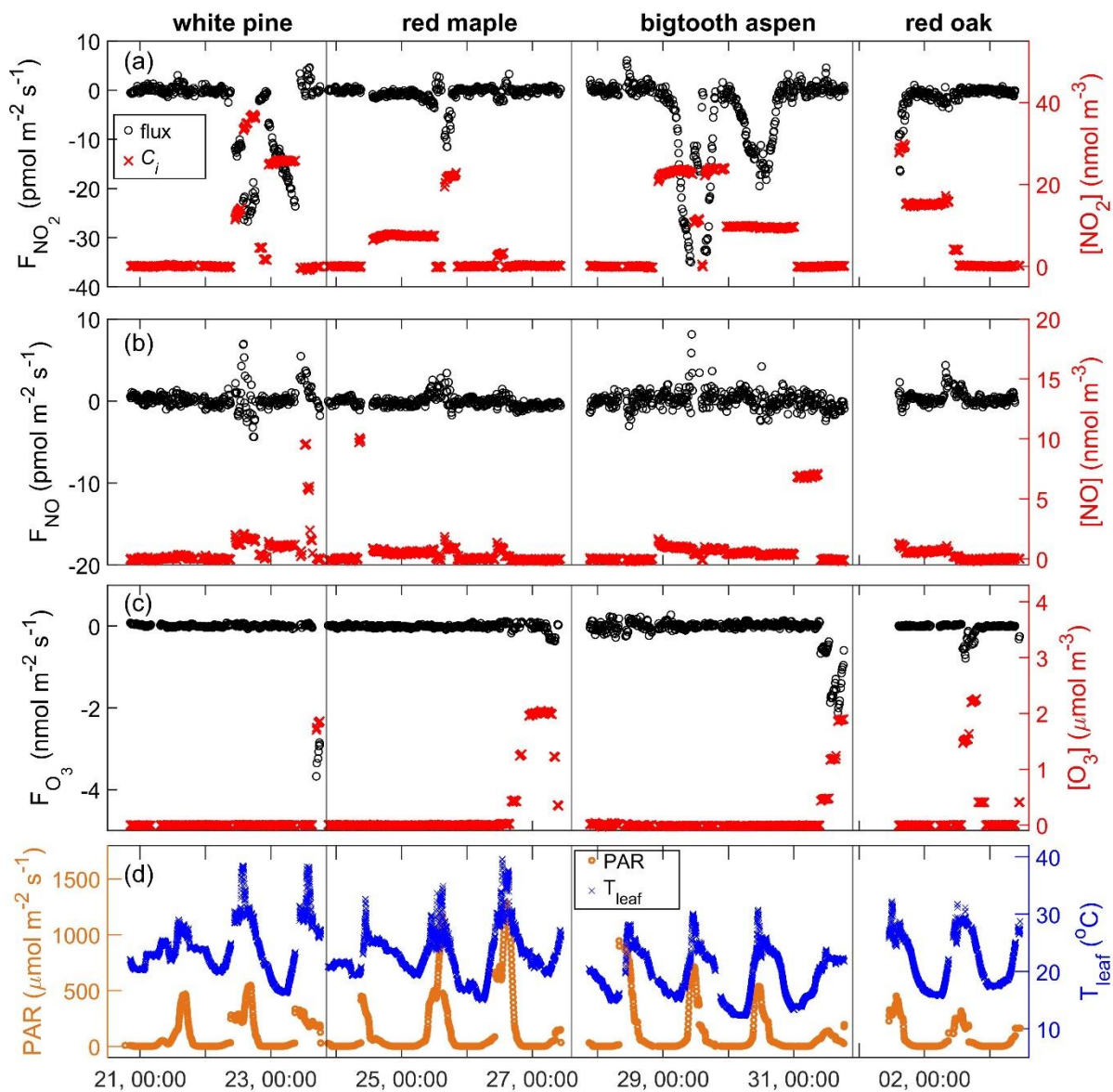


865 Figure 2. Schematic of the enclosure experiment system. The system is comprised of three main parts as shown in the figure: (a) the
enclosures, (b) the purge air flow system, and (c) the trace gas measurement instruments. The blue lines and arrows indicate the air
flowing into the enclosures; the green lines and arrows indicate the air flowing out of the enclosures; and the black lines and arrows
indicate the air sample flow and the balance flow (to maintain constant flow rates in the enclosures). NO and NO₂ gas standards
were used for the controlled addition of these trace gases to the input air stream. Controlled O₃ addition was done by generating
ozone on demand using a pen-ray lamp and ultra-high purity oxygen. See text for instrument details.

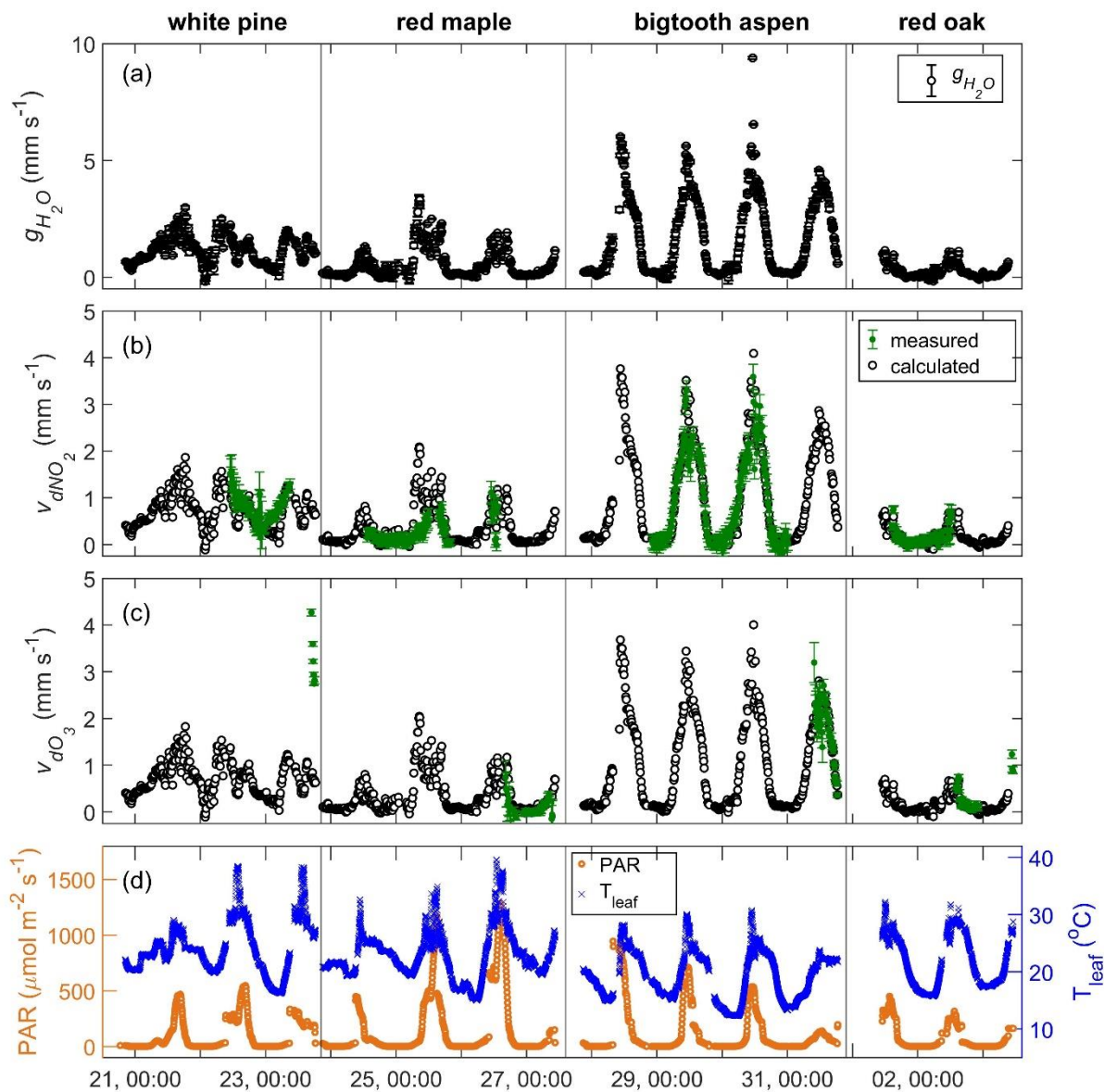
870



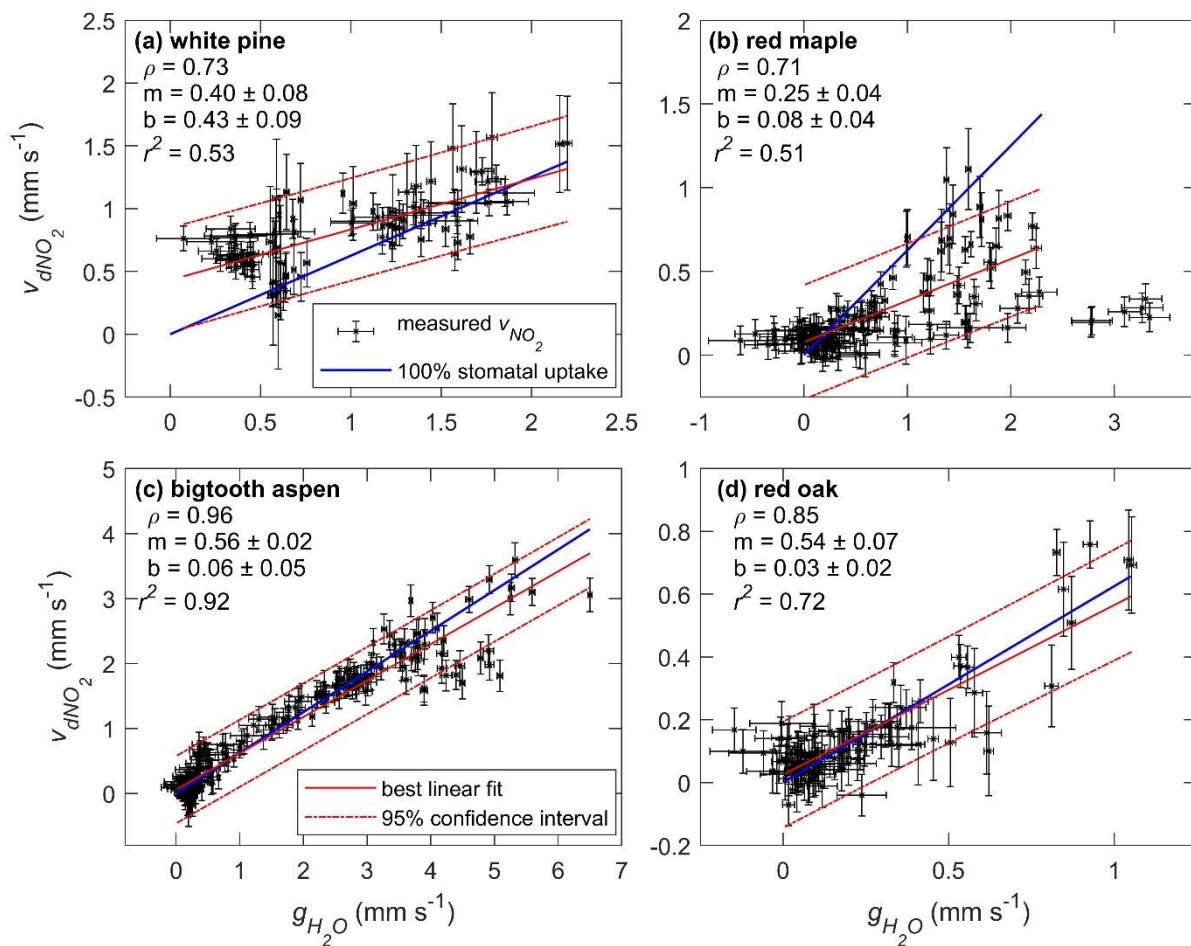
875 **Figure 3.** Apparent fluxes of NO₂ and NO when the enclosures were purged with scrubbed air. From left to right each panel corresponds to the enclosure of white pine, red maple, bigtooth aspen, and red oak. From top to bottom: (a) NO₂ flux, (b) NO flux, and (c) PAR (left axis, orange) and temperature of the enclosure leaves (right axis, blue). In panel (a) and (b), fluxes that are indistinguishable from zero within the 95% confidence interval are represented by gray dots; statistically significant fluxes are represented by black dots; error bars represent 1- σ measurements uncertainties propagated through the calculations.



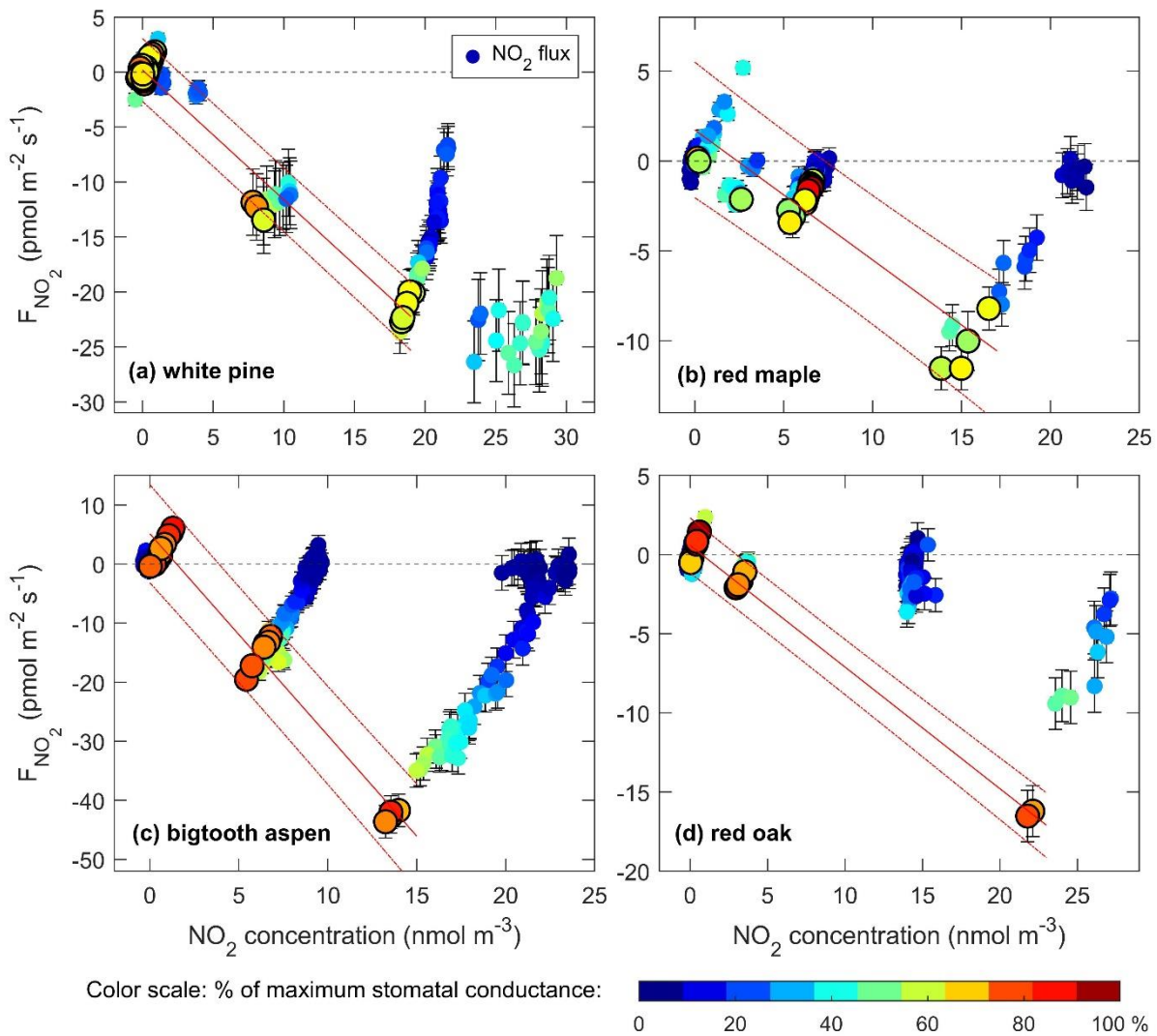
880 **Figure 4.** Time series of the enclosure gas exchange experiments from July 21 to August 3, showing the trace gas fluxes (black symbols: o, left axis) and input trace gas concentrations, C_i , (red symbols: x, right axis) of, (a) NO₂, (b) NO, and (c) O₃. Solar irradiation PAR (orange: o, left axis) and temperature of the enclosure leaves (blue x, right axis) are shown in the bottom panel (d). The tree species are labeled for each enclosure period at the top of the figure. The x-axis tick label format is Day, HH:MM.



885 **Figure 5.** Time series plots of (a) the measured stomatal conductance of water; (b) the measured foliar deposition velocity (green symbols) and the calculated stomatal uptake rate (black symbols) of NO_2 ; (c) the measured foliar deposition velocity (green symbols) and the calculated stomatal uptake rate (black symbols) of O_3 ; and (d) the corresponding PAR and leaf temperature during the experiments from July 21 to August 3, 2016.



890 **Figure 6:** Scatter plots of foliar NO_2 deposition velocity ($v_{d\text{NO}_2}$) vs. stomatal conductance of water ($g_{\text{H}_2\text{O}}$) for (a) white pine, (b) red maple, (c) bigtooth aspen, and (d) red oak. The data points and their error bars are represented by the black symbols. The solid and dashed red lines are the best-fit linear regression and the 95% confidence bounds, respectively. The solid blue line shows the relationship between the deposition velocity and the stomatal conductance if NO_2 loss is entirely controlled by the stomata. The slope of the blue line is 0.62, the square root of the ratio of the molecular weight of water to NO_2 . Listed in each subplot under the tree name are the Pearson correlation coefficient (ρ), and the slope (m) and intercept (b) of the best fit linear regression line.



895

Figure 7. NO_2 flux toward the leaf surface vs. NO_2 concentration in each enclosure. Also shown is the stomatal conductance on a cool-warm color scale with the dark blue representing the lowest values and the red the highest values observed. Flux data with the stomatal conductance 60% of the observed maximum or higher were used for the linear extrapolation to find the compensation point. These data points are shown as larger symbols with a black outline/border. The solid and dashed red lines show the linear fit and 95% confidence bounds. The resulting compensation points are listed in Table 2.

900

905

910

Table 1. Detection limits of the foliar fluxes of NO₂, NO, and O₃. These were determined using the flux data obtained during the nighttime scrubbed air purges when no foliar gas exchange was expected. These limits mainly reflect the measurement precision of the trace gas concentrations at the inlets and outlets of the branch and reference enclosures, variations of the enclosure conditions over time, and the fluctuation of the purge air flow rate.

Detection limit	F_{NO_2} (pmol m ⁻² s ⁻¹)	F_{NO} (pmol m ⁻² s ⁻¹)	F_{O_3} (pmol m ⁻² s ⁻¹)
White pine	1.1	1.0	76.3
Red maple	0.6	0.6	68.0
Bigtooth aspen	2.0	1.3	233
Red oak	0.8	0.8	42.7

915

Table 2. Compensation points from the flux vs. concentration linear fits in Fig. 7. The ranges of the stomatal conductance of the data used are also listed.

Tree species	White pine	Red maple	Bigtooth aspen	Red oak
Stomatal conductance (mm s ⁻¹)	1.8–3.0	1.8–3.5	4.5–6.0	0.8–1.3
Compensation point ± 95% confidence level (ppt)	4 ± 60	60 ± 119	38 ± 59	19 ± 56
Compensation point ± 95% confidence level (nmol m ⁻³)	0.2 ± 2.4	2.4 ± 4.9	1.6 ± 2.4	0.8 ± 2.3

Table 3: Comparison of foliar NO₂ deposition velocity from this work and earlier studies. The maximum velocity measured in each enclosure is listed with the corresponding light, RH, and leaf temperature at the time of the measurement.

Tree species	v_{NO_2} (mm s ⁻¹)	PAR (μmol m ⁻² s ⁻¹)	RH (%)	T_leaf (°C)	Source
<i>Pinus strobus</i> (white pine)	1.6	601	67	30	This work
<i>Pinus strobus</i> (white pine, seedling)	0.4	“Adequate to open leaf stomata”	n/a	29.4	Hansen (1989)
<i>Acer rubrum</i> (red maple)	1.1	1200	72	30	This work
<i>Acer rubrum</i> (red maple, seedling)	1.8	“Adequate to open leaf stomata”	n/a	29.4	Hansen (1989)
<i>Quercus rubra</i> (red oak)	0.76	1086	61	28	This work
<i>Quercus agrifolia</i> (California live oak)	1.23	1190	50–65	26	Delaria (2018)
<i>Populus grandidentata</i> (bigtooth aspen)	3.6	850	71	25	This work

920