

Downscaling system for modelling of atmospheric composition on regional, urban and street scales

Roman Nuterman¹, Alexander Mahura², Alexander Baklanov^{3,1}, Bjarne Amstrup⁴, Ashraf Zaakey⁵

¹Niels Bohr Institute, University of Copenhagen, Copenhagen, DK-2100, Denmark

5 ²Institute for Atmospheric and Earth System Research, University of Helsinki, Helsinki, 00560, Finland

³World Meteorological Organization, Geneva 2, CH-1211, Switzerland

⁴Danish Meteorological Institute, Copenhagen, DK-2100, Denmark

⁵Egyptian Meteorological Authority, Cairo, 11784, Egypt

Correspondence to: Roman Nuterman (nuterman@nbi.ku.dk)

10 **Abstract.** In this study, the downscaling modelling chain for prediction of weather and atmospheric composition is described and evaluated against observations. The chain consists of interfaced models for forecasting at different spatio-temporal scales and run in a semi-operational mode. The forecasts were performed for European (EU) regional and Danish (DK) sub-regional/urban-scales by the offline coupled numerical weather prediction HIRLAM and atmospheric chemical transport CAMx models, and for Copenhagen city/street scale - by the online coupled computational fluid dynamics M2UE model.

15 The results showed elevated NO_x and lowered O_3 concentrations over major urban, industrial and transport land/water routes in both the EU and DK domain forecasts. The O_3 diurnal cycle predictions in both these domains were equally good, although O_3 values were closer to observations for Denmark. At the same time, the DK forecast of NO_x and NO_2 levels was more biased (with better prediction score of the diurnal cycle) than EU forecast, indicating a necessity to adjust emission rates. Further downscaling to the street level (Copenhagen) indicated that the NO_x pollution was 2-fold higher on weekend

20 and more than 5 times higher during working day with high pollution episode. Despite of high uncertainty in road traffic emissions, the street-scale model captured well the NO_x and NO_2 diurnal cycles and onset of elevated pollution episode.

The demonstrated downscaling system could be used in future online integrated meteorology and air quality research and operational forecasting, as well as applied for impact assessments on environment, population and decision making for emergency preparedness and safety measures planning.

25 1 Introduction

A progress in numerical weather and atmospheric composition modelling and continuously increasing supercomputing power make it possible to perform downscaling and nesting from the global to the local scales reaching necessary horizontal and vertical resolutions for a very detailed local meteorology and pollution forecasts. The global and regional scale Atmospheric Chemistry Transport (ACT) modelling systems actively developed and applied during the last decade. These

30 were developed and applied within the frameworks of multiple EU FP6, FP7 and H2020 Monitoring of Atmospheric

Composition and Climate (MACC) projects (Hollingsworth et al., 2008; Simmons, 2010; Peuch et al., 2014; Peuch et al., 2016). Such systems simulate mostly the regional background of air pollution, for instance, in the Copernicus Atmosphere Monitoring Service (CAMS; Grasso, 2017). These large-scale models with increased resolution have limited performance improvement for rural areas (Schaap et al., 2015), but have better modelling scores at reproducing spatio-temporal pollution
35 gradients in and near large urban areas. As a matter of fact, urban and street air pollution is usually several times higher than the pollution at regional scale over suburbs and rural areas and is mostly associated with both local emission sources (Falasca and Curci, 2018) and dominating urban weather conditions (González et al., 2018). Therefore, improvements in performance of high-resolution models for urban areas are closely linked to availability and quality of emission inventories at high spatio-temporal resolution as well as accurate simulation of urban meteorology (Mahura et al., 2008a; Mahura et al.,
40 2008b; Pepe et al., 2016).

Generally, within the deterministic modelling approach, there are two ways applicable for downscaling modelling. It can be performed with a single model capable of local grid refinement (Gettelman et al., 2018) or nesting of numerical grids (Petersen et al., 2005; Lauwaet et al., 2013). It can be also realised as a chain of different resolution models interfacing with each other (Temel et al., 2018; Veratti et al., 2020). In the latter case, the need of different models is justified by the fact that
45 mesoscale models cannot capture local scale processes accurately since the fine-scale flow patterns should be explicitly resolved rather than parameterized (Schlünzen et al., 2011; Ching, 2013). As for the air-quality prediction systems, an offline (Kukkonen et al., 2012) and online (Baklanov et al., 2014) approaches of coupling meteorological and chemical transport models have been commonly used. Each of these has its own advantages and limitations. Currently, there are several studies describing and evaluating systems capable of downscaling modelling of weather and atmospheric composition from regional
50 to micro-scales. Amongst these the study by José et al. (2021) performed operational micro-scale simulations, but this model has very basic chemistry scheme predominately applicable for cold seasons. The others did not consider an operational aspect and/or unlikely to be able to run their micro-scale models in operational mode. The operational runtime constraints will not allow doing that because the complexity of gas-phase chemistry mechanism (Kwak et al., 2015) or requirements for numerical grid resolution in large eddy simulation models (Khan et al., 2021).

The goal of this paper is to demonstrate and evaluate applicability of the downscaling system coupled with computational fluid dynamics model on an example of operational modelling of an acute air-pollution episode. This system consists of several models with nested numerical grids where meteorological and atmospheric composition prediction on regional- and sub-regional/urban-scales is performed. Three interfaced and coupled models – (i) numerical weather prediction (HIRLAM; Undén et al., 2002); (ii) atmospheric chemical transport (CAMx; Ramboll Environ, 2016; Amstrup et al., 2010a; Amstrup et al., 2010b); (iii) computational fluid dynamics (M2UE; Nuterman, et al., 2010; Sabatino, et al., 2011) – were used for
60 airflow and pollution prediction at city/street-scale (on example of Copenhagen, Denmark). In the Methodology section, we firstly describe the applied models and their configurations; and secondly - their interplay within semi-operational setup of the downscaling system. The Results and Discussion section presents the models' evaluation against two urban observation

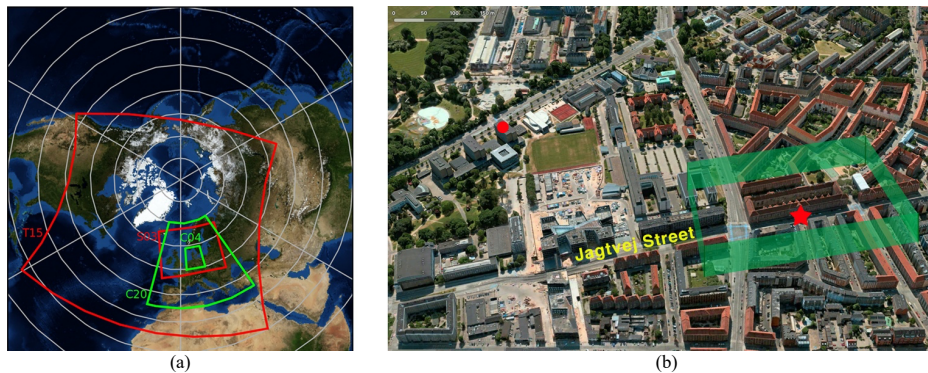
sites (at roof and street levels) as well as recommendations about possible improvements in downscaling system to achieve better prediction quality of forecasting at finest scales.

2 Methodology: downscaling model system

2.1 Description of models

HIRLAM

The Numerical Weather Prediction (NWP) model used in the current downscaling system is the DMI's version of High-Resolution Limited Area Model (HIRLAM; Undén et al., 2002; Petersen et al., 2005). It has basic components such as the hydrostatic semi-Lagrangian dynamical core, digital filtering initialization (Lynch and Huang, 1992), physical parameterization of radiation processes (Savijärvi, 1990), cloud-microphysics Soft Transition Condensation scheme (Sass, 2002), turbulence parametrization (Cuxart et al., 2000), and Interaction-Soil-Biosphere-Atmosphere surface scheme (ISBA; Noilhan and Planton, 1989). The ISBA scheme also includes the building effect parametrization (BEP; Martilli et al., 2002) module to account for effects associated with urban anthropogenic heat flux and roughness. The model is forced by meteorological lateral boundary conditions and 3D-VAR assimilated ground-based and satellite observation data (Gustafsson et al., 2001; Lindskog et al., 2001). The lateral boundaries are received every 6 h interval from the European Centre for Medium-Range Weather Forecasts (ECMWF) and had horizontal grid resolution of $0.15^\circ \times 0.15^\circ$.



80
85 **Figure 1:** (a) operational and research modelling domains for European regional-scale (HIRLAM-T15+CAMx-C20) and sub-regional/urban Denmark scale (HIRLAM-S03+CAMx-C04) forecasts; (b) Nørrebro district of Copenhagen urban area with 2 air-quality monitoring stations, where red circle indicates a roof level air-quality observation at H.C. Ørsted Institute and red star indicates Jagtvej Street level observation; the green trapezoid shows M2UE modelling domain (extracted from © Apple Maps 2020).

In this study, the chosen modelling domains were used for operational numerical weather prediction at DMI. These two domains with crude (T15: $0.15^\circ \times 0.15^\circ$) and fine (S03: $0.03^\circ \times 0.03^\circ$) horizontal grids were applied for European regional and sub-regional/urban Denmark scale modelling (Fig. 1a), correspondingly. In vertical, 40 hybrid pressure levels (starting from 32 m above ground) were used in T15 domain and 65 such levels (starting from 12 m above ground) - in S03 domain. The upper boundary reached 10 hPa at the top of the atmosphere in both computational domains.

There are approximately 8×8 horizontal grids cells (each cell is about 3×3 km size) covering the Copenhagen metropolitan area in S03 domain. According to (Mahura et al., 2008b), the HIRLAM model with activated BEP module must have at least 4 times more grid cells to predict a significant effect of the city area on meteorology. Thus, the BEP module was disabled during operational forecasting with S03 domain, considering the employed numerical grid as well as city size and urban characteristics of Copenhagen. The urban effects were taken into account through roughness parameter and meteorological data assimilated from urban and suburban stations.

CAMx

The Comprehensive Air Quality Model with Extensions (CAMx; Ramboll Environ, 2016) is the finite volume ACT model for regional- and urban-scales employed for air-quality forecasting in our downscaling system. An updated version of Carbon Bond IV (CB-IV) Mechanism (Gery et al., 1989) with improved isoprene chemistry (Yarwood et al., 2005) and 2-mode aerosol microphysics scheme were used in the current setup. The Tropospheric Ultraviolet and Visible radiation model (Madronich and Focke, 1998) was applied to calculate photolysis rate coefficients. Further details about gas-phase chemistry and aerosol microphysics together with wet (Seinfeld and Pandis, 2016) and dry (Wesely, 1989; Slinn and Slinn, 1980) deposition schemes are described in the model's users guide (Ramboll Environ, 2016).

For this study, two computational domains (Fig. 1a) were selected within the ACT model for modelling on regional- ($C20: 0.2^\circ \times 0.2^\circ$) and sub-regional/urban scales ($C04: 0.04^\circ \times 0.04^\circ$) forced by meteorological output (with a coupling interval of 1 hour) from HIRLAM-T15 and -S03 modelling domains, respectively. The vertical resolution of CAMx numerical grid is defined by the one of meteorological driver and therefore, corresponds to 25 HIRLAM hybrid pressure levels covering the lowest 3 km of the troposphere. The chemical initial and boundary conditions for regional-scale modelling are represented by climatological mean values, and those for the sub-regional/urban scale modelling are obtained from the regional scale CAMx model output.

The emission rates were calculated from emission inventory provided by TNO (Kuenen et al., 2010). Although, the EMEP emission inventory was also available, but at substantially lower resolution of $0.5^\circ \times 0.5^\circ$, and therefore, the TNO inventory was used. The inventory has longitude-latitude resolution of $0.125^\circ \times 0.0625^\circ$ and covers the entire Europe, Western Russia and Northern Africa. It includes gases (NO_x , SO_2 , CO , $NM VOC$, NH_3 , CH_4) and lumped primary aerosols with diameters less than $2.5 \mu m$ and $10 \mu m$. The emission rates are associated with different anthropogenic sources attributed to various anthropogenic activities according to the Selected Nomenclature for sources of Air Pollution (SNAP).

Deleted: Figure

Deleted: Figure

M2UE

For the city/street scale modelling, the Micro-scale Model for Urban Environment (M2UE) was developed and applied. It is a Computational Fluid Dynamics (CFD) code for airflow and pollution prediction in an urban environment (Nuterman et al., 2010), which is able to simulate a complex aerodynamics in heterogeneous urban canopy with penetrable (vegetation) and impenetrable (buildings) obstacles and traffic induced turbulence. The model includes three-dimensional system of Reynolds equations, $k - \epsilon$ (Launder and Spalding, 1974) and cubic eddy-viscosity (Craft et al., 1996) turbulence closure schemes, and the 'advection-diffusion' equations to simulate atmospheric chemistry transport. A numerical solution of governing equations is based on the fully implicit time advancing scheme and the finite volume method (Patankar, 1980; Ilin, 1995; van Leer, 1974). An ordinary uniform or non-uniform regular 3D grid with fictitious domain method (Aloyan et al., 1982; Vabishchevich, 1991) is used in the model. The M2UE model is coupled with simplified atmospheric gas-phase chemistry mechanism. This mechanism is based on Stockwell and Goliff (2002) with extra chemical reaction included: $SO_2 + OH \rightarrow H_2SO_4 + HO_2$. Full list of chemical reactions and corresponding rate parameter for this reaction are given in Table A1, Appendix A. Such simple chemistry is dictated by the fact that the model was run in a semi-operational mode, which implies relatively short forecasting time on available computer facility. In the future, when more powerful supercomputers become available the mechanism could be extended or improved with more comprehensive one.

The computational domain (a section of Jagtvej Street and surroundings) used in the current study is explicitly defined by buildings, roads, vegetation of the Copenhagen metropolitan (Fig. 1b) area obtained from the high-resolution Danish Elevation Model dataset (Flatman et al., 2016). The horizontal and vertical extent of the computational domain is 500 x 500 x 100 m (detailed grid is shown in Fig. A2). The distance between buildings in the centre of computational domain and inlet/outlet boundaries is $5H_{max}$, where $H_{max} = 20$ m is the tallest building height. The distance between the tallest building and top boundary was $4H_{max}$. Therefore, the current micro-scale domain extent/size is acceptable compromise between the best practices and guidelines (Franke et al., 2007) as well as total operational runtime (should not exceed 12 hr in order to satisfy modelling system requirements for the entire modelling chain). The horizontal and vertical numerical grids with local refinement of grid-cells ranging from 1 m at the Jagtvej Street to 5 m near the domain's boundaries was used. The Jagtvej Street emission inventory was derived from hourly traffic counts (Berkowicz et al., 2004) and emissions for different types of road-vehicles (Chao et al., 2018). The traffic volume at the Jagtvej street is similar to measured diurnal variations (Berkowicz et al., 2004; Berkowicz et al., 2006). The emissions are given in Appendix A (see Fig. A1), where only one peak of concentration was observed during morning hours and also proven by street-level observations. Note, the emissions utilized in large- and micro-scale models are different. The CAMx model uses annual emission inventory from TNO. It is pre-processed to account for monthly, weekly and diurnal emission variations. M2UE uses traffic counts measured at the Jagtvej street of Copenhagen to derive more accurate emissions (Fig. A1) and hence, account for a very local spatio-temporal features specific for this street.

Previously, the M2UE model contributed to the COST Action 732 evaluation exercise. This exercise was devoted to micro-scale models quality evaluation and assurance. Moreover, the dispersion patterns of chemical species in typical urban

Deleted: '

Deleted: model of turbulence

Deleted: The model is coupled with simplified atmospheric gas-phase chemistry mechanism with 19 chemical reactions (Stockwell and Goliff, 2002)....

Deleted: Figure

canyons were investigated in the previous studies (Franke et al., 2007; Schatzmann et al., 2010; Nuterman et al., 2010; Nuterman et al., 2011; Sabatino et al., 2011) and would not add value to this research. Since the model's dispersion capabilities were thoroughly tested, it seemed interesting and valuable to focus on operational aspects of the problem, and hence, to apply the CFD M2UE model using real time weather and atmospheric composition fields. Therefore, the purpose of the current study is rather the concept proof (on possibility to run CFD type model operationally coupled with gas-phase chemistry) than rigorous full-scale evaluation of the proposed downscaling chain.

2.2 Description of downscaling model system

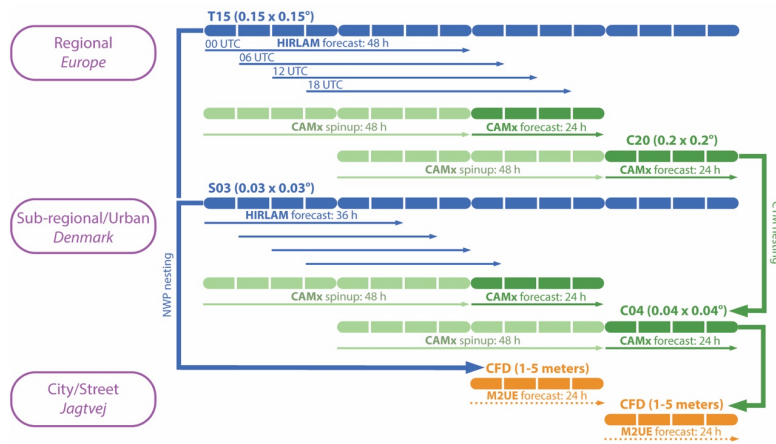
In the developed downscaling model system (Fig. 2), both the European regional (hereafter referred to as the EU) and the sub-regional/urban Denmark scale (hereafter referred to as the DK) forecasts were performed by the off-line coupled HIRLAM and CAMx models. After up-to-date meteorological data assimilation and boundary conditions from ECMWF became available, the HIRLAM-T15 produced 48 h meteorological forecast for the EU domain. This NWP model was always fully spun-up, because such forecast was performed in a continuous manner 4 times per day (at 00, 06, 12 and 18 UTC). Afterwards, the meteorological output was post-processed, interpolated and adapted to drive the CAMx-C20 model with a spin-up time of 48 hour and the forecast length of 24 hour. The spin-up integration was the model's cold-start run prior to the current forecasted day. The entire cycle of offline coupled HIRLAM-T15+CAMx-C20 modelling chain took approximately 4.5 hour of CPU time.

As soon as the EU scale forecast is completed, the DK scale forecast of meteorology and atmospheric composition is initiated. In general, the entire procedure of model runs and interplay is very similar to the EU modelling chain. However, the differences were in boundary conditions, forcing and resolution of numerical grids. The HIRLAM-S03 meteorological forecast was forced by outer model lateral boundaries, while the CAMx-C04 atmospheric composition forecast was forced by meteorology from HIRLAM-S03 plus chemical boundary and initial conditions from CAMx-C20. For each integration cycle, new boundary fields are read at 1-h interval. So, the models retrieve updated meteorological and chemical fields from the previous low-resolution outer domains. The forecast length of HIRLAM-S03 and CAMx-C04 runs was 36 h and 24 h, respectively. The forecast cycle used 4 h of CPU time since the DK forecast initiation.

After the urban-scale forecast completed, the street-scale (hereafter referred to as the street) forecast is launched for a section of Jagtvej Street of Copenhagen and surroundings. For the Jagtvej street domain inlet boundaries, the Dirichlet conditions with constant profiles of airflow characteristics (from HIRLAM-S03), averaged urban roughness and atmospheric composition fields (from CAMx-C04) were chosen to drive the M2UE model. In particular, the output from S03 and C04 was linearly interpolated from four surrounding grid points into a grid point corresponding to the M2UE domain. The interpolated fields were used to derive the mean inlet conditions under the assumption of equilibrium boundary layer with power-law velocity profile and local equilibria assumption for turbulent parameters (Richards and Hoxey, 1993). As for the chemical fields, the interpolated values were considered as the urban background concentrations. The outlet boundary condition is of the Neumann type with zero normal derivatives of all meteorological and chemical concentration variables

Deleted: Figure

200 corresponding to a fully developed and well-mixed flow. These above-mentioned boundary conditions follow the COST
 Action 732 best practises and guidelines (Franke et al., 2007) for micro-scale meteorological and atmospheric composition
 models and ensure consistency with each other. The forecast for 24 h was performed after HIRLAM-S03+CAMx-C04
 completed runs and it took ~1.5 h of CPU time. Since the M2UE model is very computationally expensive, the 24 h forecast
 was performed with 24 instant integration cycles forced by hourly HIRLAM-CAMx models' output. In this case, the spin-up
 time was just several minutes; so, such as for individual M2UE forecast. It is a reasonable approach of doing such the
 forecast, because the boundary conditions and emission rates for each integration cycle were constant and only the rapid-
 photochemical reactions of O_3 , NO_x and NO_2 were of principal interest in the study. Due to the fact that the nested M2UE
 205 domain and roof-level observation site are spatially located very close to each other and within the same grid-cell of DK
 domain, the time-series of CFD boundary conditions are identical for O_3 , NO_x and NO_2 . Therefore, the air-flow regime was
 assumed to be steady during an instant integration cycle. The ratio of horizontal resolution of HIRLAM-S03+CAMx-C04
 and M2UE-Jagtvej domains exceeds a permissible limit of 5 (Sokhi et al., 2018). However, the runtime of the entire
 modelling chain equals to 10 CPU hours, and adding an intermediate domain (or chain of domains) between these 3 model
 210 domains will obviously lead to increased runtime over 12 hours. Such large span of forecasting time is considered to be too
 large, taking into account the time constrains for operational tasks and cases when the models' rerun is required (not to
 mention pre-processing and post-processing the large amount of models' input and output). Thus, such downscaling is a
 trade-off between acceptable runtime and permissible resolution.



215 **Figure 2:** Downscaling modelling system: from the European regional-scale forecast (HIRLAM-T15+CAMx-C20) to the sub-
 regional/urban Denmark (HIRLAM-T03+CAMx-C04) and city/street scale for Copenhagen (CFD M2UE); the blue, green and orange
 horizontal bars indicate NWP HIRLAM, CTM CAMx and CFD M2UE forecasts, respectively; horizontal and vertical arrows indicate the
 forecasts' cycles and downscaling (dataflow), correspondingly.

3 Results and Discussion

220 The example of the downscaling modelling chain realised in this study in a semi-operational mode with coupled HIRLAM+CAMx+M2UE models is described and evaluated with focus on Denmark and Copenhagen for specific meteorological situation.

During 4-5 September 2011 the meteorological situation was the following. The cyclonic system originated over Iceland moved southward towards the British Islands, and then eastward towards the Jutland Peninsula of Denmark with gradually changing atmospheric pressure from 990 to 1010 hPa. The cold front associated with cyclone passed over UK and Denmark on these days. On 4th September morning, the cold front approached the northern part of the Jutland Peninsula, and then propagated towards the Zealand Island, and brought up to 10 mm of accumulated (6 hour) precipitation. Over Denmark, during night-morning hours on 5th September, the precipitation increased on average up to 15-20 mm (with several local maxima up to 40 mm). During these days, on a diurnal cycle the air temperature's range was 18-24 °C and 12-18 °C (on 4th and 5th September, respectively) with further gradual cooling. The vertical sounding diagrams (Schleswig, Germany, 54.53° N, 9.55° E – the closest station to Denmark) showed the presence of the temperature inversion layer extended up to 1.5 km (at noon on 4th Sep) and reduced to 500 m altitude (at night on 5th Sep), and then a layer of smaller depth remained at top of boundary layer at noon.

235 A near surface spatial distribution of O_3 and NO_x concentrations (Fig. 3ab) within the EU domain is shown for 5th Sep 2011, at 10 UTC. As seen, the elevated NO_x concentration of up to 50 $\mu\text{g m}^{-3}$ was observed over urban, industrial and port areas of Denmark and neighbouring countries. In addition, the North Sea oil extraction and international shipping were other sources of elevated NO_x levels over the Danish territorial waters. The near surface O_3 concentration varied within the range of 40-150 $\mu\text{g m}^{-3}$, with local minima over and downwind the areas of anthropogenic NO_x sources (Fig. 3a) where ozone was depressed due to the NO_x titration.

240 As for the nested DK domain (Fig. 3cd), it is seen from the near-surface wind and concentrations patterns that the mesoscale circulation as well as the local anthropogenic emission sources were resolved in greater details due to the finer S03-C04 horizontal resolution. Therefore, one can observe additional local concentration maxima of NO_x with higher levels up to 250 $\mu\text{g m}^{-3}$ over Denmark. These were mostly localized near the same type of anthropogenic sources as the mentioned above in the EU domain. As the result, there were more O_3 depression spots including those over the northern Jutland Peninsula's highways over the territories of Denmark and Germany. However, the background values of the near surface ozone did not change significantly at large distances from the anthropogenic NO_x sources.

245 In Figure 4, the time-series of O_3 , NO_x and NO_2 observations provided by the Danish air-quality monitoring programme (Ellerman et al., 2012) and modelled concentrations by the downscaling system are presented. Those observations were performed by automatic stations (Fig. 1b) at the roof level of H.C. Ørsted Institute and at the Jagtvej Street (only NO_x , NO_2 , particulate matter and benzene were measured on the street; O_3 was not available for that time at this location). As seen in Fig. 4a, the T15-C20 and S03-C04 results showed an ability to reproduce well the O_3 diurnal cycle ($EU_R_p = 0.81$ and

Deleted: Figure

Deleted: u

Deleted: u

Deleted: Figure

Deleted: Figure

Deleted: u

Deleted: Figure

Deleted: Figure

260 $DK_{R_p} = 0.8$, with $p \ll 5\%$) for both domains at regional- and sub-regional/urban scales. However, the forecasted O_3 at the EU scale was generally overestimated in comparison to the modelling results at the DK scale ($EU_{RMSE} = 31$ vs. $DK_{RMSE} = 19$). Although, the NO_x and NO_2 levels were generally overestimated in the DK scale forecast (Fig. 4bc) when compared to the EU scale forecast and observations ($EU_{RMSE} = 23$ vs. $DK_{RMSE} = 47$ for NO_x and $EU_{RMSE} = 13$ vs. $DK_{RMSE} = 33$ for NO_2), the diurnal cycle at the DK scale is better captured according to obtained Pearson correlation values ($EU_{R_p} = 0.56$ vs. $DK_{R_p} = 0.69$ for NO_x and $EU_{R_p} = 0.64$ vs. $DK_{R_p} = 0.72$ for NO_2). And it is particularly notable when the NO_x and NO_2 peaks were observed during several morning hours (on 5th Sep 2011, 07 UTC). This caused by the complex unfavourable meteorological conditions over the Copenhagen metropolitan area and high emission rates mainly from intense morning traffic. The timing and levels of NO_x and NO_2 peaks were well captured by the DK scale forecast in contrast to the EU one, which poorly predicted it with slightly elevated NO_x and NO_2 values. Note, the O_3 depression at the same time, which was not captured by the EU air-quality forecast. Since the primary sources of atmospheric nitrogen are anthropogenic emissions, its overestimated concentrations are rather attributed to pre-processing and treatment of emission rates. It can be related to interpolation of original gridded emissions into the meshes of ACT model, which is apparently insufficient, and therefore, some additional rescaling adjustments in terms of emission rates and their time dynamics are required.

275 The diurnal cycles of NO_x and NO_2 concentrations observed and modelled for the Jagtvej Street are shown in Fig. 4de. Following analysis and calculated correlation values ($R_p = 0.66$ and $R_p = 0.45$ for NO_x and NO_2 , respectively), the street-scale M2UE model forecasted well the observed NO_x and NO_2 diurnal cycles including the onset of elevated air pollution episode on 5th Sep (see forecast length 30-35 h). It corresponded to the local time of 8-10 h of a typical working day (Monday) when the most intense road traffic is observed. However, the model's quantitative estimate of NO_x concentration is substantially biased (with $RMSE = 103$) particularly during 5th Sep 2011. In spite of the captured elevated NO_x levels, the model predicted two peaks at 31 and 34 h of forecast length and depression at 32 h, while the time-series of observations showed only one peak at 32 h, which was approximately $200 \mu\text{g m}^{-3}$ higher than the modelled peaks. Note, the model also exhibited elevated NO_2 levels (with $RMSE = 38$) during the high air pollution episode with the concentrations underestimated.

285 There are several reasons why the M2UE model was able to make the qualitatively good prediction in general but had difficulties at capturing the elevated NO_x and NO_2 concentrations. First of all, it is the coupling interval span of the offline coupled models (HIRLAM+CAMx), which plays an important role in constraining the influence of mesoscale disturbances on evolution of atmospheric composition (Korsholm et al., 2011). It might give an offset in timing and position of the predicted concentrations. As seen in Fig. 4abc, the effect of that at the onset of the high air pollution episode (where its slight offset of approximately half an hour) was observed, and then inherited by the nested micro-scale model. The second reason is that the M2UE forcing was provided on an hourly basis by the HIRLAM-S03+CAMx-C04 modelling chain. Such forcing is rather crude in terms of time and horizontal resolution for the CFD model capable to predict very fine spatio-temporal

Deleted: Figure

Deleted: was

Deleted: is

Deleted: Figure

Deleted: 4c

Deleted: u

Deleted: Figure

300 turbulent flow scales occurring within meters and seconds. The third reason is an uncertainty in local road traffic emissions used by the M2UE model, although some traffic count data and information about emissions from different types of vehicles were available (Chao et al., 2018). Although those above-mentioned shortcomings, the presented downscaling modelling system was able to produce good quality atmospheric composition forecasts across different spatial and temporal scales.

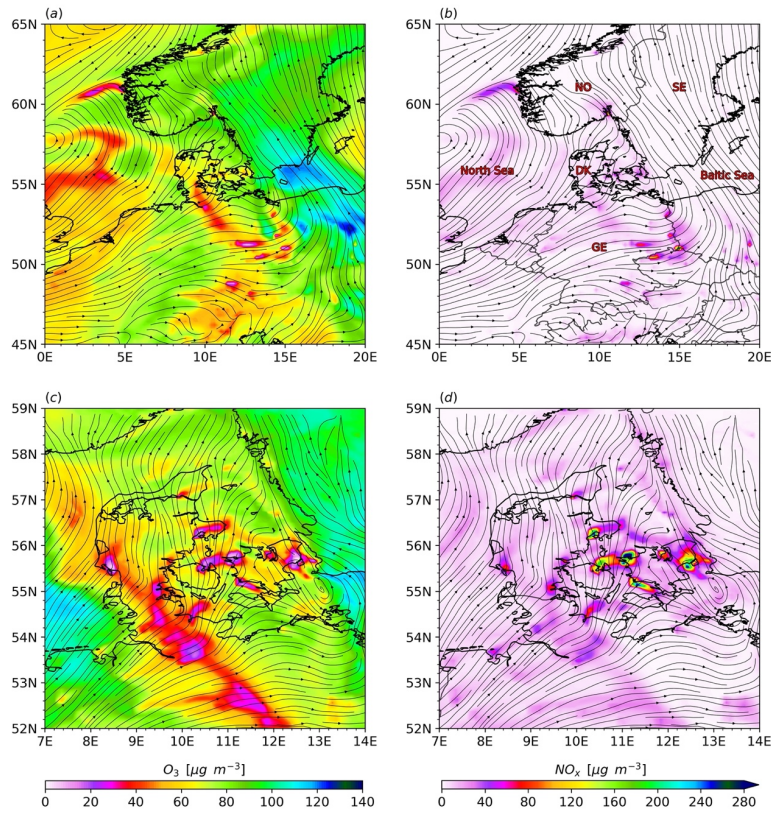
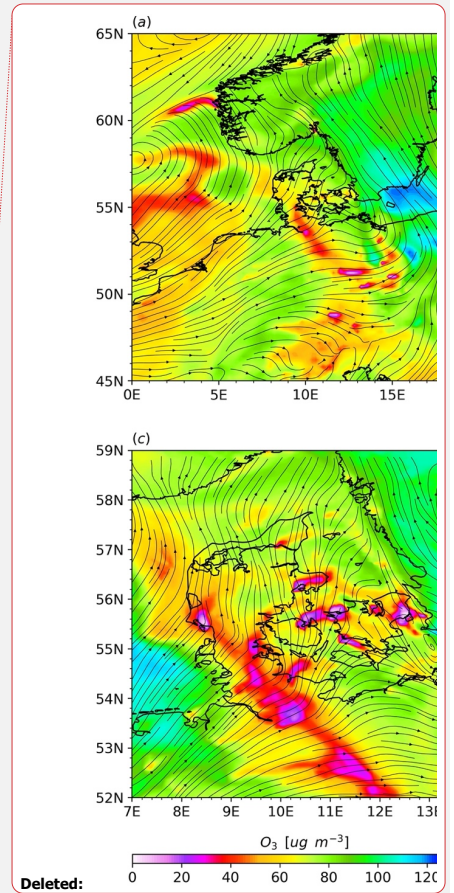
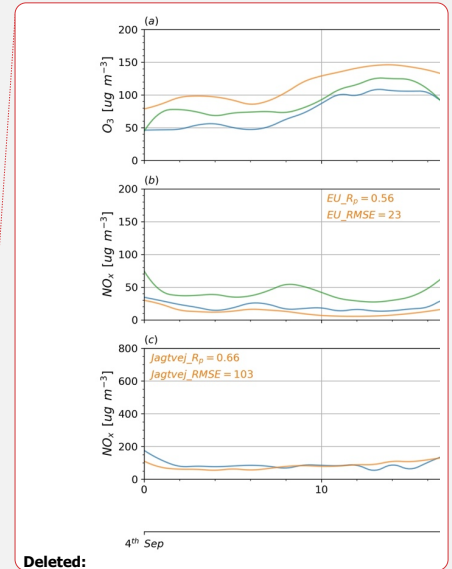
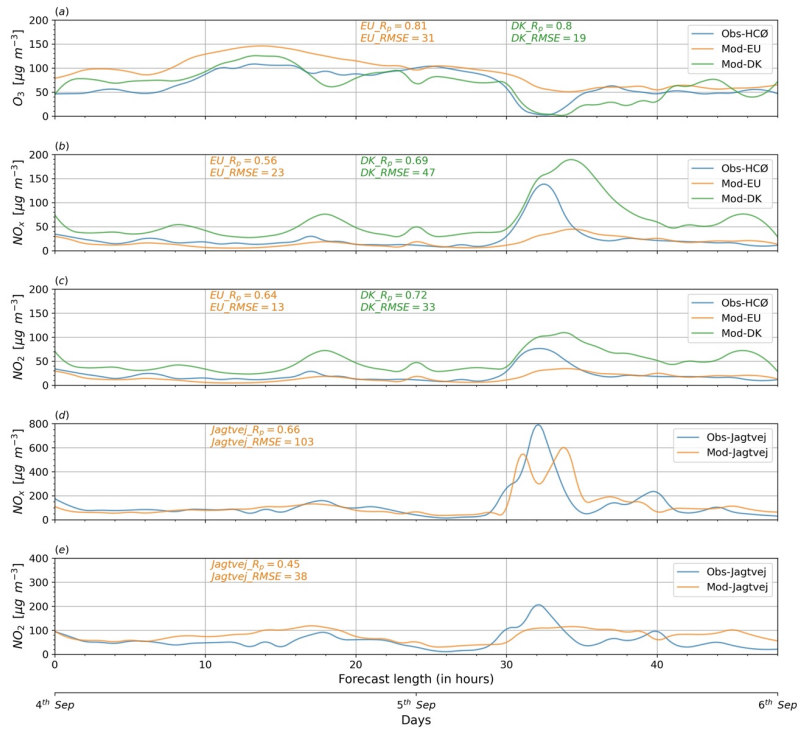


Figure 3: Simulation output on 5 Sep 2011, 10 UTC: HIRLAM-T15+CAMx-C20 results for concentrations in [$\mu\text{g m}^{-3}$] of (a) O_3 and (b) NO_x within the European regional-scale domain and HIRLAM-S03+CAMx-C04 results for concentrations of (c) O_3 and (d) NO_x within the Denmark sub-regional/urban scale domain.



Deleted:

305



Deleted:

Deleted: at the building's roof level

Deleted: and

Deleted: ,

Deleted: x

Deleted: c

Deleted: 's

315 **Figure 4:** Time-series of observations vs. HIRLAM+CAMx+M2UE forecasts for (a) O_3 , (b, d) NO_x , and (c, e) NO_2 for the European, Denmark and Copenhagen modelling domains during Sunday-Monday 4-5 Sep 2011; (a, b, c) HCØ roof level observations of O_3 , NO_x and NO_2 vs. modelling results for EU and DK domains; (d, e) Jagtvej Street level observations of NO_x and NO_2 vs. M2UE /Pearson correlation R_p and root mean square error $RMSE$ of modelled vs. observed concentrations for 3 domains/.

4 Conclusions

In this study, the downscaling modelling system for real time prediction of weather and atmospheric composition up to the street scale has been described and tested. It consists of several interfaced models. The forecasts were performed at the regional and sub-regional/urban-scales by the offline coupled operational numerical weather prediction HIRLAM and atmospheric chemical transport CAMx models and at the city/street scale by the online coupled computational fluid dynamics M2UE model. The downscaling system was tested for the Europe (EU), Denmark (DK) and Copenhagen's street

domains in a semi-operational forecasting mode and evaluated against existing observations for a high pollution episode of
330 4-5 September 2011.

The results of modelling showed elevated NO_x and lowered O_3 concentrations over major urban, industrial and transport
land/water routes in both EU and DK scale forecasts. The comparison of these forecasts showed higher levels of NO_x and
slightly lower O_3 in the DK domain because of higher NO_x emission rates and titration. The O_3 diurnal cycle predictions in
both the EU and DK domains are equally good, although O_3 values were closer to observations for DK. At the same time,
335 the DK scale forecast of NO_x and NO_2 levels was more biased (with better prediction score of the diurnal cycle) than EU
scale forecast. Further downscaling to the street level indicated that the NO_x pollution (mainly from road traffic) was 2-fold
higher on weekend and more than 5 times higher during working day with high pollution episode. Despite of high
uncertainty in road traffic emissions, the M2UE model captured well the NO_x and NO_2 diurnal cycles and onset of elevated
pollution episode. However, in order to come to the final conclusion about the performance of individual system's
340 components and the entire downscaling chain, one needs to perform an evaluation for extended time period and additional
measurement sites around Denmark.

A potential improvement of such downscaling system can come from employing online coupled (instead of offline coupled)
mesoscale models. Such approach could help to minimize problems associated with offline coupling interval and therefore,
to give a better fit of modelling results to observations, and to better identify a timing and location of elevated pollution
345 episodes. As for the local-scale predictions, an intermediate additional nested domain between sub-regional/urban and micro-
scale runs for the Copenhagen metropolitan area could provide improvement for local scale airflow and pollution forecasting
scores. However, these will be conditioned on availability of a better-quality high-resolution emission inventory. The
demonstrated downscaling system with the suggested above improvements could be used in future online integrated
meteorology and air quality research and operational forecasting. Such system can be also applied for advanced planning
350 safety measures, post-accidental analysis, emergency preparedness and health/environment impact assessments.

Keeping in mind the main uncertainties (e.g., street-level emissions, increasing number of urban observations, etc.), there are
several possibilities to improve demonstrated urban / street level forecasts using different types of observations (e.g., from
remote sensing, crowd sourcing and citizen science) in urban areas. These observations and recently developing methods
such as the bias correction techniques, machine learning, artificial intelligence and neural networks can also improve air-
355 quality forecasting (see overview e.g., in Bai et al., 2018).

Appendix A

Table A1: List of chemical reactions included as gas-phase chemistry mechanism in M2UE model

$NO_2 + hv \rightarrow O(^3P) + NO$	$RO_2 + NO \rightarrow NO_2 + HO_2 + HCHO$
$O_3 + hv \rightarrow O(^1D) + O_2$	$CO + HO \rightarrow HO_2 + CO_2$
$HCHO + hv \rightarrow 2HO_2 + CO$	$HO + HC \rightarrow RO_2 + H_2O$

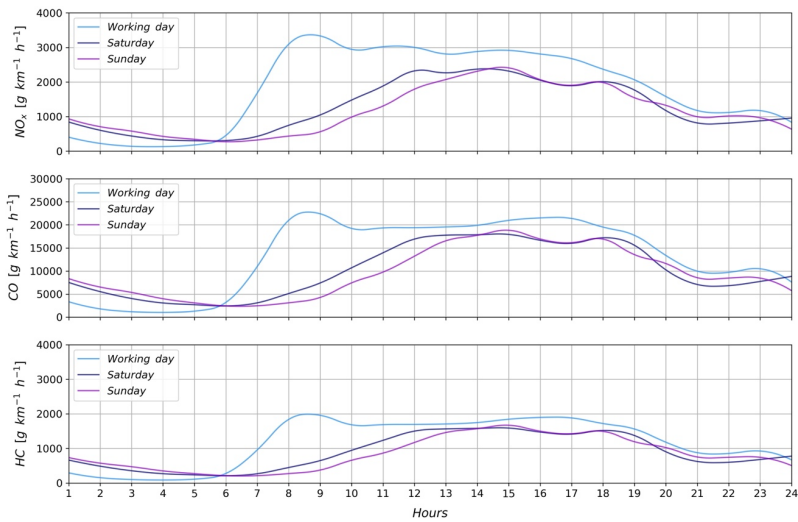
$HCHO + hv \rightarrow H_2 + CO$	$HO + HCHO \rightarrow HO_2 + CO + H_2O$
$O(^3P) + O_2 \rightarrow O_3$	$HO + NO_2 \rightarrow HNO_3$
$O(^1D) + N_2 \rightarrow O(^3P) + N_2$	$2HO_2 \rightarrow H_2O_2 + O_2$
$O(^1D) + O_2 \rightarrow O(^3P) + O_2$	$2HO_2 + H_2O \rightarrow H_2O_2 + H_2O + O_2$
$O(^1D) + H_2O \rightarrow 2OH$	$HO_2 + RO_2 \rightarrow ROOH + O_2$
$HO_2 + NO \rightarrow NO_2 + HO$	$2RO_2 \rightarrow 2HCHO + HO_2$
$O_3 + NO \rightarrow NO_2 + O_2$	$SO_2 + OH \rightarrow H_2SO_4 + HO_2$

360 Chemical reactions and rate parameters are the same as in Stockwell and Goliff (2002), except chemical reaction ($SO_2 + OH \rightarrow H_2SO_4 + HO_2$) with the rate parameter from (Sander et al., 2006):

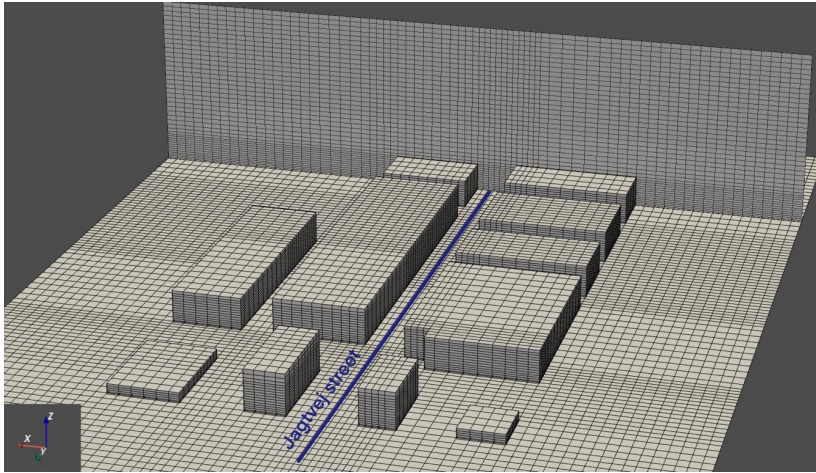
$$k_0 = 3 \times 10^{-31} \times C_{air} \times (300/T)^{3.3}, k_{\infty} = 1.5 \times 10^{-12}$$

$$k = \frac{k_0}{1 + k_0/k_{\infty}} \times 0.6(1 + [\log_{10}(k_0/k_{\infty})]^2)^{-1}$$

where T is temperature [K] and C_{air} is air concentration [molecules/cm³].



365 Figure A1: Time-series of diurnal cycle emissions on typical Saturday, Sunday and Working day of a week at the Jagtvej street, Copenhagen, Denmark.



370 [Figure A2: M2UE numerical grid of the Jagtvej street, Copenhagen, Denmark.](#)

Code availability

The HIRLAM model source code is available under the HIRLAM consortium agreement (<http://hirlam.org>). The CAMx model source code is an open-source software (can be downloaded from <http://www.camx.com>). The M2UE model source code is available from the authors upon request.

375 Authors contribution

AB, AM designed the research; BA, RN created and setup integrated downscaling of the models; AZ developed local scale gas-phase chemistry mechanism; RN performed models' evaluation; RN, AM and AB wrote the paper.

Competing interests

The authors declare that they have no conflict of interest.

380 Acknowledgments

The research leading to these results received funding from the European Union's Seventh Framework Programme FP/2007-2011 under grant agreement n°218793 (MACC – Monitoring of Atmospheric Composition and Climate; 2009-2011). The authors are thankful to the PEEEX (Pan-Eurasian Experiment; <https://www.atm.helsinki.fi/peex>) programme for long-term collaboration within the PEEEX's Modelling Platform and Impact on Society tasks. The authors are thankful to Drs. Bent H. 385 Sass and Jens H. Sorensen (Danish Meteorological Institute, DMI; Copenhagen, Denmark) for administrative support. Especial thanks to DMI's IT and eScience departments for computing advise and support on HPC CRAY-XT5, and in particular to Dr. Jacob Weismann (DMI) for the M2UE model optimization.

References

- 390 [Aloyan, A., Baklanov, A., Penenko, V.: Fictitious regions in numerical simulation of quarry ventilation, *Soviet Meteorology and Hydrology*, 7,32–37, 1982.](#)
- Amstrup B., Baklanov, A., Feddersen, H., Lorenzen, T., Mahura, A., Nuterman, R., Weismann, J., Caian, M., Dumitrache, R., Rada, C., and Craciunescu, V.: Core-downstream processing chain test cases. Evaluation of current R-ENS individual and ensemble forecasts in the Copenhagen and Bucharest areas, in EU FP7 MACC Report D_OINT_2.4.1-2, edited by: Baklanov, A., and Mahura, A., Danish Meteorological Institute, Copenhagen, 36 pp., 2010a.
- 395 Amstrup B., Baklanov, A., Lorenzen, T., Mahura, A., Nuterman, R., Weismann, J., Banciu, D., Tascu, S., Pietrisi, M., Dumitrache, R., and Caian, M.: Core-downstream processing chain test cases. Setup of the two downscaling model configurations, in EU FP7 MACC Report D_OINT_2.5.1-2, edited by: Baklanov, A., and Nuterman, R., Danish Meteorological Institute, Copenhagen, 18 pp., 2010b.
- Bai, L., Wnag, J., Ma, X., Lu, X.: Air Pollution Forecasts: An Overview, *Int. J. Environ. Res. Public Health*, 15, 780; 400 doi:10.3390/ijerph15040780, 2018.
- Baklanov, A., Schlünzen, K., Suppan, P., Baldasano, J., Brunner, D., Aksoyoglu, S., Carmichael, G., Douros, J., Flemming, J., Forkel, R., Galmarini, S., Gauss, M., Grell, G., Hirtl, M., Joffre, S., Jorba, O., Kaas, E., Kaasik, M., Kallos, G., Kong, X., Korsholm, U., Kurganskiy, A., Kushta, J., Lohmann, U., Mahura, A., Manders-Groot, A., Maurizi, A., Moussiopoulos, N., Rao, S. T., Savage, N., Seigneur, C., Sokhi, R. S., Solazzo, E., Solomos, S., Sorensen, B., Tsegas, G., Vignati, E., Vogel, B., 405 and Zhang, Y.: Online Coupled Regional Meteorology-Chemistry Models in Europe, *Atmospheric Chemistry and Physics*, 14(1), 317-398, <https://doi.org/10.5194/acp-14-317-2014>, 2014.
- Berkowicz, R., Britter, R., and Di Sabatino, S.: Optimisation of Modelling Methods for Traffic Pollution in Streets (TRAPOS), National Environment Research Institute, Roskilde, Denmark, 114 pp., 2004.

- 410 [Berkowicz, R., Winther, M., Ketzel, M.: Traffic pollution modelling and emission data, *Environmental Modelling & Software*, 21, 454-460, <https://doi.org/10.1016/j.envsoft.2004.06.013>, 2006.](#)
- Chao, E. L., Rosen, J. A., Hu, P. S., Schmitt, R., Sprung, M. J., Nguyen, L. X., Riley, D., Parker, K., Young, L., Zhang, J., Beningo, S., Chambers, M., Ford, C., Notis, K., Liu, M., and Smith-Pickel, S.: National Transportation Statistics, Bureau of Transportation Statistics, U.S. Department of Transportation, 469 pp., 2018.
- Ching, J.: A perspective on urban canopy layer modeling for weather, climate and air quality applications, *Urban Climate*, 3, 13-39, <https://doi.org/10.1016/j.uclim.2013.02.001>, 2013.
- 415 [Craft, T.J., Launder, B.E., Suga, K.: Development and application of a cubic eddy-viscosity model of turbulence, *Int. J. of Heat and Fluid Flow*, 17\(2\), 108-115, \[https://doi.org/10.1016/0142-727X\\(95\\)00079-6\]\(https://doi.org/10.1016/0142-727X\(95\)00079-6\), 1996.](#)
- Cuxart, J., Bougeault, P., and Redelsperger, J.-L.: A turbulence scheme allowing for mesoscale and large-eddy simulations, *Quart. J. Roy. Meteor. Soc.*, 126, 1-30, <https://doi.org/10.1002/qj.49712656202>, 2000.
- 420 Ellermann, T., Nøjgaard, J., Nordstrøm, C., Brandt, J., Christensen, J., Ketzel, M., & Jensen, S.: The Danish Air Quality Monitoring Programme. Annual Summary for 2011, DCE – Danish Centre for Environment and Energy, Aarhus: Aarhus University, 63 pp., <https://www2.dmu.dk/Pub/SR37.pdf>, 2012.
- Falasca, S. and Curci, G.: High-resolution air quality modeling: Sensitivity tests to horizontal resolution and urban canopy with WRF-CHIMERE, *Atmospheric Environment*, 187, 241-254, <https://doi.org/10.1016/j.atmosenv.2018.05.048>, 2018.
- 425 Flatman, A., Rosenkranz, B., Evers, K., Bartels, P., Kokkendorff, S., Knudsen, T., and Nielsen, T.: Quality assessment report to the Danish Elevation Model (DK-DEM), Agency for Data Supply and Efficiency, Copenhagen, 26 pp., 2016.
- [Franke J., Hellsten, A., Schlünzen, H., Carissimo, B. \(Eds.\): Best Practice Guideline for the CFD Simulation of Flows in the Urban Environment: COST Action 732 Quality Assurance and Improvement of Microscale Meteorological Models, COST Office, ISBN: 3-00-018312-4, 2007.](#)
- 430 Gery, M., Whitten, G., Killus, J., and Dodge, M.: A photochemical kinetics mechanism for urban and regional scale computer modelling, *J. Geophys. Res.*, 94(D10), 12925–12956, <https://doi.org/10.1029/JD094iD10p12925>, 1989.
- Gottelman, A., Callaghan, P., Larson, V.E., Zarzycki, C.M., Bacmeister, J.T., Lauritzen, P.H., Bogenschutz, P.A., and Neale, R.B.: Regional climate simulations with the Community Earth System Model, *Journal of Advances in Modeling Earth Systems*, 10, 1245–1265, <https://doi.org/10.1002/2017MS001227>, 2018.
- 435 González, C.M., Ynoue, R.Y., Vara-Vela, A., Rojas, N.Y., and Aristizábal, B.H.: High-resolution air quality modeling in a medium-sized city in the tropical Andes: Assessment of local and global emissions in understanding ozone and PM10 dynamics, *Atmospheric Pollution Research*, 9(5), 934-948, <https://doi.org/10.1016/j.apr.2018.03.003>, 2018.
- Grasso, O.: Interim evaluation of Copernicus, Final report, Imelpgriuerie centrale, Luxembourg, 224 pp., <https://doi.org/10.2873/373088>, 2017.

- 440 Gustafsson, N., Berre, L., Hörnquist, S., Huang, X.-Y., Lindskog, M., Navascués, B., Mogensen, K.S., Thorsteinsson, S.: Three-dimensional variational data assimilation for a limited area model. Part I: General formulation and the background error constraint, *Tellus A: Dynamic Meteorology and Oceanography*, 53A, 425-446, <https://doi.org/10.3402/tellusa.v53i4.12198>, 2001.
- Hollingsworth, A., Engelen, R. J., Textor, C., Benedetti, A., Boucher, O., Chevallier, F., Dethof, A., Elbern, H., Eskes, H., 445 Flemming, J., Granier, C., Kaiser, J. W., Morcrette, J.-J., Rayner, P., Peuch, V.-H., Rouil, L., Schultz, M. G., Simmons, A. J., and The GEMS Consortium: Towards a monitoring and forecasting system for atmospheric composition: The GEMS Project, *Bull. Amer. Meteor. Soc.*, 89, 1147–1164, <https://doi.org/10.1175/2008BAMS2355.1>, 2008.
- Ilin, V.: *Methods of Incomplete Factorization for Solving the Algebraic Systems*, Moscow: Fizmatlit, 286 pp., 1995.
- [Khan, B., Banzhaf, S., Chan, E. C., Forkel, R., Kanani-Sühring, F., Ketelsen, K., Kurppa, M., Maronga, B., Mauder, M., 450 Raasch, S., Russo, E., Schaap, M., and Sühring, M.: Development of an atmospheric chemistry model coupled to the PALM model system 6.0: implementation and first applications, *Geosci. Model Dev.*, 14, 1171-1193, <https://doi.org/10.5194/gmd-14-1171-2021>, 2021.](#)
- Korsholm, U., Baklanov, A., and Sørensen, J.: Status and Evaluation of Enviro-HIRLAM: Differences Between Online and Offline Models, in *Integrated Systems of Meso-Meteorological and Chemical Transport Models*, edited by: A. Baklanov, A. 455 Mahura, and R. Sokhi, 61-74, Springer, Berlin, 2011.
- Kuenen, J., van der Gon, H., Visschedijk, A., van der Brugh, H., Finardi, S., Radice, P., d'Allura, A., Beevers, S., Theloke, J., Uzbasich, M., Honoré, C., and Perrussel, O.: A Base Year (2005) MEGAPOLI European Gridded Emission Inventory (Final Version), MEGAPOLI Scientific Report 10-17, DMI, Copenhagen, 39 pp., ISBN:978-87-993898-8-9, 2010.
- Kukkonen, J., Balk, T., Schultz, A., Baklanov, A., Klein, T., Miranda, A., Monteiro, A., Hirtl, M., Tarvainen, V., Boy, M., 460 Sokhi, R., Lehtinen, K., Karatzas, K., San Jose, R., Astitha, M., Kallos, G., Schaap, M., Reimer, E., Jakobs, H., and Eben, K.: A Review of Operational, Regional-Scale, Chemical Weather Forecasting Models in Europe, *Atmospheric Chemistry and Physics*, 12, 1-87, <https://doi.org/10.5194/acp-12-1-2012>, 2012.
- [Kwak, K.-H., Baik, J.-J., Ryu, Y.-H., Lee, S.-H.: Urban air quality simulation in a high-rise building area using a CFD model coupled with mesoscale meteorological and chemistry-transport models, *Atmospheric Environment*, 100, 167-177, 465 <https://doi.org/10.1016/j.atmosenv.2014.10.059>, 2015.](#)
- [Lauder, B.E. and Spalding, D.B.: "The numerical computation of turbulent flows", *Computer Methods in Applied Mechanics and Engineering*, 3\(2\), 269-289, \[https://doi.org/10.1016/0045-7825\\(74\\)90029-2\]\(https://doi.org/10.1016/0045-7825\(74\)90029-2\), 1974.](#)
- Lauwaet, D., Viaene, P., Brisson, E., van Noije, T., Strunk, A., van Looy, S., Maiheu, B., Veldeman, N., Blyth, L., de Ridder, K., and Janssen, S.: Impact of nesting resolution jump on dynamical downscaling ozone concentrations over 470 Belgium, *Atmospheric Environment*, 67, 46-52, <https://doi.org/10.1016/j.atmosenv.2012.10.034>, 2013.

- Lindskog, M., Gustafsson, N., Navascués, B., Mogensen, K.S., Huang, X.-Y., Yang, X., Andræ, U., Berre, L., Thorsteinsson, S., Rantakokko, J.: Three-dimensional variational data assimilation for a limited area model. Part II: Observation handling and assimilation experiments, *Tellus A: Dynamic Meteorology and Oceanography*, 53A, 447-468, <https://doi.org/10.3402/tellusa.v53i4.14578>, 2001.
- 475 Lynch, P., and Huang, X.-Y.: Initialization of the HIRLAM Model Using a Digital Filter, *Mon. Wea. Rev.*, 120, 1019–1034, [https://doi.org/10.1175/1520-0493\(1992\)120<1019:IOTHMU>2.0.CO;2](https://doi.org/10.1175/1520-0493(1992)120<1019:IOTHMU>2.0.CO;2), 1992.
- Madronich, S., and Focke, S.: The role of solar radiation in atmospheric chemistry, in *Handbook of Environmental Chemistry*, edited by Boule P., Springer-Verlag, New York, 1–26, 1998.
- Mahura, A., Leroyer, S., Baklanov, A., Mestayer, P., Korsholm, U., and Calmet, I.: Temporal and Spatial Variability of
480 Fluxes in Urbanized Areas, *Urban Climate and Bioclimate*, 219–232, ISBN:978-83-7525-243-9, 2008a.
- Mahura, A., Petersen, C., Baklanov, A., and Amstrup, B.: Evaluation of Building Effect Parameterization Module for Urbanized Numerical Weather Prediction Modelling, *Urban Climate and Bioclimate*, 371–380, ISBN:978-83-7525-243-9, 2008b.
- Martilli, A., Clappier, A., and Rotach, M.: An urban surface exchange parameterization for mesoscale models, *Boundary-
485 Layer Meteorology*, 104, 261-304, <https://doi.org/10.1023/A:1016099921195>, 2002.
- Noilhan, J., and Planton, S.: A simple parameterization of land surface processes for meteorological models, *Mon. Wea. Rev.*, 117, 536–549, [https://doi.org/10.1175/1520-0493\(1989\)117<0536:ASPOLS>2.0.CO;2](https://doi.org/10.1175/1520-0493(1989)117<0536:ASPOLS>2.0.CO;2), 1989.
- Nuterman, R., Baklanov, A., and Starchenko, A.: Modeling of aerodynamics and pollution dispersion from traffic in the urban sublayer, *Math. Models Comput. Simul.*, 2, 738–752, ISSN: 2070-0482, 2010.
- 490 [Nuterman, R., Starchenko, A.V., Baklanov, A.: Numerical model of urban aerodynamics and pollution dispersion. *Int. J. of Environment and Pollution*, 44\(1\), <https://doi.org/10.1504/IJEP.2011.038440>, 2011.](https://doi.org/10.1504/IJEP.2011.038440)
- Patankar, S.: *Numerical Heat Transfer and Fluid Flow* (1st Ed.), CRC Press, 214 pp., 1980.
- Pepe, N., Pirovano, G., Lonati, G., Balzarini, A., Toppetti, A., Riva, G.M., and Bedogni, M.: Development and application of a high-resolution hybrid modelling system for the evaluation of urban air quality, *Atmospheric Environment*, 141, 297-
495 311, <https://doi.org/10.1016/j.atmosenv.2016.06.071>, 2016.
- Petersen, C., Kmit, M., Nielsen, N., Amstrup, B., and Huess, V.: Performance of DMI-HIRLAM-T15 and DMI-HIRLAM-S05 and the storm surge model in winter storms, Technical Report 05-13, DMI, Copenhagen, 31 pp., ISSN:1399-1388, 2005.
- Peuch, V.-H., Engelen, R., Calnan, R., Lambert, J.-C., and de Rudder, A., and The MACC-II Consortium: Monitoring Atmospheric Composition and Climate II - Interim Implementation, Final Report, ECMWF, Reading, 137 pp., 2014.
- 500 Peuch, V.-H., Engelen, R., Calnan, R., Lambert, J.-C., and de Rudder, A., and The MACC-III Consortium: Monitoring Atmospheric Composition and Climate 3, Final Report, ECMWF, Reading, 148 pp., 2016.

- Ramboll Environ: User's Guide - COMPREHENSIVE AIR QUALITY MODEL WITH EXTENSIONS Version 6.40, Ramboll Environ, Novato, California, 283 pp., 2016.
- 505 [Richards, P.J. and Hoxey, R.P.: Appropriate boundary conditions for computational wind engineering models using the k-ε turbulence model, Journal of Wind Engineering and Industrial Aerodynamics, 46 & 47, 145-153, \[https://doi.org/10.1016/0167-6105\\(93\\)90124-7\]\(https://doi.org/10.1016/0167-6105\(93\)90124-7\), 1993.](#)
- 510 Sabatino, S. D., Buccolieri, R., Olesen, H., Rordam, H., Ketzel, M., Berkowicz, R., Franke, J., Schatzmann, M., Schlünzen, K.H., Leidl, B., Britter, R., Borrego, C., Alexandre, C., Castelli, S.T., Reisin, T.G., Hellsten, A., Saloranta, J., Moussiopoulos, N., Barmpas, F., Brzozowski, K., Goricsán, I., Balczò, M., Bartzis, J.G., Efthimiou, G., Nuterman, R., and Starchenko, A.V.: COST 732 in practice: the MUST model evaluation exercise. International Journal of Environment and Pollution, 44(1/2/3/4), 403-418, <https://doi.org/10.1504/IJEP.2011.038442>, 2011.
- 515 [Sander, S. P., Friedl, R. R., Golden, D. M., Kurylo, M. J., Moortgat, G. K., Keller-Rudek, H., Wine, P. H., Ravishankara, A. R., Kolb, C. E., Molina, M. J., Finlayson-Pitts, B. J., Huie, R. E., and Orkin, V. L.: Chemical Kinetics and Photochemical Data for Use in Atmospheric Studies, Evaluation Number 15, JPL Publication 06-2, Jet Propulsion Laboratory, Pasadena, CA, 2006.](#)
- [San José, R., Pérez, J.L., Gonzalez-Barras, R.M.: Assessment of mesoscale and microscale simulations of a NO2 episode supported by traffic modelling at microscopic level, Science of The Total Environment, 752, <https://doi.org/10.1016/j.scitotenv.2020.141992>, 2021.](#)
- 520 Sass, B. H.: A research version of the STRACO cloud scheme, DMI Tech. Rep. 02-10, Danish Meteorological Institute, Copenhagen, 25 pp., ISSN:1399-1388, 2002.
- Savijärvi, H.: Fast radiation parameterization schemes for mesoscale and short-range forecast models, J. Appl. Meteor., 29, 437-447, [https://doi.org/10.1175/1520-0450\(1990\)029<0437:FRPSFM>2.0.CO;2](https://doi.org/10.1175/1520-0450(1990)029<0437:FRPSFM>2.0.CO;2), 1990.
- 525 Schaap, M., Cuvelier, C., Hendriks, C., Bessagnet, B., Baldasano, J.M., Colette, A., Thunis, P., Karam, D., Fagerli, H., Graff, A., Kranenburg, R., Nyiri, A., Pay, M.T., Rouil, L., Schulz, M., Simpson, D., Stern, R., Terrenoire, E., and Wind, P.: Performance of European chemistry transport models as function of horizontal resolution, Atmospheric Environment, 112, 90-105, <https://doi.org/10.1016/j.atmosenv.2015.04.003>, 2015.
- [Schatzmann, M., Olesen, H., Franke, J. \(Eds.\): COST 732 Model Evaluation Case Studies: Approach and Results. COST Office, ISBN: 3-00-018312-4, 2010.](#)
- 530 Schlünzen, K., Grawe, D., Bohnenstengel, S., Schlüter, I., and Koppmann, R.: Joint modelling of obstacle induced and mesoscale changes - Current limits and challenges, Journal of Wind Engineering and Industrial Aerodynamics, 99(4), 217-225, <https://doi.org/10.1016/j.jweia.2011.01.009>, 2011.

- Seinfeld, J., and Pandis, S.: Atmospheric Chemistry and Physics, From Air Pollution to Climate Change (2nd Ed.), John Wiley & Sons, New York, 1152 pp., 2016.
- 535 Simmons, A.: Monitoring Atmospheric Composition and Climate, Meteorology - ECMWF Newsletter No. 123, 10–13, <https://doi.org/10.21957/vqcvmylg>, 2010.
- Slinn, S., and Slinn, W.: Predictions for particle deposition on natural waters, Atmos. Environ., 24, 1013-1016, [https://doi.org/10.1016/0004-6981\(80\)90032-3](https://doi.org/10.1016/0004-6981(80)90032-3), 1980.
- Sokhi, R., Baklanov, A., and Schlünzen, K. (Eds.): Mesoscale Modelling for Meteorological and Air Pollution Applications, Anthem Press, New York, 382 pp., <http://www.jstor.org/stable/j.ctv80cdh5>, 2018.
- 540 Stockwell, W. R., and Goliff, W. S.: Comment on “Simulation of a reacting pollutant puff using an adaptive grid algorithm” by R. K. Srivastava et al. J. Geophysical Research, 107(D22), 4643, <https://doi.org/10.1029/2002JD002164>, 2002.
- Temel, O., Bricteux, L., and van Beeck, J.: Coupled WRF-OpenFOAM study of wind flow over complex terrain, Journal of Wind Engineering and Industrial Aerodynamics, 174, 152-169, <https://doi.org/10.1016/j.jweia.2018.01.002>, 2018.
- 545 Undén, P., Rontu, L., Järvinen, H., Lynch, P., Calvo, J., Cats, G., Cuxart, J., Eerola, K., Fortelius, C., Garcia-Moya, J. A., Jones, C., Lenderink, G., McDonald, A., Mc-Grath, R., Navascues, B., Nielsen, N. W., Øidegaard, V., Rodriguez, E., Rummukainen, M., Rööm, R., Sattler, K., Sass, B. H., Savijärvi, H., Schreur, B. W., Sigg, R., The, H., and Tijm, A.: HIRLAM-5 Scientific Documentation, Tech. rep., The HIRLAM project, Norrköping, Sweden, 2002.
- [Vabishchevich, P.N.: The Method of Fictitious Domains in Problems of Mathematical Physics \[in Russian\], Moscow University, Moskva, 1991.](#)
- 550 van Leer, B.: Towards the Ultimate Conservative Difference Scheme. II. Monotonicity and Conservation Combined in a Second Order Scheme, J. Comput. Phys., 14, 361–370, [https://doi.org/10.1016/0021-9991\(74\)90019-9](https://doi.org/10.1016/0021-9991(74)90019-9), 1974.
- Veratti, G., Fabbi, S., Bigi, A., Lupascu, A., Tinarelli, G., Teggi, S., Brusasca, G., Butler, T.M., Ghermandi, G.: Towards the coupling of a chemical transport model with a micro-scale Lagrangian modelling system for evaluation of urban NOx levels in a European hotspot, Atmospheric Environment, 223, 117285, <https://doi.org/10.1016/j.atmosenv.2020.117285>, 2020.
- 555 Wesely, M.: Parameterization of Surface Resistances to Gaseous Dry Deposition in Regional-Scale Numerical Models, Atmos. Environ., 23, 1293-1304, [https://doi.org/10.1016/0004-6981\(89\)90153-4](https://doi.org/10.1016/0004-6981(89)90153-4), 1989.
- Yarwood, G., Rao, S., Yocke, M., and Whitten, G.: Updates to the Carbon Bond chemical mechanism: CB05, RT-04-00675, ENVIRON International Corporation. Novato, CA: Yocke & Company, 161 pp., 2005.