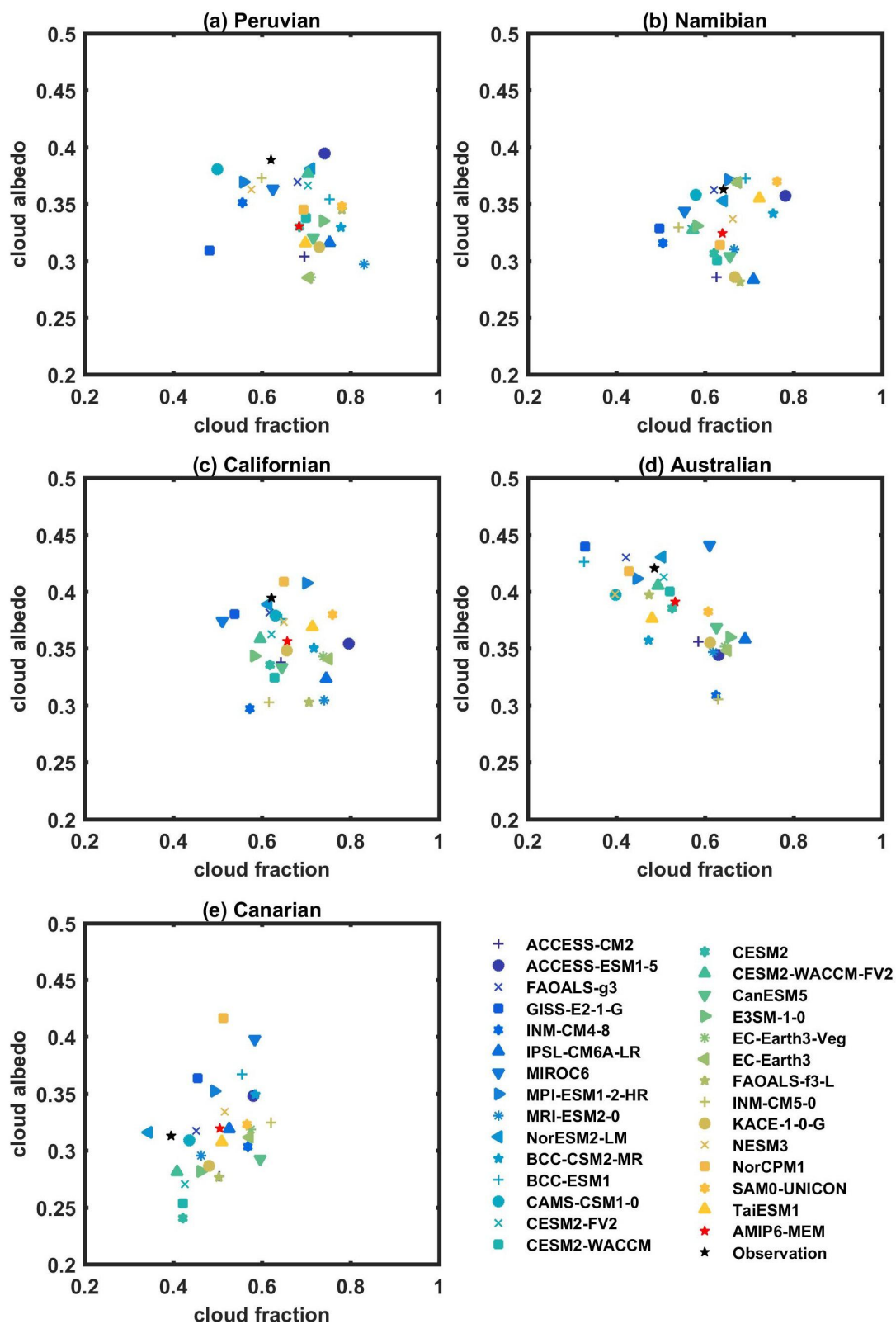


1

Supplementary Figures



2

3

4

5

Figure S1: Long-term mean cloud fraction and estimated cloud albedo from the 29 AMIP6 models and satellite observations during 2003-2014.

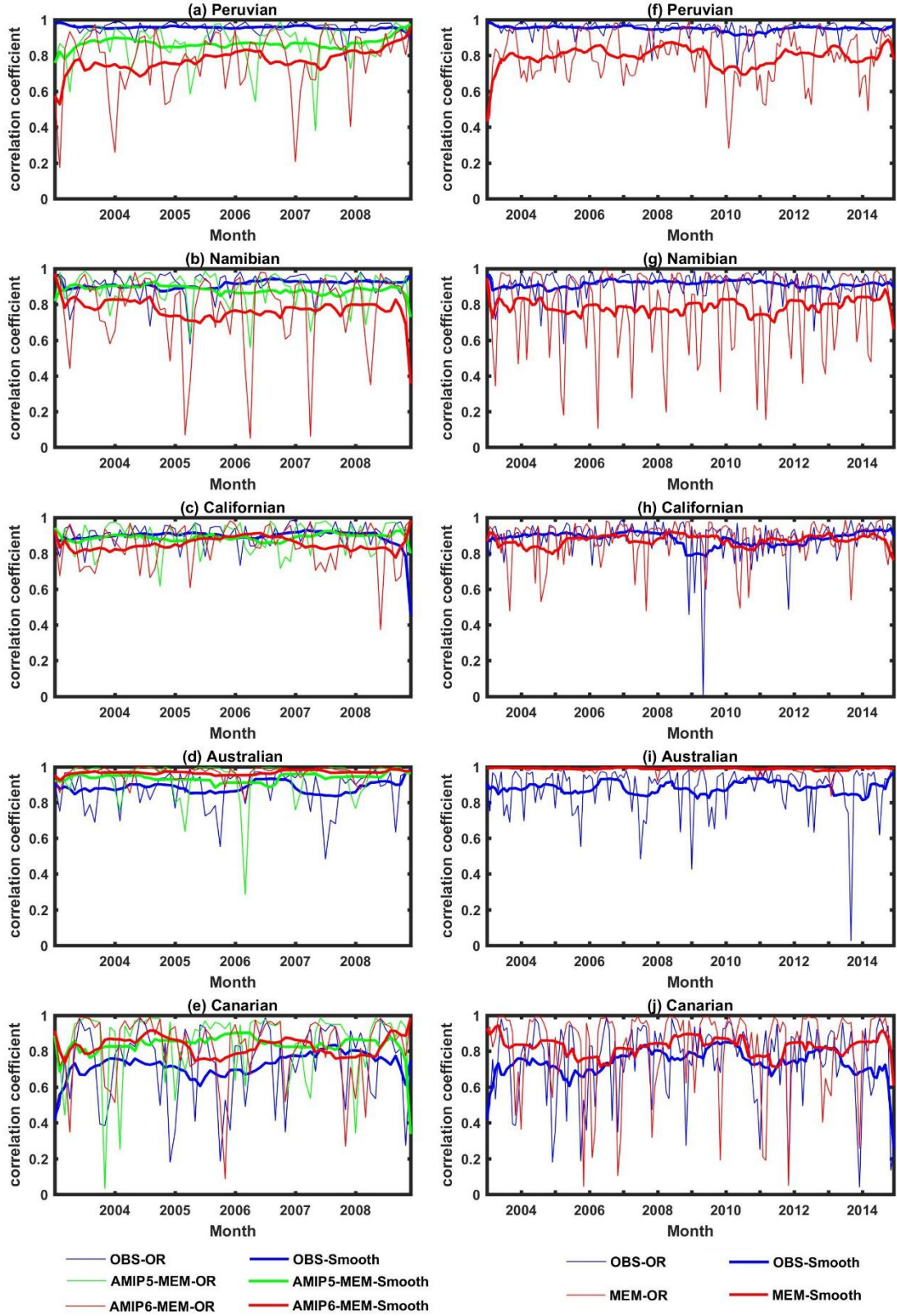
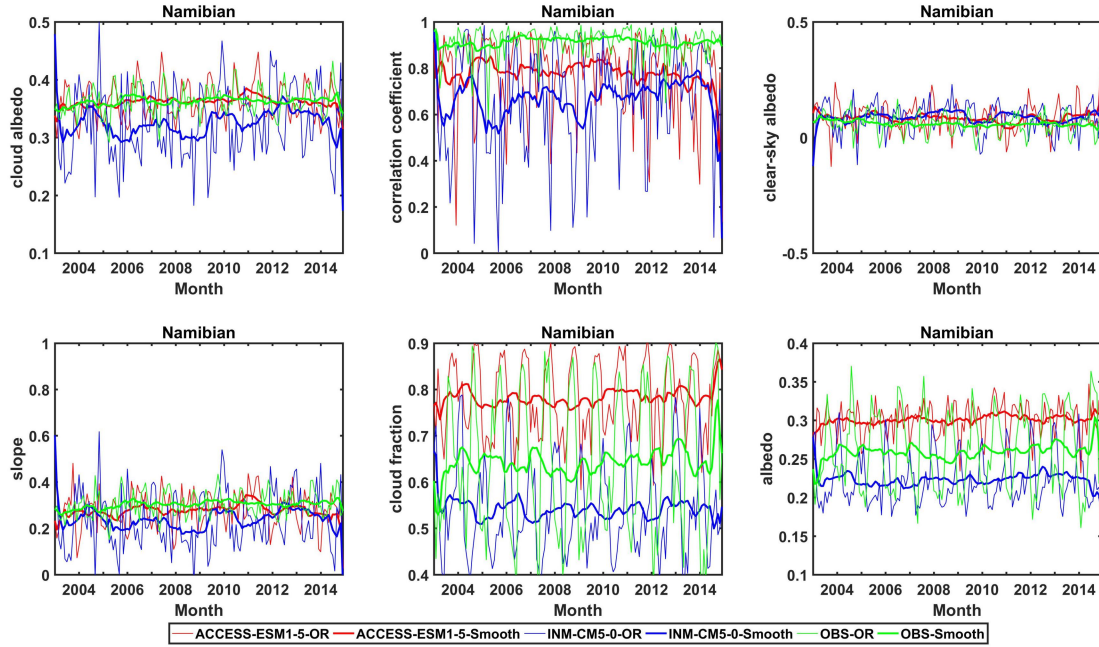


Figure S2: Monthly mean time series of correlation coefficient between cloud fraction and planetary albedo (a-e) from AMIP5 and AMIP6 multimodel ensemble mean during 2003-2008, and (f-j) from

10 **AMIP6 multimodel ensemble mean during 2003-2014 compared with**
 11 **satellite observations, over the (a, f) Peruvian, (b, g) Namibian (c, h)**
 12 **Californian, (d, i) Australian and (e, j) Canarian regions.**

13



14

15 **Figure S3: Monthly mean time series of estimated cloud albedo,**
 16 **correlation coefficient between cloud fraction and planetary albedo,**
 17 **clear-sky albedo, regressed slope, cloud fraction and planetary**
 18 **albedo over the Namibian region from 2 models compared with**
 19 **satellite observations.**

20

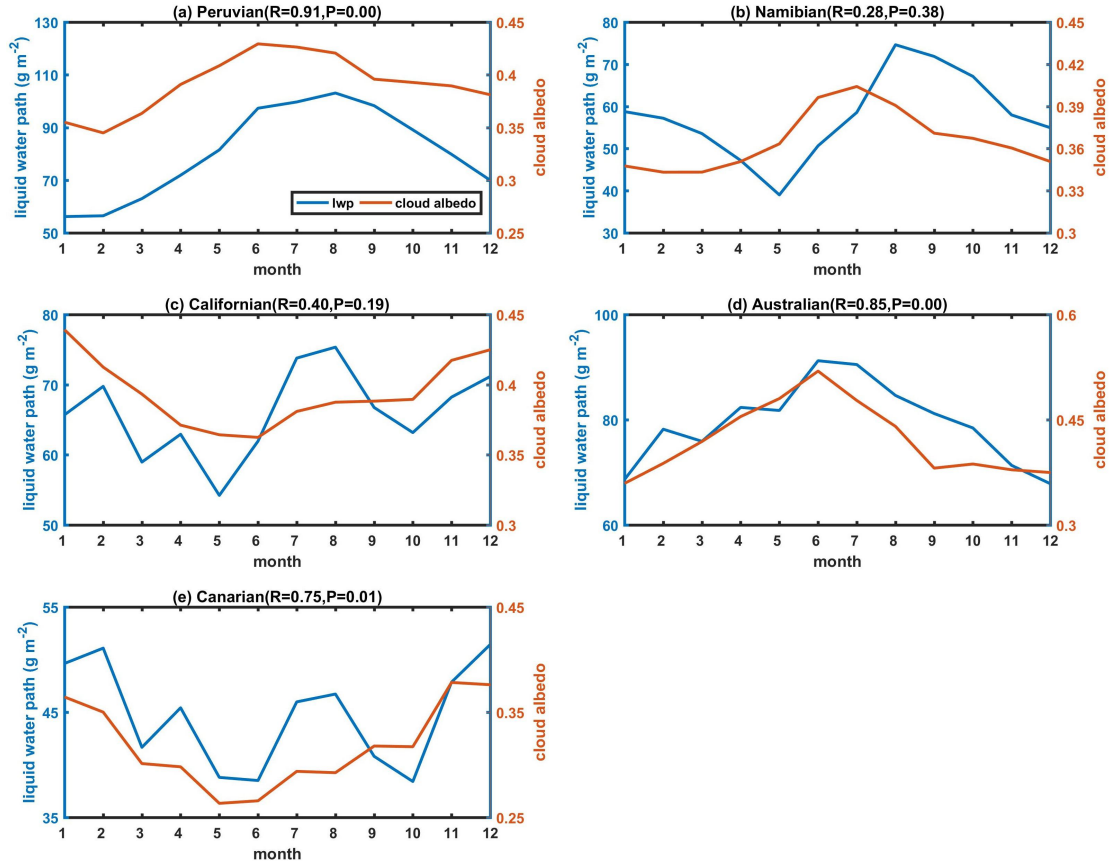


Figure S4: Annual cycles of the estimated cloud albedo and LWP from satellite observations during 2003-2014 over the (a) Peruvian, (b) Namibian, (c) Californian, (d) Australian, (e) Canarian regions. The temporal correlations (R value) and P value (if $P < 0.10$, indicating the correlation R is significant) between cloud albedo and LWP are given in parentheses.

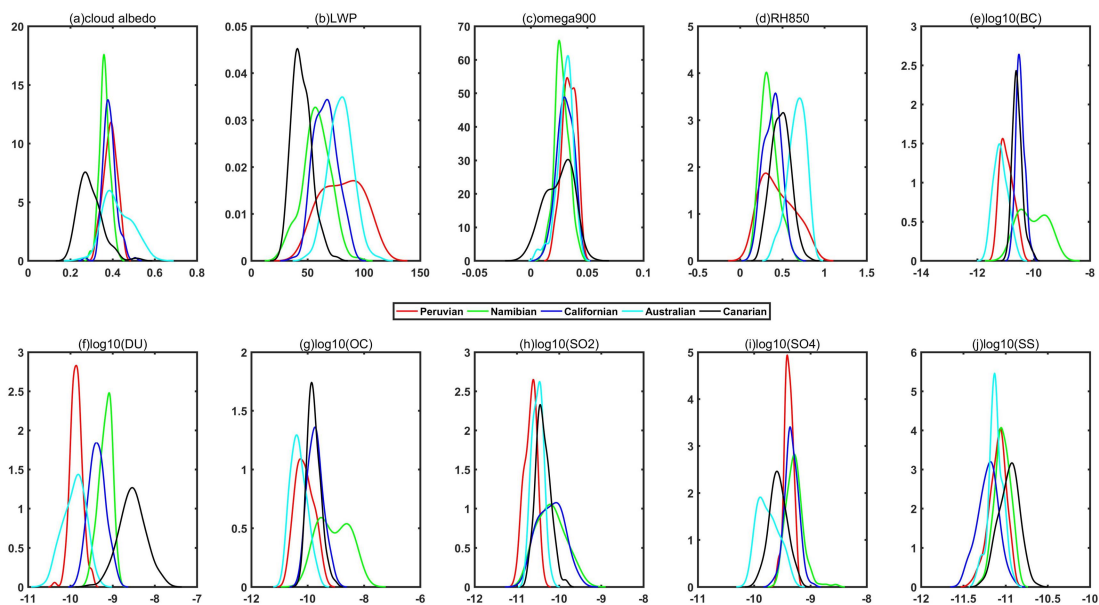


Figure S5: The probability density functions (PDF) of (a) cloud albedo, (b) LWP, (c) omega900, (d) RH850 and (e-j) log10 mass concentrations of different aerosol types over the five stratocumulus regions.