

## Supplemental material

# <sup>14</sup>C observations of atmospheric CO<sub>2</sub> at Anmyeondo GAW station, Korea: Implications for fossil fuel CO<sub>2</sub> and emission ratios

*Haeyoung Lee<sup>1,2\*</sup>, Edward J. Dlugokencky<sup>3</sup>, Jocelyn C Turnbull<sup>4,5</sup>, Sepyo Lee<sup>1</sup>, Scott J. Lehman<sup>6</sup>, John B Miller<sup>3</sup>, Gabrielle Petron<sup>3,5</sup>, Jeongsik Lim<sup>7</sup>, Gangwoong Lee<sup>2</sup>, Sang-Sam Lee<sup>1</sup> and Young-San Park<sup>1</sup>*

<sup>1</sup>National Institute of Meteorological Sciences, Jeju, 63568, Republic of Korea

<sup>2</sup>Atmospheric Chemistry Laboratory, Hankuk University of Foreign Studies, Gyeonggi-do, 17035, Republic of Korea

<sup>3</sup>NOAA, Earth System Research Laboratory, Global Monitoring Division, Boulder, Colorado, USA

<sup>4</sup>National Isotope Center, GNS Science, Lower Hutt, New Zealand

<sup>5</sup>CIRES, University of Colorado, Boulder, Colorado, USA

<sup>6</sup>INSTAAR, University of Colorado, Boulder, Colorado, USA

<sup>7</sup>Korea Research Institute of Standard and Science, Daejeon, 34113, Republic of Korea

Table S1.  $^{14}\text{C}$  in  $\text{CO}_2$  measurements at Anmyeondo station from May 2014 to August 2016. Korea local time (UTC+9 hr).

DATE	$^{14}\text{C}(\text{‰})$	DATE	$^{14}\text{C}(\text{‰})$	DATE	$^{14}\text{C}(\text{‰})$
2014-05-16 15:00	-2.06	2015-04-02 14:00	-3.64	2016-05-04 14:00	-6.06
2014-07-02 14:00	14.3	2015-04-09 15:00	6.08	2016-05-27 14:00	-42.35
2014-07-07 14:00	6.42	2015-04-30 14:00	-2.54	2016-06-17 15:00	-11.15
2014-07-22 13:00	20.36	2015-05-08 14:00	3.7	2016-06-24 13:00	-46.96
2014-07-30 17:00	23.09	2015-05-21 14:00	12.77	2016-06-30 15:00	12.18
2014-08-05 15:00	-5.24	2015-06-15 14:00	1.24	2016-08-02 10:00	-49.34
2014-08-07 13:00	-18.05	2015-06-22 14:00	-14.32		
2014-08-19 14:00	7.55	2015-07-01 15:00	-10.25		
2014-08-22 15:00	-7.37	2015-07-24 13:00	11.14		
2014-08-27 16:00	2.51	2015-07-27 9:00	17.18		
2014-08-29 14:00	-17.64	2015-08-12 17:00	-59.46		
2014-09-04 14:00	17.2	2015-08-21 13:00	-28.04		
2014-09-05 13:00	6.89	2015-08-28 13:00	7.17		
2014-09-15 16:00	-13.48	2015-09-04 14:00	-1.62		
2014-09-17 14:00	12.73	2015-09-11 15:00	-2.38		
2014-09-19 15:00	-4.81	2015-09-17 14:00	-19.51		
2014-09-25 13:00	4.64	2015-09-25 14:00	-10.16		
2014-10-08 17:00	-21.59	2015-10-02 14:00	8.3		
2014-10-17 14:00	7.54	2015-10-08 15:00	8.06		
2014-10-30 14:00	-28.04	2015-12-01 14:00	-23.18		
2014-11-07 14:00	15.03	2015-12-07 14:00	8.07		
2014-11-27 16:00	9.28	2015-12-08 9:00	5.59		
2014-12-24 14:00	-28.59	2015-12-24 14:00	0.27		
2014-12-29 16:00	-46.11	2016-01-15 14:00	-14.91		
2015-01-09 14:00	-4.68	2016-02-04 14:00	-0.24		
2015-01-23 13:00	5.5	2016-02-19 15:00	-33.82		
2015-01-30 14:00	8.03	2016-03-04 14:00	1.88		
2015-02-10 14:00	-17.79	2016-03-11 15:00	5.87		
2015-02-24 17:00	-3.93	2016-03-24 14:00	3.09		
2015-03-06 15:00	-26.49	2016-04-01 10:00	-45.84		
2015-03-12 14:00	9.66	2016-04-18 15:00	-4.34		
2015-03-20 14:00	-40.94	2016-04-28 15:00	0.46		

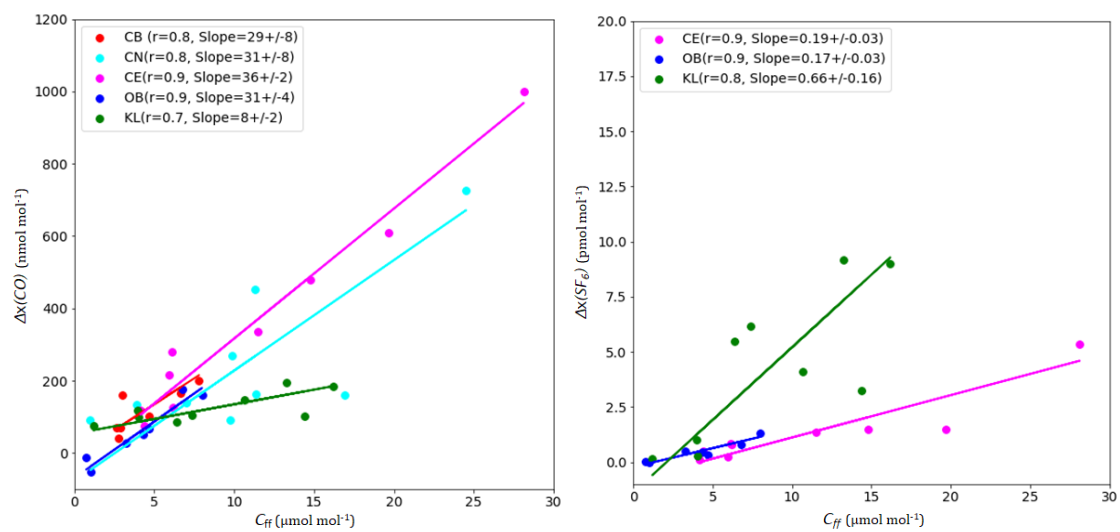


Figure S1.  $\Delta x(\text{CO}):C_{\text{ff}}$  (left) and  $\Delta x(\text{SF}_6):C_{\text{ff}}$  (right) for a subset of AMY data. The samples were categorized according to the cluster analysis described in the main text.

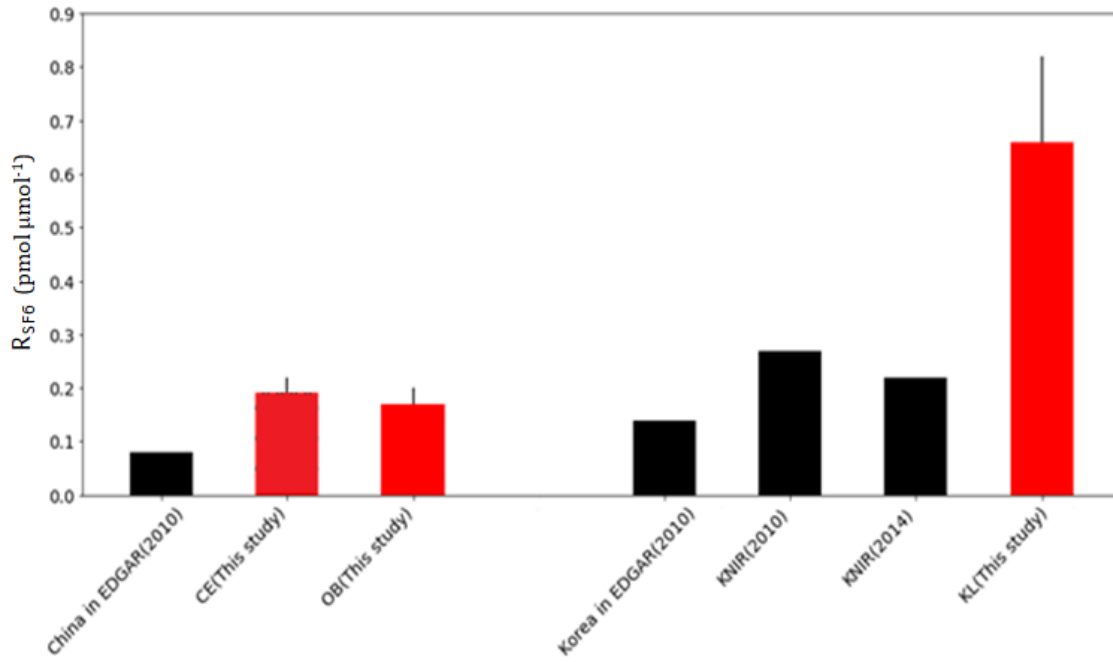


Figure S2.  $R_{SF_6}$  from bottom-up inventories and observations. Black bars: EDGAR ( $CO_2$  from v4.3.2. and  $SF_6$  from v4.2) and Korea National Inventory Report (KNIR). Red bars:  $R_{SF_6}$  from CE, OB and KL sectors in this study.

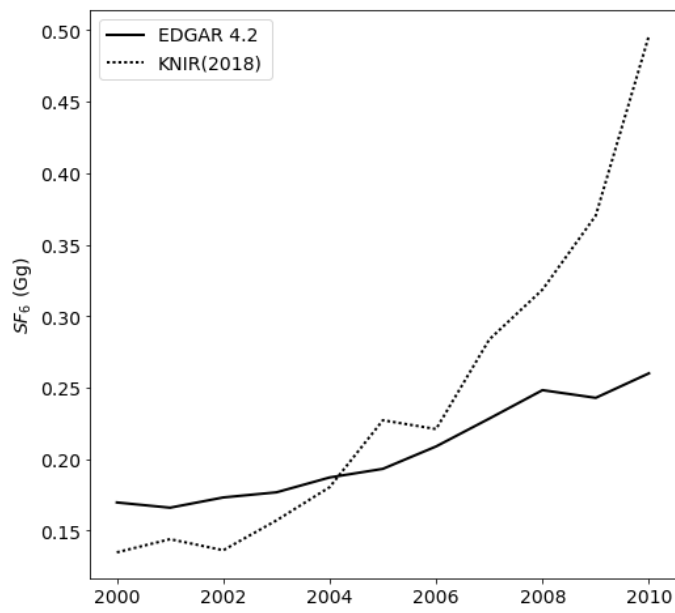


Figure S3. Comparison between EDGAR4.2 and Korea National Inventory Report (KNIR, 2018) SF<sub>6</sub> emissions. From 2005, EDGAR was lower than KNIR.

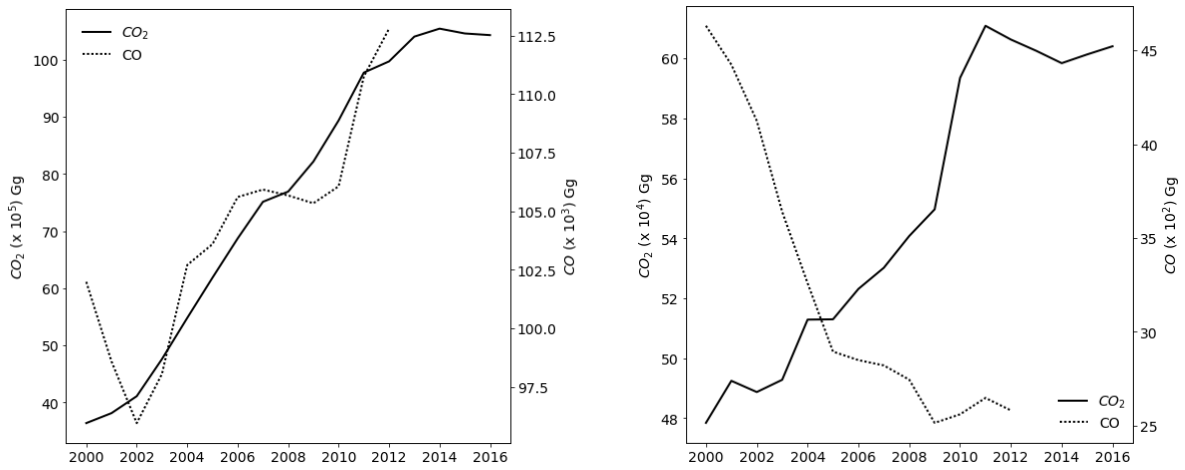


Figure S4. EDGAR v.4.3.2 bottom-up inventories for CO<sub>2</sub>ff and CO in China (left) and South Korea (Right). Left axis for CO<sub>2</sub>ff and right axis for CO. The units for both are 10<sup>9</sup> g (Gg). CO<sub>2</sub>ff inventory was reported until 2016 but CO until 2012.

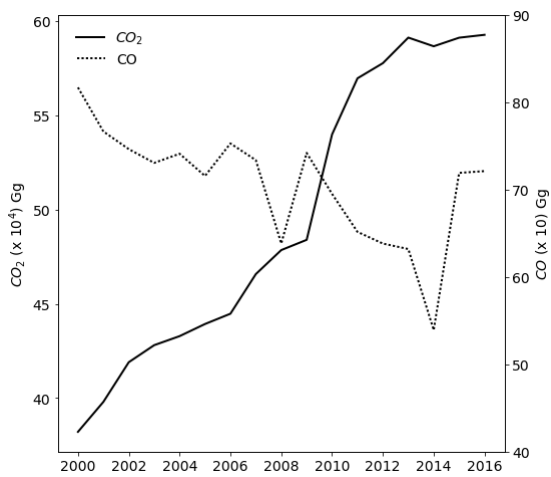


Figure S5. Bottom-up inventory from KNIR for CO<sub>2</sub> and CO in South Korea.