

Characteristics of surface energy balance and atmospheric circulation during hot-and-polluted episodes and their synergistic relationships with urban heat islands over the Pearl River Delta region

5 Ifeanyichukwu C. Nduka¹, ~~Steve Hung Lam Yim^{1,2,3}~~, Chi-Yung Tam²³, Jianping Guo³⁴, ~~Steve Hung Lam Yim^{1,4,*}~~

¹Department of Geography and Resource Management, The Chinese University of Hong Kong, Sha Tin, N.T., Hong Kong, China

10 ~~²Stanley Ho Big Data Decision Analytics Research Centre, The Chinese University of Hong Kong, Sha Tin, N.T., Hong Kong, China~~

^{2a}Earth System Science Programme, The Chinese University of Hong Kong, Sha Tin, N.T., Hong Kong, China

^{3a}State Key Laboratory of Severe Weather, Chinese Academy of Meteorological Sciences, Beijing 100081, China

15 ~~^{4a}Stanley Ho Big Data Decision Analytics Research Centre, The Chinese University of Hong Kong, Sha Tin, N.T., Hong Kong, China~~

Corresponding author: Steve H.L. Yim (yimsteve@gmail.com)

20 **Abstract.** This study analyzed the nature, mechanisms and drivers for Hot-and-Polluted episodes (HPEs) in the Pearl River Delta, China. Numerical model simulations were conducted for summer and autumn of 2009–2011. A total of eight HPEs were identified, mainly happening in August and September. K-means clustering was applied to group the HPEs into three clusters based on their characteristics and mechanism. We found three HPEs were driven by weak subsidence and convection induced by approaching tropical cyclones (TC-HPE), two HPEs ~~were~~ controlled by calm conditions (ST-HPE) with low wind speed at the lower atmosphere, whereas the remaining three HPEs were driven by the combination of both
25 aforementioned systems (HY-HPE). ~~TC-HPE and ST-HPE had both p~~Positive synergistic effect between HPE and UHI (~1.1°C increase) ~~was observed in TC-HPE and ST-HPE~~; whereas no discernible synergistic effect was found in HY-HPE. Total aerosol radiative forcing (TARF) caused a reduction in temperature (0.5–1.0°C) in TC-HPE and ST-HPE, but an increase (0.5°C) in HY-HPE.

30 1 Introduction

Air pollution and heat waves were identified as major atmospheric environmental disasters (Khafaie et al., 2016; Xia et al., 2018). Air pollution can vary at spatial scales ranging from local to global (Shi et al., 2020; Wang, et al., 2019; Wang, et al., 2019; Yang et al., 2019; Yim et al., 2009; Yim et al., 2014; Yim et al., 2010, 2015). Studies have reported the significant effects of air pollution on human health (Chen et al., 2017; Gu et al., 2018; Liu et al., 2017), ecosystems and biodiversity

35 (Lovett et al., 2009; Nowak et al., 2015; Yim et al., 2019b), and weather and climate (Guo et al., 2016, 2018; Z. Liu et al., 2018; Z. Liu et al., 2019, 2020).

Heat waves are generally defined as extended periods of elevated temperatures across the globe varying in frequency, intensity, and duration. Previous studies have revealed the significant impacts of heat waves on human health and mortality (Matusick et al., 2018), and natural systems (Unal et al., 2013). More seriously, heat wave events are likely to occur more frequently in future years as a consequence of climate change (Murari & Ghosh, 2019; Silva et al., 2016; Wang et al., 2018). Despite their large spatial heterogeneity, air pollution and heat waves have been shown to share several common underlying meteorological drivers (Founda & Santamouris, 2017; Papanastasiou et al., 2014; Zhang et al., 2017). Although great advances have been made in either air pollution or heat waves, few studies have comprehensively investigated both hot-and-polluted episodes (HPEs) in which extreme temperature and air pollution occurred simultaneously, causing an even more serious impact on human health due to their synergic effect (Pinheiro et al., 2014; Qian et al., 2010; Scortichini et al., 2018). Before this effect can be comprehensively assessed, fully understanding the driving mechanisms underlying the formation and remediation of HPEs is imperative.

The processes responsible for HPE formation and intensity vary case by case (S.-Fan et al., 2011; Katsouyanni et al., 1993; Ordóñez et al., 2010; Yim, 2020). For instance, Yim, (2020) analyzed the atmospheric condition in 3D during these events, and found that HPEs were mostly associated with a reduction in both vertical and horizontal wind velocities. By contrast, (S.-Fan et al., 2011) illustrated that approaching tropical cyclones, which may cause subsidence, weak vertical diffusion, and poor horizontal transport, were the mechanism responsible for the HPEs. To obtain a complete picture of all possible mechanisms of HPEs, a multi-episodic study is therefore warranted.

The surface energy balance, which modified and demarcated turbulent energy fluxes, were well illustrated to influence heat waves (Founda and Santamouris, 2017; Li et al., 2015; Li and Bou-Zeid, 2013; Miralles et al., 2014). For instance, Miralles et al. (2014) found that soil desiccation led to the modification of turbulent heat fluxes through the changes of latent and sensible heat fluxes. Li and Bou-Zeid (2013) and Li et al. (2015) demonstrated the effect of built-up and vegetated surfaces on the demarcation and modification of turbulent energy. However, the interaction between surface characteristics and atmospheric conditions during HPEs, which may exhibit synergies, has yet to be completely understood. The role of surface characteristics in HPE formation and development merits further investigation.

60 Studies are limited in China and more far in-between in the PRD region. Previous HPE related studies in China has been focused mostly on summertime O₃ mechanisms and characteristics (Gong and Liao, 2019; Lam et al., 2005; Li et al., 2018b; Shu et al., 2020), while others focused on atmospheric drivers for, and interactions between air pollution and mortality. However, other studies analyzed the atmospheric boundary layer characteristics over PRD using measurements and numerical models to identify boundary layer conditions that could result in HPE (S. Fan et al., 2008; S. Fan et al., 2011; Yim, 2020). Thus far, there has been limited research on HPE mechanisms in China, particularly in the Pearl River Delta (PRD) region, which has been rapidly and substantially urbanized in recent years (Li et al., 2016). The urbanization has a significant impact on the regional climate and air quality through modification of the ecosystem, land surface, atmospheric,

and energy processes (Mirzaei and Haghghat, 2010; Wang et al., 2019, 2020; Xie et al., 2016; Yim et al., 2019c; Yu et al., 2014). Mirzaei and Haghghat (2010) identified the ways urbanization modified the surface cover, climate, and energy processes, including the conversion of more surfaces into urban impervious surfaces; alteration of the local winds; humidity, temperature, and precipitation patterns; and changes in demarcation in turbulent energy fluxes within the surface and boundary layer. Furthermore, PRD is susceptible to events associated with the monsoon and tropical cyclone activities that may cause HPEs (Fan et al., 2011; Li et al., 2018), making the PRD region an ideal location for assessing HPEs.

This study identified all the HPEs occurring during 2009–2011, and analyzed their associated thermodynamic and circulation characteristics. Representative episodes were examined for a possible synergistic relationship ~~between the~~^{with} urban/~~vegetated~~^{and vegetated} land covers ~~and the HPE~~ within the PRD region (see SI section 1 and Figure S2 for details in land cover characteristics, and delineation of urban and vegetated surfaces). This is expected to ~~end up~~^{contribute to} advancing knowledge regarding the factors responsible for the evolution and sustenance of HPEs as well as the relationship between HPEs and surface characteristics.

2 Materials and Methods

2.1 Observations

This study used meteorological and air quality measurements for model validation and HPE identification. Hourly air temperature at 2 m above ground (T_2) for the study was obtained from Hong Kong Observatory (HKO). Hourly mean concentration of coarse particulate matter (PM_{10}) and ozone (O_3) concentrations was obtained from Environmental Protection Department (EPD - <https://cd.epic.epd.gov.hk/EPICDI/air/station/?lang=en>). The hourly data were used for model validation, whereas daily maximum and mean values were calculated based on the hourly data for HPE identification.

2.2 HPE Selection

The concept of hot polluted episodes that refer to an episode with coincident high temperature and air pollution level have been investigated (Chan et al., 2012; Katsouyanni et al., 1993; Ordóñez et al., 2010; Yim, 2020^a), however, most of the studies have been focused on their compounding impact on health (Chan et al., 2012) or the impact of the excess temperature on air pollution levels (Ordóñez et al., 2010). Only few studies (Fan et al., 2011; Yim, 2020^a) have considered the mechanisms responsible for their co-occurrence. While ~~the previous study focused~~ (Yim, 2020^a) ~~focused~~ on high temperature and $PM_{2.5}$ pollution in Hong Kong, this study focused on high temperature and high PM_{10} and O_3 in the PRD region. Similar to Yim (2020), this study identified a HPE based on daily maximum temperature, and daily mean of PM_{10} and O_3 . PM_{10} was used in this study because of the lack of $PM_{2.5}$ data in the study period which was June to October in 2009–2011. The time period was selected because these months represent a period in a year with the highest daily maximum temperature, which when combined with days with poor air quality, forms a HPE. ~~More so,~~ (Chan et al., (2012); and Wang et al., (2019b) ~~identified 28.2 °C and 29.77 °C as critical temperature for Hong Kong above which the risk of heat related~~

Formatted: Font: Times New Roman

Formatted: Font: Times New Roman

Formatted: Font: Times New Roman

Formatted: Font: Times New Roman

100 illnesses increases. T₂, O₃ and PM₁₀ thresholds were first defined as their 50th percentiles at each station in the study period. The maximum temperature data at Hong Kong Observatory (<https://www.hko.gov.hk/en/cis/stn.htm>) – HKO weather station (latitude: 22°18'07"; longitude: 114°10'27") was used for the HPE identification with three reasons. First, the temperature difference among urban stations was marginal. Second, the HKO station is located in the downtown of Hong Kong and thus serves as a representative urban station in Hong Kong. Third, the critical temperature was chosen for the HPE identification

105 because medical studies have reported the risk of health impact above the critical temperature. While population is concentrated in urban areas, using the HKO station was considered as adequate in this study. A total of 14 air quality stations for the PM₁₀ and O₃ were used for the HPE identification. The justifications for the threshold is presented in section 3 of SI. A HPE was identified when, daily maximum temperature on each day exceeded its threshold for at least three consecutive days, and daily mean O₃ and PM₁₀ levels on the same days exceeded their threshold values at more than 50% of all air

110 quality stations. All identified HPEs corresponded to a significant regional climatic event that past studies (Freychet et al., 2017; Hou et al., 2019; Yim et al., 2019a) have suggested could lead to either an increase in temperature, a deterioration in air quality or both. It is noted that the thresholds derived here and those derived in Yim (2020) were different. It is because this model study was designed to ~~focus on the most extreme cases to balance between the science and computational eos~~ combine the methods for the traditional heatwave definition (occurrence for an extended period) and health impact study

115 requiring the use of a critical value.

2.3 Model Description and Setup

This study employed Weather Research and Forecasting (Skamarock and Klemp, 2008) with Chemistry (WRF-Chem) version 3.7.1 (Grell et al., 2005), which is a nonhydrostatic, mesoscale numerical model coupling both meteorology and chemistry. This model downscaled the meteorology and air quality in three domains at a downscaling ratio of 3 (Figure S1a

120 in the SI): domain 1 (D1; 27 km) covering the whole of China, domain 2 (D2; 9 km) covering southern China, and domain 3 (D3; 3 km) covering the PRD region. The detailed model configuration is provided in Section 1 in SI. The initial condition data used was provided by NCEP Final Analysis (https://rda.ucar.edu/datasets/ds083.2/#metadata/detailed.html?_do=yFNL&from=GFS) with a 1° × 1° resolution, while the boundary condition was updated every 6 hours from FNL data. The emissions data for Hong Kong were provided by the Hong Kong Environmental Protection Department (HKEPD), whereas the

125 emissions within PRD except HK were provided by Zheng et al (2009). The emissions outside the PRD region were based on the INTEX-B 2006 regional emission inventory (Zhang et al., 2009). Biogenic emissions were based on Guenther et al (2006), whereas shipping emissions were based on Streets et al (2003).

We performed a series of WRF-Chem simulations for each HPE. The performance of the model was evaluated against observations, which was detailed in Section 2 of SI. For each HPE, two sets of WRF-Chem simulations were conducted with

130 a 2-day spin-up period. Two additional days were included before and after the HPEs in each simulation run. This setting was used to identify and calculate ~~trends–variations~~ in the variables before, during, and after HPEs. The first set of simulations turned on the aerosol–radiation feedback option (CTRL) while the second turned off the option (NOFB). The

Formatted: Font: (Default) +Body (Times New Roman)

Formatted: Font: (Default) +Body (Times New Roman)

Formatted: Font: 10 pt

Formatted: Font: 10 pt

Formatted: Font: 10 pt

Formatted: Font: 10 pt

Formatted: Font: 10 pt

135 difference between the two sets of simulations was attributable to the effect of aerosols on radiation fluxes during an HPE. The [model results for all the CTRL episodic simulations were](#) ~~results were~~ separated into groups using K-means clustering, and a representative of each group [was](#) characterized based on the mechanisms responsible for its formation. The mechanisms of, thermodynamic and circulation patterns of HPEs, and synergistic relationship between HPEs and [surface](#) ~~over~~UHI effect were then discussed in detail.

2.4 HPE Clustering

140 Based on our identification method, eight HPEs were identified (Table [1S4](#)). To enhance our understanding of atmospheric conditions in each HPE, cluster analysis were performed of meteorological variables (Stefanon et al., 2012; Tan et al., 2019) such as T₂, Sea Level Pressure (SLP), specific humidity at 2 m, wind components (u, v) at 10 m, incoming solar radiation at the surface, and geopotential height (GPH) at 500 hPa, which could group these variables from different times into clusters having the same meteorological conditions. A modified K-means clustering algorithm (Hartigan and Wong, 1979) function on NCAR command language (NCL) with its center set at random and iterations set at 1,000,000 was applied for all the 145 aforementioned meteorological variables.

3 Results and Discussion

3.1 HPE Identification and Classification

[Table 1. HPEs for the study period. Eight HPEs were identified and classified into three HPE groups: Stagnant \(ST\); Tropical cyclone \(TC\), and Hybrid \(HY\).](#)

HPE	Year	Start		End		No. of days	Group
		Month	Day	Month	Day		
1	2009	8	1	8	3	3	TC
2		8	30	9	10	12	ST
3		9	19	9	21	3	HY
4		9	23	9	26	4	HY
5	2010	8	4	8	7	4	ST
6		8	29	9	1	4	TC
7	2011	8	26	8	30	5	TC
8		9	7	9	10	4	HY

Formatted: Normal

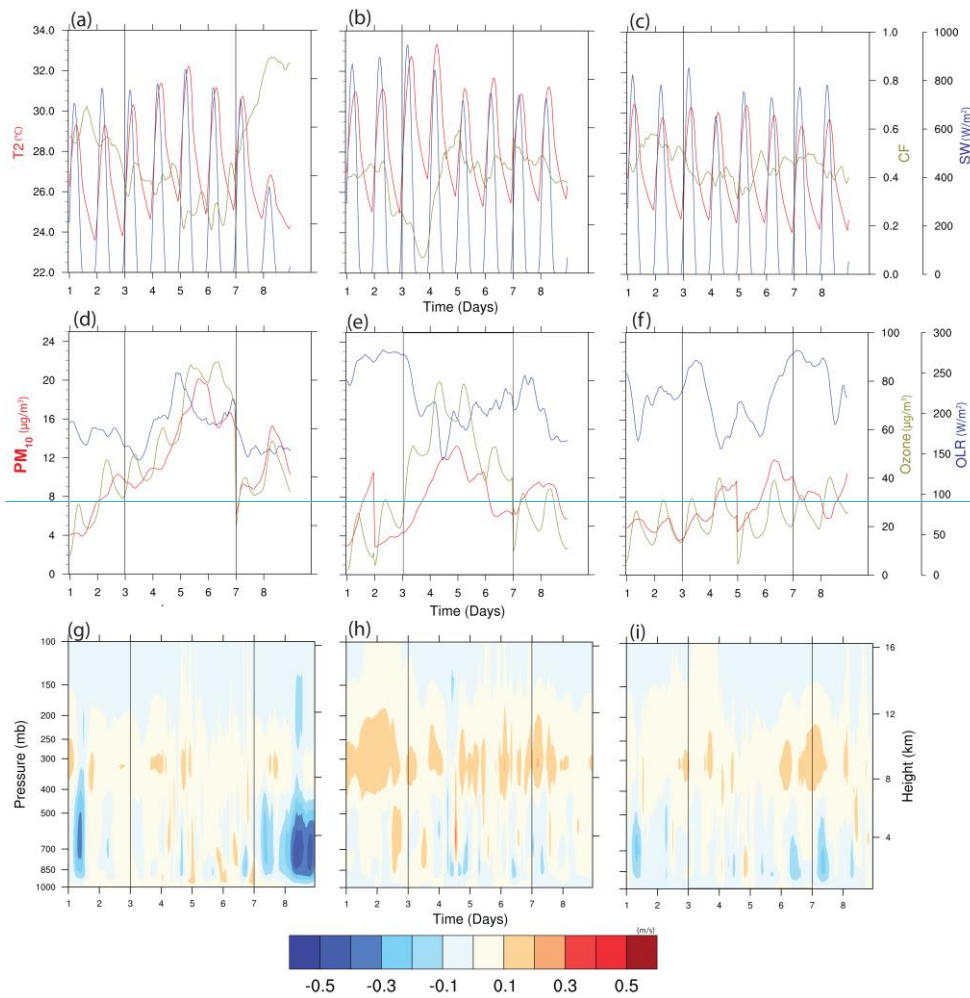
Due to the different durations of HPEs, mean diurnal variations of the variables for the study domain during the three periods (before, during, and after) from the model results were analyzed. The dissimilarity was optimized at three clusters showing the number of groups that the HPEs could be grouped into. The results of the cluster analysis indicate that the HPEs were classified based on their formation and characteristics into: Tropical Cyclone (TC-HPE); Stagnant (ST-HPE); and Hybrid (HY-HPE), and they are discussed below. The weather conditions of the TC-HPE were characterized by lower SLP and GPH but higher T_2 and specific humidity. The TC-HPE typically occurred when a tropical cyclone was approaching the PRD region. A representative episode (TC-HPE_{rep}) occurring from the August 29 to September 1, 2010, was selected to further explain the weather conditions along with weather charts provided by the Hong Kong Observatory (HKO; see Figure S4 in SI). In this episode, the tropical storm LIONROCK passed through the PRD region. Its passage caused stagnation and expansion of the high-pressure system in the lower atmosphere over the north of the region. This led to an increase in T_2 over the region. Mid-day T_2 in Hong Kong rose from 32 °C on August 29 to 34 °C on August 31, which broadly corroborated our previous studies (Yim et al., 2019b) that tropical cyclones within 1,100 km of the region can cause HPEs.

The second group, ST-HPE, was found to be characterized by higher temperature and lower specific humidity in the PRD region, as demonstrated by the representative HPE (ST-HPE_{rep}) occurring from August 4 to 7, 2010 (see Figure S5 in SI). This group represents a slow-moving weather system formed by a low-pressure system covering most of China and the Philippine Sea. This is in contrast to previous studies that have reported a strong association between high-pressure systems and air stagnation. However, when Freychet et al. (2017) assessed the dynamical processes for heatwave formation over Eastern China, they found that a low-pressure system along with northerly flow within the region often led to heat convergence and an extreme high temperature episode. The ST-HPE_{rep} was observed to have a region-wide slow-moving weather condition characterized by a wide low-pressure system that covered most of East Asia for a few days.

The third group, HY-HPE, has a unique profile that was defined by Karremann et al. (2016). This group consisted of more than one dominant synoptic condition during an episode. A representative HY-HPE (HY-HPE_{rep}) occurring from September 7 to 10, 2011, was compared with corresponding HKO charts (see Figure S6 in SI). The result confirmed the co-occurrence of more than one large scale weather system during the HPE. The result of their characterization demonstrated that different pressure centers, synoptic conditions, or their combination can be juxtaposed during a weather event and that their gradient will determine the weather condition of a region.

3.2 HPE Characterization

This section mainly analyzes the formation mechanism for each HPE group. Due to the similarities of the members in each group, we discuss the air quality, energy, and circulation characteristics of one representative HPE from each group.



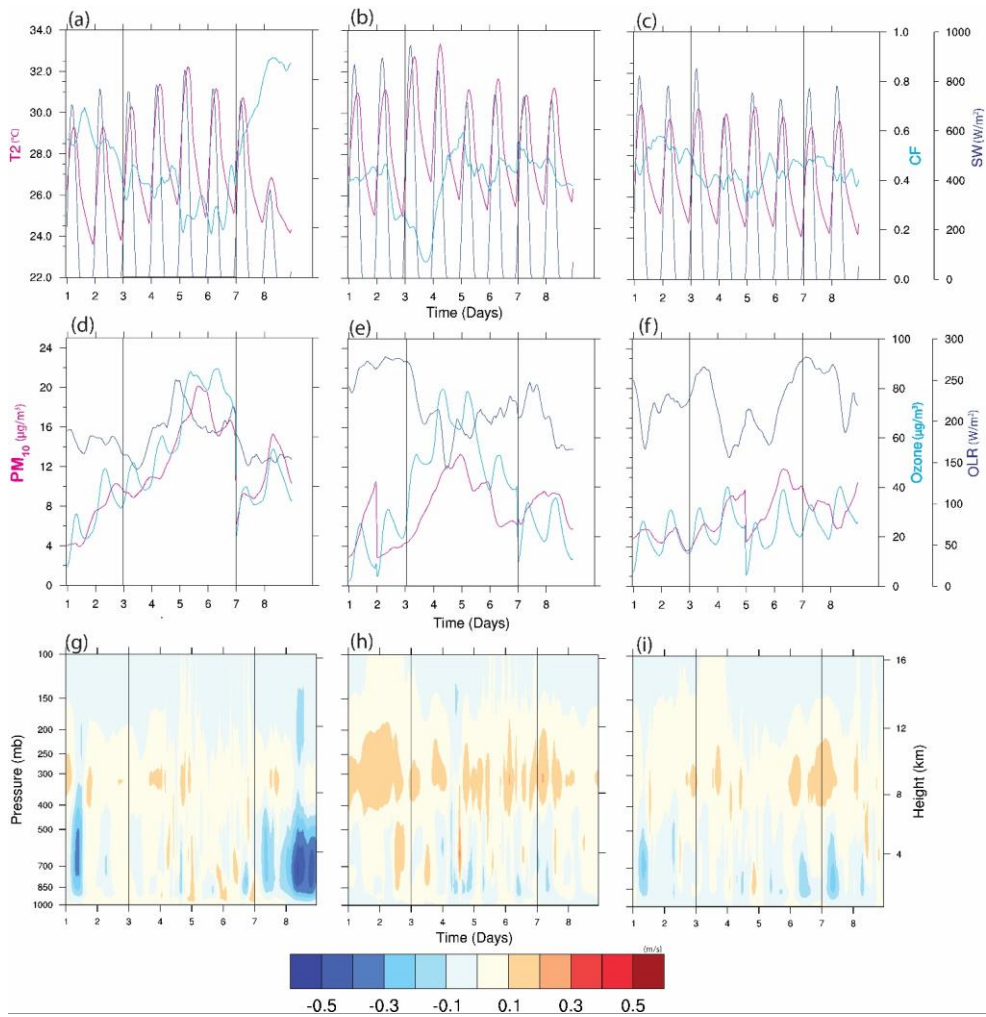


Figure 1. The model (CTRL) domain averaged results for A_{air} air temperature at 2m (T_2 ; [magenta/red](#)), cloud fraction (CF; [cyan/yellow](#)), and incoming shortwave radiation (blue) at ground level for (a) TC-HPE, (b) ST-HPE, and (c) HY-HPE; PM_{10} ([magenta/red](#)), O_3 ([cyan/yellow](#)), outgoing longwave radiation (OLR) at the top of the atmosphere (blue) for (d) TC-HPE_{rep},

(e) ST-HPE_{rep}, and (f) HY-HPE_{rep}; Time series of vertical velocity (color shading) for (g) TC-HPE_{rep}, (h) ST-HPE_{rep}, and (i) HY-HPE_{rep}. Positive vertical velocity means downward motion, whereas negative vertical velocity means upward motion. Black boxes represent the period of HPEs. Days 1 and 2 were before the HPEs; days 3–6 were during the HPEs; and days 7 and 8 were after the HPEs.

190 3.2.1 TC-HPE

Figure 1a depicts the time series for domain averaged hourly T_2 during the TC-HPE_{rep} representative HPE. During the TC-HPE_{rep}, T_2 increased on day 3 [onset (~ 30.2 °C)], reached a peak (~ 32.7 °C) on day 5, and decreased on day 7 (~ 30.8 °C). Figure 1g shows the height-time cross-section of vertical velocity. Positive vertical velocity means downward motion, whereas negative vertical velocity means upward motion. In the lower atmosphere, the positive and even relatively small negative vertical velocity values during the TC-HPE_{rep} indicate a weak subsidence of air masses resulting from an approaching tropical cyclone (Luo et al., 2018; Yim et al., 2019a). As shown in Figure 1a, the cloud fraction was maintained at approximately 0.40 at the onset of the TC-HPE_{rep} and reduced to 0.20 at 08:00 on day 5. The reduction in cloud fraction was due to weak convection. These clear sky conditions caused a significant increase in incoming shortwave radiation, leading to a remarkable increase in T_2 due to greater direct exposure to solar radiation at the surface. Figure 1d shows that the outgoing longwave radiation (OLR) also increased up to 250 W/m² at 08:00 on day 5. The situation changed by the end of day 6 due to the increased upward motion, as indicated by the large negative vertical velocity shown in Figure 1g. A greater number of convective activities led to an increase in cloud fraction (up to 0.30) and thus a reduction in SW radiation. Consequently, T_2 decreased, signaling the end of the HPE.

During TC-HPE_{rep}, the weak vertical motions led to an accumulation of PM₁₀, as shown in Figure 1d. The PM₁₀ concentration rose from approximately 10 $\mu\text{g}/\text{m}^3$ on day 3 to >24 $\mu\text{g}/\text{m}^3$ on day 5. This change can be attributed to the northerly wind during the episode, as shown in Figure S7a in SI. Enhanced northerly wind has been found to significantly enhance transboundary air pollution in the region (Hou et al., 2019; Luo et al., 2018; Tong et al., 2018b; Yim et al., 2019a). During the TC-HPE_{rep}, O₃ accumulation also occurred. The increase in insolation due to lower cloud fraction and accumulation of pollutants, some of which are precursors of O₃ formation, led to the increase in mid-day O₃ concentration from approximately 60 $\mu\text{g}/\text{m}^3$ on day 3 to approximately 90 $\mu\text{g}/\text{m}^3$ on day 6. The result also demonstrated that the diurnal variation in O₃ concentration was maintained but the mean concentration increased significantly as the TC-HPE_{rep} got hotter and more polluted before falling at the end of the episode.

3.2.2 ST-HPE

Figure 1b depicts the evolution of the ST-HPE_{rep}. T_2 increased on day 3 [onset (~ 32.7 °C)], reached a peak (~ 33.3 °C) on day 4 and then decreased until the end of day 6 (~ 32.1 °C). The ST-HPE_{rep} was distinguished by a 5 m/s wind speed at the lower atmosphere from day 1 to 4, as shown in Figure S7b in SI. The wind speed reduced to approximately 2 m/s on day 3, which led to an intense accumulation of heat and a 1.7 °C increase in T_2 . The subsequent increase in wind speed after day 4 (>5

m/s) coincided with the decrease in T_2 until the end of day 6, which marked the end of this episode. Vertical movement during this event, as shown in Figure 1h, ranged from -0.1 to 0.2 m/s. The strong subsidence observed on days 2 and 3 in the mid/lower atmosphere contributed to the stable atmosphere because the cloud fraction (shown in Figure 1b) was lower (~ 0.20 on day 2, whereas ≤ 0.1 on day 3). On day 4, the convective motions (-0.1 m/s) contributed to a steady increase in cloud fraction to 0.5. Consequently, the increase in cloud cover cut off insolation (down to approximately 8504.700 W/m^2 on day 4 and approximately 4.56850 W/m^2 on day 5, as shown in Figure 1b). However, the cloud could retain most of the heat on day 4 as the OLR displayed in Figure 1e decreased from 210 W/m^2 on day 3 to 16550 W/m^2 on day 4, while the T_2 increased by 0.6 $^{\circ}C$. T_2 reduced thereafter by 2.3 $^{\circ}C$ due to the amount of persistent high cloud, which blocked incoming shortwave radiation and cut off the source of heat. This episode persisted until the end of the ST-HPE_{rep} (day 6).

The calm wind condition also contributed to the deterioration in air quality, as shown in Figure 1e. The increase in the concentration of PM_{10} to 20 $\mu g/m^3$ from days 4 to 6 was accentuated by the change in wind direction to north/northeast, as shown in Figure S7e in SI. This result was consistent with a number of findings (Hou et al., 2019; Luo et al., 2018b; Tong et al., 2018b, 2018a; Yim et al., 2019b) showing that a northerly wind is usually associated with air pollution in the region as a result of transboundary air pollution. The increase in O_3 concentration displayed in Figure 1e is attributable to the increase in precursors and the amount of incoming shortwave radiation available. The diurnal variation in the time series of O_3 is also indicative of this cumulative trend.

3.2.3 HY-HPE

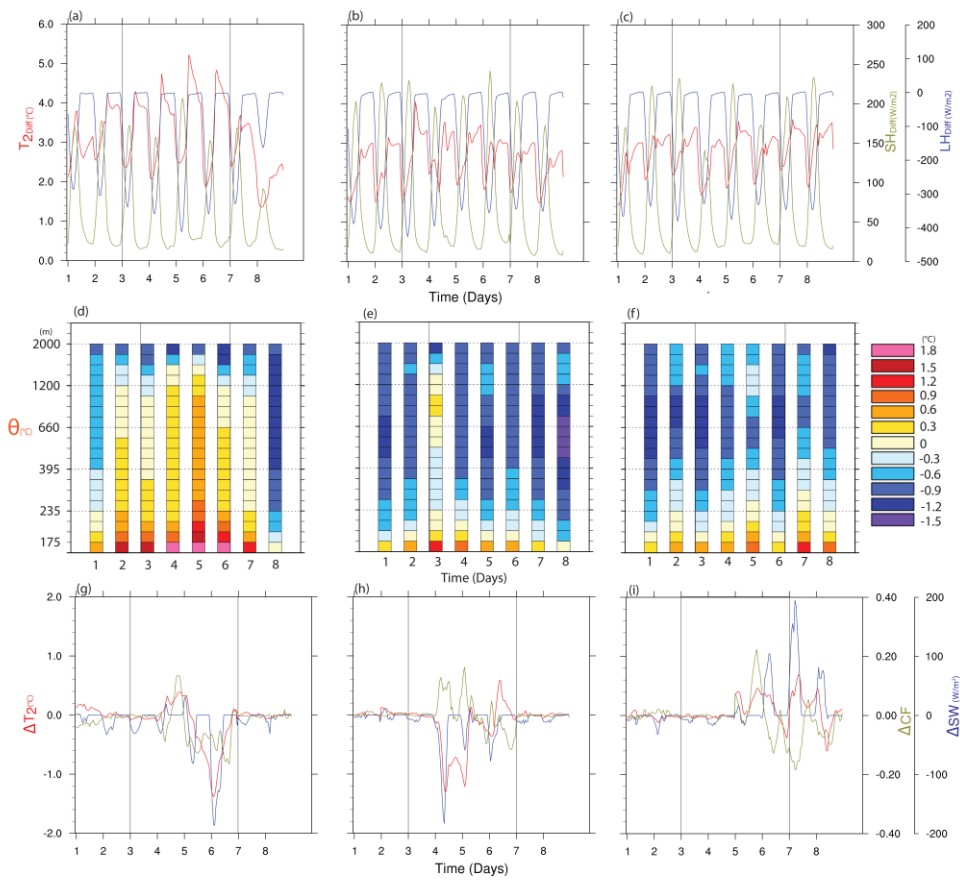
Compared with the other two groups, HY-HPE did not show an obvious increase in daily T_2 during the episode. As shown in Figure 1c, the HY-HPE_{rep} (days 3–6) had a mean daily maximum T_2 of approximately 30.0 $^{\circ}C$ with a variation of only ± 0.3 $^{\circ}C$. The HY-HPE_{rep} showed a relatively large change in horizontal wind speed at the lower troposphere (Figure S7c in SI) from <5 m/s on days 1 to 3 to a higher wind speed (≥ 8 m/s) from days 4 to 8. Similar to the other two groups, Figure 1i shows a weak subsidence in this episode due to weak vertical velocity (from -0.2 m/s to 0.2 m/s), which was accompanied by weak downward motion (except on day 5). The increased horizontal wind speed from day 4 contributed to the temperature regime of the HY-HPE_{rep} by offsetting the heat buildup due to the weak vertical motion. This led to marginal variations in the diurnal temperature between pre-, mid-, and post-HPE days.

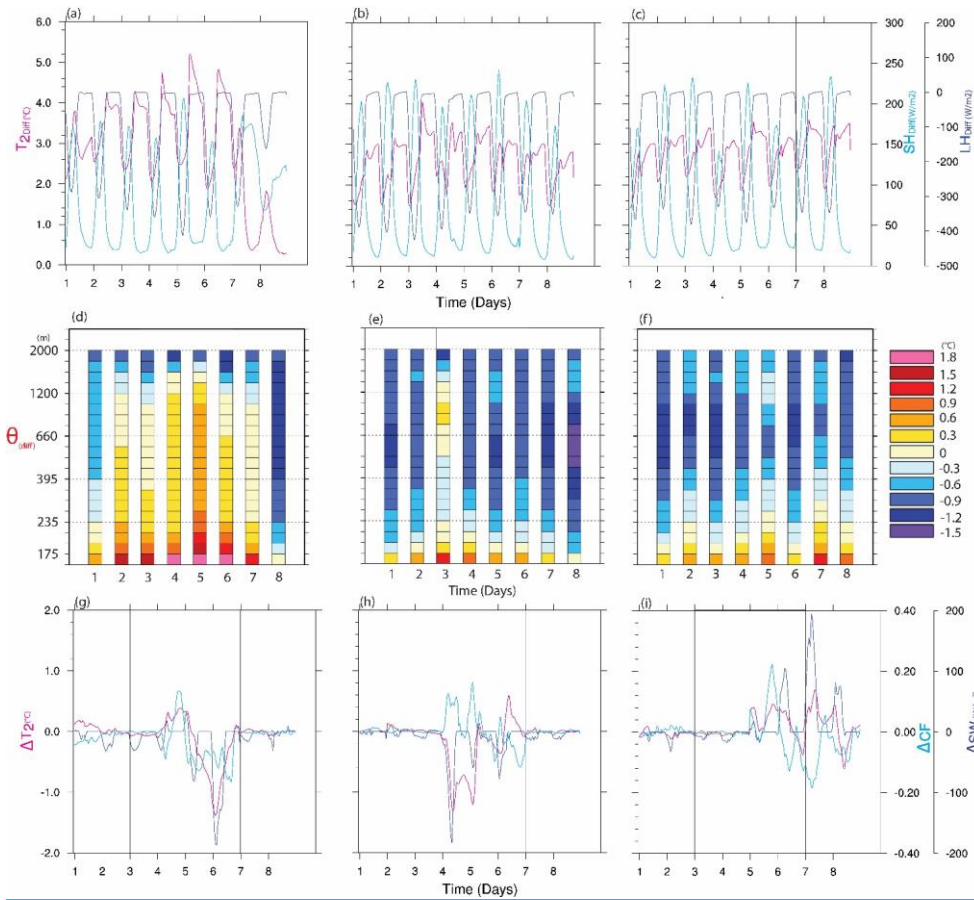
The changes in air quality during this episode were influenced primarily by the horizontal wind direction and speed. This is exemplified by the effect of the prevailing wind speed and direction on the relatively lower concentration of PM_{10} (about 15 $\mu g/m^3$ at its peak; see Figure S7i&f in SI). The prevailing easterly wind suggests a marginal effect of transboundary air pollution in HY-HPE; the increase in air pollutant level was thus due to local emissions. The subsequent increase in wind speed resulted in a dispersion and reduction in the PM_{10} concentration. However, as the wind direction switched to the north (day 6), PM_{10} concentration began to rise due to increases in transboundary air pollution. Changes in O_3 concentration followed the same pattern due to the availability of precursors and the influence of wind speed and direction. Consequently, HY-HPE was unable to accumulate heat, PM_{10} , and O_3 concentration despite the weak convection.

3.3 Synergistic Relationship

We examined the synergistic relationship between UHIs and HPEs during these episodes. This was achieved by scrutinizing the daily mid-day height-time series of potential temperatures, which have been found to be a suitable indicator for heatwave accumulation and structure because they exhibit the characteristics of an air parcel over time (Miralles et al., 2014; Ramamurthy et al., 2017). ~~OLR was also adopted as an indicator to show how transparent the sky was at the time.~~ The effects of land cover on the evolution and sustenance of the HPE were analyzed by examining UHI intensities during the HPEs. The UHI intensities were quantified as the difference between the average urban and rural grids (as shown in Figure S2). The rural grids are the average of all the vegetated land use land cover categorizations shown in Figure S2. Quantification of potential temperature, sensible and latent heat fluxes were also carried out using the same method. The effect of the air quality on the HPEs was also examined, largely through analyzing the effect of total aerosol radiative forcing (TARF).

3.3.1 TC-HPE





265 Figure 2. The model (CTRL) domain averaged results showing (a-c) Difference of T_2 ($T_{2,diff}$), sensible heat SH (SH_{diff}), and latent heat LH (LH_{diff}) between urban and vegetated gridsareas for TC-HPE_{rep}, ST-HPE_{rep}, and HY-HPE_{rep}; (d-f) Vertical profile of potential temperature difference θ (θ_{diff}) for TC-HPE_{rep}, ST-HPE_{rep}, and HY-HPE_{rep} at mid-day for the PRD region; (g-i) the changes of T_2 (ΔT_2), $-CF$ (ΔCF), and incoming shortwave radiation SW (ΔSW) at the surface induced by total aerosol radiative forcing for TC-HPE_{rep}, ST-HPE_{rep}, and HY-HPE_{rep}.

Formatted: Subscript

Formatted: Not Superscript/ Subscript

Formatted: Subscript

Formatted: Subscript

Formatted: Not Superscript/ Subscript

Figure 2a shows the T_2 difference between urban and vegetated areas during TC-HPE_{rep}. The results indicate a remarkable 4.2-5.5 °C difference in T_2 between the two types of land cover due to the UHI effect during the HPE, while the pre- and post- HPE UHI effect had a lower range of 2.2 °C to 4.2 °C indicating the contribution of the HPE to the UHI effect.

Figure 2d depicts the difference between the potential temperature over urban and vegetated land covers in the PRD region at mid-day. The temporal distribution in potential temperature shows an increasing trend in the lower atmosphere (≥ 1.8 °C from days 4 to 6) and upward expansion in height for warm air beyond 1.2 km (0.3 °C on day 5). Persistent daily heating from incoming solar radiation provided energy that precipitated a rise in temperature, thereby entrapping and accumulating heat during the TC-HPE_{rep}. For the TC group of HPE_{rep}, the T_2 difference ranged from 0.5 °C to >1.5 °C, showing that TC-HPE provided extra heat to the surface which enabled the urban areas to warm up to a greater extent than normal. This result indicates that the UHI effect was enhanced during the TC-HPE.

The effect of surface moisture availability, surface energy retention, and transfer for both urban and vegetated surfaces was investigated by analyzing latent and sensible heat fluxes (Figure 2a). The largest absolute latent heat difference between the two types of land cover was between 350 and 400 W/m². This illustrates the impact of the limited vegetation in the city. This is buttressed by the 130–200 W/m² difference, respectively in the amount of sensible heat for both types of land cover.

Although while both the latent and sensible heat fluxes shared similar incoming shortwave radiation, the fact that the sensible heat results were lower than the latent heat results suggest that more water was available for evapotranspiration due to the tropical cyclone associated rainfall. The continued increase in the temperature can be attributed to the continued desiccation of the urban areas, leading to faster buildup of heat and increase in temperature, even as the cloud cover continued to decrease until day 6, marking the end of the episode.

TARF caused an initial increase in T_2 but then a significant reduction in T_2 (>1.0 °C) on day 6 when the PM₁₀ increased to a peak. Figure 1d and Figure 2g show that when PM₁₀ was increased but below 10 µg/m³, the TARF caused a reduction in cloud fraction and thus an increase in T_2 . The reduction in cloud fraction due to TARF may be due to the aerosol-cloud interaction in which aerosols served as cloud condensation nuclei and thus more cloud droplets were formed with a smaller radius, and the cloud fraction hence decreased (Liu et al., 2020). Nevertheless, when the PM₁₀ level exceeded 10 µg/m³, the aerosol-radiation interaction (aerosol scattering and absorption) may become dominant, causing a reduction in amount of solar radiation reaching to the ground level due to the blockage effect of aerosols and thus temperature reduced.

3.3.2 ST-HPE

Figure 2b shows the difference in T_2 between the two land covers in the ST-HPE_{rep}. The T_2 in urban areas was higher by a range of approximately 3.0-4.8 °C during the ST-HPE_{rep}. There was also approximately 0.2 °C to 1.0 °C difference in T_2 between the ST-HPE_{rep} period and its pre/post periods. Figure 2e shows that heat accumulated at before the onset of ST-HPE_{rep} began to decay during the episode. The heat accumulation led to a maximum difference of about 1.5 °C on day 3, which was the first day of the ST-HPE_{rep} and the day with the highest incoming solar radiation and lowest cloud cover. This contrasts with the pre/post periods which had a minimal difference in their cloud fraction during the episode, hence

Formatted: Subscript

305 [highlighting the importance of incoming solar radiation to the HPE. Comparing urban and vegetated land covers, there was a difference of approximately 250 and 400 W/m² in the amount of latent heat and sensible heat, respectively \(The sensible and latent heat fluxes shown Figure 2b indicates that the heat buildup for this episode started before the onset of this HPE, as the continuously increased \(decreased\) for sensible \(latent\) heat\). However, the changes in the cloud fraction from day 4 and 5, led to the retention of the accumulated heat, and subsequent attenuation of temperature, sensible and latent heat differences.](#)

310 The potential temperature [difference](#) also shows a positive synergy during the ST-HPE_{rep} by maintaining a positive difference throughout the episode, even though it progressively weakened over time. These results indicate that the UHI effect was accentuated during the ST-HPE_{rep}, leading to a larger temperature difference between urban and vegetated surfaces.

315 The results of the effect of TARG on T₂, SW_{in}, and CF for ST-HPE indicate that TARG caused marginal changes during the pre- and post-ST-HPE periods (Figure 2h). Like the TC-HPE_{rep}, the TARG effect led to a reduction in approximately 1.5°C when the PM₁₀ reached a peak on days 4 and 5. The cloud fraction (Figure 1b) also increased significantly during this period, thus contributing to the decrease in T₂. As explained in the TC-HPE_{rep}, the reduction in T₂ could be mainly due to effect of aerosol–radiation interaction. The TARG effect on T₂ by day 6 led to a 0.5 °C increase: this was due to the slight increase of PM₁₀ concentration (the total level was lower than 8 µg/m³) on that day that reduced the cloud fraction.

3.3.3 HY-HPE

320 HP-HPE_{rep} did not show any significant difference in UHI intensity between the pre-, mid-, and post-HPE periods. Figure 2c shows a similar magnitude (3.0–3.5 °C) during, pre- and post-HPE periods. The daily variation did not display any obvious signs of heat retention in the atmosphere, indicating that there was no heat accumulation during this episode. The potential temperature shown in Figure 1c indicates that heat generated from heating the surface by the incoming solar radiation could not be entrained due to its increased wind speed and weak vertical motions, thereby making it difficult to accumulate heat; an observed pre-requisite for HPE and UHI synergistic effect. There was therefore no synergistic relationship between UHI and HPE during the HY-HPE.

325 The effect of TARG on T₂ and OLR in the HY-HPE_{rep}, as displayed in Figure 2i shows a variation of –0.5 °C to 0.5 °C in temperature across the pre-, mid-, and post-HPE periods. The pre-HPE period shows marginal changes for CF, SW_{in}, and T₂; however, variations began to be apparent from day 5. For instance, on the afternoon of day 5, the PM₁₀ started to increase and reached a peak early on day 6. The cloud fraction increased in response to the increase in PM₁₀, as did SW_{in} and then T₂.

330 These changes became marginal late on day 6. Nevertheless, PM₁₀ still maintained a relatively high level and the cloud fraction reduced once more, allowing more solar radiation to reach the ground causing an increase in T₂.

4 Conclusions

In this study, eight HPEs during 2009–2011 were identified. We found that TC-HPE was influenced by incoming solar radiation and subsidence, ST-HPE influenced by low wind speed and reduction in cloud cover; while HY-HPE was

335 influenced by weak vertical transport, and increased wind speed. Consequently, TC-HPE and ST-HPE had a positive
synergetic relationship (~1.1 °C) between UHI and HPE because their characteristic meteorological conditions (weak
subsidence, low wind speeds and reduced cloud cover) accentuated insolation, heat storage and heat entrainment, while HY-
HPE had no discernable relationship. TARF was found to contribute significantly to the temperature variations during the
HPEs, leading to significant cooling effects on the HPEs (0.5–1 °C), except when upward vertical transport prevailed,
340 particularly during the daytime.

This study provided further insight into the nature of HPEs at both regional and local level by analyzing their modes of
formation and thermodynamic characteristics, and by investigating the contributions of land use/land cover (LULC) changes
to the nature of HPEs. These findings can aid policymakers in redesigning and renewing our urban environments to alleviate
the UHI effect, global warming, and air pollution. Especially the impact of aerosol radiative forcing during the HPEs will
345 improve our understanding of the mechanisms responsible for the co-occurrence of unusually high temperature and poor air
quality in the PRD region, showing enormous implications for regional climate and health. The next phase of our study will
focus on the regional scale implications of the effect of HPEs on human health, the relative contribution of aerosol–radiation
and aerosol–cloud interactions, and the combined effect of LULC and aerosols on our climate.

350 **Data availability:** The in-situ meteorology data was provided by Hong Kong Observatory at
http://www.hko.gov.hk/cis/climat_e.htm (last access: 14 September 2019); while the in-situ air quality data was provided by
Hong Kong Environmental Protection Department at <https://cd.epic.epd.gov.hk/EPICDI/air/station/?lang=en> (last access: 14
September 2019).

Supplement: The supplement related to this article is attached.

355 **Author contributions:** Steve Yim and Ifeanyichukwu C. Nduka designed the study. Ifeanyichukwu C. Nduka did all
calculations with support from Steve Yim, Chin-Yung Tam. Ifeanyichukwu C. Nduka wrote the paper with support and
editing from Steve Yim, Jianping Guo and Chi-Yung Tam.

Competing interests: The authors declare that they have no conflict of interest.

360 **Disclaimer:** The views expressed in this paper are those of the authors and do not necessarily reflect the views or policies of
the Hong Kong government or any of its agencies or parastatal.

Acknowledgments: This work is supported by the Early Career Scheme of Research Grants Council of Hong Kong (grant
no. CUHK24301415). The in-situ meteorology and air quality observations are provided by Hong Kong Observatory
(http://www.hko.gov.hk/cis/climat_e.htm) and Hong Kong Environmental Protection Department
(<https://cd.epic.epd.gov.hk/EPICDI/air/station/?lang=en>)

365 **Financial support:** This work is supported by the Early Career Scheme of Research Grants Council of Hong Kong (grant
no. CUHK24301415).

References

370 Chan, E. Y. Y., Goggins, W. B., Kim, J. J. and Griffiths, S. M.: A study of intracity variation of temperature-related
mortality and socioeconomic status among the Chinese population in Hong Kong, *J Epidemiol Community Health*, 66(4),
322–327, <https://doi.org/10.1136/jech.2008.085167>, 2012.

Chen, X., Shao, S., Tian, Z., Xie, Z. and Yin, P.: Impacts of air pollution and its spatial spillover effect on public health
based on China's big data sample, *Journal of Cleaner Production*, 142, 915–925,
<https://doi.org/10.1016/j.jclepro.2016.02.119>, 2017.

375 Fan, S., Wang, B., Tesche, M., Engelmann, R., Althausen, A., Liu, J., Zhu, W., Fan, Q., Li, M., Ta, N., Song, L. and Leong,
K.: Meteorological conditions and structures of atmospheric boundary layer in October 2004 over Pearl River Delta area,
Atmospheric Environment, 42(25), 6174–6186, <https://doi.org/10.1016/j.atmosenv.2008.01.067>, 2008.

380 Fan, S. J., Fan, Q., Yu, W., Luo, X. Y., Wang, B. M., Song, L. L. and Leong, K. L.: Atmospheric boundary layer
characteristics over the Pearl River Delta, China, during the summer of 2006: measurement and model results, *Atmospheric
Chemistry and Physics*, 11(13), 6297–6310, <https://doi.org/10.5194/acp-11-6297-2011>, 2011.

Founda, D. and Santamouris, M.: Synergies between Urban Heat Island and Heat Waves in Athens (Greece), during an
extremely hot summer (2012), *Scientific Reports*, 7(1), 10973, <https://doi.org/10.1038/s41598-017-11407-6>, 2017.

Freychet, N., Tett, S., Wang, J. and Hegerl, G.: Summer heat waves over Eastern China: dynamical processes and trend
attribution, *Environ. Res. Lett.*, 12(2), 024015, <https://doi.org/10.1088/1748-9326/aa5ba3>, 2017.

385 Gong, C. and Liao, H.: A typical weather pattern for ozone pollution events in North China, *Atmospheric Chemistry and
Physics*, 19(22), 13725–13740, <https://doi.org/10.5194/acp-19-13725-2019>, 2019.

Grell, G. A., Peckham, S. E., Schmitz, R., McKeen, S. A., Frost, G., Skamarock, W. C. and Eder, B.: Fully coupled “online”
chemistry within the WRF model, *Atmospheric Environment*, 39(37), 6957–6975,
<https://doi.org/10.1016/j.atmosenv.2005.04.027>, 2005.

390 Gu, Y., Wong, T. W., Law, C. K., Dong, G. H., Ho, K. F., Yang, Y. and Yim, S. H. L.: Impacts of sectoral emissions in
China and the implications: air quality, public health, crop production, and economic costs, *Environ. Res. Lett.*, 13(8),
084008, <https://doi.org/10.1088/1748-9326/aad138>, 2018.

395 Guenther, A., Karl, T., Harley, P., Wiedinmyer, C., Palmer, P. I. and Geron, C.: Estimates of global terrestrial isoprene
emissions using MEGAN (Model of Emissions of Gases and Aerosols from Nature), *Atmospheric Chemistry and Physics*,
6(11), 3181–3210, <https://doi.org/10.5194/acp-6-3181-2006>, 2006.

Guo, J., Deng, M., Lee, S. S., Wang, F., Li, Z., Zhai, P., Liu, H., Lv, W., Yao, W. and Li, X.: Delaying precipitation and
lightning by air pollution over the Pearl River Delta. Part I: Observational analyses, *Journal of Geophysical Research:
Atmospheres*, 121(11), 6472–6488, <https://doi.org/10.1002/2015JD023257>, 2016.

- 400 Guo, J., Liu, H., Li, Z., Rosenfeld, D., Jiang, M., Xu, W., Jiang, J. H., He, J., Chen, D., Min, M. and Zhai, P.: Aerosol-induced changes in the vertical structure of precipitation: a perspective of TRMM precipitation radar, *Atmospheric Chemistry and Physics*, 18(18), 13329–13343, <https://doi.org/10.5194/acp-18-13329-2018>, 2018.
- Hartigan, J. A. and Wong, M. A.: Algorithm AS 136: A K-Means Clustering Algorithm, *Journal of the Royal Statistical Society. Series C (Applied Statistics)*, 28(1), 100–108, <https://doi.org/10.2307/2346830>, 1979.
- 405 Hou, X., Chan, C. K., Dong, G. H. and Yim, S. H. L.: Impacts of transboundary air pollution and local emissions on PM_{2.5} pollution in the Pearl River Delta region of China and the public health, and the policy implications, *Environ. Res. Lett.*, 14(3), 034005, <https://doi.org/10.1088/1748-9326/aaf493>, 2019.
- Karremann, M. K., Liberato, M. L. R., Ordóñez, P. and Pinto, J. G.: Characterization of synoptic conditions and cyclones associated with top ranking potential wind loss events over Iberia, *Atmospheric Science Letters*, 17(6), 354–361, <https://doi.org/10.1002/asl.665>, 2016.
- 410 Katsouyanni, D. K., Pantazopoulou, A., Touloumi, G., Tselepidaki, I., Moustris, K., Asimakopoulos, D., Pouloupoulou, G. and Trichopoulos, D.: Evidence for Interaction between Air Pollution and High Temperature in the Causation of Excess Mortality, *Archives of Environmental Health: An International Journal*, 48(4), 235–242, <https://doi.org/10.1080/00039896.1993.9940365>, 1993.
- 415 Khafaie, M. A., Yajnik, C. S., Salvi, S. S. and Ojha, A.: Critical review of air pollution health effects with special concern on respiratory health, 1, 1(2), 123–136 <http://japh.tums.ac.ir/index.php/japh/article/view/42>, last access: 16 May 2019, 2016.
- Lam, K. S., Wang, T. J., Wu, C. L. and Li, Y. S.: Study on an ozone episode in hot season in Hong Kong and transboundary air pollution over Pearl River Delta region of China, *Atmospheric Environment*, 39(11), 1967–1977, <https://doi.org/10.1016/j.atmosenv.2004.11.023>, 2005.
- 420 Li, D. and Bou-Zeid, E.: Synergistic Interactions between Urban Heat Islands and Heat Waves: The Impact in Cities Is Larger than the Sum of Its Parts, *J. Appl. Meteor. Climatol.*, 52(9), 2051–2064, <https://doi.org/10.1175/JAMC-D-13-02.1>, 2013.
- Li, D., Sun, T., Liu, M., Yang, L., Wang, L. and Gao, Z.: Contrasting responses of urban and rural surface energy budgets to heat waves explain synergies between urban heat islands and heat waves, *Environ. Res. Lett.*, 10(5), 054009, <https://doi.org/10.1088/1748-9326/10/5/054009>, 2015.
- 425 Li, H., Wang, B., Fang, X., Zhu, W., Fan, Q., Liao, Z., Liu, J., Zhang, A. and Fan, S.: Combined effect of boundary layer recirculation factor and stable energy on local air quality in the Pearl River Delta over southern China, *J Air Waste Manag Assoc*, 68(7), 685–699, <https://doi.org/10.1080/10962247.2018.1439125>, 2018a.
- Li, M., Song, Y., Mao, Z., Liu, M. and Huang, X.: Impacts of thermal circulations induced by urbanization on ozone formation in the Pearl River Delta region, China, *Atmospheric Environment*, 127, 382–392, <https://doi.org/10.1016/j.atmosenv.2015.10.075>, 2016.
- 430 Li, N., He, Q., Greenberg, J., Guenther, A., Li, J., Cao, J., Wang, J., Liao, H., Wang, Q. and Zhang, Q.: Impacts of biogenic and anthropogenic emissions on summertime ozone formation in the Guanzhong Basin, China, *Atmospheric Chemistry and Physics*, 18(10), 7489–7507, <https://doi.org/10.5194/acp-18-7489-2018>, 2018b.
- 435 Liu, M., Huang, Y., Ma, Z., Jin, Z., Liu, X., Wang, H., Liu, Y., Wang, J., Jantunen, M., Bi, J. and Kinney, P. L.: Spatial and temporal trends in the mortality burden of air pollution in China: 2004–2012, *Environ Int*, 98, 75–81, <https://doi.org/10.1016/j.envint.2016.10.003>, 2017.

- Liu, Z., Yim, S. H. L., Wang, C. and Lau, N. C.: The Impact of the Aerosol Direct Radiative Forcing on Deep Convection and Air Quality in the Pearl River Delta Region, *Geophysical Research Letters*, 45(9), 4410–4418, <https://doi.org/10.1029/2018GL077517>, 2018.
- 440 Liu, Z., Ming, Y., Wang, L., Bollasina, M., Luo, M., Lau, N.-C. and Yim, S. H.-L.: A Model Investigation of Aerosol-Induced Changes in the East Asian Winter Monsoon, *Geophysical Research Letters*, 46(16), 10186–10195, <https://doi.org/10.1029/2019GL084228>, 2019.
- Liu, Z., Ming, Y., Zhao, C., Lau, N. C., Guo, J., Bollasina, M. and Yim, S. H. L.: Contribution of local and remote anthropogenic aerosols to a record-breaking torrential rainfall event in Guangdong Province, China, *Atmospheric Chemistry and Physics*, 20(1), 223–241, <https://doi.org/10.5194/acp-20-223-2020>, 2020.
- 445 Lovett, G. M., Tear, T. H., Evers, D. C., Findlay, S. E. G., Cosby, B. J., Dunscomb, J. K., Driscoll, C. T. and Weathers, K. C.: Effects of air pollution on ecosystems and biological diversity in the eastern United States, *Ann. N. Y. Acad. Sci.*, 1162, 99–135, <https://doi.org/10.1111/j.1749-6632.2009.04153.x>, 2009.
- Luo, M., Hou, X., Gu, Y., Lau, N.-C. and Yim, S. H.-L.: Trans-boundary air pollution in a city under various atmospheric conditions, *Science of The Total Environment*, 618, 132–141, <https://doi.org/10.1016/j.scitotenv.2017.11.001>, 2018a.
- 450 Luo, M., Hou, X., Gu, Y., Lau, N.-C. and Yim, S. H.-L.: Trans-boundary air pollution in a city under various atmospheric conditions, *Science of The Total Environment*, 618, 132–141, <https://doi.org/10.1016/j.scitotenv.2017.11.001>, 2018b.
- Matusick, G., Ruthrof, K. X., Kala, J., Brouwers, N. C., Breshears, D. D. and Hardy, G. E. S. J.: Chronic historical drought legacy exacerbates tree mortality and crown dieback during acute heatwave-compounded drought, *Environ. Res. Lett.*, 13(9), 095002, <https://doi.org/10.1088/1748-9326/aad8cb>, 2018.
- 455 Miralles, D. G., Teuling, A. J., van Heerwaarden, C. C. and Vilà-Guerau de Arellano, J.: Mega-heatwave temperatures due to combined soil desiccation and atmospheric heat accumulation, *Nature Geoscience*, 7(5), 345–349, <https://doi.org/10.1038/ngeo2141>, 2014.
- Mirzaei, P. A. and Haghghat, F.: Approaches to study Urban Heat Island – Abilities and limitations, *Building and Environment*, 45(10), 2192–2201, <https://doi.org/10.1016/j.buildenv.2010.04.001>, 2010.
- 460 Murari, K. K. and Ghosh, S.: Future Heat Wave Projections and Impacts, in *Climate Change Signals and Response: A Strategic Knowledge Compendium for India*, edited by C. Venkataraman, T. Mishra, S. Ghosh, and S. Karmakar, pp. 91–107, Springer Singapore, Singapore, https://doi.org/10.1007/978-981-13-0280-0_6, , 2019.
- Nowak, D. J., Jovan, S., Branquinho, C., Augusto, S., Ribeiro, M. C. and Kretsch, C. E.: Biodiversity, air quality and human health, In: *Connecting global priorities: biodiversity and human health: a state of knowledge review*. Geneva, Switzerland: World Health Organization: 63-74. Chapter 4., 63–74 <https://www.fs.usda.gov/treearch/pubs/49691>, last access: 16 May 2019, 2015.
- 465 Ordóñez, C., Elguindi, N., Stein, O., Huijnen, V., Flemming, J., Inness, A., Flentje, H., Katragkou, E., Moinat, P., Peuch, V.-H., Segers, A., Thouret, V., Athier, G., van Weele, M., Zerefos, C. S., Cammas, J.-P. and Schultz, M. G.: Global model simulations of air pollution during the 2003 European heat wave, *Atmospheric Chemistry and Physics*, 10(2), 789–815, <https://doi.org/10.5194/acp-10-789-2010>, 2010.
- 470 Panastasiou, D. K., Melas, D. and Kambezidis, H. D.: Heat waves characteristics and their relation to air quality in Athens, *Global NEST Journal*, 16(5), 919–928, <https://doi.org/10.30955/gnj.001530>, 2014.

- 475 Pinheiro, S. de L. L. de A., Saldiva, P. H. N., Schwartz, J. and Zanobetti, A.: Isolated and synergistic effects of PM10 and average temperature on cardiovascular and respiratory mortality, *Rev. Saúde Pública*, 48, 881–888, <https://doi.org/10.1590/S0034-8910.2014048005218>, 2014.
- 480 Qian, Z., He, Q., Lin, H.-M., Kong, L., Zhou, D., Liang, S., Zhu, Z., Liao, D., Liu, W., Bentley, C. M., Dan, J., Wang, B., Yang, N., Xu, S., Gong, J., Wei, H., Sun, H., Qin, Z., and HEI Health Review Committee: Part 2. Association of daily mortality with ambient air pollution, and effect modification by extremely high temperature in Wuhan, China, *Res Rep Health Eff Inst*, (154), 91–217, 2010.
- Ramamurthy, P., González, J., Ortiz, L., Arend, M. and Moshary, F.: Impact of heatwave on a megacity: an observational analysis of New York City during July 2016, *Environ. Res. Lett.*, 12(5), 054011, <https://doi.org/10.1088/1748-9326/aa6e59>, 2017.
- 485 Scortichini, M., De Sario, M., De’Donato, F. K., Davoli, M., Michelozzi, P. and Stafoggia, M.: Short-Term Effects of Heat on Mortality and Effect Modification by Air Pollution in 25 Italian Cities, *International Journal of Environmental Research and Public Health*, 15(8), 1771, <https://doi.org/10.3390/ijerph15081771>, 2018.
- Shi, C., Nduka, I. C., Yang, Y., Huang, Y., Yao, R., Zhang, H., He, B., Xie, C., Wang, Z. and Yim, S. H. L.: Characteristics and meteorological mechanisms of transboundary air pollution in a persistent heavy PM2.5 pollution episode in Central-East China, *Atmospheric Environment*, 223, 117239, <https://doi.org/10.1016/j.atmosenv.2019.117239>, 2020.
- 490 Shu, L., Wang, T., Han, H., Xie, M., Chen, P., Li, M. and Wu, H.: Summertime ozone pollution in the Yangtze River Delta of eastern China during 2013–2017: Synoptic impacts and source apportionment, *Environmental Pollution*, 257, 113631, <https://doi.org/10.1016/j.envpol.2019.113631>, 2020.
- 495 Silva, R. A., West, J. J., Lamarque, J.-F., Shindell, D. T., Collins, W. J., Dalsoren, S., Faluvegi, G., Folberth, G., Horowitz, L. W., Nagashima, T., Naik, V., Rumbold, S. T., Sudo, K., Takemura, T., Bergmann, D., Cameron-Smith, P., Cionni, I., Doherty, R. M., Eyring, V., Josse, B., MacKenzie, I. A., Plummer, D., Righi, M., Stevenson, D. S., Strode, S., Szopa, S. and Zengast, G.: The effect of future ambient air pollution on human premature mortality to 2100 using output from the ACCMIP model ensemble, *Atmospheric Chemistry and Physics*, 16(15), 9847–9862, <https://doi.org/10.5194/acp-16-9847-2016>, 2016.
- 500 Skamarock, W. C. and Klemp, J. B.: A time-split nonhydrostatic atmospheric model for weather research and forecasting applications, *Journal of Computational Physics*, 227(7), 3465–3485, <https://doi.org/10.1016/j.jcp.2007.01.037>, 2008.
- Stefanon, M., D’Andrea, F. and Drobinski, P.: Heatwave classification over Europe and the Mediterranean region, *Environ. Res. Lett.*, 7(1), 014023, <https://doi.org/10.1088/1748-9326/7/1/014023>, 2012.
- 505 Streets, D. G., Bond, T. C., Carmichael, G. R., Fernandes, S. D., Fu, Q., He, D., Klimont, Z., Nelson, S. M., Tsai, N. Y., Wang, M. Q., Woo, J.-H. and Yarber, K. F.: An inventory of gaseous and primary aerosol emissions in Asia in the year 2000, *Journal of Geophysical Research: Atmospheres*, 108(D21), <https://doi.org/10.1029/2002JD003093>, 2003.
- Tan, P.-N., Steinbach, M., Karpatne, A. and Kumar, V.: *Introduction to data mining.*, 2019.
- Tong, C. H. M., Yim, S. H. L., Rothenberg, D., Wang, C., Lin, C.-Y., Chen, Y. D. and Lau, N. C.: Assessing the impacts of seasonal and vertical atmospheric conditions on air quality over the Pearl River Delta region, *Atmospheric Environment*, 180, 69–78, <https://doi.org/10.1016/j.atmosenv.2018.02.039>, 2018a.

- 510 Tong, C. H. M., Yim, S. H. L., Rothenberg, D., Wang, C., Lin, C.-Y., Chen, Y. D. and Lau, N. C.: Projecting the impacts of atmospheric conditions under climate change on air quality over the Pearl River Delta region, *Atmospheric Environment*, 193, 79–87, <https://doi.org/10.1016/j.atmosenv.2018.08.053>, 2018b.
- Unal, Y. S., Tan, E. and Mentés, S. S.: Summer heat waves over western Turkey between 1965 and 2006, *Theor Appl Climatol*, 112(1), 339–350, <https://doi.org/10.1007/s00704-012-0704-0>, 2013.
- 515 Wang, M. Y., Yim, S. H. L., Wong, D. C. and Ho, K. F.: Source contributions of surface ozone in China using an adjoint sensitivity analysis, *Science of The Total Environment*, 662, 385–392, <https://doi.org/10.1016/j.scitotenv.2019.01.116>, 2019a.
- Wang, M. Y., Yim, S. H. L., Dong, G. H., Ho, K. F. and Wong, D. C.: Mapping ozone source-receptor relationship and apportioning the health impact in the Pearl River Delta region using adjoint sensitivity analysis, *Atmospheric Environment*, 117026, <https://doi.org/10.1016/j.atmosenv.2019.117026>, 2020a.
- 520 Wang, Y., Nordio, F., Naim, J., Zanobetti, A. and Schwartz, J. D.: Accounting for adaptation and intensity in projecting heat wave-related mortality, *Environmental Research*, 161, 464–471, <https://doi.org/10.1016/j.envres.2017.11.049>, 2018.
- Wang, Y., Chan, A., Lau, G. N.-C., Li, Q., Yang, Y. and Yim, S. H. L.: Effects of urbanization and global climate change on regional climate in the Pearl River Delta and thermal comfort implications, *International Journal of Climatology*, 39(6), 2984–2997, <https://doi.org/10.1002/joc.5996>, 2019b.
- 525 Wang, Y., Yim, S. H. L., Yang, Y. and Morin, C. W.: The effect of urbanization and climate change on the mosquito population in the Pearl River Delta region of China, *Int J Biometeorol*, 64(3), 501–512, <https://doi.org/10.1007/s00484-019-01837-4>, 2020b.
- Xia, Y., Guan, D., Meng, J., Li, Y. and Shan, Y.: Assessment of the pollution–health–economics nexus in China, *Atmospheric Chemistry and Physics*, 18(19), 14433–14443, <https://doi.org/10.5194/acp-18-14433-2018>, 2018.
- Xie, M., Zhu, K., Wang, T., Feng, W., Gao, D., Li, M., Li, S., Zhuang, B., Han, Y., Chen, P. and Liao, J.: Changes in regional meteorology induced by anthropogenic heat and their impacts on air quality in South China, *Atmospheric Chemistry and Physics*, 16(23), 15011–15031, <https://doi.org/10.5194/acp-16-15011-2016>, 2016.
- 535 Yang, Y., Yim, S. H. L., Haywood, J., Osborne, M., Chan, J. C. S., Zeng, Z. and Cheng, J. C. H.: Characteristics of Heavy Particulate Matter Pollution Events Over Hong Kong and Their Relationships With Vertical Wind Profiles Using High-Time-Resolution Doppler Lidar Measurements, *Journal of Geophysical Research: Atmospheres*, 124(16), 9609–9623, <https://doi.org/10.1029/2019JD031140>, 2019.
- Yim, S. H. L.: Development of a 3D Real-Time Atmospheric Monitoring System (3DREAMS) Using Doppler LiDARs and Applications for Long-Term Analysis and Hot-and-Polluted Episodes, *Remote Sensing*, 12(6), 1036, <https://doi.org/10.3390/rs12061036>, 2020a.
- 540 Yim, S. H. L.: Development of a 3D Real-Time Atmospheric Monitoring System (3DREAMS) Using Doppler LiDARs and Applications for Long-Term Analysis and Hot-and-Polluted Episodes, *Remote Sensing*, 12(6), 1036, <https://doi.org/10.3390/rs12061036>, 2020b.
- 545 Yim, S. H. L., Fung, J. C. H., Lau, A. K. H. and Kot, S. C.: Air ventilation impacts of the “ wall effect ” resulting from the alignment of high-rise buildings, *Atmospheric Environment*, 43(32), 4982–4994, <https://doi.org/10.1016/j.atmosenv.2009.07.002>, 2009.

- Yim, S. H. L., Fung, J. C. H. and Lau, A. K. H.: Use of high-resolution MM5/CALMET/CALPUFF system: SO₂ apportionment to air quality in Hong Kong, *Atmospheric Environment*, 44(38), 4850–4858, <https://doi.org/10.1016/j.atmosenv.2010.08.037>, 2010.
- 550 Yim, S. H. L., Fung, J. C. H. and Ng, E. Y. Y.: An assessment indicator for air ventilation and pollutant dispersion potential in an urban canopy with complex natural terrain and significant wind variations, *Atmospheric Environment*, 94, 297–306, <https://doi.org/10.1016/j.atmosenv.2014.05.044>, 2014.
- Yim, S. H. L., Lee, G. L., Lee, I. H., Allroggen, F., Ashok, A., Caiazzo, F., Eastham, S. D., Malina, R. and Barrett, S. R. H.: Global, regional and local health impacts of civil aviation emissions, *Environmental Research Letters*, 10(3), 034001, <https://doi.org/10.1088/1748-9326/10/3/034001>, 2015.
- 555 Yim, S. H. L., Gu, Y., Shapiro, M. A. and Stephens, B.: Air quality and acid deposition impacts of local emissions and transboundary air pollution in Japan and South Korea, *Atmospheric Chemistry and Physics*, 19(20), 13309–13323, <https://doi.org/10.5194/acp-19-13309-2019>, 2019a.
- Yim, S. H. L., Hou, X., Guo, J. and Yang, Y.: Contribution of local emissions and transboundary air pollution to air quality in Hong Kong during El Niño-Southern Oscillation and heatwaves, *Atmospheric Research*, 218, 50–58, <https://doi.org/10.1016/j.atmosres.2018.10.021>, 2019b.
- 560 Yim, S. H. L., Hou, X., Guo, J. and Yang, Y.: Contribution of local emissions and transboundary air pollution to air quality in Hong Kong during El Niño-Southern Oscillation and heatwaves, *Atmospheric Research*, 218, 50–58, <https://doi.org/10.1016/j.atmosres.2018.10.021>, 2019c.
- Yim, S. H. L., Wang, M., Gu, Y., Yang, Y., Dong, G. and Li, Q.: Effect of Urbanization on Ozone and Resultant Health Effects in the Pearl River Delta Region of China, *Journal of Geophysical Research: Atmospheres*, 124(21), 11568–11579, <https://doi.org/10.1029/2019JD030562>, 2019d.
- 565 Yu, M., Carmichael, G. R., Zhu, T. and Cheng, Y.: Sensitivity of predicted pollutant levels to anthropogenic heat emissions in Beijing, *Atmospheric Environment*, 89, 169–178, <https://doi.org/10.1016/j.atmosenv.2014.01.034>, 2014.
- 570 Zhang, H., Wang, Y., Park, T.-W. and Deng, Y.: Quantifying the relationship between extreme air pollution events and extreme weather events, *Atmospheric Research*, 188, 64–79, <https://doi.org/10.1016/j.atmosres.2016.11.010>, 2017.
- Zhang, Q., Streets, D. G., Carmichael, G. R., He, K. B., Huo, H., Kannari, A., Klimont, Z., Park, I. S., Reddy, S., Fu, J. S., Chen, D., Duan, L., Lei, Y., Wang, L. T. and Yao, Z. L.: Asian emissions in 2006 for the NASA INTEX-B mission, *Atmospheric Chemistry and Physics*, 9(14), 5131–5153, <https://doi.org/10.5194/acp-9-5131-2009>, 2009.
- 575 Zheng, J., Zhang, L., Che, W., Zheng, Z. and Yin, S.: A highly resolved temporal and spatial air pollutant emission inventory for the Pearl River Delta region, China and its uncertainty assessment, *Atmospheric Environment*, 43(32), 5112–5122, <https://doi.org/10.1016/j.atmosenv.2009.04.060>, 2009.