

Shape dependence of snow crystal fall speed

Sandra Vázquez-Martín¹, Thomas Kuhn¹, and Salomon Eliasson²

¹Luleå University of Technology (LTU). Department of Computer Science, Electrical and Space Engineering. Division of Space Technology, 98 128, Kiruna, Sweden.

²Swedish Meteorological and Hydrological Institute (SMHI), 601 76, Norrköping, Sweden.

Correspondence: Thomas Kuhn (thomas.kuhn@ltu.se)

Abstract.

Improved snowfall predictions require accurate knowledge of the properties of ice crystals and snow particles, such as their size, cross-sectional area, shape, and fall speed. ~~In particular, the shape is an important parameter as it strongly influences the scattering properties of these ice particles, and thus their response to remote sensing techniques such as radar measurements.~~

5 The fall speed of ice particles is a critical parameter for the representation of ice clouds and snow in atmospheric numerical models, as it determines the rate of removal of ice from the modelled clouds. ~~They are~~ Fall speed is also required for snowfall predictions alongside other properties such as ice particle size, cross-sectional area, and shape. For example, shape is important as it strongly influences the scattering properties of these ice particles, and thus their response to remote sensing techniques.

This work analyses fall speed as a function of ~~particle size (maximum dimension), cross-sectional area and shape and other~~ 10 ~~properties~~ using ground-based in-situ measurements. The measurements for this study were done in Kiruna, Sweden during the snowfall seasons of 2014 to 2019, using the ground-based in-situ instrument Dual Ice Crystal Imager (D-ICI). The resulting data consist of high-resolution images of falling hydrometeors from two viewing geometries that are used to determine ~~particle~~ size (maximum dimension), cross-sectional area, area ratio, orientation, and the fall speed of individual particles. The selected dataset covers sizes from about 0.06 to 3.2 mm and fall speeds from 0.06 to 1.6 m s⁻¹.

15 ~~The particles are shape classified into 15 different shape groups depending on their shape and morphology. For these 15 shape groups relationships are studied, firstly,~~ Relationships between ~~particle size, and~~ cross-sectional area, ~~then between and~~ fall speed ~~and size or cross-sectional area~~ are studied for different shapes. The data show in general low correlations to fitted fall-speed relationships due to large spread observed in fall speed. After binning the data according to size or cross-sectional area, correlations improve and we can report reliable parameterizations of fall speed ~~vs.~~ vs ~~particle~~ size or cross-sectional 20 area for part of the shapes. ~~For most of these shapes the fall speed is better correlated with cross-sectional area than with~~ ~~particle size~~. The effects of orientation and area ratio on the fall speed are also studied, and measurements show that vertically orientated particles fall faster on average. However, most particles for which orientation can be defined fall horizontally.

Keywords: Natural snow crystals; hydrometeors; microphysical properties; fall speed; orientation; ground-based in-situ measurements.

1 Introduction

The accurate knowledge of the microphysical properties of atmospheric snow particles (ice crystals and snowflakes) is essential to achieve more realistic parameterizations in atmospheric models (e.g., Stoelinga et al., 2003; Tao et al., 2003). Also, the accuracy of many different remote sensing applications, such as ~~scattering properties~~, cloud and precipitation retrievals from satellite passive and active microwave measurements (e.g., Bauer et al., 1999; Olson et al., 2001), and ~~snowfall estimates based on ground- and space-based radar (Cooper et al., 2017)~~ (Posselt et al., 2008; Zhang et al., 2009; Cooper and Garrett, 2010, and others) is highly dependent on the assumptions made on the microphysical properties of snow particles. Some of these critical properties are particle size, particle size distribution, cross-sectional area, area ratio, shape, orientation, and fall speed. Some of these critical properties are particle size, particle size distribution, cross-sectional area, area ratio, shape, orientation, and fall speed.

Several studies have classified snow crystal shape according to different classification schemes (Nakaya, 1954; Magono and Lee, 1966; Kikuchi et al., 2013; Vázquez-Martín et al., 2020). Particle shape is essential, not only for investigating growth processes but also because it affects remote sensing measurements, for instance, radar measurements (e.g., Sun et al., 2011; Matrosov et al., 2012; Marchand et al., 2013) or passive measurements of microwave brightness temperatures (Kneifel et al., 2010). Furthermore, it is of significant importance for optical remote sensing retrievals of cloud properties (see, e.g., Yang et al., 2008; Baum et al., 2011; Xie et al., 2011; Loeb et al., 2018) and snow albedo (e.g., Jin et al., 2008). The physical properties of snow particles, including shape, govern their fall speed. For a given volume and density, non-spherical particles fall slower than spheres (Haider, 1989). *At the same size, shape variations account for spread in fall speed, which causes variations in other properties such as the vertical mass flux of water (Dunnavan, 2021).* Therefore, also the particle shape is an important parameter to ensure accurate cloud parameterizations in climate and forecast models (e.g., Stoelinga et al., 2003; Tao et al., 2003), and for the understanding of precipitation in cold climates.

Together with particle size and shape, the snow particle orientation also plays a significant role. It is highly dependent on the local aerodynamic conditions (Pruppacher and Klett, 1997), and significant uncertainties regarding particle orientation remain, especially for rimed particles and aggregates (Xie et al., 2012; Jiang et al., 2019). The particle orientation determines its horizontal cross-sectional area and influences its drag, and, therefore, its fall speed. Particle orientation also affects the bulk scattering properties of clouds (Yang et al., 2008, 2011). For instance, for microwave radiation, particle orientation significantly affects the radar reflectivity (e.g., Sun et al., 2011; Gergely and Garrett, 2016), and due to its sizeable impact on absorption (e.g., Foster et al., 2000), strongly modulates the microwave brightness temperature (Xie and Miao, 2011; Xie et al., 2015).

The fall speed of snow crystals plays a significant role in modelling microphysical precipitation processes (Schefold et al., 2002) and for climate since it determines the ~~lifetime of cirrus clouds and influences the vertical transport of water vapour in the upper troposphere, modulating the top of atmosphere radiation budget (Westbrook and Sephton, 2017).~~ *lifetime of cirrus clouds, and thus the cloud coverage and ice water path (Mitchell et al., 2008), and the top of atmosphere radiation budget (Westbrook and Sephton, 2017).* Additionally, fall speed determines the snowfall rate, i.e., the rate of particle removal from clouds. The precipitation rate is proportional to the fall speed of the particles, implying quantitative forecasts of this variable

60 require accurate snowflake fall speeds (Westbrook and Sephton, 2017). Therefore, it is essential to know particle size, shape, and fall speed simultaneously.

Earlier studies have used different methods to investigate and parameterize the dependence of fall speed on snow particle size. Most parameterizations can be given as a power law with general form $v = a_D \cdot D^{b_D}$, where v is the fall speed, D is the particle size, and a_D, b_D are constant coefficients. This power-law relationship is often adopted because it facilitates analytical
65 solutions in models, for instance for calculations of Doppler velocity, and appears in many studies (e.g., Locatelli and Hobbs, 1974; Heymsfield and Kajikawa, 1987; Mitchell, 1996; Barthazy and Schefold, 2006; Yuter et al., 2006; Brandes et al., 2008; Heymsfield and Westbrook, 2010; Zawadzki et al., 2010; Lee et al., 2015). The dependence of fall speed on particle cross-sectional area is also readily represented as a power law, $v = a_A \cdot A^{b_A}$, where v is the fall speed, A is the cross-sectional area, and a_A, b_A are constant coefficients (e.g., Kuhn and Gultepe, 2016; Kuhn and Vázquez-Martín, 2020). In a few studies,
70 different functions are used to describe relationships. For example, Barthazy and Schefold (2006) showed that an exponential function that asymptotically approaches a constant speed at larger sizes could also be used to describe the size dependence of fall speed, in particular for particles larger than about 3 mm.

This study analyses the fall speed relationships of snow particles as a function of particle size and cross-sectional area based on a dataset of falling natural snow particles that have been collected in Kiruna in northern Sweden with the ground-
75 based instrument Dual Ice Crystal Imager (D-ICI) presented in Kuhn and Vázquez-Martín (2020). Section 2 describes the measurements and methods used to classify the snow particle shape and determine their size, cross-sectional area, and fall speed. Section 3 investigates the influence of the particle shape on relationships between fall speed and particle size or cross-sectional area. Furthermore, we examine the dependence of fall speed on area ratio and particle orientation. These results are then compared to previous studies. Finally, this study is summarized and concluded in Sect. 4.

80 2 Methods

2.1 Measurements and instrument

Our measurements are carried out in Kiruna, Sweden (67.8° N, 20.4° E, at approximately 400 m above sea level), at a site
described in Vázquez-Martín et al. (2020), using D-ICI, the ground-based in-situ instrument described in Kuhn and Vázquez-Martín (2020). D-ICI captures and records dual images of falling snow crystals and other hydrometeors. Detected particles
85 are imaged simultaneously from two different viewing directions. One is horizontal, recording a side view, and one is close to vertical, recording a top view. From the top-view image, we can determine particle size, cross-sectional area, and area ratio. From the side-view image, since it is exposed twice, we can determine fall speed (see Sect. 2.2).

These images have a high optical resolution of about 10 μm , and one pixel corresponds to 3.7 μm . This resolution allows for the identification of snow particles even smaller than 0.1 mm. The additional information dual images provide, improves
90 the shape classification carried out by looking at both top- and side-view images. The particles are classified according to their shape and sorted into 15 shape groups, as described in Vázquez-Martín et al. (2020).

More than 10,000 particles have been recorded during multiple snowfall seasons, the winters of 2014/2015 to 2018/2019. Each winter season at the Kiruna site lasts approximately from the beginning of November to the middle of May. Part of these data from 2014 to 2018 was selected to carry out this work. During image processing (see Sect. 2.2), we only consider particles that are entirely in the field of view (FOV) and that are not significantly tumbling (for a detailed description, see Kuhn and Vázquez-Martín, 2020). Furthermore, the ambient wind speed is taken into account. As mentioned in Kuhn and Vázquez-Martín (2020), higher wind speeds may alter fall speed measurements. Therefore data taken at averaged wind speeds higher than 3 m s^{-1} are excluded. The SMHI weather data (SMHI, 2020), based on instruments at the Kiruna airport, are recorded 6 km away from our measurement site and provide the wind speed data used in this study. ~~The site in Kiruna does not often experience high wind speeds; hence the dataset is only reduced by 23% to 2,461 particles from 48 days.~~ After excluding FOV and tumbling problems, about 3,200 particles remained. Of these, 23% were measured at wind speeds higher than 3 m s^{-1} , leaving a total of 2,461 particles to form our dataset.

2.2 Snow properties

Figure 1 shows two different snow particles from the side (*right*) and the top view (*left*). The images from the top view are used to determine particle size, cross-sectional area, and area ratio by the automated process presented in Kuhn and Vázquez-Martín (2020). For this, first, the background features are removed, then the in-focus particles are detected, and their boundaries traced. Consequently, the particle properties, such as particle size, cross-sectional area, and area ratio can be determined. As we have described in Vázquez-Martín et al. (2020), the maximum dimension, D_{\max} , defined as the smallest diameter that completely encircles the particle boundary in the top-view image, is used to describe the particle size. Thus, in the following, particle size and maximum dimension are used synonymously. The cross-sectional area, A , is defined as the area in the top-view image enclosed by the particle boundary based on pixel count. Once, particle size and cross-sectional area determined, the area ratio A_r can be also calculated from these quantities:

$$A_r = \frac{A}{\frac{\pi}{4} \cdot D_{\max}^2}. \quad (1)$$

~~These quantities are particularly relevant when provided from this vertical viewing geometry corresponding to the falling motion, rather than a horizontal geometry, which is standard in many instruments.~~ The aerodynamic drag, which chiefly governs fall speed, more closely depends on the quantities D_{\max} , A , and A_r retrieved using images that view the particles from above (in the falling direction) as done by D-ICI, rather than from a horizontal viewing direction as done by other instruments. Furthermore, this view is more suitable to enable comparison with remote sensing measurements that often also have a vertical viewing geometry.

The side-view images are exposed twice to enable fall speed measurements so that both particle exposures are displayed in the same image (Fig. 1, *right*). These particle exposures correspond to the first and second position, respectively, of the particle when falling. In our data, the two-particle exposures in the side-view images might be partly overlapping due to a combination of fall speed and size of the particle. Figure 1a shows an example of non-overlapping particles, whereas, in Fig. 1b, the particles are partly overlapping, which poses a limitation for an automated fall speed determination. The following describes the manual

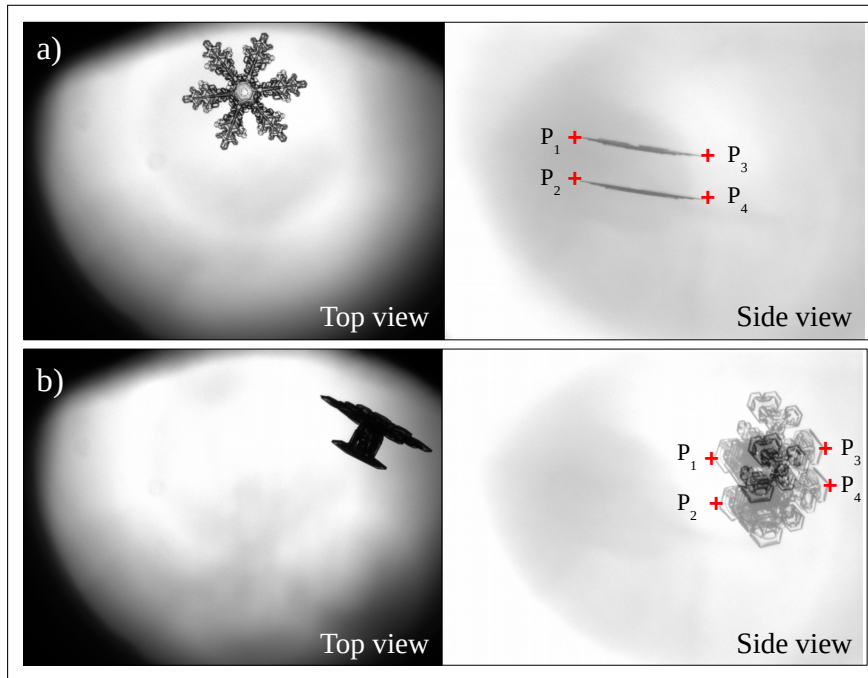


Figure 1. Two particle examples (a–b). *Left:* Top-view images. *Right:* Side-view images, which are exposed twice to enable fall speed measurements. Both viewing geometries are used to classify the particle shape. In both examples, two pairs of points (P_1 , P_3 and P_2 , P_4) were selected to determine the fall speed.

125 ~~procedure to, nonetheless, include such particles in the analysis~~. In both cases, a manual procedure is carried out for the fall speed determination, which is described in the following.

At least two points of the particle need to be selected, for instance, the left and right edges of the particle (P_1 and P_3 in Fig. 1, *right*). The same points are found by eye on the second exposure (P_2 and P_4 in Fig. 1, *right*). The falling distance is then the average of the euclidean distances between P_1 and P_2 , and between P_3 and P_4 , and the fall speed is this falling distance divided by the time between exposures. These fall speeds are reported as they are measured at our local conditions and are not corrected to, for example, sea level pressure, which would only change values by less than 3%.

130

By selecting at least two points on each particle to determine fall speed, one can notice differences of the fall speed across the particle. If there is no difference, then the particle is falling straight. If there is a difference, then the particle is tumbling, i.e., has a rotating motion in addition to the straight falling motion. Tumbling is most noticeable if the rotation is around an axis perpendicular to the imaging plane.

135

When rotating around an axis parallel to the imaging plane, it may be challenging to select the same points on the second exposure. Particle images where it is difficult to identify the same points on both exposures, or when significant tumbling is apparent, are excluded. The tumbling limit is when the speed of the points differ by more than $\pm 10\%$ from the mean speed. However, tumbling is not observed frequently in our dataset. Figure 2 shows different side-view images of particles included

140 and excluded from the analysis, respectively. In Fig. 2a–d, the particles are not, or are only slightly, tumbling, and therefore included in the analysis. In Fig. 2e–h, the particles are tumbling significantly. Consequently, these particles were discarded and not included in the analysis.

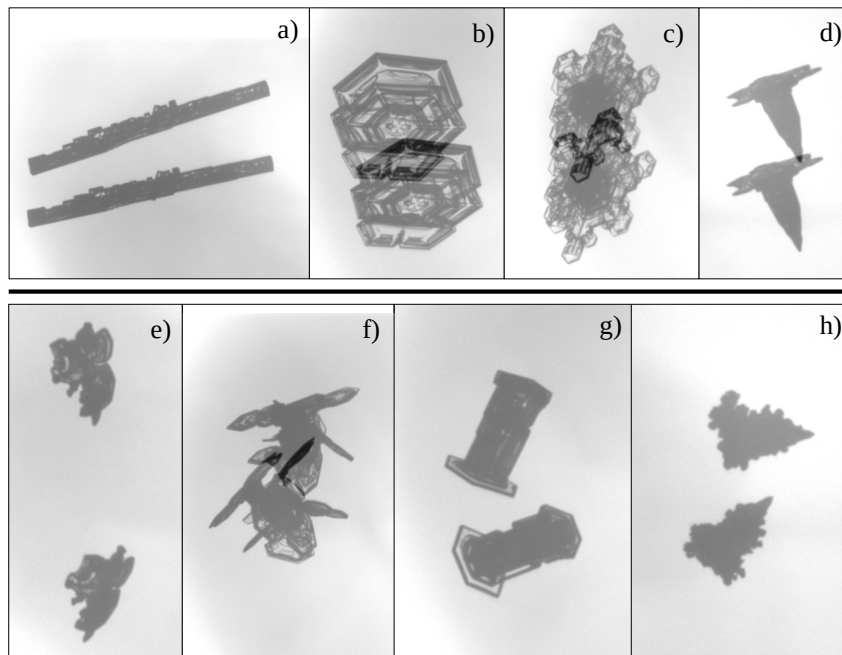


Figure 2. Panels (a–h) show eight examples of different particles with side-view images. The panels in the top row (a–d), show particles that were included in the analysis. Panels in the bottom row (e–h), show particles that were excluded since the two-particle exposures reveal significant tumbling.

3 Results and discussions

3.1 Cross-sectional area

145 For this study, we use a large subset of the data from Vázquez-Martín et al. (2020). Although we excluded measurements with higher wind speeds than 3 m s^{-1} , the cross-sectional areas as a function of particle size are nonetheless very similar here to results presented in Vázquez-Martín et al. (2020). However, for completeness, we briefly analyse and discuss the cross-sectional area versus particle size, A vs. D_{max} , for all the shape groups in this section. Table 1 shows these results, along with the meta-data on the particle groups, including their full names. For simplicity, we will use shorter names from here on
150 (see, e.g., in Table 2). As seen in Table 1, generally, particle size and cross-sectional area are very well correlated ($R^2 > 0.7$)

if expressed by the power law

$$A(D_{\max}) = a \cdot \left(\frac{D_{\max}}{1 \text{ mm}} \right)^b, \quad (2)$$

where the parameter a corresponds to the cross-sectional area at $D_{\max} = 1 \text{ mm}$ and b is the exponent in the power law.

Table 1. Cross-sectional area versus particle size (A vs. vs D_{\max}) relationship fitted to a power law given by Eq. (2) for each shape group and for all data, i.e., for all the particles regardless of shape. The number of particles N , D_{\max} , and A ranges (min, max), the parameters a and b with their respective uncertainties, and the correlation coefficients R^2 are shown for each shape group and all data. The root-mean-square error (RMSE) values of base-10 logarithms of measured A vs predicted A are also shown to indicate the uncertainty of these power laws. Note that RMSE values of logarithms of A_r as determined from measurements using Eq. (1) vs predicted values using Eq. (3) are the same.

Shape groups (1–15)	N	D_{\max} [mm]	A [mm ²]	A vs. vs D_{\max}			
				a [mm ²]	b	R^2	RMSE
(1) Needles and thin or long columns	317	0.27–3.0	0.03–0.7	0.15 ± 0.01	1.06 ± 0.03	0.79	0.11
(2) Crossed needles and crossed columns	66	0.57–2.6	0.10–0.7	0.18 ± 0.04	1.01 ± 0.08	0.70	0.10
(3) Thick columns and bullets	103	0.16–0.9	0.02–0.2	0.17 ± 0.04	1.24 ± 0.05	0.88	0.09
(4) Capped columns and capped bullets	189	0.28–2.1	0.02–1.3	0.32 ± 0.03	1.60 ± 0.06	0.79	0.15
(5) Plates	197	0.21–1.7	0.03–1.3	0.45 ± 0.03	1.71 ± 0.03	0.93	0.09
(6) Stellar crystals	43	0.54–2.3	0.13–1.9	0.40 ± 0.07	1.59 ± 0.15	0.75	0.12
(7) Bullet rosettes	41	0.54–1.5	0.12–0.8	0.35 ± 0.04	1.62 ± 0.12	0.83	0.10
(8) Branches	438	0.27–2.9	0.03–3.4	0.32 ± 0.01	1.74 ± 0.03	0.86	0.12
(9) Side planes	350	0.29–2.7	0.04–2.7	0.37 ± 0.01	1.77 ± 0.04	0.87	0.09
(10) Spatial plates	48	0.30–1.3	0.06–0.6	0.42 ± 0.05	1.62 ± 0.10	0.85	0.09
(11) Spatial stellar crystals	185	0.36–2.8	0.06–2.9	0.40 ± 0.01	1.76 ± 0.03	0.95	0.08
(12) Graupel	37	0.25–1.2	0.03–0.8	0.51 ± 0.04	1.99 ± 0.05	0.98	0.05
(13) Ice and melting or sublimating particles	60	0.13–1.2	0.01–0.3	0.23 ± 0.09	1.45 ± 0.07	0.87	0.12
(14) Irregulars and aggregates	346	0.21–3.2	0.02–2.7	0.34 ± 0.02	1.65 ± 0.03	0.91	0.13
(15) Spherical particles	41	0.06–0.4	0.003–0.15	0.80 ± 0.02	2.04 ± 0.01	1.00	0.01
All data	2461	0.06–3.2	0.003–3.4	0.30 ± 0.01	1.54 ± 0.01	0.81	0.18

Figure 3 shows these fitted A vs. vs D_{\max} relationships. We note that shape groups (1) Needles, (2) Crossed needles, and (3) Thick columns are the groups with the lowest values of parameter b that are close to 1. For these groups, this is understandable from their morphology. An increase in A primarily follows an increase in D_{\max} (needle length), rather than in both D_{\max} and the diameter (needle width). The low values of b also explain why the area ratio, A_r , decreases most rapidly with increasing D_{\max} for these shape groups, which can be seen if one expresses A_r as a power law in D_{\max} (inserting Eq. (2) in (1)),

$$A_r = \frac{4}{\pi} \cdot \frac{a}{1 \text{ mm}^2} \cdot \left(\frac{D_{\max}}{1 \text{ mm}} \right)^{b-2}, \quad (3)$$

160 as the exponent in this power law is $b=2$. It is also evident in Fig. 4, which shows these power laws for all shape groups determined from Eq. (3), and the coefficients given in Table 1.

For most other shape groups, the coefficient b varies between 1.4 and 1.8. Only for the groups (12) *Graupel* and (15) *Spherical*, it is larger with $b = 2.0$, which is the expected theoretical value for spherical shapes. Thus, apart from (15) *Spherical*, (12) *Graupel* is the only shape group where A_r remains constant with increasing D_{\max} . ~~for which shape does not change with size, i.e., A_r does not decrease with increasing D_{\max} but remains constant.~~

The fitted relationships for all particles (regardless of shape) also appear in Fig. 3 and 4 for A vs. vs D_{\max} and A_r vs. vs D_{\max} , respectively. They represent a kind of average; however, they do not seem to be a good approximation for most of the shapes.

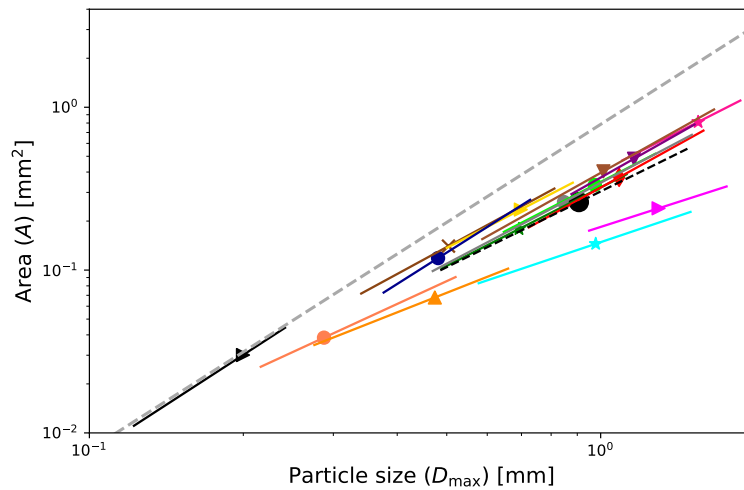


Figure 3. Cross-sectional area versus particle size (A vs. vs D_{\max}) relationships are shown in logarithmic scale for all the shape groups (solid lines) and all data (dashed black line). The median D_{\max} of the data is represented as a single point on each line. The length of the fit lines are defined by 16th and 84th percentiles of D_{\max} . For a legend of the shape groups, see Fig. 5. For comparison, the cross-sectional area of spheres given by $(\pi/4) \cdot D_{\max}^2$ is shown as a grey dashed line.

3.2 Fall speed relationships

170 ~~This section provides an analysis of how the particle size, cross-sectional area, and shape influence its fall speed. Figure 5 shows the distribution of fall speed data for each shape group and all data (regardless of shape). A vertical bar represents the distribution of fall speed data for each shape. The bounds of each bar correspond to the 16th and 84th percentiles of the distribution. The point on the bar shows the location of the median value. These bounds would correspond to $\pm 1\sigma$ (standard deviation) if the distribution were normal. Table 2 contains a list of these percentiles and medians. We note~~ Analysis of the shape dependence of

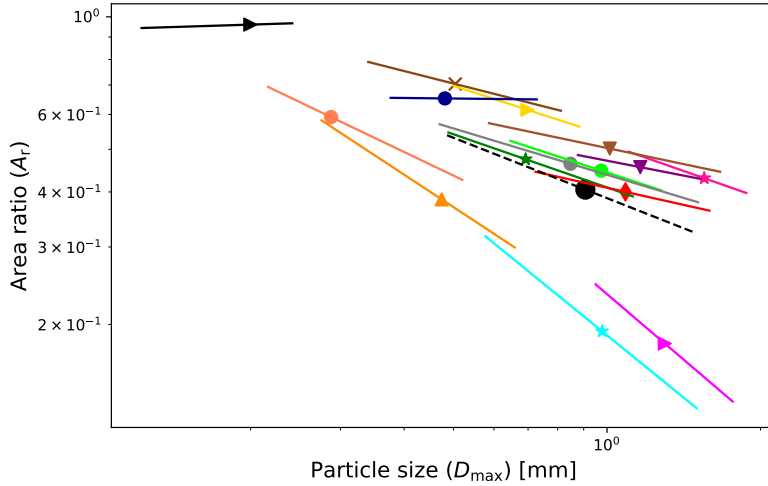


Figure 4. Area ratio versus particle size (A_r vs. D_{\max}) relationships are shown in logarithmic scale for all the shape groups (solid lines) and all data (dashed black line). The median D_{\max} of the data is represented as a single point on each line. The length of the fit lines is defined by 16th and 84th percentiles of D_{\max} . For a legend of the shape groups, see Fig. 5.

175 fall speed (see Figure 5) shows that shape groups (7) *Bullet rosettes* and (12) *Graupel* have the fastest fall speeds with a median value of $v \simeq 0.6 \text{ m s}^{-1}$, followed by shape groups (4) *Capped columns*, (9) *Side planes*, (11) *Spatial stellar*, (14) *Irregulars*, and (15) *Spherical* with a median fall speed value of $v \simeq 0.5 \text{ m s}^{-1}$. The median of all data is approximately 0.43 m s^{-1} , and most shape groups have their median within $\pm 0.08 \text{ m s}^{-1}$ from this value. Shape groups (1) *Needles*, (2) *Crossed needles*, and (3) *Thick columns* have the lowest median values of 0.34 m s^{-1} or less.

180 3.2.1 Fitting to individual data: M_a

Fall speed versus particle size (v vs. D_{\max}) and fall speed versus cross-sectional area (v vs. A) relationships are useful to parameterize fall speed. In order to find the v vs. D_{\max} relationships on the data, one can apply a power-law fit given by

$$v(D_{\max}) = a_D \cdot \left(\frac{D_{\max}}{1 \text{ mm}} \right)^{b_D} . \quad (4)$$

~~which yields straight lines on a logarithmic plot, and, from these lines, derive the parameters a_D and b_D . The parameters~~

185 a_D and b_D are determined from linear fits to the data expressed as logarithm of v vs logarithm of D_{\max} . The v vs. A relationships result from fitting data to a power law given by

$$v(A) = a_A \cdot \left(\frac{A}{1 \text{ mm}^2} \right)^{b_A} . \quad (5)$$

The parameters a_A and b_A are determined from linear fits to the data expressed as $\log(v)$ versus $\log(A)$. This method of fitting to individual data is further referred to as M_a . As an example, we look at shape group (5) *Plates*, representing a commonly

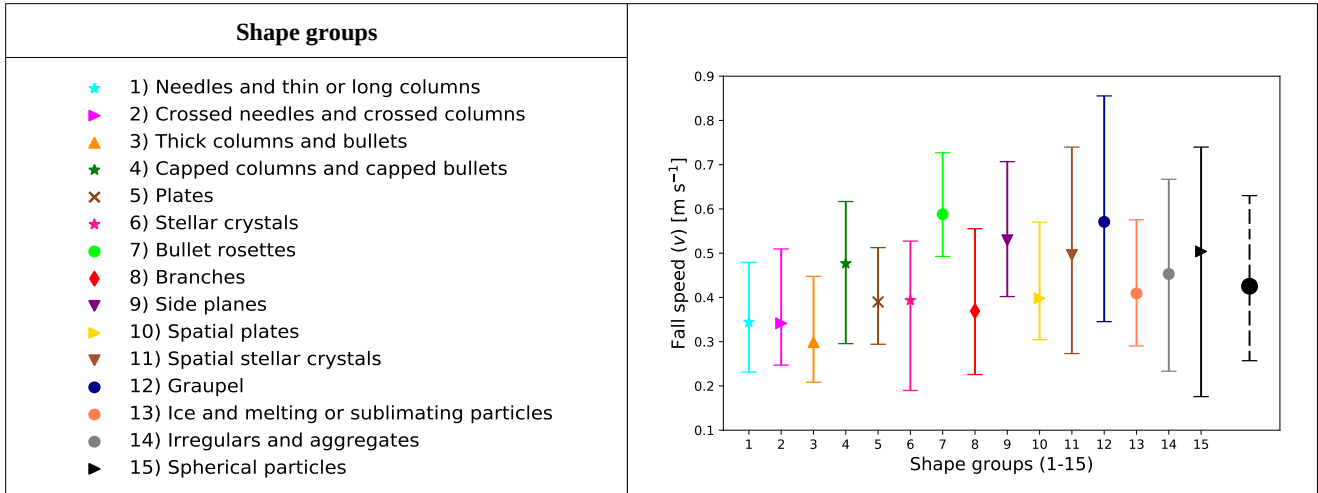


Figure 5. The fall speeds v of snow crystals for each shape group are shown in solid lines. The median and the distribution of v are shown. The values of the median are represented as points. The lower and upper ends of the vertical bars indicating the distributions are given by the 16th and 84th percentiles, respectively. These bounds would correspond to $\pm 1\sigma$ (standard deviation) if the distribution were normal. For comparison, a black dashed line shows all data (regardless of shape). Table 2 contains a list of these percentiles and medians.

190 occurring shape that has clear results. The individual data points of the measured fall speeds appear in Fig. 6. It also shows the 68% prediction band, which describes the region, where to expect 68% of any new measurements. The prediction band can be considered a measure of the spread of the data around the fit, which appears as lines in the same colour as the individual data points.

The large spread in fall speed apparent from Fig. 6, results in a low correlation to the fit functions. The results for this shape group represent the general features found in all shape groups, i.e., a large spread in fall speed data and relatively low R^2 for M_a . The v vs. D_{\max} and v vs. A relationships for all the shape groups are shown in Figures A1-A2 (see Appendix A). Tables 3 and 4, show these results for v vs. D_{\max} and for v vs. A , respectively. The only exceptions from the generally low correlations are shape groups (11) *Irregulars*, (12) *Graupel*, and (15) *Spherical* with $R^2 > 0.5$. For all other shape groups, the correlation coefficients for M_a are $R^2 \lesssim 0.2$ for both v vs. D_{\max} and v vs. A . Judging by these low R^2 values, it is 200 uncertain if the fit functions are representative of the measured data.

3.2.2 Fitting to binned data: M_b

The spread of fall speed data may be considered random noise, and binning the data should remove this noise to some extent. Therefore, to improve the correlation, the data are first binned into ten particle size or cross-sectional area bins before fitting to Eq. (4) and (5), respectively, where each bin contains as close to the same number of particles as possible. Therefore, the bin 205 widths are variable and specific to each shape group, and thereby avoid the problem of individual bins having a disproportional

Table 2. Fall speed, v , for the shape groups. The fall speed range, the median and 16th and 84th percentiles are displayed. For comparison, results for all the data, regardless of shape, are also shown.

Shape groups (1–15)	v [m s^{-1}]			
	Range	Median	16 th	84 th
(1) <i>Needles</i>	0.10–0.8	0.34	0.23	0.48
(2) <i>Crossed needles</i>	0.17–0.9	0.34	0.25	0.51
(3) <i>Thick columns</i>	0.14–0.8	0.30	0.21	0.45
(4) <i>Capped columns</i>	0.11–1.0	0.48	0.30	0.62
(5) <i>Plates</i>	0.11–0.9	0.39	0.29	0.51
(6) <i>Stellar</i>	0.13–0.8	0.39	0.19	0.53
(7) <i>Bullet rosettes</i>	0.15–0.8	0.59	0.49	0.73
(8) <i>Branches</i>	0.06–1.2	0.37	0.23	0.56
(9) <i>Side planes</i>	0.19–0.9	0.53	0.40	0.71
(10) <i>Spatial plates</i>	0.16–1.0	0.40	0.30	0.57
(11) <i>Spatial stellar</i>	0.13–1.1	0.50	0.27	0.74
(12) <i>Graupel</i>	0.26–1.0	0.57	0.35	0.86
(13) <i>Ice particles</i>	0.13–1.0	0.41	0.29	0.58
(14) <i>Irregulars</i>	0.06–1.5	0.45	0.23	0.67
(15) <i>Spherical</i>	0.09–1.6	0.50	0.18	0.74
All data	0.06–1.6	0.43	0.26	0.63

effect on the fit. The number of bins, ten, is a compromise; few enough bins to contain enough particles per bin and many enough bins to allow for a good fit to the measurements. The binned data consists of the median values in each bin, i.e., median fall speeds versus median maximum dimensions and median fall speeds versus median cross-sectional areas. This method of fitting to binned data is further referred to as M_b . ~~Previous studies have also used a similar method of binning fall speed before data fitting (e.g., Barthazy and Schefold, 2006; Zawadzki et al., 2010).~~ The apparent randomness in fall speed, manifested as the wide spread in data, may have several reasons. While instrumental uncertainties and errors introduced by the manual analysis (see Kuhn and Vázquez-Martín, 2020) contribute to the variability, much of the observed randomness is likely inherent to the data. For example, Dunnavan (2021) showed that aggregate snowflakes' fall speed is very sensitive to shape. Other studies have also reported a wide spread and used a similar method of binning fall speed before data fitting (e.g., Barthazy and Schefold, 2006; Zawadzki et al., 2010). Shape and orientation affect the fall speed, since they are responsible for the drag force. Within most shape groups there is still a wide variety of different shapes. In addition, for any particle shape, the orientation may also contribute to the spread in data.

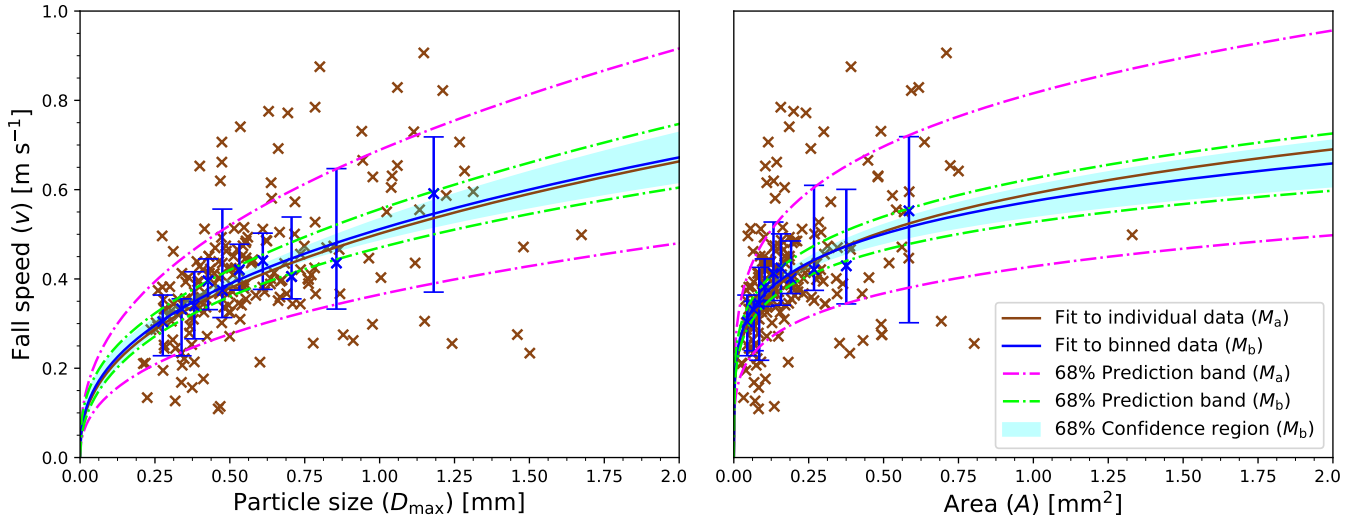


Figure 6. Fall speed versus particle size (v vs. D_{\max}) and fall speed versus cross-sectional area (v vs. A) relationships for shape group (5) Plates. Individual data (brown symbols) and binned data (blue symbols with error bars) are displayed. Median values in the respective bins represent the binned data. The total length of the error bars represents the spread in fall speed data, which is given by the difference between the 16th and 84th percentiles. Fits that apply to individual data (M_a) and to binned data (M_b) are shown for comparison. The 68% prediction band and the 68% confidence region for both fits (M_a , M_b) are also shown. The 68% confidence region is shown for M_b . Left: v vs. D_{\max} relationship given by Eq. (4). Right: v vs. A relationship given by Eq. (5). The same data are shown in Table 3 for v vs. D_{\max} and in Table 4 for v vs. A .

Since the binned data is based on the individual data, the fits obtained from the binned data (M_b) should match be consistent with the fits based on the individual data (M_a). If so When they do match, and, in particular, when R^2 for M_b is high, the fits are deemed representative for the given shape group. If R^2 remains low after binning, it implies that no reliable relationship could be found. This may indicate that no adequate fit exists for that particular shape group, or it may be the consequence of too much spread in the fall speed data obscuring any relationship. For example, Fig. 6 shows the binned data of shape group (5) Plates and the corresponding fit, which matches closely the fit to M_a . After binning, the correlation coefficients, which for clarity are denoted R_D^2 and R_A^2 for the fits to v vs D_{\max} and v vs A relationships, respectively, are much higher for both the v vs. D_{\max} and the v vs. A relationships with R^2 $R_D^2 \simeq 0.898$ (Table 3) and R^2 $R_A^2 \simeq 0.878$ (Table 4), respectively. Therefore, for this shape group, the fits M_b can be considered representative.

The method M_a fits agree reasonably well with M_b fits for all shape groups if considering confidence regions (see Figures A1 and A2 in Appendix A). Therefore, considering To judge if the relationships are reliable or not, the correlation coefficients R^2 from the binned data (M_b) is necessary in order to judge if the relationships are reliable or not. R_D^2 (v vs D_{\max}) and R_A^2 (v vs A) for M_b will be considered too. For clarity, R^2 for the two types of comparisons are denoted differently so that R_a^2 and R_b^2 are the individual correlation scores for the fits to v vs. D_{\max} and v vs. A relationships, respectively. They are compared to each other plotted in Fig. 7, which shows that the correlation coefficients of seven out of 15 groups improve past 0.5 in M_b for

both $R_a^2 R_D^2$ and $R_b^2 R_A^2$ (see Tables 3 and 4), including three shape groups with a very high correlation to their fit ($R^2 \gtrsim 0.9$ both $R_D^2 \gtrsim 0.9$ and $R_A^2 \gtrsim 0.9$), namely groups (5) *Plates*, (11) *Spatial stellar*, and (12) *Graupel*. The other groups with good correlation are (7) *Bullet rosettes*, (8) *Branches*, (14) *Irregulars*, and (15) *Spherical*. For all other eight shape groups, one or both of $R_a^2 R_D^2$ and $R_b^2 R_A^2$ remain below 0.5. Therefore, for these groups, no solid relationship could be found for v vs. D_{\max} , or v vs. A , or both.

3.2.3 Comparing size and cross-sectional area dependencies

For the seven groups with good correlations, $R_a^2 R_D^2$ and $R_b^2 R_A^2$ are similar (see also Fig. 7). As discussed in Sect. 3.1, particle size and cross-sectional area are very well correlated, so this is expected. Only for two of the other eight groups, are the values of $R_a^2 R_D^2$ and $R_b^2 R_A^2$ similar. While for shape group (4) *Capped columns*, binning the data made a similar improvement to both $R_a^2 R_D^2$ and $R_b^2 R_A^2$, increasing the correlation towards 0.5, for (10) *Spatial plates*, both $R_a^2 R_D^2$ and $R_b^2 R_A^2$ remain very low for M_b . For the remaining six groups, there is a noticeable difference between $R_a^2 R_D^2$ and $R_b^2 R_A^2$. On the one hand, shape groups (6) *Stellar* and (13) *Ice particles* have improved their correlation coefficients $R_a^2 R_D^2$ to above 0.5, but without an improvement in $R_b^2 R_A^2$. On the other hand, groups (1) *Needles*, (2) *Crossed needles*, (3) *Thick columns*, and (9) *Side planes* have $R_b^2 R_A^2$ values that are significantly larger than the respective $R_a^2 R_D^2$ values. For example, shape group (1) *Needles* has $R_a^2 R_D^2 = 0.24$ and $R_b^2 R_A^2 = 0.50$, and (3) *Thick columns* has $R_a^2 R_D^2 = 0.11$ and $R_b^2 R_A^2 = 0.44$. For the groups (2) *Crossed needles* and (9) *Side planes*, the difference between $R_a^2 R_D^2$ and $R_b^2 R_A^2$ is most pronounced with no improvement in $R_a^2 R_D^2$ but moderate values for $R_b^2 R_A^2$ of 0.36 and 0.50, respectively.

The results discussed above show that among these groups with a noticeable difference between $R_a^2 R_D^2$ and $R_b^2 R_A^2$, more have larger $R_b^2 R_A^2$ (four groups) than larger $R_a^2 R_D^2$ (two groups), i.e., more have better v versus A correlation than v versus D_{\max} . Particles are falling at a speed for which gravitational and drag forces are in equilibrium, i.e., fall speed depends on mass and drag, which in turn depends on cross-sectional area A and the drag coefficient C_D (e.g., Mitchell, 1996). Since drag depends directly on cross-sectional area, one may expect fall speed to depend more on the cross-sectional area than on particle size maximum dimension. Drag, in addition to cross-sectional area, also depends on C_D , which is proportional to the particle Reynolds number, which in turn depends on a characteristic length of the particle. For most particle shapes, D_{\max} may be a good approximation for this characteristic length; hence, fall speed also depends directly on D_{\max} . However, for some shapes, D_{\max} may be significantly different from the characteristic length for the Reynolds number, so that fall speed is not necessarily well correlated to D_{\max} .

For example, for needles or columns, if falling horizontally, this characteristic length is given by the needle's or column's width rather than its maximum dimension D_{\max} , which is similar to the needle's or column's length. Indeed, the shape groups related to needles and columns, i.e., (1) *Needles*, (2) *Crossed needles*, and (3) *Thick columns*, are among the four groups for which fall speed is better correlated to A than to D_{\max} . Interestingly, as seen in Sect. 3.1, these three shape groups also have the lowest exponents b for the A vs. D_{\max} relationships with values close to 1. Two of these groups, (1) and (2), are also among the four groups with the lowest correlation between A and D_{\max} (together with shape groups (4) *Capped columns* and

(6) *Stellar*), indicating again that the differences between $R_a^2 R_D^2$ and $R_b^2 R_A^2$ that we see in three of these four groups are not unexpected.

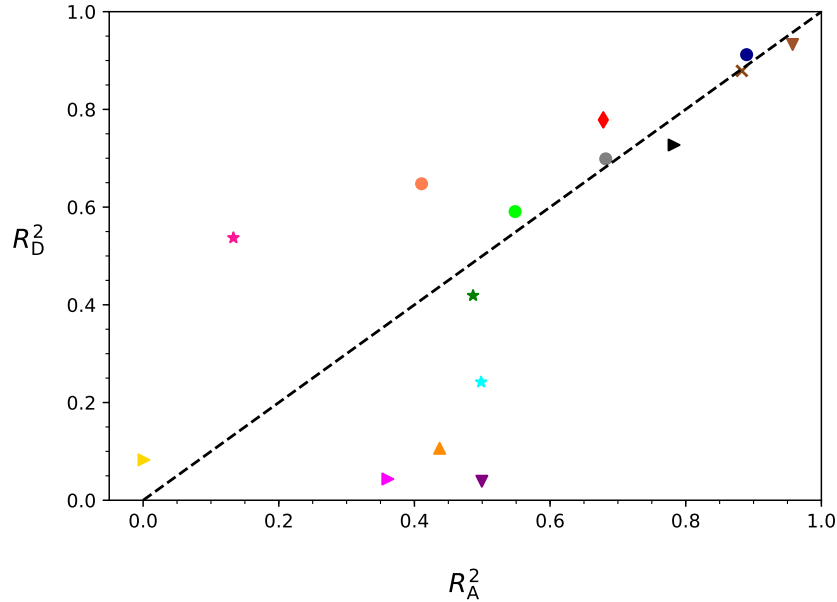


Figure 7. The correlation coefficients $R_a^2 R_D^2$ (v versus D_{\max}) and $R_b^2 R_A^2$ (v versus A) from M_b are shown for the 15 shape groups. For a legend of the shape groups, see Fig. 5. The black dashed line represents $R_a^2 R_D^2 = R_b^2 R_A^2 = R_A^2$.

3.2.4 Representative relationships

Figure 8 shows the fitted v vs. D_{\max} (left) and v vs. A (right) relationships (from method M_b) as solid lines for the shape groups with relatively good correlations ($R_a^2 R_D^2$ or $R_b^2 R_A^2 \gtrsim 0.50$, respectively). These are shape groups (5) *Plates*, (6) *Stellar*, (7) *Bullet rosettes*, (8) *Branches*, (11) *Spatial stellar crystals*, (12) *Graupel*, (13) *Ice particles*, (14) *Irregulars*, and (15) *Spherical* for the v vs. D_{\max} relationships. For the v vs. A relationships, the correlated shape groups are (1) *Needles*, (4) *Capped columns*, (5) *Plates*, (7) *Bullet rosettes*, (8) *Branches*, (9) *Side planes*, (11) *Spatial stellar*, (12) *Graupel*, (14) *Irregulars*, and (15) *Spherical*. For comparison, the relationships for all shapes combined appear as dashed lines in both figures.

Given by their compact shape, (15) *Spherical* have the largest mass and least drag for a given size. Therefore, they will fall faster than any other shape and have the highest slopes, i.e., values for steepest slopes, i.e., highest values of exponents b_D and b_A . Among all shapes, (12) *Graupel* is most similar to spherical particles as they often have spheroidal shape. However, their b_D (1.0) and b_A (0.47) are considerably smaller than those of spheres, though still larger than for any other shape (see Fig. 8 and Tables 3-4).

Table 3. Fall speed versus particle size (v vs. D_{\max}) relationships fitted to Eq. (4) for each shape group and all data, i.e., for all the particles regardless of shape. The parameters a_D , b_D with their respective uncertainties, and the correlation coefficients (R_a^2 and R_b^2) R_D^2 are shown for both methods (M_a and M_b) for each shape group and regardless of shape. The root-mean-square error (RMSE) values of base-10 logarithms of measured v vs predicted v are also shown to indicate the uncertainty of these power laws.

Shape groups (1–15)	v vs. D_{\max}						
	Method M_a			Method M_b			
	a_D [m s^{-1}]	b_D	R_a^2 R_D^2	a_D [m s^{-1}]	b_D	R_b^2 R_D^2	RMSE
(1) <i>Needles</i>	0.34 ± 0.02	-0.03 ± 0.05	0.001	0.35 ± 0.05	-0.15 ± 0.11	0.24	0.05
(2) <i>Crossed needles</i>	0.35 ± 0.06	0.01 ± 0.13	0.0002	0.35 ± 0.05	-0.07 ± 0.13	0.04	0.05
(3) <i>Thick columns</i>	0.36 ± 0.08	0.19 ± 0.09	0.05	0.34 ± 0.14	0.12 ± 0.15	0.11	0.07
(4) <i>Capped columns</i>	0.48 ± 0.03	0.33 ± 0.06	0.12	0.49 ± 0.07	0.28 ± 0.14	0.42	0.06
(5) <i>Plates</i>	0.50 ± 0.04	0.40 ± 0.05	0.24	0.51 ± 0.05	0.39 ± 0.06	0.88	0.03
(6) <i>Stellar</i>	0.26 ± 0.10	0.67 ± 0.21	0.20	0.23 ± 0.17	0.99 ± 0.37	0.54	0.11
(7) <i>Bullet rosettes</i>	0.59 ± 0.04	0.51 ± 0.14	0.26	0.62 ± 0.05	0.44 ± 0.15	0.59	0.05
(8) <i>Branches</i>	0.34 ± 0.02	0.33 ± 0.06	0.07	0.35 ± 0.03	0.36 ± 0.08	0.78	0.03
(9) <i>Side planes</i>	0.52 ± 0.02	0.14 ± 0.05	0.02	0.54 ± 0.02	0.04 ± 0.08	0.04	0.02
(10) <i>Spatial plates</i>	0.44 ± 0.09	0.21 ± 0.19	0.03	0.44 ± 0.13	0.20 ± 0.28	0.08	0.08
(11) <i>Spatial stellar</i>	0.46 ± 0.03	0.70 ± 0.05	0.48	0.45 ± 0.04	0.88 ± 0.10	0.93	0.05
(12) <i>Graupel</i>	0.98 ± 0.08	0.89 ± 0.11	0.65	1.07 ± 0.09	1.00 ± 0.13	0.91	0.05
(13) <i>Ice particles</i>	0.61 ± 0.12	0.38 ± 0.10	0.21	0.65 ± 0.14	0.39 ± 0.12	0.65	0.06
(14) <i>Irregulars</i>	0.44 ± 0.03	0.37 ± 0.05	0.16	0.46 ± 0.07	0.46 ± 0.12	0.70	0.07
(15) <i>Spherical</i>	4.49 ± 0.28	1.37 ± 0.16	0.67	4.76 ± 0.63	1.42 ± 0.35	0.73	0.14
All data	0.42 ± 0.01	0.20 ± 0.02	0.06	0.44 ± 0.02	0.19 ± 0.03	0.87	0.02

280 While two shape groups ((6) *Stellar* and (11) *Spatial stellar*) have similarly large values of b_D , the relationships shift towards
much lower speeds and larger sizes compared to the relationships of shape groups (12) *Graupel* and (15) *Spherical* (see Fig. 8).
Shape group (11) also has a similarly large value of b_A as shape group (12), but again its relationship shifts towards lower
speeds and this time larger cross-sectional areas. The other groups with $R_a^2 R_D^2 > 0.5$ have b_D values around 0.4, and the other
groups with $R_b^2 R_A^2 > 0.5$ have b_A values around 0.2 (0.16 to 0.27) except for shape group (9) *Side planes*, which has the
285 smallest value (0.11).

There seems to be around factor 2 between b_A and b_D . By combining Equations 4, 5, and 2 one finds that b should give this
factor. As can be seen in Table 1, the coefficient b is for most shape groups between 1.5 and 2. Figure 9 shows the ratios $\frac{b_D}{b_A}$
as a function of b , and most ratios on this plot are close to the line $\frac{b_D}{b_A} = b$. The exceptions are the two shape groups where R_a^2
 R_D^2 was larger than $R_b^2 R_A^2$ ((6) *Stellar*, and (10) *Spatial plates*), which are found above the line. Group (10) is outside the plot
290 domain since it has an excessively high ratio of 9.37 caused by a very small b_D . However, this is probably not meaningful since

Table 4. Fall speed versus cross-sectional area (v vs. A) relationships fitted to Eq. (5) for each shape group and for all data, i.e., for all the particles regardless of shape. The parameters a_A , b_A with their respective uncertainties, and the correlation coefficients (R_a^2 and R_b^2) R_D^2 are shown for both methods (M_a and M_b) for each shape group and regardless of shape. The root-mean-square error (RMSE) values of base-10 logarithms of measured v vs predicted v are also shown to indicate the uncertainty of these power laws.

v vs. A							
Shape groups (1–15)	Method M_a			Method M_b			
	a_A [m s^{-1}]	b_A	R_a^2 R_A^2	a_A [m s^{-1}]	b_A	R_b^2 R_A^2	RMSE
(1) <i>Needles</i>	0.51 ± 0.07	0.21 ± 0.04	0.10	0.50 ± 0.16	0.20 ± 0.08	0.50	0.04
(2) <i>Crossed needles</i>	0.54 ± 0.15	0.30 ± 0.10	0.12	0.57 ± 0.27	0.33 ± 0.18	0.36	0.08
(3) <i>Thick columns</i>	0.73 ± 0.17	0.31 ± 0.06	0.22	0.60 ± 0.34	0.26 ± 0.12	0.44	0.07
(4) <i>Capped columns</i>	0.57 ± 0.07	0.17 ± 0.04	0.10	0.60 ± 0.12	0.16 ± 0.07	0.49	0.05
(5) <i>Plates</i>	0.59 ± 0.06	0.22 ± 0.03	0.23	0.57 ± 0.06	0.20 ± 0.03	0.88	0.02
(6) <i>Stellar</i>	0.37 ± 0.08	0.31 ± 0.12	0.14	0.37 ± 0.14	0.24 ± 0.25	0.13	0.13
(7) <i>Bullet rosettes</i>	0.81 ± 0.10	0.30 ± 0.08	0.28	0.79 ± 0.11	0.24 ± 0.09	0.55	0.05
(8) <i>Branches</i>	0.43 ± 0.04	0.20 ± 0.03	0.09	0.45 ± 0.07	0.20 ± 0.06	0.68	0.04
(9) <i>Side planes</i>	0.57 ± 0.03	0.11 ± 0.03	0.05	0.59 ± 0.04	0.11 ± 0.05	0.50	0.03
(10) <i>Spatial plates</i>	0.43 ± 0.17	0.04 ± 0.11	0.004	0.40 ± 0.40	0.02 ± 0.25	0.001	0.13
(11) <i>Spatial stellar</i>	0.67 ± 0.04	0.40 ± 0.03	0.51	0.70 ± 0.05	0.47 ± 0.04	0.96	0.04
(12) <i>Graupel</i>	1.35 ± 0.11	0.46 ± 0.05	0.69	1.40 ± 0.14	0.47 ± 0.07	0.89	0.05
(13) <i>Ice particles</i>	1.01 ± 0.19	0.30 ± 0.06	0.31	0.87 ± 0.38	0.24 ± 0.12	0.41	0.09
(14) <i>Irregulars</i>	0.56 ± 0.04	0.23 ± 0.03	0.19	0.60 ± 0.12	0.27 ± 0.08	0.68	0.07
(15) <i>Spherical</i>	5.42 ± 0.29	0.68 ± 0.08	0.69	5.92 ± 0.59	0.71 ± 0.15	0.78	0.12
All data	0.52 ± 0.02	0.18 ± 0.01	0.14	0.54 ± 0.02	0.18 ± 0.01	0.97	0.01

the correlation is very bad for this group. The four shape groups with R_b^2 R_A^2 larger than R_a^2 R_D^2 ((1) *Needles*, (2) *Crossed needles*, (3) *Thick columns*, and (9) *Side planes*), are below the line.

3.3 Particle orientation and area ratio

3.3.1 Orientation

295 For certain shapes, the orientation of the falling particle can considerably change the cross-sectional area seen in the top-view image. Therefore, the particle orientation will influence the drag and thus the fall speed. To test how much this affects our data, particles that clearly show a horizontal or vertical orientation are selected among predominantly elongated particles, found within the shape group (1) *Needles*, or predominantly planar particles found within one of the two groups (5) *Plates* and (6) *Stellar*. Particles that are identified by eye as having an orientation angle close to 0° are considered horizontal, and conversely,

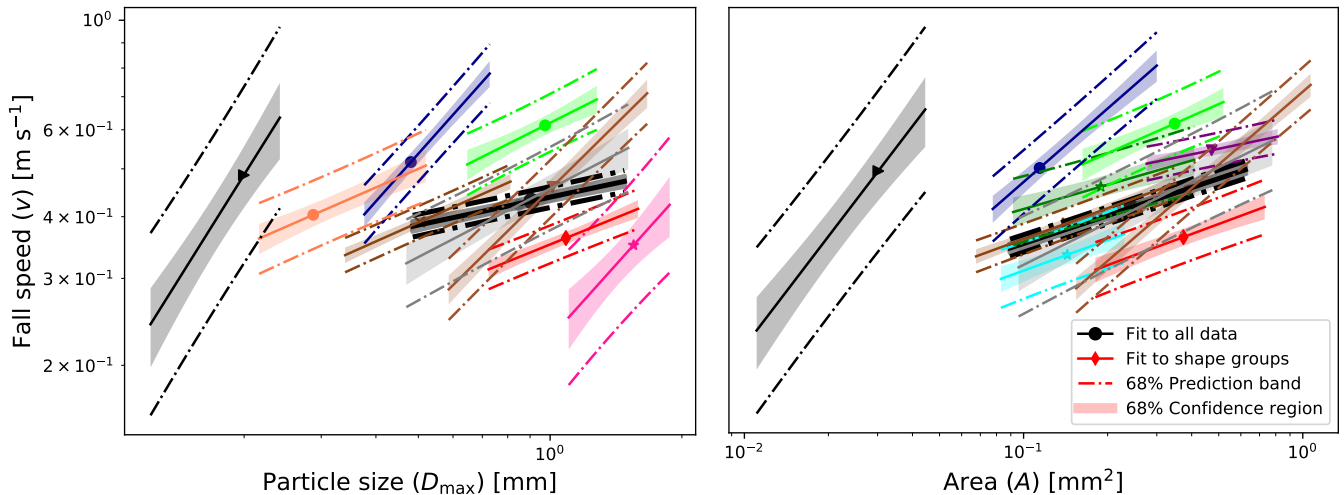


Figure 8. Fall speed versus particle size (v vs. D_{\max}) and fall speed versus cross-sectional area (v vs. A) relationships for the shape groups where we have found a good correlation (solid lines) and all data regardless of shape (black dashed lines) are shown. The 68% prediction band and the 68% confidence region for the fits (M_b). For a legend of the shape groups, see Fig. 5. *Left:* v vs. D_{\max} relationship. Shape groups (5), (6), (7), (8), (11), (12), (13), (14) and (15) are displayed. The values of the median of D_{\max} are represented as points. *Right:* v vs. A relationship. Shape groups (1), (4), (5), (7), (8), (9), (11), (12), (14), and (15) are displayed. The values of the median of A are represented as points. The length of the fit lines is defined by 16th and 84th percentiles of D_{\max} (left) and A (right). The corresponding data are shown in Tables 3-4.

300 particles with an orientation angle close to 90° are considered vertical. The orientation angle is here defined as the angle that the horizontal plane forms with the particle plane, in case of planar particles, or with the particle axis, in case of elongated particles. Only a total of 135 particles fulfilled these criteria, 109 with horizontal and 26 with vertical orientation. Figure 10 shows six examples (a–f) using side-view images of individual particles with horizontal orientation and six examples (g–l) with vertical orientations.

305 Figure 11 shows the individual fall speeds of these particles. When trying to fit these data to Eq. (4) or 5, the correlation coefficients remained very low, and thus no meaningful relationships could be found. However, particles falling with a vertical orientation are slightly faster (with a median $v = 0.42 \text{ m s}^{-1}$) than the horizontally orientated (with a median $v = 0.34 \text{ m s}^{-1}$).

3.3.2 Area ratio

In addition to orientation, also area ratio, A_r , may be important, especially given that the Reynolds number, which influences
 310 fall speed (Sect. 3.2), can be related, in part, to the area ratio (Heymsfield and Westbrook, 2010). In general, the smallest particles tend to have the largest A_r , and A_r becomes smaller for larger particles. This is true for most shape groups, and this tendency is particularly strong in the four shape groups (1) *Needles*, (2) *Crossed needles*, (3) *Thick columns*, and (13) *Ice particles* (see Fig. 4), of which groups (1)–(3) are elongated shapes. The lowest A_r , at any given size, are found in these

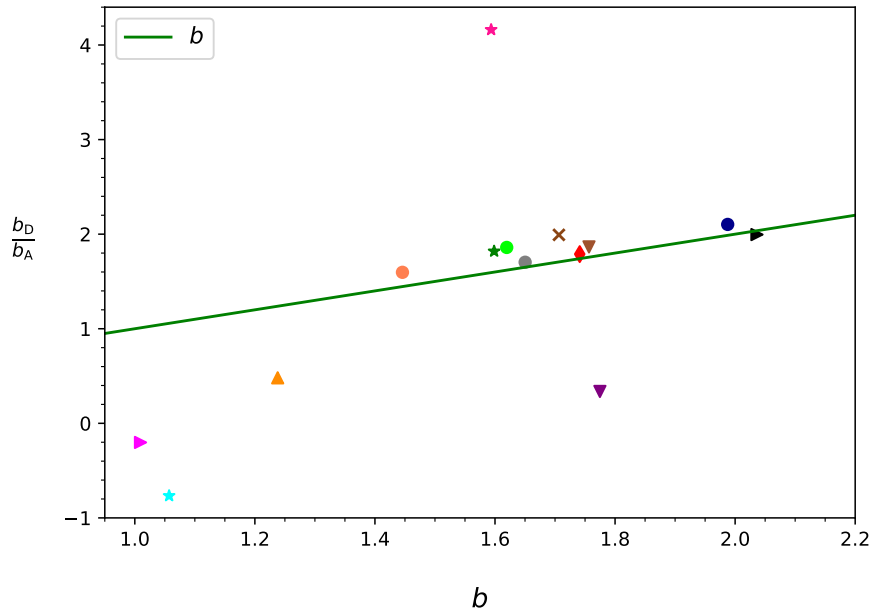


Figure 9. Ratio of the coefficients b_D and b_A from fits (M_b) to v vs. D_{\max} and v vs. A relationships, respectively, and the coefficient b corresponding to A vs. D_{\max} relationship are shown for all the shape groups. The green solid line corresponds to $\frac{b_D}{b_A} = b$.

shape groups. The elongated shapes also showed a particular size dependence of their cross-sectional area (Sect. 3.1). This dependence of area ratio and of cross-sectional area on particle size leads to a particular fall speed behaviour, which can be better visualized by splitting the data into different A_r ranges. Figure 12 shows this after splitting the data equally into three distinct regions of low, intermediate, and high A_r values. In each range, there is a different fall speed relationship for both v vs. D_{\max} and v vs. A . ~~These relationships are overlapping somewhat in D_{\max} and A , respectively. Figure 12 illustrate As can be seen in Fig. 12, these relationships are spread out in a way, so that for a given particle size or cross-sectional area, higher and lower A_r means higher and lower fall speed, respectively.~~ One may expect the effects of orientation to be responsible since the same elongated particle would have a relatively larger A_r when orientated vertically, and thus falling faster, compared to when orientated horizontally. However, a closer inspection of the data shows that the majority of particles are horizontally orientated. The predominance of the horizontal orientation is probably a consequence of vertically falling particles being less aerodynamically stable and, thus, likely to transition to horizontal orientation. Therefore, particle orientation does not appear to explain the dependence of fall speed on area ratio. Instead, particles with higher area ratios are generally bulkier, i.e., needles or columns that are shorter in length, and consequently fall faster.

To better understand this area ratio dependence of fall speed, we first consider elongated particles that have the same D_{\max} (approximately given by the length) but different values of A_r . Note, that the top-view images, used to determine A , always present a view perpendicular to the major axis of elongated particles, if these are horizontally orientated. Therefore, the cross-

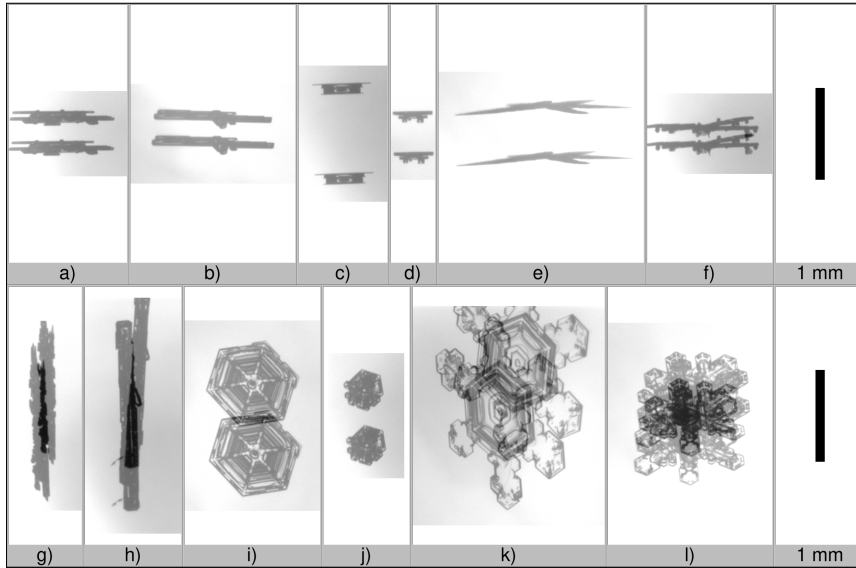


Figure 10. Panels (a–f) show six examples using side views of different particles with horizontal orientation and panels (g–l) show six examples using side views of different particles with vertical orientation. These particles have elongated shape (shape group (1) *Needles*) and planar shape (shape groups (5) *Plates* and (6) *Stellar*). Two examples of each shape group are displayed for both orientations. The same scaling is applied to all images; a 1 mm scale bar is shown as reference.

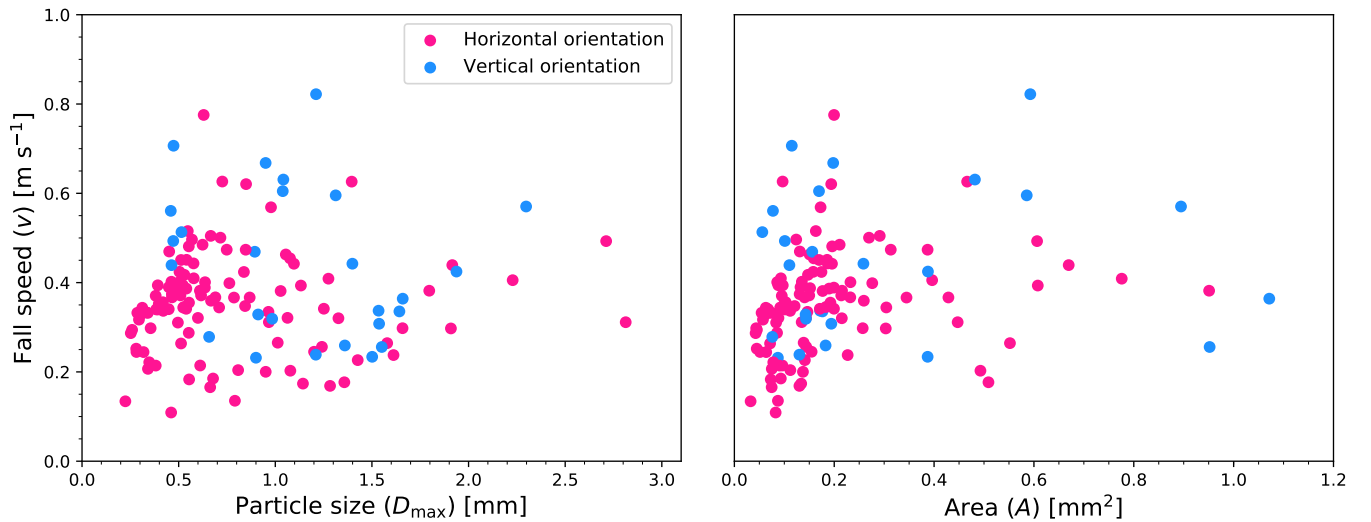


Figure 11. Fall speed versus particle size (v vs. D_{\max}) and fall speed versus cross-sectional area (v vs. A) for mixed particle shapes, predominantly elongated particles (shape group (1) *Needles*) and planar particles (shape groups (5) *Plates* and (6) *Stellar*) with horizontal and vertical orientation angles. *Left:* v vs. D_{\max} relationship. *Right:* v vs. A .

330 sectional area is approximately given by the length of the particles times its diameter d (with diameter we refer to the width perpendicular to the major axis), i.e., $A \approx D_{\max} \cdot d$.

Also, as can be seen in Eq. (1), the cross-sectional area A is proportional to A_r for the case of $D_{\max} = \text{constant}$ as considered here. Then, also their diameter is proportional to A_r . Consequently, their volume ($\approx D_{\max} \cdot d^2$) or mass (m) is proportional to A_r^2 . While, in case of constant D_{\max} , $A \propto A_r$ is valid in general for all shapes, the strong dependence $m \propto A_r^2$ is distinctive
335 for elongated shapes. Then, for these shapes, as A_r increases, mass increases much more rapidly than A , and consequently, fall speed needs to increase considerably for drag to compensate gravitational force. This effect can explain the strong dependence of fall speed on area ratio for these elongated shapes.

For other shapes, the general dependence may be similar, though less pronounced due to a weaker A_r dependence of m . Additionally, for these other shapes, the range of A_r is not as wide as for the elongated shapes. Moreover, for no other shape
340 group do the fall speeds separate into distinguishable relationships after splitting the data according to A_r . That indicates that the natural spread in fall speed may hide the A_r dependence of fall speed.

To examine further, we also consider what happens at increasing D_{\max} in the case of constant A_r . In this case, $A \propto D_{\max}^2$ and $m \propto D_{\max}^3$ in general and $m \propto D_{\max}^\beta$ where β is between 2 and 3. Consequently, as m increases much more rapidly with increasing D_{\max} than A (for all cases but the extreme $m \propto D_{\max}^2$), the fall speed also increases rapidly with increasing D_{\max} ,
345 which is consistent with the strongest size dependence of fall speed existing in shape groups (12) *Graupel* and (15) *Spherical* (see Sect. 3.2).

Finally, considering the general case when neither D_{\max} nor A_r are constant, one needs to take into account both of the special cases explained above. On the one hand, increasing D_{\max} leads directly to increasing fall speed. On the other hand, increasing D_{\max} changes the particle morphology so that A_r decreases, which, in turn, causes fall speed to decrease. Since
350 these effects are opposed, they cancel each other out to some extent. The stronger the negative size dependence of A_r is, the weaker the positive size dependency of fall speed. If the effect related to A_r is the strongest, they cancel out almost entirely, as in case of shape groups (1)–(3) where this results in the weakest size dependence of fall speed with low correlation. Another consequence of the A_r dependence of fall speed is that variations in A_r cause variations in fall speed, i.e., they account in part for the natural spread in the data.

355 3.4 Comparison with previous fall speed relationships

This section compares the fall speed relationships as functions of particle size presented in this study, further referred to as $[VM]$, to parameterizations of previous studies. Here, we assess the shape groups (5) *Plates*, (6) *Stellar* (called dendrites in other studies), and (12) *Graupel*, where the data are reasonably well correlated with the fall speed relationships ($R^2 \gtrsim 0.5$). Table 6 lists the parameterizations of Locatelli and Hobbs (1974) $[Lo]$, Heymsfield and Kajikawa (1987) $[H]$, Mitchell (1996)
360 $[M]$, Barthazy and Schefold (2006) $[B]$, and Lee et al. (2015) $[Le]$ used in the comparison.

Before comparing, it is important to note that the particle size D was defined somewhat differently depending on the study. For $[VM]$, as well as for $[H]$ and $[M]$, D corresponds to D_{\max} . For $[Lo]$, D is the diameter of an estimated circle that has the same cross-sectional area as the imaged particle, and for $[B]$ and $[Le]$, D corresponds to the maximum length of any horizontal

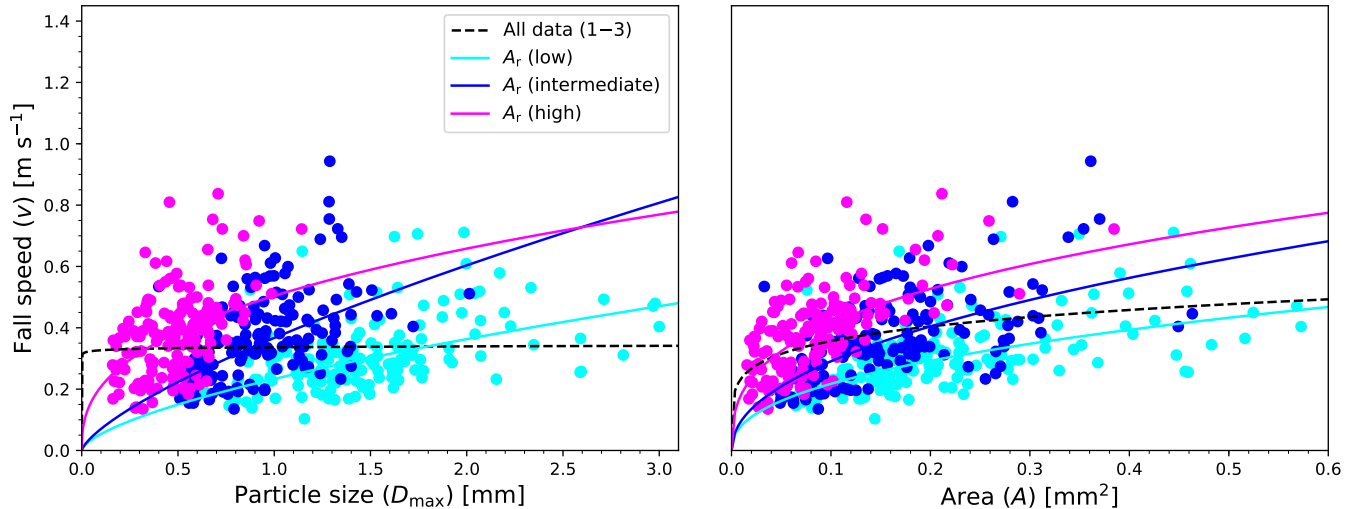


Figure 12. Fall speed versus particle size (*left*) and fall speed versus cross-sectional area (*right*) relationships for the combination of shape groups (1) *Needles*, (2) *Crossed needles*, and (3) *Thick columns*. Fits that apply to binned data (M_b) are shown for all the data (solid black line) and for different A_r (low, intermediate and high) ranges. All data, in this case, only include particles in these three shape groups, i.e., (1)–(3). For the binned data, the median fall speed in the size and cross-sectional area bins, and the median was chosen. Same data are shown in Table 5.

Table 5. Fall speed versus particle size (v vs. D_{\max}) and fall speed versus cross-sectional area (v vs. A) relationships fitted to binned data (M_b) for the combination of particles in shape groups (1) *Needles*, (2) *Crossed needles*, and (3) *Thick columns* with different area ratio A_r ranges (low, intermediate and high). The number of particles, N , the parameters a_D , b_D , a_A , b_A and their respective uncertainties, and the correlation coefficients R_b^2 are shown. All data are also shown. In this case, all data include only particles in these three shape groups, i.e., (1)–(3).

Ranges	N	v vs. D_{\max}			v vs. A		
		a_D [m s^{-1}]	b_D	R_b^2 R_D^2	a_A [m s^{-1}]	b_A	R_b^2 R_A^2
All data (1–3)	486	0.34 ± 0.04	0.01 ± 0.07	0.01	0.50 ± 0.10	0.20 ± 0.05	0.74
A_r low	161	0.23 ± 0.05	0.64 ± 0.11	0.84	0.58 ± 0.08	0.43 ± 0.05	0.93
A_r intermediate	164	0.37 ± 0.04	0.72 ± 0.14	0.82	0.87 ± 0.12	0.48 ± 0.06	0.91
A_r high	161	0.50 ± 0.07	0.38 ± 0.08	0.80	0.93 ± 0.20	0.35 ± 0.08	0.78

row in the side-view shadowgraphs. Furthermore, we have not adjusted the different studies to common temperature and pressure conditions but compared them as they are reported. While some did adjust measurements to some standard conditions, others did not. For example, [H] adjusted measurements from about 1000 m altitude to a pressure level of 1000 hPa, whereas [Lo] used measurements from, on average, the same altitude but did not adjust them to a common or standard pressure level, which results in a difference of about 5%.

[Lo] studied fall speeds of different types of ice crystals by first measuring the fall speed of individual particles and then subsequently collecting and imaging them. Their fitted relationships of fall speed are often used as a reference by other studies in the literature. [H] also used data from fall speed measurements and subsequent imaging of individual snow particles, which were collected by Kajikawa (1972). What [Lo] and [H] have in common with [VM] is that all ice particles that contribute to a fall speed parameterization are individually shape classified and therefore belong to the studied shape. [B], on the other hand, loosely tied particle shape to fall speeds by determining the dominant particle shape (occurrence > 50%) per time interval from an independent instrument, and later associated the fall speeds in the time interval to the dominant shape. [Le] used a method similar to [B]; however, they used a higher occurrence threshold of 70%. The fall speed parameterizations of the study by [M] are predicted from previous literature relationships of cross-sectional area and mass versus particle size.

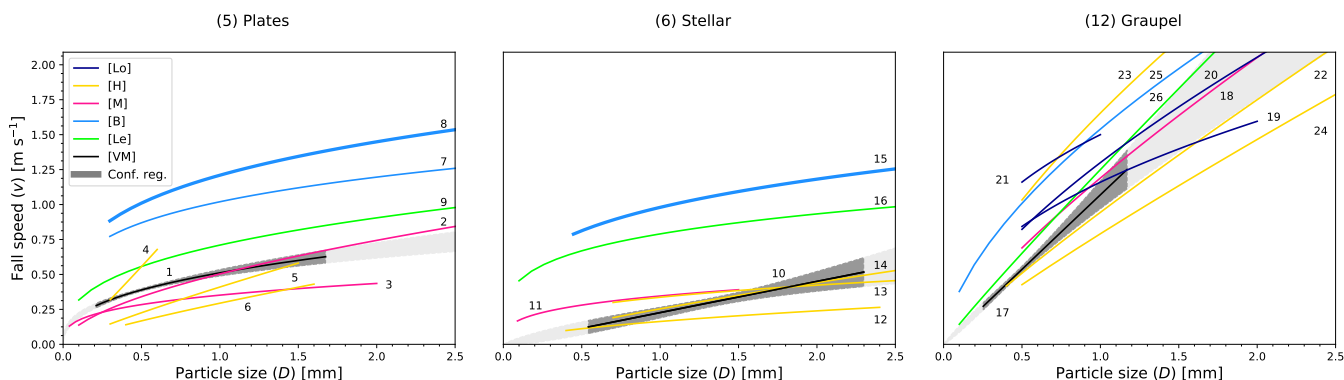


Figure 13. A comparison of the fall speed versus particle size (v vs. D) relationships between this study and previous studies for some shape groups: (5) Plates, (6) Stellar, and (12) Graupel. For the comparison, v vs. D parameterizations from Locatelli and Hobbs (1974) [Lo], Heymsfield and Kajikawa (1987) [H], Mitchell (1996) [M], Barthazy and Schefold (2006) [B], Lee et al. (2015) [Le], and this work [VM] are shown. These v vs. D relationships are the same shown and enumerated in Table 6. The thickness in lines corresponding to [B] represent the riming degree, the thinner line denotes ‘unrimed’, the thicker denotes ‘moderately rimed’. The power laws that correspond to [VM] are shown together with their respective 68% confidence regions (M_b). The lengths of all relationships correspond to the ranges of D (see Table 6).

Figure 13 shows that, for plates, the previous relationships by [H] and [M] are closest to results from [VM]. While their relationships for crystal with sector-like branches (P1b) produce slower fall speeds than [VM], their relationships for plates are closer and extend into or cross the confidence region of [VM]. [H] also reported a relationship for thick plates, which in most of its size range, is just above [VM]. The relationships reported by [B] have the highest fall speeds for plates. They reported different relationships for different degrees of riming, with more riming leading to higher fall speeds. Our data included in shape group (5) Plates are mainly composed of unrimed particles (for a detailed description, see Vázquez-Martín et al., 2020). However, even the unrimed plates from [B] appear to be much faster. The relationships from [B] may overestimate fall speeds because of their classification method mentioned above, which allowed up to half of the particles that contributed to the relationship to have different shapes. [Le] also reported relationships for plates’ speed that are faster than our relationship,

much closer and considerably slower than $[B]$. The better agreement is possibly due to a more accurate shape classification, while otherwise using a similar method to $[B]$.

As for plates, also for stellar particles the previous relationships by $[H]$ and $[M]$ are closest to $[VM]$. Note, that $[M]$ is based on the flow regime for particles larger than about 1 mm (Eq. 20 in $[M]$). Using the flow regime for smaller particles, $[M]$ would come somewhat closer to $[VM]$ below about 0.6 mm. Again, $[Le]$ and $[B]$ reported relationships with considerably higher fall speeds.

$[Lo]$ reported three relationships for lump graupel with different densities. The higher the density, i.e., the more compact the graupel particles are, the faster their predicted fall speeds will be. The relationship for lump graupel by $[M]$ bases on the mass relationship of the medium density graupel by $[Lo]$; consequently, it is very close to the corresponding fall speed relationship. These are within or above $[VM]$'s confidence region. $[H]$ reported lump graupel for temperatures below and above 0.5 °C, with faster speeds for higher temperatures. These are below and above $[VM]$'s confidence region, respectively. Their relationship for colder temperatures than 0.5 °C is closer to $[VM]$. The relationship by $[Le]$ is close to $[VM]$, just above the confidence region, and the relationship from $[B]$ is again at higher speeds, similar to the differences for plates and stellar.

In general, our v vs. D relationships agree reasonably well with the previous studies. The studies with the largest disparity compared to this study may, in large part, be explained by the different approach to classifying snow particle shapes.

4 Summary and conclusions

We have presented D-ICI measurements of natural snow, ice crystals and other hydrometeors, covering sizes from 0.06 to 3.2 mm. These data with dual images of every particle enable the retrieval of the particle shape, as well as size parameters from the top view and fall speed from the double-exposed side-view images.

The particles were sorted according to a classification scheme presented in Vázquez-Martín et al. (2020), which uses 15 different shape groups: needles, crossed needles, thick columns, capped columns, plates, stellar crystals, bullet rosettes, branches, spatial plates, spatial stellar, graupel, ice particles, irregulars, and spherical particles. In this study, we have analysed fall speed versus particle size (v vs. D_{\max}) and fall speed versus cross-sectional area (v vs. A) for each of the 15 shape groups. Fall speed dependence of particle orientation has also been studied as well as dependence of area ratio. Following is a summary of the conclusions drawn.

- Power-law functions represent the relationship between the cross-sectional area and the maximum dimension (Eq. (2)) very well for all shape groups (see Table 1). The exponent b varies between about 1 and 2. Theoretically, the value approaches 1.0 for very elongated shapes that predominantly grow in only one of the two dimensions shown on the top-view images and 2.0 for spherical shapes. Indeed, data from the shape groups with very elongated shapes, (1) *Needles*, (2) *Crossed needles*, and (3) *Thick columns*, and the groups with round particles, (12) *Graupel* and (15) *Spherical*, have b values close to these theoretical limits. For the other shape groups, b varies between 1.4 and 1.8. Ultimately, as can be seen in Eq. (3), the smaller the value in b , the faster A_r decreases as D_{\max} increases (see Figure 4).

- 420 • Shape groups (7) *Bullet rosettes* and (12) *Graupel* have the fastest fall speeds with median speeds near 0.58 m s^{-1} (see Sect. 3.2). The lowest median values of 0.34 m s^{-1} or less are observed for shape groups (1) *Needles*, (2) *Crossed needles*, and (3) *Thick columns* and the median of all data is approximately 0.43 m s^{-1} , and most shape groups have their median within $\pm 0.08 \text{ m s}^{-1}$ from this value.
- 425 • Overall, the fall speed data of individual particles show a broad spread of values as a function of D_{max} or A so that no good correlation to the power-law fits given by Equations 4 and 5 exists. However, binning the data before applying the power law improves the correlations substantially. For all shape groups, the fit to the individual data and the fit to the data after binning, agree with each other within uncertainties. For about half of the shape groups, the correlation coefficients after binning the data is larger than 0.5, and the corresponding fits are considered representative. For the remaining groups, it is uncertain if it is possible to find sufficiently representative power-law fits. See Table 3 (for v vs. D_{max}) and Table 4 (for v vs. A) for a full overview of these results.
- 430 • For the majority of shape groups, the v vs. A correlation is about equally good as v vs. D_{max} . This is expected due to the generally very good correlation between A and D_{max} .
- For a few shapes the v vs. D_{max} and v vs. A correlations are different. For most of these shapes the v vs. A correlation is better than the v vs. D_{max} . The fall speed depends on mass and drag, and drag on the cross-sectional area so that one expects A to be more significant for fall speed than D_{max} .
- 435 • The drag force depends on cross-sectional area, but also on the particle Reynolds number, which in turn depends on a characteristic particle length. While for most shapes this characteristic length may be well approximated by D_{max} , it can be significantly different from D_{max} for a few shapes. For such shapes, one can expect low correlation for the v vs. D_{max} relationship, and this is the case for shape groups (1)–(3), for which D_{max} is equivalent to the needles’ or columns’ length, but the characteristic length is given by their width instead. These groups have low v vs. D_{max} correlation but better v vs. A correlation.
- 440 • In this dataset, generally, only a few groups contained particles where we could distinguish clearly the orientation of the falling particle, the planar and elongated shape groups. Only 135 particles have been found with close to exactly horizontal and vertical orientation. Of these, most are falling with a horizontal orientation, and we have found only 26 particles that are falling vertically orientated. These are falling slightly faster (the median is 0.08 m s^{-1} faster) than the horizontally orientated particles (see Sect. 3.3), however, the small sample size inhibited any further analysis of fall speed dependence on particle orientation.
- 445 • The shape groups (1) *Needles*, (2) *Crossed needles*, and (3) *Thick columns* show a distinct fall speed dependence on area ratio. By splitting particles of the same size or cross-sectional area into three categories of area ratio (low, medium, high), we found that those with larger area ratios have higher fall speeds. These relationships have a high correlation, and much higher than before splitting the data into different area ratio ranges (see Table 5). Only these three shape groups show
- 450 this behaviour. Thus, if a similar area ratio dependence exists for other shapes, then it is less pronounced.

• Our v vs. D_{\max} relationships for some of the better-correlated shape groups, (5) *Plates*, (6) *Stellar*, and (12) *Graupel*, are compared with other fall speed relationships given by previous studies. Our results agree reasonably well with the studies that determined shape and fall speed for all particles or based on literature area–dimensional and mass–dimensional relationships for specific shapes. Of these studies, some of them are somewhat faster, and some are somewhat slower than our relationships for the corresponding shape group. Other studies differ significantly from our relationships. However, in these studies, the shape groups were determined based on the identity of the most frequent particle shape within a time interval, i.e., other particle shapes undoubtedly reduced the precision of the dataset, and therefore may be the cause of the bias between this dataset and theirs (see Sect. 3.4).

455
460 These resulting parameterizations of the snow microphysical properties as a function of particle shape may be useful for improving our understanding of precipitation in cold climates in addition to helping improve the microphysical parameterizations in the climate and forecast models.

Data availability. The presented data will be available at the Swedish National Data Service (DOI will be available).

Author contributions. Conceptualization, T.K., S.V.-M.; resources–instrumentation, T.K.; investigation, S.V.-M., T.K., S.E.; formal analysis, 465 S.V.-M., T.K.; data curation, S.V.-M., T.K.; writing–original draft preparation, S.V.-M.; writing–review and editing, S.V.-M., T.K., S.E.; visualization, S.V.-M.; supervision, T.K., S.E.

Competing interests. The authors declare no conflict of interest.

Acknowledgements. We like to thank the Graduate School of Space Technology at the Luleå University of Technology for financial support and the Swedish Institute of Space Physics (IRF) at Kiruna for offering its facilities for our instrument.

Table 6. The v vs. D relationships of previous studies given by Locatelli and Hobbs (1974) [*Lo*], Heymsfield and Kajikawa (1987) [*H*], Mitchell (1996) [*M*], Barthazy and Schefold (2006) [*B*], and Lee et al. (2015) [*Le*] are shown for some shapes that were selected for the comparison and correspond to (5) *Plates*, (6) *Stellar*, and (12) *Graupel*. The power laws for [*M*] have been determined by using equations [20] and [22] in Mitchell (1996). The relationships found in this work are also shown as [*VM*]. The power laws from the literature have been converted to use the same units, i.e., mm and m s^{-1} , as in [*VM*]. The snow particles type, the total number of particles N , ranges of particle sizes D , v vs. D relationships, the correlation coefficient R^2 , and the reference of the studies are displayed. In some of these studies, the particle size is defined somewhat differently. However, in [*H*] and [*M*] D is defined as D_{max} as in [*VM*]. Magono and Lee (1966)'s symbols are sometimes added for shape clarification. These v vs. D relationships are shown in Fig. 13. To easily connect the fit lines to the power laws, the same relationship numbers have been used in Table 6 and Fig. 13.

Snow particle type	N	Range of D	Relationship (v - D)	R^2	Ref.
Shape group (5) <i>Plates</i>	197	0.21–1.7 mm	1. $v/(\text{m s}^{-1}) = 0.51 \cdot (D/\text{mm})^{0.39}$	0.88	[<i>VM</i>]
Hexagonal plates	–	0.10–3.0 mm	2. $v/(\text{m s}^{-1}) = 0.51 \cdot (D/\text{mm})^{0.56}$	–	[<i>M</i>]
Crystal with sector-like branches (P1b)	–	0.04–2.0 mm	3. $v/(\text{m s}^{-1}) = 0.35 \cdot (D/\text{mm})^{0.31}$	–	[<i>M</i>]
Thick plate (C1h)	19	0.30–0.6 mm	4. $v/(\text{m s}^{-1}) = 1.18 \cdot (D/\text{mm})^{1.09}$	0.46	[<i>H</i>]
Hexagonal plate (P1a)	34	0.30–1.5 mm	5. $v/(\text{m s}^{-1}) = 0.41 \cdot (D/\text{mm})^{0.86}$	0.69	[<i>H</i>]
Crystal with sector-like branches (P1b)	19	0.40–1.6 mm	6. $v/(\text{m s}^{-1}) = 0.29 \cdot (D/\text{mm})^{0.81}$	0.96	[<i>H</i>]
Unrimed plates	–	0.30–2.7 mm	7. $v/(\text{m s}^{-1}) = 1.02 \cdot (D/\text{mm})^{0.23}$	0.87	[<i>B</i>]
Moderately rimed plates	–	0.30–3.6 mm	8. $v/(\text{m s}^{-1}) = 1.21 \cdot (D/\text{mm})^{0.26}$	0.73	[<i>B</i>]
Plate	–	0–4.0 mm	9. $v/(\text{m s}^{-1}) = 0.71 \cdot (D/\text{mm})^{0.35}$	–	[<i>Le</i>]
Shape group (6) <i>Stellar</i>	43	0.54–2.3 mm	10. $v/(\text{m s}^{-1}) = 0.23 \cdot (D/\text{mm})^{0.99}$	0.54	[<i>VM</i>]
Stellar crystal with broad arms (P1d)	–	0.09–1.5 mm	11. $v/(\text{m s}^{-1}) = 0.35 \cdot (D/\text{mm})^{0.30}$	–	[<i>M</i>]
Stellar crystal with broad arms (P1d)	23	0.40–2.4 mm	12. $v/(\text{m s}^{-1}) = 0.16 \cdot (D/\text{mm})^{0.55}$	0.82	[<i>H</i>]
Stellar with end plates (P2a)	11	0.70–3.0 mm	13. $v/(\text{m s}^{-1}) = 0.34 \cdot (D/\text{mm})^{0.33}$	0.54	[<i>H</i>]
Plate with dendritic extensions (P2g)	10	0.70–2.8 mm	14. $v/(\text{m s}^{-1}) = 0.25 \cdot (D/\text{mm})^{0.80}$	0.89	[<i>H</i>]
Moderately rimed dendrites	–	0.45–3.7 mm	15. $v/(\text{m s}^{-1}) = 0.98 \cdot (D/\text{mm})^{0.27}$	0.69	[<i>B</i>]
Dendrite	–	0–4.0 mm	16. $v/(\text{m s}^{-1}) = 0.79 \cdot (D/\text{mm})^{0.24}$	–	[<i>Le</i>]
Shape group (12) <i>Graupel</i>	37	0.25–1.2 mm	17. $v/(\text{m s}^{-1}) = 1.07 \cdot (D/\text{mm})^{1.00}$	0.91	[<i>VM</i>]
Lump graupel (R4b)	–	0.5–3.0 mm	18. $v/(\text{m s}^{-1}) = 1.18 \cdot (D/\text{mm})^{0.79}$	–	[<i>M</i>]
Lump graupel (R4b)	35	0.5–2.0 mm	19. $v/(\text{m s}^{-1}) = 1.16 \cdot (D/\text{mm})^{0.46}$	$r = 0.55$	[<i>Lo</i>]
Lump graupel (R4b)	58	0.5–3.0 mm	20. $v/(\text{m s}^{-1}) = 1.3 \cdot (D/\text{mm})^{0.66}$	$r = 0.77$	[<i>Lo</i>]
Lump graupel (R4b)	17	0.5–1.0 mm	21. $v/(\text{m s}^{-1}) = 1.5 \cdot (D/\text{mm})^{0.37}$	$r = 0.58$	[<i>Lo</i>]
Lump graupel (R4b)	116	0.4–9.0 mm	22. $v/(\text{m s}^{-1}) = 0.94 \cdot (D/\text{mm})^{0.89}$	0.78	[<i>H</i>]
R4b, $T \geq 0.5$ °C	31	0.5–4.7 mm	23. $v/(\text{m s}^{-1}) = 1.65 \cdot (D/\text{mm})^{0.68}$	0.92	[<i>H</i>]
R4b, $T < 0.5$ °C	85	0.5–9.0 mm	24. $v/(\text{m s}^{-1}) = 0.79 \cdot (D/\text{mm})^{0.89}$	0.92	[<i>H</i>]
Graupel	–	0–4.8 mm	25. $v/(\text{m s}^{-1}) = 1.54 \cdot (D/\text{mm})^{0.61}$	0.95	[<i>B</i>]
Graupel	–	0–4.0 mm	26. $v/(\text{m s}^{-1}) = 1.25 \cdot (D/\text{mm})^{0.94}$	–	[<i>Le</i>]

470 Appendix A: Fall speed relationships for the shape groups

Figures A1 and A2 represent v vs. D_{\max} and v vs. A , respectively fitted to a power law, for all the 15 shape groups and, as in Fig. 6 (Sect. 3.2), both methods (M_a , M_b) are shown for comparison.

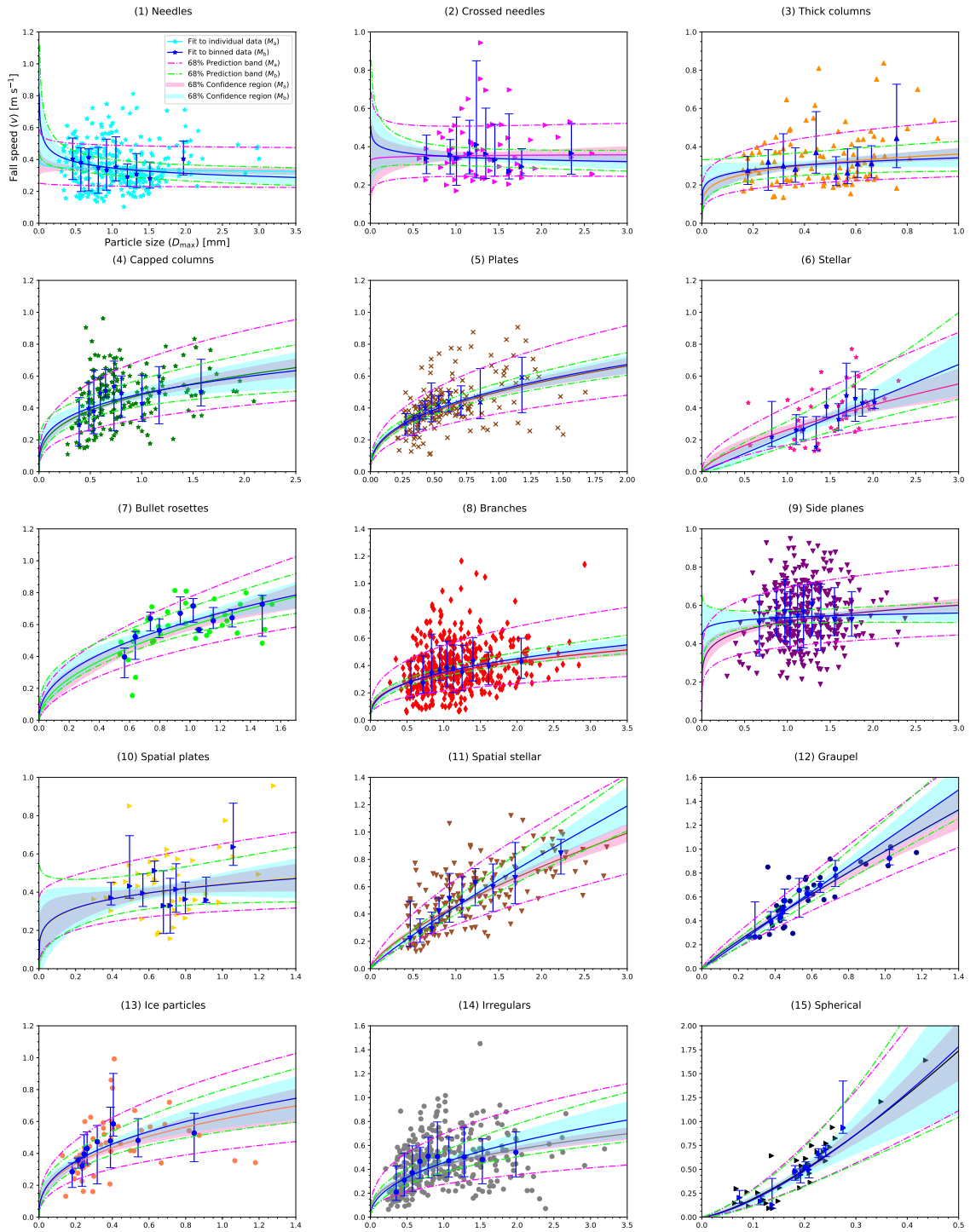


Figure A1. Fall speed versus particle size (v vs. D_{\max}) relationships given by Eq. (4) for all the shape groups are shown. Individual data (coloured symbols) and binned data (blue symbols with error bars) are displayed. Median values in the respective bins represent the binned data. The total length of the error bars represents the spread in fall speed data, which is given by the difference between the 16th and 84th percentiles. Fits that apply to individual data (M_a) and to binned data (M_b) are shown for comparison. The 68% prediction band and the 68% confidence region for both fits (M_a , M_b) are also shown. The same data are shown in Table 3.

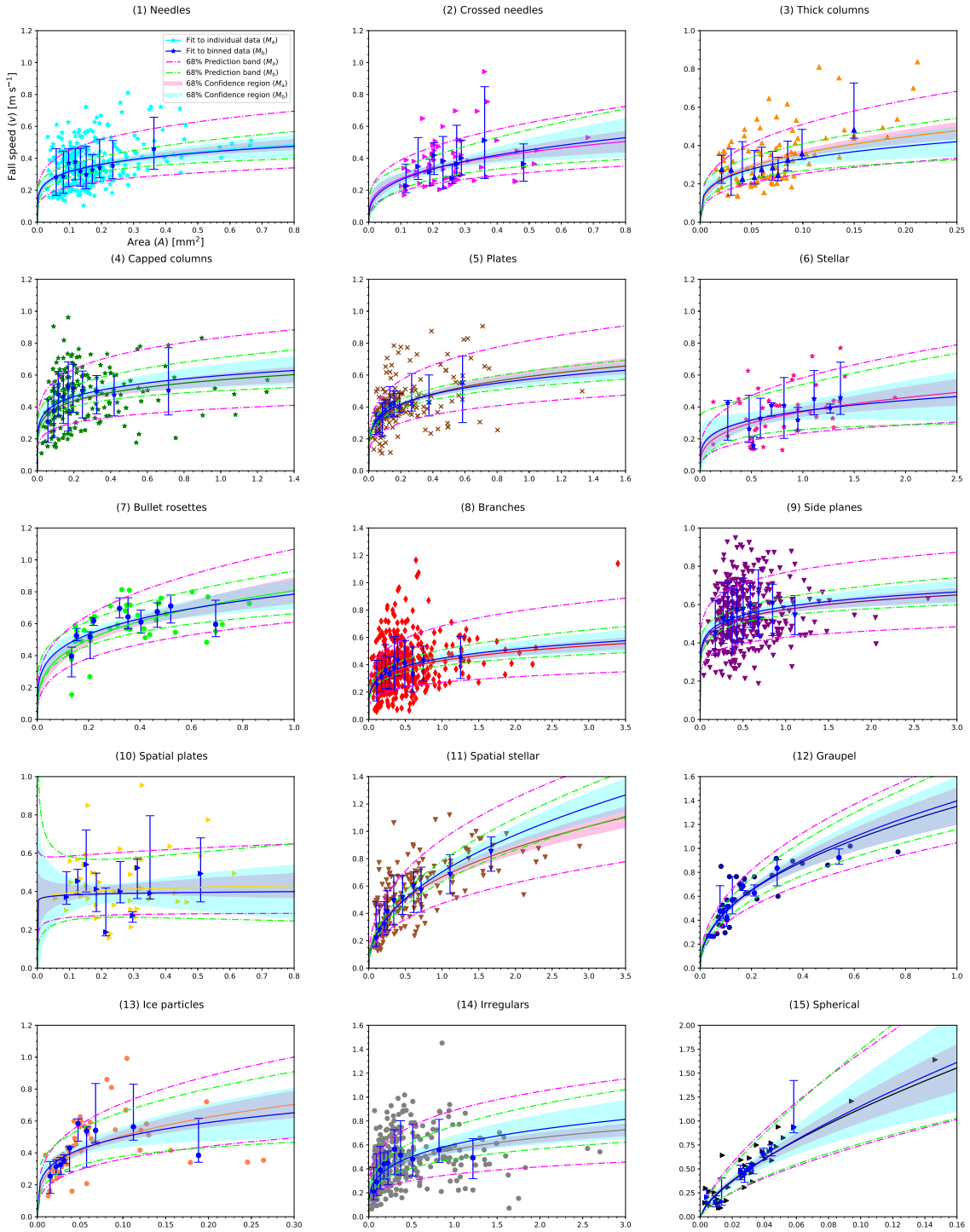


Figure A2. Same as for Fig. A1, but fall speed versus cross-sectional area (v vs. A) relationships given by Eq. (5) are shown here.

References

- Barthazy, E. and Schefold, R.: Fall velocity of snowflakes of different riming degree and crystal types, *J. Atmos. Res.*, 82, 391–398, 475 <https://doi.org/10.1016/j.atmosres.2005.12.009>, 2006.
- Baum, B. A., Yang, P., Heymsfield, A. J., Schmitt, C. G., Xie, Y., Bansemer, A., Hu, Y.-X., and Zhang, Z.: Improvements in Short-wave Bulk Scattering and Absorption Models for the Remote Sensing of Ice Clouds, *J. Appl. Meteorol. Clim.*, 50, 1037–1056, <https://doi.org/10.1175/2010JAMC2608.1>, 2011.
- Brandes, E. A., Ikeda, K., Thompson, G., and Schönhuber, M.: Aggregate Terminal Velocity/Temperature Relations, *J. Appl. Meteorol. Clim.*, 47, 2729–2736, <https://doi.org/10.1175/2008JAMC1869.1>, 2008. 480
- Cooper, S. J. and Garrett, T. J.: Identification of small ice cloud particles using passive radiometric observations, *J. Appl. Meteorol.*, 49, 2334–247, 2010.
- Dunnavan, E. L.: How Snow Aggregate Ellipsoid Shape and Orientation Variability Affects Fall Speed and Self-Aggregation Rates, *J. Atmos. Sci.*, 78, 51–73, <https://doi.org/10.1175/JAS-D-20-0128.1>, 2021.
- 485 Foster, J., Barton, J., Chang, A., and Hall, D.: Snow crystal orientation effects on the scattering of passive microwave radiation, *Geoscience and Remote Sensing, IEEE Transactions on*, 38, 2430–2434, <https://doi.org/10.1109/36.868899>, 2000.
- Gergely, M. and Garrett, T. J.: Impact of the natural variability in snowflake diameter, aspect ratio, and orientation on modeled snowfall radar reflectivity, *Journal of Geophysical Research (Atmospheres)*, 121, 12,236–12,252, <https://doi.org/10.1002/2016JD025192>, 2016.
- Haider, A.: Drag Coefficient and Terminal Velocity of Spherical and Non-Spherical Particles, *Powder Technology - POWDER TECHNOL.*, 490 58, 63–70, [https://doi.org/10.1016/0032-5910\(89\)80008-7](https://doi.org/10.1016/0032-5910(89)80008-7), 1989.
- Heymsfield, A. J. and Kajikawa, M.: An Improved Approach to Calculating Terminal Velocities of Plate-like Crystals and Graupel, *J. Atmos. Sci.*, 44, 1088–1099, [https://doi.org/10.1175/1520-0469\(1987\)044<1088:AIATCT>2.0.CO;2](https://doi.org/10.1175/1520-0469(1987)044<1088:AIATCT>2.0.CO;2), 1987.
- Heymsfield, A. J. and Westbrook, C. D.: Advances in the Estimation of Ice Particle Fall Speeds Using Laboratory and Field Measurements, *J. Atmos. Sci.*, 67, 2469–2482, <https://doi.org/10.1175/2010JAS3379.1>, 2010.
- 495 Jiang, Z., Verlinde, J., Clothiaux, E., Aydin, K., and Schmitt, C.: Shapes and Fall Orientations of Ice Particle Aggregates, *J. Atmos. Sci.*, 76, <https://doi.org/10.1175/JAS-D-18-0251.1>, 2019.
- Jin, Z., Charlock, T. P., Yang, P., Xie, Y., and Miller, W.: Snow optical properties for different particle shapes with application to snow grain size retrieval and MODIS/CERES radiance comparison over Antarctica, *Rem. Sen. Env.*, 112, 3563–3581, <https://doi.org/https://doi.org/10.1016/j.rse.2008.04.011>, 2008.
- 500 Kajikawa, M.: Measurement of Falling Velocity of Individual Snow Crystals, *J. Meteorol. Soc. Jpn.*, 50, 577–583, 1972.
- Kikuchi, K., Kameda, T., Higuchi, K., and Yamashita, A.: A global classification of snow crystals, ice crystals, and solid precipitation based on observations from middle latitudes to polar regions, *Atmospheric Research*, 132–133, 460–472, <https://doi.org/10.1016/j.atmosres.2013.06.006>, 2013.
- Kneifel, S., Löhnert, U., Battaglia, A., Crewell, S., and Siebler, D.: Snow scattering signals in ground-based passive microwave radiometer measurements, *J. Geophys. Res.: Atmos.*, 115, <https://doi.org/10.1029/2010JD013856>, 2010. 505
- Kuhn, T. and Gultepe, I.: Ice Fog and Light Snow Measurements Using a High-Resolution Camera System, *Pure Appl. Geophys.*, 173, 3049–3064, <https://doi.org/10.1007/s00024-016-1343-7>, 2016.
- Kuhn, T. and Vázquez-Martín, S.: Microphysical properties and fall speed measurements of snow ice crystals using the Dual Ice Crystal Imager (D-ICI), *Atmospheric Measurement Techniques*, 13, 1273–1285, <https://doi.org/10.5194/amt-13-1273-2020>, 2020.

- 510 Lee, J., Jung, S.-H., Park, H.-M., KWON, S., Lin, P.-L., and Lee, G.: Classification of Precipitation Types Using Fall Velocity-Diameter Relationships from 2D-Video Distrometer Measurements, *Advances in Atmospheric Sciences*, 32, 1277–1290, <https://doi.org/10.1007/s00376-015-4234-4>, 2015.
- Locatelli, J. D. and Hobbs, P. V.: Fall speeds and masses of solid precipitation particles, *J. Geophys. Res.*, 79, 2185–2197, <https://doi.org/10.1029/JC079i015p02185>, 1974.
- 515 Loeb, N. G., Yang, P., Rose, F. G., Hong, G., Sun-Mack, S., Minnis, P., Kato, S., Ham, S.-H., Smith, W. L., Hioki, S., and Tang, G.: Impact of Ice Cloud Microphysics on Satellite Cloud Retrievals and Broadband Flux Radiative Transfer Model Calculations, *J. Climate*, 31, 1851–1864, <https://doi.org/10.1175/JCLI-D-17-0426.1>, 2018.
- Magono, C. and Lee, C. W.: Meteorological classification of natural snow crystals, *J. Fac. Sci. Hokkaido Univ.*, Vol. II, 321–335, <http://hdl.handle.net/2115/8672>, 1966.
- 520 Marchand, R., Mace, G., Hallar, A., McCubbin, I., Matrosov, S., and Shupe, M.: Enhanced Radar Backscattering due to Oriented Ice Particles at 95 GHz during StormVEx, *J. Atmos. Oceanic Technol.*, 30, 2336–2351, <https://doi.org/10.1175/JTECH-D-13-00005.1>, 2013.
- Matrosov, S., Mace, G., Marchand, R., Shupe, M., Hallar, A., and McCubbin, I.: Observations of Ice Crystal Habits with a Scanning Polarimetric W-Band Radar at Slant Linear Depolarization Ratio Mode, *J. Atmos. Oceanic Technol.*, 29, 989–1008, <https://doi.org/10.1175/JTECH-D-11-00131.1>, 2012.
- 525 Mitchell, D. L.: Use of Mass- and Area-Dimensional Power Laws for Determining Precipitation Particle Terminal Velocities, *J. Atmos. Sci.*, 53, 1710–1723, [https://doi.org/10.1175/1520-0469\(1996\)053<1710:UOMAAD>2.0.CO;2](https://doi.org/10.1175/1520-0469(1996)053<1710:UOMAAD>2.0.CO;2), 1996.
- Mitchell, D. L., Rasch, P., Ivanova, D., McFarquhar, G., and Nousiainen, T.: Impact of small ice crystal assumptions on ice sedimentation rates in cirrus clouds and GCM simulations, *Geophysical Research Letters*, 35, 1–5, <https://doi.org/https://doi.org/10.1029/2008GL033552>, 2008.
- 530 Nakaya, U.: Snow crystals: natural and artificial, Harvard University Press, 1954.
- Posselt, D. J., L’Ecuyer, T. S., and Stephens, G. L.: Exploring the error characteristics of thin ice cloud property retrievals using a Markov chain Monte Carlo algorithm, *J. Geophys. Res.*, 113, D24206, <https://doi.org/10.1029/2008JD010832>, 2008.
- Pruppacher, H. R. and Klett, J. D.: Microphysics of clouds and precipitation, Dordrecht: Kluwer Academic Publishers, 2nd rev. and enl. edn., 1997.
- 535 Schefold, R., Baschek, B., Uest, M., and Barthazy, E.: Fall velocity and axial ratio of snowflakes, Copernicus GmbH, pp. 84–89, 2002.
- SMHI: Ladda ner meteorologiska observationer, <https://www.smhi.se/data/meteorologi/ladda-ner-meteorologiska-observationer/#param=wind,stations=all,stationid=180940>, 2020.
- Stoelinga, M. T., Hobbs, P. V., Mass, C. F., Locatelli, J. D., Colle, B. A., Houze, R. A., Rangno, A. L., Bond, N. A., Smull, B. F., Rasmussen, R. M., Thompson, G., and Colman, B. R.: Improvement of Microphysical Parameterization through Observational Verification Experiment, *Bull. Amer. Met. Soc.*, 84, 1807–1826, <https://doi.org/10.1175/bams-84-12-1807>, 2003.
- 540 Sun, W., Hu, Y., Lin, B., Liu, Z., and Videen, G.: The impact of ice cloud particle microphysics on the uncertainty of ice water content retrievals, *J. Quant. Spectrosc. Radiat. Transfer*, 112, 189–196, <https://doi.org/https://doi.org/10.1016/j.jqsrt.2010.04.003>, international Symposium on Atmospheric Light Scattering and Remote Sensing (ISALSaRS’09), 2011.
- Tao, W.-K., Simpson, J., Baker, D., Braun, S., Chou, M.-D., Ferrier, B., Johnson, D., Khain, A., Lang, S., Lynn, B., Shie, C.-L., Starr, D., Sui, C.-H., Wang, Y., and Wetzell, P.: Microphysics, radiation and surface processes in the Goddard Cumulus Ensemble (GCE) model, *Meteorol. Atmos. Phys.*, 82, 97–137, 2003.

- Vázquez-Martín, S., Kuhn, T., and Eliasson, S.: Shape Dependence of Falling Snow Crystals' Microphysical Properties Using an Updated Shape Classification, *Appl. Sci.*, 10, 1163, <https://doi.org/10.3390/app10031163>, 2020.
- Westbrook, C. D. and Sephton, E. K.: Using 3-D-printed analogues to investigate the fall speeds and orientations of complex ice particles, *Geophys. Res. Lett.*, 44, 7994–8001, <https://doi.org/10.1002/2017GL074130>, 2017.
- 550 Xie, X. and Miao, J.: Polarization difference due to nonrandomly oriented ice particles at millimeter/submillimeter waveband, *J. Quant. Spectrosc. Radiat. Transfer*, 112, 1090–1098, <https://doi.org/https://doi.org/10.1016/j.jqsrt.2010.11.020>, 2011.
- Xie, X., Löhnert, U., Kneifel, S., and Crewell, S.: Snow particle orientation observed by ground-based microwave radiometry, *J. Geophys. Res.: Atmos.*, 117, <https://doi.org/10.1029/2011JD016369>, 2012.
- 555 Xie, X., Crewell, S., Löhnert, U., Simmer, C., and Miao, J.: Polarization signatures and brightness temperatures caused by horizontally oriented snow particles at microwave bands: Effects of atmospheric absorption: ATMOSPHERIC ABSORPTION EFFECTS ON PD/TB, *Journal of Geophysical Research: Atmospheres*, 120, <https://doi.org/10.1002/2015JD023158>, 2015.
- Xie, Y., Yang, P., Kattawar, G., Baum, B., and Hu, Y.: Simulation of the optical properties of plate aggregates for application to the remote sensing of cirrus clouds, *Appl. Opt.*, 50, 1065–81, <https://doi.org/10.1364/AO.50.001065>, 2011.
- 560 Yang, P., Zhang, Z., Kattawar, G. W., Warren, S. G., Baum, B. A., Huang, H.-L., Hu, Y. X., Winker, D., and Iaquinta, J.: Effect of Cavities on the Optical Properties of Bullet Rosettes: Implications for Active and Passive Remote Sensing of Ice Cloud Properties, *J. Appl. Meteorol. Clim.*, 47, 2311–2330, <https://doi.org/10.1175/2008JAMC1905.1>, 2008.
- Yang, P., Wendisch, M., Bi, L., Kattawar, G., and Hu, Y.: Dependence of extinction cross-section on incident polarization state and particle orientation, *J. Quant. Spectrosc. Radiat. Transfer*, 112, 2035–2039, <https://doi.org/https://doi.org/10.1016/j.jqsrt.2011.04.012>, 2011.
- 565 Yuter, S., Kingsmill, D., Nance, L., and Löffler-Mang, M.: Observations of precipitation size and fall speed characteristics within coexisting rain and wet snow, *J. Appl. Meteorol. Clim.*, 45, 1450–1464, 2006.
- Zawadzki, I., Jung, E., and Lee, G.: Snow Studies. Part I: A Study of Natural Variability of Snow Terminal Velocity, *J. Atmos. Sci.*, 67, 1591–1604, <https://doi.org/10.1175/2010JAS3342.1>, 2010.
- Zhang, Z., Yang, P., Kattawar, G., Riedi, J., Labonnote, L. C., Baum, B. A., Platnick, S., and Huang, H. L.: Influence of ice particle model on satellite ice cloud retrieval: lessons learned from MODIS and POLDER cloud product comparison, *Atmos. Chem. Phys.*, 9, 7115–7129, <https://doi.org/10.5194/acp-9-7115-2009>, 2009.
- 570