

Coral reef-derived dimethyl sulfide and the climatic impact of the loss of coral reefs

Sonya L. Fiddes^{1,2,3,*}, Matthew T. Woodhouse³, Todd P. Lane⁴, and Robyn Schofield⁴

¹Australian-German Climate and Energy College, University of Melbourne, Parkville, Australia

²ARC Centre of Excellence for Climate System Science, School of Earth Sciences, University of Melbourne, Parkville, Australia

³Climate Science Centre, Oceans and Atmosphere, Commonwealth Scientific and Industrial Research Organisation, Aspendale, Australia

⁴ARC Centre of Excellence for Climate Extremes, School of Earth Sciences, University of Melbourne, Parkville, Australia

*Now at the Australian Antarctic Program Partnership, Institute of Marine and Antarctic Science, University of Tasmania, Hobart, Australia

Correspondence: S. Fiddes (sonya.fiddes@utas.edu.au)

Abstract. Dimethyl sulfide (DMS) is a naturally occurring aerosol precursor gas which plays an important role in the global sulfur budget, aerosol formation and climate. While DMS is produced predominantly by phytoplankton, recent observational literature has suggested that corals and their symbionts produce a comparable amount of DMS, which is unaccounted for in models. It has further been hypothesised that the coral reef source of DMS may modulate regional climate. This hypothesis presents a particular concern given the current threat to coral reefs under anthropogenic climate change. In this paper, a global climate model with online chemistry and aerosol is used to explore the influence of coral reef-derived DMS on atmospheric composition and climate. A simple representation of coral reef-derived DMS is developed and added to a common DMS surface water climatology, resulting in an additional flux of $0.3 \text{ Tg year}^{-1} \text{ S}$, or 1.7% of the global sulfur flux. By comparing the differences between both nudged and free-running ensemble simulations with and without coral reef-derived DMS, the influence of coral reef-derived DMS on regional climate is quantified. In the Maritime Continent-Australian region, where the highest density of coral reefs exist, a small decrease in nucleation and Aitken mode aerosol number concentration and mass is found when coral reef DMS emissions are removed from the system. However, these small responses are found to have no robust effect on regional climate via direct and indirect aerosol effects. This work emphasises the complexities of the aerosol-climate system and the limitations of current modelling capabilities are highlighted, in particular surrounding convective responses to changes in aerosol. In conclusion we find no robust evidence that coral reef-derived DMS influences global and regional climate.

Copyright statement.

1 Introduction

Marine organisms (phytoplankton, algae) are known to produce the chemical dimethyl sulfoniopropionate (DMSP). In the ocean, DMSP experiences enzymatic cleavage forming dimethyl sulfide (DMS, Yoch, 2002, see Figure 1 point 1), which can then be released into the atmosphere (2). Atmospheric DMS (DMS_a) can undergo a series of chemical reactions to become a sulfate aerosol (3). When in sufficiently large abundance (4) these sulfate aerosol can impact aerosol loading and cloud properties, altering the radiation budget directly (5) and indirectly (6) and having a cooling effect (7). This effect has been hypothesised to form a short-term bioregulatory negative feedback system, known as the CLAW (Charlson, Lovelock, Andreae and Warren) hypothesis (Charlson et al., 1987), whereby marine organisms can alter their environment when stressed. This hypothesis remains unproven, and arguments against it cite the complexity and non-linearity of the DMS-climate system (Quinn and Bates, 2011; Green and Hatton, 2014). Nevertheless, at longer time scales, global modelling studies have shown that marine derived DMS plays an important role in maintaining the current large-scale climate (Thomas et al., 2010; Woodhouse et al., 2010; Gabric et al., 2013; Mahajan et al., 2015), providing global cooling via direct and indirect aerosol effects of up to 0.45°C (Fiddes et al., 2018) when compared to a world in which no marine DMS exists. Our previous paper, Fiddes et al. (2018), describes these studies, DMS surface water climatologies and flux parameterisations in more detail.

Many global DMS-climate modelling studies have also considered DMS under future scenarios (Bopp et al., 2004; Gabric et al., 2004; Kloster et al., 2007; Cameron-Smith et al., 2011; Six et al., 2013; Grandey and Wang, 2015; Schwinger et al., 2017). However, considering our understanding of DMS in the current climate remains uncertain, the aforementioned studies do not provide a clear consensus on how DMS production may respond to a warming climate. With this in mind, better knowledge of current sources of DMS is important to further our understanding of DMS-climate interaction now and into the future.

One such source of DMS that is currently unaccounted for in climate modelling is coral reefs. Recent studies have shown that corals, coral symbionts, and coral by-products (eg. mucus) produce large amounts of DMSP (Broadbent et al., 2002; Broadbent and Jones, 2004; Jones and Trevena, 2005; Jones et al., 2007; Burdett et al., 2015; Jackson et al., 2020a). Of note for this work, Jones et al. (2018) has summarised reports of flux_{DMS} values of $0\text{-}4906\ \mu\text{g m}^{-2}\ \text{day}^{-1}$ and a mean of $205\ \mu\text{g m}^{-2}\ \text{day}^{-1}$ in summer and $0.6\text{-}481\ \mu\text{g m}^{-2}\ \text{day}^{-1}$ with a mean of $77\ \mu\text{g m}^{-2}\ \text{day}^{-1}$ over winter over the Great Barrier Reef (GBR). Jones et al. (2018) also suggest that total emissions from the GBR are equivalent to $0.02\ \text{Tg year}^{-1}$ of sulfur, noting that total global sulfur flux from DMS is estimated to be between $9\text{-}35\ \text{Tg year}^{-1}$ (Belviso et al., 2004; Elliott, 2009; Woodhouse et al., 2010; Tesdal et al., 2016; Fiddes et al., 2018) and that DMS makes up approximately one fifth of the global sulfur budget (Sheng et al., 2015). The Jones et al. (2018) coral reef flux estimation has been made from measurements both over coral reefs and in the GBR lagoon, and also includes an estimate of the additional flux from tropical cyclones. The tropical cyclone emission has been calculated (not observed) using the Liss and Merlivat (1986) flux parameterisation, taking into account average wind speeds of tropical cyclones and accounting for approximately five cyclone days per year in the region. However, we note that many parameterisations overestimate DMS flux (flux_{DMS}) at high wind speeds.

In addition, recent work has shown a sensitivity of DMS production by corals when stressed due to tidal exposure, warming temperatures, rainfall events and light exposure (Swan et al., 2012; Fischer and Jones, 2012; Hopkins et al., 2016; Swan

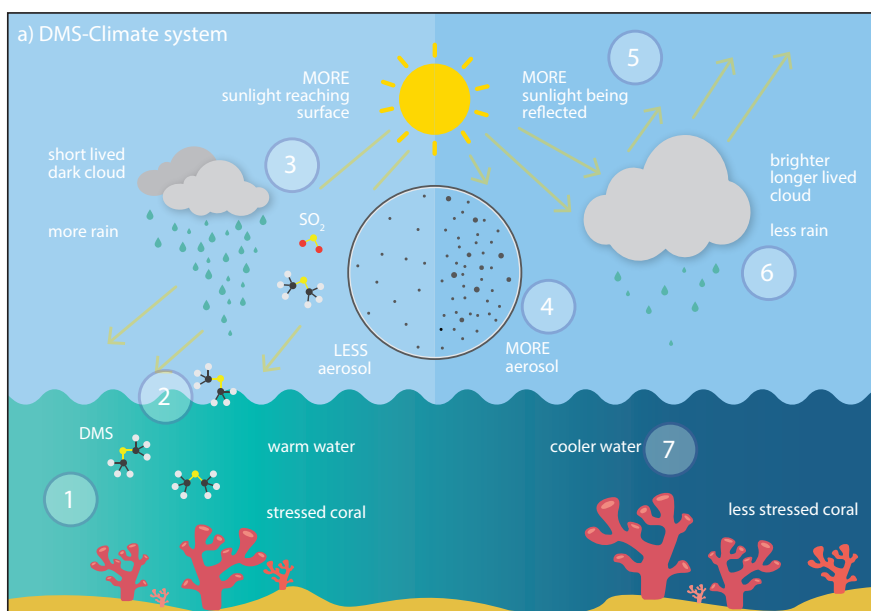


Figure 1. Schematic diagram describing the DMS-climate system. The numbers are described in detail in the text. Graphics designed by G. Harmer

et al., 2017). Of interest to this study are the findings from Hopkins et al. (2016), where the effect of tidal exposure on three Indo-Pacific coral species were studied in laboratory experiments. From their results, Hopkins et al. (2016) extrapolate a flux_{DMS} of 9-35 $\mu\text{mol m}^{-2} \text{day}^{-1}$ over coral reefs from *Acropora cf. horrida*, while an additional 5 $\mu\text{mol m}^{-2} \text{day}^{-1}$ and 8 $\mu\text{mol m}^{-2} \text{day}^{-1}$ can be estimated from two other species in their experiments (*P. cylindrica* and *S. hystrix*). These estimates are equivalent to a total of 709-1548 $\mu\text{g m}^{-2} \text{day}^{-1}$ of sulfur (if all species are present), and in this work is further extrapolated to global coral reef coverage (approximately 284300 km^2), giving 0.074-0.16 Tg year^{-1} of sulfur. Whilst these extrapolations are highly speculative in terms of artificial laboratory experiments, estimated exposure time, coverage of coral reefs, account for just three Indo-Pacific species of coral and only DMS produced during tidal stress, the Hopkins et al. (2016) estimations were the first to attempt to quantify the large-scale flux of coral reef-derived DMS.

Following these observed results, numerous studies have made links to coral DMS, aerosol formation, cloud cover and/or sea surface temperatures (SSTs) (Modini et al., 2009; Deschaseaux et al., 2012; Leahy et al., 2013; Swan et al., 2017; Jones et al., 2017; Cropp et al., 2018; Jackson et al., 2018, 2020b). Jones (2013), Jones et al. (2017) and Cropp et al. (2018) further suggest that coral reefs participate in bioregulatory feedback as suggested by the CLAW hypotheses. Most of these studies do not explicitly account for the complexity of the DMS-climate system and its significant non-linearities (see Thomas et al., 2011; Quinn and Bates, 2011; Green and Hatton, 2014; Fiddes et al., 2018). In addition, deducing a climatic impact of one aerosol species using observations alone is fraught with co-varying and confounding influences from other aerosol species. These

complexities can only be addressed through modelling studies, however no modelling study has included coral reef-derived DMS as a source of sulfur to date.

70 To add urgency to this problem, coral reef ecosystems globally are facing dire risk due to anthropogenic climate change (Hughes et al., 2017, 2018). The IPCC special report on climate change (IPCC, 2018) states that under 1.5 °C warming, 70-90% of coral reefs will be extinct. The risk to coral reefs is two fold; increasing sea surface temperatures are causing more frequent mass coral bleaching events (Hughes et al., 2017; King et al., 2017), whilst increasing ocean acidification is causing reduced calcification and growth of coral species (Hoegh-Guldberg et al., 2017; Magnan et al., 2016). Whilst the death of
75 global coral reefs due to anthropogenic climate change will have clear impacts on the ecosystems (Plaisance et al., 2011) and economies (Deloitte Access Economics, 2017; Spalding et al., 2017) they support, a lesser known, and as of yet unquantified impact is on the climate itself.

In light of these recent studies and the current threat to coral reefs, we raise the questions: what is the influence of coral reef-derived DMS on climate, including its influence on aerosol production and cloud formation, and what implications does
80 mass coral extinction have for the climate? To address these questions we use a global climate-chemistry model to investigate whether coral reef-derived DMS has an impact on climate. This is the first study to estimate what implications mass coral extinction may have for global and regional climate.

2 Methods

2.1 ACCESS-UKCA description

85 The coupled climate-chemistry model ACCESS (Australian Community Climate and Earth System Simulator) - UKCA (United Kingdom Chemistry and Aerosol) is used in this work to quantify the importance of global coral reef-derived sulfur. The ACCESS-UKCA physical atmospheric model is based on the Global Atmosphere 4.0 configuration of the Unified Model at Version 8.4 (Walters et al., 2014) and the UKCA model includes the state of the art aerosol scheme GLObal Model of Aerosol Processes (GLOMAP)-mode scheme (Mann et al., 2010, 2012). GLOMAP-mode is a two-moment microphysical
90 aerosol scheme that simulates aerosol mass and number distributions across four soluble modes (corresponding to nucleation, Aitken, accumulation and coarse modes) and, in this work, one insoluble mode (Aitken) (Mann et al., 2010, 2012). The size distributions of these modes are shown in Table 1.

GLOMAP-mode simulates coagulation (Seinfeld and Pandis, 1998; Spracklen et al., 2005), condensation of H₂SO₄ and secondary organics (Fuchs and Sutugin, 1971), new particle formation of sulfate aerosol in the free troposphere via binary ho-
95 mogeneous nucleation (Kulmala et al., 1998) and organic-mediated boundary layer nucleation (Metzger et al., 2010). Aqueous chemistry calculates the dissolution of SO₂ and H₂O₂ into cloud droplets within the soluble accumulation and coarse modes (Mann et al., 2010) and aerosol dry deposition is calculated following Slinn (1982), Zhang (2001) and Binkowski and Shankar (1995). GLOMAP-mode includes particle compositions of sulfate, sea-salt and elemental and organic carbon (Mann et al., 2010).

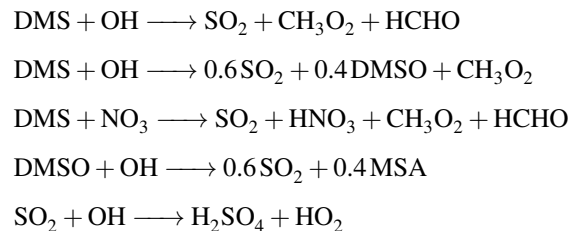
Table 1. The four modal size distributions used by GLOMAP-mode

Mode	Particle dry diameter range (nm)
Nucleation (soluble)	< 5
Aitken (soluble and insoluble)	5 to 50
Accumulation (soluble)	50 to 500
Coarse (soluble)	> 500

100 The Lana et al. (2011) DMS surface water concentration (DMS_w) climatology is used in this work. Lana et al. (2011) (and before that Kettle et al., 1999; Kettle and Andreae, 2000) used a global database of observations (Kettle et al., 1999) to derive a gridded global DMS_w climatology via a piecewise cubic Hermite interpolation technique over fifty four well defined biogeographic ocean provinces. This climatology is the standard for most global climate modelling studies and is discussed in more detail in (Fiddes et al., 2018).

105 In this work, as in Fiddes et al. (2018), the Liss and Merlivat (1986) $flux_{DMS}$ parameterisation is used and a full description of this scheme can be found in Fiddes et al. (2018). Detailed discussion about $flux_{DMS}$ parameterisation choices and sensitivities can also be found in Fiddes et al. (2018). In short, the Liss and Merlivat (1986) scheme calculates the $flux_{DMS}$ under three wind-induced sea states representing smooth (10m wind speeds less than 3.6 ms^{-1}) and rough (10m wind speeds between 3.6 and 13 ms^{-1}) gas transfer as well as wave-breaking and bubble bursting (10m wind speeds greater than 13 ms^{-1}). Liss and
 110 Merlivat (1986) is considered a conservative parameterisation and was chosen for this work based on recommendations by Vlahos and Monahan (2009) and Bell et al. (2017) that suggest many parameterisation overestimate the $flux_{DMS}$.

With online chemistry, ACCESS-UKCA includes four key oxidative pathways to convert DMS into SO_2 , which are shown in Table 2. SO_2 can then be further oxidised into H_2SO_4 (Table 2), after which it can contribute to aerosol growth or new particle formation. Description of these processes can be found in Mann et al. (2010).

Table 2. The oxidative pathways relevant to DMS in ACCESS-UKCA as defined in Pham et al. (1995)

115 Anthropogenic emissions, pre- and post-2000 respectively are provided by Lamarque et al. (2010); van Vuuren et al. (2011)
and biomass emissions by van der Werf et al. (2017). Emissions of other species (biogenic, primary aerosol) are described in
Woodhouse et al. (2015). SSTs and sea ice are prescribed following the Atmospheric Model Intercomparison Project (AMIP)
method (Taylor et al., 2015). The UKCA is coupled to the ACCESS model via the radiation scheme and the large-scale cloud
and precipitation schemes; both the direct and indirect aerosol forcing are modelled. ACCESS-UKCA has a resolution of 1.25°
120 latitude $\times 1.875^\circ$ longitude with 85 vertical levels. Where the model is nudged, ERA-Interim (Dee et al., 2011) is used at six
hourly intervals (via horizontal wind components and potential temperature, see Section 2.3 for more details). Further model
details and evaluation are available in Fiddes et al. (2018).

2.2 DMS climatologies

We have developed a DMS surface water concentration (DMS_w) climatology based on Lana et al. (2011), in which additional
125 DMS_w over coral reef regions is included. To determine the amount of DMS_w to be added to the Lana et al. (2011) climatology,
we first needed to know where coral reefs were located globally. The UNEP-WCMC et al. (2010) global coral reef distribution
database was used to calculate the fraction of each ACCESS-UKCA grid box covered by coral reefs. The UNEP-WCMC et al.
(2010) database is the most comprehensive global database of warm water coral reefs, 85% of which was drawn from the
Millennium Coral Reef Mapping Project, a remote sensing project at spatial resolutions of up to 30m.

130 The gridded areal distribution drawn from the coral reef database, shown in Figure 2, was then used to weight a fixed
concentration of DMS_w to be added to the Lana et al. (2011) DMS_w climatology. For example, the maximum fraction in any
gridbox found in Figure 2 is 15.6% in the northern GBR. In this study, we used 50 nM as the fixed concentration (a number
of different DMS_w concentrations were tested, from 10 nM to 500 nM). Therefore, at this gridbox, with the highest density of
coral reefs, the amount of DMS_w added to the Lana et al. (2011) climatology as a coral reef source is $0.156 \times 50 = 7.8$ nM.
135 The choice of 50 nM was somewhat subjective in part due to the relatively few estimations of large-scale coral reef production
of DMS_w , as described in Section 1. Nevertheless, below we describe how this choice aligns with observations found in the
literature. In addition, we made a conscious choice to create a climatology that represents a plausible maximum DMS_w in an
attempt to ensure a response to this perturbation. We note that at this initial stage, the DMS_w climatology developed here does
not vary in time beyond that of the monthly Lana et al. (2011) dataset.

140 The weighted addition of 50 nM of DMS_w caused a global mean increase of 0.03 nM and an additional $flux_{DMS}$ of
0.3 $Tg\ year^{-1} S$. The $flux_{DMS}$ of the (Lana et al., 2011) and the additional coral reef $flux_{DMS}$ are shown in Figure 3. These
increases do not impact the global sulfur budget, contributing only 1.7% of additional sulfur to the global $flux_{DMS}$. The 50 nM
climatology adds a mean of 0.74 nM and a maximum of 7.8 nM, to coral reef regions, values that are within those found in
the literature. The additional daily $flux_{DMS}$ simulated by ACCESS-UKCA over coral reefs, shown in Figure 3b (maximum
145 of $621.9 \mu g\ m^{-2}\ day^{-1} S$), is similar to that of the Hopkins et al. (2016) estimations of $flux_{DMS}$ due to three coral species
in response to tidal stress (708.9 - $1547.6 \mu g\ m^{-2}\ day^{-1} S$). Furthermore, Jones et al. (2018) suggest that the total $flux_{DMS}$
from the GBR and surrounding lagoon is approximately $0.002 Tg\ year^{-1} S$. If this number is extrapolated to global coral reef
regions then an annual $flux_{DMS}$ of $0.12 Tg\ year^{-1} S$ is estimated. The values from the Hopkins et al. (2016) and Jones et al.

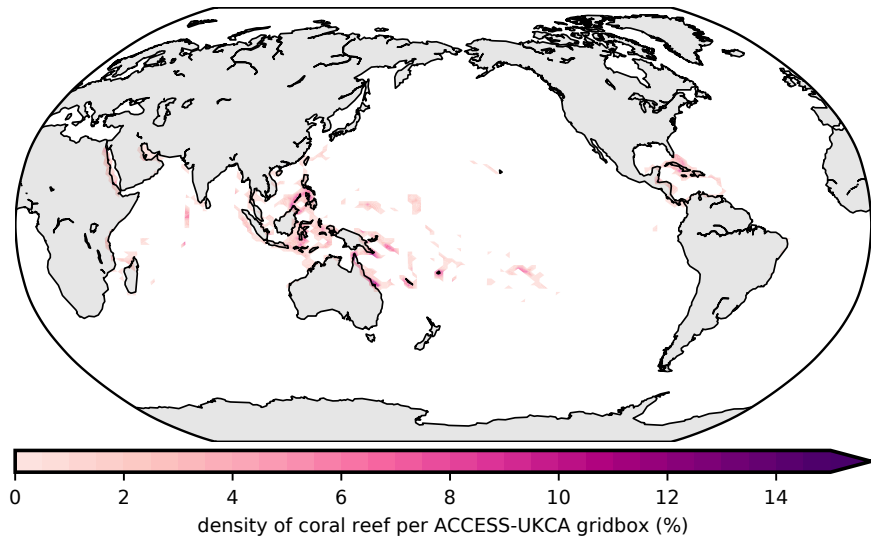


Figure 2. The areal fraction of each ACCESS-UKCA grid box covered by warm water coral reefs as indicated by UNEP-WCMC et al. (2010)

(2018) both suggest that the amount of DMS_w attributed to coral reefs in this study is within the high end of what is currently
 150 observed.

However, it is noted that the values stated here are averages over large grid-boxes, and so likely overestimate the extent of coral reef influence. Nevertheless, the 50 nM perturbation was chosen in part to ensure that if no significant changes in the atmosphere were found it would not be because the additional coral reef DMS was too small.

2.3 Experiment set-up

155 To study the impact of coral reef-derived DMS in ACCESS-UKCA two sets of simulations were performed: nudged and free-running. In both sets of simulations a control (using the Lana et al. (2011) climatology, referred to as L11) and experimental simulation (using the Lana et al. (2011) climatology with additional coral and hereafter referred to as the L11C50 simulation) were completed. The nudged simulations follow the methods described by Fiddes et al. (2018) in which the control and coral simulations were nudged to the ERA-Interim data set (Dee et al., 2011) in the free troposphere at six hourly intervals using
 160 horizontal winds and potential temperature. We note that by nudging the model, we limit the model's ability to respond to the DMS flux perturbations. However, nudged simulations, by restricting meteorological feedbacks, give us an indication as to which responses are purely dynamical as opposed to those that may in fact be caused directly by DMS perturbations.

In the second setup, the model was allowed to freely run, with no nudging applied. In both sets of simulations, SSTs are prescribed. Without nudging, feedbacks from the meteorology, such as changes in wind fields, are able to manifest within the

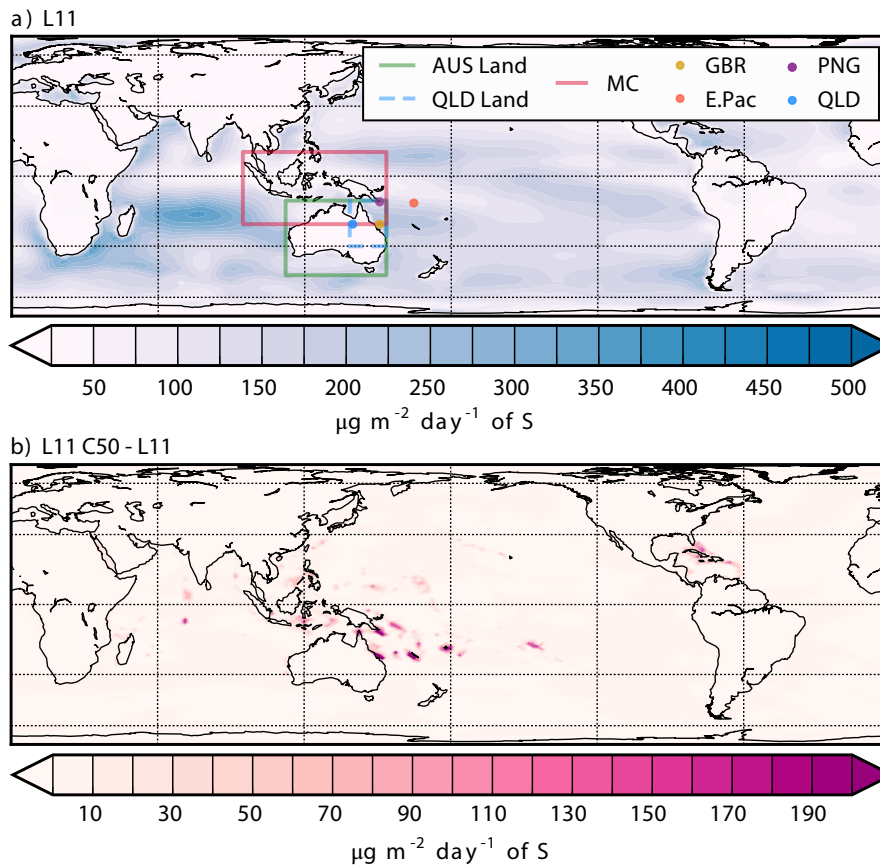


Figure 3. a) the flux_{DMS} (in $\mu\text{g m}^{-2} \text{ day}^{-1} \text{ S}$) based on the Lana et al. (2011) DMS_w climatology and b) the additional flux_{DMS} in the climatology with added coral reef derived DMS_w . In a) the Maritime Continent-Australian region shown by a red box, Australian land only region by a green box, Queensland (QLD) land only region by a blue box. Additionally, four single points used for analysis are shown over the Great Barrier Reef (GBR - yellow), Papua New Guinea (PNG - pink), the eastern Pacific (E.Pac- orange) and QLD (blue)

165 model. In the free-running simulations, much greater model variability manifested and differentiating between a true signal
 from the perturbed DMS field and internal model variability was difficult. For this reason, seven simulations (for both the L11
 and L11C50), each of ten years, were performed with the free-running setup to provide an ensemble. Each set of simulations
 used different atmospheric initial conditions from a previous nudged simulation, taken at 0000UTC, January 1 for 1996, 1998,
 1999, 2000, 2001, 2002 and 2003 (noting that 1997 was excluded as it was a strong El Niño year). Whilst this exercise was
 170 computationally expensive it was able to provide sufficient data to perform statistical analyses.

2.4 Statistical analysis

The following regions were defined for statistical analysis: the Maritime Continent - Australian (MC-Aus) region from 17.4°S to 10°N, 95.625°E to 153.75°E; the Queensland (QLD) land only region from 30°S to 10°S, 138.75°E to 153.75°E and the Australian land only region from 45°S to 10°S, 112.5°E to 153.75°E. Four grid points were selected for analysis of aerosol size distribution: a location off the coast of Papua New Guinea (PNG) at 10.5°S, 151°E, a point in the East Pacific (E.Pac) at 10.5°S, 165°E, a location over the GBR at 20°S, 151°E and a point in inland QLD at 20°S, 140°E. These regions and points are shown in Figure 3a. In addition the boundary of the South Pacific Convergence Zone (SPCZ) is defined as the area within the 6 mm day⁻¹ or greater precipitation threshold (Vincent et al., 2011).

To test the significance of differences in a given field, the two-tailed Student T-test (Wilks, 2011) and the respective field significance (Wilks, 2011) are used. Both of these methods have been evaluated at confidence levels of the 95th percentile ($p < 0.05$) unless otherwise stated. In addition to this, ensemble agreement, where at least five out of the seven ensemble members agree on the change in sign, has been shown as stippling as a further indicator of confidence.

3 Impacts of coral reef-derived DMS over the MC-Aus region

3.1 DMS and sulfur dioxide

This Section describes the changes in atmospheric DMS (DMS_a) when coral reefs are removed (L11 minus L11C50), noting that the results are presented this way in order to demonstrate what the impact of the loss of coral reefs may be on the climate system. The annual differences in DMS_a (with respect to the L11C50 simulation, shown in Figure 4a) for the nudged simulations (Figure 4b) and the free-running ensemble (Figure 4c) are spatially very similar to each other and to the respective change in $flux_{DMS}$ (shown in Figure 1b). Good agreement across the ensemble is found with the free-running simulations over reef regions. Figure 4d-g shows, for both the free and nudged simulations, a strong seasonal signal over the MC-Aus region in terms of both mean value and the range of values. A seasonal signal is found in both the DMS_a and $flux_{DMS}$ (see Table 3), and is in part due to the variation of the L11 DMS_w climatology. In DJF, the range of results from the ensemble are larger than those of any other season and it appears that the free-running meteorology is actually dampening the response of DMS_a compared to the nudged runs. This damped response is not surprising as surface wind speeds were found to be stronger in this region at this time in the free ensemble (not shown). Increased wind speeds in the free ensemble cause an increased $flux_{DMS}$ leading to a smaller decrease in $flux_{DMS}$ and DMS_a than in the nudged run. Such examples of wind driven DMS responses are also found in other locations (and in other seasons), including over the Southern Ocean at around 60°E and 60°W (see annual plots in Figure 4c). These responses highlight the complexity of the DMS-climate system. In addition, wind driven responses in other aerosol sources are found in regions around the globe (eg. from sea salt and dust), but are not discussed further here.

Figure 5 shows changes in SO_2 that are spatially similar to that of DMS_a . However the reductions around smaller coral reefs, such as those in the central Pacific, Indian or Caribbean oceans, are of lesser magnitude to that of the coral reefs in the MC-Aus region. This is true for both the nudged (Figure 5b) and the free simulations (Figure 5c) which implies that these areas

Table 3. Seasonal changes over the Maritime Continent-Australian region as a percent (except for $SW_{\downarrow\text{Surf,CS}}$, $SW_{\uparrow\text{TOA,CS}}$ and $SW_{\downarrow\text{Surf}}$ which are an absolute change in $W m^{-2}$ and w in $cm s^{-1}$) for both the free running ensemble (F) and the nudged simulations (N). Number density is abbreviated as ND, and mass to MS for each of the four aerosol modes (nucleation, Aitken, accumulation and coarse)

Field	Run	DJF	MAM	JJA	SON
Flux _{DMS} (%)	F	-5.1 ⁹⁵	-13.7 ⁹⁵	-19.2 ⁹⁵	-13.5 ⁹⁵
	N	-8.8 ⁹⁵	-12.2 ⁹⁵	-18.6 ⁹⁵	-11.4 ⁹⁵
DMS _a (%)	F	-6.1 ⁹⁵	-14.2 ⁹⁵	-22.3 ⁹⁵	-14.3 ⁹⁵
	N	-8.9 ⁹⁵	-12.6 ⁹⁵	-20.6 ⁹⁵	-13.3 ⁹⁵
SO ₂ (%)	F	-3.2 ⁹⁵	-0.9	-3.8 ⁹⁵	-2.4 ⁹⁵
	N	-2.7	-1.3	-2.2	-1.5
N ₃ (%)	F	-0.1	-4.6 ⁹⁵	-5.2 ⁹⁵	-5.3 ⁹⁵
	N	-3.3	-3.8 ⁹⁰	-5.1	-3.6 ⁹⁰
Nuc. ND (%)	F	-0.2	-5.2 ⁹⁵	-6.0 ⁹⁵	-6.2 ⁹⁵
	N	-3.8	-4.4 ⁹⁰	-6.1	-4.6 ⁹⁵
Nuc. MS (%)	F	-1.4	-6.4 ⁹⁵	-6.5 ⁹⁵	-6.6 ⁹⁵
	N	-4.3	-5.8 ⁹⁵	-5.5	-4.3 ⁹⁵
Ait. ND (%)	F	0.0	-1.9 ⁹⁵	-2.1 ⁹⁵	-1.5
	N	-1.3	-1.2	-2.3 ⁹⁵	-1.1
Ait. MS (%)	F	-1.6	0.0	-3.1 ⁹⁵	-2.0
	N	-2.4	-1.2	-1.3	-1.2
Acc. ND (%)	F	-1.4	0.1	-1.8	-1.3
	N	-0.5	-0.8	-0.7	-0.7
Acc. MS (%)	F	-4.3 ⁹⁰	1.1	-4.3 ⁹⁵	-2.0
	N	-1.9	-1.5	-1.1	-0.6
Coa. ND (%)	F	1.8	-1.3	0.0	-1.9
	N	-0.4	0.2	0.2	-0.4
Coa. MS (%)	F	-2.3 ⁹⁵	-0.7	-3.1 ⁹⁵	-3.4 ⁹⁵
	N	-0.9	-1.8	-0.4	-0.7
CCN ₇₀ (%)	F	-0.7	0.3	-1.4 ⁹⁰	-1.4
	N	-0.6	-0.8	-0.9	-0.9

⁹⁵ Statistical significant at the 95th percentile, $p < 0.05$

⁹⁰ Statistical significant at the 90th percentile, $p < 0.1$

Table 3. Seasonal changes over the Maritime Continent-Australian region as a percent (except for $SW_{\downarrow\text{Surf,CS}}$, $SW_{\uparrow\text{TOA,CS}}$ and $SW_{\downarrow\text{Surf}}$ which are an absolute change in $W m^{-2}$ and w in $cm s^{-1}$) for both the free running ensemble (F) and the nudged simulations (N). Number density is abbreviated as ND, and mass to MS for each of the four aerosol modes (nucleation, Aitken, accumulation and coarse (continued))

Field	Run	DJF	MAM	JJA	SON
AOD (%)	F	-1.4	0.0	-1.6 ⁹⁰	-1.7
	N	-1.1	-1.1	-0.6	-0.6
$SW_{\uparrow\text{TOA,CS}}$ ($W m^{-2}$)	F	-0.04	0.00	-0.06 ⁹⁰	-0.11 ⁹⁰
	N	-0.05	-0.04	-0.03	-0.04
$SW_{\downarrow\text{Surf,CS}}$ ($W m^{-2}$)	F	0.12	0.00	0.11	0.03
	N	0.07	0.06	0.01	0.05
CDN (%)	F	-0.6	0.1	-0.9 ⁹⁰	-0.9
	N	-0.4	-0.6	-0.4	-0.6
LWP (%)	F	0.3	-0.8	0.4	0.4
	N	-0.1	-0.2	0.3	0.2
Water Vapour (%)	F	-1.0	0.0	-0.1	1.0
	N	0.1	0.1	-0.1	-0.1
Low cloud frac. (%)	F	0.7	-0.6	0.9	1.7
	N	0.1	-0.1	-0.4	0.2
High cloud frac. (%)	F	-1.0	-0.6	0.5	-0.1
	N	-0.1	0.0	-0.1	-0.1
Precip. (%)	F	-0.3	-0.4	0.2	0.8
	N	-0.2	-0.2	0.4	0.2
Large-scale precip. (%)	F	0.9	-0.7	-0.8	1.0
	N	-0.2	0.6	0.6	0.1
Convective precip. (%)	F	-0.4	-0.3	0.3	0.8
	N	-0.2	-0.3	0.4	0.2
w_{500hPa} ($cm s^{-1}$)	F	-0.009	-0.004	-0.001	0.015
	N	-0.001	-0.001	0.003	-0.001
$SW_{\downarrow\text{Surf}}$ ($W m^{-2}$)	F	0.56	0.23	0.01	-0.14
	N	0.11	0.25	0.01	0.09

⁹⁵ Statistical significant at the 95th percentile, $p < 0.05$

⁹⁰ Statistical significant at the 90th percentile, $p < 0.1$

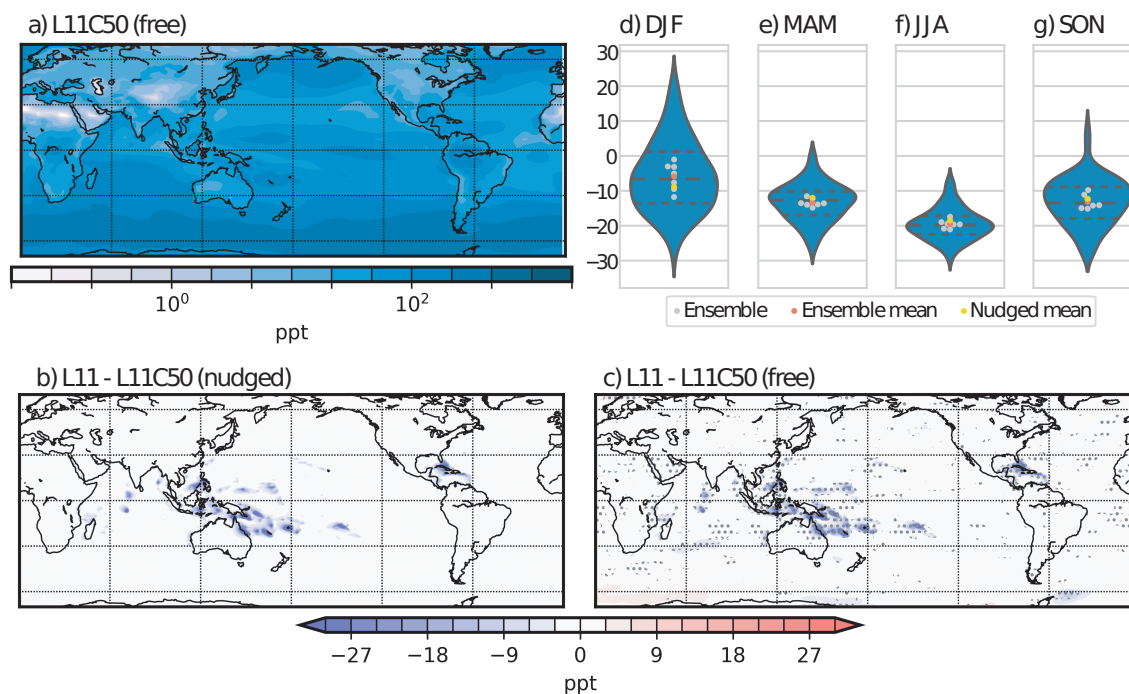


Figure 4. The annual surface DMS_a concentration (ppt) for the L11C50 simulation (a) and the L11-L11C50 difference for the nudged simulations (b) and free-running ensemble (c). In c) the model agreement, where at least five of the seven ensemble pairs agree in the sign of the difference, is shown by stippling. d-g) show violin plots of the average seasonal difference (L11-L11C50) in DMS_a over the MC-Aus region as a percentage, where all years in the ensemble is shown by the distribution, the dashed lines represent the 25, 50 and 75th percentiles, the grey dots show each pair of models mean difference, red represents the ensemble average and yellow represents the nudged average

of lower reef density are unlikely to have a significant impact on regional climate. In terms of seasonality, Table 3 and Figure 5d-g indicate less SO_2 variability compared to DMS_a throughout the year for both the free and nudged simulations. MAM (March, April, May) has the smallest, statistically insignificant change (-0.9% and -1.3% for the free and nudged simulations respectively), while DJF (December, January, February) and JJA (June, July, August) show larger changes over the MC-Aus region of -3.2 and -3.8% ($p < 0.05$) in the free ensemble and -2.7 and -2.2% ($p > 0.1$) for the nudged runs. The violin plots indicate there is a similar degree of variability for each of these seasons (compared to DMS_a) and the influence of free-running meteorology is again noted where changes in SO_2 are found outside of coral reef regions.

210 3.2 Nucleation and Aitken mode aerosol

The removal of coral reef-derived DMS leads to a significant ($p < 0.05$) decline in nucleation mode aerosol number concentration of -5.1, -6.0 and -6.2% for MAM, JJA and SON respectively in the free ensemble over the MC-Aus region (see Table 3). In

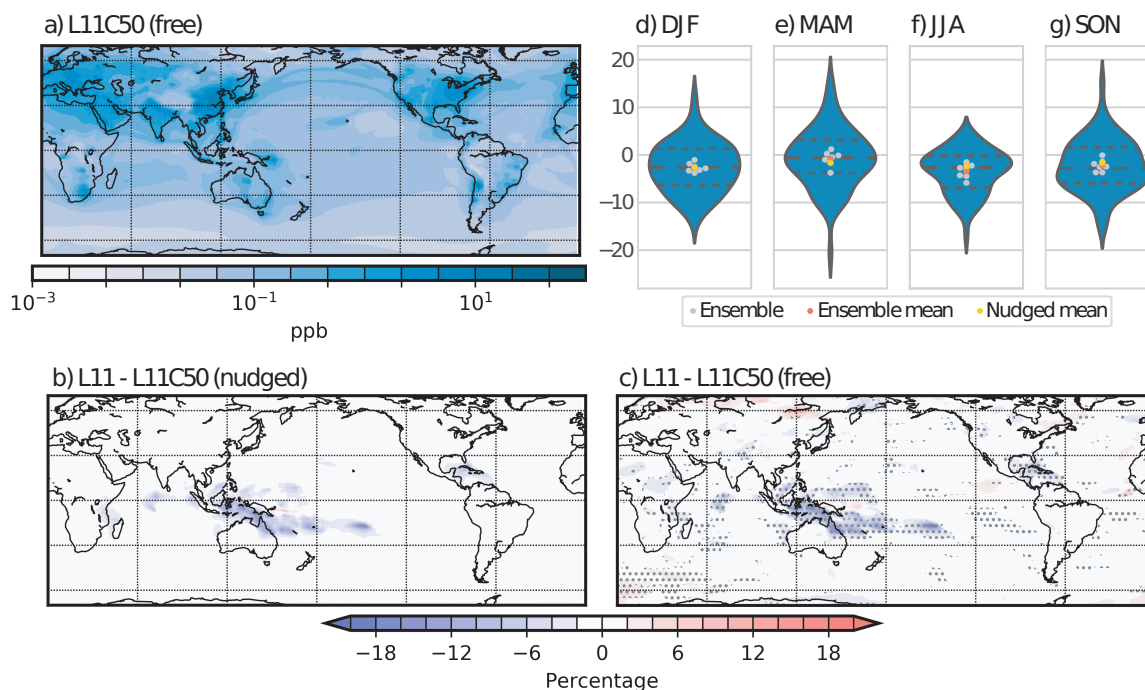


Figure 5. As for Figure 4 but for SO₂ in parts per billion (ppb) (a) and percent (b-g)

the nudged simulations, nucleation mode number concentration decreases by 4.6% ($p < 0.05$) in SON and by 4.4% ($p < 0.1$) in MAM. Although not statistically significant, JJA continues to show the largest changes (-6.1%), and DJF the smallest (-3.8%), in the nudged runs. The changes in nucleation mode number concentration are strongly reflected in the number concentrations of particles greater than 3 nm dry diameter (N_3) which are shown annually in Figure 6. The violin plots in Figure 6d-g show a large range in the response in DJF, while a much smaller range in SON, with many of the individual free-running pairs agreeing on the magnitude of the change.

These small aerosol (nucleation mode sized) show a greater response to changes in DMS than the larger aerosol sizes (see Table 3) in both the free and nudged simulations, aligning with the results of Fiddes et al. (2018). This result indicates that fewer homogeneous nucleation events are occurring in the free troposphere as a result of removing coral reef-derived DMS. Hence, fewer particles are being entrained back into the boundary layer. This process is confirmed by the vertical profile of N_3 showing a decrease in the upper levels of the atmosphere (not shown).

The size distributions shown in Figure 7 at four grid points also show the larger decreases are occurring in the nucleation mode and the Aitken mode. The range of locations shown by the size distribution, including directly over coral reefs (GBR and PNG) and remotod from coral reefs (East Pacific and QLD) demonstrate that the effect of coral reef-derived DMS loss

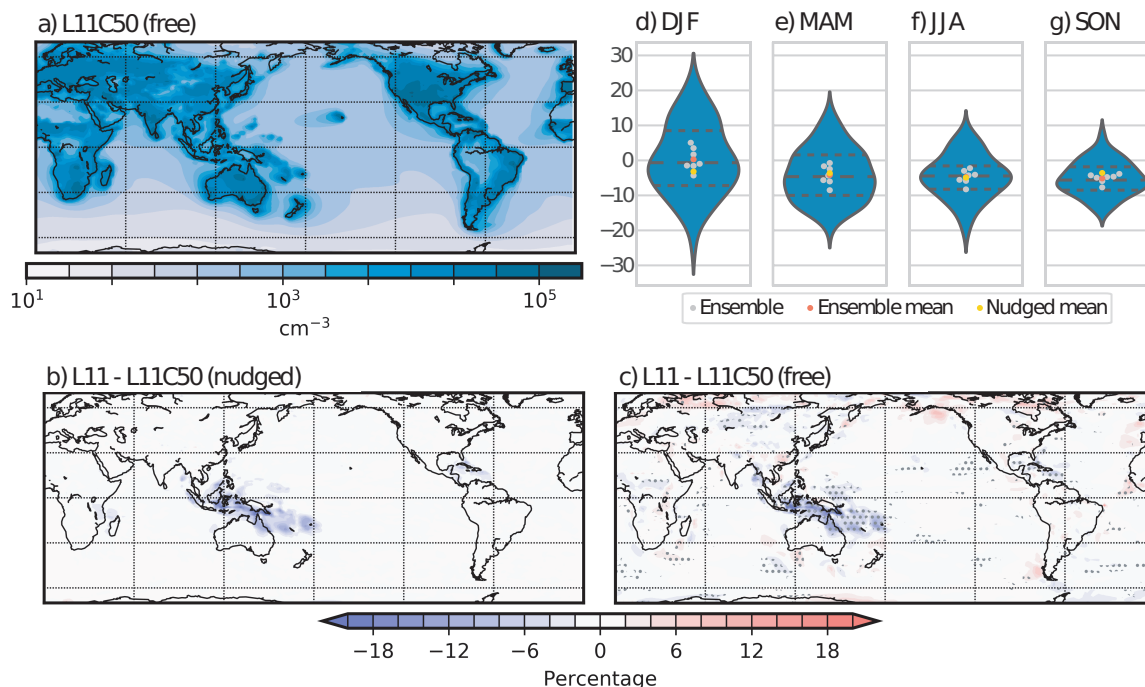


Figure 6. As for Figure 4 but for N_3 number concentration in cm^{-3} (a) and percent (b-g)

is not restricted to directly over coral reef regions. This is shown notably at the QLD location for JJA in both the nucleation and Aitken modes and SON for the Aitken mode. Over the MC-Aus region, decreases in the soluble Aitken aerosol number occur in MAM and JJA of 1.9 and 2.1% respectively ($p < 0.05$). The changes in both the nucleation and Aitken mode number concentrations are accompanied by similar changes in aerosol mass at this size (see Table 3).

3.3 Accumulation and coarse mode aerosol

At the larger sizes (soluble accumulation and coarse modes) little change in aerosol number is found on average over the MC-Aus region. However, significant ($p < 0.05$) decreases in aerosol mass are found in the coarse mode during DJF, JJA and SON, and in the accumulation mode in DJF ($p < 0.1$) and JJA ($p < 0.05$) for the free-running ensemble (see Table 3). Declines of smaller magnitude ($p > 0.1$) are found for the nudged runs. For the free ensemble, the larger change in mass instead of number suggests a reduction in aerosol growth at these sizes as the larger aerosol sizes rely on condensational growth and cloud processing to interact with DMS-derived sulfate. One exception to the observed change in mass instead of number is the region east of PNG, which varies by season (not shown). In this region, a small increase in accumulation mode aerosol number is found, accompanied by a larger increase in the aerosol mass. This increase is more evident in the nudged runs.

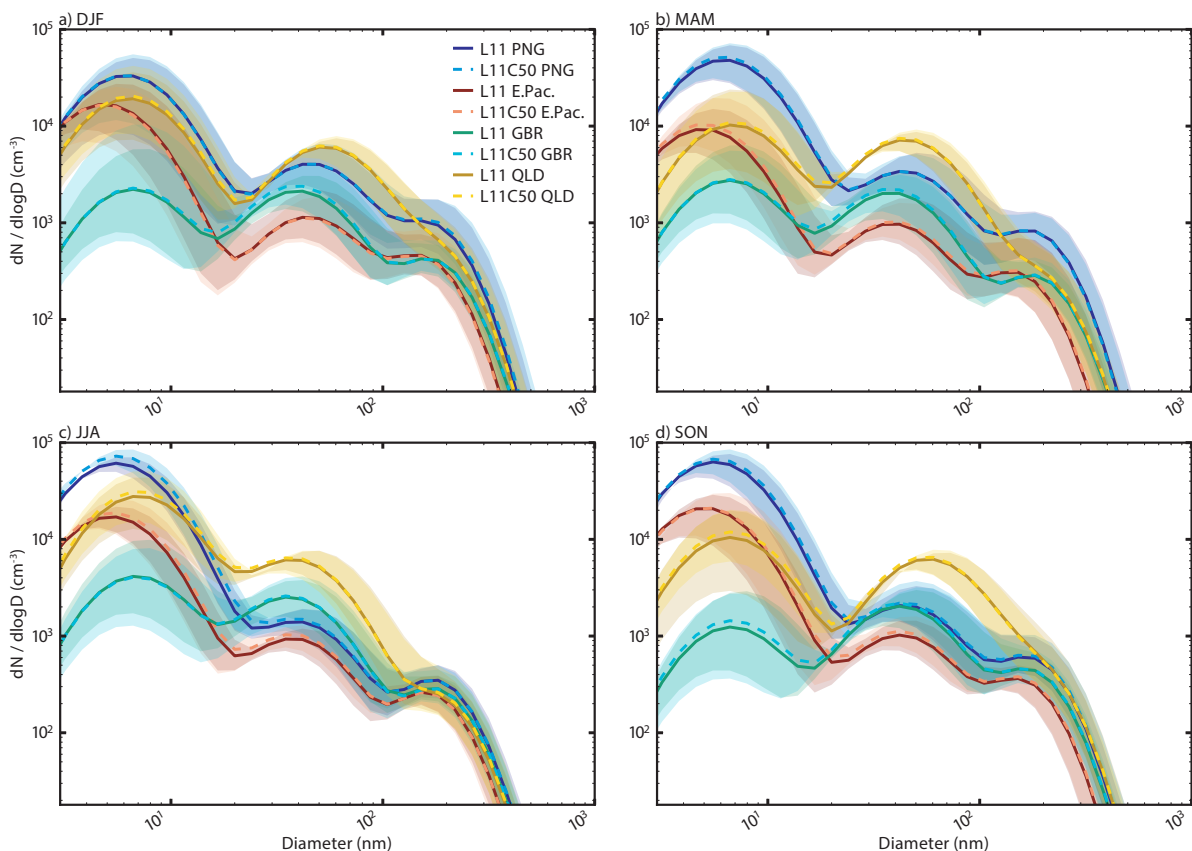


Figure 7. Aerosol dry diameter in nm (x-axis) and number concentration (as a function of number over the log of the diameter) in cm^{-3} (y-axis), both in log scales, for four regions: off the coast of PNG (blues), in the East Pacific (reds/oranges), over the GBR (green/turquoise) and inland QLD (yellow/brown), for the L11C50 (dashed lines) and L11 simulations (solid lines) (see Figure 1b for regions), for four seasons DJF (a), MAM (b), JJA (c), SON (d). The lines show the ensemble mean for the free-running simulations and the shaded regions show the range of results from all years in the ensemble

240 So far we show that the largest response in aerosol due to loss of coral reef-derived DMS occurs over the MC-Aus region. For this reason, all subsequent plots focus on the MC-Aus region. It is noted that there are impacts on aerosol from the free-running meteorology outside of this domain, but these can mostly be explained by changes in surface wind speeds due to variability in the free-running ensemble (not shown). In addition, the influence of the free-running meteorology is found to have a larger impact on the results in subsequent analysis, with greater seasonal variation.

245 3.4 Cloud condensation nuclei

Despite the removal of coral reef-derived aerosol having the largest impact on the nucleation mode aerosol, these small aerosol don't interact with model radiation via direct or indirect aerosol effects. While the changes are small in the larger sized aerosol number and mass, a cumulative response to the loss of coral reef-derived sulfur has some interesting impacts. Figure 8 shows the column integrated seasonal cloud condensation nuclei with a dry diameter greater than 70 nm (CCN_{70}) response to removal of coral reef-derived DMS. For the nudged simulations in Figure 8b, f, j and n, a consistent, yet small and insignificant reduction in CCN_{70} is found over the MC-Aus region (between 0.6 to 0.9%). Interestingly, over the SPCZ region, decreases of 1.0, 0.3, 1.9 and 1.1% are also found in the nudged simulations for each season (DJF, MAM, JJA and SON) respectively. The SPCZ is a relatively clean region, with few CCN_{70} sized aerosol (see Figure 8a) and also few coral reefs. This lack of direct aerosol source suggests that changes in aerosol from other regions is affecting this region via transport along the SPCZ.

255 For the free ensemble, in Figure 8c, g, k, and o, the SPCZ region again stands out in MAM, JJA and SON with decreases in CCN_{70} of 2.8, 2.2 and 1.9% for each season respectively (MAM and SON, $p < 0.1$, and JJA, $p < 0.05$). In this region, little change in surface wind speeds are found, suggesting that the changes found here are also likely due to loss of aerosol from coral reefs and their subsequent transport, as seen in the nudged runs.

Over the MC-Aus region in the free-running ensemble, JJA and SON have decreases in CCN_{70} of -1.4% ($p < 0.1$ and $p > 0.1$ respectively). The violin plots in the far right column of Figure 8 indicate large model spread in the CCN_{70} changes. SON (Figure 8o) has the most ensemble agreement over the MC-Aus region, while little agreement is observed in other seasons. For this reason (and that the subsequent dynamical results to be discussed in Section 3.5 on-wards were the largest in this season), the SON results will be shown and discussed from this point only (although the statistics for all seasons can be found in the continuation of Table 3).

265 Whilst the changes in aerosol discussed in this section are small, it is worth noting that in Fiddes et al. (2018), where all marine DMS_w was removed, a global decrease of 8% of all N_3 (17% for Australia) was found. For CCN_{70} , a decrease of just 5% was found globally (8% for Australia). It is clear from the perturbation of total marine DMS that global DMS contributes only a small amount to the total aerosol number. Hence local differences from coral reef-derived DMS found in this study could be considered to be relatively large.

270 3.5 Direct aerosol radiative effects

Aerosol in the Aitken, accumulation and coarse modes are used by the ACCESS-UKCA radiation scheme to calculate aerosol direct effects. In Figure 9, the SON AOD, clear sky outgoing shortwave radiation at the top of the atmosphere (abbreviated to $SW\uparrow_{TOA,CS}$) and clear sky incoming shortwave radiation at the surface ($SW\downarrow_{Surf,CS}$) are shown. The clear sky radiation fields are examined in this Section to allow detection of direct effects from aerosol without the influence of clouds. Changes in the all sky fields are dominated by the convective cloud response, which will be discussed in Section 4.

The spatial response of AOD to changes in aerosol in the nudged simulations (Figure 9b) is broadly similar to the CCN_{70} changes (Figure 8n). Decreasing AOD is found over most of the MC-Aus region, while the area to the east of PNG experiences

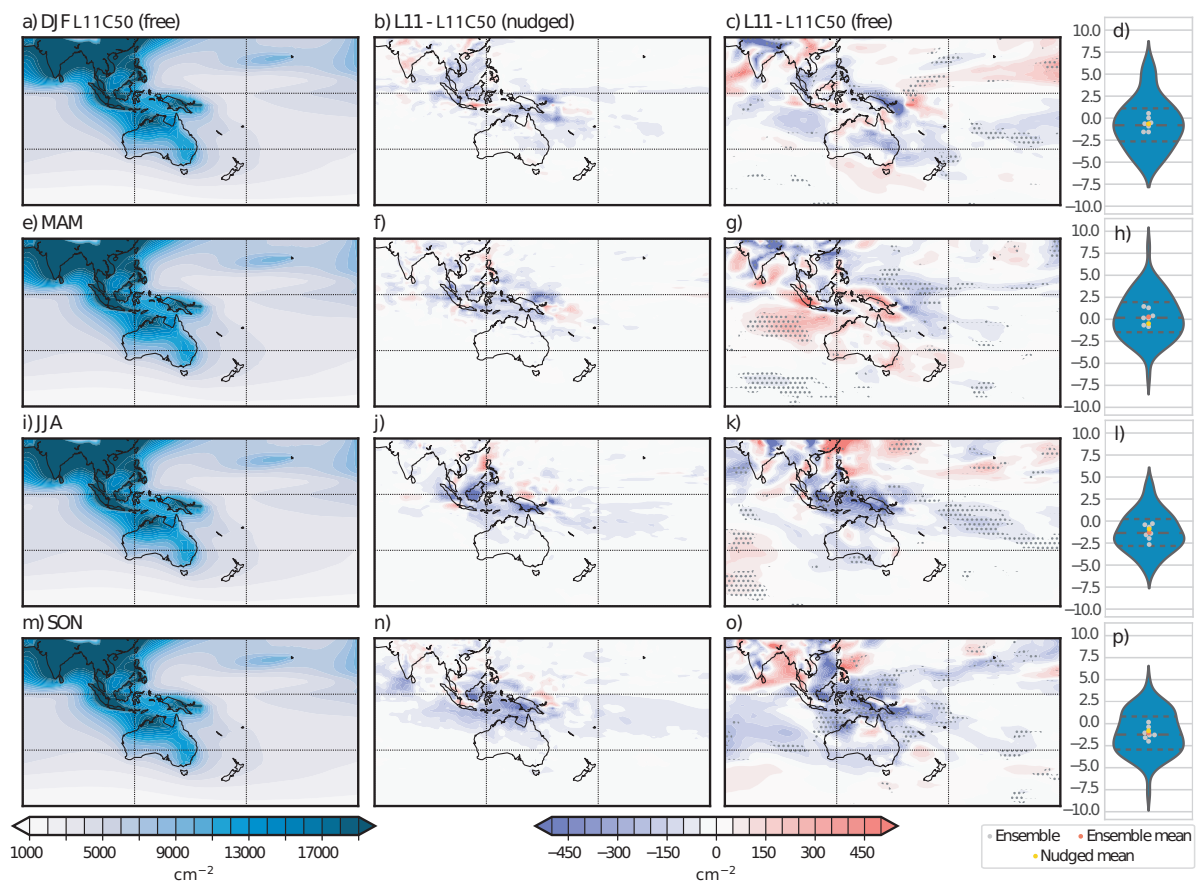


Figure 8. The seasonal (DJF - top row, MAM - upper middle row, JJA - lower middle row and SON - bottom row) total column CCN_{70} concentration (in cm^{-2}) over the broad MC-Aus region for the free L11C50 simulation (left column); the L11-L11C50 difference for the nudged simulations (middle left column); and the L11-L11C50 difference for the free-running ensemble (middle right column) with the model agreement shown by stippling, where at least five of the seven ensemble pairs agree in the sign of the difference. The right column shows violin plots of the average seasonal difference (L11-L11C50) in total column CCN_{70} over the MC-Aus region as a percentage, where all years in the ensemble is shown by the distribution, the dashed lines represent the 25, 50 and 75th percentiles, the grey dots show the mean of each pair of models, the red dots the ensemble average and the yellow the nudged average

an increase. The seemingly amplified aerosol response in the PNG region is due to the increased accumulation mode sulfate mass. This increase is not believed to be associated with coral reef-derived DMS removal but a function of complex non-linearities and model sensitivities. This anomaly is likely to be dampening the area averages over the MC-Aus region.

In Figure 9f, the change in nudged $SW\uparrow_{TOA,CS}$ is consistent with the change seen in AOD, indicating that there is a weak reduction in the amount of shortwave radiation being reflected out to space at the top of the atmosphere over significant coral reef regions. This decrease in $SW\uparrow_{TOA,CS}$ suggests more shortwave radiation is passing through the atmosphere and reaching

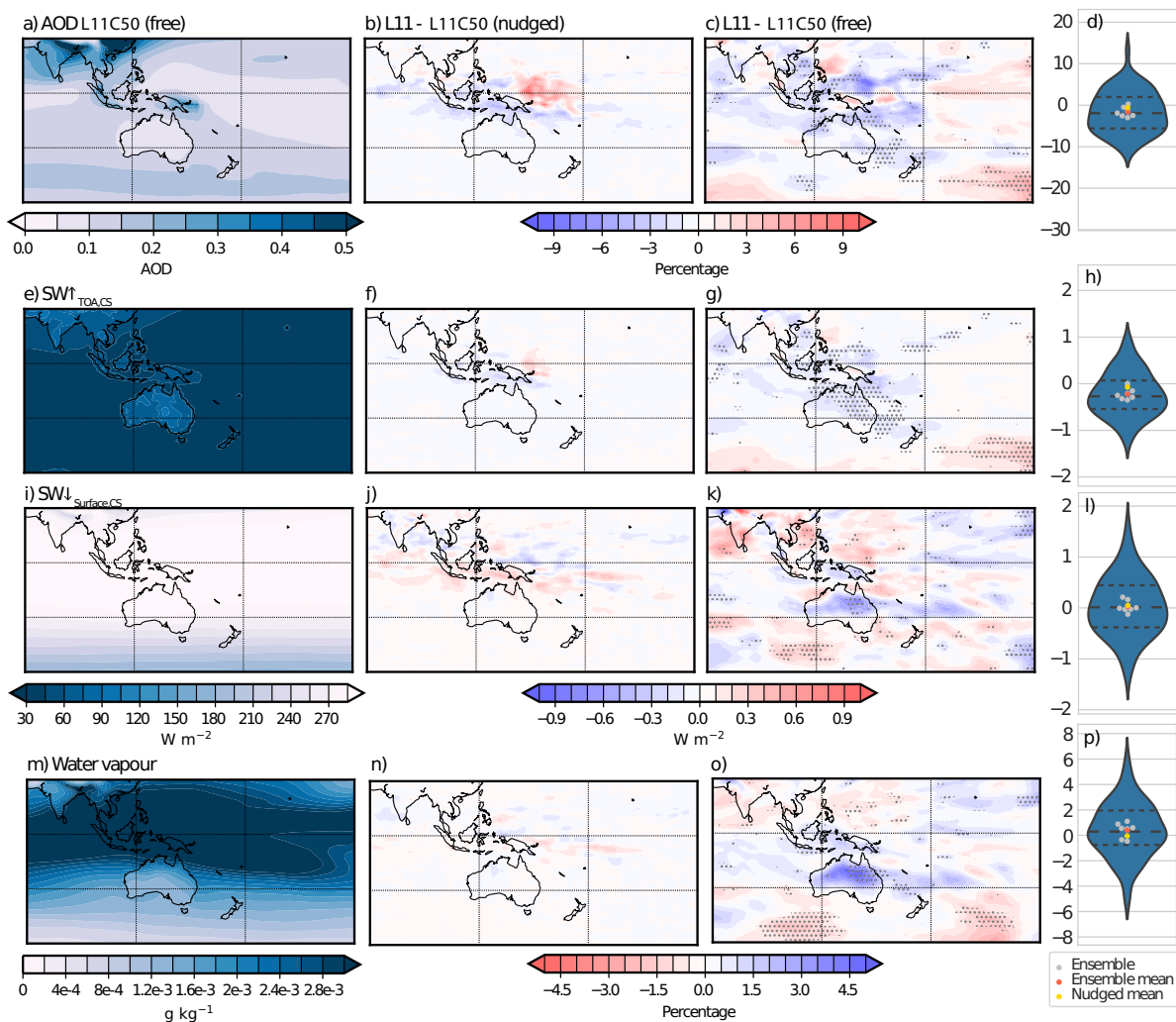


Figure 9. SON averages over the MC-Aus region for top row: the AOD (unitless and changes in percentage); upper middle row: $SW\uparrow_{TOA,CS}$ ($W m^{-2}$); lower middle row: $SW\downarrow_{Surf,CS}$ ($W m^{-2}$); and bottom row: column average specific humidity ($g kg^{-1}$ and percent). The left column shows the free L11C50 simulation; the middle left column shows the L11-L11C50 difference for the nudged simulations; the middle right column shows the L11-L11C50 difference for the free-running ensemble with the model agreement shown by stippling, where at least five of the seven ensemble pairs agree in the sign of the difference; and the right column shows violin plots of the average seasonal differences (L11-L11C50) as a percentage for AOD and specific humidity and in $W m^{-2}$ for $SW\uparrow_{TOA,CS}$ and $SW\downarrow_{Surf,CS}$, where all years in the ensemble are shown by the distribution; the dashed lines represent the 25, 50 and 75th percentiles; the grey dots show each pair of models mean, the red dot the ensemble average and the yellow the nudged average

the surface. For the nudged runs, this is broadly true, as shown by the $SW_{\downarrow\text{Surf,CS}}$ in Figure 9j. These results indicate that when
285 no interaction with meteorology is allowed, a weak, statistically insignificant direct aerosol effect is associated with certain
regions over the MC under clear sky conditions in austral spring.

For the free-running ensemble, however, the result is far less clear, primarily due to interactions with meteorology. The AOD
response (Figure 9c) is again broadly consistent with the changes in CCN_{70} (Figure 8o), where over the MC-Aus region a
decrease of 1.7% ($p < 0.1$) is found. The $SW_{\uparrow\text{TOA,CS}}$ responds as expected with a decrease of 0.11 W m^{-2} over the MC-Aus
290 region ($p < 0.1$, with considerable model agreement). However, the subsequent $SW_{\downarrow\text{Surf,CS}}$ response (Figure 9k) is not as
clear. While the SON MC-Aus average suggests a weak, insignificant increase in shortwave radiation reaching the surface, the
spatial patterns are inconsistent with the AOD, aerosol fields or the $SW_{\uparrow\text{TOA,CS}}$.

In ACCESS-UKCA, the shortwave (defined as wavelengths between $0.2\text{-}5 \mu\text{m}$) radiative transfer scheme considers not just
the scattering and absorption of energy by aerosol and cloud droplets, but also the absorption of energy by water vapour
295 (Edwards et al., 2013). Water vapour has an effect at wavelengths greater than $0.7 \mu\text{m}$. In Figure 9o, the mean change in water
vapour throughout the column is shown, which is more spatially consistent with the free-running $SW_{\downarrow\text{Surf,CS}}$ response than
that of the AOD or $SW_{\uparrow\text{TOA,CS}}$. This consistency is particularly clear over the Australian region. An increase in water vapour
in the column would suggest more absorption of radiation throughout the column, and hence less energy is received at the
surface, as found in the $SW_{\downarrow\text{Surf,CS}}$ results (Figure 9k). Upper level warming over the tropics (not shown) is also found and we
300 note that changes in temperatures nearer the surface is limited due to the prescribed SSTs. It is emphasised that this interaction
of energy with water vapour is only found in the free ensemble, when meteorology is allowed to vary.

The cause of the change in water vapour is difficult to determine as it is intricately linked to both local and large-scale climate
processes. For example, meteorological effects found in this study that could explain the water vapour increase include:

- Warming at upper levels (15-20 km) of the atmosphere over the tropics (not shown), indicating more water vapour can
305 be held in the atmosphere, but could also be a result of increased water vapour
- Increased latent heat flux at the surface over the Australian region (not shown), suggesting increased evaporation
- A general increase in vertical motion found for the Southern Hemisphere tropics-mid latitudes (Figure 10b), aligning
neatly with the regions of increased water vapour (Figure 10d). Increased vertical motion is accompanied by decreased
southwards transport at upper levels and decreased northwards transport at the surface (Figure 10f), suggesting a weak-
310 ening of the southern branch of the Hadley Cell.
- Increased high level cloud and convective precipitation found over the MC-Aus region, causing increased high cloud
cover, an overall decrease in $SW_{\downarrow\text{Surf}}$ and increased convective precipitation.

It is hypothesised that the small reduction in aerosol resulting from decreased DMS_a has caused an increase in short wave
radiation passing through the atmospheric column, resulting in warming, which may cause increased evaporation, vertical
315 transport and convective activity, and subsequently increased water vapour. Despite many of the responses described above
having good ensemble agreement, low confidence is attributed to this hypothesis for three reasons:

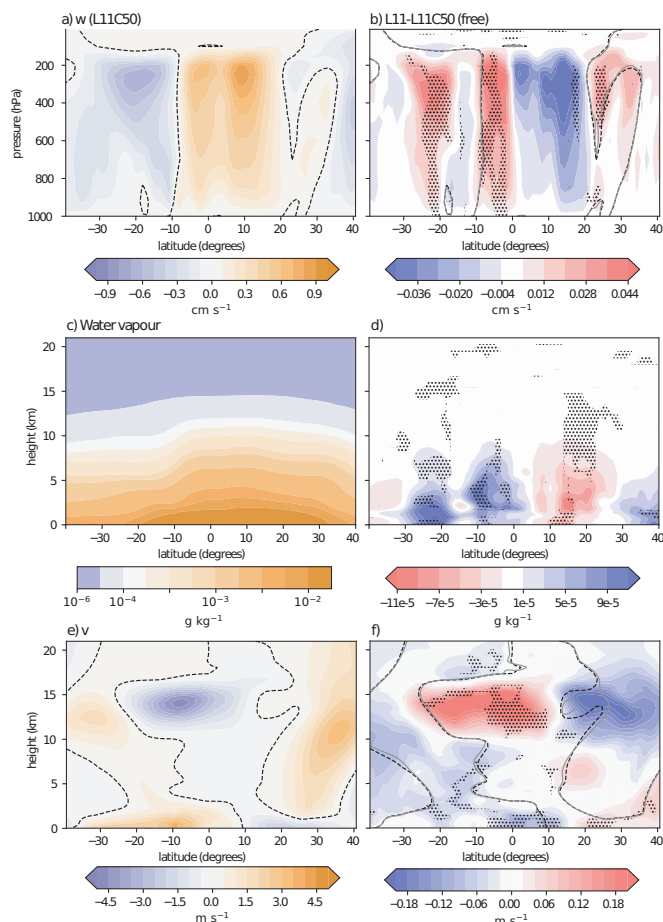


Figure 10. The zonal mean vertical profiles over the MC-Aus longitudinal region for vertical velocity (w , top row) in cm s^{-1} , water vapour (middle) in g kg^{-1} and the v component of wind (bottom) in m s^{-1} for the free-running L11C50 simulation (left column) and the difference in L11-L11C50 the free ensemble (right column), with the model agreement shown by stippling where at least five of the seven ensemble pairs agree in the sign of the difference. For a-b) and (e,f), the black dashed lines in all plots represent the zero contour of the L11C50 field, while in b) and f) the solid grey line indicates the zero contour of the L11 field

- The top of the atmosphere direct radiative effect that is proposed to initiate these responses is small. Furthermore, the changes in aerosol and AOD that have caused the radiative effect are also small and insignificant. Hence it is unreasonable to suggest such small changes in aerosol could be causing a direct radiative effect.
- 320
- Over the MC-Aus region as a whole, little statistical significance is found in these responses, and ensemble agreement can be found in regions that are seemingly not associated with coral reef-derived DMS. Thus, internal model variability cannot be ruled out as the cause for these meteorological responses.

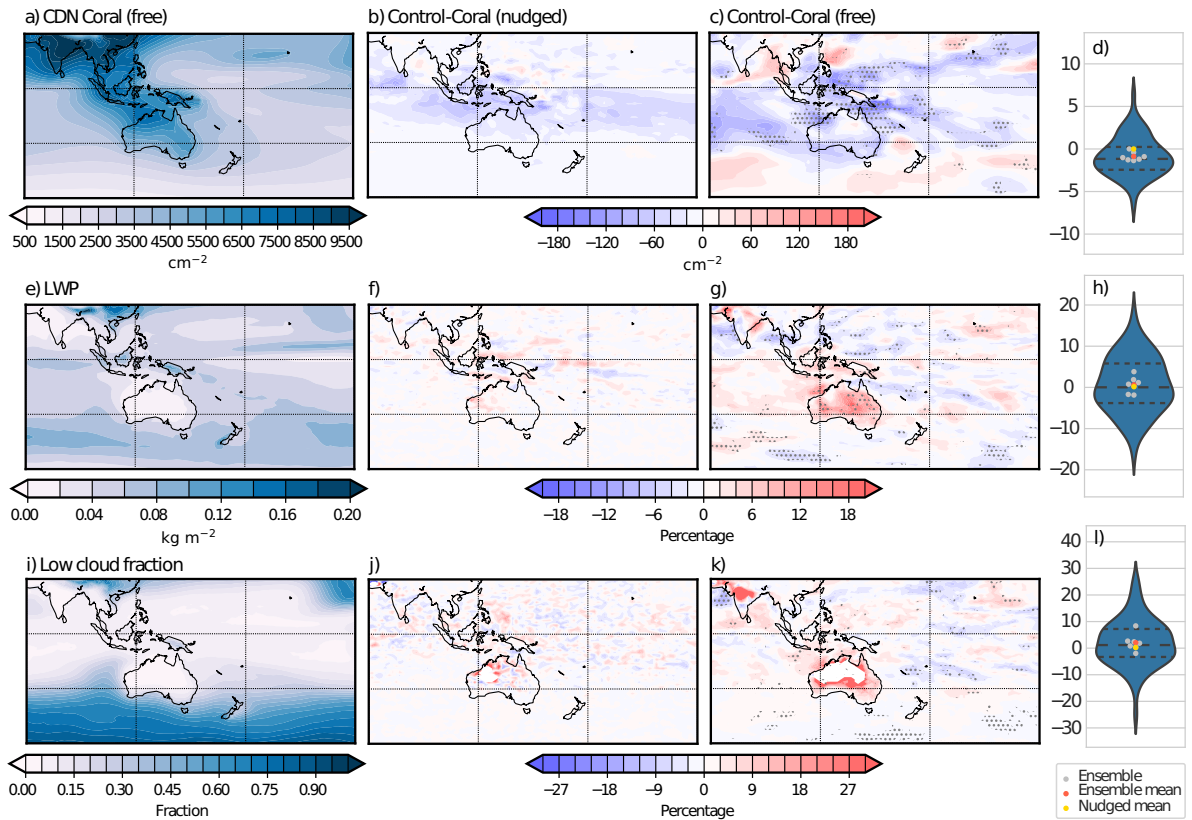


Figure 11. As for Figure 9 but for column integral of CDN (top row) in cm^{-2} , LWP (middle row) in kg m^{-2} and percent and low cloud fraction (bottom row) as a fraction and in percent

– In Fiddes et al. (2018), where all marine DMS-derived aerosol was removed from the system, decreases in convective activity were found over the tropics, despite those simulations being nudged (nudging allows small differences in meteorology if the forcing is large enough). The change in convective activity induced by removing all DMS is of the opposite sign to that found here.

Therefore, despite a weak yet significant ($p < 0.1$) decline in $\text{SW}\uparrow_{\text{TOA,CS}}$, it is concluded that over the MC-Aus region, no robust impact on climate via the direct radiative effect can be confidently detected. This result may be due to averaging over a large area, as the same processes are found over QLD with generally greater statistical significance and ensemble agreement.

This is discussed further in Section 4.

3.6 Indirect aerosol radiative effects in the large-scale cloud and precipitation scheme

Indirect aerosol effects, such as cloud brightening or lifetime effects, take place as CCN particles activate and become cloud droplets. In ACCESS-UKCA, aerosol activation depends on the size and composition of aerosol as well as the atmospheric supersaturation, which is influenced by the vertical velocity. Thus, the significant increase in smaller size aerosol found in Section 3.2 may have some influence over indirect aerosol effects in certain conditions, although it is noted that larger aerosol have much greater ability to influence indirect effects. Figure 11 shows the responses of cloud droplet number (CDN), cloud liquid water path (LWP) and low cloud fraction (noting that only the cloud microphysics scheme can respond to change in CDN, not the convective scheme). For both the nudged and free simulations, the changes found in CDN are consistent with, though weaker than, the changes observed in the CCN_{70} fields (noting again the vertical integral of CDN through the column is shown). No statistical significance is attributed to the changes in CDN over the MC-Aus region, although reasonable ensemble agreement is found in Figure 11c. These weak changes suggest that the reductions in CDN are unlikely to have an effect on cloud properties or large-scale precipitation (via the second indirect effect where fewer CDN, given the same availability of liquid water, would increase rainfall).

A small increase in LWP is found on average over the MC-Aus region in the free simulations, although Figure 11g-h shows a large amount of variability in the region and little model agreement. This change in CDN and LWP has had little impact on properties such as low cloud fraction (Figure 9k) or large scale precipitation (not shown), as shown in Table 3, over the MC-Aus region for each season. In addition there is very little model agreement in these responses. For the nudged simulations, constrained meteorology has meant little response of cloud properties is allowed. Subsequently, these results suggest that the loss of coral reef-derived aerosol has little or no impact on climate via the indirect aerosol effects.

4 Implications for Queensland, Australia

A relatively large increase in precipitation, of 11 %, has been found over QLD in response to removal of DMS produced by coral. Although approximately equivalent increases were found in the large-scale and convective precipitation (10.9 %, $p > 0.1$, and 9.4 %, $p < 0.1$), very little large-scale precipitation occurs in this region, with convective precipitation by far the more important of the two. Furthermore, while CDN concentrations have decreased insignificantly (by 0.5%) and the LWP has increased (7.4% $p < 0.1$) over the QLD region, resulting in more large-scale rainfall, attributing the change in LWP in particular to changes in aerosol is difficult, as discussed in the previous sections.

At this point, it is worth remembering that the convective scheme is not coupled to the aerosol scheme and thus has no knowledge of the removal of coral reef-derived DMS. Hence the increased convective activity must be occurring dynamically, with possible causes discussed in Section 3.5. Specifically, over QLD, a significant decrease in N_3 of 5 % is found ($p < 0.05$). Although this does not translate into a meaningful decrease of CCN_{70} (0.5 %), a significant ($p < 0.1$) decline in the AOD is found of 1.6 %, which has resulted in less $SW_{\uparrow TOA,CS}$ of -0.16 W m^{-2} , ($p < 0.05$). As for the MC-Aus region, the increased radiation allowed through the atmospheric column has been absorbed by increased water vapour (see Figure 9o), resulting in a significant reduction in $SW_{\downarrow Surf}$ of -0.38 W m^{-2} ($p < 0.1$). While high cloud cover has increased by 7.4 % ($p < 0.1$), which

in turn has caused a decrease in $SW_{\downarrow\text{Surf}}$ of 1.61 W m^{-2} ($p < 0.1$), linking these convective responses to the changes in direct
365 aerosol effect at the top of the atmosphere is not able to be done with confidence.

Due to increased high cloud cover, the relatively large change in all sky surface solar radiation is of the opposite sign to what one would expect following the aerosol direct and indirect theories. Further, it is noted that the changes in the all-sky radiation is much larger than that of the clear-sky radiation and indicates that the response in cloud cover is much more important for radiative processes in this region than the direct aerosol effects.

370 Despite the changes presented in this Section for QLD having greater statistical significance and more ensemble agreement than over the MC-Aus region, low confidence is attached to these results due to an unclear physical mechanism (Section 3.5) and the existence of similar responses elsewhere that are likely to be model noise (not shown). It is emphasised that the meteorological results discussed above are considered to be a response to a direct aerosol radiative effect, only possible when meteorological feedbacks are allowed. Nevertheless, these results were interesting and unexpected, demonstrating a clear
375 example of how non-linear the DMS-climate system is and how important it is to consider the system as a whole, rather than isolating certain aspects.

5 Conclusions

This study set out to determine if the loss of coral reef-derived DMS could impact global and regional climate. The ability of coral reefs to produce an aerosol precursor gas has been known for sometime, however the impact of this source of sulfur
380 on the climate has not been quantified until now. On the global scale, coral reefs appear to have little influence on the sulfur budget or global energy balance. At regional scales, however, this work has found some interesting and unexpected effects that highlight the complexity of this system.

The MC-Aus region has been found to have the largest aerosol response to removal of coral reef-derived DMS across the globe. This is unsurprising given that this region has the highest density of coral reefs in the world. Over other coral reef
385 regions, the effects of coral reef-derived DMS are quickly diluted by other influencing factors, such as anthropogenic aerosol sources. Significant decreases in the free-running ensemble's small size aerosol (both number and mass) are found over the MC-Aus region when coral reef-derived DMS is removed. For the larger sized aerosols, small, generally insignificant decreases in sulfate mass are found while little change in number is noted. The nudged simulation shows a more consistent small decrease across all aerosol fields and seasons. The decreases in aerosol have cumulatively lead to an insignificant decrease in SON of
390 AOD in the MC-Aus region, and a significant decrease of AOD over QLD. No significant or robust changes were detected in other seasons.

Despite the weak AOD response over the MC-Aus region, a significant reduction in $SW_{\uparrow\text{TOA,CS}}$ of -0.11 W m^{-2} was found for SON in the free-running ensemble and is attributed, in part, to the reduction of aerosol (despite it's statistical insignificance) in the region. This decrease is greater than the equivalent decrease in the nudged simulations. Much smaller (or no) reductions
395 were found in all other seasons. In contrast to the nudged simulations, the free-running SON reduction in $SW_{\uparrow\text{TOA,CS}}$ does not directly translate to similar increases in $SW_{\downarrow\text{Surf,CS}}$ as expected. The most likely explanation is that interaction of shortwave

radiation with water vapour causes the opposite $SW_{\downarrow,CS}$ effect, which is itself a result of complex meteorological feedbacks. The response of water vapour could not be confidently attributed to changes in aerosol (as opposed to model variability between ensemble members) and the direct effects at the top of the atmosphere are found to be weak. For these reasons, this work
400 concludes that no robust direct aerosol effects can be confidently associated with coral reef-derived DMS.

We have found little to no evidence of indirect aerosol effects in any region in response to coral reef DMS. This is unsurprising given the small and insignificant changes found in the CDN and also the results of Fiddes et al. (2018), where few indirect effects were observed outside of the clean marine regions of the Southern Hemisphere mid-latitudes. However, it may also be a result of the lack of coupling between the convective scheme and aerosol in the model. Coral reefs, by nature, are located
405 in tropical regions that are dominated by convective processes. Hence, it is possible that no indirect effects were found in this work simply because such effects are only allowed to occur in the large-scale scheme, which is not particularly active in the regions of interest.

How convection may interact with changes in aerosol is currently a large source of uncertainty (Tao et al., 2012). Aerosol-induced convective invigoration theories suggest that with less aerosol, CDN would rain out more quickly, reducing the amount
410 of latent heat release caused by condensation, thus, inhibiting convection. This mechanism has been found in both simulations and observations with respect to increased anthropogenic ultrafine aerosol over the Amazon invigorating deep convection (Fan et al., 2018). However, Nishant et al. (2019) has demonstrated that while satellite observations correlate high aerosol loading to increased convection, the presence of aerosol may not be the cause of connectivity activity due to the co-variation of aerosol-wind and wind-cloud processes. Fan et al. (2016) summarise that the influence of aerosol on convection is highly dependent
415 on different kinds of convective systems (eg. the trigger mechanism, whether it is a super cell) and the environment (eg. wind shear, cloud base temperature). The studies discussed above and the results of this work indicate that tropical aerosol interaction with climate is far from linear and requires significantly more work to integrate both the convective and large-scale responses in climate modelling.

Interestingly, this study has found some unexpected changes in convective processes, via dynamical mechanism, including
420 a significant increase of 10.9% in convective rainfall over QLD, attributed to suppressed downwards motion in the region. However, low confidence is given to the physical cause (weak direct radiative effects) of the changes in vertical motion in this study.

It should be noted that the weak direct effects discussed above consider clear sky processes only. The changes in convective processes result in significant changes in high-cloud fraction. Increased cloud cover subsequently has large impacts on the
425 all-sky radiation response (decreased $SW_{\downarrow,Surf}$), overwhelming any clear-sky responses. This again highlights the complexity of the system and issues a warning to the oversimplification, or perhaps more appropriately, the lack detailed understanding surrounding the current limitations of aerosol effects in climate models, especially as aerosol schemes are more routinely used in climate models.

The tool used for this work, ACCESS-UKCA, is able to provide detailed diagnostics of the DMS-climate system; however,
430 important model limitations remain. By conducting a global study, a limitation of this work is the model resolution, both with respect to model time steps (hourly) and output (monthly), as well as spatial resolution. Higher resolution aerosol-cloud

interaction studies have been planned with respect to coral reef-derived DMS to address this issue. In addition, by allowing the model to run freely, disentangling responses due to coral reef-derived DMS as opposed to internal model variability has been difficult. While an effort to resolve this problem has been made by creating a seven member ensemble (limited by computer resources) and comparing to nudged simulations, there remains a significant likelihood that some of the results presented in the work are purely from internal model variability. Despite this difficulty, we suggest that future aerosol-climate interaction studies use a large-enough ensemble to reduce the signal due to internal variability and that significant analysis of the dynamical aspects of any aerosol response is performed to ensure a robust physical mechanisms is found explaining meteorological changes. Double call radiation diagnostics can also be a useful tool in this instance to diagnose model feedbacks if computer resources permit.

Further limitations of this model are the underlying biases in clouds and radiation (Fiddes et al., 2018), and the lack of representation of some microphysical processes, which can have important effects on how aerosol interact with the climate. In particular we note the single moment cloud microphysics used in this version of ACCESS places a limitation on the modeling of indirect aerosol effects, despite the double moment aerosol scheme. Of note, evaluation performed in Fiddes et al. (2018) showed that ACCESS-UKCA significantly underestimated cloud fractions at all levels, which led to overestimated $SW\uparrow_{TOA}$. The responses found here in cloud and radiation are well within the model uncertainties reported in the literature and are smaller than the model biases themselves (found in Fiddes et al., 2018). In effect, improved model representation of the climate system may have a larger impact on the energy balance than the small perturbation applied in this work. The sensitivity of global climate models to changes in model structure has been highlighted recently, where new generation models reportedly have a higher climate sensitivity than previously, in part due to improved representation of cloud feedbacks (Zelinka et al., 2020).

The results presented here indicate that although the loss of coral reef-derived DMS may have small impacts on nucleation and Aitken mode aerosol, the end result is not as straightforward as the aerosol effects theory suggests. This complexity is highlighted by the difference between the nudged simulations and the free ensemble, where in the latter, the impact of changing meteorology in response to a weak direct effect has impacts on the radiation budget often opposing what was expected. These results also demonstrate how interdependent this system is and suggests that not explicitly resolving all aspects of the DMS-climate cycle (chemistry, aerosol, dynamics, clouds, radiation etc) may result in misleading findings. These results further highlight the costs and benefits of the two modelling methods (free versus nudged simulation) when trying to separate climate responses from climate variability.

This has been the first study to include coral reef-derived DMS in a global climate-chemistry model and to then determine what possible effect the loss of this DMS source may have on climate. It is noted that the amount of DMS_w assumed to be produced by coral reefs in this work (an area weighted 50 nm) is likely larger than reality due to area averaging and the far more variable nature of DMS production. That said, no robust evidence of indirect effects and weak evidence of a direct effect over just one season (SON) has been found over the MC-Aus region. These results suggest that with smaller estimates of coral reef DMS_w , little to no climatic forcing would be found. These results have significant implications for current coral-DMS-climate literature, effectively signalling that DMS produced by coral reefs has little importance for climate via sulfate aerosol radiative forcing. However, we note that we have not evaluated other coral reef links to the climate such as carbon uptake or

ecosystem services. A future study, including simulations conducted with short (hourly) time-scales, is planned to evaluate if coral reef-derived DMS can have a local impact on meteorology, in order to assess the possibility of a bioregulatory feedback system.

470 Reflecting on the questions posed at the beginning of this study, we are now able to provide the first quantitative evidence that coral reefs likely play little role in regional climate modulation. As coral reefs globally face extinction due to anthropogenic climate change, it is unlikely that the subsequent reduction in precursor aerosols will have a noticeable impact on regional climate. Further modelling studies using future climate scenarios where anthropogenic aerosol dominate, are unlikely to yield different results by the same reasoning. A more interesting question may be what the change in climate would be in a pre-
475 industrial world, with no anthropogenic greenhouse gases and in particular, aerosol pollution. We speculate that under pre-industrial conditions coral reefs may have a greater influence on climate.

Code and data availability. The model used for this study is a licensed product of the UK Met Office and is available to specific users under a license agreement. Model simulation output can be made available upon request. Analysis of model output (plotting and statistical analysis) was performed using Python 2.7 and the code can be made available upon request for analysis.

480 *Author contributions.* SLF completed the model simulations, analysis and write-up presented in this study. MTW provided project guidance, specific model set-up and analysis advice and contributed to the subsequent revisions of this work. RS and TPL provided project guidance, analysis advice and provided comment on the revisions of this paper.

Competing interests. The authors have no competing interests to declare

Acknowledgements. SLF was supported by the Australian Research Council (ARC) Centre of Excellence for Climate System Science
485 (CE110001028). TL is supported by the Australian Research Council (ARC) Centre of Excellence for Climate Extremes (CE170100023). SLF, RS, were supported by the ARC Discovery Project: Great Barrier Reef as a significant source of climatically relevant aerosol particles (DP150101649) and RS has funding from the ARC Discovery project: : Tackling Atmospheric Chemistry Grand Challenges in the Southern Hemisphere (DP160101598). This research was undertaken with the assistance of resources and services from the National Computational Infrastructure (Project q90 and w40), which is supported by the Australian Government. SLF was supported by the Australian Government
490 Research Training Program Scholarship. SLF would like to thank Georgina Harmer for her help in the design of Figure 1a.

References

- Bell, T. G., Landwehr, S., Miller, S. D., De Bruyn, W. J., Callaghan, A. H., Scanlon, B., Ward, B., Yang, M., and Saltzman, E. S.: Estimation of bubble-mediated air-sea gas exchange from concurrent DMS and CO₂ transfer velocities at intermediate-high wind speeds, *Atmospheric Chemistry and Physics*, 17, 9019–9033, <https://doi.org/10.5194/acp-17-9019-2017>, 2017.
- 495 Belviso, S., Moulin, C., Bopp, L., and Stefels, J.: Assessment of a global climatology of oceanic dimethylsulfide (DMS) concentration based on SeaWiFS imagery (1998-2001), *Canadian Journal of Fisheries and Aquatic Sciences*, 61, 804–816, <https://doi.org/10.1139/F04-001>, 2004.
- Binkowski, F. S. and Shankar, U.: The Regional Particulate Matter Model: 1. Model description and preliminary results, *Journal of Geophysical Research*, 100, 26 191, <https://doi.org/10.1029/95JD02093>, 1995.
- 500 Bopp, L., Boucher, O., Aumont, O., Belviso, S., Dufresne, J.-L., Pham, M., and Monfray, P.: Will marine dimethylsulfide emissions amplify or alleviate global warming? A model study, *Canadian Journal of Fisheries and Aquatic Sciences*, 61, 826–835, <https://doi.org/10.1139/f04-045>, 2004.
- Broadbent, A., Jones, G. B., and Jones, R. J.: DMSP in Corals and Benthic Algae from the Great Barrier Reef, *Estuarine, Coastal and Shelf Science*, 55, 547–555, <https://doi.org/10.1006/ecss.2002.1021>, 2002.
- 505 Broadbent, A. D. and Jones, G. B.: DMS and DMSP in mucus ropes, coral mucus, surface films and sediment pore waters from coral reefs in the Great Barrier Reef, *Marine and Freshwater Research*, 55, 849–855, <https://doi.org/10.1071/MF04114>, 2004.
- Burdett, H. L., Hatton, A. D., and Kamenos, N. A.: Coralline algae as a globally significant pool of marine dimethylated sulfur, *Global Biogeochemical Cycles*, 29, 1845–1853, <https://doi.org/10.1002/2015GB005274>, <http://doi.wiley.com/10.1002/2015GB005274>, 2015.
- Cameron-Smith, P., Elliott, S., Maltrud, M., Erickson, D., and Wingenter, O.: Changes in dimethyl sulfide oceanic distribution due to climate change, *Geophysical Research Letters*, 38, 1–5, <https://doi.org/10.1029/2011GL047069>, 2011.
- 510 Charlson, R. J., Lovelock, J. E., Andreae, M. O., and Warren, S. G.: Oceanic phytoplankton, atmospheric sulphur, cloud albedo and climate, *Nature*, 326, 655–661, <https://doi.org/10.1038/326655a0>, 1987.
- Cropp, R., Gabric, A., van Tran, D., Jones, G., Swan, H., and Butler, H.: Coral reef aerosol emissions in response to irradiance stress in the Great Barrier Reef, Australia, *Ambio*, <https://doi.org/10.1007/s13280-018-1018-y>, 2018.
- 515 Dee, D. P., Uppala, S. M., Simmons, A. J., Berrisford, P., Poli, P., Kobayashi, S., Andrae, U., Balmaseda, M. A., Balsamo, G., Bauer, P., Bechtold, P., Beljaars, A. C. M., van de Berg, L., Bidlot, J., Bormann, N., Delsol, C., Dragani, R., Fuentes, M., Geer, A. J., Haimberger, L., Healy, S. B., Hersbach, H., Hólm, E. V., Isaksen, I., Kållberg, P., Köhler, M., Matricardi, M., McNally, A. P., Monge-Sanz, B. M., Morcrette, J. J., Park, B. K., Peubey, C., de Rosnay, P., Tavolato, C., Thépaut, J. N., and Vitart, F.: The ERA-Interim reanalysis: Configuration and performance of the data assimilation system, *Quarterly Journal of the Royal Meteorological Society*, 137, 553–597, <https://doi.org/10.1002/qj.828>, 2011.
- 520 Deloitte Access Economics: The economic, social and icon value of the Great Barrier Reef Acknowledgement, Tech. rep., Deloitte Touche Tohmatsu, Brisbane, QLD, Australia, <https://www2.deloitte.com/au/en/pages/economics/articles/great-barrier-reef.html>, 2017.
- Deschaseaux, E., Jones, G. B., Miljevic, B., Ristovski, Z., and Swan, H.: Can corals form aerosol particles through volatile sulphur compound emissions?, in: *Proceedings of the 12th International Coral Reef Symposium*, edited by Yellowlees, D. and Hughes, T., James Cook University, Cairns, QLD, Australia, 2012.
- 525 Edwards, J. M., Manners, J., Thelen, J.-C., Ingram, W. J., and Hill, P. G.: Unified Model Documentation Paper No. 23: The Radiation Code, Tech. Rep. Model version 8.2, UK Met Office, Exeter, UK, 2013.

- Elliott, S.: Dependence of DMS global sea-air flux distribution on transfer velocity and concentration field type, *Journal of Geophysical Research: Biogeosciences*, 114, 1–18, <https://doi.org/10.1029/2008JG000710>, 2009.
- 530 Fan, J., Wang, Y., Rosenfeld, D., and Liu, X.: Review of aerosol-cloud interactions: Mechanisms, significance, and challenges, *Journal of the Atmospheric Sciences*, 73, 4221–4252, <https://doi.org/10.1175/JAS-D-16-0037.1>, 2016.
- Fan, J., Rosenfeld, D., Zhang, Y., Giangrande, S. E., Li, Z., Machado, L. A., Martin, S. T., Yang, Y., Wang, J., Artaxo, P., Barbosa, H. M., Braga, R. C., Comstock, J. M., Feng, Z., Gao, W., Gomes, H. B., Mei, F., Pöhlker, C., Pöhlker, M. L., Pöschl, U., and De Souza, R. A.: Substantial convection and precipitation enhancements by ultrafine aerosol particles, *Science*, 359, 411–418, <https://doi.org/10.1126/science.aan8461>, 2018.
- 535 Fiddes, S. L., Woodhouse, M. T., Nicholls, Z., Lane, T. P., and Schofield, R.: Cloud, precipitation and radiation responses to large perturbations in global dimethyl sulfide, *Atmospheric Chemistry and Physics*, 18, 10 177–10 198, <https://doi.org/10.5194/acp-18-10177-2018>, <https://www.atmos-chem-phys.net/18/10177/2018/>, 2018.
- Fischer, E. and Jones, G. B.: Atmospheric dimethylsulphide production from corals in the Great Barrier Reef and links to solar radiation, climate and coral bleaching, *Biogeochemistry*, 110, 31–46, <https://doi.org/10.1007/s10533-012-9719-y>, 2012.
- 540 Fuchs, N. and Sutugin, A.: Highly dispersed aerosols, in: *Topics in Current Aerosol Research*, pp. 1–86, US Army Foreign Science and Technology Centre, New York, 1971.
- Gabric, A., Qu, B., Rotstayn, L., and Shephard, J.: Global simulations of the impact on contemporary climate of a perturbation to the sea-to-air flux of dimethylsulfide, *Australian Meteorological and Oceanographic Journal*, 63, 365–376, <https://doi.org/10.22499/2.6303.002>, 2013.
- 545 Gabric, A. J., Simó, R., Cropp, R. A., Hirst, A. C., and Dachs, J.: Modeling estimates of the global emission of dimethylsulfide under enhanced greenhouse conditions, *Global Biogeochemical Cycles*, 18, <https://doi.org/10.1029/2003GB002183>, 2004.
- Grandey, B. S. and Wang, C.: Enhanced marine sulphur emissions offset global warming and impact rainfall., *Scientific reports*, 5, 13 055, <https://doi.org/10.1038/srep13055>, 2015.
- 550 Green, T. K. and Hatton, A. D.: The Claw Hypothesis: A New Perspective on the Role of Biogenic Sulphur in the Regulation of Global Climate, *Oceanography and Marine Biology*, 52, 315–336, <https://doi.org/10.1201/b17143-7>, 2014.
- Hoegh-Guldberg, O., Poloczanska, E. S., Skirving, W., and Dove, S.: Coral Reef Ecosystems under Climate Change and Ocean Acidification, *Frontiers in Marine Science*, 4, <https://doi.org/10.3389/fmars.2017.00158>, 2017.
- Hopkins, F. E., Bell, T. G., Yang, M., Suggett, D. J., and Steinke, M.: Air exposure of coral is a significant source of dimethylsulfide (DMS) to the atmosphere, *Scientific Reports*, 6, 36 031, <https://doi.org/10.1038/srep36031>, 2016.
- 555 Hughes, T. P., Kerry, J. T., Alvarez-Noriega, M., Alvarez-Romero, J. G., Anderson, K. D., Baird, A. H., Babcock, R. C., Beger, M., Bellwood, D. R., Berkemans, R., Bridge, T. C., Butler, I. R., Byrne, M., Cantin, N. E., Comeau, S., Connolly, S. R., Cumming, G. S., Dalton, S. J., Diaz-Pulido, G., Eakin, C. M., Figueira, W. F., Gilmour, J. P., Harrison, H. B., Heron, S. F., Hoey, A. S., Hobbs, J.-P. A., Hoogenboom, M. O., Kennedy, E. V., Kuo, C.-Y., Lough, J. M., Lowe, R. J., Liu, G., McCulloch, M. T., Malcolm, H. A., McWilliam, M. J., Pandolfi, J. M., Pears, R. J., Pratchett, M. S., Schoepf, V., Simpson, T., Skirving, W. J., Sommer, B., Torda, G., Wachenfeld, D. R., Willis, B. L., and Wilson, S. K.: Global warming and recurrent mass bleaching of corals, *Nature*, 543, 373–377, <https://doi.org/10.1038/nature21707>, 2017.
- 560 Hughes, T. P., Anderson, K. D., Connolly, S. R., Heron, S. F., Kerry, J. T., Lough, J. M., Baird, A. H., Baum, J. K., Berumen, M. L., Bridge, T. C., Claar, D. C., Eakin, C. M., Gilmour, J. P., Graham, N. A., Harrison, H., Hobbs, J. P. A., Hoey, A. S., Hoogenboom, M., Lowe, R. J., McCulloch, M. T., Pandolfi, J. M., Pratchett, M., Schoepf, V., Torda, G., and Wilson, S. K.: Spatial and temporal patterns of mass bleaching of corals in the Anthropocene, *Science*, 359, 80–83, <https://doi.org/10.1126/science.aan8048>, 2018.
- 565

- IPCC: Summary for Policy Makers, in: *Global Warming of 1.5°C. An IPCC Special Report on the impacts of global warming of 1.5°C above pre-industrial levels and related global greenhouse gas emission pathways, in the context of strengthening the global response to the threat of climate change*, edited by Masson-Delmotte, V., Zhai, P., Pörtner, H.-O., Roberts, D., Skea, J., Shukla, P., Pirani, A., Moufouma-Okia, W., C. Péan, R. P., Connors, S., Matthews, J., Chen, Y., Zhou, X., Gomis, M., Lonnoy, E., Maycock, T., Tignor, M., and Waterfield, T., p. 32, World Meteorological Organization, Geneva, Switzerland, 2018.
- 570 Jackson, R. L., Gabric, A., and Cropp, R.: Effects of ocean warming and coral bleaching on aerosol emissions in the Great Barrier Reef, Australia, *Scientific Reports*, 8, 1–11, <https://doi.org/10.1038/s41598-018-32470-7>, 2018.
- Jackson, R. L., Gabric, A. J., Cropp, R., and Woodhouse, M. T.: Dimethylsulfide (DMS), marine biogenic aerosols and the ecophysiology of coral reefs, *Biogeosciences*, 17, 2181–2204, <https://doi.org/10.5194/bg-17-2181-2020>, 2020a.
- 575 Jackson, R. L., Gabric, A. J., Woodhouse, M. T., Swan, H. B., Jones, G. B., Cropp, R., and Deschaseaux, E. S.: Coral Reef Emissions of Atmospheric Dimethylsulfide and the Influence on Marine Aerosols in the Southern Great Barrier Reef, Australia, *Journal of Geophysical Research: Atmospheres*, 125, <https://doi.org/10.1029/2019JD031837>, 2020b.
- Jones, G., Curran, M., Swan, H., and Deschaseaux, E.: Dimethylsulfide and Coral Bleaching: Links to Solar Radiation, Low Level Cloud and the Regulation of Seawater Temperatures and Climate in the Great Barrier Reef, *American Journal of Climate Change*, 06, 328–359, <https://doi.org/10.4236/ajcc.2017.62017>, 2017.
- 580 Jones, G., Curran, M., Deschaseaux, E., Omori, Y., Tanimoto, H., Swan, H., Eyre, B., Ivey, J., McParland, E., Gabric, A., and Cropp, R.: The flux and emission of dimethylsulfide from the Great Barrier Reef region and potential influence on the climate of NE Australia, *Journal of Geophysical Research: Atmospheres*, <https://doi.org/10.1029/2018JD029210>, 2018.
- Jones, G. B.: Coral animals combat stress with sulphur, *Nature*, 502, 634–635, <https://doi.org/10.1038/nature12698>, 2013.
- 585 Jones, G. B. and Trevena, A. J.: The influence of coral reefs on atmospheric dimethylsulphide over the Great Barrier Reef, Coral Sea, Gulf of Papua and Solomon and Bismarck Seas, *Marine and Freshwater Research*, 56, 85–93, <https://doi.org/10.1071/MF04097>, 2005.
- Jones, G. B., Curran, M., Broadbent, A., King, S., Fischer, E., and Jones, R. J.: Factors affecting the cycling of dimethylsulfide and dimethylsulfoniopropionate in coral reef waters of the great barrier reef, *Environmental Chemistry*, 4, 310–322, <https://doi.org/10.1071/EN06065>, 2007.
- 590 Kettle, A. J. and Andreae, M.: Flux of dimethylsulfide from the oceans : A comparison of updated data sets and flux models, *Journal of Geophysical Research*, 105, 793–26, <https://doi.org/10.1029/2000JD900252>, 2000.
- Kettle, A. J., Amouroux, D., Andreae, T. W., Bates, T. S., Berresheim, H., Bingemer, H., Boniforti, R., Helas, G., Leck, C., Maspero, M., Matrai, P., McTaggart, A. R., Mihalopoulos, N., Nguyen, B. C., Novo, A., Putaud, J. P., Rapsomanikis, S., Roberts, G., Schebeske, G., Sharma, S., Simó, R., Staubes, R., Turner, S., and Uher, G.: A global data base of sea surface dimethyl sulfide (DMS) measurements and a simple model to predict sea surface DMS as a function of latitude, longitude, and month, *Global Biogeochem. Cycles*, 13, 399–444, 1999.
- 595 King, A. D., Karoly, D. J., and Henley, B. J.: Australian climate extremes at 1.5 °C and 2 °C of global warming, *Nature Climate Change*, 7, <https://doi.org/10.1038/nclimate3296>, 2017.
- Kloster, S., Six, K. D., Feichter, J., Maier-Reimer, E., Roeckner, E., Wetzell, P., Stier, P., and Esch, M.: Response of dimethylsulfide (DMS) in the ocean and atmosphere to global warming, *Journal of Geophysical Research: Biogeosciences*, 112, 1–13, <https://doi.org/10.1029/2006JG000224>, 2007.
- 600 Kulmala, M., Laaksonen, A., and Pirjola, L.: Parameterizations for sulfuric acid/water nucleation rates, *Journal of Geophysical Research*, 103, 8301, <https://doi.org/10.1029/97JD03718>, 1998.

- Lamarque, J. F., Bond, T. C., Eyring, V., Granier, C., Heil, A., Klimont, Z., Lee, D., Liousse, C., Mieville, A., Owen, B., Schultz, M. G., Shindell, D., Smith, S. J., Stehfest, E., Van Aardenne, J., Cooper, O. R., Kainuma, M., Mahowald, N., McConnell, J. R., Naik, V., Riahi, K., and Van Vuuren, D. P.: Historical (1850–2000) gridded anthropogenic and biomass burning emissions of reactive gases and aerosols: Methodology and application, *Atmospheric Chemistry and Physics*, 10, 7017–7039, <https://doi.org/10.5194/acp-10-7017-2010>, 2010.
- Lana, A., Bell, T. G., Simó, R., Vallina, S. M., Ballabrera-Poy, J., Kettle, A. J., Dachs, J., Bopp, L., Saltzman, E. S., Stefels, J., Johnson, J. E., and Liss, P. S.: An updated climatology of surface dimethylsulfide concentrations and emission fluxes in the global ocean, *Global Biogeochemical Cycles*, 25, 1–17, <https://doi.org/10.1029/2010GB003850>, 2011.
- Leahy, S. M., Kingsford, M. J., and Steinberg, C. R.: Do Clouds Save the Great Barrier Reef? Satellite Imagery Elucidates the Cloud-SST Relationship at the Local Scale, *PLoS ONE*, 8, e70400, <https://doi.org/10.1371/journal.pone.0070400>, 2013.
- Liss, P. S. and Merlivat, L.: Air-Sea Gas Exchange Rates: Introduction and Synthesis, in: *The Role of Air-Sea Exchange in Geochemical Cycling*, edited by Buat-Ménard, P., pp. 113–127, Springer Netherlands, Dordrecht, https://doi.org/10.1007/978-94-009-4738-2_5, 1986.
- Magnan, A. K., Colombier, M., Billé, R., Joos, F., Hoegh-Guldberg, O., Pörtner, H.-O., Waisman, H., Spencer, T., and Gattuso, J.-P.: Implications of the Paris agreement for the ocean, *Nature Climate Change*, 6, 732–735, <https://doi.org/10.1038/nclimate3038>, 2016.
- Mahajan, A. S., Fadnavis, S., Thomas, M. a., Pozzoli, L., Gupta, S., Royer, S.-j., Saiz-Lopez, A., and Simó, R.: Quantifying the impacts of an updated global dimethyl sulfide climatology on cloud microphysics and aerosol radiative forcing, *Journal of Geophysical Research: Atmospheres*, 120, 2524–2536, <https://doi.org/10.1002/2014JD022687>, 2015.
- Mann, G. W., Carslaw, K. S., Spracklen, D. V., Ridley, D. A., Manktelow, P. T., Chipperfield, M. P., Pickering, S. J., and Johnson, C. E.: Description and evaluation of GLOMAP-mode: a modal global aerosol microphysics model for the UKCA composition-climate model, *Geosci. Model Dev*, 3, 519–551, <https://doi.org/10.5194/gmd-3-519-2010>, 2010.
- Mann, G. W., Carslaw, K. S., Ridley, D. A., Spracklen, D. V., Pringle, K. J., Merikanto, J., Korhonen, H., Schwarz, J. P., Lee, L. A., Manktelow, P. T., Woodhouse, M. T., Schmidt, A., Breider, T. J., Emmerson, K. M., Reddington, C. L., Chipperfield, M. P., and Pickering, S. J.: Intercomparison of modal and sectional aerosol microphysics representations within the same 3-D global chemical transport model, *Atmospheric Chemistry and Physics*, 12, 4449–4476, <https://doi.org/10.5194/acp-12-4449-2012>, 2012.
- Metzger, A., Verheggen, B., Dommen, J., Duplissy, J., Prevot, A. S. H., Weingartner, E., Riipinen, I., Kulmala, M., Spracklen, D. V., Carslaw, K. S., and Baltensperger, U.: Evidence for the role of organics in aerosol particle formation under atmospheric conditions., *Proceedings of the National Academy of Sciences of the United States of America*, 107, 6646–51, <https://doi.org/10.1073/pnas.0911330107>, 2010.
- Modini, R. L., Ristovski, Z. D., Johnson, G. R., He, C., Surawski, N., Morawska, L., Suni, T., and Kulmala, M.: New particle formation and growth at a remote, sub-tropical coastal location, *Atmospheric Chemistry and Physics Discussions*, 9, 12 101–12 139, <https://doi.org/10.5194/acpd-9-12101-2009>, 2009.
- Nishant, N., Sherwood, S. C., and Geoffroy, O.: Aerosol-induced modification of organised convection and top-of-atmosphere radiation, *npj Climate and Atmospheric Science*, 2, 33, <https://doi.org/10.1038/s41612-019-0089-1>, 2019.
- Pham, M., Muller, J. F., Brasseur, G. P., Granier, C., and Megie, G.: A three-dimensional study of the tropospheric sulfur cycle, *Journal of Geophysical Research*, 100, <https://doi.org/10.1029/95jd02095>, 1995.
- Plaisance, L., Caley, M. J., Brainard, R. E., and Knowlton, N.: The Diversity of Coral Reefs: What Are We Missing?, *PLoS ONE*, 6, e25 026, <https://doi.org/10.1371/journal.pone.0025026>, <http://dx.plos.org/10.1371/journal.pone.0025026>, 2011.
- Quinn, P. K. and Bates, T. S.: The case against climate regulation via oceanic phytoplankton sulphur emissions, *Nature*, 480, 51–56, <https://doi.org/10.1038/nature10580>, 2011.

- 640 Schwinger, J., Tjiputra, J., Goris, N., Six, K. D., Kirkevåg, A., Seland, O., Heinze, C., and Ilyina, T.: Amplification of global warming through pH dependence of DMS production simulated with a fully coupled Earth system model, *Biogeosciences*, 14, 3633–3648, <https://doi.org/10.5194/bg-14-3633-2017>, <https://bg.copernicus.org/articles/14/3633/2017/>, 2017.
- Seinfeld, J. H. and Pandis, S. N.: *Atmospheric Chemistry and Physics: From Air Pollution to Climate Change*, Wiley, New York, 1st edn., 1998.
- 645 Sheng, J. X., Weisenstein, D. K., Luo, B. P., Rozanov, E., Stenke, A., Anet, J., Bingemer, H., and Peter, T.: Global atmospheric sulfur budget under volcanically quiescent conditions: Aerosol-chemistry-climate model predictions and validation, *Journal of Geophysical Research Atmospheres*, 120, 256–276, <https://doi.org/10.1002/2014JD021985>, 2015.
- Six, K. D., Kloster, S., Ilyina, T., Archer, S. D., Zhang, K., and Maier-Reimer, E.: Global warming amplified by reduced sulphur fluxes as a result of ocean acidification, *Nature Climate Change*, 3, 975–978, <https://doi.org/10.1038/nclimate1981>, 2013.
- 650 Slinn, W. G.: Predictions for particle deposition to vegetative canopies, *Atmospheric Environment (1967)*, 16, 1785–1794, [https://doi.org/10.1016/0004-6981\(82\)90271-2](https://doi.org/10.1016/0004-6981(82)90271-2), 1982.
- Spalding, M., Burke, L., Wood, S. A., Ashpole, J., Hutchison, J., and zu Ermgassen, P.: Mapping the global value and distribution of coral reef tourism, *Marine Policy*, 82, 104–113, <https://doi.org/10.1016/j.marpol.2017.05.014>, 2017.
- Spracklen, D. V., Pringle, K. J., Carslaw, K. S., Chipperfield, M. P., and Mann, G. W.: A global off-line model of size-resolved
655 aerosol microphysics: I. Model development and prediction of aerosol properties, *Atmospheric Chemistry and Physics*, 5, 2227–2252, <https://doi.org/10.5194/acpd-5-3437-2005>, 2005.
- Swan, H. B., Jones, G. B., and Deschaseaux, E.: Dimethylsulfide, Climate and Coral Reef Ecosystems, in: *Proceedings of the 12th International Coral Reef Symposium*, edited by Yellowlees, D. and Hughes, T. P., James Cook University, Cairns, QLD, Australia, 2012.
- Swan, H. B., Jones, G. B., Deschaseaux, E. S. M., and Eyre, B. D.: Coral reef origins of atmospheric dimethylsulfide at Heron Island,
660 southern Great Barrier Reef, Australia, *Biogeosciences Discussions*, 14, 229–239, <https://doi.org/10.5194/bg-2016-387>, 2017.
- Tao, W. K., Chen, J.-P., Li, Z., Wang, C., and Zhang, C.: Impact of Aerosols on boundary layer clouds and precipitation, *Reviews of Geophysics*, 50, 2011RG000369, <https://doi.org/10.1029/2011RG000369.1>.INTRODUCTION, 2012.
- Taylor, K. E., Williamson, D., and Zwiers, F. W.: *AMIP Sea Surface Temperature and Sea Ice Concentration Boundary Conditions*, 2015.
- Tesdal, J. E., Christian, J. R., Monahan, A. H., and Von Salzen, K.: Sensitivity of modelled sulfate aerosol and its radiative effect on climate
665 to ocean DMS concentration and air-sea flux, *Atmospheric Chemistry and Physics*, 16, 10847–10864, <https://doi.org/10.5194/acp-16-10847-2016>, 2016.
- Thomas, M. A., Suntharalingam, P., Pozzoli, L., Rast, S., Devasthale, A., Kloster, S., Feichter, J., and Lenton, T. M.: Quantification of DMS aerosol-cloud-climate interactions using the ECHAM5-HAMMOZ model in a current climate scenario, *Atmospheric Chemistry and Physics*, 10, 7425–7438, <https://doi.org/10.5194/acp-10-7425-2010>, 2010.
- 670 Thomas, M. A., Suntharalingam, P., Pozzoli, L., Devasthale, A., Kloster, S., Rast, S., Feichter, J., and Lenton, T. M.: Rate of non-linearity in DMS aerosol-cloud-climate interactions, *Atmospheric Chemistry and Physics*, 11, 11175–11183, <https://doi.org/10.5194/acp-11-11175-2011>, 2011.
- UNEP-WCMC, WorldFish Centre, WRI, and TNC: *Global distribution of coral reefs*, compiled from multiple sources including the Millennium Coral Reef Mapping Project. Version 1.3. Includes contributions from IMaRS-USF and IRD (2005), IMaRS-USF (2005) and
675 Spalding et al. (2001)., Tech. rep., UNEP World Conservation Monitoring Centre, Cambridge (UK), 2010.

- van der Werf, G. R., Randerson, J. T., Giglio, L., van Leeuwen, T. T., Chen, Y., Rogers, B. M., Mu, M., van Marle, M. J. E., Morton, D. C., Collatz, G. J., Yokelson, R. J., and Kasibhatla, P. S.: Global fire emissions estimates during 1997–2015, *Earth System Science Data Discussions*, Online, 1–43, <https://doi.org/10.5194/essd-2016-62>, 2017.
- 680 van Vuuren, D. P., Edmonds, J., Kainuma, M., Riahi, K., Thomson, A., Hibbard, K., Hurtt, G. C., Kram, T., Krey, V., Lamarque, J. F., Masui, T., Meinshausen, M., Nakicenovic, N., Smith, S. J., and Rose, S. K.: The representative concentration pathways: An overview, *Climatic Change*, 109, 5–31, <https://doi.org/10.1007/s10584-011-0148-z>, 2011.
- Vincent, E. M., Lengaigne, M., Menkes, C. E., Jourdain, N. C., Marchesiello, P., and Madec, G.: Interannual variability of the South Pacific Convergence Zone and implications for tropical cyclone genesis, *Climate Dynamics*, 36, 1881–1896, <https://doi.org/10.1007/s00382-009-0716-3>, 2011.
- 685 Vlahos, P. and Monahan, E. C.: A generalized model for the air-sea transfer of dimethyl sulfide at high wind speeds, *Geophysical Research Letters*, 36, L21 605, <https://doi.org/10.1029/2009GL040695>, 2009.
- Walters, D. N., Williams, K. D., Boutle, I. A., Bushell, A. C., Edwards, J. M., Field, P. R., Lock, A. P., Morcrette, C. J., Stratton, R. A., Wilkinson, J. M., Willett, M. R., Bellouin, N., Bodas-Salcedo, A., Brooks, M. E., Copsey, D., Earnshaw, P. D., Hardiman, S. C., Harris, C. M., Levine, R. C., Maclachlan, C., Manners, J. C., Martin, G. M., Milton, S. F., Palmer, M. D., Roberts, M. J., Rodríguez, J. M.,
- 690 Tennant, W. J., and Vidale, P. L.: The Met Office Unified Model Global Atmosphere 4.0 and JULES Global Land 4.0 configurations, *Geoscientific Model Development*, 7, 361–386, <https://doi.org/10.5194/gmd-7-361-2014>, 2014.
- Wilks, D. S.: *Statistical Methods in the Atmospheric Sciences*, Elsevier, 3rd edn., <https://doi.org/10.1016/B978-0-12-385022-5.00026-9>, 2011.
- Woodhouse, M. T., Carslaw, K. S., Mann, G. W., Vallina, S. M., Vogt, M., Halloran, P. R., and Boucher, O.: Low sensitivity of
- 695 cloud condensation nuclei to changes in the sea-air flux of dimethyl-sulphide, *Atmospheric Chemistry and Physics*, 10, 7545–7559, <https://doi.org/10.5194/acp-10-7545-2010>, 2010.
- Woodhouse, M. T., Luhar, A. K., Stevens, L., Galbally, I., Thatcher, M., Uhe, P., Noonan, J., and Molloy, S.: Australian reactive-gas emissions in a global chemistry-climate model and initial results, *Air Quality and Climate Change*, 49, 31–38, 2015.
- Yoch, D. C.: Dimethylsulfoniopropionate : Its Sources , Role in the Marine Food Web , and Biological Degradation to Dimethylsulfide, *Applied and Environmental Microbiology*, 68, 5804–5815, <https://doi.org/10.1128/AEM.68.12.5804-5815.2002>, 2002.
- 700 Zelinka, M. D., Myers, T. A., McCoy, D. T., Po-Chedley, S., Caldwell, P. M., Ceppi, P., Klein, S. A., and Taylor, K. E.: Causes of Higher Climate Sensitivity in CMIP6 Models, *Geophysical Research Letters*, 47, 1–12, <https://doi.org/10.1029/2019GL085782>, 2020.
- Zhang, L.: A size-segregated particle dry deposition scheme for an atmospheric aerosol module, *Atmospheric Environment*, 35, 549–560, [https://doi.org/10.1016/S1352-2310\(00\)00326-5](https://doi.org/10.1016/S1352-2310(00)00326-5), 2001.