

3-D tomographic observations of Rossby wave breaking over the Northern Atlantic during the WISE aircraft campaign in 2017

Lukas Krasauskas¹, Jörn Ungermann^{1,2}, Peter Preusse¹, Felix Friedl-Vallon³, Andreas Zahn³, Helmut Ziereis⁴, Christian Rolf¹, Felix Plöger¹, Paul Konopka¹, Bärbel Vogel¹, and Martin Riese¹

¹Institute of Energy and Climate Research – Stratosphere (IEK-7), Forschungszentrum Jülich, Germany

²Jülich Aachen Research Alliance (JARA), Forschungszentrum Jülich, Germany

³The Institute of Meteorology and Climate Research (IMK), Karlsruhe Institute of Technology, Germany

⁴The German Aerospace Center (Deutsches Zentrum für Luft- und Raumfahrt; DLR), Institute for Atmospheric Physics

Correspondence: L. Krasauskas (l.krasauskas@fz-juelich.de)

Abstract. This paper presents measurements of ozone, water vapour and nitric acid (HNO_3) in the upper troposphere/lower stratosphere (UTLS) over North Atlantic and Europe. The measurements were acquired with the Gimballed Limb Observer for Radiance Imaging of the Atmosphere (GLORIA) during the Wave Driven Isentropic Exchange (WISE) campaign in October 2017. GLORIA is an airborne limb imager capable of acquiring both 2-D data sets (curtains along the flight path) and, when the carrier aircraft is flying around the observed air mass, spatially highly resolved 3-D tomographic data. Here we present a case study of a Rossby wave (RW) breaking event observed during two subsequent flights two days apart. RW breaking is known to steepen tracer gradients and facilitate stratosphere-troposphere exchange (STE). Our measurements reveal complex spatial structures in stratospheric tracers (ozone and nitric acid) with multiple vertically stacked filaments. Backward trajectory analysis is used to demonstrate that these features are related to several previous Rossby wave breaking events and that the small-scale structure of the UTLS in the Rossby wave breaking region, which is otherwise very hard to observe, can be understood as stirring and mixing of air masses of tropospheric and stratospheric origin. It is also shown that a strong nitric acid enhancement observed just above the tropopause is likely a result of NO_x production by lightning activity. The measurements showed signatures of enhanced mixing between stratospheric and tropospheric air near the polar jet with some transport of water vapour into the stratosphere. Some of the air masses seen in 3-D data were encountered again two days later, stretched to very thin filament (horizontal thickness down to 30 km at some altitudes) rich in stratospheric tracers. This repeated measurement allowed us to directly observe and analyse the progress of mixing processes in a thin filament over two days. Our results provide direct insight into small-scale dynamics of the UTLS in the Rossby wave breaking region, which is of great importance to understanding STE and poleward transport in the UTLS.

1 Introduction

The upper troposphere and lower stratosphere (UTLS) is the atmospheric region heavily influenced by both stratospheric and tropospheric air masses and is characterised by sharp gradients of many tracer concentrations in both vertical and horizontal

directions. The composition of the UTLS plays a key role in stratosphere-troposphere exchange (STE) (Gettelman et al., 2011), has a large effect on radiative forcing (Forster and Shine, 1997; Riese et al., 2012) and hence on climate change.

Rossby wave (RW) activity (e. g. Salby, 1984) is one of the major processes that shapes the dynamics and structure of UTLS. In particular, RW breaking is known to steepen the tracer gradients and act as a horizontal transport barrier (McIntyre and Palmer, 1983, 1984) and facilitate STE (Vaugh et al., 1994; Günther et al., 2008; Rolf et al., 2015). RW breaking events can transport wet polluted air masses from the troposphere into the lower stratosphere, which is important for the transport of ozone-depleting very short-lived substances and radiatively active substances into the lower stratosphere. The tendency of RW breaking events to create complex spatial distributions of tracers, such as very thin filamentary structures, has been known for some time both from theoretical work (Polvani and Plumb, 1992; Scott and Cammas, 2002) and studies combining modelling with *in situ* aircraft measurements (e.g. Vaugh et al. 1994, Vogel et al. 2011, Konopka and Pan (2012)) or satellite data (Bacmeister et al., 1999; Pan et al., 2009). RW breaking plays an important role in the formation of the extratropical transition layer (ExTL; Shapiro, 1980; Kritz et al., 1991; Hoor et al., 2004), characterised by mixing of tropospheric and stratospheric air masses. Quantifying these mixing processes as well as modelling ExTL structure in general is still a major challenge (e.g. Hegglin et al., 2010). Observing RW breaking, as well as the related mixing and transport, remains difficult: satellite instruments have global coverage, but typically lack resolution (vertical resolution in the UTLS is particularly problematic) for the characteristically small scales involved in wave breaking, while *in situ* observations from aircraft are very highly resolved and accurate, but their spatial coverage is limited to the flight path of the carrier aircraft. Aircraft based limb sounders provide the very attractive middle ground between satellites and *in situ* with better resolution than the former and much better spatial coverage than the latter.

In this paper, we present data acquired by the Gimballed Limb Observer for Radiance Imaging of the Atmosphere (GLORIA; Friedl-Vallon et al., 2014), an airborne imaging IR spectrometer. It can be used to retrieve temperature and volume mixing ratios (VMR) of a number of tracers, including ozone, water vapour, nitric acid (HNO_3), trichlorofluoromethane (CFC-11), chlorine nitrate (ClONO_2), and peroxyacetyl nitrate (PAN) among others. Besides the 2-D slices of the atmosphere acquired by combining a set of atmospheric profiles along the aircraft flight path, GLORIA can be flown around an air volume to acquire a data set suitable for 3-D tomographic retrieval of temperature and trace gas concentrations (Ungermaun et al., 2010). 3-D data products have measurement resolution better than 0.2 km vertically and 20 km horizontally. Filamentation and mixing are inherently 3-D processes, their full analysis requires dimensions of features in all spatial directions. These are immediately available when working with 3-D data, while *in situ* data often involves complex theory or model based argumentation to compensate for the sparse measurements. Before this study, GLORIA 3-D retrievals were used to study internal gravity waves (Krisch et al., 2017).

The main focus of this case study is to determine to what extent the small scale tracer structure of UTLS around the polar jet can be understood as a consequence of Rossby wave related stratosphere-troposphere exchange and how this structure is effected by mixing. The outcome of this investigation could further be used to constrain mixing in models as well as to gain insights into STE transport pathways.

The Wave Driven Isentropic Exchange (WISE) measurement campaign took place in Shannon, Ireland in September-October 2017. A flight on 7 October (Figure 1a) studied an early stage of a Rossby Wave breaking event. Tomographic 3-D GLORIA observations of ozone and nitric acid were performed around a heavily meandered part of the polar jet, resulting in a unique data set with signatures of multiple vertically stacked filaments. The origins of the filaments were studied using backward trajectories computed by the Chemical Lagrangian model of the Stratosphere (CLaMS; Pommrich et al., 2014). The same air mass was observed again during the subsequent flight on 9 October, in the late stage of the wave breaking event (Figure 1b). This repeated measurement was used to directly observe mixing in progress by a match of air parcels and comparing the degree of mixing via tracer-tracer correlations. It is also shown that a strong nitric acid enhancement observed just above the tropopause could not have resulted from the descent of stratospheric air masses and is likely a result of NO_x production by lightning activity.

The paper is organised as follows. Section 2 briefly describes the GLORIA instrument, data analysis techniques and introduces the reader to the meteorological situation during the two research flights discussed in this paper. Measurement results and analysis of the observed phenomena are presented in Section 3. The effects of Rossby wave breaking on UTLS in the region around the polar jet is discussed in Section 3.1 by comparing the vicinity of the jet to surrounding areas in terms of filamentation and tracer correlations. Section 3.2 presents in depth analysis of the small scale structure observed using 3-D reconstruction within the hexagonal flight pattern of 7 October flight. Section 3.3 is dedicated to nitric acid-ozone correlation analysis and the origins of the nitric acid enhancement observed just above tropopause. Section 3.4 presents analysis of the thin filament of stratospheric tracer rich air from 9 October flight and mixing analysis based on air parcels observed during both flights. Finally, conclusions are given in Section 4. The appendices provide technical information about data retrieval methods, errors and validation.

2 Measurement and analysis techniques

2.1 GLORIA instrument and retrieval methods

The Gimballed Limb Observer of Air Radiance in the Atmosphere (GLORIA) is an airborne IR limb imager. It is a Michelson interferometer and acquires spectra in the 770 to 1400 cm^{-1} range (Riese et al., 2005; Friedl-Vallon et al., 2014). Spectral resolution depends on measurement mode. The best possible spectral sampling of 0.0625 cm^{-1} is achieved in the so called *chemistry mode* used for retrieving a large number of trace species with often low mixing ratios. One full interferogram is recorded in about 13 s in this mode. In *dynamics mode*, spectral sampling is reduced to 0.2 cm^{-1} , but the faster acquisition rate of ≈ 5 s per interferogram allows for instrument panning, i.e. the observation direction with respect to aircraft heading alternates between 10 values in between 45° and 135° . This is useful for observing dynamically complex structures from different directions. The measurements used for 3-D tomography are acquired in this mode.

The detector of the spectrometer is a 2-D array with 128×48 effective pixels and $4^\circ \times 1.5^\circ$ field of view in vertical and horizontal directions, respectively. In limb observation geometry, the instrument looks in a close to horizontal direction. Infrared radiation along any line of sight comes mostly from the lowest altitude point on that line of sight (called *tangent point*). That

way, a large range of altitudes can be recorded with the 2-D detector in a single interferogram. This set-up also allows for very high vertical resolution of up to 200 m of the retrieved atmospheric quantities. Limb observers can, however, only provide detailed information on the air masses at and below flight altitude. The WISE measurement campaign discussed here was conducted with the German HALO research aircraft at flight altitudes up to 15 km. All retrieved data is limited by this altitude.

Best resolution is achieved when the aircraft is flying around the observed air mass in a close-to-circular flight pattern and also panning the instrument (dynamics mode). Due to practical considerations, the actual tomography-optimised flight paths are typically hexagonal and around 400 km in diameter (Ungermann et al., 2010).

Both 2-D and 3-D retrievals are performed by means of inverse modelling, using the Jülich Rapid Spectral Simulation Code Version 2 (JURASSIC2). The radiative transfer model (Hoffmann et al., 2008) (employed as the forward model) uses the emissivity growth approximation method (Weinreb and Neuendorffer, 1973; Gordley and Russell, 1981) and the Curtis-Godson approximation (Curtis, 1952; Godson, 1953). Levenberg-Marquardt algorithm (Marquardt, 1963) and conjugate gradients solver (Hestenes and Stiefel, 1952) are used for inverse modelling. For more information about 3-D tomography implementation refer to Ungermann et al. (2010, 2011) and Krasauskas et al. (2019). In general, 3-D tomographic retrievals are computationally expensive, typically requiring a few hundred of CPU core-hours to complete.

The tomographic retrieval combines data from measurements taken over a period of 1 h and 45 min. Some locations are observed from one direction in the beginning of this period, and then again from another angle near the end of it. If there is significant change in the measured parameters during that time, these observations will no longer agree. This problem is solved by introducing advection compensation (Ungermann et al., 2011). The main idea of the approach is as follows. We choose a time t_v for which the retrieval will be valid (16:50 UTC in this case, approximately the middle of the measurement time window). As it is the case with most instruments, GLORIA retrieval data is provided on a discrete grid. If a measurement was taken at a time t_m , one can relate all required atmospheric parameters (temperature, trace gas concentrations) at each grid point at time t_m to the actual retrieved quantities (atmospheric parameters at time t_v) by advecting grid points at time t_m to time t_v and reinterpolating. In practice, this advection is not performed for every t_m , but only to a number of preset values and then temporal interpolation is used.

Table 1. Spectral windows for 3-D retrieval

#	Spectral range, cm^{-1}	#	Spectral range, cm^{-1}
1	791.0 - 793.0	6	980.0 - 984.2
2	863.0 - 866.0	7	992.6 - 997.4
3	892.6 - 896.2	8	1000.6 - 10006.2
4	900.0 - 903.0	9	1010.0 - 1014.2
5	956.8 - 962.4		

The 3-D retrievals of ozone and nitric acid (HNO_3) shown in this paper were performed using radiances from the spectral windows given in Table 1. The a priori data for air temperature and pressure was taken from the European Centre for Medium-Range Weather Forecasts (ECMWF Dee et al., 2011) operational analyses. Whole Atmosphere Community Climate Model (WACCM; e.g. Garcia et al., 2007) data was chosen as a priori for ozone and HNO_3 .

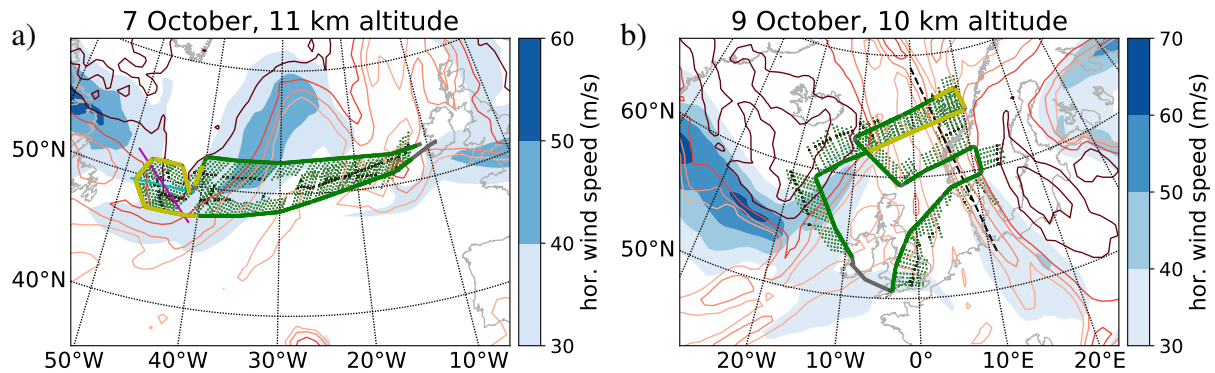


Figure 1. Synoptic situation during measurement flights. Flight track shown in green for chemistry mode, yellow for dynamics mode measurements. Tangent points are depicted as green dots. Potential vorticity contours for 2, 4, 6, and 8 PVU, respectively, are shown in increasingly darker reddish colours. Magenta and cyan lines in panel a) mark the position of cuts shown in Figure 7, dashed black line in panel b) marks a filament with older air from the stratosphere (see Section 2.2 for discussion)

2.2 Measurement flights

On 7 October 2017 an onset of a Rossby wave breaking event was predicted over the western part of North Atlantic using ECMWF forecast products. A research flight was planned to probe the UTLS above the polar jet (Figure 1a). The HALO aircraft took off from Shannon, Ireland, at around 12:30 UTC and landed just after 20:00 UTC. The GLORIA instrument performed well and measured for the whole duration of the flight. These measurements were used for 1-D retrievals, and the resulting profiles were combined into a 2-D data product (curtain) along the flight path.

A hexagonal flight pattern in the Rossby wave breaking region itself was flown between 16:00 UTC and 17:45 UTC, allowing for a 3-D tomographic analysis of the volume. Due to the limited aircraft range, flying a full hexagon this far from the operating base was not possible, hence only 5 sides were flown. Also, after flying 2 of the 5 sides, HALO climbed from the altitude of 13.4 km to around 13.9 km. For best results and easier processing, one would wish to avoid climbing in the middle of the tomographic data acquisition. In this case, however, flying at the higher altitude was not possible earlier due to the weight of the remaining fuel. Also the benefits of flying the last 3 hexagon sides higher and hence observing a wider altitude range were deemed more important. This choice was further motivated by the presence of optically thick clouds at low altitudes. In parts of the hexagon, cloud tops reached to almost 10.5 km altitude, thereby restricting the altitude range available for retrieval. Another complication for producing 3-D data was the high wind speeds of the polar jet, reaching more than 40 m/s, resulting in significant advection of air masses during the measurement acquisition time (see Section 2.1 for solution to this particular problem). The measured air masses could be successfully reconstructed in 3-D despite of these challenges. The tomographic retrieval is complemented by 2-D data (curtains of profiles obtained from 1D retrievals) of the region immediately east of the hexagon, which also proved to be of interest.

By 9 October 2017, the wave breaking event was at its final stage and most of the air masses that were present in the hexagon flown two days before were stretched into a thin filament extending from 70°N, 0°E to 51°N, 12°E. This filament can be seen

as an elongated 2 PVU contour in Figure 1b and is highlighted by a dashed black line. A research flight on 9 October was flown to investigate the late stage of this RW breaking by measuring this filament. The aircraft crossed the filament a total of
140 four times during this flight, as seen in Figure 1b. The flight lasted from 08:30 UTC till 17:00 UTC. In this paper, we present only 2-D data products from this flight.

2.3 Backward trajectories

Backward trajectory calculations from the chemical Lagrangian model of the Stratosphere (CLaMS; Pommrich et al. 2014) were used for measurement data analysis. CLaMS back trajectory calculations are very well suited to analyse the detailed
145 transport pathway of an air parcel in the UTLS and were applied to a variety of problems such as transport in the tropics as well as STE processes (e.g. Ploeger et al. 2012, Vogel et al. 2014, Li et al. 2018). The model was driven by winds obtained from ECMWF operational analysis data. An air parcel was placed at each grid point of the GLORIA data product, and the trajectories of these parcels were traced back for up to 1 month. Mixing and chemical processes, which are normally included in the 3-D version of CLaMS model, are not used for backward trajectory calculations. One of the main uses of backward
150 trajectories was to determine the "age-of-air", i.e. time that an air parcel in question spent in stratosphere. The maximum potential vorticity gradient tropopause (Kunz et al., 2011) was used to define stratospheric and tropospheric regions along the calculated backward trajectories. This tropopause definition is based on the product of isentropic PV gradients and wind speed. It is well-suited for our study as it is generally in good agreement with chemical discontinuity in trace gas distributions.

3 Results and discussion

155 3.1 Filamentation and mixing near and away from the polar jet

The results presented in this section are based on the GLORIA 2-D data products. They were generated along most parts of both flights considered in this work (Figure 1). The measured volume mixing ratios of ozone, water vapour and nitric acid for 7 October flight are presented in Figure 2. The retrieved values are shown as functions of time and altitude, but it is important to remember that the GLORIA 2-D curtains do not represent a vertical cut through the atmosphere along the flight path but a
160 slant curtain. At flight altitude, the data shown represents the atmosphere ~ 10 km to the right of the aircraft, while at lowest altitude this distance increases to up to 250 km. The locations of the tangent points of the observations are shown in Figure 1a. The missing data in Figure 2 is due to aircraft manoeuvres and optically thick clouds. In the cases where clouds are present, atmospheric properties can only be retrieved in the regions above cloud tops. The retrieval of 2-D data was also performed for the hexagonal part of the flight path (from 16:15 to 17:42 UTC) for consistency, even though the 3-D data are available for that
165 part of the flight. 2-D data products are valid at the measurement acquisition time, indicated in the plots.

Generally, water vapour has high volume mixing ratios in the extratropical troposphere and is much less abundant in the stratosphere due to freezeout in particular around the tropical tropopause (e.g. Schiller et al., 2009). O_3 and HNO_3 are more abundant in stratosphere, where their abundances are controlled by photochemistry, and less abundant in the troposphere.

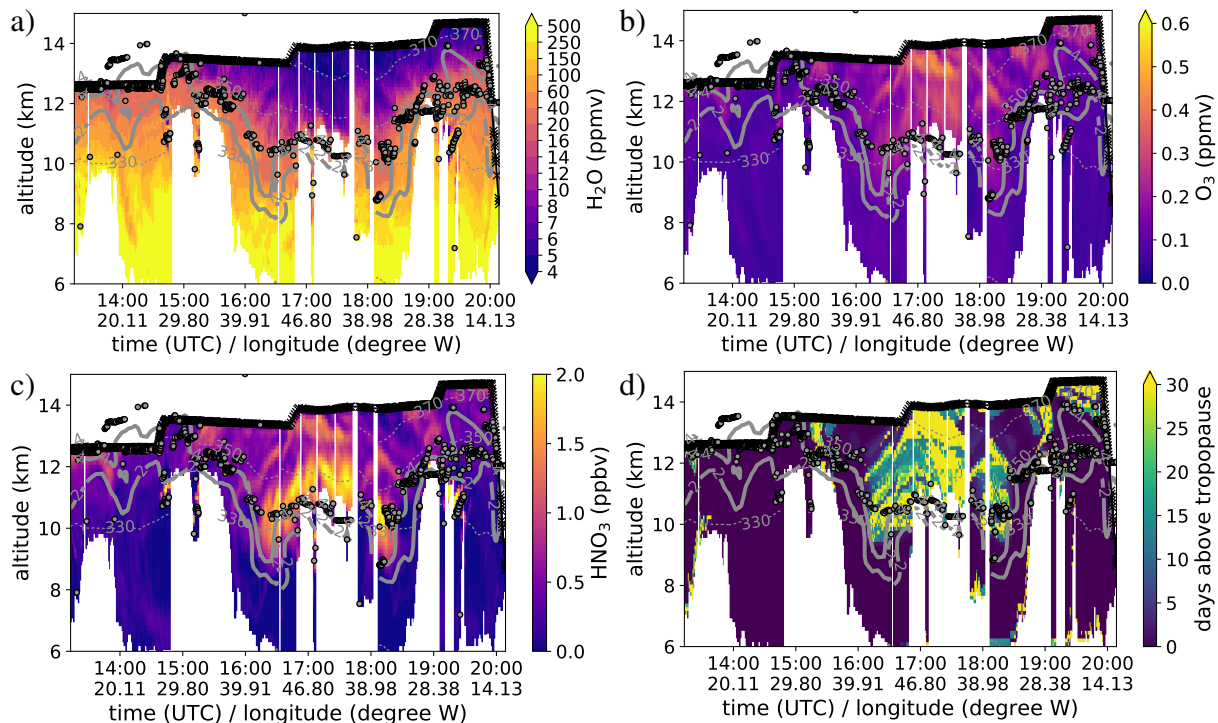


Figure 2. Panels a-c): 7 October H_2O , O_3 and HNO_3 2-D GLORIA data along the flight path shown in Figure 1a. Panel d): stratosphere residence time (details in Section 3.1). All residence times of 30 days or more are depicted in the same colour. Isentropes are shown as dashed lines, 2 and 4 PVU contours – thick solid lines, thermal tropopause – dots.

Generally these two gases have a compact positive correlation in the deep stratosphere. The correlation is attributed mostly to source and sink regions being similar for the two gases, and not a result of chemical interactions between them (Section 3.3; Popp et al., 2009). Retrievals generally confirm this generally expected behaviour, but also show heavily filamented structures in all the tracers presented here. There is a clear positive correlation between ozone and nitric acid: ozone-rich air masses tend to have high nitric acid concentrations and vice versa. One can also see negative correlation between water vapour and ozone (or, alternatively, between water vapour and nitric acid), especially around 16:15 and 18:30 UTC, where the H_2O structure shows more filamentation. This suggests that the whole structure was formed by STE: air parcels rich in ozone and nitric acid (old air) come from higher up in the stratosphere, while wet air masses have relatively recently resided in the troposphere (young air).

The origins of the filaments were investigated using CLaMS backward trajectory calculations. The typical mixdown time scale (i.e. time needed for the mixing to erase all structure) for the Rossby wave surf zone in the lower stratosphere is of the order of one month (Juckes and McIntyre, 1987). Hence, in this region, one may expect small scale ozone-poor structures to be a consequence of transport of ozone-poor tropospheric air across the dynamical tropopause within the last month. Based on this reasoning, we plotted the air parcel residence time in the stratosphere (i.e., time spent above the maximum potential vorticity gradient tropopause) of each stratospheric air parcel observed by GLORIA (Figure 2d). There is good agreement between

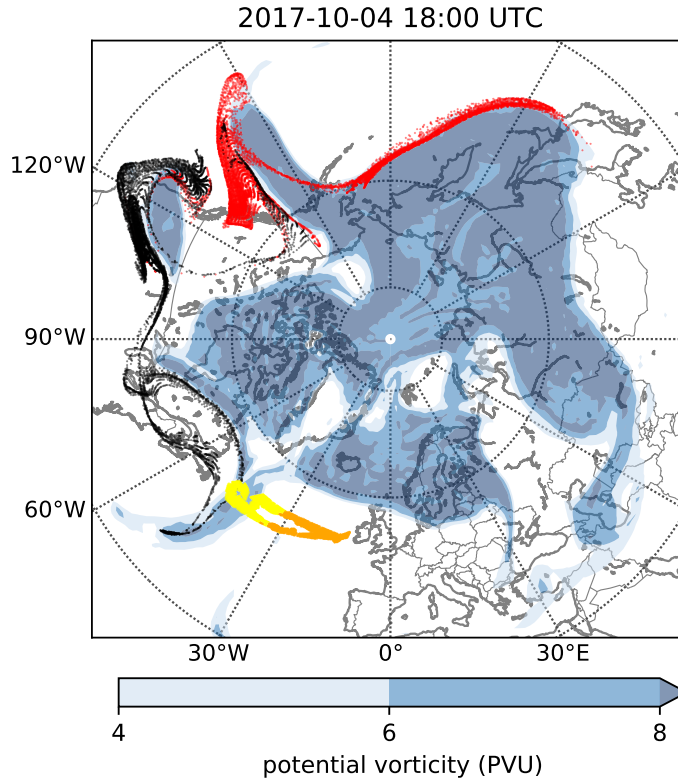


Figure 3. Air mass origin plot for the retrieved 2-D data. Horizontal cut at 11 km altitude 3 days before measurement flight is shown. Locations of GLORIA observations on 7 October: yellow - near polar jet (west from 30° W, PV > 1 PVU), orange – away from jet (all the rest). The positions of "yellow" air parcels 3 days before measurement are shown in red, of "orange" air parcels – in black.

young air masses in Figure 2d and ozone-poor and HNO₃-poor air in GLORIA retrieval (Figure 2b,c). Almost all ozone rich
185 (>0.25 ppmv) air masses, including thin filaments, have stayed in the stratosphere for more than one month. Younger air, conversely, is almost always ozone poor. Also, wet air filaments correspond to young air masses from the troposphere, that can be seen best around 16:15 UTC, 10-13 km altitude; 17:50 UTC, 11.5 km altitude and 18:40 UTC, 13-14 km altitude. Unfortunately, the air mass within the hexagonal flight pattern (16:15 to 17:42 UTC) was very dry, significant water vapour structures could only be found around the very edges of the hexagon and were advected outwards while this pattern was flown.
190 The 3-D tomographic water vapour retrieval was therefore not performed.

HALO took off from Ireland, which was, at the time of the flight (7 October), south of the polar jet and therefore not directly affected by air masses of the polar UTLS, the polar jet and Rossby waves that shape it. One can clearly see the jet (in wind speed) and Rossby waves (in PV) in Figure 1a. Conversely, the western part of the flight, including the hexagonal flight pattern, is directly on top of the polar jet and therefore heavily influenced by it and the RW surf zone. To illustrate this difference, we
195 divided the observed air masses into those "near polar jet" (we defined these as air masses observed at locations west of 30°W and with PV > 1 PVU at 11 km altitude), and "away from the jet" (all the rest). The locations of observation for these air

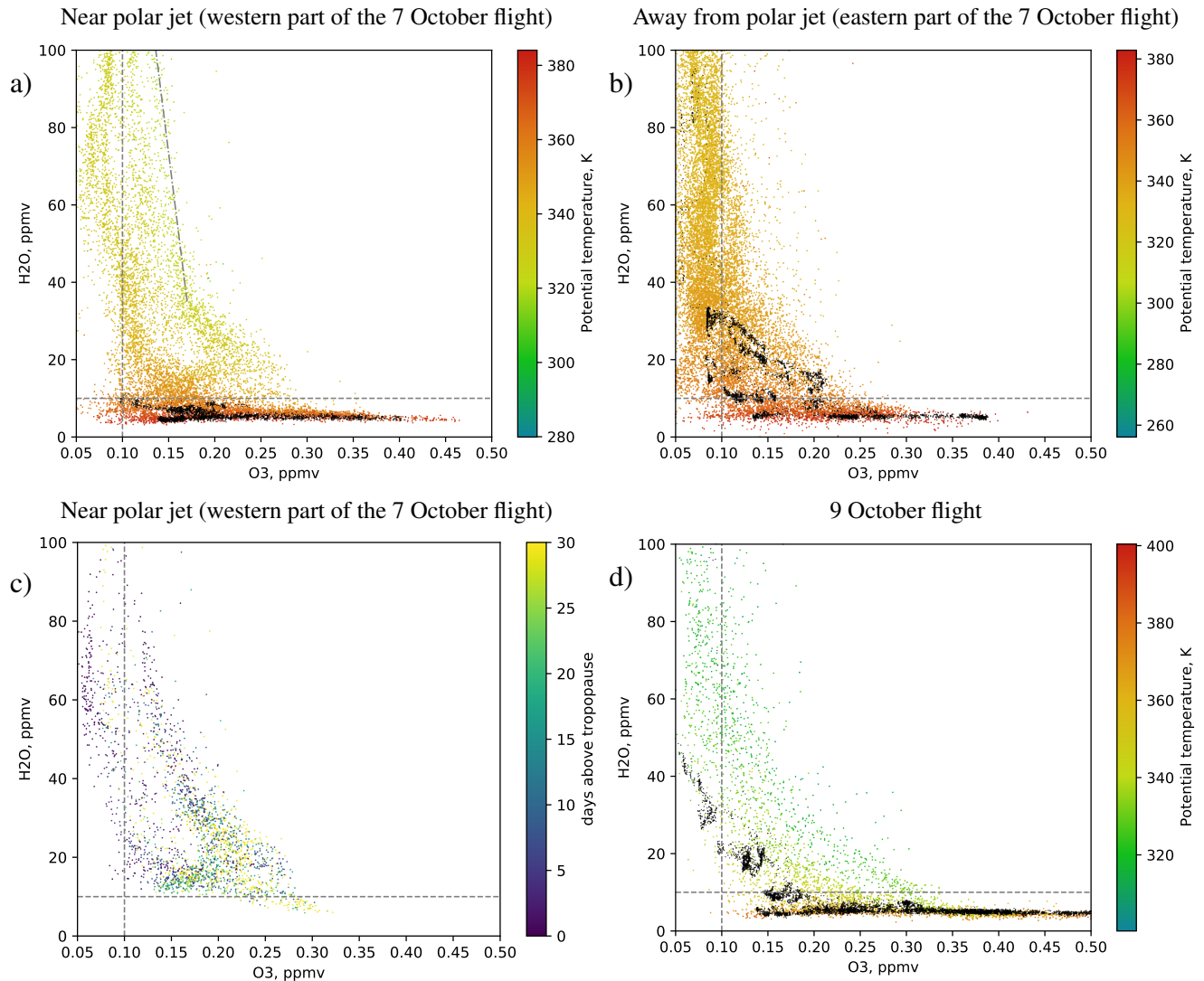


Figure 4. Ozone - water vapour tracer-tracer correlations. Black dots represent in situ measurements at flight altitude. O₃ was measured by FAIRO (Zahn et al., 2012), H₂O – by FISH (Meyer et al., 2015). The dashed grey lines mark 0.1 and 10 ppmv values of ozone and water vapour, respectively, as discussed in the main text. In Panels a,b,d GLORIA measurements are colour-coded in potential temperature. In Panel c only stratospheric air parcels below $\theta = 350$ K are shown, all stratosphere residence times greater or equal to 30 days are depicted in the same colour.

masses are shown in yellow and orange, respectively, in Figure 3. The PV at 11 km is plotted there as well and shows Rossby waves. The polar jet is located on the edges of the high-PV area (see Figure 1). The backward trajectory calculations show the position of the observed air parcels three days before observation. We see that the air masses "away from the jet" (black) came from lower latitudes and did not travel as far around the pole. The air found near the jet (red) has stayed near the jet for the last 3 days at least. The air parcels measured on 7 October as a rather compact group were stretched through a long portion of polar jet on the other side of the pole just 3 days ago. These air masses were brought together by strong wind shear and

subsequently transported far away by the strong westerlies of the jet. Note as well that the original positions of "near jet" air look especially dispersed around a breaking Rossby wave at 140° W. Such a sparse group of air parcels could only be brought
205 into a compact group by strong wind shear and stirring in the breaking RW. This difference in air mass origin explains, why most of the filamentation in trace gas structure can be seen between 15:10 and 19:10 UTC ("near jet" air). The origins of air inside the hexagonal flight pattern will be studied in more detail in Section 3.2.

To highlight the effect of RW breaking, we provide separate O₃ – H₂O tracer-tracer plots for "near jet" air masses (Figure 4a) and the rest (Figure 4b). We designate air parcels as stratospheric, if they contain less than 10 ppm water vapour, and tropo-
210 spheric, if they have less than 0.1 ppm ozone. Air parcels that fall into neither of these two categories are typically products of mixing between stratospheric and tropospheric air (Proffitt et al., 1990; Hoor et al., 2002; Pan et al., 2004). When compared to in situ measurements, GLORIA data has lower spatial resolution, making it more difficult to identify individual mixing lines, but it has better spatial coverage allowing us to see a more complete picture of mixing across a range of altitudes. In the eastern part of the flight there is evidence of some mixing, but only between end members with relatively low values of both ozone
215 and water vapour. This indicates that stratospheric air masses do not penetrate far into the troposphere and vice versa. Since in situ observations represent a more spatially limited data set (black dots), two separate mixing lines can be discerned there. The "western" part of the flight, close to the polar jet, shows evidence of more vigorous mixing. The air mass with around 0.2 ppmv O₃ and 30 ppmv H₂O could only have originated from a substantially deeper STE than that needed to explain the ozone-water vapour structure of the eastern part of the flight. As the aircraft stayed in stratosphere for the whole western part
220 of the flight, all in situ data shows stratospheric signatures.

A particularly interesting feature in the western part of the flight is a distinct branch of wet (> 20 ppmv water) air with potential temperatures consistent with the upper troposphere in this region and enhanced ozone (> 0.15 ppmv), suggesting an influx of stratospheric (or partially mixed with stratospheric) air into relatively low levels and intense mixing. This feature was studied in detail using backward trajectories. Figure 4c shows the stratosphere residence time for all air parcels observed in the
225 stratosphere below 350 K potential temperature level during the western part of the flight. Firstly, it is notable that majority of the air observed in this region seems to be mixed to some degree. This is evident both from the general position of air parcels in tracer-tracer space and the strong variation of stratosphere residence times within the tracer-tracer space structures, suggesting different origins. Also, points with more than 40 ppmv water and more than 10 ppmv ozone seem to be arranged in mixing lines. The line highlighted in Figure 4a appeared in the observations between 18:15 and 18:25 UTC (a 160 km long
230 flight stretch). All measurements from that part of the flight below 330 K potential temperature and below 150 ppmv water vapour are shown in Figure 5a. This correlation suggests that an air mass with stratospheric residence times above 10 days and water vapour below 40 ppmv, which was itself a result of earlier mixing, descended close to the tropopause and became the more stratospheric end member for another mixing event with wet air of the upper troposphere. This is supported both by the very different stratosphere residence times of this air mass to the rest of the mixing line and the fact that the line lacks clear
235 extension into lower water vapour values (see Figure 4a). Figure 5 shows the backward trajectories for this "more stratospheric end member" (blue lines) and the rest of the mixing line (defined by water vapour between 40 and 100 ppmv, orange lines). The trajectories indicate that the more stratospheric air parcels were advected as a very tight group since a RWB event 8 days

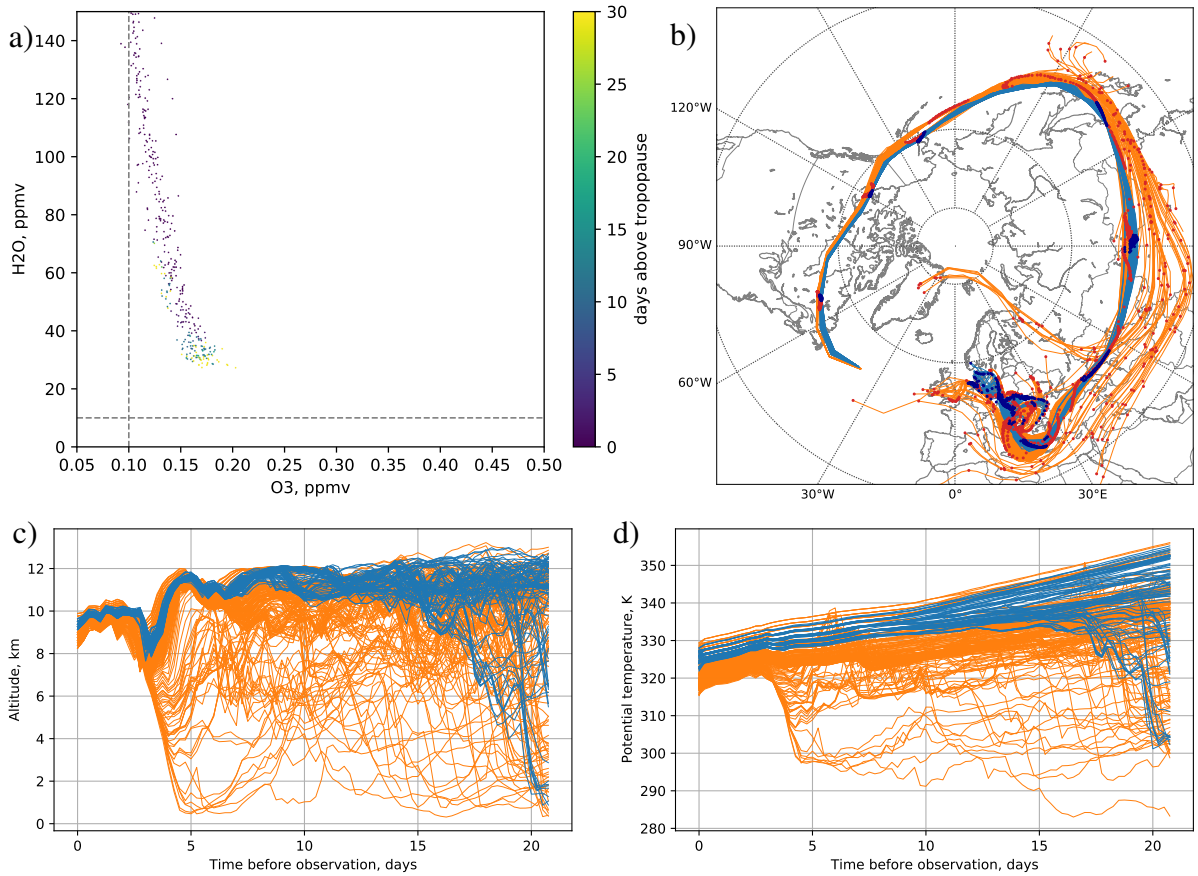


Figure 5. Panel a shows ozone – water vapour tracer-tracer correlation for 7 October flight below 330 K potential temperature. Colour scale shows stratosphere residence time, tropospheric air parcels are included with zero residence time. The remaining panels show backward trajectories for air parcels from Panel a: air with less than 40 ppmv H₂O and residence time above 10 days (blue), and air with 40 to 100 ppmv H₂O (orange). Trajectories in Panel b have markers every 24 h (red for orange trajectories, dark blue for blue) and are plotted for 10 days in total.

before the measurement brought them together, the group had not been as tight at earlier times. Some of these parcels come from higher up in the stratosphere, some from the PBL as recently 20 days before our measurement, but the group seems to be well-mixed at the time of measurement. The rest of mixing line was only brought together during the RWB event 3 days before measurement and the mixing was clearly ongoing when observed. These results could be used to roughly constrain the mixing time scale in this region of UTLS. A more detailed analysis, using mixing schemes in the numerical models, would be required to give tighter, more robust bounds and to account for possible differences in wind shear or for influence of air masses not observed by GLORIA. However, our results seem to indicate that 8 days were enough for mixing to run its course, while 3 days were not.

The O₃ - H₂O correlation for the 9 October flight (Figure 4d) has a line indicating deeper mixing than the rest of the flight and similar to the line in the 7 October flight we discussed in the previous paragraph (Figure 4a). This is not surprising and

supports the previous result, since many of the air masses seen during the 9 October flight come from the area observed on 7 October around the hexagonal flight pattern. The relative lack of purely tropospheric air masses is due to high clouds that
 250 prevented measurements in the troposphere (see Section 3.4 and Figure 13).

The combinations of ozone and water vapour concentrations observed by GLORIA during this flight are generally compatible with in situ observations during previous campaigns. For example, the air parcels indicating intense mixing, like the ones with 0.27 ppmv O_3 , 20 ppmv H_2O or 0.2 ppmv O_3 , 50 ppmv H_2O are within the range of values observed near Fairbanks, Alaska during the POLARIS campaign in 1997 (Pan et al., 2009).

255 3.2 3-D tomography of filamentation near the polar jet

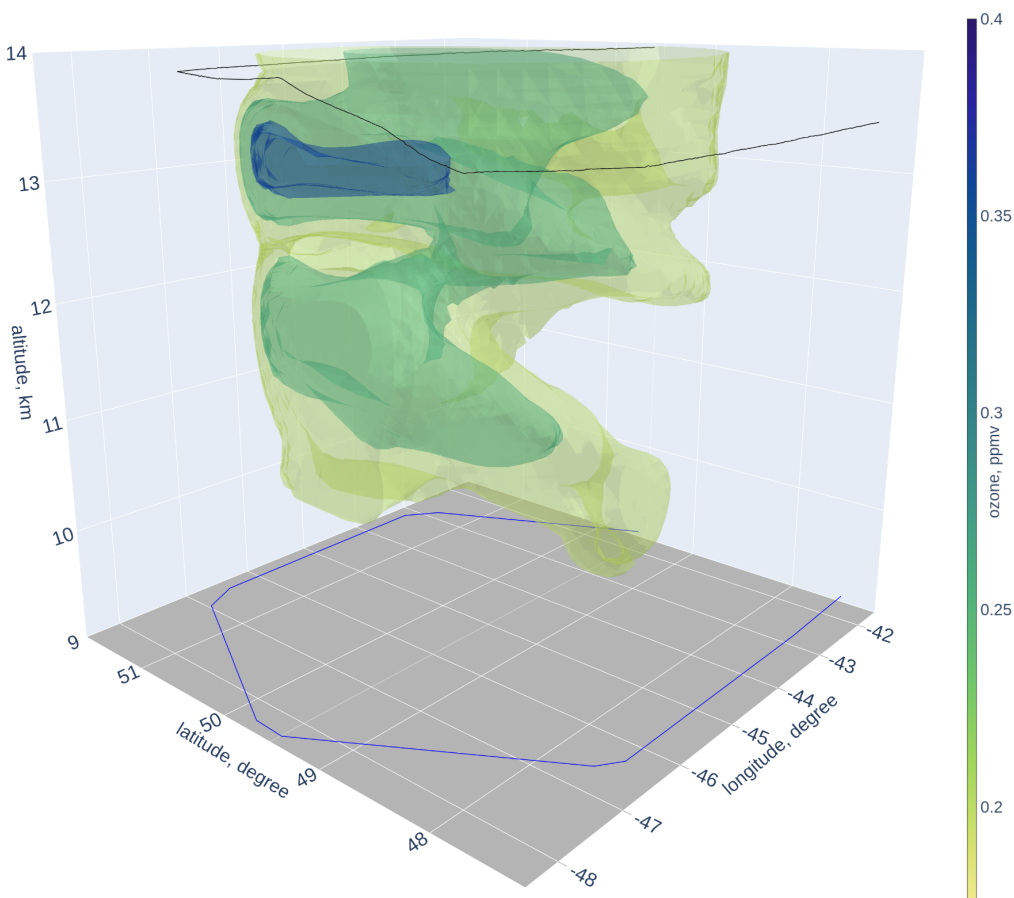


Figure 6. 3-D plot of tomographic retrieval of ozone VMR. Flight track is represented by thin black line, a horizontal projection of the flight track – by thin blue line.

In this section we study the origin of the air inside the hexagonal tomographic flight pattern on 7 October (see Figure 1a). The flight pattern is shown, together with a 3-D plot of ozone results, in Figure 6. The results of the tomographic retrieval for

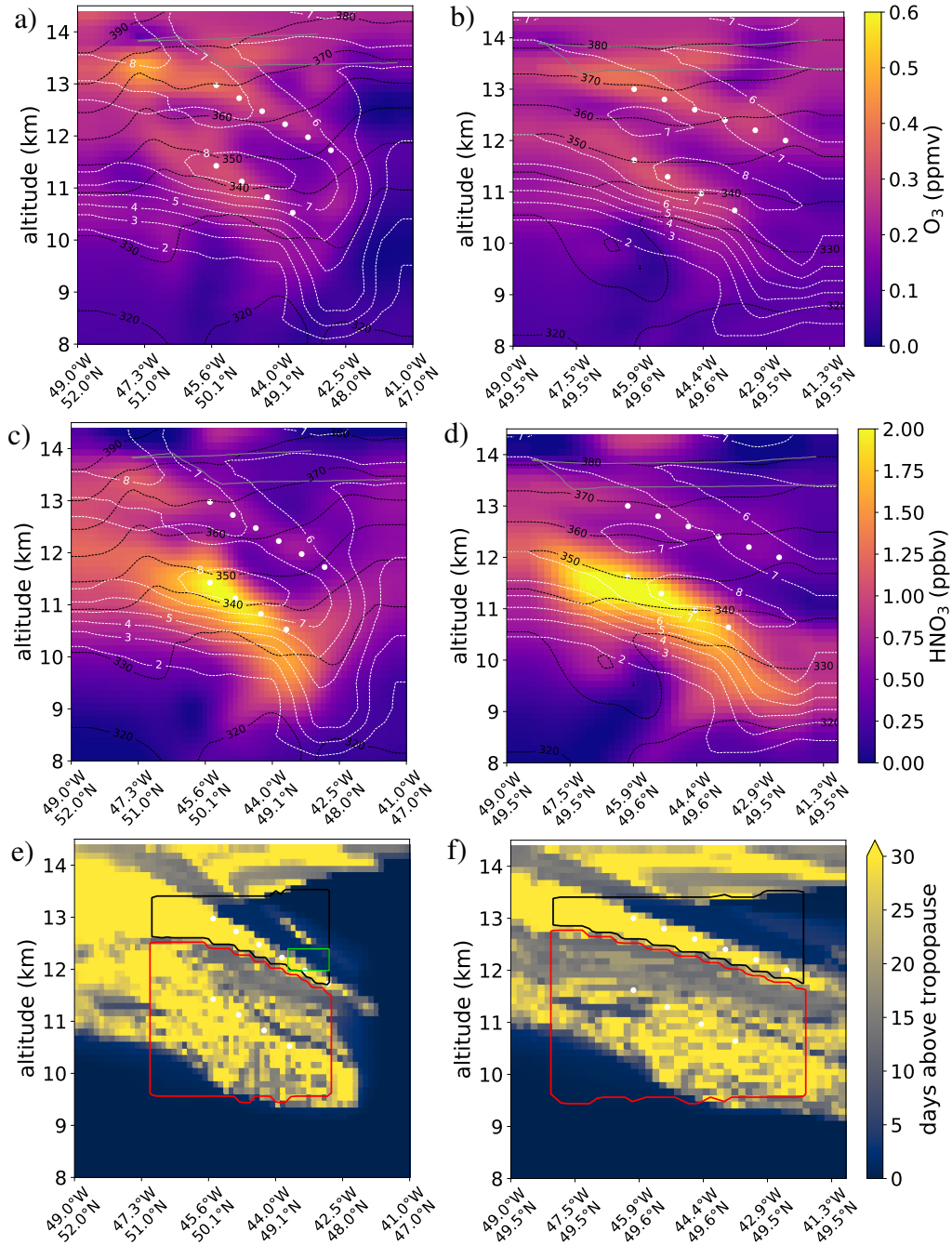


Figure 7. Panels a-d show vertical cuts through 3-D tomographic retrieval and corresponding air mass origin plots. Solid grey line – projection of flight path onto the displayed cut, black dashed lines – isentropes, labelled in K, white dashed lines – PV isosurfaces, labelled in PVU. Panels e-f show air residence time in the stratosphere, black and red lines show the position of air parcels for which backward trajectories were calculated. Their previous positions are depicted, with those same colours, in Figure 8. Positions of vertical cuts are shown in Figure 1a: left panels - magenta, right panels - cyan. White dots mark filaments (see Section 3.2).

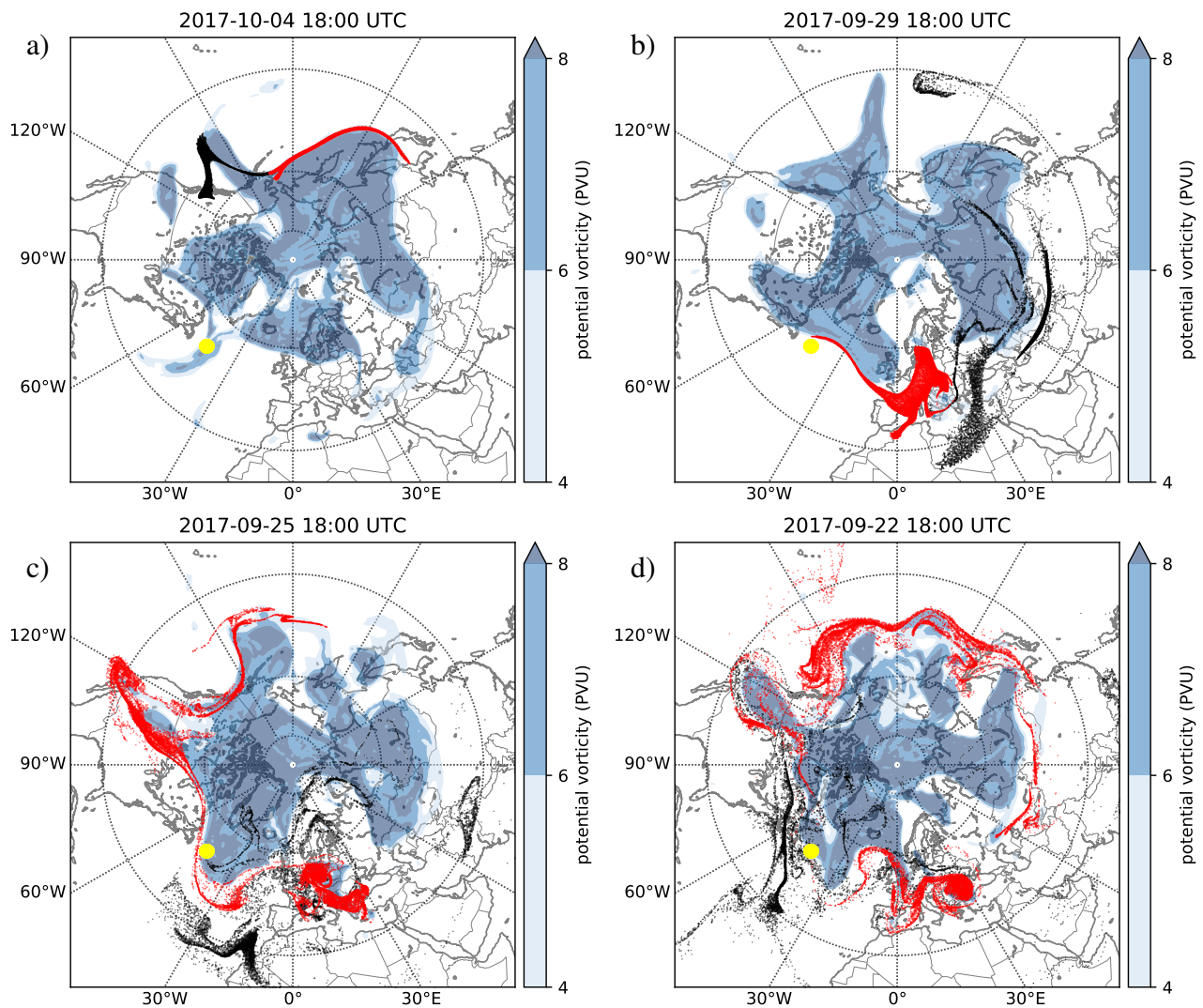


Figure 8. Origins of observed air parcels. Panels show horizontal cuts at 11 km altitude. Potential vorticity is shown in shades of blue. The location where air parcels were observed by means of GLORIA 3-D tomography on 7 October is shown in yellow (they form a small disc). The parcel locations at the dates indicated for each panel are shown in black and red. We further distinguish those into: red - those that were east of 165°W on 4 October 18:00 UTC, black – the remaining ones.

ozone and nitric acid (HNO_3) are presented in detail as vertical 2-D cuts through the measured volume in Figure 7. There is, as before, a clear positive correlation between the two trace gases. A more detailed look into this correlation is presented in
260 Section 3.3.

Figure 7 also shows a complex structure of thin filaments (layers) of younger and older air in the lower stratosphere (LS). As in the previous section, we use backward trajectories to determine the "age" (time spent above dynamical tropopause) of each stratospheric air parcel observed by GLORIA (Figure 7e, f). The two older air filaments (marked with white dots) that

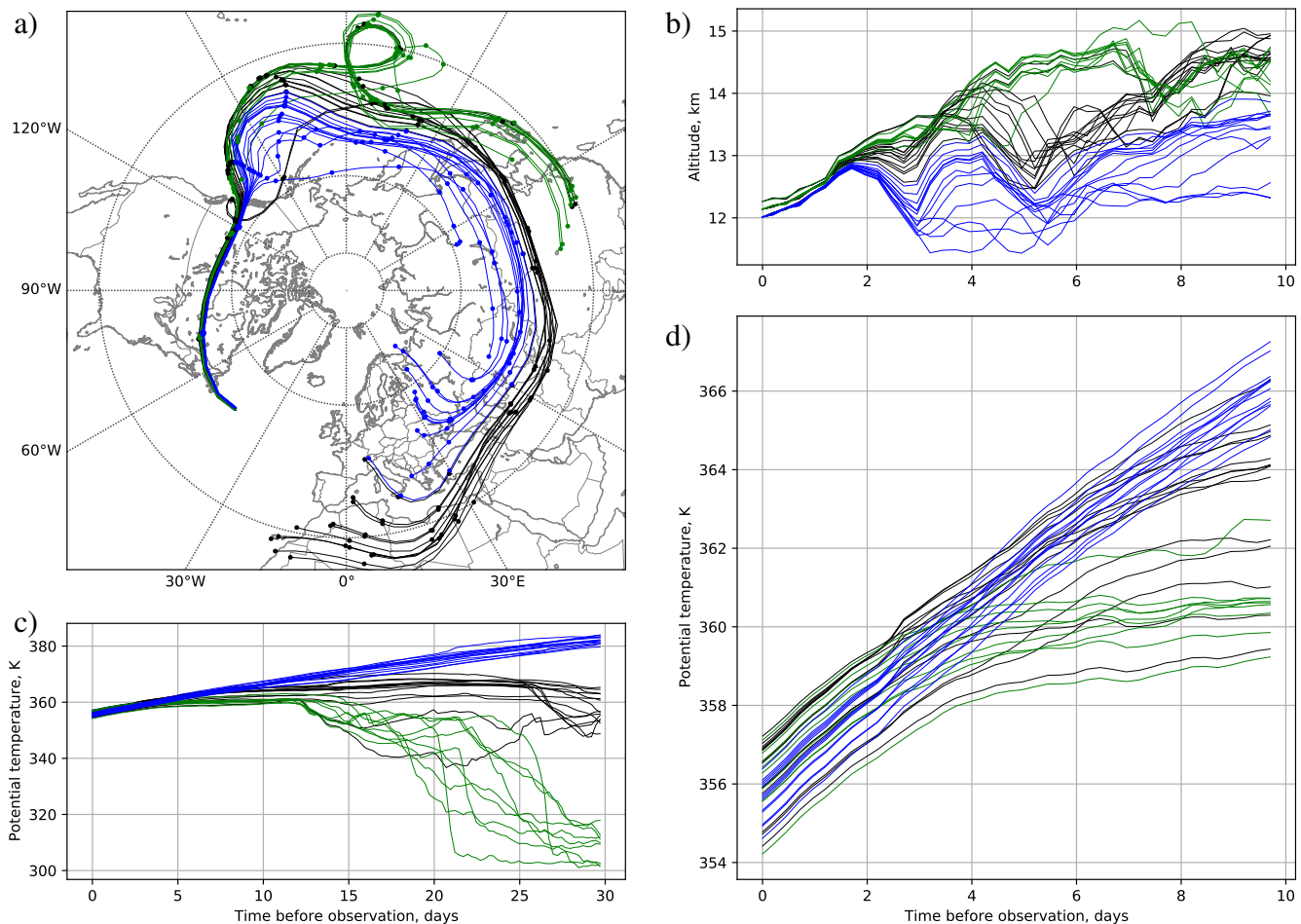


Figure 9. The backward trajectories for some of the air parcels found within 50 km from 48.5°N , 43.5°W , at altitudes between 12 and 12.4 km. We distinguish between groups of air parcels that have descended (blue), ascended (green) and remained at similar potential temperature levels (black) over the last 30 days before observation on 7 October. Panel a shows horizontal trajectories with circular markers every 24 h, panel b – altitude, panels c and d – potential temperature.

are the main features of both ozone and nitric acid retrievals can be identified with the two filaments of air that has stayed in the stratosphere for more than 30 days. Younger air masses can be seen in between the two filaments as well as above them. The boundary between older stratospheric air and the troposphere at 10-11 km altitudes is also reflected in the retrieval. For ozone, in particular, values higher than approximately 0.25 ppmv within the hexagonal flight pattern are mostly measured for air parcels that stayed in the stratosphere for more than 30 days. The accuracy and resolution of the retrieval decreases away from the centre of the hexagonal flight pattern, which is the likely reason for the "smearing out" of the filaments at around 48°N , 42.5°W .

The panels of Figure 7 with GLORIA data also show potential temperature isolines, derived from GLORIA temperature retrieval and ECMWF pressure data. The major filaments are almost uniform in nitric acid and especially ozone structure, de-

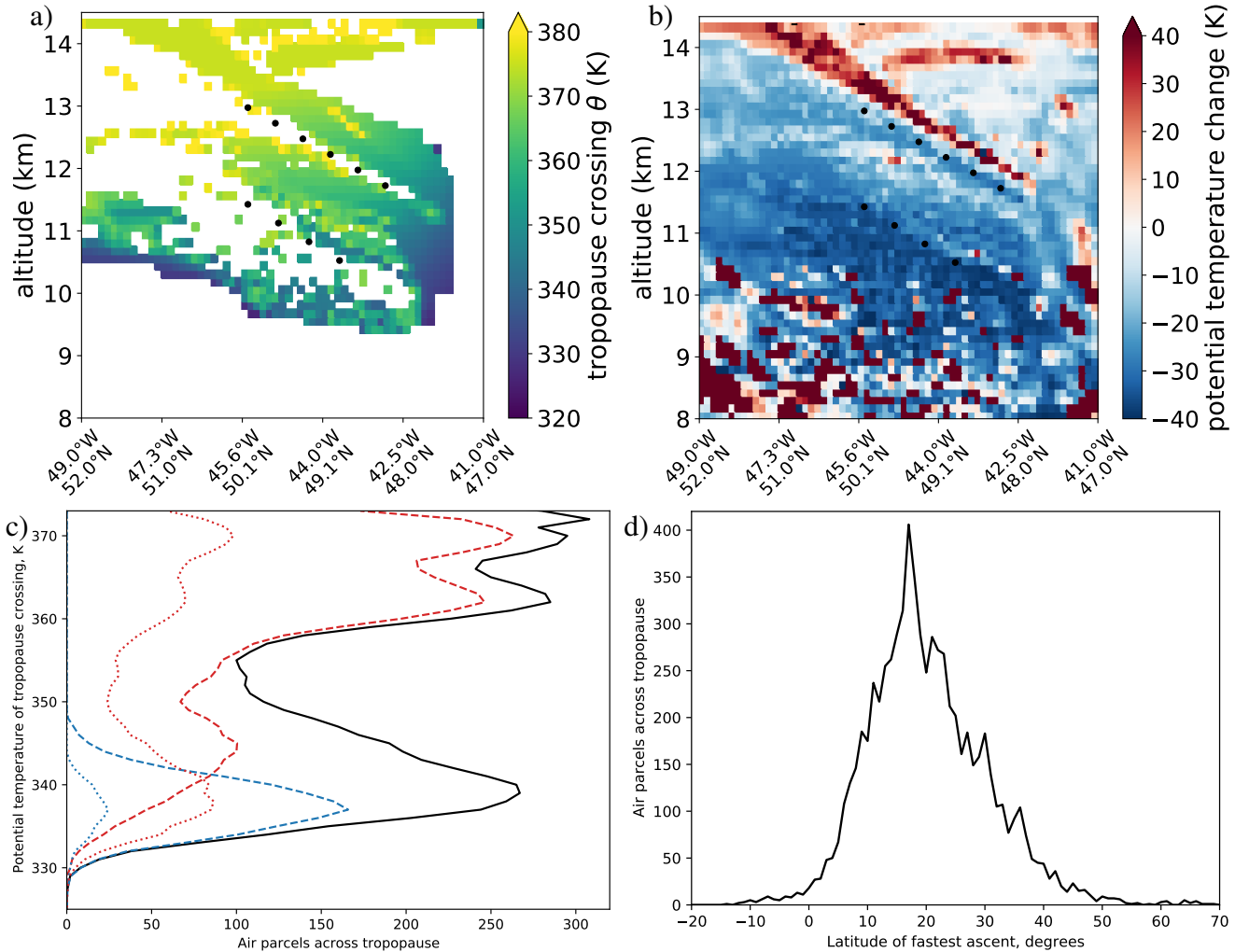


Figure 10. Panel a shows the potential temperature of tropopause crossing for the parcels that crossed tropopause within the last month. Panel b shows the change in potential temperature of observed air parcels within the last month. Black circles in panels a and b mark retrieved old air filaments, they are at the same positions as the white circles in Figure 7. Panel c shows the distribution of potential temperature of tropopause crossing for the observed air parcels (black line). Other lines show how many of these parcels have been to: TTL within last 30 days (dashed red line), extratropics below 330 K potential temperature within last 30 days (dashed blue line), PBL within last 60 days (dotted red line), PBL within last 60 days, but not TTL (dotted blue line). All lines show 5 K running mean. Panel d shows the latitude of fastest ascent (over one day) in potential temperature for the parcels shown in Panel c.

spite the fact that they are not isentropic. This suggests that diabatic processes or turbulence due to Rossby wave breaking were involved in their formation. The arrangement of tracer filaments and potential vorticity with respect to potential temperature surfaces shows that scale breakdown has occurred: although the filaments remain quasi-horizontal, they can subsequently be
 275 erased by mixing along isentropes, making the effective horizontal length scales shorter (≈ 100 km around the upper filament).

A more detailed look into the backward trajectories allows us to trace the origin of each major filament and explain most of the observed ozone structure in terms of planetary wave activity. Figure 8a shows that air masses sampled by the 3-D retrieval on 7 October (location highlighted in yellow) come from an elongated region along the polar jet (edge of high PV region). Specifically, the air masses right on top of the jet at different altitudes were observed. Air parcels in the jet tend to stay confined to it, but are subject to extreme vertical wind shear. In the observed altitude range the wind speed of the jet decreases rapidly with altitude, thus air masses from low altitudes have travelled a longer distance around the pole. This can be confirmed in Figure 7e-f – the "red" air parcels of Figure 8, where observed below the "black" ones. A breaking Rossby wave can be seen around 140°W on 4 October. The "black" group of air parcels were brought together by this breaking event. One can already see them as a relatively compact group on 4 October, but the panel from 29 September shows that they in fact come from very different locations west of the breaking wave (this is shown with explicit trajectory examples in Figure 9). The old and young air structures seen in the areas encircled in black in Figure 7e-f are hence a consequence of this event: the young air masses (they are roughly 3 days old, as the event happened 3 days ago) entered the stratosphere because of the event, and older air masses were completely reshaped. In a similar fashion, another Rossby wave breaking event around 8 days prior to measurement (29 September) created the other prominent young air filament (seen at the top of the region marked by red contours in Figure 7e-f), with most of the air entering from the troposphere over western Europe. Most of the remaining air masses observed by GLORIA below 12 km can be traced back to a third wave breaking event on 25 September (Figure 8c). One can then see that the RW breaking is the dominant process for tracer structure genesis in this region, with most of the old versus young air structure formed by it. The 3-D data set could further be compared to models (such as CLaMS) with full mixing implementation enabled to evaluate the performance of such implementations and help to determine the model mixing parameters that would be appropriate for the extratropical UTLS, but this is outside the scope of the paper.

To demonstrate the effect of an RWB event more explicitly, Figure 9 shows the very different trajectories of some of the air parcels observed in a small cylindrical volume 100 km in diameter and 400 m high shown as a green rectangle in Figure 7e. Trajectories of three groups of air parcels coming from very different potential temperature levels are shown. The RWB event around 3 days before observation can be seen both as a slight disturbance in potential temperature and as trajectories from very different locations coming together around that time to form an air mass that was eventually observed by GLORIA. Although the potential temperature changes due to RWB are small, these events cause significant changes in altitude that, in a high wind shear environment around the polar jet, dramatically alter air parcel trajectories and long term potential temperature trends.

Figure 10 gives further insight into the vertical transport of observed air parcels, the origin of these parcels and troposphere to stratosphere transport (TST) pathways. Panel a shows the temperature of tropopause crossing. Panel b shows the origin of air parcels in terms of potential temperature change. We can distinguish between the two old air filaments that have descended from the stratosphere (black circles) that match the retrieved old air structures, the air in between and to the south east of the filaments, that has been isentropically transported into the stratosphere and has less stratospheric tracers, and the turbulent troposphere below ≈ 9.5 km with low ozone and nitric acid values. The young air filament just above the upper filament marked in circles has been displaced during a Rossby wave breaking event. Its signature can be seen in Figure 7a between the upper old air filament marked with white circles and a small old air blob at 43.5°W, around 13 km altitude. Figure 10c shows the

distribution of potential temperatures at which the observed air parcels entered the stratosphere (maximum potential vorticity gradient tropopause was used to determine the entry point) and the origin of these parcels¹. It demonstrates two distinct TST pathways. The first pathway is direct isentropic transport from the TTL to the extratropical stratosphere. The air travelling via this pathway enters the stratosphere at high potential temperature values, corresponding to a peak in Figure 10c above 355 K. This pathway plays a major role, as expected for this region (Holton et al., 1995; Pan et al., 2009). The second pathway is via the lower potential temperature levels, and corresponds to the second peak in the same figure between 330 K and 350 K. Both air from TTL and air vertically uplifted from extratropical troposphere enters via this pathway. Our observations show that this potential temperature range does indeed contain the most strongly mixed air (see Figure 4). Although a significant fraction of air entering the stratosphere had been in the PBL within the last 60 days (dotted red line in Figure 10c), only small part of it has not travelled through the TTL since (dotted blue line in the same figure). This explains low water vapour VMRs in the region of the hexagonal flight pattern (Figure 2, 16:15 to 17:42 UTC). Finally, Figure 10d shows where the air that has entered the stratosphere has experienced strongest uplift. One can clearly see that the uplift in the tropics dominates, TST from extratropical upper troposphere involves a lot of air uplifted in the tropics and, in some cases, mixed with extratropical air masses.

3.3 Origins of nitric acid enhancement above the tropopause

Nitric acid (HNO_3) is produced in the stratosphere (mainly from NO_x) and removed in the troposphere by washout. Hence tropospheric HNO_3 mixing ratios can be as low as 0.1 ppbv or less. Owing to the similarity of their source and sink regions, HNO_3 and O_3 typically display a very compact relationship within the stratosphere. Popp et al. (2009) give a simple linear relation between the two gases, which typically holds within 15% in the stratosphere for ozone concentrations higher than 150 ppbv

$$\text{HNO}_3 = (0.00256 \pm 0.000154)\text{O}_3 - (0.0922 \pm 0.0886)\text{ppbv} \quad (1)$$

The tracer-tracer correlation of ozone and nitric acid for the 3-D tomographic retrieval is shown in Figure 11. We can distinguish between several types of air masses in this tracer-tracer space. There is a HNO_3 poor tropospheric branch ($\text{HNO}_3 < 0.2$ ppbv), which consists solely of air parcels located below the dynamical tropopause (around 330 K here). A "deep stratospheric" branch conforms to the relationship of (1) within the prescribed $\pm 15\%$ tolerance and consists mainly of air parcels above 360 K potential temperature. Air along the flight path falls into this category based on both GLORIA and *in situ* measurement data. Most of observed stratospheric air parcels have slightly enhanced HNO_3 values (between +15% and +50% HNO_3 compared to (1)). Finally, there is the air mass with strongly enhanced HNO_3 values around the tropopause, clearly seen in Figure 7. It has > 1.25 ppbv HNO_3 and potential temperature of 330-350 K. Evidence of mixing between this air mass and its surroundings can be seen as linear structures in Figure 11.

¹In the figure, the tropical tropopause layer (TTL) is defined as altitudes from 14 km to 18.5 km at latitudes lower than 30° , planetary boundary layer (PBL) is defined by altitude lower than 3 km and extratropics are latitudes higher than 30° .

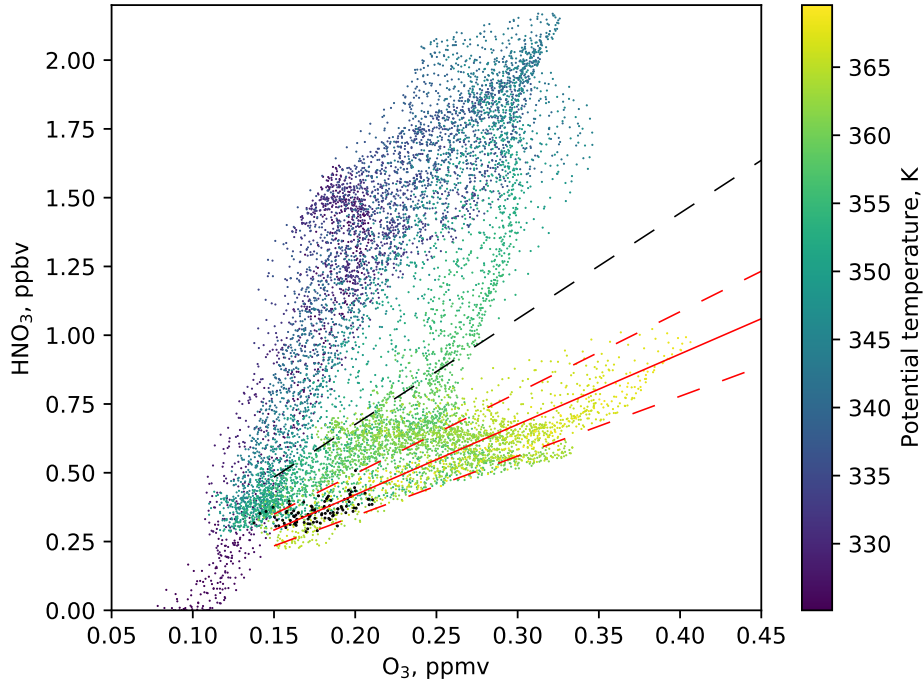


Figure 11. Ozone - nitric acid tracer-tracer correlation. Solid red line represents linear relationship of ozone and nitric acid typical for the stratosphere. Dashed red lines indicate the $\pm 15\%$ HNO_3 compared to that relationship, black dashed line indicates $+50\%$ HNO_3 . Black dots represent in situ measurement data (see Appendix C for details), dots of the shown colour scale – GLORIA data. Maximum potential vorticity gradient tropopause was used here.

It is clear from the argument above that the strong HNO_3 enhancement seen in Figure 7b-c at the altitude of around 11.5 km could not be a consequence of STE alone. The most important tropospheric source of HNO_3 is conversion from NO_x , which, in turn, is produced mostly by fossil fuel burning (24 TgNyr^{-1}), biomass burning (8 TgNyr^{-1}), soil emissions (12 TgNyr^{-1}) and lightning (9 TgNyr^{-1}) (Price et al., 1997; Nesbitt et al., 2000). All of these sources, except for lightning, release NO_x into the boundary layer, where its lifetime is often below 1 day (Tie et al., 2001) and any HNO_3 produced is subject to washout. Therefore, despite lower total emissions, lightning is the most important source of NO_x in the upper troposphere (Zhang et al., 2000, 2003).

Backward trajectories were used to investigate whether the air masses with enhanced HNO_3 values could have been influenced by lightning. The air parcels observed on 7 October only came into proximity of significant lightning activity around 8 days before the measurement. That was also the time when the structures around the enhanced HNO_3 air masses were formed, i.e., it is the earliest time when the measured air parcels constituted a relatively compact group (Figure 8). Figure 12 shows the positions of the air parcels with more than 2 ppbv HNO_3 and other air parcels observed by GLORIA on 29 September and the map of lightning activity that day. We see that some of the observed air parcels came into close proximity to the lightning strikes over France, Germany, Belgium and the Netherlands. They are both located below 5 PVU (close to tropopause) and

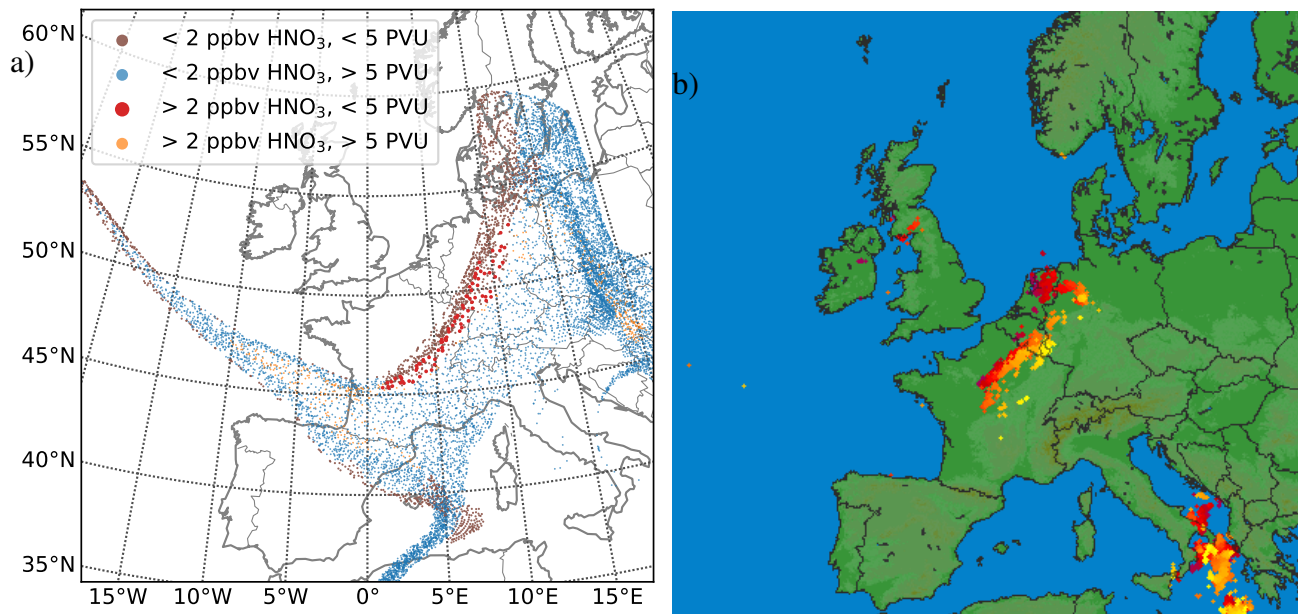


Figure 12. Panel a) shows the positions of air parcels observed as part of the 7 October 3-D retrieval on 29 September 18:00 UTC (8 days before measurement). Air parcel colouring: brown – less than 2 ppbv HNO₃, less than 5 PVU; light blue – less than 2 ppbv HNO₃, more than 5 PVU; red (larger markers) – more than 2 ppbv HNO₃, less than 5 PVU; orange – more than 2 ppbv HNO₃, more than 5 PVU. HNO₃ VMRs considered are from the 7 October 3-D retrieval. Panel b) shows lightning strikes between 29 September 18:00 UTC and 30 September 00:00 UTC in the area, based on very low frequency (VLF) radio observations. Lightning strikes are indicated by purple-to-yellow colour scale, depending on their time of occurrence within the given period.

close by horizontally: the separation of the order of 100 km is small considering that these air masses were traced back almost all the way around the pole over eight days. A large proportion of these air parcels are HNO₃ rich, and, conversely, significant proportion of HNO₃ rich air is located close to the lightning activity. Also, the time of 8 days between NO_x emission and HNO₃ measurement would have been sufficient for NO_x to HNO₃ conversion based on, e.g., Jaeglé et al. (1998). It is therefore possible, that the highest HNO₃ values observed on 7 October were due to lightning. The lightning positions were obtained from very low frequency (VLF) radio observations (lightningmaps.org, Narita et al. (2018)).

3.4 The thin filament of the 9 October flight

The breaking Rossby wave event seen on 7 October was observed again during a flight on 9 October. No measurements suitable for tomography were taken during this flight and the 2-D data for O₃, HNO₃ and H₂O are shown in Figure 13. ECMWF forecasts before the flight led us to expect that the breaking wave would be stretched into a thin filament, shown as 2 PVU contour in Figure 1b extending from 70°N, 0°E to 51°N, 12°E (dashed black line). The filament was crossed twice in both directions and can indeed be seen as old air structures around 11:00 and 14:00 UTC. The old air (ozone and nitric acid rich) parts of the filament are very thin (some are only around 35 km across). The air mass that filled the hexagon (400 km in diameter) on 7 October was also stretched into a filament of 30 km thickness in its narrowest parts. Using backward trajectories

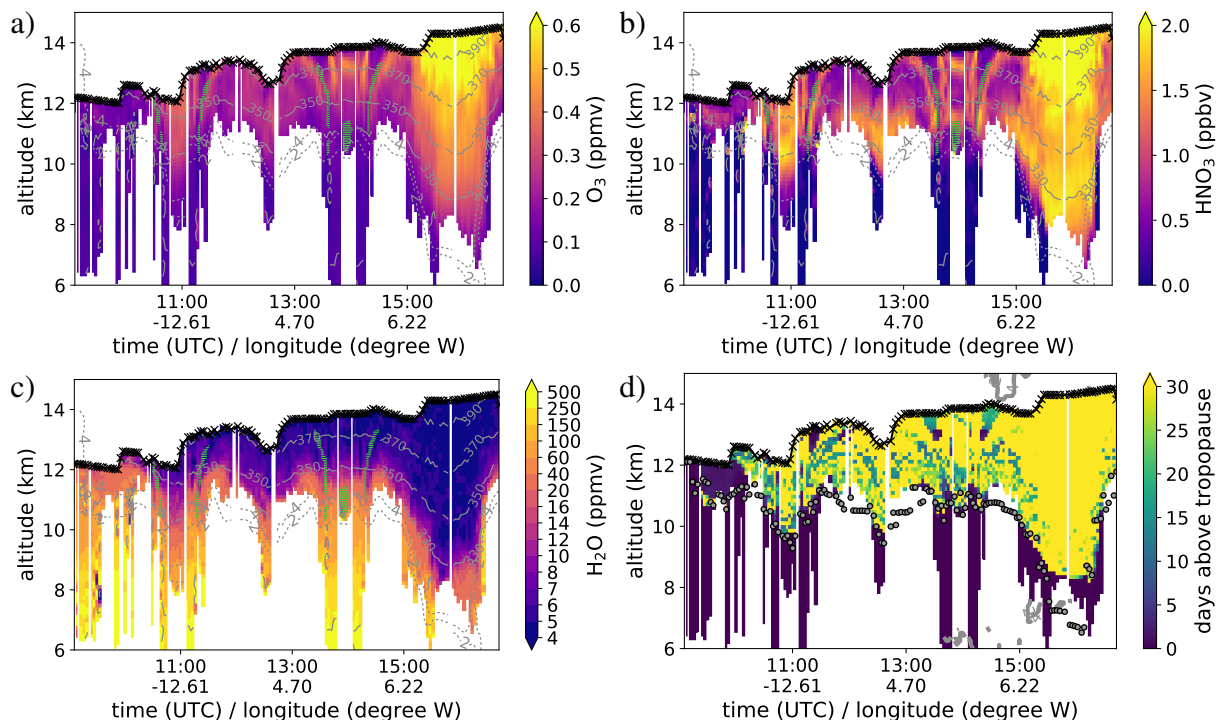


Figure 13. 2-D data from 9 October flight. Ozone (a), nitric acid (b), water vapour (c) retrievals with stratosphere residence time plot (d) for the same air parcels. Isentropes are shown as thin solid lines, 2 and 4 PVU contours – thick dashed lines. Green hatches represent air parcels observed by GLORIA on 7 October.

the air parcels that were measured both as part of the tomographic 3-D retrieval on 7 October and 2-D retrieval on 9 October were identified. They are highlighted by horizontal green hatches in Figure 13.

As before, a plot showing the stratosphere residence time is provided in Figure 13d. Note the qualitatively different nature of younger air structures compared to previous plots of this sort and lack of filamentation in this region, generally less effected by planetary waves. The only young air structures that significantly exceed the instrument resolution are found around the filament originating from a breaking Rossby wave. A O_3 - HNO_3 tracer - tracer plot for the air parcels observed in both flights is shown in Figure 14. The general positive correlation between O_3 and HNO_3 and the enhanced HNO_3 values remain in the retrieval of 9 October. Slightly more parcels show tropospheric ozone and nitric acid values, these could be strongly diluted by tropospheric air or a result of collocation inaccuracies. The maximum concentrations of both tracers are now slightly lower, and there are more air samples of with tracer concentrations closer to the mean values for the filament (e.g. more air parcels around 0.17 ppmv of ozone and 0.65 ppbv of nitric acid), while the distinct outlying branches, such as the highest HNO_3 enhancement and the purely stratospheric branch (around solid red line), are noticeably subdued. The latter branch also appears to be shifted towards the middling values of both tracers, and is closer to the black line in Figure 14. This is evidence of mixing, as tracer concentrations in all samples approach their average values. It is remarkable, however, that such a thin filament preserved the

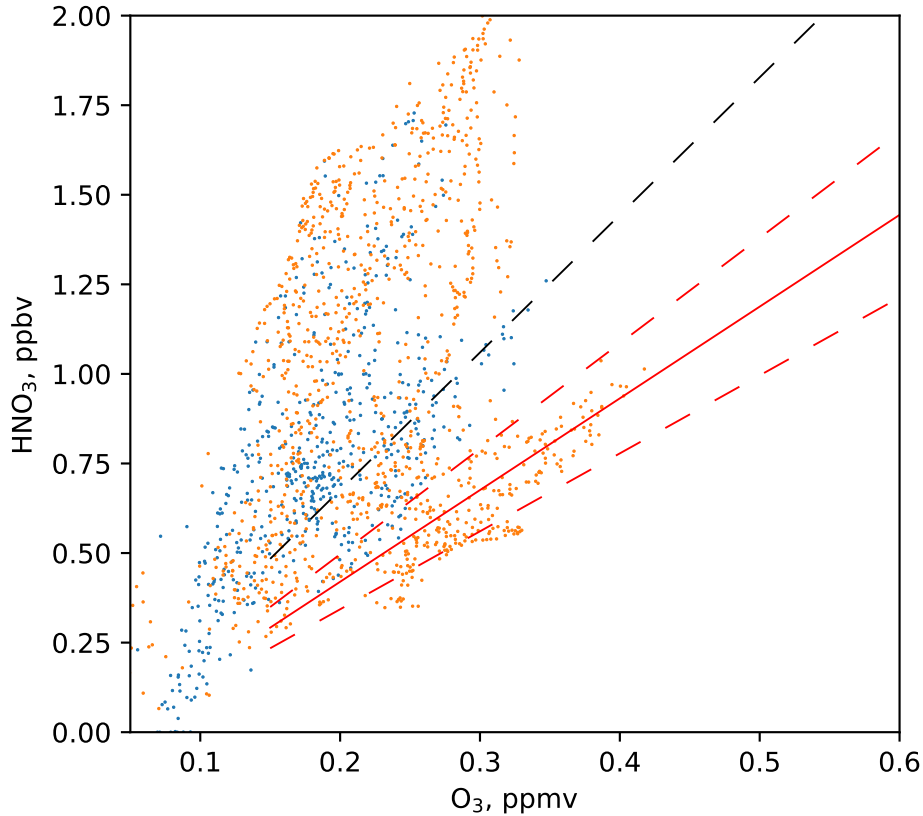


Figure 14. Ozone – nitric acid tracer-tracer correlation for air parcels observed in both flights. Tracer concentrations measured on 7 October (3-D tomographic retrieval) shown in orange, those measured on 9 October – in blue. Solid red line represents linear relationship of ozone and nitric acid typical for the stratosphere. Dashed red lines indicate the $\pm 15\%$ HNO_3 compared to that relationship, black dashed line indicates $+50\%$ HNO_3 .

general tracer-tracer structure of an air mass of completely different shape, and that relatively little tropospheric influence is
 385 seen.

To further investigate the evolution of the air parcels observed in both flights, we determined the HNO_3 values in the hexagon based on the 9 October retrieval performed 2 days later. Air parcels from the 9 October 2-D data product were traced back to the hexagon. Each grid point inside the hexagon was assigned the HNO_3 volume mixing ratio of the closest back traced parcel. If no parcel was traced back to a particular point within 100 km horizontally or 0.4 km vertically, the HNO_3 volume
 390 mixing ratio was deemed undetermined. One vertical cut through the HNO_3 reconstruction obtained in this manner is shown in Figure 15, with a cut through the actual 3-D retrieval from 7 October shown for comparison. We can see that the tracer structure obtained by back tracing reflects many of the features in the tomographic retrieval, just with a lot lower resolution, since the 3-D retrieval grid has far more points than the number of air parcels that could be traced back to the 3-D retrieval volume from the observations two days later. The contrast (i.e. the difference between the highest and lowest HNO_3 VMRs)

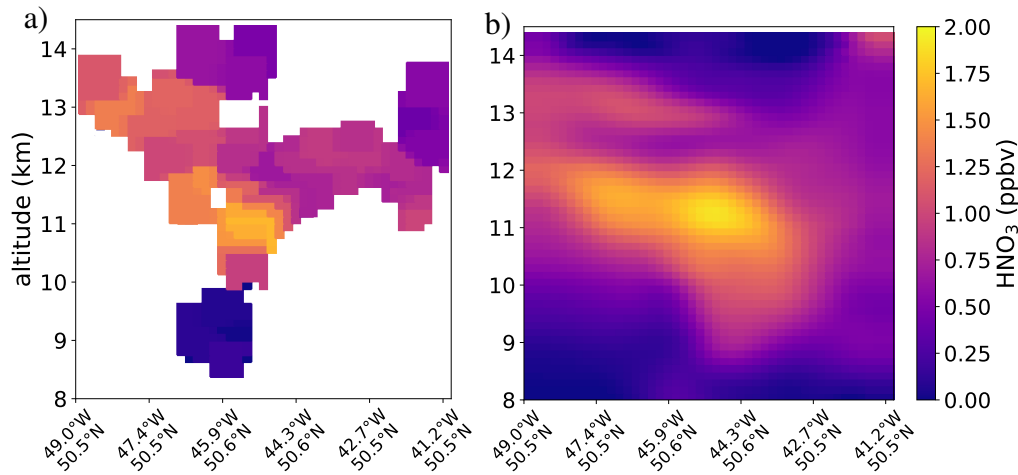


Figure 15. Left panel - HNO_3 volume mixing ratios on a vertical cut inside the hexagonal flight pattern based on back traced 9 October measurements, right panel – HNO_3 volume mixing ratios from the 7 October tomographic 3-D retrieval on the save vertical cut for comparison.

395 is lower for the back-traced data, suggesting that some mixing took place between the flights. This comparison demonstrates, however, that the thin filament, although clearly irreversibly separated from air masses around the polar jet, is still not fully mixed and "remembers" its past.

4 Conclusions

The UTLS in the Rossby wave surf zone is a highly interesting region of the atmosphere characterised by sharp gradients and fine structure of the tracer distributions that are very challenging to observe directly. Mixing in the Rossby wave surf zone has a major role on stratosphere-troposphere exchange (STE). Previous studies have shown that cross-tropopause transport into the extratropical lower stratosphere occurs mainly above the Atlantic and Pacific oceans and is most likely driven by Rossby wave breaking events (e.g. Kunz et al. 2015, Vogel et al. 2016). A Rossby wave breaking event was observed with the GLORIA instrument during two research flights two days apart. Both standard 2-D data sets and 3-D tomographic data of trace gas volume mixing ratios were acquired. Signs of enhanced mixing between stratospheric and tropospheric air parcels were seen near the polar jet with some transport of water vapour into the stratosphere. Mixing line analysis with the help of backward trajectories gave some indication on what the mixing time scales in this region could be. The observations performed in the first flight showed complex vertical structure in stratospheric tracers (ozone and nitric acid) with heavy filamentation, related to several Rossby wave breaking events 3 to 8 days before observation. With the help of CLaMS backward trajectory calculations, much of the observed tracer structure can be understood as stirring and mixing of air masses of tropospheric and stratospheric origins. There are still unexpected aspects: for instance, the filaments were not only slanted in space, but also stretched across different potential temperature levels. Therefore, even though these filaments were still sharply defined in the tracer structure and not strongly mixed, they could subsequently be erased by isentropic mixing. The backward trajectory calculations revealed

large amounts of air with histories indicative of horizontal transport from the lower latitude troposphere and matching tracer signatures were found in the observations. Air masses from the extratropical troposphere were located mostly at the lowest altitudes of the observed part of the stratosphere. However, we found strongly uplifted (by more than 10 K) filaments, closely related to Rossby wave breaking events, and their histories were consistent with the measured tracer content. Just above the tropopause, nitric acid was enhanced by far more than could be explained by descent of air from the deep stratosphere. It is demonstrated in our study that NO_x production by lightning activity was a likely cause of this nitric acid enhancement. In the late stage of the RW breaking event, a filament containing air masses rich in stratospheric tracers became very long, thin (horizontal width was down to 30 km at some altitudes) and was advected away from the polar jet. Some of the air masses of the filament were observed during both flights (7 and 9 October) and showed a reduced contrast in tracer VMRs in the second flight indicating some mixing of the filament with its immediate surroundings, but the tracer structures seen during the first flight were still traceable in the data from the second. This direct observation of mixing provides valuable data set for validation of mixing implementations in models.

A direct comparison of the full 3-D structure to model data in such detail would not have been possible with any other observational technique. Airborne observations of a significant number of air parcels twice with two days in between the measurements was also possible only due to the altitude range of GLORIA data and the unique 3-D capability of the instrument.

Data availability. All measurement data is available from the HALO database. GLORIA 3-D tomography can be found at <https://halo-db.pa.op.dlr.de/dataset/7471>. GLORIA 2-D (<https://halo-db.pa.op.dlr.de/dataset/5503>, <https://halo-db.pa.op.dlr.de/dataset/5504>), FISH (<https://halo-db.pa.op.dlr.de/dataset/5488>, <https://halo-db.pa.op.dlr.de/dataset/5789>), AENEAS (<https://halo-db.pa.op.dlr.de/dataset/5549>, <https://halo-db.pa.op.dlr.de/dataset/5550>) and FAIRO (<https://halo-db.pa.op.dlr.de/dataset/5685>, <https://halo-db.pa.op.dlr.de/dataset/5687>) data for the 7 October and 9 October flights, respectively, is available using the given links.

Appendix A: GLORIA retrieval technique

The GLORIA tomographic retrieval works by combining the JURASSIC2 fast radiative transfer model (Hoffmann et al., 2008; Ungermann et al., 2010) with an iterative inverse modelling scheme. The main idea of this scheme can be presented as follows. Let vector \mathbf{y} represent a set of GLORIA radiance measurements, and let vector \mathbf{x} represent a discrete representation of the state of the atmosphere to be retrieved. In practice, \mathbf{x} would contain assumed temperature and trace gas concentration values for each point in the retrieval grid. Using the forward model, one can calculate a vector $\mathbf{F}(\mathbf{x})$ - a simulation of the radiances GLORIA would measure, if the atmosphere were indeed in the state \mathbf{x} . Then the retrieval works by iteratively minimising the following quantity, which we call the cost function

$$J(\mathbf{x}) = (\mathbf{F}(\mathbf{x}) - \mathbf{y})^T \mathbf{S}_\epsilon^{-1} (\mathbf{F}(\mathbf{x}) - \mathbf{y}) + (\mathbf{x} - \mathbf{x}_a)^T \mathbf{S}_a^{-1} (\mathbf{x} - \mathbf{x}_a) \quad (\text{A1})$$

The first term in the sum measures how strongly the simulated measurements $\mathbf{F}(\mathbf{x})$, i.e. what GLORIA would measure if atmosphere state were \mathbf{x} , differs from the actual measurement \mathbf{y} . The covariance matrix \mathbf{S}_ϵ^{-1} contains information about the instrument accuracy. Large values of this term would mean that state \mathbf{x} is unlikely, as it does not agree with the measurements.

The second term in the sum measures how well \mathbf{x} fits our general knowledge of the atmosphere. Here \mathbf{x}_a is the *a priori* atmospheric state. A climatology, or low resolution model data can be used for this purpose. An atmospheric state that deviates very strongly from *a priori* is considered unlikely. The covariance matrix \mathbf{S}_a^{-1} is typically non-diagonal, its purpose is not only to rule out atmospheric states that differ from *a priori*, but also to suppress states that are discontinuous, have sharp jumps in atmospheric quantities or are otherwise unphysical. We construct this matrix to represent the exponential covariance. For two points in the atmosphere with the Cartesian coordinates (x, y, z) and (x', y', z') , respectively (z coordinate vertical), the exponential covariance between the values of an atmospheric quantity at these points is

$$C((x, y, z), (x', y', z')) = \sigma^2 \exp \left[-\sqrt{\frac{(x - x')^2}{L_h^2} + \frac{(y - y')^2}{L_h^2} + \frac{(z - z')^2}{L_v^2}} \right] \quad (\text{A2})$$

Hence σ describes the magnitude the expected departure from the *a priori* for an atmospheric quantity, and L_h, L_v determine the typical length scales of structures in horizontal and vertical directions, respectively. The relevant parameters for the retrieval in this paper are given in Table A1.

Table A1. Regularisation parameters for 3-D retrieval

Parameter	Value, ppbv	Parameter	Value, km
σ_{O_3}	50	ρ_h	250
σ_{HNO_3}	0.12	ρ_v	1

The standard deviations σ_{O_3} and σ_{HNO_3} were obtained by computing the standard deviation of in situ data for each tracer (shown in Appendix C for result validation). The ratio of horizontal and vertical correlation lengths ρ_h/ρ_v was set to 250, as this was estimated to be a typical aspect ratio for lower stratosphere (Haynes and Anglade, 1997), and also seems to match the aspect ratios of structures that form in CLaMS backward trajectory runs (Section 3.2). The final values of ρ_h and ρ_v were then selected to optimise the resolution of the retrieval.

Appendix B: Tomographic retrieval error estimation

The data quality and expected errors of tomographic retrieval differ depending on the position of the point where these errors are calculated with respect to the flight path (hexagonal part of pattern). The relative errors for HNO_3 and O_3 were estimated for each point on the retrieval grid using a Monte Carlo based technique (Ungermann, 2013; Krasauskas et al., 2019). The particular error estimate calculated here includes measurement error and error due to inaccuracies of the retrieval method, but

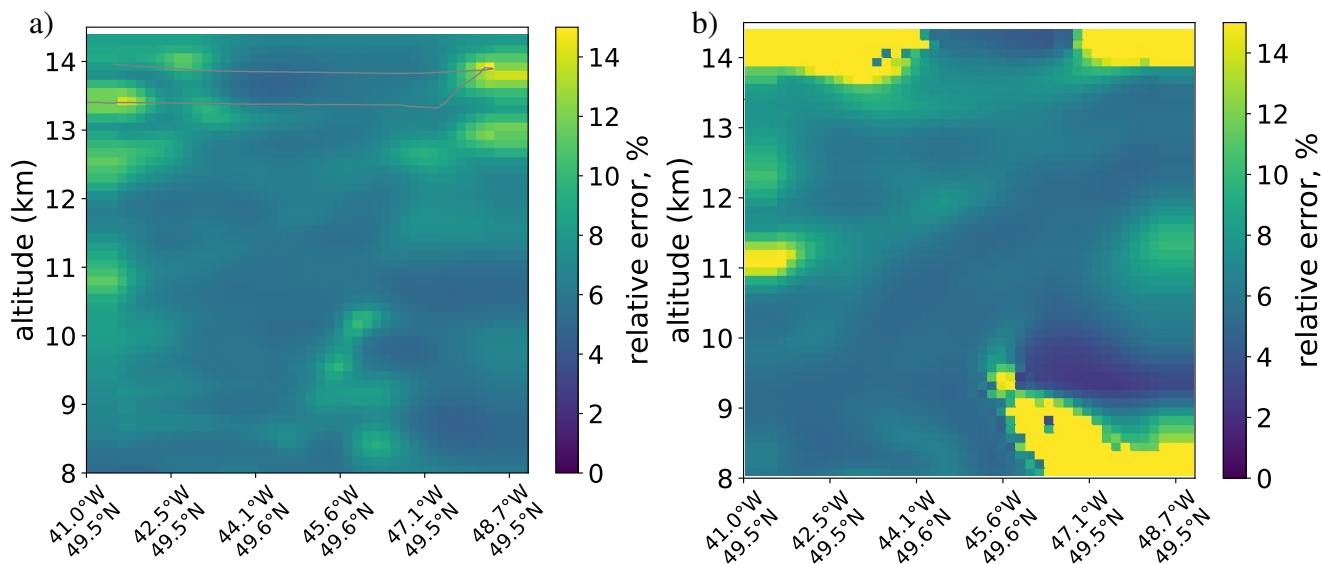


Figure B1. 3-D tomography relative error, Monte Carlo estimate. Panel a) – ozone, panel b) – nitric acid.

does not include errors due to imprecise knowledge of atmospheric parameters (e.g. pressure, CO₂ concentration, etc.), that are required for retrieval and taken from external sources, mostly models.

Results of the calculation are presented as a vertical cut through the retrieved 3-D volume (Figure B1). The same cut as in Figure 7, left, was used. One can confirm that, as expected, the data quality is best under the centre of the hexagonal flight pattern and quickly gets worse just outside the hexagon. Ozone retrieval around the flight path itself also seems problematic and should be interpreted with care. The average error values for measurements at 11 to 12 km altitude with horizontal distance of up to 200 km from the centre of the hexagonal flight pattern are given in Table B1. The table also contains estimates for linear retrievals at the same altitude range. They were estimated from the instrument noise and retrieval method uncertainties in linear manner described in Ungermann et al. (2012).

Table B1. Average measurement error for 11 to 12 km altitude

Retrieval	O ₃ ppmv	HNO ₃ ppbv
7 October, 3-D	0.014	0.06
7 October, 2-D	0.006	0.03
9 October, 2-D	0.008	0.04

Appendix C: Tomographic retrieval validation using *in situ* instrument data

To validate the 3-D data products, we have performed a comparison with *in situ* measurements. During WISE ozone volume mixing ratio were measured by the Fast Airborne Ozone instrument (FAIRO; Zahn et al., 2012). The Atmospheric Nitrogen

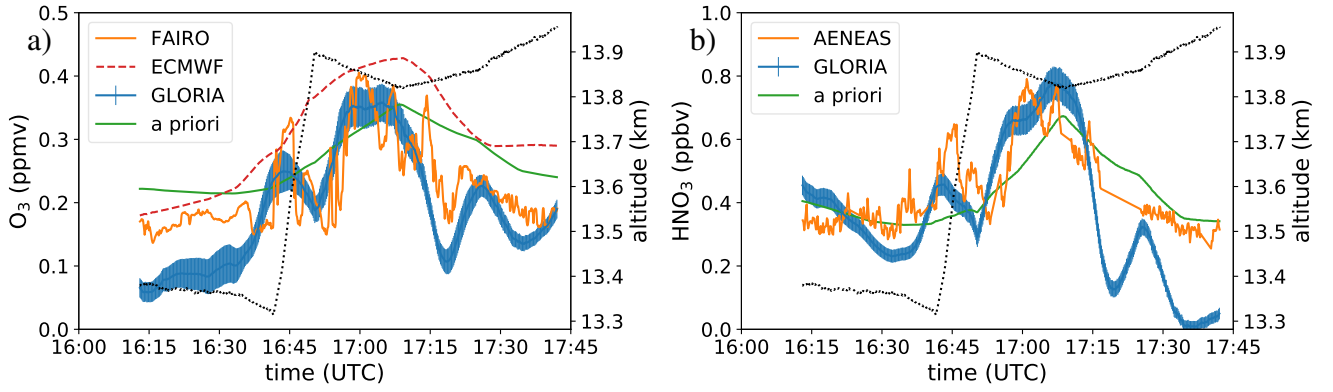


Figure C1. Comparison to in situ instrument data along the flight path. *A priori* data is from the WACCM model. Refer to main text regarding details on *in situ* instruments and data.

Oxides Measuring System (AENEAS; Ziereis et al., 2004) was also on board and provided NO_y and NO data products. In
 480 UTLS one can generally identify the total reactive nitrogen as the sum of volume mixing ratios of the following gases (ignoring
 the ones with typically much lower VMRs)

$$\text{NO}_y \approx \text{NO} + \text{NO}_2 + \text{HNO}_3 + \text{PAN} + \text{ClONO}_2 \quad (\text{C1})$$

The volume mixing ratios of NO₂, PAN and ClONO₂ are all typically at least one order of magnitude lower than that of
 HNO₃ considering the latitude and season of observation. PAN, and ClONO₂ can be obtained by GLORIA data, and NO₂ is
 485 a relatively well mixed tracer which we estimated based on WACCM model data. HNO₃ can hence be derived from AENEAS
 data for GLORIA validation purposes.

The comparison of GLORIA data and the *in situ* instruments is presented in Figure C1. There are two important consider-
 ations that have a significant effect on how good of a match to *in situ* can be expected. Firstly, GLORIA measures trace gas
 concentrations along its line of sight, with a vertical resolution of about 200 m, and horizontal resolution of 20 km. Since the
 490 whole line of sight (for usable measurements) is actually below the flight altitude, the highest altitude data available cannot be
 regarded as measured from the aircraft location, but rather from the location centred around ≈ 100 m below the aircraft and
 ≈ 10 km to the side of it. The result is imperfect spatial coincidence between GLORIA and *in situ*, which can introduce biases
 into the comparison in the areas of high tracer gradients. Secondly, the GLORIA data product is valid for 16:50 UTC, while the
in situ data is valid for the measurement time (see advection compensation description in Section 2.1). The data in Figure C1
 495 is corrected for this discrepancy in the sense that GLORIA data is provided for the actual air masses that the aircraft was flying
 through and not for the locations with respect to ground that were sampled. By 16:50 UTC, however, many of these air masses,
 especially the ones from the beginning of the flight, were advected outside of the best resolved area of the hexagonal flight path
 (i.e. there were few overlapping measurements of these air parcels). This has a negative effect on data quality there. The errors
 for air further below flight altitude and closer to the centre of the hexagon should therefore be more accurate.

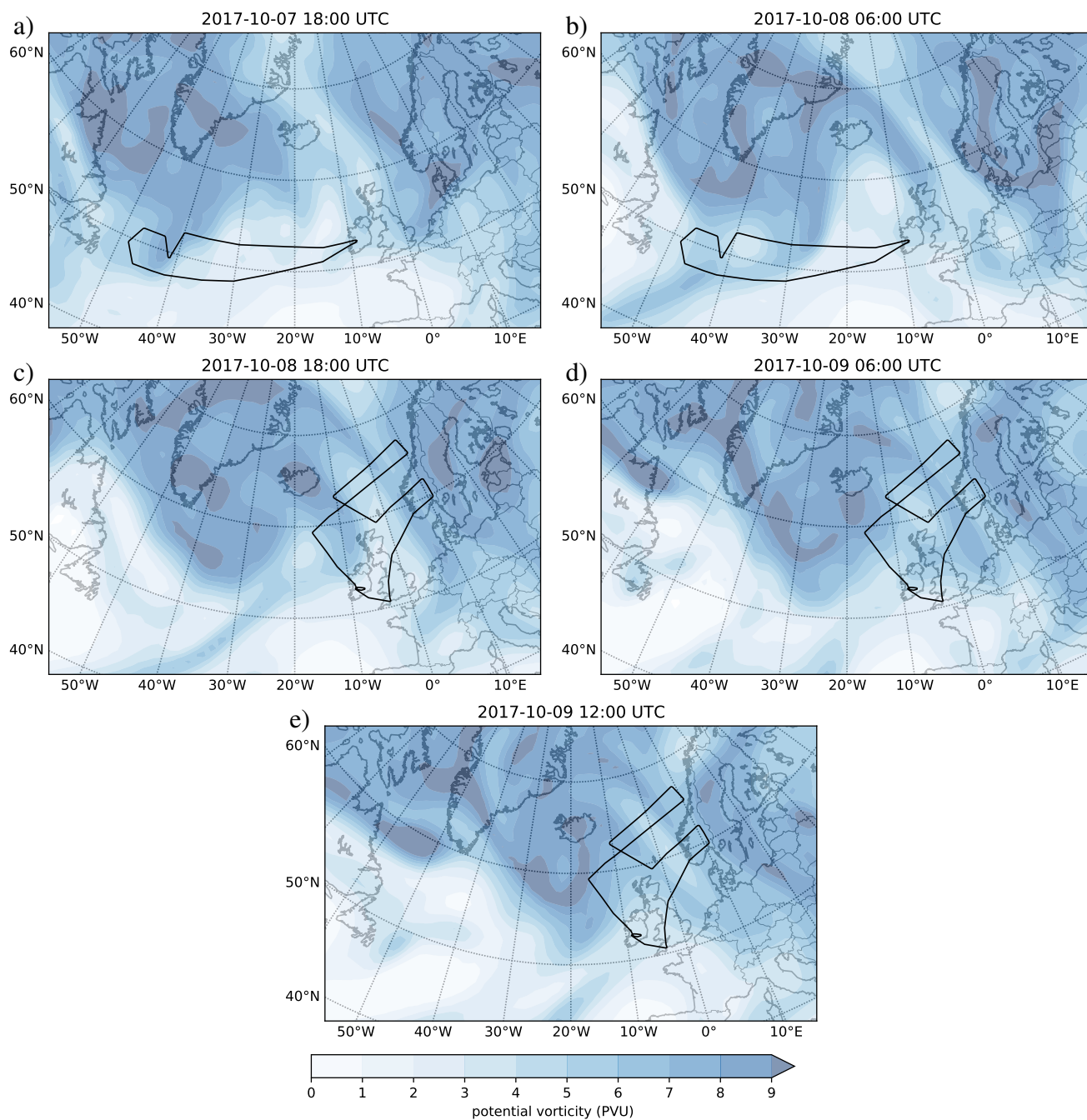


Figure D1. Potential vorticity at 340 K potential temperature level. Black lines show flight paths.

Author contributions. PP, MR, FP and BV contributed to flight planning. FFV coordinated GLORIA operations. JU performed the level 1 data processing and prepared the 2-D GLORIA data products. LK prepared the 3-D GLORIA data products, performed backward trajectory analysis, tracer correlation analysis and wrote most of the manuscript. AZ provided the ozone data. CR provided FISH data. HZ provided the NO_y and NO data used as a proxy for HNO₃. PP, JU, FP, PK, MR, CR and BV contributed many ideas for towards the different aspects of data analysis and interpretation. All authors commented on the paper and helped to improve it.

Competing interests. The authors declare that they have no conflict of interest.

Financial support. Lukas Krasauskas was partly funded by the German Science Foundation (Deutsche Forschungsgemeinschaft, DFG) under the DFG project AMOS (HALO-SPP 1294/VO 1276/5-1). The WISE campaign was supported by the German Research Foundation (Deutsche Forschungsgemeinschaft, DFG Priority Program SPP 1294).

Acknowledgements. The authors gratefully acknowledge the computing time granted through JARA on the supercomputer JURECA at Forschungszentrum Jülich. The European Centre for Medium-Range Weather Forecasts (ECMWF) is acknowledged for meteorological data support. Blitzortung.org and contributors and LightningMaps.org are credited for the lightning data. The authors especially thank the GLORIA team, including the institutes ZEA-1, ZEA-2 at Forschungszentrum Jülich and the institute for Data Processing and Electronics at the Karlsruhe Institute of Technology, for their great work during the WISE campaign on which all the data in this paper are based. We would also like to thank the WISE flight planning team as well as the pilots and the ground support team at the Flight Experiments facility of the Deutsches Zentrum für Luft- und Raumfahrt (DLR-FX).

References

- Bacmeister, J. T., Küll, V., Offermann, D., Riese, M., and Elkins, J. W.: Intercomparison of satellite and aircraft observations of ozone, CFC-11, and NO_y using trajectory mapping, *J. Geophys. Res.*, 104, 16 379–16 390, <https://doi.org/10.1029/1999JD900173>, 1999.
- 520 Curtis, A. R.: Discussion of 'A statistical model for water vapour absorption' by R. M. Goody, *Quart. J. Roy. Meteorol. Soc.*, 78, 638–640, 1952.
- Dee, D. P., Uppala, S. M., Simmons, A. J., Berrisford, P., Poli, P., Kobayashi, S., Andrae, U., Balmaseda, M. A., Balsamo, G., Bauer, P., Bechtold, P., Beljaars, A. C. M., van de Berg, L., Bidlot, J., Bormann, N., Delsol, C., Dragani, R., Fuentes, M., Geer, A. J., Haimberger, L., Healy, S. B., Hersbach, H., Hølm, E. V., Isaksen, I., Kållberg, P., Köhler, M., Matricardi, M., McNally, A. P., Monge-Sanz, B. M., Morcrette, J.-J., Park, B.-K., Peubey, C., de Rosnay, P., Tavolato, C., Thépaut, J.-N., and Vitart, F.: The ERA-Interim reanalysis: configuration and performance of the data assimilation system, *Quart. J. Roy. Meteorol. Soc.*, 137, 553–597, <https://doi.org/10.1002/qj.828>, 2011.
- 525 Forster, P. M. d. F. and Shine, K. P.: Radiative forcing and temperature trends from stratospheric ozone changes, *J. Geophys. Res.*, 102, 10 841–10 855, <https://doi.org/10.1029/96JD03510>, 1997.
- Friedl-Vallon, F., Gulde, T., Hase, F., Kleinert, A., Kulesa, T., Maucher, G., Neubert, T., Olschewski, F., Piesch, C., Preusse, P., Rongen, H., Sartorius, C., Schneider, H., Schönfeld, A., Tan, V., Bayer, N., Blank, J., Dapp, R., Ebersoldt, A., Fischer, H., Graf, F., Guggenmoser, T., Höpfner, M., Kaufmann, M., Kretschmer, E., Latzko, T., Nordmeyer, H., Oelhaf, H., Orphal, J., Riese, M., Schardt, G., Schillings, J., Sha, M. K., Suminska-Ebersoldt, O., and Ungermann, J.: Instrument concept of the imaging Fourier transform spectrometer GLORIA, *Atmos. Meas. Tech.*, 7, 3565–3577, <https://doi.org/10.5194/amt-7-3565-2014>, 2014.
- 530 Garcia, R. R., Marsh, D., Kinnison, D. E., Boville, B., and Sassi, F.: Simulations of secular trends in the middle atmosphere 1950–2003, *J. Geophys. Res.*, 112, D09 301, <https://doi.org/10.1029/2006JD007485>, 2007.
- Gettelman, A., Hoor, P., Pan, L. L., Randel, W. J., Hegglin, M. I., and Birner, T.: The extra tropical upper troposphere and lower stratosphere, *Rev. Geophys.*, 49, RG3003, <https://doi.org/10.1029/2011RG000355>, 2011.
- Godson, W. L.: The evaluation of infra-red radiative fluxes due to atmospheric water vapour, *Quart. J. Roy. Meteorol. Soc.*, 79, 367–379, 1953.
- 540 Gordley, L. L. and Russell, J. M.: Rapid inversion of limb radiance data using an emissivity growth approximation, *Appl. Optics*, 20, 807–813, <https://doi.org/10.1364/AO.20.000807>, 1981.
- Günther, G., Müller, R., von Hobe, M., Stroh, F., Konopka, P., and Volk, C. M.: Quantification of transport across the boundary of the lower stratospheric vortex during Arctic winter 2002/2003, *Atmospheric Chemistry and Physics*, 8, 3655–3670, <https://doi.org/10.5194/acp-8-3655-2008>, <https://www.atmos-chem-phys.net/8/3655/2008/>, 2008.
- 545 Haynes, P. and Anglade, J.: The vertical scale cascade in atmospheric tracers due to large-scale differential advection, *J. Atmos. Sci.*, 54, 1121–1136, 1997.
- Hegglin, M. I., Gettelman, A., Hoor, P., Krichevsky, R., Manney, G., Pan, L. L., Son, S.-W., Stiller, G., Tilmes, S., Walker, K. A., Eyring, V., Shepherd, T. G., Waugh, D., Akiyoshi, H., Anel, J. A., Austin, J., Baumgaertner, A., Bekki, S., Braesicke, P., Brühl, C., Butchart, N., Chipperfield, M., Dhomse, S., Frith, S., Garny, H., Hardiman, S., Jöckel, P., Kinnison, D., Lamarque, J., Mancini, E., Michou, M., Morgenstern, O., Nakamura, T., Olivieri, D., Pawson, S., Pitari, G., Plummer, D., Pyle, J., Rozanov, E., Scinocca, J., Shibata, K., Smeate, D., Teyssède, H., Tian, W., and Yamashita, Y.: Multimodel assessment of the upper troposphere and lower stratosphere: Extratropics, *J. Geophys. Res.*, 115, D00M09, <https://doi.org/10.1029/2010JD013884>, 2010.
- 550

- Hestenes, M. R. and Stiefel, E.: Methods of conjugate gradients for solving linear systems, *J Res NIST*, 49, 409–436, <https://doi.org/10.6028/jres.049.044>, <http://dx.doi.org/10.6028/jres.049.044>, 1952.
- 555 Hoffmann, L., Kaufmann, M., Spang, R., Müller, R., Remedios, J. J., Moore, D. P., Volk, C. M., von Clarmann, T., and Riese, M.: Envisat MIPAS measurements of CFC-11: retrieval, validation, and climatology, *Atmos. Chem. Phys.*, 8, 3671–3688, <https://doi.org/10.1016/j.asr.2005.03.112>, 2008.
- Holton, J. R., Haynes, P. H., McIntyre, M. E., Douglass, A. R., Rood, R. B., and Pfister, L.: Stratosphere-Troposphere Exchange, *Rev. Geophys.*, 33, 403–439, 1995.
- 560 Hoor, P., Fischer, H., Lange, L., Lelieveld, J., and Brunner, D.: Seasonal variations of a mixing layer in the lowermost stratosphere as identified by the CO-O₃ correlation from in situ measurements, *J. Geophys. Res.*, 107, 4004, <https://doi.org/10.1029/2000JD000289>, 2002.
- Hoor, P., Gurk, C., Brunner, D., Hegglin, M. I., Wernli, H., and Fischer, H.: Seasonality and extent of extratropical TST derived from in-situ CO measurements during SPURT, *Atmos. Chem. Phys.*, 4, 1427–1442, <https://doi.org/10.5194/acp-4-1427-2004>, 2004.
- Jaeglé, L., Jacob, D. J., Wang, Y., Weinheimer, A. J., Ridley, B. A., Campos, T. L., Sachse, G. W., and Hagen, D. E.: Sources and chemistry of
- 565 NO_x in the upper troposphere over the United States, *Geophysical Research Letters*, 25, 1705–1708, <https://doi.org/10.1029/97GL03591>, <https://agupubs.onlinelibrary.wiley.com/doi/abs/10.1029/97GL03591>, 1998.
- Juckes, M. N. and McIntyre, M. E.: A high-resolution one-layer model of breaking planetary waves in the stratosphere, *Nature*, 328, 590–595, 1987.
- Konopka, P. and Pan, L. L.: On the mixing-driven formation of the Extratropical Transition Layer (ExTL), *J. Geophys. Res.*, 117, D18 301, <https://doi.org/10.1029/2012JD017876>, 2012.
- 570 Krasauskas, L., Ungermann, J., Ensmann, S., Krisch, I., Kretschmer, E., Preusse, P., and Riese, M.: 3-D tomographic limb sounder retrieval techniques: irregular grids and Laplacian regularisation, *Atmos. Meas. Tech.*, 12, 853–872, <https://doi.org/10.5194/amt-12-853-2019>, <https://www.atmos-meas-tech.net/12/853/2019/>, 2019.
- Krisch, I., Preusse, P., Ungermann, J., Dörnbrack, A., Eckermann, S. D., Ern, M., Friedl-Vallon, F., Kaufmann, M., Oelhaf, H., Rapp, M.,
- 575 Strube, C., and Riese, M.: First tomographic observations of gravity waves by the infrared limb imager GLORIA, *Atmos. Chem. Phys.*, 17, 14 937–14 953, <https://doi.org/10.5194/acp-17-14937-2017>, 2017.
- Kritz, M. A., Rosner, S. W., Danielsen, E. F., and Selkirk, H. B.: Air mass origins and troposphere-to-stratosphere exchange associated with mid-latitude cyclogenesis and tropopause folding inferred from 7Be measurements, *Journal of Geophysical Research: Atmospheres*, 96, 17 405–17 414, <https://doi.org/https://doi.org/10.1029/91JD01358>, <https://agupubs.onlinelibrary.wiley.com/doi/abs/10.1029/91JD01358>,
- 580 1991.
- Kunz, A., Konopka, P., Müller, R., and Pan, L. L.: Dynamical tropopause based on isentropic potential vorticity gradients, *J. Geophys. Res.*, 116, D01 110, <https://doi.org/10.1029/2010JD014343>, 2011.
- Kunz, A., Sprenger, M., and Wernli, H.: Climatology of potential vorticity streamers and associated isentropic transport pathways across PV gradient barriers, *J. Geophys. Res.*, 120, 3802–3821, <https://doi.org/10.1002/2014JD022615>, 2014JD022615, 2015.
- 585 Li, D., Vogel, B., Müller, R., Bian, J., Günther, G., Li, Q., Zhang, J., Bai, Z., Vömel, H., and Riese, M.: High tropospheric ozone in Lhasa within the Asian summer monsoon anticyclone in 2013: influence of convective transport and stratospheric intrusions, *Atmospheric Chemistry and Physics*, 18, 17 979–17 994, <https://doi.org/10.5194/acp-18-17979-2018>, <https://acp.copernicus.org/articles/18/17979/2018/>, 2018.
- Marquardt, D. W.: An algorithm for least-squares estimation of nonlinear parameters, *J. Soc. Ind. Appl. Math.*, 11, 431–441, 1963.
- 590 McIntyre, M. E. and Palmer, T. N.: Breaking planetary waves in the stratosphere, *Nature*, 305, 593–600, 1983.

- McIntyre, M. E. and Palmer, T. N.: The “surf zone” in the stratosphere, *J. Atm. Terr. Phys.*, 46, 825–849, 1984.
- Meyer, J., Rolf, C., Schiller, C., Rohs, S., Spelten, N., Afchine, A., Zöger, M., Sitnikov, N., Thornberry, T. D., Rollins, A. W., Bozoki, Z., Tatrai, D., Ebert, V., Kühnreich, B., Mackrodt, P., Möhler, O., Saathoff, H., Rosenlof, K. H., and Krämer, M.: Two decades of water vapor measurements with the FISH fluorescence hygrometer: a review, *Atmos. Chem. Phys.*, 15, 8521–8538, <https://doi.org/10.5194/acp-15-8521-2015>, 2015.
- Narita, T., Wanke, E., Sato, M., Sakanoi, T., Kumada, A., Kamogawa, M., Hirohiko, I., Harada, S., Kameda, T., Tsuchiya, F., and Kaneko, E.: A study of lightning location system (Blitz) based on VLF sferics, 2018 34th International Conference on Lightning Protection (ICLP), pp. 1–7, 2018.
- Nesbitt, S., Zhang, R., and Orville, R.: Seasonal and global NO_x production by lightning estimated from the Optical Transient Detector (OTD), *Tellus B*, 52, 1206 – 1215, <https://doi.org/10.1034/j.1600-0889.2000.01121.x>, 2000.
- Pan, L. L., Randel, W. J., Gary, B. L., Mahoney, M. J., and Hints, E. J.: Definitions and sharpness of the extratropical tropopause: A trace gas perspective, *J. Geophys. Res.*, 109, D23 103, <https://doi.org/10.1029/2004JD004982>, 2004.
- Pan, L. L., Randel, W. J., Gille, J. C., Hall, W. D., Nardi, B., Massie, S., Yudin, V., Khosravi, R., Konopka, P., and Tarasick, D.: Tropospheric intrusions associated with the secondary tropopause, *J. Geophys. Res. Atmos.*, 114, <https://doi.org/10.1029/2008JD011374>, 2009.
- Ploeger, F., Konopka, P., Müller, R., Günther, G., Grooss, J.-U., Schiller, C., Ravegnani, F., Ulanovski, A., and Riese, M.: Back-trajectory reconstruction of water vapour and ozone in-situ observations in the TTL, *Meteorologische Zeitschrift*, 21, 239–244, <https://doi.org/10.1127/0941-2948/2012/0314>, <http://dx.doi.org/10.1127/0941-2948/2012/0314>, 2012.
- Polvani, L. M. and Plumb, R. A.: Rossby Wave Breaking, Microbreaking, Filamentation, and Secondary Vortex Formation: The Dynamics of a Perturbed Vortex, *J. Atmos. Sci.*, 49, 462–476, 1992.
- Pommrich, R., Müller, R., Groß, J.-U., Konopka, P., Ploeger, F., Vogel, B., Tao, M., Hoppe, C. M., Günther, G., Spelten, N., Hoffmann, L., Pumphrey, H.-C., Viciani, S., D’Amato, F., Volk, C. M., Hoor, P., Schlager, H., and Riese, M.: Tropical troposphere to stratosphere transport of carbon monoxide and long-lived trace species in the Chemical Lagrangian Model of the Stratosphere (CLaMS), *Geosci. Model Dev.*, 7, 2895–2916, <https://doi.org/10.5194/gmd-7-2895-2014>, <http://www.geosci-model-dev.net/7/2895/2014/>, 2014.
- Popp, P. J., Marcy, T. P., Gao, R. S., Watts, L. A., Fahey, D. W., Richard, E. C., Oltmans, S. J., Santee, M. L., Livesey, N. J., Froidevaux, L., Sen, B., Toon, G. C., Walker, K. A., Boone, C. D., and Bernath, P. F.: Stratospheric correlation between nitric acid and ozone, *Journal of Geophysical Research: Atmospheres*, 114, <https://doi.org/10.1029/2008JD010875>, <https://agupubs.onlinelibrary.wiley.com/doi/abs/10.1029/2008JD010875>, 2009.
- Price, C., Penner, J., and Prather, M.: NO_x from lightning: 1. Global distribution based on lightning physics, *Journal of Geophysical Research: Atmospheres*, 102, 5929–5941, <https://doi.org/10.1029/96JD03504>, <https://agupubs.onlinelibrary.wiley.com/doi/abs/10.1029/96JD03504>, 1997.
- Proffitt, M. H., Margitan, J. J., Kelly, K. K., Loewenstein, M., Pdolske, J. R., and Chan, K. R.: Ozone loss in the Arctic polar vortex inferred from high-altitude aircraft measurements, *Nature*, 347, 31–36, 1990.
- Riese, M., Friedl-Vallon, F., Spang, R., Preusse, P., Schiller, C., Hoffmann, L., Konopka, P., Oelhaf, H., von Clarmann, T., and Höpfner, M.: GLObal limb Radiance Imager for the Atmosphere (GLORIA): Scientific objectives, *Adv. Space Res.*, 36, 989–995, <https://doi.org/10.1016/j.asr.2005.04.115>, 2005.
- Riese, M., Ploeger, F., Rap, A., Vogel, B., Konopka, P., Dameris, M., and Forster, P.: Impact of uncertainties in atmospheric mixing on simulated UTLS composition and related radiative effects, *J. Geophys. Res. Atmos.*, 117, n/a–n/a, <https://doi.org/10.1029/2012JD017751>, 2012.

- Rolf, C., Afchine, A., Bozem, H., Buchholz, B., Ebert, V., Guggenmoser, T., Hoor, P., Konopka, P., Kretschmer, E., Müller, S., Schlager, H., Spelten, N., Sumińska-Ebersoldt, O., Ungermann, J., Zahn, A., and Krämer, M.: Transport of Antarctic stratospheric strongly dehydrated air into the troposphere observed during the HALO-ESMVal campaign 2012, *Atmos. Chem. Phys.*, 15, 9143–9158, <https://doi.org/10.5194/acp-15-9143-2015>, 2015.
- Salby, M.: Survey of planetary-scale traveling waves - the state of theory and observations, *Rev. Geophys.*, 22, 209–236, <https://doi.org/10.1029/RG022i002p00209>, 1984.
- Schiller, C., Grooß, J.-U., Konopka, P., Plöger, F., Silva dos Santos, F. H., and Spelten, N.: Hydration and dehydration at the tropical tropopause, *Atmos. Chem. Phys.*, 9, 9647–9660, <https://doi.org/10.5194/acp-9-9647-2009>, 2009.
- Scott, R. and Cammas, J.: Wave breaking and mixing at the subtropical tropopause, *Journal of the atmospheric sciences*, 59, 2347–2361, 2002.
- Shapiro, M. A.: Turbulent mixing within tropopause folds as a mechanism for the exchange of chemical constituents between the stratosphere and troposphere, *J. Atmos. Sci.*, 37, 994–1004, [https://doi.org/10.1175/1520-0469\(1980\)037<0994:TMWTFA>2.0.CO;2](https://doi.org/10.1175/1520-0469(1980)037<0994:TMWTFA>2.0.CO;2), 1980.
- Tie, X., Zhang, R., Brasseur, G., Emmons, L., and Lei, W.: Effects of lightning on reactive nitrogen and nitrogen reservoir species in the troposphere, *Journal of Geophysical Research: Atmospheres*, 106, 3167–3178, <https://doi.org/10.1029/2000JD900565>, <https://agupubs.onlinelibrary.wiley.com/doi/abs/10.1029/2000JD900565>, 2001.
- Ungermann, J.: Improving retrieval quality for airborne limb-sounders by horizontal regularisation, *Atmos. Meas. Tech.*, 6, 15–32, <https://doi.org/10.5194/amt-6-15-2013>, 2013.
- Ungermann, J., Kaufmann, M., Hoffmann, L., Preusse, P., Oelhaf, H., Friedl-Vallon, F., and Riese, M.: Towards a 3-D tomographic retrieval for the air-borne limb-imager GLORIA, *Atmos. Meas. Tech.*, 3, 1647–1665, <https://doi.org/10.5194/amt-3-1647-2010>, 2010.
- Ungermann, J., Blank, J., Lotz, J., Leppkes, K., Hoffmann, L., Guggenmoser, T., Kaufmann, M., Preusse, P., Naumann, U., and Riese, M.: A 3-D tomographic retrieval approach with advection compensation for the air-borne limb-imager GLORIA, *Atmos. Meas. Tech.*, 4, 2509–2529, <https://doi.org/10.5194/amt-4-2509-2011>, <http://www.atmos-meas-tech.net/4/2509/2011/>, 2011.
- Ungermann, J., Kalicinsky, C., Olschewski, F., Knieling, P., Hoffmann, L., Blank, J., Woiwode, W., Oelhaf, H., Hösen, E., Volk, C. M., Ulanovsky, A., Ravegnani, F., Weigel, K., Stroh, F., and Riese, M.: CRISTA-NF measurements with unprecedented vertical resolution during the RECONCILE aircraft campaign, *Atmos. Meas. Tech.*, 5, 1173–1191, <https://doi.org/10.5194/amt-5-1173-2012>, 2012.
- Vogel, B., Pan, L. L., Konopka, P., Günther, G., Müller, R., Hall, W., Campos, T., Pollack, I., Weinheimer, A., Wei, J., Atlas, E. L., and Bowman, K. P.: Transport pathways and signatures of mixing in the extratropical tropopause region derived from Lagrangian model simulations, *J. Geophys. Res.*, 116, <https://doi.org/10.1029/2010JD014876>, 2011.
- Vogel, B., Günther, G., Müller, R., Grooß, J.-U., Hoor, P., Krämer, M., Müller, S., Zahn, A., and Riese, M.: Fast transport from Southeast Asia boundary layer sources to northern Europe: rapid uplift in typhoons and eastward eddy shedding of the Asian monsoon anticyclone, *Atmos. Chem. Phys.*, 14, 12 745–12 762, <https://doi.org/10.5194/acp-14-12745-2014>, 2014.
- Vogel, B., Günther, G., Müller, R., Grooß, J.-U., Afchine, A., Bozem, H., Hoor, P., Krämer, M., Müller, S., Riese, M., Rolf, C., Spelten, N., Stiller, G. P., Ungermann, J., and Zahn, A.: Long-range transport pathways of tropospheric source gases originating in Asia into the northern lower stratosphere during the Asian monsoon season 2012, *Atmos. Chem. Phys.*, 16, 15 301–15 325, <https://doi.org/10.5194/acp-16-15301-2016>, 2016.
- Waugh, D., Plumb, R., Atkinson, R., Schoeberl, M., Lait, L., Newman, P., Loewenstein, M., Toohey, D., Avallone, L., Webster, C., et al.: Transport out of the lower stratospheric Arctic vortex by Rossby wave breaking, *Journal of Geophysical Research: Atmospheres*, 99, 1071–1088, 1994.

- Weinreb, M. P. and Neuendorffer, A. C.: Method to Apply Homogeneous-path Transmittance Models to Inhomogeneous Atmospheres, *J. Atmos. Sci.*, 30, 662–666, [https://doi.org/10.1175/1520-0469\(1973\)030<0662:MTAHPT>2.0.CO;2](https://doi.org/10.1175/1520-0469(1973)030<0662:MTAHPT>2.0.CO;2), 1973.
- 670 Zahn, A., Weppner, J., Widmann, H., Schlote-Holubek, K., Burger, B., Kühner, T., and Franke, H.: A fast and precise chemiluminescence ozone detector for eddy flux and airborne application, *Atmos. Meas. Tech.*, 5, 363–375, <https://doi.org/10.5194/amt-5-363-2012>, 2012.
- Zhang, R., Sanger, N. T., Orville, R. E., Tie, X., Randel, W., and Williams, E. R.: Enhanced NO_x by lightning in the upper troposphere and lower stratosphere inferred from the UARS Global NO₂ measurements, *Geophysical Research Letters*, 27, 685–688, <https://doi.org/10.1029/1999GL010903>, <https://agupubs.onlinelibrary.wiley.com/doi/abs/10.1029/1999GL010903>, 2000.
- 675 Zhang, R., Tie, X., and Bond, D. W.: Impacts of anthropogenic and natural NO_x sources over the U.S. on tropospheric chemistry, *Proceedings of the National Academy of Sciences*, 100, 1505–1509, <https://doi.org/10.1073/pnas.252763799>, <https://www.pnas.org/content/100/4/1505>, 2003.
- Ziereis, H., Minikin, A., Schlager, H., Gayet, J. F., Auriol, F., Stock, P., Baehr, J., Petzold, A., Schumann, U., Weinheimer, A., Riddle, B., and Ström, J.: Uptake of reactive nitrogen on cirrus cloud particles during INCA, *Geophysical Research Letters*, 31, <https://doi.org/10.1029/2003GL018794>, <https://agupubs.onlinelibrary.wiley.com/doi/abs/10.1029/2003GL018794>, 2004.